



## The NANOTUMOR consortium - Towards the Tumor Cell Atlas

Florent Colin, Kristine Schauer, Ali Hamiche, Pierre Martineau, Jean-Paul Borg, Jan Bednar, Giulia Bertolin, Luc Camoin, Yves Collette, Stephan Dimitrov, et al.

### ► To cite this version:

Florent Colin, Kristine Schauer, Ali Hamiche, Pierre Martineau, Jean-Paul Borg, et al.. The NANOTUMOR consortium - Towards the Tumor Cell Atlas. *Biology of the Cell*, 2021, 113 (6), pp.272-280. 10.1111/boc.202000135 . hal-03169719

**HAL Id: hal-03169719**

**<https://hal.science/hal-03169719>**

Submitted on 29 Mar 2021

**HAL** is a multi-disciplinary open access archive for the deposit and dissemination of scientific research documents, whether they are published or not. The documents may come from teaching and research institutions in France or abroad, or from public or private research centers.

L'archive ouverte pluridisciplinaire **HAL**, est destinée au dépôt et à la diffusion de documents scientifiques de niveau recherche, publiés ou non, émanant des établissements d'enseignement et de recherche français ou étrangers, des laboratoires publics ou privés.

The NANOTUMOR consortium - towards the Tumor Cell Atlas.

Florent Colin<sup>1</sup>, Kristine Schauer<sup>2</sup>, Ali Hamiche<sup>3</sup>, Pierre Martineau<sup>4</sup>, Jean-Paul Borg<sup>5,6</sup>, Jan Bednar<sup>7</sup>, Guilia Bertolin<sup>8</sup>, Luc Camoin<sup>5</sup>, Yves Collette<sup>5</sup>, Stephan Dimitrov<sup>7</sup>, Isabelle Fournier<sup>9,6</sup>, Vincent Hyenne<sup>1</sup>, Marco A. Mendoza-Parra<sup>10</sup>, Xavier Morelli<sup>5</sup>, Philippe Rondé<sup>11</sup>, Izabela Sumara<sup>5</sup>, Marc Tramier<sup>8</sup>, Patrick Schultz<sup>3‡</sup>, Jacky G. Goetz<sup>1‡</sup>

# Affiliations:

<sup>1</sup> INSERM UMR\_S1109, Tumor Biomechanics Lab, Université de Strasbourg, Fédération de Médecine Translationnelle de Strasbourg (FMTS), CNRS SNC5055, F-67000 Strasbourg, France.

<sup>2</sup> CNRS UMR144, Molecular Mechanisms of Intracellular Transport group, Institut Curie, 75005 Paris, France; PSL Research University, Paris, France; Sorbonne Université, Paris, France

<sup>3</sup> Institut de Génétique et de Biologie Moléculaire et Cellulaire (IGBMC), CNRS UMR7104, INSERM U1258, Université de Strasbourg, 67400 Illkirch, France

<sup>4</sup> Institut de Recherche en Cancérologie de Montpellier (IRCM), INSERM U1194, Université de Montpellier, Institut régional du Cancer de Montpellier (ICM), Montpellier, France

<sup>5</sup> Centre de Recherche en Cancérologie de Marseille (CRCM), INSERM UMR1068, CNRS UMR7258, Aix Marseille Université, Institut Paoli Calmettes, Marseille Proteomique, Marseille France.

<sup>6</sup> Institut Universitaire de France (IUF), 75005, Paris, France

<sup>7</sup> Institute for Advanced Biosciences (IAB), Université Grenoble Alpes, CNRS UMR5309, INSERM U1209, 38700 La Tronche, France

<sup>8</sup> Genetics and Development Institute of Rennes (IGDR), CNRS UMR6290, Université de Rennes, F-35000 Rennes, France

<sup>9</sup> INSERM U1192 - Protéomique Réponse Inflammatoire Spectrométrie de Masse (PRISM), Université de Lille, Centre Hospitalier Universitaire (CHU) de Lille, F-59000 Lille, France.

<sup>10</sup> UMR8030 Génomique Métabolique, Genoscope, Institut François Jacob, CEA, CNRS, University of Evry-val-d'Essonne, University Paris-Saclay, 91057 Évry, France

<sup>11</sup> Faculté de Pharmacie, Université de Strasbourg, 67401 Illkirch, France ; CNRS UMR7021, Laboratoire de Bioimagerie et Pathologies, 67401 Illkirch, France.

<sup>‡</sup> Consortium coordination; correspondence: jacky.goetz@inserm.fr & patrick.schultz@igbmc.fr; @nanotumor; [www.nanotumor.fr](http://www.nanotumor.fr)

This article has been accepted for publication and undergone full peer review but has not been through the copyediting, typesetting, pagination and proofreading process, which may lead to differences between this version and the [Version of Record](#). Please cite this article as [doi: 10.1111/boc.202000135](https://doi.org/10.1111/boc.202000135).

## Abstract

Cancer is a multi-step disease where an initial tumor progresses through critical steps shaping, in most cases, life-threatening secondary foci called metastases. The oncogenic cascade involves genetic, epigenetic, signaling pathways, intracellular trafficking and/or metabolic alterations within cancer cells. In addition, pre-malignant and malignant cells orchestrate complex and dynamic interactions with non-malignant cells and acellular matricial components or secreted factors within the tumor microenvironment that is instrumental in the progression of the disease. As our aptitude to effectively treat cancer mostly depends on our ability to decipher, properly diagnose and impede cancer progression and metastasis formation, full characterization of molecular complexes and cellular processes at play along the metastasis cascade is crucial. For many years, the scientific community lacked adapted imaging and molecular technologies to accurately dissect, at the highest resolution possible, tumor and stromal cells behavior within their natural microenvironment. In that context, the NANOTUMOR consortium is a French national multi-disciplinary workforce which aims at providing a multi-scale characterization of the oncogenic cascade, from the atomic level to the dynamic organization of the cell in response to genetic mutations, environmental changes or epigenetic modifications. Ultimately, this program aims at identifying new therapeutic targets using innovative drug design.

## Introduction

The cellular organization and organelle morphology reflect the integrated action of the expressed proteins directed by the genetic and epigenetic program of a given cell type. The cellular ultrastructure is affected by metabolic or pathologic changes and therefore informs us about the physio-pathological state of the cell. Deciphering the links between genetic alteration, cell morphology and disease progression could therefore help to establish a diagnosis and/or determine the stage of a large number of human diseases and in particular in cancer (Rozenblatt-Rosen et al., 2020), which is the focus of the NANOTUMOR consortium (**Figure 1**).. The pathway between one – or a collection of – point mutation(s) identified in a patient affected by cancer to the actual cellular defect is often not straightforward. Indeed, cells behave like multicomponent networks in which the alteration of one or several

component(s) may have distal, antagonist or synergic effects which are difficult to predict. Thus, an adequate cure might not be to replace the exact function of the altered protein(s), but to remedy more general downstream effects that may be revealed by cell morphology alterations. Consequently, an atlas of normal and cancer cell morphologies throughout the oncogenic cascade may guide researchers and clinicians towards altered pathways for which treatments exist.

A major goal of the NANOTUMOR Consortium (**Figure 1**) is thus to provide the nanoscale and molecular maps of cancer cells, at different steps of the metastasis cascade, from tumor initiation to metastasis formation. Our ambition is to provide high-resolution characterization of subcellular processes and cellular organelles, within tumor cells. Cells are occupied by numerous organelles which carry important cellular functions and are constantly remodeled to exchange molecules and carry out important cellular functions. In addition, being responsible for the viscoelastic properties of any cell (Pu et al., 2016) - and thereby of tumor cells as well -, these organelles are under extreme mechanical/metabolic stress when tumor cells are subjected to high compression or tension forces which they need to cope with during their metastatic journey (Gensbittel et al., 2020; van Bergeijk et al., 2016). Indeed, mechanical forces alter nuclear envelope structure and composition, chromatin organization and gene expression, which are likely to change the fate of cancer / metastatic cells (Reviewed in Gensbittel et al., 2020). A careful evaluation of the effect of mechanical forces, among other constraints, and metastatic steps on cellular organelles is crucial. Such information would allow to understand their effects on important organelle-carried cellular functions, in addition to identifying organelles and cytoskeletal elements that are responsible for rheological responses and differences. Furthermore, although cancer is a disease that actually covers a heterogeneous combinatorial spectrum of genetic and epigenetic alterations in various micro-environmental contexts, transformed cells are characterized by a handful of common mechanistic behaviors, such as stemness, proliferation and invasion. This leads to the assumption that modules that most likely present converging, significant and interpretable patterns in cancers may extend upwards in scale to include protein complexes, broad cellular processes, and in particular organelles. A major aim of our program is thus to shed light on the alterations of intracellular organelles during cancer progression and to use this higher order modules to delineate mechanisms

driving tumorigenesis. We aim at establishing an unprecedented top-down strategy to stratify protein networks driving cancer and exploit key protein interactions and complexes for vulnerabilities of therapeutic relevance. Once protein networks have been identified, we aim at purifying, characterizing and determining the atomic structure of molecular complexes involved in the cancer cascade. Recent progresses in mass molecular biology, spectrometry coupled to cross-linking or single particle cryo-EM opens the possibility to identify major cellular nano-machines in terms of protein composition, post-translational modifications, functional dissection, and determine atomic models of molecular assemblies of low cellular abundance. Such developments could, in the near future, be applied to samples coming from cancer patients but also offer the opportunity to determine a structural framework to explain the mode of action of these complexes, to shed light on their dysfunction in human diseases, and to describe in atomic details key molecular interactions that can be used for innovative drug design. We thus aim at describing the structural alterations and the modifications of the interaction partners induced during cancer disease progression and upon drug resistance. The biochemical and structural characterization of the cancer-induced alterations of molecular complexes needs to be validated *in vivo*. The structure of key protein-protein interfaces will be a powerful asset for *in-silico* drug design and purified complexes will be available for *in vitro* screening and lead optimization. In conclusion, the overarching objective of the NANOTUMOR project is to reach a higher level of integration and correlate mutations found in specific molecular complexes with the appearance of characteristic cellular morphological traits in order to explain the neoplastic transformations. We anticipate major insights into the underlying tumor biology allowing rational design of antitumor strategies.

### **NANOTUMOR consortium**

The NANOTUMOR consortium is establishing a new, transdisciplinary and collaborative community, structured around 4 work packages (WP) with specific objectives samples (**Figure 2**). These WP were designed and structured during initial steps of the construction of the consortium and thus represent integrated interests of the 13 selected partners, whose expertise are highly complementary (**Figure 3**). We aim at (WP1) isolating, characterizing the protein composition and determining the structure of key molecular complexes involved in cancer onset and progression, (WP2) quantifying alterations of intracellular organelles

during the cancer cascade and identifying and characterizing protein complexes that sustain oncogenic intracellular signature, (WP3) developing biosensors, protein and chemical inhibitors to characterize *in cellulo* the molecular or cellular targets and modifying their properties by targeted inhibitors, and finally at (WP4) validating the targeted candidate protein complexes *in vivo* on patients. The acronyms used in the following paragraphs are defined in **Table 1**.

**WP1: Molecular and structural study of keys protein complexes.** While cancer was originally mostly explained by accumulation of genetic abnormalities over time, including mutations in oncogenes and tumor-suppressor genes, it is now well accepted that cancer is also driven by epigenetic changes (Jones & Baylin, 2002; Jones & Laird, 1999). Epigenetic modifications are implemented by multi-subunit molecular machines, which integrate multiple enzymatic, regulatory and signaling functions. These machines are frequently mutated in cancer patients, such the three interlinked molecular complexes – namely H2A.Z and/or H3.3 containing complexes, the chromatin remodeling complex DAXX/ATRX, and the SWI/SNF complexes – that have been implicated in cancer onset, development and cancer drug resistance (Jiao et al., 2011; Kadoch & Crabtree, 2015; Schwartzentruber et al., 2012). A few challenges remain : studying the composition and interaction properties of these supramolecular complexes, determining their molecular architecture, and describing their cellular activity throughout the oncogenic cascade in order to understand their mechanisms of action. Moreover, it is essential to study and understand how mutations identified in cancer patients perturb these properties. One potent strategy to achieve these goals, and which will be undertaken within this WP, relies on purification of these molecular complexes and structural analysis that can be achieved through cryo-FIB-SEM. This approach will be complemented by state-of-the-art proximal interaction technologies (ie. using TurboID) coupled with mass spectrometry to determine the peripheral protein interaction networks. In addition, spatio-temporal single-cell OMICS will be used to monitor the transcriptional status upon complex modifications. These will also be implemented into model organisms and/or organoid cultures to test the epigenetic perturbations at different stages of cancer development or during resistance, notably in the context of pediatric glioblastoma which is at the heart of our efforts for WP1. From the study of these machineries, either involved or mutated in several cancer types, we expect to describe cancer-specific anomalies in their structure and activities. Moreover, our ambition is to identify epigenetic co-factors and

other interactors that sustain the epigenetic modifications in cancer and the alterations in cell cycle regulation. Improved target identification and established atomic structures will be instrumental for *in silico* design of protein-protein interaction inhibitors in WP3 (**Figure 2 – bottom-up**).

**WP2: Building an ultrastructural atlas of cancer cells.** In addition to studying changes in cancer that occur in the nucleus, an additional ambition of this project is to establish an atlas of alterations of key intracellular organelles during the cancer cascade based on the models most used by the members of the consortium, namely breast cancer, bladder cancer, and melanoma in WP2. The availability of cell lines, zebrafish, mouse, PDX models and patient biopsies for breast cancer through the consortium will make it the convergent cancer model across WP2, WP3 and WP4 in a later stage. Because organelles carry out distinct cellular functions, this knowledge will provide a framework to stratify cancer cell deregulations. Our idea is to perform an unprecedented top-down strategy going from cancerogenic organelle alterations (including positioning) to higher order protein complexes and their networks, and finally to specific druggable targets of therapeutic relevance (**Figure 2 – top-down**). Our objective is to first establish higher order organelle alterations as morphological signatures of cancer progression using an interdisciplinary toolkit of organelle tracking under controlled cell culture conditions based on micropatterning and electron microscopy methodologies such as intravital CLEM (Karreman et al., 2016) and FIB-SEM technologies (Spehner et al., 2020)) to build an atlas of micro-to-nano scale deformations. Using preliminary results from co-partners of the consortium, targeted organelles will include late endosome/lysosomes (LEL) in breast cancer, bladder cancer and melanoma cell lines. In later stages, the program aims at documenting additional organelles such as the nucleus, mitochondria, Golgi apparatus and centrosomes whose numbers, densities and morphologies are likely to be impacted and influential throughout cancer progression (Gensbittel et al., 2020). Identified alterations will guide us towards the molecular machineries/complexes that sustain higher order organelle alterations of cancer cells. Based on recently published work of the consortium (Ghoroghi et al., 2021), we have unanimously selected two GTPases of the Ral family (RalA and RalB) acting downstream of RAS, as proof of concept for the top-down efforts of WP2. More generally, potent approaches such as LOPIT (Geladaki et al., 2019; Mulvey et al., 2017) as well as proximal interaction technologies using TurboID coupled to mass spectrometry will allow the identification of

such complexes (Branon et al., 2018). Complementary, high-end dynamic light microscopy techniques such as FRET/FLIM (Bertolin et al., 2016) and space and time super-resolved imaging using like 3D-STORM will allow live and resolute tracking of these complexes and their interactions, and provide the technological backbone for the characterization of complexes identified by this top-down strategy. While the consortium is centered around the two axes represented by WP1 (structural and molecular analyses of complexes involved in cancer) and WP2 (ultrastructural mapping efforts on different cancers), two additional high-risk high-gain translational work-packages have been designed.

**WP3: develop & screen biosensors, protein and chemical inhibitors.** The identification of new therapeutic targets and specific inhibitors remains the key to develop new medicines (Swinney & Anthony, 2011). So far, all the methods used to reach these objectives employ a two-step process that either first identify a suitable target before designing or screening for chemical inhibitors, (WP3 bottom-up approach), or screen for inhibitors in a cellular system for a given phenotypic change and identify the drug target in a second stage (WP3 top-down approach). The main objective of the WP3 is to implement both approaches based on the results generated in WP1 and WP2. The high quality of the 3D structural characterizations of macromolecular complexes generated in WP1 will allow to implement bottom-up approaches to identify original protein-protein inhibitors that target the identified pathogenic protein-protein interactions. This will be initiated by a *in silico* docking and virtual screening of chemicals against these protein complexes protein-protein interface, and then evaluated *in vitro* by homogeneous time resolved fluorescence or ELISA. The identified hits will be then evaluated in a relevant cellular model (proliferation, invasion, migration, etc.) and allow to identify compounds that have an inhibitory effect. Eventually, in all cases, the effect of the chemical PPI will be fully characterized in cell lines (patient-derived cells when available) and in animal models. Efforts in WP1 and WP2 will be concentrated on a very small number of molecular complexes and emphasis is given to the exploration of the molecular mechanisms using a large panel of complementary methods. In addition, we will implement a top-down complementary approach based on genetically encoded protein inhibitor screens (intrabodies) to identify original targets and inhibitors that revert the cancer phenotype previously identified (WP2). We will start from a semi-targeted approach to generate a collection of intrabodies that will be tested in cells to narrow the diversity down to a small number of efficient inhibitors (Mazuc et al., 2014).



Such cellular screens will require the optimization of intrabody libraries, high throughput screening systems by FRET/FLIM, in-cell proteomics to identify and characterize the intrabody-induced disturbed protein networks before performing the PPI screening. The main advantage of this top-down approach is that the selection of the inhibitor intrabody facilitates the identification of the target. Indeed, the intrabody will serve as a traditional high affinity tool to perform immuno-precipitation, TurboID, chemical crosslinking and mass spectrometry analysis. In addition, the fact that the inhibitor is genetically encoded opens the way towards large scale screening of cell populations using cell sorting and next-generation sequencing (Mazuc et al., 2014). Since the implemented strategy will directly look at oncogenic-specific events identified in WP2 this strategy will confer a high degree of selectivity to the identified inhibitors for subsequent therapeutic developments.

**WP4: integrate and validate the targeted candidates *in vivo*.** An important aim of our program is to quickly validate our findings in cancer patient primary tissues (both *in vitro* and *in vivo*) such as for example through the use of established patient-derived xenograft (PDX) models in mouse or zebrafish. An exciting approach will be to define the spatial transcriptomics profile of primary tumors and metastatic evolution from animal model systems to link the behavior of cancer cells – in example adhesion or extravasation potential of circulating tumor cells – with their transcriptional program. We also ambition to validate whether the over- or under-expression of key proteins forming the complexes identified in previous WPs can be correlated with clinical features using human samples. Finally, it will be important to explore the therapeutic potency of drug inhibitors generated in WP3, alone or in combination with standard therapy, using established preclinical models. This WP will build on tissue microarrays and PDXs with defined molecular alterations and linked clinical records that are available within the consortium (Charafe-Jauffret et al., 2013).

### Partners and organization

The NANOTUMOR consortium network currently consist of 13 teams. These are spread over 10 different research units in France on 7 geographical sites and possess specific but very complementary expertises that shape into a highly complementary and multi-disciplinary network (**Figure 3**). The consortium is open to evolution in its composition and to welcome international partners in a co-funding strategy. In addition to a global management lead by two coordinators and project manager, each work-package is under the supervision of a

head (with help/support provided by a co-head). Interactions between teams and work-packages are optimized to take full advantage of the technical skills and solutions available in each group and at each site and also benefit from several long-term team interactions (**Figure 4**). This program is designed so that it allows the construction of a new french transdisciplinary community that – once we obtained sufficient preliminary results, increased our funding and attracted new international partners – interact and exchange with complementary and very large-scale initiatives such as the HTAN (Rozenblatt-Rosen et al., 2020).

### **Conclusions**

The ambition of the NANOTUMOR Consortium is not only to establish stable links between the different teams, but also to create a synergy around this common project, and to obtain key scientific results to pave the way for further funding applications. Through a very active communication strategy and the organization of NANOTUMOR events (such as meetings or conferences to be launched in 2021) focusing on the “Tumor Cell Atlas” concept, we wish to attract additional partners and support, locally or at the european and international level. Based on a strong technology background, the consortium should benefit from a leverage effect to create or strengthen existing infrastructures, to allow local researchers to initiate state-of-the-art projects with high-end technologies, and to develop new technologies for cancer research. Through the construction of a new community, where the search for complementary funding will be instrumental, we aim at studying cancer progression from a multi-disciplinary and multi-scale angle that will, hopefully, be beneficial to the patient.

### **Funding**

The NANOTUMOR consortium – of which this first stage will end in May 2023 – is funded by the Plan Cancer, with logistical support from Aviesan and ITMO Cancer and BMSV. It is subject to annual evaluation by an international committee.

### **Acknowledgments**

We are grateful to Aviesan and ITMO Cancer and BMSV for their trust and support. We thank all members of the NANOTUMOR Consortium Network and colleagues supporting the consortium (Michel Salzet, Etienne Coyaud & Marie-Dominique Gallibert), and the post-

doctoral fellows and engineers currently working directly for the consortium (Katerina Jerabkova, Avais Daulat, Hatem Salem). Thanks to Valentin Gensbittel for the help in formatting the images.

### Conflict of interest statement

No conflict of interest declared by the authors.

### References

- Bertolin, G., Sizaïre, F., Herbomel, G., Reboutier, D., Prigent, C., & Tramier, M. (2016). A FRET biosensor reveals spatiotemporal activation and functions of aurora kinase A in living cells. *Nature Communications*, 7(1), 12674. <https://doi.org/10.1038/ncomms12674>
- Branon, T. C., Bosch, J. A., Sanchez, A. D., Udeshi, N. D., Svinkina, T., Carr, S. A., Feldman, J. L., Perrimon, N., & Ting, A. Y. (2018). Efficient proximity labeling in living cells and organisms with TurboID. *Nature Biotechnology*, 36(9), 880–887. <https://doi.org/10.1038/nbt.4201>
- Charafe-Jauffret, E., Ginestier, C., Bertucci, F., Cabaud, O., Wicinski, J., Finetti, P., Josselin, E., Adelaide, J., Nguyen, T. T., Monville, F., Jacquemier, J., Thomassin-Piana, J., Pinna, G., Jalaguier, A., Lambaudie, E., Houvenaeghel, G., Xerri, L., Harel-Bellan, A., Chaffanet, M., ... Birnbaum, D. (2013). ALDH1-positive cancer stem cells predict engraftment of primary breast tumors and are governed by a common stem cell program. *Cancer Research*, 73(24), 7290–7300. <https://doi.org/10.1158/0008-5472.CAN-12-4704>
- Geladaki, A., Kočevár Britovšek, N., Breckels, L. M., Smith, T. S., Vennard, O. L., Mulvey, C. M., Crook, O. M., Gatto, L., & Lilley, K. S. (2019). Combining LOPIT with differential ultracentrifugation for high-resolution spatial proteomics. *Nature Communications*, 10(1), 331. <https://doi.org/10.1038/s41467-018-08191-w>
- Gensbittel, V., Kräter, M., Harlepp, S., Busnelli, I., Guck, J., & Goetz, J. G. (2020). Mechanical Adaptability of Tumor Cells in Metastasis. *Developmental Cell*, 2020, 1–16. <https://doi.org/10.1016/j.devcel.2020.10.011>
- Ghoroghi, S., Mary, B., Larnicol, A., Asokan, N., Klein, A., Osmani, N., Busnelli, I., Delalande, F., Paul, N., Halary, S., Gros, F., Fouillen, L., Haeberle, A.-M., Royer, C., Spiegelhalter, C., André-Grégoire, G., Mittelheisser, V., Detappe, A., Murphy, K., ... Hyenne, V. (2021). Ral GTPases promote breast cancer metastasis by controlling biogenesis and organ targeting of exosomes. *ELife*, 10. <https://doi.org/10.7554/eLife.61539>
- Jiao, Y., Shi, C., Edil, B. H., de Wilde, R. F., Klimstra, D. S., Maitra, A., Schulick, R. D., Tang, L. H., Wolfgang, C. L., Choti, M. A., Velculescu, V. E., Diaz, L. A., Vogelstein, B., Kinzler, K. W., Hruban, R. H., & Papadopoulos, N. (2011). DAXX/ATRX, MEN1, and mTOR Pathway Genes Are Frequently Altered in Pancreatic

- Neuroendocrine Tumors. *Science*, 331(6021), 1199–1203. <https://doi.org/10.1126/science.1200609>
- Jones, P. A., & Baylin, S. B. (2002). The fundamental role of epigenetic events in cancer. In *Nature Reviews Genetics* (Vol. 3, Issue 6, pp. 415–428). Nat Rev Genet. <https://doi.org/10.1038/nrg816>
- Jones, P. A., & Laird, P. W. (1999). Cancer-epigenetics comes of age. *Nature Genetics*, 21(2), 163–167. <https://doi.org/10.1038/5947>
- Kadoch, C., & Crabtree, G. R. (2015). Mammalian SWI/SNF chromatin remodeling complexes and cancer: Mechanistic insights gained from human genomics. *Science Advances*, 1(5), e1500447. <https://doi.org/10.1126/sciadv.1500447>
- Karreman, M. A., Mercier, L., Schieber, N. L., Solecki, G., Allio, G., Winkler, F., Ruthensteiner, B., Goetz, J. G., & Schwab, Y. (2016). Fast and precise targeting of single tumor cells in vivo by multimodal correlative microscopy. *Journal of Cell Science*, 129(2), 444–456. <https://doi.org/10.1242/jcs.181842>
- Mazuc, E., Guglielmi, L., Bec, N., Perez, V., Hahn, C. S., Mollevi, C., Parrinello, H., Desvignes, J.-P., Larroque, C., Jupp, R., Dariavach, P., & Martineau, P. (2014). In-Cell Intrabody Selection from a Diverse Human Library Identifies C12orf4 Protein as a New Player in Rodent Mast Cell Degranulation. *PLoS ONE*, 9(8), e104998. <https://doi.org/10.1371/journal.pone.0104998>
- Mulvey, C. M., Breckels, L. M., Geladaki, A., Britovšek, N. K., Nightingale, D. J. H., Christoforou, A., Elzek, M., Deery, M. J., Gatto, L., & Lilley, K. S. (2017). Using hyperLOPIT to perform high-resolution mapping of the spatial proteome. *Nature Protocols*, 12(6), 1110–1135. <https://doi.org/10.1038/nprot.2017.026>
- Pu, J., Guardia, C. M., Keren-Kaplan, T., & Bonifacino, J. S. (2016). Mechanisms and functions of lysosome positioning. *Journal of Cell Science*, 129(23), 4329–4339. <https://doi.org/10.1242/jcs.196287>
- Rozenblatt-Rosen, O., Regev, A., Oberdoerffer, P., Nawy, T., Hupalowska, A., Rood, J. E., Ashenberg, O., Cerami, E., Coffey, R. J., Demir, E., Ding, L., Esplin, E. D., Ford, J. M., Goecks, J., Ghosh, S., Gray, J. W., Guinney, J., Hanlon, S. E., Hughes, S. K., ... Zhuang, X. (2020). The Human Tumor Atlas Network: Charting Tumor Transitions across Space and Time at Single-Cell Resolution. *Cell*, 181(2), 236–249. <https://doi.org/10.1016/j.cell.2020.03.053>
- Schwartzentruber, J., Korshunov, A., Liu, X.-Y., Jones, D. T. W., Pfaff, E., Jacob, K., Sturm, D., Fontebasso, A. M., Quang, D.-A. K., Tönjes, M., Hovestadt, V., Albrecht, S., Kool, M., Nantel, A., Konermann, C., Lindroth, A., Jäger, N., Rausch, T., Ryzhova, M., ... Jabado, N. (2012). Driver mutations in histone H3.3 and chromatin remodelling genes in paediatric glioblastoma. *Nature*, 482(7384), 226–231. <https://doi.org/10.1038/nature10833>
- Spehner, D., Steyer, A. M., Bertinetti, L., Orlov, I., Benoit, L., Pernet-Gallay, K., Schertel, A., & Schultz, P. (2020). Cryo-FIB-SEM as a promising tool for localizing proteins in 3D. *Journal of Structural Biology*, 211(1),

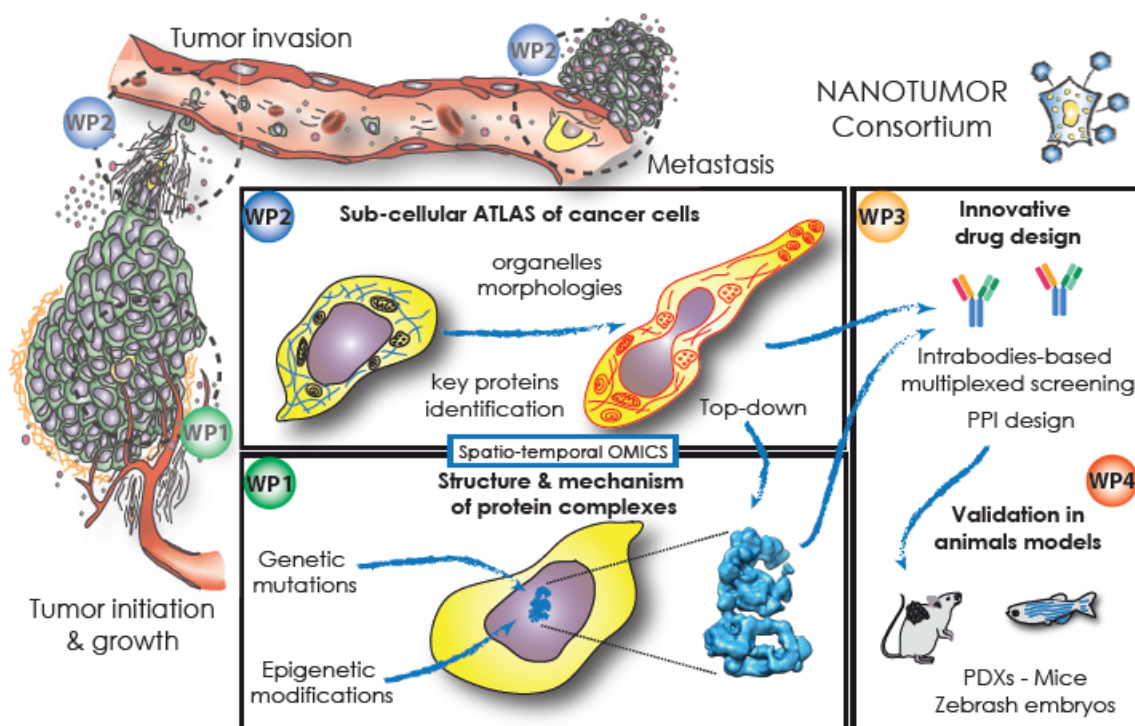
107528. <https://doi.org/10.1016/j.jsb.2020.107528>

Swinney, D. C., & Anthony, J. (2011). How were new medicines discovered? *Nature Reviews Drug Discovery*, 10(7), 507–519. <https://doi.org/10.1038/nrd3480>

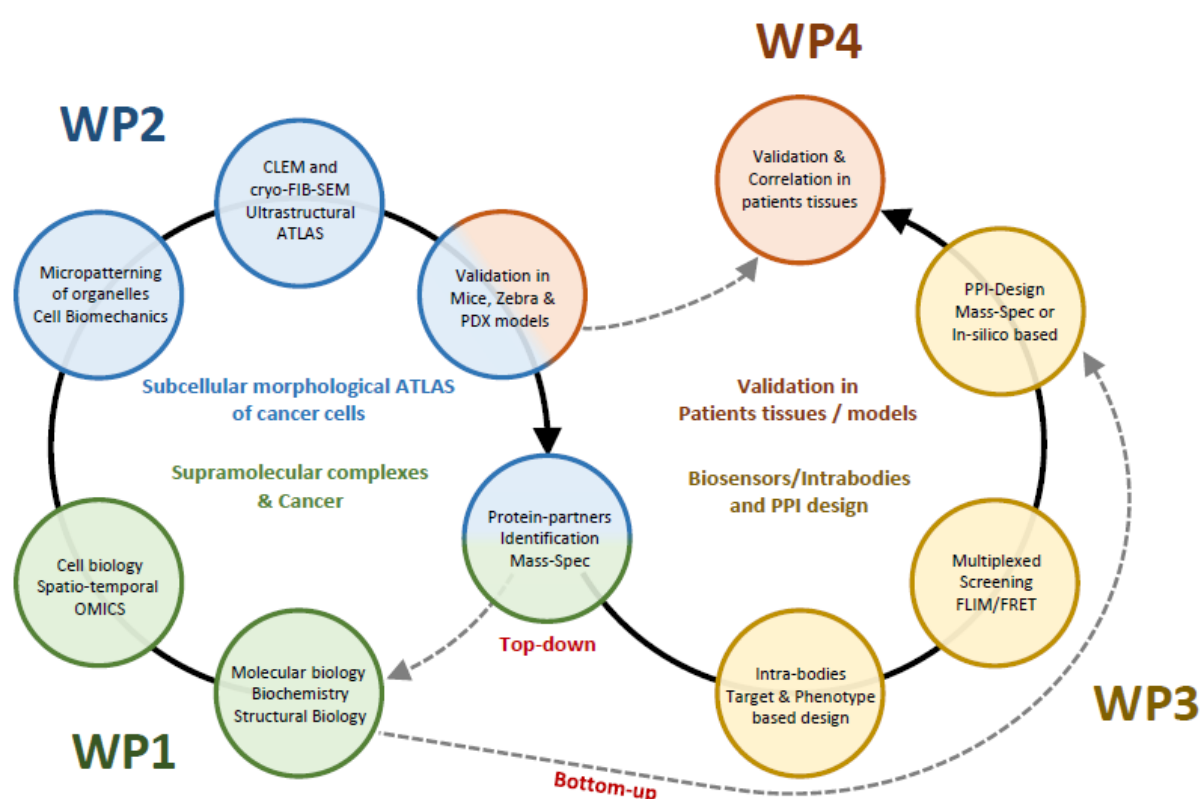
van Bergeijk, P., Hoogenraad, C. C., & Kapitein, L. C. (2016). Right Time, Right Place: Probing the Functions of Organelle Positioning. *Trends in Cell Biology*, 26(2), 121–134. <https://doi.org/10.1016/j.tcb.2015.10.001>

## Legends

**Figure 1 | Schematic representation of the NANOTUMOR project** which aims at a multi-resolution description of the oncogenic cascade from the atomic level to the dynamic organization of the cell in response to genetic mutations, environmental changes or epigenetic modifications, with the possibility to interfere with these processes with innovative drug design.



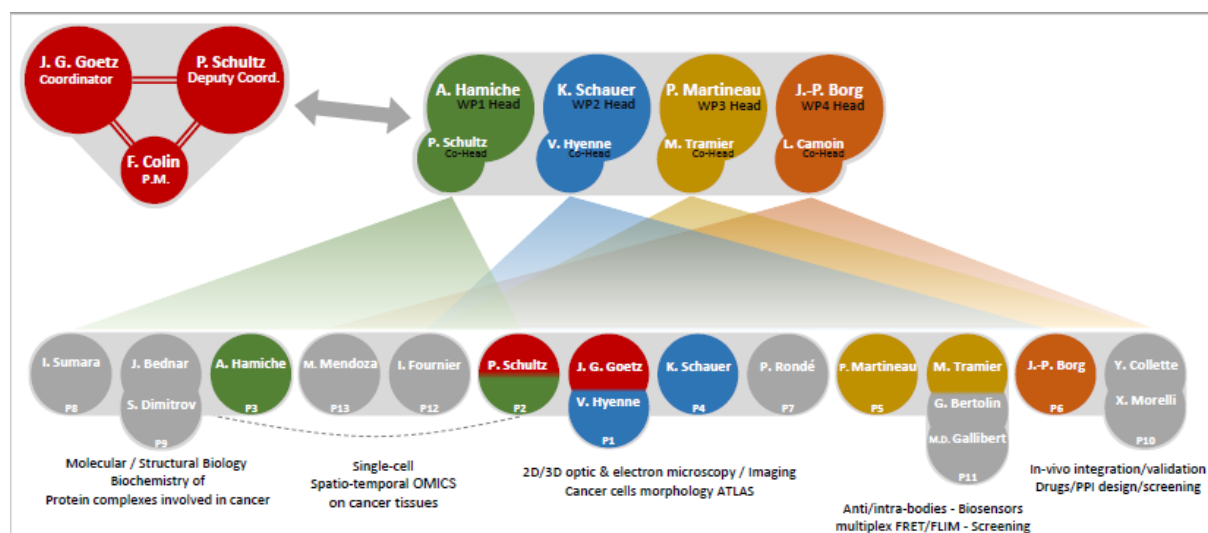
**Figure 2 | Structure and logic of the consortium's research axes.** WP1 objective is to isolate, characterize the protein composition and determine the structure of key molecular complexes involved in cancer onset and progression. WP2 aim is to quantify alterations of intracellular organelles during the cancer cascade and identify and characterize protein complexes that sustain oncogenic intracellular signature. WP3 concentrate on the development of biosensors, protein and chemical inhibitors to characterize *in cellulo* the molecular or cellular targets and to modify their properties by targeted inhibitors. WP4 is designed to validate the targeted candidate protein complexes *in vivo* on patients samples and PDX.



**Figure 3 | Co-partners of the NANOTUMOR consortium.** The network currently consist of 13 teams selected team spread over 10 different research units in France on 7 geographical sites (Lille, Lyon, Marseille, Montpellier, Paris, Rennes and Strasbourg,).



**Figure 4 | Coordination of NANOTUMOR and repartition in work-packages.** A global management is carried out by Jacky G. Goetz (U1109 – Strasbourg) and Patrick Schultz (IGBMC – Illkirch), with the help of Florent Colin, project manager (U1109 – Strasbourg). The four work-packages are led respectively by Ali Hamiche (IGBMC – Illkirch), Kristine Schauer (Institut Curie – Paris), Pierre Martineau (IRCM – Montpellier) and Jean-Paul Borg (CRCM – Marseille). The involvement of each co-partner in the four axes of the program is highlighted.



**Table 1 | Glossary**

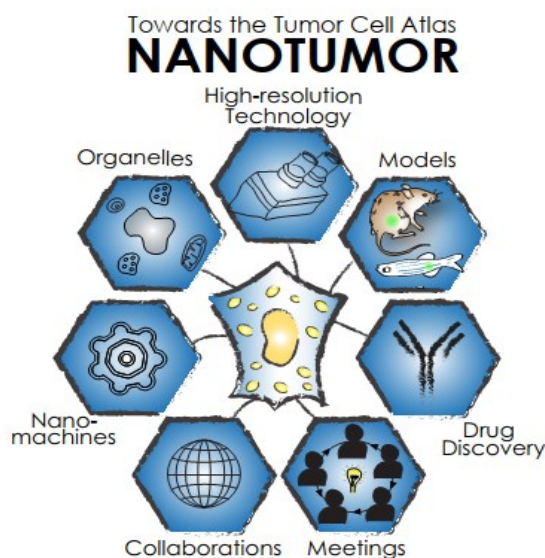
3D-STORM	Stochastic optical reconstruction microscopy
cryo-EM	Single particle cryo-electron microscopy
(cryo-) FIB-SEM	Focused ion beam milling combined with scanning electron microscopy
FRET/FLIM	Multiplex or classic Förster's resonance energy transfer of biosensors, measured by fluorescence lifetime imaging microscopy
intravital CLEM	Correlative light and electron microscopy, in living organism
LOPIT	Localization of organelle proteins by isotope tagging
OMICS	In this context, refers to proteomics and transcriptomics
PDXs	Patient-derived xenografts
TurboID	Optimized biotin ligase for enzyme-catalyzed proximity labeling (PL)



## Graphical Abstract Document

### The NANOTUMOR consortium - towards the Tumor Cell Atlas.

Florent Colin<sup>1</sup>, Kristine Schauer<sup>2</sup>, Ali Hamiche<sup>3</sup>, Pierre Martineau<sup>4</sup>, Jean-Paul Borg<sup>5,6</sup>, Jan Bednar<sup>7</sup>, Guilia Bertolin<sup>8</sup>, Luc Camoin<sup>5</sup>, Yves Collette<sup>5</sup>, Stephan Dimitrov<sup>7</sup>, Isabelle Fournier<sup>9,6</sup>, Vincent Hyenne<sup>1</sup>, Marco A. Mendoza-Parra<sup>10</sup>, Xavier Morelli<sup>5</sup>, Philippe Rondé<sup>11</sup>, Izabela Sumara<sup>5</sup>, Marc Tramier<sup>8</sup>, Patrick Schultz<sup>3†</sup>,  
Jacky G. Goetz<sup>1†</sup>



NANOTUMOR is a French initiative whose objective is to map key ultrastructural and protein elements in cancer cells using multi-resolution approaches. At the interface between molecular and structural biology, cell biology, as well as biosensor and drug design, this program aims to be the incubator of new and cross-disciplinary collaborations, on a national scale and beyond. It will also initiate conferences and webinars on these themes (more information on <https://www.nanotumor.fr/>).