



**HAL**  
open science

## **A decision tree to inform restoration of Salicaceae riparian forests in the Northern Hemisphere**

Eduardo González, Vanesa Martínez-Fernández, Patrick B Shafroth, Anna A Sher, Annie L Henry, Virginia Garófano-Gómez, Dov Corenblit

► **To cite this version:**

Eduardo González, Vanesa Martínez-Fernández, Patrick B Shafroth, Anna A Sher, Annie L Henry, et al.. A decision tree to inform restoration of Salicaceae riparian forests in the Northern Hemisphere. ÉCOVÉG14 – Ecologie des Communautés Végétales, Apr 2019, Toulouse, France. . hal-03168439

**HAL Id: hal-03168439**

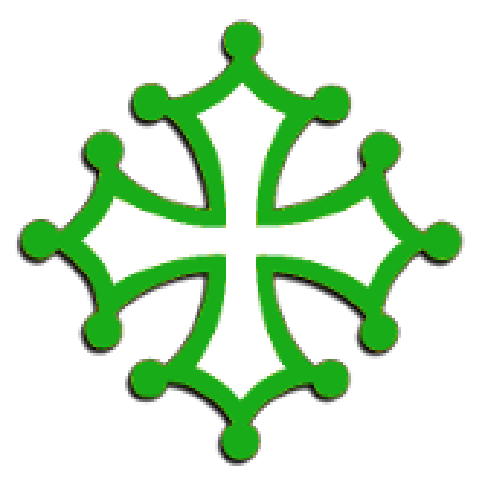
**<https://hal.science/hal-03168439v1>**

Submitted on 19 Mar 2021

**HAL** is a multi-disciplinary open access archive for the deposit and dissemination of scientific research documents, whether they are published or not. The documents may come from teaching and research institutions in France or abroad, or from public or private research centers.

L'archive ouverte pluridisciplinaire **HAL**, est destinée au dépôt et à la diffusion de documents scientifiques de niveau recherche, publiés ou non, émanant des établissements d'enseignement et de recherche français ou étrangers, des laboratoires publics ou privés.





# A decision tree to inform restoration of *Salicaceae* riparian forests in the Northern Hemisphere

## Background

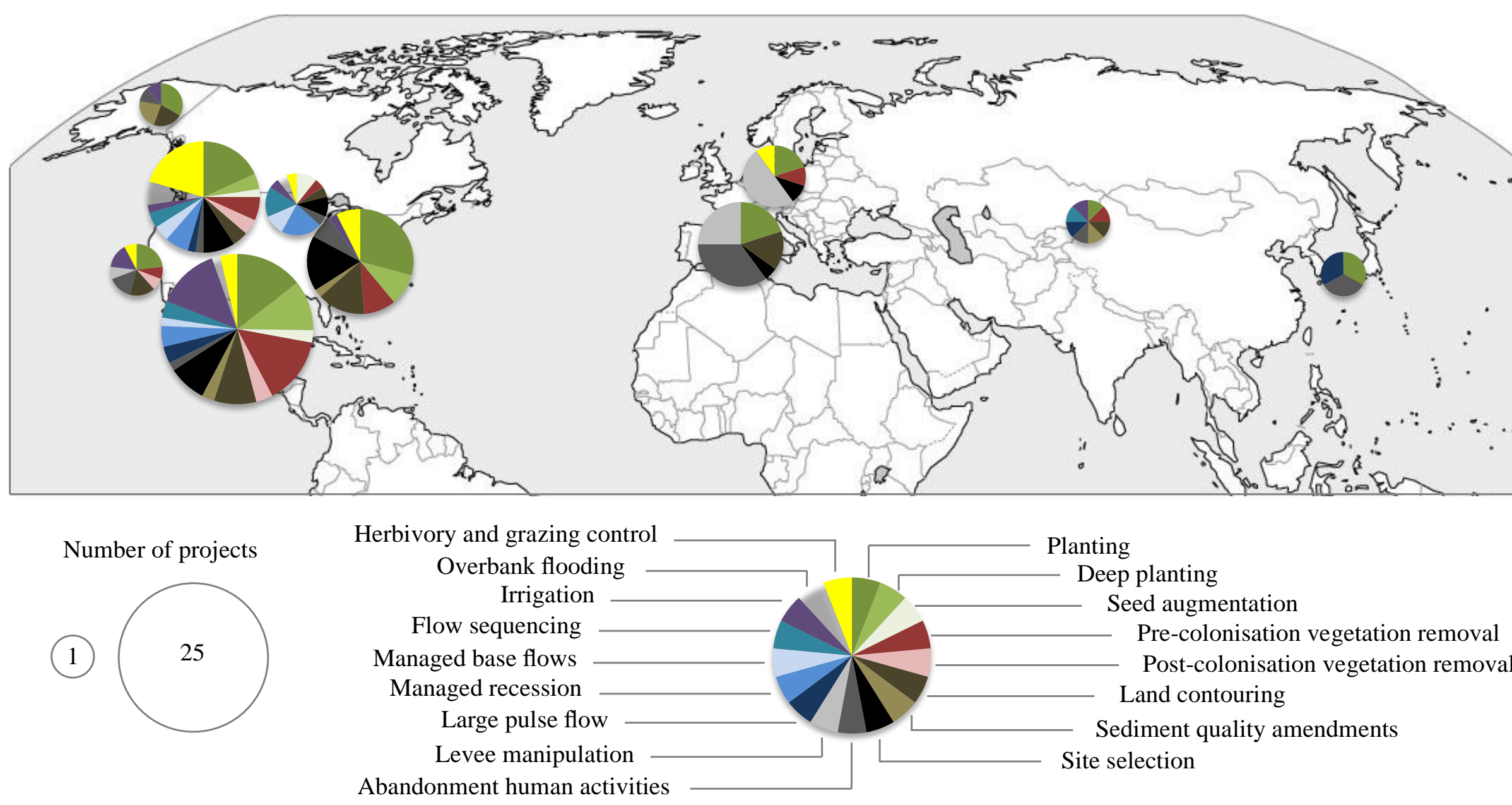
- **Human activities** in floodplains have severely disrupted the **regeneration** of foundation riparian shrub and tree species of the *Salicaceae* family (*Populus* and *Salix* spp.) throughout the Northern Hemisphere.
- Restoration ecologists initially tackled this problem from a **terrestrial perspective** that emphasized planting. More recently, floodplain restoration activities have embraced an **aquatic perspective**, inspired by the expanding practice of managing river flows to improve river health (environmental flows).
- However, riparian *Salicaceae* occupy floodplain and riparian areas, which lie at the **interface** of both terrestrial and aquatic ecosystems along watercourses. Thus, their regeneration depends on a **complex interaction** of **hydrologic and geomorphic processes** that have shaped key **life-cycle requirements** for seedling establishment.
- Ultimately, restoration needs to integrate these concepts to succeed. However, while regeneration of *Salicaceae* is now reasonably well-understood, the literature reporting **restoration actions** on *Salicaceae* regeneration is sparse, and a specific **theoretical framework** is still missing.

## Goal

Create a tool to **inform restoration planning** through explicit links between the well-studied **biophysical requirements** of *Salicaceae* regeneration and specific **restoration actions**.

## Methods

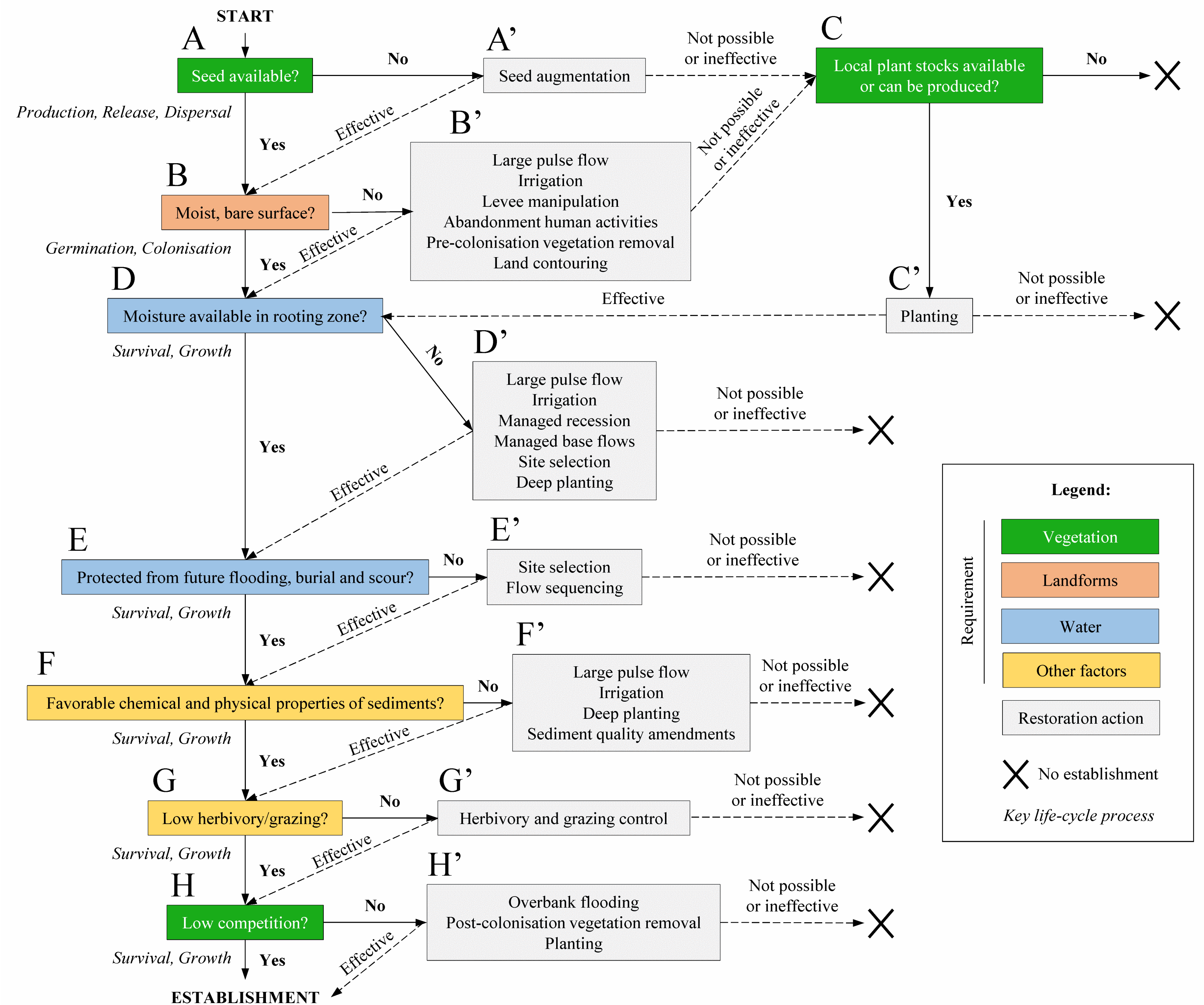
We reviewed 105 peer-reviewed published experiences in restoration of *Salicaceae* forests, including 91 projects in 10 world regions.



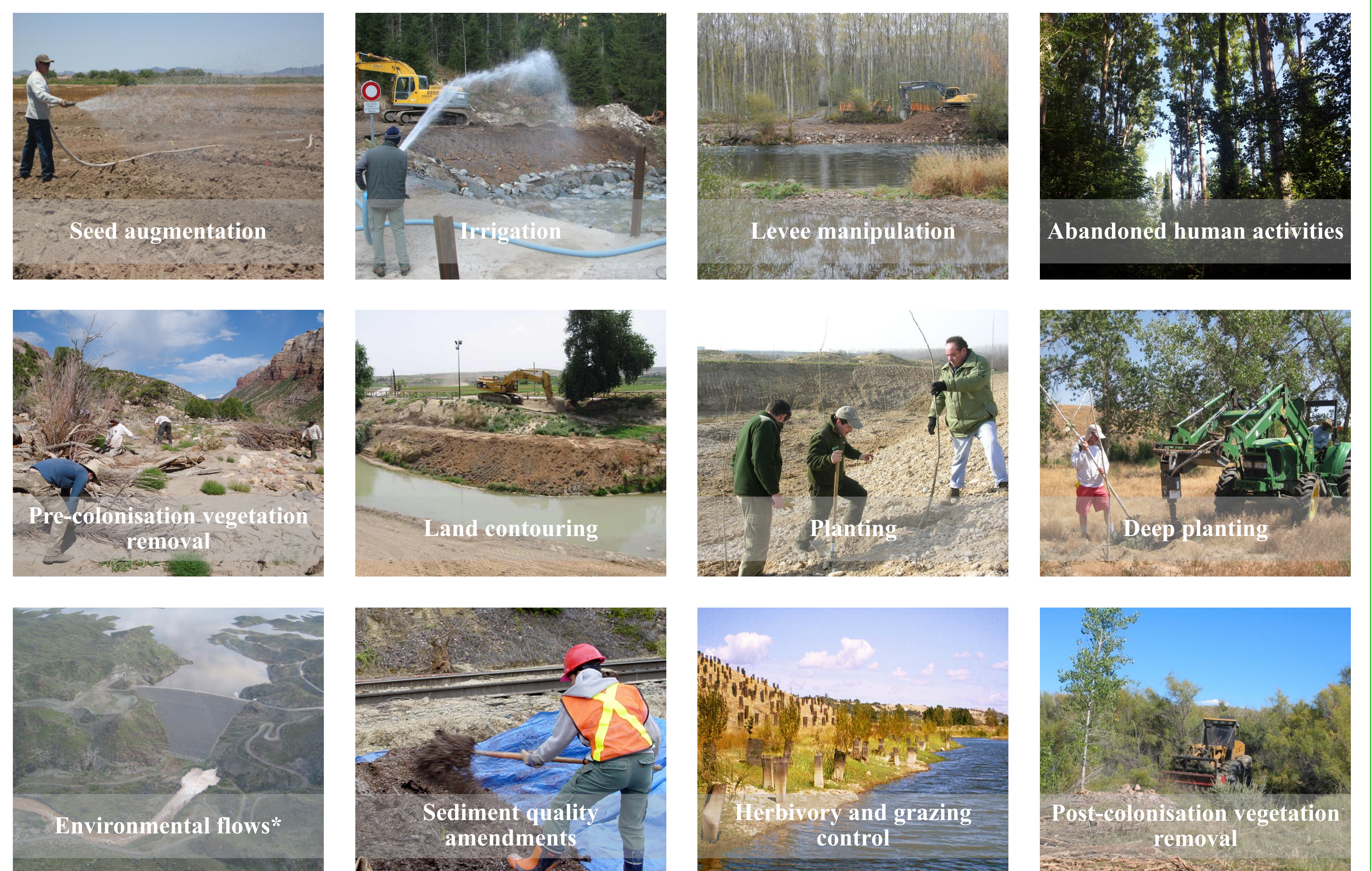
**Figure 1.** Relative importance of restoration actions by regions of the Northern Hemisphere. Size of pie charts and of the pie “slices” is proportional to the number of projects. North America was divided in the following eco-regions: Alaska (3 projects), Eastern Temperate Forests (14), Great Plains (5), Mediterranean California (4), Northwestern Forested (16), and Southwestern U.S. (27). Europe was divided in Central (7) and Southern (10). Asia was divided in Central (2) and Coastal (3). Note that different shades of the same color were used for related restoration actions (e.g., actions related to water management are depicted in different intensities of the blue color).

González E, Martínez-Fernández V, Shafroth PB, Sher AA, Henry AL, Garófano-Gómez V, Corenblit D (2018). **Regeneration of *Salicaceae* riparian forests in the Northern Hemisphere: A new framework and management tool.** *Journal of Environmental Management* 218: 374-387.

## A decision tree for regeneration of *Salicaceae* forests



**Figure 2.** A stepwise dichotomous decision tree for restoring the regeneration capacity of *Salicaceae* forests. Boxes in the tree represent establishment requirements of seedlings and planted individuals. They are formulated as Yes/No questions, and are presented sequentially, following a chronological order related to the life-cycle of the plants associated with characteristics of vegetation, landforms, water and other factors. If a requirement is met (“Yes”), then the key life-cycle processes (in italics) occur and the next requirement is examined (downward facing arrows). “No” answers in the tree lead to white boxes that list restoration actions that would help meet the given requirement. If a chain of requirements is not met (“No”), then no establishment is likely (dead-end indicated by a cross).



**Figure 3.** Images of actions to restore the regeneration of *Salicaceae* forests.

## Acknowledgements

EG's participation in this work was partially supported by a Marie Curie International Outgoing Fellowship within the 7<sup>th</sup> European Community Framework Programme (ESFFORES project grant number 299044). VMF was supported by a pre-doctoral program from the Ministerio de Educación, Cultura y Deporte, Spain, FPU 2013. PBS and EG were partially supported by the U.S. Geological Survey, Invasive Species Program.

Eduardo González<sup>1,2</sup> ([edusargas@hotmail.com](mailto:edusargas@hotmail.com)), Vanesa Martínez-Fernández<sup>3</sup>, Patrick B. Shafroth<sup>4</sup>, Anna A. Sher<sup>1</sup>, Annie L. Henry<sup>1</sup>, Virginia Garófano-Gómez<sup>5,6</sup>, Dov Corenblit<sup>6</sup>

<sup>1</sup>Department of Biological Sciences, University of Denver – 80208-9010 Denver, Colorado, EEUU; <sup>2</sup>Department of Biology, Colorado State University – 80523 Fort Collins, Colorado, EEUU; <sup>3</sup>Department of Natural Systems and Resources, E.T.S. Ingeniería de Montes, Forestal y del Medio Natural, Universidad Politécnica de Madrid – Ciudad Universitaria s/n, 28040 Madrid, Spain; <sup>4</sup>Fort Collins Science Center, U.S. Geological Survey – 80526 Fort Collins, Colorado, EEUU; <sup>5</sup>Institut d'Investigació per a la Gestió Integrada de Zones Costaneres (IGIC), Universitat Politècnica de València – Paranimf 1, 46730 Grau de Gandia, Valencia, Spain; <sup>6</sup>Universite Clermont Auvergne, CNRS, GEOLAB – F-63000 Clermont-Ferrand, France

