



Schoolchildren cooperate more successfully with non-kin than with siblings

Gladys Barragan, Maxime Cauchoix, Anne Regnier, Marie Bourjade, Astrid Hopfensitz, Alexis Chainé

► To cite this version:

Gladys Barragan, Maxime Cauchoix, Anne Regnier, Marie Bourjade, Astrid Hopfensitz, et al.. Schoolchildren cooperate more successfully with non-kin than with siblings. Proceedings - Royal society. Biological sciences, 2021, 288 (1944), 10.1098/rspb.2020.2951 . hal-03167067

HAL Id: hal-03167067

<https://hal.science/hal-03167067>

Submitted on 19 Oct 2021

HAL is a multi-disciplinary open access archive for the deposit and dissemination of scientific research documents, whether they are published or not. The documents may come from teaching and research institutions in France or abroad, or from public or private research centers.

L'archive ouverte pluridisciplinaire **HAL**, est destinée au dépôt et à la diffusion de documents scientifiques de niveau recherche, publiés ou non, émanant des établissements d'enseignement et de recherche français ou étrangers, des laboratoires publics ou privés.

Schoolchildren cooperate more successfully with non-kin than with siblings

Gladys Barragan-Jason^{1*}, Maxime Cauchoux¹, Anne Regnier¹, Marie Bourjade², Astrid Hopfensitz³ & Alexis S. Chaine^{1,3}

¹Station d'Écologie Théorique et Expérimentale du CNRS (UMR5321), 09200, Moulis, France

²CLLE, Université de Toulouse, CNRS, 31000, Toulouse, France

³Toulouse School of Economics, Institute for Advanced Studies in Toulouse, 31000, Toulouse, France

* *Corresponding Author*: Gladys Barragan-Jason

11 **Abstract**

12 Cooperation plays a key role in the development of advanced societies and can be stabilized
13 through shared genes (kinship) or reciprocity. In humans, cooperation among kin occurs
14 more readily than cooperation among non-kin. In many organisms, cooperation can shift with
15 age (e.g. helpers at the nest), however little is known about developmental shifts between kin
16 and non-kin cooperation in humans. Using a cooperative game, we show that 3-to-10 year-
17 old French schoolchildren cooperated less successfully with siblings than with non-kin
18 children, whether or not non-kin partners were friends. Furthermore, children with larger
19 social networks cooperated better and the perception of friendship among non-friends
20 improved after cooperating. These results contrast with the well-established preference for
21 kin-cooperation among adults and indicate that non-kin cooperation in humans might serve to
22 forge and extend non-kin social relationships during middle childhood and create
23 opportunities for future collaboration beyond kin. Our results suggest that the current view of
24 cooperation in humans may only apply to adults and that future studies should focus on how
25 and why cooperation with different classes of partners might change during development in
26 humans across cultures as well as other long-lived organisms.

27

28 **Keywords**

29 Kin selection, Kinship, Evolution of cooperation, Children development, Human Evolution

Introduction

Cooperation is thought to have played a key role in the evolution of advanced societies, especially in humans [1–7]. Both kin-based interactions and reciprocity can promote cooperation while protecting against cheating [2–6]. Cooperation among kin can mean that benefits to the recipient of help can lead to indirect genetic benefits to the donor, an evolutionary process called “kin-selection” [8], as described in social insects [9,10] and a number of vertebrates [11,12]. Alternatively (or additionally), unrelated individuals who interact repeatedly can *reciprocate* leading to benefits to each individual in the partnership across time [13,14] such as egg trading in fish [15,16] and allogrooming in primates [17]. More recently, a few studies have shown that both mechanisms can operate in tandem with one mechanism playing a more important role in cooperation for a given system. For example, food sharing in vampire bats is clearly maintained by reciprocity even if such sharing can occur among kin adding further indirect benefits [18–20]. Likewise, cooperation in humans occurs both among kin [21,22] as well as through reciprocal interactions [6,23–27], although human adults clearly favor cooperation with kin over strangers [28–31].

In many organisms, the form of cooperation can change with age. For example, young individuals act as helpers in cooperative breeding birds but adults do not [32,33] whereas the opposite is true in many cooperative breeding mammals [34]. Whether similar shifts occur with age in systems where both kin and non-kin cooperation occur either in absolute terms or in the relative importance of each form of cooperation, is unknown. Studying the development of kin and non-kin cooperation is critical to our understanding of the evolution and function of cooperation in longer-lived organisms and their role in the development and evolution of advanced societies [7,35]. Surprisingly, appropriate experimental tests in humans are still lacking. Among the limited number of experimental studies comparing kin and non-kin cooperation or prosociality in children, reciprocation seems to be important [36–

39] but children tend to favor sharing with their relatives compared to strangers [40,41] like adults. However, previous experimental studies of kin-sharing in children use third party tasks, where participants are asked about abstract scenarios, and these tests often give different results from direct participation in a task [42,43] since it reflects what the participant thinks another person *should* do but not necessarily how they would *actually* behave in a real cooperative situation (see however Crittenden et al. [31]). In addition, third party tasks are thought to be “removed from the evolutionary mechanisms that [...] likely shape these phenomena in early ontogeny” and do not “reflect the effects of the collaborative foraging context of early humans, in which one shares the spoils [...] among those who took part in the *collaborative effort*” [43]. Because no experimental study in children has directly compared kin and non-kin cooperation in situations in which individuals are asked to actively collaborate in a realistic setting, little is known about the development of kin and non-kin cooperation in humans with age.

Here, we used a direct-action cooperation task to evaluate if children cooperate more with kin, friends, or non-friends when actively engaged in a game that requires children to cooperate and coordinate actions with other children. We measured cooperation using a rope pulling task (Fig. 1A) in which two children coordinate in pulling a single rope to reach a reward and succeed only if both rope ends are pulled at the same time and same speed [44–46]. This task is complex and needs the active engagement of children in the task since it requires paying attention to the partners’ actions to succeed. While a previous experiment using this design began by giving the children a demonstration, we decided to render the task more difficult by omitting the demonstration and merely telling the children that they would have to work together to complete the task [46]. To examine the roles of kinship and friendship on performance by children of a cooperative task, we assigned each child a partner who could be classified as kin (a sibling), a socially close non-kin (a “best friend”) or a

socially distant non-kin (a non-friend). Pairs were quasi-randomly assigned by the experimenter based on questionnaires administered to teachers and children before the task (see methods) and each pair was allowed to conduct the task until successful or up to three attempts if unsuccessful. In so doing, we investigated whether joint success in a cooperative task was linked to the degree of relatedness between partners in children. We found that children cooperate more efficiently with non-kin (friends and non-friends) than with kin (i.e. siblings) partners.

Methods

Participants

We recruited 290 children from ages 3 to 10 (92 3-to-5 year-olds, 139 6-7 year-olds and 59 8-to-10 year-olds; 135 females) from 15 kindergartens and elementary schools in southwestern France. While this age range is large, it reflects all children that potentially interact within schools where the study was conducted as many schools have mixed level classes and a common play area. All parents signed an informed consent form for their children and only children who gave their verbal assent were included. Parents also filled a demographic questionnaire including parents' income, living area (urban vs. rural), number of siblings and native language. Thirty percent of children were from middle-class backgrounds (20,000 to 30,000 euros/year) and 35 % lived in urban areas. Participants had 2.5 siblings on average: 18% were an only child, 44% had only one sibling, 20% had two siblings and 18% had more than 2 siblings. Sixty-nine percent of the children were native French and all children (except 2 children from whom the test was performed in English) were French-speaking. The same female experimenter tested children during a single video-recorded session in an available room at their schools.

Experimental procedure

Participants performed a rope pulling task [44] that requires coordinated pulling to reach a reward (see Fig. 1 and Fig. S1). Two children are required to pull their end of the rope simultaneously, each holding the end of the same rope where the two ends are far enough apart that one person could not reach both ends at the same time. A single rope is threaded around an apparatus such that only if both rope ends are pulled at the same time can the containers be moved and the rewards be reached. Pulling on one end would only move the rope but not the two sliding containers which contain the rewards, making the other end of the rope unavailable to a partner. Only if both participants pulled the rope at the same time and at similar speeds, would they each obtain a reward (i.e. joint success, with no delayed reciprocity). Two cases lead to failure in the cooperative task: asymmetric pulling led to neither participant obtaining the reward (0/0) or if both participants pulled at the same time but one let go after gathering their reward but before their partner could take their own reward such that just one of the two obtained the reward (0/1 or 1/0). If only one child took his/her own sticker, the sticker was put back into the sliding container and children began a new trial together.

The Experimenter (E) explained to the children that they would play together to each win a reward (stickers) but provided no further instruction. By not providing more guidance, this cooperative task was rendered more difficult than in previous studies using the same game (63% success here vs. 94% success during first trials in a previous study [46]). E placed the two rewards (one for each child) in the apparatus (one in each container of the apparatus) under observation of the children and told them they could start to play.

Each time a pair attempted to pull the ropes is termed a “trial”. Our measure of cooperation and coordination was focused on a single trial, but upon request of teachers to not create inequalities in the classroom, dyads of children could perform a maximum of 3 trials beyond which E stopped the testing and gave the stickers to the children. As such, we

focused our analyses on the first trials to avoid any impact of learning on joint success in subsequent trials. Overall, most children succeeded within those 3 trials as 63% (91/145) of the pairs succeeded in the first trial, 21% (31/145) in the second trial, 6% (9/145) during the third trial, and only 10 % (14/145) of dyads did not succeed by the 3 trial. In supplemental information, we provide additional analyses of these subsequent trials which reinforces results from the first trial only (see supplemental results, Table S1 and Fig. S2). Overall the sample included 39 pairs of siblings, 52 pairs of friends, and 54 pairs of non-friends who performed 77, 71 and 67 trials respectively, corresponding to a total of 215 trials among 145 dyads.

The partners of a dyad could be either siblings, friends (someone they frequently play and interact with), or non-friends (someone they know but do not particularly interact with). The status of the dyad (i.e., siblings, friends, non-friends) was determined before conducting the experiment by asking the children's teachers to name the friends of the participants and specifying each participant's best friend through a questionnaire filled out before the experiment. We asked teachers to base their estimation of relationship closeness of a dyad on the amount of time children spent together, intensity of positive interactions, and time they play with each other at school [47,48]. Based on the responses of the questionnaires, dyads were formed by E. Following the definition of friendship in the literature [49], "friends" were formed by dyads where both children considered the other their best friend and "non-friends" were formed among two individuals where neither considered the other a friend. Furthermore, "non-friend" dyads specifically avoided matching individuals who have conflictual relationships. Finally, kin status was assigned to any siblings within the class or between two classes in the school. Because it was more rare to find siblings given logistical constraints at schools, possible sibling dyads were formed as a priority. Remaining individuals were then assigned to the other two categories at random. Given that kin dyads

naturally showed larger age and sex differences than friend dyads (often same age and same sex), the “non-friend” dyads were balanced by matching both pairs of the same age and same sex children and pairs with large age differences and different sex to be more similar to the kin category (see Fig. S3).

In order to confirm the assignment of the dyads based on teacher evaluation of friendship, a questionnaire for children was also performed. E asked children about their relationship with their partner (“Do you like to play with CHILD X?”) and about the quality of their relationship using an emoticon Likert scale (“How much do you like to play with CHILD X?: a lot, a little, not at all) [50]. The order of the emoticons was counterbalanced across participants to avoid bias. In order to investigate whether participation in the rope pulling task affected the relationship of the partners, the same questions were administered 24 h after the test. Finally, we gathered information about each child’s friend network before the experiment, by asking the child to name their friends (“Please, tell me the names of the children you like to play with the most?”). Due to logistical constraints, we were only able to gather complete friendship network data at 10 of the 15 schools in our sample.

Data coding

All trials were recorded using a video camera oriented so that both participants and the apparatus were visible allowing us to score the children’s performances. Successful trials were scored when both partners pulled together and successfully reached the reward (i.e. joint success). Failed trials were scored when children failed to pull the rope together such that neither reached the reward or when only one child reached the reward. The same trained research assistant coded the number of gazes (each movement of the eyes accompanied by a movement of the head toward the partner) of each dyad blind to dyad category for the first trial only of each dyad. The number of gazes included situations when both partners look at each other and when a single individual looks at the other one.

Statistical analysis

All analyses were performed in the R environment for statistical computing version 3.3.6 (R Development Core Team, 2018).

We examined the effect of partner relationship within a dyad on joint success using a binomial GLM [51] including the first trial (0 vs. 1) performed by each dyad. We built a full model that included fixed effects of dyad relationship (kin, friend, non-friend), dyad sex (male-male (MM), female-female (FF), male-female (MF)), average age of partners and age difference between the partners. Since nearly all dyads eventually succeeded in performing the task by the third trial (see above), analyses of the change in relationship between a pair could not be compared between pairs that succeeded in the first trial relative to those who did not and so simply included all individuals.

Coordinated rope pulling could be facilitated by looking at a partner, so we looked at the impact of gaze frequency (gazes per second) on joint success in the first trial (0 vs. 1) performed by each dyad using a GLM. We built a full model that included fixed effects of dyad relationship (kin, friend, non-friend), dyad sex (MM, FF, MF), average age of partners and age difference between the partners. We also investigated the effect of partner status on the number of gazes using a LM including gaze frequency (gaze per second) during the first trial. We included dyad relationship (kin, friend, non-friend), dyad sex (MM, FF, MF), average age of partners and age difference between the partners as fixed effects.

We then assessed the relationship between performance in the task and the size of a child's social network. Using a binomial GLM, we asked whether performance (0 vs. 1) during the first trial was affected by a child's number of friends (i.e. outdegree centrality in social network analysis) while controlling for dyad sex, mean age of the dyad, age difference of the dyad partners, and number of children in the classroom.

For GLMs, visual inspection of residual plots using the DHARMA package [52] did not reveal deviations from homoscedasticity or normality. For each fixed effect, statistical significance was evaluated by likelihood ratio tests of the full model against the same model without the tested fixed effect. In supplemental tables, we report odd-ratios and their corresponding 95% confidence intervals, p-values as well as marginal, conditional or pseudo R² of the Full Model when appropriate.

Finally, we tested the effect of the rope pulling task on the quality of the relationship between the two partners, we performed McNemar and Cochran Q test when appropriate on kin, friend and non-friend partners separately.

Results and discussion

During first trials, 63% (91 out of 145 trials) of the children jointly succeeded in the cooperative rope pulling task. We found that children cooperate less well with kin than with non-kin (Fig. 1B): the likelihood of cooperating during the first trial was significantly affected by dyad type while controlling for mean age, age difference and sex of dyads (binomial GLM, partner status: $P=0.019$, mean age: $P=0.008$; age difference: $P=0.084$, sex: $P=0.81$; Fig. 1B and Table S2). Friends (52 dyads, 71% successful; $z=2.62$; $P=0.009$) and non-friends (54 dyads, 68 % successful, $z=2.29$; $P=0.022$) were more likely to succeed on their first cooperative trial than kin partners (39 dyads, 44%, Fig. 1B and Table S2) whereas performance of friends and non-friends did not differ from each other ($z=-0.61$; $P=0.54$; Fig. 1B and Table S2). There was no effect of an interaction between the mean age of the dyad and partner status (mean age \times partner status: deviance= -0.056; $P=0.97$) nor between age difference of the dyad and partner status (age difference \times partner status: deviance: 1.22 $P=0.54$) suggesting that any shifts in cooperative preferences towards kin with age must

occur beyond 8-10 years-old (Fig. S4). These patterns were consistent when controlling for demographic information (Table S3) and restriction to subsets of the data (Figs. S4, S5).

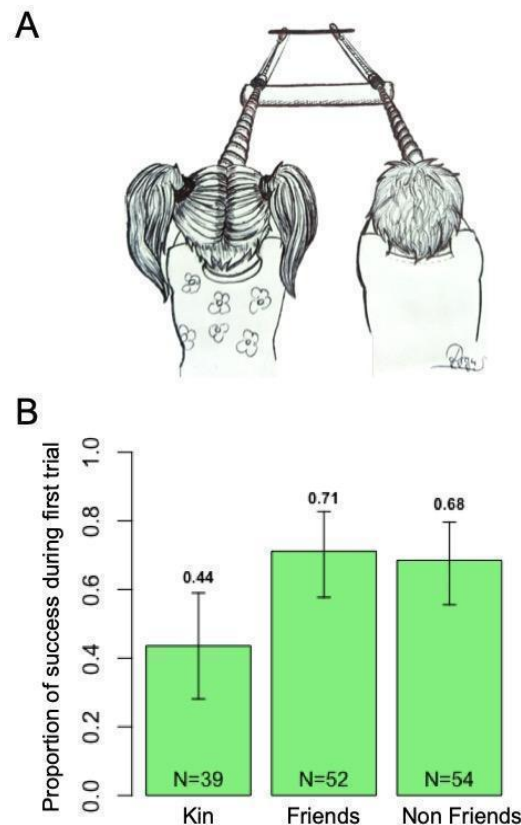


Fig. 1. Performance in the cooperative rope pulling task by partner status. A) Illustration of the cooperation apparatus. The "rope pulling game" was adapted from previous studies on chimpanzees and children [46,54]. Photograph of the apparatus is also provided in Fig. S1 in supplemental information (SI). B) Proportion of successful first trials of kin (i.e. siblings) and non-kin friend and non-friend dyads in cooperative rope pulling. Error bars indicate 95% bootstrapped confidence interval. N values indicate the number of dyads in each category (i.e. kin, friends, non-friends). Kin partners were less successful than non-kin in the rope-pulling task.

The contrast in the propensity to cooperate with kin relative to non-kin between studies in adults [21,22,53] and our results in children suggest that there is a striking developmental shift in the value of different forms of interactions. We could not run the same exact study in adults since the task would be far too easy for them and so could not directly contrast preferences in adults and children using the same population. However, studies in

adults show a very consistent pattern of kin preferences over non-kin across a broad variety of experimental paradigms (e.g. public good game, prisoners' dilemma) and populations. For instance, adults from Western industrialized countries trust kin more [21], are more likely to cooperate with individuals who have similar facial features to their own [22], and minimize punishment after rule transgression for kin compared to strangers [55,56]. Furthermore, non-Western traditional societies show comparable preferences for cooperation with kin [57,58]. While we did find an improvement in joint success in the cooperative task with age (Fig. S4 and Tables S2 and S3), this improvement did not alter patterns of cooperation between kin versus non-kin (i.e. no significant interaction effect reported above; Fig. S4) while controlling for dyad age suggesting that contrasts between children and adults in their preference for cooperating with kin are not simply due to an improvement of solving a cooperative task. Well known cooperative systems shift from cooperation among kin to no cooperation or the reverse with age [32] [33] [34], but to our knowledge, such age related shifts in cooperative preferences have not yet been examined experimentally in systems where both kin and non-kin cooperation coexist. For example, it would be interesting to know if vampire bats which show reciprocal cooperation with non-kin more so than kin among adults show a strong preference for food sharing among kin rather than non-kin among juveniles. Knowing if such shifts are general will require both a concerted effort to document more cases of kin and non-kin cooperation in the same system as well as tests of cooperative preferences with age.

Shifts in preferences for cooperating with kin vs. non-kin may be a consequence of a shift in the value of cooperating with different classes of individuals with age. Kin cooperation among adults might provide the greatest direct and indirect benefits to success (e.g., fitness, wealth, etc. [60]) since they have reached reproductive maturity where gene transmission is likely more important than reciprocity thereby favoring kin interactions and indirect genetic benefits from cooperation. On the other hand, children are far from

reproductive age and therefore might invest primarily in resource acquisition and survival which can benefit from reciprocal cooperation with peers regardless of kinship. Furthermore, kin-competition might reduce the value of kin-cooperation among children (e.g. siblings) [61–63] especially if resources are primarily provided by parents [43]. The benefits of a given cooperative interaction to success in children are indeed modest given that children are still supported by their parents and instead may serve primarily to develop cooperative skills needed for the future such as building a social network [64].

Developing friendships and affiliations with peers in mid-childhood has indeed been linked to future success at adulthood [60,65,66]. Since the current network of young children is still fairly limited, reinforcing and increasing reputation through reciprocity and building a broader social network might thus be more important during childhood than adulthood. Indeed, social networks tend to expand in size among young adults, but shrink in older adults [67]. Here, we found that having a bigger social network before the experiment was related to subsequent performance during the first trial in the rope pulling task (Fig. 2) after controlling for the age difference between partners, mean age, sex and number of children in the classroom (binomial GLM, out degree centrality or number of friends named by participants: deviance=5.61; $P=0.018$, mean age: deviance=10.27; $P=0.001$; age difference: deviance=3.14; $P=0.076$, sex: deviance=2.12; $P=0.35$; number of children in the classroom: deviance=1.12; $P=0.29$; Fig. 3, Fig. 2, Table S4 and Fig. S6). This correlative relationship could exist either because social individuals cooperate more readily or because those who have built a bigger network develop cooperative skills. Regardless of directionality, our results show a cooperative benefit to a larger social network.

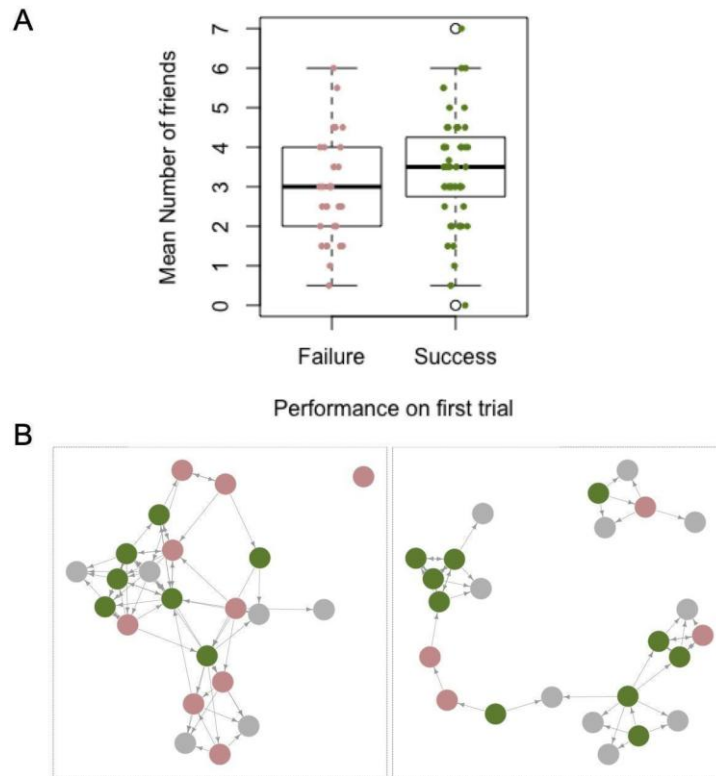


Fig. 2. Relationship between the number of friends (out degree centrality) and performance in the rope pulling task. The number of friends and social network were based on a questionnaire before the experiment where children were asked to give the names of children they prefer to play with in their classroom including children who did not participate in the task. A) Boxplots contrasting the number of friends averaged between the two partners according to their performance during the first trial. Failure in the first trial is shown in red and joint success in green. Each dot represents a dyad of children. B) Examples of two classroom networks in which individuals who succeeded in the first trial appear in green and who failed in red. Children who did not participate and who participants named as friends appear in grey. Arrows represent friendship between children such that bi-directional arrows represent pairs of individuals who each listed the other as a friend whereas single headed arrows represent cases where one individual considered the other a friend while the second individual did not list the first as a friend. All networks are presented in Fig. S6. Having more friends is linked to a higher success in the cooperative task.

Building a large social network should be especially valuable in unpredictable environments, since extending one's social network to cooperate with non-kin could provide benefits when the social community is perturbed whereas limiting one's social network only to kin would be risky [18,19]. For example, under unpredictable/risky situations [19,68] or when non-kin are more numerous than kin [18], different species of mammals (e.g. bats [19], primates and dolphins [68]), tend to favor cooperation with non-kin compared to kin partners. For children,

314 the school environment is constituted mostly of non-kin and has some risks (e.g.
315 victimization by peers [69–71]), so expansion of the social network could indeed carry
316 “social bet hedging” benefits. If cooperation serves to strengthen or build a social network,
317 we would predict that participation in a cooperative action should alter future interactions. As
318 such, we investigated whether performing the rope pulling task subsequently modified the
319 relationship between the two partners. To do so, children were asked to rate their relationship
320 with their partner before and again one day after the cooperative task (Fig. 3) using a Yes/No
321 preference test (“Do you like to play with CHILD X?”; Fig. 3A) and an emoticon Likert scale
322 (“How much do you like to play with CHILD X? A lot, a little, not at all”; Fig. 3B). We
323 found that the relationship quality of non-friends improved after performing the rope pulling
324 task together in both the Yes/No preference scale (McNemar $\chi^2_{(1,56)}=9.60$; $P = 0.002$; Fig. 3A)
325 and the Emoticon Likert scale (Cochran $Q(1,55)=7.35$; $P=0.007$; Fig. 3B). As expected, we
326 did not detect a change in how much children liked kin partners (Yes/No preference test:
327 McNemar $\chi^2_{(1,25)}=1.33$; $P=0.25$; emoticon Likert scale: Cochran $Q^{(1,25)}=1.80$; $P= 0.18$; Fig. 3)
328 and friend partners (Yes/No preference test: McNemar $\chi^2_{(1,49)}=1$; $P=1$; emoticon Likert scale:
329 Cochran $Q^{(1,49)}=2.78$; $P=0.10$; Fig. 3) after the task since kin and friends already liked their
330 dyad partners in nearly all cases before performing the cooperative task (Fig. 3).

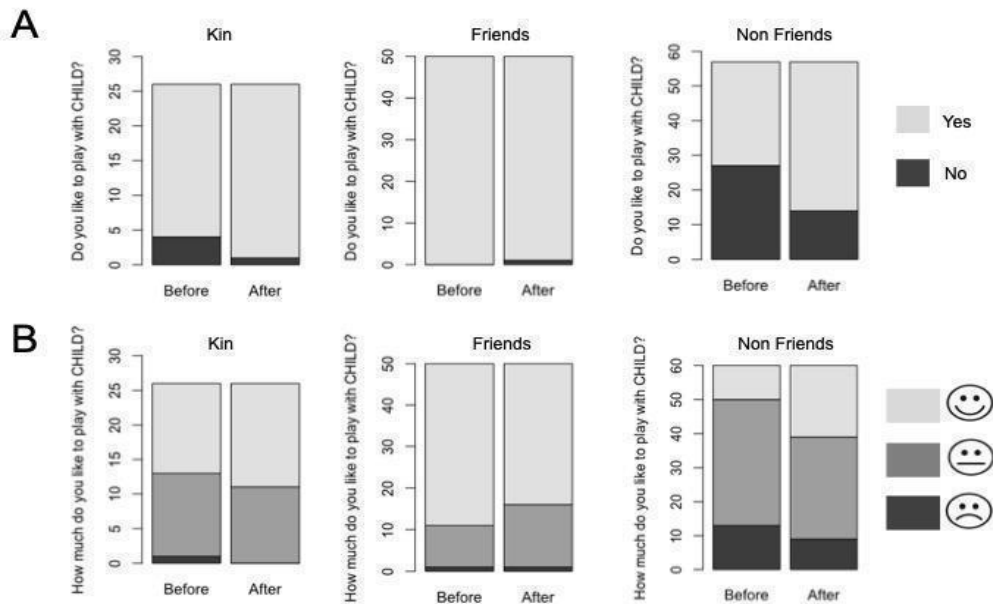


Fig. 3. Effect of the cooperative task on the relationship quality between kin, friend and non-friend partners. A) Results from the Yes/No preference scale in which children were asked to answer the following question, before and after the rope pulling task: “Do you like to play with CHILD X?”. “Yes” responses appear in light grey and “No” responses in dark grey. B) Responses from the Emoticon Likert scale during which children were asked to rate how much they like to play with their partner twice (before and after the rope pulling task). They can either respond “A lot” in light grey, “a little” in medium grey or “not at all” in dark grey while pointing to a “smiley scale” corresponding to each level. Perceived relationship quality of non-friends improved after cooperating.

Overall, our results show that cooperation between non-kin partners plays a key role during childhood which we argue serves to expand a child’s social network since non-friends had a more positive view of their “unknown” partner after interacting during the cooperative task. These results contrast with two studies in which children had to choose how to allocate resources between dolls (i.e. third party tasks with fictional characters) which both showed greater apparent cooperation with kin than friends or strangers [e.g. 40,72]. We believe that differences in experimental methods lead to this contrast since the use of fictional characters is more likely to elicit a response that reflects what children think they or others *should* do [42,73] whereas direct interactions to cooperate in a face-to-face situation used in our experiments should better reflect the actual outcome of natural cooperative situations.

Furthermore, direct tasks are more challenging than simple allocation tasks such that costs of cooperation could also alter decisions. A difference in the value of friendships vs. sibling relationships among children relative to adults might drive contrasts in how much effort each group put into the cooperative task. The rope pulling task used here requires continued, active attention and coordination with a partner to succeed. Indeed, we observed that most of the unsuccessful trials happened either when a child pulled the rope before the other could grab it, or when a child let go of the rope before his/her partner could grab their own reward. We hypothesized that one possible explanation of failure could be a lack of attention between the two partners. Consistent with this idea, the number of gazes during the first trials was indeed a strong predictor of joint success (Fig. S7 and Tables S5) and kin dyads displayed fewer gazes than other types of dyads (friends partners: $P < 0.005$; non-friends: $P=0.056$; Fig. S7). Using this direct-action cooperation task, we found that children cooperate more with non-kin peers compared to siblings in direct contrast with results in adults. Given the difficulty of our cooperative task for children and considering the time children in western societies spend at school, we believe our results reflect an ecologically realistic measure [74] of cooperation in schoolchildren, at least in France. However, the value of cooperation with kin versus non-kin could vary by context or culture and it would be interesting to see if our results hold in other populations. Indeed, a more complete understanding of how decisions about cooperation shift through life will require both attention to the context of testing (e.g. [75]) and application of similar direct-interaction tests in individuals from a broad age range and across cultures. Whether such developmental shifts in cooperation are common in other organisms also remains to be explored, but should exist in cases where the benefits of cooperating with different types of partners shifts through life [76]. This new hypothesis motivated by our findings challenges our understanding of cooperation and should stimulate new research into cooperation across life stages in both humans and other social organisms.

References

1. Melis, A. P. & Semmann, D. 2010 How is human cooperation different? *Philos. Trans. R. Soc. Lond. B. Biol. Sci* **365**, 2663–2674. (doi:10.1098/rstb.2010.0157)
2. Dugatkin, L. A. 1997 *Cooperation among animals: an evolutionary perspective*. Oxford University Press on Demand.
3. West, S. A., Griffin, A. S. & Gardner, A. 2007 Social semantics: altruism, cooperation, mutualism, strong reciprocity and group selection. *J. Evol. Biol.* **20**, 415–432. (doi:10.1111/j.1420-9101.2006.01258.x)
4. Clutton-Brock, T. 2009 Cooperation between non-kin in animal societies. *Nature* **462**, 51–57. (doi:10.1038/nature08366)
5. Sachs, J. L., Mueller, U. G., Wilcox, T. P. & Bull, J. J. 2004 The evolution of cooperation. *Q. Rev. Biol.* **79**, 135–160. (doi:10.1086/383541)
6. Fehr, E., Fischbacher, U. & Gächter, S. 2002 Strong reciprocity, human cooperation, and the enforcement of social norms. *Hum. Nat.* **13**, 1–25. (doi:10.1007/s12110-002-1012-7)
7. Boyd, R. & Richerson, P. J. 2009 Culture and the evolution of human cooperation. *Philos. Trans. R. Soc. Lond. B. Biol. Sci* **364**, 3281–3288. (doi:10.1098/rstb.2009.0134)
8. Hamilton, W. D. 1964 The genetical theory of kin selection. *J. Theor. Biol.* **7**, 1–52.
9. Queller, D. C. & Strassmann, J. E. 1998 Kin selection and social insects. *Bioscience* **48**, 165–175. (doi:10.2307/1313262)
10. Hughes, W. O. H., Oldroyd, B. P., Beekman, M. & Ratnieks, F. L. W. 2008 Ancestral monogamy shows kin selection is key to the evolution of eusociality. *Science* **320**, 1213–1216. (doi:10.1126/science.1156108)
11. Emlen, S. T. & Wrege, P. H. 1988 The role of kinship in helping decisions among white-fronted bee-eaters. *Behav. Ecol. Sociobiol.* **23**, 305–315. (doi:10.1007/BF00300577)
12. Sinervo, B. et al. 2006 Self-recognition, color signals, and cycles of greenbeard mutualism and altruism. *Proc Natl Acad Sci USA* **103**, 7372–7377. (doi:10.1073/pnas.0510260103)
13. Trivers, R. L. 1971 The evolution of reciprocal altruism. *Q. Rev. Biol.* **46**, 35–57. (doi:10.1086/406755)
14. Axelrod, R. & Hamilton, W. D. 1981 The evolution of cooperation. *Science* **211**, 1390–1396. (doi:10.1126/science.7466396)
15. Petersen, C. W. 1995 Reproductive behavior, egg trading, and correlates of male mating success in the simultaneous hermaphrodite, *Serranus tabacarius*. *Environ. Biol. Fishes* **43**, 351–361. (doi:10.1007/BF00001169)
16. Fischer, E. A. 1980 The relationship between mating system and simultaneous hermaphroditism in the coral reef fish, *Hypoplectrus nigricans* (Serranidae). *Animal*

- 415 *Behaviour* **28**, 620–633. (doi:10.1016/S0003-3472(80)80070-4)
- 416 17. Schino, G. & Aureli, F. 2010 The relative roles of kinship and reciprocity in explaining
417 primate altruism. *Ecol. Lett.* **13**, 45–50. (doi:10.1111/j.1461-0248.2009.01396.x)
- 418 18. Carter, G. G. & Wilkinson, G. S. 2015 Social benefits of non-kin food sharing by female
419 vampire bats. *Proc. Biol. Sci.* **282**. (doi:10.1098/rspb.2015.2524)
- 420 19. Carter, G. G., Farine, D. R. & Wilkinson, G. S. 2017 Social bet-hedging in vampire bats.
421 *Biol. Lett.* **13**. (doi:10.1098/rsbl.2017.0112)
- 422 20. Carter, G. G. & Wilkinson, G. S. 2013 Food sharing in vampire bats: reciprocal help
423 predicts donations more than relatedness or harassment. *Proc. Biol. Sci.* **280**, 20122573.
424 (doi:10.1098/rspb.2012.2573)
- 425 21. Volland, B. 2011 The difference between kinship and friendship: (Field-) experimental
426 evidence on trust and punishment. *J. Socio Econ.* **40**, 14–25.
427 (doi:10.1016/j.socec.2010.10.003)
- 428 22. Krupp, D., Debruine, L. & Barclay, P. 2008 A cue of kinship promotes cooperation for
429 the public good. *Evol. Hum. Behav.* **29**, 49–55.
430 (doi:10.1016/j.evolhumbehav.2007.08.002)
- 431 23. Milinski, M., Semmann, D. & Krambeck, H.-J. 2002 Reputation helps solve the
432 “tragedy of the commons”. *Nature* **415**, 424–426. (doi:10.1038/415424a)
- 433 24. Forsythe, R., Horowitz, J. L., Savin, N. E. & Sefton, M. 1994 Fairness in Simple
434 Bargaining Experiments. *Games Econ. Behav.* **6**, 347–369.
435 (doi:10.1006/game.1994.1021)
- 436 25. Wedekind, C. & Milinski, M. 2000 Cooperation through image scoring in humans.
437 *Science* **288**, 850–852. (doi:10.1126/science.288.5467.850)
- 438 26. Reis, H. T. & Gruen, J. 1976 On mediating equity, equality, and self-interest: The role
439 of self-presentation in social exchange. *J. Exp. Soc. Psychol.* **12**, 487–503.
440 (doi:10.1016/0022-1031(76)90079-2)
- 441 27. Haley, K. J. & Fessler, D. M. T. 2005 Nobody’s watching? *Evolution and Human*
442 *Behavior* **26**, 245–256. (doi:10.1016/j.evolhumbehav.2005.01.002)
- 443 28. Smith, M. S., Kish, B. J. & Crawford, C. B. 1987 Inheritance of wealth as human kin
444 investment. *Ethol. Sociobiol.* **8**, 171–182. (doi:10.1016/0162-3095(87)90042-2)
- 445 29. Stewart-Williams, S. 2007 Altruism among kin vs. nonkin: effects of cost of help and
446 reciprocal exchange. *Evolution and Human Behavior* **28**, 193–198.
447 (doi:10.1016/j.evolhumbehav.2007.01.002)
- 448 30. Berté, N. A. 1988 K’ekchi’ horticultural labor exchange: productive and reproductive
449 implications. *Human reproductive behaviour*, 83–96.
- 450 31. Crittenden, A. N., Conklin-Brittain, N. L., Zes, D. A., Schoeninger, M. J. & Marlowe, F.
451 W. 2013 Juvenile foraging among the Hadza: Implications for human life history.
452 *Evolution and Human Behavior* **34**, 299–304.

- (doi:10.1016/j.evolhumbehav.2013.04.004)
32. Emlen, S. T. 1984 Cooperative breeding in birds and mammals. *Behavioural ecology: an evolutionary approach* , 305–339.
 33. Cockburn, A. 1998 Evolution of helping behavior in cooperatively breeding birds. *Annu. Rev. Ecol. Syst.* **29**, 141–177. (doi:10.1146/annurev.ecolsys.29.1.141)
 34. Clutton-Brock, T. H. 1989 Review Lecture: Mammalian Mating Systems. *Proceedings of the Royal Society B: Biological Sciences* **236**, 339–372. (doi:10.1098/rspb.1989.0027)
 35. Carballo, D. M. 2012 *Cooperation and collective action: archaeological perspectives*. University Press of Colorado.
 36. Sebastián-Enesco, C., Hernández-Lloreda, M. V. & Colmenares, F. 2013 Two and a half-year-old children are prosocial even when their partners are not. *J. Exp. Child Psychol.* **116**, 186–198. (doi:10.1016/j.jecp.2013.05.007)
 37. Warneken, F. & Tomasello, M. 2013 The emergence of contingent reciprocity in young children. *J. Exp. Child Psychol.* **116**, 338–350. (doi:10.1016/j.jecp.2013.06.002)
 38. Hamlin, J. K., Wynn, K., Bloom, P. & Mahajan, N. 2011 How infants and toddlers react to antisocial others. *Proc Natl Acad Sci USA* **108**, 19931–19936. (doi:10.1073/pnas.1110306108)
 39. Martin, A. & Olson, K. R. 2015 Beyond good and evil: what motivations underlie children's prosocial behavior? *Perspect. Psychol. Sci.* **10**, 159–175. (doi:10.1177/1745691615568998)
 40. Olson, K. R. & Spelke, E. S. 2008 Foundations of cooperation in young children. *Cognition* **108**, 222–231. (doi:10.1016/j.cognition.2007.12.003)
 41. Lu, H. J. & Chang, L. 2016 Resource allocation to kin, friends, and strangers by 3- to 6-year-old children. *J. Exp. Child Psychol.* **150**, 194–206. (doi:10.1016/j.jecp.2016.05.018)
 42. Bruce Morton, J. & Munakata, Y. 2002 Are you listening? Exploring a developmental knowledge-action dissociation in a speech interpretation task. *Dev. Sci.* **5**, 435–440. (doi:10.1111/1467-7687.00238)
 43. Tomasello, M. & Gonzalez-Cabrera, I. 2017 The role of ontogeny in the evolution of human cooperation. *Hum. Nat.* **28**, 274–288. (doi:10.1007/s12110-017-9291-1)
 44. Plotnik, J. M., Lair, R., Suphachoksahakun, W. & de Waal, F. B. M. 2011 Elephants know when they need a helping trunk in a cooperative task. *Proc Natl Acad Sci USA* **108**, 5116–5121. (doi:10.1073/pnas.1101765108)
 45. Rekers, Y., Haun, D. B. M. & Tomasello, M. 2011 Children, but not chimpanzees, prefer to collaborate. *Curr. Biol.* **21**, 1756–1758. (doi:10.1016/j.cub.2011.08.066)
 46. Warneken, F., Lohse, K., Melis, A. P. & Tomasello, M. 2011 Young children share the spoils after collaboration. *Psychol. Sci.* **22**, 267–273. (doi:10.1177/0956797610395392)
 47. Howes, C. & Phillipsen, L. 1992 Gender and friendship: relationships within peer

- groups of young children. *Social Development* **1**, 230–242. (doi:10.1111/j.1467-9507.1992.tb00126.x)
48. Howes, C. 1996 The earliest friendships. *The company they keep: Friendship in childhood and adolescence*, 66–86.
49. Howes, C. 1983 Patterns of Friendship. *Child Dev.* **54**, 1041. (doi:10.2307/1129908)
50. Asher, S. R., Singleton, L. C., Tinsley, B. R. & Hymel, S. 1979 A reliable sociometric measure for preschool children. *Dev. Psychol.* **15**, 443–444. (doi:10.1037/0012-1649.15.4.443)
51. Bates, D., Maechler, M., Bolker, B. & Walker, S. 2015 Package “lme4.” *Convergence*, **12** **12**.
52. Hartig, F. 2017 DHARMA: residual diagnostics for hierarchical (multi-level/mixed) regression models. *R package version 0.1*, **5** **5**.
53. Thomas, M. G., Ji, T., Wu, J., He, Q., Tao, Y. & Mace, R. 2018 Kinship underlies costly cooperation in Mosuo villages. *R. Soc. Open Sci.* **5**, 171535. (doi:10.1098/rsos.171535)
54. Hirata, S. & Fuwa, K. 2007 Chimpanzees (*Pan troglodytes*) learn to act with other individuals in a cooperative task. *Primates*. **48**, 13–21. (doi:10.1007/s10329-006-0022-1)
55. Lieberman, D. & Linke, L. 2007 The effect of social category on third party punishment. *Evol. Psychol.* **5**, 147470490700500. (doi:10.1177/147470490700500203)
56. O’Gorman, R., Wilson, D. S. & Miller, R. R. 2005 Altruistic punishing and helping differ in sensitivity to relatedness, friendship, and future interactions. *Evolution and Human Behavior* **26**, 375–387. (doi:10.1016/j.evolhumbehav.2004.12.006)
57. Chagnon, N. A. 1979 Evolutionary biology and human social behavior: An anthropological perspective. *Evolutionary biology and human social behavior: An anthropological perspective*
58. Smith, E. A. 1991 Inujjuamiunt foraging strategies: Evolutionary ecology of an Arctic hunting economy. *Inujjuamiunt foraging strategies: Evolutionary ecology of an Arctic hunting economy*
59. Ramenzoni, V. C. & Gonzalez-Gadea, M. L. 2020 Parental Behavior Models Prosocial Behavior in Face-to-Face Interactions with their School-age Children.
60. Chopik, W. J. 2017 Associations among relational values, support, health, and well-being across the adult lifespan. *Pers Relatsh* **24**, 408–422. (doi:10.1111/pere.12187)
61. Vehrencamp, S. L. 1983 A model for the evolution of despotic versus egalitarian societies. *Animal Behaviour* **31**, 667–682. (doi:10.1016/S0003-3472(83)80222-X)
62. Rousset, F. 2013 Genetic structure and selection in subdivided populations (MPB-40). *Genetic structure and selection in subdivided populations (MPB-40)*
63. Hamilton, W. D. & May, R. M. 1977 Dispersal in stable habitats. *Nature* **269**, 578–581. (doi:10.1038/269578a0)

64. Kramer, K. L. 2005 Children's help and the pace of reproduction: cooperative breeding in humans. *Evol. Anthropol.* **14**, 224–237. (doi:10.1002/evan.20082)
65. Gifford-Smith, M. E. & Brownell, C. A. 2003 Childhood peer relationships: social acceptance, friendships, and peer networks. *J. Sch. Psychol.* **41**, 235–284. (doi:10.1016/S0022-4405(03)00048-7)
66. Masten, A. S. & Coatsworth, J. D. 1998 The development of competence in favorable and unfavorable environments. Lessons from research on successful children. *Am. Psychol.* **53**, 205–220. (doi:10.1037//0003-066x.53.2.205)
67. Wrzus, C., Hänel, M., Wagner, J. & Neyer, F. J. 2013 Social network changes and life events across the life span: a meta-analysis. *Psychol. Bull.* **139**, 53–80. (doi:10.1037/a0028601)
68. Olson, L. E. & Blumstein, D. T. 2009 A trait-based approach to understand the evolution of complex coalitions in male mammals. *Behavioral Ecology* **20**, 624–632. (doi:10.1093/beheco/arp040)
69. Boulton, M. J. & Underwood, K. 1992 BULLY/VICTIM PROBLEMS AMONG MIDDLE SCHOOL CHILDREN. *British Journal of Educational Psychology* **62**, 73–87. (doi:10.1111/j.2044-8279.1992.tb01000.x)
70. Olweus, D. 1991 Bully/victim problems among schoolchildren: Basic facts and effects of a school based intervention program. *The development and treatment of childhood aggression*, 17 **17**, 411–448.
71. Ladd, G. W., Kochenderfer, B. J. & Coleman, C. C. 1997 Classroom peer acceptance, friendship, and victimization: distinct relation systems that contribute uniquely to children's school adjustment? *Child Dev.* **68**, 1181–1197. (doi:10.1111/j.1467-8624.1997.tb01993.x)
72. Engelmann, J. M., Over, H., Herrmann, E. & Tomasello, M. 2013 Young children care more about their reputation with ingroup members and potential reciprocators. *Dev. Sci.* **16**, 952–958. (doi:10.1111/desc.12086)
73. Bélanger, M. J., Atance, C. M., Varghese, A. L., Nguyen, V. & Vendetti, C. 2014 What will I like best when i'm all grown up? preschoolers' understanding of future preferences. *Child Dev.* (doi:10.1111/cdev.12282)
74. Tomasello, M. & Vaish, A. 2013 Origins of human cooperation and morality. *Annu. Rev. Psychol.* **64**, 231–255. (doi:10.1146/annurev-psych-113011-143812)
75. Daly, M. & Wilson, M. 1988 Evolutionary social psychology and family homicide. *Science* **242**, 519–524. (doi:10.1126/science.3175672)
76. Heinsohn, R. & Johnstone, R. A. 2004 Reproductive skew. *Ecology and evolution of cooperative breeding in birds*

Acknowledgments

We thank parents of participants, directors, teachers and inspectors of the schools for permission to work in schools and children who participated in the study. We thank Orlane Scelsi for her drawing of the apparatus, David Lieuré for help adapting and building the apparatus for children and Bruce Lyon and Michael Singer for helpful feedback on the manuscript. ANR-Labex TULIP (ANR-10-LABX-41) New Frontiers Grant entitled “Human Altruism Genes” and the Institute for Advanced Studies in Toulouse provided funding. This work was supported by the Laboratoire d'Excellence (LABEX) entitled TULIP (ANR-10-LABX-41) and IAST through ANR grant ANR-17-EURE-0010 (Investissements d'Avenir program).

Author Contributions

G. B. -J., A. S. C, M.B and A.H. designed research; G. B. -J and A. R. performed research; M. C. and G. B. -J. analyzed data; G.B.-J, A.S.C and M.C. wrote the paper; M. B. and A.H. gave feedback on the paper.

Additional Information

Supplementary Information is available for this paper. Correspondence and requests for materials should be addressed to Gladys Barragan-Jason.

Email: gladys.barraganjason@gmail.com