



HAL
open science

Schoolchildren cooperate more successfully with non-kin than with siblings

Gladys Barragan, Maxime Cauchoix, Anne Regnier, Marie Bourjade, Astrid Hopfensitz, Alexis Chaine

► To cite this version:

Gladys Barragan, Maxime Cauchoix, Anne Regnier, Marie Bourjade, Astrid Hopfensitz, et al.. Schoolchildren cooperate more successfully with non-kin than with siblings. Proceedings - Royal society. Biological sciences, 2021, 288 (1944), 10.1098/rspb.2020.2951 . hal-03167067

HAL Id: hal-03167067

<https://hal.science/hal-03167067v1>

Submitted on 19 Oct 2021

HAL is a multi-disciplinary open access archive for the deposit and dissemination of scientific research documents, whether they are published or not. The documents may come from teaching and research institutions in France or abroad, or from public or private research centers.

L'archive ouverte pluridisciplinaire **HAL**, est destinée au dépôt et à la diffusion de documents scientifiques de niveau recherche, publiés ou non, émanant des établissements d'enseignement et de recherche français ou étrangers, des laboratoires publics ou privés.

1 **Schoolchildren cooperate more successfully with non-kin than with siblings**

2

3 Gladys Barragan-Jason^{1*}, Maxime Cauchoix¹, Anne Regnier¹, Marie Bourjade², Astrid
4 Hopfensitz³ & Alexis S. Chainé^{1,3}

5 ¹Station d'Écologie Théorique et Expérimentale du CNRS (UMR5321), 09200, Moulis,
6 France

7 ²CLLE, Université de Toulouse, CNRS, 31000, Toulouse, France

8 ³Toulouse School of Economics, Institute for Advanced Studies in Toulouse, 31000,
9 Toulouse, France

10 * *Corresponding Author*: Gladys Barragan-Jason

11 **Abstract**

12 Cooperation plays a key role in the development of advanced societies and can be stabilized
13 through shared genes (kinship) or reciprocation. In humans, cooperation among kin occurs
14 more readily than cooperation among non-kin. In many organisms, cooperation can shift with
15 age (e.g. helpers at the nest), however little is known about developmental shifts between kin
16 and non-kin cooperation in humans. Using a cooperative game, we show that 3-to-10 year-
17 old French schoolchildren cooperated less successfully with siblings than with non-kin
18 children, whether or not non-kin partners were friends. Furthermore, children with larger
19 social networks cooperated better and the perception of friendship among non-friends
20 improved after cooperating. These results contrast with the well-established preference for
21 kin-cooperation among adults and indicate that non-kin cooperation in humans might serve to
22 forge and extend non-kin social relationships during middle childhood and create
23 opportunities for future collaboration beyond kin. Our results suggest that the current view of
24 cooperation in humans may only apply to adults and that future studies should focus on how
25 and why cooperation with different classes of partners might change during development in
26 humans across cultures as well as other long-lived organisms.

27

28 **Keywords**

29 Kin selection, Kinship, Evolution of cooperation, Children development, Human Evolution

30 **Introduction**

31 Cooperation is thought to have played a key role in the evolution of advanced
32 societies, especially in humans [1–7]. Both kin-based interactions and reciprocity can
33 promote cooperation while protecting against cheating [2–6]. Cooperation among kin can
34 mean that benefits to the recipient of help can lead to indirect genetic benefits to the donor, an
35 evolutionary process called “kin-selection” [8], as described in social insects [9,10] and a
36 number of vertebrates [11,12]. Alternatively (or additionally), unrelated individuals who
37 interact repeatedly can *reciprocate* leading to benefits to each individual in the partnership
38 across time [13,14] such as egg trading in fish [15,16] and allogrooming in primates [17].
39 More recently, a few studies have shown that both mechanisms can operate in tandem with
40 one mechanism playing a more important role in cooperation for a given system. For
41 example, food sharing in vampire bats is clearly maintained by reciprocity even if such
42 sharing can occur among kin adding further indirect benefits [18–20]. Likewise, cooperation
43 in humans occurs both among kin [21,22] as well as through reciprocal interactions [6,23–
44 27], although human adults clearly favor cooperation with kin over strangers [28–31].

45 In many organisms, the form of cooperation can change with age. For example, young
46 individuals act as helpers in cooperative breeding birds but adults do not [32,33] whereas the
47 opposite is true in many cooperative breeding mammals [34]. Whether similar shifts occur
48 with age in systems where both kin and non-kin cooperation occur either in absolute terms or
49 in the relative importance of each form of cooperation, is unknown. Studying the
50 development of kin and non-kin cooperation is critical to our understanding of the evolution
51 and function of cooperation in longer-lived organisms and their role in the development and
52 evolution of advanced societies [7,35]. Surprisingly, appropriate experimental tests in
53 humans are still lacking. Among the limited number of experimental studies comparing kin
54 and non-kin cooperation or prosociality in children, reciprocation seems to be important [36–

55 39] but children tend to favor sharing with their relatives compared to strangers [40,41] like
56 adults. However, previous experimental studies of kin-sharing in children use third party
57 tasks, where participants are asked about abstract scenarios, and these tests often give
58 different results from direct participation in a task [42,43] since it reflects what the participant
59 thinks another person *should* do but not necessarily how they would *actually* behave in a real
60 cooperative situation (see however Crittenden et al. [31]). In addition, third party tasks are
61 thought to be “removed from the evolutionary mechanisms that [...] likely shape these
62 phenomena in early ontogeny” and do not “reflect the effects of the collaborative foraging
63 context of early humans, in which one shares the spoils [...] among those who took part in
64 the *collaborative effort*” [43]. Because no experimental study in children has directly
65 compared kin and non-kin cooperation in situations in which individuals are asked to actively
66 collaborate in a realistic setting, little is known about the development of kin and non-kin
67 cooperation in humans with age.

68 Here, we used a direct-action cooperation task to evaluate if children cooperate more
69 with kin, friends, or non-friends when actively engaged in a game that requires children to
70 cooperate and coordinate actions with other children. We measured cooperation using a rope
71 pulling task (Fig. 1A) in which two children coordinate in pulling a single rope to reach a
72 reward and succeed only if both rope ends are pulled at the same time and same speed [44–
73 46]. This task is complex and needs the active engagement of children in the task since it
74 requires paying attention to the partners’ actions to succeed. While a previous experiment
75 using this design began by giving the children a demonstration, we decided to render the task
76 more difficult by omitting the demonstration and merely telling the children that they would
77 have to work together to complete the task [46]. To examine the roles of kinship and
78 friendship on performance by children of a cooperative task, we assigned each child a partner
79 who could be classified as kin (a sibling), a socially close non-kin (a “best friend”) or a

80 socially distant non-kin (a non-friend). Pairs were quasi-randomly assigned by the
81 experimenter based on questionnaires administered to teachers and children before the task
82 (see methods) and each pair was allowed to conduct the task until successful or up to three
83 attempts if unsuccessful. In so doing, we investigated whether joint success in a cooperative
84 task was linked to the degree of relatedness between partners in children. We found that
85 children cooperate more efficiently with non-kin (friends and non-friends) than with kin (i.e.
86 siblings) partners.

87 **Methods**

88 Participants

89 We recruited 290 children from ages 3 to 10 (92 3-to-5 year-olds, 139 6-7 year-olds
90 and 59 8-to-10 year-olds; 135 females) from 15 kindergartens and elementary schools in
91 southwestern France. While this age range is large, it reflects all children that potentially
92 interact within schools where the study was conducted as many schools have mixed level
93 classes and a common play area. All parents signed an informed consent form for their
94 children and only children who gave their verbal assent were included. Parents also filled a
95 demographic questionnaire including parents' income, living area (urban vs. rural), number
96 of siblings and native language. Thirty percent of children were from middle-class
97 backgrounds (20,000 to 30,000 euros/year) and 35 % lived in urban areas. Participants had
98 2.5 siblings on average: 18% were an only child, 44% had only one sibling, 20% had two
99 siblings and 18% had more than 2 siblings. Sixty-nine percent of the children were native
100 French and all children (except 2 children from whom the test was performed in English)
101 were French-speaking. The same female experimenter tested children during a single video-
102 recorded session in an available room at their schools.

103 Experimental procedure

104 Participants performed a rope pulling task [44] that requires coordinated pulling to
105 reach a reward (see Fig. 1 and Fig. S1). Two children are required to pull their end of the rope
106 simultaneously, each holding the end of the same rope where the two ends are far enough
107 apart that one person could not reach both ends at the same time. A single rope is threaded
108 around an apparatus such that only if both rope ends are pulled at the same time can the
109 containers be moved and the rewards be reached. Pulling on one end would only move the
110 rope but not the two sliding containers which contain the rewards, making the other end of
111 the rope unavailable to a partner. Only if both participants pulled the rope at the same time
112 and at similar speeds, would they each obtain a reward (i.e. joint success, with no delayed
113 reciprocity). Two cases lead to failure in the cooperative task: asymmetric pulling led to
114 neither participant obtaining the reward (0/0) or if both participants pulled at the same time
115 but one let go after gathering their reward but before their partner could take their own
116 reward such that just one of the two obtained the reward (0/1 or 1/0). If only one child took
117 his/her own sticker, the sticker was put back into the sliding container and children began a
118 new trial together.

119 The Experimenter (E) explained to the children that they would play together to each
120 win a reward (stickers) but provided no further instruction. By not providing more guidance,
121 this cooperative task was rendered more difficult than in previous studies using the same
122 game (63% success here vs. 94% success during first trials in a previous study [46]). E placed
123 the two rewards (one for each child) in the apparatus (one in each container of the apparatus)
124 under observation of the children and told them they could start to play.

125 Each time a pair attempted to pull the ropes is termed a “trial”. Our measure of
126 cooperation and coordination was focused on a single trial, but upon request of teachers to
127 not create inequalities in the classroom, dyads of children could perform a maximum of 3
128 trials beyond which E stopped the testing and gave the stickers to the children. As such, we

129 focused our analyses on the first trials to avoid any impact of learning on joint success in
130 subsequent trials. Overall, most children succeeded within those 3 trials as 63% (91/145) of
131 the pairs succeeded in the first trial, 21% (31/145) in the second trial, 6% (9/145) during the
132 third trial, and only 10 % (14/145) of dyads did not succeed by the 3 trial. In supplemental
133 information, we provide additional analyses of these subsequent trials which reinforces
134 results from the first trial only (see supplemental results, Table S1 and Fig. S2). Overall the
135 sample included 39 pairs of siblings, 52 pairs of friends, and 54 pairs of non-friends who
136 performed 77, 71 and 67 trials respectively, corresponding to a total of 215 trials among 145
137 dyads.

138 The partners of a dyad could be either siblings, friends (someone they frequently play
139 and interact with), or non-friends (someone they know but do not particularly interact with).
140 The status of the dyad (i.e., siblings, friends, non-friends) was determined before conducting
141 the experiment by asking the children's teachers to name the friends of the participants and
142 specifying each participant's best friend through a questionnaire filled out before the
143 experiment. We asked teachers to base their estimation of relationship closeness of a dyad on
144 the amount of time children spent together, intensity of positive interactions, and time they
145 play with each other at school [47,48]. Based on the responses of the questionnaires, dyads
146 were formed by E. Following the definition of friendship in the literature [49], "friends" were
147 formed by dyads where both children considered the other their best friend and "non-friends"
148 were formed among two individuals where neither considered the other a friend.
149 Furthermore, "non-friend" dyads specifically avoided matching individuals who have
150 conflictual relationships. Finally, kin status was assigned to any siblings within the class or
151 between two classes in the school. Because it was more rare to find siblings given logistical
152 constraints at schools, possible sibling dyads were formed as a priority. Remaining
153 individuals were then assigned to the other two categories at random. Given that kin dyads

154 naturally showed larger age and sex differences than friend dyads (often same age and same
155 sex), the “non-friend” dyads were balanced by matching both pairs of the same age and same
156 sex children and pairs with large age differences and different sex to be more similar to the
157 kin category (see Fig. S3).

158 In order to confirm the assignment of the dyads based on teacher evaluation of friendship, a
159 questionnaire for children was also performed. E asked children about their relationship with
160 their partner (“Do you like to play with CHILD X?”) and about the quality of their
161 relationship using an emoticon Likert scale (“How much do you like to play with CHILD X?:
162 a lot, a little, not at all) [50]. The order of the emoticons was counterbalanced across
163 participants to avoid bias. In order to investigate whether participation in the rope pulling task
164 affected the relationship of the partners, the same questions were administered 24 h after the
165 test. Finally, we gathered information about each child’s friend network before the
166 experiment, by asking the child to name their friends (“Please, tell me the names of the
167 children you like to play with the most?”). Due to logistical constraints, we were only able to
168 gather complete friendship network data at 10 of the 15 schools in our sample.

169 Data coding

170 All trials were recorded using a video camera oriented so that both participants and
171 the apparatus were visible allowing us to score the children’s performances. Successful trials
172 were scored when both partners pulled together and successfully reached the reward (i.e. joint
173 success). Failed trials were scored when children failed to pull the rope together such that
174 neither reached the reward or when only one child reached the reward. The same trained
175 research assistant coded the number of gazes (each movement of the eyes accompanied by a
176 movement of the head toward the partner) of each dyad blind to dyad category for the first
177 trial only of each dyad. The number of gazes included situations when both partners look at
178 each other and when a single individual looks at the other one.

179 Statistical analysis

180 All analyses were performed in the R environment for statistical computing version
181 3.3.6 (R Development Core Team, 2018).

182 We examined the effect of partner relationship within a dyad on joint success using a
183 binomial GLM [51] including the first trial (0 vs. 1) performed by each dyad. We built a full
184 model that included fixed effects of dyad relationship (kin, friend, non-friend), dyad sex
185 (male-male (MM), female-female (FF), male-female (MF)), average age of partners and age
186 difference between the partners. Since nearly all dyads eventually succeeded in performing
187 the task by the third trial (see above), analyses of the change in relationship between a pair
188 could not be compared between pairs that succeeded in the first trial relative to those who did
189 not and so simply included all individuals.

190 Coordinated rope pulling could be facilitated by looking at a partner, so we looked at
191 the impact of gaze frequency (gazes per second) on joint success in the first trial (0 vs. 1)
192 performed by each dyad using a GLM. We built a full model that included fixed effects of
193 dyad relationship (kin, friend, non-friend), dyad sex (MM, FF, MF), average age of partners
194 and age difference between the partners. We also investigated the effect of partner status on
195 the number of gazes using a LM including gaze frequency (gaze per second) during the first
196 trial. We included dyad relationship (kin, friend, non-friend), dyad sex (MM, FF, MF),
197 average age of partners and age difference between the partners as fixed effects.

198 We then assessed the relationship between performance in the task and the size of a
199 child's social network. Using a binomial GLM, we asked whether performance (0 vs. 1)
200 during the first trial was affected by a child's number of friends (i.e. outdegree centrality in
201 social network analysis) while controlling for dyad sex, mean age of the dyad, age difference
202 of the dyad partners, and number of children in the classroom.

203 For GLMs, visual inspection of residual plots using the DHARMA package [52] did
204 not reveal deviations from homoscedasticity or normality. For each fixed effect, statistical
205 significance was evaluated by likelihood ratio tests of the full model against the same model
206 without the tested fixed effect. In supplemental tables, we report odd-ratios and their
207 corresponding 95% confidence intervals, p-values as well as marginal, conditional or pseudo
208 R2 of the Full Model when appropriate.

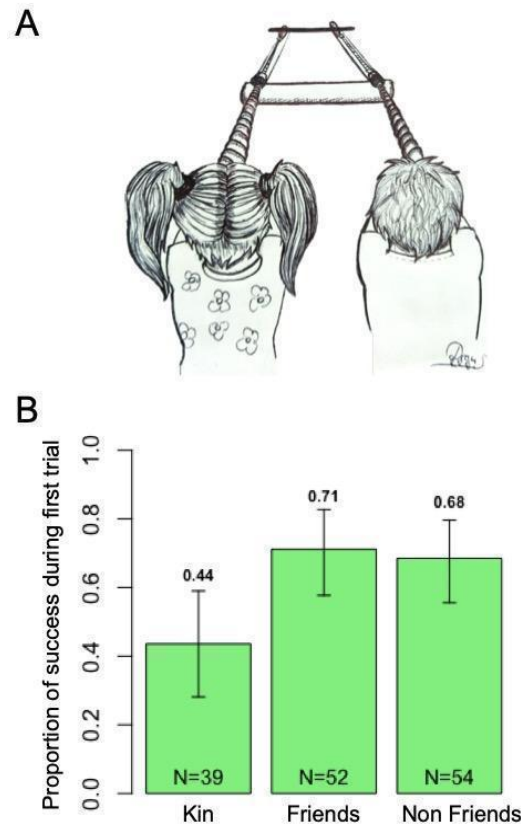
209 Finally, we tested the effect of the rope pulling task on the quality of the relationship
210 between the two partners, we performed McNemar and Cochran Q test when appropriate on
211 kin, friend and non-friend partners separately.

212

213 **Results and discussion**

214 During first trials, 63% (91 out of 145 trials) of the children jointly succeeded in the
215 cooperative rope pulling task. We found that children cooperate less well with kin than with
216 non-kin (Fig. 1B): the likelihood of cooperating during the first trial was significantly
217 affected by dyad type while controlling for mean age, age difference and sex of dyads
218 (binomial GLM, partner status: $P=0.019$, mean age: $P=0.008$; age difference: $P=0.084$, sex:
219 $P=0.81$; Fig. 1B and Table S2). Friends (52 dyads, 71% successful; $z=2.62$; $P=0.009$) and
220 non-friends (54 dyads, 68 % successful, $z=2.29$; $P=0.022$) were more likely to succeed on
221 their first cooperative trial than kin partners (39 dyads, 44%, Fig. 1B and Table S2) whereas
222 performance of friends and non-friends did not differ from each other ($z=-0.61$; $P=0.54$; Fig.
223 1B and Table S2). There was no effect of an interaction between the mean age of the dyad
224 and partner status (mean age \times partner status: deviance= -0.056 ; $P=0.97$) nor between age
225 difference of the dyad and partner status (age difference \times partner status: deviance: 1.22
226 $P=0.54$) suggesting that any shifts in cooperative preferences towards kin with age must

227 occur beyond 8-10 years-old (Fig. S4). These patterns were consistent when controlling for
228 demographic information (Table S3) and restriction to subsets of the data (Figs. S4, S5).



229

230 *Fig. 1. Performance in the cooperative rope pulling task by partner status. A) Illustration of*
231 *the cooperation apparatus. The "rope pulling game" was adapted from previous studies on*
232 *chimpanzees and children [46,54]. Photograph of the apparatus is also provided in Fig. S1*
233 *in supplemental information (SI). B) Proportion of successful first trials of kin (i.e. siblings)*
234 *and non-kin friend and non-friend dyads in cooperative rope pulling. Error bars indicate*
235 *95% bootstrapped confidence interval. N values indicate the number of dyads in each*
236 *category (i.e. kin, friends, non-friends). Kin partners were less successful than non-kin in the*
237 *rope-pulling task.*

238

239 The contrast in the propensity to cooperate with kin relative to non-kin between
240 studies in adults [21,22,53] and our results in children suggest that there is a striking
241 developmental shift in the value of different forms of interactions. We could not run the same
242 exact study in adults since the task would be far too easy for them and so could not directly
243 contrast preferences in adults and children using the same population. However, studies in

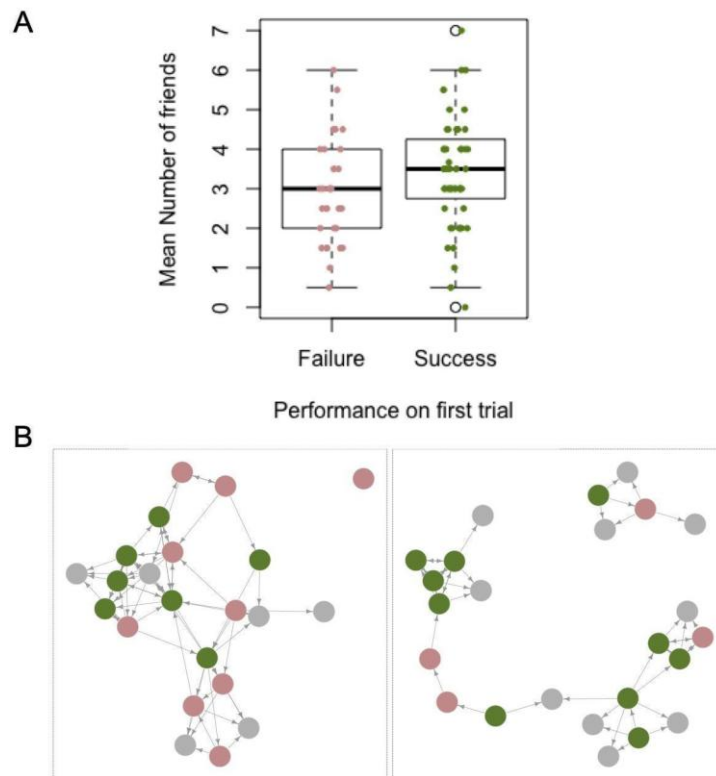
244 adults show a very consistent pattern of kin preferences over non-kin across a broad variety
245 of experimental paradigms (e.g. public good game, prisoners' dilemma) and populations. For
246 instance, adults from Western industrialized countries trust kin more [21], are more likely to
247 cooperate with individuals who have similar facial features to their own [22], and minimize
248 punishment after rule transgression for kin compared to strangers [55,56]. Furthermore, non-
249 Western traditional societies show comparable preferences for cooperation with kin [57,58].
250 While we did find an improvement in joint success in the cooperative task with age (Fig. S4
251 and Tables S2 and S3), this improvement did not alter patterns of cooperation between kin
252 versus non-kin (i.e. no significant interaction effect reported above; Fig. S4) while controlling
253 for dyad age suggesting that contrasts between children and adults in their preference for
254 cooperating with kin are not simply due to an improvement of solving a cooperative task.
255 Well known cooperative systems shift from cooperation among kin to no cooperation or the
256 reverse with age [32] [33] [34], but to our knowledge, such age related shifts in cooperative
257 preferences have not yet been examined experimentally in systems where both kin and non-
258 kin cooperation coexist. For example, it would be interesting to know if vampire bats which
259 show reciprocal cooperation with non-kin more so than kin among adults show a strong
260 preference for food sharing among kin rather than non-kin among juveniles. Knowing if such
261 shifts are general will require both a concerted effort to document more cases of kin and non-
262 kin cooperation in the same system as well as tests of cooperative preferences with age.

263 Shifts in preferences for cooperating with kin vs. non-kin may be a consequence of a
264 shift in the value of cooperating with different classes of individuals with age. Kin
265 cooperation among adults might provide the greatest direct and indirect benefits to success
266 (e.g., fitness, wealth, etc. [60]) since they have reached reproductive maturity where gene
267 transmission is likely more important than reciprocity thereby favoring kin interactions and
268 indirect genetic benefits from cooperation. On the other hand, children are far from

269 reproductive age and therefore might invest primarily in resource acquisition and survival
270 which can benefit from reciprocal cooperation with peers regardless of kinship. Furthermore,
271 kin-competition might reduce the value of kin-cooperation among children (e.g. siblings)
272 [61–63] especially if resources are primarily provided by parents [43]. The benefits of a given
273 cooperative interaction to success in children are indeed modest given that children are still
274 supported by their parents and instead may serve primarily to develop cooperative skills
275 needed for the future such as building a social network [64].

276 Developing friendships and affiliations with peers in mid-childhood has indeed been
277 linked to future success at adulthood [60,65,66]. Since the current network of young children
278 is still fairly limited, reinforcing and increasing reputation through reciprocity and building a
279 broader social network might thus be more important during childhood than adulthood.
280 Indeed, social networks tend to expand in size among young adults, but shrink in older adults
281 [67]. Here, we found that having a bigger social network before the experiment was related to
282 subsequent performance during the first trial in the rope pulling task (Fig. 2) after controlling
283 for the age difference between partners, mean age, sex and number of children in the
284 classroom (binomial GLM, out degree centrality or number of friends named by participants:
285 deviance=5.61; P=0.018, mean age: deviance=10.27; P=0.001; age difference:
286 deviance=3.14; P=0.076, sex: deviance=2.12; P=0.35; number of children in the classroom:
287 deviance=1.12; P=0.29; Fig. 3, Fig. 2, Table S4 and Fig. S6). This correlative relationship
288 could exist either because social individuals cooperate more readily or because those who
289 have built a bigger network develop cooperative skills. Regardless of directionality, our
290 results show a cooperative benefit to a larger social network.

291



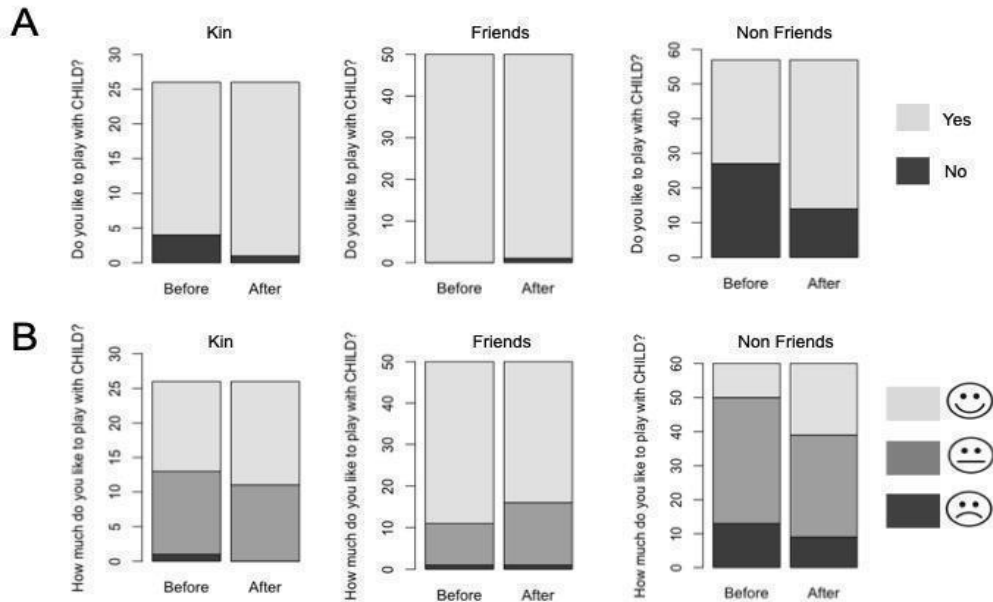
292

293 *Fig. 2. Relationship between the number of friends (out degree centrality) and performance*
 294 *in the rope pulling task. The number of friends and social network were based on a*
 295 *questionnaire before the experiment where children were asked to give the names of children*
 296 *they prefer to play with in their classroom including children who did not participate in the*
 297 *task. A) Boxplots contrasting the number of friends averaged between the two partners*
 298 *according to their performance during the first trial. Failure in the first trial is shown in red*
 299 *and joint success in green. Each dot represents a dyad of children. B) Examples of two*
 300 *classroom networks in which individuals who succeeded in the first trial appear in green and*
 301 *who failed in red. Children who did not participate and who participants named as friends*
 302 *appear in grey. Arrows represent friendship between children such that bi-directional arrows*
 303 *represent pairs of individuals who each listed the other as a friend whereas single headed*
 304 *arrows represent cases where one individual considered the other a friend while the second*
 305 *individual did not list the first as a friend. All networks are presented in Fig. S6. Having more*
 306 *friends is linked to a higher success in the cooperative task.*

307

308 Building a large social network should be especially valuable in unpredictable environments,
 309 since extending one's social network to cooperate with non-kin could provide benefits when
 310 the social community is perturbed whereas limiting one's social network only to kin would be
 311 risky [18,19]. For example, under unpredictable/risky situations [19,68] or when non-kin are
 312 more numerous than kin [18], different species of mammals (e.g. bats [19], primates and
 313 dolphins [68]), tend to favor cooperation with non-kin compared to kin partners. For children,

314 the school environment is constituted mostly of non-kin and has some risks (e.g.
315 victimization by peers [69–71]), so expansion of the social network could indeed carry
316 “social bet hedging” benefits. If cooperation serves to strengthen or build a social network,
317 we would predict that participation in a cooperative action should alter future interactions. As
318 such, we investigated whether performing the rope pulling task subsequently modified the
319 relationship between the two partners. To do so, children were asked to rate their relationship
320 with their partner before and again one day after the cooperative task (Fig. 3) using a Yes/No
321 preference test (“Do you like to play with CHILD X?”; Fig. 3A) and an emoticon Likert scale
322 (“How much do you like to play with CHILD X? A lot, a little, not at all”; Fig. 3B). We
323 found that the relationship quality of non-friends improved after performing the rope pulling
324 task together in both the Yes/No preference scale (McNemar $\chi^2(1,56)=9.60$; $P = 0.002$; Fig. 3A)
325 and the Emoticon Likert scale (Cochran $Q(1,55)=7.35$; $P=0.007$; Fig. 3B). As expected, we
326 did not detect a change in how much children liked kin partners (Yes/No preference test:
327 McNemar $\chi^2(1,25)=1.33$; $P=0.25$; emoticon Likert scale: Cochran $Q(1,25)=1.80$; $P= 0.18$; Fig. 3)
328 and friend partners (Yes/No preference test: McNemar $\chi^2(1,49)=1$; $P=1$; emoticon Likert scale:
329 Cochran $Q(1,49)=2.78$; $P=0.10$; Fig. 3) after the task since kin and friends already liked their
330 dyad partners in nearly all cases before performing the cooperative task (Fig. 3).



331

332 *Fig. 3. Effect of the cooperative task on the relationship quality between kin, friend and non-*
 333 *friend partners. A) Results from the Yes/No preference scale in which children were asked to*
 334 *answer the following question, before and after the rope pulling task: “Do you like to play*
 335 *with CHILD X?”. “Yes” responses appear in light grey and “No” responses in dark grey. B)*
 336 *Responses from the Emoticon Likert scale during which children were asked to rate how*
 337 *much they like to play with their partner twice (before and after the rope pulling task). They*
 338 *can either respond “A lot” in light grey, “a little” in medium grey or “not at all” in dark*
 339 *grey while pointing to a “smiley scale” corresponding to each level. Perceived relationship*
 340 *quality of non-friends improved after cooperating.*

341

342 Overall, our results show that cooperation between non-kin partners plays a key role during
 343 childhood which we argue serves to expand a child’s social network since non-friends had a
 344 more positive view of their “unknown” partner after interacting during the cooperative task.
 345 These results contrast with two studies in which children had to choose how to allocate
 346 resources between dolls (i.e. third party tasks with fictional characters) which both showed
 347 greater apparent cooperation with kin than friends or strangers [e.g. 40,72]. We believe that
 348 differences in experimental methods lead to this contrast since the use of fictional characters
 349 is more likely to elicit a response that reflects what children think they or others *should* do
 350 [42,73] whereas direct interactions to cooperate in a face-to-face situation used in our
 351 experiments should better reflect the actual outcome of natural cooperative situations.

352 Furthermore, direct tasks are more challenging than simple allocation tasks such that costs of
353 cooperation could also alter decisions. A difference in the value of friendships vs. sibling
354 relationships among children relative to adults might drive contrasts in how much effort each
355 group put into the cooperative task. The rope pulling task used here requires continued, active
356 attention and coordination with a partner to succeed. Indeed, we observed that most of the
357 unsuccessful trials happened either when a child pulled the rope before the other could grab
358 it, or when a child let go of the rope before his/her partner could grab their own reward. We
359 hypothesized that one possible explanation of failure could be a lack of attention between the
360 two partners. Consistent with this idea, the number of gazes during the first trials was indeed
361 a strong predictor of joint success (Fig. S7 and Tables S5) and kin dyads displayed fewer
362 gazes than other types of dyads (friends partners: $P < 0.005$; non-friends: $P=0.056$; Fig. S7).

363 Using this direct-action cooperation task, we found that children cooperate more with non-kin
364 peers compared to siblings in direct contrast with results in adults. Given the difficulty of our
365 cooperative task for children and considering the time children in western societies spend at
366 school, we believe our results reflect an ecologically realistic measure [74] of cooperation in
367 schoolchildren, at least in France. However, the value of cooperation with kin versus non-kin
368 could vary by context or culture and it would be interesting to see if our results hold in other
369 populations. Indeed, a more complete understanding of how decisions about cooperation shift
370 through life will require both attention to the context of testing (e.g. [75]) and application of
371 similar direct-interaction tests in individuals from a broad age range and across cultures.

372 Whether such developmental shifts in cooperation are common in other organisms also
373 remains to be explored, but should exist in cases where the benefits of cooperating with
374 different types of partners shifts through life [76]. This new hypothesis motivated by our
375 findings challenges our understanding of cooperation and should stimulate new research into
376 cooperation across life stages in both humans and other social organisms.

377 **References**

- 378 1. Melis, A. P. & Semmann, D. 2010 How is human cooperation different? *Philos. Trans.*
379 *R. Soc. Lond. B. Biol. Sci* **365**, 2663–2674. (doi:10.1098/rstb.2010.0157)
- 380 2. Dugatkin, L. A. 1997 *Cooperation among animals: an evolutionary perspective*. Oxford
381 University Press on Demand.
- 382 3. West, S. A., Griffin, A. S. & Gardner, A. 2007 Social semantics: altruism, cooperation,
383 mutualism, strong reciprocity and group selection. *J. Evol. Biol.* **20**, 415–432.
384 (doi:10.1111/j.1420-9101.2006.01258.x)
- 385 4. Clutton-Brock, T. 2009 Cooperation between non-kin in animal societies. *Nature* **462**,
386 51–57. (doi:10.1038/nature08366)
- 387 5. Sachs, J. L., Mueller, U. G., Wilcox, T. P. & Bull, J. J. 2004 The evolution of
388 cooperation. *Q. Rev. Biol.* **79**, 135–160. (doi:10.1086/383541)
- 389 6. Fehr, E., Fischbacher, U. & Gächter, S. 2002 Strong reciprocity, human cooperation,
390 and the enforcement of social norms. *Hum. Nat.* **13**, 1–25. (doi:10.1007/s12110-002-
391 1012-7)
- 392 7. Boyd, R. & Richerson, P. J. 2009 Culture and the evolution of human cooperation.
393 *Philos. Trans. R. Soc. Lond. B. Biol. Sci* **364**, 3281–3288. (doi:10.1098/rstb.2009.0134)
- 394 8. Hamilton, W. D. 1964 The genetical theory of kin selection. *J. Theor. Biol.* **7**, 1–52.
- 395 9. Queller, D. C. & Strassmann, J. E. 1998 Kin selection and social insects. *Bioscience* **48**,
396 165–175. (doi:10.2307/1313262)
- 397 10. Hughes, W. O. H., Oldroyd, B. P., Beekman, M. & Ratnieks, F. L. W. 2008 Ancestral
398 monogamy shows kin selection is key to the evolution of eusociality. *Science* **320**,
399 1213–1216. (doi:10.1126/science.1156108)
- 400 11. Emlen, S. T. & Wrege, P. H. 1988 The role of kinship in helping decisions among
401 white-fronted bee-eaters. *Behav. Ecol. Sociobiol.* **23**, 305–315.
402 (doi:10.1007/BF00300577)
- 403 12. Sinervo, B. et al. 2006 Self-recognition, color signals, and cycles of greenbeard
404 mutualism and altruism. *Proc Natl Acad Sci USA* **103**, 7372–7377.
405 (doi:10.1073/pnas.0510260103)
- 406 13. Trivers, R. L. 1971 The evolution of reciprocal altruism. *Q. Rev. Biol.* **46**, 35–57.
407 (doi:10.1086/406755)
- 408 14. Axelrod, R. & Hamilton, W. D. 1981 The evolution of cooperation. *Science* **211**, 1390–
409 1396. (doi:10.1126/science.7466396)
- 410 15. Petersen, C. W. 1995 Reproductive behavior, egg trading, and correlates of male mating
411 success in the simultaneous hermaphrodite, *Serranus tabacarius*. *Environ. Biol. Fishes*
412 **43**, 351–361. (doi:10.1007/BF00001169)
- 413 16. Fischer, E. A. 1980 The relationship between mating system and simultaneous
414 hermaphroditism in the coral reef fish, *Hypoplectrus nigricans* (Serranidae). *Animal*

- 415 *Behaviour* **28**, 620–633. (doi:10.1016/S0003-3472(80)80070-4)
- 416 17. Schino, G. & Aureli, F. 2010 The relative roles of kinship and reciprocity in explaining
417 primate altruism. *Ecol. Lett.* **13**, 45–50. (doi:10.1111/j.1461-0248.2009.01396.x)
- 418 18. Carter, G. G. & Wilkinson, G. S. 2015 Social benefits of non-kin food sharing by female
419 vampire bats. *Proc. Biol. Sci.* **282**. (doi:10.1098/rspb.2015.2524)
- 420 19. Carter, G. G., Farine, D. R. & Wilkinson, G. S. 2017 Social bet-hedging in vampire bats.
421 *Biol. Lett.* **13**. (doi:10.1098/rsbl.2017.0112)
- 422 20. Carter, G. G. & Wilkinson, G. S. 2013 Food sharing in vampire bats: reciprocal help
423 predicts donations more than relatedness or harassment. *Proc. Biol. Sci.* **280**, 20122573.
424 (doi:10.1098/rspb.2012.2573)
- 425 21. Volland, B. 2011 The difference between kinship and friendship: (Field-) experimental
426 evidence on trust and punishment. *J. Socio Econ.* **40**, 14–25.
427 (doi:10.1016/j.socec.2010.10.003)
- 428 22. Krupp, D., Debruine, L. & Barclay, P. 2008 A cue of kinship promotes cooperation for
429 the public good. *Evol. Hum. Behav.* **29**, 49–55.
430 (doi:10.1016/j.evolhumbehav.2007.08.002)
- 431 23. Milinski, M., Semmann, D. & Krambeck, H.-J. 2002 Reputation helps solve the
432 “tragedy of the commons”. *Nature* **415**, 424–426. (doi:10.1038/415424a)
- 433 24. Forsythe, R., Horowitz, J. L., Savin, N. E. & Sefton, M. 1994 Fairness in Simple
434 Bargaining Experiments. *Games Econ. Behav.* **6**, 347–369.
435 (doi:10.1006/game.1994.1021)
- 436 25. Wedekind, C. & Milinski, M. 2000 Cooperation through image scoring in humans.
437 *Science* **288**, 850–852. (doi:10.1126/science.288.5467.850)
- 438 26. Reis, H. T. & Gruzen, J. 1976 On mediating equity, equality, and self-interest: The role
439 of self-presentation in social exchange. *J. Exp. Soc. Psychol.* **12**, 487–503.
440 (doi:10.1016/0022-1031(76)90079-2)
- 441 27. Haley, K. J. & Fessler, D. M. T. 2005 Nobody’s watching? *Evolution and Human*
442 *Behavior* **26**, 245–256. (doi:10.1016/j.evolhumbehav.2005.01.002)
- 443 28. Smith, M. S., Kish, B. J. & Crawford, C. B. 1987 Inheritance of wealth as human kin
444 investment. *Ethol. Sociobiol.* **8**, 171–182. (doi:10.1016/0162-3095(87)90042-2)
- 445 29. Stewart-Williams, S. 2007 Altruism among kin vs. nonkin: effects of cost of help and
446 reciprocal exchange. *Evolution and Human Behavior* **28**, 193–198.
447 (doi:10.1016/j.evolhumbehav.2007.01.002)
- 448 30. Berté, N. A. 1988 K’ekchi’ horticultural labor exchange: productive and reproductive
449 implications. *Human reproductive behaviour* , 83–96.
- 450 31. Crittenden, A. N., Conklin-Brittain, N. L., Zes, D. A., Schoeninger, M. J. & Marlowe, F.
451 W. 2013 Juvenile foraging among the Hadza: Implications for human life history.
452 *Evolution and Human Behavior* **34**, 299–304.

- 453 (doi:10.1016/j.evolhumbehav.2013.04.004)
- 454 32. Emlen, S. T. 1984 Cooperative breeding in birds and mammals. *Behavioural ecology:*
455 *an evolutionary approach* , 305–339.
- 456 33. Cockburn, A. 1998 Evolution of helping behavior in cooperatively breeding birds. *Annu.*
457 *Rev. Ecol. Syst.* **29**, 141–177. (doi:10.1146/annurev.ecolsys.29.1.141)
- 458 34. Clutton-Brock, T. H. 1989 Review Lecture: Mammalian Mating Systems. *Proceedings*
459 *of the Royal Society B: Biological Sciences* **236**, 339–372. (doi:10.1098/rspb.1989.0027)
- 460 35. Carballo, D. M. 2012 *Cooperation and collective action: archaeological perspectives.*
461 University Press of Colorado.
- 462 36. Sebastián-Enesco, C., Hernández-Lloreda, M. V. & Colmenares, F. 2013 Two and a
463 half-year-old children are prosocial even when their partners are not. *J. Exp. Child*
464 *Psychol.* **116**, 186–198. (doi:10.1016/j.jecp.2013.05.007)
- 465 37. Warneken, F. & Tomasello, M. 2013 The emergence of contingent reciprocity in young
466 children. *J. Exp. Child Psychol.* **116**, 338–350. (doi:10.1016/j.jecp.2013.06.002)
- 467 38. Hamlin, J. K., Wynn, K., Bloom, P. & Mahajan, N. 2011 How infants and toddlers react
468 to antisocial others. *Proc Natl Acad Sci USA* **108**, 19931–19936.
469 (doi:10.1073/pnas.1110306108)
- 470 39. Martin, A. & Olson, K. R. 2015 Beyond good and evil: what motivations underlie
471 children’s prosocial behavior? *Perspect. Psychol. Sci.* **10**, 159–175.
472 (doi:10.1177/1745691615568998)
- 473 40. Olson, K. R. & Spelke, E. S. 2008 Foundations of cooperation in young children.
474 *Cognition* **108**, 222–231. (doi:10.1016/j.cognition.2007.12.003)
- 475 41. Lu, H. J. & Chang, L. 2016 Resource allocation to kin, friends, and strangers by 3- to 6-
476 year-old children. *J. Exp. Child Psychol.* **150**, 194–206.
477 (doi:10.1016/j.jecp.2016.05.018)
- 478 42. Bruce Morton, J. & Munakata, Y. 2002 Are you listening? Exploring a developmental
479 knowledge-action dissociation in a speech interpretation task. *Dev. Sci.* **5**, 435–440.
480 (doi:10.1111/1467-7687.00238)
- 481 43. Tomasello, M. & Gonzalez-Cabrera, I. 2017 The role of ontogeny in the evolution of
482 human cooperation. *Hum. Nat.* **28**, 274–288. (doi:10.1007/s12110-017-9291-1)
- 483 44. Plotnik, J. M., Lair, R., Suphachoksakun, W. & de Waal, F. B. M. 2011 Elephants
484 know when they need a helping trunk in a cooperative task. *Proc Natl Acad Sci USA*
485 **108**, 5116–5121. (doi:10.1073/pnas.1101765108)
- 486 45. Rekers, Y., Haun, D. B. M. & Tomasello, M. 2011 Children, but not chimpanzees,
487 prefer to collaborate. *Curr. Biol.* **21**, 1756–1758. (doi:10.1016/j.cub.2011.08.066)
- 488 46. Warneken, F., Lohse, K., Melis, A. P. & Tomasello, M. 2011 Young children share the
489 spoils after collaboration. *Psychol. Sci.* **22**, 267–273. (doi:10.1177/0956797610395392)
- 490 47. Howes, C. & Phillipsen, L. 1992 Gender and friendship: relationships within peer

- 491 groups of young children. *Social Development* **1**, 230–242. (doi:10.1111/j.1467-
 492 9507.1992.tb00126.x)
- 493 48. Howes, C. 1996 The earliest friendships. *The company they keep: Friendship in*
 494 *childhood and adolescence* , 66–86.
- 495 49. Howes, C. 1983 Patterns of Friendship. *Child Dev.* **54**, 1041. (doi:10.2307/1129908)
- 496 50. Asher, S. R., Singleton, L. C., Tinsley, B. R. & Hymel, S. 1979 A reliable sociometric
 497 measure for preschool children. *Dev. Psychol.* **15**, 443–444. (doi:10.1037/0012-
 498 1649.15.4.443)
- 499 51. Bates, D., Maechler, M., Bolker, B. & Walker, S. 2015 Package “lme4.” *Convergence,*
 500 *12* **12**.
- 501 52. Hartig, F. 2017 DHARMA: residual diagnostics for hierarchical (multi-level/mixed)
 502 regression models. *R package version 0.1*, **5** **5**.
- 503 53. Thomas, M. G., Ji, T., Wu, J., He, Q., Tao, Y. & Mace, R. 2018 Kinship underlies costly
 504 cooperation in Mosuo villages. *R. Soc. Open Sci.* **5**, 171535. (doi:10.1098/rsos.171535)
- 505 54. Hirata, S. & Fuwa, K. 2007 Chimpanzees (*Pan troglodytes*) learn to act with other
 506 individuals in a cooperative task. *Primates.* **48**, 13–21. (doi:10.1007/s10329-006-0022-
 507 1)
- 508 55. Lieberman, D. & Linke, L. 2007 The effect of social category on third party punishment.
 509 *Evol. Psychol.* **5**, 147470490700500. (doi:10.1177/147470490700500203)
- 510 56. O’Gorman, R., Wilson, D. S. & Miller, R. R. 2005 Altruistic punishing and helping
 511 differ in sensitivity to relatedness, friendship, and future interactions. *Evolution and*
 512 *Human Behavior* **26**, 375–387. (doi:10.1016/j.evolhumbehav.2004.12.006)
- 513 57. Chagnon, N. A. 1979 Evolutionary biology and human social behavior: An
 514 anthropological perspective. *Evolutionary biology and human social behavior: An*
 515 *anthropological perspective*
- 516 58. Smith, E. A. 1991 Inujjuamiunt foraging strategies: Evolutionary ecology of an Arctic
 517 hunting economy. *Inujjuamiunt foraging strategies: Evolutionary ecology of an Arctic*
 518 *hunting economy*
- 519 59. Ramenzoni, V. C. & Gonzalez-Gadea, M. L. 2020 Parental Behavior Models Prosocial
 520 Behavior in Face-to-Face Interactions with their School-age Children.
- 521 60. Chopik, W. J. 2017 Associations among relational values, support, health, and well-
 522 being across the adult lifespan. *Pers Relatsh* **24**, 408–422. (doi:10.1111/pere.12187)
- 523 61. Vehrencamp, S. L. 1983 A model for the evolution of despotic versus egalitarian
 524 societies. *Animal Behaviour* **31**, 667–682. (doi:10.1016/S0003-3472(83)80222-X)
- 525 62. Rousset, F. 2013 Genetic structure and selection in subdivided populations (MPB-40).
 526 *Genetic structure and selection in subdivided populations (MPB-40)*
- 527 63. Hamilton, W. D. & May, R. M. 1977 Dispersal in stable habitats. *Nature* **269**, 578–581.
 528 (doi:10.1038/269578a0)

- 529 64. Kramer, K. L. 2005 Children's help and the pace of reproduction: cooperative breeding
530 in humans. *Evol. Anthropol.* **14**, 224–237. (doi:10.1002/evan.20082)
- 531 65. Gifford-Smith, M. E. & Brownell, C. A. 2003 Childhood peer relationships: social
532 acceptance, friendships, and peer networks. *J. Sch. Psychol.* **41**, 235–284.
533 (doi:10.1016/S0022-4405(03)00048-7)
- 534 66. Masten, A. S. & Coatsworth, J. D. 1998 The development of competence in favorable
535 and unfavorable environments. Lessons from research on successful children. *Am.*
536 *Psychol.* **53**, 205–220. (doi:10.1037//0003-066x.53.2.205)
- 537 67. Wrzus, C., Hänel, M., Wagner, J. & Neyer, F. J. 2013 Social network changes and life
538 events across the life span: a meta-analysis. *Psychol. Bull.* **139**, 53–80.
539 (doi:10.1037/a0028601)
- 540 68. Olson, L. E. & Blumstein, D. T. 2009 A trait-based approach to understand the evolution
541 of complex coalitions in male mammals. *Behavioral Ecology* **20**, 624–632.
542 (doi:10.1093/beheco/arp040)
- 543 69. Boulton, M. J. & Underwood, K. 1992 BULLY/VICTIM PROBLEMS AMONG
544 MIDDLE SCHOOL CHILDREN. *British Journal of Educational Psychology* **62**, 73–87.
545 (doi:10.1111/j.2044-8279.1992.tb01000.x)
- 546 70. Olweus, D. 1991 Bully/victim problems among schoolchildren: Basic facts and effects
547 of a school based intervention program. *The development and treatment of childhood*
548 *aggression*, **17**, 411–448.
- 549 71. Ladd, G. W., Kochenderfer, B. J. & Coleman, C. C. 1997 Classroom peer acceptance,
550 friendship, and victimization: distinct relation systems that contribute uniquely to
551 children's school adjustment? *Child Dev.* **68**, 1181–1197. (doi:10.1111/j.1467-
552 8624.1997.tb01993.x)
- 553 72. Engelmann, J. M., Over, H., Herrmann, E. & Tomasello, M. 2013 Young children care
554 more about their reputation with ingroup members and potential reciprocators. *Dev. Sci.*
555 **16**, 952–958. (doi:10.1111/desc.12086)
- 556 73. Bélanger, M. J., Atance, C. M., Varghese, A. L., Nguyen, V. & Vendetti, C. 2014 What
557 will I like best when i'm all grown up? preschoolers' understanding of future
558 preferences. *Child Dev.* (doi:10.1111/cdev.12282)
- 559 74. Tomasello, M. & Vaish, A. 2013 Origins of human cooperation and morality. *Annu.*
560 *Rev. Psychol.* **64**, 231–255. (doi:10.1146/annurev-psych-113011-143812)
- 561 75. Daly, M. & Wilson, M. 1988 Evolutionary social psychology and family homicide.
562 *Science* **242**, 519–524. (doi:10.1126/science.3175672)
- 563 76. Heinsohn, R. & Johnstone, R. A. 2004 Reproductive skew. *Ecology and evolution of*
564 *cooperative breeding in birds*

565 **Acknowledgments**

566 We thank parents of participants, directors, teachers and inspectors of the schools for
567 permission to work in schools and children who participated in the study. We thank Orlane
568 Scelsi for her drawing of the apparatus, David Lieuré for help adapting and building the
569 apparatus for children and Bruce Lyon and Michael Singer for helpful feedback on the
570 manuscript. ANR-Labex TULIP (ANR-10-LABX-41) New Frontiers Grant entitled “Human
571 Altruism Genes” and the Institute for Advanced Studies in Toulouse provided funding. This
572 work was supported by the Laboratoire d'Excellence (LABEX) entitled TULIP (ANR-10-
573 LABX-41) and IAST through ANR grant ANR-17-EURE-0010 (Investissements d’Avenir
574 program).

575 **Author Contributions**

576 G. B. -J., A. S. C, M.B and A.H. designed research; G. B. -J and A. R. performed research;
577 M. C. and G. B. -J. analyzed data; G.B.-J, A.S.C and M.C. wrote the paper; M. B. and A.H.
578 gave feedback on the paper.

579 **Additional Information**

580 Supplementary Information is available for this paper. Correspondence and requests for
581 materials should be addressed to Gladys Barragan-Jason.

582 **Email:** gladys.barraganjason@gmail.com