



HAL
open science

Direct experimental comparison of krypton and xenon discharge properties in the magnetic nozzle of a helicon plasma source

Alfio Vinci, Stéphane Mazouffre

► **To cite this version:**

Alfio Vinci, Stéphane Mazouffre. Direct experimental comparison of krypton and xenon discharge properties in the magnetic nozzle of a helicon plasma source. *Physics of Plasmas*, 2021, 28 (3), pp.033504. 10.1063/5.0037117. hal-03165087

HAL Id: hal-03165087

<https://hal.science/hal-03165087v1>

Submitted on 10 Mar 2021

HAL is a multi-disciplinary open access archive for the deposit and dissemination of scientific research documents, whether they are published or not. The documents may come from teaching and research institutions in France or abroad, or from public or private research centers.

L'archive ouverte pluridisciplinaire **HAL**, est destinée au dépôt et à la diffusion de documents scientifiques de niveau recherche, publiés ou non, émanant des établissements d'enseignement et de recherche français ou étrangers, des laboratoires publics ou privés.

Direct Experimental Comparison of Krypton and Xenon Discharge Properties in the Magnetic Nozzle of a Helicon Plasma Source

Alfio E. Vinci^{1, a)} and Stéphane Mazouffre^{1, b)}

Institut de Combustion, Aérodynamique, Réactivité et Environnement, Centre National de la Recherche Scientifique, 1C Avenue de la Recherche Scientifique, 45071 Orléans

(Dated: 9 February 2021)

Helicon plasma sources currently represent an active field of research in the domain of low-temperature plasmas due to several interesting characteristics for in-space propulsion applications. This work reports direct comparison of krypton and xenon plasma properties through spatially resolved measurements performed in the near-field plume of a sub-kilowatt-class 13.56 MHz Helicon source. The set of developed and employed intrusive diagnostics is comprehensively described. The magnetic components of the plasma rf field are inferred using a 3-D B-dot probe along the reactor axial direction with and without the externally applied DC magnetic field. Plasma floating potential fluctuations are measured using a capacitive probe to draw design requirements for a rf-compensated Langmuir probe. The latter is used to perform axial and radial measurements of plasma density, electron temperature and plasma potential. A 4-grids Retarding Potential Analyzer is used to infer the ion kinetic energy downstream the source exit. The effect of magnetic field magnitude on ions and electrons properties is especially investigated.

I. INTRODUCTION

The research performed on helicon plasma (HP) discharges¹⁻⁶ has recently become subject of growing interest among the electric space propulsion community⁷⁻¹⁷. These devices feature several attractive characteristics for propulsion purposes, namely a relatively simple design, no need for a neutralizer, expected long lifetime, easy use of alternative propellants and high plasma densities (typically $> 10^{17} \text{ m}^{-3}$) over a wide range of sizes and input powers. Although still at an early stage¹⁸, promising performance measurements have been recently reported^{7,16}. As a result, HP thrusters have been proposed as an innovative alternative worth to be investigated to enrich the set of already available technologies for use on small platforms^{19,20}.

HP sources comprise three main components: *i*) a dielectric tube as plasma discharge region, *ii*) a radiofrequency (rf) emitting antenna for gas ionization and *iii*) an axially directed DC magnetic field for plasma confinement and expansion throughout its diverging region, i.e. the magnetic nozzle (MN). Power radiated by the antenna is deposited in the electron population as thermal energy by means of helicon wave modes²¹ and Trivelpiece-Gould wave modes²². Energy is then spent for plasma production and plasma transport phenomena, such as ambipolar electric field, resulting in axial supersonic acceleration in the MN region^{23,24}.

Most of fundamental studies involving HP sources have been employing argon as working gas because of the main interest in plasma processing applications. Likewise, more recent studies focused on space propulsion have equally employed argon propellant²⁵⁻²⁷. However, it is expected that the use of krypton or xenon in electric propulsion systems would enhance thrust, thrust density and thrust efficiency due to higher ion mass and larger ionization cross section. Thus

far, only a few works have been reported on HP discharges using either krypton^{16,28} or xenon²⁹⁻³¹. Nevertheless, it is imperative to extensively characterize the plasma generated using these gases for progressing in terms of maturity and competitiveness of HP thrusters.

This paper analyzes measurements of a variety of plasma properties performed using krypton and xenon gases in the MN region that extends upstream the exit plane. These activities are intended to better understand the physics of such rf plasma sources and to provide a comprehensive dataset for comparison with numerical simulations and for optimization of thruster design and performance. In Section II a detailed description of the HP reactor is provided; the set of diagnostics which has been employed to attain ions and electrons properties is reported in Section III. It includes: a 3-D B-dot probe to measure the rf propagating magnetic field components; a capacitive probe (CP) for detection of floating potential fluctuations; a rf-compensated Langmuir probe (LP) for characterization of plasma density, electron temperature and plasma potential; a Retarding Potential Analyzer (RPA) to assess ions energy. Eventually, in Section IV the collection of measurements is presented and discussed. Conclusions are drawn in Section V.

II. HELICON PLASMA SOURCE

The HP source employed in this work is schematically depicted in Fig. 1. It comprises a vertically oriented quartz tube with $\phi = 9 \text{ cm}$ inner diameter and $L = 58 \text{ cm}$ length, whose open exit defines the origin of the system axial coordinate z . The top aperture is equipped with an off-axis gas injector, while the bottom part is connected to a 30 cm in inner diameter and 50 cm in length expansion chamber. One lateral side of the chamber is connected to a turbomolecular/primary pumping system providing an ultimate base pressure in the order of 10^{-3} mbar . Typical values of pressure during operation lay in the 10^{-3} mbar range.

RF power is generated by a 1 kW class power supply at

^{a)}Electronic mail: alfio.vinci@cns-orleans.fr.

^{b)}Electronic mail: stephane.mazouffre@cns-orleans.fr.

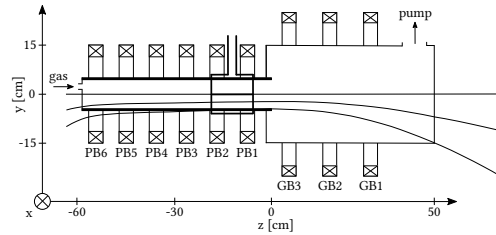


FIG. 1. Helicon Plasma Reactor Schematics. The $z = 0$ position refers to the tube outlet, $y = 0$ refers to the reactor axis.

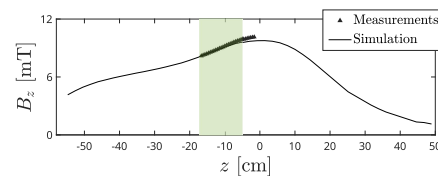


FIG. 2. Externally applied magnetic field profile. The shaded area indicates the antenna location.

13.56 MHz and fed into a copper-made double-saddle antenna through a 2 kW custom π -type matching network. The antenna is 12 cm high and its center is located at $z \cong -11$ cm. It is designed such that it is directly connected to the matching network to reduce power transfer losses. A rendering of the antenna is provided in Fig. 3.

The HP source features nine electromagnets, also depicted in Fig. 1. The electromagnets surrounding the expansion chamber are named GB and numbered from 1 to 3, moving upstream. The same progression is applied to those surrounding the quartz tube, named PB from 1 to 6. Each electromagnet is made up of a 2 mm diameter copper wire, constituting 510 loops for PB1-6 and 430 loops for GB1-3. Fig. 2 illustrates the measured and simulated intensity of B_z obtained by driving a current of 7 A through GB3 and 1 A through PB1-6 and GB2. This arrangement allows a specific magnetic topology with the magnetic throat exactly at $z = 0$ with strength of about 10 mT. The same qualitative topology applies for three additional scaled-down magnetic profiles with peak values of about 7, 5 and 4 mT, which are investigated to obtain the results contained in Section IV D.

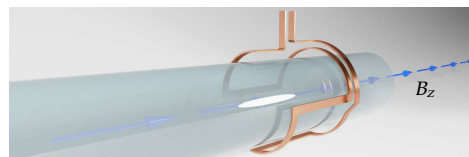


FIG. 3. Rendering of double-saddle antenna wrapped about the discharge tube. Electromagnets and expansion chamber are not shown.

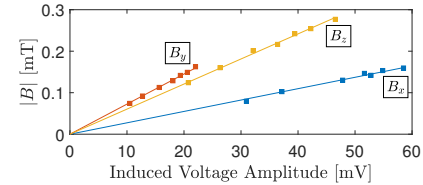


FIG. 4. B -dot probe calibration results.

III. DIAGNOSTICS

A. B -dot Probe

The 3-D B -dot probe developed for this work is inspired by the design reported in Ref. (32) and it consists of: a main body, three orthogonal magnetic pickup coils, a protective cover and a noninductive pickup rejection filtering unit.

The main body is a 4 mm outer diameter alumina tube which has been hand-shaped to allow winding of the coils. Each coil consists of 3 loops of 0.22 mm insulated copper wire. The coils assembly is shielded from direct exposure to plasma by using a PEEK cover with 8 mm outer diameter. Wire leads are first arranged in the twister pair configuration nearby the coils assembly, and finally they are converted into six coaxial cables. These are eventually connected to a 2.5 GS/s digital oscilloscope through the noninductive pickup rejection filtering unit^{33,34}. It consists of one sub-unit per coil, each of which features a Coilcraft SWB2010-PCL 1:1 center-tapped transformer and a Faraday shield.

The magnetic sensitivity of the probe is absolutely calibrated using two magnetic coils in the Helmholtz configuration with a radius of 60 mm and 100 loops. Power at 13.56 MHz between 5 W and 20 W is fed into the coils connected in parallel to a 50 Ω resistor to the ground. Current flowing in the coils is measured using a Pearson Current Monitor 2878, post-processed using a Savitzky-Golay filter and used to compute the rf magnetic field amplitude, which is finally related to the measured induced voltage in the probe coil by a linear fit. The resulting calibration curves are reported in Fig. 4.

B. Capacitive Probe

The capacitive probe developed for this work is based on the design reported in Ref. (35). It comprises an exposed electrode made of stainless steel and an inner electrode connected to a coaxial cable. An exposed insulator layers made of PEEK is interposed between the two electrodes. The coaxial cable is carried into the plasma inside a 4 mm alumina tube which also provides structural support to the electrodes assembly. The probe has a cylindrical geometry with an outermost diameter of 10 mm.

For calibration, an aluminum foil envelops the primary

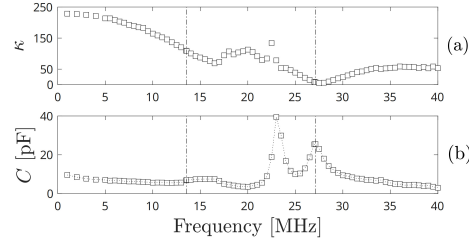


FIG. 5. Capacitive probe (a) calibration coefficient and (b) capacitance vs. frequency.

electrode and the PEEK layer. A 10 V amplitude sine wave is generated at 1 to 40 MHz and applied to the aluminum foil. The probe is connected to a 2.5 GS/s digital oscilloscope to acquire the measured voltage and retrieve the calibration factor κ reported in Fig. 5(a) as function of the input frequency. Probe capacitance C is inferred by measuring the current flowing in the probe cable using a Pearson Current Monitor 2878. Results are reported in Fig. 5(b). In both plots, dash-dotted lines indicate 13.56 MHz and second harmonic. Values for κ and C at the third harmonic are approximated to those at 40 MHz due to setup limitations. Note that the probe exhibits a non-ideal behavior in the ~ 17 -35 MHz range.

C. RF-compensated Langmuir Probe

The rf-compensated LP is depicted in Fig. 6. Its design is based on the results and guidelines reported in Ref. (36–38). The probe tip is a 0.38 mm tungsten wire with 5 mm length. A 1 mm outer diameter alumina tube insulates the tip from the rf compensating electrode made of stainless steel. The back end of the compensating electrode is soldered to a 1 nF axial capacitor. The probe tip and the small capacitor are together connected to a series of three chokes, each of which self-resonates at one of the first three harmonics. The employed chokes are: Bourns 78F270J-RC for the fundamental harmonic, API Delevan 1025-60K for the second one and Bourns 9230-52-RC for the third one. The whole assembly is encapsulated in a 6 mm outer diameter Pyrex tube which also accommodates the coaxial cable for probe biasing and current measuring.

Characterization of the chokes is a crucial aspect of probe development as they are typically manufactured to satisfy a requirement on the inductance value but not on the self-resonating frequency. Therefore, an Agilent 4264A precision analyzer has been used to characterize the choke for the funda-



FIG. 6. rf-compensated Langmuir Probe.

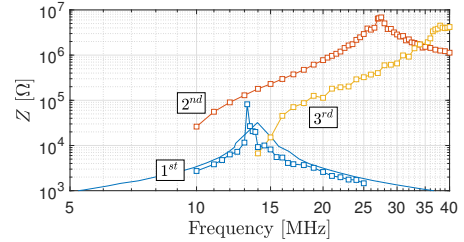


FIG. 7. Impedance of 1st, 2nd and 3rd harmonic chokes.

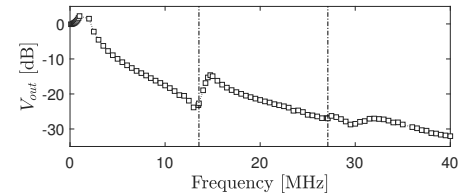


FIG. 8. rf-compensated LP characterization.

mental harmonic. It also allowed validation of a more easily accessible method hereafter described which has been used to characterize the other two chokes. A 10 V amplitude sine wave is fed to one lead of the testing choke. The other lead is connected to a resistor (46.52 k Ω is used in this setup) and the series circuit closes to the ground. Input frequency is changed while the voltage drop across the resistor is measured and used to calculate the current flowing in the circuit. The frequency at which the current is minimum is the self-resonating frequency of the choke. The voltage drop across the choke is maximum at resonance. Impedance is then computed using Ohm's law. Chokes characterization results are reported in Fig. 7. The blue solid line represents the impedance profile obtained using the Agilent 4264A precision analyzer and blue squares are obtained with the aforementioned method, showing good agreement. The theory illustrated in Ref. 36 allows stating that this configuration of chokes series and compensating electrode enables proper rf compensation for plasma potential fluctuations up to 99.5 V in krypton and 85.1 V in xenon. The whole probe is characterized by applying a 10 V amplitude sine wave to the tip at different frequencies. The probe output is illustrated in Fig. 8 in dB units, showing local minima for the desired harmonics (dash-dotted vertical lines indicate first and second harmonics).

D. Retarding Potential Analyzer

The RPA, also known as Retarding Field Electrostatic Analyzer (RFEA), used in this work consists of four mesh grids with 0.4 mm mesh size: the entrance grid (G1), the electron

repeller grid (G2), the ion filtering grid (G3) and the secondary electron repeller grid (G4). A collector (C) is placed downstream the grids assembly to enable ion current measurement. The whole assembly is encapsulated in an aluminum body with 4.5 cm outer diameter and 1 cm entrance orifice. The gap between all the elements is kept constant at 1 mm. In principle, this is not compatible with the expected value of Debye length in the bulk of the plasma (in the order of 10^{-2} mm), implying a requirement on the grid spacing to be smaller than about 0.15 mm to avoid space charge limited flow³⁹. Such a grid spacing is technologically difficult to achieve. Hence, to reduce the plasma flux entering the probe, i.e. the plasma density inside the probe itself, an additional grid (G0) is placed in contact with the outer body. This allowed to significantly increase the quality of the measured I-V signal. The grid polarization scheme with respect to ground is: G0 at 0 V; G1 at 0 V; G2 at -60 V; G3 swept from -20 V to 100 V with 0.2 V step size; G4 at -30 ; C at -3 V.

IV. EXPERIMENTAL RESULTS AND DISCUSSION

All the spatially-resolved measurements presented hereafter are obtained by feeding 750 W rf power to the antenna. Reflected power is below 2.5% for all operating conditions. Krypton and xenon are injected at 1 mg/s and 0.2 mg/s, respectively. Assuming the two gases have the same molar vol-

ume, the neutral density is about 8 times larger for krypton. These mass flow rate values are implicitly assumed in the following when not specified.

The diagnostics presented in Section III is manually actuated using a single-axis translation stage with a resolution of 10 μm and 150 mm stroke. Probes are individually employed and displaced with a step size of 5 ± 0.05 mm. Probe alignment is ensured by use of a cross-line laser pendulum.

A. RF Propagating Magnetic Field

The B-dot probe is mounted off axis at $r = 30$ mm and displaced axially. It is mounted in such a way that the vector defining its y-coil, i.e. the coil probing the B_y component of the propagating field, is aligned with the antenna feeding lines. The notation is consistent with the reference frame illustrated in Fig. 1. It should be noted that there is an ambiguity of 180 in the phase of the recorded signals, yet it is of no relevance for this study.

At each axial location of the probe, the waveform of the induced voltage on the three coils is acquired using a 2.5 GS/s digital oscilloscope. Noise reduction on the signal is attained using a Savitzky-Golay filter. Fast Fourier Transform (FFT) is then performed to infer the spatially-resolved frequency spectrum for B_x , B_y and B_z . Since the probe is absolutely calibrated at 13.56 MHz only, the FFT component at this frequency is

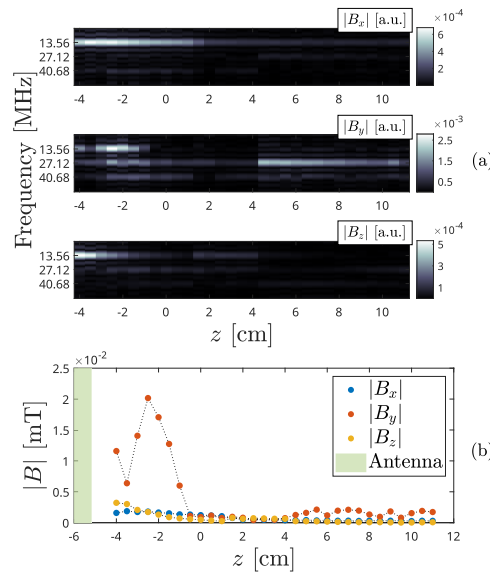


FIG. 9. B-dot probe measurements with $P_N = 750$ W, $\dot{m} = 1$ mg/s Kr and no external B field. Spatially-resolved (a) frequency spectrum and (b) first harmonic amplitude.

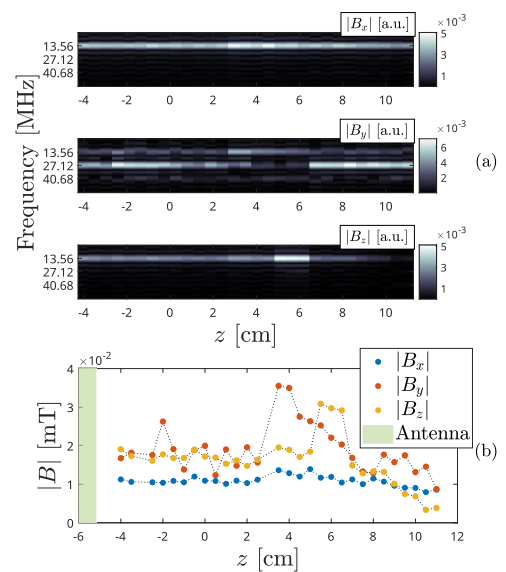


FIG. 10. B-dot probe measurements with $P_N = 750$ W, $\dot{m} = 1$ mg/s Kr and 10 mT peak value of the external B field. Spatially-resolved (a) frequency spectrum and (b) first harmonic amplitude.

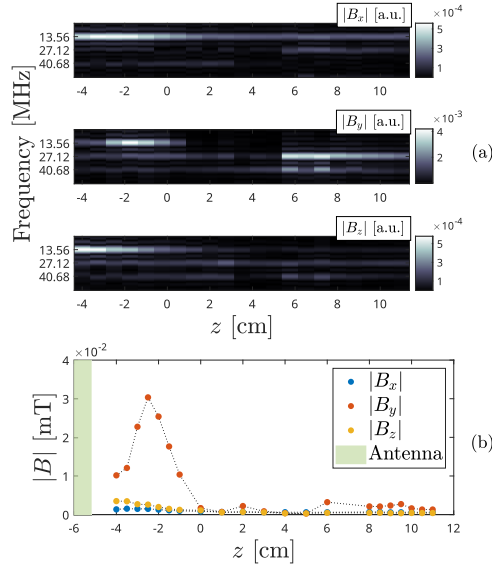


FIG. 11. B-dot probe measurements with $P_N = 750$ W, $\dot{m} = 0.2$ mg/s Xe and no external B field applied. Spatially-resolved (a) frequency spectrum and (b) first harmonic amplitude.

extracted to quantitatively evaluate the rf B field amplitude.

Results using krypton as propellant are reported in Fig. 9 and Fig. 10. The measurements of Fig. 9 are obtained without applying any external DC magnetic field, while those in Fig. 10 result from the application of the magnetic profile depicted in Fig. 2. Similar qualitative results are obtained using xenon as propellant and are reported in Fig. 11 for the $B = 0$ case and in Fig. 12 for the externally applied magnetic field case.

It is immediately evident from Fig. 9 and Fig. 11 that no electromagnetic wave propagates in the $B = 0$ case, as expected. Indeed, visual inspection of the reactor operating in this condition strongly suggests an inductively-coupled regime, with a very bright plasma just below the antenna and very low light emission elsewhere, either using krypton or xenon. Differently, when the external magnetic field is applied, the plasma column appears quite uniform over a length about ten times larger than the antenna length, suggesting higher power absorption and transport downstream, typical of helicon mode plasmas^{4,5}. In the $B = 0$ configuration, a larger amplitude of B_y is recorded in the upstream region of the axial scan, see Fig. 9(b) and Fig. 11(b), suggesting it is related to the field radiated by the antenna⁴⁰. By comparing Fig. 9(a) and Fig. 10(a), as well as Fig. 11(a) and Fig. 12(a), it is noted that the presence of higher harmonics in B_x and B_z components is reduced when the external magnetic field is applied, while they are anyhow present in the B_y component.

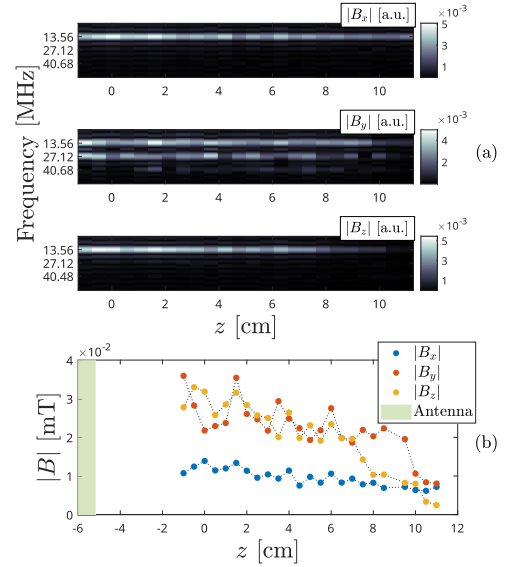


FIG. 12. B-dot probe measurements with $P_N = 750$ W, $\dot{m} = 0.2$ mg/s Xe and 10 mT peak value of the external B field. Spatially-resolved (a) frequency spectrum and (b) first harmonic amplitude.

Higher order harmonics cannot be attributed to the rf power supply, which is certified to carry harmonics below -40 dBc. As their presence is susceptible to the external magnetic field, it is reasonable to consider they are related to some physical phenomenon. However, it is not possible to accurately quantify the influence of each harmonic due to the lack of calibration factors at frequencies different from the fundamental one. Furthermore, with reference to Fig. 10(b) and 12(b), an important amplitude decay can be observed for B_z approximately for $z > 7$ cm. This could be explained by observing that the applied magnetic field starts weakening rapidly at $z \cong 7$ cm, cf. Fig. 2. Also, it shall be shown in Section IV C that the plasma density n_p monotonically increases for $z > 0$. Using the 0-D dispersion relation for helicon waves^{4,41},

$$kk_z = e\mu_0\omega\frac{n_p}{B_0}, \quad (1)$$

where k and k_z are respectively the total and axial wavenumbers, n_p is the plasma density, B_0 is the assumed uniform external magnetic field and the rest is conventional, it can be qualitatively stated that as the ratio n_p/B_0 increases, the condition for wave propagation is met only for higher order axial wavenumbers. These are not necessarily efficiently coupled with the antenna, therefore helicon waves could not propagate further downstream. However, lack of data at larger axial locations prevents excluding that the amplitude decay of B_z is rather due to modulation, which has been previ-

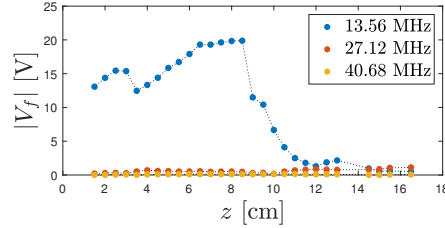


FIG. 13. V_f fluctuation amplitude vs. z . $P_{IN} = 750$ W, 1 mg/s Kr, $r = 0$ mm and 10 mT peak value for the B field.

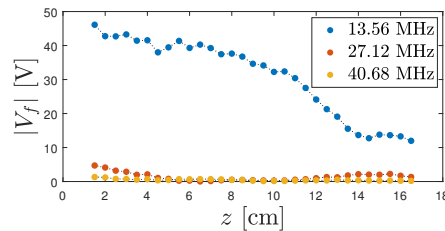


FIG. 14. V_f fluctuation amplitude vs. z . $P_{IN} = 750$ W, 1 mg/s Kr, $r = 30$ mm and 10 mT peak value for the B field.

ously observed and attributed to the presence of multiple axial wavenumbers^{4,21}.

B. Floating Potential Fluctuations

It is well known that typical plasma potential fluctuations occurring in rf plasmas substantially alter the I-V characteristic of a LP, leading to a poor estimation of plasma properties³⁶⁻³⁸. In order to properly design a passively rf-compensated LP, i.e. chokes selection and compensating electrode sizing³⁶, it is important to estimate the amplitude of these fluctuations within the operating condition of interest. To do so, the capacitive probe described in Section III B is immersed in the plasma and displaced axially in a similar fashion to the B-dot probe. Axial scans have been performed at $r = 0$ and $r = 30$ mm radial locations. At each axial location, the measured voltage is recorded using a 2.5 GS/s digital oscilloscope. FFT allows isolating the first three harmonics out of the signal which are scaled according to the calibration outcomes. Results obtained using krypton are reported in Fig. 13 and Fig. 14, while those using xenon are in Fig. 15 and Fig. 16.

It is clearly evident that fluctuations at the second and third harmonic are weakly present in the spectrum. With reference to Fig. 14 and Fig. 16, larger amplitudes of the oscillating floating potential are recorded off-axis, starting from few tens of volts close to the quartz tube exit and then smoothly decaying to zero downstream. Comparing on-axis profiles us-

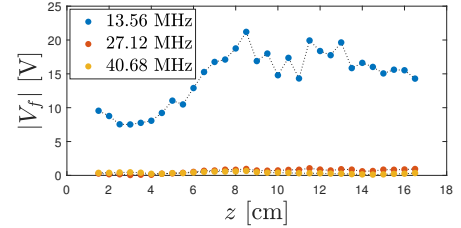


FIG. 15. V_f fluctuation amplitude vs. z . $P_{IN} = 750$ W, 0.2 mg/s Xe, $r = 0$ mm and 10 mT peak value for the B field.

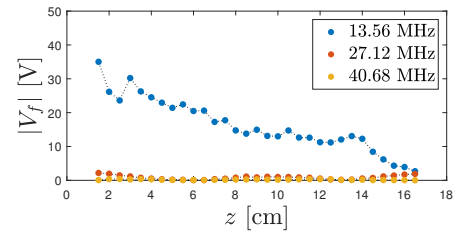


FIG. 16. V_f fluctuation amplitude vs. z . $P_{IN} = 750$ W, 0.2 mg/s Xe, $r = 30$ mm and 10 mT peak value for the B field.

ing krypton and xenon, cf. Fig. 13 and Fig. 15, it is evident that substantially different results are obtained. After a shared increase of $|V_f|$, a very sharp edge is present in Fig. 13 at $z = 8.5$ cm. The reason behind this remains unclear.

Ultimately, it is observed that V_f fluctuations amplitude can reach an upper value of about 50 V. This value is taken as requirement in designing the rf-compensated LP described in Section III C.

C. Plasma Properties

Characterization of plasma properties has been carried out using the rf-compensated LP described in Section III C. I-V characteristics are obtained by using an automated control unit by Impedans Ltd and afterwards interpreted using the OML theory³⁸. An example is provided in Fig. 17. Ion current squared is plotted versus probe potential and fitted by a straight line, enabling the evaluation of plasma density n_p (assuming local quasi-neutrality). The ion current fit is subtracted to the total current to obtain a better estimation of the electron current. Assuming that the electron population is described by a Maxwell-Boltzmann distribution function, the logarithmic curve of the electron current is fitted by a straight line. Electron temperature T_e is deduced from the slope of the linear fit and plasma potential V_p is consequently inferred using the electron current equation with the known values of n_p and T_e .

This is the author's peer reviewed, accepted manuscript. However, the online version of record will be different from this version once it has been copyedited and typeset.

PLEASE CITE THIS ARTICLE AS DOI: 10.1063/1.50037117

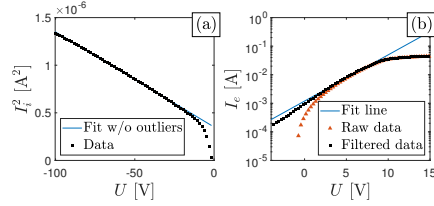


FIG. 17. Typical (a) squared ion current and (b) electron current vs. probe potential. Curves obtained for $P_{IN} = 750$ W, $\dot{m} = 1$ mg/s Kr, 10 mT peak value of the external B field.

A statistical analysis is performed to evaluate the uncertainty associated with the assessment of plasma properties. The rf-compensated LP is placed at two axial locations ($z = -5$ cm and $z = 10$ cm), at each of which twenty I-V characteristics are recorded in different moments of the day, randomly switching between the magnetic configurations investigated in Section IV D. Values for n_p , T_e and V_p are computed at both $z = -5$ cm and $z = 10$ cm as previously discussed, together with the associated mean value μ and standard deviation σ . The error is then computed as the ratio σ/μ . Starting from the errors evaluated at $z = -5$ cm and $z = 10$ cm, a single representative value is calculated as the average of the two. The whole process is repeated for krypton and xenon propellants. Results are reported in Table I. It is shown that n_p , T_e and V_p are measured with an error as high as $\sim 2\%$ in all cases.

Data is collected by displacing the probe radially between $r = 0$ mm and $r = 30$ mm and axially, both directions with a step size of 5 mm. Seven axial profiles for n_p , T_e and V_p are obtained. By interpolation, contour plots for krypton and xenon are derived and shown in Fig. 18(a)-(d) and Fig. 19(a)-(d), respectively. Electron pressure p_e is computed using the measured density and temperature. Peak values for T_e are about $4.5 \div 5$ eV both for krypton and xenon, occurring off-axis and few centimeters downstream the antenna. Then, from $z \cong 0$ on, the temperature decays monotonically. Counter-intuitively, n_p is peaked downstream where T_e is low. It is notable that the same qualitative results have been previously found in numerical⁴² and experimental⁵ studies using completely different setups in terms of scale and input parameters, such as antenna type and associated azimuthal mode numbers, input power frequency, magnetic field strengths and propel-

	$\sigma_{n_p}/\mu_{n_p} \times 100$		$\sigma_{T_e}/\mu_{T_e} \times 100$		$\sigma_{V_p}/\mu_{V_p} \times 100$	
	Kr	Xe	Kr	Xe	Kr	Xe
4 mT	0.90%	0.64%	0.31%	0.37%	1.05%	0.56%
5 mT	1.07%	0.85%	0.59%	0.34%	1.99%	1.17%
7 mT	0.76%	0.78%	0.69%	0.51%	2.17%	0.72%
10 mT	1.22%	0.49%	0.84%	0.43%	1.41%	0.75%

TABLE I. Uncertainty analysis of rf-compensated LP measurements: percentage error of plasma properties for four different magnetic field strengths.

lant. It shall be noted that likewise reported in Ref. (5), also in the present case this phenomenon is due to pressure balance. In a simplified 1-D two fluids description of the plasma, the axial component of the electron momentum equation in cylindrical coordinates reads

$$-n_p e E_z - j_{\theta} B_r - \frac{\partial p_e}{\partial z} = 0, \quad (2)$$

where p_e is the electron pressure, E_z is the axial electric field, j_{θ} is the electron azimuthal current density and B_r is the radial component of the applied magnetic field. For simplicity, the momentum transfer collisional term has been neglected. This is justified by observing that the mean free path λ is much larger than the source diameter. Values of λ are computed using average values for n_p and T_e from Fig. 18 and Fig. 19 together with the available dataset for the elastic momentum transfer cross section⁴³, yielding $\lambda \approx 25$ m for krypton and $\lambda \approx 15$ m for xenon. With reference to Fig. 1, it can be observed that $B_r/B_z \ll 1$ in the region where the scan is performed, with typical values of $B_r \approx 10^{-6} \div 10^{-7}$ T. The electron current density shall be shown to be $j_{\theta} \lesssim 10^3$ A/m², cf. Fig. 25 and Fig. 26 later described. Hence, the electrons momentum equation reduces to a balance between the volumetric electric forces term, i.e. $-n_p e E_z$, and the volumetric pressure forces term, i.e. $-\partial p_e / \partial z$. By averaging the measured $n_p(r, z)$, $V_p(r, z)$ and $p_e(r, z)$ over the radial direction, both terms of Eq. 2 can be easily evaluated. Results are reported in Fig. 20(a) for krypton and Fig. 20(b) for xenon. It is shown that pressure gradient and potential gradient are nearly equal and opposite through all the scanned region. Yet, this is more evident for krypton than for xenon, potentially due to the neglected collisional term in Eq. 2. Hence, it is concluded that the density peak localized downstream is due to pressure balance. As the external magnetic field reduces the cross-field electron mobility, a relatively large axial conductivity ensues, which determines an almost constant plasma potential profile. This results in a small pressure gradient for equilibrium reasons, cf. Equation 2. The density peaks downstream because the temperature drops.

It is worth noting that, by knowing the number of neutrals injected in the system per unit time $\dot{N}_g = \dot{m}/M_i$, where M_i is the ion mass, and by taking a tentative value for the average plasma density \bar{n}_p accounting for all measured values in Fig. 18(a) and Fig. 19(a), it is possible to further compare the two working gases in terms of local propellant utilization efficiency η_p . It is implicitly assumed that the two gases share the same mean ion charge as T_e is relatively low to enable a significant amount of multiply charged particles. Since $\eta_p \propto \bar{n}_p / \dot{N}_g$, it is computed that $\eta_p^{Xe} / \eta_p^{Kr} \approx 5$, suggesting that xenon is much more efficiently ionized, as expected.

D. Effect of Different Magnetic Strengths

Plasma properties are also investigated as function of the external magnetic field strength. By tuning the current in the electromagnets, the magnetic profile depicted in Fig. 2 can be scaled down attaining peak values of 7 mT, 5 mT and 4 mT.

This is the author's peer reviewed, accepted manuscript. However, the online version of record will be different from this version once it has been copyedited and typeset.

PLEASE CITE THIS ARTICLE AS DOI: 10.1063/5.0037117

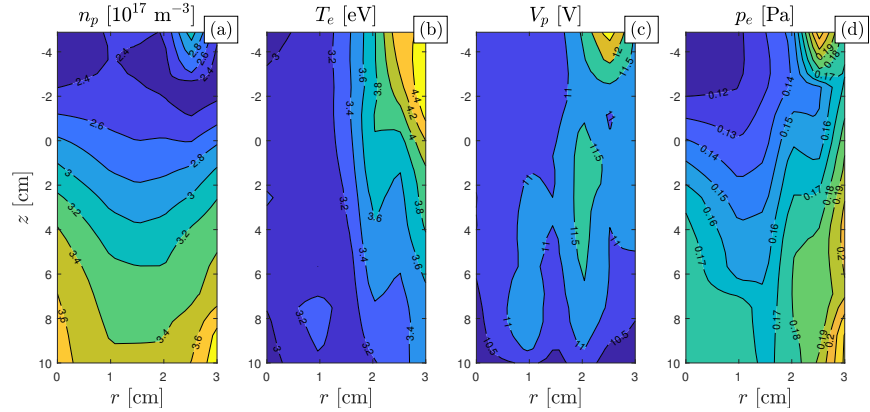


FIG. 18. Contour plot of (a) plasma density, (b) electron temperature, (c) plasma potential, (d) electron pressure. Input parameters are: $P_N = 750$ W, $\dot{m} = 1$ mg/s Kr, 10 mT peak value of the external B field.

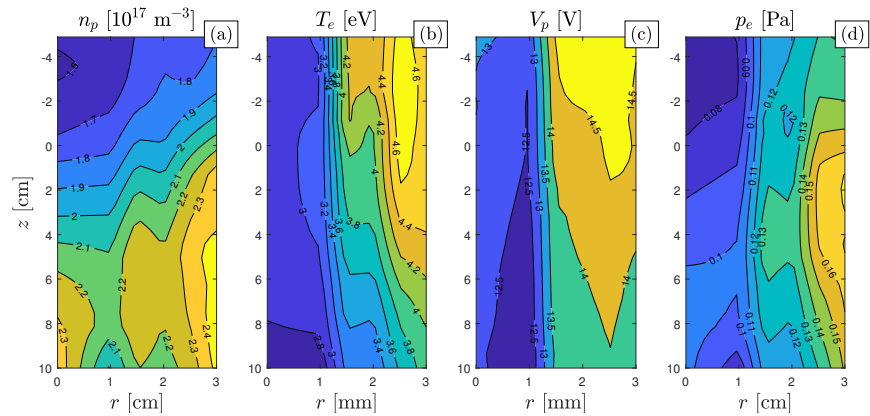


FIG. 19. Contour plot of (a) plasma density, (b) electron temperature, (c) plasma potential, (d) electron pressure. Input parameters are: $P_N = 750$ W, $\dot{m} = 0.2$ mg/s Xe, 10 mT peak value of the external B field.

Measurements of plasma properties are performed both axially and radially. On-axis scans of n_p , T_e and V_p are reported in Fig. 21(a)-(c) and Fig. 22(a)-(c) using krypton and xenon, respectively. Notably, substantial differences are drawn.

In Fig. 21(c), it is shown that the plasma potential changes from a rapidly dropping profile to an almost constant profile as the strength of the external magnetic field is increased. Furthermore, with reference to Fig. 21(a), the plasma density peak moves downstream. Visual inspection of the plasma source in operation agrees with these results. Indeed, at 4 and 5 mT, it is observed that plasma concentrates just below the antenna region, with almost null light emission elsewhere. On the contrary, a visibly homogeneous plasma column appears at 10 mT, extending over several antenna lengths. This

strongly suggests that a magnetic field between 7 and 10 mT is somewhat a threshold external parameter characterizing the transition from inductively-coupled regime to a wave-mode regime. Differently, when the plasma source operates with xenon, no mode transitions have been recorded. Qualitatively speaking, this is clearly shown in Fig. 22(a),(c) where the density and potential profiles shift up as the external magnetic field strength is increased. It has been previously reported the presence of density peaks at low externally applied magnetic fields⁴⁴. In this particular experimental setup, either using krypton or xenon as working gas, no larger plasma density at lower magnetic fields has been recorded. Note that the density in Fig. 21 is larger than that in Fig. 22 because the reactor operates with a larger \dot{m} for krypton, see Section IV.

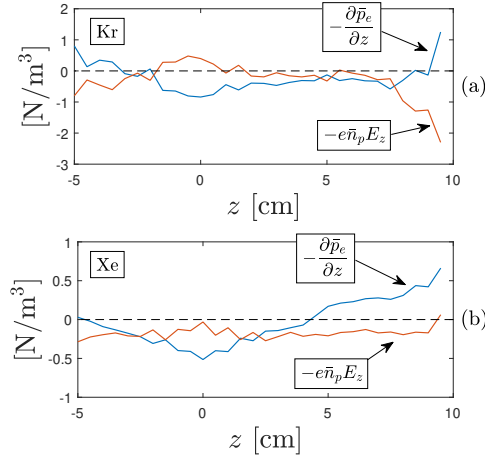


FIG. 20. Volumetric forces acting on the electrons for (a) krypton and (b) xenon propellants. Variables \bar{p}_e and \bar{n}_p refer to radially averaged quantities.

Detailed plasma properties measurements were also performed in the radial direction at $z = 3$ cm for the four different magnetic profiles. In accordance with the reference system in Fig. 1, the measurements were performed along the x axis. The results are given in Fig. 23(a)-(d) and Fig. 24(a)-(d) for krypton and xenon respectively. Filled dots represent measurement points and dotted lines are smoothed profiles to enhance data visualization. In agreement with Fig. 18 and 19, density, temperature and potential peak values are localized off-axis. Similar outcomes have been previously reported for n_p and T_e ^{45,46}, but not for the plasma potential to the knowledge of the authors. It has been suggested that off-axis density peak is due to transport of high temperature electrons from the plasma discharge along the surface of the MN⁴⁷. Fig. 23(a) and Fig. 24(a) show how ionization efficiency is enhanced at stronger magnetic fields. No relevant advantages in terms of electron temperature are obtained by increasing the applied field for krypton, as seen in Fig. 23(b). Differently, peak value of T_e increases by more than 20% (4 mT vs. 10 mT) when xenon is used, cf. Fig. 24(b). Similarly, V_p profiles in Fig. 23(c) and Fig. 24(c) show that a more energetic plasma is obtained at larger B fields.

Neglecting the ion contribution to the plasma pressure ($T_i \ll T_e$), the local β parameter, i.e. particle pressure over magnetic pressure⁴⁸, is computed using the pressure profiles illustrated in Fig. 23(d) and Fig. 24(d). Calculations yield $10^{-4} \lesssim \beta \lesssim 10^{-2}$, outlining a negligible diamagnetic effect in the proximity of the magnetic throat.

Radially non-uniform pressure and potential profiles shown in Fig. 23 and 24 inherently imply the presence of a Hall current $j_{\theta e}$ in the expanding plasma, which has been analyzed theoretically/numerically²⁴ and experimentally⁴⁶. When de-

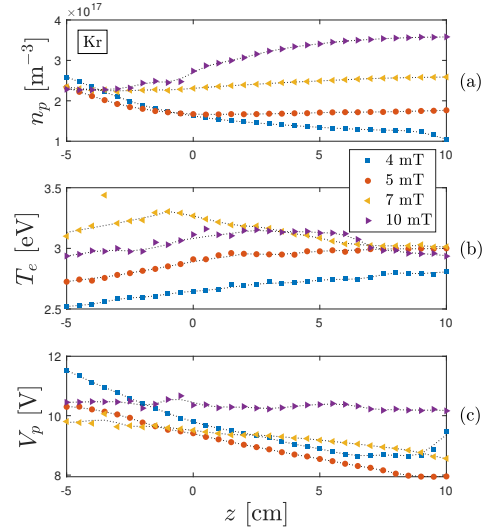


FIG. 21. Evolution along the reactor axis of (a) plasma density, (b) electron temperature and (c) plasma potential for different magnetic strengths. $P_N = 750$ W, $\dot{m} = 1$ mg/s Kr, $r = 0$ mm.

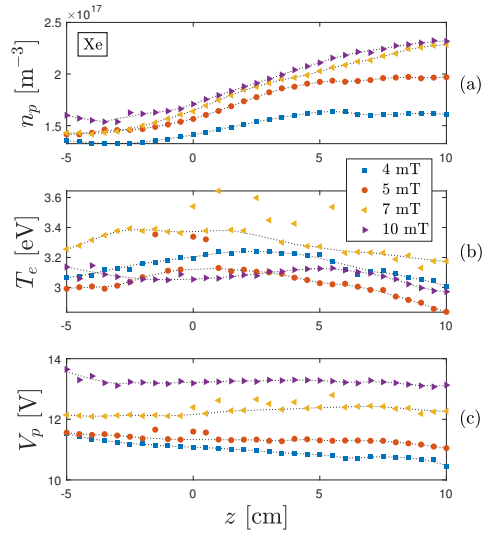


FIG. 22. Evolution along the reactor axis of (a) plasma density, (b) electron temperature and (c) plasma potential for different magnetic strengths. $P_N = 750$ W, $\dot{m} = 0.2$ mg/s Xe, $r = 0$ mm.

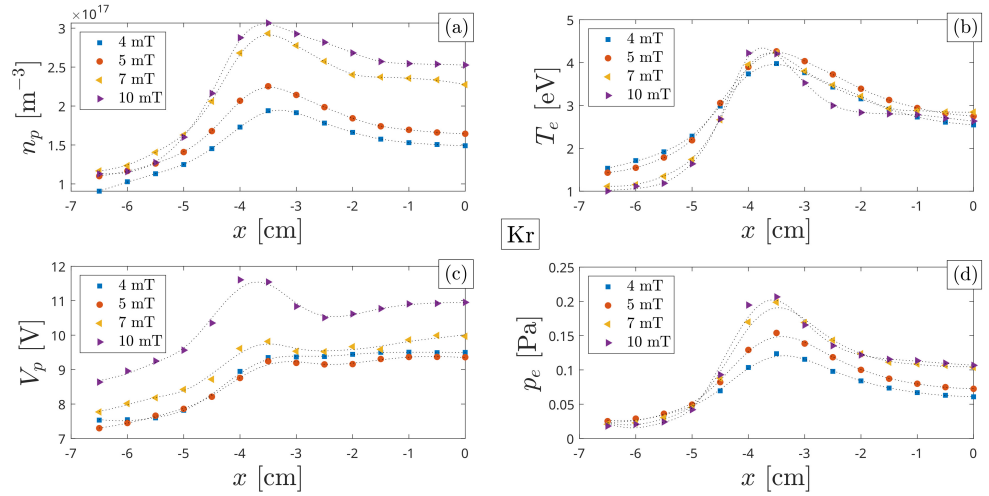


FIG. 23. Radial profile of (a) plasma density, (b) electron temperature, (c) plasma potential and (d) electron pressure for different magnetic strengths. $P_N = 750$ W, $\dot{m} = 1$ mg/s Kr, $z = 3$ cm.

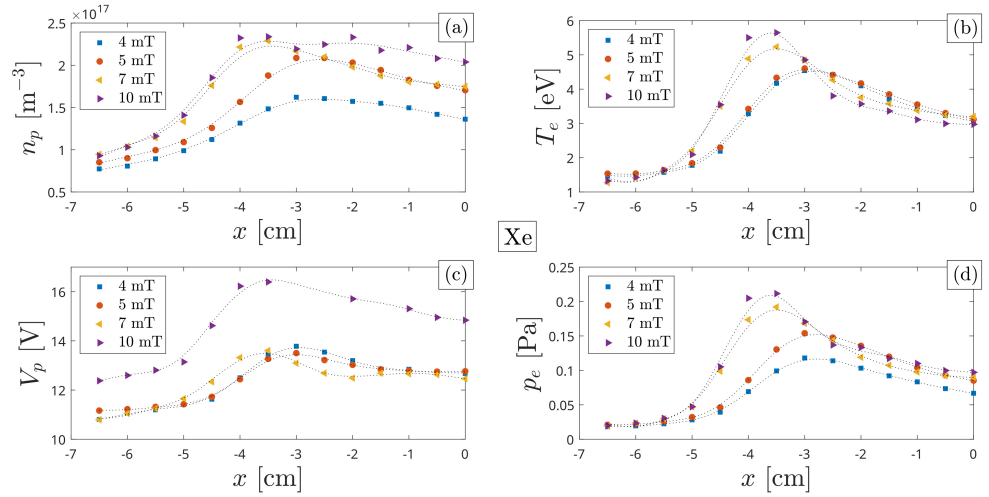


FIG. 24. Radial profile of (a) plasma density, (b) electron temperature, (c) plasma potential and (d) electron pressure for different magnetic strengths. $P_N = 750$ W, $\dot{m} = 0.2$ mg/s Xe, $z = 3$ cm.

describing the evolution of axial momentum in a single conducting fluid description, i.e. combining electrons and ions momentum equations, it is deduced that thrust generation mechanisms in a HP thruster are due to an electrothermal acceleration and an electromagnetic Hall acceleration^{24,49}. The first contribution results from the plasma pressure acting inside the

discharge chamber and on the "walls" of the diverging MN, while the second one results from a Lorentz force proportional to the net azimuthal current j_θ . However, it has been experimentally observed²⁶ that the swirl current j_θ , i.e. the ion contribution to j_θ , is fairly negligible for the values of applied magnetic field in analysis as the ions are unmagnetized. The

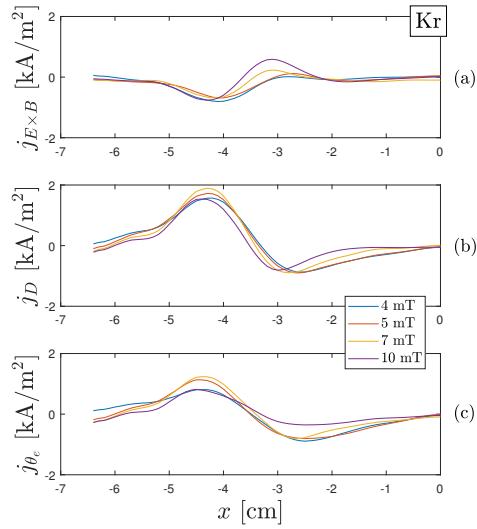


FIG. 25. Computed profiles of (a) electron $E \times B$ current density, (b) electron diamagnetic current density and (c) Hall current $j_{E \times B} + j_D$ from plasma properties in Fig. 23.

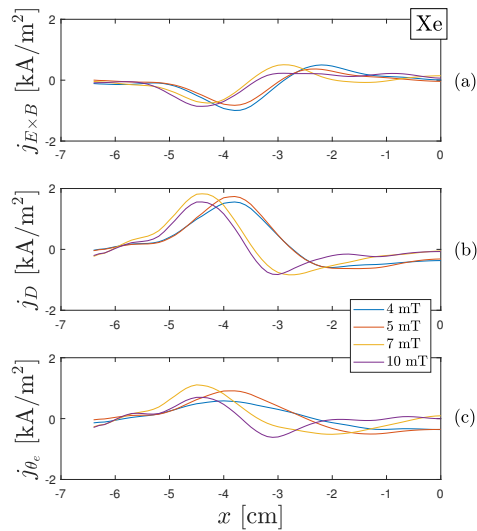


FIG. 26. Computed profiles of (a) electron $E \times B$ current density, (b) electron diamagnetic current density and (c) Hall current $j_{E \times B} + j_D$ from plasma properties in Fig. 24.

profile of j_{θ_e} in this particular experiment can be inferred by using the radial component of the electron momentum equation in cylindrical coordinates, which reads

$$-n_p e E_r + j_{\theta_e} B_z - \frac{\partial p_e}{\partial r} = 0, \quad (3)$$

where E_r is the radial electric field, B_z is the axial magnetic strength and the rest has already been introduced. It is shown that the Hall current comprises an $E \times B$ drift component $j_{E \times B}$ and a diamagnetic drift j_D component:

$$j_{\theta_e} = j_{E \times B} + j_D = n_p e \frac{E_r}{B_z} + \frac{1}{B_z} \frac{\partial p_e}{\partial r}. \quad (4)$$

The smoothed profiles of p_e and V_p in Fig. 23 and Fig. 24 have been used to calculate the current densities reported in Fig. 25 and Fig. 26, for krypton and xenon respectively. Taylor Series Method (TSM) is used to evaluate the uncertainty associated with the indirect estimation of j_{θ_e} through Equation 4. It has been assumed that propagation of the error is only due to n_p , T_e and V_p , whose error values are shown in Table I. By expanding Equation 4 and substituting partial derivatives with finite differentiation terms, the expression for the uncertainty of j_{θ_e} truncated to the first order reads⁵⁰

$$\left(\frac{U_{j_{\theta_e}}}{j_{\theta_e}} \right)^2 = 2 \left(\frac{U_{n_p}}{n_p} \right)^2 + \left(\frac{U_{T_e}}{T_e} \right)^2 + \left(\sqrt{2} \frac{U_{n_p}}{\Delta n_p} \right)^2 + \left(\sqrt{2} \frac{U_{T_e}}{\Delta T_e} \right)^2 + \left(\sqrt{2} \frac{U_{V_p}}{\Delta V_p} \right)^2. \quad (5)$$

Typical values of $U_{j_{\theta_e}}/j_{\theta_e}$ are in the order of 3% for all operating conditions in terms of magnetic field strength and propellant. Note that $j_{\theta_e} > 0$ at $x < 0$ indicates that current flows in the diamagnetic direction (i.e. the magnetic field associated to the net j_{θ} is directed along $-z$), while $j_{\theta_e} < 0$ at $x < 0$ indicates it flows in the anti-diamagnetic direction. No profound differences are found when using krypton or xenon. With both propellants, $j_{E \times B}$ flows in the diamagnetic direction in the inner radial region and in the anti-diamagnetic direction in the outer radial region, cf. Fig. 25(a) and Fig. 26(a). The opposite behavior is recorded for j_D , cf. Fig. 25(b) and Fig. 26(b). Since the local thrust component due to the Lorentz force expressed in cylindrical coordinates is proportional to the product $r j_{\theta_e} B_r$, only values of j_{θ_e} flowing in the positive θ direction contribute to thrust generation. In the Cartesian reference system presented here, positive thrust contribution is given by $j_{\theta_e} > 0$ at $x < 0$ and vice versa. At the specific axial location

$$\int_0^{|x_{\max}|} |x| j_{\theta_e} dx \quad [\text{A}]$$

	4 mT	5 mT	7 mT	10 mT
Kr	0.26	0.27	0.35	0.25
Xe	0.34	0.49	0.40	0.15

TABLE II. Mean cumulative values of $|x| j_{\theta_e}$ integration along $|x|$ for krypton and xenon propellants at different magnetic strengths.

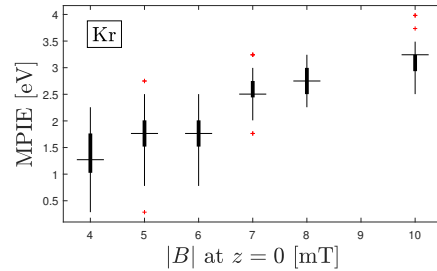


FIG. 27. Most probable ion energy as function of the magnetic field. $P_{IN} = 750$ W, $\dot{m} = 1$ mg/s Kr, $z = 33$ cm. Horizontal mark indicates median value, thick box delimits 25th and 75th percentiles, red marks represent outliers.

where the radial scans are performed, integration over the radial direction outlines that a net thrust is produced for all the magnetic field magnitudes. Numerical values are reported in Table II. Accounting for B_r in the integral does not contribute in sign changing as it is positive in the r direction. Estimation of the total thrust would require a complete map of the plume and integration over the plasma volume.

Additional measurements include the investigation of ion energy as function of the externally applied magnetic field. In doing so, the RPA detailed in Section III D has been employed. To increase data resolution, magnetic profiles with 6 mT and 8 mT peak values have been added to the four ones previously discussed. The probe has been placed downstream at $z = 33$ cm. While operating the HP source at one specific magnetic configuration, fifty I-V characteristics are acquired in groups of ten. Data is firstly smoothed and later numerically derived to obtain the ion energy distribution function (IEDF).

The most probable ion energy (MPIE) is then extracted as the IEDF peak value. Results in terms of MPIEs for krypton and xenon are reported in Fig. 27 and Fig. 28, respectively. As expected, higher ion energies are measured as the external magnetic field strength is increased, coherently with what reported in Fig. 21(c) and Fig. 22(c). Generally speaking, although consistent with the values of plasma potential, typical ion energies herein reported are very small, suggesting low propulsive performance of the HP source in analysis. The measured ion energies imply electrostatic ion speeds of about 2.7 km/s for Kr^+ and about 3.5 km/s for Xe^+ , both estimated for the highest strength of the magnetic field. Higher beam energies in the range of few tens of eV have been reported in previous works.^{7,29,51–53} It is reasonable to state that this large performance discrepancy with respect to other HP sources comes from a complete different set of input parameters. The source analyzed in this work features a relatively large geometry and operated at relatively weak magnetic fields and small mass flow rates.

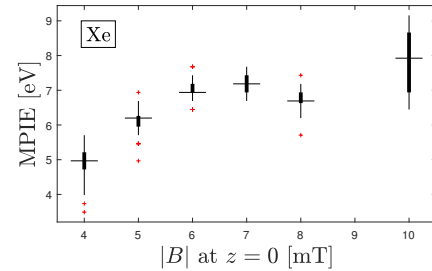


FIG. 28. Most probable ion energy as function of the magnetic field. $P_{IN} = 750$ W, $\dot{m} = 0.2$ mg/s Xe, $z = 33$ cm. Horizontal mark indicates median value, thick box delimits 25th and 75th percentiles, red marks represent outliers.

V. CONCLUSION

Several plasma properties have been inferred via direct measurement in a HP source operating with krypton and xenon as propellants. The magnetic component of the rf field in the plasma is axially characterized with and without the external magnetic field, showing that an electromagnetic wave propagates downstream in the first case only. Plasma density, electron temperature and plasma potential have been determined both axially and radially for different configurations of the externally applied magnetic field. 2-D profiles of these properties are then provided when the HP source operates with a magnetic field peak value of 10 mT at the exit cross section of the discharge chamber. It is found that the electron temperature peaks off-axis just before the exit cross section, while the peak in plasma density occurs similarly off-axis but downstream where the electrons are cooler. This phenomenon is quantitatively attributed to pressure balance effects. Using the plasma density data for the two propellants and their related mass flow rates, it is computed that xenon is roughly 5 times more efficiently ionized in the probed region. Qualitatively and quantitatively different plasma potential axial profiles are reported when using krypton for distinct external magnetic fields strengths, thus suggesting that the plasma source operates in inductive mode below a threshold value of the applied field. On the contrary, no mode transitions have been found when using xenon, which operates in helicon mode even for the weakest magnetic field. By using radial measurements performed few centimeters downstream the tube exit, the Hall current is computed as the sum of a $E \times B$ contribution and a diamagnetic contribution. Radial integration of the Hall current shows that a positive net thrust is locally produced. Ion energy is measured as function of the applied magnetic field strengths, showing that xenon performs better. Nevertheless, low ion energies are recorded.

The present work provides an useful dataset to be exploited in developing theoretical models and numerical simulations of the plasma expansion in the MN. A complete 2-D description of krypton and xenon plasma plume would enable the eval-

uation of the attained performance thus guiding the thruster design procedure. Investigation of smaller size devices and different topologies of the magnetic field are certainly of interest for performance improvement and thruster optimization. Examination of the multiply-charged species fraction in the plume would further refine the knowledge of such plasma sources.

ACKNOWLEDGMENTS

This project has received funding from the European Union's Horizon 2020 research and innovation program under grant agreement No 870542 (HelIcon Plasma Thruster for In-space Applications).

DATA AVAILABILITY

The data that support the findings of this study are available from the corresponding author upon reasonable request.

- ¹R. W. Boswell, "Very efficient plasma generation by whistler waves near the lower hybrid frequency," *Plasma Physics and Controlled Fusion* **26**, 1147–1162 (1984).
- ²F. F. Chen, "Plasma ionization by helicon waves," *Plasma Physics and Controlled Fusion* **33**, 339–364 (1991).
- ³F. F. Chen, M. J. Hsieh, and M. Ligh, "Helicon waves in a non-uniform plasma," *Plasma Sources Sci. Technol.* **3**, 49–57 (1993).
- ⁴F. F. Chen, "Physics of helicon discharges," *Physics of Plasmas* **3**, 1783–1793 (1996).
- ⁵I. D. Sudit and F. F. Chen, "Discharge equilibrium of a helicon plasma," *Plasma Sources Science and Technology* **5**, 43–53 (1996).
- ⁶A. W. Degeling, C. O. Jung, R. W. Boswell, and A. R. Ellingboe, "Plasma production from helicon waves," *Physics of Plasmas* **3**, 2788–2796 (1996).
- ⁷O. V. Batishchev, "Minihelicon plasma thruster," *IEEE Transactions on Plasma Science* **37**, 1563–1571 (2009).
- ⁸E. Ahedo and M. Merino, "On plasma detachment in propulsive magnetic nozzles," *Physics of Plasmas* **18**, 1–8 (2011).
- ⁹K. Takahashi, T. Laffeur, C. Charles, P. Alexander, R. W. Boswell, M. Perren, R. Laine, S. Pottinger, V. Lappas, T. Harle, and D. Lamprou, "Direct thrust measurement of a permanent magnet helicon double layer thruster," *Applied Physics Letters* **98**, 2–4 (2011).
- ¹⁰M. Merino and E. Ahedo, "Plasma detachment in a propulsive magnetic nozzle via ion demagnetization," *Plasma Sources Science and Technology* **23** (2014), 10.1088/0963-0252/23/3/032001.
- ¹¹A. Cardinali, D. Melazzi, M. Manente, and D. Pavarin, "Ray-tracing WKB analysis of Whistler waves in non-uniform magnetic fields applied to space thrusters," *Plasma Sources Science and Technology* **23** (2014), 10.1088/0963-0252/23/1/015013.
- ¹²M. Magarotto, D. Melazzi, and D. Pavarin, "Study on the influence of the magnetic field geometry on the power deposition in a helicon plasma source," *Journal of Plasma Physics* **85**, 1–19 (2019).
- ¹³M. Magarotto and D. Pavarin, "Parametric Study of a Cathode-Less Radio Frequency Thruster," *IEEE Transactions on Plasma Science*, 1–13 (2020).
- ¹⁴M. Magarotto, M. Manente, F. Trezzolani, and D. Pavarin, "Numerical Model of a Helicon Plasma Thruster," *IEEE Transactions on Plasma Science*, 1–10 (2020).
- ¹⁵M. Magarotto, D. Melazzi, and D. Pavarin, "3D-VIRTUS: Equilibrium condition solver of radio-frequency magnetized plasma discharges for space applications," *Computer Physics Communications* **247**, 106953 (2020).
- ¹⁶K. Takahashi, Y. Takao, and A. Ando, "Increased Thrust-to-Power Ratio of a Stepped-Diameter Helicon Plasma Thruster with Krypton Propellant," *Journal of Propulsion and Power* (2020), 10.2514/1.J054179.
- ¹⁷K. Takahashi, C. Charles, R. W. Boswell, Y. Takao, A. Fruchtman, J. Navarro-Cavalleé, and M. Merino, "Commentary: On helicon thrusters: Will they ever fly?" *Frontiers in Physics* (2020), 10.1063/1.5139998.
- ¹⁸E. Dale, B. Jorns, and A. Gallimore, "Future Directions for Electric Propulsion Research," *Aerospace* **7** (2020).
- ¹⁹M. Manente, F. Trezzolani, M. Magarotto, D. Pavarin, E. Fantino, A. Selmo, N. Bellomo, and E. Toson, "REGULUS : A propulsion platform to boost small satellite missions," *Acta Astronautica* **157**, 241–249 (2019).
- ²⁰M. Ruiz, V. Gomez, P. Fajardo, J. Navarro-Cavalleé, R. Albertoni, G. Dickeli, A. Vinci, S. Mazouffre, and N. Hildebrand, "HIPATIA: A project for the development of the Helicon Plasma Thruster and its associated technologies to intermediate-high TRLs," in *71st International Astronautical Congress (IAC) – The CyberSpace Edition* (2020).
- ²¹M. Light, I. D. Sudit, F. F. Chen, and D. Arnush, "Axial propagation of helicon waves," *Physics of Plasmas* **2**, 4094–4103 (1995).
- ²²D. D. Blackwell, T. G. Madziwa, D. Arnush, and F. F. Chen, "Evidence for Trivelpiece-Gould Modes in a Helicon Discharge," *Physical Review Letters* **88**, 4 (2002).
- ²³S. A. Andersen, V. O. Jensen, P. Nielsen, and N. D'Angelo, "Continuous supersonic plasma wind tunnel," *Physics of Fluids* **12**, 557–560 (1969).
- ²⁴E. Ahedo and M. Merino, "Two-dimensional supersonic plasma acceleration in a magnetic nozzle," *Physics of Plasmas* **17**, 1–15 (2010).
- ²⁵J. M. Little and E. Y. Choueiri, "Critical condition for plasma confinement in the source of a magnetic nozzle flow," *IEEE Transactions on Plasma Science* **43**, 277–286 (2015).
- ²⁶K. Takahashi, S. Takayama, A. Komuro, and A. Ando, "Standing Helicon Wave Induced by a Rapidly Bent Magnetic Field in Plasmas," *Physical Review Letters* **116**, 1–5 (2016).
- ²⁷K. Takahashi and A. Ando, "Enhancement of axial momentum lost to the radial wall by the upstream magnetic field in a helicon source," *Plasma Physics and Controlled Fusion* **59** (2017), 10.1088/1361-6587/aa626f.
- ²⁸R. M. Magee, M. E. Galante, J. Carr, G. Lusk, D. W. McCarren, and E. E. Scime, "Neutral depletion and the helicon density limit," *Physics of Plasmas* **20**, 1–6 (2013).
- ²⁹C. Charles and R. W. Boswell, "Effect of exhaust magnetic field in a helicon double-layer thruster operating in Xenon," *IEEE Transactions on Plasma Science* **36**, 2141–2146 (2008).
- ³⁰F. Gesto, C. Charles, and R. Boswell, "Xenon ion beam detachment from a helicon double layer thruster," *IEEE Transactions on Plasma Science* **36**, 1194–1195 (2008).
- ³¹J. Navarro-Cavallé, M. Wijnen, P. Fajardo, and E. Ahedo, "Experimental characterization of a 1 kW Helicon Plasma Thruster," *Vacuum* **149**, 69–73 (2018).
- ³²R. Jacquier, R. Agnello, B. Pouradier Duteil, P. Guittienne, A. Howling, G. Plyushchev, C. Marini, A. Simonin, I. Morgal, S. Bechu, and I. Furno, "First B-dot measurements in the RAID device, an alternative negative ion source for DEMO neutral beams," (2019).
- ³³C. M. Franck, O. Grulke, and T. Klinger, "Magnetic fluctuation probe design and capacitive pickup rejection," *Review of Scientific Instruments* **73**, 3768 (2002).
- ³⁴M. P. Reilly, W. Lewis, and G. H. Miley, "Magnetic field probes for use in radio frequency plasma," *Review of Scientific Instruments* **80** (2009), 10.1063/1.3136907.
- ³⁵D. Gerst, M. Cirisan, S. Mazouffre, and A. Aanesland, "Investigation of Ion-Ion Plasmas for Application in electric thrusters," in *IEPC* (2011) pp. 1–7.
- ³⁶I. D. Sudit and F. F. Chen, "RF Compensated Probes for High-density Discharges," *Plasma Sources Science and Technology* **3**, 162–168 (1994).
- ³⁷F. F. Chen, "Lectures Notes on Langmuir Probe Diagnostics," (2003).
- ³⁸F. F. Chen, "Langmuir probes in RF plasma: Surprising validity of OML theory," *Plasma Sources Science and Technology* **18** (2009), 10.1088/0963-0252/18/3/035012.
- ³⁹I. H. Hutchinson, *Principles of Plasma Diagnostics* (2002).
- ⁴⁰C. Niu, G. Zhao, Y. Wang, Z. Liu, and Q. Chen, "Correlation of wave propagation modes in helicon plasma with source tube lengths," *Physics of Plasmas* **24** (2017).
- ⁴¹P. Chabert and N. Braithwaite, *Physics of Radio-Frequency Plasmas* (Cambridge University Press, 2011).

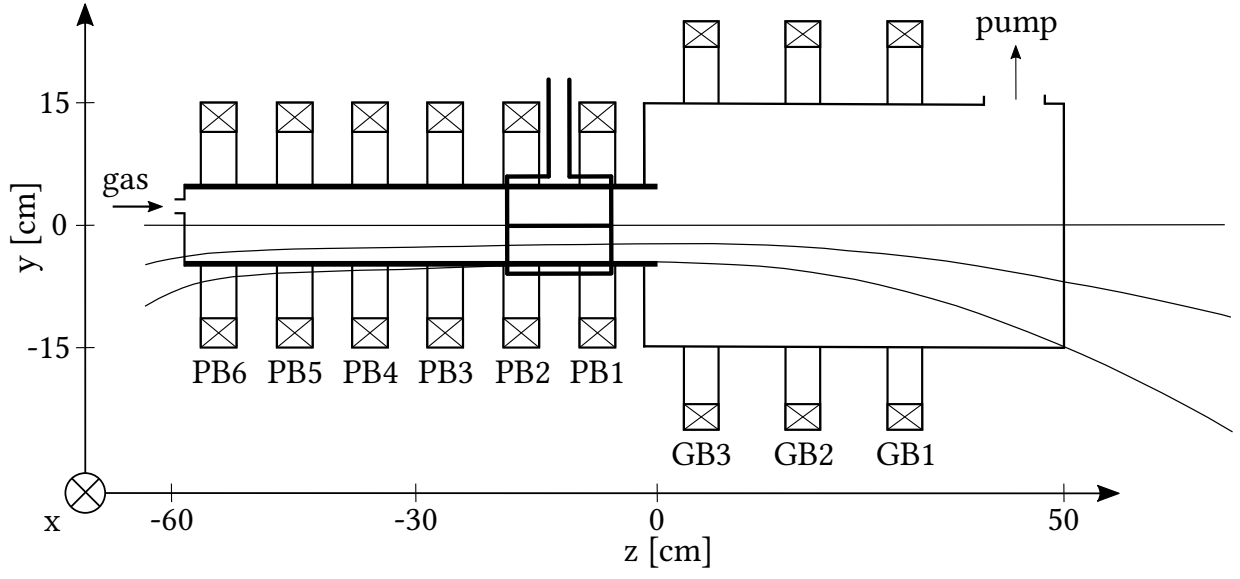
This is the author's peer reviewed, accepted manuscript. However, the online version of record will be different from this version once it has been copyedited and typeset.

PLEASE CITE THIS ARTICLE AS DOI: 10.1063/1.50037117

- ⁴²D. Bose, T. R. Govidan, and M. Meyyappan, "Modeling of a helicon plasma source," IEEE TRANSACTIONS ON PLASMA SCIENCE, **31** (2003), 10.1109/PPPS.2001.01002007.
- ⁴³B. v7.1 database, www.lxcat.net, retrieved on November 8, 2020.
- ⁴⁴F. F. Chen, "Experiments on helicon plasma sources," Journal of Vacuum Science & Technology A: Vacuum, Surfaces, and Films **10**, 1389–1401 (1992).
- ⁴⁵C. Charles, "High density conics in a magnetically expanding helicon plasma," Applied Physics Letters **96**, 13–16 (2010).
- ⁴⁶K. Takahashi, A. Chiba, A. Komuro, and A. Ando, "Experimental identification of an azimuthal current in a magnetic nozzle of a radiofrequency plasma thruster," Plasma Sources Science and Technology **25**, 55011 (2016).
- ⁴⁷K. Takahashi, C. Charles, R. Boswell, W. Cox, and R. Hatakeyama, "Transport of energetic electrons in a magnetically expanding helicon double layer plasma," Applied Physics Letters **94**, 2007–2010 (2009).
- ⁴⁸F. F. Chen, *Introduction to Plasma Physics and Controlled Fusion* (2016).
- ⁴⁹K. Takahashi, T. Lafleur, C. Charles, P. Alexander, and R. W. Boswell, "Axial force imparted by a current-free magnetically expanding plasma," Physics of Plasmas **19**, 1–9 (2012).
- ⁵⁰H. W. Coleman and W. G. Steele, *Experimentation, Validation, and Uncertainty Analysis for Engineers* (Wiley, 2009).
- ⁵¹C. Charles and R. W. Boswell, "Laboratory evidence of supersonic ion beam generated by a current-free "helicon" double-layer," Physics of Plasmas **11**, 1706–1714 (2004).
- ⁵²T. Lafleur, C. Charles, and R. W. Boswell, "Characterization of the ion beam formed in a low magnetic field helicon mode," Journal of Physics D: Applied Physics **44** (2011), 10.1088/0022-3727/44/14/145204.
- ⁵³N. Gulbrandsen and Å. Fredriksen, "RFEA measurements of high-energy electrons in a helicon plasma device with expanding magnetic field," Frontiers in Physics **5**, 1–8 (2017).

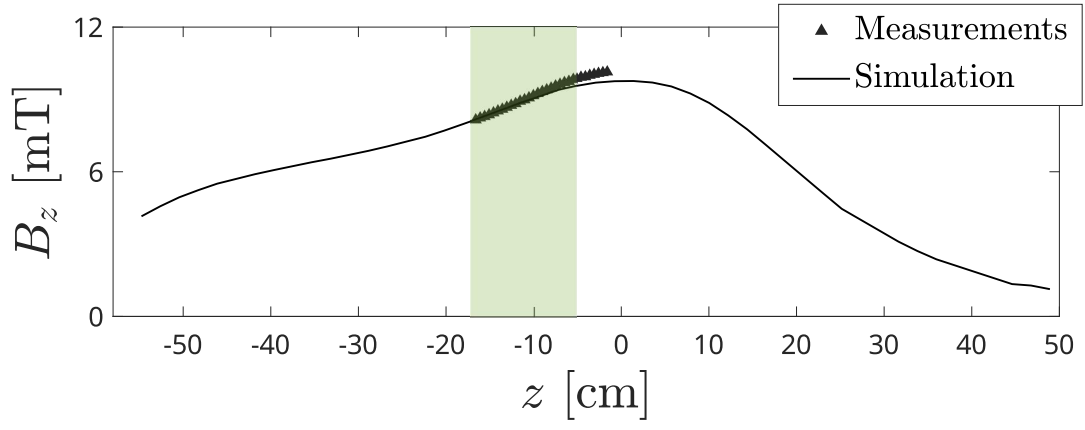
This is the author's peer reviewed, accepted manuscript. However, the online version of record will be different from this version once it has been copyedited and typeset.

PLEASE CITE THIS ARTICLE AS DOI: 10.1063/5.0037117



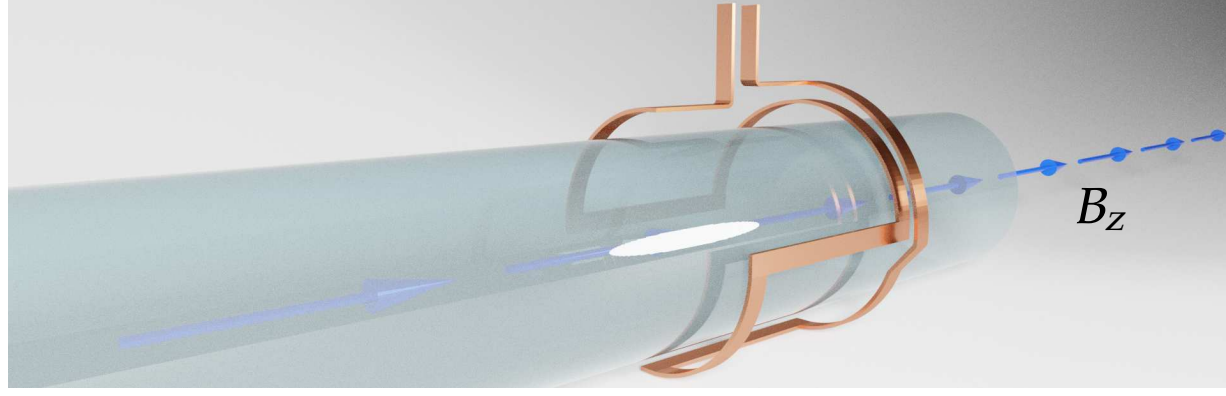
This is the author's peer reviewed, accepted manuscript. However, the online version of record will be different from this version once it has been copyedited and typeset.

PLEASE CITE THIS ARTICLE AS DOI: 10.1063/5.0037117



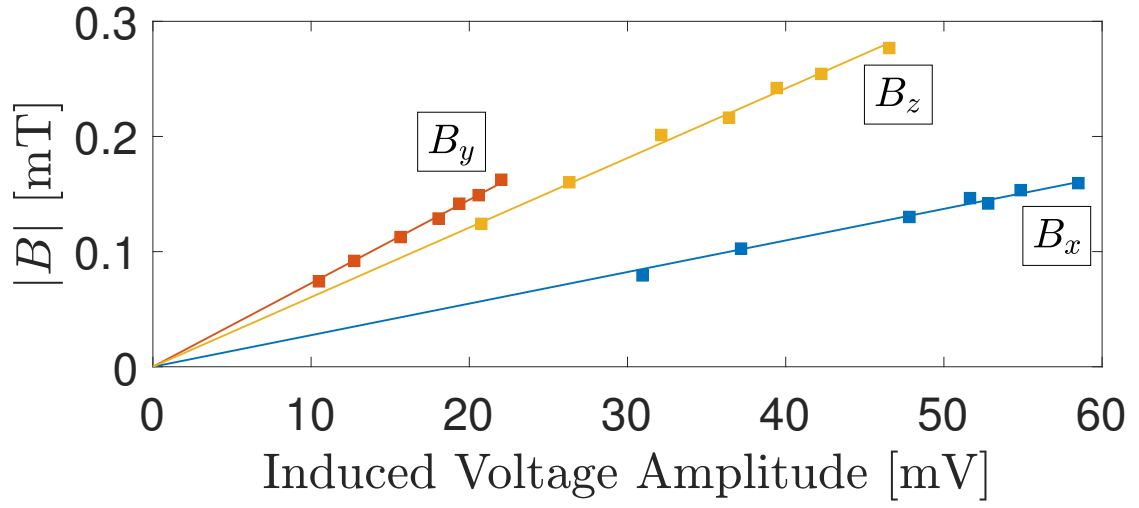
This is the author's peer reviewed, accepted manuscript. However, the online version of record will be different from this version once it has been copyedited and typeset.

PLEASE CITE THIS ARTICLE AS DOI: 10.1063/5.0037117

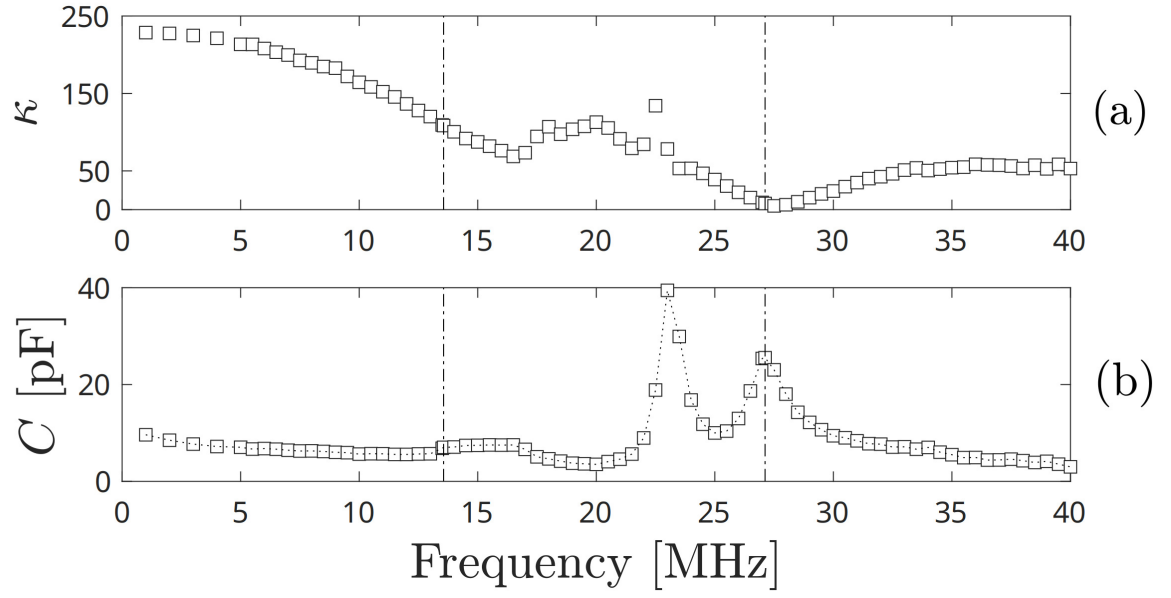


This is the author's peer reviewed, accepted manuscript. However, the online version of record will be different from this version once it has been copyedited and typeset.

PLEASE CITE THIS ARTICLE AS DOI: 10.1063/5.0037117



This is the author's peer reviewed, accepted manuscript. However, the online version of record will be different from this version once it has been copyedited and typeset.
 PLEASE CITE THIS ARTICLE AS DOI: 10.1063/5.0037117



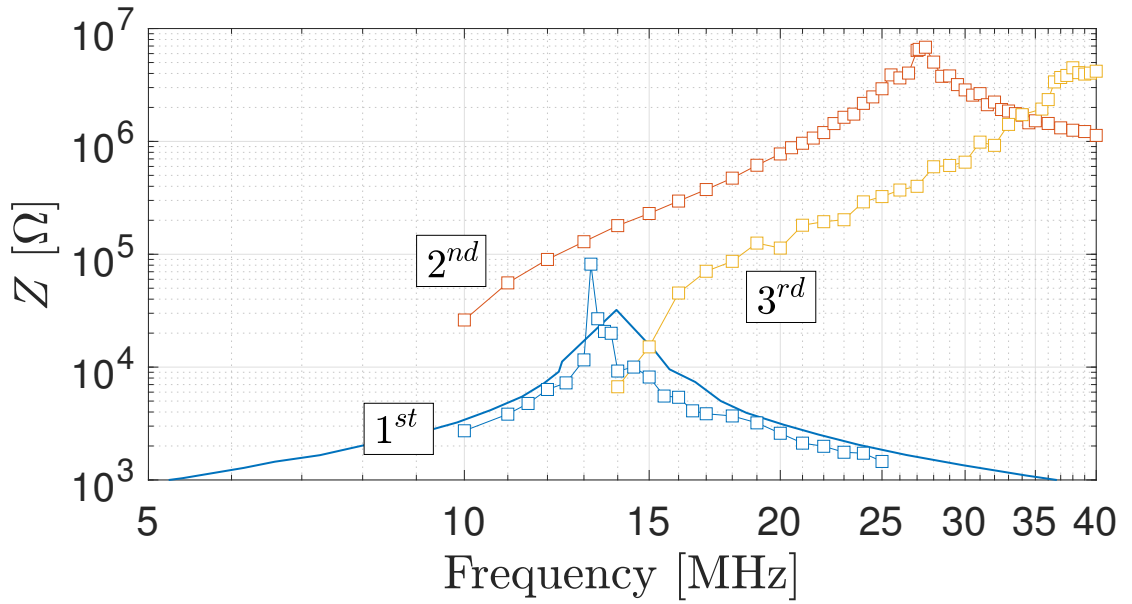
This is the author's peer reviewed, accepted manuscript. However, the online version of record will be different from this version once it has been copyedited and typeset.

PLEASE CITE THIS ARTICLE AS DOI: 10.1063/5.0037117



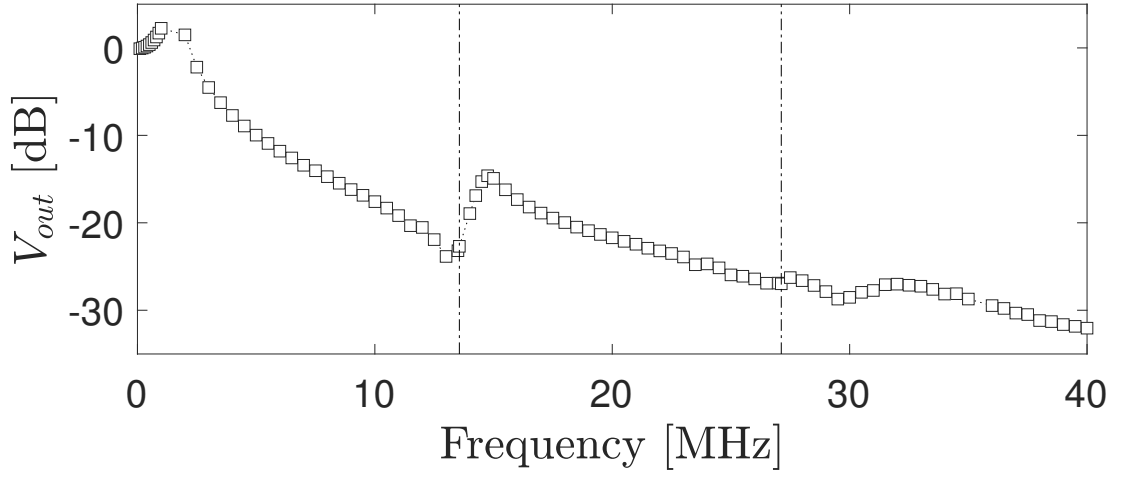
This is the author's peer reviewed, accepted manuscript. However, the online version of record will be different from this version once it has been copyedited and typeset.

PLEASE CITE THIS ARTICLE AS DOI: 10.1063/5.0037117



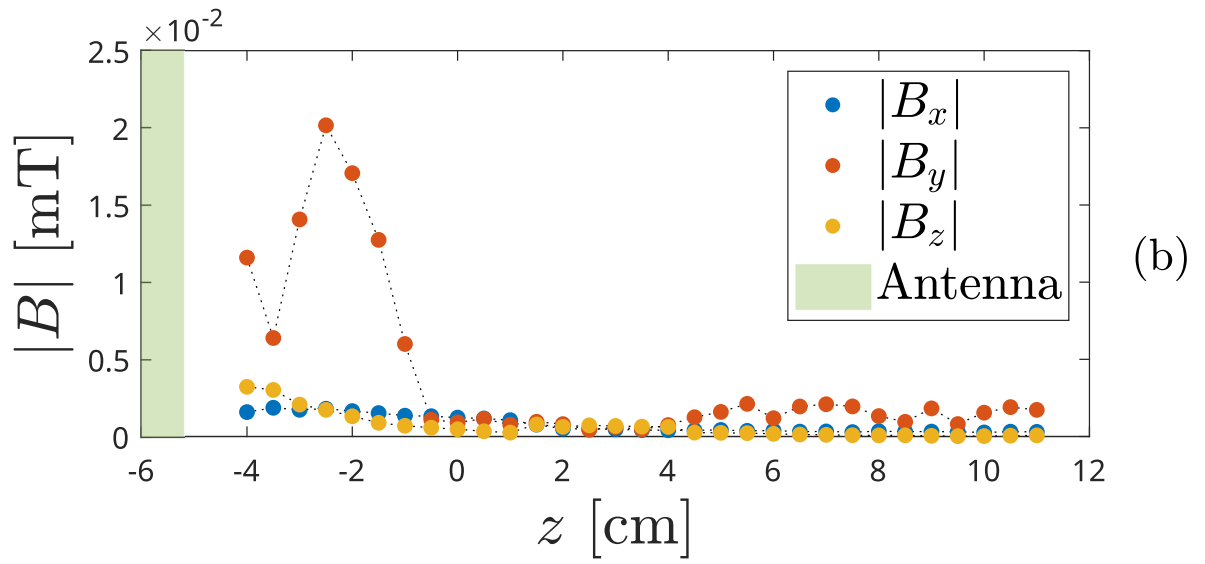
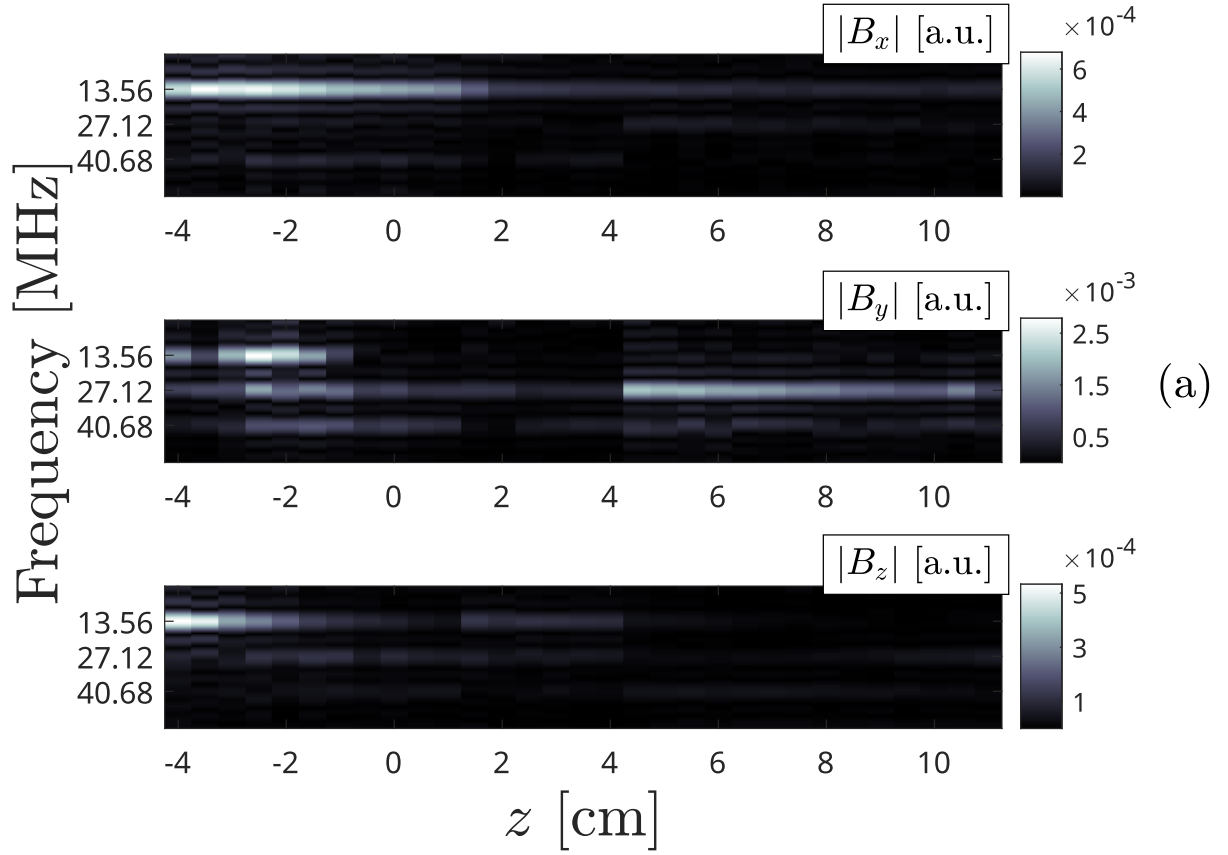
This is the author's peer reviewed, accepted manuscript. However, the online version of record will be different from this version once it has been copyedited and typeset.

PLEASE CITE THIS ARTICLE AS DOI: 10.1063/5.0037117



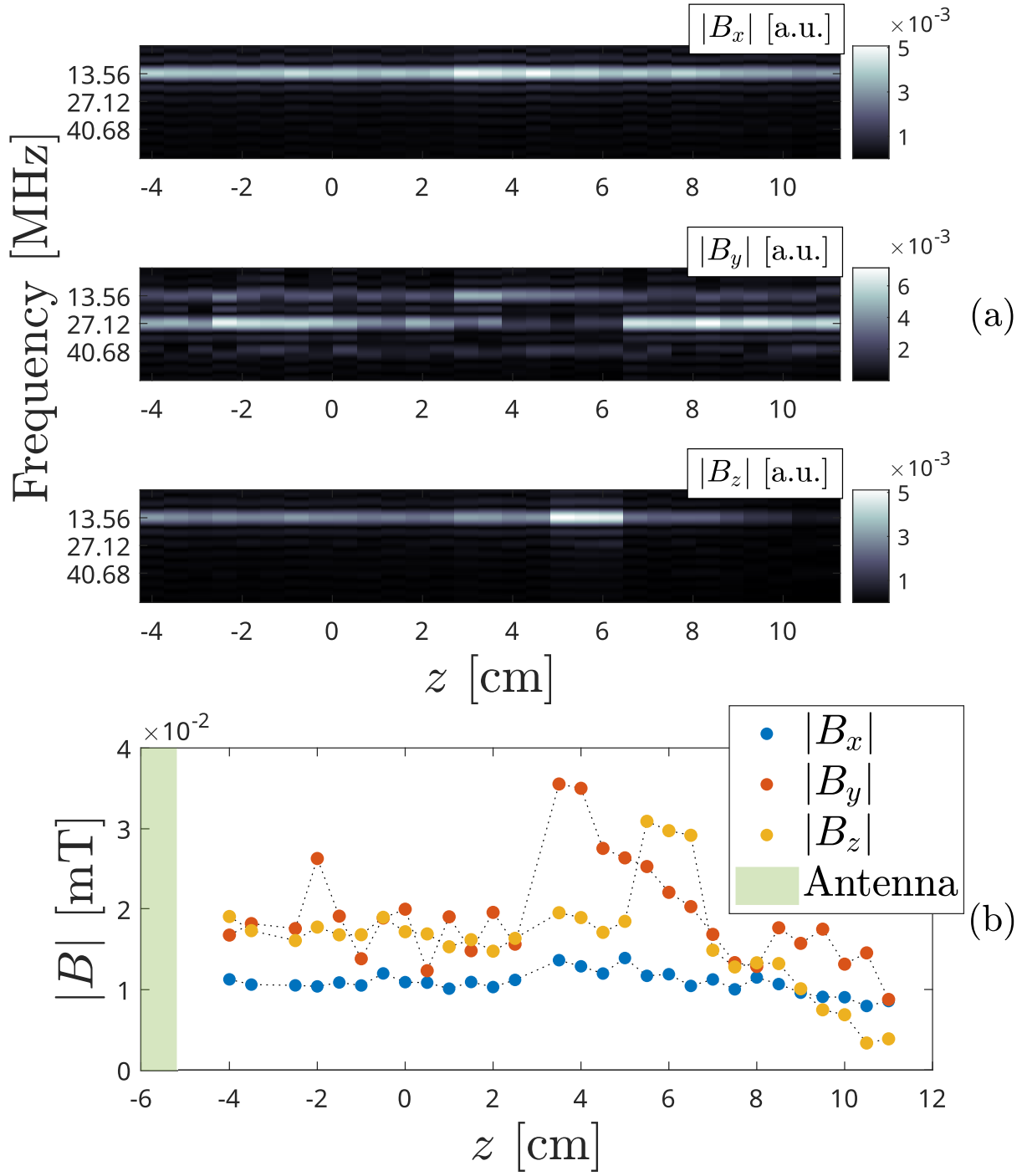
This is the author's peer reviewed, accepted manuscript. However, the online version of record will be different from this version once it has been copyedited and typeset.

PLEASE CITE THIS ARTICLE AS DOI: 10.1063/5.0037117



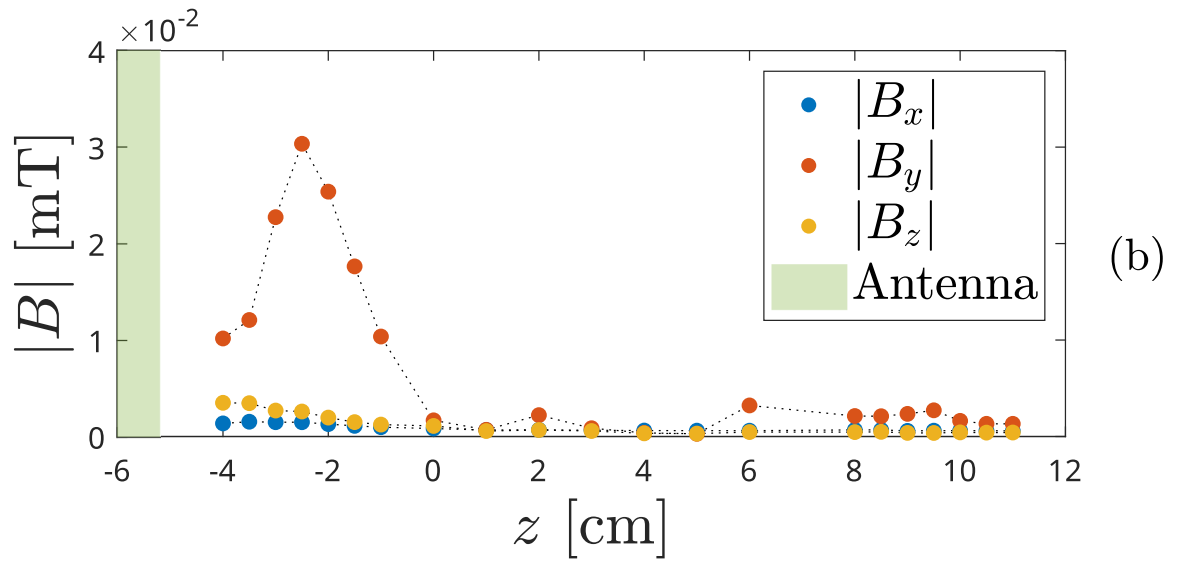
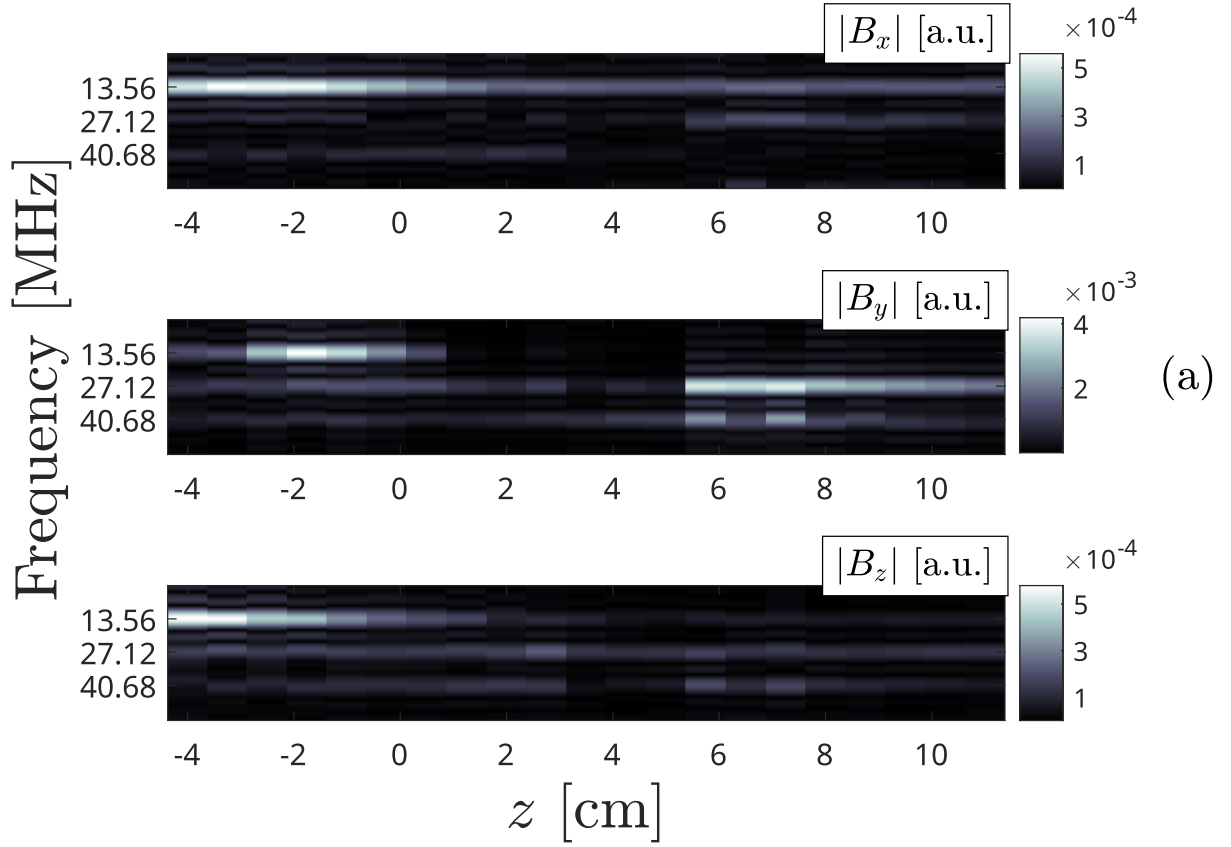
This is the author's peer reviewed, accepted manuscript. However, the online version of record will be different from this version once it has been copyedited and typeset.

PLEASE CITE THIS ARTICLE AS DOI: 10.1063/5.0037117



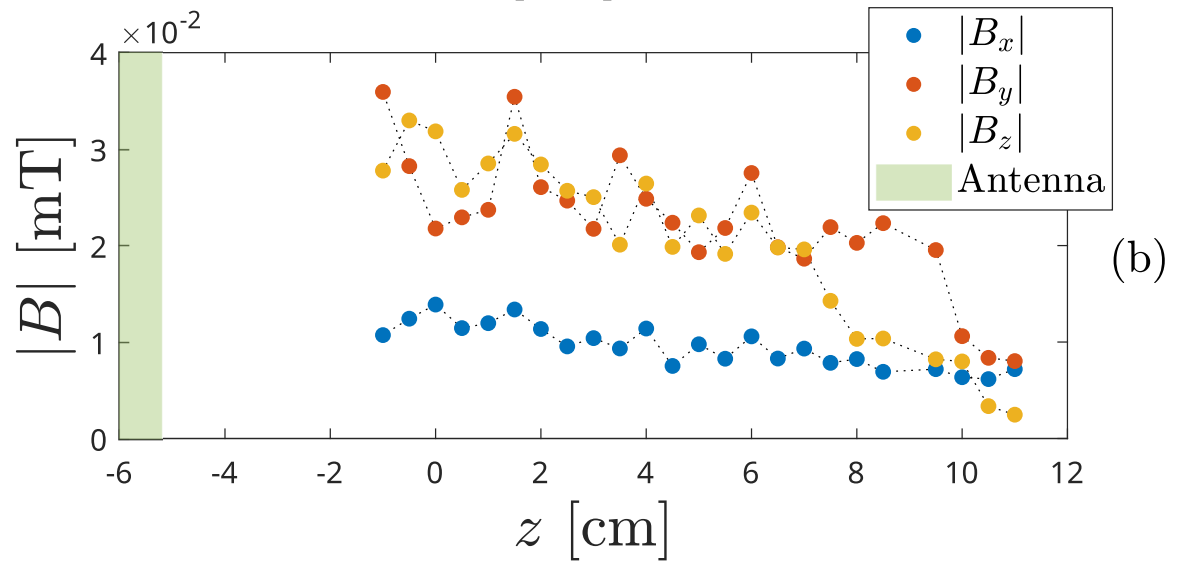
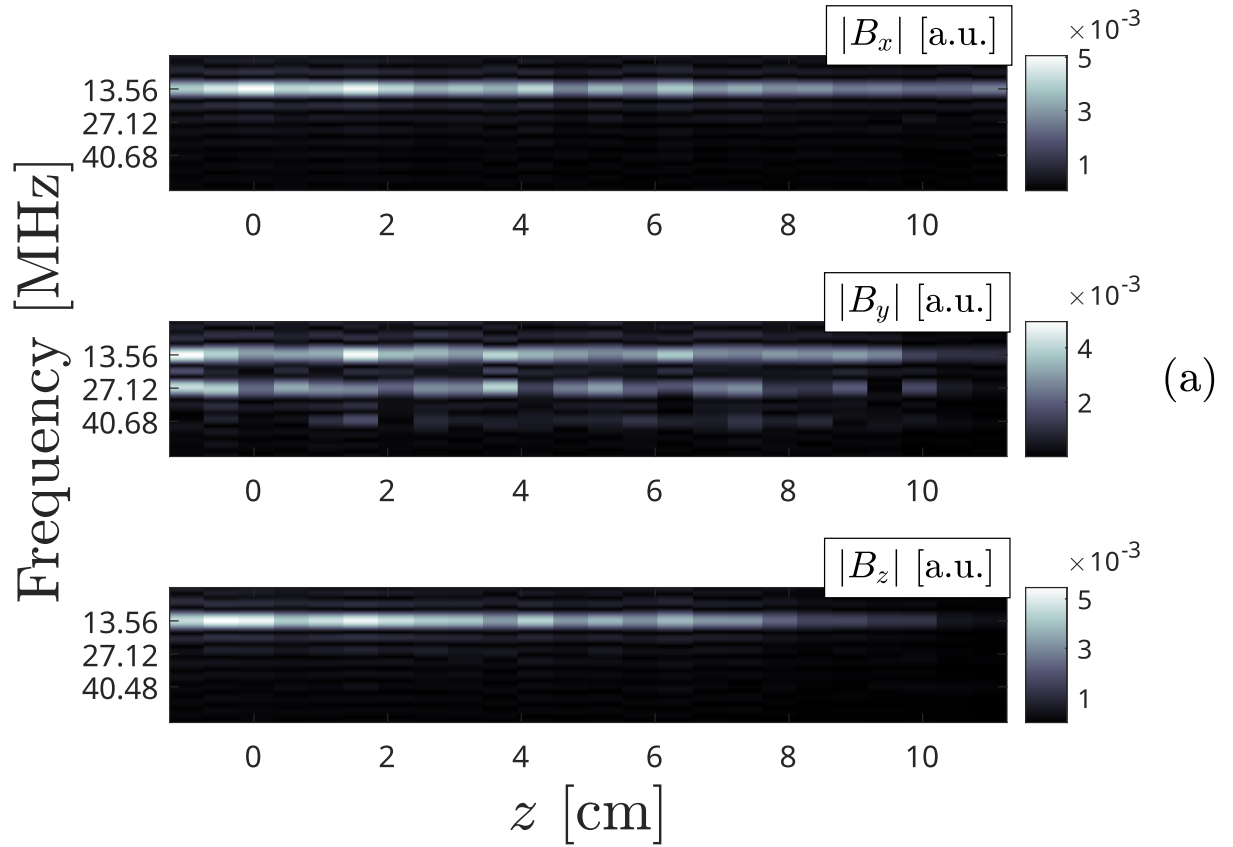
This is the author's peer reviewed, accepted manuscript. However, the online version of record will be different from this version once it has been copyedited and typeset.

PLEASE CITE THIS ARTICLE AS DOI: 10.1063/5.0037117

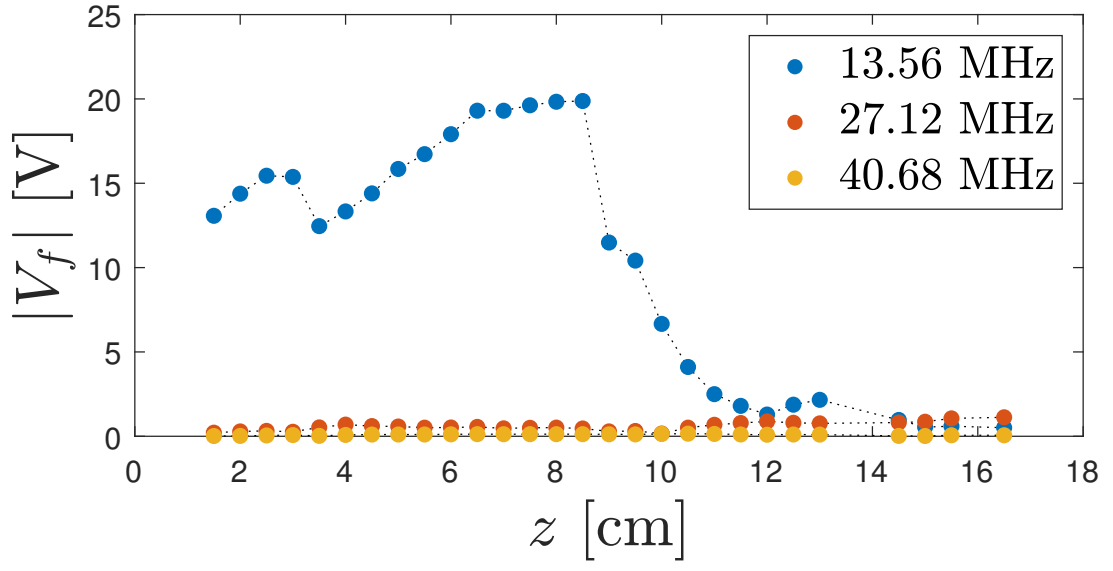


This is the author's peer reviewed, accepted manuscript. However, the online version of record will be different from this version once it has been copyedited and typeset.

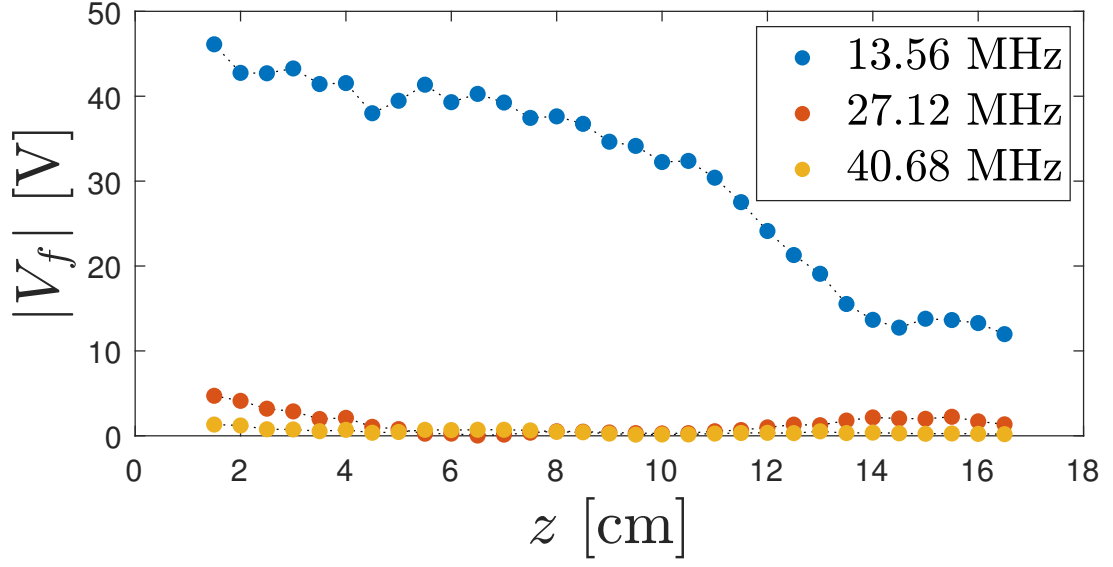
PLEASE CITE THIS ARTICLE AS DOI: 10.1063/5.0037117



This is the author's peer reviewed, accepted manuscript. However, the online version of record will be different from this version once it has been copyedited and typeset.
 PLEASE CITE THIS ARTICLE AS DOI: 10.1063/5.0037117

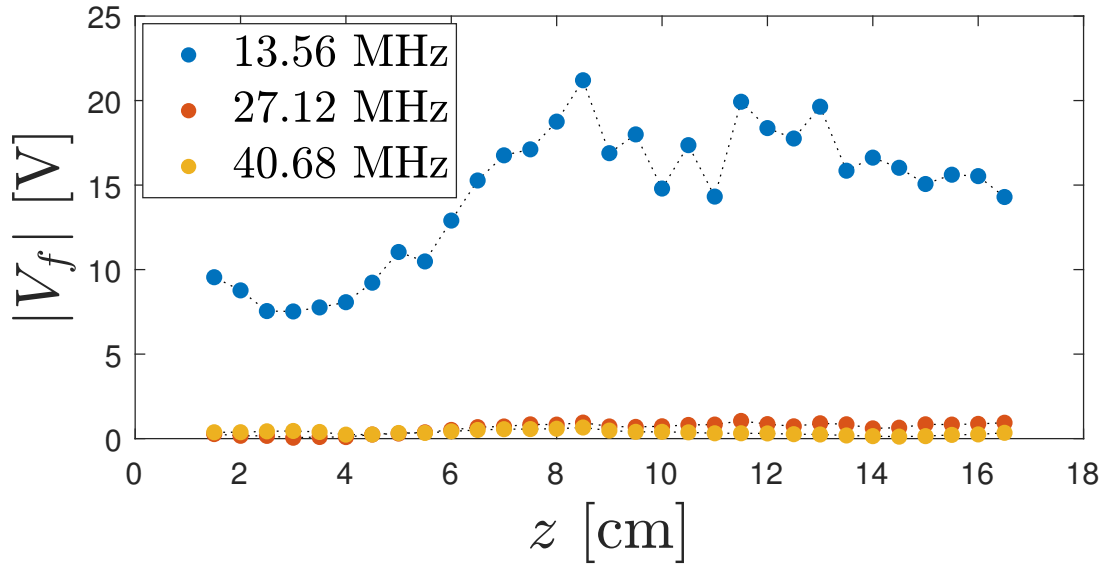


This is the author's peer reviewed, accepted manuscript. However, the online version of record will be different from this version once it has been copyedited and typeset.
 PLEASE CITE THIS ARTICLE AS DOI: 10.1063/5.0037117



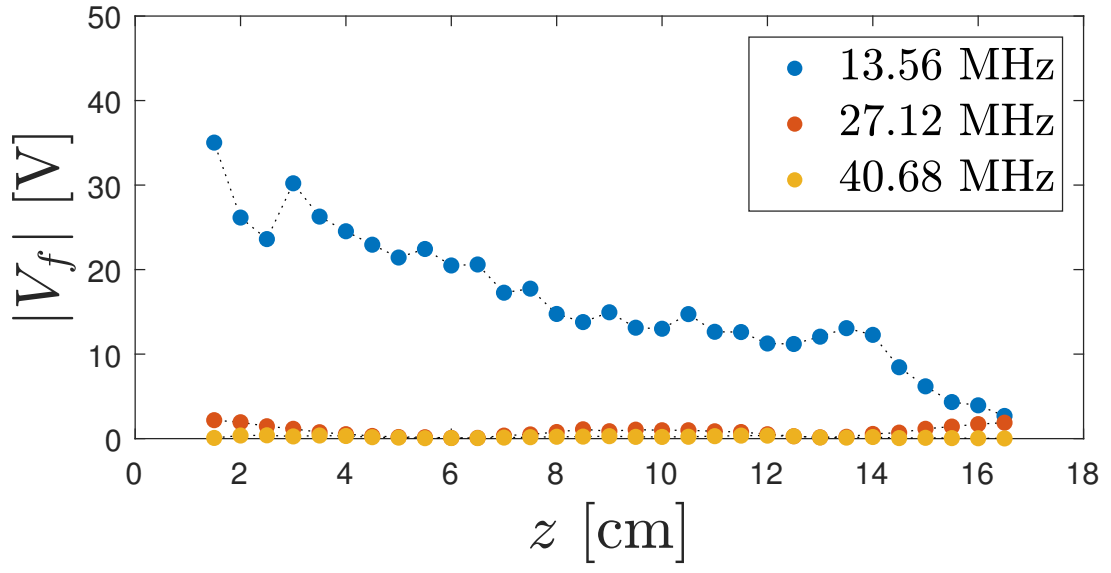
This is the author's peer reviewed, accepted manuscript. However, the online version of record will be different from this version once it has been copyedited and typeset.

PLEASE CITE THIS ARTICLE AS DOI: 10.1063/5.0037117



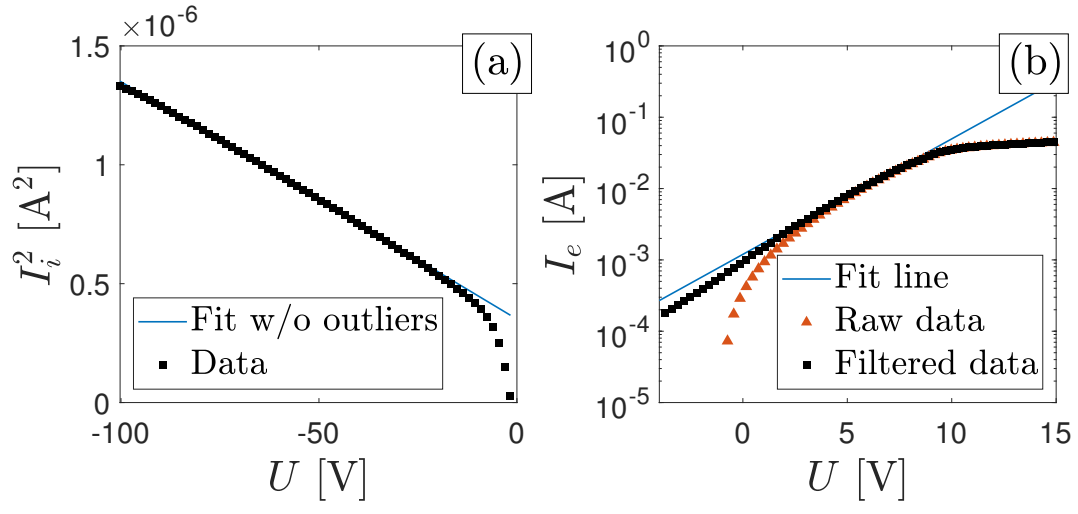
This is the author's peer reviewed, accepted manuscript. However, the online version of record will be different from this version once it has been copyedited and typeset.

PLEASE CITE THIS ARTICLE AS DOI: 10.1063/5.0037117



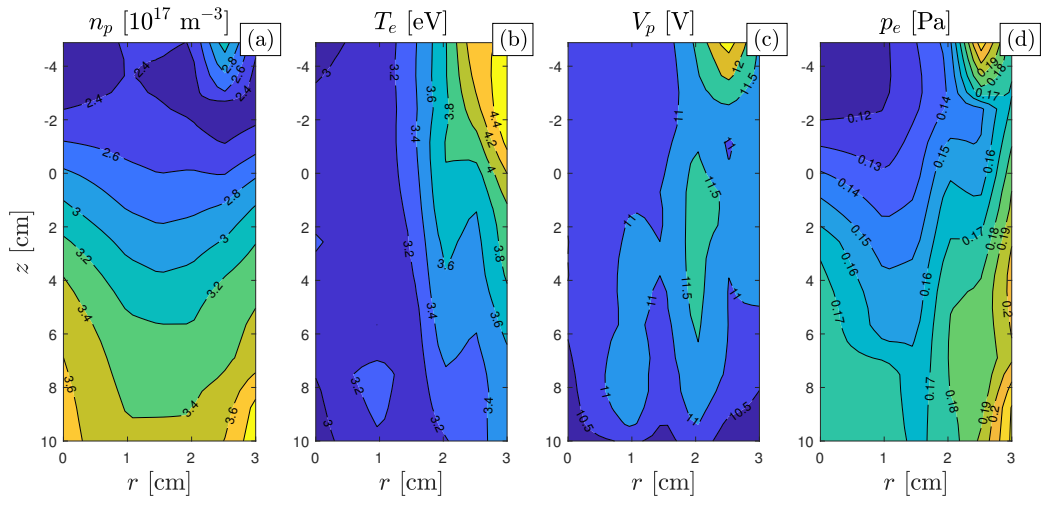
This is the author's peer reviewed, accepted manuscript. However, the online version of record will be different from this version once it has been copyedited and typeset.

PLEASE CITE THIS ARTICLE AS DOI: 10.1063/5.0037117



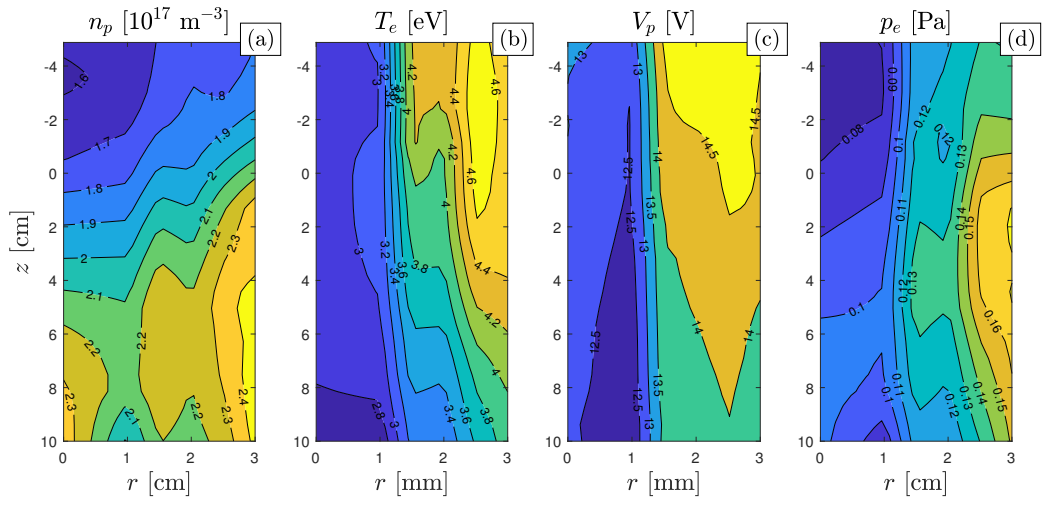
This is the author's peer reviewed, accepted manuscript. However, the online version of record will be different from this version once it has been copyedited and typeset.

PLEASE CITE THIS ARTICLE AS DOI: 10.1063/5.0037117



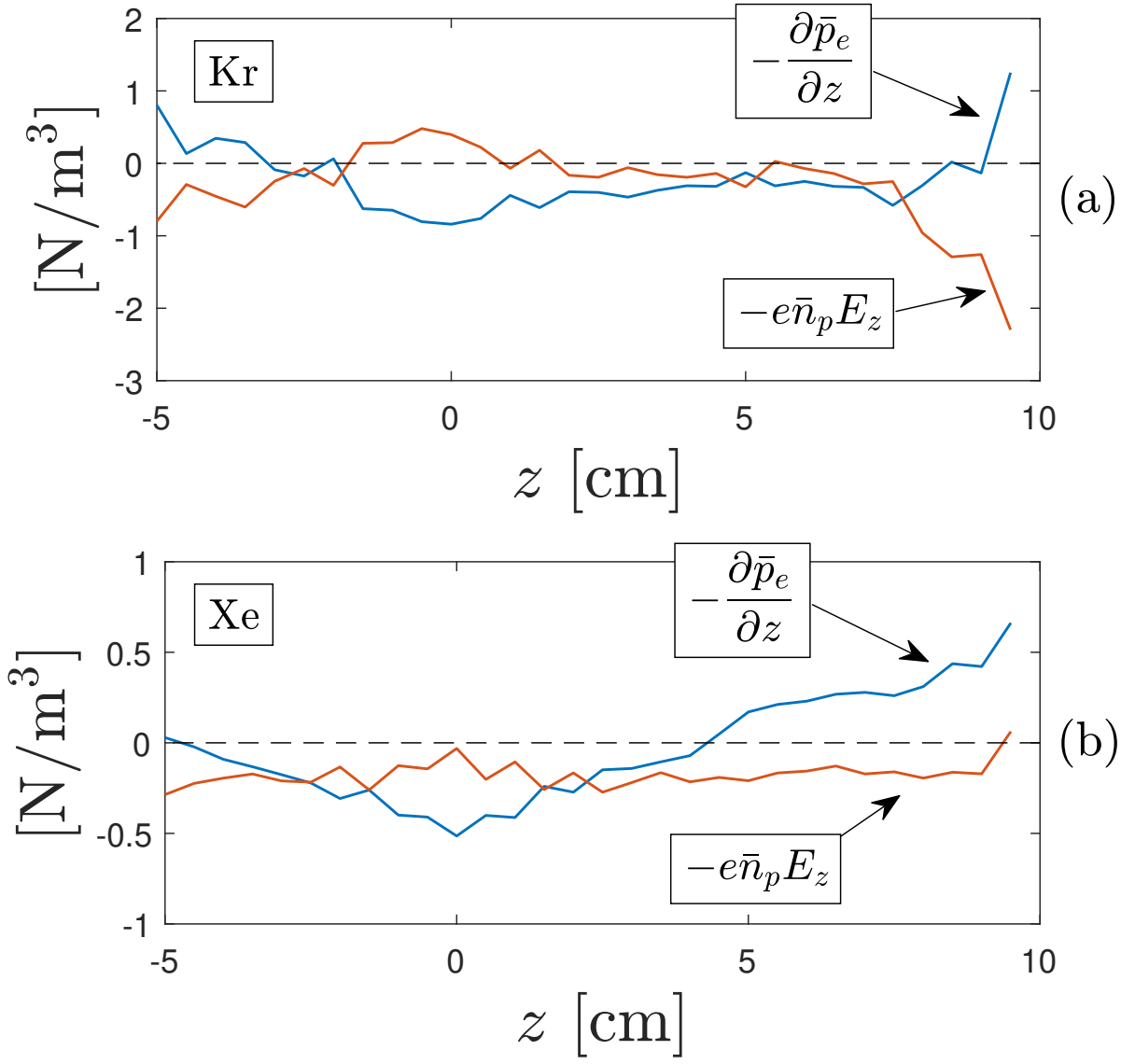
This is the author's peer reviewed, accepted manuscript. However, the online version of record will be different from this version once it has been copyedited and typeset.

PLEASE CITE THIS ARTICLE AS DOI: 10.1063/5.0037117

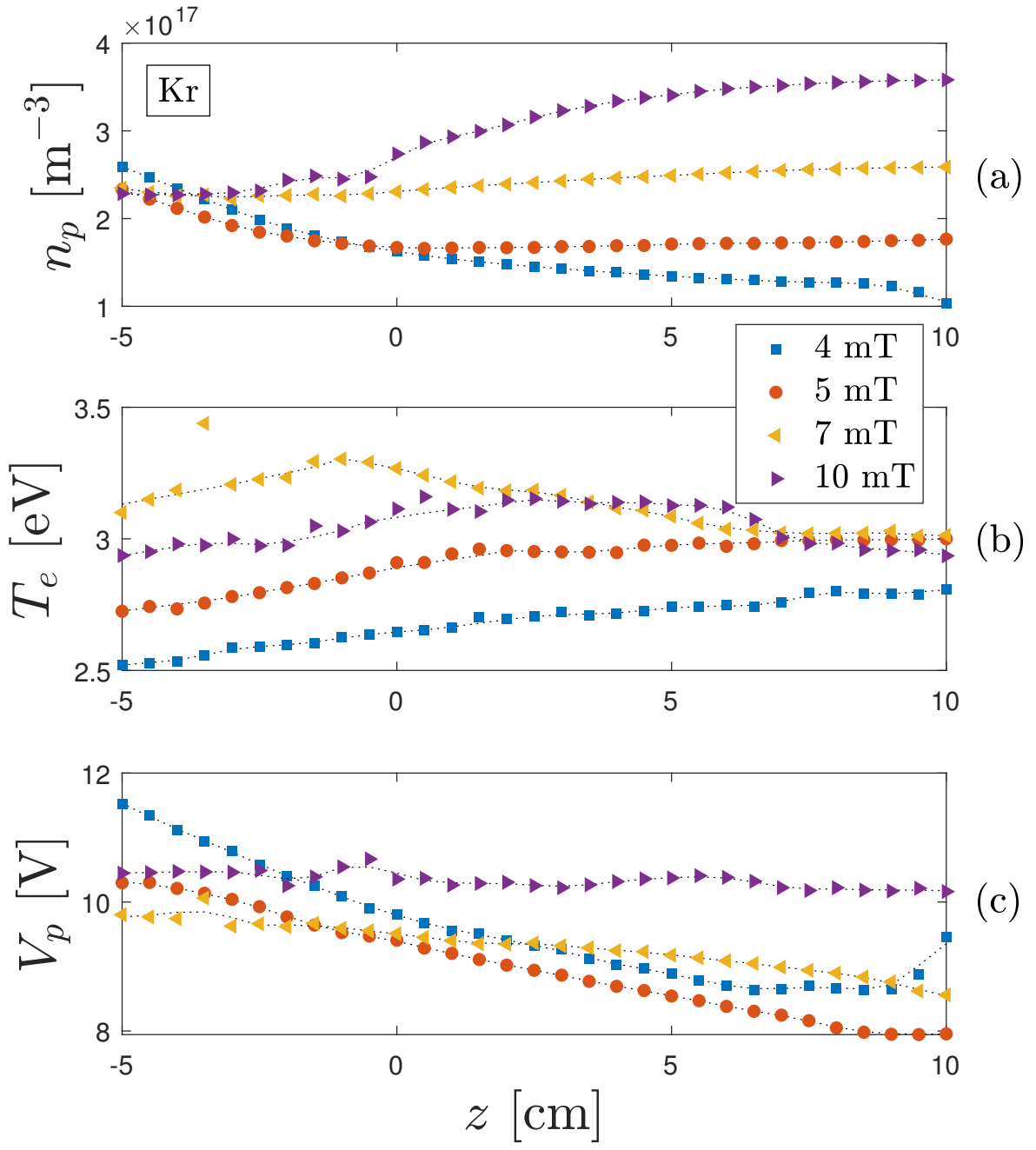


This is the author's peer reviewed, accepted manuscript. However, the online version of record will be different from this version once it has been copyedited and typeset.

PLEASE CITE THIS ARTICLE AS DOI: 10.1063/5.0037117

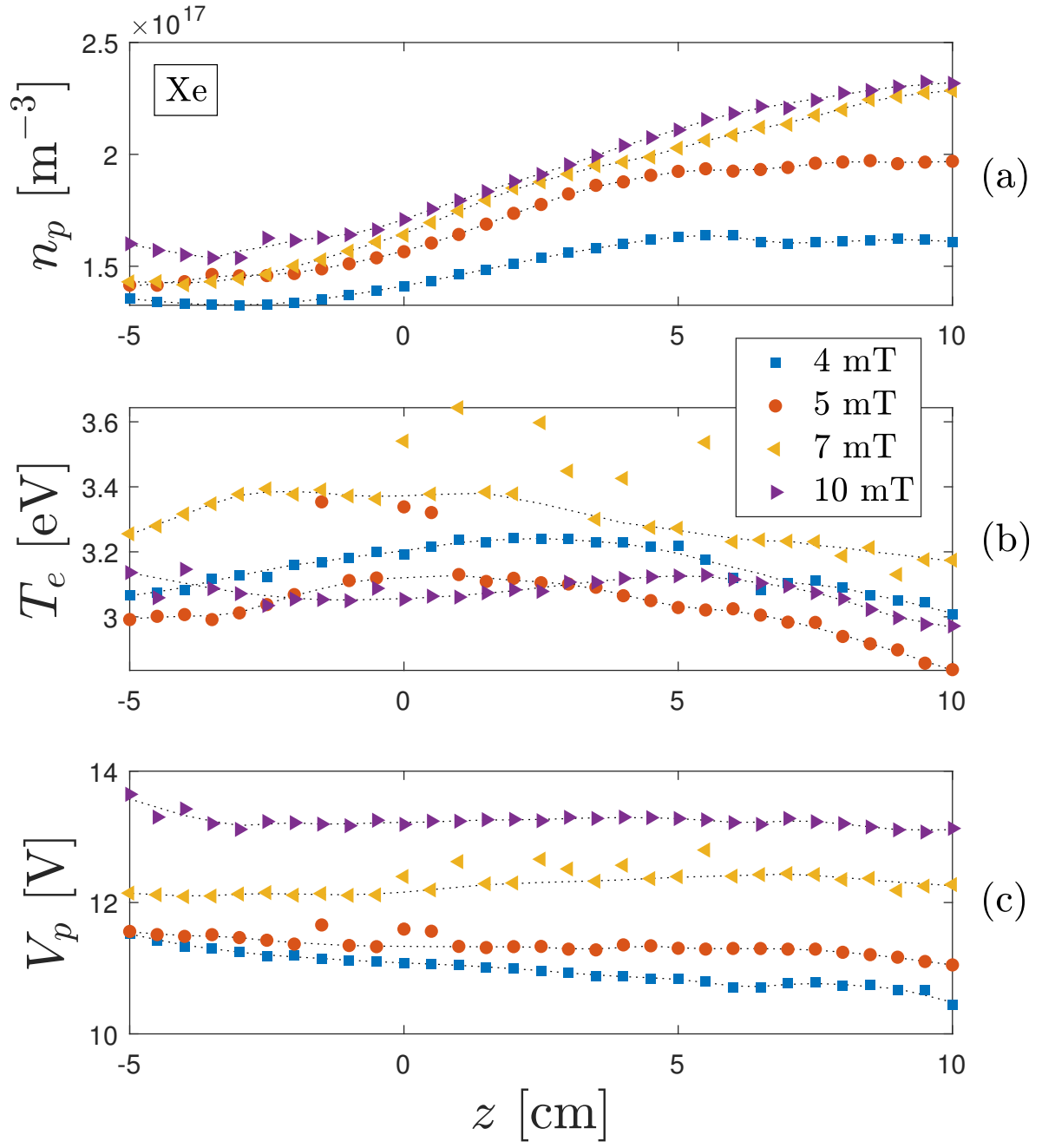


This is the author's peer reviewed, accepted manuscript. However, the online version of record will be different from this version once it has been copyedited and typeset.
 PLEASE CITE THIS ARTICLE AS DOI: 10.1063/5.0037117



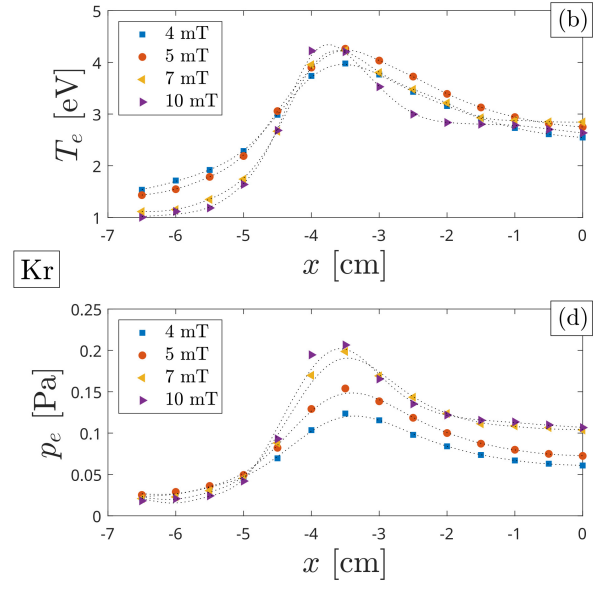
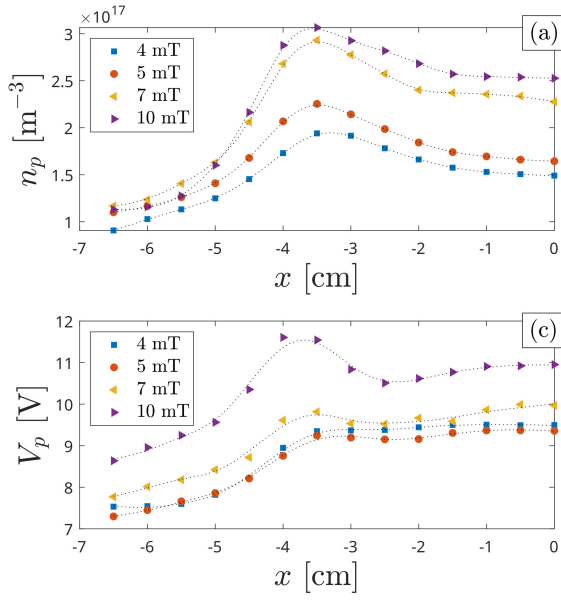
This is the author's peer reviewed, accepted manuscript. However, the online version of record will be different from this version once it has been copyedited and typeset.

PLEASE CITE THIS ARTICLE AS DOI: 10.1063/5.0037117



This is the author's peer reviewed, accepted manuscript. However, the online version of record will be different from this version once it has been copyedited and typeset.

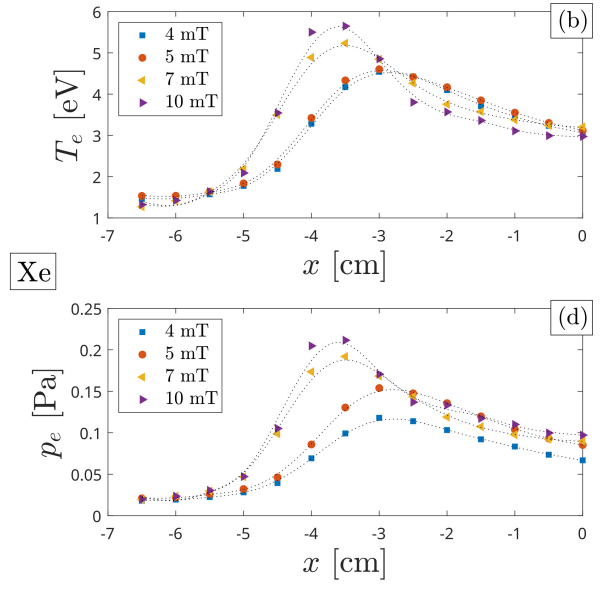
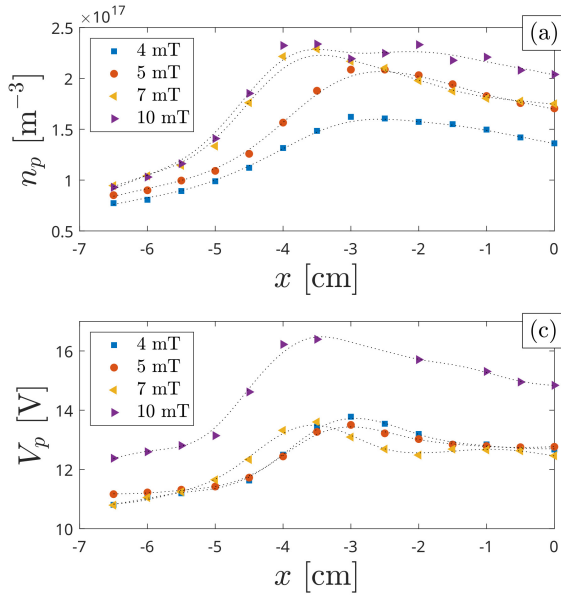
PLEASE CITE THIS ARTICLE AS DOI: 10.1063/5.0037117



Kr

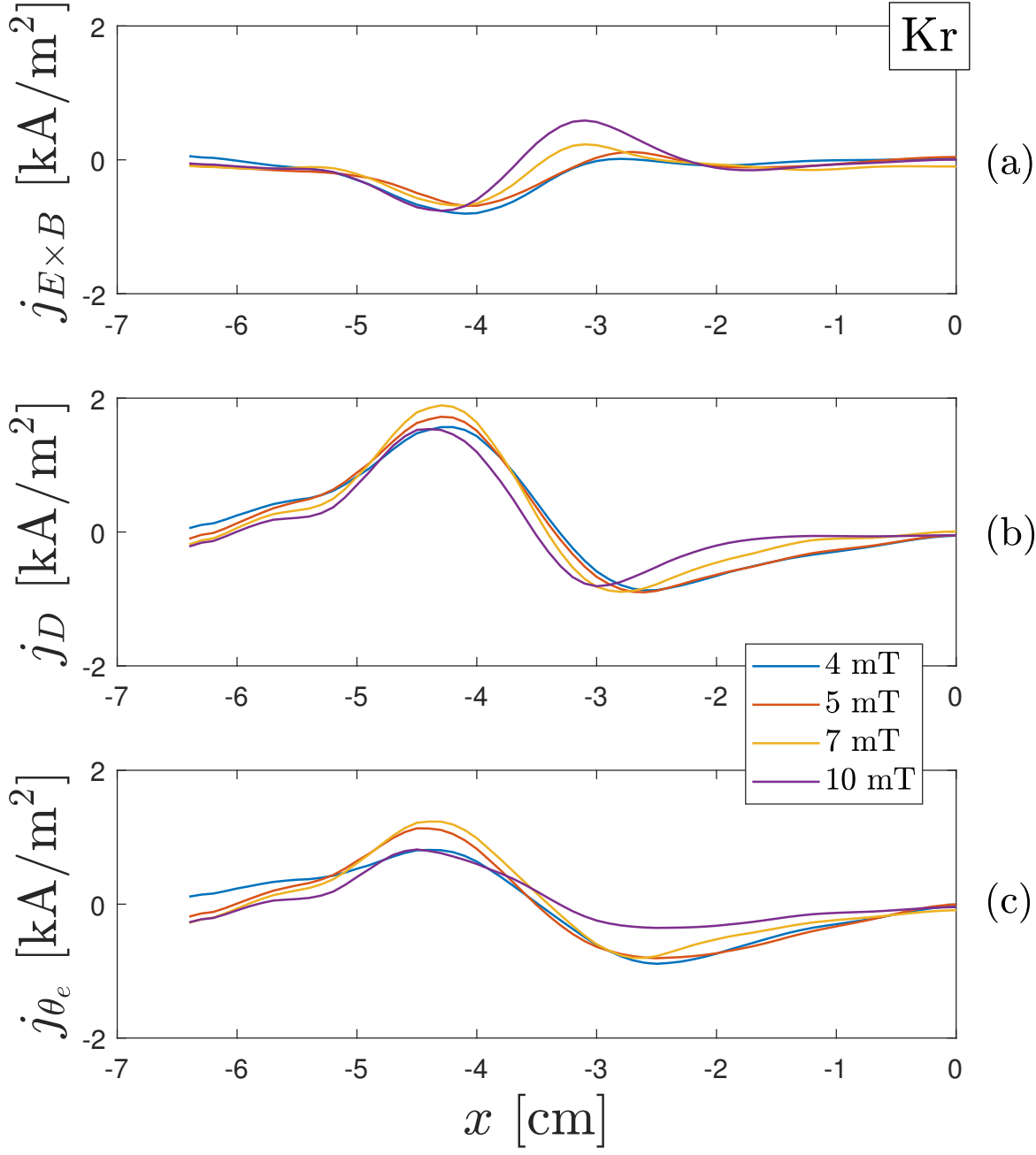
This is the author's peer reviewed, accepted manuscript. However, the online version of record will be different from this version once it has been copyedited and typeset.

PLEASE CITE THIS ARTICLE AS DOI: 10.1063/5.0037117



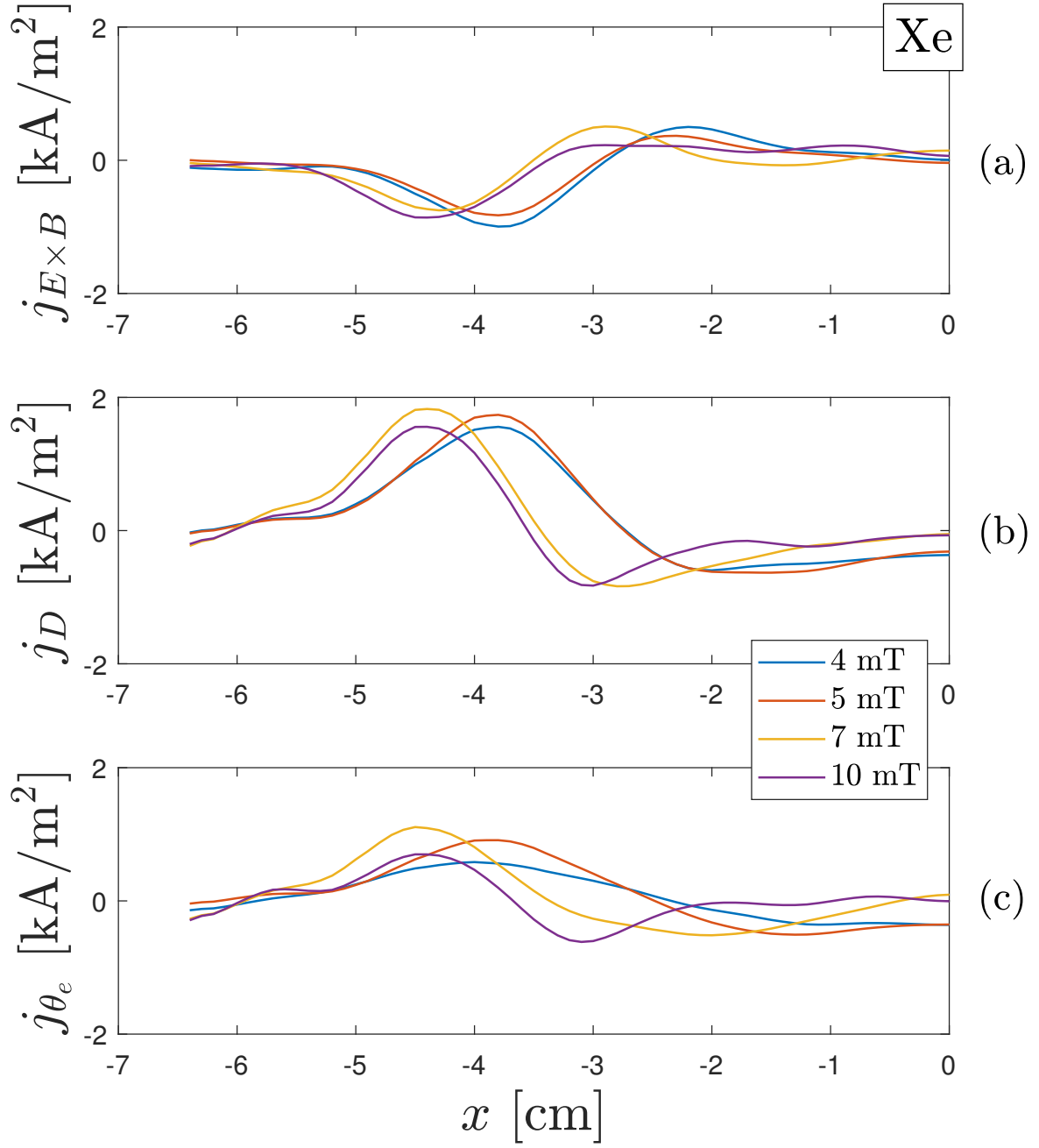
This is the author's peer reviewed, accepted manuscript. However, the online version of record will be different from this version once it has been copyedited and typeset.

PLEASE CITE THIS ARTICLE AS DOI: 10.1063/5.0037117



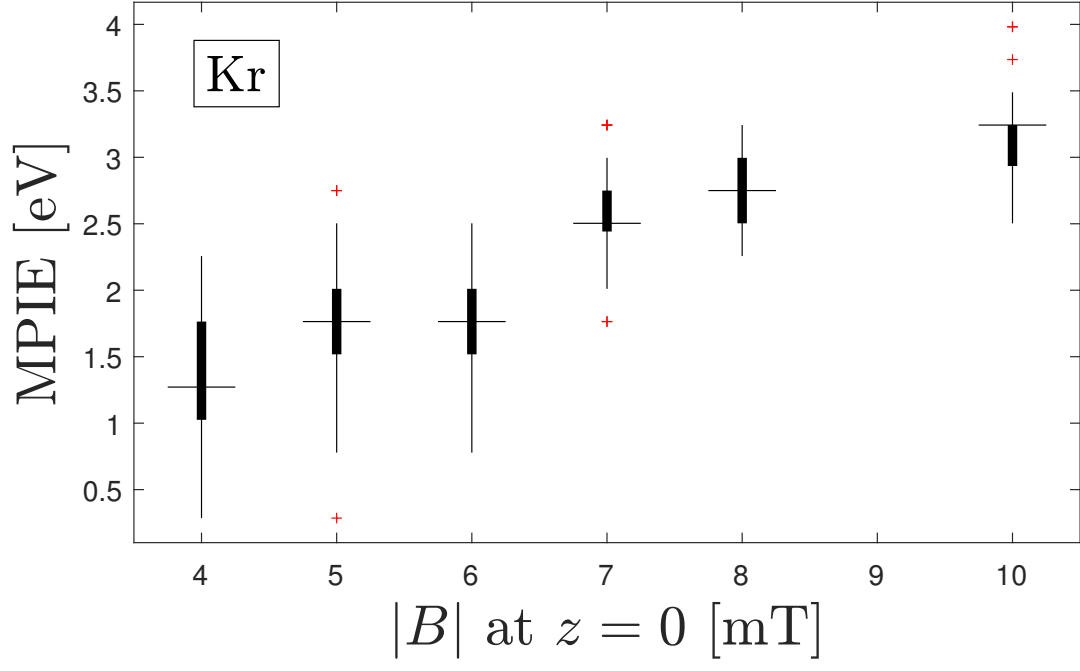
This is the author's peer reviewed, accepted manuscript. However, the online version of record will be different from this version once it has been copyedited and typeset.

PLEASE CITE THIS ARTICLE AS DOI: 10.1063/5.0037117



This is the author's peer reviewed, accepted manuscript. However, the online version of record will be different from this version once it has been copyedited and typeset.

PLEASE CITE THIS ARTICLE AS DOI: 10.1063/5.0037117



This is the author's peer reviewed, accepted manuscript. However, the online version of record will be different from this version once it has been copyedited and typeset.
 PLEASE CITE THIS ARTICLE AS DOI: 10.1063/5.0037117

