



HAL
open science

Synthetic galaxy clusters and observations based on Dark Energy Survey Year 3 Data

T.N. Varga, D. Gruen, S. Seitz, N. Maccrann, E. Sheldon, W.G. Hartley, A.
Amon, A. Choi, A. Palmese, Y. Zhang, et al.

► **To cite this version:**

T.N. Varga, D. Gruen, S. Seitz, N. Maccrann, E. Sheldon, et al.. Synthetic galaxy clusters and observations based on Dark Energy Survey Year 3 Data. *Mon.Not.Roy.Astron.Soc.*, 2021, 509 (4), pp.4865-4885. 10.1093/mnras/stab3269 . hal-03164428

HAL Id: hal-03164428

<https://hal.science/hal-03164428>

Submitted on 4 May 2023

HAL is a multi-disciplinary open access archive for the deposit and dissemination of scientific research documents, whether they are published or not. The documents may come from teaching and research institutions in France or abroad, or from public or private research centers.

L'archive ouverte pluridisciplinaire **HAL**, est destinée au dépôt et à la diffusion de documents scientifiques de niveau recherche, publiés ou non, émanant des établissements d'enseignement et de recherche français ou étrangers, des laboratoires publics ou privés.

Synthetic galaxy clusters and observations based on Dark Energy Survey Year 3 Data

T. N. Varga^{1,2*}, D. Gruen^{3,4,5}, S. Seitz^{1,2}, N. MacCrann⁶, E. Sheldon⁷, W. G. Hartley⁸, A. Amon⁴, A. Choi⁹, A. Palmese^{10,11}, Y. Zhang¹⁰, M. R. Becker¹², J. McCullough⁴, E. Rozo¹³, E. S. Rykoff^{4,5}, C. To^{3,4,5}, S. Grandis¹⁴, G. M. Bernstein¹⁵, S. Dodelson¹⁶, K. Eckert¹⁵, S. Everett¹⁷, R. A. Gruendl^{18,19}, I. Harrison^{20,21}, K. Herner¹⁰, R. P. Rollins²¹, I. Sevilla-Noarbe²², M. A. Troxel²³, B. Yanny¹⁰, J. Zuntz²⁴, H. T. Diehl¹⁰, M. Jarvis¹⁵, M. Aguena^{25,26}, S. Allam¹⁰, J. Annis¹⁰, E. Bertin^{27,28}, S. Bhargava²⁹, D. Brooks³⁰, A. Carnero Rosell^{26,31,32}, M. Carrasco Kind^{18,19}, J. Carretero³³, M. Costanzi^{34,35,36}, L. N. da Costa^{26,37}, M. E. S. Pereira³⁸, J. De Vicente²², S. Desai³⁹, J. P. Dietrich¹⁴, I. Ferrero⁴⁰, B. Flaugher¹⁰, J. García-Bellido⁴¹, E. Gaztanaga^{42,43}, D. W. Gerdes^{38,44}, J. Gschwend^{26,37}, G. Gutierrez¹⁰, S. R. Hinton⁴⁵, K. Honscheid^{9,46}, T. Jeltema¹⁷, K. Kuehn^{47,48}, N. Kuropatkin¹⁰, M. A. G. Maia^{26,37}, M. March¹⁵, P. Melchior⁴⁹, F. Menanteau^{18,19}, R. Miquel^{33,50}, R. Morgan⁵¹, J. Myles^{3,4,5}, F. Paz-Chinchón^{18,52}, A. A. Plazas⁴⁹, A. K. Romer²⁹, E. Sanchez²², V. Scarpine¹⁰, M. Schubnell³⁸, S. Serrano^{42,43}, M. Smith⁵³, M. Soares-Santos³⁸, E. Suchyta⁵⁴, M. E. C. Swanson¹⁸, G. Tarle³⁸, D. Thomas⁵⁵, J. Weller^{1,2} and (DES Collaboration)

Affiliations are listed at the end of the paper

Accepted 2021 October 29. Received 2021 October 29; in original form 2021 February 22

ABSTRACT

We develop a novel data-driven method for generating synthetic optical observations of galaxy clusters. In cluster weak lensing, the interplay between analysis choices and systematic effects related to source galaxy selection, shape measurement, and photometric redshift estimation can be best characterized in end-to-end tests going from mock observations to recovered cluster masses. To create such test scenarios, we measure and model the photometric properties of galaxy clusters and their sky environments from the Dark Energy Survey Year 3 (DES Y3) data in two bins of cluster richness $\lambda \in [30; 45)$, $\lambda \in [45; 60)$ and three bins in cluster redshift ($z \in [0.3; 0.35)$, $z \in [0.45; 0.5)$ and $z \in [0.6; 0.65)$). Using deep-field imaging data, we extrapolate galaxy populations beyond the limiting magnitude of DES Y3 and calculate the properties of cluster member galaxies via statistical background subtraction. We construct mock galaxy clusters as random draws from a distribution function, and render mock clusters and line-of-sight catalogues into synthetic images in the same format as actual survey observations. Synthetic galaxy clusters are generated from real observational data, and thus are independent from the assumptions inherent to cosmological simulations. The recipe can be straightforwardly modified to incorporate extra information, and correct for survey incompleteness. New realizations of synthetic clusters can be created at minimal cost, which will allow future analyses to generate the large number of images needed to characterize systematic uncertainties in cluster mass measurements.

Key words: gravitational lensing: weak – galaxies: clusters: general – cosmology: observations.

1 INTRODUCTION

The study of galaxy clusters has in recent years become a prominent pathway towards understanding the non-linear growth of cosmic structure, and towards constraining the cosmological parameters of the universe (Allen, Evrard & Mantz 2011; Kravtsov & Borgani 2012; Weinberg et al. 2013). Weak gravitational lensing provides a practical method to study the mass properties of clusters. It relies

on estimating the gravitational shear imprinted on to the shapes of background source galaxies. The lensing effect is directly connected to the gravitational potential of the lens, and its measurement is readily scalable to an ensemble of targets in wide-field surveys (Bartelmann & Schneider 2001). For this reason, the lensing based mass calibration of galaxy clusters has become a standard practice for galaxy cluster based cosmological analyses (Roza et al. 2010; Mantz et al. 2015; Planck Collaboration 2016; Costanzi et al. 2019; Bocquet et al. 2019; DES Collaboration 2020).

Methods for estimating the shapes of galaxies include model fitting and measurements of second moments, with several innovative

* E-mail: t.varga@physik.lmu.de

approaches developed in recent literature (Miller et al. 2013; Zuntz et al. 2013; Bernstein & Armstrong 2014; Refregier & Amara 2014; Huff & Mandelbaum 2017; Sheldon & Huff 2017; Sheldon et al. 2020). Irrespective of the chosen family of algorithms, the performance of the shear estimates cannot be a priori guaranteed, and needs to be validated in a series of tests (Jarvis et al. 2016; Fenech Conti et al. 2017; Zuntz et al. 2018; Mandelbaum et al. 2018; Samuroff et al. 2018; Kannawadi et al. 2019). These rely on synthetic observations: *image simulations* which are then used to estimate the bias and uncertainty of the different methods in a controlled environment (Massey et al. 2007; Bridle et al. 2009; Mandelbaum et al. 2015; Samuroff et al. 2018; Kannawadi et al. 2019; Pujol et al. 2019; MacCrann et al. 2021).

Galaxy clusters present a unique challenge for validating weak lensing measurements for a multitude of reasons: they deviate from the cosmic median line of sight in terms of the abundance and properties of cluster member galaxies (Hansen et al. 2009; To et al. 2020) resulting in increased blending among light sources (Simet & Mandelbaum 2015; Euclid Collaboration 2019; Eckert et al. 2020; Everett et al. 2020), host a diffuse intra-cluster light (ICL) component (Gruen et al. 2019; Zhang et al. 2019; Kluge et al. 2020; Sampaio-Santos et al. 2021) influencing photometry, and induce characteristically stronger shear at small scales (McClintock et al. 2019).

In this study, we create synthetic galaxy clusters, and optical observations of these synthetic galaxy clusters in an unsupervised way from a combination of observational data sets. To achieve this, we measure and model the average galaxy content of redMaPPer selected galaxy clusters in Dark Energy Survey Year 3 (DES Y3) data along with the measurement and model for galaxies in the foreground and background. During this procedure, the DES Y3 wide-field survey (Sevilla-Noarbe et al. 2020) is augmented with information from deep-field imaging data (Hartley et al. 2021), resulting in enhanced synthetic catalogue depth and better resolved galaxy features. Each synthetic cluster and its line of sight is generated as a random draw from a model distribution, which enables creating the large numbers of mock cluster realizations required for benchmarking precision measurements. This approach shortcuts the computational cost and limited representation of reality of numerical simulations. The synthetic catalogues of cluster member galaxies and foreground and background galaxies along with the small-scale model for light around the cluster centres are then rendered into images in the same format as actual survey observations and can be further processed with the standard data reduction and analysis pipelines of the survey.

The synthetic cluster images are controlled environments, where all light can be traced back to a source specified in the underlying model. A mass model calibrated by McClintock et al. (2019) is used to imprint a realistic lensing signal on background galaxies, which will enable future studies to perform end-to-end tests for recovering cluster masses from a weak lensing analysis of synthetic images, incorporating photometric processing, shear and photometric redshift measurement and systematic calibration for lensing profiles and maps in a fully controlled environment. This is different from insertion based methods (Suchyta et al. 2016; Everett et al. 2020), where synthetic galaxies are added on to real observations: Our method involves a generalization step avoiding re-using identical clusters multiple times, the full control of synthetic data allows quantifying the specific impact of the different cluster properties on the lensing measurement.

The primary focus of this work is to present the algorithm and a pilot implementation for generating synthetic cluster observations

for the DES Y3 observational scenario mimicking the stacked lensing strategy of McClintock et al. (2019) and DES Collaboration (2020). Due to the transparent nature of the framework, changes and improvements aiming for increased realism: e.g. corrections for input photometry incompleteness or high resolution, deep cluster imaging, can be directly added to the model in future studies. For this reason, the presented algorithm is expected to be easily generalized and expanded to other ongoing (HSC: Hyper Suprime-Cam,¹ Aihara et al. 2018; KiDS: Kilo-Degree Survey,² de Jong et al. 2013) and upcoming (Vera C. Rubin Observatory,³ Ivezić et al. 2019; Euclid,⁴ Laureijs et al. 2011; Nancy Grace Roman Space Telescope,⁵ Spergel et al. 2015) weak lensing surveys as well.

The structure of this paper is the following. In Section 2, we introduce the DES year 3 (Y3) data set; in Section 3, we outline the statistical approach used in modelling the synthetic lines of sight; in Section 4, we describe the concrete results of the galaxy distribution models derived from the DES Y3 data set, and finally in Section 5, we outline the method for generating mock observations for DES Y3. In the following, we assume a flat Λ CDM cosmology with $\Omega_m = 0.3$ and $H_0 = 70 \text{ km s}^{-1} \text{ Mpc}^{-1}$, with distances defined in physical coordinates, rather than comoving.

2 DES Y3 DATA

The first three years of DES observations were made between 2013 August 15 and 2016 February 12 (DES Collaboration 2016; Sevilla-Noarbe et al. 2020). This Y3 wide-field data set has achieved nearly full footprint coverage albeit at shallower depth, with on average 4 tilings in each band (g, r, i, z) out of the eventually planned 10 tilings. From the full 5000 deg^2 , the effective survey area is reduced to approximately 4400 deg^2 due to the masking of the Large Magellanic Cloud and bright stars. In parallel to the wide-field survey a smaller, deep field survey is also conducted covering a total unmasked area of 5.9 deg^2 in four patches (Hartley et al. 2021). These consist of undithered pointings of the Dark Energy Camera (DECam; Flaugher et al. 2015) repeated on a weekly cadence, resulting in data 1.5–2 mag deeper than the wide-field survey. The DES Y3 footprint is shown on Fig. 1. We use three of the four of DES Y3 Deep Fields denoted as SN-C, SN-E, and SN-X. These consist of eight partially overlapping tilings: three tilings for SN-C and SN-X, and two of the SN-E. Their location is also shown on Fig. 1.

2.1 Wide-field data

The primary photometric catalogue of DES Y3 is the Y3A2 GOLD data set (Sevilla-Noarbe et al. 2020). This includes catalogues of photometric detections and parameters from the wide-field survey as well as the corresponding maps of the characteristics of the observations, foreground masks, and star–galaxy classification.

Data processing starts with single-epoch images for which de-trending and photometric corrections are applied. They are subsequently co-added to facilitate the detection of fainter objects. The base set of photometric detections is obtained via SExtractor (Bertin & Arnouts 1996) from $r+i+z$ coadds. The fiducial photometric properties for these detections are derived using the

¹<http://hsc.mtk.nao.ac.jp/ssp/>

²<http://kids.strw.leidenuniv.nl/index.php>

³<https://www.lsst.org/>

⁴<http://sci.esa.int/euclid/>

⁵<https://wfirst.gsfc.nasa.gov/>

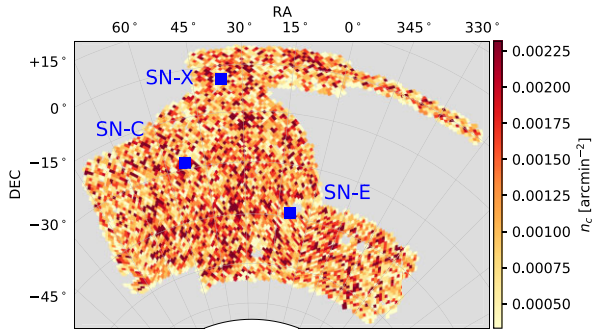


Figure 1. Footprint of targeted clusters in DES Y3. Blue markers: location of Deep field regions SN-C, SN-E, SN-X (marker size not to scale). The colour scale indicates the number density of galaxy clusters (n_c) identified by the redMaPPer algorithm.

single-object-fitting (SOF) algorithm based on the `ngmix` (Sheldon 2015) software that performs a simultaneous fit of a bulge + disc composite model (CModel, `cm`) to all available exposures of a given object while modelling the point spread function (PSF) as a Gaussian mixture for each exposure. An expansion of this model is the *multi-object-fitting* (MOF; Sevilla-Noarbe et al. 2020) approach where in addition to the above first step friends-of-friends (FoF) groups of galaxies are identified based on their fiducial models, and in a subsequent step the galaxy models are corrected for all members of a FoF group in a combined fit. While for the Y3A2 GOLD data set the SOF and MOF photometry were found to yield similar solutions, it is expected that in crowded environments the MOF photometry would perform better, due to its more advanced treatment of blending.

The 10σ detection limit for galaxies using SOF photometry in the Y3A2 catalogue is $g = 23.78$, $r = 23.56$, $i = 23.04$, $z = 22.39$ defined in the AB system (Sevilla-Noarbe et al. 2020). There is a 99 per cent completeness for galaxies with $i < 22.5$. Star–galaxy separation is performed based on the morphology derived from SOF and MOF quantities, which for the $i < 22.5$ sample has 98.5 per cent efficiency and 99 per cent purity, yielding approximately 226 million extended objects out of a base sample of 390 million detections. SOF and MOF derived magnitudes are corrected for atmospheric and instrumental effects and for interstellar extinction to obtain the final corrected magnitudes.

2.2 RedMaPPer cluster catalogue

We consider an optically selected sample of galaxy clusters identified by the redMaPPer algorithm in the DES Y3 data (Rykoff et al. 2014). The base input for this cluster finding is the Y3A2 SOF photometry catalogue described above, from which redMaPPer identifies galaxy clusters as overdensities of red-sequence galaxies. This analysis uses redMaPPer version v6.4.22+2. An optical mass proxy *richness* λ is assigned to each cluster defined by the effective number of red-sequence member galaxies brighter than $0.2L_*$. Cluster redshifts are estimated based on the photometric redshifts of likely cluster members yielding a nearly unbiased estimate with a scatter of $\sigma_z/(1+z) \approx 0.006$ (McClintock et al. 2019).

We consider a locally volume-limited sample of clusters extending up to $z \approx 0.65$, set by the survey completeness depth of $i \approx 22.6$. This redMaPPer cluster catalogue contains more than 869 000 clusters down to $\lambda > 5$ and more than 21 000 above $\lambda > 20$. The spatial distribution of the latter higher richness sample is shown on Fig. 1, and the richness and redshift distribution is shown on Fig. 2. In

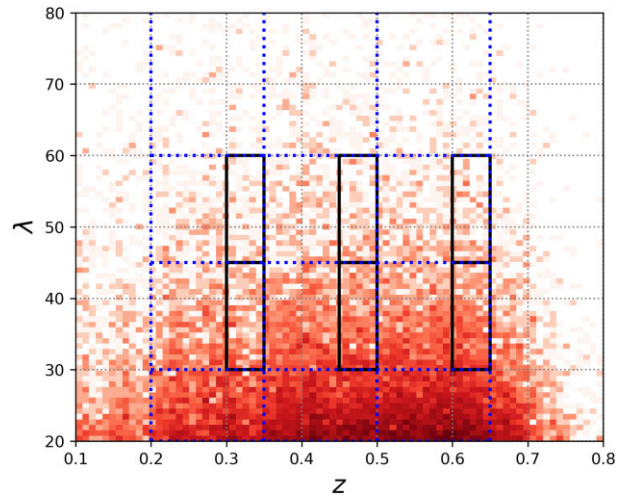


Figure 2. Distribution of redMaPPer clusters in DES Y3 data set in the volume-limited sample. *Solid black rectangles*: narrow redshift selection. *Blue dotted rectangles*: DES Y1 cluster cosmology selection.

addition to the cluster catalogue, a catalogue of reference random points is also provided, which are drawn from the part of the footprint where survey conditions permit the detection of a cluster of given richness and redshift.

Finally, we note that redMaPPer uses SOF-derived photometric catalogues instead of MOF; however, this is expected to have no impact on the result of this work as we only utilize the positions, richnesses, and redshifts of the clusters.

2.3 Deep-field data

The DES supernova and deep field survey is organized into four distinct fields: SN-S, SN-X, SN-C, and SN-E (Kessler et al. 2015; Abbott et al. 2019; Hartley et al. 2021). In this work, we only consider the SN-X, SN-C, SN-E fields covering a total unmasked area of 4.64 deg^2 that overlap with the VISTA Deep Extragalactic Observations (VIDEO) survey (Jarvis et al. 2013), providing J , H , K band coverage.

In this study, we consider only the detections derived from the COADD.TRUTH stacking strategy that aims to optimize for reaching approximately $10\times$ the wide-field survey depth while requiring that the deep field resolution (FWHM) be no worse than the median FWHM in the wide-field data (Hartley et al. 2021).

A difference compared to Y3A2 GOLD is that the MOF algorithm is run with ‘forced photometry’ where astrometry and deblending are done using DECam data, and infrared bands incorporated only for the photometry measurement. This approach results in a coadded consistent photometric depth of $i = 25$ mag. The photometric performance of these solutions were compared between the DES wide and deep field data sets using a joint set of photometric sources, finding very good agreement on the derived colours (see fig. 12 of Hartley et al. 2021). Additionally, for the deep field photometry the `ngmix` algorithm is run using the bulge + disc composite model with fixed size ratio between the bulge and disc components (in the following denoted as `bdf` to distinguish from the wide-field processing).

A photometric redshift estimate is derived by Hartley et al. (2021) for the deep-field galaxies via the EAZY algorithm (Brammer, van Dokkum & Coppi 2008). These photometric redshift estimates are obtained by fitting a mixture of stellar population templates to the

ugrizJHK band fluxes of the deep field galaxies. The possible galaxy redshifts and stellar template parameters are varied jointly to obtain a redshift probability density function. The redshift estimates are validated using a reference set of spectroscopic galaxy redshifts over the same footprint, and Hartley et al. (2021) finds overall good performance for bright and intermediate depths that however deteriorates into a very large outlier fraction for the faintest galaxies ($i > 24$). In light of this, we note that our algorithm for modelling the properties of cluster member galaxies presented in this analysis does not rely on redshifts, and we consider photometric redshifts only for describing the line-of-sight distribution of foreground and background galaxies. Due to the substantially shallower limiting depth of the DES Y3 wide-field survey, the impact of the increased fraction of very faint ($i > 24$) redshift outliers is expected to be negligible.

3 STATISTICAL MODEL

3.1 Analysis choices

The focus of this study is to measure and model the galaxy content of redMaPPer selected galaxy clusters within a bin of cluster properties, and to use this measurement to create mock galaxy clusters. The cluster member model is complemented by a measurement and model for the properties of foreground and background galaxies. Each mock cluster is constructed to be representative in terms of its member galaxies of the whole bin of cluster properties, and does not aim to capture cluster-to-cluster or line-of-sight to line-of-sight variations.

By construction, the clusters identified by redMaPPer are always centred on a bright central galaxy (BCG). Central galaxies form a unique and small subset of all galaxies, and therefore we treat them separately from non-central galaxies. In our synthetic observations, we consider for each cluster bin a mock central galaxy that has the mean properties of the observed redMaPPer BCG properties within that bin. In this study, we only consider clusters selected on richness and redshift (mimicking DES Collaboration 2020) and do not aim to incorporate correlated scatter between additional observables and mass properties at fixed selection. Thus, the task for the rest of this section is to model the properties and distribution of non-central, foreground and background galaxies, in the following simply denoted as galaxies. Faint stars are treated in the same framework as foreground galaxies, while bright stars, transients, streaks, and other imperfections that are masked during data processing are not incorporated in this model.⁶

Throughout this analysis, we assume that galaxies are to first order sufficiently described by a set of observable features, primarily provided by the DES photometric processing pipeline. The key features are i -band magnitude m_i with de-reddening and other relevant photometric corrections applied, colours $\mathbf{c} = (g - r, r - i, i - z)$, galaxy redshift z_g , and morphology parameters \mathbf{s} describing the scale radius, ellipticity and flux ratio of the two components of the ngmix SOF/MOF bulge + disc galaxy model. The full list of features and their relation to the DES Y3 data products is listed in Table A1.

Our aim is to model the distribution of cluster member galaxies, and foreground and background galaxies in the space of the above features as a function of projected separation R from galaxy clusters of richness λ and redshift z . These distributions cannot be directly measured from the DES wide-field survey, as individual cluster member galaxies cannot be identified with sufficient completeness

from photometric data alone, and the bulk of the galaxy populations lie beyond the completeness threshold magnitude of $i \approx 22.5$, where photometric errors come to dominate the derived features. To counteract this limitation, we adopt a two-step approach: First, a target distribution of well-measured reference features, in this case a set of reference colours and radius ($c_{ref}; R|\lambda, z$) is measured in the wide-field survey (Sections 3.2 and 3.3). In the second step, the wide-field target distribution is used as a prior for resampling the galaxy features measured in the DES Deep Fields (Section 3.5). Comparing the target distribution around clusters and around a set of reference random points enables us to isolate the feature distribution of cluster members (Section 3.6). Thus, the resampling transforms the deep-field feature distribution into an estimate on the full feature distribution of cluster member galaxies, while keeping additional features measured accurately only in the deep-field data and extrapolate the cluster population to fainter magnitudes.

Fig. 3 shows an illustration of a mock cluster generated as a result of this analysis at the level of a galaxy catalogue and also as a fully rendered DES Y3-like coadd image, along with an actual redMaPPer cluster taken from the DES Y3 footprint with similar richness and redshift.

3.2 Data preparation

We group galaxy clusters into two bins of richness $\lambda \in [30; 45)$ and $[45; 60)$, and three bins of redshift $z \in [0.3; 0.35)$, $[0.45; 0.5)$ and $[0.6; 0.65)$, where each sample is processed separately. Our binning scheme is motivated by the selections of McClintock et al. (2019) and DES Collaboration (2020), shown in Fig. 2. In this pathfinder study, however, we only cover their central richness bins, and enforce a narrower redshift selection to reduce the smearing of observed photometric features (e.g. red sequence) due to mixing of different redshift cluster members. While this smearing is not a limitation for the presented model, reduced smearing and redshift mixing will enable useful sanity checks in evaluating performance.

The base data set for this study is a subset of the Y3A2 GOLD photometric catalogue selected via the flags listed in Table A2, queried from the DES Data Management system (DES DM; Mohr et al. 2008). The flags are chosen to yield a high-completeness galaxy sample while excluding photometry failures. For each cluster in a given cluster selection, we select all entries from this base catalogue that are within a pre-defined search radius $\theta_{\text{query}} \approx 6$ deg around the cluster using the HEALPix algorithm (Górski et al. 2005).

Directly manipulating the above data set is not feasible, therefore we select a weighted, representative subsample of entries. First, we measure the total radial number profile of galaxies around the clusters in radial bins arranged as $[10^{-3}; 0.1)$ arcmin, and in 50 consecutive logarithmically spaced radial bins between 0.1 and 100 arcmin. Then, from each radial range we draw $N_{\text{draw}} = \min(N_{\text{bin}}; N_{\text{th}})$ galaxies, where N_{bin} is the number of galaxies in the radial bin and $N_{\text{th}} = 10\,000$ is a threshold number.

The random draws are equally partitioned across the N_{clust} clusters.⁷ To account for the number threshold N_{th} , for each drawn galaxy a weight

$$w_{\text{bin}} = N_{\text{bin}}/N_{\text{draw}} \quad (1)$$

is assigned. Therefore, the number of tracers representing the galaxy distribution is reduced in an adaptive way. For each selected galaxy,

⁶Nevertheless, these can be added after the synthetic images are generated.

⁷That is from the vicinity of each cluster approximately $N_{\text{draw}}/N_{\text{clust}}$ galaxies are drawn without replacement from each radial bin.

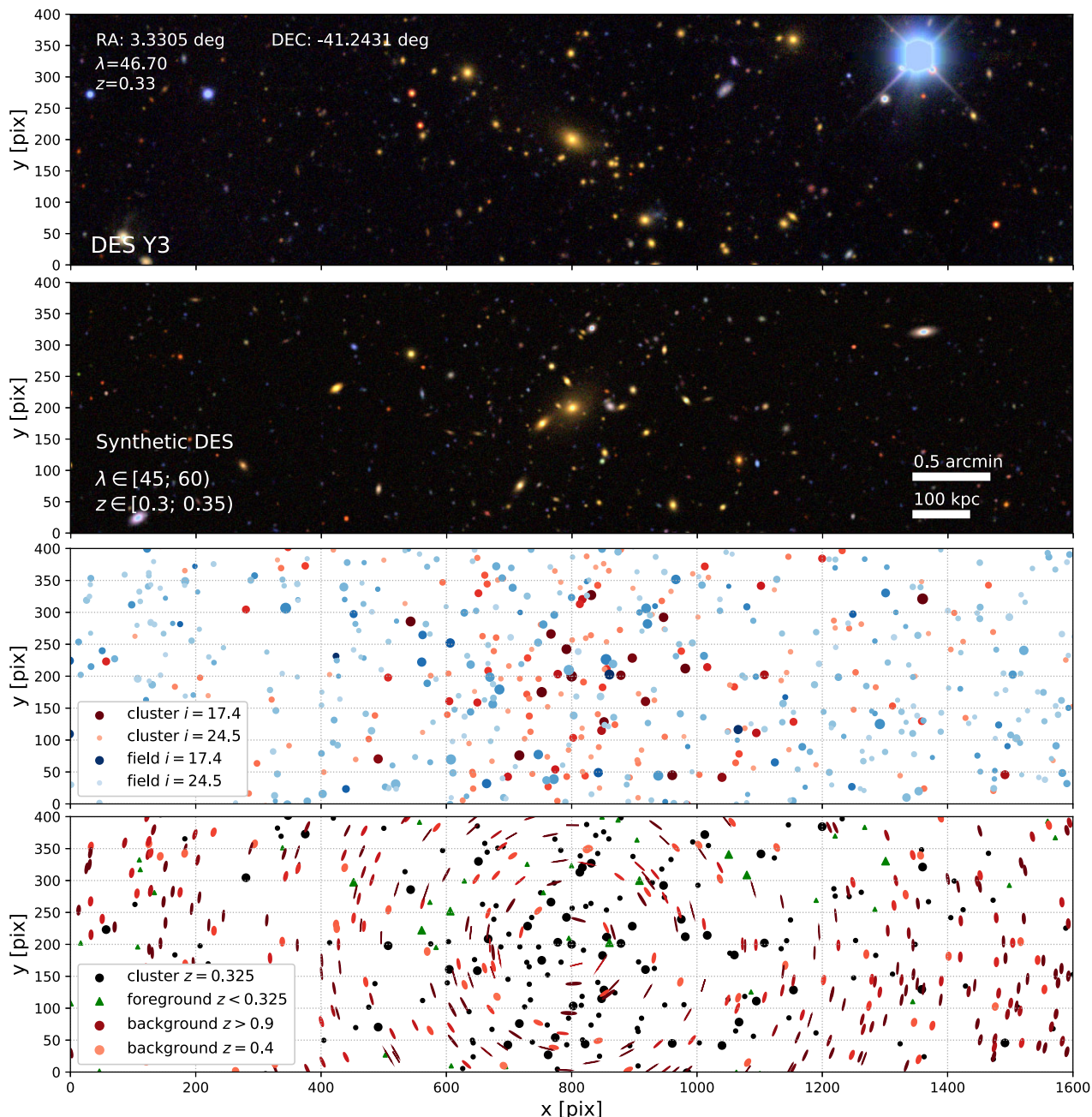


Figure 3. Real and synthetic galaxy cluster side by side. *Top:* *gri* colour composite image of a real redMaPPer galaxy cluster in the DES Y3 footprint. *Second row:* *gri* colour composite image of a synthetic galaxy cluster representative of $\lambda \in [45; 60]$, $z \in [0.3; 0.35]$. *Third row:* Brightness distribution of the synthetic light sources for cluster members (red/brown) and foreground and background objects (blue). Darker shades and larger symbols correspond to brighter objects. *Bottom row:* Exaggerated shear map of background sources (red ellipses) with the shade representing redshift, cluster members (black), and foreground sources (green).

the full catalogue row is transferred from the GOLD catalogue, and through the random draws the same galaxy can enter multiple times, but at different radii.

The outcome of the above is a galaxy photometry catalogue containing the projected radius R of each entry measured from the targeted cluster sample with a weight for each entry. The measurement is repeated for a sample of reference random points selected in the same richness and redshift range as the cluster sample. This second data set is representative of the *field* galaxy

distributions; however, through the spatial and redshift distribution of the reference random points, it also incorporates the impact of survey inhomogeneities and masking.

Foreground stars appear in the projected vicinity of each galaxy cluster on the sky and also within the deep-field areas, and enter into the photometry data set. The model presented in this study is not dependent on separation between stars and galaxies, as stars are automatically removed during statistical background subtraction. Nevertheless, the photometric properties of stars compared to

galaxies increases the computational cost, as the difference between the proposal and target distribution increases when a large number of stars are included. To counteract this we employ a size–luminosity cut $i - \text{mag} < -50 + \log_{10}(1 + T) + 22$ to remove the bulk of the stellar population,⁸ where T is the effective size of a detection defined as listed in Table A1. These objects will be re-added at a later stage to produce survey-like observations.

3.3 Kernel density representation of survey data

Our aim is to generalize the features of a finite set of observed galaxies into an estimate on their multivariate feature probability density function (PDF). We achieve this task via kernel density estimation (KDE), which is a type of unsupervised learning algorithm (Parzen 1962; Hastie, Tibshirani & Friedman 2001). In brief, the finite set of data points are convolved with a *Kernel function* $K(r, h)$, where h is the bandwidth which sets the smoothing scale during the PDF reconstruction. We adopt a multivariate Gaussian kernel function $K(r, h)$ formulated for d dimensional data with a single bandwidth h equal to the standard deviation. This way gaps and undersampled regions are modelled to have non-zero probability. For the practical calculation of KDEs, we make use of the `scikit-learn` implementation of the above algorithm.⁹ A benefit of this KDE implementation is that it is numerically optimized for large number of features, allowing for efficient future expansions, augmentations of the set of considered galaxy properties.

The photometry catalogue has features with very disparate scales.¹⁰ This means that any single bandwidth h (smoothing scale) is not equally applicable for all dimensions. To address this, we standardize and transform the input features before the KDE step into a set of new features that are better described by a single bandwidth parameter. First, we subtract the mean of each feature, then perform a principle component analysis (PCA) to find the eigendirections of the input features (Hastie et al. 2001) via the `scikit-learn` implementation¹¹ and map the features of each galaxy into a set of eigenfeatures. Finally, these are standardized by dividing each eigenfeature by its estimated standard deviation among the sample.

In order to find the optimal bandwidth h for each KDE, we perform k -fold leave-one-out cross-validation (Hastie et al. 2001). Here, the same base data is split into k equal parts, and from these each part is once considered as the test data, and the remainder is used as the training data. In this approach, the score $\mathcal{S} = \frac{1}{N} \sum_j \ln p_n(x_j, h)$ is calculated $k = 5$ times on different training and test combinations, and from this a joint cross-validation score is estimated. The final KDE is then constructed from the full data set, using the bandwidth maximizing the cross-validation score.

Using PCA standardization, bandwidths can be expressed relative to the standard deviation $\sigma = 1$ of the various standardized eigenfeatures. Based on this, we evaluate the cross-validation score on a logarithmically spaced bandwidth grid from 0.01σ to 1.2σ for each KDE constructed. We find that $h = 0.1\sigma$ simultaneously provides a good bandwidth estimate for the deep-field and the wide-field

KDEs, for this reason we adopt it as a global bandwidth for further calculations.

3.4 Cluster and field population estimates

Our aim is to model the radial feature distribution of *cluster member* galaxies for different samples of galaxy clusters. These must be separated from the distribution of foreground and background galaxies which we expect to be similar to the galaxies of the mean survey line of sight. The input data product for the following calculations is the feature PDF estimated from the various deep-field and wide-field galaxy catalogues for each, using the KDE approach in Section 3.3. The full list of feature definitions are shown in Table A1.

Photometric redshift estimates available for the DES wide-field (Hoyle et al. 2018; Myles et al. 2021) are not precise enough to isolate a sufficiently pure and complete sample of cluster member galaxies across the full range of galaxy populations (e.g. not only the red sequence). Therefore, to avoid the above limitation, we perform a *statistical background subtraction* (Hansen et al. 2009) to estimate the feature distribution of pure cluster member galaxies. In this framework, we describe the line-of-sight galaxy distribution around galaxy clusters p_{clust} as a two-component system of a cluster member population p_{memb} , and a field population which is approximated by the distribution around reference random points p_{rand} . This yields

$$p_{\text{memb}}(\boldsymbol{\theta}, R) = \frac{\hat{n}_r}{\hat{n}_c - \hat{n}_r} \left[\frac{\hat{n}_c}{\hat{n}_r} p_{\text{clust}}(\boldsymbol{\theta}, R) - p_{\text{rand}}(\boldsymbol{\theta}, R) \right] \quad (2)$$

where in practice both p.d.f.s on the right-hand side are KDEs constructed from the wide-field data set, $\boldsymbol{\theta}$ is the list of features considered, and R is the projected separation from the targeted positions on the sky. \hat{n}_c and \hat{n}_r refer to the mean number of galaxies detected within R_{max} around clusters and random points.

The above approach is only applicable for those features $\boldsymbol{\theta}$ and their respective value ranges which are covered by the wide-field data set. Furthermore, the formalism implicitly assumes that the p.d.f.s are dominated by the intrinsic distribution of properties, and not by measurement errors. To fulfill this requirement the wide-field data must be restricted to a parameter range where photometry errors play a subdominant role, and the completeness of the survey is high. This necessitates excluding the bulk of the galaxy population from the naive background subtraction scheme.

Especially important in relation to this study are galaxies whose flux is great enough to meaningfully contribute to the total light in a part of the sky, yet are not fully resolved or cannot be detected with confidence using standard survey photometry pipelines (Suchyta et al. 2016; Everett et al. 2020). Nevertheless, these partial or non-detections have a significant impact on the photometric performance of survey data products (Hoekstra, Viola & Herbonnet 2017; Euclid Collaboration 2019; Eckert et al. 2020). Therefore, they must be modelled and included in the statistical description of a line of sight. A distinct undetected population of galaxies is associated with galaxy clusters, which are the faint-end of the cluster member galaxy population. The feature distribution of these galaxies is markedly different from the distribution of faint galaxies in the *field* (cosmic mean) line of sight.

3.5 Survey depth and feature extrapolation

To characterize the properties of galaxies too faint to have complete detections in the DES wide-field survey, we make use of the DES Deep Fields. Owing to significantly greater exposure time over many epochs, the completeness depth of the Deep Fields in the

⁸This simple size–luminosity cut was adopted as the DES deep field star galaxy separation was not yet finalized during the data preparation stage of this analysis. Any differences between that and the current form are expected to manifest only in the run time requirement of the rejection sampling step.

⁹<https://scikit-learn.org/stable/modules/density.html>

¹⁰E.g. the value range and distribution of galaxy magnitudes and galaxy colours is markedly different.

¹¹<https://scikit-learn.org/stable/modules/decomposition.html>

COADD_TRUTH mode is ~ 2 mag deeper than the Wide Fields (Hartley et al. 2021), and the measured fluxes and models of galaxy morphology are less impacted by noise at fixed magnitude compared to the DES Y3 GOLD wide-field catalogue. Even for $i < 22.5$, there are features measured more robustly for Deep Fields such as the ngmix SOF/MOF morphology model parameters. However, the colours of photometric sources detected in both data sets are found to be largely robust against the differences in the photometry analysis choices (see section 2.3 of Everett et al. 2020). Therefore, we aim to combine the galaxy distributions of the Deep Fields and the wide-field using colours to inform the extrapolation of the various feature distributions to fainter magnitudes.

First, we denote our target distribution $p_D(\boldsymbol{\theta}, R|\lambda, z)$, where the subscript D indicates that the distribution is estimated from the Deep Fields down to a completeness limit of $i \approx 24.5$. Similarly, we denote distributions estimated from the wide-field data set to the wide-field limiting magnitude with subscript W , and denote restricting a deep-field derived quantity to the shallower wide-field depth with $|_W$. In the following we decompose $\boldsymbol{\theta}$ into two sets of features: $\boldsymbol{\theta}_{\text{wide}}$ which can be measured from the wide-field data set, and $\boldsymbol{\theta}_{\text{deep}}$ which can only be reliably measured from the Deep Fields:

$$p_D(\boldsymbol{\theta}, R|\lambda, z) \equiv p_D(\boldsymbol{\theta}_{\text{deep}}, \boldsymbol{\theta}_{\text{wide}}, R|\lambda, z). \quad (3)$$

Here, we note that R , λ , and z are features and quantities which also only originate from the wide-field data set. We note that all features in $\boldsymbol{\theta}_{\text{wide}}$ can also be measured with confidence in the Deep Fields, but the reverse is not necessarily true.

Let us formulate equation (3) as a transformation of a naive proposal distribution:

$$p_D(\boldsymbol{\theta}_{\text{deep}}, \boldsymbol{\theta}_{\text{wide}}, R|\lambda, z) = p_{D:\text{prop}}(\boldsymbol{\theta}_{\text{deep}}, \boldsymbol{\theta}_{\text{wide}}, R|\lambda, z) \times F(\boldsymbol{\theta}_{\text{deep}}, \boldsymbol{\theta}_{\text{wide}}, R|\lambda, z). \quad (4)$$

Here, we separate the task into two parts, where the proposal distribution $p_{D:\text{prop}}$ carries information measured from the Deep Fields, and the multiplicative term F represents the required transformation of the PDF. As there is no cluster information from the deep-field survey, the proposal PDF cannot depend on λ and z :

$$p_{D:\text{prop}}(\boldsymbol{\theta}_{\text{deep}}, \boldsymbol{\theta}_{\text{wide}}, R|\lambda, z) = p_{D:\text{prop}}(\boldsymbol{\theta}_{\text{deep}}, \boldsymbol{\theta}_{\text{wide}}, R), \quad (5)$$

and for the same reason in the proposal distribution of $\boldsymbol{\theta}_{\text{deep}}$ and $\boldsymbol{\theta}_{\text{wide}}$ cannot be correlated with R :

$$p_{D:\text{prop}}(\boldsymbol{\theta}_{\text{deep}}, \boldsymbol{\theta}_{\text{wide}}, R|\lambda, z) = p_D(\boldsymbol{\theta}_{\text{deep}}, \boldsymbol{\theta}_{\text{wide}}) \cdot p_{D:\text{prop}}(R). \quad (6)$$

Here, $p_D(\boldsymbol{\theta}_{\text{deep}}, \boldsymbol{\theta}_{\text{wide}})$ can be directly measured from the deep-field survey, and $p_{D:\text{prop}}(R)$ is chosen to capture the approximately uniform surface density of galaxies, e.g. $p_{D:\text{prop}}(R) \propto R$.

The remaining task is to find an appropriate multiplicative term $F(\boldsymbol{\theta}_{\text{deep}}, \boldsymbol{\theta}_{\text{wide}}, R|\lambda, z)$ which transforms the proposal distribution $p_{D:\text{prop}}$ into the target distribution \tilde{p}_D . In the following, we denote with a tilde distributions or estimates that cover the full feature space, but are constrained by approximations due to information not accessible to us. Since \tilde{p}_D depends on λ , z and R , and $p_{D:\text{prop}}$ is independent of these, the F term must contain all such information. Furthermore, the correlation between $\boldsymbol{\theta}_{\text{deep}}$ and R cannot be measured from wide-field data, therefore we approximate F as

$$\tilde{F}(\boldsymbol{\theta}_{\text{wide}}, R|\lambda, z) \approx F(\boldsymbol{\theta}_{\text{deep}}, \boldsymbol{\theta}_{\text{wide}}, R|\lambda, z). \quad (7)$$

A necessary consistency constraint placed on \tilde{F} is expressed as

$$\tilde{p}_D(\boldsymbol{\theta}_{\text{wide}}, R|\lambda, z)|_W = p_{D:\text{prop}}(\boldsymbol{\theta}_{\text{wide}}, R)|_W \times \tilde{F}(\boldsymbol{\theta}_{\text{wide}}, R|\lambda, z) \quad (8)$$

$$= p_W(\boldsymbol{\theta}_{\text{wide}}, R|\lambda, z), \quad (9)$$

where the W subscript indicates a PDF estimated from wide-field data, and the $|_W$ subscript denotes that the otherwise greater magnitude range is restricted to the wide-field completeness magnitude of $i \approx 22.5$. From the above constraint it is then possible to find the simplest form of F , as

$$\tilde{F}(\boldsymbol{\theta}_{\text{wide}}, R|\lambda, z) = \frac{1}{\hat{V}} \frac{p_W(\boldsymbol{\theta}_{\text{wide}}, R|\lambda, z)}{p_{D:\text{prop}}(\boldsymbol{\theta}_{\text{wide}}, R)|_W} \quad (10)$$

$$= \frac{1}{\hat{V}} \frac{p_W(\boldsymbol{\theta}_{\text{wide}}, R|\lambda, z)}{p_D(\boldsymbol{\theta}_{\text{wide}})|_W \cdot p_{D:\text{prop}}(R)}, \quad (11)$$

where \hat{V} is a normalization factor to account for the different volumes of the wide-field and deep-field parameter spaces, e.g. the difference in the limiting depth of $i < 22.5$ versus $i < 24.5$.

From the combination of equations (6) and (11), we can then write our estimate of the target distribution as

$$\tilde{p}_D(\boldsymbol{\theta}_{\text{deep}}, \boldsymbol{\theta}_{\text{wide}}, R|\lambda, z) \approx \frac{p_D(\boldsymbol{\theta}_{\text{deep}}, \boldsymbol{\theta}_{\text{wide}}) p_W(\boldsymbol{\theta}_{\text{wide}}, R|\lambda, z)}{\hat{V} \cdot p_D(\boldsymbol{\theta}_{\text{wide}})|_W}, \quad (12)$$

where $p_{D:\text{prop}}(R)$ drops out, and the approximation is composed entirely of p.d.f.s which can be directly measured from the wide-field or deep-field data. In simple terms, $p_D(\boldsymbol{\theta}_{\text{deep}}, \boldsymbol{\theta}_{\text{wide}})$ describes the correlation between features seen only in the Deep Fields and features seen also in the wide-field survey, while $p_W(\boldsymbol{\theta}_{\text{wide}}, R|\lambda, z)/p_D(\boldsymbol{\theta}_{\text{wide}})|_W$ captures the imprint of the cluster on the feature distributions. This framework conserves the colour-dependent luminosity function, and obeys

$$\tilde{p}_D(\boldsymbol{\theta}_{\text{deep}}|\boldsymbol{\theta}_{\text{wide}}, R, \lambda, z) \equiv p_D(\boldsymbol{\theta}_{\text{deep}}|\boldsymbol{\theta}_{\text{wide}}). \quad (13)$$

Since magnitudes are part of $\boldsymbol{\theta}_{\text{deep}}$, this means that the final PDF estimate inherits the luminosity function of the Deep Fields, along with all additional features that are measured in the Deep Fields.

An illustration of the outcome and the ingredients of this approach is shown on Fig. 4. There, the centre left-hand panel shows the target distribution: the colour–magnitude diagram of galaxies measured in projection with $R \in [10^{-0.5}; 1]$ arcmin around redMaPPer galaxy clusters with $\lambda \in [45; 60]$ and $z \in [0.3; 0.35]$ in the DES wide-field survey. The leftmost panel shows a wide-field and the restricted deep-field feature (colour) distribution. The rightmost panel shows the proposal distribution of galaxies measured in the DES Deep Fields, with the wide-field completeness magnitude shown as the vertical dashed line. The centre right-hand panel shows the transformed deep-field distribution according to equation (12), where the radial colour distribution around the cluster sample was used as the target PDF. The colour scale is identical in the three panels with iso-probability contours overlaid. For simplicity, we take $\boldsymbol{\theta}_{\text{wide}} = \boldsymbol{c}_{\text{wide}}$ as a set of colours measured in both the wide-field survey and deep-field survey, and $\boldsymbol{\theta}_{\text{deep}} = (m, s, \boldsymbol{c}_{\text{deep}}, z_g)$ is a vector composed of magnitudes, colours, morphology parameters, and redshifts measured in the deep-field survey according to Table A1.

3.6 Rejection sampling

In the KDE framework, evaluating the PDF is computationally much more expensive than drawing random samples from it. Therefore, we adopt an approach where instead of directly performing the background subtraction we aim to generate random samples from the target distribution $\tilde{p}_{D:\text{memb}}$. For this we make use of an approach known as *rejection sampling* (MacKay 2002). In short, this generates random variables distributed according to a *target distribution* p_{targ} by performing random draws from a *proposal distribution* p_{prop} , which are then accepted or rejected according to a decision criterion.

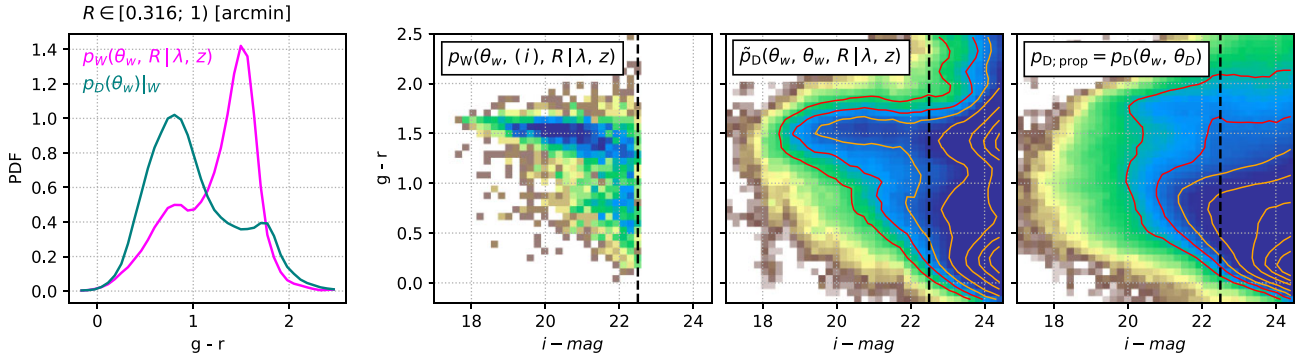


Figure 4. Illustration of the re-weighting approach according to equation (12) and the various ingredients for the radial range $R \in [10^{-0.5}; 1]$ arcmin around redMaPPer galaxy clusters with $\lambda \in [45; 60]$ and $z \in [0.3; 0.35]$. *Left:* Colour PDF estimates for the wide-field shown in magenta, and the depth restricted Deep Field shown in green. *Centre left:* Colour–magnitude diagram of galaxies in the DES wide-field survey (not directly used in the transformation). This is the target which the transformation aims to reproduce for $i < 22.5$. *Centre right:* Transformed deep-field distribution according to equation (12). *Right:* Colour–magnitude diagram of galaxies measured in the DES Deep Fields. *Dashed vertical lines:* Wide-field completeness magnitude $i \approx 22.5$. The colour scale and contour levels are identical in the three panels. For the $i < 22.5$ magnitude range, the colour-based re-weighting shown on the centre right-hand panel is in very good agreement with the colour–magnitude distribution of the cluster line of sight shown on the centre left-hand panel. The colour scale is capped to the same level on the three right-hand panels to allow direct comparison of the distributions.

3.6.1 Background subtraction through resampling

The cluster member galaxy population can be statistically defined as the feature dependent galaxy excess compared to a reference random line of sight shown in equation (2). In the language of rejection sampling, p_{memb} can be calculated by stochastically estimating the volume between two PDFs (MacKay 2002). In our case, the two distributions are p_{rand} and $\frac{\hat{n}_c}{\hat{n}_r} p_{\text{clust}}$, the scaled feature PDF of galaxies measured in projection around reference random points and galaxy clusters respectively, and \hat{n}_r and \hat{n}_c refer to the normalization factors, respectively.

In the following we empirically sample p_{memb} . For each sample:

- (i) Draw a proposal sample $\beta_i \sim p_{\text{prop}} \sim \mathcal{U}$, where β_i is drawn from a uniform distribution whose support covers the support of both p_{clust} and p_{rand} .
- (ii) Perform a uniform random draw $u_i \sim \mathcal{U}[0; 1]$.
- (iii) Evaluate the acceptance condition

$$p_{\text{rand}}(\beta_i) < u_i \cdot \frac{\hat{n}_c}{\hat{n}_r} \text{sup}(p_{\text{clust}}(\beta_i)) < \frac{\hat{n}_c}{\hat{n}_r} p_{\text{clust}}(\beta_i), \quad (14)$$

and repeat from the previous step until the condition is fulfilled and a sample can be accepted. The rejection sampling recipe guarantees that accepted samples will be distributed according to p_{memb} . (MacKay 2002).

Since in practice p_{clust} is not known exactly, we can rewrite Inequality (14) by replacing it with an appropriately chosen value \mathcal{M} which fulfils that $\frac{\hat{n}_c}{\hat{n}_r} p_{\text{clust}} < \mathcal{M}$ and $p_{\text{rand}} < \mathcal{M}$:

$$p_{\text{rand}}(\beta_i) < u_i \cdot \frac{\hat{n}_c}{\hat{n}_r} \mathcal{M} < \frac{\hat{n}_c}{\hat{n}_r} p_{\text{clust}}(\beta_i). \quad (15)$$

We further increase the acceptance rate by drawing samples β_i from an appropriately chosen proposal distribution p_{prop} instead of from a uniform distribution. In this case, the inequality modifies as

$$\frac{p_{\text{rand}}(\beta_i)}{\frac{\hat{n}_c}{\hat{n}_r} \mathcal{M} \cdot p_{\text{prop}}} < u_i < \frac{p_{\text{clust}}(\beta_i)}{\mathcal{M} \cdot p_{\text{prop}}}, \quad (16)$$

where \hat{n}_c/\hat{n}_r is the average relative overdensity of galaxy counts in the cluster line of sight compared to a reference random line of sight.

3.6.2 Combining resampling and extrapolation

The primary use of equation (16) over directly performing the subtraction of the rescaled PDFs is that it can incorporate the extrapolation according to equation (12). For this, we adopt the proposal distribution as defined by equation (6):

$$\begin{aligned} p_{\text{prop}} &= p_{\text{prop}}(\theta_{\text{deep}}, \theta_{\text{wide}}, R|\lambda, z) \\ &= p_D(\theta_{\text{deep}}, \theta_{\text{wide}}) \cdot p_{W;\text{rand}}(R|\lambda, z) \\ &= p_D(m, \mathbf{c}, \mathbf{s}, z_g) \cdot p_{W;\text{rand}}(R|\lambda, z), \end{aligned} \quad (17)$$

which we use to draw the proposal random samples from. Furthermore, we define a restricted proposal distribution which contains only features contained within θ_{ref} , that is

$$\begin{aligned} p_{rp} &= p_{rp}(\theta_{\text{wide}}, R|\lambda, z) \\ &= p_D(\mathbf{c}_{\text{wide}}) \cdot p_{W;\text{wide}}(R|\lambda, z), \end{aligned} \quad (18)$$

which can be directly compared with p_{clust} and p_{rand} .

Combining the above, we can generate random samples from the survey extrapolated \tilde{p}_{memb} , by drawing samples $\{m_i, \mathbf{c}_i, \mathbf{s}_i, z_{g,i}, R_i\}$ from equation (17), and considering the subset which fulfils the extrapolated membership criteria

$$\frac{\hat{n}_r}{\hat{n}_c} \frac{p_{W;\text{rand}}(\mathbf{c}_{\text{wide};i}^{\text{ref}}, R_i|\lambda, z)}{\mathcal{M} \cdot p_D(\mathbf{c}_{\text{wide};i}^{\text{ref}}) \cdot p_{W;\text{rand}}(R_i|\lambda, z)} < u_i \quad (19)$$

and

$$u_i < \frac{p_{W;\text{clust}}(\mathbf{c}_{\text{wide};i}^{\text{ref}}, R_i|\lambda, z)}{\mathcal{M} \cdot p_D(\mathbf{c}_{\text{wide};i}^{\text{ref}}) \cdot p_{W;\text{rand}}(R_i|\lambda, z)}. \quad (20)$$

Here, $\mathbf{c}_{\text{wide}}^{\text{ref}}$ denotes a set of reference colours selected from $\mathbf{c}_{\text{wide}}: \{g-r; r-i\}_{z1}, \{g-r; r-i\}_{z2}$ and $\{r-i; i-z\}_{z3}$ for the three cluster redshift bins, respectively. These colours are chosen to bracket the red sequence at the respective redshift ranges in a manner similar to Rykoff et al. (2014).

The above two inequalities define the decision criterion for the combined statistical background subtraction and extrapolation, and serve as the basis of the computation in this work. Note that these criteria already implicitly contain the evaluation of equation (12) yielding an estimate of \tilde{p}_{memb} , and are composed entirely of factors

which can be directly estimated from either the wide-field or the deep-field galaxy data sets.

As a null-test, we can also perform the same resampling for the galaxies around random points, which using the same proposal distribution as above, is defined by the criterion

$$u_i < \frac{\hat{n}_r}{\hat{n}_c} \frac{p_{W;\text{rand}}(\mathbf{c}_{\text{wide};i}^{\text{ref}}, R_i | \lambda, z)}{\mathcal{M} \cdot p_D(\mathbf{c}_{\text{wide};i}^{\text{ref}}) \cdot p_{W;\text{rand}}(R_i | \lambda, z)}, \quad (21)$$

which generates samples from the extrapolated field galaxy distribution \tilde{p}_{rand} .

In the above formulas, the factor \mathcal{M} must be chosen appropriately to ensure that the ratios are always less than or equal to unity. In practice there is no recipe for \mathcal{M} , and the suitable value must be found for the actual samples proposed. Furthermore, measurement noise leads to small fluctuations in the KDEs which especially in the wings of the distributions manifests as $p_{\text{targ}}/p_{\text{prop}}$ being very poorly constrained. To regularize this behaviour, we relax the requirement on \mathcal{M} and in practice only require the criterion to be fulfilled for 99 per cent of the proposed points. We explore the \mathcal{M} range in an iterative fashion up to 500, and find no significant change in the distribution of the samples for $\mathcal{M} > 40$, thus we adopt $\mathcal{M} = 100$ throughout this study.

The random draws can be repeated until a sufficiently large sample is accepted for the cluster member and the field object data set. Accepted draws can either be used directly to construct mock observations, or alternatively a KDE can then be constructed to estimate the PDF of the cluster members and extrapolated field galaxies separately.

A practical limitation of this sampling method is that since the proposal R_i values are drawn from the full considered radial range around clusters and reference random points, the larger radial ranges will be much better sampled than the lower radius ranges because of the increase in surface area. In our implementation, we counteract this by simultaneously considering multiple nested shells of overlapping radial intervals to ensure the efficient covering of the full radial range. While each of these PDFs is individually normalized to unity, we express the relative probability p_l of a member galaxy residing in a given radial interval r_l around a cluster as

$$p_l \approx \frac{\hat{n}_{c;l} - \hat{n}_{r;l}}{p_l(i < 22.5)} \bigg/ \sum_l \frac{\hat{n}_{c;l} - \hat{n}_{r;l}}{p_l(i < 22.5)}, \quad (22)$$

where $\hat{n}_{c;l}, \hat{n}_{r;l}$ is the average number of galaxies around clusters and random points residing in the radial bin in the wide-field data set, and $p_l(i < 22.5)$ is the probability that based on the KDE in radial bin l a galaxy is bright enough to be in the wide-field selection. While this formalism is similar to the direct background subtraction scheme defined in Section 3.4, it is only used to approximate the relative weight of different radial ranges, and does not influence the estimation of the feature PDFs within the radial ranges.

4 MODEL RESULTS

4.1 Input feature KDEs

For each sample of galaxy clusters, we present the measurements and the corresponding KDE estimates for the two primary input distributions: The distribution of features around clusters in the wide-field data, and the distribution of features in the deep-field data set. We note that each KDE is constructed globally for all features and the full value range, and not only for the shown conditional distributions.

4.1.1 Distributions of wide-field galaxies around clusters

Fig. 5 shows the measured feature distribution of galaxies around a selection of redMaPPer galaxy clusters with $\lambda \in [45; 60]$ and $z \in [0.3; 0.35]$. The features of this distribution are the reference colours $\mathbf{c}_{\text{ref}} = (g - r, r - i)$ and the projected radial separation R measured from the target galaxy cluster centres. Using these sets of features a KDE is constructed according to Section 3.3, whose model for the PDF is shown as the continuous curves and contours on Fig. 5, while the 1D and 2D histograms represent the measured data.

The top left two panels of Fig. 5 show galaxy colours at different projected radii from the cluster centre for all galaxies with $i < 22.5$, while the bottom panels show the $g - r - r - i$ colour-colour diagram of galaxies with $i < 22.5$ in different radial bins. The histograms correspond to the measured distributions, while the contours represents the appropriate slice of the global KDE model. A prominent radial dependence is visible as the red sequence becomes increasingly dominant for small radii. The KDE model provides a good overall description of these galaxy distributions capturing the two-component nature of the galaxy population. It recovers the position and the approximate relative weight of the red sequence population. We note that since the targeted galaxy clusters span a redshift range $\Delta z = 0.05$, the width of the observed red sequence population is measured to be wider, by this dispersion, compared to its intrinsic width.

The top right-hand panel of Fig. 5 shows the surface number density profile $\Sigma_{\text{gal}}(R) = N(R)/2\pi R$ of galaxies with $i < 22.5$ around the selected cluster sample in the wide-field survey as the solid black curve. Coloured curves show the corresponding KDE models for the four nested shells. In addition to the target range of the KDEs that are shown as the full lines, as a consistency test the interior continuation of the KDE model for the outermost nested spherical bin is shown as the dotted line. This only shows mild deviation from the respective profile of the data, and the measured radial *surface density* profile and the KDE models show very good agreement. This means that the difference between the measured and modeled absolute density is very small over a range of two orders of magnitude, as set by the change in area element.

4.1.2 Distributions of deep-field galaxies

Fig. 6 shows the $g - r - r - i$ and the $r - i - i - z$ colour-colour diagrams of the deep-field galaxies in three different magnitude ranges. The measured distributions are shown as a 2D histograms, and the corresponding KDE model is represented by contours. This KDE model is constructed simultaneously for all features listed in Table A1, and it provides an excellent description of the colour-colour-magnitude distribution of galaxies.

Fig. 7 shows the same KDE model projected into the space of bulge / disc flux fraction (a morphology parameter) and redshift estimate. The left-hand panel of Fig. 7 shows the histograms of the measured bulge / disc flux fraction of the `ngmix` bdf galaxy model for two magnitude bins $19.5 < i < 21$ and $21 < i < 22.5$, along with the corresponding KDE model. Brighter galaxies are more likely to be bulge dominated (e.g. described by a de Vaucouleurs light profile) compared to fainter galaxies, which is in accordance with expectations from galaxy evolution (Gavazzi et al. 2010). The peak appearing at 0.5 is an imprint of the morphology prior of the deep-field photometry pipeline, and it becomes prominent for the fainter galaxy selection as there the available information to constrain morphology from survey observations diminishes. KDE estimates cannot reproduce the hard cut-off edges [0; 1] of the bulge / disc flux

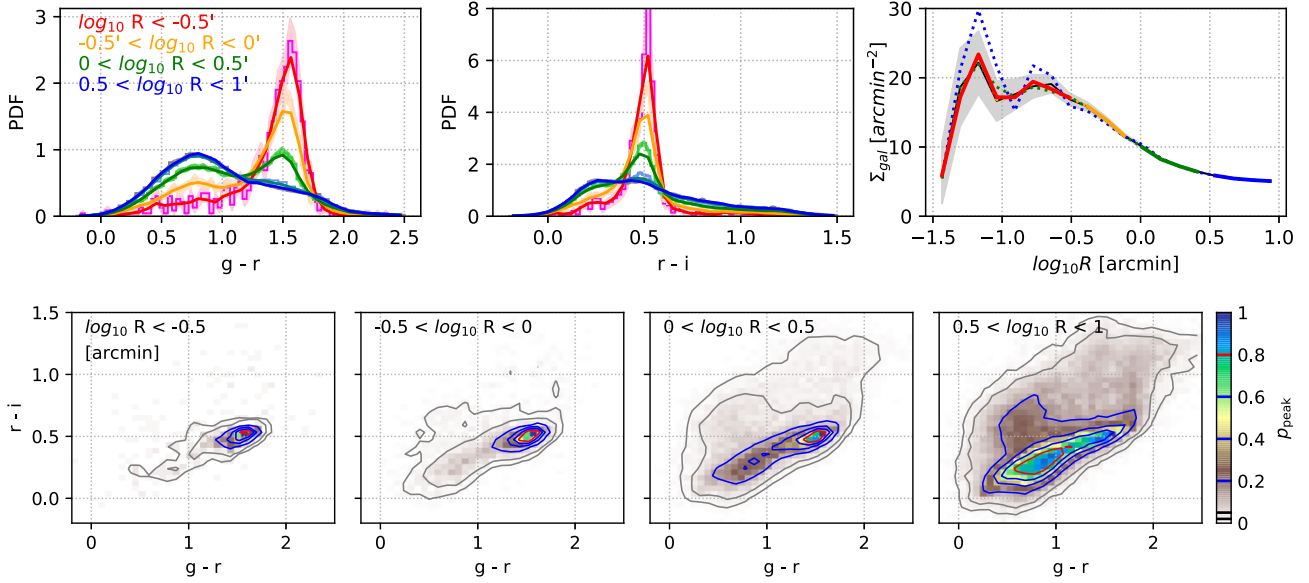


Figure 5. Distribution of galaxy features with $i < 22.5$ around redMaPPer galaxy clusters ($\lambda \in [45; 60]$, $z \in [0.3; 0.35]$) in the DES wide-field data set. *Top left and centre:* $g - r$ and $r - i$ colour histograms of galaxies in bins of projected radius. *Histogram:* DES data. *Contours:* KDE reconstruction. The radial bins correspond to the radial shells used in the calculation. *Top right:* Surface density profile of galaxies around the targeted cluster sample. *black:* measured profile. *Colour:* KDE reconstruction of the surface density profile, colour coded to the radial bins of the top left and centre panels. *Bottom:* $g - r - r - i$ colour distribution of galaxies in the four radial shells. Each panel is normalized to the same colour and contour levels such that the broadening of the colour distribution of galaxies and the reduction in the prominence of the red sequence with increasing radius is clearly visible in the data and is well reproduced by the KDE. *Histogram:* DES data. *Contours:* KDE reconstruction. We note that the KDE is constructed globally for the full magnitude and feature ranges, and not only for the shown 2d marginal distribution.

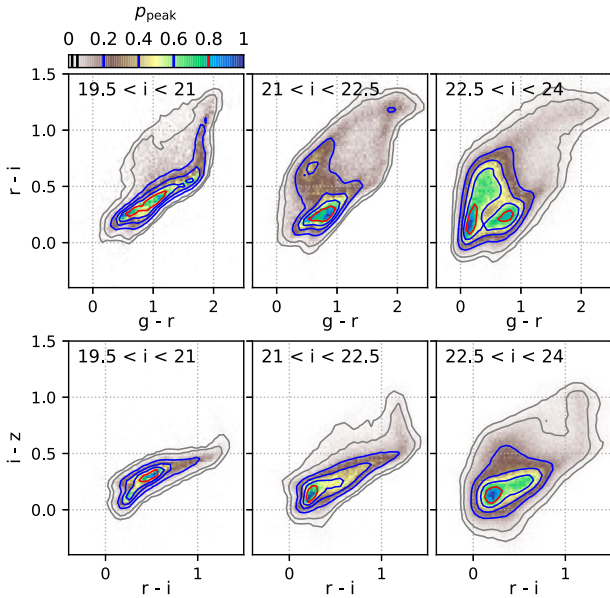


Figure 6. Distribution of $g - r$, $r - i$, $i - z$ galaxy colours in the DES Deep Fields in bins of i -band magnitude. *Histogram:* DES data. *Contours:* KDE reconstruction. We note that the KDE is constructed globally for the full magnitude and feature ranges, and not only for the shown marginal distribution.

fraction value, and for this reason, we cap the distributions around 0 and 1 to restrict the PDF model to the appropriate interval, so that values greater than 1 or lower than 0 receive a value of 1 or 0, respectively. The right-hand panel of Fig. 7 shows the estimated redshift distribution of the deep-field galaxies, as predicted by the

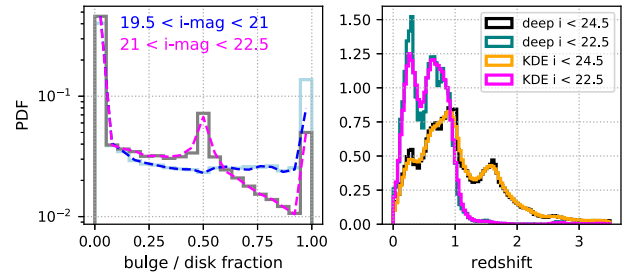


Figure 7. Distribution of galaxy morphology parameters in the DES Deep Fields, as listed in Table A1. *Histogram:* DES data. *Contours / curves:* KDE reconstruction. We note that the KDE is constructed globally for the full magnitude and feature ranges, and not only for the shown marginal distributions.

EAZY algorithm (Brammer et al. 2008, see Section 2.3) along with the KDE reconstruction for two different magnitude ranges. For both the bulge/disc ratio and the redshift parameters, the KDE model provides a very good description of the measured data. We emphasize that these are different projections of the same model shown on Fig. 6.

4.2 Cluster member feature distributions

The result of the statistical model is a set of random samples drawn from the feature PDF of the extrapolated cluster member galaxies, and a set of random samples which are drawn from the extrapolated field galaxy population. For both of these samples a KDE is constructed according to Section 3.3, whose purpose is to provide a computationally efficient way of generating further samples. This model covers the full set of features listed in Table A1

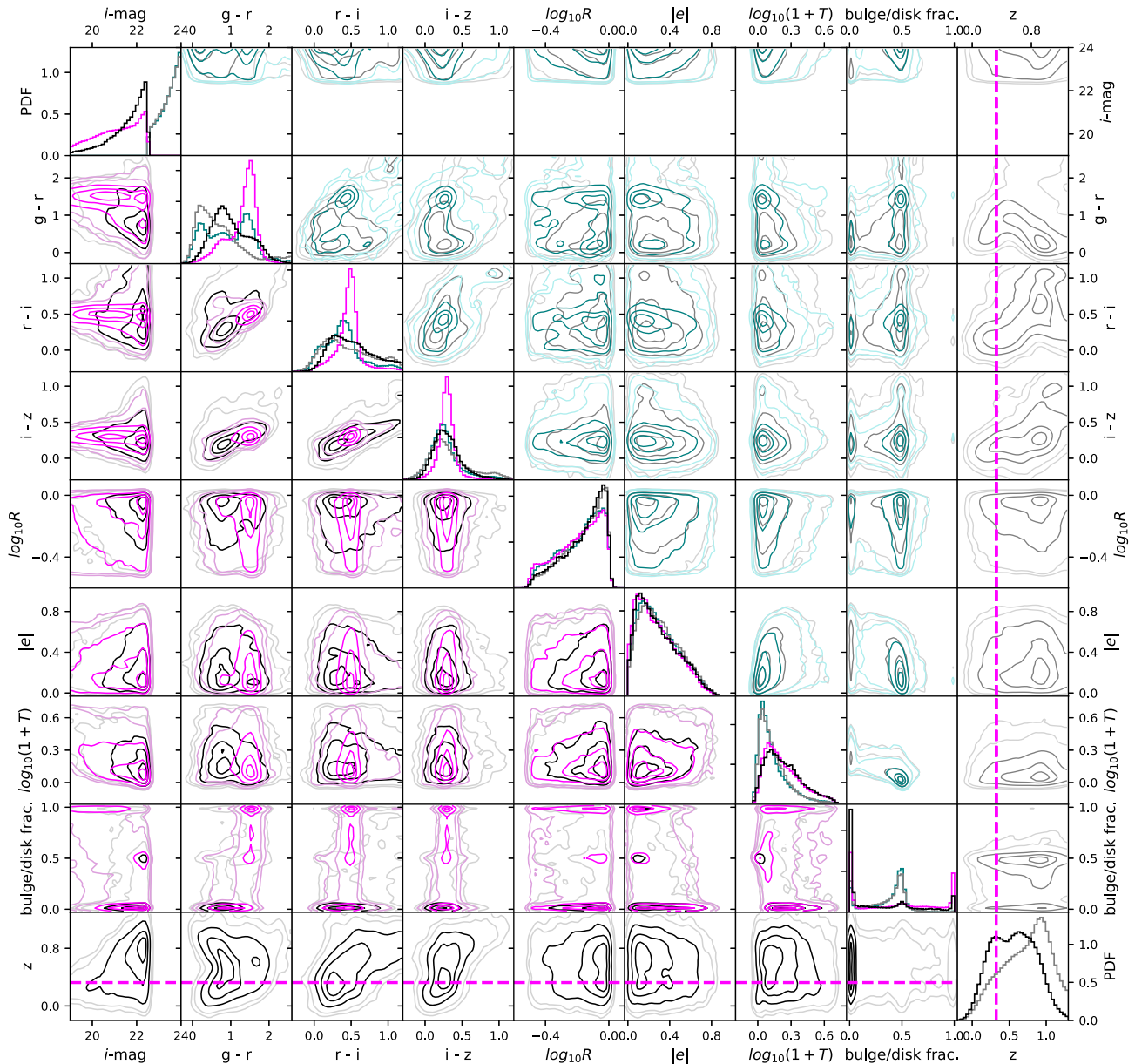


Figure 8. Joint galaxy feature model in the radial range $R \in [10^{-0.5}; 1]$ arcmin, for the cluster sample with $\lambda \in [45; 60]$ and $z \in [0.3; 0.35]$. The parameters shown are summarized in Table A1. *Lower left-hand panels, magenta:* Cluster member galaxies with $i < 22.5$. *Lower left panels, black:* field galaxies with $i < 22.5$. *Upper right-hand panels, green:* Extrapolated cluster member galaxies $22.5 < i < 24$. *Upper right-hand panels, grey:* Extrapolated foreground and background galaxies with $22.5 < i < 24$. The bump visible in the redshift PDF near the cluster redshift range (magenta dashed lines) is coincidental, it is a property of the DES deep-field galaxy distribution, also visible on Fig. 7.

to a deeper limiting magnitude of $i = 24$ and is shown on Fig. 8 for a single cluster bin with $\lambda \in [45; 60]$ and $z \in [0.3; 0.35]$. In the following, we overview the noteworthy features reproduced by this model and present the line-of-sight structure and galaxy surface density distribution of our synthetic clusters.

4.2.1 Line-of-sight model

Our galaxy redshift distribution model used for creating synthetic cluster lines of sight is illustrated on Fig. 9 for a cluster sample with $\lambda \in [45; 60]$ and $z \in [0.3; 0.35]$ where the emulated redshift PDF of galaxies with $i < 22.5$ and within the radial range $R \in [1; 3.16]$ arcmin is shown as the magenta histogram. This is a combination of

a cluster member term located at the mean cluster redshift $z = 0.325$, and a field term. As a comparison the redshift PDF of deep-field galaxies is shown in blue for the same magnitude range. Owing to the extrapolation part of the analysis, the reconstructed line of sight is modelled down to the deep-field limiting magnitude of $i < 24.5$. It contains a faint cluster member population in addition to the faint end of the field galaxy population shown as the orange histogram, with the comparison redshift distribution of the deep-field galaxies shown as the green histogram.

This line-of-sight model incorporates galaxy redshifts derived from the deep-fields using *ugrizJHK* bands. In turn, the reduced redshift uncertainty for deep-field galaxies allows us to take the lens geometry correctly into account to apply the lensing effect

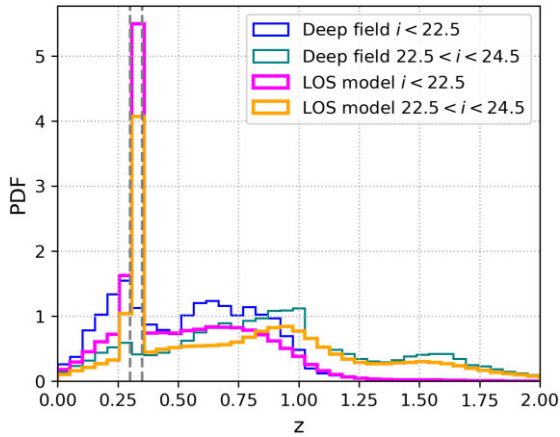


Figure 9. Line-of-sight model for the redshift distribution of galaxies near clusters with $\lambda \in [45; 60]$ and $z \in [0.3; 0.35]$ within the projected radial range $R \in [1; 3.16]$. *Magenta, orange:* Redshift distribution model around clusters in different magnitude bins. *Blue, green:* Photometric redshift distribution measured in the DES Deep Fields in different magnitude bins. *Grey dashed:* Limits of the cluster redshift range. The cluster line-of-sight models show a significant deviation from the field line of sight, concentrated in a narrow redshift peak at z_{clust} .

for each galaxy. Fig. 9 also shows that the redshift distribution of galaxies near a cluster in projection is significantly different from the one in the Deep Fields. This aspect of the line-of-sight model enables us to construct mock observations, where we can test the response of photometric redshift estimates to the presence of the galaxy cluster. This manifests itself as the problem of *boost factors* or cluster member contamination (Sheldon et al. 2004; Melchior et al. 2017; Varga et al. 2019), as well as propagating blending-related photometry effects on to the performance estimates of photometric redshifts.

4.2.2 Surface density model

The models for the galaxy surface density profiles are shown on Fig. 10. The magnitude range is restricted to $i < 22.5$. In addition, the measured galaxy surface density profile is indicated by the orange shaded area, and the surface density profile around the corresponding sample of reference random points as the grey shaded area. The width of these areas indicates the Poisson uncertainty of the number of galaxies.

The model for the field population is shown as the green lines on Fig. 10. This distribution corresponds to the background model during the statistical background subtraction, but it is constructed by re-weighting and resampling deep-field galaxies. The excellent agreement between this and the profile measured around random points in the DES wide-field data is a strong consistency test of the statistical model, and is an indication that the statistical background subtraction works as intended.

The model for the pure cluster member distribution is shown as the magenta curves on Fig. 10, and it captures the radial variations in surface density, approaching zero at large radii, consistent with the finite extent of the cluster galaxy populations. The model for the full surface density profile is then obtained as the sum of the cluster member (magenta) and the field (green) population estimates, and this surface density profile is shown as the black dashed lines, which can then be directly compared with the galaxy profiles measured in the DES data around clusters (orange lines). The two show excellent

agreement. The downturn of the surface density profiles at $R < 0.1$ arcmin is due detection incompleteness caused by the central galaxy. In our model, this regime is however described by the BCG + ICL component components (see Section 5.3, compare with Fig. 13). The light profile of cluster centrals do show considerable variability on such small scales (see fig. 18 of Kluge et al. 2020), this is however not incorporated in the smooth ICL model of Gruen et al. (2019) adopted in this study.

4.2.3 Cluster member and field galaxy features

Galaxy clusters host a characteristic population of quiescent red galaxies distributed along the red-sequence, and also a non-red cluster member component. In projection, these cluster members are mixed together with foreground and background galaxies.

Fig. 11 shows the model and measurements for the $g - r$ colour distribution of galaxies as an illustration of the statistical learning model for the cluster sample with $\lambda \in [45; 60]$ $z \in [0.3; 0.35]$. The columns correspond to different bins of projected radius, and the rows to different magnitude ranges. The first two [19; 21) and [21; 22.5) rows show the model fitted to the DES wide-field data, while the third [23; 24) is a pure extrapolation based on the algorithm. The measured colour distributions from the DES wide-field data are shown as the orange histograms, with the coloured area representing the Poisson uncertainty of the measurement. As a comparison, for each cell the respective conditional colour distribution measured in the DES Deep Fields is shown (blue histogram). This population naturally has no radial dependence, and is thus identical in the different columns.

Out of the above two populations, only the deep-field one is measured down to the third magnitude bin $i \in [23; 24)$, therefore the cluster measurement (orange) is not shown there. The colour distribution around clusters shows a strong radial trend, with the orange histogram approaching the blue with increasing radius. A dominant driver of this trend is increasing prominence of the red-sequence at low radii, which manifests as a peak in the colour distribution. The relative weight of the red-sequence is greater for brighter galaxies, and the difference between cluster and field lines of sight is also greater for brighter galaxies. As a reference, the location of the redMaPPer red-sequence model is indicated by the vertical grey dotted lines. These lines correspond to the 1σ range of the membership probability weighted colour distribution of redMaPPer cluster members for that cluster richness, redshift range. Both the location and the width of the peak of the cluster member histogram (shown in orange) are consistent with the properties of redMaPPer cluster members, indicating that it is indeed an imprint of the red sequence. We note that only galaxies with $L > 0.2L_*$ are considered by redMaPPer as potential member galaxies and this does not fully cover the faintest magnitude bin of this analysis.

Fig. 11 shows the model for the projected galaxy distributions around galaxy clusters as the black dashed lines, which can be directly compared with the orange histogram. This model is derived without direct information about the wide-field galaxy luminosity function around clusters, and only using information from the deep-field data. Nevertheless, as visible on the upper two rows of Fig. 11, the line-of-sight model can describe the magnitude dependent colour variations of the galaxy distributions, and well approximate the relative weight of the red-sequence peak, albeit slightly overestimating its width. The bottom row shows the model for galaxies in the line of sight with $i \in [23; 24)$. Due to the extrapolation part of the approach, the

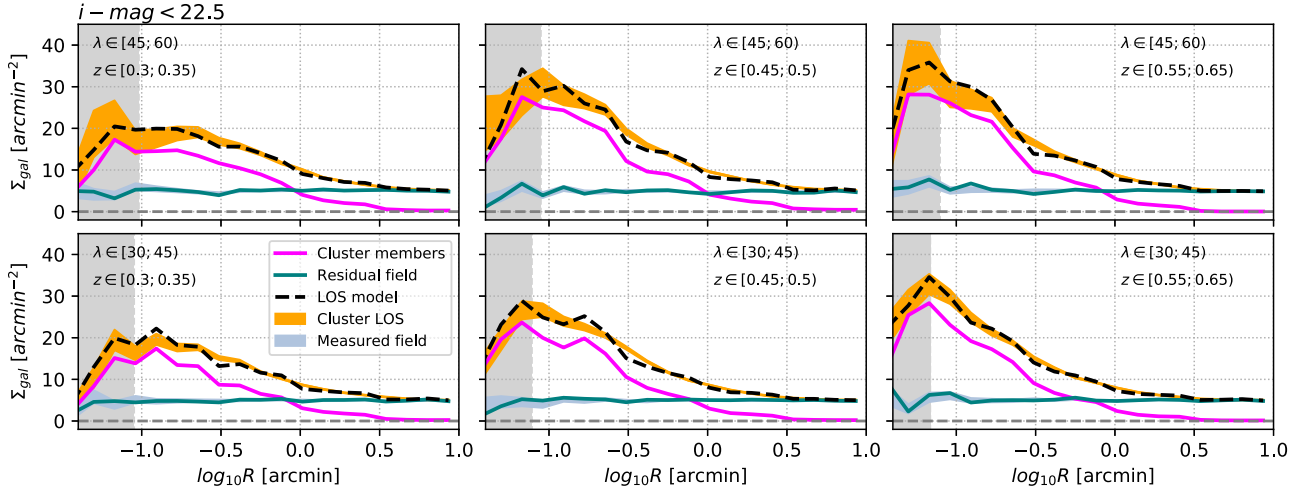


Figure 10. Surface density of galaxies around galaxy clusters with different richness and redshift. *Orange*: Surface density profile measured around redMaPPer clusters. The width of the shaded area represents the Poisson uncertainty propagated into surface density. *Grey vertical area*: Effective size of the cluster BCG (\sqrt{T}). The drop of the cluster LOS profile within this range represents a detection incompleteness due to the light of the central galaxy. In our model, this regime is instead described by the BCG + ICL component (see Section 5.3, compare with Fig. 13). *Grey*: Surface density of galaxies measured around reference random points. *Green*: model for the surface density profile of *field* galaxies within the cluster line of sight. *Magenta*: model for the surface density profile of *cluster member* galaxies in the cluster line of sight. *Black dashed*: Model for the total galaxy surface density profile in the cluster line of sight (the sum of the green and magenta curves).

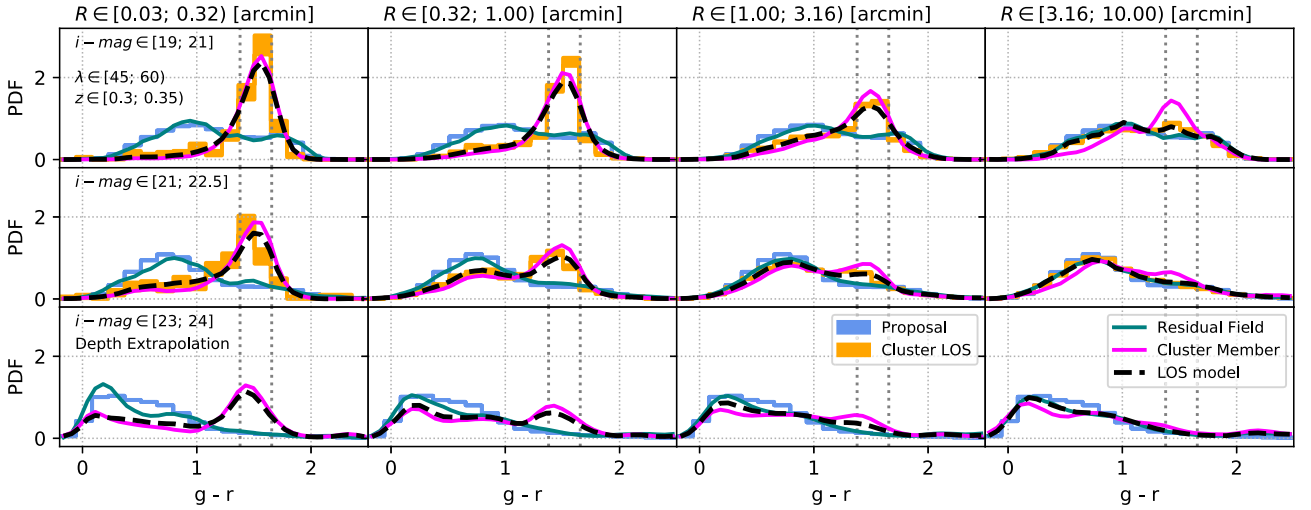


Figure 11. Conditional colour distribution of galaxies around galaxy clusters across four projected radial regimes (shown in the different columns) around galaxy clusters with $\lambda \in [45; 60]$ and $z \in [0.3; 0.35]$. The distribution of galaxies are shown in $g-r$, $g-r$, and $r-i$ colours, respectively. There are three magnitude ranges shown (rows), the first two [19; 21] and [21; 22.5] are fitted to the DES wide-field data, while the third [23; 24] is a pure extrapolation based on the algorithm. *Orange*: Colour PDF measured as a histogram around galaxy clusters in DES data. The height of the shaded area indicates the Poisson uncertainty propagated into the normalized histogram. *Blue*: Colour distribution measured within the corresponding magnitude range in the DES Deep Fields. This distribution is identical for each column and for all cluster samples. *Green*: Model for the colour distribution of foreground and background galaxies in the line of sight. *Magenta*: Model for the colour distribution of cluster member galaxies. *Black dashed*: Model for the full line of sight, which can be directly compared with the orange histogram. *Grey dotted*: 1σ location of the redMaPPer red-sequence cluster member galaxies.

model extends to these fainter magnitudes, even though they are not directly measured in cluster lines of sight.

The feature distributions of foreground and background galaxies are independent of the cluster galaxy population. Thus, it is expected that the residual field model is independent of radius. While the bright tip of the DES Deep Fields is not fully representative of the actual median DES wide-field survey due to sample variance, it still provides a reasonable reference distribution. Comparing the residual field model (green curve) with the deep-field distribution

(blue histogram) on Fig. 11 shows no strong radial variations. The residual field indeed approximates the deep-field distribution, with only minor deviations visible at the faint end.

4.2.4 Red fraction estimates

The radial colour evolution of the cluster member galaxy population can be described by the approximate red fraction, whose radial profile for the three high richness bins is shown on Fig. 12, along with the

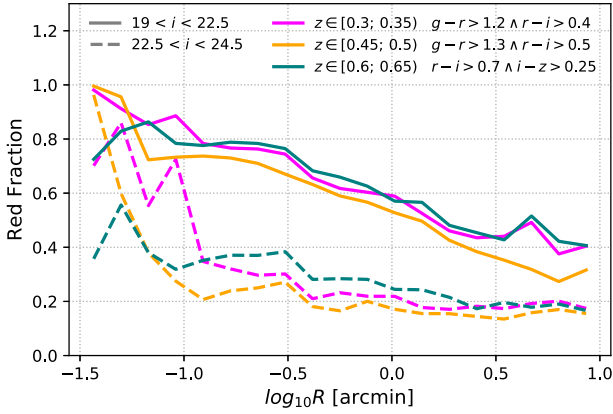


Figure 12. Red fraction of cluster members as a function of projected radius for three different cluster redshift samples with $\lambda \in [45; 60]$.

colour cuts used in the definition. These regions are chosen to bracket the position of the red sequence which is dominant at low radii. Two magnitude ranges are shown: a brighter bin covering $i \in [19; 22.5)$ coincides with the DES wide-field depth, and a fainter bin covering $i \in [22.4; 24.5)$, which is derived from a purely extrapolated colour-colour distributions. While the figure shows only the higher richness samples, there appears to be no significant difference between the richness bins.

The bright galaxy sample shows a clear monotonic trend in all redshift and richness samples, where the red-fraction decreases from approximately unity at very low projected radii to approximately 30–40 per cent at large radii approaching 10 arcmin. This behaviour is consistent with previous measurements (Butcher & Oemler 1978; Hansen et al. 2009; Hennig et al. 2017). It is also in agreement with existing DES-like synthetic clusters derived from decorated gravity-only numerical simulations presented in DeRose et al. (2019) and Varga et al. (2019). The same behaviour is not uniformly true for the fainter, extrapolated red-fraction profiles. Some cluster bins show a prominent red galaxy population at the centre, the decline is much faster for these fainter populations than the brighter counterparts for the same clusters. At large radii the galaxy population appears to show a constant mix of red and blue members, and approach the preferentially bluer cosmic mean galaxy populations.

5 SYNTHETIC OBSERVATIONS

5.1 Random draws of galaxy populations

The model for non-central galaxies is composed of two main components: the distribution of cluster member galaxies (satellites) and the distribution of foreground and background galaxies. A synthetic cluster line-of-sight is created by random draws from the PDF of the different components. Here, each draw corresponds to adding a new galaxy to a mock catalogue with an angular and redshift position, and the photometric and morphological features contained within the model.

A PDF carries no information about the absolute number of objects, therefore this needs to be set based on the observed number of galaxies. In real observations only the bright end of the luminosity function is observed in the survey (i.e. $i < 22.5$) therefore the number of fainter galaxies must be defined according to their relative probability in the model.

A single mock galaxy cluster is constructed the following way:

(i) For each radial range l , calculate $\hat{N}_{C;l}$ and $\hat{N}_{R;l}$ the mean number of galaxies with $i < 22.5$ around clusters and random points, respectively, in radial range l .

(ii) For each radial range l , take a Poisson random number of galaxies based on the mean number as

$$N_{M;l} = \text{Poisson} \left(\frac{\hat{N}_{C;l} - \hat{N}_{R;l}}{p_{\text{memb};l}(i < 22.5)} \right), \quad (23)$$

and

$$N_{R;l} = \text{Poisson} \left(\frac{\hat{N}_{R;l}}{p_{\text{rand};l}(i < 22.5)} \right). \quad (24)$$

(iii) Draw cluster members $N_{M;l}$ times from $p_{\text{memb};l}$ and foreground and background galaxies $N_{R;l}$ times from $p_{\text{rand};l}$.

(iv) For cluster members set the redshift to z_{clust} .

(v) Convert the projected radius feature R_i into 2D position assuming circular symmetry in a flat-sky approximation.

The outcome of the above recipe is a galaxy catalogue which contains cluster members and foreground and background galaxies each distributed according to their respective statistical models derived from the survey data, but extrapolated to a fainter limiting magnitude, and the surface density of galaxies is set to the mean surface density measured around galaxy clusters.

In practice, we update step 1 by only measuring $\hat{N}_{C;l}$ from data, and expressing $\hat{N}_{R;l}$ as a function of $\hat{N}_{C;l}$ using the statistical model. In practice, this is achieved by taking the ratio of accepted events during the rejection sampling (see Section 3.6) which only fulfill equation (21), to the amount of events which fulfill both equations (21) and (20). This latter formulation avoids scenarios when due to measurement noise by chance $\hat{N}_{R;l} > \hat{N}_{C;l}$.

5.2 Cluster lens model and galaxy shapes

Synthetic weak lensing measurements require a mass model for the galaxy cluster to apply gravitational shear to the background galaxies. For this, we make use of the mass models and mass constraints found in McClintock et al. (2019). As that analysis did not find a significant redshift evolution in the richness-mass scaling, we can approximate the relevant mean cluster masses for the present mocks, that is $M_{200\text{m}} \approx 10^{14.45} M_{\odot}$ for the $\lambda \in [30; 45)$ bin and $M_{200\text{m}} \approx 10^{14.65} M_{\odot}$ for the $\lambda \in [45; 60)$ bin across the three different redshift bins.

In the following pathfinder study, we only consider the mass model for the 1-halo term which is dominant on the small scales explored in this study, and consists of a spherically symmetric mass distribution with Navarro–Frenk–White (NFW) mass profile (Navarro, Frenk & White 1996). This lens mass distribution is placed at the cluster redshift z_{clust} and subsequently gravitational shear and magnification is applied to line-of-sight galaxies based on their true redshifts assigned by the model. The lensing effect induced by a NFW halo is expressed analytically following (Oaxaca Wright & Brainerd 1999). Reduced gravitational shear \mathbf{g} is directly applied to each galaxy through the `ngmix bdf` galaxy model. The magnification (μ) is however only applied as a simple approximation, by modulating the total flux of the galaxy light models $F_{\text{lensed};i} = \mu_i F_i$ in an a-chromatic way. This correctly captures the change in the total observed flux of each galaxy, but does not reproduce the increase in observed size. The impact of this approximation is expected to be minor given the very small apparent size of the high-redshift galaxies which experience the greatest magnification effect.

5.3 BCG and intra-cluster light model

A prominent feature of galaxy clusters is the presence of a BCG and a surrounding distribution of *intra-cluster light* (ICL) emitted by a diffuse stellar component bound to the cluster halo. These components contain a significant fraction of the total optical light emitted by the cluster (Zhang et al. 2019; Kluge et al. 2020; Sampaio-Santos et al. 2021), therefore accounting for them is essential in a dedicated simulation of synthetic galaxy cluster observations.

By construction galaxy clusters identified by redMaPPer are always centred on a bright red-sequence galaxy. This is a simplified view of reality, as in recent mergers or in non-equilibrium systems the central galaxy might not be red or the brightest, or there might be multiple similarly bright BCGs (Rykoff et al. 2014). Originating from the special location they inhabit, the central galaxies of massive haloes follow a different evolutionary track compared to satellite galaxies. It is observed that their properties are closely tied to the mass and properties of their cluster (Postman & Lauer 1995), and their luminosity function is approximately Gaussian at fixed cluster mass proxy and redshift (Hansen et al. 2009). Based on these observations, we model the synthetic central galaxy in the mocks as having the mean properties of the redMaPPer central galaxies in the cluster sample. The relevant mean central galaxy features are listed in Table A3 for the different cluster redshift and richness samples. The central galaxies are assumed to have a de Vaucouleurs light profile, and the only stochastic element in the model is their random orientation in the plane of the sky with fixed ellipticity $|g|$.

The total light in the central region of a cluster is, however, not fully described by the above model, as there is a continuous transition between the light usually associated with the central galaxy and the intra-cluster light (Kluge et al. 2020). Zhang et al. (2019) investigated the properties of the ICL for redMaPPer selected galaxy clusters with $z_{\text{clust}} \in [0.2; 0.3]$ within the DES Y1 data set. In a stacked analysis, they measured the diffuse light of the ICL down to a surface brightness of 30 magarcsec⁻². Zhang et al. (2019) investigated the richness (mass) dependence of the ICL, finding a self-similarity of the light profile when expressed in units of R_{200m} . The ICL–mass relation was further established by Sampaio-Santos et al. (2021) in an expanded re-analysis of the DES Y1 redMaPPer cluster sample. Using the measurements of Zhang et al. (2019), Gruen et al. (2019) constructed a simple model for the ICL observed around redMaPPer clusters in DES. This model extrapolates from the measurement of Zhang et al. (2019) in terms of cluster mass using the self-similarity of the profiles, and also in terms of cluster redshift by assuming a simple passively evolving stellar population within the ICL. We note that this latter assumption is closely related to the formation history and age of the ICL, which is poorly constrained from current observational studies due to the difficulty of high redshift observations. Thus, in case of a late-forming ICL, the above extrapolation overestimates the total light contained in it at early times. Furthermore, the model neglects the mild radius dependent colour gradient in the ICL, where the outer ranges are slightly bluer.

In the following, we adopt the ICL model of Gruen et al. (2019). As a simplification we assume that the colours of the ICL are identical to the mean colours of BCGs at that redshift and cluster richness sample. The ICL component extends to large radii as an approximate power-law surface density light profile, while the ngmix BCG light model is dominant in the inner regions. Because of their overlap, these components cannot be directly added to each other. Therefore, we define a tapered ICL model where the tapering scale is set by the size of the BCG component $\theta_S = \sqrt{T_{\text{BCG}}}$, where T_{BCG} is taken from the DES Y3 MOF photometry catalogue and is defined the same

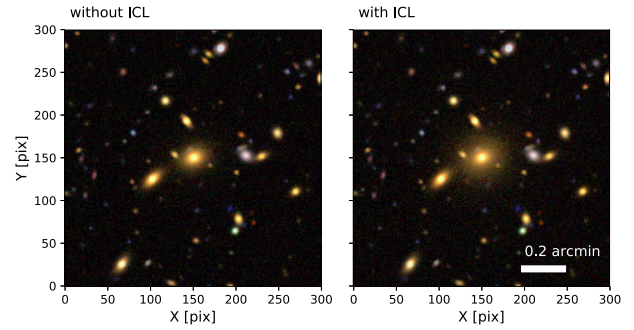


Figure 13. Synthetic centre of a mock galaxy cluster without (left) and with the intracluster light model applied (right). Real galaxy clusters host a large fraction of their stellar light in the form of ICL, which the simple BCG only light model cannot reproduce. This is seen in Figs 3 and 14.

way as the size parameter listed in Table A1. To ensure the smooth joining of the BCG and ICL components we define the total light profile model as

$$\mu(\theta) = \mu_{\text{BCG}}(\theta) + \left(1 - \frac{1}{1 + e^{2(\theta - \theta_S)}}\right) \mu_{\text{ICL}}(\theta). \quad (25)$$

An illustration of this joint BCG + ICL light profile in the mock cluster images is shown on Fig. 13. The two panels show an identical set of mock galaxies for a synthetic cluster corresponding to the cluster bin with $\lambda \in [45; 60]$ and $z \in [0.3; 0.35]$; however, the left-hand panel shows only the ngmix galaxy models, while the right-hand panel also shows the ICL component added.

5.4 Survey-like images

Simulated galaxy images are the bedrock of estimating the performance of weak lensing methods, and therefore they were the topic of extensive study in the literature (Massey et al. 2007; Bridle et al. 2009; Mandelbaum et al. 2015; Jarvis et al. 2016; Samuroff et al. 2018; Zuntz et al. 2018). In the following, we make use of a simplified version of the image simulation pipeline developed for the Y3 analysis of DES (MacCrann et al. 2021).

The construction starts with a catalogue of photometric objects which will inhabit the mock image. For this study, this catalogue contains the parameters of the ngmix bdf light distribution model for each entry that are pixel position in the image, shape ($g_1; g_2$), size T , bulge / disc flux fraction, and fluxes in g, r, i, z bands. This catalogue corresponds to a random realization of a mock line-of-sight constructed according to Sections 5.1 and 5.2. Finally, the central galaxy is added as defined in Section 5.3. At this stage, stars and foreground objects can be added according to their density at the targeted galactic latitude. In the present pathfinder study, these are drawn from the population of stars excluded in Section 3.2. Furthermore, we only consider a simplified scenario and add a stellar sample drawn from the deep-field catalogue according to their relative density in the deep-field footprints.

Synthetic images are created via a customized version of the DES Y3 image simulation pipeline (MacCrann et al. 2021), which renders images based on a galaxy image simulation package GalSim (Rowe et al. 2015), while using an extension package for the ngmix bdf light profile model used in the actual DES Y3 deep-field analysis.¹² This model describes the galaxies as a combination of two terms:

¹²<https://github.com/esheldon/ngmix>, the ngmix.gmix.GmixBDF model.

an exponential light profile (disc) and a de Vaucouleurs (bulge) light profile. Given that most galaxies in a DES-like survey are poorly resolved, an additional constraint is enforced by setting the effective radius of both light profile components to be identical.

In the following, we consider a simplified set-up of the observational scenario of DES where we directly simulate the so-called *co-added* survey images. Under real circumstances due to variations in observing conditions and the point spread function (PSF) between exposures the net PSF in co-added images is difficult to model, thus the DES shape estimation pipeline itself takes single exposure images as input. In a simulation such variations can be factored out, which allows us to simplify the simulation setup into deeper mock co-added images with well-behaved PSFs.

The synthetic co-added images are constructed the following way:

(i) The image canvas is defined with its desired dimensions and pixel scale, in the case of DES, 0.27 arcsec/pixel. The canvas is defined as a $10k \times 10k$ pixel rectangle.

(ii) For each object a small cutout image (postage stamp) is constructed. The light model is defined using `ngmix`, convolved with a representation of the mock PSF, then rendered into a postage stamp. We model the PSF as a Gaussian with a full-width half-maximum (FWHM) of 0.9 arcsec, which is roughly equal to the median DES observing condition (Sevilla-Noarbe et al. 2020).

(iii) After the creation of all postage stamps, they are added on to the main canvas at their intended pixel positions.

(iv) A noise map is applied to the image. In this study, we take the noise properties of a randomly selected DES tile (DES2122+0209) and apply Gaussian noise matched to reproduce the median flux of the unmasked regions of the reference tile in the chosen observational band. Choosing the noise level for synthetic images is not straightforward, as a substantial amount of light which is traditionally attributed to noise in fact originates from undetected faint stars and galaxies (Hoekstra et al. 2017; Euclid Collaboration 2019; Eckert et al. 2020). In the framework of the present analysis, many of these undetected sources are explicitly part of the rendered objects, therefore as a rough approximation we reduce the background noise variance by half for illustration purposes.

(v) Finally, the tapered ICL model defined according to Section 5.3 is evaluated for the pixel positions of the mock image and the additional light component is added on to the synthetic observation. We assume that the ICL has the same ellipticity and major axis direction alignment as the central galaxy.

The result of this recipe is illustrated on Fig. 3 where a *gri*-band colour composite image is shown for synthetic clusters side by side with redMaPPer clusters with similar observable parameters. While the synthetic images do contain an approximate stellar population based on faint stars observed in the Deep Fields, very bright stars that need to be masked are not currently reproduced in the mock observations. Furthermore, low redshift foreground objects such as galaxies with visible disc and spiral arm features are not contained in the scope of the present analysis. In addition to the colour composite images, Fig. 3 also illustrates the composition of the lines of sight. The third row of each figure shows the brightness distribution of the cluster component with brown/red symbols, and the foreground and background component with blue symbols. The shade and size of the symbols indicate the brightness with fainter objects shown as smaller markers. Many of the faint objects are barely or not at all discernible on the composite images. Yet these unresolved sources influence the performance of photometric methods (Hoekstra et al. 2017; Euclid Collaboration 2019; Everett et al. 2020). The bottom row of each figure shows the exaggerated gravitational shear imprinted

on background sources (the ellipticities are increased by a factor of 20). The background sources are shown in as darker colour for low redshift and lighter colour for high redshifts. Cluster members are shown in black symbols, while foreground objects are shown in green. The different brightness values are indicated by the different marker sizes.

While the galaxy populations of the $\lambda \in [30; 45)$ and $\lambda \in [45; 60)$ bins are found to be close in terms of their galaxy surface density profiles, clusters show greater differences between the different redshift ranges. This is illustrated by Fig. 14, which shows synthetic galaxy clusters with $\lambda \in [45; 60)$ in the $z \in [0.3; 0.35)$, $z \in [0.45; 0.5)$ and $z \in [0.6; 0.65)$ cluster samples. These colour composite images show a striking illustration of the changes in the visible properties of galaxy clusters across cosmic time.

6 SUMMARY AND CONCLUSIONS

6.1 Method overview

We present a pathfinder study to generate synthetic galaxy clusters and cluster observations in an unsupervised way from a combination of observational data taken by the Dark Energy Survey up to its third year of observations (DES Y3). Example realizations of synthetic galaxy cluster observations are shown on Figs 3 and 14. Galaxy clusters present a unique challenge for validating weak lensing measurements due to the increased blending among light sources, the presence of the intra-cluster light (ICL), and the characteristically stronger shear imprinted on source galaxies. The aim of these synthetic observations is to enable future studies to address the above factors by calibrating and validating the performance of galaxy cluster weak lensing in an end-to-end fashion from photometry, through shear and photometric redshift measurement and calibration to mass recovery from lensing profiles or lensing maps in a fully controlled environment. The focus of this paper is to introduce the statistical learning algorithm itself and to demonstrate a pilot implementation for DES Y3 data. This consists of the following steps:

(i) We measure the galaxy content of redMaPPer galaxy clusters and their sky environments in projection, as a function of cluster richness and redshift (Section 3.2).

(ii) Develop and validate a KDE framework for representing galaxy distributions as high-dimensional probability density functions of photometric and morphological features (Section 3.3). This KDE generalizes the finite set of galaxy and cluster observations into a continuous model, and provides a numerically efficient, extendable framework for accommodating potential new galaxy features from external data.

(iii) Derive a mathematical formalism to combine wide-field and deep-field survey data, augmenting and extrapolating our model beyond the depth and scope of the wide-field data (Section 3.5).

(iv) Create a model for the cluster member galaxy content of redMaPPer clusters via statistical background subtraction in a multi-dimensional feature space (Section 3.6).

(v) Through a series of comparisons between the properties of observed and modeled galaxies drawn from the KDE, we demonstrate an excellent agreement in terms of real and synthetic galaxy catalogs of cluster lines of sight (Section 4). We note that this reflects primarily on the performance of the input catalogues used in creating the synthetic observations. A detailed analysis of the agreement between real data and the photometry derived from the synthetic images is delegated for future work. Corrections for the potential

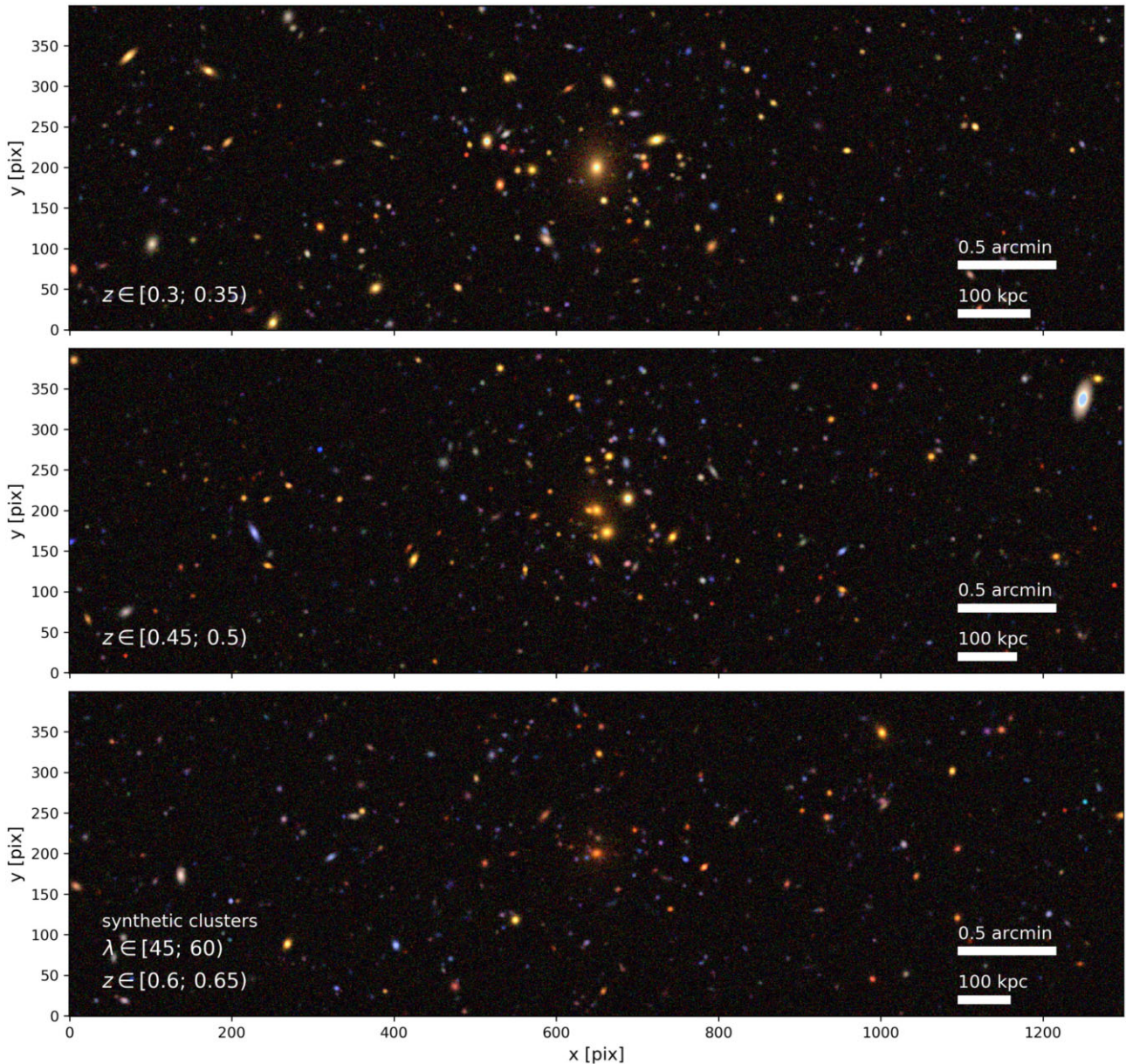


Figure 14. Synthetic galaxy clusters corresponding to redMaPPer clusters with $\lambda \in [45; 60]$ across the different redshift ranges.

incompleteness of synthetic images can be addressed as a prior for equation (12).

(vi) Combine the above steps into an algorithm constructing and rendering new realizations of mock galaxy clusters into synthetic images (Section 5).

This work addresses four distinct problems arising with simulated data:

A The method does not rely on numerical simulations of baryonic structure formation and galaxy evolution to construct galaxy clusters and thus it is independent from assumptions and approximations inherent in cosmological simulations.

B Synthetic galaxy clusters are generated to match their observed galaxy content in DES Y3. Extrapolations of the galaxy populations are performed where necessary, based on observational data.

C The algorithm is formulated as a transparent, explicit recipe. Therefore, the different components can be readily modified where

necessary and external information (e.g. survey incompleteness corrections, priors on cluster galaxy properties) can be added in a principled way.

D Via the statistical learning approach, new, statistically independent realizations of synthetic galaxy cluster observations can be created at minimal computational cost.

Finally, the generative cluster galaxy model encapsulates the properties of cluster member galaxies in DES Y3 observations, and thus can be used as a validation or augmentation data set for the results of numerical galaxy cluster simulations.

6.2 Future outlook

Due to the inherent complexity and scope of a full cluster weak lensing systematics control analysis, the overall effort is divided into multiple stages, of which this paper presents the initial step, and defines the framework for a data driven, customizable, generative

cluster model. Upcoming studies will focus on integrating the synthetic cluster image generation into the weak lensing analysis pipeline of DES, and following that will perform a direct end-to-end calibration for cluster lensing systematics. Since the synthetic cluster images mimic the observational setting of the real survey, applying standard survey data processing pipelines is expected to require only minor adaptations in analysis choices, and will provide the same data products as the real measurement. Of particular interest will be the quantification of detection efficiency in the crowded environments near cluster centres, and the impact of ICL and blending on the photometry solutions. These systematics propagate to photometric redshift errors, which we will be able to directly quantify. Similarly, running shear measurement pipelines on the synthetic images will allow a direct measurement on any additive or multiplicative shear bias caused by the presence of the ICL and cluster member galaxies. The primary outcome of the above steps will be to quantify the scale dependent shear and photometric redshift bias induced by galaxy clusters, as a function of their observable features (e.g. redshift, richness, or other mass proxy). Due to the modular nature of the recipe for generating galaxy clusters, various ingredients (e.g. ICL; cluster member morphology) can be turned off for parts of the analysis, allowing to also constrain their *specific* impact on shear and photo- z bias. Such correction profiles are already used in literature to account for cluster member contamination, and can be propagated to the mass-observable during the likelihood analysis (McClintock et al. 2019).

The planned analysis will be made possible in two distinct configurations. While the use-case described in this paper focuses on full line-of-sight image simulations, cluster-only images can also be straightforwardly generated to allow for mock image injections into the real survey observations in a manner similar to Everett et al. (2020).

A further future direction is increasing the realism and plausibility of the generative galaxy cluster model. The presented implementation aims to reproduce the stacked observational scenario, while using only those data sets available within DES. Nevertheless, our framework is designed to allow easy augmentation with external data, such as numerical cosmological simulations of galaxy clusters (e.g. Magneticum, Dolag et al. in preparation; or illustrisTNG, Nelson et al. 2019), while ensuring that the final cluster model remains consistent with observations. These augmentations would take the form of replacing the p_{prop} taken from the DES deep fields with the appropriate KDE model from the chosen external data. By using a proposal distribution already informed by the feature PDF of real cluster members, that information will be propagated to the generative cluster model.

Deviations from the mean stacked line-of-sight model can be implemented by allowing the BCG and ICL properties, and the mass model to be also drawn from distributions, rather than being fixed to the mean value for each stack. Given a model for intrinsic or correlated scatter between BCG, member galaxy properties or the mass model, a further layer of rejection sampling can be added in Section 5. In that additional layer, from many realizations of galaxy cluster catalogs, subsets can be filtered out which reproduce the desired intrinsic or correlated scatter. Furthermore, in case there is access to a preferential direction in individual clusters (e.g. miscentering offset from multi-wavelength centroids, or cluster ellipticity major axis direction), that can be incorporated by replacing the scalar R in the formalism with a 2D relative position $\vec{R} = (R_1, R_2)$, augmenting the default circular symmetry of the cluster model. The presented KDE framework is designed anticipating such extension features; therefore, their

incorporation to the generative cluster model is expected to be straightforward.

While this work was done in preparation of a cluster weak lensing analysis using the DES Y3 data, owing to the transparent and modular nature of the presented recipe it is expected that the algorithm can be fitted to other similar weak lensing surveys with minimal effort. Given their great statistical power, current (DES; The Dark Energy Survey Collaboration 2005; KiDS, de Jong et al. 2013; HSC, Aihara et al. 2018) and upcoming (Rubin Observatory, Ivezić et al. 2019; Euclid, Laureijs et al. 2011; Roman Space Telescope, Spergel et al. 2015) weak lensing surveys are increasingly dominated by systematic uncertainties. For this reason, calibration and validation tools such as the one presented in this study will be indispensable in exploiting the cosmological and astrophysical information made accessible by large area sky surveys.

ACKNOWLEDGEMENTS

This research was supported by the Excellence Cluster ORIGINS which is funded by the Deutsche Forschungsgemeinschaft (DFG, German Research Foundation) under Germany’s Excellence Strategy – EXC-2094-390783311. The calculations have been in part carried out on the computing facilities of the Computational Center for Particle and Astrophysics (C2PAP). This work was supported by the Department of Energy, Laboratory Directed Research and Development program at SLAC National Accelerator Laboratory, under contract DE-AC02-76SF00515 and as part of the Panofsky Fellowship awarded to DG.

Funding for the DES Projects has been provided by the U.S. Department of Energy, the U.S. National Science Foundation, the Ministry of Science and Education of Spain, the Science and Technology Facilities Council of the United Kingdom, the Higher Education Funding Council for England, the National Center for Supercomputing Applications at the University of Illinois at Urbana-Champaign, the Kavli Institute of Cosmological Physics at the University of Chicago, the Center for Cosmology and Astro-Particle Physics at the Ohio State University, the Mitchell Institute for Fundamental Physics and Astronomy at Texas A&M University, Financiadora de Estudos e Projetos, Fundação Carlos Chagas Filho de Amparo à Pesquisa do Estado do Rio de Janeiro, Conselho Nacional de Desenvolvimento Científico e Tecnológico and the Ministério da Ciência, Tecnologia e Inovação, the Deutsche Forschungsgemeinschaft, and the Collaborating Institutions in the Dark Energy Survey.

The Collaborating Institutions are Argonne National Laboratory, the University of California at Santa Cruz, the University of Cambridge, Centro de Investigaciones Energéticas, Medioambientales y Tecnológicas-Madrid, the University of Chicago, University College London, the DES-Brazil Consortium, the University of Edinburgh, the Eidgenössische Technische Hochschule (ETH) Zürich, Fermi National Accelerator Laboratory, the University of Illinois at Urbana-Champaign, the Institut de Ciències de l’Espai (IEEC/CSIC), the Institut de Física d’Altes Energies, Lawrence Berkeley National Laboratory, the Ludwig-Maximilians Universität München and the associated Excellence Cluster Universe, the University of Michigan, the National Optical Astronomy Observatory, the University of Nottingham, The Ohio State University, the University of Pennsylvania, the University of Portsmouth, SLAC National Accelerator Laboratory, Stanford University, the University of Sussex, Texas A&M University, and the OzDES Membership Consortium.

Based in part on observations at Cerro Tololo Inter-American Observatory, National Optical Astronomy Observatory, which is operated by the Association of Universities for Research in Astronomy

(AURA) under a cooperative agreement with the National Science Foundation.

The DES data management system is supported by the National Science Foundation under Grant Numbers AST-1138766 and AST-1536171. The DES participants from Spanish institutions are partially supported by MINECO under grants AYA2015-71825, ESP2015-66861, FPA2015-68048, SEV-2016-0588, SEV-2016-0597, and MDM-2015-0509, some of which include ERDF funds from the European Union. IFAE is partially funded by the CERCA programme of the Generalitat de Catalunya. Research leading to these results has received funding from the European Research Council under the European Union's Seventh Framework Program (FP7/2007-2013) including ERC grant agreements 240672, 291329, and 306478. We acknowledge support from the Australian Research Council Centre of Excellence for All-sky Astrophysics (CAASTRO), through project number CE110001020.

This manuscript has been authored by Fermi Research Alliance, LLC under Contract No. DE-AC02-07CH11359 with the US Department of Energy, Office of Science, Office of High Energy Physics. The United States Government retains and the publisher, by accepting the article for publication, acknowledges that the United States Government retains a non-exclusive, paid-up, irrevocable, worldwide license to publish or reproduce the published form of this manuscript, or allow others to do so, for United States Government purposes.

DATA AVAILABILITY

The data underlying this article will be made available according to the data release schedule of the Dark Energy Survey.

REFERENCES

- Abbott T. M. C. et al., 2019, *ApJ*, 872, L30
 Aihara H. et al., 2018, *PASJ*, 70, S4
 Allen S. W., Evrard A. E., Mantz A. B., 2011, *ARA&A*, 49, 409
 Bartelmann M., Schneider P., 2001, *Phys. Rep.*, 340, 291
 Bernstein G. M., Armstrong R., 2014, *MNRAS*, 438, 1880
 Bertin E., Arnouts S., 1996, *A&AS*, 117, 393
 Bocquet S. et al., 2019, *ApJ*, 878, 55
 Brammer G. B., van Dokkum P. G., Coppi P., 2008, *ApJ*, 686, 1503
 Bridle S. et al., 2009, *Ann. Appl. Stat.*, 3, 6
 Butcher H., Oemler A. Jr, 1978, *ApJ*, 219, 18
 Costanzi M. et al., 2019, *MNRAS*, 488, 4779
 de Jong J. T. A., Verdoes Kleijn G. A., Kuijken K. H., Valentijn E. A., 2013, *Exp. Astron.*, 35, 25
 DeRose J. et al., 2019, preprint (arXiv:1901.02401)
 DES Collaboration, 2016, *MNRAS*, 460, 1270
 DES Collaboration, 2020, *Phys. Rev. D*, 102, 023509
 Eckert K. et al., 2020, *MNRAS*, 497, 2529
 Euclid Collaboration, 2019, *A&A*, 627, A59
 Everett S. et al., 2020, preprint (arXiv:2012.12825)
 Fenech Conti I., Herbonnet R., Hoekstra H., Merten J., Miller L., Viola M., 2017, *MNRAS*, 467, 1627
 Flaugher B. et al., 2015, *AJ*, 150, 150
 Gavazzi G., Fumagalli M., Cucciati O., Boselli A., 2010, *A&A*, 517, A73
 Górski K. M., Hivon E., Banday A. J., Wand elt B. D., Hansen F. K., Reinecke M., Bartelmann M., 2005, *ApJ*, 622, 759
 Gruen D. et al., 2019, *MNRAS*, 488, 4389
 Hansen S. M., Sheldon E. S., Wechsler R. H., Koester B. P., 2009, *ApJ*, 699, 1333
 Hartley W. G. et al., 2021, *MNRAS*, in press
 Hastie T., Tibshirani R., Friedman J., 2001, *The Elements of Statistical Learning*, Springer Series in Statistics. Springer New York Inc., New York

- Hennig C. et al., 2017, *MNRAS*, 467, 4015
 Hoekstra H., Viola M., Herbonnet R., 2017, *MNRAS*, 468, 3295
 Hoyle B. et al., 2018, *MNRAS*, 478, 592
 Huff E., Mandelbaum R., 2017, preprint (arXiv:1702.02600)
 Ivezić Ž. et al., 2019, *ApJ*, 873, 111
 Jarvis M. J. et al., 2013, *MNRAS*, 428, 1281
 Jarvis M. et al., 2016, *MNRAS*, 460, 2245
 Kannawadi A. et al., 2019, *A&A*, 624, A92
 Kessler R. et al., 2015, *AJ*, 150, 172
 Kluge M. et al., 2020, *ApJS*, 247, 43
 Kravtsov A. V., Borgani S., 2012, *ARA&A*, 50, 353
 Laureijs R. et al., 2011, preprint (arXiv:1110.3193)
 MacCrann N. et al., 2021, *MNRAS*, in press
 MacKay D. J. C., 2002, *Information Theory, Inference & Learning Algorithms*. Cambridge Univ. Press, Cambridge
 Mandelbaum R. et al., 2015, *MNRAS*, 450, 2963
 Mandelbaum R. et al., 2018, *MNRAS*, 481, 3170
 Mantz A. B. et al., 2015, *MNRAS*, 446, 2205
 Massey R. et al., 2007, *MNRAS*, 376, 13
 McClintock T. et al., 2019, *MNRAS*, 482, 1352
 Melchior P. et al., 2017, *MNRAS*, 469, 4899
 Miller L., et al., 2013, *MNRAS*, 429, 2858
 Mohr J. J. et al., 2008, in Brissenden R. J., Silva D. R., eds, *Proc. SPIE Conf. Ser. Vol. 7016, Observatory Operations: Strategies, Processes, and Systems II*. SPIE, Bellingham, p. 70160L
 Myles J. et al., 2021, *MNRAS*, 505, 4249
 Navarro J. F., Frenk C. S., White S. D. M., 1996, *ApJ*, 462, 563
 Nelson D. et al., 2019, *Comput. Astrophys. Cosmol.*, 6, 2
 Oaxaca Wright C., Brainerd T. G., 1999, preprint (arXiv:astro-ph/9908213)
 Parzen E., 1962, *Ann. Math. Statist.*, 33, 1065
 Planck Collaboration, 2016, *A&A*, 594, A24
 Postman M., Lauer T. R., 1995, *ApJ*, 440, 28
 Pujol A., Kilbinger M., Sureau F., Bobin J., 2019, *A&A*, 621, A2
 Refregier A., Amara A., 2014, *Phys. Dark Univ.*, 3, 1
 Rowe B. T. P. et al., 2015, *Astron. Comput.*, 10, 121
 Rozo E. et al., 2010, *ApJ*, 708, 645
 Rykoff E. S. et al., 2014, *ApJ*, 785, 104
 Sampaio-Santos H. et al., 2021, *MNRAS*, 501, 1300
 Samuroff S. et al., 2018, *MNRAS*, 475, 4524
 Sevilla-Noarbe I. et al., 2021, *ApJS*, 254, 24
 Sheldon E., 2015, *Astrophysics Source Code Library*, record ascl:1508.008
 Sheldon E. S., Huff E. M., 2017, *ApJ*, 841, 24
 Sheldon E. S. et al., 2004, *AJ*, 127, 2544
 Sheldon E. S., Becker M. R., MacCrann N., Jarvis M., 2020, *ApJ*, 902, 138
 Simet M., Mandelbaum R., 2015, *MNRAS*, 449, 1259
 Spergel D. et al., 2015, preprint (arXiv:1503.03757)
 Suchyta E. et al., 2016, *MNRAS*, 457, 786
 The Dark Energy Survey Collaboration, 2005, preprint (arXiv:e-print)
 To C.-H., Reddick R. M., Rozo E., Rykoff E., Wechsler R. H., 2020, *ApJ*, 897, 15
 Varga T. N. et al., 2019, *MNRAS*, 489, 2511
 Weinberg D. H., Mortonson M. J., Eisenstein D. J., Hirata C., Riess A. G., Rozo E., 2013, *Phys. Rep.*, 530, 87
 Zhang Y. et al., 2019, *ApJ*, 874, 165
 Zuntz J., Kacprzak T., Voigt L., Hirsch M., Rowe B., Bridle S., 2013, *MNRAS*, 434, 1604
 Zuntz J. et al., 2018, *MNRAS*, 481, 1149

APPENDIX: DATA SELECTION

The wide-field galaxy sample used in this study for the statistical modeling (Section 3) is obtained from the DES Y3 GOLD galaxy catalogue (Sevilla-Noarbe et al. 2020), using the criteria listed in Table A2. The full list of galaxy features used in this study are listed in Table A1 along with their relation to the DES Y3 data products produced by Sevilla-Noarbe et al. (2020) and Hartley et al. (2021), corresponding to the wide-field and deep-field features, respectively.

Table A1. Features and their definitions from the column of the relevant photometric catalogues. Deep field features: DES Y3 deep and supernova fields (Hartley et al. 2021) for further explanation, see Section 2.3. Wide-field features: DES Y3 GOLD (Sevilla-Noarbe et al. 2020), for further explanation see Section 2.1.

Feature	Catalogue parameter	Description
Deep-field features		
<i>m</i>	bdf_mag_dered_3	<i>i</i> -band MOF magnitude with photometric correction
<i>c</i>	bdf_mag_dered_2 - bdf_mag_dered_1	<i>g</i> - <i>r</i> MOF colour with photometric correction
	bdf_mag_dered_3 - bdf_mag_dered_2	<i>r</i> - <i>i</i> MOF colour with photometric correction
	bdf_mag_dered_4 - bdf_mag_dered_3	<i>i</i> - <i>z</i> MOF colour with photometric correction
<i>s</i>	sqrt(bdf_g_0 ² + bdf_g_1 ²)	absolute MOF ellipticity $ e $
	FRACDEV	bulge / disc flux fraction at fixed component size
	log ₁₀ (1 + bdf_T)	MOF size squared in arcsec ² $T = \langle x^2 \rangle + \langle y^2 \rangle$
<i>z_g</i>	<i>z</i> _mc	<i>ugrizJHK</i> -band based photo- <i>z</i> estimate from EAZY
Wide-field features		
<i>R</i>	log ₁₀ √((RA - ra _{ref}) ² + (DEC - dec _{ref}) ²)	log ₁₀ projected separation in arcmin from reference point
<i>m</i>	MOF_CM_MAG_CORRECTED_I	<i>i</i> -band MOF magnitude with photometric correction
<i>c</i>	MOF_CM_MAG_CORRECTED_G - MOF_CM_MAG_CORRECTED_R	<i>g</i> - <i>r</i> MOF colour with photometric correction
	MOF_CM_MAG_CORRECTED_R - MOF_CM_MAG_CORRECTED_I	<i>r</i> - <i>i</i> MOF colour with photometric correction
	MOF_CM_MAG_CORRECTED_I - MOF_CM_MAG_CORRECTED_Z	<i>i</i> - <i>z</i> MOF colour with photometric correction

Table A2. Y3A2 GOLD catalogue query cuts used in obtaining the survey data from the DES Data Management System (DESDM; Mohr et al. 2008).

Y3A2 GOLD column	Value	Description
FLAGS_FOOTPRINT	1	Restricts catalog to fiducial survey footprint
FLAGS_FOREGROUND	0	Excludes regions masked due to foreground objects
bitand(FLAGS_GOLD, 122)	0	Photometric processing failure exclusion based on SOF
EXTENDED_CLASS_SOF	3	High purity galaxy sample based on SOF model

Table A3. Properties of the mean BCG across the different cluster richness and redshift bins. For each BCG the bulge (de Vaucouleurs) fraction is set to unity. The T_{BCG} parameter is the effective area of the galaxy corresponding to the SOF size squared in arcsec² $T = \langle x^2 \rangle + \langle y^2 \rangle$.

<i>z</i> ∈	λ ∈	$\langle i \rangle$	$\langle g - r \rangle$	$\langle r - i \rangle$	$\langle i - z \rangle$	$\langle T_{BCG} \rangle$ (arcsec ²)	$\langle g \rangle$
[0.3; 0.35)	[30; 45)	17.76	1.36	0.54	0.32	28.90	0.14
[0.3; 0.35)	[45; 60)	17.62	1.38	0.54	0.31	33.20	0.14
[0.45; 0.5)	[30; 45)	18.58	1.85	0.70	0.37	21.92	0.15
[0.45; 0.5)	[45; 60)	18.50	1.85	0.71	0.37	28.43	0.14
[0.6; 0.65)	[30; 45)	19.36	1.83	1.01	0.44	16.90	0.17
[0.6; 0.65)	[35; 60)	19.18	1.83	1.02	0.45	22.44	0.16

The mean photometric and morphological parameters of redMaPPer BCGs are listed in Table A3. These are obtained by matching the galaxy properties of the Y3 GOLD catalogue with the catalogue of redMaPPer central galaxies based on the COADD_OBJECT_ID.

¹Max Planck Institute for Extraterrestrial Physics, Giessenbachstrasse, D-85748 Garching, Germany

²Universitäts-Sternwarte, Fakultät für Physik, Ludwig-Maximilians-Universität München, Scheinerstr. 1, D-81679 München, Germany

³Department of Physics, Stanford University, 382 Via Pueblo Mall, Stanford, CA 94305, USA

⁴Kavli Institute for Particle Astrophysics & Cosmology, PO Box 2450, Stanford University, Stanford, CA 94305, USA

⁵SLAC National Accelerator Laboratory, Menlo Park, CA 94025, USA

⁶Department of Applied Mathematics and Theoretical Physics, University of Cambridge, Cambridge CB3 0WA, UK

⁷Brookhaven National Laboratory, Bldg 510, Upton, NY 11973, USA

⁸Département de Physique Théorique and Center for Astroparticle Physics, Université de Genève, 24 quai Ernest Ansermet, CH-1211 Geneva, Switzerland

⁹Center for Cosmology and Astro-Particle Physics, The Ohio State University, Columbus, OH 43210, USA

¹⁰Fermi National Accelerator Laboratory, PO Box 500, Batavia, IL 60510, USA

¹¹Kavli Institute for Cosmological Physics, University of Chicago, Chicago, IL 60637, USA

¹²Argonne National Laboratory, 9700 South Cass Avenue, Lemont, IL 60439, USA

¹³Department of Physics, University of Arizona, Tucson, AZ 85721, USA

¹⁴Faculty of Physics, Ludwig-Maximilians-Universität, Scheinerstr. 1, D-81679 Munich, Germany

¹⁵Department of Physics and Astronomy, University of Pennsylvania, Philadelphia, PA 19104, USA

- ¹⁶Department of Physics, Carnegie Mellon University, Pittsburgh, PA 15312, USA
- ¹⁷Santa Cruz Institute for Particle Physics, Santa Cruz, CA 95064, USA
- ¹⁸Center for Astrophysical Surveys, National Center for Supercomputing Applications, 1205 West Clark St., Urbana, IL 61801, USA
- ¹⁹Department of Astronomy, University of Illinois at Urbana-Champaign, 1002 W. Green Street, Urbana, IL 61801, USA
- ²⁰Department of Physics, University of Oxford, Denys Wilkinson Building, Keble Road, Oxford OX1 3RH, UK
- ²¹Jodrell Bank Center for Astrophysics, School of Physics and Astronomy, University of Manchester, Oxford Road, Manchester M13 9PL, UK
- ²²Centro de Investigaciones Energéticas, Medioambientales y Tecnológicas (CIEMAT), 28040 Madrid, Spain
- ²³Department of Physics, Duke University Durham, NC 27708, USA
- ²⁴Institute for Astronomy, University of Edinburgh, Edinburgh EH9 3HJ, UK
- ²⁵Departamento de Física Matemática, Instituto de Física, Universidade de São Paulo, CP 66318, São Paulo, SP 05314-970, Brazil
- ²⁶Laboratório Interinstitucional de e-Astronomia - LInEA, Rua Gal. José Cristino 77, Rio de Janeiro, RJ-20921-400, Brazil
- ²⁷CNRS, UMR 7095, Institut d'Astrophysique de Paris, F-75014, Paris, France
- ²⁸Sorbonne Universités, UPMC Univ Paris 06, UMR 7095, Institut d'Astrophysique de Paris, F-75014, Paris, France
- ²⁹Department of Physics and Astronomy, Pevensey Building, University of Sussex, Brighton, BN1 9QH, UK
- ³⁰Department of Physics & Astronomy, University College London, Gower Street, London, WC1E 6BT, UK
- ³¹Instituto de Astrofísica de Canarias, La Laguna, E-38205 Tenerife, Spain
- ³²Universidad de La Laguna, Dpto. Astrofísica, La Laguna, E-38206 Tenerife, Spain
- ³³Institut de Física d'Altes Energies (IFAE), The Barcelona Institute of Science and Technology, Campus UAB, E-08193 Bellaterra (Barcelona), Spain
- ³⁴Astronomy Unit, Department of Physics, University of Trieste, via Tiepolo 11, I-34131 Trieste, Italy
- ³⁵INAF-Osservatorio Astronomico di Trieste, via G. B. Tiepolo 11, I-34143 Trieste, Italy
- ³⁶Institute for Fundamental Physics of the Universe, Via Beirut 2, I-34014 Trieste, Italy
- ³⁷Observatório Nacional, Rua Gal. José Cristino 77, Rio de Janeiro, RJ-20921-400, Brazil
- ³⁸Department of Physics, University of Michigan, Ann Arbor, MI 48109, USA
- ³⁹Department of Physics, IIT Hyderabad, Kandi, Telangana 502285, India
- ⁴⁰Institute of Theoretical Astrophysics, University of Oslo. PO Box 1029 Blindern, NO-0315 Oslo, Norway
- ⁴¹Instituto de Física Teórica UAM/CSIC, Universidad Autónoma de Madrid, 28049 Madrid, Spain
- ⁴²Institut d'Estudis Espacials de Catalunya (IEEC), E-08034 Barcelona, Spain
- ⁴³Institute of Space Sciences (ICE, CSIC), Campus UAB, Carrer de Can Magrans, s/n, E-08193 Barcelona, Spain
- ⁴⁴Department of Astronomy, University of Michigan, Ann Arbor, MI 48109, USA
- ⁴⁵School of Mathematics and Physics, University of Queensland, Brisbane, QLD 4072, Australia
- ⁴⁶Department of Physics, The Ohio State University, Columbus, OH 43210, USA
- ⁴⁷Australian Astronomical Optics, Macquarie University, North Ryde, NSW 2113, Australia
- ⁴⁸Lowell Observatory, 1400 Mars Hill Rd, Flagstaff, AZ 86001, USA
- ⁴⁹Department of Astrophysical Sciences, Princeton University, Peyton Hall, Princeton, NJ 08544, USA
- ⁵⁰Institució Catalana de Recerca i Estudis Avançats, E-08010 Barcelona, Spain
- ⁵¹Physics Department, 2320 Chamberlin Hall, University of Wisconsin-Madison, 1150 University Avenue Madison, WI 53706-1390, USA
- ⁵²Institute of Astronomy, University of Cambridge, Madingley Road, Cambridge CB3 0HA, UK
- ⁵³School of Physics and Astronomy, University of Southampton, Southampton, SO17 1BJ, UK
- ⁵⁴Computer Science and Mathematics Division, Oak Ridge National Laboratory, Oak Ridge, TN 37831, USA
- ⁵⁵Institute of Cosmology and Gravitation, University of Portsmouth, Portsmouth PO1 3FX, UK

This paper has been typeset from a $\text{\TeX}/\text{\LaTeX}$ file prepared by the author.