



**HAL**  
open science

## No effect of test and treat on sexual behaviours at population level in rural South Africa

Matthieu Rolland, Nuala Mcgrath, Thierry Tiendrebeogo, Joseph Larmarange, Deenan Pillay, François Dabis, Joanna Orne-Gliemann

### ► To cite this version:

Matthieu Rolland, Nuala Mcgrath, Thierry Tiendrebeogo, Joseph Larmarange, Deenan Pillay, et al.. No effect of test and treat on sexual behaviours at population level in rural South Africa. AIDS. Official journal of the international AIDS Society, 2019, 33 (4), pp.709-722. 10.1097/QAD.0000000000002104 . hal-03162644

**HAL Id: hal-03162644**

**<https://hal.science/hal-03162644>**

Submitted on 11 Dec 2023

**HAL** is a multi-disciplinary open access archive for the deposit and dissemination of scientific research documents, whether they are published or not. The documents may come from teaching and research institutions in France or abroad, or from public or private research centers.

L'archive ouverte pluridisciplinaire **HAL**, est destinée au dépôt et à la diffusion de documents scientifiques de niveau recherche, publiés ou non, émanant des établissements d'enseignement et de recherche français ou étrangers, des laboratoires publics ou privés.



Distributed under a Creative Commons Attribution 4.0 International License

# No effect of test and treat on sexual behaviours at population level in rural South Africa

Matthieu Rolland<sup>a</sup>, Nuala McGrath<sup>b,d,e</sup>, Thierry Tiendrebeogo<sup>a</sup>,  
Joseph Larmarange<sup>c,f</sup>, Deenan Pillay<sup>c,d,g</sup>, François Dabis<sup>a</sup>,  
Joanna Orne-Gliemann<sup>a</sup>, for the ANRS 12249 TasP study group

**Context:** Within the community-randomized ANRS 12249 Treatment-as-Prevention trial conducted in rural South Africa, we analysed sexual behaviours stratified by sex over time, comparing immediate antiretroviral therapy irrespective of CD4<sup>+</sup> cell count vs. CD4<sup>+</sup>-guided antiretroviral therapy (start at CD4<sup>+</sup> cell count > 350 cells/ $\mu$ l then >500 cells/ $\mu$ l) arms.

**Methods:** As part of the 6-monthly home-based trial rounds, a sexual behaviour individual questionnaire was administered to all residents at least 16 years. We considered seven indicators: sexual intercourse in the past month; at least one regular sexual partner in the past 6 months; at least one casual sexual partner in the past 6 months and more than one sexual partner in the past 6 months; condom use at last sex (CLS) with regular partner, CLS with casual partner, and point prevalence estimate of concurrency. We conducted repeated cross-sectional analyses, stratified by sex. Generalized Estimating Equations models were used, including trial arm, trial time, calendar time and interaction between trial arm and trial time.

**Results:** CLS with regular partner varied between 29–51% and 23–46% for men and women, respectively, with significantly lower odds among women in the control vs. intervention arm by trial end ( $P < 0.001$ ). CLS with casual partner among men showed a significant interaction between arm and trial round, with no consistent pattern. Women declared more than one partner in the past 6 months in less than 1% of individual questionnaires; among men, rates varied between 5–12%, and odds significantly and continuously declined between calendar rounds 1 and 7 [odds ratio = 4.2 (3.24–5.45)].

**Conclusion:** Universal Test and Treat was not associated with increased sexual risk behaviours.

Copyright © 2019 The Author(s). Published by Wolters Kluwer Health, Inc.

*AIDS* 2019, **33**:709–722

**Keywords:** Africa, antiretroviral therapy, HIV, prevention, sexual behaviour

## Introduction

Universal antiretroviral therapy (ART) at high CD4<sup>+</sup> cell counts reduces morbidity and mortality rates among people living with HIV [1,2] and reduces the risk of transmission to HIV-negative partners [3]. Over the past

few years, following the 2015 WHO ART initiation guidelines [4] and the repeated calls to improve ART coverage [5], implementation of universal ART is being generalized. Mathematical models suggested that important reductions in HIV transmission were achievable with universal test and treat (UTT), that is high uptake of

<sup>a</sup>University Bordeaux, ISPED, Inserm, Bordeaux Population Health Research Center, UMR 1219, Bordeaux, France, <sup>b</sup>Academic Unit of Primary Care and Population Sciences and Department of Social Statistics and Demography, University of Southampton, Southampton, UK, <sup>c</sup>Africa Health Research Institute, Somkhele, Mtubatuba, <sup>d</sup>School of Nursing & Public Health, University of KwaZulu-Natal, KwaZulu-Natal, South Africa, <sup>e</sup>Research Department of Epidemiology & Public Health, University College London, London, UK, <sup>f</sup>Centre Population et Développement, Institut de Recherche pour le Développement, Université Paris Descartes, Inserm, Paris, France, and <sup>g</sup>Division of Infection and Immunity, University College London, London, UK.

Correspondence to Joanna Orne-Gliemann, University Bordeaux, ISPED, Inserm, Bordeaux Population Health Research Center, UMR 1219, F-33000 Bordeaux, France.

E-mail: Joanna.Orne-Gliemann@u-bordeaux.fr

Received: 18 April 2018; accepted: 12 November 2018.

DOI:10.1097/QAD.0000000000002104

ISSN 0269-9370 Copyright © 2019 The Author(s). Published by Wolters Kluwer Health, Inc. This is an open access article distributed under the Creative Commons Attribution License 4.0 (CCBY), which permits unrestricted use, distribution, and reproduction in any medium, provided the original work is properly cited.

regular HIV testing and universal ART initiation when diagnosed HIV-positive [6,7].

One of the premises of UTT strategies is that ART decreases infectivity. However, there has been concern that increased access to ART could alter HIV risk perception, and lead to sexual disinhibition or risk compensation [8], which could potentiate the continued spread of the epidemic.

There is no evidence of increased sexual risk behaviours related to increased access to ART among high-risk populations in high-resource settings [9]. In sub-Saharan Africa, where HIV epidemics are largely driven by heterosexual transmission, available data among people living with HIV on ART does not suggest any increase in at-risk sexual behaviours and no increase in partner acquisition or partnership dissolution [10,11]. Studies conducted in the context of early or universal ART did not report any increase in rates of condom-less sex over time [12] and sexual behaviours did not differ between HIV-infected people treated below and above the 350 cells/ $\mu$ l CD4<sup>+</sup> cell count threshold [13]. Among sero-discordant couples followed within the Partners-PrEP study in Eastern Africa, ART was associated with a significant decrease in reports of condom-less vaginal sex acts with HIV-uninfected partners [14]. Recent work conducted in rural KwaZulu Natal (KZN) province (South Africa) found no evidence of increased sexual risk-taking at the population level following ART availability, and even protective changes in some behaviours [15].

The consequences of UTT roll-out on sexual behaviours at population-level are still largely unknown. Our primary objective was to assess the impact of universal ART on sexual behaviours at population-level in the context of the ANRS 12249 Treatment-as-Prevention (TasP) study conducted in rural KZN. Our secondary objective was to analyse the change over time of sexual behaviours in the study area.

## Methods

### Treatment-as-Prevention trial design and setting

The TasP study is a cluster-randomized trial conducted by the Africa Health Research Institute (AHRI) that investigated whether UTT reduces HIV incidence at population-level [16,17]. It was implemented in Hlabisa subdistrict, northeast KZN, in a largely rural area, with approximately 28 000 resident adults, and an HIV prevalence reaching 30% [18]. It was approved by the Biomedical Research Ethics Committee, University of KZN (BFC 104/11) and the Medicines Control Council of South Africa (ClinicalTrials.gov: NCT01509508; South African National Clinical Trials Register: DOH-27-0512-3974). Follow-up began in four clusters in 2012, was expanded to 10 clusters in 2013, and from

2014 the trial included 22 clusters (11  $\times$  2) (Supplementary data, Fig. 1, <http://links.lww.com/QAD/B416>). The TasP study did not show any significant population-level impact of universal ART (vs. national ART initiation guidelines) on cumulative HIV incidence [19].

### Study procedures

Six-monthly home-based survey rounds were implemented, during which all eligible individuals (aged 16 years and older, resident in the trial area) were enumerated and given a unique identifier; the list of household members was updated to take into account deaths, out-migration, in-migration and individuals reaching the age of 16 years; after written informed consent, participants were offered point-of-care rapid HIV counselling and testing. In the intervention clusters, HIV-positive participants were offered ART regardless of CD4<sup>+</sup> cell count, whereas in the control clusters, ART was provided according to national guidelines (initially CD4<sup>+</sup> cell count  $\leq$  350 cells/ $\mu$ l, then  $<$ 500 cells/ $\mu$ l from January 2015).

### Socio-demographic and sexual behaviours questionnaire

TasP trial participants were invited to respond to a socio-demographic and sexual behaviours questionnaire (individual questionnaire), administered face-to-face by fieldworkers/HIV counsellors as part of the home-based survey rounds. It was based on items used in previous AHRI research studies [15]. Sexual behaviour data described the type, duration and sexual risks associated with up to the three most recent sexual partnerships of participants in the last 12 months. For those with no partner in the last 12 months, details of the most recent partner were recorded.

### Outcomes

Five indicators were computed at the level of the participant: sexual intercourse in the past month, at least one regular sexual partner reported in the past 6 months, at least one casual sexual partner reported in the past 6 months, at least two sexual partners reported in the past 6 months, and point prevalence estimate of concurrency [20]. Two indicators were computed at the partnership level: condom use at last sex (CLS) with regular partner, CLS with casual partner. For participant-level indicators each individual questionnaire contributed one observation that took into account information from all the reported partnerships for the past 6 months. For partnership-level indicators each individual questionnaire contributed as many observations as there were partnerships reported (i.e. between 0 and 3). To avoid duplicates due to the individual questionnaire being administered every 6 months, partnerships with date of last sex missing or more than 6 months were not included in our analyses.

### Statistical analysis

We conducted a repeated cross-sectional analysis of sexual behaviours among the resident population, regardless of

whether participants had participated to the previous round or the next round: each survey round was considered as a cross-sectional survey.

To estimate indicators representative of the entire population, and to account for varying participation rates per cluster and survey round, we adjusted estimates using poststratification weights [21] that accounted for the distribution of sex, age group, education level, professional status and marital status of the eligible population, separately by cluster, for each survey round. For participants whose characteristics were not documented at a given survey round, we used the closest available questionnaire. In the rare cases in which a participant characteristic was not documented at any point, multi-factorial analysis was used to impute missing socio-demographic with the imputeFAMD method of R's missMDA package [22]. In the rare cases in which people completed two questionnaires in the same survey round, half the weight was applied to each questionnaire. No sexual behaviour data was collected from trial participants from the clusters opened in 2012 ( $n=4$  clusters) and 2013 ( $n=6$  clusters) during their second and third survey round, respectively. These data were considered as missing data.

Because the clusters were included in different stages, we included in our analyses two different time scales to distinguish contextual time trends from intervention-

related time trends. Calendar time relates to the overall number of survey rounds implemented since the start of the study in March 2012 (expressed in calendar rounds). Trial time relates to the number of survey rounds implemented from the date each cluster was included in the study (expressed in trial rounds and starting respectively in March 2012 for the first series of clusters, January 2013 for the second and June 2014 for the last). For example for a cluster that was in the group of clusters opened in January 2013, the second round of questionnaires was at Trial Round 2, which corresponds to the Calendar Round 3 (Table 1).

We first described the proportion for each indicator by trial round, sex and trial arm, with and without survey weights (Fig. 1). The 95% confidence intervals were computed using the 2.5 and 97.5 percentile of the bootstrapped distribution of the proportion using the boot function of R's boot package [23].

We then computed multivariate models for each indicator, separately for each sex and using post-stratification weights. To account for multiple observations per participant, marginal Generalized Estimating Equations models of logistic regression assuming an independent correlation structure [24] were used, using the R package geepack [25]. First, a full model was computed for each indicator. This model included *trial arm*, which represents the baseline difference between

**Table 1. Number of individuals eligible to answer the individual questionnaire and response rate per calendar round, stratified by sex and cluster group. ANRS 12249 TasP trial (2012–2016).**

Calendar round	Men										
	Clusters opened in 2012			Clusters opened in 2013			Clusters opened in 2014			All open clusters	
	Trial round	N Eligible	% response	Trial round	N Eligible	% response	Trial round	N Eligible	% response	% HIV positive	% Aged 18–25
1	1	1141	63							13	43
2	2	1180	51	1	2526	45				18	35
3	3	1141	44	2	3111	49				18	35
4	4	1087	60	3	2924	54	1	3722	72	20	36
5	5	1003	58	4	2766	70	2	3587	76	22	36
6	6	891	66	5	2494	70	3	3382	72	22	36
7	7	792	55	6	2251	64	4	3017	63	23	33
Calendar round	Women										
	Clusters opened in 2012			Clusters opened in 2013			Clusters opened in 2014			All open clusters	
	Trial round	N Eligible	% response	Trial round	N Eligible	% response	Trial round	N Eligible	% response	% HIV positive	% Aged 18–25
1	1	1952	80							25	31
2	2	2035	72	1	4194	71				31	27
3	3	1964	63	2	5009	73				32	27
4	4	2006	77	3	5029	67	1	7100	85	33	26
5	5	1883	73	4	4846	82	2	7179	86	35	25
6	6	1741	79	5	4545	80	3	6948	83	35	24
7	7	1648	65	6	4226	78	4	6351	76	35	21

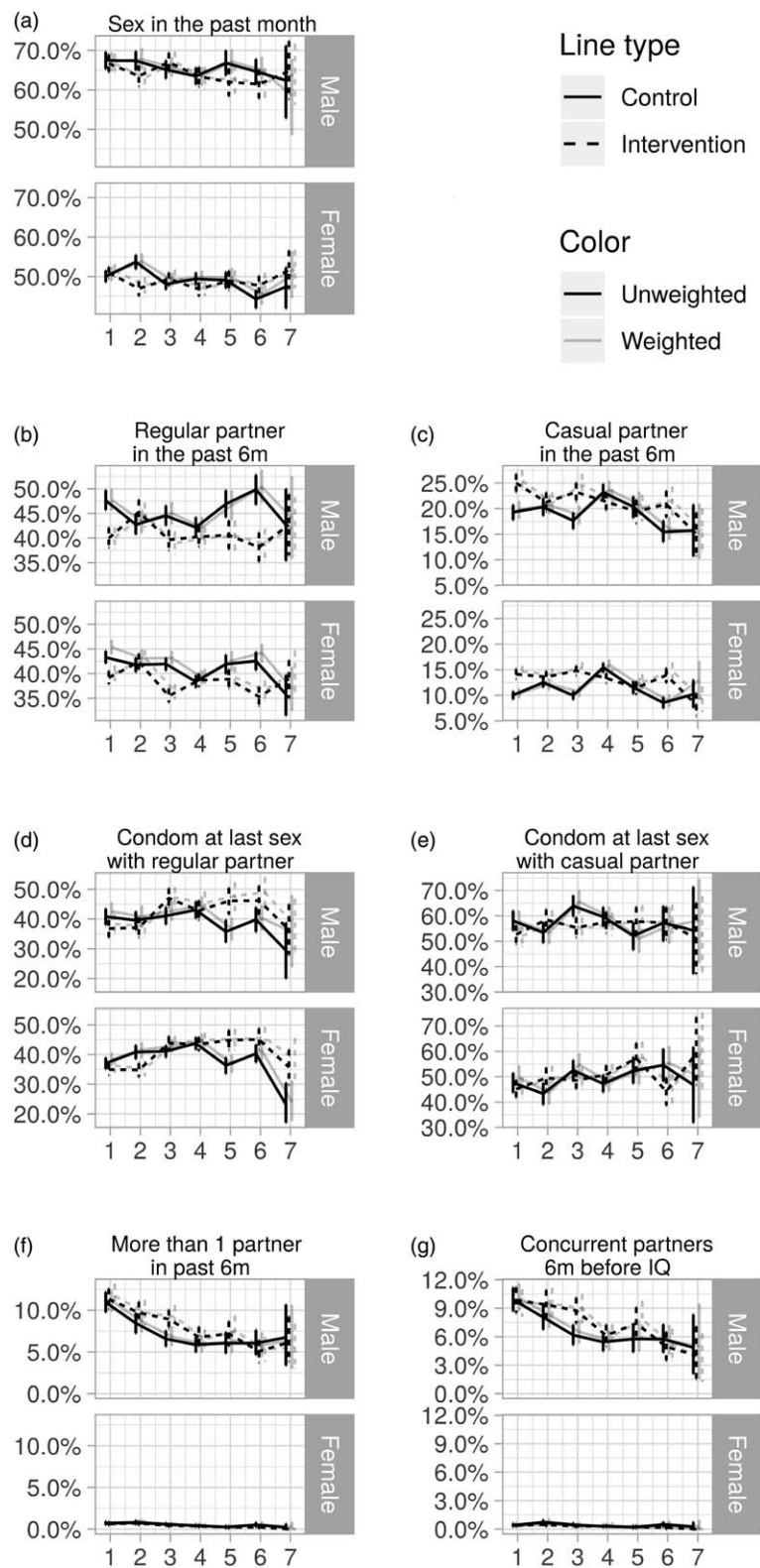


Fig. 1. Unweighted and weighted sexual behaviour indicators in rural KwaZulu-Natal, by trial rounds, sex and trial arm with 95% confidence intervals, ANRS 12249 TasP trial (2012–2016).

arms; *trial round*, which represents the effect over time of the trial interventions implemented in both arms; an *interaction term* between trial arm and trial rounds, which represents the specific effect over time of universal ART implemented in the intervention arm only; and *calendar round*, which represents the structural change over time in the study area (independently of trial implementation). Trial rounds and calendar rounds were represented by dummy indicators to allow for non-linear trends (refer to Supplementary data, Table S1, <http://links.lww.com/QAD/B416>). Once the full model was computed, the most parsimonious model with the lowest Quasi-Akaike Criterion was kept. This was evaluated using the dredge function of R's MuMin package [26]. In all cases, trial arm remained in the final model to allow estimation of the association between trial arm and each outcome. To visualize possible patterns, when the interaction between arm and trial round was selected in the final model, the model was re-run with arm and trial round combinations represented directly by dummy variables. All analyses were performed using R version 3.3.2 [27].

## Results

### Study population

Overall during the study period, participation rate at each survey round varied between 45 and 76% for men and between 71 and 86% for women (Table 1). A total of 9008 men and 16 672 women were included in the study. 66 120 partnerships were reported. Among those, 10 564 partnerships were excluded due to missing date of last sex and 12 957 due to last sex being more than 6 months prior to individual questionnaire. Finally, a total of 15 831 partnerships reported by men (10 199 regular and 5632 casual) and 26 460 by women (20 083 regular and 6377 casual) were included.

### Differences in sexual behaviours

Figure 1 presents the weighted and unweighted proportions for men and women, by trial arm and trial round, for the seven sexual behaviour indicators. For all indicators applying weights did not significantly change the estimates (Fig. 1) and for all remaining analyses weighted estimates are presented. The results of the final model for each indicator are presented in Tables 2–4 (men) and Tables 5 and 6 (women). Interaction model outputs (Table 7) are presented visually in Supplementary data (Fig. 3, <http://links.lww.com/QAD/B416>).

### Sexual intercourse in the past month

The proportion of individual questionnaires at which sexual intercourse was reported in the past month varied between 59 and 68% for men and between 44 and 54% for women (Fig. 1a). Among men, there was no difference according to arm. Among women, the interaction between arm and trial round was significant ( $P < 0.001$ ; Tables 5 and 6). The odds of women

reporting sexual intercourse showed significant variations between arms across trial rounds but with no consistent pattern (Fig. 2, Table 7).

### Regular partner in the past 6 months

The proportion of individual questionnaires at which a regular partner in the past 6 months was declared varied between 38 and 50% for men and between 35 and 46% for women (Fig. 1b). There was a significant interaction between arm and trial round for men and women (both:  $P < 0.001$ ; Tables 2–6) with statistically significantly lower odds of reporting a regular partner in the intervention arm compared with the control arm for both sexes at enrolment, and no consistent pattern over trial rounds (Fig. 2, Table 7). For both men and women, the odds of reporting a regular partner varied significantly across calendar rounds, with no consistent pattern (Tables 2–6).

### Casual partner in the past 6 months

The proportion of individual questionnaires at which a casual partner in the past 6 months was declared varied between 15 and 26% for men and between 8 and 17% for women (Fig. 1c). There was a significant interaction between arm and trial round for men and women (both:  $P < 0.001$ ; Tables 2–6), with statistically significantly higher odds of reporting a casual partner in the intervention arm compared with the control arm for both sexes at enrolment, and no consistent pattern over trial rounds. Figure 1c and Table 7 suggest that for women, the odds of reporting a casual partner in the past 6 months decreased more rapidly in the intervention arm than in the control arm between trial rounds 1 and 7. At round 1, the odds are significantly higher in the intervention arm than in the control arm [odds ratio (OR) = 1.46 (1.29–1.67),  $P < 0.001$ , Table 7]. At round 7, the odds in the intervention arm were significantly lower than the reference category [OR = 0.64 (0.46–0.91),  $P = 0.012$ , Table 7], whereas the odds in the control arm were not ( $P = 0.8$ , Table 7). The odds of reporting a casual partner among men and women significantly varied across calendar round, with no consistent pattern (Tables 2–6, Fig. 2).

### Condom use at last sex with regular partner

CLS with a regular partner for men varied between 29 and 51% and between 23 and 46% for women (Fig. 1d). There was a significant interaction between arm and trial round for men and women (both:  $P < 0.001$ ; Tables 2–6), with no consistent pattern over trial rounds for men (Table 7). For women, Table 7 suggests that the odds of reporting CLS with a regular partner decreased more rapidly in the control arm than in the intervention arm between trial rounds 1 and 7. At round 1, the odds were not significantly different ( $P = 0.2$ , Table 7). At round 7, the odds in the control arm were significantly lower than the reference category [OR = 0.46 (0.30–0.70),  $P < 0.001$ , Table 4], whereas the odds in the intervention

Table 2. Final multivariable model for each sexual behaviour indicator among men in the ANRS 12249 TasP trial (2012–2016)

Arm	Had a sexual intercourse (past month)			≥1 regular partner (past 6 months)			≥1 casual partner (past 6 months)		
	P	n (%)	aOR 95% CI	P	n (%)	aOR 95% CI	P	n (%)	aOR 95% CI
Intervention	0.12	11 115 (64.6%)	0.95 [0.88–1.01]	<0.001	11 115 (40.8%)	0.76 [0.67–0.86]	<0.001	11 115 (22.1%)	1.38 [1.20–1.60]
Trial round 2	Not selected			0.065	5081 (43.9%)	1.03 [0.87–1.23]	<0.001	5081 (20.7%)	0.83 [0.67–1.04]
Trial round 3					4648 (42.2%)	1.02 [0.88–1.18]		4648 (20.3%)	0.92 [0.77–1.11]
Trial round 4					4582 (41.3%)	0.99 [0.85–1.17]		4582 (22.4%)	1.10 [0.91–1.34]
Trial round 5					2373 (44.0%)	1.11 [0.93–1.33]		2373 (19.9%)	1.02 [0.82–1.28]
Trial round 6					2043 (44.3%)	1.28 [1.06–1.56]		2043 (18.0%)	0.84 [0.66–1.09]
Trial round 7					438 (42.7%)	1.01 [0.70–1.45]		438 (15.3%)	0.81 [0.51–1.29]
Interaction arm:	Not selected			<0.001	2289 (45.3%)	1.40 [1.17–1.69]	<0.001	2289 (21.3%)	0.73 [0.58–0.91]
trial round 2					2187 (39.6%)	1.02 [0.85–1.21]		2187 (23.2%)	1.03 [0.83–1.27]
trial round 3					2038 (40.3%)	1.19 [1.00–1.41]		2038 (21.3%)	0.67 [0.54–0.82]
trial round 4					1086 (40.6%)	1.05 [0.85–1.29]		1086 (19.4%)	0.65 [0.50–0.84]
trial round 5					968 (38.1%)	0.81 [0.65–1.02]		968 (20.9%)	1.03 [0.78–1.36]
trial round 6					260 (42.7%)	1.23 [0.80–1.90]		260 (15.0%)	0.74 [0.42–1.31]
trial round 7					3794 (42.9%)	1.08 [0.87–1.33]		3794 (17.9%)	0.98 [0.75–1.28]
Calendar round	<0.001	3794 (62.9%)	1.09 [0.89–1.34]	<0.001	3794 (42.9%)	1.08 [0.87–1.33]	<0.001	3794 (17.9%)	0.98 [0.75–1.28]
Calendar round 1		789 (63.3%)	1.15 [0.99–1.35]		789 (41.2%)	1.51 [1.25–1.81]		789 (19.3%)	1.05 [0.83–1.32]
Calendar round 2		1889 (66.7%)	1.12 [0.94–1.34]		1889 (53.4%)	1.09 [0.92–1.29]		1889 (19.2%)	1.15 [0.92–1.42]
Calendar round 3		2186 (66.2%)	1.21 [1.09–1.35]		2186 (46.9%)	1.00 [0.87–1.15]		2186 (18.2%)	1.18 [1.00–1.39]
Calendar round 4		5110 (67.5%)	1.01 [0.91–1.12]		5110 (41.5%)	0.87 [0.77–0.98]		5110 (22.7%)	1.54 [1.34–1.78]
Calendar round 5		5376 (63.7%)	1.16 [1.04–1.30]		5376 (41.3%)	1.05 [0.92–1.19]		5376 (23.7%)	1.06 [0.90–1.24]
Calendar round 6									

CI, confidence interval.

**Table 3. Final multivariable model for each sexual behaviour indicator among men in the ANRS 12249 TasP trial (2012–2016)**

		Condom use at last sex – regular partner			Condom use at last sex – casual partner		
		<i>P</i>	<i>n</i> (%)	aOR 95% CI	<i>P</i>	<i>n</i> (%)	aOR 95% CI
Arm	Intervention	0.18	4630 (41.7%)	0.84 [0.70–1.01]	0.052	2832 (55.9%)	0.89 [0.79–1.00]
Trial round	Trial round 2	0.001	1752 (38.4%)	0.93 [0.78–1.11]	Not selected		
	Trial round 3		2063 (43.7%)	1.01 [0.86–1.19]			
	Trial round 4		1996 (43.0%)	1.08 [0.92–1.27]			
	Trial round 5		1105 (40.1%)	0.78 [0.64–0.95]			
	Trial round 6		947 (42.4%)	0.91 [0.74–1.11]			
	Trial round 7		205 (33.5%)	0.75 [0.43–1.31]			
	Interaction arm: trial round	Int arm: round 2	<0.001	829 (37.1%)	1.04 [0.80–1.35]	Not selected	
Int arm: round 3			934 (47.0%)	1.42 [1.12–1.82]			
Int arm: round 4			871 (42.8%)	1.24 [0.97–1.59]			
Int arm: round 5			469 (46.1%)	1.88 [1.39–2.54]			
Int arm: round 6			387 (46.2%)	1.69 [1.23–2.32]			
Int arm: round 7			120 (36.4%)	1.30 [0.65–2.59]			
Calendar round		Calendar round 1	Not selected			Not selected	
	Calendar round 2						
	Calendar round 3						
	Calendar round 4						
	Calendar round 5						
	Calendar round 6						

CI, confidence interval.

**Table 4. Final multivariable model for each sexual behaviour indicator among men in the ANRS 12249 TasP trial (2012–2016)**

		≥2 Sexual partnerships in the past 6 months			Concurrency (at the time of survey)		
		<i>P</i>	<i>n</i> (%)	aOR 95% CI	<i>P</i>	<i>n</i> (%)	aOR 95% CI
Arm	Intervention	0.011	11 115 (8.6%)	1.14 [1.03–1.26]	0.064	11 115 (8%)	1.12 [0.99–1.25]
Trial round	Trial round 2	Not selected			Not selected		
	Trial round 3						
	Trial round 4						
	Trial round 5						
	Trial round 6						
	Trial round 7						
	Interaction arm: trial round	Intervention arm: round 2	Not selected			Not selected	
Intervention arm: round 3							
Intervention arm: round 4							
Intervention arm: round 5							
Intervention arm: round 6							
Intervention arm: round 7							
Calendar round		Calendar round 1	<0.001	3794 (4.7%)	3.88 [3.00–5.01]	<0.001	3794 (4.1%)
	Calendar round 2		789 (15.3%)	3.42 [2.73–4.28]		789 (13.7%)	2.93 [2.25–3.82]
	Calendar round 3		1889 (13.9%)	2.99 [2.36–3.79]		1889 (10.9%)	3.12 [2.34–4.16]
	Calendar round 4		2186 (13.2%)	1.83 [1.52–2.20]		2186 (11.6%)	1.99 [1.60–2.48]
	Calendar round 5		5110 (8.5%)	1.74 [1.44–2.09]		5110 (8.0%)	1.97 [1.58–2.45]
	Calendar round 6		5376 (7.6%)	1.43 [1.18–1.74]		5376 (7.4%)	1.67 [1.33–2.10]

The reference categories were trial round 1 and calendar round 7 which had the largest eligible populations given the staged inclusion protocol. The estimates of trial round presented here must be interpreted as the effect of each trial round compared with round 1, the trial arm main effect must be interpreted as the estimate of difference between arms at round 1, and that the point estimates for each trial round for the intervention arm is a composite (on the log scale) of the treatment estimate, the trial round estimate and specific interaction estimate – the directly estimated ORs are presented in Table 7 for easier interpretation and shown visually in Fig. 3 (Supplementary material, <http://links.lww.com/QAD/B416>). We considered that universal ART had an effect on a sexual behaviours if there was a significant interaction between trial arm and trial round, and if that interaction showed a consistent pattern over time (Table 7 and Fig. 3 in Supplementary material, <http://links.lww.com/QAD/B416>): in cases in which the interaction was selected for the final model, the trial arm main effect represents the difference between arms at round 1, that is at trial baseline; in cases in which the interaction was not selected in the model, the trial arm main effect represents an average mean difference between trial arms across all trial rounds. For example, in the model of sex in past month the interaction term was not selected, neither was trial arm or calendar round thus the only factor remaining in the model (based on the QIC approach) was trial round. In contrast, in the model for casual partner all terms were significant, including the interaction. ART, antiretroviral therapy; CI, confidence interval; OR, odds ratio; QIC, Quasi-Akaike Criterion.



Table 5. Final multivariable model for each sexual behaviour indicator among women in the ANRS 12249 TasP trial (2012–2016)

Arm	Had a sexual intercourse (past month)			≥1 regular partner (past 6 months)			≥1 casual partner (past 6 months)		
	P	n (%)	aOR 95% CI	P	n (%)	aOR 95% CI	P	n (%)	aOR 95% CI
Intervention	0.068	25 757 (48.7%)	1.03 [0.93–1.13]	<0.001	25 757 (38.4%)	0.83 [0.77–0.91]	<0.001	25 757 (13.6%)	1.44 [1.27–1.64]
Trial round 2	<0.001	11 576 (50.3%)	1.13 [1.02–1.25]	<0.001	11 576 (42.1%)	1.14 [1.01–1.29]	<0.001	11 576 (13%)	0.85 [0.70–1.02]
Trial round 3		10 564 (48.7%)	0.94 [0.85–1.03]		10 564 (38.8%)	1.08 [0.98–1.19]		10 564 (12.3%)	0.84 [0.71–0.99]
Trial round 4		10 441 (48.2%)	0.96 [0.88–1.06]		10 441 (38.5%)	1.02 [0.91–1.13]		10 441 (14.5%)	1.12 [0.95–1.32]
Trial round 5		5071 (49.0%)	0.96 [0.86–1.07]		5071 (40.5%)	1.12 [0.99–1.27]		5071 (11.5%)	0.83 [0.69–1.01]
Trial round 6		4671 (45.8%)	0.81 [0.72–0.90]		4671 (39.2%)	1.23 [1.08–1.40]		4671 (11.1%)	0.62 [0.50–0.76]
Trial round 7		1075 (49.7%)	0.98 [0.78–1.24]		1075 (37.6%)	0.92 [0.73–1.16]		1075 (9%)	0.94 [0.65–1.36]
Interaction arm:	<0.001	5473 (47%)	0.76 [0.66–0.89]	<0.001	5473 (42.4%)	1.21 [1.07–1.37]	<0.001	5473 (13.6%)	0.80 [0.66–0.96]
trial round 2		5068 (49.3%)	1.00 [0.87–1.15]		5068 (35.5%)	0.90 [0.80–1.01]		5068 (14.8%)	1.07 [0.89–1.28]
trial round 3		4785 (46.8%)	0.87 [0.76–0.99]		4785 (38.6%)	1.20 [1.06–1.35]		4785 (13.4%)	0.61 [0.51–0.72]
trial round 4		2349 (48.9%)	0.94 [0.80–1.11]		2349 (38.9%)	1.05 [0.91–1.22]		2349 (11.5%)	0.71 [0.57–0.88]
trial round 5		2192 (47.7%)	1.09 [0.92–1.29]		2192 (35.3%)	0.86 [0.75–1.00]		2192 (13.9%)	1.23 [0.98–1.55]
trial round 6		614 (51.6%)	1.03 [0.75–1.42]		614 (38.9%)	1.40 [1.06–1.84]		614 (8.1%)	0.47 [0.30–0.75]
Calendar round		Not selected							
Calendar round 1					9173 (38.2%)	1.20 [1.04–1.39]	<0.001	9173 (12.2%)	0.67 [0.53–0.84]
Calendar round 2					1651 (39.9%)	1.61 [1.42–1.82]		1651 (10.5%)	0.58 [0.47–0.71]
Calendar round 3					4643 (47.5%)	1.23 [1.09–1.39]		4643 (9.1%)	0.60 [0.50–0.73]
Calendar round 4					5078 (43.9%)	1.13 [1.03–1.24]		5078 (8.1%)	0.87 [0.76–0.99]
Calendar round 5					11 263 (39.3%)	0.97 [0.90–1.05]		11 263 (12.9%)	1.21 [1.08–1.35]
Calendar round 6					11 667 (39.6%)	1.07 [0.99–1.17]		11 667 (14.8%)	0.99 [0.87–1.13]

CI, confidence interval.

**Table 6. Final multivariable model for each sexual behaviour indicator among women in the ANRS 12249 TasP trial (2012–2016)**

		Condom use at last sex – regular partner			Condom use at last sex – casual partner		
		<i>P</i>	<i>n</i> (%)	aOR 95% CI	<i>P</i>	<i>n</i> (%)	aOR 95% CI
Arm	Intervention	0.65	9211 (40.2%)	0.92 [0.81–1.06]	0.82	3289 (48.8%)	0.99 [0.88–1.10]
Trial round	Trial round 2	<0.001	3307 (37.9%)	1.22 [1.02–1.46]	<0.001	1040 (46.4%)	1.33 [1.00–1.77]
	Trial round 3		4030 (42.3%)	1.20 [1.03–1.41]		1297 (50.3%)	1.61 [1.27–2.02]
	Trial round 4		4022 (43.6%)	1.23 [1.04–1.46]		1528 (48.7%)	1.49 [1.15–1.94]
	Trial round 5		2057 (40.1%)	0.95 [0.77–1.16]		584 (54.6%)	2.13 [1.58–2.87]
	Trial round 6		1839 (42.3%)	1.05 [0.84–1.31]		524 (48.6%)	1.73 [1.26–2.36]
	Trial round 7		404 (30.6%)	0.46 [0.30–0.71]		97 (53.1%)	2.06 [1.22–3.48]
	Interaction arm: trial round	Int arm: round 2	<0.001	1594 (34.8%)	0.82 [0.67–0.99]	Not selected	
	Int arm: round 3		1767 (43.8%)	1.15 [0.97–1.37]			
	Int arm: round 4		1850 (43.5%)	1.09 [0.91–1.29]			
	Int arm: round 5		915 (44.8%)	1.54 [1.23–1.91]			
	Int arm: round 6		779 (45.1%)	1.31 [1.04–1.64]			
	Int arm: round 7		239 (35.7%)	2.14 [1.32–3.46]			
Calendar round	Calendar round 1	<0.001	3510 (42.5%)	0.72 [0.55–0.94]	0.0039	1122 (47.7%)	1.00 [0.65–1.56]
	Calendar round 2		662 (29.2%)	0.90 [0.73–1.11]		176 (36.6%)	1.69 [1.17–2.45]
	Calendar round 3		1614 (36.1%)	0.73 [0.60–0.89]		315 (50.3%)	1.07 [0.73–1.56]
	Calendar round 4		1043 (35.8%)	0.97 [0.83–1.12]		192 (45.3%)	1.61 [1.25–2.08]
	Calendar round 5		4437 (40.7%)	0.90 [0.79–1.02]		1474 (51.9%)	1.10 [0.90–1.35]
	Calendar round 6		4628 (40.0%)	0.90 [0.79–1.02]		1760 (48.2%)	0.92 [0.73–1.17]

The reference categories were trial round 1 and calendar round 7 which had the largest eligible populations given the staged inclusion protocol. The estimates of trial round presented here must be interpreted as the effect of each trial round compared with round 1, the trial arm main effect must be interpreted as the estimate of difference between arms at round 1, and that the point estimates for each trial round for the intervention arm is a composite (on the log scale) of the treatment estimate, the trial round estimate and specific interaction estimate – the directly estimated ORs are presented in Table 7 for easier interpretation and shown visually in Supplementary material Fig. 3, <http://links.lww.com/QAD/B416>. We considered that universal ART had an effect on a sexual behaviours if there was a significant interaction between trial arm and trial round, and if that interaction showed a consistent pattern over time (Table 7 and Supplementary material Fig. 3, <http://links.lww.com/QAD/B416>): in cases in which the interaction was selected for the final model, the trial arm main effect represents the difference between arms at round 1, that is at trial baseline; in cases in which the interaction was not selected in the model, the trial arm main effect represents an average mean difference between trial arms across all trial rounds. For example, in the model of sex in past month the interaction term was not selected, neither was trial arm or calendar round thus the only factor remaining in the model (based on the QIC approach) was trial round. In contrast, in the model for casual partner all terms were significant, including the interaction. ART, antiretroviral therapy; CI, confidence interval; OR, odds ratio; QIC, Quasi-Akaike Criterion.

arm were not ( $P=0.56$ , Table 7). For men there was no significant variation in CLS with a regular partner over calendar round (Tables 2–4). For women the odds of reporting CLS with a regular partner varied significantly across calendar round with no consistent pattern (Fig. 2, Tables 5 and 6).

### Condom use at last sex with casual partner

CLS with a casual partner varied between 51 and 65% for men and between 43 and 60% for women (Fig. 1e). There was no significant differences between arms (Tables 2–4). However for women, there seems to have been an increase between trial round 1 and 7 [OR = 2.03 (1.21–3.43),  $P<0.001$ ; Tables 5 and 6]. Among women the odds of reporting CLS with a casual partner varied significantly across calendar round with no consistent pattern (Tables 5 and 6).

### Two or more sexual partners in the past 6 months

The percentage of individual questionnaires at which men declared more than one partner in the past 6 months varied between 5 and 12% and remained below 1% for women (Fig. 1f). Hence, only the model for men was produced. The interaction between arm and trial round was not statistically significant. Overall the odds of men reporting two or more sexual partners in the past 6 months were higher in the intervention arm compared

with the control arm [OR = 1.15 (0.03–1.28),  $P=0.015$ ; Tables 2–4]. The odds of men reporting two or more sexual partners in the past 6 months varied significantly and continuously declined between calendar rounds 1 and 7 [OR = 4.2 (3.24–5.45)] (Tables 2–4).

### Concurrency

The percentage of individual questionnaires at which men declared concurrent relationships varied between 4 and 11% and remained below 1% for women (Fig. 1g). The interaction between arm and trial round was not statistically significant. Concurrency among men significantly and continuously declined between calendar rounds 1 and 7 (Tables 2–4).

### Discussion

In this study, we reported on the impact of universal ART on sexual behaviours at population-level in rural South Africa. Virtually no signs of sustained changes in sexual behaviour were observed in the universal ART arm compared with the standard guidelines arm, and in particular sexual disinhibition was not observed for any of the indicators under study.

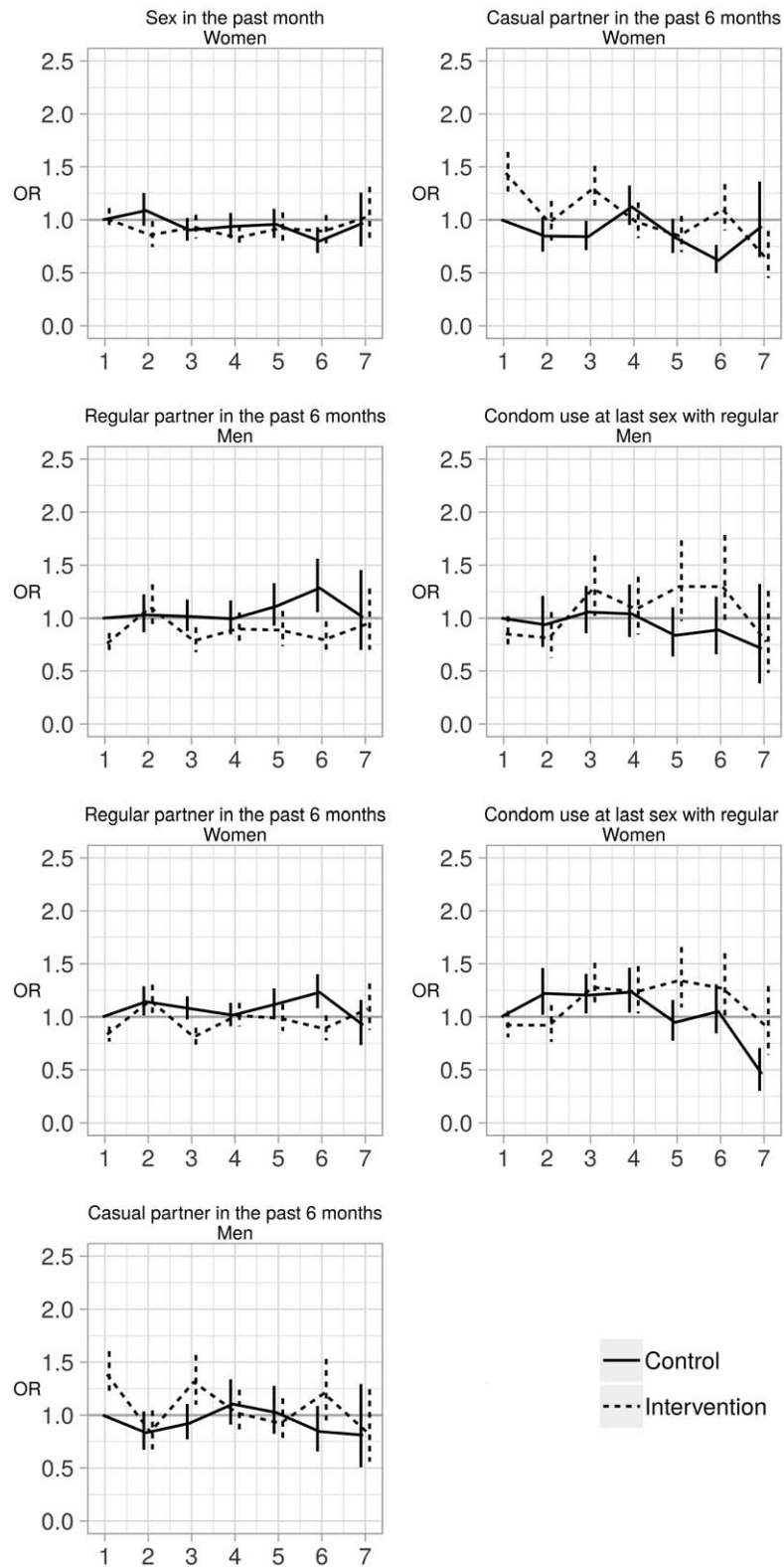
Table 7. Model output with arm and trial round combinations represented directly by dummy variables (ANRS 12249 TasP trial (2012–2016)).

	Arm	Round	Women		Men	
			OR_CI	P	OR_CI	P
Sex in the past month	Control	1	réf.		No interaction for men	
		2	1.09 [0.94–1.25]	0.25		
		3	0.90 [0.80–1.02]	0.094		
		4	0.94 [0.83–1.07]	0.32		
		5	0.96 [0.83–1.10]	0.55		
		6	0.80 [0.69–0.93]	<b>0.0039</b>		
		7	0.97 [0.75–1.26]	0.82		
	Intervention	1	1.01 [0.92–1.11]	0.86		
		2	0.86 [0.74–0.99]	<b>0.033</b>		
		3	0.93 [0.82–1.05]	0.24		
		4	0.83 [0.73–0.95]	<b>0.0049</b>		
		5	0.92 [0.79–1.07]	0.28		
		6	0.89 [0.76–1.05]	0.16		
		7	1.03 [0.81–1.31]	0.82		
At least one regular partner in the past 6 months	Control	1	réf.		réf.	
		2	1.14 [1.01–1.29]	<b>0.031</b>	1.03 [0.87–1.23]	0.73
		3	1.08 [0.98–1.19]	0.14	1.02 [0.88–1.18]	0.83
		4	1.02 [0.91–1.13]	0.78	0.99 [0.85–1.17]	0.94
		5	1.12 [0.99–1.27]	0.072	1.11 [0.93–1.33]	0.25
		6	1.23 [1.08–1.40]	<b>0.0018</b>	1.28 [1.06–1.56]	<b>0.012</b>
		7	0.92 [0.73–1.16]	0.49	1.01 [0.70–1.45]	0.97
	Intervention	1	0.83 [0.77–0.91]	<b>&lt;0.001</b>	0.76 [0.67–0.86]	<b>1.3e–05</b>
		2	1.15 [1.02–1.30]	0.022	1.10 [0.92–1.32]	0.29
		3	0.81 [0.73–0.90]	<b>&lt;0.001</b>	0.79 [0.68–0.91]	<b>0.0017</b>
		4	1.01 [0.91–1.13]	0.80	0.90 [0.76–1.05]	0.19
		5	0.99 [0.87–1.12]	0.82	0.89 [0.74–1.07]	0.21
		6	0.89 [0.78–1.01]	0.08	0.80 [0.65–0.97]	<b>0.024</b>
		7	1.07 [0.88–1.31]	0.49	0.95 [0.70–1.28]	0.72
At least one casual partner in the past 6 months	Control	1	réf.		réf.	
		2	0.85 [0.70–1.02]	0.087	0.83 [0.67–1.04]	0.1
		3	0.84 [0.71–0.99]	<b>0.038</b>	0.92 [0.77–1.11]	0.39
		4	1.12 [0.95–1.32]	0.17	1.10 [0.91–1.34]	0.31
		5	0.83 [0.69–1.01]	0.063	1.02 [0.82–1.28]	0.83
		6	0.62 [0.50–0.76]	<b>&lt;0.001</b>	0.84 [0.66–1.09]	0.19
		7	0.94 [0.65–1.36]	0.74	0.81 [0.51–1.29]	0.38
	Intervention	1	1.44 [1.27–1.64]	<b>&lt;0.001</b>	1.38 [1.20–1.60]	<b>&lt;0.001</b>
		2	0.97 [0.80–1.18]	0.78	0.84 [0.68–1.05]	0.12
		3	1.29 [1.11–1.51]	<b>0.0013</b>	1.31 [1.10–1.57]	<b>0.0027</b>
		4	0.98 [0.83–1.16]	0.83	1.02 [0.84–1.24]	0.85
		5	0.85 [0.70–1.04]	0.11	0.92 [0.73–1.16]	0.49
		6	1.10 [0.90–1.34]	0.36	1.21 [0.95–1.53]	0.12
		7	0.64 [0.45–0.90]	<b>0.0097</b>	0.83 [0.56–1.24]	0.38
Used condom last time with regular partner	Control	1	réf.		réf.	
		2	1.22 [1.02–1.46]	0.03	0.94 [0.73–1.21]	0.63
		3	1.20 [1.03–1.41]	<b>0.018</b>	1.06 [0.86–1.30]	0.6
		4	1.23 [1.04–1.46]	<b>0.016</b>	1.04 [0.82–1.32]	0.74
		5	0.95 [0.77–1.16]	0.60	0.84 [0.64–1.10]	0.21
		6	1.05 [0.84–1.31]	0.66	0.89 [0.66–1.20]	0.45
		7	0.46 [0.30–0.71]	<b>&lt;0.001</b>	0.71 [0.38–1.32]	0.28
	Intervention	1	0.92 [0.81–1.06]	0.24	0.85 [0.71–1.02]	0.08
		2	0.92 [0.76–1.11]	0.39	0.81 [0.62–1.06]	0.12
		3	1.28 [1.08–1.51]	<b>0.0038</b>	1.28 [1.02–1.59]	<b>0.032</b>
		4	1.24 [1.03–1.48]	<b>0.021</b>	1.08 [0.85–1.39]	0.52
		5	1.34 [1.09–1.66]	<b>0.0061</b>	1.30 [0.97–1.73]	0.077
		6	1.27 [1.00–1.60]	<b>0.046</b>	1.30 [0.94–1.79]	0.11
		7	0.91 [0.64–1.29]	0.60	0.78 [0.48–1.26]	0.31

Computed for all indicators in which the interaction term in the final model was significant. CI, confidence interval; OR, odds ratio.

At the start of the trial, men and women in the intervention arm were more likely to report casual partners and less likely to report regular partners than in the control arm. Men in the intervention arm were also more likely to report more than one partner in the last 6 months than in the control arm.

Proportions of sexual intercourse in the past month among women, regular partner among women, regular and casual partner among men and CLS with regular partners among men fluctuated over time. This may be related to changes in trial participation rate and changes in the population profile inherent to repeated cross-sectional



**Fig. 2. Odds ratios and 95% confidence intervals plots of the model output with arm and trial round combinations represented directly by dummy variables. Note:** Computed for all indicators in which the interaction term in the final model was significant

survey designs. We used sampling weights to adjust for differences in participation rates. Further, mobility in this rural population is high, with an estimated 10–20% population change at each survey round due to in-out migration [28]. In addition, the high numbers of questionnaires (>75 000) provided sufficient power for very small differences in the prevalence of sexual behaviour indicators to be statistically significant.

For two indicators, reporting a casual partner in the past 6 months among women and CLS with a regular partner among women, the interaction between arm and trial round was significant with signs of consistent diverging trends between the two arms between trial rounds 1 and 7. The odds of casual partners seem to have decreased in the intervention arm compared with the control arm and the rates of condom use with a regular partner at last sex seem to have increased in the intervention compared with the control arm. These differences may be reflect the fact that round 7 only includes four clusters out of the total 22, but in any case it would suggest a beneficial effect of messaging around universal ART on condom use. This finding would confirm the trends in reduced unprotected sex documented in South Africa among HIV-infected clinic attendees after ART initiation [10], or in Uganda among HIV-negative household members living with HIV-infected people initiated on ART [29].

Two indicators showed clear improvements over time. The odds of women declaring having used a condom at last sex with a casual partner was significantly higher in the later trial rounds than in the first trial round (Tables 2–4). This may be a result of the repeated exposure to trial staff and preventive messages, and to increased risk perception associated with unprotected sexual intercourse. And finally we observed a decrease over calendar time in the proportion of men reporting two or more sexual partners in the past 6 months and of concurrency. This time trend is however different from what was found in a recent meta-analysis, in which reporting multiple partners over the past 12 months increased consistently across almost all study countries [30].

There are several limits to our analysis. First, the phased approach of the TasP trial may have biased the population characteristics, as the clusters were not opened at random. This can mainly be observed at rounds in which only the first set of clusters are under observation (calendar round 1 and trial round 7); significant differences at these rounds thus needed to be treated carefully and were actually not considered sufficient to argue for an arm difference. Participation rates changed over time and were not uniform within the population. However, we observed no significant difference between the weighted and unweighted results. Second, the collection of sexual

behaviour data was not homogenous over time, resulting in missing data for calendar rounds 2 and 3. Third, we chose to retain the most parsimonious model to preserve power for our primary question: analysing differences between arms during follow-up for each sexual behaviour indicator. Although parsimonious models do not allow direct comparison between the different indicators, they ensure that the question is answered in the ‘best’ (most parsimonious) way for each indicator, even while using the same approach for all indicators. The full model results are presented in Tables S2 and S3, <http://links.lww.com/QAD/B416>. For sexual intercourse in the past month among women and CLS with a casual partner for men and women, the significant time variables are not the same as for the parsimonious models. However, the added significant variables show no trend. And the arm difference for concurrency among men, which was close to significance in the parsimonious model ( $P=0.064$ ), becomes significant in the full model. Thus interpretation for these indicators did not change substantially between the full and parsimonious models. Forth, our analysis is based on self-reported data. The changes we observed over time may thus reflect changes in reporting sexual behaviours rather changes in sexual behaviours per se. Finally, we cannot assume that the TasP population is representative of rural KZN or even of all of Hlabisa subdistrict.

The TasP trial was unable to show any evidence of universal ART on the prevention of HIV transmission; with HIV incidence remaining comparable between both trial arms and population-level increase in ART coverage being similar in both arms [19]. We did not observe any signs of sexual disinhibition associated with early ART in this rural population of KZN. The lack of difference in HIV incidence between both arms cannot be explained by increased sexual risk taking in the intervention arm. Continued monitoring of population-level sexual behaviour indicators is needed as the UTT strategy is rolled out. In particular multiple partnerships, partnership selection/dissolution, sero-sorting or ‘ART-sorting’ phenomenon, which may also affect in the end the impact of ART on HIV incidence [31].

## Acknowledgements

We thank the study volunteers for allowing us into their homes and participating in this trial, the KwaZulu-Natal Provincial and the National Department of Health of South Africa for their support of this study.

We thank staff of the Africa Health Research Institute (previously Africa Centre for Population Health) for the

trial implementation and analysis of data, including those who conducted the fieldwork, provided clinical care, developed and maintained the database, entered the data and verified data quality.

We acknowledge the advice and support of the Scientific Advisory Board: Bernard Hirschel (Chair), Xavier Anglaret, Hoosen Coovadia, Eric Djimeu, Eric Fleutelot, Eric Goemaere, Alice Jacob, Jean-Michel Molina, Lynn Morris, Golriz Pahlavan-Grumel, Calice Talom, Francois Venter, Sibongile Zungu.

We acknowledge the advice and support of the DSMB: Patrick Yeni (Chair), Nathan Ford, Hakima Himmich, Catherine Hankins, Helen Weiss, Sinead Delany-Moretlwe.

Special thanks to Professor Jean-François Delfraissy, prior Director of ANRS.

Research discussed in this publication has been cofunded by the ANRS, the Deutsche Gesellschaft für Internationale Zusammenarbeit (GIZ), and the International Initiative for Impact Evaluation, Inc. (3ie) with support from the Bill & Melinda Gates Foundation. The content is solely the responsibility of the authors and does not represent the official views of the ANRS, 3ie or the Bill & Melinda Gates Foundation.

The trial was conducted with the support of Merck & Co. Inc and Gilead Sciences that provided the Atripla drug supply. The Africa Health Research Institute receives core funding from the Wellcome Trust, which provides the platform for the population-based and clinic-based research at the Centre.

## Conflicts of interest

There are no conflicts of interest.

## References

- Danel C, Moh R, Gabillard D, Badje A, Le Carrou J, Ouassa T, *et al.* **A trial of early antiretrovirals and isoniazid preventive therapy in Africa.** *N Engl J Med* 2015; **373**:808–822.
- Lundgren JD, Babiker AG, Gordin F, Emery S, Grund B, Sharma S, *et al.* **Initiation of antiretroviral therapy in early asymptomatic HIV infection.** *N Engl J Med* 2015; **373**:795–807.
- Cohen MS, Chen YQ, McCauley M, Gamble T, Hosseinipour MC, Kumarasamy N, *et al.* **Antiretroviral therapy for the prevention of HIV-1 transmission.** *N Engl J Med* 2016; **375**:830–839.
- World Health Organisation. *Consolidated guidelines on HIV testing services. 5Cs: consent, confidentiality, counselling, correct results and connection.* Geneva: World Health Organisation; 2015. Available at: [http://apps.who.int/iris/bitstream/10665/179870/1/9789241508926\\_eng.pdf?ua=1](http://apps.who.int/iris/bitstream/10665/179870/1/9789241508926_eng.pdf?ua=1). [Accessed 10/04/2018].
- UNAIDS. *90-90-90. An ambitious treatment target to help end the AIDS epidemic.* UNAIDS; 2014. Available at: [http://www.unaids.org/sites/default/files/media\\_asset/90-90-90\\_en.pdf](http://www.unaids.org/sites/default/files/media_asset/90-90-90_en.pdf). [Accessed 11/03/2016].
- Granich R, Crowley S, Vitoria M, Smyth C, Kahn JG, Bennett R, *et al.* **Highly active antiretroviral treatment as prevention of HIV transmission: review of scientific evidence and update.** *Curr Opin HIV AIDS* 2010; **5**:298–304.
- Granich RM, Gilks CF, Dye C, De Cock KM, Williams BG. **Universal voluntary HIV testing with immediate antiretroviral therapy as a strategy for elimination of HIV transmission: a mathematical model.** *Lancet* 2009; **373**:48–57.
- Hogben M, Liddon N. **Disinhibition and risk compensation: scope, definitions, and perspective.** *Sex Transm Dis* 2008; **35**:1009–1010.
- Crepaz N, Hart TA, Marks G. **Highly active antiretroviral therapy and sexual risk behavior: a meta-analytic review.** *JAMA* 2004; **292**:224–236.
- McGrath N, Grapsa E. **Does antiretroviral therapy change partnership dynamics and HIV risk behaviours among HIV-infected adults.** *AIDS* 2017; **31**:1451–1460.
- Venkatesh KK, de Bruyn G, Lurie MN, Mohapi L, Pronyk P, Moshabela M, *et al.* **Decreased sexual risk behavior in the era of HAART among HIV-infected urban and rural South Africans attending primary care clinics.** *AIDS* 2010; **24**:2687–2696.
- Jean K, Gabillard D, Moh R, Danel C, Desgrees-du-Lou A, N'Takpe JB, *et al.* **Decrease in sexual risk behaviours after early initiation of antiretroviral therapy: a 24-month prospective study in Cote d'Ivoire.** *J Int AIDS Soc* 2014; **17**:18977.
- Jean K, Gabillard D, Moh R, Danel C, Fassassi R, Desgrees-du-Lou A, *et al.* **Effect of early antiretroviral therapy on sexual behaviors and HIV-1 transmission risk among adults with diverse heterosexual partnership statuses in Cote d'Ivoire.** *J Infect Dis* 2014; **209**:431–440.
- Mujugira A, Celum C, Ngunjiri K, Thomas KK, Katabira E, Baeten JM. **Antiretroviral therapy initiation is not associated with risky sexual behavior among heterosexual human immunodeficiency virus-infected persons in serodiscordant partnerships.** *Sex Transm Dis* 2017; **44**:57–61.
- McGrath N, Eaton JW, Barnighausen TW, Tanser F, Newell ML. **Sexual behaviour in a rural high HIV prevalence South African community: time trends in the antiretroviral treatment era.** *AIDS* 2013; **27**:2461–2470.
- Iwuji CC, Orne-Gliemann J, Tanser F, Boyer S, Lessells RJ, Lert F, *et al.* **Evaluation of the impact of immediate versus WHO recommendations-guided antiretroviral therapy initiation on HIV incidence: the ANRS 12249 TasP (treatment as prevention) trial in Hlabisa sub-district, KwaZulu-Natal, South Africa: study protocol for a cluster randomised controlled trial.** *Trials* 2013; **14**:230.
- Orne-Gliemann J, Larmarange J, Boyer S, Iwuji C, McGrath N, Barnighausen T, *et al.* **Addressing social issues in a universal HIV test and treat intervention trial (ANRS 12249 TasP) in South Africa: methods for appraisal.** *BMC Public Health* 2015; **15**:209.
- Iwuji CC, Orne-Gliemann J, Larmarange J, Okesola N, Tanser F, Thiebaut R, *et al.* **Uptake of home-based HIV testing, linkage to care, and community attitudes about ART in rural KwaZulu-Natal, South Africa: descriptive results from the first phase of the ANRS 12249 TasP Cluster-Randomised Trial.** *PLoS Med* 2016; **13**:e1002107.
- Iwuji CC, Orne-Gliemann J, Larmarange J, Balestre E, Thiebaut R, Tanser F, *et al.* **Universal test and treat and the HIV epidemic in rural South Africa: a phase 4, open-label, community cluster randomised trial.** *Lancet HIV* 2018; **5**:e116–e125.
- UNAIDS Reference Group on Estimates Modelling, Projections: Working Group on Measuring Concurrent Sexual Partnerships. **HIV: consensus indicators are needed for concurrency.** *Lancet* 2010; **375**:621–622.
- Holt D, Smith TMF. **Post stratification.** *J R Stat Soc* 1979; **142**:33–46.
- Josse J, Husson F. **missMDA: a package for handling missing values in multivariate data analysis.** *J Stat Soft* 2016; **70**:1–31.
- Canty A, Ripley B. *Boot: bootstrap R (S-Plus) functions. R package version 13-19.* Vienna, Austria: R Foundation; 2017.
- Pepe MS, Anderson GL. **A cautionary note on inference for marginal regression models with longitudinal data and general correlated response data.** *Commun Stat Simul Comput* 1994; **23**:939–951.

25. Højsgaard S, Halekoh U, Yan J. **The R package geeppack for generalized estimating equations.** *J Stat Soft* 2006; **15**: 1–11.
26. Barton K. *Package “MuMIn”*.2016, Available at: <https://cran.r-project.org/web/packages/MuMIn/MuMIn.pdf>. [Accessed 10/04/2018].
27. R Core Team. *A language and environment for statistical computing*.2017, Available at: <https://www.R-project.org>. [Accessed 10/04/2018].
28. Larmarange J, Iwuji C, Orne Gliemann J, McGrath N, Plazy M, Baisley K, *et al.* **Measuring the impact of test & treat on the HIV cascade: the challenge of mobility.** *Conference on Retroviruses and Opportunistic Infections (CROI)*; 2016; Boston (USA), 22–25 February 2016.
29. Bechange S, Bunnell R, Awor A, Moore D, King R, Mermin J, *et al.* **Two-year follow-up of sexual behavior among HIV-uninfected household members of adults taking antiretroviral therapy in Uganda: no evidence of disinhibition.** *AIDS Behav* 2010; **14**:816–823.
30. Legemate EM, Hontelez JAC, Looman CWN, de Vlas SJ. **Behavioural disinhibition in the general population during the antiretroviral therapy roll-out in sub-Saharan Africa: systematic review and meta-analysis.** *Trop Med Int Health* 2017; **22**:797–806.
31. Delva W, Helleringer S. **Beyond risk compensation: clusters of antiretroviral treatment (ART) users in sexual networks can modify the impact of ART on HIV incidence.** *PLoS One* 2016; **11**:e0163159.