



HAL
open science

The effect of ram pressure on the molecular gas of galaxies: three case studies in the Virgo cluster: three case studies in the Virgo cluster

Bumhyun Lee, Aeree Chung, Stephanie Tonnesen, Jeffrey Kenney, O. Ivy Wong, B. Vollmer, Glen Petitpas, Hugh Crowl, Jacqueline van Gorkom

► To cite this version:

Bumhyun Lee, Aeree Chung, Stephanie Tonnesen, Jeffrey Kenney, O. Ivy Wong, et al.. The effect of ram pressure on the molecular gas of galaxies: three case studies in the Virgo cluster: three case studies in the Virgo cluster. *Monthly Notices of the Royal Astronomical Society*, 2017, 466 (2), pp.1382-1398. 10.1093/mnras/stw3162 . hal-03161862

HAL Id: hal-03161862

<https://hal.science/hal-03161862>

Submitted on 17 Mar 2021

HAL is a multi-disciplinary open access archive for the deposit and dissemination of scientific research documents, whether they are published or not. The documents may come from teaching and research institutions in France or abroad, or from public or private research centers.

L'archive ouverte pluridisciplinaire **HAL**, est destinée au dépôt et à la diffusion de documents scientifiques de niveau recherche, publiés ou non, émanant des établissements d'enseignement et de recherche français ou étrangers, des laboratoires publics ou privés.

The effect of ram pressure on the molecular gas of galaxies: three case studies in the Virgo cluster

Bumhyun Lee,¹★ Aeree Chung,^{1,2,3}★ Stephanie Tonnesen,⁴ Jeffrey D. P. Kenney,⁵ O. Ivy Wong,⁶ B. Vollmer,⁷ Glen R. Petitpas,⁸ Hugh H. Crowl⁹ and Jacqueline van Gorkom¹⁰

¹Department of Astronomy, Yonsei University, 50 Yonsei-ro, Seodaemun-gu, Seoul 03722, Korea

²Yonsei University Observatory, Yonsei University, 50 Yonsei-ro, Seodaemun-gu, Seoul 03722, Korea

³Joint ALMA Observatory, Alonso de Córdova 3107 Vitacura, Santiago, Chile

⁴Carnegie Observatories, 813 Santa Barbara St, Pasadena, CA 91101, USA

⁵Yale University Astronomy Department, PO Box 208101, New Haven, CT 06520-8101, USA

⁶International Centre for Radio Astronomy Research, The University of Western Australia M468, 35 Stirling Highway, Crawley, WA 6009, Australia

⁷CDS, Observatoire astronomique de Strasbourg, Université de Strasbourg, CNRS, UMR 7550, 11 rue de l'Université, F-67000 Strasbourg, France

⁸Harvard-Smithsonian Center for Astrophysics, 60 Garden Street, Cambridge, MA 02138, USA

⁹Division of Science and Mathematics, Bennington College, 1 College Drive, Bennington, VT 05201, USA

¹⁰Department of Astronomy, Columbia University, Mail Code 5246, 550 W 120th St, New York, NY 10027, USA

Accepted 2016 December 2. Received 2016 December 2; in original form 2016 July 16

ABSTRACT

We present 12CO (2–1) data of three Virgo spirals – NGC 4330, NGC 4402 and NGC 4522 obtained using the Submillimeter Array. These three galaxies show clear evidence of ram pressure stripping due to the cluster medium as found in previous H I imaging studies. Using the high-resolution CO data, we investigate how the properties of the inner molecular gas disc change while a galaxy is undergoing H I stripping in the cluster. At given sensitivity limits, we do not find any clear signs of molecular gas stripping. However, both its morphology and kinematics appear to be quite disturbed as those of H I. Morphological peculiarities present in the molecular and atomic gas are closely related with each other, suggesting that the molecular gas can be also affected by strong intracluster medium (ICM) pressure even if it is not stripped. CO is found to be modestly enhanced along the upstream sides in these galaxies, which may change the local star formation activity in the disc. Indeed, the distribution of H α emission, a tracer of recent star formation, well coincides with that of the molecular gas, revealing enhancements near the local CO peak or along the CO compression. FUV and H α share some properties in common, but FUV is always more extended than CO/H α in the three galaxies, implying that the star-forming disc is rapidly shrinking as the molecular gas properties have changed. We discuss how ICM pressure affects dense molecular gas and hence star formation properties while diffuse atomic gas is being removed from a galaxy.

Key words: ISM: molecules – galaxies: clusters: intracluster medium – galaxies: evolution – galaxies: ISM – galaxies: spiral.

1 INTRODUCTION

Since Gunn & Gott (1972) suggested that a galaxy might lose its interstellar medium (ISM) by interacting with the intracluster medium (ICM) in the cluster environment, much evidence for ram pressure stripping has been found to date. In early days, Davies & Lewis (1973) have shown that Virgo galaxies are generally more

deficient in H I compared to field galaxies based on their single-dish observations. In addition, Giovanelli & Haynes (1985) have found that the H I content is well correlated with the location of galaxies in a sense that H I is more deficient at smaller distances from the cluster centre. Then the H I synthesis imaging studies such as Warmels (1988a,b) and Cayatte et al. (1990) have shown that H I-deficient galaxies near the cluster centre have small H I-to-optical extents, truncated within the stellar disc in many cases. In a more recent high-resolution H I imaging study of ~ 50 selected Virgo galaxies by Chung et al. (2009), a number of galaxies have been

* E-mail: bhlee301@gmail.com (BL); achung@yonsei.ac.kr (AC)

found with various scales of extraplanar H I gas or long H I tails, indicating that ram pressure stripping is indeed acting in the cluster environment.

As a galaxy loses its ISM, the star formation rate is expected to be suppressed, which agrees well with the observations. As a good example, Koopmann & Kenney (2004a) find that the massive star formation rate of Virgo spirals is lower than their field counterpart by a factor of 2.5 on average. Koopmann & Kenney (2004b) also show that many Virgo spirals have a smaller H α extent compared to their stellar disc, reflecting that the process truncating H I discs may also be acting on the star-forming disc and H α emission.

On the other hand, molecular gas is unlikely to be as easily stripped as atomic hydrogen, since it is more tightly bound to the galactic centre and the density is higher. In fact, most previous studies find that the molecular gas mass of the cluster population is not significantly different from that of field galaxies (Stark et al. 1986; Kenney & Young 1989). In addition, more recent studies are finding clumpy dust features in the upstream side of H I gas stripped galaxies, which are likely to be surviving dense clouds that are unveiled after diffuse atomic gas is removed (Crowl et al. 2005; Abramson & Kenney 2014; Kenney, Abramson & Bravo-Alfaro 2015).

On the other hand, however, the opposite results have also been reported. Rengarajan & Iyengar (1992) find that H₂ mass normalized by the dynamical mass of galaxies tends to get larger with increasing clustercentric distance, which supports that the molecular gas can be also deficient in the cluster environment. More recently, Boselli et al. (2014) show that H I-deficient galaxies in the cluster environment tend to be also modestly deficient in molecular gas.

However, the molecular gas fraction to the optical luminosity of spiral galaxies measured using 12CO (1–0) ranges quite widely for all environments (Chung 2012). This implies that the molecular gas fraction alone may not be a good tracer of molecular gas deficiency. Due to the scatter in this relation and opposing observational results, it is still arguable whether molecular gas can be affected by the ICM pressure in a similar way to H I gas, and it is then still puzzling why star formation appears to be quenched in H I stripped galaxies if molecular gas, which is the more direct ingredient for star formation, is not deficient.

No clear evidence for molecular gas stripping yet low star formation activities in cluster galaxies may imply distinct molecular gas properties in high-density environments as supported by some previous observations. For example, Kenney et al. (1990) have found a highly asymmetric CO morphology in an H I deficient Virgo cluster galaxy. Vollmer et al. (2008) also have found very peculiar CO distributions in some of Virgo spirals undergoing active H I stripping. These studies indicate that the molecular gas can be potentially disturbed by strong ICM pressure whether it is stripped or not.

Particularly along the side experiencing ICM pressure, it has been suggested that interstellar gas including the molecular phase can be pushed up against the centre of a galaxy. This leads to ISM compression and increasing H₂ formation; hence, it locally triggers intensive star formation (Fujita & Nagashima 1999; Kronberger et al. 2008; Merluzzi et al. 2013; Henderson & Bekki 2016). Indeed, ISM compression with high molecular fraction in the upstream side is seen in a number of galaxies experiencing ICM pressure (Vollmer et al. 2012b; Nehlig, Vollmer & Braine 2016), which are often accompanied by an enhancement of star formation. Molecular gas enhancement among the Virgo cluster members has been also recently reported by Mok et al. (2016). These observations clearly show that molecular gas properties and hence star formation activity within a stellar disc can be affected by ram pressure.

Therefore, in order to get a deeper understanding on how galaxies become passive after H I stripping, not only the possibility of stripping but also the detailed properties of molecular gas inside a galaxy under strong ICM pressure need to be probed. Hence, using the Submillimeter Array (SMA),¹ we have taken high-resolution 12CO (2–1) imaging data of a subsample of Virgo galaxies that have lost atomic gas significantly by ICM pressure. Some preliminary results are published in Lee & Chung (2015), and in this work, we present more complete analysis on both morphology and kinematics of three Virgo galaxies based on the SMA data.

This paper is organized as follows. We introduce the sample in Section 2. Details of observations and data reduction procedure are provided in Section 3. In Section 4, we present the SMA data, describing the CO morphology and kinematics. In Section 5, we compare the CO and other wavelength data to discuss how the molecular gas in these galaxies has been affected by the ICM pressure. In Section 6, we summarize the results and conclude.

A distance of 16 Mpc (1 arcsec \sim 78 pc) to Virgo cluster is adopted in this work (Yasuda, Fukugita & Okamura 1997).

2 SAMPLE GALAXIES

The sample for the SMA observations has been selected from the VLA (Very Large Array)² Imaging study of Virgo galaxies in Atomic gas (VIVA) by Chung et al. (2009). The VIVA is a high-resolution H I imaging study of 53 late-type galaxies that are located throughout the Virgo cluster from a high-density core region to low-density outskirts. Among the VIVA sample, we have selected three galaxies with clear evidence for active H I stripping, NGC 4330, NGC 4402 and NGC 4522 (Fig. 1). Although these galaxies are thought to have lost a similar fraction of H I gas, being deficient by a factor of 6 \sim 7 compared to their field counterparts (Table 1), they show distinct properties in their H I morphology.

NGC 4330 is truncated in H I within one side of the stellar disc, while it reveals a long H I tail on the opposite side as if the H I disc is pushed to the tail side (Chung et al. 2009; Abramson et al. 2011). The location and the H I morphology suggest that this galaxy is a recent arrival, entering the high-density region for the first time (Chung et al. 2007), and this galaxy will reach the peak pressure after 100 Myr, based on the simulation of Vollmer (2009). Meanwhile, NGC 4402 has been experiencing strong ICM pressure in the last \sim 150–250 Myr (Abramson & Kenney 2014), currently crossing the core region (Crowl et al. 2005). Lastly, NGC 4522 is farther away from the cluster centre compared to NGC 4402 in projection, but its H I morphology is also suggestive of active ram pressure stripping as NGC 4402. Vollmer et al. (2006) show in their simulations that it has been at least 50 Myr, since this galaxy experienced quite strong ICM pressure. This is likely due to turbulence in the ICM that could have been caused by merging of M49 group to the main cluster (Kenney, van Gorkom & Vollmer 2004).

In spite of subtle differences in their H I morphologies, the mean star formation quenching time-scale, i.e. how long ago a galaxy stopped forming stars, is not significantly different among our sample by ranging from 100 to 300 Myr (Crowl & Kenney 2008;

¹ The SMA is a joint project between the Smithsonian Astrophysical Observatory and the Academia Sinica Institute of Astronomy and Astrophysics and is funded by the Smithsonian Institution and the Academia Sinica.

² The National Radio Astronomy Observatory is a facility of the National Science Foundation operated under cooperative agreement by Associated Universities, Inc.

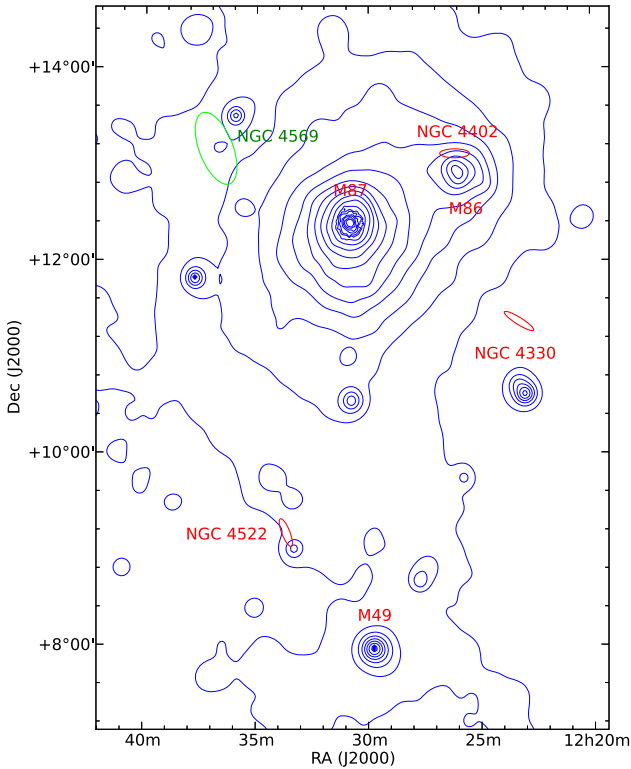


Figure 1. The locations of our sample are shown on the *ROSAT* X-ray map (blue contours; Böhringer et al. 1994). Red ellipses represent the position angle and $D_{25} \times 5$ of the sample in the *B* band. NGC 4569 that we have not observed using the SMA but is included in our discussion as a good representative of a galaxy at post-peak pressure is shown in green. The sample galaxies, located at 0.4–1 Mpc from M87, adopting a Virgo distance of 16 Mpc (Yasuda, Fukugita & Okamura 1997), make a nice sequence of ram pressure stripping from early stage, close to peak pressure and post-peak pressure in their orbit.

Abramson et al. 2011). Therefore, the detailed CO data of these three cases should enable us to probe how molecular gas properties and thus star formation activities are modified by strong ICM pressure. In addition, by comparing our data with the CO data of NGC 4569, which is known to have crossed the cluster a while ago (Fig. 1, and has a star formation quenching time $\gg \sim 300$ Myr; Vollmer et al. 2004; Crowl & Kenney 2008), we will probe how molecular gas properties evolve with time, during the first infall to the cluster and under strong ICM pressure, then after core crossing. For NGC 4569, which is not included in our SMA sample, we make use of the CO data from the HERACLES survey (Leroy et al. 2009). The general properties of our SMA sample are summarized in Table 1.

3 OBSERVATIONS AND DATA REDUCTION

The SMA is a radio interferometer with eight antenna elements, 6 m each in diameter. It is located in Mauna Kea at the elevation of 4080 m above the sea level.

Our SMA observations were done in March 2010 and March 2011 in the subcompact configuration. Among eight antennas in total, only seven antennas were available for our observations in both years. The total bandwidth of 4 GHz is composed of 48 chunks that are overlapped by ~ 20 MHz. Each chunk was configured with 128 channels, each of which is 0.8125 MHz width or 1.1 km s^{-1} at the rest frequency of ^{12}CO (2–1), 230.538 GHz. ^{12}CO for each target was placed on the upper sideband so that ^{13}CO (2–1) ($\nu_{\text{rest}} = 220.398$ GHz) and C18O (2–1) ($\nu_{\text{rest}} = 219.560$ GHz) frequencies were covered simultaneously. The lower sideband where ^{13}CO was included was separated with the upper sideband by 10 GHz.

The primary beam of the SMA is ~ 54 arcsec at ^{12}CO (2–1) rest frequency. Aiming to cover at least half the stellar disc, we mosaicked 3–5 points depending on the optical size of individual galaxies as shown in Fig. 2. In the case of NGC 4522, one additional field in the south-west was included to cover the extraplanar $\text{H}\alpha$ and H I gas. The total integration time ranges from ~ 2 to ~ 5.5 h per field depending on the weather conditions, yet we aimed to achieve a uniform sensitivity for each galaxy. Details of the SMA observations are summarized in Table 2.

Table 1. General information of sample galaxies^a.

Galaxy	NGC 4330	NGC 4402	NGC 4522
Right ascension (J2000)	12 ^h 23 ^m 17 ^s .0	12 ^h 26 ^m 07 ^s .6	12 ^h 33 ^m 39 ^s .7
Declination (J2000)	+11°22′03″.5	+13°06′47″.4	+09°10′30″.2
Morphological type	Sc	Sb	Sbc
Inclination (°)	79	82	79
Position angle (°)	60	89	35
V_{rad} (km s ⁻¹) ^b	1565	232	2328
D_{25} (arcmin)	2.29	3.55	3.47
Total apparent <i>B</i> -band magnitude	12.02	12.05	11.86
Total <i>K</i> -band luminosity ($10^9 L_{\odot, K}$) ^c	6.58	21.30	5.64
$M_{\text{H I}}$ ($10^8 M_{\odot}$) ^d	4.45	3.70	3.40
$\text{def}_{\text{H I}}$ ^{d,e}	0.80	0.74	0.86
d_{M87} (°) ^d	2.1	1.4	3.3

^aGeneral information of the sample galaxies from Paturel et al. (2003, HyperLeda, <http://leda.univ-lyon1.fr>).

^bcf. the Virgo mean $\sim 1100 \text{ km s}^{-1}$ (Mei et al. 2007).

^cSkrutskie et al. (2006), cf. Milky Way: $8.24 \times 10^{10} L_{\odot, K}$ (Drimmel & Spergel 2001), M31: $1.29 \times 10^{11} L_{\odot, K}$ (Barmby et al. 2006).

^dthe VIVA study (Chung et al. 2009).

^e $\text{def}_{\text{H I}} = \langle \log \overline{\Sigma}_{\text{H I, all}} \rangle - \log \overline{\Sigma}_{\text{H I, obs}}$, where $\langle \log \overline{\Sigma}_{\text{H I, all}} \rangle$ is the mean H I surface density of field galaxies (Haynes & Giovanelli 1984), and $\log \overline{\Sigma}_{\text{H I, obs}}$ is the mean H I surface density of an observed galaxy (Chung et al. 2009). In this work, morphology independent deficiency has been adopted as Chung et al. (2009).

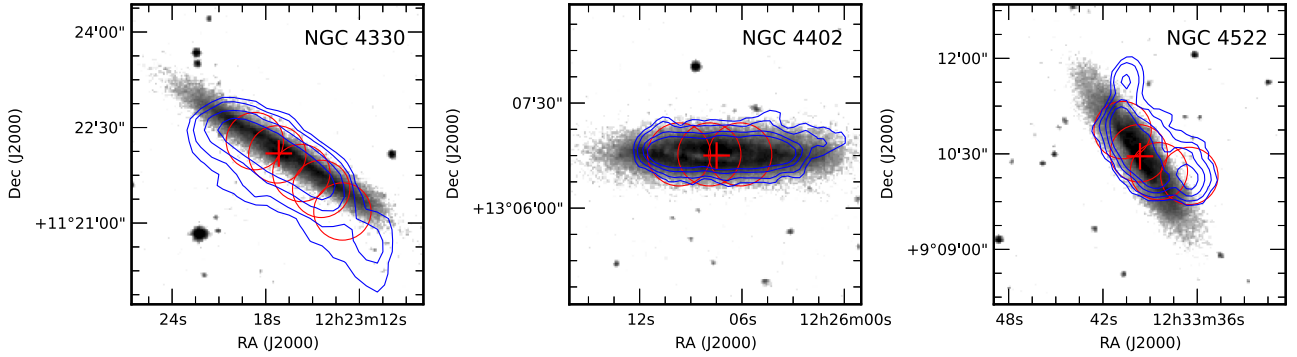


Figure 2. The H I distribution of NGC 4330, NGC 4402 and NGC 4522 (from left to right) is shown in blue contours overlaid on the Digitized Sky Survey 2 (DSS2, <https://archive.stsci.edu/dss/index.html>) red image. The red cross indicates the stellar disc centre of each galaxy estimated from *Spitzer* 3.6 μm data (Salo et al. 2015), and the thin red circles represent the SMA observation points, each of which corresponds to the size of the primary beam at 230 GHz (≈ 54 arcsec).

Table 2. Observation parameters.

Galaxy	NGC 4330	NGC 4402	NGC 4522
Observation date	2011 Mar 02, 03	2010 Mar 20, 21, 27	2011 Feb 28, Mar 01
Synthesized beam (arcsec)	6.35×4.47	7.21×3.89	6.62×3.92
Position angle ($^\circ$)	-28.4	73.4	-26.4
Spectral resolution (km s^{-1})	5.0	5.0	5.0
Integration time per point (h)	2.1	5.5	2.6
rms per channel (mJy beam^{-1})			
12CO $J = 2 - 1$	35.2	16.3	32.7
13CO $J = 2 - 1^a$	29.7	13.0	29.9
Bandpass calibrators	0854+201, 1751+096	0854+201	1751+096, 3c279
Flux calibrators	titan, vesta	mars, titan	mwc349a, vesta
Gain calibrators	3c273, 3c279	3c273, 3c279	3c273, 3c279

Note. ^a 13CO (2–1) emission is detected only in NGC 4402.

Flux, gain and bandpass calibrations were done using the MIR software (Qi 2012). The calibrators used for our observations are listed in Table 2. After the calibration, the data had been analysed using the MIRIAD. The continuum has been subtracted using UVLIN by applying a linear fit to the uv-data in line-free channels selected based on the H I emission of each galaxy. The imaging and mosaicking were done using INVERT. In order to maximize the sensitivity while keeping optimal resolution, the robust was set to 0.5 (for NGC 4402) or 1 (for NGC 4330 and NGC 4522). The channel width in the final cube was regridded to 5 km s^{-1} , which is comparable to H I data (VIVA; Chung et al. 2009). We have detected 12CO (2–1) in all three galaxies, while 13CO (2–1) has been detected only in NGC 4402, which will be presented in a separate paper (Lee et al. in preparation).

4 RESULTS

In this section, we present the results of our SMA observations. The 12CO (2–1) flux and its uncertainty are measured in Jy km s^{-1} as follows:

$$S_{\text{CO}} = \sum F_{\text{CO}} \times \Delta V \pm \left(\sum \sigma^2 \right)^{1/2} \times \Delta V, \quad (1)$$

where F_{CO} is the total flux of CO emission in each channel, ΔV is the channel separation of the final cube (5 km s^{-1}) and σ is the rms of each channel outside CO emission. Continuous features above 2σ – 3σ are considered as real signal in individual channels. CO linewidths are calculated using the velocities, where the flux density corresponds to 20 per cent and 50 per cent of the peaks in

the receding and the approaching side, adopting the definition of Rhee & van Albada (1996):

$$W_{20} = V_{\text{high}}^{20 \text{ per cent}} - V_{\text{low}}^{20 \text{ per cent}}, \quad (2)$$

$$W_{50} = V_{\text{high}}^{50 \text{ per cent}} - V_{\text{low}}^{50 \text{ per cent}}. \quad (3)$$

The CO velocity is determined following Verheijen (1997):

$$V_{\text{sys}} = 0.25 \left(V_{\text{low}}^{20 \text{ per cent}} + V_{\text{low}}^{50 \text{ per cent}} + V_{\text{high}}^{50 \text{ per cent}} + V_{\text{high}}^{20 \text{ per cent}} \right). \quad (4)$$

Following the recipe from Solomon et al. (1997), 12CO (2–1) line luminosity is measured as follows:

$$L'_{\text{CO}(2-1)} = 3.25 \times 10^7 S_{\text{CO}} \nu_{\text{obs}}^{-2} D_L^2 (1+z)^{-3}, \quad (5)$$

in $\text{K km s}^{-1} \text{pc}^2$, where S_{CO} is an integrated total 12CO (2–1) flux in Jy km s^{-1} , D_L is the luminosity distance in Mpc, ν_{obs} is the observation frequency in GHz and z is the redshift. Adopting a typical 12CO (2–1)/(1–0) ratio of nearby galaxies ($R_{21} \approx 0.8$; Leroy et al. 2009) and using the conversion relation of normal spirals ($\alpha_{\text{CO}} = 3.2 M_{\odot} \text{pc}^{-2} (\text{K km s}^{-1})^{-1}$; Strong & Mattox 1996), the molecular gas mass can be calculated by

$$M_{\text{H}_2} = \frac{\alpha_{\text{CO}}}{R_{21}} L'_{\text{CO}(2-1)}, \quad (6)$$

where $L'_{\text{CO}(2-1)}$ is the luminosity of 12CO (2–1) transition. The global CO properties of the sample are summarized in Table 3. On the left of Figs 3–5, the CO intensity map, velocity field and

Table 3. SMA CO properties of sample galaxies.

	NGC 4330	NGC 4402	NGC 4522
W_{20} (km s ⁻¹)	208	255	176
W_{50} (km s ⁻¹)	184	226	159
V_{sys} (km s ⁻¹)	1562	246	2326
S_{CO} (Jy km s ⁻¹)	182.22 ± 8.02	1400.76 ± 11.91	139.43 ± 4.77
M_{H_2} (10 ⁸ M _⊙) ^a	1.19 ± 0.05	8.83 ± 0.08	0.88 ± 0.03

Note. ^aThe CO-to-H₂ conversion factor of 3.2 M_⊙ pc⁻² (K km s⁻¹)⁻¹ is adopted from Strong & Mattox (1996).

position–velocity diagram (PVD) with global and radial profiles are presented in (a), (b) and (c) for each galaxy. The overlays with other wavelength data shown on the right-hand side of Figs 3–5 are discussed in Section 5.

4.1 NGC 4330

As seen in Figs 3(a)–(c), the CO morphology of NGC 4330 is highly asymmetric, with the south-west extent in the downstream side being about 75 per cent (40 arcsec versus 53 arcsec) of the north-east but only 68 per cent when the outermost 4 arcsec of the south-west disc, which is bent down to the south (indicated by arrow in Fig. 3a) is excluded (36 arcsec versus 53 arcsec). The central part, within 30 arcsec in diameter (~2 kpc at the distance of Virgo), is also asymmetric due to the strong local peak in the north-east from the stellar disc centre. The distinct extents and surface densities are also clearly seen in radial profiles. In the end of the south-west disc of the downstream side, CO is found to be slightly bent (Fig. 3a). This bending is also found in many other wavelengths such as UV, H α and H I, but all are different in scale and angle from one another as further discussed in Section 5. In the case of CO, this bending part is clumpy, almost identified as an independent blob or clump (see the arrow in Fig. 3c). This CO clump corresponds to 2 per cent of the total in flux (~1.9 × 10⁶ M_⊙, comparable to that of a large molecular cloud). The centre of the clump is off from the mid-plane of the main disc towards the south by ~4 arcsec (~312 pc).

The CO kinematics also shows peculiar structures, especially along the south-west concentration and the end of the tail as shown in Fig. 3(b). The velocity gradient of the south-west is quite steep, while it is more slowly rising on the other side within the small radii from the centre, reaching 72 km s⁻¹ on the approaching side but only 43 km s⁻¹ on the receding at 15 arcsec radii. In the south-west clump, the velocity gradient is inverted. The kinematical complexity is also clearly seen in the PVD (Fig. 3c). A distinct component of a steep velocity gradient in the central ~13 arcsec (~1 kpc) is quite noticeable. This may indicate a molecular ring or bar. In addition, the CO peak is off from the stellar disc centre by ~270 pc (Fig. 3a), while the CO kinematic centre is more or less consistent with the stellar disc centre (Fig. 3c).

4.2 NGC 4402

As shown in Fig. 4(a), the CO disc of NGC 4402 is slightly more extended in the west (62 arcsec in the west versus 58 arcsec in the east), but the difference is subtle and not as significant as in H I. What makes this case look highly asymmetric is the north-west quarter of the downstream side (the west side of the disc). In this region, a modest CO bump (indicated by arrow in Fig. 4a) is found as in H I (Fig. 4d). Meanwhile, the southern part of the CO disc looks quite compressed along the enhanced far-ultraviolet

(FUV) emission (Fig. 4e), which will be discussed more in detail in Section 5. The northern part above the major axis is measured to be 91 per cent of that of the south in flux. Although the CO peak agrees well with the stellar disc centre, the inner CO disc also appears to be slightly more stretched towards the west, reflecting the outer CO disc.

The CO kinematics reveals the evidence for non-circular motions as shown in Fig. 4(b). In the inner region, the isovelocity curves are highly skewed and not perfectly parallel with the minor axis. The skewness in velocity must be the result of two distinct disc components in the inner ~15 arcsec (~1 kpc) being projected on the sky as seen in its PVD (Fig. 4c). The velocity gradient in the outer part is quite different in the two sides of the disc along the major axis. In the north-west quarter (in the downstream side), the kinematics of modest CO bump is slightly deviated from the main disc.

It also has a distinct CO component with steep velocity gradient in the inner ~15 arcsec. This likely indicates a nuclear bar or ring, although we favour a nuclear bar as this would also explain the skewed isovelocity contours. In NGC 4402, Sofue et al. (2003a,b) also find a nuclear molecular disc traced by 12CO (1–0) in the inner ~10 arcsec. We do not find any direct relevance of these nuclear structures with ram pressure stripping.

4.3 NGC 4522

While the overall size of 12CO (2–1) disc in the SMA image is consistent with the extent measured by a single dish for NGC 4330 (Vollmer et al. 2012a) and NGC 4402 (Lee et al. in preparation), our SMA data of NGC 4522 reveal only the inner ~57 per cent of its single-dish map in size (Vollmer et al. 2008). While Vollmer et al. (2008) have detected CO along the extraplanar H α and H I in both ends of the disc, we did not detect any such features in the south-west in our SMA data due to the lack of sensitivity and/or potentially due to the diffuse nature of gas in the outer molecular disc. The north-east end was not covered in the SMA observations. Therefore, we limit our discussion to only the inner CO disc for this particular case in this section and we cite the IRAM single-dish data when it is needed for comparisons with other wavelength data in Section 5.

As shown in Fig. 5, the CO extent is comparable in both sides (27.4 arcsec in the north-east versus 27.6 arcsec in the south-west). The inner CO disc of NGC 4522 is found to be curved in the opposite way to the outer CO and H I disc, i.e. to the south-east as the inner H α disc. We find two features sticking out from the inner part, one from the end of north-east disc and another almost to the same direction but connected from the centre of the main disc, more to the south. The north-east blob coincides with the morphology of the inner CO disc in the IRAM image (Fig. 6c; Vollmer et al. 2008), which is smoothly connected to the disc farther extended in the north-east, coinciding with a dust loop in this region. While the downward bending coincides with the inner spiral structure including the dust feature (see Fig. A1 in Appendix A).

The CO velocity structure within the main disc generally shows that of a regularly rotating disc as seen in Figs 5(b) and (c). The velocity keeps rising up to ~10 arcsec on both sides, then almost flattens out, and towards the end of the disc, the velocity rises again. The velocity gradient along the north-east branch is overall consistent with that of the main disc on the same side. However, the gradient is smaller and the velocity rises more slowly compared to the other side.

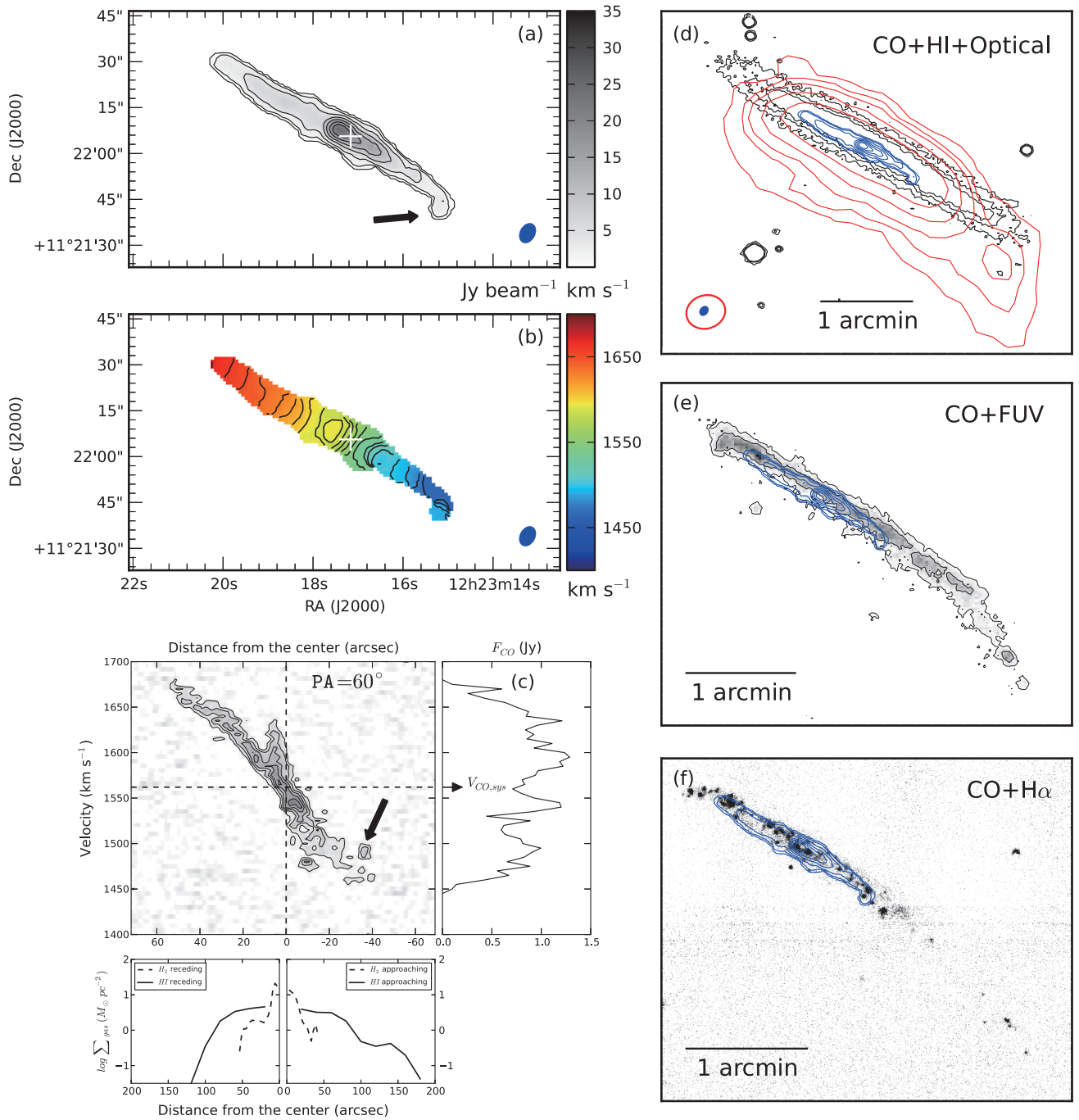


Figure 3. NGC 4330: (a) 12CO (2–1) integrated intensity map (the 0th moment) in grey-scale with contours. Contour levels are 0.3, 1.5, 4, 8, 12, 16, 20 Jy beam⁻¹ km s⁻¹. The synthesized beam size is 6.35 arcsec \times 4.47 arcsec (blue ellipse at the bottom right). The white cross indicates the stellar disc centre. (b) 12CO (2–1) velocity field map (the 1st moment). Velocity contours are drawn in every 10 km s⁻¹ from 1470 to 1670 km s⁻¹. The white cross again indicates the stellar disc centre. (c) Upper left: a position–velocity cut through the major axis integrated along the minor axis. Contour levels are 0.7, 1.4, 2.1, 2.8, 3.5 Jy beam⁻¹. The CO clump is indicated by black arrow. Right: the global profile of 12CO (2–1). The CO velocity (1562 km s⁻¹) is indicated with an arrow. Bottom: the gas surface densities (H₂ and H_I) along the approaching side and the receding side on the right and the left, respectively. (d) An overlay of 12CO (2–1) (blue contours) on H_I (red contours) and DSS2 red (black contours). Synthesized beam of the VLA and the SMA are shown in red and blue at the bottom left. The entire CO disc is located inside the optical disc. Unlike the stellar disc, however, the CO disc is found to be highly asymmetric as the atomic gas disc. (e) 12CO (2–1) (blue contours) is overlaid on FUV emission (black contours and grey-scale). FUV tail is also extended and bent towards the south-west as CO and H_I gas tail. (f) 12CO (2–1) (blue contours) overlaid on the H α emission (grey-scale). The overall bending shape coincides well between H α and CO, while CO is not extended as much as H α .

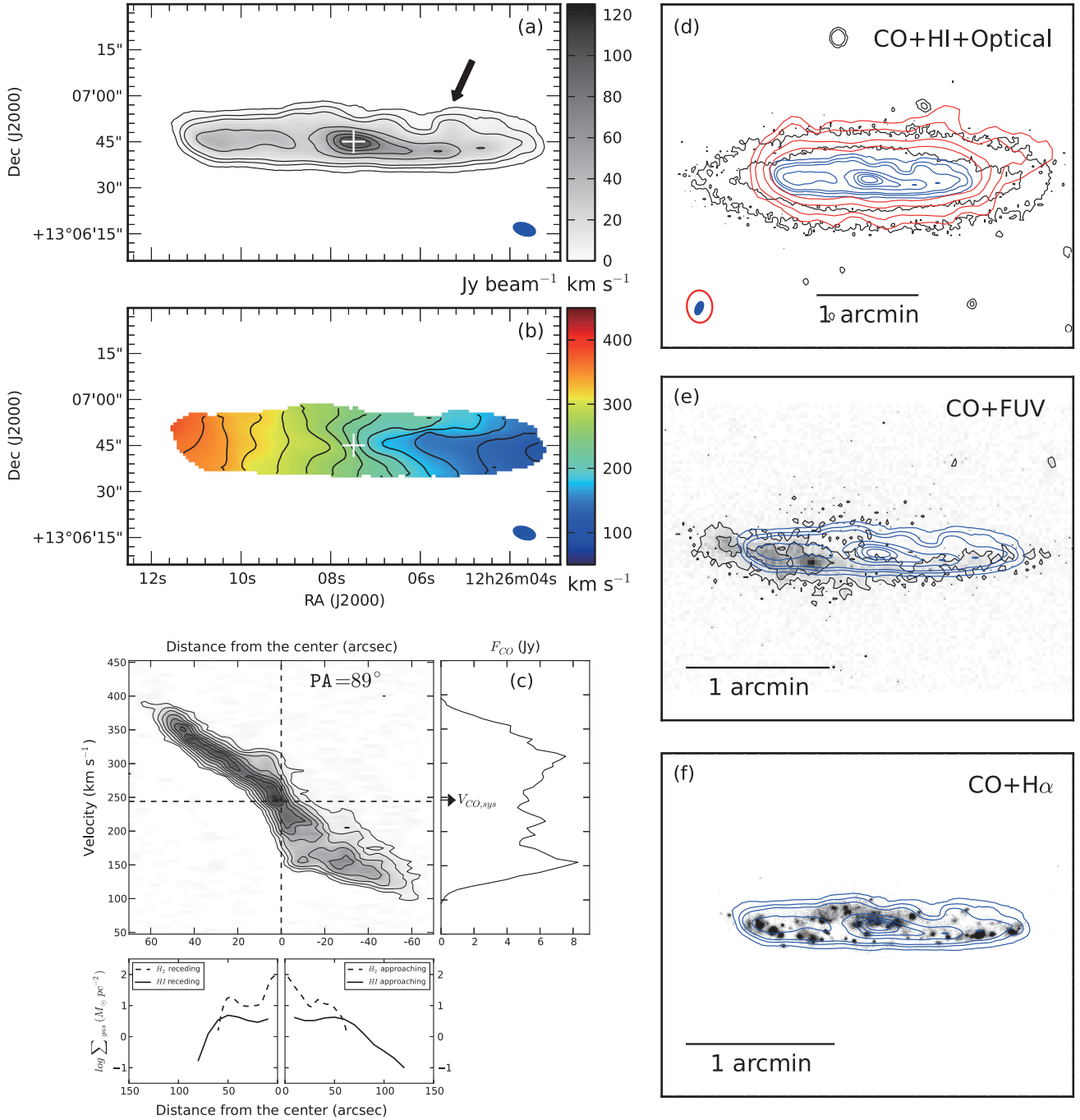


Figure 4. NGC 4402: (a) 12CO (2–1) integrated intensity map (the 0th moment) in grey-scale with contours. Contour levels are 1, 5, 10, 30, 50, 70, 90 $\text{Jy beam}^{-1} \text{ km s}^{-1}$. The synthesized beam size is $7.21 \text{ arcsec} \times 3.89 \text{ arcsec}$ (blue ellipse at the bottom right). The white cross indicates the stellar disc centre. A modest CO bump is indicated by black arrow. (b) 12CO (2–1) velocity field map (the 1st moment). Velocity contours are drawn in every 20 km s^{-1} from 120 to 360 km s^{-1} . The white cross again indicates the stellar disc centre. (c) Upper left: a position–velocity cut through the major axis integrated along the minor axis. Contour levels are 0.5, 1.5, 3, 5, 7, 9, 11 Jy beam^{-1} . Right: the global profile of 12CO (2–1). The CO velocity (246 km s^{-1}) is indicated with an arrow. Bottom: the gas surface densities (H I and H_2) along the approaching side and the receding side on the right and the left, respectively. (d) An overlay of 12CO (2–1) (blue contours) on H I (red contours) and DSS2 red (black contours). 12CO gas is well confined within the optical disc, while H I is pushed off outside from the stellar disc. The optical disc does not look disturbed, while both molecular and atomic gas components reveal asymmetry in a similar sense. (e) 12CO (2–1) (blue contours) is overlaid on FUV emission (black contours and grey-scale). FUV is found to be enhanced along the CO compression. (f) 12CO (2–1) (blue contours) overlaid on the $\text{H}\alpha$ emission (grey-scale). The overall extent and morphology well coincide with each other.

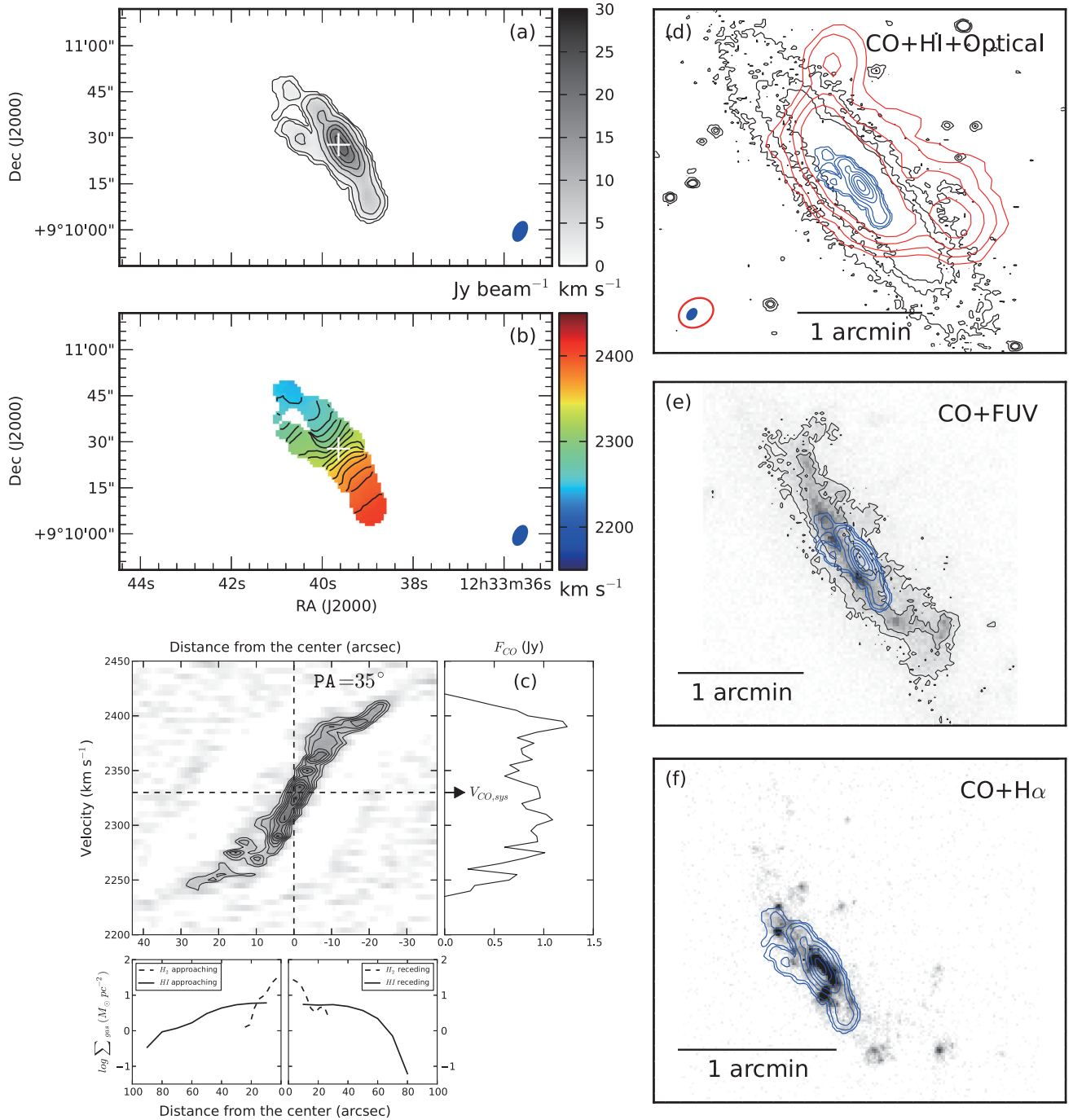


Figure 5. NGC 4522: (a) 12CO (2–1) integrated intensity map (the 0th moment) in grey-scale with contours. Contour levels are 0.3, 1.5, 4, 8, 12, 16, 20 Jy beam^{−1} km s^{−1}. The synthesized beam size is 6.62 arcsec × 3.92 arcsec (blue ellipse at the bottom right). The white cross indicates the stellar disc centre. (b) 12CO (2–1) velocity field map (the 1st moment). Velocity contours are drawn in every 10 km s^{−1} from 2250 to 2400 km s^{−1}. The white cross again indicates the stellar disc centre. (c) Upper left: a position–velocity cut through the major axis integrated along the minor axis. Contour levels are 1.5, 2.0, 2.5, 3.0, 3.5, 4.0, 4.5, 5.0 Jy beam^{−1}. Right: the global profile of 12CO (2–1). The CO velocity (2326 km s^{−1}) is indicated with an arrow. Bottom: the gas surface densities (H₁ and H₂) along the approaching side and the receding side on the left and the right, respectively. (d) An overlay of 12CO (2–1) (blue contours) on H₁ (red contours) and DSS2 red (black contours). Our SMA data reveal only the inner part of the molecular gas disc, missing out the outer part that is detected by the IRAM (Vollmer et al. 2008) due to the lack in pointings and sensitivity. In Sections 4 and 5, we focus more on the morphology and kinematics revealed by the SMA. (e) 12CO (2–1) (blue contours) is overlaid on FUV emission (black contours and grey-scale). Enhanced FUV emission is found along the side on which the ICM wind is presumably acting. (f) 12CO (2–1) (blue contours) overlaid on the H α emission (grey-scale). The inner CO disc is slightly bent towards south-east as the inner H α disc.

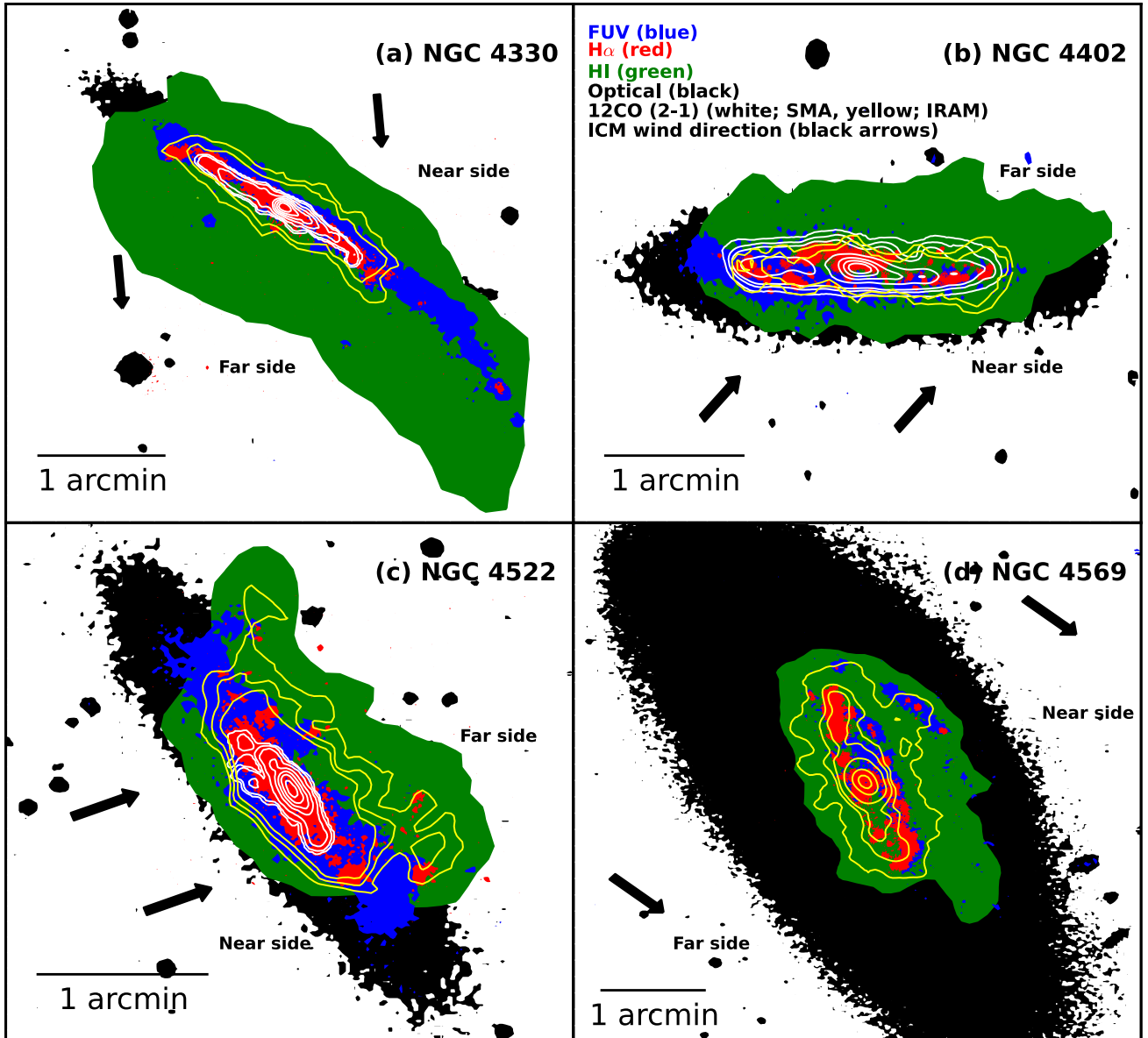


Figure 6. A composite map of FUV (blue; Gil de Paz et al. 2007), H α (NGC 4330 and NGC 4569 from Gavazzi et al. 2003, NGC 4402 from Crowl et al. 2005, NGC 4522 from Koopmann, Kenney & Young 2001), optical (black; DSS2 red), H I (green; Chung et al. 2009) and 12CO (2–1) (white contours from our SMA data) of NGC 4330 (redshifted), NGC 4402 (blueshifted), NGC 4522 (redshifted), and NGC 4569 (blueshifted). The IRAM 12CO (2–1) data are shown in yellow contours. Contour levels are 3.7, 7.5 Jy beam $^{-1}$ km s $^{-1}$ for NGC 4330 (Vollmer et al. 2012a); 5, 20 Jy beam $^{-1}$ km s $^{-1}$ for NGC 4402 (Lee et al. in preparation); 1.7, 3.5, 5.3 Jy beam $^{-1}$ km s $^{-1}$ for NGC 4522 (Vollmer et al. 2008) and 14, 71, 106, 214, 498, 712 Jy beam $^{-1}$ km s $^{-1}$ for NGC 4569 (Leroy et al. 2009). The ICM wind direction deduced from H I morphology is shown with black arrows (Vollmer et al. 2004; Crowl et al. 2005; Abramson et al. 2011; Abramson & Kenney 2014). NGC 4330, NGC 4402 and NGC 4522 are at relatively early to active H I stripping stage due to the ICM, while NGC 4569 is thought to be a post-peak pressure case where some H I gas is falling back on the disc after core crossing.

5 DISCUSSION

5.1 Comparison with other wavelength data

In this section, we compare 12CO (2–1) properties with other wavelength data including H I (Chung et al. 2009), optical (DSS2 red), FUV (Gil de Paz et al. 2007) and H α (NGC 4330 and NGC 4569 from Gavazzi et al. 2003, Abramson et al. 2011; NGC 4402 from Crowl et al. 2005; NGC 4522 from Koopmann, Kenney & Young 2001). CO traces star-forming gas, and H α and FUV emission are good indicators of star formation with time-scales of ~ 20

and 100 Myr, respectively (Kennicutt 1998). We also compare the radial gas surface density between atomic and molecular hydrogen. The H I column density is calculated using

$$N(\text{H I}) = 1.82 \times 10^{18} \times \sum T_{\text{B}} \Delta V \quad (7)$$

in cm $^{-2}$, where $\sum T_{\text{B}} \Delta V$ is the integrated intensity (brightness temperature) in K km s $^{-1}$ (Walter et al. 2008). The H $_2$ surface density is estimated by the following relation:

$$N(\text{H}_2) = \frac{\alpha_{\text{CO}}}{R_{21}} I(\text{CO}) \quad (8)$$

in $M_{\odot} \text{pc}^{-2}$, where $I(\text{CO})$ is $^{12}\text{CO} (2-1)$ integrated intensity, and $\frac{\alpha_{\text{CO}}}{R_{21}}$ is the same as in equation (6). Considering the high inclination of all three galaxies in our sample, we utilize the strip integral method instead of ellipse fitting to derive radial surface density because ellipse fitting is usually inappropriate for edge-on galaxies when the spatial resolution is limited (Warmels 1988a; Rhee & van Albada 1996; Swaters 1999). This method calculates *strip integrals* by integrating H I column density perpendicularly to the major axis, using Lucy's (1974) iterative deconvolution method. Then the strip integrals of approaching and receding sides are deprojected separately to infer the face-on H I surface density (Kregel, van der Kruit & de Blok 2004). The surface density of both atomic and molecular hydrogen is measured in $M_{\odot} \text{pc}^{-2}$. The comparison between atomic and molecular gas radial distributions is found in the bottom on the left-hand column of Figs 3–5. Overlays between CO and other multiwavelength data are presented on the right-hand column of Figs 3–5 and Fig. 6.

For the reference, the IRAM $^{12}\text{CO} (2-1)$ maps are also overlaid in the composite map. The sensitivity of the IRAM cubes is $\sim 10 \text{ mK per } 5 \text{ km s}^{-1}$ channel (the same channel width as ours), which is comparable to the SMA cubes or slightly better in the cases of NGC 4330 and NGC 4522 when the different spatial resolutions are taken into account (~ 11 arcsec versus ~ 5 arcsec for IRAM and SMA, respectively). For NGC 4402, the sensitivity of SMA data is somewhat better than the IRAM data not only because of the sufficient integration time with the SMA but also because of the poor weather condition when the IRAM data were taken. For NGC 4330 and NGC 4402, the IRAM and SMA maps are generally in good agreement in morphology, considering the beam sizes, while we are missing most of the extraplanar molecular of NGC 4522 in the SMA data due to the lack in coverage, sensitivity and/or potentially due to the diffuse nature of molecular gas in the extragalactic space as further discussed in Section 5.1.3.

5.1.1 NGC 4330

Asymmetry is ubiquitous in a range of wavelengths data except in the red optical image (DSS2 red). In Fig. 6(a), we see that the H I is truncated within the stellar disc in the north-east, where $\text{H}\alpha$ and FUV emission reveal an upturn feature (Chung et al. 2009; Abramson et al. 2011). A hint of upturn is also found in the north-east end of the upstream of radio continuum at 6 and 20 cm (Chung et al. 2009; Vollmer et al. 2012a). The single-dish $^{12}\text{CO} (2-1)$ data (Vollmer et al. 2012a) appear to be similar to the radio morphology, also with some hint of upturn, although the extent of the molecular gas is much less than that of H I . In our SMA data, we are missing some outermost features including the tip of the nose in the north-east. Instead, the SMA data clearly reveal very detailed structures of the inner CO disc such as the difference in scaleheight between the north and the south along the major axis (up to $\sim 0.36 \text{ kpc}$, Fig. 3a), which is not as clear as this in the previous single-dish data.

The south-west side, i.e. the downstream of the galaxy where an H I gas tail is present, is bent towards the south. On this side, we also find FUV, $\text{H}\alpha$ and radio continuum tail but the extents and bending angles are all different in various wavelengths (Fig. 6a). The distribution becomes patchy in the outer CO disc as seen in both IRAM single-dish data (Vollmer et al. 2012a) as well as our SMA data. Intriguingly, the CO blob towards the end is located in almost the same galactic radius as one of the distinct $\text{H}\alpha$ blobs and off from the mid-plane in the same direction as the tails of the other wavelengths (Fig. 6a).

As clearly seen, the molecular disc, which extends to only half the stellar disc or less, shows many properties in common with the morphologies in the other wavelengths, reflecting the impact of the ICM pressure. Although there are subtle differences, this suggests that the molecular gas in this galaxy has been also affected in similar ways by the same mechanism that is responsible for the peculiarities found in the other wavelengths. This indicates that ICM pressure can change molecular gas properties well inside the stellar disc.

5.1.2 NGC 4402

The CO emission shows a number of properties in common with the H I gas (Fig. 4d). It is somewhat extended in the west, i.e. the same side where the H I is more extended. Both phases show a bump in the west (indicated by arrow in Fig. 4a), although the scale is distinct because the H I bump is visible in extraplanar gas. H I is truncated within the mid-plane of the stellar disc on both sides, with a sharp cut-off in the east to south along the upstream. Meanwhile, the northern side is more extended with a short tail pointing the north-west in the downstream side. The extent of the molecular gas is not significantly different in the receding and the approaching side, yet its distribution is quite distinct. These differences between the two sides of the CO disc can be also clearly seen in the radial velocity distributions (Fig. 4c). Note that the H I extent appears to be almost twice as long as the CO in the west due to the tail (Figs 4c and d).

The molecular gas disc is thicker in the east (especially third contour level from the outermost contour), reflecting the change in FUV disc thickness across the disc. Although the overall morphology of FUV is quite different from that of CO, both the FUV enhancement and CO compression are present in the east and south-east (Fig. 4e). $\text{H}\alpha$ is tightly correlated with CO in general, with a similar distribution and extent. Also, strong $\text{H}\alpha$ knots are found near or within the local CO peaks (Fig. 4f). As with NGC 4330, the CO morphology is surprisingly similar to that of H I , strongly suggesting that the impact of the ICM has reached the inner interstellar gas disc.

5.1.3 NGC 4522

With given sensitivity limit, we are missing the outer part of the molecular gas disc in the SMA data for this case. As shown by Vollmer et al. (2008), however, the overall morphology of CO is quite similar to that of H I , revealing a significant fraction of molecular gas outside the stellar disc (Fig. 6c). This galaxy must be one of the best examples found to date where extraplanar molecular gas is present. In addition to the sensitivity, the molecular gas could be more diffuse in nature compared to the gas within the disc, which could make the detection more difficult. In fact, we recently have detected some extragalactic $^{13}\text{CO} (1-0)$ in NGC 4522 using the Atacama Large Millimeter Array (ALMA) – cycle 3. The nature of this extraplanar CO gas will be further analysed using $^{12}/^{13}\text{CO}$ ratio, and will be presented in a separate work.

The inner CO disc is slightly bent down to the south as $\text{H}\alpha$ emission. The strongest $\text{H}\alpha$ blobs near the galactic centre are located within the inner CO disc (Fig. 5f), but there is an offset between the inner FUV enhancement and the inner CO disc (Fig. 5e). However, this offset in the inner region might be simply due to the dust extinction effect. On the other hand, the offset between CO (the IRAM data)/ $\text{H}\alpha$ and FUV at large radii is real since there is almost no dust beyond the CO extent. The extent of FUV is larger than the CO and $\text{H}\alpha$ extents within the stellar disc by a factor of 1.5 (Fig. 6c).

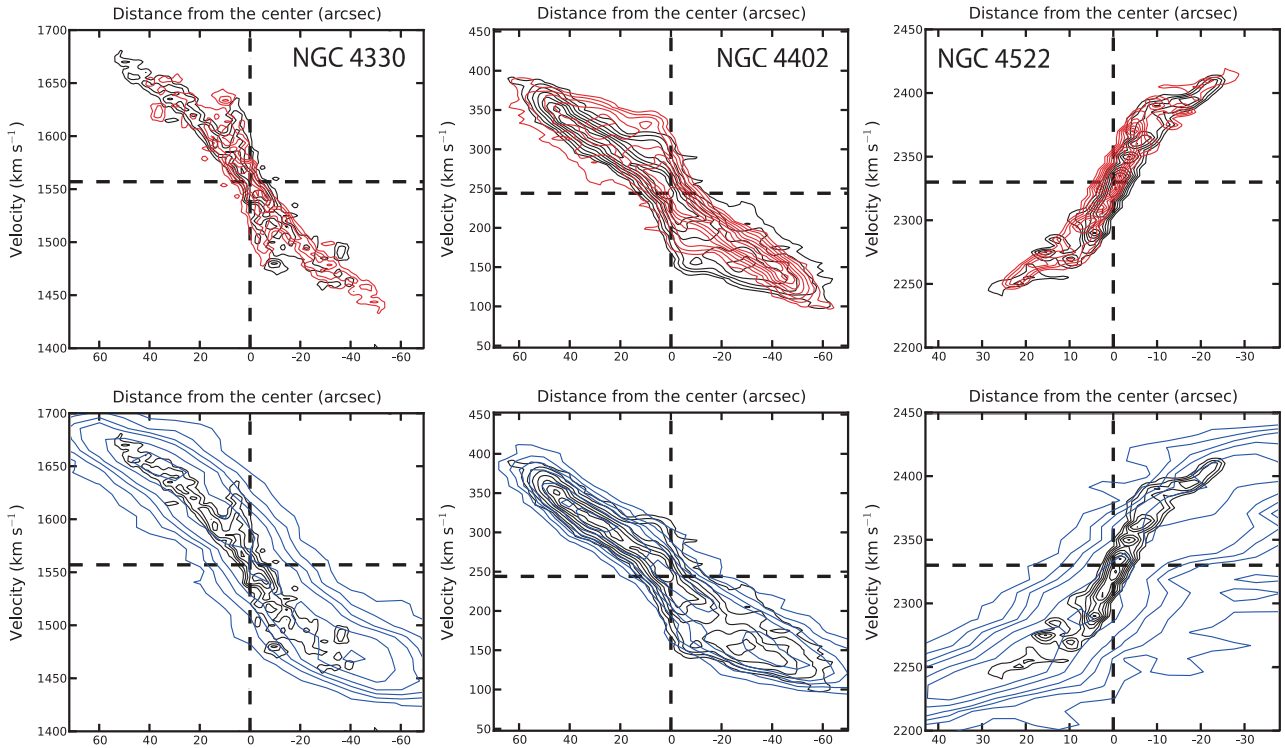


Figure 7. The PVD of each galaxy (black contours) is mirrored (red contours) and overlaid on the original one. These images are folded along the centre of the stellar disc. The kinematics of molecular gas in NGC 4330 and NGC 4402 is quite distinct in the receding and the approaching side. In the bottom row, the comparisons with the H I PVD (blue contours) are presented.

However, the FUV enhancement is roughly consistent with the CO compression in the downstream side as in NGC 4402. This implies that there is significant change in the recent star formation activity and the distribution of molecular gas in a very short time as further discussed in Section 5.3.

5.2 Impact of ram pressure on molecular gas

Most previous studies using single-dish radio telescopes did not find a significant difference in CO luminosities between field galaxies and cluster members (Stark et al. 1986; Kenney & Young 1989). However, some individual galaxies in the cluster environment have been reported to show very distinct CO distributions from those with normal H I content in the field (e.g. Kenney et al. 1990; Sofue et al. 2003c). More recently, Fumagalli et al. (2009) have shown that the molecular gas surface density of galaxies that are H I deficient tends to be low. These suggest that the molecular gas of cluster galaxies can be affected in some ways by ram pressure even if it is not stripped. Indeed, our high-resolution CO data clearly show that the molecular gas has been affected in a similar manner as diffuse gas by ram pressure, and the impact of ICM winds reaches as deeply as a few kpc from the galactic centre, as we further elaborate below.

First, the CO morphology in our sample is all found to be highly asymmetric and disturbed. The inner molecular gas disc of many field galaxies does show some peculiarities to a certain degree, including asymmetry (e.g. BIMA SONG survey; Helfer et al. 2003). However, the overall asymmetry found in the CO morphology of all three galaxies is similar to that of the H I morphology. In Figs 6(a)–(c), the composite maps of cool ISM contents (CO and H I), star formation indicators (FUV and H α) and the old stellar disc

(DSS2 red) of our SMA sample are presented. A rough direction of the ICM wind based on the H I morphology for each case is shown with thick arrows.

Secondly, the detailed CO structure of the sample shows good connections with the H I features that have been pushed and/or stripped by the ICM pressure. In NGC 4330, the CO clump in the south-west end seems to have been pushed down to the south from the mid-plane of the stellar disc, similarly to its H I tail (Fig. 3d). In addition, similar kinematical structures are found in this side, i.e. in the downstream in both H I and CO (Fig. 7). For example, the CO gas reveals an inverted velocity gradient in the end of south-west like H I, which shows an anomalous velocity component in the same side (Abramson et al. 2011). This implies that dense molecular phase gas can be pushed by ram pressure in addition to the diffuse atomic phase gas. Although the morphology is suggestive of gas being pushed away, one problem with this possibility is that both the H I tail and the CO clump in the downstream are found with higher velocities than the main disc, i.e. the opposite direction of the system velocity of cluster centre. This is inconsistent with what is generally expected in the case of the gas pushed by the ICM as found in other Virgo spirals (e.g. NGC 4522; Kenney, van Gorkom & Vollmer 2004). However, this is still feasible if the gas has been losing angular momentum in extraplanar space as suggested by Abramson et al. (2011).

Alternatively, the CO clump might be an example of a dense cloud unveiled after the stripping of surrounding diffuse gas, which hence appears to stand alone, decoupled from the rest of the disc, similar to the ones seen as narrow dusty plumes found in Virgo galaxies such as NGC 4402 and NGC 4522 (Crowl et al. 2005; Abramson & Kenney 2014; Kenney, Abramson & Bravo-Alfaro 2015) or NGC 4921, a Coma spiral (Kenney et al. 2015). If this is an example of those decoupled clouds, it is the first time it has been seen clearly

in CO. However, one aspect that makes this case particularly interesting is its gas kinematics. Rather than being smoothly connected from the inner disc, the velocity gradient at the location of the CO clump turns back. This velocity structure strongly suggests that this clump is the molecular gas that has been pushed off from the main disc.

In NGC 4402, both H I and CO are compressed from the south-east to south along the upstream. Meanwhile in the north-west, a modest CO bump is found to be pointing to the same direction as the H I bump (Fig. 4d). The compressed CO in the upstream side reveals a steeper velocity gradient than the other side. Meanwhile, the CO bump in the north-west downstream side (Fig. 4b) is found to have larger velocities than the main disc (Fig. 4c), i.e. closer to the cluster centre. This is consistent with our expectations if the gas is accelerated by ram pressure due to the ICM.

In NGC 4522, the overall CO morphology from the IRAM data (Vollmer et al. 2008) is very similar to the H I morphology, with the extraplanar gas in the downstream side and compression in the upstream side (Fig. 6c). This strongly suggests that the molecular gas has been influenced by the same mechanism that affects the atomic gas, i.e. ram pressure due to the ICM wind. In the upstream side, the interstellar gas can also get compressed by the ICM pressure, which potentially results in the formation of molecules as inferred by the excess of CO in this side (see also the example of NGC 4654; Chung & Kim 2014).

As shown in Fig. 7, the CO kinematics also suggests that the ICM pressure can disturb the molecular gas, deep inside a galactic potential well. In NGC 4330 and NGC 4402, the CO velocity gradients are quite distinct in the receding and the approaching side, an asymmetry also observed in H I. In the outer part of NGC 4330 and NGC 4402 (the CO clump and the modest CO bump, respectively) where the molecular gas is off from the mid-plane, we also find the velocity gradient deviates from the overall gas flow of the gas disc. The comparisons with the H I PVD is also intriguing (the bottom row of Fig. 7). In the upstream of NGC 4330 and NGC 4402, the velocity gradients of the molecular gas and atomic gas are similar to each other, but they deviate in the downstream. In NGC 4522, the deviation starts at ~ 0.8 kpc from the centre on both sides. This may indicate a delay in stripping of gas in distinct phases, i.e. more diffuse gas dragged prior to relatively dense gas.

Our results clearly show that the molecular gas in galaxies experiencing active H I stripping can become highly asymmetric, as demonstrated by simulations (e.g. Hidaka & Sofue 2002; Vollmer et al. 2008, 2012a). In addition, our high-resolution data indicate that the influence of strong ICM pressure reaches quite deep inside of the galactic disc. Although the molecular gas may be pushed off from the stellar disc together with the atomic gas as in NGC 4522 (Vollmer et al. 2008), active ram pressure does not seem to always cause molecular gas stripping (NGC 4330 and NGC 4402). Indeed, NGC 4569, which is thought to have lost more than 90 per cent of its H I gas while crossing the cluster core a few hundreds Myr ago (H I deficiency: 1.47, a projected distance of 1.7 deg; ~ 0.5 Mpc to M87, the bottom right of Fig. 6), has a comparable molecular gas fraction to optical luminosity of our SMA sample (NGC 4330, NGC 4402 and NGC 4522). Adopting the H₂ deficiency of Fumagalli et al. (2009), single-dish measured CO fluxes and the MW conversion factor result in $M(\text{H}_2)_{\text{observed}}/M(\text{H}_2)_{\text{expected}}$ of 0.48, 1.25, 0.97 and 1.19 for NGC 4330, NGC 4402, NGC 4522 and NGC 4569, respectively. Considering that the sample of Fumagalli et al. (2009) does not include galaxies as faint as NGC 4330 or NGC 4522, the expected H₂ mass could have been overestimated for these two galaxies. This supports that the molecular gas mass does not necessarily change

significantly during and after severe H I stripping, while its detailed molecular gas properties may change. These changes to the CO gas properties are consistent with those from Wong et al. (2014), who found enhanced levels of warm molecular gas that resulted from additional ISM-heating due to ram pressure driven shocks in NGC 4330, NGC 4402 and NGC 4522.

5.3 Evolution of molecular gas and star formation activities by ram pressure

5.3.1 Galactic disc

All three galaxies have lost H I gas significantly, containing only $< \sim 20$ per cent of H I mass compared to field galaxies of similar size. The star formation quenching time-scale, τ_q , measured based on the youngest stellar age at the location, where H I gas is truncated (i.e. one way to estimate how long ago star formation was suppressed in a galaxy), ranges from a few tens Myr to a few hundreds Myr for our sample (Crowl & Kenney 2008; Abramson et al. 2011). It is however comparable among the sample within the uncertainties, and they share several properties in common in star formation activity in spite of subtle differences due to the ICM wind angle and the projection on the sky as shown in Fig. 6.

The spatial distributions of CO and H α (a tracer of recent star formation with a time-scale of ~ 20 Myr; Kennicutt 1998) are remarkably well correlated in the inner few kpc radius (Fig. 6). The locations of local CO peaks are generally coincident with the H α knots as shown by high-resolution data. The extents and overall morphology are also similar to each other as seen in the comparison with single-dish data, although the H α blobs outside the old stellar disc do not always have a CO counterpart (e.g. in both ends of NGC 4330's FUV disc; Fig. 6a).

Meanwhile, FUV (a star formation tracer of a time-scale of ~ 100 Myr; Kennicutt 1998) is somewhat distinct from CO and H α in extent and morphology, at least on one side, with FUV being more extended than CO and H α . Although the FUV disc of many field galaxies is larger than their H α disc (e.g. Leroy et al. 2008), these three galaxies are distinct from the field population in a sense that both FUV and H α are highly truncated within the stellar disc. These observations indicate that star-forming discs have been shrunk considerably (by a factor of up to 1.5) while undergoing strong ram pressure. Then the question is what causes the quenching of star formation, whether it is molecular gas stripping, the change of molecular gas properties, or both.

As seen by the morphological/kinematical peculiarities of molecular gas in our sample, the ICM pressure is strong enough to strip the H I gas in the outer disc or push the H I disc to one side, and seems to be able to also affect the molecular gas at a few kpc radii of the stellar disc. This can cause a number of consequences. First, in the outer disc where stars must have been formed mostly from low-density interstellar gas, star formation activity will gradually decrease as the atomic gas is stripped. Even when quenching starts, some young stars from the last star formation event may be still observable, and indeed, the FUV emission outside CO and H α discs yet inside the old stellar disc could be good examples of this process.

Our SMA data suggest that these galaxies are close to or approaching peak pressure (Kenney et al. 2004; Crowl et al. 2005; Chung et al. 2007; Vollmer 2009; Abramson et al. 2011; Vollmer et al. 2012a; Abramson & Kenney 2014), which is also supported by the results of simulations in the cases of NGC 4330 and NGC 4522 (Vollmer et al. 2006, 2012b; Vollmer 2009). Therefore, they

will experience strong(er) ram pressure for a while, losing more H I. As long as H I is supplied into the disc, the galaxy should be capable of forming molecular gas, keeping up with star formation. Hence, within one galaxy where star formation can be regulated, the FUV morphology should be more or less in good agreement with those of H α , which traces more recent star formation on a time-scale of <20 Myr (Kennicutt 1998). This is indeed true for isolated galaxies such as the sample of Leroy et al. (2008). In addition, the FUV extent in isolated galaxies is usually smaller than the H I extent as shown in the comparison of radial profiles (Leroy et al. 2008). In our galaxies, however, the H α looks much smaller than the FUV disc, and quite distinct in morphology. This implies that star-forming disc in these galaxies has been shrunken at least in the last 100 Myr.

While the outer disc undergoes star formation truncation, the inner disc is also less likely to form stars in the same manner as field galaxies, despite enough molecular gas present. In the upstream side, molecular gas is found to be compressed as if it is pushed by the ICM pressure. This can be the result of direct molecular gas compression but also molecular gas excess due to formation from compressed diffuse gas (Henderson & Bekki 2016). Consequently, the star formation rate is likely to be locally increased as Fujita & Nagashima (1999) suggested (see also Kronberger et al. 2008; Bekki 2014). Indeed, we find strong FUV enhancement on the same side where the outer CO disc is found to be compressed.

Alternatively, this might be the result of the removal of dust due to the ICM pressure and hence the upstream side being unveiled. However, the FUV disc also shows morphological peculiarities and it is quite distinct from the old stellar disc (e.g. a tail in NGC 4330, different extents and scale heights of NGC 4402, extraplanar FUV emission in NGC 4522), which cannot be explained by dust stripping alone. In addition, more evidence for increased star formation due to gas compression by the ICM pressure has been found in other galaxies (e.g. Merluzzi et al. 2013; Chung & Kim 2014), which also seems to be the case in our sample. Local FUV enhancements found near CO compression within the old stellar disc (such as the north-east of NGC 4330, the east of NGC 4402 and the south-east of NGC 4522) can be good examples of induced star formation by ram pressure (Figs 3e–5e and Figs 6a–c).

Some interstellar gas removed from the main stellar disc yet lingering around in a galactic halo may be re-accreted on to the disc after core crossing. NGC 4569 shown in Fig. 6(d), is known to be such case. The single-arm structure in H I agrees well in morphology and kinematics with a model of stripped gas falling back to the galaxy, which assumes that the galaxy is currently moving away from the cluster centre after crossing the core \sim a few hundreds Myr ago (Vollmer et al. 2004). Its star formation quenching time-scale estimated by Crowl & Kenney (2008) is also somewhat longer than our SMA sample by ~ 100 Myr or so, indicating that this galaxy has experienced strong ICM pressure relatively longer ago than the other three galaxies.

What is intriguing in the case of NGC 4569 is that the extent of the FUV disc is comparable to that of the H α and CO (Fig. 6d). In this case, the star formation is limited in the central region of the galaxy as most of the H I gas at larger galactic radii is stripped. Some gas can be re-obtained but not enough gas is left to replenish the entire disc. Therefore, the FUV extent can decrease to a similar size as the H α extent because FUV emission may fade as time goes by, if molecular gas cannot be replenished because the atomic gas has been stripped. At this stage, it is similar to isolated galaxies in a sense that FUV is overall well correlated with H α /CO, but now the star-forming disc is somewhat shrunken in comparison to what it used to be during active H I stripping or before. The three

galaxies that we observed using the SMA are expected to go through a similar evolutionary sequence and will be found with a truncated FUV disc of a comparable size to the H α and CO disc within their old stellar disc. Judging from the star formation quenching time-scales by Crowl & Kenney (2008) and simulations by Vollmer et al. (2008, 2012a), the time it will take for our SMA sample to become a galaxy like NGC 4569 is expected to be only a few hundreds Myr.

5.3.2 Extraplanar space

While a galaxy is undergoing very strong ram pressure, some molecular gas might be pushed away from the stellar disc as clearly seen in NGC 4522. In order to test whether dense molecular gas can get stripped from a galaxy or not, we compare the ram pressure acting on our sample due to the ICM wind with the restoring force (per unit area) by the galactic potential as a function of galactic radii (i.e. $\rho_{\text{ICM}} V_{\text{gal}}^2$ versus $V_{\text{rot}}^2 R^{-1} \Sigma_{\text{gas}}$) in Fig. 8. The ICM density and the orbital velocity of each galaxy are adopted from the model of the Virgo cluster (Vollmer et al. 2001; Yoon 2013). The shaded region indicates the range of possible orbital velocities at a given projected clustercentric distance. To estimate the restoring force at given galactic radii, we take the mean molecular gas and the H I gas surface densities along the major axis from the radial profiles (i.e. Figs 3c–5c) using our SMA CO data and the H I data (VIVA; Chung et al. 2009). Hence, in this calculation, we do not include the IRAM data of NGC 4522, and therefore the restoring force of this case in Fig. 8 is only the lower limit of the lowest possible value. The parameters used to estimate the restoring force and ram pressure are summarized in Table 4.

Our rough estimate suggests that it is not impossible to remove the molecular gas in the very outer region in some circumstances. However, by adopting the rotational velocity of the CO disc, which in all cases has a radius less than 5 kpc, we are focused on a region whose potential is dominated by the stellar component, not the dark matter halo. Therefore, in practice, the actual stripping of the molecular gas must be more difficult than our estimation. Also, depending on the encounter angle between the ICM wind and the galactic disc, the inner molecular gas can be better shielded, which will make the stripping even harder. Lastly, considering that the ISM is one entity after all and the total gas surface density of the two phases is more appropriate for more realistic estimation, the chance for the molecular gas to get stripped can be even less. In addition, even if the molecular gas is pushed off from the galactic disc, whether the extraplanar molecular gas leaves the galactic halo for good or partially comes back is still debatable. Considering that cluster galaxies are not significantly different from their field counterpart in CO luminosity (Stark et al. 1986; Kenney & Young 1989), the molecular gas completely stripped out of a galaxy is inferred to be a very small fraction.

Our estimate is, however, only the prediction for how easy or hard it is to remove the molecular gas from a galaxy completely, and the molecular gas can be still disturbed without stripping, as our data clearly show. In fact, the recent result by Fumagalli et al. (2009) that severely H I-deficient galaxies tend to be found with lower molecular gas surface density may simply reflect the fact that the molecular gas of galaxies under strong ICM pressure is perturbed, not necessarily implying that molecular gas being deficient.

Extraplanar molecular gas may also form new stars (e.g. ESO 137-001 with a prominent RPS tail found in a massive cluster, Abell 3627; Sun, Donahue & Voit 2007; Sun et al. 2010; Jáchym et al. 2014). The FUV emission with several H α knots along the H I

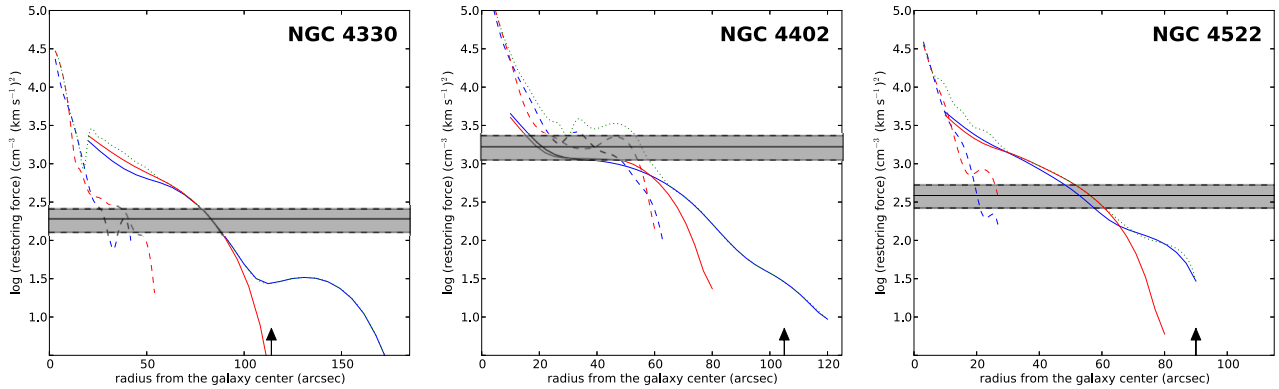


Figure 8. The gravitational restoring force acting on the molecular gas of our sample is probed as a function of galactic radius and compared with the current ram pressure estimate. The dashed and the solid lines represent the molecular and the atomic gas, respectively, with the receding side in red and the approaching side in blue. The dotted green line represents the maximum total gas surface density, i.e. $\sum(H_{1\max} + H_{2\max})$ measured at given radii. The upper arrow at the bottom of each panel corresponds to the galaxy radius measured in the R band. The vertical range in the ram pressure value (shaded area) corresponds to a range in orbital velocities of each galaxy at a given projected cluster centric distance from the model of Vollmer et al. (2001). Detailed parameters adopted in this plot can be found in Table 4.

Table 4. Parameters of the restoring force and ram pressure.

	NGC 4330	NGC 4402	NGC 4522
Ram pressure parameters			
$d_{M87}(\text{arcsec})^a$	2.1	1.4	3.3
$\rho_{\text{ICM}}(10^{-5} \text{ cm}^{-3})^b$	8.2	63.8	20.4
$V_{\text{gal}}(\text{km s}^{-1})^c$	1255–1775	1338–1892	1138–1609
Restoring force parameters			
R (kpc) ^d	0.2–4.2	0.2–4.9	0.2–2.1
$\Sigma_{\text{H}_2}(10^{19} \text{ cm}^{-2})^e$	1.4–109	6.6–568	1.5–187
$V_{\text{rot}}(\text{km s}^{-1})^f$	140	145	122

^aProjected distance from M87.

^bICM density.

^cRange of possible orbital velocities.

^dRadius from the galactic centre (minimum and maximum values from either side).

^eMolecular gas surface density (minimum and maximum values from either side).

^fRotational velocity, $V_{\text{rot}} = \frac{W_{\text{H}_1,20}}{2\sin i}$, i : the inclination angle, $W_{\text{H}_1,20}$: the H I linewidth (Chung et al. 2009).

tail of NGC 4330 and the extraplanar FUV/ $\text{H}\alpha$ emission in NGC 4522 might be such a case. Outside the old stellar disc, stars may form in two ways, from stripped molecular gas, or alternatively from newly formed molecular gas. Indeed, Tonnesen & Bryan (2012) in their simulations show that stripped diffuse gas can form dense molecular gas by cooling process, which can possibly form new stars. However, in extraplanar space, it is questionable how efficiently stripped atomic hydrogen can be pressurized, turning into molecular form (Blitz & Rosolowsky 2006). Therefore, star formation taking place outside the main disc is more likely to be utilizing the molecular gas that is pushed from the main disc but has not left the galactic halo.

As in NGC 4522, however, there are several extraplanar $\text{H}\alpha$ regions with no detectable CO. This suggests that the H_2 gas depletion time-scale (τ_{H_2}) in extraplanar space can be much shorter than what it is on the disc (of the order of a few Gyr; Bigiel et al. 2008, 2011). Meanwhile, τ_{H_2} at the location of $\text{H}\alpha$ /CO blob is measured to be comparable to what is normally found in the galactic disc (see Appendix B). Therefore, there might be some extraplanar CO even

in NGC 4330 and NGC 4402, but with mass smaller than our detectability or that of the IRAM (Vollmer et al. 2008).

Together with this, there is also an important difference between NGC 4330 and NGC 4522, which is the presence of CO in the extraplanar star formation region. In the case of NGC 4330, more rapidly increasing ram pressure compared to NGC 4522 might be responsible for faster dissociation of molecular cloud, and hence absence of CO along the FUV tail. Alternatively, some fraction of stripped molecular gas might be destroyed by high-energy photon emitted from massive young stars (Crowl et al. 2005). Therefore, extraplanar or stripped CO may not be always observable even if it is pushed off from the stellar disc.

6 CONCLUSIONS

In this work, we have presented high-resolution 12CO (2–1) data obtained using the SMA of three Virgo spirals, NGC 4330, NGC 4402 and NGC 4522, which are undergoing active H I stripping due to ram pressure. By comparing with single-dish 12CO (2–1), H I , FUV, $\text{H}\alpha$ and DSS2 red data, we have discussed how ICM pressure changes molecular gas and star formation properties. Most important results from our study can be summarized as follows:

(i) The overall CO morphology and kinematics are quite asymmetric and disturbed. Morphological peculiarities found in CO are closely related to H I morphology in these galaxies, indicating that the molecular gas is also affected by the ram pressure.

(ii) We find the CO clump in the south-west of NGC 4330 (Figs 3a–c) and the modest CO bump in the north-west of NGC 4402 (Figs 4a–c), with distinct velocity structure from the overall velocity gradient of the molecular disc. This also supports the idea that molecular gas can be displaced by the external pressure inside a stellar disc.

(iii) Both FUV and $\text{H}\alpha$ are enhanced where H I and CO are compressed, supporting that ram pressure can also trigger star formation temporarily (e.g. Figs 4d–f of NGC 4402). In these galaxies, however, FUV shows distinct morphology and extent from those of CO, while $\text{H}\alpha$ and CO are overall in good agreement (Fig. 6). The large offset between FUV and $\text{H}\alpha$ must indicate that the star formation has been recently quenched, likely over the last 100 Myr as the molecular gas properties have changed.

(iv) To compare with NGC 4569 (Fig. 6d), which is thought to have already crossed the cluster core, the offset between FUV and Ha/CO is expected to smooth out over time (\sim a few hundreds Myr) after the core crossing as the galaxy further loses H I, i.e. the capability of forming molecular gas, and star formation is completely shut down at large galactic radii.

In summary, our results suggest that a strong ICM pressure not only strips diffuse atomic gas but also changes the properties of dense molecular gas in the inner few kpc of a galaxy. Molecular gas can be pushed from the stellar disc in the outer part as reported in previous studies, yet we find that the molecular gas is less likely to be completely stripped from a galaxy. On the side where the ICM pressure acts, molecular gas can be enhanced by compression and molecular formation from atomic gas, locally increasing star formation. As the gas is rapidly used up, the star-forming disc will decrease in size as no sufficient atomic gas is left to form more molecular gas. On the opposite side, molecular gas can be perturbed in a way that reflects the atomic gas, which may prevent a galaxy from forming stars as before, i.e. injecting turbulence into molecular gas is likely to cause star formation rates to be inefficient (Alatalo et al. 2015). The combination of these two effects must be an important driver that makes galaxies evolve to become passive in the cluster environment.

In order to investigate the molecular gas properties and its conditions for star formation under strong ICM pressure more quantitatively, we are currently probing the density and temperature of molecular gas using multitransitions and isotopes of CO (Lee et al. in preparation). Our future work is expected to provide further insights on the evolution of molecular gas and thus star formation efficiency in galaxies undergoing ram pressure.

ACKNOWLEDGEMENTS

Support for this work was provided by the National Research Foundation of Korea to the Center for Galaxy Evolution Research (No. 2010-0027910) and Science Fellowship of POSCO TJ Park Foundation. This work has been also supported by NRF grant no. 2015R1D1A1A01060516. The SMA is a joint project between the Smithsonian Astrophysical Observatory and the Academia Sinica Institute of Astronomy and Astrophysics and is funded by the Smithsonian Institution and the Academia Sinica. This work made the use of HERACLES, ‘The HERA CO-Line Extragalactic Survey’ (Leroy et al. 2009). We acknowledge the usage of the HyperLeda database (<http://leda.univ-lyon1.fr>). This research has made use of the GOLDMine Database (Gavazzi et al. 2003), and it made use of APLPY, an open-source plotting package for PYTHON hosted at <http://aplpy.github.com>. ST was supported by the Alvin E. Nashman Fellowship in Theoretical Astrophysics. BL is grateful to E.-J. Chung for the technical help with GIPSY.

REFERENCES

- Abramson A., Kenney J. D. P., 2014, *AJ*, 147, 63
 Abramson A., Kenney J. D. P., Crowl H. H., Chung A., van Gorkom J. H., Vollmer B., Schiminovich D., 2011, *AJ*, 141, 164
 Alatalo K. et al., 2015, *ApJ*, 812, 117
 Barmby P. et al., 2006, *ApJ*, 650, L45
 Bekki K., 2014, *MNRAS*, 438, 444
 Bigiel F., Leroy A., Walter F., Brinks E., de Blok W. J. G., Madore B., Thornley M. D., 2008, *AJ*, 136, 2846
 Bigiel F. et al., 2011, *ApJ*, 730, L13
 Blitz L., Rosolowsky E., 2006, *ApJ*, 650, 933
 Böhringer H., Briel U. G., Schwarz R. A., Voges W., Hartner G., Trümper J., 1994, *Nature*, 368, 828
 Boselli A., Cortese L., Boquien M., Boissier S., Catinella B., Gavazzi G., Lagos C., Saintonge A., 2014, *A&A*, 564, A67
 Cayatte V., van Gorkom J. H., Balkowski C., Kotanyi C., 1990, *AJ*, 100, 604
 Chung E. J., 2012, PhD thesis, Yonsei University
 Chung E. J., Kim S., 2014, *PASJ*, 66, 11
 Chung A., van Gorkom J. H., Kenney J. D. P., Vollmer B., 2007, *ApJ*, 659, L115
 Chung A., van Gorkom J. H., Kenney J. D. P., Crowl H., Vollmer B., 2009, *AJ*, 138, 1741
 Crowl H. H., Kenney J. D. P., 2008, *AJ*, 136, 1623
 Crowl H. H., Kenney J. D. P., van Gorkom J. H., Vollmer B., 2005, *AJ*, 130, 65
 Davies R. D., Lewis B. M., 1973, *MNRAS*, 165, 231
 Drimmel R., Spergel D. N., 2001, *ApJ*, 556, 181
 Fujita Y., Nagashima M., 1999, *ApJ*, 516, 619
 Fumagalli M., Krumholz M. R., Prochaska J. X., Gavazzi G., Boselli A., 2009, *ApJ*, 697, 1811
 Gavazzi G., Boselli A., Donati A., Franzetti P., Scodreggio M., 2003, *A&A*, 400, 451
 Gil de Paz A. et al., 2007, *ApJS*, 173, 185
 Giovanelli R., Haynes M. P., 1985, *ApJ*, 292, 404
 Gunn J. E., Gott J. R., III 1972, *ApJ*, 176, 1
 Haynes M. P., Giovanelli R., 1984, *AJ*, 89, 758
 Helfer T. T., Thornley M. D., Regan M. W., Wong T., Sheth K., Vogel S. N., Blitz L., Bock D. C.-J., 2003, *ApJS*, 145, 259
 Henderson B., Bekki K., 2016, *ApJ*, 822, L33
 Hidaka M., Sofue Y., 2002, *PASJ*, 54, 33
 Jáchym P., Combes F., Cortese L., Sun M., Kenney J. D. P., 2014, *ApJ*, 792, 11
 Kenney J. D. P., Young J. S., 1989, *ApJ*, 344, 171
 Kenney J. D. P., Young J. S., Hasegawa T., Nakai N., 1990, *ApJ*, 353, 460
 Kenney J. D. P., van Gorkom J. H., Vollmer B., 2004, *AJ*, 127, 3361
 Kenney J. D. P., Abramson A., Bravo-Alfaro H., 2015, *AJ*, 150, 59
 Kennicutt R. C., Jr, 1998, *ARA&A*, 36, 189
 Koopmann R. A., Kenney J. D. P., 2004a, *ApJ*, 613, 851
 Koopmann R. A., Kenney J. D. P., 2004b, *ApJ*, 613, 866
 Koopmann R. A., Kenney J. D. P., Young J., 2001, *ApJS*, 135, 125
 Kregel M., van der Kruit P. C., de Blok W. J. G., 2004, *MNRAS*, 352, 768
 Kronberger T., Kapferer W., Ferrari C., Unterguggenberger S., Schindler S., 2008, *A&A*, 481, 337
 Lee B., Chung A., 2015, *Publ. Korean Astron. Soc.*, 30, 491
 Leroy A. K., Walter F., Brinks E., Bigiel F., de Blok W. J. G., Madore B., Thornley M. D., 2008, *AJ*, 136, 2782
 Leroy A. K. et al., 2009, *AJ*, 137, 4670
 Lucy L. B., 1974, *AJ*, 79, 745
 Mei S. et al., 2007, *ApJ*, 655, 144
 Merluzzi P. et al., 2013, *MNRAS*, 429, 1747
 Mok A. et al., 2016, *MNRAS*, 456, 4384
 Nehlig F., Vollmer B., Braine J., 2016, *A&A*, 587, A108
 Paturel G., Petit C., Prugniel P., Theureau G., Rousseau J., Brouty M., Dubois P., Cambrésy L., 2003, *A&A*, 412, 45
 Qi C., 2012, Available at: <http://www.cfa.harvard.edu/~cqj/mircook.html>
 Rengarajan T. N., Iyengar K. V. K., 1992, *MNRAS*, 259, 559
 Rhee M.-H., van Albada T. S., 1996, *A&AS*, 115, 407
 Salo H. et al., 2015, *ApJS*, 219, 4
 Skrutskie M. F. et al., 2006, *AJ*, 131, 1163
 Sofue Y., Koda J., Nakanishi H., Onodera S., Kohno K., Tomita A., Okumura S. K., 2003a, *PASJ*, 55, 17
 Sofue Y., Koda J., Nakanishi H., Onodera S., 2003b, *PASJ*, 55, 59
 Sofue Y., Koda J., Nakanishi H., Hidaka M., 2003c, *PASJ*, 55, 75
 Solomon P. M., Downes D., Radford S. J. E., Barrett J. W., 1997, *ApJ*, 478, 144
 Stark A. A., Knapp G. R., Bally J., Wilson R. W., Penzias A. A., Rowe H. E., 1986, *ApJ*, 310, 660
 Strong A. W., Mattox J. R., 1996, *A&A*, 308, L21

Sun M., Donahue M., Voit G. M., 2007, *ApJ*, 671, 190
 Sun M., Donahue M., Roediger E., Nulsen P. E. J., Voit G. M., Sarazin C., Forman W., Jones C., 2010, *ApJ*, 708, 946
 Swaters R. A., 1999, PhD thesis, Univ. Groningen
 Tonnesen S., Bryan G. L., 2012, *MNRAS*, 422, 1609
 Verheijen M. A. W., 1997, PhD thesis, Univ. Groningen
 Vollmer B., 2009, *A&A*, 502, 427
 Vollmer B., Cayatte V., Balkowski C., Duschl W. J., 2001, *ApJ*, 561, 708
 Vollmer B., Balkowski C., Cayatte V., van Driel W., Huchtmeier W., 2004, *A&A*, 419, 35
 Vollmer B., Soida M., Otmianowska-Mazur K., Kenney J. D. P., van Gorkom J. H., Beck R., 2006, *A&A*, 453, 883
 Vollmer B., Braine J., Pappalardo C., Hily-Blant P., 2008, *A&A*, 491, 455
 Vollmer B. et al., 2012a, *A&A*, 537, A143

Vollmer B., Wong O. I., Braine J., Chung A., Kenney J. D. P., 2012b, *A&A*, 543, A33
 Walter F., Brinks E., de Blok W. J. G., Bigiel F., Kennicutt R. C., Jr, Thornley M. D., Leroy A., 2008, *AJ*, 136, 2563
 Warmels R. H., 1988a, *A&AS*, 72, 19
 Warmels R. H., 1988b, *A&AS*, 72, 427
 Wong O. I., Kenney J. D. P., Murphy E. J., Helou G., 2014, *ApJ*, 783, 109
 Yasuda N., Fukugita M., Okamura S., 1997, *ApJS*, 108, 417
 Yoon H., 2013, MS thesis, Yonsei University

APPENDIX A: ^{12}CO GAS DISTRIBUTION ON THE OPTICAL COLOUR IMAGE

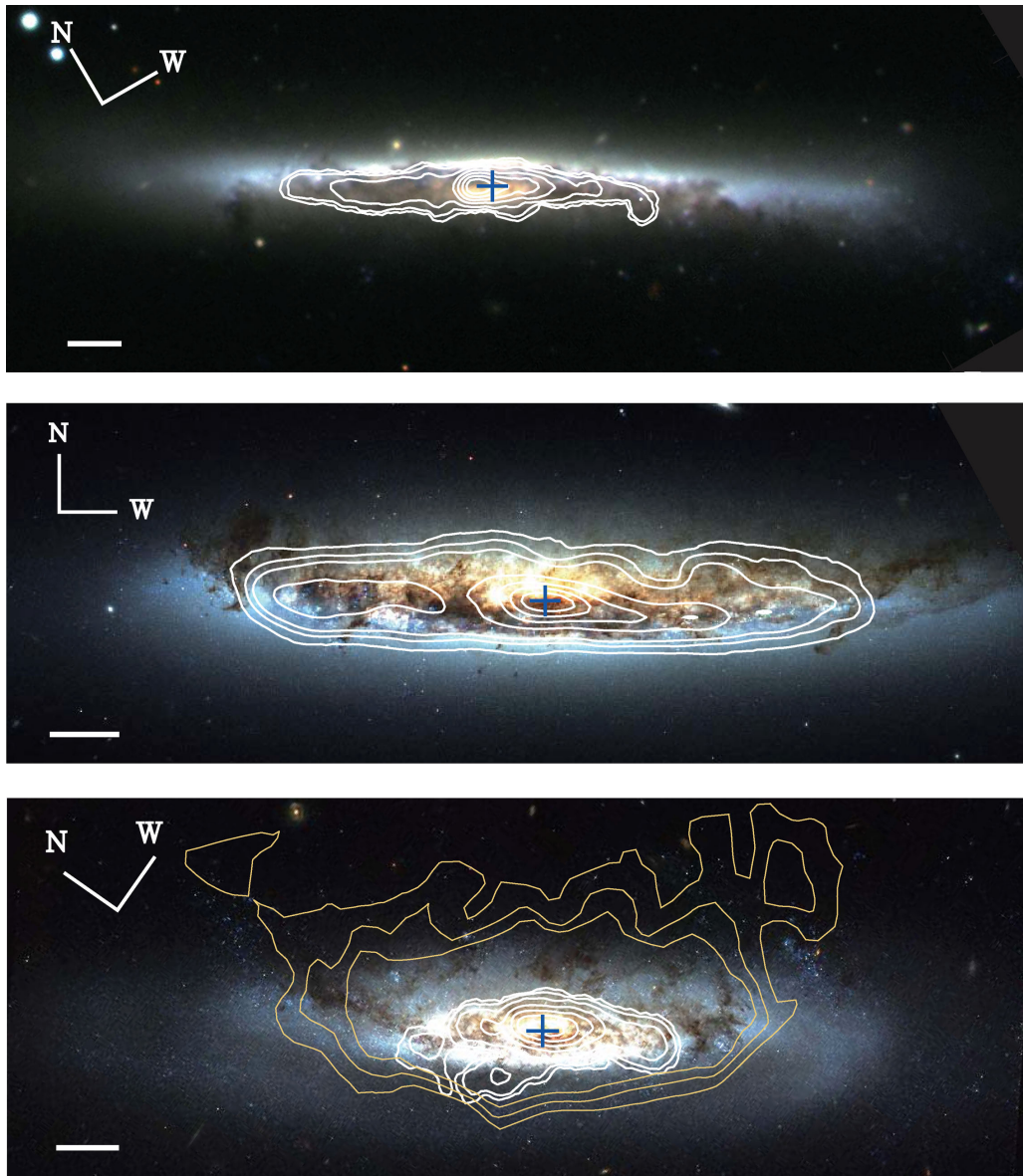


Figure A1. ^{12}CO (2–1) contours (white contours: SMA, yellow contours: IRAM) are overlaid on optical colour images (NGC 4330: WIYN 3.5 m telescope BVR colour image; Abramson et al. 2011, NGC 4402 and NGC 4522: *HST*³ BVI colour images). Top: NGC 4330. Middle: NGC 4402. Bottom: NGC 4522. The physical scale bar (20 arcsec) of each galaxy is shown at the bottom left. The blue cross indicates the stellar disc centre of each galaxy.

³Based on observations made with the NASA/ESA *Hubble Space Telescope*, obtained from the data archive at the Space Telescope Science Institute. STScI is operated by the Association of Universities for Research in Astronomy, Inc. under NASA contract NAS 5-26555.

APPENDIX B: THE H₂ GAS DEPLETION TIME-SCALE (τ_{H_2}) IN THE EXTRAPLANAR REGION OF NGC 4522

We estimate the molecular gas depletion time-scale (the ratio of molecular gas mass and star formation rate) in extraplanar region of NGC 4522 following the prescription below. We first calculate the molecular gas mass in two regions (Fig. B1, red squares) using

IRAM 12CO (2–1) data of Vollmer et al. (2008). Using H α image (Koopmann et al. 2001), the star formation rate in each region (Fig. B1, red squares) is estimated as follows:

$$\text{SFR} = 7.9 \times 10^{-42} L(\text{H}\alpha) \quad (\text{B1})$$

in $M_{\odot} \text{ yr}^{-1}$, where $L(\text{H}\alpha)$ is the H α luminosity in erg s^{-1} (Kennicutt 1998). Measured depletion time-scales are 1.1 Gyr (region 1) and 0.8 Gyr (region 2), respectively.

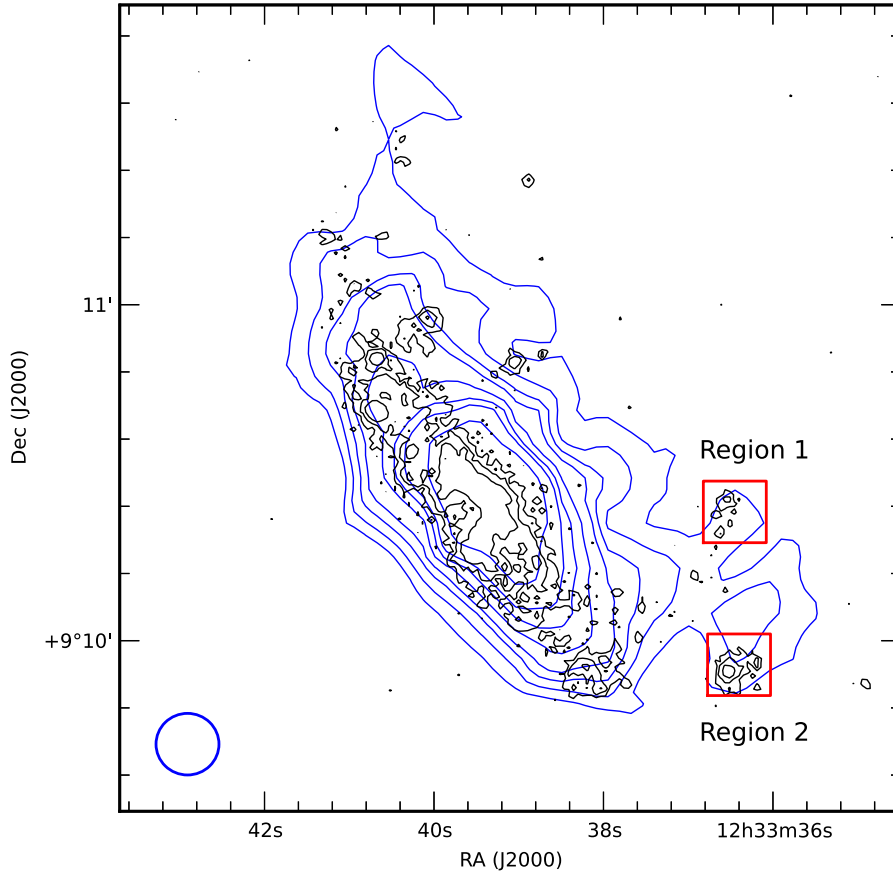


Figure B1. The H α image is shown in black contours overlaid with IRAM 12CO (2–1) image in blue contours. The beam size of the IRAM is shown in blue circle at the bottom left. Two regions with extraplanar H α and CO emissions where the molecular gas depletion time has been estimated are indicated in red boxes.

This paper has been typeset from a $\text{\TeX}/\text{\LaTeX}$ file prepared by the author.