



HAL
open science

Mu-suppression detection in motor imagery electroencephalographic signals using the generalized extreme value distribution

Antonio Quintero Rincón, Carlos D'giano, Hadj Batatia

► **To cite this version:**

Antonio Quintero Rincón, Carlos D'giano, Hadj Batatia. Mu-suppression detection in motor imagery electroencephalographic signals using the generalized extreme value distribution. International Joint Conference on Neural Networks (IJCNN 2020), Jul 2020, Glasgow, United Kingdom. pp.1-5, 10.1109/IJCNN48605.2020.9206862 . hal-03159930

HAL Id: hal-03159930

<https://hal.science/hal-03159930v1>

Submitted on 4 Mar 2021

HAL is a multi-disciplinary open access archive for the deposit and dissemination of scientific research documents, whether they are published or not. The documents may come from teaching and research institutions in France or abroad, or from public or private research centers.

L'archive ouverte pluridisciplinaire **HAL**, est destinée au dépôt et à la diffusion de documents scientifiques de niveau recherche, publiés ou non, émanant des établissements d'enseignement et de recherche français ou étrangers, des laboratoires publics ou privés.



Open Archive Toulouse Archive Ouverte

OATAO is an open access repository that collects the work of Toulouse researchers and makes it freely available over the web where possible

This is an author's version published in: <http://oatao.univ-toulouse.fr/26797>

Official URL:

<https://doi.org/10.1109/IJCNN48605.2020.9206862>

To cite this version:

Quintero Rincón, Antonio and D’Giano, Carlos and Batatia, Hadj Mu-suppression detection in motor imagery electroencephalographic signals using the generalized extreme value distribution. (2020) In: 2020 International Joint Conference on Neural Networks (IJCNN), 19 July 2020 - 24 July 2020 (Glasgow, United Kingdom).

Any correspondence concerning this service should be sent to the repository administrator: tech-oatao@listes-diff.inp-toulouse.fr

Mu-suppression detection in motor imagery electroencephalographic signals using the generalized extreme value distribution

Antonio Quintero-Rincón, Carlos D’Giano

Centro Integral de Epilepsia y Telemetría

Fundación Lucha contra las Enfermedades Neurológicas Infantiles (FLENI)

Buenos Aires, Argentina

tonioquintero@ieee.org

Hadj Batatia

IRIT - INPT

University of Toulouse

Toulouse, France

Abstract—This paper deals with the detection of mu-suppression from electroencephalographic (EEG) signals in brain-computer interface (BCI). For this purpose, an efficient algorithm is proposed based on a statistical model and a linear classifier. Precisely, the generalized extreme value distribution (GEV) is proposed to represent the power spectrum density of the EEG signal in the central motor cortex. The associated three parameters are estimated using the maximum likelihood method. Based on these parameters, a simple and efficient linear classifier was designed to classify three types of events: imagery, movement, and resting. Preliminary results show that the proposed statistical model can be used in order to detect precisely the mu-suppression and distinguish different EEG events, with very good classification accuracy.

Index Terms—Motor imagery, Mu-suppression, Generalized extreme value, Electroencephalography, Brain-computer interface

I. INTRODUCTION

Electroencephalograms (EEG) are a non-invasive longstanding medical modality that measures the brain’s activity by recording the electromagnetic field at the scalp. Since its creation, EEG has played a fundamental role in understanding several major neurological disorders, by analyzing their manifestation into brain rhythms. For example, the study of diseases such as depression, age-related cognitive deterioration, epilepsy, anxiety disorders and subnormal brain development in children have benefited from this technology. The typical brain rhythms are distinguished by their different frequency ranges, called delta (δ) within the range 0.5 to 4Hz, theta (θ) within the range 4 to 7.5Hz, alpha (α) within the range 8 to 13Hz, beta (β) within the range 14 to 30Hz, and gamma (γ) within the range 30 to 64Hz. In this study, we focus on the brain rhythm called mu (μ) within the range 7.5 to 11.5Hz. Mu-waves are considered to emerge naturally and may convey information about what the functioning of brain hierarchies [1]. According to [2], there exist three historical theoretical hypotheses to explaining the mu-brain rhythm: i) the neuronal hyperexcitability related to the rolandic cortex; ii) the superficial cortical inhibition explaining its suppression with motor activity; and iii) the somatosensory cortical idling,

related to the afference-dependent phenomenon. This study considers the second hypothesis, as the mu-rhythm relates strongly to the sensorimotor cortex and associated areas, in particular, the changes in the bilateral brain activities subject to physical and imaginary movements [3]. Based on the same consideration, this rhythm has been studied in brain-computer interface (BCI) [4], [5]. The underlying idea of BCI is to supply communication and control of devices through the monitoring of brain activity, by using EEG channels.

The generalized extreme value (GEV) distribution is a family that includes continuous probability distributions obtained as the limit of maxima of a sequence of independent and identically distributed random variables [6]. This distribution has been used in [7] to detect interictal spikes in epileptic EEG signals, using time-frequency properties. The underlying idea was to identify strong outliers using GEV to model normalized EEG data. In [8], showed that both EEG and MEG signals can be correctly modeled using GEV distribution. Luca et al. [9] used an unsupervised method to detect hyper-motor epileptic seizures, where GEV was applied for extracting maxima in EEG signals, using multivariate kernel density. In [10], GEV was used to assess characteristics of Alzheimer’s disease using EEG signals, where the variance of the power of each frequency were used to derive an index of neuronal abnormality. For applications in other biomedical signals see [11].

The purpose of this paper is to present a novel and rapid algorithm for detecting mu-suppression in EEG signals by using the generalized extreme value distribution. The underlying idea is to estimate the maximum and minimum values of the signal in the central motor cortex using statistical modeling, for motor imagery events, corresponding to mu-suppression. To the best of our knowledge, this statistical model has not been investigated yet for detecting the mu-suppression in EEG signals, despite the extensive study of this phenomenon [12]–[14]. Several other methods have been proposed in the literature to estimate mu-suppression in motor imagery, see [15], [16] for a comprehensive state-of-the-art. Table I summarizes the most common methods, such as

independent components analysis, common spatial patterns, linear discriminant analysis, and the support vector machines.

Method	Features	Electrodes	Classf.	Perf.	Ref.
GEV from periodogram	GEV parameters	C5, C3, C1, Cz, C2, C4, C6	LDA	100%	our
AAR + BP	Coefficients from AAR and BP	C3, Cz	LDA	80%	[17]
RFE	Welch method from RFE	C1, C2, C3, C4, FC3, FC4, CP3, CP4	SVM	87%	[18]
ICA vs. CSP	log-transformed normalized variances	C3, C4, Cz, CP1, CP2, CPz, Fz, Pz	LDA	84%	[19]
CSP	Eigenvalue spectrum	multi-channels	LDA	84%	[20]
EMD	Periodograms fluctuations from intrinsic mode functions and the Hilbert envelope	C3, C4	NR	NR	[21]
SCSP	Variance of the spatially filtered signals	C3, C4, Cz	SVM	94%	[22]
ICA	time-frequency average	multi-channels	LAT	90%	[16]

TABLE I

STATE-OF-THE-ART METHODS TO THE MU-SUPPRESSION ESTIMATION IN EEG SIGNALS, COMPARED IN TERMS CLASSIFICATION TECHNIQUES, FEATURES, AND REPORTED PERFORMANCE. ABBREVIATIONS ARE AS FOLLOWS: ADAPTIVE AUTOREGRESSIVE MODEL (AAR), BAND POWER ESTIMATION (BP), RECURSIVE FEATURE ELIMINATION (RFE), INDEPENDENT COMPONENTS ANALYSIS (ICA), COMMON SPATIAL PATTERNS (CSP), EMPIRICAL MODE DECOMPOSITION (EMD), SPARSE COMMON SPATIAL PATTERN (SCSP), LINEAR DISCRIMINANT ANALYSIS (LDA), SUPPORT VECTOR MACHINE (SVM), ACCORDING TO THE LATENCY (LAT), NOT REPORTED (NR). FIGURE 1(A) SHOWS CHANNEL LOCATIONS. NOTE THAT OUR METHOD (HIGHLIGHTED IN RED) HAD EXCELLENT ACCURACY RESULTS.

The remainder of the paper is organized as follows. In Section II-B, the generalized extreme value distribution is presented. Section II describes the database used and the proposed methodology. Experimentation using the EEG dataset of motor imagery from [23] is presented in Section III and the results discussed. Finally, Section IV draws conclusions and future works.

II. MATERIALS AND METHODS

A. Motor Imagery database

A motor imagery EEG database of the left and right hands taken from [23] was used. EEG data of 52 healthy subjects were recorded using a 64 channel montage based on the international 10-10 system, with a 512 Hz sampling rate. In this database, 3 events were taken into account. First, non-task,

with the motor cortex, data was recorded in order to understand each subject's performance related to their eye blinking, eyeball up/down movement, eyeball left/right movement, head movement, jaw clenching, and resting state. Second, real right and left-hand movement was measured, where subjects had to follow certain established patterns. Finally, motor imagery data was computed when asking subjects to imagine hand movement. The signals were preprocessed with a high pass and low pass Butterworth filter of order 4th, having an 8-30 Hz bandpass. Data was validated by using the percentage of bad trials, event-related desynchronization/synchronization (ERD/ERS) analysis, and classification analysis. The central motor cortex was selected for this study, see Fig. 1(a).

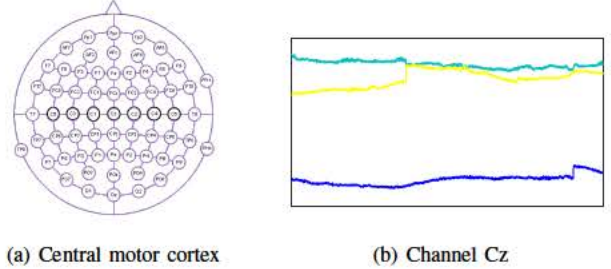


Fig. 1. Figure (a) shows the central motor cortex channels (C5,C3,C1,Cz,C2,C4,C6) following the international 10-10 system. Figure (b) shows an example of the central channel for each type of event. Imagery event (grey) having the highest amplitude, movement event (yellow) with a medium amplitude, and resting event (blue) corresponds to the lower amplitude. Note that, imagery signals and movement signals may have very close amplitudes.

B. Statistical modeling

We propose to model the periodogram power spectral density of the EEG data using the generalized extreme value distribution (GEV). The choice of this distribution is motivated by its flexibility. It is a family that combines the Gumbel (type I), Fréchet (type II) and Weibull (type III) maximum extreme value distributions through three parameters, namely location ($\mu \in \mathcal{R}$), scale ($\sigma > 0$), and shape ($\xi \in \mathcal{R}$). Its probability density function (PDF) is given by

$$f(x, \mu, \sigma, \xi) = \frac{1}{\sigma} t(x)^{\xi+1} \exp^{-t(x)} \quad (1)$$

where

$$t(x) = \begin{cases} (1 + \xi(\frac{x-\mu}{\sigma}))^{-1/\xi} & , \text{ if } \xi \neq 0 \\ \exp \frac{x-\mu}{\sigma} & , \text{ if } \xi = 0 \end{cases} \quad (2)$$

ξ determines the domain of the PDF as follows:

$$\begin{aligned} x &\in \left[\frac{\mu - \sigma}{\xi}, +\infty \right), \text{ when } \xi > 0, \text{ type II} \\ x &\in (-\infty, +\infty), \text{ when } \xi = 0, \text{ type I} \\ x &\in \left(-\infty, \frac{\mu - \sigma}{\xi} \right], \text{ when } \xi < 0, \text{ type III} \end{aligned} \quad (3)$$

In order to fit the GEV distribution to the data, we calculated the parameters μ and σ using the maximum likelihood estimators [24]

$$\hat{\mu} = -\hat{\sigma} \log \left(\frac{1}{n} \sum_{i=1}^n \exp \frac{x_i}{\hat{\sigma}} \right) \quad (4)$$

$$\hat{\sigma} = \bar{X} - \frac{\sum_{i=1}^n X_i \exp^{-\frac{x_i}{\hat{\sigma}}}}{\sum_{i=1}^n \exp^{-\frac{x_i}{\hat{\sigma}}}} \quad (5)$$

The cumulative density function (CDF) is given by

$$f(x, \mu, \sigma, \xi) = \exp^{-t(x)} \quad (6)$$

for $x \in (2)$ and (3).

We refer the reader to [25] for a comprehensive treatment of the mathematical properties of the extreme value distribution.

C. Proposed methodology

Let $X \in \mathbb{R}^{N \times M}$ denote the matrix of M EEG signals $x_m \in \mathbb{R}^{N \times 1}$ measured simultaneously on different channels related to the central motor cortex and at N discrete-time instants. The proposed methodology is composed of three stages. In the first-stage, the periodogram power spectral density (PSD) is estimated from the EEG signal on the mu-brain rhythm, in steps of half the sampling frequency without overlapping using a symmetric Hamming window

$$P(f) = \frac{\Delta t}{N} \left| \sum_{n=0}^{N-1} x_{m,n} \exp^{-2j\pi f n} h(n) \right|^2, \frac{1}{2} \Delta t < f \leq \frac{1}{2} \Delta t \quad (7)$$

where Δt is the sampling interval, $1 \leq m \leq 7$ is related to the seven channels in the central motor cortex (C5, C3, C1, Cz, C2, C4, C6) and the Hamming window defined as $h(n) = 0.54 - 0.46 \cos(2\pi \frac{n}{N})$, $0 \leq n \leq N$.

In the second-stage, the generalized extreme value distribution is fitted to the PSD of each event (imagery, movement and resting), obtaining the corresponding parameters (μ , σ and ξ):

$$I_i = [\mu_i, \sigma_i, \xi_i] \quad (8)$$

$$M_i = [\mu_i, \sigma_i, \xi_i] \quad (9)$$

$$R_i = [\mu_i, \sigma_i, \xi_i] \quad (10)$$

Finally in the third stage, the vectors (8),(9) and (10) are classified using a linear classifier derived from a linear discriminant analysis (LDA) [26], [27]. Three classes $\{0, 1, -1\}$ are possible, respectively for imagery, movement and resting.

III. RESULTS AND DISCUSSION

Figures 2, 3, and 4 show the Goodness-of-fit measures for the probability density function (PDF) and the cumulative distribution density (CDF), and the CDF error for the central motor cortex data. These measures are clearly significant. This is corroborated by the CDFs errors ($-0.05 \leq \text{CDF error} \leq 0.05$), and the p -values ≤ 0.05 using the Kolmogorov-Smirnov (KS) score, where the imagery events exhibit a $p = 0.0021$, the movement events a $p = 0.0094$, and the resting events a $p = 1.9847e - 04$.

Tables II to IV show the mean values, with their 95% confidence intervals, for the three GEV parameters corresponding to the different events. It appears clearly that the proposed statistical model allows for a threshold approach to detect the mu-suppression by distinguishing imagery, from movement and resting events. For illustration, in EEG data shown in Figure 1(b), the imagery event has the highest amplitude, the movement event has the medium amplitude, and the resting event has a lower amplitude. While in Figure 5, showing averages from Table II, the scale (σ) and the location (μ) parameters have the highest amplitude for resting state, the medium amplitude for imagery event, and the lower amplitude for movement event. Whereas, the shape (ξ) parameter shows the movement event with the highest amplitude, the resting event with the medium amplitude and the imagery state with the lower amplitude. The combination of these different thresholds makes it possible to use the three parameters, estimated by fitting the GEV distribution to the periodogram, for detecting the mu-suppression in motor imagery EEG signals.

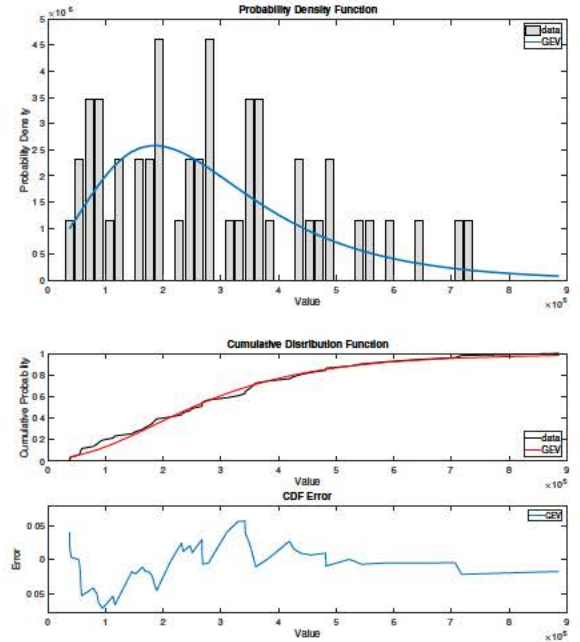


Fig. 2. Mu-band in imagery event

	shape (ξ)
Ima	0.09 [-0.21,0.38]
Mov	0.26 [-0.06,0.58]
Res	0.15 [-0.26,0.56]

TABLE II

MEAN VALUES OF THE SHAPE PARAMETER OF THE GEV ADJUSTED TO THE PERIOGRAM OF MU-BAND, WITH THE 95% CONFIDENCE INTERVALS.

To assess the quality of the proposed method for mu-band suppression, we adopted a supervised classification approach with 30 thousand randomized signals for training and testing from the motor imagery database with the 3 GEV features for each vector as follows:

- $\theta_1 = [\mu_1, \sigma_1, \xi_1]$ 10 thousand randomized imagery events.
- $\theta_0 = [\mu_0, \sigma_0, \xi_0]$ 10 thousand randomized movement events.

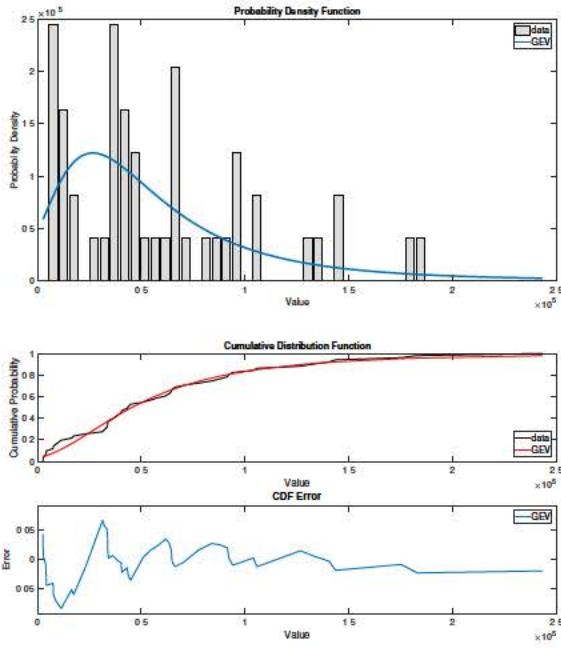


Fig. 3. Mu-band in movement event

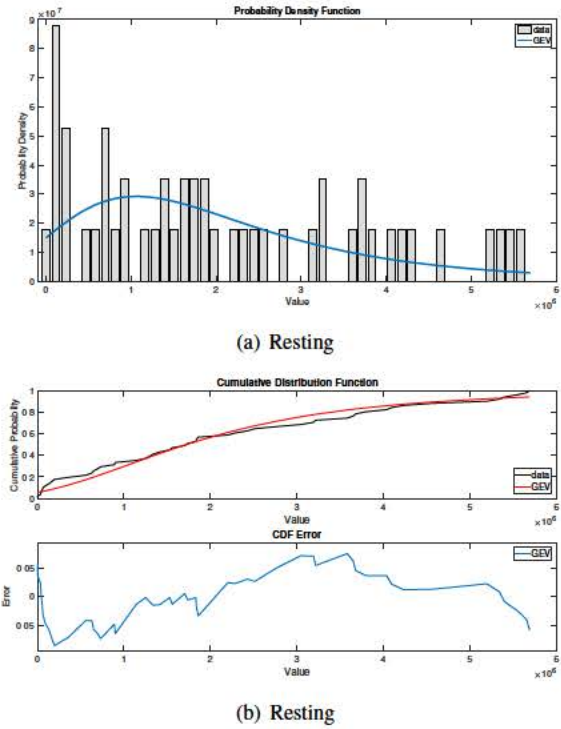


Fig. 4. Mu-band in resting event

- $\theta_{-1} = [\mu_{-1}, \sigma_{-1}, \xi_{-1}]$ 10 thousand randomized resting events.

A linear classifier derived from the linear discriminant analysis (LDA) was designed to distinguish between the different events $[\theta_1, \theta_0, \theta_{-1}]$. Note that, the LDA computational complexity is lower with respect to support vector machines

	scale (σ)	
Ima	143275.14	[110712.36, 185415.39]
Mov	31104.66	[23545.71, 41090.27]
Res	1273712.63	[945447.56, 1715953.13]

TABLE III
MEAN VALUES OF THE SCALE PARAMETER OF THE GEV ADJUSTED TO THE PERIODOGRAM OF MU-BAND, WITH THE 95% CONFIDENCE INTERVALS

	location (μ)	
Ima	196975.08	[149574.66, 244375.50]
Mov	33551.02	[23148.30, 43953.76]
Res	1241060.75	[778886.63, 1703234.88]

TABLE IV
MEAN VALUES OF THE LOCATION PARAMETER OF THE GEV ADJUSTED TO THE PERIODOGRAM OF MU-BAND, WITH THE 95% CONFIDENCE INTERVALS

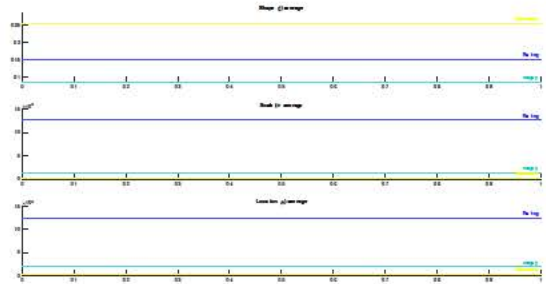


Fig. 5. Plot of the mean values from Tables II to IV. Note that, these parameters allow the identification of imagery events (grey), the movement events (yellow), and the resting events (blue) using a threshold approach.

(SVM), which is one of the most used classifiers. The LDA computational complexity is $O(mn + mt + nt)$, where m is the number of samples, n is the number of features, and $t = \min(m, n)$. While SVM complexity is $O(n^2)$ or $O(n^3)$ depending on the parametrization, with n being the size of the dataset, which is generally large when EEG signals are analyzing [27].

Due to the big data volume generated, a 20-fold cross-validation technique was used for training and testing, with 10 times repetition to ensure no bias in the partitioning and to avoid imbalanced data [28]. Figure 6, shows the scatter distribution of the different randomized events, namely imagery, movement, and resting. It is interesting to note the separability of the classes. This justifies evidently the use of linear classification to distinguish events. The classifier achieves a 100% sensitivity (True positive rate) and specificity (True false rate) for mu-suppression detection.

IV. CONCLUSIONS

This work presented a study of detecting mu-suppression in EEG signals, based on the generalized extreme value (GEV) distribution. The three parameters of this distribution were estimated from its periodogram power spectral density for three events: imagery, movement, and resting. A linear

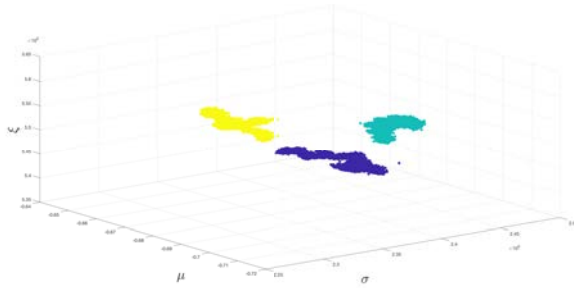


Fig. 6. Scatter plot example with randomized data. It is clearly possible to use a linear classifier as imagery events (grey), the movement events (yellow), and the resting events (blue) are well separated in the GEV parameter space.

classifier derived from the linear discriminant analysis (LDA) was designed to distinguish between event types using these parameters. The performance of the proposed method was evaluated on a real dataset from 52 subjects achieving 100% accuracy. In addition to its performance, an advantage of this method is its low computational cost compared to existing methods. These good results have the potential to shed new light on mu-suppression detection in motor imagery EEG signals in the central motor cortex.

The noise and artifacts were not taken into consideration in this work, which constitutes its main limitation. Future work will focus on the study of the noise and artifacts in order to make the method applicable in real-time. A large scale testing campaign will also be undertaken with other databases and other possible channel locations with the idea of using the least amount of channels possible.

V. ACKNOWLEDGMENTS

The authors would like to thank Joaquin Ems, Lourdes Hirschson, and Catalina Carenzo for useful comments on an earlier version of the manuscript. We are grateful to the professor emeritus Jaime A. Pineda from the University of California, San Diego, La Jolla, CA, USA, for all the useful discussions during the process of this study.

REFERENCES

- [1] K. Friston, "Waves of prediction," *PLOS Biology*, vol. 10, no. 17, p. e3000426, 2019.
- [2] D. L. Schomer and F. L. da Silva, *Niedermeyer's Electroencephalography: Basic Principles, Clinical Applications, and Related Fields*. Lippincott Williams and Wilkins, 2010.
- [3] S. Sanei, *Adaptive Processing of Brain Signals*. Wiley-Blackwell, 2013.
- [4] S. Arroyo, R. P. Lesser, B. Gordon, S. Uematsu, D. Jackson, and R. Webber, "Functional significance of the mu rhythm of human cortex: an electrophysiologic study with subdural electrodes," *Electroencephalography and Clinical Neurophysiology*, vol. 3, no. 87, pp. 76–87, 1993.
- [5] G. Pfurtscheller and C. Neuper, "Event-related synchronization of mu rhythm in the EEG over the cortical hand area in man," *Neuroscience Letters*, vol. 1, no. 174, pp. 93–96, 1994.
- [6] E. Castillo, A. S. Hadi, N. Balakrishnan, and J. M. Sarabia, *Extreme Value and Related Models with Applications in Engineering and Science*. Wiley-Interscience, 2004.
- [7] N. Gaspard, R. Alkawadri, P. Farooque, I. I. Goncharova, and H. P. Zaveri, "Automatic detection of prominent interictal spikes in intracranial EEG: Validation of an algorithm and relationship to the seizure onset zone," *Clinical Neurophysiology*, vol. 6, no. 125, pp. 1095–1103, 2014.

- [8] N. Nazmia, S. A. Mazlana, H. Zamzuria, M. Azizi, and A. Rahman, "Fitting distribution for electromyography and electroencephalography signals based on goodness-of-fit tests," *IEEE International Symposium on Robotics and Intelligent Sensors*, no. 76, pp. 468–473, 2015.
- [9] S. Luca, P. Karsmakers, K. Cuppens, T. Croonenborghs, A. V. de Vel, B. Ceulemans, L. Lagace, and B. V. Sabine Van Huffel a, b, "Detecting rare events using extreme value statistics applied to epileptic convulsions in children," *Artificial Intelligence in Medicine*, no. 60, pp. 89–96, 2014.
- [10] T. Ueda, T. Musha, and T. Yagi, "Research of the characteristics of alzheimer's disease using EEG," *Annual International Conference of the IEEE EMBS*, no. 2009, pp. 4998–5001, 2009.
- [11] S. J. Roberts, "Extreme value statistics for novelty detection in biomedical data processing," *IEE Proceedings - Science, Measurement and Technology*, no. 147, pp. 363–367, 2000.
- [12] J. Pineda, "The functional significance of mu rhythms: Translating "seeing" and "hearing" into "doing"," *Brain Research Reviews*, vol. 68, no. 57, pp. 57–68, 2005.
- [13] H. M. Hobson and D. V. M. Bishop, "The interpretation of mu suppression as an index of mirror neuron activity: past, present and future," *Royal Society Open Science*, vol. 3, no. 4, p. 160662, 2017.
- [14] Y. Nishimura1, Y. Ikeda1, A. Suematsu1, and S. Higuchi, "Effect of visual orientation on mu suppression in children: a comparative EEG study with adults," *Journal of Physiological Anthropology*, vol. 16, no. 37, pp. 1–9, 2018.
- [15] M. Hamedi, S.-H. Salleh, and A. M. Noor, "Electroencephalographic motor imagery brain connectivity analysis for BCI: A review," *Neural Computation*, no. 6, pp. 999–1041, 2016.
- [16] K. Xu, Y.-Y. Huang, and J.-R. Duann, "The sensitivity of single-trial mu-suppression detection for motor imagery performance as compared to motor execution and motor observation performance," *Frontiers in Human Neuroscience*, vol. 13, no. 302, pp. 1–12, 2019.
- [17] C. Guger, G. Edlinger, W. Harkam, I. Niedermayer, and G. Pfurtscheller, "How many people are able to operate an EEG-based brain-computer interface (BCI)?" *IEEE Transactions on Neural Systems and Rehabilitation Engineering*, vol. 2, no. 11, pp. 145–147, 2003.
- [18] M. Schroder, T. N. Lal, T. Hinterberger, M. Bogdan, N. Hill, N. Birbaumer, W. Rosenstiel, and B. Scholkopf, "Robust EEG channel selection across subjects for brain-computer interfaces," *EURASIP Journal on Applied Signal Processing*, no. 19, pp. 3103–3112, 2005.
- [19] M. Naeem, C. Brunner, R. Leeb, B. Graimann, and G. Pfurtscheller, "Seperability of four-class motor imagery data using independent components analysis," *Journal of Neural Engineering*, no. 3, pp. 208–216, 2006.
- [20] B. Blankertz, F. Losch, M. Krauledat, G. Dornhege, G. Curio, and K.-R. Muller, "The Berlin brain-computer interface: Accurate performance from first-session in BCI-naive subjects," *IEEE Transactions on Biomedical Engineering*, vol. 10, no. 55, pp. 2452–2462, 2008.
- [21] B. Wan, Z. Zhou, L. Xu, D. Ming, H. Qi, and L. Cheng, "Mu rhythm desynchronization detection based on empirical mode decomposition," *31st Annual International Conference of the IEEE EMBS*, pp. 2232–2235, 2009.
- [22] M. Arvaneh, C. Guan, K. K. Ang, and C. Quek, "Optimizing the channel selection and classification accuracy in EEG-based BCI," *IEEE Transactions on Biomedical Engineering*, vol. 6, no. 58, pp. 1865–1873, 2011.
- [23] H. Cho, M. Ahn, S. Ahn, M. Kwon, and S. C. Jun, "EEG datasets for motor imagery brain computer interface," *Gigascience*, vol. 7, no. 6, pp. 1–8, 2017.
- [24] R. B. D'Agostino and M. A. Stephens, *Goodness-of-Fit Techniques*. Dekker, 1986.
- [25] S. Kotz and S. Nadarajah, *Extreme Value Distributions: Theory and Applications*. ICP, 2001.
- [26] A. Quintero-Rincón, M. Pereyra, C. D'Giano, M. Risk, and H. Batatia, "Fast statistical model-based classification of epileptic EEG signals," *Biocybernetics and Biomedical Engineering*, vol. 38, no. 4, pp. 877–889, 2018.
- [27] A. Quintero-Rincón, C. D'Giano, and M. Risk, "Epileptic seizure prediction using Pearson's product-moment correlation coefficient of a linear classifier from generalized Gaussian modeling," *Neurología Argentina*, vol. 10, no. 4, pp. 201–217, 2018.
- [28] A. Quintero-Rincón, M. Flugelman, J. Prendes, and C. D'Giano, "Study on epileptic seizure detection in EEG signals using largest Lyapunov exponents and logistic regression," *Revista Argentina de Bioingeniería, Bioingeniería Argentinian Society*, vol. 23, no. 2, pp. 17–24, 2019.