



HAL
open science

Deciphering the radio star formation correlation on kpc scales

B. Vollmer, M. Soida, R. Beck, M. Powalka

► **To cite this version:**

B. Vollmer, M. Soida, R. Beck, M. Powalka. Deciphering the radio star formation correlation on kpc scales. *Astronomy & Astrophysics - A&A*, 2020, 633, pp.A144. <10.1051/0004-6361/201935923>. <hal-03158922>

HAL Id: hal-03158922

<https://hal.science/hal-03158922v1>

Submitted on 4 Mar 2021

HAL is a multi-disciplinary open access archive for the deposit and dissemination of scientific research documents, whether they are published or not. The documents may come from teaching and research institutions in France or abroad, or from public or private research centers.

L'archive ouverte pluridisciplinaire **HAL**, est destinée au dépôt et à la diffusion de documents scientifiques de niveau recherche, publiés ou non, émanant des établissements d'enseignement et de recherche français ou étrangers, des laboratoires publics ou privés.



HAL Authorization

Deciphering the radio star formation correlation on kpc scales

I. Adaptive kernel smoothing experiments

B. Vollmer¹, M. Soida², R. Beck³, and M. Powalka¹

¹ Université de Strasbourg, CNRS, Observatoire astronomique de Strasbourg, UMR 7550, 67000 Strasbourg, France
e-mail: bernd.vollmer@astro.unistra.fr

² Astronomical Observatory, Jagiellonian University, Kraków, Poland

³ Max-Planck-Institut für Radioastronomie, Auf dem Hügel 69, 53121 Bonn, Germany

Received 20 May 2019 / Accepted 4 November 2019

ABSTRACT

One of the tightest correlations in astronomy is the relation between the integrated radio continuum and the far-infrared (FIR) emission. Within nearby galaxies, variations in the radio–FIR correlation have been observed, mainly because the cosmic ray electrons migrate before they lose their energy via synchrotron emission or escape. The major cosmic-ray electron transport mechanisms within the plane of galactic disks are diffusion, and streaming. A predicted radio continuum map can be obtained by convolving the map of cosmic-ray electron sources, represented by that of the star formation, with adaptive Gaussian and exponential kernels. The ratio between the smoothing lengthscales at 6 cm and 20 cm can be used to determine, between diffusion and streaming, which is the dominant transport mechanism. The dependence of the smoothing lengthscale on the star formation rate bears information on the dependence of the magnetic field strength, or the ratio between the ordered and turbulent magnetic field strengths on star formation. Star formation maps of eight rather face-on local and Virgo cluster spiral galaxies were constructed from *Spitzer* and *Herschel* infrared and GALEX UV observations. These maps were convolved with adaptive Gaussian and exponential smoothing kernels to obtain model radio continuum emission maps. It was found that in asymmetric ridges of polarized radio continuum emission, the total power emission is enhanced with respect to the star formation rate. At a characteristic star formation rate of $\dot{\Sigma}_* = 8 \times 10^{-3} M_{\odot} \text{ yr}^{-1} \text{ kpc}^{-2}$, the typical lengthscale for the transport of cosmic-ray electrons is $l = 0.9 \pm 0.3 \text{ kpc}$ at 6 cm, and $l = 1.8 \pm 0.5 \text{ kpc}$ at 20 cm. Perturbed spiral galaxies tend to have smaller lengthscales. This is a natural consequence of the enhancement of the magnetic field caused by the interaction. The discrimination between the two cosmic-ray electron transport mechanisms, diffusion, and streaming is based on (i) the convolution kernel (Gaussian or exponential); (ii) the dependence of the smoothing kernel on the local magnetic field, and thus on the local star formation rate; (iii) the ratio between the two smoothing lengthscales via the frequency dependence of the smoothing kernel, and (iv) the dependence of the smoothing kernel on the ratio between the ordered and the turbulent magnetic field. Based on our empirical results, methods (i) and (ii) cannot be used to determine the cosmic ray transport mechanism. Important asymmetric large-scale residuals and a local dependence of the smoothing length on $B_{\text{ord}}/B_{\text{turb}}$ are most probably responsible for the failure of methods (i) and (ii), respectively. On the other hand, the classifications based on $I_{6 \text{ cm}}/I_{20 \text{ cm}}$ (method iii) and $B_{\text{ord}}/B_{\text{turb}}$ (method iv), are well consistent and complementary. We argue that in the six Virgo spiral galaxies, the turbulent magnetic field is globally enhanced in the disk. Therefore, the regions where the magnetic field is independent of the star formation rate are more common. In addition, $B_{\text{ord}}/B_{\text{turb}}$ decreases, leading to a diffusion lengthscale that is smaller than the streaming lengthscale. Therefore, cosmic ray electron streaming dominates in most of the Virgo spiral galaxies.

Key words. galaxies: ISM – galaxies: magnetic fields – galaxies: star formation

1. Introduction

One of the tightest correlations in astronomy is the relation between the integrated radio continuum (synchrotron) and the far-infrared (FIR) emission (Helou et al. 1985; Condon 1992; Mauch & Sadler 2007; Yun et al. 2001; Bell 2003; Appleton et al. 2004; Kovács et al. 2006; Murphy et al. 2009; Sargent et al. 2010; Li et al. 2016). It holds over five orders of magnitude in various types of galaxies, including starbursts. The common interpretation of the correlation is that both emission types are proportional to star formation: the radio emission via (i) the cosmic ray source term caused by supernova explosions and the turbulent amplification of the small-scale magnetic field (small-scale dynamo e.g., Schleicher & Beck 2013) and (ii) the FIR emission via the dust heating, mainly through massive stars. Within nearby galaxies, variations in the radio–FIR correlation have been observed by Gordon et al. (2004), Murphy et al.

(2006, 2008), Dumas et al. (2011), Hughes et al. (2006), and Tabatabaei et al. (2013a). The latter authors found that the slope of the radio–FIR correlation across the galaxy varies as a function of the star formation rate and the magnetic field strength. For the resolved correlation between the radio continuum emission and the star formation rate, Heesen et al. (2014, 2019) found non-linear slopes of 0.79 ± 0.25 , and 0.75 ± 0.10 , respectively. When the star formation distribution was smoothed, owing to the transport of cosmic-ray electrons away from the star formation site, the slope became about unity (Heesen et al. 2019). Thus, the radio continuum emission is smoothed with respect to the star formation rate resulting from the transport of cosmic ray electrons.

Radio continuum emission observed at frequencies below a few GHz is most frequently dominated by synchrotron emission, which is emitted by cosmic-ray electrons with relativistic velocities that spiral around galactic magnetic fields. The magnetic

field can be regular, meaning structured on large-scales (kpc), or tangled on small-scales via turbulent motions. The turbulent magnetic field has an isotropic and an anisotropic component. The total magnetic field B is the total magnetic field, which is the quadratic sum of the ordered and turbulent magnetic field components. The ordered magnetic field includes the large-scale regular magnetic field, and the anisotropic small-scale magnetic field. The turbulent magnetic field dominates in spiral arms with total magnetic field strengths of 20–30 μG , the ordered field dominates in the interarm regions with total magnetic field strengths of 5–15 μG (Beck 2005, 2015; Beck & Wiebeinski 2013). The evolution of the magnetic field is determined by the induction equation.

The energy loss caused by synchrotron emission depends on the magnetic field strength and the electron energy or Lorentz factor γ :

$$\frac{dE}{dt} = b(E) = 3.4 \times 10^{-17} \text{ GeV s}^{-1} \times \left(\frac{E}{1 \text{ GeV}} \right)^2 \left(\frac{B}{3 \mu\text{G}} \right)^2. \quad (1)$$

A cosmic ray electron with energy E emits most of its energy at a critical frequency ν_c where

$$\nu_c = 1.3 \times 10^{-2} \left(\frac{B}{\mu\text{G}} \right) \left(\frac{E}{\text{GeV}} \right)^2 \text{ GHz}. \quad (2)$$

The timescale for synchrotron emission is

$$t_{\text{syn}} = \frac{E}{b(E)} \simeq 4.5 \times 10^7 \left(\frac{B}{10 \mu\text{G}} \right)^{-3/2} \nu_{\text{GHz}}^{-1/2} \text{ yr}. \quad (3)$$

Cosmic ray particles are mainly produced in supernova shocks via Fermi acceleration. However, the relativistic electrons do not stay at the location of their creation. They propagate either via diffusion, or by streaming with the Alfvén velocity. In addition, cosmic ray electrons can be transported into the halo by advection, meaning a galactic wind. During the transport process, the cosmic ray electron loses energy via synchrotron emission. The associated diffusion–advection–loss equation for the cosmic ray electron density N reads as

$$\begin{aligned} \frac{\partial N}{\partial t} = & D \nabla^2 N + \frac{\partial}{\partial E} (b(E) N(E)) \\ & - (\mathbf{u} + \mathbf{v}) \nabla N + \frac{p}{3} \frac{\partial N}{\partial p} \nabla \mathbf{u} + Q(E), \end{aligned} \quad (4)$$

where D is the diffusion coefficient, E the cosmic ray electron energy, \mathbf{u} the advective flow velocity, \mathbf{v} the streaming velocity, p the cosmic ray electron pressure, Q the source term, and $b(E)$ the energy loss rate. The first part of the right-hand side is the diffusion term, followed by the synchrotron loss, advection, streaming, adiabatic energy gain or loss, and the source terms. The advection and adiabatic terms are only important for the transport in a vertical direction. For the cosmic ray electron transport within the disk, these terms play a minor role. Energy can be lost via inverse Compton radiation, Bremsstrahlung, pion or ionization energy loss, and most importantly synchrotron emission (e.g., Murphy 2009; Lacki et al. 2010). In non-starburst galaxies, the synchrotron loss term is expected to dominate.

To predict the distribution of non-thermal radio continuum emission, where the thermal and AGN emissions have been removed, one has to solve the diffusion equation (Eq. (4)). If we assume that advection, meaning galactic winds, are negligible, and adiabatic gains and losses are unimportant, the equation becomes a diffusion-advection equation with a source term. In a

steady state this gives: $D \nabla^2 N + \mathbf{v} \nabla N + Q(E) = 0$. The assumption of steady state at a spatial resolution of ~ 1 kpc is justified by the tightness of the correlation between the resolved star formation rate and non-thermal radio continuum emission, with a dispersion of 0.3 dex at 20 cm (Heesen et al. 2019) and 0.2 dex at 6 cm (Fig. 2). The predicted radio continuum map can thus be obtained by convolving the source map, represented by that of the star formation rate, with Gaussian (diffusion) and exponential (streaming) kernels (cf. middle panels of Figs. 5 and 6 in Heesen et al. 2016)¹.

The transport mechanism of cosmic ray electrons within galactic disks could be diffusion as a result of random motions across tangled magnetic field lines, or streaming as a result of ordered motion along magnetic field lines down a cosmic ray pressure gradient (e.g., Yan et al. 2012). The two transport mechanisms give rise to different dependencies of the kernel lengthscale with respect to the magnetic field and the frequencies of radio continuum observations. It should thus be possible to discriminate between the two transport mechanisms through the study of the lengthscale of the Gaussian/exponential convolution kernels and their dependence on frequency and magnetic field strength in face-on galaxies.

Diffusion is found to be the dominant transport process in the Galaxy (Strong et al. 2011). Murphy et al. (2006, 2008, 2009) created modeled radio continuum distributions by appropriately smoothed far infrared images of a sample of local spiral galaxies. For unperturbed spiral galaxies, Murphy et al. (2008) showed that the dispersion in the far infrared-radio ratios on subkiloparsec scales within galaxies can be reduced by a factor of ~ 2 , on average. These authors used a spatially constant lengthscale for the smoothing kernel within a galactic disk. However, for cosmic ray diffusion or streaming the lengthscale should depend on the synchrotron timescale, which depends on the magnetic field strength. Since the magnetic field strength is related to the star formation rate (e.g. Tabatabaei et al. 2013a; Heesen et al. 2014), we expect that the smoothing kernel is proportional to the local star formation rate density. This behaviour was found globally by Murphy et al. (2006, 2008) using one single smoothing lengthscale for the whole galaxy. We want to see if we can find evidence for such a local behaviour. In addition, the cosmic ray electron source term, $Q(E)$, should be directly linked to the star formation distribution, rather than the FIR emission distribution (e.g., Heesen et al. 2014, 2019).

For this paper, we tested our hypothesis by applying a Gaussian and exponential convolution with an adaptive Kernel to the star formation maps of eight local rather face-on spiral galaxies, and compared the results with synchrotron emission maps. For the comparison, we used the same minimization as Murphy et al. to find the “best fit” model, and thus the smoothing lengthscale. Heesen et al. (2019) used a different criterion: the relation between the star formation rate $\dot{\Sigma}_*$ and the radio surface brightness, becomes linear for the appropriate smoothing lengthscale. In addition to the work of Murphy et al. and Heesen et al., we used an adaptive smoothing kernel that depends on the local star formation rate $\dot{\Sigma}_*$. This is physically motivated, because the smoothing lengthscale depends on the synchrotron timescale, which depends on the magnetic field. The latter is assumed to depend on $\dot{\Sigma}_*$. The possible advection of cosmic electrons via a galactic outflow is also taken into account in our models. Compared to Murphy et al. (2006, 2008, 2009),

¹ A leaky-box model, i.e., with a diffusion, a source, and loss terms leads to an exponential kernel (Eq. (12) of Atoyan et al. 1995).

we derived the smoothing lengthscales at two frequencies (as Heesen et al. 2019).

Our aim is to discriminate between the two cosmic ray transport mechanisms, diffusion and streaming, based on (i) the convolution kernel (Gaussian or exponential), (ii) the dependence of the smoothing kernel on the local magnetic field, and thus on the local star formation rate, (iii) the ratio between the two smoothing lengthscales via the frequency-dependence of the smoothing kernel, and (iv) the dependence of the smoothing kernel on the ratio between the ordered and the turbulent magnetic field.

The paper is structured in the following way: the observations, on which the input star formation and radio continuum maps are based, are described in Sect. 2. The correlations between the integrated star formation, radio continuum emission, and average magnetic field are presented in Sect. 3. The adaptive kernel smoothing method is described in Sect. 4, and tested on toy model images in Sect. 5. We present the results of the adaptive kernel smoothing in Sect. 6. Section 7 is dedicated to the question of which transport mechanism of cosmic ray electrons dominates in the disks of our sample galaxies. We discuss our results in Sect. 8 and give our conclusions in Sect. 9.

2. Data

The eight local face-on galaxies studied are presented in Table 1. For the resolved radio-SFR correlation, we use published radio continuum, UV, and infrared data.

2.1. Radio continuum

Four Virgo spiral galaxies (NGC 4321, NGC 4535, NGC 4501, NGC 4654) were observed at 4.85 and 1.4 GHz between November 8, 2005 and January 10, 2006 with the Very Large Array (VLA) of the National Radio Astronomy Observatory (NRAO) in the D array configuration. In addition, we observed the eight galaxies at 1.4 GHz on August 15, 2005 in the C array configuration. The band passes were 2×50 MHz. The final cleaned maps were convolved to a symmetric Gaussian beam size of $18'' \times 18''$ (1.5×1.5 kpc). The total power images at 6 cm and 20 cm are presented in Vollmer et al. (2010). The galaxy NGC 4303 was observed with the VLA at 4.86 GHz between October 12, 2009 and December 23, 2009 with the VLA in the D array configuration. In addition, we observed all galaxies at 1.4 GHz on March 21, 2008 in the C array configuration. The band widths were 2×50 MHz. The final cleaned maps were convolved to a symmetric Gaussian beam size of $22'' \times 22''$ (1.8×1.8 kpc). The total power images at 6 cm and 20 cm are presented in Vollmer et al. (2013). In addition, we used VLA 4.85 and 1.4 GHz images of NGC 4254 (Chyży et al. 2007), NGC 6946 (Beck & Hoernes 1996), and M 51 (Fletcher et al. 2011) with spatial resolutions of $15'' \times 15''$. We subtracted strong point sources and the thermal free-free radio emission according to the recipe of Murphy et al. (2008),

$$\left(\frac{S_{\text{therm}}}{\text{Jy}}\right) = 7.9 \times 10^{-3} \left(\frac{T}{10^4 \text{ K}}\right)^{0.45} \left(\frac{\nu}{\text{GHz}}\right)^{-0.1} \left(\frac{I_{\nu}(24 \mu\text{m})}{\text{Jy}}\right), \quad (5)$$

where T is the electron temperature, and $I_{\nu}(24 \mu\text{m})$ is the flux density at a wavelength of $24 \mu\text{m}$. We note that there are other alternative methods to account for the thermal free-free emission using, for example, the extinction-corrected $H\alpha$ emission (Tabatabaei et al. 2007; Heesen et al. 2014).

In the inner regions of many galaxies, the ratio between the radio continuum emission and star formation is significantly dif-

ferent from that of the disk. Tests with radio continuum emission maps, including the nuclei, showed that these regions can behave significantly differently than the disks in terms of cosmic ray electron transport. To prevent a strong influence of the nucleus on our results, we therefore removed the emission of the inner kpc in many cases.

2.2. Star formation rate

The star formation rate was calculated from the FUV luminosities corrected by the total infrared to FUV luminosity ratio (Hao et al. 2011). This method takes into account the UV photons from young massive stars that escape the galaxy, and those which are absorbed by dust and re-radiated in the far infrared:

$$\dot{\Sigma}_* = 8.1 \times 10^{-2} (I(\text{FUV}) + 0.46 I(\text{TIR})), \quad (6)$$

where $I(\text{FUV})$ is the GALEX far ultraviolet and $I(\text{TIR})$ the total infrared intensity based on *Spitzer* IRAC and MIPS data in units of MJy sr^{-1} . $\dot{\Sigma}_*$ has the units of $M_{\odot} \text{ kpc}^{-2} \text{ yr}^{-1}$. This prescription only holds for a constant star formation rate over the last few 100 Myr.

The full width at half-maximum (FWHM) of the point spread functions (PSFs), as stated in the *Spitzer* Observer's Manual (*Spitzer* Science Centre 2006), are 1.7, 2.0, 6, and 18 arcsec at 3.6, 8.0, 24, and $70 \mu\text{m}$, respectively. In addition, we used *Herschel* Virgo Cluster Survey (HeViCS) 100 and $160 \mu\text{m}$ images (Davies et al. 2010), which have spatial resolutions of seven and 12 arcsec, respectively. Firstly, the data are convolved with Gaussian kernels that match the PSFs of the images in the 3.6, 8, 24, 70, 100, and $160 \mu\text{m}$ bands to the PSF of the radio continuum data. Next, the data were re-binned to the common pixel size of the radio continuum maps. We exclude regions not detected at the 3σ level in one or more wave bands from the analysis. This resulted in a loss of surface of 10%–20% compared to the regions with $24 \mu\text{m}$ 3σ detections with a tendency for less loss for truncated galaxies. Following Helou et al. (2004), we subtracted the stellar continuum from the 8 and $24 \mu\text{m}$ surface brightnesses (in MJy sr^{-1}) using

$$I_{\nu}(\text{PAH } 8 \mu\text{m}) = I_{\nu}(8 \mu\text{m}) - 0.232 I_{\nu}(3.6 \mu\text{m}) \quad \text{and} \quad (7)$$

$$I_{\nu}(24 \mu\text{m}) = I_{\nu}(24 \mu\text{m}) - 0.032 I_{\nu}(3.6 \mu\text{m}). \quad (8)$$

We calculated the TIR surface brightnesses using

$$I(\text{TIR}) = 2.064 \nu I_{\nu}(24 \mu\text{m}) + 0.539 \nu I_{\nu}(70 \mu\text{m}) + 0.277 \nu I_{\nu}(100 \mu\text{m}) + 0.938 \nu I_{\nu}(160 \mu\text{m}) \quad (9)$$

based on Table 3 from Galametz et al. (2013). In most galactic environments, the error introduced to $I(\text{TIR})$ is about 50%, based on the Draine & Li (2007) models.

One should keep in mind that these star formation rates are not perfect: for example, the SF timescales probed by FIR and GALEX UV might not match the bibliography GALEX UV probes star formation timescales of ~ 50 –100 Myr, whereas the FIR probes timescales that are probably shorter, although this depends on the star formation history. Leroy et al. (2008) estimated the typical uncertainty on their $24 \mu\text{m}$ –FUV star formation rate to be of the order of 50% or 0.2 dex. The uncertainty of our star formation rates is of the same order. For a comparison between different star formation indicators based on mixed processes (direct stellar light (FUV), dust-processed stellar light (FIR, TIR), ionised gas emission($H\alpha$)) we refer to Calzetti (2013).

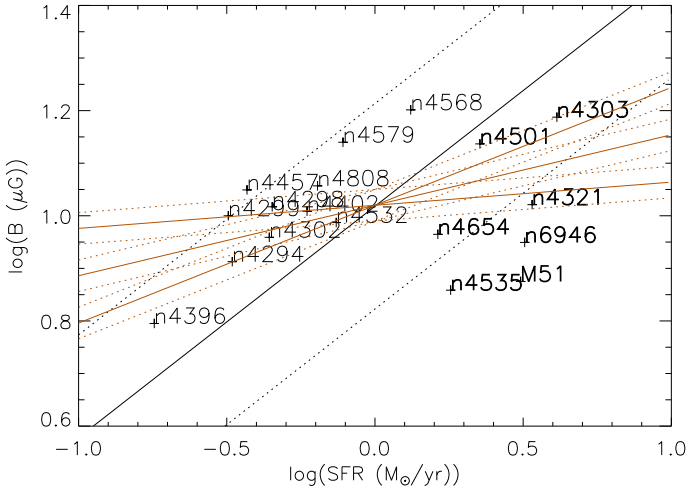


Fig. 3. Average magnetic field strength as a function of total star formation rate. The black line corresponds to an outlier-resistant two-variable linear regression, and the red lines to a Bayesian approach to linear regression.

due to environmental interactions. In Sect. 8, we show that there is evidence for an increase of B_{turb} on the local star formation rate ($\dot{\Sigma}_*$).

4. Method

The lengthscale of cosmic ray electron diffusion is given by $l_{\text{diff}} = \sqrt{4D t_{\text{syn}}}$ (see Sect. 7.4). The synchrotron timescale t_{syn} is given by Eq. (3). The diffusion coefficient might be constant or proportional to the ratio between the ordered and turbulent magnetic field (Chuvilgin & Ptuskin 1993; Breitschwerdt et al. 2002) $D \propto (B_{\text{ord}}/B_{\text{turb}})^2$. Tabatabaei et al. (2013b) indeed found the diffusion length scales with the ratio $(B_{\text{ord}}/B_{\text{turb}})$ (their Fig. 12). For a power law dependence of the magnetic field on the star formation rate $B \propto \dot{\Sigma}_*^j$ the diffusion lengthscale is

$$l_{\text{diff}} \propto (B_{\text{ord}}/B_{\text{turb}}) \dot{\Sigma}_*^{-0.75} j v^{-0.25}. \quad (10)$$

If the ratio between the ordered and the turbulent magnetic fields depends on the star formation rate via a power law $(B_{\text{ord}}/B_{\text{turb}}) \propto \dot{\Sigma}_*^{-m}$ (as observed by Stil et al. 2009), the expression for the diffusion lengthscale becomes

$$l_{\text{diff}} \propto \dot{\Sigma}_*^n v^{-0.25} \propto \dot{\Sigma}_*^{-(0.75+j+m)} v^{-0.25}. \quad (11)$$

If streaming dominates the transport of cosmic ray electrons, the lengthscale is $l_{\text{stream}} = v_A t_{\text{syn}}$, where $v_A = B/\sqrt{\rho_i}$ is the Alfvén velocity and ρ_i the ionized gas density. Assuming energy equipartition between the magnetic field and the turbulent kinetic energy $\rho v_{\text{turb}}^2 = B^2/(8\pi)$ and a constant gas velocity dispersion v_{turb} , the streaming length scale becomes

$$l_{\text{stream}} \propto \dot{\Sigma}_*^n v^{-0.5} \propto \dot{\Sigma}_*^{-1.5} j v^{-0.5}. \quad (12)$$

Streaming occurs preferentially along the anisotropic component of the small-scale or the ordered large-scale magnetic field, lines which are traced by the polarized radio continuum emission.

If diffusion is the dominating transport mechanism, a Gaussian convolution of the source term, meaning the star formation map, is expected. If streaming dominates the cosmic ray electron transport, the convolution kernel is expected to be an exponential. This is justified by the results of Heesen et al.

(2016), who found that within their 1D cosmic ray transport model, advection leads to approximately exponential radio continuum intensity profiles, whereas diffusion leads to profiles that can be better approximated by Gaussian functions. Since advection and streaming are formally similar (the outflow velocity has to be replaced by the Alfvén velocity), the effect of streaming can be approximated by a convolution with an exponential kernel.

The exponent j might vary between 0.3 (Heesen et al. 2014) and 0.5. The latter value is based on the model presented in Vollmer & Leroy (2011) and assuming energy equipartition between the magnetic field and the turbulent kinetic energy. It is close to the value found in Sect. 3 (Fig. 3). For the simple case $m = 0$, we thus obtain:

$$l_{\text{diff}} \propto \dot{\Sigma}_*^{-(0.23-0.38)} v^{-0.25} \\ l_{\text{stream}} \propto \dot{\Sigma}_*^{-(0.45-0.75)} v^{-0.5}. \quad (13)$$

If m is non-zero, the dependence of the diffusion lengthscale on the star formation becomes steeper. The exponents of the star formation rate and the frequency are thus well-separated between the cases of cosmic ray electron diffusion and streaming if m is not too large. The absolute values of both exponents are always smaller in the case of diffusion. If the magnetic field were independent of the star formation rate, meaning it were generated by mechanisms other than the small-scale turbulence induced by supernova explosions, an exponent n close to zero would be expected for both cases. If the smoothing lengthscales are known at two frequencies, the different frequency dependences in Eq. (13) lead to different ratios between the smoothing lengthscales: $l_{6\text{cm}}/l_{20\text{cm}} = 1.34$ for diffusion, and $l_{6\text{cm}}/l_{20\text{cm}} = 1.81$ for streaming. It is expected that the ratio between the smoothing lengthscales is consistent with the smoothing kernel (Gaussian or exponential). We can thus hope to separate diffusion as the dominant transport mechanism from streaming in our galaxies based on: (i) the smoothing kernel (Sects. 6.2 and 6.3), (ii) the ratio $l_{6\text{cm}}/l_{20\text{cm}}$ (Sect. 7.1), and (iii) the ratio $(B_{\text{ord}}/B_{\text{turb}})$ (Eq. (10); Sect. 7.2).

To produce the predicted radio continuum maps, we convolved the star formation maps with Gaussian and exponential functions,

$$f(r) \propto \exp(-(r/l)^2); \quad f(r) \propto \exp(-r/l), \quad (14)$$

using an adaptive kernel with the star formation dependence $l = l_0 (\dot{\Sigma}_*/\dot{\Sigma}_{*,0})^n$ (Eq. (13)) with $\dot{\Sigma}_{*,0} = 8 \times 10^{-3} M_{\odot} \text{ yr}^{-1} \text{ kpc}^{-2}$. This star formation rate is characteristic for the outer edges of spiral arms in the galaxies of our sample. Spiral arms generally show $\dot{\Sigma}_* > \dot{\Sigma}_{*,0}$, whereas interarm regions have $\dot{\Sigma}_* < \dot{\Sigma}_{*,0}$.

To determine the smoothing lengthscale at a given star formation rate, we convolved the “observed” star formation rate with kernels of different l and calculated the goodness ϕ of the fit² following Murphy et al. (2006):

$$\phi = \frac{\sum (\text{radio}_{\text{obs}} - \text{radio}_{\text{model}})^2}{\sum \text{radio}_{\text{obs}}^2}. \quad (15)$$

To obtain a minimum ϕ , the model radio map has to be normalized with the factor

$$Q = \frac{\sum \dot{\Sigma}_{*,\text{convolved}}^2}{\sum (\text{radio}_{\text{obs}} \times \dot{\Sigma}_{*,\text{convolved}})}, \quad (16)$$

so that $\text{radio}_{\text{model}} = \dot{\Sigma}_{*,\text{convolved}}/Q$.

² A smaller goodness corresponds to a better fit.

We considered 6 different circular and elliptical smoothing kernels with major and minor half-axes a and b . The kernel lengthscale depends on the local star formation rate according to Eq. (13).

1. circular constant smoothing kernel: $a = b = l_0$;
2. circular variable smoothing kernel: $a = b = l_0(\dot{\Sigma}_*/\dot{\Sigma}_{*,0})^{0.225}$;
3. circular variable smoothing kernel: $a = b = l_0(\dot{\Sigma}_*/\dot{\Sigma}_{*,0})^{0.5}$;
4. elliptical constant smoothing kernel. This is motivated by the expectation that the cosmic ray electrons are transported preferentially along the field lines of the ordered magnetic field: $b = l_0$, $a = b/(1 - p/0.75)$; the ellipse is rotated so that its major axis has the same orientation as the ordered magnetic field. The field orientation is determined from the polarized radio continuum emission.
5. elliptical variable smoothing kernel: $b = l_0(\dot{\Sigma}_*/\dot{\Sigma}_{*,0})^{0.225}$, $a = b/(1 - p/0.75)$;
6. elliptical variable smoothing kernel: $b = l_0(\dot{\Sigma}_*/\dot{\Sigma}_{*,0})^{0.5}$, $a = b/(1 - p/0.75)$.

For NGC 6946 and M 51, we also calculated models with exponents 0.7–1.2.

Within our method, we neglect the mean free path of the UV photons, meaning between the young stars and the dust that absorbs and reradiates the UV and optical photons. We thus assume that the average UV path length is generally less than the diffusion length of relativistic electrons.

In the presence of a galactic wind, launched from sites of high local star formation rates, cosmic ray electrons can be lost in the halo by advection. In the absence of a detailed treatment of the cosmic ray electron distribution via the diffusion energy-loss equation (e.g., Eq. (1) of [Mulcahy et al. 2016](#)), we model this effect by a loss term, which is directly subtracted from the source term, meaning the star formation map. The model radio map thus becomes $\text{radio}_{\text{model}} = (\dot{\Sigma}_* - \text{loss})/Q$. Without a physical model of the galactic wind, the loss rate is assumed to have the form of a power law with respect to star formation:

$$\text{loss} = 10^{-3} \times c \times (10^3 \times \dot{\Sigma}_*)^k. \quad (17)$$

This is an ad hoc prescription that mainly removes the peaks of the emission distribution, e.g. spiral arms, for high $k > 1$. The dependence of the loss rate on the synchrotron lifetime is contained within the constant c . The normalization factor and the exponent are varied in a systematic way: $k = 1.0\text{--}2.0$ and $c = 0.01\text{--}0.08$. The constant c is adapted to k to produce losses between a few and $\sim 50\%$ of the total emission.

[Heesen et al. \(2018\)](#) and [Davies et al. \(2019\)](#) found the following relation between the wind velocity and the local star formation rate: $v_{\text{wind}} \propto \dot{\Sigma}_*^{0.4}$. The mass outflow rate per area is the $\dot{\Sigma} \sim \Sigma v_{\text{wind}}/H$, where H is the height of the gas disk. With a Schmidt–Kennicutt law of the form $\dot{\Sigma}_* \propto \Sigma^{1.0\text{--}1.5}$ and a constant disk height, one obtains $\dot{\Sigma} \sim \dot{\Sigma}_*^{1.4\text{--}1.9}$. We thus expect $1.4 \leq k \leq 1.9$, which is what we found (Tables D.8 and D.10).

In total, we carried out 12 convolution series within which l_0 , k , and c were varied. The derived smoothing lengthscales may well be smaller than the beam size (FWHM). This is possible, because the rms error of a source position is given by $\Delta\alpha = \Delta\delta \sim 0.6(S/N)^{-1}FWHM^3$ (Eq. (B2) of [Ivison et al. 2007](#)). As a consequence, beam shifts of the same order can also be detected, and this is what is done using our method. For $(S/N) \sim 5$, the source position can be determined with an accuracy superior to $0.12FWHM$. For a Virgo cluster distance of

17 Mpc and $FWHM = 18''$, this leads to an accuracy better than ~ 180 pc compared to $FWHM = 1.5$ kpc.

In reality, the convolution of the star formation distribution should be performed in three dimensions. However, the vertical dimension is not accessible in our sample of face-on galaxies. We therefore have to assume that diffusive losses in the vertical direction are not significant (except in the radio-deficient galaxy, NGC 4535). This assumption is motivated by the ubiquitous existence of radio continuum halos in edge-on spiral galaxies ([Krause et al. 2018](#)). The cosmic ray electrons are thus expected to diffuse into the halo, where they radiate away most of their energy. However, [Mulcahy et al. \(2016\)](#) found a diffusive vertical loss in M 51 by fitting the radial profile of the spectral index between 151 MHz and 1.4 GHz. We argue that the loss is only significant at a frequency of 151 MHz, small at 1.4 GHz, and negligible at 5 GHz.

5. Tests

Before the application of the adaptive smoothing kernel to observations, we tested our method on simple model data. We generated the star formation map of a toy model galaxy with two symmetric spiral arms and orderedly spaced point sources of different flux densities. The “perfect” model radio continuum map was obtained by convolving the model star formation map with an adaptive kernel whose lengthscale l is proportional to the star formation rate $l = a\dot{\Sigma}_*^n$. Finally, we convolved the model star formation and “perfect” radio continuum maps with a Gaussian kernel of constant lengthscale to obtain the “observed” maps.

The “perfect” star formation maps were convolved with Gaussian kernels of lengths of four, six, eight, and 10 pixels to obtain the “perfect” radio maps. These “perfect” maps were then convolved with Gaussian and exponential kernels of lengths of between two and 16 pixels. Figs. 4 and A.1 show the results of our tests.

For both kinds of kernels, we observe that the curve of goodness shows less pronounced minima for maps of lower resolution. Between two and 10 pixels, we can recover the lengthscale of the Gaussian or exponential smoothing kernel at a given local star formation rate within 10–20%.

As an additional test, we used the “perfect” model radio continuum map obtained with a Gaussian convolution and determined the best-fitting exponential kernel with which the star formation map is convolved. Conversely, a “perfect” model radio continuum map obtained with an exponential convolution was used to determine the best-fitting Gaussian kernel with which the star formation map is convolved. It turned out the lengthscale of the best-fitting exponential is half of that of the Gaussian kernel, because the half-light radius of an exponential is half that of a Gaussian light profile.

Secondly, we compare our constant exponential smoothing lengthscales with those of [Murphy et al. \(2006\)](#) for the two closest galaxies that we have in common: NGC 6946 and M 51 (Fig. 5). It should be noted that [Murphy et al. \(2006\)](#) used the *Spitzer* 70 μm maps as a proxy for the star formation map. An additional difference between our method and that of [Murphy et al. \(2006\)](#) is the normalization of the model radio map. While [Murphy et al. \(2006\)](#) used $Q = \frac{\Sigma_{\dot{\Sigma}_*}^{\text{convolved}}}{\Sigma_{\text{radio}_{\text{obs}}}}$, we used Eq. (16), which minimizes the goodness (ϕ , Eq. (15)). The two graphs on the left-hand side of Fig. 5 show that the lengthscales using the two normalizations Q are well-comparable, but the lengthscales with the ϕ -minimizing normalization are smaller than those with the normalization of [Murphy et al. \(2006\)](#). A comparison

³ This is valid for a symmetric beam shape and no sidelobes, which is the case for our data.

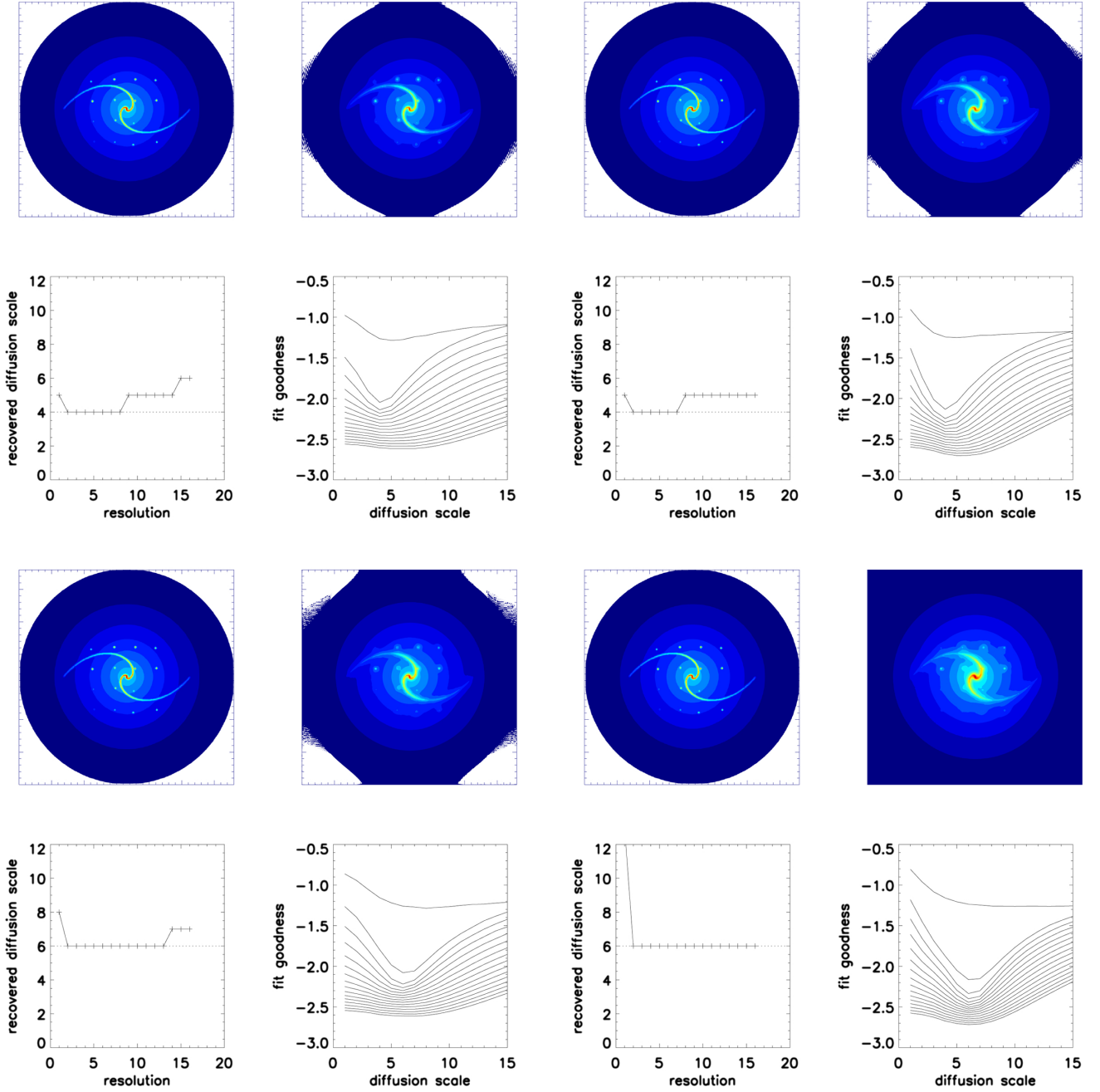


Fig. 4. Adaptive Gaussian kernel (*left row*) and exponential (*right row*) convolution of model star formation maps. Smoothing lengthscale at a given local star formation rate equals four pixels (*upper four panels*) and six pixels (*lower four panels*). *Upper left*: “perfect” star formation distribution; *upper right*: “observed” star formation distribution; *lower left*: recovered (solid line) and injected (dotted line) lengthscale of the adaptive Gaussian kernel. The resolution and diffusion scale correspond to 1.67 FWHM.

between our smoothing lengthscales and those of [Murphy et al. \(2006, 2009\)](#) can be found in Sect. 8.

The goodnesses for the convolutions with SFR-dependent smoothing kernels are shown on the right-hand side of Fig. 5. Using these adaptive smoothing kernels increases the “best-fit” lengthscale, and decreases the minimum goodness by up to 20% for NGC 6946 and M 51. The decrease of ϕ is consistent with the findings of [Murphy et al. \(2008\)](#), who convolved the small- and large-scale structures of the FIR maps separately.

The model data are noiseless and have a perfect point spread function (PSF). Though our radio continuum data have a circular Gaussian PSF, they contain noise and areas of stochastically-increased and decreased radio continuum emissions, most

probably due to time-delay effects between star formation and the subsequent radio continuum emission. Thanks to the proximity of NGC 6946 and M 51, we were able to degrade the spatial resolution of the radio continuum emission to study its influence on the derived smoothing length (Sect. 6.1).

6. Results

The adaptive smoothing kernel convolution is applied to the observed star formation maps. Gaussian and exponential kernels are used. In a second step, losses were applied to the star formation maps. The obtained model radio continuum maps were then compared to the observed 6 cm and 20 cm radio data. Since we

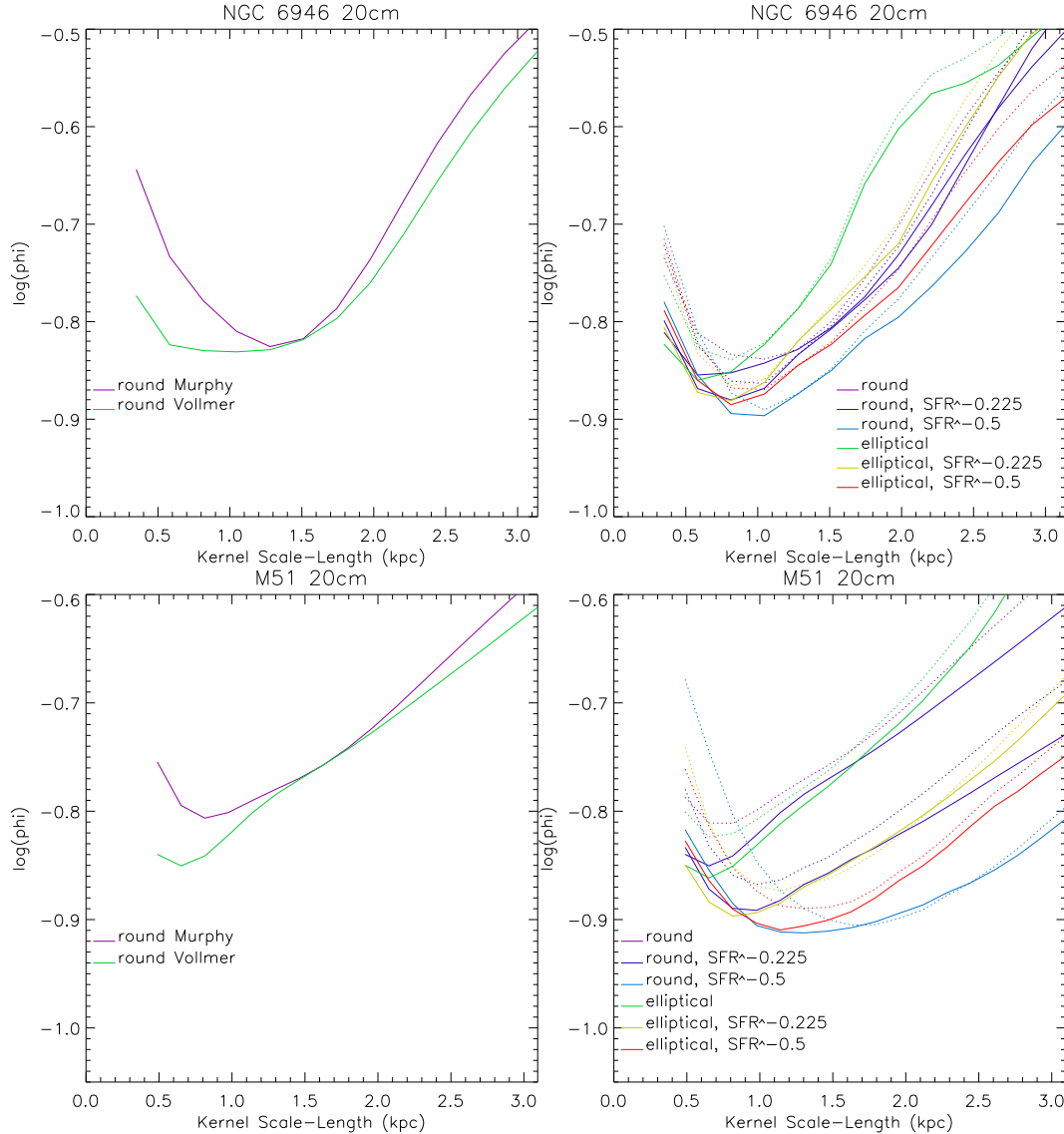


Fig. 5. *Left-hand panels:* exponential convolutions of star formation maps using [Murphy et al. \(2006\)](#) and our own normalization Q (Eq. (16)). *Right-hand panels:* exponential convolution using adaptive round and elliptical kernels.

realized that regions of high degree of polarization at 6 cm are radio-bright with respect to star formation (Fig. 6 and Vollmer et al., in prep.), we decided to enhance the source term (the star formation map) using the degree of polarization p :

$$\dot{\Sigma}'_* = \frac{\dot{\Sigma}_*}{1.0 - (p/0.75)}. \quad (18)$$

Possible physical explanations are (i) ordered magnetic fields generated by a large-scale dynamo ([Tabatabaei et al. 2013a](#)), (ii) magnetic field compression by large-scale shocks in strong density waves or in interaction regions, or (iii) less cosmic ray losses due to a slower wind. It turned out that this modification of the source term significantly improved the goodness of the fits for NGC 4303, NGC 4535, NGC 4254, NGC 4501, and NGC 4654.

In the following, we first present the results for the “best fit” models yielding the lowest goodness ϕ (Eq. (15)). The “best fit” analysis yields unique results for the different model facilitating their visual inspection (Sect. 6.2). In a statistical approach, the goodness distribution were taken into account (Sect. 6.3). This allowed us to calculate uncertainties for the parameter determined by our model.

6.1. The influence of resolution, sensitivity, and the galaxy central region

In this section, we study the influence of resolution, sensitivity, and the galaxy central region on the results of our smoothing experiments. The measured smoothing length indeed depends on the properties of the radio continuum image.

6.1.1. Resolution

Galaxies NGC 6946 and M 51 are located at much smaller distances than the Virgo cluster galaxies ($D = 17$ Mpc). The spatial resolution of $18''$ corresponds to physical distances of 0.5 kpc, 0.7 kpc, and 1.5 kpc for the distances of NGC 6946, M 51, and the Virgo cluster, respectively. We thus convolved the radio and SFR images of NGC 6946 and M 51 to obtain the same physical resolution as for the Virgo cluster galaxies. In principle, our method should be able to recover the same smoothing lengthscale as those derived from the higher resolution images (Sect. 5). The results are presented in Tables D.1–D.10. Since the results for the “best fit” models are similar to those taking

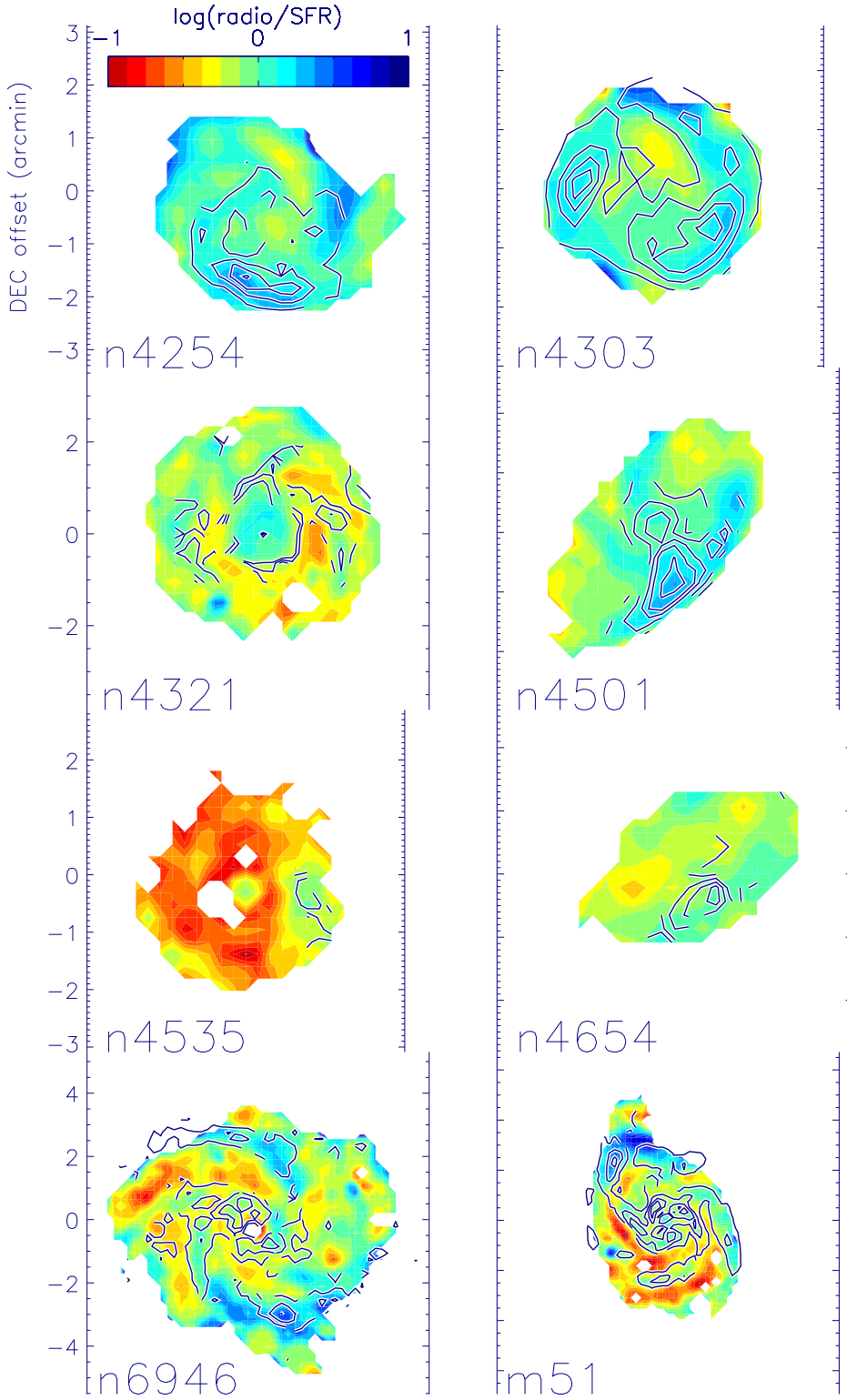


Fig. 6. Color: radio/SFR maps (in arbitrary units). Blue is radio-bright, red is radio-dim. Blue contours: polarized radio continuum emission (Vollmer et al. 2010, 2013). The contour levels were chosen so that the asymmetric ridges of polarized emission are clearly visible.

into account the goodness distribution (Sect. 6), we only discuss the results presented in Tables D.7–D.10.

Using the low-resolution input images does not change the normalization Q in all cases. However, it changes the smoothing lengthscale l . At 20 cm, the smoothing lengthscales of NGC 6946 decrease by $\sim 20\%$, those of M 51 stay constant, with and without advective losses. At 6 cm, without losses, the smoothing lengthscales decrease by 28% and 17% for NGC 6946 and M 51, respectively. At 6 cm, with losses, the decrease is 52% for NGC 6946, and 9% for M 51.

For NGC 4535, we decreased the resolution to the VIVA (Chung et al. 2009) resolution of $27''$. Surprisingly, the smoothing lengthscale increased by a factor of two at 6 cm with respect to the analysis based on the high-resolution images (Table D.7). This is due to the changing depth of the input images (see below): the lower resolution results in the detection of low surface brightness emission in the northern part of the galaxy where a large smoothing lengthscale is needed. At 20 cm, less diffuse emission is recovered by the VIVA observations, leading to a more modest increase ($\sim 20\%$) of the smoothing lengthscale.

We conclude that an increase of resolution (better resolution) of the input images by a factor 1.5–2 may lead to an increase of the smoothing lengthscale by ~ 20 –30%. If losses are included, a decrease in resolution can lead, in extreme cases, to a decrease of the smoothing lengthscale by ~ 50 %. The ratio between the smoothing lengthscales at 6 cm and 20 cm is only significantly modified in the cases where losses were included (Table 2). Without losses, the ratio increases by 15% for NGC 6946 and M 51.

6.1.2. Sensitivity

The “best fit” models of NGC 6946 and M 51 at 6 cm were those models with $l \propto \Sigma_*^n$ and high exponents $n \sim 1.5$ (Table D.7). This means that regions of low local star formation rate have huge smoothing lengthscales. These regions are located within the interarm regions and, most importantly, at the border of the galactic disk. Indeed, there is a faint diffuse 6 cm radio continuum emission observed in NGC 6946 (symmetric) and M 51 (mainly to the south) that extends well beyond the star formation distribution. To test the influence of this faint emission, we clipped the 6 cm radio continuum image at the surface brightness of the faintest levels detected in the star formation map. As expected, the clipping decreased the smoothing lengthscale by 20–40%, but it did not change the normalization Q . The fact that NGC 6946 and M 51 have strong ordered magnetic fields (Tabatabaei et al. 2013a; Fletcher et al. 2011) gives rise to larger diffusion lengthscales (Eq. (10)). The radio continuum emission from the interarm regions is quite strong, which explains that the clipping did not change the exponent n significantly. We thus conclude that deep radio continuum images with emission that extends well beyond the optical disk can lead to an overestimation of the smoothing lengthscale by 20–40%.

6.1.3. Galaxy central region

We realized that the radio properties of the central few kpc of NGC 4321 behave differently than those of the galactic disk. This effect was already noted by Murphy et al. (2008) who decomposed the galaxies into star-forming structures and diffuse disks, and looked at the propagation physics for those two components independently. These authors noted that the smoothing lengthscales were generally shorter for the star-forming structures compared to those of the diffuse disks. We thus decided to increase the central region that was removed from the input maps. At 20 cm, this procedure did not change the derived parameters. However, at 6 cm, the normalization Q increases to the mean value found for the other galaxies (Table D.7), and the smoothing lengthscale decreases by ~ 40 %. This means that the derived parameters of the model with a significant part of the central region included in the analysis were dominated by the central emission. This seems to be the limit of our rather simple model convolution and seems to indicate that the magnetic field strength at a star formation rate Σ_{*0} is lower in the central region than in the disk. In this case, the synchrotron emission timescale and the smoothing lengthscale increase. We thus conclude that one has to be cautious about including the central region of a galaxy in the smoothing experiments.

6.1.4. Summary

The variation of the smoothing lengthscale with resolution is expected to be of the order of ~ 30 %. If losses are included in the model, the variation can reach ~ 50 % in extreme cases. The

presence of an extended low surface brightness disk emission can lead to an overestimation of the smoothing lengthscale by up to ~ 40 %. The ratio between the smoothing lengthscales at 6 cm and 20 cm is robust with respect to a variation of the smoothing lengthscale (within less than 20%). It is often preferable to exclude the galaxy central region from the input radio continuum image, because the dominant cosmic ray transport mechanism can be different from that of the disk.

6.2. “Best-fit models”

We applied the convolution series described in Sect. 4 to the 8 local spiral galaxies of Table 1. The derived smoothing lengths are those from the models with the smallest goodness.

6.2.1. Model radio continuum maps

The “best-fit” model radio continuum maps are presented in Figs. 7, B.1, F.1–F.4 for the convolution with Gaussian and exponential kernels, respectively. The residual maps of the Gaussian and exponential methods are very similar. The inspection of the residual maps shows significant large-scale asymmetries. These asymmetries are similar for the 6 cm and 20 cm data. We note that NGC 6946 has a north-south asymmetry with a radio-bright southern half and a radio-dim northern half of the galactic disk. The disk of M 51 is rather radio-dim, whereas the region between M 51 and its companion is radio-bright. The northeastern half of the galactic disk of NGC 4321 is radio-bright, whereas the south-western half is radio-dim. The southern spiral arm of NGC 4303 is strongly radio-bright, whereas a part of the northern spiral arm is radio-dim. The disk of NGC 4535 is radio-dim, except in the region of the strongly-polarized radio continuum arm (Vollmer et al. 2007), which is radio-bright. The southeastern half of the galactic disk of NGC 4254 is radio-bright, whereas the north-western half is radio-dim. The southwestern side of the galactic disk of NGC 4501 where the asymmetric ridge of polarized emission is located is radio-bright, the opposite side being radio-dim. The galactic disk of NGC 4654 behaves in a similar way to that of NGC 4501.

We conclude that large-scale asymmetries are observed in the residual emission of all galaxies. If the galaxy has an asymmetric ridge of polarized emission, the ridge region is always radio-bright. The ring of strong polarized radio continuum emission in NGC 4303 is also radio-bright. It is surprising to us that in most of the galaxies (NGC 6946, NGC 4321, NGC 4535, NGC 4254, NGC 4501, NGC 4654) these asymmetries follow the disk’s kinematic minor axis, meaning they are separated by the kinematic major axis. The distribution of radio-bright and radio-dim regions is not linked to disk orientation, meaning to whether a disk half is located in front of or behind the galaxy center. These large-scale asymmetries of radio-bright and radio-dim regions dominate the goodness of the fit and thus explain the rather small decrease in the goodness (~ 10 –20%) when the different model convolutions are applied.

6.2.2. Smoothing lengthscales

The resulting curves of goodness ϕ associated with the minimum ϕ are presented in Figs. 8–C.1. Only models without an advective loss term are shown. The model convolutions with different kernels are shown in different colors. The models with an enhanced source term based on the degree of polarization are shown as dashed lines.

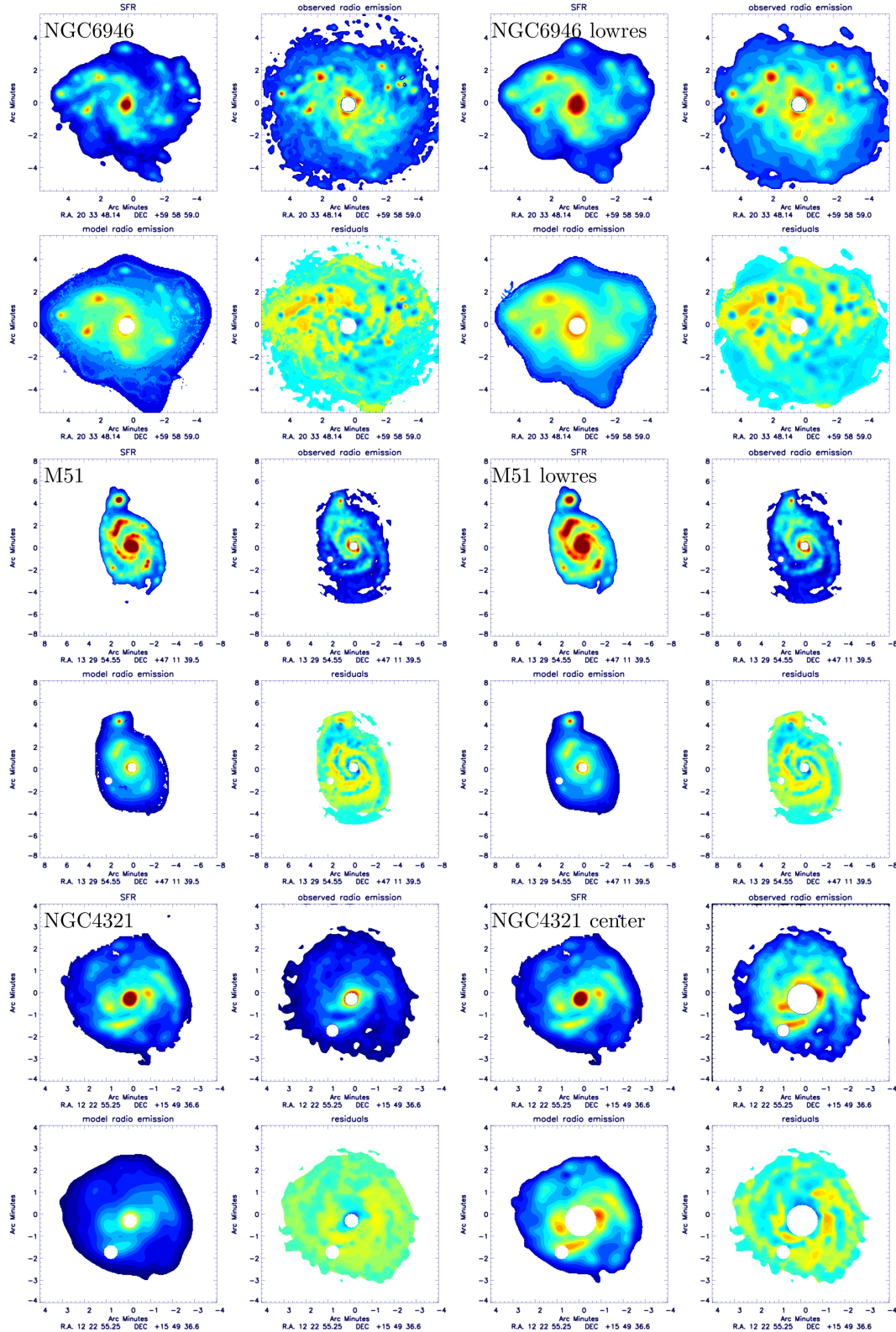


Fig. 7. Gaussian convolution: “best-fit” model radio continuum maps at 6 cm. Four maps are shown for each galaxy. *Upper left*: observed star formation; *upper right*: observed radio continuum emission; *lower left*: model radio continuum; *lower right*: residuals; blue is radio-bright, red radio-dim.

The resulting Gaussian and exponential smoothing lengthscales are compared to each other in Fig. 9. Overall, the exponential lengthscale equals half the Gaussian lengthscale with a scatter of 0.1 dex or 25%, because the half-light radius of an exponential is half that of a Gaussian light profile (see Sect. 5).

At 6 cm, the outliers are NGC 6946, NGC 6946 lowres, M 51 lowres, and NGC 4654. At 20 cm, the outliers are NGC 6946, NGC 6946 lowres, NGC 4303, and NGC 4535 VIVA. In all the cases, except NGC 4303, the exponential lengthscale is larger than half of the Gaussian lengthscale. In addition, the minimum

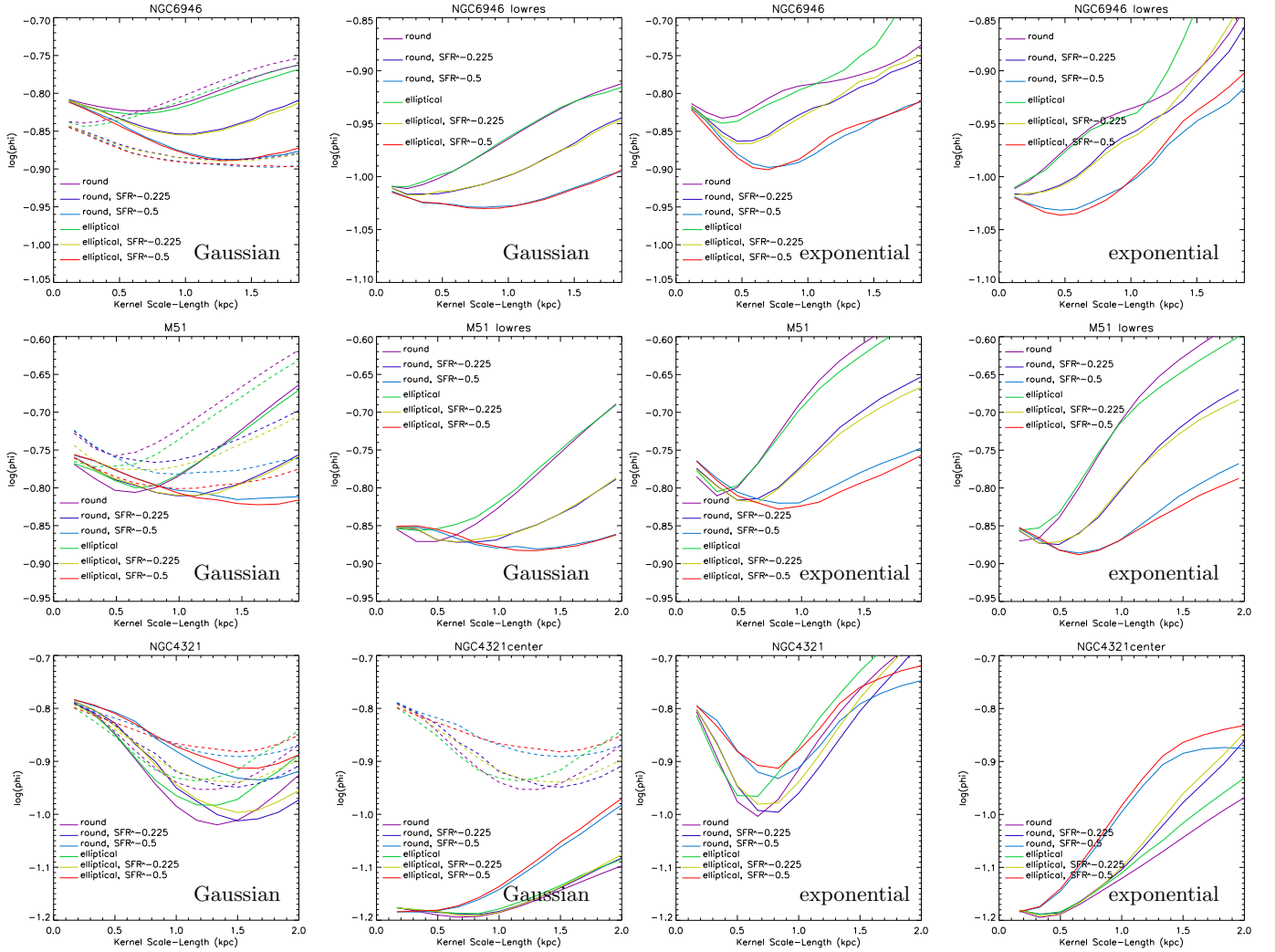


Fig. 8. Curves of goodness ϕ associated with minimum ϕ for the 12 models. The 6 cm radio continuum observations are used. The model convolutions with different kernels are shown in different colors. The models with an enhanced source term based on the degree of polarization are shown as dashed lines.

goodnesses of the “best-fit” models for the Gaussian and exponential kernels are, in most cases, well-comparable (Fig. 8–C.1). These figures also show that the enhancement of the source term (the star formation map) using the degree of polarization p leads to the same decrease in the goodness ϕ for the Gaussian and exponential kernels. This is consistent with the statement of Murphy et al. (2006) that exponential kernel “works as well as, or better than, the other kernel types”. Thus, the minimum goodness of the “best-fit” models of the Gaussian and exponential convolutions cannot be used to discriminate between the two transport mechanisms (diffusion or streaming). In the following section, we will only comment on the Gaussian length-scales given that the exponential lengthscales are about two times smaller.

6.2.3. Source term enhancement based on polarization

At 6 cm and 20 cm, the models with an enhanced source term based on the degrees of polarization lead to lower ϕ for NGC 4303, NGC 4535, NGC 4254, and NGC 4501. The last three galaxies do indeed show asymmetric ridges of polarized radio continuum emission, which are caused by the compression of the magnetic fields by ram pressure (Vollmer et al. 2007).

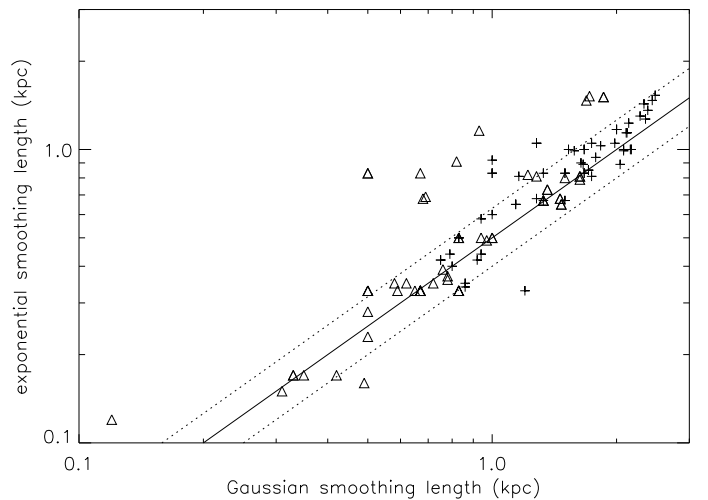


Fig. 9. Comparison between Gaussian and exponential smoothing lengthscales. Crosses: 6 cm. Triangles: 20 cm.

We note that NGC 4303 shows a strongly-polarized asymmetric ring structure (Vollmer et al. 2013). For NGC 4654, only for the 20 cm model is an enhanced source term preferred. In general,

the convolution of the star formation maps leads to a decrease in the fit goodness ϕ by ~ 0.1 dex or 25%. The improvement of the goodness caused by the enhancement of the source term based on polarization is more significant than the one caused by the variation of the smoothing lengthscale.

6.2.4. Typical smoothing lengthscales

The minimum values of ϕ , the associated smoothing lengthscales, and the ratio between the model and observed radio continuum maps at 6 cm $Q = \text{radio}_{\text{model}}/\text{radio}_{\text{obs}}$ are presented in Tables D.1 and D.2. In the case of a constant smoothing kernel (Table D.1), the minimum goodness varies between $\phi_{\text{min}} = 0.028$ (NGC 4254) and $\phi_{\text{min}} = 0.16$ (NGC 6946). The Gaussian smoothing lengthscales range between 0.42 kpc (NGC 4535) and 1.33 kpc (NGC 4321). However, the latter large smoothing lengthscale seems to be mostly needed for the galaxy center. Once the center is excluded, the smoothing lengthscale is 1.00 kpc. We thus find smoothing lengthscales between 0.4 and 1 kpc. Berkhuijsen et al. (2013) found a comparable smoothing lengthscale for M 31.

The normalization constant Q (Eq. (16))⁴ is different from $\text{SFR}/L_{\text{radio}} = \sum \dot{\Sigma}_{*, \text{ convolved}} / \sum \text{radio}_{\text{obs}}$, because it is weighted towards, and thus sensitive to, regions of high $\dot{\Sigma}_{*, \text{ convolved}}$. The comparison between both values is thus a sanity check for our model. The values of Q lie in the range between 17 and 19 for half of the galaxies. Such a narrow range is expected for galaxies that follow the radio–SFR correlation. However, NGC 4303, NGC 4254, and NGC 4501 show a higher radio-continuum emission than expected, and NGC 4535 shows a much lower radio continuum emission than expected. This is consistent with their location in the L_{radio} –SFR plot (Fig. 1). The typical Gaussian smoothing lengthscale at 20 cm (Tables D.4 and D.5) is $l = 0.8$ –2.4 kpc.

6.2.5. Asymmetric smoothing kernels with star formation dependence

The addition of models with asymmetric smoothing kernels with a dependence on star formation leads to only a small decrease (3–5%) of ϕ_{min} for most of the galaxies, except for NGC 6946 and M 51, where we observe a decrease of 25%. The smoothing lengthscales stay the same within 20% for all galaxies, except NGC 6946 and M 51, where they almost triple. Elliptical smoothing kernels improve the fits for NGC 6946, M 51, NGC 4535, NGC 4501, and NGC 4654.

The addition of a star-formation-dependent loss term (Eq. (17), Table D.3) leads to significant losses only for NGC 6946, NGC 4321 (excluding the galaxy central region), NGC 4303, NGC 4254, and NGC 4654. The most prominent effect is observed in NGC 6946, where the losses lead to a Q two times smaller, without changing the smoothing lengthscale. For NGC 4303, NGC 4254, and NGC 4654, the inclusion of a loss term leads to $\sim 25\%$ smaller smoothing lengthscales. The decrease of ϕ caused by the inclusion of a loss term is small (3–5%), comparable to that for the inclusion of an asymmetric smoothing kernel.

At 20 cm, we see similar tendencies for the smoothing goodness ϕ_{min} , the smoothing lengthscale l , and the normalization Q : ϕ_{min} at 20 cm and 6 cm are comparable (within 0.1 dex) except for NGC 4321 (excluding the center) and NGC 4501 where the ϕ_{min} at 20 cm are ~ 0.2 dex lower than the ϕ_{min} at 6 cm

(Table D.4). We observe a significantly modified Q for the same galaxies at 6 cm. The greatest difference lies in the smoothing lengthscales, which are about two times higher at 20 cm than the values at 6 cm.

As for the 6 cm data, the addition of models with asymmetric smoothing kernels (Table D.5) with a dependence on star formation leads to a significantly increased smoothing lengthscale only for NGC 6946 and M 51 at 20 cm. In the cases of NGC 6946, M 51, NGC 4535, and NGC 4501, for which an asymmetric kernel is preferred at 6 cm, they seem to prefer a symmetric kernel at 20 cm. The addition of a star-formation-dependent loss term (Table D.6) leads to significant losses only for NGC 6946, M 51, NGC 4303, and NGC 4254.

6.3. Taking into account the goodness distribution

As a second step, we want to quantify the uncertainty on our model choice as the most relevant. In contrast to a classical χ^2 value, the goodness ϕ (Eq. (15)) is a relative merit, because it is normalized with respect to the content of the radio continuum image. In addition, the existence of important large-scale asymmetries in the residual maps well above the detection limit ($>5\sigma$), make ϕ and its minimum vary from galaxy to galaxy. The only way to select “best-fit” models is to apply a relative cut to ϕ . To exploit the full wealth of goodness values ϕ of our models, we apply such a cut to the goodness distribution to determine the family of model convolutions that best reproduce the radio continuum observations. We decided to define the limiting ϕ_{lim} as the goodness for which 1% of the models have $\phi < \phi_{\text{lim}}$. The distribution of the goodness and its cut are presented in Figs. E.1–E.4. The results with and without losses are shown separately. As in the previous section, we only discuss the results for the Gaussian smoothing.

In most of the cases, the goodness distribution rises steeply from its minimum value to higher values. A notable exception to this rule is NGC 4321, which shows a maximum of the ϕ distribution that is much farther away from ϕ_{min} than that of the other galaxies. With the cut in ϕ , we can give uncertainties on the derived parameters and thus determine the most probable models with the most probable parameters. It has to be kept in mind that these uncertainties are based on relative cuts and on relative figures of merit. They are only valid in a loose, qualitative sense and should not be over-interpreted.

The resulting parameters with the associated uncertainties are listed in Tables D.7 for the 6 cm data, and D.9 for the 20 cm data. The results are well-comparable to those for the “best-fit” models (Tables D.1 and D.4).

The results for models with losses are presented in Tables D.8 and D.10. Again, the derived parameters are close to those for the “best-fit” models.

At a characteristic star formation rate of $\dot{\Sigma}_{*} = 8 \times 10^{-3} M_{\odot} \text{ yr}^{-1} \text{ kpc}^{-2}$, the typical lengthscale for the diffusive transport of cosmic ray electrons is $l = 0.9 \pm 0.3$ kpc at 6 cm (Table D.7), and $l = 1.8 \pm 0.5$ kpc at 20 cm (Table D.9). Perturbed spiral galaxies tend to have smaller Gaussian lengthscales. This is a natural consequence of the enhancement of the magnetic field caused by the interaction (see also Otmianowska-Mazur & Vollmer 2003; Drzazga et al. 2011),

6.4. Summary

Large-scale asymmetries are observed in the residual emission of all galaxies. If the galaxy has an asymmetric ridge of polarized emission, the ridge region is always radio-bright. The decrease

⁴ The unit of Q is $167 M_{\odot} \text{ kpc}^{-2} (\text{MJy sr}^{-1})^{-1}$.

in the fit goodness caused by the inclusion of an asymmetric smoothing kernel and a loss term is generally small (3–5%). The improvement of the goodness caused by the enhancement of the source term based on polarization is more important than the improvement caused by the variation of the smoothing lengthscale. The large-scale asymmetries of radio-bright and radio-dim regions dominate the goodness of the fit, and thus explain the rather small decrease in the goodness (~ 10 – 20%) when the different model convolutions are applied. Taking into account the goodness distribution leads to results that are well-comparable to those of the “best-fit” models. Overall, the exponential lengthscale equals half the Gaussian lengthscale with a scatter of 0.1 dex or 25%. Typical Gaussian smoothing lengthscales are $l_{6\text{cm}} = 0.9 \pm 0.3$ kpc and $l_{20\text{cm}} = 1.8 \pm 0.5$ kpc.

The minimum goodness of the “best-fit” models of the Gaussian and exponential convolutions cannot be used to discriminate between the two transport mechanisms (diffusion or streaming).

7. Diffusion or streaming?

As mentioned in Sect. 4, Eq. (13) can be used to distinguish between cosmic ray electron diffusion or streaming as the dominant transport mechanism in a face-on spiral galaxy: the different frequency dependence of the lengthscales leads to an expected ratio between the smoothing lengthscales at 6 cm and 20 cm of $l_{6\text{cm}}/l_{20\text{cm}} = 1.34$ for diffusion and $l_{6\text{cm}}/l_{20\text{cm}} = 1.81$ for streaming. In Sect. 6.1, we showed that the lengthscale ratio $l_{6\text{cm}}/l_{20\text{cm}}$ is more robust with respect to the image resolution than the derived lengthscales. With an uncertainty of $\Delta(l_{6\text{cm}}/l_{20\text{cm}}) \sim 15\%$, it is possible to discriminate between diffusion and streaming. We decided to fix the border for the ratio of lengthscales to $l_{6\text{cm}}/l_{20\text{cm}} = 1.57$. The ratios between the lengthscales at the two different frequencies and the associated cosmic ray electron transport mechanism are presented in Table 2 for models with and without losses. The more distant Virgo galaxies might have a 15% lower ratio than observed due to a resolution effect (Sect. 6.1). The inclusion of losses in the analysis changed the dominant transport mechanism only in the NGC 4303 model that has the strongest losses. The analysis of $l_{6\text{cm}}/l_{20\text{cm}}$ is thus robust in the presence of moderate losses.

7.1. Lengthscale ratio $l_{6\text{cm}}/l_{20\text{cm}}$

In principle, the smoothing kernels should be Gaussians if diffusion is the dominant transport mechanism, and exponential if streaming is the dominant transport mechanism of cosmic ray electrons. However, as we saw in Sects. 6.2 and 6.3, the two convolution methods did not lead to significantly different minimum goodnesses ϕ .

The convolution kernel (Gaussian or exponential) should be consistent with the ratio of lengthscales $l_{6\text{cm}}/l_{20\text{cm}}$ (bold-face galaxy names in Table 2): diffusion is the dominant transport mechanism in NGC 6946, M 51, and the center of NGC 4321. Streaming is the dominant transport mechanism in the disks of NGC 4321 and NGC 4254. In NGC 4303, both mechanisms seem to work, whereas we find contradicting results for NGC 4501 and NGC 4654. The case of NGC 4535 is particular because of its low surface brightness radio continuum disk, which is only partly detected at 6 cm with a $18''$. We therefore rely on analysis based on the $27''$ resolution maps. We thus suggest that the dominant transport mechanism for NGC 4535 is diffusion.

Diffusion or streaming along the large-scale ordered magnetic field line only plays a major role in NGC 4535 ($e = 1.0$ parameter in Table D.7), and a minor role in NGC 4501 and NGC 4654. These galaxies show asymmetric ridges on polarized radio continuum emission. In the Virgo galaxies where streaming is the dominant transport mechanism, the cosmic ray electrons travel most probably along the anisotropic component of the turbulent magnetic field.

7.2. Ratio between the ordered and the turbulent magnetic field

As stated in Sect. 4, the Gaussian smoothing lengthscale is expected to be proportional to the ratio between the ordered and the turbulent magnetic field, if diffusion dominates the cosmic ray electron transport. In the left-hand part of Fig. 10, the Gaussian smoothing lengthscales are shown for all galaxies. Galaxies where we believe that diffusion is the dominant transport mechanism are marked in boldface. While all galaxies except NGC 4501 and NGC 4535 lie close to this relation at 6 cm, most of the galaxies deviated from this relation at 20 cm, except NGC 6946 and M 51. These plots illustrate why diffusion is the preferred transport mechanism in the latter two galaxies. The cases of NGC 4535 and NGC 4501 are particular: NGC 4535 is radio-deficient (Fig. 1). We think that the cosmic ray electrons diffuse out of a thin magnetic disk with a low magnetic field strength, causing the radio-deficiency. The diffusion lengthscale is therefore not set by the synchrotron timescale, but by the disk height. It seems that NGC 4501 has a higher magnetic field strength at Σ_{*0} , which leads to a smaller lengthscale. The steep spectral index observed in this galaxy (Vollmer et al. 2010) corroborates this hypothesis.

The right-hand section of Fig. 10 shows the exponential smoothing lengthscale for all galaxies. Galaxies where we believe that streaming is the dominant transport mechanism are marked in boldface. The lengthscale is expected to be independent of the magnetic field. This is approximately the case for NGC 4321, NGC 4303, NGC 4254, and NGC 4654.

We therefore conclude that diffusion is the main transport mechanism in NGC 6946, M 51, NGC 4535, and the central region of NGC 4321. Cosmic ray electron streaming dominates in NGC 4303, NGC 4254, NGC 4501, NGC 4654, and the disk of NGC 4321, which show the highest degrees of polarization in the Virgo cluster sample exceeding 12% (Vollmer et al. 2013).

Taken together, a consistent picture emerges from Fig. 1: we measure the lengthscale at a constant star formation rate $\dot{\Sigma}_{*0}$, and thus a constant magnetic field strength. While the streaming lengthscale is constant, the diffusion lengthscale increases with mounting $B_{\text{ord}}/B_{\text{turb}}$ (Eq. (10)). As long as the diffusion lengthscale is larger than the streaming lengthscale, diffusion is the dominant cosmic ray electron transport mechanism. Once the diffusion lengthscale is smaller than the streaming lengthscale, the transport is dominated by streaming. To be able to compare the two lengthscales, we compare the Gaussian lengthscales for diffusion and streaming, meaning we multiply the streaming lengthscales by a factor of two (see Sect. 5). The transition between streaming and diffusion occurs around $\log(B_{\text{ord}}/B_{\text{turb}}) \sim -0.3$ at 6 cm and $\log(B_{\text{ord}}/B_{\text{turb}}) \sim -0.155$ at 20 cm, which corresponds to a lengthscale of $l \sim 1$ kpc at 6 cm and $l \sim 1.9$ kpc at 20 cm (Fig. 11). At this point $l_{\text{diff}} = l_{\text{stream}} = v_{\text{stream}} t_{\text{syn}}$, where v_{stream} is the cosmic ray electron streaming velocity. With a typical magnetic field strength of $B = 10 \mu\text{G}$ leading to synchrotron timescales of $t_{\text{syn}}^{20\text{cm}} = 3.8 \cdot 10^7$ yr and $t_{\text{syn}}^{6\text{cm}} = 2.0 \cdot 10^7$ yr, we obtain

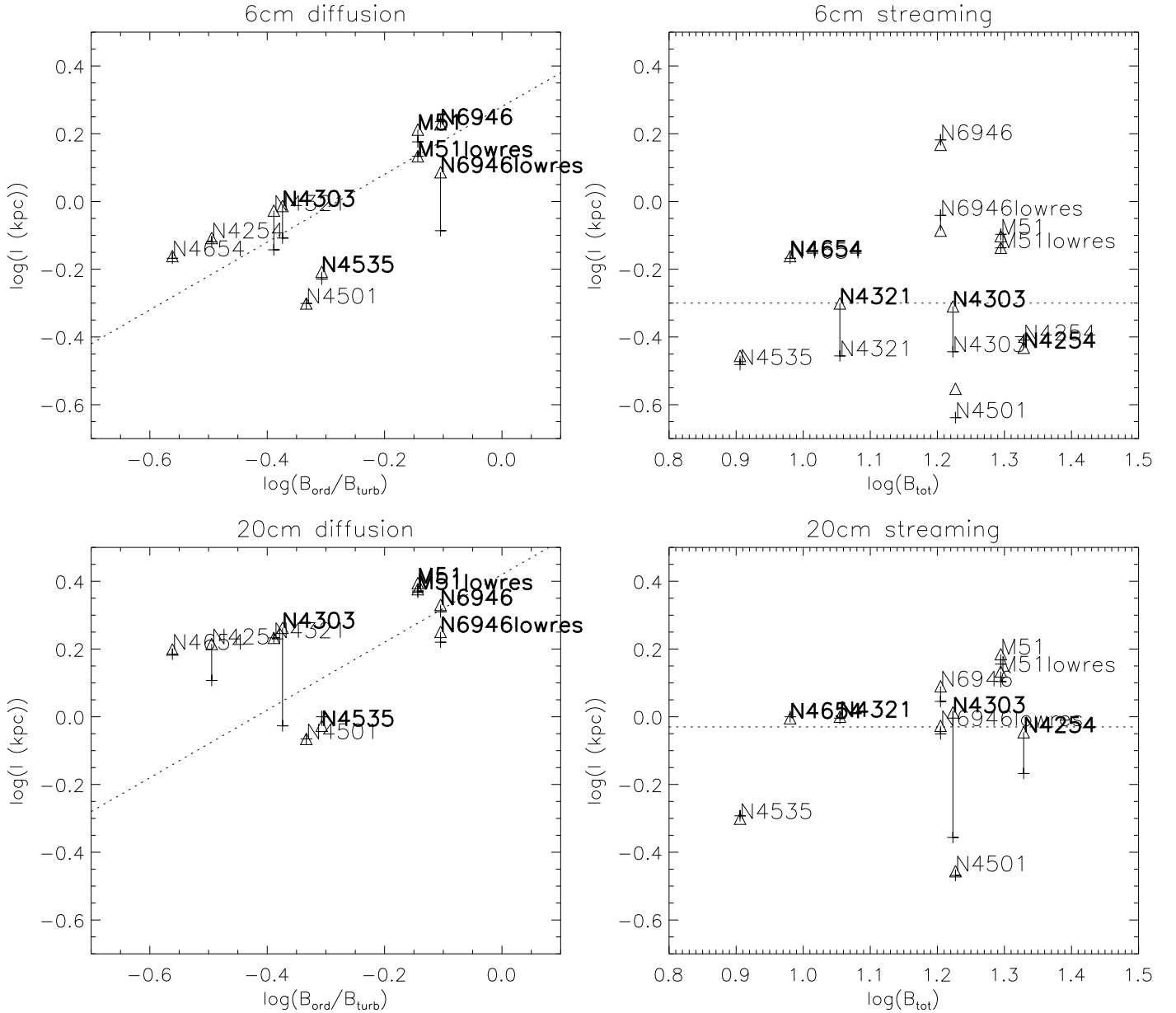


Fig. 10. *Left-hand section:* diffusion lengthscale (Gaussian kernels) as function of ratio between ordered and turbulent magnetic fields. *Right-hand section:* streaming lengthscale (exponential kernels) as function of total magnetic field. Pluses correspond to smoothing experiments with losses, triangles to experiments without losses. The expected relations are shown with dotted lines. The galaxies where we think that diffusion or streaming is the dominant transport mechanism are marked in boldface.

an effective streaming velocity of $v_{\text{stream}} = l_{\text{diff}}/t_{\text{syn}} \sim 50 \text{ km s}^{-1}$ at 6 and 20 cm.

In a magnetized plasma, the streaming velocity is expected to be of the order of the Alfvén speed, because cosmic ray electrons scatter on self-generated Alfvén waves. In the case of energy density equipartition between the magnetic field and the ISM turbulence, the Alfvén speed is $v_A \sim v_{\text{turb}}/\sqrt{X_i}$, where X_i is the degree of ionization, and v_{turb} the turbulent velocity. For the warm ionized medium, $v_A \sim v_{\text{turb}} \sim 20 \text{ km s}^{-1}$. This is about a factor of two too low compared to the value we found. In the warm neutral medium with a turbulent velocity dispersion of $v_{\text{turb}} \sim 10 \text{ km s}^{-1}$ and a typical degree of ionization of $X_i \sim 0.01$ (Draine 2011), the Alfvén speed is $v_A \sim 100 \text{ km s}^{-1}$, about a factor of two higher than our estimated value. However, in such a weakly-ionized medium, the Alfvén waves are expected to be strongly damped due to frequent ion-neutral collisions. This

damping should lead to an even further increase of the streaming velocity with respect to the Alfvén velocity. We therefore argue that we have measured the effective streaming velocity of the cosmic ray electrons, which is a mixture of the streaming velocities in the neutral and ionized warm ISM.

7.3. Star formation dependence of the smoothing lengthscale

Is the discrimination between diffusion and streaming based on $l_{6\text{cm}}/l_{20\text{cm}}$ and $B_{\text{ord}}/B_{\text{turb}}$ consistent with the derived exponents of the smoothing lengthscale $l \propto \Sigma_{\text{g}}^n$, where $n = -0.23$ to -0.38 for diffusion, and $n = -0.45$ to -0.75 for streaming are expected (Eq. (13))? For all galaxies, except NGC 4303 at 6 cm, and NGC 4535 at 6 and 20 cm, the results are not altered in the presence of advection losses (Eq. (17)). Based on the exponent n (Tables D.7 and D.8), streaming seems to be relevant

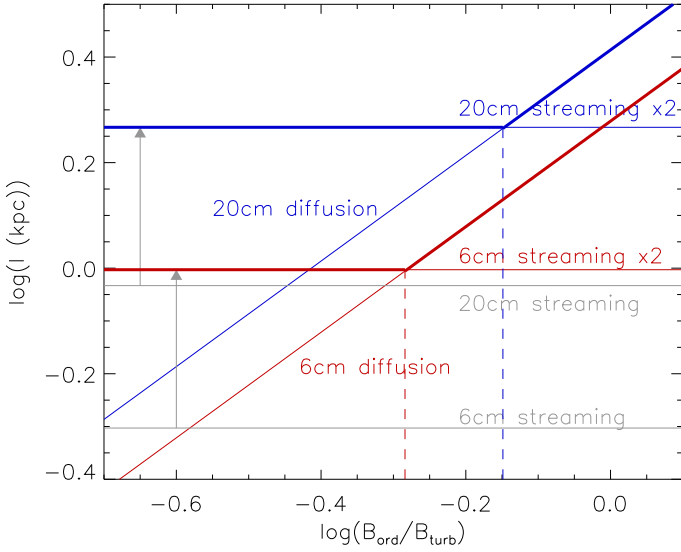


Fig. 11. Schematic sketch to explain behaviour of convolution lengthscales as a function of the ratio between ordered and turbulent magnetic field strengths (Fig. 10). Red: Gaussian convolution lengthscales at 6 cm. Blue: Gaussian convolution lengthscales at 20 cm. Grey: exponential convolution lengthscales at 6 cm and 20 cm. The grey arrow indicates that the Gaussian convolution lengthscales are about two times larger than the exponential convolution lengthscales (see Sect. 5). The dashed line indicates the transition from diffusion (Gaussian convolution) to streaming (exponential convolution). Thick lines mark the region populated by observed galaxies (cf. Fig. 10).

(NGC 6946, M 51, NGC 4535, and NGC 4654), whereas diffusion is the dominant transport mechanism in NGC 4321, NGC 4303, NGC 4254, and NGC 4501. If losses are included in the model, NGC 4303 and NGC 4535 become dominated by streaming.

The determination of the transport mechanism based on the ratio of (i) the smoothing lengthscales, and (ii) the ordered to the turbulent magnetic field, leads to consistent results for NGC 6946, M 51, NGC 4321, NGC 4535, and NGC 4254. Both methods are thus complementary. The determination of the transport mechanism based on the star formation dependence of the smoothing lengthscale leads to results that contradict the results based on $\log(B_{\text{ord}}/B_{\text{turb}})$ for all galaxies, except the central region of NGC 4321 and NGC 4654. Therefore, the exponent n cannot be used to discriminate between diffusion and streaming for the following reason: by assuming $l \propto \Sigma_*^n$, we assumed that there is no dependence of the smoothing length on $\log(B_{\text{ord}}/B_{\text{turb}})$ ($m = 0$). The apparent contradiction between the determination of the transport mechanism based on n can be resolved if we assume $m > 0$ locally, as suggested in Sect. 7.2. This hypothesis is discussed in Sect. 8.

7.4. The diffusion coefficient

For the two diffusion-dominated galaxies, NGC 6946 and M 51, we can determine the diffusion coefficient D . The Syrovatskii (1959) solution of the diffusion equation is

$$N \propto \exp(-r^2/(4Dt_{\text{syn}})). \quad (19)$$

With the Gaussian convolution of Eq. (14), this yields $l_{\text{diff}}^2 = 4Dt_{\text{syn}}$. We adopt a total magnetic field strength of $B_{\text{tot}} = 16 \pm 3 \mu\text{G}$ for $\dot{\Sigma}_* = 8 \times 10^{-3} M_{\odot} \text{kpc}^{-2} \text{yr}^{-1}$ derived by Tabatabaei et al. (2013a). This value is somewhat lower than the magnetic

field strength at the same star formation $B_{\text{tot}} \sim 20 \mu\text{G}$ in NGC 4254 (Chyży 2008). Moreover, we use the average diffusion length at 6 cm $l_{\text{diff}} = 1.6 \pm 0.2 \text{kpc}$ (Table D.7, upper part). With a frequency dependence of $l_{\text{diff}} \propto \nu^{-0.25}$, this corresponds to a diffusion lengthscale of $l_{\text{diff}} = 2.2 \text{kpc}$ at 20 cm (Table D.9). With these numbers, we derive a diffusion coefficient of $D = (1.8 \pm 0.6) \times 10^{28} \text{cm}^2 \text{s}^{-1}$ for $B_{\text{ord}}/B_{\text{turb}} = 0.8$ (Table 1). For comparison, Mulcahy et al. (2016) found a diffusion coefficient of $D = (6.6 \pm 0.2) \times 10^{28} \text{cm}^2 \text{s}^{-1}$ in M 51 with $B_{\text{ord}}/B_{\text{turb}} = 0.7$ (Table 1). Heesen et al. (2019) found $D = (0.13 - 1.5) \times 10^{28} \text{cm}^2 \text{s}^{-1}$ at 1 GeV, which corresponds to a frequency of $\sim 200 \text{MHz}$ for $B_{\text{tot}} = 16 \mu\text{G}$. Moreover, the Milky Way diffusion coefficient is $D = 3 \times 10^{28} \text{cm}^2 \text{s}^{-1}$ Strong et al. (2007).

7.5. Summary

Diffusion or streaming along the large-scale ordered magnetic field line only play a major role in NGC 4535, and a minor role in NGC 4501 and NGC 4654. Based on the ratio $B_{\text{ord}}/B_{\text{turb}}$, we conclude that diffusion is the main transport mechanism in NGC 6946, M 51, NGC 4535, and the central region of NGC 4321. Cosmic ray electron streaming dominates in NGC 4303, NGC 4254, NGC 4501, NGC 4654, and the disk of NGC 4321. The classifications on $l_{6\text{cm}}/l_{20\text{cm}}$ and $B_{\text{ord}}/B_{\text{turb}}$ are well consistent and complementary. However, the star formation dependence of the smoothing lengthscale cannot be used to determine the cosmic ray transport mechanism, because of a local dependence of the smoothing length on $B_{\text{ord}}/B_{\text{turb}}$. Models based on a star formation dependence of the smoothing lengthscale indicate $(B_{\text{ord}}/B_{\text{turb}}) \propto \Sigma_*^{-m}$ with $m > 0$.

The following overall picture emerges: while the streaming lengthscale is constant, the diffusion lengthscale decreases with $B_{\text{ord}}/B_{\text{turb}}$. As long as the diffusion lengthscale is larger than the streaming lengthscale, diffusion is the dominant cosmic ray electron transport mechanism. Once the diffusion lengthscale is smaller than the streaming lengthscale, the transport is dominated by streaming. The transition occurs around $\log(B_{\text{ord}}/B_{\text{turb}}) \sim -0.3$ at 6 cm and $\log(B_{\text{ord}}/B_{\text{turb}}) \sim -0.15$ at 20 cm, which corresponds to a lengthscale of $l \sim 1 \text{kpc}$ at 6 cm and $l \sim 1.9 \text{kpc}$ at 20 cm.

We derive a diffusion coefficient of $D = (1.8 \pm 0.6) \times 10^{28} \text{cm}^2 \text{s}^{-1}$ for $B_{\text{ord}}/B_{\text{turb}} = 0.8$.

8. Discussion

Cosmic ray electron diffusion occurs on scales which are much smaller than our spatial resolution of $\sim 1 \text{kpc}$. The results of Sect. 7.2 imply that the diffusion lengthscale depends on the ordered magnetic field. It is not obvious why this should be the case, because diffusion is a small-scale process. One possibility is that the ordered magnetic field is dominated by anisotropic turbulent small-scale magnetic fields. In this case the small scales would have a direct impact at large scales.

Berkhuijsen et al. (2013) found smoothing lengthscales for M 31 and M 33 that are well-comparable to our results (Tables D.1 and D.2). The smoothing lengthscales at 1.4 GHz found by Heesen et al. (2019) for three local spiral galaxies (1.0–3.5 kpc) also agree with our values. A direct comparison with the work of Murphy et al. (2009) is difficult, because these authors used FIR maps as source maps. Nevertheless, we can have a look at the ratios between the smoothing lengthscales of the galaxies that we have in common: NGC 6946, M 51, NGC 4321, and NGC 4254 (Table D.4). The ratio between our

Table 2. Ratio between smoothing lengthscales at 20 cm and 6 cm.

Gaussian convolution						
Name	Polarization ^(a)	$l_{20\text{cm}}/l_{6\text{cm}}$ ("best fit")	$l_{20\text{cm}}/l_{6\text{cm}}$	CR transport (with losses)	$l_{20\text{cm}}/l_{6\text{cm}}$	CR transport (without losses)
NGC 6946		2.2	1.19 ± 0.21	Diffusion	1.26 ± 0.26	Diffusion
NGC 6946 low resolution		10.7	2.02 ± 0.64	Streaming	1.46 ± 0.55	Diffusion
M 51		1.8	1.55 ± 0.33	Diffusion	1.52 ± 0.33	Diffusion
M 51 low resolution		2.3	1.73 ± 0.29	Streaming	1.75 ± 0.30	Streaming
NGC 4321		1.1	1.17 ± 0.24	Diffusion	1.17 ± 0.24	Diffusion
NGC 4321 disk		2.2	2.89 ± 0.50	Streaming	2.21 ± 0.42	Streaming
NGC 4303	POL	2.4	1.21 ± 0.33	Diffusion	1.89 ± 0.38	Streaming
NGC4535	POL	2.2	2.58 ± 0.59	Streaming	2.29 ± 0.55	Streaming
NGC 4535 VIVA	POL	1.2	1.56 ± 0.34	Diffusion	1.44 ± 0.36	Diffusion
NGC 4254	POL	2.0	1.69 ± 0.27	Streaming	2.11 ± 0.36	Streaming
NGC 4501	POL	1.7	1.72 ± 0.60	Streaming	1.72 ± 0.60	Streaming
NGC 4654	POL	2.7	2.26 ± 0.61	Streaming	2.28 ± 0.64	Streaming
Exponential convolution						
NGC 6946		3.0	0.73 ± 0.18	Diffusion	0.83 ± 0.26	Diffusion
NGC 6946 low resolution		8.8	0.98 ± 0.29	Streaming	1.14 ± 0.34	Diffusion
M 51		2.0	1.79 ± 0.53	Streaming	1.95 ± 0.51	Streaming
M 51 low resolution		4.1	1.74 ± 0.40	Streaming	1.86 ± 0.49	Streaming
NGC 4321		1.0	1.24 ± 0.38	Diffusion	1.24 ± 0.38	Diffusion
NGC 4321 disk		2.0	2.84 ± 0.94	Streaming	2.00 ± 0.74	Streaming
NGC 4303	POL	2.3	1.22 ± 0.36	Diffusion	2.11 ± 0.60	Streaming
NGC 4535	POL	2.5	2.60 ± 0.56	Streaming	2.67 ± 0.87	Streaming
NGC 4535 VIVA	POL	1.5	1.57 ± 0.31		1.44 ± 0.31	Diffusion
NGC 4254	POL	3.0	1.74 ± 0.48	Streaming	2.41 ± 0.87	Streaming
NGC 4501	POL	1.5	1.45 ± 0.85	Diffusion	1.25 ± 0.81	Diffusion
NGC 4654	POL	1.0	1.45 ± 0.79	Diffusion	1.42 ± 0.78	Diffusion

Notes. ^(a)Increased source term proportional to the degree of polarization.

smoothing lengthscale and those of [Murphy et al. \(2009\)](#) are 1.8, 1.3, 1.4, 0.4. The mean ratio for the first three galaxies is 1.5 ± 0.3 . The results therefore seem to be consistent. However, the results for NGC 4254 are vastly different, the ratio being 0.4. The reason for this discrepancy is that the smoothing lengthscale determined for NGC 4254 by [Murphy et al. \(2009\)](#) is about three times higher than those of the other galaxies of their sample.

Can we detect the presence of a radio halo as observed in many local spiral galaxies with high star formation rates (e.g., [Krause et al. 2018](#))? We think that the decrease in goodness ϕ by allowing a loss term might also be interpreted as an indication for the existence of a radio halo. We expect the radio halo to be a dimmed and smoothed-out version of the underlying disk emission. It is therefore not surprising that we obtain a better fit if we remove the small-scale regions of high local star formation rates from the source maps of NGC 6946 and NGC 4303. In this case, the normalization factors Q with and without losses give a rough idea about the radio continuum emission contained in the radio halo: $\text{loss}/\dot{\Sigma}_* = Q_{\text{loss}}(1/Q_{\text{loss}} - 1/Q_{\text{no loss}}) \sim 30\%$ in NGC 6946, and $\sim 20\%$ in NGC 4303. We interpret this result as evidence for the existence of a radio halo in these two galaxies.

We now go back to the question about the dependence of the magnetic field on the star formation rate $B \propto \dot{\Sigma}_*^j$ (Sect. 3). While [Heesen et al. \(2014\)](#) found $j = 0.3$, we found $j = 0.44$ or $j = 0.13 \pm 0.1$ (Fig. 3) for the integrated values where the magnetic field is calculated under the assumption of energy equipartition between the magnetic field and the cosmic ray electrons. On the other hand, the model of [Vollmer & Leroy \(2011\)](#), together with the assumption of equipartition between the kinetic and magnetic energy densities yields $j = 0.5$ for the

local values. This model assumes conservation of the energy flux injected by supernova explosions and the turbulent energy flux $\Sigma v_{\text{turb}}^3/l_{\text{driv}} = \xi \dot{\Sigma}_*$. The height of the gas disk is then proportional to the turbulent driving lengthscale l_{driv} and the turbulent velocity dispersion v_{turb} is constant. On the other hand, in the presence of a constant scale height of the gas disk, a constant turbulent velocity, and $\Sigma \propto \dot{\Sigma}_*^{1.4}$, the expected exponent is $j = 0.36$. The exponent of the SFR-dependence of the smoothing lengthscale is a mixture of two exponents (Sect. 4): j with $B \propto \dot{\Sigma}_*^j$ and m with $(B_{\text{ord}}/B_{\text{turb}}) \propto \dot{\Sigma}_*^{-m}$ (Eq. (11)). The relation between the different exponents is $n = -(0.75j + m)$, which yields $j = -(m + n)/0.75$.

To investigate the dependence of $(B_{\text{ord}}/B_{\text{turb}}) \propto \dot{\Sigma}_*^{-m}$ on the star formation rate, we make use of the observed degree of polarization $p = B_{\text{ord}}/B_{\text{tot}} = B_{\text{ord}}/(B_{\text{turb}} + B_{\text{ord}})$, where B_{tot} is the total magnetic field strength. We thus obtain $(B_{\text{ord}}/B_{\text{turb}}) = 1/(1/p - 1)$. This quantity is shown in Fig. 12 as a function of the local star formation rate. The relation (in log-log scale) is straight and quite tight. A robust bisector fit yields a slope of $m = 0.24$ and $\sigma = 0.07$ dex. With a Bayesian approach to linear regression, we obtain $m = 0.221 \pm 0.005$.

Table 3 shows the exponent $j = -(m + n)/0.75$ for diffusion and $j = -n/1.5$ for streaming for our sample galaxies. The mean of all exponents is $j = 0.30 \pm 0.24$. We note that the exponents of the galaxies whose cosmic ray electron transport is dominated by streaming, except that of NGC 4654, are significantly smaller ($j = 0.17 \pm 0.16$) than those of the galaxies whose transport is dominated by diffusion ($j = 0.51 \pm 0.22$).

If the magnetic field within the galactic disk is enhanced by an external interaction, and if the enhancement of the total magnetic field by the additional magnetic field component is

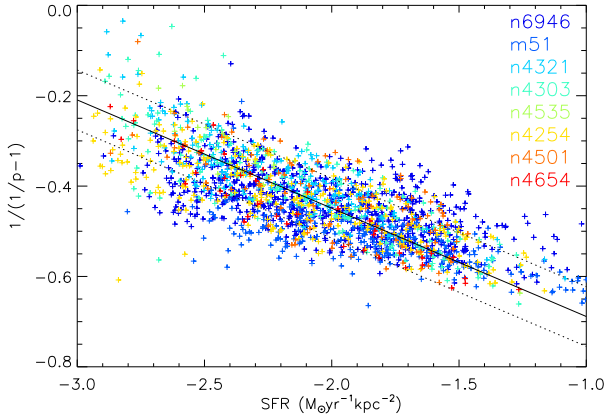


Fig. 12. Ratio between ordered and turbulent magnetic field strengths ($B_{\text{ord}}/B_{\text{turb}} = 1/(1/p - 1)$) as a function of local star formation rate.

highest in regions of low local star formation, meaning in interarm regions, the dependence of the magnetic field on star formation is expected to be weakened. In this case, the exponent j ($B \propto \dot{\Sigma}_*^j$) is expected to be smaller than 0.5. In Sect. 3, we showed that there is no clear dependence of the average magnetic field, which is dominated by the turbulent field, on the integrated star formation rate (Fig. 3). On the other hand, there is a clear dependence of ($B_{\text{ord}}/B_{\text{turb}}$) on the local star formation rate $\dot{\Sigma}_*$, and the degree of polarization is not exceptionally high in the Virgo cluster galaxies compared to field galaxies (Fig. 12). Therefore, we think that environmental interactions lead to an enhancement of both the ordered and turbulent magnetic fields. Presumably, this enhancement with respect to the already existing magnetic field is more significant in the interarm regions than in the arm regions.

We conclude that our results are broadly consistent with energy equipartition between the energy density of the magnetic field and the kinetic energy density of the interstellar medium ($j = 0.5$) in isolated systems. In cluster galaxies, the exponent j is smaller, presumably due to an enhancement of the magnetic field caused by interactions with the environment.

The mean exponent is steeper than that found in NGC 6946 ($j = 0.14$) by Tabatabaei et al. (2013a) and comparable to that found in NGC 4254 ($j = 0.26$) by Chyży (2008). The discrepancy probably lies in the determination of the total magnetic field strength by Tabatabaei et al. (2013a) and Chyży (2008), where equipartition between the energy densities of the magnetic field and cosmic rays was assumed. It should also be taken into account that our method is an indirect way to determine the exponent j , which is independent of equipartition hypotheses. Further investigations are needed to determine which equipartition is relevant in the disks of spiral galaxies, between the energy densities of the magnetic field and that of (i) the cosmic rays and/or (ii) the kinetic energy of the gas.

9. Conclusions

The transport mechanism of cosmic ray electrons within galactic disks may be diffusion, as a result of random motions across tangled magnetic field lines, or streaming, as a result of streaming which is uni-directional down a cosmic ray pressure gradient. The two transport mechanisms give rise to different dependencies of the kernel lengthscale with respect to the magnetic field strength and the frequencies of radio continuum observations. Since the magnetic field strength is related to the star formation rate (e.g., Heesen et al. 2014), we expect the smooth-

Table 3. Dependence of magnetic field strength on star formation rate $B \propto \dot{\Sigma}_*^j$.

Name	n (6 cm)	j (6 cm)	n (20 cm)	j (20 cm)
Diffusion				
NGC 6946	-0.93	0.92	-0.70	0.61
M 51	-0.53	0.39	-0.54	0.40
N4535 VIVA	-0.50	0.35	-0.54	0.40
Streaming				
NGC 4321 disk	-0.12	0.08	-0.04	0.03
NGC 4303	-0.33	0.22	-0.08	0.05
NGC 4254	-0.28	0.19	-0.17	0.11
NGC 4501	-0.17	0.11	-0.10	0.07
NGC 4654	-0.76	0.51	-0.57	0.38

Notes. The relation between the diffusion lengthscale and the star formation rate is $l \propto \dot{\Sigma}_*^n$. In addition, we use $(B_{\text{ord}}/B_{\text{turb}}) \propto \dot{\Sigma}_*^{-m}$ with $m = 0.24$.

ing kernel to be proportional to the local star formation rate. Star formation maps were constructed from *Spitzer* and *Herschel* infrared and GALEX UV observations. We convolved the star formation maps of eight rather face-on galaxies with adaptive Gaussian and exponential smoothing kernels to obtain model radio continuum emission maps (Sect. 4). The smoothing lengthscales depend on the observation frequency and the star formation rate (Eq. (13)). The dependencies are different for cosmic ray electron diffusion and streaming. The model radio continuum maps were compared to 6 cm and 20 cm continuum observations to determine the dominant cosmic ray electron transport mechanism in the disks of the 8 spiral galaxies (Sect. 6).

The comparison between the model and observed radio continuum maps showed that the residuals are dominated by galaxy-wide large-scale asymmetries. These cannot be removed by our model. The discrimination between the two cosmic ray electron transport mechanisms is based on (i) the convolution kernel (Gaussian or exponential), (ii) the dependence of the smoothing kernel on the local magnetic field, and hence on the local star formation rate, (iii) the ratio between the two smoothing lengthscales via the frequency dependence of the smoothing kernel, and (iv) the dependence of the smoothing kernel on the ratio between the ordered and the turbulent magnetic field. The results of method (ii) depend on the image resolution, whereas the results of method (iii) are sensitive to an extended diffuse radio continuum emission beyond the optical radius of the galactic disk (Sect. 6.1). These two effects have to be taken into account for the interpretation of the results of our adaptive kernel smoothing experiments. We introduced losses of cosmic ray electrons in regions of high local star formation rates caused by advection into the halo, meaning a galactic wind, in our models. Two galaxies in which losses play a role are tentatively identified: NGC 6946 and NGC 4303 (Sect. 8). Methods (i) and (ii) cannot be used to determine the cosmic ray transport mechanism. Important asymmetric large-scale residuals and a local dependence of the smoothing length on $B_{\text{ord}}/B_{\text{turb}}$ are most probably responsible for the failure of methods (i) and (ii), respectively. On the other hand, the classifications based on $l_{6\text{cm}}/l_{20\text{cm}}$ (method iii) and $B_{\text{ord}}/B_{\text{turb}}$ (method iv) are well-consistent and complementary.

From the analysis of our adaptive kernel smoothing experiments we draw the following conclusions:

1. In asymmetric ridges of polarized radio continuum emission, the total power emission is enhanced with respect to the star formation rate (Fig. 6), due to ISM compression.

2. At a characteristic star formation rate of $\dot{\Sigma}_* = 8 \times 10^{-3} M_{\odot} \text{ yr}^{-1} \text{ kpc}^{-2}$, the typical lengthscale for the transport of cosmic ray electrons is $l = 0.9 \pm 0.3 \text{ kpc}$ at 6 cm (Table D.7), and $l = 1.8 \pm 0.5 \text{ kpc}$ at 20 cm (Table D.9).
3. Perturbed spiral galaxies tend to have smaller lengthscales. This is a natural consequence of the enhancement of the magnetic field caused by the interaction (see also Otmianowska-Mazur & Vollmer 2003; Drzazga et al. 2011).
4. Models with advection losses through galactic winds are viable for NGC 6946 and NGC 4303, the two galaxies with the highest local star formation rates. Alternatively, this can be interpreted as the existence of a radio halo around their disks.
5. The determination of the dominating cosmic ray electron transport mechanism is based on the frequency dependence of the smoothing lengthscale. Diffusion is the main transport mechanism in unperturbed galactic disks (NGC 6946, M 51, and the central region of NGC 4321). Streaming dominates in the disks of the perturbed Virgo spiral galaxies NGC 4321, NGC 4303, NGC 4254, NGC 4501, and NGC 4654.
6. Diffusion or streaming along the ordered magnetic field is not a measurable effect in our galaxy sample, except for NGC 4535. In most of the Virgo galaxies where streaming is the dominant transport mechanism, the cosmic ray electrons travel most probably along the anisotropic component of the turbulent magnetic field.
7. The streaming lengthscale at a constant star formation rate $\dot{\Sigma}_{*,0}$ is constant (right panels of Fig. 10). On the other hand, the diffusion lengthscale decreases with $B_{\text{ord}}/B_{\text{turb}}$. As long as the diffusion lengthscale is larger than the streaming lengthscale, diffusion is the dominant cosmic ray electron transport mechanism. Once the diffusion lengthscale is smaller than the streaming lengthscale, the transport is dominated by streaming. The transition occurs around $\log(B_{\text{ord}}/B_{\text{turb}}) \sim -0.3$ at 6 cm, and $\log(B_{\text{ord}}/B_{\text{turb}}) \sim -0.15$ at 20 cm, which corresponds to a lengthscale of $l \sim 1 \text{ kpc}$ at 6 cm, and $l \sim 1.9 \text{ kpc}$ at 20 cm (Fig. 11).
8. We derived a diffusion coefficient of $D = (B_{\text{ord}}/B_{\text{turb}}) \times (9.3 \pm 2.8) \times 10^{28} \text{ cm}^2 \text{ s}^{-1}$ for $(B_{\text{ord}}/B_{\text{turb}}) > 0.5$.
9. We determined a streaming velocity of $v_{\text{stream}} \sim 50 \text{ km s}^{-1}$.
10. The observed independence of the smoothing lengthscale on the star formation rate (small n in Table 3) indicates that the magnetic field in the interarm regions of perturbed Virgo spiral galaxies might be mostly independent of star formation.
11. In our sample galaxies, the ratio between the ordered and turbulent magnetic field strengths is $(B_{\text{ord}}/B_{\text{turb}}) \propto \dot{\Sigma}_*^{-0.24}$ (Fig. 12). From this we obtained the relation between the local magnetic field strength and star formation rate $B \propto \dot{\Sigma}_*^{0.51 \pm 0.21}$ for the diffusion-dominated galaxies NGC 6946, M 51, and NGC 4535, and $B \propto \dot{\Sigma}_*^{0.30 \pm 0.24}$ for the whole sample. This result is broadly consistent with energy equipartition between the energy density of the magnetic field and the kinetic energy density of the interstellar medium ($j = 0.5$) in isolated systems.
12. We argue that in the Virgo spiral galaxies, the turbulent magnetic field is globally enhanced in the disk. Therefore, the regions where the magnetic field is independent of the star formation rate are more common. In addition, $B_{\text{ord}}/B_{\text{turb}}$ decreases leading to a diffusion lengthscale that is smaller than the streaming lengthscale. Therefore, cosmic ray electron streaming dominates in most of the Virgo spiral galaxies.

References

- Atoyan, A. M., Aharonian, F. A., & Völk, H. J. 1995, *Phys. Rev. D*, **52**, 3265
- Appleton, P. N., Fadda, D. T., Marleau, F. R., et al. 2004, *ApJS*, **154**, 147
- Beck, R. 2005, in *Cosmic Magnetic Fields*, eds. R. Wielebinski, & R. Beck (Berlin: Springer), *Lecture Notes in Physics*, **664**, 41
- Beck, R. 2015, *A&ARv*, **24**, 4
- Beck, R., & Hoernes, P. 1996, *Nature*, **379**, 47
- Beck, R., & Krause, M. 2005, *Astron. Nachr.*, **326**, 414
- Beck, R., & Wielebinski, R. 2013, *Planets, Stars and Stellar Systems. Volume 5: Galactic Structure and Stellar Populations*, 641
- Bell, E. F. 2003, *ApJ*, **586**, 794
- Berkhuijsen, E. M., Beck, R., & Tabatabaei, F. S. 2013, *MNRAS*, **435**, 1598
- Breitschwerdt, D., Dogiel, V. A., & Voelk, H. J. 2002, *A&A*, **385**, 216
- Calzetti, D. 2013, *Secular Evolution of Galaxies* (Cambridge: Cambridge University Press), 419
- Chung, A., van Gorkom, J. H., Kenney, J. D. P., Crowl, H., & Vollmer, B. 2009, *AJ*, **138**, 1741
- Chuvilgin, L. G., & Ptuskin, V. S. 1993, *A&A*, **279**, 278
- Chyży, K. T. 2008, *A&A*, **482**, 755
- Chyży, K. T., Ehle, M., & Beck, R. 2007, *A&A*, **474**, 415
- Condon, J. J. 1992, *ARA&A*, **30**, 575
- Davies, J. I., Baes, M., Bendo, G. J., et al. 2010, *A&A*, **518**, L48
- Davies, R. L., Förster Schreiber, N. M., Übler, H., et al. 2019, *ApJ*, **873**, 122
- Draine, B. T., & Li, A. 2007, *ApJ*, **657**, 810
- Draine, B. T. 2011, *Physics of the Interstellar and Intergalactic Medium* (Princeton: Princeton University Press)
- Drzazga, R. T., Chyży, K. T., Jurusik, W., & Wiórkiewicz, K. 2011, *A&A*, **533**, A22
- Dumas, G., Schinnerer, E., Tabatabaei, F. S., et al. 2011, *AJ*, **141**, 41
- Fletcher, A., Beck, R., Shukurov, A., Berkhuijsen, E. M., & Horellou, C. 2011, *MNRAS*, **412**, 2396
- Galamez, M., Kennicutt, R. C., Calzetti, D., et al. 2013, *MNRAS*, **431**, 1956
- Gordon, K. D., Pérez-González, P. G., Misselt, K. A., et al. 2004, *ApJS*, **154**, 215
- Hao, C. N., Kennicutt, R. C., Johnson, B. D., et al. 2011, *ApJ*, **741**, 124
- Heesen, V., Brinks, E., Leroy, A. K., et al. 2014, *AJ*, **147**, 103
- Heesen, V., Dettmar, R.-J., Krause, M., Beck, R., & Stein, Y. 2016, *MNRAS*, **458**, 332
- Heesen, V., Krause, M., Beck, R., et al. 2018, *MNRAS*, **476**, 158
- Heesen, V., Buie, II., E., Huff, C. J., et al. 2019, *A&A*, **622**, A8
- Helou, G., Soifer, B. T., & Rowan-Robinson, M. 1985, *ApJ*, **298**, L7
- Helou, G., Roussel, H., Appleton, P., et al. 2004, *ApJS*, **154**, 253
- Hughes, A., Wong, T., Ekers, R., et al. 2006, *MNRAS*, **370**, 363
- Ivison, R. J., Greve, T. R., Dunlop, J. S., et al. 2007, *MNRAS*, **380**, 199
- Kovács, A., Chapman, S. C., Dowell, C. D., et al. 2006, *ApJ*, **650**, 592
- Krause, M., Irwin, J., Wiegert, T., et al. 2018, *A&A*, **611**, A72
- Lacki, B. C., Thompson, T. A., & Quataert, E. 2010, *ApJ*, **717**, 1
- Leroy, A. K., Walter, F., Brinks, E., et al. 2008, *AJ*, **136**, 2782
- Li, J.-T., Beck, R., Dettmar, R.-J., et al. 2016, *MNRAS*, **456**, 1723
- Mauch, T., & Sadler, E. M. 2007, *MNRAS*, **375**, 931
- Mulcahy, D. D., Fletcher, A., Beck, R., Mitra, D., & Scaife, A. M. M. 2016, *A&A*, **592**, A123
- Murphy, E. J. 2009, *ApJ*, **706**, 482
- Murphy, E. J., Braun, R., Helou, G., et al. 2006, *ApJ*, **638**, 157
- Murphy, E. J., Helou, G., Kenney, J. D. P., Armus, L., & Braun, R. 2008, *ApJ*, **678**, 828
- Murphy, E. J., Kenney, J. D. P., Helou, G., Chung, A., & Howell, J. H. 2009, *ApJ*, **694**, 1435
- Otmianowska-Mazur, K., & Vollmer, B. 2003, *A&A*, **402**, 879
- Sargent, M. T., Schinnerer, E., Murphy, E., et al. 2010, *ApJ*, **714**, L190
- Schleicher, D. R. G., & Beck, R. 2013, *A&A*, **556**, A142
- Stil, J. M., Krause, M., Beck, R., & Taylor, A. R. 2009, *ApJ*, **693**, 1392
- Strong, A. W., Moskalenko, I. V., & Ptuskin, V. S. 2007, *Ann. Rev. Nucl. Part. Sci.*, **57**, 285
- Strong, A. W., Orlando, E., & Jaffe, T. R. 2011, *A&A*, **534**, A54
- Syrovatskii, S. I. 1959, *Sov. Astron.*, **3**, 22
- Tabatabaei, F. S., Beck, R., Kruegel, E., et al. 2007, *A&A*, **475**, 133
- Tabatabaei, F. S., Schinnerer, E., Murphy, E. J., et al. 2013a, *A&A*, **552**, A19
- Tabatabaei, F. S., Berkhuijsen, E. M., Frick, P., Beck, R., & Schinnerer, E. 2013b, *A&A*, **557**, A129
- Vollmer, B., & Leroy, A. K. 2011, *AJ*, **141**, 24
- Vollmer, B., Soida, M., Beck, R., et al. 2007, *A&A*, **464**, L37
- Vollmer, B., Soida, M., Chung, A., et al. 2010, *A&A*, **512**, A36
- Vollmer, B., Soida, M., Beck, R., et al. 2013, *A&A*, **553**, A116
- Yan, H., Lazarian, A., & Schlickeiser, R. 2012, *ApJ*, **745**, 140
- Yun, M. S., Reddy, N. A., & Condon, J. J. 2001, *ApJ*, **554**, 803

Acknowledgements. The authors would like to thank J. D. P. Kenney, E. J. Murphy, and Olaf Wucknitz for useful comments on the article.

Appendix A: Tests

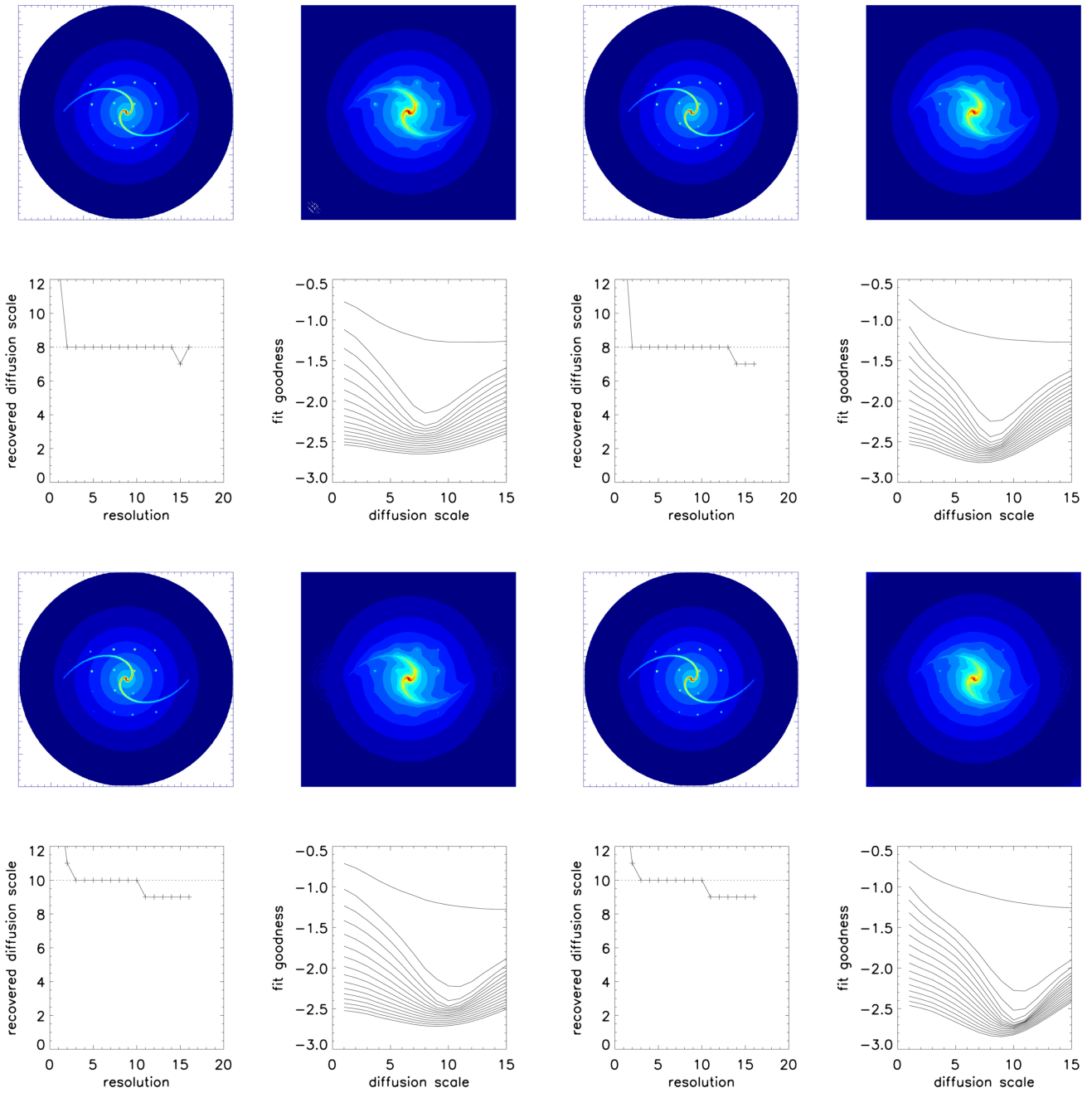


Fig. A.1. Same as Fig. 4, *left row*: Gaussian kernels, *right row*: exponential kernels, but with smoothing lengthscales at a given local star formation rate equal to eight pixels (*upper four panels*) and 10 pixels (*lower four panels*). The resolution and diffusion scale correspond to 1.67 FWHM.

Appendix B: “Best-fit” model radio continuum maps

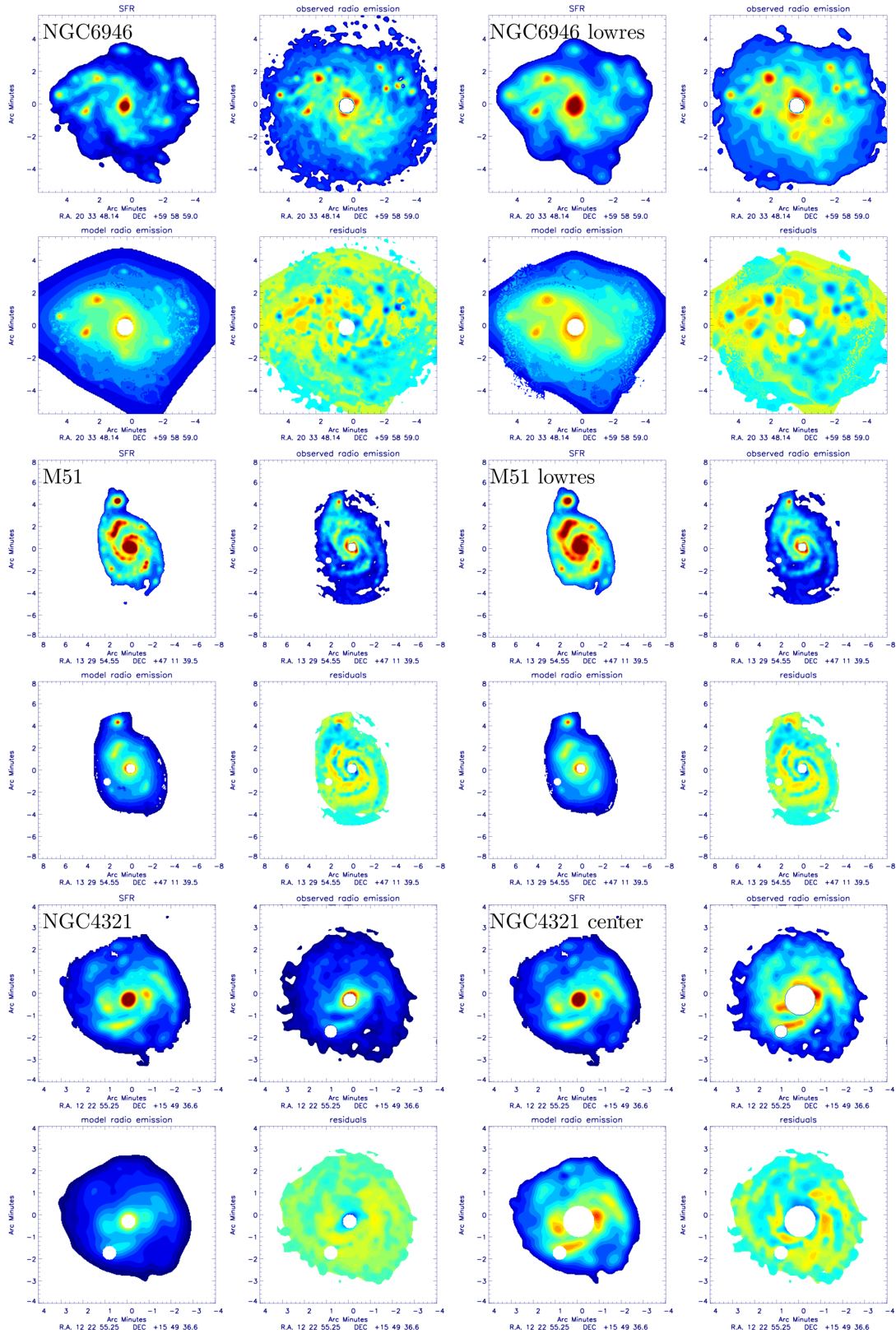


Fig. B.1. Exponential convolution: “best-fit” model radio continuum maps at 6 cm. Four maps are shown for each galaxy. *Upper left*: observed star formation; *upper right*: observed radio continuum emission; *lower left*: model radio continuum; *lower right*: residuals; blue is radio-bright, red radio-dim.

Appendix C: Curves of goodness

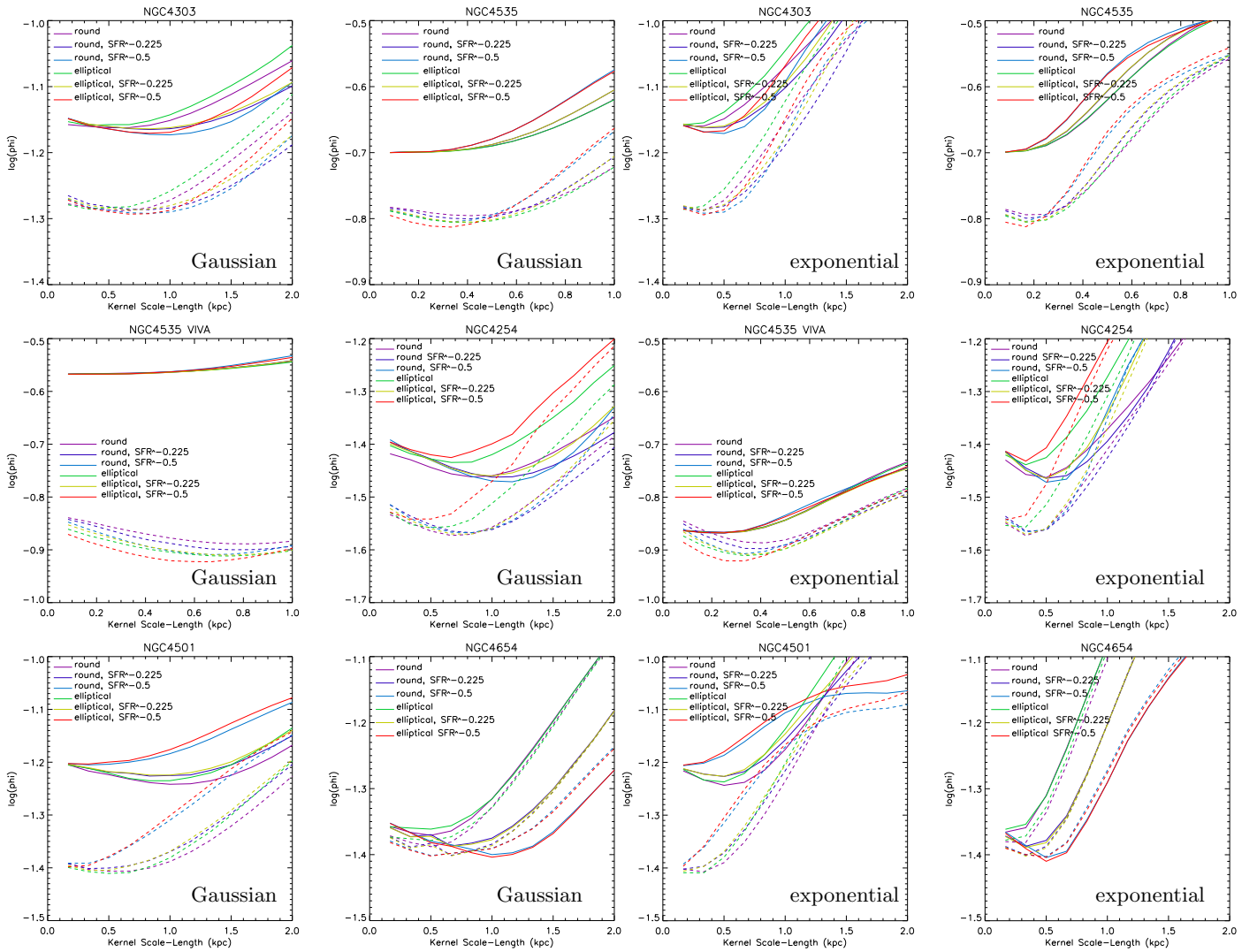


Fig. C.1. Same as Fig. 8.

B. Vollmer et al.: Deciphering the radio star formation correlation on kpc scales. I.

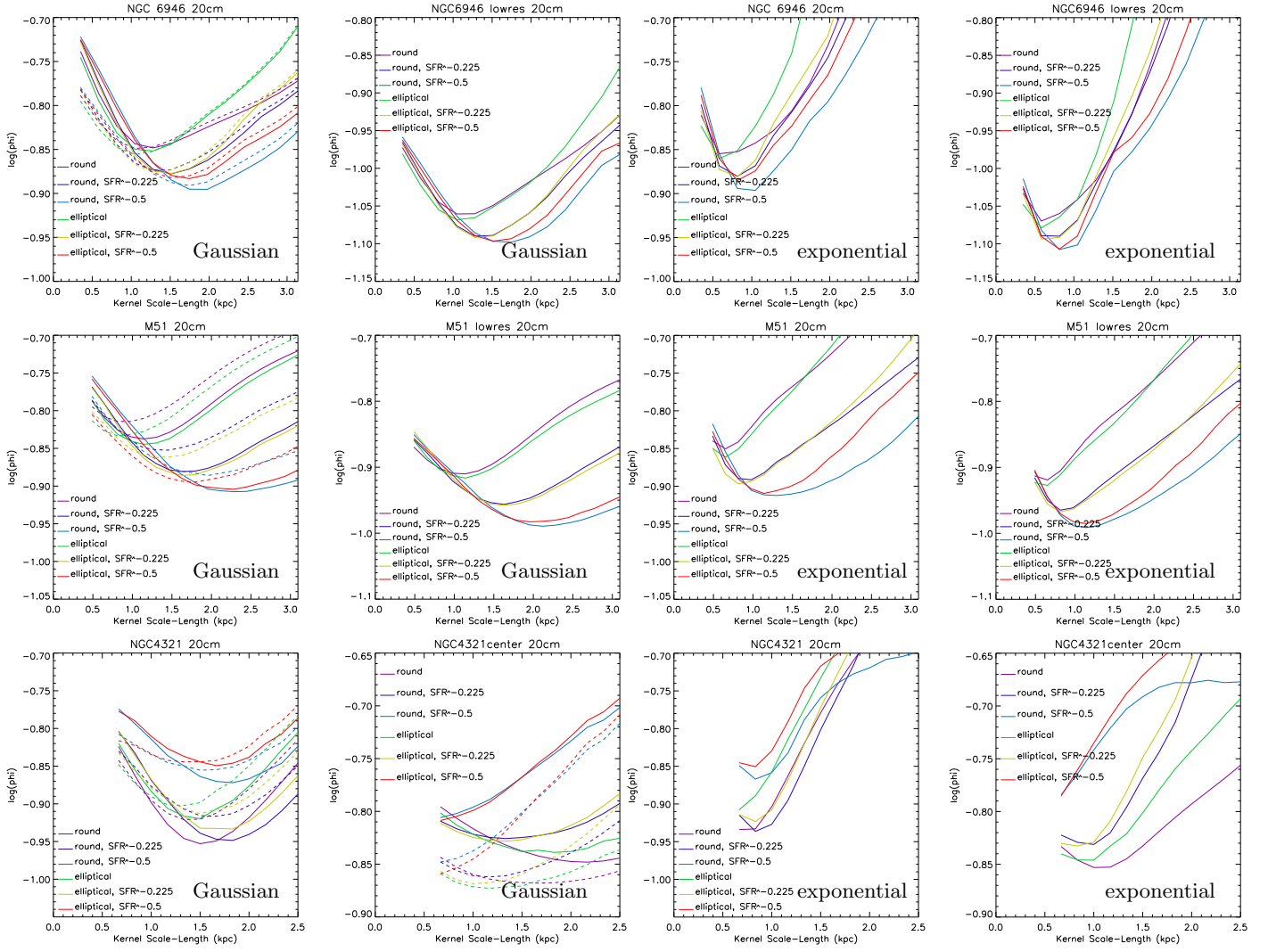


Fig. C.1. continued.

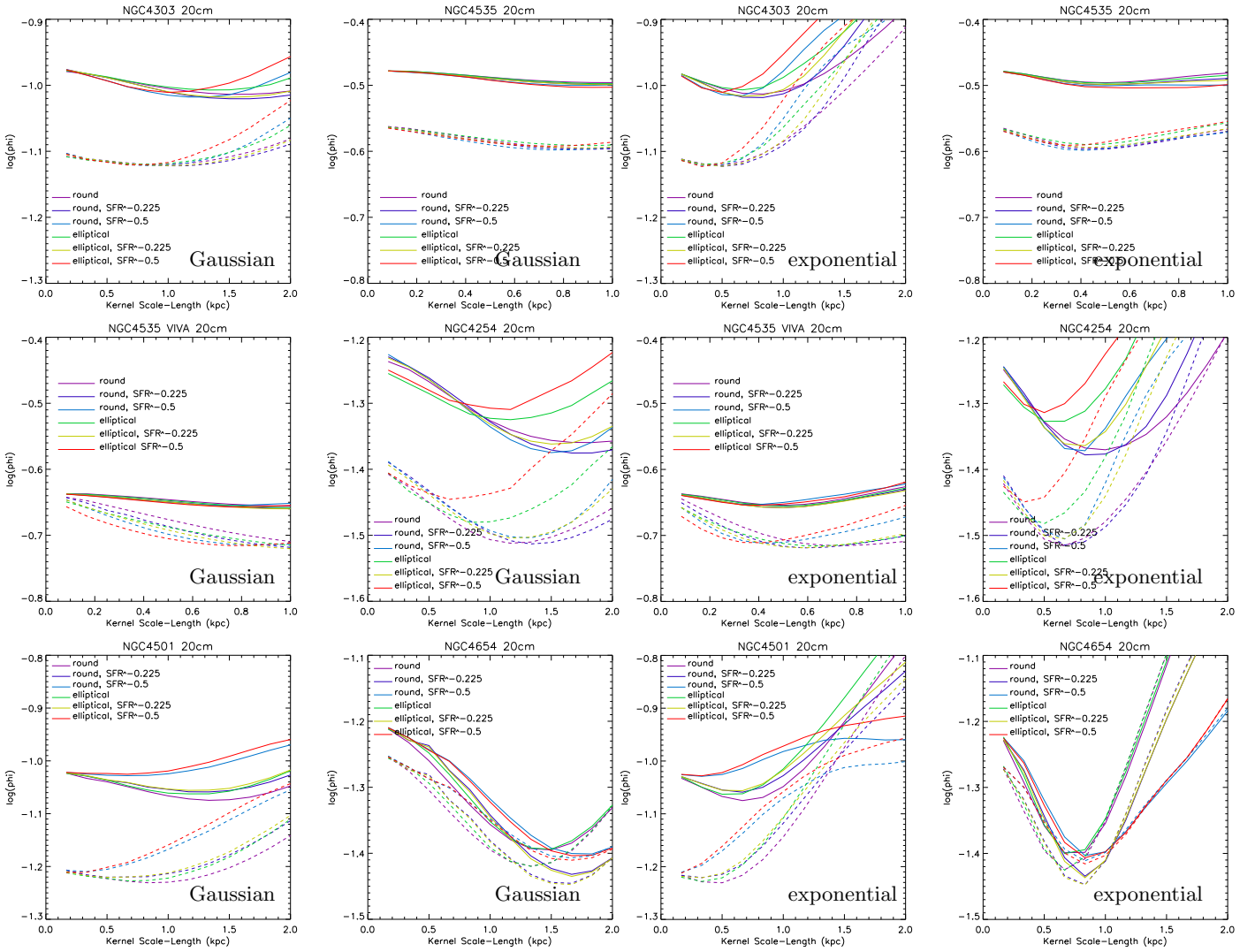


Fig. C.1. continued.

Appendix D: Tables

Table D.1. “Best-fit” models at 6 cm.

Gaussian convolution			
Name	l	Q	$\log(\phi)$
NGC 6946	0.58	19.1	-0.79
NGC 6946 low resolution	0.12	19.9	-0.91
NGC 6946 clipped	0.47	19.2	-0.82
M 51	0.65	16.8	-0.81
M 51 low resolution	0.49	16.8	-0.87
M 51 clipped	1.30	17.9	-0.77
NGC 4321	1.33	15.5	-1.02
NGC 4321 disk	1.00	19.2	-1.17
NGC 4303	0.83	14.5	-1.26
NGC 4535	0.42	35.1	-0.80
NGC 4535 VIVA	0.83	36.5	-0.89
NGC 4254	0.83	12.7	-1.55
NGC 4501	0.50	12.0	-1.40
NGC 4654	0.50	17.6	-1.39
Exponential convolution			
NGC 6946	0.35	19.1	-0.80
NGC 6946 low resolution	0.12	19.8	-0.91
NGC 6946 clipped	0.35	19.2	-0.82
M 51	0.33	16.9	-0.81
M 51 low resolution	0.16	17.1	-0.87
M 51 clipped	1.14	17.9	-0.77
NGC 4321	0.67	15.4	-1.00
NGC 4321 disk	0.50	19.2	-1.17
NGC 4303	0.50	14.8	-1.26
NGC 4535	0.17	34.8	-0.81
NGC 4535 VIVA	0.33	36.5	-0.92
NGC 4254	0.33	12.8	-1.55
NGC 4501	0.33	11.9	-1.41
NGC 4654	0.83	18.2	-1.41

Table D.2. “Best-fit” models at 6 cm with Σ_* dependence.

Gaussian					
Name	l	Q	n	e	$\log(\phi)$
NGC 6946	1.86	20.4	-0.9	1	-0.89
NGC 6946 lr	1.28	20.5	-1.1	1	-0.98
NGC 6946 cl	1.28	20.0	-0.7	-1	-0.88
M 51	1.63	17.3	-0.5	1	-0.82
M 51 lr	1.47	17.4	-0.7	-1	-0.89
M 51 cl	1.14	17.5	-1.1	-1	-0.78
NGC 4321	1.33	15.5	0.0	-1	-1.02
NGC 4321 d	1.00	19.2	0.0	-1	-1.17
NGC 4303	0.83	14.5	0.0	-1	-1.26
NGC 4535	0.33	34.8	-0.5	1	-0.81
N4535 V	0.67	36.2	-0.5	1	-0.92
NGC 4254	0.83	12.7	0.0	-1	-1.55
NGC 4501	0.50	11.9	0.0	1	-1.41
NGC 4654	0.67	17.6	-0.225	1	-1.40
Exponential					
NGC 6946	1.51	20.5	-1.1	-1	-0.93
NGC 6946 lr	0.81	20.5	-1.1	-1	-0.99
NGC 6946 cl	1.05	20.2	-0.7	1	-0.88
M 51	0.81	17.3	-0.5	1	-0.83
M 51 lr	0.65	17.1	-0.5	1	-0.89
M 51 cl	1.14	17.5	-0.5	1	-0.78
NGC 4321	0.67	15.4	0.0	-1	-1.00
NGC 4321 d	0.50	19.2	0.0	-1	-1.17
NGC 4303	0.50	14.8	-0.5	-1	-1.26
NGC 4535	0.17	34.8	-0.5	1	-0.81
NGC 4535 V	0.33	36.4	-0.5	1	-0.92
NGC 4254	0.33	12.8	0.0	-1	-1.55
NGC 4501	0.33	11.9	0.0	1	-1.41
NGC 4654	0.83	18.2	-1.1	1	-1.41

Table D.3. “Best-fit” models at 6 cm with $\hat{\Sigma}_*$ dependence and losses.

Gaussian							
Name	l	Q	n	e	k	c	$\log(\phi)$
NGC 6946	1.86	10.9	-1.1	1	1.2	0.24	-0.91
(NGC 6946 lr	0.81	9.4	-0.5	1	1.2	0.32	-1.03)
NGC 6946 lr	0.93	14.5	-0.5	-1	1.6	0.04	-1.01
NGC 6946 cl	1.16	10.7	-0.7	-1	1.2	0.24	-0.89
M 51	1.63	17.3	-0.5	1	-	0.0	-0.82
M 51 lr	1.47	17.4	-0.5	-1	-	0.0	-0.89
M 51 cl	1.14	17.5	-1.1	-1	-	0.0	-0.78
NGC 4321	1.33	15.5	0.0	-1	-	0.0	-1.02
(NGC 4321 d	0.67	12.2	0.0	-1	1.2	0.24	-1.19)
NGC 4321 d	0.67	15.6	0.0	-1	1.6	0.05	-1.19
NGC 4303	0.67	12.3	-0.5	1	2.0	0.006	-1.29
NGC 4535	0.33	34.8	-0.5	1	-	0.0	-0.81
NGC 4535 V	0.67	36.1	-0.5	1	-	0.0	-0.92
NGC 4254	0.67	11.8	0.0	-1	2.2	0.002	-1.57
NGC 4501	0.50	11.9	0.0	1	-	0.0	-1.41
NGC 4654	0.50	15.13	-0.5	1	1.2	0.08	-1.40
Exponential							
NGC 6946	1.51	10.6	-1.1	-1	1.2	0.24	-0.95
NGC 6946 lr	1.16	8.0	-1.1	1	1.2	0.32	-1.07
NGC 6946 cl	1.05	13.9	-0.7	1	1.2	0.32	-0.89
M 51	0.81	17.3	-0.5	1	-	0.0	-0.83
M 51 lr	0.65	17.1	-0.5	1	-	0.0	-0.89
NGC 4321	0.67	15.4	0.0	-1	-	0.0	-1.00
NGC 4321 d	0.33	12.3	0.0	-1	1.2	0.24	-1.19
NGC 4303	0.33	12.3	-0.7	1	2.0	0.01	-1.29
NGC 4535	0.17	34.8	-0.5	1	-	0.0	-0.81
NGC 4535 V	0.33	36.5	-0.5	1	-	0.0	-0.92
NGC 4254	0.33	11.8	0.0	-1	2.2	0.002	-1.57
NGC 451	0.33	11.9	0.0	1	-	0.0	-1.41
NGC 4654	0.83	18.2	-1.1	1	-	0.0	-1.41

Table D.4. “Best-fit” models at 20 cm.

Gaussian			
Name	l	Q	$\log(\phi)$
NGC 6946	1.28	6.7	-0.81
NGC 6946 low resolution	1.28	6.7	-1.00
M 51	1.14	5.4	-0.84
M 51 low resolution	1.14	5.3	-0.91
NGC 4321	1.50	4.1	-0.95
NGC 4321 disk	2.17	4.8	-0.85
NGC 4303	2.00	4.8	-1.02
NGC 4535	0.92	8.6	-0.60
NGC 4535 VIVA	1.00	12.0	-0.71
NGC 4254	1.67	4.2	-1.44
NGC 4501	0.83	2.6	-1.23
NGC 4654	1.33	5.0	-1.42
Exponential			
NGC 6946	1.05	6.2	-0.83
NGC 6946 low resolution	1.05	6.3	-1.02
M 51	0.65	5.3	-0.85
M 51 low resolution	0.65	5.2	-0.92
NGC 4321	0.67	4.0	-0.93
NGC 4321 disk	1.00	4.9	-0.85
NGC 4303	1.17	4.5	-1.03
NGC 4535	0.42	8.7	-0.60
NGC 4535 VIVA	0.58	12.0	-0.76
NGC 4254	1.00	4.1	-1.46
NGC 4501	0.50	2.6	-1.23
NGC 4654	0.83	5.0	-1.45

Table D.5. “Best-fit” models at 20 cm with $\hat{\Sigma}_*$ dependence.

Gaussian					
Name	l	Q	n	e	$\log(\phi)$
NGC 6946	1.74	7.0	-0.5	-1	-0.87
N6946 lr	1.74	7.0	-0.7	1	-1.05
M 51	2.44	5.6	-0.5	-1	-0.91
M 51 lr	2.12	5.6	-0.5	-1	-0.99
NGC 4321	1.50	4.1	0.0	-1	-0.95
NGC 4321 d	2.16	4.8	0.0	-1	-0.85
NGC 4303	2.00	5.0	-0.5	-1	-1.02
NGC 4535	0.75	8.7	-0.5	-1	-0.60
N4535 V	1.00	11.5	-0.225	1	-0.77
NGC 4254	1.67	4.2	0.0	-1	-1.44
NGC 4501	0.83	2.6	0.0	-1	-1.23
NGC 4654	1.67	5.0	-0.225	1	-1.45
Exponential					
NGC 6946	1.05	6.9	-0.5	-1	-0.87
NGC 6946 lr	0.81	7.0	-0.7	1	-1.06
M 51	1.47	5.4	-0.5	-1	-0.91
M 51 lr	1.14	5.5	-0.5	-1	-0.99
NGC 4321	0.83	4.1	-0.225	-1	-0.94
NGC 4321 d	1.00	4.9	0.0	-1	-0.85
NGC 4303	1.17	4.5	0.0	-1	-1.03
NGC 4535	0.42	8.73	-0.5	-1	-0.60
NGC 4535 V	0.50	12.0	-0.225	1	-0.77
NGC 4254	1.00	4.1	0.0	-1	-1.46
NGC 4501	0.50	2.6	0.0	-1	-1.23
NGC 4654	0.83	5.0	-0.225	1	-1.45

Table D.6. “Best-fit” models at 20 cm with $\hat{\Sigma}_*$ dependence and losses.

Gaussian							
Name	l	Q	n	e	k	c	$\log(\phi)$
NGC 6946	1.98	3.6	-0.5	-1	1.2	0.24	-0.90
NGC 6946 lr	1.16	3.7	-0.7	-1	1.2	0.24	-1.10
M 51	2.28	4.7	-0.5	-1	1.2	0.08	-0.91
M 51 lr	2.11	4.6	-0.5	-1	1.2	0.08	-0.99
NGC 4321	1.50	4.1	0.0	-1	-	0.0	-0.95
NGC 4321 d	2.17	4.8	0.0	-1	-	0.0	-0.85
(NGC 4303	1.00	2.7	-0.225	-1	1.4	0.13	-1.12)
NGC 4303	1.20	3.3	-0.225	-1	1.8	0.03	-1.12
NGC 4535	0.75	7.7	-0.5	-1	1.2	0.08	-0.60
NGC 4535 V	1.00	11.3	-0.225	1	-	0.0	-0.77
NGC 4254	1.33	3.6	-0.225	-1	2.0	0.006	-1.51
NGC 4501	0.83	2.6	0.0	-1	-	0.0	-1.23
NGC 4654	1.67	5.0	-0.225	1	-	0.0	-1.45
Exponential							
NGC 6946	1.05	3.6	-1.1	-1	1.2	0.24	-0.90
NGC 6946 lr	0.81	3.7	-0.5	-1	1.2	0.24	-1.11
M 51	1.30	4.6	-0.5	-1	1.2	0.08	-0.91
M 51 lr	1.14	4.6	-0.5	-1	1.2	0.08	-0.99
NGC 4321	0.83	4.1	-0.225	-1	-	0.0	-0.94
NGC 4321 d	1.00	4.9	0.0	-1	-	0.0	-0.85
NGC 4303	0.33	4.5	-0.5	1	1.4	0.13	-1.12
NGC 4535	0.42	8.3	-0.5	-1	1.6	0.01	-0.60
NGC 4535 V	0.50	12.0	-0.225	1	-	0.0	-0.77
NGC 4254	0.67	3.6	0.0	-1	2.0	0.006	-1.52
NGC 4501	0.50	2.6	0.0	-1	-	0.0	-1.23
NGC 4654	0.83	5.0	-0.225	1	-	0.0	-1.45

Table D.7. Most probable parameters for the model with $\dot{\Sigma}_*$ dependence at 6 cm.

Gaussian				
Name	l	Q	n	e
NGC 6946	1.69 ± 0.12	20.4 ± 0.2	-0.93	0.12
NGC 6946 lowres	1.22 ± 0.43	19.6 ± 4.2	-0.93	-0.04
NGC 6946 clipped	1.29 ± 0.17	20.1 ± 0.19	-0.71	-0.50
M 51	1.63 ± 0.24	17.6 ± 0.3	-0.53	0.17
M 51 lowres	1.36 ± 0.18	17.2 ± 0.3	-0.58	0.39
M 51 clip	1.02 ± 0.28	17.4 ± 0.4	-0.94	0.00
NGC 4321	1.46 ± 0.23	15.6 ± 0.2	-0.15	-0.50
NGC 4321 disk	0.94 ± 0.13	19.3 ± 0.2	-0.08	0.00
NGC 4303	0.97 ± 0.18	14.6 ± 0.1	-0.25	-1.00
NGC 4535	0.35 ± 0.08	34.9 ± 0.1	-0.36	1.00
NGC 4535 VIVA	0.62 ± 0.14	36.2 ± 0.1	-0.50	1.00
NGC 4254	0.78 ± 0.08	12.8 ± 0.1	-0.21	-0.33
NGC 4501	0.50 ± 0.14	11.9 ± 0.1	-0.04	0.33
NGC 4654	0.69 ± 0.18	17.7 ± 0.1	-0.42	0.33
Exponential				
NGC 6946	1.47 ± 0.25	20.4 ± 0.1	-1.09	0.12
NGC 6946 lowres	0.82 ± 0.22	20.7 ± 0.0	-1.06	0.38
M 51	0.79 ± 0.20	17.3 ± 0.5	-0.47	0.00
M 51 lowres	0.73 ± 0.13	17.2 ± 0.1	-0.68	0.17
NGC 4321	0.68 ± 0.16	15.5 ± 0.2	-0.15	-0.17
NGC 4321 disk	0.50 ± 0.14	19.4 ± 0.3	-0.12	0.00
NGC 4303	0.49 ± 0.11	14.7 ± 0.1	-0.33	-0.17
NGC 4535	0.17 ± 0.05	34.9 ± 0.2	-0.29	0.67
NGC 4535 VIVA	0.35 ± 0.06	36.5 ± 0.1	-0.29	1.00
NGC 4254	0.37 ± 0.10	12.8 ± 0.1	-0.28	-0.17
NGC 4501	0.28 ± 0.13	11.9 ± 0.1	-0.17	0.00
NGC 4654	0.69 ± 0.33	17.9 ± 0.2	-0.76	0.00

Table D.8. Most probable parameters for the model with $\dot{\Sigma}_*$ dependence and advection losses at 6 cm.

Gaussian						
Name	l	Q	n	e	k	c
NGC 6946	1.72 ± 0.14	13.5 ± 2.7	-0.96	0.18	1.36 ± 0.19	$1.3E-01 \pm 9.3E-02$
(NGC 6946 lowres	0.71 ± 0.36	9.0 ± 2.8	-0.45	-0.08	1.23 ± 0.27	$2.3E-01 \pm 1.1E-01$)
NGC 6946 lowres	0.82 ± 0.23	14.5 ± 1.0	-0.50	0.08	1.67 ± 0.10	$3.5E-02 \pm 1.4E-02$
NGC 6946 clipped	1.12 ± 0.19	13.5 ± 2.4	-0.78	-0.51	1.30 ± 0.14	$1.4E-01 \pm 8.4E-03$
M 51	1.50 ± 0.23	16.9 ± 0.9	-0.54	0.49	1.71 ± 0.37	$9.2E-03 \pm 2.3E-02$
M 51 lowres	1.36 ± 0.18	17.2 ± 0.3	-0.58	0.39	-	0.00
M 51 clip	1.00 ± 0.27	17.2 ± 0.7	-1.0	0.01	1.69 ± 0.35	$2.9E-3 \pm 1.3E-02$
NGC 4321	1.46 ± 0.23	15.6 ± 0.2	-0.15	-0.50	-	0.00
(NGC 4321 disk	0.68 ± 0.13	13.4 ± 2.1	-0.11	-0.39	1.37 ± 0.17	$1.6E-01 \pm 1.0E-01$)
NGC 4321 disk	0.72 ± 0.11	16.3 ± 0.8	-0.11	-0.33	1.73 ± 0.15	$3.4E-02 \pm 1.7E-02$
NGC 4303	0.78 ± 0.14	11.6 ± 1.5	-0.50	0.06	1.74 ± 0.31	$4.6E-02 \pm 7.3E-02$
NGC 4535	0.31 ± 0.07	34.4 ± 0.8	-0.55	1.00	1.69 ± 0.38	$4.4E-03 \pm 1.4E-02$
NGC 4535 VIVA	0.59 ± 0.11	36.1 ± 0.2	-0.50	1.00	1.76 ± 0.36	$1.8E-04 \pm 5.1E-04$
NGC 4254	0.76 ± 0.09	11.9 ± 0.3	-0.18	-0.39	1.99 ± 0.24	$4.9E-03 \pm 7.3E-03$
NGC 4501	0.50 ± 0.14	11.9 ± 0.1	-0.04	0.33	-	0.00
NGC 4654	0.68 ± 0.18	17.4 ± 0.8	-0.41	0.32	1.64 ± 0.36	$8.5E-03 \pm 2.4E-02$
Exponential						
NGC 6946	1.52 ± 0.21	15.3 ± 2.6	-1.10	-0.53	1.52 ± 0.31	$7.8E-02 \pm 8.2E-02$
NGC 6946 lowres	0.91 ± 0.23	12.1 ± 2.8	-1.08	0.35	1.48 ± 0.27	$1.4E-01 \pm 1.2E-01$
M 51	0.80 ± 0.18	16.7 ± 0.8	-0.48	0.44	1.70 ± 0.35	$7.9E-03 \pm 2.1E-02$
M 51 lowres	0.73 ± 0.13	17.2 ± 0.3	-0.68	0.17	1.70 ± 0.34	$0.0E+00 \pm 0.0E+00$
NGC 4321	0.68 ± 0.16	15.4 ± 0.4	-0.15	-0.20	1.68 ± 0.35	$3.2E-03 \pm 1.6E-02$
NGC 4321 disk	0.35 ± 0.11	14.4 ± 2.4	-0.14	-0.09	1.49 ± 0.25	$1.2E-01 \pm 1.0E-01$
NGC 4303	0.36 ± 0.06	11.5 ± 1.5	-0.54	-0.06	1.75 ± 0.32	$4.5E-02 \pm 7.0E-02$
NGC 4535	0.15 ± 0.03	34.6 ± 0.8	-0.38	0.69	1.73 ± 0.35	$3.6E-03 \pm 1.4E-02$
NGC 4535 VIVA	0.33 ± 0.05	36.3 ± 0.7	-0.38	1.00	1.74 ± 0.35	$2.6E-03 \pm 1.3E-02$
NGC 4254	0.39 ± 0.09	11.8 ± 0.5	-0.26	-0.49	1.89 ± 0.29	$1.1E-02 \pm 2.3E-02$
NGC 4501	0.23 ± 0.08	11.9 ± 0.4	-0.18	0.11	1.72 ± 0.36	$3.6E-03 \pm 1.6E-02$
NGC 4654	0.68 ± 0.33	17.9 ± 0.5	-0.74	0.00	1.69 ± 0.35	$2.2E-03 \pm 1.3E-02$

Table D.9. Most probable parameters for the model with $\dot{\Sigma}_*$ dependence at 20 cm.

Gaussian				
Name	l	Q	n	e
NGC 6946	2.14 ± 0.41	7.2 ± 0.1	-0.70	-0.38
NGC 6946 lowres	1.78 ± 0.22	7.0 ± 0.3	-0.68	-0.08
M 51	2.48 ± 0.40	5.6 ± 0.1	-0.54	-0.29
M 51 lowres	2.38 ± 0.27	5.6 ± 0.2	-0.60	-0.25
NGC 4321	1.71 ± 0.23	4.1 ± 0.1	-0.17	-0.50
NGC 4321 disk	2.08 ± 0.29	4.9 ± 0.1	0.00	-1.00
NGC 4303	1.83 ± 0.14	4.9 ± 0.1	-0.12	-1.00
NGC 4535	0.79 ± 0.08	8.7 ± 0.1	-0.38	-1.00
NGC 4535 VIVA	0.94 ± 0.06	11.5 ± 0.1	-0.54	0.33
NGC 4254	1.64 ± 0.23	4.2 ± 0.1	-0.04	-1.00
NGC 4501	0.86 ± 0.18	2.6 ± 0.0	0.00	-0.33
NGC 4654	1.58 ± 0.16	5.1 ± 0.0	-0.25	0.33
Exponential				
NGC 6946	1.23 ± 0.32	7.1 ± 0.2	-0.74	-0.38
NGC 6946 lowres	0.94 ± 0.12	7.2 ± 0.1	-0.62	0.23
M 51	1.53 ± 0.30	5.5 ± 0.2	-0.59	-0.29
M 51 lowres	1.36 ± 0.27	5.6 ± 0.1	-0.62	-0.18
NGC 4321	0.85 ± 0.16	4.1 ± 0.0	-0.15	-0.17
NGC 4321 disk	1.00 ± 0.25	4.9 ± 0.0	-0.04	-0.17
NGC 4303	1.03 ± 0.18	4.6 ± 0.1	-0.08	-1.00
NGC 4535	0.44 ± 0.06	8.7 ± 0.1	-0.33	-1.00
NGC 4535 VIVA	0.50 ± 0.07	12.0 ± 0.1	-0.29	0.00
NGC 4254	0.90 ± 0.22	4.2 ± 0.1	-0.17	-0.67
NGC 4501	0.35 ± 0.16	2.6 ± 0.0	-0.10	-0.17
NGC 4654	0.99 ± 0.28	5.1 ± 0.1	-0.57	-0.17

Table D.10. Most probable parameters for the model with $\dot{\Sigma}_*$ dependence and advection losses at 20 cm.

Gaussian						
Name	l	Q	n	e	k	c
NGC 6946	2.04 ± 0.33	4.9 ± 1.0	-0.62	-0.57	1.38 ± 0.25	$1.2\text{E}-01 \pm 9.3\text{E}-02$
NGC 6946 lowres	1.66 ± 0.24	4.6 ± 0.8	-0.55	-0.09	1.38 ± 0.18	$1.3\text{E}-01 \pm 9.2\text{E}-02$
M 51	2.33 ± 0.25	5.0 ± 0.6	-0.53	-0.55	1.57 ± 0.34	$4.1\text{E}-02 \pm 6.0\text{E}-02$
M 51 lowres	2.35 ± 0.26	5.0 ± 0.4	-0.61	-0.80	1.58 ± 0.35	$3.4\text{E}-02 \pm 5.3\text{E}-02$
NGC 4321	1.71 ± 0.23	4.1 ± 0.1	-0.17	-0.50	–	0.00
NGC 4321 disk	2.08 ± 0.17	4.7 ± 0.2	0.00	-1.00	1.67 ± 0.36	$1.1\text{E}-02 \pm 2.5\text{E}-02$
(NGC 4303	0.92 ± 0.19	2.4 ± 0.3	-0.22	-0.09	1.31 ± 0.10	$2.1\text{E}-01 \pm 9.6\text{E}-02$)
NGC 4303	0.94 ± 0.19	3.1 ± 0.2	-0.29	-0.09	1.68 ± 0.10	$4.5\text{E}-02 \pm 1.7\text{E}-02$
NGC 4535	0.80 ± 0.04	8.4 ± 0.4	-0.50	-1.00	1.77 ± 0.35	$1.4\text{E}-02 \pm 3.2\text{E}-02$
NGC 4535 VIVA	1.00 ± 0.02	11.3 ± 1.3	-0.57	0.77	1.66 ± 0.32	$6.7\text{E}-02 \pm 8.0\text{E}-02$
NGC 4254	1.28 ± 0.14	3.3 ± 0.5	-0.12	-1.00	1.74 ± 0.35	$5.8\text{E}-02 \pm 8.5\text{E}-02$
NGC 4501	0.86 ± 0.18	2.6 ± 0.0	0.00	-0.33	–	0.00
NGC 4654	1.53 ± 0.11	5.0 ± 0.2	-0.25	0.15	1.74 ± 0.36	$4.4\text{E}-03 \pm 1.8\text{E}-02$
Exponential						
NGC 6946	1.11 ± 0.23	5.1 ± 1.0	-0.67	-0.63	1.45 ± 0.26	$9.6\text{E}-02 \pm 8.9\text{E}-02$
NGC 6946 lowres	0.89 ± 0.14	4.8 ± 0.8	-0.62	-0.09	1.43 ± 0.24	$1.2\text{E}-01 \pm 9.9\text{E}-02$
M 51	1.43 ± 0.28	5.0 ± 0.6	-0.58	-0.59	1.56 ± 0.33	$3.4\text{E}-02 \pm 5.3\text{E}-02$
M 51 lowres	1.27 ± 0.19	5.2 ± 0.4	-0.62	-0.55	1.61 ± 0.35	$2.5\text{E}-02 \pm 4.5\text{E}-02$
NGC 4321	0.85 ± 0.16	4.0 ± 0.1	-0.16	-0.31	1.67 ± 0.35	$4.5\text{E}-03 \pm 1.9\text{E}-02$
NGC 4321 disk	0.99 ± 0.13	4.6 ± 0.3	0.00	-0.40	1.66 ± 0.34	$2.1\text{E}-02 \pm 4.1\text{E}-02$
NGC 4303	0.44 ± 0.11	2.5 ± 0.4	-0.27	-0.09	1.41 ± 0.20	$1.7\text{E}-01 \pm 1.1\text{E}-01$
NGC 4535	0.40 ± 0.03	8.4 ± 0.4	-0.46	-1.00	1.75 ± 0.35	$1.2\text{E}-02 \pm 3.1\text{E}-02$
NGC 4535 VIVA	0.51 ± 0.06	11.8 ± 0.2	-0.25	0.26	1.73 ± 0.36	$2.5\text{E}-03 \pm 1.3\text{E}-02$
NGC 4254	0.68 ± 0.11	3.3 ± 0.4	-0.16	-0.71	1.76 ± 0.34	$5.0\text{E}-02 \pm 7.6\text{E}-02$
NGC 4501	0.34 ± 0.16	2.6 ± 0.0	-0.09	-0.11	1.73 ± 0.35	$6.3\text{E}-05 \pm 2.9\text{E}-04$
NGC 4654	1.00 ± 0.25	5.1 ± 0.2	-0.61	-0.03	1.74 ± 0.36	$4.8\text{E}-03 \pm 1.9\text{E}-02$

Appendix E: Goodness distributions

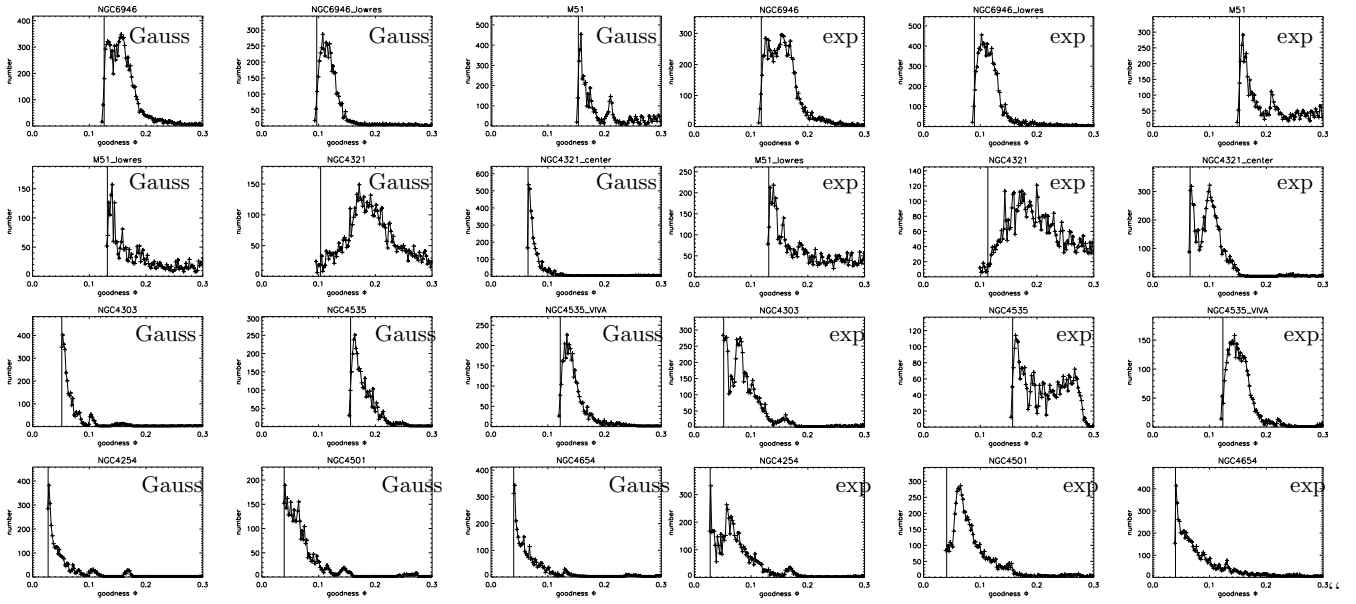


Fig. E.1. Distribution of goodness parameter ϕ based on the 6 cm radio continuum data. The cut for the accepted models is shown as a vertical line. No losses are included in these models.

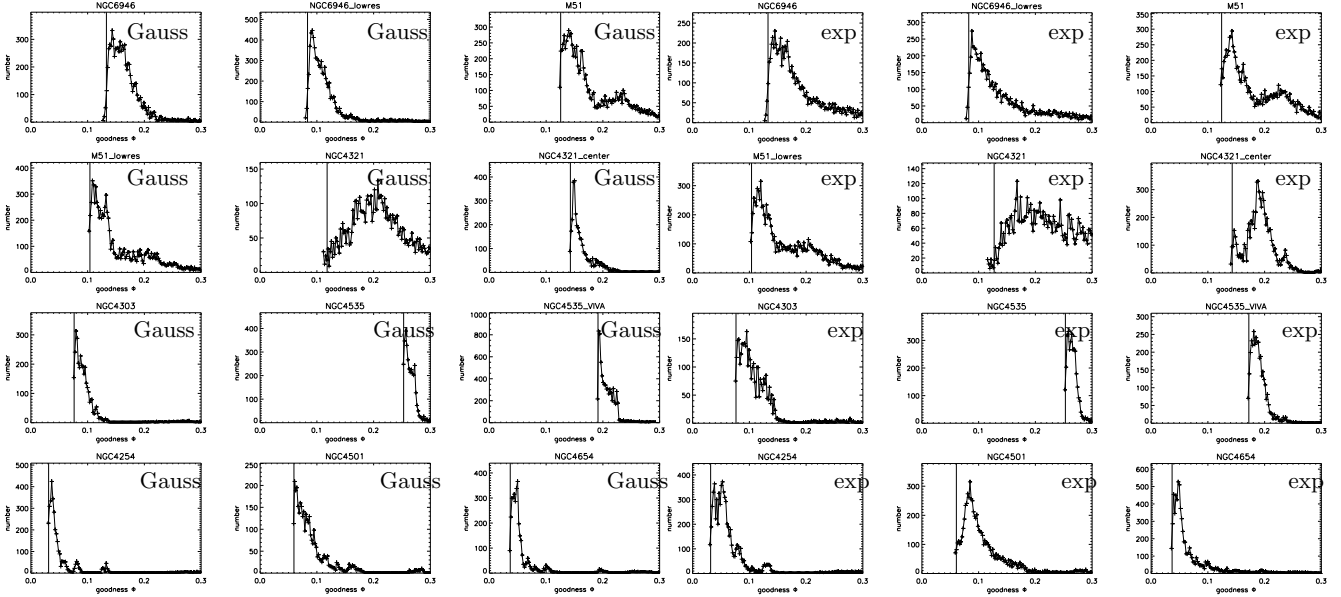


Fig. E.2. Distribution of goodness parameter ϕ based on the 20 cm radio continuum data. The cut for the accepted models is shown as a vertical line. No losses are included in these models.

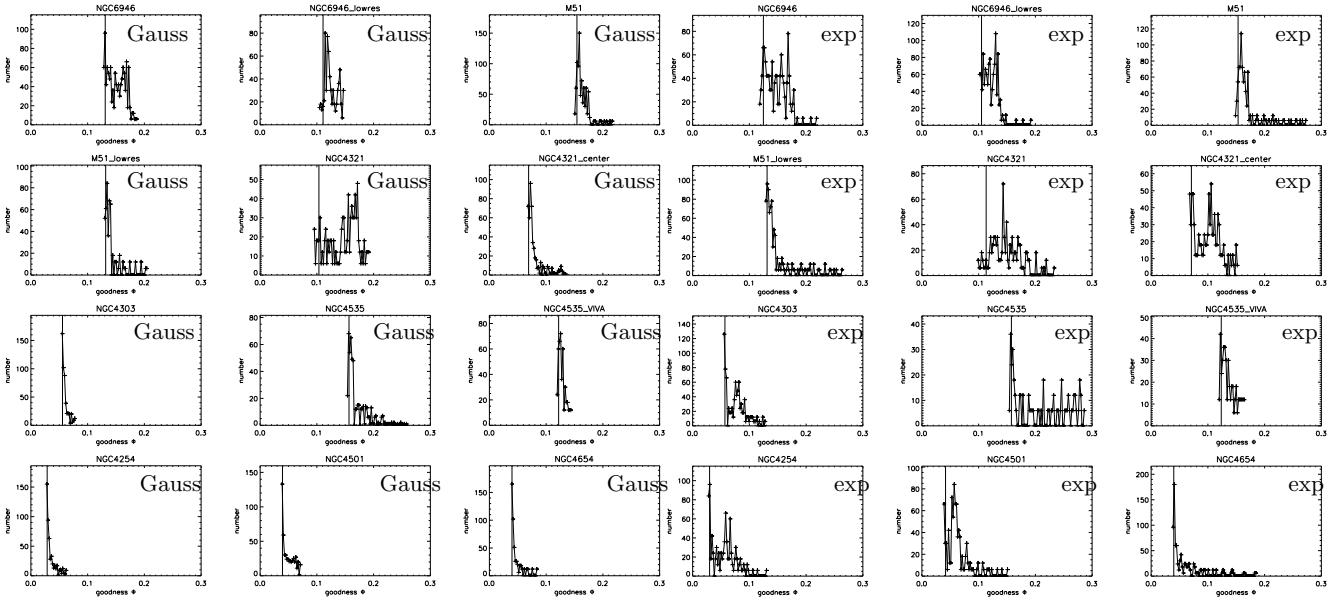


Fig. E.3. Distribution of goodness parameter ϕ based on the 6 cm radio continuum data. The cut for the accepted models is shown as a vertical line. Losses are included in these models.

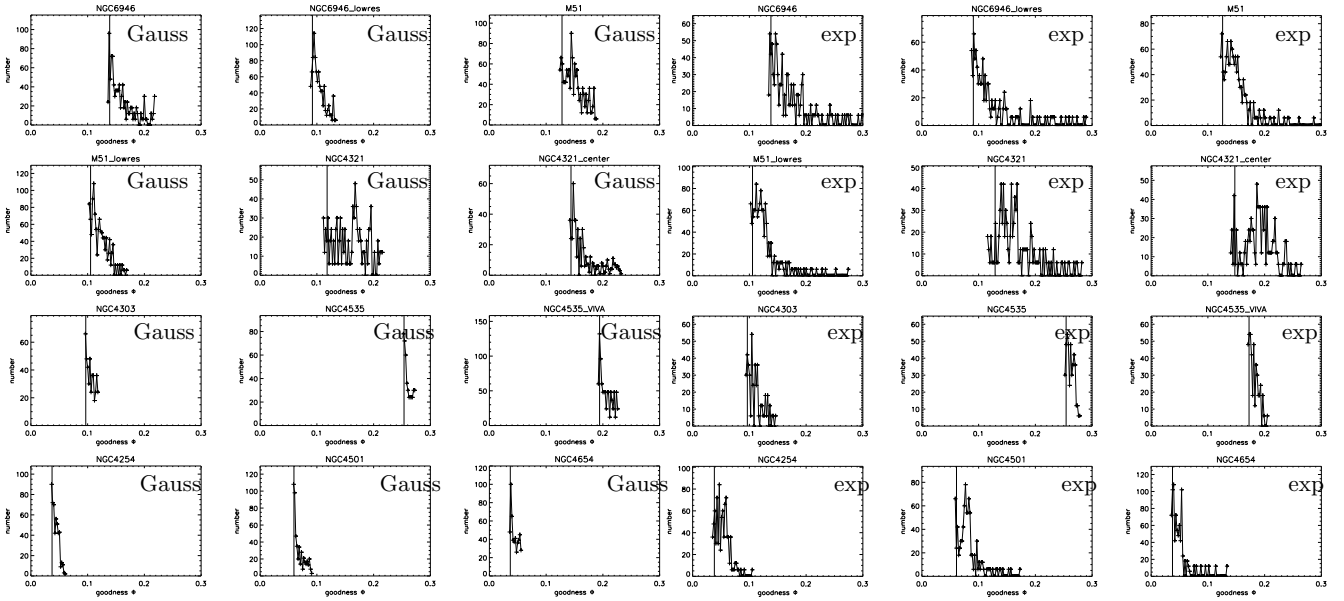


Fig. E.4. Distribution of goodness parameter ϕ based on the 20 cm radio continuum data. The cut for the accepted models is shown as a vertical line. Losses are included in these models.

Appendix F: “Best-fit” model radio continuum maps

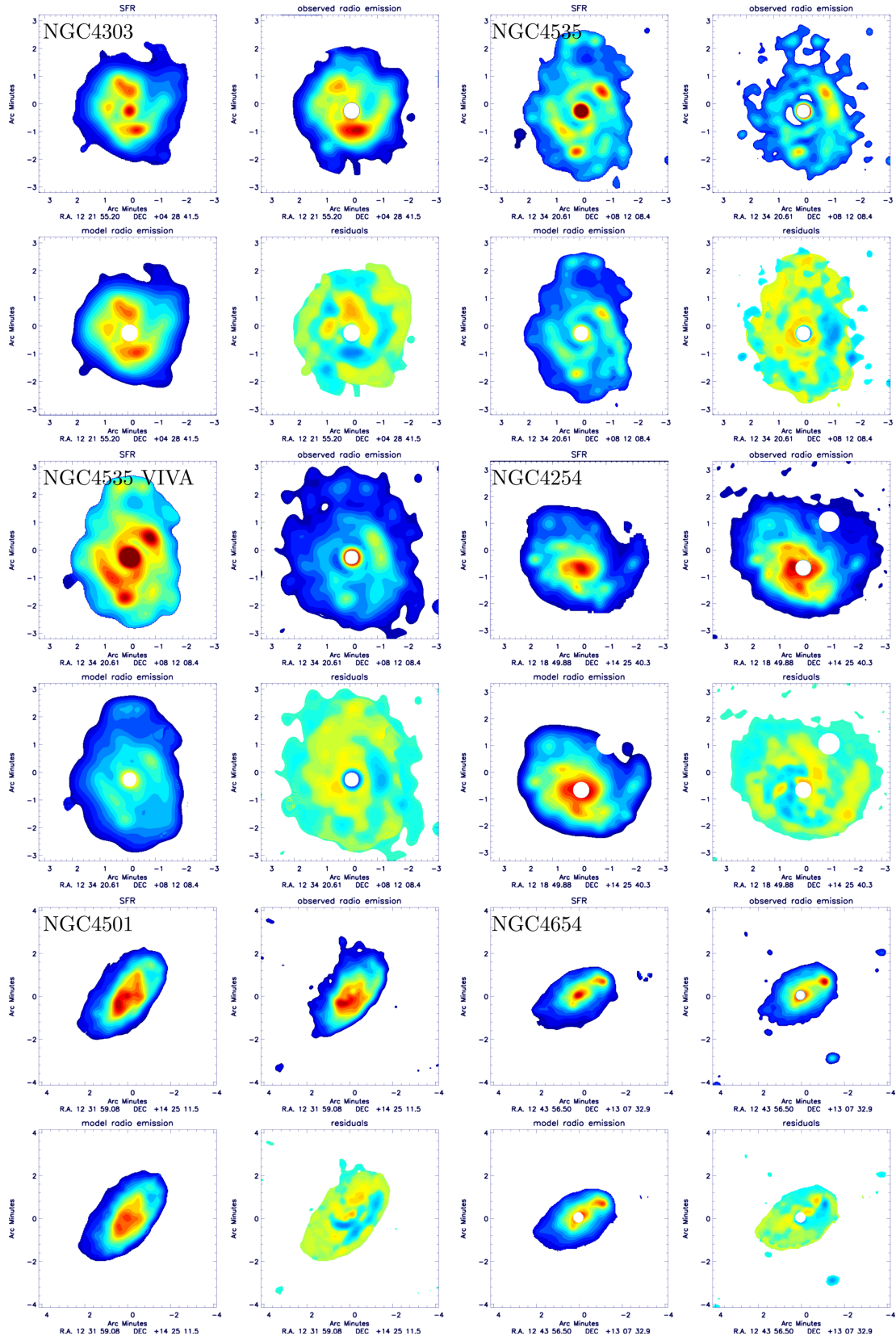


Fig. F.1. Gaussian convolution: “best-fit” model radio continuum maps at 6 cm. Four maps are shown for each galaxy. *Upper left:* observed star formation; *upper right:* observed radio continuum emission; *lower left:* model radio continuum; *lower right:* residuals; blue is radio bright, red radio dim.

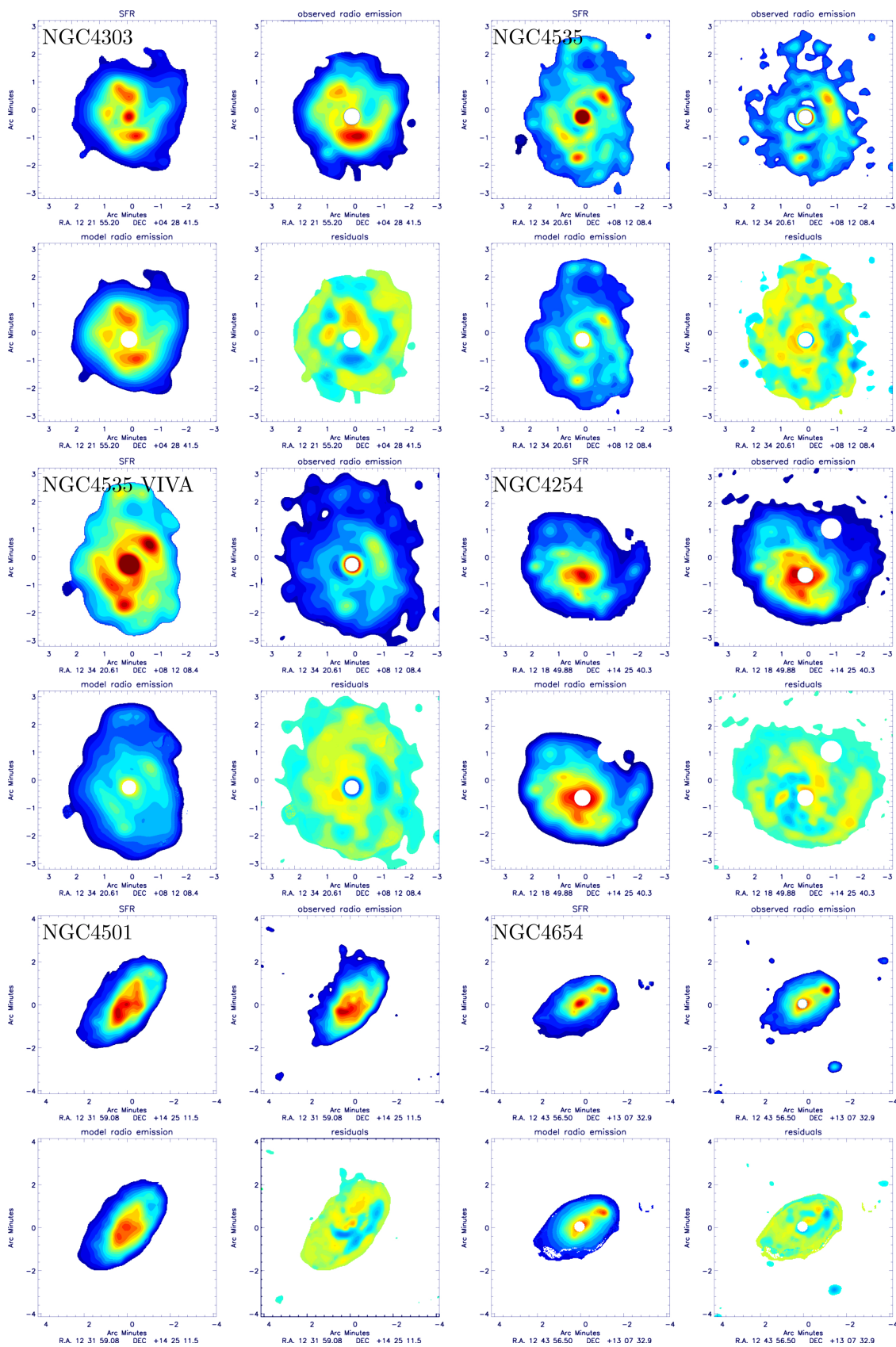


Fig. F.2. Exponential convolution: “best-fit” model radio continuum maps at 6 cm. Four maps are shown for each galaxy. *Upper left*: observed star formation; *upper right*: observed radio continuum emission; *lower left*: model radio continuum; *lower right*: residuals; blue is radio bright, red radio dim.

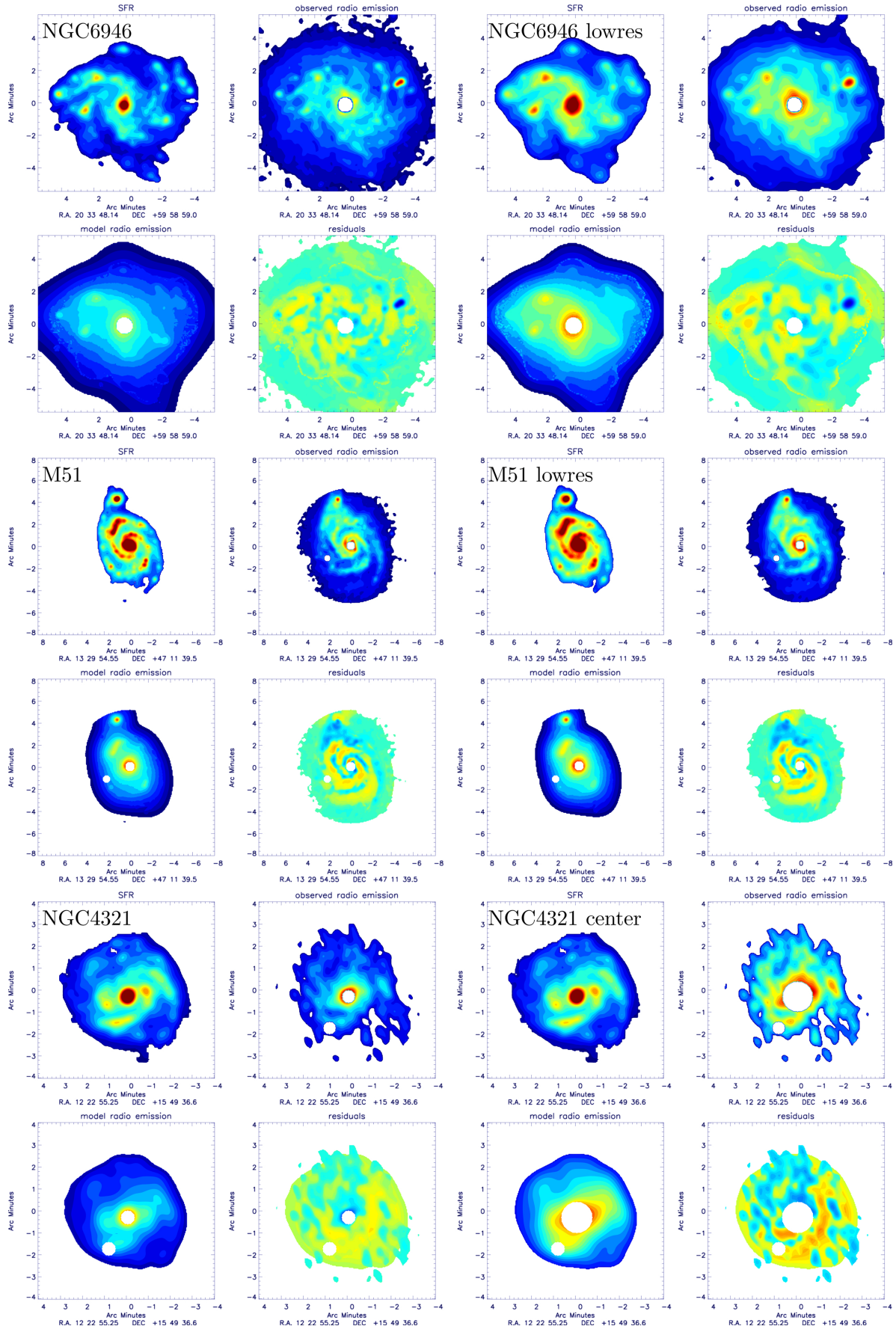


Fig. F3. Same as Fig. F.1 for the 20 cm data.

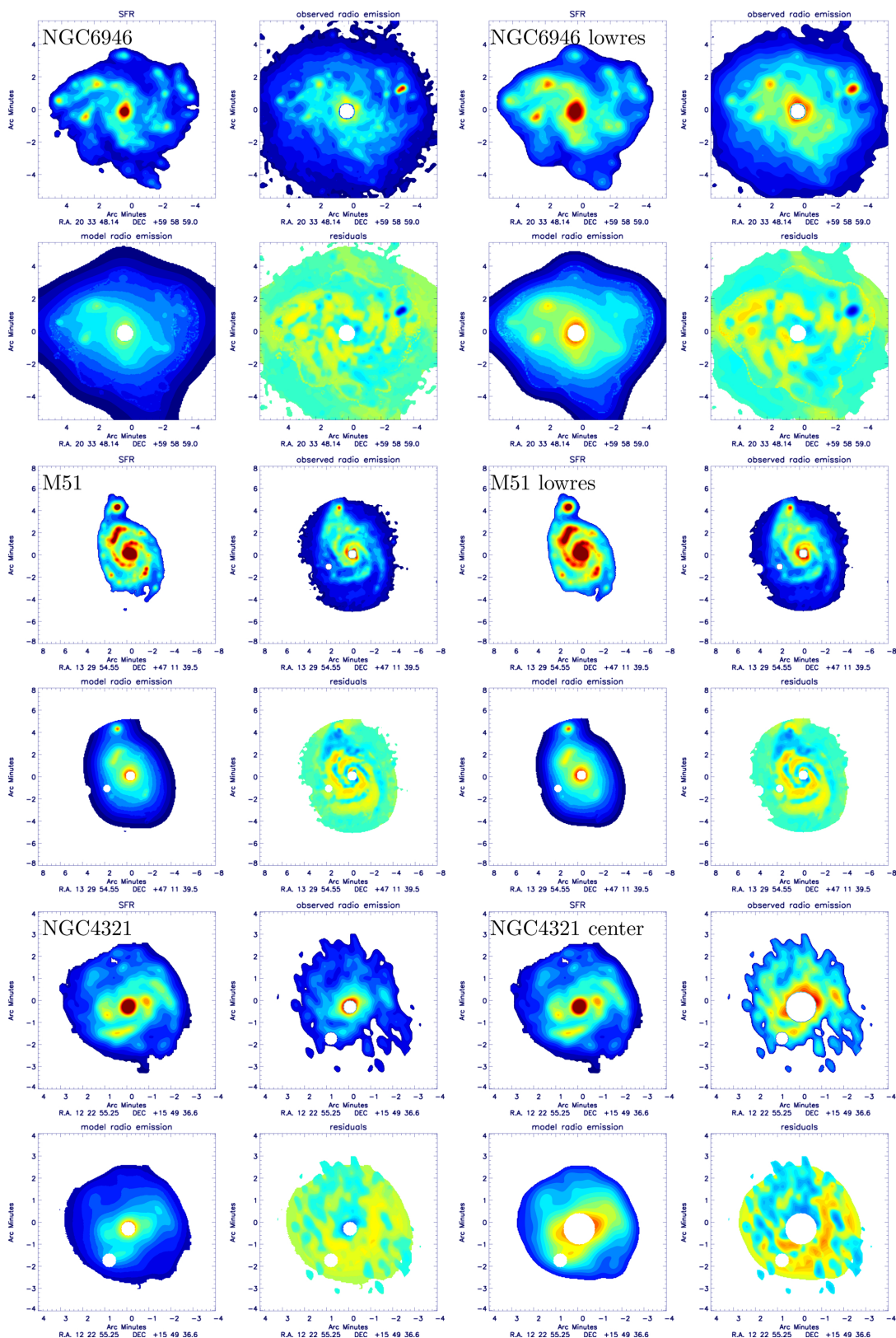


Fig. F.3. continued.

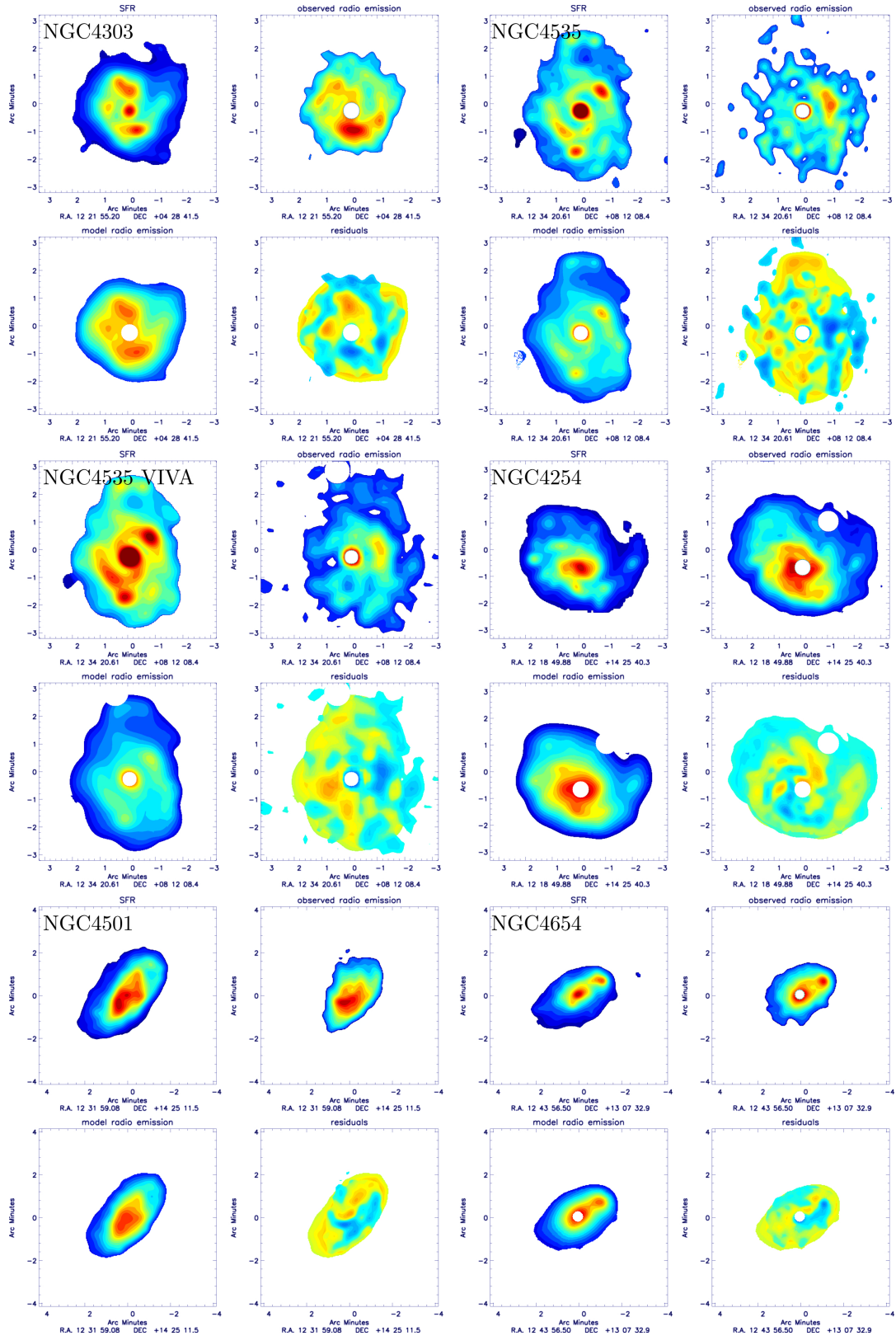


Fig. F.3. continued.

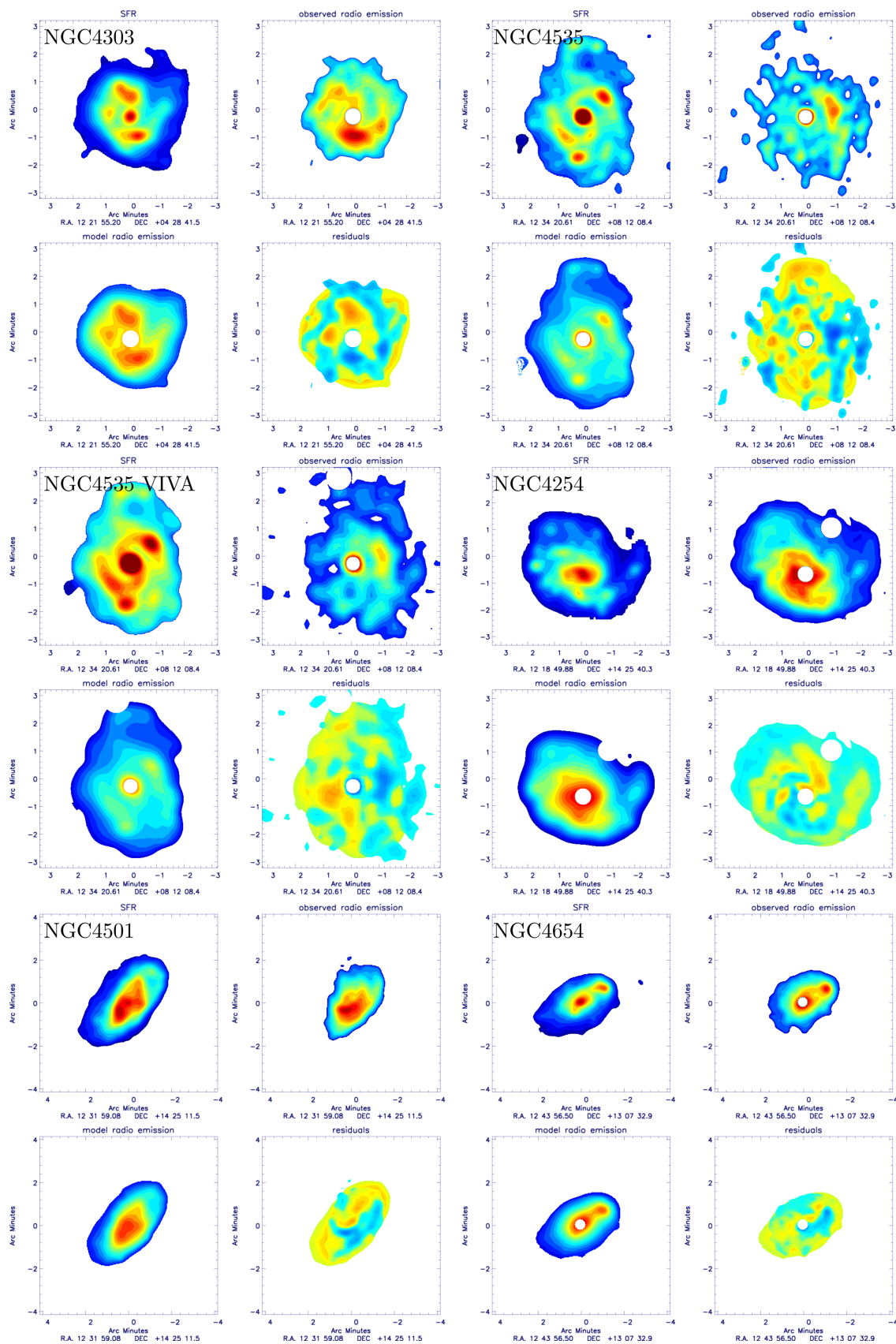


Fig. F3. continued.

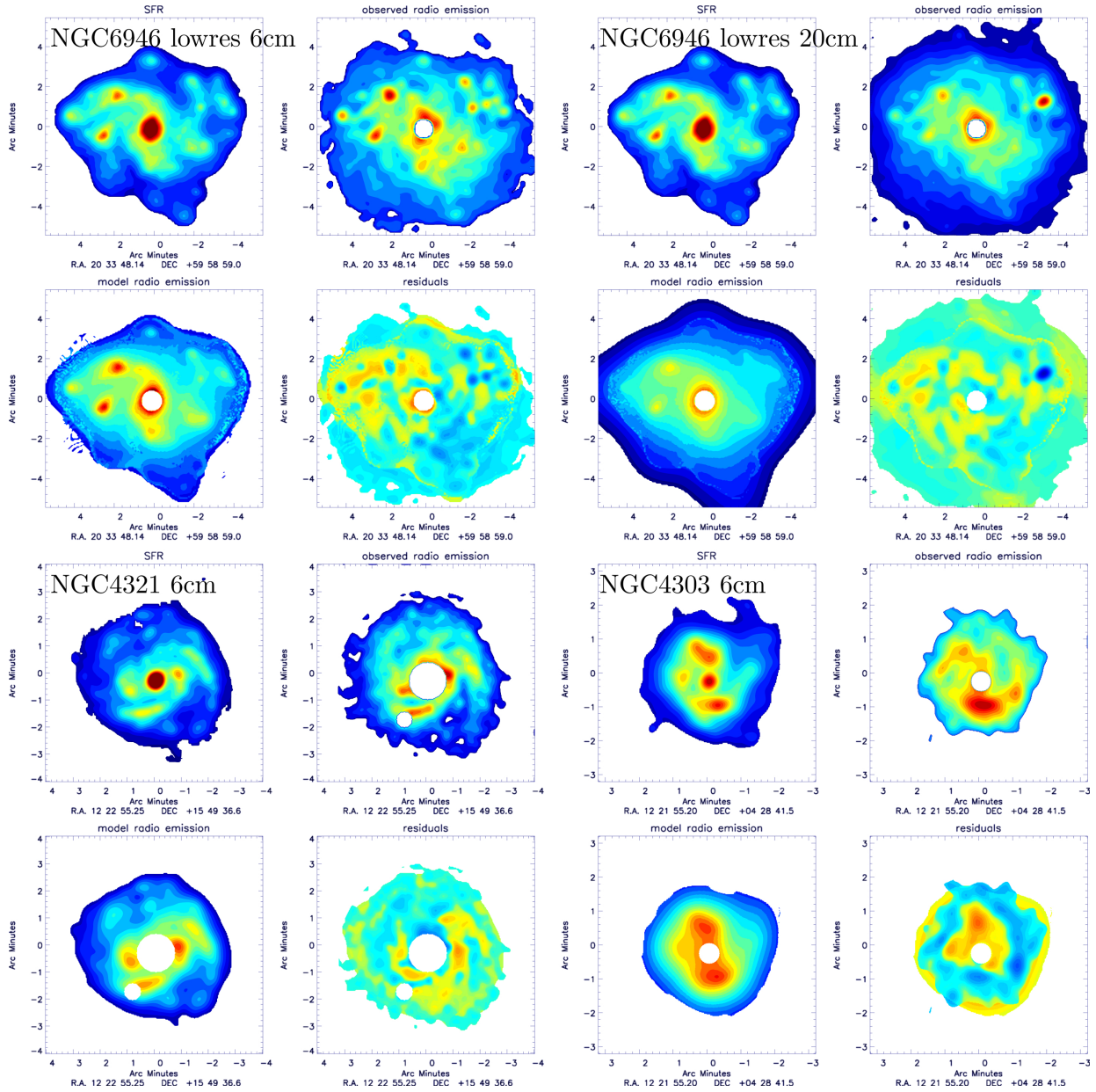


Fig. F.4. "Best-fit" model radio continuum maps for additional studies (low resolution or removed central emission).