



HAL
open science

Effect of aging temperature on a thermoset-like novel acrylic thermoplastic composite for marine vessels

Haithem Bel Haj Frej, Romain Léger, Didier Perrin, Patrick Ienny

► To cite this version:

Haithem Bel Haj Frej, Romain Léger, Didier Perrin, Patrick Ienny. Effect of aging temperature on a thermoset-like novel acrylic thermoplastic composite for marine vessels. *Journal of Composite Materials*, 2021, 55 (19), pp.002199832199678. 10.1177/0021998321996780 . hal-03154606

HAL Id: hal-03154606

<https://hal.science/hal-03154606>

Submitted on 1 Mar 2021

HAL is a multi-disciplinary open access archive for the deposit and dissemination of scientific research documents, whether they are published or not. The documents may come from teaching and research institutions in France or abroad, or from public or private research centers.

L'archive ouverte pluridisciplinaire **HAL**, est destinée au dépôt et à la diffusion de documents scientifiques de niveau recherche, publiés ou non, émanant des établissements d'enseignement et de recherche français ou étrangers, des laboratoires publics ou privés.

Effect of aging temperature on a thermoset-like novel acrylic thermoplastic composite for marine vessels

Haithem Bel Haj Frej¹, Romain Léger¹, Didier Perrin², Patrick Jenny¹

¹ *LMGC, IMT Mines Ales, Univ Montpellier, CNRS, Ales, France*

² *Polymers Composites and Hybrids (PCH), IMT Mines Ales, Ales, France*

Abstract

This work aims at evaluating the durability of a carbon fibre reinforced thermoplastic composite under different aging conditions. The absorption and desorption of deionised water in carbon fibre (CF) reinforced Elium composite material were measured gravimetrically over two different temperatures. Water uptake experimental data were fitted to a Langmuir type diffusion model in order to identify and compare diffusion parameters and kinetics and to evaluate their dependence to aging conditions. It was found that the temperature increase had a significant effect only on saturation water uptake. Water desorption after aging was modelled accurately using Fick's law and slight differences were found between model parameters. The effect of hydrothermal aging conditions and their reversibility were then evaluated by static and vibratory mechanical analysis. Results showed a slight and quasi-reversible reduction of longitudinal properties compared to shear properties at moderate aging temperature. While for higher aging temperature, the impact was found to be more significant and permanent on mechanical in-plane properties. Furthermore, static and modal results are confirmed by dynamic mechanical analysis, where the behaviour of studied material is differently affected by aging temperature, with a considerable increase in dried materials glass transition temperature.

Keywords

Carbon fibre; Thermoplastic resin; Hydrothermal aging; Durability; Mechanical properties

1. Introduction:

Since the late 1950s, composite materials have been widely in use in marine construction. Nowadays, sailing and motor boats for recreational and sports use are the products of a dynamic and competitive sector, with more than 3600 companies all over Europe, and more than 52k new boats produced in France in 2017 ¹. In addition to lightweight and corrosion resistance advantages, the use of fibre-reinforced materials makes it possible to produce parts of complex shapes. Therefore, every year, around 12,000 thermoset-based boats reach their end-of-life in French ports, with nearly no eco-friendly valorisation solution known, except landfilling or incineration. In addition to environmental considerations, the increasingly demanding legislation and new European directives make it more than urgent to find a lasting solution for materials for marine use, more specifically for recreational boat construction. In the last few decades, thermoplastic polymers began to find application in marine environment as a substitution to widely used thermoset matrix ². A newly developed low-viscosity liquid

thermoplastic resin from Arkema is being developed for a range of technical use such as wind energy and marine transport industry. Fibre reinforced Elium composites can be produced by resin infusion method alike their thermoset counterparts. Therefore, a possible substitution of the widely used thermoset resin by the novel recyclable acrylic resin in marine application may be possible, as far as the substitute presents similar or better durability along service-life. In order to study the durability and predict the lifespan of materials, accelerated aging tests could be conducted under various environments depending on the exposure of the material, including hydrothermal aging, in which the degree of aging is determined via temperature, time, and water ingress. According to the literature, physical and chemical aging are the most common involved mechanisms^{3,4}. Physical aging is reversible and takes place in materials exposed to high temperatures for prolonged duration with a possible alteration in thermal and mechanical properties, whilst chemical aging is irreversible and involves chain scission and permanent degradation⁵.

This study focuses on composites for marine vessels, which operate in harsh wet environments with various and coupled loads and stresses. The knowledge of water diffusion kinetics and materials mechanical properties is essential in order to evaluate their durability. Diffusion of water in polymer matrix composites has been extensively studied in the literature⁶⁻⁸. Fick's second law of diffusion is the mostly used model for moisture uptake and diffusion parameters identification from gravimetric tests⁹. In case of anisotropic composites, water diffusion depends on several parameters such as reinforcement type, morphology and geometry but also on aging environment and conditions. Depending on aging conditions, composites may exhibit a non-reversible damage generally due to physico-chemical degradation and its explicit numerical modelling becoming complex, thus the classic Fickian model is not adequate. Several authors proposed numerical models, generally derived from Fick^{10,11} or Langmuir^{12,13} theories. Other non-empirical modelling of water absorption kinetics induced by chemical reactions¹⁴ and wicking mechanisms^{15,16}. The evolution of mechanical properties is generally monitored when absorption and subsequent desorption studies are conducted in order to evaluate aging effects on studied materials^{17,18}. Thermoset reinforced composites durability has been widely studied in the literature in terms of mechanisms and consequences of water absorption. In order to switch to thermoplastic polymers, durability has to be investigated. Only few works are already available on some grades of thermoplastic Elium. Davies et al.¹⁹ studied aging mechanism of acrylic Elium 190 reinforced glass and carbon fibres. Even if a slight drop of mechanical properties was observed after one year of immersion in seawater at 60 °C, material properties were recovered after drying. Their fatigue behaviour is also at least as good as their glass fibre/epoxy counterparts²⁰. Nash et al. studied the effect of environmental conditioning in water and diesel fuel on the interlaminar shear and dynamic mechanical properties of glass fibre/Elium 150 composites compared to other thermoset matrix composites²¹. Results showed that acrylic and epoxy composites had similar properties at dry condition, but the effect of water absorption was more significant on Elium reinforced composites²². In these results, only diffusion parameters of non-reinforced matrix were given by Davies et al.¹⁹, and no data on water absorption

curves or diffusion coefficients were published. A further study by Chilali et al. found comparable mechanical properties evolution of natural flax fibre reinforced Elium 150 and epoxy composites in dry and wet conditions ²³.

In this work, accelerated aging test were performed on neat Elium 188-O resin and its carbon fibre reinforced Elium 188-O composite at two different aging temperatures. Diffusion coefficients and other model parameters were identified and their dependency to the aging conditions was evaluated. Tensile tests were carried out in order to investigate the impact of water sorption and desorption on mechanical properties. In addition, modal analysis was performed to follow the evolution of dynamic elastic modulus during aging and drying steps. Finally, dynamic mechanical analysis allowed the comparison of thermo-mechanical properties of dry, wet and re-dried materials.

2. Materials and manufacturing processes

2.1. Materials

The materials under investigation in this study were carbon fibre (CF) reinforced acrylic laminates, comprising four plies of stitched biaxial carbon fabric Cbx600 24 K T620 from Sicomin. Fibres in +45° and -45° directions and textured polyester stitching account for 309, 309 and 9 g/m², respectively for a total areal weight of 627 g/m². The compatibility of the fabric is for general use like epoxy, polyester, vinylester, and phenolic resin and no special sizing for acrylic resin is used due to the limited availability of acrylic sized fabric. The acrylic resin used is Elium 188-O supplied by Arkema. Its formulation given by the manufacturer shows that the resin is mainly composed by methyl-methacrylate monomer (70-90 %) with citral ($\leq 5\%$) and other copolymers and additives. A Perkadox CH-50X dibenzoyl peroxide (BPO) initiator from AkzoNobel is used to initiate the radical polymerisation of the polymer, followed by an exothermic peak. Data from relevant datasheet and literature of physical and mechanical properties of neat Elium 188-O resin are reported in Table 1.

Table 1: Mechanical and thermomechanical properties of Elium 188-O neat resin at 25 °C with 3% of BPO initiator ^{24,25}

Properties	Elium 188-O
Viscosity (mPa.s)	100
Density (g/cm ³)	1.2
Peak time (minutes)	55
Glass transition temperature T _g (°C)	109*
Tensile Strength (MPa)	76
Tensile Modulus (GPa)	3.3
Tensile Deformation (%)	6
Flexural Strength (MPa)	130
Flexural Modulus (GPa)	3.25

* Value of measured T_g by differential scanning calorimetry (DSC)

2.2. Manufacturing processes

Casting method was used to produce neat resin samples. Elium resin and BPO initiator were manually mixed in a weight ratio of 2%, then the mixture was casted vertically between two rectangular thick glass plates covered with Teflon sheet to ensure demoulding. The 4 mm thickness resin plates hereby casted were left to polymerize for 24 hours at room temperature in the closed mould with no further post-curing or thermal treatment. To produce composite laminates, liquid composite moulding method corresponding of vacuum assisted resin infusion process is used. Laminates with stacking sequences of $[0/90]_4$ and $[+45/-45]_4$ were prepared. For each plate, four layers of fabric were cut and weighed, then the infusion layout was prepared while insuring no leak. Once the resin flow achieved the end of the fabric stack, resin inlet and vacuum outlet were closed. The infused plates were left to polymerize at room temperature for 24 hours, and no post-curing of infused composite plates was performed as for neat resin plates. The average thickness of final composite laminates is around 2.5 mm.

2.3. Preparation of test specimen

Specimens were cut from the prepared laminates and casted neat resin plates using a water-lubricated diamond-coated circular saw in accordance with specific test standards. All cut specimens were then conditioned in a convection oven at 40° C and less than 15% of relative humidity (RH) to ensure a free moisture state before testing. In order to assess the quality of produced composite plate, fibre, matrix and void volume fractions were calculated using density measurement performed on an AccuPyc 1330 gas pycnometer from Micromeritics using helium. For this purpose, rectangular samples were cut at random locations on the plate. Knowing the densities of different constituent phases, as well as the fabric areal weight, fibre and matrix volume fractions are calculated and thus void volume fraction is concluded using a weighing method inspired from ASTM D 3171 – 99 and as presented by Cadu et al. ²⁶. The calculated volume fractions results are given in Table 2.

Table 2: Constituent volume fractions of Elium 188-O / CF laminates

Properties	Fibre volume fraction v_f	Matrix volume fraction v_m	Void volume fraction v_v	Fibre weight fraction
Measurement	61 (1.78)	35.1 (1.92)	3.8 (1.27)	71.2 (0.51)

Standard deviations are given between parentheses

3. Experimental methods

3.1. Conditioning and accelerated hydrothermal aging

Dry neat resin and composite samples were immersed in deionised water at two distinct temperatures: 40 °C and 70 °C. The choice of deionised water is motivated by its availability in the laboratory and also by its known aggressiveness on the polymer and composites in terms of diffusion rate and its consequences on the properties of the materials, compared to composites aged in sea water ^{27,28}. Immersion temperatures were chosen to accelerate water diffusion kinetics while being far enough from

glass transition temperature of both neat Elixir resin and its fibre reinforced composite. Many techniques are suitable for measuring penetrant uptake, including laser interferometry, Raman spectroscopy, Fourier transform infrared (FTIR) spectroscopy and nuclear magnetic resonance imaging, among others^{29–34}. The most common technique, due to its simplicity and versatility, is gravimetric sorption³⁵. This latter involves exposing the specimen to water and monitoring the change in its mass with time. All surface water was removed from the sample prior to weighing and immersed coupon weight was monitored using a ± 0.1 mg accurate scale (Sartorius Secura 225D-1S) according to ASTM D 5229/D 5229M – 92 standard specifications. Average moisture content M_{t_exp} (%) was taken as the ratio of the mass of absorbed water to the weight of oven-dry material and expressed as given by Equation 1:

$$M_{t_exp}(\%) = \frac{W_i - W_0}{W_0} \times 100 \quad \text{Equation 1}$$

where W_i is the specimen mass and W_0 is the oven-dry specimen mass. Water sorption is regularly monitored during immersion in both temperatures, and then water content is reported in a graph as function of a square root of time. When equilibrium plateau is achieved, aged samples were removed from the bath, half of them was tested wet, and the other half was dried in an oven at 40 °C. Here also, the weight loss due to water desorption was monitored by gravimetric analysis until reaching an effective equilibrium state. Mechanical properties were determined in the dry state in order to assess reversibility of aging mechanism. A scheme of the proposed aging protocol is presented in Figure 1.

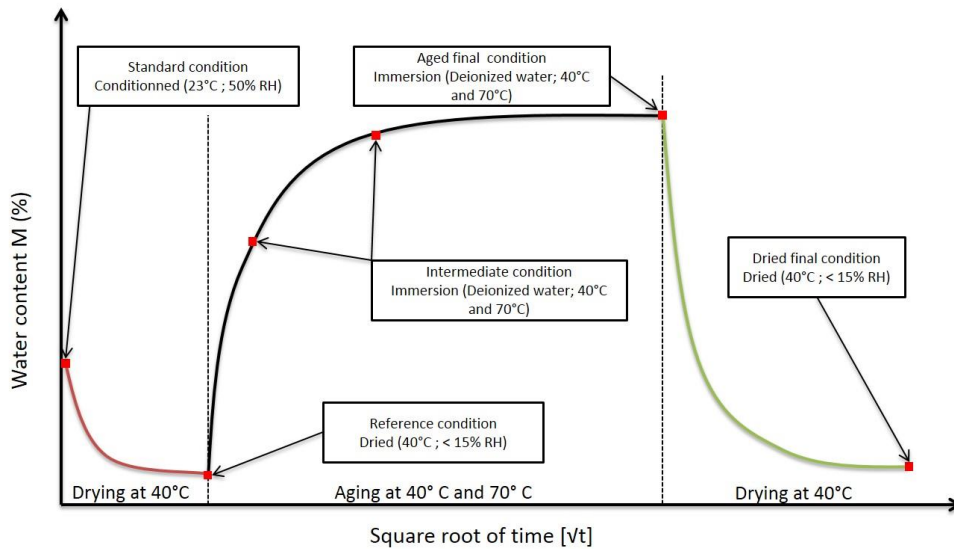


Figure 1: Aging methodology scheme

3.2. Tensile testing

Longitudinal and off-axis tensile tests were conducted in accordance with the ISO 527-4 standard requirement on an MTS Criterion C45.105 tensile machine equipped with a 100 kN load cell. Composite sample dimensions were 250 mm length, 25 mm width and around 2.5 mm thickness. After surface sanding and cleaning, aluminium tabs ($50 \times 25 \times 2$ mm³) were bonded to the tests specimens using

cyanoacrylate-based Loctite Super Glue 3 adhesive. Test specimens were then painted and speckled in order to use digital image correlation to assess the evaluation of the in-plane strain tensor³⁶. The optical extensometer used is a high resolution camera set in front of the specimen. Images from the camera and load from the tensile device are simultaneously recorded in a way that for each image there is a unique load value using LabVIEW software. All tensile tests were carried out at a constant crosshead speed of 1 mm/min at unaged, aged at both temperatures and dried final states until breaking according to the protocol presented by Figure 1. Young's modulus was calculated by the means of linear regression between 0.05 and 0.25 % strain interval on at least 5 samples in each case.

3.3. Modal analysis

It is a non-destructive test allowing the measurement of Eigen modes of a structure. Each mode is defined by a frequency, modal damping and a mode shape. These modes are directly related to the stiffness, density and boundary conditions of the structure. Using a modal analysis software, the dynamic properties can be estimated from the frequency response function (FRF)³⁷. In practical, tensile samples of 250 mm × 25 mm are suspended by elastics in order to consider free-free boundary conditions. An impact hammer (Kistler 9722A2000) is used to apply forced vibration of the specimen and generate a pulse. An accelerometer, placed at the opposite end of the test sample, records the impulse response. Thereby, signals acquisition enables to calculate FRF by means of Fast Fourier transform (FFT). The dynamic Young's modulus can be then computed using analytic model for simple geometry, or finite element numerical model for complex ones. In order to quantify the dynamic elastic modulus of the structure, the resonance frequency of the first tension-compression mode is measured by means of ModalVIEW software. Taking into account samples dimensions, the dynamic modulus is measured as follow:

$$E = 4 \times \rho \times L^2 \times f^2 \quad \text{Equation 2}$$

with ρ is the material density, L the length and f its resonance frequency.

During aging, tensile samples were removed from the conditioning bath, wiped off of surface water, weighed and then modal analysis was conducted.

3.4. Dynamic mechanical analysis (DMA)

Tests were performed on composite and neat resin specimens having dimensions of (80 × 10 × 2.5) and (80 × 10 × 4) mm³, respectively. The dual cantilever beam testing mode is used accordingly to ASTM D5418-15 on a METRAVIB DMA50 machine. The tested specimens were cut in the longitudinal and off-axis directions of the fibres. Preliminary tests were conducted in order to define relevant test parameters (temperature range, frequency and dynamic displacement) and to validate the linear response of the studied materials according to selected parameters. A 5 Hz frequency, 10 μm dynamic strain amplitude and temperature range from 50 to 160 °C at a heating rate of 3 °C/min were finally chosen. The complex dynamic modulus E^* and loss factor η can be written as:

$$E^* = E' + i E'' \quad \text{Equation 3}$$

and

$$\eta = \tan(\delta) = \frac{E''}{E'} \quad \text{Equation 4}$$

in which E' is the storage modulus (real part) showing material elastic behavior, and E'' is the loss modulus (imaginary part), which is related to viscoelastic behaviour. The loss factor η is also called damping factor. It is related to the amount of energy that the material can dissipate due to the viscous behaviour³⁷.

4. Results and discussion

4.1. Hydrothermal aging

Water sorption

Samples of both neat Elium resin and carbon fibre reinforced composite were initially conditioned at 40 °C in a convection oven in order to quantify the already present moisture inside studied samples prior to hydrothermal aging test. Regular weighings of mass loss were performed until reaching an effective equilibrium state, in which the average mass loss between two successive measurements was less than 0.01 %. At this stage, Elium neat resin samples have lost around 0.25 % from their initial weight, whereas CF/Elium composites lost around 1% of their weight. All next measurements and results will be referred to this moisture-free state as samples at reference condition according to aging scheme presented in Figure 1.

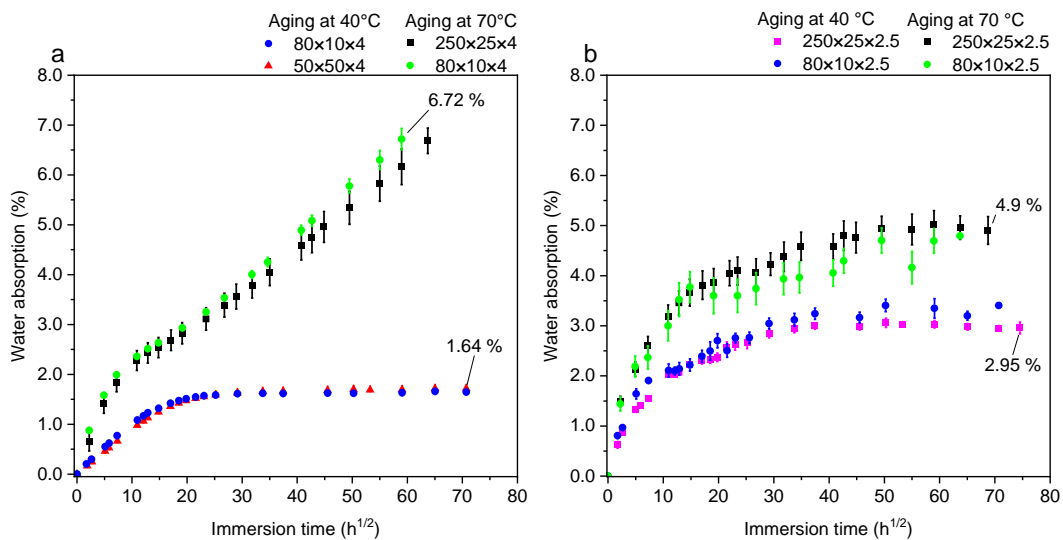


Figure 2: (a) Elium neat resin and (b) carbon fibre ([0/90]₄) reinforced Elium composite water uptake curves measured as % of weight increase vs. time in square root of hours

Elium neat resin samples immersed in deionised water at 40 °C and 70 °C water uptake curves are shown in Figure 2.a. For samples immersed at 40 °C, water sorption profile is Fickian-like for samples with different geometries. Water content increases linearly before forming a concave region to the abscissa

characterized by a slower diffusion rate until reaching a saturation plateau at around $M_{t_exp}=1.66\%$. At 70 °C, a two-step non-Fickian aging behaviour is observed: A first linear part up to 64 hours of immersion ($8\text{ h}^{1/2}$) is followed by significant decrease in diffusion rate observed by the change of the slope. No saturation plateau is reached after 150 days of immersion. In the literature, such a diffusive behaviour accounts for the case of rapid increase in the fluid content, followed by a decrease in the diffusive rate, while the weight gain never reaches equilibrium, as with two-phase diffusion⁷. Furnished information from the manufacturer about the composition of the supplied resin showed that it consists of around 50% to 85% of methyl methacrylate (MMA) monomer. In analogy with poly(methylmethacrylate) PMMA polymer aged at high temperatures, the mechanism of water sorption is accelerated and the PMMA chains undergo hydrolysis reactions at the level of the side groups without scission of its macromolecular chain. There is then a change in the polarity of side groups: more polar acid groups replace the initial groups and their formation causes an increase in polymer hydrophilicity³⁸. A further possible explanation of the typical two-step diffusion for Elium neat resin at 70 °C may be related to its chemical formulation as it is a mixture of MMA monomer and other copolymers³⁹. Furthermore, samples dimensions do not seem to have significant influence on initial water uptake. Compared to 70 °C aging plots, water uptake of neat resin at 40 °C is clearly slower and maximum moisture content at equivalent immersion period is lower. This can be related to thermally induced water diffusion behaviour. In fact, from a chemical point of view, hydrolysis rate is known to be a thermally accelerated reaction that occurs at the level of polymer molecular bonding¹⁴. Moreover, it is clear that sample dimensions do not have influence on water uptake in both aging conditions.

With respect to the composite samples (only [0/90]₄ lay-up configuration), water uptake vs. square root of immersion time plots are given in Figure 2. **Erreur ! Source du renvoi introuvable.** As is the case with neat resin specimens, aged composites samples show different responses when immersed at either 40 °C or 70 °C. For tensile and DMA samples (i.e. samples of $250 \times 25 \times 2.5\text{ mm}^3$ and $80 \times 10 \times 2.5\text{ mm}^3$ dimensions) aged at 70 °C, water uptake increases gradually but not linearly with a similar rate until around $14\text{ h}^{1/2}$ (9 days). A significant slowdown in diffusion rate is observed then, with gradually increasing moisture content until reaching an equilibrium plateau at around $M_{t_exp} = 4.9\%$ after 150 days of immersion. The absence of a clear linear part followed by a saturation plateau suggest that the sorption behaviour is non-Fickian. Regarding aging mechanisms at 40 °C, similarities are found but with a lower moisture content at saturation ($\sim 3\%$) for rectangular samples. Moisture uptake linear part in the early immersion stage is rapidly followed by a gradually change in curve slope. At 40 °C, maximum moisture content is reached at lower immersion duration (60 days) compared to results of aging at 70 °C. It is also worth noting that composites samples with different panel sizes absorbed twice more water than neat resin. Regarding significant voids fraction already present in composite materials (Table 2), it is evident that moisture uptake is significantly altered by the presence and the volumetric distribution of voids, particularly at the level of fibre/matrix interface where it is known that the bonding state at that area have significant effect on water diffusion behaviour and mechanisms⁴⁰.

Water desorption

Moisture content curves of neat resin and composite samples dried at 40 °C after hydrothermal aging at 70 °C and 40 °C are presented in Figure 3. Neat resin samples aged at 70 °C do not reach saturation plateau as it showed in Figure 2. However, when subjected to drying, the moisture content decreases constantly until reaching an equilibrium around zero water content, suggesting that all absorbed water have been desorbed (Figure 3.a). Excess in desorbed moisture content in neat resin samples was around 0.1 % for samples aged at 40 °C and 0.2% for samples aged at 70 °C, which represents respectively 6% and 3% of initial moisture content at the end of aging stage. In addition, samples dried after being aged at 70 °C have a similar length to width ratio and present a similar behaviour.

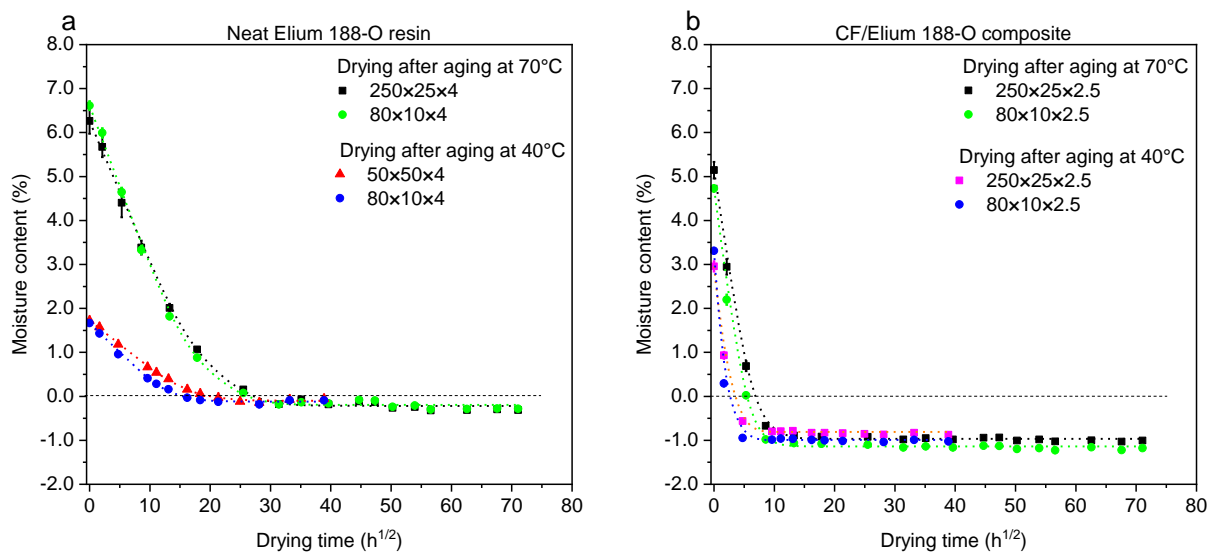


Figure 3: Moisture content vs. drying time of (a) neat resin and (b) CF ([0/90]₄) reinforced composite dried at 40 °C after aging. Dashed curves represent Fickian desorption model results.

Composite samples with [0/90]₄ configuration drying results follow a Fickian-like behaviour for any geometry and aging temperature as presented in Figure 3.b. Almost identical mass loss of around 1% of initial moisture content after aging is found despite the difference found at maximum moisture content at the end of aging at both different temperatures. These observations lead to consider that an irreversible damage occurred during aging of composites independently from aging temperature. A recent published work by Hendlmeier et al. suggests that epoxy sizing on carbon fibre fabric is soluble on methyl methacrylate monomer, and it was removed from fibres surface during processing and before complete polymerisation of MMA based polymer⁴¹. A leaching of unreacted and solubilised species may be the cause of this excess in weight loss level no matter what the aging temperature is.

4.2. Modelling of sorption and desorption behaviour

4.2.1. Fickian sorption and desorption models

In order to better understand and to propose a comparison of diffusion kinetics in both resin and composite material subjected to hydrothermal aging at two different temperatures, analytic models are

proposed to fit experimental findings. The most common approach to model moisture sorption (and desorption) is Fick's law. It suggests that the mass of absorbed water increase linearly with square root of time and then gradually slows until reaching an equilibrium moisture content. As recorded sorption and desorption results are geometrically independent, the hypothesis of isotropic large plane samples can be considered. Therefore, moisture diffusion is considered as one-dimensional phenomena, i.e. water only diffuses through the thickness. It is worth noting that Fick's second law can be applied for simple diffusion moisture process, in which chemical reactions between polymer and water molecules are not considered. The solution of moisture concentration over the thickness of the material, can be written as:

$$\frac{M_t}{M_\infty} = 1 - \frac{8}{\pi^2} \sum_{n=0}^{\infty} \frac{1}{(2n+1)^2} \exp\left(\frac{-\pi^2 D t (2n+1)^2}{h^2}\right) \quad \text{Equation 5}$$

Where M_t is the water content at time t , D is diffusion coefficient and M_∞ is the water content at equilibrium. In the same context, desorption process in the case of initially saturated samples can be modelled using Fick's law in conjunction with the adequate boundary conditions. The integration of the solution of the differential equation set for time t and for spatial coordinate x over the thickness of a plate is given as:

$$\frac{M_t - M_r}{M_\infty - M_r} = \frac{8}{\pi^2} \sum_{n=0}^{\infty} \frac{1}{(2n+1)^2} \exp\left(\frac{-\pi^2 D_d t (2n+1)^2}{h^2}\right) \quad \text{Equation 6}$$

Where M_r is the residual mass fraction at the equilibrium. In order to identify unknown diffusion and desorption coefficient from Equation 5 and Equation 6, an optimisation approach relying on the construction of an objective function q is given by:

$$q = \sum_i [M_{t_exp}(t_i) - M_t(t_i)]^2 \quad \text{Equation 7}$$

With $M_t(t_i)$ is the analytical moisture content calculated from Equation 5 and Equation 6 at time t_i and M_i is the experimental water content extracted from the gravimetric curve. Minimizing the function q allows the identification of different unknowns by adjusting the diffusion curve according to Fick's law solution to the experimental data. Optimization is carried out with Matlab[®] software using a PSO (Particle Swarm Optimization) metaheuristic routine.

4.2.2. Non-Fickian water diffusion

In case of anomalous water content evolution against square root of time, the use of Fickian model is no longer appropriate and can lead to less reliable estimation of diffusion parameters and local concentration field. The deviation from the Fickian diffusion model can be related to either physical or chemical degradation that occurs in aged materials, especially in harsh aging conditions⁴². Further explications of anomalous diffusion process are related to manufacturing quality, especially the presence of voids in bulk matrix or at fibre/matrix interface as well as the quality of fibre/matrix bonding. Thomason showed that porosity and voids can significantly increase absorption rate and saturation level

of composite laminates, even at low volume contents⁴⁰. Several models were proposed in the literature in order to quantify anomalous and non-Fickian responses of aged materials like time-dependent diffusion coefficient model^{43,44}, concentration-dependent diffusion coefficient model⁴⁵, dual Fickian model¹⁰, etc. Furthermore, Carter and Kibler¹² have developed a Langmuir type sorption model in order to better understand, with reliable manner, non-linear diffusion processes. Moisture uptake curves, represented as a function of square root of time, are divided into two successive sub-behaviours: The first linear “Fickian-like” part described by a constant diffusion coefficient is transformed at later times to lower, but non-zero, gradient. This model is based on a hypothesis of the existence of two “types” or “states” of absorbed water: Bound water and free (i.e. mobile) water. A probability per unit time γ [s⁻¹] is associated to the probability of mobile water molecules to become bound and β [s⁻¹] is probability of already bound molecules to break the bonding and become free. If we consider $n(t)$ mobile water molecules content and $N(t)$ bound water molecules content per unit volume at time t , at saturation we obtain:

$$\gamma n_{\infty} = \beta N_{\infty} \quad \text{Equation 8}$$

In the literature, several works have tried experimentally to bring out the existence of bound and mobile water in aged materials using different techniques like infrared spectroscopy⁴⁶, nuclear magnetic resonance (NMR)²⁹ and differential scanning microscopy⁴⁷. When analysing NMR peaks, Popineau et al²⁹ found that water diffusion process can be presented as a four steps process: Initially, molecular water with strong interactions diffuses into the polymer as mobile molecules until saturation of interaction sites of polymer. When a quasi-equilibrium is reached, water absorption begins again, but since water molecules have already occupied microvoids, relatively large clusters are formed. These clusters are with lower inertia, forming then bound water. From a mathematical point of view, the Carter & Kibler model is based on the assumption that the diffusion of mobile molecules conforms to simple diffusion theory modified by sources and sinks¹². In one-dimensional case, molecular densities at position x and time t satisfy the system of equations:

$$\begin{cases} D_{\gamma} \frac{\partial^2 n}{\partial x^2} = \frac{\partial n}{\partial t} + \frac{\partial N}{\partial t} \\ \frac{\partial N}{\partial t} = \gamma n - \beta N \\ c = n + N \end{cases} \quad \text{Equation 9}$$

It can be seen from Equation 9 that Fick diffusion model is a specific case of two stage Carter and Kibler diffusion, where $N=0$. The total water uptake M_t after exposure time t in an initially dry one-dimensional specimen is given by:

$$M_t = M_\infty \left\{ \left(\frac{\beta}{\gamma + \beta} \right) e^{-\gamma t} \left(1 - \frac{8}{\pi^2} \sum_{n=0}^{\infty} \frac{1}{(2n+1)^2} \exp\left(\frac{-\pi^2 D_\gamma t (2n+1)^2}{h^2} \right) \right) \right. \\ \left. + \left(\frac{\beta}{\gamma + \beta} \right) (e^{-\beta t} - e^{-\gamma t}) + (1 - e^{-\beta t}) \right\} \quad \text{Equation 10}$$

In order to identify separately the contribution of both free and bound water to the total moisture content, a solution to Equation 9 mentioned above with the introduction of an integration factor as it is done in²⁹ leads to:

$$\begin{cases} \frac{n(t)}{M_\infty} = \frac{\beta}{\gamma + \beta} \left\{ 1 - \frac{8}{\pi^2} e^{-\kappa t} \right\} \\ \frac{N(t)}{M_\infty} = \frac{\gamma\beta}{\gamma + \beta} e^{-\beta t} \left\{ \frac{1}{\beta} (e^{\beta t} - 1) - \frac{8}{\pi^2 \kappa} (e^{-\kappa t} - 1) \right\} ; \beta, \gamma \ll \kappa \end{cases} \quad \text{Equation 11}$$

With $\kappa = \frac{\pi^2 D_\gamma}{h^2}$ and M_∞ is the maximum moisture content.

4.2.3. Neat resin diffusion modelling

In Figure 4, experimental gravimetric data of aged neat resin samples are compared to 1D Fick model in the case of samples aged at 40 °C and to the Carter and Kibler model for samples aged at 70 °C. Only one specimen size results are illustrated here for each aging temperature for brevity, but detailed results are given in Table 3. In Figure 4.a, experimental data recorded from DMA samples perfectly fit to the Fick model with a saturation plateau found at 1.67 %. In addition, identified diffusion coefficients from both DMA and square samples are relatively close (3.4 E-12 m²/s and 2.41 E-12 m²/s, respectively). In this case, it is unnecessary to fit Elium resin results to the Carter and Kibler model, since it is assumed that for a Fickian diffusion, water present in the material is only in the free state, Fick model is hence a particular case from Carter & Kibler model. Figure 4.b depicts the comparison of experimental results of square Elium resin samples aged at 70 °C against Carter and Kibler model. As described in the previous section, water uptake level rises linearly until around 2.2% then a change in the curve slope is observed. Mass gain continues to raise linearly without reaching any saturation plateau or a second slope change. Carter & Kibler model parameters are identified by the means of Equation 10 and the PSO optimisation algorithm in order to better fit model to experimental results. The contribution of water in the “free” state is represented by dashed green curve with a Fickian-like behaviour. The initial part of the curve allows the identification of the diffusion coefficient D_γ , while the pseudo-saturation level represents the moisture equilibrium state of the free water contribution part. The second part of the curve represents the bound water contributions to the total water uptake. Bound water volume content begin to rise slowly in the early immersion duration. At the equivalent time, which free water contribution curve reached the equilibrium level, bound water curve slope begins then to gradually rise over immersion time. Tensile and DMA samples present comparable identified model parameters, all given in Table 3. It is worth noting that diffusion coefficients are higher for samples aged at higher temperatures. In the case of aging at 70 °C, the identified probabilities are geometrically independent.

Moreover, the probabilities of mobile water molecules to become bound (γ) are higher than the probabilities of already bound molecules to become free (β).

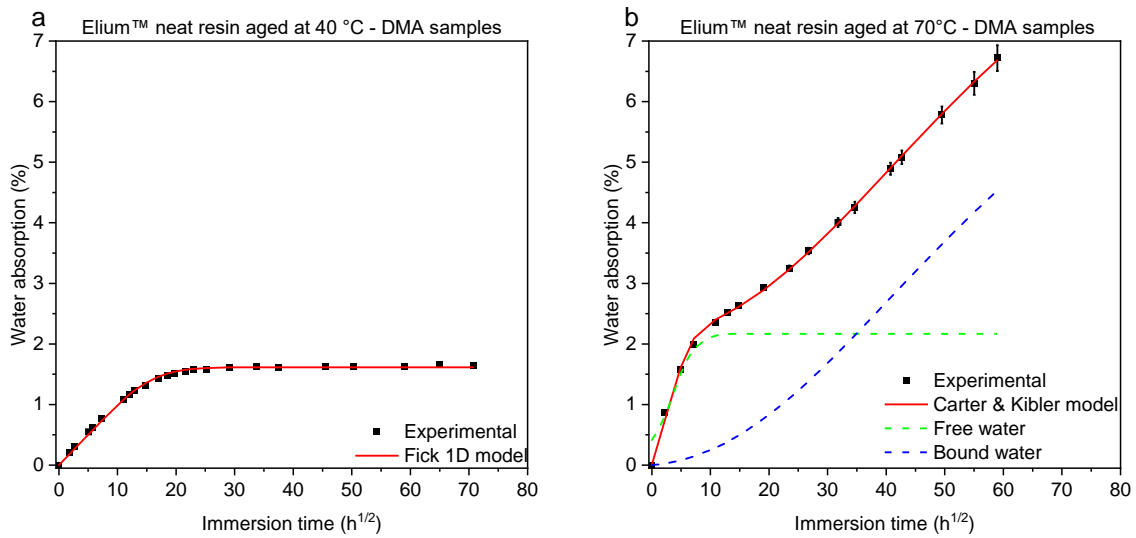


Figure 4: Elium 188-O neat resin experimental results versus numerical models for DMA samples aged at : a) 40°C and b) 70°C

4.2.4. Composite diffusion modelling

Regarding composite samples, an overall similar behaviour as neat resin is observed with a free water content presenting a Fickian behaviour, which saturates at the level of pseudo-equilibrium state identified by a change in the slope of water absorption curve. On the other hand, bound water fraction evolution is slower than free water one, which may be responsible of the gradual increase of water content and the delay to reach effective equilibrium compared to a Fickian-like diffusion. Furthermore, the objective function is minimized in order to identify Carter and Kibler model parameters, and the found theoretical curves for all temperatures and sample dimensions (only [0/90]₄ tensile samples are presented in Figure 5) are in a good agreement with experimental findings. For tensile and DMA samples, it was found that diffusion coefficients for samples aged at 40 °C are slightly higher than for those aged at 70 °C, which is not expected. A postulated explanation is that, at small immersion time, the temperature does not influence water diffusion mechanism, which may be governed by surface porosities and fibre/matrix bonding quality.

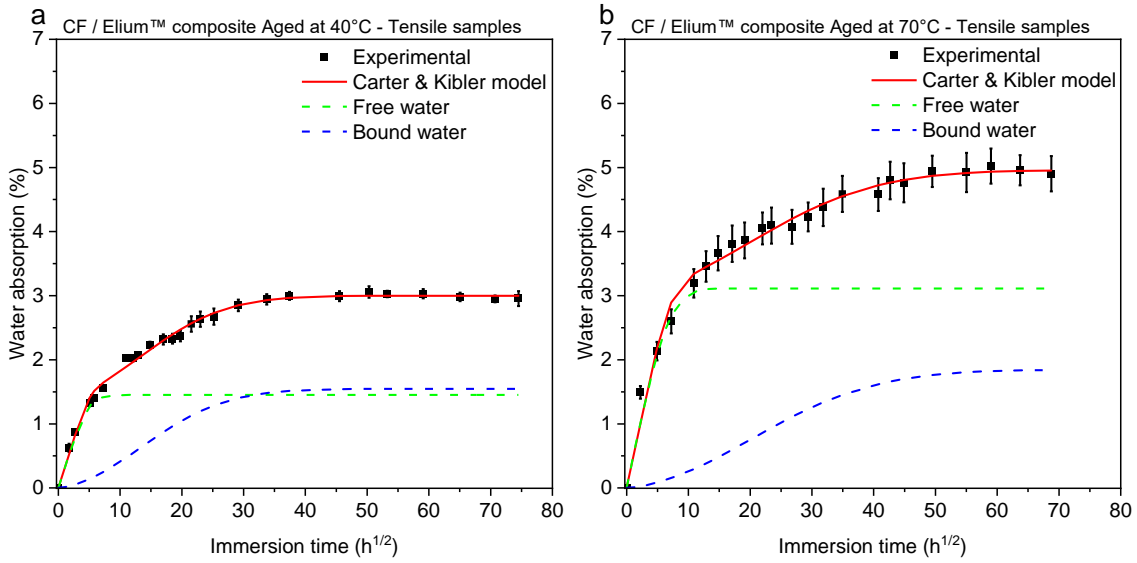


Figure 5: CF / Elium composite experimental aging results versus numerical models for tensile ($250 \times 25 \times 2.5 \text{ mm}^3$) samples aged at : a) $40 \text{ }^\circ\text{C}$ and b) $70 \text{ }^\circ\text{C}$

From a literature point of view, both β and γ probabilities are found to have weak dependency to aging temperature compared to polymer hydrophilicity according to Carter and Kibler's study¹². Although, Popineau et al. suggested that it is not unreasonable to expect a temperature dependency of the model parameters as it is for the diffusion coefficient. Further findings proved that Carter & Kibler identified parameters depend strongly on aging conditions such as temperature and relative humidity¹⁰. In this study, identified probabilities β and γ from composite samples presented in Table 3 seems to slightly lower with increased temperature, but this evolution is trivial compared to other published results, where β and γ probabilities are at least 8 times higher when temperature raised from $35 \text{ }^\circ\text{C}$ to $60 \text{ }^\circ\text{C}$ ²⁹.

Table 3: Carter & Kibler model results for neat Elium and CF / Elium composite samples aged at $40 \text{ }^\circ\text{C}$ and $70 \text{ }^\circ\text{C}$

Material	Elium 188-O resin				CF / Elium composite			
	$40 \text{ }^\circ\text{C}$		$70 \text{ }^\circ\text{C}$		$40 \text{ }^\circ\text{C}$		$70 \text{ }^\circ\text{C}$	
Sample dimensions	Square $50 \times 50 \times 4$	DMA $80 \times 10 \times 4$	Tensile $250 \times 25 \times 4$	DMA $80 \times 10 \times 4$	Tensile $250 \times 25 \times 2.5$	DMA $80 \times 10 \times 2.5$	Tensile $250 \times 25 \times 2.5$	DMA $80 \times 10 \times 2.5$
D_γ [m^2/s]	2.41 E-12	3.4 E-12	1.33 E-11	1.96 E-11	1.37 E-11	1.63 E-11	6.92 E-12	5.48 E-12
β [s^{-1}]	-	-	7.52 E-8	8.32 E-8	7.64 E-7	5.05 E-7	3.44 E-7	1.54 E-7
γ [s^{-1}]	-	-	2.28 E-7	2.68 E-7	8.14 E-7	4.56 E-7	2.04 E-7	7.3 E-8
N [%]	1.67	1.61	8.79	9.14	2.99	3.32	4.96	4.82

4.2.5. Desorption modelling

Drying tests were performed after aging in order to elucidate the reversibility of aging mechanisms and their effects on material physical and mechanical properties. Equation 6 represents the solution of the

numerical model based on Fick's second law of diffusion. As for absorption processes, desorption model best parameters were determined by mean of the optimisation method. In Figure 3, experimental and numerical model curves are both presented, and subsequent identified parameters are reported in Table 4. It is clear that, whatever sample dimensions are, neat resin desorption coefficients are lower than their composite counterparts. However, it seems that the heterogeneity in composite material aids the desorption of water molecules compared to bulk resin samples. It is also worth noting that samples, which have been aged at 40 °C, present relatively higher desorption coefficients compared to samples aged at 70 °C. The negative values of residual weight loss M_r indicate that permanent degradation other than plasticization took place during aging process. This phenomenon is usually related to the desorption of hydrolysed species and the dissolution and leaching of unreacted monomers. As a consequence, the hypotheses that this excess in desorbed water coming from water already present in the material cannot be adopted, since all samples were dried in the same conditions until an effective equilibrium state prior to aging.

Table 4: Desorption model results for neat Elium resin and CF / Elium composite samples aged at 40 °C and 70 °C and dried at 40 °C

Material	Elium 188-O resin				CF / Elium composite			
	40 °C		70 °C		40 °C		70 °C	
Sample dimensions	Square 50×50×4	DMA 80×10×4	Tensile 250×25×4	DMA 80×10×4	Tensile 250×25×2.5	DMA 80×10×2.5	Tensile 250×25×2.5	DMA 80×10×2.5
D_d [m ² /s]	3.13 E-12	4.95 E-12	2.2 E-12	2.57 E-12	3.49 E-11	6.43 E-11	7.55 E-12	1.06 E-11
M_∞ [%]	1.72	1.66	6.26	6.61	2.95	3.31	5.14	4.72
M_r [%]	-0.10	-0.12	-0.21	-0.19	-0.81	-0.99	-0.96	-1.14

4.3. Evolution of mechanical properties

4.3.1. Longitudinal tensile tests

Uniaxial tensile tests were carried out on samples at unaged (reference condition), aged (aged final condition at 40 °C or 70 °C) and dried (dried final condition) states. Relative stress-strain curves, presented in Figure 6, have shown a similar fragile-brittle elastic behaviour until failure, with a marked decrease of tensile strength between unaged and aged at both temperatures cases. Figure 7 recapitulates mean values and standard deviation of Young's modulus and ultimate tensile strengths. From Figure 7.a and Figure 7.c, the axial tensile modulus drop is found to be similar but more important for samples aged at 70 °C (6.7 %) compared to those aged at 40 °C (5.5 %). After drying, the behaviour is quite different: for 40 °C aged samples, a full recovery of the sample tensile modulus is observed, while specimens aged at 70 °C exhibit non-reversible degradation of about 17% compared to reference unaged state. This dissimilar reversibility of aging effects in studied laminates under accelerated aging shows the temperature dependency of the mechanical properties, suggesting that, when immersed at 70 °C,

composite material exhibits permanent chemical degradation compared to 40 °C aging condition, during which only reversible plasticization took effect. Furthermore, tensile strength results at different study steps are depicted in Figure 7.b and Figure 7.d. As found for Young modulus, the evolution of the ultimate tensile strength after aging was in the same range. However, results for this aged state were less repeatable, since samples were directly prepared after being extracted from immersion bath and then rapidly tested, which altered the bonding of aluminium tabs and caused their slipping between machine clamps just prior to sample breakage. On the other hand, after drying at 40 °C, a moisture free state is obtained and a partial recovery of ultimate tensile strength is found for samples aged at 40 °C compared to 70 °C aged samples, where non reversible permanent degradation took place. Those findings confirm that, when exposed to hydrothermal aging at high temperature, permanent chemical degradations govern the moisture saturated composite laminate response. At lower aging temperature, water absorption effect seems to be partially recoverable after eliminating absorbed water.

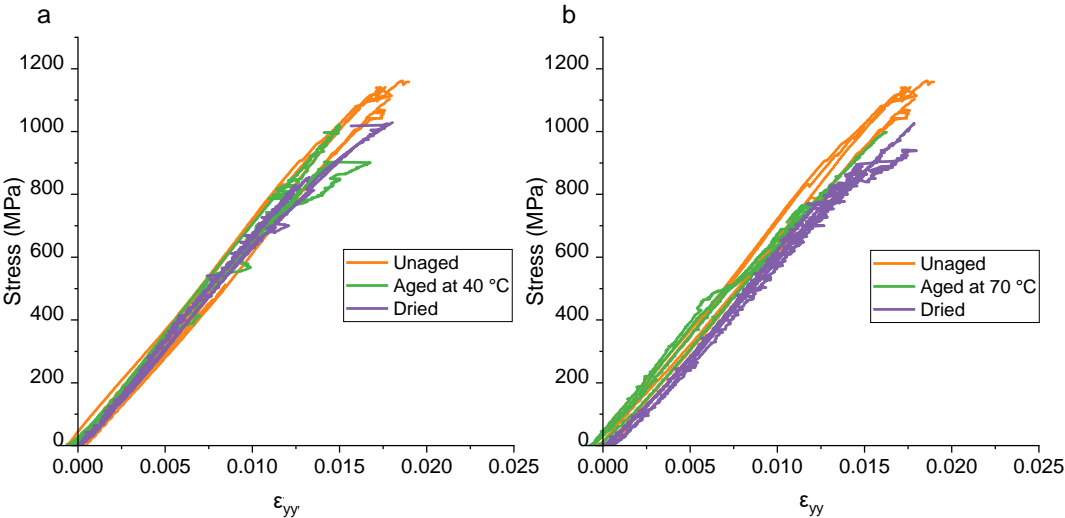


Figure 6 : Stress-strain curves of tensile test on $[0/90]_4$ samples at unaged, aged at 40 °C (a) and 70 °C (b) and dried after aging states

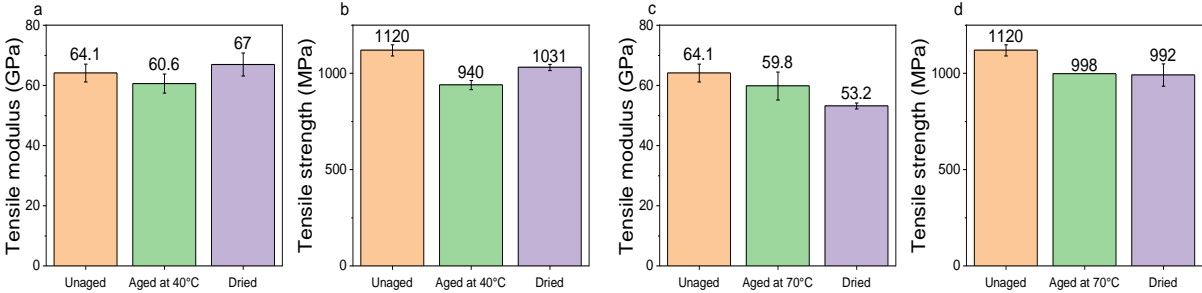


Figure 7: The evolution of tensile modulus (a, c) and tensile strength (b, d) from longitudinal tensile test performed on samples at reference (unaged), aged at both 40 °C and 70 °C and dried after aging.

4.3.2. Off-axis tensile tests

Tensile tests on samples with $[+45/-45]_4$ reinforcement lay-up were conducted in the same condition as longitudinal tensile test and related stress-strain curves are depicted in Figure 8. In all studied cases, the recorded longitudinal (ϵ_{yy}) and transverse (ϵ_{xx}) strains are perfectly symmetrical. For samples aged at 40 °C, a clear decrease of stress and strain levels at failure was partially recovered after drying. Regarding samples aged 70 °C, the maximum strain level was markedly reduced in parallel with a slight increase in yield stress. After drying, the yield stress continued to increase to nearly reach shear ultimate stress. In addition, one can see that the aged and dried maximum strain at breaking are similar in each studied case, suggesting a non-reversible damage of material properties even at low aging temperature and after drying. In order to further explore the influence of aging temperature on off-axis behaviour, the in-plane shear modulus G is calculated from longitudinal test results for each sample in unaged, aged and dried states as follow:

$$\frac{1}{G} = \frac{4}{E_{45}} - \frac{1}{E_L} - \frac{1}{E_T} + 2 \frac{\nu_{LT}}{E_L} \quad \text{Equation 12}$$

where E_L , E_T and ν_{LT} are tensile moduli and Poisson's ratio obtained from tensile tests in longitudinal and transverse directions, E_{45} is the apparent modulus measured from off-axis test. In this study $E_L = E_T$ since the biaxial reinforcement used is balanced. From Figure 9.a and Figure 9.c, one can see the trend of the evolution of the shear modulus during study steps. A similar trend is found when samples are aged at 40 °C or 70 °C with a drop in shear modulus by the effect of aging. It is clear that the presence of water in the microstructure and more specifically at fibre / matrix interface enhances the hydrolysis reaction, which leads to a drop in shear modulus. This drop is more significant at lower aging temperature (40 °C) suggesting that higher aging temperature can lead to a post-curing effects. The effect of water on shear modulus of studied composites is found to be irreversible, since no recovery is found after drying. The permanent degradation of samples aged at 40 °C and then dried is found to be different from longitudinal test results presented here above, where a full recovery is observed denying the hypothesis that only plasticization occurs when the material is aged at 40 °C. Furthermore, shear strength results are presented in Figure 9.b and Figure 9.d. The ultimate stress at breakage recorded on aged samples at 40 °C and 70 °C shows a similar trend with a significant drop, which is more important for samples aged at 40 °C (25 %) compared to samples aged at 70 °C (17%). After elimination of water absorbed during aging at both temperatures by means of desiccation, a partial recovery of shear strength is recorded. The permanent loss of around 10 % in shear strength is caused by irreversible chemical effects of interactions between water and polymer molecules.

From a molecular point of view in the presence of water, there is an important amount of intermolecular hydrogen bonding between polymer chains essentially due to the preferred hydrogen bonding at polar sites which makes the formation of water clusters possible for certain systems³⁸. When water molecules accumulate at the level of free volumes already present in the polymer between its macromolecular chains, they begin to disrupt the intermolecular bonding, which leads to a temporary lowering of the material physical and mechanical properties such as its rigidity. When a load is applied, the material

response is different with a generally increased deformation. In such a case, water favour the formation of microcracks at the surface or in the bulk matrix and could cause weakening of the fibre/matrix interfacial adhesion. For fibre-dependent properties in the case of axial tensile test, the breakage of intermolecular bonds interactions, induced by plasticization in polymer matrix composites immersed in water, generally induce a lowering of material modulus and strength, but may lead to higher levels of elongation at break and better impact resistance; i.e. plasticization could favour composite softening providing greater plastic deformation, which promotes a ductile fracture of the composite. On the other hand, physical and chemical degradation caused by water presence can alter significantly the dependent properties of the polymer matrix, such as shear, compression and interlaminar properties. When water is eliminated from the structure, polymer mobility is often found to decrease. Subsequently, materials properties may be totally recovered in case of no chemical degradation have occurred during the immersion time.

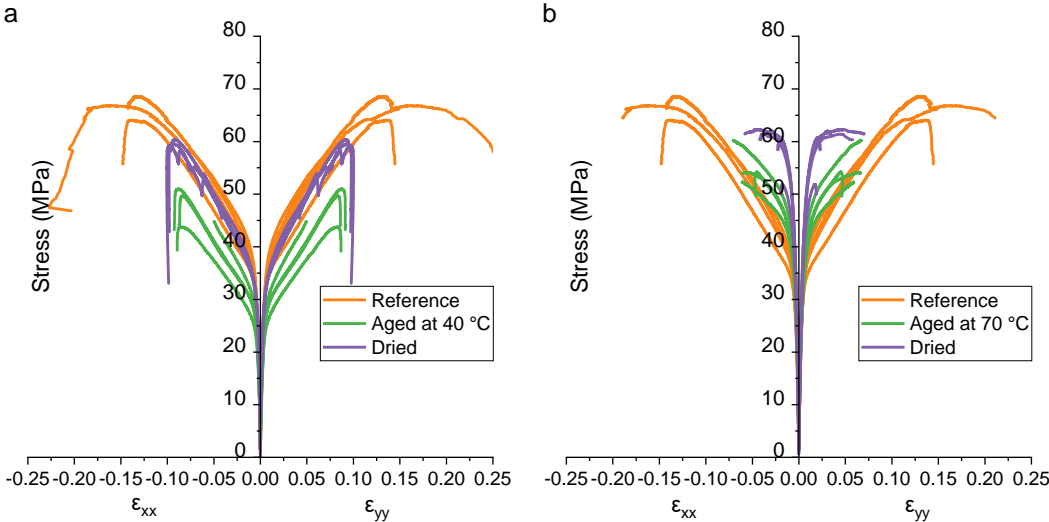


Figure 8 : Stress-strain curves of tensile test on $[+45/-45]_4$ samples at unaged, aged at 40 °C (a) and 70 °C (b) and dried after aging states

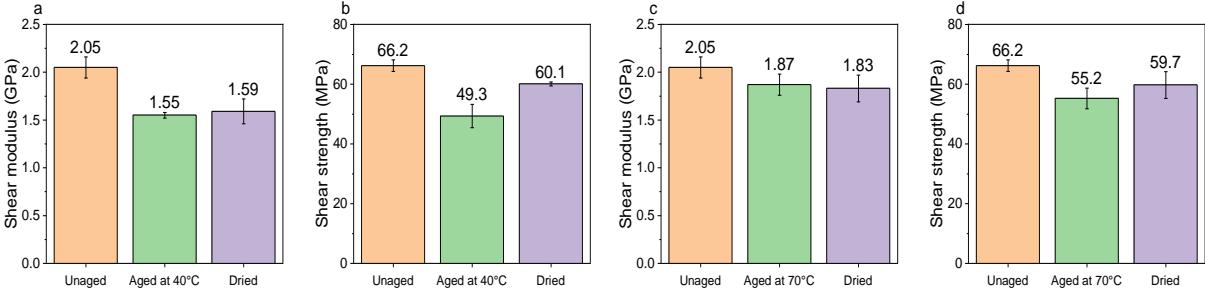


Figure 9: Off-axis tensile test results represented by shear modulus (a and c) and shear strength (b and d) performed on samples at reference (unaged), aged at both 40 °C and 70 °C and dried after aging

4.3.3. Modal analysis

In order to better understand the effect of immersion time and so moisture content on the material mechanical properties, non-destructive modal analysis was conducted during the immersion and the resonance frequency of the first tension-compression mode was recorded. By measuring the laminate density and the impulsive frequency response, the dynamic elastic modulus is calculated by means of Equation 2. The evolution of the dynamic elastic modulus of CF / Elicum composite samples during aging at 40 °C and 70 °C and during drying are presented in Figure 10. Each point represents an average of measurements performed on at least 5 samples.

In the case of samples aged at 40 °C (Figure 10.a and Figure 10.b), a slight and gradual decrease in dynamic elastic modulus is noticed while samples are immersed. Once saturation is reached and samples are dried, a recovery of the calculated dynamic elastic modulus is found. For off-axis samples, a similar trend is found and presented in Figure 10.b. A decrease of the elastic modulus during immersion is followed by a recovery while drying. Similarities are found in the case of coupons aged at 70 °C (Figure 10.c and Figure 10.d) compared to those aged at 40 °C, but, when compared to quasi-static tensile test results, dynamic modulus drop seems to be totally recoverable after drying step even at high aging temperature, while clear irreversible degradation took place when tensile tests are performed as presented in Figure 7 and Figure 9. It is clear that vibratory analysis, which is considered as high-frequency resonance method, give precious information about material behaviour when subjected to accelerated aging. The evolution of the global or local reduction in rigidity of the studied laminates can be considered as indicators of local damage. Globally, the increase of water content in the composite leads to a decrease of its mechanical properties. In a similar way, desorption of water during drying stage gives rise to an increase of the material properties. Compared to quasi-static tests, the low deformation level of vibratory analysis does not allow to perceive the permanent degradation after aging at 70 °C.

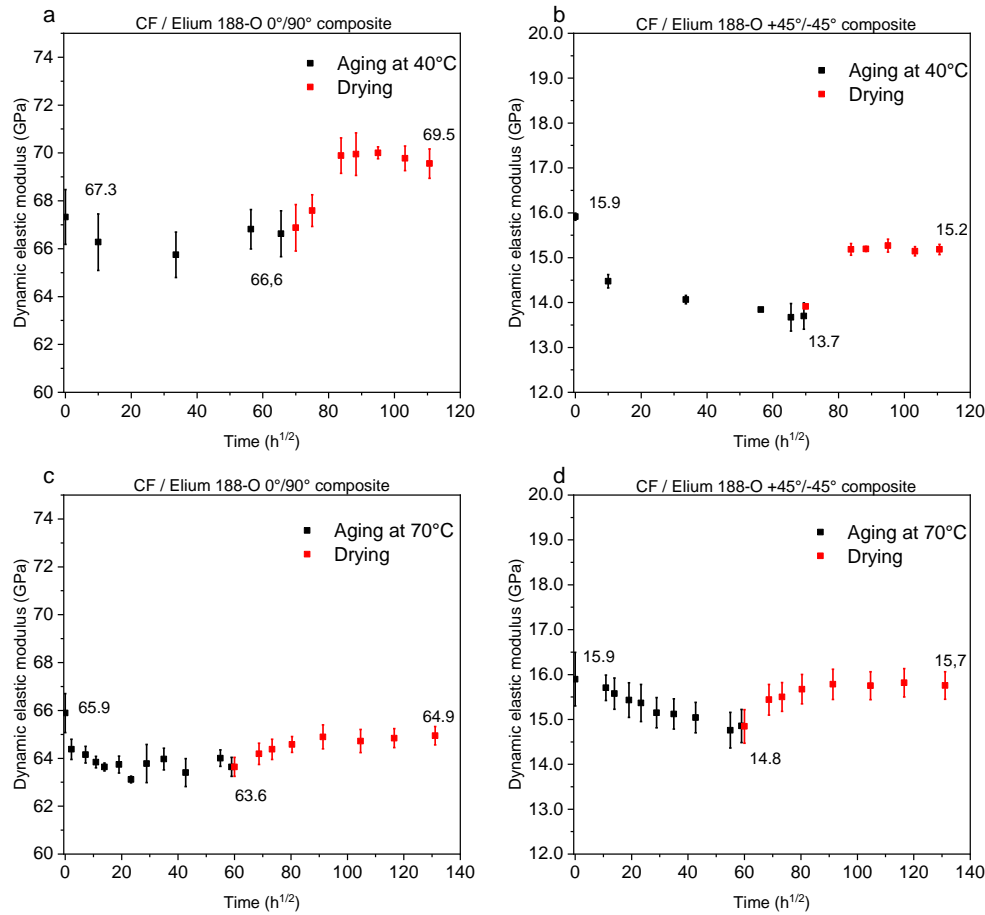


Figure 10: Modal analysis results represented by dynamic elastic modulus performed on $[0/90]_4$ and $[+45/-45]_4$ samples at reference (unaged), aged at 40 °C (a, b) and 70 °C (c, d) and dried after aging

4.3.4. Dynamic mechanical analysis

The literature review highlights that hydrothermal aging and more specifically water uptake could promote physical and chemical degradations, which can affect mechanical properties of polymers. In order to evaluate the effect of the hydrothermal aging protocol at two distinct temperatures, DMA tests were performed on neat Elium resin, CF / Elium composites ($[0/90]_4$ and $[+45/-45]_4$) samples at reference, final aged and dried final states. The related results are presented in Figure 11 and Figure 12.

Neat resin samples

In Figure 11.a, the loss factor ($\tan \delta$) - temperature spectrum of neat resin sample before aging present a well-defined peak attributable to resin relaxation. The corresponding temperature of the peak is considered as the material glass transition temperature T_g . After aging at 40 °C, a slight shifting of loss factor curve is observed. It is considered that this reduction of $\tan \delta$ peak temperature and area under curve at 40 °C immersion is related to plasticization characterized by an increased chain mobility, which is considered as a hydrothermal physical aging⁴⁸. When immersed at 70 °C, a significant change of curve shape marked by the apparition of two distinct peaks is reported in Figure 12.a. When coupons are dried, ($\tan \delta$) - temperature spectrum retrieve their initial shape, i.e. a well-defined peak but at

relatively higher temperatures, which is in average 10 °C higher than temperature found at initial dry state. The newly formed second peak of $\tan \delta$ curve related to resin samples aged at 70 °C coincides with the peak of the dried material after aging. As mentioned above, as neat resin specimens present high water content level after large immersion duration, the temperature sweep from 50 °C to 160 °C during test promotes desorption of water from tested samples and thus the appearance of a “second glass transition” corresponding to the dry state. A similar behaviour was reported by Xu and Dillard⁴⁹ on three different epoxy based conductive adhesives. In addition, Alessi et al. draw a connection between extended aging duration and temperatures, which are responsible of the formation of a less uniform network compared to unaged polymer, and the formation of $\tan \delta$ distinct relaxation peaks, indicating a severe heterogeneity induced by water uptake. In fact, the coupled effects of water and temperatures may cause synergic results such as plasticization, molecular degradation, post-curing reactions and the formation of pseudo-cross-links by multiple hydrogen bonds with water⁴. In a recent study, it was found that the increase of moisture uptake level over time of carbon fibre reinforced Elium 150 composites lead to an increase in the $\tan \delta$ curve due to the heterogeneity of the structure³⁹. In fact, the increase of free volume between monomer units caused by water molecules ingress affects the local polymerization reaction and molecular mobility. Regarding the formulation of Elium resin, which is made from bloc copolymers, the presence of water can promote phase separation and thus giving rise to a peak-splitting in $\tan \delta$ curve and the apparition of a new T_g .

One can also see the shifting of the “first peak” towards lower temperatures, which is expected due to the increase of chain mobility after water uptake. After drying, the increase of T_g of neat Elium samples is related to irreversible chemical modifications of the main macromolecular chain such as further polymerisation reactions in already water plasticized material. This phenomenon is all the more important as the ageing temperature is higher as it can be seen by comparing $\tan \delta$ curve amplitude of dried samples.

Regarding the storage modulus evolution of studied Elium 188-O neat resin (Figure 11.b and Figure 12.b), for initial non aged specimens, the average storage modulus was about 2.12 GPa. When exposed to hydrothermal aging, the storage modulus decreased by about 18% and 33% after aging at 40 °C and 70 °C, respectively. After water desorption, dried samples which were aged at 40 °C exhibits a full recovery of their storage modulus, whilst samples aged at 70 °C and then dried presented a slight permanent loss of their storage modulus by around 8%. It is then clear that water effects on Elium 188-O resin are different for both studied temperatures.

To conclude, it appears that water absorption and polymerisation of polymers have opposite effects on T_g (referred to the loss factor peak); the former tends to lower the transition temperature and the latter enhancing it.

Composite samples

By analysing DMA results of composites samples for both [0/90]₄ and [+45/-45]₄ specimens given respectively by Figure 11.c to Figure 11.f and Figure 12.c to Figure 12.f, an overall similar behaviour

as found for neat resin samples can be observed due in particular to the stability of carbon fibre over aging conditions and temperature range. It is worth noting that the presence of carbon fibres in the composite markedly reduce $\tan \delta$ peak level compared to neat resin results (~ 0.4 compared to 1.06) due to their constraints during the matrix relaxation⁴. Composite samples aged at 40 °C exhibited a slight lowering of $\tan \delta$ peak temperature (T_g) so a shifting to left side due to plasticization of the matrix caused by enhanced chain mobility and shorter end group due to chain scission in the presence of water as presented in Figure 11.c and Figure 11.e. It is also noted the appearance of a “shoulder” in the temperature range of 70 - 100 °C on aged curves due to the presence of water, whereas unaged and dried samples show smooth curves with no shoulder detected during temperature scanning. After drying step, a significant shifting of $\tan \delta$ curve towards higher temperatures is noted. For all dried samples, the T_g is around 132 °C which is high compared to measured unaged T_g , which range between 103 °C to 111 °C. The same explanation as adopted for neat resin may be applied here, since the polymer matrix in the composite could exhibit further polymerisation reaction resulting in an increase in chain length and molecular weight after prolonged exposure to relatively high temperatures humid environments. With respect to samples aged at 70 °C, results presented in Figure 12.c and Figure 12.e showed peak-splitting, the first peak corresponding to the T_g of unaged samples and the second to the dried samples. The same behaviour is reported previously in this section for neat resin coupons aged at 70 °C and was related to high moisture content and aging temperature, favouring further polymerisation reactions, and to the synergic effect of temperature gradient during DMA test, which induces desorption and the raise of a dried state.

It is also interesting to compare $\tan \delta$ curve amplitude of dried samples after aging at 40 °C (Figure 11.c and Figure 11.e) and 70 °C (Figure 12.c and Figure 12.e). $\tan \delta$ curve amplitude for samples dried after immersion at 40 °C is 0.49 in average, whereas for samples immersed at 70 °C and then dried, the amplitude is about 0.72, compared to 0.41 at unaged state. This higher loss factor level after drying reveals the non-reversibility of aging mechanisms after immersion at both 40 °C 70 °C compared to unaged state. In fact, the higher loss factor, the higher damping of the material, since the loss factor is mathematically defined as the ratio of loss modulus and storage modulus, and so higher molecular mobility which affects the material stiffness. In addition, high damping ratio is usually related to inefficient fibre/matrix bonding⁵⁰.

Finally, storage modulus of composite samples from [0/90]₄ and [+45/-45]₄ laminates before aging at 40 °C, presented in Figure 11.d and Figure 11.f, were 22.7 GPa and 7.43 GPa, respectively. After reaching saturation of water content, DMA tests revealed a drop of storage modulus by around 17% and 12%, respectively. Then after desorption, a partial recovery was found for [0/90]₄ samples, whilst a full recovery is reported for [+45/-45]₄ configurations. In the case of immersion at 70 °C, storage modulus presented by Figure 12.d and Figure 12.f exhibit similar evolution. Indeed, the initial drop of storage modulus at aged state of around 10% for both composite configurations is lower than the loss reported when samples were aged at 40 °C, which can be related to further polymerisation induced by higher

temperature. When water is desorbed, a partial recovery is outlined for [0/90]₄ samples. On the other hand, a near full recovery of storage modulus is reported for [+45/-45]₄ samples. This leads to confirm that, when samples are aged at higher temperature, coupled phenomena could take place in the material. Polymer matrix have tendency to plasticize due to water presence and may reach hydrolysis and further chemical irreversible degradation for prolonged exposure duration. In return, polymerisation reactions could take place in the presence of initially incomplete reactions.

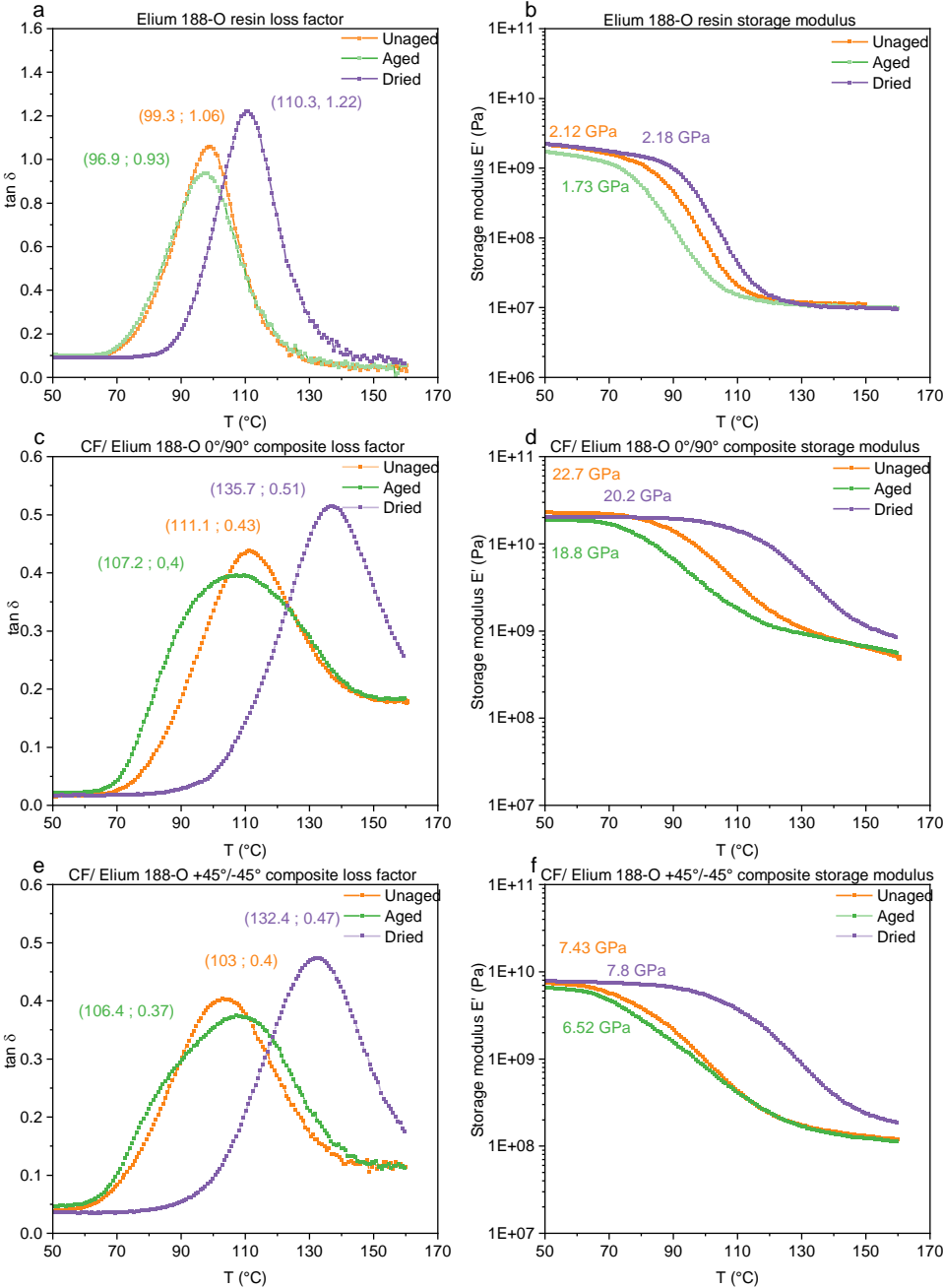


Figure 11 : DMA loss factor (a, c and e) and storage modulus (b, d and f) results of unaged, aged at 40 °C and dried samples of neat Elium resin and CF/Elium composites

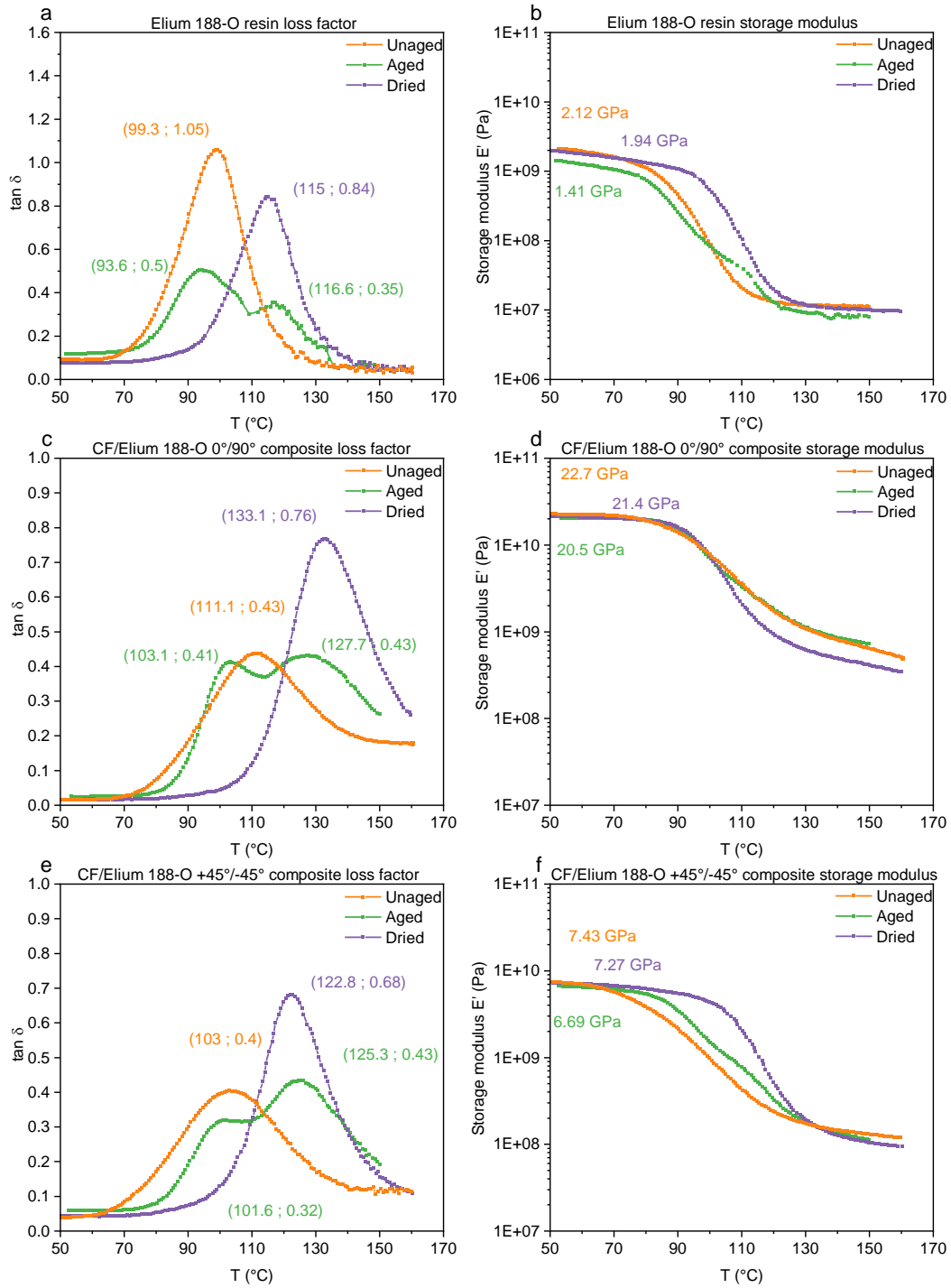


Figure 12 : DMA loss factor (a, c and e) and storage modulus (b,d and f) results of unaged, aged at 70 °C and dried samples of neat Elium resin and CF/Elium composites

5. Conclusion

In the present work, original results from accelerated aging and durability tests are presented for a novel acrylic thermoplastic matrix and composites. The absorption and desorption behaviours were monitored for neat thermoplastic Elium 188-O resin and carbon fibre reinforced Elium composite at 40 °C and 70

°C. Mechanical quasi-static, dynamic and vibratory analyses were performed at unaged, saturated and dried states.

- Gravimetric measurements showed dissimilar absorption behaviour for neat resin samples aged at different temperatures. At 40 °C, the resin showed a Fickian behaviour, while a fractional mass uptake profile is recorded for samples with various dimensions aged at higher temperatures. In case of composites, a similar non-Fickian behaviour is reported, with an initial increasing water uptake profile followed by a lower slope until reaching a saturation plateau.
- This behaviour agreed well with the Carter & Kibler diffusion model. The comparison of identified numerical model parameters at both aging temperatures for neat resin and composite samples showed that, while neat resin diffusion coefficients increased with increasing temperature, composite diffusion coefficients decreased with increased aging temperature, in parallel to a significant increase in water content at saturation.
- Drying test at 40 °C was performed at the end of aging steps and water desorption behaviour was well described by Fick's law. Identified desorption coefficients of neat resin are independent from aging temperature as well as the excess in desorbed water content. However, desorption coefficients of composite samples decreased with increasing aging temperature. The permanent mass loss after drying can be related to an irreversible internal chemical degradation of the matrix or the fibre matrix interphase during prolonged exposure.
- Composite longitudinal tensile properties are found to be completely reversible at 40 °C, but a significant permanent loss is reported when aging occurred at higher temperature. However, off-axis tensile properties presented more dependency and irreversibility in both aging conditions.
- Dynamic rigidity monitored by non-destructive modal analysis during both aging and drying steps showed that water ingress induces a drop in the composite dynamic elastic modulus, which was totally reversible at both moderate and high temperatures.
- Dynamic mechanical analysis results showed notable differences between aging conditions for both neat resin and composite samples. At saturation, glass transition temperatures were slightly lowered in particular at 70 °C, where a splitting in the curve giving rise to a double peak was observed. After drying, a considerable rise of transition temperature is recorded for all studied materials. Storage modulus evolution was similar to static tensile modulus. An initial considerable drop is partially recovered after drying.

In light of these results, the material has good durability after accelerated aging at 40 °C as properties were partially recovered. However, the aging at higher temperature induced a non-reversible degradation. Further studies may concern the coupling effects of mechanical load and aging by mean of in-situ tests in order to get closer to real operating conditions.

6. Acknowledgement

Authors would like to acknowledge Occitanie region and REV Inside, France for the support of this project. The authors would also like to thank Dr Pierre GERARD from ARKEMA for the supply of Elium™ resin.

7. Declaration of Conflicting Interests

The author(s) declared no potential conflicts of interest with respect to the research, authorship, and/or publication of this article.

8. Funding

The author(s) received no financial support for the research, authorship, and/or publication of this article.

9. References:

1. ICOMIA. *Recreational Boating Industry Statistics 2017*, www.icomia.org (2018).
2. Arhant M, Davies P. Thermoplastic matrix composites for marine applications. In: Pemberton R, Summerscales J, Graham-Jones J (eds) *Marine Composites: Design and Performance*. Elsevier, 2019, pp. 31–53.
3. Marouani S, Curtil L, Hamelin P. Ageing of carbon/epoxy and carbon/vinylester composites used in the reinforcement and/or the repair of civil engineering structures. *Compos Part B Eng* 2012; 43: 2020–2030.
4. Alessi S, Pitarresi G, Spadaro G. Effect of hydrothermal ageing on the thermal and delamination fracture behaviour of CFRP composites. *Compos Part B Eng* 2014; 67: 145–153.
5. Uthaman A, Xian G, Thomas S, et al. Durability of an epoxy resin and its carbon fiber-reinforced polymer composite upon immersion in water, acidic, and alkaline solutions. *Polymers (Basel)*; 12. Epub ahead of print 2020. DOI: 10.3390/polym12030614.
6. Shen C-H, Springer GS. Moisture Absorption and Desorption of Composite Materials. *J Compos Mater* 1976; 10: 2–20.
7. Weitsman YJ. *Fluid Effects in Polymers and Polymeric Composites*. Boston, MA: Springer US. Epub ahead of print 2012. DOI: 10.1007/978-1-4614-1059-1.
8. Summerscales J. Durability of Composites in the Marine Environment. In: Davies P, Rajapakse YDS (eds) *Durability of Composites in a Marine Environment. Solid Mechanics and Its Applications*. Dordrecht: Springer Netherlands, 2014, pp. 1–13.
9. Summerscales J. Materials selection for marine composites. In: Pemberton R, Summerscales J, Graham-Jones J (eds) *Marine Composites: Design and Performance*. Elsevier, 2019, pp. 3–30.

10. Ameli A, Datla N V., Papini M, et al. Hygrothermal properties of highly toughened epoxy adhesives. *J Adhes* 2010; 86: 698–725.
11. Bao L-R, Yee AF, Lee CYC. Moisture absorption and hygrothermal aging in a bismaleimide resin. *Polymer (Guildf)* 2001; 42: 7327–7333.
12. Carter HG, Kibler KG. Langmuir-Type Model for Anomalous Moisture Diffusion In Composite Resins. *J Compos Mater* 1978; 12: 118–131.
13. Gurtin ME, Yatomi C. On a Model for Two Phase Diffusion in Composite Materials. *J Compos Mater* 1979; 13: 126–130.
14. Colin X. Nonempirical Kinetic Modeling of Non-fickian Water Absorption Induced by a Chemical Reaction in Epoxy-Amine Networks. In: Davies P, Rajapakse YDS (eds) *Durability of Composites in a Marine Environment 2*. Cham: Springer, 2018, pp. 1–18.
15. Fichera M, Carlsson LA. Moisture transport in unidirectional carbon/vinylester panels with imperfect fiber/matrix interface. *J Compos Mater* 2016; 50: 751–760.
16. Galpayage Dona KNU, Du E, Carlsson LA, et al. Modeling of water wicking along fiber/matrix interface voids in unidirectional carbon/vinyl ester composites. *Microfluid Nanofluidics* 2020; 24: 31.
17. De Souza Rios A, De Amorim WF, De Moura EP, et al. Effects of accelerated aging on mechanical, thermal and morphological behavior of polyurethane/epoxy/fiberglass composites. *Polym Test* 2016; 50: 152–163.
18. Guerrazi N, Ben Tarjem A, Ksouri I, et al. On the durability of FRP composites for aircraft structures in hygrothermal conditioning. *Compos Part B Eng* 2013; 85: 294–304.
19. Davies P, Le Gac P-Y, Le Gall M. Influence of Sea Water Aging on the Mechanical Behaviour of Acrylic Matrix Composites. *Appl Compos Mater* 2017; 24: 97–111.
20. Davies P, Arhant M. Fatigue Behaviour of Acrylic Matrix Composites: Influence of Seawater. *Appl Compos Mater* 2019; 26: 507–518.
21. Nash NH, Portela A, Bachour-Sirerol CI, et al. Effect of environmental conditioning on the properties of thermosetting- and thermoplastic-matrix composite materials by resin infusion for marine applications. *Compos Part B Eng* 2019; 177: 107271.
22. Nash N, Sirerol CB, Manolakis I, et al. Thermoplastic infusible resin systems: Candidates for the marine sector? In: *ECCM 2018 - 18th European Conference on Composite Materials*. Athens, 2020.
23. Chilali A, Zouari W, Assarar M, et al. Effect of water ageing on the load-unload cyclic behaviour of flax fibre-reinforced thermoplastic and thermosetting composites. *Compos Struct* 2017; 183: 309–319.
24. Kazemi ME, Shanmugam L, Lu D, et al. Mechanical properties and failure modes of hybrid fiber reinforced polymer composites with a novel liquid thermoplastic resin, Elium®. *Compos Part A Appl Sci Manuf* 2019; 125: 105523.

25. Arkema. *Elium 188: Technical datasheet*. 2015.
26. Cadu T, Berges M, Sicot O, et al. What are the key parameters to produce a high-grade bio-based composite? Application to flax/epoxy UD laminates produced by thermocompression. *Compos Part B Eng* 2018; 150: 36–46.
27. Springer GS, Loos AC. Moisture Absorption of Graphite-Epoxy Composites Immersed in Liquids and in Humid Air. *J Compos Mater* 1979; 13: 131–147.
28. Deroiné M, Le Duigou A, Corre Y, et al. Accelerated ageing of polylactide in aqueous environments: Comparative study between distilled water and seawater. *Polym Degrad Stab* 2014; 108: 319–329.
29. Popineau S, Rondeau-Mouro C, Sulpice-Gaillet C, et al. Free/bound water absorption in an epoxy adhesive. *Polymer (Guildf)* 2005; 46: 10733–10740.
30. Krauklis AE, Gagani AI, Echtermeyer AT. Near-infrared spectroscopic method for monitoring water content in epoxy resins and fiber-reinforced composites. *Materials (Basel)*; 11. Epub ahead of print 2018. DOI: 10.3390/ma11040586.
31. Philippe LVS, Lyon SB, Sammon C, et al. Validation of electrochemical impedance measurements for water sorption into epoxy coatings using gravimetry and infra-red spectroscopy. *Corros Sci* 2008; 50: 887–896.
32. Musto P, Ragosta G, Mascia L. Vibrational Spectroscopy Evidence for the Dual Nature of Water Sorbed into Epoxy Resins. Epub ahead of print 2000. DOI: 10.1021/cm9906809.
33. Jelinski LW, Dumais JJ, Cholli AL, et al. Nature of the water-epoxy interaction. *Macromolecules* 1985; 18: 1091–1095.
34. Wang W, Jin Y, Su Z. Spectroscopic study on water diffusion in poly(ester urethane) block copolymer matrix. *J Phys Chem B* 2009; 113: 15742–15746.
35. Chin JW, Nguyen T, Aouadi K. Sorption and Diffusion of Water, Salt Water, and Concrete. *J Appl Polym Sci* 1998; 71: 483–492.
36. Christmann A, Jenny P, Quantin JC, et al. Mechanical behaviour at large strain of polycarbonate nanocomposites during uniaxial tensile test. *Polymer (Guildf)* 2011; 52: 4033–4044.
37. Corn S, Dupuy JS, Jenny P, et al. Vibration analysis techniques for detecting filler-matrix decohesion in composites. *Rev des Compos des matériaux avancés* 2012; 22: 77–90.
38. Moghbelli E, Banyay R, Sue HJ. Effect of moisture exposure on scratch resistance of PMMA. *Tribol Int* 2014; 69: 46–51.
39. Barbosa LCM, Santos M, Oliveira TLL, et al. Effects of moisture absorption on mechanical and viscoelastic properties in liquid thermoplastic resin/carbon fiber composites. *Polym Eng Sci* 2019; 59: 2185–2194.
40. Thomason JL. The interface region in glass fibre-reinforced epoxy resin composites: 2. Water absorption, voids and the interface. *Composites* 1995; 26: 477–485.
41. Hendlmeier A, Marinovic LI, Al-Assafi S, et al. Sizing effects on the interfacial shear strength

- of a carbon fibre reinforced two-component thermoplastic polymer. *Compos Part A Appl Sci Manuf* 2019; 127: 105622.
42. Chateauinois A, Vincent L, Chabert B, et al. Study of the interfacial degradation of a glass-epoxy composite during hygrothermal ageing using water diffusion measurements and dynamic mechanical thermal analysis. *Polymer (Guildf)* 1994; 35: 4766–4774.
 43. Bao LR, Yee AF. Moisture diffusion and hygrothermal aging in bismaleimide matrix carbon fiber composites: Part II-woven and hybrid composites. *Compos Sci Technol* 2002; 62: 2111–2119.
 44. Roy S, Xu WX, Park SJ, et al. Anomalous Moisture Diffusion in Viscoelastic Polymers: Modeling and Testing. *J Appl Mech* 2000; 67: 391.
 45. Chen X, Zhao S, Zhai L. Moisture Absorption and Diffusion Characterization of Molding Compound. *J Electron Packag* 2005; 127: 460.
 46. Feng J, Berger KR, Douglas EP. Water vapor transport in liquid crystalline and non-liquid crystalline epoxies. *J Mater Sci* 2004; 39: 3413–3423.
 47. Nakamura K, Hatakeyama T, Hatakeyama H. Studies on bound water of cellulose by differential scanning calorimetry. 1981; 607–613.
 48. Gao Y, Li C, Wang J, et al. Investigation on fatigue behavior and damage mechanism of C/BMI composites under hygrothermal environment. *Polym Degrad Stab* 2019; 169: 108989.
 49. Xu S, Dillard DA. Environmental aging effects on thermal and mechanical properties of electrically conductive adhesives. *J Adhes* 2003; 79: 699–723.
 50. Perret P, Chabert B, Gérard J-F. Viscoelastic study of carbon/epoxy unidirectional composite materials. *Makromol Chemie Macromol Symp* 1989; 23: 139–147.