



HAL
open science

The Stability and Stiffness Analysis of a Dual-Triangle Planar Rotation Mechanism

Wanda Zhao, Anatol Pashkevich, Alexandr Klimchik, Damien Chablat

► **To cite this version:**

Wanda Zhao, Anatol Pashkevich, Alexandr Klimchik, Damien Chablat. The Stability and Stiffness Analysis of a Dual-Triangle Planar Rotation Mechanism. ASME 2020: International Design Engineering Technical Conferences and Computers and Information in Engineering Conference, Aug 2020, Virtual, United States. 10.1115/DETC2020-22076 . hal-03147414

HAL Id: hal-03147414

<https://hal.science/hal-03147414>

Submitted on 19 Feb 2021

HAL is a multi-disciplinary open access archive for the deposit and dissemination of scientific research documents, whether they are published or not. The documents may come from teaching and research institutions in France or abroad, or from public or private research centers.

L'archive ouverte pluridisciplinaire **HAL**, est destinée au dépôt et à la diffusion de documents scientifiques de niveau recherche, publiés ou non, émanant des établissements d'enseignement et de recherche français ou étrangers, des laboratoires publics ou privés.

THE STABILITY AND STIFFNESS ANALYSIS OF A DUAL-TRIANGLE PLANAR ROTATION MECHANISM

Wanda Zhao¹, Anatol Pashkevich^{1,2}, Alexandr Klimchik³, D. Chablat^{1,4}

¹Laboratoire des Sciences du Numérique de Nantes (LS2N),
UMR CNRS 6004, 1 rue de la Noe, 44321 Nantes, France

²IMT Atlantique Nantes, 4 rue Alfred-Kastler, Nantes 44307, France

³Innopolis University, Universitetskaya St, 1, Innopolis, Tatarstan, 420500, Russia

⁴Centre National de la Recherche Scientifique (CNRS), France

ABSTRACT

The paper deals with the stiffness analysis and stability study of equilibrium configurations for dual-triangle tensegrity mechanism, which is actuated by adjusting elastic connections between the triangle edges. For this mechanism, the torque-deflection relation was obtained as a function of control inputs and geometric parameters. It was proved that the mechanism can have either a single or three equilibrium configurations that can be both stable and unstable. Corresponding conditions of stability were found allowing user to choose control inputs ensuring the mechanism controllability. The obtained results are confirmed by the simulation examples presented in the paper.

Keywords: Tensegrity mechanisms, Equilibrium configurations, Stability analysis.

INTRODUCTION

Many modern robotic applications require new type of manipulators that possess high flexibility similar to an elephant trunk [1][2]. Such manipulators are usually composed of a number of similar segments based on various tensegrity mechanisms, which are assembly of compressive elements and tensile elements (cables or springs) held together in equilibrium [3][4]. This paper concentrates on the stiffness analysis and equilibrium stability study, which are connected by a passive joint in the center and two elastic edges on each side with controllable preload.

Some kinds of the tensegrity mechanisms have been already studied carefully in literature [5][6]. In particular, in [7][8], there were considered the cable-driven X-shape tensegrity structures, where each section was composed of four fixed-length rigid bars and two springs. For this mechanism, the authors investigated influence on the cable lengths on the mechanism equilibrium configurations, which may be both stable and unstable. Special attention was paid to the work space and singularities analysis. Another group of related works [9] deals with the mechanism composed of two springs and two length-changeable bars. The authors analyzed the mechanism

stiffness using the energy method and demonstrated that the stiffness of this mechanism always decreases when it is subjected to external loads with the actuators locked, which may lead to “buckling”. Some other research in this area [10] focus on the three-spring mechanisms, for which the equilibrium configurations stability and singularity were analyzed. Using these results the authors obtained conditions under which the mechanism can work continuously, without the “buckling” or “jump” phenomenon. There are also some research studying a four-legged parallel platform [11], which is based on the compliant tensegrity mechanisms. Here, each leg consists of a piston and a spring in series, which allows the platform to achieve in the desired position and orientation. The authors investigated the loaded equilibrium configurations and numerically computed the platform stiffness. However, the tensegrity mechanism based on dual-triangles were not studied in robotic literature yet.

This paper focuses on the stiffness analysis of a new tensegrity mechanism, which is composed of rigid dual-triangles connected by a passive joint that is actuated by adjusting elastic connections between the remaining triangle edges. This structure proved to be very promising for designing of multi-section serial chains possessing very high flexibility. For this mechanism, we concentrate on the equilibriums computing, the stability analysis and the selection of the geometric parameters and control inputs allowing to achieve the desired configuration while ensuring its stability. The results provide a good base of the study of the multi-segment manipulators in the future work.

MECHANISM GEOMETRY AND EQUILIBRIUM EQUATION

Let us consider first a 1-d.o.f. (degree of freedom) segment of the total flexible structure to be studied, which consists of two rigid triangles connected by a passive joint whose rotation is constrained by two linear springs as shown in Fig. 1. It is assumed that the mechanism geometry is described by the triangle parameters (a_1, b_1) and (a_2, b_2) , and the

mechanism shape is defined by the angle q that can be adjusted by means of two control inputs influencing on the spring lengths L_1 and L_2 . Let us denote the spring lengths in the non-stress state as L_1^0 and L_2^0 , and the springs stiffness coefficients as k_1 and k_2 .

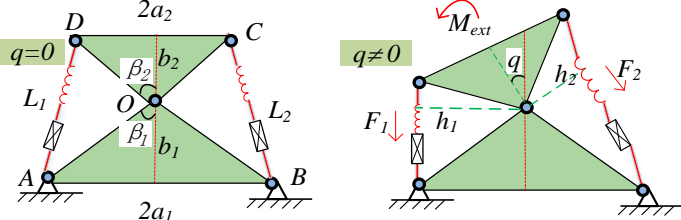


FIGURE 1 MECHANISM GEOMETRY.

To find mechanism configuration angle q corresponding to given control inputs L_1^0 and L_2^0 , let us derive the static equilibrium equation. The forces F_1 , F_2 generated by the springs can be obtained from Hook's law as follows.

$$F_1 = k_1 (L_1 - L_1^0); \quad F_2 = k_2 (L_2 - L_2^0) \quad (1)$$

where L_1 and L_2 are the spring lengths $|AD|$, $|BC|$ corresponding to the current value of the angle q . These values can be computed from the triangles ΔAOD and ΔBOC using the formulas

$$\begin{aligned} L_1(\theta_1) &= \sqrt{c_1^2 + c_2^2 + 2c_1c_2 \cos(\theta_1)} \\ L_2(\theta_2) &= \sqrt{c_1^2 + c_2^2 + 2c_1c_2 \cos(\theta_2)} \end{aligned} \quad (2)$$

where $c_1 = \sqrt{a_1^2 + b_1^2}$; $c_2 = \sqrt{a_2^2 + b_2^2}$, and the angles θ_1, θ_2 are expressed via the mechanism parameters as follows

$$\theta_1 = \beta_{12} + q; \quad \theta_2 = \beta_{12} - q; \quad \beta_{12} = \text{atan}(a_1/b_1) + \text{atan}(a_2/b_2)$$

The torques $M_1 = F_1 \cdot h_1$, $M_2 = -F_2 \cdot h_2$ created by the forces F_1 , F_2 in the passive joint O can be computed using the triangle area relations $L_1 h_1 = c_1 c_2 \sin(\theta_1)$, $L_2 h_2 = c_1 c_2 \sin(\theta_2)$ of ΔAOD and ΔBOC , which yield the following expressions

$$\begin{aligned} M_1(q) &= +k_1 (1 - L_1^0/L_1(\theta_1)) c_1 c_2 \sin(\theta_1) \\ M_2(q) &= -k_2 (1 - L_2^0/L_2(\theta_2)) c_1 c_2 \sin(\theta_2) \end{aligned} \quad (3)$$

where the difference in signs is caused by the different directions of the torques generated by the forces F_1 , F_2 with respect to the passive joint.

Further, taking into account the external torque M_{ext} applied to the moving platform, the static equilibrium equation for the considered mechanism can be written as follows

$$M_1(q) + M_2(q) + M_{ext} = 0 \quad (4)$$

Solving this equation we can get the rotation angle q_0 corresponding to the control inputs L_1^0 , L_2^0 and to the external torque M_{ext} applied to the moving platform. It is clear that this equation is highly nonlinear and cannot be solved analytically, so it is reasonable to apply the numerical Newton technique, which leads to the iterative scheme

$$q^{k+1} = q^k - (M(q^k) + M_{ext}) / M'(q^k) \quad (5)$$

where $M(q) = M_1(q) + M_2(q)$, $M'(q^k) = dM(q)/dq$.

STABILITY ANALYSIS OF THE MECHANISM

Let us now evaluate the stability of the considered mechanism at the equilibriums, which shows its reaction to the external disturbances. In general, this property highly depends on the equilibrium configuration defined by the angle q , which satisfies the equilibrium equation $M(q) + M_{ext} = 0$. As follows from the relevant analysis, the function $M(q)$ can be either monotonic or non-monotonic one, so the single-segment mechanism under study may have multiple stable and unstable equilibriums, which are studied in detail below.

To analyze the mechanism equilibriums, let us consider the torque-angle curves $M(q) = M_1(q) + M_2(q)$ defined by Eq. 3 and presented in Fig. 2. It is clear that for the monotonic function $M(q)$ with negative derivative (see Fig. 2a) increase of the external loading M_{ext} always leads to higher mechanism resistance, so the equilibrium is unique and stable. However, in the non-monotonic case, while increasing the external loading, it is possible to achieve a point where the mechanism does not resist any more and suddenly changes its configuration as shown in Fig. 2b. It is worth mentioning that similar phenomenon can be observed in other robotic mechanisms and is known in mechanics as "buckling" [13]. Hence, in the non-monotonic case, there maybe three solutions of the equilibrium equation (two stables and one unstable).

As follows from the above presented figures, the static equilibrium defined by angle q is stable if and only if the corresponding derivative $M'(q)$ is negative. However, taking into account possible shapes of the torque-angle curves $M(q)$ that can be either monotonic or with two maximum/minimum

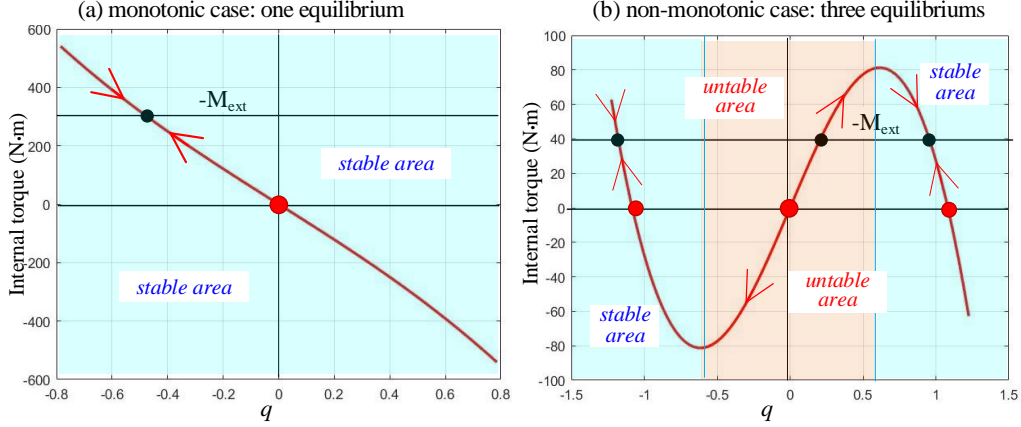


FIGURE 2 THE TORQUE-ANGLE CURVES AND EQUILIBRIUMS FOR DIFFERENT COMBINATIONS OF MECHANISM PARAMETERS

points, the considered stability condition can be simplified and reduced to the derivative sign verification at the zero point only,

$$M'(q)|_{q=0} < 0 \quad (6)$$

which is easy to verify in practice. It should be noted that here the derivative represent the mechanism stiffness for the unloaded configuration.

To compute the desired derivative for any given q , it is convenient to represent the function $M(q)$ in the following way

$$M(q) = c_1 c_2 k_1 \left(1 - \frac{L_1^0}{L_1(\theta_1)} \right) \sin \theta_1 - c_1 c_2 k_2 \left(1 - \frac{L_2^0}{L_2(\theta_2)} \right) \sin \theta_2 \quad (7)$$

This allows us to express the mechanism stiffness in general case as follows

$$M'(q) = c_1 c_2 k_1 \left(1 - \frac{L_1^0}{L_1(\theta_1)} \right) \cos \theta_1 + c_1 c_2 k_2 \left(1 - \frac{L_2^0}{L_2(\theta_2)} \right) \cos \theta_2 - \frac{c_1^2 c_2^2 k_1 L_1^0}{(L_1(\theta_1))^3} \sin^2 \theta_1 - \frac{c_1^2 c_2^2 k_2 L_2^0}{(L_2(\theta_2))^3} \sin^2 \theta_2 \quad (8)$$

For the special cases, when $q = 0$ and $q = \beta_{12}$ (or $q = -\beta_{12}$), the above expression is simplified respectively to

$$M'(q)|_{q=0} = c_1 c_2 \cos \beta_{12} \left(k_1 + k_2 - \frac{k_1 L_1^0 + k_2 L_2^0}{L(\beta_{12})} \right) - c_1^2 c_2^2 (k_1 L_1^0 + k_2 L_2^0) \frac{\sin^2 \beta_{12}}{(L(\beta_{12}))^3} \quad (9)$$

$$M'(q)|_{q_0=\beta_{12}} = c_1 c_2 k_1 \cos 2\beta_{12} \left(1 - \frac{L_1^0}{L(2\beta_{12})} \right) + c_1 c_2 k_2 \left(1 - \frac{L_2^0}{c_1 + c_2} \right) - c_1^2 c_2^2 k_1 L_1^0 \frac{\sin^2 2\beta_{12}}{(L(2\beta_{12}))^3} \quad (10)$$

where $L(\beta_{12}) = \sqrt{c_1^2 + c_2^2 + 2c_1 c_2 \cos \beta_{12}}$

$L(2\beta_{12}) = \sqrt{c_1^2 + c_2^2 + 2c_1 c_2 \cos 2\beta_{12}}$.

Let us also consider in detail the symmetrical case, for which $a_1 = a_2$, $b_1 = b_2$, $c_1 = c_2$, $k_1 = k_2$, $L_1^0 = L_2^0$. In this case, we can omit some indices and present the torque-angle relationship as well as the stiffness expression in forms that are more compact

$$M(q) = 2ck \left(c \cos \beta_{12} \sin q - L^0 \cos \frac{\beta_{12}}{2} \sin \frac{q}{2} \right) \quad (11)$$

$$M'(q) = ck \left(2c \cos \beta_{12} \cos q - L^0 \cos \frac{\beta_{12}}{2} \cos \frac{q}{2} \right) \quad (12)$$

where the control input must satisfy the condition $0 < L^0 < 2b$, which follows from the mechanism geometry (Fig. 1). To distinguish the monotonic and non-monotonic cases presented in Fig. 2, let us compute the derivative for the unloaded equilibrium configuration $q = 0$, which after simplification can be expressed in the following way

$$M'(q)|_{q=0} = k \left(2(b^2 - a^2) - L^0 b \right) \quad (13)$$

The latter allows us to present the condition (6) of torque-angle curve monotonicity as

$$\frac{L^0}{b} > 2 \left(1 - \left(\frac{a}{b} \right)^2 \right) \quad (14)$$

and separate the parameter plane in two regions as shown in Fig. 3a. As follows from this figure, the unloaded equilibrium is always stable if $a > b$. Otherwise, to have a stable unloaded equilibrium, the control inputs $L_1^0 = L_2^0$ should be higher than certain value

$$L_i^0 > 2b \left[1 - (a/b)^2 \right]; \quad i = 1, 2$$

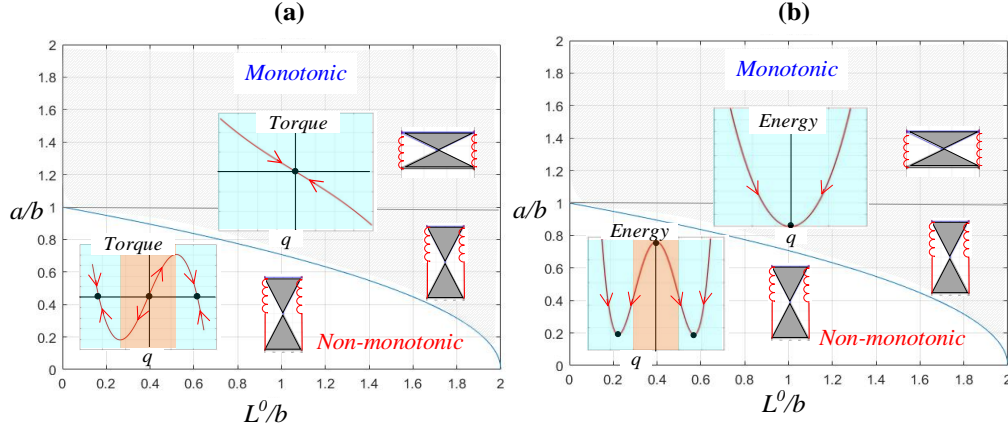


FIGURE 3 STABLE AND UNSTABLE REGIONS OF THE PARAMETER PLANE FOR UNLOADED EQUILIBRIUM $q=0$.

The monotonic and non-monotonic cases are also illustrated by Fig. 3b, which includes the energy curves

$$E(q) = \frac{1}{2} \sum_{i=1}^2 k(L_i(q) - L^0)^2$$

as the function of the rotation angle q . As follows from this figure, the energy $E(q)$ has either a single minimum $q=0$ corresponding to a stable equilibrium, or two symmetrical minima

$$q_e = \pm 2 \arccos\left(\frac{L^0 b}{2(b^2 - a^2)}\right) \quad (15)$$

and a local maximum $q=0$ corresponding to two stable equilibria and one unstable equilibrium.

For the symmetrical case, where $L_1^0 = L_2^0$, let us also compute the torques (7) at the boundary points $q = \pm\beta_{12}$.

$$M(q)|_{q=\pm\beta_{12}} = \pm \frac{2abk}{a^2 + b^2} (2(b^2 - a^2) - L^0 c) \quad (16)$$

which allows us to decide if the stable equilibria in the non-monotonic case are located inside of the interval of feasible rotation angles $q \in [-\beta_{12}, +\beta_{12}]$. It can be proved that the relevant condition can be expressed as follows

$$L^0 > \frac{2(b^2 - a^2)}{\sqrt{b^2 + a^2}} \quad (17)$$

and allows user to estimate if the energy minimum is achieved inside or on the border of the feasible region of q . A physical interpretation of this equation is shown in Fig. 4, where two cases are presented. In the first case, the mechanism is unstable in the desired configuration $q=0$ and jumps to one of two possible stable configurations $q = \pm q_e$ that are located inside of mechanical limits. In the second case, the mechanism is also

unstable in the equilibrium configuration $q=0$ but it jumps to one of the mechanical limits $q = \pm\beta_{12}$ (because the stable configurations are out of the limits). So, a static error appears in both cases, where q is equal to either $\pm\beta_{12}$ or $\pm q_e$. For this reason, it is necessary to avoid in practice the parameters combinations producing non-monotonic torque-angle curves.

It is also useful to investigate the case when the control inputs are not equal, i.e. $L_1^0 \neq L_2^0$, assuming that they produce the desired stable configuration with the output angle $q \neq 0$. In this case, the torque and its derivative can be presented as follows.

$$M(q) = ck \left(2c \cos \beta_{12} \sin q - L_1^0 \sin \frac{\beta_{12} + q}{2} + L_2^0 \sin \frac{\beta_{12} - q}{2} \right) \quad (18)$$

$$M'(q) = k \left(2(b^2 - a^2) \cos q - \frac{L_1^0 + L_2^0}{2} b \cos \frac{q}{2} + \frac{L_1^0 - L_2^0}{2} a \sin \frac{q}{2} \right) \quad (19)$$

where all notations are the same as in the above expressions (7) and (8). It can be proved from the equilibrium equation that the control inputs L_1^0, L_2^0 insuring the desired output angle q must satisfy the linear relation

$$L_1^0 \sin \frac{\beta_{12} + q}{2} - L_2^0 \sin \frac{\beta_{12} - q}{2} = 2c \cos \beta_{12} \sin q \quad (20)$$

which gives infinite set of control variables $\{L_1^0, L_2^0\}$ that may correspond either to stable or unstable equilibrium. To analyze sign of the derivative $dM(q)/dq$, let us consider separately two cases: $a > b$ and $a < b$. In the first case, when $a > b$ and mechanism geometry impose the constraint $|q| < \pi/2$, all three terms of (19) are negative, so the desired equilibrium configuration q is stable.

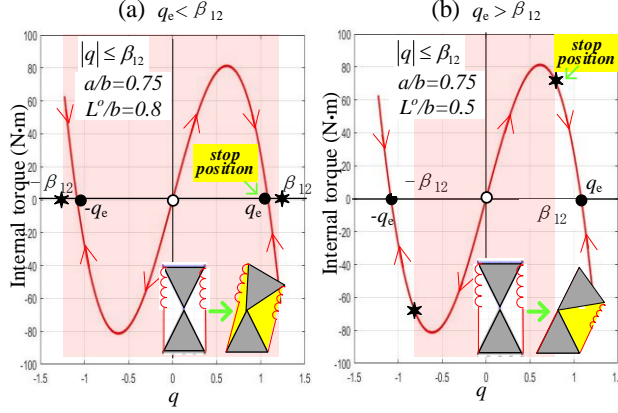


FIGURE 4 LOCATION OF STABLE “●” AND UNSTABLE “○” EQUILIBRIUMS WITH RESPECT TO GEOMETRIC BOUNDARY $[-\beta_{12}, \beta_{12}]$.

In the second case, when $a < b$, the equilibrium maybe either stable or unstable. Corresponding separation curves can be found from the conditions $M(q)=0$ and $dM(q)/dq=0$, which yield the following system of linear equations with respect to L_1^0, L_2^0

$$\begin{aligned} \left(\sin \frac{\beta_{12}+q}{2}\right)L_1^0 - \left(\sin \frac{\beta_{12}-q}{2}\right)L_2^0 &= 2c \cos \beta_{12} \sin q \\ \left(\frac{a}{2} \sin \frac{q}{2} - \frac{b}{2} \cos \frac{q}{2}\right)L_1^0 - \left(\frac{a}{2} \sin \frac{q}{2} + \frac{b}{2} \cos \frac{q}{2}\right)L_2^0 &= -2(b^2 - a^2) \cos q \end{aligned} \quad (21)$$

whose solution allows us to present the stability condition in the following form

$$\begin{aligned} \frac{L_1^0}{b} &> 2 \left(\frac{b-a}{a-b}\right) \left(\frac{a}{b} \cos^3 \frac{q}{2} + \sin^3 \frac{q}{2}\right) \\ \frac{L_2^0}{b} &> 2 \left(\frac{b-a}{a-b}\right) \left(\frac{a}{b} \cos^3 \frac{q}{2} - \sin^3 \frac{q}{2}\right) \end{aligned} \quad (22)$$

It is worth mentioning that in the case of $q=0$ the above expressions give the stability condition Eq. 22.

Hence, to achieve the desired configuration q , it is necessary to apply the control inputs L_1^0, L_2^0 satisfying both the equilibrium condition Eq. 20 and the stability conditions Eq. 22. Corresponding regions of L_1^0, L_2^0 are presented in Fig. 5, which clearly shows for which combination of inputs the desired configuration can be reached geometrically and it is statically stable, and where the angle q is constrained by the geometry conditions:

$$\begin{aligned} |q| &< 2 \operatorname{atan}(a/b), \quad a \leq b \\ |q| &< \pi - 2 \operatorname{atan}(a/b), \quad a > b \end{aligned} \quad (23)$$

CONCLUSION

The paper presents some results on the stiffness analysis of a new type of tensegrity mechanism, which is composed of two rigid triangles connected by a passive joint. In contrast to conventional cable driven mechanisms, here there are two length-controllable elastic edges that can generate internal preloading. So, the mechanism can change its equilibrium configuration by adjusting the control inputs length. Such design is very promising and convenient for constructing a multi-section serial structures with high flexibility, which are needed in many modern robotic applications.

For this mechanism, the main attention was paid to a symmetrical structure composed of similar triangles. In particular, the case of equal control inputs was investigated in detail and analytical condition of equilibrium stability was obtained, which allows user to select the control inputs ensuring the mechanism controllability. The relation between the external torque and the deflection was also obtained allowing to find loaded equilibriums. It was proved that depending on parameters combinations, the actuation can lead to either the desired mechanism configuration (corresponding to a stable equilibrium) or undesired configuration corresponding to shifted stable equilibrium or joint limits. Besides, similar analysis has been done for the case of non-equal control inputs, and equivalent serial structure was proposed where the passive joint was replaced by a virtual actuated joint with variable stiffness. In future, these results will be used for the stiffness analysis of multi-section mechanisms that may demonstrate unusual behavior under static load and suddenly change its configuration.

ACKNOWLEDGEMENTS

This work was supported by the China Scholarship Council (No. 201801810036)

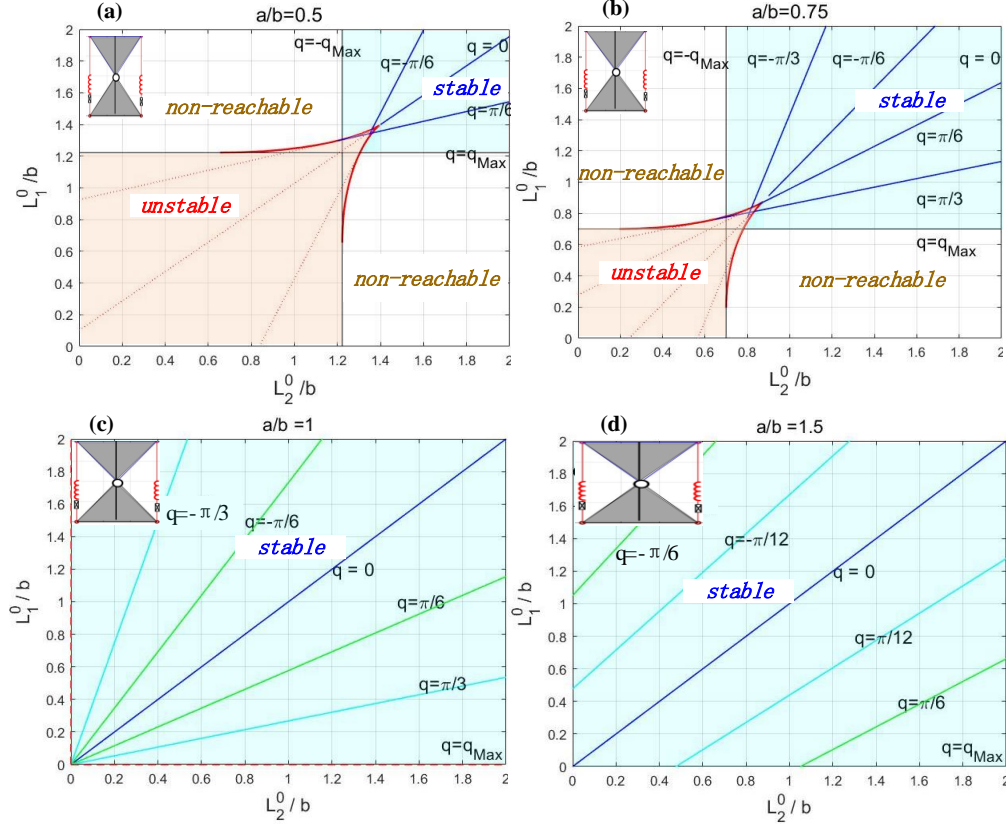


Fig. 5 Regions of equilibrium stability for different inputs L_1^0 , L_2^0 .

REFERENCES

- [1] Rolf, M., & Steil, J. J. (2012, October). Constant curvature continuum kinematics as fast approximate model for the Bionic Handling Assistant. In *2012 IEEE/RSJ International Conference on Intelligent Robots and Systems* (pp. 3440-3446). IEEE.
- [2] Yang, Y., & Zhang, W. (2015, December). An elephant-trunk manipulator with twisting flexional rods. In *2015 IEEE International Conference on Robotics and Biomimetics (ROBIO)*(pp. 13-18). IEEE.
- [3] Skelton, R. E., & de Oliveira, M. C. (2009). *Tensegrity systems*(Vol. 1). New York: Springer.
- [4] Moored, K. W., Kemp, T. H., Houle, N. E., & Bart-Smith, H. (2011). Analytical predictions, optimization, and design of a tensegrity-based artificial pectoral fin. *International Journal of Solids and Structures*, 48(22-23), 3142-3159.
- [5] Duffy, J., Rooney, J., Knight, B., & Crane III, C. D. (2000). A review of a family of self-deploying tensegrity structures with elastic ties. *Shock and Vibration Digest*, 32(2), 100-106.
- [6] Arsenault, M., & Gosselin, C. M. (2006). Kinematic, static and dynamic analysis of a planar 2-DOF tensegrity mechanism. *Mechanism and Machine Theory*, 41(9), 1072-1089.
- [7] Furet, M., Lettl, M., & Wenger, P. (2018, July). Kinematic analysis of planar tensegrity 2-X manipulators. In *International Symposium on Advances in Robot Kinematics* (pp. 153-160). Springer, Cham.
- [8] Furet, M., & Wenger, P. (2018, August). Workspace and cuspidality analysis of a 2-X planar manipulator. In *IFTOMM Symposium on Mechanism Design for Robotics* (pp. 110-117). Springer, Cham.
- [9] Arsenault, M., & Gosselin, C. M. (2006). Kinematic, static and dynamic analysis of a planar 2-DOF tensegrity mechanism. *Mechanism and Machine Theory*, 41(9), 1072-1089.
- [10] Wenger, P., & Chablat, D. (2018). Kinestatic analysis and solution classification of a planar tensegrity mechanism. In *Computational Kinematics* (pp. 422-431). Springer, Cham.
- [11] Moon, Y., Crane, C. D., & Roberts, R. G. (2012). Position and force analysis of a planar tensegrity-based compliant mechanism. *Journal of Mechanisms and Robotics*, 4(1).
- [12] Venkateswaran, S., Furet, M., Chablat, D., & Wenger, P. (2019, August). Design and analysis of a tensegrity mechanism for a bio-inspired robot. In *ASME 2019 International Design Engineering Technical Conferences and Computers and Information in Engineering Conference*. American Society of Mechanical Engineers Digital Collection.
- [13] Jones, R. M. (2006). Buckling of bars, plates, and shells. Bull Ridge Corporation.