



Climbing the cosmic ladder with stellar twins in RAVE with Gaia

P. Jofré, G. Traven, K. Hawkins, G. Gilmore, J. Sanders, T. Mädlér, M.
Steinmetz, A. Kunder, G. Kordopatis, P. Mcmillan, et al.

► To cite this version:

P. Jofré, G. Traven, K. Hawkins, G. Gilmore, J. Sanders, et al.. Climbing the cosmic ladder with stellar twins in RAVE with Gaia. *Monthly Notices of the Royal Astronomical Society*, 2017, 472 (3), pp.2517-2533. 10.1093/mnras/stx1877 . hal-03143226

HAL Id: hal-03143226

<https://hal.science/hal-03143226>

Submitted on 16 Feb 2021

HAL is a multi-disciplinary open access archive for the deposit and dissemination of scientific research documents, whether they are published or not. The documents may come from teaching and research institutions in France or abroad, or from public or private research centers.

L'archive ouverte pluridisciplinaire **HAL**, est destinée au dépôt et à la diffusion de documents scientifiques de niveau recherche, publiés ou non, émanant des établissements d'enseignement et de recherche français ou étrangers, des laboratoires publics ou privés.

Climbing the cosmic ladder with stellar twins in RAVE with *Gaia*

P. Jofré,^{1,2★} G. Traven,³ K. Hawkins,⁴ G. Gilmore,¹ J. L. Sanders,¹ T. Mädler,¹ M. Steinmetz,⁵ A. Kunder,⁵ G. Kordopatis,⁶ P. McMillan,⁷ O. Bienaymé,⁸ J. Bland-Hawthorn,⁹ B. K. Gibson,¹⁰ E. K. Grebel,¹¹ U. Munari,¹² J. Navarro,¹³ Q. Parker,^{14,15} W. Reid,^{16,17} G. Seabroke¹⁸ and T. Zwitter³

¹*Institute of Astronomy, University of Cambridge, Madingley Road, Cambridge CB3 0HA, UK*

²*Núcleo de Astronomía, Facultad de Ingeniería, Universidad Diego Portales, Av. Ejército 441, Santiago, Chile*

³*Faculty of Mathematics and Physics, University of Ljubljana, Jadranska 19, 1000 Ljubljana, Slovenia*

⁴*Department of Astronomy, Columbia University, 550 W 120th St, New York, NY 10027, USA*

⁵*Leibniz-Institut für Astrophysik Potsdam (AIP), An der Sternwarte 16, D-14482 Potsdam, Germany*

⁶*Laboratoire Lagrange, Université Côte d'Azur, Observatoire de la Côte d'Azur, Bd de l'Observatoire, CS 34229, F-06304 Nice cedex 4, France*

⁷*Department of Astronomy and Theoretical Physics, Lund University, Box 43, SE-22100 Lund, Sweden*

⁸*Observatoire astronomique de Strasbourg, Université de Strasbourg, CNRS, UMR 7550, 11 rue de l'Université, F-67000 Strasbourg, France*

⁹*Sydney Institute for Astronomy, School of Physics, A28, University of Sydney, NSW 2006, Australia*

¹⁰*E.A. Milne Centre for Astrophysics, University of Hull, Hull HU6 7RX, UK*

¹¹*Astronomisches Rechen-Institut, Zentrum für Astronomie der Universität Heidelberg, Mönchhofstr 12-14, D-69120 Heidelberg, Germany*

¹²*Dipartimento di Fisica e Astronomia Galileo Galilei, Università di Padova, Vicolo dell'Osservatorio 3, I-35122 Padova, Italy*

¹³*Department of Physics and Astronomy, University of Victoria, Victoria, BC V8P 5C2, Canada*

¹⁴*Department of Physics, CYM Building, The University of Hong Kong, Hong Kong, China*

¹⁵*The Laboratory for Space Research, The University of Hong Kong, Hong Kong, China*

¹⁶*Department of Physics, Macquarie University, Sydney, NSW 2109, Australia*

¹⁷*University of Western Sydney, Locked Bag 1797, Penrith South DC, NSW 1797, Australia*

¹⁸*Mullard Space Science Laboratory, University College London, Holmbury St Mary, Dorking RH5 6NT, UK*

Accepted 2017 July 20. Received 2017 July 20; in original form 2017 May 31

ABSTRACT

We apply the *twin method* to determine parallaxes to 232 545 stars of the RAVE survey using the parallaxes of *Gaia* DR1 as a reference. To search for twins in this large data set, we apply the t-student stochastic neighbour embedding projection that distributes the data according to their spectral morphology on a two-dimensional map. From this map, we choose the twin candidates for which we calculate a χ^2 to select the best sets of twins. Our results show a competitive performance when compared to other model-dependent methods relying on stellar parameters and isochrones. The power of the method is shown by finding that the accuracy of our results is not significantly affected if the stars are normal or peculiar since the method is model free. We find twins for 60 per cent of the RAVE sample that are not contained in *Tycho–Gaia* Astrometric Solution (TGAS) or that have TGAS uncertainties that are larger than 20 per cent. We could determine parallaxes with typical errors of 28 per cent. We provide a complementary data set for the RAVE stars not covered by TGAS, or that have TGAS uncertainties which are larger than 20 per cent, with model-free parallaxes scaled to the *Gaia* measurements.

Key words: methods: statistical – techniques: spectroscopic – stars: distances.

1 INTRODUCTION

Stellar surveys are revolutionizing our way of studying the structure and evolution of the Milky Way as large samples of stars allow us to investigate the properties of their parent populations in a statistical way. This revolution is now going through its

climax thanks to *Gaia* and its first data release in 2016 September (Gaia Collaboration 2016). In this data release, the position, proper motions and parallaxes of more than two million of stars in the *Tycho-2* catalogue became available [the so-called *Tycho–Gaia* Astrometric Solution (TGAS) sample]. Of this sample, a good overlap can be found with spectroscopic surveys, such as LAMOST (Zhao et al. 2012), RAVE (Steinmetz et al. 2006), APOGEE (Wilson et al. 2010), GALAH (De Silva et al. 2015) and *Gaia*-ESO (Gilmore et al. 2012).

★ E-mail: paula.jofre@mail.udp.cl

The next data release will contain parallaxes of almost every target which has been observed with a spectrograph from the ground, allowing us to perform full chemodynamical studies of the Milky Way with unprecedented accuracy. At the same time, such complete data sets will help us to better calibrate the distance ladder by determining distances to field stars with different methods as has been done with Hipparcos data (Binney et al. 2014; Rodrigues et al. 2014; Carlin et al. 2015, to name recent examples using spectroscopic survey data).

Most commonly, with the spectrum in hand, one can derive stellar parameters that are used to place the star in the Hertzsprung–Russell diagram and infer, with the help of stellar evolutionary models, the absolute magnitude of a star. Combined with apparent magnitudes, this is used to determine its distance modulus. The methods are usually tested using a sample of stars for which distances are known and applied to larger data sets for which distances are not known. In these cases, results have been so far tested against sets of Hipparcos stars, star clusters, or with other literature values which are obtained using same approaches but by independent groups.

The results for the distances obtained using stellar parameters and evolutionary tracks (a.k.a. spectrophotometric distances) are, however, very model dependent (see also discussion in Serenelli et al. 2013). On the one hand, accurate stellar parameters are required. Accuracy is obtained when we have a good handle of the systematic uncertainties in the modelling of stellar atmospheres and atomic data. We further need to have realistic assumptions to solve the radiative transfer equations and good control on other technical issues such as procedures to fit spectra (e.g. Lebzelter et al. 2012; Hinkel et al. 2016; Jofré et al. 2017). On the other hand, several parameters are needed to model the evolution of a star but cannot always be observationally constrained. Some examples include the mixing length, the overshooting parameters, abundances of helium or the colours considered to fit the observables (Hills et al. 2015, or Miglio et al., in preparation, for a detailed comparison of different stellar tracks). It is a great challenge to use stellar models for distance determination and demonstrates the importance of *Gaia* data for improving our understanding of the many important physical processes governing stars.

It might be possible to overcome the aforementioned limitations in our modelling of the structure and evolution of stars and still use stellar survey spectra to determine distances accurately. Jofré et al. (2015a, hereafter J15) recently introduced *the twin method*, which relies on the assumption that if two stars have identical spectra within the observed wavelength range, it is possible to determine the distance of one star provided the distance of the other star is known and both stars have photometry with the same passbands. This is possible because of the proposition that if the stars have the same spectra it implies that they must also have the same intrinsic luminosity and therefore, the difference of their brightness in the sky is directly related to their difference in distance. The method is model free, as the spectra are used as a way to assess that both stars have the same intrinsic luminosity, but nothing else. This idea of spectroscopic twins can indeed be applied not only to determine distances to stars, but also to galaxies (Paturel 1984) or to supernovae (Fakhouri et al. 2015).

J15 demonstrated the first application of the twin method on a set of Hipparcos stars and open clusters using high-resolution and high signal-to-noise ratio (SNR) spectra from the High Accuracy Radial velocity Planet Searcher (HARPS) instrument located in La Silla, Chile (Mayor et al. 2003). It was shown that with twin stars it is possible to determine parallaxes to 10 per cent precision for FGK-type stars. This precision is the order of magnitude of the

Hipparcos parallax uncertainties used for that study. The excellent performance of the method on that kind of data was then further demonstrated in the determination of the distance of the Pleiades (also called Melotte 22) by Mädler et al. (2016, hereafter M16). That measurement has since been corroborated by *Gaia* DR1 (Gaia Collaboration 2016).

Here we explore the twin method further by applying it for the first time to survey spectra. We choose to use the RAVE survey due to its large overlap with TGAS. Furthermore, its spectra roughly cover the same wavelength range as *Gaia* RVS spectra. We want to address the following questions in this analysis:

(i) *How accurate are our results when applied to a spectroscopic survey of considerably lower resolution and wavelength coverage than HARPS?*

(ii) *For how many stars in a spectroscopic survey can we apply the twin method to determine distances and how do the results depend on spectral type?*

Question (i) is important in the era of *Gaia* since climbing the cosmic ladder with twin stars will have the largest impact for very faint stars, where a high-resolution and high-SNR spectrum is difficult to obtain and direct measurement of parallaxes becomes uncertain. Question (ii) addresses the usefulness of the method. While the method is model-free, it requires having a twin star with well-measured parallax and observed with the same photometry and spectrograph. Also, it helps us to know how good can be the results for stars observed in different evolutionary stages, especially for serendipitous peculiar stars. Finally, this analysis serves as test case for the future use of twins in *Gaia* spectra.

As a result of this analysis, we provide not only answers for the above questions, but also a catalogue of parallaxes for the RAVE stars that are not in TGAS. Such parallaxes should help with chemodynamical analyses of the Milky Way. It is worth to mention that new UCAC5 proper motions (Zacharias, Finch & Frouard 2017) are also available for all the RAVE stars, which have uncertainties comparable than TGAS proper motions. Therefore, once combined with the twin parallaxes, we can have the motion of the stars through space in six dimensions with TGAS quality for a much large data set within RAVE before *Gaia* DR2 becomes public. In Section 2 we briefly describe the RAVE and TGAS data used in this work and in Section 3 we explain the method employed to find twins and determine parallaxes. In Section 4 we discuss the performance of our results with respect to *Gaia* parallaxes as well as results obtained by other methods. In Section 5 we describe the catalogue of twin parallaxes for the non-TGAS stars and in Section 6 we summarize and give our conclusions.

2 DATA

In this work, we use the fifth data release of the RAVE survey (RAVE DR5) which is described in detail in Kunder et al. (2017, hereafter K17). Briefly, the data set contains about 500 000 spectra of resolution $R \sim 7500$ and wavelength coverage 8410–8795 Å observed between 2003 and 2013 for which accurate radial velocities (RVs) are available. In this sample, about 200 000 stars have parallaxes and proper motions from the TGAS sample in *Gaia* DR1 (Gaia Collaboration 2016).

The RAVE spectra do contain information on the temperature, gravity and metallicity of the observed star. We have measurements of stellar parameters at our disposal. The RAVE-collaboration DR5 parameters that were determined using the RAVE DR4 pipeline (Kordopatis et al. 2013) with improvements thanks to calibrations

using Kepler 2 targets for seismic gravities (Valentini et al. 2017), the *Gaia* benchmark stars spectral library (Blanco-Cuaresma et al. 2014a) and stellar parameters (Jofré et al. 2014; Heiter et al. 2015), as well as other results obtained from high-resolution studies and temperatures obtained with infrared flux method. From the stellar parameters, model-dependent distances are available which we can use to compare our results. While current distances are those obtained following the method described in Binney et al. (2014, hereafter B14), there are several previous works that have provided with important lessons needed for this task (Breddels et al. 2010; Zwitter et al. 2010; Burnett et al. 2011). For discussion on how these improved parameters affect the spectroscopic distances from RAVE, we refer the reader to the extensive discussion in section 9 of K17. Here we note that we use the parameters only for assessing the performance of our method for different kind of stars, but the parameters are not an input of our method.

Recently, a second set of RAVE stellar parameters became available, provided by Casey et al. (2017), who employed *The Cannon* data-driven approach (Ness et al. 2015), based on training the data using parameters from results obtained from data with higher resolution and wavelength coverage than RAVE. This set of parameters is referred to RAVE-on. We emphasize that the information on the stellar parameters is not used in our case to determine distances, but only used to assess the accuracy and reliability of the twin method.

Since the distances are determined by looking at the difference in the observed magnitudes of the stars, we use the photometric data coming from 2MASS (Skrutskie et al. 2006) which are available for all the stars in the sample. In addition to the photometry, we need to have a set of reference stars for which we already know the distance. These come from the stars that are contained in TGAS.

3 METHOD

Our method is based on selecting stars that are similar based on the morphology of their spectra. This follows the principle used in J15 and M16 but here we employ a new approach for two main reasons. First, the RAVE spectra are of considerably lower resolution and wavelength coverage than the HARPS spectra used in the previous works ($R = 115\,000$ and a wavelength coverage from 400 to 600 nm approximately). This made it impossible to concentrate on individual absorption lines, especially when these lines were those selected to be clean lines containing information on the metal content and structure of a wide variety of FGK-type stars according to Jofré et al. (2015b). The vast majority of these lines are not part of the RAVE spectral domain and therefore cannot be used. An approach aimed to consider the entire shape of the spectra is more suitable for this case.

A second reason is the size of the data set. In J15 the method was applied to a set of ~ 700 Hipparcos stars while in M16 the distance of the Pleiades was determined by looking for twins of ~ 20 cluster members only using the reference set of ~ 700 Hipparcos stars. Here we aim to analyse the entire RAVE survey, that is, approximately 500 000 stars, which is several orders of magnitudes larger. Finally, our reference set of stars for which parallaxes are known is larger now that the first data release of *Gaia* is available. In our case, the TGAS set of stars is of about 250 000 stars. A technique that can handle this large data set is needed.

In this era of big data, such techniques exist on the market, and here we chose the machine-learning method called ‘t-student stochastic neighbour embedding’ (t -SNE, Maaten & Hinton 2008). The method converts a high-dimensional data set into a matrix of pair-wise similarities which starts by converting

the high-dimensional Euclidean distance between data points into probabilities that represent similarities. A final two-dimensional (2D) map is produced which aims to visualize the data into the dimensions in which the data are distributed by their similarities by clustering similar features together.

t -SNE has already been applied to surveys of stellar spectra with the purpose of identifying potential peculiar stars or technical issues such as data reduction problems. For details on this, we refer the reader to Traven et al. (2017, hereafter T17), who recently presented the method applied to GALAH spectra, showing on the one hand how the stars separate well in this map according to their stellar parameters, and on the other hand how peculiar objects lie in definite regions in the map. We also note that the t -SNE 2D map applied to the RAVE spectra was used by Valentini et al. (2017) to highlight that one part of the map corresponds to the giants while the other part to the dwarfs and recently in Matijević et al. (2017) to detect metal-poor stars.

The motivation for applying t -SNE to spectra comes from the already successful attempt to reduce dimensions and study the morphology of spectra using the neighbour embedding method presented in Matijević et al. (2012, hereafter M12). They showed that the normal and the peculiar spectra are located in different parts in a 2D map. That method has become the inherently quantifiable way of assigning flags to peculiar RAVE spectra, which are basically assigned by looking at the closest neighbours of given templates with known peculiarities. Recently, an extensive analysis of RAVE stars with chromospheric activity detected with this method has been published (Žerjal et al. 2017).

The method presented in M12 however suffers from a crowding problem, meaning that it squeezes the ‘normal’ spectra to the central part of the map, so in the particular case of analysing twin stars, it is not as good as t -SNE. Thus, for the purpose of finding twin stars, we employ the same procedure as in T17 but adjusting the parameters to cluster similar ‘normal’ stars as much as possible. That is, we computed the t -SNE by (1) projecting our data set into two-dimensional space, (2) setting the Barnes–Hut parameter θ to 0.5 and (3) setting the perplexity parameter to 10, which produced in general sparser projection maps with denser collections of points than in T17. More details of how this is done in RAVE data can be found in Matijević et al. (2017).

In Fig. 1 we show the t -SNE maps coloured by the DR5 stellar parameters. It is possible to see how the different kinds of stars are distributed in the map with stars with the same parameters close together. This figure also validates the quality of the DR5 stellar parameters. As in T17 and Matijević et al. (2017), a large part of the data are ‘normal’ and populate the largest regions in the map. There are however some islands, produced notably by very cool giants or by hot stars.

The same t -SNE map is shown in Fig. 2 coloured by the different flags employed for the $c1$, $c2$, $c3$ variables in DR5, which correspond to the morphological classification of M12. Here we plot the stars whose three first morphological classification flags are identical. We can see how the central region of the map is mostly grey (normal stars) but there are some stars that have been flagged. This is consistent with the study of the morphology of RAVE spectra of M12 who concluded that about 90–95 per cent of the stars are normal, and the rest are either peculiar (double-line binaries, chromospherically active, strong TiO bands, etc.) or have some technical failure in the spectra (ghosts, wavelength calibration, etc.). Each of these not-normal stars have a flag denoted by different colour.

In the t -SNE map, the differently flagged stars populate well-defined regions and are consistent with our expectations from the

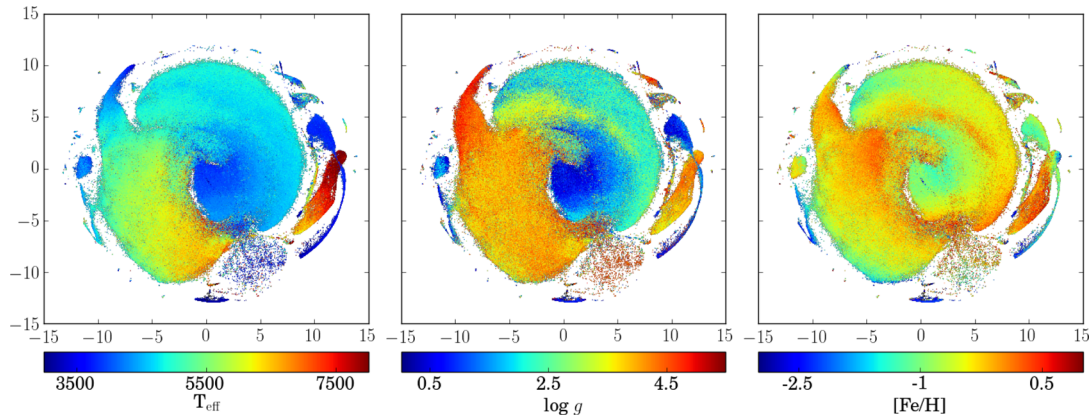


Figure 1. t -SNE maps of the RAVE stars coloured by effective temperature (left), surface gravity (middle) and metallicity (right). The parameters are those of the RAVE DR5 pipeline. Black colour corresponds to stars with no parameters in DR5, which are mostly those with very low SNR.

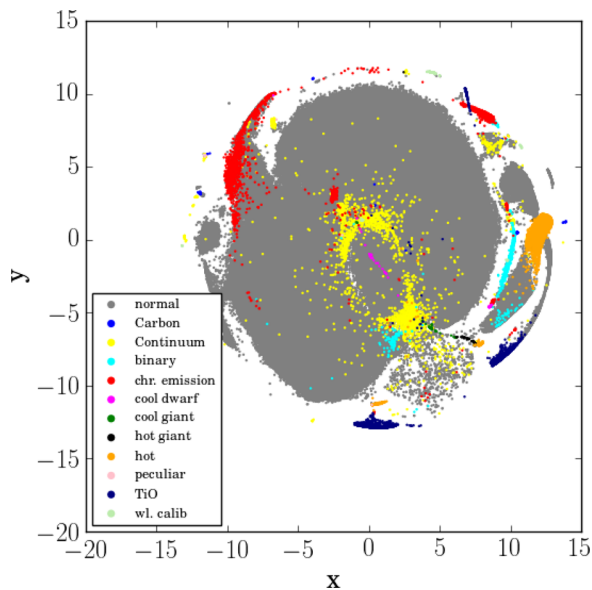


Figure 2. t -SNE map of the stars which have $c1$, $c2$ and $c3$ flags consistent with the nomenclature of the legend. The majority of the stars are coloured with grey, indicating they have normal spectra. The analysis of the flags of these data is described in M12.

stellar parameters. For example, some islands of cool giants are flagged with strong TiO bands (dark blue colour). There is also a flag for the very hot main-sequence stars (orange colour). Binaries populate an island coloured in cyan and chromospherically active stars populate the edge of the main island, as well as the binary island, and are coloured with red. Stars with problems in continuum normalization are coloured with yellow and are distributed in different parts of the map but still clustered together in three main groups, mostly representing the cool stars. This is not surprising, we know that cool stars have strong absorption features making it more difficult to find the continuum in the spectra (see e.g. Lebzelter et al. 2012; Jofré et al. 2014, for extensive discussions). It is worth to mention that this normalization issue does not necessarily impact the DR5 parameters as the pipeline re-normalizes the spectra to account for such problems.

Both figures tell us that the t -SNE map indeed orders the stars according to their morphology and thus, neighbouring stars in this map can very likely be treated as twins. In order to use this map

and the twin method to determine parallax to the non-TGAS-RAVE stars, we basically search for stars in the TGAS-RAVE set that are neighbours of the non-TGAS-RAVE stars. To do so, we first review the basics of how we determine the parallax of twin stars below.

3.1 Determination of twin parallaxes

First, we emphasize that in this work we determine parallaxes and not distances. This is because we use the parallax of TGAS as a reference. To transform parallax to a distance, we refer to the discussion of Bailer-Jones (2015) who highlights the challenges of inverting and estimating the parallax, in particular its uncertainty. We follow the procedure of J15 and M16 to determine the twin parallaxes. Here we consider the 2MASS J and K_s photometric bands for two main reasons. First, they are less affected by extinction and second, all stars in the RAVE catalogue have this photometry.

An important assumption to mention here is that spectroscopic twins must have not only the same luminosity but also the same intrinsic colour. Therefore, the extinction between two stars can be directly related to the differences in their observed colours, $(J-K_s)_1$ and $(J-K_s)_2$. This allows us to use the following equation to determine the parallax:

$$K_{s,1} - K_{s,2} = \frac{R_K}{R_J - R_K} [(J - K_s)_1 - (J - K_s)_2] = -5 \log(\varpi_1 / \varpi_2), \quad (1)$$

where $R_J = 0.7$ and $R_K = 0.3$ are the ratio of total-to-selective extinction in the J and K_s bands, respectively. The values are taken from the empirical transformations done by Yuan, Liu & Xiang (2013). The importance of assuming that twin stars have the same colour is that we do not need to correct the photometry of the stars by extinction, which implies that we do not depend on using dust maps such as those provided by Schlegel, Finkbeiner & Davis (1998) or Schlafly & Finkbeiner (2011). We note that equation (1) is only valid if the assumption that $d = 1/\varpi$ is good. This is only the case for precise parallaxes (Bailer-Jones 2015).

In Fig. 3 we show the distribution of stars in the t -SNE map of the entire TGAS sample in black, and for accurate (better than 20 per cent fractional uncertainty) and positive parallaxes from TGAS with red. About half of the RAVE-TGAS sample is suitable as reference, covering large parts of the parameter space except the coolest giants, which include the most distant stars because they are very bright. The performance of our method for such stars

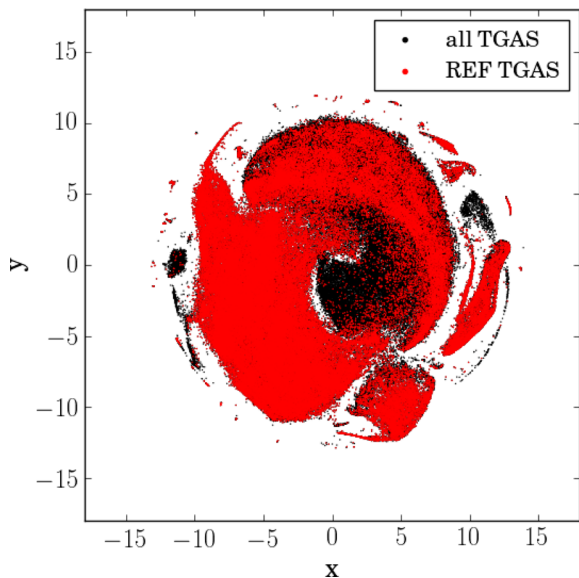


Figure 3. t -SNE maps for the TGAS sample and the sample with accurate and positive parallaxes, which is the one suitable for determination of twin parallaxes. A large number of stars is rejected from this cut, in particular cool distant giants.

will have to be investigated when the second data release of *Gaia* becomes public in 2018.

To get a robust result in the twin parallax, we require to have at least five twin candidates with a measured parallax of accuracy better than 20 per cent of a given target (e.g. ‘quintuples’) to compute a distribution of twin parallaxes following equation (1) (see below and in M16, as well as discussions in Ivezić et al. 2014). We define the final parallax to be mean of this distribution after performing a 5σ clipping to remove spurious values due to wrong reference parallaxes, poor photometry or bad spectra, and its uncertainty is the standard error of this mean. We note however that this value corresponds to the internal error only. To have a realistic measure of the uncertainty of our parallax, we need to account for external errors. For that we study the agreement in the parallaxes derived with external sources which is discussed below. We finally comment that this work is done only with reference stars with positive parallaxes, as we can only determine ϖ_2 by applying equation (1) if ϖ_1 is positive.

3.2 Twin stars suitable for parallax determination

To take the best twins of a given target from the t -SNE map, we choose the stars within a circle of radius R around the location of that target in the map. That gives us the stars with closest spectra and therefore the best twin candidates for each star. We then selected the best candidates using a χ^2 criterion which would minimize the fractional difference between the twin parallax and the direct value by TGAS which we define by

$$\Delta = \frac{\varpi_{\text{TWIN}} - \varpi_{\text{Gaia}}}{\varpi_{\text{Gaia}}}, \quad (2)$$

where ϖ_{TWIN} and ϖ_{Gaia} correspond to the twin and *Gaia* parallax of an object, respectively.

The aim is to have a radius R that encloses at least five twin candidates with accurate parallaxes and provides the distribution of Δ with a mean that is closest to zero and small dispersion. The dispersion is attributed to the fractional external uncertainty of our

method. Furthermore, we require a value of R that maximizes the number of twin candidates, i.e. we aim to determine parallaxes for the entire data set. In order to find this value, we randomly selected a sample of 75 per cent of the TGAS-RAVE stars as reference stars. The parallaxes of these stars were used to measure the twin parallax of the remaining 25 per cent of the stars (30 303 stars), which were then compared to the *Gaia* parallaxes. We note that these numbers correspond to stars which were selected to have TGAS parallaxes that were measured with an uncertainty of better than 20 per cent and were positive.

In this sample, 30 143 had at least five twin candidates enclosed in a circle with a radius of $R = 0.5$ with the median number of twin candidates being 341. For these candidates, we calculated their χ^2 with the target star and studied the distribution of all pairs in order to find which χ^2 would give us the best agreement with TGAS for the largest number of RAVE targets.

In order to calculate the χ^2 , we had to normalize the spectra, correct them to have in the same reference frame and finally re-sample them such that every pixel could be compared. This was done using the functionalities of *iSpec* (Blanco-Cuaresma et al. 2014b). Since we do not aim to compare the spectra with models, we performed a cross-correlation of the twin candidates with the desired target directly. The result of this cross-correlation was then used to align and re-sample the twin candidates to the reference frame of the target. Likewise, the spectra of the twin candidates were normalized using the target as the reference template. While this procedure was more time-consuming than correcting by RV and fitting with polynomial fits the continuum of the spectra, this differential comparison gives us the chance to resample one spectrum to the reference template that gives us an accurate goodness-of-fit measure. We further comment that with this procedure we could use the peak and width of the cross-correlation to select the best candidates, which were expected to have the highest peak and narrower width. Since all stars selected to belong to the circular area of the t -SNE map and were thus quite similar to the template already, the two cross-correlation output values were not clearly indicative as the χ^2 as we see below.

To find an appropriate cut in χ^2 , we randomly selected 1000 stars and studied their χ^2 distributions as a function of the agreement between the derived twin parallax and TGAS. This can be seen in Fig. 4, which shows how different quantities depend on χ^2 . For this plot, we binned the sample in χ^2 and calculated the mean and the width of the Δ distribution. The width was defined as the difference of the 25 per cent and 75 per cent percentiles (Ivezić et al. 2014). These quantities are shown for each χ^2 bin on the top and middle panel, respectively. On the bottom panel, we show the fraction of the stars in our sample for which a twin parallax could be determined after requiring at least five twin candidates that have χ^2 of the corresponding bin.

There is a correlation of χ^2 as a function of agreement between TGAS and our results, in which the larger the χ^2 , the larger the disagreements. However, by forcing χ^2 values that are too small, we compromise too by obtaining results for fewer stars. By requiring to have at least five twin candidates that have $R < 0.5$ in the t -SNE map and have parallaxes more accurate than 20 per cent and individual twin parallaxes in 35 per cent agreement with TGAS, we need to consider twin pairs that cannot have a χ^2 above 670. This allows us to determine twin parallaxes for 80 per cent of the TGAS sample.

To illustrate this, we show in Fig. 5 examples of spectra of stars that are located at different parts of the t -SNE map, which is plotted in the central panel for reference. Each spectrum is represented with a different colour and we see how their morphology is different at

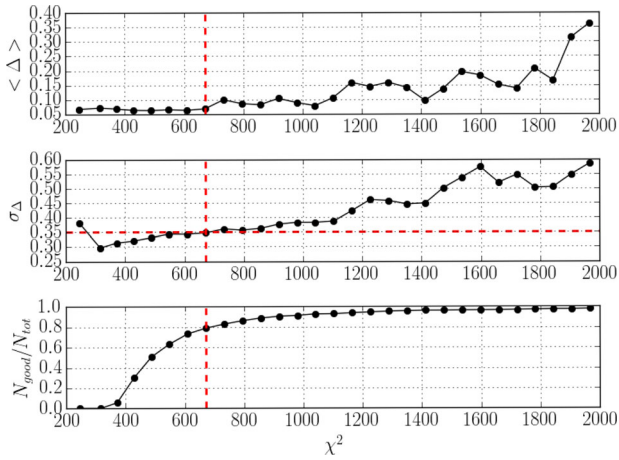


Figure 4. Distribution of χ^2 of pairs of a randomly selected sample of 1000 stars. Upper panel: The mean difference of twin and TGAS parallaxes. Middle panel: The dispersion of the difference between twin and TGAS parallaxes. Lower panel: The fraction of stars in the sample for which we could determine twin parallaxes following the criteria discussed in the text. The dashed horizontal red line indicates the external accuracy of 35 per cent.

different regions in the map. In addition, the spectra of all twin candidates which have $R < 0.5$ from the target have been added with a scatter plot to the corresponding panels. Stars with $\chi^2 > 670$ are represented with grey while stars with $\chi^2 < 670$ are illustrated with pink. It is possible to see that the pink stars are systematically more alike to the target than the grey stars.

The final twin parallaxes (i.e. the average of all twins of a given target which satisfy the conditions of above) have an agreement with TGAS of 28 per cent and a bias of 9 per cent towards larger values

in the case of the twin parallaxes. The fact that the agreement is better than 35 per cent is because we have included all stars that have smaller χ^2 than 670, which show to have better agreement than 35 per cent.

3.3 Uncertainties

To see if our uncertainty estimates are well-determined, we consider the difference of the twin and *Gaia* parallax of a given star as follows:

$$\Delta/\sigma = \frac{\varpi_{\text{TWIN}} - \varpi_{\text{Gaia}}}{(\sigma(\varpi_{\text{TWIN}})^2 + \sigma(\varpi_{\text{Gaia}})^2)^{1/2}}, \quad (3)$$

where ϖ_{TWIN} and ϖ_{Gaia} correspond to the twin and *Gaia* parallax of an object respectively, and $\sigma(\varpi_{\text{TWIN}})$ and $\sigma(\varpi_{\text{Gaia}})$ are their respective uncertainties. Here $\sigma(\varpi_{\text{TWIN}})$ corresponds to the sum of the quadratures of the internal uncertainty (standard error of mean parallax of all twins) and external uncertainty (agreement with TGAS of 28 per cent, see above). Expression 3 is taken from B14 and serves to indicate if the differences are significant considering the uncertainties of the measurements.

In Fig. 6 we show the distribution of Δ/σ . We obtain a small offset of $\langle \Delta/\sigma \rangle = 0.01$ and unit dispersion, indicating that our uncertainties are well determined. For comparison, we also show with blue the Δ/σ distribution of the parallaxes reported as part of RAVE-DR5 which are determined as described in B14. We note that the distances used here are based on RAVE DR5 stellar parameters. The distribution of DR5 parallaxes has a similar offset and dispersion as our distribution.

We comment that systematic uncertainties in the TGAS sample are extremely complex as they are highly correlated with the position of the star in the sky (the scanning law), the distance of

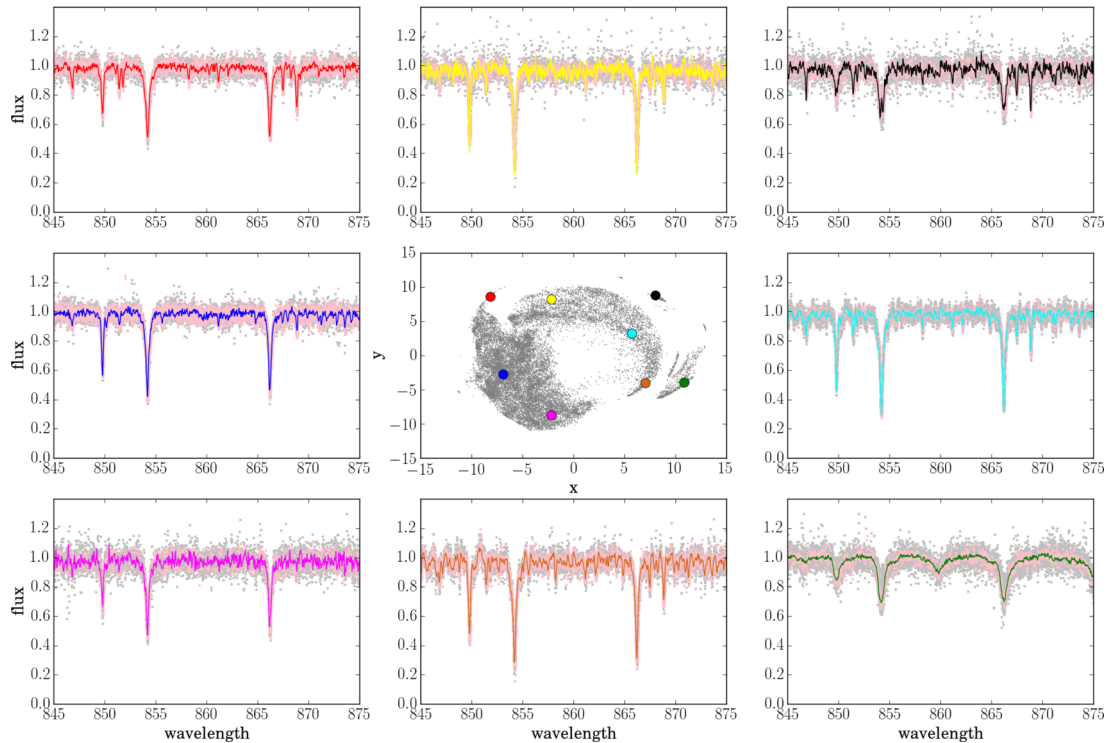


Figure 5. Example of RAVE spectra of different types. Their twin candidates with $\chi^2 > 670$ are plotted with grey while the twin candidates with $\chi^2 < 670$ are plotted with pink. It is possible to identify the position of the stars in the t-SNE map by identifying the circle of the same colour as the spectra in the central panel.

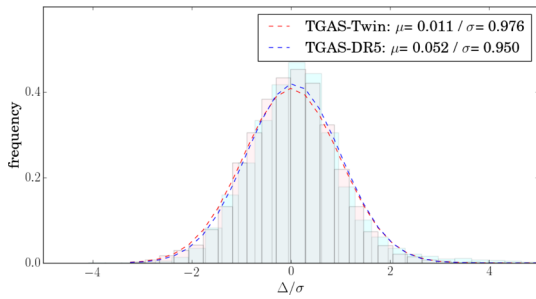


Figure 6. Upper panel: Distribution of Δ/σ between our results and TGAS. Lower panel: Distribution of fractional uncertainties (internal and external) for the twin parallaxes and for TGAS for the same stars.

the stars, spectral type and so on (Lindgren et al. 2016; Gaia Collaboration 2017). Extensive discussions have recently arisen in the literature concerning systematic uncertainties of TGAS, which not necessarily agree (e.g. Gould, Kollmeier & Sesar 2016; Jao et al. 2016; Casertano et al. 2017; Davies et al. 2017; Gaia Collaboration 2017; Hawkins et al. 2017, to name a few). Therefore, in this work we only take the uncertainties reported directly by the first data release of *Gaia*, which are described in Lindgren et al. (2016). Further systematic uncertainties will be thus propagated through the entire sample according to equation (1) (see also J15 for discussions).

4 RESULTS

In this section, we investigate how our results for the TGAS-RAVE sample agrees with the *Gaia* values, as well as with the model-dependent results provided as part of RAVE-DR5 which are calculated using the procedure described in B14. We also compare our results with open clusters.

4.1 Comparisons of parallaxes

We consider only the randomly selected 25 per cent (see above) of the RAVE-TGAS sample with uncertainties above 20 per cent and positive parallaxes to see with what accuracy we can determine the distances of twin stars when RAVE spectra are available. From the 30 303 selected stars, we could determine parallaxes for about 80 per cent of this sample when adopting a value of $R = 0.5$ for the radius enclosing the twin stars of a given target and a $\chi^2 \leq 670$, which corresponds to a total of 22 927 stars. We compare the *Gaia* parallaxes with our parallaxes as well as with parallaxes determined considering stellar parameters and isochrones.

When considering (model-dependent) spectrophotometric distances, parallaxes could be determined for 22 028 stars with RAVE-DR5 parameters and for 21 052 stars with RAVE-on parameters. In both cases, an additional criterion based on the quality of the parameters had to be adopted to provide a distance. In the case of the distances reported in B14, no distances for stars whose parameters were too far from the isochrones employed could be provided. We found that stars with DR5 parameters having temperatures above 7500 K and metallicities below -3 had no DR5 parallax provided. In the case of the distances derived from RAVE-on parameters, an initial selection was done to the stars removing those stars whose parameters were not reported and those with $\chi^2 > 3$, which indicates a low quality of the fits. Like in the case of B14, no further distances could be provided when the parameters were too far from isochrones. We found that most of the low SNR stars suffered from

these selections, and that no star with $\text{SNR} < 10$ had a distance determined from RAVE-on parameters.

Low SNR stars have been flagged for problems with continuum level by M12, making our criteria to assess good twins more uncertain. Thus, for low SNR our twin parallaxes also became very uncertain. To compare the performance of our results with the model-dependent results, we compare parallaxes obtained for the exact same sample, i.e. for the sample with derived twin parallaxes and spectrophotometric parallaxes (considering both, DR5 and RAVE-on parameters). Our sample thus comprises of 21 052 stars.

4.1.1 Twin versus Gaia parallaxes

The fractional difference of the *Gaia* parallaxes relative to our values, as defined in equation (2), as a function of stellar parameters is displayed in the upper panels of Fig. 7. In this comparison, we use the RAVE DR5 parameters for reference for the x -axis, but using the RAVE-on parameters does not change the main features of these figures as in general both parameters agree (see K17 for discussion). We recall here that our method is independent of the parameters of the stars; hence here they are displayed for analysis of how well we can obtain parallaxes for different kinds of stars only. In the lower panels, we show the differences of parallaxes as a function of Galactic latitude, as a function of parallax (in logarithm), as well as a function of *Gaia* parallaxes and SNR of the spectra. In all panels, we plot with grey the normal stars and with colours the flagged ones (see Fig. 2). We binned the data and calculated the mean and width of the distribution for the normal data for each bin; the numbers of stars in each bin are indicated at the top of each panel. These are represented with the filled grey circles and the error bar.

The scatter between *Gaia* and our parallaxes decreases with increasing temperature, in which stars with temperatures below 5000 K have a dispersion that can be larger than 30 per cent. These stars are located in a region of the τ -SNE map which overlaps with dwarfs. By requiring twins to be those enclosed within a given radius R in the map, we might be using wrong assumptions of the absolute magnitude, i.e. confusing our giants with dwarfs and hence, underestimating their distances. This is consistent with the trend seen for surface gravity. For giants we obtain an overestimation of parallaxes and a very large scatter, because using the magnitude of a dwarf as a reference for a giant implies closer distance for the giant. This reflects the difficulty of separating between dwarfs and giants when only spectra around the Ca II triplet are available (e.g. Kordopatis et al. 2011; Recio-Blanco et al. 2016; Valentini et al. 2017). We also note that by selecting only stars with accurate *Gaia* parallaxes, we have a sample more dwarfs than giants, which can be seen by the number of stars in each bin. For stars with surface gravities above 2, the scatter of Δ is of the order of 30 per cent and there is no significant offset.

For metallicity we do not obtain a clear trend of Δ , except that for metal-poor stars our method becomes more uncertain. We note however that there are very few stars at low metallicities, which could be the cause of the apparent large error bars. The agreement as a function of Galactic latitude also does not show an evident trend, although at $b \sim -5^\circ$ a slight increase of parallaxes is found. This could be the reflection that employing the ratio of total to selective extinction ratio of $R_K = 0.3$ is not the best approximation for very extincted regions. This slight difference is however still negligible compared to other uncertain regions in the parameter space such as the low-gravity stars.

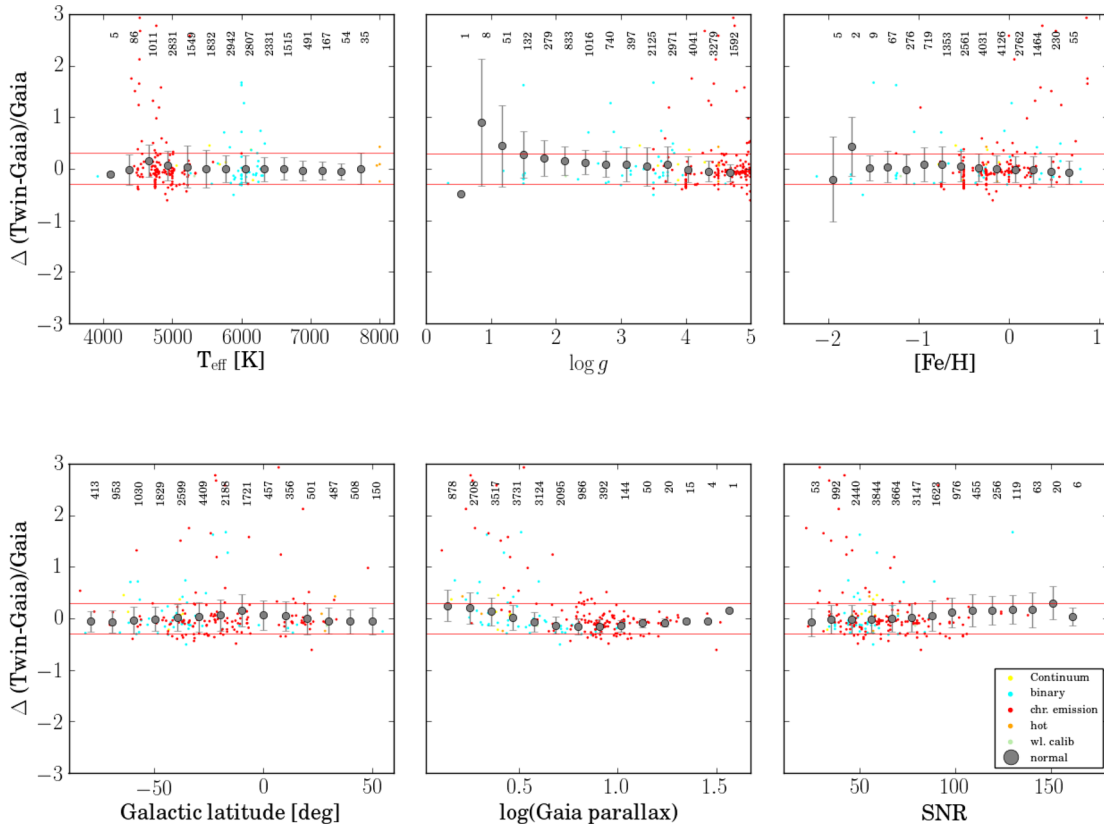


Figure 7. Upper panels: Δ comparisons of parallaxes between TGAS and our results as a function of stellar parameters taken from RAVE DR5. Lower panels: Comparison of parallaxes as a function Galactic latitude, parallax and SNR. For better visualization, normal stars have been binned with their mean of Δ represented with the circle and the dispersion with the error bar. The number of stars in each bin is indicated at the top of each panel.

There is a dependence of Δ with *Gaia* parallax, in the sense that for smaller *Gaia* parallaxes a larger twin parallax is found. Again that might be related to the giants, which due to the selection effect of RAVE stars have a tendency to be further away and thus have smaller parallaxes. These are uncertain with a systematic offset towards larger twin parallaxes, which is what we find here. For larger parallaxes (of the order of 10 mas or more) our parallaxes have a very good agreement with *Gaia*, with very small dispersion. Finally, our results do not have a strong dependence on SNR. Δ slightly increases with SNR but remains within 30 per cent agreement with a scatter that seems to be the same in every bin.

In general, we obtain parallaxes with the same accuracy for normal and for flagged stars, demonstrating our ability to determine parallaxes independently of stellar parameters. It is encouraging to note that we retrieve accurate distances for most of the chromospherically active stars (red), carbon stars (light blue), hot stars (orange), TiO stars (blue) and binaries (cyan). In many cases, there are numerous normal stars within the radius R of the star flagged (see Section 3.2), i.e. the signatures of peculiarity are in these occasions very weak. This suggests that this peculiarity (activity, binarity, pollution by e.g. carbon) might not systematically affect the luminosity with respect to a star of similar nature but not peculiar. This weak signature, however, might be significant enough to affect the pipeline deriving parameters such that the pipeline converges at wrong parameters (see further discussion in next section).

If the signature is large, the stars normally will be more isolated in the τ -SNE map and not many normal stars will be in the same region (see also discussions in T17 on this matter), which can then affect the luminosity more significantly. This was studied by Reid &

Parker (2012), who used the known and somewhat constant distance for all objects in the LMC to compare brightnesses of emission-line stars according to spectral types. In this case the constant was the distance rather than the spectral type. They found that $H\alpha$ alone could distort the expected magnitude according to spectral type by as much as 4 mag. In RAVE we do not have $H\alpha$ emission but it is certainly important to keep in mind that stars showing strong peculiar features might have uncertain distances with our method. We find that stars flagged as hot (orange) show some systematically larger scatter in distances but still not significantly off from normal star scatter, in particular for the cool stars. This is consistent with our results found for the clusters Blanco 1 and Melotte 22, whose members were hot stars (below).

4.1.2 RAVE DR5 versus *Gaia* parallaxes

Distances and parallaxes to all RAVE stars are provided in K17 as part of the RAVE-DR5 data release. They are obtained using the stellar parameters and with the help of PARSEC isochrones (Bressan et al. 2012) as described in B14. We use these results in order to compare the performance of our results with an approach that is model-dependent. Fig. 8 shows the same as Fig. 7 but here the parallaxes are those provided by RAVE-DR5. There is an overall similar picture than our case. Regarding the dependence of stellar parameters, the RAVE-DR5 parallaxes show a strong trend with effective temperature which is an opposite one as for the twin parallaxes. This reflects the fact that it is more difficult to determine distances for giants using isochrones given the large change in luminosity for small changes of temperature which characterizes the red

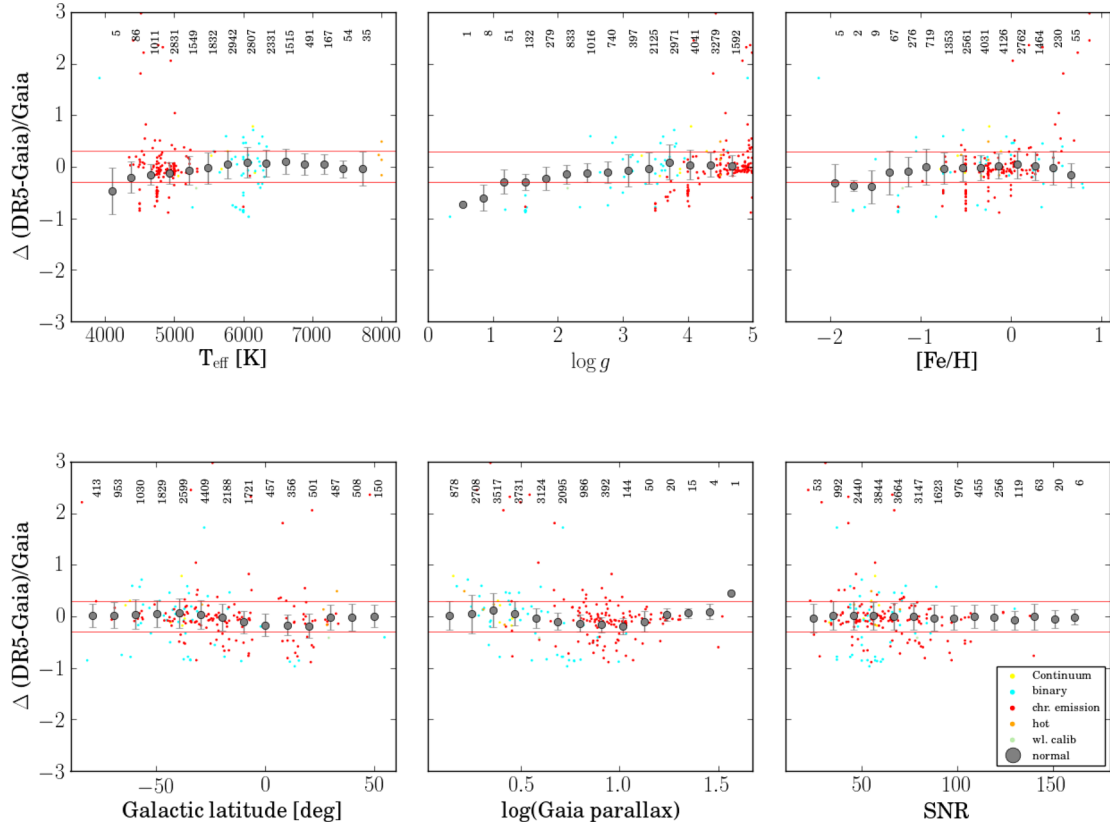


Figure 8. Upper panels: Same as Fig. 7 but here we compare our parallaxes with the model-based ones (see Binney et al. 2014, for details). Further quality flags regarding the convergence of the DR5 pipeline have not been taken into consideration for this sample. Red horizontal lines represent 30 per cent difference.

giant branch in the HR diagram (see discussions in e.g. Rodrigues et al. 2014; Santiago et al. 2016).

It is important to note that parameters of red giants are also challenging to obtain. On the one hand, 3D effects become dominant in the atmospheres of giants (Magic et al. 2015; Collet, Asplund & Trampedach 2007) and on the other hand, red giants have stronger lines making it more difficult to identify the continuum for spectral analysis (Lebzelter et al. 2012; Jofré et al. 2014; Heiter et al. 2015). Differences of stellar parameters, in particular surface gravities, can yield dramatic differences in distances of giants as extensively discussed in Serenelli et al. (2013). In B14 it is extensively discussed how the distances to giants are more uncertain than the distances to dwarfs. As in our case, metal-poor stars show a systematic offset but we repeat that there are too few metal-poor stars to have strong conclusions on this offset.

When looking at Δ as a function of Galactic latitude, we again do not find a strong trend, but at lower latitudes ($15^\circ < b < 15^\circ$) an underdetermination of parallaxes (i.e. overestimation of distances) is obtained by DR5 with respect to *Gaia*. That again hints towards some uncertainties related to the treatment of extinction, but again this underdetermination is small compared to the uncertainties obtained for the giants. In this case, while the dispersion of Δ obtained for low parallaxes is larger than for high parallaxes, the systematic offset is not as large as in the twin case. Finally, the dispersion of Δ seems to slightly improve for higher SNR stars, reflecting the better quality of the stellar parameters and hence the distances derived from them.

In contrast to our results, spectroscopic parallaxes obtained with DR5 parameters show larger discrepancies with respect to *Gaia* for binary stars (cyan), as well as for spectra with chromospheric

activity (red). It is expected that flagged stars will tend to yield more discrepant parallaxes with respect to *Gaia* since features in the spectra like extra lines due to a binary or emission due to chromospheric activity can lead to wrong solutions in the parameter determination pipeline. If the pipeline to derive stellar parameters fails for these cases, this can lead to wrong distances as we see here. As in the previous case, hot stars are slightly more scattered than normal stars. We emphasize here that in K17 and in Kordopatis et al. (2013) it is extensively discussed how the parameters obtained for these flagged stars should not be used.

4.1.3 RAVE-on versus *Gaia* parallaxes

Parallaxes can be determined following the procedure described in B14 but considering the RAVE-on parameters instead. The comparison of these values can be seen in Fig. 9 displayed in the same way as in Figs 7 and 8.

In general the scatter between these parallaxes and those of *Gaia* is comparable to the ones obtained considering DR5 parameters or the twin method (see above) but with some minor differences for particular kind of stars, notably the systematic underestimation of RAVE-on parallaxes for very hot stars. The hot stars have RAVE-on parameters that are uncertain, because no suitable set of training set could be found (see Casey et al. 2017, for further discussions). The fact that the results are in general similar to the DR5 ones is not surprising since the stellar parameters of DR5 and RAVE-on are in general in good agreement when errors are taken into account (K17). We comment that this method to determine distances is based on a Bayesian approach that uses the stellar parameters and a Galactic

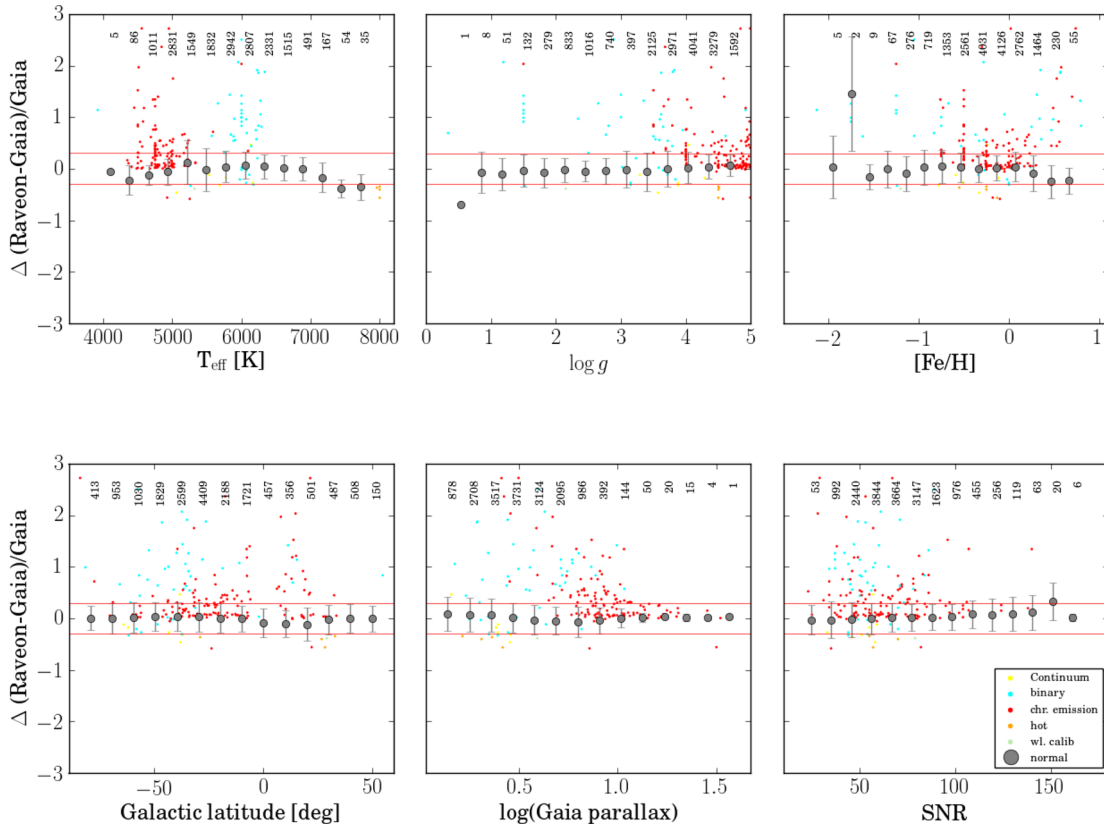


Figure 9. As in Fig. 7 but here using distances obtained from RAVE-on parameters and isochrones.

model as a prior. If the parameters agree within errors, it is expected that the posterior probability for the parallax will be very similar in both cases. Besides the stellar parameters, both approaches employ the same data (photometric bands and isochrone sets) and further priors such as the Galaxy model and extinction law. Indeed, the same systematically lower parallaxes are obtained for stars in the Galactic disc as in the previous cases. For low metallicity, however, a similar large discrepancy of parallaxes as in the twin case is obtained, although this result is found for a very small sample of stars so the offsets could be caused by the small number statistics. There is no significant trend of dependence on SNR or Galactic latitude for this case.

The fractional difference between normal and flagged stars is quite different. While the normal stars appear to yield good agreements within 30 per cent, many chromospherically active stars and binaries do not, in an even more evident way than the DR5 or the twin case. This does not pose a serious problem for distances obtained with this method as stars are flagged and thus can easily be removed from the analysis. However, the difference between normal and flagged stars in this case suggests that the training set needed by *The Cannon* might be incomplete. While recent results of parameters obtained with this method have shown an impressive performance (e.g. Ness et al. 2015; Hogg et al. 2016; Ho et al. 2017) it is clear that this kind of methodology can only perform as well as the training set used to build the model. It is still challenging to have a training set that contains representatives of all kinds of stars in a data set, and that this training set has well-determined parameters for all of these stars. Since *The Cannon* uses the entire spectrum to derive a large set of labels, the fact that flagged stars show a large scatter in the derived parallaxes hints at this method employing the wrong model for

the stars with peculiarities (see also Casey et al. 2017, for further discussions).

4.1.4 Summary of comparisons

We conclude that our parallaxes are competitive with those obtained from isochrones and stellar parameters. We emphasize that our parallaxes are model free. Furthermore, we can obtain parallaxes with equal confidence for the peculiar stars, except some with bad continuum normalization. A better reduction of the data would be necessary to improve these distances. In the same way, better projection parameters for the t -SNE map and perhaps further considerations of colours might help to separate better dwarfs and giants and thus decrease the scatter down to the level of the model-dependent distances. Such improvements remain as part of future work. We note however that our results use the *Gaia* parallaxes of the remaining 75 per cent of the TGAS-RAVE sample and therefore they are calibrated on those data. The spectrophotometric parallaxes, on the other hand, are independent of astrometry, still making them competitive for testing *Gaia* parallaxes.

4.2 Open clusters

Members of several open clusters have been observed in RAVE. A list is reported in Conrad et al. (2014), providing an average value for their RVs and metallicities as determined from RAVE spectra. We looked for these members by selecting stars within an area of 2° around their coordinates. We further selected the stars in that area that have RAVE-DR5 metallicities and RVs within 0.5 dex and 3 km s^{-1} , respectively, of the reported values in Conrad et al. (2014). For our analysis we considered only the clusters for which at least

Table 1. Clusters analysed in this work. The reference parallax (ϖ_L) the metallicity ([Fe/H]) and RV are obtained from the literature (see the text). Our results for the parallax are listed as ϖ_{Tw} with N representing the number of members used for the analysis.

Cluster	ϖ_L (mas)	$\sigma \varpi_L$ (mas)	[Fe/H] (dex)	RV (km s ⁻¹)	ϖ_{Tw} (mas)	$\sigma \varpi_{Tw}$ (mas)	N
NGC 2477	0.77	0.03	-0.19	6.37	1.01	0.11	14
Blanco 1	4.16	0.14	-0.19	6.17	4.03	0.57	7
Melotte 22	7.38	0.31	-0.04	5.9	6.34	0.21	8
NGC 2682	1.18	0.04	-0.1	33.81	1.43	0.11	14
NGC 2632	5.4	0.06	0.1	34.0	5.54	0.28	19
Hyades	21.29	0.81	0.0	39.4	23.70	1.46	6
IC 4651	1.09	0.04	-0.13	-30.41	1.59	0.15	8

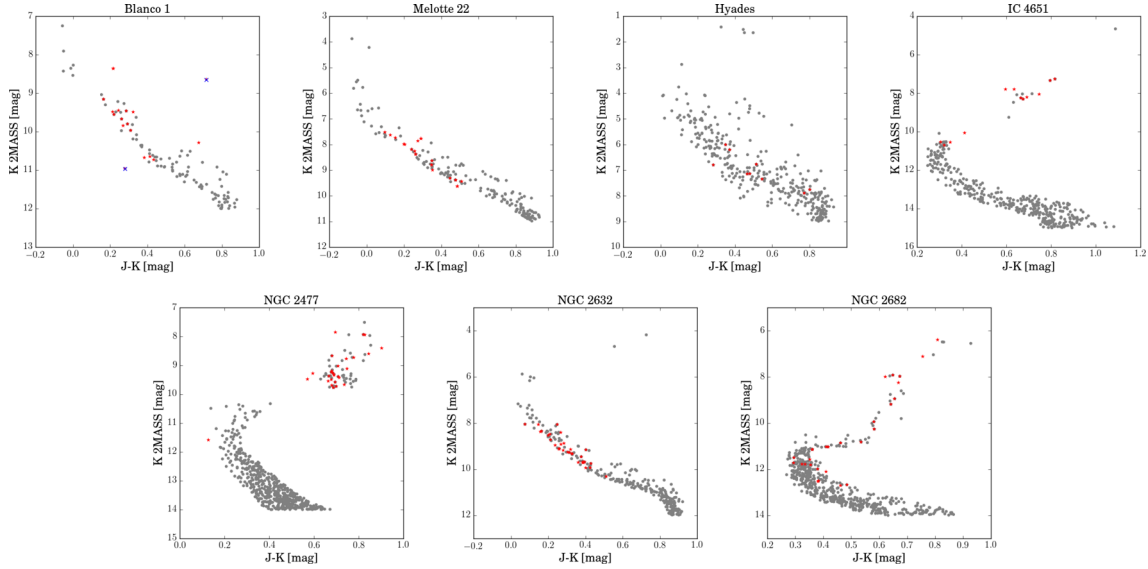


Figure 10. Open cluster 2MASS colour magnitude diagram. In grey, the stars from Kharchenko et al. (2013) that are selected to be members are shown while in red the RAVE stars that satisfy our selection criteria (see the text) are plotted.

10 candidate members passed these selection criteria. For Melotte 22, we adopted the RV reported in Dias et al. (2002), which gave us more selected members. We note that this cluster contains stars that are fast rotators, making the RVs and parameters of RAVE reported in Conrad et al. (2014) more uncertain. We further included the Hyades cluster which was not studied in Conrad et al. (2014) but observed with RAVE. For that cluster we took the reported RV from the Simbad data base (Wenger et al. 2000) and the metallicity from Heiter et al. (2014), which corresponds to a compilation of many literature reports. In Table 1 we list the literature parallax, which is the mean and the standard deviation of different values reported by independent works (see Table A2), as well as the reference RV and [Fe/H] considered for the clusters. We further list our final result for the twin parallaxes.

A further check to ensure we had selected the right cluster members was to analyse the colour-magnitude diagrams (CMD) of the clusters using 2MASS photometry. We considered the stars analysed in Kharchenko et al. (2013), selecting the stars that had a spatial probability $P_s = 1$, kinematic probability $P_{kin} > 0.68$ and photometric probability $P_{JK} > 0.68$. This was done for all clusters except the Hyades, for which we took the photometry published in Röser et al. (2011). In the latter, no further selection based on membership probability was applied since the photometry published in that paper had already analysed membership probabilities.

The CMDs of the selected stars can be seen in Fig. 10 with grey. Our RAVE targets are overplotted with red star symbols. There are two clear outliers in Blanco 1 which have a blue cross and have been removed from our analysis, but for the rest, the CMDs tell us that our selection of members is robust. In Fig. 11 we plot the t -SNE map but this time the cluster stars are colour-coded by cluster membership. The grey colour indicates the field stars. We can see that we have cluster members that span a large area of the map, meaning that we are not biasing this analysis towards one specific spectral type only.

Our results were obtained from the average of the individual twin parallaxes determined for each of the cluster members indicated with red stars in the CMDs of Fig. 10 with the uncertainty corresponding to the standard error of the mean. The names of these member stars along with the twin parallaxes can be found in Table A1. A comparison of the parallaxes for all clusters is shown in Fig. 12, where we plot the fractional difference, $(\varpi_{Tw} - \varpi_L)/\varpi_L$, for each cluster sorted by parallax, i.e. from most distant to closest cluster. Our results are given in red while in grey the error bars of the literature are shown. We see a general good agreement when considering the error bars, with no strong dependence on cluster distance.

The largest difference is found for IC 4651. However, if we consider only the red clump stars of the cluster, our resulting parallax of 1.4 ± 0.06 mas agrees better with the literature value. That value

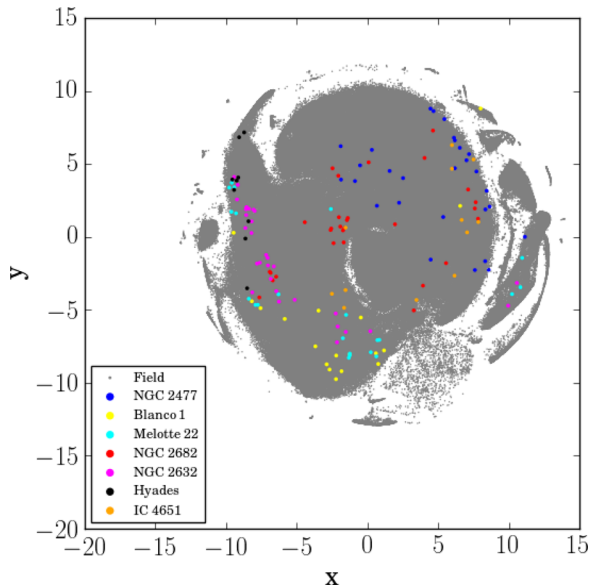


Figure 11. t -SNE map with the cluster members indicated with colours. We have cluster stars spanning a large fraction of the parameter space of RAVE.

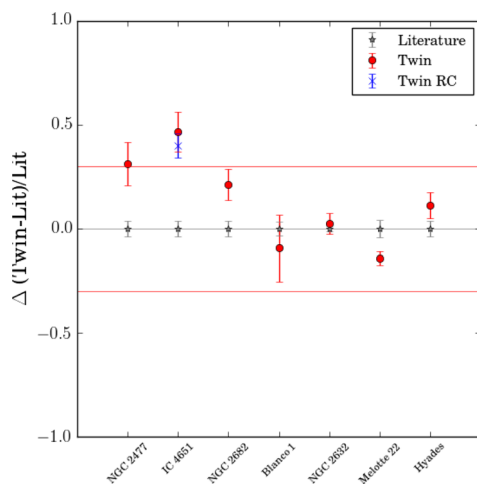


Figure 12. Difference between our values compared with the mean literature value for each cluster as indicated in Table 1. The clusters are sorted by parallax, i.e. NGC 2477 is the most distant cluster and the Hyades the closest. The red lines indicate the 30 per cent agreement. Most of the clusters, when considering the errors, agree within 30 per cent with the literature.

is indicated with a blue cross in Fig. 12. The dwarf stars in the clusters are hot and are located in a region of the t -SNE map in which degeneracies with cool giants exist (see Figs 1 and 11, and also Kordopatis et al. 2011). It is possible that for these stars many giants were used as reference, underestimating the resulting distance.

We comment that for NGC 2682 (also known as M67) and for Melotte 22, a twin parallax has already been reported using high-resolution spectroscopy from HARPS in J15 ($\varpi = 1.23$ mas for NGC 2682) and in M16 ($\varpi = 7.45$ mas for Melotte 22). They present an opportunity to compare the performance of the twin method between high resolution and extended wavelength coverage with lower and shorter wavelength coverage. Our results agree within 20 per cent. Melotte 22 is a young cluster and the cluster members observed with RAVE are many fast rotators and very

hot, which means that the spectra do not contain as many signatures as older and of later spectral types would, e.g. the cluster members we found for NGC 2682 (see Fig. 10). Blanco 1 is a cluster with similar age and metallicity properties as Melotte 22, and thus we obtain a similar overestimate of the distance. The fact that in M16 the distance of the cluster is more accurately determined indicates that the twin method can be applied for such stars, but that the spectra need to be of higher resolution.

Taking our results without further cuts on spectral type, we obtain a mean agreement of 0.13 ± 0.19 , which is consistent with the external uncertainties of our method (see Section 3.3).

5 DISCUSSION

5.1 Parallaxes of the complementary RAVE sample

The complementary RAVE sample consists of stars with negative TGAS parallaxes or with TGAS parallaxes with uncertainties above 20 per cent, as well as the RAVE stars that are not part of TGAS. This sample contains 367 895 stars with non-saturated 2MASS photometry ($K_s > 4.5$ mag) and spectra with $\text{SNR} > 10$.

In the left-hand panel of Fig. 13 we show the t -SNE map of these stars with black. We also show the t -SNE map of the TGAS-RAVE sample with blue selected to have non-saturated 2MASS photometry, spectra with SNR above 1, positive parallaxes and parallaxes measured with accuracies better than 20 per cent. This is our sample used to find twins for reference parallaxes. We can see that there is a good overlap of both samples in the 2D t -SNE map. This indicates that we have a good chance of finding twins for most of the complementary RAVE sample and hence determining parallaxes. We however note the clear islands for which there are no reference TGAS stars, in particular in the regions of cool giants at the centre, as well as the edges of the map.

By requiring $R < 0.5$, $\chi^2 \leq 670$, and at least five *Gaia* targets in the TGAS-RAVE catalogue (see Section 3.2), we could determine parallaxes for 232 545 targets. This corresponds to 60 per cent of the entire complementary RAVE sample. This is less than what we found in Section 3.2 but we were biased towards the same type of stars while in Fig. 13 we see that the TGAS targets do not cover the entire domain of the complementary RAVE sample.

In the right-hand panel of Fig. 13, we plot again the projections of the entire complementary RAVE sample with black but we overplot the stars for which we could determine distances with magenta. We find twins for essentially all stars in the central parts of the map, which are almost all normal stars according to the flags of M12 (see also Fig. 2). We also find twins for stars located some of the islands of the map, notably for binaries, and chromospherically active stars. As discussed extensively above, our method does not show significant discrepancies in the parallaxes retrieved for these peculiar stars with respect to normal stars and therefore the parallaxes derived with our method are as reliable as for normal stars. We recall however that stars flagged with problems with continuum could be incorrect, as well as stars flagged as very hot.

Fig. 14 shows again the t -SNE map this time coloured by the number of TGAS twins found for each target (left), the parallax (middle) and the fractional internal error of the parallax (right). There are few spots in the t -SNE map which are very dense where we find more than 1000 twins, but the majority have about 300 twins. In addition, there are some other regions in which fewer than 50 twins are found.

The middle panel of Fig. 14 is interesting as it shows how the giants are more distant than the dwarfs. We know from Fig. 1 that

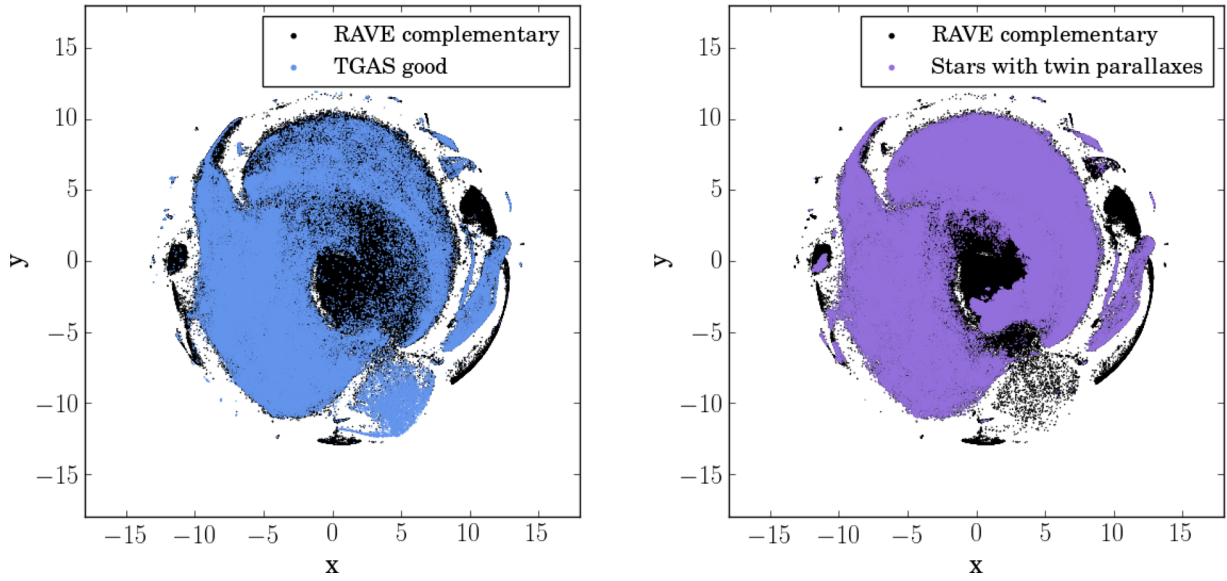


Figure 13. t -SNE maps. Left-hand panel: The complementary RAVE data set is plotted with black and the RAVE-TGAS stars with positive and accurate parallaxes are displayed with blue. Right-hand panel: The complementary RAVE data set is plotted with black and the stars for which we could determine distances using the RAVE-TGAS stars with positive and accurate parallaxes as reference are displayed with magenta.

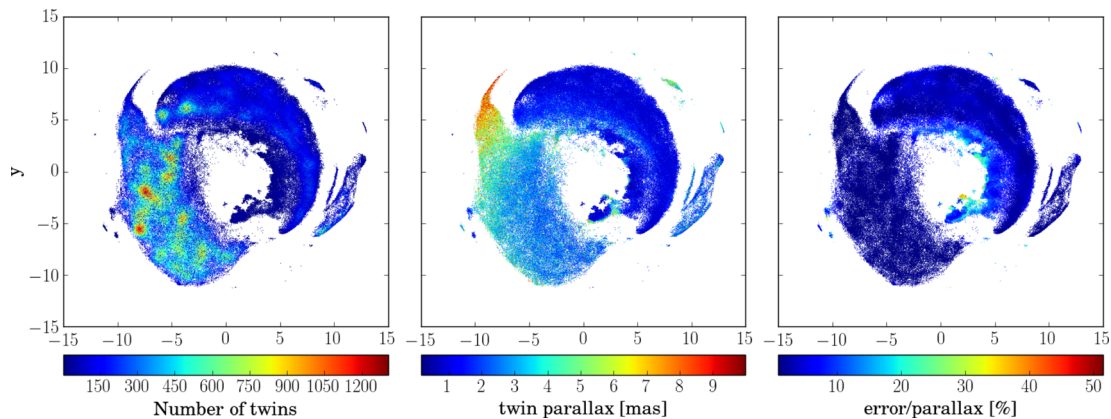


Figure 14. t -SNE map of the stars with twin parallaxes coloured by number of twins (left), parallax (middle) and fractional error of the parallax (right).

the left region of the t -SNE map is where the FGK dwarfs lie while the upper right-hand side is where the FGK giants are located. It is consistent that the map colour distribution has a tendency to be bimodal. The fact that there are very few nearby giants hints at selection effects of RAVE observing all stars within a magnitude range. Nearby giants are too bright and therefore are either not part of RAVE or have saturated photometry which implies we cannot use equation (1) for the parallax determination (see Wojno et al. 2017, for details of the selection function).

We further note that the closest stars correspond to the cool dwarfs (see Fig. 1). They populate the upper tip of the map, as well as a small region above the FGK giants around $(x, y) = (6, 6)$. They have to be close since their intrinsic luminosities are very low. The island of hot stars also corresponds to mainly OBA main-sequence stars, which are intrinsically brighter than FGK dwarfs but fainter than giants. These stars have a wide range of parallaxes. There are other islands around $(x, y) = (-10, 0)$ which contain rather distant stars. Most of these islands are where the very cool giants lie (see Fig. 1). These stars are very luminous so it is expected they are in general more distant.

It is also interesting to see a rather sharp transition from nearby to distant stars at the centre of the map. The parameters also change relatively abruptly in that region of the map. There is a mixture however of dwarfs and giants, which explains why in that region the error in the parallax is larger (see right-hand panel). When inspecting that panel, we also note that the fractional internal error in the parallax is in general independent on the parallaxes. Other more uncertain results are seen for the island at the inner edge of the right-hand side of the map. These regions are flagged to have problems with the continuum, have very few twins (see right-hand panel) and correspond to the regions in which dwarfs and giants overlap, causing a larger dispersion of the distribution of twin parallaxes. The stream of the binaries does not appear to be significantly more uncertain than the rest of the stars.

We note, however, that the island of cool giants has quite uncertain parallaxes. These stars are not flagged, but we know they show evidence of being discrepant from TGAS in our analysis of Section 4.1. These stars also have a small number of twins, making the standard error of the mean systematically larger than the rest of the sample. To summarize, we obtain in general internal errors

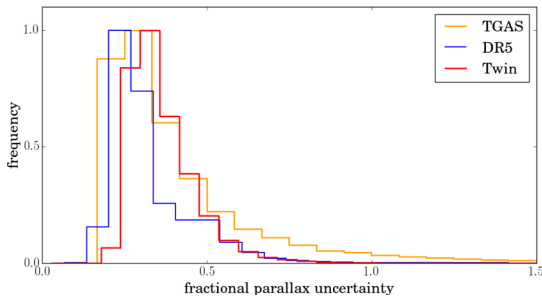


Figure 15. Distribution of fractional uncertainties for the TGAS stars that were not included as reference stars, along with the results obtained with the twin method, as well as with DR5.

that are no more than 10 percent the majority are of the order of 5 per cent but in a few cases of the order of 30 per cent.

5.2 Comparison with TGAS

In the complementary RAVE sample there are 36 per cent of the stars that have positive TGAS parallaxes with accuracies worse than 20 per cent. We compare these values with those obtained with the twin method, as well as with the spectroscopic parallaxes from DR5. In our case we consider the total uncertainties, i.e. the internal standard error of the mean and the external one of 28 per cent obtained from our analysis in Section 3.3, which are added quadratically.

In Fig. 15 we show the distributions of the total fractional uncertainties obtained by us with the red histogram while the TGAS uncertainties are shown with orange and DR5 with blue. All histograms have been scaled to peak at 1.0 for better visualization. The quality cuts on the parallax of requiring accuracies better than 20 per cent were done on the reference sample for our results. Our results peak at higher uncertainties than TGAS and RAVE-DR5, but TGAS has a long tail towards uncertainties above 50 per cent. The results from RAVE seem in general to be more accurate than ours, but since they depend on stellar parameters, which means that for 5 per cent of this sample no DR5 parallaxes were available.

This comparison shows us that the twin method is a good complement of *Gaia* as it helps to improve the precision for uncertain cases, even when spectra of short wavelength coverage and intermediate resolution are to our disposal. This situation can only improve in the advent of on-going and future high resolution spectroscopic surveys.

5.3 Climbing the cosmic distance ladder in RAVE

Due to the large differences in absolute magnitudes between dwarfs and giants, we separated the sample using the CMD constructed using the *Gaia* parallaxes for the TGAS-RAVE sample with accuracies above 20 per cent (reference TGAS sample) and our twin parallaxes for the complementary RAVE sample. The K_s and parallax distributions both samples for dwarfs and giants are shown in Fig. 16.

In the upper panels of Fig. 16 we plot the K_s distributions of dwarfs and giants separately for both, reference TGAS and the complementary RAVE samples, with blue and red colours, respectively. The complementary RAVE sample is in general fainter than the TGAS one but there is still a large overlap in brightness between both samples. The giant sample in particular shows a very

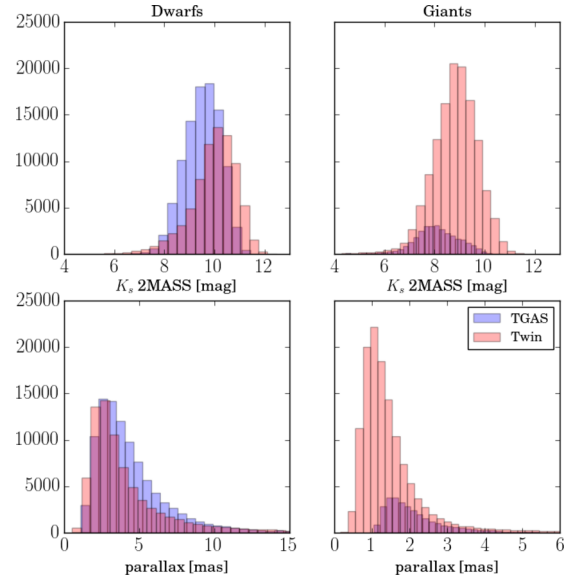


Figure 16. Distribution of K_s magnitudes (top) and parallaxes (bottom) for dwarfs (left) and giants (right) of the TGAS and our complementary sample, in blue and red, respectively.

large number of complementary RAVE stars that are fainter than the TGAS reference sample.

The distribution of parallaxes is shown in the lower panels of Fig. 16, following the same nomenclature and order as the upper panels. For the dwarfs, it seems that the twin stars cover the same range in distances our reference TGAS sample, which might suggest that the faint end of the K_s distribution of the dwarfs corresponds mostly to faint low-mass dwarfs that are not very luminous. For the giant sample, however, the twin stars are overall at large distances compared to the reference TGAS ones.

5.4 Final catalogues

We provide a catalogue of twin distances to 232 545 stars with internal uncertainties defined as the standard error of the mean of all individual twin parallaxes. They can be downloaded from RAVE page or from Vizier.

We also provide the list of twin candidates for each of the TGAS stars used in our reference sample as selected from the τ -SNE maps and their value for the χ^2 . This material can be used to develop further models of parallax estimate of twin stars selected from our selection of candidates, as well as to investigate further science problems of Galactic structure of twin stars.

6 SUMMARY AND CONCLUSIONS

We have described the application of the twin method to determine parallaxes for stars in the RAVE survey. The method is based on the proposition that if two stars have the same spectra (hence twins) they have the same luminosity. By knowing the parallax of one star, we can estimate the parallax of its twin by comparing their magnitudes. The power of this method is that it is remarkably simple and model-independent.

To find twin stars, we applied the τ -SNE technique to analyse the spectra in a two-dimensional map in which the spectra are distributed according to their similarity. Neighbouring stars in the map are treated as twin candidates. The reason for using τ -SNE to do this was because the RAVE data set is the largest one used with

the twin method so far, and the spectra have more noise and shorter wavelength coverage than previous works on this subject. We therefore had to implement a procedure to deal with the entire available spectrum efficiently. Previous literature on the performance of τ -SNE and related techniques on spectra suggested that this procedure is suitable for our purpose. In this paper, we demonstrate that it is the case. We further computed for all the twin candidates their χ^2 to select the best twin candidates.

By requiring the stars located at a radius of $R = 0.5$ in the τ -SNE map around a given target to be their twins and selecting those with $\chi^2 \leq 670$, we were able to determine parallaxes for 60 per cent of the sample. This number was obtained after selecting only the stars with TGAS parallaxes more accurate than 20 per cent, which reduced our reference sample by a factor of 2 and removed a large portion of the cool giants. The accuracies of our parallaxes were investigated and compared to the accuracies of other model-dependent methods based on stellar parameters derived from the spectra and isochrone fitting. Our uncertainties show a unit dispersion when compared to *Gaia* parallaxes, which suggests that our results have properly estimated systematic uncertainties. We defined the internal uncertainties as the standard error of the mean of all twins found in the map with the criterion of above. External uncertainties were estimated as 28 per cent from comparisons to TGAS. We applied the method to seven open clusters, finding a similar agreement with the literature as with our comparisons with TGAS.

An important result of this work is that we could also determine parallaxes with comparable accuracy for peculiar and for normal stars. This result further demonstrates the power of the twin method in that it does not depend on stellar parameters. Peculiar signatures in spectra are sometimes very weak and do not affect significantly the total stellar flux, hence maintaining the proposition that they have same luminosities. These weak signatures can however cause a significant effect in parameter determination leading to erroneous solutions. This propagates to wrong distances with model-dependent methods. Likewise, cool dwarfs have isochrones that are uncertain, also making it more difficult to determine distances for these stars. Our twin parallaxes for them are like for any other star as we do not employ isochrones.

We note however that for stars with low gravities our results were not very accurate, mainly because of degeneracies between dwarfs and giants in RAVE spectra which means that we had dwarf stars as reference for giants. Very hot stars also showed more uncertain results, perhaps due to the few and very broad lines presented in the spectra which makes the RV determination and thus the comparison of the spectra harder. Finally, we found that for cool giants our results also showed larger errors. We attributed that to the fact that for those stars fewer twins were found leading to a larger standard error of the mean.

Our final catalogues include a list of all twin candidates for each TGAS-RAVE target of our reference sample, as well as a catalogue of twin parallaxes of the complementary RAVE targets. These catalogues can be found either on the RAVE website¹ or in Vizier.

We conclude this work by answering the questions placed in Section 1:

(i) *How accurate are our results when applied to the RAVE survey?* We can compare directly the results obtained with the twin method with very high resolution and extended wavelength

coverage from spectra taken from the HARPS spectrograph and with lower resolution and shorter wavelength coverage from RAVE spectra for the distances of two open clusters, the Pleiades (Melotte 22) and M67 (NGC 2682). For the Pleiades we obtain with RAVE spectra an accuracy of 0.23 mas while a much better accuracy of 0.03 mas was obtained with HARPS spectra. For M67 the results have comparable accuracies that might be due to the fact that the stars analysed in M67 are in the red clump, whose spectra have well-defined lines. It is clear that the method applied to spectra like RAVE will produce more uncertain results, as the confidence with which we assess twin stars decreases, in particular for spectra which have very few and broad lines.

While it is true that one pair of twins might yield a twin parallax that is significantly more uncertain in the RAVE case than in HARPS, the power of surveys is that we have much larger data sets at our disposal than the HARPS archive. Thus, the final results will have a strong statistical significance. In several cases, we found more 500 twins for our targets, which means that the mean of the distribution of their distances is very robust, with standard errors that tend to be negligible compared to the input uncertainty of *Gaia*.

(ii) *For how many stars in a spectroscopic survey can we apply the twin method to determine distances?* For RAVE, we could determine distances to 60 per cent of the sample. This is because the TGAS reference and the complementary RAVE samples have stars of very similar nature, which means that we could find reference stars for almost every target in the τ -SNE map that was covered by the accurate TGAS reference sample. Spectroscopic surveys follow a selection function and thus obtain spectra that are similar to each other. In the case of RAVE, we refer the reader to Wojno et al. (2017) for its selection function. We also note here that the reference data set is equally large as the target data set. It remains to be investigated if this percentage is also obtained for other surveys with a smaller overlap with TGAS, such as APOGEE.

Soon the second *Gaia* data release will become available and will contain parallaxes of a billion of stars in the Galaxy, including all stars of the RAVE survey. While such trigonometric parallaxes will provide with the basic knowledge about the distances of stars, the accuracy will inevitably decrease with distance. With the data sets of stellar spectra forthcoming with WEAVE (Dalton et al. 2016) and 4MOST (de Jong et al. 2012), the twin method offers an attractive alternative to complement *Gaia* for the most distant stars.

ACKNOWLEDGEMENTS

This work was partly supported by the European Union FP7 programme through ERC grant number 320360. PJ acknowledges King's College Cambridge Research Associate Programme and C. Rodrigo for tips in using VO tools for this work. KH is supported by Simons Foundation. This research has made use of the SIMBAD data base, operated at CDS, Strasbourg, France, as well as tools from the Virtual Observatory.

This work has made use of data from the European Space Agency (ESA) mission *Gaia* (<https://www.cosmos.esa.int/gaia>), processed by the *Gaia* Data Processing and Analysis Consortium (DPAC, <https://www.cosmos.esa.int/web/gaia/dpac/consortium>). Funding for the DPAC has been provided by national institutions, in particular the institutions participating in the *Gaia* Multilateral Agreement.

Funding for RAVE has been provided by the Australian Astronomical Observatory, the Leibniz-Institut fuer Astrophysik Potsdam (AIP), the Australian National University, the Australian Research Council, the French National Research Agency, the German

¹ <https://www.rave-survey.org/project/>

Research Foundation (SPP 1177 and SFB 881), the European Research Council (ERC-StG 240271 Galactica), the Istituto Nazionale di Astrofisica at Padova, The Johns Hopkins University, the National Science Foundation of the USA (AST-0908326), the W.M. Keck foundation, the Macquarie University, the Netherlands Research School for Astronomy, the Natural Sciences and Engineering Research Council of Canada, the Slovenian Research Agency, the Swiss National Science Foundation, the Science & Technology Facilities Council of the UK, Opticon, Strasbourg Observatory and the Universities of Groningen, Heidelberg and Sydney. The RAVE web site is at <https://www.rave-survey.org>.

REFERENCES

- An D., Terndrup D. M., Pinsonneault M. H., Paulson D. B., Hanson R. B., Stauffer J. R., 2007, *ApJ*, 655, 233
- Bailer-Jones C. A. L., 2015, *PASP*, 127, 994
- Binney J. et al., 2014, *MNRAS*, 437, 351 (B14)
- Blanco-Cuaresma S., Soubiran C., Jofré P., Heiter U., 2014a, *A&A*, 566, A98
- Blanco-Cuaresma S., Soubiran C., Heiter U., Jofré P., 2014b, *A&A*, 569, A111
- Breddels M. A. et al., 2010, *A&A*, 511, A90
- Bressan A., Marigo P., Girardi L., Salasnich B., Dal Cero C., Rubele S., Nanni A., 2012, *MNRAS*, 427, 127
- Burnett B. et al., 2011, *A&A*, 532, A113
- Carlin J. L. et al., 2015, *AJ*, 150, 4
- Casertano S., Riess A. G., Bucciarelli B., Lattanzi M. G., 2017, *A&A*, 599, A67
- Casey A. R. et al., 2017, *ApJ*, 840, 59
- Chen L., Hou J. L., Wang J. J., 2003, *AJ*, 125, 1397
- Collet R., Asplund M., Trampedach R., 2007, *A&A*, 469, 687
- Conrad C. et al., 2014, *A&A*, 562, A54
- Dalton G. et al., 2016, in Evans C. J., Simard L., Takami H., eds, *Proc. SPIE Conf. Ser. Vol. 9908, Ground-based and Airborne Instrumentation for Astronomy VI*. SPIE, Bellingham, p. 99081G
- David T. J. et al., 2016, *AJ*, 151, 112
- Davies G. R. et al., 2017, *A&A*, 598, L4
- de Jong R. S. et al., 2012, in McLean I. S., Ramsay S. K., Takami H., eds, *Proc. SPIE Conf. Ser. Vol. 8446, Ground-based and Airborne Instrumentation for Astronomy IV*. SPIE, Bellingham, p. 84460T
- De Silva G. M. et al., 2015, *MNRAS*, 449, 2604
- Dias W. S., Alessi B. S., Moitinho A., Lépine J. R. D., 2002, *A&A*, 389, 871
- Eigenbrod A., Mermilliod J.-C., Clariá J. J., Andersen J., Mayor M., 2004, *A&A*, 423, 189
- Fakhouri H. K. et al., 2015, *ApJ*, 815, 58
- Gaia Collaboration, 2016, *A&A*, 595, A2
- Gaia Collaboration, 2017, *A&A*, 601, A19
- Galli P. A. B., Moraux E., Bouy H., Bouvier J., Olivares J., Teixeira R., 2017, *A&A*, 598, A48
- Gilmore G. et al., 2012, *The Messenger*, 147, 25
- Gould A., Kollmeier J. A., Sesar B., 2016, preprint ([arXiv:1609.06315](https://arxiv.org/abs/1609.06315))
- Hawkins K., Leistedt B., Bovy J., Hogg D. W., 2017, *MNRAS*, 471, 722
- Heiter U., Soubiran C., Netopil M., Paunzen E., 2014, *A&A*, 561, A93
- Heiter U., Jofré P., Gustafsson B., Korn A. J., Soubiran C., Thévenin F., 2015, *A&A*, 582, A49
- Hills S., von Hippel T., Courteau S., Geller A. M., 2015, *AJ*, 149, 94
- Hinkel N. R. et al., 2016, *ApJS*, 226, 4
- Ho A. Y. Q. et al., 2017, *ApJ*, 836, 5
- Hogg D. W. et al., 2016, *ApJ*, 833, 262
- Ivezic Z., Connolly A., Vanderplas J., Gray A., 2014, *Statistics, Data Mining and Machine Learning in Astronomy*. Princeton Univ. Press, Princeton, NJ
- Jao W.-C., Henry T. J., Riedel A. R., Winters J. G., Slatten K. J., Gies D. R., 2016, *ApJ*, 832, L18
- Jofré P. et al., 2014, *A&A*, 564, A133
- Jofré P., Mädlér T., Gilmore G., Casey A. R., Soubiran C., Worley C., 2015a, *MNRAS*, 453, 1428 (J15)
- Jofré P. et al., 2015b, *A&A*, 582, A81
- Jofré P. et al., 2017, *A&A*, 601, A38
- Kharchenko N. V., Piskunov A. E., Schilbach E., Röser S., Scholz R.-D., 2013, *A&A*, 558, A53
- Kordopatis G., Recio-Blanco A., de Laverny P., Bijaoui A., Hill V., Gilmore G., Wyse R. F. G., Ordenovic C., 2011, *A&A*, 535, A106
- Kordopatis G. et al., 2013, *AJ*, 146, 134
- Kunder A. et al., 2017, *AJ*, 153, 75 (K17)
- Lebzelter T. et al., 2012, *A&A*, 547, A108
- Lindgren L. et al., 2016, *A&A*, 595, A4
- Maaten L. v. d., Hinton G., 2008, *J. Mach. Learn. Res.*, 9, 2579
- Mädlér T., Jofré P., Gilmore G., Clare Worley C., Soubiran C., Blanco-Cuaresma S., Hawkins K., Casey A. R., 2016, *A&A*, 595, A59
- Magic Z., Chiavassa A., Collet R., Asplund M., 2015, *A&A*, 573, A90
- Matijević G. et al., 2012, *ApJS*, 200, 14
- Matijević G. et al., 2017, *A&A*, 603, A19
- Mayor M. et al., 2003, *The Messenger*, 114, 20
- Ness M., Hogg D. W., Rix H.-W., Ho A. Y. Q., Zasowski G., 2015, *ApJ*, 808, 16
- Paturel G., 1984, *ApJ*, 282, 382
- Paunzen E., Netopil M., 2006, *MNRAS*, 371, 1641
- Recio-Blanco A. et al., 2016, *A&A*, 585, A93
- Reid W. A., Parker Q. A., 2012, *MNRAS*, 425, 355
- Rodrigues T. S. et al., 2014, *MNRAS*, 445, 2758
- Röser S., Schilbach E., Piskunov A. E., Kharchenko N. V., Scholz R.-D., 2011, *A&A*, 531, A92
- Santiago B. X. et al., 2016, *A&A*, 585, A42
- Sarajedini A., Dotter A., Kirkpatrick A., 2009, *ApJ*, 698, 1872
- Schlafly E. F., Finkbeiner D. P., 2011, *ApJ*, 737, 103
- Schlegel D. J., Finkbeiner D. P., Davis M., 1998, *ApJ*, 500, 525
- Serenelli A. M., Bergemann M., Ruchti G., Casagrande L., 2013, *MNRAS*, 429, 3645
- Skrutskie M. F. et al., 2006, *AJ*, 131, 1163
- Steinmetz M. et al., 2006, *AJ*, 132, 1645
- Stello D. et al., 2016, *ApJ*, 832, 133
- Traven G. et al., 2017, *ApJS*, 228, 24
- Twarog B. A., Ashman K. M., Anthony-Twarog B. J., 1997, *AJ*, 114, 2556
- Valentini M. et al., 2017, *A&A*, 600, A66
- van Leeuwen F., 2009, *A&A*, 497, 209
- Wenger M. et al., 2000, *A&AS*, 143, 9
- Wilson J. C. et al., 2010, in McLean I. S., Ramsay S. K., Takami H., eds, *Proc. SPIE Conf. Ser. Vol. 7735, Ground-based and Airborne Instrumentation for Astronomy III*. SPIE, Bellingham, p. 77351C
- Wojno J. et al., 2017, *MNRAS*, 468, 3368
- Yuan H. B., Liu X. W., Xiang M. S., 2013, *MNRAS*, 430, 2188
- Zacharias N., Finch C., Frouard J., 2017, *AJ*, 153, 166
- Zhao G., Zhao Y.-H., Chu Y.-Q., Jing Y.-P., Deng L.-C., 2012, *Res. Astron. Astrophys.*, 12, 723
- Zwitter T. et al., 2010, *A&A*, 522, A54
- Žerjal M. et al., 2017, *ApJ*, 835, 61

SUPPORTING INFORMATION

Supplementary data are available at [MNRAS](https://www.mnras.org) online.

Table A1. Parallaxes obtained for individual members in each cluster analysed in this work.

Please note: Oxford University Press is not responsible for the content or functionality of any supporting materials supplied by the authors. Any queries (other than missing material) should be directed to the corresponding author for the article.

APPENDIX A: OPEN CLUSTERS

In this section, we list the individual values for the resulting parallax of each cluster member found in the RAVE survey in Table A1. The RAVE name of the star is given, as well as its corresponding cluster.

Here we also list the literature values for the distance of the clusters in Table A2. The parallax was obtained by inverting the distance as $1000/d$, with d corresponding to the distance in parsecs, when only distance was provided. The reference for each value is listed too. In Table 1 we list the mean and the standard deviation of the values indicated here.

Table A1. Parallaxes obtained for individual members in each cluster analysed in this work. A full version of this table can be found online.

Cluster	Star	ϖ twin	$\sigma \varpi$ twin	ntw
Blanco 1	20050807_0005m26_005	5.79238	0.132197	428
Blanco 1	20060726_2353m28_122	3.29293	0.0547224	673
Blanco 1	20060930_2359m33_084	3.057	0.0594117	613
Blanco 1	20061118_2353m28_117	4.22382	0.249239	84
Blanco 1	20061118_2353m28_118	3.49395	0.111179	265
Blanco 1	20110727_2353m28_116	5.37608	0.12647	467
Blanco 1	20110905_0020m31_044	3.00227	0.10113	443
Melotte 22	20120107_0336p23_107	5.6664	0.183508	252
Melotte 22	20120107_0336p23_115	6.38786	0.208054	267
Melotte 22	20120107_0336p23_119	6.35511	0.380769	39
Melotte 22	20120109_0346p23_117	7.00413	0.282162	15
Melotte 22	20120109_0346p23_127	5.68836	0.157212	366
Melotte 22	20120109_0346p23_133	6.60906	0.334615	143
Melotte 22	20120112_0346p23_117	6.44514	0.35437	17
Melotte 22	20120112_0346p23_133	6.52762	0.348053	126

Table A2. Parallaxes reported in the literature for the clusters in our study.

Cluster	ϖ (mas)	Ref.
Blanco 1	4.00	Dias et al. (2002)
Blanco 1	4.34	Gaia Collaboration (2017)
Blanco 1	4.14	van Leeuwen (2009)
NGC 2477	0.74	Dias et al. (2002)
NGC 2477	0.80	Eigenbrod et al. (2004)
Melotte 22	7.41	Dias et al. (2002)
Melotte 22	7.69	Kharchenko et al. (2013)
Melotte 22	6.66	Chen, Hou & Wang (2003)
Melotte 22	7.42	M16
Melotte 22	7.48	Gaia Collaboration (2017)
Melotte 22	7.57	David et al. (2016)
Melotte 22	7.44	Galli et al. (2017)
NGC 2862	1.21	Paunzen & Netopil (2006)
NGC 2862	1.16	Twarog, Ashman & Anthony-Twarog (1997)
NGC 2862	1.10	Kharchenko et al. (2013)
NGC 2862	1.22	Stello et al. (2016)
NGC 2862	1.23	J15
NGC 2862	1.14	Sarajedini, Dotter & Kirkpatrick (2009)
NGC 2862	1.20	An et al. (2007)
Hyades	22.22	webda
Hyades	21.53	van Leeuwen (2009)
Hyades	21.39	Gaia Collaboration (2017)
Hyades	20.00	Twarog et al. (1997)
NGC 2632	5.34	Dias et al. (2002)
NGC 2632	5.47	Gaia Collaboration (2017)
IC 4651	1.13	Kharchenko et al. (2013)
IC 4651	1.05	Twarog et al. (1997)

This paper has been typeset from a \LaTeX file prepared by the author.