



HAL
open science

An atlas of MUSE observations towards twelve massive lensing clusters

Johan Richard, Adélaïde Claeysens, David Lagattuta, Lucia Guaita, Franz Erik Bauer, Roser Pello, David Carton, Roland Bacon, Geneviève Soucail, Gonzalo Prieto Lyon, et al.

► To cite this version:

Johan Richard, Adélaïde Claeysens, David Lagattuta, Lucia Guaita, Franz Erik Bauer, et al.. An atlas of MUSE observations towards twelve massive lensing clusters. *Astronomy and Astrophysics - A&A*, 2021, 646, pp.A83. 10.1051/0004-6361/202039462 . hal-03140526

HAL Id: hal-03140526

<https://hal.science/hal-03140526v1>

Submitted on 12 Feb 2021

HAL is a multi-disciplinary open access archive for the deposit and dissemination of scientific research documents, whether they are published or not. The documents may come from teaching and research institutions in France or abroad, or from public or private research centers.

L'archive ouverte pluridisciplinaire **HAL**, est destinée au dépôt et à la diffusion de documents scientifiques de niveau recherche, publiés ou non, émanant des établissements d'enseignement et de recherche français ou étrangers, des laboratoires publics ou privés.

An atlas of MUSE observations towards twelve massive lensing clusters[★]

Johan Richard¹, Adélaïde Claeysens¹, David Lagattuta^{1,2,3}, Lucia Guaita^{4,5}, Franz Erik Bauer^{4,6,7}, Roser Pello^{8,9}, David Carton¹, Roland Bacon¹, Geneviève Soucaïl⁸, Gonzalo Prieto Lyon^{4,6}, Jean-Paul Kneib^{10,9}, Guillaume Mahler^{1,11}, Benjamin Clément^{1,10}, Wilfried Mercier⁸, Andrei Variu¹⁰, Amélie Tamone¹⁰, Harald Ebeling¹², Kasper B. Schmidt¹³, Themiya Nanayakkara^{14,15}, Michael Maseda¹⁴, Peter M. Weilbacher¹³, Nicolas Bouché¹, Rychar J. Bouwens¹⁴, Lutz Wisotzki¹³, Geoffroy de la Vieuville⁸, Johany Martinez¹, and Vera Patrício¹

¹ Univ Lyon, Univ Lyon1, ENS de Lyon, CNRS, Centre de Recherche Astrophysique de Lyon UMR5574, 69230 Saint-Genis-Laval, France

e-mail: johan.richard@univ-lyon1.fr

² Centre for Extragalactic Astronomy, Durham University, South Road, Durham DH1 3LE, UK

³ Institute for Computational Cosmology, Durham University, South Road, Durham DH1 3LE, UK

⁴ Instituto de Astrofísica and Centro de Astroingeniería, Facultad de Física, Pontificia Universidad Católica de Chile, Casilla 306, Santiago 22, Chile

⁵ Núcleo de Astronomía, Facultad de Ingeniería, Universidad Diego Portales, Av. Ejército 441, Santiago, Chile

⁶ Millennium Institute of Astrophysics (MAS), Nuncio Monseñor Sótero Sanz 100, Providencia, Santiago, Chile

⁷ Space Science Institute, 4750 Walnut Street, Suite 205, Boulder, CO 80301, USA

⁸ Institut de Recherche en Astrophysique et Planétologie (IRAP), Université de Toulouse, CNRS, UPS, CNES, 14 Av. Edouard Belin, 31400 Toulouse, France

⁹ Aix Marseille Université, CNRS, CNES, LAM (Laboratoire d'Astrophysique de Marseille), UMR 7326, 13388 Marseille, France

¹⁰ Institute of Physics, Laboratory of Astrophysics, Ecole Polytechnique Fédérale de Lausanne (EPFL), Observatoire de Sauverny, 1290 Versoix, Switzerland

¹¹ Department of Astronomy, University of Michigan, 1085 South University Ave, Ann Arbor, MI 48109, USA

¹² Institute for Astronomy, University of Hawaii, 2680 Woodlawn Dr, Honolulu, HI 96822, USA

¹³ Leibniz-Institut für Astrophysik Potsdam (AIP), An der Sternwarte 16, 14482 Potsdam, Germany

¹⁴ Leiden Observatory, Leiden University, PO Box 9513, 2300 RA Leiden, The Netherlands

¹⁵ Centre for Astrophysics and Supercomputing, Swinburne University of Technology, Hawthorn, VIC 3122, Australia

Received 17 September 2020 / Accepted 8 December 2020

ABSTRACT

Context. Spectroscopic surveys of massive galaxy clusters reveal the properties of faint background galaxies thanks to the magnification provided by strong gravitational lensing.

Aims. We present a systematic analysis of integral-field-spectroscopy observations of 12 massive clusters, conducted with the Multi Unit Spectroscopic Explorer (MUSE). All data were taken under very good seeing conditions ($\sim 0''.6$) in effective exposure times between two and 15 h per pointing, for a total of 125 h. Our observations cover a total solid angle of ~ 23 arcmin² in the direction of clusters, many of which were previously studied by the MASSIVE Clusters Survey, Frontier Fields (FFs), Grism Lens-Amplified Survey from Space and Cluster Lensing And Supernova survey with *Hubble* programmes. The achieved emission line detection limit at 5σ for a point source varies between $(0.77\text{--}1.5) \times 10^{-18}$ erg s⁻¹ cm⁻² at 7000 Å.

Methods. We present our developed strategy to reduce these observational data, detect continuum sources and line emitters in the datacubes, and determine their redshifts. We constructed robust mass models for each cluster to further confirm our redshift measurements using strong-lensing constraints, and identified a total of 312 strongly lensed sources producing 939 multiple images.

Results. The final redshift catalogues contain more than 3300 robust redshifts, of which 40% are for cluster members and $\sim 30\%$ are for lensed Lyman- α emitters. Fourteen percent of all sources are line emitters that are not seen in the available HST images, even at the depth of the FFs (~ 29 AB). We find that the magnification distribution of the lensed sources in the high-magnification regime ($\mu = 2\text{--}25$) follows the theoretical expectation of $N(z) \propto \mu^{-2}$. The quality of this dataset, number of lensed sources, and number of strong-lensing constraints enables detailed studies of the physical properties of both the lensing cluster and the background galaxies. The full data products from this work, including the datacubes, catalogues, extracted spectra, ancillary images, and mass models, are made available to the community.

Key words. galaxies: distances and redshifts – galaxies: high-redshift – techniques: imaging spectroscopy – gravitational lensing: strong – galaxies: formation – galaxies: clusters: general

* The dataset and full Tables A.1. and A.2 are only available at the CDS via anonymous ftp to cdsarc.u-strasbg.fr (130.79.128.5) or via <http://cdsarc.u-strasbg.fr/viz-bin/cat/J/A+A/646/A83>

1. Introduction

Strong gravitational lensing by massive galaxy clusters leads to the magnification of sources lying behind them, and this amplification can reach very large factors in the cluster cores ($\mu \sim 5\text{--}10$, Kneib & Natarajan 2011), and even higher factors for images in the vicinity of the so-called critical lines (Seitz et al. 1998). For this reason, massive clusters are sometimes referred to as nature’s telescopes since the combined power of large diameter telescopes and gravitational magnifications provide us with the best views of background galaxies in the distant Universe. Since the first spectroscopic confirmation of a giant gravitational arc was reported (Soucail et al. 1988), high resolution images from the *Hubble* Space Telescope (HST) have significantly contributed to the success of lensing clusters, with the discovery of a high density of multiple images in deep observations (e.g., Kneib et al. 1996; Broadhurst et al. 2005; Jauzac et al. 2015). Indeed, multiply-imaged systems give us the most precise constraints on the mass distribution in the cluster cores, and consequently the magnification factors.

Multi-object spectrographs on 8–10 m class telescopes have helped start large spectroscopic campaigns to confirm the lensed nature of very distant galaxies and the identification of multiple images (e.g., Campusano et al. 2001; Bayliss et al. 2011). However these large spectroscopic campaigns were largely limited by the crowding of galaxy clusters in their central regions, which leads to strong contamination between cluster galaxies and background sources as well as an inefficient use of multi-object spectrographs. In addition, the redshift distribution of lensed sources peaks at $z > 1.5$ in the redshift desert, where only the brightest UV-selected galaxies can be confirmed in the optical (Limousin et al. 2007). Because of these limitations, typically only a small number of multiply-imaged systems (typically < 10) have been spectroscopically confirmed in a given cluster with such instruments (e.g., Richard et al. 2010). Several observing campaigns have focused on near-infrared spectroscopy to avoid the redshift desert and complement optical observations (e.g., HST grism Treu et al. 2015, or Keck/MOSFIRE Hoag et al. 2015).

The advent of the Multi Unit Spectroscopic Explorer (MUSE, Bacon et al. 2010) on the Very Large Telescope (VLT) has revolutionised the study of strong lensing galaxy clusters. MUSE is a panoramic integral field spectrograph, fully covering a 1 arcmin^2 field of view with spectroscopy in the optical range (475–930 nm). Together with its very high throughput (40% end-to-end including the telescope and atmosphere), medium resolution ($R \sim 3000$), and fine spatial sampling ($0''.2$), MUSE is very well-suited for crowded field spectroscopy (Roth et al. 2018), and more specifically in galaxy cluster cores. Its pairing with the ground-layer Adaptive Optics (AO) system in 2017 (Leibundgut et al. 2017) has improved its observing efficiency even further.

The versatile capabilities of MUSE on galaxy cluster fields were demonstrated almost immediately: in commissioning (Richard et al. 2015), science verification (Karman et al. 2015) and regular observations (e.g., Jauzac et al. 2016; Grillo et al. 2016; Caminha et al. 2017a; Lagattuta et al. 2017, 2019; Mahler et al. 2018). Most notably, it has been very successful to follow up on the Frontier Field clusters (hereafter FFs; Lotz et al. 2017), a programme initiated by STScI to get deep observations of six massive clusters with the *Hubble* (HST) and *Spitzer* space telescopes. But MUSE was also very successful to follow up on clusters with shallower HST images (e.g., Jauzac et al. 2019; Mahler et al. 2019; Rescigno et al. 2020).

This success has pushed several teams to analyse MUSE observations of known massive clusters such as the Cluster Lens-

ing and Supernova Survey with *Hubble* (CLASH, Postman et al. 2012) programme (Rexroth et al. 2017; Caminha et al. 2019; Jauzac et al. 2020). Indeed, the richness of the MUSE spectroscopic datasets have a strong legacy aspect, for example to identify small-scale gravitational lenses in the clusters (Meneghetti et al. 2020), or cross-match with multiwavelength observations of the same fields (e.g., with ALMA; Laporte et al. 2017; Fujimoto et al. 2020).

In this paper, we present a full analysis of 12 lensing clusters, totalling more than 125 hours of exposure time with the MUSE instrument. These observations are in majority taken as part of the MUSE Guaranteed Time Observations (GTO) programme, but are complemented by additional MUSE datasets publicly available on the same clusters or following a similar target selection. We have benefited from many years of developments in MUSE analysis tools as part of the MUSE GTO programmes (Bacon et al. 2017; Inami et al. 2017; Piqueras et al. 2019) to improve the data reduction, source detection and analysis. The results of this analysis are made available in the form of a public data release.

This paper is organised as follows. Section 2 presents the target selection, observations and data reduction for the MUSE and ancillary datasets used in our analysis. Section 3 describes the construction of the spectroscopic catalogues contained in the data release and Sect. 4 describes the mass models we use to estimate the magnification and source properties. We provide an overview of the full spectroscopic catalogue and a few science highlights in Sect. 5, and give our conclusions in Sect. 6.

Throughout the paper, we assume a standard Λ -cold dark matter (CDM) cosmological model with $\Omega_M = 0.3$, $\Omega_\Lambda = 0.7$, and $H_0 = 70 \text{ km s}^{-1} \text{ Mpc}^{-1}$ whenever necessary. At the typical redshift of the lensing clusters ($z = 0.4$), $1''$ covers a physical distance of 5.373 kpc. All magnitudes are given in the AB system.

2. Observations and data reduction

2.1. Cluster sample

The observations used in our analysis focus on the cores of massive galaxy clusters from both the MUSE Lensing Cluster GTO programme and available archival programmes that target similar clusters. Cluster fields in the MUSE GTO programme were chosen based on their strong-lensing efficiency at magnifying background sources, in particular Lyman- α Emitters (LAEs) at $z > 3$ expected to be detected within the MUSE spectral range.

We compile our sample from a master list of massive X-ray luminous clusters, mainly from the ROSAT Brightest Cluster Sample (BCS, Ebeling et al. 1998, 2000) and the MASSive Cluster Survey (MACS, Ebeling et al. 2001), along with its southern counterpart, SMACS. Valuable follow-up imaging with the HST was performed in particular for MACS and SMACS clusters for HST SNAPshot programmes GO-10491, -10875, -11103, -12166, and -12884 (PI Ebeling), allowing the identification of strong-lensing features in the form of arcs and arclets in almost every single target (e.g., Ebeling et al. 2007; Repp et al. 2016).

To build the sample, we chose targets based on the following selection criteria: firstly a cluster redshift $0.2 < z_{cl} < 0.6$, to ensure that the main spectral signatures (K,H absorption lines and 4000 break) of cluster members are located in a low-background region of the MUSE spectrum; secondly, a wide range in Right Ascension (RA), to allow easier scheduling with respect to the rest of MUSE GTO observations, and a transit at low airmass (< 1.25) as seen from Cerro Paranal Observatory, corresponding to declinations $-60 < \text{Dec} < +10$ degrees.

Table 1. Summary of selected lensing clusters.

Cluster	RA (J2000)	Dec (J2000)	z_{cl}	Notes	Model reference
Abell 2744	00:14:20.702	-30:24:00.63	0.308	MACS, FF	Jauzac et al. (2015)
Abell 370	02:39:53.122	-01:34:56.14	0.375	FF	Richard et al. (2010)
MACS J0257.6-2209	02:57:41.070	-22:09:17.70	0.322	MACS	Repp & Ebeling (2018)
MACS J0329.6-0211	03:29:41.568	-02:11:46.41	0.450	MACS, CLASH	Zitrin et al. (2012)
MACS J0416.1-2403	04:16:09.144	-24:04:02.95	0.397	MACS, CLASH, FF	Jauzac et al. (2014)
1E 0657-56 (Bullet)	06:58:38.126	-55:57:25.87	0.296		Paraficz et al. (2016)
MACS J0940.9+0744	09:40:53.698	+07:44:25.31	0.335	MACS	Leethochawalit et al. (2016)
MACS J1206.2-0847	12:06:12.149	-08:48:03.37	0.438	MACS, CLASH	Ebeling et al. (2009)
RX J1347.5-1145	13:47:30.617	-11:45:09.51	0.451	MACS, CLASH	Halkola et al. (2008)
SMACS J2031.8-4036	20:31:53.256	-40:37:30.79	0.331	MACS	Christensen et al. (2012)
SMACS J2131.1-4019	21:31:04.831	-40:19:20.92	0.442	MACS	Repp & Ebeling (2018)
MACS J2214.9-1359	22:14:57.292	-14:00:12.91	0.502	MACS	Ebeling et al. (2007)

Notes. The reference WCS location corresponds to the brightest cluster member of the (sub-)cluster targetted by the MUSE observations. We mention in the notes whether the target belongs to the MACS, Frontier Fields (Lotz et al. 2017) or CLASH (Postman et al. 2012) surveys, as well as other relevant publications about preliminary mass models or known lensed arcs in these clusters prior to the MUSE observations. The rightmost columns give the reference to the lens model used to design the MUSE observations.

Thirdly, we require at least one existing high-resolution broadband HST image (in either the $F606W$ or $F814W$ filter to ensure overlap with the MUSE spectral range), that shows bright arcs and multiple images; these images are critical to pinpoint the location of sources sufficiently bright in the continuum. Finally, we require a preliminary mass model based on HST images and spectroscopic confirmation of at least one multiply imaged system to roughly estimate the total mass in the cluster core. From this crude map the MUSE observations could be designed to efficiently cover the critical lines and multiple-image region.

For clusters observed in the framework of the MUSE GTO, the choice of the precise centre for the pointing, or the mosaic configuration, were determined in such a way that the observed area included as far as possible the tangential critical lines, in order to maximise the number of strongly magnified and multiple images (see also Sect. 3.6).

We present here the results for a set of 12 clusters selected through this process, all of which were analysed in a uniform manner. The combination of the aforementioned criteria makes our selection similar to the one used in other cluster surveys such as CLASH and the FFs. It is therefore not surprising that half of the clusters we selected overlap with these two programmes.

The main properties of the 12 selected clusters are summarised in Table 1. Additional clusters observed as part of the GTO programme will be analysed following the same procedure as described in this paper, and included in a future data release.

2.2. MUSE GTO survey

The MUSE Lensing Cluster project (PI: Richard) is a multi-semester programme, which has been running since ESO semester P94 starting in Fall 2014. It targets the central regions of the massive lensing clusters introduced in the previous section, with an effective exposure time of 2–10 h per pointing. Data are acquired in Wide Field Mode (WFM), using both standard (WFM-NOAO-N) and adaptive-optics (WFM-AO-N) observations – the latter configuration having been available since Fall 2017, following the commissioning of the ground layer Adaptive Optics (AO) correction. Although the AO mode improves the seeing, we note that WFM-AO-N datasets have a gap in the 5800–5980 Å wavelength range due to the AO notch

filter. Additionally, while nearly all of the data are acquired in Nominal mode, covering the 4750–9350 Å wavelength range, one exception is the Bullet cluster, for which observations were taken in Extended mode (WFM-NOAO-E) covering bluer wavelengths (see Sect. 2.5).

The location and orientation of each MUSE pointing has been chosen to maximise the coverage of the multiply-imaged regions (Fig. 1), and also to guarantee the availability of suitable Tip-Tilt stars for observations taken in WFM-AO-N mode. In the case of FF and CLASH clusters, we adopted a coverage of larger mosaics of multiple contiguous MUSE pointings to increase the legacy value of these datasets, in coordination with non-GTO programmes (see below).

The observations were split into blocks of ~1–1.15 h execution time. Each observing block consists in either 2×1800 s, 3×900 s or 3×1000 s. exposures. We included a small spatial dithering box ($<0''.3$) as well as 90 degrees rotations of the instrument between each exposure. Indeed this strategy has been shown to help reduce the systematics due to the IFU image slicer (Bacon et al. 2015). A summary of all exposures taken is provided in Table 2.

Standard calibrations have been used for this programme, including day-time instrument calibrations as well as standard star observations. All exposures taken after the 2nd MUSE commissioning in June 2014 (i.e. all cluster fields presented here except for SMACS2031) include single internal flat-field exposures taken with the instrument as night calibrations. These short (0.35 s) exposures are used for an illumination correction and taken every hour, or whenever there is a sudden temperature change in the instrument. These calibrations are important to correct for time and temperature dependence on the flat-field calibration between each slitlet throughout the night. In addition, twilight exposures are taken every few days and are used to produce an on-sky illumination correction between the 24 channels.

2.3. MUSE archival data

The importance of getting deep MUSE exposures on the FFs has led us to coordinate a joint effort between the GTO programme and additional programmes towards MACS0416 and Abell 370 (ESO programmes 094.A-0525 and 096.A-0710 respectively, PI:

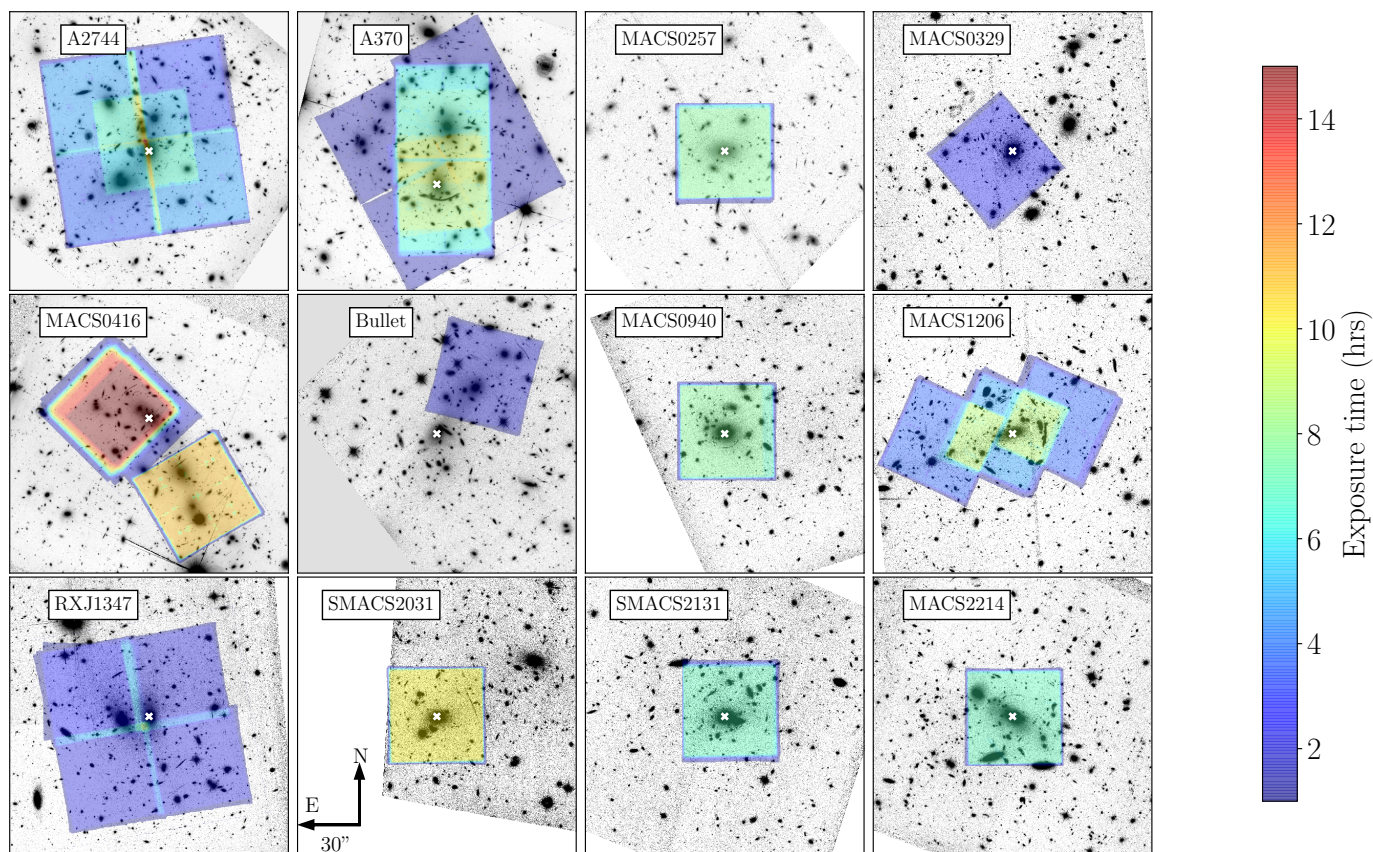


Fig. 1. MUSE exposure maps overlaid on top of the HST/*F814W* images. The 12 clusters from Table 1 are displayed in reading order, with the reference position from the same table marked as a white cross.

Bauer). Overall, the same strategy as for the GTO campaign has been followed for these observations, and were combined with GTO data when overlapping. Similarly, additional exposure time in the northern part of the FF cluster MACS0416 has been obtained as part of ESO programme 0100.A-0764 (PI: Vanzella, Vanzella et al. 2021), and combined with the GTO observations.

Finally, we include in our analysis two CLASH clusters observed as part of ESO programmes 095.A-0525, 096.A-0105, 097.A-0909 (PI: Kneib) on MACS0329 and RXJ1347, again with very similar science goals and observing strategy to the GTO programme. A first analysis on these datasets with only partial exposure time was presented in Caminha et al. (2019) and we present here a more detailed analysis of the full datasets after homogeneous reduction as for the other fields.

2.4. Ancillary HST data

We make use of the available high-resolution WFPC2, ACS/WFC, and WFC3-IR images in the optical/near-infrared covering the MUSE observations. Six clusters in our sample are included in the CLASH (Postman et al. 2012) and FF (Lotz et al. 2017) surveys, for which High Level Science Products (HLSP) incorporating all observations taken in 12 and 6 filters respectively have been aligned and combined. We use the HLSP images provided by the Space Telescope at the respective repositories for CLASH¹ and FFs².

¹ <https://archive.stsci.edu/missions/hlsp/clash/>

² <https://archive.stsci.edu/missions/hlsp/frontier/>

For the remaining six clusters, Snapshot and GO programmes on HST were obtained as part of the MACS survey (PI: Ebeling) as well as follow-up HST programmes (PIs: Bradac, Egami). The details of the HST programmes and available bands are given in Table 3, and were used in previous strong-lensing work. We make use of the reduced HST images available in the *Hubble Legacy Archive* (HLA).

Following the MUSE observations on MACS0940, we have obtained as part of HST programme 15696 (PI: Carton) new images with ACS and WFC3-IR at a higher resolution and going much deeper than the previous WFPC2 snapshot in *F606W*. Three orbits were obtained in *F814W* (totalling 7526 s), one orbit in *F125W* (totalling 2605 s) and 1.5 orbits in *F160W* (totalling 3900 s). We have aligned and drizzled the individual calibrated exposures for each band using the *astroDrizzle* and *TweakReg* utilities (Koekemoer et al. 2011).

All HLSP datasets were already calibrated for absolute astrometry. The HST images for the remaining 6 clusters were aligned against one another and with respect to star positions in J2000 selected from the *Gaia* Data Release 2 (Gaia Collaboration 2018) catalogue. The accuracy of the absolute astrometry is $<0''.06$.

2.5. MUSE data reduction

For consistency, data from each cluster are reduced using a common pipeline, which processes the raw exposures retrieved from the ESO archive into a fully-calibrated combined datacube. This sequence largely follows the main standard steps described in Weilbacher et al. (2020) as well as the MUSE Data Reduction

Table 2. Summary of MUSE observations analysed on the 12 clusters.

Cluster	Prog. ID	Obs. date [UT]	Exp. time (Mode) [s]	PSF "	T_{eff} [h]	Notes
A2744	094.A-0115, 095.A-0181, 096.A-0496	2014-09-21 – 2015-11-09	40 × 1800 (NOAO)	0.61	3.5–7	2 × 2 mosaic
A370	094.A-0115, 096.A-0710	2014-11-20 – 2016-09-28	4 × 1800 (NOAO) 37 × 962 (NOAO) 24 × 930 (NOAO) 3 × 953 (NOAO)	0.66	1.5–8.5	2 × 2 mosaic
MACS0257	099.A-0292, 0100.A-0249, 0103.A-0157	2017-09-20 – 2019-09-28	6 × 1000 (NOAO) 24 × 1000 (AO)	0.52	8	
MACS0329	096.A-0105	2016-01-09 – 2016-01-29	6 × 1447 (NOAO)	0.69	2.5	
MACS0416 (N)	094.A-0115, 0100.A-0763	2014-12-17 – 2019-03-04	4 × 1800 (NOAO) 6 × 1670 (NOAO) 27 × 1670 (AO)	0.53	17	
MACS0416 (S)	094.A-0525	2014-10-02 – 2015-02-24	50 × 700 (NOAO) 8 × 667 (NOAO)	0.65	11–15	
Bullet	094.A-0115	2014-12-18	4 × 1800 (NOAO) ^(a)	0.56	2	
MACS0940	098.A-0502, 098.A-0502, 0101.A-0506	2017-01-30 – 2018-05-13	3 × 1000 (NOAO) 30 × 900 (AO) ^(b)	0.57	8	
MACS1206	095.A-0181, 097.A-0269	2015-04-15 – 2016-04-09	26 × 1800 (NOAO) ^(c)	0.52	4–9	3 × 1 mosaic
RXJ1347	095.A-0525, 097.A-0909	2015-07-16 – 2018-03-21	8 × 1475 (NOAO) 18 × 1345 (AO)	0.55	2–3	2 × 2 mosaic
SMACS2031	60.A-9100 ^(d)	2014-04-30 – 2014-05-07	33 × 1200 (NOAO)	0.79	10	
SMACS2131	0101.A-0506, 0102.A-0135, 0103.A-0157	2018-08-13 – 2019-09-30	30 × 900 (AO)	0.59	7	
MACS2214	099.A-0292, 0101.A-0506, 0103.A-0157, 0104.A-0489	2017-09-21 – 2019-10-22	3 × 1000 (NOAO) 27 × 900 (AO)	0.55	7	

Notes. It is important to note that the two datasets on MACS0416 cluster (N)orth and (S)outh have been treated separately. From left to right: MUSE dataset, ESO Programs, range of observing dates, list of exposure times and instrument modes, final image quality of the combined datacube (FWHM at 700 nm), range of effective exposure time per spaxel, notes on multiple pointings (see also Fig. 1). ^(a)Taken in extended mode (WFM-NOAO-E). ^(b)1 exposure stopped after 740 s. ^(c)1 exposure stopped after 1405 s. ^(d)MUSE commissioning run .

Table 3. Details of the HST programs and filters used for the 6 clusters which are not part of the FF or CLASH samples.

Cluster	HST Program(s)	Filters	References
MACS J0257.6–2209	12166, 14148	<i>F606W, F814W, F110W, F160W</i>	Repp & Ebeling (2018)
1E 0657–56 (Bullet)	10863, 11099, 11591	<i>F435W, F606W, F775W, F814W, F850LP, F110W, F160W</i>	Paraficz et al. (2016)
MACS J0940.9+0744	15696	<i>F606W, F814W, F125W, F160W</i>	This work
SMACS J2031.8–4036	12166, 12884	<i>F606W, F814W</i>	Repp & Ebeling (2018)
SMACS J2131.1–4019	12166	<i>F814W, F110W, F140W</i>	Repp & Ebeling (2018)
MACS J2214.9–1359	9722, 13666	<i>F555W, F814W, F105W, F125W, F160W</i>	Zitrin et al. (2011)

Pipeline User Manual³. However, we make some modifications due to the crowded nature of lensing cluster fields, which contain extended bright objects. We summarise each step below. While the specific version of the Data Reduction Pipeline used on each cluster ranged between v2.4 to v2.7, there are only minor changes between these versions, and these do not affect the quality of the resulting datacubes.

The first step in the pipeline provides basic calibrations. Raw calibration exposures are combined and analysed to produce a master bias, master flat and trace table (which locates the edges of the slitlets on the detectors), as well as the wavelength solution and Line Spread Function (LSF) estimate for each observing night. These calibrations are then applied on all the raw science

exposures to produce a pixel table propagating the information on each detector pixel without any interpolation. A bad pixel map is used to reject known detector defects, and we make use of the geometry table created once for each observing run to precisely locate the slitlets from the 24 detectors over the MUSE FoV. Twilight exposures and night-time internal flat calibrations (when available) are used for additional illumination correction.

The second step of the data reduction makes use of the `muse_scipost` module of the data reduction pipeline to process science pixel tables. The calibrations performed in this step include flux calibration using standard star exposures taken at the beginning of the night, telluric correction, auto-calibration (detailed below), sky subtraction, differential atmospheric refraction correction, relative astrometry and radial velocity correction to barycentric velocity. In the case of

³ <https://www.eso.org/sci/software/pipelines/muse/>

WFM-AO-N observations with adaptive optics, laser-induced Raman lines are also fit and subtracted.

Each calibrated pixel table is then resampled onto a datacube with associated variance, regularly sampled at a spatial pixel (hereafter spaxel) scale of $0''.2$ and a wavelength step of 1.25 \AA , between 4750 (4600 for WFM-NOAO-E) and 9350 \AA . The drizzling method from `muse_scipost` is used in the resampling process, which also performs a rejection of cosmic-rays. A white light image is constructed for each datacube by inverse-variance weighted averaging all pixel values along the spectral axis. Individual white light images are used to measure spatial offsets between individual exposures. This is done either through the use of the `muse_exp_align` task of the data reduction pipeline, or by locating point sources against an HST image in the *F606W* or *F814W* filter, in the case of large MUSE mosaics. The measured offsets are then used to produce fully aligned (in World Coordinate System, or WCS) datacubes for each exposure.

Once resampled to the same WCS pixel grid, all datacubes are finally combined together outside of the pipeline using the `MPDAF`⁴ (Piqueras et al. 2019) software task `CubeList.combine`, or its equivalent `CubeMosaic.pycombine` for large mosaics. This allows one to perform an inverse-variance weighted average over a large number of datacubes. A $3\text{--}5\sigma$ rejection (depending on the number of exposures) of the input pixels was applied in the average, to remove remaining defects and cosmic rays, totalling $\sim 5\text{--}10\%$ of all pixels in each exposure. We visually inspected each individual white light image and manually rejected very few obvious cases of light contamination, issues in telescope tracking, etc. from the combination. We also masked 4 cases of satellite and asteroid trails by selecting and masking the relevant spaxels across the cubes. We estimated variations in atmospheric transmission by comparing the total flux of bright isolated sources between individual exposures and provided the correction factors as input to `CubeList.combine` or `CubeMosaic.pycombine`.

Low level systematics due to flat-field residuals (at the $\sim 1\%$ level) remain between each slitlet after applying the internal flat-field calibrations and nighttime illuminations. They appear prominently as a weaving pattern over the FoV in the white light image (Fig. 2, left panel). In v2.4 (and subsequent versions) of the data reduction pipeline, an optional self-calibration can be performed as part of `muse_scipost`, which makes use of the overall sky signal within each slitlet to correct for these flat-field systematics. This procedure has been shown to work accurately in MUSE deep fields where very bright continuum sources are scarce (Bacon et al. 2017). However the very bright extended cluster light haloes in the MUSE lensing fields, in particular in the vicinity of the Brightest Cluster Galaxies (BCGs) strongly bias this measurement when the procedure is applied automatically (Fig. 2), due to the extent of the Intra-Cluster light (ICL). We have the possibility to give as input to the pipeline a sky mask for the self-calibration procedure, to help the algorithm identify spaxels with a clean background. We constructed this mask in two steps, by thresholding a deep HST continuum image (smoothed by a $\sim 0''.6$ FWHM Gaussian filter) or a MUSE white-light image created from a first combined datacube, and then applying it to produce the self-calibrated exposures. The threshold was determined by inspecting the mask to avoid using a too small fraction of the spaxels in a given slitlet for the background level estimation. In a few very crowded regions we make use of the multiple rotations in the observations to compute the self-calibration corrections only in the most favourable cases, and

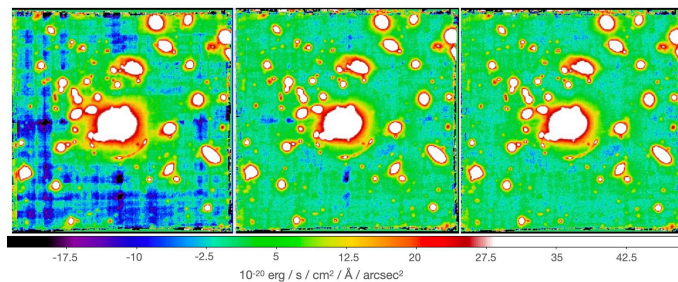


Fig. 2. Effect of auto-calibration on the white light image (example shown for MACS0940). *From left to right:* without auto-calibration, using auto-calibration with tuned object masks, with additional interstack masks. See Sect. 2.5 for more details.

provide them as a user table (see more details in Weilbacher et al. 2020). When deemed necessary, another iteration on the sky mask was performed on the new combined cube to improve the self-calibration further. An illustration of the resulting combined white light image and sky mask is presented in the middle panel of Fig. 2. In the case of the SMACS J2031 cluster field, which is the only cluster lacking for night-time illumination corrections during the commissioning run, the improvements due to self-calibration are even more significant (see Claeysens et al. 2019).

The white-light image of the self-calibrated combined datacube shows some imperfections in the sky background, in the form of negative ‘holes’ in the interstacks between the MUSE slices, in particular within the top channels of the instrument. These can typically be corrected in empty fields by producing a super-flat calibration (Bacon et al., in prep.) combining all exposures in the instrument frame of reference while masking objects. However this method is not suited for crowded cluster fields. Instead, we aligned all the individual white light exposures in the instrument referential frame by inverting all WCS offsets and rotations between exposures, then detected deviant spaxels with strongly negative flux over the average combined image. This produces a small mask containing $\sim 0.6\%$ of the FoV, which we use to mask pixels in the datacubes at all wavelengths prior to combination. This results in the removal of the majority of the imperfections as seen in the white-light image (Fig. 2, right panel).

The combined datacube is finally processed using the Zurich Atmospheric Purge (ZAP, Soto et al. 2016) v2, which performs a subtraction of remaining sky residuals based on a Principal Component Analysis (PCA) of the spectra in the background regions of the datacube. This has been shown to remove most of the systematics in particular towards the longer wavelengths (see e.g., Bacon et al. 2017 in the UDF). We provide as input to ZAP an object mask by inverting the sky mask described above. Although the number of eigenvectors removed is automatically selected by ZAP, we have performed multiple tests adjusting this number to check that the chosen value did not affect the extracted spectra of faint continuum and line emitting sources.

2.6. MUSE data quality

The reduced datacube is given as a FITS file with two extensions, containing the f_λ and associated variance over a regular 3D grid. The spectral resolution of the observations varies from $R = 2000$ to $R = 4000$, with a spectral range between 4750 and 9350 \AA . To ensure that cubes are properly Nyquist sampled, we set the wavelength grid to $1.25 \text{ \AA pixel}^{-1}$. The final spatial sampling is

⁴ <https://mpdaf.readthedocs.io/en/latest/>

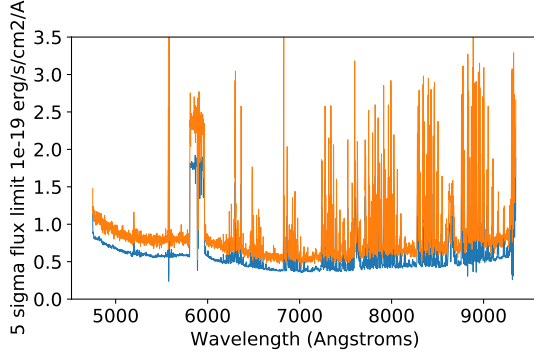


Fig. 3. 5σ continuum flux limit estimated in empty sky region of the MACS0940 datacube (8 h exposure time), including (orange curve) or not (blue curve) the correction for correlated noise. The increased noise level within the AO filter (around 5890 Angstroms) is due to the shorter effective exposure time in WFM-NOAO-N instrument mode (50 min).

$0.2 \text{ arcsec pixel}^{-1}$ in order to properly sample the Point Spread Function (PSF).

We have cross-checked the relative astrometry between the MUSE cubes and the HST images presented in Sect. 2.4, by cross-matching bright sources in the two datasets. We measure a global rms of $\sim 0''.12$, that is to say about half a MUSE spaxel.

In order to estimate the spatial Point Spread Function, which varies as a function of wavelength, we have followed the MUSE *Hubble* Ultra Deep Field approach, described by Bacon et al. (2017). From the MUSE datacube we produce pseudo-HST images in the bandpasses matching the HST filters (Table 3) and overlapping with the MUSE spectral range. These images are compared with pseudo-MUSE images created from HST and convolved with a Moffat (1969) PSF at fixed $\beta = 2.5$. The FWHM of the Moffat function is optimised by minimising the residuals in Fourier space. This method allows to use all objects in the field to measure the PSF.

The wavelength dependence on the PSF is then adjusted by assuming a linear relation:

$$FWHM(\lambda) = C(\lambda - \lambda_0) + FWHM(\lambda_0). \quad (1)$$

The slope C of this relation depends on the use of Adaptive Optics, we find values ranging between -1.9×10^{-5} and $-3.6 \times 10^{-5} \text{ arcsec } \text{\AA}^{-1}$, which are similar to the ones from the MUSE Ultra Deep Fields (Bacon et al. 2017) and MUSE-Wide (Urrutia et al. 2019). We report for each dataset the FWHM of the PSF at 7000 \AA in Table 2. In general the datacubes have been taken in very good seeing conditions, translating into a typical $FWHM_{7000}$ value between $0''.55$ and $0''.65$. The only exception is SMACS2031 ($FWHM_{7000} = 0''.79$) which was observed during MUSE commissioning. The same MUSE vs. HST comparison allows us to cross-check the photometric accuracy of the MUSE cubes, and we find an agreement within 5–10% between the two datasets.

The variance extension of the cube is estimated during the data reduction and gives an estimate of the noise level which is generally underestimated due to correlation in the noise introduced during the final 3D resampling process (see e.g., Herenz et al. 2017; Urrutia et al. 2019; Weilbacher et al. 2020). To properly assess the noise properties of each cube as a function of wavelength, we make use of objects-free regions (as defined with the sky masks mentioned in Sect. 2.5) and measure the variance of the flux level integrated over $1''$ square apertures. When compared with the direct estimate from the variance extension,

the two measurements show a simple constant correction factor between 1.3 and 1.5 on the standard deviation as a function of wavelength (e.g., Fig. 3). We apply this constant correction factor to the noise estimation of the datacube.

The relative noise levels presented in Fig. 3 are very similar in all datacubes (with the exception of the AO filter region which depends on the relative fraction of AO vs. NOAO exposure time), and roughly scale with the square root of the effective exposure time. The 5σ surface brightness limits (averaged in a 1 arcsec^2 region) between skylines at 7000 \AA is 4.8×10^{-19} and $2.5 \times 10^{-19} \text{ erg s}^{-1} \text{ cm}^{-2} \text{ \AA}^{-1} \text{ arcsec}^{-2}$ for cubes with 2 h and 8 h exposure time respectively. This translates into a 5σ line flux limit of 1.5×10^{-18} and $7.7 \times 10^{-19} \text{ erg s}^{-1} \text{ cm}^{-2}$ at 7000 \AA when averaged over a 5×5 spaxels aperture and 3 wavelength planes (6.25 \AA).

3. Construction of MUSE spectroscopic catalogues

3.1. Overview

The sheer number of volume pixels (voxels) in a 1 arcmin^2 MUSE datacube ($\sim 4 \times 10^8$) makes it challenging to locate and identify all the extragalactic sources; this is especially true when observing crowded fields like galaxy clusters. Prior knowledge of source locations from HST images provides crucial external information to help distinguish and deblend overlapping sources. Our goal is to extract a spectrum and estimate the redshift for all sources down to a limiting signal-to-noise ratio (described in subsequent subsections), either in the stellar continuum or via emission lines. Additional prior information on the redshift of background sources can be obtained for strongly-lensed multiple images, where well-constrained models allow. We have therefore developed a common process to analyse the MUSE datacubes incorporating all these elements.

The general concept of this procedure has been described previously in Mahler et al. (2018) and Lagattuta et al. (2019), but we have further refined and partially automated the methods for the subsequent cluster observations presented here, in order to create more uniform and robust catalogues. We summarise each step of the process in the flowchart shown in Fig. 4, and provide details on each step in the following subsections.

3.2. HST prior sources

We make use of all the available high-resolution HST imaging in each field (see Sect. 2.4) to produce input photometric catalogues of continuum sources that overlap with the MUSE FoV to identify regions for subsequent spectral extraction. Since our goal is to measure the spectra of typically faint compact background sources, usually embedded within the bright extended haloes of cluster members, we first produce a median-subtracted version of each image by subtracting a $1''.5 \times 1''.5$ running median filter box. The WCS-aligned, median-subtracted HST images are cropped to the common MUSE area and further combined into an inverse-variance-weighted detection image, using SWARP (Bertin et al. 2002).

This procedure was used in previous works searching for faint high-redshift dropouts (Atek et al. 2015, 2018) in deep *Hubble* FF images, and significantly improves the detection of background sources while still keeping the central cores of all bright cluster members. The negative impact of the median subtraction is a reduction of the isophotal area for bright extended sources in the segmentation map, which reduces the total flux in their extracted MUSE spectra. However, as these sources all

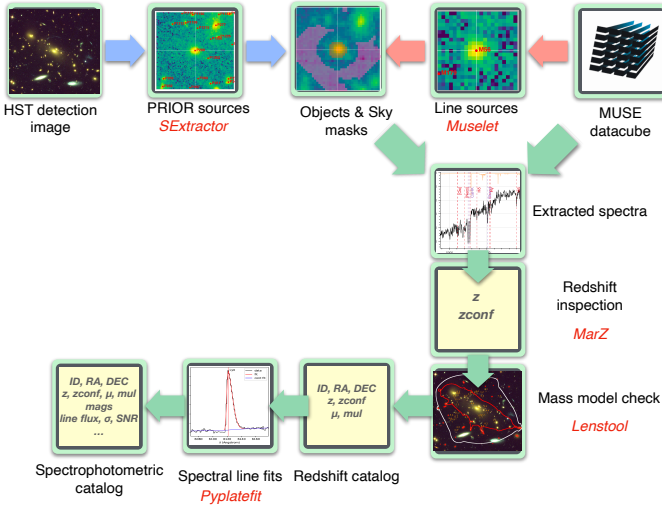


Fig. 4. Flowchart presenting the process of building the MUSE spectrophotometric catalogues, based on the input HST images and MUSE datacube. Section 3 presents each step of the procedure in detail.

have high signal-to-noise ratio in the MUSE datacube, this has no impact on the spectroscopic redshift measurements, and we adjusted the size of the median-box filter in order to mitigate this effect.

The detection image is given as input to the SEExtractor software (Bertin & Arnouts 1996) used in dual mode to measure the photometry over each HST band (aligning each band image with MONTAGE)⁵. We make use of the HST weight maps to account for variation of depth over the FoV, and selected typical SEExtractor parameter values `detect_minarea = 10–15` pixels and `detect_thresh = 1.2–1.5`. These values were optimised for each cluster to account for variations in depth and pixel scale of the HST images.

The photometry performed by SEExtractor in each band is merged together into a photometric catalogue of HST sources, dubbed prior sources through the rest of the paper. SEExtractor also produces a segmentation map where each spaxel in the MUSE FoV is flagged with a source ID number.

During the detection process, SEExtractor tends to split large clumpy sources such as foreground disk galaxies or very elongated arcs into multiple entries in the catalogue. Such cases are visually identified as part of the source inspection and redshift estimation process (see Sect. 3.5), and the corresponding photometry and segmentation map are merged together to produce a single prior source located at the HST light barycenter.

3.3. Line-emitting sources

Independent from the HST continuum sources, we produced a catalogue of line-emitter candidates identified directly from the MUSE datacubes. This was performed by running the *muselet* software, which is part of the MPDAF python package (Piqueras et al. 2019). *muselet* first creates a ‘pseudo-narrow-band’ MUSE datacube by replacing each wavelength plane of the cube with a continuum-subtracted narrow-band image. To generate the narrow-band emission for a given wavelength, we take a weighted average of five planes of the cube (the original wavelength plane and its four nearest neighbours), using a fixed FWHM Gaussian weight function corresponding to 150 km s^{-1}

for a line centred at 7000 \AA . This weighting scheme improves the signal-to-noise ratio of the narrow-band at the centre of a typical emission line of similar FWHM. The subtracted continuum is estimated by an inverse-variance weighted average of two 25 \AA wide wavelength windows located directly bluewards and redwards of the narrow-band. We have found that these parameters are generally appropriate for an automatic subtraction of the local continuum.

The full set of narrow-band images is run through SEExtractor to detect candidate spectral lines at each wavelength. Because we expect some galaxies to show diffuse extended emission, especially Lyman- α emitters, we tune our SEExtractor detection parameters (`detect_minarea = 12` pixels; `detect_thresh = 1.2`), and spatial smoothing filter (a 5×5 pixel tophat with $FWHM = 0''.8$) to better identify these objects. By construction, all bright lines will be detected in adjacent wavelength planes, and therefore they are automatically merged into a master list of individual line candidates. We specifically masked three 4 \AA -wide wavelength regions in the cube corresponding to bright sky lines at 5577 and 6300 \AA as well as the strongest Raman line at 6825 \AA , to prevent artefacts in the detections. Sets of lines spatially coincident (within 1 seeing disk) are then grouped together into *muselet* sources and a segmentation map is produced. A first redshift estimate is also provided by *muselet* based on an automatic match with a list of bright emission lines.

The MPDAF v2.0 of the *muselet* software was used for a first set of clusters (Abell 2744, Abell 370, MACS1206, MACS0416S). MPDAF v3.1 introduces improvements in the merging and weighting schemes of the *muselet* sources, and was used for the rest of the clusters.

3.4. Spectral extraction

In order to characterise the detected prior and *muselet* sources, we adopt the following procedure to extract 1D spectra, which optimises the signal-to-noise of the detections while being adapted to crowded fields. A weight image is created for each source by taking the flux distribution over the segmentation maps produced as part of the detection process. In the case of prior sources this flux distribution is taken from the combination of all HST filters, and the 2D weight map is convolved by the MUSE PSF model described in Sect. 2.6. To account for the wavelength variation of the PSF (Eq. (1)), weight images are created for each source at 10 wavelength planes (i.e. at $\sim 500 \text{ \AA}$ intervals) over the MUSE spectral range and interpolated into a 3D weight cube. In the case of *muselet* sources, the segmentation map used is the one of the brightest emission line of the object. Since we do not account for wavelength variations in the intrinsic flux profiles of galaxies (e.g., colour gradients), the weighted extractions, while optimal for the distant compact sources, are not spectrophotometrically accurate for the extended cluster members. For this reason we also extract unweighted spectra.

The weighted spectrum is computed following the optimal extraction algorithm from Horne (1986):

$$F(\lambda) = \frac{\sum_{x,y} C_{x,y,\lambda} W_{x,y,\lambda} / V_{x,y,\lambda}}{\sum_{x,y} W_{x,y,\lambda}^2 / V_{x,y,\lambda}}, \quad (2)$$

where $C_{x,y,\lambda}$ and $V_{x,y,\lambda}$ respectively correspond to the pixel flux and associated variance at a specific location in the cube, and $W_{x,y,\lambda}$ is the optional weight cube.

⁵ <http://montage.ipac.caltech.edu/>

In addition, we estimate a local background spectrum around each source, produced by averaging the spectra from MUSE spaxels outside of all detected sources in the field. This local background estimate removes large-scale contamination from bright sources, such as stars and cluster members, as well as potential systematics in the background level remaining from the data reduction. We define spaxels containing sky and intra-cluster light by convolving the combined HST 2D weight map with the central wavelength MUSE PSF. From this, the darkest 50% of spaxels are considered as background-spaxels. However, for each object extracted we compute the local background, by aggregating the nearest ~ 500 background-spaxels surrounding it (with a minimum Manhattan distance of $0''.4$ from the object). To retain locality, we do not aggregate beyond $4''.0$, even if we have not reached the desired ~ 500 spaxel target. This ensures a good trade-off between aggregating sufficient sky spaxels to achieve a high signal-to-noise estimate of the background, without aggregating so many spaxels that they are no longer locally relevant.

Therefore, for every object we compute four sets of spectra: weighted (with and without) local background subtraction and unweighted (with and without) local background subtraction. In general weighted spectra with local background subtraction are those most optimal for source identification and redshift measurement. But for the bright very extended cluster members, the unweighted spectra without local background subtraction would provide superior spectrophotometric accuracy.

3.5. Source inspection

To determine the redshift of extracted sources, we adopt a semi-automatic approach similar to the one used to produce the redshift catalogue in the MUSE observations over the *Hubble* Ultra Deep Field (Inami et al. 2017). We make use of the Marz software (Hinton 2016) which looks for the best redshift solutions by performing a cross-correlation with a set of pre-defined spectral templates. The templates used in our analysis are described in detail in Appendix B of Inami et al. (2017). They include a variety of stellar spectra from Baldry et al. (2014) and deep MUSE spectra from blank fields (Bacon et al. 2015, 2017).

All `muselet` sources and every prior source down to a limiting (continuum-level) signal-to-noise ratio (S/N) have been inspected individually by at least 3 coauthors. Based on our first assessments, we adjust the prior magnitude limit for each cluster as a function of MUSE exposure time, given by $F814W_{AB} = 25 + 1.25 \log(T/2.0)$, with T the maximum exposure time over the field in hours. This allows us to avoid reviewing sources with too low signal, and corresponds to a typical median S/N of ~ 1.5 per pixel over the MUSE spectral range. Any prior source in our final catalogue below this limit is therefore measured from a corresponding `muselet` detection.

To inspect each source in detail, we use a graphical interface tool designed within the MUSE collaboration (Bacon et al., in prep.) that lets a user simultaneously view all HST and MUSE white light images of the object, the extracted spectrum (and its variations) compared to features of the five best Marz redshift solutions, and zoom-ins on specific spectral lines and narrow-band images. The tool allows us to navigate quickly between all neighbouring sources, to check for contaminations or object blending. This tool has been adapted to the needs of the lensing cluster fields.

More specifically, the following information is inspected for each source:

- Spectroscopic redshift and confidence. All Marz solutions are assessed, and the user can also choose a different value

manually. When a redshift solution is found, a confidence level ($zconf$) is selected according to its level of reliability:

- Confidence 1: redshift based on a single low-S/N or ambiguous emission line, or several very low S/N absorption features. These sources are given in the public catalogue for comparison with other measurements, but are not used in the subsequent analysis.
- Confidence 2: redshift based on a single emission line without additional information, several low S/N absorption features, or whose redshift confidence is increased by the identification of multiply-imaged systems (see Sect. 3.6).
- Confidence 3: redshift based on multiple spectral features, or with additional information on a high S/N emission line (e.g., very clear asymmetry of the line, HST non-detection bluewards of the line).
- Association between prior and `muselet` sources. The two detection methods will most of the time identify the same sources, and we keep the prior sources by default when a clear match is found with `muselet` emission lines. It is important to note that significant spatial offsets can be found between the two sources, for example in the case of star-forming/photoionised gas trailing behind infalling galaxies in the cluster, or Lyman- α emission which is physically offset from the underlying UV continuum emission.
- Merging of sources. Clumpy star-forming galaxies or very elongated lensed arcs tend to be separated into multiple prior sources. We identify them and perform a new extraction of the merged source as in Sect. 3.4 by aggregating their segmentation maps and combining their photometry.
- Defects and artefacts. We identify stellar spikes or cosmic ray residuals in the prior catalogue, as well as artefacts found by `muselet` in the cube due to strongly varying spectral continuum (typically low-mass stars or cluster members).

The resulting inspection information is stored in a database, and since each spectrum was reviewed independently by at least three users, the results are cross-matched during a consolidation phase, where a consensus is reached in case of disagreement between the users, and the entry is written in the catalogue.

3.6. Assessment of multiple images

All sources with a reliable redshift in the catalogue are tested with the corresponding LENSTOOL mass model of the cluster (see Sect. 4) to predict multiple images. As the precision of the lens model is typically $0''.5-0''.9$ over the area of multiple images, and the density of objects in a given redshift plane is low, we easily find good matches for systems of images at the same redshift which are predicted to arise from the same source. We manually inspect the corresponding spectra of each matching candidate, as we expect precisely the same redshift and spectral features from multiple images. This assessment serves two purposes: (a) identifying multiple images in order to pinpoint truly independent sources, and (b) cross-checking the redshift measurements for background lensed sources.

Indeed, the main spectral features identified for background galaxies through the redshift inspection are typically bright emission lines ([O II], C III], C IV, Lyman- α) or absorption features (rest-frame UV ISM absorptions or Lyman- α break). Ambiguous redshifts are typically limited to an uncertainty between [O II] and Lyman- α as a single emission line, which produce very different lensing configurations between $z \sim 0.5-1.5$ and $z \sim 3-7$. The multiple-image assessment allows us to correct a very small number of erroneous redshifts (typically less than

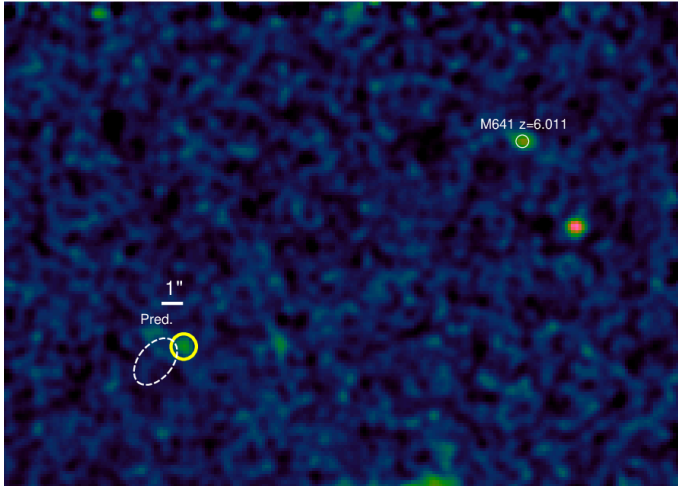


Fig. 5. Example of faint Lyman- α emission (large yellow circle) detected near the position of the predicted counterimage from `museLet` source 641 in cluster MACS0329, at $z = 6.011$ (small white circle). The image shows a smoothed narrow-band image at the peak wavelength of the emission. The dotted ellipse denotes the estimated $1\text{-}\sigma$ error region of the predicted location.

3 images per cluster), and more importantly to boost the redshift confidence level to $zconf = 2$ for faint line emitters with $zconf = 1$ showing a clear matching counterimage predicted by the model.

As new multiple images help us refine and improve the lensing model, this is an iterative process: we start by using only spectroscopically confirmed images from the most secure systems (having confidence levels 2 or 3) as constraints in the model, and make further predictions from the refined model. We systematically search for spectral features in all predicted counter-images, even when they are not included in the original catalogue, solving all possible inconsistencies. This process allows us to identify a small number (up to 5–10 per cluster) of images as faint emission lines in the narrow-band datacube, which were not identified originally by `museLet`. We include these images as additional entries in the catalogue by manually forcing their extraction, adopting a point source extraction aperture in the procedure described in Sect. 3.4. A typical example of faint counter image discovered during the assessment is presented in Fig. 5.

Remaining strongly-lensed sources not matched to a given system are $zconf = 1$ objects for which we are able to explain the lack of counterimage by either (a) its much lower magnification, (b) its strong contamination by a cluster member or foreground source, or (c) it being outside the MUSE FoV. Conversely, when the counterimage is predicted to be bright and isolated, but is not seen in the observations, we choose to entirely remove the $zconf = 1$ source from the redshift catalogue due to the large uncertainty in the measured redshift.

Multiple images are identified in a dedicated column (MUL) of the final spectroscopic catalogue: we adopt the usual notation $X.Y$ where X identifies a system of multiple images and Y is a running number identifying all images for a given system.

3.7. Cross-checks with public spectroscopic catalogues

We performed a comparison of our spectroscopic catalogues with available spectroscopy from VLT and HST in the literature, including some of the same MUSE observations included in our sample.

3.7.1. Abell 2744 and Abell 370

First versions of the MUSE spectroscopic catalogues, using the same datasets but based on an earlier version of our data reduction and analysis process, were presented in Mahler et al. (2018) for Abell 2744 and in Lagattuta et al. (2019) for Abell 370. Both catalogues were cross-checked with available observations from the Grism Lens-Amplified Survey from Space (GLASS) (Schmidt et al. 2014; Treu et al. 2015). The datacubes included in these publications were reduced and analysed using an earlier version of the reduction pipeline and MPDAF, which did not include autocalibration or the interstack masks, and which used older versions of ZAP and MUSELET. In light of the newly processed datacube and source inspection catalogues, we reviewed all of the low-confidence sources ($zconf = 1$ or 2) from the public catalogues and rejected 18 sources. We corrected the redshifts for 9 sources, typically faint [O II] and Lyman- α emitters or sources in the redshift desert.

3.7.2. SMACS2031

An early catalogue from the MUSE commissioning data taken on this cluster was presented in Richard et al. (2015) together with a cluster mass model. In view of the significant improvements in the data reduction since these observations were taken (see also Claeysens et al. 2019) we fully re-reduced and analysed the MUSE observations following our common process. We identify three additional multiply-imaged systems as faint Lyman- α emitters (forming a total of nine images), and also find two counterimages for existing systems. One published redshift has been corrected.

3.7.3. MACS0416

A first analysis of the MUSE datasets in MACS0416 was presented by Caminha et al. (2017a) together with the CLASH/VLT redshifts from Balestra et al. (2016). The data they analysed includes the full MUSE coverage in the southern part (MACS0416S, programme ID 094.A-0525) but only the GTO coverage in the northern part (MACS0416N, programme ID 094.A-0115). In the southern part, we find small redshift differences for five sources in common and at low confidence ($zconf = 1$). One confirmed Lyman- α emitter (CLASHVLTJ 041608.03-240528.1 at $z = 4.848$) was not detected with `museLet` in our catalogue but we confirmed it from the narrow-band cube at low confidence. In the same region, we identify nine new multiply-imaged systems producing 22 images in the MUSE data, which were not used in previous published models.

In the northern part, the MUSE data used in our analysis is much deeper and we find no discrepancy for the sources in common with (Caminha et al. 2017a). Vanzella et al. (2021) present one source at $z = 6.63$ from the deep observations, which was also identified in our `museLet` catalogue. The deeper data provide us with additional redshifts (not used in previous published models) for 15 systems and 33 multiple images in that region, including 11 systems newly discovered with MUSE as faint Lyman- α emitters.

Following the submission of this manuscript, Vanzella et al. (2020) presented an analysis of the same MACS0416 MUSE fields. They identify a counter-image for 6 multiply imaged systems in the north, which were not originally included in our analysis, and we confirm them in our extracted spectra at low to medium confidence level ($zconf = 1\text{--}2$). In addition, they present one additional triply imaged system in the overlap region between the two MUSE fields, which we add in our catalogues

for completeness as system 100. In comparison with their catalogue of multiple images, we confirm 16 additional multiply imaged systems with MUSE redshifts in our analysis, including 7 in the deep northern part.

Finally, as in Sect. 3.7.1, we cross-check the agreement between our redshift measurements and the GLASS catalogue from (Hoag et al. 2016) for the sources in common, and find no redshift discrepancies.

3.7.4. MACS1206

Caminha et al. (2017b) presented an analysis of the same MUSE data taken in the field of the cluster MACS1206 as in our sample. Their full spectroscopic catalogue is not publicly available but we have cross-checked the redshifts and multiply-imaged systems with our own analysis. We recover all of the systems at the same spectroscopic redshifts as used in their strong-lensing model. In addition, we identify eight new systems (named 29–36) of two to four images each (total 21 images) in our analysis of the datacubes. These 21 images are in their large majority Lyman- α emitters, generally diffuse and extended, that were found by muselet. The redshifts were further confirmed by predictions from the well-constrained lens model ($\text{rms}_{\text{model}} = 0''.52$).

3.7.5. RXJ1347

Caminha et al. (2019) presented an analysis of early observations taken in the RXJ1347, restricted to the upper-left quadrant of the mosaic taken in WFM-NOAO-N. We compare our spectroscopic redshifts with the public catalogue available on VizieR, as well as the constraints presented in their lens model, based on 8 multiply-imaged systems including 4 with spectroscopic confirmation (totalling 9 images). All the published sources are in common with our spectroscopic catalogue and there are no redshift discrepancies. The full dataset on this cluster gives us a significant increase in the number of spectroscopic redshifts and multiple systems: we identify 25 additional systems with a spectroscopic redshift, producing a total of 119 images. We compared our sample with the public redshift catalogue from GLASS on this cluster and did not identify any discrepancies between common redshifts. We boosted the confidence level for 2 MUSE sources with matching lines with GLASS observations.

3.7.6. MACS0329

Caminha et al. (2019) presented an analysis of the same MUSE data taken in the field of the cluster MACS0329. We compare our spectroscopic redshifts with the public catalogue available on VizieR, and identify one source at $z = 2.919$ with diffuse Lyman- α emission which we did not detect in our muselet catalogue. We confirm from our lensing predictions that it is indeed a multiply imaged candidate associated with the halo of our muselet source 129 showing the same spectral line. We treat these images as a multiply-imaged candidate, but their precise location is too uncertain to be included as multiple images in our lensing model.

In addition, we identify two clear pairs of multiply imaged Lyman- α emitters which we include as strong lensing constraints (our systems 4 and 7) but which were not used in the strong lensing model from Caminha et al. (2019). In both cases, one image from the system was in common between the two spectroscopic catalogues. We also identify 11 low confidence ($z_{\text{conf}} = 1$) Lyman- α emitters not present in their catalogue, which either do not predict or for which we cannot rule out the presence of a

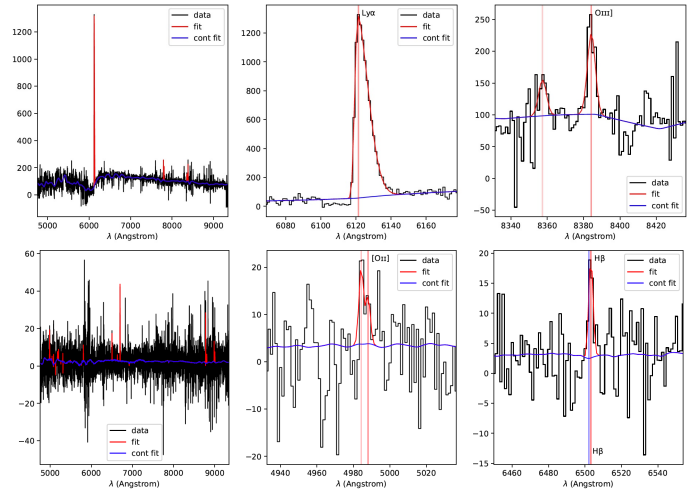


Fig. 6. Examples of PYPLATEFIT spectral fitting, for two sources in our catalogues. *Top row* shows the case of the bright $z = 4.03$ galaxy in MACS0940 (Claeyssens et al. 2019) with $z_{\text{conf}} = 3$ and the *bottom row* a MUSELET-selected galaxy at $z = 0.337$ and $z_{\text{conf}} = 2$ in the same cluster field (M364). The *left panel* gives an overview of the spectrum, while the *middle and right panels* zoom in on specific spectral line fits. The best-fit spectrum and global continuum fit are plotted in red and blue, respectively.

counterimages, as well as a high confidence ($z_{\text{conf}} = 3$) [O II] emitter at $z = 0.963$.

3.8. Spectral analysis

Due to their different physical origins, the spectral features identified in each source as part of the cross-correlation (e.g., K, H Ca lines in cluster members, nebular emission lines, ISM absorption lines, Lyman- α emission) or through manual redshift measurement do not provide uniform constraints on the accuracy and precision of the redshift estimates. In addition, the cross-correlation carried out by Marz can be systematically off, and the results do not provide us with a reliable error on the redshift measurement.

Therefore, to properly distinguish between the various redshift estimates and get a better estimate on the redshift error, we make use of the PYPLATEFIT tool developed for the MUSE deep fields (Bacon et al., in prep.) on the weighted, sky-subtracted 1D spectra. PYPLATEFIT is a simplified python version of the original PLATEFIT IDL routines developed by Tremonti et al. (2004) and Brinchmann et al. (2004) for the SDSS project. It performs a global continuum fitting of the spectrum, and then fits individual emission and absorption lines using a Gaussian profile (or asymmetric Gaussian for the Lyman- α line). Multiple redshift estimates are measured for each family of spectral features (nebular emission lines, Balmer absorption lines, Lyman- α ,...), allowing for small velocity offsets (within 150 km s^{-1} , but up to 500 km s^{-1} for Lyman- α emission).

The line profile fitting is performed using the LMFIT python module. The best values and errors on the redshift and spectral line parameters (flux, signal-to-noise ratio, equivalent width) are computed using a bootstrap technique. Two examples of this spectral line fitting are presented in Fig. 6.

3.9. Full redshift catalogue

We provide a summary of all spectroscopic measurements for each cluster, in the form of two tables available at the CDS

(examples for the first entries are presented in Tables A.1 and A.2). A main table gives the relevant information for each source: location, redshift, and confidence, as well as photometric measurements, magnification, and multiple image identification. A companion table lists the measurements obtained by the PYPLATEFIT spectral fits for each source.

Figure 7 presents the spectroscopic catalogues overlaid on the colour HST images of each cluster, showing the spatial distribution of each redshift category with respect to the MUSE Fields as well as the region where we expect the multiple images.

Table 4 summarises the redshift measurements both for all sources and for the high-confidence ($zconf > 1$) sources. There is a clear trend for clusters having shallower MUSE data (e.g., MACS0329, Bullet) to have a lower fraction of secure redshifts ($zconf > 1$). We present a redshift histogram for all sources in Fig. 8, which is discussed further in Sect. 5. Fourteen percent of all redshift measurements from the MUSE datacubes (and 12% of high confidence detections, with $zconf > 1$) are sources purely detected from their line emission with *muselet*, that is to say they cannot be securely associated with an HST source from the photometric catalogues. While the number of such *line-only* sources in the final catalogue strongly depends on the depth of the HST images (which varies from 26–29 AB for a point source depending on the field/filter), we have identified a few such sources even at the depth of the HST FF images (~29 AB). They correspond to high equivalent width Lyman- α emitters, comparable to sources discovered in the MUSE deep fields (Bacon et al. 2017; Hashimoto et al. 2017; Maseda et al. 2018). Low-redshift line-only sources are typically associated stripped gas and jellyfish galaxies in the clusters, or high equivalent width emission lines from compact galaxies.

4. Mass models

In order to interpret the measured spectrophotometric properties of lensed background sources in a more physical way, we must first account for (and correct) both the magnification factors and the general shape distortions that massive cluster cores impart to the observations. To do this, we generate parametric models of each cluster’s total mass distribution, using the numerous multiple images identified in the MUSE catalogues as constraints. In this section, we describe the procedure we use for this analysis, which is similar to the process employed by the CATS (Clusters As Telescopes) team to generate mass models of the FF clusters (e.g., Richard et al. 2014; Jauzac et al. 2014, 2015, 2016; Lagattuta et al. 2017, 2019; Mahler et al. 2018) and makes use of the latest version (v7.1) of the public LENSTOOL software⁶ (Kneib et al. 1996; Jullo et al. 2007).

To reduce uncertainty, we use the spatial positions of only high-confidence multiple-image systems as constraints for a given model. Specifically, we include systems that are either confirmed spectroscopically (having at least one image with a spectroscopic redshift; called gold systems), or bright HST sources without a spectroscopic redshift, but with an obvious, unambiguous lensing configuration, similar to the ones reported as silver systems in previous works. Here, gold and silver are based on the notation used in previous FF studies (e.g., Lotz et al. 2017). We note that the vast majority of known systems will have new spectroscopic redshifts thanks to MUSE, so this limitation does not

strongly bias the final model. In fact, this conservative approach allows us to reach a sufficient precision such that we can assess additional multiple images in the spectroscopic catalogues, as discussed in Sect. 3.6. We also make use of the preliminary mass models and known HST arcs from references listed in Table 1 as a starting point for our strong-lensing analysis.

4.1. Model parametrisation

LENSTOOL uses a Monte Carlo Markov chain (MCMC) to sample the posterior probability distribution of the model, expressed as a function of the likelihood defined in Jullo et al. (2007). In practice, we minimise the distances in the image plane:

$$\chi^2 = \sum_{i,j} \frac{\|\theta_{\text{obs}}^{(i,j)} - \theta_{\text{pred}}^{(i,j)}\|^2}{\sigma_{\text{pos}}^2}, \quad (3)$$

with $\theta_{\text{obs}}^{(i,j)}$ and $\theta_{\text{pred}}^{(i,j)}$ representing the observed and predicted vector positions of multiple image j in system i , respectively. Furthermore, σ_{pos} is a global error on the position of all multiple images, which we fix at 0''.5. This value corresponds to the typical uncertainty in reproducing the strongly-lensed images, which is affected by the presence of mass substructures within the cluster or along the line of sight (Jullo et al. 2010). The best model found (which minimises the χ^2 value) also minimises the global rms between $\theta_{\text{obs}}^{(i,j)}$ and $\theta_{\text{pred}}^{(i,j)}$ (hereafter $\text{rms}_{\text{model}}$).

In order to estimate all the values of $\theta_{\text{pred}}^{(i,j)}$, LENSTOOL inverts the lens equation with a parametric potential which we assume to be a combination of double Pseudo Isothermal Elliptical mass profiles (dPIE, Elíasdóttir et al. 2007; Suyu & Halkola 2010). dPIE potentials are isothermal profiles which are characterised by a central velocity dispersion σ_0 and include a core radius r_{core} (producing a flattening of the mass distribution at the centre), and a cut radius r_{cut} (producing a drop-off of the mass distribution on large scales). Together with the central position (x_c, y_c) and elliptical shape (ellipticity e , angle θ), dPIE potentials are fully-defined by 7 parameters.

For each cluster, we include a small number of cluster-scale dPIE profiles (up to three) to account for the smooth large-scale components of the mass distribution. Additionally, we assign individual dPIE potentials to each cluster member, which represent the galaxy-scale substructure. We fix the cut radius of cluster-scale mass components to 1 Mpc (e.g., Limousin et al. 2007), as it is generally unconstrained by strong lensing, but allow the other parameters to vary freely in the fit.

Cluster members used as galaxy-scale potentials are selected through the red sequence of elliptical galaxies, which is well-identified in a colour-magnitude diagram based on the HST photometry. More details on this selection are provided in, for instance, Richard et al. (2014) for the FF clusters. For the newest lens models and most recent HST observations, we make use of the $F606W-F814W$ vs. $F160W$ colour-magnitude diagram to select cluster members down to $0.01 L^*$, where L^* is the characteristic luminosity at the cluster redshift based on the luminosity function from Lin et al. (2006). As a further refinement to this process, we cross-check the selected members with existing redshifts in our MUSE spectroscopic catalogue.

To reduce the number of free parameters in the model, we assume that the shape parameters (x_c, y_c, e, θ) of the galaxy-scale potentials follow the shape of their light distribution, and use the following scaling relations on the dPIE parameters with respect to their luminosity L :

⁶ Publicly available at: <https://git-cral.univ-lyon1.fr/lenstool/lenstool>, more details at: <https://projets.lam.fr/projects/lenstool/wiki/>

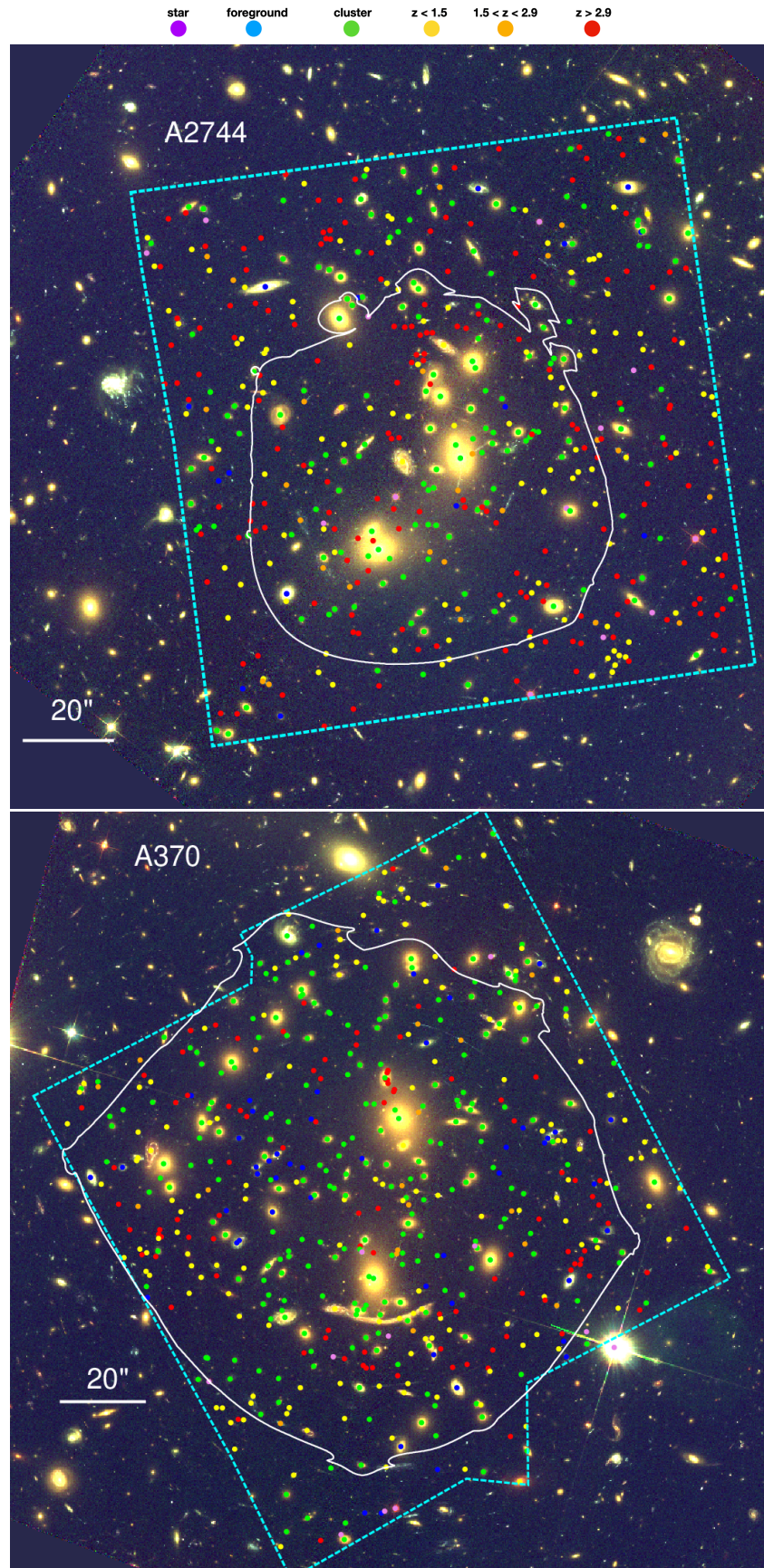


Fig. 7. Location of MUSE spectroscopic redshifts over HST F606W-F814W-F160W colour composites. North is up and east is left. The cyan dashed lines represent the limits of the MUSE datasets, while the solid white contour highlights the region where strongly-lensed multiple images are expected.

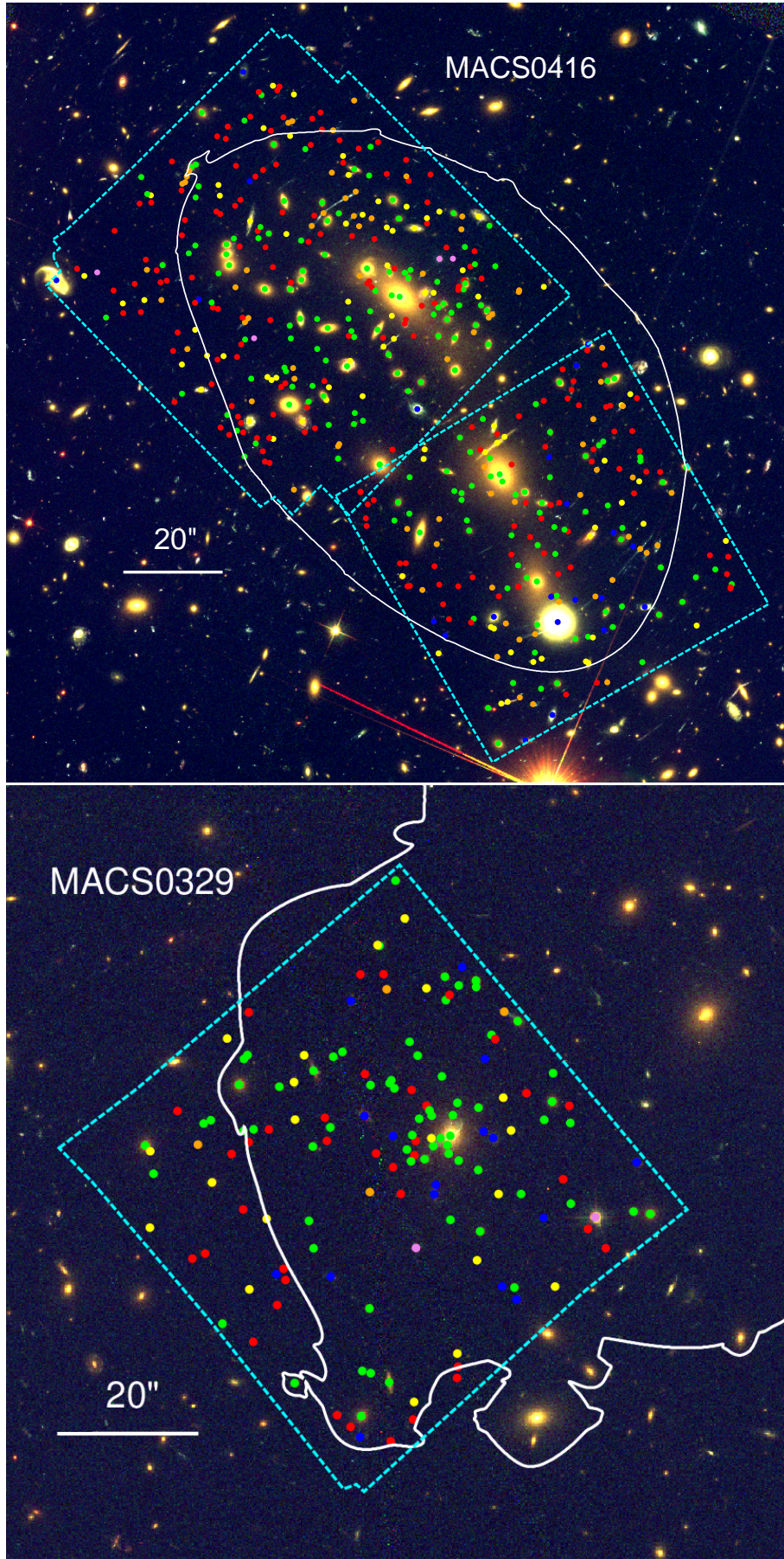


Fig. 7. continued.

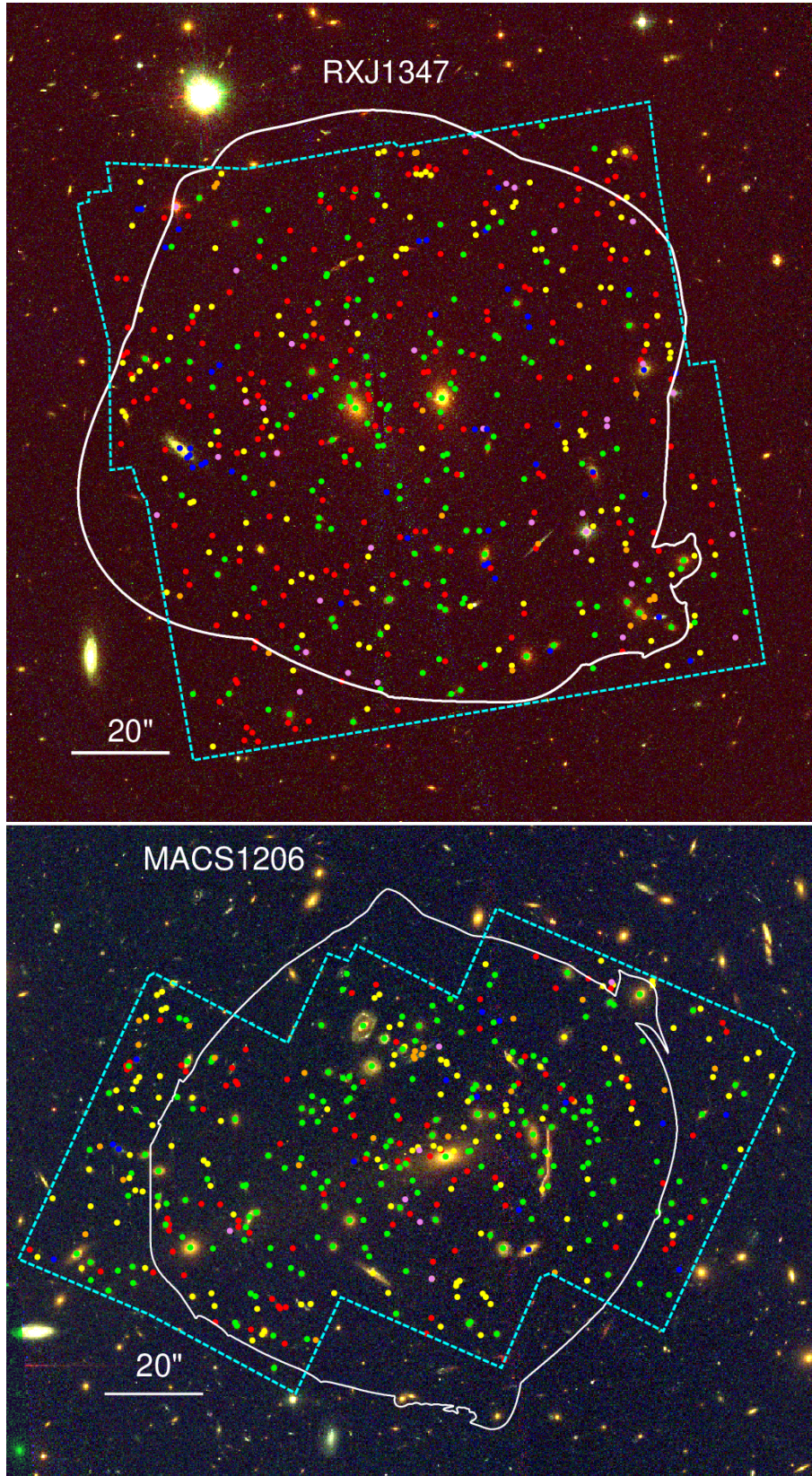


Fig. 7. continued.

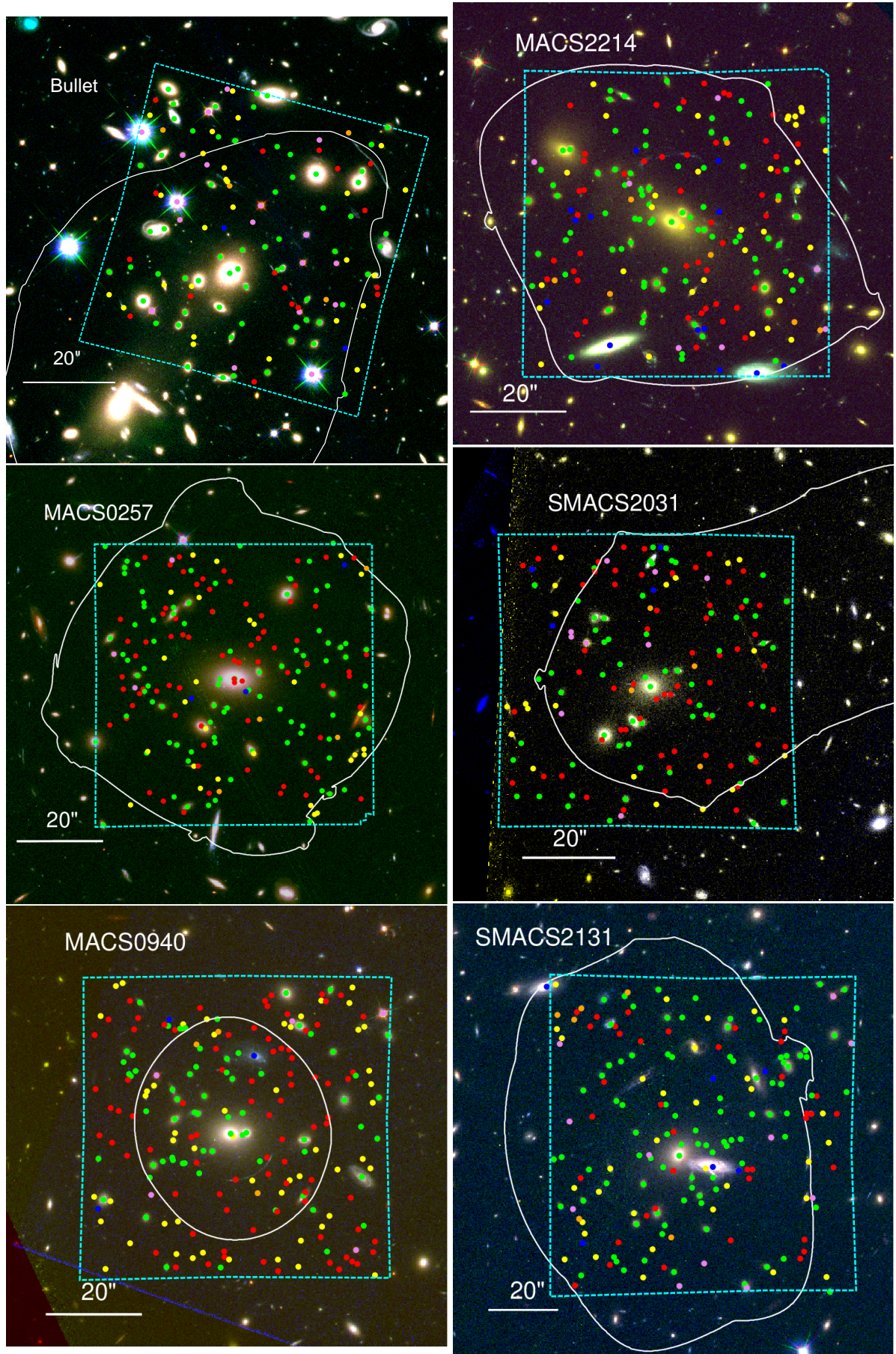


Fig. 7. continued.

Table 4. Summary of all spectroscopic measurements.

Cluster	Nz	$z_{\min}-z_{\max}$	$z < z_{\min}$	$z_{\min} < z < z_{\max}$	$z_{\max} < z < 1.5$	$1.5 < z < 2.9$	$z > 2.9$
A2744	506 (471)	0.280–0.340	28 (28)	158 (153)	115 (113)	29 (23)	176 (154)
A370	572 (546)	0.340–0.410	62 (60)	244 (227)	148 (144)	20 (17)	98 (98)
MACS0257	215 (183)	0.300–0.345	8 (8)	94 (85)	28 (25)	4 (3)	81 (62)
MACS0329	147 (107)	0.430–0.470	18 (14)	68 (55)	20 (16)	4 (4)	37 (18)
MACS0416	523 (421)	0.380–0.420	26 (20)	176 (147)	78 (65)	71 (50)	172 (139)
BULLET	130 (105)	0.250–0.330	20 (19)	63 (55)	26 (15)	4 (2)	17 (14)
MACS0940	216 (175)	0.320–0.355	8 (8)	67 (61)	53 (44)	3 (2)	85 (60)
MACS1206	442 (415)	0.405–0.460	22 (20)	186 (171)	119 (116)	24 (21)	91 (87)
RXJ1347	542 (450)	0.420–0.485	77 (69)	152 (138)	107 (97)	24 (17)	182 (129)
SMACS2031	158 (138)	0.325–0.360	13 (11)	60 (57)	19 (17)	4 (4)	62 (49)
SMACS2131	187 (157)	0.410–0.480	18 (16)	92 (76)	33 (30)	6 (3)	38 (32)
MACS2214	189 (159)	0.480–0.520	21 (17)	81 (71)	34 (32)	8 (2)	45 (37)
Total	3827 (3327)	–	321 (290)	1441 (1296)	780 (714)	201 (148)	1084 (879)

Notes. For each cluster we provide the total number of redshifts measured as well as in separate redshift bins: in the foreground, in the cluster, and in the background. The cluster redshift limits are defined from the velocity distributions and given as $z_{\min} - z_{\max}$. Numbers given in boldface are limited to the sources with high confidence redshifts ($z_{\text{conf}} > 1$).

$$r_{\text{core}} = 0.15 \text{ kpc}, \quad r_{\text{cut}} = r_{\text{cut}}^* \left(\frac{L}{L^*}\right)^{1/2}, \quad \sigma_0 = \sigma_0^* \left(\frac{L}{L^*}\right)^{1/4} \quad (4)$$

which follow from the [Faber & Jackson \(1976\)](#) relation of elliptical galaxies and the assumption of a constant mass-to-light ratio. The fixed value for r_{core} is negligible and follows from the discussion in [Limousin et al. \(2007\)](#).

The mass models are constructed through an iterative process, using a single cluster-scale dPIE profile at first to fit the most confident sets of multiply imaged systems. Other systems are tested and included as additional constraints, and a second or third cluster-scale dPIE profile is added when it has a significant effect in reducing $\text{rms}_{\text{model}}$. While most galaxy-scale mass components follow the general scaling relations presented in Eq. (4), we do fit the mass parameters of some individual galaxies separately, in special cases where we can constrain these values using additional information outside of the scaling relation. This is particularly the case for (a) BCGs, which are known not to follow the usual scaling relations of elliptical galaxies, (b) cluster members lying very close ($\leq 5''$) to multiple images, which locally influence their location (and sometimes produce galaxy-galaxy lens systems), and (c) additional galaxies located slightly in the foreground or background of the cluster, which produce a local lensing effect on their surroundings but will not follow the same scaling relations.

Finally, for the most complex clusters (A370, MACS1206, RXJ1347) we have tested the addition of an external shear potential. Typically used when modelling galaxy-galaxy lensed systems (e.g., [Desprez et al. 2018](#)), this potential accounts for an unknown effect of the large scale mass environment surrounding the cluster, in the form of a constant shear γ_{ext} at an angle Φ_{ext} . However it does not bring any additional mass to the model (see also the discussions in [Mahler et al. 2018](#) and [Lagattuta et al. 2019](#)).

4.2. Results of the strong lensing analysis

In Table 5, we summarise the number of strong-lensing constraints (systems and images) which were confirmed by our strong lensing analysis for each cluster, along with the rms from the best fit models. The complete list of multiple images

and the best-fit parameters of the mass models are detailed in Appendix B.

Overall, these models are among the most constrained (in terms of number of independent multiply imaged systems) strong-lensing cluster cores to date. We stress that this occurs not only for clusters with deep HST imaging, such as those available in the FFs, but even clusters in our sample observed with snapshot HST images are densely constrained; for example, MACS0257 has 25 systems with spectroscopic redshifts, producing 81 total multiple images over a single 1 arcmin² MUSE field. This is entirely dominated by the population of multiply-imaged Lyman- α emitters, which are very faint in HST but are easily revealed by the MUSE IFU.

Such a high density of constraints allows for a precise measurement of the mass profile, with a typical statistical error of <1% (e.g., [Jauzac et al. 2014](#); [Caminha et al. 2019](#)). The improvement is typically a factor of ~ 5 with respect to the models prior to MUSE observations (e.g., [Richard et al. 2015](#)). This has many applications, allowing us for example to test different parametrisations of the mass models and line of sight effects (e.g., [Chirivì et al. 2018](#)) to improve the $\text{rms}_{\text{model}}$ even further and reduce systematics. Some discussion on these effects were presented for the clusters Abell 2744 and Abell 370 in [Mahler et al. \(2018\)](#) and [Lagattuta et al. \(2019\)](#), respectively. One route to improve the models further is to combine the parametric mass models with a non-parametric (grid-like) mass distribution using a perturbative approach ([Beauchesne et al. 2020](#)).

Another application of these very-constrained models is to make use of the high density of constraints at the centre of the cluster, and probe the inner slope of the mass distribution to test predictions from Λ -CDM simulations ([Caminha et al. 2019](#)). Several clusters in our sample show so-called ‘hyperbolic-umbilic’ lensing configurations ([Orban de Xivry & Marshall 2009](#)), which are rarely seen and provide us with very important constraints in the cluster core ([Richard et al. 2009](#)). Finally, multiply-imaged systems appearing in the same regions of the cluster but originating from very different source plane redshifts are important for strong-lensing cosmography studies ([Jullo et al. 2010](#); [Caminha et al. 2016a](#); [Acebron et al. 2017](#)).

A full discussion of the 2D mass distribution of individual clusters is beyond the scope of this paper. However, in Table 5 we provide the main cluster parameters derived from our lens

Table 5. Global cluster properties measured from our strong lensing mass model.

Cluster	Nsys	Nimg	rms _{model} [""]	$\theta_E(z=4)$ [""]	$M(\theta < \theta_E(z=4))$ [$10^{14} M_\odot$]	σ_{model} [km s^{-1}]	σ_{dynamics} [km s^{-1}]
A2744	29 (29)	83 (83)	0.67	23.9	0.62 ± 0.04	1394 ± 37	1357 ± 138
A370	45 (39)	137 (122)	0.78	39.5	2.53 ± 0.03	1976 ± 50	1789 ± 109
MACS0257	25 (25)	81 (78)	0.78	28.1	1.10 ± 0.02	1487 ± 30	1633 ± 164
MACS0329	9 (8)	24 (21)	0.53	29.9	1.56 ± 0.08	1621 ± 68	1231 ± 130
MACS0416	71 (71)	198 (198)	0.58	29.9	1.05 ± 0.04	1559 ± 25	1277 ± 93
Bullet	15 (5)	40 (15)	0.39	25.8	0.73 ± 0.02	1601 ± 90	1283 ± 273
MACS0940	7 (7)	22 (22)	0.23	10.9	0.17 ± 0.01	859 ± 291	856 ± 192
MACS1206	37 (36)	113 (110)	0.52	31.5	1.76 ± 0.06	1603 ± 69	1842 ± 184
RXJ1347	36 (35)	121 (119)	0.84	38.6	2.75 ± 0.02	1684 ± 48	1097 ± 121
SMACS2031	13 (13)	46 (45)	0.33	26.1	0.76 ± 0.05	1683 ± 24	1531 ± 210
SMACS2131	10 (10)	28 (29)	0.79	24.4	1.08 ± 0.05	1270 ± 40	1378 ± 408
MACS2214	15 (15)	46 (46)	0.41	22.5	0.99 ± 0.02	1578 ± 60	1359 ± 224
Total	312 (293)	939 (888)	–	–	–	–	–

Notes. From left to right: number of multiply-imaged systems, total number of multiple images, global rms of the model, Einstein radius at $z = 4$, total enclosed mass within the Einstein radius, global velocity dispersion measured from the lens model or the cluster dynamics. Numbers in boldface are confirmed with spectroscopy.

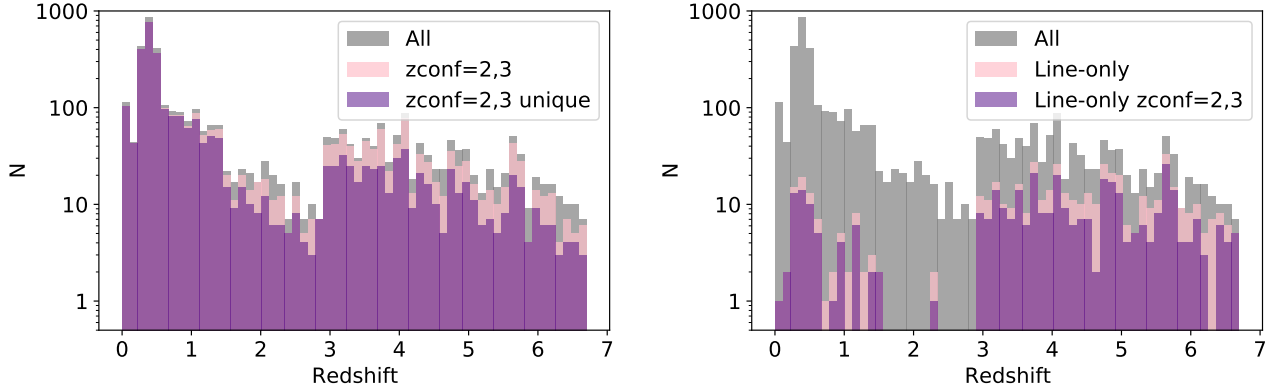


Fig. 8. Global redshift distribution of MUSE sources in the lensing cluster fields. *Left panel:* comparison between the overall distribution and sources with high confidence redshifts ($z_{\text{conf}} = 2, 3$), the latter before and after (‘unique’) accounting for image multiplicity. *Right panel:* comparison between the overall distribution and the line-only sources (pure line emitters without any HST counterpart, see Sect. 3.9).

model which characterise their lensing power: namely the equivalent Einstein radius θ_E at $z = 4$ (defined from the area within the critical curve Σ , as $\theta_E = \sqrt{\Sigma/\pi}$), and the enclosed projected mass within this radius $M < \theta_E$. We selected $z = 4$ as it is the average DLS/DS (the lensing efficiency factor, ratio of the distance between the lens and the source over the distance to the source) for Lyman- α emitters which contribute to the majority of constraints.

5. Source properties

5.1. Redshift distribution

The complete spectroscopic dataset of the 12 clusters amount to more than 3200 high-confidence redshifts, consisting of galaxies either in the foreground, in the cluster itself, or in the background. Overall, cluster members dominate the redshift distribution; this is clearly apparent in Table 4, where cluster members account for $\sim 40\%$ of the total spectroscopic sample. We display a histogram of the global redshift distribution combining all clusters in Fig. 8. The left panel shows the distribution of all and high confidence redshifts when limited to unique sources, that is to say removing the additional images of strongly lensed systems.

The right panel shows the distribution of line-only sources (i.e. sources detected purely from line emission without any HST counterpart).

These histograms reveal a number of important features in the data, both intrinsic to our sample and unique to the MUSE instrument. Notably, since all of the clusters are located within a relatively narrow redshift range, there is a prominent peak around $z = 0.4$ representing the cluster overdensities. At the same time, we see that multiply imaged lensed sources start to represent a significant fraction (37%) of all galaxies at $z > 1.8$, as evidenced by the increasing discrepancy between the ‘‘all’’ (grey) and ‘‘unique’’ (purple) distributions in the left panel. Furthermore, the MUSE redshift desert ($1.5 < z < 2.9$), a region where no strong emission lines ([O II], Lyman- α) are present in the MUSE wavelength range, is also clearly visible, with a significant deficit of redshifts (especially for line-only sources) in those bins. Finally, the redshift histogram at $z > 2.9$ is dominated by the population of Lyman- α emitters, which are more easily detected between sky lines. This produces small gaps in the redshift distribution at wavelengths where the sky is brighter, in particular at $z \sim 4.6$ and $z > 5.8$.

Compared to the total redshift histograms, individual clusters tend to show more prominent peaks at specific redshifts. This

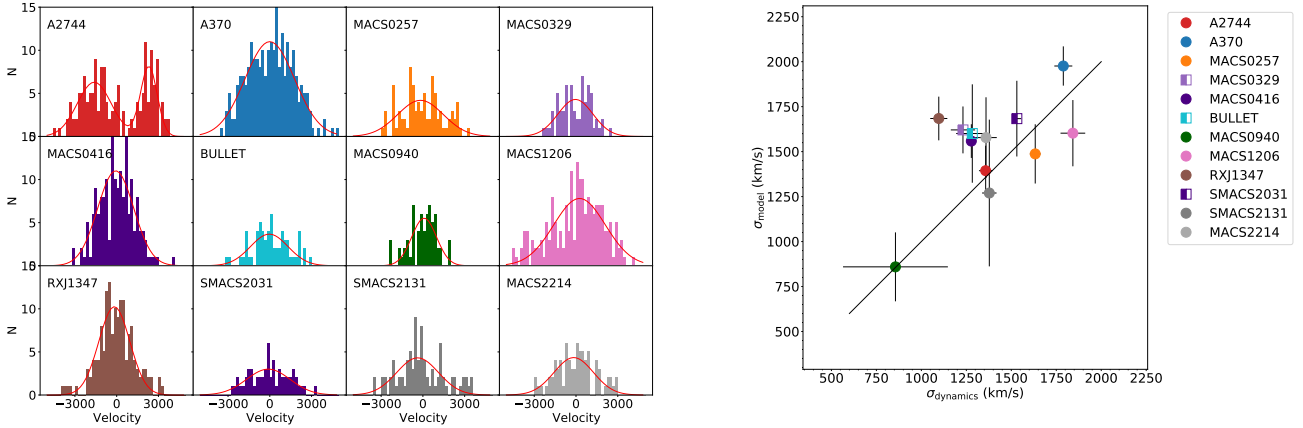


Fig. 9. *Left panel:* velocity distribution of cluster members for each of the 12 fields. The red curves shows the best fit Gaussian model of the distribution (2 Gaussian components in Abell 2744). *Right panel:* comparison between the total velocity dispersion from the dPIE profiles in the mass model and the total velocity dispersion from the velocity distribution. The square symbols mark the three clusters with only partial MUSE coverage in the cluster cores.

is a known effect of galaxy clustering in the small area probed behind lensing clusters (e.g., Kneib et al. 2004). Specific group-like structures are seen at $z \sim 4$ behind Abell 2744 (Mahler et al. 2018) and $z \sim 1$ behind Abell 370 (Lagattuta et al. 2019).

5.2. Kinematics of the cluster cores

The high velocities of galaxies in cluster cores appear clearly in the redshift distribution when zooming-in around the systemic cluster redshift (Fig. 9). The shape of the distribution generally follows a single normal distribution, with the exception of Abell 2744 showing a clear bimodal distribution. For that particular cluster, Mahler et al. (2018) demonstrated that the two velocity components seen in the inner 400 kpc radius persist out to much larger distances, as they are associated (and in good agreement) with sparser spectroscopic data covering >1 Mpc scales (Owers et al. 2011).

Although a full analysis of the cluster kinematics is clearly limited by the spatial coverage of MUSE-only spectroscopy in the cluster core, the large number of cluster redshifts measured in the very central core ($R < 300$ kpc) still provides insight into the overall velocity dispersion in the different cluster components seen in the distribution. We fit either 1 or 2 Gaussian components per cluster to the velocity distribution and estimate the global velocity dispersion σ_{dynamics} as the quadratic sum of their σ . We independently estimate a global velocity dispersion σ_{model} from our strong lensing model, by taking the quadratic sum of the σ_0 parameters in the cluster-scale dPIE components. We include a $1.3\times$ correction factor between the line-of-sight velocity dispersion and the dPIE σ_0 parameters, as discussed in Elíasdóttir et al. (2007) for the typical values of core and cut radii in our cluster potentials.

Figure 9 (right panel) directly compares the two velocity dispersion estimators for the 12 clusters. Taken at face value, we find that the clusters span a large range in σ , but there is a generally good agreement between the two estimators for most of the clusters. This shows that despite the strong differences in the dynamical state of the clusters, the mass components included in our mass models account for a similar amount of mass as seen in the cluster velocity distribution, although we cannot directly associate between the large-scale clumps of the lens model and the velocity components. We observe a large dispersion on σ_{dynamics} , which is certainly due to the limited

coverage of the velocity measurements and line-of-sight projection effects due to the overall geometry of the cluster. Moreover, clusters showing very high σ_{dynamics} (close to ~ 2000 km s^{-1} , as for Abell 370 and MACS1206) are most likely formed of multiple lower σ components which we cannot isolate individually. RXJ1347 is the most discrepant point in this diagram, with $\sigma_{\text{dynamics}} \sim 1100$ km s^{-1} despite it having the largest mass of the sample within its Einstein radius. This could be explained if multiple cluster structures are present with a low velocity difference, enhancing its lensing power while maintaining a low σ_{dynamics} . Regardless, we find an average ratio $\langle \sigma_{\text{dynamics}} / \sigma_{\text{model}} \rangle = 0.92 \pm 0.14$. Even though the cluster dynamics only probe the inner regions (< 200 kpc), we do not see a significant under- or overestimation of the global velocity dispersion in the velocity measurements.

5.3. Magnification distribution and survey volume at high redshift

One of the direct outputs of the mass models is an estimate of the magnification factor at a given source redshift and image position. These values are crucial in order to correct absolute physical measurements of lensed sources, such as the stellar mass, luminosity, and star-formation rate, etc. We include this estimated magnification μ at the central location of each source in the spectroscopic catalogue (Table A.1). These values are generally well-constrained within the multiply imaged regions, but tend to be overestimated in the vicinity of the critical lines (typically $\mu > 25$), where the emergence of lensed pairs and the resolved sources limit very strong magnification factors.

We present the magnification distribution of the full set of lensed images in Fig. 10, where we count the magnification of each observed image individually (i.e., multiply-imaged systems are not combined into a single entry). The minimum magnification is set by the limits of the MUSE coverage in each cluster, but is typically $\mu \sim 1.5-2$. The distribution $N(\mu)$ at $\mu > 2$ follows a clear power-law, with an exponent $\mu^{-2.02 \pm 0.09}$. This value is very close to the theoretical prediction of optical depth for strong lensing magnification, $\tau \propto \mu^{-2}$ (Blandford & Narayan 1986) in the case of smooth mass distributions like the ones used in our modelling. This shows that our detection process of MUSE lensed sources is not strongly affected and missing additional sources at very high magnifications.

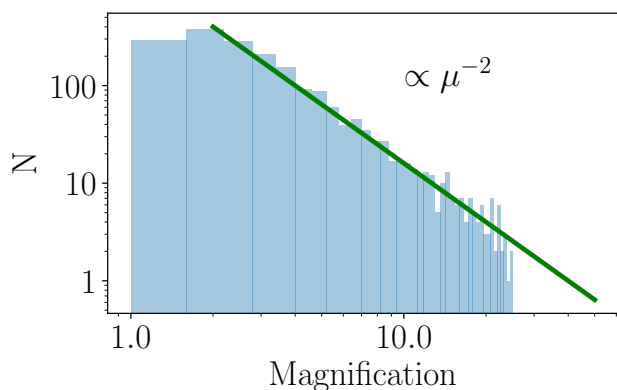


Fig. 10. Magnification distribution for all background sources. We overlay a theoretical μ^{-2} relation to guide the eye. We observe a significant drop in the number of sources at low magnifications ($\mu < 1.5$), due to the limits set by the FoV of the MUSE observations, and at very high magnifications ($\mu > 25$) due to the very small statistics and possibly the resolved nature of Lyman- α emitters.

Another important measurement we derive from the lens model is the equivalent source-plane area covered by the MUSE observations. This differs from the image-plane area (i.e., the MUSE footprint) due to the strong lensing effect, with the effective source-plane area reduced by the same amount as the magnification factor; unsurprisingly this also diminishes the associated survey volume behind the cluster. Figure 11 presents the source-plane area for each cluster at a typical source redshift $z = 4$, with the colourscale representing the greatest magnification factor at a given source position (recall that sources lying within the multiply-imaged region will have more than one magnification solution). In the figure, the strongly lensed region itself appears in the form of the caustic lines in the source plane.

Compared to the total observed area of ~ 23.5 arcmin² on sky covered with MUSE, the total effective area covered in the source plane at high redshift is 4 arcmin², a factor 6 \times smaller. From these source plane areas we compute the effective volume covered at source redshifts $2.9 < z < 6.7$ when detecting lensed Lyman- α emitters, as a function of lensing magnification. This is important knowledge when probing the luminosity function of Lyman- α emitters behind clusters (Bina et al. 2016; de La Vieuville et al. 2019) compared to blank fields (Drake et al. 2017; Herenz et al. 2019). We stress that there are strong cluster-to-cluster variations in the volume surveyed depending on the geometry of the caustics and the MUSE coverage, with a maximum volume ranging between 600 and 10 000 comoving Mpc³ in individual clusters at any magnification. While a full volume computation would require more precise completeness measurements accounting for spatial variations of exposure time and the evolution of the noise as a function of wavelength, these variations can easily explain the cluster-to-cluster differences in the observed number counts of LAEs, as found by de La Vieuville et al. (2019).

5.4. Resolved properties of high redshift galaxies

Despite the effective surface reduction in the source plane, one of the strong benefits from the magnification is to increase the apparent size of lensed galaxies, allowing us to reach much smaller intrinsic scales. Combined with MUSE integral field spectroscopy, this magnification gives access to resolved spectral properties in particular from the nebular line emission.

Some of the brightest and most extended arcs at $0.5 < z < 1.5$ in the present sample have been studied in Patrício et al. (2018) to measure the detailed gas kinematics at sub-kpc scales, in relation with the presence of star-forming clumps and significant resolved metallicity gradients as a function of radius (Patrício et al. 2019). These bright extended arcs are rare cases of very strong magnification in typical L^* galaxies. But the measurement of resolved kinematics can be pushed to fainter masses/luminosities and larger samples to study the Tully-Fisher relation and morpho-kinematics of lensed sources reconstructed in the source plane. This allows spatially resolved analyses which are complementary to blank field studies, the latter being more strongly limited by the spatial resolution (Contini et al. 2016; Girard et al. 2020; Abril-Melgarejo et al. 2021).

At higher redshifts ($z > 2.9$) IFU observations have now established that the Lyman- α emission of distant galaxies is typically more spatially extended than the stellar UV continuum, illuminating the surrounding circumgalactic medium (Wisotzki et al. 2016; Leclercq et al. 2017). The origin of this Lyman- α emission is complex, and only the brightest Lyman- α haloes are sufficiently extended to allow spatially resolved analyses in the absence of any lensing effect (Erb et al. 2018; Leclercq et al. 2020) and test predictions from simulations.

MUSE observations on lensing clusters offer the power to identify extended gas around high redshift galaxies (once magnified), allowing detailed studies of the spectral line properties within multiple regions, in particular through bright Lyman- α extended haloes (Patrício et al. 2016; Smit et al. 2017; Caminha et al. 2016b; Vanzella et al. 2017; Claeysens et al. 2019). Figure 12 shows a very clear example taken from our sample of extended emission detected over the $z = 4.086$ source originally identified by Cohen & Kneib (2002) in RXJ1347. This galaxy appears as a very compact source in the HST image ($FWHM < 0''.3$, limited by the PSF), while the Lyman- α emission reaches an extension of $13''$ in the form of an arc. The critical line at $z = 4.086$ straddles the arc at the location of the UV source, which appears as a bright H II knot coincidentally located over the caustic line in the source plane. This example illustrates the capability of MUSE observations to clearly disentangle between stellar and nebular emission at these high redshifts. We identified 2–3 such magnified (spanning $> 5''$) Lyman- α emitters per cluster, for which we will be able to retrieve detailed physical properties at scales better than typically ~ 1 kpc (Claeysens et al., in prep.).

6. Summary and conclusion

We have presented a spectroscopic survey of MUSE/VLT observations towards 12 massive clusters selected from the MACS, CLASH, and FF samples. The data represent ~ 23 arcmin² on sky as single pointings or mosaics, with an effective exposure time ranging between 2 and 15 h and a grand total of > 125 h.

Thanks to improvements in the data reduction and the tools developed for source detection and inspection in the datacubes, our final spectroscopic catalogue presents > 3200 spectroscopic redshifts with high confidence ($z_{conf} = 2$ or 3). Improvements include careful self-calibration and specific masking to remove instrumental systematics and other artefacts in the datacube, a better estimate of the noise properties, and the establishment of a clear process for spectral analysis.

Deep (> 8 h per pointing) MUSE observations reveal a very high density of faint lensed LAEs, which dominate the population of background galaxies with spectroscopic redshifts. A very significant fraction of high-redshift galaxies are multiply-imaged

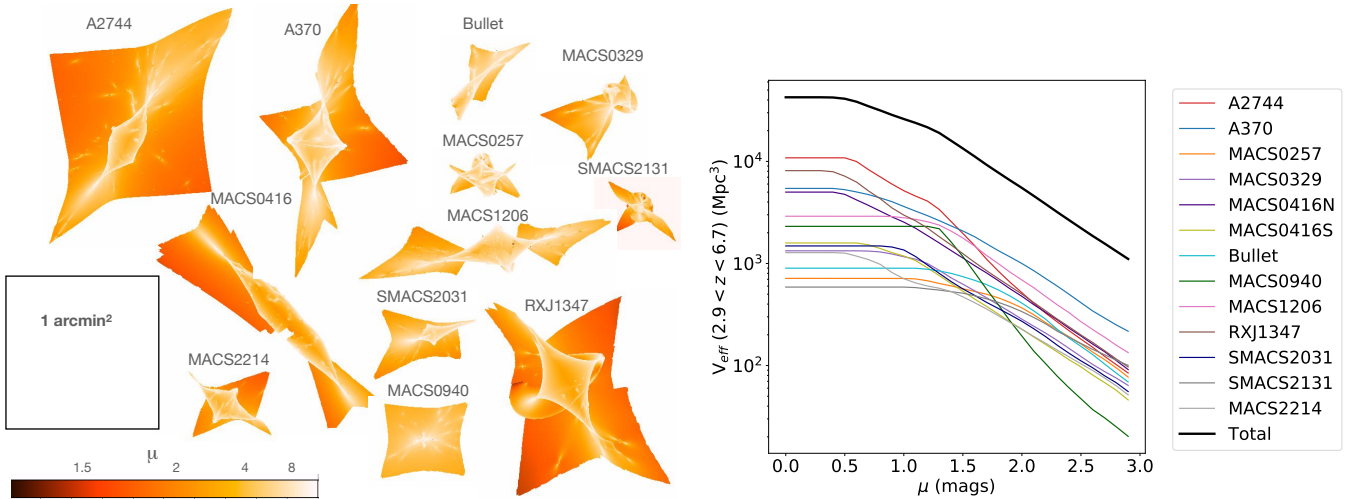


Fig. 11. *Left panel:* source plane coverage of each cluster at $z = 4$, as a function of the strong lensing magnification of the most magnified image. The black square shows a 1 arcmin^2 for scale. *Right panel:* effective volume surveyed at $2.9 < z < 6.7$ with MUSE for Lyman- α emitters, as a function of the magnification of the brightest image. Presented are individual volumes behind each cluster and the total over all fields.

systems, which we use to precisely constrain mass models in the cluster cores. The number of strong lensing constraints in a single cluster, reaching 70 systems producing 189 multiple images in the case of MACS0416, and the fraction of spectroscopically confirmed images ($>90\%$ in the models used in our analysis) are among the highest in any known cluster including the FFs. These parametric mass models are fully included in our redshift assessment process to help confirm or reject some multiple images.

Based on our cluster mass models, we assess the source plane survey area at high redshift ($z > 3$) and find that the effective surface area is $\sim 6 \text{ arcmin}^2$, a factor of 6 smaller than in the image plane due to the lensing magnification. This shows that the number density of LAEs is very high at the low luminosities probed through lensing magnification. The magnification distribution $N(\mu)$ is compatible with the theoretical predictions in the very strong magnification regime ($2 < \mu < 25$), showing that our detection process for lensed sources is not missing additional sources in the high magnification regime. We note that, in the area covered by MUSE observations, multiple images dominate the detected sources at $z > 1.8$, while the fraction of multiple images is much lower at $z < 1.5$ (Fig. 8). This difference is related to the magnification bias (Broadhurst et al. 1995), which affects the source populations differently depending on the redshift and therefore intrinsic luminosity. The redshift range $1.8 < z < 6.7$ is therefore ideal to identify a large number of multiply imaged sources and makes MUSE very efficient for this purpose at $3 < z < 6.7$. The future BlueMUSE instrument (Richard et al. 2019) will complement this redshift range by targeting LAEs at $1.9 < z < 4$, where the density of multiply-imaged LAEs is expected to be very high.

We make the results of this analysis publicly available in the form of a first data release⁷, including the reduced datacubes, spectrophotometric catalogues, extracted spectra, and mass models. Additional MUSE observations of lensing clusters taken under the GTO programme and archival observations (including lower redshift clusters such as Abell 1689, 2390 and 2667) will be inspected in a similar manner and their data released in subsequent catalogues. Overall, this very rich dataset has a strong legacy value, allowing for a large variety

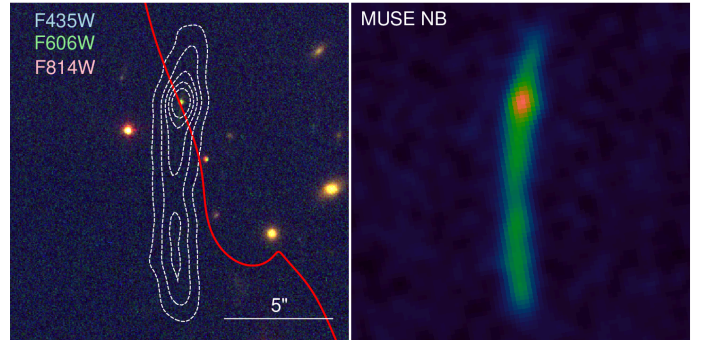


Fig. 12. Example of very extended Lyman- α emitter in RXJ1347 (system 25), at $z = 4.086$. *Left panel* shows the HST colour image and the *right panel* the MUSE NB image around the Lyman- α emission. White dashed contours of the NB are overlaid on HST. The red curve shows the critical line at this redshift, which crosses the arc-shaped Lyman- α emission at the location of a point-like source in HST.

of statistical studies from cluster physics to very high redshift galaxies. The sample of magnified Lyman- α emitters will be particularly suitable for follow-ups at longer wavelengths with the *James Webb* Space Telescope (JWST) and the Atacama Large Millimeter/submillimeter Array (ALMA) to better constrain the resolved star formation and clump properties through ISM diagnostics.

Acknowledgements. We would like to thank the anonymous referee for their helpful comments on the manuscript. J.R., A.C., D.L., D.C., B.C., G.M., V.P., and J.M. acknowledge support from the ERC starting grant 336736-CALENDS. We acknowledge support from the Programa de Cooperación Científica – ECOS SUD/CONICYT Program C16U02 (J.R., A.C., F.E.B., R.P., L.G., D.L., G.V.), ANID grants CATA-Basal AFB-170002 (F.E.B., L.G., G.P.L.), FONDECYT Regular 1190818 (F.E.B.) and 1200495 (F.E.B., G.P.L.) and Millennium Science Initiative ICN12_009 (F.E.B., G.P.L.). JPK acknowledges support from the ERC advanced grant 290975-LIDA. This work has been carried out thanks to the support of the OCEVU Labex (ANR-11-LABX-0060) and the A*MIDEX project (ANR11-IDEX-0001-02) funded by the “Investissements d’Avenir” French government programme managed by the ANR. The authors gratefully acknowledge financial support from STScI grant 15696. HE gratefully acknowledges support from STScI grants GO-9722, -12166, and -12884. Based on observations made with ESO Telescopes at the La Silla Paranal Observatory under programme IDs listed in the second column of Table 2. We thank all the staff at Paranal Observatory for their valuable support during the MUSE-GTO observations. Also based

⁷ https://cral-perso.univ-lyon1.fr/labo/perso/johan.richard/MUSE_data_release/

on observations made with the NASA/ESA *Hubble* Space Telescope, which is operated by the Association of Universities for Research in Astronomy, Inc., under NASA contract NAS 5-26555. This research made use several open source Python libraries: NUMPY (van der Walt et al. 2011), SCIPY (Virtanen et al. 2020), MATPLOTLIB (Hunter 2007), and ASTROPY, a community-developed core Python package for Astronomy (Astropy Collaboration 2013). This research has made use of the VizieR catalogue access tool, CDS, Strasbourg, France. The original description of the VizieR service was published in A&AS 143, 23. This research made use of MONTAGE. It is funded by the National Science Foundation under Grant Number ACI-1440620, and was previously funded by the National Aeronautics and Space Administration's Earth Science Technology Office, Computation Technologies Project, under Cooperative Agreement Number NCC5-626 between NASA and the California Institute of Technology.

References

- Abril-Melgarejo, V., Epinat, B., Mercier, W., et al. 2021, *A&A*, in press [arXiv:2101.08069]
- Acebron, A., Jullo, E., Limousin, M., et al. 2017, *MNRAS*, 470, 1809
- Astropy Collaboration (Robitaille, T. P., et al.) 2013, *A&A*, 558, A33
- Atek, H., Richard, J., Kneib, J.-P., et al. 2015, *ApJ*, 800, 18
- Atek, H., Richard, J., Kneib, J.-P., & Schaerer, D. 2018, *MNRAS*, 479, 5184
- Bacon, R., Accardo, M., Adjali, L., et al. 2010, in *Ground-based and Airborne Instrumentation for Astronomy III*, SPIE Conf. Ser., 7735, 773508
- Bacon, R., Brinchmann, J., Richard, J., et al. 2015, *A&A*, 575, A75
- Bacon, R., Conseil, S., Mary, D., et al. 2017, *A&A*, 608, A1
- Baldry, I. K., Alpaslan, M., Bauer, A. E., et al. 2014, *MNRAS*, 441, 2440
- Balestra, I., Mercurio, A., Sartoris, B., et al. 2016, *ApJS*, 224, 33
- Bayliss, M. B., Hennawi, J. F., Gladders, M. D., et al. 2011, *ApJS*, 193, 8
- Beauchesne, B., Clément, B., Richard, J., & Kneib, J. P. 2020, *MNRAS*, submitted
- Bertin, E., & Arnouts, S. 1996, *A&AS*, 117, 393
- Bertin, E., Mellier, Y., Radovich, M., et al. 2002, in *Astronomical Data Analysis Software and Systems XI*, eds. D. A. Bohlender, D. Durand, T. H. Handley, et al., *ASP Conf. Ser.*, 281, 228
- Bina, D., Pelló, R., Richard, J., et al. 2016, *A&A*, 590, A14
- Blandford, R., & Narayan, R. 1986, *ApJ*, 310, 568
- Brinchmann, J., Charlot, S., White, S. D. M., et al. 2004, *MNRAS*, 351, 1151
- Broadhurst, T. J., Taylor, A. N., & Peacock, J. A. 1995, *ApJ*, 438, 49
- Broadhurst, T., Benítez, N., Coe, D., et al. 2005, *ApJ*, 621, 53
- Caminha, G. B., Grillo, C., Rosati, P., et al. 2016a, *A&A*, 587, A80
- Caminha, G. B., Karman, W., Rosati, P., et al. 2016b, *A&A*, 595, A100
- Caminha, G. B., Grillo, C., Rosati, P., et al. 2017a, *A&A*, 600, A90
- Caminha, G. B., Grillo, C., Rosati, P., et al. 2017b, *A&A*, 607, A93
- Caminha, G. B., Rosati, P., Grillo, C., et al. 2019, *A&A*, 632, A36
- Campusano, L. E., Pelló, R., Kneib, J. P., et al. 2001, *A&A*, 378, 394
- Chirivì, G., Suyu, S. H., Grillo, C., et al. 2018, *A&A*, 614, A8
- Christensen, L., Richard, J., Hjorth, J., et al. 2012, *MNRAS*, 427, 1953
- Claeysens, A., Richard, J., Blaizot, J., et al. 2019, *MNRAS*, 489, 5022
- Cohen, J. G., & Kneib, J.-P. 2002, *ApJ*, 573, 524
- Contini, T., Epinat, B., Bouché, N., et al. 2016, *A&A*, 591, A49
- de La Vieuville, G., Bina, D., Pello, R., et al. 2019, *A&A*, 628, A3
- Desprez, G., Richard, J., Jauzac, M., et al. 2018, *MNRAS*, 479, 2630
- Drake, A. B., Garel, T., Wisotzki, L., et al. 2017, *A&A*, 608, A6
- Ebeling, H., Edge, A. C., Bohringer, H., et al. 1998, *MNRAS*, 301, 881
- Ebeling, H., Edge, A. C., Allen, S. W., et al. 2000, *MNRAS*, 318, 333
- Ebeling, H., Edge, A. C., & Henry, J. P. 2001, *ApJ*, 553, 668
- Ebeling, H., Barrett, E., Donovan, D., et al. 2007, *ApJ*, 661, L33
- Ebeling, H., Ma, C. J., Kneib, J. P., et al. 2009, *MNRAS*, 395, 1213
- Elíasdóttir, Á., Limousin, M., Richard, J., et al. 2007, *ArXiv e-prints* [arXiv:0710.5636]
- Erb, D. K., Steidel, C. C., & Chen, Y. 2018, *ApJ*, 862, L10
- Faber, S. M., & Jackson, R. E. 1976, *ApJ*, 204, 668
- Fujimoto, S., Oguri, M., Brammer, G., et al. 2020, *ApJ*, in press [arXiv:2101.01937]
- Gaia Collaboration (Brown, A. G. A., et al.) 2018, *A&A*, 616, A1
- Girard, M., Mason, C. A., Fontana, A., et al. 2020, *MNRAS*, 497, 173
- Grillo, C., Karman, W., Suyu, S. H., et al. 2016, *ApJ*, 822, 78
- Halkola, A., Hildebrandt, H., Schrabback, T., et al. 2008, *A&A*, 481, 65
- Hashimoto, T., Garel, T., Guiderdoni, B., et al. 2017, *A&A*, 608, A10
- Herenz, E. C., Urrutia, T., Wisotzki, L., et al. 2017, *A&A*, 606, A12
- Herenz, E. C., Wisotzki, L., Saust, R., et al. 2019, *A&A*, 621, A107
- Hinton, S., 2016, *MARZ: Redshifting Program*, *Astrophys. Source Code Libr.* [record ascl:1605.001]
- Hoag, A., Bradač, M., Huang, K. H., et al. 2015, *ApJ*, 813, 37
- Hoag, A., Huang, K. H., Treu, T., et al. 2016, *ApJ*, 831, 182
- Horne, K. 1986, *PASP*, 98, 609
- Hunter, J. D. 2007, *Comput. Sci. Eng.*, 9, 90
- Inami, H., Bacon, R., Brinchmann, J., et al. 2017, *A&A*, 608, A2
- Jauzac, M., Clément, B., Limousin, M., et al. 2014, *MNRAS*, 443, 1549
- Jauzac, M., Richard, J., Jullo, E., et al. 2015, *MNRAS*, 452, 1437
- Jauzac, M., Richard, J., Limousin, M., et al. 2016, *MNRAS*, 457, 2029
- Jauzac, M., Mahler, G., Edge, A. C., et al. 2019, *MNRAS*, 483, 3082
- Jauzac, M., Klein, B., Kneib, J.-P., et al. 2020, *MNRAS*, submitted, [arXiv:2006.10700]
- Jullo, E., Kneib, J. P., Limousin, M., et al. 2007, *New J. Phys.*, 9, 447
- Jullo, E., Natarajan, P., Kneib, J. P., et al. 2010, *Science*, 329, 924
- Karman, W., Caputi, K. I., Grillo, C., et al. 2015, *A&A*, 574, A11
- Kneib, J. P., Ellis, R. S., Smail, I., Couch, W. J., & Sharples, R. M. 1996, *ApJ*, 471, 643
- Kneib, J.-P., van der Werf, P. P., Kraiberg Knudsen, K., et al. 2004, *MNRAS*, 349, 1211
- Kneib, J.-P., & Natarajan, P. 2011, *A&ARv*, 19, 47
- Koekemoer, A. M., Faber, S. M., Ferguson, H. C., et al. 2011, *ApJS*, 197, 36
- Lagattuta, D. J., Richard, J., Clément, B., et al. 2017, *MNRAS*, 469, 3946
- Lagattuta, D. J., Richard, J., Bauer, F. E., et al. 2019, *MNRAS*, 485, 3738
- Laporte, N., Bauer, F. E., Troncoso-Iribarren, P., et al. 2017, *A&A*, 604, A132
- Leclercq, F., Bacon, R., Wisotzki, L., et al. 2017, *A&A*, 608, A8
- Leclercq, F., Bacon, R., Verhamme, A., et al. 2020, *A&A*, 635, A82
- Leethochawalit, N., Jones, T. A., Ellis, R. S., Stark, D. P., & Zitrin, A. 2016, *ApJ*, 831, 152
- Leibundgut, B., Bacon, R., Jaffé, Y. L., et al. 2017, *Messenger*, 170, 20
- Limousin, M., Richard, J., Jullo, E., et al. 2007, *ApJ*, 668, 643
- Lin, Y.-T., Mohr, J. J., Gonzalez, A. H., & Stanford, S. A. 2006, *ApJ*, 650, L99
- Lotz, J. M., Koekemoer, A., Coe, D., et al. 2017, *ApJ*, 837, 97
- Mahler, G., Richard, J., Clément, B., et al. 2018, *MNRAS*, 473, 663
- Mahler, G., Sharon, K., Fox, C., et al. 2019, *ApJ*, 873, 96
- Maseda, M. V., Bacon, R., Franx, M., et al. 2018, *ApJ*, 865, L1
- Meneghetti, M., Davoli, G., Bergamini, P., et al. 2020, *Science*, 369, 1347
- Moffat, A. F. J. 1969, *A&A*, 3, 455
- Orban de Xivry, G., & Marshall, P. 2009, *MNRAS*, 399, 2
- Owers, M. S., Randall, S. W., Nulsen, P. E. J., et al. 2011, *ApJ*, 728, 27
- Paraficz, D., Kneib, J. P., Richard, J., et al. 2016, *A&A*, 594, A121
- Patrício, V., Richard, J., Verhamme, A., et al. 2016, *MNRAS*, 456, 4191
- Patrício, V., Richard, J., Carton, D., et al. 2018, *MNRAS*, 477, 18
- Patrício, V., Richard, J., Carton, D., et al. 2019, *MNRAS*, 489, 224
- Piqueras, L., Conseil, S., Shepherd, M., et al. 2019, in *Astronomical Data Analysis Software and Systems XXVI*, eds. M. Molinaro, K. Shorridge, F. Pasion, et al., *ASP Conf. Ser.*, 521, 545
- Postman, M., Coe, D., Benítez, N., et al. 2012, *ApJS*, 199, 25
- Repp, A., & Ebeling, H. 2018, *MNRAS*, 479, 844
- Repp, A., Ebeling, H., & Richard, J. 2016, *MNRAS*, 457, 1399
- Rescigno, U., Grillo, C., Lombardi, M., et al. 2020, *A&A*, 635, A98
- Rexroth, M., Kneib, J. P., Joseph, R., Richard, J., & Her, R. 2017, *ArXiv e-prints* [arXiv:1703.09239]
- Richard, J., Pei, L., Limousin, M., Jullo, E., & Kneib, J. P. 2009, *A&A*, 498, 37
- Richard, J., Smith, G. P., Kneib, J.-P., et al. 2010, *MNRAS*, 404, 325
- Richard, J., Jauzac, M., Limousin, M., et al. 2014, *MNRAS*, 444, 268
- Richard, J., Patrício, V., Martínez, J., et al. 2015, *MNRAS*, 446, L16
- Richard, J., Bacon, R., Blaizot, J., et al. 2019, *ArXiv e-prints* [arXiv:1906.01657]
- Roth, M. M., Sandin, C., Kamann, S., et al. 2018, *A&A*, 618, A3
- Schmidt, K. B., Treu, T., Brammer, G. B., et al. 2014, *ApJ*, 782, L36
- Seitz, S., Saglia, R. P., Bender, R., et al. 1998, *MNRAS*, 298, 945
- Smit, R., Swinbank, A. M., Massey, R., et al. 2017, *MNRAS*, 467, 3306
- Soto, K. T., Lilly, S. J., Bacon, R., Richard, J., & Conseil, S. 2016, *MNRAS*, 458, 3210
- Soucail, G., Mellier, Y., Fort, B., Mathez, G., & Cailloux, M. 1988, *A&A*, 191, L19
- Suyu, S. H., & Halkola, A. 2010, *A&A*, 524, A94
- Tremonti, C. A., Heckman, T. M., Kauffmann, G., et al. 2004, *ApJ*, 613, 898
- Treu, T., Schmidt, K. B., Brammer, G. B., et al. 2015, *ApJ*, 812, 114
- Urrutia, T., Wisotzki, L., Kerutt, J., et al. 2019, *A&A*, 624, A141
- van der Walt, S., Colbert, S. C., & Varoquaux, G. 2011, *Comput. Sci. Eng.*, 13, 22
- Vanzella, E., Balestra, I., Gronke, M., et al. 2017, *MNRAS*, 465, 3803
- Vanzella, E., Meneghetti, M., Caminha, G. B., et al. 2020, *MNRAS*, 494, L81
- Vanzella, E., Caminha, G. B., Rosati, P., et al. 2021, *A&A*, 646, A57
- Virtanen, P., Gommers, R., Oliphant, T. E., et al. 2020, *Nat. Methods*, 17, 261
- Weilbacher, P. M., Palsa, R., Streicher, O., et al. 2020, *A&A*, 641, A28
- Wisotzki, L., Bacon, R., Blaizot, J., et al. 2016, *A&A*, 587, A98
- Zitrin, A., Broadhurst, T., Barkana, R., Rephaeli, Y., & Benítez, N. 2011, *MNRAS*, 410, 1939
- Zitrin, A., Moustakas, J., Bradley, L., et al. 2012, *ApJ*, 747, L9

Appendix A: Description of spectroscopic catalogues

Table A.1. Example entries of the spectroscopic table for the two sources presented in Fig. 6.

ID	IDFROM	RA [deg]	Dec [deg]	z	$zconf$	m_{F606W} [mag]	[...]	z_{forbid}	$z_{forbid_{err}}$	z_{balmer}	$z_{balmer_{err}}$	$z_{Ly\alpha}$	$z_{Ly\alpha_{err}}$	μ	μ_{err}	MUL
183	PRIOR	145.22577	7.73872	4.03679	3	22.62	[...]	4.03354	0.00029	–	–	4.03658	0.00002	12.8	2.6	1.2
364	MUSELET	145.22850	7.73786	0.33751	2	–	[...]	0.33769	0.00002	0.33774	0.00007	–	–	1.0	0.0	–
...	[...]

Notes. From left to right: source identification and origin of catalog (PRIOR, MUSELET or EXTERN), sky coordinates, redshift and confidence level, HST photometry in all bands, redshift measurements and errors from `pyplatefit` for each family of spectral lines, magnification and error estimate, and multiple image identification.

Table A.2. Example entries of the spectroscopic lines table, for the same sources as Table A.1.

ID	IDFROM	RA	Dec	$zconf$	z_{init}	Family	Line	λ_{rf}	z	z_{err}	[...]	Flux	Flux _{err}	SNR	λ_{obs}
183	PRIOR	145.22577	7.73872	3	4.03679	Ly α	Ly α	1215.67	4.03658	0.00002	[...]	5616	32	173.0	6121.13
						N v λ 1238	N v λ 1243	1242.80	4.03737	0.00049	[...]	121	30	4.01	6258.41
						C IV	C IV λ 1548	1548.19	4.03466	0.00013	[...]	220	26	8.41	7792.50
						C IV	C IV λ 1551	1550.77	4.03466	0.00013	[...]	128	16	7.90	7805.44
						Forbidden	O III] λ 1660	1660.81	4.03354	0.00029	[...]	120	23	5.14	8357.45
						Forbidden	[O III] λ 1666	1666.15	4.03354	0.00029	[...]	346	60	5.78	8384.32
364	MUSELET	145.22850	7.73786	2	0.33751	Forbidden	[O II] λ 3727	3727.09	0.33769	0.00002	[...]	51	10	4.9	4984.31
						Forbidden	[O II] λ 3729	3729.88	0.33769	0.00002	[...]	31	9	3.3	4988.04
						Balmer	H β	4862.68	0.33774	0.00007	[...]	52	10	5.49	6503.17
						Forbidden	[O III]	5008.24	0.33769	0.00002	[...]	125	9	14.06	6697.64
						Balmer	H α	6564.61	0.33774	0.00007	[...]	112	34	3.29	8779.29
					

Notes. Each row gives the best parameters of a PYPLATEFIT line fit for the most significant lines detected. Fluxes are in units of 10^{-20} erg s $^{-1}$ cm $^{-2}$.

Appendix B: Mass model parameters and multiple images

We present for all new mass models the best fit parameters from Lenstool in Table B.1 and the list of constraints used in Tables B.2–B.10. Figure B.1 mark these multiply imaged systems over the HST colour image in each cluster. A full descrip-

tion of the Abell 2744 and Abell 370 mass models has been provided in Mahler et al. (2018) and Lagattuta et al. (2019) respectively, and they were released as v4 of the Clusters As Telescopes (CATs) in the Frontier Field mass models⁸. The new MACS0416 model is very similar to v4 of the CATS model available on the same page.

Table B.1. Best fit model parameters for the mass distribution in each cluster.

Potential	ΔRA ["]	ΔDec ["]	e	θ [deg]	r_{core} [kpc]	r_{cut} [kpc]	σ [km s $^{-1}$]
MACS0257							
DM1	$-2.1^{+0.3}_{-0.2}$	$1.8^{+0.3}_{-0.2}$	$0.59^{+0.02}_{-0.02}$	$200.9^{+1.1}_{-1.2}$	62^{+2}_{-2}	1014^{+145}_{-79}	877^{+17}_{-16}
DM2	$8.5^{+5.0}_{-2.4}$	$-8.4^{+0.8}_{-2.6}$	$0.87^{+0.03}_{-0.04}$	$150.1^{+2.1}_{-0.8}$	189^{+6}_{-12}	1093^{+111}_{-174}	733^{+15}_{-22}
GAL1	[−14.1]	[15.1]	$0.39^{+0.13}_{-0.14}$	$6.8^{+35.7}_{-34.5}$	[0]	88^{+5}_{-10}	184^{+6}_{-5}
GAL2	[−10.6]	[17.6]	[0.50]	$30.6^{+8.2}_{-12.5}$	[0]	[40]	171^{+22}_{-16}
GAL3	[12.2]	[19.6]	$0.17^{+0.09}_{-0.11}$	$55.5^{+9.6}_{-7.0}$	[0]	145^{+10}_{-31}	322^{+8}_{-8}
GAL4	[−0.2]	[0.0]	[0.46]	[−9.6]	[0]	148^{+41}_{-27}	349^{+3}_{-1}
L^* galaxy					[0.15]	51^{+4}_{-3}	154^{+3}_{-2}

Notes. From left to right: mass component, position relative to cluster centre (ΔRA and ΔDec), dPIE shape (ellipticity and orientation), core and cut radii, velocity dispersion. The final row is the generic galaxy mass at the characteristic luminosity L^* , which is scaled to match each of cluster member galaxies. Parameters in square brackets are fixed a priori in the model.

⁸ Available at <https://archive.stsci.edu/prepds/frontier/lensmodels/>

Table B.1. continued.

Potential	ΔRA [arcsec]	ΔDec [arcsec]	e	θ [deg]	r_{core} [kpc]	r_{cut} [kpc]	σ [km s ⁻¹]
MACS0329							
DM1	0.4 ^{+0.1} _{-0.2}	-0.4 ^{+0.2} _{-0.1}	0.16 ^{+0.02} _{-0.01}	64.7 ^{+4.1} _{-2.1}	55 ⁺³ ₋₄	[1000]	959 ⁺¹⁴ ₋₁₇
DM2	43.2 ^{+1.5} _{-0.7}	17.8 ^{+1.2} _{-1.5}	[0.30]	73.1 ^{+5.0} _{-4.4}	7 ⁺¹⁰ ₋₂₅	[1000]	552 ⁺³⁰ ₋₄₀
DM3	40.6 ^{+2.2} _{-1.0}	67.9 ^{+2.1} _{-1.1}	[0.30]	50.6 ^{+3.0} _{-2.5}	[25]	[1000]	573 ⁺⁴⁰ ₋₂₂
GAL1	[0.0]	[0.0]	[0.19]	[-73.6]	[0]	[98]	281 ⁺¹⁵ ₋₃₀
GAL2	[-12.7]	[-39.9]	[0.14]	[56.9]	[0]	[41]	218 ⁺⁴ ₋₄
L^* galaxy					[0.15]	[45]	159 ⁺⁴ ₋₄
MACS0416							
DM1	-2.9 ^{+0.3} _{-0.3}	1.4 ^{+0.3} _{-0.2}	0.78 ^{+0.01} _{-0.01}	142.1 ^{+0.4} _{-0.4}	59 ⁺² ₋₂	[1000]	731 ⁺¹⁰ ₋₁₁
DM2	22.6 ^{+0.3} _{-0.2}	-42.4 ^{+0.4} _{-0.6}	0.69 ^{+0.01} _{-0.01}	127.1 ^{+0.2} _{-0.3}	92 ⁺² ₋₃	[1000]	940 ⁺¹² ₋₁₁
GAL1	[31.8]	[-65.5]	[0.04]	[-40.4]	[0]	[62]	137 ⁺¹⁰ ₋₁₁
GAL2	-37.2 ^{+0.6} _{-0.8}	7.8 ^{+1.3} _{-1.1}	0.82 ^{+0.03} _{-0.03}	118.5 ^{+3.9} _{-3.8}	[25]	[200]	252 ⁺¹⁰ ₋₇
L^* galaxy					[0.15]	36 ⁺³ ₋₂	137 ⁺² ₋₂
Bullet Cluster							
DM1	4.8 ^{+0.2} _{-0.1}	1.2 ^{+0.5} _{-0.5}	0.68 ^{+0.03} _{-0.03}	79.5 ^{+0.2} _{-0.7}	138 ⁺⁸ ₋₉	[1000]	787 ⁺¹⁹ ₋₂₅
DM2	29.9 ^{+0.0} _{-0.2}	26.3 ^{+0.4} _{-0.5}	0.64 ^{+0.02} _{-0.02}	55.8 ^{+0.6} _{-0.9}	168 ⁺⁴ ₋₄	[1000]	1004 ⁺²⁸ ₋₂₁
DM3	183.8 ^{+0.4} _{-0.4}	49.1 ^{+0.2} _{-0.2}	0.42 ^{+0.04} _{-0.03}	11.8 ^{+1.2} _{-0.7}	78 ⁺³ ₋₅	[1000]	885 ⁺²³ ₋₂₀
GAL1	[0.0]	[0.0]	[0.26]	[43.5]	[0]	[150]	268 ⁺⁹ ₋₁₃
GAL2	[24.0]	[29.1]	[0.20]	[37.4]	[0]	[112]	118 ⁺¹² ₋₁₀
GAL3	[51.9]	[48.9]	[0.13]	[9.9]	[0]	[60]	164 ⁺² ₋₂
GAL4	[5.2]	[23.0]	0.16 ^{+0.02} _{-0.03}	-77.1 ^{+10.0} _{-10.3}	[0]	73 ⁺¹⁰ ₋₉	73 ⁺⁵ ₋₆
L^* galaxy					[0.15]	25 ⁺³ ₋₂	165 ⁺² ₋₃
MACS0940							
DM1	0.6 ^{+0.8} _{-0.7}	0.6 ^{+1.4} _{-0.2}	0.46 ^{+0.19} _{-0.04}	23.5 ^{+2.0} _{-1.2}	31 ⁺⁷⁹ ₋₈	1386 ⁺⁵⁶⁵ ₋₇₀	496 ⁺²²³ ₋₄₂
GAL1	[-0.1]	[0.1]	0.37 ^{+0.09} _{-0.06}	[-7.7]	[0]	[52]	436 ⁺¹⁵ ₋₃₀
GAL2	[-11.8]	[3.1]	0.66 ^{+0.07} _{-0.29}	5.9 ^{+19.9} _{-20.9}	[0]	[17]	195 ⁺¹⁷ ₋₁₄
GAL3	[5.9]	[-5.7]	[0.00]	-5.7 ^{+87.0} _{-34.1}	[0]	68 ⁺³⁴ ₋₂₄	80 ⁺⁶ ₋₂₄
L^* galaxy					[0.15]	62 ⁺⁶² ₋₉₄	162 ⁺²⁸ ₋₇
MACS1206							
DM1	-0.1 ^{+0.0} _{-0.0}	0.7 ^{+0.0} _{-0.0}	0.63 ^{+0.01} _{-0.01}	19.9 ^{+0.2} _{-0.1}	44 ⁺⁰ ₋₁	[1000]	888 ⁺⁷ ₋₆
DM2	9.5 ^{+0.5} _{-0.2}	5.7 ^{+0.4} _{-0.3}	0.70 ^{+0.02} _{-0.03}	114.7 ^{+0.7} _{-0.5}	94 ⁺³ ₋₃	[1000]	575 ⁺⁶ ₋₉
DM3	-32.5 ^{+0.9} _{-1.0}	-9.4 ^{+0.2} _{-0.2}	0.40 ^{+0.02} _{-0.02}	-15.5 ^{+2.0} _{-1.8}	109 ⁺³ ₋₃	[1000]	592 ⁺⁸ ₋₉
GAL1	[-0.1]	[0.0]	[0.71]	[14.4]	1 ⁺⁰ ₋₁	20 ⁺¹ ₋₁	355 ⁺¹¹ ₋₆
GAL2	[35.8]	[16.1]	[0.23]	133.8 ^{+69.7} _{-47.6}	[0]	4 ⁺¹ ₋₁	275 ⁺¹⁸ ₋₁₁
γ			0.10 ^{+0.01} _{-0.01}	101.4 ^{+0.4} _{-0.5}			
L^* galaxy						34 ⁺⁵ ₋₁	198 ⁺⁵ ₋₆
RXJ1347							
DM1	0.4 ^{+0.1} _{-0.1}	5.1 ^{+0.4} _{-0.2}	0.76 ^{+0.02} _{-0.02}	111.8 ^{+0.5} _{-0.7}	37 ⁺¹ ₋₁	[1000]	638 ⁺²⁴ ₋₂₄
DM2	-13.6 ^{+0.2} _{-0.1}	-4.5 ^{+0.2} _{-0.4}	0.78 ^{+0.00} _{-0.01}	121.4 ^{+0.2} _{-0.1}	78 ⁺² ₋₂	[1000]	850 ⁺⁸ ₋₄
DM3	2.0 ^{+0.4} _{-0.2}	0.3 ^{+0.3} _{-0.3}	0.43 ^{+0.03} _{-0.02}	60.4 ^{+1.9} _{-1.8}	67 ⁺² ₋₂	[1000]	739 ⁺²³ ₋₂₈
GAL1	[0.0]	[-0.0]	[0.23]	[-86.9]	[0]	84 ⁺¹³ ₋₁₃	354 ⁺⁷ ₋₅
GAL2	[-17.8]	[-2.1]	[0.30]	[-64.1]	[0]	94 ⁺⁶ ₋₄	364 ⁺² ₋₃
GAL3	[15.5]	[19.6]	[0.06]	[14.2]	[0]	88 ⁺³¹ ₋₁₉	109 ⁺¹⁰ ₋₇
γ				64.4 ^{+0.4} _{-0.4}			
L^* galaxy					[0.15]	81 ⁺⁹ ₋₉	135 ⁺³ ₋₄
SMACS2031							
DM1	0.4 ^{+0.1} _{-0.1}	-0.7 ^{+0.1} _{-0.1}	0.31 ^{+0.02} _{-0.02}	4.4 ^{+1.0} _{-1.1}	29 ⁺¹ ₋₁	[1000]	624 ⁺¹² ₋₁₁
DM2	61.2 ^{+0.4} _{-0.5}	25.3 ^{+0.4} _{-0.3}	0.46 ^{+0.05} _{-0.04}	6.4 ^{+2.1} _{-3.9}	112 ⁺⁸ ₋₇	[1000]	1037 ⁺²⁰ ₋₁₉
GAL1	[0.1]	[-0.1]	[0.09]	[-0.4]	[0]	128 ⁺¹² ₋₄₆	242 ⁺³ ₋₄
L^* galaxy					[0.15]	9 ⁺² ₋₁	161 ⁺¹⁹ ₋₉

Table B.1. continued.

Potential	ΔRA [arcsec]	ΔDec [arcsec]	e	θ [deg]	r_{core} [kpc]	r_{cut} [kpc]	σ [km s ⁻¹]
SMACS2131							
DM1	-3.2 ^{+0.4} _{-0.2}	3.2 ^{+0.1} _{-0.3}	0.66 ^{+0.01} _{-0.01}	155.2 ^{+0.2} _{-0.3}	84 ⁺¹ ₋₁	[1000]	866 ⁺¹⁵ ₋₅
DM2	21.2 ^{+0.9} _{-0.3}	[17.0]	0.53 ^{+0.02} _{-0.02}	82.7 ^{+6.4} _{-6.9}	95 ⁺¹⁴ ₋₆	[1000]	452 ⁺⁴⁴ ₋₁₂
GAL1	[-0.0]	[0.0]	[0.11]	59.0 ^{+1.4} _{-1.3}	[0]	155 ⁺³ ₋₁₄	399 ⁺⁰ ₋₁
GAL2	[6.7]	[-2.2]	[0.76]	7.2 ^{+9.7} _{-6.4}	[0]	96 ⁺⁸ ₋₁₇	93 ⁺¹⁸ ₋₁₂
L^* galaxy					[0.15]	93 ⁺⁶ ₋₂₁	202 ⁺⁴ ₋₁
MACS2214							
DM1	-1.2 ^{+0.1} _{-0.2}	0.7 ^{+0.1} _{-0.1}	0.55 ^{+0.01} _{-0.01}	147.5 ^{+0.7} _{-0.8}	38 ⁺¹ ₋₁	[1000]	903 ⁺¹⁵ ₋₁₈
DM2	-20.8 ^{+0.2} _{-0.2}	17.2 ^{+0.3} _{-0.2}	0.70 ^{+0.06} _{-0.05}	112.0 ^{+3.2} _{-3.5}	20 ⁺⁸ ₋₅	[1000]	299 ⁺¹¹ ₋₃₄
DM3	20.8 ^{+3.9} _{-4.9}	-22.8 ^{+2.0} _{-1.6}	0.92 ^{+0.05} _{-0.03}	22.6 ^{+1.7} _{-2.0}	186 ⁺¹¹ ₋₁₃	[1000]	753 ⁺⁴² ₋₄₁
GAL1	[0.0]	[0.0]	[0.20]	151.1 ^{+34.0} _{-45.5}	4 ⁺¹⁴ ₋₃	9 ⁺¹⁶ ₋₁₂	179 ⁺⁶¹ ₋₂₈
GAL2	[8.2]	[18.8]	0.48 ^{+0.07} _{-0.04}	[0.0]	[0]	81 ⁺² ₋₃	169 ⁺⁵ ₋₉
GAL3	[19.9]	[2.0]	0.42 ^{+0.06} _{-0.35}	89.2 ^{+31.5} _{-53.1}	[0]	23 ⁺⁴² ₋₈	73 ⁺⁸ ₋₅
L^* galaxy					[0.15]	46 ⁺³ ₀	111 ⁺² ₋₃

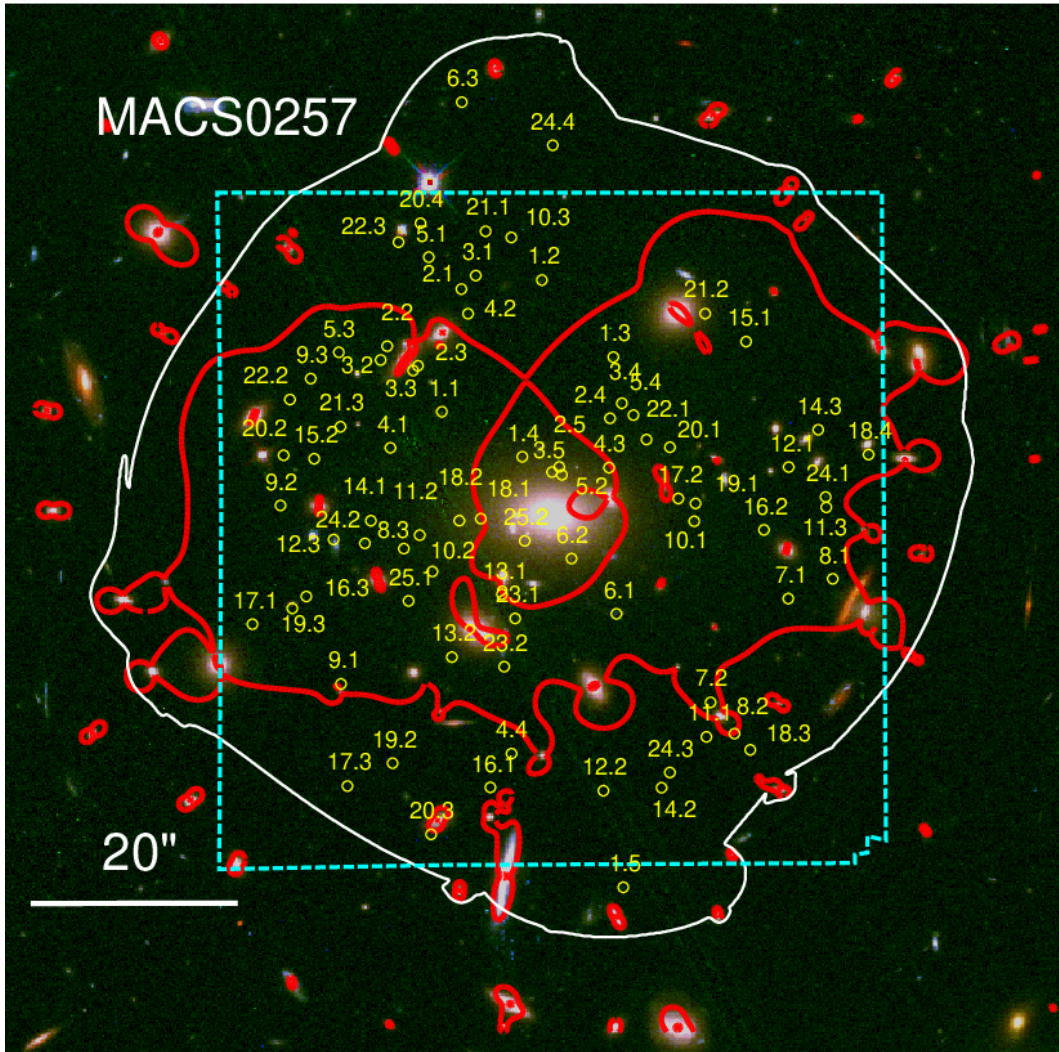


Fig. B.1. Overview of all multiply-imaged systems used in the strong-lensing model of MACS0257. The cyan dashed line highlights the limits of the MUSE observations. The white line represents the limit of the region where we expect multiples images. The red line delineates the critical line for a source at $z = 4$.

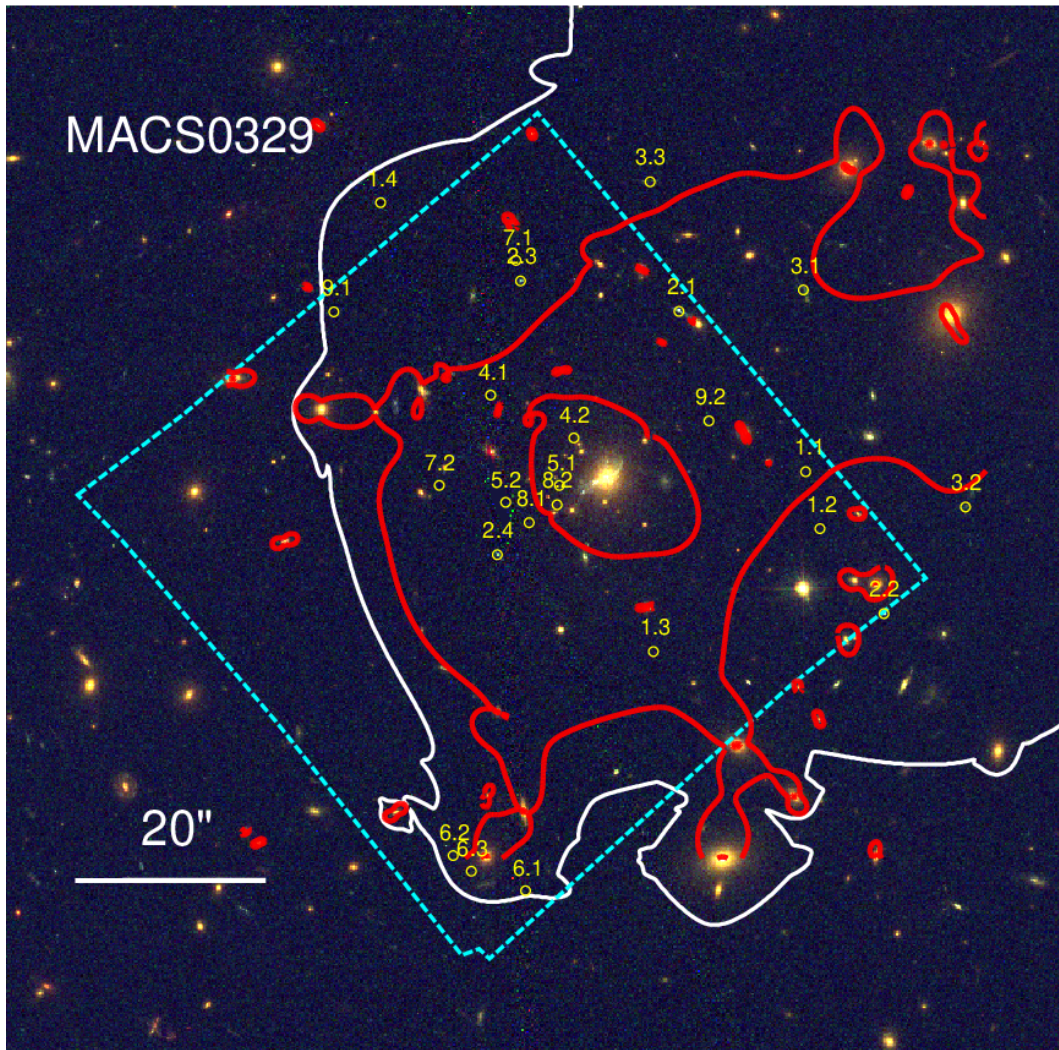


Fig. B.1. continued. Same figure for MACS0329.

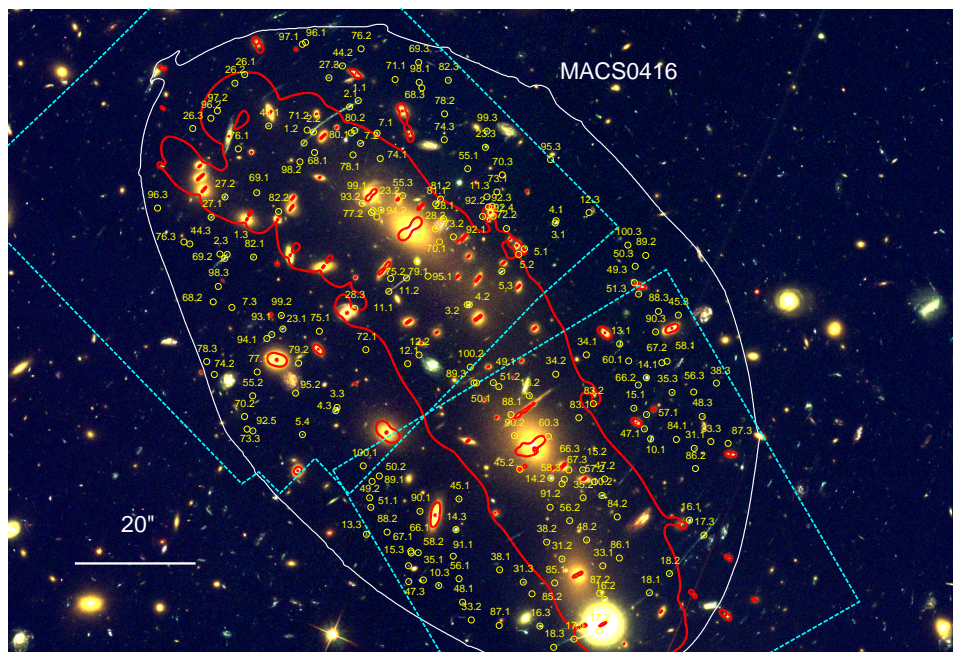


Fig. B.1. continued. Same figure for MACS0416.

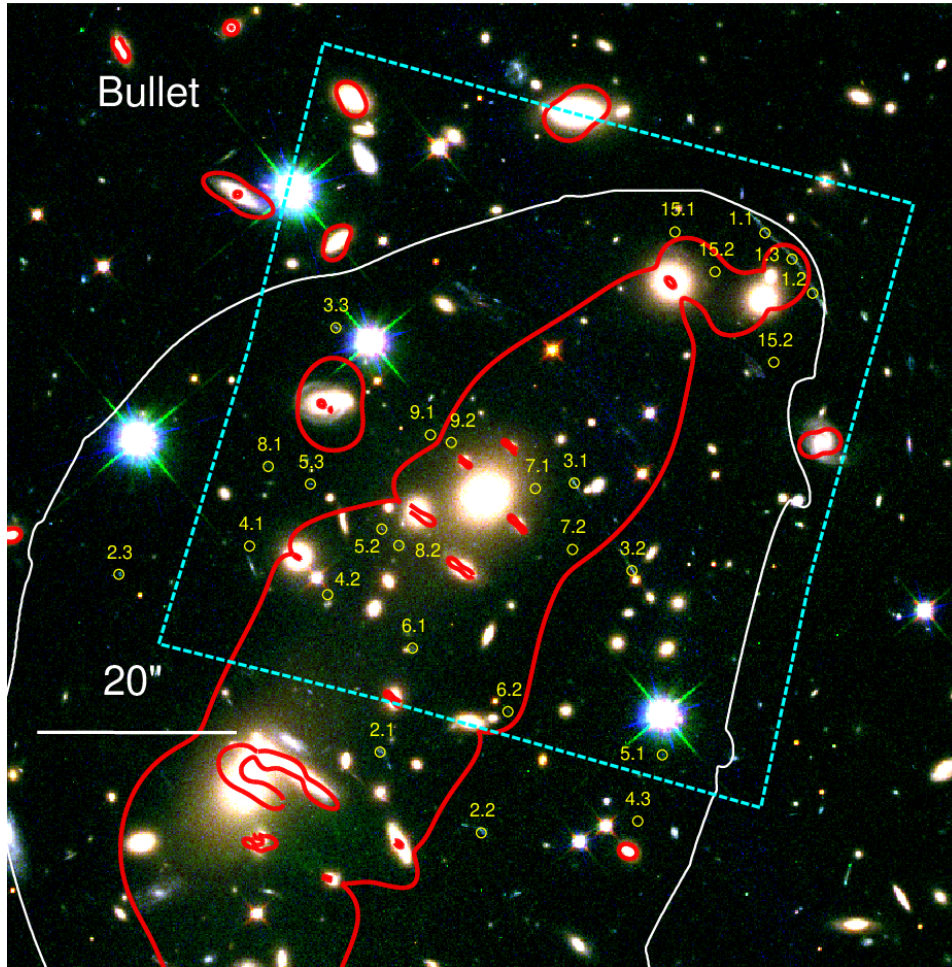


Fig. B.1. Same as Fig. B.1 for the Bullet Cluster.

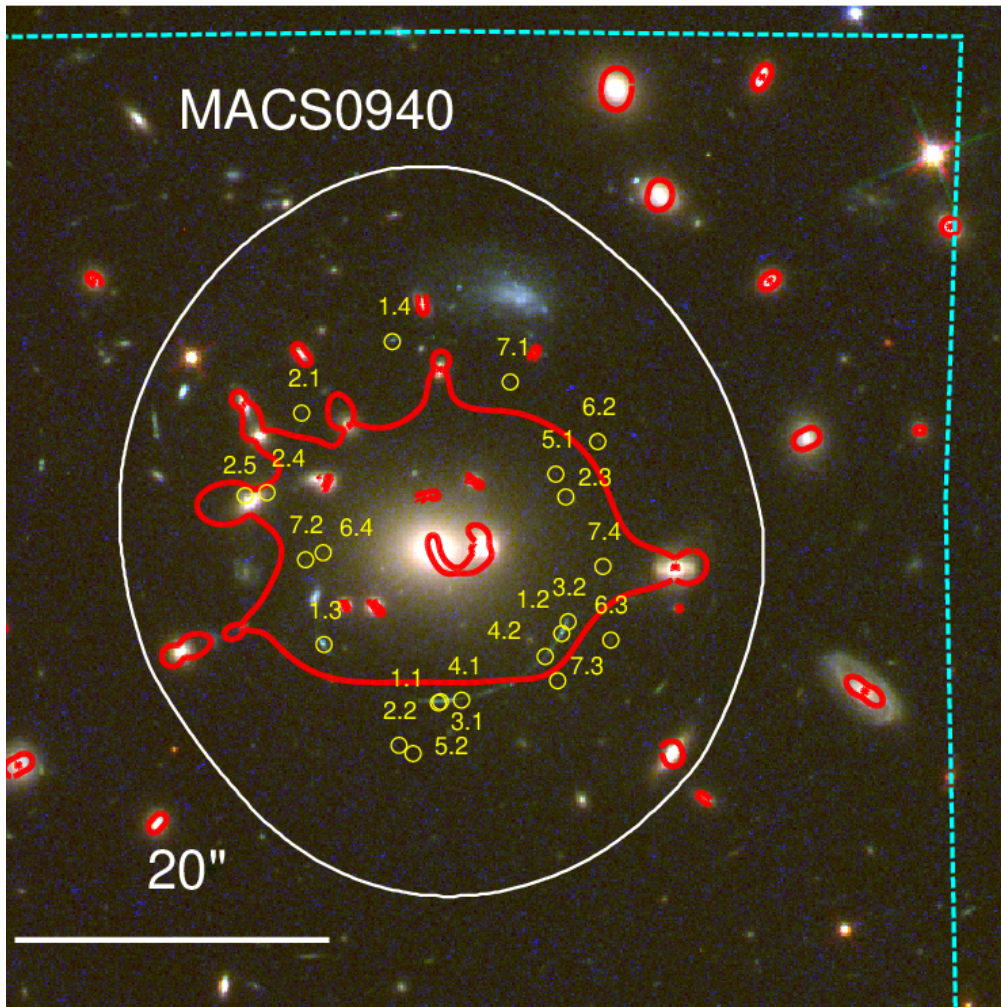


Fig. B.1. continued. Same figure for MACS0940.

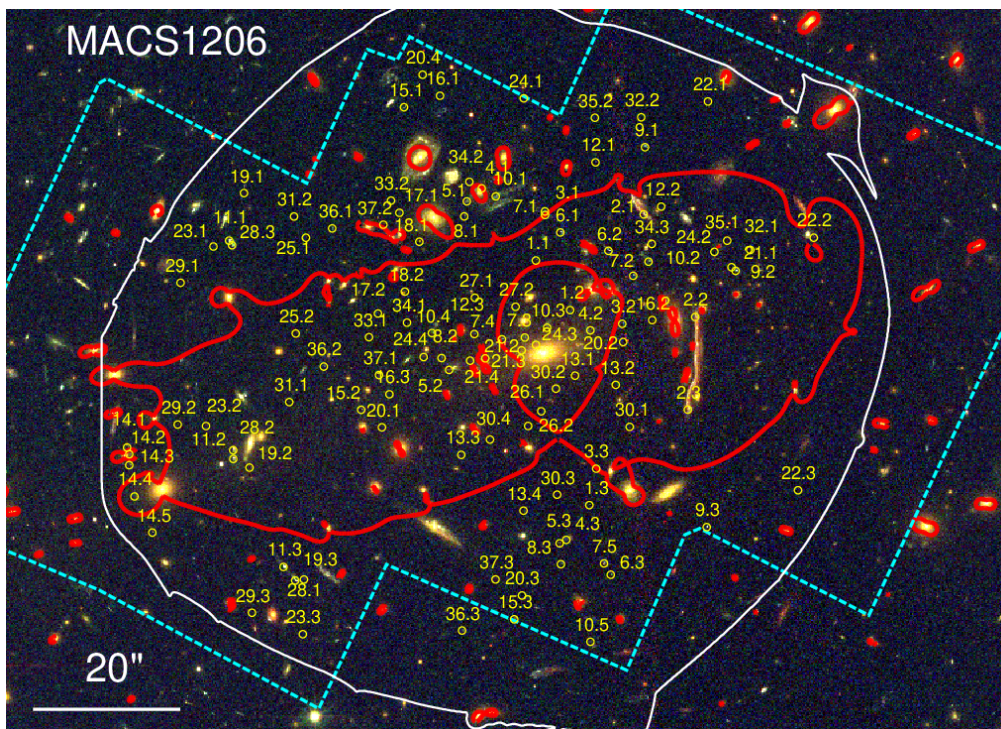


Fig. B.1. continued. Same figure for MACS1206.

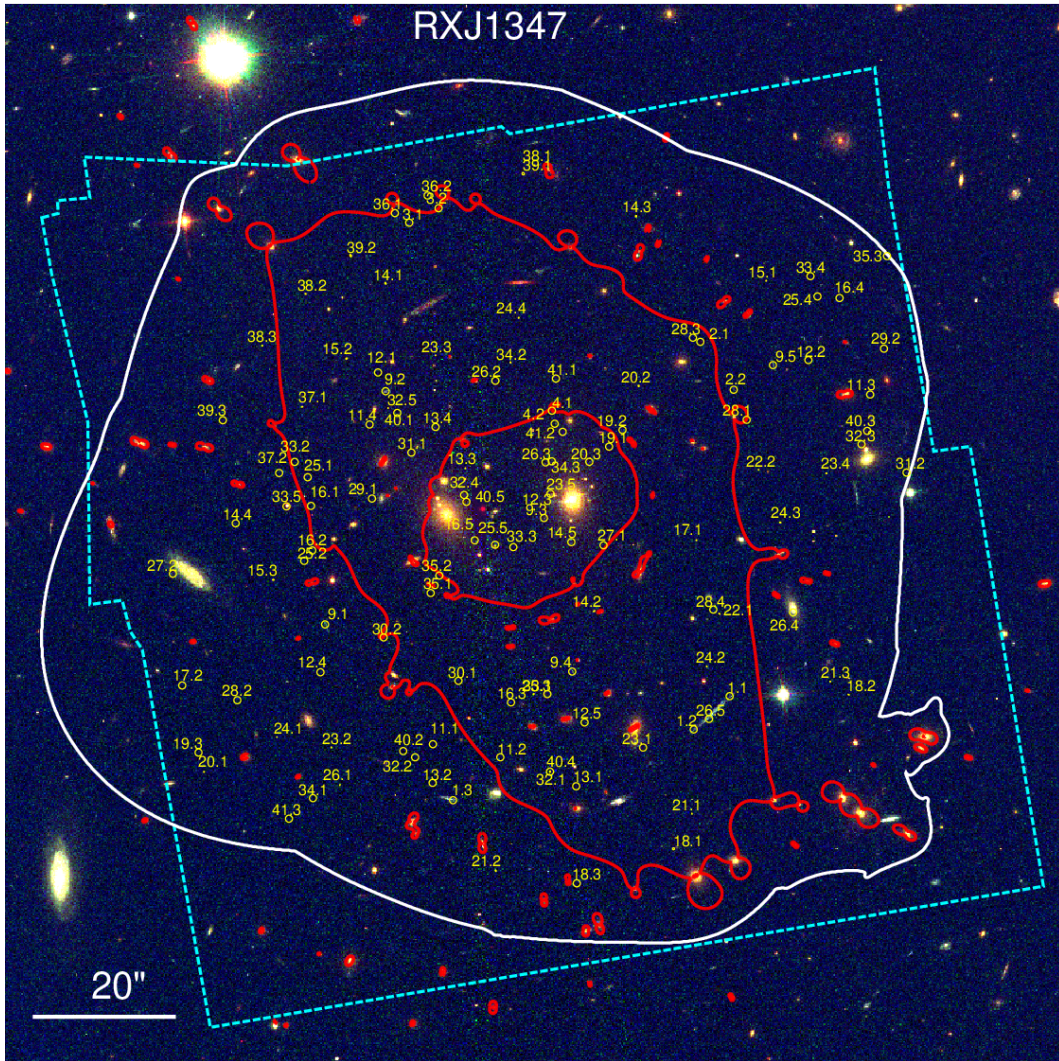


Fig. B.1. continued. Same figure for RXJ1347.

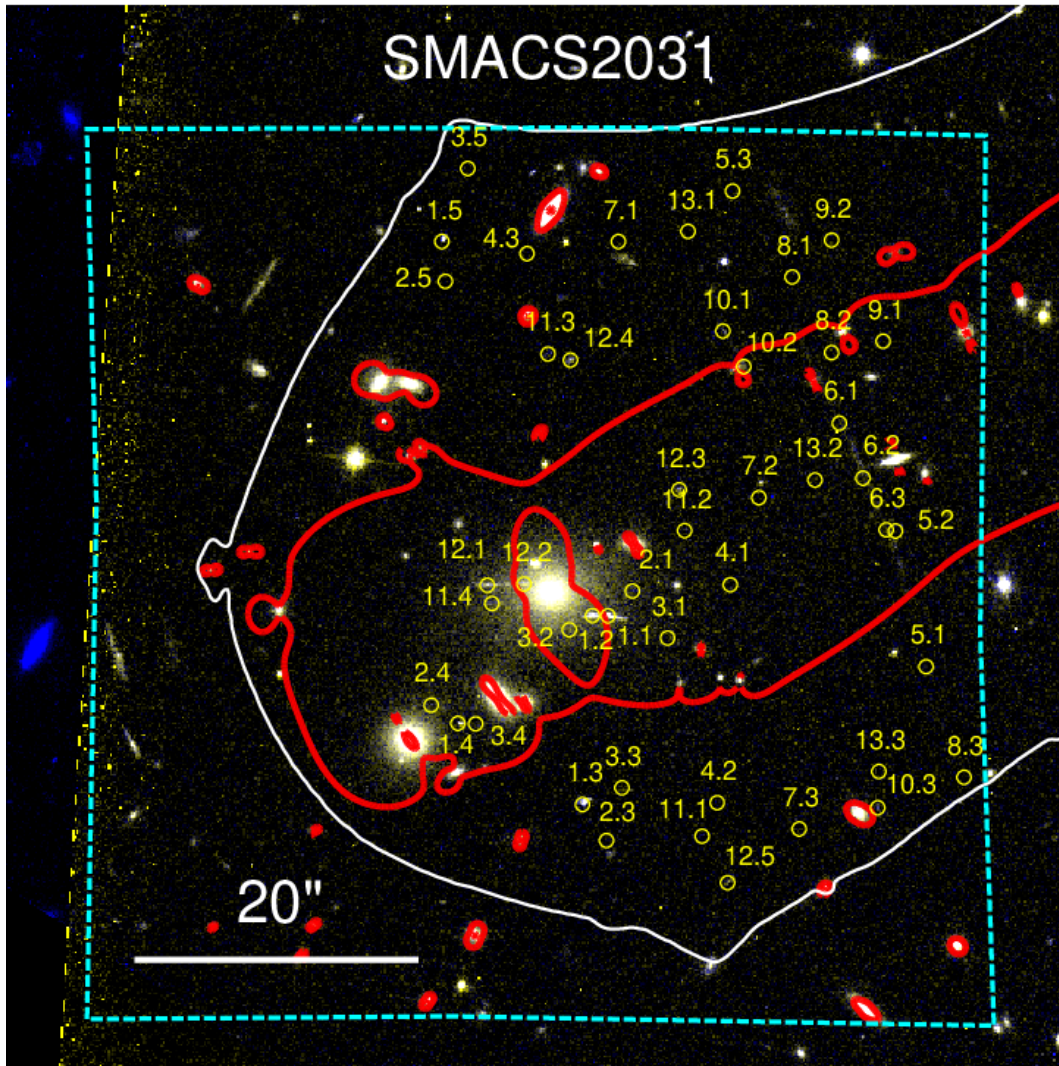


Fig. B.1. continued. Same figure for SMACS2031.

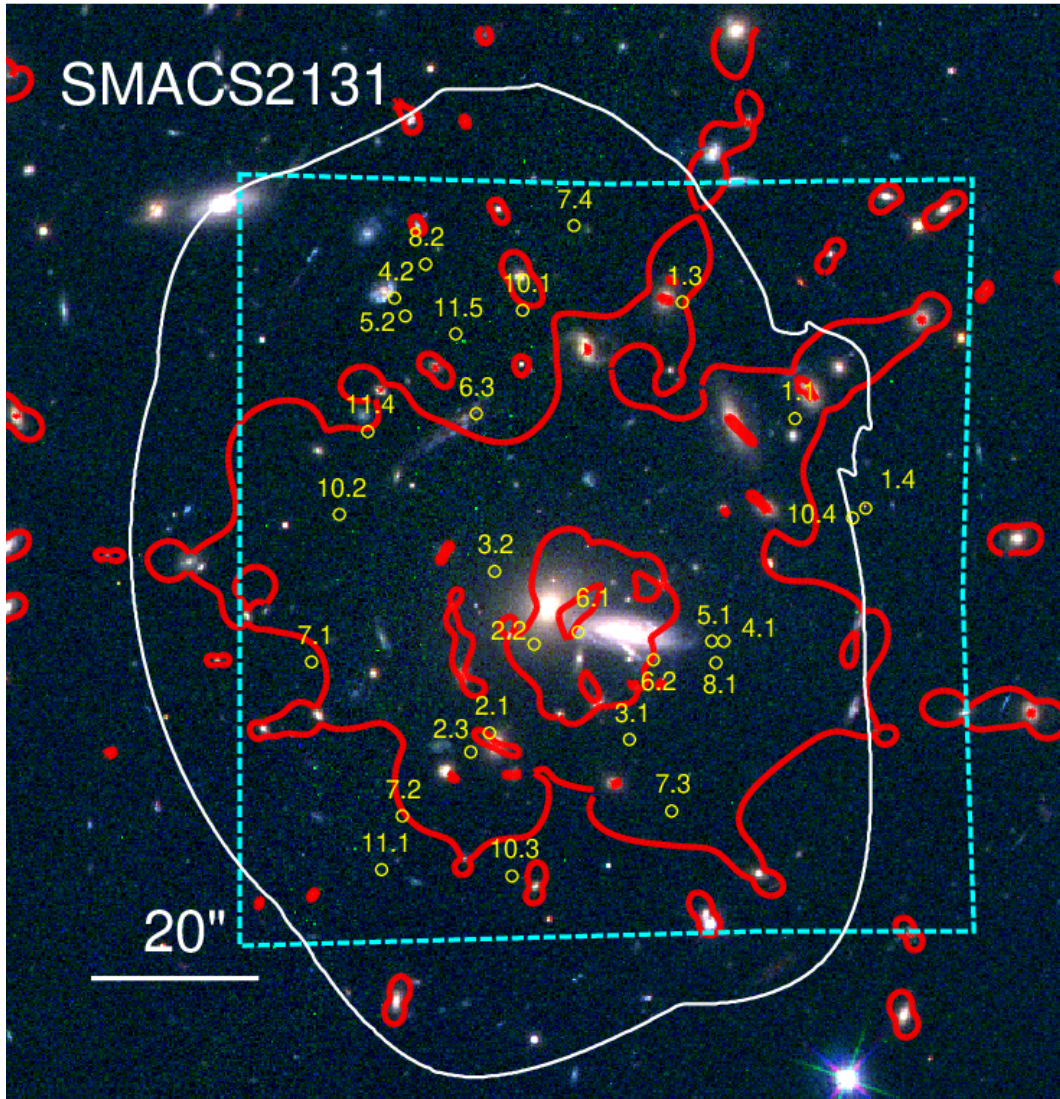


Fig. B.1. continued. Same figure for SMACS2131.

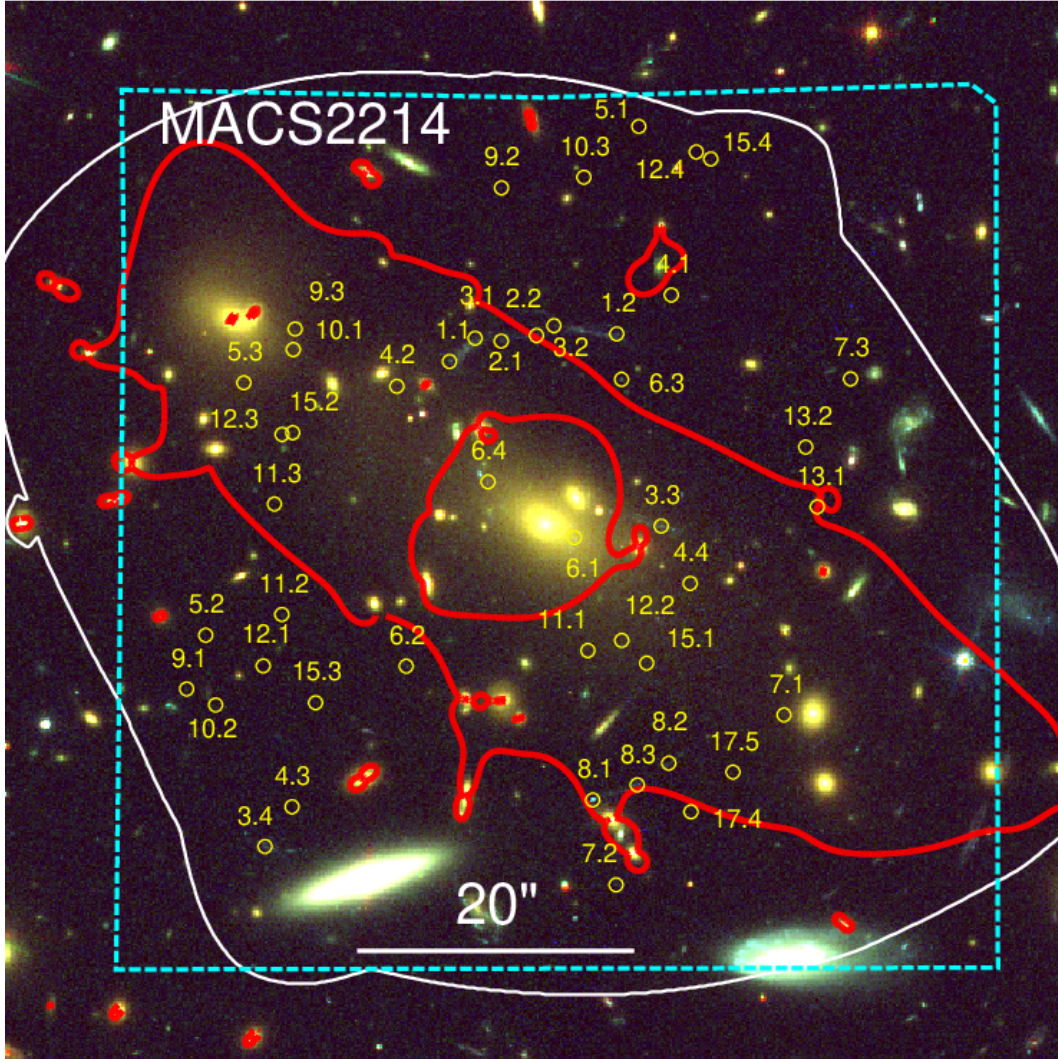


Fig. B.1. continued. Same figure for MACS2214.

Table B.2. Multiply imaged systems used as constraints in the MACS0257 mass model.

ID	α (J2000) h m s	δ (J2000) ° ' "	z_{system}
1.1	02:57:41.84	-22:09:07.78	4.69
1.2	02:57:41.14	-22:08:55.06	4.69
1.3	02:57:40.65	-22:09:02.51	4.69
1.4	02:57:41.28	-22:09:12.14	4.69
1.5	02:57:40.58	-22:09:53.75	4.69
2.1	02:57:41.70	-22:08:55.93	3.22
2.2	02:57:42.22	-22:09:01.45	3.22
2.3	02:57:42.01	-22:09:03.35	3.22
2.4	02:57:40.67	-22:09:08.42	3.22
2.5	02:57:41.02	-22:09:13.12	3.22
3.1	02:57:41.60	-22:08:54.63	3.85
3.2	02:57:42.26	-22:09:02.79	3.85
3.3	02:57:42.04	-22:09:03.80	3.85
3.4	02:57:40.59	-22:09:06.97	3.85
3.5	02:57:41.07	-22:09:13.62	3.85

Notes. From left to right: identification number for the multiple image, sky coordinates, redshift constraints from spectroscopy. Redshifts with error bars are not constrained with spectroscopy and are predictions from our lens model.

Table B.2. continued.

ID	α (J2000) h m s	δ (J2000) ° ' "	z_{system}
4.1	02:57:42.20	-22:09:11.27	1.1690
4.2	02:57:41.66	-22:08:58.31	1.1690
4.3	02:57:40.68	-22:09:13.19	1.1690
4.4	02:57:41.35	-22:09:40.82	1.1690
5.1	02:57:41.93	-22:08:52.85	6.609
5.2	02:57:41.00	-22:09:13.89	6.609
5.3	02:57:42.56	-22:09:02.04	6.609
5.4	02:57:40.51	-22:09:08.11	6.609
6.1	02:57:40.63	-22:09:27.31	2.424
6.2	02:57:40.94	-22:09:21.98	2.424
6.3	02:57:41.70	-22:08:37.86	2.424
7.1	02:57:39.43	-22:09:25.85	4.69
7.2	02:57:39.97	-22:09:35.87	4.69
8.1	02:57:39.12	-22:09:23.93	6.080
8.2	02:57:39.80	-22:09:38.90	6.080
8.3	02:57:42.10	-22:09:21.02	6.080
9.1	02:57:42.54	-22:09:34.09	1.157
9.2	02:57:42.96	-22:09:16.84	1.157
9.3	02:57:42.75	-22:09:04.58	1.157
10.1	02:57:40.08	-22:09:18.37	1.169

Table B.2. continued.

ID	α (J2000) h m s	δ (J2000) ° ' "	z_{system}
10.2	02:57:41.91	-22:09:23.23	1.169
10.3	02:57:41.36	-22:08:50.94	1.169
11.1	02:57:40.00	-22:09:39.21	3.01
11.2	02:57:41.99	-22:09:19.72	3.01
11.3	02:57:39.17	-22:09:17.02	3.01
12.1	02:57:39.43	-22:09:13.13	3.807
12.2	02:57:40.72	-22:09:44.42	3.807
12.3	02:57:42.59	-22:09:20.14	3.807
13.1	02:57:41.42	-22:09:25.43	3.9545
13.2	02:57:41.77	-22:09:31.50	3.9545
14.1	02:57:42.33	-22:09:18.32	4.030
14.2	02:57:40.31	-22:09:44.13	4.030
14.3	02:57:39.22	-22:09:09.52	4.030
15.1	02:57:39.72	-22:09:01.01	6.467
15.2	02:57:42.73	-22:09:12.33	6.467
16.1	02:57:41.50	-22:09:44.09	6.225
16.2	02:57:39.60	-22:09:19.20	6.225
16.3	02:57:42.78	-22:09:25.64	6.225
17.1	02:57:43.16	-22:09:28.32	6.066
17.2	02:57:40.19	-22:09:16.17	6.066
17.3	02:57:42.50	-22:09:43.96	6.066
18.1	02:57:41.57	-22:09:18.13	5.277
18.2	02:57:41.72	-22:09:18.32	5.277
18.3	02:57:39.69	-22:09:40.47	5.277
18.4	02:57:38.87	-22:09:11.93	5.277
19.1	02:57:40.08	-22:09:16.65	3.223
19.2	02:57:42.18	-22:09:41.76	3.223
19.3	02:57:42.88	-22:09:26.79	3.223
20.1	02:57:40.25	-22:09:11.22	3.246
20.2	02:57:42.94	-22:09:11.99	3.246
20.3	02:57:41.91	-22:09:48.63	3.246
20.4	02:57:41.99	-22:08:49.57	3.246
21.1	02:57:41.54	-22:08:50.35	4.685
21.2	02:57:40.01	-22:08:58.30	4.685
21.3	02:57:42.54	-22:09:09.24	4.685
22.1	02:57:40.42	-22:09:10.47	5.32295
22.2	02:57:42.90	-22:09:06.61	5.32295
22.3	02:57:42.14	-22:08:51.40	5.32295
23.1	02:57:41.33	-22:09:27.77	5.557
23.2	02:57:41.41	-22:09:32.43	5.557
24.1	02:57:39.17	-22:09:16.02	4.69
24.2	02:57:42.37	-22:09:20.51	4.69
24.3	02:57:40.25	-22:09:42.65	4.69
24.4	02:57:41.07	-22:08:42.03	4.69
25.1	02:57:42.07	-22:09:26.07	4.4633
25.2	02:57:41.26	-22:09:20.27	4.4633

Table B.3. Same as Table B.2 for the MACS0329 mass model.

ID	α (J2000) h m s	δ (J2000) ° ' "	z_{system}
1.1	03:29:40.17	-02:11:45.71	6.18
1.2	03:29:40.07	-02:11:51.71	6.18
1.3	03:29:41.24	-02:12:04.66	6.18
1.4	03:29:43.16	-02:11:17.36	6.18
2.1	03:29:41.06	-02:11:28.82	2.14
2.2	03:29:39.62	-02:12:00.66	2.14
2.3	03:29:42.17	-02:11:25.61	2.14
2.4	03:29:42.33	-02:11:54.46	2.14
3.1	03:29:40.18	-02:11:26.56	2.42 ± 0.08
3.2	03:29:39.04	-02:11:49.43	"
3.3	03:29:41.26	-02:11:15.16	"
4.1	03:29:42.38	-02:11:37.64	3.795
4.2	03:29:41.80	-02:11:42.15	3.795
5.1	03:29:41.90	-02:11:47.15	4.575
5.2	03:29:42.28	-02:11:48.93	4.575
6.1	03:29:42.14	-02:12:29.85	5.661
6.2	03:29:42.65	-02:12:26.15	5.661
6.3	03:29:42.52	-02:12:27.80	5.661
7.1	03:29:42.20	-02:11:23.44	6.0112
7.2	03:29:42.74	-02:11:47.14	6.0112
8.1	03:29:42.11	-02:11:51.07	3.8546
8.2	03:29:41.91	-02:11:49.19	3.8546
9.1	03:29:43.48	-02:11:28.86	6.0261
9.2	03:29:40.85	-02:11:40.35	6.0261

Table B.4. Same as Table B.2 for the MACS0416 mass model.

ID	α (J2000) h m s	δ (J2000) ° ' "	z_{system}
1.1	04:16:09.78	-24:03:41.73	1.8960
1.2	04:16:10.43	-24:03:48.75	1.8960
1.3	04:16:11.36	-24:04:07.21	1.8960
2.1	04:16:09.88	-24:03:42.77	1.8925
2.2	04:16:10.32	-24:03:46.93	1.8925
2.3	04:16:11.39	-24:04:07.86	1.8925
3.1	04:16:07.39	-24:04:01.62	1.9885
3.2	04:16:08.46	-24:04:15.53	1.9885
3.3	04:16:10.04	-24:04:32.56	1.9885
4.1	04:16:07.40	-24:04:02.01	1.9885
4.2	04:16:08.44	-24:04:15.53	1.9885
4.3	04:16:10.05	-24:04:33.08	1.9885
5.1	04:16:07.77	-24:04:06.28	2.0970
5.2	04:16:07.84	-24:04:07.21	2.0970
5.3	04:16:08.04	-24:04:10.01	2.0970
5.4	04:16:10.45	-24:04:37.04	2.0970
7.1	04:16:09.55	-24:03:47.13	2.0854
7.2	04:16:09.75	-24:03:48.82	2.0854
7.3	04:16:11.31	-24:04:15.99	2.0854
10.1	04:16:06.24	-24:04:37.76	2.2982
10.2	04:16:06.83	-24:04:47.12	2.2982
10.3	04:16:08.81	-24:05:02.04	2.2982
11.1	04:16:09.41	-24:04:13.32	1.0060
11.2	04:16:09.20	-24:04:11.11	1.0060
11.3	04:16:08.22	-24:03:57.66	1.0060
12.1	04:16:09.18	-24:04:25.31	1.9530
12.2	04:16:09.04	-24:04:23.86	1.9530
12.3	04:16:06.99	-24:04:00.27	1.9530

Table B.4. continued.

ID	α (J2000) h m s	δ (J2000) ° ' "	z_{system}
13.1	04:16:06.62	-24:04:22.03	3.2226
13.2	04:16:07.71	-24:04:30.61	3.2226
13.3	04:16:09.68	-24:04:53.56	3.2226
14.1	04:16:06.30	-24:04:27.62	1.6350
14.2	04:16:07.45	-24:04:44.26	1.6350
14.3	04:16:08.60	-24:04:52.78	1.6350
15.1	04:16:06.45	-24:04:32.68	2.3340
15.2	04:16:07.07	-24:04:42.90	2.3340
15.3	04:16:09.17	-24:04:58.77	2.3340
16.1	04:16:05.77	-24:04:51.22	1.9644
16.2	04:16:06.80	-24:05:04.35	1.9644
16.3	04:16:07.58	-24:05:08.77	1.9644
17.1	04:16:07.17	-24:05:10.91	2.2181
17.2	04:16:06.87	-24:05:09.55	2.2181
17.3	04:16:05.60	-24:04:53.69	2.2181
18.1	04:16:06.26	-24:05:03.24	2.2210
18.2	04:16:06.02	-24:05:00.06	2.2210
18.3	04:16:07.42	-24:05:12.28	2.2210
23.1	04:16:10.69	-24:04:19.56	2.0960
23.2	04:16:09.50	-24:03:59.87	2.0960
23.3	04:16:08.24	-24:03:49.47	2.0960
26.1	04:16:11.15	-24:03:37.41	3.2380
26.2	04:16:11.27	-24:03:38.85	3.2380
26.3	04:16:11.78	-24:03:46.35	3.2380
27.1	04:16:11.56	-24:04:01.05	2.0960
27.2	04:16:11.39	-24:03:57.69	2.0960
27.3	04:16:10.13	-24:03:37.95	2.0960
28.1	04:16:08.75	-24:04:01.29	0.9394
28.2	04:16:08.85	-24:04:02.99	0.9394
28.3	04:16:09.82	-24:04:16.14	0.9394
31.1	04:16:05.72	-24:04:39.32	1.8178
31.2	04:16:07.32	-24:04:57.65	1.8178
31.3	04:16:07.78	-24:05:01.48	1.8178
33.1	04:16:06.82	-24:04:58.78	5.3651
33.2	04:16:08.41	-24:05:07.75	5.3651
33.3	04:16:05.52	-24:04:38.19	5.3651
34.1	04:16:07.02	-24:04:23.84	5.1060
34.2	04:16:07.39	-24:04:27.05	5.1060
35.1	04:16:08.99	-24:05:01.13	3.4900
35.2	04:16:07.06	-24:04:47.50	3.4900
35.3	04:16:05.98	-24:04:30.06	3.4900
38.1	04:16:08.07	-24:04:59.44	3.4400
38.2	04:16:07.50	-24:04:54.86	3.4400
38.3	04:16:05.45	-24:04:28.52	3.4400
44.1	04:16:10.86	-24:03:45.93	3.2905
44.2	04:16:09.97	-24:03:35.99	3.2905
44.3	04:16:11.82	-24:04:05.47	3.2905
45.1	04:16:08.56	-24:04:47.70	2.5420
45.2	04:16:07.83	-24:04:42.79	2.5420
45.3	04:16:05.91	-24:04:17.25	2.5420
47.1	04:16:06.32	-24:04:36.10	3.2510
47.2	04:16:06.80	-24:04:44.40	3.2510
47.3	04:16:09.17	-24:05:01.39	3.2510
48.1	04:16:08.52	-24:05:04.80	4.1210
48.2	04:16:07.02	-24:04:54.49	4.1210
48.3	04:16:05.62	-24:04:34.04	4.1210
49.1	04:16:08.15	-24:04:28.45	3.8696
49.2	04:16:09.64	-24:04:47.51	3.8696
49.3	04:16:06.44	-24:04:11.88	3.8696

Table B.4. continued.

ID	α (J2000) h m s	δ (J2000) ° ' "	z_{system}
50.1	04:16:08.35	-24:04:28.49	3.2195
50.2	04:16:09.53	-24:04:43.91	3.2195
50.3	04:16:06.43	-24:04:09.17	3.2195
51.1	04:16:09.63	-24:04:49.09	4.1020
51.2	04:16:08.08	-24:04:29.11	4.1020
51.3	04:16:06.39	-24:04:13.78	4.1020
55.1	04:16:08.46	-24:03:53.01	3.2910
55.2	04:16:11.06	-24:04:30.63	3.2910
55.3	04:16:09.24	-24:03:57.47	3.2910
56.1	04:16:08.56	-24:05:00.91	3.2910
56.2	04:16:07.22	-24:04:51.30	3.2910
56.3	04:16:05.72	-24:04:29.99	3.2910
57.1	04:16:06.29	-24:04:33.73	2.9259
57.2	04:16:06.92	-24:04:44.85	2.9259
58.1	04:16:06.04	-24:04:24.90	3.0802
58.2	04:16:09.06	-24:04:56.60	3.0802
58.3	04:16:07.32	-24:04:45.19	3.0802
60.1	04:16:06.51	-24:04:24.84	3.9230
60.3	04:16:07.48	-24:04:37.35	3.9230
66.1	04:16:09.14	-24:04:56.33	2.2300
66.2	04:16:06.39	-24:04:28.83	2.2300
66.3	04:16:07.23	-24:04:42.91	2.2300
67.1	04:16:09.14	-24:04:56.65	3.1094
67.2	04:16:06.11	-24:04:25.14	3.1094
67.3	04:16:07.29	-24:04:44.47	3.1094
68.1	04:16:10.31	-24:03:50.32	4.1138
68.2	04:16:11.53	-24:04:15.07	4.1138
68.3	04:16:09.01	-24:03:39.63	4.1138
69.1	04:16:11.01	-24:03:56.99	4.1150
69.2	04:16:11.45	-24:04:07.15	4.1150
69.3	04:16:09.05	-24:03:35.41	4.1150
70.1	04:16:08.82	-24:04:04.77	4.609
70.2	04:16:11.16	-24:04:34.05	4.609
70.3	04:16:08.04	-24:03:54.04	4.609
71.1	04:16:09.33	-24:03:38.24	6.147
71.2	04:16:10.40	-24:03:46.61	6.147
72.1	04:16:09.69	-24:04:22.98	1.14717
72.2	04:16:07.99	-24:04:02.92	1.14717
73.1	04:16:08.10	-24:03:56.87	4.07074
73.2	04:16:08.63	-24:04:04.30	4.07074
73.3	04:16:11.12	-24:04:36.14	4.07074
74.1	04:16:09.51	-24:03:51.34	4.30
74.2	04:16:11.52	-24:04:27.09	4.30
74.3	04:16:08.74	-24:03:48.20	4.30
75.1	04:16:10.25	-24:04:19.93	4.30
75.2	04:16:09.39	-24:04:11.19	4.30
76.1	04:16:11.23	-24:03:49.73	5.0996
76.2	04:16:09.75	-24:03:33.14	5.0996
76.3	04:16:11.89	-24:04:05.14	5.0996
77.1	04:16:11.00	-24:04:26.67	5.998
77.2	04:16:09.55	-24:04:01.00	5.998
78.1	04:16:09.84	-24:03:50.72	6.06645
78.2	04:16:08.74	-24:03:43.93	6.06645
78.3	04:16:11.61	-24:04:24.95	6.06645
79.1	04:16:09.07	-24:04:08.38	2.99113
79.2	04:16:10.50	-24:04:25.23	2.99113
80.1	04:16:09.86	-24:03:47.09	2.243
80.2	04:16:09.82	-24:03:46.68	2.243
81.1	04:16:08.84	-24:03:58.84	1.827

Table B.4. continued.

ID	α (J2000) h m s	δ (J2000) ° ' "	z_{system}
81.2	04:16:08.78	-24:03:58.05	1.827
82.1	04:16:11.05	-24:04:07.65	2.922
82.2	04:16:10.74	-24:04:00.09	2.922
82.3	04:16:08.69	-24:03:38.36	2.922
83.1	04:16:07.11	-24:04:34.26	3.0750
83.2	04:16:06.94	-24:04:31.92	3.0750
84.1	04:16:05.93	-24:04:37.84	4.5300
84.2	04:16:06.65	-24:04:50.67	4.5300
85.1	04:16:07.40	-24:05:01.62	5.9730
85.2	04:16:07.68	-24:05:03.42	5.9730
86.1	04:16:06.62	-24:04:57.49	3.9230
86.2	04:16:05.70	-24:04:42.66	3.9230
87.1	04:16:08.08	-24:05:08.65	5.6380
87.2	04:16:06.86	-24:05:03.34	5.6380
87.3	04:16:05.31	-24:04:38.51	5.6380
88.1	04:16:07.93	-24:04:33.73	4.5018
88.2	04:16:09.43	-24:04:53.20	4.5018
88.3	04:16:06.15	-24:04:16.63	4.5018
89.1	04:16:09.61	-24:04:44.80	5.1060
89.2	04:16:06.30	-24:04:07.37	5.1060
89.3	04:16:08.38	-24:04:28.50	5.1060
90.1	04:16:09.03	-24:04:49.75	2.2800
90.2	04:16:07.89	-24:04:37.20	2.2800
90.3	04:16:06.18	-24:04:20.03	2.2800
91.1	04:16:08.63	-24:04:57.19	3.7153
91.2	04:16:07.46	-24:04:49.09	3.7153
92.1	04:16:08.28	-24:04:00.91	3.2240
92.2	04:16:08.20	-24:03:59.36	3.2240
92.3	04:16:08.16	-24:03:59.21	3.2240
92.4	04:16:08.15	-24:04:00.86	3.2240
92.5	04:16:11.05	-24:04:36.43	3.2240
93.1	04:16:10.83	-24:04:20.47	3.2883
93.2	04:16:09.62	-24:04:00.26	3.2883
94.1	04:16:10.88	-24:04:21.13	3.2883
94.2	04:16:09.60	-24:03:59.96	3.2883
95.1	04:16:08.94	-24:04:10.80	4.0690
95.2	04:16:10.54	-24:04:30.18	4.0690
95.3	04:16:07.45	-24:03:51.49	4.0690
96.1	04:16:10.42	-24:03:32.10	6.1480
96.2	04:16:11.56	-24:03:44.65	6.1480
96.3	04:16:12.21	-24:03:59.53	6.1480
97.1	04:16:10.46	-24:03:32.40	6.1480
97.2	04:16:11.48	-24:03:43.43	6.1480
98.1	04:16:09.04	-24:03:38.71	3.6100
98.2	04:16:10.48	-24:03:51.87	3.6100
98.3	04:16:11.47	-24:04:12.51	3.6100
99.1	04:16:09.73	-24:03:58.76	2.281
99.2	04:16:10.71	-24:04:17.32	2.281
99.3	04:16:08.22	-24:03:46.78	2.281
100.1	04:16:09.72	-24:04:42.23	3.9680
100.2	04:16:08.43	-24:04:25.88	3.9680
100.3	04:16:06.52	-24:04:05.66	3.9680

Table B.5. Same as Table B.2 for the Bullet cluster mass model.

ID	α (J2000) h m s	δ (J2000) ° ' "	z_{system}
1.1	06:58:31.90	-55:56:30.21	3.24
1.2	06:58:31.33	-55:56:36.26	3.24
1.3	06:58:31.58	-55:56:32.83	3.24
2.1	06:58:36.50	-55:57:22.48	2.35 ± 0.06
2.2	06:58:35.29	-55:57:30.59	"
2.3	06:58:39.64	-55:57:04.64	"
3.1	06:58:34.18	-55:56:55.39	3.2541
3.2	06:58:33.49	-55:57:04.19	3.2541
3.3	06:58:37.04	-55:56:39.81	3.2541
4.1	06:58:38.07	-55:57:01.79	2.8
4.2	06:58:37.14	-55:57:06.66	2.8
4.3	06:58:33.42	-55:57:29.39	2.8
5.1	06:58:33.12	-55:57:22.72	2.92 ± 0.06
5.2	06:58:36.49	-55:57:00.05	"
5.3	06:58:37.34	-55:56:55.54	"
6.1	06:58:36.12	-55:57:12.02	1.24 ± 0.02
6.2	06:58:34.97	-55:57:18.39	"
7.1	06:58:34.65	-55:56:55.95	1.67 ± 0.04
7.2	06:58:34.20	-55:57:02.07	"
8.1	06:58:37.85	-55:56:53.78	3.34 ± 0.25
8.2	06:58:36.28	-55:57:01.70	"
9.1	06:58:35.91	-55:56:50.58	5.27 ± 0.33
9.2	06:58:35.66	-55:56:51.33	"
10.1	06:58:15.14	-55:56:22.60	2.99
10.2	06:58:14.73	-55:56:33.50	2.99
10.3	06:58:14.87	-55:56:51.45	2.99
11.1	06:58:14.86	-55:56:46.00	3.13 ± 0.12
11.2	06:58:14.78	-55:56:39.25	"
11.3	06:58:15.55	-55:56:17.25	"
12.1	06:58:16.89	-55:56:38.55	1.69 ± 0.06
12.2	06:58:16.62	-55:56:45.50	"
12.3	06:58:16.78	-55:56:19.58	"
13.1	06:58:15.76	-55:56:23.40	3.45 ± 0.33
13.2	06:58:15.41	-55:56:31.37	"
14.1	06:58:15.38	-55:56:43.51	2.05 ± 0.08
14.2	06:58:15.32	-55:56:41.56	"
14.3	06:58:15.94	-55:56:17.41	"
15.1	06:58:32.98	-55:56:30.13	3.537
15.2	06:58:32.50	-55:56:34.12	3.537
15.3	06:58:31.80	-55:56:43.21	3.537

Table B.6. Same as Table B.2 for the MACS0940 mass model.

ID	α (J2000) h m s	δ (J2000) ° ' "	z_{system}
1.1	09:40:53.68	07:44:15.69	4.03
1.2	09:40:53.16	07:44:20.03	4.03
1.3	09:40:54.18	07:44:19.33	4.03
1.4	09:40:53.88	07:44:38.62	4.03
3.1	09:40:53.69	07:44:15.61	4.03
3.2	09:40:53.13	07:44:20.79	4.03
4.1	09:40:53.59	07:44:15.79	4.03
4.2	09:40:53.23	07:44:18.56	4.03
2.1	09:40:54.27	07:44:34.07	5.70
2.2	09:40:53.86	07:44:12.91	5.70
2.3	09:40:53.14	07:44:28.73	5.70
2.4	09:40:54.42	07:44:29.01	5.70
2.5	09:40:54.52	07:44:28.81	5.70
5.1	09:40:53.18	07:44:30.18	5.70
5.2	09:40:53.80	07:44:12.39	5.70
6.2	09:40:53.00	07:44:32.25	5.491
6.3	09:40:52.95	07:44:19.61	5.491
6.4	09:40:54.18	07:44:25.18	5.491
7.1	09:40:53.38	07:44:36.05	3.57
7.2	09:40:54.26	07:44:24.73	3.57
7.3	09:40:53.18	07:44:17.03	3.57
7.4	09:40:52.98	07:44:24.30	3.57

Table B.7. continued.

ID	α (J2000) h m s	δ (J2000) ° ' "	z_{system}
10.1	12:06:12.59	-08:47:42.00	2.5393
10.2	12:06:11.18	-08:47:50.88	2.5393
10.3	12:06:12.12	-08:47:59.85	2.5393
10.4	12:06:13.17	-08:48:00.58	2.5393
10.5	12:06:11.72	-08:48:42.53	2.5393
11.1	12:06:15.04	-08:47:48.02	3.0358
11.2	12:06:15.00	-08:48:17.68	3.0358
11.3	12:06:14.54	-08:48:32.36	3.0358
12.1	12:06:11.67	-08:47:37.38	3.3890
12.2	12:06:11.07	-08:47:43.39	3.3890
12.3	12:06:12.78	-08:48:00.71	3.3890
13.1	12:06:11.86	-08:48:06.36	3.3961
13.2	12:06:11.49	-08:48:07.61	3.3961
13.3	12:06:12.90	-08:48:17.13	3.3961
13.4	12:06:12.33	-08:48:24.71	3.3961
14.1	12:06:15.97	-08:48:16.13	3.7531
14.2	12:06:15.95	-08:48:17.04	3.7531
14.3	12:06:15.95	-08:48:18.53	3.7531
14.4	12:06:15.91	-08:48:22.78	3.7531
14.5	12:06:15.74	-08:48:27.69	3.7531
15.1	12:06:13.43	-08:47:29.89	3.7611
15.2	12:06:13.82	-08:48:11.00	3.7611
15.3	12:06:12.42	-08:48:39.47	3.7611
16.1	12:06:13.10	-08:47:28.33	3.7617
16.2	12:06:11.15	-08:47:58.82	3.7617
16.3	12:06:13.56	-08:48:08.90	3.7617
17.1	12:06:13.47	-08:47:44.23	3.8224
17.2	12:06:13.67	-08:47:57.92	3.8224
18.1	12:06:13.29	-08:47:48.17	4.0400
18.2	12:06:13.42	-08:47:54.94	4.0400
19.1	12:06:14.90	-08:47:41.55	4.0520
19.2	12:06:14.85	-08:48:18.86	4.0520
19.3	12:06:14.35	-08:48:34.07	4.0520
20.1	12:06:13.63	-08:48:13.39	4.0553
20.2	12:06:11.42	-08:48:01.80	4.0553
20.3	12:06:12.35	-08:48:36.24	4.0553
20.4	12:06:13.26	-08:47:25.47	4.0553
21.1	12:06:10.42	-08:47:51.63	4.0718
21.2	12:06:12.35	-08:48:02.93	4.0718
21.3	12:06:12.68	-08:48:04.01	4.0718
21.4	12:06:12.82	-08:48:04.33	4.0718
22.1	12:06:10.64	-08:47:29.11	4.2913
22.2	12:06:09.67	-08:47:47.62	4.2913
22.3	12:06:09.81	-08:48:21.94	4.2913
23.1	12:06:15.18	-08:47:48.81	4.7293
23.2	12:06:15.25	-08:48:13.21	4.7293
23.3	12:06:14.36	-08:48:41.49	4.7293
24.1	12:06:12.33	-08:47:28.68	5.6984
24.2	12:06:10.58	-08:47:49.54	5.6984
24.3	12:06:12.22	-08:48:02.18	5.6984
24.4	12:06:13.25	-08:48:03.84	5.6984
25.1	12:06:14.33	-08:47:47.62	5.7927
25.2	12:06:14.42	-08:48:00.64	5.7927
26.1	12:06:12.17	-08:48:11.20	6.0106
26.2	12:06:12.29	-08:48:13.21	6.0106
27.1	12:06:12.78	-08:47:55.77	6.0601
27.2	12:06:12.41	-08:47:57.00	6.0601
28.1	12:06:14.43	-08:48:34.20	3.0385

Table B.7. Same as Table B.2 for the MACS1206mass model.

ID	α (J2000) h m s	δ (J2000) ° ' "	z_{system}
1.1	12:06:12.22	-08:47:50.72	1.0121
1.2	12:06:11.90	-08:47:57.46	1.0121
1.3	12:06:11.73	-08:48:23.96	1.0121
2.1	12:06:11.23	-08:47:44.45	1.0369
2.2	12:06:10.76	-08:47:58.39	1.0369
2.3	12:06:10.82	-08:48:10.99	1.0369
3.1	12:06:12.14	-08:47:44.04	1.0433
3.2	12:06:11.43	-08:47:59.32	1.0433
3.3	12:06:11.67	-08:48:19.01	1.0433
4.1	12:06:12.72	-08:47:40.92	1.4248
4.2	12:06:11.72	-08:48:00.21	1.4248
4.3	12:06:11.94	-08:48:28.67	1.4248
5.1	12:06:12.85	-08:47:42.68	1.4254
5.2	12:06:13.02	-08:48:05.59	1.4254
5.3	12:06:12.00	-08:48:29.15	1.4254
6.1	12:06:11.99	-08:47:46.90	1.4255
6.2	12:06:11.55	-08:47:49.41	1.4255
6.3	12:06:11.53	-08:48:33.42	1.4255
7.1	12:06:12.14	-08:47:44.53	1.4257
7.2	12:06:11.33	-08:47:52.79	1.4257
7.3	12:06:12.32	-08:48:01.18	1.4257
7.4	12:06:12.53	-08:48:01.43	1.4257
7.5	12:06:11.59	-08:48:31.88	1.4257
8.1	12:06:12.88	-08:47:44.72	1.4864
8.2	12:06:13.09	-08:48:03.97	1.4864
8.3	12:06:11.99	-08:48:31.99	1.4864
9.1	12:06:11.22	-08:47:35.32	1.9600
9.2	12:06:10.39	-08:47:52.12	1.9600
9.3	12:06:10.65	-08:48:26.95	1.9600

Table B.7. continued.

ID	α (J2000) h m s	δ (J2000) ° ' "	z_{system}
28.2	12:06:15.00	-08:48:16.50	3.0385
28.3	12:06:15.01	-08:47:48.65	3.0385
29.1	12:06:15.48	-08:47:53.74	5.0174
29.2	12:06:15.51	-08:48:13.01	5.0174
29.3	12:06:14.83	-08:48:38.58	5.0174
30.1	12:06:11.36	-08:48:13.32	4.104
30.2	12:06:12.04	-08:48:08.13	4.104
30.3	12:06:12.02	-08:48:22.54	4.104
30.4	12:06:12.64	-08:48:15.04	4.104
31.1	12:06:14.48	-08:48:09.95	3.011
31.2	12:06:14.44	-08:47:44.74	3.011
32.1	12:06:10.25	-08:47:49.28	3.161
32.2	12:06:11.25	-08:47:31.25	3.161
33.1	12:06:13.75	-08:48:01.14	3.207
33.2	12:06:13.55	-08:47:42.58	3.207
34.1	12:06:13.40	-08:47:59.16	4.047
34.2	12:06:12.83	-08:47:40.02	4.047
34.3	12:06:11.16	-08:47:48.46	4.047
35.1	12:06:10.46	-08:47:48.02	4.050
35.2	12:06:11.68	-08:47:31.32	4.050
36.1	12:06:14.09	-08:47:46.35	2.504
36.2	12:06:14.17	-08:48:05.13	2.504
36.3	12:06:12.90	-08:48:41.00	2.504
37.1	12:06:13.66	-08:48:06.28	1.69 ± 0.01
37.2	12:06:13.62	-08:47:45.85	"
37.3	12:06:12.59	-08:48:34.06	"

Table B.8. continued.

ID	α (J2000) h m s	δ (J2000) ° ' "	z_{system}
13.4	13:47:31.92	-11:44:59.19	3.705
14.1	13:47:32.40	-11:44:38.89	3.681
14.2	13:47:30.40	-11:45:25.21	3.681
14.3	13:47:29.99	-11:44:29.41	3.681
14.4	13:47:33.85	-11:45:12.80	3.681
14.5	13:47:30.62	-11:45:15.45	3.681
15.1	13:47:28.74	-11:44:38.53	3.993
15.2	13:47:32.78	-11:44:49.53	3.993
15.3	13:47:33.48	-11:45:20.78	3.993
16.1	13:47:33.12	-11:45:10.34	4.7445
16.2	13:47:33.11	-11:45:16.64	4.7445
16.3	13:47:31.20	-11:45:38.10	4.7445
16.4	13:47:28.04	-11:44:40.96	4.7445
16.5	13:47:31.55	-11:45:15.20	4.7445
17.1	13:47:29.41	-11:45:15.20	5.008
17.2	13:47:34.36	-11:45:35.71	5.008
18.1	13:47:29.63	-11:45:58.79	4.947
18.2	13:47:27.95	-11:45:37.01	4.947
18.3	13:47:30.56	-11:46:03.67	4.947
19.1	13:47:30.25	-11:45:01.97	4.038
19.2	13:47:30.12	-11:44:59.61	4.038
19.3	13:47:34.20	-11:45:45.19	4.038
20.1	13:47:34.15	-11:45:47.92	5.769
20.2	13:47:29.97	-11:44:53.38	5.769
20.3	13:47:30.44	-11:45:04.11	5.769
21.1	13:47:29.46	-11:45:53.84	4.384
21.2	13:47:31.34	-11:46:01.89	4.384
21.3	13:47:28.12	-11:45:35.17	4.384
22.1	13:47:29.19	-11:45:25.58	3.995
22.2	13:47:28.81	-11:45:05.24	3.995
23.1	13:47:29.93	-11:45:44.49	4.382
23.2	13:47:32.93	-11:45:44.47	4.382
23.3	13:47:31.92	-11:44:49.06	4.382
23.4	13:47:28.16	-11:45:05.73	4.382
23.5	13:47:30.82	-11:45:08.63	4.382
24.1	13:47:33.45	-11:45:43.01	3.7508
24.2	13:47:29.31	-11:45:33.04	3.7508
24.3	13:47:28.61	-11:45:12.69	3.7508
24.4	13:47:31.12	-11:44:43.76	3.7508
25.1	13:47:33.15	-11:45:06.29	4.084
25.2	13:47:33.19	-11:45:18.11	4.084
25.3	13:47:30.98	-11:45:36.92	4.084
25.4	13:47:28.25	-11:44:40.74	4.084
25.5	13:47:31.35	-11:45:15.83	4.084
26.1	13:47:32.84	-11:45:49.78	3.5675
26.2	13:47:31.35	-11:44:52.65	3.5675
26.3	13:47:30.86	-11:45:04.19	3.5675
26.4	13:47:28.48	-11:45:25.39	3.5675
26.5	13:47:29.29	-11:45:40.45	3.5675
27.1	13:47:30.31	-11:45:15.90	5.723
27.2	13:47:34.45	-11:45:19.92	5.723
28.1	13:47:28.93	-11:44:58.18	4.086
28.2	13:47:33.83	-11:45:37.79	4.086
28.3	13:47:29.45	-11:44:46.58	4.086
28.4	13:47:29.25	-11:45:24.99	4.086
29.1	13:47:32.53	-11:45:09.31	3.703
29.2	13:47:27.61	-11:44:48.12	3.703
30.1	13:47:31.70	-11:45:35.05	3.065
30.2	13:47:32.42	-11:45:28.92	3.065

Table B.8. Same as Table B.2 for the RXJ1347 mass model.

ID	α (J2000) h m s	δ (J2000) ° ' "	z_{system}
1.1	13:47:29.09	-11:45:37.22	1.75
1.2	13:47:29.44	-11:45:41.93	1.75
1.3	13:47:31.75	-11:45:51.93	1.75
2.1	13:47:29.37	-11:44:47.16	4.086
2.2	13:47:29.05	-11:44:53.93	4.086
3.1	13:47:32.18	-11:44:30.32	3.67
3.2	13:47:31.89	-11:44:28.28	3.67
4.1	13:47:30.80	-11:44:56.89	2.32 ± 0.20
4.2	13:47:30.78	-11:44:58.73	"
9.1	13:47:32.99	-11:45:27.09	2.127
9.2	13:47:32.40	-11:44:54.13	2.127
9.3	13:47:30.88	-11:45:12.04	2.127
9.4	13:47:30.61	-11:45:33.74	2.127
9.5	13:47:28.68	-11:44:50.44	2.127
11.1	13:47:31.95	-11:45:44.01	4.847
11.2	13:47:31.30	-11:45:45.86	4.847
11.3	13:47:27.74	-11:44:54.61	4.847
11.4	13:47:32.56	-11:44:58.84	4.847
12.1	13:47:32.48	-11:44:51.49	3.704
12.2	13:47:28.34	-11:44:49.73	3.704
12.3	13:47:30.97	-11:45:10.86	3.704
12.4	13:47:33.03	-11:45:33.84	3.704
12.5	13:47:30.49	-11:45:40.93	3.704
13.1	13:47:30.57	-11:45:49.96	3.705
13.2	13:47:31.95	-11:45:49.48	3.705
13.3	13:47:31.64	-11:45:05.02	3.705

Table B.8. continued.

ID	α (J2000) h m s	δ (J2000) ° ' "	z_{system}
31.1	13:47:32.16	-11:45:02.80	5.421
31.2	13:47:27.39	-11:45:05.62	5.421
32.1	13:47:30.82	-11:45:47.90	4.163
32.2	13:47:32.12	-11:45:45.86	4.163
32.3	13:47:27.82	-11:45:01.63	4.163
32.4	13:47:31.65	-11:45:08.79	4.163
32.5	13:47:32.29	-11:44:57.20	4.163
33.1	13:47:30.85	-11:45:36.93	5.673
33.2	13:47:33.28	-11:45:04.12	5.673
33.3	13:47:31.17	-11:45:16.17	5.673
33.4	13:47:28.32	-11:44:37.88	5.673
33.5	13:47:33.36	-11:45:10.41	5.673
34.1	13:47:33.10	-11:45:51.63	4.947
34.2	13:47:31.20	-11:44:50.07	4.947
34.3	13:47:30.80	-11:45:04.04	4.947
35.1	13:47:31.97	-11:45:22.65	6.567
35.2	13:47:31.89	-11:45:20.18	6.567
35.3	13:47:27.58	-11:44:35.04	6.567
36.1	13:47:32.31	-11:44:28.97	4.038
36.2	13:47:32.00	-11:44:26.49	4.038
37.1	13:47:33.21	-11:44:56.34	4.298
37.2	13:47:33.43	-11:45:05.69	4.298
38.1	13:47:30.97	-11:44:22.23	3.682
38.2	13:47:33.17	-11:44:40.38	3.682
38.3	13:47:33.59	-11:44:47.70	3.682
39.1	13:47:31.08	-11:44:23.41	4.660
39.2	13:47:32.74	-11:44:34.97	4.660
39.3	13:47:33.97	-11:44:58.24	4.660
40.1	13:47:32.38	-11:44:56.52	4.835
40.2	13:47:32.23	-11:45:44.98	4.835
40.3	13:47:27.77	-11:44:59.74	4.835
40.4	13:47:30.82	-11:45:47.90	4.835
40.5	13:47:31.63	-11:45:09.76	4.835
41.1	13:47:30.76	-11:44:52.35	4.875
41.2	13:47:30.70	-11:44:59.87	4.875
41.3	13:47:33.33	-11:45:54.54	4.875

Table B.9. Same as Table B.2 for the SMACS2031 mass model.

ID	α (J2000) h m s	δ (J2000) ° ' "	z_{system}
1.1	20:31:52.90	-40:37:32.62	3.5077
1.2	20:31:52.99	-40:37:32.60	3.5077
1.3	20:31:53.06	-40:37:45.95	3.5077
1.4	20:31:53.83	-40:37:40.21	3.5077
1.5	20:31:53.93	-40:37:06.17	3.5077
2.1	20:31:52.75	-40:37:30.87	3.5077
2.3	20:31:52.91	-40:37:48.49	3.5077
2.4	20:31:53.99	-40:37:38.93	3.5077
2.5	20:31:53.91	-40:37:08.98	3.5077
3.1	20:31:52.53	-40:37:34.18	5.6231
3.2	20:31:53.14	-40:37:33.60	5.6231
3.3	20:31:52.81	-40:37:44.77	5.6231
3.4	20:31:53.72	-40:37:40.25	5.6231
3.5	20:31:53.77	-40:37:01.01	5.6231
4.1	20:31:52.14	-40:37:30.42	3.34
4.2	20:31:52.22	-40:37:45.82	3.34
4.3	20:31:53.40	-40:37:07.02	3.34
5.1	20:31:50.92	-40:37:36.22	3.723
5.2	20:31:51.11	-40:37:26.63	3.723
5.3	20:31:52.12	-40:37:02.62	3.723
6.1	20:31:51.46	-40:37:19.01	1.4249
6.2	20:31:51.32	-40:37:22.89	1.4249
6.3	20:31:51.17	-40:37:26.54	1.4249
7.1	20:31:52.83	-40:37:06.17	5.2397
7.2	20:31:51.96	-40:37:24.27	5.2397
7.3	20:31:51.71	-40:37:47.67	5.2397
8.1	20:31:51.76	-40:37:08.68	5.6128
8.2	20:31:51.51	-40:37:14.02	5.6128
8.3	20:31:50.69	-40:37:44.03	5.6128
9.1	20:31:51.19	-40:37:13.22	6.4085
9.2	20:31:51.51	-40:37:06.08	6.4085
10.1	20:31:52.18	-40:37:12.50	3.8561
10.2	20:31:52.06	-40:37:15.01	3.8561
10.3	20:31:51.22	-40:37:46.18	3.8561
11.1	20:31:52.31	-40:37:48.19	2.2556
11.2	20:31:52.42	-40:37:26.60	2.2556
11.3	20:31:53.27	-40:37:14.12	2.2556
11.4	20:31:53.62	-40:37:31.75	2.2556
12.1	20:31:53.65	-40:37:30.45	3.414
12.2	20:31:53.42	-40:37:30.37	3.414
12.3	20:31:52.46	-40:37:23.71	3.414
12.4	20:31:53.13	-40:37:14.55	3.414
12.5	20:31:52.16	-40:37:51.47	3.414
13.1	20:31:52.40	-40:37:05.46	4.73
13.2	20:31:51.61	-40:37:23.02	4.73
13.3	20:31:51.22	-40:37:43.62	4.73

Table B.10. Same as Table B.2 for the SMACS2131 mass model.

ID	α (J2000) h m s	δ (J2000) ° ' "	z_{system}
1.1	21:31:02.97	-40:19:04.59	5.718
1.3	21:31:03.82	-40:18:54.54	5.718
1.4	21:31:02.44	-40:19:12.32	5.718
11.1	21:31:06.09	-40:19:43.48	5.718
11.4	21:31:06.19	-40:19:05.71	5.718
11.5	21:31:05.53	-40:18:57.28	5.718
2.1	21:31:05.27	-40:19:31.69	3.478
2.2	21:31:04.94	-40:19:24.05	3.478
2.3	21:31:05.41	-40:19:33.34	3.478
3.1	21:31:04.22	-40:19:32.26	0.994
3.2	21:31:05.23	-40:19:17.77	0.994
4.1	21:31:03.51	-40:19:23.78	4.971
4.2	21:31:05.99	-40:18:54.20	4.971
5.1	21:31:03.60	-40:19:23.78	3.353
5.2	21:31:05.91	-40:18:55.75	3.353
6.1	21:31:04.61	-40:19:22.99	1.265
6.2	21:31:04.04	-40:19:25.39	1.265
6.3	21:31:05.37	-40:19:04.15	1.265
7.1	21:31:06.62	-40:19:25.57	4.820
7.2	21:31:05.93	-40:19:38.85	4.820
7.3	21:31:03.90	-40:19:38.43	4.820
7.4	21:31:04.64	-40:18:47.95	4.820
8.1	21:31:03.57	-40:19:25.65	4.45465
8.2	21:31:05.75	-40:18:51.28	4.45465
10.1	21:31:05.02	-40:18:55.25	4.59
10.2	21:31:06.41	-40:19:12.85	4.59
10.3	21:31:05.10	-40:19:44.03	4.59
10.4	21:31:02.53	-40:19:13.17	4.59

Table B.11. Same as Table B.2 for the MACS2214 mass model.

ID	α (J2000) h m s	δ (J2000) ° ' "	z_{system}
1.1	22:14:57.76	-14:00:01.08	3.01
1.2	22:14:56.93	-13:59:59.09	3.01
2.1	22:14:57.51	-13:59:59.61	3.01
2.2	22:14:57.33	-13:59:59.21	3.01
3.1	22:14:57.64	-13:59:59.40	3.01
3.2	22:14:57.24	-13:59:58.49	3.01
3.3	22:14:56.71	-14:00:12.99	3.01
3.4	22:14:58.68	-14:00:36.15	3.01
4.1	22:14:56.66	-13:59:56.27	3.14
4.2	22:14:58.02	-14:00:02.88	3.14
4.3	22:14:58.55	-14:00:33.29	3.14
4.4	22:14:56.57	-14:00:17.13	3.14
5.1	22:14:56.82	-13:59:44.09	6.62
5.2	22:14:58.97	-14:00:20.88	6.62
5.3	22:14:58.78	-14:00:02.62	6.62
6.1	22:14:57.14	-14:00:13.82	1.16
6.2	22:14:57.98	-14:00:23.11	1.16
6.3	22:14:56.91	-14:00:02.38	1.16
6.4	22:14:57.57	-14:00:09.79	1.16
7.1	22:14:56.10	-14:00:26.63	2.95
7.2	22:14:56.94	-14:00:38.93	2.95
7.3	22:14:55.77	-14:00:02.34	2.95
8.1	22:14:57.05	-14:00:32.79	2.98
8.2	22:14:56.67	-14:00:30.13	2.98
8.3	22:14:56.83	-14:00:31.70	2.98
9.1	22:14:59.07	-14:00:24.76	3.66
9.2	22:14:57.51	-13:59:48.53	3.66
9.3	22:14:58.53	-13:59:58.73	3.66
10.1	22:14:58.54	-14:00:00.22	4.34
10.2	22:14:58.92	-14:00:25.92	4.34
10.3	22:14:57.10	-13:59:47.76	4.34
11.1	22:14:57.08	-14:00:21.99	4.81
11.2	22:14:58.60	-14:00:19.38	4.81
11.3	22:14:58.63	-14:00:11.39	4.81
12.1	22:14:58.69	-14:00:23.10	5.09
12.2	22:14:56.91	-14:00:21.26	5.09
12.3	22:14:58.59	-14:00:06.36	5.09
12.4	22:14:56.54	-13:59:45.93	5.09
13.1	22:14:55.94	-14:00:11.59	6.47
13.2	22:14:55.99	-14:00:07.27	6.47
15.1	22:14:56.78	-14:00:22.90	5.57
15.2	22:14:58.54	-14:00:06.24	5.57
15.3	22:14:58.43	-14:00:25.76	5.57
15.4	22:14:56.47	-13:59:46.44	5.57
17.4	22:14:56.56	-14:00:33.65	2.95
17.5	22:14:56.36	-14:00:30.77	2.95