



Global Value Chains and the transmission of exchange rate shocks to consumer prices

Hadrien Camatte, Guillaume Daudin, Violaine Faubert, Antoine Lalliard,
Christine Riffart

► To cite this version:

Hadrien Camatte, Guillaume Daudin, Violaine Faubert, Antoine Lalliard, Christine Riffart. Global Value Chains and the transmission of exchange rate shocks to consumer prices. 2021. hal-03134873

HAL Id: hal-03134873

<https://hal.science/hal-03134873>

Preprint submitted on 8 Feb 2021

HAL is a multi-disciplinary open access archive for the deposit and dissemination of scientific research documents, whether they are published or not. The documents may come from teaching and research institutions in France or abroad, or from public or private research centers.

L'archive ouverte pluridisciplinaire **HAL**, est destinée au dépôt et à la diffusion de documents scientifiques de niveau recherche, publiés ou non, émanant des établissements d'enseignement et de recherche français ou étrangers, des laboratoires publics ou privés.

Global Value Chains and the transmission of exchange rate shocks to consumer prices

Hadrien Camatte¹, Guillaume Daudin², Violaine Faubert³,
Antoine Lalliard⁴, Christine Riffart⁵

December 2020, WP 797

ABSTRACT

Following the 2008 financial crisis, inflation rates in advanced economies have been at odds with the prediction of a standard Phillips curve. This puzzle has triggered a debate on the global determinants of domestic prices. We contribute to this debate by investigating the impact of exchange rate shocks on consumer prices from 1995 to 2018. We focus on cost-push inflation through global value chains, using three sectoral world input-output datasets. Depending on countries, the absolute value of the elasticity of the household consumption expenditure (HCE hereafter) deflator to the exchange rate ranges from 0.05 to 0.35, confirming the importance of global value chains in channelling external shocks to domestic inflation. Using data from WIOD on a sample of 43 countries, we find that the mean output-weighted elasticity of the HCE deflator to the exchange rate increased in absolute value from 0.075 in 2000 to 0.094 in 2008. After peaking in 2008, it declined to 0.088 in 2014. World Input-Output tables (WIOD hereafter) are released with a lag of several years and the latest WIOD dates back to 2015. To fill this gap, we approximate the impact of an exchange rate shock on the HCE deflator from 2016 onwards using up-to-date GDP and trade data. Our extrapolations suggest that the decline in the elasticity of the HCE deflator continued until 2016, before reversing in 2017 and 2018. Our findings are robust to using three different datasets.

Keywords: Inflation, global value chains, Phillips curve, input output tables, international trade, pass through

JEL classification: D57, E31, F14

¹ Banque de France, hadrien.camatte@banque-france.fr

² Université Paris-Dauphine, PSL University, CNRS, 8007, IRD, 260, LEDa, DIAL ; Sciences Po, OFCE, guillaume.daudin@dauphine.psl.eu

³ Banque de France, European Central Bank, violaine.faubert@ecb.europa.eu

⁴ Banque de France. E-mail: antoine.lalliard@banque-france.fr

⁵ Sciences Po, OFCE. E-mail: christine.riffart@sciencespo.fr

We thank Marion Cochard, Pavel Diev, Hubert Escaith, Guillaume Gaulier, Yannick Kalantzis, Guy Levy-Rueff, Sébastien Miroudot, Jean-François Ouvrard and François de Soyres for comments and suggestions, as well as participants at Banque de France seminars. Any remaining errors are ours. All programs and are available at https://github.com/gdaudin/OFCE_CommerceVA

NON-TECHNICAL SUMMARY

Following the 2008 financial crisis, inflation rates in advanced economies have been a puzzle. The apparent disconnection between inflation and its traditional domestic drivers triggered a debate on the potential growing role of global determinants. We contribute to this debate by investigating the impact of global value chains on inflation dynamics over the past twenty years on a sample of 43 economies.

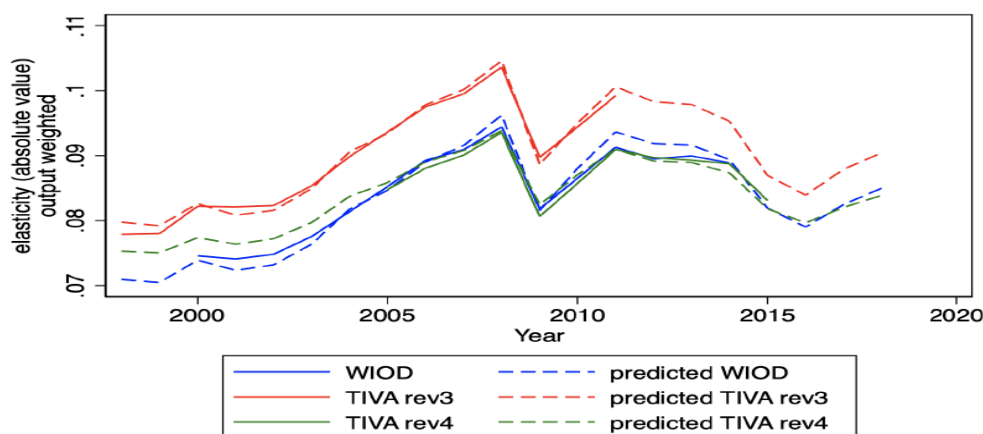
Participation in global value chains strengthens cross-country linkages via trade in intermediate inputs. When value chains are global, fluctuations in exchange rates affect household consumption expenditure deflator (HCE hereafter).

Assuming a Cobb-Douglas production framework where firms follow a simple cost-minimising behaviour, we compute the partial-equilibrium effects of an exchange rate shock on consumer prices. We use world input-output tables covering twenty years of data (from 1995 to 2015). We analyse the impact of exchange rate shocks on the main components of consumer prices and on the prices of imported and domestic final goods. We confirm the importance of global value chains in explaining inflation dynamics. We find that the elasticity of the HCE to exchange rate shocks ranges from 0.05 to 0.35, depending on the openness rate of each economy. In the euro area, the elasticity of the HCE deflator to changes in the euro exchange rate ranges from 0.07 to 0.18.

We show that the direct impact (through imported final goods) and domestic input-output linkages (i.e. domestic final goods produced using foreign inputs) account for most of the propagation of an exchange rate shock to domestic prices. First-round effects explain three-quarters of the propagation of exchange rate shocks to domestic prices. By contrast, we find a limited role for the second-round effects, i.e. the additional transmission of lower domestic input prices. Domestic core inflation (defined as inflation excluding food and energy) accounts for a significant share of the total elasticity, mainly reflecting the weight of domestic services and non-energy industrial goods in total consumption.

The construction of World Input-Output tables (WIOT hereafter) is data-demanding and WIOTs are typically released with a lag of several years (2015 at the time of writing). To address this gap, we show it is possible to exploit more up-to-date GDP and trade data to approximate the impact of an exchange rate shock on the HCE deflator for recent years. We analyse time variation in the elasticities over the past two decades. On our sample of 43 countries, the mean output-weighted elasticity of the HCE deflator to exchange rate shocks increased from 0.08 in 2000 to 0.09 in 2008. The elasticity declined in subsequent years. Extrapolations suggest that this decline was reversed in 2017 and 2018 (see figure).

Figure: Output-weighted HCE deflator elasticity (observed and predicted)



The average CPI elasticity has been computed from each of countries in a common 43 countries sample (assuming no Eurozone) and aggregated using an output weighted mean

Sources: WIOD, World Bank, Comtrade and authors' calculations

Chaînes de valeurs et transmission de chocs de taux de change sur les prix à la consommation

RÉSUMÉ

Depuis la crise financière de 2008, les difficultés pour prévoir l'inflation ont suscité un débat sur les déterminants mondiaux des prix. Nous contribuons à ce débat en étudiant l'impact des chocs de taux de change sur le déflateur de la consommation entre 1995 et 2018 en prenant en compte les chaînes de valeur mondiales à partir de trois tableaux entrées-sorties au niveau mondial (WIOD et deux versions de TiVA). Nous travaillons en équilibre partiel avec des fonctions de production Cobb-Douglas. La dernière version disponible des TES mondiaux remontant à 2015, nous extrapolons à partir de données disponibles plus récentes (PIB et commerce international). Selon les pays, l'élasticité de l'inflation au taux de change varie de 0,05 à 0,35. En utilisant les données WIOD sur un échantillon de 43 pays, nous montrons que l'élasticité moyenne du déflateur de la consommation au taux de change a augmenté de 0,075 en 2000 à 0,094 en 2008, avant de décroître à 0,08 en 2014. Nos extrapolations suggèrent que la baisse s'est poursuivie jusqu'en 2016, avant de s'inverser en 2017 et 2018. Nos résultats sont robustes aux trois bases de données utilisées.

Mots-clés : inflation, chaînes de valeur, courbes de Phillips, tableaux entrées-sorties, commerce international, pass through

Les Documents de travail reflètent les idées personnelles de leurs auteurs et n'expriment pas nécessairement la position de la Banque de France. Ils sont disponibles sur publications.banque-france.fr

1 Introduction

Following the 2008 financial crisis, inflation rates in advanced economies have been at odds with the prediction of a standard Phillips curve, which suggests an inverse relationship between unemployment and inflation. While inflation in the pre-crisis period followed a standard Phillips curve relationship, two consecutive puzzles have emerged. The "missing disinflation episode" emerged during the economic downturn (2009-2011), when inflation remained much higher than suggested by the high level of economic slack. The "missing inflation puzzle" emerged from 2012 onwards, as inflation remained subdued despite the economic recovery (see Ball and Mazumder (2011); Coibion and Gorodnichenko (2015)). From a central bank perspective, the underlying question is whether the Phillips curve remains a reliable tool to explain inflation in a globalised world, or whether domestic cyclical conditions are superseded by external drivers of inflation. This triggered a very intense debate named "Phillips curve war" between supporters (among them Blanchard (2016), the European Central Bank (see Eser et al. (2020)) and Bank of France (see Berson et al. (2018)) and critics (led by Farmer and Nicolo (2018)). All agree that external factors play a role in driving domestic inflation, either through more integration or more coordination. This paper contributes to this debate by quantifying the role of global value chains in inflation dynamics following an exchange rate shock in a Cobb-Douglas, partial equilibrium framework.

Participation in global value chains strengthens cross-country linkages via trade in intermediate inputs. When value chains are global, fluctuations in exchange rates (we assume here an appreciation of a currency) affect household consumption deflator (HCE hereafter) through distinct channels: *i*) the prices of imported final goods sold directly to domestic consumers; *ii*) the prices of imported inputs feeding through domestic production; and *iii*) the price of exported inputs feeding through imported foreign production. Finally, *iv*), changes in domestic and foreign production costs in turn pass through to the price of inputs for domestic and foreign goods and cause further production costs variations through input-output linkages.

Assuming a Cobb-Douglas production framework where firms have a simple cost-minimising behaviour, we compute the partial-equilibrium effects of an exchange rate shock on consumer prices. This exercise neglects other determinants of the pass-through of exchange rate shocks into prices (see for example Berman et al. (2012)). For example, the pass-through depends on the intensity of competition in domestic markets: while an exchange rate appreciation lowers the price of imported inputs, a firm with limited competitive pressure may avail of greater profit margins rather than reduce prices in an effort to maintain its market share. The elasticity we compute thus overestimates the sensitivity of prices to exchange rate shocks. We also assume that all pricing occur using the currency of the producing country, despite the well-documented role of dominant-currency pricing (Gopinath et al. (2020)). Despite these shortcomings, this partial equilibrium approach is useful for identifying which countries and sectors are under pressure to adjust their prices when subject to exchange rate shocks.

We focus on consumer prices, whose stabilisation is a major objective of monetary policy. We use world input-output tables covering twenty years of data (from 1995 to 2015).

Most of the literature on global supply chains has focused on the role of input-output linkages in propagating shocks to production. By contrast, we examine the role of input-output linkages

in propagating shocks to consumer prices. We analyse the impact of exchange rate shocks on the main components of consumer prices (manufacturing goods, services, food and energy) and on the prices of imported and domestic final goods.

The construction of World Input-Output tables (WIOT hereafter) is data-demanding and WIOTs are typically released with a lag of several years. As a result, at the time of writing, the latest WIOT is five year old (2015). To address this gap, we use more up-to-date GDP and trade data to approximate the partial equilibrium impact of an exchange rate shock on the HCE deflator from 2016 onwards.

The absolute value of the elasticity of the HCE deflator to exchange rate shocks varies widely between countries, from 0.05 to 0.35. In the euro area, the elasticity of the HCE deflator to changes in the value of the euro ranges from 0.065 to 0.18. Such heterogeneity add to the challenges faced by the European Central Bank in stabilising prices in the monetary union. In a sample of 43 countries, the mean output-weighted elasticity of the HCE deflator to exchange rate shocks based on WIOD increased in absolute value from 0.075 in 2000 to 0.094 in 2008. It then declined to 0.088 in 2014. Extrapolations using more up-to-date GDP and trade data suggest that this decline continued to 2016 and was reversed in 2017 and 2018. Both recent versions of TIVA yield a similar evolution. Input-output mechanisms (i.e. excluding the change in the prices of imported final goods sold directly to domestic consumers) explain a large share of the elasticity, especially for large countries or for countries of the Eurozone subject to a shock on the Euro.

The paper is organised as follows. Section 2 reviews the related literature. Section 3 presents the methodology and the data sources. Section 4 computes the partial equilibrium impact of an exchange rate shock on HCE deflator up to 2015. Section 5 relies on up-to-date GDP and trade data to approximate the partial equilibrium impact of an exchange rate shock on HCE deflator from 2016 onwards.

2 Related literature

2.1 Trade in intermediate goods and the exchange rate pass-through

Our paper relates to several strands of literature. First, it relates to the literature that examines the link between global value chain (GVC) participation and the exchange rate pass-through (ERPT) to domestic prices. De Soyres et al. (2018) found evidence that an increase in production linkages, as proxied by trade in intermediate inputs, is strongly associated with higher inflation correlation. Georgiadis et al. (2019) estimate that the rise of GVC participation accounts for 50% of the decline in the ERPT to import prices observed since the mid-1990s.¹ Hagemejer et al. (2020) provide evidence that the decline in ERPT resulting from the enhanced participation in GVC may be nonlinear with respect to the country's position in the global value chain. They find that a growing backward GVC participation of the suppliers of imported intermediate inputs reduces the ERPT to producer prices. The ERPT for countries whose suppliers are strongly

¹The intuition is as follow: an exchange rate appreciation will increase the foreign-currency price of exports. However, when exports have high import contents, the appreciation will reduce the local-currency price of imported inputs, thus decreasing the foreign-currency price of exports. This will lead to a lower ERPT.

involved in GVC is significantly smaller than for economies whose suppliers do not participate in GVC.

Our research also relates to the literature on the cross-border propagation of cost shocks. Auer et al. (2019) document that input-output linkages contribute substantially to synchronising producer price (PPI) inflation across countries. Antoun de Almeida (2016) shows that the cross-border sectors pairs which trade more intensively with each other in intermediate inputs display higher PPI inflation correlation, indicating price spillovers along the global supply chain.

Another strand of literature has focused on the link between the ERPT and the share of intermediate goods in imports. The empirical literature shows that the pass-through declines across the pricing chain. Ortega and Osbat (2020) find that the ERPT into import prices is high and fast, whereas the ERPT into final consumer prices is significantly smaller and relatively slower (see also Hahn (2003); Kunovac and Comunale (2017); Ben Cheikh and Rault (2017)).

From an input-output perspective, the ERPT to consumer prices depends on the direct and indirect import contents of consumption. Using WIOD and assuming a full exchange rate pass-through to import prices, Ortega and Osbat (2020) (box 1 prepared by Stefan Schaefer) find that the sum of the direct and indirect import contents in consumption was 16% in the HICP in 2014 in the euro area.

Another strand of literature investigates whether the ERPT is stable over time. Campa and Goldberg (2008) have documented a declining ERPT to import and consumer prices since the 1980s and 1990s. Özyurt (2016) also shows that the pass-through is partial in the euro area. The decline in the ERPT observed over the past two decades coincided with the increasing share of emerging economies in world trade and the accession of China to the WTO. By contrast, Leigh et al. (2017) find that both the ERPT and the price elasticity of trade volumes are stable over time. In the euro area, Ortega and Osbat (2020) show that the ERPT into total import prices has been broadly stable over time (at around 20%), while the ERPT to extra-euro area import prices has declined.

Our contribution to the literature is fourfold. While most of the literature focuses on producer prices, we focus on consumer prices, a variable of paramount interest for monetary policy. We compute the full partial equilibrium impact of exchange rate shocks through world input-output tables. By comparing the results obtained using three different databases, we make sure our results are robust to using different datasets. The construction of World Input-Output tables is data-demanding and WIOTs are typically released with a lag of several years. To address this gap, we use more up-to-date GDP and trade data, thus providing a tool for computing up-to-date estimates of the elasticity of consumer prices to exchange rate shocks.

2.2 The Input-Output model applied to a shock on production costs

The Leontief's production model (or Input-Output model, I-O thereafter) studies the impact of a demand shock in a closed economy (Leontief, 1951). The trade in value-added analysis reconciles international trade statistics with national I-O tables, and thus allows to extend Leontief's analysis to an international context. A number of studies (Hummels et al., 2001; Daudin et al., 2006, 2011; De Backer and Yamano, 2012; Johnson and Noguera, 2012; Koopman et al., 2014; Amador et al., 2015; Los et al., 2016; Miroudot and Ye, 2020) analyse the value

added content of world trade. Some authors focus on Asia (Sato and Shrestha, 2014) or on the euro area (Cappariello and Felettigh, 2015).

Leontief's production model has a dual: the cost-push price model. In France, the Insee (Bourgeois and Briand, 2019) has developed the AVIONIC model based on French symmetric input-output tables. It measures the impact of an exogenous variation in the price of inputs on the price of production. Leontief's price model is broadly used in multi-sector, single-country macroeconomic models, for example, to measure the effect of changes in energy prices (Bournay and Piriou, 2015; Sharify, 2013). Implicitly, Bems and Johnson (2015) use it to focus on competitiveness. They compute real effective exchange rates weighted by the value-added trade structure to measure the impact of a demand change in value added on value added prices and final expenditure levels. Cochard et al. (2016) rely on an accounting approach to analyse the effects of costs on prices ("cost-push inflation") and shows that they are all the higher as countries are open.

Supply-driven input-output models (such as the Gosh model) have come under numerous criticism in the literature (e.g. Oosterhaven (1988)). Supply-driven price models are more widely accepted (Dietzenbacher (1997)). Still, the limitations of this approach are well known (Folloni and Miglierina, 1994). In particular, and although the division of global value chains largely takes place within multinational firms, it assumes a unique pricing system based on market prices and independent of firms' strategies. Still, this method provides a measure of the vulnerability of each sector to price or productivity shocks (Acemoglu et al., 2012; Carvalho, 2014). Hence, though unrealistic, this partial equilibrium approach using input-output tables is useful for identifying which countries and sectors are under pressure to adjust their prices when subject to exogenous cost shocks. For instance, it can show which euro area countries benefit most from an appreciation of the euro or whether adopting the euro has increased interdependence between member states.

3 The PIWIM model

Based on initial work from the OFCE (Observatoire Français des Conjonctures Économiques) Cochard et al. (2016), we have developed a model named «PIWIM» (Push-cost Inflation through World Input-output Matrices).

3.1 Defining a price shock in an I-O model

To identify which countries are most affected by a price shock through value-added and vertical international trade flows, we need a large structural matrix that integrates input flows between sectors, both within each country and between countries. This matrix traces the sectoral and geographical origin of inputs.

The standard I-O model relies on input-output tables registering transactions of goods and services (domestic or imported) at current prices. The I-O tables describe the sale and purchase relationships between producers and consumers within an economy. Each column describes, for each industry j , the intermediate consumption of goods and services from the various sectors. By extension, a "world" I-O table (WIOT) describes the sale and purchase relationships between

producers and consumers in the whole world, differentiating between sectors in different countries. The WIOT has, on its diagonal, the country blocks with flows of domestic transactions of intermediate goods and services between industries. The "bilateral" blocks outside of the diagonal represent international flows of intermediate goods and services via bilateral sectoral exports and imports.

Traditionnaly, WIOTs are interpreted in a Leontief framework of Leontief production functions. That facilitates the study of the evolution of quantities in the economy. Here, we assume a Cobb-Douglas production function: the technical coefficients correspond to the share of each input in total costs. Hence, we can derive a price equation, following (De Soyres et al., 2018)). We define N as the product of the number of countries (I) and the number of sectors (J), \mathcal{A} the matrix of technical input coefficient of dimension (N, N) , and Y the gross output vector of dimension $(1, N)$.

In each sector of each (country,sector) there is a representative firm producing with domestic production factors (V) and domestic and imported intermediary inputs m according to a Cobb-Douglas technology:

$$Y_n = V_n^{\gamma_n} \times \prod_{n'=1}^{n'=N} m_{n,n'}^{a_{n,n'}} \text{ with } \gamma_n + \sum_{n'=1}^{n'=N} a_{n,n'} = 1$$

Where γ_n is the domestic production factors share, $a_{n,n'}$ the share of output from (country,sector) n' in the total production of (country,sector) n .

Assuming perfectly competitive firms and price at marginal cost, standard cost minimisation for each country leads to the following pricing system:

$$p_n = x_n \times w_n^{\gamma_k} \times \prod_{n'=1}^{n'=N} p_{n'}^{a_{n,n'}}, \forall n$$

With x the unit income of domestic production factors and x_n a constant depending only on parameters:

$$x_n = \gamma_k^{-\gamma_k} \times \prod_{n'=1}^{n'=N} a_{n,n'}^{-a_{n,n'}}$$

Taking logs, we have:

$$\log(p_n) = \log(x_n) + \gamma_n \log(w_n) + \sum_{n'=1}^{n'=N} a_{n,n'} \cdot \log(p_{n'}), \forall n$$

Define P the vector of prices, Z a vector of $\log(x_n) + \gamma_n \cdot \log(w_n)$, all of dimension $(1, N)$:

$$\log(P) = Z + \log(P) \mathcal{A} \tag{1}$$

Suppose an exogenous input price shock defined in log points (approximating percentages for small shocks). Define $\Delta^0 \log(P)$ the shock vector of dimension $(1, N)$ computed as the difference between the original price vector $\log(P^0)$ and the new vector $\log(P^1)$. Then:

$$\Delta^0 \log(P) = \log(P^1) - \log(P^0) = C,$$

with C the shock vector of dimension $(1, N)$ that contains the direct effect of the shock on prices expressed in log points.

C directly affects the HCE deflator. In addition, firms face a change in their costs, which affects their prices according to equation 1. Hence, the price change is transmitted to country-specific industries that use shocked products as intermediate consumptions. The higher their reliance on shocked inputs, the higher the variation in their prices.

In a first step, the impact of the shock on each country-specific industry's output prices amounts to $\Delta^1 \log(P) = C\mathcal{A}$.

In a second step, the shock is passed on to all country-specific industries that rely on those shocked inputs in their production processes. For the k^{th} step, the increase in production prices amounts to $\Delta^k \log(P) = C\mathcal{A}^k$.

As the technical coefficients are smaller than 1, the effect of the shock on input prices wears out as k increases. The overall effect of the shock is equal to the sum of the initial shock and all the changes in each step. Let us call S the total effect of the shock on prices (in log points), a vector $(1, N)$ composed of the elements s_{ij} measuring the total effect of the shock on the price of sector j in country i . We have:

$$S = C(I + \mathcal{A} + \mathcal{A}^2 + \dots + \mathcal{A}^k + \dots) = C(I - \mathcal{A})^{-1} \quad (2)$$

with $(I - \mathcal{A})^{-1}$ the well-known of Leontieff inverse matrix. If the shock is small enough, the elements of S can be understood as the elasticity of sectoral price to an input price shock. Using consumption shares to do a weighted average of these elasticities will generate the Household consumption expenditure (HCE) deflator elasticity to an input price shock ².

3.2 Data

WIOTs are an extension of the national input-output tables. Input-output tables measure the relationships between the producers of goods and services (including imports) within an economy and the users of these goods and services (including exports). The national tables specify, in line, for each industry, the use of the product as intermediate or final use. In a national table, final use includes exports alongside domestic final uses, whereas exports are not a final use in world input-output tables. WIOTs show which foreign industry produces a good for a specific final use, and which foreign industry or final user uses the exports of a given country. For example, WIOTs show how much international trade is embedded in the consumption of a particular final product.

²This HCE deflator has different sectoral weights than the headline Consumer price index (CPI) as it also covers, for example, the rental equivalent of real estate expenditures.

Aggregating national input-output tables into world input-output tables is challenging for many reasons. National input-output tables vary widely in terms of detail and scope, and are therefore not fully consistent. Furthermore, the availability of year-specific national input-output tables is limited, especially for developing economies.

This paper uses two multi-year WIOTs: the World Input Output Database (WIOD) and the Trade in Value Added Database (TiVA) from the OECD-ICIO.

The World Input Output Database (WIOD) WIOD is hosted and updated by the University of Groningen (Netherlands) and benefits from the financial support of the European Commission. It contains time series of inter-country input-output tables from 2000 to 2014. It provides WIOTs that reconcile national input-output tables (or supply-use tables) with bilateral trade statistics. WIOD covers 43 countries (of which 28 members of the European Union) accounting for 85% of global GDP (see Table 1). It contains annual information for 56 industries. Therefore, for each year a full country-sector input-output matrix traces the importance of a supplying industry in one country for an industry in another country. The values in WIOTs are expressed in U.S. dollars at basic prices; market exchange rates were used for currency conversion (Timmer et al., 2015).

Europe	Austria, Belgium, Bulgaria, Croatia, Cyprus, Czech Republic, Denmark, Estonia, Finland, France, Germany, Greece, Hungary, Ireland, Italy, Latvia, Lithuania, Luxembourg, Malta, Netherlands, Norway, Poland, Portugal, Romania, Slovakia, Slovenia, Spain, Sweden, Switzerland, United Kingdom
North America	Canada, United States
Latin America	Brazil, Mexico
Asia-Pacific	Australia, China, India, Indonesia, Japan, Korea, Taiwan
Other	Russia, Turkey

Table 1: **Economies included in the World Input-Output Database**

The Trade in Value Added (TiVA) database The TiVA database is compiled by the OECD (initially associated with the WTO, but not for the latter versions). It builds on the OECD harmonised individual country input-output tables to provide matrices of inter-industrial flows of goods and services in current prices (U.S. dollars). We use two versions of TiVA (see OECD (Decembre 2018) on the differences between the two datasets.). The third revision, released in 2016, includes 64 economies (i.e. 35 OECD Countries, 28 non-OECD economies and the Rest of the world) and 34 industries, and covers the period 1995-2011. It is based on the 1993 system of national accounts. The fourth revision, released in 2018, includes 65 economies (see Table 2) and 36 sectors and covers the 2005-2015 period. It is based (like WIOD) on the 2008 system of national accounts.

Comparison of the WIOD and TiVA databases The WIOD and TiVA databases are constructed using similar assumptions (OECD and WTO (2011); Timmer et al. (2015); OECD (Decembre 2018)). For example, both start with the construction of harmonized country-specific supply-use tables (SUTs) that are then transformed into world input-output tables. Both

Europe	Austria, Belgium, Bulgaria, Croatia, Cyprus, Czech Republic, Denmark, Estonia, Finland, France, Germany, Greece, Hungary, Iceland, Ireland, Italy, Latvia, Lithuania, Luxembourg, Malta, Netherlands, Norway, Poland, Portugal, Romania, Slovakia, Slovenia, Spain, Sweden, Switzerland, United Kingdom
North America	Canada, United States
Latin America	Argentina, Brazil, Chile, Colombia, Costa Rica, Mexico (differentiating between three (Rev. 3) or two (Rev. 4) Mexico), Peru
Asia-Pacific	Australia, Cambodia, China (differentiating between four (Rev. 3) or three (Rev. 4) China), Hong Kong SAR, India, Indonesia, Japan, Kazakhstan (in Rev. 4), Korea, Malaysia, New Zealand, Philippines, Singapore, Taiwan, Thailand, Viet Nam
Other	Brunei, Israel, Morocco, Russia, Saudi Arabia, South Africa, Tunisia, Turkey

Table 2: **Economies included in TiVA revisions 3 (2016) and 4 (2018)**

databases use the "import proportionality assumption" to allocate specific bilateral imports to using industries. National input-output statistics provide how much of each product firms use for intermediary consumption and investment. However, the breakdown of these into domestic and imported product is not available. Hence, the construction of world input-output tables requires allocating imports to using industries. The import proportionality assumption assumes that the proportion of intermediates that an industry purchases from abroad is equal to the ratio of imports of intermediates to total domestic demand of intermediates in that product. This assumption can be misleading. Feenstra and Jensen (2012) find that shares of imported materials may differ substantially across U.S. industries. Based on Asian input-output tables, Puzzello (2012) finds that the proportionality assumption understates the use of foreign intermediate inputs. WIOD and TiVA databases, however, rely on the BEC (Broad Economic Categories) classification to map detailed six-digit products into intermediate use, final consumption and investment (Dietzenbacher et al., 2013).

One explicit difference between the databases is that WIOD assumes that the input mix is independent of the destination market. TiVA databases do not rely on this assumption for two countries (Mexico and China). They use different input-output tables for the exporting, import processing and domestic-market oriented sectors of these countries (or at least two of those depending on the country and the version of the TiVA database). Yet (probably because our study does not focus on Mexico and China) the results we obtain from these different databases are very similar.

Another difference is that in harmonizing national data and trade statistics, WIOD treats the shares of imported inputs given by national account as given, and TiVA does not. As a result, TiVA is closer to international trade statistics than WIOD. That explains why the share of imported inputs is smaller in TiVA for some countries (but not China and the USA).

3.3 Nominal exchange rate shock

Implementing an exchange rate shock is more complex than implementing a production cost shock. The appreciation of the currency of country A leads to a fall in the national currency price of country A 's imports, while the foreign-currency price of its exports increase. We are mainly interested in the impact of this shock on the consumer prices in country A . Yet, we also estimate the inflationary impact on countries that directly and indirectly, through third

countries linkages, consume inputs from country A .

Suppose a world with two countries A and B , each having its own national currency, and a third currency for international transactions, the dollar. Following a 5% appreciation of the currency of country A against the two other currencies, the prices of country A expressed in dollars increase by 5% compared to those of country B expressed in dollars. Country B pays more for its imports of inputs, in dollars as well as in national currency, since its exchange rate against the dollar has not changed. Conversely, the prices of imported inputs in country A remain constant in dollars, since the prices of country B have not changed, and fall by half once expressed in country A 's national currency. This has an impact on consumer prices (in national currency) in country A .

We assume that producers completely pass the exchange rate shock on their production prices. The change in the prices of imported goods is therefore transmitted to all domestic prices, both directly and through inter-industry linkages. These upward (downward) movements for country B (country A) affect all input prices in both countries.

The effects of the shock spread over multiple simultaneous production cycles. The overall impact of the shock in dollar terms is equal, for the shocked country A , to the rise in prices due to the exchange rate shock, minus direct and indirect decreases (via inter-industry linkages in the country), in national currency and then converted back into dollar terms, in the prices of inputs imported from B and disseminated to all branches. The overall impact on prices in dollar terms in country A is therefore lower than the initial exchange rate shock, as national currency prices are also affected. For country B , the final impact is equal to the cumulative direct and indirect effects of the higher prices of imported inputs.

In a global economy composed of I countries, each with J sectors, the appreciation of a country's currency i against all other currencies translates into a rise in country i 's prices in dollars. The price of each sector will vary in percentage (approximated as log point assuming the shock is small enough) by: $c_{\i for sectors in the shock-stricken country i and 0 in other countries. Hence, for each sector j in country i :

$$\Delta^0 \log(p_{\$ij}) = \log(p_{\$ij}^1) - \log(p_{\$ij}^0) = c_{\$ij} = c_{\i$

And for each sector j in country k ($k \neq i$),

$$\Delta^0 \log(p_{\$kj}) = \log(p_{\$kj}^1) - \log(p_{\$kj}^0) = c_{\$kj} = 0$$

The appreciation affects producers through changes in relative prices between countries and, therefore, through changes in input prices traded between the shock-stricken country i and other countries.

Consider first the direct impact on other countries of the rise in imported input prices from shocked country i . For any sector l of a country k ($k \neq i$), the increase in the producer price depends directly on the quantity of inputs imported from the shock-stricken country i , weighed by the variation in level of the price of inputs in dollars (i. e. the exchange rate shock). If $a_{kl,ij}$ is the share of inputs from the country i 's sector j needed in the production of country's k sector l , we have :

$$\Delta^1 \log(p_{\$kl}) = c_{\$}^i . a_{kl,i1} + \dots + c_{\$}^i . a_{kl,ij} + \dots + c_{\$}^i . a_{kl,iJ} = \sum_{j=1}^J c_{\$}^i . a_{kl,ij} = c_{\$}^i . \sum_{j=1}^J a_{kl,ij} \quad (3)$$

For the shocked country, an appreciation of the currency has a disinflationary effect. In national currency, the prices of imported inputs fall in each sector by $c^i = -\frac{c_{\$}^i}{1+c_{\i , or by $-\frac{10}{11}\%$ with $c_{\$}^i = 10\%$.

We approximate these shocks by their log point equivalent³. This decline then spreads to all domestic-input using sectors. In sector j of the shocked country i , this fall amounts in national currency to:

$$\Delta^1 \log(p_{ij}) = \sum_{l=1}^{l=J} c^i . a_{ij,1l} + \dots + \sum_{l=1}^{l=J} c^i . a_{ij,kl} + \sum_{l=1}^{l=J} c^i . a_{ij,Il} = \left(-\frac{c_{\$}^i}{1+c_{\$}^i} \right) \cdot \sum_{\substack{k=1 \\ k \neq i}}^{k=I} \left[\sum_{l=1}^{l=J} a_{ij,kl} \right]$$

This shock can be converted into dollars:

$$\Delta^1 \log(p_{\$ij}) = (1 + c_{\$}^i) \cdot \left(-\frac{c_{\$}^i}{1+c_{\$}^i} \right) \sum_{\substack{k=1 \\ k \neq i}}^{k=I} \left[\sum_{l=1}^{l=J} a_{ij,kl} \right] \quad (4)$$

This yields the first step impact of the shock on all input prices of all countries.

To express this in matrix notation, we define two matrices that build on the world input-output matrix \mathcal{A} defined in 3.1. These two matrices retain only the first-step effects of the exchange rate shock on the price of goods and services imported by the shocked country i and the first-step effects of the exchange rate shock on the price of goods and services imported by the rest of the world from country i . Compared to \mathcal{A} , we "close off" the links between a domestic input price shock and the price of goods as well as on the link between non-shocked input prices and the price of goods in a non-shocked country.

Let us first look at the shock from the perspective of countries that import inputs from country i .

Let $C_{\i be the vector of log points changes in dollar prices following the appreciation of the currency of country i against all other currencies. Hence,

$$C_{\$}^i = (0 \dots 0 \dots c_{\$ij} \dots c_{\$ik} \dots 0 \dots 0)$$

with $c_{\$ij} = c_{\$ik} = c_{\i for all sectors j and k in the shocked country i .

Building on Equation 3, the direct impact of the exchange rate shock on the other countries

³We could have used the log point approximation earlier and write that $c^i = -c_{\i with nearly the same results for small shocks.

corresponds to the product of the shock vector $C_{\i and a matrix \mathcal{B}^i . \mathcal{B}^i builds on the large matrix \mathcal{A} of technical coefficients, but only keeps the coefficients of each country's sectoral inputs imported from the shocked country i . The other coefficients are replaced by 0, including those of the block of country i concerning the domestic inputs of country i . The first-step impact of the appreciation of a currency against the dollar on the price of inputs in countries that are not shocked is equal to $C_{\$}^i \mathcal{B}^i$ with

$$C_{\$}^i \mathcal{B}^i = (0 \dots c_{\$}^i \dots 0) \begin{pmatrix} 0 & \dots & 0 \\ a_{11,ij} & 0 & a_{IJ,ij} \\ 0 & \dots & 0 \end{pmatrix} \quad (5)$$

where each $a_{kl,ij}$ element of the line block represents the technical coefficient related to imports of inputs by sector l in country k (with $k \neq i$) from sector j of country i .

Let us now consider the shock from the perspective of the shocked country i .

Define C^i the vector of change in prices everywhere expressed in country i 's currency.

$$C^i = \left(-\frac{c_{\$}^i}{1 + c_{\$}^i}, \dots, 0, \dots, -\frac{c_{\$}^i}{1 + c_{\$}^i} \right)$$

From Equation 4, we can write the first-step impact for country i of the fall in input prices from the rest of the world. The first-step impact corresponds to the product of the shock vector C^i and a matrix $\tilde{\mathcal{B}}^i$. $\tilde{\mathcal{B}}^i$ builds on the large matrix \mathcal{A} of which only the country blocks of the inputs imported by country i from other countries have been retained. The other coefficients are replaced by 0, including those of the block of country i concerning the domestic inputs of country i .

Notation table

- $a_{kl,ij}$: the share of inputs from the country i 's sector j in the production of country's k sector l .
- \mathcal{A} : Matrix of world input-output coefficients.
- \mathcal{B}^i : \mathcal{A} including only the coefficients of each country's sectoral inputs imported from country i (excluding domestic inputs in i).
- $\tilde{\mathcal{B}}^i$: \mathcal{A} including only the country blocks of the inputs imported by country i from other countries (excluding domestic inputs in i).
- $c_{\i : exchange rate shock on the currency of country i in dollar. If it appreciates by 10%, $c_{\$}^i = 0.1$.
- c^i : exchange rate shock on the price of non- i goods expressed in the currency of i . $c^i = -\frac{c_{\$}^i}{1+c_{\i . If $c_{\$}^i = 0.1$, $c^i = -0.0909...$
- C^i : vector of log point change in prices everywhere expressed in country i 's currency: $C^i = \left(-\frac{c_{\$}^i}{1+c_{\$}^i}, \dots, 0, \dots, -\frac{c_{\$}^i}{1+c_{\$}^i}\right) = (c_i, \dots, 0, \dots, c_i)$
- $C_{\i : vector of log points changes in dollar prices following the appreciation of the currency of country i against all other currencies. $C_{\$}^i = (0 \dots 0 \dots c_{\$ij} \dots c_{\$ik} \dots 0 \dots 0)$ with $c_{\$ij} = c_{\$ik} = c_{\i
- $\hat{C}_{\i : vector of the log point change in dollar prices of goods and services from country i used as inputs in all other countries. $\hat{C}_{\$}^i = \left(0 \dots \frac{c_{\$}^i}{1+c_{\$}^i}, \dots, 0\right)$
- $p_{\$ij}$: price of goods produced by the sector j in country i in dollars (or any international reference currency)

The first step impact of the appreciation of the shocked country i on the price of its inputs corresponds, in national currency, to $C^i \tilde{\mathcal{B}}^i$ with:

$$C^i \tilde{\mathcal{B}}^i = \left(-\frac{c_{\$}^i}{1+c_{\$}^i}, \dots, 0, \dots, -\frac{c_{\$}^i}{1+c_{\$}^i}\right) \begin{pmatrix} 0 & \dots & a_{ij,11} & \dots & 0 \\ 0 & & 0 & & 0 \\ 0 & \dots & a_{ij,IJ} & \dots & 0 \end{pmatrix} \quad (6)$$

where each $a_{ij,kl}$ element in the column block represents imports of inputs by sector j in country i from sector l of country k . We then convert this direct impact in dollars, by multiplying it by the new value of the national currency in dollars, $(1+c_{\$}^i)$. The direct impact of the appreciation of the shocked country i on the price of its inputs corresponds, in dollars, to $\tilde{C}_{\$}^i \tilde{\mathcal{B}}^i$ with:

$$\tilde{C}_{\$}^i \tilde{\mathcal{B}}^i = (1+c_{\$}^i) \cdot C^i \tilde{\mathcal{B}}^i = (-c_{\$}^i \dots 0 \dots -c_{\$}^i) \begin{pmatrix} 0 & \dots & a_{ij,11} & \dots & 0 \\ 0 & & 0 & & 0 \\ 0 & \dots & a_{ij,IJ} & \dots & 0 \end{pmatrix} \quad (7)$$

The first-step effect on the world is therefore the sum of these vectors from equations 5 and 7, i. e. $C_{\$}^i \cdot \mathcal{B}^i + \tilde{C}_{\$}^i \tilde{\mathcal{B}}^i$.

The input price shock then spreads to all sectors in all countries via the global intersectoral exchanges transcribed by the matrix of technical coefficients of the large matrix \mathcal{A} . This process will be simultaneously repeated several times, until the effects are completely exhausted. In the end, the total price effect of the exchange rate shock is equal to the sectoral shock itself, incremented by changes in input prices due to changes in imported input prices (both in the shocked country and in the non-shocked countries), and by all changes in prices during the production processes, i. e.:

$$\begin{aligned} S_{\$}^i = \Delta P_{\$}^i = C_{\$}^i &+ \left(C_{\$}^i \cdot \mathcal{B}^i + \tilde{C}_{\$}^i \tilde{\mathcal{B}}^i \right) + \left(C_{\$}^i \cdot \mathcal{B}^i + \tilde{C}_{\$}^i \tilde{\mathcal{B}}^i \right) \mathcal{A} + \left(C_{\$}^i \cdot \mathcal{B}^i + \tilde{C}_{\$}^i \tilde{\mathcal{B}}^i \right) \mathcal{A}^2 \\ &+ \dots + \left(C_{\$}^i \cdot \mathcal{B}^i + \tilde{C}_{\$}^i \tilde{\mathcal{B}}^i \right) \mathcal{A}^k + \dots \end{aligned}$$

$$S_{\$}^i = C_{\$}^i + \left(C_{\$}^i \cdot \mathcal{B}^i + \tilde{C}_{\$}^i \tilde{\mathcal{B}}^i \right) * (I - \mathcal{A})^{-1} \quad (8)$$

With $S_{\i the total impact vector composed of the elements $s_{\$kj}^i$ showing the total impact of a shock on country i 's exchange rate on the price of the country k 's sector j in international currency in log points. Equation 8 gives the evolution of sectoral prices in international currency. Analysing this vector is the main objet of Cochard et al. (2016), which focuses on the evolution of price-competitiveness.

By contrast, this paper focuses on the effect of an exchange rate shock on the consumer prices. Hence, we are interested in the same impact expressed in national currency. To obtain the evolution of the sectoral prices of the shocked country in national currency, we remove the exchange rate shock in international currency, multiply the balance by the scalar of conversion equal to $\frac{1}{1+c_{\i and add the initial exchange rate shock in national currency.

$$\begin{aligned} S^i &= C^i + \left(\frac{1}{1+c_{\$}^i} \right) * (S_{\$}^i - C_{\$}^i) \\ &= C^i + \left(\frac{1}{1+c_{\$}^i} \right) * \left(C_{\$}^i \cdot \mathcal{B}^i + \tilde{C}_{\$}^i \tilde{\mathcal{B}}^i \right) * (I - \mathcal{A})^{-1} \\ &= C^i + \left(\hat{C}_{\$}^i \cdot \mathcal{B}^i + C^i \tilde{\mathcal{B}}^i \right) * (I - \mathcal{A})^{-1} \end{aligned} \quad (9)$$

Where $\hat{C}_{\$}^i = \left(0 \dots \frac{c_{\$}^i}{1+c_{\$}^i}, \dots 0 \right)$ is the increase in dollar prices of goods and services from country i used as inputs in all other countries.

S^i represents the overall impact of a exchange rate shock on prices in each sector of each country expressed in the currency of country i . It is expressed in log points. If the shock is small enough, its elements are the elasticities to an exchange rate shock of the prices consumers in country i are paying for each good. We return to this equation and its interpretation in section 5.

To convert this vector into the HCE deflator elasticity in country i , \bar{s}^i , we use the household consumption shares to compute a weighed average of the elements of S^i . Let HC^i be the vector

of sectoral shares in country i 's household consumption⁴:

$$HC^i = \begin{pmatrix} \frac{hc_{11}^i}{hc^i} \\ \dots \\ \frac{hc_{kj}^i}{hc^i} \\ \dots \\ \frac{hc_{IJ}^i}{hc^i} \end{pmatrix}$$

Where hc_{kj}^i corresponds to household consumption in country i of goods and services produced by sector j from country k and hc^i represents the total household consumption of country i .

$\bar{s}_i^{i,HC}$ provides the HCE deflator of country i elasticity to an exchange rate shock.

$$\bar{s}_i^{i,HC} = S^i \cdot HC^i = \sum_{\substack{j=1 \dots J \\ k=1 \dots I}} s_{kj}^i \cdot \frac{hc_{kj}^i}{hc^i} \quad (10)$$

where s_{kj}^i is a coefficient of S^i for country i .

4 The impact of exchange rates fluctuations on consumer prices

We use the model presented in 3.3 to analyse the impact of an exchange rate shock on the household consumption expenditure (HCE) deflator. We assume that the shock is small enough to assimilate log and percentage points and hence consider $\bar{s}_i^{i,HC}$ as the HCE deflator elasticity to an exchange rate shock. Following an appreciation of the national currency versus all other currencies, imported inputs and imported consumer goods become cheaper and domestic prices expressed in national currency decrease. Using WIOD, we find that the absolute value of the elasticity of the HCE deflator to an exchange rate shock is 0.055 for the US in 2011.

For euro-area members, we distinguish between the effect of the appreciation of the euro and the effect of the appreciation of a hypothetical national currency. For France, the elasticity of the HCE deflator to an appreciation of the euro is -0.076. The elasticity of the HCE deflator to an appreciation of an hypothetical French national currency is -0.122.

Figure 1 shows that country elasticities are similar, accross our three databases both in 2011 and 2014.

⁴Consumption is at market prices, whereas the WIOTs are all at basic prices. This is not an issue as long as we assume that all taxes and subsidies on products are proportional, as is the main one, the value-added tax.

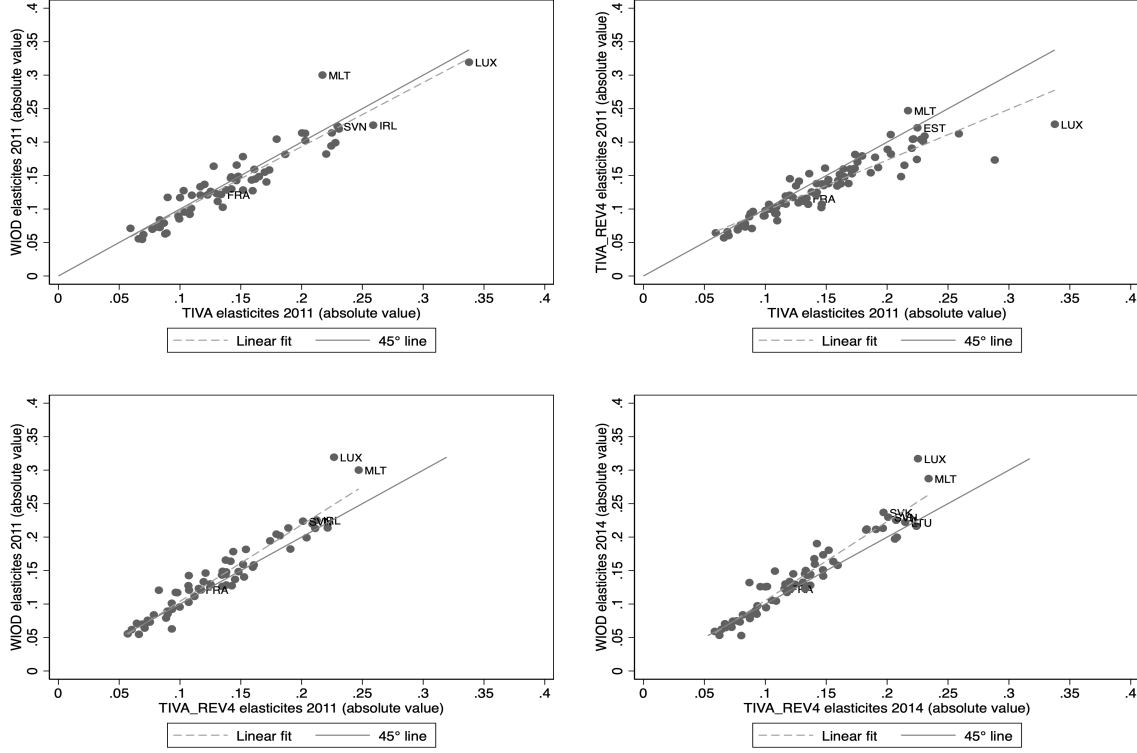


Figure 1: Comparison of the HCE deflator elasticity to an exchange rate shock for WIOD, TIVA and TIVA rev. 4, 2011 and 2014

Sources: WIOD, TIVA rev3 and TIVA rev4, authors' calculations

Using a sample of 43 countries, we plot the elasticity of the HCE deflator to the exchange rate over time. The annual evolution is the same regardless of the database (WIOD or TIVA). Using data from TIVA rev. 3 yields a higher elasticity (see Figure 2): it can be explained by different treatment of contract manufacturing in the 2008 system of national accounts compared to the 1993 one which reduces imported inputs. The small difference between WIOD and TIVA rev. 4 comes maybe from their different ways of reconciling national accounts and international trade statistics. Output-weighted results show a lower elasticity, reflecting the fact that large countries are relatively closed compared to small economies. Based on the third revision of TIVA database, we find that the output-weighted elasticity has increased by 25% between 1995 and 2008, reaching 0.1 in 2008. The elasticity has slightly declined afterwards.

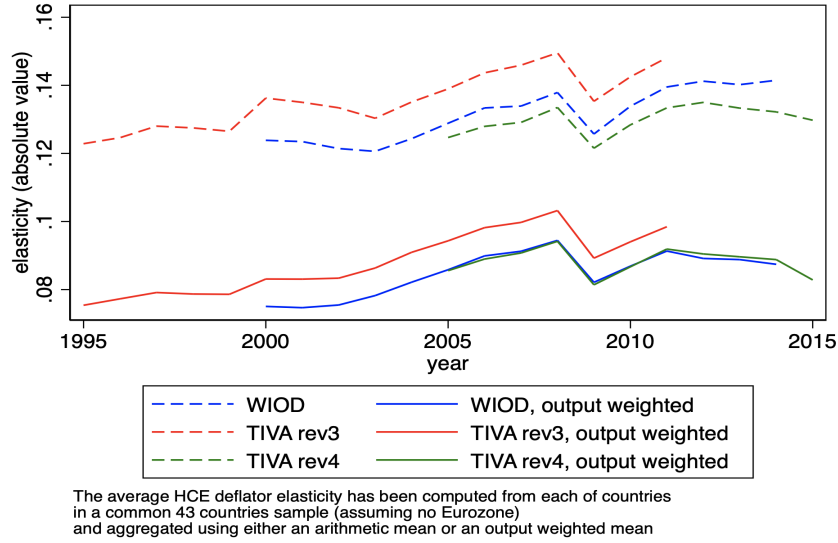


Figure 2: Comparison of the average HCE deflator elasticity to an exchange rate shock in the whole sample for WIOD and TIVA, 1995-2015

Sources: WIOD, TIVA rev3, TIVA rev4 and authors' calculations

Using data from WIOD, Figure 3 shows that, in absolute terms, the elasticity lies between 0.05 and 0.15, but can be as high as 0.35. In the euro area, the elasticity to changes in the value of the euro ranges from 0.065 to 0.18 depending on the member state. This heterogeneity adds to the challenges faced by the European Central Bank in stabilizing prices throughout a monetary union. Figure 4 shows that the value of the elasticity is closely related to the share of imported goods and services in household consumption.

WIOD elasticities 2014 (absolute value)

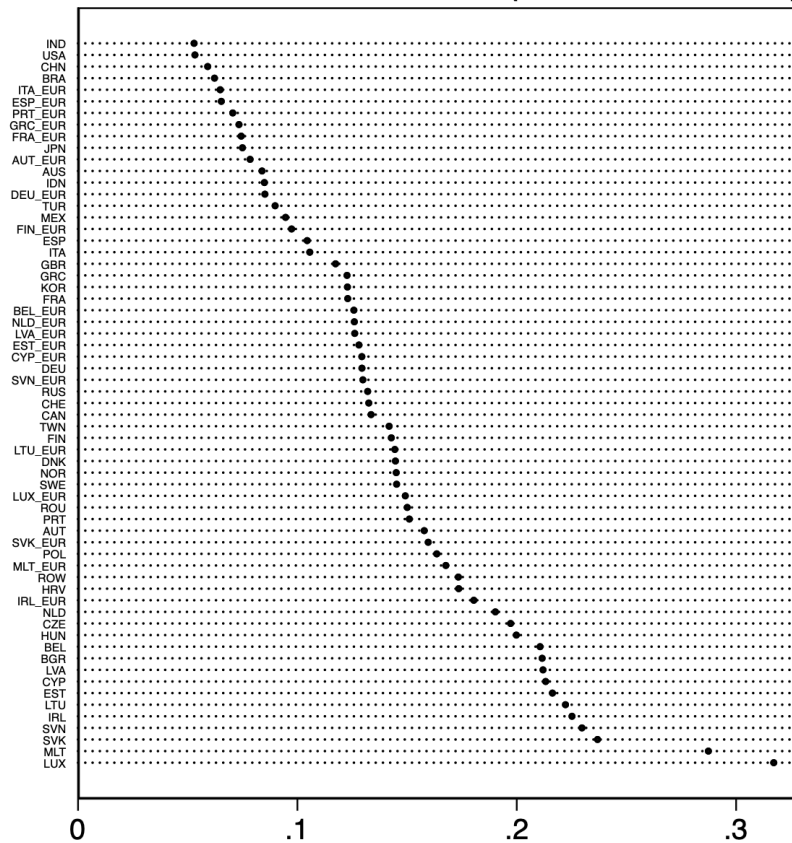


Figure 3: Distribution of the HCE deflator elasticity to an exchange rate shock (WIOD) - 2014.

Sources: WIOD and authors' calculations

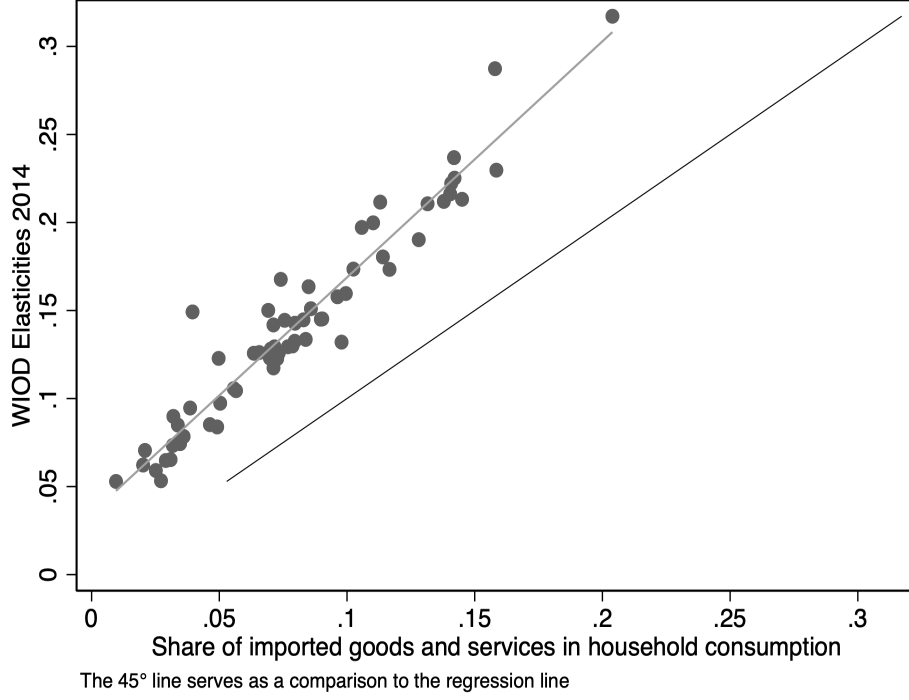


Figure 4: **HCE deflator elasticity to an exchange rate shock and the share of imported consumption in total consumption (WIOD)**

Sources: WIOD and authors' calculations

Figure 5 contrasts the contribution of domestic versus imported goods to the HCE deflator elasticity to an exchange rate shock. We define

$$\bar{s}_i^{i,HC} = \bar{s}_{i,imp}^{i,HC} + \bar{s}_{i,dom}^{i,HC} = S^i.HC^{i,dom} + S^i.HC^{i,imp} \quad (11)$$

Where:

$$\begin{aligned} HC^i &= HC^{i,dom} + HC^{i,imp} \\ &= \begin{pmatrix} 0 \\ \dots \\ \frac{hc_{ij}^i}{hc^i} \\ \dots \\ 0 \end{pmatrix} + \begin{pmatrix} \frac{hc_{11}^i}{hc^i} \\ \dots \\ 0 \\ \dots \\ \frac{hc_{IJ}^i}{hc^i} \end{pmatrix} \end{aligned} \quad (12)$$

For example,

$$\bar{s}_{i,imp}^{i,HC} = \sum_{\substack{j=1 \dots J \\ k=1 \dots I \\ k \neq i}} s_{kj}^i \cdot \frac{hc_{kj}^i}{hc^i} \quad (13)$$

Figure 5 shows that changes in the prices of imported final consumer goods contribute more to the total effect than changes in the prices of domestic goods. Although imported final consumer goods account for a smaller share of total consumption than domestic goods, they are the most impacted by the initial exchange rate shock. Imported final consumer goods also explain the differences in price elasticities observed between open and less open economies.

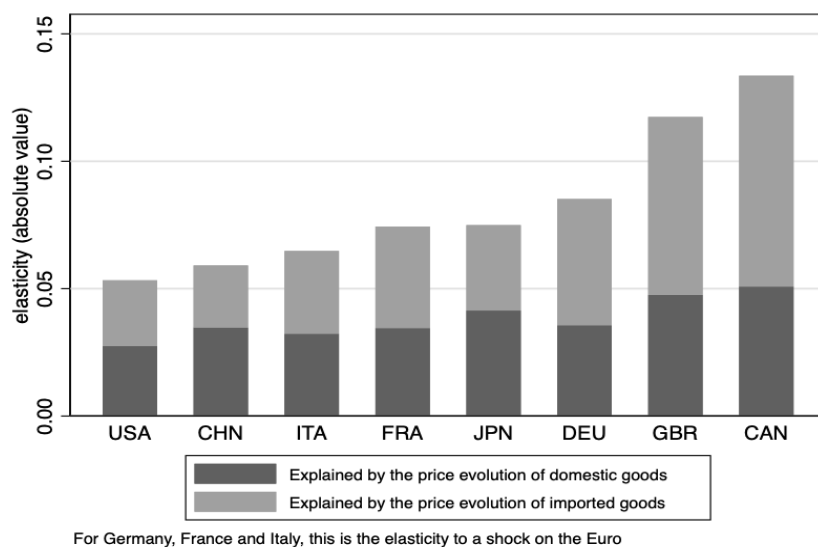


Figure 5: Contribution of imported and domestic final goods and services to the HCE deflator elasticity to an exchange rate shock

Sources: WIOD and authors' calculations

Figure 6 analyses the impact of global inflationary shocks on the main components of the HCE deflator (manufacturing goods, services, food and energy). Non-energy industrial goods make the bulk of the total impact. However, services also play a significant role, especially in advanced economies. Although services are mainly produced domestically and do not rely much on imported inputs, they make up a substantial share of total consumption. Similarly, domestic core inflation (all products except food and energy) accounts for a significant share of the total impact (Figure 7), reflecting the weight of domestic services and non-energy industrial goods in total consumption.

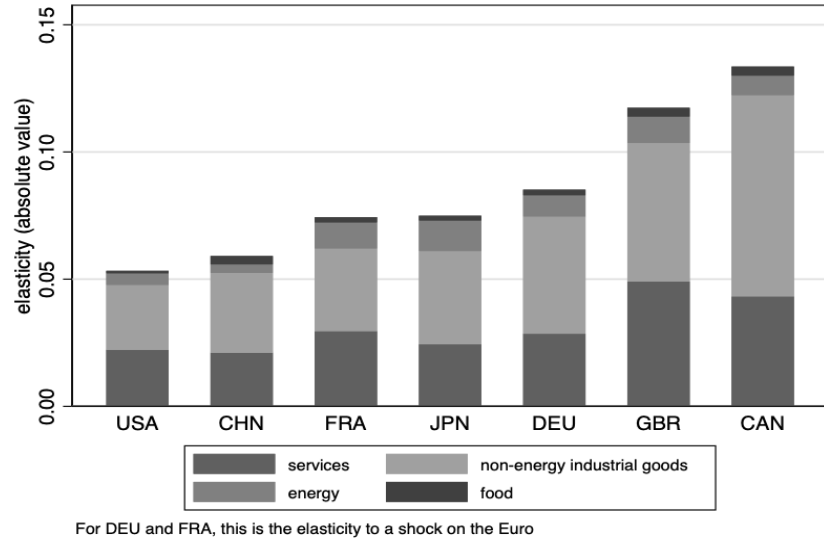


Figure 6: Contribution of different products to the HCE deflator elasticity to an exchange rate shock

Sources: WIOD and authors' calculations

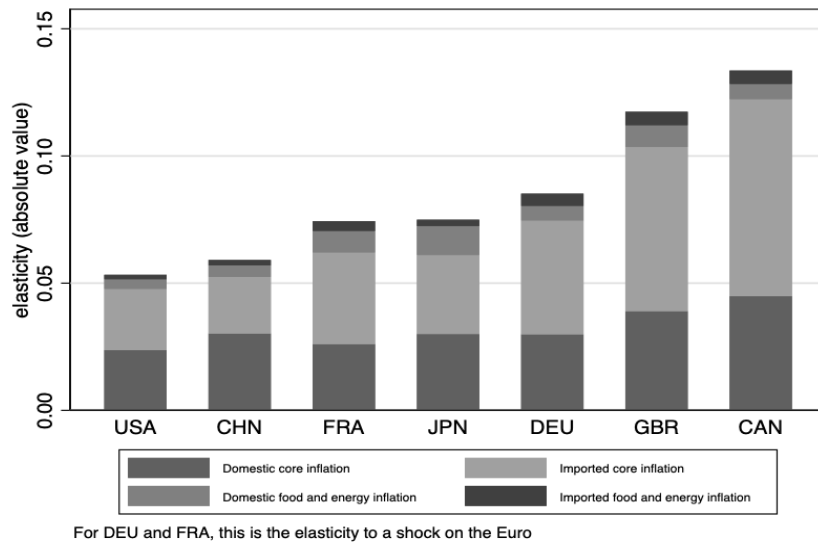


Figure 7: Contribution of domestic and imported components to the HCE deflator elasticity

Sources: WIOD and authors's calculations

5 Can we extrapolate the HCE deflator elasticity?

5.1 Doing without the world input-output matrices

World input-output matrices are not available for the most recent years: the latest years covered by WIOD and TiVA rev4 are, respectively, 2014 and 2015. In addition, using WIOTs involves

cumbersome computations. Given these difficulties, we look for a simpler way to compute the elasticity of the HCE deflator to the exchange rate. We break down $\bar{s}_i^{i,HC}$ into different elements classified by ease of use and computation. Let us start from equation 9. We have:

$$\begin{aligned}
S^i &= C^i + \left(\hat{C}_s^i \cdot \mathcal{B}^i + C^i \tilde{\mathcal{B}}^i \right) * (I - \mathcal{A})^{-1} \\
S^i &= \underbrace{C^i}_{\text{(E1) direct effect through imported consumption goods}} + \underbrace{C^i \tilde{\mathcal{B}}^i}_{\text{(E2) effect on domestic consumption goods through imported inputs}} + \underbrace{\hat{C}_s^i \cdot \mathcal{B}^i}_{\text{(E3) effect on imported consumption goods through domestic inputs}} \\
&\quad + \underbrace{\left(\hat{C}_s^i \cdot \mathcal{B}^i + C^i \tilde{\mathcal{B}}^i \right) * (I - \mathcal{A})^{-1} * \mathcal{A}}_{\text{(E4) residual}}
\end{aligned} \tag{14}$$

C^i and \hat{C}_s^i have a large number of zeros. So, we can write, defining $HC^{i,dom}$ and $HC^{i,imp}$ as the domestic and imported shares of HC^i and adjusting the dimension of $E1$, $E2$ and $E3$.

$$\begin{aligned}
\bar{s}_i^{i,HC} &= S^i \cdot HC^i = E1.HC^i + E2.HC^i + E3.HC^i + E4.HC^i \\
&= E1.HC^{i,imp} + E2.HC^{i,dom} + E3.HC^{i,imp} + E4.HC^i
\end{aligned} \tag{15}$$

When the domestic currency appreciates, $E1.HC^{i,imp}$ (for short $E1.HC$), $E2.HC^{i,dom}$ (for short $E2.HC$) reduce the consumer prices of the country i whereas $E3.HC^{i,imp}$ (for short $E3.HC$) increases them.

This decomposition differs from equation 11. Equation 11 focuses on the contribution of domestic versus imported goods to the HCE deflator elasticity to an exchange rate shock. By contrast, equation 15 highlights the transmission channels of the shock.

Figure 8 plots the shares of $E1.HC$, $E2.HC$, $E3.HC$ and $E4.HC$ (shortening $E4.HC^i$) in $\bar{s}_i^{i,HC}$. $E1.HC$ dominates. While $E3.HC$ is negligible, $E4.HC$ accounts for 10% to 30% of $\bar{s}_i^{i,HC}$ for most countries except China. On the whole, as shown by Figure 9, input-output mechanisms (i.e. everything but $E1.HC$) explain a large share of the elasticity, especially for large countries or countries of the Eurozone subject to a shock on the Euro. This share has increased until 2013-2014, implying an increasing need of data from WIOTs to perform our computations (see Figure 10).

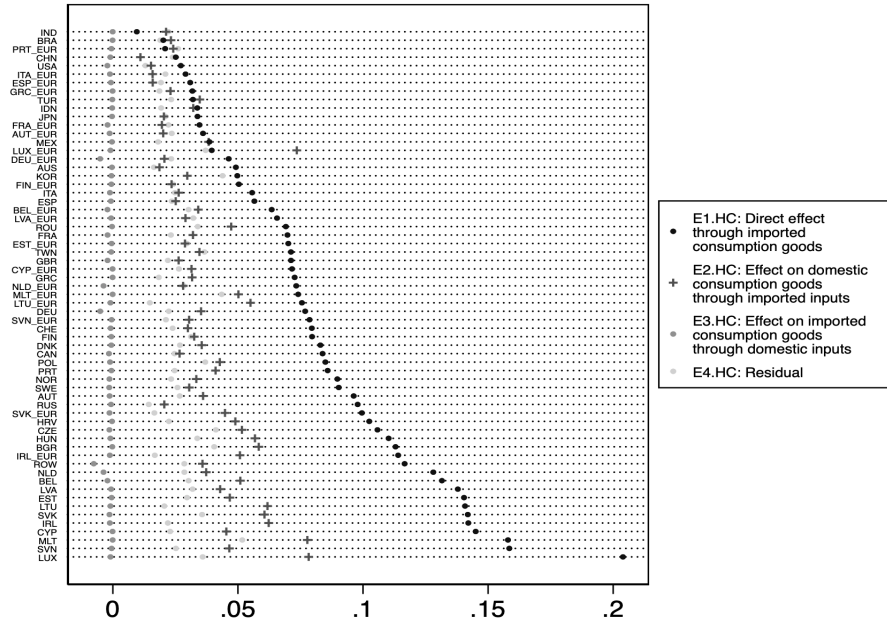


Figure 8: Decomposition of $\bar{s}_i^{i,HC}$ into E1.HC, E2.HC, E3.HC and E4.HC

Sources: WIOD and authors' calculations

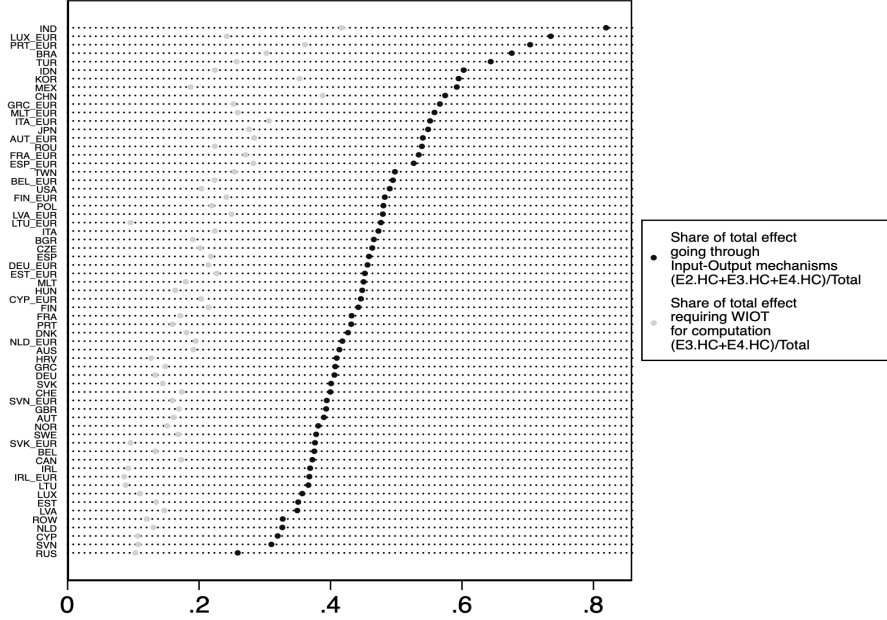


Figure 9: Decomposition of $\bar{s}_i^{i,HC}$

Sources: WIOD and authors' calculations

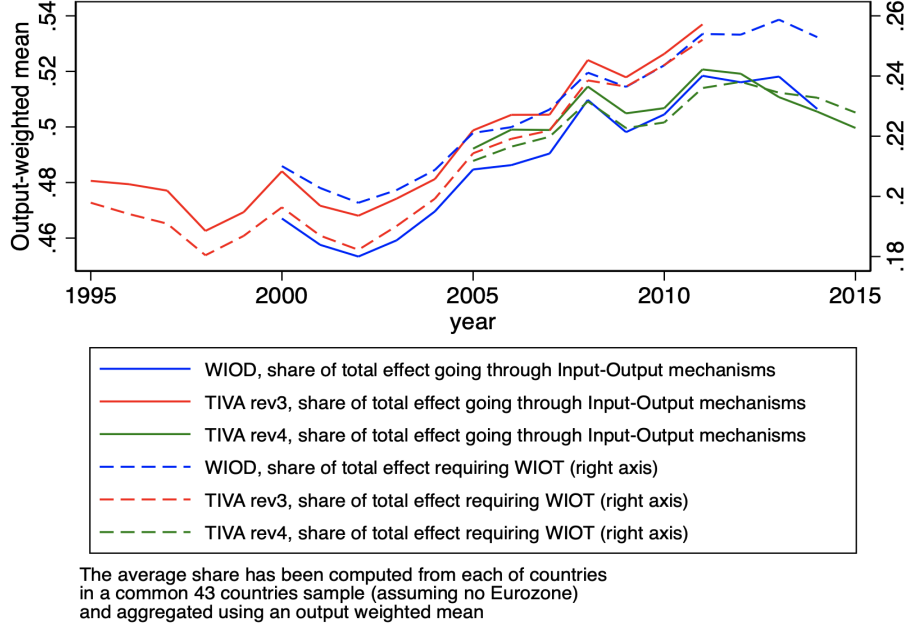


Figure 10: **Decomposition of $\bar{s}_i^{i,HC}$ through time**

Sources: WIOD, TIVA rev3, TIVA rev4 and authors' calculations

$E1.HC$ and $E2.HC$ can be computed with national input-output matrices whereas world input-output matrices are needed for computing $E3.HC$ and $E4.HC$. Although world input-output matrices are not available for the most recent years, $E4.HC$ can be inferred from easier-to-compute elements of $\bar{s}_i^{i,HC}$.

We try to infer $\bar{s}_i^{i,HC}$ from $E1.HC$ and $E2.HC$. Figure 11 depicts the relationship between $\bar{s}_i^{i,HC}$ and $E1.HC + E2.HC$ according to equation 16. The high R^2 (0.98) suggests that $E1.HC + E2.HC$ is a good predictor of $\bar{s}_i^{i,HC}$.

$$\bar{s}_i^{i,HC} = \alpha + \beta \left(E1.HC^{i,imp} + E2.HC^{i,dom} \right) + \varepsilon_i \quad (16)$$

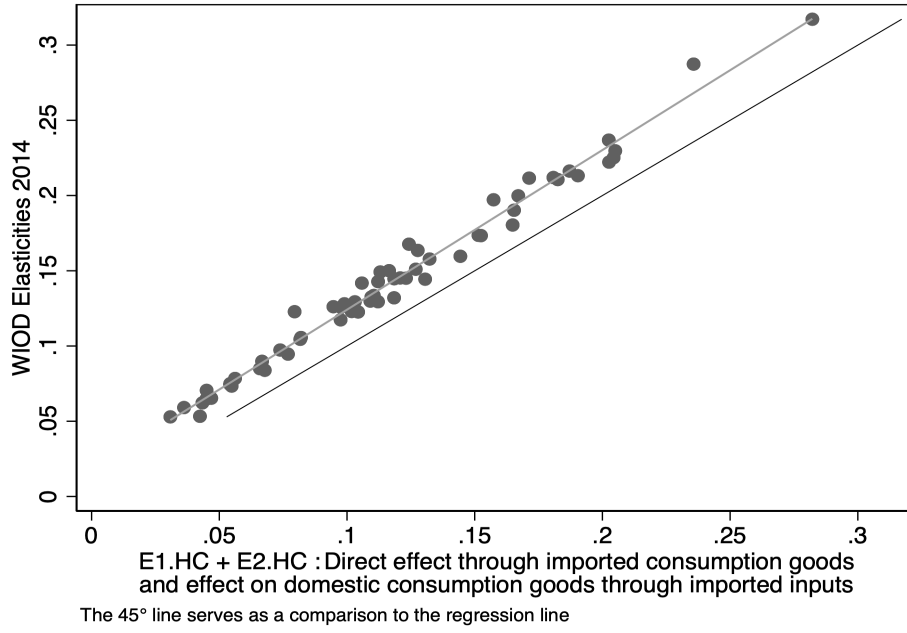


Figure 11: Comparison of $\bar{s}_i^{i,HC}$ and $E1.HC^{i,imp} + E2.HC^{i,dom}$

Sources: WIOD and authors' calculations

We check whether the relationship is constant over time by estimating yearly cross-sections of equation 16. With the exception of 2009, the relationship is broadly stable (see Figures 12 and 13).

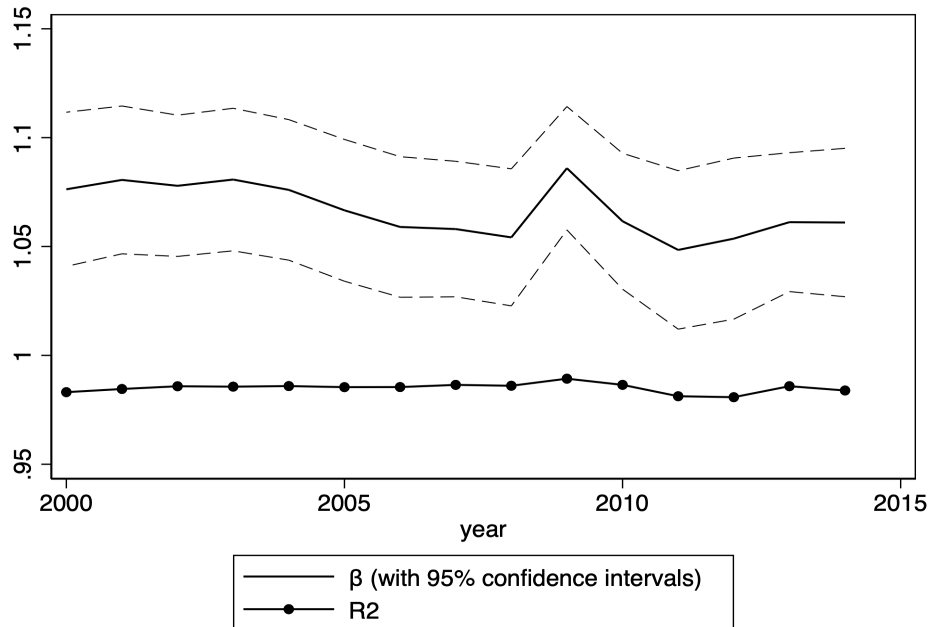


Figure 12: Evolution of β (the coefficient of $E1.HC + E2.HC$) and R^2 over time (WIOD)

Sources: WIOD and authors' calculations

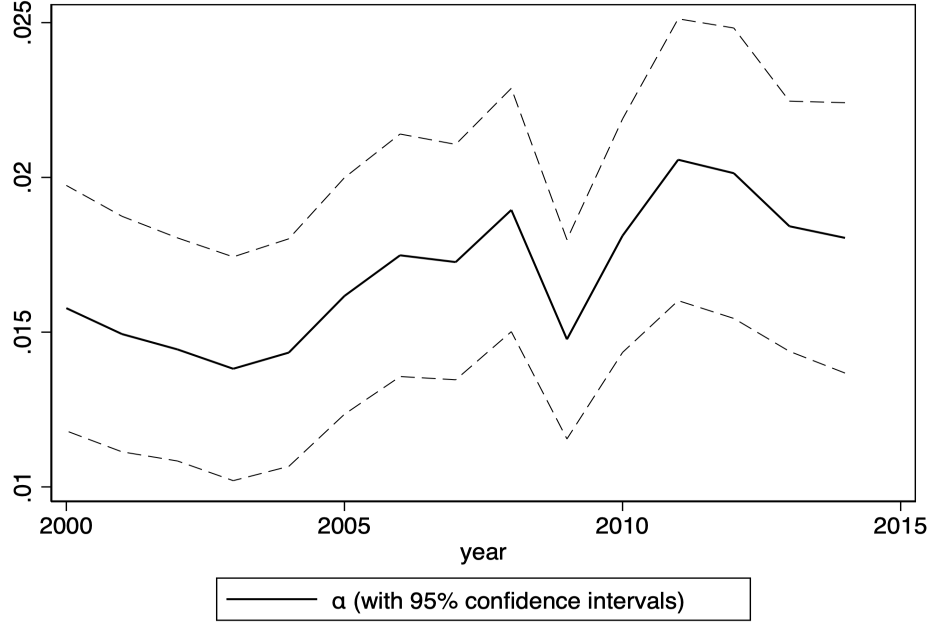


Figure 13: **Evolution of α (the constant) over time (WIOD)**

Sources: WIOD and authors' calculations

We obtain similar results with TiVA (see Appendix C). Our results suggest that we can approximate the HCE deflator elasticity for the most recent years, using the share of imported goods in household consumption and the share of imported inputs in household consumption of domestic goods. $E1.HC + E2.HC$ is a good predictor of the total effects. Yet, they cannot be extrapolated in a multiplicative way, as the other effects ($E3.HC + E4.HC$) add to them rather than amplifying them. They are of similar size for small open economies and large closed ones. It might be that the small economy counterbalances its small size with its large openness rate and vice versa.⁵

5.2 Doing without TiVA and WIOD, but keeping Eurostat

However, even these data ($E1.HC$ and $E2.HC$) are not up-to-date for a large number of countries. The share of imports in household final consumption and in intermediate consumption for the production of domestic household final consumption are not routinely computed by national statistical institutes. We have to use a proxy. It is easy to identify consumption and intermediary goods imports using UN Comtrade data and the BEC classification. While the World Bank provides regular estimates for household consumption, it does not provide an estimate for intermediate consumptions. Eurostat provides estimates for intermediate consumptions in the case of European countries. Combining these three data sources, we compute the share of imported consumption goods in household consumption and the share of imported inputs in all inputs.

⁵Although this functional form might seem counterintuitive (one might expect that the elasticity is an affine function of openness as summarized by $E1.HC$), the analytical examination of the two-country, one-sector case shows that it is plausible (see Appendix D).

We mimick equation 16 by equation 17. We estimate successive cross-sections of equation 17 to check whether the proxy is satisfactory.

$$\bar{s}_i^{i,HC} = \alpha + \beta_1 \frac{\text{imported consumption goods}_i}{\text{household consumption}_i} + \beta_2 \left[\frac{\text{imported intermediate goods}_i}{\text{intermediate consumption}_i} * \frac{\text{domestic consumption goods}_i}{\text{household consumption}_i} \right] + \varepsilon_i \quad (17)$$

In the same way, Figure 14 mimicks Figure 12. The results are less encouraging: the R^2 is smaller and declining over time, and the estimated coefficient is not constant.

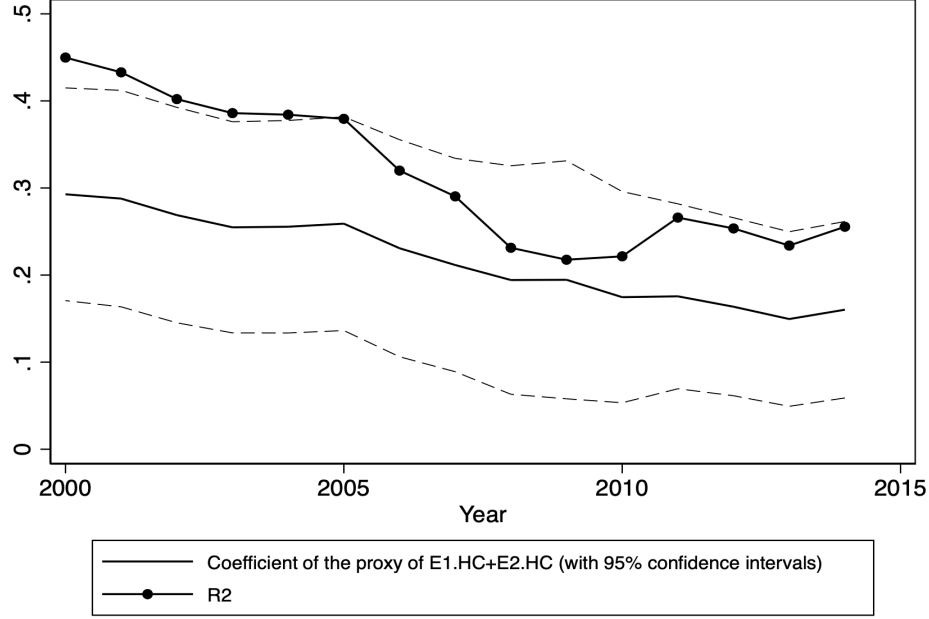


Figure 14: Evolution of β and R^2 (WIOD) using Eurostat data to approximate $E1.HC + E2.HC$ (limited number of countries)

Sources: WIOD and authors' calculations

Yet, estimating successive cross-sections of equation 17 is a demanding test to establish a link between the elasticity computed by PIWIM based on WIOD data and more up-to-date data assembled from various sources. It does not allow to exploit country-specific information on the determinant of the elasticity. A less demanding test is to run a panel with country fixed-effects, assuming that β is constant over time but that it explains only within-country variations. To take into account year-specific shocks, we add two year-specific variables : the GDP-weighted mean of each variable of interest (see equation 18).

$$\begin{aligned} \bar{s}_{i,t}^{i,t,HC} = & \alpha + \beta_1 \frac{\text{imported consumption goods}_{i,t}}{\text{household consumption}_{i,t}} \\ & + \beta_2 \left[\frac{\text{imported intermediate goods}_{i,t}}{\text{intermediate consumption}_{i,t}} * \frac{\text{domestic consumption goods}_{i,t}}{\text{household consumption}_{i,t}} \right] \\ & + \beta_3 \frac{\text{Total imported consumption goods}_t}{\text{Total household consumption}_t} \\ & + \beta_4 \left[\frac{\text{Total imported intermediate goods}_t}{\text{Total intermediate consumption}_t} * \frac{\text{Total domestic consumption goods}_t}{\text{Total household consumption}_t} \right] \\ & + f e_i + \varepsilon_{i,t} \end{aligned} \quad (18)$$

We run the panel regressions for the period 2000 to 2008. We then estimate the out-of-sample elasticity for each country i for 2014. The outcome is close to the elasticity computed with WIOD for 2014 despite a small downward bias (see Figure 15). Hence, we could use this approach to estimate the HCE deflator elasticity to the exchange rate from 2015 onwards.

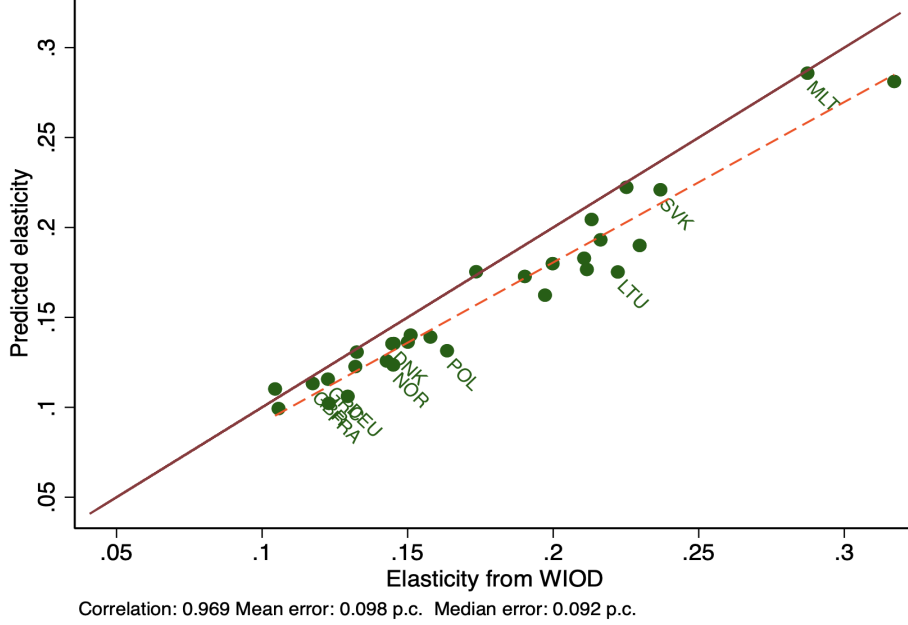


Figure 15: Comparing the HCE deflator elasticity in 2014 (WIOD) and the prediction from a panel regression on the 2000-2008 period with fixed effects using Eurostat data.

5.3 Doing with only World Bank and Comtrade data

Data on intermediate consumption and household consumption are not available for all countries. As a result, our regressions only include a limited number of observations. To expand our panel, we use an even simpler proxy for $E1.HC + E2.HC$ that requires only trade data from Comtrade and GDP data from the World Bank, both available until 2018. As a result, we can include many more countries in the new panel (see equation 19).

$$\begin{aligned}
 \bar{s}_{i,t}^{i,t,HC} = \alpha & + \beta_1 \frac{\text{imported consumption goods}_{i,t}}{\text{GDP}_{i,t}} \\
 & + \beta_2 \frac{\text{imported intermediate goods}_{i,t}}{\text{GDP}_{i,t}} \\
 & + \beta_3 \frac{\text{Total imported consumption goods}_t}{\text{Total GDP}_t} \\
 & + \beta_4 \frac{\text{Total imported intermediate goods}_t}{\text{Total GDP}_t} \\
 & + fe_i + \varepsilon_{i,t}
 \end{aligned} \tag{19}$$

The out-of-sample prediction remains satisfactory, although the mean and median errors are larger (see Figure 16). Our findings are robust to using other databases (revision 3 and revision 4 of TIVA).⁶

Using these equations, we can predict the HCE deflator elasticity from 2016 onwards to make up for the lack of WIOTs. Figure 17 shows the predictions. The in-sample predictions seem

⁶Results are available upon request

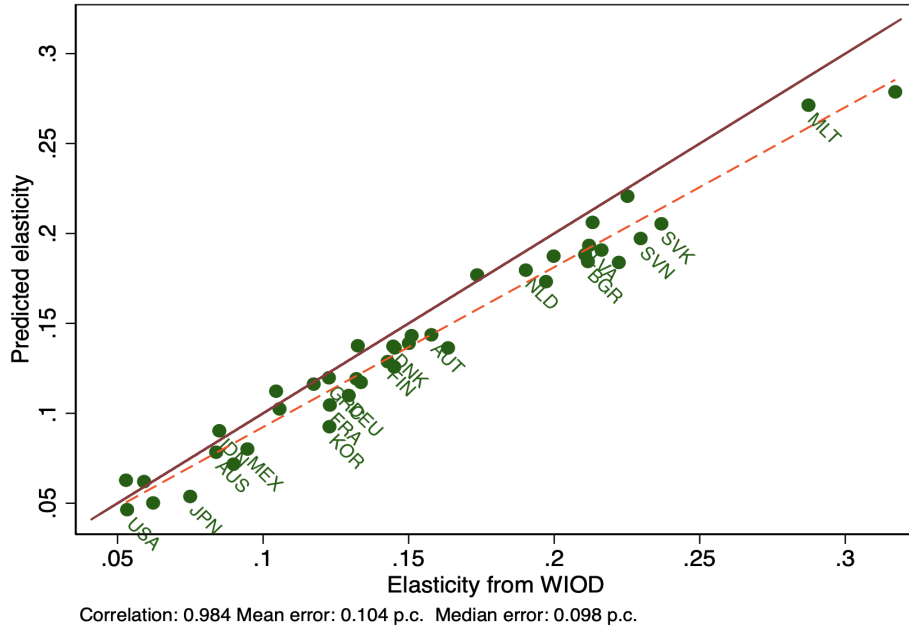


Figure 16: Comparing the HCE deflator elasticity in 2014 (WIOD) and the prediction from a panel regression on the 2000-2008 period with fixed effects using only World Bank and Comtrade data.

Sources: WIOD, World Bank, Comtrade and authors' calculations

rather robust, giving us confidence in the quality of the out-of-sample predictions.

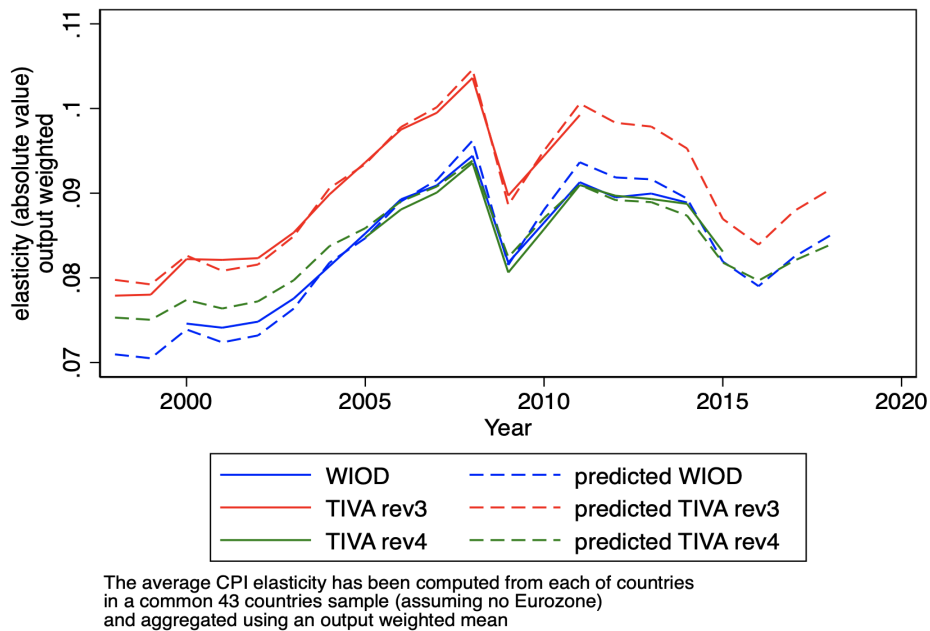


Figure 17: Comparing the output-weighted HCE deflator elasticity to its prediction using only World Bank and Comtrade data.

Sources: WIOD, World Bank, Comtrade and authors' calculations

6 Conclusion

In this paper, we investigate the role of GVCs for inflation dynamics within a unified framework of input-output databases (WIOT and TiVA) from 1995 to 2018. Our main results are threefold. First, we confirm the importance of Global Value Chains in explaining inflation dynamics. The Household consumption expenditure deflator elasticity to a shock on the domestic currency ranges from 0.05 to 0.35, depending mainly on the openness of countries. Within the euro area, the range of elasticities is large, adding to the challenges faced by the European Central Bank in stabilising prices throughout the monetary union. Input-output mechanisms explain a large share of the elasticity, especially for large countries. Our results are robust to using different databases (WIOD, TiVA 2016 and TiVA 2018).

Second, we show that the direct impact (through imported final goods) and domestic Input-Output linkages (i.e. domestic final goods produced using foreign inputs) account for most of the propagation of an exchange rate shock to domestic prices. First-round effects explain three-quarters of the propagation of exchange rate shocks to domestic prices. By contrast, we find a limited role for the second-round effects, i.e. the additional transmission of lower domestic input prices to other sectors of the domestic economy and other countries occurring during subsequent production cycles. We analyse the contribution of different sectors to the HCE deflator elasticity to an exchange rate shocks. Domestic core inflation (defined as inflation excluding food and energy) accounts for a significant share of the total elasticity, mainly reflecting the weight of domestic services and non-energy industrial goods in total consumption.

Third, we provide a tool to make up for the lack of timely WIOTs. The construction of World Input-Output tables is data-demanding and WIOTs are typically released with a lag of several years. To address this gap, we use more up-to-date GDP and trade data, which can be easily updated and used to make up for the lack of WIOTs. We thus provide a tool for approximating the HCE deflator elasticity to an exchange rate shock from 2015 onwards.

References

- Acemoglu, D., Carvalho, V.M., Ozdaglar, A., Tahbaz-Salehi, A., 2012. The Network Origins of Aggregate Fluctuations. *Econometrica* 80, 1977–2016. doi:10.3982/ECTA9623.
- Amador, J., Cappariello, R., Stehrer, R., 2015. Global Value Chains: A View from the Euro Area. Working Paper Series 1761. European Central Bank. Frankfurt.
- Antoun de Almeida, L., 2016. Globalization of Inflation and Input-Output Linkages. Chapter 2 of PhD Thesis. Goethe University Frankfurt.
- Auer, R.A., Levchenko, A.A., Sauré, P., 2019. International inflation spillovers through input linkages. *Review of Economics and Statistics* 101, 507–521.
- Ball, L.M., Mazumder, S., 2011. Inflation Dynamics and the Great Recession. Technical Report. National Bureau of Economic Research.
- Bems, R., Johnson, R.C., 2015. Demand for Value Added and Value-Added Exchange Rates. Working Paper 21070. National Bureau of Economic Research.
- Ben Cheikh, N., Rault, C., 2017. Investigating first-stage exchange rate pass-through: Sectoral and macro evidence from euro area countries. *The World Economy* 40, 2611–2638.
- Berman, N., Martin, P., Mayer, T., 2012. How do different exporters react to exchange rate changes? *The Quarterly Journal of Economics* 127, 437–492.
- Berson, C., de Charsonville, L., Diev, P., Faubert, V., Ferrara, L., Guilloux-Nefussi, S., Kalantzis, Y., Lalliard, A., Matheron, J., Mogliani, M., 2018. Does the Phillips curve still exist? *Rue de la Banque* .
- Blanchard, O., 2016. The Phillips Curve: Back to the '60s? *American Economic Review* 106, 31–34.
- Bourgeois, A., Briand, A., 2019. Le modèle Avionic : La modélisation input/output des comptes nationaux - Documents de travail - G2019/02 | Insee. Document de travail INSEE .
- Bournay, J., Piriou, J.P., 2015. La comptabilité nationale. 17e édition ed., La Découverte, Paris.
- Campa, J.M., Goldberg, L.S., 2008. Pass-through of exchange rates to consumption prices: What has changed and why?, in: *International Financial Issues in the Pacific Rim: Global Imbalances, Financial Liberalization, and Exchange Rate Policy* (NBER-EASE Volume 17). University of Chicago Press, pp. 139–176.
- Cappariello, R., Felettigh, A., 2015. How Does Foreign Demand Activate Domestic Value Added? A Comparison among the Major Euro-Area Economies. Banca d'Italia Temi Di Discussione 1001. Bank of Italy, Economic Research and International Relations Area.
- Carvalho, V.M., 2014. From micro to macro via production networks. *The Journal of Economic Perspectives* , 23–47.

- Cochard, M., Daudin, G., Fronteau, S., Riffart, C., 2016. Commerce vertical et propagation des chocs de prix: Le cas de la zone euro. *Revue de l'OFCE* , 131–166.
- Coibion, O., Gorodnichenko, Y., 2015. Is the Phillips curve alive and well after all? Inflation expectations and the missing disinflation. *American Economic Journal: Macroeconomics* 7, 197–232.
- Daudin, G., Monperrus-Veroni, P., Riffart, C., Schweisguth, D., 2006. Le commerce extérieur en valeur ajoutée. *Revue de l'OFCE* , 129–165.
- Daudin, G., Riffart, C., Schweisguth, D., 2011. Who produces for whom in the world economy? *Canadian Journal of Economics/Revue canadienne d'économie* 44, 1403–1437.
- De Backer, K., Yamano, N., 2012. International Comparative Evidence on Global Value Chains. Technical Report 2012/3. OECD. Paris.
- De Soyres, F., Frohm, E., Gunnella, V., Pavlova, E., 2018. Bought, Sold, and Bought Again: The Impact of Complex Value Chains on Export Elasticities. Policy Research Working Paper 8535. World Bank.
- Dietzenbacher, E., 1997. In Vindication of the Ghosh Model: A Reinterpretation as a Price Model. *Journal of Regional Science* 37, 629–651. doi:10.1111/0022-4146.00073.
- Dietzenbacher, E., Los, B., Stehrer, R., Timmer, M., de Vries, G.J., 2013. The Construction of World Input-Output Tables in the WIOD Project. *Economic Systems Research* 25, 71–98.
- Eser, F., Karadi, P., Moretti, L., Osbat, C., 2020. The Phillips Curve at the ECB. ECB Working Paper .
- Farmer, R.E., Nicolo, G., 2018. Keynesian economics without the Phillips curve. *Journal of Economic Dynamics and Control* 89, 137–150.
- Feenstra, R.C., Jensen, J.B., 2012. Evaluating Estimates of Materials Offshoring from U.S. Manufacturing. NBER Working Papers 17916. National Bureau of Economic Research, Inc.
- Folloni, G., Miglierina, C., 1994. Hypothesis of price formation in input-output tables. *Economic Systems Research* 6, 249–264.
- Georgiadis, G., Gräb, J., Khalil, M., 2019. Global Value Chain Participation and Exchange Rate Pass-Through. Working Paper Series 2327. European Central Bank. Frankfurt.
- Gopinath, G., Boz, E., Casas, C., Díez, F.J., Gourinchas, P.O., Plagborg-Møller, M., 2020. Dominant Currency Paradigm. *American Economic Review* 110, 677–719. doi:10.1257/aer.20171201.
- Hagemejer, J., Halka, A., Kotłowski, J., 2020. Global Value Chains and Exchange Rate Pass-through: The Role of Non-Linearities. NBP Working Paper 324. Narodowy Bank Polski, Economic Research Department.

- Hahn, E., 2003. Pass-through of External Shocks to Euro Area Inflation. Working Paper Series 243. European Central Bank. Frankfurt.
- Hummels, D., Ishii, J., Yi, K.M., 2001. The nature and growth of vertical specialization in world trade. *Journal of International Economics* 54, 75–96.
- Johnson, R.C., Noguera, G., 2012. Accounting for intermediates: Production sharing and trade in value added. *Journal of International Economics* 86, 224–236. doi:10.1016/j.jinteco.2011.10.003.
- Koopman, R., Wang, Z., Wei, S.J., 2014. Tracing Value-Added and Double Counting in Gross Exports. *American Economic Review* 104, 459–494.
- Kunovac, D., Comunale, M., 2017. Exchange Rate Pass-Through in the Euro Area. Working Paper Series 2003. European Central Bank. Frankfurt.
- Leigh, M.D., Lian, W., Poplawski-Ribeiro, M., Szymanski, R., Tsyrennikov, V., Yang, H., 2017. Exchange Rates and Trade: A Disconnect? IMF Working Paper WP/17/58. International Monetary Fund.
- Leontief, W.W., 1951. *The Structure of American Economy, 1919-1939: An Empirical Application of Equilibrium Analysis*. Second ed., Oxford University Press, New York.
- Los, B., Timmer, M.P., de Vries, G.J., 2016. Tracing Value-Added and Double Counting in Gross Exports: Comment. *American Economic Review* 106, 1958–1966.
- Miroudot, S., Ye, M., 2020. Decomposing value added in gross exports. *Economic Systems Research* , 1–21.
- OECD, Decembre 2018. What’s new? Differences between the 2018 and 2016 edition of the TiVA indicators. <http://www.oecd.org/industry/ind/tiva-2018-differences-tiva-2016.pdf>.
- OECD, WTO, 2011. Trade in value-added: Concepts, methodologies and challenges (joint oecd-wto note). <https://www.oecd.org/sti/ind/49894138.pdf>.
- Oosterhaven, J., 1988. On the plausibility of the supply-driven input-output model. *Journal of Regional Science* 28, 203–217.
- Ortega, E., Osbat, C., 2020. Exchange Rate Pass-through in the Euro Area and in EU Countries. Occasional Paper Series 241. European Central Bank. Frankfurt.
- Özyurt, S., 2016. Has the Exchange Rate Pass through Recently Declined in the Euro Area? ECB Working Paper 1955. European Central Bank. Frankfurt.
- Puzzello, L., 2012. A proportionality assumption and measurement biases in the factor content of trade. *Journal of International Economics* 87, 105–111. doi:10.1016/j.jinteco.2011.11.
- Sato, K., Shrestha, N., 2014. Global and Regional Shock Transmission -An Asian Perspective-. CESSA Working Paper 2014-04. Center for Economic and Social Studies in Asia (CESSA), Department of Economics, Yokohama National University. Yokohama.

Sharify, N., 2013. Input-output modelling of the effect of implicit subsidies on general prices. *Economic Modelling* 33, 913–917. doi:10.1016/j.econmod.2013.06.

Timmer, M., Dietzenbacher, E., Los, B., Stehrer, R., de Vries, G.J., 2015. An Illustrated User Guide to the World Input-Output Database: The Case of Global Automotive Production. John Wiley and Sons Ltd , 31doi:DOI:10.1111/roie.12178.

Appendix A WIOD Sectors

A01	Crop and animal production, hunting and related service activities
A02	Forestry and logging
A03	Fishing and aquaculture
B	Mining and quarrying
C10-C12	Manufacture of food products, beverages and tobacco products
C13-C15	Manufacture of textiles, wearing apparel and leather products
C16	Manufacture of wood and of products of wood and cork, except furniture; articles of straw and plaiting materials
C17	Manufacture of paper and paper products
C18	Printing and reproduction of recorded media
C19	Manufacture of coke and refined petroleum products
C20	Manufacture of chemicals and chemical products
C21	Manufacture of basic pharmaceutical products and pharmaceutical preparations
C22	Manufacture of rubber and plastic products
C23	Manufacture of other non-metallic mineral products
C24	Manufacture of basic metals
C25	Manufacture of fabricated metal products, except machinery and equipment
C26	Manufacture of computer, electronic and optical products
C27	Manufacture of electrical equipment
C28	Manufacture of machinery and equipment n.e.c.
C29	Manufacture of motor vehicles, trailers and semi-trailers
C30	Manufacture of other transport equipment
C31-C32	Manufacture of furniture; other manufacturing
C33	Repair and installation of machinery and equipment
D35	Electricity, gas, steam and air conditioning supply
E36	Water collection, treatment and supply
E37-E39	Sewerage and other waste management services
F	Construction
G45	Wholesale and retail trade and repair of motor vehicles and motorcycles
G46	Wholesale trade, except of motor vehicles and motorcycles
G47	Retail trade, except of motor vehicles and motorcycles
H49	Land transport and transport via pipelines
H50	Water transport
H51	Air transport
H52	Warehousing and support activities for transportation
H53	Postal and courier activities
I	Accommodation and food service activities
J58	Publishing activities
J59-J60	Motion picture, video and television programme production; programming and broadcasting activities
J61	Telecommunications
J62-J63	Computer programming, consultancy; information service activities
K64	Financial service activities, except insurance and pension funding
K65	Insurance, reinsurance and pension funding, except compulsory social security
K66	Activities auxiliary to financial services and insurance activities
L68	Real estate activities
M69-M70	Legal and accounting activities
M71	Architectural and engineering activities; technical testing and analysis
M72	Scientific research and development
M73	Advertising and market research
M74-M75	Other professional, scientific and technical activities; veterinary activities
N	Administrative and support service activities
O84	Public administration and defence; compulsory social security
P85	Education
Q	Human health and social work activities
R-S	Other service activities
T	Activities of households as employers; producing activities of households for own use
U	Activities of extraterritorial organizations and bodies

Table 3: Industries in WIOD

Appendix B Comparison of S and S^i in the two-country, one-sector case

In this appendix, we use the two-country and one-good case to illustrate the difference between a price shock (section 3.1) and an exchange rate shock (section 3.3)

B.1 Effect of a price shock based of VA contents

Using the notations of the paper, we have in the two-country and one good case:

$$\begin{aligned}\mathcal{A} &= \begin{pmatrix} a_{1,1} & a_{1,2} \\ a_{2,1} & a_{2,2} \end{pmatrix} \\ I - \mathcal{A} &= \begin{pmatrix} 1 - a_{1,1} & -a_{1,2} \\ -a_{2,1} & 1 - a_{2,2} \end{pmatrix} \\ (I - \mathcal{A})^{-1} &= \frac{1}{(1 - a_{1,1})(1 - a_{2,2}) - a_{2,1}a_{1,2}} \begin{pmatrix} 1 - a_{2,2} & a_{1,2} \\ a_{2,1} & 1 - a_{1,1} \end{pmatrix} = z \cdot \begin{pmatrix} 1 - a_{2,2} & a_{1,2} \\ a_{2,1} & 1 - a_{1,1} \end{pmatrix} \\ &= \begin{pmatrix} u & v \\ w & x \end{pmatrix} \\ \text{Country 1 demand shares} = d &= \begin{pmatrix} 1 - f \\ f \end{pmatrix} \\ (I - \mathcal{A})^{-1} d &= \begin{pmatrix} u - uf + vf \\ w - wf + xf \end{pmatrix}\end{aligned}$$

When a shock c occurs on the prices of country 2 (the currency does not matter here), we have the following initial shock vector : $C = (0, c)$. In the first instance, this has an impact on prices $C\mathcal{A}$, and then $C\mathcal{A}^2$, etc. Hence the total effect of the shock S is:

$$S = C + C\mathcal{A} + C\mathcal{A}^2 \dots = C(I - \mathcal{A})^{-1} = \begin{pmatrix} cw & cx \end{pmatrix}$$

To measure the effect on the French household consumption expenditure deflator, we compute a weighted sum of these effects.

$$\bar{s} = c \cdot [(1 - f)w + xf] = c \cdot \frac{(1 - f)a_{2,1} + f(1 - a_{1,1})}{(1 - a_{1,1})(1 - a_{2,2}) - a_{2,1}a_{1,2}} \quad (20)$$

If each nation's production only uses national inputs, we have:

$$\bar{s} = c \cdot \frac{f}{1 - a_{2,2}}$$

B.2 Exchange rate shock

Using the notations in the paper, we have:

$$\begin{aligned}
C &= \left(0, \frac{-c_{\$}}{1 + c_{\$}}\right) = (0, -c) \\
C_{\$} &= (c_{\$}, 0) \\
\tilde{C}_{\$} &= (0, -c_{\$}) \\
\hat{C}_{\$} &= \left(\frac{c_{\$}}{1 + c_{\$}}, 0\right) = (c, 0) \\
\mathcal{B} &= \begin{pmatrix} 0 & a_{1,2} \\ 0 & 0 \end{pmatrix} \\
\tilde{\mathcal{B}} &= \begin{pmatrix} 0 & 0 \\ a_{2,1} & 0 \end{pmatrix}
\end{aligned}$$

Hence

$$\begin{aligned}
S &= (0, c) + [(0, -c.a_{1,2}) + (c.a_{2,1}, 0)] * \begin{pmatrix} u & v \\ w & x \end{pmatrix} \\
&= (0, c) + (c.a_{2,1}, -c.a_{1,2}) * \begin{pmatrix} u & v \\ w & x \end{pmatrix} \\
&= (0, c) + (u.c.a_{2,1} - w.c.a_{1,2}, v.c.a_{2,1} - x.c.a_{1,2}) \\
&= (u.c.a_{2,1} - w.c.a_{1,2}, c + v.c.a_{2,1} - x.c.a_{1,2})
\end{aligned}$$

and

$$\begin{aligned}
\bar{s} &= (u.c.a_{2,1} - w.c.a_{1,2}, c + v.c.a_{2,1} - x.c.a_{1,2}) \cdot \begin{pmatrix} 1 - f \\ f \end{pmatrix} \\
\bar{s} &= c[f(1 + v.a_{2,1} - x.a_{1,2}) + (1 - f)(u.a_{2,1} - w.a_{1,2})]
\end{aligned}$$

If each nation's production only uses national inputs, we have a plausible

$$\bar{s} = c.f$$

This confirms that an exchange rate shock differs from a price shock.

Appendix C Comparison of $\bar{s}_i^{i,HC}$ and $E1.HC^{i,imp} + E2.HC^{i,dom}$ in the TIVA rev. 3 and TIVA rev. 4 databases

Figures 18, 19 and 20 for TIVA rev. 3 and Figures 21, 22 and 23 for TIVA rev. 4 show that we get a good prediction of the partial equilibrium effects of an exchange rate shock on consumption prices by using simply the share of imported final consumption goods and services and the share of imported intermediate goods in domestic final consumption.

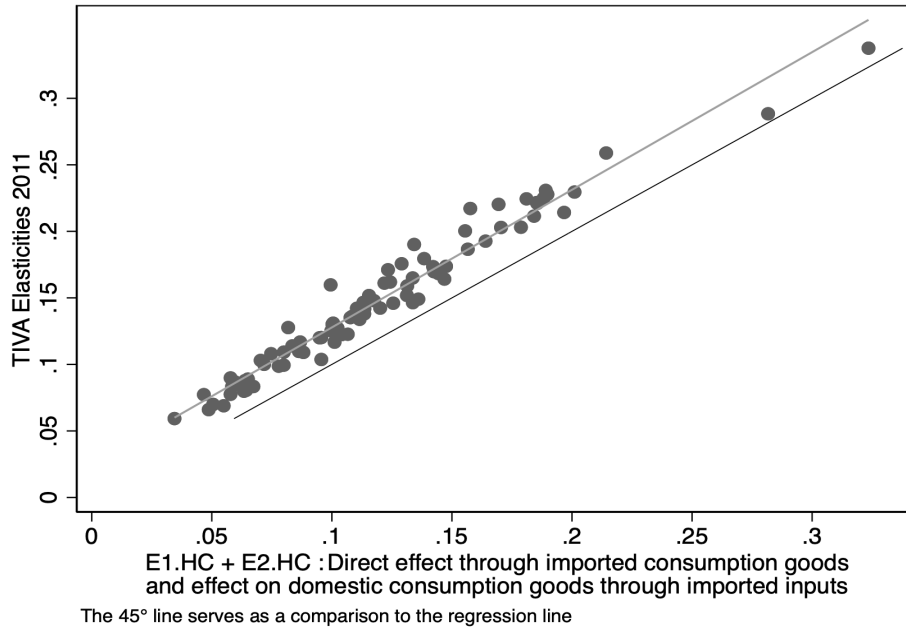


Figure 18: Comparing $\bar{s}_i^{i,HC}$ and $E1.HC^{i,imp} + E2.HC^{i,dom}$ (TIVA rev. 3)

Sources: TIVA rev3 and authors' calculations

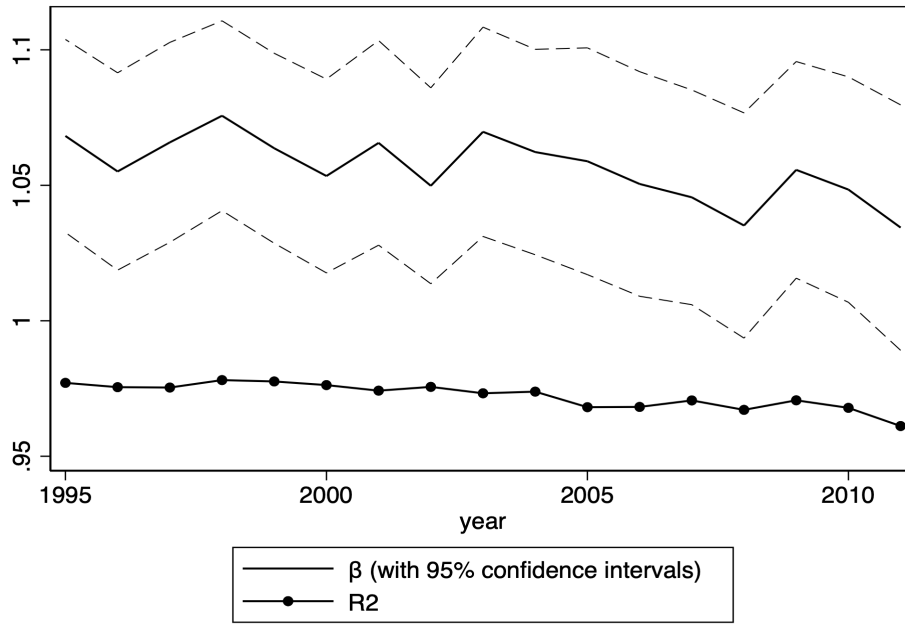


Figure 19: Evolution of β and R^2 (TIVA rev. 3)

Sources: TIVA rev3 and authors' calculations

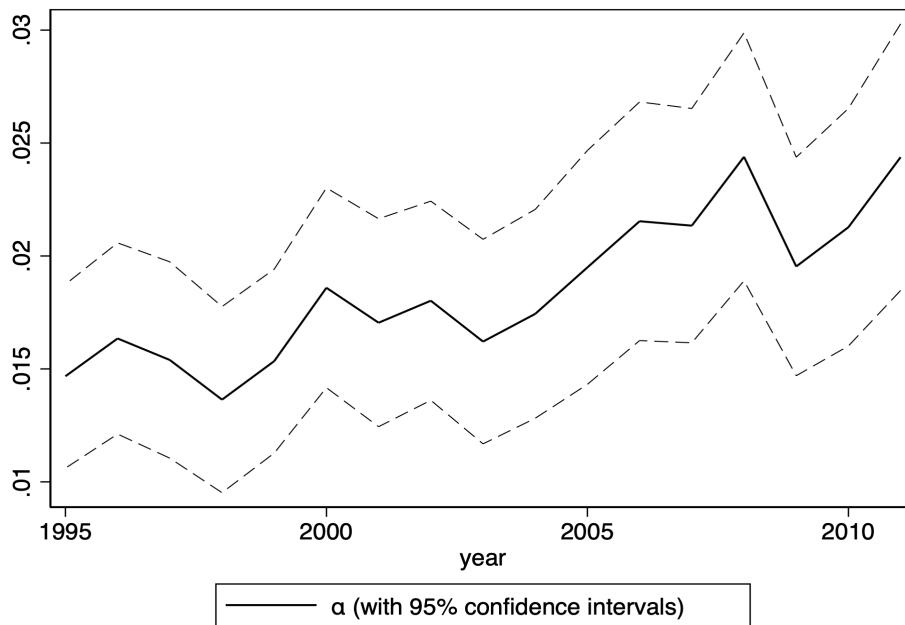


Figure 20: Evolution of α (TIVA rev. 3)

Sources: TIVA rev3 and authors' calculations

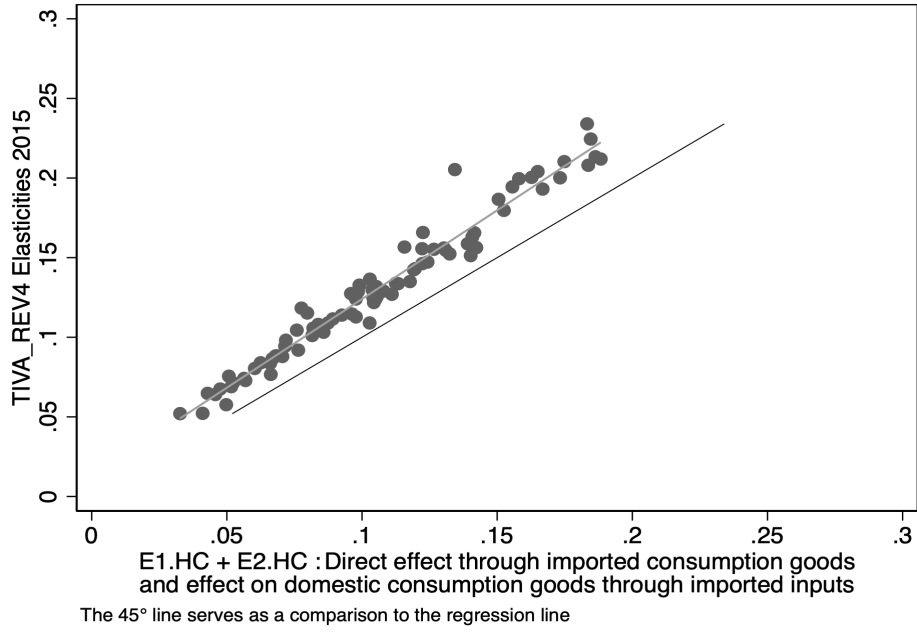


Figure 21: Comparison between $\bar{s}_t^{i,HC}$ and $E1.HC^{i,imp} + E2.HC^{i,dom}$ (TIVA rev. 4)

Sources: TIVA rev4 and authors' calculations

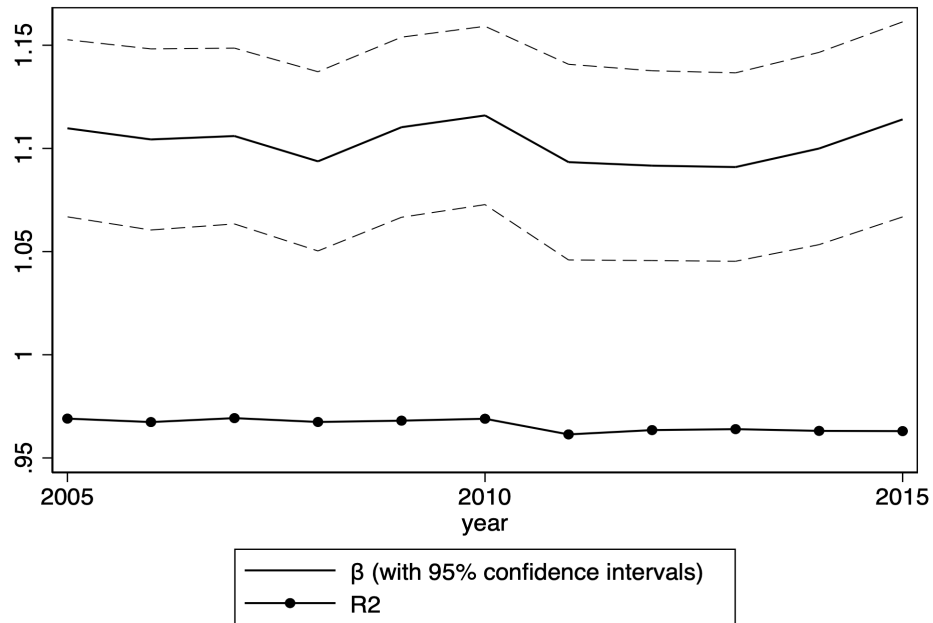


Figure 22: Evolution of β and R^2 (TIVA rev. 4)

Sources: TIVA rev4 and authors' calculations

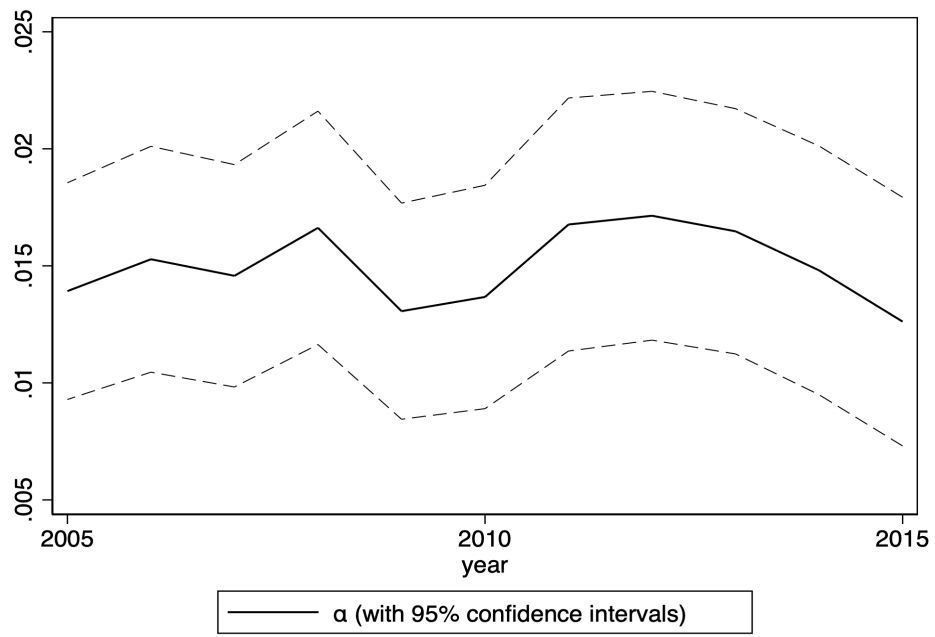


Figure 23: **Time evolution of α (TIVA rev. 4)**

Sources: TIVA rev4 and authors' calculations

Appendix D Study of the decomposition of the shock in the two-country, one-sector case

D.1 The issue

As a reminder from the paper, where $\bar{s}_i^{i,HC}$ is the effect of an exchange rate shock on consumption prices :

$$\begin{aligned}\bar{s}_i^{i,HC} &= S^i.HC^i = E1.HC^i + E2.HC^i + E3.HC^i + E4.HC^i \\ &= E1.HC^{i,imp} + E2.HC^{i,dom} + E3.HC^{i,imp} + E4.HC^i\end{aligned}\quad (21)$$

and

$$\begin{aligned}S^i &= C^i + \left(\hat{C}_s^i.B^i + C^i.\tilde{B}^i \right) * (I - \mathcal{A})^{-1} \\ S^i &= \underbrace{C^i}_{\text{(E1) direct effect through imported consumption goods}} + \underbrace{\hat{C}_s^i.B^i}_{\text{(E2) effect on domestic consumption goods through imported inputs}} + \underbrace{C^i.\tilde{B}^i}_{\text{(E3) effect on imported consumption goods through domestic inputs}} \\ &\quad + \underbrace{\left(\hat{C}_s^i.B^i + C^i.\tilde{B}^i \right) * (I - \mathcal{A})^{-1} * \mathcal{A}}_{\text{(E4) residual}}\end{aligned}\quad (22)$$

When the shock corresponds to an appreciation of the domestic currency, $E1$ and $E2$ reduce country i 's consumer prices whereas $E3$ increases them. $E1$ and $E2$ are easy to compute with national input-output matrices, whereas world input-output matrices are needed for computing $E3$ and $E4$.

Unexpectedly, $E3 + E4$ seems to be constant, regardless of the openness rate of the economy (see Figure 11).

Let us focus on the two-country, one-sector economy :

$$\begin{aligned}E1 &= C = (0, -c) \\ E2 &= C.\tilde{B}^i = (0, -c) \cdot \begin{pmatrix} 0 & 0 \\ a_{2,1} & 0 \end{pmatrix} = (-c.a_{2,1}, 0) \\ E3 &= (c, 0) \cdot \begin{pmatrix} 0 & a_{1,2} \\ 0 & 0 \end{pmatrix} = (0, c.a_{1,2}) \\ E1.HC &= (0, -c) \cdot \begin{pmatrix} 1-f \\ f \end{pmatrix} = -f.c \\ E2.HC &= (-c.a_{2,1}, 0) \cdot \begin{pmatrix} 1-f \\ f \end{pmatrix} = -c.a_{2,1} \cdot (1-f) \\ E3.HC &= (0, c.a_{1,2}) \cdot \begin{pmatrix} 1-f \\ f \end{pmatrix} = f.c.a_{1,2}\end{aligned}$$

We do not lose any generality by normalising the shock c to 1.

And, developped from SAGE :

$$\bar{s} - E1.HC - E2.HC = \left(-\frac{a_{12}a_{21}^2 - a_{11}a_{21}a_{22} + (a_{11} - a_{12})a_{21} - (a_{12}a_{21}^2 - a_{11}a_{21}a_{22} - (a_{11} - 1)a_{12} + (a_{11} - 2a_{12})a_{21})f}{a_{12}a_{21} - (a_{11} - 1)a_{22} + a_{11} - 1} \right) \quad (23)$$

We assume that: $\frac{a_{1,1}}{a_{2,1}} = \frac{1-f}{f}$ and $a_{1,1} + a_{2,1} = a$.

So $a_{1,1} = (1-f)a$ and $a_{2,1} = fa$.

Then:

$$\bar{s} - E1.HC - E2.HC = \left(-\frac{(a^2a_{12} + a^2a_{22} - a^2)f^3 - (2a^2a_{22} - 2a^2 + (a^2 + a)a_{12})f^2 + (a^2a_{22} - a^2 + a_{12})f}{(a-1)a_{22} - (aa_{12} + aa_{22} - a)f - a + 1} \right) \quad (24)$$

According to SAGE, the derivative of this according to f is:

$$\left(-\frac{((a^2a_{12} + a^2a_{22} - a^2)f^3 - (2a^2a_{22} - 2a^2 + (a^2 + a)a_{12})f^2 + (a^2a_{22} - a^2 + a_{12})f)(aa_{12} + aa_{22} - a)}{(a-1)a_{22} - (aa_{12} + aa_{22} - a)f - a + 1} - \frac{a^2a_{22} + 3(a^2a_{12} + a^2a_{22} - a^2)f^2 - a^2 - 2(2a^2a_{22} - 2a^2 + (a^2 + a)a_{12})f + a_{12}}{(a-1)a_{22} - (aa_{12} + aa_{22} - a)f - a + 1} \right)$$

The sign of this expression is difficult to study. We hence move to a numerical application.

D.2 Numerical application

Based on WIOD 2014, we compute the ratio between value added and production. The computation with the WIOD data is : $\text{egen total} = \text{rowtotal}(\text{vAUS1} - \text{vROW})$ and then $(161-74)/161 = 0.54$.

To simplify, we assume that the ratio is equal to 0.5.

$$a_{1,1} + a_{1,2} = a_{2,1} + a_{2,2} = 0.5$$

$$\frac{a_{1,2}}{a_{1,1} + a_{1,2}} = f$$

$$a_{2,1} = 0.48$$

$$a_{2,2} = 0.02$$

In that case:

$$\bar{s} - E1.HC - E2.HC = \frac{-0.125f^3 + 0.245f^2 - 0.11f}{-0.25f - 0.26}$$

Which yields Figures 24 and 25.

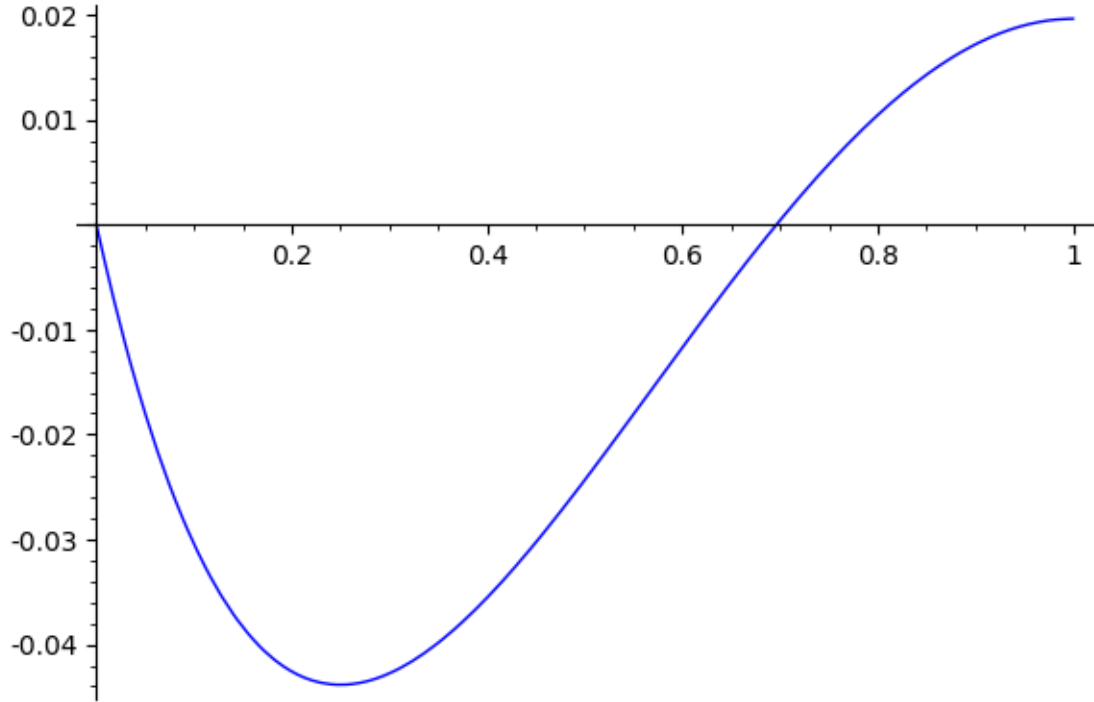


Figure 24: $\bar{s} - E1.HC - E2.HC$ as a function of the openness rate

Actual openness rates in the sample vary between 0.15 and 0.5. In that zone, the relationship between the openness rate and the residual is not monotonous (see Figure 24).

Figure 25 confirms that, in that numerical exercise, the total effect is dominated by the direct effect through imported consumption goods and, to a lesser extent, the effect on domestic consumption goods through imported inputs. The other effects are approximately additive if the openness rate is between 0.15 and 0.5.

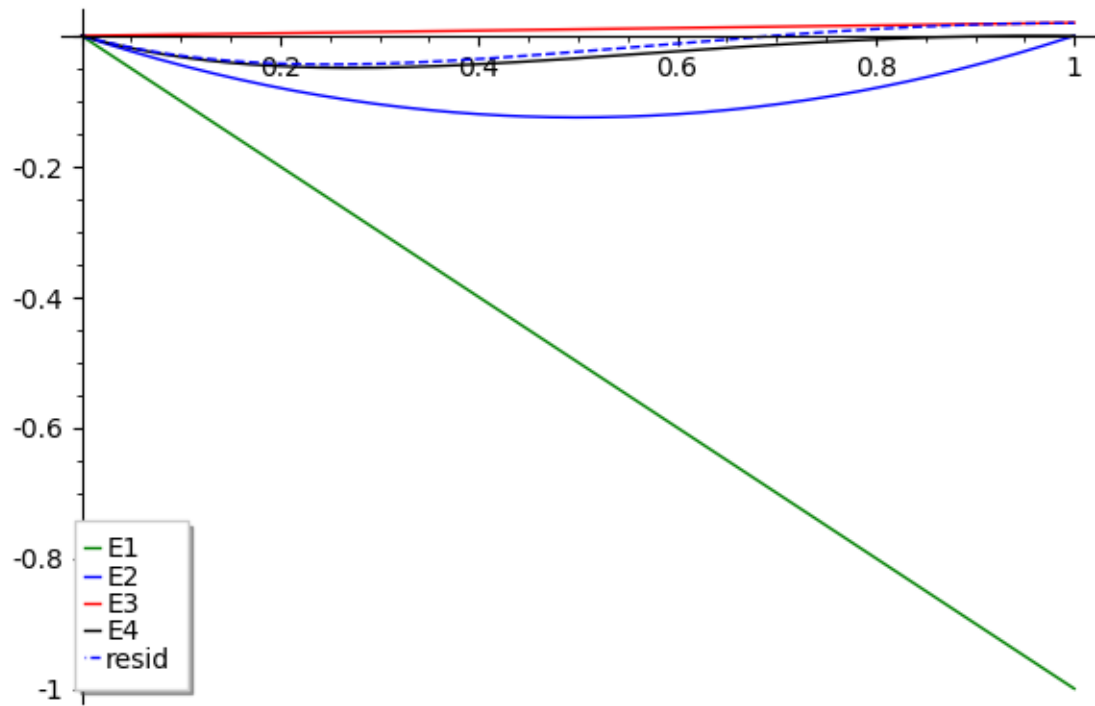


Figure 25: E1.HC, E2.HC, E3.HC, E4.HC and the "residual" ($\bar{s} - E1.HC - E2.HC$) as a function of the openness rate