



**HAL**  
open science

## Shotgun lipidomics and mass spectrometry imaging unveil diversity and dynamics in *Gammarus fossarum* lipid composition

Tingting Fu, Oskar Knittelfelder, Yohann Clément, Eric Testet, Nicolas Elie, David Touboul, Khedidja Abbaci, Andrej Shevchenko, Jérôme Lemoine, Arnaud Chaumot, et al.

► **To cite this version:**

Tingting Fu, Oskar Knittelfelder, Yohann Clément, Eric Testet, Nicolas Elie, et al.. Shotgun lipidomics and mass spectrometry imaging unveil diversity and dynamics in *Gammarus fossarum* lipid composition. *iScience*, 2021, 24 (2), pp.1-44. 10.1016/j.isci.2021.102115 . hal-03134038

**HAL Id: hal-03134038**

**<https://hal.science/hal-03134038v1>**

Submitted on 14 Oct 2021

**HAL** is a multi-disciplinary open access archive for the deposit and dissemination of scientific research documents, whether they are published or not. The documents may come from teaching and research institutions in France or abroad, or from public or private research centers.

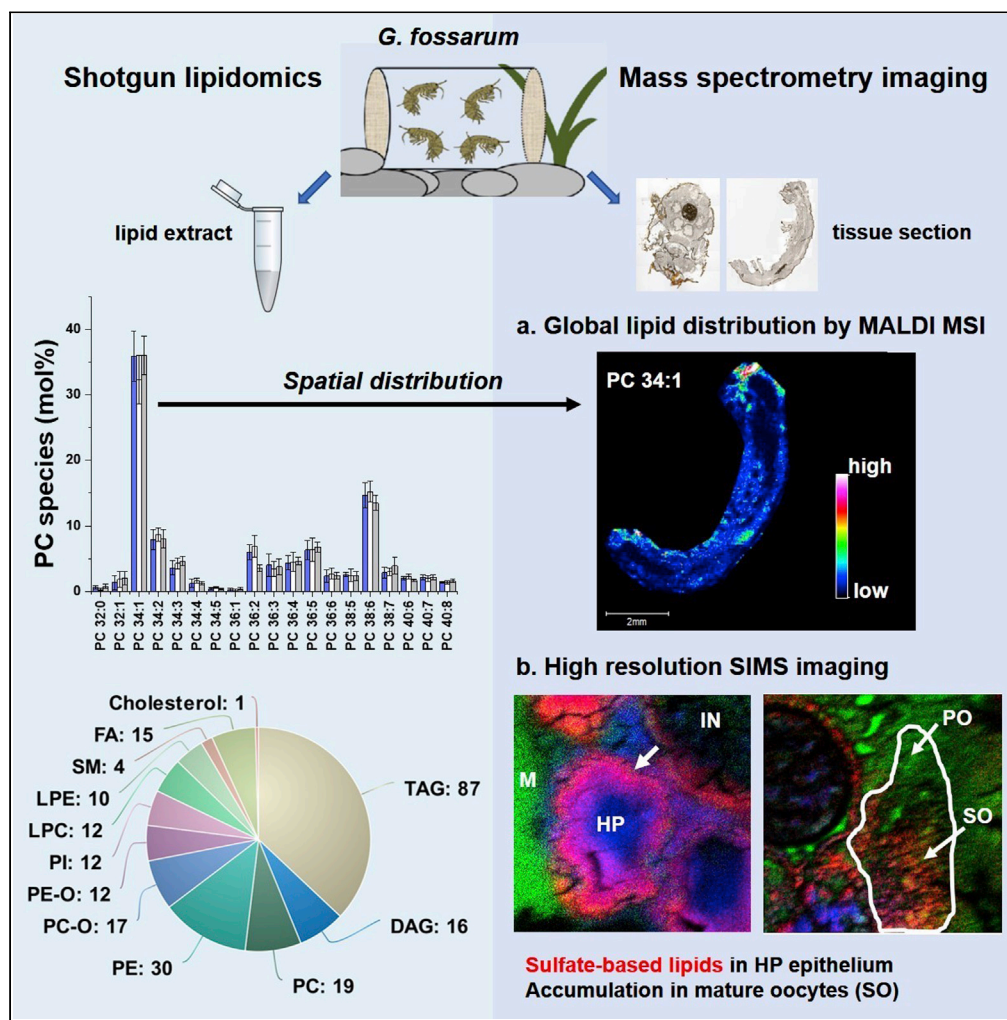
L'archive ouverte pluridisciplinaire **HAL**, est destinée au dépôt et à la diffusion de documents scientifiques de niveau recherche, publiés ou non, émanant des établissements d'enseignement et de recherche français ou étrangers, des laboratoires publics ou privés.



Distributed under a Creative Commons Attribution - NonCommercial - NoDerivatives 4.0 International License

Article

# Shotgun lipidomics and mass spectrometry imaging unveil diversity and dynamics in *Gammarus fossarum* lipid composition



Tingting Fu, Oskar Knittelfelder, Olivier Geffard, ..., Arnaud Salvador, Davide Degli-Esposti, Sophie Ayciriex

sophie.ayciriex@univ-lyon1.fr

**HIGHLIGHTS**

Baseline lipidome profiling of *G. fossarum* of different sex and reproductive stages

Spatial localization of lipids in gammarid tissue by mass spectrometry imaging

SIMS imaging guided discovery of sulfate-based lipids in hepatopancreas epithelium

Disclosure of a dynamic lipid composition in maturing female oocytes



## Article

Shotgun lipidomics and mass spectrometry imaging unveil diversity and dynamics in *Gammarus fossarum* lipid composition

Tingting Fu,<sup>1</sup> Oskar Knittelfelder,<sup>2,6</sup> Olivier Geffard,<sup>3</sup> Yohann Clément,<sup>1</sup> Eric Testet,<sup>4</sup> Nicolas Elie,<sup>5</sup> David Touboul,<sup>5</sup> Khedidja Abbaci,<sup>3</sup> Andrej Shevchenko,<sup>2</sup> Jerome Lemoine,<sup>1</sup> Arnaud Chaumot,<sup>3</sup> Arnaud Salvador,<sup>1</sup> Davide Degli-Esposti,<sup>3</sup> and Sophie Ayciriex<sup>1,7,\*</sup>

## SUMMARY

**Sentinel species are playing an indispensable role in monitoring environmental pollution in aquatic ecosystems. Many pollutants found in water prove to be endocrine disrupting chemicals that could cause disruptions in lipid homeostasis in aquatic species. A comprehensive profiling of the lipidome of these species is thus an essential step toward understanding the mechanism of toxicity induced by pollutants. Both the composition and spatial distribution of lipids in freshwater crustacean *Gammarus fossarum* were extensively examined herein. The baseline lipidome of gammarids of different sex and reproductive stages was established by high throughput shotgun lipidomics. Spatial lipid mapping by high resolution mass spectrometry imaging led to the discovery of sulfate-based lipids in hepatopancreas and their accumulation in mature oocytes. A diverse and dynamic lipid composition in *G. fossarum* was uncovered, which deepens our understanding of the biochemical changes during development and which could serve as a reference for future ecotoxicological studies.**

## INTRODUCTION

Lipids are a structurally diverse group of molecules that can be classified into several categories, including fatty acyls, glycerolipids, glycerophospholipids, sphingolipids, sterol lipids, prenol lipids, saccharolipids, and polyketides, according to the LIPID MAPS (Lipid Metabolites and Pathways Strategy) lipid classification system (Fahy, et al., 2011; Fahy, et al., 2005; Fahy, et al., 2009). Besides their basic function as building blocks of the cell membrane, lipids are involved in essential biofunctions, including signaling and energy storage that mediate cell growth, reproduction, and so on (Dutta and Sinha, 2017; Obeid, et al., 1993; van Meer, 2005; van Meer, et al., 2008). Lipid homeostasis in the organisms is extremely crucial for their development, maintenance, and reproduction (De Mendoza and Pilon, 2019; Klose, et al., 2012; Zhang and Rock, 2008). However, this homeostasis can be disrupted when the organism is subjected to threats from environmental stressors. As a result of anthropogenic activities, especially the intense use of chemical products, various kinds of pollutants are continuously released into the aquatic environment. Increasing evidence has shown that some of these pollutants are endocrine disrupting chemicals, also referred to as obesogens, which could interfere lipid homeostasis and cause toxic effects on a number of aquatic animal species (Capitao, et al., 2017; Fuertes, et al., 2020). Therefore, it is highly desirable to get retrospective and prospective comprehensive profiles of the lipidome in sentinel organisms in order to understand which, and how, the lipid species could be altered by chemical pollutants and to further assess the ecological risk incurred by the contaminated aquatic environment.

Freshwater sentinel species *Gammarus fossarum* is one of the most represented amphipod crustaceans widespread across European inland aquatic habitats (Wattier, et al., 2020). Its broad distribution and sensitivity to a wide range of contaminants has made this keystone species a valuable model organism in ecotoxicology (Besse, et al., 2013; Chaumot, et al., 2015; Dedourge-Geffard, et al., 2009; Kunz, et al., 2010; Mhennaoui, et al., 2016; Wigh, et al., 2017). Endocrine effects (e.g., accelerated oocyte maturation, smaller vitellogenic oocytes, and decreased spermatozoon production) have also been observed in this species when exposed to endocrine disrupting chemicals in wastewater effluents (Schirling, et al., 2005; Trapp,

<sup>1</sup>Univ Lyon, CNRS, Université Claude Bernard Lyon 1, Institut des Sciences Analytiques, UMR 5280, 5 rue de la Doua, F-69100 Villeurbanne, France

<sup>2</sup>Max Planck Institute of Molecular Cell Biology and Genetics, Pfötenhauerstraße 108, 01307 Dresden, Germany

<sup>3</sup>INRAE, UR RiverLy, Ecotoxicology Team, F-69625 Villeurbanne, France

<sup>4</sup>Laboratoire de Biogenèse Membranaire (LBM), CNRS, University of Bordeaux, UMR 5200, F-33882 Villenave d'Ornon, France

<sup>5</sup>Université Paris-Saclay, CNRS, Institut de Chimie des Substances Naturelles, UPR 2301, 91198, Gif-sur-Yvette, France

<sup>6</sup>Present address: Chemistry department, Humboldt University of Berlin, Brook-Taylor-Straße 2, 12489 Berlin

<sup>7</sup>Lead contact

\*Correspondence: [sophie.ayciriex@univ-lyon1.fr](mailto:sophie.ayciriex@univ-lyon1.fr)  
<https://doi.org/10.1016/j.isci.2021.102115>



et al., 2015) and in laboratory experiments (Schirling, et al., 2005; Trapp, et al., 2015). It is thus of great interest to characterize the lipidome of this organism to understand the molecular mechanism underlying these endocrine effects and to develop biomarkers for early stage risk assessment of obesogen contamination in freshwater systems. Initial assessment of lipid perturbation in *Gammarus fossarum* exposed to a growth regulator insecticide has been recently reported (Arambourou, et al., 2018). However, only a limited number of lipid classes and molecular species in this non-model organism have been described (Arambourou, et al., 2018; Fu, et al., 2020; Kolanowski, et al., 2007). Our knowledge about the lipid composition, especially the associated dynamics, in this species is scarce.

Lipidomics per se covers a broad range of mass spectrometry (MS) workflows that aim to identify and quantify a great variety of lipid classes, including their molecular species in biological systems (Hsu, 2018; Hu, et al., 2019; Klose, et al., 2013; Shevchenko and Simons, 2010; van Meer, 2005; Wenk, 2005). In addition, when required, advanced lipid structural characterization (e.g., double bond and *sn*-positions) is also readily achievable via MS-related developments, such as ozonolysis (Brown, et al., 2011), UV-induced photodissociation (Bowman, et al., 2017; Brown, et al., 2011; Ryan, et al., 2017; Williams, et al., 2017), and ion mobility spectrometry (Groessl, et al., 2015; Jackson, et al., 2008; Kim, et al., 2009; Leaprot, et al., 2019). The most popular analytical platforms for lipidomic analysis are electrospray ionization (ESI)-MS-based shotgun lipidomics (i.e., direct infusion MS) and liquid chromatography (LC)-MS. In contrast to the necessity of time-consuming chromatography separation in LC-MS, shotgun lipidomics is a high-throughput approach which relies on the direct infusion of a crude lipid extract into the ion source of a mass spectrometer (Han and Gross, 2003, 2005a, 2005b; Hsu, 2018). The maintenance of a constant concentration of the delivered lipid extract provides a stable ionization environment, thus enabling reproducible qualitative and quantitative detection of hundreds of molecular lipid species in a single run. Nowadays, high-resolution MS (e.g., Fourier transform ion cyclotron resonance and Orbitrap) is frequently used in shotgun lipidomics and has tremendously increased the confidence of analysis with its capability of resolving isobaric lipid species (Zullig and Kofeler, 2020). Up to now, shotgun lipidomics has been successfully applied to describe the lipidome of a variety of biological systems like yeast cells (Ejsing, et al., 2009; Klose, et al., 2012), *Drosophila* (Carvalho, et al., 2012; Palm, et al., 2012), flatworm (Thommen, et al., 2019), nematode *Caenorhabditis elegans* (Harvald, et al., 2017; Penkov, et al., 2010), and freshwater crustacean *Daphnia magna* (Taylor, et al., 2017).

Despite the access of the molecular complexity and the identification of hundreds to thousands of chemical species offered by shotgun lipidomics, the spatial distribution of the measured molecular lipid species is missing due to the mandatory lipid extraction procedures. Even though a global evaluation of lipid content in an organism proves to be very valuable for studying the lipid metabolism variations associated with development or disease (Ayciriex, et al., 2017; Carvalho, et al., 2012; Guan, et al., 2013; Knittelfelder, et al., 2018; Wang, et al., 2020), the spatial distribution of these biomolecules is crucial to understand their modes of action, in particular functional compartments. In the last two decades, MS imaging (MSI) has emerged as a novel tool to localize various molecules such as metabolites, lipids, drugs, and so on in biological tissues without the need of labeling (Davoli, et al., 2020; McDonnell and Heeren, 2007; Spengler, 2015). By using a laser or an ion beam to generate ions directly from the tissue, MSI preserves the spatial localization of the ions and enables multiplexed molecular mapping of important structures in tissue sections. Among the various MSI techniques, secondary ion MS (SIMS) is well recognized for its high spatial resolving power, providing a micron or even submicron routine resolution (Ayciriex, et al., 2011; Benabdellah, et al., 2010; Touboul and Brunelle, 2016). Therefore, SIMS remains popular in biological imaging despite the severe molecular fragmentation due to the employment of energetic primary ion beams. Matrix-assisted laser desorption/ionization (MALDI), on the other hand, enables intact molecular detection with a good spatial resolution, typically >10  $\mu\text{m}$  (Benabdellah, et al., 2010; Gessel, et al., 2014). Both SIMS and MALDI MS imaging techniques have been intensively employed for lipid mapping (Bich, et al., 2014; Djambazova, et al., 2020; Sämfors and Fletcher, 2020; Zemski Berry, et al., 2011).

With the aim to provide an exhaustive characterization of the lipidome of freshwater sentinel species *G. fossarum* and to disclose the lipid dynamics during the development, we performed shotgun lipidomics and MSI on gammarids of different gender and distinct female reproductive stages. The baseline lipidome of this organism was defined by high-throughput shotgun lipidomics using a robotic chip-based nano-ESI infusion device coupled to a high-resolution mass spectrometer. To reveal the *in situ* localization of a variety of lipids in the organs and tissues, gammarid tissue sections were examined globally by MALDI MSI

and scrutinized in detail by time-of-flight (TOF)-SIMS imaging. Several unknown sulfate-based lipids were uncovered in this organism and localized in the epithelium of hepatopancreas (HP) by high-resolution SIMS imaging, which subsequently guided the targeted high mass resolution analysis of HP lipid extract for molecular identification and structural characterization. Dynamic distribution of these sulfate-based lipids in the course of reproduction or oocyte maturation was then investigated by mapping the oocytes of female gammarids at two different reproductive stages. Overall, our results provide both compositional and spatial information of the lipids in this crustacean species.

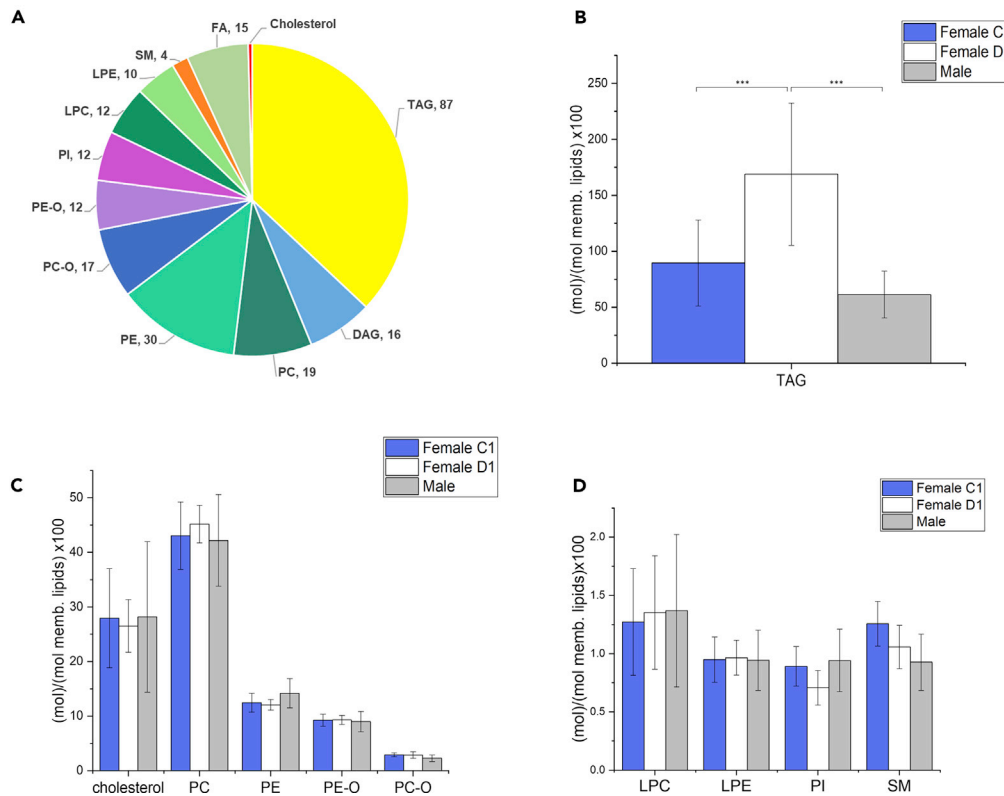
## RESULTS AND DISCUSSION

### Lipid composition of the *Gammarus fossarum* lipidome

Shotgun lipidomics analyses via high-resolution MS in positive and negative ion modes were conducted to decipher the lipidome of males and females of the freshwater crustacean *G. fossarum* and at specific female reproductive stages (Figure S1). The reproduction cycle of female gammarids (oogenesis/vitellogenesis, embryogenesis) is closely synchronized with molting and is now well characterized (Chaumot, et al., 2020; Geffard, et al., 2010; Schirling, et al., 2004). In total, six molt stages are defined according to the phenotypic features of the females, namely postmolt (A, B), intermolt (C1, C2), and premolt (D1, D2). Postmolt stage A is very short, lasts approximately one day (Chaumot, et al., 2020) and can be grouped with stage B as one stage, the AB stage, which involves the hardening of the cuticle. At this stage, the oocytes contain very few lipid globules and yolk vesicles. Intermolt stages C1 and C2 are characterized by an epidermal retraction from the cuticle, which constitutes a determination criterion of these stages based on integument morphogenesis observation of the periopod pairs in this species (Geffard, et al., 2010). The transition between C1 and C2 stage marks the onset of secondary vitellogenesis, the yolk vesicles and lipid globules in the oocytes increase drastically in both number and size. Finally, at premolt stages D1 and D2, a new cuticle is generated before the molting. The histological features of the oocytes at these stages are very similar to those at C2 stage. Along with the phenotypic development, an accumulation of vitellogenin, the key protein involved in reproduction, has been observed throughout the reproductive cycle, and the biggest increases occur from C1 to C2 and C2 to D1 (Jubeaux, et al., 2012). Contrary to females, spermatogenesis in male gammarids is not related to the molting cycle, and morphological parameters are not available to depict accurately the organisms at different spermatogenesis stages. In this study, all the male organisms sampled were in amplexus to ensure they were at similar spermatogenesis stage (mature). Female gammarids were collected at the beginning of intermolt stage (C1) and at premolt stage (D1) to investigate lipid alterations related to oocyte maturation.

By shotgun lipidomics, more than 200 molecular lipid species were quantified, corresponding to 11 major lipid classes in wild male and female adult gammarids – triacylglycerols (TAGs), diacylglycerols, phosphatidylcholines (PCs), phosphatidylethanolamines (PEs), ether lipids (PE-O and PC-O), phosphatidylinositols (PIs), lysophosphatidylcholines (LPCs), lysophosphatidylethanolamines (LPEs), sphingomyelins (SMs), and cholesterol (Figure 1A and Data S1). Our findings have significantly expanded the lipidome coverage reported previously in *G. fossarum* in terms of both lipid class and molecular lipid species (Arambourou, et al., 2018). Total fatty acids (FAs), including the acyl chains of larger lipid molecules from the whole organism, were also examined and deciphered by gas chromatography with flame ionization detector (GC-FID) (Figure S2). The predominant fatty acid in gammarids was monounsaturated C18:1 (~33%). Other FAs of comparatively high level were saturated C16:0 (~16%), polyunsaturated C20:5 n-3 (~14%), and monounsaturated C16:1 (~13%). Omega-3 FAs made up ~25% of the polyunsaturated fatty acid (PUFA) in contrast of omega-6 PUFA (~9%). The main n-3 FA was eicosapentaenoic acid (20:5, n-3), followed by  $\alpha$ -linolenic acid (FA 18:3, n-3).

The TAG class turned out to be the most predominant lipid class in gammarids. Interestingly, females at D1 stage contained more TAGs than females at C1 stage and males (Figure 1B), whereas no major changes were observed for membrane lipids like cholesterol, phospholipids (PC, PE, PE-O, PC-O, PI), lysophospholipids (LPE, LPC), and sphingomyelin (Figures 1C and 1D). In the reproductive cycle of female gammarids, D1 stage follows the second vitellogenesis where dramatically increased follicular surface has been observed compared to females at C1 postmolt stages (Geffard, et al., 2010). It is well documented that in many crustacean species, ovarian maturation requires huge amount of lipids to realize the vitellogenesis process (Alava, et al., 2007; Lee and Walker, 1995; Ravid, et al., 1999). In the female gammarids at D1 stage, TAG is predicted to serve as an energy storage reservoir (FA store) that might be rapidly mobilized on demand during the second vitellogenesis (Subramoniam, 2011). Although a global lipid accumulation during



**Figure 1. Lipid composition of the *Gammarus fossarum* lipidome**

(A) Lipid classes identified in *G. fossarum* organism with the associated number of lipid species identified. Comparison of the different lipid profile between male and female gammarids at specific female reproductive stages (C1 versus D1). (B) TAG profile.

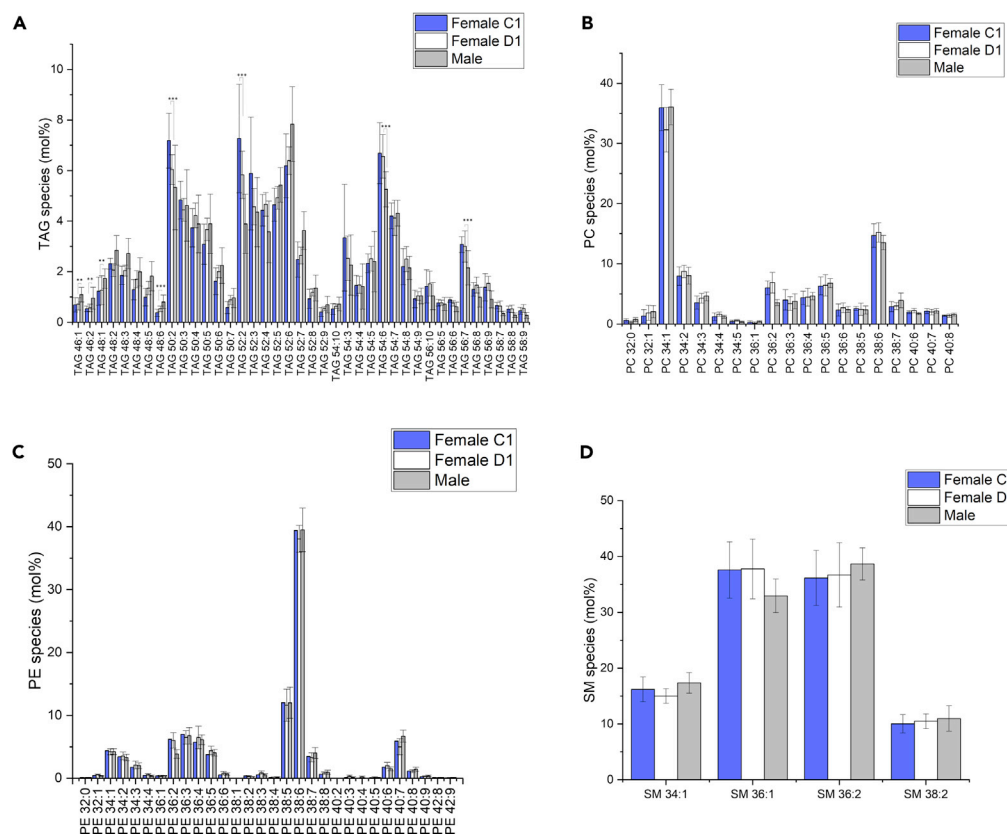
(C) Cholesterol, phosphatidylcholine, phosphatidylethanolamine, and ether lipid distribution.

(D) Lysophospholipid, phosphatidylinositol, and sphingomyelin profile. Lipid class abundance is presented as moles per mole of total membrane lipid (phospholipids, sphingolipids, and sterols – not including storage lipids). Significance was calculated by Student's t test, and statistically significant changes (\*\*\*) are marked by asterisks. Data are represented as mean  $\pm$  standard deviation.

oocyte maturation is evident, the mostly affected stages and lipid species seem to differ among the crustacean species. Equal amounts of TAG and phospholipids are accumulated in the ovary of *Penaeus semisulcatus* when oocytes reach maturation (Ravid, et al., 1999). However, in most species, TAG is primarily responsible for the changes in total lipid content and increase of phospholipids only occurs at the end of maturation (Mourete, et al., 1994; Wouters, et al., 2001) as probably in the case of *G. fossarum*.

### Diversity of molecular lipid species in *G. fossarum* across gender and distinct female reproductive stages

Next, we questioned whether the profile of the molecular lipid species of each lipid class found in adult gammarid varies between the gender and different female reproductive stages. Figure 2 displays the profiles of the molecular species of four lipid classes (namely TAG, PC, PE, and SM) in male gammarid and female gammarids at C1 and D1 stages. The abundance of each lipid was normalized to the total abundance of the corresponding lipid class to show the proportion of each molecular lipid species within a lipid class. It is observed that TAG species containing relatively short chain and PUFAs (e.g., TAG 46:1, TAG 46:2, and TAG 48:1 to TAG 48:6) have a higher proportion in males compared to females, whereas TAGs with longer chain and PUFAs are more prominent in females (e.g., TAG 54:6, TAG 56:7). This difference in the proportion of each molecular species in total TAG is less significant between the females at C1 and D1 reproductive stages. All the reported 46 TAG molecular species were characterized by tandem MS. TAG precursors were detected in positive ion mode as ammonium adduct  $[M + NH_4]^+$ , of which the MS/MS spectra were



**Figure 2. Diverse molecular lipid species in *G. fossarum* across gender and female reproductive stages**

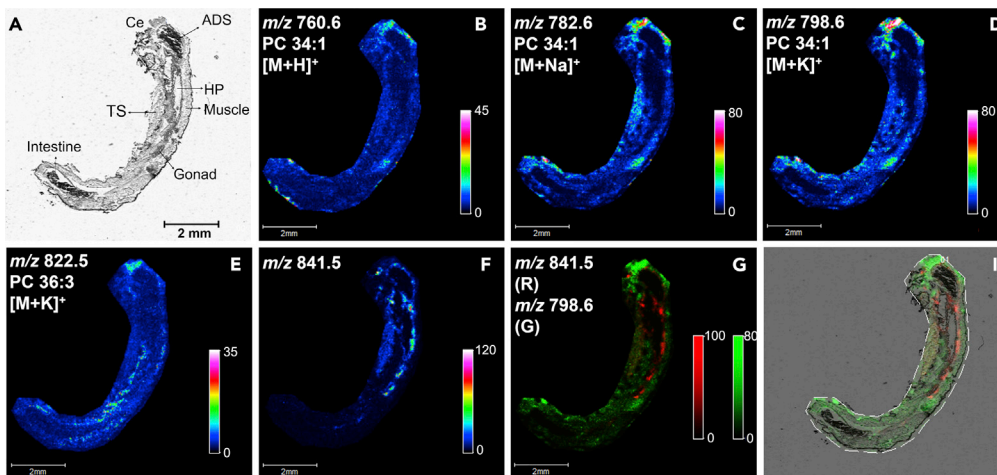
Lipid profile for the main glycerolipid (A) TAG and the two main phospholipid classes (B) PC and (C) PE. (D) Sphingomyelin profile. Note that for TAG profile only the species higher than 5 mol% are presented. Significance was calculated by Student's t test, and statistically significant changes (\*\*p < 0.01, \*\*\*p < 0.001) are marked by asterisks. Data are represented as mean +/- standard deviation.

featured by neutral losses (NLs) of NH<sub>3</sub> and an acyl side chain (as a carboxylic acid ROOH) to generate a diacyl product ion (Figure S3). For instance, under higher-energy collisional dissociation (HCD), the precursor ion at m/z 868.7416 (TAG 52:6, [M + NH<sub>4</sub>]<sup>+</sup>) exhibited NLs of 319, 271, 299, and 245 which correspond to FA 20:5, 16:1, 18:1, and 14:0, respectively. It was also revealed by MS/MS analysis that TAG 52:6 was composed of two isomers TAG 16:0-16:1-20:5 and 14:0-18:1-20:5 (Figure S3B).

For glycerophospholipid class, the predominant PC species in gammarids is monounsaturated PC 34:1, followed by the polyunsaturated PC 38:4 (Figure 2B). These two major PC species were defined as PC 16:0-18:1 and PC 18:1-20:5, respectively, based on the observation of the fragments corresponding to FAs in the negative MS/MS spectra (Figure S4). For PE lipid class, PE 38:6 (PE 18:1-20:5) stands out as the most abundant molecular lipid species (Figures 2C and S5). Only 4 SM species were detected in the gammarid, namely SM 34:1 (d18:1/16:0), 36:1 (d18:1/18:0), 36:2 (d18:1/18:1), and 38:2 (d18:1/20:1) (Figures 2D and S6). This finding was confirmed by a targeted lipidomics approach employing LC-ESI-MS/MS (data not shown). Overall, no significant differences in the proportional abundance of the glycerophospholipid and sphingolipid lipids were observed between male and female gammarid at the molecular species level.

### Localization of lipids in whole-body gammarid section by MALDI MSI

With the rich molecular lipid species information obtained with shotgun lipidomics, MSI was then performed to map the lipids *in situ* and reveal their spatial localization in the tissues and organs of *G. fossarum*. First, longitudinal sections of the male gammarid were mapped by MALDI MSI to examine the global distribution of the lipid species. In negative ion mode, the ions at m/z 295.2 and 297.2 were the main species detected from the tissue section (Figure S7), while in positive ion mode, PCs were the



**Figure 3. Localization of lipids in whole-body gammarid section by MALDI MSI**

(A) Optical image of the whole-body tissue section of the male gammarid. Scale bar, 2mm.

(B) Ion image of protonated PC 34:1.

(C) Ion image of sodium adduct of PC 34:1.

(D) Ion image of potassium adduct of PC 34:1.

(E) Ion image of potassium adduct of PC 36:3.

(F) Ion image of the ion at  $m/z$  841.5.

(G) Two-color overlay of the ion at  $m/z$  841.5 and the potassium adduct of PC 34:1.

(I) Overlay of the two-color overlay image in G and the optical image. Ce: cephalon; ADS: anterior digestive system; HP: hepatopancreas; TS: thorax segments.

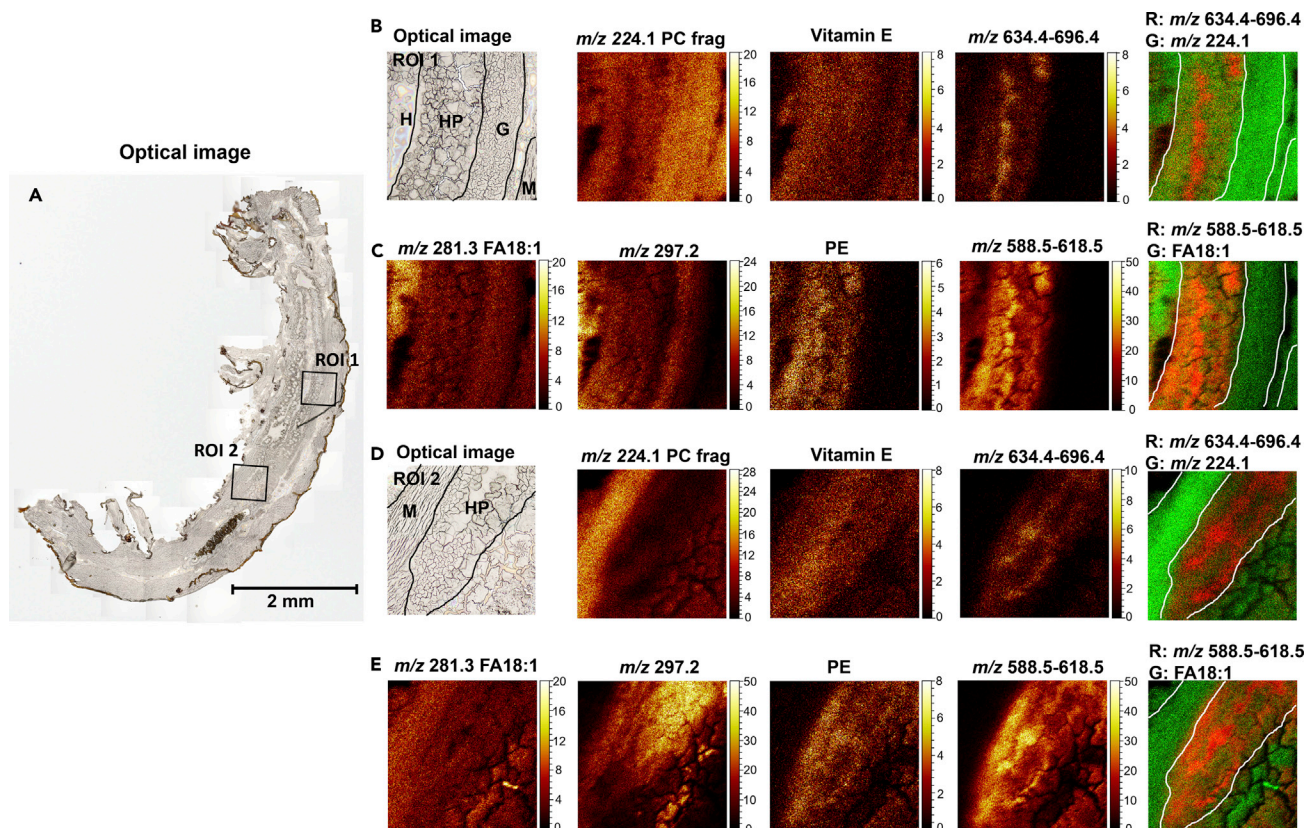
prominent lipid species observed in the mass range of  $m/z$  750-850 (Figure S8). MALDI MS ion images of the main PC lipids, PC 34:1 and PC 36:3, are displayed in Figure 3. Both PC species are distributed across the whole body in cephalon, muscle, and thorax segments (TSs) with higher abundance in cephalon. PC 34:1 is the most abundant PC species according to the shotgun analysis (Figure 2). Three ions related to PC 34:1 ( $[M + H]^+$ ,  $[M + Na]^+$ , and  $[M + K]^+$ ) were detected, all showing identical distribution in the cephalon, muscle, and TS tissue of the male gammarid. Besides the PC lipids, an ion at  $m/z$  841.5 was also observed in the measured mass range (Figures 3F and S8). The ion image showed a distinct spatial localization from the PC lipids. By overlaying the ion image with that of PC 34:1  $[M + K]^+$  and subsequently the optical image of the analyzed tissue section (Figures 3G and 3I), it is revealed that this molecule is principally colocalized to the gonad, as well as to the area close to HP where the gonad is usually located but not seen in the optical image due to the non-ideal cutting orientation during cryosectioning. This ion at  $m/z$  841.5 was tentatively attributed as sulfated glyceroglycolipid (SGG), also referred to as seminolipid with C16:0/C16:0 alkyl/acyl chains (Lessig, et al., 2004).

Seminolipid C16:0/16:0 is the predominant SGG species and is a key lipid involved in germ cell differentiation during spermatogenesis in mammals (Tanphaichitr, et al., 2018; Zhang, et al., 2005), and it is likely to have similar function in *G. fossarum*. In the anatomy of male gammarid, the gonad is surrounded by orange lipid droplets (Wigh, et al., 2017). Therefore, it is unclear if this molecule detected here is derived from the gonad tissue or from the surrounding lipid droplets. The future work will be focusing on characterizing this seminolipid, discovering its potential analogs and identifying its precise localization.

### Lipid distribution in targeted organs by high-resolution SIMS imaging

After examining the global distribution of lipids in the male gammarid, we then applied high-resolution SIMS imaging to scrutinize the individual organs at 2- $\mu$ m lateral resolution. Two regions of interest (ROIs) covering various tissue types including the HP, gonad, and muscle were targeted as shown in the optical images in Figure 4. The ion at  $m/z$  224.1, which is a characteristic fragment of PC lipids, was found abundant in the muscle tissue (Figures 4B and 4D), consistent with the results from MALDI MSI. It is interesting to note that this PC fragment was also observed with high intensity in the gonad tissue, implying the presence of PC lipids in the gonad and which may differ from those in the muscle as certain PC species such





**Figure 4. Lipid distribution in targeted organs of male gammarid by high-resolution SIMS imaging**

(A) Optical image of the gammarid tissue section. Scale bar, 2mm.

(B) Ion images of lipid species detected in positive ion mode in ROI 1.

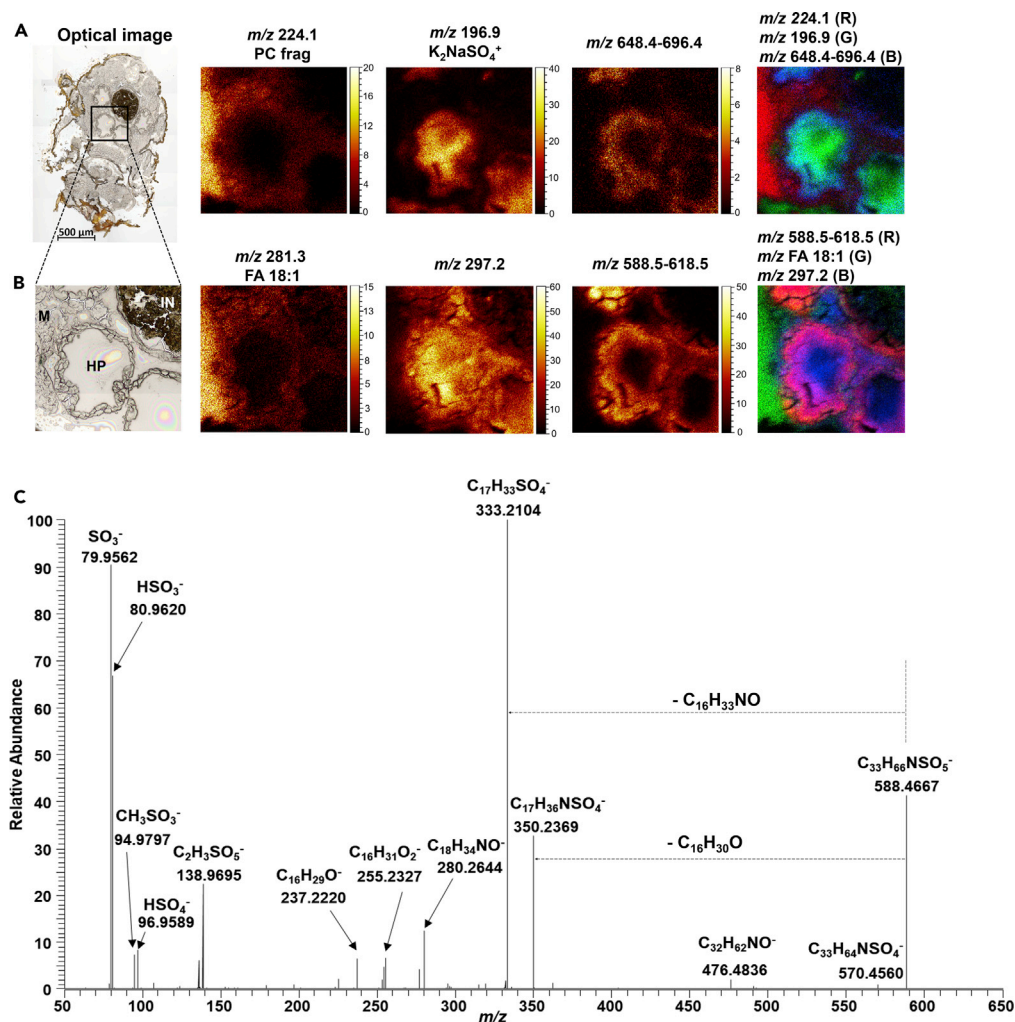
(C) Ion images of lipid species detected in negative ion mode in ROI

(D) Ion images of lipid species detected in positive ion mode in ROI 2.

(E) Ion images of lipid species detected in negative ion mode in ROI 2. Ion image of vitamin E was summed from those of ions at  $m/z$  429.4 ( $C_{29}H_{49}O_2^+$  [M + H-2H] $^+$ ) and  $m/z$  430.4 ( $C_{29}H_{49}O_2^+$  M $^+$ ). Ion image of  $m/z$  634.4–696.4 was summed from those of ions at  $m/z$  634.4, 648.5, 648.4, 664.5, 666.4, 680.4, 682.4, and 696.4. Ion image of  $m/z$  588.5–618.5 was summed from those of ions at  $m/z$  588.5, 602.5, 604.5, 616.5, and 618.5. ROI: region of interest; H: hemocoel; HP: hepatopancreas; G: gonad; M: muscle.

as PC 34:1 was not observed in the gonad from MALDI MSI analysis. Vitamin E (ions at  $m/z$  429.4,  $C_{29}H_{49}O_2^+$  [M + H-2H] $^+$  and  $m/z$  430.4,  $C_{29}H_{49}O_2^+$  M $^+$ ) was also observed in SIMS imaging analysis and was found in all kinds of tissue types. Several unknown ion species were detected between  $m/z$  648.4 and  $m/z$  696.4 in the positive ion mode (Figure S9), and the corresponding ion images show that they appear to be specifically colocalized to the HP (Figures 4B and 4D).

In negative ion mode, several FA species were detected (Figure S10), among which FA 18:1 (oleic acid) was observed across the analyzed regions with higher abundance observed in the body cavity hemocoel (Figures 4C and 4E). The ion at  $m/z$  297.2 showed strong signal in the SIMS spectra acquired in negative ion mode, and the ion images illustrate that this ion species seems to be mostly derived from the lumen of the HP (Figure 4E). The ion image of PE lipid was summed from those of diacylglycerophosphatidylethanolamine and 1-(1Z-alkenyl)-2-acylglycerophosphatidylethanol amines which were all predominantly localized in the HP (Figure S11). Also, in HP, some unknown ion species at  $m/z$  588.5, 602.5, 604.5, 616.5, and 618.5 were detected. These ions turned out to have a very different distribution pattern from that of the ion at  $m/z$  297.2, although they were all derived from the HP organ (Figures S12, 4C, and 4E). The overlay images of the sum of these ion species and FA 18:1 reveal that their distribution is similar to that of ions at  $m/z$  648.4–696.4 detected in positive ion mode. This high-resolution examination of ROIs of the whole-body tissue section provided not only a clearer map of the chemical species distributed in individual organs of the gammarid but also supplementary information in terms of lipid detection.



**Figure 5. Identification of sulfate-based lipid species in the hepatopancreas**

(A) Ion images of selected chemical species detected in positive ion mode. Scale bar, 500  $\mu\text{m}$ .

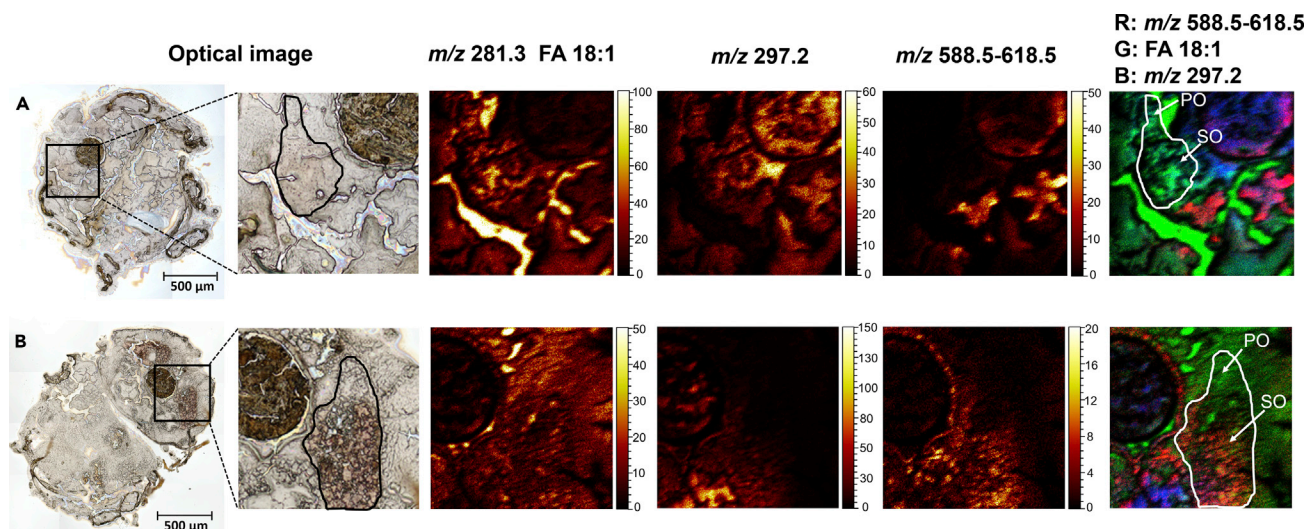
(B) Ion images of selected chemical species detected in negative ion mode.

(C) MS/MS spectrum of the precursor ion at  $m/z$  588.4667 acquired on a QExactive mass spectrometer in negative ion mode. HP: hepatopancreas; M: muscle; IN: intestine.

### Identification of sulfate-based lipid species in the hepatopancreas

With the aim to identify whether the ion species at  $m/z$  632.4–696.4 (in positive ion mode) and  $m/z$  588.5–618.5 (in negative ion mode) are localized in the lumen or the epithelium of the HP, the HP region was then targeted by SIMS imaging on the transverse section where the structures of the 4 HP caeca are well defined (Figure 5). Consistent with the above MALDI and SIMS analyses of longitudinal tissue sections, the ion at  $m/z$  224.1 (PC head group) was predominantly found in the muscle tissue. The ion at  $m/z$  196.9 which was assigned as salt ion  $\text{K}_2\text{NaSO}_4^+$  (based on spectral library search in SurfaceLab) turned out to be concentrated in the lumen of the HP, whereas the ions at  $m/z$  632.4–696.4 were mainly detected from the epithelium of the HP and intestine (Figure 5A). For ions generated in negative ion mode, FA 18:1 shared similar distribution as the PC head group. The ion at  $m/z$  297.2 was found in both the lumen and epithelium of the HP with higher abundance in the lumen. The summed ion image of the ions at  $m/z$  588.5–618.5 and its overlay with FA 18:1 and  $m/z$  297.2 confirm that these ion species are localized principally in the epithelium of the HP and intestine (Figure 5B).

To characterize these unknown ion species, HP tissues from 10 male gammarids were pooled and then extracted according to a modified Folch lipid extraction procedure. Full scan mode and MS/MS on a



**Figure 6. Dynamic change in oocyte lipid composition during the reproductive cycle**

(A) Optical image of the transvers tissue section of C1 female and ion images of FA18:1 and sulfate-based lipids. Scale bar, 500 μm.

(B) Optical image of the transvers tissue section of D1 female and ion images of FA 18:1 and sulfate-based lipids. Scale bar, 500 μm. The ion image of sulfate-based lipids at  $m/z$  588.5–618.5 was summed from those of  $m/z$  588.5,  $m/z$  602.5,  $m/z$  604.5,  $m/z$  616.5, and  $m/z$  618.5.

high-resolution mass spectrometer (ESI-Orbitrap) was performed in both polarities. The ions at  $m/z$  634.4–696.4 were not observed in the positive ion mode, either due to low abundance or low extraction efficiency. In negative ion mode, the ions at  $m/z$  295.2, 297.2 and  $m/z$  588.5–618.5 were readily detected, and subsequent MS/MS analyses yielded informative tandem mass spectra (Figures 5C and S13–S18). Fragment ions corresponding to sulfate ion ( $m/z$  79.9562,  $\text{SO}_3^-$ ,  $m/z$  80.9620,  $\text{HSO}_3^-$  and  $m/z$  96.9589,  $\text{HSO}_4^-$ ), as well as neutral losses of hydrocarbon chains containing O and N motifs (e.g.,  $\text{C}_{16}\text{H}_{30}\text{O}$  and  $\text{C}_{16}\text{H}_{33}\text{NO}$  in Figure 5C), were observed in the MS/MS spectra of all the precursor ions at  $m/z$  588.5–618.5, indicating these molecules were sulfate-based lipids. Both precursor and fragment ions were annotated with a high mass accuracy better than 5 ppm (Figure 5C, Figures S15–S18, and Table S1). Based on these accurate MS and MS/MS data, various databases including METLIN (Smith, et al., 2005) and LIPID MAPS (Fahy, et al., 2007) were interrogated without getting any possible matches. Thus, these sulfate-based lipids are predicted to be new molecules present in this gammarid species. Sulfate-based lipids (SBLs) belong to sulfolipids, a heterogeneous class of lipids containing sulfur element in the structure (Dias, et al., 2019). In mammals, SBLs are involved in various biochemical processes including cell-cell communication (Honke, 2013), inflammation (Hu, et al., 2007), and immunity (Avila, et al., 1996). Some SBLs, such as cholesterol sulfate and  $\text{SO}_3$ -Gal-ceramide, are commonly found in the epithelium of digestive tracts to regulate the activities of pancreatic protease by inhibiting elastase (Ito, et al., 1998). We hypothesized that the SBL detected in the HP might be involved in similar activities in *G. fossarum*. However, further investigations are required to elucidate their biological functions.

### Dynamic change in oocyte lipid composition during the female reproductive cycle

As described previously, the reproductive cycle of female gammarids comprises six molt stages which are characterized by the maturation of oocytes (Geffard, et al., 2010; Schirling, et al., 2004). To investigate the dynamics of lipid composition related to the maturation process, high-resolution TOF-SIMS imaging was performed to map the chemical composition of the early vitellogenic oocytes of female gammarids at C1 stage and the late vitellogenic oocytes of female gammarids at D1 stage, respectively. The analyzed areas covering various tissue types including oocytes, HP, intestine, and muscle are shown in Figure 6. The regions of oocytes were defined and outlined by comparing with hematoxylin and eosin-stained images of the same sections analyzed by TOF-SIMS (Figure S19). For females at both C1 and D1 stages, FAs were detected across the analyzed area with lower abundance in the intestine and HP. Intense signals of FAs were also observed in the hallow area caused by tissue cracking which frequently occurred during preparation of fragile tissue sections. The ion at  $m/z$  297.2 was found abundant in the HP and intestine in females at both stages. Very interesting to note is the distribution of the newly identified sulfate-based lipids. Compared to

the female at C1 stage where the SBLs were mainly detected from the HP, the D1 female showed a significant accumulation of SLs in the oocytes. In [Figure 6B](#), the overlay image of SBL, FA18:1, and the ion at  $m/z$  297.2 illustrates that the SBLs are only accumulated in the secondary oocytes and are absent in the primary oocytes, which are immature oocytes at the previtellogenic stage ([Schirling, et al., 2004](#); [Tan-Fermin and Pudadera, 1989](#)).

Although it is demonstrated in many crustacean species that accumulation of lipids in the oocytes occurs during the ovarian maturation, the origin of these rapidly accumulated lipids is not fully understood. Mobilization of lipids from the HP to oocytes in the prawn *Penaeus japonicus* has been proven by tracing the lipids derived from radioactive labeled FAs ([Teshima, et al., 1988](#)). In addition, several studies have reported the co-occurrence of a decreased lipid content in the HP and an increased lipid content in the ovary during ovarian maturation ([Alava, et al., 2007](#); [Castille and Lawrence, 1989](#); [Spaargaren and Haefner, 1994](#)). Therefore, it has been hypothesized that the HP also functions as a lipid storage organ in crustacean species and could release the required lipids to oocytes to facilitate their maturation. By high-resolution MSI, the observation of the accumulation of SBLs in oocytes of D1 female suggests that these SBLs have probably gone through this lipid transfer process to accumulate in oocytes of the female gammarids and play an important role in the maturation process.

### Limitations of the study

The chemical structure of sulfate-based lipid species observed in the HP and oocytes should be determined by nuclear magnetic resonance spectroscopy and their respective isomers if they exist by ion mobility-MS. Characterization of seminolipid is a challenge since this lipid may be associated with lipid storage droplets or/and gonad tissue. The determination of the precise FA structure (geometric isomerism, *cis/trans*) was not addressed in this study.

### Resource availability

#### Lead contact

Further information should be directed to and will be fulfilled by the lead contact, Sophie Ayciriex ([sophie.ayciriex@univ-lyon1.fr](mailto:sophie.ayciriex@univ-lyon1.fr)).

#### Material availability

This study did not generate new unique materials.

#### Data and software availability

Shotgun lipidomics data and MS imaging data have been deposited to the EMBL-EBI MetaboLights database with the identifier MTBLS1901. The data sets can be accessed here: <https://www.ebi.ac.uk/metabolights/MTBLS1901>.

## METHODS

All methods can be found in the accompanying [Transparent methods supplemental file](#).

## SUPPLEMENTAL INFORMATION

Supplemental Information can be found online at <https://doi.org/10.1016/j.isci.2021.102115>.

## ACKNOWLEDGMENTS

This work was supported by the French National Research Agency (ANR) (young investigator grant, ANR-18-CE34-0008 PLAN-TOX), the Chemistry Institute of Lyon (young investigator inter-laboratory cooperation grant, ICL-2017 DOSAGE), the ISA research funds grant, and also the French GDR "Aquatic Ecotoxicology" framework which aims at fostering stimulating discussions and collaborations for more integrative approaches. MALDI-TOF instrument at CNRS-ICSN was founded by the Région Ile-de-France (DIM Analytics). We would like to thank Elodie Chauvet, Yves de Puydt from Tescan Analytics (Fuveau, France) for the access to TOF-SIMS instrument and the help with the experiments. We thank Jean-Valery Guillaubez for his technical assistance on the lipid MS analysis of the hepatopancreas sample. We would also like to warmly thank Dr. Serge Della-Negra for his support and fruitful discussions. We thank Dr. Alain Brunelle for his careful and critical reading of the manuscript. The authors thank Nicolas Delorme, Laura Garnero,

Hervé Quéau for their technical assistance in gammarids sampling and Guy Charmantier for his help on gammarids histology. We thank the Pôle Biosciences, Technologies, Ethique of Lyon Catholic University for the access to the microtome.

### AUTHOR CONTRIBUTIONS

T.F., O.G., A.C., D.D.E., and S.A. designed research; T.F., O.K., E.T., N.E., and S.A. performed the experiments; J.L., A.S., A.Sh., and D.T. contributed analytic tools; T.F., Y.C., and S.A. performed data processing; T.F., O.K., O.G., Y.C., E.T., and S.A. analyzed data; T.F., O.G., and K.A. conducted histology analysis; S.A. provided funding, project administration, and resources; and T.F. and S.A. prepared the figures and wrote the manuscript. All authors have provided feedback on the manuscript and have approved the final version.

### DECLARATION OF INTERESTS

The authors declare no competing interests.

Received: December 11, 2020

Revised: January 14, 2021

Accepted: January 22, 2021

Published: February 19, 2021

### REFERENCES

- Alava, V.R., Quinitio, E.T., De Pedro, J.B., Priolo, F.M.P., Orozco, Z.G.A., and Wille, M. (2007). Lipids and fatty acids in wild and pond-reared mud crab *Scylla serrata* (Forsskål) during ovarian maturation and spawning. *Aquac. Res.* 38, 1468–1477.
- Arambourou, H., Fuertes, I., Vulliet, J., Daniele, G., Noury, P., Delorme, N., Abbaci, K., and Barata, C. (2018). Fenoxycarb exposure disrupted the reproductive success of the amphipod *Gammarus fossarum* with limited effects on the lipid profile. *PLoS One* 13, e0196461.
- Avila, J.L., Rojas, M., and Avila, A. (1996). Cholesterol sulphate-reactive autoantibodies are specifically increased in chronic chagasic human patients. *Clin. Exp. Immunol.* 103, 40–46.
- Ayciriex, S., Djelti, F., Alves, S., Regazzetti, A., Gaudin, M., Varin, J., Langui, D., Bieche, I., Hudry, E., Dargere, D., et al. (2017). Neuronal cholesterol accumulation induced by Cyp46a1 down-regulation in mouse hippocampus disrupts brain lipid homeostasis. *Front Mol. Neurosci.* 10, 211.
- Ayciriex, S., Touboul, D., Brunelle, A., and Laprevote, O. (2011). Time-of-flight secondary ion mass spectrometer: a novel tool for lipid imaging. *Clin. Lipidol.* 6, 437–445.
- Benabdellah, F., Seyer, A., Quinton, L., Touboul, D., Brunelle, A., and Laprevote, O. (2010). Mass spectrometry imaging of rat brain sections: nanomolar sensitivity with MALDI versus nanometer resolution by TOF-SIMS. *Anal Bioanal. Chem.* 396, 151–162.
- Besse, J.P., Coquery, M., Lopes, C., Chaumot, A., Budzinski, H., Labadie, P., and Geffard, O. (2013). Caged *Gammarus fossarum* (Crustacea) as a robust tool for the characterization of bioavailable contamination levels in continental waters: towards the determination of threshold values. *Water Res.* 47, 650–660.
- Bich, C., Touboul, D., and Brunelle, A. (2014). Cluster TOF-SIMS imaging as a tool for micrometric histology of lipids in tissue. *Mass Spectrom. Rev.* 33, 442–451.
- Bowman, A.P., Abzalimov, R.R., and Shvartsburg, A.A. (2017). Broad separation of isomeric lipids by high-resolution differential ion mobility spectrometry with tandem mass spectrometry. *J. Am. Soc. Mass Spectrom.* 28, 1552–1561.
- Brown, S.H., Mitchell, T.W., and Blanksby, S.J. (2011). Analysis of unsaturated lipids by ozone-induced dissociation. *Biochim. Biophys. Acta* 1811, 807–817.
- Capitao, A., Lyssimachou, A., Castro, L.F.C., and Santos, M.M. (2017). Obesogens in the aquatic environment: an evolutionary and toxicological perspective. *Environ. Int.* 106, 153–169.
- Carvalho, M., Sampaio, J.L., Palm, W., Brankatschk, M., Eaton, S., and Shevchenko, A. (2012). Effects of diet and development on the *Drosophila* lipidome. *Mol. Syst. Biol.* 8, 600.
- Castille, F.L., and Lawrence, A.L. (1989). Relationship between maturation and biochemical composition of the gonads and digestive glands of the shrimps *Penaeus aztecus* and *Penaeus setiferus* (L.). *J. Crust. Biol.* 9, 202–211.
- Chaumot, A., Coulaud, R., Adam, O., Queau, H., Lopes, C., and Geffard, O. (2020). In situ reproductive bioassay with caged *Gammarus fossarum* (Crustacea): Part 1-gauging the confounding influence of temperature and water hardness. *Environ. Toxicol. Chem.* 39, 667–677.
- Chaumot, A., Geffard, O., Armengaud, J., and Maltby, L. (2015). Chapter 11 - gammarids as reference species for freshwater monitoring. In *Aquat Ecotoxicol*, C. Amiard-Triquet, J.-C. Amiard, and C. Mouneyrac, eds. (Academic Press), pp. 253–280.
- Davoli, E., Zucchetti, M., Matteo, C., Ubezio, P., D'Incalci, M., and Morosi, L. (2020). The space dimension at the micro level: mass spectrometry imaging of drugs in tissues. *Mass Spectrom. Rev.* <https://doi.org/10.1002/mas.21633>.
- De Mendoza, D., and Pilon, M. (2019). Control of membrane lipid homeostasis by lipid-bilayer associated sensors: a mechanism conserved from bacteria to humans. *Prog. Lipid Res.* 76, 100996.
- Dedourge-Geffard, O., Palais, F., Biagianti-Risbourg, S., Geffard, O., and Geffard, A. (2009). Effects of metals on feeding rate and digestive enzymes in *Gammarus fossarum*: an in situ experiment. *Chemosphere* 77, 1569–1576.
- Dias, I.H.K., Ferreira, R., Gruber, F., Vitorino, R., Rivas-Urbina, A., Sanchez-Quesada, J.L., Vieira Silva, J., Fardilha, M., de Freitas, V., and Reis, A. (2019). Sulfate-based lipids: analysis of healthy human fluids and cell extracts. *Chem. Phys. Lipids* 221, 53–64.
- Djambazova, K.V., Klein, D.R., Migas, L.G., Neumann, E.K., Rivera, E.S., Van de Plas, R., Caprioli, R.M., and Spraggins, J.M. (2020). Resolving the complexity of spatial lipidomics using MALDI TIMS imaging mass spectrometry. *Anal Chem.* 92, 13290–13297.
- Dutta, A., and Sinha, D.K. (2017). Zebrafish lipid droplets regulate embryonic ATP homeostasis to power early development. *Open Biol.* 7, 170063.
- Ejsing, C.S., Sampaio, J.L., Surendranath, V., Duchoslav, E., Ekroos, K., Klemm, R.W., Simons, K., and Shevchenko, A. (2009). Global analysis of the yeast lipidome by quantitative shotgun mass spectrometry. *Proc. Natl. Acad. Sci. U S A.* 106, 2136–2141.
- Fahy, E., Cotter, D., Sud, M., and Subramaniam, S. (2011). Lipid classification, structures and tools. *Biochim. Biophys. Acta* 1811, 637–647.
- Fahy, E., Subramaniam, S., Brown, H.A., Glass, C.K., Merrill, A.H., Jr., Murphy, R.C., Raetz, C.R., Russell, D.W., Seyama, Y., Shaw, W., et al. (2005). A comprehensive classification system for lipids. *J. Lipid Res.* 46, 839–861.

- Fahy, E., Subramaniam, S., Murphy, R.C., Nishijima, M., Raetz, C.R., Shimizu, T., Spener, F., van Meer, G., Wakelam, M.J., and Dennis, E.A. (2009). Update of the LIPID MAPS comprehensive classification system for lipids. *J. Lipid Res.* 50 (Suppl), S9–S14.
- Fahy, E., Sud, M., Cotter, D., and Subramaniam, S. (2007). LIPID MAPS online tools for lipid research. *Nucleic Acids Res.* 35, W606–W612.
- Fu, T., Oetjen, J., Chapelle, M., Verdu, A., Szesny, M., Chaumont, A., Degli-Esposti, D., Geffard, O., Clement, Y., Salvador, A., et al. (2020). In situ isobaric lipid mapping by MALDI-ion mobility separation-mass spectrometry imaging. *J. Mass Spectrom.* 55, e4531.
- Fuertes, I., Pina, B., and Barata, C. (2020). Changes in lipid profiles in *Daphnia magna* individuals exposed to low environmental levels of neuroactive pharmaceuticals. *Sci. Total Environ.* 733, 139029.
- Geffard, O., Xuereb, B., Chaumont, A., Geffard, A., Biagianni, S., Noel, C., Abbaci, K., Garric, J., Charmantier, G., and Charmantier-Daures, M. (2010). Ovarian cycle and embryonic development in *Gammarus fossarum*: application for reproductive toxicity assessment. *Environ. Toxicol. Chem.* 29, 2249–2259.
- Gessel, M.M., Norris, J.L., and Caprioli, R.M. (2014). MALDI imaging mass spectrometry: spatial molecular analysis to enable a new age of discovery. *J. Proteom* 107, 71–82.
- Groessl, M., Graf, S., and Knochenmuss, R. (2015). High resolution ion mobility-mass spectrometry for separation and identification of isomeric lipids. *Analyst* 140, 6904–6911.
- Guan, X.L., Cestra, G., Shui, G., Kuhrs, A., Schittenhelm, R.B., Hafen, E., van der Goot, F.G., Robinett, C.C., Gatti, M., Gonzalez-Gaitan, M., et al. (2013). Biochemical membrane lipidomics during *Drosophila* development. *Dev. Cell* 24, 98–111.
- Han, X., and Gross, R.W. (2003). Global analyses of cellular lipidomes directly from crude extracts of biological samples by ESI mass spectrometry: a bridge to lipidomics. *J. Lipid Res.* 44, 1071–1079.
- Han, X., and Gross, R.W. (2005a). Shotgun lipidomics: electrospray ionization mass spectrometric analysis and quantitation of cellular lipidomes directly from crude extracts of biological samples. *Mass Spectrom. Rev.* 24, 367–412.
- Han, X., and Gross, R.W. (2005b). Shotgun lipidomics: multidimensional MS analysis of cellular lipidomes. *Expert Rev. Proteomics* 2, 253–264.
- Harvald, E.B., Sprenger, R.R., Dall, K.B., Ejsing, C.S., Nielsen, R., Mandrup, S., Murillo, A.B., Larance, M., Gartner, A., Lamond, A.I., et al. (2017). Multi-omics analyses of starvation responses reveal a central role for lipoprotein metabolism in acute starvation survival in *C. elegans*. *Cell Syst.* 5, 38–52 e34.
- Honke, K. (2013). Biosynthesis and biological function of sulfolipids. *Proc. Jpn. Acad. Ser. B Phys. Biol. Sci.* 89, 129–138.
- Hsu, F.F. (2018). Mass spectrometry-based shotgun lipidomics - a critical review from the technical point of view. *Anal. Bioanal. Chem.* 410, 6387–6409.
- Hu, C., Wang, C., He, L., and Han, X. (2019). Novel strategies for enhancing shotgun lipidomics for comprehensive analysis of cellular lipidomes. *Trends Analyt. Chem.* 120, 115330.
- Hu, R., Li, G., Kamijo, Y., Aoyama, T., Nakajima, T., Inoue, T., Node, K., Kannagi, R., Kyogashima, M., and Hara, A. (2007). Serum sulfatides as a novel biomarker for cardiovascular disease in patients with end-stage renal failure. *Glycoconj. J.* 24, 565–571.
- Ito, N., Iwamori, Y., Hanaoka, K., and Iwamori, M. (1998). Inhibition of pancreatic elastase by sulfated lipids in the intestinal mucosa. *J. Biochem.* 123, 107–114.
- Jackson, S.N., Ugarov, M., Post, J.D., Egan, T., Langlais, D., Schultz, J.A., and Woods, A.S. (2008). A study of phospholipids by ion mobility TOFMS. *J. Am. Soc. Mass Spectrom.* 19, 1655–1662.
- Jubeaux, G., Simon, R., Salvador, A., Queau, H., Chaumont, A., and Geffard, O. (2012). Vitellogenin-like proteins in the freshwater amphipod *Gammarus fossarum* (Koch, 1835): functional characterization throughout reproductive process, potential for use as an indicator of oocyte quality and endocrine disruption biomarker in males. *Aquat. Toxicol.* 112–113, 72–82.
- Kim, H.I., Kim, H., Pang, E.S., Ryu, E.K., Beegle, L.W., Loo, J.A., Goddard, W.A., and Kanik, I. (2009). Structural characterization of unsaturated phosphatidylcholines using traveling wave ion mobility spectrometry. *Anal. Chem.* 81, 8289–8297.
- Klose, C., Surma, M.A., Gerl, M.J., Meyenhofer, F., Shevchenko, A., and Simons, K. (2012). Flexibility of a eukaryotic lipidome—insights from yeast lipidomics. *PLoS One* 7, e35063.
- Klose, C., Surma, M.A., and Simons, K. (2013). Organellar lipidomics—background and perspectives. *Curr. Opin. Cell Biol.* 25, 406–413.
- Knittelfelder, O., Traikov, S., Vvedenskaya, O., Schuhmann, A., Segeletz, S., Shevchenko, A., and Shevchenko, A. (2018). Shotgun lipidomics combined with laser capture microdissection: a tool to analyze histological zones in cryosections of tissues. *Anal. Chem.* 90, 9868–9878.
- Kolanowski, W., Stolyhwo, A., and Grabowski, M. (2007). Fatty acid composition of selected fresh water gammarids (Amphipoda, Crustacea): a potentially innovative source of omega-3 LC PUFA. *J. Am. Oil Chem. Soc.* 84, 827–833.
- Kunz, P.Y., Kienle, C., and Gerhardt, A. (2010). *Gammarus* spp. in aquatic ecotoxicology and water quality assessment: toward integrated multilevel tests. *Rev. Environ. Contam. Toxicol.* 205, 1–76.
- Leapfrog, K.L., May, J.C., Dodds, J.N., and McLean, J.A. (2019). Ion mobility conformational lipid atlas for high confidence lipidomics. *Nat. Commun.* 10, 985.
- Lee, R.F., and Walker, A. (1995). Lipovitellin and lipid droplet accumulation in oocytes during ovarian maturation in the blue crab, *Callinectes sapidus*. *J. Exp. Zool.* 271, 401–412.
- Lessig, J., Gey, C., Suss, R., Schiller, J., Glander, H.J., and Arnhold, J. (2004). Analysis of the lipid composition of human and boar spermatozoa by MALDI-TOF mass spectrometry, thin layer chromatography and <sup>31</sup>P NMR spectroscopy. *Comp. Biochem. Physiol. B Biochem. Mol. Biol.* 137, 265–277.
- McDonnell, L.A., and Heeren, R.M.A. (2007). Imaging mass spectrometry. *Mass Spectrom. Rev.* 26, 606–643.
- Mehennaoui, K., Georgantzopoulou, A., Felten, V., Andrej, J., Garaud, M., Cambier, S., Serchi, T., Pain-Devin, S., Guérol, F., Audinot, J.N., et al. (2016). *Gammarus fossarum* (Crustacea, Amphipoda) as a model organism to study the effects of silver nanoparticles. *Sci. Total Environ.* 566–567, 1649–1659.
- Mourente, G., Medina, A., González, S., and Rodríguez, A. (1994). Changes in lipid class and fatty acid contents in the ovary and midgut gland of the female fiddler crab *Uca tangeri* (Decapoda, Ocypodiidae) during maturation. *Mar. Biol.* 121, 187–197.
- Obeid, L.M., Linardic, C.M., Karolak, L.A., and Hannun, Y.A. (1993). Programmed cell death induced by ceramide. *Science* 259, 1769–1771.
- Palm, W., Sampaio, J.L., Brankatschk, M., Carvalho, M., Mahmoud, A., Shevchenko, A., and Eaton, S. (2012). Lipoproteins in *Drosophila melanogaster*-assembly, function, and influence on tissue lipid composition. *PLoS Genet.* 8, e1002828.
- Penkov, S., Mende, F., Zagoriy, V., Erkut, C., Martin, R., Passler, U., Schuhmann, K., Schwudke, D., Gruner, M., Mantler, J., et al. (2010). Maradolipids: diacyltrehalose glycolipids specific to dauer larva in *Caenorhabditis elegans*. *Angew. Chem. Int. Ed.* 49, 9430–9435.
- Ravid, T., Tietz, A., Khayat, M., Boehm, E., Michelis, R., and Lubzens, E. (1999). Lipid accumulation in the ovaries of a marine shrimp *Penaeus semisulcatus* (de haan). *J. Exp. Biol.* 202 (Pt 13), 1819–1829.
- Ryan, E., Nguyen, C.Q.N., Shiea, C., and Reid, G.E. (2017). Detailed structural characterization of sphingolipids via 193 nm ultraviolet photodissociation and ultra high resolution tandem mass spectrometry. *J. Am. Soc. Mass Spectrom.* 28, 1406–1419.
- Sämfors, S., and Fletcher, J.S. (2020). Lipid diversity in cells and tissue using imaging SIMS. *Annu. Rev. Anal. Chem.* 13, 249–271.
- Schirling, M., Jungmann, D., Ladewig, V., Nagel, R., Triebkorn, R., and Köhler, H.R. (2005). Endocrine effects in *Gammarus fossarum* (Amphipoda): influence of wastewater effluents, temporal variability, and spatial aspects on natural populations. *Arch. Environ. Contam. Toxicol.* 49, 53–61.
- Schirling, M., Triebkorn, R., and Köhler, H.R. (2004). Variation in stress protein levels (hsp70 and hsp90) in relation to oocyte development in *Gammarus fossarum* (Koch 1835). *Invertebr. Reprod. Dev.* 45, 161–167.

- Shevchenko, A., and Simons, K. (2010). Lipidomics: coming to grips with lipid diversity. *Nat. Rev. Mol. Cell Biol.* *11*, 593–598.
- Smith, C.A., O'Maille, G., Want, E.J., Qin, C., Trauger, S.A., Brandon, T.R., Custodio, D.E., Abagyan, R., and Siuzdak, G. (2005). METLIN: a metabolite mass spectral database. *Ther. Drug Monit.* *27*, 747–751.
- Spaargaren, D.H., and Haefner, P.A. (1994). Interactions of ovary and hepatopancreas during the reproductive cycle of Crangon crangon (L.). II. biochemical relationships. *J. Crust Biol.* *14*, 6–19.
- Spengler, B. (2015). Mass spectrometry imaging of biomolecular information. *Anal. Chem.* *87*, 64–82.
- Subramoniam, T. (2011). Mechanisms and control of vitellogenesis in crustaceans. *Fish. Sci.* *77*, 1–21.
- Tan-Fermin, J.D., and Pudadera, R.A. (1989). Ovarian maturation stages of the wild giant tiger prawn, *Penaeus monodon Fabricius*. *Aquaculture* *77*, 229–242.
- Tanphaichitr, N., Kongmanas, K., Faull, K.F., Whitelegge, J., Compostella, F., Goto-Inoue, N., Linton, J.J., Doyle, B., Oko, R., Xu, H., et al. (2018). Properties, metabolism and roles of sulfogalactosylglycerolipid in male reproduction. *Prog. Lipid Res.* *72*, 18–41.
- Taylor, N.S., White, T.A., and Viant, M.R. (2017). Defining the baseline and oxidant perturbed lipidomic profiles of *Daphnia magna*. *Metabolites* *7*, 11.
- Teshima, S., Kanazawa, A., Koshio, S., and Horinouchi, K. (1988). Lipid metabolism in destalked prawn *Penaeus japonicus*: induced maturation and accumulation of lipids in the ovaries. *Nippon Suisan Gakk* *54*, 1115–1122.
- Thommen, A., Werner, S., Frank, O., Philipp, J., Knittelfelder, O., Quek, Y., Fahmy, K., Shevchenko, A., Friedrich, B.M., Julicher, F., et al. (2019). Body size-dependent energy storage causes Kleiber's law scaling of the metabolic rate in planarians. *Elife* *8*, e38187.
- Touboul, D., and Brunelle, A. (2016). What more can TOF-SIMS bring than other MS imaging methods? *Bioanalysis* *8*, 367–369.
- Trapp, J., Armengaud, J., Pible, O., Gaillard, J.C., Abbaci, K., Habtoul, Y., Chaumot, A., and Geffard, O. (2015). Proteomic investigation of male *Gammarus fossarum*, a freshwater crustacean, in response to endocrine disruptors. *J. Proteome Res.* *14*, 292–303.
- van Meer, G. (2005). Cellular lipidomics. *EMBO J.* *24*, 3159–3165.
- van Meer, G., Voelker, D.R., and Feigenson, G.W. (2008). Membrane lipids: where they are and how they behave. *Nat. Rev. Mol. Cell Biol.* *9*, 112–124.
- Wang, Y., Hinz, S., Uckermann, O., Honscheid, P., von Schonfels, W., Burmeister, G., Hendricks, A., Ackerman, J.M., Baretton, G.B., Hampe, J., et al. (2020). Shotgun lipidomics-based characterization of the landscape of lipid metabolism in colorectal cancer. *Biochim. Biophys. Acta Mol. Cell Biol. Lipids* *1865*, 158579.
- Wattier, R., Mamos, T., Copilas-Ciocianu, D., Jelic, M., Ollivier, A., Chaumot, A., Danger, M., Felten, V., Piscart, C., Zganec, K., et al. (2020). Continental-scale patterns of hyper-cryptic diversity within the freshwater model taxon *Gammarus fossarum* (Crustacea, Amphipoda). *Sci. Rep.* *10*, 16536.
- Wenk, M.R. (2005). The emerging field of lipidomics. *Nat. Rev. Drug Discov.* *4*, 594–610.
- Wigh, A., Geffard, O., Abbaci, K., Francois, A., Noury, P., Bergé, A., Vulliet, E., Domenjoud, B., Gonzalez-Ospina, A., Bony, S., et al. (2017). *Gammarus fossarum* as a sensitive tool to reveal residual toxicity of treated wastewater effluents. *Sci. Total Environ.* *584-585*, 1012–1021.
- Williams, P.E., Klein, D.R., Greer, S.M., and Brodbelt, J.S. (2017). Pinpointing double bond and sn-positions in glycerophospholipids via hybrid 193 nm ultraviolet photodissociation (UVPD) mass spectrometry. *J. Am. Chem. Soc.* *139*, 15681–15690.
- Wouters, R., Molina, C., Lavens, P., and Calderón, J. (2001). Lipid composition and Vitamin content of wild female *Litopenaeus vannamei* in different stages of sexual maturation. *Aquaculture* *198*, 16.
- Zemski Berry, K.A., Hankin, J.A., Barkley, R.M., Spraggins, J.M., Caprioli, R.M., and Murphy, R.C. (2011). MALDI imaging of lipid biochemistry in tissues by mass spectrometry. *Chem. Rev.* *111*, 6491–6512.
- Zhang, Y., Hayashi, Y., Cheng, X., Watanabe, T., Wang, X., Taniguchi, N., and Honke, K. (2005). Testis-specific sulfoglycolipid, seminolipid, is essential for germ cell function in spermatogenesis. *Glycobiology* *15*, 649–654.
- Zhang, Y.M., and Rock, C.O. (2008). Membrane lipid homeostasis in bacteria. *Nat. Rev. Microbiol.* *6*, 222–233.
- Zullig, T., and Kofeler, H.C. (2020). High resolution mass spectrometry in lipidomics. *Mass Spectrom. Rev.* <https://doi.org/10.1002/mas.21627>.

## Supplemental Information

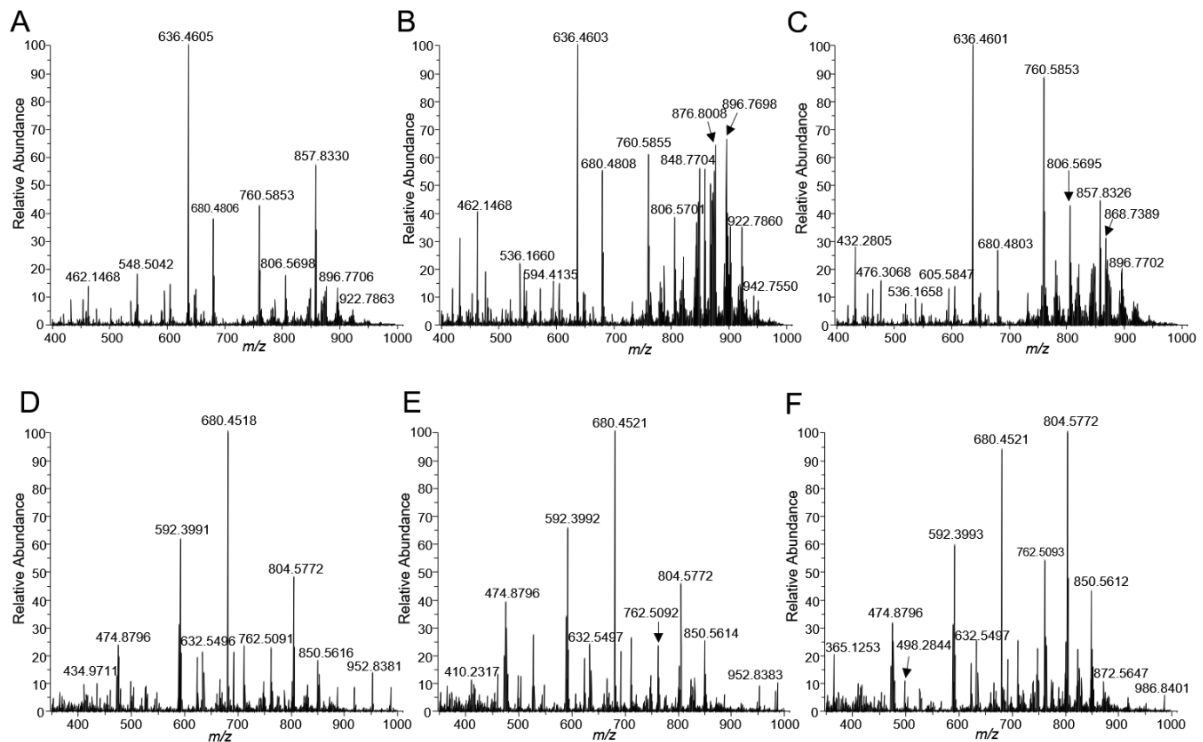
### Shotgun lipidomics and mass spectrometry imaging unveil diversity and dynamics in *Gammarus fossarum* lipid composition

Tingting Fu, Oskar Knittelfelder, Olivier Geffard, Yohann Clément, Eric Testet, Nicolas Elie, David Touboul, Khedidja Abbaci, Andrej Shevchenko, Jerome Lemoine, Arnaud Chaumot, Arnaud Salvador, Davide Degli-Esposti, and Sophie Ayciriex



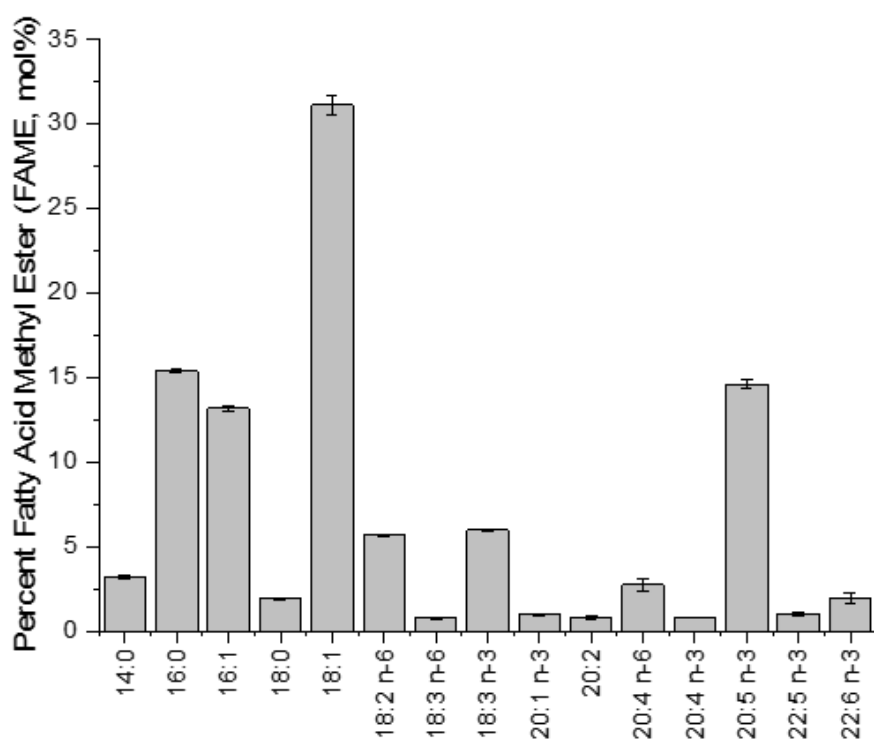
## Supplemental Information

## Supplemental Figures



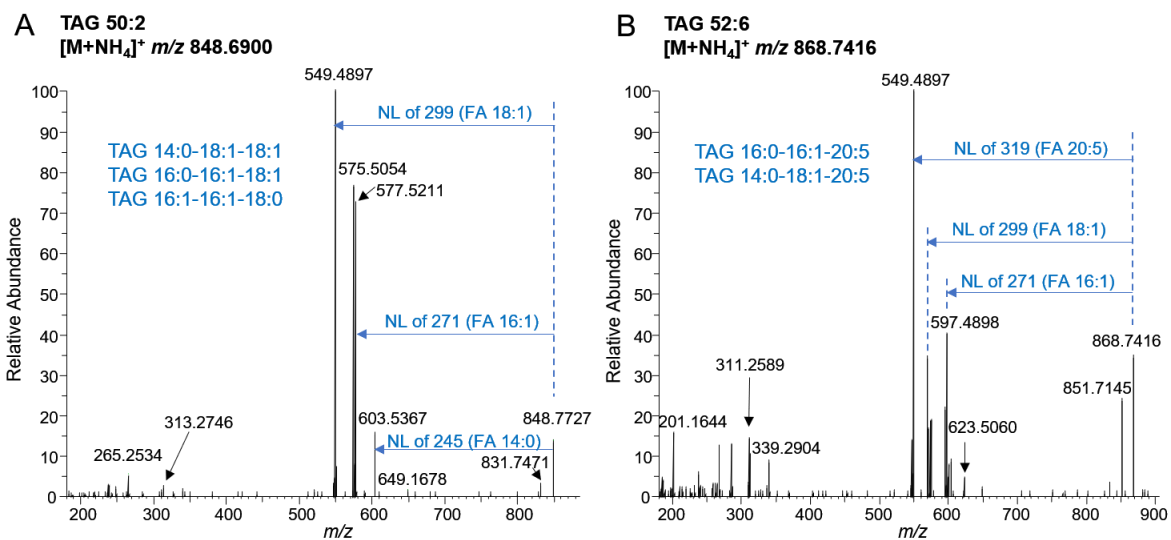
**Figure S1. Representative mass spectra of *G. fossarum* lipid extract.** Related to Figure 1 and 2.

Spectra were collected in  $m/z$  range 400-1000 in positive ion mode (A-C) and in negative ion mode (D-F). A. Mass spectra of lipid crude extract from female at C1 stage. B. Mass spectra of lipid crude extract from female at D1 stage. C. Mass spectra of lipid crude extract from male. D. Mass spectra of lipid crude extract from female at C1 stage. E. Mass spectra of lipid crude extract from female at D1 stage. F. Mass spectra of lipid crude extract from male.



**Figure S2. Fatty acid composition in total *G. fossarum* lipid extract.** Related to Figure 1.

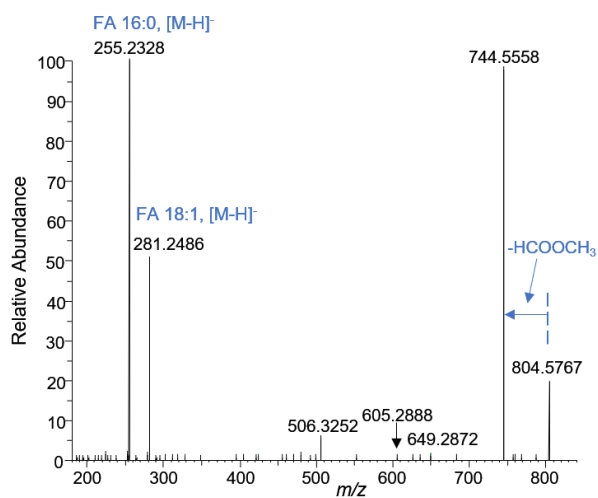
FA composition was determined using GC-FID from adult organisms (n=24). The prominent FA is oleic acid (18:1) followed by palmitic acid (16:0) and eicosapentanoic acid (20:5). n-3 (omega-3) symbol represents the presence of a double bond three C atoms away from the terminal methyl group in the chemical structure. Data are represented as mean +/- standard deviation (n=3).



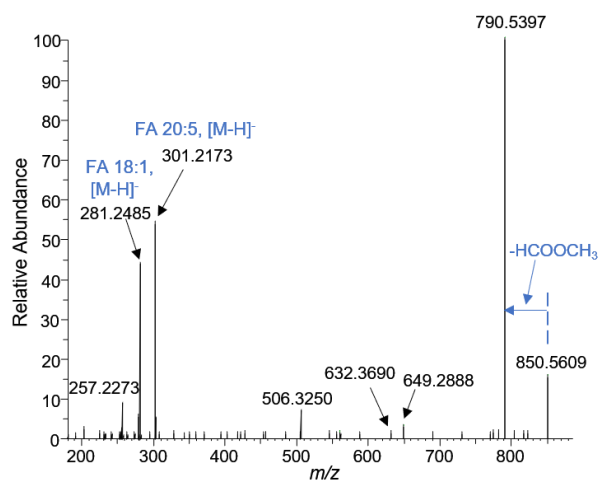
**Figure S3. MS/MS spectra of major TAG species acquired in positive ion mode (HCD=25).** Related to Figure 2.

(A) MS/MS spectrum of TAG 50:2 precursor ion, exhibiting the following neutral loss (NL): 299, 271 and 245. (B) MS/MS spectrum of TAG 52:6 precursor ion, exhibiting NL of 319, 271, 299 and 245.

**A** PC 34:1, PC 16:0-18:1  
[M+HCOO]<sup>-</sup> *m/z* 804.5767



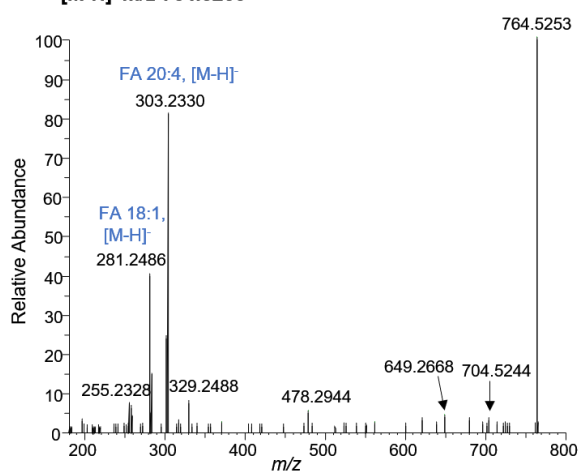
**B** PC 38:6, PC 18:1-20:5  
[M+HCOO]<sup>-</sup> *m/z* 850.5609



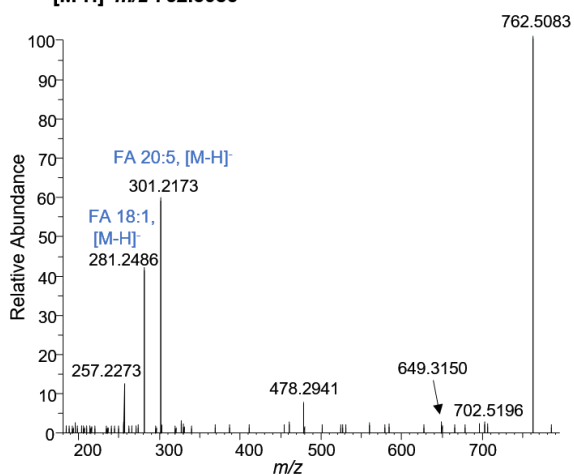
**Figure S4. MS/MS spectra of the major PC species acquired in negative ion mode (HCD=25).** Related to Figure 2.

PC species were detected in negative ion mode as formate adduct. (A) MS/MS spectrum of PC 34:1 precursor ion at *m/z* 804.5767 which was annotated as PC 16:0-18:1. (B) Mass spectrum of PC 38:6 precursor ion at *m/z* 850.5609 which was annotated as PC 18:1-20:5.

**A** PE 38:5, PE 18:1-20:4  
[M-H]<sup>-</sup> *m/z* 764.5253

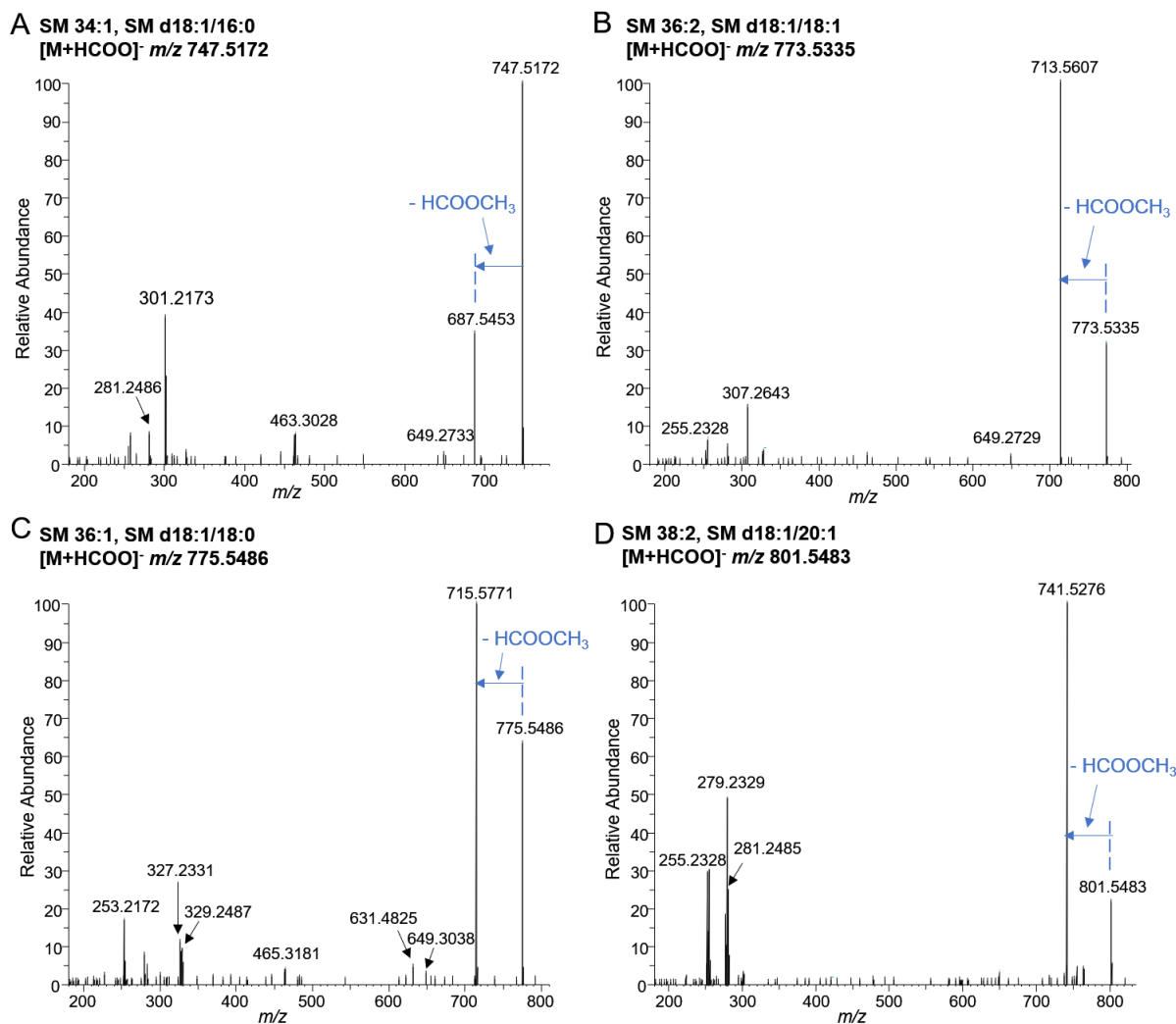


**B** PE 38:6, PE 18:1-20:5  
[M-H]<sup>-</sup> *m/z* 762.5083



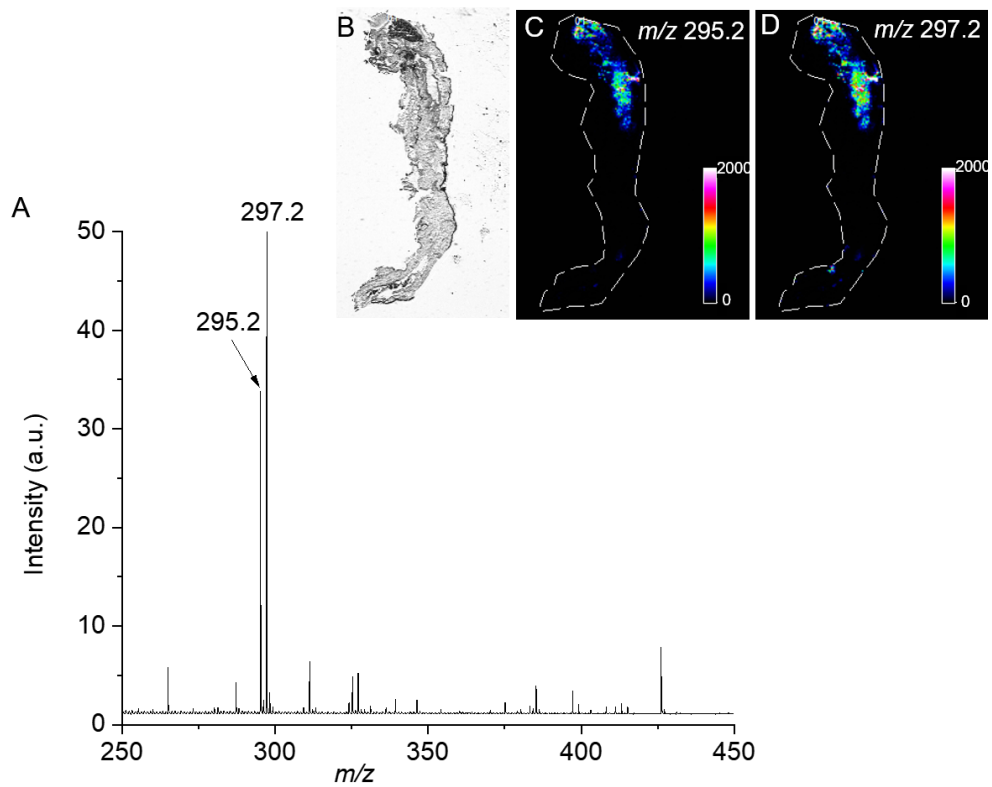
**Figure S5. MS/MS spectra of the major PE species acquired in negative ion mode (HCD=25).** Related to Figure 2.

PE species were detected in negative ion mode as deprotonated molecule. (A) MS/MS spectrum of PE 38:5 precursor ion at *m/z* 764.5253 which was annotated as PE 18:1-20:4. (B) Mass spectrum of PE 38:6 precursor ion at *m/z* 762.5083 which was annotated as PE 18:1-20:5.



**Figure S6. MS/MS spectra of SM species acquired in negative ion mode (HCD=25). SM species were detected in negative ion mode as formate adduct. Related to Figure 2.**

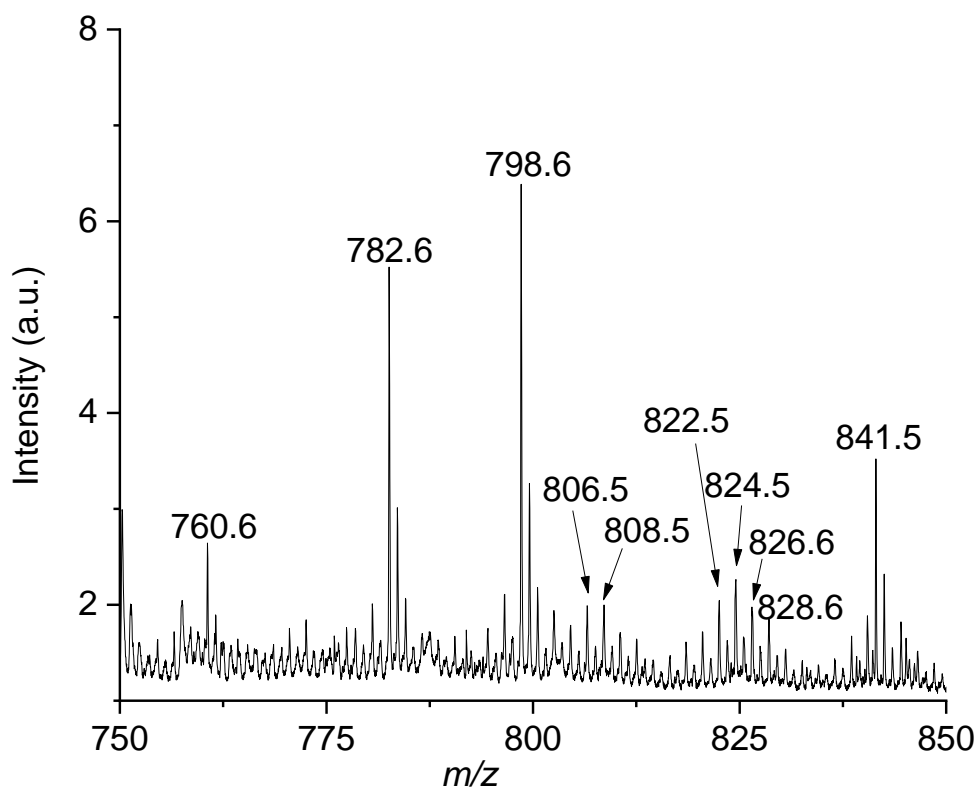
(A) MS/MS spectrum of SM 34:1 precursor ion at *m/z* 747.5172. (B) MS/MS spectrum of SM 36:2 precursor ion at *m/z* 773.5335. (C) MS/MS spectrum of SM 36:1 precursor ion at *m/z* 775.5486. (D) MS/MS spectrum of SM 38:2 precursor ion at *m/z* 801.5483.



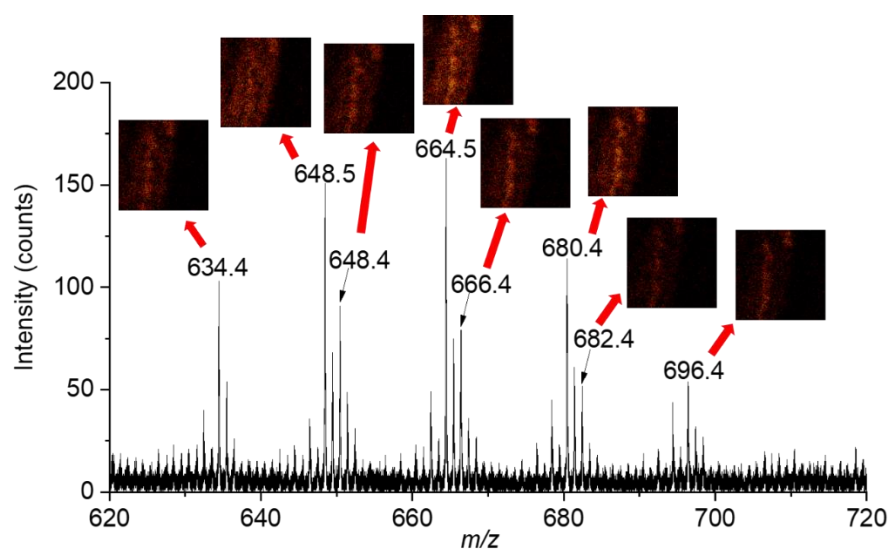
**Figure S7. MALDI MSI data acquired in negative ion mode.** Related to Figure 3.

(A) Partial MALDI-TOF mass spectrum in the mass range of  $m/z$  250-450. (B) Optical image of the analyzed whole-body gammarid tissue section. (C) Ion image of the ion at  $m/z$  295.2. (D) Ion image of the ion at  $m/z$  297.2.



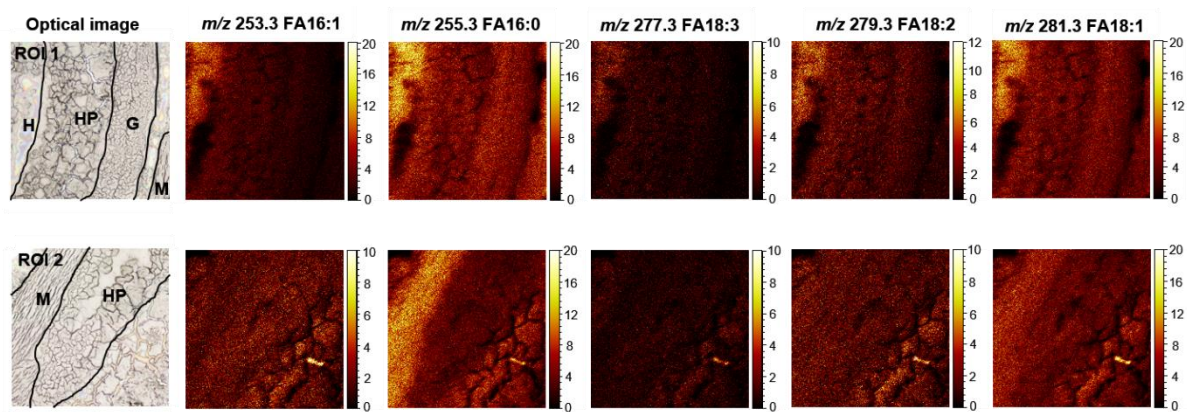


**Figure S8.** Partial MALDI-TOF mass spectrum in the mass range of  $m/z$  750-850 acquired in positive ion mode. Related to Figure 3.

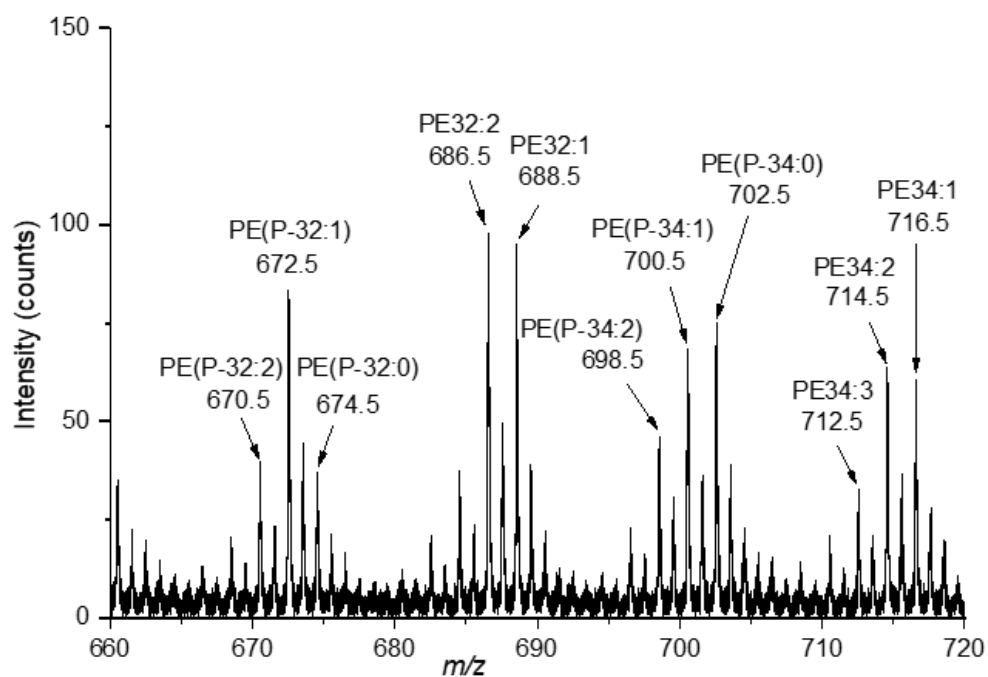


**Figure S9. Partial TOF-SIMS spectrum showing the detection of unknown ion species at  $m/z$  634.4-696.4 in positive ion mode. Related to Figure 4.**

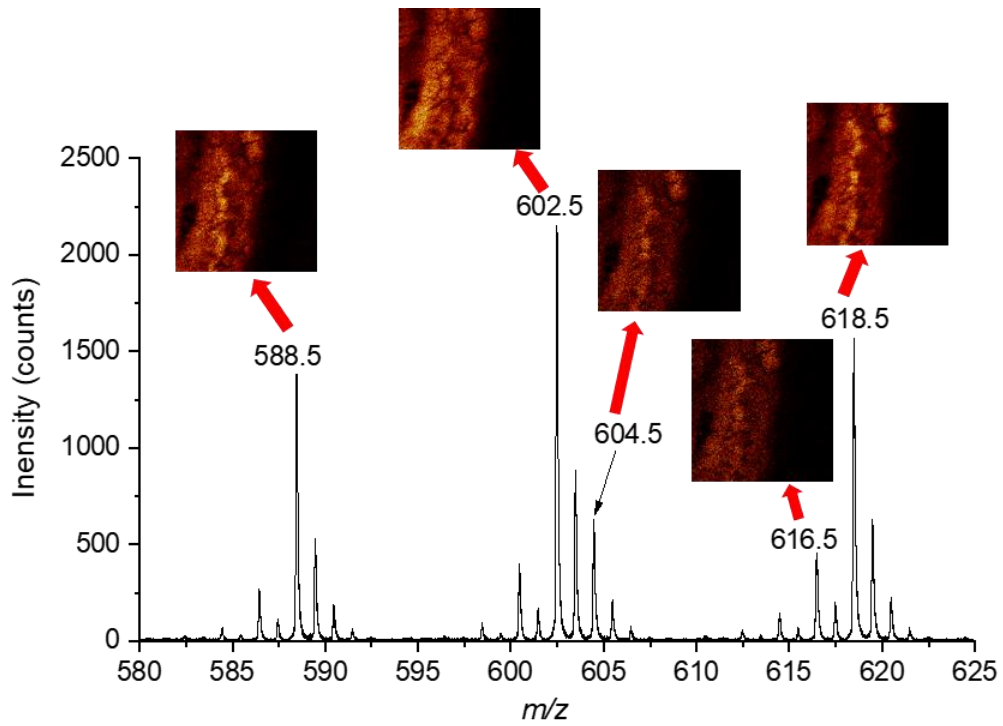
Ion images of individual ion species illustrating their localization in the hepatopancreas are also shown.



**Figure S10.** Ion images of fatty acids detected from the two regions of interest. Related to Figure 4.

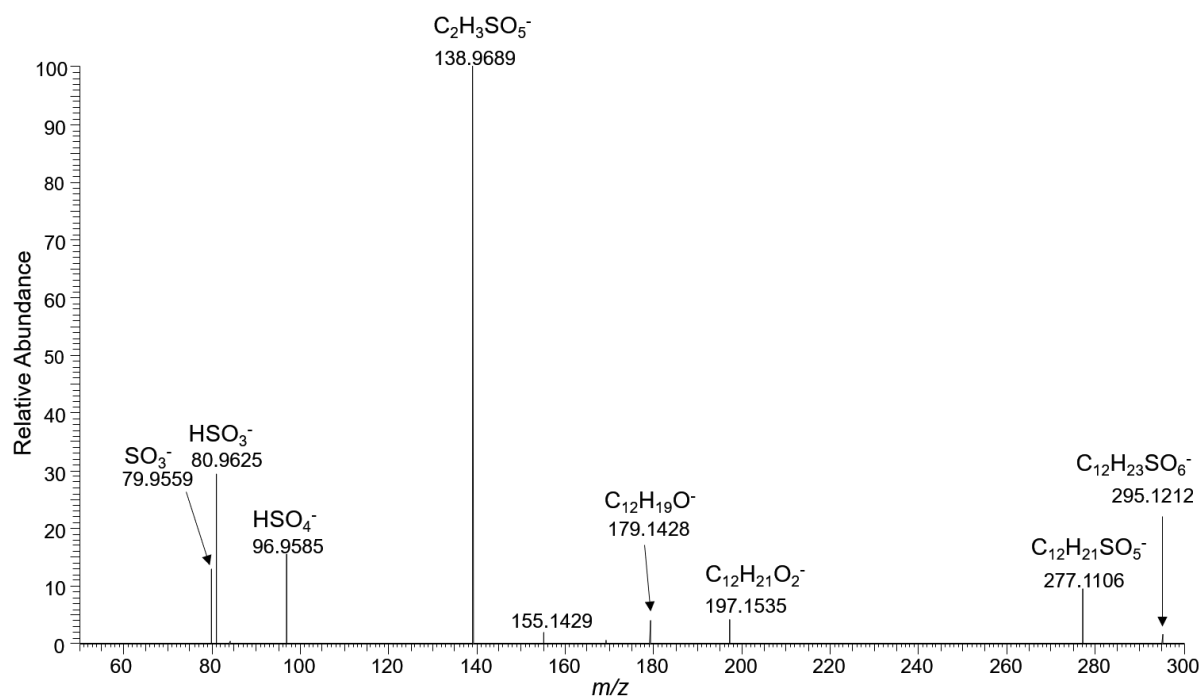


**Figure S11.** Partial TOF-SIMS spectrum showing the detection of phosphatidylethanolamine (PE) lipids in the mass range of  $m/z$  660-720 in negative ion mode. Related to Figure 4.

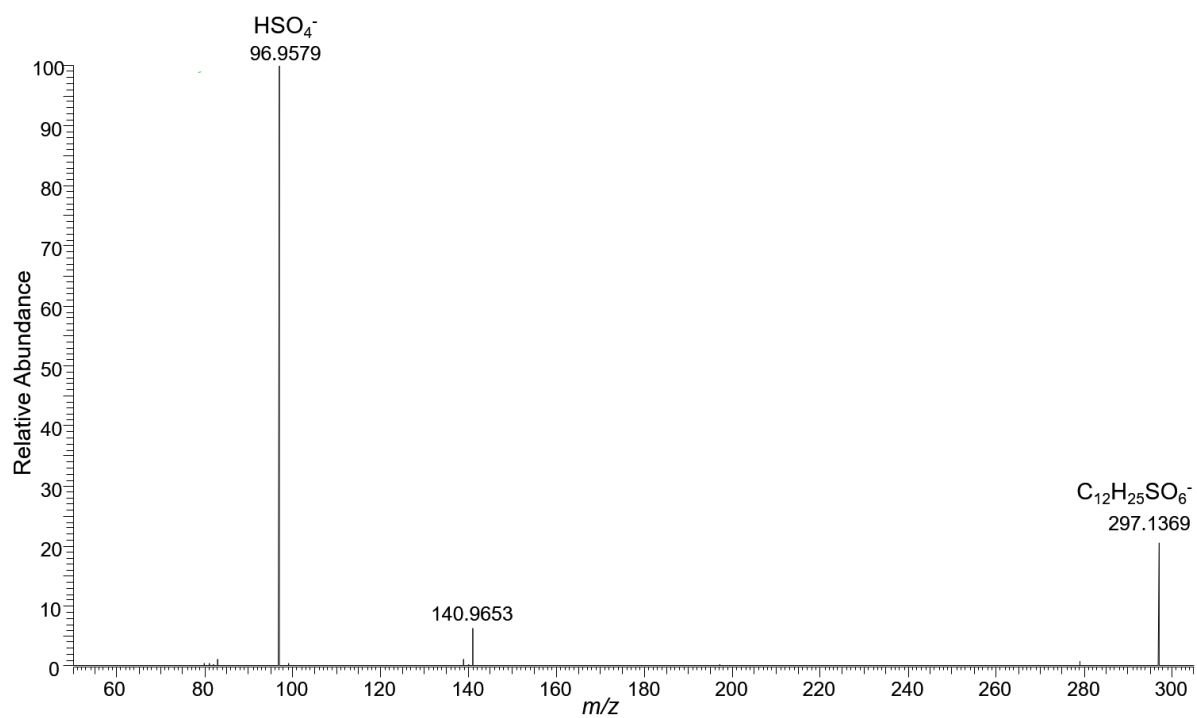


**Figure S12. Partial TOF-SIMS spectrum showing the detection of ions at  $m/z$  588.5-618.5 in negative ion mode. Related to Figure 4.**

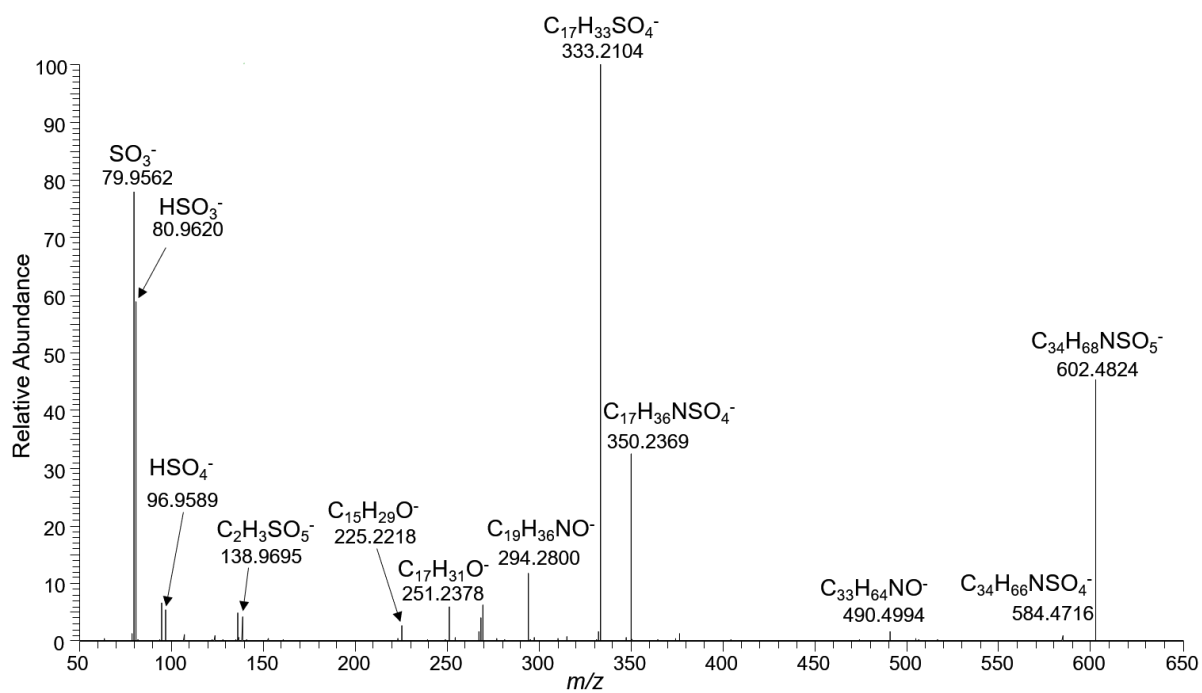
Ion images of individual ion species illustrating their localization in the hepatopancreas are also shown.



**Figure S13.** Orbitrap MS/MS spectrum of the precursor ion at  $m/z$  295.1212 from lipid extract of hepatopancreas of male gammarid. Related to Figure 5.

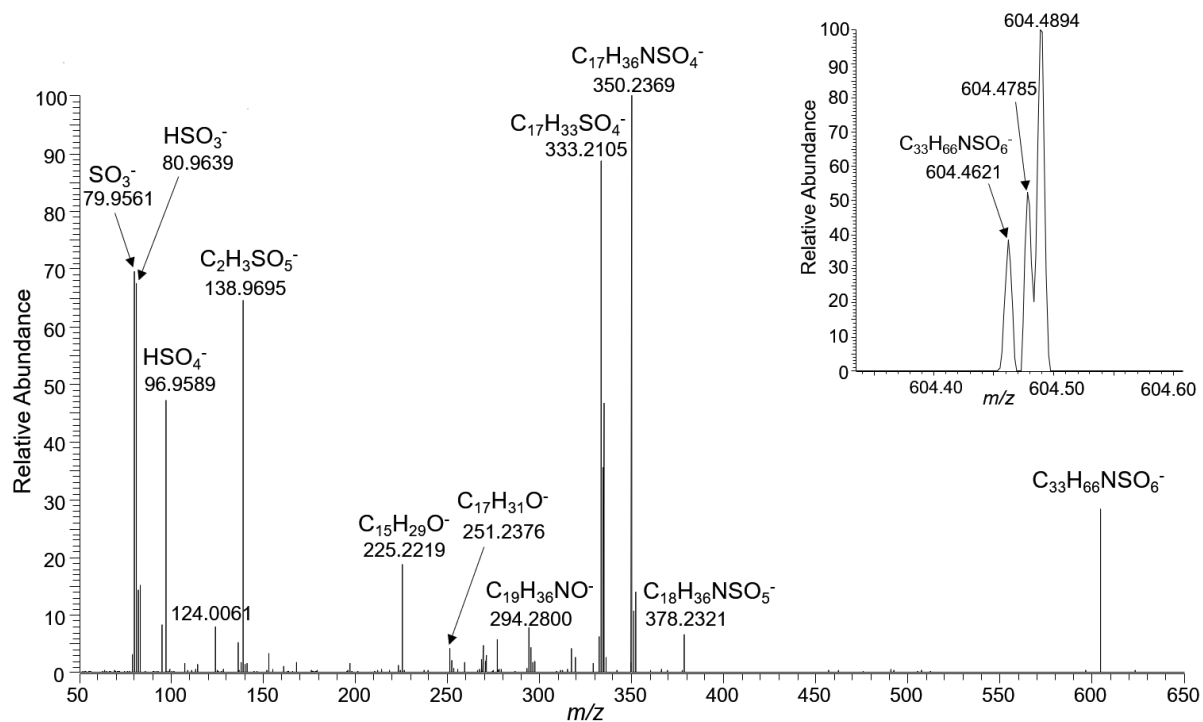


**Figure S14.** Orbitrap MS/MS spectrum of the precursor ion at  $m/z$  297.1369 from lipid extract of hepatopancreas of male gammarid. Related to Figure 5.

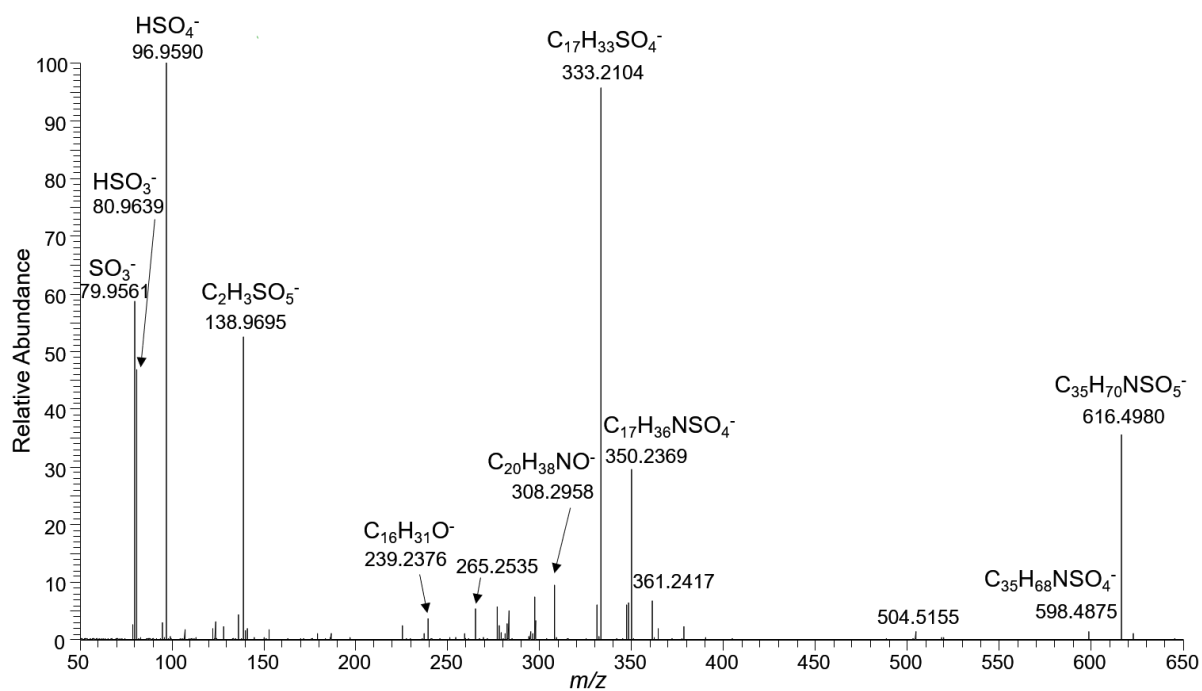


**Figure S15.** Orbitrap MS/MS spectrum of the precursor ion at  $m/z$  602.4824 from lipid extract of hepatopancreas of male gammarid. Related to Figure 5.

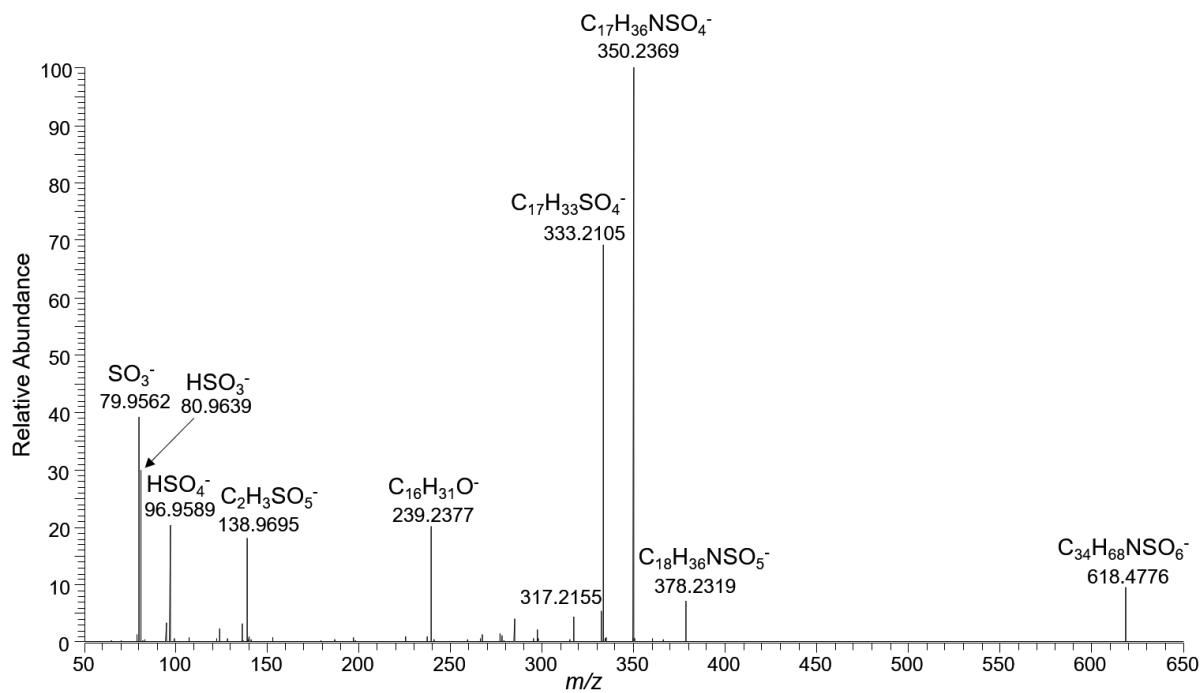




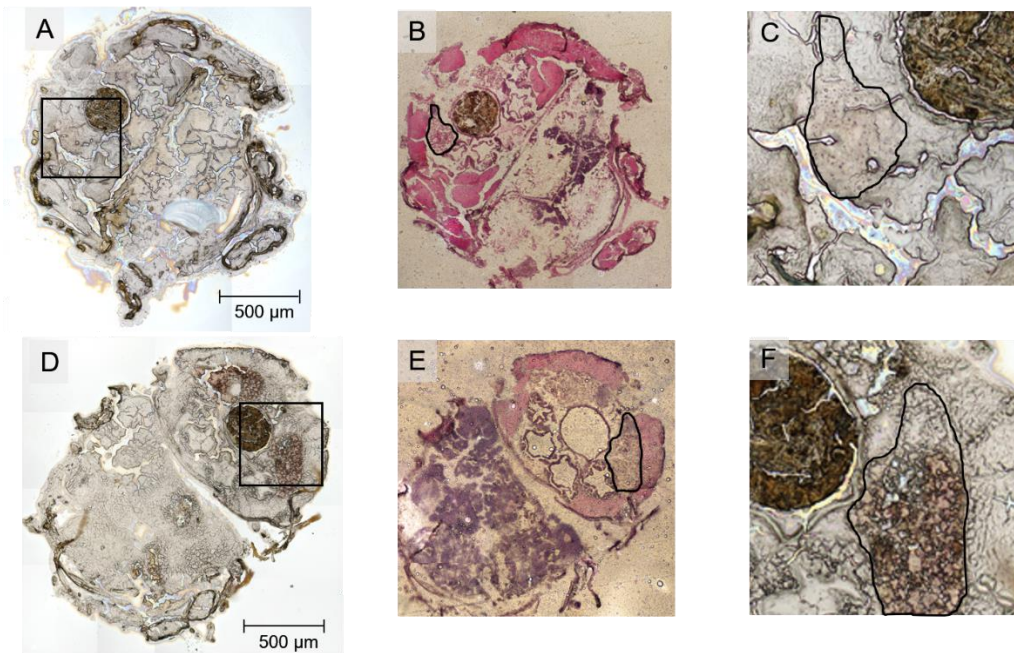
**Figure S16. Orbitrap MS/MS spectrum of the precursor ion at  $m/z$  604.4621 from lipid extract of hepatopancreas of male gammarid. Related to Figure 5.**



**Figure S17. Orbitrap MS/MS spectrum of the precursor ion at  $m/z$  616.4980 from lipid extract of hepatopancreas of male gammarid. Related to Figure 5.**



**Figure S18.** Orbitrap MS/MS spectrum of the precursor ion at  $m/z$  618.4776 from lipid extract of hepatopancreas of male gammarid. Related to Figure 5.



**Figure S19. Defining the oocyte areas by comparing the optical image with H&E stained images.** Related to Figure 6.

(A) Optical image of transvers tissue section of female gammarid at C1 stage. (B) H&E stained image of the post-analyzed tissue section of female gammarid at C1 stage. (C) Zoomed image of the analyzed area shown in (A). (D) Optical image of transvers tissue section of female gammarid at D1 stage. (E) H&E stained image of the post-analyzed tissue section of female gammarid at D1 stage. (F) Zoomed image of the analyzed area shown in (D). The black square indicates the region of interest analyzed by TOF-SIMS. The oocytes areas are outlined with black line.

**Table S1. Assignments of the unknown ion species observed in MSI.** Related to Figure 5.

<i>m/z</i> (MALDI &SIMS))	<i>m/z</i> (Orbitrap)	Assignment	Theoretical <i>m/z</i>	Mass deviation (ppm)
295.2	295.1212	C <sub>12</sub> H <sub>23</sub> SO <sub>6</sub> <sup>-</sup>	295.1215	-1.0
297.2	297.1369	C <sub>12</sub> H <sub>25</sub> SO <sub>6</sub> <sup>-</sup>	297.1372	-1.0
588.5	588.4667	C <sub>33</sub> H <sub>66</sub> NSO <sub>5</sub> <sup>-</sup>	588.4662	0.85
602.5	602.4824	C <sub>34</sub> H <sub>68</sub> NSO <sub>5</sub> <sup>-</sup>	602.4818	1.0
604.5	604.4621	C <sub>33</sub> H <sub>66</sub> NSO <sub>6</sub> <sup>-</sup>	604.4611	1.6
	604.4785	Not assigned	N/A	N/A
	604.4894	Not assigned	N/A	N/A
616.5	616.4980	C <sub>35</sub> H <sub>70</sub> NSO <sub>5</sub> <sup>-</sup>	616.4975	0.81
618.5	618.4776	C <sub>34</sub> H <sub>68</sub> NSO <sub>6</sub> <sup>-</sup>	618.4767	1.5

## Supplemental Experimental Procedures

### TRANSPARENT METHODS

#### KEY RESOURCES TABLE

REAGENT or RESOURCE	SOURCE	IDENTIFIER
Chemicals, Peptides and lipid standards		
Ammonium formate	Sigma Aldrich	Cat#70221
butanol-1 RPE	Carlo Erba	Cat#414131
$\alpha$ -Cyano-4-hydroxycinamic acid (CHCA)	Sigma-Aldrich	Cat#03841
9-aminoacridine (9-AA)	Sigma-Aldrich	Cat#92817
5 $\beta$ -Cholestan-3 $\alpha$ -ol	Sigma-Aldrich	Cat#C2882
Indium tin oxide (ITO) coated glass slides	Sigma-Aldrich	Cat#703176
cholesteryl-d <sub>7</sub> ester 16:0	Avanti Polar Lipids	Cat#700149
cholesterol-d <sub>7</sub>	Avanti Polar Lipids	Cat#700041
1,3(d <sub>5</sub> )-dihexadecanoyl-2-octadecanoyl-glycerol (TAG 16:0-18:0-16:0-d <sub>5</sub> )	Avanti Polar Lipids	Cat#110543
1,3(d <sub>5</sub> )-diheptadecanoyl-glycerol (DAG 17:0/17:0-d <sub>5</sub> )	Avanti Polar Lipids	Cat#110538
1-tridecanoyl-sn-glycero-3-phosphate (LPA 13:0)	Avanti Polar Lipids	Cat#LM-1700
1-dodecanoyl-2-tridecanoyl-sn-glycero-3-phosphate (PA 12:0/13:0)	Avanti Polar Lipids	Cat#LM1400
N-lauroyl-D-erythro-sphingosine (Cer d18:1/12:0)	Avanti Polar Lipids	Cat#860512
1-dodecanoyl-2-tridecanoyl-sn-glycero-3-phosphocholine (PC 12:0/13:0)	Avanti Polar Lipids	Cat#LM1000
1-dodecanoyl-2-tridecanoyl-sn-glycero-3-phosphoethanolamine (PE 12:0/13:0)	Avanti Polar Lipids	Cat#LM1100
N-lauroyl-D-erythro-sphingosylphosphorylcholine (SM d18:1/12:0)	Avanti Polar Lipids	Cat#860583
1-tridecanoyl-2-hydroxy-sn-glycero-3-phosphocholine (LPC 13:0)	Avanti Polar Lipids	Cat#855476P
1-tridecanoyl-sn-glycero-3-phosphoethanolamine	Avanti Polar Lipids	Cat#110696

(LPE 13:0)		
D-galactosyl- $\beta$ -1,1' N-lauroyl-D-erythro-sphingosine (GalCer d18:1/12:0)	Avanti Polar Lipids	Cat#860544
D-lactosyl- $\beta$ -1,1' N-lauroyl-D-erythro-sphingosine (LacCer d18:1/12:0)	Avanti Polar Lipids	Cat#860545
1-tridecanoyl-2-hydroxy-sn-glycero-3-phospho-(1'-myo-inositol) (LPI 13:0)	Avanti Polar Lipids	Cat#110716
1-dodecanoyl-2-tridecanoyl-sn-glycero-3-phospho-L-serine (PS 12:0/13:0)	Avanti Polar Lipids	Cat#111129
1-dodecanoyl-2-tridecanoyl-sn-glycero-3-phospho-inositol (PI 12:0/13:0)	Avanti Polar Lipids	Cat#110955
1-dodecanoyl-2-tridecanoyl-sn-glycero-3-phospho-glycerol (PG 12:0/13:0)	Avanti Polar Lipids	Cat#111126
Eosin solution	RAL diagnostics	Cat# 312710
Ethanol absolute anhydre RPE	Carlo Erba	Cat#4146012
Hematoxylin solution	Sigma Aldrich	Cat#H3136
Heptadecanoic acid	Sigma Aldrich	Cat#H3500-1G
PepMix 5	LaserBio Laboratories	Cat#C105
Deposited Data		
Shotgun Lipidomics data	Repository Metabolights	MTBLS1901
MALDI imaging raw data	Repository Metabolights	MTBLS1901
Experimental Models: Organisms/Strains		
<i>Gammarus fossarum</i>	INRAe	#N/A
Software and Algorithms		
LipidXplorer 1.2.7	MPI-CBG	<a href="https://lifs.isas.de/lipidexplorer.html">https://lifs.isas.de/lipidexplorer.html</a>
Peakstrainer	gitlab (git mpi-cbg)	<a href="https://git.mpi-cbg.de/labShevchenko/PeakStrainer/wikis/About">https://git.mpi-cbg.de/labShevchenko/PeakStrainer/wikis/About</a>

### Experimental model and subject details

*Gammarus fossarum* organisms were collected in a watercress site in the vicinity of the Pollon river (45°57'25.8"N 5°15'43.6"E) in France from a source population commonly used in our laboratory. Organisms were collected by kick sampling using a net and selected in the field according to their size by using a series of sieves ( $\pm 1$  cm in length). Organisms were quickly transported to the laboratory and kept in 30 L tanks supplied with continuous drilled groundwater

under constant aeration without food supply. The temperature was kept at  $12\pm 1^\circ\text{C}$ . After 24h, adult gammarids were sorted out at specific reproductive stages according to morphological criteria (Geffard, et al., 2010). Male gammarids in amplexus were collected and females were collected at C1 stage and D1 stage, respectively. The sampling was performed at the same time of day. All the collected gammarids were washed with deionized water, weighted and flash frozen in liquid nitrogen.

### **Lipid extraction procedure**

Entire adult gammarid ( $n=10$  per stage) was homogenized in 300  $\mu\text{L}$  of cold isopropanol with one stainless steel bead ( $\varnothing$  4 mm). Protein determination assay from the homogenates was performed with BCA protein assay.  $\sim 50\mu\text{g}$  of total protein content was extracted according to a modified version of the MTBE lipid extraction procedure (Matyash et al., 2008). Briefly, 700  $\mu\text{L}$  of solvent mixture (MTBE/MeOH, 10:3, v/v) containing one synthetic internal standard representative for each lipid class was added to the dried homogenates. Samples were vortexed for 1 h at  $4^\circ\text{C}$ . Phase separation was produced by adding 140  $\mu\text{L}$  of water and agitating for 15 min at  $4^\circ\text{C}$ , followed by centrifugation (15 min, 13 400 rpm at  $4^\circ\text{C}$ ). The upper organic phase was collected, dried down and reconstituted in 600  $\mu\text{L}$  of solvent mixture  $\text{CHCl}_3/\text{MeOH}$ , 1:2 (v/v). 10  $\mu\text{L}$  of total lipid extract was diluted with 90  $\mu\text{L}$  of solvent mixture IPA/MeOH/ $\text{CHCl}_3$ , 4:2:1 (v/v/v) containing 7.5 mM ammonium formate for high resolution MS analysis.

### **Shotgun lipidomics experiment**

Shotgun lipidomics analyses were performed on a Q Exactive instrument (Thermo Fischer Scientific, Bremen, Germany) equipped with a robotic nanoflow ion source TriVersa NanoMate (Advion BioSciences, Ithaca, NY, USA) using nanoelectrospray chips with a diameter of 4.1  $\mu\text{m}$ . The ion source was controlled by the Chipsoft 8.3.1 software (Advion BioSciences). Ionization voltage was + 0.96 kV in positive and - 0.96 kV in negative mode. Backpressure was set at 1.25 psi in both modes by polarity switching according to Schuhmann, et al. (Schuhmann, et al., 2012). The temperature of the ion transfer capillary was set to  $200^\circ\text{C}$  and S-lens RF level 50%. FTMS spectra were acquired within the range of  $m/z$  400–1000 from 0 min to 1.5 min in positive and then within the range of  $m/z$  350–1000 from 4.2 min to 5.7 min in negative mode at a mass resolution of 140,000 (at  $m/z$  200), automated gain control (AGC) of  $3 \times 10^6$  and with a maximal injection time of 3000 ms. Free cholesterol was quantified by parallel reaction monitoring FT MS/MS within runtime 1.51 to 4.0 min in positive ion mode. For FT MS/MS (PRM method), the micro scans were set to 1, isolation window to 1 Da, stepped normalized collision energy to 15, 25, 35, AGC to  $2 \times 10^4$  and maximum injection time to 650 ms. All acquired data was filtered by



PeakStrainer that can be found in gitlab <https://git.mpi-cbg.de/labShevchenko/PeakStrainer/wikis/About> (Schuhmann, et al., 2017). Lipids were identified by LipidXplorer 1.2.7 software (Herzog, et al., 2012). Molecular Fragmentation Query Language (MFQL) queries were compiled for TAG, DAG, Cholesterol, CE, SM, PC, PC O-, LPC, LPC O-, PE, PE O-, LPE, PI, LPI lipid classes. The identification of the lipid class relied on accurately determined intact lipid masses (mass accuracy better than five ppm). The identification of the lipid molecular species relied on the MS/MS spectra inspection in both polarities of the polar head group fragments and fatty acid moieties. Lipids were quantified by comparing the isotopically corrected abundances of their molecular ions with the abundances of internal standards of the same lipid class. The amount of lipids per animal was calculated and normalized to the fresh mass of gammarids.

### **Fatty acid profiling by GC-FID**

After lipid extraction of adult gammarids (n=24), lipids were dried down and reconstituted in 1 mL of methanol with 2.5% sulfuric acid containing 5 µg of heptadecanoic acid methyl ester as internal standard. The mixture was incubated at 80°C for 1 h. Then, 1.5 mL of water was added. Fatty acid methyl esters (FAMES) were extracted using 750 µL of hexane and separated in a 15 m x 0.53 mm Carbowax column (Alltech Associates, Deerfield, IL, U.S.A.) on a GC-FID (Hewlett–Packard 5890 series II). The oven temperature was programmed for 1 min at 160°C, followed by a 20°C per min ramp to 190°C and a second ramp of 5°C per min to 210°C, and then maintained at 210°C for a further 6 min. FAMES retention times were determined by comparison with those of standards and quantified using heptadecanoic acid methyl ester as standard.

### **Annotation of lipid molecular species**

Annotation of lipid species follows the guidelines established by the Lipid Maps Consortium (Fahy, et al., 2005; Fahy, et al., 2009) and the Lipidomics Standards Initiative (LSI) (Liebisch, et al., 2013; Pauling, et al., 2017). Lipid species were noted as the following: <lipid class><number of total C number in the sum of fatty acid moieties>:<number of unsaturation in the sum of fatty acid moieties> (e.g., PC 34:1). Lipids molecular species were annotated as the following: <lipid class><number of C in the first fatty acid moiety>:<number of double-bond in the first fatty acid moiety>–<number of total C number in the second fatty acid moiety>:<number of double bond in the second fatty acid moiety> [e.g., phosphatidylcholine (PC) 16:0–18:1]. Sphingolipid species were annotated as <lipid class><number of C in the long-chain base (LCB) + fatty acid moieties>:<number of double bonds in the LCB + fatty acid moieties> (e.g., SM 34:1).

## **Preparation of gammarid tissue sections**

The male and female gammarids of C1 and D1 stages were directly plunge-frozen in liquid N<sub>2</sub> without embedding and then stored at - 80°C until cryo-sectioning. Transversal and longitudinal sections of adult *G. fossarum* were cut at - 23°C with a thickness of 12 µm utilizing a MICROM HM505E cryostat microtome. The sections were immediately thaw mounted onto ITO coated glass slides (Sigma-Aldrich) and dried for 30 min in a desiccator under low vacuum. Then the slides were placed in plastic bags filled with N<sub>2</sub> to avoid oxidation and stored at - 80°C until analysis.

All optical images were recorded at 10X magnification on an Olympus BX41M optical microscope.

## **MALDI-TOF imaging**

The longitudinal sections of male gammarid were coated with a homogeneous layer of matrices using a robotic TM-Sprayer (HTX Technologies, Chapel Hill, NC, USA) prior to MALDI imaging. 10 mg/mL α-Cyano-4-hydroxycinamic acid (CHCA) solution prepared in ACN/H<sub>2</sub>O/TFA (70:30:0.1, v/v/v) and 10 mg/mL 9-aminoacridine (9-AA) solution prepared in EtOH/H<sub>2</sub>O (70:30, v/v) were used for positive and negative ion mode MALDI imaging experiments, respectively. CHCA solution was sprayed at 70°C and 9-AA solution at 90°C with the following parameters: flow rate: 0.12 mL/min; nozzle height: 40 mm; nozzle moving speed: 120 cm/min; moving pattern: CC; track spacing: 3 mm; drying time: 30 s; nebulizing gas (N<sub>2</sub>) pressure: 10 psi; 2 passes. MALDI imaging experiments were carried out with an UltrafleXtreme MALDI-TOF/TOF mass spectrometer (Bruker Daltonics, Wissembourg, France) equipped with a 2 kHz Smart beam-II™ Nd:YAG laser (wavelength: λ=355 nm). The ion images were acquired with a pixel size of 40 µm ('medium' focus setting) and the spectrum of each pixel represented ion signals summed from 500 laser shots. The mass spectra were acquired in reflectron mode over a mass range of *m/z* 120 to 1700. Mass calibration was achieved using calibration standard PepMix 5 (LaserBio Labs, Sophia Antipolis, France) which was deposited onto the matrix coated slide. Data acquisition and processing were performed using flexControl 3.4 and flexImaging 4.1 (Bruker Daltonics, Wissembourg, France), respectively. 'Median' method was employed for normalization of all the mass spectra given that it provided slightly higher signal to noise ratio.

## **TOF-SIMS imaging**

TOF-SIMS imaging experiments were performed on a TOF-SIMS V (IONTOF GmbH, Münster, Germany) mass spectrometer. The bismuth liquid metal ion gun (LMIG) was operated in high current bunch (HCBU) mode to ensure a good mass resolution and a sufficient beam current

together with a reasonable analysis time. The 25 keV  $\text{Bi}_3^+$  cluster ions were selected as primary ion beam, of which the current was about 0.45 pA measured at 10 kHz with a fixed pulse width of 20.5 ns. The secondary ions were extracted and accelerated to 2 keV at the entrance of the TOF analyzer, and then post-accelerated to 10 keV before reaching the detector which is composed of a single micro-channel plate, a scintillator and a photomultiplier. A low energy pulsed electron flood gun (20 eV) was employed to compensate the charge accumulation on the insulating tissue samples. Ion images were generated from areas of  $500 \mu\text{m} \times 500 \mu\text{m}$  divided by  $256 \times 256$  pixels. The total ion dose applied on each area is  $\sim 5 \times 10^{11}$  ions/cm<sup>2</sup>. Data processing was performed using SurfaceLab 7 software (IONTOF GmbH, Münster, Germany). Mass spectra were internally calibrated using small fragments commonly observed in SIMS spectra such as  $\text{CH}^+$ ,  $\text{CH}_2^+$ ,  $\text{CH}_3^+$ ,  $\text{C}_2\text{H}_3^+$ ,  $\text{C}_2\text{H}_5^+$  in positive ion mode and  $\text{CH}^-$ ,  $\text{CH}_2^-$ ,  $\text{C}_3^-$ ,  $\text{C}_4^-$ ,  $\text{C}_4\text{H}^-$  in negative ion mode. Improvement of mass accuracy was obtained by adding characteristic ion peaks of Vitamin E ( $m/z$  429.373,  $\text{C}_{29}\text{H}_{49}\text{O}_2^-$  and  $m/z$  430.381,  $\text{C}_{29}\text{H}_{50}\text{O}_2^+$ ) to the mass calibration list.

### **Histological staining**

The post MSI analyzed tissue sections were stained with Hematoxylin and Eosin (H&E) to visualize the anatomy of the tissue sections. After washing away the MALDI matrices with ethanol, the tissue sections were stained in hematoxylin solution for 15 min before being washed with running tap water for 5 min. Then the sections were immersed in eosin solution for 10 min. After washing the tissues with distilled water for 5 min, the slides were placed successively in 70% ethanol, 96% ethanol and 100% ethanol, each for 2 min. Finally, the slides were plunged in n-butanol solution for 4 min and then allowed to dry at ambient atmosphere before observation under a microscope.

### **MS/MS analysis of unknown sulfate-based lipids in hepatopancreas**

Hepatopancreas were dissected and pooled from 10 male gammarids for lipid extraction and subsequent MS analysis. For lipid extraction, hepatopancreas tissues were homogenized in 300  $\mu\text{L}$  methanol with zirconia beads ( $\varnothing$  0.5 mm) and then extracted with a mixture of  $\text{MeOH}/\text{CHCl}_3$  (1/2, v:v) through continuous agitation at 4°C for 1 h. 100  $\mu\text{L}$   $\text{H}_2\text{O}$  were added for phase separation. After a quick centrifugation, the lower phase containing the lipids was collected and dried down at 40°C under constant  $\text{N}_2$  flow. The final product was reconstituted in pure methanol for MS analysis.

The lipid extract was infused directly into the HESI source of a Q Exactive mass spectrometer (Thermo Fischer Scientific, Bremen, Germany) with a Hamilton™ syringe (1 mL, 600  $\mu\text{L}/\text{min}$ ). For

both MS and MS/MS analyses, the spray voltage was set at + 4 kV for positive ion mode and - 3.3 kV for negative ion mode. Capillary temperature was 320°C and S-lens level was 75. For MS/MS fragmentation, the AGC target was set at  $5 \times 10^6$  and maximum injection time was 100 ms. Collision energy used to fragment the selected precursors was optimized and set at a normalized value of 50 except for the precursor ions at  $m/z$  295.212 and  $m/z$  297.1369, for which the normalized collision energies were 45 and 40, respectively. The mass resolution was 140,000 for all the analyses.

### Supplemental References:

Fahy, E., Subramaniam, S., Brown, H.A., Glass, C.K., Merrill, A.H., Jr., Murphy, R.C., Raetz, C.R., Russell, D.W., Seyama, Y., Shaw, W., et al. (2005). A comprehensive classification system for lipids. *J Lipid Res* 46, 839-861.

Fahy, E., Subramaniam, S., Murphy, R.C., Nishijima, M., Raetz, C.R., Shimizu, T., Spener, F., van Meer, G., Wakelam, M.J., and Dennis, E.A. (2009). Update of the LIPID MAPS comprehensive classification system for lipids. *J Lipid Res* 50 Suppl, S9-14.

Geffard, O., Xuereb, B., Chaumot, A., Geffard, A., Biagiante, S., Noel, C., Abbaci, K., Garric, J., Charmantier, G., and Charmantier-Daures, M. (2010). Ovarian cycle and embryonic development in *Gammarus fossarum*: application for reproductive toxicity assessment. *Environ Toxicol Chem* 29, 2249-2259.

Herzog, R., Schuhmann, K., Schwudke, D., Sampaio, J.L., Bornstein, S.R., Schroeder, M., and Shevchenko, A. (2012). LipidXplorer: a software for consensual cross-platform lipidomics. *PLoS One* 7, e29851.

Liebisch, G., Vizcaino, J.A., Kofeler, H., Trotschmuller, M., Griffiths, W.J., Schmitz, G., Spener, F., and Wakelam, M.J. (2013). Shorthand notation for lipid structures derived from mass spectrometry. *J Lipid Res* 54, 1523-1530.

Matyash, V., Liebisch, G., Kurzchalia, T.J., Shevchenko, A., and Schwudke, D. (2008). Lipid extraction by methyl-*tert*-butyl ether for high-throughput lipidomics. *J Lipid Res* 49, 1137-1146.

Pauling, J.K., Hermansson, M., Hartler, J., Christiansen, K., Gallego, S.F., Peng, B., Ahrends, R., and Ejsing, C.S. (2017). Proposal for a common nomenclature for fragment ions in mass spectra of lipids. *PLoS One* 12, e0188394.

Schuhmann, K., Almeida, R., Baumert, M., Herzog, R., Bornstein, S.R., and Shevchenko, A. (2012). Shotgun lipidomics on a LTQ Orbitrap mass spectrometer by successive switching between acquisition polarity modes. *J Mass Spectrom* 47, 96-104.

Schuhmann, K., Thomas, H., Ackerman, J.M., Nagornov, K.O., Tsybin, Y.O., and Shevchenko, A. (2017). Intensity-Independent Noise Filtering in FT MS and FT MS/MS Spectra for Shotgun Lipidomics. *Anal Chem* 89, 7046-7052.