



**HAL**  
open science

# Explainable Hyperparameters Optimization using Hilbert-Schmidt Independence Criterion

Paul Novello, Gaël Poëtte, David Lugato, Pietro M Congedo

► **To cite this version:**

Paul Novello, Gaël Poëtte, David Lugato, Pietro M Congedo. Explainable Hyperparameters Optimization using Hilbert-Schmidt Independence Criterion. 2021. hal-03128298v3

**HAL Id: hal-03128298**

**<https://hal.science/hal-03128298v3>**

Preprint submitted on 13 Apr 2021 (v3), last revised 13 Dec 2021 (v5)

**HAL** is a multi-disciplinary open access archive for the deposit and dissemination of scientific research documents, whether they are published or not. The documents may come from teaching and research institutions in France or abroad, or from public or private research centers.

L'archive ouverte pluridisciplinaire **HAL**, est destinée au dépôt et à la diffusion de documents scientifiques de niveau recherche, publiés ou non, émanant des établissements d'enseignement et de recherche français ou étrangers, des laboratoires publics ou privés.

# Explainable Hyperparameter Optimization using Hilbert-Schmidt Independence Criterion

Paul Novello <sup>†\*</sup>  
 Gaël Poëtte <sup>\*</sup>  
 David Lugato <sup>\*</sup>  
 Pietro M. Congedo <sup>†</sup>

PAUL.NOVELLO@INRIA.FR  
 GAEL.POETTE@CEA.FR  
 DAVID.LUGATO@CEA.FR  
 PIETRO.CONGEDO@INRIA.FR

*\*CEA Cesta  
 15 avenue des Sablières  
 Le Barp, 33114, France*

*†Inria, Centre de Mathématiques Appliquées, Ecole Polytechnique, IPP  
 1 Rue Honoré d’Estienne d’Orves,  
 Palaiseau, 91120, France*

**Editor:**

## Abstract

Tackling new machine learning problems with neural networks always means optimizing numerous hyperparameters that define their structure and strongly impact their performances. In this work, we study the use of sensitivity analysis and, more specifically, the Hilbert-Schmidt Independence Criterion (HSIC) for hyperparameter analysis and optimization. Hyperparameter spaces can be complex and awkward, with different natures of hyperparameters (categorical, discrete, boolean, continuous), interactions, and inter-dependencies, making it non-trivial to perform classical sensitivity analysis. We alleviate these difficulties and obtain an analysis tool that quantifies hyperparameters’ relative impact on a Neural Network’s final error. This knowledge allows us to understand hyperparameters better and to make hyperparameter optimization interpretable and explainable. An HSIC based explainable optimization algorithm illustrates the benefits of this knowledge. This method yields competitive neural networks that are naturally cost-effective in FLOPs and the number of parameters.

## 1. Introduction

Hyperparameter optimization is ubiquitous in machine learning, and especially in Deep Learning, Neural Networks are often cluttered with lots of hyperparameters. Finding good hyperparameters is mandatory in deep learning applications to real-world machine learning tasks but can be fastidious for different reasons. i) The high number of hyperparameters by itself makes this problem challenging. ii) Their impact on error changes very often depending on the problem, so it is challenging to adopt general best practices and permanently recommend hyperparameter values for every machine learning problem. iii) Hyperparameters can be of very different natures, like continuous, discrete, categorical, or boolean, and have non-trivial relations, like conditionality or interactions. All this leads to complex hyperparameters spaces.

Many techniques have been introduced to tackle this problem. Grid search or random search (Bergstra and Bengio, 2012) uniformly explore the search space. The main difference between the two methods is that hyperparameters values are chosen on a uniform grid for grid search. These values are deterministic, whereas, for a random search, hyperparameters values are randomly sampled from a uniform distribution in a Monte Carlo fashion. The main advantages of random search over grid search are that it allows for more efficient exploration of the hyperparameter search and that it is not constrained to a grid, so it does not suffer from the curse of dimensionality (Bergstra and Bengio, 2012) - which is a problem here since the hyperparameters can be pretty numerous. The standard costly part of these two methods is that it requires training a neural network for each hyperparameter configuration, so exploring the search space can be computationally very expensive.

Some methods aim at reducing the cost of such searches. For instance, Successive Halving (Jamieson and Talwalkar, 2016) and Hyperband (Li et al., 2018) train neural networks in parallel, like in grid search or random search, and stop their training after a certain number of epochs. Then, they choose the best half of neural networks and carry on the training only for these neural networks, for the same number of epochs, and so on. This procedure allows testing more hyperparameters values for the same computational budget.

On the contrary, other methods are designed to improve the quality of the search with more minor training instances. Bayesian optimization is based on the approximation of the loss function by a surrogate model. After an initial uniform sampling of hyperparameter configurations, the surrogate model is trained on these points and used to maximize an acquisition function. This acquisition function, often chosen to be expected improvement or upper confident bound (Shahriari et al., 2016), is supposed to lead to hyperparameter configurations that will improve the error. Therefore, it focuses the computation on potentially better hyperparameters values instead of randomly exploring the hyperparameters space. The surrogate model can be a Gaussian process (Snoek et al., 2012), a kernel density estimator (Bergstra et al., 2011) or even a neural network (Snoek et al., 2015).

Model-based hyperparameter optimization is not easily and naturally applicable to conditional or categorical hyperparameters that often appear when optimizing a neural network architecture. Such categorical hyperparameter can be the type of convolution layer for a convolutional neural network, regular convolution or depth-wise convolution (Chollet, 2016), and a conditional hyperparameter could be the specific parameters of each different convolution type. Neural architecture search explicitly tackles this problem. It dates back to evolutionary and genetic algorithms (Stanley and Miikkulainen, 2002) and has been the subject of many recent works. For instance, Kandasamy et al. (2018) models the architecture as a graph, or Pham et al. (2018); Tan et al. (2018) use reinforcement learning to automatically construct representations of the search space. See Elsken et al. (2019) for an exhaustive survey of this field. Yet, their implementation can be tedious, often involving numerous hyperparameters themselves.

Previous methods are end-to-end algorithms that return the best neural network, and the user does not have to interact with the algorithm during its execution. This lack of interactivity has many automating advantages but can bring some drawbacks. First, these methods do not give any insight on the relative importance of hyperparameters, whereas it may be of interest in the first approach to a machine learning problem. These methods are black boxes and not explainable. Second, one could have other goals than test the accuracy

of a neural network, like execution speed or memory consumption. Some works like Tan et al. (2018) introduce multi-objective hyperparameter optimization, but it requires additional tuning of the hyperparameter optimization algorithm itself. Finally, there may be flaws in the hyperparameters space, e.g. a useless hyperparameter that could be dropped but is included in the search space and becomes a nuisance for the optimization. This aspect is all the more problematic since some popular algorithms, like gaussian process-based Bayesian optimization, suffer from the curse of dimensionality. We can sum up the drawbacks as lack of explainability, difficulties in a multi-objective context, and unnecessary search space complexity.

In this work, we tackle these problems proposing a sensitivity analysis applied to hyperparameter search space. To this end, we select a powerful metric used for sensitivity analysis, called Hilbert-Schmidt Independence Criterion (HSIC) Gretton et al. (2005), which is a distribution dependence measure initially used for two-sample test problem (Gretton et al., 2007). Once adapted to hyperparameter search space, HSIC gives insights into hyperparameters’ relative importance in a deep learning problem. This analysis integrates seamlessly with classical random search since a simple Monte Carlo sampling estimates HSIC value.

Using HSIC in hyperparameters space is non-trivial due to their complex structure. First, hyperparameters can be discrete (width of the neural network), continuous (learning rate), categorical (activation function), or boolean (batch normalization). Second, some hyperparameter’s presence is conditional to others (moments decay rates specific to ADAM optimizer). Third, they can strongly interact (as shown in Tan and Le (2019): in some cases, it is better to increase depth and width by a similar factor). The metric should be able to compare hyperparameters reliably in such situations. We introduce solutions to overcome these obstacles and to be able to apply HSIC in these complex situations that we illustrate on simple examples. Once adapted to such complex spaces, we show that HSIC allows us to understand hyperparameter’s relative importance better and focus research efforts on specific hyperparameters. We also identify hyperparameters that have an impact on execution speed but not on the error. Based on all this knowledge, we introduce ways of reducing the hyperparameter’s variation range to improve the stability of the training and execution speed. Finally, we propose an HSIC-based optimization methodology in two steps, one focused on essential hyperparameters and the other on remaining hyperparameters. Its efficiency is validated on real-world problems: MNIST, Cifar10, and a Physical Sciences data set. In the last case, we obtain competitive errors with up to 500 less neural network parameters (weights and biases) and FLOPs.

The main contributions of this paper are the following ones: i) Introduction of a new approach to hyperparameter analysis based on sensitivity analysis; ii) Adaptation of a powerful metric, HSIC, used in sensitivity analysis to the context of hyperparameter analysis; iii) Illustration of the benefits that stem from the knowledge obtained with HSIC (explainability, hyperparameters space reduction for cost efficiency and stability); iv) Construction of an HSIC based explainable hyperparameter optimization methodology.

Sections 2, 3 present the formulation of the problem with concepts from sensitivity analysis, the HSIC definitions and their advantages for hyperparameter analysis. Then, we thoroughly study the application of HSIC to hyperparameters in Section 4. Specifically, we fully characterize the solutions designed to overcome the aforementioned problems related

to hyperparameters space and illustrate their efficiency on simple toy examples but also more complex machine learning tasks. In Section 5, we showcase usages of HSIC for hyperparameter analysis, and finally, in Section 6, we construct and validate an HSIC based hyperparameter optimization methodology.

## 2. Problem Formalization

Let a neural network be described by  $n_h$  hyperparameters  $X_1, \dots, X_{n_h}$  with  $X_i \in \mathcal{X}_i$  and  $\sigma = (X_1, \dots, X_{n_h})$ . We indicate  $f(\sigma)$  as the error of the neural network on a test dataset once trained on a training dataset. The aim of hyperparameter optimization is to find  $\sigma^* = \underset{\sigma}{\operatorname{argmin}} f(\sigma)$ . Even if its formulation is simple, neural networks hyperparameter optimization is a challenging task because of the great number of hyperparameters to optimize, the computational cost for evaluating  $f(\sigma)$  and the complex structure of hyperparameter space. Figure 1 gives a graphical representation of a possible hyperparameter space and illustrates its complexity. Specific aspects to point out are the following ones :

- Hyperparameters do not live in the same measured space. Some are continuous (`weights_decay`  $\in [10^{-6}, 10^{-1}]$ ), some are integers (`n_layers`  $\in \{8, \dots, 64\}$ ), others are categorical (`activation`  $\in \{\text{relu}, \dots, \text{sigmoid}\}$ ), or boolean (`dropout`  $\in \{\text{True}, \text{False}\}$ ).
- They could interact with each others. For instance `batch_size` adds variance on the objective function optimized by `optimizer`.
- Some hyperparameters are not involved for every neural networks configurations, e.g. `dropout_rate` is not used when `dropout = False` or `adam_beta` is only involved when `optimizer = adam`. In this case, we denote them as "conditional", otherwise we call them "main" hyperparameters.

As detailed in the introduction, classical hyperparameter optimization algorithms (random search, Bayesian optimization, ...) tackle this problem quite successfully but suffer from some drawbacks. These drawbacks can be summed up as lack of explainability, difficulties in a multi-objective context and unnecessary search space complexity. In this work, we alleviate these concerns by tinting hyperparameter optimization with hyperparameter analysis. In other words, we construct an approach to hyperparameter optimization that relies on understanding hyperparameter's effects on the neural network's performances.

One powerful tool to analyze the effect of some input variables on the variability of a quantity of interest is sensitivity analysis (Razavi et al., 2021). Sensitivity analysis consists in studying the sensitivity of the output of a function to its inputs. We could define this function as  $f$  and its inputs as  $\sigma$ . Then, it would be possible to make hyperparameter optimization benefit from characteristics of sensitivity analysis. Indeed, sensitivity allows specifically:

- Analyzing the relative importance of input variables for explaining the output, which answers the lack of explainability problem. We could explain and understand hyperparameters impact better.

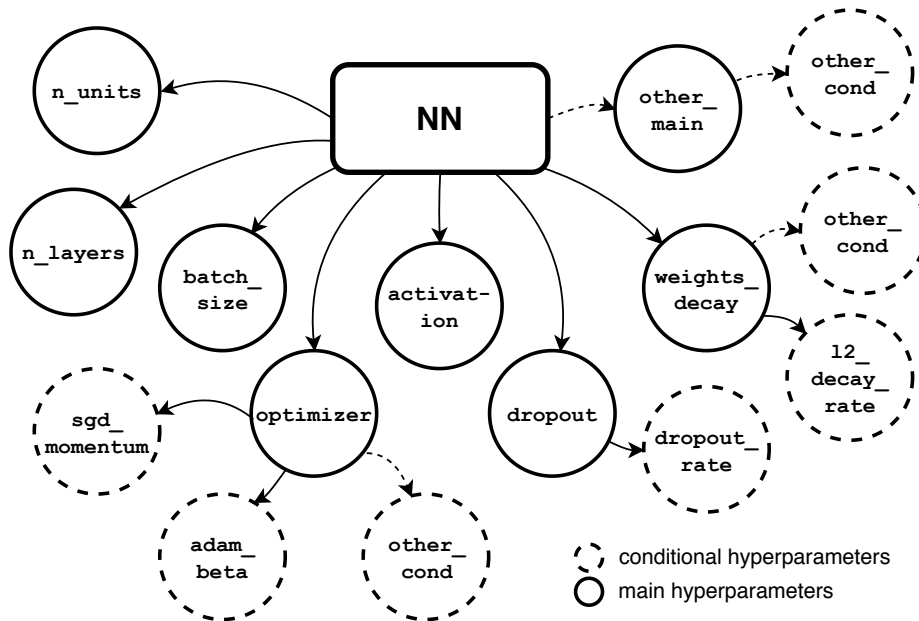


Figure 1: Example of hyperparameters space.

- Selecting practically convenient values for input variables with a limited negative impact on the output, which answers the complexities in a multi-objective context since we could, for instance, select values that improve execution speed with a limited impact on the neural network error.
- Identifying where to efficiently put research efforts to improve the output, which answers the unnecessary search space complexity problem since we could focus on fewer hyperparameters to optimize by knowing which of them most impact the neural network error.

Several types of sensitivity measures can be estimated after an initial sampling of  $n_s$  input vectors and their corresponding output values. The first type of metric gives information about the contribution of an input variable to the output based on variance analysis. The most common metric used for that purpose are Sobol indices (Sobol, 1993), but they only assess the contribution of variables to the output variance. Goal-oriented Sobol indices (Fort et al., 2016) or uncertainty importance measure (Borgonovo, 2007) construct quantities based on the output whose variance analysis gives more detailed information. However, computing these indices can be very costly since estimating them with an error of  $O(\frac{1}{\sqrt{n_s}})$  requires  $(n_h + 2) \times n_s$  sample evaluations (Saltelli, 2002), which can be prohibitive for hyperparameter analysis. Another type of metrics, called dependence measures, assesses the dependence between  $X_i$  and the output  $f(\sigma)$  (Da Veiga, 2013). It relies on the claim that the more  $X_i$  is independent of  $f(\sigma)$ , the less important it is to explain it. Dependence measures are based on dissimilarity measures between  $\mathbb{P}_{X_i}\mathbb{P}_Y$  and  $\mathbb{P}_{X_i,Y}$ , where  $X_i \sim \mathbb{P}_{X_i}$  and  $Y = f(\sigma) \sim \mathbb{P}_Y$ , since  $\mathbb{P}_{X_i,Y} = \mathbb{P}_Y\mathbb{P}_{X_i}$  when  $X_i$  and  $Y$  are independent. In Da Veiga (2013), the author gives several examples of indices based on dissimilarity measures like  $f$ -divergences (Csizar, 1967) or integral probability metrics (Müller, 1997). These indices are

easier and less expensive to estimate ( $n_s$  training instances instead of  $(n_h + 2) \times n_s$ ) than variance-based measures since they only need a simple Monte Carlo design of experiment.

In this work, we focus on a specific dependence measure, known as the Hilbert-Schmidt Independence Criterion (HSIC). The following sections are dedicated to the description of HSIC and its adaptation to hyperparameter optimization.

### 3. Hilbert-Schmidt Independence Criterion

Hilbert Space Information Criterion (Gretton et al., 2005) (HSIC) is one of the dependence measures used for sensitivity analysis (Da Veiga, 2013). It relies on a distance called Maximum Mean Discrepancy (MMD) (Gretton et al., 2007). In this section, we describe its construction and its advantages.

#### 3.1 From Integral Probability Metrics to Maximum Mean Discrepancy

Let  $X$  and  $Y$  be two random variables of probability distribution  $\mathbb{P}_X$  and  $\mathbb{P}_Y$  defined in  $\mathcal{X}$ . Gretton et al. (2007) show that distributions  $\mathbb{P}_X = \mathbb{P}_Y$  if and only if  $\mathbb{E}_X[f(X)] - \mathbb{E}_Y[f(Y)] = 0$  for all  $f \in C(\mathcal{X})$ , where  $C(\mathcal{X})$  is the space of bounded continuous functions on  $\mathcal{X}$ . This lemma explains the intuition behind the construction of Integral Probability Metrics (IPM) (Müller, 1997).

Let  $\mathcal{F}$  be a class of functions,  $f : \mathcal{X} \rightarrow \mathbb{R}$ . An IPM  $\gamma$  is defined as

$$\gamma(\mathcal{F}, \mathbb{P}_X, \mathbb{P}_Y) = \sup_{f \in \mathcal{F}} (\mathbb{E}_X[f(X)] - \mathbb{E}_Y[f(Y)]). \quad (1)$$

The Maximum Mean Discrepancy (MMD) can be defined as an IPM restricted to a class of functions  $\mathcal{F}_{\mathcal{H}}$  defined on the unit ball of a Reproducing Kernel Hilbert Space (RKHS)  $\mathcal{H}$  of kernel  $k : \mathcal{X}^2 \rightarrow \mathbb{R}$ . In Gretton et al. (2005), this choice is motivated by the capacity of RKHS to embed probability distributions efficiently. The authors define  $\mu_X$  such that  $\mathbb{E}_X(f(X)) = \langle f, \mu_X \rangle_{\mathcal{H}}$  as the mean embedding of  $\mathbb{P}_X$ . Then,  $\gamma_k^2(\mathbb{P}_X, \mathbb{P}_Y)$  can be written

$$\begin{aligned} \gamma_k^2(\mathbb{P}_X, \mathbb{P}_Y) &= \|\mu_X - \mu_Y\|_{\mathcal{H}}^2 \\ &= \int \int k(x_1, x_2)(p_X(x_1) - p_Y(x_1))(p_X(x_2) - p_Y(x_2))dx_1dx_2 \\ &= \mathbb{E}_{X X'}[k(X, X')] + \mathbb{E}_{Y Y'}[k(Y, Y')] - 2\mathbb{E}_{XY}[k(X, Y)], \end{aligned} \quad (2)$$

where  $p_X(x)dx = d\mathbb{P}_X(x)$  and  $p_Y(x)dx = d\mathbb{P}_Y(x)$ . After a Monte Carlo sampling of  $\{X_1, \dots, X_{n_s}\}$  and  $\{Y_1, \dots, Y_{n_s}\}$ ,  $\gamma_k^2(\mathbb{P}_X, \mathbb{P}_Y)$  can thus be estimated by  $\hat{\gamma}_k^2(\mathbb{P}_X, \mathbb{P}_Y)$ , with

$$\hat{\gamma}_k^2(\mathbb{P}_X, \mathbb{P}_Y) = \sum_{j=1}^{n_s} \sum_{l=1}^{n_s} k(X_j, X_l) + \sum_{j=1}^{n_s} \sum_{l=1}^{n_s} k(Y_j, Y_l) - 2 \sum_{j=1}^{n_s} \sum_{l=1}^{n_s} k(X_j, Y_l), \quad (3)$$

and  $\hat{\gamma}_k^2(\mathbb{P}_X, \mathbb{P}_Y)$  being an unbiased estimator, its standard error can be estimated using the empirical variance of  $\hat{\gamma}_k^2(\mathbb{P}_X, \mathbb{P}_Y)$ .

#### 3.2 The kernel choice

Formula (2) involves to choose a kernel  $k$ . In practice,  $k$  is chosen among a class of kernels that depends on a set of parameters  $\mathbf{h} \in \mathbf{H}$ . We therefore temporarily denote the kernel by  $k_{\mathbf{h}}$ .

Examples of kernels are the Gaussian Radial Basis Function  $k_h : (x, y) \rightarrow \exp(-\frac{\|x-y\|^2}{2h^2})$  or the Matérn function  $k_{\mathbf{h}} : (x, y) \rightarrow \sigma^2 \frac{2^{1-\nu}}{\Gamma(\nu)} \left(\sqrt{2\nu} \frac{\|x-y\|}{\eta}\right)^\nu K_\nu\left(\sqrt{2\nu} \frac{\|x-y\|}{\eta}\right)$ , where  $\mathbf{h} = \{\sigma, \nu, \eta\}$ . In Fukumizu et al. (2009), the authors study the choice of the kernel, and more importantly of the kernel parameters  $\mathbf{h}$ . They state that, for the comparison of probabilities  $\mathbb{P}_X$  and  $\mathbb{P}_Y$ , the final parameter  $\mathbf{h}^*$  should be chosen such that

$$\gamma_{k_{\mathbf{h}^*}}^2(\mathbb{P}_X, \mathbb{P}_Y) = \sup_{\mathbf{h} \in \mathbf{H}} \gamma_{k_{\mathbf{h}}}^2(\mathbb{P}_Y, \mathbb{P}_Y).$$

The authors suggest focusing on unnormalized kernel families, like Gaussian Radial Basis Functions  $\{k_h : (x, y) \rightarrow \exp(-\frac{\|x-y\|^2}{2h^2}), h \in (0, \infty)\}$ , also used in Da Veiga (2013), for which they demonstrate that  $\hat{\gamma}_{k_{\mathbf{h}^*}}^2(\mathbb{P}_X, \mathbb{P}_Y)$ , defined as

$$\hat{\gamma}_{k_{\mathbf{h}^*}}^2(\mathbb{P}_X, \mathbb{P}_Y) = \sup_{\mathbf{h} \in \mathbf{H}} \left[ \sum_{j=1}^{n_s} \sum_{l=1}^{n_s} k_{\mathbf{h}}(X_j, X_l) + \sum_{j=1}^{n_s} \sum_{l=1}^{n_s} k_{\mathbf{h}}(Y_j, Y_l) - 2 \sum_{j=1}^{n_s} \sum_{l=1}^{n_s} k_{\mathbf{h}}(X_j, Y_l) \right], \quad (4)$$

is a consistent estimator of  $\gamma_{k_{\mathbf{h}^*}}^2(\mathbb{P}_X, \mathbb{P}_Y)$ . It is thus possible to choose  $\mathbf{h}$  by maximizing  $\hat{\gamma}_{k_{\mathbf{h}^*}}^2(\mathbb{P}_X, \mathbb{P}_Y)$  with respect to  $\mathbf{h}$ . Therefore, in this work, we use Gaussian Radial Basis Functions kernel. Once  $\mathbf{h}^*$  is chosen,  $\hat{\gamma}_{k_{\mathbf{h}^*}}^2(\mathbb{P}_X, \mathbb{P}_Y)$  approximation error can also be estimated like in Section 3.1. It is important to note that both  $\gamma_{k_{\mathbf{h}^*}}^2(\mathbb{P}_X, \mathbb{P}_Y)$  and optimal  $\mathbf{h}$  can be estimated in a  $\mathcal{O}(n_s^2)$  computational complexity, which is not expensive given usual values of  $n_s$  in hyperparameter optimization context. To simplify the notations, we denote  $k_{\mathbf{h}^*}$  by  $k$  in the following sections.

### 3.3 Hilbert-Schmidt Independence Criterion Definition (HSIC)

Let  $X \in \mathcal{X}$  and  $Y \in \mathcal{Y}$ , and  $\mathcal{G}$  the RKHS of kernel  $k : \mathcal{X}^2 \times \mathcal{Y}^2 \rightarrow \mathbb{R}$ . HSIC can be written

$$HSIC(X, Y) = \gamma_k^2(\mathbb{P}_{XY}, \mathbb{P}_Y \mathbb{P}_X) = \|\mu_{XY} - \mu_Y \mu_X\|_{\mathcal{G}}. \quad (5)$$

Then, HSIC measures the distance between  $\mathbb{P}_{XY}$  and  $\mathbb{P}_Y \mathbb{P}_X$  embedded in  $\mathcal{H}$ . Indeed, since  $X \perp Y \Rightarrow \mathbb{P}_{XY} = \mathbb{P}_Y \mathbb{P}_X$ , the closer these distributions are, in the sense of  $\gamma_k$ , the more independent they are.

### 3.4 HSIC for goal-oriented sensitivity analysis

In Spagnol et al. (2018), the authors present a goal oriented sensitivity analysis by focusing on the sensitivity of  $f$  w.r.t.  $X_i$  when  $Y = f(X_1, \dots, X_{n_h}) \in \mathbf{Y}$ , with  $\mathbf{Y} \subset \mathbb{R}$ . The sub-space  $\mathbf{Y}$  is chosen based on the goal of the analysis. In the context of optimization, for instance,  $\mathbf{Y}$  is typically chosen to be the best percentile of  $Y$ . To achieve this, the authors introduce a new random variable,  $Z = \mathbb{1}_{Y \in \mathbf{Y}}$ . Then,

$$HSIC(X_i, Z) = \mathbb{P}(Z = 1)^2 \times \gamma_k^2(\mathbb{P}_{X_i|Z=1}, \mathbb{P}_{X_i}), \quad (6)$$

so  $HSIC(X_i, Z)$  measures the distance between  $X_i$  and  $X_i|Z = 1$  (to be read  $X_i$  conditioned to  $Z = 1$ ) and can be used to measure the importance of  $X_i$  to reach the sub-space  $\mathbf{Y}$  with  $f$ . Using the expression of  $\gamma_k$  given by equation (2), its exact expression is

$$HSIC(X_i, Z) = \mathbb{P}(Z = 1)^2 \left[ \mathbb{E}_{X_i X_i'} [k(X_i, X_i')] + \mathbb{E}_{ZZ'} [k(Z, Z')] - 2 \mathbb{E}_{X_i Z} [k(X_i, Z)] \right]. \quad (7)$$



It is estimated for each  $X_i$  using Monte Carlo estimators denoted by  $S_{X_i, \mathbf{Y}}$ , based on samples  $\{X_{i,1}, \dots, X_{i,n_s}\}$  from  $X_i \sim d\mathbb{P}_{X_i}$  and corresponding  $\{Z_1, \dots, Z_{n_s}\}$ , defined as

$$\begin{aligned}
 S_{\mathbf{Y}, X_i} = \mathbb{P}(Z = 1)^2 & \left[ \frac{1}{m^2} \sum_{j=1}^{n_s} \sum_{l=1}^{n_s} k(X_{i,j}, X_{i,l}) \delta(Z_j = 1) \delta(Z_l = 1) \right. \\
 & + \frac{1}{n_s^2} \sum_{j=1}^{n_s} \sum_{l=1}^{n_s} k(X_{i,j}, X_{i,l}) \\
 & \left. - \frac{2}{n_s m} \sum_{j=1}^{n_s} \sum_{l=1}^{n_s} k(X_{i,j}, X_{i,l}) \delta(Z_l = 1) \right], \tag{8}
 \end{aligned}$$

with  $m = \sum_k^{n_s} \delta(Z_k = 1)$  and  $\delta(x) = 1$  if  $x$  is True and 0 otherwise. We use this metric in the following. In this section, we have mainly summed up the mathematics on which the sensitivity indices are based and how they are used in practice in a sensitivity analysis context. The following section is devoted to the application of HSIC in hyperparameter space.

#### 4. Application of HSIC to hyperparameters space

HSIC has two advantages that make it stand out from other sensitivity indices and make it particularly suitable to the hyperparameters space. First, Eq. (8) emphasizes that it is possible to estimate HSIC using simple Monte Carlo estimation. In the context of hyperparameter optimization, it could be possible to compute such indices after a classical random search. Secondly, Using Eq. (6), HSIC allows to perform goal-oriented sensitivity analysis easily, i.e. to assess the importance of each hyperparameter contributing to a given  $\mathbf{Y}$ . For hyperparameter analysis,  $\mathbf{Y}$  can be chosen to be the sub-space for which  $f(X_1, \dots, X_{n_h})$  is in the best percentile  $p$  of a metric ( $L_2$  error, accuracy,...), say  $p = 10\%$ . Then, the quantity  $S_{X_i, \mathbf{Y}}$  measures the importance of each hyperparameter  $X_i$  for obtaining the 10% best neural networks.

However, HSIC cannot be used as they are in hyperparameter analysis, but some issues require specific treatment. Specifically, hyperparameters do not live in the same measured space, they could interact with each other, and some are not directly involved for each configuration. In the following sections, we suggest some original solutions to these issues.

To illustrate the performances of these solutions, we consider a toy example, the approximation by a Fully connected neural network of Runge function  $r : x \rightarrow \frac{1}{1+15x^2}$ ,  $x \in [-1, 1]$  which is a historical benchmark of approximation theory. We consider  $n_h = 14$  different hyperparameters (see **Appendix A** for details). We randomly draw  $n_s = 10000$  hyperparameter configurations and perform the corresponding training on 11 training points. We record the test error on a test set of 1000 points. All samples are equally spaced between 0 and 1. We are aware that training neural networks for 10000 different hyperparameter configurations is not realistic, but in this special toy problem, it allows observing the asymptotical behavior of HSIC estimation.

In Section 4.1, we introduce a transformation to deal with hyperparameters that do not live in the same measured space. Then, in Section 4.2 we explain how to use HSIC to

	$X_1$	$X_2$
$S_{X,\mathbf{Y}}$	$3.7 \times 10^{-3}$	$4.8 \times 10^{-3}$

Table 1:  $S_{X,\mathbf{Y}}$  values for  $X_1$  and  $X_2$

	$U_1$	$U_2$
$S_{X,\mathbf{Y}}$	$4.8 \times 10^{-3}$	$4.8 \times 10^{-3}$

Table 2:  $S_{X,\mathbf{Y}}$  values for  $U_1$  and  $U_2$

evaluate hyperparameters’ interactions. Finally, in Section 4.3 we deal with conditionality between hyperparameters.

#### 4.1 Normalization of hyperparameters space

Hyperparameters can be defined in very different spaces. For instance, the activation function is a categorical variable that can be `relu`, `sigmoid` or `tanh`, `dropout_rate` is a continuous variable between 0 and 1 while `batch_size` is an integer that can go from 1 to hundreds. Moreover, it may be useful to sample hyperparameters with a non-uniform distribution (e.g. log-uniform for `learning_rate`). Doing so affects HSIC value and its interpretation, which is undesirable since this distribution choice is arbitrary and only relies on practical considerations. Let us illustrate this phenomenon in the following example.

**Example** Let  $f : [0, 2]^2 \rightarrow \{0, 1\}$  such that

$$f(X_1, X_2) = \begin{cases} 1 & \text{if } X_1 \in [0, 1], X_2 \in [0, 1], \\ 0 & \text{otherwise.} \end{cases}$$

Suppose we want to assess the importance of  $X_1$  and  $X_2$  for reaching the goal  $f(X_1, X_2) = 1$  without knowing  $f$ . In the formalism of the previous section, we have  $\mathbf{Y} = \{1\}$ . Regarding its definition,  $X_1$  and  $X_2$  are equally important for  $f$  to reach  $\mathbf{Y}$ , due to their symmetrical effect. Let  $X_1 \sim \mathcal{N}(1, 0.1, [0, 2])$  (normal distribution of mean 1 and variance 0.1 truncated between 0 and 2) and  $X_2 \sim \mathcal{U}[0, 2]$ . We compute  $S_{X_1,\mathbf{Y}}$  and  $S_{X_2,\mathbf{Y}}$  with  $n_s = 10000$  points and display their value in Table 1. Values of  $S_{X_1,\mathbf{Y}}$  and  $S_{X_2,\mathbf{Y}}$  are quite different, and we could erroneously conclude that  $X_2$  is more important than  $X_1$ .

This example shows that we have to ensure that  $S_{X_i,\mathbf{Y}}$  and  $S_{X_j,\mathbf{Y}}$  can be compared in order to say that hyperparameter  $X_i$  is more important than hyperparameter  $X_j$ . Indeed, if  $X_i$  and  $X_j$  do not follow the same distribution or  $\mathcal{X}_i \neq \mathcal{X}_j$ , it may be irrelevant to compare them directly. We need a method to obtain values for  $S_{X_i,\mathbf{Y}}$  that are robust to the choice of  $d\mathbb{P}_{X_i}$ . To tackle this problem, we introduce a novel approach for comparing variables with HSIC. Let  $\Phi_i$  be the CDF of  $X_i$ . We have that  $\Phi_i(X_i) = U_i$ , with  $U_i \sim \mathcal{U}[0, 1]$ . After an initial Monte Carlo sampling of hyperparameter  $X_i$  which can be a random search, we can apply  $\Phi_i$  to each input point to obtain  $U_i$  corresponding to  $X_i$  with  $U_i$  iid, so living in the same measured space. Yet, one must be aware that to obtain  $U_i \sim \mathcal{U}[0, 1]$ , its application is different for continuous and discrete variables:

- for continuous variables,  $\Phi_i(X_i)$  is a bijection between  $\mathcal{X}_i$  and  $[0, 1]$  so  $\Phi_i$  can be applied on draws from  $X_i$ .
- For categorical, integer or boolean variables,  $\Phi_i(X_i)$  is not a bijection between  $\mathcal{X}_i$  and  $[0, 1]$ . Suppose that  $X_i$  is a discrete variable with  $p$  possible values  $\{X_i[1], \dots, X_i[p]\}$ , each with probability  $w_p$ . We can encode  $\{X_i[1], \dots, X_i[p]\}$  by  $\{1, \dots, p\}$ . Then,  $\Phi_i(X_i) =$

$\sum_{j=1}^p w_j \mathbb{1}_{[X_i \leq j]}(X_i)$ . When  $\Phi_i$  is applied as is,  $\Phi_i(X_i)$  is not uniform. To overcome that, a trick is commonly used in Monte Carlo resolution of Partial Differential Equations (Gillespie, 1976). One can simply use  $U_i = \sum_{j=1}^p \mathcal{U}[\sum_{k < j} w_k, \sum_{k < j+1} w_k] \delta(X_i = j)$ . As a result,  $U_i \sim \mathcal{U}[0, 1]$ .

Finally, all we have to do is sampling  $X_i$  like in random search following the distribution we want, and then apply  $\Phi_i$  to obtain  $U_i$ . The corresponding HSIC estimation is  $S_{U_i, \mathbf{Y}}$ . It only involves  $U_i$  and  $U_i|Z = 1$  and since  $U_i$  are iid, the comparison of different  $S_{U_i, \mathbf{Y}}$  becomes relevant. Coming back to the previous example, Table 2 displays values of  $S_{U_1, \mathbf{Y}}$  and  $S_{U_2, \mathbf{Y}}$ . This time, the value is the same, leading to the correct conclusion that both variables are equally important. Note that in the following, we denote  $S_{U_i, \mathbf{Y}}$  by  $S_{X_i, \mathbf{Y}}$  for clarity but always resort to this transformation.

Let us apply this methodology to Runge approximation hyperparameter analysis problem. Note that in this toy example, hyperparameters are sampled uniformly and the usage of  $\Phi_i$  is mostly motivated by the comparison between discrete and continuous variables. Figure 2 displays a comparison between  $S_{X_i, \mathbf{Y}}$  for hyperparameters of the Runge approximation problem, with  $\mathbf{Y}$  the set of the 10% best neural networks. For readability, we order  $X_i$  by  $S_{X_i, \mathbf{Y}}$  value in the legend and the figure. We also display black error bars corresponding to HSIC estimation standard error. This graphic highlights that **optimizer** is by far the most important hyperparameter for this problem, followed by **activation**, **loss\_function** and **n\_layers**. Other hyperparameters may be considered as non-impactful, because their  $S_{X_i, \mathbf{Y}}$  values are low. Besides, these values are lower than the error evaluation, so it could be only noise, and therefore these hyperparameters can not be ordered on this basis.

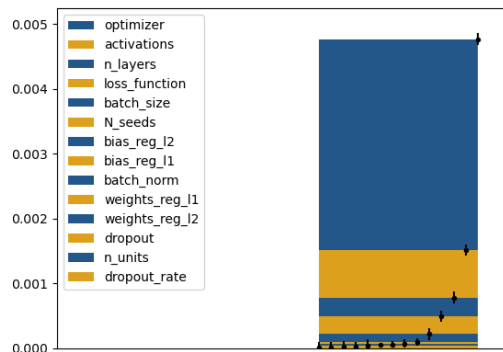


Figure 2: Comparison of  $S_{X_i, \mathbf{Y}}$  for hyperparameters in Runge approximation problem.

## 4.2 Interactions between hyperparameters

If  $S_{X_i, \mathbf{Y}}$  is low, it means that  $\mathbb{P}_{X_i}$  and  $\mathbb{P}_Z$  are similar (in the sense of HSIC). We could be tempted to conclude that  $X_i$  has a limited impact on  $Y$ . However,  $X_i$  may have an impact due to its interactions with the other hyperparameters. In other words, let  $X_i$  and  $X_j$  be two variables, it can happen that  $S_{X_i, \mathbf{Y}}$  and  $S_{X_j, \mathbf{Y}}$  are low while  $S_{(X_i, X_j), \mathbf{Y}}$  is high. This point is illustrated in the next example.

**Example** For instance let  $f : [0, 2]^3 \rightarrow \{0, 1\}$  such that

$$f(X_1, X_2, X_3) = \begin{cases} 1 & \text{if } X_1 \in [0, 1], X_2 \in [1, 2], X_3 \in [0, 1], \\ 1 & \text{if } X_1 \in [0, 1], X_2 \in [0, 1], X_3 \in [1, 2], \\ 0 & \text{otherwise.} \end{cases}$$

In that case, let  $\mathbf{Y} = \{1\}$ ,  $\forall x \in [0, 2]$  we have  $p_{X_2|Z=1}(x) = p_{X_2}(x)$  and  $p_{X_3|Z=1}(x) = p_{X_3}(x)$ . Hence, according to equation 7 we have  $HSIC(X_2, Z) = HSIC(X_3, Z) = 0$ .

However, we have

$$\begin{aligned} HSIC(X_1, Z) &= \mathbb{P}(Z = 1)^2 \int_{[0,2]^2} k(x, x') [p_{X_1|Z=1}(x) - p_{X_1}(x)] \times [p_{X_1|Z=1}(x') - p_{X_1}(x')] dx dx' \\ &= \frac{1}{8} \left[ \int_{[0,1] \times [0,1]} k(x, x') dx dx' + \int_{[1,2] \times [1,2]} k(x, x') dx dx' - 2 \int_{[0,1] \times [1,2]} k(x, x') dx dx' \right], \end{aligned}$$

so for non-trivial choice of  $k$ ,  $HSIC(X_1, Z) \neq 0$ . One could deduce that  $X_1$  is the only relevant variable for reaching  $\mathbf{Y}$ , but in practice it is necessary to chose  $X_2$  and  $X_3$  carefully as well. For instance, if  $X_1 \in [0, 1]$ ,  $f(X_1, X_2, X_3) = 1$  if  $X_2 \in [1, 2]$  and  $X_3 \in [0, 1]$  but  $f(X_1, X_2, X_3) = 0$  if  $X_2 \in [1, 2]$  and  $X_3 \in [1, 2]$ . This is illustrated in Figure 3, which displays the histograms of  $X_1$ ,  $X_1|Z = 1$ ,  $X_2$ ,  $X_2|Z = 1$ ,  $X_3$ ,  $X_3|Z = 1$ , obtained from 10000 points  $(X_1, X_2, X_3)$  sampled uniformly in the definition domain of  $f$ .

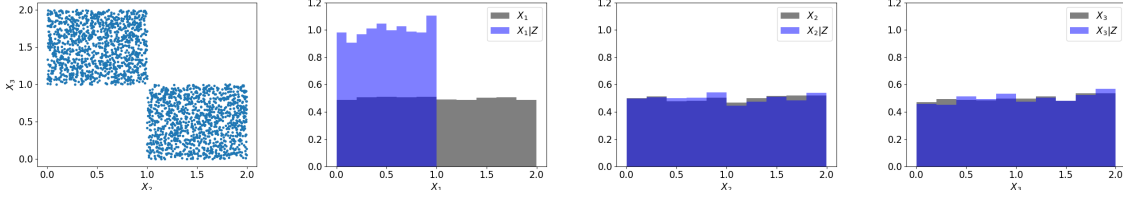


Figure 3: **From left to right:** **1** - Pairs of  $(X_2|Z = 1, X_3|Z = 1)$ . **2** - Histogram of  $X_1$  and  $X_1|Z = 1$ . **3** - Histogram of  $X_2$  and  $X_2|Z = 1$ . **4** - Histogram of  $X_3$  and  $X_3|Z = 1$ .

Histograms are the same for  $X_2$ ,  $X_2|Z = 1$  and  $X_3$ ,  $X_3|Z = 1$  (uniform between 0 and 2), but different for  $X_1$ ,  $X_1|Z = 1$ . Therefore, HSIC being a distance measure between  $X_1$  and  $X_1|Z = 1$ , it becomes intuitive that it will be high for  $X_1$  and close to zero for  $X_2$  and  $X_3$ , even if  $X_2$  and  $X_3$  are important as well because of their interaction. To assess this intuition, we compute  $S_{X_1, \mathbf{Y}}$ ,  $S_{X_2, \mathbf{Y}}$ ,  $S_{X_3, \mathbf{Y}}$  and  $S_{(X_2, X_3), \mathbf{Y}}$  after simulating  $f$  for  $n_s = 2000$  points. We also computed  $S_{(X_4, X_5), \mathbf{Y}}$ , with  $X_4$  and  $X_5$  two dummy variables, uniformly distributed, to have a reference for  $S_{(X_2, X_3), \mathbf{Y}}$ . The results can be found in Table 3. They show that  $S_{X_1, \mathbf{Y}}$  and  $S_{(X_2, X_3), \mathbf{Y}}$  are of the same order while  $S_{X_2, \mathbf{Y}}$ ,  $S_{X_3, \mathbf{Y}}$  and  $S_{(X_4, X_5), \mathbf{Y}}$  are two decades lower than  $S_{X_1, \mathbf{Y}}$ , which confirms that  $S_{X, \mathbf{Y}}$  may be low while interactions are impactful.

	$X_1$	$X_2$	$X_3$	$(X_2, X_3)$	$(X_4, X_5)$
$S_{X, \mathbf{Y}}$	$1.17 \times 10^{-3}$	$8.11 \times 10^{-7}$	$1.68 \times 10^{-6}$	$3.04 \times 10^{-4}$	$1.37 \times 10^{-6}$

Table 3:  $S_{X, \mathbf{Y}}$  values for variables of the experiment

Additionally, we display the  $S_{(X_i, X_j), \mathbf{Y}}$  for each pair of variable  $X_i$  and  $X_j$  on Figure 4. We can see that for variables other than  $X_1$ ,  $S_{(X_i, X_j), \mathbf{Y}}$  is high only for  $i = 2$  and  $j = 3$ . This example shows that it is necessary to compute  $S_{X, \mathbf{Y}}$  of joint variables to perceive the importance of interactions between variables.

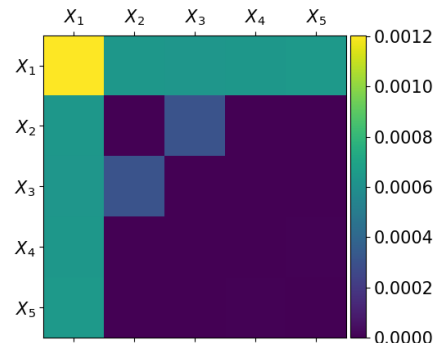


Figure 4:  $S_{X, \mathbf{Y}}$  for each pair of variable.

The values are easy to interpret in this example because we know the behavior of the underlying function  $f$ . In practice,  $S_{X_1, \mathbf{Y}}$  and  $S_{(X_2, X_3), \mathbf{Y}}$  can not be compared because  $(X_2, X_3)$  and  $X_1$  do not live in the same measured space ( $\mathcal{X}_2 \times \mathcal{X}_3$  and  $\mathcal{X}_1$  respectively). Moreover, like we see on Figure 4,  $S_{(X_i, X_j), \mathbf{Y}}$  is always the highest when  $i = 1$ , regardless of  $j$ . In fact, if for a given variable  $X_i$ ,  $S_{X_i, \mathbf{Y}}$  is high, so will be  $S_{(X_i, X_j), \mathbf{Y}}$  for any other variable  $X_j$ . Hence, care must be taken to only compare interactions of low  $S_{X, \mathbf{Y}}$  variables with each others, and not with high  $S_{X, \mathbf{Y}}$  variables. Coming back to Runge approximation example, Figure 5a displays the  $S_{(X_i, X_j), \mathbf{Y}}$  for each pair of hyperparameters, and Figure 5b for each pair of hyperparameters, except for the impactful hyperparameters `optimizer`, `activation`, `n_layers` and `loss_function`.

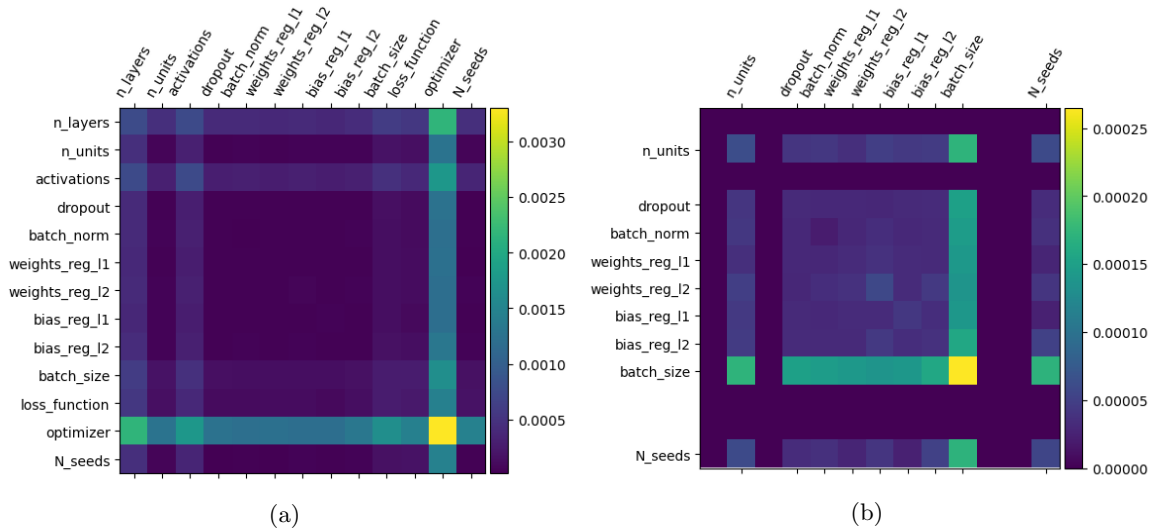


Figure 5: (a)  $S_{(X_i, X_j), \mathbf{Y}}$  for each pair of hyperparameters. (b)  $S_{(X_i, X_j), \mathbf{Y}}$  for each pair of hyperparameters, except for `optimizer`, `activation`, `n_layers` and `loss_function`

Figures 5a and 5b illustrate the remarks of the previous section. First, if we only look for interactions on Figure 5a, we would conclude that the most impactful hyperparameters are the only one to interact, and that they only interact with each others. Figure 5b shows that this conclusion is not true. Hyperparameter `batch_size` is the 5-th most impactful hyperparameter, and like we can see in Figure 2, is slightly above remaining hyperparameters. It is normal that  $S_{(\text{batch\_size}, X_j), \mathbf{Y}}$  is high, with  $X_j$  every other hyperparameters. However,  $S_{(\text{batch\_size}, \text{n\_units}), \mathbf{Y}}$  is higher, whereas `n_units` is the 13-th most impactful hyperparameter. This means that `batch_size` interacts with `n_units` in this problem, i.e. that when considered together, they contribute to explain the best results.

### 4.3 Conditionality between hyperparameters

Conditionality between hyperparameters, which often arises in Deep Learning, is a non-trivial challenge in hyperparameter optimization. For instance, hyperparameter "dropout\_rate" will only be involved when hyperparameter "dropout" is set to True. Classically, two

approaches can be considered. The first **(i)** splits the hyperparameter optimization between disjoint groups of hyperparameters that are always involved together, like in Bergstra et al. (2011). Then, two separate instances of hyperparameter optimization are created, one for the main hyperparameters, and another for `dropout_rate`. The second **(ii)** simply considers these hyperparameters as if they were always involved, even if they are not, like in Falkner et al. (2018). In that case, `dropout_rate` is always assigned a value even when `dropout = False`, and these dummy values are used in the optimization. First, we explain why these two approaches are not suited to our case and then we propose a third approach **(iii)**.

**(i)** The first formulation splits the hyperparameters between disjoint sets of hyperparameters whose value and presence are involved jointly in the training. In Runge approximation hyperparameter analysis, it would mean to split the hyperparameters between two groups: `{dropout_rate}` and another containing all the others, since `dropout_rate` is the only conditional hyperparameter. This splitting approach is not suited to HSIC computation because it produces disjoint sets of hyperparameters, while we would want to measure the importance of every hyperparameter as compared to each other hyperparameter. As a result, `dropout_rate` could not be compared to any other hyperparameters.

**(ii)** In the second case, if we apply HSIC with the same idea, we could compute HSIC of a hyperparameter with irrelevant values coming from configurations where it is not involved. Two situations can occur. First, if a conditional variable  $X_i$  is never involved in the hyperparameter configurations that yield the  $p$ -percent best accuracies (depending on the percentile chosen), the values used for computing  $S_{X_i, \mathbf{Y}}$ , i.e.  $X_i|Z = 1$ , are drawn from the initial, uniform distribution  $U_i$ . Then,  $S_{X_i, \mathbf{Y}}$  will be very low, and the conclusion will be that it is not impactful for reaching the percentile, which is correct since none of the best neural networks have used this hyperparameter. However, if  $X_i$  is only involved in a subset of all tested hyperparameter configurations, and is really impactful in that case,  $S_{X_i, \mathbf{Y}}$  would be lowered by the presence of the other artificial values of  $X_i$  drawn from the uniform distribution. In that case, we could miss its real impact. This phenomenon is illustrated in the following example.

**Example.** Let  $f : [0, 2]^3 \rightarrow \{0, 1\}$  such that:

$$f(X_1, X_2, X_3) = \begin{cases} B & \text{if } X_1 \in [0, 1], X_2 \in [0, t] \\ 1 & \text{if } X_1 \in [0, 1], X_2 \in [t, 2], X_3 \in [0, 1], \\ 0 & \text{otherwise,} \end{cases}$$

With  $B$  a Bernoulli variable of parameter 0.5 and  $t \in [0, 2]$  (so that  $S_{X_2, \mathbf{Y}}$  is low). Let  $\mathbf{Y} = \{1\}$ . In that case,  $X_1$  plays a key role for reaching  $\mathbf{Y}$ , and  $X_3$  is taken into account only when  $X_2 > t$ . In these cases, it is as important as  $X_1$  for reaching  $\mathbf{Y}$  and we would like to retrieve this information. Parameter  $t$  allows controlling how many values of  $X_3$  will be involved. We evaluate  $f$  on  $n_s = 2000$  points uniformly distributed across  $[0, 2]^3$ , first with  $t = 1$ .

Figure 6a compares the histograms of  $X_3$  and  $X_3|Z$ . Figure 6b compares histograms of  $X_3|X_2 > t$  and of  $X_3|X_2 > t, Z$ . This shows that the distribution of  $X_3|Z$  is different

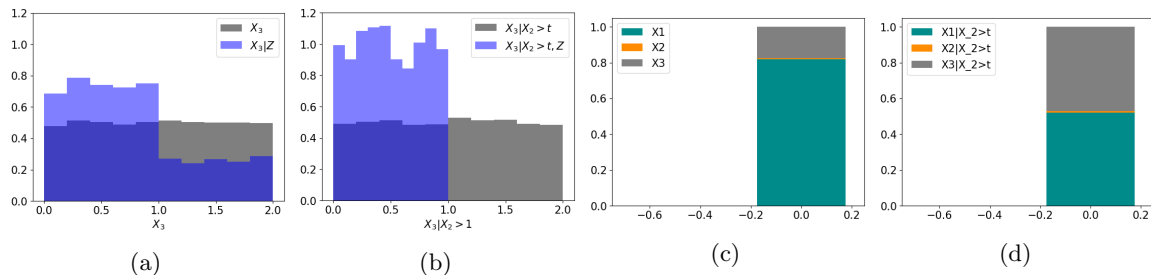


Figure 6: **(a)** - Histogram of  $X_3$  and  $X_3|Z$  **(b)** - Histogram of  $X_3$  and  $X_3|X_2 > t, Z$ . **(c)** -  $S_{X,\mathbf{Y}}$  for  $X_1; X_2$  and  $X_3$ . **(d)** -  $S_{X,\mathbf{Y}}$  for  $X_1|X_2 > t; X_2|X_2 > t$  and  $X_3|X_2 > t$ .

if we choose to consider artificial values of  $X_3$  or values of  $X_3$  that are actually used by  $f$  ( $X_3|X_2 > t$ ). Figures 6c and 6d show that relative values of  $S_{X_1,\mathbf{Y}}$  and  $S_{X_3,\mathbf{Y}}$  are quite different whether we chose to consider  $X_2 > t$  or not, meaning that the conclusions about the impact of  $X_3$  can be potentially different. To emphasize how different these conclusions can be, we compare  $S_{X_1,\mathbf{Y}}$  and  $S_{X_3,\mathbf{Y}}$  for different values of  $t$ . The results are displayed on Figure 7 (top row). Since the value of  $t$  controls how much artificial values there are for  $X_3$ , this demonstrates how different  $S_{X_3,\mathbf{Y}}$  can be, depending on the amount of artificial points. This experiment emphasizes the problem because in all cases,  $X_3$  is equally important for reaching  $\mathbf{Y}$  whereas for  $t = 1.8$  we would be tempted to discard  $X_3$ .

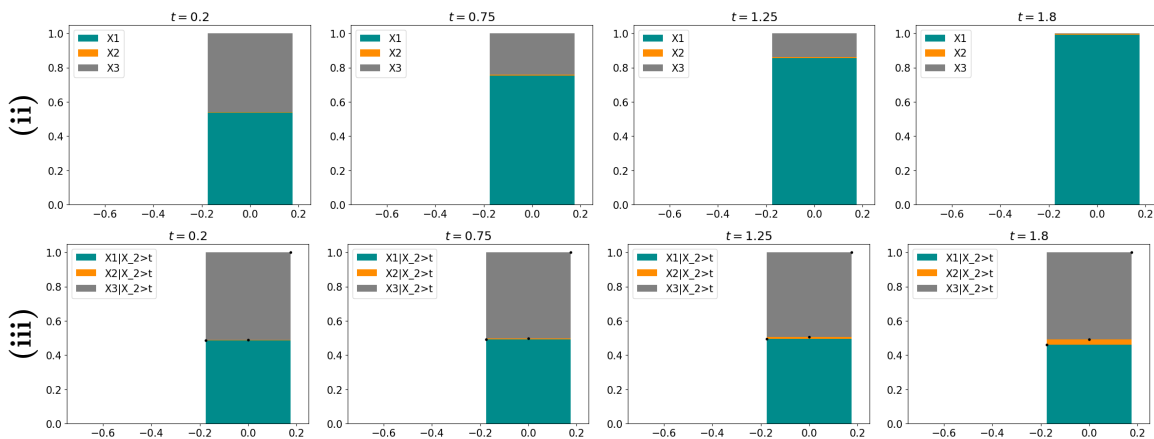


Figure 7: **Top (ii):**  $S_{X,\mathbf{Y}}$  for  $X_1, X_2$  and  $X_3$  for different values of  $t$ . **Bottom (iii):**  $S_{X,\mathbf{Y}}$  for  $X_1|X_2 > t, X_2|X_2 > t$  and  $X_3|X_2 > t$  for different values of  $t$ .

To sum up, this formulation brings important implementation advantages, because it allows computing  $S_{X_i,\mathbf{Y}}$  as if there were no conditionality, but carries a risk to miss important impacts of conditional hyperparameters, and discard them illegitimately.

**(iii)** In this work, we propose a splitting strategy that produces sets of hyperparameters that are involved together in the training, but are not disjoint, unlike **(i)**. Let  $\mathcal{J}_k \in \{1, \dots, n_h\}$  be the set of indices of hyperparameters that can be involved in a training jointly with conditional hyperparameter  $X_k$ . We define  $\mathcal{G}_{X_k} = \{X_i|X_k, i \in \mathcal{J}_k\}$ , the set of hyperparameters involved jointly in hyperparameter configurations when  $X_k$  is also

involved. By convention, we denote the set of all main hyperparameters by  $\mathcal{G}_0$ . In Runge problem, `dropout_rate` is the only conditional hyperparameter, so we have two sets  $\mathcal{G}_0 = \{X_1, \dots, X_{n_h}\} \setminus \text{dropout\_rate}$  and  $\mathcal{G}_{\text{dropout\_rate}} = \{X_1 | \text{dropout\_rate}, \dots, X_{n_h} | \text{dropout\_rate}\} = \{X_1 | \text{dropout} = \text{true}, \dots, X_{n_h} | \text{dropout} = \text{true}\}$ . It is then possible to compute  $S_{X_i, \mathbf{Y}}$  for  $X_i \in \mathcal{G}_0$ , identify the most impactful main hyperparameters, then to compute  $S_{X_i, \mathbf{Y}}$  for  $X_i \in \mathcal{G}_{\text{dropout\_rate}}$  and to assess if `dropout_rate` is impactful by comparing it to other variables of  $\mathcal{G}_{\text{dropout\_rate}}$ . On the example problem, we can compute  $S_{X_i, \mathbf{Y}}$  only for  $X_1$ ,  $X_2$  and  $X_3$  when  $X_2 > t$ . This set would be  $\mathcal{G}_{X_3}$  (except that  $X_2$  is not categorical nor integer - but in that case we can consider  $\bar{X}_2 = \mathbb{1}(X_2 > t)$ ). On the bottom row of Figure 7,  $S_{X_1 | X_2 > t, \mathbf{Y}}$  and  $S_{X_3 | X_2 > t, \mathbf{Y}}$  keep approximately the same values for all  $t$ , which is the correct conclusion since when  $X_3$  is involved (i.e.  $X_2 > t$ ), it is as important as  $X_1$  for reaching  $\mathbf{Y}$ . Coming back to Runge, Figure 8 displays  $S_{X_i, \mathbf{Y}}$  for Runge approximation for  $X_i \in \mathcal{G}_{\text{dropout\_rate}}$ , compared to the first approach where we do not care about conditionality, though in this specific case it does not change much of the conclusion that `dropout_rate` is not impactful.

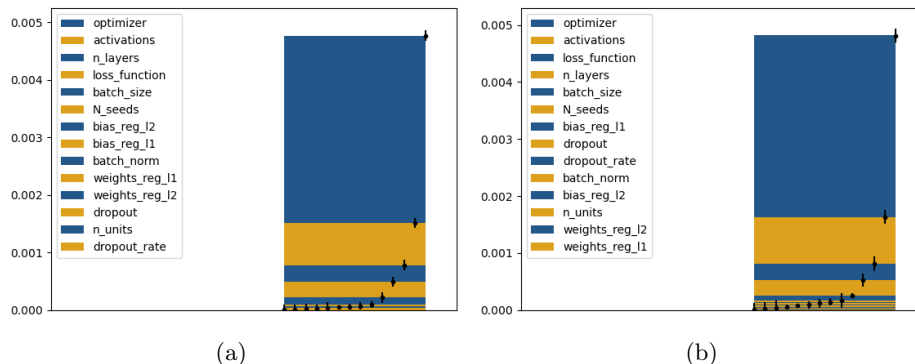


Figure 8: Comparison of  $S_{X_i, \mathbf{Y}}$  without considering conditionality (a) and for variables  $X_i \in \mathcal{G}_{\text{dropout\_rate}}$  (b)

In Runge example, we have only considered one conditional hyperparameter, `dropout_rate`, leading to only two groups  $\mathcal{G}_0$  and  $\mathcal{G}_{\text{dropout\_rate}}$ . For another, more complex example, we could introduce additional conditional hyperparameters such as SGD’s `momentum`. In that case, there would be two additional groups. The group  $\mathcal{G}_{\text{momentum}}$ , that contains hyperparameters conditioned to when `momentum` is involved, but also  $\mathcal{G}_{(\text{dropout\_rate}, \text{momentum})}$  that contains hyperparameters conditioned to when `momentum` and `dropout_rate` are *simultaneously* involved. If the initial random search contains  $n_s$  configurations, `dropout_rate` and `momentum` are involved in  $n_s/2$  configurations. HSIC estimation of hyperparameters of the groups  $\mathcal{G}_{\text{dropout\_rate}}$  and  $\mathcal{G}_{\text{momentum}}$  will be coarser but still acceptable. However, `dropout_rate` and `momentum` would only be involved simultaneously in  $n_s/4$  configurations, which may lead to too inaccurate HSIC estimation for  $\mathcal{G}_{(\text{dropout\_rate}, \text{momentum})}$ . This happens because `dropout_rate` and `momentum` do not depend on the same main hyperparameter. Hence, to avoid this problem, we only consider groups  $\mathcal{G}$  with conditional hyperparameters that depend on the same main hyperparameter. In our case, these groups are  $\mathcal{G}_0$ ,  $\mathcal{G}_{\text{dropout\_rate}}$  and  $\mathcal{G}_{\text{momentum}}$ .



#### 4.4 Summary: evaluation of HSIC in hyperparameter analysis

In this section, we summarize the results of the previous discussions to provide a clear methodology for evaluating HSIC of hyperparameters in complex search spaces in Algorithm 1.

**Comments on Algorithm 1.** **Line 1:** one can choose any initial distribution for hyperparameters. **Line 2:** this step is a classical random search. We remind that HSIC evaluation can be applied after any random search, even if it was not initially conducted for HSIC estimation. Configurations  $\sigma_i$  are sampled from  $\sigma = (X_1, \dots, X_{n_h}) \in \mathcal{H}$ . **Line 3:** this step strongly benefits from parallelism. **Line 4:** the set  $\mathbf{Y}$  is often taken as the  $p$  % percentile of  $\{Y_1, \dots, Y_{n_s}\}$ , but can be any other set depending on what we want to assess. **Line 6 - 10:** the evaluation starts with main hyperparameters because they are always involved. Once most impactful main hyperparameters are selected, we assess the conditional ones.

---

#### Algorithm 1 Evaluation of HSIC in hyperparameter analysis

---

- 1: **Inputs:** hyperparameter search space  $\mathcal{H} = \mathcal{X}_1 \times \dots \times \mathcal{X}_{n_h}$ ,  $n_s$ .
  - 2: Sample  $n_s$  hyperparameter configurations  $\{\sigma_1, \dots, \sigma_{n_s}\}$ .
  - 3: Train a neural network for each configuration and gather outputs  $\{Y_1, \dots, Y_{n_s}\}$ .
  - 4: Define  $\mathbf{Y}$ .
  - 5: Construct conditional groups  $\mathcal{G}_0, \dots$ .
  - 6: **for** each group, starting with  $\mathcal{G}_0$  **do**
  - 7:   Construct  $U_i$  for every  $X_i$  using  $\Phi_i$  of section 4.1.
  - 8:   Compute  $S_{X_i, \mathbf{Y}} := S_{U_i, \mathbf{Y}}$  using (8).
  - 9:   By comparing them, select the most impactful hyperparameters.
  - 10:   Check for interacting hyperparameters.
  - 11: **Outputs:** Most impactful hyperparameters and interacting hyperparameters.
- 

## 5. Hyperparameter analysis using HSIC

Now that we are able to compute and correctly assess HSIC, we introduce possible usages of this metric in the context of hyperparameter analysis. In this section we explore three benefits that can be drawn from HSIC based hyperparameter analysis.

- **Knowledge gain:** HSIC allows analyzing hyperparameters, obtaining knowledge about their relative impact on error.
- **Stability:** Some hyperparameter configurations can lead to dramatically high errors. A hyperparameters range reduction based on HSIC can prevent such situations.
- **Acceleration:** We can choose values for less important hyperparameters that improve inference and training time.

We illustrate these points through hyperparameters studies for the training of a fully connected neural network on MNIST and a convolutional neural network on Cifar10. We also introduce a less common benchmark which is the approximation by a fully connected neural network of Bateman equations solution. Solving these equations is an important part of many high-performance numerical simulations of several phenomena (neutronic (Bernède

and Poëtte, 2018; Dufek et al., 2013), combustion (Bisi and Desvillettes, 2006), detonics (Lucor et al., 2007), etc.). Approximating this solution with a light neural network could accelerate these simulations whose execution time is often prohibitive. We believe that it is a relevant illustration of the multi-objective need of hyperparameter optimization. Details about the construction of Bateman equations data set can be found in **Appendix B** and hyperparameters space and conditional groups  $\mathcal{G}_0, \dots$  for each problem in **Appendix A**.

## 5.1 hyperparameter analysis

This section presents a first analysis of HSIC estimation for the three benchmark datasets: MNIST, Cifar10, and Bateman equations. These evaluations are based on an initial random search for  $n_s = 1000$  different hyperparameter configurations. The set  $\mathbf{Y}$  is the 10%-best errors percentile, so  $n_s$  is taken sufficiently large for  $U_i|Z = 1$  to be correctly estimated by HSIC. Indeed, if  $n_s = 1000$ , there will be 100 samples of  $U_i|Z = 1$ . This Random search was conducted using 100 parallel jobs on CPU nodes for fully connected neural networks and 24 parallel jobs on Nvidia Tesla v100 GPUs for convolutional neural networks, so the results for these configurations were obtained quite quickly, in less than two days.

Note that for each dataset, graphical comparison of  $S_{X_i, \mathbf{Y}}$  for conditional groups  $\mathcal{G}_0, \dots$  is displayed in **Appendix C**, for conciseness and clarity.

### 5.1.1 MNIST

We train  $n_s = 1000$  different neural networks. The error is evaluated on a validation set constructed by extracting 5000 points from the training set. We keep the test set for final evaluations. We can see on Figure 9a that the accuracy goes up to  $\sim 99\%(1 - \text{error})$  which is quite high for a fully connected neural network on MNIST. Figure 9a also displays the values of  $S_{X_i, \mathbf{Y}}$  for each hyperparameter  $X_i$  stacked vertically. Here, `activation`, `optimizer`, `batch.size` and `loss_function` have significantly high  $S_{X_i, \mathbf{Y}}$ . Hyperparameter `n.layers` also stands out from the remaining hyperparameter, while staying far below `loss_function` HSIC. There is one conditional group to consider,  $\mathcal{G}_{\text{dropout\_rate}}$ , and `dropout_rate` is found not to be impactful.

Interestingly, neither the depth (`n.layers`) nor the width (`n.units`) are among the most important hyperparameters. Notice that in the random search, we obtained a neural network of depth 4 and width 340 which obtained 98.70% accuracy, while the best networks (there were two) obtained 98.82% accuracy for a depth of 10 and a width of 791 and 1403, respectively. Recall that the min-max depth was 1-10 and width were 134-1500. It means that lighter networks are capable of obtaining very good accuracy. Another interesting observation is that `loss_function` does not have the highest HSIC, meaning that Mean Squared Error allows obtaining good test errors which is surprising for a classification problem.

We plot histograms of  $U_i$  and  $U_i|Z = 1$  on Figure 10a for `activation` (top) and `weights_reg_l1` (bottom) with repeated sampling for categorical hyperparameters, like in Section 4.1. Note that the first and the second hyperparameters have respectively a high and low  $S_{X_i, \mathbf{Y}}$ . We can see that for hyperparameters with high  $S_{X_i, \mathbf{Y}}$ ,  $U_i|Z = 1$  (orange for KDE, blue for histogram) is quite different from  $U_i$  (red for KDE, gray for histogram). On the contrary, for hyperparameters with low  $S_{X_i, \mathbf{Y}}$  there not seems to have major differences.

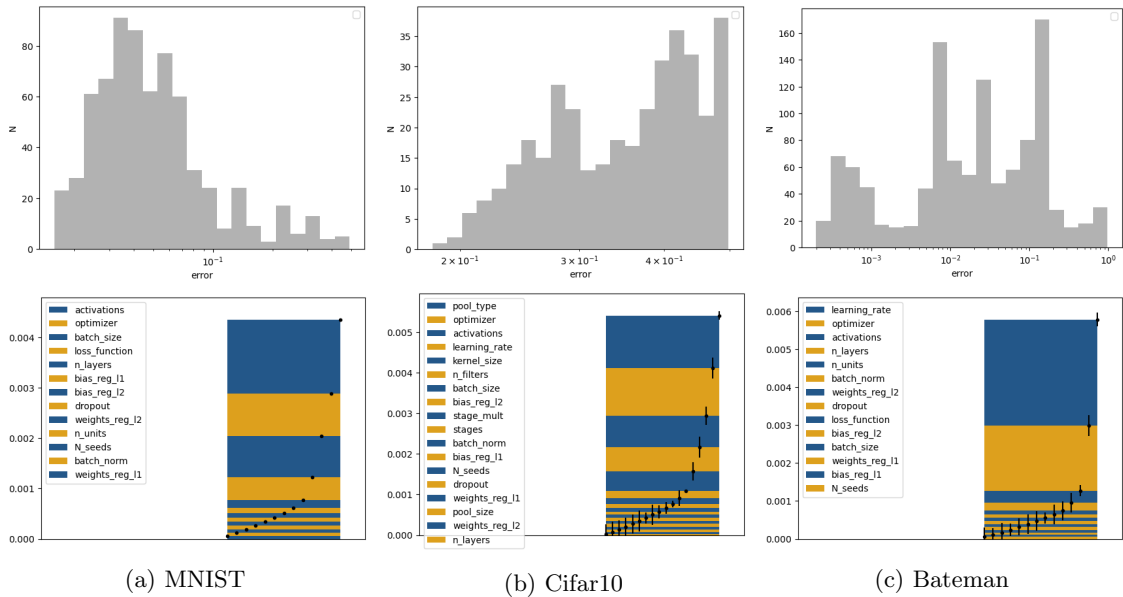


Figure 9: (top) Histograms of the initial random sampling of configurations and (bottom) comparison of  $S_{X_i, Y}$  for every main hyperparameters.

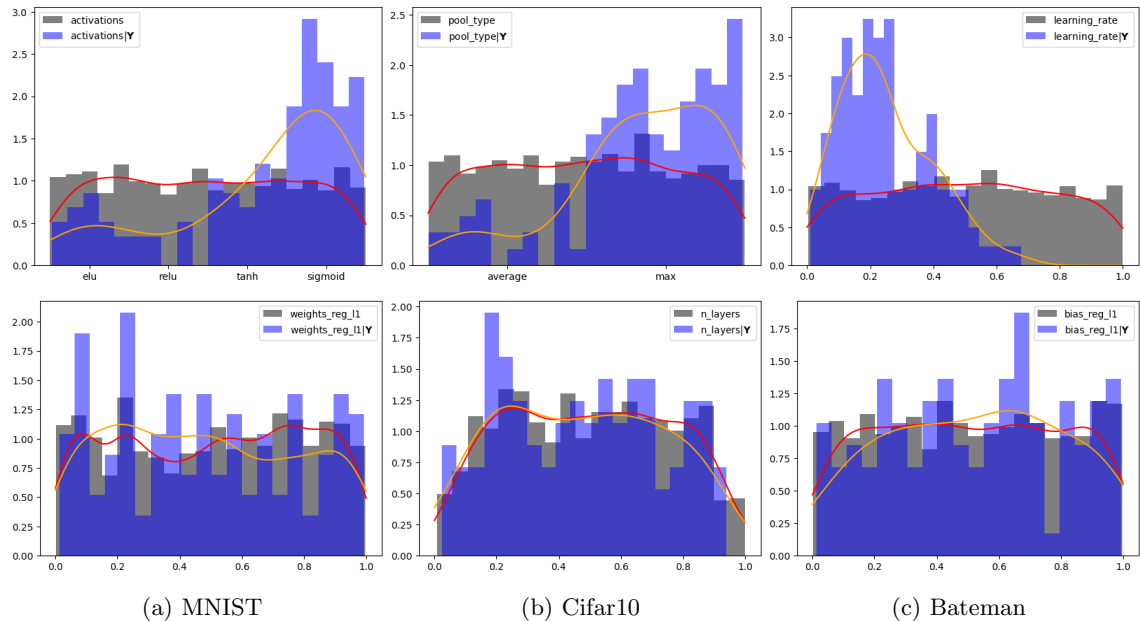


Figure 10: Representation of  $U_i|Z=1$  (orange for KDE and blue for histogram) and  $U_i$  (red for KDE and grey for histogram), for hyperparameters  $X_i$  with high (top) and low (bottom)  $S_{X_i, Y}$

### 5.1.2 CIFAR10

We train  $n_s = 1000$  different convolutional neural networks. The error is evaluated on a validation set constructed by extracting 5000 points from the training set. We keep the test set for final evaluations in Section 6. After the initial random search, the best validation error is 81.37%. Note that the histogram of Figure 9b is truncated because many hyperpa-

parameter configurations led to diverging errors. Here, `pool_type`, `optimizer`, `activation`, `learning_rate` and `kernel_size` have the highest  $S_{X_i, \mathbf{Y}}$ , followed by `n_filters`. Half of these hyperparameters are specific to convolutional neural networks, which validates the impact of these layers on classification tasks for image data. The conditional groups are listed in **Appendix A**. We do not show  $S_{X_i, \mathbf{Y}}$  comparisons for every group for clarity of the article and simply report that one conditional hyperparameter `centered`, which triggers centered RMSPROP if this value is chosen for `optimizer`, is also found to be impactful.

The depth (`n_layers`) is the less important hyperparameters. Notice that in the random search, we obtained a neural network of depth 4 and width 53, with 3 stages (meaning that the neural network is widened 3 times), which obtained 80.70% validation accuracy, while the best networks obtained 81.37% accuracy for a depth of 6 and 48 but 4 stages. The conclusion is the same as for MNIST: increasing the size of the network is not the only efficient way to improve its accuracy.

We plot histograms of  $U_i$  and  $U_i|Z = 1$  on Figure 10b for `pool_type` (top) and `n_layers` (bottom) like in the previous section. The histograms of `n_layers` are interesting because even the histogram of  $U_i$  does not seem uniform. It may be explained by configurations leading to out-of-memory errors or so long to train that 1000 other neural networks with different configurations had already been trained meanwhile. It also explains why its HSIC is so low. Still, the conclusions that `n_layers` has a limited impact is valid since there is no major differences between  $U_i$  and  $U_i|Z = 1$ .

### 5.1.3 BATEMAN EQUATIONS

For Bateman equations, we use a training set of 100000 points and a validation set of 10000 points. Like for Cifar10, we keep a test set of 20000 points for final evaluations. The error is evaluated on the validation set. Mean squared error goes down to  $2.90 \times 10^{-5}$ . Like for Cifar10, the histogram of Figure 9b is truncated because many hyperparameter configurations led to diverging errors. For this problem, `learning_rate`, `optimizer`, `activations` and `n_layer` can be considered as impactful. Conditional groups are also listed in **Appendix A**. Three conditional hyperparameters are important: `beta_2`, the second moment decay coefficient of ADAM and NADAM, `nesterov`, that triggers Nesterov’s momentum in SGD and `centered`, described previously.

HSIC for `n_layers` is still the lowest of the significant  $S_{X_i, \mathbf{Y}}$  and `n_units` belongs to less impactful hyperparameters. We perform the same analysis as for MNIST and Cifar10 and quote that the best neural network has depth 5 and width 470 while another neural network of depth 5 and width 62 reaches  $3.74 \times 10^{-5}$  validation error.

We plot histograms of  $U_i$  and  $U_i|Z = 1$  on Figure 10c for `learning_rate` (top) and `bias_reg_l1` (bottom). Histograms of `learning_rate` is interesting because this hyperparameter is continuous so the distribution  $U_i|Z = 1$  seems more natural. This once again illustrates the differences of  $U_i$  and  $U_i|Z = 1$  for hyperparameters with high and low  $S_{X_i, \mathbf{Y}}$ .

## 5.2 Modification of hyperparameters distribution to improve stability

Up to now, we only considered  $\mathbf{Y}$  to be the 10% best error percentile, which is natural since we want to understand the impact of hyperparameters towards good errors. But HSIC formalism and our adaptation to hyperparameter analysis allow us to choose any  $\mathbf{Y}$ . We

saw in the previous Section that for Cifar10 and Bateman, histograms of Figure 9b are truncated because many hyperparameter configurations led to diverging errors. It is possible to understand why by choosing  $\mathbf{Y}$  as the set of the 10% worst errors. Then, HSIC can be applied to assess the importance of each hyperparameter towards the worst errors.

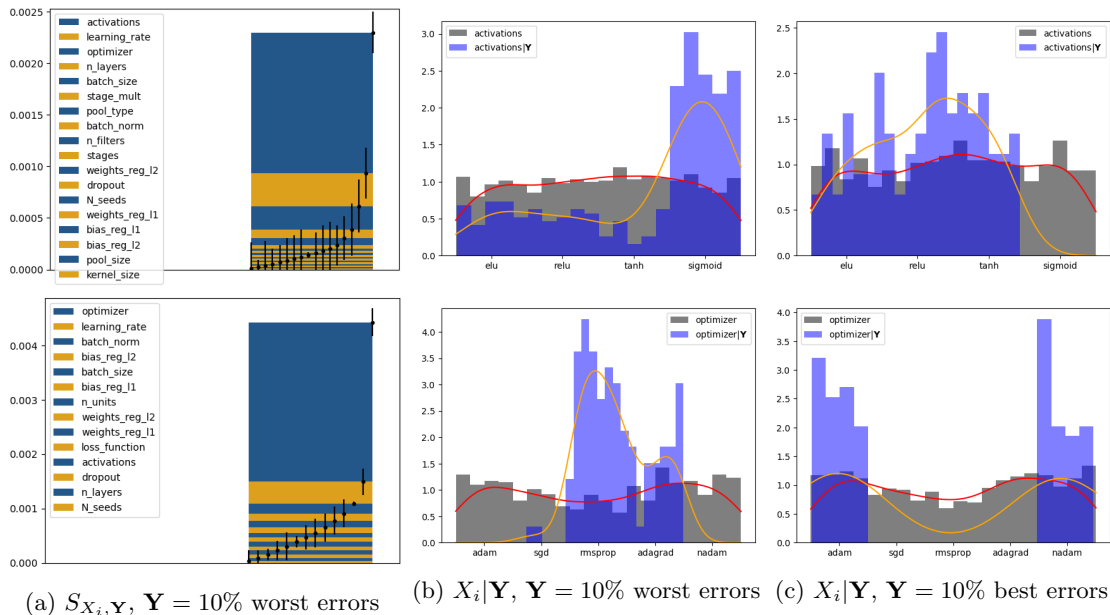


Figure 11: **Top:** Cifar10. **Bottom:** Bateman. (a) Comparison of  $S_{X_i, \mathbf{Y}}$  when  $\mathbf{Y}$  is the set of the 10% worst errors. (b) Histogram of  $X_i | \mathbf{Y}$  when  $\mathbf{Y}$  is the set of 10% worst errors, with  $X_i = \text{activations}$  for Cifar10 and  $X_i = \text{optimizer}$  for Bateman. (c) Histogram of  $X_i | \mathbf{Y}$  when  $\mathbf{Y}$  is the set of the 10% best errors, with  $X_i = \text{activations}$  for Cifar10 and  $X_i = \text{optimizer}$  for Bateman.

Figure 11b shows  $S_{X_i, \mathbf{Y}}$  comparisons, for Cifar10 and Bateman, when  $\mathbf{Y}$  is the set of the 10% worst errors. In that case,  $S_{X_i, \mathbf{Y}}$  measures how detrimental bad values of  $X_i$  can be for the neural network error. For Cifar10, **activation** is shown to be the main responsible for the highest errors. If we plot the histogram of **activation** $| \mathbf{Y}$ , we can clearly see that **sigmoid** is a bad value in the sense that most of the worst neural network use this activation function. If we come back to  $\mathbf{Y}$  being the set of the 10% best neural networks, we see that none of the best neural networks have **sigmoid** as the activation function. By itself, this kind of knowledge is valuable because it improves our understanding of hyperparameter’s impact. This also directly brings some practical benefits: in that case, we could reasonably discard **sigmoid** from the hyperparameter space and therefore adapt the distribution of **activation** to improve stability. The same reasoning can be applied to Bateman, with  $X_i = \text{optimizer}$ , for **adagrad** and **rmsprop** optimizers.

Note that we could have drawn the previous conclusions by directly looking at histograms as represented in Figure 11b and 11c. However, when the number of hyperparameters grows, the number of histograms to look at and to visually evaluate grows as well and the analysis can become tedious. Thanks to HSIC, we know directly which histograms to look at, and how to rank hyperparameters when it is not visually clear-cut.

### 5.3 Interval reduction for hyperparameters that affect execution speed

One common conclusion of  $S_{X_i, \mathbf{Y}}$  values for the last three machine learning problems is that one does not have to set high values for hyperparameters that affect execution speed, such as `n_units`, `n_layers`, or `n_filters`, in order to obtain competitive models. This naturally raises the question of how to bias the hyperparameter optimization towards such models. Multi-objective hyperparameter optimization algorithms have already been successfully applied, like in Tan et al. (2018) for instance, but these algorithms are black-boxes and involve tuning additional hyperparameters for the multi-objective loss function.

In our case, we can use information from  $S_{X_i, \mathbf{Y}}$  to reduce the hyperparameters space search in order to obtain more cost-effective neural networks. The most simple way to achieve that goal is to select values that improve execution speed for hyperparameters that have low  $S_{X_i, \mathbf{Y}}$  values. For MNIST, it would mean for instance to choose `n_units` = 128, for Cifar10, `n_layers` = 3 or for Bateman, `n_units` = 32.

However, if all hyperparameters that affect execution speed are important, i.e. they have high  $S_{X_i, \mathbf{Y}}$  value, we may not be able to apply the previous idea. In that case, we can use HSIC in another way to still achieve our goal. Most of the time, hyperparameters value can be easily linked to good or bad execution time. A larger `n_units`, `n_layers`, or `kernel_size` will always hurt execution time. Suppose that  $X_i = \text{n\_units} \in [a, b]$  and that  $S_{X_i, \mathbf{Y}}$  is high, so that  $n_{units}$  is among the most important hyperparameters. Very often, a too low value for `n_units` can significantly hurt the accuracy. It is likely that  $S_{X_i, \mathbf{Y}}$  is high because  $a$  is too small. One could therefore compute  $S_{X_i | X_i \in [a+c, b], \mathbf{Y}}$  for  $c \in [1, b - a]$ , starting with  $c = 1$  until  $S_{X_i | X_i \in [a+c, b], \mathbf{Y}}$  becomes low. Then, hyperparameter `n_units` can be replaced by `n_units | n_units  $\in [a + c, b]$` , which has a low HSIC, and whose value can be set close to  $a + c$  like in the previous paragraph. This methodology is illustrated on Figure 12, where  $S_{X_i | X_i \in [a+c, b], \mathbf{Y}}$  is plotted with respect to  $c$ .

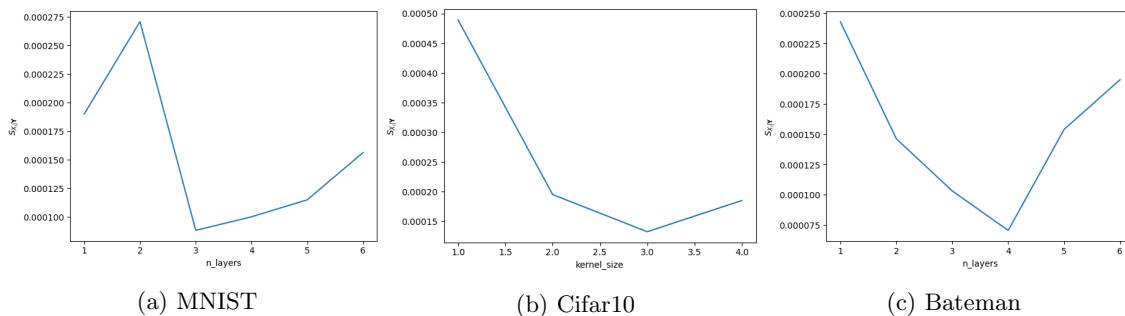


Figure 12:  $S_{X_i | X_i \in [a+c, b], \mathbf{Y}}$  w.r.t.  $c$  for (a) `n_layers` in MNIST, (b) `kernel_size` in Cifar10 and (c) `n_layers` in Bateman.

This plot highlights that in each case,  $S_{X_i, \mathbf{Y}}$  decreases until it reaches a value that would make the corresponding hyperparameter belong to the less important hyperparameters. It suggests that we could set `n_layers` = 3 for MNIST, `kernel_size` = 3 for Cifar10 and `n_layers` = 4 for Bateman without affecting the error too much. Once hyperparameters space has been reduced to improve neural networks execution time, it is possible to apply any classical hyperparameter optimization algorithm.

## 6. Two step hyperparameter optimization: focusing on impactful hyperparameters

One of the most successful and widely used hyperparameter optimization algorithms is Gaussian Processes-based Bayesian Optimization, that we denote GPBO by convenience. However, this algorithm is known to struggle in too high dimensions. In the case of Cifar10, choosing values for hyperparameters that affect execution time would still lead to a space of dimension 20, which is quite large to apply GPBO.

In Song et al. (2007), the authors introduce the use of HSIC for feature selection and in Spagnol et al. (2018), HSIC based feature selection is used in the context of optimization. The idea is to compute  $S_{X_i, \mathbf{Y}}$  for each variable involved in the optimization, and to discard low  $S_{X_i, \mathbf{Y}}$  variables from it. More specifically, the discarded variables are fixed to an arbitrary value, and then the optimization algorithm is applied only in the dimension of the high  $S_{X_i, \mathbf{Y}}$  variables.

This methodology is particularly suited to hyperparameter optimization. In this work, we have emphasized the ability of HSIC to identify the most important hyperparameters. This allows performing relevant HSIC driven hyperparameters selection, which can overcome the problem of optimization in too high dimensional hyperparameters space. We go farther and present a two-step optimization. We do not stop to the optimization of most relevant hyperparameters but also fine-tune less important hyperparameters in a second optimization step. As a result, the problematic optimization in high dimension is split into two easier optimization steps:

- 1 Optimization in the reduced, yet impactful hyperparameters space, which has reasonable dimension. It allows applying GPBO despite the initially large dimension of the hyperparameters space. At the end of this step, optimal values for the most impactful hyperparameters are selected.
- 2 Optimization on the remaining dimensions. In our case, GPBO can be reasonably applied in this space, but note that we might have hyperparameters spaces whose initial dimension is so high that after the first step, the remaining dimensions to optimize could still be too numerous for GPBO to be performed. In that case, other, less refined but more robust hyperparameter optimization algorithms (like random search or Tree Parzen Estimators (Bergstra et al., 2011)) could be applied, which would not be so much of a problem since remaining hyperparameters are less impactful.

For the first step, values have to be chosen for less impactful hyperparameters that are not involved in the optimization. In Spagnol et al. (2018), the authors choose the values yielding the best output after the initial random search. Here, the value selection method that aims at improving execution speed, introduced in Section 5.3, integrates perfectly with this two-step optimization. Following this method brings two advantages. First, we can obtain more cost-effective neural networks if we keep these values through the two optimization step. Second, if we do not care so much about execution speed but only look for accuracy, still fixing these values during the first optimization step allows to improve the training speed and so global hyperparameter optimization time.

The rest of the low  $S_{X_i, \mathbf{Y}}$  hyperparameters value can be set as those of the hyperparameter configuration yielding the best error. There is one last attention point: one has

to be careful about interactions between low  $S_{X_i, \mathbf{Y}}$  hyperparameters. If two low HSIC hyperparameters  $X_i$  and  $X_j$  are found to interact, like discussed in section 4.2, and  $X_i$  has an impact on execution speed, the value of  $X_j$  must be chosen so that value of the pair  $(X_i, X_j)$  is close to a value yielding a good neural network error. The two-step optimization is summarized in Algorithm 2.

---

**Algorithm 2** Two-step Optimization
 

---

- 1: **Inputs:** hyperparameter search space  $\mathcal{H} = \mathcal{X}_1 \times \dots \times \mathcal{X}_{n_h}, n_s$
  - 2: Apply Algorithm 1: "Evaluation of HSIC in hyperparameter analysis".
  - 3: Perform interval reduction
  - 4: Select values for less impactful hyperparameters that improve execution speed, taking care of interaction.  
     // Step 1:
  - 5: Apply GPBO to the most impactful hyperparameters.  
     // Step 2:
  - 6: **if** goal = accuracy and execution speed **then**
  - 7:   Keep the optimal values of step 1 and the values of less impactful hyperparameters that improve execution speed. Apply GPBO to the remaining dimensions.
  - 8: **else if** goal = accuracy only **then**
  - 9:   Keep the optimal values of step 1. Apply GPBO to the remaining dimensions.
- 

We evaluate this two-step optimization on our three data sets. For each of these, we consider 4 baselines:

- Random search: The result of the random search of 1000 configurations plus 200 additional configurations for a total of  $n_s = 1200$  points.
- Full GPBO: Gaussian Processes-based Bayesian Optimization, conducted on the full hyperparameters space, without any analysis based on HSIC. We initialize the optimization with 50 random configurations and perform the optimization for 50 iterations (enough to reach convergence).
- TS-GPBO (accuracy): Two-Step GPBO described in Algorithm 2, with goal = accuracy. Step 1 and 2 are run for 25 iterations.
- TS-GPBO (accuracy + speed): Two-Step GPBO described in Algorithm 2, with goal = accuracy and execution speed.

For each of these baselines, the *test* error is reported (the metric is accuracy for MNIST and Cifar10 and MSE for Bateman), as well as the number of parameters of the best models and their FLOPs. Random search (ran using 100 parallel jobs for MNIST and Bateman and 24 for Cifar10) took between 2 and 3 days depending on the data set, full GPBO between 3 and 4 days and TS-GPBO between 3 and 4 days as well (2 – 3 days for the initial random search and 1 day for the two steps of GPBO). Time measure is coarse because not all the training has been conducted on the same architectures (Sandy Bridge CPUs, Nvidia Tesla V100, and Nvidia Tesla P100 GPUs), even within the same baseline, for cluster accessibility



reasons. Nonetheless, these approximate time measures demonstrate that full GPBO and TS-GPBO take approximately the same amount of time. This is explained by step 1 of TS-GPBO which always chooses values for non-optimized hyperparameters that improve execution speed and training time. As a result, step 1 is quite fast. Besides, experiments show that step 2 usually converges faster, in terms of number of evaluations, than full GPBO to the reported minimum, perhaps because the optimal values found during step 1 make step 2 begin close to an optimum. The results of 5 repetitions (except for random search) of each baseline can be found in Table 4.

Results show that except for Cifar10, TS+GPBO yields very competitive neural networks while having far fewer parameters and FLOPs. For MNIST, TS+GPBO model has  $\approx 66$  and 3 times fewer parameters and FLOPs than full GPBO and random search. For Bateman these factors are 482 and 380. This huge factor may be explained by an oversized initial hyperparameter search space. Still, a reasonable size for the search space cannot be found *a priori* and our method makes hyperparameter optimization robust to such bad *a priori* choices. Note that for these cases, we only reported results of TS-GPBO (accuracy + speed), because the results of this baseline were already very good and TS-GPBO (accuracy) did not bring significant improvement. For the special case of Cifar10, TS-GPBO (accuracy) and (accuracy + speed) both find a model which has 11 and 9 times fewer parameters than random search and full GPBO. TS-GPBO (accuracy) finds a model which has  $\approx 3$  and 2 fewer FLOPs than random search and full GPBO while these factors are 10 and 8 for (accuracy + speed). Full GPBO and TS-GPBO (accuracy) achieve comparable accuracy but the standard deviation for full GPBO is 2.5 times higher than for TS-GPBO (accuracy), which demonstrates the robustness of TS-GPBO (accuracy). Even if execution time is not an explicitly desired output of TS-GPBO (accuracy), the first step of TS-GPBO, which selects values that improve execution time, seems to bias the optimization towards more cost-effective models, as the final number of parameters and FLOPs shows. All these good results have been allowed thanks to information given by HSIC analysis. Hence, not only TS-GPBO outputs good and cost-effective models, but it also outputs a better knowledge of hyperparameters interaction in these machine learning problems, as opposed to random search and full GPBO which are black-boxes.

## 7. Discussion and Perspectives

**Hyperparameters modeling choice.** HSIC is a powerful tool that is widely used for sensitivity analysis as a dependence measure. Its application to hyperparameter optimization required some work, especially regarding the complex structure of hyperparameters space. To achieve this goal, some modeling choices have been made, such as the application of  $\Phi_{X_i}$  to map hyperparameter  $X_i$  to a uniform random variable. The good results obtained in Section 6 not only validate the usage of information given by HSIC for hyperparameter analysis, but also this modeling choice.

**Automating Two-Step Gaussian Process-based Bayesian Optimization.** In this work, we presented methodologies for exploiting HSIC information that involved human intervention. Indeed, someone has to actively decide which hyperparameter deserves to be considered as more or less important. Nevertheless, one advantage of HSIC is that it is a scalar metric. One could construct an HSIC based hyperparameter optimization by

data set	baseline	test metric	params	MFLOPs
MNIST	RS	98.36	436,147	871
-	full GPBO	<b>98.42</b> $\pm$ 0.05	10,271,367	20,534
-	TS-GPBO (accuracy + speed)	<b>98.42</b> $\pm$ 0.02	<b>151,306</b>	<b>307</b>
Cifar10	RS	81.8	99,444,880	1,832,615
-	full GPBO	<b>82.73</b> $\pm$ 1.45	71,111,761	1,441,230
-	TS-GPBO (accuracy)	<b>82.60</b> $\pm$ 0.58	9,604,539	650,269
-	TS-GPBO (accuracy + speed)	79.34 $\pm$ 0.15	<b>9,281,258</b>	<b>178,621</b>
Bateman	RS	<b>1.99</b> $\times 10^{-4}$	1,259,140	2,516
-	full GPBO	2.94 $\pm$ 0.42 $\times 10^{-4}$	1,588,215	3,173
-	TS-GPBO (accuracy + speed)	3.49 $\pm$ 0.31 $\times 10^{-4}$	<b>3,291</b>	<b>7</b>

Table 4: Results of hyperparameter optimization for Random Search (RS), Gaussian Processes based Bayesian Optimization on full hyperparameters space (full GPBO) and Two-Steps Gaussian Processes based Bayesian Optimization (TS-GPBO). The mean  $\pm$  standard deviation across 5 repetitions is displayed for the test metric. For the number of parameters and FLOPs, the maximum value obtained across repetitions is reported because it illustrates the worst scenario that can happen for execution speed, and how much our method prevents it.

setting a threshold above which hyperparameters are considered as important, leading to an end-to-end automatic, yet explainable hyperparameter optimization algorithm. Though the idea of a threshold is used in Spagnol et al. (2018) its application to hyperparameter optimization has not been studied in this paper and could be part of future works.

**Other dependence measures.** In this work, we used HSIC as a dependence measure. Our derivations for its application to hyperparameter analysis still hold for any other dependence measure sharing the same properties as HSIC, though studies of different dependence measures is beyond the scope of this paper.

**Global hyperparameter optimization speed up.** We presented some ways of using HSIC in hyperparameter optimization, but this paper mostly emphasized the possibility to exploit it in order to find lighter models. We are aware that execution speed is not always a goal for machine learning practitioners. Still, machine learning practitioners are always concerned about training speed. The first step of TS-GPBO (accuracy) demonstrated the possibility to use HSIC to improve training speed without hurting the final accuracy so even if final execution speed is not a goal, TS-GPBO made it interesting to use HSIC for that purpose. To go farther, it would even be possible to apply parallel GPBO like described in Snoek et al. (2012), or to use Hyperband on the initial random search, since HSIC computation only relies on the error of the  $p$ -% best neural networks.

**Further execution time improvement.** One advantage of execution time improvement obtained thanks to HSIC is that it only relies on the conception of the neural network. Therefore, additional improvement could be made by applying other techniques like quantization or weights pruning.

## 8. Conclusion

Hyperparameter optimization is a very important step of machine learning applications and ordinarily only returns one optimal hyperparameter configuration, in a black-box fashion. Using an approach based on sensitivity analysis, we show that we can make hyperparameter optimization explainable. In particular, we adapt Hilbert Schmidt Independence Criterion, a statistical dependence tool used in sensitivity analysis, to hyperparameters spaces that can be complex and awkward due to the different nature of hyperparameters (continuous or categorical) and their interactions and inter-dependencies. Their use for hyperparameter analysis allows constructing new optimization methodologies, based on two-step Bayesian optimization where each step is applied on a relevant subset of hyperparameters and other hyperparameters values are chosen in principled ways. These methodologies allow finding optimal values for hyperparameters that improve execution speed as well as test error.

## References

- James Bergstra and Yoshua Bengio. Random search for hyper-parameter optimization. *Journal of Machine Learning Research*, 13(10):281–305, 2012.
- James S. Bergstra, Rémi Bardenet, Yoshua Bengio, and Balázs Kégl. Algorithms for hyper-parameter optimization. In J. Shawe-Taylor, R. S. Zemel, P. L. Bartlett, F. Pereira, and K. Q. Weinberger, editors, *Advances in Neural Information Processing Systems 24*, pages 2546–2554. Curran Associates, Inc., 2011.
- Adrien Bernède and Gaël Poëtte. An unsplit monte-carlo solver for the resolution of the linear boltzmann equation coupled to (stiff) bateman equations. *Journal of Computational Physics*, 354:211–241, 02 2018.
- M. Bisi and L. Desvillettes. From reactive boltzmann equations to reaction–diffusion systems. *Journal of Statistical Physics*, 124(2):881–912, Aug 2006.
- E. Borgonovo. A new uncertainty importance measure. *Reliability Engineering & System Safety*, 92(6):771 – 784, 2007.
- François Chollet. Xception: Deep learning with depthwise separable convolutions. *CoRR*, abs/1610.02357, 2016.
- I. Csizar. Information-type measures of difference of probability distributions and indirect observation. *Studia Scientiarum Mathematicarum Hungarica*, 2:229–318, 1967.
- Sébastien Da Veiga. Global sensitivity analysis with dependence measures. *Journal of Statistical Computation and Simulation*, 85, 11 2013.
- Jan Dufek, Dan Kotlyar, and Eugene Shwageraus. The stochastic implicit euler method – a stable coupling scheme for monte carlo burnup calculations. *Annals of Nuclear Energy*, 60:295 – 300, 10 2013.
- Thomas Elsken, Jan Hendrik Metzen, and Frank Hutter. Neural architecture search: A survey. *Journal of Machine Learning Research*, 20(55):1–21, 2019.
- Stefan Falkner, Aaron Klein, and Frank Hutter. BOHB: Robust and efficient hyperparameter optimization at scale. volume 80 of *Proceedings of Machine Learning Research*, pages 1437–1446, Stockholmsmässan, Stockholm Sweden, 10–15 Jul 2018. PMLR.
- Jean-Claude Fort, Thierry Klein, and Nabil Rachdi. New sensitivity analysis subordinated to a contrast. *Communications in Statistics - Theory and Methods*, 45(15):4349–4364, 2016.
- Kenji Fukumizu, Arthur Gretton, Gert R. Lanckriet, Bernhard Schölkopf, and Bharath K. Sriperumbudur. Kernel choice and classifiability for rkhs embeddings of probability distributions. In Y. Bengio, D. Schuurmans, J. D. Lafferty, C. K. I. Williams, and A. Culotta, editors, *Advances in Neural Information Processing Systems 22*, pages 1750–1758. Curran Associates, Inc., 2009.

- Daniel T Gillespie. A general method for numerically simulating the stochastic time evolution of coupled chemical reactions. *Journal of Computational Physics*, 22(4):403 – 434, 1976.
- Arthur Gretton, Olivier Bousquet, Alex Smola, and Bernhard Schölkopf. Measuring statistical dependence with hilbert-schmidt norms. In *Proceedings of the 16th International Conference on Algorithmic Learning Theory*, ALT’05, page 63–77, Berlin, Heidelberg, 2005. Springer-Verlag.
- Arthur Gretton, Karsten Borgwardt, Malte Rasch, Bernhard Schölkopf, and Alex J. Smola. A kernel method for the two-sample-problem. In B. Schölkopf, J. C. Platt, and T. Hoffman, editors, *Advances in Neural Information Processing Systems 19*, pages 513–520. MIT Press, 2007.
- Kevin Jamieson and Amee Talwalkar. Non-stochastic best arm identification and hyperparameter optimization. In Arthur Gretton and Christian C. Robert, editors, *Proceedings of the 19th International Conference on Artificial Intelligence and Statistics*, volume 51 of *Proceedings of Machine Learning Research*, pages 240–248, Cadiz, Spain, 09–11 May 2016. PMLR.
- Kirthevasan Kandasamy, Willie Neiswanger, Jeff Schneider, Barnabás Póczos, and Eric P. Xing. Neural architecture search with bayesian optimisation and optimal transport. In *Proceedings of the 32nd International Conference on Neural Information Processing Systems*, NIPS’18, page 2020–2029, Red Hook, NY, USA, 2018. Curran Associates Inc.
- Lisha Li, Kevin Jamieson, Giulia DeSalvo, Afshin Rostamizadeh, and Amee Talwalkar. Hyperband: A novel bandit-based approach to hyperparameter optimization. *Journal of Machine Learning Research*, 18(185):1–52, 2018.
- D. Lucor, C. Eaux, H. Jourden, and P. Sagaut. Stochastic design optimization: Application to reacting flows. *Computer Methods in Applied Mechanics and Engineering*, 196(49):5047 – 5062, 2007.
- Alfred Müller. Integral probability metrics and their generating classes of functions. *Advances in Applied Probability*, 29(2):429–443, 1997.
- Hieu Pham, Melody Guan, Barret Zoph, Quoc Le, and Jeff Dean. Efficient neural architecture search via parameters sharing. volume 80 of *Proceedings of Machine Learning Research*, pages 4095–4104, Stockholmsmässan, Stockholm Sweden, 10–15 Jul 2018. PMLR.
- Saman Razavi, Anthony Jakeman, Andrea Saltelli, Clémentine Prieur, Bertrand Iooss, Emanuele Borgonovo, Elmar Plischke, Samuele Lo Piano, Takuya Iwanaga, William Becker, Stefano Tarantola, Joseph H.A. Guillaume, John Jakeman, Hoshin Gupta, Nicola Melillo, Giovanni Rabitti, Vincent Chabridon, Qingyun Duan, Xifu Sun, Stefán Smith, Razi Sheikholeslami, Nasim Hosseini, Masoud Asadzadeh, Arnald Puy, Sergei Kucherenko, and Holger R. Maier. The future of sensitivity analysis: An essential discipline for systems modeling and policy support. *Environmental Modelling & Software*, 137:104954, 2021.
- Andrea Saltelli. Making best use of model evaluations to compute sensitivity indices. *Computer Physics Communications*, 145(2):280 – 297, 2002.

- Bobak Shahriari, Kevin Swersky, Ziyu Wang, Ryan P. Adams, and Nando de Freitas. Taking the human out of the loop: A review of bayesian optimization. *Proceedings of the IEEE*, 104:148–175, 2016.
- Jasper Snoek, Hugo Larochelle, and Ryan P. Adams. Practical bayesian optimization of machine learning algorithms. In *Proceedings of the 25th International Conference on Neural Information Processing Systems - Volume 2*, NIPS’12, page 2951–2959, Red Hook, NY, USA, 2012. Curran Associates Inc.
- Jasper Snoek, Oren Rippel, Kevin Swersky, Ryan Kiros, Nadathur Satish, Narayanan Sundaram, Mostofa Patwary, Mr Prabhat, and Ryan Adams. Scalable bayesian optimization using deep neural networks. In Francis Bach and David Blei, editors, *Proceedings of the 32nd International Conference on Machine Learning*, volume 37 of *Proceedings of Machine Learning Research*, pages 2171–2180, Lille, France, 07–09 Jul 2015. PMLR.
- Ilya M. Sobol. Sensitivity estimates for nonlinear mathematical models. *MMCE*, (1):407–414, 1993.
- Le Song, Alex Smola, Arthur Gretton, Karsten M. Borgwardt, and Justin Bedo. Supervised feature selection via dependence estimation. In *Proceedings of the 24th International Conference on Machine Learning*, ICML ’07, page 823–830, New York, NY, USA, 2007. Association for Computing Machinery.
- Adrien Spagnol, Rodolphe Le Riche, and Sébastien Da Veiga. Global sensitivity analysis for optimization with variable selection. *SIAM/ASA J. Uncertain. Quantification*, 7:417–443, 2018.
- Kenneth O. Stanley and Risto Miikkulainen. Evolving neural networks through augmenting topologies. *Evol. Comput.*, 10(2):99–127, June 2002.
- Mingxing Tan and Quoc Le. EfficientNet: Rethinking model scaling for convolutional neural networks. In Kamalika Chaudhuri and Ruslan Salakhutdinov, editors, *Proceedings of the 36th International Conference on Machine Learning*, volume 97 of *Proceedings of Machine Learning Research*, pages 6105–6114, Long Beach, California, USA, 09–15 Jun 2019. PMLR.
- Mingxing Tan, Bo Chen, Ruoming Pang, Vijay Vasudevan, and Quoc V. Le. Mnasnet: Platform-aware neural architecture search for mobile. *CoRR*, abs/1807.11626, 2018.

## Appendix A: Hyperparameters spaces

In this section, we describe hyperparameters spaces used for each problem in this paper. Note that hyperparameter `n_seeds` denotes the number of random repetitions of the training for each hyperparameter configuration. If a conditional hyperparameter  $X_j$  is only involved for some specific values of a main hyperparameter  $X_i$ , it is displayed with an indent on tab lines below that of  $X_i$ , with the value of  $X_i$  required for  $X_j$  to be involved in the training.

### Runge & MNIST

For Runge & MNIST, only fully connected Neural Networks are trained, and the width (`n_units`) is the same for every layer.

hyperparameter	type	values for Runge	values for MNIST
<code>n_layers</code>	integer	$\in \{1, \dots, 10\}$	same
<code>n_units</code>	integer	$\in \{7, \dots, 512\}$	$\in \{128, \dots, 1500\}$
<code>activation</code>	categorical	<code>elu</code> , <code>relu</code> , <code>tanh</code> or <code>sigmoid</code>	same
<code>dropout</code>	boolean	<code>true</code> or <code>false</code>	same
<code>yes:dropout_rate</code>	continuous	$\in [0, 1]$	same
<code>batch_norm</code>	boolean	<code>true</code> or <code>false</code>	same
<code>weights_reg_l1</code>	continuous	$\in [1 \times 10^{-6}, 0.1]$	same
<code>weights_reg_l2</code>	continuous	$\in [1 \times 10^{-6}, 0.1]$	same
<code>bias_reg_l1</code>	continuous	$\in [1 \times 10^{-6}, 0.1]$	same
<code>bias_reg_l2</code>	continuous	$\in [1 \times 10^{-6}, 0.1]$	same
<code>batch_size</code>	integer	$\in \{1, \dots, 11\}$	$\in \{1, \dots, 256\}$
<code>loss_function</code>	categorical	$L_2$ error or $L_1$ error	$L_2$ error or crossentropy
<code>optimizer</code>	categorical	<code>adam</code> , <code>sgd</code> , <code>rmsprop</code> or <code>adagrad</code>	same
<code>n_seeds</code>	integer	$\in \{1, \dots, 40\}$	$\in \{1, \dots, 10\}$

Table 5: Hyperparameters values for Runge & MNIST

**Conditional groups:** (see (iii) of Section 4.3)  $\mathcal{G}_0$  and  $\mathcal{G}_{\text{dropout\_rate}}$

**Bateman**

For Bateman, only fully connected Neural Networks are trained, and the width (`n_units`) is the same for every layer.

hyperparameter	type	values for Bateman
<code>n_layers</code>	integer	$\in \{1, \dots, 10\}$
<code>n_units</code>	integer	$\in \{7, \dots, 512\}$
<code>activation</code>	categorical	<code>elu</code> , <code>relu</code> , <code>tanh</code> or <code>sigmoid</code>
<code>dropout</code>	boolean	<code>true</code> or <code>false</code>
<code>yes:dropout_rate</code>	continuous	$\in [0, 1]$
<code>batch_norm</code>	boolean	<code>true</code> or <code>false</code>
<code>learning_rate</code>	continuous	$\in [1 \times 10^{-6}, 1 \times 10^{-2}]$
<code>weights_reg_l1</code>	continuous	$\in [1 \times 10^{-6}, 0.1]$
<code>weights_reg_l2</code>	continuous	$\in [1 \times 10^{-6}, 0.1]$
<code>bias_reg_l1</code>	continuous	$\in [1 \times 10^{-6}, 0.1]$
<code>bias_reg_l2</code>	continuous	$\in [1 \times 10^{-6}, 0.1]$
<code>batch_size</code>	integer	$\in \{1, \dots, 500\}$
<code>loss_function</code>	categorical	$L_2$ error or $L_1$ error
<code>optimizer</code>	categorical	<code>adam</code> , <code>sgd</code> , <code>rmsprop</code> , <code>adagrad</code> or <code>nadam</code>
<code>adam:amsgrad</code>	boolean	<code>true</code> or <code>false</code>
<code>adam, nadam:1st_moment_decay</code>	continuous	$\in [0.8, 1]$
<code>adam, nadam:2nd_moment_decay</code>	continuous	$\in [0.8, 1]$
<code>rmsprop:centered</code>	boolean	<code>true</code> or <code>false</code>
<code>sgd:nesterov</code>	boolean	<code>true</code> or <code>false</code>
<code>sgd, rmsprop:momentum</code>	continuous	$\in [0.5, 0.99]$
<code>n_seeds</code>	integer	$\in \{1, \dots, 10\}$

Table 6: Hyperparameters values for Bateman

**Conditional groups:** (see (iii) of Section 4.3)  $\mathcal{G}_0$ ,  $\mathcal{G}_{\text{dropout\_rate}}$ ,  $\mathcal{G}_{\text{amsgrad}}$ ,  $\mathcal{G}_{\text{centered}}$ ,  $\mathcal{G}_{\text{nesterov}}$ ,  $\mathcal{G}_{\text{momentum}}$  and  $\mathcal{G}_{(1\text{st\_moment}, 2\text{nd\_moment})}$



**Cifar10**

For Cifar10, we use Convolutional Neural Networks, whose width increases with the depth according to hyperparameters `stages` and `stage_mult`. The first layer has width `n_filters`, and then, `stages - 1` times, the network is widen by a factor `stage_mult`. For instance, a neural network with `n_filters = 20`, `n_layers = 3`, `stages = 3` and `stage_mult = 2` will have a first layer with 20 filters, a second layer with `n_filters × stage_mult = 40` filters, and a third layer with `n_filters × stage_multstages-1 = 60` filters.

hyperparameter	type	values for Bateman
<code>n_layers</code>	integer	$\in \{3, \dots, 12\}$
<code>n_filters</code>	integer	$\in \{16, \dots, 100\}$
<code>stages</code>	integer	$\in \{1, 4\}$
<code>stage_mult</code>	continuous	$\in [1, 3]$
<code>kernel_size</code>	integer	$\in \{1, 5\}$
<code>pool_size</code>	integer	$\in \{2, 5\}$
<code>pool_type</code>	categorical	max or average
<code>activation</code>	categorical	elu, relu, tanh or sigmoid
<code>dropout</code>	boolean	true or false
<code>yes:dropout_rate</code>	continuous	$\in [0, 1]$
<code>batch_norm</code>	boolean	true or false
<code>learning_rate</code>	continuous	$\in [1 \times 10^{-6}, 1 \times 10^{-2}]$
<code>weights_reg_l1</code>	continuous	$\in [1 \times 10^{-6}, 0.1]$
<code>weights_reg_l2</code>	continuous	$\in [1 \times 10^{-6}, 0.1]$
<code>bias_reg_l1</code>	continuous	$\in [1 \times 10^{-6}, 0.1]$
<code>bias_reg_l2</code>	continuous	$\in [1 \times 10^{-6}, 0.1]$
<code>batch_size</code>	integer	$\in \{10, \dots, 128\}$
<code>loss_function</code>	categorical	$L_2$ error or crossentropy
<code>optimizer</code>	categorical	adam, sgd, rmsprop, adagrad or nadam
<code>adam:amsgrad</code>	boolean	true or false
<code>adam, nadam:1st_moment_decay</code>	continuous	$\in [0.8, 1]$
<code>adam, nadam:2nd_moment_decay</code>	continuous	$\in [0.8, 1]$
<code>rmsprop:centered</code>	boolean	true or false
<code>sgd:nesterov</code>	boolean	true or false
<code>sgd, rmsprop:momentum</code>	continuous	$\in [0.5, 0.99]$
<code>n_seeds</code>	integer	$\in \{1, \dots, 10\}$

Table 7: Hyperparameters values for Bateman

**Conditional groups:** (see (iii) of Section 4.3)  $\mathcal{G}_0$ ,  $\mathcal{G}_{\text{dropout\_rate}}$ ,  $\mathcal{G}_{\text{amsgrad}}$ ,  $\mathcal{G}_{\text{centered}}$ ,  $\mathcal{G}_{\text{nesterov}}$ ,  $\mathcal{G}_{\text{momentum}}$  and  $\mathcal{G}_{(1\text{st\_moment}, 2\text{nd\_moment})}$

## Appendix B - Construction of Bateman data set

Bateman data set is based on the resolution of the Bateman equations, which is an ODE system modelling multi species reactions:

$$\partial_t \boldsymbol{\eta}(t) = \boldsymbol{\Sigma}_r(\boldsymbol{\eta}(t)) \cdot \boldsymbol{\eta}(t), \text{ with initial conditions } \boldsymbol{\eta}(0) = \boldsymbol{\eta}_0,$$

and  $\boldsymbol{\eta} \in (\mathbb{R}^+)^M$ ,  $\boldsymbol{\Sigma}_r \in \mathbb{R}^{M \times M}$ . Here,  $f : (\boldsymbol{\eta}_0, t) \rightarrow \boldsymbol{\eta}(t)$ , and we are interested in  $\boldsymbol{\eta}(t)$ , which is the concentration of each of the species  $S_k$ , with  $k \in \{1, \dots, M\}$ . For physical applications,  $M$  ranges from tens to thousands. We consider the particular case  $M = 11$ . Matrix  $\boldsymbol{\Sigma}_r(\boldsymbol{\eta}(t))$  depends on reaction constants. Here, 4 reactions are considered and each reaction  $p$  has constant  $\sigma_p$ .

$$\left\{ \begin{array}{l} (1) : S_1 + S_2 \rightarrow S_3 + S_4 + S_6 + S_7, \\ (2) : S_3 + S_4 \rightarrow S_2 + S_8 + S_{11}, \\ (3) : S_2 + S_{11} \rightarrow S_3 + S_5 + S_9, \\ (4) : S_3 + S_{11} \rightarrow S_2 + S_5 + S_6 + S_{10}, \end{array} \right.$$

with  $\sigma_1 = 1$ ,  $\sigma_2 = 5$ ,  $\sigma_3 = 3$  and  $\sigma_4 = 0.1$ . To obtain  $\boldsymbol{\Sigma}_r(\boldsymbol{\eta}(t))$ , we have to consider the species one by one. Here we give an example of how to construct the second row of  $\boldsymbol{\Sigma}_r(\boldsymbol{\eta}(t))$ . The other rows are built the same way. Given the reaction equations :

$$\partial_t \eta_2 = -\sigma_1 \eta_1 \eta_2 + \sigma_2 \eta_3 \eta_4 - \sigma_3 \eta_2 \eta_{11} + \sigma_4 \eta_3 \eta_{11},$$

because  $S_2$  disappears in reactions (1) and (3) involving  $S_1$  and  $S_{11}$  as other reactants at rate  $\sigma_1$  and  $\sigma_3$ , respectively, and appears in reactions (2) and (4) involving  $S_3$ ,  $S_4$  and  $S_3$ ,  $S_{11}$  as reactants, at rate  $\sigma_2$  and  $\sigma_4$  respectively. Hence, the second row of  $\boldsymbol{\Sigma}_r(\boldsymbol{\eta}(t))$  is

$$[0, -\sigma_1 \eta_1, 0, \sigma_2 \eta_3, 0, 0, 0, 0, 0, 0, -\sigma_3 \eta_2 + \sigma_4 \eta_3],$$

with  $\boldsymbol{\eta}(t)$  denoted by  $\boldsymbol{\eta}$  to simplify the equation and  $\eta_i$  the  $i$ -th component of  $\boldsymbol{\eta}$ . To construct the training, validation and test data sets, we sample uniformly  $(\boldsymbol{\eta}_0, t) \in [0, 1]^{12} \times [0, 5]$  130000 times. We denote these samples  $(\boldsymbol{\eta}_0, t)_i$  for  $i \in \{1, \dots, 130000\}$ . Then, we apply a first order Euler solver with a time step of  $10^{-3}$  to compute  $f((\boldsymbol{\eta}_0, t)_i)$ . As a result, neural network's input is  $(\boldsymbol{\eta}_0, t)$  and neural network's output is  $f((\boldsymbol{\eta}_0, t))$ .

## Appendix C - HSICs for conditional hyperparameters

### MNIST

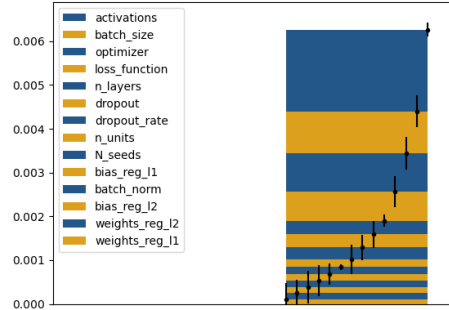


Figure 13: HSICs for  $\mathcal{G}_{\text{dropout\_rate}}$  of MNIST hyperparameter analysis

### Bateman

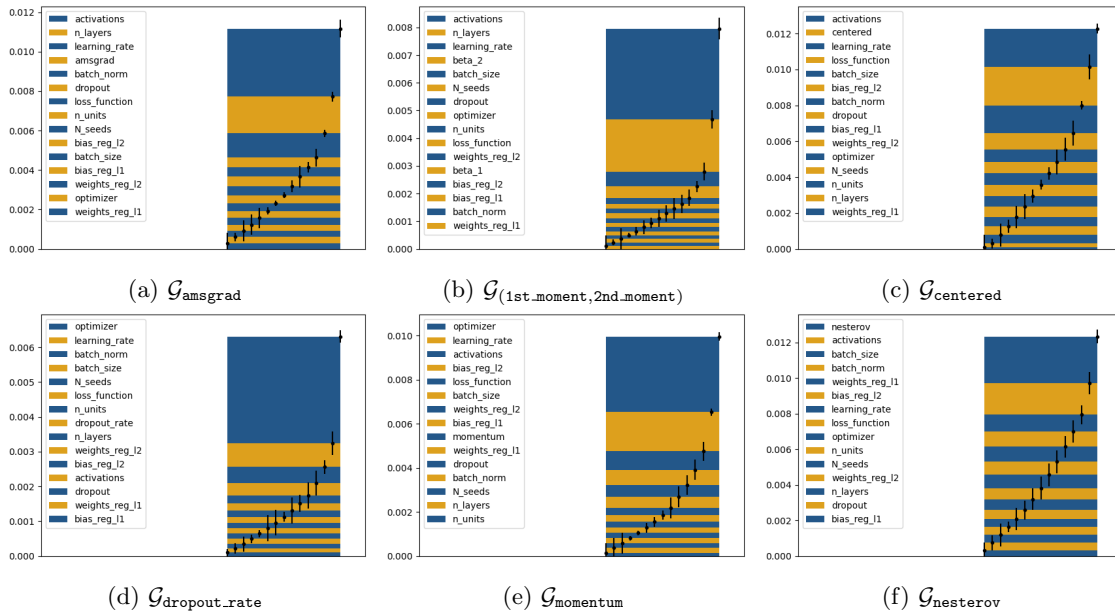


Figure 14: HSICs for conditional groups of Bateman hyperparameter analysis

Cifar10

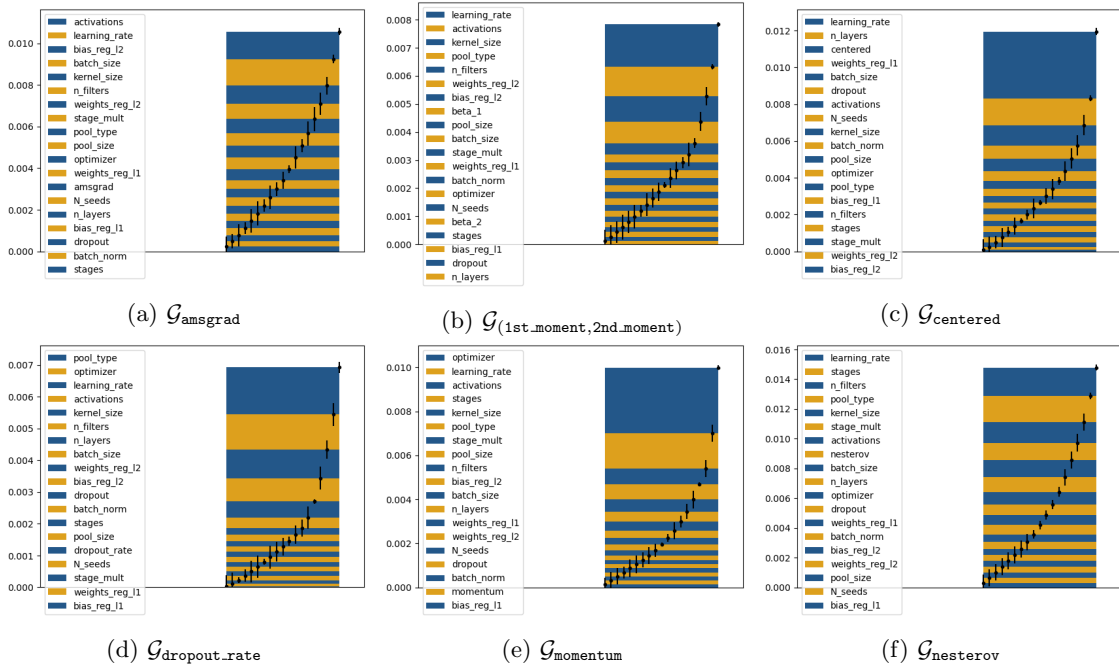


Figure 15: HSICs for conditional groups of cifar10 hyperparameter analysis