



HAL
open science

Multi-Tissue Multi-Compartment Models of Diffusion MRI

Matteo Frigo, Rutger H.J. Fick, Mauro Zucchelli, Samuel Deslauriers-Gauthier, Rachid Deriche

► **To cite this version:**

Matteo Frigo, Rutger H.J. Fick, Mauro Zucchelli, Samuel Deslauriers-Gauthier, Rachid Deriche. Multi-Tissue Multi-Compartment Models of Diffusion MRI. 2021. hal-03125887

HAL Id: hal-03125887

<https://hal.science/hal-03125887v1>

Preprint submitted on 29 Jan 2021

HAL is a multi-disciplinary open access archive for the deposit and dissemination of scientific research documents, whether they are published or not. The documents may come from teaching and research institutions in France or abroad, or from public or private research centers.

L'archive ouverte pluridisciplinaire **HAL**, est destinée au dépôt et à la diffusion de documents scientifiques de niveau recherche, publiés ou non, émanant des établissements d'enseignement et de recherche français ou étrangers, des laboratoires publics ou privés.

Multi-Tissue Multi-Compartment Models of Diffusion MRI

Matteo Frigo^{1,3}, Rutger H.J. Fick², Mauro Zucchelli¹, Samuel Deslauriers-Gauthier¹, and Rachid Deriche¹

¹Athena Project-Team, Inria Sophia Antipolis - Méditerranée, Université Côte D’Azur, France

²TRIBVN Healthcare, Paris, France

³Corresponding author: matteo.frigo@inria.fr

Abstract

State-of-the-art multi-compartment microstructural models of diffusion MRI (dMRI) in the human brain have limited capability to model multiple tissues at the same time. In particular, the available techniques that allow this multi-tissue modelling are based on multi-TE acquisitions. In this work we propose a novel multi-tissue formulation of classical multi-compartment models that relies on more common single-TE acquisitions and can be employed in the analysis of previously acquired datasets. We show how modelling multiple tissues provides a new interpretation of the concepts of signal fraction and volume fraction in the context of multi-compartment modelling. The software that allows to inspect single-TE diffusion MRI data with multi-tissue multi-compartment models is included in the publicly available Dmipy Python package.

Keywords diffusion MRI, microstructure, multi tissue, single-TE, volume fraction, signal fraction

1 Introduction

Diffusion MRI (dMRI) is an imaging technique that allows to inspect the brain tissue microstructure in-vivo non-invasively. One of the most commonly studied microstructural feature is the *volume fraction* of a tissue in a sample. In particular, the intra-axonal (i.e., intra-cellular - IC), extra-axonal (i.e., extra-cellular - EC) and cerebro-spinal fluid (CSF) volume fractions have been investigated with models like the neurite orientation dispersion and density imaging (NODDI) (Zhang et al., 2012), ActiveAx (Alexander et al., 2010), and the multi-compartment microscopic diffusion imaging framework (Kaden et al., 2016). The differences between these models lie on the representation employed in describing the tissue-specific signal and on the assumptions made on the model parameters. For example, intra-axonal diffusion can be modelled as the diffusion within a stick or a cylinder and some models fix the value of the diffusivity or tortuosity. A unifying aspect that characterizes most of the brain microstructure models is the *building-blocks* concept behind their formalisation. In other words, models are defined in a multi-compartment (MC) fashion, where the dMRI signal is described as a linear combination of single-tissue models. The resulting models are called MC models and they require the acquisition of multi-shell dMRI data in order to accurately disentangle the contribution of each compartment (Scherrer and Warfield, 2010). Thorough reviews have been dedicated to the design and validation of such models (Jelescu and Budde, 2017), to the sensitivity of MC models to experimental factors and microstructural properties of the described tissues (Afzali et al., 2020), and to the abstraction of these models that allows to obtain a unified theory (Fick et al., 2019).

Recent studies have highlighted that all of the available MC models are transparent to the T_2 relaxation times of the modelled tissues (Veraart et al., 2018; Lampinen et al., 2019). As a consequence, they implicitly assume that all the considered tissues have the same non-diffusion weighted signal S_0 . While this is a

reasonable assumption in some contexts, it is not true in general. In fact, each brain tissue is characterized by a specific relaxation time which makes T_2 imaging possible. Assuming that all the tissues have a single S_0 response simplify the model at the cost of biophysical accuracy. Tissue fractions obtained with this assumption are called *signal* fractions, in contrast with the unbiased *volume* fractions which can be obtained with models that account for different S_0 responses of the modelled tissues. The former measures the linear relation between the signal generated by a single tissue compartment and the acquired signal, while the latter measures the volume of single tissue compartment that is present in the voxel.

Given the known interdependence between the T_2 times of tissues and the TE of the acquisition, some attempts at addressing this issue have been formulated making use of multi-TE multi-shell dMRI acquisitions (Veraart et al., 2018; Lampinen et al., 2020; Gong et al., 2020). Despite allowing to increase the signal-to-noise ratio (SNR) (Eichner et al., 2020), these techniques require a complete re-design of the experiments from acquisition to post-processing, posing severe limitations in terms of usability of already acquired data. This aspect is crucial in modern neuroimaging, where large studies like the Human Connectome Project (HCP) (Van Essen et al., 2012), the UK Biobank (Sudlow et al., 2015) and the Alzheimer Disease Neuroimaging Initiative (ADNI) (Mueller et al., 2005) invest significant amounts of time and financial resources to acquire data of large cohorts with standardised protocols that need to be carefully designed a priori.

In this work¹ we will show that the signal fractions are a biased estimation of the volume fractions and that the latter can still be retrieved from the first without acquiring new data or re-fitting the MC model. We call this new technique, Multi-Tissue MC (MT-MC) model. To our knowledge MT-MC is the only model that estimates the *volume* fractions from single-TE multi-shell dMRI data. This novel formulation is inspired by the technique of Jeurissen et al. (2014) for the estimation of tissue-specific orientation distribution functions. The use of the MT-MC formulation solves some limitations of the previously mentioned multi-TE approaches and opens the door to the multi-tissue investigation of brain microstructure with data acquired with standard single-TE multi-shell dMRI protocols. Two algorithms for fitting the MT-MC model are proposed, one of which is designed to build on top of data already processed with standard MC models. Our new model is implemented and freely available in the Diffusion Microstructure Imaging in Python (Dmipy) (Fick et al., 2019) framework, which is an open source tool designed for the abstraction, simulation, and fitting of MC models of dMRI. The ability of the MT-MC model to retrieve the unbiased volume fractions is tested on both synthetic data generated with Dmipy and real data obtained from the HCP database.

This article is organized as follows: Section 2 is devoted to the theoretical aspects of MC modelling, highlighting why *signal* and *volume* fractions are not equivalent in general, and to the formalization of the proposed MT-MC model. In Section 3 we will present the design of the experiments and in Section 4 we will show the corresponding results, which are then discussed in Section 5, where also some conclusive remarks are presented.

2 Theory

2.1 Multi-Compartment models

Complex microstructural configurations can be modelled as a linear combination of few elementary compartments. For example, the diffusion within axons can be described as the motion of water molecules along a stick or within a cylinder, while diffusion in free water, like the one that can be observed in the CSF, can be modelled as an isotropic 3D Gaussian function. A vast portion of the dMRI literature of the last twenty years is devoted to the definition of compartmental models for the anisotropic intra-axonal and extra-axonal diffusivity and for the isotropic diffusivity. These are known as Multi Compartment (MC) models and they all describe the shape of the normalized dMRI signal E by means of the following linear combination of

¹This work has partially been presented at the International Symposium on Biomedical Imaging of 2020 (Frigo et al., 2020a) and at the 26th meeting of the Organization for Human Brain Mapping (Frigo et al., 2020b).

compartment-specific shapes:

$$E(b, \mathbf{G}) = \frac{S(b, \mathbf{G})}{S_0} = \sum_{i=1}^{N_c} \phi_i \cdot E_i(b, \mathbf{G}) \quad (1)$$

where b is the b -value, S is the raw diffusion signal, S_0 is the diffusion signal acquired at $b = 0$, and \mathbf{G} is the gradient direction, N_c is the number of considered compartments, E_i is the signal attenuation of compartment i , and ϕ_i is the portion of E explained by compartment i , i.e. the *signal fraction* of the compartment. The derivation of analytical expressions for the compartment-specific response functions has been researched broadly and deeply in the past literature. See the work of Panagiotaki et al. (2014) for a thorough review of the topic. Among the most used MC models we can mention the stick-and-ball model of Behrens et al. (2003), the ActiveAx model of Alexander et al. (2010) and the neurite orientation dispersion and density imaging (NODDI) model of Zhang et al. (2012). A generalized MC model has been proposed by Novikov et al. (2019) in what they called the *standard model* of dMRI in the brain.

The standard model is composed of three compartments which, borrowing the taxonomy from Panagiotaki et al. (2014), are defined as follows:

- The IC compartment is modelled as a stick whose free parameters are the parallel diffusivity λ_{\parallel} and the direction of the fiber population as the unit vector \mathbf{n} . The corresponding signal is given by

$$E_{IC}(b, \mathbf{G}, \lambda_{\parallel}, \mathbf{n}) = e^{-b\lambda_{\parallel}\langle \mathbf{n}, \mathbf{G} \rangle} \quad (2)$$

where $\langle \mathbf{n}, \mathbf{G} \rangle$ denotes the usual scalar product in \mathbb{R}^2 .

- The EC component is described by an axially symmetric Gaussian function (i.e., zeppelin), which can be defined as a diffusion tensor that depends on the parallel diffusivity λ_{\parallel} , the perpendicular diffusivity λ_{\perp} and the direction of the fiber population \mathbf{n} (which is assumed to be the same as the one of the stick compartment). The signal shape is given by the classical tensor model

$$E_{EC}(b, \mathbf{G}, \lambda_{\parallel}, \lambda_{\perp}, \mathbf{n}) = e^{-b\mathbf{G}^T D \mathbf{G}} \quad (3)$$

where the diffusion tensor is defined as $D = (\lambda_{\parallel} - \lambda_{\perp}) \mathbf{nn}^T + \lambda_{\perp} I$ and I is the 3-by-3 identity matrix.

- The CSF compartment is modelled an isotropic Gaussian function (i.e., ball), which is defined as a zeppelin with $\lambda_{\parallel} = \lambda_{\perp} = \lambda_r$, where λ_r is the radial diffusivity. The expression for the signal shape reads as follows:

$$E_{CSF}(b, \lambda_r) = e^{-b\lambda_r}. \quad (4)$$

Notice that the first term in the definition of the diffusion tensor disappears, hence the model does not depend on the principal direction \mathbf{n} , making the compartment *isotropic* as wanted.

Additionally, fiber dispersion is formalized as the convolution of the stick and zeppelin compartments with an ODF denoted by \mathcal{P} . An example of such orientation function is the Watson distribution $W(\mathbf{n}, \kappa)$ (Mardia and Jupp, 1990), which assumes axial symmetry of the dispersion around the main direction of the bundle $\mathbf{n} \in \mathbb{S}^2$ with concentration κ . The corresponding orientation dispersion index (ODI) can be computed as $ODI = 2/\pi \cdot \arctan(1/\kappa)$ (Zhang et al., 2012).

Given the elements described in the previous lines, the MC formulation of the standard model is defined as

$$E(\mathbf{n}, \kappa, \lambda_{\parallel}, \lambda_{\perp}, \lambda_r, \phi_{IC}, \phi_{EC}, \phi_{CSF}) = \mathcal{P}(\mathbf{n}) * [\phi_{IC} \cdot E_{IC}(\lambda_{\parallel}, \mathbf{n}) + \phi_{EC} \cdot E_{EC}(\lambda_{\parallel}, \lambda_{\perp}, \mathbf{n})] + \phi_{CSF} \cdot E_{CSF}(\lambda_r) \quad (5)$$

where $*$ is spherical convolution operator and the dependence on the acquisition parameters b and \mathbf{G} has been omitted for the sake of readability. Several constraints can be applied to the model given in Equation (5), among which the most commons are:

- the sum of the signal fractions is unitary: $\phi_{IC} + \phi_{EC} + \phi_{CSF} = 1$;
- the perpendicular diffusivity of the EC compartment is tortuous (Szafer et al., 1995a,b), which in mathematical terms means

$$\lambda_{\perp} = \frac{\phi_{EC}}{\phi_{IC} + \phi_{EC}} \cdot \lambda_{\parallel}; \quad (6)$$

- the parallel diffusivity of the IC and EC compartments is fixed (e.g. $\lambda_{\parallel} = 1.7 \cdot 10^{-9} m^2/s$ as in (Zhang et al., 2012));
- the radial diffusivity of the CSF compartment is fixed (e.g. $\lambda_r = 3.0 \cdot 10^{-9} m^2/s$ as in (Zhang et al., 2012)).

Recent studies questioned the validity of these constraints (Jelescu et al., 2016; Lampinen et al., 2017; Dell’Acqua and Tournier, 2019).

As highlighted by the left hand side of Equation (5), the model depends on eight parameters, where \mathbf{n} is two-dimensional, yielding 9 degrees of freedom, to which one has to subtract the degrees of freedom covered by the constraints. The remaining parameters can be estimated solving the minimization problem

$$p^* = \underset{p}{\operatorname{argmin}} \frac{1}{2} \left\| \frac{\hat{S}}{\hat{S}_0} - E(p) \right\|_2^2 \quad (7)$$

where p is the parameter vector, \hat{S} is the acquired dMRI signal, \hat{S}_0 is the mean $b = 0$ image and $E(p)$ is the realization of the forward model given in Equation (5). Fitting such parameters requires the acquisition of multi-shell data with at least one shell per compartment (Scherrer and Warfield, 2010). The obtained parameters p^* are the microstructural parameters that can finally be analysed for clinical or research purposes. In practice, the fitted signal fractions ϕ_i will likely not sum to 1, as they absorb any discrepancies between the normalised signal in the left hand side and the signal shapes in the left hand sides of Equation (5), in particular when more than one image is acquired at $b = 0$.

A thorough review on the variety of MC models of WM that can be defined with the current state-of-the-art tools is the one of Fick et al. (2019), where also the Dmipy package is presented. This software is the reference tool used throughout this work for the study of microstructure. More recently, MC models have been used to assess also the microstructural composition of the gray matter (GM) (Ganepola et al., 2018; Fukutomi et al., 2019; Villalon-reina et al., 2020), but the literature is still sparse and there is a lack of agreement on how to model the GM with MC models.

The key operation behind the definition of MC models is the division of the diffusion-weighted signal S by the non-diffusion-weighted component S_0 , which allows to retrieve the signal shape which is then modelled as the linear combination of the signal shape of the compartments that characterize the model. In the next section we are going to question the applicability of this division by S_0 .

2.2 MC models do not account for T2 differences

As stated in the previous section and formalised in Equation (1), MC models aim at fitting the signal attenuation E as the ratio of the PGSE signal S and the S_0 amplitude. The implicit assumption that lies behind this formulation is that the S_0 by which the acquired signal is divided is the same for all the modelled compartments. In particular, as the S_0 image corresponds to the signal coming from the non-diffusion-weighted spin-echo sequence, we know that its amplitude depends on the echo time TE and the repetition time TR of the acquisition and on the T_1 and T_2 times of the sample. The relationship between these quantities reads as

$$S_0 \sim [H] \cdot (1 - e^{-TR/T_1}) \cdot e^{-TE/T_2} \quad (8)$$

where $[H]$ is the proton density in the sample. While in the formation of the S_0 image the different T_1 times of the tissues are negligible thanks to the length of TR (which is usually one order of magnitude longer than

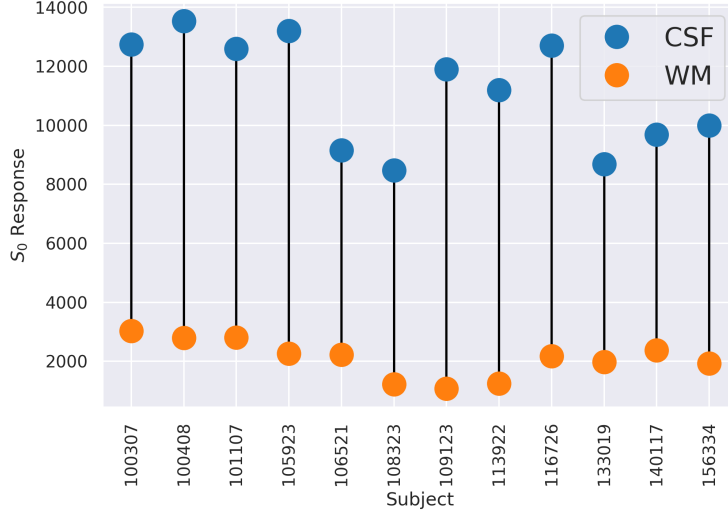


Figure 1: The figure shows the S_0 response of the WM and of the CSF for twelve randomly picked subjects from the HCP database. Values are obtained with the heuristic technique of [Dhollander et al. \(2016\)](#) via Mrtrix3 ([Tournier et al., 2019](#)).

TE), tissues with different T_2 will generate sensibly different contrast in the image ([Plewes, 1994](#); [Just and Thelen, 1988](#); [Veraart et al., 2018](#)). Figure 1 illustrates how this difference is visible in the S_0 response of the WM and the CSF. These differences are the result of the different contrast in T_2 -weighted images between the different compartments. In order to understand how this difference in the T_2 impacts the signal-fraction estimation, consider the following example. Let a voxel in the WM containing some partial volume of CSF, which is common in the corpus-callosum near the ventricles. In particular, let's assume that the volume fractions are $f_{WM} = 0.9$ and $f_{CSF} = 0.1$. The corresponding signal equation will be

$$S = 0.9 \cdot S_0^{WM} \cdot E_{WM} + 0.1 \cdot S_0^{CSF} \cdot E_{CSF}. \quad (9)$$

As highlighted by Figure 1, the value of S_0^{CSF} can be up to six times the one of S_0^{WM} . Including this into our toy model, hence defining $S_0^{CSF} = 6 \cdot S_0^{WM}$, Equation (9) becomes

$$S = 0.9 \cdot S_0^{WM} \cdot E_{WM} + 0.6 \cdot S_0^{WM} \cdot E_{CSF} \quad (10)$$

which after dividing both sides of the equation by the composite $S_0 = f_{WM} \cdot S_0^{WM} + f_{CSF} \cdot S_0^{CSF}$ becomes

$$\frac{S}{S_0} = 0.6 \cdot E_{WM} + 0.4 \cdot E_{CSF} \quad (11)$$

yielding the signal fractions $\phi_{WM} = 0.6$ and $\phi_{CSF} = 0.4$. This example showed how signal fractions and volume fractions are not interchangeable concepts when it comes to modelling multiple tissues having different S_0 responses. Not taking into account this differences can lead to significant misrepresentations of the tissue composition, as showed in the previous example and in the results reported in Section 4.

2.3 Leveraging multi-TE sequences in Multi-Compartment modelling of the dMRI signal

If the problem of MC models is that they do not distinguish the S_0 of different tissues because of the limitations of single-TE acquisition sequences like the one considered in the previous sections, the solution could simply be to use multi-TE (MTE) acquisitions, despite the required longer acquisition time. This

idea has been investigated in recent works of [Veraart et al. \(2018\)](#), [Lampinen et al. \(2019, 2020\)](#), and [Gong et al. \(2020\)](#). These works are all based on the assumptions that the volume fraction of a tissue can not be computed with conventional multi-shell dMRI data acquired with a single echo time.

The TE-dependent Diffusion Imaging (TEdDI) technique proposed by [Veraart et al. \(2018\)](#) technique considers a rewriting of the MC equation that directly includes the contribution of the T_2 time of the tissue modelled by the compartment and the TE of the acquisition into the volume fraction of each compartment. The same principles are followed in the more recent works of [Lampinen et al. \(2019, 2020\)](#) and of [Gong et al. \(2020\)](#). For the sake of coherence, we adapted the original notation used in the articles. The TEdDI model is designed to account for the TE/T_2 effects in the same way as in the S_0 -image formation process described in Equation (8), obtaining

$$S(b, TE, T_2^i, \mathbf{p}_i) = S_0 \cdot \sum_{i=1}^{N_c} \phi_i \cdot e^{-TE/T_2^i} \cdot E_i(b, \mathbf{p}_i), \quad \sum_{i=1}^{N_c} \phi_i = 1 \quad (12)$$

where e^{-TE/T_2^i} plays the role of the compartment-specific contribution of the T_2 time. Notice that the T_2 time of each compartment is an independent variable of the model, hence it must be estimated in the fitting process. This requires the acquisition of multi-shell (to allow the use of multiple compartments) and multi-TE (to avoid degeneracy in the joint fitting of ϕ_i and T_2^i) dMRI data. The *volume fraction* of each compartment is defined by [Veraart et al. \(2018\)](#) and [Gong et al. \(2020\)](#) as follows:

$$f_i(TE) = \frac{\phi_i \cdot e^{-TE/T_2^i}}{\sum_j \phi_j \cdot e^{-TE/T_2^j}} \quad (13)$$

where one should notice how the volume fraction f_i depends on the echo time TE . Conversely, [Lampinen et al. \(2019, 2020\)](#) opted for defining the volume fractions as

$$f_i = \frac{\phi_i}{\sum_j \phi_j}, \quad (14)$$

which corresponds to the normalisation of the ϕ_i retrieved from fitting the model given in Equation (12). The formulation provided in Equation (12) can be regarded as the multi-TE standard model of the dMRI signal in the human brain, in analogy with what reported by [Novikov et al. \(2019\)](#) (see Equation (5)).

The MTE standard model has already been used in the previously cited works of [Veraart et al. \(2018\)](#), [Lampinen et al. \(2019, 2020\)](#) and [Gong et al. \(2020\)](#) to investigate the microstructure of the white matter of the brain. They showed that particular instances of the MTE standard model allow to assess how the T_2 time of the acquired sample is formed by the different compartments. Also, with MTE-MC models they showed that the concept of *volume fraction* should not just be abandoned in favor of the concept of *signal fraction*. Its straightforward interpretability is of much appeal in brain pathology research ([Suzuki et al., 2017](#); [Hara et al., 2018](#); [Vestergaard-Poulsen et al., 2007](#)), where biomarkers are not only quantified but also contextualized, related to other non-microstructural information and interpreted.

Some limitations come with the use of such formulation. First, the volume fractions defined in Equation (13) are TE -dependent. This poses severe limitations in terms of usability and prevents from having a single index for the volume fraction of a compartment, which intuitively should be a characteristic of the sample, not of the acquisition. This ambiguity adds itself to the second limitation of the MTE formulation, which concerns *how* the T_2 time of the tissue modelled by each compartment is included in the model. As shown in Equation (12), the MTE framework corrects the classical MC model by multiplying each term in the sum by the T_2 -dependent factor Equation (8) of the S_0 image, which is exactly e^{-TE/T_2} . This contribution to the signal S is counted twice, as it is implicitly present also in the S_0 term that multiplies the sum on the right hand side of Equation (12). Notice that relaxing the $\sum_{i=1}^{N_c} \phi_i = 1$ constraint would solve the issue, as the double contribution would be corrected by an identical scaling of each ϕ_i , which is then absorbed in the normalization performed in Equation (13). Assessing if and how the repeated presence of

the term affects the fitting of the T_2 times is out of the scope of this work. The third limitation of MTE-MC modelling that we highlight is of methodological nature. Classical MC models are representations of the dMRI signal that rely on standard multi-shell acquisitions designed in a HARDI fashion which have been used in the last 15 years for the study of both microstructure and tractography-based structural connectivity. The MTE framework does have the merit to correct the signal/volume fraction ambiguity, but this is achieved by increasing the complexity of the acquisition, which requires multiple TE to be considered. For this reason, the MTE framework is not to be considered an alternative to the MC formulation but rather a new method for the estimation of microstructural parameters that spans the whole range from acquisition design to post-processing, preventing from correcting the estimation of volume fractions on datasets acquired in the past.

2.4 Multi-Tissue Multi-Compartment models

The standard formulation of MC models includes a normalization of the dMRI signal S_0 by its non-diffusion-weighted component S_0 . This operation is performed in order to retrieve the shape E of the acquired signal. The shape is then modelled as a linear combination of signal shapes of different compartments. In Section 2.2 we showed how this formulation hides the assumption that all the tissues modelled by the compartments have the same T_2 time (hence S_0), highlighting how this is not true a-priori. The solutions to the multi-tissue problem proposed in the literature have the remarkable limitation of requiring the acquisition of multi-TE data to be used.

A solution to a similar problem has been proposed by [Jeurissen et al. \(2014\)](#) in the context of fODF estimation for multi-shell data, where the shell- and tissue-specific signal amplitude is leveraged in order to rescale the fODF that describes the signal shape of each considered tissue. This includes the response of each tissue in the $b = 0$ shell, hence the S_0 of the tissues. The technique we are proposing builds on top of this idea.

Let N_c be the number of compartments included in the model we want to design and let S_0^i be the S_0 response of compartment i . We define the *Multi-Tissue Multi-Compartment* (MT-MC) model as follows:

$$S(b, TE) = \sum_{i=1}^{N_c} f_i \cdot S_0^i(TE) \cdot E_i(b, \mathbf{p}_i) \quad (15)$$

where f_i is the *volume fraction* of compartment i and $S_0^i(TE)$ is the S_0 response of the tissue modelled by compartment i . Notice that Equation (15) is equivalent to Equation (1) whenever $S_0^i = S_0^j \forall i, j$, namely when all the tissues described by the MT-MC model have equal S_0 responses.

In general, the signal fraction ϕ_i is not equivalent to the volume fraction f_i of the tissue modelled by the compartment. The only case in which they are equivalent is when all the tissues modelled by the MT-MC model have equal S_0 responses. In that case, Equation (15) reduces to (1) after multiplying both the sides by S_0 . For this reason we say that ϕ_i is a *biased estimator* of f_i . One could argue that the relationship between the signal fractions ϕ_i and the volume fractions f_i is just a rescaling, in which case the volume fractions could be retrieved with a simple correction that takes into account the S_0 signal and the S_0^i response of the compartment. This is true, except when the volume fraction of the compartment is an independent variable in some other compartment, as for the case of the tortuosity constraint. In that case, the perpendicular diffusivity of the extra-axonal compartment is a function of the volume fraction of the intra-axonal compartment. This makes the intra-axonal volume fraction a non-linear independent parameter of the model, therefore it can not be transformed into the corresponding signal fraction (or vice-versa) with the aforementioned rescaling.

2.4.1 Fitting MT-MC models

The fitting of a MT-MC model is designed in a fashion similar to the one of MC models. Here we propose two different approaches. The first is a direct fitting that provides only the volume fractions (VF), while the second is a two-step strategy that builds on top of the fitting of the signal fractions and yields both the signal

and the volume fractions (SVF), allowing to re-process in a MT fashion results that had previously been obtained on standard MC models. Given the acquired dMRI signal S , the corresponding S_0 , the number of compartments N_c , the signal shape $E_i(\mathbf{p}_i)$ of compartment i depending on the parameter vector \mathbf{p}_i and the compartment-specific signal amplitude S_0^i , the fitting can be performed in the two following ways.

VF The first approach directly fits the volume fractions by solving a least squares problem with respect to the microstructural parameters f_i and \mathbf{p}_i :

$$f^*, p^* = \operatorname{argmin}_{f_i, \mathbf{p}_i} \left\| S - \sum_{i=1}^{N_c} f_i \cdot S_0^i \cdot E_i(\mathbf{p}_i) \right\|_2^2 \quad (16)$$

which can be solved with ordinary inverse-problem solvers. Here, the forward model is the one given in Equation (15). The procedure yields the volume fractions (VF) of the compartments.

SVF The second approach extracts the volume fractions after fitting the signal fractions ϕ_i and the microstructural parameters \mathbf{p}_i from the MC formulation of Equation (5). The volume fractions are retrieved as a rescaling of the signal fractions. The described procedure reads as follows:

1. Solve the associated MC problem:

$$\phi^*, \mathbf{p}^* = \operatorname{argmin}_{\phi_i, \mathbf{p}_i} \left\| \frac{S}{S_0} - \sum_{i=1}^{N_c} \phi_i \cdot E_i(\mathbf{p}_i) \right\|_2^2 \quad (17)$$

where the product of the minimization problem is the signal fraction ϕ_i and the parameter vector \mathbf{p}_i of each compartment i ;

2. Fix the fitted non-signal-fraction parameters in the MT-MC model. At this point the volume fractions are not related to each other (or to other compartments in general) and it is therefore possible to estimate them by rescaling the signal fractions. The rescaling is the one suggested by the comparison of the coefficients that multiply the signal shapes in Equations (1) and (15) and reads as follows:

$$\begin{aligned} f_i \cdot S_0^i &= \phi_i \cdot S_0 \\ f_i &= \phi_i \cdot \frac{S_0}{S_0^i} \end{aligned} \quad (18)$$

yielding a simple operation that allows to retrieve volume fractions from signal fractions once the S_0 of each compartment is known. Both the signal and volume fractions of each compartment are returned.

To employ either of the two fitting strategies, extra caution must be taken towards the use of the tortuosity constraint. The intra- and extra- axonal fractions used for the definition of the perpendicular diffusivity can be either the signal fractions or the volume fractions of the compartments, i.e.,

$$\lambda_{\perp} = \frac{\phi_{EC}}{\phi_{IC} + \phi_{EC}} \lambda_{\parallel} \quad \text{or} \quad \lambda_{\perp} = \frac{f_{EC}}{f_{IC} + f_{EC}} \lambda_{\parallel}. \quad (19)$$

The choice influences the whole model design and can not be reverted in the fitting process. In particular, switching between signal fractions and volume fractions with the S_0/S_0^i rescaling must be done keeping in mind that the tortuous parameters have been obtained using a specific type of fraction, and the results should be interpreted accordingly. In an effort to keep the notation coherent with the previous literature, we will say that whenever the tortuosity constraint is defined using the volume fractions f_i we will have a *MT-corrected* tortuosity constraint.

The SVF strategy is the one implemented in Dmipy (Fick et al., 2019), which to our knowledge is the only available framework for MC modelling that includes the definition of MT-MC models.

2.5 The MT Standard Model of dMRI in White Matter

In this Section, we define a MT generalization of the standard model of dMRI in WM as described by [Novikov et al. \(2019\)](#). We recall that the model includes a stick and a zeppelin compartment for the intra- and extra-cellular diffusivity respectively and a ball that accounts for the isotropic diffusivity in the CSF. Let S_0^i be the S_0 response of the tissue modelled by each compartment i and $\mathcal{P} : \mathbb{S}^2 \rightarrow \mathbb{R}^+$ the orientation distribution. The MT standard model of dMRI in WM is given by

$$S(\mathbf{n}, \kappa, \lambda_{\parallel}, \lambda_{\perp}, \lambda_r, f_{IC}, f_{EC}, f_{CSF}) = P(\mathbf{n}) * \left(\underbrace{f_{IC} \cdot S_0^{IC} \cdot E_{IC}(\lambda_{\parallel}, \mathbf{n})}_{\text{intra-axonal}} + \underbrace{f_{EC} \cdot S_0^{EC} \cdot E_{EC}(\lambda_{\parallel}, \lambda_{\perp}, \mathbf{n})}_{\text{extra-axonal}} \right) + \underbrace{f_{CSF} \cdot S_0^{CSF} \cdot E_{CSF}(\lambda_r)}_{\text{CSF}} \quad (20)$$

where the compartment specific parameters are defined as in Section 2.1. Three scenarios can be described with this model:

- *3-tissue model* - The three compartments describe tissues with distinct S_0 responses. This corresponds to the explicit case of Equation (20).
- *2-tissue model* - The two anisotropic compartments model tissues whose S_0 is equal. Typically, it is the S_0 of the WM, so we say that $S_0^{IC} = S_0^{EC} = S_0^{WM}$ and $S_0^{WM} \neq S_0^{CSF}$.
- *1-tissue model* - In absence of any prior knowledge on the S_0 of the three tissues, they are considered all equal. We denote this as $S_0^{IC} = S_0^{EC} = S_0^{CSF} = S_0$ where S_0 is the average across the images acquired at $b = 0 \text{ s/mm}^2$.

Notice that the 1-tissue scenario is mathematically equivalent to the single-tissue (ST) standard model of Equation (20), hence in that case the volume fractions are equivalent to the signal fractions.

3 Methods

3.1 Dataset

3.1.1 Synthetic data

The simulated dataset is obtained from the forward model given by Equation (20) and generated with Dmipy ([Fick et al., 2019](#)). A total of 10000 voxels was simulated on a multi-shell acquisition scheme identical to the one that will be considered on the real dataset, which includes a TE of 0.0895 s and is composed of 288 samples subdivided in 18 points at $b = 0 \text{ s/mm}^2$ and 90 diffusion-weighted samples obtained with uniformly distributed directions at $b = 1000 \text{ s/mm}^2$, $b = 2000 \text{ s/mm}^2$ and $b = 3000 \text{ s/mm}^2$ for a total of 3 diffusion-weighted shells plus the $b = 0$ shell. The direction of the two anisotropic compartments was set to $\mathbf{n} = [0, 0] \in \mathbb{S}^2$ for all the voxels. The T_2 time of each tissue was randomly sampled from a uniform distribution in the range specified in Table 1. The corresponding S_0 was then computed as $S_0 = c \cdot e^{-TE/T_2}$ where c is a scaling parameter that positions the value of S_0 in a realistic range and we tuned to $c = 1400$. The ODI of the Watson distribution was sampled from a uniform distribution in the range specified in Table 1. Finally, the volume fractions of each compartment were randomly generated from a uniform distribution in the range specified in Table 1, then normalized in such a way that their sum was equal to 1. The choice of each range was tuned to mimic the single-bundle configuration in the WM that one expects to be able to model with the considered formulation. An additive rician noise was added to the simulated data to obtain a signal-to-noise ratio equal to 30.

Parameter	Min	Max
f_{IC}	0.5	0.8
f_{EC}	0.3	0.5
f_{CSF}	0.3	0.7
T_2^{IC}	0.080s	0.100s
T_2^{EC}	0.050s	0.070s
T_2^{CSF}	0.900s	1.100s
ODI	0.02	0.99

Table 1: For each parameter used in the definition of the forward model of the synthetic dataset we report the minimum and maximum value of the uniform distribution from which it was drawn.

3.1.2 Real data

From the Human Connectome Project (HCP) database we considered three randomly picked subjects² available at the Connectome Coordination Facility (Van Essen et al., 2012; Sotiropoulos et al., 2013). For each subject a total of 288 images is acquired, subdivided in 18 volumes at $b = 0s/mm^2$ and 90 diffusion-weighted volumes obtained at uniformly distributed directions at $b = 1000s/mm^2$, $b = 2000s/mm^2$ and $b = 3000s/mm^2$ for a total of 3 shells. All subjects provided written informed consent, procedures were approved by the ethics committee and the research was performed in compliance with the Code of Ethics of the World Medical Association (Declaration of Helsinki).

To our knowledge, current state-of-the-art techniques do not allow to estimate subject-specific S_0 responses of the IC and EC compartments, while the S_0 of the CSF compartment can be estimated together with S_0^{WM} via techniques such as the heuristic approach of Dhollander et al. (2016). For this reason, we analysed the aforementioned data with a 1-tissue and a 2-tissue model where S_0^{WM} and S_0^{CSF} have been estimated with the Dhollander technique. The obtained values of S_0 are displayed in Figure 1 and reported in Table 2.

Subject	S_0^{WM}	S_0^{CSF}
#1	3024	12740
#2	2794	13531
#3	2811	12598

Table 2: S_0 response of the WM and of the CSF of the three studied HCP subjects. Values are obtained with the heuristic technique of Dhollander et al. (2016) via Mrtrix3 (Tournier et al., 2019).

3.2 Model fitting

The model considered in the performed experiments is the MT standard model defined in the previous section with fixed S_0^i and three additional constraints:

- The fiber orientation distribution is modelled with a Watson distribution of axis \mathbf{n} and fixed ODI.
- The perpendicular diffusivity is subject to the tortuosity constraint, hence

$$\lambda_{\perp} = \left(1 - \frac{f_{IC}}{f_{IC} + f_{EC}}\right) \cdot \lambda_{\parallel}. \quad (21)$$

- The parallel and radial diffusivity are fixed to $\lambda_{\parallel} = 1.7 \cdot 10^{-9} m^2 s^{-1}$ and $\lambda_r = 3.0 \cdot 10^{-9} m^2 s^{-1}$ respectively.

²ID subject 1: 100307, ID subject 2: 100408, ID subject 3: 101107.

The free parameters that are left are $[f_{IC}, f_{EC}, f_{ISO}, \mathbf{n}, \kappa]$, where we recall that the unit vector \mathbf{n} is expressed in spherical coordinates $[\theta, \varphi]$. The fitting was performed with Dmipy (Fick et al., 2019, version 1.0.3) using the SVF procedure described in Section 2.4.1 in order to retrieve both the signal fractions and the volume fractions to be compared.

4 Results

4.1 Synthetic data

We fitted the volume fractions \hat{f}_i of each compartment with the SVF procedure explained in Section 2.4.1 with the 1-tissue, 2-tissue and 3-tissue model, both with standard and MT-corrected tortuosity. The latter is actually different from the standard tortuosity only when the 3-tissue model is considered. When the 2-tissue model is employed, the S_0^{WM} response is computed as the weighted average of the S_0 response of the IC and EC compartments, hence

$$S_0^{WM} = \frac{f_{IC} \cdot S_0^{IC} + f_{EC} \cdot S_0^{EC}}{f_{IC} + f_{EC}}. \quad (22)$$

Once each \hat{f}_i was estimated, we computed the absolute fitting error $|f_i - \hat{f}_i|$. In Figure 2 we report the boxplot of the distribution of the absolute fitting error across all the simulations. As we expected, the signal

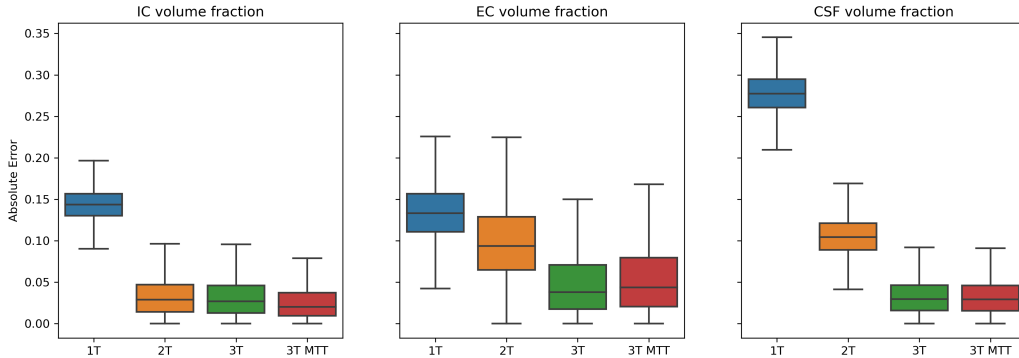


Figure 2: Boxplot of the absolute error of the estimated volume fraction of each compartment computed on the synthetic dataset. The 1T categorical variable corresponds to the 1-tissue model, 2T to the 2-tissue, 3T to the 3-tissue with standard tortuosity and 3T MTT to the 3-tissue model with MT-corrected Tortuosity (MTT).

fractions retrieved by the 1-tissue model are biased estimates of the volume fractions retrieved with the 2-tissue and 3-tissue model. The bias in the estimation of the volume fraction of the CSF compartment is four times bigger than the one of the IC and EC compartment. This is coherent with the fact that the S_0 of the CSF compartment is much higher than the one of the IC and EC compartments. The error decreases importantly when the 2-tissue model is used. Here, the IC volume fraction has absolute error comparable to the one of the 3-tissue models. The first factor that could induce such phenomenon is the definition of S_0^{WM} , which by design of the experiment will be closer to the S_0 of the IC than to the one of the EC compartment ($f_{IC} > f_{EC}$ as reported in Table 1). This induces the estimated EC volume fraction to be farther from the ground truth than the one of the IC compartment. This difference is reflected in the absolute error of the estimated volume fraction of the CSF compartment, which is affected by the presence of the non-zero perpendicular diffusivity of the EC compartment. Nevertheless, the estimation error of the CSF volume fraction is much lower than in the 1-tissue model thanks to the inclusion of the specific S_0^{CSF} in the

formulation. Finally, the 3-tissue model retrieves volume fractions that are in line with the ground truth ones. We highlight how the inclusion of the MT-correction of the tortuosity constraint does not sensibly benefit the fitting. We hypothesise that the effects of the inclusion of the MT-correction are lower than the ones made by the noise included in the system.

4.2 Real data

For each model, we fitted the signal and volume fractions with the SVF technique. Figure 3 shows the distribution of the signal fraction and volume fraction of each compartment in the WM for three HCP subjects. The WM mask was computed with FSL *fast* from the T_1 -weighted image with $1.25mm$ voxel size available at the HCP database, then dilated by one voxel with Mrtrix3's (Tournier et al., 2019) *maskfilter* command to smooth the boundary.

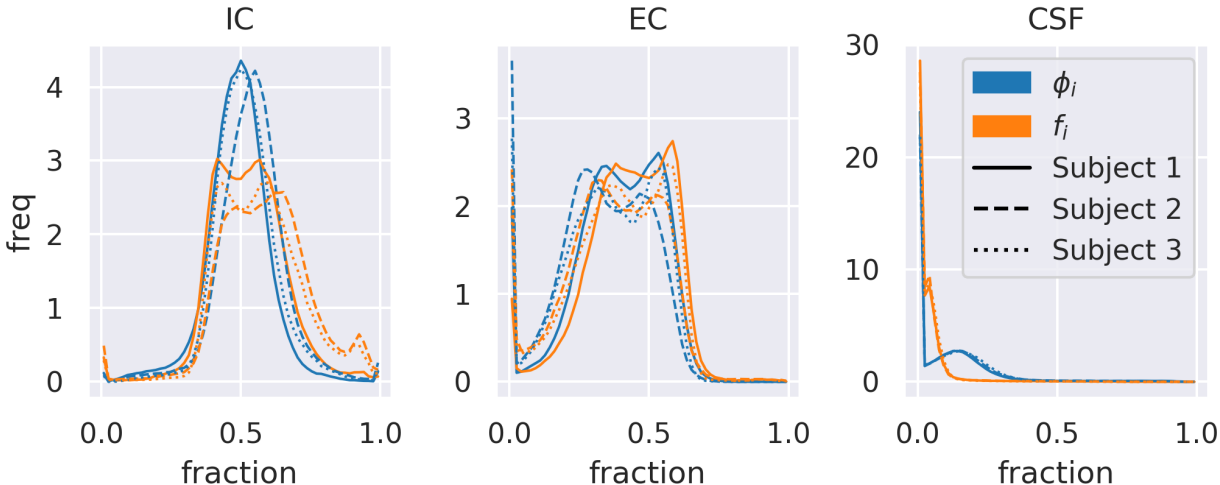


Figure 3: The displayed data are obtained three subjects of the HCP database (solid lines, dashed lines, and dotted lines). Each panel shows the distribution of the signal fraction and the volume fraction of the IC, EC and CSF compartments respectively. The blue lines correspond to *signal* fractions and the orange lines to *volume* fractions.

We recall that we considered a 2-tissue model by compressing the IC and EC compartments in a unique block that describes the WM tissue. The distribution of the volume fractions of the IC and EC compartments showed in Figure 3 is right-shifted with respect to the distribution of the corresponding signal fractions. On the contrary, the distribution of CSF volume fractions in the WM mask is shifted towards lower values with respect to the corresponding signal fractions. This means that the signal fraction *underestimates* the presence of the intracellular compartment in favour of the CSF compartment. This behaviour is consisted in all the tested subjects and the three distributions are consistent between the subjects for all the tissues. This is coherent with the proportion between S_0^{WM} and S_0^{CSF} , as the former is typically lower than the acquired S_0 and the latter is higher. The results displayed in Figure 4 show how, within the WM mask, the WM volume fraction is globally higher than the WM signal fraction. Also, the absolute difference between the two exhibits some uniformity within the considered sample. The macroscopic differences between the left and right hemispheres present in all the three subjects may be due to some bias field effect that we did not include in the model and survived the minimal preprocessing of the data (Glasser et al., 2013).

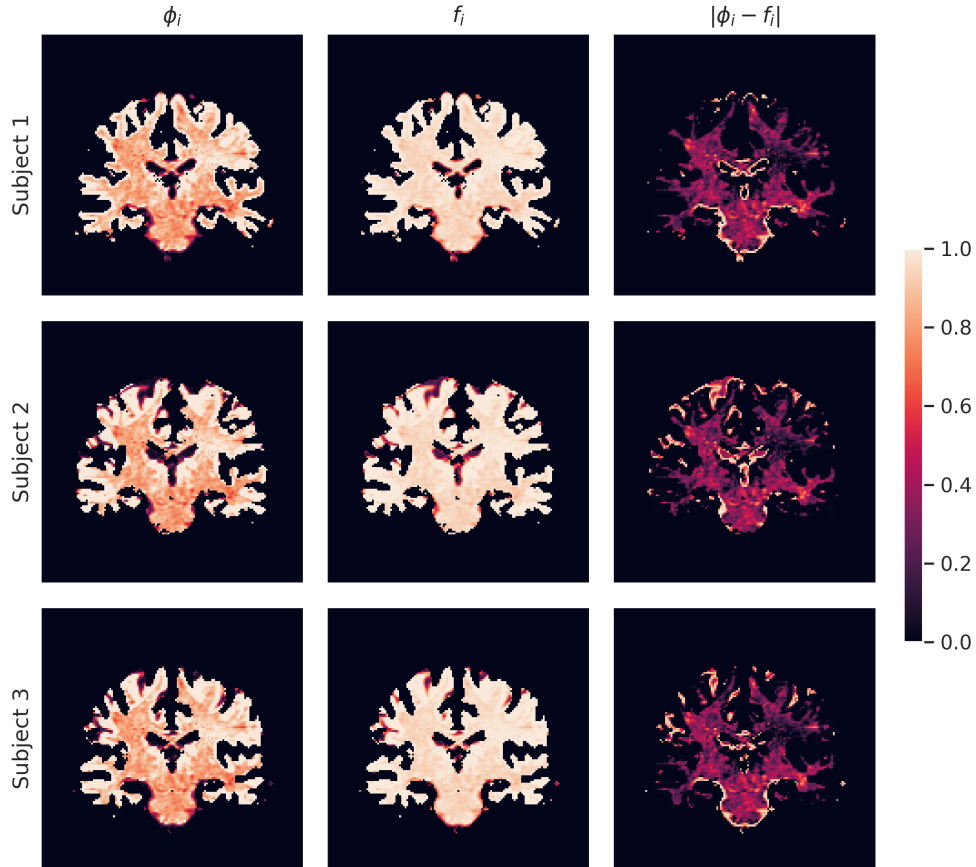


Figure 4: Signal fractions (first column), volume fractions (second column), and their absolute difference (third column) for three subjects of the HCP database. Brighter colors correspond to higher fractions (in the first two columns) and errors (in the third column). Voxels shown in orange/red and black correspond to decreasingly lower values of the same fractions and errors.

5 Discussion and Conclusions

In this paper we analysed how multi-compartment models of brain tissue microstructure can be adapted to account for the presence of tissues having different T_2 relaxation times. In particular, we focused on the capability of such models to estimate the volume fraction of each tissue in the WM. We proposed a solution based on single-TE dMRI data, in contrast with the state-of-the-art techniques that require multi-TE dMRI data. Our results on both synthetic and in-vivo data show that *signal fraction* and *volume fraction* are not interchangeable concepts in the context of MC microstructure modelling. The shift of paradigm from signal fractions to volume fractions has already been shown to improve the estimation of fODFs (Jeurissen et al., 2014) and in this work we transferred the same approach to the field of MC models of brain tissue microstructure, leveraging the differences between the S_0 responses of each modelled tissue.

Overall, the presented results yielded an empirical confirm of the theoretical considerations made in this work. In particular, the following aspects are highlighted:

- With *single-TE dMRI data* it is possible to retrieve tissue-specific volume fractions. Under the assumption that the IC and EC compartments have equal S_0 response, techniques like the one of Dhollander et al. (2016) allow to define the 2-tissue model used in this section, opening the door to a better estimation of the compartment-specific volume fractions. This is made possible by the MT-version of

the standard model of dMRI in the WM that we presented in this work. It models multiple tissues in a MC fashion *without* requiring multi-TE acquisition, which are conversely necessary in order to use other state-of-the-art models.

- *Signal fractions and volume fractions are not equivalent in general.* This fact has considerable implications in clinical context. Previous studies that drew conclusions based on the idea of inspecting volume fractions with single-TE dMRI need to be re-interpreted in light of the fact that what they are based on is the *signal* fraction of the tissues and not their volume fraction. How those differences are expressed in the presence of pathology or group differences remains unexplored and needs to be assessed in future studies.

We designed a multi-tissue version of the standard model of dMRI in the WM, which allows to separate the contribution of the intra-axonal, the extra-axonal and the CSF compartments and estimate the corresponding three volume fractions. The results reported in Figure 2 suggest that 2-tissue and 3-tissue models are always preferable to the 1-tissue model. A bigger improvement is obtained by considering two tissues instead of one, compared to the shift from the 2-tissue to the 3-tissue model. This is due to the proportion between the S_0 s of each tissue, which sees $S_0^{CSF} \gg S_0^{WM}$, with $S_0^{IC} > S_0^{EC}$ but the latter difference is lower than the former (Jeurissen et al., 2014).

A remarkable property of the proposed MT-MC model is that not only it can be straightforwardly fitted on single-TE dMRI data (VF strategy), but it can also re-use the results obtained with the MC version of the model (which in principle would have returned only the signal fraction of each compartment) and yield the volume fractions by means of an elementary rescaling operation (SVF strategy). While employing the SVF solution, extra care must be devoted to the use of the tortuosity constraint. Rescaling signal fractions obtained using the non-MT-corrected tortuosity constraint yields the volume fractions of a model where some diffusivity has been obtained using signal fractions, configuring an ambiguous (if not degenerate) solution. Nevertheless, the extent of the effect of including the MT-correction of tortuosity does not justify its inclusion. It remains unclear whether the effect of the correction is absorbed by the noise of the data or by the mixed contribution of the zeppelin and the ball compartment. Further studies are necessary to address this issue.

The proposed model strongly relies on the external estimation of the T_2 or the S_0 of the modelled tissues. Our experiments on real data leveraged the heuristic of Dhollander et al. (2016) to retrieve the S_0 of the WM and the CSF. Understanding how this choice affects the estimation of volume fractions is out of the scope of this work, but the raised question suggests that further efforts should be devoted to researching techniques that estimate tissue-specific S_0 responses using single-TE data. Additionally, analysing the proportion between the S_0 of each tissue in a large cohort of subjects could highlight patterns that could be exploited. If hypothetically the T_2 of extra-axonal was showed to be a constant fraction of the T_2 of the intra-axonal compartment, this could straightforwardly be encoded in the model.

The difference between signal fractions and volume fractions has implications also in the field of tractography filtering, where a coefficient is assigned to each streamline in a tractogram weighing its contribution to the formation of the dMRI signal. In the COMMIT framework (Daducci et al., 2015) these coefficients are the signal fractions associated to each streamline. The model can be easily adapted to obtain the volume fraction associated to each streamline, in particular in the context of the recent work of Barakovic et al. (2020), where streamlines are associated to bundle-specific T_2 times.

In this work, we analyzed the brain tissue microstructure estimation via multi-compartment models of dMRI. We tackled the known limitation concerning the inability of state-of-the-art multi-compartment models to describe multiple tissues having distinct T_2 relaxation times. We showed how what has always been considered the volume fraction of a certain tissue is actually the signal fraction of the same tissue. State-of-the-art techniques for overtaking such limitation rely on multi-TE dMRI data. Here, we introduced the Multi-Tissue Multi-Compartment models of dMRI, which allow to model multiple tissues at the same time using single-TE dMRI data. Moreover, we formulated a generalised multi-tissue modelling framework that encompasses both single-TE and multi-TE multi-tissue models. Our results indicate that with single-TE dMRI data alone one can model multiple tissues at the same time using the proposed multi-tissue multi-compartment models.

Acknowledgements

This work was funded by the European Research Council (ERC) under the European Union’s Horizon 2020 research and innovation program (ERC Advanced Grant agreement No 694665: CoBCoM - Computational Brain Connectivity Mapping). Data were provided by the Human Connectome Project, WU-Minn Consortium (Principal Investigators: David Van Essen and Kamil Ugurbil; 1U54MH091657) funded by the 16 NIH Institutes and Centers that support the NIH Blueprint for Neuroscience Research; and by the McDonnell Center for Systems Neuroscience at Washington University. This work has been supported by the French government, through the 3IA Côte D’Azur Investments in the Future project managed by the National Research Agency (ANR) with the reference number ANR-19-P3IA-0002.

Declaration of competing interest

The authors declare that they have no known competing financial interests or personal relationships that could have appeared to influence the work reported in this paper.

Open science

In this work we used only publicly available data from the Human Connectome Project database (Van Essen et al., 2012) and open source code from the Dmipy (Fick et al., 2019, version 1.0.3) Python package and the Mrtrix3 (Tournier et al., 2019) suite.

References

- M. Afzali, T. Pieciak, S. Newman, E. Garifallidis, E. Özarslan, H. Cheng, and D. K. Jones. The sensitivity of diffusion mri to microstructural properties and experimental factors. *Journal of Neuroscience Methods*, page 108951, 2020.
- D. C. Alexander, P. L. Hubbard, M. G. Hall, E. A. Moore, M. Ptito, G. J. Parker, and T. B. Dyrby. Orientationally invariant indices of axon diameter and density from diffusion mri. *Neuroimage*, 52(4):1374–1389, 2010.
- M. Barakovic, C. M. Tax, U. S. Rudrapatna, M. Chamberland, J. Rafael-Patino, C. Granziera, J.-P. Thiran, A. Daducci, E. J. Canales-Rodríguez, and D. K. Jones. Resolving bundle-specific intra-axonal t2 values within a voxel using diffusion-relaxation tract-based estimation. *NeuroImage*, page 117617, 2020.
- T. E. Behrens, M. W. Woolrich, M. Jenkinson, H. Johansen-Berg, R. G. Nunes, et al. Characterization and propagation of uncertainty in diffusion-weighted mr imaging. *Magnetic Resonance in Medicine: An Official Journal of the International Society for Magnetic Resonance in Medicine*, 50(5):1077–1088, 2003.
- A. Daducci, A. Dal Palù, A. Lemkaddem, and J.-P. Thiran. Commit: convex optimization modeling for microstructure informed tractography. *IEEE transactions on medical imaging*, 34(1):246–257, 2015.
- F. Dell’Acqua and J.-D. Tournier. Modelling white matter with spherical deconvolution: How and why? *NMR in Biomedicine*, 32(4):e3945, 2019.
- T. Dhollander, D. Raffelt, and A. Connelly. Unsupervised 3-tissue response function estimation from single-shell or multi-shell diffusion mr data without a co-registered t1 image. In *ISMRM Workshop on Breaking the Barriers of Diffusion MRI*, volume 5, page 2016, 2016.
- C. Eichner, M. Paquette, T. Mildner, T. Schlumm, K. Pléh, L. Samuni, C. Crockford, R. M. Wittig, C. Jäger, H. E. Möller, et al. Increased sensitivity and signal-to-noise ratio in diffusion-weighted mri using multi-echo acquisitions. *Neuroimage*, 2020.

- R. Fick, D. Wassermann, and R. Deriche. The dmipy toolbox: Diffusion mri multi-compartment modeling and microstructure recovery made easy. *Frontiers in Neuroinformatics*, 13(64), 2019. doi: /10.3389/fninf2019.00064.
- M. Frigo, R. Fick, M. Zucchelli, S. Deslauriers-Gauthier, and R. Deriche. Multi tissue modelling of diffusion mri signal reveals volume fraction bias. In *2020 IEEE 17th International Symposium on Biomedical Imaging (ISBI)*, pages 991–994. IEEE, 2020a.
- M. Frigo, M. Zucchelli, R. Fick, S. Deslauriers-Gauthier, and R. Deriche. Multi-compartment modelling of diffusion mri signal shows te-based volume fraction bias. In *OHBM 2020-26th meeting of the Organization of Human Brain Mapping*, pages hal-02925963, 2020b.
- H. Fukutomi, M. F. Glasser, K. Murata, T. Akasaka, K. Fujimoto, T. Yamamoto, J. A. Autio, T. Okada, K. Togashi, H. Zhang, et al. Diffusion tensor model links to neurite orientation dispersion and density imaging at high b-value in cerebral cortical gray matter. *Scientific reports*, 9(1):1–12, 2019.
- T. Ganepola, Z. Nagy, A. Ghosh, T. Papadopoulo, D. C. Alexander, and M. I. Sereno. Using diffusion mri to discriminate areas of cortical grey matter. *NeuroImage*, 182:456–468, 2018.
- M. F. Glasser, S. N. Sotiropoulos, J. A. Wilson, T. S. Coalson, B. Fischl, et al. The minimal preprocessing pipelines for the human connectome project. *Neuroimage*, 80:105–124, 2013.
- T. Gong, Q. Tong, H. He, Y. Sun, J. Zhong, and H. Zhang. Mte-noddi: Multi-te noddi for disentangling non-t2-weighted signal fractions from compartment-specific t2 relaxation times. *NeuroImage*, page 116906, 2020.
- S. Hara, M. Hori, S. Murata, R. Ueda, Y. Tanaka, M. Inaji, T. Maehara, S. Aoki, and T. Nariai. Microstructural damage in normal-appearing brain parenchyma and neurocognitive dysfunction in adult moyamoya disease. *Stroke*, 49(10):2504–2507, 2018.
- I. O. Jelescu and M. D. Budde. Design and validation of diffusion mri models of white matter. *Frontiers in physics*, 5:61, 2017.
- I. O. Jelescu, J. Veraart, E. Fieremans, and D. S. Novikov. Degeneracy in model parameter estimation for multi-compartmental diffusion in neuronal tissue. *NMR in Biomedicine*, 29(1):33–47, 2016.
- B. Jeurissen, J.-D. Tournier, T. Dhollander, A. Connelly, and J. Sijbers. Multi-tissue constrained spherical deconvolution for improved analysis of multi-shell diffusion mri data. *NeuroImage*, 103:411–426, 2014.
- M. Just and M. Thelen. Tissue characterization with t1, t2, and proton density values: results in 160 patients with brain tumors. *Radiology*, 169(3):779–785, 1988.
- E. Kaden, N. D. Kelm, R. P. Carson, M. D. Does, and D. C. Alexander. Multi-compartment microscopic diffusion imaging. *NeuroImage*, 139:346–359, 2016.
- B. Lampinen, F. Szczepankiewicz, J. Mårtensson, D. van Westen, P. C. Sundgren, and M. Nilsson. Neurite density imaging versus imaging of microscopic anisotropy in diffusion mri: A model comparison using spherical tensor encoding. *Neuroimage*, 147:517–531, 2017.
- B. Lampinen, F. Szczepankiewicz, M. Novén, D. van Westen, O. Hansson, E. Englund, J. Mårtensson, C.-F. Westin, and M. Nilsson. Searching for the neurite density with diffusion mri: challenges for biophysical modeling. *Human brain mapping*, 40(8):2529–2545, 2019.
- B. Lampinen, F. Szczepankiewicz, J. Mårtensson, D. van Westen, O. Hansson, C.-F. Westin, and M. Nilsson. Towards unconstrained compartment modeling in white matter using diffusion-relaxation mri with tensor-valued diffusion encoding. *Magnetic Resonance in Medicine*, 84(3):1605–1623, 2020.

- K. V. Mardia and P. E. Jupp. *Directional statistics*, volume 494. John Wiley & Sons, 1990.
- S. G. Mueller, M. W. Weiner, L. J. Thal, R. C. Petersen, C. Jack, W. Jagust, J. Q. Trojanowski, A. W. Toga, and L. Beckett. The alzheimer’s disease neuroimaging initiative. *Neuroimaging Clinics*, 15(4):869–877, 2005.
- D. S. Novikov, E. Fieremans, S. N. Jespersen, and V. G. Kiselev. Quantifying brain microstructure with diffusion mri: Theory and parameter estimation. *NMR in Biomedicine*, 32(4):e3998, 2019.
- E. Panagiotaki, S. Walker-Samuel, B. Siow, S. P. Johnson, V. Rajkumar, R. B. Pedley, M. F. Lythgoe, and D. C. Alexander. Noninvasive quantification of solid tumor microstructure using verdict mri. *Cancer research*, 74(7):1902–1912, 2014.
- D. B. Plewes. Contrast mechanisms in spin-echo mr imaging. *Radiographics*, 14(6):1389–1404, 1994.
- B. Scherrer and S. K. Warfield. Why multiple b-values are required for multi-tensor models. evaluation with a constrained log-euclidean model. In *2010 IEEE International Symposium on Biomedical Imaging: From Nano to Macro*, pages 1389–1392. IEEE, 2010.
- S. N. Sotiropoulos, S. Jbabdi, J. Xu, J. L. Andersson, S. Moeller, E. J. Auerbach, M. F. Glasser, M. Hernandez, G. Sapiro, M. Jenkinson, et al. Advances in diffusion mri acquisition and processing in the human connectome project. *Neuroimage*, 80:125–143, 2013.
- C. Sudlow, J. Gallacher, N. Allen, V. Beral, P. Burton, J. Danesh, P. Downey, P. Elliott, J. Green, M. Landray, et al. Uk biobank: an open access resource for identifying the causes of a wide range of complex diseases of middle and old age. *Plos med*, 12(3):e1001779, 2015.
- H. Suzuki, H. Gao, W. Bai, E. Evangelou, B. Glocker, D. P. O’Regan, P. Elliott, and P. M. Matthews. Abnormal brain white matter microstructure is associated with both pre-hypertension and hypertension. *PLoS One*, 12(11):e0187600, 2017.
- A. Szafer, J. Zhong, A. W. Anderson, and J. C. Gore. Diffusion-weighted imaging in tissues: theoretical models. *NMR in Biomedicine*, 8(7):289–296, 1995a. ISSN 10991492. doi: 10.1002/nbm.1940080704.
- A. Szafer, J. Zhong, and J. C. Gore. Theoretical model for water diffusion in tissues. *Magnetic resonance in medicine*, 33(5):697–712, 1995b.
- J.-D. Tournier, R. Smith, D. Raffelt, R. Tabbara, T. Dhollander, M. Pietsch, D. Christiaens, B. Jeurissen, C.-H. Yeh, and A. Connelly. Mrtrix3: A fast, flexible and open software framework for medical image processing and visualisation. *NeuroImage*, 202:116137, 2019.
- D. C. Van Essen, K. Ugurbil, E. Auerbach, D. Barch, T. Behrens, R. Bucholz, A. Chang, L. Chen, M. Corbetta, S. W. Curtiss, et al. The human connectome project: a data acquisition perspective. *Neuroimage*, 62(4):2222–2231, 2012.
- J. Veraart, D. S. Novikov, and E. Fieremans. Te dependent diffusion imaging (teddi) distinguishes between compartmental t2 relaxation times. *NeuroImage*, 182:360–369, 2018. ISSN 1053-8119. doi: 10.1016/j.neuroimage.2017.09.030. URL <http://www.sciencedirect.com/science/article/pii/S1053811917307784>.
- P. Vestergaard-Poulsen, B. Hansen, L. Østergaard, and R. Jakobsen. Microstructural changes in ischemic cortical gray matter predicted by a model of diffusion-weighted mri. *Journal of Magnetic Resonance Imaging: An Official Journal of the International Society for Magnetic Resonance in Medicine*, 26(3): 529–540, 2007.
- J. E. Villalon-reina, T. M. Nir, S. I. Thomopoulos, L. E. Salminen, R. Fick, M. Frigo, R. Deriche, P. M. Thompson, and ADNI. Tracking microstructural biomarkers of Alzheimer’s disease via advanced multi-shell diffusion MRI scalar measures. In *ISMRM*, page 2020, 2020.

H. Zhang, T. Schneider, C. A. Wheeler-Kingshott, and D. C. Alexander. Noddi: practical in vivo neurite orientation dispersion and density imaging of the human brain. *Neuroimage*, 61(4):1000–1016, 2012.