



HAL
open science

Patients facing the choice of renal replacement therapy: What is the role of relatives?

Lucile Montalescot, Karine Legrand, Géraldine Dorard, Carole Ayav,
Christian Combe, Benedicte Stengel, Aurélie Untas

► **To cite this version:**

Lucile Montalescot, Karine Legrand, Géraldine Dorard, Carole Ayav, Christian Combe, et al.. Patients facing the choice of renal replacement therapy: What is the role of relatives?. European Health Psychology Society, Sep 2019, Dubrovnik, Croatia. hal-03121073

HAL Id: hal-03121073

<https://hal.science/hal-03121073v1>

Submitted on 26 Jan 2021

HAL is a multi-disciplinary open access archive for the deposit and dissemination of scientific research documents, whether they are published or not. The documents may come from teaching and research institutions in France or abroad, or from public or private research centers.

L'archive ouverte pluridisciplinaire **HAL**, est destinée au dépôt et à la diffusion de documents scientifiques de niveau recherche, publiés ou non, émanant des établissements d'enseignement et de recherche français ou étrangers, des laboratoires publics ou privés.

Patients facing the choice of renal replacement therapy: What is the role of relatives?

Acknowledgements – with the support of:

Lucile Montalescot¹, Karine Legrand², Géraldine Dorard¹, Carole Loos-Ayav², Christian Combe³, Bénédicte Stengel⁴, Aurélie Untas¹

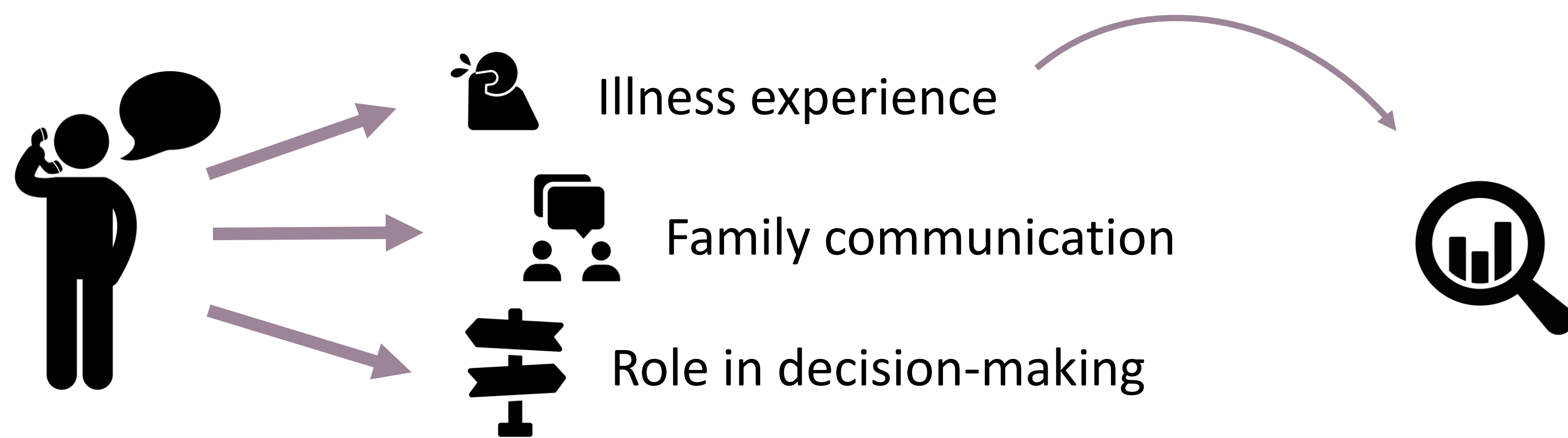
¹ Université de Paris, LPPS, F-92100 Boulogne-Billancourt, France. ; ² Centre d'Epidémiologie Clinique, Inserm CIC-EC 1433, CHU de Nancy, Vandoeuvre-lès-Nancy, France; ³ Département de Néphrologie Transplantation Dialyse, Centre Hospitalier Universitaire de Bordeaux, Bordeaux, France. Inserm, U1026, Université Bordeaux Segalen, Bordeaux, France; ⁴ Inserm, U1018, CESP Centre de Recherche en Epidémiologie et Santé Publique, Equipe 5, Epidémiologie Rénale et Cardiovasculaire. Université Paris Sud, Villejuif, France

INTRODUCTION

- Treatment choice (TC) is **stressful** for patients with chronic kidney disease (CKD) (Harwood & Clarke, 2013).
- Guidelines advise to proceed to a **shared decision-making** (Haute Autorité de Santé, 2017).
- **Individual** (e.g., way of life) but also **social** (e.g., meeting with peers) and **family** factors (e.g., sharing information) influence decision-making (Morton et al., 2010; Valson et al., 2018)
- Most studies are **retrospective**, question exclusively patients and focus on the elderly.

METHODS

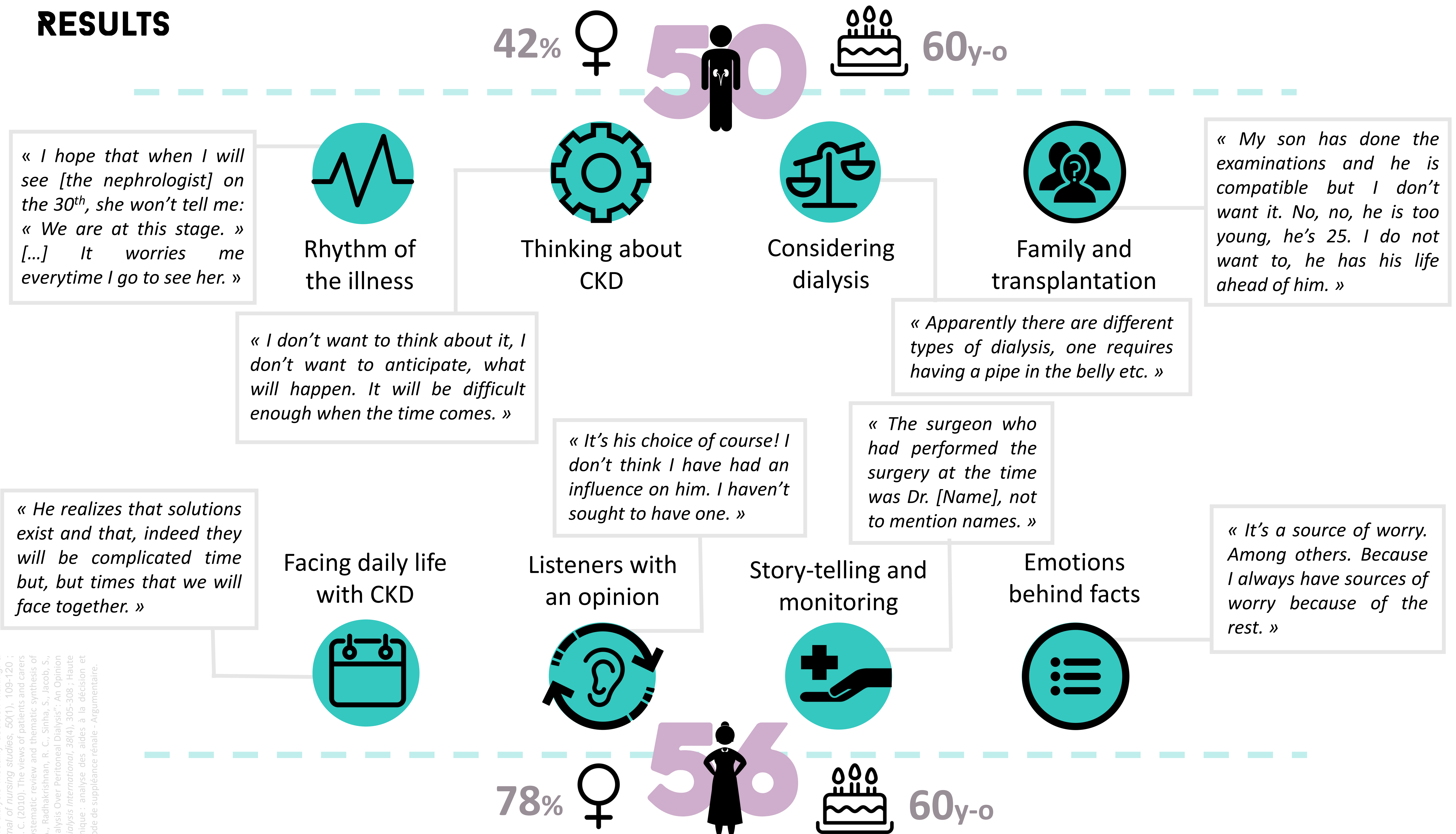
Semi-structured individual interviews



OBJECTIFS

- + Explore **patients and close others' experience** of advanced CKD
- + Investigate how they view **treatment decision-making**.

RESULTS



CONCLUSION

- **Cognitive avoidance** about renal replacement therapy is common among patients.
- TC does **not** seem **relevant** to patients' **life today** according to participants' discourse.
- Family member, partners especially, face CKD with patients by keeping a positive outlook on the future.
- According to participants, family has little influence on TC except regarding **living-donor transplantation**.
- However, family members **do** express an **opinion** regarding treatment choice.
- Thematic analysis on **subgroups** could highlight differences between participants.

Harwood, L., & Clarke, A. M. (2013). Understanding pre-dialysis modality decision-making: a meta-synthesis of qualitative studies. *International journal of nursing studies*, 50(1), 109-120. Morton, R. L., Tong, A., Howard, K., Shelling, P., & Webster, A. C. (2010). The views of patients and carers in treatment decision making for chronic kidney disease: systematic review and thematic synthesis of qualitative studies. *BMC*, 340, e112. Valson, A. T., Asad, R. A., Redhakrishnan, B. C., Srinha, S., Jacob, S., Varughese, S., & Tomilarski, V. (2018). "Why I Chose Hemodialysis Over Peritoneal Dialysis": An Opinion Survey Among In-center Hemodialysis Patients. *Peritoneal Dialysis International*, 38(4), 305-308. Haute Autorité de Santé (HAS). (2017). *Insuffisance rénale chronique - analyse des aides à la décision et élaboration d'une méthode pour l'ICD/ICER ensemble d'un mode de suppléance rénale - Argumentaire*.