

Modeling (some aspects of) the female reproductive system

Gonadotropin and follicular dynamics

Frédérique Clément¹, Danielle Monniaux², Marie Postel³,
Frédérique Robin¹ & Romain Yvinec²

¹ M3DISIM, INRIA Saclay

²Physiologie de la Reproduction et des Comportements, INRA Tours

³ LJLL, Université Pierre et Marie Curie.

Understanding of a complex process of developmental biology, occurring during the whole lifespan

- Numerous cell types involved, and various interactions
- Many different spatial and temporal scales
- Hormonal feedback (endocrine, paracrine, autocrine)
- Steric and biophysical constraint

Preserve the reproductive ability

- Iatrogenic or physiological alterations
- Sensibility to environmental conditions
- Biodiversity preservation

Control of the reproduction function (in humans and animals)

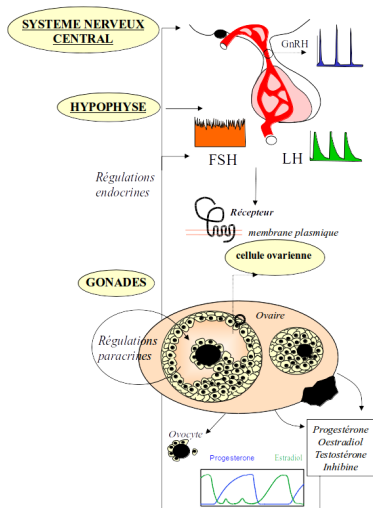
- Biotechnology of reproduction (*in vivo*, *ex vivo*, *in vitro*)
- Clinical, economical and environmental issues

Multiscale biology and Folliculogenesis

Encoding et decoding **complex neuro-hormonal signals**

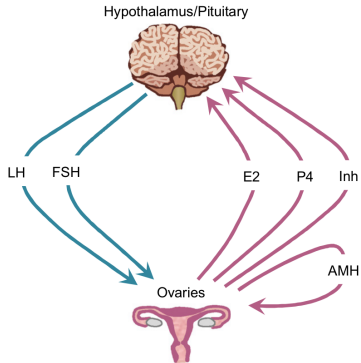
Population dynamics : **gametogenesis**

Intra-cellular level : **signaling networks**

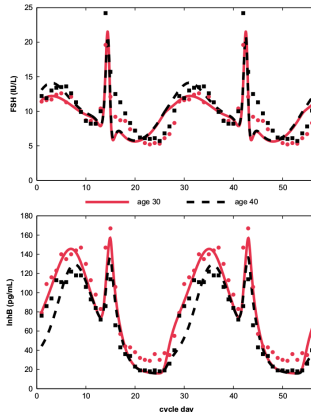


Hormonal signals (at the anatomic scale)

Mostly phenomenological equations (DDEs/SDEs) to represent measured levels of circulating hormones.



Margolskee & Selgrade, JTB 2013

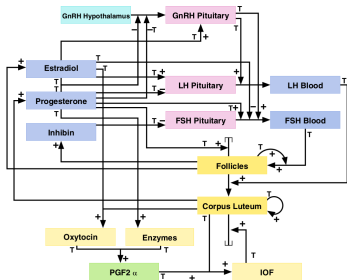


Margolskee & Selgrade, JTB 2013

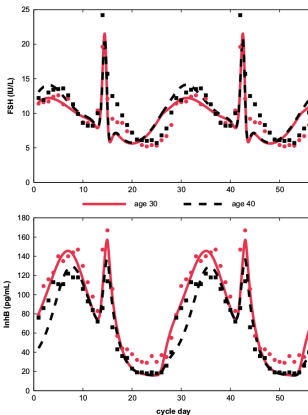
These models can explain some disorders in hormonal levels and predict the effect of pharmaceutical intervention.

Hormonal signals (at the anatomical scale)

Mostly phenomenological equations (DDEs/SDEs) to represent measured levels of circulating hormones.



Stötzel et al., *Therio*. 2012

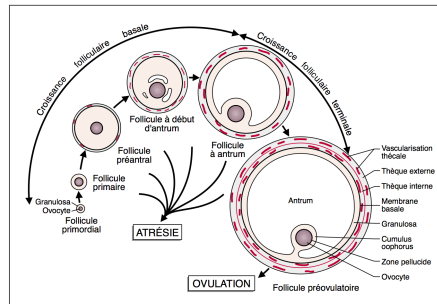
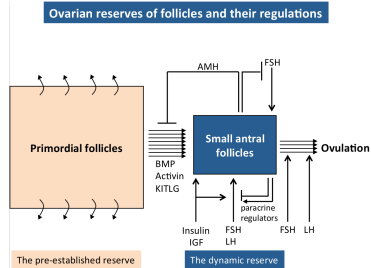


Margolskee & Selgrade, *JTB* 2013

These models can explain some disorders in hormonal levels and predict the effect of pharmaceutical intervention. **Theoretical analysis gets rapidly challenging!**

Gametogenesis : Ovarian folliculogenesis

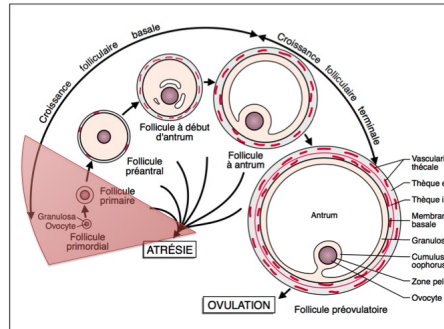
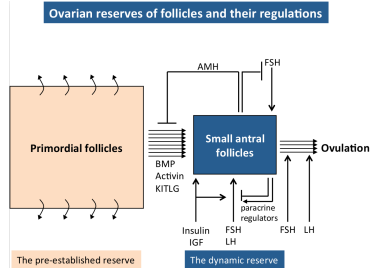
- Morphogenesis and maturation of ovarian follicles
somatic and germ (egg) cells



Monniaux, Theriogenology 2016

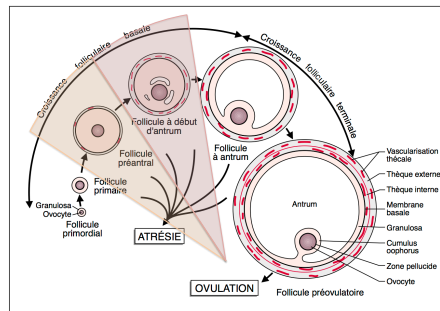
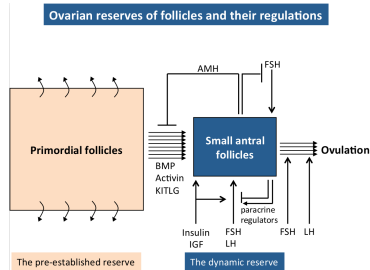
Gametogenesis : Ovarian folliculogenesis

- Morphogenesis and maturation of ovarian follicles
somatic and germ (egg) cells
- Pool of Quiescent follicles
static reserve (perinatal in most mammals)
 Slow activation



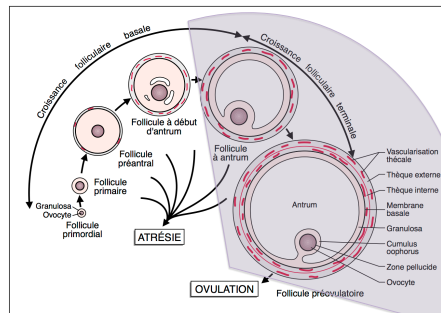
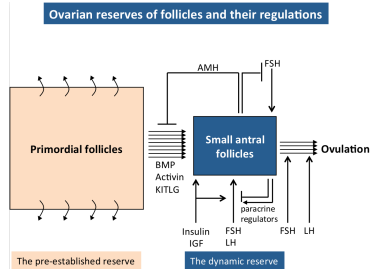
Gametogenesis : Ovarian folliculogenesis

- Morphogenesis and maturation of ovarian follicles
somatic and germ (egg) cells
- Pool of Quiescent follicles
static reserve (perinatal in most mammals)
 Slow activation
- Basal growth
Dynamic reserve (starting at birth)
 Spanning over several ovarian cycles



Gametogenesis : Ovarian folliculogenesis

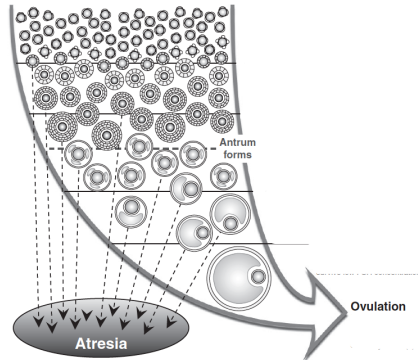
- Morphogenesis and maturation of ovarian follicles
somatic and germ (egg) cells
- Pool of Quiescent follicles
static reserve (perinatal in most mammals)
 Slow activation
- Basal growth
Dynamic reserve (starting at birth)
 Spanning over several ovarian cycles
- Terminal growth
 After puberty : ovulation within an ovarian cycle



Gametogenesis : Ovarian folliculogenesis

Order of magnitude of the follicle population in women

- Quiescent follicles
 - peri-natal $\approx 5 \cdot 10^6$
 - At birth $\approx 1 \cdot 10^6$
 - At puberty $10^4 - 10^6$
 - At menopause $< 10^3$
 - Activation rate "A few per days"

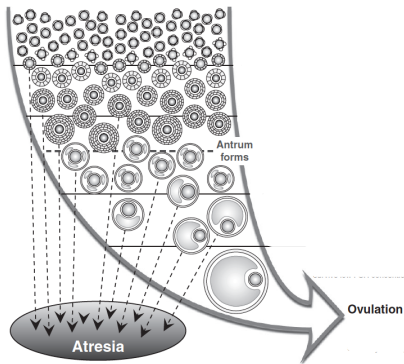


Scaramuzzi et al., *Reprod.Fert. Dev.* 2011

Gametogenesis : Ovarian folliculogenesis

Order of magnitude of the follicle population in women

- Quiescent follicles
 - peri-natal $\approx 5 \cdot 10^6$
 - At birth $\approx 1 \cdot 10^6$
 - At puberty $10^4 - 10^6$
 - At menopause $< 10^3$
 - Activation rate "A few per days"
- Growing follicles
 - Maturation time 120 – 180j
 - Basal follicles $10^3 - 10^4$
 - Terminal follicles 10^2
 - Pre-Ovulatory follicles a few
 - Atresia Most of them !

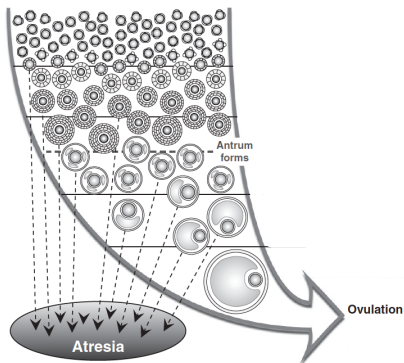


Scaramuzzi et al., *Reprod.Fert. Dev.* 2011

Gametogenesis : Ovarian folliculogenesis

Order of magnitude of the follicle population in women

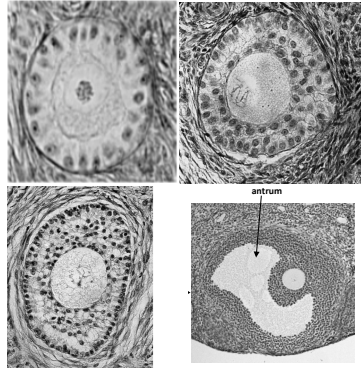
- Quiescent follicles
 - peri-natal $\approx 5 \cdot 10^6$
 - At birth $\approx 1 \cdot 10^6$
 - At puberty $10^4 - 10^6$
 - At menopause $< 10^3$
 - Activation rate "A few per days"
 - Growing follicles
 - Maturation time 120 – 180j
 - Basal follicles $10^3 - 10^4$
 - Terminal follicles 10^2
 - Pre-Ovulatory follicles a few
 - Atresia Most of them !
- > **Only 400 follicles will ever reach the pre-ovulatory stage**



Scaramuzzi et al., *Reprod.Fert. Dev.* 2011

Gametogenesis : Ovarian folliculogenesis

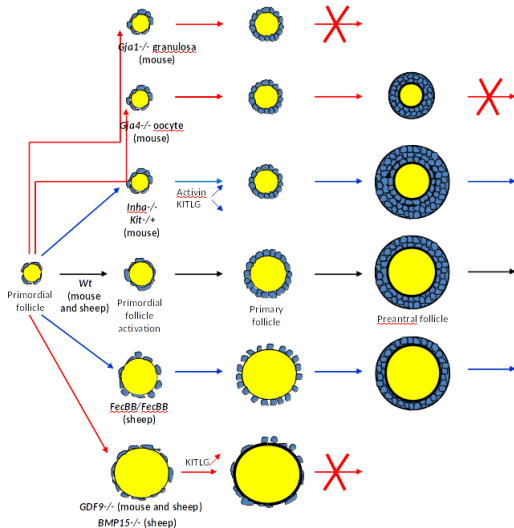
- Order of magnitude for a single follicle (women) at different maturation stages
 - ovocyte (egg cell) diam. : $0.01 - 0.1\text{mm}$
 - follicle diam. $0.03 - 20\text{mm}$
 - somatic cells diam. $\approx 0.01\text{mm}$
 - nb somatic cells $10^2 - 10^7$



Courtesy of Danielle Monniaux.

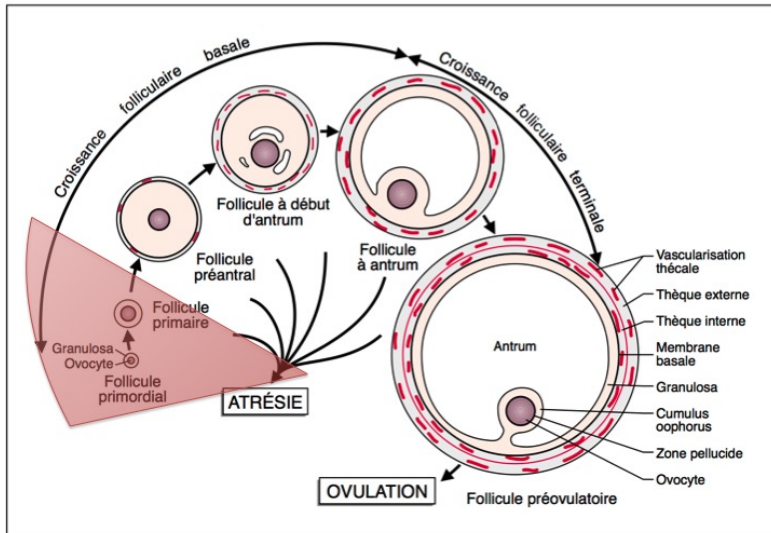
Morphogenesis of a single follicle

Possible physiological or pathological disorders



Monniaux, *Theriogenology* 2016

Initiation of a follicle



Key points of follicle initiation

Exiting of a **quiescent** state

A single layer of somatic cells

Two somatic cell types :
flattened and cuboid

Irreversible transition from
flattened to cuboid

**Proliferation of cuboid
cells**

Auto-amplification ?

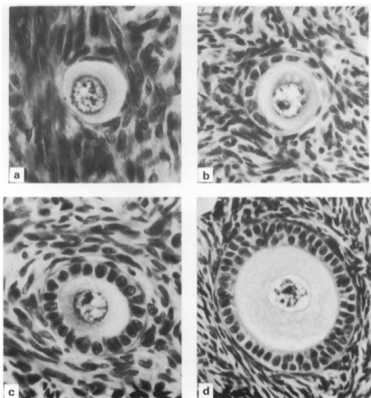


Fig. 1. Illustrations of follicle types: (a) Type B, $\times 570$; (b) Type B/C, $\times 570$; (c) Type C, $\times 570$; (d) Type D, $\times 410$.

Histological section of women ovarian follicles, Gougeon et al, 1987

Key points of follicle initiation

Exiting of a **quiescent** state

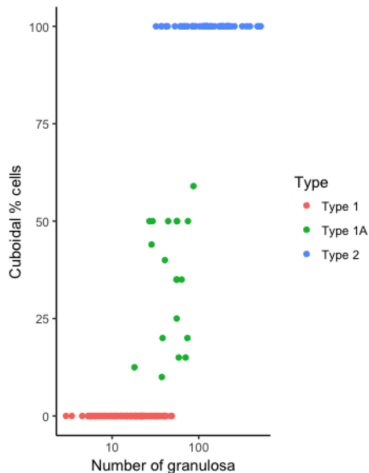
A single layer of somatic cells

Two somatic cell types :
flattened and cuboid

Irreversible transition from
flattened to cuboid

**Proliferation of cuboid
cells**

Auto-amplification ?



Courtesy of Mc Natty

Dynamical model

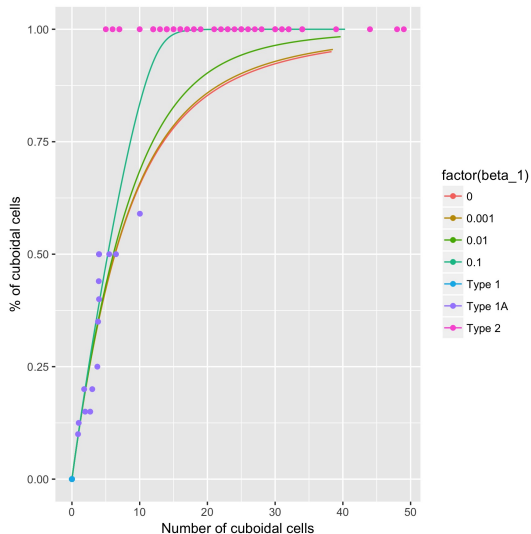
↔ Two population of cells : F (flattened) and C (cuboid)

↔ Small number of cells : Markov chain model

Events	Reaction	Intensity function
differentiation	$F \rightarrow C$	$\alpha F + \beta \frac{FC}{F + C}$
division	$C \rightarrow C + C$	γC

↔ Feedback of cuboid cells on the differentiation rate

Comparison with data *ex vivo*

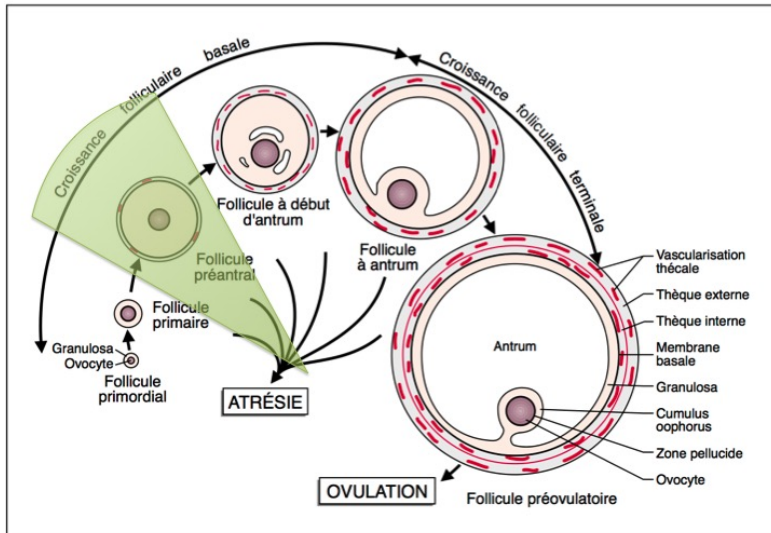


- Ex vivo data in sheep fetus (Courtesy of K. McNatty)

⇒ superposition of proliferation and differentiation processes

⇒ Prediction of the statistics of the initiation time

Basal growth of a follicle



Key points of the basal growth of a follicle

Growth of a follicle after initiation

Spherical symmetry

Concentric layers of somatic cells

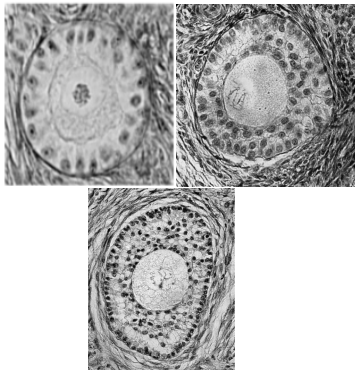
Joint dynamic

oocyte **Growth**

somatic cells **proliferation**

Feedback mechanism ?

Dynamical characteristic ?



Courtesy of Danielle Monniaux.

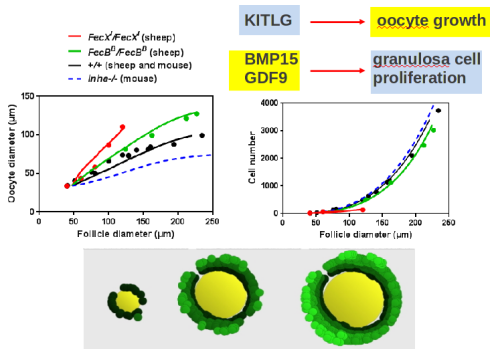
Dynamical model

Individual-based spatial model (that started in CEMRACS 2009!)

Growth of the oocyte given by an ODE, modulated by the number of somatic cells

Age-dependent division and Displacement of somatic cells driven by local crowding

Free Boundary problem



Michel et al., Multiscale Model. & Simul. 2013

Study of a linear model and "kinetic" data

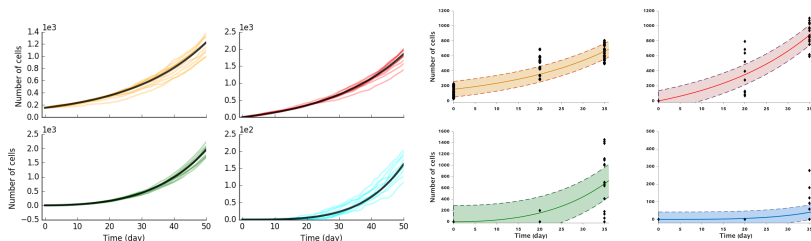
Bellman-Harris multi-types // McKendrick-von Foerster multi-dim

Quantification of the **doubling time**

Malthusian exponential growth

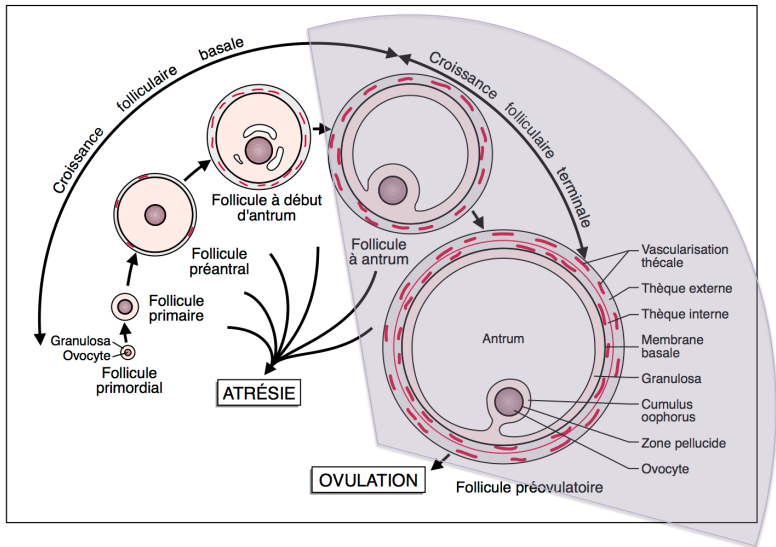
Long time stable age-spatial distribution ($\lim_{t \rightarrow \infty} \varrho(t, x) e^{-\lambda t} = \hat{\varrho}(x)$)

Calibration of the model with reconstructed **kinetic data**
parameter values



Robin et al., arXiv :1712.05372

Terminal growth



Antral growth

- No more spherical symmetry

- Joint dynamics

Antrum growth

Proliferation and Differentiation of somatic cells

Morphogen gradient

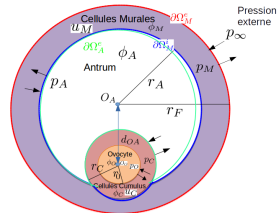
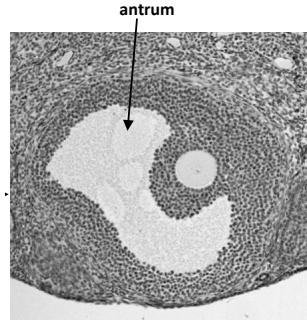
$$\frac{\partial \phi_A}{\partial t} + D \Delta \phi_A = 0, x \in \Omega_A(t),$$

$$\frac{\partial u_M}{\partial t} + \text{div}(\vec{v}_M u_M) = R_M(u_M), x \in \Omega_M(t),$$

$$\frac{\partial u_C}{\partial t} + \text{div}(\vec{v}_C u_C) = R_C(u_C), x \in \Omega_C(t),$$

+ Boundary conditions and constitutive laws

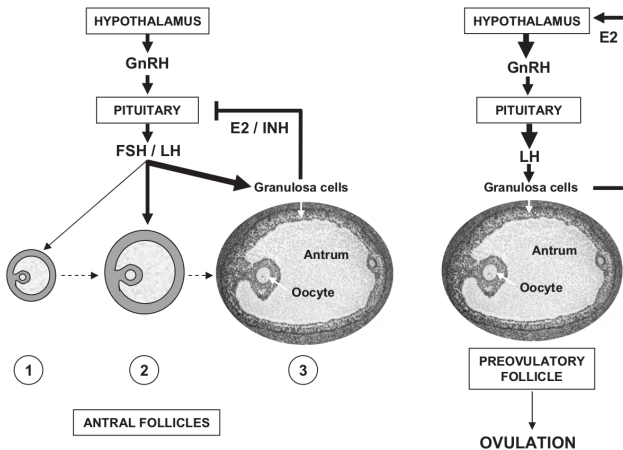
work in progress...



Tertiary (antral) follicle

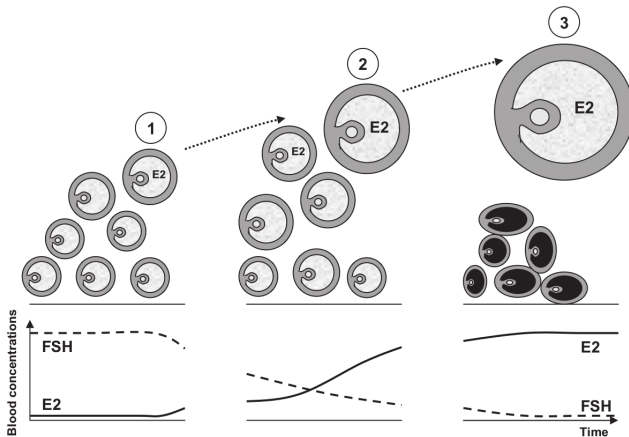
Models of population of follicles : selection model

In reality, the growth process of follicles are not independent but are highly coordinated, both by steric/biophysical constraints and hormonal feedbacks.



Models of population of follicles : selection model

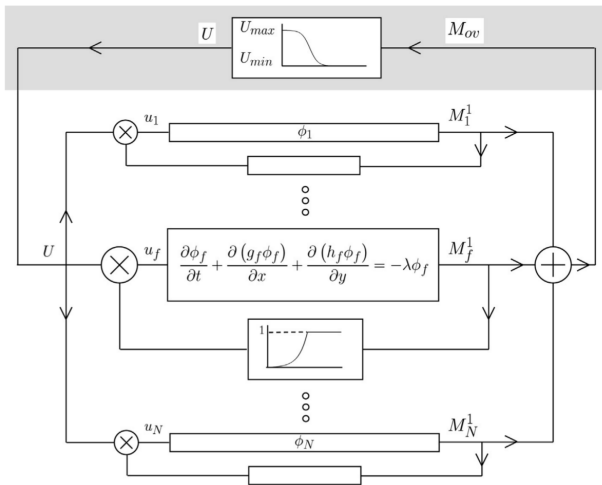
In reality, the growth process of follicles are not independent but are highly coordinated, both by steric/biophysical constraints and hormonal feedbacks.



Clément and Monniaux, PBMB 2013

Models of population of follicles : selection model

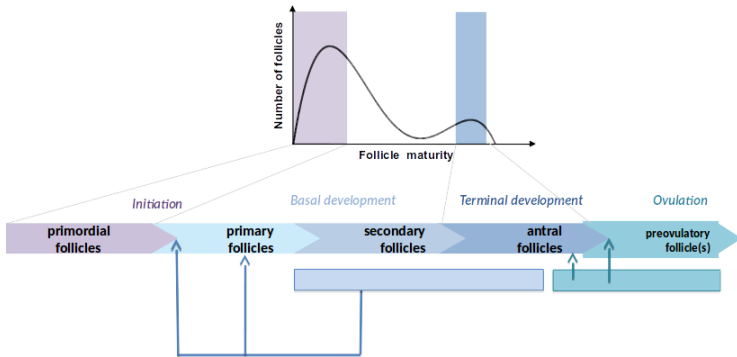
Nonlinearly coupled conservation laws, one for each follicle (somatic cells density population, structured by age and maturity)



Models of population of follicles : on the lifespan

Folliculogenesis on the lifespan

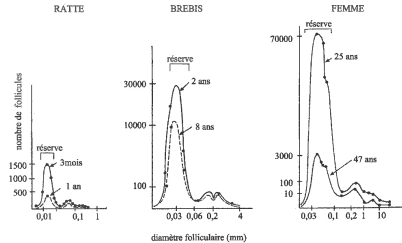
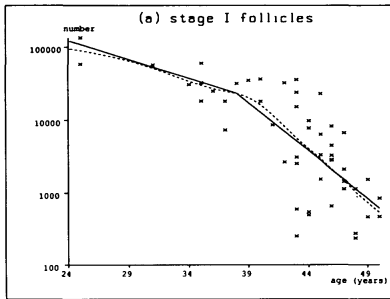
- ⇒ Nonlinear interactions between follicles populations (endocrine and paracrine)
- ⇒ (Slow) (decay) of total follicles number and "stable" repartition in the maturity space



Models of population of follicles : on the lifespan

Folliculogenesis on the lifespan

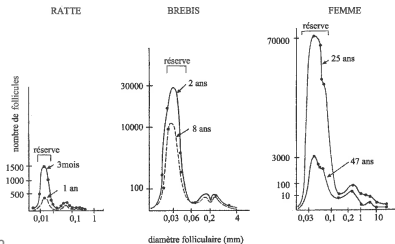
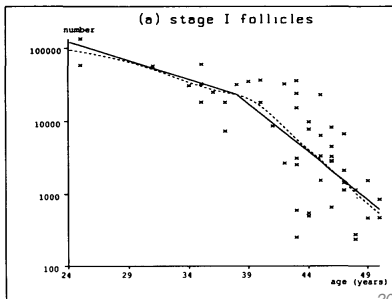
- ⇒ Nonlinear interactions between follicles populations (endocrine and paracrine)
- ⇒ (Slow) (decay) of total follicles number and "stable" repartition in the maturity space



Models of population of follicles

Cemracs project

$$\begin{aligned} \frac{\partial \rho(t, x)}{\partial t} + \frac{\partial (\lambda(t, x) \rho(t, x))}{\partial x} &= -\mu(t, x) \rho(t, x), \quad t > 0, 0 < x < 1, \\ \lim_{x \rightarrow 0} (\lambda(t, x) \rho(t, x)) &= \lambda_0(t) \rho_0(t), \\ \frac{d\rho_0(t)}{dt} &= -\lambda_0(t) \rho_0(t) - \mu_0(t) \rho_0(t). \end{aligned}$$



- ★ Frédérique Clément, Frédérique Robin (INRIA Saclay, projet EPC)
- ★ Danielle Monniaux, team BIOS, BINGO (PRC INRA)
- ★ Marie Postel (LJLL, UPMC)
- ★ Celine Bonnet, Keltoum Chahour (cemracs)



★ Fundings (INRA PHASE department)

F. Robin et al., arXiv :1712.05372

Analysis and calibration of a linear model for structured cell populations with unidirectional motion : Application to the morphogenesis of ovarian follicles



R. Y. et al., In press

Advances in computational modeling approaches of pituitary gonadotropin signaling



D. Monniaux. et al., Biol. Cell (2016)

Multi-scale modelling of ovarian follicular development : From follicular morphogenesis to selection for ovulation

Inria



Initiation Model

$$\begin{aligned}F(t) &= F_0 - Y_1 \left(\int_0^t \alpha F(s) + \beta \frac{F(s)C(s)}{F(s) + C(s)} ds \right) \\C(t) &= Y_1 \left(\int_0^t \alpha F(s) + \beta \frac{F(s)C(s)}{F(s) + C(s)} ds \right) + Y_2 \left(\int_0^t \gamma C(s) ds \right)\end{aligned}$$

We are interested in the initiation time $\tau = \inf\{t \geq 0, F(t) = 0\}$ and the number of cells at that time $C(\tau)$.

$$\begin{aligned}
 Z(t) &= \sum_{k=1}^{N_0} \delta_{X_k(0), A_k(0)+t} + \int_0^t \mathbf{1}_{k < N_{s^-}} Q(ds, n(dk), d\theta, J(dj)) \\
 &\quad \left[\begin{aligned}
 &(2\delta_{X_k(s^-), t-s} - \delta_{X_k(s^-), A_k(s^-)+t-s}) \mathbf{1}_{\theta < m_1(s, Z_s, k)} \\
 &(\delta_{J, A_k(s^-)+t-s} - \delta_{X_k(s^-), A_k(s^-)+t-s}) \mathbf{1}_{m_1(s, Z_s, k) < \theta < m_2(s, Z_s, k, J)}
 \end{aligned} \right] \\
 \frac{d}{dt} d_0 &= d_0^\alpha (1 - d_0)^\beta f(Z_s).
 \end{aligned}$$

m_1 and m_2 gives the birth rates (age and position dependent) and displacement rate (crowding dependent). We are interested in the respective growth rate of the somatic cell population versus the oocyte diameter.

Linear basal Model

$$Z_t = \sum_{k=1}^{N(0)} \delta_{i_k(0), a_k(0)+t} + \int_0^t \int \overbrace{\mathbf{1}_{k \leq N(s^-)}}^{\text{Mother } \varphi} \cdot \overbrace{\mathbf{1}_{\theta < b_k(s^-)}}^{\text{division time}} Q(ds, dk, d\theta, du)$$

$$\left[\underbrace{2\delta_{i_k+1, t-s} \mathbf{1}_{E_1}}_{2 \text{ displacements}} + \underbrace{(\delta_{i_k, t-s} + \delta_{i_k+1, t-s}) \mathbf{1}_{E_2}}_{\text{daughter } \varphi : 1 \text{ displacement}} + \underbrace{2\delta_{i_k, t-s} \mathbf{1}_{E_3}}_{0 \text{ displacement}} - \delta_{i_k, a_k+t-s} \right]$$

where Q Poisson measure on $\mathbb{R}^+ \times \mathbb{N}^* \times \mathbb{R}^+ \times [0, 1]$,

$$E_1 = \{u \leq p_{0,2}^{i_k}\}, E_2 = \{p_{0,2}^{i_k} < u \leq p_{0,2}^{i_k} + p_{1,1}^{i_k}\}, E_3 = \{p_{0,2}^{i_k} + p_{1,1}^{i_k} < u\}$$

and $b_k(s) = b_{i_k(s)}(a_k(s))$

Linear basal Model

Starting with one cell on layer i and age 0,

$$Z_t^{[i]} := \delta_{i,t} + \int_0^t \int \overbrace{\mathbf{1}_{k \leq N(s^-)}}^{\text{c Mère}} \cdot \overbrace{\mathbf{1}_{\theta < b_k(s^-)}}^{\text{Temps de division}} Q(ds, dk, d\theta, du)$$

$$\left[\underbrace{2\delta_{i_k+1, t-s} \mathbf{1}_{E_3}}_{\text{2 déplacements}} + \underbrace{(\delta_{i_k, t-s} + \delta_{i_k+1, t-s}) \mathbf{1}_{E_1}}_{\text{c filles : 1 déplacement}} + \underbrace{2\delta_{i_k, t-s} \mathbf{1}_{E_2}}_{\text{0 déplacement}} - \delta_{i_k, a_k+t-s} \right]$$

we have the **branching property**

$$Z^{[i]}(t) = \begin{cases} \delta_{i,t}, & t < \tau(i) \\ Z_1^{[i_1]}(t - \tau) +_{\perp\perp} Z_2^{[i_2]}(t - \tau), & t \geq \tau(i) \end{cases}$$

where $\mathbb{P}\{\tau(i) > t\} = \exp\left(-\int_0^t b_i(s) ds\right)$

and (i_1, i_2) randomly drawn according to $p_{1,1}^i, p_{2,0}^i, p_{0,2}^i$.

Linear basal Model

Starting with one cell on layer i and age 0,

$$Z_t^{[i]} := \delta_{i,t} + \int_0^t \int \overbrace{\mathbf{1}_{k \leq N(s^-)}}^{\text{c Mère}} \cdot \overbrace{\mathbf{1}_{\theta < b_k(s^-)}}^{\text{Temps de division}} Q(ds, dk, d\theta, du)$$

$$\left[\underbrace{2\delta_{i_k+1, t-s} \mathbf{1}_{E_3}}_{\text{2 déplacements}} + \underbrace{\left(\delta_{i_k, t-s} + \delta_{i_k+1, t-s} \right) \mathbf{1}_{E_1}}_{\text{c filles : 1 déplacement}} + \underbrace{2\delta_{i_k, t-s} \mathbf{1}_{E_2}}_{\text{0 déplacement}} - \delta_{i_k, a_k+t-s} \right]$$

We show that there exists λ such that

$$\lim_{t \rightarrow \infty} Z_t e^{-\lambda t} = \hat{Z}.$$

- ◇ The Malthus parameter λ exists when the ensemble

$$\mathcal{M} := \left\{ \lambda_j, \overbrace{\int_0^{+\infty} b_j(a) e^{-\lambda_j a - \int_0^a b_j(u) du} da}^{\mathbb{E}[e^{-\lambda_j \tau(j)}]} = \frac{1}{2p_S^{(j)}} \right\}$$

admits a **unique maximal element**, et $\lambda = \max \mathcal{M}$.

Let $\rho(t, \cdot) = \mathbb{E}Z_t$.

Theorem (Robin et al., submitted)

If $\forall j, \forall a, 0 < \underline{b}_j \leq b_j(a) \leq \bar{b}_j < \infty$, Then there exists a polynomial β of degree at most $J - 1$, η et $\mu > 0$ such that

$$\ll |e^{-\lambda t} \rho(t, \cdot) - \eta \hat{\rho}| \gg \leq \beta(t) e^{-\mu t} \ll |\varrho_0 - \eta \hat{\rho}| \gg .$$

where $(\lambda, \hat{\rho}, \hat{\varphi})$ are maximal eigenelements , and $\eta = \langle \varrho_0, \hat{\varphi} \rangle$.

+ analogous results on asymptotic higher moments of Z_t .

Folliculogenesis and signaling

Signaling

- ⇒ Signaling model of FSH in somatic cells
- ⇒ Auto-amplification of the FSH signaling that could explain the selection process
- ⇒ Coupling of a follicle population model and a modèle de signalisation cellulaire "bi-stable".

