



**HAL**  
open science

# Do Sphecodes cuckoo bees use chemical insignificance to invade the nests of their social *Lasioglossum* bee hosts?

Carlo Polidori, Mareen Geyer, Thomas Schmitt

## ► To cite this version:

Carlo Polidori, Mareen Geyer, Thomas Schmitt. Do Sphecodes cuckoo bees use chemical insignificance to invade the nests of their social *Lasioglossum* bee hosts?. *Apidologie*, 2020, 51 (2), pp.147-162. 10.1007/s13592-019-00692-x . hal-03112965

**HAL Id: hal-03112965**

**<https://hal.science/hal-03112965>**

Submitted on 18 Jan 2021

**HAL** is a multi-disciplinary open access archive for the deposit and dissemination of scientific research documents, whether they are published or not. The documents may come from teaching and research institutions in France or abroad, or from public or private research centers.

L'archive ouverte pluridisciplinaire **HAL**, est destinée au dépôt et à la diffusion de documents scientifiques de niveau recherche, publiés ou non, émanant des établissements d'enseignement et de recherche français ou étrangers, des laboratoires publics ou privés.



# Do *Sphecodes* cuckoo bees use chemical insignificance to invade the nests of their social *Lasioglossum* bee hosts?

Carlo POLIDORI<sup>1</sup>, Mareen GEYER<sup>2</sup>, Thomas SCHMITT<sup>2</sup>

<sup>1</sup>Instituto de Ciencias Ambientales (ICAM), Universidad de Castilla-La Mancha, Avenida Carlos III, s/n, 45071, Toledo, Spain

<sup>2</sup>Department of Animal Ecology and Tropical Biology, Biocenter, University of Würzburg, Am Hubland, 97074, Würzburg, Germany

Received 26 February 2019 – Revised 4 August 2019 – Accepted 11 September 2019

**Abstract** – Brood parasites need to overcome host detection in order to exploit their target resource. Nest invasion by brood parasites is possibly enabled either by chemical mimicry (innate odour match with host), camouflage (acquired odour match with host) and/or chemical insignificance (odour reduction). We analysed which of these strategies may be used by the cuckoo bees *Sphecodes monilicornis* and *S. puncticeps* to sneak into the nests of their social *Lasioglossum* bee hosts. In staged dyadic encounters, the host bee workers interacted much more rarely towards *S. monilicornis* than towards nestmates, suggesting that the host bee may weakly detect this cuckoo bee in the nest. Cuticular hydrocarbon (CHC) profiles of *S. monilicornis* included about 30–50% of compounds found on host bees, possessed exclusively linear alkanes, a class known to be generally less important in nestmate recognition, and lacked exclusive compounds. *S. monilicornis* may thus avoid recognition by hosts through chemical insignificance. On the other hand, *S. puncticeps* has a more complex CHC profile including several exclusive methyl-branched alkanes, though no alkenes. This cuckoo bee species does not seem to use either chemical mimicry or insignificance to invade host nests. However, only a large comparative study may elucidate the evolution of CHC adaptations in *Sphecodes* to their hosts' template.

**Halictidae / *Sphecodes* / *Lasioglossum* / cleptoparasitism / chemical insignificance**

## 1. INTRODUCTION

Natural enemies such as parasites and parasitoids are selected to evolve strategies aimed to reduce the probability of being detected by their hosts, and, in turn, hosts are selected to defend themselves by evolving mechanisms, e.g. to detect and escape their enemies (Poulin et al. 2000). These different selective forces lead to an

evolutionary arms race between hosts and natural enemies (Dawkins and Krebs 1979; Schmid-Hempel 1998), in which reciprocal adaptations are as diverse as behavioural (e.g. Polidori et al. 2010; Foitzik et al. 2003), morphological (e.g. Ortolani and Cervo 2010) or chemical (e.g. Brandt et al. 2005; Wurdack et al. 2015).

Striking examples of the variety of strategies evolved in natural enemies to evade host defence come from parasitic aculeate Hymenoptera (bees, ants and stinging wasps) (e.g. Lenoir et al. 2001; Wurdack et al. 2015). This diverse group include brood parasitoids (females lay eggs on or into the host immatures) (O'Neill 2001), cleptoparasites (females lay eggs on the host food stores) (Michener 2007) and social parasites (reproductive females occupy and exploit the worker force

**Electronic supplementary material** The online version of this article (<https://doi.org/10.1007/s13592-019-00692-x>) contains supplementary material, which is available to authorized users.

Corresponding author: C. Polidori,  
carlo.polidori@uclm.es

Manuscript editor: James Nieh

of the host colony to raise their own offspring) (Lorenzi 2006).

Since chemical recognition and communication are central in both insect intra- and interspecific interactions (Howard and Blomquist 2005), several different chemical strategies have been observed in such natural enemies according to this diversity in parasitic lifestyle. In particular, studies from different lineages, particularly from wasps and ants, converged in identifying three ways in which natural enemies overcome host aggression while invading host nests. Chemical mimicry occurs when a parasite produces *ex novo* an odour matching that of the host, leading the host to recognize it as a conspecific (Strohlm et al. 2008). Chemical camouflage, widespread in social parasites, also involves an odour match, but host odour is acquired during nest invasion (Lorenzi 2006). Chemical insignificance, on the other hand, occurs when the natural enemy shows a substantial reduction of recognition cues, so that hosts simply cannot perceive their presence in the nests (Cini et al. 2009; Uboni et al. 2012).

Cleptoparasitic (cuckoo) behaviour in bees, i.e. the use of host pollen and nectar stores to rear parasitic brood, is a widespread phenomenon evolved several times independently within at least three bee families (Michener 2007). However, compared with wasps and ants, cuckoo bee invasion strategies have been much less investigated. Mimicry, based on mandibular gland chemistry, was suggested between the cuckoo bee genus *Nomada* (Apidae) and its solitary host bees (Tengö and Bergström 1977). Chemical camouflage was reported in cuckoo bumblebees (Apidae: *Bombus* (*Psythirus*)) (social parasites) while invading their bumblebee host nests (Kreuter et al. 2012), and mimicry may be also involved (Martin et al. 2010). Chemical insignificance was reported in obligate social inquiline bumblebees but exclusively at the invasion stage, prior to camouflage (Dronnet et al. 2005). To develop a more comprehensive picture of parasitism strategy evolution in bees, it is thus important to investigate this topic in additional lineages.

Here, we investigated which chemical strategy may have evolved in the cuckoo bee genus *Sphecodes* (Halictidae), whose species are

obligate parasites of ground-nesting bees. *Sphecodes* females sneak into the nests of both solitary and social bee hosts (Sick et al. 1994; Bogusch et al. 2006) and may remain for hours or even a few days in the host nest during a single invasion (Eickwort and Eickwort 1972; Knerer 1980), with some species reported to kill the host workers prior to egg-laying (Polidori et al. 2009). Previous observations on the interactions between *Sphecodes* bees and their hosts showed that, within laboratory nests or artificial arenas, the host bees are generally not very aggressive towards these cuckoo bees (Heide 1992; Polidori and Borruso 2012). Given these pieces of evidence, *Sphecodes* bees can be thus expected to have evolved some chemical strategy to be unrecognizable as a foe. The only previous attempt to study this possibility suggested an absence of mimicry, based on Dufour's gland secretion chemistry (Sick et al. 1994). However, cuticular chemical profile, which is increasingly considered critical in Hymenoptera recognition and communication systems (Howard and Blomquist 2005; Leonhardt et al. 2016), has not yet been investigated in these bees.

Hence, we conducted a study on the recognition ability of host bees towards these cuckoo bees and we analysed the cuticular chemical profile of both hosts and cuckoo bees, in order to determine which chemical strategy introduced above may apply to *Sphecodes* cuckoo bees.

## 2. MATERIALS AND METHODS

### 2.1. Study species

Our model system includes the cuckoo bees *Sphecodes monilicornis* Kirby and *Sphecodes puncticeps* Thomson and four of their host bee species within the subgenus *Evyleus* of the genus *Lasioglossum* (Halictidae): *Lasioglossum malachurum* (Kirby), *Lasioglossum calceatum* (Scopoli), *Lasioglossum laticeps* (Schenck) and *Lasioglossum politum* (Schenck). Based on direct evidence of parasitism and/or observations of nest invasion, *S. monilicornis* is associated with the first three host bee species, while *S. puncticeps* is associated with the fourth species (Bogusch and Straka 2012). *Sphecodes puncticeps* seems to be

ancestrally specialized in host range (two subgenera of *Lasioglossum*: *Evylaues* and *Dialictus*), while *S. monilicornis* seems to be ancestrally more generalist (at least two genera of Halictidae and Andrenidae) (Habermannová et al. 2013). All the host bee species studied here are obligate eusocial with the exception of *L. calceatum*, which is known to be socially polymorphic (i.e. some populations are solitary and other are eusocial) (Davison and Field 2016). On the other hand, *L. laticeps* has a less complex eusocial organization compared with *L. malachurum* and *L. politum* (Packer 1983). Queens of eusocial species establish their colonies in spring, followed by 1–3 worker phases and a last phase composed by males and reproductive females (Knerer 1992).

## 2.2. Behavioural experiments

The behavioural interactions between cuckoo and host bees were studied near Alberese, a small town inside the Maremma Regional Park (Tuscany, Italy: 42° 40' 5" N, 11° 6' 23" E), from 5 to 25 July 2008, where a nest aggregation of *L. malachurum* of > 1000 nests was previously studied (Polidori et al. 2009). At this site, nests are parasitized by *S. monilicornis*. Females of *S. puncticeps* were also observed to fly in the nesting area, but no evidence of parasitic interactions with *L. malachurum* was recorded.

Behavioural tests were performed between 900 h and 1500 h during the highest foraging activity period of the host bees and their cleptoparasites (Polidori et al. 2009). Only females of the cuckoo bees and female workers of the host bee were used. *Lasioglossum malachurum* females were collected while exiting from their nest, while females of *S. monilicornis* were collected after having visited a nest or while attempting to enter a nest. All the tested individuals were preserved and identified by specialist taxonomists (see “Acknowledgments”).

We studied the behavioural interactions between the host bees and their cuckoo bees by setting staged dyadic encounters in a circle-tube apparatus (e.g. Pabalan et al. 2000; Boesi and Polidori 2011), in order to test if the host bee reacts differently with the cuckoo bee and with a nestmate.

The circle-tube consisted of a 44-cm-long piece of clear sterile plastic tube of 0.7 cm inner diameter fashioned into circles. After having collected a pair of nestmate host bees for a trial, they were placed in the arena, first one bee and the second one after 2 min. In interspecific trials, the host bee entered first. In this way we tried to resume natural conditions, i.e. a bee worker inside its nest and a visitor (either a conspecific nestmate or a cuckoo bee) which entered the nest. Each trial lasted 15 min, a sufficient period to detect behavioural differences (Pabalan et al. 2000). Bees were handled with plastic gloves and each circle tube was used only once (Smith and Weller 1989). A total of 29 trials (19 intraspecific and 10 heterospecific trials) were performed, recording the behaviour of the bees on a tape recorder.

Previous studies showed that behaviours performed by *L. malachurum* in circle-tube arenas are mainly cooperative behaviours such as “mutual passing” (bees accommodate each other while they pass in opposite directions), “following” (a forward movement by a bee towards the other which walks backward through the circle tube), “stop in contact” (bees in a frontal encounter stop in contact and touch each other slowly with antennae and mandibles), with lower frequency of avoidance behaviours (“withdrawing” (WHD): a bee makes a  $180^\circ \pm$  turn away from the other individual or backs quickly away from it), and very rare aggressions through the “C-posture” (a female curls her abdomen under the thorax with the intention to sting the other bee) and the “mandibular hold” (a female clamp the mandibles around the neck, limbs or antenna of the other bee) (Polidori and Borruso 2012). Because *L. malachurum* was shown to be extremely peaceful towards both nestmates and non-nestmates (Polidori and Borruso 2012), we did not use the number of aggressive interactions as a proxy for cuckoo bee vs. nestmate recognition. Instead, we counted the total number of interactions of any type (see below) as an estimate for cuckoo bee vs. nestmate detection, under the assumption that the lesser the level of interaction, the lower the detection of the other occupant on the arena. The overall number of host-parasite interactions was also used with a similar meaning in myrmecophile-ant associations (von Beeren

et al. 2018). Aggressive interactions were, however, separately recorded in order to see if cuckoo bees attack the host bees in the experimental conditions. The raw behavioural data are available in the [Supplementary file](#) BehavDATA.xls.

### 2.3. Cuticular hydrocarbon profile (CHC)

Ten *L. malachurum* workers, 10 *S. monilicornis* females and 7 *S. puncticeps* females were collected by netting at the *L. malachurum* nest aggregation and on surrounding flowering plants. Workers of the other three host bee species (7 individuals each) were collected by netting on flowers at southern German localities in Baden-Württemberg (Freiburg (47° 59' 41" N, 7° 50' 59" E) and Ihringen (48° 02' 35" N, 7° 38' 51" E)), from end of April to end of July 2008–2010. Upon collection, individuals were killed by freezing and stored at  $-20\text{ }^{\circ}\text{C}$  until the CHCs were extracted.

To extract cuticular hydrocarbons, bees were allowed to thaw and immersed in *n*-hexane for 10 min (e.g. Wurdack et al. 2015). Hexane extracts were then concentrated with a gentle stream of  $\text{N}_2$  until approximately 80–100  $\mu\text{L}$  of the extract remained and stored at  $-20\text{ }^{\circ}\text{C}$ . The bees were stored in 95% ethanol. CHC extracts were analysed with a HP 6890 gas chromatograph (GC) coupled to a HP 5973 Mass Selective Detector (MS) (Hewlett Packard, Waldbronn, Germany) or an Agilent 7890/5975 GC/MS System. The GC (split/splitless injector in splitless mode for 1 min, injected volume: 1  $\mu\text{L}$  at 300  $^{\circ}\text{C}$  injector temperature) was equipped with a DB-5 Fused Silica capillary column (30 m  $\times$  0.25 mm ID,  $df=0.25\text{ }\mu\text{m}$ , J&W Scientific, Folsom, USA). Helium was used as carrier gas with a constant flow of 1 mL/min. For both GC/MS the temperature program starts at 60  $^{\circ}\text{C}$  with a subsequent increase of 5  $^{\circ}\text{C}/\text{min}$  until 300  $^{\circ}\text{C}$  and kept isotherm at 300  $^{\circ}\text{C}$  for 10 min. An ionization voltage of 70 eV (source temperature, 230  $^{\circ}\text{C}$ ) was set for the acquisition of the mass spectra by electron ionization (EI-MS).

The software MSD ChemStation G1701EA E.02.02.1431 was used to record and analyse the chromatograms and mass spectra. The MS data base Wiley275 (John Wiley & Sons, New York,

USA), the compound-specific retention time, Kovats indices, and the detected diagnostic ions (Carlson et al. 1998) were used to identify CHC compounds. For few substances eluting at similar retention times we combined these compounds and classified them as mixes.

In order to select peak which represents a specific species, we deleted all the compounds which add less than 0.5% to the overall relative amount within each species. If a compound shows more than 0.5% in a single species, we kept it in all investigated species for the comparative analysis. In a second step we eliminated all compounds which did not occur in at least 50% of all individuals within a species. The final matrix included 41 peaks (Table 1). We also checked substances with lower abundance ( $>0.1\%$ ) to verify the presence of rare compounds. Prior to the statistical analysis, we transformed all peak values to avoid undefined values for peaks with an area of zero ( $\log_{10}((\text{relative peak area}/\text{geometric mean of relative peak area}) + 1)$ ) (Strohm et al. 2008, modified after Aitchison 1986). The raw chemical data are available in the [Supplementary file](#) ChemDATA.xls.

### 2.4. Statistical analysis

Data from the behavioural experiments were not normally distributed, so that we used the non-parametric Kruskal-Wallis test, followed by paired comparisons through Dunn's procedure, to test for differences in the median number of interactions observed in intra- and interspecific behavioural trials.

To analyse the chemical data, we used two methods which do not require a priori grouping of species, meaning that these methods allow pattern formation which is exclusively based on CHC similarities. We first performed an agglomerative cluster analysis based on the unweighted pair group method using arithmetic means of Bray-Curtis dissimilarities, which is suitable for zero-inflated datasets (Leyer and Wesche 2007). The dissimilarity matrix was based on the proportions of the previously selected hydrocarbons as revealed by GC/MS analysis. Bray-Curtis dissimilarities were then used for ordinations using non-metric multidimensional scaling analysis (NMDS), which is a non-parametric

**Table 1.** Mean value  $\pm$  standard error of the relative peak area (%) of selected substances (see Section 2) in the cuticular hydrocarbon profiles of the six studied species

ID	Substance	RI	Sm	Sp	Lc	Ll	Lm	Lp
1	C21	2100	0.20 $\pm$ 0.08	0.18 $\pm$ 0.07	2.10 $\pm$ 0.77	0.82 $\pm$ 0.10	0.13 $\pm$ 0.03	0.41 $\pm$ 0.09
2	C22	2200	0.40 $\pm$ 0.09	0.30 $\pm$ 0.07	1.46 $\pm$ 0.87	0.21 $\pm$ 0.04	0.45 $\pm$ 0.04	0.11 $\pm$ 0.04
3	10-C23en	2270	0.00	0.00	0.00	1.11 $\pm$ 0.54	0.00	0.00
4	5-C23en	2292	0.00	0.00	4.79 $\pm$ 2.33	0.00	0.00	0.00
5	C23	2300	1.40 $\pm$ 0.29	2.11 $\pm$ 0.99	22.45 $\pm$ 4.07	17.30 $\pm$ 3.06	35.47 $\pm$ 2.15	14.91 $\pm$ 3.78
6	11-; 9-MeC23	2332	0.00	0.44 $\pm$ 0.12	7.00 $\pm$ 6.76	0.00	8.78 $\pm$ 1.85	0.00
7	3-MeC23	2372	0.00	0.42 $\pm$ 0.19	0.31 $\pm$ 0.12	0.00	1.21 $\pm$ 0.12	0.29 $\pm$ 0.11
8	C24	2400	1.15 $\pm$ 0.11	1.13 $\pm$ 0.14	0.65 $\pm$ 0.10	0.84 $\pm$ 0.8	1.12 $\pm$ 0.9	0.88 $\pm$ 0.10
9	2-MeC24	2463	0.00	7.79 $\pm$ 1.55	0.00	0.00	0.00	0.00
10	10-C25en	2471	0.00	0.00	0.00	3.84 $\pm$ 1.59	0.00	0.00
11	9-C25en	2474	0.00	0.00	6.81 $\pm$ 3.60	4.70 $\pm$ 1.90	0.88 $\pm$ 0.13	0.00
12	7-C25en	2479	0.00	0.00	3.26 $\pm$ 2.41	0.00	0.39 $\pm$ 0.06	0.60 $\pm$ 0.25
13	C25	2500	49.74 $\pm$ 3.16	10.86 $\pm$ 1.13	14.24 $\pm$ 2.39	32.50 $\pm$ 5.68	13.86 $\pm$ 1.09	45.60 $\pm$ 2.90
14	13-; 11-; 9-MeC25	2533	0.00	7.79 $\pm$ 0.40	3.42 $\pm$ 2.49	0.00	2.16 $\pm$ 0.36	0.00
15	7-MeC25	2539	0.00	6.25 $\pm$ 0.62	0.76 $\pm$ 0.62	0.00	0.00	0.00
16	5-MeC25	2549	0.00	1.49 $\pm$ 0.46	0.00	0.00	0.35 $\pm$ 0.07	1.19 $\pm$ 0.66
17	7,11-diMeC25	2568	0.00	2.94 $\pm$ 0.42	0.00	0.00	0.00	0.00
18	C26	2600	1.97 $\pm$ 0.12	2.92 $\pm$ 0.19	0.55 $\pm$ 0.11	0.39 $\pm$ 0.06	1.12 $\pm$ 0.10	0.86 $\pm$ 0.20
19	13-; 12-; 9-; 8-MeC26	2632	0.00	0.88 $\pm$ 0.19	0.00	0.00	0.00	0.00
20	2-MeC26	2662	0.00	4.24 $\pm$ 0.80	0.19 $\pm$ 0.13	0.00	0.00	0.00
21	10-C27en	2673	0.00	0.00	0.56 $\pm$ 0.25	4.07 $\pm$ 0.81	0.00	0.00
22	9-C27en	2675	0.00	0.00	4.65 $\pm$ 1.19	0.00	5.17 $\pm$ 0.78	0.00
23	8-C27en	2679	0.00	0.00	0.00	3.35 $\pm$ 0.96	0.00	0.00
24	7-C27en	2683	0.00	0.00	2.34 $\pm$ 1.08	0.00	17.40 $\pm$ 1.32	0.71 $\pm$ 0.37
25	C27	2700	38.49 $\pm$ 2.42	24.82 $\pm$ 1.64	8.90 $\pm$ 1.34	8.55 $\pm$ 1.19	0.00	16.04 $\pm$ 1.65
26	13-; 11-; 9-; 7-MeC27	2731	0.00	12.15 $\pm$ 0.92	0.86 $\pm$ 0.42	0.00	1.63 $\pm$ 0.29	0.00
27	5-MeC27	2749	0.00	1.33 $\pm$ 0.16	0.00	0.00	0.00	0.00

Table 1 (continued)

ID	Substance	RI	Sm	Sp	Lc	Ll	Lm	Lp
28	3-MeC27	2771	0.00	0.00	0.43 ± 0.19	0.00	0.80 ± 0.09	4.15 ± 1.73
29	5,9-diMeC27	2778	0.00	1.31 ± 0.19	0.00	0.00	0.00	0.00
30	C28	2800	0.58 ± 0.11	2.70 ± 0.39	0.24 ± 0.05	0.19 ± 0.05	0.59 ± 0.07	0.00
31	3,11-diMeC27	2807	0.00	0.00	0.00	0.00	0.00	1.69 ± 0.84
32	13-C29en	2867	0.00	0.00	1.71 ± 0.55	0.00	0.00	0.00
33	10-C29en	2873	0.00	0.00	0.00	4.60 ± 1.83	0.00	0.00
34	9-C29en	2874	0.00	0.00	5.11 ± 1.06	0.00	3.99 ± 0.76	3.06 ± 1.13
35	8-C29en	2880	0.00	0.00	0.00	5.21 ± 1.03	0.00	0.00
36	C29	2900	6.08 ± 1.11	5.94 ± 0.91	3.39 ± 0.38	7.13 ± 0.90	4.49 ± 0.43	8.27 ± 0.99
37	15-; 13-; 11-; 9; 7-MeC29	2930	0.00	2.01 ± 0.29	0.00	0.00	0.00	0.00
38	13-C31en	3066	0.00	0.00	1.60 ± 0.63	0.00	0.00	0.77 ± 0.32
39	10-C31en	3074	0.00	0.00	0.00	4.01 ± 1.65	0.00	0.00
40	9-C31en	3075	0.00	0.00	1.67 ± 0.43	0.00	0.00	0.00
41	C31	3100	0.00	0.00	0.55 ± 0.15	1.20 ± 0.30	0.00	0.46 ± 0.25

Sm: *S. monilicornis*, Sp: *S. puncticeps*, Lc: *L. calceatum*, Ll: *L. laticeps*, Lm: *L. malachurum*, Lp: *L. politum*



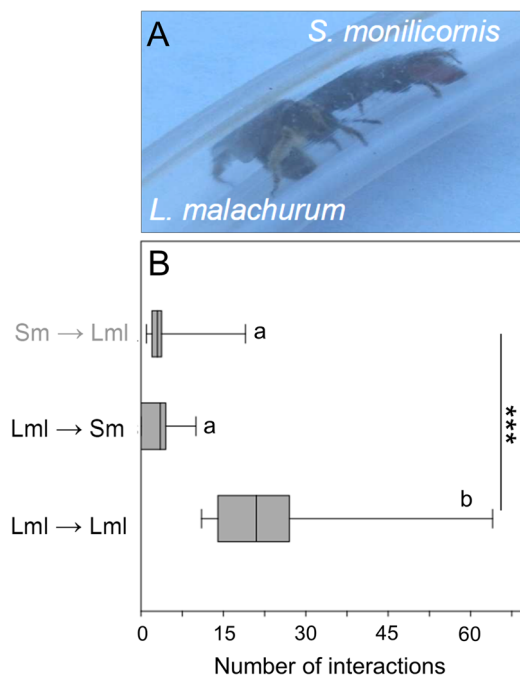
method that avoids assuming linearity among variables (e.g. McCune et al. 2002) and whose resulting plot shows the spatial distances between individuals (i.e. their chemical differences). In the NMDS, deviations are expressed in terms of “stress”, for which values  $< 0.15$  indicate a good fit of ordination (Kruskal and Carroll 1969). An analysis of similarity (ANOSIM) was performed to statistically test for differences between the studied species (9999 permutations). Similarity percentages (SIMPER) were calculated to identify the compounds that predominantly contributed to the Bray-Curtis dissimilarities (Clarke 1993), both overall among all species and both between all pairs of species, thus investigating which compounds differ between cuckoo bees and their host bees.

In the text and tables, mean values are expressed with their standard error (SE). The statistical analysis was performed in XLSTAT 2008 and in PAST 3.04 (Paleontological Statistics Software Package, Hammer et al. 2001).

### 3. RESULTS

#### 3.1. Do *L. malachurum* workers recognize *Sphecodes* cuckoo bees as foes?

Individuals placed in the circle tubes started to interact generally within 1–2 min from the start of the experiments (Figure 1A). Overall we recorded 541 interactions, most of them cooperative/tolerant (349, i.e. 64.3% of the total number of interactions). Aggressive interactions were rare (45, i.e. 8.3% of the total). The remaining interactions (147) showed avoidance behaviour. *Lasioglossum malachurum* interacted much more with a conspecific than with *S. monilicornis* ( $24.6 \pm 3.2$  vs.  $3.2 \pm 1.0$  interactions/trial) (Figure 1B). *Sphecodes monilicornis* did start few interactions with the host bee ( $4.4 \pm 1.7$ ). Overall, the number of interactions performed by *L. malachurum* towards *L. malachurum*, *L. malachurum* towards *S. monilicornis* and *S. monilicornis* towards *L. malachurum* significantly differed (Kruskal-Wallis test:  $\chi^2 = 26.3$ ,  $df = 2$ ,  $P < 0.0001$ ), but not in interspecific trials (Dunn’s procedure,  $P = 0.82$ ). Almost all cooperative interactions were expressed as “passing” and “following” (91.7%,  $n = 349$ ), while the few recorded aggressive



**Figure 1.** (A) *S. monilicornis* and *L. malachurum* interacting in the circle-tube arena (the cuckoo bee is attacking the host bee by holding its neck with mandibles). (B) Box-and-whisker plots showing medians (horizontal lines within boxes), 1<sup>o</sup> and 3<sup>o</sup> quartile (horizontal lines closing the boxes), and maximum and minimum values (ends of the whiskers) for the number of behavioural interactions recorded in circle-tube experiments. Lm → Lm: behaviours of *L. malachurum* directed towards *L. malachurum*; Lm → Sm: behaviours of *L. malachurum* directed towards *S. monilicornis*; Sm → Lm: behaviours of *S. monilicornis* directed towards *L. malachurum*. Different letters above the bars were used to show the results of the multiple pairwise comparisons using Dunn’s procedure.

behaviours were mainly performed by the cuckoo bee (60%,  $n = 45$ ) (Figure 1A). The host bee rarely attacked the cuckoo bee (3.1%,  $n = 45$ ) and if so, then only in response to cuckoo bee’s aggression.

#### 3.2. Comparison of *Sphecodes* CHC profiles with *Lasioglossum* CHC profiles

Linear alkanes, alkenes, monomethyl-branched alkanes and dimethyl-branched alkanes with chain lengths ranging from 21 to 31 carbon atoms (Table I,

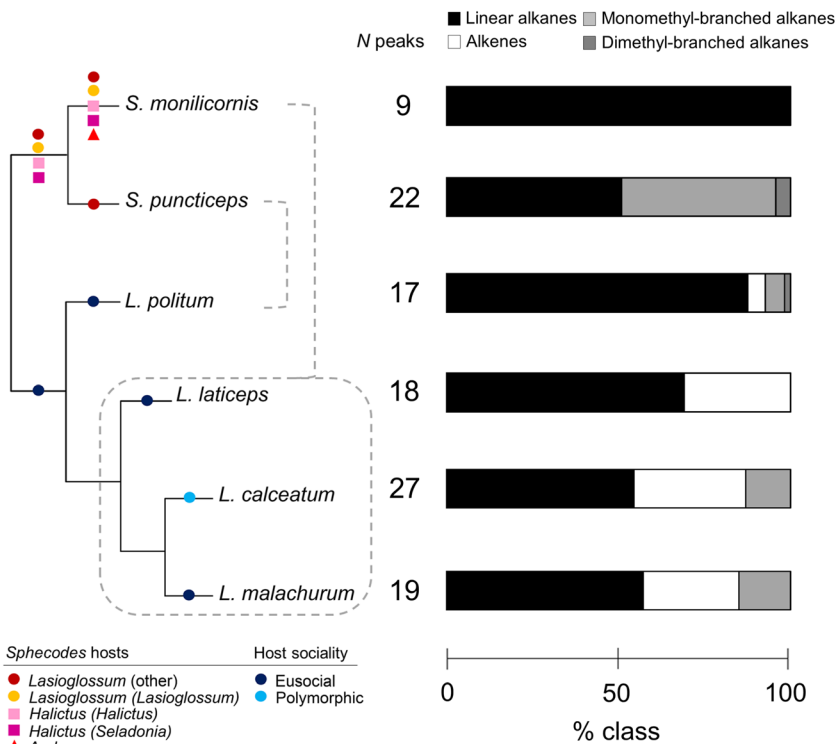


Figure 2 and S Figure 1) occurred as main components on the cuticle of all studied bees. Overall, linear alkanes clearly dominated the CHC profiles of studied species, while the rarest substance class was dimethyl-branched alkanes (Table I, Figure 2).

*Sphecodes monilicornis* was by far the species with the lowest number of peaks (9), while *S. puncticeps* had 22 peaks and the host bee species had 17–27 peaks (Table I, Figure 2). Overall, no exclusive compounds were found in *S. monilicornis*, i.e. all of its compounds were found in at least one *Lasioglossum* species. Thus, its CHC profile is basically a subgroup (about 30–50%, depending on the host-cuckoo pair) of the host bee CHC profiles. On the other hand, *S. puncticeps* has 5 exclusive compounds which do not occur in any of the studied *Lasioglossum* species; this number increases if we only consider its unique host, *L. politum*, which lacks 10

compounds occurring in its associated cuckoo bee (Table I). *Sphecodes monilicornis* presented a CHC profile exclusively composed of linear alkanes. *Sphecodes puncticeps*, on the other hand, has a more complex profile with additionally methyl-branched alkanes, mainly monomethyl-branched alkanes, though no alkenes (Table I, Figure 2). The two *Sphecodes* species shared 9 compounds, which corresponded to the whole profile of *S. monilicornis* (Table I).

*Lasioglossum* species have even more complex profiles compared with *Sphecodes*, since they also include large proportions (5–32%) of alkenes, in addition to the abundant linear alkanes and, with the exception of *L. laticeps*, methyl-branched alkanes (Table I, Figure 2). Furthermore, much rarer compounds (below the 0.5% threshold criterion) from additional substance classes (alkadienes) were only found on *Lasioglossum* species. Overall, the



**Figure 2.** Main characteristics of the CHC profile of the studied species, when associated with their phylogenetic relationships (shown on the left, together with their host groups (for *Sphecodes* spp.) and their sociality (for *Lasioglossum* spp.)). Dashed grey lines connect the cuckoo bee species with their respective host species. The total number of peaks that make up > 0.5% per individual and are present in at least half of the group (see Section 2) and the mean relative % of each compound class are shown in correspondence with each species. Phylogenetic relationships follow Danforth et al. (2003).

number of compounds shared by all host bee species was 7, which corresponds to about 40% of the compounds found in *L. politum*, the species with the lowest number of compounds (Table I).

The cluster analysis (Figure 3) showed a first bifurcation between the individuals of *S. puncticeps* and all other species. Then, all individuals of *L. malachurum* and *L. calceatum*, plus 4 individuals of *L. politum*, are separated from the rest of individuals of the latter and *S. monilicornis* (Figure 3). Thus, at least a part of the cluster is congruent with the phylogenetic relationships among *Lasioglossum* species, i.e. their hierarchy (*L. laticeps* + (*L. malachurum* + *L. calceatum*)) (Figures 2 and 3). On the other hand, the two cuckoo bee species were largely separated in the cluster, in contrast to their close phylogenetic relationship.

The NMDS shows species-specific CHC profiles except for *L. politum* which overlaps to some extent with *S. monilicornis* (stress = 0.14) (Figure 4A). Indeed, the mean ranked distance between species was much larger (648.8) than the mean ranked distance within species (102.2) (Figure 4B). However, the ANOSIM test reveals a species-specific profile for all investigated species ( $R^2 = 0.97$ ,  $P = 0.0001$ ) (Figure 4A). In detail, ANOSIM's  $R^2$  were  $> 0.8$  for all paired distances between species except for the distance of *S. monilicornis* towards *L. politum* ( $R^2 = 0.78$ ) (Table II). The SIMPER analysis reveals that alkenes and monomethyl-branched alkanes contribute most to species-species dissimilarities, while linear alkanes, except for few paired comparisons (5 out of 15), are less important (Table II, S Figure 2). This is true for the comparison between different *Lasioglossum* species and between *Lasioglossum* and *Sphecodes* species. Interestingly, while the differences between *S. monilicornis* and its three hosts rely almost exclusively on alkenes, the differences between *S. puncticeps* and its host rely exclusively on monomethyl-branched alkanes (Table II). Obviously, the dissimilarity between the two *Sphecodes* species does not depend on alkenes, while both species lack of this substance class (Table II).

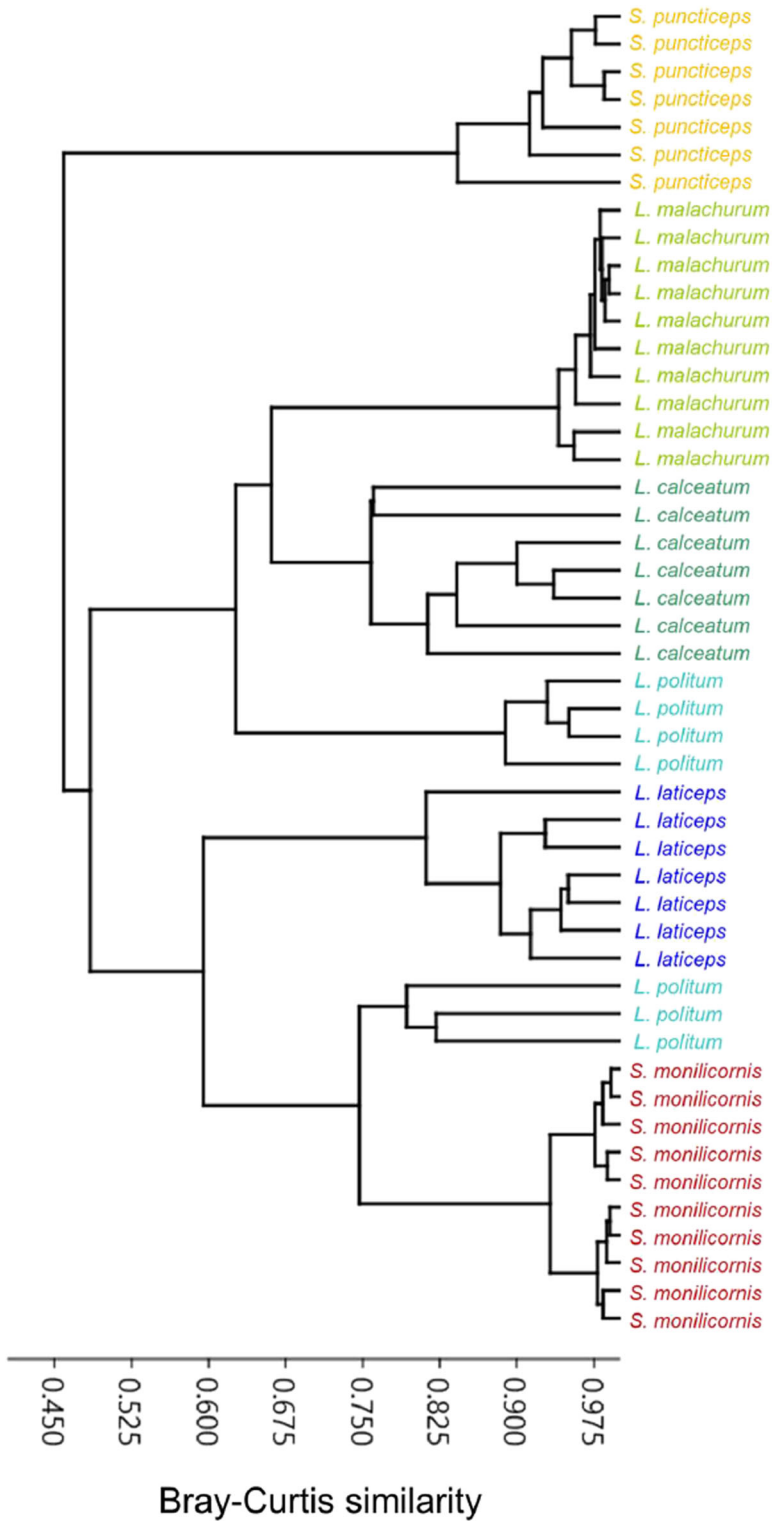
#### 4. DISCUSSION

The hypothesis that *Sphecodes* cuckoo bees (as well as other closely related genera within the

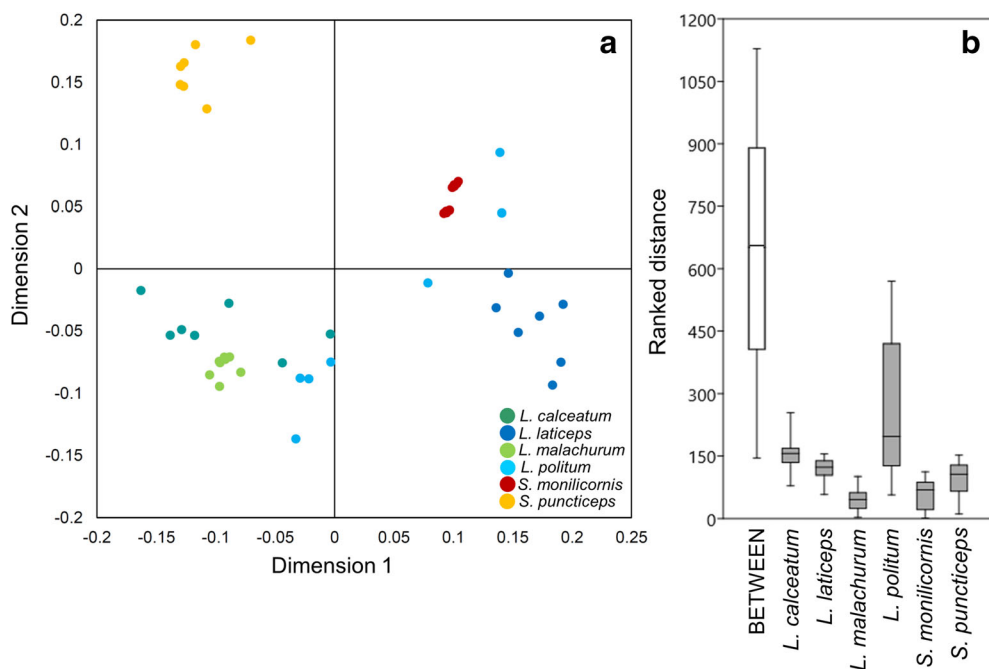
subtribe Sphecodina, such as *Microsphecodes*) may use a chemical strategy to avoid host aggression during nest invasion was initially suggested by behavioural studies showing that some species of cuckoo bees can stay in the host nests for hours or even days together with their hosts (Eickwort and Eickwort 1972; Knerer 1980). During nest invasion, the cuckoo female may kill the adult workers and eject them from the nest (Marchai 1890; Knerer and Atwood 1967; Polidori et al. 2009) or share the nest with host workers provisioning the brood of the parasite (which replaced the killed host brood) (Sakagami and Moure 1962; Eickwort and Eickwort 1972). It is likely that cuckoo bees would be attacked if recognized by the host, given that in social *Lasioglossum* the guards at nest entrances allow only nestmates to enter on the basis of differences in odours (Bell 1974; Bell and Hawkins 1974; Smith and Weller 1989), although the discrimination ability may change in its strength among species (Smith and Breed 1995; Soro et al. 2011; Polidori and Borruso 2012). Thus, we hypothesised in the present study that cuckoo bees evolved a chemical strategy to sneak into host nests bypassing any host discrimination.

Here, we provide evidence that the strategy used by at least one of the two studied cuckoo bee species, *S. monilicornis*, may be chemical insignificance. Chemical insignificance was previously reported among bees only in obligate social inquiline bumblebees at the invasion stage, prior to camouflage (Dronnet et al. 2005). Thus, this would be the first observation of this type of strategy for cleptoparasitic bees. Our conclusions for this species are supported by both the behavioural and the chemical data, as discussed below.

The circle-tube experiments support the hypothesis that *S. monilicornis* cuckoo bees are not recognized either as foes or as a nestmate (which would imply a camouflage strategy) by their host bees. In fact, *L. malachurum* showed weak interest in interacting with the cuckoo bee. Heide (1992) also reports similar interactions between *Sphecodes hyalinatus* Hagens and its solitary host *Lasioglossum fratellum* (Perez). On the other hand, *S. monilicornis* attacks sometimes the host bee, a behaviour which normally occurs during nest invasion (Polidori et al. 2009), and the very few aggressions by the host bee were indeed responses towards



**Figure 3.** Dendrogram based on the agglomerative cluster analysis (Bray-Curtis dissimilarities) of the cuticular hydrocarbon profiles of all chemically studied individuals.



**Figure 4.** (A) Non-metric multidimensional scaling (NMDS) based on Bray-Curtis dissimilarities of cuticular hydrocarbon profiles of all studied individuals. (B) The ranked distance between and within species as calculated by the ANOSIM.

these attacks. These results may explain why under field conditions fights between *Sphecodes* and *Lasioglossum* may occur during a nest attack (Sick et al. 1994). The cuckoo bee enters the nest by attacking the guard bee first, which evokes an aggressive response by the host bee.

However, *L. malachurum* workers are very peaceful in circle tubes, rarely showing aggression towards both nestmate and non-nestmate conspecifics (Polidori and Borroso 2012), while the general trend for social species in similar experiments is to be tolerant towards nestmates but aggressive towards non-nestmates (e.g. Pabalan et al. 2000; Boesi and Polidori 2011). Indeed, social parasites have to camouflage themselves by acquiring the host colony odours in order to escape such finely developed nestmate recognition (Turillazzi et al. 2000; Cini et al. 2011; Kreuter et al. 2012). *Lasioglossum malachurum* may not have a strong nestmate recognition ability and this is in accordance with the frequent shifts of workers observed among nests (Paxton et al. 2002). However, this halictid bee still seems to have the ability to discriminate between conspecifics and heterospecifics, given that

defensive reactions were observed in the field against both *Sphecodes* and other natural enemies such as mutillid wasps (Polidori et al. 2009). In an experimental context such as nest-mimicking circle-tube arenas, however, the very few interactions observed suggest that the presence of *S. molinicornis* is weakly detected.

The CHC composition of *S. molinicornis* showed that a strong mimicry or camouflage by *Sphecodes* has to be excluded, since no strong resemblance of CHCs between the parasites and their hosts was found. Instead, the chemical data support the hypothesis of chemical insignificance as a strategy. Overall, our chemical results show for *S. molinicornis* one of the simplest CHC profiles in aculeate parasitic hymenopterans.

First, *S. molinicornis* presented a much lower number of peaks than their hosts, a pattern also observed in the solitary velvet ant *Mutilla europea* L., a cleptoparasite of social paper wasps which is chemically insignificant (Uboni et al. 2012), as well as in socially parasitic paper wasps and socially parasitic ants before host colony invasion/

**Table II.** Results of ANOSIM and SIMPER analysis of the cuticular hydrocarbon profiles of the studied species

Comparison	$R^2$	$P$	Compounds that predominantly contribute to Bray-Curtis dissimilarities
<i>L. calceatum</i> vs. <i>L. laticeps</i>	1	0.006	8-C29en (6.1%), 10-C31en (5.8%), 8-C27en (5.0%)
<i>L. calceatum</i> vs. <i>L. malachurum</i>	0.98	0.001	C27 (7.9%), 9-MeC27 (7.6%), 11-; 9-C31en (6.5%)
<i>L. calceatum</i> vs. <i>L. politum</i>	0.83	0.013	9-C25en (6.0%), 9-C27en (5.8%), 9-C31en (5.4%)
<b><i>L. calceatum</i> vs. <i>S. monilicornis</i></b>	<b>1</b>	<b>0.003</b>	<b>9-C29en (5.7%), 9-C25en (5.6%), 9-C27en (5.5%)</b>
<i>L. calceatum</i> vs. <i>S. puncticeps</i>	1	0.016	9-C29en (5.1%), 2-MeC24 (5.1%), 9-C25en (5.0%)
<i>L. laticeps</i> vs. <i>L. malachurum</i>	1	0.001	C27 (6.0%), 8-C29en (5.7%), 7-C27en (5.7%)
<i>L. laticeps</i> vs. <i>L. politum</i>	0.90	0.004	8-C29en (7.4%), 10-C27en (7.2%), 10-C31en (6.9%)
<b><i>L. laticeps</i> vs. <i>S. monilicornis</i></b>	<b>1</b>	<b>0.003</b>	<b>8-C29en (9.8%), 10-C27en (9.6%), 10-C31en (9.2%)</b>
<i>L. laticeps</i> vs. <i>S. puncticeps</i>	1	0.012	8-C29en (5.3%), 10-C27en (5.2%), 10-C31en (5.0%)
<i>L. malachurum</i> vs. <i>L. politum</i>	0.85	0.001	C27 (9.7%), 11-; 9-MeC23 (7.7%), 9C27en (7.5%)
<b><i>L. malachurum</i> vs. <i>S. monilicornis</i></b>	<b>1</b>	<b>0.001</b>	<b>C27 (10.7%), 7-C27en (7.8%), 11-; 9-MeC23 (7.2%)</b>
<i>L. malachurum</i> vs. <i>S. puncticeps</i>	1	0.003	7-C27en (6.4%), C27 (5.8%), 9-C27en (5.7%)
<i>L. politum</i> vs. <i>S. monilicornis</i>	0.78	0.003	C28 (13.0%), 9-C29en (8.4%), 7-C25en (8.1%)
<b><i>L. politum</i> vs. <i>S. puncticeps</i></b>	<b>1</b>	<b>0.015</b>	<b>13-; 11-; 9-; 7-MeC27 (5.3%), 13-; 11-; 9-MeC25 (5.1%), 7-MeC25 (5.0%)</b>
<i>S. monilicornis</i> vs. <i>S. puncticeps</i>	1	0.001	13-; 11-; 9-; 7-MeC27 (6.7%), 13-; 11-; 9-MeC25 (6.4%), 7-MeC25 (6.3%)

$R^2$  values between 0 and 1 indicate the level of similarity or dissimilarity ( $R^2 = 0$  indicates no difference between the species,  $R^2 = 1$  indicates a larger similarity within a group than between groups).  $P$  Bonferroni-adjusted  $P$  values. The listed compounds are the first three in decreasing % of contribution to dissimilarity (shown in brackets). The host-cuckoo pairs are highlighted in bold

integration, when they are chemically insignificant (Lorenzi et al. 2004; Lenoir et al. 2001).

Second, *S. molinicornis* CHC profile is almost exclusively composed of linear alkanes. This pattern is similar to that observed in the social parasitic ant *Polyergus breviceps* (Emery), in which newly mated queens, before host colony invasion (i.e. when it has an insignificant profile), possess only six hydrocarbons of which five are linear alkanes (Johnson et al. 2001). Similarly, the socially parasitic hornet *Vespa dybowskii* (André) lays eggs that are, in contrast to those of its host, covered almost exclusively by linear alkanes and are therefore probably insignificant (Martin et al. 2008). In other cases of chemical insignificance, parasites seemed to rely more on reducing the amount of hydrocarbons rather than on excluding

entire substance classes (Uboni et al. 2012; Lorenzi and Bagnères 2002; Lorenzi et al. 2004). Furthermore, in most of the known cases of chemical insignificance, parasites possess at least a species-specific set of compounds not present in their hosts (e.g. Bagnères et al. 1996; Turillazzi et al. 2000), while in our study this was not seen for this cuckoo bee species.

The strongly linear alkane-based CHC profile of *S. molinicornis* supports the insignificance hypothesis, since alkanes are known to be the substance class less likely involved in nestmate discrimination/recognition in social Hymenoptera (Dani et al. 2001; Dani et al. 2005). For example, kin-based odour differences in *L. malachurum* are mainly based on linear alkanes (Soro et al. 2011),

but because of their simple structure, these substances might have lower information content compared with alkenes and methyl-branched alkanes (Breed 1998; Dani et al. 2001, 2005). Furthermore, alkenes, which *S. molinicornis* lacks but are abundant in their hosts, are known to play an important role in various recognition systems both as species-specific pheromones and for nestmate recognition in eusocial insects (van Zweden and d’Ettorre 2010). Thus, it is also not surprising that chemical distances between pairs of *Lasioglossum* species in this study were mainly driven by alkenes.

Further evidence supporting the insignificance hypothesis in *S. molinicornis* comes from Sick et al. (1994), who showed in fact that Dufour’s gland extracts of six *Sphecodes* species lacked macrocyclic lactones, which are dominant in their hosts’ glands, and lactones were suggested to have an important role in different *Lasioglossum* communication contexts, e.g. queen dominance (Smith and Weller 1989).

Although there is evidence for chemical insignificance in *S. molinicornis*, the chemical data of our study do not support the insignificance hypothesis for the other cuckoo bee species, *S. puncticeps*. This species has a complex CHC profile, very similar to that of *Lasioglossum* species in terms of number of peaks and diversity of substance classes, but it largely diverges from all tested species in CHC composition. However, this species is similar to *S. monilicornis* in lacking alkenes. Possibly, the insignificance strategy in *Sphecodes* cuckoo bees is based on the absence of alkenes, which are known to be very important in communication in other insect species (van Zweden and d’Ettorre 2010). However, these cuckoo bee species possess many methyl-branched alkanes, also strongly related to communication in insects (Breed 1998; Dani et al. 2001, 2005). It is thus not possible at the moment to accept the insignificance hypothesis for *S. puncticeps*.

We have also detected similarities between CHCs of *S. monilicornis* and *L. politum*, which, however, is not reported as a host for this cuckoo bee. On the other hand, *L. politum* is a host of *S. puncticeps*, which did not show any evident chemical strategy in this study. We cannot exclude that cuckoo bees also use a weak mimicry or camouflage strategy, to an extent perhaps related to the degree of host specialization. Indeed, an association between specialization level and a parasite’s chemical strategy is expected: while specialist natural enemies often show mimicry (e.g. Strohm et al. 2008; Wurdack et al. 2015), generalist natural enemies more likely evolve chemical insignificance (e.g. Uboni et al. 2012; Parmentier et al. 2017). Although we have found several lines of evidence for a chemical insignificance strategy in *S. monilicornis*, we cannot exclude an coevolutionary arms race and signs of local adaptation between parasites and hosts on a population level (e.g. Lenoir et al. 2001; Casacci et al. 2019), since (except for *S. monilicornis* and *L. malachurum*) we had no access to hosts and parasites at the host nesting sites for our chemical comparison. From this point of view, and given its higher degree of host specialization, *S. puncticeps* may perhaps show both insignificance and even mimicry at a given host aggregation via local adaptations. In future, a comparative study with a broader sample of *Sphecodes* and their host species from different populations will provide a better understanding of the possible link between chemical strategies and host specialization and of potential local adaptation.

## ACKNOWLEDGEMENTS

We are indebted to Maximilian Schwarz and Andreas Ebmer, who kindly identified the specimens. Thanks are due to the administration office at Maremma Regional Park for issuing the permits necessary to carry out the fieldwork. We are indebted to Marco Marandola for helping in field data collection and to Marie Christine Melchior for helping in CHC extraction and GC/MS analysis. Experiments comply with the current Italian and German laws.



## AUTHOR CONTRIBUTIONS

CP and TS conceived the study and designed the experiments; CP and TS collected the sample and the data; CP, TS and MG performed the experiments and the analyses; CP took the lead in writing the manuscript. All authors read and approved the final manuscript.

## FUNDING INFORMATION

The study was funded by a project of Ministerio de Economía, Industria y Competitividad (España) (CGL2017- 83046-P). CP was funded with a post-doctoral contract from the Universidad de Castilla-La Mancha and the European Social Fund (ESF) and by a mobility fellowship from the Universidad de Castilla-La Mancha (2016-II Call).

## COMPLIANCE WITH ETHICAL STANDARDS

**Conflict of interest** The authors declare that they have no conflict of interest.

**L'abeille coucou, *Sphecodes*, utilise-t-elle un camouflage chimique pour envahir les nids de leurs hôtes sociaux *Lasioglossum* ?**

**Halictidae / *Sphecodes* / *Lasioglossum* / cleptoparasitisme / camouflage chimique.**

**Benutzen *Sphecodes* Kuckucksbienen chemische Unscheinbarkeit, um in die Nester ihrer *Lasioglossum* Wirte einzudringen ?**

**Halictidae / *Sphecodes* / *Lasioglossum* / Kleptoparasitismus / chemische Unscheinbarkeit.**

## REFERENCES

- Aitchison, J. (1986) The Statistical Analysis of Compositional Data. Monographs in statistics and applied probability. London: Chapman and Hall.
- Bagnères, A.-G., Lorenzi, M. C., Clément, J.-L., Dusticier, G., Turillazzi, S. (1996) Chemical usurpation of a nest by paper wasp parasites. *Science* **272**, 889–892
- Bell, W. J. (1974) Recognition of resident and non-resident individuals in intraspecific nest defense of a primitively eusocial halictine bee. *J. Comp. Physiol.* **93**, 195–202
- Bell, W. J., Hawkins, W. A. (1974) Patterns of intraspecific agonistic interactions involved in nest defense of a primitively eusocial halictine bee. *J. Comp. Physiol.* **93**, 183–193
- Boesi, R., Polidori, C. (2011) Nest membership determines the levels of aggression and cooperation between females of a supposedly communal digger wasp. *Aggress. Behav.* **37**, 405–416
- Bogusch, P., Straka, J. (2012). Review and identification of the cuckoo bees of central Europe (Hymenoptera: Halictidae: *Sphecodes*). *Zootaxa* **3311**, 1–41
- Bogusch, P., Kratochvíl, L., Straka, J. (2006). Generalist cuckoo bees are species specialist at the individual level (Hymenoptera: Apoidea, Sphecodes). *Behav. Ecol. Sociobiol.* **60**, 422–429
- Brandt, M., Heinze, J., Schmitt, T., Foitzik, S. (2005) A chemical level in the coevolutionary arms race between an ant social parasite and its hosts. *J. Evol. Biol.* **18**, 576–586
- Breed, M. D. (1998) Chemical cues in kin recognition: criteria for identification, experimental approaches, and the honey bee as an example, in: Vander Meer R. K., Breed M. D., Espelie K. E., Winston M. L. (Eds.), *Pheromone communication in social insects*. Westview, Boulder, pp. 56–78
- Carlson, D. A., Bernier, U. R., Sutton, B. D. (1998) Elution patterns from capillary GC for methyl-branched alkanes. *J. Chem. Ecol.* **24**, 1845–1865
- Casacci L. P., Schönrogge, K., Thomas, J. A., Balletto, E., Bonelli, S. & Barbero, F. (2019) Host specificity pattern and chemical deception in a social parasite of ants. *Sci. Rep.* **9**, Article number: 1619, <https://doi.org/10.1038/s41598-018-38172-4>.
- Cini, A., Gioli, L., Cervo, R. (2009) A quantitative threshold for nestmate recognition in a paper social wasp. *Biol. Lett.* **5**, 459–461
- Cini, A., Bruschini, C., Signorotti, L., Pontieri, L., Turillazzi, S., Cervo, R. (2011) The chemical basis of host nest detection and chemical integration in a cuckoo paper wasp. *J. Exp. Biol.* **214**, 3698–3703
- Clarke, K. R. (1993) Non-parametric multivariate analysis of changes in community structure. *Aust. J. Ecol.* **18**, 117–143.
- Danforth, B. N., Conway, L., Ji, S. (2003) Phylogeny of eusocial *Lasioglossum* reveals multiple losses of eusociality within a primitively eusocial clade of bees (Hymenoptera: Halictidae). *Syst. Biol.* **52**, 23–36.
- Dani, F. R., Jones, G. R., Destri, S., Spencer, S. H., Turillazzi, S. (2001) Deciphering the recognition signature within the cuticular chemical profile of paper wasps. *Anim. Behav.* **62**, 165–171
- Dani, F. R., Jones, G. R., Corsi, S., Beard, R., Pradella, D., Turillazzi, S. (2005) Nestmate recognition cues in the



- honey bee: differential importance of cuticular alkanes and alkenes. *Chem. Senses* **30**, 477–489
- Davison, P. J., Field, J. (2016) Social polymorphism in the sweat bee *Lasioglossum (Evyllaues) calceatum*. *Insect. Soc.* **63**, 327–338
- Dawkins, R., Krebs, J. R. (1979) Arms races between and within species. *Proc. R. Soc. Lond. B Biol. Sci.* **205**, 489–511
- Dronnet, S., Simon, X., Verhaeghe, J. C., Rasmont, P., Errard, C. (2005) Bumblebee inquilinism in *Bombus (Fernaldaepsithyrus) sylvestris* (Hymenoptera, Apidae): behavioural and chemical analyses of host-parasite interactions. *Apidologie* **10**, 59–70
- Eickwort, G. C., Eickwort, K. R. (1972) Aspects of the biology of Costa Rican Halictine bees. III. *Sphecodes kathleena*, a social kleptoparasite of *Dialictus umbripennis* (Hymenoptera: Halictidae). *J. Kans. Entomol. Soc.* **45**, 529–541
- Foitzik, S., Fischer, B., Heinze, J. (2003) Arms races between social parasites and their hosts: geographic patterns of manipulation and resistance. *Behav. Ecol.* **14**, 80–88.
- Habermannová, J., Bogusch, P., Straka, J. (2013) Flexible host choice and common host switches in the evolution of generalist and specialist cuckoo bees (Anthophila: *Sphecodes*). *PLoS ONE* **8**, e64537
- Hammer, Ø., Harper, D. A. T., Ryan, P. D. (2001) PAST: Paleontological statistics software package for education and data analysis. Version 2.15. *Paleontol. Electronica* **4**, 9. [http://palaeo-electronica.org/2001\\_1/past/issue1\\_01.htm](http://palaeo-electronica.org/2001_1/past/issue1_01.htm).
- Heide, A. v. D. (1992) Zur Bionomie von *Lasioglossum (Evyllaues) fratellum* (P6rez), einer Furchenbiene mit ungewöhnlich langlebigen Weibchen (Hymenoptera, Halictinae). *Drosera* **92**, 89–206
- Howard, R. W., Blomquist, G. J. (2005) Ecological, behavioral, and biochemical aspects of insect hydrocarbons. *Annu. Rev. Entomol.* **50**, 371–393
- Johnson, C. A., Vander Meer, R. K., Lavine, B. (2001) Changes in the cuticular hydrocarbon profile of the slave-maker ant queen, *Polyergus breviceps* Emery, after killing a *Formica* host queen (Hymenoptera: Formicidae). *J. Chem. Ecol.* **27**, 1787–1804
- Knerer, G. (1980) Biologie und Sozialverhalten von Bienenarten der Gattung *Halictus* Latreille (Hymenoptera: Halictidae). *Zool. Jb. Syst.* **107**, 511–536
- Knerer, G. (1992) The biology and social behaviour of *Evyllaues malachurus* (K.) (Hymenoptera: Halictidae) in different climatic regions in Europe. *Zool. Jahrb. Abt. Syst. Oekol. Geogr. Tiere* **119**, 261–290
- Knerer, G., Atwood, C. E. (1967) Parasitization of social halictine bees in southern Ontario. *Proc. Entomol. Soc. Ontario* **97**, 103–110
- Kreuter, K., Bunk, E., Lückemeyer, A., Twele, R., Francke, W., Ayasse, M. (2012) How the social parasitic bumblebee *Bombus bohemicus* sneaks into power of reproduction. *Behav. Ecol. Sociobiol.* **66**, 475–486
- Kruskal J., Carroll J. D. (1969) Geometrical models and badness-of-fit functions. In *Multivariate analysis* (P. R. Krishnaiah, Ed.), pp. 639–671. New York, NY: Academic Press.
- Lenoir, A., d’Ettorre, P., Errard, C., Hefetz, A. (2001) Chemical ecology and social parasitism in ants. *Annu. Rev. Entomol.* **46**, 573–599
- Leonhardt, S. D., Menzel, F., Nehring, V., Schmitt, T. (2016) Ecology and evolution of communication in social insects. *CELL* **164**, 1277–1287
- Leyer, I., Wesche, K. (2007) *Multivariate Statistik in der Ökologie*. Berlin: Springer.
- Lorenzi, M. C. (2006) The result of an arms race: the chemical strategies of *Polistes* social parasites. *Ann. Zool. Fenn.* **43**, 550–563
- Lorenzi, M. C., Bagnères, A.-G. (2002) Concealing identity and mimi-cking hosts: A dual chemical strategy for a single social parasite? (*Polistes atrimandibularis*, Hymenoptera: Vespidae). *Parasitology* **125**, 507–512
- Lorenzi, M. C., Cervo, R., Zacchi, F., Turillazzi, S., Bagnères, A.-G. (2004) Dynamics of chemical mimicry in the social parasite wasp *Polistes semenowi* (Hymenoptera Vespidae). *Parasitology* **129**, 643–651.
- Marchai, P. (1890) Formation d’une espece par le parasitisme. Etude sur le *Sphecodes gibbus*. *Rev. Scient.* **45**, 199–204
- Martin, S. J., Takahashi, J., Ono, M., Drijfhout, F. P. (2008) Is the social parasite *Vespa dybowskii* using chemical transparency to get her eggs accepted? *J. Insect Physiol.* **54**, 700–707
- Martin, S. J., Carruthers, J. M., Williams, P. H., Drijfhout, F. P. (2010) Host specific social parasites (*Psithyrus*) indicate chemical recognition system in bumblebees. *J. Chem. Ecol.* **36**, 855–863
- McCune, B., Grace, J., Urban, D. (2002) *MjM Software Design. Analysis of Ecological Communities*. Glenden Beach, Oregon.
- Michener, C. D. (2007) *The bees of the World*. The Johns Hopkins University Press, Baltimore.
- O’Neill, K.M. (2001) *Solitary Wasps: Natural History and Behavior*. Cornell University Press, Ithaca, New York.
- Ortolani, I., Cervo, R. (2010) Intraspecific body size variation in *Polistes* paper wasps as a response to social parasitism pressure. *Ecol. Entomol.* **35**, 352–359
- Pabalan, N., Davey, K. G., Packer, L. (2000) Escalation of aggressive interactions during staged encounters in *Halictus ligatus* Say (Hymenoptera: Halictidae), with a comparison of circle tube behaviors with other halictine species. *J. Insect. Behav.* **13**, 627–650
- Packer, L. (1983) The nesting biology and social organisation of *Lasioglossum (Evyllaues) laticeps* (Hymenoptera, Halictidae) in England. *Insect. Soc.* **30**, 367–375
- Parmentier, T., Dekoninck, W., Wenseleers, T. (2017) Arthropods associate with their red wood ant host without matching nestmate recognition cues. *J. Chem. Ecol.* **43**, 644–61

- Paxton, R. J., Ayasse, M., Field, J., Soro, A. (2002) Complex sociogenetic organization and reproductive skew in a primitively eusocial sweat bee, *Lasioglossum malachurum*, as revealed by microsatellites. *Mol. Ecol.* **11**, 2405–2416
- Polidori, C., Borruso, L. (2012) Socially peaceful: foragers of the eusocial bee *Lasioglossum malachurum* are not aggressive against non-nestmates in circle-tube arenas. *Acta Ethol.* **15**, 15–23
- Polidori, C., Borruso, L., Boesi, R., Andrietti, F. (2009) Segregation of temporal and spatial distribution between kleptoparasites and parasitoids of the eusocial sweat bee, *Lasioglossum malachurum* (Hymenoptera: Halictidae, Mutillidae). *Entomol. Sci.* **12**, 116–129
- Polidori, C., Bevacqua, S., Andrietti, F. (2010) Do digger wasps time their provisioning activity to avoid cuckoo wasps (Hymenoptera: Crabronidae and Chrysididae)? *Acta Ethol.* **13**, 11–21.
- Poulin, R., Morand, S., Skorpjng, A. (2000) Evolutionary biology of host–parasite relationships: theory meets reality. Elsevier, Amsterdam.
- Sakagami, S. F., Moure, J. S. (1962) *Sphecodes russeichypeatus*, n. sp., obtido de um ninho de *Dialictus (Chloralictus) seabrai* (Moure, 1956) (Hymenoptera-Apoidea). *Bol. Univ. Paraná, Zool.* **1**, 1–6
- Schmid-Hempel, P. (1998) Parasites in social insects. : Princeton University Press, New Jersey.
- Sick, M., Ayasse, M., Tengö, J., Engels, W., Lübke, G., Francke, W. (1994) Host-parasite relationships in six species of *Sphecodes* bees and their halictid hosts: Nest intrusion, intranidal behavior, and Dufour's gland volatiles. *J. Insect Behav.* **7**, 101–117
- Smith, B. H., Breed, M. D. (1995) The chemical basis for nest-mate recognition and mate discrimination in social insects. In: Cardé R. T., Bell W. J. (Eds.), *Chemical ecology of insects 2*. Chapman & Hall, London, pp 287–317
- Smith, B. H., Weller, C. (1989) Social competition among gynes in Halictine bees – the influence of bee size and pheromones on behavior. *J Insect Behav.* **2**, 397–411
- Soro, A., Ayasse, M., Zobel, M. U., Paxton, R. J. (2011) Kin discriminators in the eusocial sweat bee *Lasioglossum malachurum*: the reliability of cuticular and Dufour's gland odours. *Behav. Ecol. Sociobiol.* **65**, 641–653
- Strohm, E., Kroiss, J., Herzner, G., Laurien-Kehnen, C., Boland, W., Schreier, P., Schmitt, T. (2008) A cuckoo in wolves' clothing? Chemical mimicry in a specialized cuckoo wasp of the European beewolf (Hymenoptera, Chrysididae and Crabronidae). *Front. Zool.* **5**, 2.
- Tengö, J., Bergström, G. (1977) Cleptoparasitism and odor mimetism in bees: Do *Nomada* males imitate the odor of *Andrena* females? *Science* **196**, 1117–1119
- Turillazzi, S., Sledge, M. F., Dani, F. R., Cerro, R., Massolo, A., Fondelli, L. (2000) Social hackers: integration in the host chemical recognition system by a paper wasp social parasite. *Naturwissenschaften* **87**, 172–176.
- Uboni, A., Bagnères, AG., Christidès, J. P., Lorenzi, C. M. (2012) Cleptoparasites, social parasites and a common host: chemical insignificance for visiting host nests, chemical mimicry for living in. *J. Insect Physiol.*, **58**, 1259–1264
- van Zweden, J. S., d'Ettorre, P. (2010) Nestmate recognition in social insects and the role of hydrocarbons. G. J. Blomquist, A.-G. Bagnères (Eds.), *Insect Hydrocarbons. Biology, Biochemistry, and Chemical Ecology*. Cambridge University Press, Cambridge, pp. 222–243
- von Beeren, C., Brückner, A., Maruyama, M., Burke, G., Wieschollek, J., Kronauer, D. J. C. (2018) Chemical and behavioral integration of army ant-associated rove beetles – a comparison between specialists and generalists. *Front. Zool.* **15**, 8
- Wurdack, M., Herbertz, S., Dowling, D., Kroiss, J., Strohm, E., Baur, H., Niehuis, O., Schmitt, T. (2015) Striking cuticular hydrocarbon dimorphism in the mason wasp *Odynerus spinipes* and its possible evolutionary cause (Hymenoptera: Chrysididae, Vespidae). *Proc. R. Soc. Lond. B Biol. Sci.* **282**, 20151777

**Publisher's note** Springer Nature remains neutral with regard to jurisdictional claims in published maps and institutional affiliations.