



HAL
open science

ALMA images the many faces of the NGC 1068 torus and its surroundings

S. García-Burillo, F. Combes, C. Ramos Almeida, A. Usero, A.
Alonso-Herrero, L. Hunt, D. Rouan, S. Aalto, M. Querejeta, S. Viti, et al.

► **To cite this version:**

S. García-Burillo, F. Combes, C. Ramos Almeida, A. Usero, A. Alonso-Herrero, et al.. ALMA images the many faces of the NGC 1068 torus and its surroundings. *Astronomy and Astrophysics - A&A*, 2019, 632, pp.A61. 10.1051/0004-6361/201936606 . hal-03106078

HAL Id: hal-03106078

<https://hal.science/hal-03106078>

Submitted on 11 Jan 2021

HAL is a multi-disciplinary open access archive for the deposit and dissemination of scientific research documents, whether they are published or not. The documents may come from teaching and research institutions in France or abroad, or from public or private research centers.

L'archive ouverte pluridisciplinaire **HAL**, est destinée au dépôt et à la diffusion de documents scientifiques de niveau recherche, publiés ou non, émanant des établissements d'enseignement et de recherche français ou étrangers, des laboratoires publics ou privés.

ALMA images the many faces of the NGC 1068 torus and its surroundings[★]

S. García-Burillo¹, F. Combes², C. Ramos Almeida^{3,4}, A. Usero¹, A. Alonso-Herrero⁵, L. K. Hunt⁶, D. Rouan⁷,
S. Aalto⁸, M. Querejeta^{1,9}, S. Viti¹⁰, P. P. van der Werf¹¹, H. Vives-Arias^{3,4}, A. Fuente¹, L. Colina⁵,
J. Martín-Pintado⁵, C. Henkel^{12,13}, S. Martín^{14,15}, M. Krips¹⁶, D. Gratadour⁷, R. Neri¹⁶, and L. J. Tacconi¹⁷

(Affiliations can be found after the references)

Received 30 August 2019 / Accepted 13 October 2019

ABSTRACT

Aims. We investigate the fueling and the feedback of nuclear activity in the nearby ($D = 14$ Mpc) Seyfert 2 barred galaxy NGC 1068 by studying the distribution and kinematics of molecular gas in the torus and its connections to the host galaxy disk.

Methods. We used the Atacama Large Millimeter Array (ALMA) to image the emission of a set of molecular gas tracers in the circumnuclear disk (CND) and the torus of the galaxy using the CO(2–1), CO(3–2), and HCO⁺(4–3) lines and their underlying continuum emission with high spatial resolutions ($0.03'' - 0.09'' \approx 2-6$ pc). These transitions, which span a wide range of physical conditions of molecular gas ($n(\text{H}_2) \subset 10^3-10^7 \text{ cm}^{-3}$), are instrumental in revealing the density radial stratification and the complex kinematics of the gas in the torus and its surroundings.

Results. The ALMA images resolve the CND as an asymmetric ringed disk of $D \approx 400$ pc in size and $\approx 1.4 \times 10^8 M_\odot$ in mass. The CND shows a marked deficit of molecular gas in its central ≈ 130 pc region. The inner edge of the ring is associated with the presence of edge-brightened arcs of NIR polarized emission, which are identified with the current working surface of the active galactic nucleus (AGN). ALMA proves the existence of an elongated molecular disk/torus in NGC 1068 of $M_{\text{torus}}^{\text{gas}} \approx 3 \times 10^5 M_\odot$, which extends over a large range of spatial scales $D \approx 10-30$ pc around the central engine. The new observations evidence the density radial stratification of the torus: the HCO⁺(4–3) torus, with a full size $D_{\text{HCO}^+(4-3)} = 11 \pm 0.6$ pc, is a factor of between two and three smaller than its CO(2–1) and CO(3–2) counterparts, which have full sizes of $D_{\text{CO}(3-2)} = 26 \pm 0.6$ pc and $D_{\text{CO}(2-1)} = 28 \pm 0.6$ pc, respectively. This result brings into light the many faces of the molecular torus. The torus is connected to the CND through a network of molecular gas streamers detected inside the CND ring. The kinematics of molecular gas show strong departures from circular motions in the torus, the gas streamers, and the CND ring. These velocity field distortions are interconnected and are part of a 3D outflow that reflects the effects of AGN feedback on the kinematics of molecular gas across a wide range of spatial scales around the central engine. In particular, we estimate through modeling that a significant fraction of the gas inside the torus ($\approx 0.4-0.6 \times M_{\text{torus}}^{\text{gas}}$) and a comparable amount of mass along the gas streamers are outflowing. However, the bulk of the mass, momentum, and energy of the molecular outflow of NGC 1068 is contained at larger radii in the CND region, where the AGN wind and the radio jet are currently pushing the gas assembled at the Inner Lindblad Resonance (ILR) ring of the nuclear stellar bar.

Conclusions. In our favored scenario a wide-angle AGN wind launched from the accretion disk of NGC1068 is currently impacting a sizable fraction of the gas inside the torus. However, a large gas reservoir ($\approx 1.2-1.8 \times 10^5 M_\odot$), which lies close to the equatorial plane of the torus, remains unaffected by the feedback of the AGN wind and can therefore continue fueling the AGN for at least $\approx 1-4$ Myr. Nevertheless, AGN fueling currently seems thwarted on intermediate scales ($15 \text{ pc} \leq r \leq 50 \text{ pc}$).

Key words. galaxies: individual: NGC 1068 – galaxies: ISM – galaxies: kinematics and dynamics – galaxies: nuclei – galaxies: Seyfert – radio lines: galaxies

1. Introduction

The fueling of super-massive black holes (SMBHs) explains the onset of nuclear activity in galaxies. High-resolution observations of molecular gas have been instrumental to our understanding of how active galactic nuclei (AGNs) are fueled (e.g., García-Burillo et al. 2005; García-Burillo & Combes 2012; Combes et al. 2013, 2014; Storchi-Bergmann & Schnorr-Müller 2019). These observations have also started to reveal that the vast amounts of energy released during the feeding process can help regulate gas accretion through the launching of molecular outflows in different types of active galaxies (e.g., Feruglio et al. 2010; Sturm et al. 2011; Alatalo et al. 2011, 2014; Aalto et al. 2012, 2016; Combes et al. 2013; Morganti et al. 2013, 2015; Ciccone et al. 2014; García-Burillo et al. 2014, 2015; Querejeta et al. 2016; Barcos-Muñoz et al. 2018;

Alonso-Herrero et al. 2019). Molecular outflows are a manifestation of AGN feedback and constitute a key ingredient to understanding the co-evolution of galaxies and SMBHs, which is inferred from the observed scaling laws relating the mass of nuclear black holes (M_{BH}) to the properties of the spheroidal components of galaxies, like the mass (M_{bulge} ; e.g., Kormendy & Richstone 1995; Magorrian et al. 1998; Marconi & Hunt 2003) or the stellar velocity dispersion (σ ; e.g., Gebhardt et al. 2000; Merritt & Ferrarese 2001; Ferrarese & Ford 2005; Gültekin et al. 2009).

Observational properties of AGNs are used to classify them into two categories: Type 1 AGNs show broad line regions (BLRs), while type 2 AGNs only show narrow line regions (NLRs). Lines are broadened in BLRs close to the central engine, while they are narrow farther out in the NLRs. The central engines of type 2 objects are thought to be hidden behind a screen of obscuring material located in a dusty torus of between a few and ten parsecs in size (Miller & Antonucci 1983; Antonucci & Miller 1985; Urry & Padovani 1995; Elitzur 2012;

[★] Reduced datacubes and maps are only available at the CDS via anonymous ftp to cdsarc.u-strasbg.fr (130.79.128.5) or via <http://cdsarc.u-strasbg.fr/viz-bin/cat/J/A+A/632/A61>

Netzer 2015; Ramos Almeida & Ricci 2017). Determining the physical parameters of the putative torus and its surroundings from observations has been challenging due to the foreseen small size of these structures. The list of key parameters to be determined includes the size, mass, and dynamical state of the gas in the torus (rotating, outflowing, and/or inflowing). Furthermore, we need a description of how the torus is connected to the host galaxy disk.

In the absence of observational constraints, the first estimates of the torus size came from theoretical models of the spectral energy distribution (SED). Pier & Krolik (1992) favored compact tori with an outer radius $\leq 5\text{--}10$ pc. Later works extended these compact structures out to radii $\approx 30\text{--}100$ pc (e.g., Pier & Krolik 1993; Granato & Danese 1994). A recent compilation of high-resolution observations in the near and mid-infrared (NIR and MIR) of 23 nearby Seyfert galaxies found relatively compact sizes for their AGN tori, yet with a remarkable range of wavelength-dependent values, from $r \approx 0.1\text{--}1$ pc in the NIR, to $r \approx 1\text{--}a$ few pc in the MIR (e.g., Burtscher et al. 2013, and references therein). Furthermore, the observed nuclear NIR-to-MIR SED (including MIR spectroscopy) of Seyferts was reproduced with clumpy tori of sizes $r \approx 1\text{--}14$ pc (Ramos Almeida et al. 2011; Alonso-Herrero et al. 2011; Ichikawa et al. 2015; García-Bernete et al. 2019).

The question of the dynamical status of the torus has also evolved from the first proposed scenario, depicting the torus as a geometrically thick rotating doughnut-like disk in hydrostatic equilibrium (Krolik & Begelman 1988), towards a more dynamical picture, describing the torus as an outflowing structure, where clouds are embedded in a hydro-magnetically or radiatively driven wind (Blandford & Payne 1982; Emmering et al. 1992; Bottorff et al. 1997; Kartje et al. 1999; Elitzur & Shlosman 2006; Wada 2012, 2015; Wada et al. 2016; Höning & Kishimoto 2017; Chan & Krolik 2016, 2017; Williamson et al. 2019; Höning 2019). This outflowing torus may be part of the obscuring structures that have been identified as polar-like dust components in a notable fraction of Seyferts observed with interferometers in the MIR (Tristram et al. 2009; Burtscher et al. 2013; Höning et al. 2013; López-Gonzaga et al. 2014, 2016).

Due to their limited (u, v) -coverage, MIR interferometers have not yet been optimized to provide a direct image of the torus and its surroundings. This limitation can be overcome by millimeter(mm)/submillimeter(submm) interferometers like the Atacama Large Millimeter Array (ALMA). Building on an exquisite coverage of the (u, v) -plane, ALMA has begun imaging with high fidelity the distribution and kinematics of molecular gas in the tori of nearby Seyfert galaxies ($D \leq 10\text{--}30$ Mpc), thanks to its ability to reach angular resolutions $\leq 0.05''\text{--}0.1''$ (García-Burillo et al. 2016; Gallimore et al. 2016; Imanishi et al. 2016, 2018; Alonso-Herrero et al. 2018, 2019; Izumi et al. 2018; Combes et al. 2019; Impellizzeri et al. 2019; Audibert et al. 2019).

The nearby ($D \sim 14$ Mpc; Bland-Hawthorn et al. 1997) Seyfert 2 galaxy NGC 1068 has been a testbed for unifying theories of AGNs after the discovery of polarized optical continuum and broad-line emission in this source (Miller & Antonucci 1983; Antonucci & Miller 1985). Single-dish observations in the NIR and MIR showed the existence of emission extending over a wide range of spatial scales ($\approx 5\text{--}70$ pc) around the AGN (Bock et al. 2000; Marco & Alloin 2000; Tomono et al. 2001; Rouan et al. 2004; Galliano et al. 2005; Gratadour et al. 2006, 2015; Lopez-Rodriguez et al. 2016). Interferometric observations in the NIR and MIR confirmed the existence of two

components (Jaffe et al. 2004; Weigelt et al. 2004; Raban et al. 2009; Burtscher et al. 2013; López-Gonzaga et al. 2014): a compact $0.5\text{--}1.4$ pc-sized disk centered at the AGN with a position angle $PA \approx 140^\circ$, and a $3\text{--}10$ pc-sized elongated structure oriented along the north–south axis. The compact disk contains hot (≈ 800 K) dust co-spatial with the H_2O megamaser disk (Greenhill et al. 1996; Greenhill & Gwinn 1997; Gallimore et al. 2001, 2004), while the elongated source contains warm (≈ 300 K) dust likely associated with the ionization cone.

García-Burillo et al. (2016) and Gallimore et al. (2016) used ALMA to map the emission of the CO(6–5) line and its underlying continuum in NGC 1068 with a spatial resolution of ~ 4 pc. These observations imaged the dust and molecular line emission from the torus of NGC 1068. The $\approx 7\text{--}10$ pc CO/dusty torus extends along $PA \approx 112 \pm 20^\circ$ over spatial scales a factor of four larger than the MIR sources detected at the AGN (Burtscher et al. 2013; López-Gonzaga et al. 2014). The CO torus shows a lopsided disk morphology, an orientation roughly perpendicular to the AGN wind/jet axis, and surprisingly perturbed kinematics, the origin of which remains a matter of debate. Firstly, García-Burillo et al. (2016) reported the apparent counter-rotation of the outer disk $r \approx 3.5$ pc (imaged in CO(6–5)), relative to the inner $r \approx 1$ pc (imaged in H_2O maser emission). This apparent counter-rotation has also been evidenced by the recent HCN(3–2) and $\text{HCO}^+(3\text{--}2)$ ALMA maps of the torus (Imanishi et al. 2018; Impellizzeri et al. 2019). Secondly, the maps of García-Burillo et al. (2016) and Gallimore et al. (2016) show a velocity gradient along the morphological minor axis of the torus. This velocity gradient could be explained by gas being entrained in the outflow (García-Burillo et al. 2016; Gallimore et al. 2016; Impellizzeri et al. 2019). This interpretation is nevertheless challenged by the fact that the reported radial shift of velocities in the torus is reversed farther out ($r \geq 100\text{--}200$ pc) at the circumnuclear disk (CND), where the CO outflow imaged by García-Burillo et al. (2014) follows the pattern of low-ionization lines (see discussion in García-Burillo et al. 2016). Alternatively, the disturbed kinematics of the torus could be the signature of the Papaloizou-Pringle instability (PPI) predicted to drive the dynamical evolution of AGN tori on scales of $r \leq 0.1$ pc (Papaloizou & Pringle 1984). This instability has been studied both in isolated tori (Kiuchi et al. 2011; Korobkin et al. 2013) and also in tori perturbed due to the accretion of gas (Dönmez 2014; Donmez 2017). These simulations show the growth of a long-lasting non-axisymmetric $m = 1$ mode. The PPI is able to sustain a lopsided distribution and noncircular motions in the gas. However, whether this instability can propagate efficiently and in due time to the significantly larger radii of the CO torus is still an open question.

Furthermore, several groups found evidence of the existence of gas streamers connecting the torus with the CND out to $r \approx 30$ pc. These gas streamers emit in the $2.12\ \mu\text{m}$ H_2 line, a tracer mostly sensitive to hot molecular gas ($T_k \geq 10^3$ K). However, these works have led to contradicting conclusions regarding the interpretation of the kinematics of the gas in these structures, interpreted in terms of either inflow (Müller Sánchez et al. 2009) or outflow motions (Barbosa et al. 2014; May & Steiner 2017). García-Burillo et al. (2016) detected no clear CO(6–5) counterpart of the NIR streamers or tongues. The nature of the CND-torus connection and the question of what the fueling budget is in this Seyfert are therefore mostly unsettled.

The new ALMA observations presented in this paper image the emission of molecular gas in the CND and the torus of

Table 1. Observational parameters.

Tracer	Beam "×"	LAS "	FoV "	Sensitivity mJy beam ⁻¹
Continuum at 229.7 GHz	0′089 × 0′087 at PA = 40°	1.3	25.4	0.030
Continuum at 344.5 GHz	0′11 × 0′072 at PA = 90°	1.8	16.9	0.046
CO(2–1)-MSR	0′11 × 0′068 at PA = 80°	1.3	25.4	0.11
CO(2–1)-HSR	0′04 × 0′03 at PA = 25°	1.3	25.4	0.14
CO(3–2)-MSR	0′13 × 0′065 at PA = 100°	1.8	16.9	0.23
CO(3–2)-HSR	0′04 × 0′03 at PA = 74°	1.8	16.9	0.23
HCO ⁺ (4–3)-MSR	0′081 × 0′046 at PA = 78°	1.7	16.4	0.28
HCO ⁺ (4–3)-HSR	0′04 × 0′03 at PA = 73°	1.7	16.4	0.28

Notes. Column (2) lists the spatial resolutions reached for the different line and continuum observations used in this work. We distinguish the MSR data set from the HSR data set obtained by using a different robust weighting parameter of the visibilities in the UV plane: robust = 1 (0.1) for the MSR (HSR) configuration. Columns (3) and (4) list, respectively, the largest angular scale (LAS) recovered and the FoV of the observations, in arc second units. Column (5) lists the sensitivity (1σ) for the continuum and line data cubes. The line sensitivities are derived for channels of 20 km s^{-1} -width.

NGC 1068 using the CO(2–1), CO(3–2), and HCO⁺(4–3) lines, with a set of spatial resolutions of $\approx 0.03 - 0.09''$ (2–6 pc) that improve by a significant factor ($\geq 6-10$) the best spatial resolutions achieved in these lines in the previous maps of Schinnerer et al. (2000) and García-Burillo et al. (2014). The use of these transitions, which purposely span a wide range of physical conditions of molecular gas ($n(\text{H}_2) \subset 10^3 - 10^7 \text{ cm}^{-3}$), is instrumental in revealing the density radial stratification of the gas in the torus. The non-detection by García-Burillo et al. (2016) of a CO(6–5) counterpart of the NIR streamers/tongues may be due to the fact that the gas in the connecting bridges has volume densities below the critical density of the CO(6–5) line ($\geq 10^5 \text{ cm}^{-3}$). In this context, the choice of the CO(2–1) line, which is sensitive to densities $n(\text{H}_2) \approx 10^3 \text{ cm}^{-3}$, is motivated by the need to trace the bulk of the H₂ gas in the CND, the torus, and also in the structures connecting the CND with the torus. Furthermore, with the chosen requirement on what should be the minimum largest angular scale (LAS) recovered ($\approx 1.3'' - 1.8'' = 90 - 130 \text{ pc}$), the spatial resolution goal in both ALMA Bands (# 6 and # 7) is still compatible with the ability to recover the emission in the CND and also in the CND-torus connections.

We describe in Sect. 2 the new ALMA observations used in this work. Section 3 presents the continuum maps derived at 229.7 GHz and 344.5 GHz. The distribution and kinematics of molecular gas derived from the CO and HCO⁺ line maps in the CND and the torus are discussed in Sects. 4 and 5 respectively. We describe in Sect. 6 the gas connections between the torus and the CND and attempt to find a global description for the kinematics of the gas in the torus and the large-scale molecular outflow in Sect. 7. The main conclusions of this work are summarized in Sect. 8.

2. Observations

We observed the emission of the CO(2–1), CO(3–2), and HCO⁺(4–3) lines and their underlying continuum emission in the CND of NGC 1068 with ALMA during Cycle 4 using Band 6 and Band 7 receivers (project-ID: #2016.1.0232.S; PI: S. García-Burillo). The phase tracking center was set to $\alpha_{2000} = 02^{\text{h}}42^{\text{m}}40.771^{\text{s}}$, $\delta_{2000} = -00^{\circ}00'47.84''$, which is the center of the galaxy according to SIMBAD taken from the

Two Micron All Sky Survey-2MASS survey (Skrutskie et al. 2006). The tracking center is offset by $\leq 1''$ relative to the AGN position: $\alpha_{2000} = 02^{\text{h}}42^{\text{m}}40.71^{\text{s}}$, $\delta_{2000} = -00^{\circ}00'47.94''$ (Gallimore et al. 1996, 2016, 2004; García-Burillo et al. 2014, 2016; Imanishi et al. 2016, 2018). The data in the two bands were calibrated using the ALMA reduction package CASA¹. The calibrated uv -tables were exported to GILDAS²-readable format in order to perform the mapping and cleaning steps as detailed below. For both bands we estimate that the absolute flux accuracy is about 10%, which is in line with the goal of standard ALMA observations at these frequencies. Rest frequencies for all the lines used in this work were corrected for the recession velocity initially assumed to be $v_o(\text{LSR}) = 1129 \text{ km s}^{-1} = v_o(\text{HEL}) = 1140 \text{ km s}^{-1}$. Systemic velocity is nevertheless re-determined in this work as $v_{\text{sys}}(\text{LSR}) = 1120 \text{ km s}^{-1} = v_{\text{sys}}(\text{HEL}) = 1131 \text{ km s}^{-1}$. When appropriate, relative velocities throughout the paper refer to v_{sys} . We also use the continuum map of NGC 1068 obtained with ALMA during Cycle 0 using Band 9 receivers (project-ID: #2011.0.00083.S; PI: S. García-Burillo) and published by García-Burillo et al. (2014) and Viti et al. (2014). Hereafter we assume a distance to NGC 1068 of $D \approx 14 \text{ Mpc}$ (Bland-Hawthorn et al. 1997); the latter implies a spatial scale of $\approx 70 \text{ pc}''$.

2.1. Band 7 data

We used a single pointing with a field of view (FoV) of $17''$. In total two tracks were observed between October 2016 and September 2017 resulting in a total of 411 278 visibilities. We had 46 antennas available during the observations with projected baselines ranging from 18 m to 7.4 km. Four spectral windows were placed, two in the lower side band (LSB) and two in the upper sideband (USB). The four windows were centered on the following sky frequencies: 344.484 GHz and 345.681 GHz in the LSB and 355.380 GHz and 357.339 GHz in the USB. All the sub-bands have a spectral bandwidth of 1.875 GHz, except for the one centered around 345.681 GHz, which is a factor of two narrower. This setup allowed us to simultaneously observe CO($J = 3-2$) (345.796 GHz at rest) and H¹³CO⁺($J = 4-3$) (346.998 GHz at rest) in the LSB bands, and HCO⁺($J = 4-3$) (356.734 GHz at rest) and the continuum emission in the USB bands. Images of the continuum emission were obtained by averaging those channels free of line emission in each of the three sub-bands centered around spectral lines. These maps were used to subtract, in the (u, v)-plane, the underlying continuum emission from the visibilities and subsequently obtain continuum-free spectral line images for all the lines. In this paper we present the CO(3–2) and HCO⁺(4–3) maps but omit any discussion on the H¹³CO⁺(4–3) data due to its low S/N.

Table 1 summarizes the main observational parameters. We obtain two sets of angular resolutions by changing the robust parameter (b) in the GILDAS task UV-MAP from 1 (in the moderate spatial resolution (MSR) data set) to 0.1 (in the high spatial resolution (HSR) data set). The range of angular resolutions obtained is $\approx 0′03 - 0′1$ (2–7 pc) in the CO(3–2) line, and $\approx 0′03 - 0′06$ (2–4 pc) in the HCO⁺(4–3) line. The conversion factors between mJy beam^{-1} and K are $1.2 \text{ K mJy}^{-1} \text{ beam}$ (MSR) and $8.4 \text{ K mJy}^{-1} \text{ beam}$ (HSR) for the CO(3–2) line, and $2.6 \text{ K mJy}^{-1} \text{ beam}$ (MSR) and $8.5 \text{ K mJy}^{-1} \text{ beam}$ (HSR) for the HCO⁺(4–3) line. The line data cubes were binned to a common

¹ <http://casa.nrao.edu/>

² <http://www.iram.fr/TRAMFR/GILDAS>

frequency resolution of 23.1 MHz (equivalent to $\sim 20 \text{ km s}^{-1}$ in Band 7). The point source sensitivities in the line data cubes were derived selecting areas free from emission in all channels, resulting in a common value of $0.23 \text{ mJy beam}^{-1}$ for the CO(3–2) line and $0.28 \text{ mJy beam}^{-1}$ for the HCO⁺(4–3) line, in channels of 20 km s^{-1} width. The corresponding point source sensitivity for the continuum is $46 \mu\text{Jy beam}^{-1}$.

As our observations do not contain short-spacing correction, we expect that the flux will start to be filtered out on scales $\geq 1.8''$ (130 pc). We nevertheless foresee that the highly clumpy distribution of the gas and the strong velocity gradients of the emission in the nuclear regions will help us recover the bulk of the flux on the spatial scales of the CNB relevant to this paper. As a sanity check, we compared the total flux of the CO(3–2) line integrated over the CNB region, shown in Fig. 3, with the corresponding value derived using the ALMA map of García-Burillo et al. (2014), which is expected to recover all the flux out to scales $\approx 6'' \approx 420 \text{ pc}$, which are similar to the total size of the CNB ($\approx 300\text{--}400 \text{ pc}$). Within the calibration errors, we obtain virtually identical fluxes from the two data sets: $1500 \text{ Jy km s}^{-1}$ (García-Burillo et al. 2014) and $\approx 1450 \text{ Jy km s}^{-1}$ (this work), an indication that the emission stemming from spatial scales $\approx 130\text{--}420 \text{ pc}$ in the new CNB map is kept to a minimum. We can therefore conclude that the new CO(3–2) map contains the bulk of the flux for the whole range of spatial scales of the CNB analyzed in this work. Furthermore, we can assume that a similar scenario is valid for the HCO⁺(4–3) line, considering that this transition is likely tracing comparatively denser and in all probability clumpier molecular gas complexes in the CNB.

2.2. Band 6 data

Similarly to Band 7, we used a single pointing that translates at the lower frequencies of Band 6 into a FoV of $25''$. We observed three tracks between October 2016 and September 2017 resulting in a total of 1 718 451 visibilities. We had 50 antennas available during the observations with projected baselines ranging from 18 m to 12 km. We placed five spectral windows, two in the LSB and three in the USB. The five windows were centered on the sky frequencies: 217.647 GHz and 216.281 GHz in the LSB and 229.663 GHz, 230.343 GHz, and 231.021 GHz in the USB. This setup allowed us to observe H₂CO[3(2,2)–2(2,1)] (218.476 GHz at rest) and SiO($J = 5\text{--}4$) (217.105 GHz at rest) in the LSB bands, and CO($J = 2\text{--}1$) (230.538 GHz at rest), ¹³CS($J = 5\text{--}4$) (231.221 GHz at rest), and H_{30 α} (231.901 GHz at rest) in the USB bands. Images of the continuum emission were obtained by averaging those channels free of line emission in all sub-bands. As for Band 7, these maps were used to obtain continuum-free spectral line images for all the lines. In this work we discuss the results obtained in the CO(2–1) line and leave out any discussion on the remaining lines, to be presented in a forthcoming paper.

The main observational parameters are listed in Table 1. Similarly to Band 7, we use two sets of angular resolutions for the CO(2–1) line that lie in the range $\approx 0':03\text{--}0':09$ (2–6 pc). The conversion factors between mJy beam^{-1} and K are $3 \text{ K mJy}^{-1} \text{ beam}$ (MSR) and $18 \text{ K mJy}^{-1} \text{ beam}$ (HSR). For the sake of comparison with the Band 7 data, we binned the Band 6 data to a frequency resolution of 15.4 MHz (equivalent to $\sim 20 \text{ km s}^{-1}$). The corresponding point source sensitivities in the line data cubes range from $0.11 \text{ mJy beam}^{-1}$ (MSR) to $0.14 \text{ mJy beam}^{-1}$ (HSR) in channels of 20 km s^{-1} width. The corresponding point source sensitivity for the continuum is $30 \mu\text{Jy beam}^{-1}$.

As for Band 7, we checked whether or not the lack of short spacing correction in the CO(2–1) map, which implies that the flux will start to be filtered out on scales $\geq 1.3''$ (90 pc), can affect the results discussed in this work. To this aim, we compared the flux integrated over the CNB region estimated from the IRAM Plateau de Bure interferometer (PdBI) array image of Krips et al. (2011), which recovers the flux out to scales³ $\approx 3'' \approx 210 \text{ pc}$, with that derived from the new ALMA map of Fig. 3. This comparison yielded similar values for the flux recovered within the errors: 530 Jy km s^{-1} (Krips et al. 2011) $\approx 580 \text{ Jy km s}^{-1}$ (this work). This suggests that the emission stemming from the missing spatial scales in the range $\approx 90\text{--}210 \text{ pc}$ of the new CNB map is negligible. In conclusion, our comparisons show that the new CO(2–1) map of the CNB contains most if not all of the flux for the range of spatial scales that are relevant to this paper.

3. Continuum maps

Figure 1 shows the continuum maps derived at 229.7 GHz (1306 μm) and 344.5 GHz (871 μm) in the inner $r \leq 1''$ (70 pc) region of NGC 1068. We also show the continuum map obtained by García-Burillo et al. (2016) at 694 GHz (432 μm). At the three frequencies examined, the strongest emission corresponds to a point-like source. We used the GILDAS task UV-FIT to locate this source at $\alpha_{2000} = 02^{\text{h}}42^{\text{m}}40.709^{\text{s}}$, $\delta_{2000} = -00^{\circ}00'47''.94$. This is in agreement with the position of the source S1, identified as the AGN core in the previous subarcsecond radio continuum maps of Gallimore et al. (1996, 2004). We also detect significant emission extending over $\approx 70 \text{ pc}$ in a highly clumpy jet-like structure at the two lowest frequencies. As illustrated in Fig. 1, the millimeter continuum clumps at 229.7 GHz and 344.5 GHz show a good correspondence with sources S2, C, and NE, which form the inner section of the collimated jet emitting synchrotron emission (Gallimore et al. 1996, 2004). This correspondence is much weaker at 694 GHz. The jet is seen to be diverted at C due to a jet–ISM interaction (Bicknell et al. 1998; Gallimore et al. 1996, 2001). The C knot is also characterized by highly polarized MIR emission (Lopez-Rodriguez et al. 2016). Reflecting this interaction, the jet changes its orientation from $\text{PA} \approx 10^{\circ} \pm 5^{\circ}$ along its inner section defined by the C–S1–S2 clumps, towards $\text{PA} \approx 30^{\circ} \pm 5^{\circ}$, as defined by the NE–C axis. The latter aligns with the general orientation of the AGN wind on larger scales ($\text{PA}_{\text{outflow}} \approx 30^{\circ} \pm 5^{\circ}$; Machetto et al. 1994; Arribas et al. 1996; Crenshaw & Kraemer 2000; Tecza et al. 2001; Cecil et al. 2002; Müller-Sánchez et al. 2011; Gratadour et al. 2015).

Figure 2 shows the spectral index maps α (with $S_{\nu} \propto \nu^{\alpha}$) derived from the continuum emissions at $\nu = 344.5 \text{ GHz}$ and 694 GHz (α_1), and from $\nu = 229.7 \text{ GHz}$ and 344.5 GHz (α_2) derived for a common aperture size of $0':11 \times 0':11$ (8 pc \times 8 pc). We also show in Fig. 2 the corresponding SED in the (sub)mm range at different regions of the CNB. Large and positive values of the two spectral indexes $\alpha \approx 3\text{--}4$ can be attributed to the prevalence of dust emission in those regions of the CNB that are located far from the radio jet trajectory (e.g., the E-knot) or at the edges of the jet trail itself. Spectral indexes are flat or marginally positive at the location of the torus and close to its southern polar elongation (knots S1 and S2, respectively). In contrast, spectral indexes become clearly negative ($\alpha \leq -1$) throughout the radio jet (e.g., the NE–C axis), as expected for synchrotron-like emission.

We used the spectral index values measured in the CNB regions dominated by dust emission ($\alpha \approx 3\text{--}4$) to derive

³ In particular, according to the results of simulations performed for this work, we expect a flux loss of 20% for scales $>3''$.

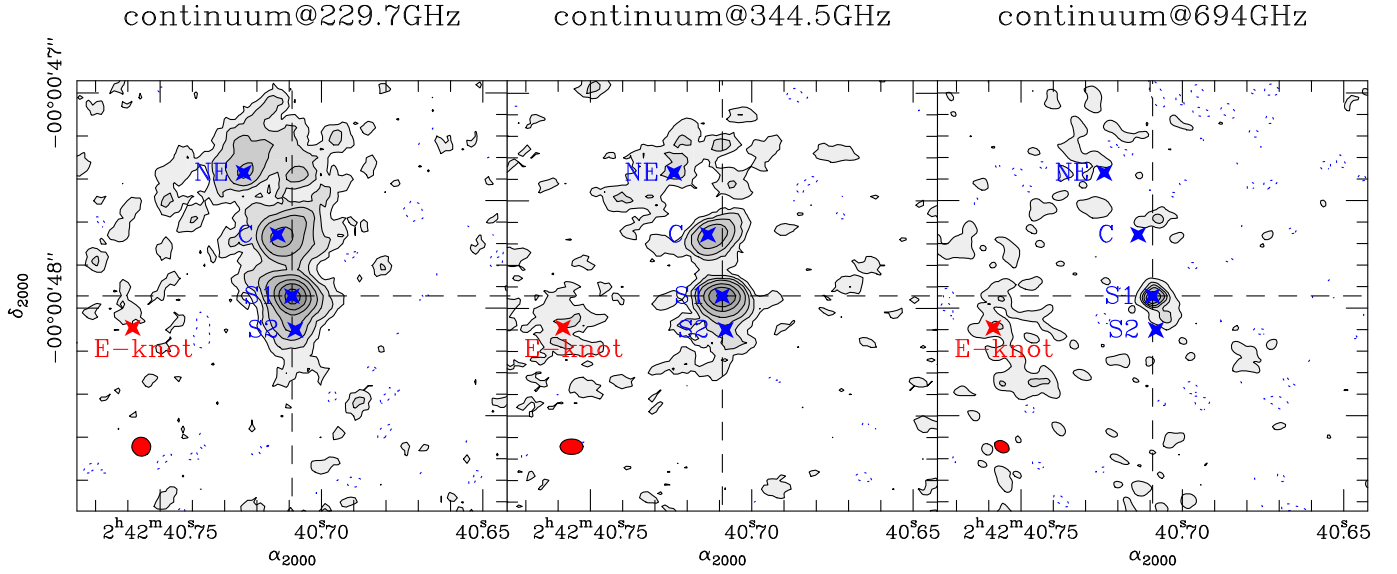


Fig. 1. *Left panel:* continuum emission map of the central $r \leq 1''$ (70 pc) region of NGC 1068 obtained with ALMA at 229.7 GHz ($1306 \mu\text{m}$). The map is shown in grayscale with contour levels -2σ (dashed contour), 2σ , 5σ , 10σ , 20σ , 50σ , 100σ , and 200σ , where $1\sigma = 30 \mu\text{Jy beam}^{-1}$. *Middle panel:* same as left panel but showing the continuum emission at 344.5 GHz ($871 \mu\text{m}$). Contour spacing is as in left panel, but with $1\sigma = 50 \mu\text{Jy beam}^{-1}$. *Right panel:* same as left panel but showing the continuum emission at 694 GHz ($432 \mu\text{m}$) published by García-Burillo et al. (2016). Contour levels are -2σ (dashed contour), 2σ , 5σ , 7σ , 9σ , 12σ , and 16σ , where $1\sigma = 0.5 \text{ mJy beam}^{-1}$. The (red) filled ellipses at the bottom left corners of the panels represent the beam sizes of ALMA at 229.7 GHz ($0''.089 \times 0''.087$ at PA = 40°), 344.5 GHz ($0''.11 \times 0''.072$ at PA = 90°) and 694 GHz ($0''.07 \times 0''.05$ at PA = 60°). The AGN lies at the intersection of the dashed lines: $\alpha_{2000} = 02^{\text{h}}42^{\text{m}}40.709^{\text{s}}$, $\delta_{2000} = -00^{\circ}00'47''.94$ (S1 knot). We highlight the position of other radio continuum knots (S2, C and NE) as given in the VLBI maps of Gallimore et al. (1996, 2004), and the E-knot, characterized by strong dust continuum and molecular line emission (García-Burillo et al. 2014; Viti et al. 2014).

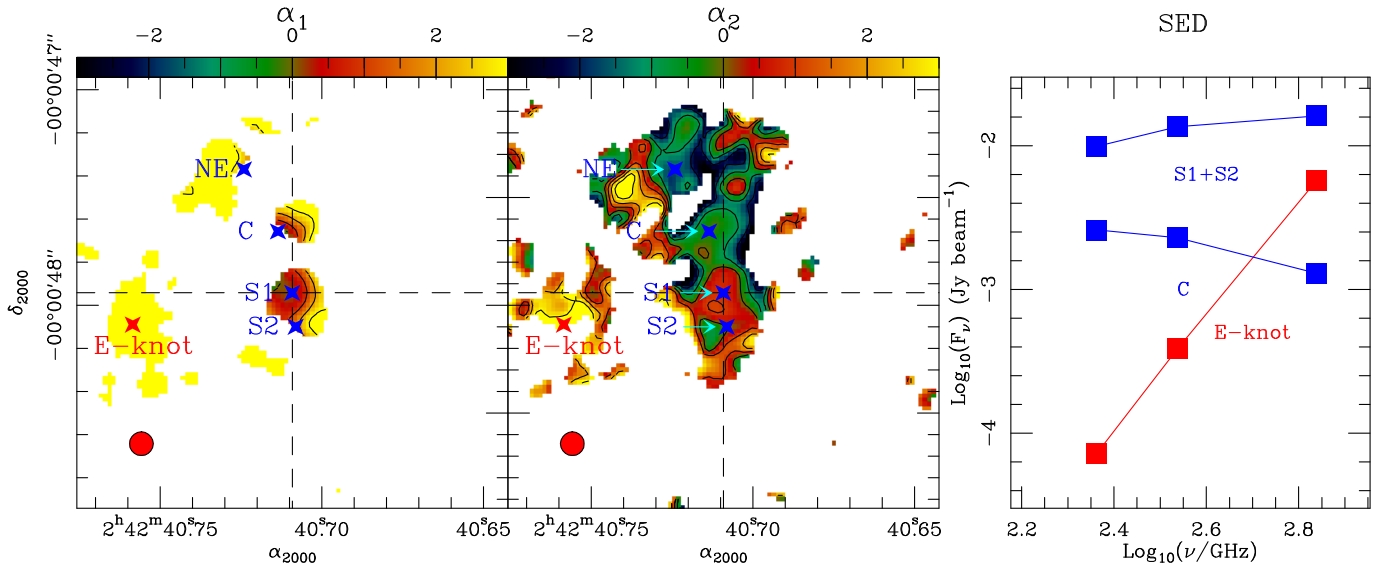


Fig. 2. Spectral index maps (α , with $S_\nu \propto \nu^\alpha$) derived from the continuum emissions at $\nu = 344.5$ GHz and 694 GHz (α_1 : left panel), and from $\nu = 229.7$ GHz and 344.5 GHz (α_2 : middle panel). Contours span the range $\alpha = [-3, 3]$ in steps of 1. The common aperture adopted to derive the spectral index map is $0''.11 \times 0''.11$ (red circle). The SED of continuum emission from 229.7 GHz to 694 GHz for the E-knot, the C-knot and the combined S1+S2 region are shown in the right panel.

the fraction of emission at $871 \mu\text{m}$ that can be attributed to dust at the S1 knot and estimated this to be $\leq 10\%$, in close agreement with the estimate derived at lower spatial resolution (≈ 35 pc) by García-Burillo et al. (2014, 2016). This result warns against the use of submm continuum emission at $\sim 850\text{--}870 \mu\text{m}$ as a straightforward tracer of the dust content of AGN tori and/or of their immediate surroundings, in particular in active galaxies that are not radio-silent such as NGC 1068 (see also the recent discussion in Alonso-Herrero et al. 2019 and Pasetto et al. 2019).

4. Molecular line emission: the circumnuclear disk

4.1. The CO maps

Figure 3 shows the CO(2–1) and CO(3–2) velocity-integrated intensity maps of the CND. The line fluxes have been integrated to include any significant emission that arises over the full velocity span due to rotation and outflow motions in NGC 1068: $v - v_{\text{sys}}^{\text{HEL}} \subset [-350, 350] \text{ km s}^{-1}$ (García-Burillo et al. 2014, 2016; Gallimore et al. 2016). The maps have also been corrected for primary beam attenuation at the respective frequencies.

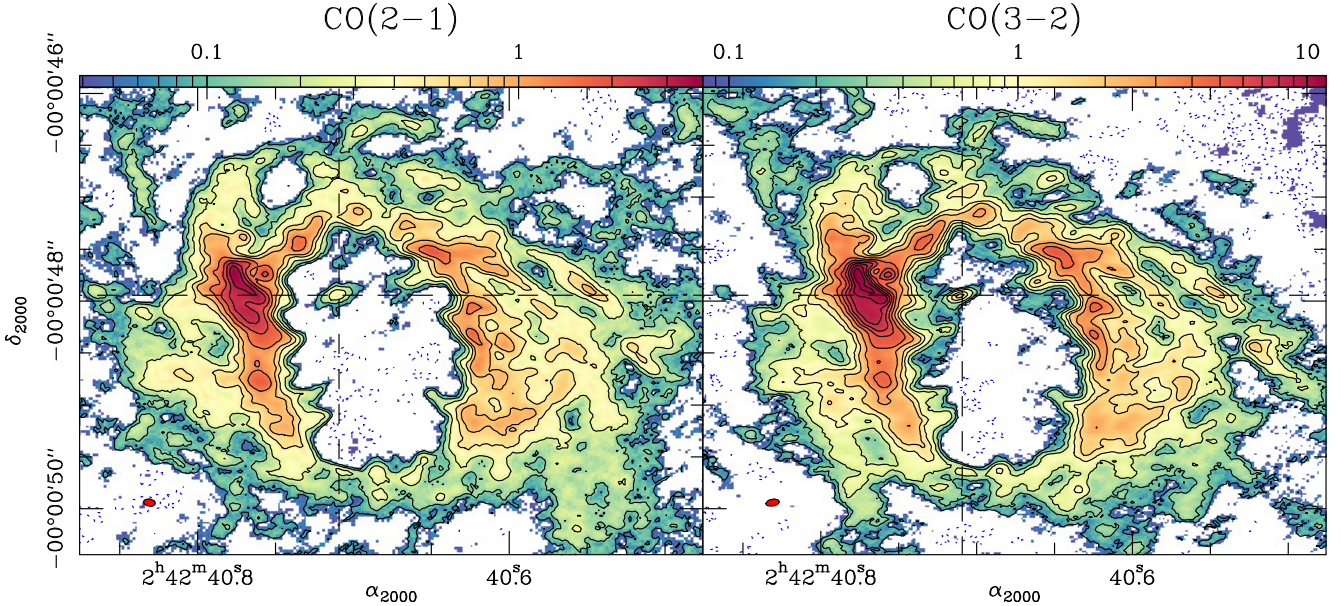


Fig. 3. *Left panel:* CO(2–1) integrated intensity map obtained with ALMA in the CND of NGC 1068 using the MSR data set as defined in Table 1. The map is shown in color scale spanning the range $[3\sigma, 300\sigma]$ in logarithmic scale with contour levels -5σ (dashed contour), 5σ , 10σ , 20σ , 40σ , 60σ , 100σ – 250σ in steps of 50σ where $1\sigma = 13 \text{ mJy km s}^{-1} \text{ beam}^{-1}$. *Right panel:* same as left panel but showing the CO(3–2) integrated intensity map. The color scale spans the range $[3\sigma, 430\sigma]$ in logarithmic scale with contour levels -5σ (dashed contour), 5σ , 10σ , 20σ , 40σ , 60σ , 100σ – 400σ in steps of 50σ where $1\sigma = 27 \text{ mJy km s}^{-1} \text{ beam}^{-1}$. The AGN locus lies at the intersection of the dashed lines in both panels. The (red) filled ellipses in the bottom left corners of both panels represent the beam sizes in CO(2–1) ($0:11 \times 0:068$ at $\text{PA} = 80^\circ$) and CO(3–2) ($0:13 \times 0:065$ at $\text{PA} = 100^\circ$).

Based on the measured total flux of the 2–1 line ($\approx 580 \text{ Jy km s}^{-1}$), we used Eq. (3) of Bolatto et al. (2013) and estimated the molecular gas mass of the CND to be $M_{\text{gas}} \approx 1.4 \times 10^8 M_\odot$, including the mass of helium. In our estimate we assumed an average 2–1/1–0 brightness temperature ratio ≈ 2.2 , as measured by Viti et al. (2014) in the CND, and a galactic CO-to- H_2 conversion factor ($X_{\text{CO}} = 2 \times 10^{20} \text{ mol cm}^{-2} (\text{K km s}^{-1})^{-1}$).

The high spatial resolution of the ALMA data fully resolves the CND, which displays in both lines of CO the shape of a highly structured asymmetric ringed disk. The CND has a total size $\approx 5:5 \times 4:0$ ($400 \text{ pc} \times 300 \text{ pc}$) and shows an east–west orientation of its principal axes ($\text{PA} \approx 90^\circ$). If we de-project the CND size onto the plane of the galaxy, assuming $\text{PA} = 286^\circ \pm 5^\circ$ and $i = 41^\circ \pm 2^\circ$ (García-Burillo et al. 2014), we derive a nearly circular shape for the CND, which would have a diameter of $\approx 400 \text{ pc}$. The CND ring feature likely corresponds to the molecular gas assembly at the inner Lindblad resonance (ILR) region of the nuclear bar detected in the NIR (Scoville et al. 1988; Bland-Hawthorn et al. 1997; Schinnerer et al. 2000; Emsellem et al. 2006; García-Burillo et al. 2014). The center of the CND is noticeably shifted $\approx 70 \text{ pc}$ southwest relative to the position of the central engine, an indication that the morphology of the ring may have been shaped to a large extent by the feedback of nuclear activity, as we discuss in Sect. 4.2.

Although the two CO line maps show notable differences at small radii, $r \leq 50 \text{ pc}$, their overall morphology elsewhere at larger radii is remarkably similar down to spatial scales of a few parsecs. Molecular line emission is detected in both CO lines at and around the AGN locus stemming from a spatially resolved elongated disk, which has a diameter $\geq 20 \text{ pc}$. Hereafter we refer to this disk as the *torus*. The torus is partly connected to the CND through gas streamers that display different morphologies in the 2–1 and 3–2 lines of CO. The torus and its connections to the host are described in detail in Sects. 5 and 6, respectively.

4.2. The CND morphology: evidence of an outflowing ring ?

Leaving aside the gas concentration at the torus and its surroundings mentioned above, the CND shows a deficit of molecular gas in its central $\approx 130 \text{ pc}$ region. This deficit leaves the imprint of a highly contrasted ring structure on the CND. The inner edge of the ring shows a steep radial profile that delimits a gas-deficient region of elliptical shape. The principal axes of the gas-deficient region ($2:3 \times 1:4 \approx 160 \text{ pc} \times 100 \text{ pc}$) are oriented roughly at right angles relative to the overall orientation of the CND. Compared to the 2–1 line, this hole in the 3–2 line seems to shrink in size closer to the central engine. The outer edge of the CND is connected on larger scales to the bar region through a network of spiral gas lanes from $r \geq 100$ – 150 pc . These bar-CND connections were previously identified in the map of García-Burillo et al. (2014).

While the central $\approx 130 \text{ pc}$ of the CND is deficient in molecular gas, this region is known to be pervaded by strong emission from a wide-angle bicone of ionized gas oriented along $\text{PA} \approx 30^\circ$ (Macchetto et al. 1994; Arribas et al. 1996; Crenshaw & Kraemer 2000; Cecil et al. 2002; Das et al. 2006; Müller-Sánchez et al. 2011; Barbosa et al. 2014). The morphology and the kinematics of the gas in this component have been interpreted in terms of an outflowing AGN-driven wind. In particular, the presence of blueshifts and redshifts on either side of the AGN locus along the outflow axis is consistent with a model where the AGN wind axis is oriented close the plane of the galaxy disk (e.g., Cecil et al. 2002). This geometry would favor a strong coupling between the AGN wind and the molecular ISM in the disk. Based on the analysis of the distortions of the molecular gas velocity field, studied with ALMA at a spatial resolution of $\approx 35 \text{ pc}$, García-Burillo et al. (2014) concluded that the ionized outflow is responsible for launching a molecular outflow in the disk over a region extending from $r \approx 50 \text{ pc}$ out to $r \approx 500 \text{ pc}$. The highly contrasted ring morphology of

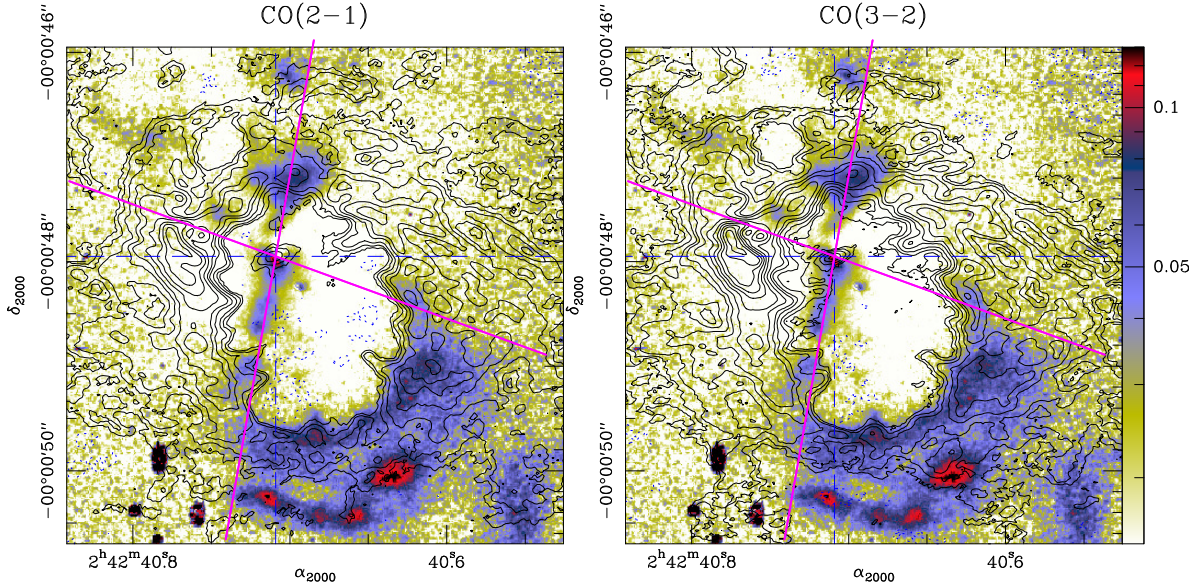


Fig. 4. *Left panel:* we overlay the CO(2–1) contour map (levels as in Fig. 3) on the image of linear polarization of dust emission obtained in the H band by Gratadour et al. (2015) (color logarithmic scale from 1.5% to 13%). *Right panel:* same as left panel but showing the comparison between the CO(3–2) map and the polarization degree. The magenta lines identify the region occupied by the AGN wind bicone modeled by Das et al. (2006): $PA_{\text{outflow}} = 30^\circ$, $FWHM_{\text{outer}} = 80''$ (see also Barbosa et al. 2014).

the CNB imaged by the new ALMA data shown in Fig. 3, which reveals a remarkably steep radial profile on its inner edge, likely reflects the accumulation of molecular gas at the working surface of the AGN wind. The outflowing CNB scenario of García-Burillo et al. (2014) is re-examined in Sects. 4.4–4.6, based on a first analysis of the gas kinematics derived from the new ALMA maps.

Further evidence showing the existence of a large-scale shock in the CNB is provided by the comparison of the ALMA CO maps with the hourglass structure displayed by the NIR polarized emission imaged by Gratadour et al. (2015). This comparison, illustrated in Fig. 4, shows a fair correspondence between the inner edge of the CNB and the edge-brightened arcs of NIR polarized emission, which are prominent at the northern and, most particularly, southern regions of the CNB⁴. In the model proposed by Das et al. (2006), and more recently by Barbosa et al. (2014), the AGN wind occupies a hollow bicone that is oriented along $PA \approx 30^\circ$ and is characterized by an opening angle, measured from the inner to the outer edge of the bicone, ranging from $FWHM_{\text{inner}} \approx 40''$ to $FWHM_{\text{outer}} \approx 80''$. Based on this model the interaction of the AGN wind with the molecular ISM of the disk is expected to be at work mainly at the northern and the southern extremes of the CNB. The increased degree of polarization shown by the dust-scattered NIR emission seems to be taking place at the working surface of the AGN wind as a result of a significant gas and dust pile-up. We also find an increased degree of polarization of NIR emission along the gas streamers connecting the torus with the CNB (see discussion in Sect. 6).

4.3. The HCO^+ map

Figure 5 shows the $HCO^+(4-3)$ integrated intensity map of the CNB. In stark contrast to the CO line maps shown in Fig. 3,

⁴ The southern arcs are brighter in NIR polarized emission due to the higher extinction of the optical emission coming from the southern lobe of the AGN wind, which is partly located below the plane of the galaxy (see Fig. 22).

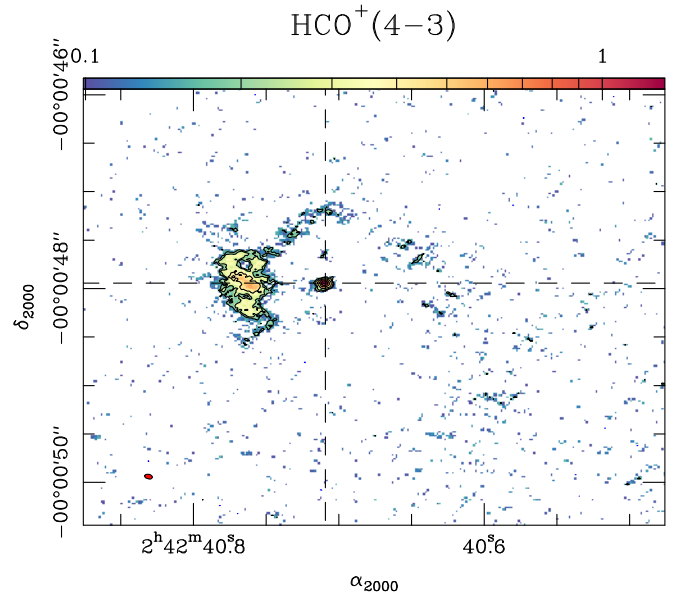


Fig. 5. $HCO^+(4-3)$ integrated intensity map obtained with ALMA in the CNB of NGC 1068 using the MSR data set as defined in Table 1. The map is shown in color scale spanning the range $[3\sigma, 40\sigma]$ with contour levels -5σ (dashed contour), 5σ , 7σ , 12σ , 20σ , and 30σ where $1\sigma = 33 \text{ mJy km s}^{-1} \text{ beam}^{-1}$. Symbols and markers as in Fig. 3. The (red) filled ellipse at the bottom left corner represents the beam size in $HCO^+(4-3)$ ($0''.081 \times 0''.046$ at $PA = 78^\circ$).

the brightest emission of the $HCO^+(4-3)$ line in the CNB corresponds to the molecular torus. The HCO^+ torus is notably smaller in size ($D < 10 \text{ pc}$) compared to the CO molecular tori (see discussion in Sect. 5). Significant HCO^+ emission is also detected at the E-knot, a spatially resolved region located $\approx 70 \text{ pc}$ east of the AGN, as well as in a number of isolated clumps throughout the CNB. The different distributions of HCO^+ and CO line emissions in the CNB reflect the wide range of critical densities probed by these transitions, which span nearly four

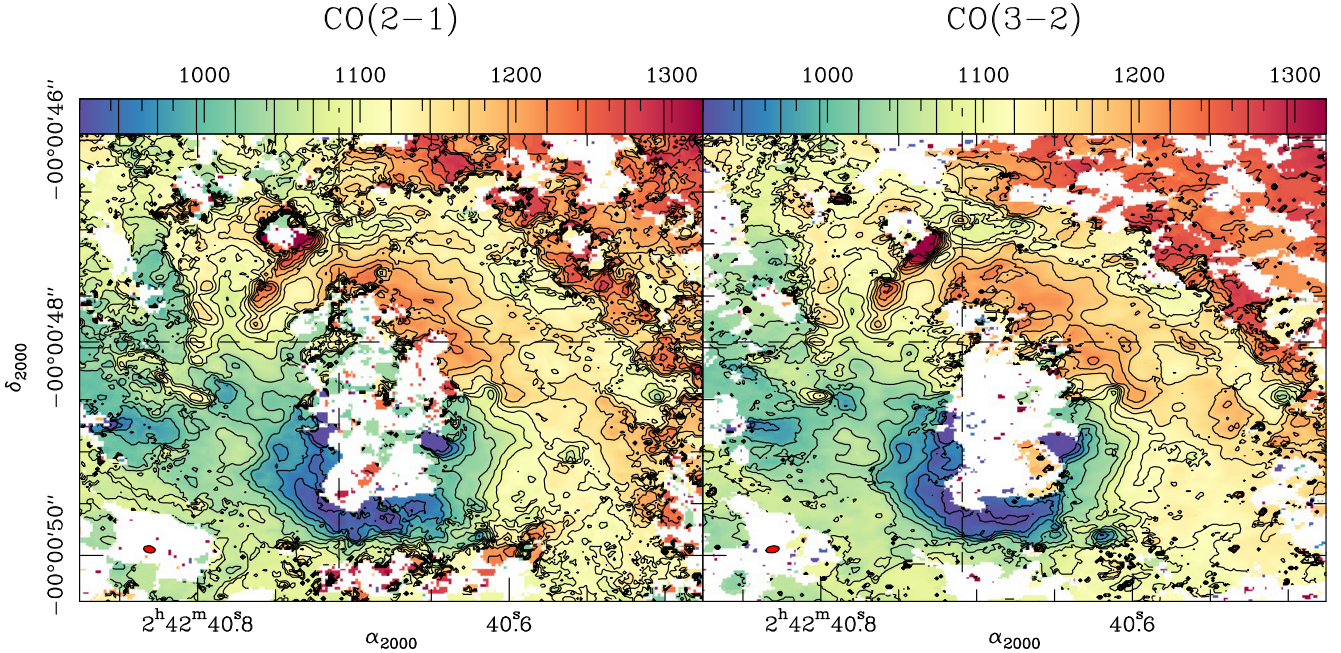


Fig. 6. Mean-velocity fields derived for the CO(2–1) (*left panel*) and CO(3–2) (*right panel*) lines in the CN of NGC 1068, as obtained from the MSR data set. IsovLOCITY contours and color scale span the range $[-200 + v_{\text{sys}}, 200 + v_{\text{sys}}]$ km s $^{-1}$, where $v_{\text{sys}}^{\text{LSR}} = 1120$ km s $^{-1}$ in steps of 25 km s $^{-1}$. Symbols and markers as in Fig. 3.

orders of magnitude: $n(\text{H}_2) \subset 10^3\text{--}10^7$ cm $^{-3}$. The location of the brightest HCO $^+$ emission in Fig. 5, namely the molecular torus and the E-knot, is a signpost of the location of the densest molecular gas: $n(\text{H}_2) \simeq$ a few 10^5 –a few 10^6 cm $^{-3}$, according to the analysis of the different line ratios studied by Viti et al. (2014) at the common $\simeq 35$ pc spatial resolution achieved in the maps of García-Burillo et al. (2014).

4.4. Kinematics of the CN: mean-velocities

Figure 6 shows the mean-velocity fields derived from the CO(2–1) and CO(3–2) lines in the CN of NGC 1068. To maximize the reliability of the maps, isovelocities have been obtained by integrating the emission with a threshold of 4σ in the two lines.

The apparent kinematic major axis of the CN at small radii is roughly oriented along the north–south direction ($\text{PA} \simeq 360^\circ$). However, the orientation of the major axis changes at the outer edge of the CN towards $\text{PA} \simeq 290^\circ$, that is, it tends to align with the large-scale disk of the galaxy, defined by $\text{PA} = 286^\circ \pm 5^\circ$ and $i = 40^\circ \pm 3^\circ$, where the southwest (northeast) side of the disk corresponds to the near (far) side (Bland-Hawthorn et al. 1997). García-Burillo et al. (2014) used the software package kinemetry (Krajnović et al. 2006) to account for a similar yet less extreme tilt of the major axis identified in previous ALMA observations of NGC 1068⁵. García-Burillo et al. (2014) concluded that the distortions of the mean-velocity field of molecular gas in the CN could be reproduced by the inclusion of an outflowing radial component (see also Krips et al. 2011). In the following section we use the package kinemetry in an attempt to improve the fit of the mean-velocity field distortions derived from the new higher-resolution ALMA data presented in this work.

⁵ Differences with respect to the magnitude of the distortions of the velocity field reported here can be attributed to the comparatively lower spatial resolution of the observations used by García-Burillo et al. (2014).

4.5. Modeling the mean-velocity field with kinemetry: a coplanar outflow?

The observed mean-velocity field of a galaxy disk, $v_{\text{mean}}(r, \psi)$, expressed as a function of the radius (r) and the phase angle (ψ , measured from the receding side of the line of nodes), can be divided into a number of elliptical ring profiles with a geometry defined by the position angle and inclination (PA , i). We can decompose $v_{\text{mean}}(r, \psi)$ as a Fourier series with harmonic coefficients $c_j(r)$ and $s_j(r)$, where

$$v_{\text{mean}}(r, \psi) = c_0 + \sum_{j=1}^n [c_j(r) \cos(j\psi) + s_j(r) \sin(j\psi)]. \quad (1)$$

While c_1 accounts for the contribution from circular rotation, the other terms of the series contain the contributions from non-circular motions, v_{nonc} , which by construction has an axisymmetric dependence (Schoenmakers et al. 1997; Schoenmakers 1999). In particular, if we expand the series out to $n = 3$:

$$v_{\text{nonc}}(r) = \sqrt{s_1^2(r) + s_2^2(r) + c_2^2(r) + s_3^2(r) + c_3^2(r)}. \quad (2)$$

We used the software package kinemetry developed by Krajnović et al. (2006) to fit the CO(2–1) mean-velocity field of the CN of Fig. 6 purposely using a minimum number of free parameters. In particular, we first assumed that the dynamical center coincides with the AGN position derived in Sect. 3. Secondly, we adopt the solution found by kinemetry for the basic parameters of the large-scale $r \simeq 1.5$ kpc disk covered by the first ALMA observations of García-Burillo et al. (2014), defined by $\text{PA} = 289 \pm 5^\circ$ and $i = 41 \pm 2^\circ$, and apply it to the relevant radii of the CN. These parameters were obtained to fit the mean-velocity field derived from the previous lower-resolution CO(3–2) ALMA map of the galaxy (see, for a detailed discussion, García-Burillo et al. 2014). This approach implicitly assumes that the molecular gas kinematics in the CN can be modeled by coplanar orbits in a thin disk⁶. From this first iteration

⁶ More realistic 3D scenarios are explored in Sect. 7.

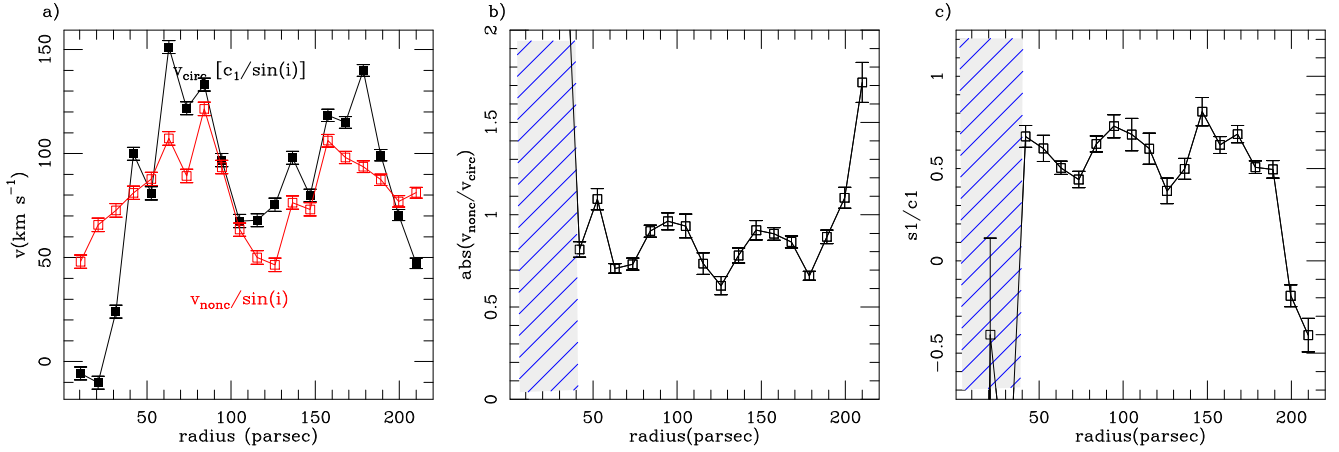


Fig. 7. *Left panel:* radial profile of the $c_1/\sin(i)$ ratio, which represents the best fit obtained by kinemetry for the deprojected axisymmetric circular component of the velocity field (v_{circ} ; black curve and filled symbols). We also plot the radial profile of the deprojected noncircular motions ($v_{\text{nonc}}/\sin(i)$) derived from the Fourier decomposition until third order (red curve and open symbols). *Middle panel:* variation of the absolute value of $v_{\text{nonc}}/v_{\text{circ}}$ ratio as function of radius (black curve and open symbols). *Right panel:* variation of the s_1/c_1 ratio as function of radius. The s_1 coefficient represents the best fit of the (projected) axisymmetric radial component of the velocity field (black curve and open symbols). The hatched gray-filled rectangles in panels (b) and (c) identify the region where the solution found by kinemetry is judged less reliable.

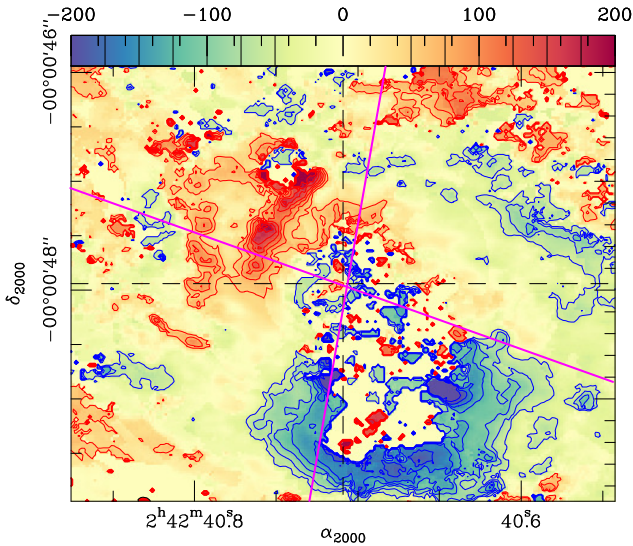


Fig. 8. Residual mean-velocity field of the CNM obtained after subtraction of the best-fit rotation component from the CO(2–1) MSR data, as described in Sect. 4.5. The color scale spans the range $[-200, 200] \text{ km s}^{-1}$ relative to $v_{\text{sys}}^{\text{LSR}} = 1120 \text{ km s}^{-1}$. Blue (red) contours go from -200 ($+50$) to -50 ($+200$) km s^{-1} in steps of 25 km s^{-1} relative to v_{sys} . The magenta lines identify the region occupied by the AGN wind bicone.

we obtained the best fit for the systemic velocity: $v_{\text{sys}}(\text{LSR}) = 1120 \pm 3 \text{ km s}^{-1} = v_{\text{sys}}(\text{HEL}) = 1131 \pm 3 \text{ km s}^{-1}$; this is compatible within the errors with the values reported in the literature inferred using different diagnostics (e.g., Greenhill & Gwinn 1997; García-Burillo et al. 2014). We then subtract v_{sys} from v_{mean} and re-derive the Fourier decomposition of Eq. (1) for a set of 20 radii sampling the CNM from $r = 0''.15$ ($\approx 10 \text{ pc}$) to $r = 3''$ ($\approx 210 \text{ pc}$).

Figure 7a represents the radial profiles of the deprojected circular and noncircular components of the CO(2–1) velocity field obtained in the fit ($v_{\text{circ}} = c_1/\sin(i)$ and $v_{\text{nonc}}/\sin(i)$, respectively). The fit fails to converge to a physically sound solution for v_{circ} at small radii $r < 40 \text{ pc}$, where kinemetry finds anomalous retrograde rotation and/or very high values of the $v_{\text{nonc}}/v_{\text{circ}}$ ratio.

This reflects the random pattern of the observed v_{mean} at these small radii (Fig. 6). As we shall argue in Sects. 4.6 and 6, v_{mean} gives an incomplete representation of the complex kinematics of molecular gas in this region, which is characterized by different velocity components around v_{sys} . Outside $r \approx 40 \text{ pc}$, the value of $v_{\text{nonc}}/v_{\text{circ}}$ stays within the range ~ 0.6 – 1 over a sizable fraction of the CNM ($40 \text{ pc} < r < 190 \text{ pc}$; Fig. 7b). As shown in Fig. 7c, the main contribution to v_{nonc} comes from the s_1 term. In particular, the sign (>0) and normalized strength of s_1 ($s_1/c_1 \approx 0.4$ – 0.8) indicate significant outflow radial motions in the CNM, which reach deprojected values, evaluated by the $s_1/\sin(i)$ term, of up to $\approx 85 \text{ km s}^{-1}$. This result is compatible with the average value reported by García-Burillo et al. (2014) for the CNM, obtained using a much coarser radial sampling and a significantly lower spatial resolution. Furthermore, at the outer edge of the CNM ($r \approx 190$ – 210 pc), strong noncircular motions ($v_{\text{nonc}}/v_{\text{circ}} > 1$) are also required to fit the complexity of the observed velocity field, which partly reflects the bar-driven gas inflow ($s_1/c_1 \approx -0.4$). The gas inflow due to the bar extends farther out in the disk up to $r \approx 1.5 \text{ kpc}$, as discussed by García-Burillo et al. (2014).

Figure 8 shows the residual mean-velocity field obtained after subtraction of the rotation component derived in the analysis above⁷. The residual velocity field of the CNM shows the largest departures from rotation (locally up to $\pm 200 \text{ km s}^{-1}$) for the molecular gas located in the region being swept by the AGN wind bicone. The signs of the residuals, mostly redshifted (blueshifted) on the northern (southern) side of the CNM across the AGN wind trail, indicate that the kinematics of the gas are shaped by outward radial motions, as captured by the axisymmetric fit of kinemetry. In conclusion, these results confirm that the imprint of the outflow on the mean-velocity field of the molecular gas can be accounted for to first order by a scenario where the gas is being pushed by the AGN wind inside the disk creating a radial expansion of the CNM with velocities that are on average $\approx 85 \text{ km s}^{-1}$ from $r \approx 50 \text{ pc}$ out to $r \approx 200 \text{ pc}$, with maximum deprojected values that can reach $\approx 200 \text{ km s}^{-1}$ locally. As expected, the residual velocity field of

⁷ For the inner 40-pc region where the kinemetry solution is judged doubtful we adopt the solution found by ^{3D}Barolo instead, as discussed in Sect. 7.

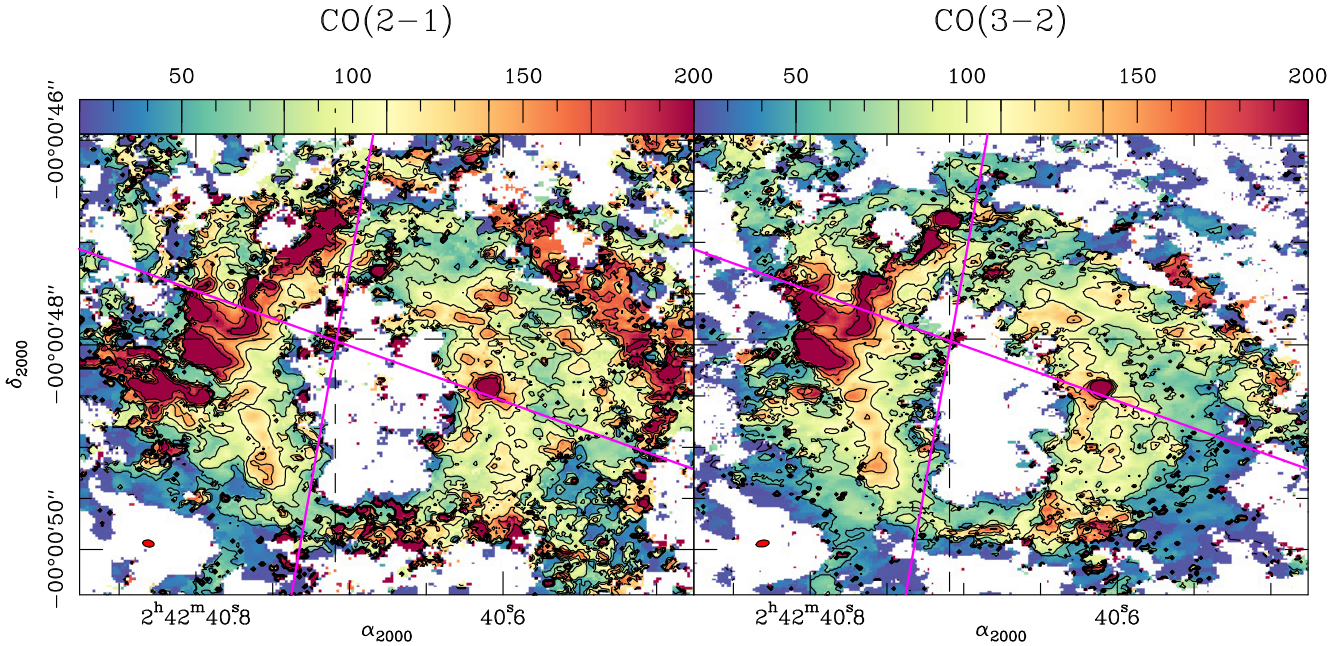


Fig. 9. Velocity-width maps in units of FWHM derived for the CO(2–1) (*left panel*) and CO(3–2) (*right panel*) lines in the CNB of NGC 1068, as obtained from the MSR data set. Contours and color scale span the range [20, 200] km s^{−1} in steps of 30 km s^{−1}. Symbols and markers as in Figs. 3 and 4.

the CNB shown in Fig. 8 exhibits significantly larger departures from circular rotation compared to the lower-resolution CO map of García-Burillo et al. (2014), as displayed in their Fig. 15.

The mass of gas in the outflow was calculated from the CO(2–1) data cube after subtraction of the projected rotation curve derived by kinemetry, by integrating the emission of the line outside a velocity interval $\langle v_{\text{res}} \rangle = [v_{\text{sys}} - 50, v_{\text{sys}} + 50]$ km s^{−1} that encompasses by construction most of the expected virial range attributable to turbulence. We determine that $\approx 55\%$ of the total CO(2–1) flux in the CNB stems from the outflow component, which implies that around half of the mass of the CNB participates in the outflow. A similar percentage ($\approx 50\%$) was derived by García-Burillo et al. (2014).

4.6. Kinematics of the CNB: line-widths

Figure 9 shows the line width maps (FWHM) of the CNB derived for the 2–1 and 3–2 lines using a 4σ -clipping. The picture drawn from both lines is similar: line widths lie in the range ≤ 25 – 50 km s^{−1} only at the outer edge of the CNB, while they increase up to significantly higher values ≥ 100 km s^{−1} at the smaller radii of the inner edge of the CNB, coinciding with the region associated with the working surface of the AGN wind. Line widths can reach very high values (≈ 200 – 250 km s^{−1}) at a fairly large number of positions located on the northern and southern extremes of the CNB, that is, in the way of the jet and AGN wind trajectories. The extreme broadening of the spectra identified in these regions cannot be easily explained by the beam smearing of velocity gradients produced by a combination of rotation and noncircular motions in a coplanar geometry, considering firstly the high spatial resolution of the observations (≈ 2 – 7 pc) and secondly the moderate inclination of the galaxy disk ($i = 41^\circ \pm 2^\circ$; García-Burillo et al. 2014).

Figure 10 shows the CO 2–1 and 3–2 spectra obtained at a representative offset where we have identified extreme line broadening ($[\Delta\alpha, \Delta\delta] = [+0'15, +0'94]$, where offsets are measured relative to the AGN; see Sect. 2). At this position, the

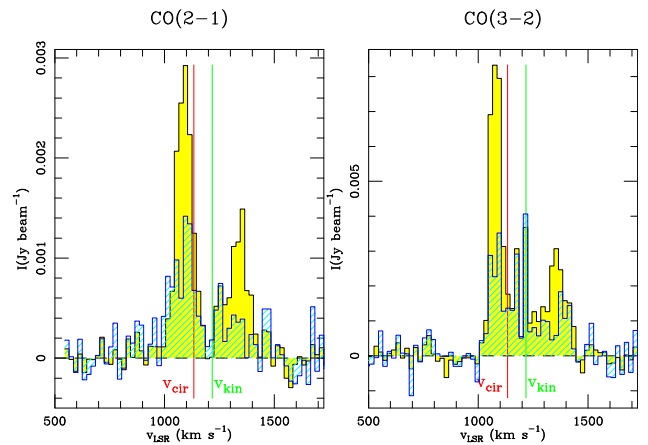


Fig. 10. Spectra extracted at $[\Delta\alpha, \Delta\delta] = [+0'15, +0'94]$ from the MSR data sets for the $J = 2-1$ line of CO (*left panel*) and the $J = 3-2$ line of CO (*right panel*) in yellow-filled histograms; these spectra were extracted using a common aperture of ≈ 6 – 7 pc. We also show in blue-hatched histograms the corresponding spectra obtained from the HSR data sets using a common aperture of ≈ 2 – 3 pc. The green line highlights the radial velocity predicted by kinemetry, which accounts for the contribution of a co-planar outflowing component (v_{kin}). We also indicate by the red line the radial velocity due to circular motions predicted by the kinemetry best-fit model (v_{cir}).

CO profiles show line splitting into two velocity components that are shifted by ≥ 250 km s^{−1} relative to each other. As illustrated by Fig. 10, this velocity span is mostly independent of the range of aperture sizes used to extract the spectra, which coincide with the spatial resolutions of the observations, namely ≈ 2 – 7 pc. This is an indication that the main contributor to the widening of the spectra must necessarily come from the projection of gas motions perpendicular to the plane of the galaxy.

As argued in Sect. 4.4 and 4.5, the coplanar outflow scenario is a first-order explanation for the overall redshift of the

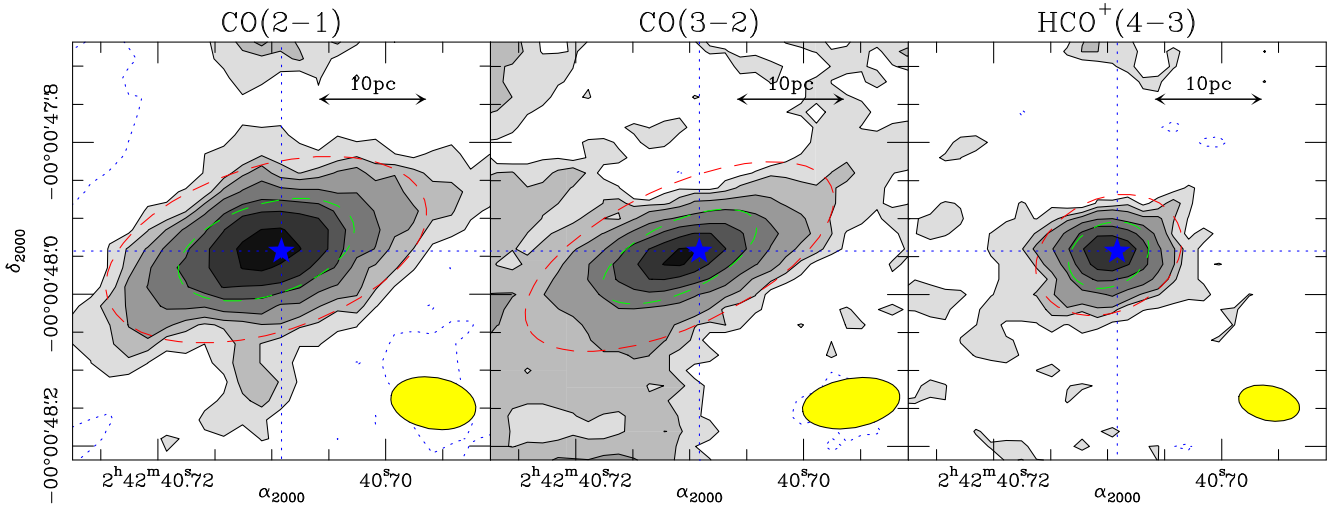


Fig. 11. *Left panel:* CO(2–1) map of the central $r \leq 0''.28$ (≈ 20 pc) region around the central engine of NGC 1068 obtained using the MSR data set, as defined in Table 1. The image shows the molecular torus or disk and its connections. The map is shown in gray-filled contour levels: -2.5σ (dashed), 2.5σ , 5σ , 7σ , 10σ , 15σ , 20σ , and 30σ , where $1\sigma = 13 \text{ mJy km s}^{-1} \text{ beam}^{-1}$. *Middle panel:* same as left panel but showing the CO(3–2) map. Contour spacing is -2.5σ (dashed), 2.5σ , 5σ , 10σ , 20σ , 35σ , 50σ , and 65σ , where $1\sigma = 27 \text{ mJy km s}^{-1} \text{ beam}^{-1}$. *Right panel:* same as left panel but showing the $\text{HCO}^+(4-3)$ map. Contour spacing is -2.5σ (dashed), 2.5σ , 5σ , 7σ , 12σ , 20σ , and 30σ , where $1\sigma = 33 \text{ mJy km s}^{-1} \text{ beam}^{-1}$. The dashed green (red) ellipses represent the FWHM sizes (full-sizes at a 3σ -level) of the Gaussian fits to the distribution of intensities of the three transitions imaged in the torus prior to deconvolution, as listed in Table 2. The position of the AGN is identified by the blue star marker. The yellow filled ellipses in the bottom right corners of the panels represent the beam sizes of ALMA.

line emission at the northern region of the CND: Fig. 10 shows that the mean-velocity predicted by the best-fit model found by kinemetry (v_{kin}) is shifted by $\approx +100 \text{ km s}^{-1}$ relative to the radial velocity attributable to circular motions (v_{cir}). A similar blueshift of CO lines relative to the predicted motions due to circular rotation at the southern region CND is also explained. However, the observed line splitting and the implied extreme broadening of the spectra illustrated by Fig. 10 strongly suggest that the molecular gas in the CND has also been forced to leave the plane of the galaxy and has therefore adopted a 3D shell-like geometry. We defer to Sects. 6 and 7 for a more detailed discussion of the kinematics of the large-scale outflow and its relation to the dynamics of the molecular torus and its immediate surroundings.

5. Molecular line emission: the torus

5.1. Morphology, size, and orientation

Figure 11 shows a zoom on the inner $r \leq 20$ pc region of the CO and HCO^+ maps around the position of the AGN. The maps were obtained using the MSR data set, as defined in Table 1. We also show in Fig. 12 the maps obtained using the HSR data set (see Table 1).

The images shown in Figs. 11 and 12 prove the existence of a spatially resolved molecular disk or torus that extends over a significantly large range of spatial scales ≈ 10 – 30 pc around the central engine. This result adds supporting evidence for the existence of a spatially resolved molecular disk or torus in NGC 1068, which has been claimed based on previous high-resolution ALMA images of the galaxy obtained in a different set of molecular lines and dust continuum emission: CO(6–5) and dust emission (García-Burillo et al. 2016; Gallimore et al. 2016); HCN(3–2) and $\text{HCO}^+(3-2)$ (Imanishi et al. 2016, 2018; Impellizzeri et al. 2019).

Table 2 lists the size, position, and orientation of the molecular disks identified in Fig. 11, derived using elliptical Gaussians

to fit the images in the plane of the sky⁸. We also list the sizes and orientations derived after deconvolution by the corresponding beams at each frequency.

The physical parameters listed in Table 2 differ notably depending on the line transition used to image the torus, a result that brings into light the many faces of the molecular torus in NGC 1068. As a common pattern, the torus is shifted overall ≈ 0.7 – 2 pc east relative to the AGN. However, the off-centering is a factor of ≈ 2 – 3 larger in the CO lines compared to that derived in $\text{HCO}^+(4-3)$. Furthermore, there is a clear trend showing comparatively larger sizes for the torus (D_{major}) imaged in the lower-density tracers. In particular, the deconvolved FWHM-sizes of the torus go from $\approx 15 \pm 0.3$ pc in CO(2–1) to $\approx 13 \pm 0.3$ pc in CO(3–2), and down to $\approx 6 \pm 0.3$ pc in $\text{HCO}^+(4-3)$. The equivalent full sizes of the tori, defined as the sizes of the disks measured at a $\approx 3\sigma$ intensity level of the Gaussian used in the fit, range from $\approx 28 \pm 0.6$ pc in CO(2–1), to $\approx 26 \pm 0.6$ pc in CO(3–2), and $\approx 11 \pm 0.6$ pc in $\text{HCO}^+(4-3)$.

The orientations of the molecular tori, measured anticlockwise from north, are found within the range $\text{PA} \subset [112^\circ - 138^\circ] \pm 5^\circ$. This range encompasses, within the errors, the values previously reported for the CO(6–5) and dust continuum tori ($\text{PA}_{\text{CO}(6-5)} = 112^\circ \pm 20^\circ$; $\text{PA}_{\text{dust}} = 143^\circ \pm 23^\circ$; García-Burillo et al. 2016; Gallimore et al. 2016), as well as for the maser disk ($\text{PA}_{\text{maser}} = 140^\circ \pm 5^\circ$; Greenhill et al. 1996; Gallimore et al. 2001).

The orientation of the molecular torus, $\text{PA} = 113^\circ$, derived from the average of the values listed in Table 2, is roughly perpendicular to the orientation of the jet and the ionized wind axes ($\text{PA} \approx 10$ – $30^\circ \pm 5^\circ$). Furthermore, the molecular torus is closely aligned with the ≈ 1 – 1.5 pc scale disk imaged in radio continuum by Gallimore et al. (2004). The described geometry adds supporting evidence that this is the orientation of the accretion disk in NGC 1068. In this context it is noteworthy that a recent high-resolution radio continuum imaging of four low-luminosity

⁸ We opted to use the images obtained from the MSR data set to derive the physical parameters of the torus so as to take advantage of the higher sensitivity of these data.

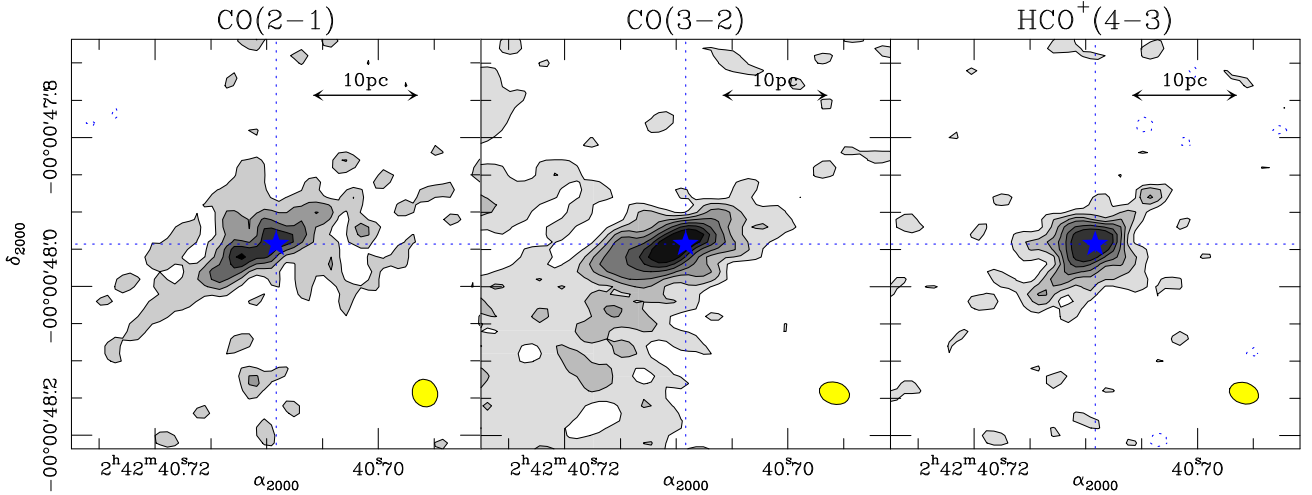


Fig. 12. Same as Fig. 11 but showing the maps obtained using the HSR data set, as defined in Table 1. The CO(2–1) contours are: -3σ (dashed), 3σ , 5σ , 7σ , 9σ , and 11σ , where $1\sigma = 22 \text{ mJy km s}^{-1} \text{ beam}^{-1}$. The CO(3–2) contours are -3σ (dashed), 3σ , 5σ , 7σ , 9σ , 12σ , 15σ , and 18σ , where $1\sigma = 35 \text{ mJy km s}^{-1} \text{ beam}^{-1}$. The HCO⁺(4–3) are -3σ (dashed), 3σ , 5σ , 7σ , 9σ , 12σ and 15σ , where $1\sigma = 34 \text{ mJy km s}^{-1} \text{ beam}^{-1}$.

Table 2. AGN position and fitted torus parameters.

Tracer	α_{2000} [^h ^m ^s]	δ_{2000} [[°] ['] ^{''}]	Offset-AGN [['] , [']] = [pc, pc]	FWHM-Size [['] × [']] = pc × pc]	PA [[°]]
Continuum at 229.7 GHz	02 ^h :42 ^m :40.709 ^s	−00°00′47.94″	–	–	–
Continuum at 344.5 GHz	02 ^h :42 ^m :40.709 ^s	−00°00′47.94″	–	–	–
CO(2–1)	02 ^h :42 ^m :40.710 ^s	−00°00′47.94″	[+0.02″, +0.00″] = [+1.4 pc, +0.1 pc]	0.24″ × 0.12″ = (16.8 ± 0.3) pc × (8.5 ± 0.2) pc	107 ± 5°
CO(2–1)-deconvolved	–	–	–	0.22″ × 0.09″ = (15.4 ± 0.3) pc × (6.3 ± 0.2) pc	112 ± 5°
CO(3–2)	02 ^h :42 ^m :40.711 ^s	−00°00′47.93″	[+0.03″, −0.01″] = [+2.0 pc, −0.5 pc]	0.22″ × 0.09″ = (15.4 ± 0.3) pc × (6.3 ± 0.2) pc	115 ± 5°
CO(3–2)-deconvolved	–	–	–	0.19″ × 0.06″ = (13.3 ± 0.3) pc × (4.2 ± 0.2) pc	119 ± 5°
HCO ⁺ (4–3)	02 ^h :42 ^m :40.710 ^s	−00°00′47.93″	[+0.01″, −0.01″] = [+0.7 pc, −0.5 pc]	0.11″ × 0.08″ = (7.7 ± 0.3) pc × (5.6 ± 0.2) pc	115 ± 5°
HCO ⁺ (4–3)-deconvolved	–	–	–	0.09″ × 0.05″ = (6.3 ± 0.3) pc × (3.5 ± 0.2) pc	138 ± 5°

Notes. Columns (2) and (3) list the AGN position in absolute coordinates derived from the continuum observations at 229.7 GHz and 344.5 GHz. We also list the parameters of the molecular tori derived from the elliptical Gaussian fits of the images obtained in the different lines: center (Cols. (2) and (3)), offset relative to the AGN position (Col. (4)), FWHM-sizes (Col. (5)), and orientation (PA; Col. (6)). We also list the sizes and orientation of the molecular tori after deconvolution by the beams listed in Table 1.

AGNs published by Kamali et al. (2019) has found that the orientations of the radio jets are misaligned with the normal to the known maser disks in these sources by less than 30°.

We measured aspect ratios for the tori within the range $D_{\text{major}}/D_{\text{minor}} \approx 2-3$. The implied lower limit to the inclination of the disks is $i \geq 60-70^\circ$. This indicates that molecular gas is settling around the central engine of NGC 1068 on the observed spatial scales $\approx 10-30 \text{ pc}$ on a highly inclined disk, which is significantly tilted relative to the large-scale disk of the galaxy ($i \approx 41^\circ \pm 2^\circ$; Bland-Hawthorn et al. 1997; García-Burillo et al. 2014). The high inclination of the molecular torus of NGC 1068 is expected given the Type 2 classification for this Seyfert. Recent ALMA observations of a sample of nine nearby Seyferts published by Combes et al. (2019) and Alonso-Herrero et al. (2018, 2019), have confirmed that NGC 1068 is not an exception: the molecular tori identified in the targets observed by ALMA are generally not aligned with the main disks of the AGN hosts, but their measured orientation tends to be in agreement with their optical Type 1–2 classification. Most remarkably, this decoupling is seen to be taking place on spatial scales $\geq 10-30 \text{ pc}$, similar to those identified in NGC 1068.

5.2. Masses and column densities

We derived the mass of the molecular torus by integrating the CO(2–1) line emission inside the area defined by the full size of

the best-fit Gaussian disk derived in Sect. 5.1 ($\approx 1.43 \text{ Jy km s}^{-1}$). Based on Eq. (3) of Bolatto et al. (2013), we estimated the molecular gas mass of the 2–1 torus to be $M_{\text{gas}}^{\text{torus}} \approx 2.9 \times 10^5 M_\odot$, including the mass of helium. In our estimate we assumed a 2–1/1–0 brightness temperature ratio ≈ 2.5 , as measured by Viti et al. (2014) at the AGN knot, and a galactic CO-to-H₂ conversion factor ($X_{\text{CO}} = 2 \times 10^{20} \text{ mol cm}^{-2} (\text{K km s}^{-1})^{-1}$). Similarly, the torus mass derived using the CO(3–2) flux integrated inside the region delimited by the red ellipse of the middle panel of Fig. 11 ($\approx 3.54 \text{ Jy km s}^{-1}$) is $M_{\text{gas}}^{\text{torus}} \approx 2.8 \times 10^5 M_\odot$, assuming a 3–2/1–0 brightness temperature ratio ≈ 2.9 at the AGN knot (Viti et al. 2014). Overall, the 3–2 and 2–1 line-based estimates for $M_{\text{gas}}^{\text{torus}}$ are both a factor of approximately three higher than the value obtained by García-Burillo et al. (2016) from the dust continuum emission measured at 694 GHz. This is not unexpected in view of the comparatively small size measured by García-Burillo et al. (2016) for the dusty torus/disk (diameter $\approx 7 \text{ pc}$).

The H₂ column densities measured towards the position of the AGN are $N(\text{H}_2) = (1.1-3.2) \times 10^{23} \text{ mol cm}^{-2}$ and $N(\text{H}_2) = (1.5-4.4) \times 10^{23} \text{ mol cm}^{-2}$ from the 2–1 and 3–2 intensities, respectively, measured at the corresponding apertures. In either case, the range of column densities encompasses the values derived from the moderate ($\approx 6-7 \text{ pc}$)- and the high ($\approx 2-3 \text{ pc}$)-spatial-resolution data sets. As expected, the higher column densities are obtained at the highest spatial resolution due to the

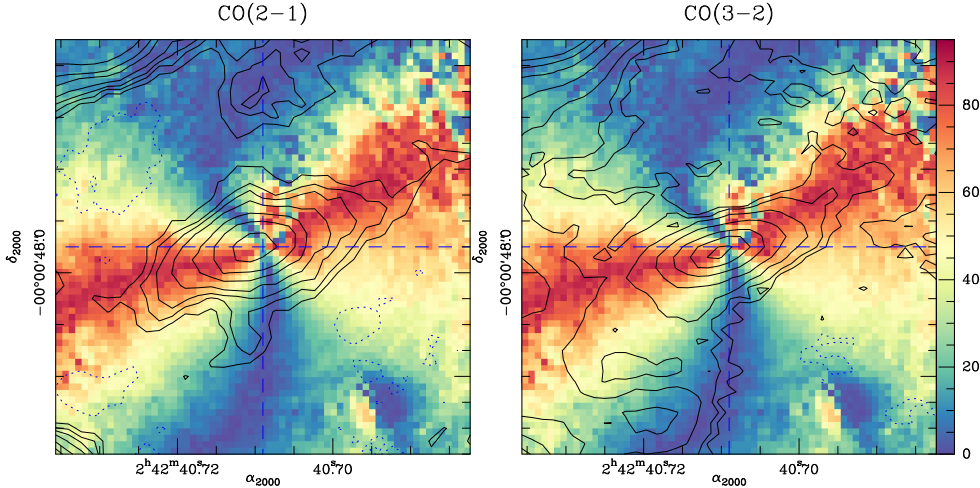


Fig. 13. *Left panel:* we overlay the CO(2–1) contours of Fig. 11 on the difference between the polarization angle map and a purely centro-symmetric pattern derived from the *H*-band map of Gratadour et al. (2015) (in color scale in units of degrees) in the central $r \leq 0.4$ (≈ 30 pc) region around the AGN of NGC 1068. *Right panel:* same as left panel but showing the comparison between the CO(3–2) contours and the angle map.

lower beam dilution of the obscuring material. These values are still a factor of between two and three below the Compton-thick limit ($N(\text{H}_2) \geq 10^{24} \text{ mol cm}^{-2}$) required to explain the nature of the Type 2 nucleus of NGC 1068. This mismatch may be an indication that X-ray absorption by clouds which lie in the dust-free inner region of the torus would be responsible for most of the obscuration (see, e.g., discussion in Elitzur 2008). However, within the uncertainties associated to the values of X_{CO} in a harsh AGN environment (of up to about an order of magnitude; see, e.g., Wada et al. 2018), the molecular torus detected by ALMA could nevertheless contribute significantly to the properties of obscuration of the central engine of NGC 1068 on the spatial scales of ≈ 2 –3 pc. In this context it is noteworthy that the recent NuSTAR observations of NGC 1068, published by Marinucci et al. (2016), found evidence of a $\sim 40\%$ decrease of the absorbing column density from $N(\text{H}_2) \sim 5 \times 10^{24} \text{ mol cm}^{-2}$ to $\sim 3.3 \times 10^{24} \text{ mol cm}^{-2}$ on a timescale of 2 years (December 2012–February 2015). The change of column densities required to explain the X-ray variability of the AGN in NGC 1068 could be associated with the small-scale structure of the molecular torus imaged by ALMA.

The range of $N(\text{H}_2)$ reported above for the 2–1 line of CO at the AGN locus translates into a range of $A_v \approx 120$ –350, derived using the ratio $N(\text{H}_2)/A_v = 0.9 \times 10^{21} \text{ mol cm}^{-2} \text{ mag}^{-1}$ of Bohlin et al. (1978). This range of A_v is compatible within the errors with the value inferred by Grosset et al. (2018) from the 20 mag extinction in the *Ks* band that these authors used to explain their NIR polarization data, which would imply $A_v \approx 180$. Furthermore, our estimate is only a factor of two higher than the value used by Rouan et al. (2019) to explain the measured radial profile in the *Ks* band.

5.3. Previous evidence of a molecular torus

The use of different transitions, which purposely span a wide range of physical conditions of molecular gas ($n(\text{H}_2) \in 10^3$ – 10^7 cm^{-3}), is instrumental in helping to reveal the density radial stratification of the gas in the torus. As expected for the contribution of a comparatively cooler gas component, the sizes reported for the molecular torus traced by the low-J CO lines are more than an order of magnitude greater compared with the sizes of the NIR and MIR sources of the hot

dust (Jaffe et al. 2004; Weigelt et al. 2004; Raban et al. 2009; Burtscher et al. 2013; López-Gonzaga et al. 2014)

The parameters of the HCO^+ torus listed in Table 2 are similar within the errors to those derived by García-Burillo et al. (2016), Gallimore et al. (2016), and Imanishi et al. (2018) for the molecular torus imaged in the CO(6–5), $\text{HCO}^+(3–2)$, and HCN(3–2) lines. Such an agreement is expected among these transitions as they probe a similar range of high densities for molecular gas ($n(\text{H}_2) \in 10^5$ – 10^7 cm^{-3}). In contrast, the lower densities to which the 2–1 and 3–2 transitions are sensitive ($n(\text{H}_2) \in 10^3$ – 10^4 cm^{-3}) seem to trace preferentially the outer region of the molecular torus of NGC 1068.

Previous evidence supporting the existence of a dusty disk that extends well beyond the canonical parsec-scale in NGC 1068 was discussed by Gratadour et al. (2015), based on NIR polarimetric imaging data. In particular, Gratadour et al. (2015) found that the inferred linear polarization vectors in the CNB change their orientation from a centro-symmetric pattern, associated with the hourglass structure shown in Fig. 4, to an orientation perpendicular to the bicone axis, which is oriented along $\text{PA} \approx 30^\circ$. These observations show the existence of an extended patch of linear polarization arising from a spatially resolved elongated nuclear disk of dust of ≈ 50 –60 pc in diameter and oriented along $\text{PA} \approx 120^\circ$. The change of orientation of the polarization vectors is interpreted by Gratadour et al. (2015) as the result of a double scattering of the radiation from the central engine by a dusty disk: photons in the ionization cone are scattered a first time on electrons or on dust grains towards the outskirts of the torus where they suffer a second scattering towards the observer (see, e.g., Murakawa 2010, for a general description of a similar phenomenology expected in the dusty disks around young stellar objects). Photons scattered towards the inner regions of the torus would not be able to escape because of extinction. This would explain why polarization traces preferentially the outer and less dense regions of the torus.

Figure 13 shows the overlay of the CO maps on the image showing the difference between the polarization angle derived from the *H*-band map of Gratadour et al. (2015) and a purely centro-symmetric pattern. The angle-difference map alone cannot be used as a direct tracer of the dust column densities in the disk. However, Fig. 13 shows a tantalizing agreement between the maximum extent and overall orientation of the putative dusty

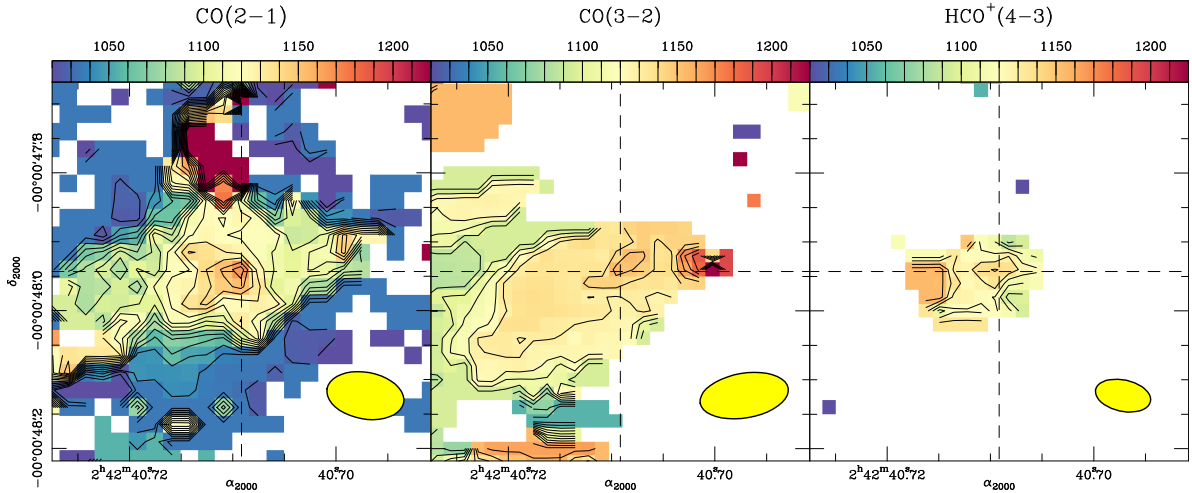


Fig. 14. Mean-velocity fields derived from the CO(2–1) (left panel), CO(3–2) (middle panel) and HCO⁺(4–3) (right panel) lines in the central $r \leq 0''.28$ (≈ 20 pc) region around the central engine of NGC 1068. Isovocity contours and color scale span the range $[-100, 100]$ km s⁻¹ relative to $v_{\text{sys}}^{\text{LSR}} = 1120$ km s⁻¹ in steps of 10 km s⁻¹. The yellow filled ellipses in the bottom right corners of the panels represent the beam sizes of ALMA.

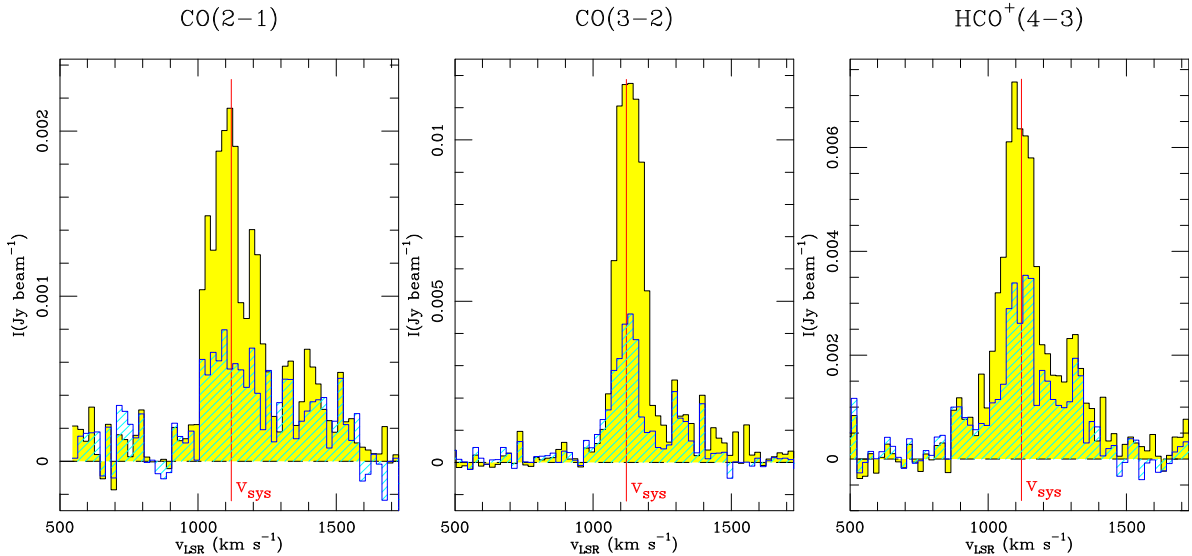


Fig. 15. Emission spectra extracted at the position of the AGN from the MSR data set for the $J = 2-1$ line of CO (left panel), the $J = 3-2$ line of CO (middle panel), and the $J = 4-3$ line of HCO⁺ (right panel) using a common aperture of $\approx 6-7$ pc-size (yellow-filled histograms). We also show in blue-hatched histograms the corresponding spectra obtained from the HSR data set using a common aperture of $\approx 2-3$ pc. The red line highlights the value of $v_{\text{sys}}^{\text{LSR}} = 1120$ km s⁻¹ in each panel.

disk, identified by [Gratadour et al. \(2015\)](#), and those of the CO torus imaged by ALMA.

5.4. Kinematics of the molecular torus

Figure 14 shows the mean-velocity fields derived from the CO(2–1), CO(3–2), and HCO⁺(4–3) lines in the central $r \leq 20$ pc region around the central engine of NGC 1068. By contrast with the CND, the three lines show a surprising lack of a regular pattern and/or a defined velocity gradient in the torus. As argued below, the existence of different velocity components inside the torus, but also in the surrounding region that connects the torus to the host (see Sect. 6), adds to the extreme complexity of the velocity field, most particularly in the case of the CO(2–1) line.

Figure 15 shows the CO and HCO⁺ emission spectra extracted at the position of the AGN using the MSR and HSR

data sets for a common aperture of $\approx 6-7$ pc and $\approx 2-3$ pc, respectively. Most of the emission for the three lines stems from a core component, which corresponds to gas at low velocities: $|v - v_{\text{sys}}| \leq 100$ km s⁻¹. Furthermore we detect significant emission at highly redshifted velocities in the 2–1 and 3–2 lines of CO up to $v - v_{\text{sys}} \approx +450$ km s⁻¹. There is a remarkable absence of any significant blueshifted counterpart of the high-velocity gas in the CO lines. A similar yet less pronounced asymmetry in the emission of high-velocity gas was present in the AGN profile of the CO(6–5) line of [Gallimore et al. \(2016\)](#). By contrast, we detect both redshifted and blueshifted high-velocity gas emission in the HCO⁺(4–3) spectrum of the AGN, although with a maximum velocity span that is smaller compared to that reported for the CO lines: $|v - v_{\text{sys}}| \leq 300-350$ km s⁻¹. As argued below, this high-velocity regime corresponds to the range of velocities displayed by the H₂O megamaser spots identified in the inner

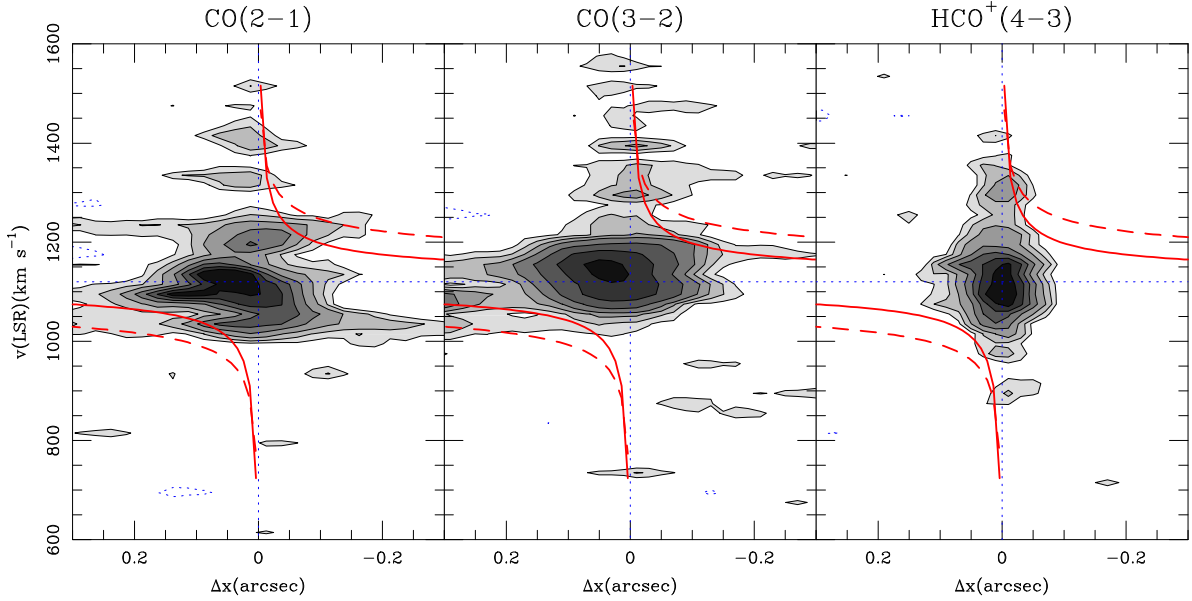


Fig. 16. Position–velocity (p – v) diagrams obtained with the MSR data set along the major axis of the torus of NGC 1068 along $\text{PA} = 113^\circ$ in the $J = 2-1$ line of CO (left panel), the $J = 3-2$ line of CO (middle panel), and the $J = 4-3$ line of HCO^+ (right panel). Gray-scale and contours are -2.5σ , 2.5σ , 4σ , 6σ to 18σ in steps of 3σ , with $1\sigma = 0.11 \text{ mJy beam}^{-1}$ (left panel), -2.5σ , 2.5σ , 5σ , 8σ , 12σ , 20σ , 35σ and 50σ , with $1\sigma = 0.23 \text{ mJy beam}^{-1}$ (middle panel), and -2.5σ , 2.5σ , 4σ , 6σ , 9σ , 12σ , 15σ , and 19σ , with $1\sigma = 0.28 \text{ mJy beam}^{-1}$ (right panel). Offsets along the x axis (Δx) are measured in arc seconds relative to the AGN locus (vertical dashed lines) with positive (negative) values corresponding to the SE (NW) side of the disk. Velocities are measured in LSR scale with $v_{\text{sys}}^{\text{LSR}} = 1120 \text{ km s}^{-1}$ (horizontal dashed lines). The dashed (solid) red curves show the best-fit sub-Keplerian (Keplerian) rotation curve $v_{\text{rot}} \propto r^{-\alpha}$ of Greenhill et al. (1996) with $\alpha = 0.31$ (0.50); the curves were fitted to the H_2O megamaser spots detected along $\text{PA}^{\text{maser}} = 140^\circ \pm 5^\circ$ (Greenhill et al. 1996; Gallimore et al. 2001) and subsequently projected along $\text{PA} = 113^\circ$. The curves account for a black hole mass $M_{\text{BH}} \approx 1 \times 10^7 M_\odot$.

$r \leq 1 \text{ pc}$ region (Greenhill et al. 1996; Gallimore et al. 2001). Unlike the emission at low velocities, the high-velocity gas component is mostly spatially unresolved, as expected if this emission comes from a region localized very close to the inner edge of the torus ($r \leq 1 \text{ pc}$; see Fig. 15).

Assuming a geometry similar to that of the H_2O megamaser spots, where redshifted velocities are located on the west side of the disk, the reported asymmetry of high-velocity CO emission would imply that the gas at the inner edge of the torus is lopsided to the west. However, the global off-centering described in Sect. 5.1 would imply that the overall gas lopsidedness of the torus changes side to the east. As the bulk of the gas in the torus emits at low velocities and at correspondingly large radii, this behavior is suggestive of the presence of a $m = 1$ –spiral in the gas. This asymmetry is expected if the molecular torus reflects the propagation of the Papaloizou-Pringle instability (PPI; Papaloizou & Pringle 1984; Kiuchi et al. 2011; Korobkin et al. 2013; Dönmez 2014; Donmez 2017).

The kinematics of the molecular torus is further illustrated in Figs. 16 and 17, which show the position–velocity (p – v) diagrams obtained along the average fitted major axis of the nuclear disk or torus ($\text{PA} = 113^\circ$: taken from the average of the values listed in Table 2). Figures 16 and 17 show that a significant fraction of the emission spreads over the bottom left and top right quadrants of the diagrams. Furthermore, the observed terminal velocities are fairly compatible with the predicted extrapolation of the sub-Keplerian (Keplerian) rotation curve $v_{\text{rot}} \propto r^{-\alpha}$ of Greenhill et al. (1996) with $\alpha = 0.31$ (0.50). Gallimore et al. (2016) also found evidence for Keplerian rotation which is relatively consistent with the compact maser disk based on their CO(6–5) ALMA data. However, we also find significant emission arising from the upper left and lower right quadrants of the p – v diagrams, especially in the 2–1 line of CO.

Taken at face value, this anomalous component would indicate the existence of gas in apparent counter-rotation. The emission at velocities that are forbidden in the frame of a circular velocity model is also identified in the CO(3–2) line, although this component appears at comparatively lower velocities in the p – v diagram.

The configuration of two apparently counter-rotating disks described above would be nevertheless dynamically unstable: the dissipative nature of the gas would make the two disks collapse on the timescale of the orbital time. The implied fast evolution of the system would make observations of this configuration very unlikely. As we shall argue in Sect. 7, we favor an alternative scenario where the apparent counter-rotation signature in the major axis p – v diagram would rather reflect the presence of noncircular motions in the gas.

6. The torus-CND connections

6.1. The central $r \leq 30 \text{ pc}$ region: the gas streamers

Figure 18 shows a zoomed-in view of the CO(2–1) channel map obtained in the central $0''.8 \times 0''.8 \approx 60 \text{ pc} \times 60 \text{ pc}$ region located around the AGN torus. The maps show that beyond the region identified in Sect. 5.1 as the torus (the blue empty ellipse in Fig. 18) there is significant emission that bridges the torus with the inner edge of the CND ring out to $r = 0.4''$ ($\approx 30 \text{ pc}$). A sizable fraction of this component is detected inside or at the boundaries of the region in the disk that is suspected to be swept by the AGN wind ($\text{PA}_{\text{outflow}} \pm 40^\circ$, with $\text{PA}_{\text{outflow}} \approx 30^\circ$; e.g., Das et al. 2006; Barbosa et al. 2014) and the radio jet ($\text{PA}_{\text{jet}} \approx 10^\circ$; e.g. Gallimore et al. 1996, 2004). The strongest emission of these features arises at velocities that are shifted by up to $\approx \pm 140 \text{ km s}^{-1}$ relative to v_{sys} .

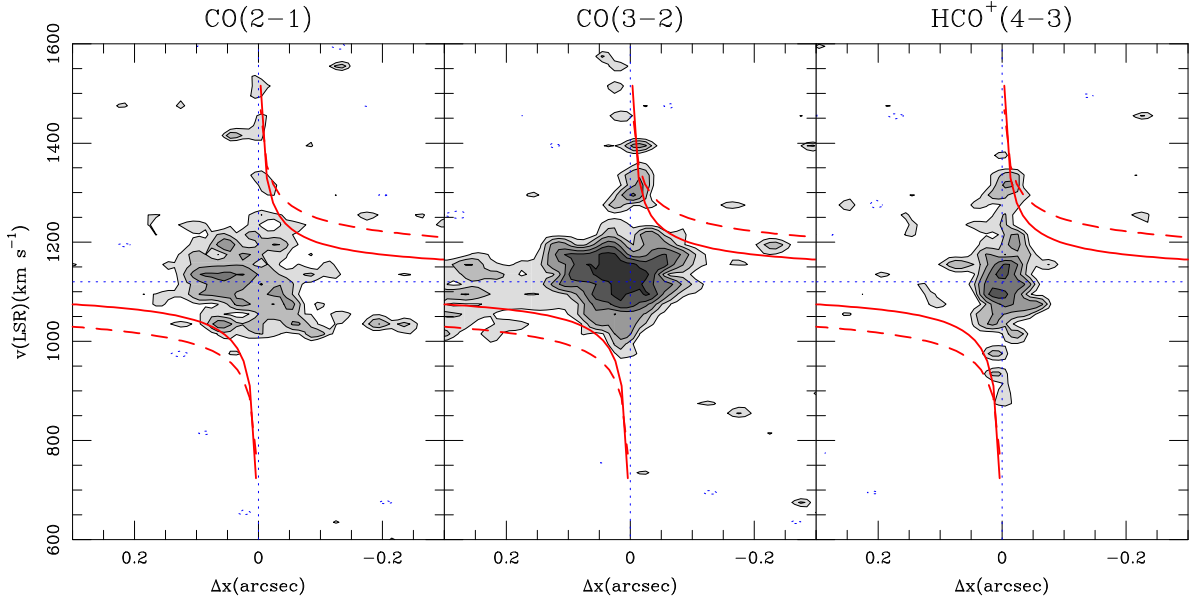


Fig. 17. Same as Fig. 16 but obtained with the HSR data set. Contours are -2.5σ , 2.5σ , 4σ , 6σ , and 9σ , with $1\sigma = 0.14 \text{ mJy beam}^{-1}$ (left panel), -2.5σ , 2.5σ , 4σ , 6σ , 9σ , 12σ , and 16σ , with $1\sigma = 0.23 \text{ mJy beam}^{-1}$ (middle panel), and -2.5σ , 2.5σ , 4σ , 6σ , 9σ , and 12σ , with $1\sigma = 0.28 \text{ mJy beam}^{-1}$ (right panel).

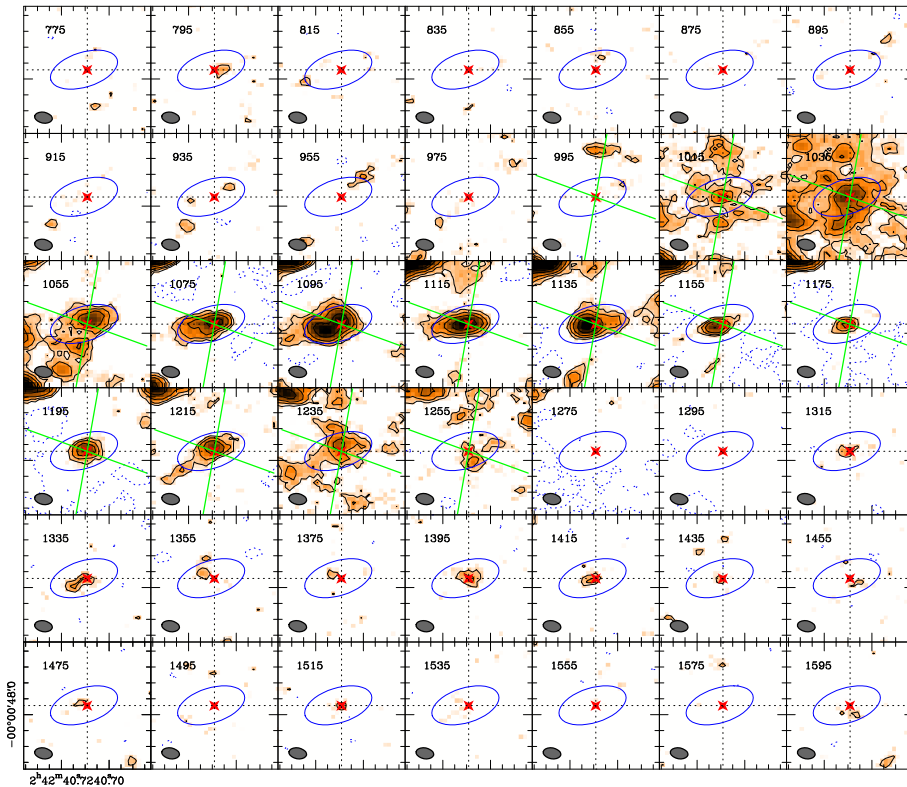


Fig. 18. CO(2-1) channel maps obtained in the central $0''.8 \times 0''.8 \approx 60 \text{ pc} \times 60 \text{ pc}$ region of NGC 1068. Intensity contours are -3σ , 3σ , 5σ , 8σ – 20σ in steps of 6σ , with $1\sigma = 0.11 \text{ mJy beam}^{-1}$. The central velocity in the LSR reference frame is displayed at the upper left corner of each panel. The position of the AGN is identified by the (red) star markers. The (gray) filled ellipses in the lower left corners of each panel represent the beam size of ALMA. The blue empty ellipses highlight the position and full size of the CO(2-1) torus as determined in Sect. 5.1. The green lines in the selected velocity channels, that is, $\approx v_{\text{sys}} \pm 140 \text{ km s}^{-1}$, identify the region occupied by the AGN ionized wind. The tick sizes on the x and y axes are $0''.075$ and $0''.1$, respectively.

Figure 19 shows the CO(2-1) intensities integrated inside the two velocity ranges that encompass the bulk of the emission in the CND-torus connections ($v^{\text{blue}} = [v_{\text{sys}} - 140, v_{\text{sys}}] \text{ km s}^{-1}$ and $v^{\text{red}} = [v_{\text{sys}}, v_{\text{sys}} + 140] \text{ km s}^{-1}$) overlaid on the millimeter continuum image of Fig. 1. Inspection of Fig. 19 confirms that the brightest emission features come from two gas streamers that spring northward and southward respectively from the torus. The emission in the blueshifted channels is stronger than in its redshifted counterpart in the southern streamer, while blueshifted and redshifted emissions of comparable strength are present in the

northern streamer. The uneven balance between blueshifted and redshifted emission explains the appearance of the mean-velocity field of Fig. 14, which shows blueshifted velocities in the southern streamer and a more chaotic pattern in the northern streamer. Further emission with a similar split into redshifted and blueshifted channels is detected in a gas lane connecting the torus with the CND eastward, as well as at a fairly large number of positions located inside the region occupied by the AGN bicone.

The northern and southern gas streamers are located close to the trajectory of the inner radio jet and the AGN wind. Overall,

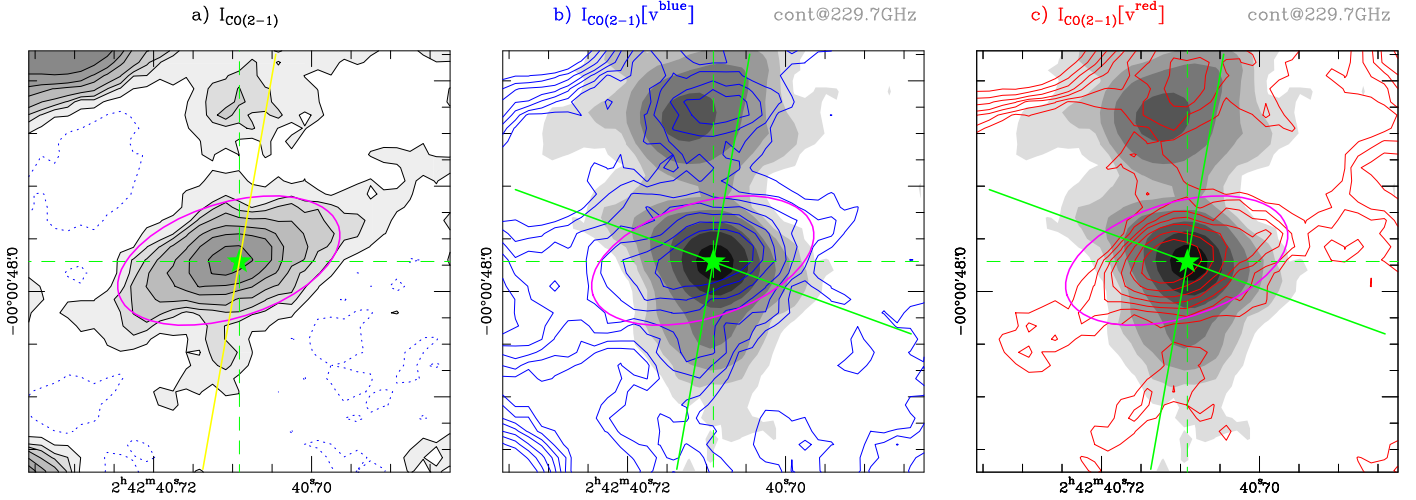


Fig. 19. *Left panel:* central $r \leq 0''.4$ (≈ 30 pc) region of the CO(2–1) map of NGC 1068 showing the torus and its connections with the CNB. The yellow line identifies the orientation of the axis chosen to derive the position–velocity diagram shown in Fig. 20 ($PA = -10^\circ$). *Middle and right panels:* overlay of the CO(2–1) intensity contours integrated inside $v^{\text{blue}} = [v_{\text{sys}} - 140, v_{\text{sys}}]$ km s $^{-1}$ (blue contours in *middle panel*) and $v^{\text{red}} = [v_{\text{sys}}, v_{\text{sys}} + 140]$ km s $^{-1}$ (red contours in *right panel*) on the continuum emission image of Fig. 1 obtained at 229.7 GHz (grayscale). Blue and red contours are 2.5σ , 4σ , 6σ , 8σ , 11σ , 15σ and 20σ where $1\sigma = 5.8$ mJy km s $^{-1}$ beam $^{-1}$. Gray contours are as in Fig. 1 (left panel). The (solid) green lines identify the region occupied by the AGN wind. In all panels, the AGN locus is identified by the green marker and the magenta ellipse highlights the position and full size of the CO(2–1) torus as determined in Sect. 5.1.

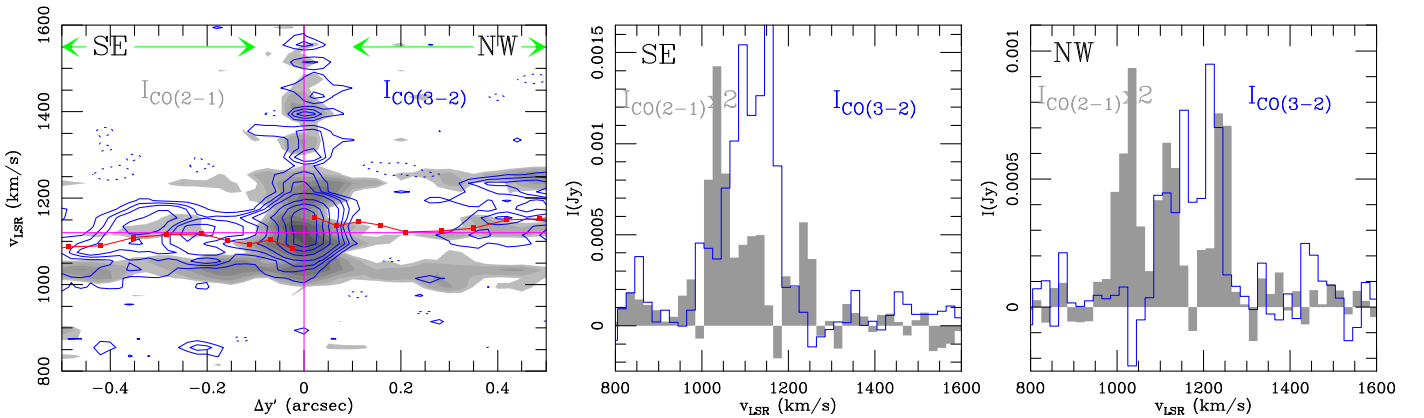


Fig. 20. *Left panel:* CO position–velocity diagrams taken along the gas streamers that connect the torus with the CNB at $PA = -10^\circ$. The CO(2–1) line emission is shown in gray linear scale spanning the range $[2\sigma, 18\sigma]$ with $1\sigma = 0.11$ mJy beam $^{-1}$. The CO(3–2) position–velocity diagram is shown in (blue) contours: -2σ (dashed), 2σ , 4σ , 6σ , 10σ to 40σ in steps of 10σ , with $1\sigma = 0.23$ mJy beam $^{-1}$. The (red) line and square markers show the mean velocities that can be attributed to circular rotation along $PA = -10^\circ$ (according to the fit of Sect. 7). The spatially integrated CO 2–1 and 3–2 line profiles averaged over the SE and NW segments of the connecting gas streamers (as defined in left panel) are shown, respectively, in the *middle panel* and in the *right panel*.

this association suggests that the interaction of the radio jet and the AGN wind with the molecular gas in the disk creates the observed line splitting reported above. In this scenario, besides a radial expansion in the disk (the *coplanar* outflow discussed in Sect. 4.5), the gas may have also been forced to leave the plane of the galaxy and adopt a 3D shell geometry (the *vertical* outflow) in the region connecting the torus with the CNB.

Figure 20 shows the CO(2–1) and CO(3–2) position–velocity diagrams taken along $PA = -10^\circ$ (see the yellow line in the left panel of Fig. 19) as well as the corresponding profiles representative of the NW and SE sections of the strip. The chosen strip goes across the NW and SE boundaries of the AGN bicone and also across the peaks of the connecting structures detected in the 2–1 line. The CO(3–2) profiles along $PA = -10^\circ$ indicate that the emission of this line is spread over a narrower range of velocities compared to the 2–1 line. The 2–1 line profile

shows several components that encompass those of the 3–2 line. In contrast to the CO(3–2) line, the CO(2–1) emission peaks at the most extreme velocities relative to the centroid dictated by circular rotation. Although the gas streamers are detected in both molecular lines, the described nested structure suggests that the lower density gas traced by the CO(2–1) line in the *vertical* outflow has been pushed to higher velocities compared to the denser gas traced by the CO(3–2) line. This may be the scenario resulting from the passage of C- and J-type shocks impacting on a stratified medium, whereby the CO (2–1) transition traces a lower-density gas compared to the CO (3–2) transition: the piston effect from the shock would then lead to the lower-density gas moving at higher velocities than the denser gas. We cannot exclude, however, an additional, evolutionary effect whereby depending on the flow time the transitions peak at different velocities with higher flow times corresponding to higher

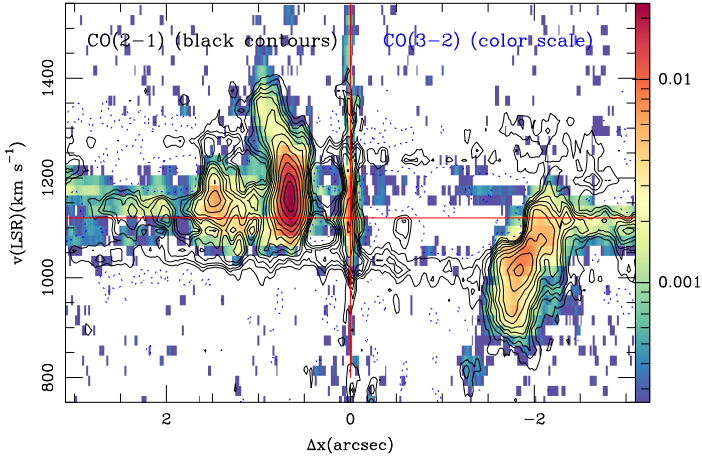


Fig. 21. Comparison of the average position–velocity (p – v) plot obtained for the outflow region out to $r = 3''$ (≈ 210 pc) in CO(2-1): contours are -2.5σ [dashed], 2.5σ , 4σ , 6σ , 9σ , 12σ , 17σ , 25σ , 35σ , 50σ , 70σ to 160σ in steps of 30σ , with $1\sigma = 0.04$ mJy beam $^{-1}$ and CO(3-2). The color logarithmic scale is $[2.5\sigma, 230\sigma]$ with $1\sigma = 0.08$ mJy beam $^{-1}$. The emission has been averaged using data cubes where the rotation curve model of Sect. 4.5 has been subtracted over a range of PA: $[\text{PA}_{\text{outflow}} - 20^\circ, \text{PA}_{\text{outflow}} + 20^\circ]$, where $\text{PA}_{\text{outflow}} = 30^\circ$. Offsets along the x -axis are measured in arc seconds relative to the AGN locus.

velocities, which means a more evolved shock. Time-dependent simulations of oblique C-type shocks in inhomogeneous media by Ashmore et al. (2010) show very complex density structures that vary with time. A similar nested structure is found on the larger scales of the outflow when we compare the CO lines with the ionized gas lines of the AGN wind, as shall be discussed in Sect. 6.2.

6.1.1. Gas streamers seen at other wavelengths: evidence of outflow

As mentioned in Sect. 4.2, there is independent evidence of a significant pile-up of dusty material along the location of the northern and southern molecular streamers detected by ALMA. As illustrated in Fig. 4, both gas streamers are characterized by an increased degree of polarization of their dust-scattered NIR emission. There is observational evidence that the C knot of the northern streamer, located at $0''.3$ (≈ 20 pc) from the AGN core, is spatially co-incident with the interaction of the jet and the molecular ISM. Lopez-Rodriguez et al. (2016) argue that this interaction can explain the increase of the polarization degree of the MIR emission in this region. Furthermore, gas streamers connecting the CND and the torus with an extent and morphology similar to the ones imaged by ALMA were previously detected in the $2.12 \mu\text{m}$ H $_2$ line, a tracer of hot ($T_k \geq 10^3$ K) molecular gas (Müller Sánchez et al. 2009; Barbosa et al. 2014; May & Steiner 2017).

Our interpretation of the kinematics of the gas detected by ALMA in these structures favors the outflow scenario, which was also invoked by Barbosa et al. (2014) and May & Steiner (2017), rather than the inflow scenario first proposed by Müller Sánchez et al. (2009). We note that the inflow interpretation of Müller Sánchez et al. (2009) was based on an analysis of the mean-velocity field of the gas streamers. In our case, and due to the extreme complexity of the CO(2-1) line profiles in the streamers characterized by the existence of different velocity components of comparable strengths, the use of

mean-velocity fields to diagnose the prevalence of inflow or outflow motions in these structures would be misleading. Similarly, the detection of multiple velocity components in the gas streamers traced by the $2.12 \mu\text{m}$ H $_2$ line, put forward after a reanalysis of Müller Sánchez et al. (2009) data (Vives-Arias et al., in prep.), has confirmed the 3D geometry of the molecular outflow.

6.1.2. Molecular gas mass of the streamers

The spatially integrated flux of the torus-CND connections out to $r \approx 30$ pc amounts to 820 mJy km s $^{-1}$. This is equivalent to a molecular gas mass $\approx 1.7 \times 10^5 M_\odot$ ⁹. Overall, the mass of the bridging gas streamers ($M_{\text{streamers}}$) represents a sizable fraction of the mass of the molecular torus ($M_{\text{streamers}} \approx 0.6 \times M_{\text{gas}}^{\text{torus}}$), while it is only a tiny fraction of the mass of the outflowing CND ($M_{\text{out}}^{\text{CND}} \approx 7 \times 10^7 M_\odot \approx 400 \times M_{\text{streamers}}$; García-Burillo et al. 2014, and this work). The remarkably different masses but similar outflow velocities, estimated through modeling in Sect. 7 for the torus-CND connections and the CND, imply that the radial profile of the molecular outflow rate shows a sharp discontinuity beyond $r \approx 50$ pc.

6.2. Connection with the large-scale molecular outflow: the $30 \text{ pc} \leq r \leq 200 \text{ pc}$ region

The splitting of the line emission into two velocity ranges identified in the gas streamers (Sect. 6.1) is similar to the one observed at larger radial distances over the northern and southern extremes of the CND ring. As discussed in Sect. 4.6, these regions of the CND lie along the path of the jet and AGN wind trajectories. Zooming out on the torus and its surroundings allows us to obtain a wider view of the entire outflow region out to $r \leq 200$ pc.

In an attempt to characterize the global kinematics of the outflow we constructed a representative p – v plot of the region, as follows. Firstly, we subtracted the contribution from circular motions derived from the rotation curve model of Sect. 4.5 from the CO data cubes on a pixel-by-pixel basis. Secondly, the re-shuffled version of the data cubes were used to average the emission along a range of strips derived for a set of PA and radial distances, which are designed to cover a large fraction of the outflow region under study, here defined by: $r \in [0, 200]$ pc and $\text{PA} \in [\text{PA}_{\text{outflow}} - 20^\circ, \text{PA}_{\text{outflow}} + 20^\circ]$, that is, covering the outflow section over its $\text{FWHM}_{\text{inner}} \approx 40^\circ$. In this diagram obtained from the rotation-subtracted cube, the line emission outside a range generously defined as $\approx v_{\text{sys}} \pm (25-50)$ km s $^{-1}$, which can be attributed to turbulence, would be produced by the contribution of (unsubtracted) noncircular motions. The latter could result from streaming motions in the plane of the galaxy (*coplanar* radial inflow/outflow or tangential motions) or outside the plane of the galaxy (*vertical* inflow or outflow). As the range of PA values used in the averages are close to $\text{PA}_{\text{minor}} = 19^\circ$, we can foresee that the contribution from the tangential component of streaming motions will be negligible¹⁰. The result is shown in Fig. 21 for the CO(2-1) and CO(3-2) lines.

An inspection of Fig. 21 shows that for a large range of radii a significant fraction of the CO emission stems from gas in noncircular motions. For the brightest features, which correspond to the crossings of the CND ring, the emission is on

⁹ We base our estimates on the same hypotheses used in Sect. 5.2.

¹⁰ The pattern of noncircular motions displayed in Fig. 21 is virtually the same as the one displayed in the minor-axis p – v plot where the projection of the tangential component of streaming motions is zero by construction; this confirms our working hypothesis.

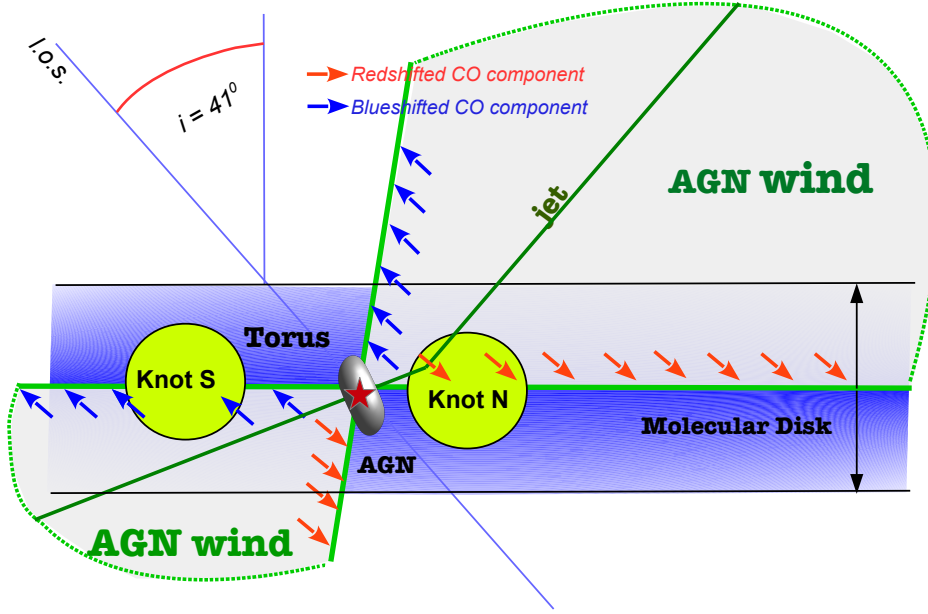


Fig. 22. Revised scheme presenting a cross-cut view of the NLR of NGC 1068 along the projected direction of the ionized outflow axis (PA $\sim 30^\circ$; shown by the green line). The new ALMA data show that CO line emission is split into blueshifted and redshifted components (relative to v_{sys}) along the outflow axis, from the torus out to the edge of the CNL, here represented by Knot N and Knot S. We highlight the extent of the AGN-ionized wind (gray shade) and the assumed geometry defined by the inclination of the galaxy disk, $i = 41^\circ$, the inclination of the outflow axis, $i_{\text{outflow}} \geq 80^\circ$, and the full opening angle of the outflow, $\text{FWHM}_{\text{outer}} \approx 80^\circ$.

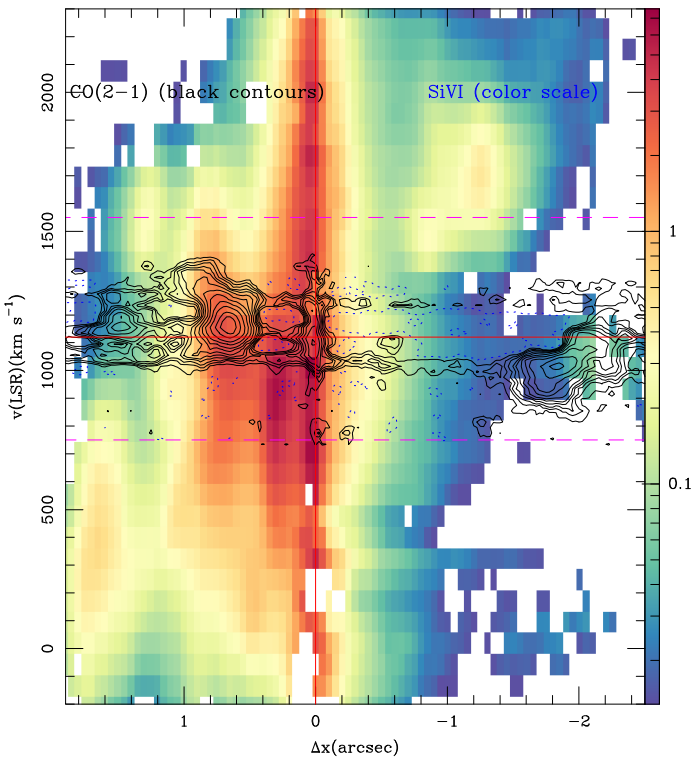


Fig. 23. Same as Fig. 21 but showing the comparison between CO(2–1) (contours) and [SiVI] (color scale spanning the range $[3\sigma, 1700\sigma]$). For visualization purposes the v -scale has been highly compressed relative to that of Fig. 21 (identified by the magenta dashed lines). [SiVI] is a high-ionization line (≈ 205 eV) that traces the emission of high-velocity ionized gas in the outflow up to $v - v_{\text{sys}} \approx \pm 800$ km s $^{-1}$ inside the CNL region.

average redshifted by ≥ 50 km s $^{-1}$ on the northern side of the CNL ($0''.5 < \Delta x < 1''.5$), while it is blueshifted by ≥ 100 km s $^{-1}$ on the southern side ($-0''.5 < \Delta x < -2''.0$). This reflects the sign and the right order of magnitude of the mean-velocity field deviations seen in the CO map of the CNL (Fig. 8), which have been interpreted in terms of a coplanar outflow. However, the emission at the crossings of the CNL ring spreads over a surprisingly large

velocity range (up to ≈ 400 – 500 km s $^{-1}$) around the reported red- and blueshifted values and it shows signs of multiple velocity components. In particular, a smaller but significant fraction of the emission is blueshifted (redshifted) on the northern (southern) side of the CNL. In conclusion, although the coplanar outflow scenario can explain the bulk of the velocity distortions identified in the outflow region, the large linewidths and the reported line-splitting of the CO lines along the outflow axis require the inclusion of a vertical component.

The proposed geometry is illustrated in Fig. 22, which shows a scaled cross-cut view of the NLR of NGC 1068 along the projected direction of the outflow axis (PA $_{\text{outflow}} \approx 30^\circ \pm 5^\circ$). This is a revised version of the scheme proposed in Fig. 17 of García-Burillo et al. (2014), where the authors first accounted for the molecular outflow detected by ALMA in the CNL by including only a coplanar outflowing component. The existence of a vertical molecular outflow would explain the simultaneous detection of blueshifts and redshifts on either side of the AGN locus in the torus–CNL connections and throughout the entire outflow region, as evidenced by the new ALMA data.

Figure 23 compares the p – v diagrams of the outflow obtained in the CO(2–1) line and in the NIR line of [SiVI], a highly ionized species imaged with the SINFONI instrument of the VLT (Ric Davies, priv. comm.). Compared to the cold molecular gas traced by the CO lines, the emission of this tracer of highly ionized gas in the AGN wind is spread throughout the outflow region over a much wider velocity range: up to $v - v_{\text{sys}} \approx \pm 900$ – 1000 km s $^{-1}$ (see Fig. 23). In the scheme depicted by Fig. 22, the ionized wind would encounter less molecular gas, and consequently less resistance against expansion, above (below) the midplane of the galaxy on the northern (southern) side of the disk. This would explain why the sign of the velocity shifts for the strongest emission components of the [SiVI] line is noticeably reversed with respect to CO along the outflow axis.

7. Towards a global model for the outflow

7.1. $3D$ Barolo fit

As argued in Sects. 4–6, the kinematics of molecular gas show strong departures from circular motions in the torus, the

torus–CND connections, and the CND ring. These velocity field distortions are interconnected and reflect the effects of feedback of the AGN on the kinematics of molecular gas on a wide range of spatial scales around the central engine. In the following we attempt to define the main features of a global model that best accounts for the complex kinematics of the molecular gas revealed by ALMA in NGC 1068.

To this aim we used the software ^{3D}Barolo (3D-Based Analysis of Rotating Objects from Line Observations) developed by Di Teodoro & Fraternali (2015). ^{3D}Barolo uses a set of tilted-ring models to fit the emission-line 3D data cubes, which have two spatial dimensions and one spectral dimension. Compared to the kinemetry software used in Sect. 4.5, which fits with tilted-ring models the 2D mean-velocity images, ^{3D}Barolo provides a more complete exploration of the 3D geometrical and kinematic parameter space and also takes into account the effects of beam smearing in finding the best-fit model. Furthermore, when we ran the fit routine we adopted the pixel-based normalization option of the program to generate the modeled maps. This allows us to have a non-axisymmetric model in density, which is excluded from the fit, while the dependence of all the physical parameters found by ^{3D}Barolo is by construction axisymmetric.

Among the set of output parameters that can be obtained for the optimum solution, ^{3D}Barolo provides the profiles of the circular rotation as a function of radius (v_{rot} , equivalent to the $c_1/\sin(i)$ term of kinemetry), and the corresponding profiles of the radial motions (v_{rad} , equivalent to the $s_1/\sin(i)$ term of kinemetry). The list of parameters that can be fitted also includes the velocity dispersion (σ_{gas}), the position angle (PA), the inclination (i), and the Gaussian scale-height for the disk (H). In all the fit runs we used a set of 103 radii sampling the CND from $r = 0''.03$ (≈ 2 pc) to $r = 3''$ (≈ 210 pc), which is the same region used to fit the velocity field with kinemetry in Sect. 4.5.

As a sanity check we first benchmarked the solutions found by ^{3D}Barolo against the output of kinemetry, using a common set of fixed parameters as detailed in Appendix A. Notwithstanding the different approach used by ^{3D}Barolo compared to kinemetry, the v_{rad} and v_{rot} profiles found are in relatively good agreement. In particular, similarly to kinemetry, ^{3D}Barolo finds a v_{rad} -profile indicative of radial outflow motions of ≈ 50 – 100 km s⁻¹ in the plane of the galaxy in a range of radii $r \approx 50$ – 210 pc (the *coplanar* outflow).

In a second ^{3D}Barolo run, which is described in detail in Appendix A, we allowed for a more generous exploration of the parameter space by only fixing the AGN position and v_{sys} and letting free v_{rot} , v_{rad} , v_{disp} , PA, i , and H . As an additional degree of freedom we also introduced a velocity field perpendicular to the plane of the galaxy at each radius, v_{vert} , in an attempt to account for the 3D nature of the outflow suggested by observations, which call for the inclusion of a vertical outflow component. This second run was executed in two steps. We first derived a model by fitting all the parameters simultaneously, while in a second iteration we used values interpolated from the previous iteration for PA and i while the rest of parameters are let free. The radial profiles of the best-fit parameters in this two-step process are shown in Fig. A.2. We summarize below the main features describing the best-fit solution found as follows:

- The overall fit reflects the fact that the angular momentum axis of the gas in the molecular torus is tilted by $\alpha \approx 60^\circ$ relative to the angular momentum of the gas in the large-scale disk: $\alpha = 180^\circ - (\langle i_{\text{disk}} \rangle - \langle i_{\text{torus}} \rangle) \approx 60^\circ$, where $\langle i_{\text{disk}} \rangle \approx 41^\circ$ and $\langle i_{\text{torus}} \rangle \approx -80^\circ$.
- The v_{rad} profile, which accounts for the *coplanar* outflow component, reflects a change of sign, similar to the one described

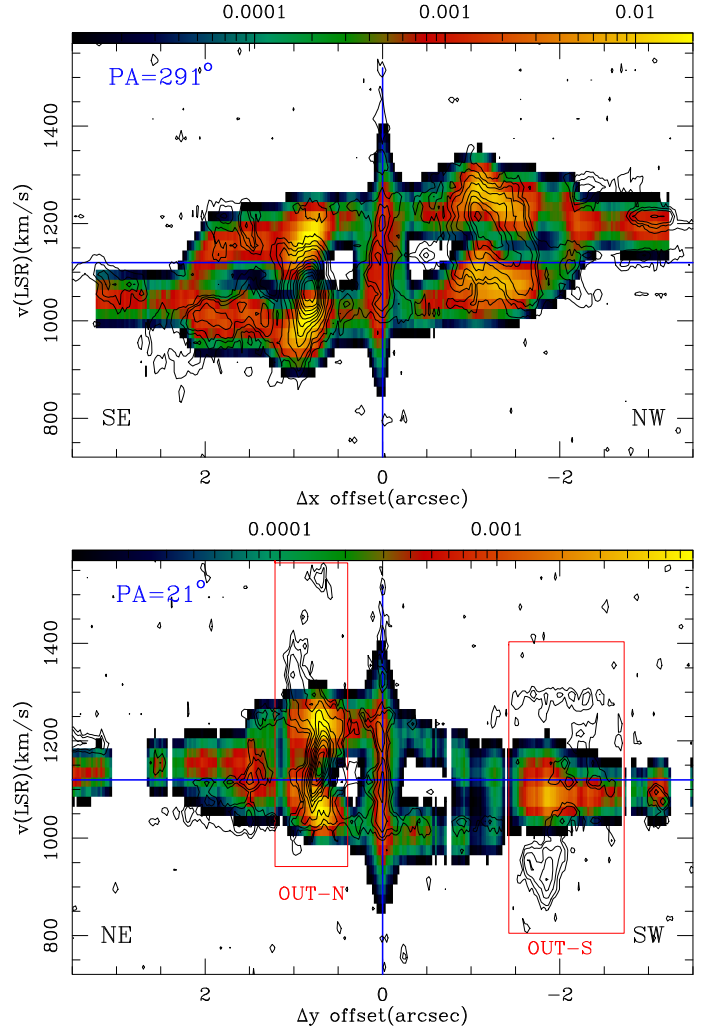


Fig. 24. Overlay of CO(2–1) p - v plots (contours in Jy beam⁻¹-units) along the average major axis (*upper panel*: PA = 291° = 180° + 111°; where we adopt the orientation of the receding side of the major axis) and average minor axis (*lower panel*: PA = 21°) on the corresponding synthetic p - v plots (in logarithmic color scale) generated by ^{3D}Barolo for the best-fit model described in Sect. 7. In our convention Δx -offsets are >0 to the SE and Δy -offsets are >0 to the NE. Contour levels in the *upper panel* are 1.3%, 3%, 5%, and then 10%–90% in steps of 10% of the peak value = 23.1 mJy beam⁻¹. Contour levels in the *lower panel* are 2.7%, 5%, and then 10%–90% in steps of 10% of the peak value = 9.1 mJy beam⁻¹. The regions identified as *OUT-N* and *OUT-S* in the *lower panel* correspond to the crossings of the AGN-wind working surface with the molecular gas at the N and S extremes of the CND.

in Appendix A for v_{rot} , from the torus region, where $v_{\text{rad}} < 0$, to the outer disk, where $v_{\text{rad}} > 0$. In either case the sign and order of magnitude of the v_{rad} solution imply the existence of a significant outward radial component of ≈ 50 – 100 km s⁻¹ throughout the fitted region $r \leq 210$ pc.

– The best-fit favors a value of $v_{\text{vert}} \approx 100$ km s⁻¹ for the vertical outflow component up to at least $r \approx 150$ pc. Combined with the v_{rad} profile, the v_{vert} value implies the existence of 3D outflow velocities ≈ 100 – 140 km s⁻¹ up to $r \approx 150$ pc.

We illustrate the goodness of the best-fit solution in Fig. 24, where we overlay the CO(2–1) emission contours observed by ALMA on the corresponding emission derived by ^{3D}Barolo (color scale) in two p - v plots oriented along PA = 291° = 180° + 111° and PA = 21°. The latter correspond, respectively, to the mean values describing the orientation of the major

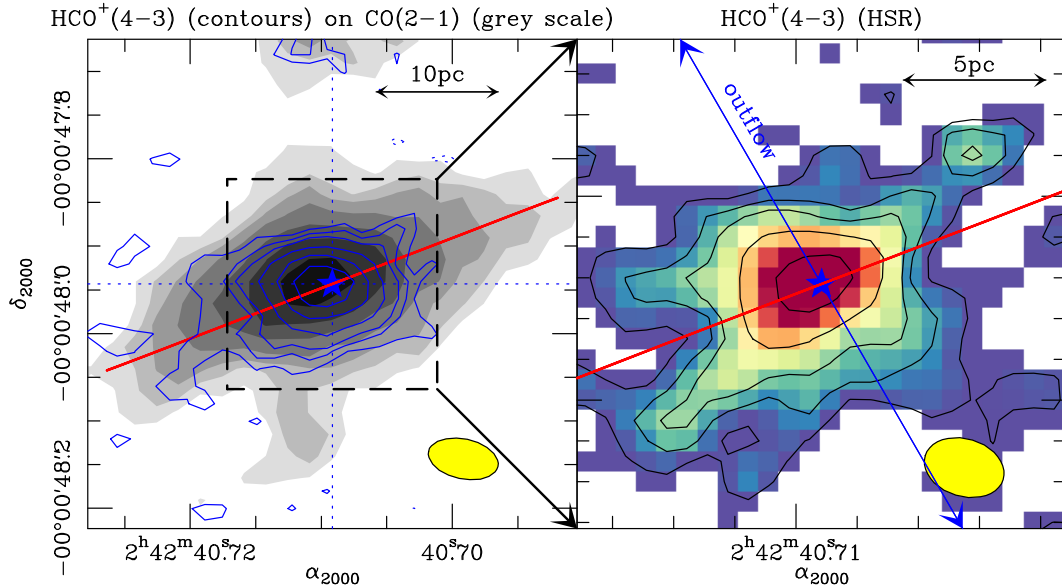


Fig. 25. Overlay of the $\text{HCO}^+(4-3)$ (blue) contours on the $\text{CO}(2-1)$ grayscale image of the molecular torus of NGC 1068 derived from the MSR data set (*left panel*). We show a zoomed view of the inner $r = 0''.12 \approx 8$ pc of the molecular torus obtained from the HSR data set in the *right panel*. Contours and intensity scales are the same as in Figs. 11 and 12. The continuous (blue) line shows the axis of the large-scale ionized outflow. The (red) line shows the orientation of the kinematic major axis of the $\text{CO}(2-1)$ torus derived in Sect. 7.1 by ${}^{\text{3D}}\text{Barolo}$ ($\text{PA} = 291^\circ = 180^\circ + 111^\circ$). The (yellow) filled ellipses show the ALMA beam sizes.

and minor axes, determined inside the region used in the fit ($0 \text{ pc} < r < 210 \text{ pc}$).

Overall, the parameter space occupied by the observations along the major and minor axis p - v plots is reasonably accounted for by the ${}^{\text{3D}}\text{Barolo}$ solution. However, there are a number of noticeable disagreements between the observations and the model. These discrepancies are explained to some extent by the inability of the model to reproduce any substantial deviation from the axisymmetric dependence of the kinematic parameters inherent to ${}^{\text{3D}}\text{Barolo}$. Figure 24 shows that the combination of v_{rad} and v_{vert} in the model is able to significantly spread the emission over blueshifted and redshifted velocities relative to v_{sys} through the inner section of the minor axis up to $\Delta y \approx \pm 1''.5$ ($\pm 100 \text{ pc}$). However, the observations show a larger velocity spread ($\Delta v_{\text{tot}} \approx 400\text{--}500 \text{ km s}^{-1}$) of the emission at $\Delta y \approx +0''.7$ ($+50 \text{ pc}$) and $\Delta y \approx -2''$ (-150 pc). These regions, identified as (*OUT-N*) and (*OUT-S*) in Fig. 24, correspond to the suspected contact points of the working surface of the AGN wind with the molecular gas at the N and S crossings of the CNB, respectively. Observations also show a significant yet comparatively less dramatic spread of the emission ($\Delta v_{\text{tot}} \approx 200 \text{ km s}^{-1}$) along the major axis up to $\Delta x \approx \pm 2''$ ($\pm 150 \text{ pc}$). This observational feature, which is fairly well accounted for by the model, suggests that although the AGN feedback on the kinematics of molecular gas is admittedly more extreme at the regions that lie closer to the outflow axis, the kinematics of the CNB seem to be globally affected.

7.2. An outflowing torus?

The global ${}^{\text{3D}}\text{Barolo}$ fit of the kinematics of the $\text{CO}(2-1)$ emitting gas discussed in Sect. 7.1 favors a 3D-outflow solution that applies to a wide range of spatial scales from the $\approx 400 \text{ pc}$ CNB down to the $\approx 10\text{--}30 \text{ pc}$ molecular torus. This scenario, which explains the distribution and kinematics of the gas in the torus and its connections, suggests that a significant fraction of the gas traced by the 2-1 line of CO inside the torus could be entrained by the AGN-driven wind.

The left panel of Fig. 25 compares the distribution of the $\text{HCO}^+(4-3)$ line emission with that of the $\text{CO}(2-1)$ line in the molecular torus, as derived from the MSR data sets used in this work. This overlay underlines that the densest molecular gas probed by HCO^+ is located in the inner region of the torus, as discussed in Sect. 5. Moreover, already at this spatial resolution the CO and the HCO^+ images show a spatially resolved vertical structure of the torus. In particular, the HCO^+ contours of the MSR image provide tantalizing evidence of a boxy structure, which is fully resolved in the image obtained from the HSR data set shown in the right panel of Fig. 25. This higher-resolution HCO^+ image shows a network of gas protrusions that stem from the central $r \leq 2 \text{ pc}$ region around the AGN. These gas protrusions extend over a wide range of angles measured from the kinematic major axis of the CO torus derived in Sect. 7.1. Taken at face value, these observations would lend support to a dynamical model where a substantial fraction of the dense gas inside the torus is being swept along the edges of an ionized wind bicone that emerges from the accretion disk, giving rise to a molecular and dusty wind or outflow. This outflow would adopt the geometry of a hollow cone, seen in projection as an X-shaped feature. The AGN wind could peel off the inner layers of the torus and push the gas outward. An X-shaped structure that extends on spatial scales similar to the ones reported above has recently been identified in the ALMA 256 GHz continuum image of the torus published by Impellizzeri et al. (2019).

In addition to the direct morphological evidence illustrated by Fig. 25, the kinematics of molecular gas inside the torus, discussed in Sect. 5.4, reveal the existence of strong noncircular motions: a sizable fraction of gas emission arises at velocities that are forbidden in the frame of a circular velocity model, that is, gas in apparent counter-rotation. These noncircular motions are to first order accounted for by the ${}^{\text{3D}}\text{Barolo}$ fit of Sect. 7.1 in terms of a molecular outflow with a significant equatorial component, without directly invoking counter-rotating gas.

In an attempt to further constrain both the geometry and the mass of the molecular gas that may be entrained by the AGN

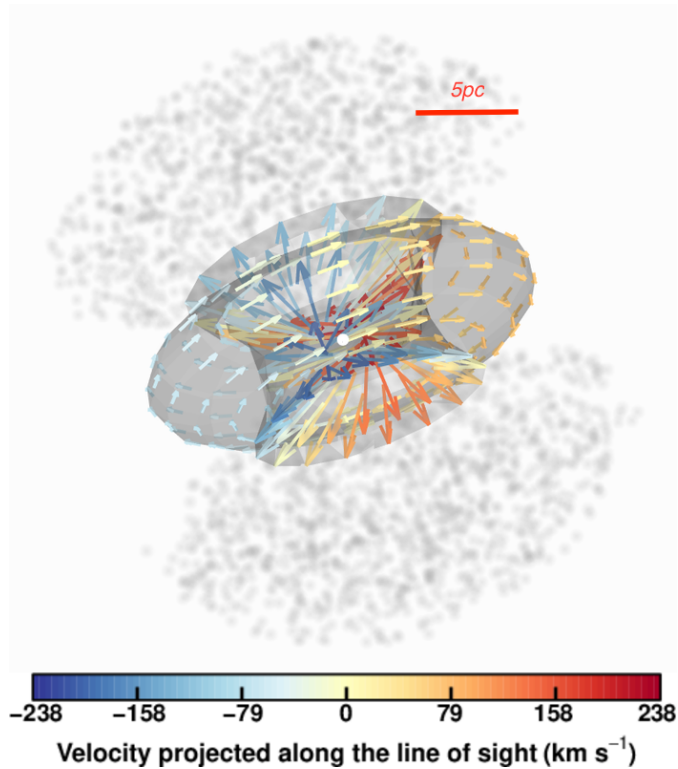


Fig. 26. View of the kinematic model of the molecular torus described in Sect. 7 projected along the line of sight. The arrows represent the velocity field of the gas in the torus (with Keplerian rotation) and over the working surface of the AGN wind on the torus (with outflowing motions). The arrows are color-coded using red, yellow, and blue according to the absolute value and the sign of the radial velocities projected along the line-of-sight measured relative to v_{sys} . The major axis of the modeled torus has the orientation of the observed torus (PA $\approx 113^\circ$). The adopted inclination ($i \approx -70^\circ$) is lower than the average value found by ${}^{\text{3D}}\text{Barolo}$ ($i \approx -80^\circ$) for a better illustration of the different velocity components of the model.

wind through this type of mechanism, we built up a simple 3D morpho-kinematic model of the NGC 1068 torus. In this model the gas is assumed to be in a toroidal ringed disk geometry and to follow circular rotation. A fraction of the gas inside the torus, as determined by the intersection of the AGN wind bicone with the torus, is perturbed by the AGN wind creating a 3D radial outflow superposed to rotation. The latter is determined by the area of the circular section of the torus that intersects with the AGN wind bicone and is therefore a function of the half-opening angle of the wind ($\theta = \text{FWHM}/2$) on the scale of the torus. The parameters assumed for the model are based on the geometry (size, orientation, and aspect ratio) and CO luminosities derived from the observations in Sects. 5.1 and 5.2, as well as on the kinematic parameters provided by the ${}^{\text{3D}}\text{Barolo}$ fit of Sect. 7.1, that is, rotation (v_{rot}) and outflow velocities ($v_{\text{out}} = (v_{\text{rad}}^2 + v_{\text{vert}}^2)^{1/2}$). In particular, we assume a purposely fixed toroidal ringed disk geometry where the gas fills with constant density a volume generated by a disk of $\approx 4\text{--}5$ pc in radius, which revolves about a vertical axis located at a radius of $\approx 5\text{--}6$ pc. The full size of the modeled torus is therefore $\approx 20\text{--}22$ pc. We adopt a PA = 113° and an $i = -80^\circ$. The rotation curve for the gas is taken from the observed maser kinematics. We scale the data cube of the model (in T_{mb} -units) to the observed luminosity of the CO(2–1) line, convolve the gas distribution by a Gaussian beam that has a FWHM of 5 pc to mimic the effect of beam smearing, and regrid the output to the same pixel scale as the observations.

Figure 26 illustrates the geometry and kinematics of the gas in the torus model projected along the line of sight for $\theta = 60^\circ$ and $v_{\text{out}} = 150 \text{ km s}^{-1}$. While we explore different values of the outflow radial velocities for the gas swept by the AGN wind from $v_{\text{out}} = 50$ to 150 km s^{-1} based on the values of v_{rad} and v_{vert} found by ${}^{\text{3D}}\text{Barolo}$, the main free parameter of the model is the amount of mass actually entrained by the outflow, which is a function of θ . This angle is allowed to vary from $\theta = 0^\circ$ (i.e., no outflow) to $\theta = 90^\circ$ (i.e., the outflow affects the bulk of the gas in the torus). To choose among the range of values assumed for θ and v_{out} , we minimize the standard goodness-of-fit parameter $\chi^2 = \sum [D(i, j) - M(i, j)/\sigma]^2$ derived for the major and minor axes of the torus and subsequently normalized those by the number of pixels used in the fit. The sum extends over the common set of pixels of the model and the observations ($M(i, j)$ and $D(i, j)$, respectively) and σ stands for the observed rms derived from the 2–1 line data cube.

Figure 27 shows the p - v plots along the major and minor axes of the torus for the best solution found for $\theta \approx 80^\circ$ and $v_{\text{out}} \approx 100 \text{ km s}^{-1}$, hereafter referred to as the OUT-model. We also show in Fig. 27 the corresponding p - v plots generated by a reference model of the same toroidal disk, hereafter referred to as the CR-model, where we eliminate outflow motions but include counter-rotation of the gas at $r > 1$ pc. A counter-rotating torus scenario, which is the basis of the CR-model explored here, has been previously invoked by Imanishi et al. (2018) and Impellizzeri et al. (2019) to explain the complex kinematics of molecular gas in the torus. Not surprisingly, the goodness-of-fit parameters are admittedly large in either case (≥ 4) due to the number of inherent assumptions in both models, which include the axisymmetry and the smoothness of the gas distribution in the torus. However, the OUT-model qualifies as a more likely scenario compared to the CR-model, based not only on its χ^2 that is lower by a factor $\approx 1.2\text{--}1.3$, but mainly because it better explains the following key observational signatures:

1. The gas emission detected in apparent counter-rotation in the major-axis p - v plot is to a large extent explained by the OUT-model as due to the projection of outflowing motions that are present at the torus AGN-wind working surface encapsulated in the beam, without having to resort to the addition of an unphysical true counter-rotating component.

2. The contribution of the outflow in the OUT-model also easily explains the presence of three distinct velocity components detected along the minor axis p - v plot. The central component around v_{sys} would be explained by gas unaffected by the outflow close to the equatorial plane of the torus, while the $\approx 100 \text{ km s}^{-1}$ redshifted (blueshifted) component would reflect the contribution from the outflowing gas below (above) the equatorial plane captured by the beam. This is not reproduced by the CR-model.

3. Overall, at this spatial resolution the superposition of circular and noncircular motions in the OUT-model significantly widens the spectra to the level required by observations, in contrast to the CR-model.

4. Figure 28 shows that an outflow model predicts that there should be a measurable yet shallow gradient of the mean-velocity centroid along the minor axis: from redshifted velocities S of the AGN to blueshifted velocities N of the AGN. This gradient is not detected in the CO(2–1) data, probably because at this spatial resolution the contribution from gas components located outside the torus in the gas streamers, which are not included in

¹¹ Relative to a reference model without counter-rotation and with no outflow, the OUT-model has a factor ≈ 1.4 lower χ^2 .

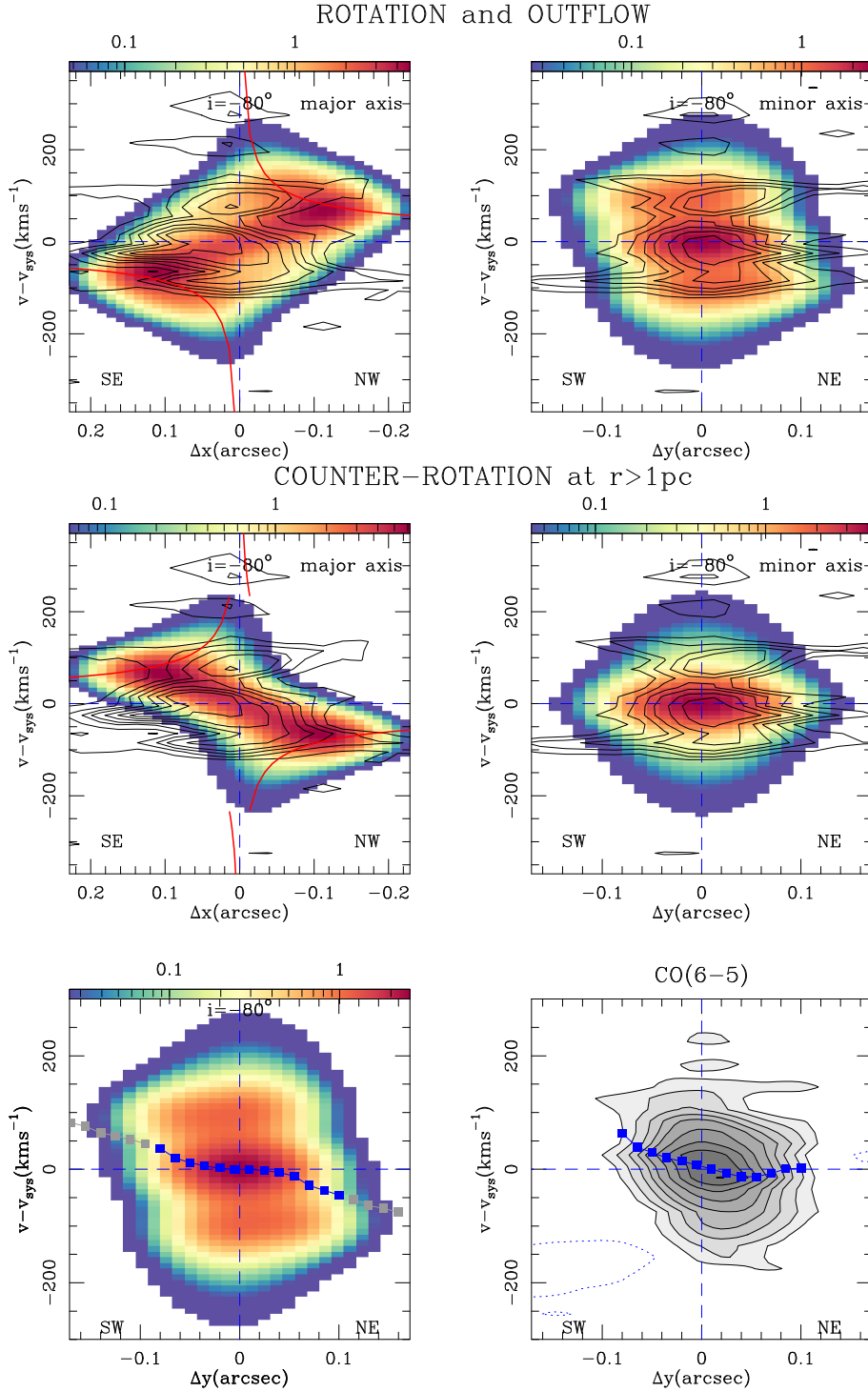


Fig. 27. *Upper panels:* overlay of CO(2–1) p - v plots (in contours) along the major and minor axis of the torus (*upper left* and *upper right panels*, respectively) on the corresponding synthetic p - v plots (in logarithmic color scale in K-units) generated by the best-fit model of the torus described in Sect. 7.2 (OUT-model). The CO(2–1) contour levels are as in Figs. 16 and 20. *Lower panels:* same as upper panels but for the CR-model described in Sect. 7.2.

Fig. 28. Comparison of the minor axis p - v plot predicted by the OUT-model of the torus described in Sect. 7.2 with the corresponding CO(6–5) minor axis p - v plot obtained from the combined data set of García-Burillo et al. (2016) and Gallimore et al. (2016). The square markers highlight in both panels the velocity centroid of the emission as a function of position along the minor axis.

the model, wash out any potential trend inside the beam. However, the gradient is tentatively detected in the CO(6–5) minor axis p - v plot¹², as illustrated in Fig. 28. By construction, the CR-model is unable to reproduce this gradient. The OUT-model easily explains why the velocity shift measured along the minor axis of the CO(6–5) torus, first reported by García-Burillo et al. (2016) and Gallimore et al. (2016), is reversed out at larger radii on the scales of the CND.

¹² Obtained from the combined data set of García-Burillo et al. (2016) and Gallimore et al. (2016).

5. The marked asymmetry shown by the high-velocity emission in the CO(2–1) and CO(3–2) AGN spectra, which is not reproduced by HCO⁺(4–3), could be explained by an outflow model that includes radiative transfer effects in the torus. The different behavior displayed by CO and HCO⁺ may be due to a larger contribution of absorption of the pc-scale central continuum source by the comparatively lower-density gas traced by CO in the outflow. This asymmetry cannot be easily reproduced by a (counter)rotating disk without imposing a strong asymmetry in the gas distribution (see Sect. 5.4).

Numerical simulations have long predicted the existence of dusty winds coming out from AGN tori at highly vari-

able geometries, which depend on the different treatment of radiation pressure driven by photons at different wavelengths (IR, X-ray, and UV), on the assumed degree of anisotropy of the AGN radiation, and on the details of the particular hydrodynamic code used in these simulations (e.g., Wada 2015; Wada et al. 2016; Chan & Krolik 2016, 2017; Namekata & Umemura 2016; Williamson et al. 2019). Furthermore, as recently argued by Giustini & Proga (2019), theoretical analyses predict that radiation-driven accretion disk winds in AGN can have a fairly large equatorial component in Seyfert galaxies that are characterized by Eddington ratios ($\text{Edd}_{\text{ratio}}$) and black hole masses (M_{BH}) similar to those of NGC 1068 ($\text{Edd}_{\text{ratio}} \approx 0.5$, $\log_{10}(M_{\text{BH}}/M_{\odot}) \approx 7.2$; Greenhill et al. 1996). The interaction of this class of AGN winds with the NGC 1068 torus could launch locally a molecular/dusty outflow with a significant equatorial component.

The value of $\theta \approx 80^\circ$ favored by the OUT-model described above implies that this class of wide-angle AGN wind is currently impacting a sizable fraction of the gas in the NGC 1068 torus. Based on the model, we estimate this fraction to be $\approx(0.4-0.6) \times M_{\text{gas}}^{\text{torus}}$. The gas mass experiencing outflowing motions inside the torus is comparable to the molecular gas mass derived in Sect. 6.1 for the streamers, which connect the torus with the CNB. Taken at face value, this coincidence highlights the continuity in the outflow mass radial profile out to $r \approx 30$ pc, an indication that the two components are part of the same outflowing feature. However, the bulk of the mass, momentum, and energy of the molecular outflow of NGC 1068 is contained in the CNB region, where the AGN wind and the radio jet are currently pushing $\approx 7 \times 10^7 M_{\odot}$ of the gas that has been assembled at the ILR ring of the bar at $r \approx 50-200$ pc.

8. Summary and conclusions

We used ALMA to image the emission of molecular gas and dust in the CNB and the torus of NGC 1068 using the CO(2–1), CO(3–2), and HCO⁺(4–3) lines and their underlying continuum emission with a set of spatial resolutions (0.03''–0.09'' \approx 2–6 pc). The use of these transitions, which span a wide range of physical conditions of molecular gas ($n(\text{H}_2) \subset 10^3-10^7 \text{ cm}^{-3}$), is instrumental in revealing the density radial stratification and the complex kinematics of the gas in the torus and its connections to the host.

We detect continuum emission at 229.7 GHz and 344.5 GHz stemming from a highly clumpy ≈ 70 pc-size jet-like structure characterized by synchrotron-like emission. The spectral index of the continuum shows the prevalence of dust emission in the regions of the CNB located far from the radio jet trajectory itself. In contrast, spectral indexes are flat or marginally positive at the location of the AGN core.

The ALMA images resolve the CNB, which displays the shape of an asymmetric ringed disk with a de-projected diameter of ≈ 400 pc and mass of $\approx 1.4 \times 10^8 M_{\odot}$. The CNB shows a marked deficit of molecular gas in its central ≈ 130 pc region, which is to a large extent filled by the emission stemming from the AGN wind. This deficit leaves the imprint of a contrasted ring morphology on the CNB. The inner edge of the ring is associated with the presence of edge-brightened arcs of NIR polarized emission, which are identified with the current working surface of the AGN wind.

The kinematics of the gas in the CNB are shaped by an outflow that is captured by the fit of kinematics. The gas is being pushed by the AGN wind inside the disk creating a radial expansion of the CNB with average velocities $\approx 85 \text{ km s}^{-1}$ from

$r \approx 50$ pc out to $r \approx 200$ pc. Furthermore, the CO emission profiles show extreme line broadening and line splitting into two velocity components, which can be shifted by up to $\approx 250 \text{ km s}^{-1}$ relative to each other, at a number of positions of the CNB that are located in the path of the AGN wind trajectory. This result indicates that the molecular gas in the CNB has been forced to leave the plane of the galaxy and has adopted a 3D outflow geometry. This scenario is confirmed by a global model of the outflow obtained with ^{3D}Barolo.

The new data prove the existence of an elongated molecular disk or torus in NGC 1068 of $3 \times 10^5 M_{\odot}$, which extends over a significantly large range of spatial scales $D \approx 10-30$ pc around the central engine. These observations capture the density radial stratification of the torus: compared to the picture drawn from the HCO⁺(4–3) line, the molecular disk is bigger and more lopsided in the lower-J CO transitions, a result that brings into light the many faces of the molecular torus.

The H₂ column densities measured towards the position of the AGN are up to $N(\text{H}_2) = 3-4 \times 10^{23} \text{ mol cm}^{-2}$. These values are a factor of between approximately two and three below the Compton-thick limit required to explain the nature of the Type 2 nucleus of NGC 1068. Furthermore, the change of column densities required to account for X-ray variability of the AGN could be explained by the small-scale structure of the molecular torus. This is an indication that the molecular torus detected by ALMA may contribute to the obscuration of the central engine of the galaxy on spatial scales of $\approx 2-3$ pc. The torus is connected to the CNB through a network of molecular gas streamers detected in the gas-deficient region. These connecting structures are associated with molecular gas that is being swept along the edges of the bicone structure of the AGN wind detected in ionized gas.

The kinematics of molecular gas show strong departures from circular motions in the torus, the gas streamers, and the CNB ring. These velocity field distortions are interconnected and are part of a 3D outflow that reflects the effects of feedback of the AGN on the kinematics of molecular gas on a wide range of spatial scales around the central engine. In particular, we estimate through modeling that a significant fraction of the gas inside the torus ($\approx 0.4-0.6 \times M_{\text{torus}}^{\text{gas}}$) is outflowing.

NGC 1068 is not the only case of an outflowing torus reported in the literature. The presence of an equatorial outflow has also been proposed to account for the complex kinematics of molecular gas in the torus or disk of the Seyfert 2 galaxy NGC 5643 imaged by ALMA (Alonso-Herrero et al. 2018). These equatorial outflows detected close to the central engines of Seyfert galaxies would reflect the AGN feedback driven by the ionized wind on the molecular reservoir of the torus, playing the role of a self-regulation mechanism.

Although the total accretion timescales of SMBHs likely exceed 10^{7-8} yr (e.g., Marconi et al. 2004), there is both observational and theoretical evidence that AGNs can have much shorter “flickering” timescales ranging from a few years up to $\approx 10^5$ yr (Schawinski et al. 2015; King & Nixon 2015). Assuming that the AGN luminosity of NGC 1068 is $L_{\text{AGN}} \approx 4.2_{-1.1}^{+1.4} \times 10^{44} \text{ erg s}^{-1}$ (García-Burillo et al. 2014), and for a canonical mass-to-luminosity accretion efficiency of $\epsilon \approx 0.1$, we can estimate an accretion rate for its SMBH of $\dot{M} = L_{\text{AGN}}/(\epsilon \times c^2) \approx 0.05-0.1 M_{\odot} \text{ yr}^{-1}$. Although the outflowing gas in the torus is a significant fraction of its total mass ($\approx 0.4-0.6 \times M_{\text{gas}}^{\text{torus}}$), a large gas reservoir ($\approx 1.2-1.8 \times 10^5 M_{\odot}$) close to its equatorial plane remains mostly unaffected by the feedback of the AGN wind. The latter implies that the molecular torus can continue fueling the AGN for at least $\approx 1-4$ Myr, which is a time span $\approx 10-40$ times longer than the expected “flickering” timescale.

We estimate that about half of the molecular gas in the CNB is outflowing ($\dot{M}_{\text{out}}^{\text{CND}} \approx 7 \times 10^7 M_{\odot}$; see also García-Burillo et al. 2014). This molecular outflow at $r \approx 50\text{--}200$ pc is likely launched when the AGN wind and the radio jet impact the gas accumulated at the ILR ring. After accounting for this outflowing component, a large amount of molecular gas in the CNB may still serve as a reservoir for future fueling episodes. However, AGN fueling seems to be currently thwarted on the intermediate scales corresponding to the torus-CNB connections ($15 \text{ pc} \leq r \leq 50 \text{ pc}$). We estimate that the outflow rate measured for the gas streamers at $r_{\text{streamers}} \approx 30$ pc is $\dot{M}_{\text{streamers}} \approx \dot{M}_{\text{streamers}} \times v_{\text{out}}/r_{\text{streamers}} \approx 0.6 M_{\odot} \text{ yr}^{-1}$, which is still a factor ≥ 100 lower than the mass outflow rate measured at the CNB scales.

Forthcoming ALMA observations of NGC 1068 will use a set of molecular tracers similar to those presented in this work but with a beam that is smaller by a factor of approximately six ($0''.013$), corresponding to an unprecedented spatial resolution of ≤ 1 pc. These new ALMA images of the torus will be used to better characterize the noncircular motions inside the torus. In particular, we aim to better resolve and disentangle the outflowing component from rotation and identify and model any inflowing component in the gas velocity field. Furthermore, the future ALMA images of the torus and its surroundings will be combined with planned interferometric observations with the MATISSE instrument at the VLT. The latter will probe the warm dust in the polar outflowing component and the hot dust in the inner walls of the torus with spatial resolutions down to $0''.01$ (0.07 pc) at $10 \mu\text{m}$ and $0''.003$ (0.02 pc) at $3.3 \mu\text{m}$.

Acknowledgements. We thank our referee, Prof. Masatoshi Imanishi, for his detailed referee report. We acknowledge the staff of ALMA in Chile and Edwige Chapillon from the ARC at IRAM-Grenoble in France for their invaluable help during the data reduction process. This paper makes use of the following ALMA data: ADS/JAO.ALMA#2016.1.0232.S and #2011.0.00083.S. ALMA is a partnership of ESO (representing its member states), NSF (USA) and NINS (Japan), together with NRC (Canada) and NSC and ASIAA (Taiwan), in cooperation with the Republic of Chile. The Joint ALMA Observatory is operated by ESO, AUI/NRAO and NAOJ. The National Radio Astronomy Observatory is a facility of the National Science Foundation operated under cooperative agreement by Associated Universities, Inc. We used observations made with the NASA/ESA *Hubble* Space Telescope, and obtained from the *Hubble* Legacy Archive, which is a collaboration between the Space Telescope Science Institute (STScI/NASA), the Space Telescope European Coordinating Facility (ST-ECF/ESA), and the Canadian Astronomy Data center (CADM/NRC/CSA). SGB and AU acknowledge support from the Spanish MINECO and FEDER funding grants AYA2016-76682-C3-2-P, AYA2016-79006-P and ESP2015-68964-P. CRA acknowledges the Ramón y Cajal Program of the Spanish Ministry of Economy and Competitiveness through project RYC-2014-15779 and the Spanish Plan Nacional de Astronomía y Astrofísica under grant AYA2016-76682-C3-2-P. AAH acknowledges support from the Spanish MINECO and FEDER funding grant AYA2015-6346-C2-1-P. AAH, SGB, and AU acknowledge support through grant PGC2018-094671-B-I00 (MCIU/AEI/FEDER,UE). AAH's work was done under project No. MDM-2017-0737 Unidad de Excelencia "María de Maeztu"- Centro de Astrobiología (INTA-CSIC). AF acknowledges support from the Spanish MINECO funding grant AYA2016-75066-C2-2.

References

Alatalo, K., Blitz, L., Young, L. M., et al. 2011, *ApJ*, **735**, 88
Aalto, S., García-Burillo, S., Müller, S., et al. 2012, *A&A*, **537**, A44
Alatalo, K., Nyland, K., Graves, G., et al. 2014, *ApJ*, **780**, 186
Aalto, S., Costagliola, F., Müller, S., et al. 2016, *A&A*, **590**, A73
Alonso-Herrero, A., Ramos Almeida, C., Mason, R., et al. 2011, *ApJ*, **736**, 82
Alonso-Herrero, A., Pereira-Santaella, M., García-Burillo, S., et al. 2018, *ApJ*, **859**, 144
Alonso-Herrero, A., García-Burillo, S., Pereira-Santaella, M., et al. 2019, *A&A*, **628**, A65
Antonucci, R. R. J., & Miller, J. S. 1985, *ApJ*, **297**, 621
Arribas, S., Mediavilla, E., & Garcia-Lorenzo, B. 1996, *ApJ*, **463**, 509

Ashmore, I., van Loo, S., Caselli, P., Falle, S. A. E. G., & Hartquist, T. W. 2010, *A&A*, **511**, A41
Audibert, A., Combes, F., García-Burillo, S., et al. 2019, *A&A*, in press, <https://doi.org/10.1051/0004-6361/201935845>
Barbosa, F. K. B., Storchi-Bergmann, T., McGregor, P., Vale, T. B., & Rogemar Riffel, A. 2014, *MNRAS*, **445**, 2353
Barcos-Muñoz, L., Aalto, S., Thompson, T. A., et al. 2018, *ApJ*, **853**, L28
Bicknell, G. V., Dopita, M. A., Tsvetanov, Z. I., & Sutherland, R. S. 1998, *ApJ*, **495**, 680
Bland-Hawthorn, J., Gallimore, J. F., Tacconi, L. J., et al. 1997, *Ap&SS*, **248**, 9
Blandford, R. D., & Payne, D. G. 1982, *MNRAS*, **199**, 883
Bock, J. J., Neugebauer, G., Matthews, K., et al. 2000, *AJ*, **120**, 2904
Bohlin, R. C., Savage, B. D., & Drake, J. F. 1978, *ApJ*, **224**, 132
Bolatto, A. D., Wolfire, M., & Leroy, A. K. 2013, *ARA&A*, **51**, 207
Bottorff, M., Korista, K. T., Shlosman, I., & Blandford, R. D. 1997, *ApJ*, **479**, 200
Burtscher, L., Meisenheimer, K., Tristram, K. R. W., et al. 2013, *A&A*, **558**, A149
Cecil, G., Dopita, M. A., Groves, B., et al. 2002, *ApJ*, **568**, 627
Chan, C.-H., & Krolik, J. H. 2016, *ApJ*, **825**, 67
Chan, C.-H., & Krolik, J. H. 2017, *ApJ*, **843**, 58
Cicone, C., Maiolino, R., Sturm, E., et al. 2014, *A&A*, **562**, A21
Combes, F., García-Burillo, S., Casasola, V., et al. 2013, *A&A*, **558**, A124
Combes, F., García-Burillo, S., Casasola, V., et al. 2014, *A&A*, **565**, A97
Combes, F., García-Burillo, S., Audibert, A., et al. 2019, *A&A*, **623**, A79
Crenshaw, D. M., & Kraemer, S. B. 2000, *ApJ*, **532**, L101
Das, V., Crenshaw, D. M., Kraemer, S. B., & Deo, R. P. 2006, *AJ*, **132**, 620
Di Teodoro, E. M., & Fraternali, F. 2015, *MNRAS*, **451**, 3021
Dönmez, O. 2014, *MNRAS*, **438**, 846
Donmez, O. 2017, *Mod. Phys. Lett. A*, **32**, 1750108
Elitzur, M. 2008, *New Astron. Rev.*, **52**, 274
Elitzur, M. 2012, *ApJ*, **747**, L33
Elitzur, M., & Shlosman, I. 2006, *ApJ*, **648**, L101
Emmering, R. T., Blandford, R. D., & Shlosman, I. 1992, *ApJ*, **385**, 460
Emsellem, E., Fathi, K., Wozniak, H., et al. 2006, *MNRAS*, **365**, 367
Ferrarese, L., & Ford, H. 2005, *Space Sci. Rev.*, **116**, 523
Feruglio, C., Maiolino, R., Piconcelli, E., et al. 2010, *A&A*, **518**, L155
Galliano, E., Pantin, E., Alloin, D., & Lagage, P. O. 2005, *MNRAS*, **363**, L1
Gallimore, J. F., Baum, S. A., O'Dea, C. P., & Pedlar, A. 1996, *ApJ*, **458**, 136
Gallimore, J. F., Henkel, C., Baum, S. A., et al. 2001, *ApJ*, **556**, 694
Gallimore, J. F., Baum, S. A., & O'Dea, C. P. 2004, *ApJ*, **613**, 794
Gallimore, J. F., Elitzur, M., Maiolino, R., et al. 2016, *ApJ*, **829**, L7
García-Bernete, I., Ramos Almeida, C., Alonso-Herrero, A., et al. 2019, *MNRAS*, **486**, 4917
García-Burillo, S., & Combes, F. 2012, *J. Phys. Conf. Ser.*, **372**, 012050
García-Burillo, S., Combes, F., Schinnerer, E., Boone, F., & Hunt, L. K. 2005, *A&A*, **441**, 1011
García-Burillo, S., Combes, F., Usero, A., et al. 2014, *A&A*, **567**, A125
García-Burillo, S., Combes, F., Usero, A., et al. 2015, *A&A*, **580**, A35
García-Burillo, S., Combes, F., Ramos Almeida, C., et al. 2016, *ApJ*, **823**, L12
Gebhardt, K., Kormendy, J., Ho, L. C., et al. 2000, *ApJ*, **543**, L5
Giustini, M., & Proga, D. 2019, *A&A*, **630**, A94
Granato, G. L., & Danese, L. 1994, *MNRAS*, **268**, 235
Gratadour, D., Rouan, D., Mugnier, L. M., et al. 2006, *A&A*, **446**, 813
Gratadour, D., Rouan, D., Grosset, L., Boccaletti, A., & Clénet, Y. 2015, *A&A*, **581**, L8
Greenhill, L. J., & Gwinn, C. R. 1997, *Ap&SS*, **248**, 261
Greenhill, L. J., Gwinn, C. R., Antonucci, R., & Barvainis, R. 1996, *ApJ*, **472**, L21
Grosset, L., Rouan, D., Gratadour, D., et al. 2018, *A&A*, **612**, A69
Gültekin, K., Richstone, D. O., Gebhardt, K., et al. 2009, *ApJ*, **698**, 198
Hönig, S. F. 2019, *ApJ*, **884**, 171
Hönig, S. F., & Kishimoto, M. 2017, *ApJ*, **838**, L20
Hönig, S. F., Kishimoto, M., Tristram, K. R. W., et al. 2013, *ApJ*, **771**, 87
Ichikawa, K., Packham, C., Ramos Almeida, C., et al. 2015, *ApJ*, **803**, 57
Imanishi, M., Nakanishi, K., & Izumi, T. 2016, *ApJ*, **822**, L10
Imanishi, M., Nakanishi, K., Izumi, T., & Wada, K. 2018, *ApJ*, **853**, L25
Impellizzeri, C. M. V., Gallimore, J. F., Baum, S. A., et al. 2019, *ApJ*, **884**, L28
Izumi, T., Wada, K., Fukushige, R., Hamamura, S., & Kohno, K. 2018, *ApJ*, **867**, 48
Jaffe, W., Meisenheimer, K., Röttgering, H. J. A., et al. 2004, *Nature*, **429**, 47
Kamali, F., Henkel, C., Koyama, S., et al. 2019, *A&A*, **624**, A42
Kartje, J. F., Königl, A., & Elitzur, M. 1999, *ApJ*, **513**, 180
King, A., & Nixon, C. 2015, *MNRAS*, **453**, L46
Kiuchi, K., Shibata, M., Montero, P. J., & Font, J. A. 2011, *Phys. Rev. Lett.*, **106**, 251102
Kormendy, J., & Richstone, D. 1995, *ARA&A*, **33**, 581
Korobkin, O., Abdikamalov, E., Stergioulas, N., et al. 2013, *MNRAS*, **431**, 349

- Krajnović, D., Cappellari, M., de Zeeuw, P. T., & Copin, Y. 2006, *MNRAS*, **366**, 787
- Krips, M., Martín, S., Eckart, A., et al. 2011, *ApJ*, **736**, 37
- Krolik, J. H., & Begelman, M. C. 1988, *ApJ*, **329**, 702
- López-Gonzaga, N., Jaffe, W., Burtscher, L., Tristram, K. R. W., & Meisenheimer, K. 2014, *A&A*, **565**, A71
- López-Gonzaga, N., Burtscher, L., Tristram, K. R. W., Meisenheimer, K., & Schartmann, M. 2016, *A&A*, **591**, A47
- Lopez-Rodriguez, E., Packham, C., Roche, P. F., et al. 2016, *MNRAS*, **458**, 3851
- Macchetto, F., Capetti, A., Sparks, W. B., Axon, D. J., & Boksenberg, A. 1994, *ApJ*, **435**, L15
- Magorrian, J., Tremaine, S., Richstone, D., et al. 1998, *AJ*, **115**, 2285
- Marco, O., & Alloin, D. 2000, *A&A*, **353**, 465
- Marconi, A., & Hunt, L. K. 2003, *ApJ*, **589**, L21
- Marconi, A., Risaliti, G., Gilli, R., et al. 2004, *MNRAS*, **351**, 169
- Marinucci, A., Bianchi, S., Matt, G., et al. 2016, *MNRAS*, **456**, L94
- May, D., & Steiner, J. E. 2017, *MNRAS*, **469**, 994
- Merritt, D., & Ferrarese, L. 2001, *ApJ*, **547**, 140
- Miller, J. S., & Antonucci, R. R. J. 1983, *ApJ*, **271**, L7
- Morganti, R., Frieswijk, W., Oonk, R. J. B., Oosterloo, T., & Tadhunter, C. 2013, *A&A*, **552**, L4
- Morganti, R., Oosterloo, T., Oonk, J. B. R., Frieswijk, W., & Tadhunter, C. 2015, *A&A*, **580**, A1
- Müller Sánchez, F., Davies, R. I., Genzel, R., et al. 2009, *ApJ*, **691**, 749
- Müller-Sánchez, F., Prieto, M. A., Hicks, E. K. S., et al. 2011, *ApJ*, **739**, 69
- Murakawa, K. 2010, *A&A*, **518**, A63
- Namekata, D., & Umemura, M. 2016, *MNRAS*, **460**, 980
- Netzer, H. 2015, *ARA&A*, **53**, 365
- Papaloizou, J. C. B., & Pringle, J. E. 1984, *MNRAS*, **208**, 721
- Pasetto, A., González-Martín, O., Esparza-Arredondo, D., et al. 2019, *ApJ*, **872**, 69
- Pier, E. A., & Krolik, J. H. 1992, *ApJ*, **401**, 99
- Pier, E. A., & Krolik, J. H. 1993, *ApJ*, **418**, 673
- Querejeta, M., Schinnerer, E., García-Burillo, S., et al. 2016, *A&A*, **593**, A118
- Raban, D., Jaffe, W., Röttgering, H., Meisenheimer, K., & Tristram, K. R. W. 2009, *MNRAS*, **394**, 1325
- Ramos Almeida, C., Levenson, N. A., Alonso-Herrero, A., et al. 2011, *ApJ*, **731**, 92
- Ramos Almeida, C., & Ricci, C. 2017, *Nat. Astron.*, **1**, 679
- Rouan, D., Lacombe, F., Gendron, E., et al. 2004, *A&A*, **417**, L1
- Rouan, D., Grosset, L., & Gratadour, D. 2019, *A&A*, **625**, A100
- Schawinski, K., Koss, M., Berney, S., & Sartori, L. F. 2015, *MNRAS*, **451**, 2517
- Schinnerer, E., Eckart, A., Tacconi, L. J., Genzel, R., & Downes, D. 2000, *ApJ*, **533**, 850
- Schoenmakers, R. H. M. 1999, PhD Thesis, University of Groningen
- Schoenmakers, R. H. M., Franx, M., & de Zeeuw, P. T. 1997, *MNRAS*, **292**, 349
- Scoville, N. Z., Matthews, K., Carico, D. P., & Sanders, D. B. 1988, *ApJ*, **327**, L61
- Skrutskie, M. F., Cutri, R. M., Stiening, R., et al. 2006, *AJ*, **131**, 1163
- Storchi-Bergmann, T., & Schnorr-Müller, A. 2019, *Nat. Astron.*, **3**, 48
- Sturm, E., González-Alfonso, E., Veilleux, S., et al. 2011, *ApJ*, **733**, L16
- Tecza, M., Thatte, N., & Maiolino, R. 2001, in *Galaxies and their Constituents at the Highest Angular Resolutions*, ed. R. T. Schilizzi, *IAU Symp.*, **205**, 216
- Tomono, D., Doi, Y., Usuda, T., & Nishimura, T. 2001, *ApJ*, **557**, 637
- Tristram, K. R. W., Raban, D., Meisenheimer, K., et al. 2009, *A&A*, **502**, 67
- Urry, C. M., & Padovani, P. 1995, *PASP*, **107**, 803
- Viti, S., García-Burillo, S., Fuente, A., et al. 2014, *A&A*, **570**, A28
- Wada, K. 2012, *ApJ*, **758**, 66
- Wada, K. 2015, *ApJ*, **812**, 82
- Wada, K., Schartmann, M., & Meijerink, R. 2016, *ApJ*, **828**, L19
- Wada, K., Fukushige, R., Izumi, T., & Tomisaka, K. 2018, *ApJ*, **852**, 88
- Weigelt, G., Wittkowski, M., Balega, Y. Y., et al. 2004, *A&A*, **425**, 77
- Williamson, D., Hönig, S., & Venanzi, M. 2019, *ApJ*, **876**, 137

-
- ¹ Observatorio Astronómico Nacional (OAN-IGN)-Observatorio de Madrid, Alfonso XII, 3, 28014 Madrid, Spain
e-mail: s.gburillo@oan.es
 - ² Observatoire de Paris, LERMA, CNRS, 61 Av. de l'Observatoire, 75014 Paris, France
 - ³ Instituto de Astrofísica de Canarias, Calle Vía Láctea, s/n, 38205 La Laguna, Tenerife, Spain
 - ⁴ Departamento de Astrofísica, Universidad de La Laguna, 38205 La Laguna, Tenerife, Spain
 - ⁵ Centro de Astrobiología (CSIC-INTA), ESAC Campus, 28692 Villanueva de la Cañada, Madrid, Spain
 - ⁶ INAF-Osservatorio Astrofisico di Arcetri, Largo Enrico Fermi 5, 50125 Firenze, Italy
 - ⁷ LESIA, Observatoire de Paris, PSL Research University, CNRS, Sorbonne Universités, UPMC Univ. Paris 06, Univ. Paris Diderot, Sorbonne Paris Cité, 5 Place Jules Janssen, 92195 Meudon, France
 - ⁸ Department of Earth and Space Sciences, Chalmers University of Technology, Onsala Observatory, 439 94 Onsala, Sweden
 - ⁹ European Southern Observatory (ESO), Karl-Schwarzschild-Strasse 2, 85748 Garching bei München, Germany
 - ¹⁰ Department of Physics and Astronomy, UCL, Gower Place, London WC1E 6BT, UK
 - ¹¹ Leiden Observatory, Leiden University, PO Box 9513, 2300 Leiden, The Netherlands
 - ¹² Max-Planck-Institut für Radioastronomie, Auf dem Hügel 69, 53121 Bonn, Germany
 - ¹³ Astronomy Department, King Abdulazizi University, PO Box 80203, Jeddah 21589, Saudi Arabia
 - ¹⁴ Joint ALMA Observatory, Alonso de Córdova, 3107, Vitacura, Santiago 763-0355, Chile
 - ¹⁵ European Southern Observatory (ESO), Alonso de Córdova, 3107, Vitacura, Santiago 763-0355, Chile
 - ¹⁶ Institut de Radio Astronomie Millimétrique (IRAM), 300 Rue de la Piscine, Domaine Universitaire de Grenoble, 38406 St. Martin d'Hères, France
 - ¹⁷ Max-Planck-Institut für Extraterrestrische Physik, Postfach 1312, 85741 Garching, Germany

Appendix A: A 3^{D} Barolo model of the NGC 1068 outflow

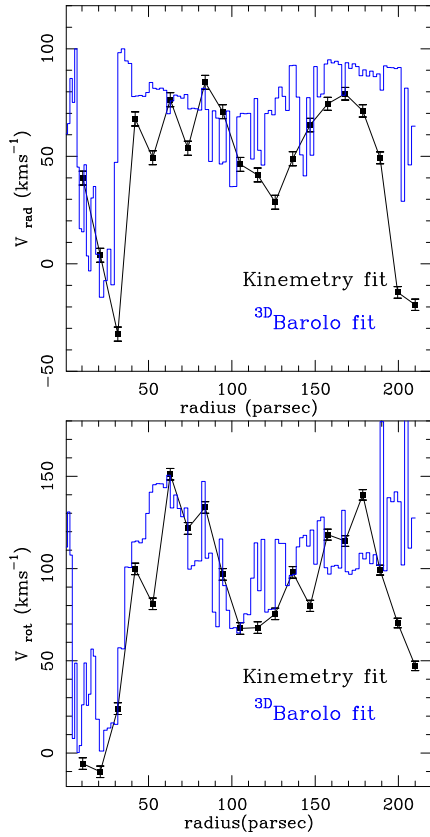


Fig. A.1. Radial profiles of v_{rad} (upper panel) and v_{rot} (lower panel) found by 3^{D} Barolo (blue histograms) and kinemetry (black line and markers) to fit the CO(2–1) data of the CNB region out to $r \approx 210$ pc.

The velocity field of molecular gas reveals strong noncircular motions and a high degree of complexity on a wide range of spatial scales in the CNB of NGC 1068. In the following we attempt to define the main features of a global *model* that best accounts for the main features of the gas kinematics derived from the CO(2–1) data using the 3^{D} Barolo software.

We first benchmarked the solutions found by 3^{D} Barolo against the output provided by kinemetry in Sect. 4.5. For this purpose we ran 3^{D} Barolo assuming the common set of fixed parameters used in Sect. 4.5 for the AGN position, the disk geometry (PA, i), and the systemic velocity (v_{sys}), but allowing v_{rot} , v_{rad} , and the velocity dispersion (σ_{gas}) to vary for a set of 103 radii sampling the CNB from $r = 0''.03$ (≈ 2 pc) to $r = 3''$ (≈ 210 pc). We also adopted a fixed Gaussian

scale-height for the disk ($H = 10$ pc) to reproduce the 2D model of the kinemetry disk, which is by construction collapsed along its vertical axis.

As shown in Fig. A.1, the v_{rad} and v_{rot} profiles found by 3^{D} Barolo and kinemetry are roughly compatible within the errors. In particular, taking into account the known orientation of the large-scale disk of NGC 1068, i.e., the NE (SW) side of the disk corresponds the far (near) side, the positive sign and modulus of the v_{rad} profile ($v_{\text{rad}} \approx (0.4\text{--}0.8) \times v_{\text{rot}}$ for $30 \text{ pc} < r < 210 \text{ pc}$) similarly found by 3^{D} Barolo and kinemetry identify the presence of a coplanar outward radial component.

Based on the available observational constraints, for the second 3^{D} Barolo run we imposed two restrictions on the starting range of the initial values for the two geometrical parameters: (1) $\text{PA} = \text{PA}_{\text{kinemetry}} \pm 20^\circ = 289 \pm 20^\circ$ and (2) $i = i_{\text{kinemetry}} \pm 20^\circ = 41 \pm 20^\circ$ at all radii. We relax this restriction in the torus region and its connections ($r < 30$ pc), where we gradually change from the known orientation of the highly inclined torus, by adopting $-60^\circ > i > -90^\circ$ in the range $r < 20$ pc, towards the orientation of the disk of the galaxy at larger radii. We note that the negative sign of i in the inner region reflects here that the $N(S)$ side of the tilted torus is the near (far) side, as dictated by the favored geometry of the NLR of the galaxy shown in Fig. 22.

In order to minimize the occurrence of discontinuities in the derived v_{rot} and v_{rad} profiles, which may appear when the geometrical parameters of the disk are simultaneously fit with the kinematic profiles, we adopted the parameter regularization approach described by Di Teodoro & Fraternali (2015). This requires execution of the second fitting routine using a two-step process. We first derived a model by fitting all the free parameters simultaneously (*step-1*), while in a second iteration we fixed the geometrical parameters to a Bezier function that interpolates the values found in the previous iteration for PA and i with the rest of parameters being let free (*step-2*). The resulting radial profiles of the best-fit parameters found after this second run are shown in Fig. A.2.

We note that v_{rot} and v_{rad} are seen to change sign at $r \approx 20$ pc: both parameters change from negative values inside this boundary to positive values at larger radii. This change of sign accounts for the change of orientation of the plane of the galaxy relative to the observer, described above. Furthermore, as the v_{vert} parameter is not iteratively fitted by the version of 3^{D} Barolo used in the fit, we chose to explore four different values of v_{vert} (0, 25, 50, 100, and 150 km s^{-1}) and constrained the range of the best-fit solutions to $v_{\text{vert}} \approx 100 \pm 50 \text{ km s}^{-1}$. In this paper we show the output of the best-fit solution for $v_{\text{vert}} \approx 100 \text{ km s}^{-1}$. The H profile (not shown) shows values going from 7 to 10 pc in the torus region ($r < 20$ pc), to higher values $\approx 20\text{--}50$ pc in the outer disk up to $r \approx 210$ pc. The main characteristics of the best-fit solution encapsulated in the radial profiles shown in Fig. A.2 are described in Sect. 7.

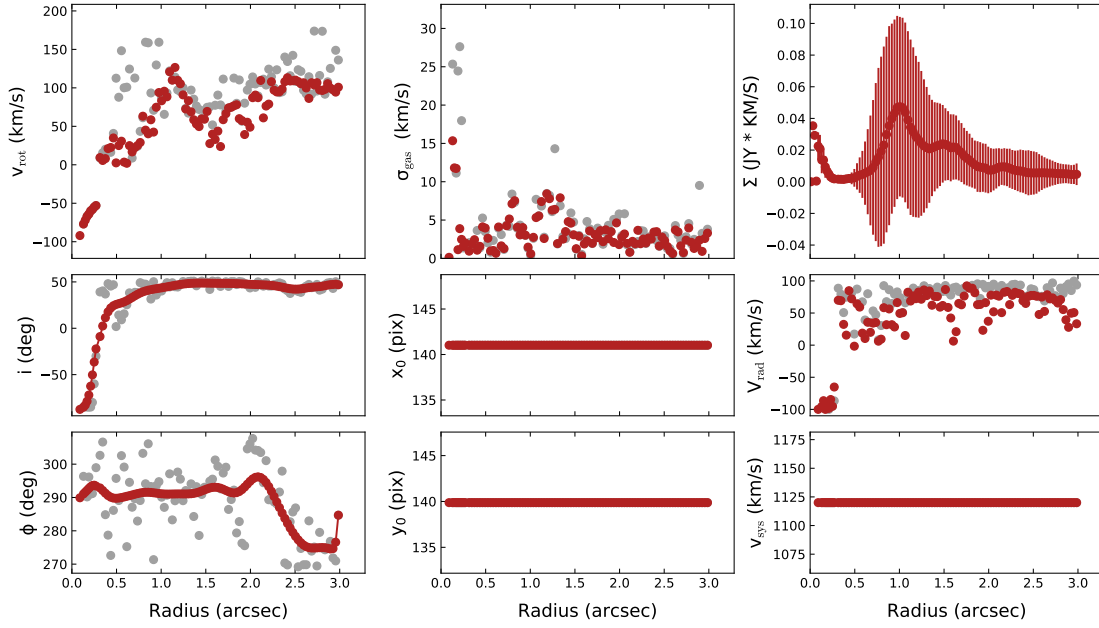


Fig. A.2. Radial profiles of the best fit found by $3^{\text{D}}\text{Barolo}$ for v_{rot} , v_{rad} , v_{disp} (σ_{gas}), PA (ϕ), and i . The position of the AGN (x_0 and y_0 in pixel units) and the systemic velocity (v_{sys}) are fixed to the values previously found by kinemetry. The size of the vertical bars in the radial profile of integrated intensities (Σ) reflect the deviations from axisymmetry in the gas distribution. The gray and red markers represent the output values of the fitted parameters obtained after the first (*step-1*) and second (*step-2*) runs, respectively.