



HAL
open science

Urban Traffic Modeling and Simulation: Moroccan Capital Case Study

Lahoucine Bahili, Brahim Aboutaib, Cyril Fonlupt, Virginie Marion, Sébastien Verel

► To cite this version:

Lahoucine Bahili, Brahim Aboutaib, Cyril Fonlupt, Virginie Marion, Sébastien Verel. Urban Traffic Modeling and Simulation: Moroccan Capital Case Study. Smart Application and Data Analysis for Smart Cities (SADASC'18), Feb 2018, Casablanca, Morocco. <10.2139/ssrn.3187065>. <hal-03105911>

HAL Id: hal-03105911

<https://hal.science/hal-03105911v1>

Submitted on 18 Apr 2023

HAL is a multi-disciplinary open access archive for the deposit and dissemination of scientific research documents, whether they are published or not. The documents may come from teaching and research institutions in France or abroad, or from public or private research centers.

L'archive ouverte pluridisciplinaire HAL, est destinée au dépôt et à la diffusion de documents scientifiques de niveau recherche, publiés ou non, émanant des établissements d'enseignement et de recherche français ou étrangers, des laboratoires publics ou privés.



HAL Authorization

Urban traffic modeling and simulation: Moroccan capital case study

Brahim Aboutaib, Lahoucine Bahili
Université Mohammed V, Rabat, Maroc
brahim.aboutaib@gmail.com

Cyril Fonlupt, Virginie Marion, Sébastien Verel
Université du Littoral - Côte d'Opale, France

Abstract—Due to its major role in assuring services based on transportation, urban traffic is no more a facultative subject. The common step between all existing work related to this area is modeling urban traffic. Different approaches are available, and each one has benefits and drawbacks, but the main obstacle behind many of existing approaches is the availability of data to use in model building. In this paper we propose a data-less solution based on activities to model traffic demand of a generated synthetic population, and a microscopic multi-agent system to simulate and analyze urban traffic in Moroccan capital Rabat.

Keywords: Urban traffic modeling, simulation, Multi-agent simulation, synthetic population, activity-based traffic demand.

I. INTRODUCTION

Nowadays, many researchers are studying problems related to urban areas in hope to build more sustainable and intelligent uses of existing resources. One of those areas is urban traffic, where two main question arised, the first one is how urban traffic works? the goal here is to understand the causes or mechanisms of some behavior (example: what cause congestion of traffic in some junctions?), the second question deals with solving a problem related to urban traffic, like how to efficiently use a network resources? All these paths of research require a preliminary work, which is a model of the urban traffic [1]. Modeling urban traffic could be approached from different perspectives related to the level of details a model can capture. From a high-order perspective, macroscopic models, a model is designed to capture few aggregated variables related to traffic like (average) density, (average) flow, and (average) speed. The result is a continuum flow representing traffic. The opposite of high-order perspectives models, microscopic model, in the other hand describes and traces the behavior of individuals vehicles (almost each one should be represented). The gap between microscopic and macroscopic models, is filled by mesoscopic models, where a probability distribution is used to represent vehicle movements. We limit the scope of our work in this paper to microscopic models.

Deciding to build a microscopic model, requires a detailed description of traffic components, where each vehicle (we also use agent to describe vehicle as we use a multi-agent system to simulate the result model) should be described with some details. To describe an agent in the context of urban traffic two main questions should be answered, what are some dominant characteristics of an agent that decide on the use of traffic? And how an agent uses urban traffic? The first question will gather details about agents (like age, driving license, education level) that will help

to answer the second question, that is how a given agent will use urban traffics resources (it is clear that driving a vehicle needs a driving license, and some jobs, that is usually the cause of traveling, need some education level). By answering to these two questions we are building two models, the first model describes agents, this is the problem of representing population (agents), that may be solved depending on availability of data, if we already have data that describe some characteristics of each agent, the problem results to expand those characteristics to the rest of agents, if a detailed description of agents is not available and only some atomic characteristics are on hand (like age, level of education, but not aggregated in one ?), the task results to aggregating those atomic data in one for each agent. The second model describes how all ready agents will use urban traffics resources, like urban network. The models in result have to be simulated to understand the state of the traffic in function of built models, this task was assured by using a multi-agent environment (MATSIM) [2].

The rest of this paper is organized as follow: in the next section II we present some relevant works related to synthetic population generation and traffic demand modeling. Our method is then presented in section III, and related results are exposed in section V, the work is then concluded in section VI.

II. RELATED WORK

In this section we present some relevant background and existing work related to synthetic population generation, and activity based model for traffic demand.

A. Synthetic population generation

Urban traffic is the result of interaction between agents themselves and between agents and urban traffics resources. Usually, in the real-life scenarios the number of agents could attend millions, which make the task of getting each ones information impossible to realize. A solution may be to generate synthetic (artificial) population using available aggregated data. Two classes to get this problem solved exist in the literature [3]:

- Sample based methods: where a sample of individuals studied zones characteristics is combined with some aggregated global data (demographic indicators) to generate a synthetic population. It has the benefit to produce a reliable representation of the real characteristics of individuals [4], [5], [6].
- Non-Sample based methods: sample based methods depend on representability and reliability of the used

sample, this could be avoided by only aggregating global demographic data to get characteristics of a population, the drawback her is the reliability of the result vs the implementation as we dont need investing time to prepare a sample, but only using demographics indicators, which is in general available [7].

B. Traffic demand modeling

Modeling traffic demand of individuals (agents, vehicles) may be achieved in different ways. In the literature, the four-stages trip-based models for travel demand forecasting, whose four steps are:

- Trip generation determining the frequency of trips origins and destinations;
- Trip distribution matching origins with destination;
- Modal choice computing the transportation mode;
- And route assignment.

The drawback of this model is the fact of ignoring the relations between all trips and activities, and only focusing on individuals trips and ignoring the travel demand as being derived from activity seeking. More details about drawbacks are studied in [14], [13]. In other hand activity based modeling could be seen as the current trend, based on idea that traveler user traffic networks to carry out activities they need our wish to perform. It has the possibility to reflect the scheduling of activities performed by individuals in time and space and the sequence of activities. This approach is now widely used and accepted, and continuously attract more attention. After the step of traffic demand was completed, the ultimate goal is reproducing the mobility behaviors of a large population, this could be attended by massive multi-agents micro-simulations. This has been made easier by the development of powerful open source agent-based simulation systems such as MATSim. Other platforms exists to perform the same task, with some different in implementation or in required data, see [8], [9] for more details.

III. METHOD

In this section we present our method used to model traffic demand of a Rabat citys synthetic population, and the simulation of dynamic assignment using MATSim.

A. Synthetic population generating

Our method uses the minimalist available data to characterize a population, by using data of census of population done by HAUT-COMMISSARIAT AU PLAN in 2014 [12]. The main steps of developed generator is given in the figure 2.

The problem of synthetic population could be formulated as following: Found a sample $S = \langle p_1, p_2, p_3, \dots, p_n \rangle$ of population, where the vector $p_i = \langle c_1, c_2, c_3, \dots, c_m \rangle$ is the characteristics of an individual p_i , where S is representable as possible of the real population. Figure show main steps in the developed generator in case Moroccan capital. Given HCP data, example figure, demographic indicators, and after clean data, we clean data to get marginal distributions of desired characteristics (age, education level, ...) to use in individuals

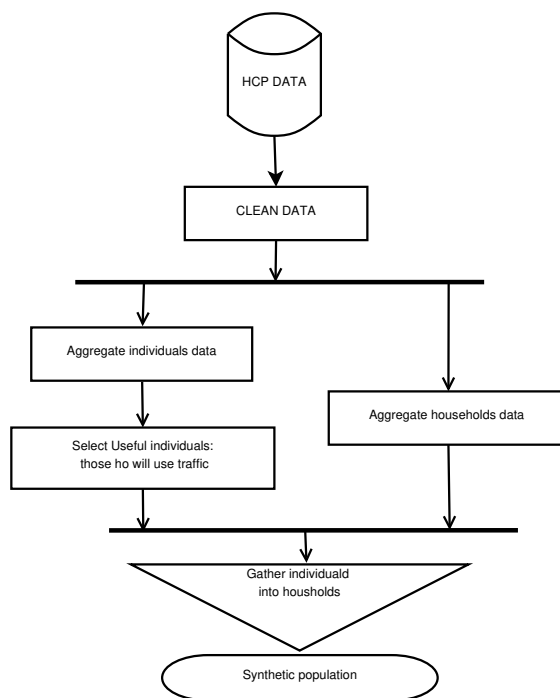


Fig. 1: Synthetic population generator of Moroccan Capital

identification. Then we aggregate marginal distribution using IPF and the result is a vector $p = \langle c_1, c_2, c_3, \dots, c_m \rangle$. From these result, we select individuals we select only those we are sure they will use traffic, like select p_i where $age > 18$ and $driving\ license = true$. The result is then a pool of individuals $S_{ind} = \langle p_1^*, p_2^*, p_3^*, \dots, p_n^* \rangle$ where $p_i^* = \langle c_1^*, c_2^*, c_3^*, \dots, c_m^* \rangle$. The task of aggregating marginal distribution was done by applying Iterative Proportional Fitting Procedure (IPFP). The IPFP is used to estimate a k-way joint-distribution table based on known marginal distributions, it was proposed in [10]. Let $\pi_{i,j}$ corresponds to the number of individuals with characteristics i and j . And let x_i, x_j be the marginal distributions for each i and j . The IPFP iteratively updates the cell's values depending on the marginal distributions of the target until the margins of the computed table match the targets one, i.e. $\pi_{i,*} = x_i$ and $\pi_{*,j} = x_j$. The adjustment at iteration l are computed by the equations:

$$\pi_{i,j}^l = \pi_{i,j}^{l-1} \cdot \frac{x_{*,j}}{\pi_{*,j}^{l-1}} \quad (1)$$

$$\pi_{i,j}^l = \pi_{i,j}^l \cdot \frac{x_{i,*}}{\pi_{i,*}^l} \quad (2)$$

The complete synthetic population should contain information about location of individuals household, thats way, and by proceeding by the same approach of individuals characterization, we generate information about households, using HCPs data. The result $S_{hh} = \langle h_1, h_2, h_3, \dots, h_n \rangle$ is the sample of households with $h_i = \langle ch_1, ch_2, ch_3, \dots, ch_k \rangle$ is the h_i s characteristics and take values from: (location, type, number of individuals). The last step is the matching of individuals sample S_{ind} with households sample S_{hh} .

The result is a synthetic population S_{pop} . The algorithm 1 formalize all the above steps.

Algorithm 1 Synthetic population generator

```

1: Begin
2:  $S_{ind} = ipfp\_to\_aggregate\_synthetic\_ind(hcp\_data);$ 
3:  $S_{hh} = ipfp\_to\_aggregate\_synthetic\_hh(hcp\_data);$ 
4:  $S_{pop} = initialize\_synthetic\_population();$ 
5: for  $i = 0; i < size(S_{hh}); i++$  do
6:   while  $is\_not\_filled(hh_i)$  do
7:      $ind\_temp = get\_ind(S_{ind});$ 
8:      $hh_i = add\_ind(hh_i, ind\_temp);$ 
9:   end while
10:   $S_{pop} = add\_hh(hh_i);$ 
11: end for
12: End

```

The output of this algorithm is a synthetic population of Rabat studied case.

B. Activity based model for travel demand

Starting from synthetic population generated, we can now generate traffic demand based on activities model. In this work we study two main activities of functionaries(selected from generated synthetic population): (i) the task of getting to home is selected and tagged as Home-activity, as the dominant one in general. And (ii) the task of going to work is the second activity and tagged as Work-activity. The result is a chain: Home-Work-Home to describe the way agents make use of traffic networks to carry those activities in the given order. A An activity A could be defined as a quadruplet $(\alpha_p; \alpha_l; \alpha_s; \alpha_d)$ where

- α_p is the purpose of the activity,
- α_l is the location (where it takes place),
- α_s is the start time of the activity,
- α_d is the duration

Of the activity. A chain of activities $A^* = (A_n)_{n \in 1, \dots, k}$ is a sequence A_1, \dots, A_k of activities. In this work we define activities by:

- 1) Purpose: the purpose in this work could take two values. Work-activity, to describe the activity of work. Or, Home-activity to describe the activity of going, or leaving, home. We choose those two activities, because they are the most dominant in the daily life, and the only possibility the disposable data gave.
- 2) Localization: to locate individuals activities, we uniformly distribute over coordination in the map, the location of each selected. That is for the activity work-activity we pick uniformly its coordination from the selected area, figure fig illustrates selected areas to study, the same process is used to locate Home-activity.
- 3) Starting time: to determine the starting time of an activity we use normal distribution over an interval (i.e. $[7h30, 8h30]$ for departure from home). that is for Work-activity starting time, we pick from the

interval $[7h30, 8h30]$ the time of ending activity Home-activity using normal distribution, and the starting time of Work-activity will be the necessary time between home-activity location and work-activity location plus the end time of home-activity.

- 4) Duration of activities: this attribute is automatically calculated given the start time and ending time of an activity.

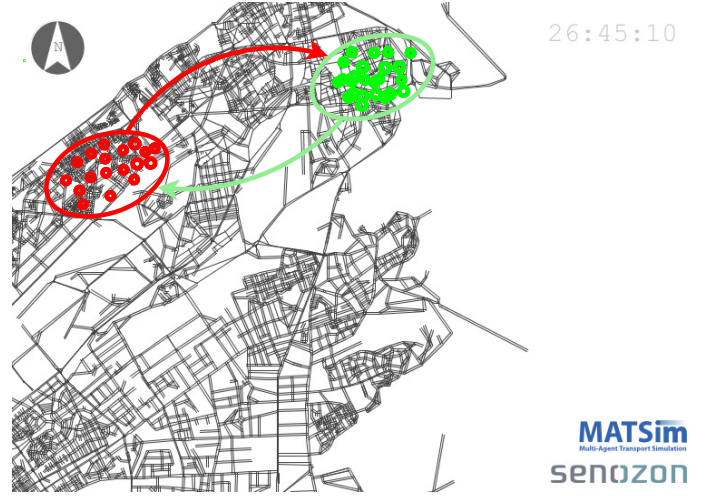


Fig. 2: Selected areas in Moroccan capital, the red zone is for home activities and the green for work activities

Algorithm 2 Activity generator

```

1: Begin
2:  $S_{pop} = synthetic\_population();$ 
3:  $plans = init\_plans();$ 
4:  $home\_activities = set\_act(act\_area, start\_time, end\_time);$ 
5:  $work\_activities = set\_act(act\_area, start\_time, end\_time);$ 
6: for  $i = 0; i < size(S_{pop}); i++$  do
7:    $ind\_temp = get\_ind(S_{ind});$ 
8:    $act\_ch = get\_act\_chain(home\_activity, work\_activity);$ 
9:    $ind\_temp = set\_act\_chain(act\_ch, ind\_temp);$ 
10:   $plans = add(plans, ind\_temp);$ 
11: end for
12: End

```

The result of this algorithm is a traffic demand model (or plans of individuals) based on activities of individuals in Rabat city. The model is then simulated/analyzed in MATSim

IV. MODEL SIMULATION IN MULTI-AGENT SIMULATION (MATSIM)

After the traffic demand of a generated synthetic population is built, we can turn to simulate it. In goal to understand, visualize the state of the traffic in the city of Rabat. A model of traffic network (roads), is then coupled with traffic demand model, and MATSim to assure the task of dynamic forecasting. MATSim is an open source framework, agent-based and activity-based microscopic transport modeling. The principal idea is to let synthetic agents act in virtual

word, that represent the infrastructures (i.e. network roads). Each agent has its daily activity plan, which describes the chain of activities that it needs to perform in the virtual world (i.e. the Home-Work-Home chain). Each agent tries to perform optimally according to a utility function that defines what is useful for an agent. One virtual day is iteratively simulated. From iteration to iteration, a predefined number of agents are allowed to change some of their daily decisions to try to obtain a higher utility. The iterative process continues as long as the overall score of the population increases. The equilibrium reached represents what real individuals do in the real world (this iterative process is illustrated in figure 3). To use MATSim three principal files should be specified:

- plans.xml: which regroup daily activity plans of all simulated agents (that is the synthetic population with traffic demand model);
- network.xml: which represent the model of the real-world traffics roads, in this we extract the used map from the open source openstreetmap OSM [11] ;
- config.xml: by using this file a simulation could be configured by adding other disposable modules in MATSim.

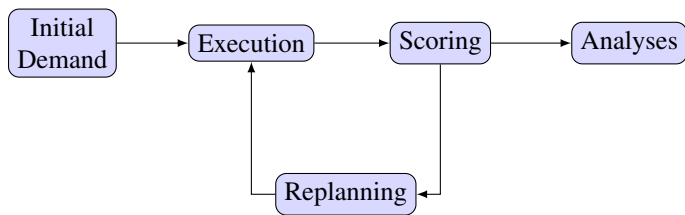


Fig. 3: Graphic representation of MATSim simulation framework.

V. RESULTS AND DISCUSSION

After modeling traffic demand in Rabat city and simulate it in MATSim we present her the results. We first show the convergence of the simulation to reach the state of equilibrium in figure V.

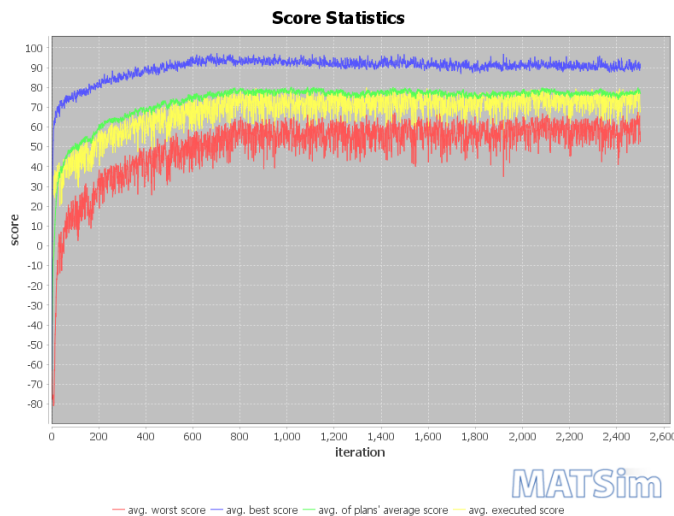


Fig. 4: Convergence to the equilibrium state of the simulation

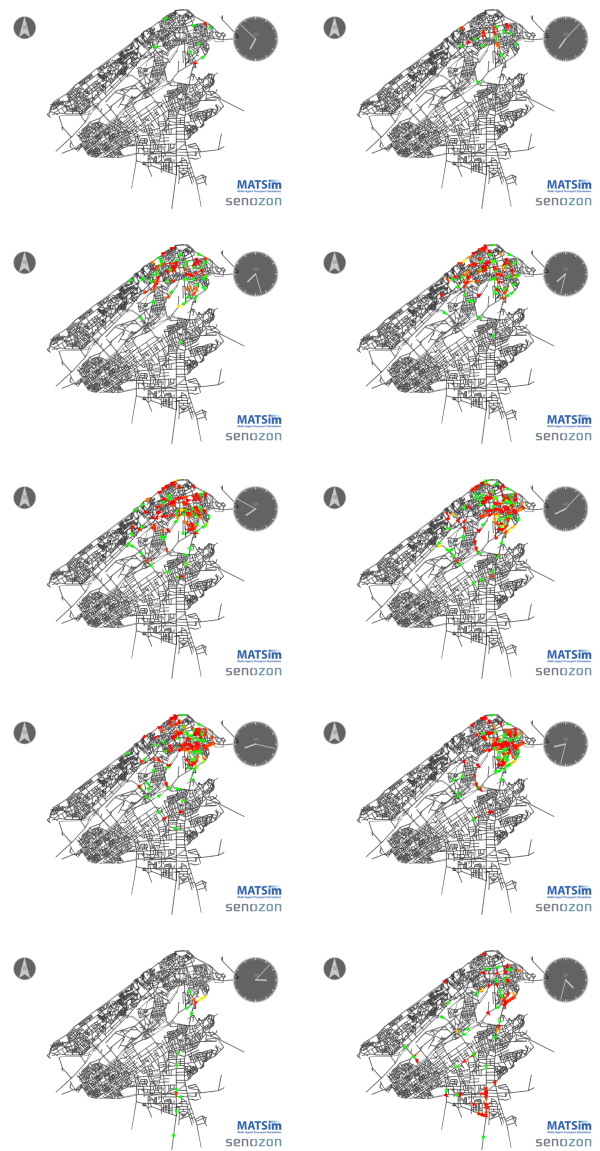


Fig. 5: Different states of the simulated traffic with MATSim in Moroccan capita. Green triangles for fluid traffic, and red for traffic jam.

It is clear that to converge to the state of equilibrium, enough time of running is then required until the criteria of convergence is reached, in this case the average of traveling time, that is no agent could only improve his travel time by only changing/improving its plans. And that is the drawback of building simulation over analytical models is the time consuming of simulations, which will be more pronounced in case of large scenarios studied. The second result we present her is the state of the traffic in function of time in the city of Rabat, see figure 5. It shows different states of traffic in a day. We can see that for in pick hours (i.e. between 7h30 and 9h00) the traffic jam occurs in built model, and in normal hours traffic is more fluid.

VI. CONCLUSIONS

In this paper we studied the case of modeling and simulating urban traffic of Moroccan capital, Rabat, in case of the minimum data are available. Using a synthetic population and an activity based model to depict the demand of traffic, the two main approaches that have been presented, they have the benefits to be easily reproducible to other scenarios with a minimum effort. As we are convinced that the approach should improved, we engage by this work to keep improving the reliability of the method and the scope and the scale of the case studied. This work, also, could be seen as a way to convince persons in charge to invest in data gather about urban traffic, in the goal to study in more details this subject motivated by its huge impact and interest in human's daily life in general.

ACKNOWLEDGMENT

The first author expresses his acknowledgement to AR-CUS E2D2 project.

REFERENCES

- [1] F. van Wageningen-Kessels, H. van Lint, K. Vuik, and S. Hoogendoorn, Genealogy of traffic flow models, *EURO J. Transp. Logist.*, vol. 4, no. 4, pp. 445473, 2015.
- [2] A. Horni, K. Nagel, and K. W. Axhausen, *The Multi-Agent Transport Simulation Title of Book: The Multi-Agent Transport Simulation MATSim Subtitle positioned below.*
- [3] K. Miller and K. W. Axhausen, Population synthesis for microsimulation: State of the art, 90th Annu. Meet. Transp. Res. Board, no. August, p. 21, 2011.
- [4] R. Moeckel, Creating a synthetic Population, *Proc. 8th Int. Conf. Comput. Urban Plan. Urban Manag.*, no. May, pp. 118, 2003.
- [5] S. Swarup and M. V Marathe, Generating Synthetic Populations for Social Modeling, *Tutor. Auton. Agents Multiagent Syst. Int. Conf. 2016*, 2016.
- [6] J. Auld and A. Mohammadian, Efficient Methodology for Generating Synthetic Populations with Multiple Control Levels, *Transp. Res. Rec. J. Transp. Res. Board*, vol. 2175, no. 2175, pp. 138147, 2010.
- [7] J. Barthelemy and P. L. Toint, Synthetic Population Generation Without a Sample, *Transp. Sci.*, vol. 1655, no. February 2015, pp. 114, 2012.
- [8] T. Hgerstrand, What about people in regional science. *Papers of the Regional Science*, 4(1), 621, 1970.
- [9] F. S. Chapin. Human activity patterns in the city: Thing people do in time and space, Vol. 13 of Wiley series in urban research. J. Wiley and Sons, 1974
- [10] E. Deming and F. F. Stephan. A least squares adjustment of a sampled frequency table when the expected marginal totals are known. *Annals of Mathematical Statistics*, 11, 428444, 1940.
- [11] Openstreet map website <http://www.openstreetmap.org>.
- [12] Site institutionnel du haut-commissariat au plan du royaume du maroc.
- [13] N. Oppenheim. *Urban Travel: From Individual Choices to General Equilibrium*. J. Wiley and Sons, New York, 1995.
- [14] B.D. Spear. Application of new travel demand forecasting techniques to transportation planning: a study of individual choice models. Dept. of Transportation, Federal Highway Administration, Office of Highway Planning, Urban Planning Division, 1977.