



**HAL**  
open science

# Emergence of New Non-Clonal Group 258 High-Risk Clones among *Klebsiella pneumoniae* Carbapenemase-Producing *K. pneumoniae* Isolates, France

Rémy Bonnin, Agnès Jousset, Adriana Chiarelli, Cécile Emeraud, Philippe Glaser, Thierry Naas, Laurent Dortet

► **To cite this version:**

Rémy Bonnin, Agnès Jousset, Adriana Chiarelli, Cécile Emeraud, Philippe Glaser, et al.. Emergence of New Non-Clonal Group 258 High-Risk Clones among *Klebsiella pneumoniae* Carbapenemase-Producing *K. pneumoniae* Isolates, France. *Emerging Infectious Diseases*, 2020, 26 (6), pp.1212-1220. 10.3201/eid2606.191517 . hal-03103752

**HAL Id: hal-03103752**

**<https://hal.science/hal-03103752>**

Submitted on 26 Jan 2021

**HAL** is a multi-disciplinary open access archive for the deposit and dissemination of scientific research documents, whether they are published or not. The documents may come from teaching and research institutions in France or abroad, or from public or private research centers.

L'archive ouverte pluridisciplinaire **HAL**, est destinée au dépôt et à la diffusion de documents scientifiques de niveau recherche, publiés ou non, émanant des établissements d'enseignement et de recherche français ou étrangers, des laboratoires publics ou privés.



Distributed under a Creative Commons Attribution 4.0 International License

# Emergence of New Non-Clonal Group 258 High-Risk Clones among *Klebsiella pneumoniae* Carbapenemase-Producing *K. pneumoniae* Isolates, France

Rémy A. Bonnin, Agnès B. Jousset, Adriana Chiarelli, Cécile Emeraud, Philippe Glaser, Thierry Naas, Laurent Dortet

The worldwide spread of *Klebsiella pneumoniae* carbapenemase-producing *Klebsiella pneumoniae* (KPC-*Kp*) isolates was reported to be caused by dissemination of 1 clonal complex (i.e., clonal group [CG] 258, which includes sequence types [STs] 258 and 512). We conducted whole-genome sequencing and epidemiologic analysis of all KPC-*Kp* isolates in France in 2018 and found that new successful high-risk clones of ST147, ST307, ST231, and ST383 are now the main drivers of *bla*<sub>KPC</sub> genes. The *bla*<sub>KPC</sub> genes were mostly carried by Tn4401a and Tn4401d structures and a new non-Tn4401 element. Our epidemiologic investigations showed that the emergence of these non-CG258 KPC-*Kp* isolates in France was linked to dissemination of these clones from Portugal. Thus, KPC-*Kp* epidemiology has changed in Europe, at least in several non-KPC-endemic countries of western Europe, such as France and Portugal, where CG258 is not the most prevalent clone.

**I**n *Klebsiella pneumoniae* bacteria, resistance to carbapenems results in 2 main mechanisms: the production of an extended spectrum β-lactamase or plasmid-borne cephalosporinase associated with a

decrease in permeability of the outer membrane (especially through alteration of OmpK35 and OmpK36 porins), or the production of a carbapenemase (1,2). In France, these carbapenemases are Ambler's class A KPC enzymes; class B metallo-β-lactamases of NDM-, VIM- and, to a lesser extent, IMP-type; and Ambler's class D oxacillinases of OXA-48-like type (3,4).

*K. pneumoniae* carbapenemase (KPC) was first identified in United States in the early 2000s (5). Since then, this carbapenemase has spread and has become endemic in several countries, including the United States, Israel, Greece, China, and Italy. It has also been sporadically described in many countries of Europe (1). The worldwide spread of KPC has been linked to the dissemination of a main clone of *K. pneumoniae* (sequence type [ST] 258) and a single-locus variant (ST512) (6). In Asia (especially China), ST11, another single-locus variant of ST258, is mostly reported among *bla*<sub>KPC</sub>-harboring *K. pneumoniae* isolates (7). In addition, a recently published study, conducted by the EUSCAPE working group in 2013 in Europe, revealed that the spread of carbapenemase-producing *K. pneumoniae* was driven by only a few clones (8). The most prevalent carbapenemase was KPC (45.5% [311/684 isolates]), and 72.7% (229/311) of KPC-producing *K. pneumoniae* (KPC-*Kp*) belong to the same clonal group (CG) 258, including ST258 and ST512. Whole-genome sequencing (WGS) analysis has suggested that ST258 and ST512 KPC-*Kp* spread out in Europe from 2 KPC-endemic countries: Greece (ST258) and Italy (ST512) (6,9–11). However, that study described the epidemiology of KPC in Europe in 2013, whereas the aim of our study was to describe the genomic characteristics of KPC isolates from a more recent period.

Author affiliations: Institut Pasteur–Assistance Publique/Hôpitaux de Paris–University Paris Sud, Paris, France (R.A. Bonnin, A.B. Jousset, A. Chiarelli, C. Emeraud, T. Naas, L. Dortet); Faculty of Medicine University Paris-Sud, University Paris–Saclay, Le Kremlin-Bicêtre, France (R.A. Bonnin, A.B. Jousset, C. Emeraud, T. Naas, L. Dortet); National Reference Center for Antibiotic Resistance: Carbapenemase Producing *Enterobacteriaceae*, Le Kremlin-Bicêtre, (R.A. Bonnin, A.B. Jousset, C. Emeraud, T. Naas, L. Dortet); Assistance Publique/Hôpitaux de Paris, Bicêtre Hospital, Le Kremlin-Bicêtre (A.B. Jousset, C. Emeraud, T. Naas, L. Dortet)

DOI: <https://doi.org/10.3201/eid2606.191517>

Analysis of the genetic context of *bla*<sub>KPC</sub> has revealed that this gene is mostly localized into a class 2 transposon named Tn4401 (12). Several variants of this Tn4401 (Tn4401a through Tn4401i) have been reported with deletions upstream of *bla*<sub>KPC</sub> within the promoter region (13,14). Consequently, expression of *bla*<sub>KPC</sub> genes is complex and might involve different promoters, depending on the specific genetic environment and bacterial species. The 2 main promoters are named P1, which is in the vicinity of *bla*<sub>KPC</sub>, and P2, a hybrid promoter located partly in the inverted repeat right of IS*Kpn7* (15). In rare cases, *bla*<sub>KPC</sub> genes have been described in genetic structure not related to Tn4401 and are named non-Tn4401 elements (NTE) (16). However, in NTE, the expression of *bla*<sub>KPC</sub> is mediated by other promoters. Our study aimed to deeply characterize the epidemiology of KPC-*Kp* circulating in France in 2018.

## Material and Methods

### Strains Collections and Culture Conditions

We included all KPC-*Kp* sent to France's National Reference Center for Antimicrobial Resistance during January 1–December 31, 2018. As previously described, we used isolates that were recovered from clinical and screening specimens and sent on a voluntary basis by any type of laboratory related to any health facility, such as private and public hospitals, nursing homes, and community laboratories (3,4). These laboratories were located throughout France, including overseas territories. KPC-*Kp* recovered by the National Reference Center for Antimicrobial Resistance represent ≈85%–90% of the KPC-*Kp* infection cases reported to the French Public Health Agency (R.A. Bonnin, L. Dortet, unpub. data). The collection used for WGS analysis represents a total of 63 non-duplicate isolates recovered from rectal screening (n = 45), urine (n = 12), blood cultures (n = 1), wound infections (n = 2), and respiratory samples (n = 2) and 1 isolate for which no recovery site information was available. Because the aim of the study was to evaluate the genetic diversity of KPC producers, we discarded from further analysis any duplicate isolates or isolates recovered from the same patient.

### Antimicrobial Susceptibility Testing and Carbapenemase Detection

We performed antimicrobial susceptibility testing by using the disc diffusion method on Mueller-Hinton agar (Bio-Rad, <https://www.bio-rad.com>) and interpreted results according to European Committee on Antimicrobial Susceptibility Testing guidelines as updated in 2018 (<http://www.eucast.org>). We determined MICs

for colistin by using broth microdilution (Sensititer Thermofisher, <https://www.thermofisher.com>). We performed carbapenemase detection by using Rapidec Carba NP (bioMérieux, <https://www.biomerieux.com>), followed by immunochromatographic detection of the carbapenemase enzyme using NG-Carba5 test (NG Biotech, <https://ngbiotech.com>).

### WGS and Bioinformatic analysis

We sequenced all KPC-*Kp* isolates by using Illumina technology as previously described (17). We extracted total DNA from colonies by using the Ultraclean Microbial DNA Isolation Kit (MO BIO Laboratories, <https://www.mobio.com>) according to the manufacturer's instructions. We prepared the DNA library as previously described (17) and performed de novo assembly and read mappings by using CLC Genomics Workbench 12.0 (QIAGEN, <https://www.qiagen.com>). We identified the acquired antimicrobial resistance genes by using Resfinder 3.1 (<https://cge.cbs.dtu.dk/services/ResFinder/>) and the CARD database (<https://card.mcmaster.ca>). We annotated the genomes by using RAST (18). We performed phylogenetic analysis by using CSIphylogeny 1.4 (<https://cge.cbs.dtu.dk/services/CSIphylogeny>) and visualized the genomes by using FigTree 1.4.3 (<http://tree.bio.ed.ac.uk/software/figtree>). We performed sequences alignments by using ClustalW (<https://www.genome.jp/tools-bin/clustalw>). We analyzed single-nucleotide polymorphisms (SNPs) on the whole genome by using CSIphylogeny V1.4 with parameters as follows: select minimum depth at SNP position at 10×, minimum distance between SNPs at 10 bp, and minimum SNP quality score of 30.

We constructed the genetic contexts by using de novo assembly or by mapping with reference genomes from GenBank and verified by in-house PCR as previously described (17). We analyzed plasmid contents of clinical isolates by using PlasmidFinder 2.1 to search for the replicase gene and by conducting manual searches for genes showing homology with the replicase gene.

## Results

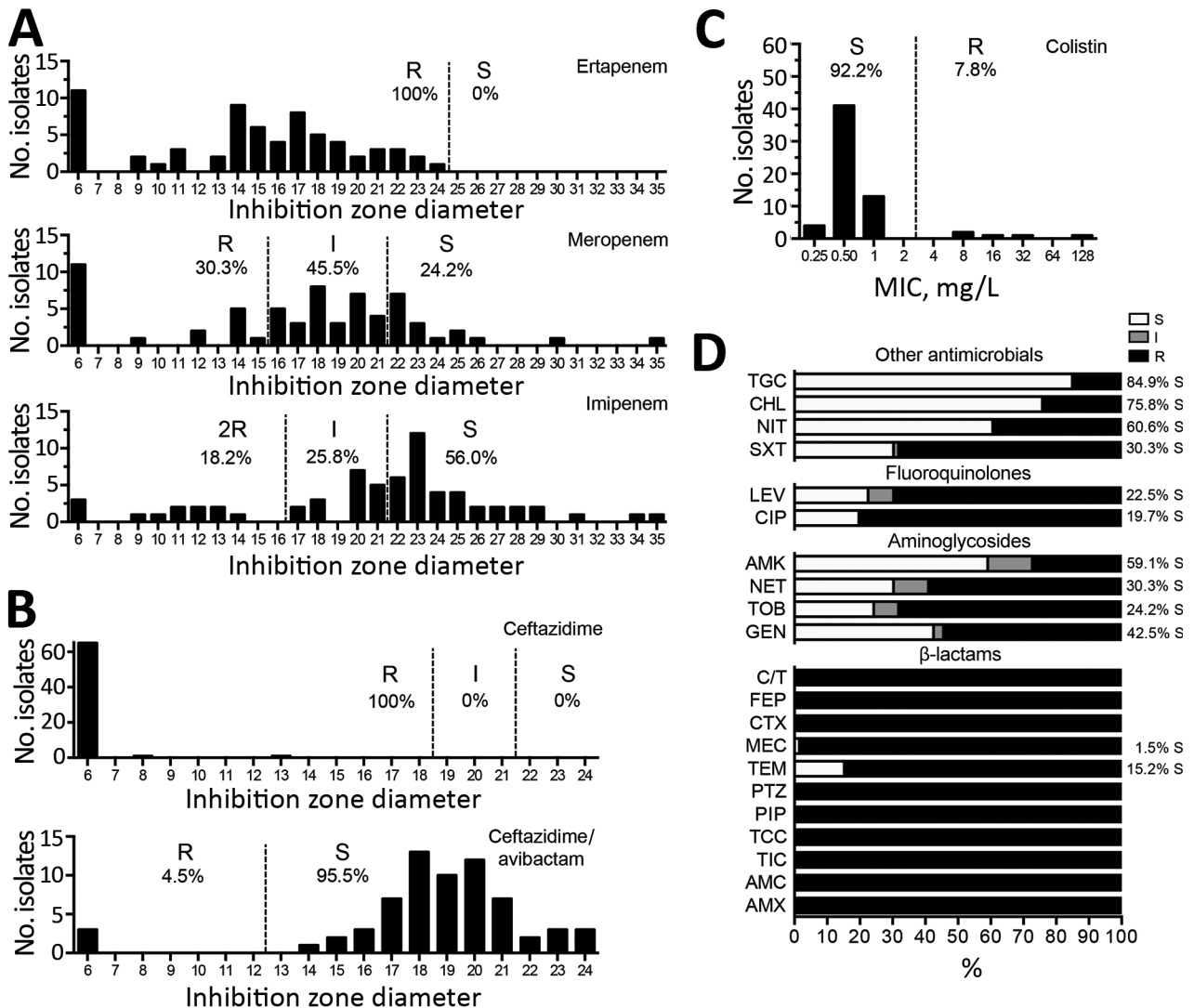
### Low Prevalence of KPC Producers among Carbapenem-Resistant *K. pneumoniae* in France

In 2018, a total of 3,931 carbapenem-resistant *Enterobacteriaceae* were collected, including 1,259 carbapenem-resistant *K. pneumoniae*, among which 1,010 were carbapenemase producers. OXA-48-like enzymes were the most prevalent carbapenemases (69.4%), followed by NDM (17.1%); 37 isolates (3.7%) had a

combination of both of these carbapenemases. KPC enzymes represent only 3.0% of all carbapenemases, corresponding to 6.8% (69 isolates, including 6 duplicated isolates) of all carbapenemase produced by *K. pneumoniae*. KPC also was produced by 13 non-*K. pneumoniae*, including 5 KPC-2 producers (2 *Escherichia coli*, 1 *Klebsiella oxytoca*, 1 *Enterobacter cloacae*, and 1 *Citrobacter koseri*) and 8 KPC-3 producers (5 *E. coli*, 1 *C. freundii*, 1 *E. cloacae*, and 1 *K. aerogenes*). Accordingly, *K. pneumoniae* is the most prevalent species (84.1%) among KPC producers.

**Antimicrobial-Susceptibility of KPC-Kp**

Susceptibility testing revealed that all KPC-*Kp* were resistant to all broad-spectrum cephalosporins (ceftazidime, cefotaxime, cefepime) and monobactam (Figure 1). All KPC-*Kp* were resistant to ertapenem. According to European Committee on Antimicrobial Susceptibility Testing breakpoints, 62.1% (41/66) KPC-*Kp* isolates remained susceptible to imipenem and 30.3% (20/66) to meropenem (Figure 1). Ceftazidime/avibactam (98.5% susceptibility) and colistin (92.2%) remained the most potent agents (Figure 1,



**Figure 1.** Susceptibility testing of *Klebsiella pneumoniae* carbapenemase-producing *K. pneumoniae* isolates, France, 2018. A) Antimicrobial susceptibility to carbapenems tested by using the disc diffusion method and interpreted according to European Committee on Antimicrobial Susceptibility Testing guidelines (<http://www.eucast.org>). B) Susceptibility to ceftazidime or ceftazidime/avibactam combination. C) MICs for colistin as determined by broth microdilution. D) Percentage of susceptibility to other antibiotic families. Where percentage of resistance is <100%, percentage of susceptible isolates is indicated. AMC, amoxicillin/clavulanate; AMK, amikacin; AMX, amoxicillin; CIP, ciprofloxacin; CHL, chloramphenicol; C/T, ceftolozane/tazobactam; CTX, cefotaxime; FEP, cefepime; GEN, gentamicin; I, intermediate; LEV, levofloxacin; MEC, mecillinam; NET, netilmicin; NIT, nitrofurane; PIP, piperacillin; PTZ, piperacillin/tazobactam; R, resistant; S, susceptible; TCC, ticarcillin/clavulanate; TEM, temocillin; TGC, tigecycline; TIC, ticarcillin.



panels B and C). However, we identified 1 isolate resistant to ceftazidime/avibactam but susceptible to carbapenems (Figure 1). This isolate produces a new variant of KPC, named KPC-39, that has been reported to possess increased ceftazidime catalytic activity but also to have concomitantly lost its carbapenemase activity (19). Among other antimicrobial families, 84.9% KPC-Kp isolates were susceptible to tigecycline, 30.3% to sulfamethoxazole/trimethoprim, and 19.7% to ciprofloxacin (Figure 1, panel D). Resistance to aminoglycosides varied from 40.9% for amikacin to 75.8% for tobramycin.

### ***bla*<sub>KPC</sub> Variants and Associated Acquired Resistance Genes**

We performed WGS on 63 nonduplicate KPC-Kp isolates and identified their resistomes by using Illumina technology. In this collection, 44 isolates possessed the *bla*<sub>KPC-3</sub> gene (69.8%), and 18 (28.5%) possessed the *bla*<sub>KPC-2</sub> gene. One isolate harbored a novel single-nucleotide variant of *bla*<sub>KPC-3'</sub>/*bla*<sub>KPC-39</sub> (Figure 1, panel B). Two isolates produced 2 carbapenemases, including 1 isolate coharboring *bla*<sub>KPC-2</sub> and *bla*<sub>VIM-1</sub> and another 1 coharboring *bla*<sub>KPC-2</sub> and *bla*<sub>NDM-4</sub> (Figure 2). We identified additional antimicrobial-resistance determinants in all isolates (Appendix 1, <https://wwwnc.cdc.gov/EID/article/26/6/19-1517-App1.xlsx>). Approximately 46% of the KPC-Kp isolates carried an extended spectrum β-lactamase encoding gene, including 22 isolates harboring *bla*<sub>CTX-M-15'</sub>; 4 isolates coharboring *bla*<sub>CTX-M-14</sub> and *bla*<sub>CTX-M-15'</sub>; and 3 isolates with *bla*<sub>CTX-M-14'</sub>, *bla*<sub>CTX-M-3'</sub> or *bla*<sub>CTX-M-65</sub>. The other acquired β-lactam resistance determinants encoded for the narrow-spectrum β-lactamases OXA-9 and TEM-1. To decipher quinolone resistance, we analyzed the presence of plasmid-mediated resistance determinants and known mutations in gyrase and topoisomerases (20–22). Resistance to quinolones was mediated by either mutation in gyrase *gyrA* affecting the residues S83 (p.S83I, n = 42; p.S83F, n = 7; and p.S83Y, n = 2) or D87 (p.D87N, n = 7; p.D87G, n = 3; and p.D87A, n = 2) or *parC* affecting the residues p.S80 (p.S80I, n = 51) or the production of *Qnr* (Qnr66-like, QnrB6, or QnrS1). Aminoglycoside resistance was caused by the production of the 16S RNA methylase RmtB (n = 7) or an aminoglycoside-modifying enzyme (encoding by *aac(3')-IIa*, *aadA1*, *aadA2*, *aac(6')-Ib-cr*, or *strA/strB*). Colistin resistance (n = 5) resulted systematically in chromosome-encoded resistance with alteration of the *mgrB* gene. In these isolates, 2 possessed a nonsense substitution (p.Q30\*), 1 missense involved in colistin resistance (p.C27W) (23), an ISKpn26-like inserted (with direct

repeats [DRs] of 4 bp: TTAA), and a missense mutation leading to the disappearance of the start codon. No isolate had plasmid-encoded resistance *mcr-1*.

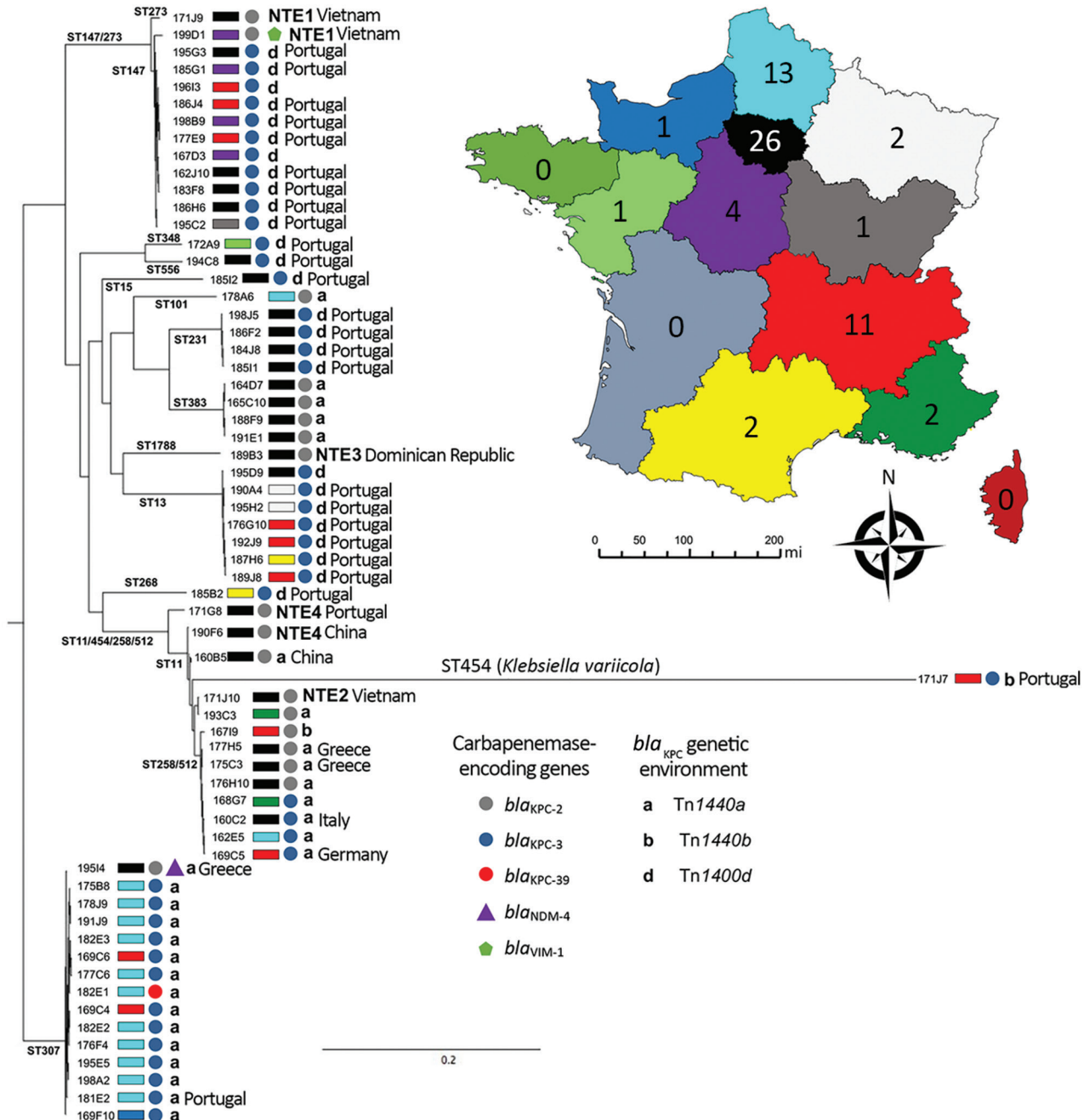
### **Genetic Diversity of KPC-Kp**

Phylogenetic analysis revealed that the 63 KPC-Kp belonged to 15 different clones (STs) circulating in France (Figure 2; Appendix 1). Although many studies have asserted that CG258 is responsible for the spread of *bla*<sub>KPC</sub> (6,8–11), in our collection, only 8 isolates (12.7%) belonged to CG258 (4 each for ST258 and ST512). Furthermore, epidemiologic investigations revealed no link between these isolates (Figure 2). Because KPC is not widely disseminated in France, we did not expect to observe such clonal diversity. Indeed, the epidemiology of KPC in France is not comparable to what was reported in nearby countries in Europe where KPC is endemic, such as Greece and Italy, and where the spread of *bla*<sub>KPC-2/3</sub> is clearly linked to CG258 (24,25). Among the 8 isolates we identified that belonged to CG258, 3 were recovered from patients with travel history in Greece (isolate 175C3 and isolate 177H5) and Italy (isolate 160C2). In France, the 3 most prevalent clones are ST307 (with 15 isolates), ST147 (12 isolates), and ST13 (7 isolates). By using the 21 SNP cutoff value proposed by David et al. to identify a single hospital outbreak caused by a ST258 and ST512 cluster (8), we identified that the ST307 clone was overrepresented because of an outbreak that included 11 isolates (Figure 2; Appendix 2, <https://wwwnc.cdc.gov/EID/article/26/6/19-1517-App2.pdf>). However, this ST307 also included 4 isolates that were not related to this outbreak, such as the 195I4 strain, which was isolated from a patient who traveled in Crete (Greece) and possesses an additional carbapenemase-encoding gene (*bla*<sub>NDM4</sub>). The second most prevalent clone, ST147, seemed to have disseminated upon distinct events (Appendix 2). Most of the ST147 isolates have been recovered from different areas with no epidemiologic link between the patients (Figure 2). A link with Portugal has been identified for most (9/11) patients infected or colonized with a KPC-3-producing *K. pneumoniae* of ST147 (Figure 2). The same link with Portugal was observed for 4 patients infected or colonized with a KPC-3-producing *K. pneumoniae* of ST231. Strains from ST383 represented a small outbreak for which cross contamination was evidenced (<20 SNPs between 4 isolates [Appendix 2]). One isolate (171J7) was distantly related to other clones and corresponded to *K. variicola*. KPC-2-producing *K. pneumoniae* isolates of ST11 were predominantly linked to patients who had a history of travel in Asia (China and Vietnam), where this ST is known to be the main vector of *bla*<sub>KPC</sub> dissemination.

**Diversity of Genetic Vehicle Involved in Spread of *bla*<sub>KPC</sub>**

Analysis of the close genetic context of *bla*<sub>KPC</sub> highlighted diversity in the genetic structures at the origin of the acquisition of the carbapenemase-encoding gene. The well-known Tn4401a (in 29 isolates) and Tn4401d (in 26 isolates) were the most prevalent

structures identified (Figure 2 and 3; Appendix 1). The KPC-Kp of the 2 main clones ST307 and ST147, *bla*<sub>KPC</sub> is carried on Tn4401a in ST307 and Tn4401d in ST147. Two unrelated isolates (ST11-16719 and the *K. variicola* 171J7 isolate) harbored *bla*<sub>KPC</sub> in the Tn4401b isoform. In the remaining 6 isolates (ST273-171J9, ST147-199D1, ST1788-189B3,



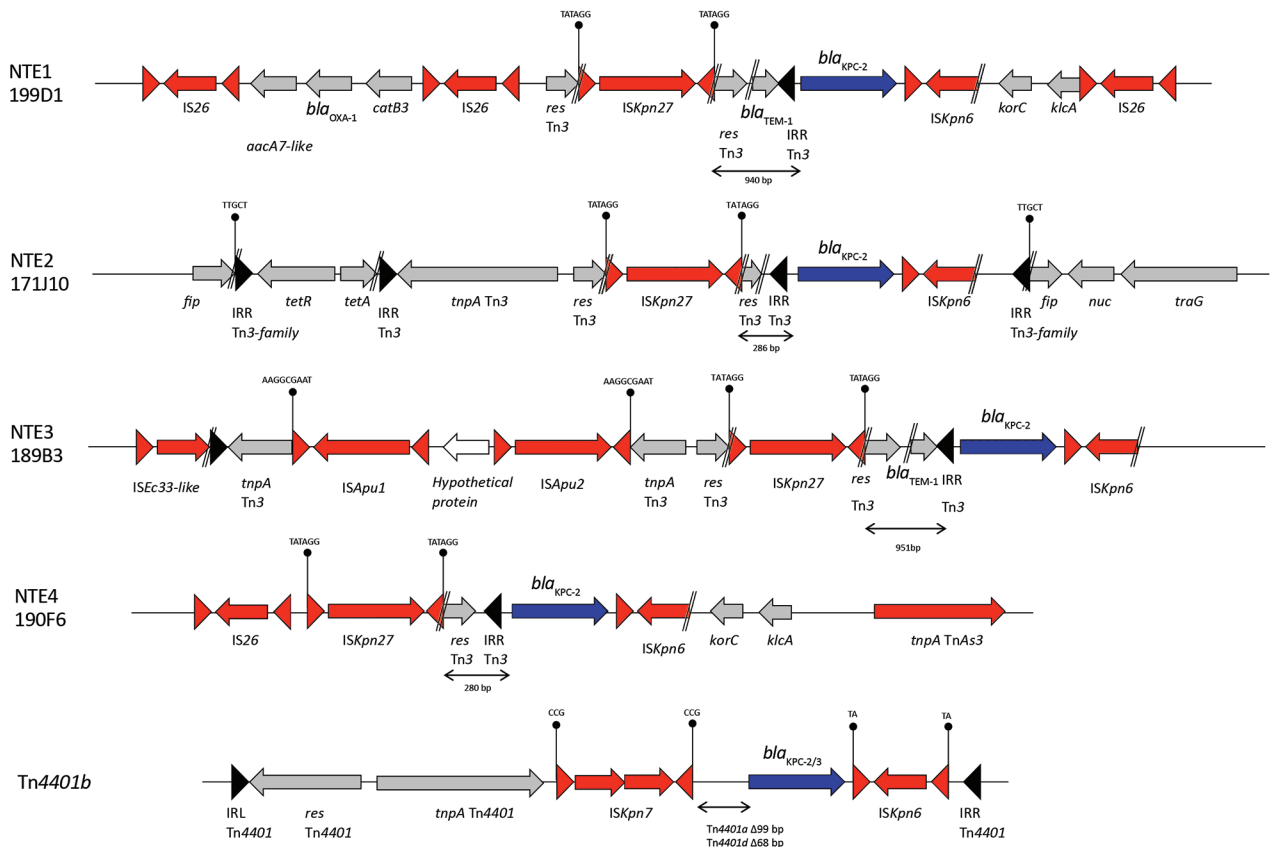
**Figure 2.** Phylogenetic analysis of *Klebsiella pneumoniae* carbapenemase-producing *K. pneumoniae* isolates, France, 2018. STs are indicated on the branches of the tree. Colored circles, triangles, or pentagons indicate carbapenemase type. Colored rectangles indicate region where isolates were recovered, as indicated on inset map; numbers on map indicate number of isolates. Genetic context indicated by isoform of Tn4401 or NTE. Labels indicate links with foreign countries. Scale bar on tree indicates the number of single-nucleotide polymorphisms per position of common sequences. NTE, non-Tn4401 element; ST, sequence type.

ST11-171G8, ST11-190F6, and ST11-171J10),  $bla_{KPC-2}$  is localized in an NTE element (Figures 2, 3). Although 3 isolates belonged to ST11, they displayed 200–800 SNPs of differences along their core genome, indicating that they were unrelated (Appendix 2). The links with 3 different countries (Portugal for ST11-171G8, China for ST11-190F6, and Vietnam for ST11-171J10) are consistent with this unrelatedness. Analysis of NTE elements revealed 4 different structures even if common features were observed (Figure 3). For instance, the presence of a fragment of *ISKpn6* downstream of  $bla_{KPC}$  and a copy of *ISKpn27* upstream were always present (Figure 3). DRs of TATAGG bracketing *ISKpn27* indicated a transposition process that occurred inside the resolvase gene of Tn3. Immediately upstream of  $bla_{KPC-2}$  (74 bp), the presence of the inverted repeat right of Tn3 is present in all NTE, indicating that all these structures were related. However, the NTE differed by the size of the deletions that are present between *ISKpn27* and  $bla_{KPC-2}$  (from 280 bp in NTE-190F6 to 940 bp in NTE-199D1). We could observe a remnant of  $bla_{TEM-1}$  in longer structures, but it was not functional anymore. Analysis of the 4 NTE

revealed that in NTE-199D1, several copies of IS26 bracketed the whole structure, indicating that this IS might be involved in its acquisition by transposition or a recombination event. IS26 has been recently demonstrated to be able to transpose and thus create a class I transposon by targeting another copy of IS26 (26). NTE-171J10 is inserted in the *fip* gene of IncN-type plasmids with the presence of DRs surrounding the NTE-171J10 (Figure 3). The *fip* gene has already been demonstrated to be an integration hot spot in IncN-type plasmids (27,28). DRs as well as putative inverted repeats of Tn3-family transposon are present at the integration site (Figure 3). Moreover, the presence of the complete Tn3 transposase gene indicated that NTE-171J10 might be functional. In NTE-189B3, a new class I transposon carrying a protein of unknown function has been identified. DRs bracketed *ISApu1* and *ISApu2*, indicating a transposition process mediated by these close insertion sequences (Figure 3).

## Discussion

In France, KPC producers (84.1% of *K. pneumoniae*) represent only 6.8% of all carbapenemase producers,



**Figure 3.** Analysis of genetic context of  $bla_{KPC}$  genes in *Klebsiella pneumoniae* carbapenemase-producing *K. pneumoniae* isolates, France, 2018. Different isoforms of NTE and Tn4401 are represented. Inverted repeat sequences are indicated by triangles. Direct repeats are indicated by vertical lines. Genes are represented by arrows. NTE, non-Tn4401 element.



far away from the global 72.7% found in Europe in 2013 (8). This relatively low prevalence of KPC producers in France compared with OXA-48-like and NDM producers has been reported since 2012 (3,4,29). We demonstrated unexpected clonal diversity among KPC-*Kp* isolated in France. A few overrepresented clones were identified (i.e., ST307, ST147, ST231, and ST13). However, ST307 was involved in a regional outbreak, whereas ST147 and ST13 were identified in different parts of France. Most of the patients colonized or infected with KPC-*Kp* had a clear link with Portugal, where these 4 STs were recently described to be the more prevalent (30,31). The KPC-2-producing *K. pneumoniae* isolates identified in France were predominantly recovered from patients with a history of travel in Greece (ST258) or Asia (ST11).

Regarding antimicrobial susceptibility of KPC-*Kp* in France, the relative high susceptibility to imipenem (30.3%) and meropenem to a lesser extent (18.2%) are in agreement with previous reports from Italy, where ST512 is highly prevalent (26.6% susceptibility to meropenem) (32). Conversely, data from the United States and Taiwan indicated that KPC-*Kp* are more resistant to carbapenems in those parts of the world, where ST258 is more prevalent (33,34).

Altogether, our results indicate that the KPC-*Kp* epidemiology has changed in Europe during the past 5 years. In 2018, ST258 and ST512 *K. pneumoniae* were no longer the main drivers of KPC resistance, at least in several non-KPC-endemic countries of western Europe, such as France and Portugal (30,31). KPC-*Kp* epidemiology also appears to have begun changing in some countries, such as Italy and Colombia, where CG-258 KPC-*Kp* was previously known to be endemic. This change is indicated by the reported emergence of ST307 and ST273 KPC-*Kp* in Sicilia (Italy) (35) and ST307 and ST14 KPC-*Kp* in Colombia (36). This change in the global epidemiology of KPC-*Kp* might have an effect on the identification of these carbapenemase producers with the molecular methods dedicated to the identification of GC258 *K. pneumoniae* (37,38).

In addition, our study highlights the dissemination of *bla*<sub>KPC</sub> genes in high-risk clones of *K. pneumoniae* (ST307 and ST147), genetic features that might provide an advantage in adaptation to the hospital environment and the human host (39). These clones already convey several antimicrobial-resistance genes, including genes encoding other carbapenemases of NDM and OXA-48-like types (40,41). Accordingly, we might now fear the emergence of ST307 and ST147 high-risk clones of *K. pneumoniae* that can co-produce multiple carbapenemases. A recent study demonstrated the importance of ST307 in the dissemination

of *bla*<sub>OXA-181</sub> in South Africa (42). In that study, >600 isolates belonging to ST307 were recovered and analyzed, and the results demonstrated the importance of this clone as a carrier of carbapenemase genes in all continents. Another study used Bayesian analysis to demonstrate that ST307 emerged in the mid-1990s (43). ST307 had been strongly associated with the diffusion of *bla*<sub>CTX-M-15</sub> (43) and now is associated with the dissemination of carbapenemase genes (42).

In conclusion, we found that the epidemiology of KPC-*Kp* has changed in Europe, in particular, with emergence of non-CG258 KPC-*Kp* isolates in France, linked to dissemination from Portugal. This change in epidemiology has to be considered by microbiologists because a few diagnostic assays specifically designed for the identification of ST-258 KPC-*Kp* isolates will not be able to detect non-CG258 KPC-*Kp* isolates.

This work was funded in part by the University Paris-Sud, France. L.D., T.N., and R.A.B. are members of the Laboratory of Excellence in Research on Medication and Innovative Therapeutics, which is supported by a grant from France's National Research Agency (grant no. ANR-10-LABX-33).

## About the Author

Dr. Bonnin is an associate professor in Medical Microbiology at the University of Paris-Sud Medical School and a member of the Associated National Reference Center for Carbapenemase-Producing Enterobacteriaceae. His research focuses on bacterial genomes and transcriptomes with a special interest in mobile genetic elements and evolution.

## References

- Munoz-Price LS, Poirel L, Bonomo RA, Schwaber MJ, Daikos GL, Cormican M, et al. Clinical epidemiology of the global expansion of *Klebsiella pneumoniae* carbapenemases. *Lancet Infect Dis*. 2013;13:785-96. [https://doi.org/10.1016/S1473-3099\(13\)70190-7](https://doi.org/10.1016/S1473-3099(13)70190-7)
- Tzouveleakis LS, Markogiannakis A, Psychogiou M, Tassios PT, Daikos GL. Carbapenemases in *Klebsiella pneumoniae* and other *Enterobacteriaceae*: an evolving crisis of global dimensions. *Clin Microbiol Rev*. 2012;25:682-707. <https://doi.org/10.1128/CMR.05035-11>
- Dortet L, Cuzon G, Nordmann P. Dissemination of carbapenemase-producing *Enterobacteriaceae* in France, 2012. *J Antimicrob Chemother*. 2014;69:623-7. <https://doi.org/10.1093/jac/dkt433>
- Dortet L, Cuzon G, Ponties V, Nordmann P. Trends in carbapenemase-producing *Enterobacteriaceae*, France, 2012 to 2014. *Euro Surveill*. 2017;22:22. <https://doi.org/10.2807/1560-7917.ES.2017.22.6.30461>
- Nordmann P, Cuzon G, Naas T. The real threat of *Klebsiella pneumoniae* carbapenemase-producing bacteria. *Lancet Infect Dis*. 2009;9:228-36. [https://doi.org/10.1016/S1473-3099\(09\)70054-4](https://doi.org/10.1016/S1473-3099(09)70054-4)
- Cuzon G, Naas T, Truong H, Villegas MV, Wisell KT, Carmeli Y, et al. Worldwide diversity of *Klebsiella pneumoniae*



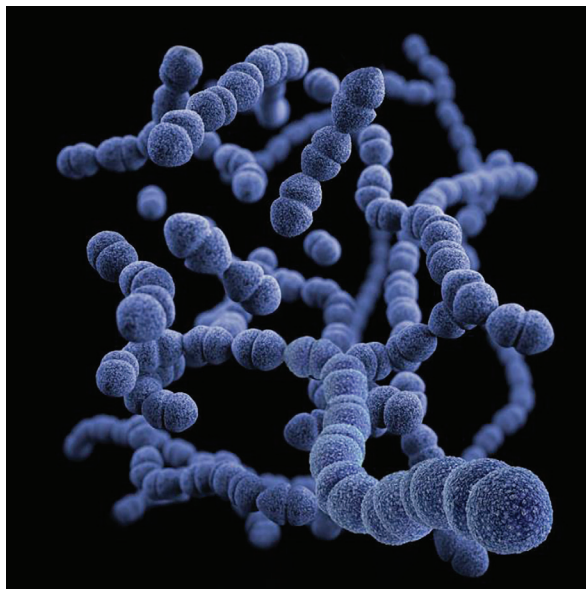
- that produce  $\beta$ -lactamase *bla*<sub>KPC-2</sub> gene. Emerg Infect Dis. 2010;16:1349–56. <https://doi.org/10.3201/eid1609.091389>
7. Fu P, Tang Y, Li G, Yu L, Wang Y, Jiang X. Pandemic spread of *bla*<sub>KPC-2</sub> among *Klebsiella pneumoniae* ST11 in China is associated with horizontal transfer mediated by IncFII-like plasmids. Int J Antimicrob Agents. 2019;54:117–24. <https://doi.org/10.1016/j.ijantimicag.2019.03.014>
  8. David S, Reuter S, Harris SR, Glasner C, Feltwell T, Argimon S, et al.; EuSCAPE Working Group; ESGEM Study Group. Epidemic of carbapenem-resistant *Klebsiella pneumoniae* in Europe is driven by nosocomial spread. Nat Microbiol. 2019;4:1919–29. <https://doi.org/10.1038/s41564-019-0492-8>
  9. Chmelnitsky I, Shklyar M, Hermesh O, Navon-Venezia S, Edgar R, Carmeli Y. Unique genes identified in the epidemic extremely drug-resistant KPC-producing *Klebsiella pneumoniae* sequence type 258. J Antimicrob Chemother. 2013;68:74–83. <https://doi.org/10.1093/jac/dks370>
  10. Fortini D, Villa L, Feudi C, Pires J, Bonura C, Mammina C, et al. Double copies of *bla*(KPC-3):Tn4401a on an IncX3 plasmid in *Klebsiella pneumoniae* successful clone ST512 from Italy. Antimicrob Agents Chemother. 2015;60:646–9. <https://doi.org/10.1128/AAC.01886-15>
  11. Kitchel B, Rasheed JK, Patel JB, Srinivasan A, Navon-Venezia S, Carmeli Y, et al. Molecular epidemiology of KPC-producing *Klebsiella pneumoniae* isolates in the United States: clonal expansion of multilocus sequence type 258. Antimicrob Agents Chemother. 2009;53:3365–70. <https://doi.org/10.1128/AAC.00126-09>
  12. Naas T, Cuzon G, Villegas MV, Lartigue MF, Quinn JP, Nordmann P. Genetic structures at the origin of acquisition of the  $\beta$ -lactamase *bla*<sub>KPC</sub> gene. Antimicrob Agents Chemother. 2008;52:1257–63. <https://doi.org/10.1128/AAC.01451-07>
  13. Araújo BF, Royer S, Campos PA, Ferreira ML, Gonçalves IR, Machado LG, et al. Insights into a novel Tn4401 deletion (Tn4401i) in a multidrug-resistant *Klebsiella pneumoniae* clinical strain belonging to the high-risk clonal group 258 producing KPC-2. Int J Antimicrob Agents. 2018;52:525–7. <https://doi.org/10.1016/j.ijantimicag.2018.08.011>
  14. Naas T, Cuzon G, Truong HV, Nordmann P. Role of ISKpn7 and deletions in *bla*<sub>KPC</sub> gene expression. Antimicrob Agents Chemother. 2012;56:4753–9. <https://doi.org/10.1128/AAC.00334-12>
  15. Girlich D, Bonnin RA, Jousset A, Naas T. Promoter characterization and expression of the *bla*<sub>KPC-2</sub> gene in *Escherichia coli*, *Pseudomonas aeruginosa* and *Acinetobacter baumannii*. J Antimicrob Chemother. 2017;72:1597–601. <https://doi.org/10.1093/jac/dkx044>
  16. Chen L, Mathema B, Chavda KD, DeLeo FR, Bonomo RA, Kreiswirth BN. Carbapenemase-producing *Klebsiella pneumoniae*: molecular and genetic decoding. Trends Microbiol. 2014;22:686–96. <https://doi.org/10.1016/j.tim.2014.09.003>
  17. Girlich D, Bonnin RA, Bogaerts P, De Laveleye M, Huang DT, Dortet L, et al. Chromosomal amplification of the *bla*<sub>OXA-58</sub> carbapenemase gene in a *Proteus mirabilis* clinical isolate. Antimicrob Agents Chemother. 2017;61:61.
  18. Aziz RK, Bartels D, Best AA, DeJongh M, Disz T, Edwards RA, et al. The RAST Server: rapid annotations using subsystems technology. BMC Genomics. 2008;9:75. <https://doi.org/10.1186/1471-2164-9-75>
  19. Jousset AB, Oueslati S, Creton E, Cotellon E, Sauvadet A, Emeraud C, et al. Resistance to ceftazidime-avibactam in a *Klebsiella pneumoniae* clinical isolate due to the production of KPC-39, a single amino-acid variant of KPC-3. Presented at: 29th European Congress of Clinical Microbiology and Infectious Diseases; Amsterdam, the Netherlands; 2019 April 13–16.
  20. Ruiz J, Goñi P, Marco F, Gallardo F, Mirelis B, Jimenez De Anta T, et al. Increased resistance to quinolones in *Campylobacter jejuni*: a genetic analysis of *gyrA* gene mutations in quinolone-resistant clinical isolates. Microbiol Immunol. 1998;42:223–6. <https://doi.org/10.1111/j.1348-0421.1998.tb02274.x>
  21. Vila J, Ruiz J, Goñi P, De Anta MT. Detection of mutations in *parC* in quinolone-resistant clinical isolates of *Escherichia coli*. Antimicrob Agents Chemother. 1996;40:491–3. <https://doi.org/10.1128/AAC.40.2.491>
  22. Vila J, Ruiz J, Marco F, Barcelo A, Goñi P, Giralte E, et al. Association between double mutation in *gyrA* gene of ciprofloxacin-resistant clinical isolates of *Escherichia coli* and MICs. Antimicrob Agents Chemother. 1994;38:2477–9. <https://doi.org/10.1128/AAC.38.10.2477>
  23. Poirel L, Jayol A, Nordmann P. Polymyxins: antibacterial activity, susceptibility testing, and resistance mechanisms encoded by plasmids or chromosomes. Clin Microbiol Rev. 2017;30:557–96. <https://doi.org/10.1128/CMR.00064-16>
  24. Conte V, Monaco M, Giani T, D'Ancona F, Moro ML, Arena F, et al.; AR-ISS Study Group on Carbapenemase-Producing *K. pneumoniae*. Molecular epidemiology of KPC-producing *Klebsiella pneumoniae* from invasive infections in Italy: increasing diversity with predominance of the ST512 clade II sublineage. J Antimicrob Chemother. 2016;71:3386–91. <https://doi.org/10.1093/jac/dkw337>
  25. Fartzonika K, Rossen JWA, Sakkas H, Rosema S, Priavali E, Friedrich AW, et al. Identification of a KPC-9-producing *Klebsiella pneumoniae* ST258 cluster among KPC-2-producing isolates of an ongoing outbreak in northwestern Greece: a retrospective study. Clin Microbiol Infect. 2018;24:558–60. <https://doi.org/10.1016/j.cmi.2017.12.007>
  26. Harmer CJ, Hall RM. IS26-mediated formation of transposons carrying antibiotic resistance genes. MSphere. 2016;1:1. <https://doi.org/10.1128/mSphere.00038-16>
  27. Gauthier L, Dortet L, Jousset AB, Mihaila L, Golse N, Naas T, et al. Molecular characterization of plasmid-encoded Tripoli MBL 1 (TMB-1) in *Enterobacteriaceae*. J Antimicrob Chemother. 2019;74:42–7.
  28. Poirel L, Bonnin RA, Nordmann P. Analysis of the resistome of a multidrug-resistant NDM-1-producing *Escherichia coli* strain by high-throughput genome sequencing. Antimicrob Agents Chemother. 2011;55:4224–9. <https://doi.org/10.1128/AAC.00165-11>
  29. Lee CR, Lee JH, Park KS, Kim YB, Jeong BC, Lee SH. Global dissemination of carbapenemase-producing *Klebsiella pneumoniae*: epidemiology, genetic context, treatment options, and detection methods. Front Microbiol. 2016;7:895. <https://doi.org/10.3389/fmicb.2016.00895>
  30. Aires-de-Sousa M, Ortiz de la Rosa JM, Gonçalves ML, Pereira AL, Nordmann P, Poirel L. Epidemiology of carbapenemase-producing *Klebsiella pneumoniae* in a hospital, Portugal. Emerg Infect Dis. 2019;25:1632–8. <https://doi.org/10.3201/eid2509.190656>
  31. Rodrigues C, Bavlovič J, Machado E, Amorim J, Peixe L, Novais A. KPC-3-producing *Klebsiella pneumoniae* in Portugal linked to previously circulating non-CG258 lineages and uncommon genetic platforms (Tn4401d-IncFIA and Tn4401d-IncN). Front Microbiol. 2016;7:1000. <https://doi.org/10.3389/fmicb.2016.01000>
  32. Cojutti P, Sartor A, Bassetti M, Scarparo C, Pea F. Is meropenem MIC increase against KPC-producing *Klebsiella pneumoniae* correlated with increased resistance rates against other antimicrobials with Gram-negative activity? J Glob Antimicrob Resist. 2018;14:238–41. <https://doi.org/10.1016/j.jgar.2018.05.005>

33. Chiu SK, Ma L, Chan MC, Lin YT, Fung CP, Wu TL, et al. Carbapenem nonsusceptible *Klebsiella pneumoniae* in Taiwan: dissemination and increasing resistance of carbapenemase producers during 2012–2015. *Sci Rep*. 2018;8:8468. <https://doi.org/10.1038/s41598-018-26691-z>
34. Kaiser RM, Castanheira M, Jones RN, Tenover F, Lynfield R. Trends in *Klebsiella pneumoniae* carbapenemase-positive *K. pneumoniae* in US hospitals: report from the 2007–2009 SENTRY Antimicrobial Surveillance Program. *Diagn Microbiol Infect Dis*. 2013;76:356–60. <https://doi.org/10.1016/j.diagmicrobio.2013.03.032>
35. Bonura C, Giuffrè M, Aleo A, Fasciana T, Di Bernardo F, Stampone T, et al.; MDR-GN Working Group. An update of the evolving epidemic of *bla*<sub>KPC</sub> carrying *Klebsiella pneumoniae* in Sicily, Italy, 2014: emergence of multiple non-ST258 clones. *PLoS One*. 2015;10:e0132936. <https://doi.org/10.1371/journal.pone.0132936>
36. Ocampo AM, Chen L, Cienfuegos AV, Roncancio G, Chavda KD, Kreiswirth BN, et al. A two-year surveillance in five Colombian tertiary care hospitals reveals high frequency of non-CG258 clones of carbapenem-resistant *Klebsiella pneumoniae* with distinct clinical characteristics. *Antimicrob Agents Chemother*. 2015;60:332–42. <https://doi.org/10.1128/AAC.01775-15>
37. Chen L, Chavda KD, Mediavilla JR, Zhao Y, Fraimow HS, Jenkins SG, et al. Multiplex real-time PCR for detection of an epidemic KPC-producing *Klebsiella pneumoniae* ST258 clone. *Antimicrob Agents Chemother*. 2012;56:3444–7. <https://doi.org/10.1128/AAC.00316-12>
38. Yu F, Lv J, Niu S, Du H, Tang YW, Pitout JDD, et al. Multiplex PCR analysis for rapid detection of *Klebsiella pneumoniae* carbapenem-resistant (sequence type 258 [ST258] and ST11) and hypervirulent (ST23, ST65, ST86, and ST375) strains. *J Clin Microbiol*. 2018;56:56. <https://doi.org/10.1128/JCM.00731-18>
39. Villa L, Feudi C, Fortini D, Brisse S, Passet V, Bonura C, et al. Diversity, virulence, and antimicrobial resistance of the KPC-producing *Klebsiella pneumoniae* ST307 clone. *Microb Genom*. 2017;3:e000110. <https://doi.org/10.1099/mgen.0.000110>
40. Potel C, Ortega A, Martínez-Lamas L, Bautista V, Regueiro B, Oteo J. Interspecies transmission of the *bla*<sub>OXA-48</sub> gene from a *Klebsiella pneumoniae* high-risk clone of sequence type 147 to different *Escherichia coli* clones in the gut microbiota. *Antimicrob Agents Chemother*. 2017;62:62. <https://doi.org/10.1128/AAC.01699-17>
41. Turton J, Davies F, Turton J, Perry C, Payne Z, Pike R. Hybrid resistance and virulence plasmids in “high-risk” clones of *Klebsiella pneumoniae*, including those carrying *bla*<sub>NDM-5</sub>. *Microorganisms*. 2019;7:7. <https://doi.org/10.3390/microorganisms7090326>
42. Lowe M, Kock MM, Coetsee J, Hoosien E, Peirano G, Strydom K-A, et al. *Klebsiella pneumoniae* ST307 with *bla*<sub>OXA-181</sub>, South Africa, 2014–2016. *Emerg Infect Dis*. 2019;25:739–47. <https://doi.org/10.3201/eid2504.181482>
43. Wyres KL, Hawkey J, Hetland MAK, Fostervold A, Wick RR, Judd LM, et al. Emergence and rapid global dissemination of CTX-M-15-associated *Klebsiella pneumoniae* strain ST307. *J Antimicrob Chemother*. 2019;74:577–81. <https://doi.org/10.1093/jac/dky492>

Address for correspondence: Laurent Dortet, Service de Bactériologie-Hygiène, Hôpital de Bicêtre, 78 rue du Général Leclerc, 94275 Le Kremlin-Bicêtre CEDEX, France; email: laurent.dortet@aphp.fr

## EID podcast

# An Increase in *Streptococcus pneumoniae* Serotype 12F



In 2009, Israel introduced a vaccine designed to protect against multiple strains of pneumococcal disease. Even though the vaccine prevented certain strains of the illness, one uncovered serotype increased in frequency.

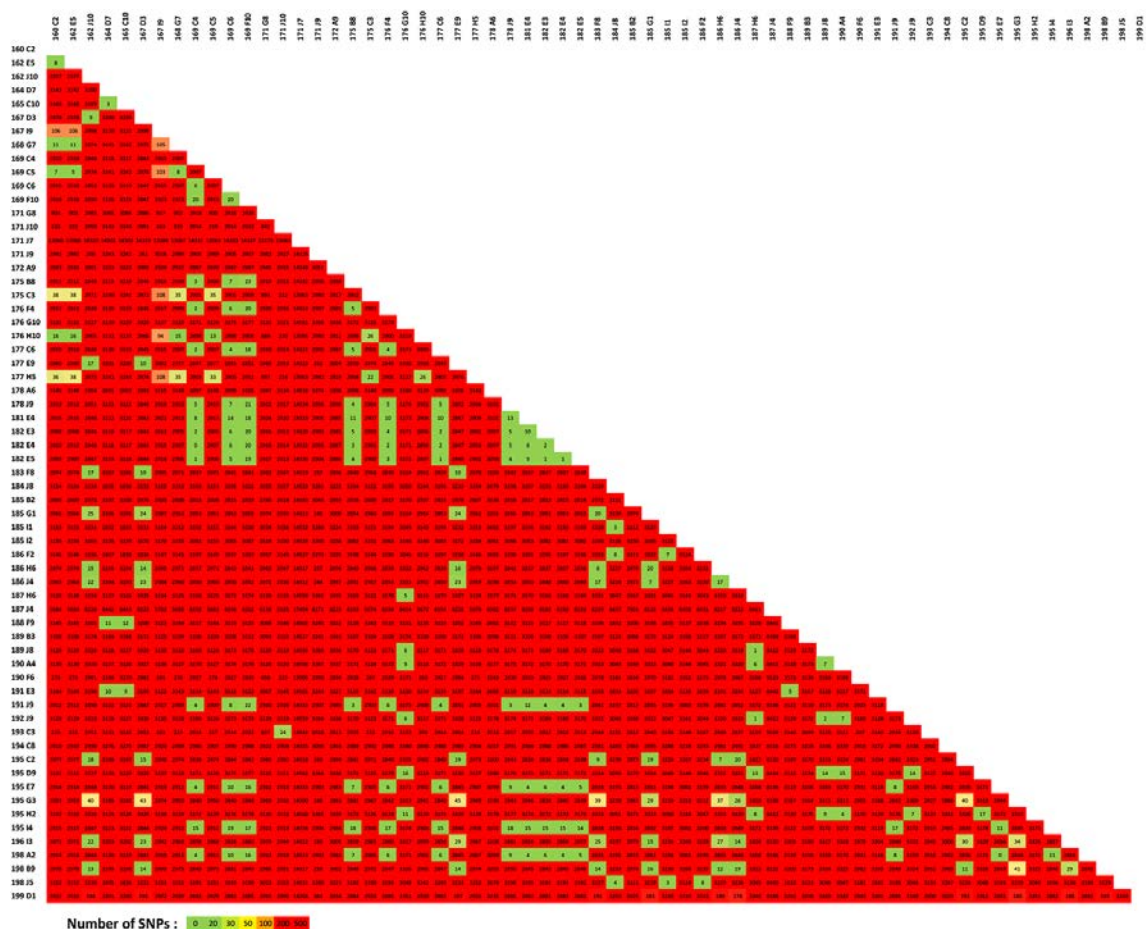
In this EID podcast, Dr. Cynthia Whitney, a CDC epidemiologist, discusses an increase in serotype 12F pneumoniae in Israel.

**Visit our website to listen:**  
<https://go.usa.gov/xy6AM>

**EMERGING  
 INFECTIOUS DISEASES®**

# Emergence of New Non-Clonal Group 258 High-Risk Clones among *Klebsiella pneumoniae* Carbapenemase-Producing *K. pneumoniae* Isolates, France

## Appendix 2



**Appendix 2 Figure.** Matrix of single-nucleotide polymorphisms (SNPs) between each KPC-producing *K. pneumoniae* isolate. Isolates with <21 SNP's difference (dark green) are considered as identical.