



HAL
open science

Determination of biological joint reaction forces from in-vivo experiments using a hybrid combination of biomechanical and mechanical engineering software

Joanne Becker, Emmanuel Mermoz, Jean-Marc Linares

► To cite this version:

Joanne Becker, Emmanuel Mermoz, Jean-Marc Linares. Determination of biological joint reaction forces from in-vivo experiments using a hybrid combination of biomechanical and mechanical engineering software. *Mechanics & Industry*, 2020, 21 (6), pp.623. 10.1051/meca/2020088 . hal-03103053

HAL Id: hal-03103053

<https://hal.science/hal-03103053v1>

Submitted on 7 Jan 2021

HAL is a multi-disciplinary open access archive for the deposit and dissemination of scientific research documents, whether they are published or not. The documents may come from teaching and research institutions in France or abroad, or from public or private research centers.

L'archive ouverte pluridisciplinaire **HAL**, est destinée au dépôt et à la diffusion de documents scientifiques de niveau recherche, publiés ou non, émanant des établissements d'enseignement et de recherche français ou étrangers, des laboratoires publics ou privés.

Determination of biological joint reaction forces from in-vivo experiments using a hybrid combination of biomechanical and mechanical engineering software

Joanne Becker^{1,2,*}, Emmanuel Mermoz^{1,2}, and Jean-Marc Linares²

¹ Airbus Helicopters, Aéroport de Marseille Provence, Marignane 13700, France

² Aix Marseille Univ, CNRS. ISM. Inst Movement Sci, Marseille 13009, France

Received: 6 March 2020 / Accepted: 9 November 2020

Abstract. In biomechanical field, several studies used OpenSim software to compute the joint reaction forces from kinematics and ground reaction forces measurements. The bio-inspired joints design and their manufacturing need the usage of mechanical modeling and simulation software tools. This paper proposes a new hybrid methodology to determine biological joint reaction forces from in vivo measurements using both biomechanical and mechanical engineering softwares. The methodology has been applied to the horse forelimb joints. The computed joint reaction forces results would be compared to the results obtained with OpenSim in a previous study. This new hybrid model used a combination of measurements (bone geometry, kinematics, ground reaction forces...) and also OpenSim results (muscular and ligament forces). The comparison between the two models showed values with an average difference of 8% at trotting and 16% at jumping. These differences can be associated with the differences between the modelling strategies. Despite these differences, the mechanical modeling method allows the computation of advanced simulations to handle contact conditions in joints. In future, the proposed mechanical engineering methodology could open the door to define a biological digital twin of a quadruped limb including the real geometry modelling of the joint.

Keywords: bio-inspiration / methodology / joint reaction force / mechanical

1 Introduction

In order to take inspiration from biological articulations to design bio-inspired mechanical joints usable in complex mechanism, the joint reactions forces must be known. In medicine, some researches have used instrumented prostheses to measure forces and pressures in the replaced bones [1]. Such methods would later permit to improve the upcoming prostheses comfort and lifespan. Another way to compute joint reaction forces is the use of musculoskeletal numerical models of human [2–5] or animal [6–9] limbs to understand biological joints characteristics. These models are anatomically based 3D models in which fluids and most soft tissues are often neglected.

However, in the scope of imitating highly performing biological articulations to change the designs of joints in mechanical systems, these models are essential in order to mechanically characterize the biological joints. In Becker et al. [10], the authors presented a model of the horse forelimb computing its joint reaction forces with OpenSim.

Moreover, most studies working on biological joint reaction forces estimation used OpenSim software for their modelling and simulation. Nevertheless, for the design and manufacturing of bio-inspired joints, the tools of a mechanical modeling and simulation software are necessary.

In this work, a hybrid method was proposed using both biomechanical and mechanical engineering software to compute the joint reaction forces from in vivo measurements. These joint reaction forces computations results were then compared with OpenSim results. The data used in this study are available at https://simtk.org/docman/?group_id=1728.

2 Materials and methods

2.1 Specimen and measurements

A French Saddle sport horse weighing 560 kg and judged free of obvious lameness was ridden by a professional rider and their total mass with the equipment was estimated to be 650 kg. The kinematics of the horse right forelimb and the ground reaction force were simultaneously recorded

* e-mail: joanne.becker@univ-amu.fr

for trotting and jumping a fence of 1 m high. The recordings were made for ten trials each time. For the kinematics measurements, markers were placed along the horse forelimb, principal markers at the centers of joints and secondary markers between principal ones. A board camera followed the horse parallel to its movement at trotting and jumping. The kinematics were therefore only measured in the sagittal plane. This simplification could have been done because the horse belongs to these animals, which have limbs that mostly move in a vertical plane, and therefore the hypothesis was made that movements and forces were very small in lateral direction. A video analyzer called Kinovea (OpenSource Software, Kinovea Association, France) was used to follow the markers trajectories. The reference frame was chosen with a vertical Y-axis, a longitudinal Z-axis and a transversal X-axis. Due to this non-invasive measurement system, the trajectories needed to be corrected before they were used as entry kinematics data. One of the crucial compensations was the skin artifact that was handled with a method inspired from the solidification method [11]. The entire correction process was developed and detailed in [10]. As the mechanical engineering software does not use optimization process to best-fit the kinematics, the movement of the limb was controlled with the angular coordinates. From the markers coordinates resulting from the corrections cited before, the angular variations were mathematically recalculated at each joint to define the entry kinematics data for the mechanical software simulations. These angular variations were validated by comparison with earlier studies in the discussion part of this paper. During the kinematics measurements, the ground reaction forces in the three directions were measured with a force plate buried under 100 mm of sand. This gave ground reaction forces values and the center of pressure at each step of measurement could be defined. The ground reaction forces values across the stride were published earlier [10] and the values were validated by comparison with literature.

In literature, authors often used CT (computed tomography) scans [8], or MRI (Magnetic Resonance Imaging) on cadavers [9] to obtain the bones geometry. Here, the forelimb bones of a horse skeleton were scanned with an industrial optical 3D digitizer, the GOM ATOS 3 (GOM, Braunschweig), that enabled to access to the geometry with a Computer aided design (CAD) software like CATIA V5 (Dassault Systems, Vélizy-Villacoublay). The numerical data of bone geometry obtained from the GOM ATOS 3 were uploaded on CATIA V5 software in order to fit to the dimensions of the horse used for kinematics experiments. The distances between the principal markers are supposed to correspond to the bones lengths. By dividing the distances between the principal markers at rest by the measured bones lengths, a scale factor of 1.2 ± 0.03 was deduced. This scale factor was applied to the bones CAD in all directions. On CATIA V5 software, the surfaces were filled and assigned with a homogenous material with the same mean density as bone ($\rho_{\text{bones}}=1800 \text{ kg.m}^{-3}$). All experimental methods used in this study were detailed in [10].

2.2 Mechanical multibody modelling

Simcenter mechanical engineering software (Siemens, Munich), combines system simulation, 3D Computer Aided Engineering (CAE) and is widely used in industry to simulate mechanical systems and predict their behavior. The joint reaction forces are the combination of kinematics, ground reaction forces and muscular and ligament forces, so all these elements would be needed to compute the joint reaction forces. First, the limb geometry measured earlier with the GOM ATOS 3 was imported to the mechanical engineering software. A six segments (humerus, radius, wrist, metacarpal and carpal bones, first phalanx, second phalanx and foot) model was defined, leading to five articular joints: shoulder, elbow, wrist, metacarpophalangeal (MCP) joint, inter-phalangeal joint (P2-P1). The kinematics frames defining the axis of rotation of each joint were defined with the same methodology than the one used in the previous study [10]. These five joints were modeled with revolute joints leading to a five degree-of-freedom model. Even if the kinematics was recorded in 2D, the revolution axes of each joint are not perpendicular to the sagittal plane and not aligned, so the simulated limb would not exactly move in a plane. To determine the joints axes of rotation, the surfaces of each articulation were best fitted with simple surfaces with CATIA V5 software (spheres, cylinders) to define the characteristic axes and centers of the joints.

In the mechanical engineering software, it was first necessary to define a FEM super-element (containing masses, inertial properties) of the model called a skeleton [12], which enabled to define the joints kinematics. Two nodes were therefore defined at the proximal and distal center of joint of each bone, and one third node was defined at the middle of these two. The FEM super-element of the model is represented in Figure 1. On this representation, only the proximal and distal nodes of each bone are represented. These three nodes were linked by rigid body element connections because bones are considered as rigid. Hinge joints were defined between the two coincident nodes at each joint with the corresponding frame (for example, a hinge joint was defined between Scapula [3] and Humerus [1]).

The bones geometries were meshed with 3D tetrahedral elements and the resulting mesh nodes were connected to the middle node of each segment with rigid body elements. The 3D meshing would be necessary for the insertion of muscles. To control the kinematics of the limb, a constraint of displacement containing the top marker corrected trajectory was assigned to the proximal node of the scapula (node named Horse [1] on Fig. 1) in order to control the overall displacement of the limb. The angular displacements previously computed were used to command the hinges rotations at each joint.

Concerning the ground reaction forces, the values resulting from the force plate measurements were directly applied to the distal node of the foot segment. Indeed, at each instant of measurement, the moment of the force was recalculated from the center of pressure at the time to the

coordinates of the distal node of the foot segment. The corresponding kinematics and ground reaction forces are given in Figure 2 for trotting and in Figure 3 for jumping.

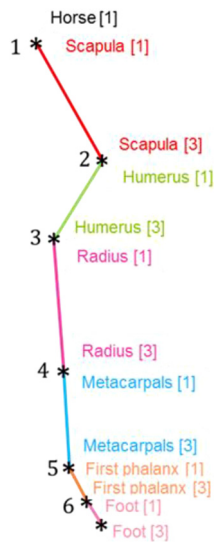


Fig. 1. FEM super-element of the horse forelimb.

The modelling of muscles and ligaments was a crucial part of the estimation of joint reaction forces. In the previous work, the muscles were first all modeled in 3D on CATIA V5 by using a software of anatomical observation (Biosphera). These muscular elements were then assembled on the bones geometry on the CAD software. This 3D modelling of the muscles on CATIA V5 enabled to deduce the precise coordinates of muscles insertion points and also the inertial properties of the limb. In the previous model built with OpenSim [10], NMS builder was used to build a model actuated with the 23 muscle-tendons and 5 ligamentous passive elastic structures. They were modeled with their insertion points, their inertial properties, their muscular parameters (maximal force in the muscle, fiber length, and angle of penation) and wrapping surfaces to prevent them to cross bones. The Static Optimization tool of OpenSim enabled to obtain the muscular activations and forces over time during the complete simulation. More precisely, the Static Optimization tool computed the muscular forces necessary to reach the kinematics inputs and the ground reaction forces applied to the limb. Some of these muscular forces are represented for the trot in Figure 4b and for the jump in Figure 4c. In the muscular forces computation with OpenSim, it was necessary to reduce the reserves (virtual torques used by the software if

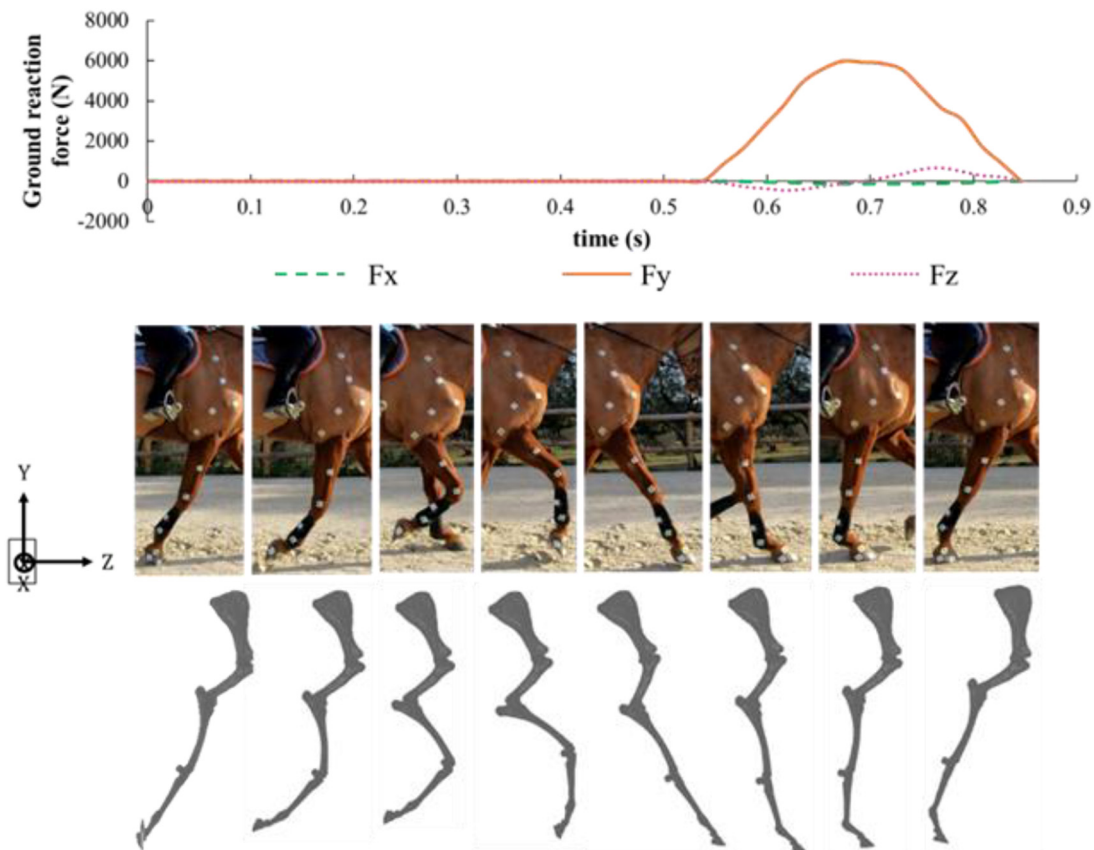


Fig. 2. Decomposition of the trotting stride (video and multibody model simulation) according to the ground reaction force. On the upper graph, the ground reaction force in the three direction is represented. The video captions in the middle represent the different steps of the trotting stride and finally the lower figure represent these steps simulated on the mechanical software. The kinematics and ground reaction forces are synchronized and moreover, the simulated limb follows properly the kinematics.

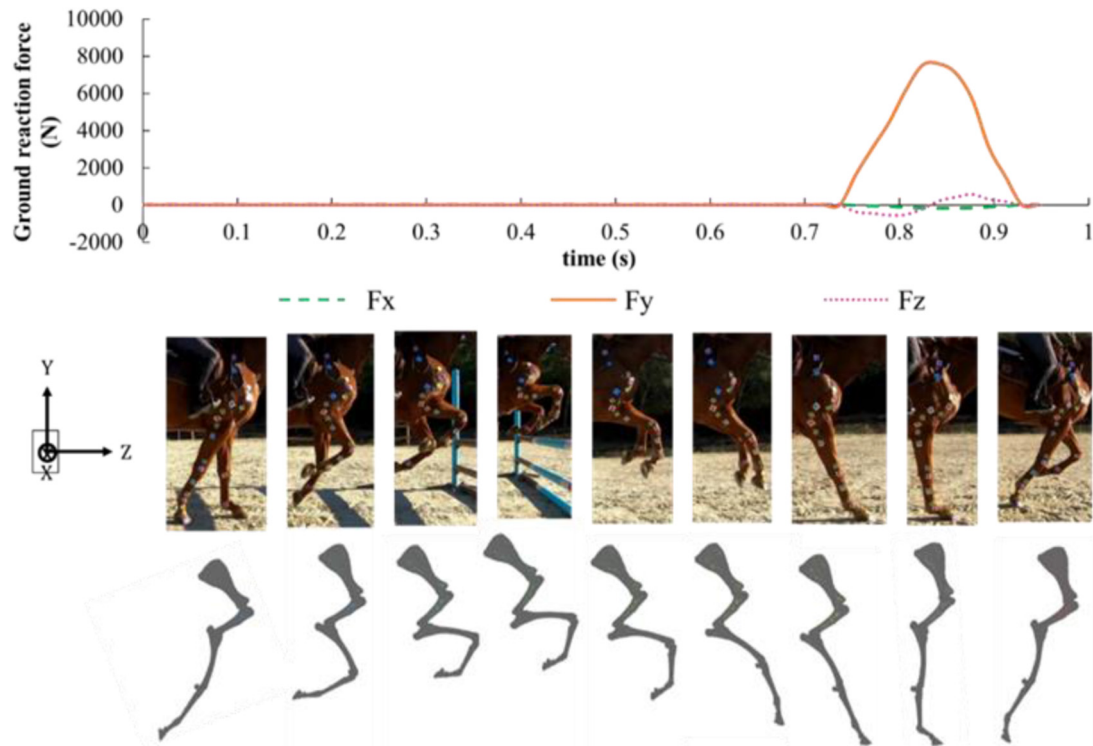


Fig. 3. Decomposition of the jumping stride (video and multibody model simulation) according to the ground reaction force. On the upper graph, the ground reaction force in the three direction is represented. The video captions in the middle represent the different steps of the trotting stride and finally the lower figure represent these steps simulated on the mechanical software. The kinematics and ground reaction forces are synchronized and moreover, the simulated limb follows properly the kinematics.

the model cannot reach the entry data) to have joint reaction forces values as realistic as possible. The methodology to reduce these reserves was detailed in Becker et al. [10], and it consisted particularly in blocking the MCP joint. There are very few muscles at the MCP level, the muscles are mostly localized in the proximal part of the limb. The long muscle-tendon structures going down to the distal part, are attached at different insertion points and are guided by wrapping surfaces. This allowed to assume that the blocking of MCP would more impact the damping of the limb than the muscular forces values. These muscular forces could therefore be used for the Simcenter modelling, where the MCP is moving.

In the current model using Simcenter, the muscles and ligaments were represented by FEM super-elements containing their inertial properties. The OpenSim resulting muscular forces were directly applied at the insertion points of muscles located on the limb bones. In practice, forces were applied directly on the mesh nodes corresponding to the insertion points of muscles (Fig. 4a).

3 Results

3.1 Kinematics results

It is important to remind that the 2D measurements of the kinematics lead to a 2D model even if some data are in 3D. The mean trotting speed was 4 m/s and the mean speed of the body of the horse at jumping was about 5 m/s. As

explained in materials and methods section, the trajectories of each markers were corrected and then the angular openings of each joint were automatically recalculated. For the shoulder, the rest angle was 125° and this angle varied from -4.5% to $+14\%$ at trotting. The initial position of the elbow was 150° and across trotting it went from -39 to $+5.8\%$. The wrist was initially opened of 175° and it closed up to -38% and opened up to $+9.2\%$. The MCP joint has an initial opening of 154° , and closed up to -1.3% but opened up to $+56.2\%$. Finally, the P2-P1 angle joint had an initial position of 172° and at trotting it closes only up to 0.7% but it opens up to 29% .

At jumping, the angular variations were globally wider than for trotting. At the shoulder joint, the angle varies from -12 to $+8.2\%$, at the elbow joint, it varies from -52 to $+7.2\%$ and at wrist joint it goes from -58 to $+9.4\%$. The MCP joint closes up to -13.4% and opens up to $+49.8\%$, and finally the P2-P1 angle varies around its rest position from -0.5 to $+29.1\%$.

3.2 Joint reaction forces comparison between the hybrid method model and the OpenSim model

3.2.1 Joint reaction force comparison at trotting

For the comparison of joint reaction forces results between the two models, the norm in the YZ plane was considered. The comparison of joint reaction forces at the five forelimb articulations for the trotting stride obtained with both models is given in Figure 5. In this figure, joint reaction

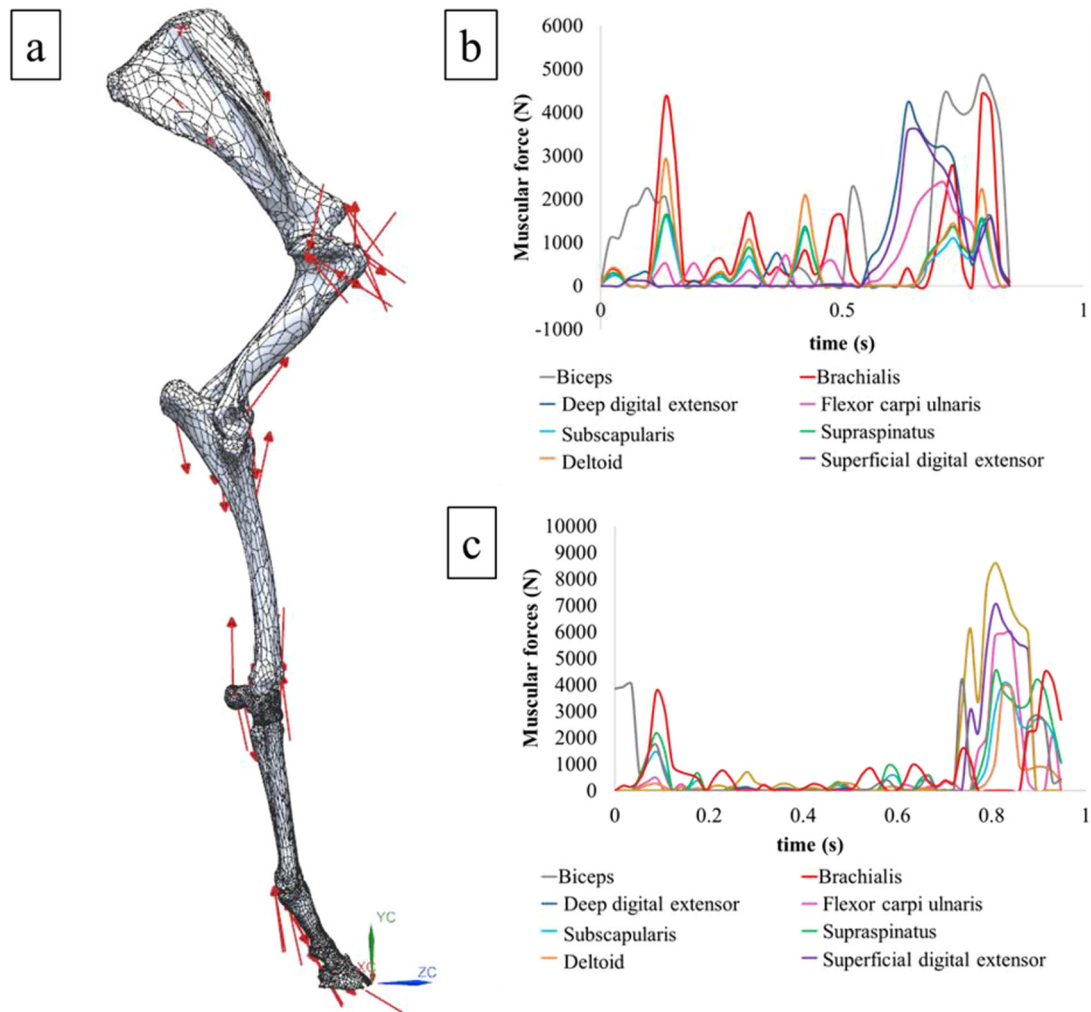


Fig. 4. Multibody model and muscular forces. (a) Mechanical engineering software model of the right forelimb of the horse. The red arrows represent some of the muscular forces. (b) Values of these muscular forces at trotting (c) Values of these muscular forces at jumping.

force obtained with OpenSim is represented with a red dashed line while the Simcenter modelling joint reaction force is represented with a green solid line.

It is important to keep in mind that the joint reaction forces are a combination of kinematics, muscular forces and ground reactions forces. This is confirmed by comparing the ground reaction forces (Fig. 2) and the muscular forces (Fig. 4b) with the joint reaction forces. It appears that the joint reactions forces at swing phase are rather low (when ground reaction forces and muscular forces are low) and that they really increase at stance phase (when ground reaction forces and muscular forces are high).

The percentages of difference for the extremum values at trotting are given in Table 1.

The joint reaction forces computed with the multibody model were quite similar to those computed with the OpenSim model. For the wrist joint, the MCP joint and the P2P1 joint, the results present at most 2.6% of difference. For the proximal joints, the results are quite more different with 17% of difference at the shoulder joint and 18% of

difference at the elbow joint. This results in a mean difference of 8% between the two models.

3.2.2 Joint reaction force comparison at jumping

The jumping joint reaction forces norm comparison between the two models at the five forelimb articulations is given in Figure 6. In this figure, joint reaction force obtained with OpenSim is represented with a red dashed line while the Simcenter modelling joint reaction force is represented with a green solid line. Here, one can notice again the synchronization between the ground reaction forces (Fig. 3), the muscular forces (Fig. 4c) and the joint reactions forces (Fig. 6). The percentages of difference between the two modelling methods are given in Table 2.

At jumping, the joint reaction forces computed with the multibody model are broadly lower than the results from OpenSim model. These differences are mainly noticed for the three proximal joints (shoulder, elbow and wrist). Indeed, the joint reactions forces computed with Simcenter

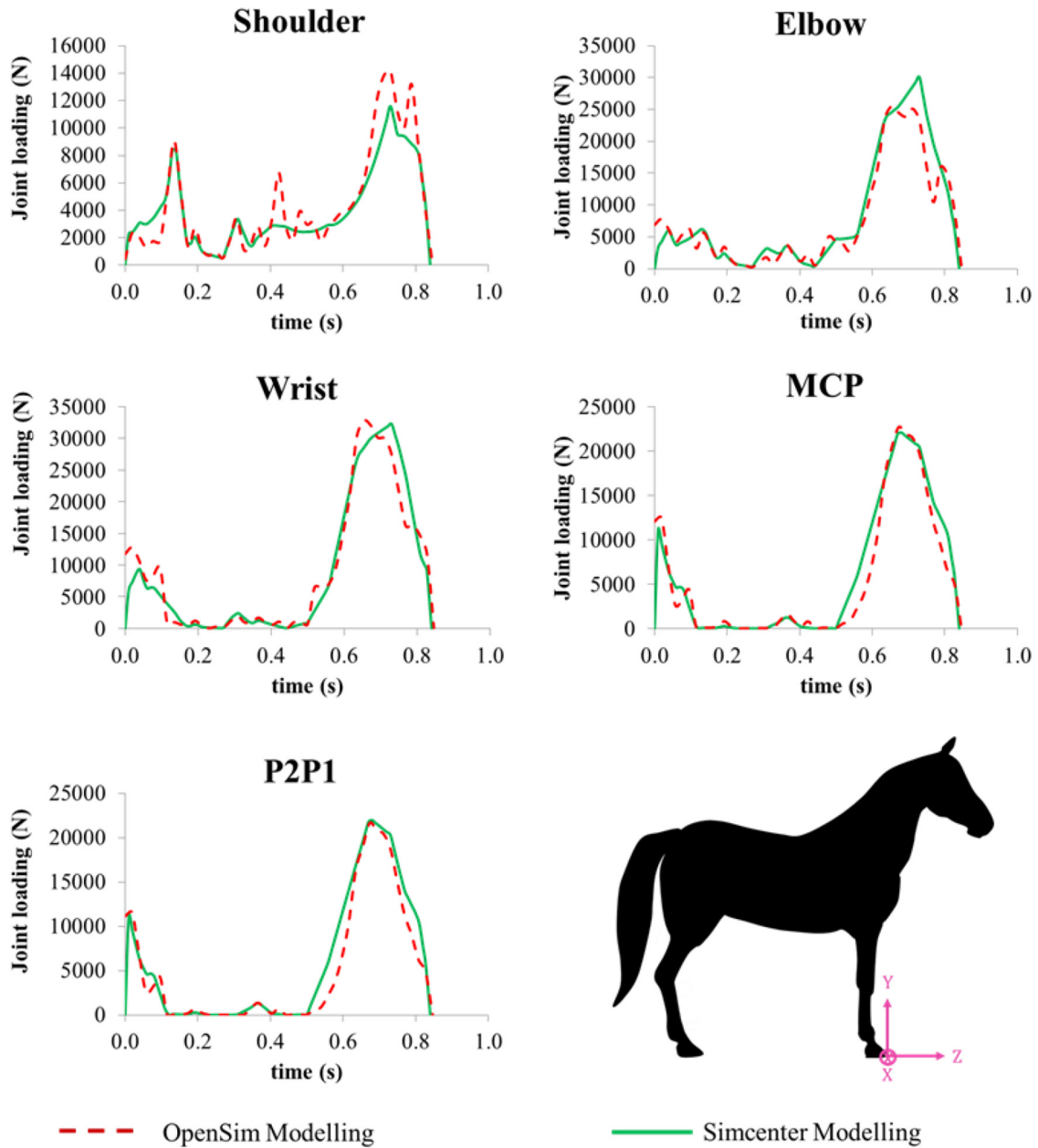


Fig. 5. Trot joint reaction force norm values comparison between OpenSim and the mechanical engineering software.

Table 1. Extremum values for the norm of the joint reaction forces at trotting for the two models and percentages of difference between the two methods.

	Maximal joint reaction force with OpenSim (N)	Maximal joint reaction force with Simcenter V12 (N)	Percentage of difference between the two models
Shoulder	14127	11594	-17
Elbow	25508	30103	+18
Wrist	32775	32260	-1.50
MCP	22681	22081	-2.60
P2P1	21652	21964	+1.40

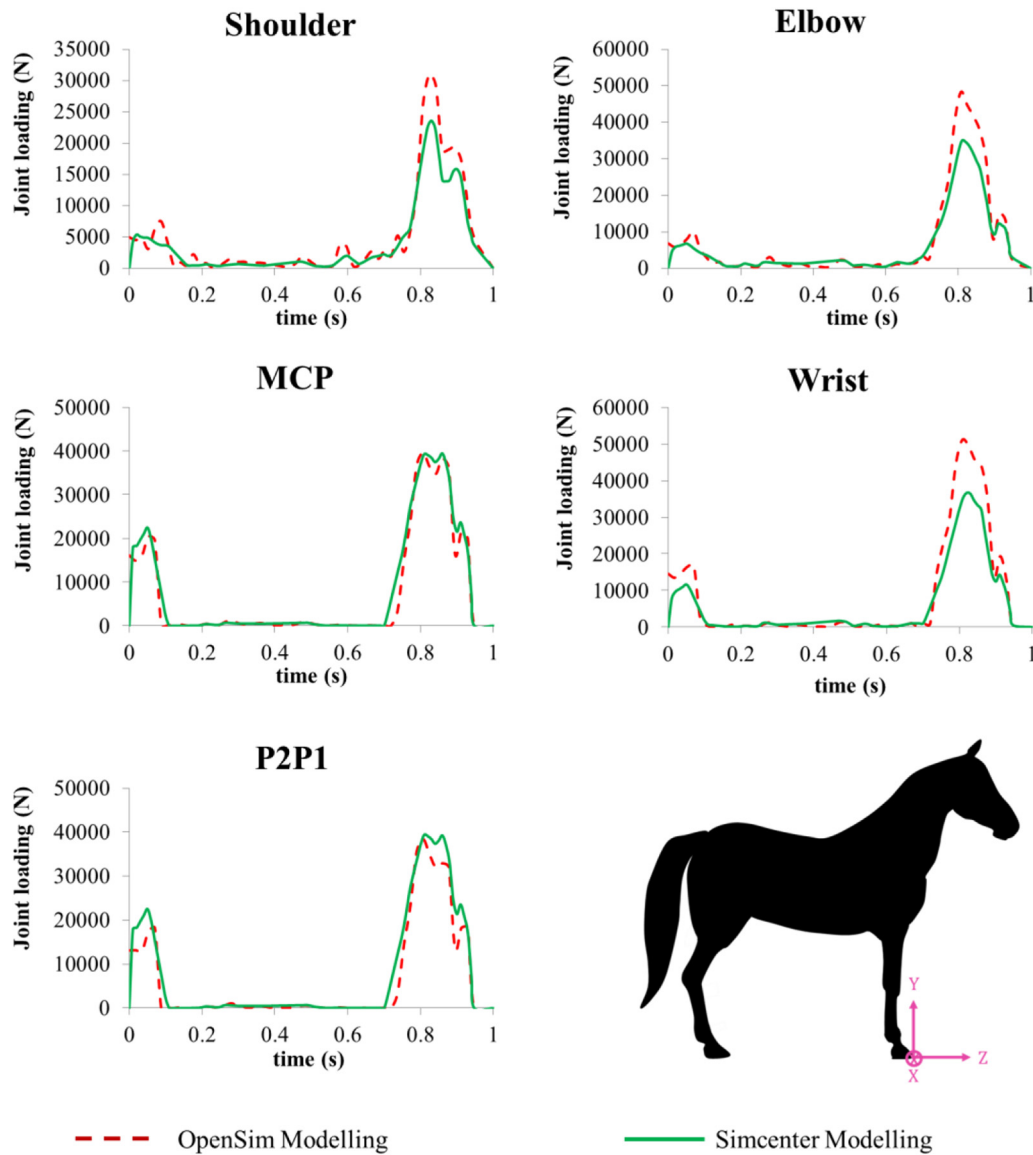


Fig. 6. Jump joint reaction force norm values comparison between OpenSim and the mechanical engineering software.

Table 2. Extremum values for the norm of the joint reaction forces at jumping for the two models and percentages of difference between the two methods.

	Maximal joint reaction force with OpenSim	Maximal joint reaction force with Simcenter V12	Percentage of difference between the two models
Shoulder	31043	23595	-23%
Elbow	48307	35014	-27%
Wrist	51008	36648	-28.00%
MCP	39683	39430	-0.60%
P2P1	38485	39404	2.30%

at the shoulder is 23% lower than the OpenSim result. For the elbow, the difference is of 27% and finally, the wrist joints loadings are 28% lower for the multibody model than for OpenSim model. For the distal joints, the

results are much closer with a difference of 0.6% for the MCP joint and a difference of 2.3% for the interphalangeal joint. This results in a mean difference of 16% between the two models.

4 Discussion

4.1 Validation of kinematics results

The recalculations of joint angles are very close to the previous studies at trotting [10,13] and at jumping [10]. In Becker et al. [10], the correction methods applied to the kinematics were the same but the angular variations were obtained from OpenSim. These comparisons would therefore validate the correction methods applied to the kinematics data because of the resemblance with Dutto et al. [13], but also to validate the inverse kinematics tool of OpenSim which earlier enabled to obtain almost the same values as here.

Peak shoulder and elbow joint angles for trotting were 142.5° and 158.7° respectively, which were very similar to the values reported by Dutto et al. [13] ($138^\circ \pm 5^\circ$ and $150^\circ \pm 10^\circ$) and Becker et al. [10] (144.5° and 158.7°). For the wrist and MCP joints, the peak recalculated values are 192.2° and 240.6° respectively and those are also very close to the values given by Dutto et al. [13] ($186^\circ \pm 9^\circ$ and $231^\circ \pm 4^\circ$), by Harrison et al. [2] ($182^\circ \pm 2^\circ$ and $241^\circ \pm 4^\circ$) and also by Becker et al. [10] (190.9° and 238.5°). Finally, for the phalangeal joint, the peak recalculated value was 221.9° which shows high resemblance with Dutto et al. [13] who reported a value of $220^\circ \pm 3^\circ$ and with Becker et al. [10] which gave a value of 220.5° .

At jumping, the joint angular variations were larger than at trotting, due to wider movements to reach the jumping kinematics. The recalculated values were very close to those obtained with the inverse kinematics tool of OpenSim [10].

4.2 Discussion about joint reaction force results

As explained earlier, the joint reaction forces are a combination of kinematics, ground reaction forces and muscular forces. It can be observed that the joint reactions forces norm values obtained with both methods (Figs. 5 and 6) are linked with the evolution of the ground



Fig. 7. Positions of the MCP joint at jumping stance phase.

reactions forces (Figs. 2 and 3) and also with muscular forces (Fig. 4). During the swing phase, there is still some co-contraction of muscles to keep it upward resulting in some joint reaction force. This explains why there is still some low reaction force in joints during the swing phase.

4.3 Comparison between Simcenter mechanical engineering software and OpenSim joint reaction force results

There were some observable differences of joint reaction force values between the two models. In OpenSim, when the kinematics and the muscles parameters did not enable the model to reach the entry data, it used virtual torques at the center of joints named the reserves. These reserves should be as low as possible. In the OpenSim model [10], the kinematics used for the estimation of joint reaction force were simplified to reduce these reserves: the MCP joint rotation was blocked. Here, in the multibody model, the kinematics was not simplified for the joint reaction force computation: the five hinge joints rotations were allowed. Moreover, it seems that the MCP joint plays an important role in the landing phase. Indeed, when looking at this joint in the jumping stance phase (Fig. 7), it appears that it is the damper for the landing phase and the propeller for the next stride. Over the complete strides, its angle has an opening interval of 85° for trotting and 94° for jumping [10]. Therefore, it means that in the OpenSim model, the MCP joint cannot complete its damper-propeller mission and the other joints need to compensate this lack by handling more joint reaction force than needed.

This would cause differences in the observed joint reaction results between the two models. It can be assumed that taking into account a kinematics closer to reality leads to a more realistic estimation of the joint reaction force. To validate this hypothesis about MCP joint, the mechanical engineering software model was simulated with blocking the rotation of this joint. This led to joint reaction forces closer to the first model as seen in Table 3.

With the blocking of the MCP joint, the difference is reduced from a mean value of 8% to a mean value of 3.7% at trotting and from a mean value of 16% to a mean value of 8.5% at jumping. The influence of the blocking of MCP joint rotation on the joint reaction forces is therefore demonstrated. Nevertheless, only some in vivo measurements could be used to verify the joint internal loads without all modelling hypotheses, but this implies surgical procedures.

Table 3. Percentages of difference between the two models for joint reaction forces values at trotting and jumping.

	Percentage of difference between the two models at trotting	Percentage of difference between the two models at jumping
Shoulder	-6.2%	-14.5%
Elbow	+8.4%	-12%
Wrist	-0.77%	-14%
MCP	-1.67%	-0.5%
P2P1	-1.62%	+1.7%

4.4 Comparison between Simcenter mechanical engineering software results and literature

Harrison et al. [9] published joint reaction force values computed in the distal part of the horse forelimb. The joint reactions result at trotting for the MCP and the wrist can be compared to the joint reactions calculated in this study. For the MCP joint, the multibody model computed a maximal value of 22.08 kN, whereas Harrison et al. [9] computed a maximal joint reaction of 40.6 N/kg, corresponding to 26.4 kN for a horse weighing 650 kg. These values are rather close, nevertheless the difference can be explained by a difference of modelling. Harrison et al. [9] only considered the distal part of the limb with movement between the little bones, whereas we considered the entire limb, leading to differences of joint reaction values. For the wrist, the difference is more important because our model resulted in a maximal value of 32.3 kN whereas the maximal joint reaction computed by Harrison et al. [9] was 18.2 kN. These differences can be explained by a higher speed (4 m.s^{-1} for us against 1.4 m.s^{-1} for Harrison et al. [9]), because the increase of speed would cause higher ground reaction force in order to keep the position against gravity and this would lead to higher moments at joints. The differences of joint reaction values can also be explained by a difference of ground material (sand for us and rubber matting or turf track for Harrison et al. [9] study). Finally, this model was simplified according to the joints considered whereas Harrison considered all joints between the little bones.

4.5 Limitations of the study

Unfortunately, this study is suffering from the difficulties of multi-scale modelling [14–16]. Indeed, biomechanical systems are difficult to model and simulate because it requires the establishment of many hypotheses regarding the biological system (kinematic uncertainties associated with markers position, muscle parameters, difficulty to define the rotation axes of biological joints...).

In our study, the limitations of the mechanical modelling of a biological system were handled by simplifications and hypothesis that modified the simulation results somehow.

The first limitation is that our model mostly uses 3D data (geometry of bones, inertial parameters, ground reaction forces, muscle parameters...), but the kinematics measurements were planar. The trajectories recorded were only the projections of the markers on the camera image. This consequently led to 2D computation results. Nevertheless, 2D results are acceptable because the horse movement is mostly in a sagittal plane and that lateral movements and therefore forces are very low. In consequence, only the norms in the sagittal plane (Y axis and Z axis) were studied and compared.

It could also be considered as a limitation to use muscular forces resulting from the OpenSim model to compute joint reaction forces in the mechanical model. This limitation first comes from the difference in the entry kinematics used in both models. First, OpenSim optimizes

the kinematics to recalculate angles of rotations. Nevertheless, when considering all the processing and corrections made on the kinematics data before importing them in the OpenSim software (corrections of speed, corrections of hoof marker trajectory, skin artifact correction), the compensation of kinematics resulting from OpenSim optimization process led to very low modification on the angles of rotations. This could explain partly the difference between the magnitudes of loads obtained in both procedures used in this study (Open Sim and Mechanical software). Concerning the MCP joint, the kinematics of the joint has been treated differently between the two models and this could concur to a variation in the joint reaction force calculation.

Finally, the torque reserves used in OpenSim model to accommodate the associated uncertainties of the experimental data are needed to have perfectly mechanically equilibrated systems. This contributes to the variations in the joint reaction values between OpenSim and Simcenter models. Nevertheless, this hybrid method constitutes a new strategy for the mechanical modelling of a horse forelimb and a solid basis for future works.

5 Conclusion

The overall goal of this work was to build a multibody model of a horse forelimb with mechanical engineering software to compute not only the joint reactions forces, but also to be able to perform usual stress and contact pressure analysis when required. A model developed with OpenSim software in a previous work [10] was used to define the applied muscular and ligament forces and compare the joint reaction forces.

This new hybrid model used a combination of measurements (bone geometry, kinematics, ground reaction forces...) and also OpenSim results (muscular and ligament forces). For the muscular and ligament forces, only biomechanical software could manage muscles modelling and the OpenSim Static Optimization tool enabled to compute the muscular forces in the horse forelimb over time. These results were directly introduced in the mechanical engineering software simulations by applying the forces at the corresponding muscles insertions points on bones.

This hybrid model led to joint reaction forces values that were compared to OpenSim published values. Some differences were observed between the two models. These differences were mostly explained by the difference in the kinematics: in the OpenSim simulation the MCP joint was blocked while it was not in the mechanical engineering software simulations. In reality, this joint seems to have a damper-propeller mission and should therefore be considered. Other limitations are described in a dedicated Section 4.5.

The comparison between the two models showed values with an average difference of 8% at trotting and 16% at jumping. These differences can be associated with the differences between the modelling strategies. Despite these differences, the mechanical modeling method allows the

computation of advanced simulations to handle contact conditions in joints. In future, the proposed mechanical engineering methodology could open the door to define a biological digital twin of a quadruped limb including the real geometry modelling of the joint.

The authors gratefully acknowledge contributions of Thomas Thouveny for his work about digitalization of horse bones. Measuring instruments used in the experiments were funded by the European Community, French Ministry of Research and Education, Pays d'Aix Conurbation Community, Aix Marseille University. Airbus Helicopters/Aix-Marseille Université Scientific Chair on Bio-Inspired Mechanical Design funded this work.

References

- [1] S.J.G. Taylor, J. Gorjon, P.S. Walker, An instrumented prosthesis for knee joint force measurement in vivo, *IEEE Colloquium on Innovative Pressure, Force and Flow Measurements (Ref. No. 1999/089)*, London, UK, 1999, 6/1–6/4
- [2] S.L. Delp, F.C. Anderson, A.S. Arnold, P. Loan, A. Habib, C.T. John, D.G. Thelen, OpenSim: open-source software to create and analyze dynamic simulations of movement, *IEEE T. Biomed. Eng.* **54**, 1940–1950 (2007)
- [3] E.M. Arnold, S.R. Ward, R.L. Lieber, S.L. Delp, A model of the lower limb for analysis of human movement, *Ann. Biomed. Eng.* **38**, 269–279 (2009)
- [4] S.R. Hamner, A. Seth, S.L. Delp, Muscle contributions to propulsion and support during running, *J. Biomech.* **43**, 2709–2716 (2010)
- [5] J.A. Reinbolt, A. Seth, S.L. Delp, Simulation of human movement: applications using OpenSim, *Procedia Iutam.* **2**, 186–198 (2011)
- [6] O. Panagiotopoulou, J.W. Rankin, S.M. Gatesy, J.R. Hutchinson, A preliminary case study of the effect of shoe-wearing on the biomechanics of a horse's foot, *Peer J.* **4**, e2164 (2016)
- [7] J.R. Hutchinson, J.W. Rankin, J. Rubenson, K.H. Rosenbluth, R.A. Siston, S.L. Delp, Musculoskeletal modeling of an ostrich (*Struthio camelus*) pelvic limb: influence of limb orientation on muscular capacity during locomotion, *Peer J.* **3**, e1001 (2015)
- [8] Z.F. Lerner, B.C. Gadowski, A.K. Ipson, K.K. Haussler, C.M. Puttlitz, R.C. Browning, Modulating tibiofemoral contact force in the sheep hind limb via treadmill walking: predictions from an opensim musculoskeletal model, *J. Orthop. Res.* **33**, 1128–1133 (2015)
- [9] S.M. Harrison, R.C. Whitton, C.E. Kawcak, S.M. Stover, M.G. Pandy, Relationship between muscle forces, joint loading and utilization of elastic strain energy in equine locomotion, *J. Exp. Biol.* **213**, 3998–4009 (2010)
- [10] J. Becker, E. Mermoz, J.M. Linares, Joint loading estimation method for horse forelimb high jerk locomotion: jumping, *J. Bionic Eng.* **16**, 674–685 (2019)
- [11] L. Cheze, B.J. Fregly, J. Dimnet, A solidification procedure to facilitate kinematic analyses based on video system data, *J. Biomech.* **28**, 879–884 (1995)
- [12] E. Mermoz, J.M. Linares, A. Bernard, Benefits and limitations of parametric design implementation in Helicopter Gearbox Design phase, *CIRP Annals.* **60**, 199–202 (2011)
- [13] D.J. Dutto, D.F. Hoyt, H.M. Clayton, E.A. Cogger, S.J. Wickler, Joint work and power for both the forelimb and hindlimb during trotting in the horse, *J. Exp. Biol.* **209**, 3990–3999 (2006)
- [14] G.A. Ateshian, M.H. Friedman, Integrative biomechanics: a paradigm for clinical applications of fundamental mechanics, *J. Biomech.* **42**, 1444–1451 (2009)
- [15] M. Tawhai, J. Bischoff, D. Einstein, A. Erdemir, T. Guess, J. Reinbolt, Multiscale modeling in computational biomechanics, *IEEE Eng. Med. Biol. Mag.* **28**, 41–49 (2009)
- [16] M. Viceconti, Multiscale modeling, in: M. Viceconti (Ed.), *Multiscale Modeling of the Skeletal System*. Cambridge University Press, Cambridge, 2011, pp. 173–195

Cite this article as: J. Becker, E. Mermoz, J.-M. Linares, Determination of biological joint reaction forces from in-vivo experiments using a hybrid combination of biomechanical and mechanical engineering software, *Mechanics & Industry* **21**, 623 (2020)