



**HAL**  
open science

# The changes in isotope composition and accumulation of snow at Vostok station, East Antarctica, over the past 200 years

Alexei Ekaykin, Vladimir Ya. Lipenkov, Irina Kuzmina, Jean Robert Petit, Valérie Masson-Delmotte, Sigfus Johnsen

## ► To cite this version:

Alexei Ekaykin, Vladimir Ya. Lipenkov, Irina Kuzmina, Jean Robert Petit, Valérie Masson-Delmotte, et al.. The changes in isotope composition and accumulation of snow at Vostok station, East Antarctica, over the past 200 years. *Annals of Glaciology*, 2004, 39, pp.569-575. 10.3189/172756404781814348 . hal-03102768

**HAL Id: hal-03102768**

**<https://hal.science/hal-03102768>**

Submitted on 11 Jan 2021

**HAL** is a multi-disciplinary open access archive for the deposit and dissemination of scientific research documents, whether they are published or not. The documents may come from teaching and research institutions in France or abroad, or from public or private research centers.

L'archive ouverte pluridisciplinaire **HAL**, est destinée au dépôt et à la diffusion de documents scientifiques de niveau recherche, publiés ou non, émanant des établissements d'enseignement et de recherche français ou étrangers, des laboratoires publics ou privés.

# The changes in isotope composition and accumulation of snow at Vostok station, East Antarctica, over the past 200 years

Alexei A. EKAYKIN,<sup>1,2</sup> Vladimir Ya. LIPENKOV,<sup>1</sup> Irina N. KUZMINA,<sup>1</sup>  
Jean Robert PETIT,<sup>2</sup> Valérie MASSON-DELMOTTE,<sup>3</sup> Sigfus J. JOHNSEN<sup>4</sup>

<sup>1</sup>Arctic and Antarctic Research Institute, 38 Beringa Street, 199397 St Petersburg, Russia  
E-mail: ekaykin@aari.nw.ru

<sup>2</sup>Laboratoire de Glaciologie et Géophysique de l'Environnement du CNRS, 54 rue Molière, BP 96,  
38402 Saint-Martin-d'Hères Cedex, France

<sup>3</sup>Laboratoire des Sciences du Climat et de l'Environnement, Orme des Merisiers, CE Saclay,  
91191 Gif-sur-Yvette Cedex, France

<sup>4</sup>The Niels Bohr Institute, Blegdamsvej, DK-2100 Copenhagen, Denmark

**ABSTRACT.** High-resolution records of isotope composition ( $\delta D$ ) and accumulation of snow have been obtained from 10–12 m deep snow pits dug in the vicinity of Vostok station during the 1979/80 and 1999/2000 Antarctic field seasons. We employ meteorological, balloon-sounding and snow-stake data to interpret the isotope record in terms of past temperature changes. Our reconstruction suggests that snow accumulation rate and the near-surface air temperature at Vostok have varied during the past 200 years between 15 and 30 kg m<sup>-2</sup> a<sup>-1</sup>, and between –56 and –55°C, respectively, with a slight general tendency to increase from the past to the present. Both parameters reveal a 50 year periodicity that correlates with the Pacific Decadal Oscillation index, implying a climatic teleconnection between central Antarctica and the tropical Pacific.

## INTRODUCTION

Vostok station is the only deep-drilling site in Antarctica where the isotope composition of snow thickness can directly be compared to the relatively long (45 years) instrumental records of meteorological observations. In our previous work (Ekaykin and others, 2002) we made a first attempt at such a comparison, revealing a linear relationship between snow isotope composition ( $\delta$ ) and surface air temperature ( $T_s$ ). In this study, we try to refine the isotope–temperature correlation by using the balloon-sounding record available for 1963–91. The correlations obtained are then used together with the stratigraphic and geochemical data to reconstruct the isotope composition and accumulation rate of snow at Vostok over the past 200 years. The aims of this study fall within the scope of the International Trans-Antarctic Scientific Expedition (ITASE) project coordinated through the Scientific Committee on Antarctic Research (SCAR) Global Change Program Office (ITASE, 1997).

## METHODS AND EXPERIMENTAL DATA

In January 1980, stratigraphic observations were carried out in the 10 m snow pit *vk10* (independently on the left and right sides of the snow wall) dug about 1 km upwind (west-southwest) of the station. The liquid conductivity measurements allowed identification of the Tambora (Indonesia) layer, dated back to 1816. In January 1997, stratigraphic studies were completed in the 2.5 m pit *vk22*, excavated about 50 m away from the previous one in order to extend the *vk10* accumulation series to 1996.

From December 1999 to January 2000, studies were carried out in two 12 m pits (*vk99* and *st30*), one located 165 m upwind from *vk10* and the other near stake 30 of the stake network, respectively. Aside from stratigraphic

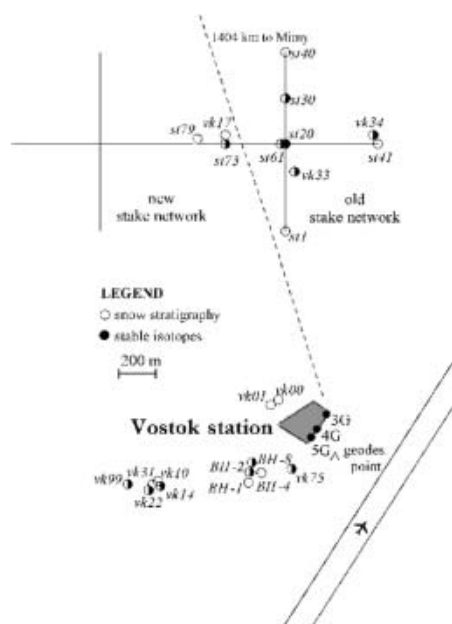
observations, snow samples were taken in both pits to be measured for isotope composition (continuously with resolution 2–5 cm), total beta radioactivity (in the depth range 1.5–3.0 m with resolution 5 cm) and liquid conductivity (from intervals 0–3 and 9–11 m in *vk99* and 9–10.5 m in *st30* with resolution 3 cm). The location of the pits studied is shown in Figure 1.

The deuterium and oxygen-18 content was measured in the mass-spectrometric laboratory of the Laboratoire des Sciences du Climat et de l'Environnement (LSCE), Saclay, France, and The Niels Bohr Institute (NBI), Copenhagen, Denmark, with a reproducibility of 0.6–0.8 and 0.05‰ (1 $\sigma$ ), sufficient for the present study. The beta-radioactivity and conductivity measurements were made at the Laboratoire de Glaciologie et Géophysique de l'Environnement (LGGE), Grenoble, France.

All the pits discussed here were dated using the stratigraphic observations taking into account the probability of annual-layer hiatus (Ekaykin and others, 1998). The initial stratigraphic dating was then corrected using the depths of the 1955 and 1965 radioactive reference layers (for pits *vk99* and *st30*) and the 1816 Tambora layer established for each pit. The stratigraphic and geochemical data obtained from pits *vk99* and *st30* are shown in Figure 2.

According to our dating, the snow in the investigated pits was deposited during the following periods: 1796–1979 for *vk10*, 1945–96 for *vk22*, 1774–1999 for *vk99* and 1750–1999 for *st30*.

To reconstruct the snow accumulation rate from the annual-layer thickness, we used the stacked density profile established for Vostok (Ekaykin and others, 2003). The interval 0–1 m of the profile comprises the data from 17 pits and mini-pits dug in 1980–97. The interval 1–3 m includes the data from six pits, whereas below 3 m the data from only two pits (*vk10* for 3–10 m and *vk99* for 10–12 m) are available. The stacked profile can be approximated by the



**Fig. 1.** Location of the snow pits and stake networks in the vicinity of Vostok station. The new stake network was set up in December 1998.

following linear equation:

$$\rho = 7.46H + 350,$$

where  $\rho$  ( $\text{kg m}^{-3}$ ) is the density at depth  $H$  (m).

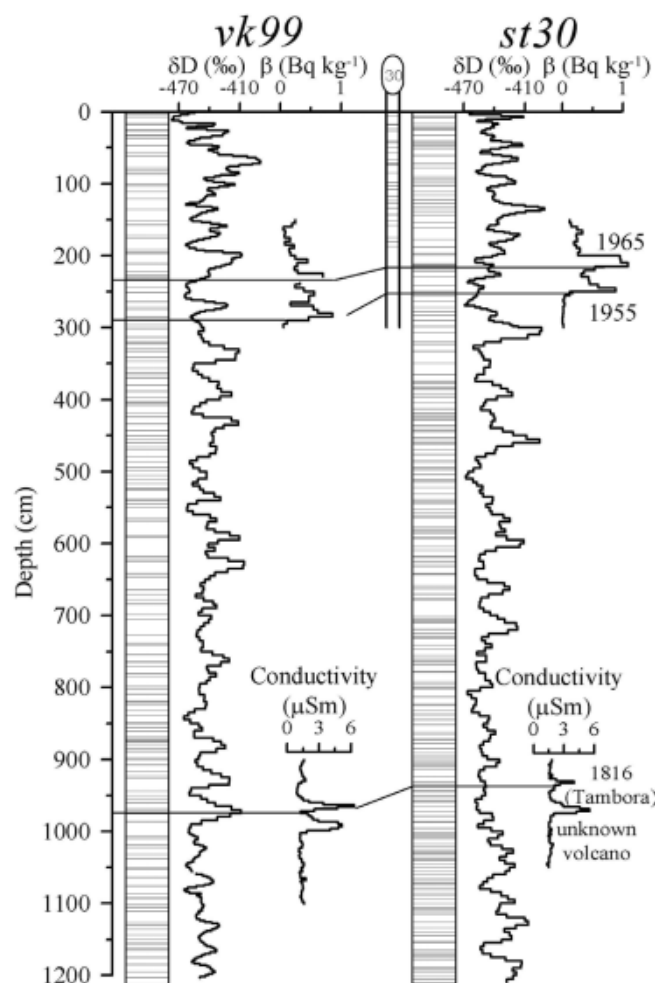
The isotope composition of snow precipitation was measured on 49 samples collected between December 1999 and December 2000.

The electronic database of balloon-sounding measurements was created using the original paper files stored in the archives of the Arctic and Antarctic Research Institute (AARI), St Petersburg, Russia. The dataset covers the whole period of balloon observations at Vostok, from December 1957 to January 1992. However, the data from the first 4 years were rejected because of the poor quality of temperature measurements made by radiosonde 'P3-049' (personal communication from N. N. Kazakova, 2003). In 1962 and 1982 the balloon-sounding observations were not carried out.

The mean monthly data of the main meteorological parameters at Vostok were taken from the official website of AARI: [http://www.aari.nw.ru/projects/Antarctic/default\\_en/asp](http://www.aari.nw.ru/projects/Antarctic/default_en/asp).

Figure 2 displays the vertical  $\delta\text{D}$  profiles obtained from pits *vk99* and *st30*. The mean values of  $\delta\text{D}$  in *vk99* and *st30* are  $-442.3\text{‰}$  and  $-440.7\text{‰}$ , respectively. The 12 m deep  $\delta$  profiles have the same characteristic features as those previously found in the 3 m profiles (Ekaykin and others, 2002). In particular, in both deep pits quasi-periodical  $\delta$  oscillations are observed with a wavelength of 20–30 and 60–80 cm and a magnitude of about 60–80‰. It has been shown that these oscillations are primarily caused by the drift of snow accumulation waves of various scales (Ekaykin and others, 2002).

Since the present work is mainly devoted to the  $\delta$  changes with the time-scales from decades to centuries, the diffusive smoothing (Johnsen and others, 2000) of the isotope profiles has not been taken into account. Nevertheless, it is worth mentioning the apparent influence of the smoothing on the 12 m profiles shown in Figure 2.



**Fig. 2.** The results of snow thickness study (layer boundaries, isotope composition, total beta activity and liquid conductivity of snow) in pits *vk99* and *st30*. The annual snow build-up values measured at stake 30 were corrected for snow settling to correspond with annual layer thickness. The horizontal lines represent the reference horizons of 1955, 1965 and 1816 as determined by the total beta-activity and liquid conductivity measurements.

## CHANGES IN $\delta\text{D}$ AND $a$ OVER THE LAST 50 YEARS

Based on the pit stratigraphy, snow density data and high-resolution isotope measurements, we reconstructed a time series of annual accumulation rates and isotope composition of snow for each pit. The mean correlation coefficient ( $r$ ) between unsmoothed individual accumulation series is 0.1. The latter supports the conclusion that stratigraphic noise accounts for about 90% of the total variance of snow accumulation as observed in a single point (Ekaykin and others, 1998). At the same time,  $r$  increases up to a statistically significant value of 0.21 for the series obtained from the left and right walls of pit *vk10* separated by a distance of 1.5 m. The  $r$  coefficient between the *vk99* and *st30*  $\delta\text{D}$  series is close to zero, but after smoothing with a period of 21 years it increases to a significant value of 0.45.

In order to improve the climatic signal in the pit data, we constructed the stacked time series of accumulation rate and deuterium content of snow. The stacked series ' $\delta\text{D}12\text{m}$ ' and ' $a12\text{m}$ ' shown in Figure 3b reveal a high level of stratigraphic noise still remains. The period of smoothing necessary to suppress this noise was estimated to be 7 years (for details see Fisher and others, 1985; Ekaykin and others,

2002) both for  $a$  and for  $\delta D$  time series. Interestingly, the amount of noise is much lower for  $\delta D$  than for  $a$ , probably due to diffusive smoothing of  $\delta D$  profiles (Fisher and others, 1985; Johnsen and others, 2000).

The intervals 1944–99 of ' $\delta D_{12m}$ ' and ' $a_{12m}$ ' are blown up in Figure 3a together with the following time series (all are 7 year running means):

1. mean annual (1958–99) near-surface air temperature ( $T_s$ ), according to meteorological observations at 2 m above snow surface;
2. stacked  $a$  and  $\delta D$  series from eight shallow pits covering the period 1944–98 (Ekaykin and others, 2002);
3. annual snow accumulation, as observed at the stake network in the period 1970–99.

The correlation coefficients between the above series are, in the main, statistically significant, in accordance with the apparent similarity between different curves in Figure 3a. Most of the parameters show a minimum around 1960, with a subsequent increase until the maximum approximately in 1980, the tendencies earlier reported for different parts of East Antarctica (Pourchet and others, 1983; Morgan and others, 1991). According to Pourchet and others (1983), the accumulation rates at 14 East Antarctic sites in 1965–77 were 30% higher than during the preceding decade. Over the last 10–20 years, all the parameters in Figure 3a show a distinct decrease in values, especially pronounced for  $T_s$ . This is in good agreement with Antarctic climate cooling in the 1990s reported for almost the whole continent except the Antarctic Peninsula (Doran and others, 2002).

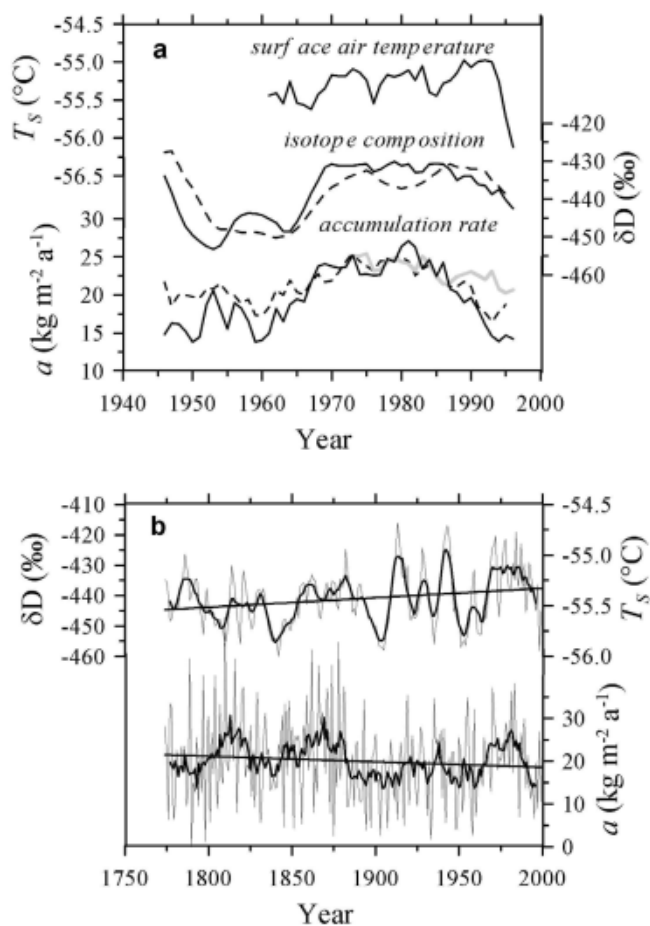
The observed changes are likely related to the variations of cyclonic activity in Antarctica (Enomoto, 1991; Morgan and others, 1991; Simmonds and Keay, 2000). Since precipitation events are associated with higher air temperatures, increases in cyclonic activity followed by more frequent or long-lasting precipitation events lead to warmer temperatures (Morgan and others, 1991). In addition, the water-vapor saturation pressure and thus the water content of the air column are controlled by temperature (Robin, 1977), implying a relation between snow accumulation rate and air temperature.

To summarize, the comparison of ' $\delta D_{12m}$ ' and ' $a_{12m}$ ' with other data available for Vostok suggests that obtained series represent climatic variations over the last 40–60 years and thus likely over the past two centuries.

As shown in Ekaykin and others (2002), mean annual near-surface air temperature accounts only for 34% of the interannual variability of isotope composition of central Antarctic precipitation. Aside from the factors related to origin and moisture transport (see review by Jouzel and others, 2003), the main reasons for this are: (1) the very low occurrence of cyclones that are thought to bring a considerable (but yet unknown) portion of precipitation, and (2) the difference between  $T_s$  and the temperature of condensation  $T_C$ , the latter being unknown, too.

Here we attempt to evaluate the contribution of the two main precipitation types, from clouds and from clear sky (the latter is also referred to as 'diamond dust'), to the total precipitation in central Antarctica using the monthly accumulation data from the Vostok stake network. Based on this analysis, we then estimate the condensation temperature using the balloon-sounding data.

To perform the former task, the annual accumulation rate  $a$  must first be corrected for the amount of summer

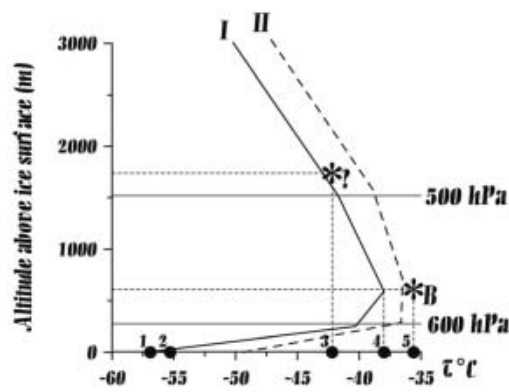


**Fig. 3.** (a) The stacked accumulation and isotope series from deep (solid lines) and shallow (dashed lines) pits and the near-surface air temperature. Thick gray line represents accumulation record from the stake network. All series are smoothed with a period of 7 years. (b) Accumulation and isotope records from deep pits. Thin lines represent stacked annual series; thick lines show 11 year running means. The temperature scale ( $T_s$ ) corresponds to the  $\delta D-T_s$  slope of 28‰ C<sup>-1</sup>.

evaporation  $e$ , to obtain the annual amount of precipitation  $p$ . As an estimation of  $e$  we took the average of the empirical data obtained by the method of turbulent diffusion in 1966 (Artemiev, 1976) and the results of direct evaporation measurement carried out by V. K. Nozdryukhin in November 1961–January 1962 (Aver'yanov, 1990). According to these works, the total evaporation for the period November–February varies from 4 to 2 mm (17% to 8% of total annual precipitation), whereas during the other months it is nearly zero. We assume that the interannual variability of  $e$  is negligible with respect to the uncertainty of its mean annual value since evaporation is mostly determined by local solar radiation, temperature and wind regime, which were essentially unchanged during the period of instrumental observations. According to the instrumental measurements, the mean annual accumulation rate for the period 1970–95 is  $22.9 \pm 1.8$  mm. Thus, the best estimate of mean precipitation rate ( $p = a + e$ ) for the same period is  $26.1 \pm 2.6$  mm. The error bars (95% confidence level) for the mean accumulation value were estimated as

$$2 \frac{\sigma}{\sqrt{n}},$$

where  $\sigma$  is the interannual variability (standard deviation) of



**Fig. 4.** The mean annual vertical profile of the air temperature (curve I), and the mean temperature profile for snow precipitation events (curve II). A and B show the mean height and the temperature of middle (As, Ac) and lower (St, Sc) clouds, respectively. Circles 1–5 show positions of some characteristic temperatures on the temperature scale: 1 and 4 are temperatures at the bottom and the top ( $T_i$ ) of the inversion layer, respectively; 2 is near-surface air temperature ( $T_s$ ); 3 and 5 are mean temperatures at the lower boundary of the middle and lower clouds, respectively.

accumulation rate and  $n$  is the period of observations (26 years). The error bars for the precipitation are calculated as

$$\sqrt{\sigma_e^2 + \sigma_a^2},$$

where  $\sigma_e$  and  $\sigma_a$  are the errors of evaporation and accumulation rate, respectively.

To estimate the proportion of precipitation originating either from clouds or from clear sky, we calculated mean monthly snow accumulation measured at the stake network separately for the months with and without precipitation from clouds, using the data on precipitation occurrence from the meteorological dataset. The results thus obtained suggest that about three-quarters (59–91% with 95% confidence level) of annual precipitation originates from clear skies and only one-quarter from clouds. Such a low contribution of the cloud precipitation could be explained by its rare occurrence (on average, only 37 events per year, according to the meteorological data) and low intensity. Because of the low accuracy of the data, we do not discuss here the seasonal variability of precipitation.

The condensation temperature was estimated separately for the two main types of precipitation.

Diamond dust is thought to be formed throughout the thickness of the temperature inversion layer where the air is supersaturated with water vapor with respect to ice, but most of the crystals are generated in the relatively moist upper

part of the surface inversion characterized by a low gradient of  $T$  (Robin, 1977; Bromwich, 1988). The thermal conditions of diamond dust formation in this case are well described by the mean annual temperature of this quasi-isothermal layer. The average temperature profile for the period 1963–91 is presented in Figure 4 (curve I). One can see that the condensation temperature for diamond dust most likely lies in the range  $-40$  to  $-38^\circ\text{C}$  (i.e.  $-39 \pm 1^\circ\text{C}$ ).

Precipitation from clouds in central Antarctica is formed at two different levels, in lower (St and Sc) and middle (As and Ac) clouds (Aver'yanov, 1990). Mean height and temperature at the lower boundary of these two cloud levels are shown in Figure 4 by the asterisks B and A, respectively. Thus, mean weighted condensation temperature for cloud precipitation (TCP) could range between  $-42$  and  $-36^\circ\text{C}$  (i.e.  $-39 \pm 3^\circ\text{C}$ ) depending on the relative contribution of different cloud types in the total amount of precipitation. Taking into account that the occurrence of snow from lower and middle clouds at Vostok is roughly the same according to the meteorological data, the mean TCP should be nearly equal to the temperature of diamond dust formation within the given uncertainty (but probably closer to its warmer limit if considering that the intensity of precipitation from lower clouds is higher (Aver'yanov, 1990)).

Thus, the best estimation for the present-day mean annual condensation temperature at Vostok ( $T_C$ ) is  $-39^\circ\text{C}$ , with an accuracy of  $\pm 1.1^\circ\text{C}$  (the latter is calculated assuming that 75% of precipitation is represented by diamond dust). The conclusion can be drawn that  $T_C$  is close to the mean annual temperature at the top of the inversion layer,  $T_i$  ( $-38.0 \pm 0.2^\circ\text{C}$  in 1963–91), in full accordance with the earlier finding by Robin (1977).

Curve II in Figure 4 represents the mean Vostok temperature profile during the cloud precipitation events. As expected, the atmosphere is substantially warmer at all levels due to advection of warm air and less cooling of the snow surface. However, the distance between profiles I and II varies with altitude, first decreasing from  $6^\circ\text{C}$  at the surface to  $1.5^\circ\text{C}$  at the top of the inversion (which reflects weakening of the inversion strength), and then increasing again to  $3^\circ\text{C}$  in the free atmosphere. Given that most of the precipitation is formed under clear-sky conditions (diamond dust), we argue that precipitation-weighted condensation temperature at Vostok is not much biased from its simple mean annual value. This is because diamond dust is observed practically every day throughout the year. Therefore, in the following we use mean annual temperature at the top of the inversion layer as the most reliable approximation of precipitation formation conditions.

Table 1 shows the values of the correlation coefficient between the stacked  $\delta\text{D}$  series from eight shallow pits and the mean annual air temperature at different levels.

**Table 1.** Correlation coefficients between stacked  $\delta\text{D}$  series and mean annual air temperature at different levels at Vostok

$r$	$T_s$	$T_{600}$	$T_i$	$T_{500}$	$T_{400}$
$\delta\text{D}$ Vostok	<b><math>0.57 \pm 0.14</math></b>	<b><math>0.69 \pm 0.16</math></b>	0.0	0.0	-0.1
$\delta\text{D}$ Vostok*	<b><math>0.76 \pm 0.12</math></b>	<b><math>0.63 \pm 0.19</math></b>	$0.37 \pm 0.23$	0.1	$-0.36 \pm 0.23$
$\delta\text{D}$ South Pole	<b>0.47</b>	<b>0.54</b>	<b>0.57</b>	<b>0.46</b>	no data

Notes: Vostok series are smoothed with 7 and 11 year running filter (the latter is marked by \*). Statistically significant coefficients with a confidence level of 95% are shown in bold. Values of  $r$  between  $\delta$  and  $T$  at South Pole Station are given for comparison (Jouzel and others, 1983).

The results suggest fast weakening of the relationship between  $\delta$  and  $T$  with ascent into the free atmosphere. Surprisingly, already for the top of the inversion  $r$  is nearly zero. This is because the short-term (with a period of about 10 years) variations of isotope composition may be linked with factors other than the local air temperature (Ekaykin, 2003). Indeed, after smoothing of both the  $\delta$  and  $T$  series with an 11 year filter, the  $\delta-T_i$  correlation becomes positive ( $0.37 \pm 0.23$ ), though still insignificant due to the shortness of the temperature series.

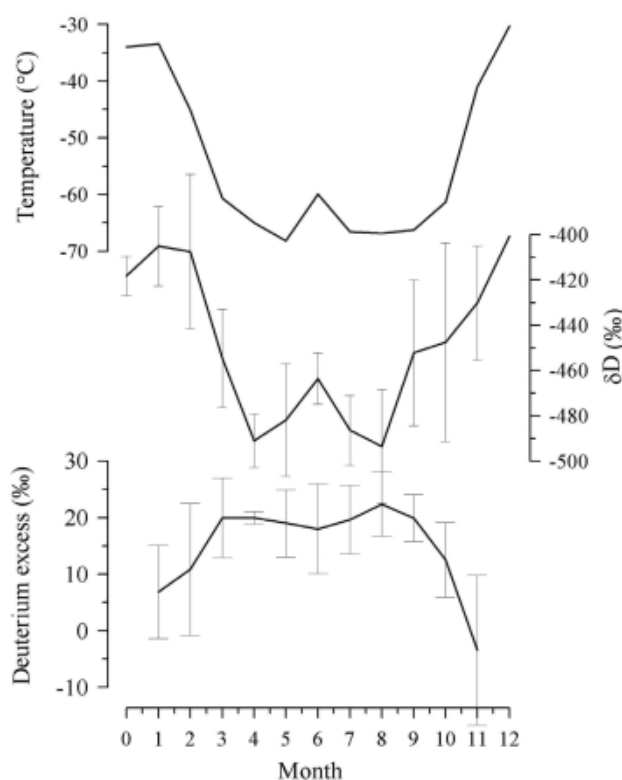
The observed correlation of  $\delta$  with the near-surface air temperature may be of a non-climatic origin. Alternatively, higher air (and thus snow surface) temperature may accelerate post-depositional processes, leading to a heavier isotope composition of the annual snow layer of a given year (Waddington and others, 2002; Jouzel and others, 2003). This effect, however, can be counterbalanced by increased snow accumulation during a warmer year, which results in more rapid burying of the corresponding annual layer, preventing its isotopic alteration.

The  $\delta-T$  slope between the stacked isotope record and  $T_i$  (both smoothed with a period of 11 years) is  $5.4 \pm 3.4\% \text{ } ^\circ\text{C}^{-1}$ , which is essentially less (even taking into account the large uncertainty of our data) than the theoretical prediction ( $9\% \text{ } ^\circ\text{C}^{-1}$ ) derived from a Rayleigh-type isotope fractionation model (Jouzel and Merlivat, 1984). The slope between  $\delta$  and  $T_s$  varies from  $17 \pm 4\% \text{ } ^\circ\text{C}^{-1}$  for the series smoothed with the period of 7 years (Ekaykin and others, 2002) to  $28 \pm 4.5\% \text{ } ^\circ\text{C}^{-1}$  for those smoothed by an 11 year filter. The gradient  $dT_i/dT_s$  equals  $0.8 \pm 0.2$ , which is close to the corresponding present-day spatial slope of 0.67 (Jouzel and Merlivat, 1984) conventionally used in paleoclimatic reconstructions (Petit and others, 1999).

In Figure 5, the seasonal variations (mean monthly values) of snow precipitation during the year 2000 are shown. The total magnitude of the  $\delta D$  variations is nearly  $90\%$  ( $-405\%$  to  $-493\%$ , with annual average of  $-453\%$ ). The correlation coefficient between monthly values of  $\delta D$  and surface air temperature for the period December 1999–November 2000 is significant and equals  $0.89 \pm 0.14$ . The corresponding regression coefficient is  $2.12 \pm 0.35\% \text{ } ^\circ\text{C}^{-1}$ . The latter value is considerably lower than the  $6\% \text{ } ^\circ\text{C}^{-1}$  predicted by simple isotope models. The difference is primarily due to the significant seasonal changes in local conditions, in particular, inversion strength controlled by radiation and heat balance. Another reason for the observed discrepancy is the significant change of moisture-source conditions between summer and winter periods suggested by strong intra-annual changes of deuterium excess values, also shown in Figure 5.

It is not possible to determine the relationship between  $\delta D$  in precipitation and the corresponding inversion temperature, because balloon-sounding observations were not carried out in 2000. Instead, we took the mean monthly values of  $T_i$  for the period 1963–91, keeping in mind the comparatively low interannual variability of this parameter. The  $\delta D-T_i$  slope is equal to  $6.2 \pm 1.1\% \text{ } ^\circ\text{C}^{-1}$ . As with the interannual variations, this value is less than the  $9\% \text{ } ^\circ\text{C}^{-1}$  given by the Rayleigh model.

Thus, for both intra- and interannual variations of snow isotope composition, the slope between  $\delta$  and the condensation temperature (estimated as the temperature at the top of the inversion layer) equals about  $6\% \text{ } ^\circ\text{C}^{-1}$ , which is 30% less than that predicted by the simple isotope model.



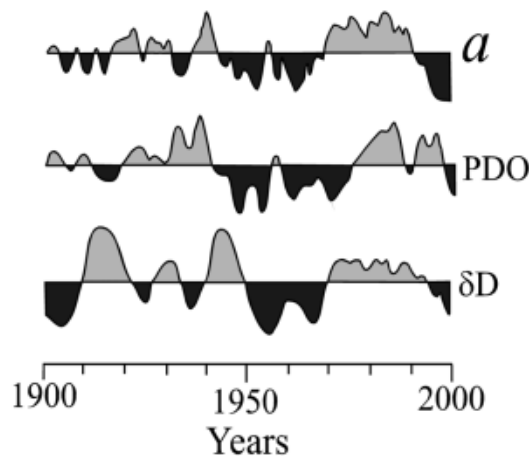
**Fig. 5.** Seasonal variations of isotope composition ( $\delta D$  and deuterium excess) of precipitation and the near-surface air temperature. Error bars show standard deviation of isotope composition in individual precipitation samples collected within a given month.

## CHANGES IN $\delta D$ AND $a$ OVER THE LAST 200 YEARS

Spectral analysis of the 200 year series of  $a$  and  $\delta D$  (not shown) revealed oscillations with a periodicity of 50–60 years, more pronounced for accumulation than for isotopes. Based on the data discussed in the previous section, we assume that the observed variations are linked to the changes of cyclonic activity around Antarctica (Enomoto, 1991; Morgan and others, 1991). In particular, Enomoto (1991) analyzed data on mean July sea surface pressure in the  $40\text{--}50^\circ\text{S}$  band over the period 1873–1981 and found a 40–60 year cycle of meridional circulation.

Recently, semi-centennial variations were found in changes of sea surface temperature, intensity of zonal and meridional circulation,  $\text{CO}_2$  concentration and biological production in the Pacific Ocean (Chavez and others, 2003). These variations are related to the Pacific Decadal Oscillation (PDO), which is a similar mechanism to El Niño. Over the last century, both  $a$  and  $\delta D$  at Vostok are practically in phase with the PDO index (see Fig. 6). The correlation between  $\delta D$  and PDO is significant and equal to  $0.44 \pm 0.10$ , which suggests a climatic teleconnection between the central Antarctic and the tropical Pacific on a decadal scale. The mechanism of this teleconnection will be investigated in future studies.

In general, according to the climate reconstruction presented in Figure 3b, the absolute magnitude of snow-accumulation changes over the past 200 years was  $15 \text{ kg m}^{-2} \text{ a}^{-1}$  (from  $15 \text{ kg m}^{-2} \text{ a}^{-1}$  to  $30 \text{ kg m}^{-2} \text{ a}^{-1}$ ). The corresponding magnitude of the isotope composition changes is 20–30%. With the  $\delta D-T_s$  slope of  $28\% \text{ } ^\circ\text{C}^{-1}$  established above, this implies that 11 year means of the annual temperature



**Fig. 6.** Vostok snow accumulation and isotope composition series and variations of PDO index over the period 1900–2000. All the series are de-trended and smoothed with a period of 7 years.

have varied over the past two centuries between  $-55$  and  $-56^{\circ}\text{C}$ .

During the period of interest, snow accumulation rate decreased by  $-3\text{ kg m}^{-2}\text{ a}^{-1}$  (20% of the total magnitude of 11 year means) and  $\delta\text{D}$  increased by 7‰ (nearly 30% of the total magnitude). The trend of deuterium content is statistically significant with the confidence level of 95%, which suggests a slight warming during the past two centuries. As shown in Ekaykin and others (2003), a negative accumulation trend can be related to red noise caused by the drift of large snow relief forms. In order to establish the true climatic change of snow accumulation rate over the last 200 years, we collected additional accumulation data from six shallow cores (*vk12*, *vk15*, *BH-1*, *BH-2*, *BH-4* and *BH-8*) drilled in the period 1985–96 (Fig. 1) in which the Tambora layer was detected. The mean accumulation rate at eight sites around Vostok (six boreholes and three deep pits; the values from *vk12* and *vk15* located close to each other were taken as one value) from 1816 to the present is found to be  $20.6 \pm 0.3\text{ kg m}^{-2}\text{ a}^{-1}$ . This is lower than the  $21.5 \pm 0.5\text{ kg m}^{-2}\text{ a}^{-1}$  obtained for the period since 1955 from beta-radioactivity measurements at nine sites around Vostok, which implies a slight increase of snow accumulation rate during the last two centuries.

## CONCLUSIONS

Based on meteorological, balloon-sounding and snow-accumulation data available for Vostok station, as well as published data on snow evaporation, we estimated the mean annual precipitation rate and determined the ratio of cloud precipitation to that from clear skies. From our estimates, the mean annual precipitation at Vostok is  $26.1 \pm 2.6\text{ mm}$ ,  $3 \pm 1\text{ mm}$  of the water evaporates during November–February, and  $22.9 \pm 1.8\text{ mm}$  contributes to the firm thickness formation. Roughly three-quarters of the annual precipitation originates from clear skies and only one-quarter from clouds. Taking into account the origin of the precipitation, the mean weighted condensation temperature at Vostok is  $-39 \pm 1.1^{\circ}\text{C}$ .

As a result of stratigraphic and geochemical investigations in the deep pits, snow accumulation and isotope composition series were reconstructed for the period 1774–

1999. Linear relationships were established between the snow isotope composition and the air temperature at different levels in the atmosphere. The slope between  $\delta$  and the air temperature at the top of the inversion layer (considered as the best approximation of the condensation temperature) was found to be about  $6\text{‰ }^{\circ}\text{C}^{-1}$ , for both the intra- and interannual variations, which is 30% less than the value derived from simple isotope models.

Snow accumulation rate has varied during the past 200 years with a magnitude of  $15\text{ kg m}^{-2}\text{ a}^{-1}$ , from  $15\text{ kg m}^{-2}\text{ a}^{-1}$  to  $30\text{ kg m}^{-2}\text{ a}^{-1}$ . The magnitude of the temperature variations (for the 11 year means of the near-surface temperature) within the same period of time amounts to  $1^{\circ}\text{C}$  (between  $-56$  and  $-55^{\circ}\text{C}$ ). Our results suggest a slight increase in temperature and accumulation rate in the Vostok region over the past two centuries.

One of the important results of the work is a 50 year cycle discovered in the high-resolution record from snow pits at Vostok. The variations of snow accumulation and isotope composition significantly correlate with the PDO index, which implies a teleconnection between the climates in central Antarctica and the tropical Pacific.

## ACKNOWLEDGEMENTS

The authors are grateful to all the participants in the Russian Antarctic Expedition who helped with the fieldwork, and especially V. Solyanik, A. Antoshin and M. Gandriev for their aid in deep-pit digging; V. A. Persky for collecting the snow precipitation samples; J. F. Pinglot and M. Pourchet (LGGE) for providing the beta-radioactivity measurements; C. Alba, O. Cattani, S. Falourd, M. Stievenard (LSCE) and A. Boas (NBI) for assistance with isotope measurements; A. Bykova, D. Anufrieva, A. Zakharov, Yu. Popov (St Petersburg State University) and A. Preobrazhenskaya (AARI) for participating in creating the database of balloon-sounding data; D. Peel for valuable comments and corrections; and F. P. Chavez for providing the data on the PDO index. This work is a contribution to Project 4 of the Subprogram ‘Study and research of the Antarctic’, FTP ‘World Ocean’ of the Russian Federation and part of the Russian–French–Danish contribution to the ITASE project. The study was supported through INTAS grant 2001-2268.

## REFERENCES

- Artemiev, A. N. 1976. Vzaimodeystviye atmosfery i podstilajustchey poverkhnosti na antarkticheskom plato. *Sovetskaya Antarkticheskaya Ekspeditsiya Trudy* 66.
- Aver'yanov, V. G. 1990. *Glyatsioklimatologiya Antarktidy*. Leningrad, Gidrometeoizdat.
- Bromwich, D. H. 1988. Snowfall in high southern latitudes. *Rev. Geophys.*, **26**(1), 149–168.
- Chavez, F. P., J. Ryan, S. E. Lluch-Cota and M. C. Niquen. 2003. From anchovies to sardines and back: multidecadal change in the Pacific Ocean. *Science*, **299**(5604), 217–221.
- Doran, P. T. and 12 others. 2002. Antarctic climate cooling and terrestrial ecosystem response. *Nature*, **415**(6871), 517–520.
- Ekaykin, A. A. 2003. Meteorological regime of central Antarctica and its role in the formation of isotope composition of snow thickness. (Thèse de Doctorat d'Etat, Université Joseph Fourier, Grenoble.)
- Ekaykin, A. A., V. Ya. Lipenkov and N. I. Barkov. 1998. Prostranstvenno-vremennaya struktura polya snegonakopleniya v rayone stantsii Vostok, Tsentral'naya Antarktida [Temporal-spatial

- structure of snow accumulation field in the vicinity of Vostok station, central Antarctica]. *Vestnik St. Peterb. Univ., Ser. 7, Geologiya, Geografiya*, **4**(28), 38–50. [In Russian with English summary.]
- Ekaykin, A. A., V. Ya. Lipenkov, N. I. Barkov, J. R. Petit and V. Masson-Delmotte. 2002. Spatial and temporal variability in isotope composition of recent snow in the vicinity of Vostok station, Antarctica: implications for ice-core record interpretation. *Ann. Glaciol.*, **35**, 181–186.
- Ekaykin, A. A., V. Ya. Lipenkov, J. R. Petit and V. Masson-Delmotte. 2003. 50-letnii tsikl v izmeneniyah akkumulyatsii i izotopnogo sostava snega na stantsii Vostok [50-year cycle in variations of accumulation rate and isotopic composition of snow at Vostok station]. *Mater. Glyatsiol. Issled./Data Glaciol. Stud.*, **94**, 163–173. [In Russian with English summary.]
- Enomoto, H. 1991. Fluctuations of snow accumulation in the Antarctic and sea level pressure in the Southern Hemisphere. *Climatic Change*, **18**(1), 67–87.
- Fisher, D. A., N. Reeh and H. B. Clausen. 1985. Stratigraphic noise in the time series derived from ice cores. *Ann. Glaciol.*, **7**, 76–83.
- International Trans-Antarctic Scientific Expedition (ITASE). 1997. 200 years of past Antarctic climate and environmental change. Science and implementation plan, 1996. *ITASE Workshop Report*, Series 97–1.
- Johnsen, S. J., H. B. Clausen, K. M. Cuffey, G. Hoffmann, J. Schwander and T. Creyts. 2000. Diffusion of stable isotopes in polar firn and ice: the isotope effect in firn diffusion. In Hondoh, T., ed. *Physics of ice core records*. Sapporo, Hokkaido University Press, 121–140.
- Jouzel, J. and L. Merlivat. 1984. Deuterium and oxygen 18 in precipitation: modeling of the isotopic effect during snow formation. *J. Geophys. Res.*, **89**(D7), 11,749–11,757.
- Jouzel, J., L. Merlivat, J. R. Petit and C. Lorius. 1983. Climatic information over the last century deduced from a detailed isotopic record in the South Pole snow. *J. Geophys. Res.*, **88**(C4), 2693–2703.
- Jouzel, J. and 6 others. 2003. Magnitude of isotope/temperature scaling for interpretation of central Antarctic ice cores. *J. Geophys. Res.*, **108**(D12), 4361–4370. (10.1029/2002JD002677.)
- Morgan, V. I., I. D. Goodwin, D. M. Etheridge and C. W. Wooley. 1991. Evidence from Antarctic ice cores for recent increases in snow accumulation. *Nature*, **354**(6348), 58–60.
- Petit, J.-R. and 18 others. 1999. Climate and atmospheric history of the past 420,000 years from the Vostok ice core, Antarctica. *Nature*, **399**(6735), 429–436.
- Pourchet, M., J. F. Pinglot and C. Lorius. 1983. Some meteorological applications of radioactive fallout measurements in Antarctic snows. *J. Geophys. Res.*, **88**(C10), 6013–6020.
- Robin, G. de Q. 1977. Ice cores and climatic change. *Philos. Trans. R. Soc. London, Ser. B*, **280**(972), 143–168.
- Simmonds, I. and K. Keay. 2000. Variability of Southern Hemisphere extratropical cyclone behaviour, 1958–97. *J. Climate*, **13**(3), 550–561.
- Waddington, E. D., E. J. Steig and T. A. Neumann. 2002. Using characteristic times to assess whether stable isotopes in polar snow can be reversibly deposited. *Ann. Glaciol.*, **35**, 118–124.