



HAL
open science

Tristichopterids (Sarcopterygii, Tetrapodomorpha) from the Upper Devonian tetrapod-bearing locality of Strud (Belgium, upper Famennian), with phylogenetic and paleobiogeographic considerations

Sébastien Olive, Yann Leroy, Edward Daeschler, Jason Downs, S. Ladevèze, Gaël Clément

► **To cite this version:**

Sébastien Olive, Yann Leroy, Edward Daeschler, Jason Downs, S. Ladevèze, et al.. Tristichopterids (Sarcopterygii, Tetrapodomorpha) from the Upper Devonian tetrapod-bearing locality of Strud (Belgium, upper Famennian), with phylogenetic and paleobiogeographic considerations. *Journal of Vertebrate Paleontology*, 2020, 40 (1), pp.e1768105. <10.1080/02724634.2020.1768105>. <hal-03099746>

HAL Id: hal-03099746

<https://hal.science/hal-03099746v1>

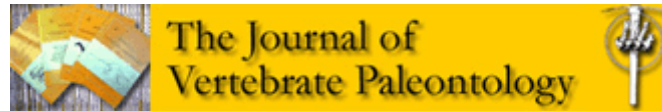
Submitted on 6 Jan 2021

HAL is a multi-disciplinary open access archive for the deposit and dissemination of scientific research documents, whether they are published or not. The documents may come from teaching and research institutions in France or abroad, or from public or private research centers.

L'archive ouverte pluridisciplinaire HAL, est destinée au dépôt et à la diffusion de documents scientifiques de niveau recherche, publiés ou non, émanant des établissements d'enseignement et de recherche français ou étrangers, des laboratoires publics ou privés.



HAL Authorization



Tristichopterids (Sarcopterygii, Tetrapodomorpha) from the Late Devonian tetrapod-bearing locality of Strud (Belgium, late Famennian), with phylogenetic and paleobiogeographic considerations

Journal:	<i>Journal of Vertebrate Paleontology</i>
Manuscript ID	Draft
Manuscript Type:	Article
Date Submitted by the Author:	n/a
Complete List of Authors:	Olive, Sébastien; Royal Belgian Institute of Natural Sciences, Paleontology Leroy, Yann; Royal Belgian Institute of Natural Sciences, Paleontology Daeschler, Edward; Academy of Natural Sciences, Department of Vertebrate Paleontology Downs, Jason; Delaware Valley University, Biology; Academy of Natural Sciences, Vertebrate Biology Clément, Gaël; Muséum national d'Histoire naturelle, Département Histoire de la Terre - UMR 5143 du CNRS;
Key Words:	tristichopterid, Strud, Famennian, Langlieria, Eusthenodon, Belgium

SCHOLARONE™
Manuscripts

1
2
3 Tristichopterids (Sarcopterygii, Tetrapodomorpha) from the Late Devonian tetrapod-bearing
4
5 locality of Strud (Belgium, late Famennian), with phylogenetic and paleobiogeographic
6
7 considerations
8
9

10
11
12 SEBASTIEN OLIVE,^{1,2,*} YANN LEROY,^{1,3,4} EDWARD B. DAESCHLER,² JASON P.
13
14 DOWNS,^{2,5} and GAËL CLEMENT,³
15
16

17
18
19 ¹OD Earth and History of Life, Royal Belgian Institute of Natural Sciences, Rue Vautier 29,
20
21 1000 Brussels, Belgium, sebastien.olive@sciencesnaturelles.be;
22

23
24 ²Academy of Natural Sciences of Drexel University, 1900 Benjamin Franklin Parkway,
25
26 Philadelphia, Pennsylvania 19103, USA, ebd29@drexel.edu;
27

28
29 ³Centre de Recherche en Paléontologie - Paris, UMR CR2P 7207, MNHN/CNRS/SU, CP 38,
30
31 57 rue Cuvier, 75231 Paris Cedex 05, France, yann.leroy35@gmail.com,
32
33 gael.clement@mnhn.fr;
34

35
36 ⁴Laboratoire de Paléontologie, Géosciences, CNRS UMR 6118, Université de Rennes 1, 263,
37
38 avenue du Général Leclerc, 35042 Rennes cedex, France;
39

40
41 ⁵Department of Biology, Delaware Valley University, 700 East Butler Avenue, Doylestown,
42
43 Pennsylvania 18901, U.S.A., jason.downs@delval.edu.
44
45

46
47 * Corresponding author
48
49

50
51
52 RH: OLIVE ET AL.—TRISTICHOPTERIDS FROM BELGIUM
53
54
55
56
57
58
59
60

1
2
3 ABSTRACT—We describe new material of the tristichopterids cf. *Langlieria socqueti* and
4
5 cf. *Eusthenodon wangsjoi* and other unassignable tetrapodomorph remains from the late
6
7 Famennian locality of Strud, Belgium. Because of recent improvements in our tristichopterid
8
9 knowledge, a new phylogenetic analysis is presented in addition to a paleobiogeographic
10
11 analysis using the Bayesian Binary MCMC statistical method. A clade formed by (*Langlieria*
12
13 *socqueti* ((*Edenopteron keithcrooki* + *Hyneria lindae*) (*Heddleithys dalgleisiensis*
14
15 (*Cabonnichthys burnsi* (*Mandageria fairfaxi* + *Eusthenodon wangsjoi*)))))) represents the
16
17 most highly-nested tristichopterids and the biogeographic analysis supports a Western
18
19 European origin for it. The biogeographic analysis additionally proposes several
20
21 tristichopterid dispersal events between Euramerica and Gondwana from the Givetian to
22
23 Famennian, providing a more complex scenario than the one proposed by the Great Devonian
24
25 Interchange.
26
27
28
29
30
31
32

33 INTRODUCTION

34
35
36
37

38 Tristichopteridae is a clade of elongate, aquatic sarcopterygians with an extratemporal
39
40 bone located between opercular and lateral extrascapular bones (Ahlberg and Johanson,
41
42 1997; Johanson and Ahlberg, 1997; Snitting, 2008a). Scales are devoid of cosmine, rounded
43
44 and thin with a small median boss on the internal surface. The caudal fin is trifurcate and
45
46 diamond-shaped in derived forms (Cloutier and Ahlberg, 1996).
47
48

49 Tristichopterids are known from the Middle Devonian (latest Givetian; Egerton, 1861;
50
51 Young et al., 1992; Swartz, 2012) through the Upper Devonian (Famennian; Jarvik, 1952;
52
53 Clément, 2002; Clément et al., 2009). Their body sizes ranged from 30 centimeters to several
54
55 meters in length. These lobe-finned predatory vertebrates are quite common in the Devonian
56
57 vertebrate assemblages of the world with about twenty described species, but only
58
59
60

1
2
3 *Eusthenodon wangsjoii* has a cosmopolitan distribution (Laurussia and Gondwana; Ahlberg et
4 al., 2001; Clément, 2002; Clément and Boisvert, 2006; Clément et al., 2009). Unassignable
5 tristichopterid remains are known from Morocco (Lehman, 1977; Lelièvre and Janvier, 1986;
6 Lelièvre et al., 1993), from Colombia (Janvier and Maisey, 2010; Olive et al., **in review**) and
7 probably from Iran (Davesne et al., 2015).
8
9

10
11
12
13
14
15 Several studies have been done on tristichopterids from Belgium (Lohest, 1888;
16 Cloutier and Candilier, 1995; Clément, 2002; Clément et al., 2009; Olive et al., 2015a).
17

18
19 *Eusthenodon wangsjoii* and *Langlieria socqueti* were described from Durnal, Namur Province
20 (Clément, 2002; Clément et al., 2009); cf. *Langlieria* from Dison and Modave, Liège
21 Province (Clément et al., 2009); and unassignable tristichopterid scales from Becco, Liège
22 Province (Olive et al., 2015a). Tristichopterid remains have also been reported from the
23 locality of Strud, Namur Province (Clément et al., 2009; Denayer et al., 2016:table 1); and
24 Evieux, Liège Province (Clément et al., 2009).
25
26
27
28
29
30
31
32

33 We report here on new tristichopterid material from the tetrapod-bearing locality of
34 Strud. We also provide a new phylogenetic analysis that was prompted by recent
35 improvements in our knowledge of tristichopterid diversity (Swartz, 2012; Schultze and
36 Reed, 2012; Young et al., 2013; Borgen and Nakrem, 2016; Daeschler and Downs, 2018;
37 Downs et al., 2018). We use our resulting cladogram as the basis for a study of the
38 paleobiogeographic history of Tristichopteridae.
39
40
41
42
43
44
45
46
47
48

49 GEOLOGICAL SETTING

50
51
52
53 During the late Famennian, Belgium was located along the southeastern margin of
54 Euramerica (London-Brabant Peninsula; Ziegler, 1990). In Wallonia (southern Belgium),
55 Devonian outcrops are present in the Dinant Synclinorium (allochthonous), Vesdre Area,
56
57
58
59
60

1
2
3 Theux Tectonic Window, Brabant Parautochton, and Haine-Sambre-Meuse Overturned
4 Thrust Sheets (HSM OTS; Fig. 1). These Variscan structures form the Namur-Dinant Basin,
5
6 which developed during Devonian and Carboniferous times (Thorez et al., 2006). Famennian
7
8 outcrops from Belgium show a regressive trend from shales formed in an open marine
9
10 environment (Famenne Group, early Famennian) to fluvio-lagunal siltstones, sandstones, and
11
12 dolomites (Evieux Formation, lower Famennian) (Thorez and Dreesen, 1986). Late
13
14 Famennian deposits from HSM OTS, Vesdre Area, and Theux Tectonic Window are more
15
16 proximal and the fluvio-lagunal facies are generally better developed than in contemporary
17
18 deposits from the Dinant Synclinorium (Thorez et al., 2006). The strata at Strud belong to the
19
20 HSM OTS. Tristichopterid remains were found in beds A, B, D–D', and E of lithological unit
21
22 7 (Fig. 1). Lithological unit 7 belongs to the late Famennian Evieux Formation. The
23
24 sedimentology of this unit corresponds to the filling sequence of a channel in an alluvial plain
25
26 (Denayer et al., 2016).
27
28
29
30
31
32
33
34

35 MATERIAL AND METHODS

36
37
38
39

40 **Preparation and Imaging**

41

42 All specimens were mechanically prepared except for a few specimens that were
43
44 virtually prepared by conventional X-ray tomography at the AST-RX (Accès Scientifique à la
45
46 Tomographie à Rayons X) facility of the MNHN. Scanning parameters were as follows:
47
48 voltage = 85 kV, current = 260 μ A; for IRSNB P 9918, number of slices = 3000, voxel size =
49
50 0.029 mm. IRSNB P 9919 is included in three rock blocks that were scanned independently.
51
52 IRSNB P 9919a, number of slices = 1500, voxel size = 0.098 mm; IRSNB P 9919b, number
53
54 of slices = 2000, voxel size = 0.098 mm; IRSNB P 9919c, number of slices = 1800, voxel
55
56 size = 0.116 mm. IRSNB P 9918 and 9919 were virtually reconstructed with MIMICS
57
58
59
60

1
2
3 (Materialise's Interactive Medical Image Control System) 16.0 Software (Materialise Inc.;
4
5
6 proprietary software at the MNHN) at the Atelier 3D, Centre de Recherche en Paléontologie -
7
8 Paris, MNHN.
9

10 11 12 **Phylogenetic Analysis** 13

14
15 Ahlberg and Johanson (1997) generated a phylogenetic analysis of Tristichopteridae
16
17 that has served as a starting point for subsequent analyses focusing on the clade (*e.g.*
18
19 Johanson and Ahlberg, 2001; Snitting, 2008b; Clément et al., 2009; Swartz, 2012). The
20
21 phylogenetic study developed for the present paper considers 15 species and is the first
22
23 published analysis to include *Hyneria lindae* and *Edenopteron keithcrooki*. We chose to
24
25 perform a species-level analysis because we did not want to assume that the genera are
26
27 monophyletic. The analysis used 28 morphological characters (SI 1–2). Twenty-three
28
29 characters come directly or are modified from previous analyses, and five new characters
30
31 (23–28) are introduced here. In an effort to minimize qualitative assessments in character
32
33 scoring, we included only characters with well-defined states. We checked character scores
34
35 against published descriptions and figures, as well as original material for *Hyneria lindae* and
36
37 *Langlieria socqueti*.
38
39
40
41

42
43 We used PAUP 4.0a162 (Swofford, 2002) and the branch-and-bound search algorithm
44
45 to analyze the complete matrix (SI 2). All characters were ordered, except for character #26
46
47 (maximum height of maxilla in external view). We chose *Gogonasus andrewsae* and
48
49 *Spodichthys buetleri* for the outgroups because they are well known and phylogenetically
50
51 close to tristichopterids (Long, 1985a; Long et al., 2006; Snitting, 2008b; Holland and Long,
52
53 2009). All characters were assigned equal weight and only characters 10, 26, and 28 were
54
55 defined as multistate. Bremer indices and the minimal and maximal number of
56
57 synapomorphies have been produced by PAUP at each node to test the node robustness.
58
59
60

1
2
3 Details of the phylogenetic analysis, and notably the character state changings, are available
4
5 in SI 3. Only a few character state changings have been reported on the tree in order not to
6
7 overload the figure.
8
9

10 11 12 **Biogeographic Analysis**

13
14 A biogeographic analysis was performed using Bayesian Binary MCMC (BBM), in
15
16 RASP 3.1 software (Yu et al., 2015). This is a statistical method that uses Bayesian inference
17
18 to reconstruct the ancestral state or biogeographical origin of clades (Ronquist and
19
20 Huelsenbeck, 2003). We applied BBM on the consensus tree resulting from the phylogenetic
21
22 analysis. Nine geographical areas were designated (Australia, Greenland, Canada,
23
24 Pennsylvania, Nevada, Western Europe, Eastern Europe/Russia, South Africa and Antarctica)
25
26 and each taxon was assigned to the geographical area(s) where it was found (SI 4). The
27
28 geographic categories were made according to the Late Devonian paleogeography proposed
29
30 by Scotese (2014) and Ziegler (1990). For instance, Scotland, England, Belgium were all
31
32 parts of the Rhenish Basin during the Late Devonian (Ziegler, 1990) and thus were grouped
33
34 together as “Western Europe”. The BBM analysis was performed over 10^6 generations with
35
36 10 Markov chains, sampling every 100 generations, with the temperature set to 0.1. The first
37
38 one hundred trees were discarded as part of the burn-in period, and the Jukes-Cantor model
39
40 was used, with equal among-site rate variation. The results of the biogeographic
41
42 reconstructions for each node are presented in SI 5. The results of the analysis are expressed
43
44 as the probability of a given clade originating from each of nine continental areas.
45
46
47
48
49
50
51

52 53 **Abbreviations**

54
55 **Institutional Abbreviations**—**IRSNB**, Institut royal des Sciences naturelles de
56
57 Belgique, Brussels, Belgium; **MNHN**, Muséum national d’Histoire naturelle, Paris, France.
58
59
60

Anatomical Abbreviations—**a.ad**, anterior wall of adductor fossa; **ar.hyo**, articulation area with hyomandibular; **ar.pal**, area for palatoquadrate dorsal process (paratemporal process); **aut.p**, autopalatine process; **bu**, bulge; **cl.d**, cleithrum postero-dorsal crest; **cl.m**, cleithrum mesial crest; **co.1**, anterior coronoid; **co.2**, middle coronoid; **co.3**, posterior coronoid; **d**, dentary; **d.d**, dentary marginal dentition; **d.f**, dentary fang; **d.s**, dentary suture; **ent.pa**, anterior process of entopterygoid; **f.co.1**, anterior coronoid fang; **f.co.2**, middle coronoid fang; **f.co.3**, posterior coronoid fang; **f1.co.3**, anterior fang of posterior coronoid; **f2.co.3**, second fang of posterior coronoid; **f3.co.3**, posterior fang of posterior coronoid; **fo.ico**, intercoronoid fossa; **fo.pco**, precoronoid fossa; **inf.1-4**, infradentaries; **l.d**, dorsal lamina of cleithrum; **l.pb**, dorsal blade post-branchial lamina of cleithrum; **l.v**, ventral lamina of cleithrum; **la.l**, lateral vertical lamina; **la.m**, mesial vertical lamina; **m.ad**, posterior part forming the mesial part of the adductor fossa; **md.g**, mandibular sensory groove; **o.r**, oblique ridge; **ov.ano**, area of cleithrum overlapping anocleithrum; **ov.br**, branchial operculum overlapping area; **ov.cla**, clavicle overlapping area; **ov.it**, intertemporal overlapping area; **ov.j**, jugal overlapping area; **ov.l.ext**, lateral extrascapular overlapping area; **ov.mx**, maxilla overlapping area; **ov.p.sr**, posterior supraorbital overlapping area; **ov.po**, postorbital overlapping area; **ov.pop**, preopercular overlapping area; **ov.psp**, postspiracular overlapping area; **ov.qj**, quadratojugal overlapping area; **ov.sm1**, submandibular 1 overlapping area; **ov.sq**, squamosal overlapping area; **ov.st**, supratemporal overlapping area; **ov.ta**, tabular overlapping area; **p.g**, parietal sensory groove; **pi**, pineal area; **pr.a**, anterior process; **pr.ad**, antero-dorsal process; **pop.g**, preopercular sensory groove; **ppr**, posterior process of postorbital; **r.f**, replacement pit of middle coronoid fang; **ri.it.so**, ridge dividing intertemporal and postorbital overlapping areas; **ri.ioc**, ridge housing infraorbital sensory canal; **sp.n**, spiracular notch.

SYSTEMATIC PALEONTOLOGY

SARCOPTERYGII Romer, 1955

OSTEOLEPIFORMES Berg, 1937

TRISTICHOPTERIDAE Cope, 1887

cf. *LANGLIERIA* Clément, Snitting and Ahlberg, 2009**Type Species**—*Langlieria socqueti* Clément, Snitting and Ahlberg, 2009.cf. *LANGLIERIA SOCQUETI* Clément, Snitting and Ahlberg, 2009

(Fig. 2)

Referred Material—IRSNB P 9912, partial left squamosal (bone has been mechanically removed to have access to the mould of the external surface), and IRSNB P 9913, right mandible.**Locality and Horizon**—Strud quarry, Namur Province, Belgium, Evieux Formation, late Famennian, Late Devonian.**Remarks**—Two tristichopterid species have been described from Belgium: *Eusthenodon wangsjoii* and *Langlieria socqueti*. We assign the following material (isolated squamosal and lower jaw) to cf. *Langlieria socqueti* according to dermal ornament and size category. Of the two specimens described here, only one (IRSNB P 9913) exhibits a feature included in the diagnostic character combination of Clément et al. (2009) and this feature (presence of dentary fang pair) is present in most tristichopterids. The one autapomorphy that Clément et al. (2009) cite for *L. socqueti* (absence of marginal vomerine teeth; Clément et al., 2009) is impossible to address in the new material.

Description

Squamosal—The squamosal (IRSNB P 9912; Fig. 2A–C) exhibits a prominent rostradorsal process and a less prominent rostromedial process. The dorsal margin of the bone is concave and the dorsocaudal corner is rounded and located well rostral to the caudoventral portion of the squamosal. The dermal surface of the squamosal contains wide, conjoined areas for the overlap of the postorbital and jugal bones. There is a narrow area for the overlapping maxilla along the ventral margin. The relationship between squamosal and maxilla is reversed in IRSNB P 9912 relative to the condition in a partial skull of *L. socqueti* (MNHN ARD 250) from the type locality (squamosal overlaps maxilla; Clément, 2002:text-figs. 8–9). Maxilla overlap onto the squamosal is the more common condition in Tristichopteridae; the reversed condition is otherwise known only in *Eusthenodon wangsjoi* and possibly *Platycephalichthys bischoffi* (Clément, 2002). On the visceral surface of IRSNB P 9912, along the dorsal margin, there is an elongated and narrow area of overlap onto supratemporal, tabular, and possibly postspiracular.

Lower Jaw—The dentary displays a large fang pair with cutting edges and ridges on its base. Ridges are absent or not preserved on the apex. As in MNHN ARD 251 (Clément et al. 2009:text-fig. 7), there is no marginal dentition of the dentary labial to the fangs or between the fangs and the mandibular symphysis (IRSNB P 9913, Fig. 2D–F). Among tristichopterids, a marginal dentary tooth row that appears only distal to the fangs is additionally observed in *Cabonnichthys burnsi* (Johanson and Ahlberg, 1997), *Edenopteron keithcrooki* (Young et al., 2013), and *Eusthenodon wangsjoi* (Jarvik, 1952; Johanson, 2004).

The distal end of infradentary 4 in IRSNB P 9913 shows a wide and ventrally slanting area of overlap for the quadratojugal. Ventral to the quadratojugal overlap area is a long

1
2
3 eroded mandibular groove. The overlapping area for the first submandibular can be observed
4
5 on the ventral part of infradentary 1 (IRSNB P 9913, Fig. 2D–E).
6
7

8 Only one fang of coronoid 3 is visible in IRSNB P 9913 (Fig. 2D–F). The number of
9
10 fang pairs on coronoid 3 is impossible to determine in this specimen and the condition is
11
12 unknown in *L. socqueti*. Among tristichopterids, only *Spodichthys buetleri* (Snitting, 2008b),
13
14 *Tristichopterus alatus* (Snitting, 2009), and *E. keithcrooki* (Young et al., 2013) are reported
15
16 with one fang pair, rather than two, on coronoid 3. The coronoid fangs of IRSNB P 9913
17
18 exhibit cutting-edges and striations at the base that may or may not reach to the apex of the
19
20 tooth.
21
22

23
24 **Dermatocranial Ornament**—The dermatocranial ornament of IRSNB P 9912 and
25
26 IRSNB P 9913 is very fine. IRSNB P 9912 (squamosal) exhibits subparallel ridges in the
27
28 rostrrodorsal part of the bone and anastomosing ridges elsewhere. On IRSNB P 9913 (dentary
29
30 + infradentaries), the ornament is mainly made of smooth anastomosed ridges, which are
31
32 more strongly pronounced at the distal end of the dentary.
33
34

35
36
37
38 cf. *EUSTHENODON* Jarvik, 1952
39
40

41
42 **Type Species**—*Eusthenodon wangsjoii* Jarvik, 1952.
43
44

45
46
47 cf. *EUSTHENODON WANGSJOI* Jarvik, 1952
48

49 (Figs 3–4, SI 6–7)
50
51

52
53
54 **Referred Material**—IRSNB P 9910, partial left parietal; IRSNB P 9914, left
55
56 supratemporal, part and counterpart; IRSNB P 9915, partial left postorbital; IRSNB P 9916,
57
58
59
60

1
2
3 left preopercular; IRSNB P 9917, left opercular; IRSNB P 9918, right dentary; IRSNB P
4
5 9919, partial right mandible.
6

7
8 **Locality and Horizon**— Strud quarry, Namur Province, Belgium, Evieux Formation,
9
10 late Famennian, Late Devonian.

11
12 **Remarks**—These specimens are referred to cf. *Eusthenodon wangsjoii* on account of
13
14 dermal ornament and size category. In addition, IRSNB P 9915 (postorbital) shares general
15
16 shape characteristics with the *E. wangsjoii* holotype (P. 1476) in addition to a well-developed
17
18 rostradorsal process (Jarvik, 1952:pl. 9). IRSNB P 9917 (preopercular) has a wide
19
20 rostroventral process similar to that observed in the *E. wangsjoii* holotype (Jarvik, 1952:pl.
21
22 10). General shape characteristics are shared between IRSNB P 9914 (supratemporal) and
23
24 IRSNB P 9918 (opercular) and the *E. wangsjoii* holotype (Jarvik, 1952:pl. 9). IRSNB P 9919
25
26 (mandible) shares with the *E. wangsjoii* holotype (Jarvik, 1952:pl. 10) a lack of fusion among
27
28 the dermatocranial mandibular bones.
29
30
31
32
33
34

35 **Description**

36
37 **Parietal**—IRSNB P 9910 (Fig. 3A–B) is an isolated partial parietal that preserves
38
39 much of the caudal margin and the medial margin. The dermal surface of the parietal exhibits
40
41 a short area of supratemporal overlap along the caudolateral margin. The posterior oblique
42
43 pitline groove is observed lateral to the pineal region. The shape of the parietal suggests a
44
45 kite-shaped pineal series, contrary to the tear-drop shaped condition in the *Eusthenodon*
46
47 *wangsjoii* holotype (P. 1476; Jarvik, 1952:pl. 9) and in Clément's (2002) emended diagnosis
48
49 of the species. In addition, it appears as though the pineal series either reaches or nearly
50
51 reaches the caudal margin of the parietal shield. Several specimens of *E. wangsjoii* (including
52
53 the holotype, P. 1476; Jarvik, 1952:pl. 9) show a more rostrally positioned pineal series. High
54
55
56
57
58
59
60

1
2
3 variability of pineal positioning in *E. wangsjoii* has previously been recognized by Jarvik
4
5 (1985).
6

7
8 **Supratemporal**—IRSNB P 9914 (Fig. 3C–F) is widest along its caudal margin and
9
10 the spiracular notch is strongly hook-shaped. This shape is quite different from what is
11
12 observed in the *Eusthenodon wangsjoii* holotype (P. 1476; Jarvik, 1952) and more closely
13
14 resembles the condition observed in *Eusthenopteron foordi* (e.g., Jarvik, 1944a). Areas
15
16 overlapped by the intertemporal and postorbital are observed on the dermal surface of the
17
18 supratemporal (Fig. 3C), in the rostralateral corner. A strong ridge divides the two overlap
19
20 areas (Fig. 3E) as in *Langlieria socqueti* (Clément, 2002:text-fig. 6B). On the visceral
21
22 surface, a smooth depression is visible anteriorly. This depression may have received the
23
24 palatoquadrate paratemporal process (as proposed by Clément, 2002, for *E. wangsjoii*). The
25
26 ridge housing the infraorbital canal is present around this depression. A possible articulation
27
28 area with the hyomandibula is located in the caudomedial corner (Fig. 3F).
29
30
31
32

33 **Postorbital**—IRSNB P 9915 (Fig. 3G–H) is an isolated partial postorbital with an
34
35 extended shared area for the overlap of both intertemporal and posterior supraorbital bones.
36
37 These overlap areas are not observable in the *Eusthenodon wangsjoii* type material.
38
39

40 **Preopercular**—IRSNB P 9916 (Fig. 3I–J) is a partial left preopercular that preserves
41
42 an area for squamosal overlap that appears short but may be incomplete.
43
44

45 **Opercular**—IRSNB P 9917 (Fig. 3K–L) is an opercular with a high height/length
46
47 ratio (1.5). Jarvik (1952) described the opercular of *Eusthenodon wangsjoii* as higher than
48
49 long and figures a single specimen (P. 1481, Jarvik, 1952:pl. 12:2) with a ratio that is not as
50
51 high (=1.24) as that in IRSNB P 9917. The ventral margin of IRSNB P 9917 is rounded as in
52
53 *Eusthenopteron foordi* (e.g., Jarvik, 1944a) and is notably unlike the condition in
54
55 *Cabonnichthys burnsi* (Ahlberg and Johanson, 1997:fig. 3), where the margin is indented by
56
57 the subopercular. The dorsal margin of IRSNB P 9917 shows a well-developed and large
58
59
60

1
2
3 overlap area divided in two parts by a ridge. The larger rostral part was probably for the
4
5 postspiracular bone and the smaller caudal part for the lateral extrascapular. In *E. wangsjoii*,
6
7 only the overlap area for the postspiracular has been previously reported (by Jarvik, 1952:pl.
8
9 12:2). However, Jarvik (1952:64) expresses doubt over whether the area was overlapped by
10
11 the postspiracular or the lateral extrascapular. The rostral margin of IRSNB P 9917 displays a
12
13 very narrow overlap area for the preopercular.
14
15

16
17 **Lower Jaw**—IRSNB P 9918 (Fig. 4A–B) exhibits a dentary fang pair and no
18
19 marginal teeth are observed from the fang pair to the symphysis. Within Tristichopteridae,
20
21 this condition is shared among *Cabonnichthys burnsi* (Johanson and Ahlberg, 1997),
22
23 *Edenopteron keithcrooki* (Young et al., 2013), and *Eusthenodon wangsjoii* (Jarvik, 1952;
24
25 Johanson, 2004). IRSNB P 9919 (Fig. 4D–F) includes all three coronoids. Coronoid 3 is
26
27 much longer than coronoids 1 or 2. Among tristichopterids, only *Spodichthys buetleri*
28
29 (Snitting, 2009) and *Tristichopterus alatus* (Snitting, 2009) have been reported with a third
30
31 coronoid of a length subequal to coronoids 1 and 2. The fangs of coronoids 1 and 2 have
32
33 sharp carinae along mesial and distal margins. The fangs of both pairs on coronoid 3 are
34
35 much smaller than those of coronoids 1 or 2. No striations are visible on the coronoid fangs
36
37 of IRSNB P 9919. A marginal tooth row is not visible on any of the three coronoids of
38
39 IRSNB P 9919. This may be a result of preservation; no other tristichopterid is without
40
41 marginal coronoid dentition. Among tristichopterids, the most reduced condition previously
42
43 recognized (marginal teeth on third coronoid only) is observed in *E. wangsjoii* (Jarvik, 1952),
44
45 *Hynertia lindae* (Daeschler and Downs, 2018), and *M. fairfaxi* (Johanson and Ahlberg, 1997).
46
47
48
49

50
51 **Dermatocranial Ornament**—As described in Clément's (2002) emended diagnosis
52
53 for *Eusthenodon wangsjoii*, the dermatocranial ornament of these Strud specimens consists of
54
55 ridges forming distinct networks and independent tubercles are rare.
56
57
58
59
60

DESCRIPTION OF OTHER TRISTICHOPTERID MATERIAL FROM STRUD

Unless otherwise noted, the specimens reported below are referred to cf.

Tristichopteridae sp. indet. according to shapes, sizes, and dermal ornaments that compare more favourably to Strud's tristichopterids than to the other vertebrates at the locality (acanthodians, actinopterygians, antiarchs, arthrodiros, phyllolepidids, porolepiforms, rhizodonts, osteolepidids, dipnoans, tetrapods; Lohest, 1888; Leriche, 1931; Clément et al., 2004; Clément and Boisvert; 2006; Olive, 2015; Olive et al., 2015b, 2016a, 2016b). Absence of diagnostic features prevents more specific taxonomic assignments. Taxonomic caution is especially warranted in the cases of isolated tetrapodomorph cleithra and suboperculars. Several authors have reported on the intraspecific variability of cleithrum morphology and ornament and of subopercular morphology in tetrapodomorphs (Andrews and Westoll, 1970; Jarvik, 1944b). For many of the specimens presented here, very little meaningful anatomical description is possible. Our intention then is to simply present an inventory of potential tristichopterid material produced by recent collecting efforts at the Strud locality.

IRSNB P 9920 (Fig. 5A) is a right preopercular with a deep dorsal–ventral sensory groove in its caudal half. Its ornamentation comprises small tubercles and ridges.

IRSNB P 9921–9923 (Fig. 5B–D) are isolated subopercular bones. The rostral process of IRSNB P 9921 is especially long and rod-like (Fig. 5B). IRSNB P 9923 is much smaller than the other two and has a more rounded shape with a short, stout rostral process (Fig. 5D).

IRSNB P 9911 (Fig. 5E–F) is a partial right entopterygoid and palatoquadrate. Much of the preserved entopterygoid is without denticles although this is possibly due to weathering. A large and rounded oblique ridge is present in the middle of the bone. This ridge runs caudodorsally and broadens from a prominent rounded bulge (Fig. 5F). The rostral end of the specimen exhibits a pronounced autopalatine process and a ventral process of the

1
2
3 entopterygoid with a short triangular groove between them that tapers caudally. A prominent
4 ascending process is partially observed at the dorsal preservational limit. A row of large and
5 pointed denticles appear along the ventral margin of the entopterygoid's rostral end. The
6
7 ventral margin of the palatoquadrate is relatively straight and does not exhibit the wide lateral
8
9 flange that surrounds the caudal end of the ectopterygoid in *Eusthenodon wangsjoi* (Jarvik,
10
11 1952:pl. 16:2).

12
13
14
15
16
17
18
19
20
21
22
23
24
25
26
27
28
29
30
31
32
33
34
35
36
37
38
39
40
41
42
43
44
45
46
47
48
49
50
51
52
53
54
55
56
57
58
59
60
IRSNB P 9924–9927 are isolated cleithra. The dorsal lamina ornament of IRSNB P
9924 (Fig. 6A–B) is a network of generally parallel fine anastomosed crests; that of IRSNB P
9926 and IRSNB P 9927 (Fig. 6E–F) is coarse tubercles and small ridges similar to cleithrum
ornament of *Platycephalichthys bischoffi* (Vorobyeva, 1959, 1962) and *Langlieria socqueti*
(Clément, 2002; Clément et al., 2009). The dorsal lamina of IRSNB P 9925 (Fig. 6D) is
generally smooth, perhaps due to weathering. In IRSNB P 9925, a long crest follows the
caudal margin of the dorsal lamina's visceral surface. (Fig. 6D).

IRSNB P 9928 and 9929 (Fig. 6G–H) are isolated fangs with ridges along their base
and sharp carinae along mesial and distal edges.

IRSNB P 9930–9933 (Fig. 6I–L) are isolated scales. Each shows the visceral boss that
allows an assignment to Tristichopteridae sp. indet. Several (IRSNB P 9930–9931, IRSNB P
9933) show radiating grooves on the free margin.

RESULTS

Phylogenetic Analysis

The phylogenetic analysis of the complete data matrix yielded three most
parsimonious trees with a score of 62 (CI = 0.5; RI = 0.617; RCI = 0.309). Figure 7 presents
the 50% majority-rule consensus tree that was generated from the data. Bremer indices are all

1
2
3 equal to 1 except the clade (*Cabonnichthys burnsi* (*Mandageria fairfaxi* + *Eusthenodon*
4 *wangsjoii*)), which has a Bremer index of 2.
5
6

7
8 Usually considered as a tristichopterid, *Tristichopterus alatus* has an unresolved basal
9 position in our phylogenetic analysis. It belongs to the basal polytomy with the two outgroups
10 and the rest of the tristichopterids (node 11).
11
12

13
14 Node 11 is characterized by five synapomorphies: presence of epichordal radials in
15 the caudal fin (character 1, state 1), a pineal foramen well posterior to orbits (9,1), two fang
16 positions on posterior coronoid (12,1), a posterior coronoid much longer than middle
17 coronoid (13,1) and a dentary fang pair (18,1).
18
19
20
21
22

23
24 Node 10 is characterized by a symmetrical caudal fin (2,1), a posterior process of the
25 posterior supraorbital much longer than its orbital margin (7,1), two fang positions on
26 ectopterygoid (11,1), less than half of the lacrimal rostral to orbit (27,1) and the presence of
27 an extratemporal in a postspiracular position (21,1).
28
29
30
31
32

33
34 *Eusthenopteron* (node 1) is characterized by the lack of epichordal radials in the
35 caudal fin (1,0), the absence of a dentary fang pair (18,0) and a straight or slightly concave
36 lateral margin of the vomer's caudal process (19,1).
37
38
39

40 In our analysis, and contrary to Borgen and Nakrem (2016), the ancestral character
41 state for the premaxillary dentition (character 10) is not homodonty (morphotype A, state 0),
42 but instead a gradual tooth size increase with proximity to the symphysis (state 1).
43
44 Homodonty is a derived character, which occurred independently in *Spodichthys buetleri*,
45 *Eusthenopteron wenjukowi*, and *Platycephalichthys bischoffi*. A single, greatly enlarged
46 premaxillary fang (state 2; morphotypes C and D of Borgen and Nakrem, 2016) supports the
47 clade of Famennian tristichopterids (node 7). It also appears independently in *Tinirau*
48 *clackae*. The Famennian tristichopterid clade (node 7) is also supported by the lack of dentary
49 marginal teeth near the symphysis (14,1).
50
51
52
53
54
55
56
57
58
59
60

1
2
3 In this analysis, the best supported clades are (*Hyneria lindae* + *Edenopteron*
4 *keithcrooki*) (minimal and maximal number of synapomorphies of five and six) and
5
6
7
8 ((*Eusthenodon wangsjoii* + *Mandageria fairfaxi*) *Cabonnichthys burnsi*) (Bremer index of 2).
9
10 The first is characterized by the absence of contact between the posterior supraorbital and the
11
12 intertemporal (5,1), an apical fossa divided in two (20,1), a flat to concave denticulated field
13
14 of the parasphenoid (22,0), a 0.5 or greater width/length ratio of vomers + parasphenoid
15
16 (23,0), a 0.5 or greater width/length ratio of parietals (24,1), and a maxilla overlap onto
17
18 squamosal (25,0). *Edenopteron keithcrooki* has only one fang position on its posterior
19
20 coronoids (12,0) and this reversal makes it unique within the Famennian tristichopterid clade
21
22 (node 7).
23
24
25

26 The second of the best supported clades, ((*Eusthenodon wangsjoii* + *Mandageria*
27 *fairfaxi*) *Cabonnichthys burnsi*), is characterized by the absence of a vertical blade-like
28
29 lamina lateral to the fangs of coronoid 1 (15,1), a marginal coronoid tooth row on coronoid 3
30
31 only (28,2), the presence of accessory vomers (16,1) and a maxilla of equal height along its
32
33 entire length (26,2). *E. wangsjoii* and *M. fairfaxi* share the following combination of
34
35 characters: jugal excluded from orbital margin (3,1), an absence of contact between posterior
36
37 supraorbital and intertemporal (5,1), a contact between posterior supraorbital and lacrimal
38
39 (6,1), absence of a marginal tooth row mesial to the dermatopalatine fang (17,1) and half or
40
41 more of the lacrimal appears rostral to the orbit (27,0). The relationships among *E. wangsjoii*,
42
43 *M. fairfaxi* and *C. burnsi* agree with the results of Ahlberg and Johanson (1997, 1998, 2001)
44
45 and place *Cabonnichthys* as the sister taxon of (*Eusthenodon* + *Mandageria*).
46
47
48
49
50
51
52
53

54 **Biogeographic Analysis**

55
56 Clade 7 includes the most derived tristichopterids: *Langlieria socqueti*, *Edenopteron*
57
58 *keithcrooki*, *Hyneria lindae*, *Heddeleithys dalglesiensis*, *Cabonnichthys burnsi*,
59
60

1
2
3 *Mandageria fairfaxi* and *Eusthenodon wangsjoii*. This node is reconstructed with a Western
4 Europe origin (~84% probability).
5
6

7
8 Clade 4 gathers taxa (*Cabonnichthys burnsi*, *Mandageria fairfaxi* and *Eusthenodon*
9 *wangsjoii*) with an Australian origin (~81% probability) and clade 2 groups taxa
10 (*Edenopteron keithcrooki* and *Hynertia lindae*) with a possible Australian origin (~67%).
11
12

13
14 The major conflict in the biogeographic reconstruction occurs at the root node 12
15 where the Australian origin is supported at 30%, the Greenland origin at 28%, the Western
16 Europe origin at 22% and the Nevada origin at 7%. This is explained by the basal polytomy
17 and the choice of the outgroups, which are themselves of Australian (*Gogonasus andrewsae*)
18 and Greenland (*Spodichthys buetleri*) origins.
19
20
21
22
23
24

25
26 The basal position of *Tinirau clackae* and *Notorhizodon mackelveyi* suggest a
27 Western North America (Nevada) origin for the clade 11 (~62% probability) and an Antarctic
28 origin for clade 10 (~63% probability).
29
30
31
32
33
34

35 DISCUSSION

36
37
38
39

40 **Phylogenetic Analysis**

41
42 As mentioned by Schultze and Reed (2012), interrelationships of tristichopterids have
43 been very stable over the years and have changed only by addition of new taxa. This is the
44 case in the present analysis. Most recent phylogenetic analyses of tristichopterids support a
45 highly nested clade of tristichopterids including variably *Cabonnichthys*, *Eusthenodon*,
46 *Mandageria*, (Ahlberg and Johanson, 1997, 1998; Johanson and Ahlberg, 2001; Zhu and
47 Ahlberg, 2004; Snitting, 2008b; Clément et al., 2009; Swartz, 2012) and *Langlieria* (Clément
48 et al., 2009). The present analysis gathers the same taxa (node 7) and additionally includes
49 *Hynertia lindae* and *Edenopteron keithcrooki*, both included for the first time in a published
50
51
52
53
54
55
56
57
58
59
60

1
2
3 phylogenetic analysis. The clade of Famennian tristichopterids that originates at node 7
4
5 additionally includes *Heddleithys dalglesiensis*.

6
7
8 **Position of *Spodichthys***—*Spodichthys* is basal to all tristichopterids in all
9
10 phylogenetic analyses where it is included (Snitting, 2008a, 2008b; Clément et al., 2009). It
11
12 displays a number of plesiomorphic characters such as the absence of contact between the
13
14 posterior supraorbital and the intertemporal (5,1), the pineal foramen located at the level with
15
16 or anterior to the posterior margin of the orbit (9,0), only one fang position on the
17
18 ectopterygoid and third coronoid (11,0 and 12,0), a third coronoid similar in length to the
19
20 middle coronoid (13,0), the presence of a vertical lamina lateral to the coronoid fang on the
21
22 anterior coronoid (15,0), the absence of a dentary fang pair (18,0) and a width/length ratio of
23
24 vomers + parasphenoid equal to or more than 0.5 (23,0). In our analysis, *Spodichthys buetleri*
25
26 appears in a basal polytomy together with *Gogonasus andrewsae*, *Tristichopterus alatus* and
27
28 a clade that contains all other Tristichopteridae. The phylogenetic position of *S. buetleri*
29
30 remains an open question because more than half of the characters are missing data (19 of
31
32 28). It is considered to be the sister group of Tristichopteridae by Snitting (2008b) because it
33
34 cannot be demonstrated that its extratemporal reaches into the postspiracular area, a feature
35
36 that diagnoses Tristichopteridae.
37
38
39
40
41

42
43 **Monophyly of Tristichopteridae**—Tristichopterid monophyly has been established
44
45 in several studies (Long, 1985b; Ahlberg and Johanson, 1997, 1998; Johanson and Ahlberg,
46
47 2001; Zhu and Ahlberg, 2004; Snitting, 2008a, 2008b; Clément et al., 2009). In the present
48
49 analysis, because of the low resolution at the base of the tree, this monophyly is not
50
51 specifically supported. The presence of an extratemporal in a postspiracular position (21,1), a
52
53 feature used to diagnose members of Tristichopteridae, is here regarded as a synapomorphy
54
55 of clade 10 only. It is absent in *Tinirau clackae* (the ‘postspiracular’ is in a rostral position)
56
57 and its presence in *Tristichopterus alatus* is regarded as a convergence.
58
59
60

1
2
3 **Newly Added Taxa**—*Edenopteron keithcrooki* and *Hyneria lindae* are included in a
4
5 phylogenetic analysis for the first time and these appear as sister species to one another (node
6
7 2). Node 2 is supported by six synapomorphies (see Results) including the division of the
8
9 apical fossa into two parts, a condition that is unique within Tristichopteridae.
10
11

12 The position of *H. lindae* within tristichopterids appears as less derived than
13
14 previously thought by several authors (Daeschler and Shubin, 2007; Clément et al., 2009;
15
16 Daeschler and Downs, 2018). In a previous publication by two of us (Daeschler and Downs,
17
18 2018), a highly nested phylogenetic position for *H. lindae* was proposed due to a suite of
19
20 characters that includes contact between parietal and postorbital, a postorbital that does not
21
22 contribute to the orbital margin, a wide and concave denticulated plate of the parasphenoid, a
23
24 dentary fang pair, and a lack of marginal dentition on all but the third coronoid. Except for
25
26 the last character (28,2), the new phylogenetic analysis supports all of these as either derived
27
28 features appearing quite early in the history of tristichopterids (dentary fang pair (18,1) and
29
30 lack of postorbital contribution to orbital margin (4,1)) or plesiomorphic for the group (wide
31
32 and concave denticulated plate of the parasphenoid, 22,0).
33
34
35
36

37 *Edenopteron keithcrooki* was also presumed to be phylogenetically highly nested
38
39 (Young et al., 2013) on account of characters including accessory vomers and contact
40
41 between parietal and postorbital. According to our analysis, while the presence of accessory
42
43 vomers suggests a derived tristichopterid, the rest of the character states support its sister
44
45 group relationship with *H. lindae*.
46
47
48

49 *Tinirau clackae* was previously included in the phylogenetic analysis of Swartz
50
51 (2012) but this analysis used a large dataset including Devonian and Carboniferous
52
53 tetrapodomorphs. As noticed by Young et al. (2013), the character list diluted characters
54
55 relevant to tristichopterids and pushed *T. clackae* and *Platycephalichthys* out of
56
57 Tristichopteridae. In Swartz's (2012) cladogram, *Platycephalichthys* was sister group to
58
59
60

1
2
3 Elpistostegalia and *Tinirau* was sister group to (*Platycephalichthys* + Elpistostegalia). In our
4
5 analysis, the only species in these two groups occupy basal position within Tristichopterae.
6
7

8 **Mandageriidae**—The subfamily Mandageriidae was established by Young (2008)
9
10 and includes Gondwana tristichopterid taxa: *Mandageria fairfaxi*, *Cabonnichthys burnsi*,
11
12 possibly *Notorhizodon mackelveyi* and *Edenopteron keithcrooki* (referred to as the
13
14 “undescribed tristichopterid from near Eden, NSW” in Young, 2008). According to Young
15
16 (2008), who did not perform a phylogenetic analysis to support his assertion, features
17
18 justifying the erection of this subfamily were a shared scale morphology and the presence of
19
20 accessory vomers. This pairing is counter to the relationships presented in Ahlberg and
21
22 Johanson’s (1997) phylogenetic analysis, wherein *M. fairfaxi* is the sister group of
23
24 *Eusthenodon wangsjoii*, not *Cabonnichthys burnsi*. One of Young’s (2008) arguments against
25
26 the pairing of *M. fairfaxi* and *E. wangsjoii* was the weakness of the only synapomorphy that
27
28 supported it. According to Young (2008), absence of contact between intertemporal and
29
30 posterior supraorbital is impossible to assess in *M. fairfaxi*.
31
32
33
34

35 In our phylogenetic analysis, we respond to the issues raised by Young (2008). The
36
37 “accessory vomers” character has been added (ch.16; as it was already done by Clément et
38
39 al., 2009). We scored character 5 (contact between posterior supraorbital and intertemporal)
40
41 in the same way as Ahlberg and Johanson (1997) for *Mandageria fairfaxi* and *Cabonnichthys*
42
43 *burnsi* since we do not have access to the type material, but whereas the absence of contact
44
45 was only a shared character by *E. wangsjoii* and *M. fairfaxi*, in our matrix, it is additionally
46
47 shared by *E. keithcrooki* and *H. lindae*. We also add characters and key species that should
48
49 help to address the validity of the subfamily Mandageriidae (*i.e.*, *N. mackelveyi* and *E.*
50
51 *keithcrooki*).
52
53
54
55

56 The relationships supported by our analysis are those originally presented by Ahlberg
57
58 and Johanson (1997, 1998) and also Clément et al. (2009): (*C. burnsi* (*M. fairfaxi* + *E.*
59
60

1
2
3 *wangsjoi*). The clade (*M. fairfaxi* + *E. wangsjoi*) is supported by five synapomorphies and
4
5 displays a minimal and maximal numbers of synapomorphies of four and six. Mandageriidae
6
7 appears as paraphyletic here and is therefore not considered to be valid.
8
9

10 **Newly Added Characters**—Compared to previous phylogenetic studies on
11
12 tristichopterids, six new characters have been added in our analysis, some of them based on
13
14 observations made on *Hyneria lindae*. Half of the new characters (23, 24, and 25) represent
15
16 unexpected synapomorphies for the clade including *Hyneria lindae* and *Edenopteron*
17
18 *keithcrooki*. Characters 23 and 24 are width/length ratios implying a widening of the palate
19
20 and of the skull roof, respectively, in clade 17. A marginal coronoid tooth row that is only
21
22 present on coronoid 3 represents a new synapomorphy for the highly nested group of
23
24 tristichopterids: (*Cabonnichthys burnsi* (*Mandageria fairfaxi* + *Eusthenodon wangsjoi*)).
25
26
27
28
29
30

31 **Biogeographic History of Tristichopteridae**

32
33 There is a perfect congruence between the phylogenetic and stratigraphic data (Fig.
34
35 7). The origin of the whole group would be, at least, Givetian in age if we consider the oldest
36
37 occurrence of tristichopterids, *i.e.* *Tristichopterus alatus*, *Notorhizodon mackelveyi*, and
38
39 *Tinirau clackae* (Egerton, 1861; Young et al., 1992; Swartz, 2012; Schultze and Reed, 2012).
40
41 More derived tristichopterids (*Eusthenopteron foordi*, *Eusthenopteron wenjukowi* and
42
43 *Platycephalichthys bischoffi*) are Frasnian in age and the most derived clade (from node 7) is
44
45 Famennian in age.
46
47
48

49 Concerning the origin of the Tristichopteridae whole group (except *Tristichopterus*
50
51 *alatus*, which is in the basal polytomy), node 11 is unambiguously reconstructed with a
52
53 Western North American origin. This Laurussian origin agrees with Ahlberg and Johanson
54
55 (1997) and disagrees with Young (2008) who argued for a Gondwanan origin of the whole
56
57 group. This Western North American origin is mainly due to the basal position of *Tinirau*
58
59
60

1
2
3 *clackae*, which comes from this area. This is also due to the fact that *Tristichopterus alatus*
4
5 ends up in the basal polytomy. If it instead occupied a resolved and most basal position
6
7 within Tristichopteridae (as in Clément et al., 2009; Ahlberg and Johanson, 1997), the origin
8
9 of the entire group would be Western European.
10

11
12 The origin of node 10 is reconstructed with a Gondwanan origin (Antarctica). This is
13
14 explained by the basal position of *Notorhizodon mackelveyi*. According to these results, and
15
16 as previously proposed by Johanson and Ahlberg (2001), tristichopterids would have already
17
18 achieved a worldwide distribution as early as the Givetian. Our biogeographic analysis also
19
20 proposes dispersal from Gondwana (Antarctica) to Laurussia (Eastern Europe) during the
21
22 Givetian–Frasnian (node 10 to 9).
23
24
25

26 During the Late Devonian Period, our results support an expansion of tristichopterids
27
28 from Eastern Europe into Western Europe (node 8 to node 7). Much of tristichopterid history
29
30 took place in Laurussia (nodes 1 and 5–9), first in Eastern Europe (nodes 9, 8, and 1) and
31
32 then in Western Europe (nodes 5–7), with the introgression of one taxon (*Eusthenopteron*
33
34 *foordi*) into Western Laurussia (Canada).
35
36
37

38 According to these results, while some tristichopterids remained in Europe during the
39
40 Famennian (*Heddeleithys dalgleisiensis* and *Langlieria socqueti*), dispersal events occurred
41
42 from Western Europe to Australia (one from node 6 to 2 and another from node 5 to 4) and at
43
44 least once from Australia to Eastern North America (*H. lindae*). *Eusthenodon wangsjoii*, with
45
46 its remarkable distribution, expanded out of Australia, in the Famennian, to reach Greenland,
47
48 Europe, and Antarctica. These hypothesized Famennian tristichopterid dispersal events are
49
50 difficult to reconcile with modern paleogeographic reconstructions. We might expect such
51
52 discrepancies to result from our still fragmentary understanding of both tristichopterid
53
54 diversity and species–scale geographic distributions (most tristichopterid species are only
55
56 known from a single geographic locality).
57
58
59
60

1
2
3 The Gondwana-Euramerica Devonian vertebrate interchange (or Great Devonian
4 Interchange) (e.g., Janvier and Villarroel, 2000; Janvier and Clément, 2005; Young, 2008) is
5 a proposed southward dispersion of reputedly Euramerican endemics (*Holoptychius*,
6 *Strepsodus* and *Asterolepis*) in the Frasnian followed by a northward dispersion of
7 Gondwanan endemics (*Groenlandaspis*, phyllolepid, rhizodontids and megalichthyids) in
8 the Famennian. This Frasnian–Famennian faunal interchange, at least in the southward
9 direction, has recently been weakened by Olive et al. (in review). The present study supports
10 several interchanges between Euramerica and Gondwana during the Middle–Late Devonian.
11 The first is a southward migration during the Givetian (node 11 to 10) and could correspond
12 to a time-extended southward migration of the Great Devonian Interchange. The second is a
13 Givetian–Frasnian northward migration (node 10 to 9) that contradicts the Interchange, and
14 then there are several Famennian migrations, mainly in the southward direction. Although
15 our results are preliminary, they lend some support to tristichopterid distributional patterns
16 that are more complex than the proposed Great Devonian Interchange.

ACKNOWLEDGMENTS

17
18
19 We thank A. Impens and S. Berton (IRSNB) for preparation of part of the fossils described
20 herein, and T. Hubin (IRSNB) for photographs. We are grateful to C. Cousin and A. Folie
21 (IRSNB) for curatorial support; to F. Solé (IRSNB) and K. Le Verger (MNHN) for their
22 support with RASP software; and to S. Ladevèze (MNHN) for her support with PAUP
23 software. We also thank D. Snitting (Uppsala University) for sending us a copy of his thesis
24 (Snitting, 2008a). We gratefully acknowledge M. Garcia Sanz at the X-ray Tomography
25 Imagery Platform AST-RX of the UMS2700, MNHN, Paris, France (funded by MNHN,
26 CNRS, Institut de France, Région Ile-de-France) for the X-ray tomography scans. Thanks are
27
28
29
30
31
32
33
34
35
36
37
38
39
40
41
42
43
44
45
46
47
48
49
50
51
52
53
54
55
56
57
58
59
60

1
2
3 also due to F. Goussard and D. Germain (UMR 7207 MNHN/CNRS/UPMC) for their help in
4
5 the 3D modelling process. We thank the Gesves local council staff for providing technical
6
7 support and excavation permission in Strud. We are indebted to the successive Strud field
8
9 teams, who helped us since 2004. Finally, we thank the editor and the reviewers who helped
10
11 to improve the quality of the manuscript. This study was partly funded by the Belgian Federal
12
13 Science Policy Office (doctoral fellowship to S. Olive).
14
15
16
17
18
19
20
21
22
23
24
25
26
27
28
29
30
31
32
33
34
35
36
37
38
39
40
41
42
43
44
45
46
47
48
49
50
51
52
53
54
55
56
57
58
59
60

LITERATURE CITED

- 1
2
3
4
5
6
7
8 Ahlberg, P. E., and Z. Johanson. 1997. Second tristichopterid (Sarcopterygii,
9
10 Osteolepiformes) from the Upper Devonian of Canowindra, New South Wales,
11
12 Australia, and phylogeny of the Tristichopteridae. *Journal of Vertebrate Paleontology*
13
14 17:653–673.
15
16
17 Ahlberg, P. E., and Z. Johanson. 1998. Osteolepiforms and the ancestry of tetrapods. *Nature*
18
19 395:792–793.
20
21
22 Ahlberg, P. E., Z. Johanson, and E. B. Daeschler. 2001. The Late Devonian lungfish
23
24 *Soederberghia* (Sarcopterygii, Dipnoi) from Australia and North America, and its
25
26 biogeographical implications. *Journal of Vertebrate Paleontology* 21:1–12.
27
28
29 Andrews, S. M., and T. S. Westoll. 1970. The postcranial skeleton of *Eusthenopteron foordi*
30
31 Whiteaves. *Transactions of the Royal Society of Edinburgh: Earth Sciences* 68:207–
32
33 329.
34
35
36 Berg, L. S. 1937. A classification of fish-like vertebrates. *Bulletin of the Academy of*
37
38 *Sciences of USSR, Class of Mathematics and Natural Sciences, Biological Series*
39
40 1237–1277.
41
42
43 Béthune, P. de. 1954. *Carte Géologique de Belgique (échelle 1/500.000) ; Atlas de Belgique.*
44
45 *Académie Royale de Belgique.*
46
47
48 Borgen, U. J., and H. A. Nakrem. 2016. Morphology, phylogeny and taxonomy of
49
50 osteolepiform fish. *Fossils and Strata* 61:1–514.
51
52
53 Clément, G. 2002. Large Tristichopteridae (Sarcopterygii, Tetrapodomorpha) from the Late
54
55 Famennian Evieux Formation of Belgium. *Palaeontology* 45:577–593.
56
57
58
59
60

- 1
2
3 Clément, G., and C. A. Boisvert. 2006. Lohest's true and false 'Devonian amphibians':
4
5 evidence for the rhynchodipterid lungfish *Soederberghia* in the Famennian of
6
7 Belgium. *Journal of Vertebrate Paleontology* 26:276–283.
8
9
10 Clément, G., D. Snitting, and P. E. Ahlberg. 2009. A new tristichopterid (Sarcopterygii,
11
12 Tetrapodomorpha) from the Upper Famennian Evieux Formation (Upper Devonian)
13
14 of Belgium. *Palaeontology* 52:823–836.
15
16
17 Clément, G., P. E. Ahlberg, A. Blicek, H. Blom, J. A. Clack, E. Poty, J. Thorez, and P.
18
19 Janvier. 2004. Palaeogeography: Devonian tetrapod from western Europe. *Nature*
20
21 427:412–413.
22
23
24 Cloutier, R., and P. E. Ahlberg. 1996. Morphology, characters, and the interrelationships of
25
26 basal sarcopterygians; pp. 445–480 in M. L. J. Stiassny, L. R. Parenti, and G. D.
27
28 Johnson, G (eds.), *Interrelationships of fishes*. Academic Press, San diego, California.
29
30
31 Cloutier, R., and A. -M. Candilier. 1995. Palaeozoic vertebrates of northern France and
32
33 Belgium: Part III - Sarcopterygii (Devonian to Carboniferous). *Geobios Mémoire*
34
35 spécial 19:335–342.
36
37
38 Cope, E. D. 1887. Zittel's Manual of Palaeontology. *The American Naturalist* 21:1014–1020.
39
40
41 Daeschler, E. B., and J. P. Downs. 2018. New description and diagnosis of *Hyneria lindae*
42
43 (Sarcopterygii, Tristichopteridae) from the Upper Devonian Catskill Formation in
44
45 Pennsylvania, USA. *Journal of Vertebrate Paleontology*:e1448834.
46
47
48 Daeschler, E. B., and N. H. Shubin. 2007. New data on *Hyneria lindae* (Sarcopterygii,
49
50 Tristichopteridae) from the Late Devonian of Pennsylvania, USA. *Journal of*
51
52 *Vertebrate Paleontology* 27 (3, Supplement):65A.
53
54
55 Davesne, D., J. Mondéjar-Fernández, V. Hairapetian, M. Rücklin, J. Wendt, and G. Clément.
56
57 2015. A new large tetrapodomorph sarcopterygian from the Late Devonian of Iran.
58
59 *Paläontologische Zeitschrift* 89:661–667.
60

- 1
2
3 Denayer, J., C. Prestianni, P. Gueriau, S. Olive, and G. Clément. 2016. Stratigraphy and
4
5 depositional environments of the Late Famennian (Late Devonian) of Southern
6
7 Belgium and characterization of the Strud locality. *Geological Magazine* 153:112–
8
9 127.
10
11
12 Downs, J. P., E. B. Daeschler, A. M. Long, and N. H. Shubin. 2018. *Eusthenopteron jenkinsi*
13
14 sp. nov. (Sarcopterygii, Tristichopteridae) from the Upper Devonian of Nunavut,
15
16 Canada, and a review of *Eusthenopteron* taxonomy). *Breviora* 562:1–24.
17
18
19 Egerton, P. de M. G. 1861. *Tristichopterus alatus*; pp. 51-55 in Figures and Descriptions
20
21 Illustrative of British Organic Remains. Memoirs of the Geological Survey of the
22
23 United Kingdom 10.
24
25
26 Holland, T., and J. A. Long. 2009. On the phylogenetic position of *Gogonasus andrewsae*
27
28 Long 1985, within the Tetrapodomorpha. *Acta Zoologica, Supplement* 1, 90:285–96.
29
30
31 Janvier, P., and G. Clément. 2005. A new groenlandaspimid Arthrodire (Vertebrata:
32
33 Placodermi) from the Famennian of Belgium. *Geologica Belgica* 8:51–67
34
35
36 Janvier, P. and J. G. Maisey. 2010. The Devonian vertebrates of South America and their
37
38 biogeographical relationships. pp.431-459 in D. K. Elliott, J. G. Maisey, X. Yu and D.
39
40 Miao (eds.), *Morphology, phylogeny and paleobiogeography of fossil fishes*. Verlag
41
42 Dr. Friedrich Pfeil. München, Germany.
43
44
45 Janvier, P., and C. Villarroel. 2000. Devonian vertebrates from Colombia. *Palaeontology*
46
47 43:729–763.
48
49
50 Jarvik, E. 1944a. On the dermal bones, sensory canals and pit-lines of the skull in
51
52 *Eusthenopteron foordi* Whiteaves, with some remarks on *E. save-soderberghi* Jarvik.
53
54 *Kungliga Svenska VetenskapsAkademiens Handlingar* 21:1–48.
55
56
57
58
59
60

- 1
2
3 Jarvik, E. 1944b. On the exoskeletal shoulder-girdle of teleostomian fishes, with special
4 reference to *Eusthenopteron foordi* Whiteaves. Kungliga Svenska
5 Vetenskapsakademiens Handlingar 21:1–32.
6
7
8
9
10 Jarvik, E. 1952. On the fish-like tail in the ichthyostegid stegocephalians with descriptions of
11 a new stegocephalian and a new crossopterygian from the Upper Devonian of East
12 Greenland. Meddelelser om Grønland 114:1–90.
13
14
15
16
17 Jarvik, E. 1985. Devonian osteolepiform fishes from East Greenland. Meddelelser om
18 Grønland, Geoscience 13:1–52.
19
20
21
22 Johanson, Z. 2004. Late Devonian sarcopterygian fishes from eastern Gondwana (Australia
23 and Antarctica) and their importance in phylogeny and biogeography. pp. 287–308 in
24 G. Arratia, M. V. H. Wilson, and R. Cloutier (eds.), Recent Advances in the Origin
25 and Early Radiation of Vertebrates. Verlag Dr. Friedrich Pfeil. München, Germany.
26
27
28
29
30
31 Johanson, Z., and P. E. Ahlberg. 1997. A new tristichopterid (Osteolepiformes:
32 Sarcopterygii) from the Mandagery Sandstone (Late Devonian, Famennian) near
33 Canowindra, NSW, Australia. Transactions of the Royal Society of Edinburgh: Earth
34 Sciences 88:39–68.
35
36
37
38
39
40 Johanson, Z., and P. E. Ahlberg. 2001. Devonian rhizodontids and tristichopterids
41 (Sarcopterygii; Tetrapodomorpha) from East Gondwana. Transactions of the Royal
42 Society of Edinburgh: Earth Sciences 92:43–74.
43
44
45
46
47 Lehman, J. -P. 1977. Sur la présence d'un ostéolépiforme dans le Dévonien supérieur du
48 Tafilalet. Comptes Rendus de l'Académie des Sciences, Série D, Sciences naturelles
49 285:151–153.
50
51
52
53
54 Lelièvre, H., and P. Janvier. 1986. L'eusthénoptéridé (Osteichthyes, Sarcopterygii) du
55 Famennien (Dévonien supérieur) du Tafilalet (Maroc): nouvelle description. Bulletin
56
57
58
59
60

1
2
3 du Muséum National d'Histoire Naturelle, Section C, Sciences de la terre,
4
5 paléontologie, géologie, minéralogie 3:351–365.
6
7

8 Lelièvre, H., P. Janvier, and A. Blicek. 1993. Silurian-Devonian vertebrate biostratigraphy of
9
10 Western Gondwana and related terranes (South America, Africa, Armorica-Bohemia,
11
12 Middle East); pp. 139–173 in J. A. Long (ed.), *Palaeozoic Vertebrate Biostratigraphy*
13
14 and Biogeography, Belhaven Press, London.
15
16

17 Leriche, M. 1931. Les poissons famenniens de la Belgique. Les faciès du Famennien dans la
18
19 région gallo-belge. Les relations entre les formations marines et les formations
20
21 continentales du Dévonien supérieur sur la bordure méridionale du Continent Nord-
22
23 Atlantique. *Mémoires de l'Académie Royale de Belgique Classe des Sciences* 10:1–72.
24
25

26 Lohest, M. 1888. Recherches sur les poissons des terrains paléozoïques de Belgique.
27
28 Poissons des Psammites du Condroz, Famennien supérieur. *Annales de la Société*
29
30 *Géologique de Belgique Mémoire* 15:112–203.
31
32

33 Long, J. A. 1985a. A new osteolepidid fish from the Upper Devonian Gogo Formation of
34
35 Western Australia. *Records of the Western Australian Museum* 12:361–377.
36
37

38 Long, J. A. 1985b. The structure and relationships of a new osteolepiform fish from the Late
39
40 Devonian of Victoria, Australia. *Alcheringa* 9:1–22.
41

42 Long, J. A., G. C. Young, T. Holland, T. J. Senden, and E. M. G. Fitzgerald. 2006. An
43
44 exceptional Devonian fish from Australia sheds light on tetrapod evolution. *Nature*
45
46 444:199–202.
47
48

49 Olive, S. 2015. Devonian antiarch placoderms from Belgium revisited. *Acta Palaeontologica*
50
51 *Polonica* 60:711–731.
52
53

54 Olive, S., G. Clément, E. B. Daeschler, and V. Dupret. 2015b. Characterization of the
55
56 placoderm (Gnathostomata) assemblage from the tetrapod-bearing locality of Strud
57
58 (Belgium, Upper Famennian). *Palaeontology* 58:981–1002.
59
60

- 1
2
3 Olive, S., G. Clément, E. B. Daeschler, and V. Dupret. 2016b. Placoderm assemblage from
4 the tetrapod-bearing locality of Strud (Belgium, Upper Famennian) provides evidence
5 for a fish nursery. PLoS ONE 11:e0161540.
6
7
8
9
10 Olive, S., P. E. Ahlberg, V. N. Pernègre, E. Poty, E. Steurbaut, and G. Clément. 2016a. New
11 discoveries of tetrapods (ichthyostegid-like and whatcheeriid-like) in the Famennian
12 (Late Devonian) localities of Strud and Becco (Belgium). Palaeontology 59:827–840.
13
14
15
16
17 Olive, S., G. Clément, J. Denayer, C. Derycke, V. Dupret, P. Gerrienne, P. Gueriau, J. –M.
18 Marion, B. Mottequin, and C. Prestianni. 2015a. Flora and fauna from a new
19 Famennian (Upper Devonian) locality at Becco, eastern Belgium. Geologica Belgica
20 18:92–101.
21
22
23
24
25
26
27 Olive, S., A. Pradel, C. Martinez-Perez, J. Lamsdell, P. Gueriau, N. Rabet, P. Duranleau-
28 Gagnon, P. Janvier, A. L. Cardenas, P. A. Zapata-Ramirez, and H. Botella. **In review**.
29 New insights into Devonian vertebrates from Colombia and associate fauna. Journal
30 of Vertebrate Paleontology.
31
32
33
34
35
36
37 Romer, A. S. 1955. Herpetichthyes, Amphibioidei, Choanichthyes or Sarcopterygii? Nature
38 176:126.
39
40
41
42 Ronquist, F., and J. P. Huelsenbeck. 2003. MrBayes3: Bayesian phylogenetic inference
43 undermixed models. Bioinformatics 19:1572–1574.
44
45
46
47 Schultze, H. -P., and J. W. Reed. 2012. A tristichopterid sarcopterygian fish from the upper
48 Middle Devonian of Nevada. Historical Biology 24:425–440.
49
50
51
52
53
54
55
56
57
58
59
60 Scotese, C. R. 2014. Atlas of Devonian paleogeographic maps, PALEOMAP atlas for
ArcGIS, 4, the Late Paleozoic, Maps 65-72, Mollweide Projection, PALEOMAP
Project, Evanston, Illinois.

- 1
2
3 Snitting, D. 2008a. Morphology, taxonomy and interrelationships of tristichopterid fishes
4
5 (Sarcopterygii, Tetrapodomorpha). Ph.D. dissertation, Acta Universitatis Upsaliensis,
6
7 Uppsala, Sweden, 54 pp.
8
9
- 10 Snitting, D. 2008b. A redescription of the anatomy of the Late Devonian *Spodichthys buetleri*
11
12 Jarvik, 1985 (Sarcopterygii, Tetrapodomorpha) from East Greenland. Journal of
13
14 Vertebrate Paleontology 28:637–655.
15
16
- 17 Snitting, D. 2009. *Heddeleichthys* - a new tristichopterid genus from the Dura Den Formation,
18
19 Midland Valley, Scotland (Famennian, Late Devonian). Acta Zoologica 90(1,
20
21 Supplement):273–284.
22
23
- 24 Swartz, B. 2012. A marine stem-tetrapod from the Devonian of western North America.
25
26 PLoS ONE 7:e33683.
27
28
- 29 Swofford, D. L. 2002. PAUP*: phylogenetic analysis using parcimony (and other methods).
30
31 Version 4.0a62. <http://phylosolutions.com/paup-test/>
32
- 33 Thorez, J., and R. Dreesen. 1986. A model of regressive depositional system around the Old
34
35 Red Continent as exemplified by a field trip in the Upper Famennian ‘Psammites du
36
37 Condroz’ in Belgium. Annales de la Société géologique de Belgique 109:285–323.
38
39
- 40 Thorez, J., R. Dreesen, and M. Streel. 2006. Famennian; pp. 27–45 in L. Dejonghe (ed.),
41
42 Current status of chronostratigraphic units named from Belgium and adjacent areas.
43
44 Geologica Belgica 9.
45
46
- 47 Vorobyeva, E. I. 1959. A new crossopterygian fish genus *Platycephalichthys* from the Upper
48
49 Devonian of the Lovat River. Paleontologicheskii Zhurnal, Acad. Sci. U.S.S.R. 3:95–
50
51 106. [Russian]
52
53
- 54 Vorobyeva, E. I. 1962. Rhizodontid crossopterygians of the main Devonian field of the
55
56 USSR. Trudy Paleontologicheskogo Instituta, Akademii Nauk SSSR 94:1–139.
57
58 [Russian]
59
60

- 1
2
3 Young, G. C. 2008. Relationships of tristichopterids (osteolepiform lobe-finned fishes) from
4 the Middle–Late Devonian of East Gondwana. *Alcheringa* 32:321–336.
5
6
7
8 Young, G. C., J. A. Long, and A. Ritchie. 1992. Crossopterygian fishes from the Devonian of
9 Antarctica: systematics, relationships and biogeographic significance. *Records of the*
10 *Australian Museum Supplement* 14:1–77.
11
12
13
14 Young, B., R. L. Dunstone, T. J. Senden, and G. C. Young. 2013. A Gigantic Sarcopterygian
15 (Tetrapodomorph Lobe-Finned Fish) from the Upper Devonian of Gondwana (Eden,
16 New South Wales, Australia). *PLoS ONE* 8:e53871.
17
18
19
20
21 Yu, Y., A. J. Harris, C. Blair, and X. J. He. 2015. RASP (Reconstruct Ancestral State in
22 Phylogenies): a tool for historical biogeography. *Molecular Phylogenetics and*
23 *Evolution* 87:46–49.
24
25
26
27
28
29 Zhu, M., and P. E. Ahlberg. 2004. The origin of the internal nostril of tetrapods. *Nature*
30 432:94–97.
31
32
33
34 Ziegler, P. A. 1990. Geological atlas of Western and Central Europe, Second edition. Shell
35 Internationale Petroleum Maatschappij B.V., and Geological Society of London,
36 Avon, 239 pp.
37
38
39
40
41
42
43
44
45 Submitted April 5th, 2019; revisions received Month DD, YYYY; accepted Month DD,
46 YYYY
47
48
49
50
51
52
53
54
55
56
57
58
59
60

Figure Captions

FIGURE 1. Geographical and geological localizations of Belgian tristichopterid localities including Strud (Namur Province). **A**, Geographic localities; **B**, Geological map of Southern Belgium, modified from Denayer et al. (2016), redrawn from Béthune (1954); **C**, schematic block diagram of the Strud channel with the location of tristichopterid remains, modified from Denayer et al (2016). [planned for page width]

FIGURE 2. cf. *Langlieria socqueti*, Strud, Belgium, late Famennian. **A**, left squamosal, internal view, IRSNB P 9912, photograph; **B**, left squamosal, imprint of the external surface (bone removed), IRSNB P 9912, photograph; **C**, left squamosal, external view, IRSNB P 9912, interpretative drawing; **D**, right mandible, external view, IRSNB P 9913, photograph; **E**, right mandible, external view, IRSNB P 9913, interpretative drawing; **F**, right mandible, external view, IRSNB P 9913, close-up photograph on the symphysis. Scale bars equal 1 cm. [planned for page width]

FIGURE 3. cf. *Eusthenodon wangsjoii*, Strud, Belgium, Upper Famennian. **A**, incomplete left parietal, external view, IRSNB P 9910, photograph; **B**, incomplete left parietal, external view, IRSNB P 9910, interpretative drawing; **C–D**, left supratemporal, external and visceral views, IRSNB P 9914, photographs; **E–F**, left supratemporal, external and visceral views, IRSNB P 9914, interpretative drawings; **G**, left postorbital, external view, IRSNB P 9915, photograph; **H**, left postorbital, external view, IRSNB P 9915, interpretative drawing; **I–J**, left preopercular, external and visceral views, IRSNB P 9916, photographs; **K**, left opercular, external view, IRSNB P 9917, photograph; **L**, left opercular, external view, IRSNB P 9917,

1
2
3 interpretative drawing. Black arrow points anteriorly. Scale bars: **A–H** equal 1 cm, **I–L** equal
4
5 2 cm. [planned for page width]
6
7
8
9

10 FIGURE 4. cf. *Eusthenodon wangsjoii*, Strud, Belgium, late Famennian. **A**, right dentary,
11 external view, IRSNB P 9918, 3D reconstruction; **B**, right dentary, visceral view, IRSNB P
12 9918, 3D reconstruction; **C**, right mandible, external view, IRSNB P 9919, 3D
13 reconstruction; **D**, right mandible, visceral view, IRSNB P 9919, 3D reconstruction; **E**,
14 coronoids, external view, IRSNB P 9919, 3D reconstruction; **F**, coronoids, apical view,
15 IRSNB P 9919, 3D reconstruction. Left white arrow indicates putative suture between the
16 infradentaries 3 and 4, right white arrow indicates pit line of infradentary 2. Black arrow
17 points anteriorly. Scale bars: **A–B**, **E–F** equal 1 cm, **C–D** equal 2 cm. [planned for page
18 width]
19
20
21
22
23
24
25
26
27
28
29
30
31
32

33 FIGURE 5. cf. Tristichopteridae indet., Strud, Belgium, Upper Famennian. **A**, right
34 preopercular, external view, IRSNB P 9920, photograph; **B**, left subopercular, visceral view,
35 IRSNB P 9921, photograph; **C**, left subopercular, visceral view, IRSNB P 9922, photograph;
36 **D**, left subopercular, visceral view, IRSNB P 9923, photograph; **E**, right palatoquadrate,
37 visceral view, IRSNB P 9911, photograph; **F**, right palatoquadrate, visceral view, IRSNB P
38 9911, interpretative drawing. Black arrow points anteriorly. Scale bars equal 1 cm. [planned
39 for page width]
40
41
42
43
44
45
46
47
48
49
50

51 FIGURE 6. cf. Tristichopteridae indet., Strud, Belgium, Upper Famennian. **A**, right
52 cleithrum, visceral view, IRSNB P 9924, photograph; **B**, right cleithrum, imprint of the
53 external view (bone removed), IRSNB P 9924, photograph; **C–D**, right cleithrum, external
54 and visceral views, IRSNB P 9925, photographs; **E**, incomplete right cleithrum, visceral
55
56
57
58
59
60

1
2
3 view, IRSNB P 9926, photograph; **F**, incomplete right cleithrum, visceral view, IRSNB P
4
5 9927, photograph; **G**, isolated fang, labial or lingual view, IRSNB P 9928, photograph; **H**,
6
7 isolated fang, labial or lingual view, IRSNB P 9929, photograph; **I**, isolated scale, visceral
8
9 view, IRSNB P 9930, photograph; **J**, isolated scale, visceral view, IRSNB P 9931,
10
11 photograph; **K**, isolated scale, visceral view, IRSNB P 9932, photograph; **L**, isolated scale,
12
13 visceral view, IRSNB P 9933, photograph. Scale bars equal 1 cm. [planned for page width]
14
15
16
17
18

19
20 **FIGURE 7.** Strict consensus tree showing phylogenetic relationships of the Tristichopteridae,
21
22 with maximum parsimony biogeographic reconstruction result using Bayesian Binary
23
24 MCMC analysis mapped on. The number in the center of each pie chart corresponds to the
25
26 node number. The pie chart over each node represents the probability that the clade
27
28 originated from each continental area. The numbers on the top of each pie chart correspond to
29
30 the Bremer index (in *italics*) and to the minimal and maximal number of synapomorphies at
31
32 each node (in **bold**). Some character state changings have been reported on the branches. GIV
33
34 for Givetian, FRAS for Frasnian and FAM for Famennian. [planned for page width]
35
36
37
38
39

40 **SUPPLEMENTAL INFORMATION 1.** List of characters considered in the phylogenetic
41
42 analysis.
43
44
45

46
47 **SUPPLEMENTAL INFORMATION 2.** Matrix of characters considered in the phylogenetic
48
49 analysis.
50
51

52
53 **SUPPLEMENTAL INFORMATION 3.** Details of the phylogenetic analysis.
54
55

56
57
58 **SUPPLEMENTAL INFORMATION 4.** Taxon geographical distribution.
59
60

1
2
3
4
5 SUPPLEMENTAL INFORMATION 5. Results of the maximum parsimony biogeographic
6
7
8 reconstructions using Bayesian Binary MCMC analysis.
9

10
11
12 SUPPLEMENTARY INFORMATION 6: 3D PDF of a right dentary of *Eusthenodon*
13
14 *wangsjoii*. Strud, Belgium, late Famennian. IRSNB P 9918. Click to activate in the PDF
15
16 version.
17
18
19

20
21 SUPPLEMENTARY INFORMATION 7: 3D PDF of a right mandible of *Eusthenodon*
22
23 *wangsjoii*. Strud, Belgium, late Famennian. IRSNB P 9919. Click to activate in the PDF
24
25 version.
26
27
28
29
30
31
32
33
34
35
36
37
38
39
40
41
42
43
44
45
46
47
48
49
50
51
52
53
54
55
56
57
58
59
60

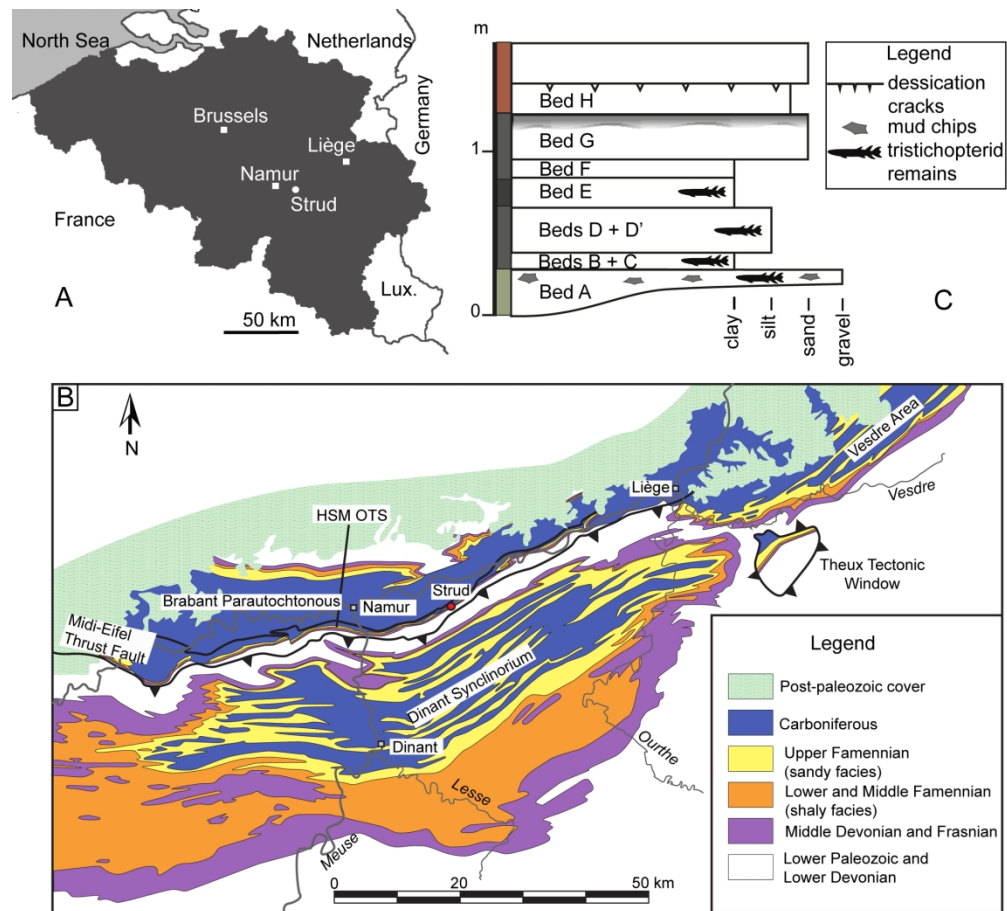


FIGURE 1. Geographical and geological localizations of Belgian tristichopterid localities including Strud (Namur Province). A, Geographic localities; B, Geological map of Southern Belgium, modified from Denayer et al. (2016), redrawn from Béthune (1954); C, schematic block diagram of the Strud channel with the location of tristichopterid remains, modified from Denayer et al (2016). [planned for page width]

180x163mm (300 x 300 DPI)

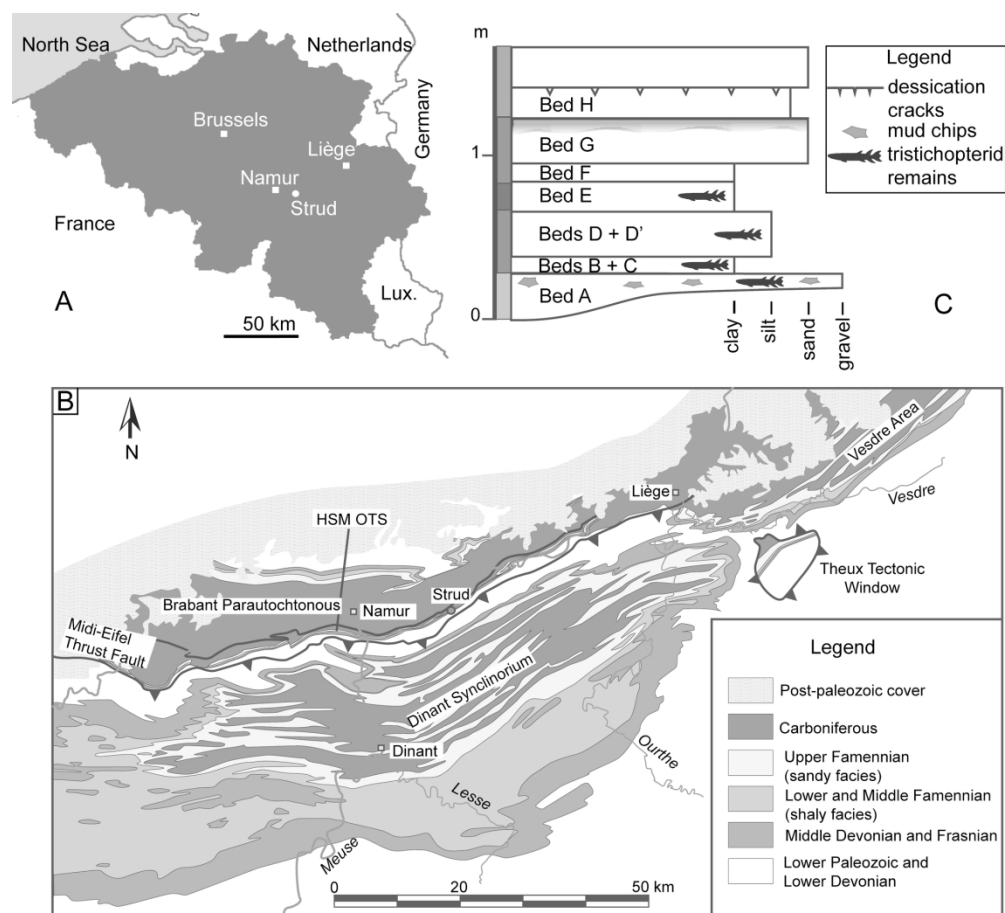


FIGURE 1. Geographical and geological localizations of Belgian tritichopterid localities including Strud (Namur Province). A, Geographic localities; B, Geological map of Southern Belgium, modified from Denayer et al. (2016), redrawn from Béthune (1954); C, schematic block diagram of the Strud channel with the location of tritichopterid remains, modified from Denayer et al (2016). [planned for page width]

180x163mm (300 x 300 DPI)

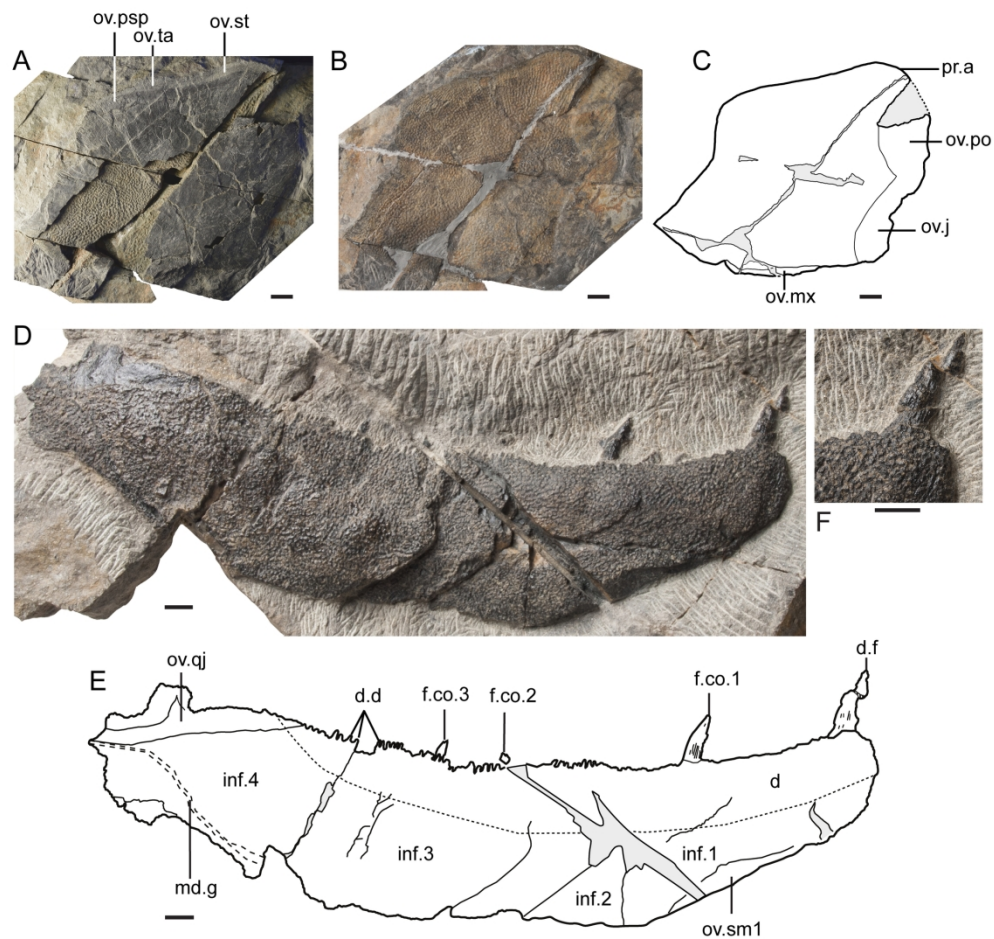


FIGURE 2. cf. *Langlieria socqueti*, Strud, Belgium, late Famennian. A, left squamosal, internal view, IRSNB P 9912, photograph; B, left squamosal, imprint of the external surface (bone removed), IRSNB P 9912, photograph; C, left squamosal, external view, IRSNB P 9912, interpretative drawing; D, right mandible, external view, IRSNB P 9913, photograph; E, right mandible, external view, IRSNB P 9913, interpretative drawing; F, right mandible, external view, IRSNB P 9913, close-up photograph on the symphysis. Scale bars equal 1 cm. [planned for page width]

181x176mm (300 x 300 DPI)

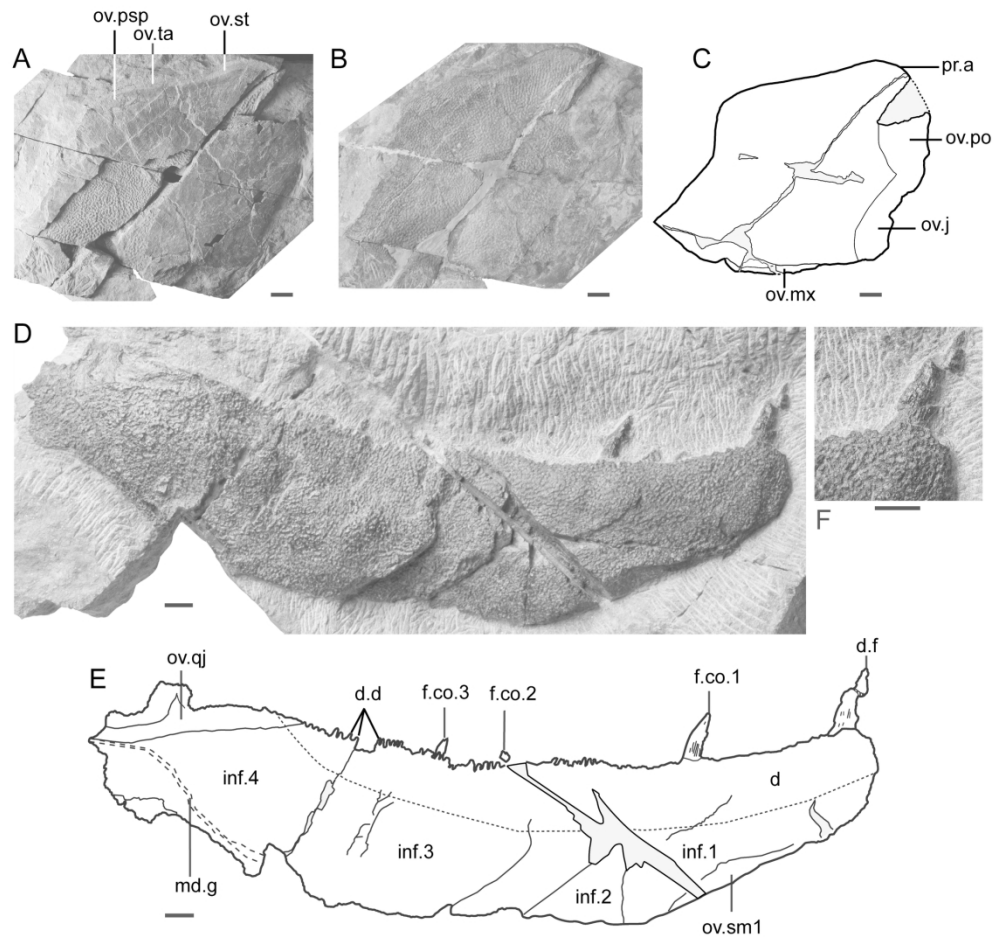


FIGURE 2. cf. *Langlieria socqueti*, Strud, Belgium, late Famennian. A, left squamosal, internal view, IRSNB P 9912, photograph; B, left squamosal, imprint of the external surface (bone removed), IRSNB P 9912, photograph; C, left squamosal, external view, IRSNB P 9912, interpretative drawing; D, right mandible, external view, IRSNB P 9913, photograph; E, right mandible, external view, IRSNB P 9913, interpretative drawing; F, right mandible, external view, IRSNB P 9913, close-up photograph on the symphysis. Scale bars equal 1 cm. [planned for page width]

181x176mm (300 x 300 DPI)

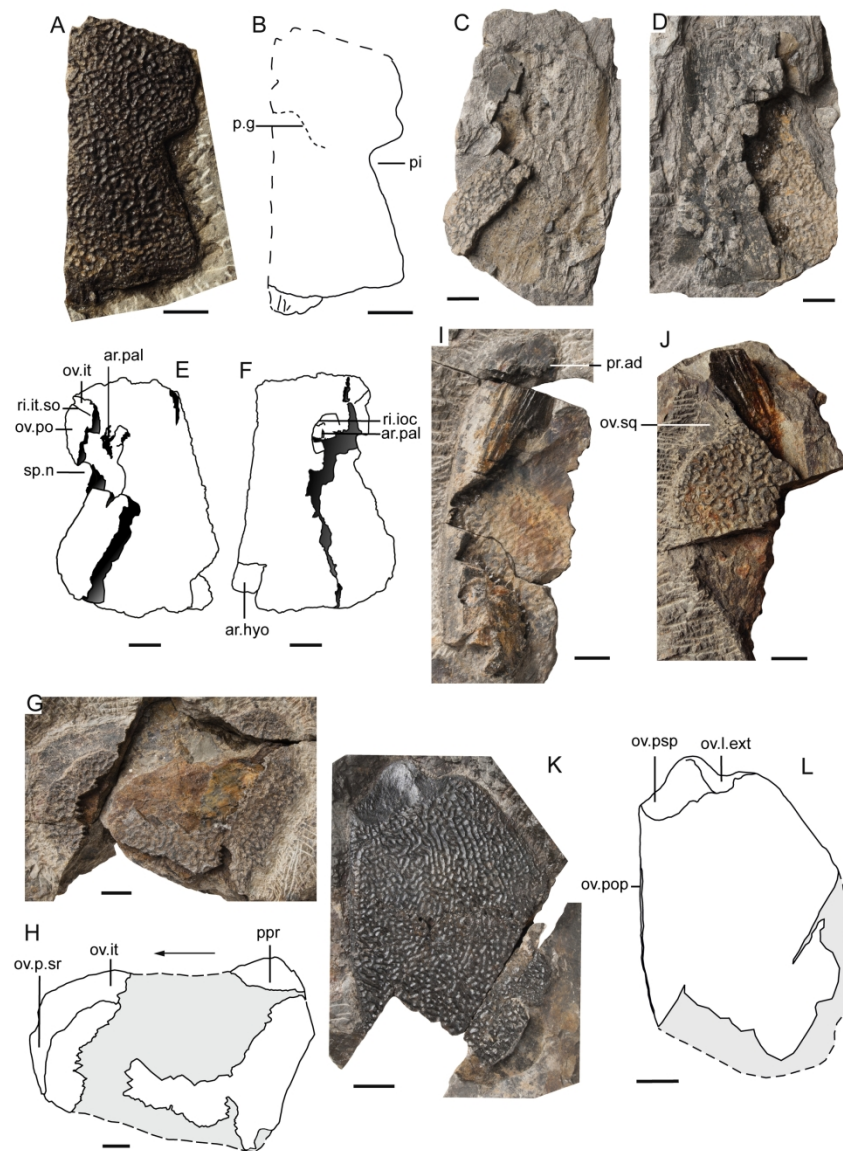


FIGURE 3. *cf. Eusthenodon wangsjoii*, Strud, Belgium, Upper Famennian. A, incomplete left parietal, external view, IRSNB P 9910, photograph; B, incomplete left parietal, external view, IRSNB P 9910, interpretative drawing; C–D, left supratermporal, external and visceral views, IRSNB P 9914, photographs; E–F, left supratermporal, external and visceral views, IRSNB P 9915, interpretative drawings; G, left postorbital, external view, IRSNB P 9915, photograph; H, left postorbital, external view, IRSNB P 9915, interpretative drawing; I–J, left preopercular, external and visceral views, IRSNB P 9916, photographs; K, left opercular, external view, IRSNB P 9917, photograph; L, left opercular, external view, IRSNB P 9917, interpretative drawing. Black arrow points anteriorly. Scale bars: A–H equal 1 cm, I–L equal 2 cm. [planned for page width]

184x260mm (300 x 300 DPI)

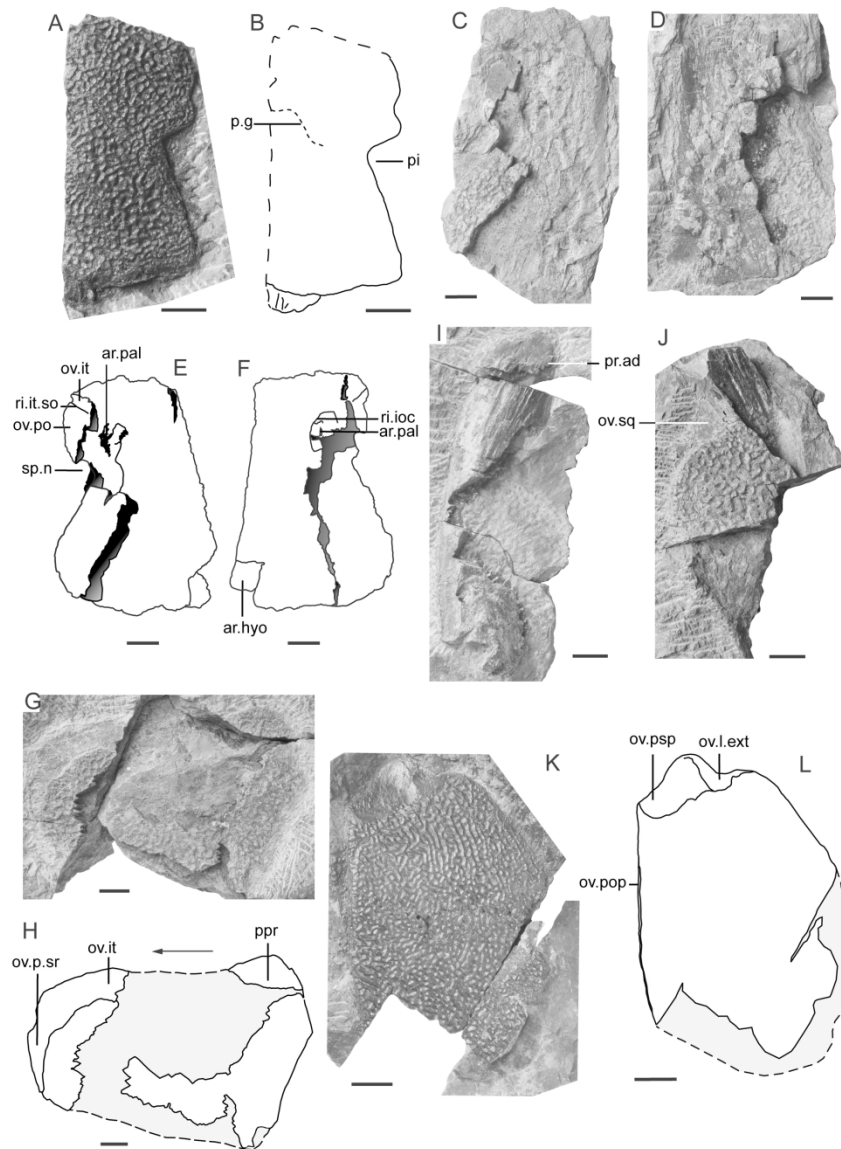


FIGURE 3. *cf. Eusthenodon wangsjoii*, Strud, Belgium, Upper Famennian. A, incomplete left parietal, external view, IRSNB P 9910, photograph; B, incomplete left parietal, external view, IRSNB P 9910, interpretative drawing; C–D, left supratermporal, external and visceral views, IRSNB P 9914, photographs; E–F, left supratermporal, external and visceral views, IRSNB P 9915, interpretative drawings; G, left postorbital, external view, IRSNB P 9915, photograph; H, left postorbital, external view, IRSNB P 9915, interpretative drawing; I–J, left preopercular, external and visceral views, IRSNB P 9916, photographs; K, left opercular, external view, IRSNB P 9917, photograph; L, left opercular, external view, IRSNB P 9917, interpretative drawing. Black arrow points anteriorly. Scale bars: A–H equal 1 cm, I–L equal 2 cm. [planned for page width]

184x260mm (300 x 300 DPI)

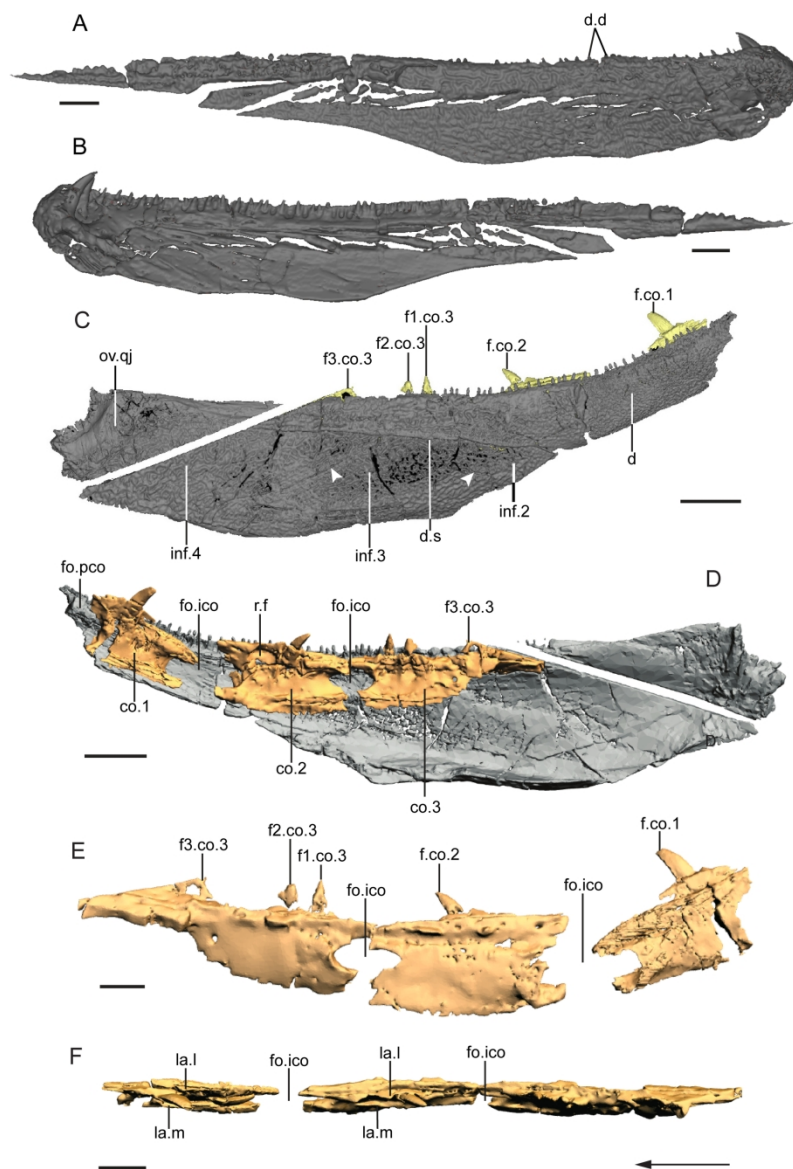


FIGURE 4. *cf. Eusthenodon wangsjoii*, Strud, Belgium, late Famennian. A, right dentary, external view, IRSNB P 9918, 3D reconstruction; B, right dentary, visceral view, IRSNB P 9918, 3D reconstruction; C, right mandible, external view, IRSNB P 9919, 3D reconstruction; D, right mandible, visceral view, IRSNB P 9919, 3D reconstruction; E, coronoids, external view, IRSNB P 9919, 3D reconstruction; F, coronoids, apical view, IRSNB P 9919, 3D reconstruction. Left white arrow indicates putative suture between the infradentaries 3 and 4, right white arrow indicates pit line of infradentary 2. Black arrow points anteriorly. Scale bars: A–B, E–F equal 1 cm, C–D equal 2 cm. [planned for page width]

181x257mm (300 x 300 DPI)

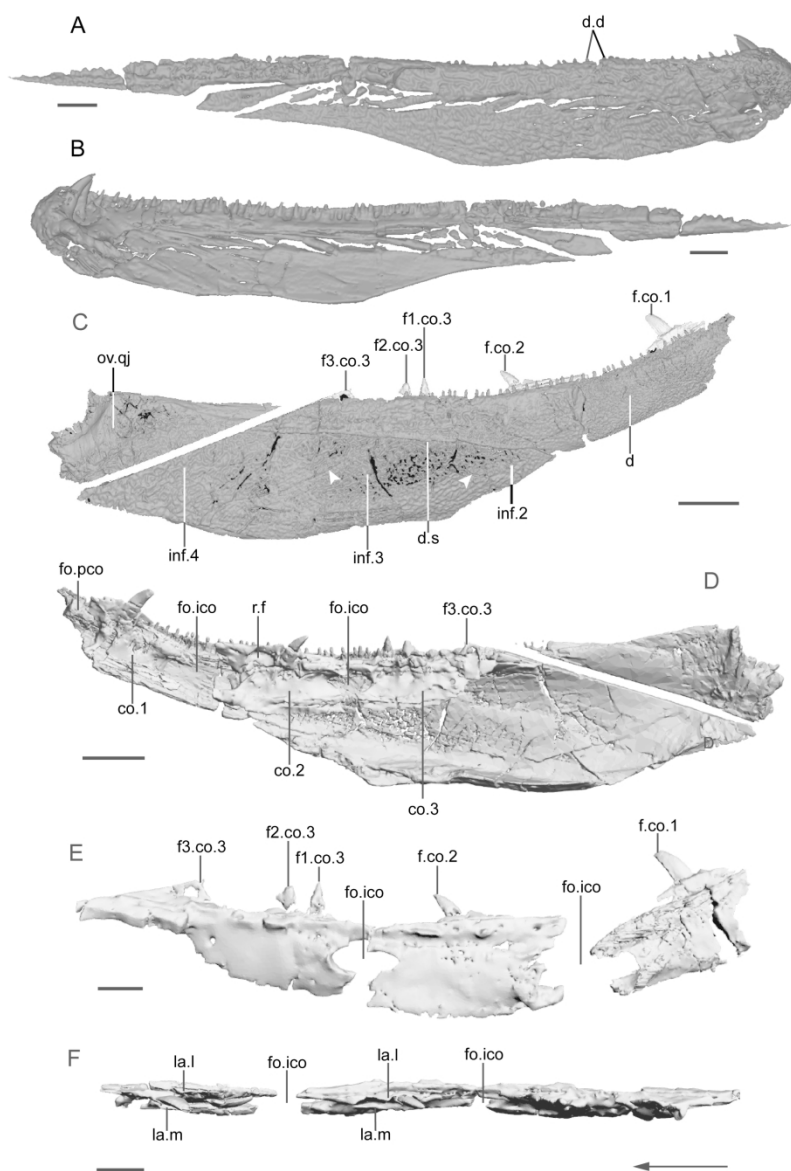


FIGURE 4. *cf. Eusthenodon wangsjoii*, Strud, Belgium, late Famennian. A, right dentary, external view, IRSNB P 9918, 3D reconstruction; B, right dentary, visceral view, IRSNB P 9918, 3D reconstruction; C, right mandible, external view, IRSNB P 9919, 3D reconstruction; D, right mandible, visceral view, IRSNB P 9919, 3D reconstruction; E, coronoids, external view, IRSNB P 9919, 3D reconstruction; F, coronoids, apical view, IRSNB P 9919, 3D reconstruction. Left white arrow indicates putative suture between the infradentaries 3 and 4, right white arrow indicates pit line of infradentary 2. Black arrow points anteriorly. Scale bars: A–B, E–F equal 1 cm, C–D equal 2 cm. [planned for page width]

181x257mm (300 x 300 DPI)

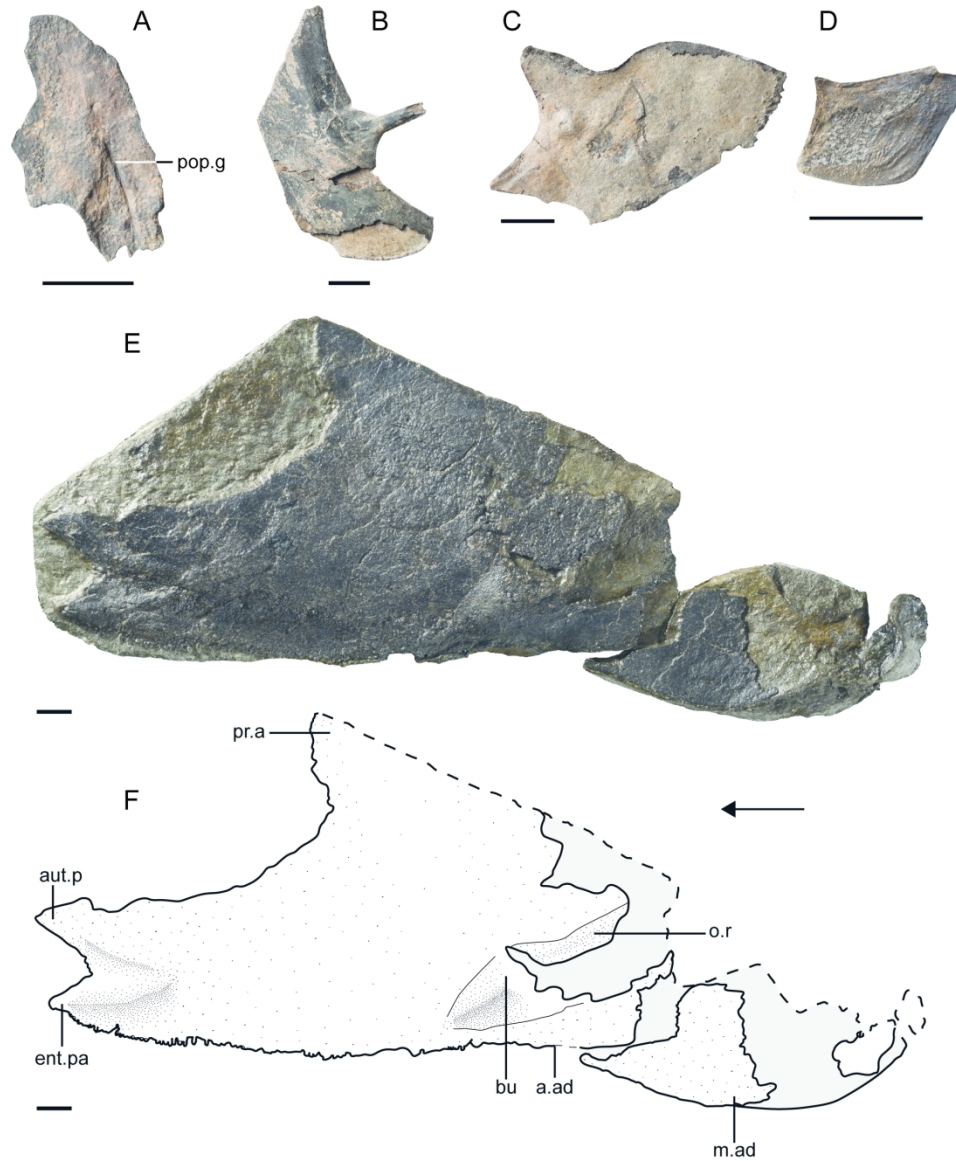


FIGURE 5. cf. *Tristichopteridae* indet., Strud, Belgium, Upper Famennian. A, right preopercular, external view, IRSNB P 9920, photograph; B, left subopercular, visceral view, IRSNB P 9921, photograph; C, left subopercular, visceral view, IRSNB P 9922, photograph; D, left subopercular, visceral view, IRSNB P 9923, photograph; E, right palatoquadrate, visceral view, IRSNB P 9911, photograph; F, right palatoquadrate, visceral view, IRSNB P 9911, interpretative drawing. Black arrow points anteriorly. Scale bars equal 1 cm. [planned for page width]

181x213mm (300 x 300 DPI)

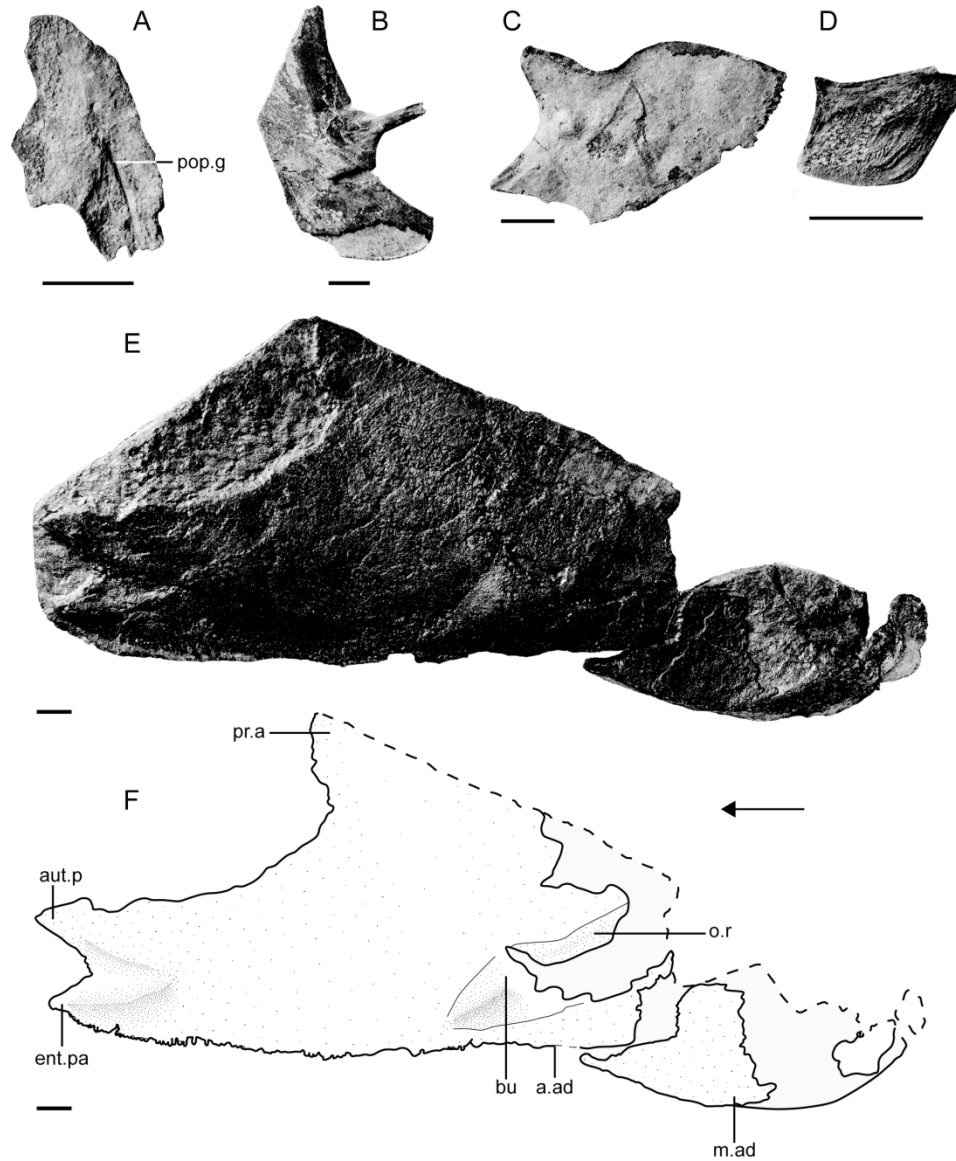


FIGURE 5. cf. *Tristichopteridae* indet., Strud, Belgium, Upper Famennian. A, right preopercular, external view, IRSNB P 9920, photograph; B, left subopercular, visceral view, IRSNB P 9921, photograph; C, left subopercular, visceral view, IRSNB P 9922, photograph; D, left subopercular, visceral view, IRSNB P 9923, photograph; E, right palatoquadrate, visceral view, IRSNB P 9911, photograph; F, right palatoquadrate, visceral view, IRSNB P 9911, interpretative drawing. Black arrow points anteriorly. Scale bars equal 1 cm. [planned for page width]

181x213mm (300 x 300 DPI)

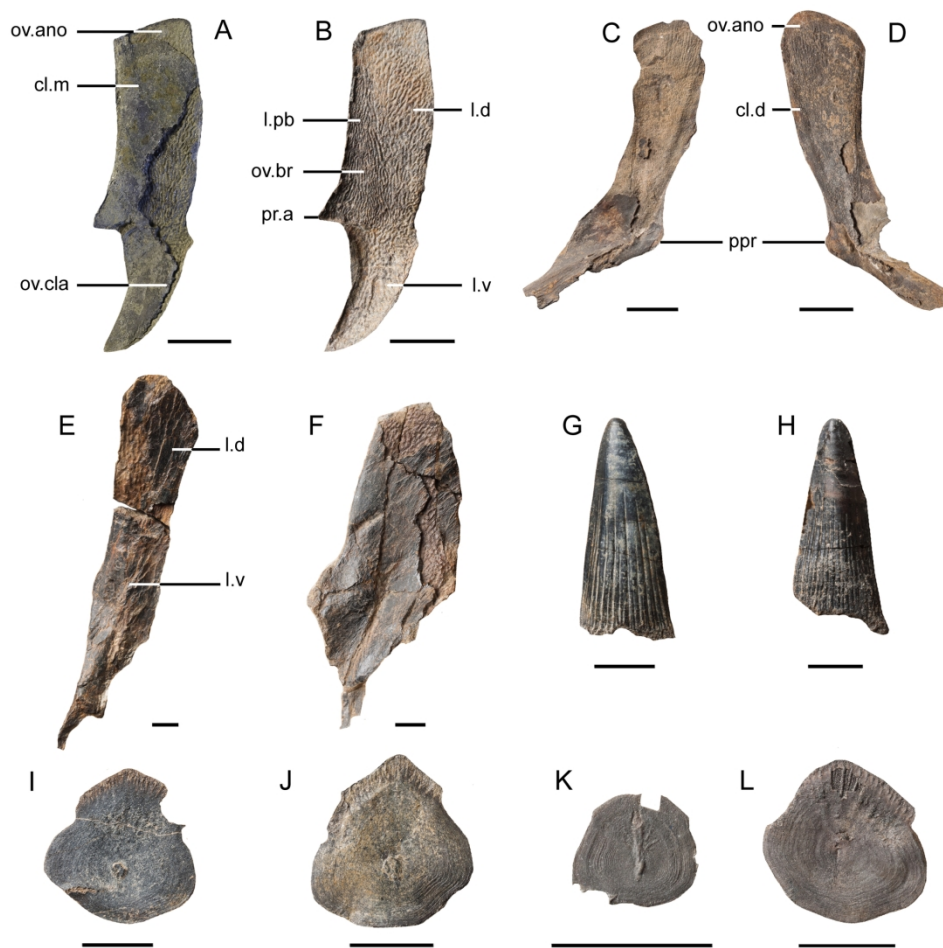


FIGURE 6. cf. *Tristichopteridae* indet., Strud, Belgium, Upper Famennian. A, right cleithrum, visceral view, IRSNB P 9924, photograph; B, right cleithrum, imprint of the external view (bone removed), IRSNB P 9924, photograph; C-D, right cleithrum, external and visceral views, IRSNB P 9925, photographs; E, incomplete right cleithrum, visceral view, IRSNB P 9926, photograph; F, incomplete right cleithrum, visceral view, IRSNB P 9927, photograph; G, isolated fang, labial or lingual view, IRSNB P 9928, photograph; H, isolated fang, labial or lingual view, IRSNB P 9929, photograph; I, isolated scale, visceral view, IRSNB P 9930, photograph; J, isolated scale, visceral view, IRSNB P 9931, photograph; K, isolated scale, visceral view, IRSNB P 9932, photograph; L, isolated scale, visceral view, IRSNB P 9933, photograph. Scale bars equal 1 cm. [planned for page width]

181x178mm (300 x 300 DPI)

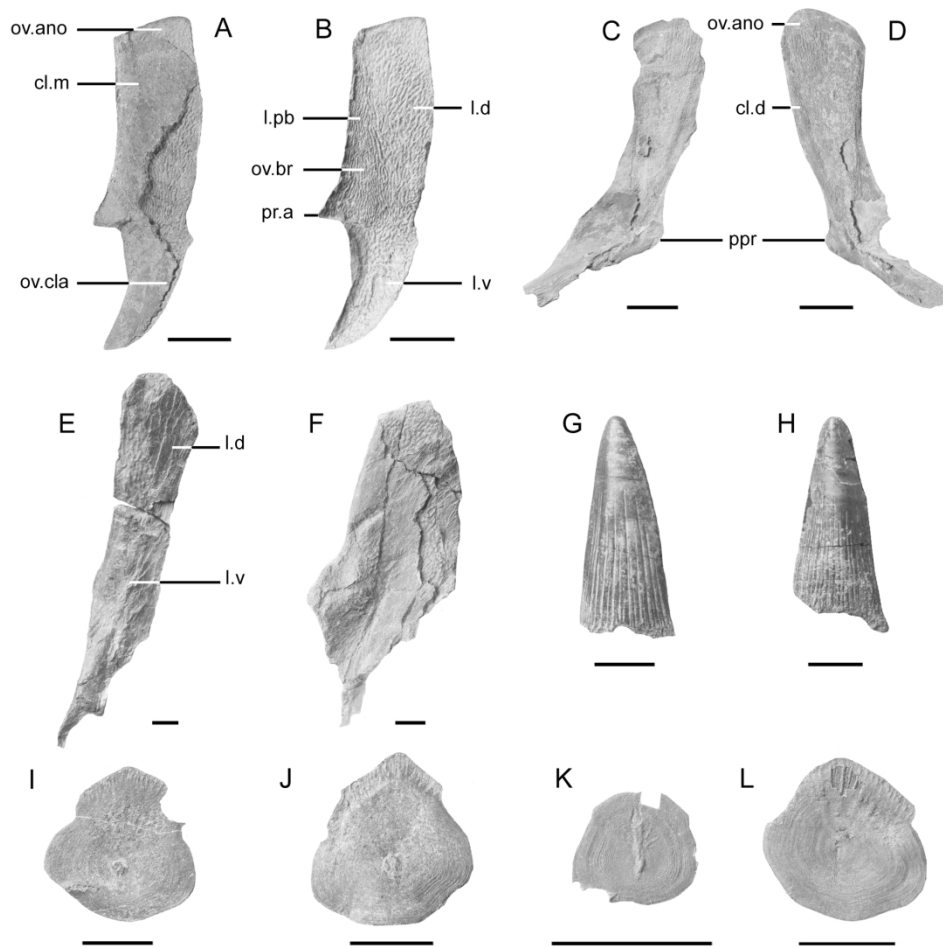


FIGURE 6. cf. *Tristichopteridae* indet., Strud, Belgium, Upper Famennian. A, right cleithrum, visceral view, IRSNB P 9924, photograph; B, right cleithrum, imprint of the external view (bone removed), IRSNB P 9924, photograph; C-D, right cleithrum, external and visceral views, IRSNB P 9925, photographs; E, incomplete right cleithrum, visceral view, IRSNB P 9926, photograph; F, incomplete right cleithrum, visceral view, IRSNB P 9927, photograph; G, isolated fang, labial or lingual view, IRSNB P 9928, photograph; H, isolated fang, labial or lingual view, IRSNB P 9929, photograph; I, isolated scale, visceral view, IRSNB P 9930, photograph; J, isolated scale, visceral view, IRSNB P 9931, photograph; K, isolated scale, visceral view, IRSNB P 9932, photograph; L, isolated scale, visceral view, IRSNB P 9933, photograph. Scale bars equal 1 cm. [planned for page width]

181x178mm (300 x 300 DPI)

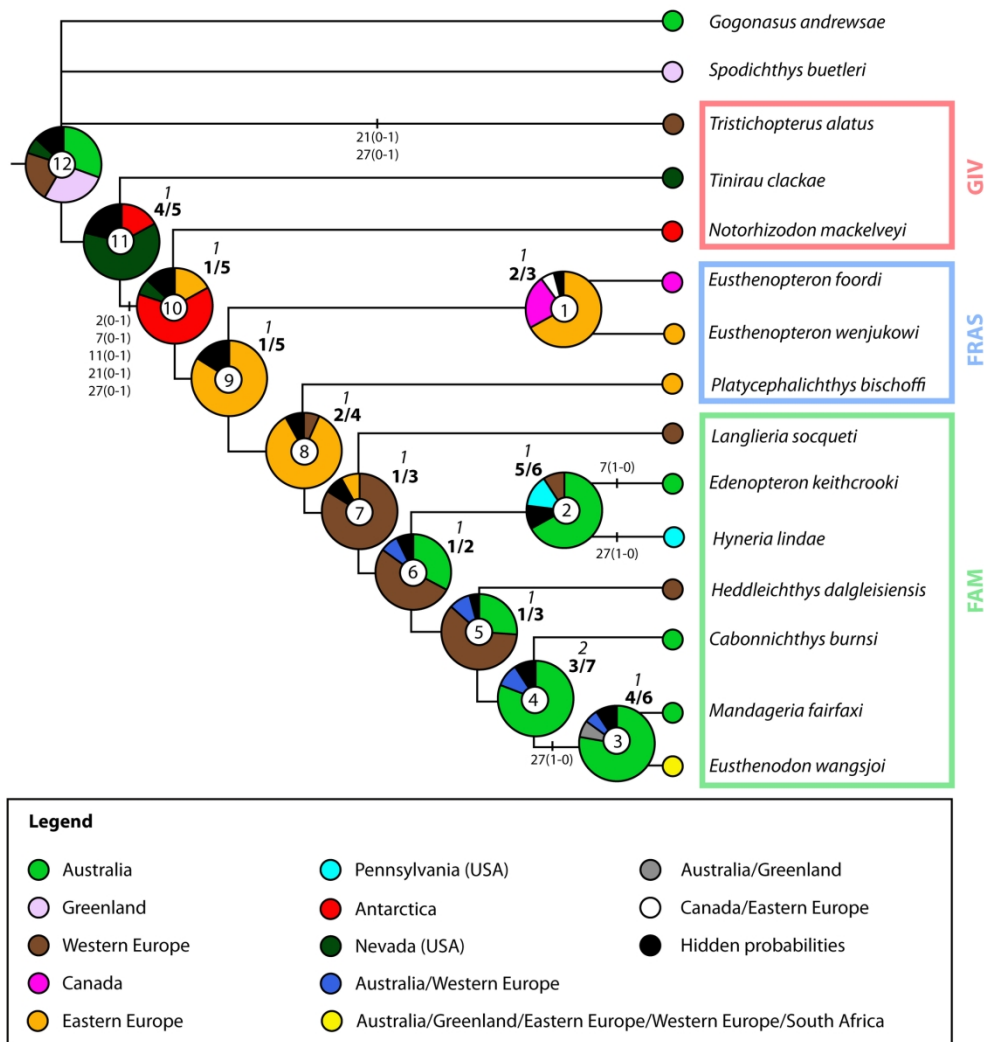


FIGURE 7. Strict consensus tree showing phylogenetic relationships of the Tristichopteridae, with maximum parsimony biogeographic reconstruction result using Bayesian Binary MCMC analysis mapped on. The number in the center of each pie chart corresponds to the node number. The pie chart over each node represents the probability that the clade originated from each continental area. The numbers on the top of each pie chart correspond to the Bremer index (in italics) and to the minimal and maximal number of synapomorphies at each node (in bold). Some character state changings have been reported on the branches. GIV for Givetian, FRAS for Frasnian and FAM for Famennian. [planned for page width]

182x193mm (300 x 300 DPI)

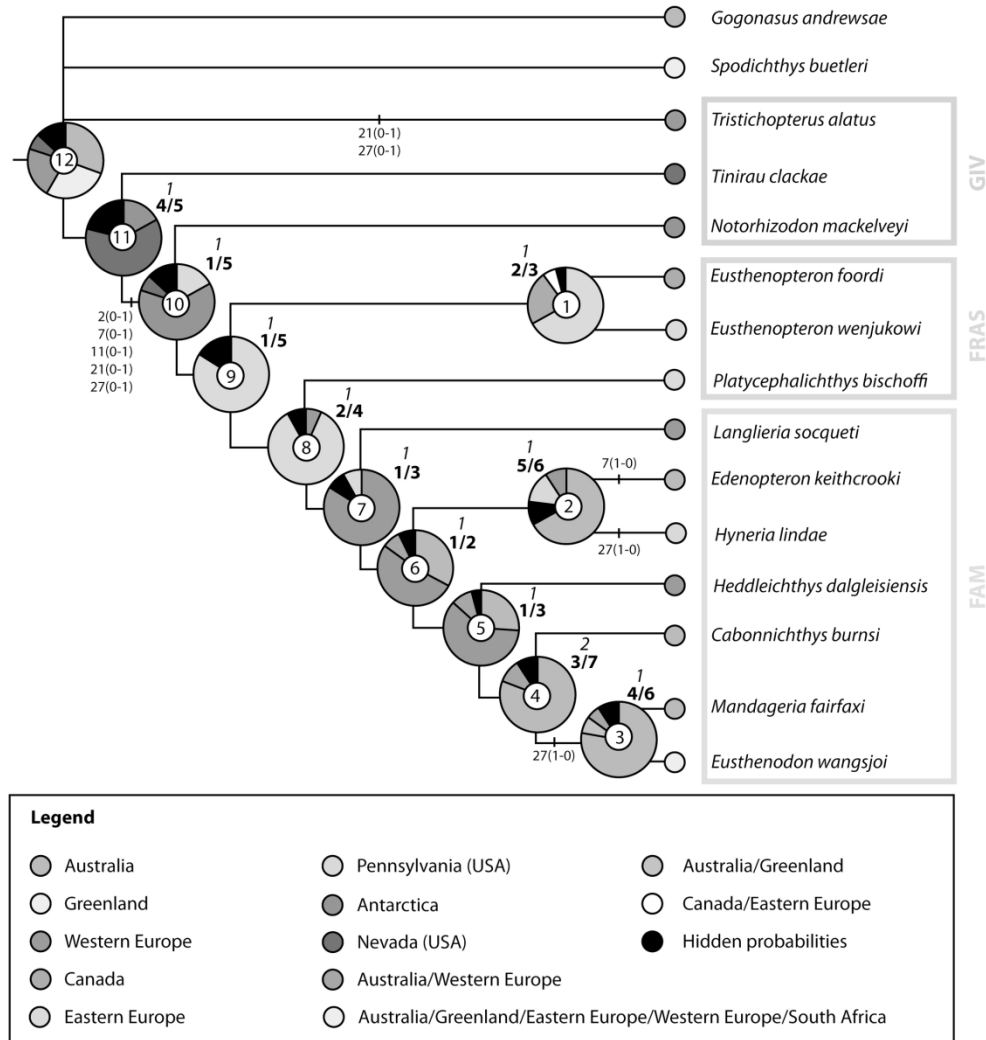


FIGURE 7. Strict consensus tree showing phylogenetic relationships of the Tristichopteridae, with maximum parsimony biogeographic reconstruction result using Bayesian Binary MCMC analysis mapped on. The number in the center of each pie chart corresponds to the node number. The pie chart over each node represents the probability that the clade originated from each continental area. The numbers on the top of each pie chart correspond to the Bremer index (in italics) and to the minimal and maximal number of synapomorphies at each node (in bold). Some character state changings have been reported on the branches. GIV for Givetian, FRAS for Frasnian and FAM for Famennian. [planned for page width]

182x193mm (300 x 300 DPI)