



**HAL**  
open science

## Toward an ecological agriculture on well catchment areas: what impacts in terms of nitric pollution at the scale of the Seine Basin, France ?

Paul Passy, Gilles Billen, Josette Garnier, Marie Silvestre, Sylvain Théry

### ► To cite this version:

Paul Passy, Gilles Billen, Josette Garnier, Marie Silvestre, Sylvain Théry. Toward an ecological agriculture on well catchment areas: what impacts in terms of nitric pollution at the scale of the Seine Basin, France?. IS.Rivers 2012, Jun 2012, Lyon, France. hal-03097824

**HAL Id: hal-03097824**

**<https://hal.science/hal-03097824>**

Submitted on 5 Jan 2021

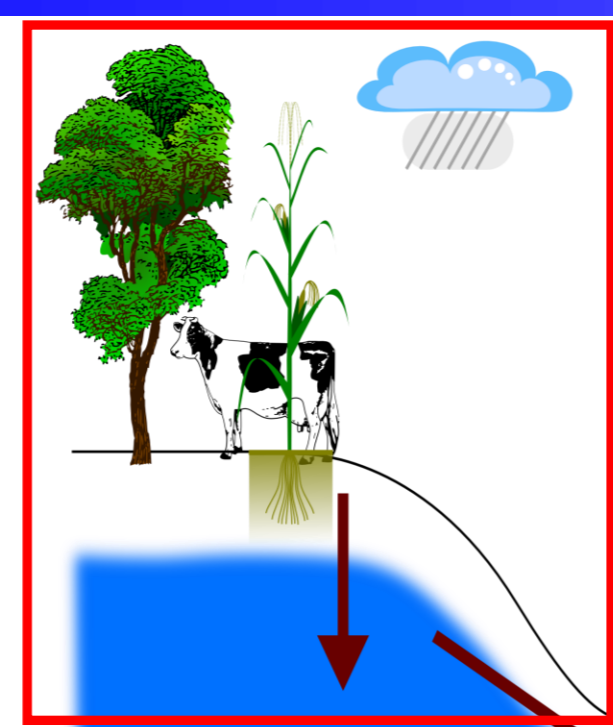
**HAL** is a multi-disciplinary open access archive for the deposit and dissemination of scientific research documents, whether they are published or not. The documents may come from teaching and research institutions in France or abroad, or from public or private research centers.

L'archive ouverte pluridisciplinaire **HAL**, est destinée au dépôt et à la diffusion de documents scientifiques de niveau recherche, publiés ou non, émanant des établissements d'enseignement et de recherche français ou étrangers, des laboratoires publics ou privés.

# TOWARD AN ECOLOGICAL AGRICULTURE ON WELL CATCHMENT AREAS: WHAT IMPACTS IN TERMS OF NITRIC POLLUTION AT THE SCALE OF THE SEINE BASIN, FRANCE ?

## 1 – Introduction, the nitrogen cascade

**Nitrogen (N)** comes for a large part from **agricultural diffuse sources**. This Nitrogen, in excess compared to the Plants requirements, is **leached** to the aquifers and to the rivers. This is a threat for producing drinking water and causes **eutrophication** of rivers and coastal zones.



Diffuse N from agriculture is leached to aquifers and to rivers

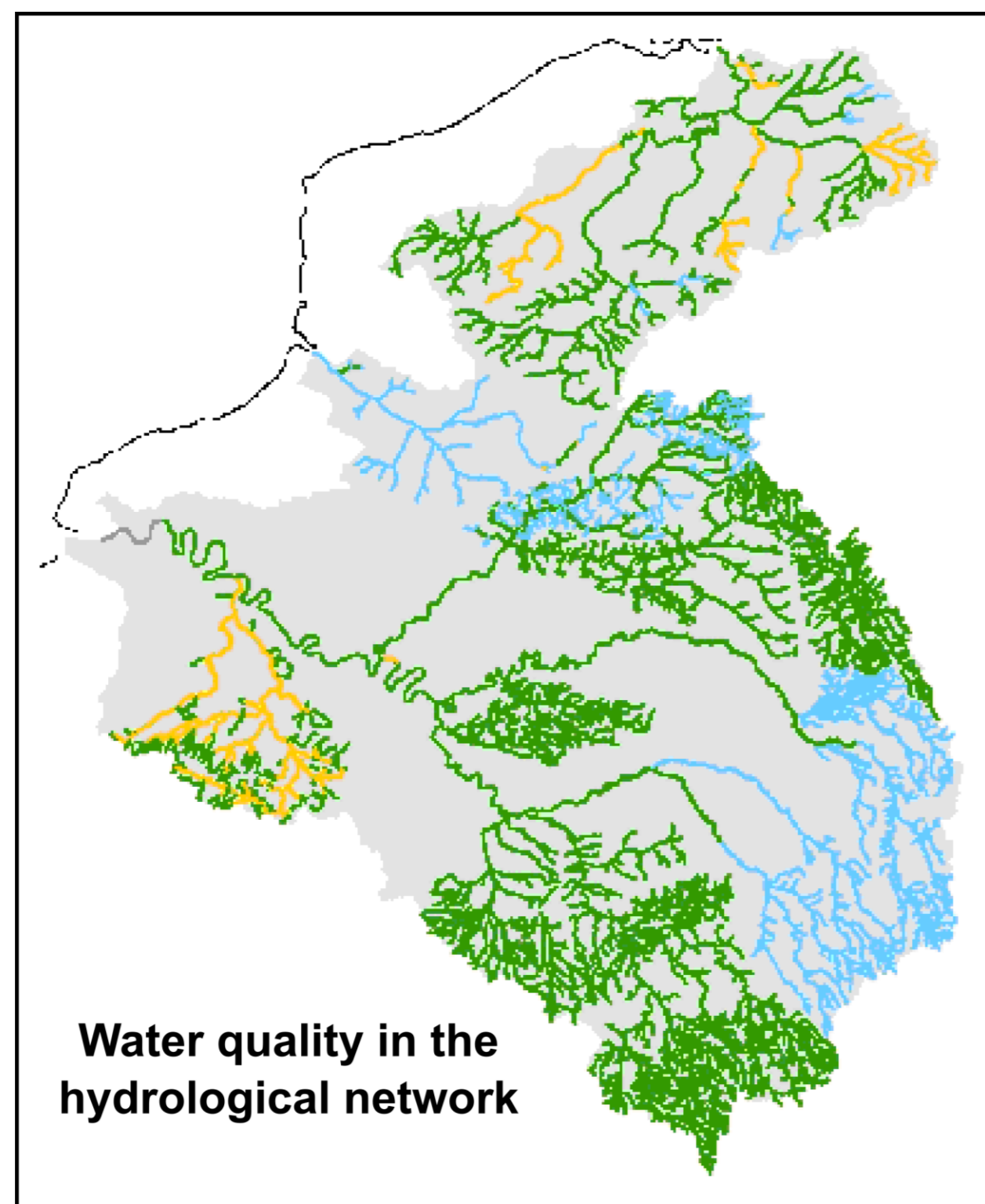
In 2007, in France, the « Grenelle de l'Environment » (a corpus of laws) was adopted. It prescribes to decrease N excess on arable lands within well catchment areas (WCA) in order to decrease N leaching to the hydrological network and coastal zones.

Riparian zones and stagnant water bodies can decrease N concentration within rivers by **denitrification**.

Point sources from cities and industries (WWTP), provide essentially phosphorus (P) and are nowadays well managed

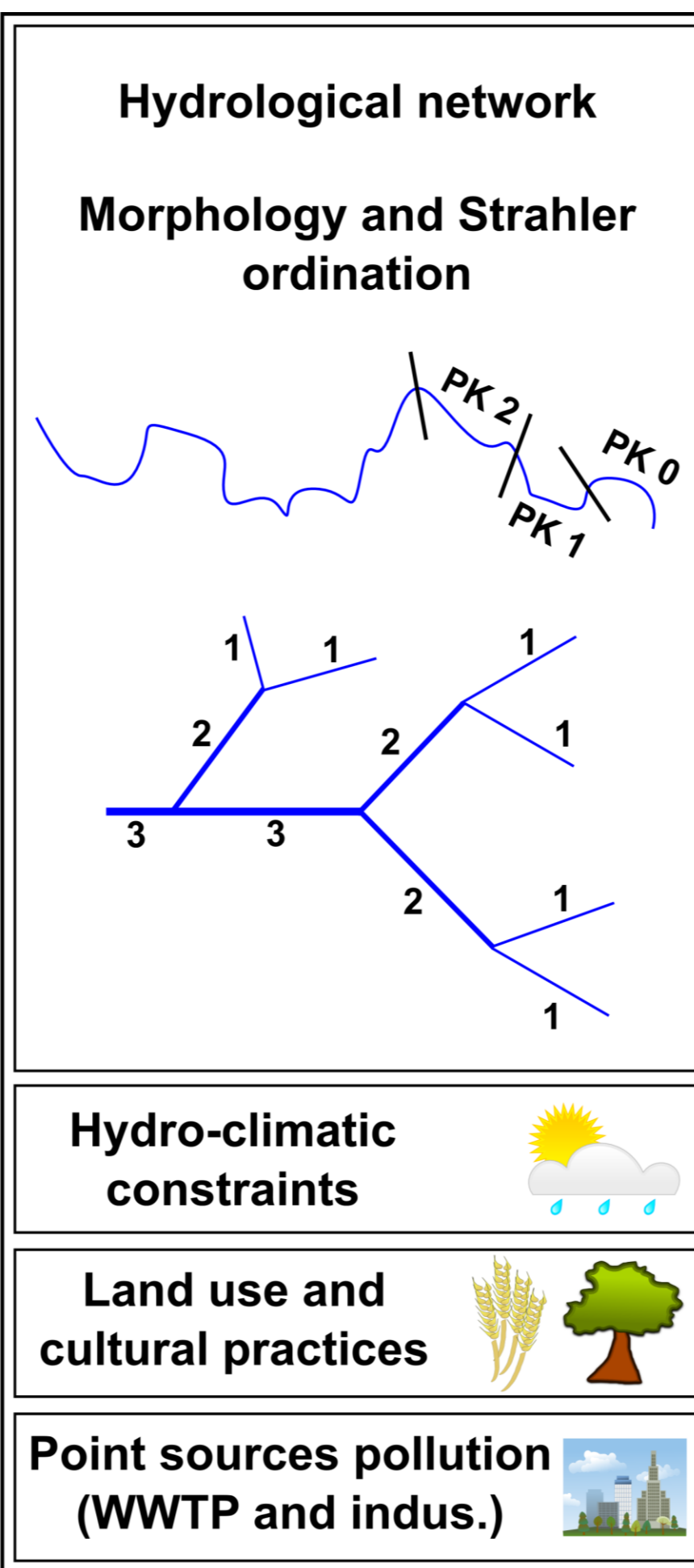
N excess over P and Si leads to **eutrophication** of coastal zones. **Hypoxic and anoxic** conditions can occur, threatening environment and economy.

## 2 – Modelling tool Seneque/Riverstrahler



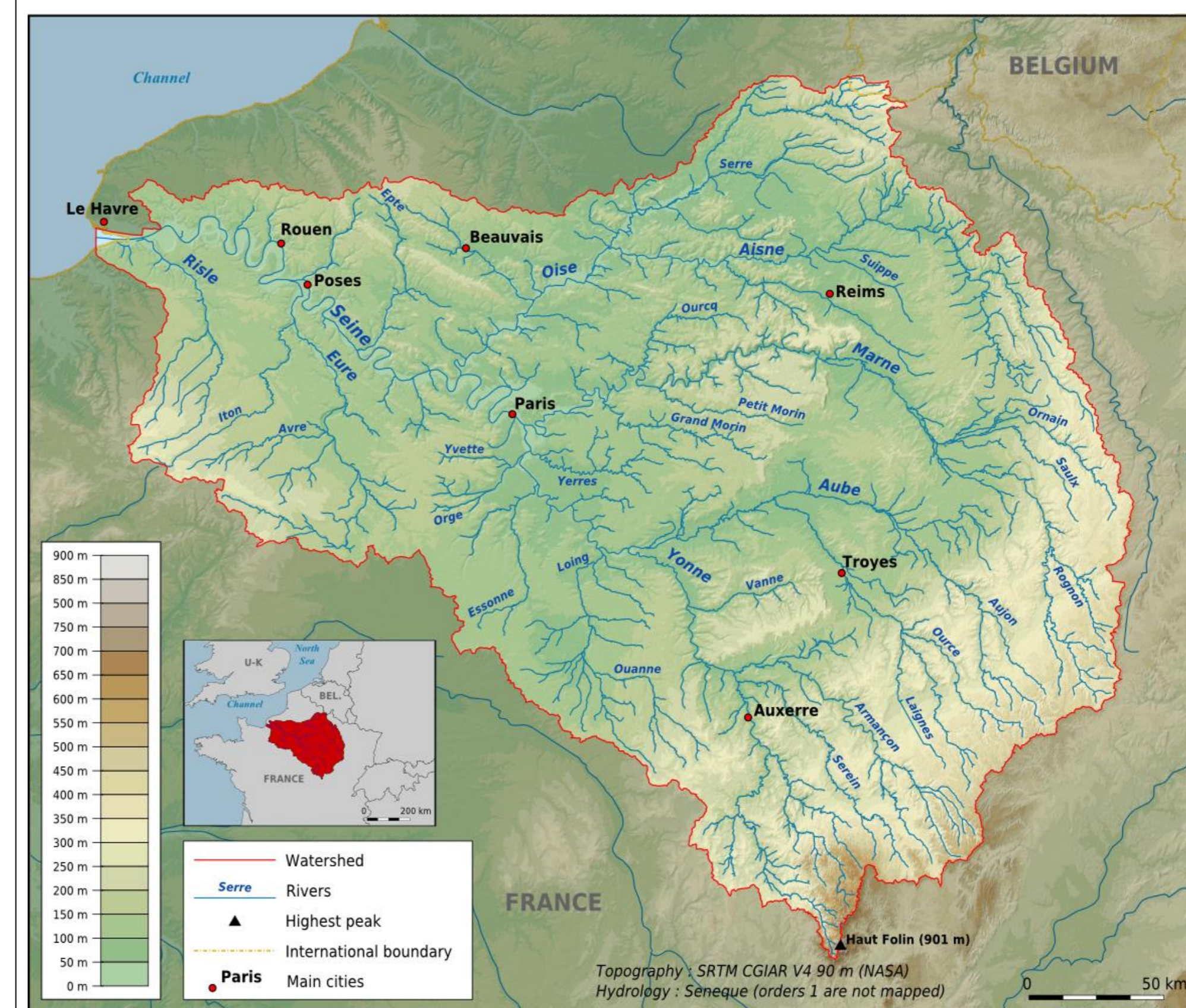
N, P, Si delivered to the sea

Seneque/Rivsetrahler model  
RIVE

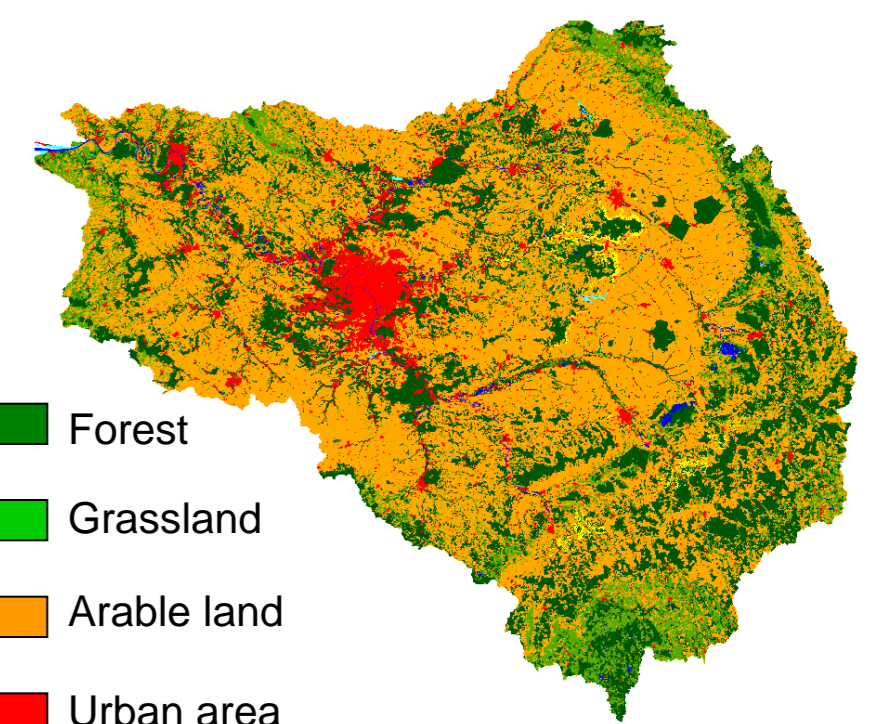


The **Seneque/Riverstrahler** model is a **mechanistic** model, depicting biogeochemical processes occurring within the water column → **Water quality within rivers**

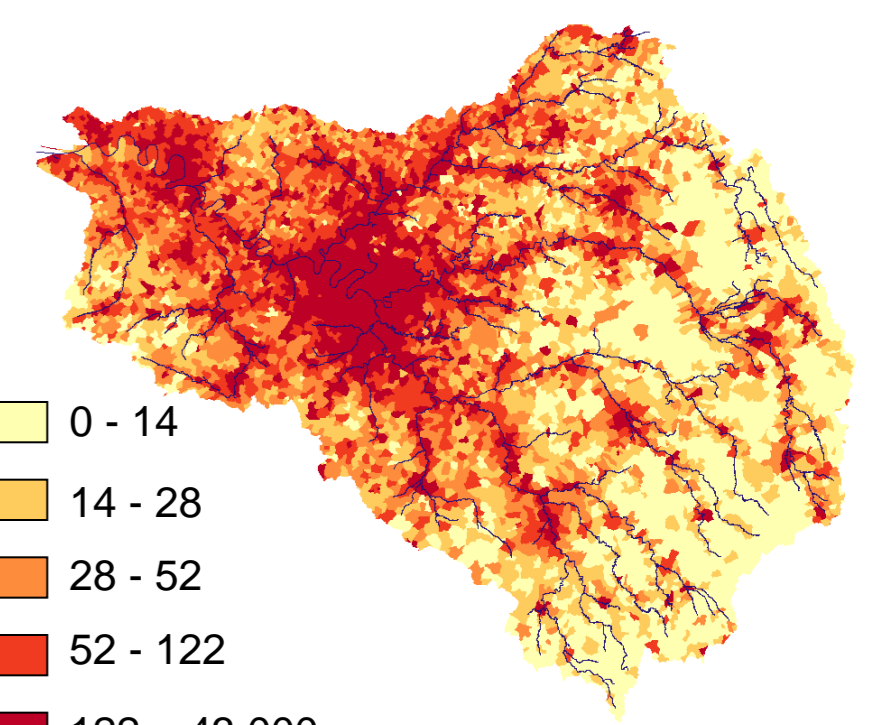
## 3 – Study site



Seine watershed: 76 270 km<sup>2</sup>  
Population: 16 000 000 inh.  
Density: 215 inh.km<sup>-2</sup>  
Intensive cerealiculture

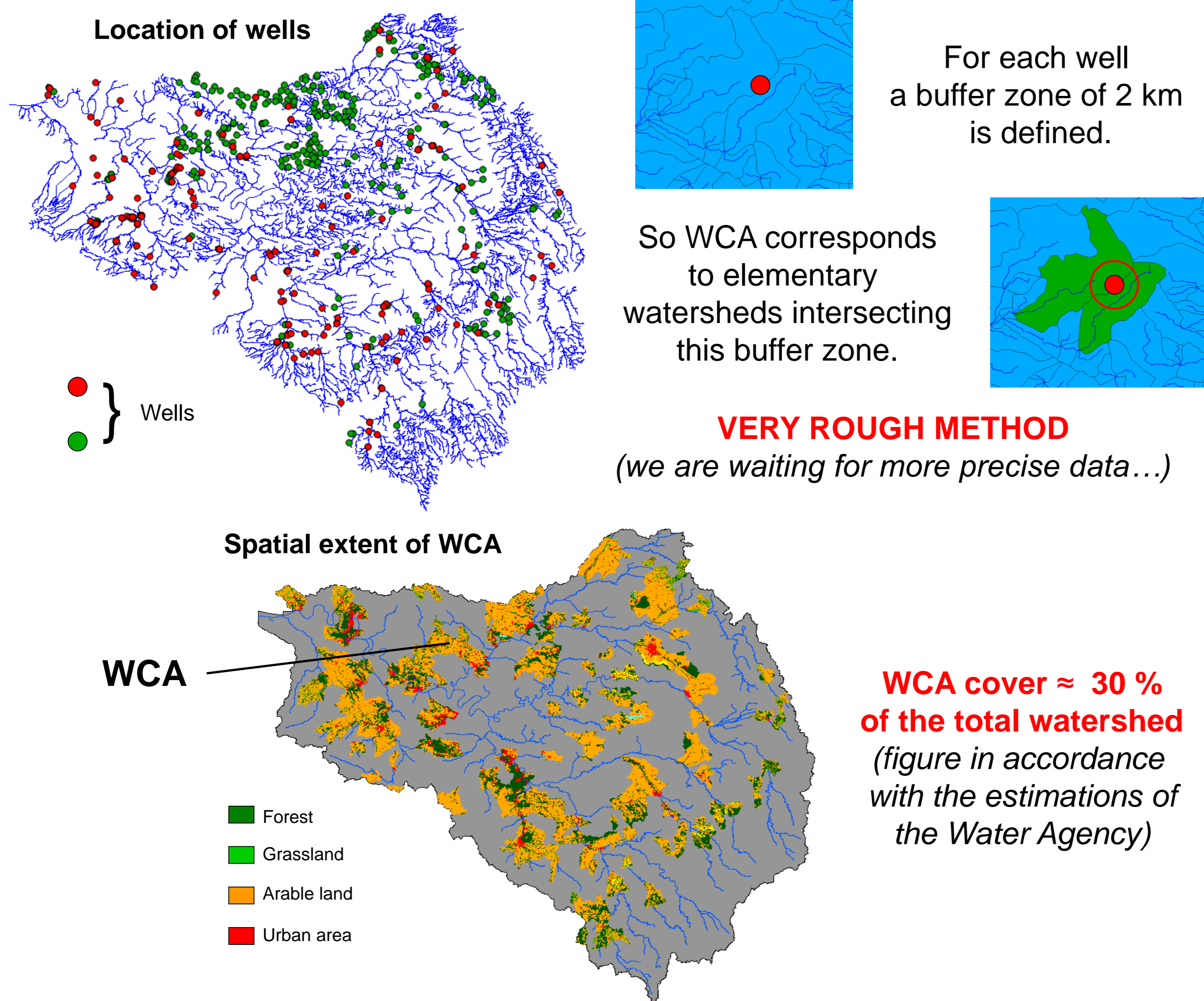


Parisian agglomeration: 12 000 000 inh  
70% of the basin devoted to intensive agriculture

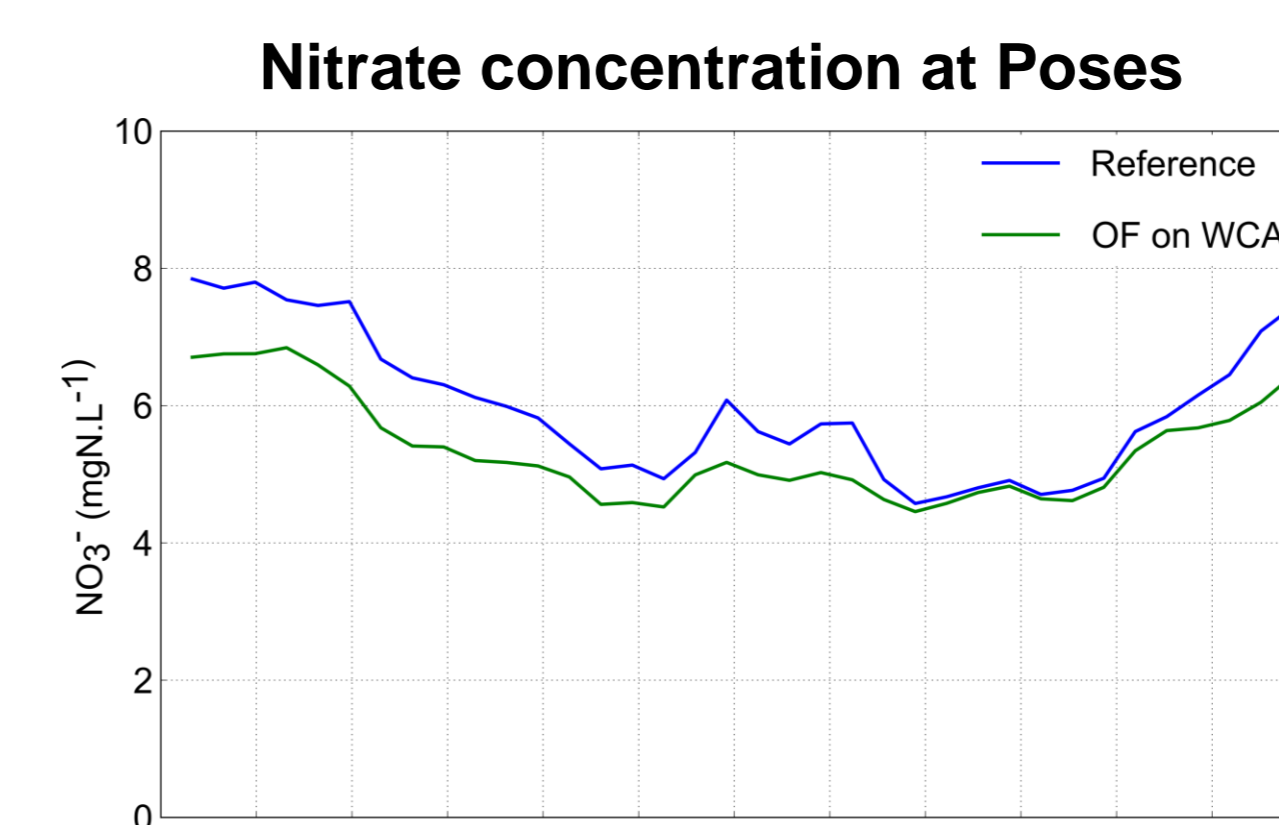


High density in the central and downstream parts of the basin.

## 4 – Delineation of WCA

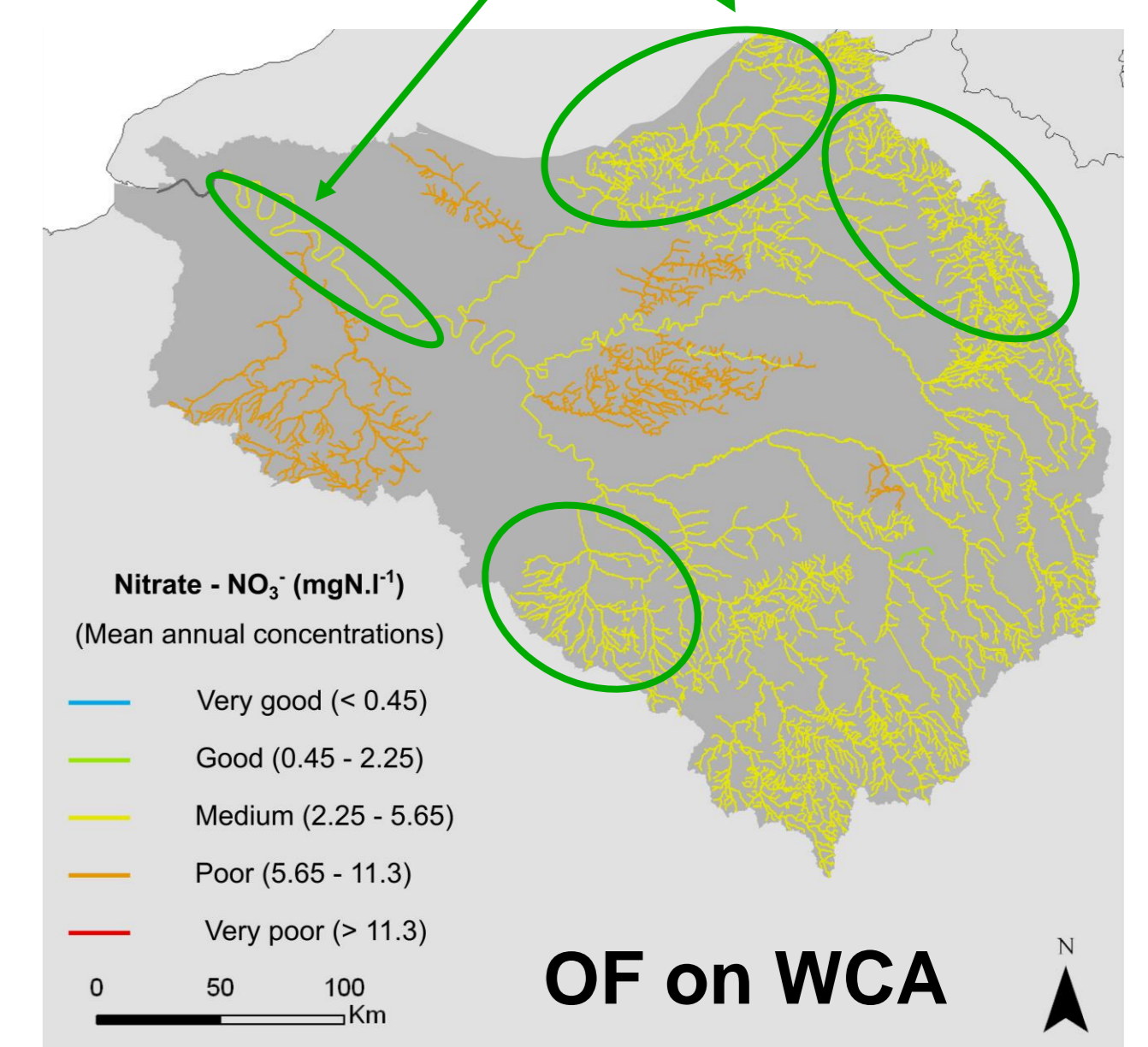
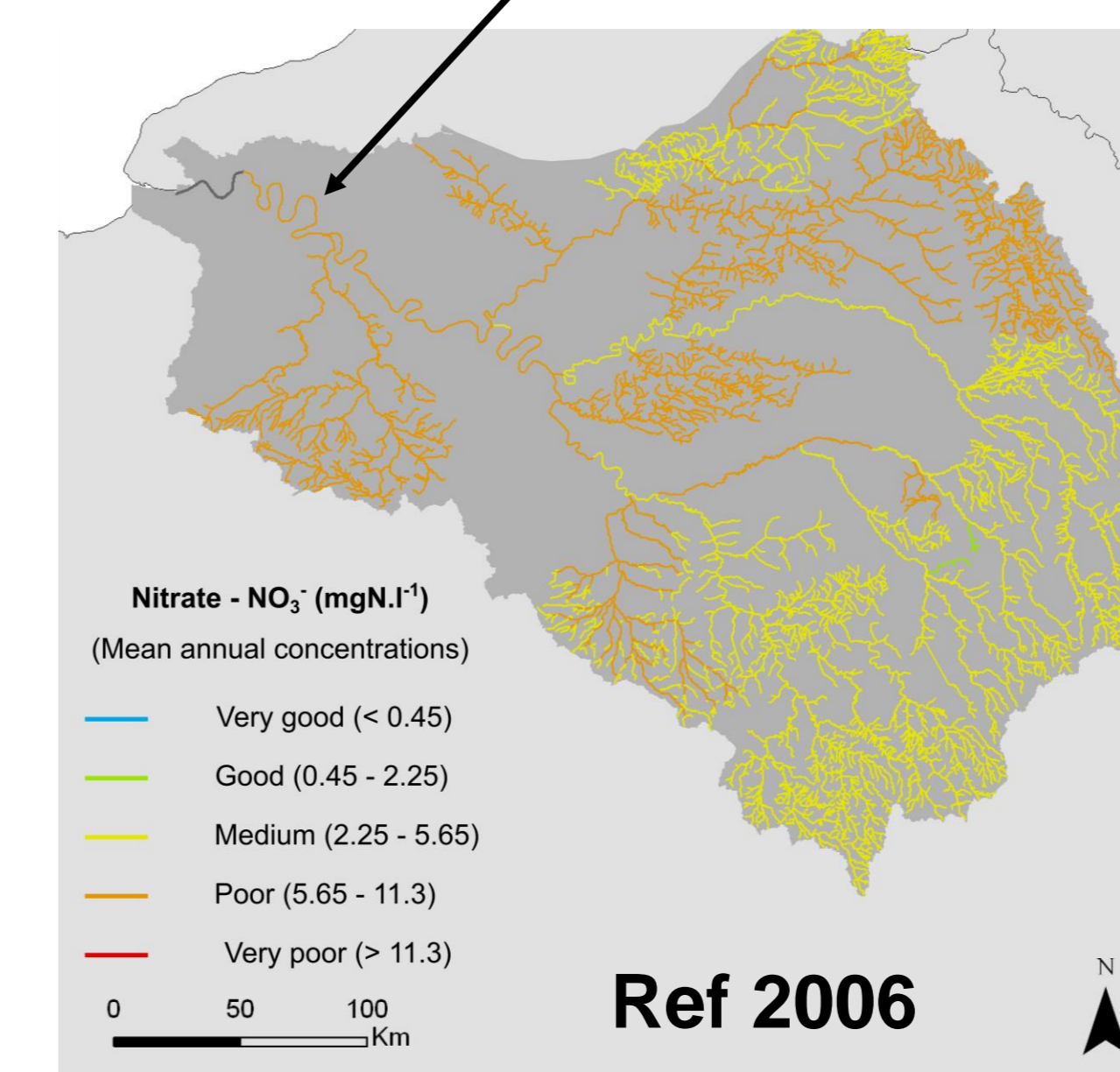


## 5 – Results



A (minor) slight decrease of NO<sub>3</sub><sup>-</sup> concentrations at the Seine outlet

Some improvements in sub-basins and the downstream part of the Seine



## 4 – Conclusions and perspectives

Encouraging results concerning the hydrological network

Only a NO<sub>3</sub><sup>-</sup> decrease by less than 5% at the outlet of the Seine

Few impacts on the coastal zone in terms of algal blooms

Some improvements within sub-basins (from poor to medium)

A better situation for the production of drinking water

To go further ...

Manage a **more retentive landscape** by reintroducing wetlands or ponds.

Generalize an agriculture using **less mineral fertilizers** to the whole basin (organic farming, precision farming ...)

What is the theoretical best achievable ?

