



## Protocol for High-Throughput Analysis of Sister-Chromatids Contacts

Elena Espinosa, Yoshiharu Yamaichi, François-Xavier Barre

### ► To cite this version:

Elena Espinosa, Yoshiharu Yamaichi, François-Xavier Barre. Protocol for High-Throughput Analysis of Sister-Chromatids Contacts. STAR Protocols, 2020, 1 (3), pp.100202. 10.1016/j.xpro.2020.100202 . hal-03097552

**HAL Id: hal-03097552**

**<https://hal.science/hal-03097552>**

Submitted on 5 Oct 2021

**HAL** is a multi-disciplinary open access archive for the deposit and dissemination of scientific research documents, whether they are published or not. The documents may come from teaching and research institutions in France or abroad, or from public or private research centers.

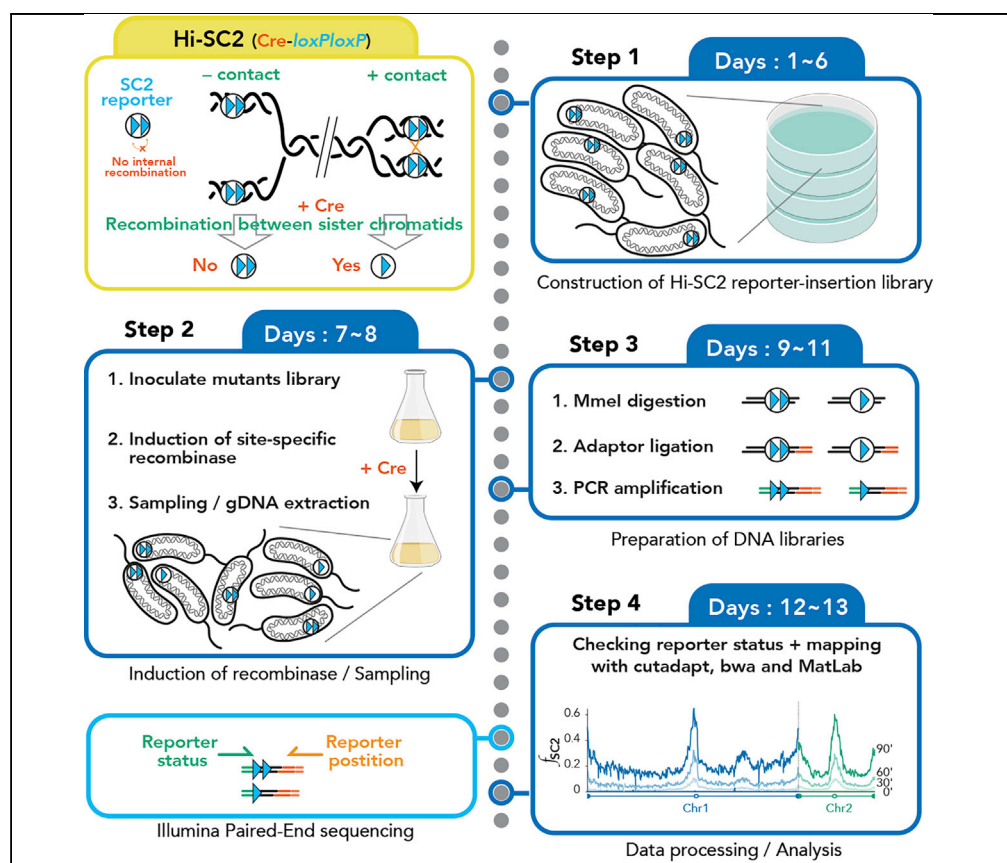
L'archive ouverte pluridisciplinaire **HAL**, est destinée au dépôt et à la diffusion de documents scientifiques de niveau recherche, publiés ou non, émanant des établissements d'enseignement et de recherche français ou étrangers, des laboratoires publics ou privés.



Distributed under a Creative Commons Attribution - NonCommercial 4.0 International License

## Protocol

# Protocol for High-Throughput Analysis of Sister-Chromatids Contacts



Sister chromatid interactions are a key step to ensure the successful segregation of sister chromatids after replication. Our knowledge about this phenomenon is mostly based on microscopy approaches, which have some constraints such as resolution limit and the impossibility of studying several genomic positions at the same time. Here, we present a protocol for Hi-SC2, a high-throughput sequencing-based method, to monitor sister chromatid contacts after replication at high resolution throughout the genome, which we applied to study cohesion in *Vibrio cholerae*.

Elena Espinosa,  
Yoshiharu Yamaichi,  
François-Xavier  
Barre

elena.espinosa@i2bc.  
paris-saclay.fr (E.E.)  
francois-xavier.barre@  
i2bc.paris-saclay.fr (F.-  
X.B.)

### HIGHLIGHTS

Method to analyze  
sister chromatid  
contacts at high  
resolution

Step-by-step  
protocol from cell  
culture to  
bioinformatics  
analysis

Protocol easy to  
adapt to different  
organisms

Espinosa et al., STAR  
Protocols 1, 100202  
December 18, 2020 © 2020  
The Author(s).  
[https://doi.org/10.1016/  
j.xpro.2020.100202](https://doi.org/10.1016/j.xpro.2020.100202)



## Protocol

# Protocol for High-Throughput Analysis of Sister-Chromatids Contacts

Elena Espinosa,<sup>1,2,\*</sup> Yoshiharu Yamaichi,<sup>1</sup> and François-Xavier Barre<sup>1,3,\*</sup>

<sup>1</sup>Université Paris-Saclay, CEA, CNRS, Institute for Integrative Biology of the Cell (I2BC), 91198 Gif-sur-Yvette, France

<sup>2</sup>Technical Contact

<sup>3</sup>Lead Contact

\*Correspondence: [elena.espinosa@i2bc.paris-saclay.fr](mailto:elena.espinosa@i2bc.paris-saclay.fr) (E.E.), [francois-xavier.barre@i2bc.paris-saclay.fr](mailto:francois-xavier.barre@i2bc.paris-saclay.fr) (F.-X.B.)  
<https://doi.org/10.1016/j.xpro.2020.100202>

## SUMMARY

Sister chromatid interactions are a key step to ensure the successful segregation of sister chromatids after replication. Our knowledge about this phenomenon is mostly based on microscopy approaches, which have some constraints such as resolution limit and the impossibility of studying several genomic positions at the same time. Here, we present a protocol for Hi-SC2, a high-throughput sequencing-based method, to monitor sister chromatid contacts after replication at high resolution throughout the genome, which we applied to study cohesion in *Vibrio cholerae*.

For complete details on the use and execution of this protocol, please refer to Espinosa et al. (2020).

## BEFORE YOU BEGIN

Hi-SC2 requires expression of a site-specific recombinase (e.g., Cre or XerCD) which must be tightly regulated. The recombinase gene is highly recommended to be integrated to the host genome rather than being provided from a plasmid. Here we use as a model an engineered *Vibrio cholerae* strain containing a tightly regulated Cre expression cassette (P<sub>BAD</sub>-cre-invP<sub>lac</sub>; OFF by supplement of 0.1 mM Isopropyl β-D-thiogalactoside (IPTG), ON by supplement of 0.02% L-arabinose (L-ara)). Adequate engineering must be made for your organism of interest. We use a SC2 reporter containing Cre-recombination sites (*loxP*) in tandem, which is associated with a kanamycin (Km) resistance selection marker on a mini-transposon (Mariner transposon). The transposon is harbored on a conditional replication plasmid carrying a chloramphenicol (Cm) resistance gene. The plasmid is delivered by conjugation using as donor an *Escherichia coli* strain that cannot grow in the absence of 2,6-Diaminopimelic acid (DAP). Adequate engineering must be made for the delivery of the SC2 reporter in your organism of interest.

- △ **CRITICAL:** It is not essential to have specific selection marker(s) for the organism of interest which will be recipient of the SC2 reporters. In the example we provide, recipient cells can be differentiated from the donor cells using a medium lacking DAP. However, the selection marker associated to the SC2 reporter should be compatible with the organism of interest. In the example we present, the recipient strain must be Km-sensitive and Cm-sensitive.

## Sample Multiplexing

Illumina allows pooling different samples and sequencing multiple libraries at the same time. We recommend such sample multiplexing for two reasons: (1) We usually use ~20 M reads to proceed informatics analysis for each sample (see below), which does not fit in a MiSeq run but is way below the capacity of NextSeq format. (2) Hi-SC2 libraries have a low initial sequence diversity, which can



impede cluster calling process as is the case for Tn-seq (Mitra et al., 2015). To (partially) avoid risk of low-quality data, we use adapters containing different length and “spacer” nucleotide sequences (Table 1). It is important to use different adapters for different samples as much as possible (here are presented eight different adapters). Furthermore, it is required to use sufficient number of P7 NGS primers with different “index” sequences (See Key Resources Table, Oligonucleotides and <https://support.illumina.com> for detail).

### Annealing Adapters

⌚ Timing: 6 h

1. Prepare 10× Hybridization buffer.
2. Turn ON the heat block and set it to 70°C.
3. Prepare the following mixture:

Reagent	Amount
10× Hybridization buffer	1 µL
100 µM Adapter Oligo A	1 µL
100 µM Adapter Oligo B	1 µL
ddH <sub>2</sub> O	7 µL
Total	10 µL

4. Incubate at 70°C for 5 min.
5. Turn OFF the heat block and let cool down slowly until it reaches 21°C.
6. Make aliquots of 5 µL and store at –20°C.

**Note:** After adapter annealing, the resulting double-stranded DNA contains two base pairs (NN) overhanging at the 3’ end. We recommend preparing a small quantity of annealed adapters to prevent degradation due to several rounds of freezing and thawing and long-term storage at –20°C.

### Preparation of Media

⌚ Timing: 1 h

**Table 1. List of Adapter Combinations**

Adapter Number	Oligo A <sup>a</sup>	Oligo B <sup>a</sup>	P5 NGS Oligo <sup>b</sup>	Adapter Coupled-Spacer Sequence <sup>c</sup>
1	3455	3456	3457	CAGT
2	3811	3812	3825	CGTA
3	3813	3814	3826	ACAGT
4	3815	3816	3827	TACTC
5	3817	3818	3828	CTAGT
6	3819	3820	3829	TGACTC
7	3821	3822	3830	ATGCTA
8	3823	3824	3831	AGCATA

<sup>a</sup>See above Annealing Adapters.

<sup>b</sup>See steps 24–26.

<sup>c</sup>See step 30a.

Media preparation for the pilot experiment (should be done on day 0)

7. Prepare 4 LB agar plates supplemented with DAP.
8. Prepare 12 LB agar plates supplemented with Km.
9. Prepare 2 LB agar plates supplemented with Cm.

Media preparation for the transposon insertion (should be done on day 4)

10. Prepare 1 LB agar plate supplemented with DAP and IPTG.
11. Prepare 1 LB agar plate supplemented with Km and IPTG.
12. Prepare 4 “large” LB agar plates supplemented with Km and IPTG. Leave them at 21°C until the use next day (dry with the lid closed).

**Note:** “Large” plates have a diameter of 20 cm and hold 250 mL of LB agar (instead of typical Ø 85 mm with 25 mL). It is advised to prepare the media the day before starting the conjugation, especially for the large plates, so that the plates are completely dry before the experiment.

**Alternatives:** We spread the SC2 reporter insertion library in four large plates to isolate ~400,000 colonies without being too confluent. Any other kind of plates can be used (e.g., large square plates or typical Ø 85 mm plates). However, the number of plates and the volume of conjugated cells that has to be spread to each plate must be adjusted accordingly.

## KEY RESOURCES TABLE

REAGENT or RESOURCE	SOURCE	IDENTIFIER
Chemicals, Peptides, and Recombinant Proteins		
Isopropyl β-D-thiogalactoside	Sigma-Aldrich	Cat# I6758
L-Arabinose	Sigma-Aldrich	Cat# A3256
2,6-Diaminopimelic acid	Sigma-Aldrich	Cat# D1337
Kanamycin	Sigma-Aldrich	Cat# K4000
Chloramphenicol	Sigma-Aldrich	Cat# C0378
Gentamycin	Sigma-Aldrich	Cat# G1264
Liquid nitrogen	N/A	N/A
Dream Taq Polymerase	Thermo Scientific	Cat# EP0713
Mmel	New England Biolabs	Cat# R0637
T4 DNA ligase (2,000,000 units/mL)	New England Biolabs	Cat# M0202M
Phusion polymerase	Thermo Scientific	Cat# F532
Critical Commercial Assays		
GenElute Bacterial Genomics DNA kit	Sigma-Aldrich	Cat# NA2110
MinElute PCR purification kit	QIAGEN	Cat# 28004
Pippin Prep Gel Cassette, 1.5% Agarose, dye free, w/ internal standards	SAGE Science	Cat# CDF1510
Pippin Prep Gel Cassette, 2% Agarose, dye free, w/ internal standards	SAGE Science	Cat# CDF2010
Deposited Data		
SC2 reporter Transposon insertion in <i>E. coli</i>	ArrayExpress	E-MTAB-9713

(Continued on next page)

**Continued**

REAGENT or RESOURCE	SOURCE	IDENTIFIER
Hi-SC2 codes	Mendeley	<a href="https://data.mendeley.com/datasets/2p4w6h56nz/1">https://data.mendeley.com/datasets/2p4w6h56nz/1</a>
<b>Experimental Models</b>		
<i>Vibrio cholerae</i> N16961 <i>ChapR ΔlacZ P<sub>BAD</sub>-cre-invP<sub>lac</sub></i> Zeo-R, Gm-R	(Espinosa et al., 2020)	EEV29
<i>Escherichia coli</i>	Laboratory stock	MG1655
<i>Escherichia coli</i> MG1655 RP4-2-Tc::[ΔMu1::aac(3)/IV-ΔaphA-Δnic35-ΔMu2::zeo ΔdapA::(erm-pir) ΔrecA	(Ferrières et al., 2010)	MFDpir
<i>Escherichia coli</i> (F-) RP4-2-Tc::Mu Δdap Kan	(Demarre et al., 2005)	β2163
<i>Escherichia coli</i> β2163 / pEE22	(Espinosa et al., 2020)	EE14
<b>Oligonucleotides</b>		
3459: 5'-TTGGATGATAAGTCCCCGGTC-3'	This paper	N/A
1514: 5'-TGACGAGTTCTTCTGAGC GGGACTCTGG-3'	This paper	N/A
Adapter 3455: 5'- TTCCTACACGACGCTCTTCC GATCTCAGTNN-3'	(Espinosa et al., 2020)	N/A
Adapter 3456: 5'-ACTGAGATCGGAAGAG CGTCGTGTAGGG-3'	(Espinosa et al., 2020)	N/A
Adapter 3811: 5'- TTCCTACACGACGCTCT TCCGATCTCGTANN-3'	(Espinosa et al., 2020)	N/A
Adapter 3812: 5'-TACGAGATCGGAAGA GCGTCGTGTAGGG-3'	(Espinosa et al., 2020)	N/A
Adapter 3813: 5'- TTCCTACACGACGCTCT TCCGATCTACAGTNN-3'	(Espinosa et al., 2020)	N/A
Adapter 3814: 5'-ACTGTAGATCGGAAGA GCGTCGTGTAGGG-3'	(Espinosa et al., 2020)	N/A
Adapter 3815: 5'-TTCCTACACGACGCTC TCCGATCTTACTCNN-3'	(Espinosa et al., 2020)	N/A
Adapter 3816: 5'-GAGTAAGATCGGAAG AGCGTCGTGTAGGG-3'	(Espinosa et al., 2020)	N/A
Adapter 3817: 5'- TTCCTACACGACGCTCT TCCGATCTCTAGTNN-3'	(Espinosa et al., 2020)	N/A
Adapter 3818: 5'- ACTAGAGATCGGAAGAG CGTCGTGTAGGG-3'	(Espinosa et al., 2020)	N/A
Adapter 3819: 5'- TTCCTACACGACGCTCTTCC GATCTTGACTCNN-3'	(Espinosa et al., 2020)	N/A
Adapter 3820: 5'- GAGTCAAGATCGGAAGAG CGTCGTGTAGGG-3'	(Espinosa et al., 2020)	N/A
Adapter 3821: 5'-TTCCTACACGACGCTC TCCGATCTATGCTANN-3'	(Espinosa et al., 2020)	N/A
Adapter 3822: 5'-TAGCATAGATCGGAAG AGCGTCGTGTAGGG-3'	(Espinosa et al., 2020)	N/A
Adapter 3823: 5'- TTCCTACACGACGCTCT TCCGATCTAGCATANN-3'	(Espinosa et al., 2020)	N/A

(Continued on next page)

### Continued

REAGENT or RESOURCE	SOURCE	IDENTIFIER
Adapter 3824: 5'-TATGCTAGATCGGAAGA GCGTCGTGTAGGG-3'	(Espinosa et al., 2020)	N/A
P5 NGS 3457: 5'- AATGATACGGCGACCACC GAGATCTACACTCTTTCCC TACACGACGCTCTCCGATCTCAGT-3'	(Espinosa et al., 2020)	N/A
P5 NGS 3825: 5'- AATGATACGGCGACCACCGA GATCTACACTCTTTCCCTACA CGACGCTCTCCGATCTCGTA-3'	(Espinosa et al., 2020)	N/A
P5 NGS 3826: 5'- AATGATACGGCGACCACCGA GATCTACACTCTTTCCCTACA CGACGCTCTCCGATCTACAGT-3'	(Espinosa et al., 2020)	N/A
P5 NGS 3827: 5'- AATGATACGGCGACCACC GAGATCTACACTCTTTCCCT ACACGACGCTCTCCGATCTTACTC-3'	(Espinosa et al., 2020)	N/A
P5 NGS 3828: 5'- AATGATACGGCGACCACC GAGATCTACACTCTTTCCC TACACGACGCTCTCCGATCTCTAGT-3'	(Espinosa et al., 2020)	N/A
P5 NGS 3829: 5'-AATGATACGGCGACCAC CGAGATCTACACTCTTTC CCTACACGACGCTCTTCC GATCTTGACTC-3'	(Espinosa et al., 2020)	N/A
P5 NGS 3830: 5'- AATGATACGGCGACCACCG AGATCTACACTCTTTCCCTA CACGACGCTCTCCGATCTATGCTA-3'	(Espinosa et al., 2020)	N/A
P5 NGS 3831: 5'- AATGATACGGCGACCACCGA GATCTACACTCTTTCCCTACA CGACGCTCTCCGATCTAGCATA-3'	(Espinosa et al., 2020)	N/A
P7 NGS*: 5'-CAAGCAGAAGACG GCATACGAGATxxxxxGTGACTGGA GTTCCAGACGT GTGCTCTCCGATCTTCTA-3'	(Espinosa et al., 2020)	N/A
Recombinant DNA		
R6Kori mob <sub>RP4</sub> cat magellan5-Mmel loxP- loxP (kan)	(Espinosa et al., 2020)	pEE22
Software and Algorithms		
Cutadapt	(Martin, 2011)	<a href="https://pypi.org/project/cutadapt/">https://pypi.org/project/cutadapt/</a>
Samtools	(Li and Durbin, 2010)	<a href="http://bio-bwa.sourceforge.net">http://bio-bwa.sourceforge.net</a>
BWA	(Li et al., 2009)	<a href="http://www.htslib.org/">http://www.htslib.org/</a>
MATLAB version R2018b	Mathworks	Mathworks.com
Other		
Membrane filter 0.45 μm	Millipore	Cat# HAWP02500
Glass Petri dishes of 20 cm diameter	LABO MODERNE	Cat# FS70517
Pippin Prep	SAGE science	<a href="https://www.SAGEscience.com">https://www.SAGEscience.com</a>
DNA LoBind Tubes	Eppendorf	Cat# 0030108051
Nanodrop	Thermo Scientific	<a href="https://www.thermofisher.com">https://www.thermofisher.com</a>

\* xxxxxx corresponds six-base sequence index for Illumina. Prepare multiple primers with different barcode accordingly to your project.

## MATERIALS AND EQUIPMENT

### M9 Minimal Media

#### M9 2× Stock

Reagent	Final Concentration	Amount
KH <sub>2</sub> PO <sub>4</sub>	20 mM	3 g
Na <sub>2</sub> HPO <sub>4</sub>	40 mM	6 g
NaCl	8 mM	0.5 g
NH <sub>4</sub> Cl	18 mM	1 g
ddH <sub>2</sub> O	N/A	1 L

#### Supplemented M9 for Cultures

Reagent	Final Concentration	Stock Concentration	Amount
M9 2×	1×	2×	50 mL
Thiamine	1 µg/mL	5 mg/mL	20 µL
MgSO <sub>4</sub>	1 mM	1 M	100 µL
CaCl <sub>2</sub>	0.1 mM	100 mM	10 µL
Fructose	0.2%	20%	1 mL
ddH <sub>2</sub> O	N/A	N/A	48.87 mL
Total	N/A	N/A	100 mL

#### Supplements to Media

Reagent	Final Concentration	Stock Concentration	Abbreviation
Kanamycin	50 µg/mL	50 mg/mL in bidistilled H <sub>2</sub> O	Km
Chloramphenicol	25 µg/mL	25 mg/mL in 96% Ethanol	Cm
Gentamycin	50 µg/mL	50 mg/mL in bidistilled H <sub>2</sub> O	Gm
2,6-Diaminopimelic acid	0.3 mM	50 mM in bidistilled H <sub>2</sub> O	DAP
L-arabinose	0.02%	20% in bidistilled H <sub>2</sub> O	L-ara
Isopropyl β-D-thiogalactoside	0.1 mM	1 M in bidistilled H <sub>2</sub> O	IPTG

#### 10× Hybridization Buffer

Reagent	Final Concentration	Stock Concentration	Amount
Tris-HCl pH 7.5	100 mM	1 M	1 mL
NaCl	500 mM	5 M	1 mL
EDTA	10 mM	0.5 M	200 µL
ddH <sub>2</sub> O	N/A	N/A	7.8 mL
Total	N/A	N/A	10 mL

## STEP-BY-STEP METHOD DETAILS

### Pilot Experiment of Transposon Insertion Library: Days 1–3

⌚ Timing: 1 h (day 1)

1. Inoculate a single colony of *Escherichia coli* EE14 into 5 mL of LB broth containing Cm and DAP and a single colony of *V. cholerae* EEV29 into 5 mL of LB broth containing Gm. Incubate at 37°C with shaking (180 rpm) for 16 h to make overnight culture.



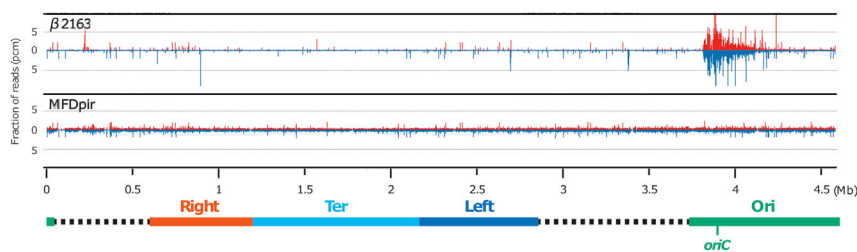
**Note:** It is important to start cultures from a single colony (rather than directly from a cryo-stock) and the colony should not be too old. We recommend isolating colonies in a plate 1 or 2 days before performing the conjugations. Furthermore, it is recommended to keep incubation time (i.e., 16 h) consistent among experiments.

**Note:** For a standard protocol, cultures are grown at 37°C for 16 h, but depending on the recipient (e.g., thermosensitive mutants), growth conditions can be modified.

**Alternatives:** Here we use *E. coli* strain  $\beta$ 2163 as the host of SC2 reporter delivery plasmid. Any other *E. coli* strain that is *pir*<sup>+</sup> and able to mobilize mobRP4 plasmids (e.g., SM10  $\lambda$  *pir*) can be used. However, if *E. coli* is your recipient, it is essential to use MFD*pir* (Ferrières et al., 2010) for the donor. The use of a Mu<sup>+</sup> donor results in disastrously biased insertion of transposon (Figure 1), which makes the Hi-SC2 analysis in vain (Problem 1).

⌚ Timing: days 2 and 3

2. Carry out conjugations.
  - a. Prepare 4 microcentrifuge tubes (1.5-mL), labeled A-D.
  - i. In the two tubes (A and B), mix 250  $\mu$ L of donor and 250  $\mu$ L of recipient cultures, add LB up to a final volume of 1 mL.
  - ii. In the other two tubes (C and D), mix 500  $\mu$ L of donor and 500  $\mu$ L of recipient.
  - b. Centrifuge at 6,000  $\times$  g at 21°C for 3 min then discard the supernatant with a pipette (be careful not to discard part of the pellet).
  - c. To wash the cells, add 1 mL of LB broth to the tube and resuspend the pellet by pipetting. Centrifuge at 6,000  $\times$  g at 21°C for 3 min.
  - d. Carefully discard the supernatant with a pipette and resuspend the pellet in the residual medium.
  - e. For each of 4 LB agar plate supplemented with DAP, place one filter membrane at the middle. Carefully put the whole amount of donor-recipient cell suspension (step 2d) at the middle of the membrane. Be careful not moving the plate to avoid cells dripping out the membrane. Once the drops got dry (~10 min with lid closed), incubate conjugations at 37°C for 2 h (for A and C) and 4 h (for B and D).
3. After incubation, by using sterile forceps, take a filter membrane and put into a tube (e.g., 14-mL round-bottom test tube, 15-mL centrifuge tube, or 50-mL centrifuge tube). Add 1 mL of LB broth and mix well by vortex to resuspend the cells.
4. Prepare serial dilutions (10, 100, 1000 times) in LB and spread 100  $\mu$ L of the dilutions into LB agar plates supplemented with Km. Incubate the plates for 16 h at 37°C.
5. Determine the conjugation condition and number of conjugations to carry out for the following Hi-SC2 insertion library construction.



**Figure 1. Distribution of Transposon Insertion in *E. coli***

Top: biased distribution of Mariner transposon at *oriC* region in *E. coli* using  $\beta$ 2163 as a donor. Bottom: random distribution of Mariner transposon in *E. coli* using MFD*pir* as a donor. Chromosomal domains and genomic positions are represented below. Red and blue peaks correspond to direction of SC2 reporter insertions.

6. Patch 200 Km-R colonies from corresponding condition to LB plate supplemented with Cm to check Cm-sensitivity.

**Note:** During the resuspension of donor-recipient mixture after washing (step 2d), it is possible to add a small amount of LB broth, but it should not exceed 50  $\mu$ L.

**Note:** The insertion mutants should be Km-resistant (Km-R) and Cm-sensitive (Cm-S). However, Cm-R Km-R colonies can be obtained by adverse events such as plasmid integration to the recipient genome (by homologous recombination). A good library should contain less than 1% of plasmid insertions. However, the presence of 2%–3% of Cm-R colonies can be tolerated for further application.

**Note:** In case of using an alternative donor host that is *dap*<sup>+</sup> (e.g., SM10  $\lambda$ pir), an appropriate selection pressure for the recipient strain is required in addition to Km.

**△ CRITICAL:** It is especially important to obtain a very good coverage of SC2 reporter insertions in the genome. In this protocol, we exploit Mariner transposon, which targets 5'-TA-3' dinucleotides, of which ~200,000 sites exist in the *V. cholerae* genome (~4.1 Mb size in total). The aim of the pilot experiment is to determine conditions that will permit to obtain a number of clones twice the number of possible integration sites.

Table 2 shows an example of the results from a pilot experiment. Among four different conjugation conditions, longer incubation time (B and D) would give more transposon insertions than shorter incubation. However, since cells can grow and divide during the incubation, it does not necessarily come with a higher complexity. Furthermore, doubling the volume of reaction would not result in doubling the number of colonies obtained (compare A and C for example). Therefore, it is better to choose shorter incubation time as long as it is feasible, and carry out multiple conjugation reactions (up to 30 conjugations are very much practical) instead of increasing the reaction volume. In this example, we will use condition C, which requires 14 conjugation reactions.

**Note:** The efficiency of the SC2 reporter insertion changes not only in different species but also with different genetic background. The pilot experiment is strikingly important and must be carried out for each mutant. In some cases for certain species and/or mutants, it might be considered to expand the conjugation parameters such as the volume of donor and recipient mixture, the donor and recipient ratio, as well as the incubation time, for the best possible results (Problem 2).

### SC2 Reporter Insertion Library: Days 4–6

⌚ Timing: 1 h (day 4)

7. Inoculate a single colony of *E. coli* EE14 donor into 5 mL of LB broth containing Cm and DAP and a *V. cholerae* EEV29 into 5 mL of LB broth containing Gm. Incubate at 37°C with shaking (180 rpm) for 16 h to make overnight culture.

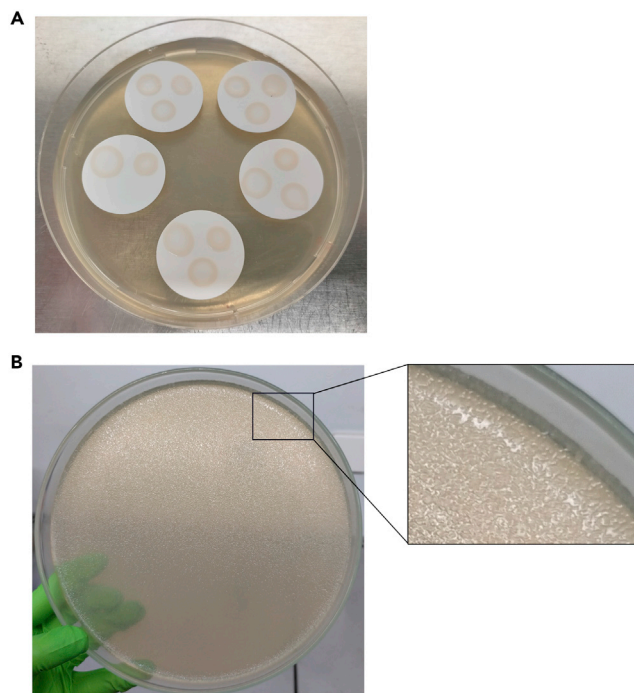
**Table 2. Example of Pilot Experiment**

Condition	Volume of Cells	Hours of Incubation	Number of Colonies per Conjugation	Number of Conjugations Required
A	250 $\mu$ L	2	17,000	24
B	250 $\mu$ L	4	44,000	9
C	500 $\mu$ L	2	28,000	14
D	500 $\mu$ L	4	55,000	7

**Note:** Depending on the conjugation conditions defined by the pilot experiment, prepare multiple number of tubes for the donor and/or recipient (for this example, we prepare two tubes each).

⌚ **Timing:** 6 h (day 5)

8. Carry out conjugations
  - a. Prepare 14 microcentrifuge tubes (1.5 mL). In each tube, mix 500  $\mu$ L of donor and 500  $\mu$ L of recipient.
  - b. Centrifuge at 6,000  $\times$  g at 21°C for 3 min and discard the supernatant with a pipette (be careful not to discard part of the pellet).
  - c. To wash the cells, add 1 mL of LB broth and resuspend the pellet by pipetting. Centrifuge at 6,000  $\times$  g at 21°C for 3 min.
  - d. Carefully discard the supernatant with a pipette and resuspend the pellet in the residual medium.
  - e. Place filter membrane(s) to LB agar plate supplemented with DAP, and carefully put the whole amount of donor-recipient cell suspension (step 8d) on the membrane. Up to five filter membranes can be placed on one LB agar plate, and each membrane can hold maximum three conjugations (Figure 2A). Once drops get dry ( $\sim$ 10 min with lid closed), incubate the plate at 37°C for 2 h.
9. After incubation, collect all the conjugation reactions into one tube.
  - a. Using sterile forceps, introduce two filters per tube (e.g., 14-mL round-bottom test tube, 15-mL centrifuge tube, or 50-mL centrifuge tube) and add 1 mL of LB broth. Vortex to resuspend the cells.
  - b. Mix all the conjugations in a new tube and add LB broth up to a final volume of 6 mL.
10. Spread conjugation mix to LB plates supplemented with Km.



**Figure 2. SC2 Reporter Library Preparation**

(A) Fourteen drops of independent conjugation reactions were placed on five membrane filters without touching each other.

(B) Example plate of almost confluent SC2 insertion library. Right: zoom of a section of the plates showing isolated colonies.

- a. Spread 1:1,000 of the volume (6  $\mu$ L) on a  $\varnothing$  85 mm plate to estimate the size of library.
- b. Spread 1.5 mL per a large plate. Let all the liquid completely absorbed ( $\sim$ 10 min). Repeat with each one of the four large plates.
- c. Incubate plates for 16 h at 30°C.

**⚠ CRITICAL:** During the preparation of the SC2 reporter insertion library, all media should be supplemented with 0.1 mM IPTG to avoid any leaky expression of the recombinase from arabinose promoter (Problem 3).

**Note:** Cell pellet can be very loose after centrifugation. It is suggested to arrange the number of tubes centrifuged together so that the supernatant can be discarded immediately and without losing cells, no more than six tubes should be centrifuged at the same time.

**Note:** In case the volume of conjugation mix (step 9b) exceeds 6 mL, or if using  $\varnothing$  85 mm plates instead of large plates, adjust the number of plates and/or volume to spread on each plate in order to obtain isolated colonies.

**Note:** We suggest to incubate at 30°C for 16 h to avoid colony-crowding in the morning of the next day (Figure 2B). If the colonies are too small, plates can be incubated for a few hours at 37°C before starting the next step.

⌚ **Timing:** 2 h (day 6)

11. Estimate the size of SC2 reporter insertion library
  - a. Count the number of Km-R colonies formed on the  $\varnothing$  85 mm plate
  - b. Multiply the number by 1,000, to calculate approximate number of Km-R colonies obtained in total.
12. Recovery of the SC2 reporter insertion library
  - a. Add 5 mL of LB broth to a large plate and scrape cells over the large plate using a cell spreader. Gather cell suspensions with the cell spreader and by tilting the plate and recover them into a 50-mL centrifuge tube by pipetting. Add another 5 mL of LB broth and repeat the procedure to collect remaining of cells. Recovered cell suspensions into the same centrifuge tube.
  - b. Repeat the same procedure for the rest of the large plates. Recover all cells into the same 50 mL tube. Vortex very well to mix and disaggregate the colonies.
  - c. Centrifuge at 3,200  $\times$  g at 21°C for 20 min. Discard the supernatant and resuspend the cells in 10 mL of media.
  - d. Add 3.3 mL of sterile 80% glycerol (v/v, final concentration at 20%). Mix thoroughly and make aliquots of 200  $\mu$ L (10–20 tubes). Store at  $-80^{\circ}\text{C}$ .

**Note:** If the number of colonies on the  $\varnothing$  85 mm plate (11) is somewhat low, even after a few hours of incubation at 37°C, calculate the coverage of library. If it is less than one time the number of possible insertion sites, do not proceed further steps and repeat from step 7 (or step 1).

**Note:** In case the SC2 reporter library was prepared in  $\varnothing$  85 mm plates instead of large plates, scrape the cells twice using 1 mL of LB each time (steps 12a and 12b).

**⏸ Pause Point:** SC2 reporter insertion libraries can be stored for a long term at  $-80^{\circ}\text{C}$ . However, freeze-thaw cycles should be avoided.

### Site-Specific Recombination of SC2 Reporters: Days 7 and 8

⌚ **Timing:** 6 h (day 7)

13. Prepare the cells for the recombination assay
  - a. Take one tube of SC2 reporter insertion library from  $-80^{\circ}\text{C}$  stock and completely thaw it on ice.
  - b. Mix 10  $\mu\text{L}$  of cells and 990  $\mu\text{L}$  of minimal media (1:100 dilution). Measure the  $\text{OD}_{600\text{ nm}}$ .
  - c. Prepare 100 mL of minimal media supplemented with IPTG in 500-mL flask. Add cells to make a final  $\text{OD}_{600\text{ nm}}$  of 0.05 ( $\sim 10^8$  cells).
14. Incubate the cells at  $30^{\circ}\text{C}$  with shaking (180 rpm) until they reach early exponential phase (in the case of *V. cholerae*, 3.5 h to  $\text{OD}_{600\text{ nm}}$  0.1).
15. Prepare two 50-mL centrifuge tubes and pour 20-mL of cultures each. Sediment cells at  $3,200 \times g$  for 10 min at  $21^{\circ}\text{C}$  and carefully discard the supernatant. Dilute the pellets into 10 mL of minimal medium without IPTG in a 125-mL flask. (Record the  $\text{OD}_{600\text{ nm}}$ ).
16. Cell sampling
  - a. Restart growing cell at  $30^{\circ}\text{C}$  with shaking (180 rpm).
  - b. After 30 min ( $t = 0$ ), add 10  $\mu\text{L}$  of 20% L-arabinose (final 0.02% w/v) to one sample to induce expression of the recombinase. Keep the flask shaken at  $30^{\circ}\text{C}$ . For the other flask, measure the  $\text{OD}_{600\text{ nm}}$  and transfer the culture into 15-mL centrifuge tube. Sediment the cells by centrifugation for 10 min at  $3,200 \times g$  at RT, followed by discarding the supernatant. Snap freeze the cell pellet in liquid nitrogen and keep it at  $-80^{\circ}\text{C}$  until next step.
  - c. For the induced sample, measure  $\text{OD}_{600\text{ nm}}$  after 90 min of induction ( $t = 90$ ) and transfer the culture into 15-mL centrifuge tube. Prepare the snap-frozen cells as written above.

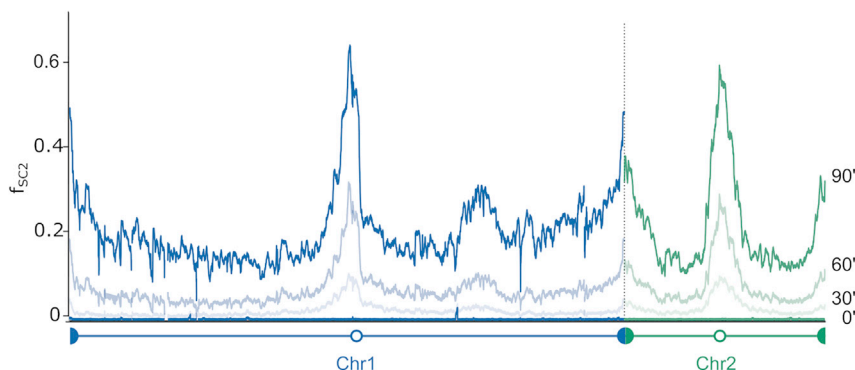
**Note:** Using the  $\text{OD}_{600\text{ nm}}$  you can estimate the number of generations passed during the incubation/induction. It is also possible to calculate it by determining the number of CFU at each step.

**Note:** We grow cells in a minimal medium at  $30^{\circ}\text{C}$ . Other growth conditions can be applied, which can result in different overall Hi-SC2 profiles (Espinosa et al., 2020).

**Note:** As shown in Figure 3, the excision frequency increases as a function of the duration of recombinase induction. Growth conditions for the recombination assay should therefore be adjusted depending on the experiment to avoid saturation in certain locus. It is suggested to carry out time course experiment for the first assay (e.g., 0, 30, 60, 90, 120 min of induction).

⌚ Timing: 4 h (day 8)

17. Thaw the frozen cell pellet and extract gDNA using GenElute Bacterial Genomics DNA kit following the manufacturer's instructions. Perform two elutions of 200  $\mu\text{L}$  each.



**Figure 3. Hi-SC2 Analysis Results in *V. cholerae***

Frequency of excision of SC2 reporter during a time course. No recombination is observed before induction. Chromosome 1 and 2 are represented in blue and green, respectively. Modified from Espinosa et al. (2020).

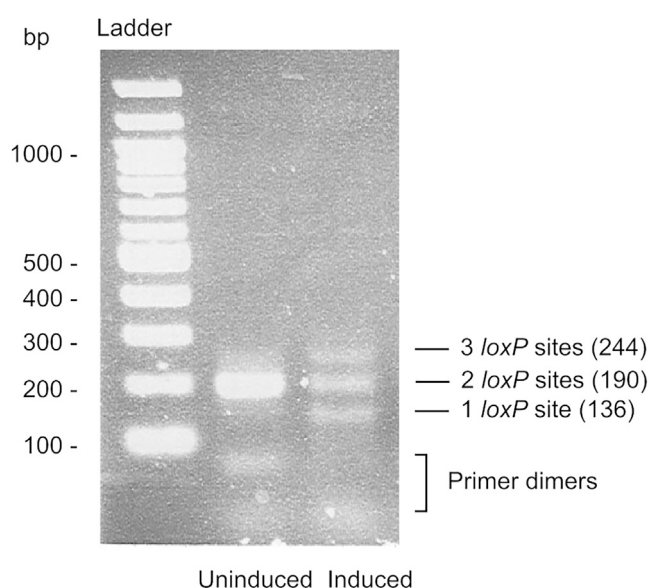
18. Check recombination state.
  - a. Carry out PCR for each sample as shown below.

Reagent	Amount
Purified gDNA (from step 17)	1 $\mu$ L
DreamTaq DNA polymerase buffer 10 $\times$	1.5 $\mu$ L
10 mM each dNTPs mix	0.3 $\mu$ L
10 $\mu$ M 1514 primer	0.3 $\mu$ L
10 $\mu$ M 3459 primer	0.3 $\mu$ L
DreamTaq DNA polymerase	0.075 $\mu$ L
ddH <sub>2</sub> O	11.525 $\mu$ L
<b>Total</b>	<b>15 <math>\mu</math>L</b>

- b. Carry out PCR as following

PCR Cycling Conditions			
Steps	Temperature	Time	Cycles
Initial Denaturation	98°C	30 s	1
Denaturation	98°C	30 s	30 cycles
Annealing	55°C	30 s	
Extension	72°C	30 s	
Final Extension	72°C	7 min	1
Hold	15°C	Forever	

- c. Run 5  $\mu$ L of the PCR product in a 2% agarose gel. Uninduced sample should have unique amplification with 190 bp while induced samples should rise three species of fragments (136, 190, and 244 bp; [Figure 4](#)).



**Figure 4. Recombination Status of Uninduced and Induced Samples**

Lane 1: size standard (0.5  $\mu$ g of 100 GenRuler DNA Ladder, Thermo Scientific). Lane 2: uninduced sample containing one single amplified fragment. Lane 3: induced sample containing three amplified fragments. Sizes are indicated.

**Alternatives:** Any equivalent DNA polymerases can be used for the PCR (step 18a).

▮▮ **Pause Point:** gDNA can be stored at  $-20^{\circ}\text{C}$ .

### Hi-SC2 Sequencing DNA Library Construction: Days 9–11

⌚ **Timing:** 8 h (day 9)

19. Quantify the gDNA concentrations using Nanodrop. A minimum of 20 ng/ $\mu\text{L}$  is suggested
20. Digest the gDNA with *MmeI*.
  - a. Prepare reaction as following.

Reagent	Amount
2 $\mu\text{g}$ gDNA (from step 17)	X $\mu\text{L}$
CutSmart buffer 10 $\times$	15 $\mu\text{L}$
1:10 diluted SAM	2 $\mu\text{L}$
<i>MmeI</i> (2 U/ $\mu\text{L}$ )	3 $\mu\text{L}$
ddH <sub>2</sub> O	130–X $\mu\text{L}$
<b>Total</b>	<b>150 <math>\mu\text{L}</math></b>

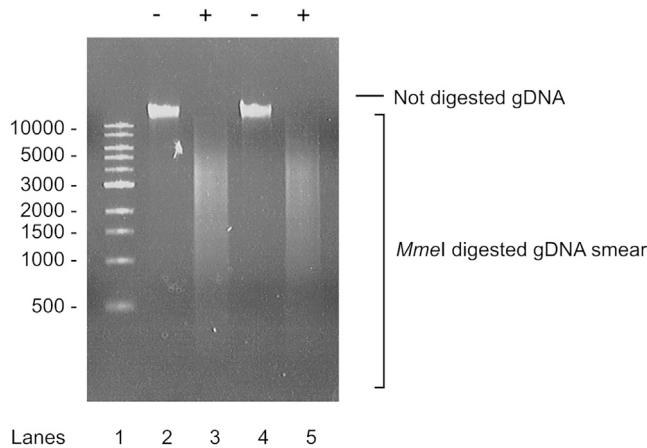
- b. Incubate at  $37^{\circ}\text{C}$  for 4 h.
- c. Inactivate *MmeI* enzyme by incubating at  $65^{\circ}\text{C}$  for 20 min.

**Note:** It is important to calculate the *MmeI* units required for the reaction. We use 6 Units of *MmeI* as *V. cholerae* genome contains 2,983 sites. The number of units needed should be adjusted according to the number of *MmeI* restriction sites in the genome. To calculate the number of units needed we calculated the number of *MmeI* sites present in 1  $\mu\text{g}$  of  $\phi\text{X174}$  which corresponds to the number of sites digested by 1 unit of enzyme. We then calculated the number of *MmeI* sites in 2  $\mu\text{g}$  of gDNA of *V. cholerae* to estimate the number of *MmeI* units needed for restriction digestion.

**Note:** SAM (S-adenosyl methionine) is thermosensitive. It is recommended to store 1 $\times$  SAM in aliquots to avoid thawing and freezing several times. 1:10 dilution has to be prepared on ice just before each experiment.

**Optional:** After step 20c, run 2  $\mu\text{L}$  of purified gDNA and 5  $\mu\text{L}$  of *MmeI*-digested DNA in 0.8% agarose gel to check the digestion. *MmeI* digestion should give smear (Figure 5).

21. Purify and concentrate the DNA with QIAGEN MinElute PURIFICATION KIT. Follow the manufacturer's instructions, except performing two times for the elution step with 16  $\mu\text{L}$  of Buffer EB (total elution volume  $\sim 30$   $\mu\text{L}$ ).
22. Size-select for the DNA fragments containing SC2 reporter by Pippin Prep.
  - a. Set a 1.5% agarose-Dye free cassette in Pippin Prep, and load the samples accordingly to the manufacturer's instructions. Program a protocol with "Range" collection mode from (start) 800 to (end) 2,000 bp.
  - b. Recover the samples ( $\sim 40$   $\mu\text{L}$ ) into 1.5 mL LoBind tubes.
23. Quantify the DNA concentration using Nanodrop. A minimum of 17 ng/ $\mu\text{L}$  is suggested.
24. Ligate the double-stranded adapters to the *MmeI*-digested sample.



**Figure 5. Mmel gDNA Digestion**

Lane 1: size standard (0.5  $\mu$ g of 1 kb DNA Ladder, New England Biolabs). Lanes 2 and 3: uninduced sample. Lanes 4 and 5: induced sample. (-) Not digested gDNA, (+) digested gDNA.

Reagent	Amount
400 ng purified DNA (from step 22)	X $\mu$ L
T4 ligase buffer 10 $\times$	3 $\mu$ L
Adaptor	0.52 $\mu$ L
High conc. T4 Ligase (2,000,000 U/mL)	2 $\mu$ L
ddH <sub>2</sub> O	24.48–X $\mu$ L
<b>Total</b>	<b>30 <math>\mu</math>L</b>

- Prepare the following reaction
- Incubate at 16°C for 16 h.

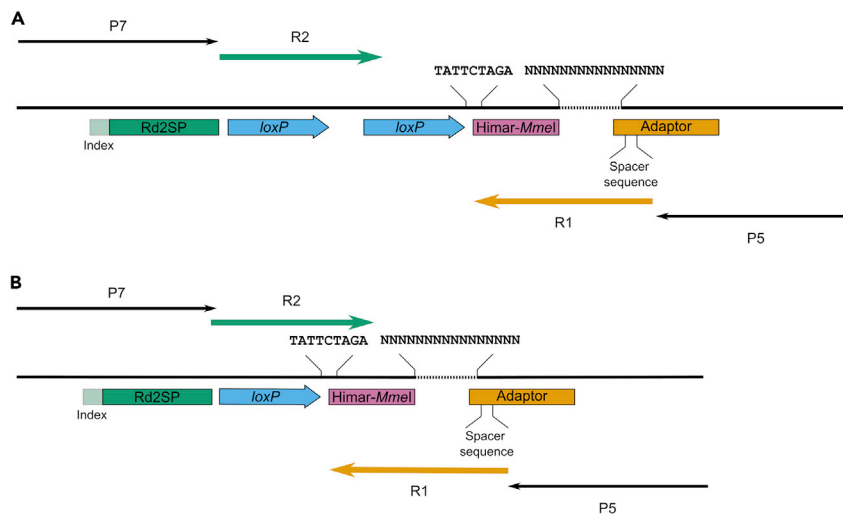
**Note:** From now on, it is recommended to use low DNA-binding microcentrifuge tubes (e.g., LoBind) when manipulating the DNA for the sequencing library.

**△ CRITICAL:** To increase sequence diversity and avoid low-quality data, we designed eight different couples of adapters which harbor different spacer sequence (see [Before you Begin](#), P5 NGS oligonucleotides in [Key Resources Table](#) and [Figure 6](#)). It is essential to use different adapters for different samples. In case of a limited number of sample (e.g., 2–3), try adapters with different spacer size. On the other hand, if more than eight samples are performed at the same time (and planned to be sequenced together), the same adapter couple can be used for more than one sample, take into account that each sample will contain a different index which will Illumina will use to differentiate between them (see P7 NGS oligonucleotides from [Key Resources Table](#) and [Figure 6](#)).

⌚ **Timing:** 8 h (day 10)

- Purify and concentrate the ligated DNA with QIAGEN MinElute PURIFICATION KIT (QIAGEN). Follow the manufacturer's instructions, except elution with 11  $\mu$ L of Buffer EB.
- PCR amplification of Illumina libraries.
  - Prepare 3 tubes (reactions) of PCR amplification for each sample.





**Figure 6. Scheme of Sequencing PCR Products**

Not recombined (A) and recombined (B) status are illustrated. Annealing sites for P5 (Adaptor) and P7 (Rd2SP) are shown in orange and green, respectively. Nucleotide sequences important for analysis are indicated. Ns represent the Reporter position. R1 (green) and R2 (orange) lines refer to the sequencing products from P5 and P7, respectively. Binding sites for sequencing primers P5 and P7 are indicated (black arrows).

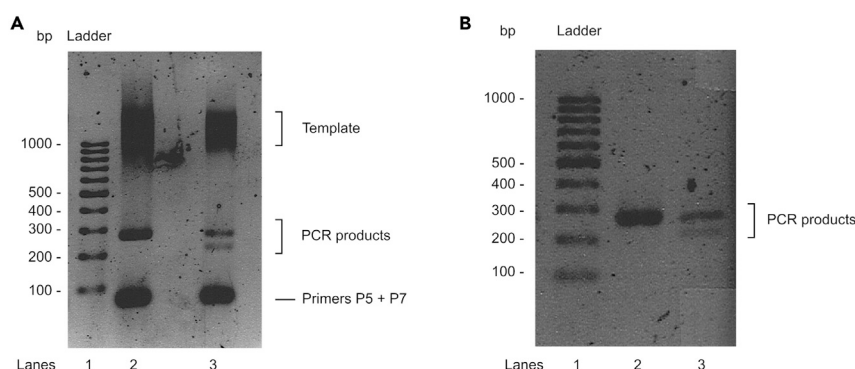
Reagent	Amount
Ligated DNA (from step 25)	3 $\mu$ L
Phusion DNA polymerase buffer 5 $\times$	10 $\mu$ L
10 mM each dNTPs mix	1 $\mu$ L
2 $\mu$ M P5 primer (see Table 1)	5 $\mu$ L
2 $\mu$ M P7 primer	5 $\mu$ L
Pushion DNA polymerase	0.5 $\mu$ L
ddH <sub>2</sub> O	25.5 $\mu$ L
<b>Total</b>	<b>50 <math>\mu</math>L</b>

b. Carry out PCR as following.

PCR Cycling Conditions			
Steps	Temperature	Time	Cycles
Initial Denaturation	98°C	30 s	1
Denaturation	98°C	30 s	17 cycles
Annealing	65°C	30 s	
Extension	72°C	30 s	
Final Extension	72°C	7 min	1
Hold	15°C	Forever	

c. Run 5  $\mu$ L of the PCR reaction in a 2% agarose gel to check amplification (Figure 7A).

27. Mix the three replicates of the PCR reaction and purify using MinElute PURIFICATION KIT. Follow the manufacturer's instructions, except performing two times for the elution step with 16  $\mu$ L of Buffer EB (total elution volume  $\sim$ 30  $\mu$ L).



**Figure 7. Sequencing PCR Products**

Hi-SC2 DNA libraries after PCR (A) and purification (B) step. Lane 1: size standard (0.5  $\mu$ g of 100 GenRuler DNA Ladder). Lane 2: uninduced sample containing one amplified fragment of 207 bp. Lane 3: induced sample containing two amplified fragments of 153 and 207 bp. Smear above 1 kb correspond to the template. Fragments below 100 bp correspond to P5 and P7 primers.

28. Size-select the PCR products using Pippin Prep.
  - a. Set a 2% agarose-Dye free cassette in Pippin Prep and load the samples accordingly to the manufacturer's instructions. Program a protocol with "Range" collection mode from (start) 160 to (end) 400 bp.
  - b. Recover the samples ( $\sim$ 40  $\mu$ L) into 1.5 mL LoBind tubes.
29. Check the quality of size-selected DNA by running 5  $\mu$ L in a 2% Agarose gel (Figure 7B).

**CRITICAL:** the P5 primer must correspond to the adaptor used (see Table 1). The P7 primer must have an "index" hexamer distinct to any other samples sequenced in the same Illumina run (see Key Resources Table and Before you Begin).

**Note:** It is recommended to perform a pilot PCR amplification with only one tube (instead of three). A good sample should have a single band of 207 bp for uninduced control and 153 and 207 bp amplified bands for induced samples (Figure 7). In case of a low amount of amplification, see Problem 4. In Figure 3, we show the products obtained after 30 cycles of PCR, which permits to detect the recombined products on an agarose gel even if there are in low quantity. In Figure 7, we show the products obtained after 17 cycles of PCR. In that case, recombined products are fainter and more difficult to distinguish in an agarose gel.

**Alternatives:** A quality check of the library DNA (step 29) can be done with a BioAnalyzer (Agilent Technologies). The quality check can be performed by the next generation sequencing facility.

### Illumina Sequencing

We outsource Illumina sequencing to next generation sequencing facility. Typically, we use a Next-seq platform with 2  $\times$  75 bp read length, which allows a total of 300–400 M reads per a flow cell. We aim to get  $\sim$ 20 M reads for each sample. To do so, quantification of the library DNA should be done with Qubit (Thermo Scientific).

**Note:** The number of reads required for the analysis varies depending on the genome size.

**CRITICAL:** Read length of Illumina sequencing must be paired-end 75 nucleotides (see Figure 6 and below analysis).

△ **CRITICAL:** In case of an Illumina sequencing flow cell is occupied only by Hi-SC2 samples, spike-in of PhiX control library (15%) is essential.

### Hi-SC2 Analysis: Days 12 and 13

This section shows how to analyze Illumina sequencing results.

**Note:** As all paired-end Illumina sequencing, two sequence files in .fastq format will be obtained. The file labeled with “R1” corresponds reporter position while the other file with “R2” contains the reporter status (Figure 6). Since the two files are coupled, they must be treated together.

**Note:** Here results files are indicated as samplename\_R1.fastq and samplename\_R2.fastq. In our case P5 and P7 sequences are already removed by the next generation sequencing facility. If not, you need to remove these sequences before succeeding the following steps.

#### 30. Extract reporter information by Cutadapt

- a. Remove the spacer sequence of the adapters. Command:

```
cutadapt -g ^[spacersequence] -G NNNNNNN -discard-untrimmed -e 0.2 -o
samplename_trim1R1.fastq -p samplename_trim1R2.fastq samplename_
me_R1.fastq samplename_R2.fastq
```

[spacersequence] corresponds to the specific sequence of each adapter couple (see Table 1)

- b. Extracting the reporter position information from trim1 files. Command:

```
cutadapt -a ACAGGTTGGATGATA -A NNNNNNN -discard-untrimmed -e 0.2 -o
samplename_totR1.fastq -p samplename_totR2.fastq samplename_
trim1R1.fastq samplename_trim1R2.fastq
```

- c. Collecting the reporter position information from those with “recombined” status. Command:

```
cutadapt -a ACAGGTTGGATGATA -A TATTCTAGA -discard-untrimmed -e 0.2 -o
samplename_recR1.fastq -p samplename_recR2.fastq samplename_
trim1R1.fastq samplename_trim1R2.fastq
```

- d. From the files samplename\_totR1.fastq and samplename\_recR1.fastq, remove sequences shorter than 14 bp and longer than 24 bp. Command:

```
cutadapt -m 14 -M 24 -o samplename_totR1.fastq samplename_totR1.fastq
```

Repeat with the rec file.

- e. Remove low-quality reads. Command:

```
cutadapt -q 35 -o samplename_tot.fastq samplename_totR1.fastq
```

Repeat with the rec file.

**Note:** Two resulting files, samplename\_tot.fastq and samplename\_rec.fastq will be used for further steps. The former represents the reporter position information no matter how the recombination status is for each reporter, and the later contains the reporter position of “recombined” status. Other intermediate files can be discarded (do not discard raw sequencing results files).

#### 31. Using a text edit software, create a reference genome file in multi-FASTA format. Assemble all the chromosome and/or plasmid sequences in the genome in one file with different entries (e.g., > chr1, > chr2 ...). Save as refgenome.fa

**Note:** It is suggested to include the SC2 reporter delivering plasmid in the genome file. It will allow you to detect how often pEE22 was integrated into the host genome and how much those non-informative reads were present in the library. pEE22 was deposited in Addgene.

#### 32. Align treated sequence results with the reference genome using BWA.

- a. Command:
 

```
bwa index refgenome.fa
bwa aln refgenome.fa samplename_tot.fastq > samplename_tot.sai
bwa samse refgenome.fa samplename_tot.sai samplename_tot.fastq > sam-
plename_tot.sam
```
- b. Repeat step a with the rec file.

From now on, the analysis will be performed in MATLAB. The scripts (available at Mendeley, see [Key Resources Table](#)) have to be kept in the same folder.

33. Extract SC2 reporter insertion site and direction information. Resulting MATLAB file (cell lists) composed of matrices, each of them corresponds to chromosome or plasmid. Similar to .wig file, number of rows equals to the size of chromosome or plasmid.
  - a. Launch MATLAB.
  - b. "Add path" or navigate to the folder containing the scripts.
  - c. In the Command Window, type: `sam2wig`
  - d. Select the .sam files (samplename\_tot.sam and samplename\_rec.sam). Multiple .sam files can be processed at the same time.
  - e. New files (e.g., samplename\_tot\_wig.mat and samplename\_rec\_wig.mat) will appear in the folder with .sam files.

**Note:** During this process, the script takes into account the reads that map only once in the genome and those mapped more than once in the genome are disregarded.

34. Combine two matrices for total reads and recombined reads into one workspace.
  - a. In the Command Window, type:
 

```
combineSC2('samplename')
```
  - b. Select paired files: samplename\_tot\_wig.mat and samplename\_rec\_wig.mat
  - c. Once files are loaded, metadata table will appear in the Command Window. You can register accordingly. Entries include:
    - i. "SSR system" refers to the Site-Specific Recombination system used for the experiment. The default is Cre-loxP.
    - ii. "Growth medium" refers to the growth conditions used in the recombination assay. The default is MM for minimal media.
    - iii. "Temperature" refers to the growth conditions used for the assay. The default is 30.
    - iv. "Drugs" refers to the additions of antibiotics or any other chemical compound supplemented during the experiment. The default is no drugs.
    - v. "Timepoint" refers to the period of time the recombinase was induced. The default is 0.
    - vi. "Inducer" refers to concentration of L-ara used for the induction. The default is ara0.02.
35. Create a workspace "strainname.mat," which contains the genome information as well as Hi-SC2 data mapped to the reference genome.
  - a. Create a GenBank file of each chromosome. Save as "strainname\_chr1\_cds.txt."
  - b. Create a nucleotide sequencing file of each chromosome. You can use .fasta file but the header line (with ">") must be removed. Save as "strainname\_chrX\_seq.txt."
  - c. Repeat steps a and b with all the chromosomes. No matter the replicon is chromosome or plasmid, use chr and numerical order (e.g., chr1, chr2, chr3...)
  - d. In the Command Window, type:
 

```
CreateGenomeFile
```
  - e. A table will appear in the Command Window. You register as follows:
    - i. "Genome file name" corresponds to the name of strain.
    - ii. "Features" include Hi-SC2 data (shown as SC2 because MATLAB does not allow to use hyphen), CDS information and any other features/genomic region of interest (see Note). Entries should be separated by comma (,).

- f. Select the file(s) "strainname\_chrX\_seq.txt." Select all applicable files at the same time.
- g. Select the file(s) "strainname\_chrX\_cds.txt." Select all applicable files at the same time.
- h. Select the combined Hi-SC2 file created above at step 34.

**Note:** Hi-SC2 plotting function (see below) also allows highlighting certain genomic regions in the figure to facilitate your analysis and/or presentation. To do so, such region(s) of interest must be registered before the step 35d. In the CreateGenomeFile.m, there is a section called "%Get Feature Data" (line 82–98). You can follow the instructions written in the code.

**Note:** CreateGenomeFile script also allows to add new Hi-SC2 data in a genome file already generated. To do so, use "strainname.mat" instead of "strainname" at the step 35e i. and only type "SC2" in the Features box at the step 35e ii.

36. Analyze and plot Hi-SC2 data.
  - a. In the Command Window, type:  
`Plot_HiSC2`
  - b. A box will appear in the Command Window.
    - i. "Resolution SC2" defines the size of sliding window for the plotting. The number corresponds to the size of window (bp) from the middle point. For example, the default number 5,000 corresponds to a sliding window of 10 kb.
    - ii. "Data" refers to the Hi-SC2 result(s) to plot. Enter "strainname" followed by "sample-name" separated by a comma. To plot multiple Hi-SC2 results at the same time, enter "strainname, samplename" pairs separated by a semicolon.
  - c. A box called "Other features to display and figure properties" will appear in the Command Window. In case of adding features in X-axis, each feature must be registered in a fashion with [Feature name, marker style, marker size]. Different features must be separated by semicolon.
  - d. Two different figures will appear:
    - i. "Recombination frequency" Figure shows Hi-SC2 results along the genome.
    - ii. "Comparative Tn hits" Figure shows insertion profile of Hi-SC2 reporter.

**Note:** To plot several Hi-SC2 results together, all the samples must be aligned with the same reference genome.

## EXPECTED OUTCOMES

In this protocol, we have described a new methodology to measure sister-chromatid contacts after replication. This method relies on the combination of two very well-established techniques, Tn-seq analysis (van Opijnen et al., 2009) and site-specific recombination assays (Lesterlin et al., 2012).

Concerning the SC2 reporter insertion library, a random distribution along the genome is essential to obtain reliable results in Hi-SC2 (Figure 2 in (Espinosa et al., 2020)). For Hi-SC2 analysis, a tight regulation of recombinase expression is a key step in the experiment. The recombination frequencies of non-induced sample should be almost zero throughout the genome, whereas they should increase progressively over the time of induction (Figure 3).

## LIMITATIONS

This technique has been developed to study sister-chromatid contacts, and this protocol uses *V. cholerae* as the organism of interest along with Mariner transposon-based SC2 reporter which targets 5'-TA-3' dinucleotides. Although we have tested only a few  $\gamma$ -proteobacteria species, Hi-SC2 is applicable to other bacteria and eukaryotic cells. Due to the nature of Mariner transposon, sufficient SC2 reporter insertion throughout the genome might be limited in bacteria with extremely high GC content. It is possible to engineer SC2 reporter with different transposon such as Tn5 or Mu.

Furthermore, for eukaryote species, it is possible to use LTR-retrotransposons or gamma-retroviruses for the delivery of SC2 reporter.

The Hi-SC2 method is based on the even insertion of a transposon in the genome of the studied organism. Insertions cannot be obtained into essential genes, impeding the analysis of the recombination frequency at a locus resolution at those positions. However, the analysis of the variations around those positions can be performed using a sliding window. For *V. cholerae*, we typically used a 10 kb resolution window.

## TROUBLESHOOTING

### Problem 1

SC2 reporter insertion exhibiting not even but extremely enriched at certain region in the chromosome.

### Potential Solution

It is especially important to obtain a random distribution of the SC2 reporter insertion in the genome. Before Hi-SC2 analysis, distribution of the SC2 reporter can be analyzed using Artemis ([Carver et al., 2012](#)). In case of biased insertions of the SC2 reporter in the genome, a different donor must be used ([Figure 1](#)).

### Problem 2

Low SC2 reporter insertion.

### Potential Solution

Several mutants exhibit slower growth rate or require special growth conditions, e.g., thermosensitive strains. If this is the case, the number of SC2 reporter insertions can be increased by changing conditions during conjugation. Performing a pilot experiment modifying the ratio of donor and recipient cells, the incubation time, or the growth temperature helps to decide the best conditions for conjugation.

### Problem 3

Recombination in the non-induced sample (step 18).

### Potential Solution

Addition of 0.1 mM IPTG efficiently represses the leaky expression of the arabinose promoter. Recombination in the not induced sample suggests that the  $P_{BAD}$  promoter was not completely repressed during the SC2 reporter insertion library preparation. A new conjugation (steps 8–10) should be performed.

### Problem 4

Low PCR product (step 26).

### Potential Solution

In case of low amount of PCR products, there are several options to increase the quantity of amplified DNA, we suggest to carry out them in the following order: (1) increase the number of PCR reactions, (2) increase the amount of DNA template, (3) increase the number of cycles (up to 19). Also, repetition from the ligation step can be performed (step 24).

## RESOURCE AVAILABILITY

### Lead Contact

Further information and requests for resources and reagents should be directed to and will be fulfilled by the Lead Contact, François Xavier Barre ([francois-xavier.barre@i2bc.paris-saclay.fr](mailto:francois-xavier.barre@i2bc.paris-saclay.fr)).

### Materials Availability

pEE22 plasmid generated in this study has been deposited in Addgene.

### Data and Code Availability

*E. coli* transposon insertion data are available in Array Express Database (<https://www.ebi.ac.uk/arrayexpress/>). Codes generated during this study are deposited in Mendeley Database (<https://data.mendeley.com/>).

### ACKNOWLEDGMENTS

This research was supported by the ERC program FP7/2007-2013, grant number 28159 (to F-X.B.) and the French National Research Agency, grant numbers ANR-16-CE12-0030-0 and ANR-18-CE12-0012-03 (to F-X.B.), grant number ANR-18-CE35-0008 (to Y.Y.). We thank the high-throughput facility of the I2BC and Jihane Challita, Adrien Camus, and Sandra Daniel for suggestions on the manuscript.

### AUTHOR CONTRIBUTIONS

Conceptualization, F-X.B. and E.E.; Investigation, Y.Y. and E.E.; Formal Analysis, Y.Y., E.E., and F-X.B.; Software, F-X.B.; Writing – Original Draft, Y.Y. and E.E.; Writing – Review & Editing, Y.Y., E.E., and F-X.B.; Funding Acquisition, Y.Y. and F-X.B.

### DECLARATION OF INTERESTS

The authors declare no competing interests.

### REFERENCES

- Carver, T., Harris, S.R., Berriman, M., Parkhill, J., and McQuillan, J.A. (2012). Artemis: an integrated platform for visualization and analysis of high-throughput sequence-based experimental data. *Bioinformatics* 28, 464–469.
- Demarre, G., Guérout, A.-M., Matsumoto-Mashimo, C., Rowe-Magnus, D.A., Marlière, P., and Mazel, D. (2005). A new family of mobilizable suicide plasmids based on broad host range R388 plasmid (IncW) and RP4 plasmid (IncPalphi) conjugative machineries and their cognate *Escherichia coli* host strains. *Res. Microbiol.* 156, 245–255.
- Espinosa, E., Paly, E., and Barre, F.-X. (2020). High-Resolution Whole-Genome Analysis of Sister-Chromatid Contacts. *Mol. Cell* 79, 857–869.
- Ferrières, L., Hémerly, G., Nham, T., Guérout, A.-M., Mazel, D., Beloin, C., and Ghigo, J.-M. (2010). Silent mischief: bacteriophage  $\mu$  insertions contaminate products of *Escherichia coli* random mutagenesis performed using suicidal transposon delivery plasmids mobilized by broad-host-range RP4 conjugative machinery. *J. Bacteriol.* 192, 6418–6427.
- Lesterlin, C., Gigant, E., Boccard, F., and Espéli, O. (2012). Sister chromatid interactions in bacteria revealed by a site-specific recombination assay. *EMBO J.* 31, 3468–3479.
- Li, H., and Durbin, R. (2010). Fast and accurate long-read alignment with Burrows-Wheeler transform. *Bioinformatics* 26, 589–595.
- Li, H., Handsaker, B., Wysoker, A., Fennell, T., Ruan, J., Homer, N., Marth, G., Abecasis, G., and Durbin, R.; 1000 Genome Project Data Processing Subgroup (2009). The Sequence Alignment/Map format and SAMtools. *Bioinformatics* 25, 2078–2079.
- Martin, M. (2011). Cutadapt removes adapter sequences from high-throughput sequencing reads. *EMBnet J* 17, 10.
- Mitra, A., Skrzypczak, M., Ginalski, K., and Rowicka, M. (2015). Strategies for achieving high sequencing accuracy for low diversity samples and avoiding sample bleeding using illumina platform. *PLoS One* 10, e0120520.
- van Opijnen, T., Bodi, K.L., and Camilli, A. (2009). Tn-seq: high-throughput parallel sequencing for fitness and genetic interaction studies in microorganisms. *Nat. Methods* 6, 767–772.