



HAL
open science

FRIPON: a worldwide network to track incoming meteoroids

F. Colas, B Zanda, S Bouley, S Jeanne, A Malgoyre, M Birlan, C Blanpain, J. Gattacceca, Laurent Jorda, J Lecubin, et al.

► **To cite this version:**

F. Colas, B Zanda, S Bouley, S Jeanne, A Malgoyre, et al.. FRIPON: a worldwide network to track incoming meteoroids. *Astronomy and Astrophysics - A&A*, 2020, 644 (6), pp.A53. 10.1051/0004-6361/202038649 . hal-03097279

HAL Id: hal-03097279

<https://hal.science/hal-03097279>

Submitted on 5 Jan 2021

HAL is a multi-disciplinary open access archive for the deposit and dissemination of scientific research documents, whether they are published or not. The documents may come from teaching and research institutions in France or abroad, or from public or private research centers.

L'archive ouverte pluridisciplinaire **HAL**, est destinée au dépôt et à la diffusion de documents scientifiques de niveau recherche, publiés ou non, émanant des établissements d'enseignement et de recherche français ou étrangers, des laboratoires publics ou privés.



Distributed under a Creative Commons Attribution 4.0 International License

FRIPON: a worldwide network to track incoming meteoroids

F. Colas^{1,9,*}, B. Zanda^{2,1,9,*}, S. Bouley^{3,1,9}, S. Jeanne^{1,9}, A. Malgoyre^{7,9}, M. Birlan^{1,9,*}, C. Blanpain^{7,9}, J. Gattacceca^{5,9}, L. Jorda^{4,9}, J. Lecubin^{7,9}, C. Marmo³, J. L. Rault^{1,9,52}, J. Vaubaillon^{1,9}, P. Vernazza^{4,9}, C. Yohia^{7,9}, D. Gardiol¹⁰, A. Nedelcu^{156,37}, B. Poppe^{18,40}, J. Rowe⁴⁵, M. Forcier^{16,17}, D. Koschny^{35,51,199}, J. M. Trigo-Rodríguez^{34,230,231}, H. Lamy^{33,136}, R. Behrend^{65,41}, L. Ferrière^{32,143}, D. Barghini^{10,11}, A. Buzzoni¹², A. Carbognani¹², M. Di Carlo²⁶, M. Di Martino¹⁰, C. Knapic¹³, E. Londero¹³, G. Pratesi^{14,22}, S. Rasetti¹⁰, W. Riva¹⁵, G. M. Stirpe¹², G. B. Valsecchi^{22,23}, C. A. Volpicelli¹⁰, S. Zorba¹³, D. Coward^{270,271}, E. Drolshagen^{18,40}, G. Drolshagen^{18,40}, O. Hernandez^{16,17}, E. Jehin^{33,133}, M. Jobin^{16,17}, A. King^{190,45,46}, C. Nitschelm^{31,155}, T. Ott^{18,40}, A. Sanchez-Lavega^{19,20}, A. Toni^{35,51}, P. Abraham⁵³, F. Affaticati¹⁸⁶, M. Albani¹⁸⁶, A. Andreis¹⁸⁷, T. Andrieu²¹⁸, S. Anghel^{37,73,156}, E. Antaluca⁵⁴, K. Antier^{9,44,52}, T. Appère⁵⁵, A. Armand¹¹⁶, G. Ascione¹¹⁸, Y. Audureau³, G. Auxepaules⁵⁶, T. Avoscan¹⁹⁷, D. Baba Aissa^{59,205}, P. Bacci²⁴⁴, O. Bădescu^{37,156}, R. Baldini²⁴⁵, R. Baldo⁵⁷, A. Balestrero¹⁵, D. Baratoux⁵⁸, E. Barbotin²⁶⁴, M. Bardy⁶⁰, S. Basso³⁰, O. Bautista⁶¹, L. D. Bayle⁶², P. Beck^{63,64}, R. Bellitto²⁵², R. Belluso²⁷, C. Benna¹⁰, M. Benammi^{66,67}, E. Beneteau¹⁴⁴, Z. Benkhaldoun^{38,68}, P. Bergamini⁶⁹, F. Bernardi²⁴⁶, M. E. Bertaina¹¹, P. Bessin¹⁵³, L. Betti²³³, F. Bettonvil^{50,35}, D. Bihel⁷⁰, C. Birnbaum^{9,43}, O. Blagoi^{156,37}, E. Blouri^{9,213}, I. Boacă^{156,37}, R. Boată^{210,37}, B. Bobiet⁷¹, R. Bonino¹¹, K. Boros²³⁴, E. Bouchet^{195,41}, V. Borgeot¹³⁰, E. Bouchez⁷², D. Boust⁷⁴, V. Boudon⁷⁵, T. Bouman⁷⁶, P. Bourget^{77,31}, S. Brandenburg^{49,35}, Ph. Bramond⁷⁸, E. Braun⁷⁹, A. Bussi¹⁹⁷, P. Cacault⁸⁰, B. Caillier⁸¹, A. Calegari^{136,33}, J. Camargo^{82,39}, S. Caminade⁸, A. P. C. Campana⁸³, P. Campbell-Burns⁴⁵, R. Canal-Domingo^{167,34}, O. Carell⁷⁰, S. Carreau⁸⁴, E. Cascone²³⁶, C. Cattaneo²⁴⁷, P. Cauhape¹²⁸, P. Cavier⁸⁵, S. Celestin⁸⁶, A. Cellino¹⁰, M. Champenois⁸⁸, H. Chennaoui Aoudjehane^{91,68}, S. Chevrier⁸⁶, P. Cholvy¹³⁸, L. Chomier⁸⁹, A. Christou^{90,45}, D. Cricchio²³⁷, P. Coadou¹⁰², J. Y. Cocaign^{94,222}, F. Cochard⁹², S. Cointin⁹³, E. Colombi²³⁵, J. P. Colque Saavedra^{155,31}, L. Corp⁹⁵, M. Costa¹⁵, F. Costard³, M. Cottier^{195,41}, P. Cournoyer^{16,17}, E. Coustal⁹⁷, G. Cremonese²⁴, O. Cristea^{37,209}, J. C. Cuzon⁷¹, G. D'Agostino¹⁵⁷, K. Daifallah^{205,59}, C. Dănescu^{156,185,37}, A. Dardon⁹⁸, T. Dasse^{9,43}, C. Davadan⁹⁹, V. Debs^{100,9}, J. P. Defaix¹⁰¹, F. Deleflie^{1,9}, M. D'Elia²³⁸, P. De Luca¹⁰³, P. De Maria¹⁸⁷, P. Deverchère¹⁸⁹, H. Devillepoix²⁶⁹, A. Dias^{7,9}, A. Di Dato²³⁶, R. Di Luca¹², F. M. Dominici²¹⁴, A. Drouard^{4,9}, J. L. Dumont¹⁰³, P. Dupouy¹⁰⁴, L. Duvignac¹⁰⁵, A. Egal^{106,196,1}, N. Erasmus²⁶⁵, N. Esseiva¹⁰⁷, A. Ebel¹⁰⁸, B. Eisengarten^{40,200}, F. Federici²⁴⁸, S. Feral²¹⁸, G. Ferrant¹⁰⁹, E. Ferreol¹¹⁰, P. Finitzer^{100,9}, A. Foucault⁷⁹, P. Francois^{114,223}, M. Frîncu^{183,184,37}, J. L. Froger⁸⁰, F. Gaborit¹¹⁵, V. Gagliarducci²³⁹, J. Galard¹¹⁶, A. Gardavot¹³², M. Garmier¹¹⁷, M. Garnung⁸⁶, B. Gautier¹¹⁸, B. Gendre^{270,271}, D. Gerard²¹⁷, A. Gerardi²³⁹, J. P. Godet²²⁹, A. Grandchamps^{16,17}, B. Grouiez¹¹⁹, S. Groult¹²¹, D. Guidetti²⁵, G. Giuli²⁴⁹, Y. Hello^{124,125}, X. Henry¹²⁶, G. Herbreteau¹²⁷, M. Herpin¹²⁸, P. Hewins^{1,9}, J. J. Hillairet¹³⁰, J. Horak¹⁹², R. Hueso^{19,20,34}, E. Huet⁹⁸, S. Huet^{122,125}, F. Hyaumé¹²⁹, G. Interrante²⁵⁹, Y. Isselin⁶⁹, Y. Jeangeorges¹⁰¹, P. Janeux¹³², P. Jeanneret¹³¹, K. Jobse^{48,35}, S. Jouin^{24,44}, J. M. Jouvard^{75,134}, K. Joy^{45,188}, J. F. Julien¹¹⁷, R. Kacerek⁴⁵, M. Kaire²⁷², M. Kempf^{135,40}, D. Koschny^{35,51,199}, C. Krier⁷¹, M. K. Kwon¹, L. Lacassagne²⁶⁸, D. Lachat^{158,41}, A. Lagain²⁶⁹, E. Laisné⁸⁵, V. Lanchares^{32,66}, J. Laskar¹, M. Lazzarin⁴², M. Leblanc¹³⁷, J. P. Lebreton⁸⁶, J. Lecomte⁹⁴, P. Le Dû^{111,215}, F. Lelong¹¹², S. Lera²³⁴, J. F. Leoni¹³⁸, A. Le-Pichon¹³⁹, P. Le-Poupon¹²⁹, A. Leroy¹⁴⁰, G. Leto²⁷, A. Levansuu¹⁴¹, E. Lewin⁶³, A. Lienard⁹³, D. Licchelli²⁵⁰, H. Locatelli¹⁴⁸, S. Loehle^{142,40}, D. Loizeau^{8,164}, L. Luciani¹⁴³, M. Maignan¹²⁹, F. Manca²⁵¹, S. Mancuso¹⁰, E. Mandon¹³¹, N. Mangold¹⁴⁴, F. Mannucci²⁸, L. Maquet^{1,9}, D. Marant¹⁴⁵, Y. Marchal⁷⁶, J. L. Marin⁹, J. C. Martin-Brisset¹⁴⁶, D. Martin^{191,45}, D. Mathieu¹⁴⁷, A. Maury^{211,31}, N. Mespoulet¹⁵⁹, F. Meyer¹⁴⁸, J. Y. Meyer¹¹⁰, E. Meza^{232,87}, V. Moggi Cecchi²¹, J. J. Moiroud^{193,194}, M. Millan^{196,34}, M. Montesarchio²⁴¹, A. Misiano¹⁵⁷, E. Molinari²⁹, S. Molau^{40,149}, J. Monari²⁵, B. Monflier¹⁵⁰, A. Monkos^{40,201}, M. Montemaggi²⁵², G. Monti²⁴², R. Moreau¹⁵¹, J. Morin¹⁵², R. Mourgues¹⁵³, O. Mousis^{4,9}, C. Nablanc¹⁵⁴, A. Nastasi²³⁷, L. Niacșu^{206,37}, P. Notez¹⁴⁵, M. Ory^{158,41}, E. Pace²⁵³, M. A. Paganelli²¹⁴, A. Pagola²⁶⁷, M. Pajuelo^{1,221,87}, J. F. Palacián²⁶⁷, G. Pallier¹⁵⁴, P. Paraschiv^{37,156}, R. Pardini²³⁵, M. Pavone²⁵⁴, G. Pavy¹³⁰, G. Payen^{124,125}, A. Pegoraro²⁵⁵, E. Peña-Asensio^{34,230}, L. Perez¹¹², S. Pérez-Hoyos^{19,20,34}, V. Perlerin^{7,9,44}, A. Peyrot^{123,125}, F. Peth¹²⁰, V. Pic¹⁶⁰, S. Pietronave²⁴², C. Pilger^{40,203}, M. Piquel¹⁶¹, T. Pisanu²⁹, M. Poppe²⁰⁴, L. Portois¹⁶², J. F. Prezeau¹⁶³, N. Pugno²⁵⁶, C. Quantin¹⁶⁴, G. Quitté¹⁶⁵, N. Rambaux^{1,9}, E. Ravier⁸⁹, U. Repetti¹⁹⁷, S. Ribas^{167,34}, C. Richard⁷⁵, D. Richard¹⁶⁸, M. Rigoni²⁴³, J. P. Rivet¹⁶⁹, N. Rizzi²⁵⁷, S. Rochain⁹⁷, J. F. Rojas^{19,20,34}, M. Romeo¹⁵⁷, M. Rotaru^{9,43}, M. Rotger¹¹⁹, P. Rougier¹⁷⁰, P. Rousselot¹⁴⁸,

* Corresponding authors: F. Colas, e-mail: Francois.Colas@obspm.fr; B. Zanda, e-mail: Brigitte.Zanda@mnhn.fr; M. Birlan, e-mail: Mirel.Birlan@obspm.fr

J. Rousset¹³⁸, D. Rousseu¹²⁸, O. Rubiera^{196,34}, R. Rudawska^{35,51}, J. Rudelle¹⁷¹, J.P. Ruguet¹⁶⁸, P. Russo¹⁹⁸, S. Sales¹⁷², O. Sauzereau¹⁷³, F. Salvati¹⁰, M. Schieffer¹⁷⁴, D. Schreiner¹⁷⁵, Y. Scribano¹⁵², D. Selvestrel²⁴, R. Serra²⁵⁸, L. Shengold⁸⁸, A. Shuttleworth⁴⁵, R. Smareglia¹³, S. Sohy^{133,33}, M. Soldi²⁴³, R. Stanga²³³, A. Steinhauser^{9,213}, F. Strafella²³⁸, S. Sylla Mbaye^{1,212,272}, A. R. D. Smedley^{188,45}, M. Tagger⁸⁸, P. Tanga¹⁶⁹, C. Taricco¹¹, J. P. Teng^{123,125}, J. O. Tercu^{37,208}, O. Thizy⁹², J. P. Thomas²¹⁶, M. Tombelli²⁵⁹, R. Trangosi¹⁴⁰, B. Tregon¹⁷⁶, P. Trivero²⁶⁰, A. Tukkers^{47,35}, V. Turcu^{37,220}, G. Umbriaco⁴², E. Unda-Sanzana^{155,31}, R. Vairetti²⁶¹, M. Valenzuela^{227,228,31}, G. Valente²⁶², G. Varennes^{225,226}, S. Vauclair¹⁸⁹, J. Vergne²²⁴, M. Verlinden¹⁷⁹, M. Vidal-Alaiz^{9,214}, R. Vieira-Martins^{82,39}, A. Viel¹⁸⁰, D. C. Vintdevará^{37,219}, V. Vinogradoff^{96,89,9,29}, P. Volpini²⁴⁰, M. Wendling¹⁸¹, P. Wilhelm¹⁸², K. Wohlgemuth^{40,202}, P. Yanguas²⁶⁷, R. Zagarella²⁶³, and A. Zollo²⁴¹

(Affiliations can be found after the references)

Received 12 June 2020 / Accepted 7 October 2020

ABSTRACT

Context. Until recently, camera networks designed for monitoring fireballs worldwide were not fully automated, implying that in case of a meteorite fall, the recovery campaign was rarely immediate. This was an important limiting factor as the most fragile – hence precious – meteorites must be recovered rapidly to avoid their alteration.

Aims. The Fireball Recovery and InterPlanetary Observation Network (FRIPON) scientific project was designed to overcome this limitation. This network comprises a fully automated camera and radio network deployed over a significant fraction of western Europe and a small fraction of Canada. As of today, it consists of 150 cameras and 25 European radio receivers and covers an area of about 1.5×10^6 km².

Methods. The FRIPON network, fully operational since 2018, has been monitoring meteoroid entries since 2016, thereby allowing the characterization of their dynamical and physical properties. In addition, the level of automation of the network makes it possible to trigger a meteorite recovery campaign only a few hours after it reaches the surface of the Earth. Recovery campaigns are only organized for meteorites with final masses estimated of at least 500 g, which is about one event per year in France. No recovery campaign is organized in the case of smaller final masses on the order of 50 to 100 g, which happens about three times a year; instead, the information is delivered to the local media so that it can reach the inhabitants living in the vicinity of the fall.

Results. Nearly 4000 meteoroids have been detected so far and characterized by FRIPON. The distribution of their orbits appears to be bimodal, with a cometary population and a main belt population. Sporadic meteors amount to about 55% of all meteors. A first estimate of the absolute meteoroid flux (mag < -5; meteoroid size ≥ 1 cm) amounts to 1250/yr/10⁶ km². This value is compatible with previous estimates. Finally, the first meteorite was recovered in Italy (Cavezzo, January 2020) thanks to the PRISMA network, a component of the FRIPON science project.

Key words. meteorites, meteors, meteoroids – surveys – methods: observational – interplanetary medium

1. Introduction

The study of the physical and dynamical properties of interplanetary matter, such as interplanetary dust particles (IDPs), meteoroids, asteroids, comets, is crucial to our understanding of the formation and evolution of the solar system. This matter exists in many sizes, from micron-sized dust grains to several hundred kilometer-sized bodies. Whereas the largest bodies are routinely studied via Earth-based telescopic observations as well as less frequent interplanetary missions, the smallest bodies (diameter ≤ 10 m) are for the most part only observed and characterized when they enter the Earth's atmosphere as their entry generates enough light to be recorded by even the simplest types of cameras; the smaller particles are called meteors and the larger bodies are fireballs.

We know that ~ 100 tons of extraterrestrial material collide with the Earth daily, mostly as small particles less than 0.2 mm in size (Zolensky et al. 2006, Rojas et al. 2019). At present, these small particles, called IDPs, are actively being collected in the stratosphere, from polar ices (Duprat et al. 2007), and within impact features on spacecraft (Moorhead et al. 2020). For such particles, the stratospheric collections provide the least contaminated and heated samples. At the other end of the size distribution of extraterrestrial material colliding with the Earth, meteorites are fragments that have survived the passage through the atmosphere without internal chemical alteration, which have been recovered at the surface of the Earth. To date, all known meteorites are pieces of either asteroids, the Moon, or Mars, with

asteroidal fragments dominating the flux of material, whereas IDPs originate mostly from comets and possibly from asteroids (Bradley et al. 1996; Vernazza et al. 2015). The most detailed information on the processes, conditions, timescales, and chronology of the early history of the solar system (e.g., Neveu & Vernazza 2019; Kruijer & Kleine 2019 and references therein), including the nature and evolution of the particles in the pre-planetary solar nebula, has so far come from the study of all these extraterrestrial materials. Recovering intact samples of such materials is therefore a critical goal of planetary studies.

However, we are not very efficient at recovering the meteorites that hit the Earth. Estimates based on previous surveys (Bland et al. 1996) and on collected falls [Meteoritical Bulletin database¹] indicate that, for meteorites with masses greater than 100 g, probably less than 1 in 500 that fall on Earth are currently recovered. In addition, taking France as an example, recovery rates were significantly higher in the nineteenth century than they are now: 45 meteorites were observed to fall and found on the ground in the nineteenth century, whereas they were 5 times fewer in the twentieth century (Fig. 1), showing that there is at present a large potential for improvement. Hot and cold deserts are privileged dense collection areas, but most meteorites are found hundreds and up to millions of years after their fall (Hutzler et al. 2016; Drouard et al. 2019). They have thus been exposed to terrestrial alteration, which has partly obliterated the

¹ <https://www.lpi.usra.edu/meteor/metbull.php>

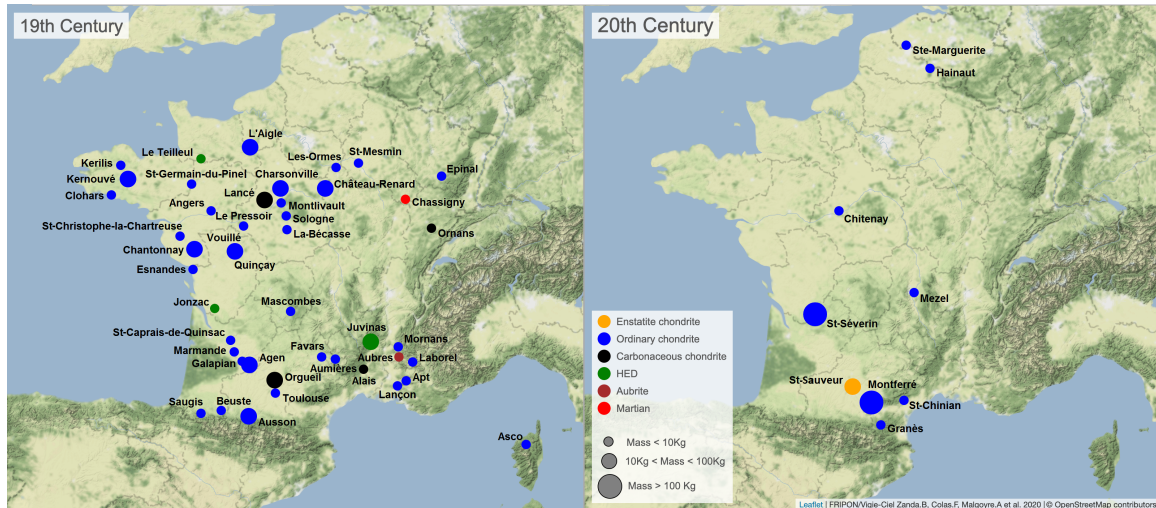


Fig. 1. Distribution of observed meteorite falls in France. In nineteenth century France, 45 meteorites were recovered after their fall was observed, a number that fell by a factor of 5 in the twentieth century. Even in the nineteenth century, witnessed falls were not randomly distributed. They were mostly located in the great river plains (Seine and Loire in the northwest, Garonne in the southwest, and Rhône valley in the southeast). In these regions, the population was denser, the view is free of obstacles (such as mountains), and the skies are often clear. The striking difference between the two centuries illustrates the need for distributed observers for meteorite recovery. Rural populations have declined because of urbanization in the twentieth century. A camera network such as FRIPON can monitor atmospheric entries and take over that role that was previously played by human observers. However, trained human eyes are still required to recover the meteorites; this is the aim of the Vigie-Ciel citizen science program (Colas et al. 2015).

scientific information they contain. Also, the critical information regarding their pre-atmospheric orbit is no longer available.

The most efficient approach for recovering freshly fallen meteorites is to witness their bright atmospheric entry via dense (60–120 km spacing) camera and radio networks. These networks make it possible to accurately calculate their trajectory from which both their pre-atmospheric orbit and their fall location (with an accuracy on the order of a few hundred meters) can be constrained.

Records of incoming meteorites started with the appearance of photographic plates at the end of the twentieth century. A first attempt to observe incoming bolides was made in the United States and consisted of a small camera network that was operated between 1936 and 1951 (Whipple 1938), but it was only in the middle of the twentieth century that the first fireball observation networks were developed with the aim of recovering meteorites. Two such networks were established in the 1960s. The first was the Prairie Network (McCrosky & Boeschenstein 1965) in the center of the United States, which remained operational from 1964 to 1975. This network comprised 16 stations located 250 km apart. Only one meteorite was recovered thanks to this network (Lost City, 1970; McCrosky et al. 1971). The low efficiency of the Prairie Network, despite the large area it covered (750 000 km²) mainly resulted from the low efficiency of the photographic plates, the large distance between the stations, and the slow pace of the data reduction process.

The European Fireball Network (EFN) was also developed in the 1960s, under the guidance of the Ondrejov Observatory, following the recovery of the Příbram meteorite in 1959 (Ceplecha 1960). It is still active, currently covers 1×10^6 km² with about 40 cameras, (Oberst et al. 1998) and benefits from modern equipment. So far, this network has enabled the recovery of nine meteorites (Table 1).

In 1971, the Meteorite Observation and Recovery Project (MORP) project was established over part of Canada and led to the recovery of the Innisfree meteorite (Halliday et al. 1978). The modern digital camera extension of this network, called the

Southern Ontario Meteor Network, led to the recovery of the Grimsby meteorite (Brown et al. 2011). The MORP project comprises 16 cameras and covers a surface area of 700 000 km². Other networks using photographic techniques have also been developed, such as the Tajikistan Fireball Network (Kokhirova et al. 2015), which consists of 5 cameras and covers 11 000 km². However, none of these other networks have made it possible to recover meteorites so far. We note the existence of other networks such as the SPMN network, which facilitated the recovery of the Villalbedo de la Peña (Trigo-Rodríguez et al. 2006) and Puerto Lápice (Llorca et al. 2009) meteorites, as well as the Finnish Fireball Network, which facilitated recovering the Annama meteorite (Gritsevich et al. 2014; Trigo-Rodríguez et al. 2015). Last, the Desert Fireball Network (Bland et al. 2012) was implemented in Australia in 2007. This network is based on high-resolution digital cameras and has made it possible to recover four meteorites: Bunburra Rockhole in 2007 (Spurný et al. 2012), Mason Gully in 2010 (Dyl et al. 2016), Murrili in 2015 (Bland et al. 2016), and Dingle Dell in 2016 (Devillepoix et al. 2018). The success of this network results from the efficiency of the cameras and the size of the network as well as an efficient data reduction and analysis process (Sansom et al. 2019a). A method to construct a successful fireball network is discussed in Howie et al. (2017).

As of today, there are 38 meteorites with reliable reconstructed orbits, 22 of which were detected by camera networks (see Table 1). Among the remaining 16 meteorites, 14 are the result of random visual observations such as the Chelyabinsk event (data from security cameras were used for orbit computation; Borovička et al. 2013a) and two meteorites were detected as asteroids before their fall (Almahata Sitta and 2018LA). During the same time interval (1959–2020), 397 meteorites were recovered after their falls were witnessed by eye (Meteoritical Bulletin Database).

The main limitation of current networks is their size. Most of these networks consist of a fairly small number of cameras spread over a comparatively small territory. Altogether, they

Table 1. Thirty-eight known meteorites with reliable orbit reference discovered by networks (“N”), visual observations (“V”) or telescopic observations (“T”).

| Year | Location | Type | Method | Ref |
|------|-----------------------|----------|--------|------|
| 1959 | Příbram | H5 | N | [1] |
| 1970 | Lost City | H5 | N | [2] |
| 1977 | Innisfree | L5 | V | [3] |
| 1991 | Benešov | LL3.5 | N | [4] |
| 1992 | Peekskill | H6 | V | [5] |
| 1994 | St-Robert | H5 | V | [6] |
| 2000 | Morávka | H5 | N | [7] |
| 2000 | Tagish Lake | C2-ung | V | [8] |
| 2002 | Neuschwanstein | EL6 | N | [9] |
| 2003 | Park Forest | L5 | V | [10] |
| 2004 | Villalbeto de la Peña | L6 | N | [11] |
| 2007 | Cali | H/L4 | V | [12] |
| 2007 | Bunburra Rockhole | Eucrite | N | [13] |
| 2008 | Almahata Sitta | Ureilite | T | [14] |
| 2008 | Buzzard Coulee | H4 | V | [15] |
| 2009 | Grimsby | H5 | N | [16] |
| 2009 | Jesenice | L6 | N | [17] |
| 2009 | Maribo | CM2 | V | [18] |
| 2010 | Mason Gully | H5 | N | [19] |
| 2010 | Košice | H5 | N | [20] |
| 2011 | Křiževci | H6 | N | [21] |
| 2012 | Sutter’s Mill | C | V | [22] |
| 2012 | Novato | L6 | N | [23] |
| 2013 | Chelyabinsk | LL5 | V | [24] |
| 2014 | Žd’ár nad Sázavou | LL5 | N | [25] |
| 2014 | Annama | H5 | N | [26] |
| 2015 | Creston | L6 | N | [27] |
| 2015 | Murrili | H5 | N | [28] |
| 2016 | Dingle Dell | LL6 | N | [29] |
| 2016 | Dishchii’bikoh | LL7 | V | [30] |
| 2016 | Stubenberg | LL6 | N | [31] |
| 2016 | Osceola | L6 | V | [32] |
| 2016 | Ejby | H5/6 | N | [33] |
| 2018 | Hamburg | H4 | V | [34] |
| 2018 | 2018 LA | — | T | [35] |
| 2019 | Renchen | L5-6 | N | [36] |
| 2020 | Cavezzo | — | N | [37] |
| 2020 | Novo Mesto | L6 | V | [38] |
| 2020 | Ozerki | L6 | V | [39] |

References. [1] Cepelcha 1960; [2] McCrosky et al. 1971; [3] Halliday et al. 1981; [4] Spurný et al. 2014; [5] Brown et al. 1994; [6] Brown et al. 1996; [7] Borovička et al. 2003; [8] Brown et al. 2000; [9] Spurný et al. 2003; [10] Simon et al. 2004; [11] Trigo-Rodríguez et al. 2006; [12] Trigo-Rodríguez et al. 2009; [13] Spurný et al. 2012; [14] Chodas et al. 2010; [15] Fry et al. 2013; [16] Brown et al. 2011; [17] Spurný et al. 2010; [18] Haack et al. 2010; [19] Dyl et al. 2016; [20] Borovička et al. 2013b; [21] Borovička et al. 2015; [22] Jenniskens et al. 2012; [23] Jenniskens et al. 2014; [24] Borovička et al. 2013a; [25] Spurný et al. 2020; [26] Trigo-Rodríguez et al. 2015; [27] Jenniskens et al. 2019; [28] Sansom et al. 2020; [29] Devillepoix et al. 2018; [30] Jenniskens et al. 2020; [31] Bischoff et al. 2017; [32] Gritsevich et al. 2017; [33] Spurný et al. 2017; [34] Brown et al. 2019; [35] de la Fuente Marcos & de la Fuente Marcos 2018; [36] Bischoff et al. 2019; [37] Gardiol et al. 2020; [38] <http://www.prisma.inaf.it/index.php/2020/03/03/the-daylight-fireball-of-february-28-2020/>; [39] Maksimova et al. 2020.

cover only 2% of the total surface of the Earth (Devillepoix et al. 2020). This implies that the number of bright events per year witnessed by these networks is small and that decades would be necessary to yield a significant number (≥ 100) of samples.

The Fireball Recovery and InterPlanetary Observation Network (FRIPON) scientific project was designed to contribute to this global effort to recover fresh meteorites. It comprises a network deployed over a large fraction of western Europe and a small fraction of Canada (see Fig. 2). As of today, this network consists of 150 cameras and 25 receivers for radio detection and covers an area of 1.5×10^6 km² (Sect. 2). The FRIPON network is coupled in France with the Vigie-Ciel citizen science program, the aim of which is to involve the general public in the search for meteorites in order to improve their recovery rate. In the present paper, we first describe the technology of the FRIPON network and its architecture, and finally we give the first results obtained after four years of observations and report on the first meteorite recovery in Italy² (Gardiol et al. 2020).

2. FRIPON science project

2.1. General description of the network

The FRIPON science project was originally designed by a core team of six French scientists from the Paris Observatory (IMCCE), the French National Museum of Natural History (MNHN-IMPMC), Université Paris-Saclay (GEOPS), and Aix-Marseille University (LAM / CEREGE / OSU Pythéas) to: (i) monitor the atmospheric entry of fireballs, that is, interplanetary matter with typical sizes greater than ~ 1 cm; (ii) characterize their orbital properties to constrain both their origin and fall location; and (iii) recover freshly fallen meteorites. This project benefited from a grant from the French National research agency (Agence Nationale de la Recherche: ANR) in 2013 to install a network of charged coupled device (CCD) cameras and radio receivers to cover the entire French territory. Specifically, the grant was used to design the hardware (Sect. 2.2), building on experience gained from previous networks; develop an efficient and automatic detection and data reduction pipeline (Sect. 2.3); and build centralized network and data storage architectures (Sect. 2.2.3). The FRIPON project is designed as a real-time network with the aim of triggering a field search within the 24 h that follow the fall in order to recover fresh meteorites. As of today, FRIPON-France consists of 105 optical all-sky cameras and 25 receivers for radio detection. These assets are homogeneously distributed over the territory, although the radio network is slightly denser in the south of France (Fig. 2).

Starting from 2016, scientists from neighboring countries were interested in joining the scientific project through the use of the FRIPON-France³ hardware, software, and infrastructure. This was the case for Italy (PRISMA network; Gardiol et al. 2016; Barghini et al. 2019), Germany (FRIPON-Germany), Romania (FRIPON-MOROI network; Anghel et al. 2019a; Nedelcu et al. 2018), the United Kingdom (FRIPON-SCAMP), Canada (FRIPON-DOME), the Netherlands (FRIPON-Netherlands), Spain (FRIPON-Spain), Belgium (FRIPON-Belgium), and Switzerland (FRIPON-Switzerland). Single FRIPON cameras were also made available to the following

² Discovered from observations by the PRISMA network, a component of the FRIPON network.

³ FRIPON-France is also known as FRIPON-Vigie-Ciel, in order to bring to the fore its citizen science component in France.

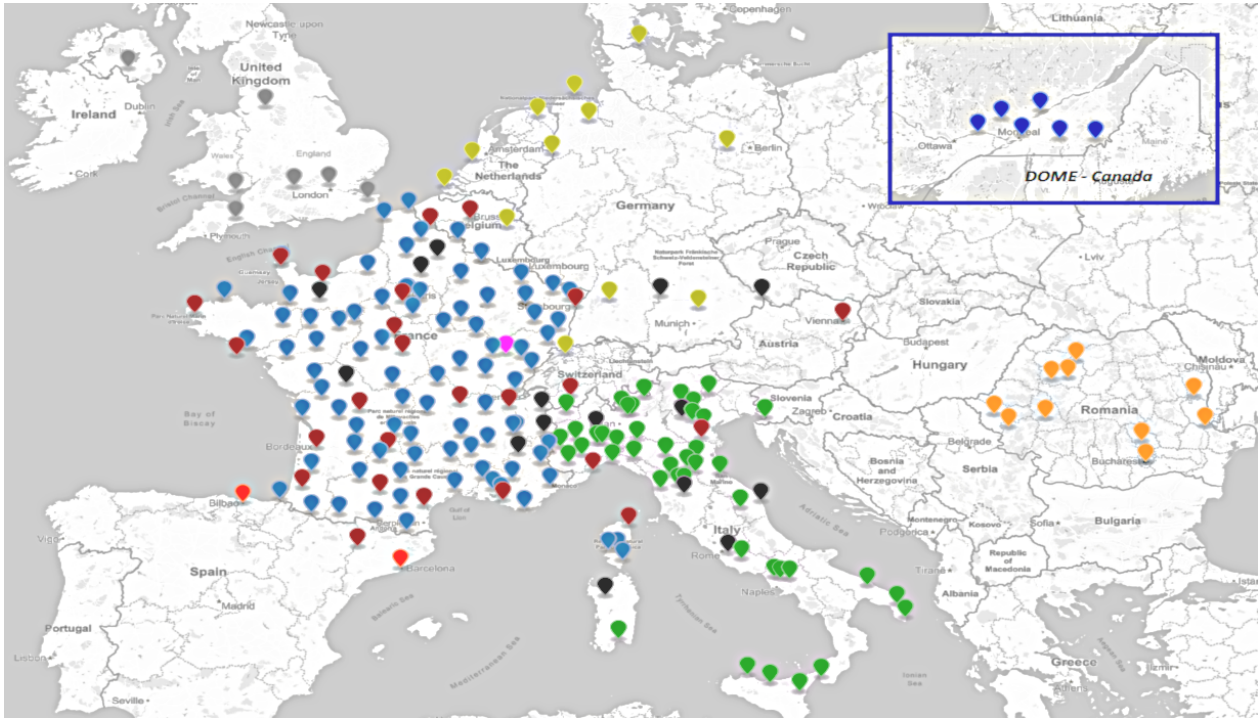


Fig. 2. FRIPON network map as of end 2019. The color code is the following: 1. Blue: FRIPON-France, optical stations. 2. Red: coupled optical camera and radio receiver stations. 3. Black: stations under development. 4. Green: PRISMA (Italy). 5. Light Orange: MOROI (Romania). 6. Yellow: FRIPON-Belgium/Netherlands/Germany/Denmark. 7. Gray: SCAMP (United Kingdom). 8. Dark blue: DOME (Canada). 9. Dark Orange: SPMN (Spain). 10. Pink: GRAVES radar.

countries to initiate new collaborations: Austria, Brazil, Chile, Denmark, Mexico, Morocco, Peru, and Tunisia. As of today, 150 cameras, using FRIPON technology, and 25 radio receivers are operational around the world (see Fig. 2).

The FRIPON science project regroups all the above-mentioned national networks, with all the cameras monitored and remotely controlled by the Service Informatique Pythéas (SIP; Aix-Marseille University, France), which maintains the whole network with the support of the scientific team. All the data from the FRIPON network are stored and processed in Marseille. The data processing consists of monthly astrometric and photometric reduction of the calibration images and daily processing of multi-detections. Two databases host the data. One stores the raw data and the other stores higher-level, processed data, such as orbits and trajectories. These data are available to all coinvestigators of the network⁴. On request, national data can be sent to a different reduction pipeline for alternate processing and storage⁵.

2.2. Hardware and observing strategy

2.2.1. Optical cameras

Since the early 2000s, digital cameras have been used by all networks that are deployed to monitor fireballs. Two alternate technical solutions are adopted. The first is based on a low-resolution detector (e.g., Southern Ontario Meteor Network; Brown et al. 2011), while the second relies on a high-resolution

detector (e.g., Desert Fireball Network; Bland et al. 2012). The measurements acquired by low-resolution cameras can be accurate enough to compute orbits and strewn fields as long as the network is dense, with numerous cameras. For example, the Southern Ontario Meteor Network, which has been operating in Canada since 2004, led to the recovery of the Grimsby meteorite (Brown et al. 2011). In the case of the FRIPON network, we followed the philosophy of the Canadian Fireball Network (Brown et al. 2011) as detailed hereafter.

We used a CCD Sony ICX445 chip with 1296×964 pixels and a pixel size of $3.75 \times 3.75 \mu\text{m}$. For the optical design, we used a 1.25 mm focal length F/2 fish-eye camera lens, which leads to a pixel scale of 10 arcmin. Given that fireballs are typically observed at an altitude between 100 and 40 km, we designed a network with a median distance of 80 km between cameras to perform an optimal triangulation. Jeanne et al. (2019) showed that the astrometric accuracy is on the order of 1 arcmin, equivalent to 30 m at a distance of 100 km. In Sect. 3, we show that the final accuracy on the trajectory is on the order of 20 m for the position and of 100 m s^{-1} for the velocity; this value is required for the identification of meteorite source regions in the solar system as shown by Granvik & Brown (2018).

The optical device and the CCD were embedded into a special case (Fig. 3) sealed with a transparent dome, thereby allowing us to record full-sky images. Moreover, these cases are equipped with a passive radiator, which serves to release the heat produced by the electronics during the warm periods of the year to minimize CCD dark current.

Each camera is controlled by an Intel NUCi3 computer on which the data are temporarily stored. A single power over ethernet (PoE) cable is used for data transfer and for powering and remotely managing the camera through a TPLINK (TL-SG22110P or 1500G-10PS) switch. Such a solution makes

⁴ <https://fireball.fripon.org>

⁵ For example, PRISMA data are also stored at the INAF IA2 (Italian Center for Astronomical Archives) facilities in Trieste (Knapic et al. 2014) and processed by an independent pipeline (Barghini et al. 2019, Carbognani et al. 2020).

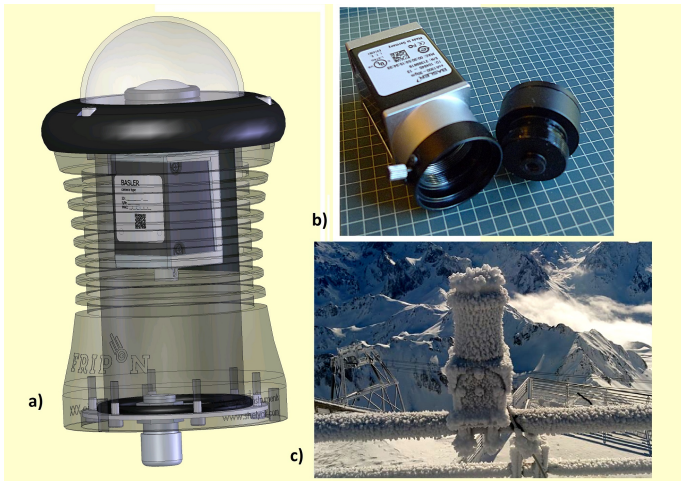


Fig. 3. Mosaic of technology developed for the FRIPON network: (a) Final design of optical detectors². (b) Core device comprising a Giga-Bit Ethernet camera and fish-eye optics. (c) FRIPON optical camera installed on the platform of Pic du Midi Observatory (2876 m altitude), in use during harsh weather conditions.

it easy to install the optical station and operate it remotely and to use cables up to 100 meters long between the camera and the computer. Figure 3 shows the design⁶ of the camera as well as its installation at the Pic du Midi Observatory.

2.2.2. Radio receivers

In addition to optical observations, we used the powerful signal of the GRAVES radar of the French Air Force. This radar is particularly well adapted for the detection, identification, and tracking of space targets including incoming meteoroids (Michal et al. 2005). Located near Dijon (Burgundy, central eastern France), its four main beams transmit nominally on a half-volume located south of a line between Austria and western France. However, the secondary radiation lobes of the radar make it possible to also detect meteors that disintegrate in the northern part of France. For such observations we do not need as tight a mesh as we do for the optical network. We have 25 stations with an average distance of 200 km, mainly in France, but also in Belgium, United Kingdom, Italy, Switzerland, Spain, and Austria. The GRAVES radar system transmits on 143.050 MHz in a continuous wave (CW) mode 24 hours a day. A meteoroid entering the E and D layers of the Earth ionosphere produces ions and free electrons generated by the ionization of air and of meteoroid molecules. The free electrons have the property of scattering radio waves according to “back or forward meteor scatter” modes when they are illuminated by a radio transmitter. The FRIPON radio setup is presented in the appendix.

2.2.3. Data storage and access

The FRIPON stations are composed of a Linux minicomputer, a wide-angle camera, and a manageable switch guaranteeing the isolation of the network of the host institute. The installation is done with an automated deployment system based on a USB key.

When connecting to the host, the station establishes a secure VPN tunnel to the central server of the FRIPON project hosted by the information technology department of the OSU Institut Pythéas (SIP) for all cameras and partner networks worldwide.

⁶ Shelyak Instruments, www.shelyak.com

The minicomputer is used for the acquisition and temporary storage of long exposure captures, and detections through the FreeTure open source software (Audureau et al. 2014) and a set of scripts. The data, which include astrometric long exposures images, single detection (stacked images), and multiple detections (both optical and radio raw data) are subsequently transferred to the central server.

The data collected on the server are then indexed in a database. During this operation, visuals are generated. When an optical event groups at least two stations, the FRIPON pipeline is executed to generate the dynamical and physical properties of the incoming meteoroid such as its orbit, its mass and its impact zone.

All the data are made available through a web interface that is accessible to the worldwide community in real time⁷. This interface makes it possible to display and download data in the form of an archive that complies with the data policy of the project by means of access right management.

2.2.4. Detection strategy

The acquisition and detection software FreeTure was specifically developed by the FRIPON team and runs permanently on the minicomputers (see Audureau et al. 2014 for a full description). The images corresponding to single detections by FreeTure are stored locally and a warning (time and location) is sent to the central server in Marseille. If at least one other station detects an event within ± 3 s, it is then treated as a “multiple detection”. We note that we implemented a distance criterion of less than 190 km to avoid false detections. This value was determined empirically by manually checking one year of double detections. This strategy works well during the night, but leads to 30% of false detections mainly during twilight.

Radio data corresponding to the last week of acquisition are only stored locally. Only radio data acquired at the time of an optical multi-detection are uploaded from the radio stations to the Marseille data center for processing.

2.3. Data processing

2.3.1. Optical data

Scientific optical data are CCD observations recorded at a rate of 30 frames per second (fps). This acquisition rate is necessary to avoid excessive elongation of the meteor in the images in the case of high speed fireballs. For example, a typical bolide with an average speed of 40 km s^{-1} at 100 km altitude at the zenith leads to a $20^\circ/\text{s}$ apparent speed on the sky and to a four pixel elongated trail on the CCD. It is larger than the average width of the point spread function (PSF; typically 1.8 pixels), but still easy to process for centroid determination. No dark and flatfield corrections are made.

However, almost no reference star is measurable on a single frame with such an acquisition speed, as the limiting magnitude is about zero. It is thus necessary to record images with a longer exposure time for calibration. We therefore recorded five second exposure images every ten minutes; the goal is to have a decent signal-to-noise ratio (S/N) up to a magnitude of 4.5 and to only marginally affect detection efficiency. Such a calibration strategy allows the detection of a few thousand calibration stars for a given camera on a clear night. To mitigate the effect of cloudy nights and breakdowns, we computed an astrometric calibration once per month for each station. This works for most cameras as

⁷ <https://fireball.fripon.org>

their mounts are rigid. However, we occasionally detected flexible mounts based on the repeated calibrations, which led us to shorten the masts of such stations.

Calibration procedure uses the ICRF2⁸ reference frame. The distortion function of the optical system is computed in the topocentric horizontal reference system. This allows for an astrometric solution for stars above 10 degrees of elevation with an accuracy of 1 arcmin. Our procedure leads to the calculation of the azimuth and the elevation of the bolides in the J2000 reference frame. More details regarding our astrometric calibration procedure can be found in [Jeanne et al. \(2019\)](#).

For the photometric reduction, we used the same frames as for the astrometric calibration, namely the long exposure frames. We then established a correspondence between the observed stars and those present in the HIPPARCOS catalog ([Bessell 2000](#)). The following steps are subsequently applied to calculate the absolute magnitude light curve of a meteor, namely: (i) determination of the flux of an equivalent magnitude 0 star at zenith and the linear extinction function of the air mass for one-month cumulative observation; (ii) measurement of the bolide flux on individual frames and conversion in magnitude; and (iii) conversion of the meteor magnitude Mag into an absolute magnitude $AMag$, defined as its magnitude at a distance of 100 km,

$$AMag_{\text{fireball}} = Mag_{\text{fireball}} - 5 \times \log_{10} \left(\frac{d}{100 \text{ km}} \right). \quad (1)$$

Figure 4 shows the final absolute magnitude light curve of an event recorded by 15 stations on 27 February 2019. We notice that the closest station saturates faster with a -8 magnitude plateau compared to the other cameras. These light curves are saturated at different times, depending on their distance to the bright flight. For the brightest part of the light curve, a saturation model will be applied in the future. At this point, we point out several limitations of our data reduction procedure as follows:

- clouds may partly cover the night sky, which may bias the measure of instrumental magnitudes;
- meteors are mainly detected at small elevations (typically below 30°). These records are therefore affected by nonlinearities of the atmospheric extinction;
- a uniform cloud layer can be the source of an under estimation of bolide magnitude.

The first photometric measurements of the FRIPON network are reflected in the histogram of all detections in Sect. 3.1.2. Routines to merge all light curves into one are now under development. As our data reduction is based on dynamics, the photometric curves are only used at present to detect major events.

To summarize, the astrometric reduction allows us to obtain an accuracy of one-tenth pixel or 1 arcmin for meteor measurements. Photometry is at that time only usable for events with an absolute magnitude lower than -8 with an accuracy of 0.5 magnitude.

2.3.2. Trajectory determination

Most of our method is described in [Jeanne et al. \(2019\)](#) and in [Jeanne \(2020\)](#) and is only be recalled briefly in this section. Owing to the limited accuracy of the Network Time Protocol (NTP; [Barry et al. 2015](#)), which is typically 20 ms, we first use a purely geometrical model (without taking into account time) by assuming that the trajectory follows a straight line, after the

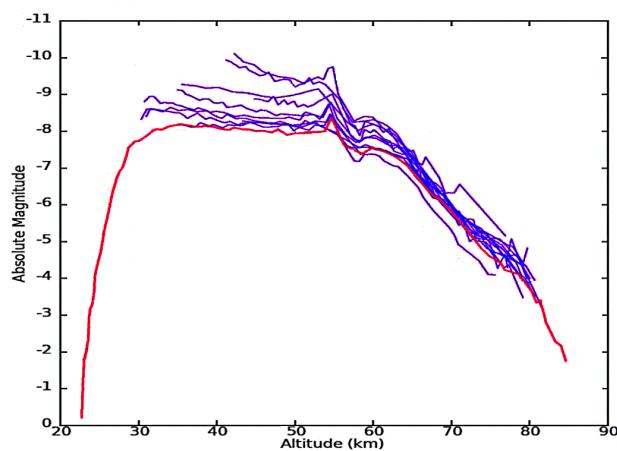
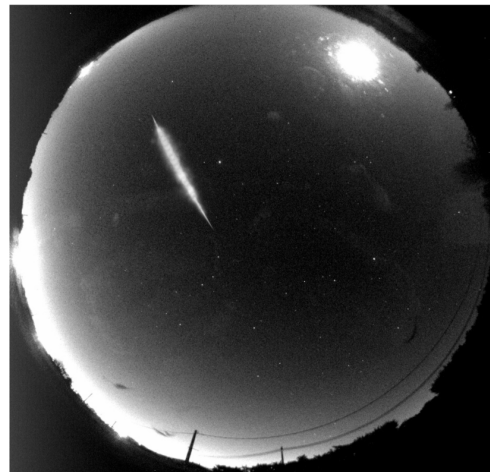


Fig. 4. *Top:* event on 27 February 2019 seen by the Beaumont-lès-Valence FRIPON camera. *Bottom:* absolute magnitude light curves of the event as seen by 15 cameras; the red curve is Beaumont-lès-Valence. It is clear that the saturation limit is around magnitude -8 (all the other light curves fall above this limit). Cameras located further away may be able to measure more non-saturated data, but all the cameras become heavily saturated as the bolide reaches its maximum luminosity.

approach of [Ceplecha \(1987\)](#). This method allows us to separate the space and time components of our measurements and to overcome the problem of temporal accuracy. We give special attention to global error estimation, which becomes accessible thanks to the large number of cameras involved in most of FRIPON's detections. By comparison, the detections of other networks usually involve fewer cameras, making external biases nonmeasurable and hard to evaluate.

The density of the FRIPON network makes it possible to observe an event with many cameras (15 in the case of the 27 February 2019 event; see Fig. 4). It is then possible to consider the external astrometric bias of each camera as a random error and to estimate it by a statistical method. Therefore, we developed a modified least-squares regression to fit the data taking into account the internal and external or systematic error on each camera.

We first estimate the internal error of each camera by fitting a plane passing through the observation station and all the measured points. The average internal error of the cameras amounts to 0.75 arcmin, which corresponds to 0.07 pixel. We also compute a first estimation of the external error by averaging distances between the observed positions of stars and those calculated from the HIPPARCOS catalog ([Bessell 2000](#)) in a

⁸ <http://hpiers.obspm.fr/icrs-pc/newwww/icrf/index.php>

neighborhood of 100 pixels around the meteor. We then compute a global solution using the modified least-squares estimator of the trajectory $\widehat{\mathcal{T}}_{\chi^2}$ given by the minimization of the following sum:

$$S(\mathcal{T}) = \sum_{i=1}^{n_{cam}} \sum_{j=1}^{n_i} \frac{\epsilon_{ij}(\mathcal{T})^2}{\sigma_i^2 + n_i s_i^2}, \quad (2)$$

where $\epsilon_{ij}(\mathcal{T})$ is the residual between the j th measure taken by the i th camera and the trajectory \mathcal{T} , σ_i is the internal error of the i th camera, s_i is the systematic error of the i th camera, and n_i is the number of images taken by the i th camera.

This method allows us to characterize the systematic errors of our cameras (e.g., a misaligned lens), but not errors such as the location of the camera. To tackle these errors, we compute a first estimate of the trajectory and we compare the residuals with the expected random and systematic errors. If they are larger than expected for a specific camera, we iteratively decrease its weight during the calculation of the trajectory. The final systematic error is usually on the order of 0.3 arcmin, which ends the iterative process.

Two geometric configurations lead to important errors or degeneracies in the trajectory determination: stations located too far from the fireball and stations aligned with the trajectory of the fireball. However, most of the time, the final bright flight straight line trajectory is known with a precision of a few tens of meters. In a second step, all individual data points with time stamps are projected on the straight line to be used afterward for dynamical purposes.

2.3.3. Orbit, drag, and ablation model

To compute the orbit of the bolide parent body, we need to measure its velocity before it has experienced significant interaction with the upper atmosphere. This interaction starts well before the bright flight. Therefore, we need a deceleration model to estimate the infinite velocity, even if the deceleration is not measurable, which happens to be the case for many events (especially the high speed events). This problem is complex because physical parameters evolve during atmospheric entry and moreover several parameters are unknown such as drag coefficient, object size, shape, density and strength. Like other teams (Lyytinen & Gritsevich 2016, Bouquet et al. 2014, Sansom et al. 2019b, etc...) we use a simple physical model to fit the bright flight data.

We used a dynamic model from Bronshten (1983), Eqs. (3) and (4). This model describes the deceleration and ablation of a meteoroid in an atmosphere based on the following three equations :

$$\frac{dV}{dt} = -\frac{1}{2}\rho_{atm}V^2c_d\frac{S_e}{M_e}\frac{s}{m} \quad (3)$$

$$\frac{dm}{dt} = -\frac{1}{2}\rho_{atm}V^3c_h\frac{S_e}{HM_e}s \quad (4)$$

$$s = m^\mu, \quad (5)$$

where c_d is the drag coefficient, c_h the heat-transfer coefficient, H is the enthalpy of destruction, ρ_{atm} is the gas density, m is the normalized meteoroid mass, M_e is the pre-entry mass, s is the normalized cross-section area, S_e is the pre-entry cross-section area, μ is the so-called shape change coefficient. The atmospheric gas density ρ_{atm} is taken from the empirical model NRLMSISE-00 (Lyytinen & Gritsevich 2016).

These three equations can be rewritten into two independent equations (Turchak & Gritsevich 2014). The equation of motion is written as

$$\frac{dV}{dt} = -\frac{1}{2}A\rho_{atm}V^2\exp\left(\frac{B}{A}\left(\frac{V_e^2}{2} - \frac{V^2}{2}\right)\right) \quad (6)$$

and the equation of mass is written as

$$m = \exp\left(\frac{B}{A(1-\mu)}\left(\frac{V^2}{2} - \frac{V_e^2}{2}\right)\right), \quad (7)$$

where A is a deceleration parameter (in square meters per kilogram) and B is an ablation parameter (in square meters per joule) as follows:

$$A = \frac{c_d S_e}{M_e} B = (1-\mu)\frac{c_h S_e}{HM_e}.$$

We used our model to fit the positions of each observation that is projected on the trajectory line (Jeanne et al. 2019). With this model, the observation of a meteor motion makes it possible to estimate the value of the three parameters V_e , A , and B . Using A and B rather than their ratio A/B , which is proportional to the enthalpy of destruction H of the meteoroid (Turchak & Gritsevich 2014), allowed us to avoid the numerical singularity when B gets close to zero. Jeanne (2020) demonstrated that the least-squares estimators of these three parameters have always defined variances and meaningful values, even in the case of faint meteors. Finally, we computed confidence intervals in the three-dimensional parameter space (V_e , A , B).

2.3.4. Dark flight

At the end of the bright flight, a meteoroid is subject only to aerodynamic drag (including winds) and gravity. At this stage, the meteoroid speed is too low to cause ablation (hence dark flight).

The equation of motion during dark flight is as follows:

$$\frac{d\vec{V}}{dt} = \frac{1}{2}A_f(V_w)\rho_{atm}V_w^2\vec{u}_w + \vec{g} \quad (8)$$

where $A_f(V_w)$ is the deceleration parameter of the fragment, which depends on the wind velocity (relative to the fragment) V_w . We used a local atmospheric model of wind retrieved from meteorological offices.

The end of the bright flight simulation gives us the initial conditions of the dark flight motion, namely the initial position, speed, and acceleration of the fragment. The initial condition of acceleration gives us a definition of A_{f_0} , the limit of A_f when wind velocity is huge in front of sound velocity c_s as follows:

$$A_{f_0} = A_f(V_w \gg c_s) = A\exp\left(\frac{V_0^2}{2} \cdot \frac{B}{A}\right). \quad (9)$$

The evolution of A_f as a function of wind velocity can be retrieved in Ceplecha (1987). Finally, we performed several computations using the Monte Carlo method to take into account the measurement errors of all the initial parameters to obtain a ground map (strewn field) as a function of the final mass of the bolide.

Of course, owing to the various simplifying assumptions made, we can only underestimate the size of the strewn field. However, we can see that varying unknowns, such as the object density or the drag parameter, only cause the strewn field to slide

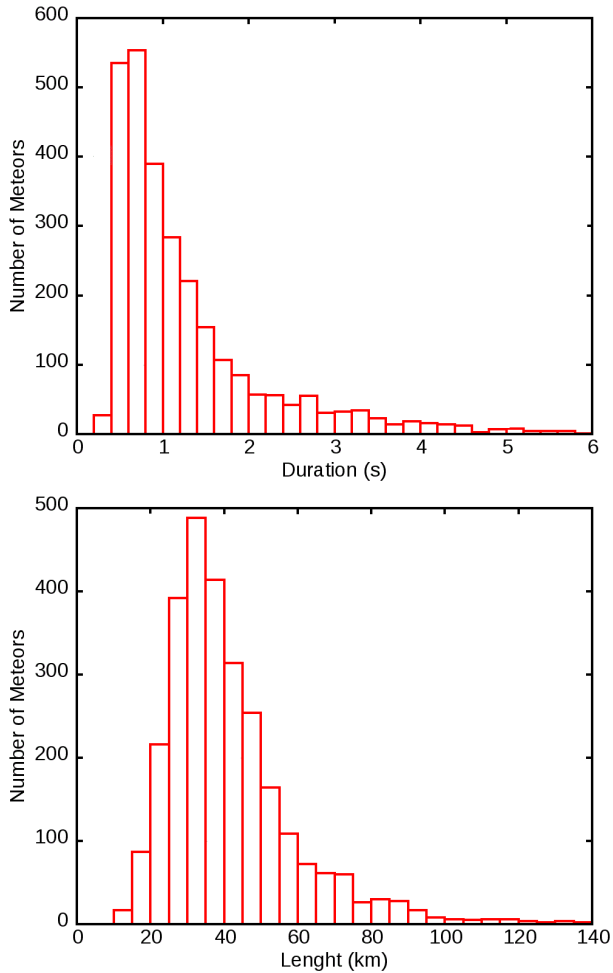


Fig. 5. Distribution of the duration (*top*) and length (*bottom*) of 3200 bright flights. The cutoff for short exposures (less than 0.5 s) is due to the acquisition software FreeTure (Audureau et al. 2014).

along its center line. In the end, the main unknown is the width of that strewn field in the direction perpendicular to its center line, which can be several hundred meters up to 1 km.

Taking the example of the 1 January 2020 fall in Italy (Gardiol et al. 2020), our determined strewn field with a 99% confidence level consisted of a thin strip 5.6 km long and 100 m wide. The actual meteorite was found only 200 meters from the central line of this strip. This demonstrates the accuracy of our method, the offset being mainly due to our approximating the meteorite shape as a sphere.

3. First results

3.1. Statistics and network efficiency

One of the main objectives of the FRIPON network is to measure the unbiased incoming flux of extraterrestrial matter. In this section, we first present the raw statistics of detected falls. Next, we attempt to constrain the absolute flux of incoming material.

3.1.1. Raw meteoroid detections

Figure 5 shows the histogram of duration and length of detected events. The average length of a meteor amounts to about 35 km and it lasts for about 0.8 s. Figure 6 shows the detection rate of

Table 2. Number of meteors observed for the different meteor showers per year.

| Code | Total | 2016 | 2017 | 2018 | 2019 |
|------|-------|------|------|------|------|
| GEM | 329 | 86 | 42 | 82 | 119 |
| PER | 462 | – | 134 | 174 | 154 |
| CAP | 38 | – | 4 | 19 | 15 |
| QUA | 37 | – | 9 | – | 28 |
| LYR | 27 | – | 13 | 8 | 6 |
| LEO | 29 | – | 12 | 16 | 1 |
| SDA | 37 | – | 9 | 20 | 8 |
| ORI | 15 | – | 8 | 7 | 0 |
| NTA | 33 | 2 | 11 | 11 | 9 |
| MON | 11 | 3 | 2 | 4 | 2 |
| SPE | 11 | – | 3 | 5 | 3 |
| STA | 9 | – | 1 | 6 | 2 |
| ETA | 5 | – | 1 | 2 | 3 |
| HYD | 24 | 6 | 1 | 8 | 9 |
| EVI | 12 | – | 7 | 4 | 1 |
| JXA | 5 | – | 2 | 3 | 0 |

Notes. The empty columns correspond to showers that fall outside the observation period from December 2016 to December 2019. The Quadrantides (QUA) were not observed in 2018 owing to a power outage during the first half of January.

the network between January 2016 and March 2020 as well as the average number of monthly clear night sky hours. Between 2016 and January 2019, we observed an increase in the number of detections that reflects the increasing number of installed cameras. Since January 2017, the annual number of detections appears to be fairly constant at around 1000 detections per year. Notably, the Perseid shower is the only shower standing out with regularity because of its high zenithal hourly rate (ZHR) and long duration. The shorter Geminid shower is less prominent (e.g., 2017 and 2018) because of greater cloud coverage. Weak meteor showers are not unambiguously detected in our data as a consequence of the photometric detection limitation of our cameras. As expected, our study shows a strong correlation between the monthly detection rate and the percentage of clear sky due to the local climate or to seasonal variations (or both, see Figs. 6 and C.1).

Figure 7 shows the radiant of 3200 fireballs detected since 2016 and Table 2 gives the number of detections for each shower per year. This figure presents that the main showers are detected and that the sporadic meteors are uniformly distributed over the celestial sphere except for part of the southern hemisphere, which is not at present within the reach of FRIPON. Overall, sporadic meteors represent 55% of the data.

3.1.2. Quantifying the absolute meteoroid flux

An important goal of the FRIPON network is to estimate the absolute flux of incoming meteoroids. For this purpose, it is mandatory to measure the efficiency of the network in terms of meteoroid discovery.

To estimate that flux, we need an estimation of the cloud coverage, the percentage of operational stations, and the sensitivity of our network as a function of meteor brightness. Regarding that last point, Fig. 8 shows the absolute magnitude histogram after three years of observations. Assuming a power-law size distribution for interplanetary matter (Brown et al. 2002), it appears that

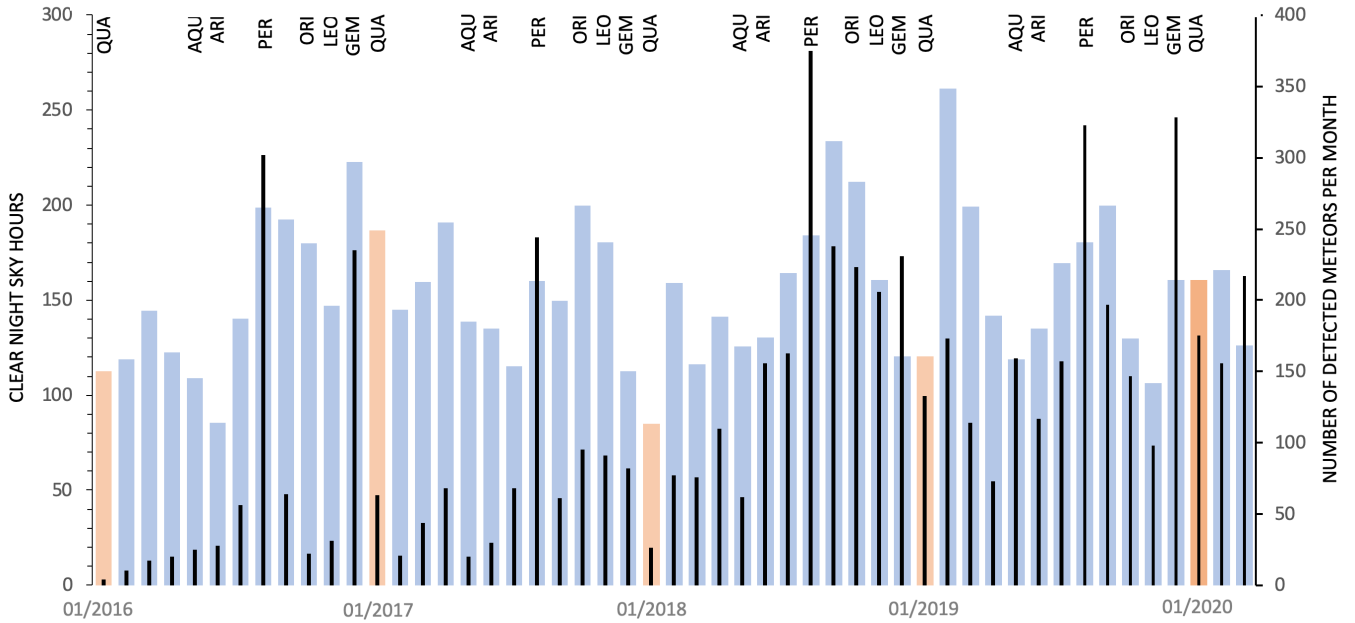


Fig. 6. Detection statistics for the last 3 yr of operation. Of a total of 3700 trajectories computed: double 58%, triple 20%, quadruple 8%, and more than 4 simultaneous detections 14%. The number of detections (black bars) gradually increases as the installation of the stations progresses. The blue bars (orange for January) indicate the number of clear night sky hours each month, making it possible to also visualize the effect of cloud cover. The main meteor showers are listed at the top.

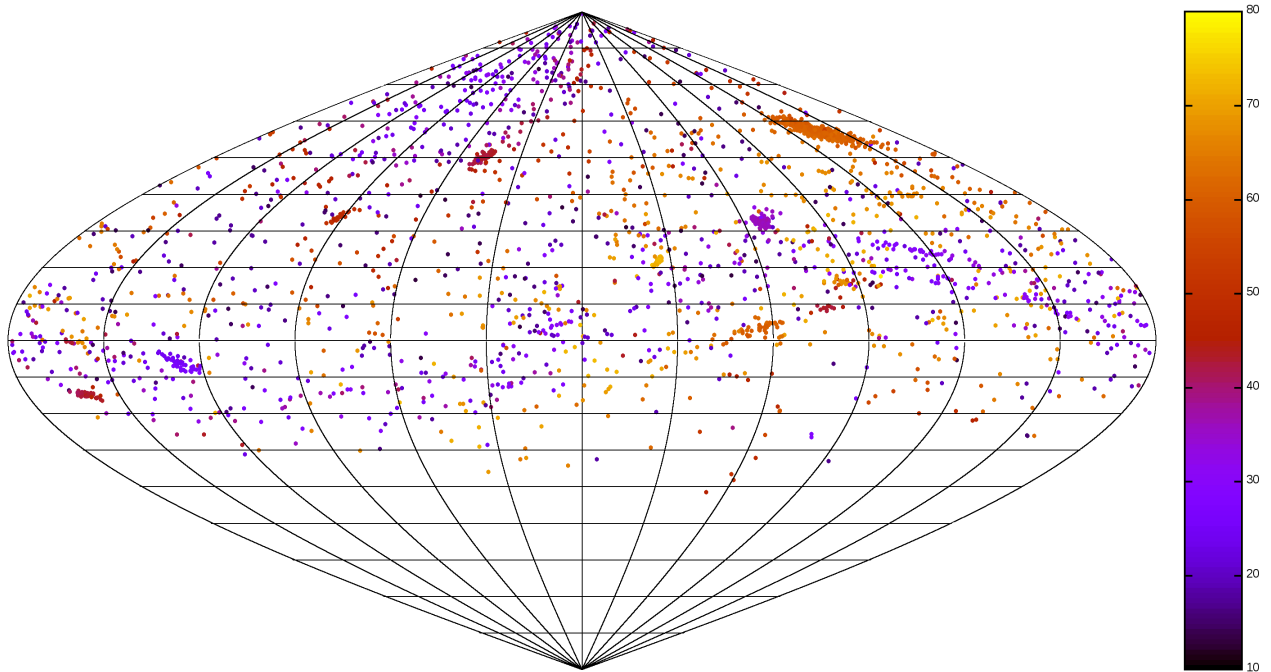


Fig. 7. Fireball radiant in Sanson-Flamsteed projection of equatorial coordinates from January 2016 to December 2019. The color scale corresponds to the initial velocity of the objects: (1) low velocities (in blue) for asteroidal like objects, (2) high velocities (in yellow) for cometary-like objects. The main showers are detected. Of the objects, 55% are sporadic: their radiants cover the sky uniformly except for its southern part, which is invisible from European latitudes. The north toroidal sporadic source is visible in the top left corner and low speed objects are shown along the ecliptic plane coming from the anti-helion source.

FRIPON is clearly not fully efficient for events fainter than -5 in magnitude. This detection threshold is similar to that of the Prairie network (Halliday et al. 1996) and implies, as for other networks (Devillepoix et al. 2020), a minimum detection size of ~ 1 cm for incoming meteoroids. We note that smaller objects can nevertheless be detected if their entry speed is high enough.

To calculate the efficiency of FRIPON, we only used the French stations as these were the first to be installed and France was fully covered in 2017. We considered its area, with a 120 km band added around it (Fig. C.1) for a total of 10^6 km², which was the basis for the calculation. For ≥ 1 cm meteoroids (i.e., for magnitude < -5 fireballs), we obtained an average rate of

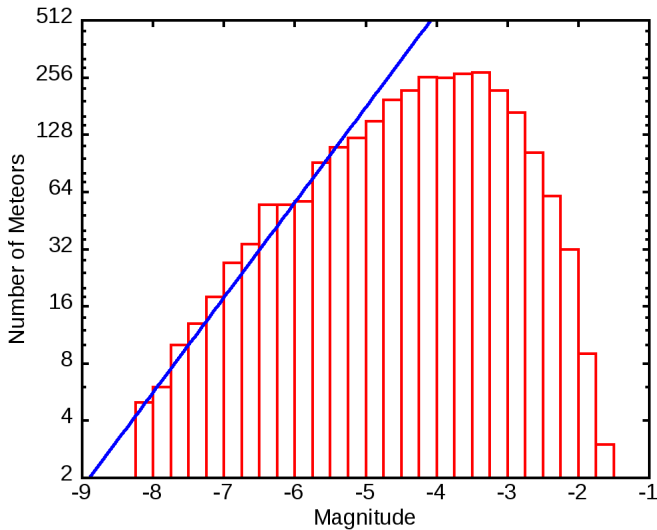


Fig. 8. Histogram of the absolute magnitude of all the events detected by the network showing that the exhaustive detection regime is only reached around mag -5 . The slope is compatible with that obtained by previous studies such as [Brown et al. \(2002\)](#), as shown on Fig. 11, which describes the distribution of interplanetary matter from 1 cm to 1 km. The global shape of the histogram is similar to that in [Ott et al. \(2014\)](#), which is shifted as CILBO cameras are more sensitive than FRIPON cameras.

250 events/yr/ 10^6 km². Last, to estimate the incoming meteoroid flux for ≥ 1 cm bodies, we needed to correct for dead time (day time: 0.5 and average cloud cover: 0.4). The dead time-corrected meteoroid flux for ≥ 1 cm meteoroids is 1250/yr/ 10^6 km², which is comparable to the 1500/yr/ 10^6 km² value given by [Halliday et al. \(1996\)](#). Our determination is raw and requires that we carry out a more detailed analysis in the future with more data. Our analysis shows that the network has reached a complete efficiency for the French territory for meteoroids larger than 1 cm.

3.1.3. Orbit precision

A precise determination of the orbit requires the extraction of a realistic initial velocity for the object. This can only be achieved by taking into account its deceleration in the upper atmosphere before the bright flight. Therefore our model of drag and ablation depends on three parameters (see Sect. 2.3.3): the initial velocity V , a drag coefficient A , and an ablation coefficient B . Depending on the quality of the data – for example, the number of cameras, weather conditions, and distance of the camera to the bolide – these three parameters do not have the same influence on the trajectory calculation and cannot be determined with the same accuracy. We classified the meteors in three categories:

1. Those whose deceleration is hardly noticeable ($A/\sigma_A < 2$), which represent 65% of all meteors.
2. Those for which only the deceleration is noticeable ($A/\sigma_A > 2$ and $B/\sigma_B < 2$), which represent 21% of all meteors. In those cases, the ablation is not observed.
3. Those for which both the deceleration and the ablation are noticeable ($A/\sigma_A > 2$ and $B/\sigma_B > 2$), which represent 14% of all meteors.

For dynamical studies, only the detections that fall in one of the last two categories (35% of all detections) can be used. The typical velocity accuracy is then 100 m s⁻¹, which is required both for the identification of meteorite source regions in the solar

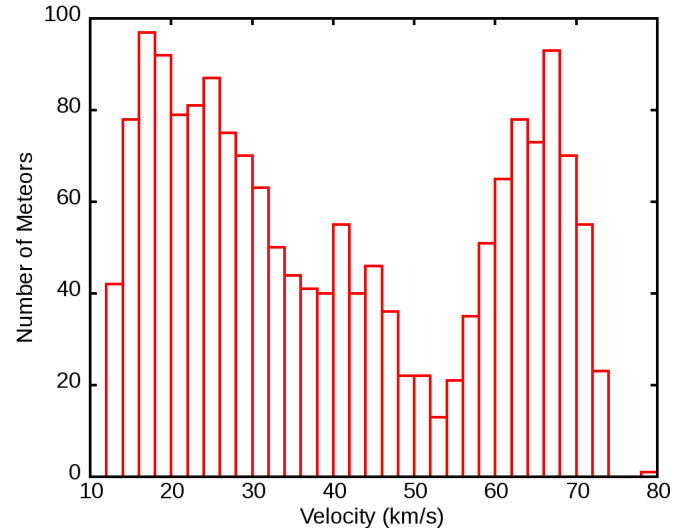


Fig. 9. Histogram of sporadic fireball entry velocities. Two populations can be observed: (1) low speed objects corresponding mostly to asteroidal orbits and (2) fast objects corresponding to TNOs or comet-like objects. This dichotomy has also been observed by [Drolshagen et al. \(2014\)](#) with the CILBO network for smaller objects.

system ([Granvik & Brown 2018](#)) and for the search for interstellar meteoroids ([Hajduková et al. 2019](#)).

3.2. Dynamical properties of the observed meteoroids

In the following, we restrict our analysis to sporadic meteors. The histogram of initial velocities is shown in Fig. 9. It reveals two populations of meteoroids whose entry velocities differ by about 50 km s⁻¹, suggesting an asteroidal (55%) and a cometary (45%) population. This result can also be inferred from the histogram of meteoroid detections as a function of the inverse of the semimajor axis of their orbit (Fig. 10). This figure clearly shows a main belt population with semimajor axes between that of Mars and that of Jupiter, as well as a cometary population, possibly including Oort cloud material, with semimajor axes greater than that of Jupiter. Last, we note the presence of a few meteoroids with negative semimajor axes. However, rather than concluding that interstellar matter was detected, we attribute these events to large errors associated with the calculation of their initial velocity. As a matter of fact, these events have semimajor axes that differ significantly from that of the interstellar object 1I/Oumuamua.

It is clear that in more than three years of observation, FRIPON has not detected any interstellar object so far. This compares to results obtained by other networks such as CMOR ([Weryk & Brown 2004](#)), who found that only 0.0008 % of the objects detected might be of interstellar origin; while a more recent work ([Moorhead 2018](#)) did not find interstellar candidate in CMOR data. In the case of the FRIPON network, only an upper limit of 0.1% can be given, but we expect the real value to be much lower. [Hajduková et al. \(2019\)](#) showed that no network so far has ever experienced a conclusive detection of an interstellar meteoroid. Most false detections are likely to stem from a bad error estimation, especially that of the initial speed, which requires an estimation of the drag coefficient.

3.3. Meteorite falls and first field search

Based on [Halliday et al. \(1989\)](#), about ten meteorites weighing more than 100 g must fall each year over the area covered by the

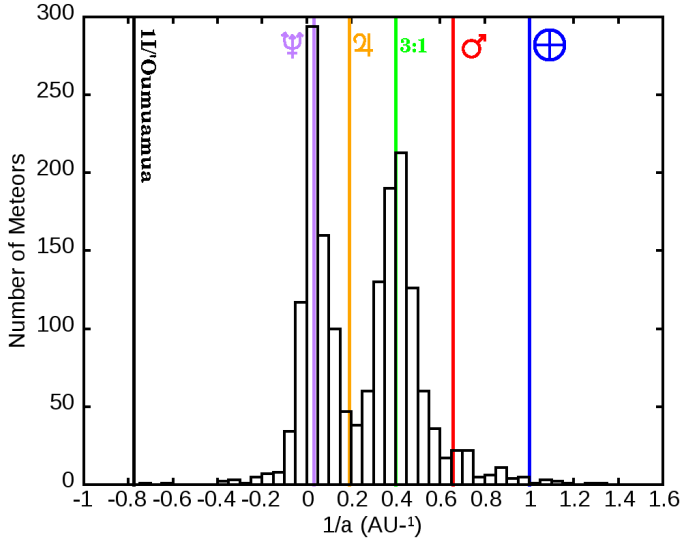


Fig. 10. Histogram of sporadic fireballs detected as a function of $1/a$. This value is proportional to the orbital energy, making it possible to highlight two populations of objects: (1) the slow objects (of asteroidal origin) with a maximum related to the 3:1 and ν_6 resonances (green line), which are the main sources of NEOs; and (2) the fast objects around Neptune (purple line). These two populations are separated by Jupiter (orange line). The figure also shows the orbits of the Earth (blue), Mars (red), and the interstellar object II/Oumuamua (black). The FRIPON orbits with negative ($1/a$) values suffer from large errors and certainly do not correspond to orbits of interstellar objects.

Table 3. 2016–2020 events with significant computed initial or final masses with a $m/\sigma_m > 2$.

| Name | Date | Initial mass (kg) | Final mass (kg) |
|---------------|------------|-------------------|-----------------|
| Roanne | 2016 08 06 | 1.6 | 0.550 |
| Karlsruhe | 2016 09 25 | 5.3 | 0.001 |
| Carlit | 2016 11 27 | 3.0 | 0.200 |
| Chambord | 2017 03 27 | 1.0 | 0.060 |
| Rovigo | 2017 05 30 | 1.4 | 0.150 |
| Golfe du Lion | 2017 06 16 | 12.2 | 0.840 |
| Sarlat | 2017-08-04 | 1.4 | 0.110 |
| Avignon | 2017 09 08 | 1.8 | 0.005 |
| Luberon | 2017 10 30 | 2.7 | 0.017 |
| Menez-Hom | 2018 03 21 | 6.0 | 0.001 |
| Quercy | 2018 11 01 | 27.0 | 0.001 |
| Torino | 2018 12 27 | 1.6 | 0.550 |
| Sceautres | 2019 02 27 | 1.4 | 0.110 |
| Glénans | 2019 09 08 | 6.4 | 0.540 |
| Saar | 2019 10 13 | 1.3 | 0.270 |
| Bühl | 2019 10 16 | 1.2 | 0.001 |
| Cavezzo | 2020 01 01 | 9.1 | 0.130 |
| Gendrey | 2020 02 16 | 1.5 | 1.100 |

Notes. σ_m is the standard deviation of the mass computed by the fit of our model.

FRIPON network. Table 3 lists the events that produced a computed significant initial and/or final mass. The fall rate that we observe for final masses equal or greater than 100 g is 2.7 per year. This value is compatible with that of Halliday et al. (1996), once corrected to take into account the 20% overall efficiency of

the FRIPON network (see above), as this yields a corrected rate of 14 falls per year. Among these events, only 1 led to the recovery of meteorite fragments. This event occurred near Cavezzo in Italy (Gardiol et al. 2020) and was detected by PRISMA cameras. Further details regarding the meteorite and its recovery will be presented in a forthcoming paper. This recovery is particularly important in showing that it is possible to find a 3 g stone thanks to the mobilization of the public with the help of various media (e.g., internet and newspapers). This strategy has worked well and can be reproduced for all comparatively small falls (typically a few dozen grams). In such cases, it is clear that the chances of finding the stone are low and do not warrant the organization of large searches, while an appeal to the general public may be fruitful. In the Cavezzo case, the meteorite was found on a path by a walker and his dog.

It is also possible to calculate the meteorite flux for objects with final masses greater than 10 g and compare this value with previous estimates found by Halliday et al. (1989) (81/yr/ 10^6 km²), Bland et al. (1996) (225/yr/ 10^6 km²), Drouard et al. (2019) (222/yr/ 10^6 km²), and Evatt et al. (2020) (149/yr/ 10^6 km²).

We chose to compute the flux of objects with final masses greater than 100 g for which the accuracy is moderate to high ($m/\sigma_m > 2$). This flux is 14 meteorites/yr/ 10^6 km² (see above). We extrapolated it down to a mass of 10 g, assuming a power-law distribution of the final masses of the meteorites (Huss 1990), and obtained a value of 94 meteorites/year/ 10^6 km², close to the value from Halliday et al. (1989); this is also based on fireball data. This value is, however, lower than the other estimates (Bland et al. 1996 and Drouard et al. 2019), which are based on field searches. The Evatt et al. (2020) estimate based on the study of meteorites found in Antarctic blue ice gives a mid-range value that is consistent with all previous estimates.

4. Perspectives

4.1. Extension of the network

Significantly increasing the area covered by the network (by at least an order of magnitude) will be fundamental in increasing the recovery rate of meteorites, as this will lead to the detection, over a reasonable period, of a statistically significant number of very bright meteors that might be recovered on the ground as meteorites. Hence, there is a major interest in extending the FRIPON network over all of Europe and to other parts of the world. Such an extension has already begun (see Fig. 2) and will be pursued over the coming years. The development plan includes, as a priority, the densification of the European coverage as well as its extension to southern countries such as Morocco, Algeria, and Tunisia. For Spain, FRIPON is complemented by the SPMN network (Trigo-Rodríguez et al. 2004), with which we already collaborate for trans-national events and with whom we organized a search for a possible meteorite fall in January 2019. Such a southern extension would be sufficient to generate a network area about ten times larger than that of metropolitan France. In addition, the network is currently also being developed in Canada in North America and in Chile in South America. Figure 11 shows that 30 objects larger than one meter fall on Earth (510×10^6 km²) every year. Taking into account the current surface area of the FRIPON network, the average expected detection rate of such objects is limited to an average of one in ten years. Extending the area of the network is thus a necessity to reach an acceptable detection rate for 1 m objects. An extension to Europe and North Africa would make it

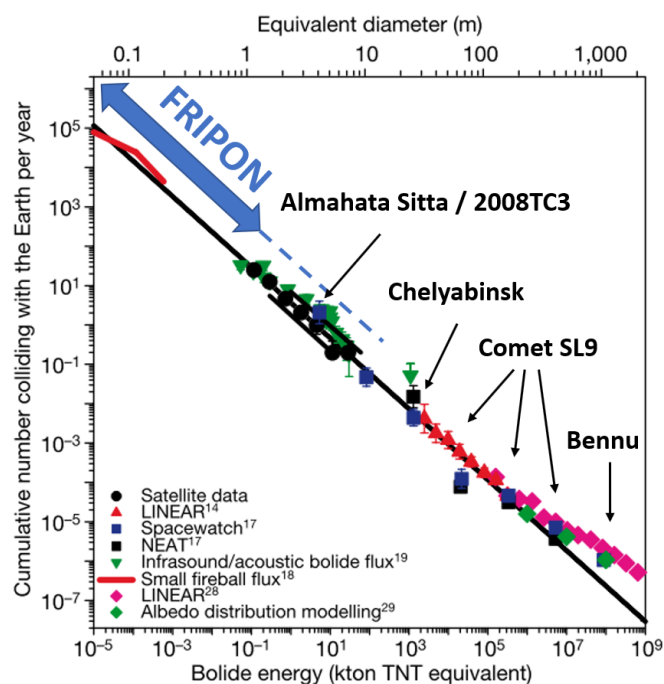


Fig. 11. Flux of small near-Earth objects colliding with the Earth (Brown et al. 2002). Data are shown over a range of 14 magnitudes in energy. The statistical model is based on near-Earth population for big sizes and, for the smaller objects, it is derived from a decade-long survey of ground-based observations of meteor and fireballs. The FRIPON network lies exactly between minor planets (detected by telescopes and planetary impacts) and interplanetary dust (detected by meteor networks). The solid arrow corresponds to FRIPON nominal mode; the dashed line is for rare events, observable by FRIPON but with a very low probability.

reach a surface area of $6 \times 10^6 \text{ km}^2$, which is comparable to that of the Australian DFN network (Devillepoix et al. 2016), leading to a probability of a one-meter event approximately every years.

4.2. Software

The reduction pipeline is operational and only requires minor improvements. The acquisition software FreeTure still shows a surprisingly high false detection rate, which requires that daylight observations are turned off at the moment. A new version using deep learning techniques is being developed so that daytime observations will become possible. The development of a tool to compute the light curve of heavily saturated events (Anghel et al. 2019b) is also planned.

4.3. Hardware

The hardware currently in use in the network corresponds to pre-2014 technology. A complete hardware update after five years of utilization is thus desirable to improve the temporal resolution of the light curves and the performance and flexibility of the acquisition computers. A non-exhaustive list of improvements includes upgrading from CCD to CMOS detectors and switching the current PCs to Raspberry Pi4 single board computers (SBCs).

In addition, a prototype of an all-sky radiometer is presently under development (Rault & Colas 2019), to resolve the saturation issue and improve on the bandwidth of the cameras. This radiometer covers the visible and near-infrared wavelengths. It

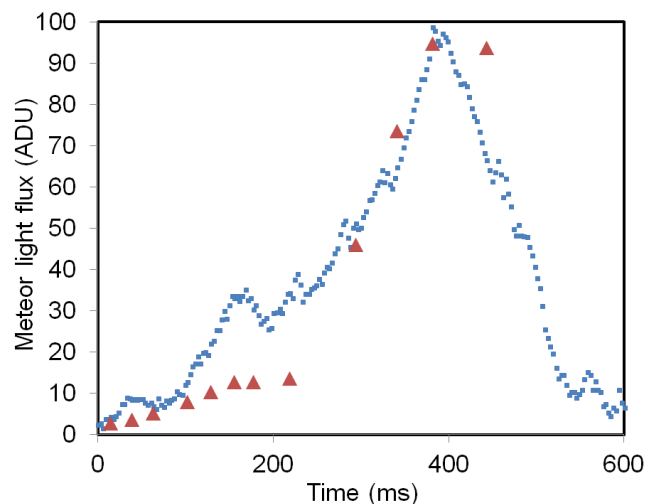


Fig. 12. Raw light flux from a bolide observed on 14 August 2019 at 03h07m02s UTC. Red triangles: Dijon FRIPON camera data (30 Hz, 12bits). Blue squares: radiometer prototype data (20 kHz, 14 bits). The faster acquisition rate and the higher amplitude dynamic range of the radiometer allows more detailed observations of the meteor fragmentation and of high speed luminosity variations.

is based on a 16 PIN photodiode matrix, followed by a trans-impedance amplification chain and a 14 bit industrial USB data acquisition module, which samples at a rate of 20 kHz. As an example, we superimposed on Fig. 12 the FRIPON camera light curve for an event of magnitude -9.5, which occurred on 14 August 2019 at 03:07:02 UTC and the corresponding high data rate radiometer light curve.

4.4. Radio

The aim of FRIPON radio receivers is an accurate measurement of meteor velocities through the Doppler effect, allowing a much better determination of the orbital data (especially semimajor axes). In Table 4, we present the value of the initial velocity and effective surface-to-mass ratio derived for a meteor observed on 15 October 2018 at 1:15 UTC by five cameras. The accuracy achieved with the radio data leads to errors one order of magnitude lower compared to that achieved with only the visible images. However, it seems at present that only about 30 % of the optical detections lead to a detectable radio signal and that several bright radio events do not have any visible counterpart. For this reason, radio data have not been widely used yet, and further work is needed to improve our understanding of the complex phenomena associated with the generation of radio echoes by the plasma surrounding the meteors. Over time, we came to the conclusion that detailed information on the fragmentation and final destruction of bolides might also be obtained thanks to the head echoes produced by the GRAVES HPLA radar. Last, we sometimes detected unexpected oscillations on the usually smooth Doppler shift curves (Rault et al. 2018), which indicates cyclic fluctuations on the radial positions of the radar cross section (RCS) of the plasma envelope surrounding the meteor bodies (see Fig. 13).

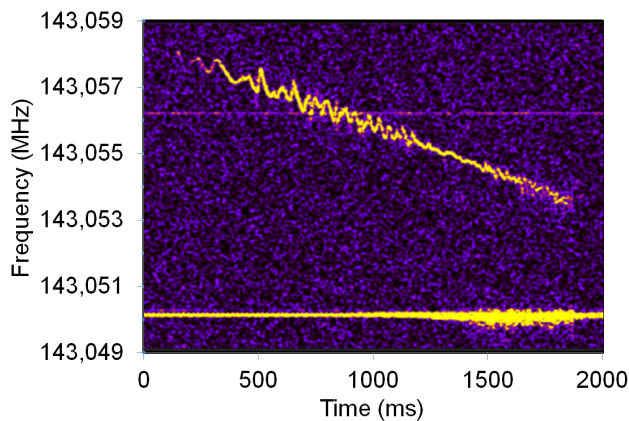
4.5. Cross-reference data with infrasound network

In recent years, infrasound has become an efficient technique, allowing for global detection of explosive sources in the atmosphere, and by extension of meteoroid atmospheric entries.

Table 4. Improvement of orbit precision by addition of radio data: example of the fireball of October 15, 2018.

| Sensor | Initial velocity km s ⁻¹ | Effective surface / mass ratio m ² kg ⁻¹ |
|-------------|--|---|
| Video | 66.49 ± 0.92 | <1.28 |
| Radio+Video | 66.09 ± 0.09 | 0.33 ± 0.14 |

Notes. First data reduction is based on all optical data. For the radio data, geometric model is first derived from the optical data. Then Doppler data are projected on the straight line of the trajectory, thus improving the speed and deceleration measurements by an order of magnitude.

**Fig. 13.** Cyclic Doppler fluctuations on radio echo of the bolide observed on 8 August 2018 at 02h25m UTC, as seen by the Sutrieu radio receiver. Initial speed was 25.8 km s⁻¹.

There is an ongoing effort to improve the identification of valid signals and optimize the detection threshold for the International Monitoring System (IMS) developed to enforce the Comprehensive Nuclear-Test-Ban Treaty (CTBT; Marty 2019). Studies have determined that the IMS system, completed by experimental infrasound networks, is able to identify approximately 25% of fireballs with $E > 100$ t (TNT equivalent) energy and can provide key ground-based confirmation of the impact (timing and geo-location). This is particularly significant, as most impacts occur over the ocean, where no other instruments are likely to record the bolides (Silber & Brown 2018).

It is expected that infrasonic observations of NEOs that regularly impact the Earth atmosphere will increase as the number of stations are deployed worldwide. Combining infrasound with optical observations, such as those collected by the dense network of cameras operated by FRIPON, would contribute to fill gaps in existing observation systems and help constraining source parameters, such as trajectory and energy deposition. The results become even more interesting in Europe, where the integration of national networks allows for a better characterization of smaller-energy events (Ott et al. 2019). The Atmospheric dynamics Research InfraStructure in Europe (ARISE) supports such multidisciplinary approaches by providing an extensive infrasound database for the estimation of NEOs potential risk and societal impact.

4.6. Other records

An extensive database of images covering a large area may be used for additional purposes. The study of transient luminous

events (TLEs), such as sprites or spatial debris re-entries, may be cited as examples (Cecconi et al. 2018). Since the Summer of 2017, the software FreeTure contains an experimental real-time algorithm for the detection of TLEs. This algorithm runs along with the meteor detection part on selected stations with a view to help localize TLEs observed by the future CNES space mission TARANIS (Blanc et al. 2017). The FRIPON network infrastructure can also be used to conduct large-scale light pollution monitoring campaigns using the all-sky calibration images collected over time (Jechow et al. 2018).

4.7. Observation from space

The network can also be extended vertically by combining space measurements with ground measurements. Space-borne observations have several advantages, such as providing a wide geographical coverage with one camera, longer recording times, and no weather constraints. The small satellite sector is evolving very quickly, opening up new opportunities for scientific missions (Millan et al. 2019). In particular, relatively inexpensive missions make it possible to design swarms of satellites or even constellations dedicated to monitoring the Earth and therefore meteors. In this framework, a University Cubesat demonstrator called Meteorix is under study (Rambaux et al. 2019). The Meteorix mission is dedicated to the observation and characterization of meteors and space debris entering the Earth's atmosphere. The orbit chosen for Meteorix is a low Earth sun-synchronous orbit at an altitude of 500 km. Such configuration will make it possible to detect on average a sporadic meteoroid entry per day and about 20 meteors during a major meteor shower. The nominal mission lifetime is one year. Three-dimensional astrometry and photometry would become possible in case of a detection over the FRIPON network.

5. Conclusion

The FRIPON scientific network, originally developed to cover the French territory, is now a fully automated network monitoring fireballs above part of western Europe and a small fraction of Canada. As of today, it consists of 150 cameras and 25 radio receivers covering an area of about 1.5×10^6 km². The level of automation of the network is such that a recovery campaign can be triggered only a few hours after a meteorite reached the surface of the Earth.

The FRIPON scientific project has been monitoring meteoroid entries in western Europe since 2016, thereby allowing the characterization of the dynamical and physical properties of nearly 4000 meteoroids. It has thus allowed us to significantly enhance the statistics of orbital parameters of meteoroids, while also searching for possible interstellar meteoroids. The FRIPON observations show that the distribution of the orbits of incoming bolides appears bimodal, comprising a cometary population and a main belt population. Sporadic meteors amount to about 55% of all meteoroids. In addition, we found no evidence for the presence of interstellar meteoroids in our sample. Overall, it appears that the range of sensitivity of the FRIPON network encompasses particles originating both from comets and asteroids. A first estimate of the absolute flux of meteoroids bigger than 1 cm amounts to 1250 /yr/10⁶ km², which is a value compatible with previous reports. We also estimate the flux of meteorites heavier than 100 g to 14/yr/10⁶ km², which is a value compatible with data from other fireball networks but lower than those obtained from collecting meteorites. Finally, the first

meteorite has been recovered in Italy following observations by the PRISMA network, a component of the FRIPON network.

Further extension of the FRIPON network is under way. In the coming years, it will be extended to North and West Africa as well as Canada and to the southern hemisphere in South America and South Africa. The goal is to reach a size large enough to allow the recovery of at least one fresh meteorite per year. In addition to the geographical extension of the network, technical developments will be conducted to improve the photometry of saturated images. Moreover, we plan to implement new algorithms in the detection software, so that daytime observations become possible and useful. Finally, we plan to fully exploit the radio network, both to improve current orbits and to reach a better understanding of the physical mechanism of meteoroid entries.

Acknowledgements. FRIPON was initiated by funding from ANR (grant N.13-BS05-0009-03), carried by the Paris Observatory, Muséum National d'Histoire Naturelle, Paris-Saclay University and Institut Pythéas (LAM-CEREGE). Vigie-Ciel was part of the 65 Millions d'Observateurs project, carried by the Muséum National d'Histoire Naturelle and funded by the French Investissements d'Avenir program. FRIPON data are hosted and processed at Institut Pythéas SIP (Service Informatique Pythéas), and a mirror is hosted at IMCCE (Institut de Mécanique Céleste et de Calcul des Éphémérides / Paris Observatory) with the help of IDOC (<https://idoc.ias.u-psud.fr>) (Integrated Data and Operation Center), supported by CNRS and CNES. PRISMA is the Italian Network for Systematic surveillance of Meteors and Atmosphere. It is a collaboration initiated and coordinated by the Italian National Institute for Astrophysics (INAF) that counts members among research institutes, associations and schools (<http://www.prisma.inaf.it>). PRISMA was partially funded by 2016 and 2020 Research and Education grants from Fondazione Cassa di Risparmio di Torino and by a 2016 grant from Fondazione Agostino De Mari (Savona). FRIPON-Bilbao is supported by a grant from Diputacion Foral Bizkaia (DFB/BFA). FRIPON-MOROI was supported by a grant of the Romanian Ministry of Research and Innovation, CCCDI - UEFISCDI, project number PN-III-P1-1.2-PCCDI-2017-0226/16PCCDI/2018, within PNCDI III. Rio de Janeiro camera is hosted and partially maintained by MAST (Museum of Astronomy and Related Sciences)/MCTIC. The Meteorix project acknowledges supports from labex ESEP (Exploration Spatiale des Environnements Planétaires), DIM-ACAV+ Région Île-de-France, Janus CNES, IDEX Sorbonne Universités and Sorbonne Université. We thank Maria Gritsevich for comments which have been very helpful in improving the manuscript.

References

- Abbey, T. 2013, *J. Br. Astron. Assoc.*, **123**, 169
- Anghel, S., Birlan, M., Nedelcu, D. A., & Boaca, I. 2019a, *Rom. Astron. J.*, **29**, 189
- Anghel, S., Birlan, M., Nedelcu, D.-A., & Boaca, I. 2019b, *EPSC-DPS Joint Meeting 2019*, Vol. 2019, EPSC-DPS2019-1758
- Audureau, Y., Marmo, C., Bouley, S., et al. 2014, Proceedings of the International Meteor Conference, Giron, France, 18-21 September 2014, ed. J.-L. Rault & P. Roggemans, 39
- Barghini, D., Gardiol, D., Carbognani, A., & Mancuso, S. 2019, *A&A*, **626**, A105
- Barry, M. A. T., Gault, D., Bolt, G., et al. 2015, *PASA*, **32**, e014
- Bessell, M. S. 2000, *PASP*, **112**, 961
- Bischoff, A., Barrat, J.-A., Bauer, K., et al. 2017, *Meteorit. Planet. Sci.*, **52**, 1683
- Bischoff, A., Barrat, J.-A., Berndt, J., et al. 2019, *Geochemistry*, **79**, 125525
- Blanc, E., Farges, T., Jehl, A., et al. 2017, *SPIE Conf. Ser.*, **10564**, 1056404
- Bland, P. A., Smith, T. B., Jull, A. J. T., et al. 1996, *MNRAS*, **283**, 551
- Bland, P. A., Spurný, P., Bevan, A. W. R., et al. 2012, *Aust. J. Earth Sci.*, **59**, 177
- Bland, P. A., Towner, M. C., Sansom, E. K., et al. 2016, *Ann. Meeting Meteorit. Soc.*, **79**, 6265
- Borovička, J., Spurný, P., Kalenda, P., & Tagliaferri, E. 2003, *Meteorit. Planet. Sci.*, **38**, 975
- Borovička, J., Spurný, P., Brown, P., et al. 2013a, *Nature*, **503**, 235
- Borovička, J., Tóth, J., Igaz, A., et al. 2013b, *Meteorit. Planet. Sci.*, **48**, 1757
- Borovička, J., Spurný, P., Šegon, D., et al. 2015, *Meteorit. Planet. Sci.*, **50**, 1244
- Bouquet, A., Baratoux, D., Vaubaillon, J., et al. 2014, *Planet. Space Sci.*, **103**, 238
- Bradley, J. P., Keller, L. P., Brownlee, D. E., & Thomas, K. L. 1996, *Meteorit. Planet. Sci.*, **31**, 394
- Bronshsten, V. A. 1983, *Physics of Meteoric Phenomena* (Dordrecht: D.Reidel Publishing Company)
- Brown, P., Ceplecha, Z., Hawkes, R. L., et al. 1994, *Nature*, **367**, 624
- Brown, P., Hildebrand, A. R., Green, D. W. E., et al. 1996, *Meteorit. Planet. Sci.*, **31**, 502
- Brown, P. G., Hildebrand, A. R., Zolensky, M. E., et al. 2000, *Science*, **290**, 320
- Brown, P., Spalding, R. E., ReVelle, D. O., Tagliaferri, E., & Worden, S. P. 2002, *Nature*, **420**, 294
- Brown, P., McCausland, P. J. A., Fries, M., et al. 2011, *Meteorit. Planet. Sci.*, **46**, 339
- Brown, P. G., Vida, D., Moser, D. E., et al. 2019, *Meteorit. Planet. Sci.*, **54**, 2027
- Carbognani, A., Barghini, D., Gardiol, D., et al. 2020, *Eur. Phys. J. Plus*, **135**, 255
- Cecconi, B., Le Sidaner, P., Tomasik, L., et al. 2018, ArXiv e-prints [arXiv:1811.12680]
- Ceplecha, Z. 1960, *Bull. Astron. Inst. Czechosl.*, **11**, 164
- Ceplecha, Z. 1987, *Bull. Astron. Inst. Czechosl.*, **38**, 222
- Chodas, P., Chesley, S., & Yeomans, D. 2010, *AAS/Division of Dynamical Astronomy Meeting*, **41**, 6.03
- Colas, F., Zanda, B., Bouley, S., et al. 2015, European Planetary Science Congress 2015, held 27 September–2 October, 2015 in Nantes, France, id.EPSC2015-604, 10, EPSC2015
- de la Fuente Marcos, C., & de la Fuente Marcos, R. 2018, *Res. AAS*, **2**, 57
- Devillepoix, H. A. R., Bland, P. A., Towner, M. C., et al. 2016, in International Meteor Conference Egmond, the Netherlands, 2-5 June 2016, ed. A. Roggemans & P. Roggemans, 60
- Devillepoix, H. A. R., Sansom, E. K., Bland, P. A., et al. 2018, *Meteorit. Planet. Sci.*, **53**, 2212
- Devillepoix, H. A. R., Cupák, M., Bland, P. A., et al. 2020, *Planet. Space Sci.*, **191**, 105036
- Drolshagen, E., Ott, T., Koschny, D., Drolshagen, G., & Poppe, B. 2014, Proceedings of the International Meteor Conference, Giron, France, 18-21 September 2014, ed. J. L. Rault & P. Roggemans, 16
- Drouard, A., Gattacceca, J., Hutzler, A., et al. 2019, *Geology*, **47**, 673
- Duprat, J., Engrand, C., Maurette, M., et al. 2007, *Adv. Space Res.*, **39**, 605
- Dyl, K. A., Benedix, G. K., Bland, P. A., et al. 2016, *Meteorit. Planet. Sci.*, **51**, 596
- Evatt, G., Smedley, A., Joy, K., et al. 2020, *Geology* <https://pubs.geoscienceworld.org/geology/article-pdf/doi/10.1130/G46733.1/4988172/g46733.pdf>
- Fry, C., Melanson, D., Samson, C., et al. 2013, *Meteorit. Planet. Sci.*, **48**, 1060
- Gardiol, D., Cellino, A., & Di Martino M. 2016, in International Meteor Conference Egmond, the Netherlands, 2-5 June 2016, ed. A. Roggemans & P. Roggemans, 76
- Gardiol, D., Barghini, D., Buzzoni, A., et al. 2020, *MNRAS*, in press, <https://doi.org/10.1093/mnr/staa3646>
- Granvik, M., & Brown, P. 2018, *Icarus*, **311**, 271
- Gritsevich, M., Lyytinen, E., Moilanen, J., et al. 2014, in Proceedings of the International Meteor Conference, Giron, France, 18-21 September 2014, eds. J. L. Rault, & P. Roggemans, 162–169
- Gritsevich, M., Lyytinen, E., Hankey, M., et al. 2017, in European Planetary Science Congress, EPSC2017-995
- Haack, H., Michelsen, R., Stober, G., Keuer, D., & Singer, W. 2010, *Meteorit. Planet. Sci. Suppl.*, **73**, 5085
- Hajduková, M. J., Sterken, V., & Wiegert, P. 2019, *Meteoroids: Sources of Meteors on Earth and Beyond*, eds. G. O. Ryabova, D. J. Asher, & M. J. Campbell-Brown (Cambridge: Cambridge University Press), 235
- Halliday, I., Blackwell, A. T., & Griffin, A. A. 1978, *JRASC*, **72**, 15
- Halliday, I., Griffin, A. A., & Blackwell, A. T. 1981, *Meteoritics*, **16**, 153
- Halliday, I., Blackwell, A. T., & Griffin, A. A. 1989, *Meteoritics*, **24**, 173
- Halliday, I., Griffin, A. A., & Blackwell, A. T. 1996, *Meteorit. Planet. Sci.*, **31**, 185
- Howie, R. M., Paxman, J., Bland, P. A., et al. 2017, *Exp. Astron.*, **43**, 237
- Huss, G. R. 1990, *Meteoritics*, **25**, 41
- Hutzler, A., Gattacceca, J., Rochette, P., et al. 2016, *Meteorit. Planet. Sci.*, **51**, 468
- Jeanne, S. 2020, PhD thesis, Ecole doctorale d'Île de France, France
- Jeanne, S., Colas, F., Zanda, B., et al. 2019, *A&A*, **627**, A78
- Jechow, A., Ribas, S. J., Domingo, R. C., et al. 2018, *J Quant. Spectr. Rad. Transf.*, **209**, 212
- Jenniskens, P., Fries, M. D., Yin, Q.-Z., et al. 2012, *Science*, **338**, 1583
- Jenniskens, P., Rubin, A. E., Yin, Q.-Z., et al. 2014, *Meteorit. Planet. Sci.*, **49**, 1388
- Jenniskens, P., Utas, J., Yin, Q.-Z., et al. 2019, *Meteorit. Planet. Sci.*, **54**, 699
- Jenniskens, P., Moskovitz, N., Garvie, L. A. J., et al. 2020, *Meteorit. Planet. Sci.*, **55**, 535
- Knopic, C., De Marco, M., Smareglia, R., & Molinaro, M. 2014, *ASP Conf. Ser.*, **485**, 131
- Kokhirova, G. I., Babadzhano, P. B., & Khamroev, U. K. 2015, *Sol. Syst. Res.*, **49**, 275

- Kruijer, T. S., & Kleine, T. 2019, *Geochim. Cosmochim. Acta*, **262**, 92
- Llorca, J., Casanova, I., Trigo-Rodríguez, J. M., et al. 2009, *Meteorit. Planet. Sci.*, **44**, 159
- Lyytinen, E., & Gritsevich, M. 2016, *Planet. Space Sci.*, **120**, 35
- Maksimova, A. A., Petrova, E. V., Chukin, A. V., et al. 2020, *Meteorit. Planet. Sci.*, **55**, 231
- Marty, J. 2019, *The IMS Infrasound Network: Current Status and Technological Developments*, eds. A. Le Pichon, E. Blanc, & A. Hauchecorne (Cham: Springer International Publishing), 3
- McCrosky, R. E., & Boeschenstein, Jr. H. 1965, *SAO Special Report*, 173
- McCrosky, R. E., Posen, A., Schwartz, G., & Shao, C.-Y. 1971, *J. Geophys. Res.*, **76**, 4090
- Michal, T., Eglizeaud, J. P., & Bouchard, J. 2005, *ESA SP*, **587**, 61
- Millan, R. M., von Steiger, R., Ariel, M., et al. 2019, *Adv. Space Res.*, **64**, 1466
- Moorhead, A. V. 2018, *Meteorit. Planet. Sci.*, **53**, 1292
- Moorhead, A. V., Kingery, A., & Ehlert, S. 2020, *J. Spacecraft Rockets*, **57**, 160
- Nedelcu, D. A., Birlan, M., Turcu, V., et al. 2018, *Romanian Astron. J.*, **28**, 57
- Neveu, M., & Vernazza, P. 2019, *ApJ*, **875**, 30
- Oberst, J., Molau, S., Heinlein, D., et al. 1998, *Meteorit. Planet. Sci.*, **33**, 49
- Ott, T., Drolshagen, E., Koschny, D., Drolshagen, G., & Poppe, B. 2014, in *Proceedings of the International Meteor Conference*, Giron, France, 18-21 September 2014, eds. J. L. Rault & P. Roggemans, 23
- Ott, T., Drolshagen, E., Koschny, D., et al. 2019, *Planet. Space Sci.*, **179**, 104715
- Rambaux, N., Vaubaillon, J., Lacassagne, L., et al. 2019, in *ESA NEO and Debris Detection Conference- Exploiting Synergies -ESA/ESOC*, Darmstadt, Germany
- Rault, J.-L., & Colas, F. 2019, ArXiv e-prints, [arXiv:1911.04290]
- Rault, J.-L., Colas, F., & Vaubaillon, J. 2014, in *Proceedings of the International Meteor Conference*, Giron, France, 18-21 September 2014, eds. J.-L. Rault & P. Roggemans, 185
- Rault, J.-L., Birlan, M., Blanpain, C., et al. 2018, *Proc. Int. Meteor Conf.*, Petnica, Serbia, 21-24 September, 2017 (eds.: Gyssens, M., & Rault, J.-L.) International Meteor Organization, 103
- Rojas, J., Duprat, J., Engrand, C., et al. 2019, *Lunar Planet. Sci. Conf.*, 1968
- Sansom, E. K., Gritsevich, M., Devillepoix, H. A. R., et al. 2019a, *ApJ*, **885**, 115
- Sansom, E. K., Jansen-Sturgeon, T., Rutten, M. G., et al. 2019b, *Icarus*, **321**, 388
- Sansom, E. K., Bland, P. A., Towner, M. C., et al. 2020, *Meteorit. Planet. Sci.*, **55**, 2157
- Silber, E., & Brown, P. 2018, *Infrasound Monitoring as a Tool to Characterize Impacting Near-Earth Objects (NEOs)*, 939
- Simon, S. B., Grossman, L., Clayton, R. N., et al. 2004, *Meteorit. Planet. Sci.*, **39**, 625
- Spurný, P., Oberst, J., & Heinlein, D. 2003, *Nature*, **423**, 151
- Spurný, P., Borovička, J., Kac, J., et al. 2010, *Meteorit. Planet. Sci.*, **45**, 1392
- Spurný, P., Bland, P. A., Shrubný, L. J., et al. 2012, *Meteorit. Planet. Sci.*, **47**, 163
- Spurný, P., Haloda, J., Borovička, J., Shrubný, L., & Halodová, P. 2014, *A&A*, **570**, A39
- Spurný, P., Borovička, J., Baumgarten, G., et al. 2017, *Planet. Space Sci.*, **143**, 192
- Spurný, P., Borovička, J., & Shrubný, L. J. 2020, *Meteorit. Planet. Sci.*, **55**, 376
- Trigo-Rodríguez, J. M., Castro-Tirado, A. J., Llorca, J., et al. 2004, *Earth Moon Planets*, **95**, 553
- Trigo-Rodríguez, J. M., Borovička, J., Spurný, P., et al. 2006, *Meteorit. Planet. Sci.*, **41**, 505
- Trigo-Rodríguez, J. M., Llorca, J., Rubin, A. E., et al. 2009, *Meteorit. Planet. Sci.*, **44**, 211
- Trigo-Rodríguez, J. M., Lyytinen, E., Gritsevich, M., et al. 2015, *MNRAS*, **449**, 2119
- Turchak, L. I., & Gritsevich, M. I. 2014, *J. Theor. Appl. Mech.*, **44**, 15
- Vernazza, P., Marsset, M., Beck, P., et al. 2015, *ApJ*, **806**, 204
- Weryk, R. J., & Brown, P. 2004, *Earth Moon Planets*, **95**, 221
- Whipple, F. L. 1938, *Proc. Am. Phil. Soc.*, **79**, 499
- Zolensky, M., Bland, P., Brown, P., & Halliday, I. 2006, *Meteorites and the Early Solar System II*, eds. D. S. Lauretta & H. Y. McSween (Tucson, AZ: University of Arizona Press), 869
- ³ GEOPS-Géosciences, CNRS, Université Paris-Saclay, 91405 Orsay, France
- ⁴ Aix Marseille Univ, CNRS, CNES, LAM, Marseille, France.
- ⁵ Aix-Marseille Univ, CNRS, IRD, Coll France, INRA, CEREGE, Aix-en-Provence, France
- ⁶ Aix -Marseille Université, CNRS, OSU Institut Pythéas UMR 3470 Marseille, France
- ⁷ Service Informatique Pythéas (SIP) CNRS – OSU Institut Pythéas – UMS 3470, Marseille, France
- ⁸ IAS, CNRS, Université Paris-Saclay, 91405 Orsay, France
- ⁹ FRIPON (Fireball Recovery and InterPlanetary Observation) and Vigie-Ciel Team, France
- ¹⁰ INAF – Osservatorio Astrofisico di Torino – Via Osservatorio 20, 10025 Pino Torinese, TO, Italy
- ¹¹ Dipartimento di Fisica, Via Pietro Giuria 1, Università degli Studi di Torino, 10125 Torino, TO, Italy
- ¹² INAF - Osservatorio di Astrofisica e Scienza dello Spazio Via Piero Gobetti 93/3, 40129 Bologna, BO, Italy
- ¹³ INAF – Osservatorio Astronomico di Trieste Via Giambattista Tiepolo 11, 10134 Trieste, TS, Italy
- ¹⁴ Università degli Studi di Firenze – Dipartimento di Scienze della Terra Via Giorgio La Pira, 4, 50121 Firenze, FI, Italy
- ¹⁵ Osservatorio Astronomico del Righi Via Mura delle Chiappe 44R, 16136 Genova, GE, Italy
- ¹⁶ Planétarium Rio Tinto Alcan / Espace pour la vie, Montréal, Québec, Canada
- ¹⁷ Réseau DOME, (Détection et Observation de Météores / Detection and Observation of Meteors), Canada
- ¹⁸ Division for Medical Radiation Physics and Space Environment, University of Oldenburg, Oldenburg, Germany
- ¹⁹ Dep. Física Aplicada I, Escuela de Ingeniería de Bilbao, Universidad del País Vasco/Euskal Herriko Unibertsitatea, 48013 Bilbao, Spain
- ²⁰ Aula EspazZio Gela, Escuela de Ingeniería de Bilbao, Universidad del País Vasco/Euskal Herriko Unibertsitatea, 48013 Bilbao, Spain
- ²¹ Università degli Studi di Firenze – Museo di Storia Naturale Via Giorgio La Pira, 4, 50121 Firenze, FI, Italy
- ²² INAF – Istituto di Astrofisica e Planetologia Spaziali Via del Fosso del Cavaliere 100, 00133 Roma, RM, Italy
- ²³ CNR – Istituto di Fisica Applicata Nello Carrara Via Madonna del Piano, 10 50019 Sesto Fiorentino (FI), Italy
- ²⁴ INAF – Osservatorio Astronomico di Padova Vicolo dell’Osservatorio 5, 35122 Padova, PD, Italy
- ²⁵ INAF - Istituto di Radioastronomia Via Piero Gobetti 101, 40129 Bologna, BO, Italy
- ²⁶ INAF – Osservatorio Astronomico d’Abruzzo Via Mentore Maggini snc, Loc. Collurania, 64100 Teramo, TE, Italy
- ²⁷ INAF – Osservatorio Astrofisico di Catania Via Santa Sofia 78, 95123 Catania, CT, Italy
- ²⁸ INAF – Osservatorio Astrofisico di Arcetri Largo Enrico Fermi 5, 50125 Firenze, FI, Italy
- ²⁹ INAF – Osservatorio Astronomico di Cagliari Via della Scienza 5, 09047 Cuccuru Angius, Selargius, CA, Italy
- ³⁰ INAF – Osservatorio Astronomico di Brera Via Brera 28, 20121 Milano, MI, Italy
- ³¹ FRIPON-Chile, Universidad de Antofagasta, 1270300 Antofagasta, Chile
- ³² Natural History Museum, Burgring 7, 1010 Vienna, Austria
- ³³ FRIPON-Belgium, Royal observatory of Belgium, Uccle, Belgium
- ³⁴ SPMN (SPANish Meteor Network), Facultat de Ciències, Bellaterra, Barcelona, Spain
- ³⁵ FRIPON-Netherlands, European Space Agency, SCI-SC, Keplerlaan 1, 2201 AZ Noordwijk, The Netherlands
- ³⁶ PRISMA (Prima Rete per la Sorveglianza sistematica di Meteore e Atmosfera), Italy
- ³⁷ MOROI (Meteorites Orbits Reconstruction by Optical Imaging) Astronomical Institute of the Romanian Academy, Bucharest, Romania
- ³⁸ Oukaimeden Observatory, High Energy Physics and Astrophysics Laboratory, Cadi Ayyad University, Marrakech, Morocco

¹ IMCCE, Observatoire de Paris, PSL Research University, CNRS UMR 8028, Sorbonne Université, Université de Lille, 77 av. Denfert-Rochereau, 75014 Paris, France

² Institut de Minéralogie, Physique des Matériaux et Cosmochimie (IMPMC), Muséum National d’Histoire Naturelle, CNRS UMR 7590, Sorbonne Université, 75005 Paris, France

- ³⁹ BRAMON (Brazilian Meteor Observation Network), National Museum of Brazil, Rio de Janeiro, Brazil
- ⁴⁰ FRIPON-Germany, University of Oldenburg, Oldenburg, Germany
- ⁴¹ FRIPON-Switzerland
- ⁴² Università di Padova – Dipartimento di Fisica e Astronomia Vicolo dell’Osservatorio 3, 35122 Padova, PD, Italy
- ⁴³ Universciences, 30 avenue Corentin Cariou, 75019 Paris, France
- ⁴⁴ REFORME (REseau Français d’ObseRvation de METéore) France
- ⁴⁵ SCAMP (System for Capture of Asteroid and Meteorite Paths), FRIPON, UK
- ⁴⁶ Natural History Museum, Cromwell Road, London, UK
- ⁴⁷ Cosmos Sterrenwacht, 7635 NK Lattrop, The Netherlands
- ⁴⁸ Cyclops Observatory, 4356 CE Oostkapelle, The Netherlands
- ⁴⁹ KVI – Center for Advanced Radiation Technology, Zernikelaan 25, 9747 AA Groningen, The Netherlands
- ⁵⁰ Leiden Observatory, 2333 CA Leiden, The Netherlands
- ⁵¹ European Space Agency, OPS-SP, Keplerlaan 1, 2201 AZ Noordwijk, The Netherlands
- ⁵² International Meteor Organization, Belgium
- ⁵³ Espace des Sciences, Planétarium, Rennes, France
- ⁵⁴ Université de technologie de Compiègne, (Multi-scale modeling of urban systems), Centre Pierre Guillaumat – Université de Technologie de Compiègne, 60200 Compiègne, France
- ⁵⁵ Lycée Saint-Paul, 12 allée Gabriel Deshayes, 56017 Vannes, France
- ⁵⁶ Station de Radioastronomie de Nançay, 18330 Nançay, France
- ⁵⁷ GISFI, Rue Nicolas Copernic, 54310 Homécourt, France
- ⁵⁸ Geosciences Environnement Toulouse, UMR5563 CNRS, IRD et Université de Toulouse, 14 avenue Edouard Belin, 31400 Toulouse, France
- ⁵⁹ FRIPON, Algeria
- ⁶⁰ Cerap – Planétarium de Belfort, Cité des associations 90000 Belfort, France
- ⁶¹ Club d’Astronomie du FLEP – La rampisolle 24660 Coulounieix-Chamiers, France
- ⁶² Les Editions du Piat, Glavenas, 43200 Saint-Julien-du-Pinet, France
- ⁶³ Université Grenoble Alpes, CNRS, IPAG, 38400 Saint-Martin d’Hères, France
- ⁶⁴ Institut Universitaire de France, Paris, France
- ⁶⁵ Geneva Observatory, CH-1290 Sauverny, Switzerland
- ⁶⁶ PALEVOPRIM (Laboratoire Paléontologie Evolution Paléo Écosystèmes Paléoprimateologie), (iPHEP, UMR-CNRS 7262), UFR SFA, Université de Poitiers, 86022 Poitiers, France
- ⁶⁷ LPG-BIAF Faculté des sciences Géologie 49045 - Poitiers France
- ⁶⁸ FRIPON-Morocco
- ⁶⁹ Observatoire Astronomique de Valcourt, 52100 Valcourt, France
- ⁷⁰ Planétarium LUDIVER, 1700, rue de la libération Tonneville 50460 La Hague, France
- ⁷¹ Association Astronomique de Belle-Ile-en-mer 56360 Bangor, France
- ⁷² Le Planétarium Roannais 42153 Riorges, France
- ⁷³ Faculty of Physics, Bucharest University, 405 Atomistilor, 077125 Magurele, Ilfov, Romania
- ⁷⁴ Groupe Astronomique de Querqueville, 50460 Cherbourg en Cotentin, France
- ⁷⁵ Laboratoire Interdisciplinaire Carnot de Bourgogne, UMR 6303 CNRS/Univ. Bourgogne Franche-Comté Dijon, France
- ⁷⁶ Société astronomique du Haut Rhin – 68570 Osenbach, France
- ⁷⁷ European Southern Observatory, Alonso de Córdova 3107, Vitacura, Santiago, Chile
- ⁷⁸ Observatoire de Gramat, 46500 Gramat, France
- ⁷⁹ Carrefour des Sciences et des Arts, 46000 Cahors, France
- ⁸⁰ Université Clermont Auvergne, CNRS, IRD, OPGC, Laboratoire Magmas et Volcans, 63000 Clermont-Ferrand, France
- ⁸¹ INU champollion dphe, Place de verdun, 81000 Albi, France
- ⁸² Observatório Nacional/MCTI, R. General José Cristino 77, Rio de Janeiro – RJ 20921-400, Brazil
- ⁸³ Stella Mare – Universta di Corsica – CNRS - 20620 Biguglia, France
- ⁸⁴ Association Astronomique “Les têtes en l’air”, Marigny, France
- ⁸⁵ Pôle des étoiles, Route de Souesmes, 18330 Nançay, France
- ⁸⁶ LPC2E, University of Orleans, CNRS, Orléans, France
- ⁸⁷ FRIPON - Peru
- ⁸⁸ CRPG – CNRS, 15 Rue Notre Dame des Pauvres, 54500 Vandœuvre-lès-Nancy, France
- ⁸⁹ Observatoire de la Lèbe, Chemin des étoiles, 01260 Valromey-sur-Séran, France
- ⁹⁰ Armagh Observatory and Planetarium, Armagh, UK
- ⁹¹ Laboratoire Géosciences Appliquées à l’ingénierie de l’Aménagement GAIA - Université Hassan II de Casablanca, Faculté des Sciences Ain Chock, Casablanca, Marocco
- ⁹² Shelyak Instruments, 77 Rue de Chartreuse, 38420 Le Versoud, France
- ⁹³ Parc du Cosmos, 30133 Les Angles, France
- ⁹⁴ Écomusée de la Baie du Mont Saint-Michel, 50300 Vains Saint-Léonard, France
- ⁹⁵ Association Science en Aveyron, 12000 Rodez, France
- ⁹⁶ CNRS, Aix-Marseille Université, PIIM UMR 7345, Marseille, France
- ⁹⁷ Observatoire de Narbonne, 11100 Narbonne, France
- ⁹⁸ Muséum des Volcans 15000 Aurillac, France
- ⁹⁹ Académie des sciences – Institut de France - Château Observatoire Abbadia - 64700 Hendaye, France
- ¹⁰⁰ Brasserie Meteor, 6 Rue Lebocq 67270 Hochfelden, France
- ¹⁰¹ Astro-Centre Yonne, 77 bis rue émile tabarant Laroche 89400 St Cydroine, France
- ¹⁰² Communauté de Communes du Canton d’Oust 5 chemin de Trésors, 09140 Seix, France
- ¹⁰³ Société Astronomique de Touraine Le Ligoret 37130 Tauxigny-Saint Bauld, France
- ¹⁰⁴ Observatoire de Dax, Rue Pascal Lafitte 40100 Dax, France
- ¹⁰⁵ Mairie, 4 Place de l’Église 36230 Saint-Denis-de-Jouhet, France
- ¹⁰⁶ Department of Physics and Astronomy, University of Western Ontario, London, Ontario, N6A 3K7, Canada
- ¹⁰⁷ Lycée Xavier marmier- 25300 Pontarlier, France
- ¹⁰⁸ Université de Technologie de Troyes (UTT) 10004 Troyes, France
- ¹⁰⁹ Lycée Polyvalent d’Etat, 20137 Porto-Vecchio, France
- ¹¹⁰ Communauté de communes de Bassin d’Aubenas 07200 Ucel, France
- ¹¹¹ Service hydrographique et océanographique de la marine (Shom), 29200 Brest, France
- ¹¹² Laboratoire Morphodynamique Continentale et Côtière (M2C), UMR6143, Université de Caen, 14000 Caen, France
- ¹¹³ FRIPON-Austria
- ¹¹⁴ GEPI, Observatoire de Paris, PSL Research University, CNRS, 61 Avenue de l’Observatoire, 75014 Paris, France
- ¹¹⁵ Pôle d’accueil universitaire Séolane, 04400 Barcelonnette, France
- ¹¹⁶ Observatoire Populaire de Laval - Planétarium 53320 Laval, France
- ¹¹⁷ Muséum national d’Histoire naturelle, 75005 Paris, France
- ¹¹⁸ Institut de radioastronomie millimétrique, Université Grenoble Alpes 38400 Saint-Martin-d’Hères, France
- ¹¹⁹ Laboratoire GSMA, UMR CNRS 7331, Université de Reims Champagne-Ardenne, 51687 Reims, France
- ¹²⁰ École d’ingénieurs en Sciences Industrielles et Numérique – Université de Reims Champagne-Ardenne 08000 Charleville-Mézières, France
- ¹²¹ Lycée Robespierre, 62000 Arras, France
- ¹²² Cité du Volcan, Bourg Murat 97418 Plaine des Cafres 97421, Ile de La Réunion, France
- ¹²³ Observatoire des Makes, Les Makes, 97421 Saint-Louis, Ile de la La Réunion, France
- ¹²⁴ Observatoire du Mardo, OSU-Réunion, CNRS, 97460 Saint Paul, Ile de la Réunion, France
- ¹²⁵ FRIPON Vigie-Ciel, Ile de la Réunion, France
- ¹²⁶ Observatoire du Pic des Fées, Mont des oiseaux 83400 Hyères, France
- ¹²⁷ Association AstroLab 48190 Le Bleymard, France
- ¹²⁸ E.P.S.A. Etablissement public des stations d’altitude 64570 La Pierre Saint Martin, France
- ¹²⁹ Observatoire de Boisricheux 28130 Pierres, France

- 130 Association d'astronomie du pays Royannais: Les Céphéides 17200 Royan, France
- 131 Observatoire de Rouen 76000 Rouen, France
- 132 Communauté de Communes du Pays Châtillonnais 21400 Châtillon-sur-Seine, France
- 133 Space sciences, Technologies Astrophysics Research (STAR) Institute, Université de Liège, Liège 4000, Belgium
- 134 IUT Chalon sur Saône, 71100 Chalon-sur-Saône, France
- 135 136 Kepler-Gesellschaft, 71263 Weil der Stadt, Germany
- 136 Royal Belgian Institute for Space Aeronomy, Brussels, Belgium
- 137 Lycée Polyvalent Robert Garnier, 72405 La Ferté Bernard, France
- 138 Observatoire des Pléiades, Les Perrots, 26760 Beaumont lès Valence, France
- 139 CEA, DAM, DIF, 91297 Arpajon, France
- 140 Uranoscope, Avenue Carnot 7, 77220 Gretz-Armainvilliers, France
- 141 Observatoire de Haute Provence-Institut Pythéas, CNRS – Aix-Marseille Université, 04870 Saint Michel l'Observatoire, France
- 142 High Enthalpy Flow Diagnostics Group, Institut für Raumfahrtssysteme, Universität Stuttgart, 70569 Stuttgart, Germany
- 143 Club Ajaccien des Amateurs d'Astronomie, Centre de recherche scientifique Georges Peri 20000 Ajaccio, France
- 144 Laboratoire de Planétologie et Géodynamique, UMR6112, CNRS, Université Nantes, Université Angers, Nantes, France
- 145 Laboratoire d'Océanologie et de Géosciences UMR 8187, 62930 Wimereux, France
- 146 Blois Sologne Astronomie 41250 Fontaines-en-Sologne, France
- 147 Planétarium d'Épinal, 88000 Épinal, France
- 148 Institut UTINAM UMR 6213, CNRS, Université Bourgogne Franche-Comté, OSU THETA, 25010 Besançon, France
- 149 Arbeitskreis Meteoree. V, Abenstalstr. 13b 84072 Seysdorf, Germany
- 150 La Ferme des Etoiles, 32380 Mauroux, France
- 151 Bibracte, Centre archéologique, 58370 Glux-en-Glenne, France
- 152 Laboratoire Univers et Particules de Montpellier, Université de Montpellier, UMR-CNRS 5299, 34095 Montpellier Cedex, France
- 153 Laboratoire de Planétologie et Géodynamique, UMR 6112, CNRS - Département de Géosciences, Le Mans Université, Le Mans, France
- 154 Récréa Sciences (CCSTI du Limousin) 23200 Aubusson, France
- 155 Centro de Astronomía (CITEVA), Universidad de Antofagasta, 1270300 Antofagasta, Chile
- 156 Astronomical Institute of the Romanian Academy, Bucharest, 040557, Romania
- 157 Planetarium Pythagoras Via Margherita Hack, 89125 Reggio Calabria, RC, Italy
- 158 Observatoire astronomique jurassien, Chemin Des Ecoles 21, 2824 Vicques, Switzerland
- 159 Le Don Saint 19380 Bonnet Elvert, France
- 160 Mairie, Le Village, 66360 Mantet, France
- 161 Planetarium de Bretagne, 22560 Pleumeur Bodou, France
- 162 Club St Quentin Astronomie, 02100 Saint Quentin, France
- 163 MAYA (Moulins Avermes Yzeure Astronomie) 03000 Moulins, France
- 164 Laboratoire de Géologie de Lyon : Terre, Planète, Environnement, UMR CNRS 5276 (CNRS, ENS, Université Lyon1), Lyon, France
- 165 IRAP, Université de Toulouse, CNRS, UPS, CNES, Toulouse, France
- 166 Institut de Ciències del Cosmos (ICC-UB-IEEC), 1, Barcelona 08028, Spain
- 167 Parc Astronòmic Montsec - Ferrocarrils de la Generalitat de Catalunya, Ager 25691, Spain
- 168 Parc naturel régional des Landes de Gascogne, 33380 Belin-Béliet, France
- 169 Université Côte d'Azur, Observatoire de la Côte d'Azur, CNRS, Laboratoire Lagrange, UMR 7293, CNRS, Université de Nice Sophia-Antipolis, Nice, France
- 170 Association Pierre de Lune, 87600 Rochechouart, France
- 171 Hotel De Ville, Plaine De Cavarc, 47330 Cavarc, France
- 172 Planète et Minéral Association, 16 rue d'aussières 11200 Bizanet, France
- 173 Marie, 85120 La Chapelle aux Lys, France
- 174 Mairie de Saint-Lupicin, 2 Place de l'Hôtel de ville, Saint-Lupicin, 39170 Coteaux du Lizon, France
- 175 Planétarium et Centre de Culture Scientifique et Technique (le PLUS), 59180 Cappelle la Grande, France
- 176 Université de Bordeaux, CNRS, LOMA, 33405 Talence, France
- 177 Instituto de Astrofísica, PUC, Santiago, Chile
- 178 Club Alpha Centauri, 11240 Cailhavel, France
- 179 Lycée Pierre Forest, 59600 Maubeuge, France
- 180 Club d'Astronomie Jupiter du Roannais, Mairie de Villerest, 7 Rue du Clos 42300 Villerest, France
- 181 Planétarium du Jardin des Sciences, 67000 Strasbourg, France
- 182 Collège Robert Doisneau: association Sirius 57430 Sarralbe, France
- 183 West University of Timisoara, Faculty of Mathematics and Computer Science, Bulevardul Vasile Pârvan 4, Timișoara 300223, Romania
- 184 Romanian Society for Cultural Astronomy, Str. Principala Nr. 95A3, Dragsina, Romania
- 185 Romanian Society for Meteors and Astronomy (SARM), 1, Targoviste 130170, Dambovita, Romania
- 186 La Torre del Sole, Via Caduti sul Lavoro 2, 24030 Brembate di Sopra, BG, Italy
- 187 Associazione Astrofili Bisalta Via Gino Eula 23, 12013 Chiusa di Pesio, CN, Italy
- 188 Department of Earth and Environmental Sciences, The University of Manchester, UK
- 189 DarkSkyLab, 3 rue Romiguières, 31000 Toulouse, France
- 190 School of Physical Sciences, The Open University, UK
- 191 European Space Agency, Oxford, UK
- 192 Amgueddfa Cymru - National Museum Wales, Cardiff, Wales, UK
- 193 lycée Gustave Flaubert, La Marsa, Tunisia
- 194 FRIPON-Tunisia, 16 Rue Othman El Kaak, Marsa 2078, Tunisia
- 195 Observatoire François-Xavier Bagnoud, 3961 St-Luc, Switzerland
- 196 LFB – Lycée français de Barcelone – Bosch i Gimpera 6-10 - 08034 Barcelona, Spain
- 197 Meteoriti Italia APS Via Fusina 6, 32032 Feltre, BL, Italy
- 198 Associazione Sky Sentinel Via Giovanni Leone 36, 81020 San Nicola la Strada CE, Italy
- 199 Chair of Astronautics, TU Munich, Germany
- 200 Herrmann-Lietz-Schule, Spiekeroog, Germany
- 201 Förderkreis für Kultur, Geschichte und Natur im Sintfeld e. V., Fürstenberg, Germany
- 202 EUC Syd, Sønderborg, Denmark
- 203 Bundesanstalt für Geowissenschaften und Rohstoffe, Hannover, Germany
- 204 Deutschen Schule Sønderburg, Denmark
- 205 Observatoire d'Alger, CRAAG, Route de l'Observatoire, Alger, Algérie
- 206 Physical-Geographic and Environmental Quality Monitoring Research Station Mdârjac - Iai, Faculty of Geography and Geology, "Alexandru Ioan Cuza" University of Iai, 700506, Romania
- 207 Planetarium and Astronomical Observatory of the Museum "Vasile Pârvan" Bârlad, 731050, Romania
- 208 Galai Astronomical Observatory of the Natural Sciences Museum Complex, 800340 Galai, Romania
- 209 BITNET Research Centre on Sensurs and Systems,, Cluj-Napoca 400464, Romania
- 210 Romanian Academy Timisoara Branch, Astronomical Observatory Timisoara, 300210 Timisoara, Romania
- 211 San Pedro de Atacama Celestial Explorations, Casilla 21, San Pedro de Atacama, Chile
- 212 Institut de Technologie Nucléaire Appliquée, Laboratoire Atomes Laser, Université Cheikh Anta Diop, Dakar, Senegal
- 213 Centre d'Ecologie et des Sciences de la Conservation (CESCO), MNHN, CNRS, Sorbonne Université, Paris, France
- 214 Mairie de Zicavo, Quartier de l'Église, 20132 Zicavo, France

- ²¹⁵ Club Pégase, amicale laïque de Saint-Renan, Rue de Kerzouar, 29290 Saint-Renan, France
- ²¹⁶ Club d’Astronomie de Rhuys, Château d’eau de Kersaux, 56730 Saint-Gildas-de-Rhuys, France
- ²¹⁷ L2n, CNRS ERL 7004, Université de Technologie de Troyes, 10004 Troyes, France
- ²¹⁸ Mairie, 12, rue des Coquelicots 12850 Onet-le-Château, France
- ²¹⁹ Planetarium and Astronomical Observatory of the Museum “Vasile Pârvan” Bârlad, Romania
- ²²⁰ Romanian Academy, Astronomical Institute, Astronomical Observatory Cluj, Cluj-Napoca, Romania
- ²²¹ Sección Física, Departamento de Ciencias, Pontificia Universidad Católica del Perú, Apartado 1761, Lima, Peru
- ²²² Direction du Patrimoine et des musées Conseil départemental de la Manche - 50050 Saint-Lô, France
- ²²³ UPJV, Université de Picardie Jules Verne, 80080 Amiens, France
- ²²⁴ IPGSEOST, CNRS/University of Strasbourg, Strasbourg, France
- ²²⁵ Mairie de Cailhavel, 11240 Cailhavel, France
- ²²⁶ Club Alpha Centauri, MJC, 11000 Carcassonne, France
- ²²⁷ Universidad Católica del Norte, 0610, Antofagasta, Chile
- ²²⁸ Millennium Institute for Astrophysics MAS, Av. Vicuña Mackenna 4860, Santiago, Chile
- ²²⁹ American Association of Variable Stars Observers, 49 Bay State Road, Cambridge, Massachusetts, USA
- ²³⁰ Institute of Space Sciences (CSIC), Campus UAB, Facultat de Ciències, 08193 Bellaterra, Barcelona, Catalonia, Spain
- ²³¹ Institut d’Estudis Espacials de Catalunya (IEEC), 08034 Barcelona, Catalonia, Spain
- ²³² Comisión Nacional de Investigación y Desarrollo Aeroespacial del Perú, CONID9, San Isidro Lima, Peru
- ²³³ Università di Firenze – Osservatorio Polifunzionale del Chianti Strada Provinciale Castellina in Chianti, 50021 Barberino Val D’elsa, FI, Italy
- ²³⁴ Associazione Astrofilii Urania Località Bric del Colletto 1, 10062 Luserna San Giovanni, TO, Italy
- ²³⁵ Associazione Culturale Googol Via Filippo Brunelleschi 21, 43100 Parma, PR, Italy
- ²³⁶ Osservatorio Astronomico di Capodimonte Salita Moiarriello 16, 80131 Napoli, NA, Italy
- ²³⁷ Fondazione GAL Hassin - Centro Internazionale per le Scienze Astronomiche, 90010 Isnello, Palermo, PA, Italy
- ²³⁸ Università del Salento – Dipartimento di Matematica e Fisica Via Per Arnesano, 73100 Lecce, LE, Italy
- ²³⁹ Gruppo Astrofilii Monti Lepini – Osservatorio Astronomico e Planetario di Gorga 00030 Gorga, RM, Italy
- ²⁴⁰ Associazione Astrofilii di Piombino – Osservatorio Astronomico Punta Falcone Punta Falcone, Località Falcone, 57025 Piombino, LI, Italy
- ²⁴¹ CIRA – Centro Italiano Ricerche Aerospaziali Via Maiorise snc, 81043 Capua, CE, Italy
- ²⁴² Astrobioparco Oasi di Felizzano Strada Fubine 79, 15023 Felizzano, AL, Italy
- ²⁴³ Associazione Astrofilii Tethys – Planetario e Osservatorio Astronomico Cà del Monte Località Ca del Monte, 27050 Cecima, PV, Italy
- ²⁴⁴ GAMP – Osservatorio Astronomico Montagna Pistoise 51028 San Marcello Piteglio, PT, Italy
- ²⁴⁵ Gruppo Astrofilii Antares Via Garibaldi 12, 48033 Cotignola, RA, Italy
- ²⁴⁶ SpaceDys Via Mario Giuntini 63, 56023 Navacchio di Cascina, PI, Italy
- ²⁴⁷ Associazione Astrofilii Tethys – Planetario e Osservatorio Astronomico Cà del Monte Località Ca’ del Monte, 27050 Cecima, PV, Italy
- ²⁴⁸ Liceo Statale “Arturo Issel” Via Fiume 42, 17024 Finale Ligure, SV, Italy
- ²⁴⁹ Università di Camerino – Scuola di Scienze e Tecnologie, sezione Geologia Via Gentile III da Varano, 62032 Camerino, MC, Italy
- ²⁵⁰ Osservatorio Astrofisico R. P. Feynman 73034 Gagliano del Capo, LE, Italy
- ²⁵¹ Manca Osservatorio Astronomico di Sormano Località Colma di, 22030 Sormano, CO, Italy
- ²⁵² Associazione Astronomica del Rubicone Via Palmiro Togliatti 5, 47039 Savignano sul Rubicone, FC, Italy
- ²⁵³ Università degli Studi di Firenze – Dipartimento di Fisica e Astronomia Via Sansone 1, 50019 Sesto Fiorentino, FI, Italy
- ²⁵⁴ IIS “E. Fermi” di Montesarchio Via Vitulanese, 82016 Montesarchio, BN, Italy
- ²⁵⁵ Liceo Scientifico Statale “G.B. Quadri” Viale Giosuè Carducci 17, 36100, Vicenza, VI, Italy
- ²⁵⁶ Università degli Studi di Trento – Dipartimento di Ingegneria Civile, Ambientale e Meccanica Via Mesiano 77, 38123 Trento, TN, Italy
- ²⁵⁷ Osservatorio Astronomico Sirio Piazzale Anelli, 70013 Castellana Grotte, BA, Italy
- ²⁵⁸ Museo del Cielo e della Terra Vicolo Baciadonne 1, 40017 San Giovanni in Persiceto, BO, Italy
- ²⁵⁹ Gruppo Astrofilii Montelupo Fiorentino Piazza Vittorio Veneto 10, 50056 Montelupo Fiorentino, FI, Italy
- ²⁶⁰ Università del Piemonte Orientale – Dipartimento di Scienze e Innovazione Tecnologica Viale Teresa Michelin 11, 15121 Alessandria, AL, Italy
- ²⁶¹ Osservatorio Astronomico Giuseppe Piazzi Località San Bernardo, 23026 Ponte in Valtellina, SO, Italy
- ²⁶² Liceo Scientifico Statale “P. Paleocapa” Via Alcide de Gasperi 19, 45100 Rovigo, RO, Italy
- ²⁶³ Osservatorio Astronomico Bobhouse Via Giuseppe Tomasi P. pe di Lampedusa 9, 90147 Palermo, PA, Italy
- ²⁶⁴ Observatoire de la grande vallée, 16250, Etriac, France
- ²⁶⁵ South African Astronomical Observatory, University of Cape Town, South Africa
- ²⁶⁶ Departamento de Matemáticas y Computación. Universidad de La Rioja, Spain
- ²⁶⁷ Departamento de Estadística, Informática y Matemáticas and Institute for Advanced Materials and Mathematics, Universidad Pública de Navarra, 31006 Pamplona, Spain
- ²⁶⁸ Laboratoire d’Informatique de Paris (LIP6), Sorbonne Université, CNRS, Paris, France
- ²⁶⁹ Space Science and Technology Centre, School of Earth and Planetary Sciences, Curtin University, Perth, WA 6845, Australia
- ²⁷⁰ Department of Physics, University of Western Australia, Crawley 6009, Australia
- ²⁷¹ Australian Research Council Centre of Excellence, OzGrav, Swinburne University of Technology, PO Box 218 Hawthorn VIC 3122, Australia
- ²⁷² ASPA (Association Sénégalaise pour la Promotion de l’Astronomie), Maison de la Culture Doua SECK, Dakar, Senegal

Appendix A: Countries and observation stations involved in FRIPON

Table A.1. Algeria.

| Station | Long | Lat | Alt |
|------------|-----------|------------|------|
| Alger | 3.033126E | 36.797014N | 342 |
| Djelfa | 2.575811E | 36.401415N | 773 |
| Khenchela | 7.191020E | 35.144201N | 1330 |
| Mostaganem | 0.656112E | 36.037056N | 502 |

Table A.2. Australia.

| Station | Long | Lat | Alt |
|---------|-------------|------------|-----|
| Perth | 115.894493E | 32.006304S | 30 |
| Zadko | 115.712002E | 31.355793S | 50 |

Table A.3. Austria.

| Station | Long | Lat | Alt |
|---------|------------|-----------|-----|
| Wien | 16.359753E | 48.20525N | 180 |

Table A.4. Belgium.

| Station | Long | Lat | Alt |
|-----------|-----------|------------|-----|
| Bruxelles | 4.357075E | 50.796727N | 114 |
| Liège | 5.566677E | 50.582574N | 240 |

Table A.5. Brazil.

| Station | Long | Lat | Alt |
|----------------|------------|-------------|-----|
| Rio de Janeiro | 43.223311W | 22.8955612S | 50 |

Table A.6. DOME - Canada.

| Station | Long | Lat | Alt |
|--------------------|------------|------------|------|
| Louiseville | 72.949033W | 46.249248N | 30 |
| Montebello | 74.937772W | 45.660370N | 70 |
| Montréal | 73.550401W | 45.560745N | 30 |
| Mont Mégantic | 71.152584W | 45.455704N | 1110 |
| Val David | 74.207167W | 46.030661N | 327 |
| Val Saint François | 72.311258W | 45.493749N | 200 |

Table A.7. Chile.

| Station | Long | Lat | Alt |
|---------------|------------|------------|------|
| Baquedano | 69.845453W | 23.335221S | 1500 |
| Cerro Paranal | 70.390400W | 24.615600S | 2518 |

Table A.7. continued.

| Station | Long | Lat | Alt |
|--------------|------------|------------|------|
| Cerro Tololo | 70.806279W | 30.169071S | 2207 |
| Chiu-Chiu | 68.650429W | 22.342471S | 2525 |
| La Silla | 70.732559W | 29.260110S | 2400 |
| Maria Helena | 69.666780W | 22.346554S | 1155 |
| Ollagüe | 68.253721W | 21.224131S | 3700 |
| Peine | 68.068760W | 23.681256S | 2450 |
| San Pedro | 68.179340W | 22.953465S | 2408 |

Table A.8. Denmark.

| Station | Long | Lat | Alt |
|------------|-----------|------------|-----|
| Sonderborg | 9.798961E | 54.908907N | 190 |

Table A.9. Vigie-Ciel - France.

| Station | Long | Lat | Alt |
|----------------------|-----------|------------|------|
| Aix en Provence | 5.333919E | 43.491334N | 184 |
| Ajaccio | 8.792768E | 41.878472N | 99 |
| Amiens | 2.298872E | 49.898572N | 39 |
| Angers | 0.600625W | 47.482477N | 58 |
| Angoulême | 0.164370E | 45.649047N | 100 |
| Arette | 0.741999W | 42.974571N | 1687 |
| Arras | 2.765306E | 50.287532N | 80 |
| Aubenas | 4.390887E | 44.621016N | 315 |
| Aubusson | 2.165551E | 45.955477N | 447 |
| Aurillac | 2.431090E | 44.924888N | 690 |
| Albi | 2.137611E | 43.918671N | 192 |
| Bangor | 3.186704W | 47.313333N | 57 |
| Barcelonnette | 6.642280E | 44.389977N | 1162 |
| Beaumont les Valence | 4.923750E | 44.883366N | 174 |
| Belfort | 6.865081E | 47.640847N | 374 |
| Besançon | 5.989410E | 47.246910N | 311 |
| Biguglia | 9.479848E | 42.616786N | 8 |
| Bizanet | 2.873811E | 43.163547N | 85 |
| Brest | 4.504642W | 48.408671N | 66 |
| Caen | 0.366897W | 49.192307N | 58 |
| Cahors | 1.445918E | 44.455450N | 126 |
| Cailhavel | 2.125917E | 43.161526N | 254 |
| Cappelle la Grande | 2.366590E | 50.996056N | 12 |
| Caussols | 6.924434E | 43.751762N | 1279 |
| Cavarc | 0.644886E | 44.687615N | 113 |
| Chalon sur Saône | 4.857151E | 46.776202N | 186 |
| Chapelle aux Lys | 0.659221W | 46.628912N | 141 |
| Charleville-Mézières | 4.720703E | 49.738458N | 187 |
| Chatillon sur Seine | 4.577100E | 47.864833N | 222 |
| Compiègnes | 2.801346E | 49.401338N | 48 |
| Coulounieix | 0.706613E | 45.154948N | 208 |
| Dax | 1.030458W | 43.693356N | 36 |
| Dijon | 5.073255E | 47.312718N | 285 |
| Epinal | 6.435744E | 48.185721N | 363 |
| Glux en Glenne | 4.029504E | 46.957773N | 688 |
| Gramat | 1.725729E | 44.745122N | 330 |
| Grenoble | 5.761051E | 45.192599N | 230 |
| Gretz-Armainvilliers | 2.742281E | 48.742632N | 112 |
| Guzet | 1.300228E | 42.787823N | 1526 |
| Hendaye | 1.749324W | 43.377440N | 87 |

Table A.9. continued.

| Station | Long | Lat | Alt |
|-----------------------|------------|------------|------|
| Hochfelden | 7.567531E | 48.756330N | 191 |
| Hyères | 6.112921E | 43.095433N | 240 |
| La Chatre | 1.866338E | 46.529210N | 28 |
| La Ferté Bernard | 0.647542E | 48.185502N | 95 |
| Laval | 0.782894W | 48.081912N | 103 |
| Le Bleynard | 3.737160E | 44.504370N | 1196 |
| Le Mans | 0.163854E | 48.015681N | 109 |
| Les Angles | 4.753658E | 43.961583N | 80 |
| Les Makes | 55.410097E | 21.198890S | 990 |
| Le Vaudoué | 2.522362E | 48.362668N | 80 |
| Le Versoud | 5.851000E | 45.211726N | 224 |
| Lille | 3.071544E | 50.614975N | 35 |
| Ludiver | 1.727798W | 49.630735N | 180 |
| Lyon | 4.866197E | 45.779935N | 190 |
| Maido | 55.383012E | 21.079594S | 2160 |
| Mantet | 2.306972E | 42.477420N | 1555 |
| Marigny | 0.417403W | 46.197592N | 59 |
| Marseille | 5.436376E | 43.343690N | 130 |
| Maubeuge | 3.987223E | 50.277947N | 145 |
| Mauroux | 0.819706E | 43.919035N | 225 |
| Migennes | 3.509820E | 47.968880N | 130 |
| Montpellier | 3.865524E | 43.632674N | 74 |
| Moulins | 3.319005E | 46.559871N | 217 |
| Nançay | 2.195688E | 47.367857N | 136 |
| Nantes | 1.554742W | 47.238106N | 26 |
| Onet le Chateau | 2.585813E | 44.364935N | 552 |
| Orléans | 1.943693E | 47.836332N | 120 |
| Orsay, GEOPS | 2.179331E | 48.706433N | 174 |
| Osenbach | 7.206581E | 47.992670N | 471 |
| Paris, MNHN | 2.357177E | 48.843075N | 55 |
| Paris, Observatoire | 2.336725E | 48.836550N | 88 |
| Pic de Bure | 10.335099E | 36.880495N | 2560 |
| Pic du Midi | 0.142626E | 42.936362N | 2877 |
| Pierres | 1.532769E | 48.579869N | 165 |
| Pleumeur Bodou | 3.527085W | 48.783253N | 35 |
| Poitiers | 0.380783E | 46.565784N | 130 |
| Pontarlier | 6.351011E | 46.914613N | 834 |
| Porto Vecchio | 9.271180E | 41.599753N | 22 |
| Puy-de-Dome | 2.964573E | 45.772129N | 1465 |
| Querqueville | 1.692611W | 49.665715N | 21 |
| Reims | 4.067164E | 49.243267N | 137 |
| Rennes | 1.674733W | 48.105705N | 100 |
| Roanne | 4.036814E | 45.996456N | 360 |
| Rochechouart | 0.819906E | 45.823100N | 250 |
| Rouen | 1.100422E | 49.447464N | 50 |
| Royan | 1.048922W | 45.639012N | 15 |
| Sabres | 0.746172W | 44.149087N | 85 |
| Saint Bonnet Elvert | 1.908838E | 45.165080N | 539 |
| Saint Denis de Jouhet | 1.866338E | 46.52921N | 280 |
| Saint Julien du Pinet | 4.054800E | 45.133304N | 961 |
| Saint Lupicin | 5.792866E | 46.397709N | 590 |
| Saint Michel (OHP) | 5.714722E | 43.933010N | 558 |
| Saint Quentin | 3.293955E | 49.862943N | 120 |
| Salon de Provence | 5.098180E | 43.642734N | 89 |
| Sarralbe | 7.021394E | 48.982666N | 229 |
| Strasbourg | 7.762862E | 48.579825N | 165 |
| Sutri | 5.626334E | 45.915575N | 867 |
| Talence | 0.59296W | 44.807851N | 48 |
| Tauxigny-St-Bauld | 0.832971E | 47.223431N | 97 |
| Toulouse | 1.479209E | 43.562164N | 151 |

Table A.9. continued.

| Station | Long | Lat | Alt |
|--------------------|-----------|------------|-----|
| Troyes | 4.064624E | 48.270024N | 132 |
| Vains | 1.446219W | 48.663646N | 16 |
| Valcourt | 4.911772E | 48.616524N | 141 |
| VandoeuvreLesNancy | 6.155328E | 48.655893N | 373 |
| Vannes | 2.810623W | 47.503369N | 58 |
| Wimereux | 1.605850E | 50.762740N | 19 |

Table A.10. Germany.

| Station | Long | Lat | Alt |
|----------------|------------|------------|-----|
| Conow | 11.325496E | 53.220087N | 68 |
| Fürstenberg | 8.747344E | 51.516789N | 330 |
| Haidmühle | 13.758000E | 48.823000N | 820 |
| Hannover | 9.822995E | 52.405035N | 80 |
| Ketzur | 12.631277E | 52.495000N | 144 |
| Oldenburg | 8.165100E | 54.908907N | 123 |
| Seysdorf | 11.720225E | 48.545182N | 460 |
| Spiekerroog | 7.713935E | 53.773939N | 10 |
| Stuttgart | 9.103641E | 48.750942N | 300 |
| Weil-der-Stadt | 8.860460E | 48.751819N | 420 |

Table A.11. PRISMA - Italia.

| Station | Long | Lat | Alt |
|----------------------|------------|------------|------|
| Agordo | 12.031320E | 46.284320N | 600 |
| Alessandria | 8.618194E | 44.923830N | 107 |
| Arcetri | 11.254372E | 43.750590N | 100 |
| Asiago | 11.568190E | 45.849170N | 1365 |
| Barolo | 7.943960E | 44.611070N | 315 |
| Bedonia | 9.6324870E | 44.507693N | 550 |
| Brembate di Sopra | 9.582623E | 45.718831N | 295 |
| Camerino | 13.065680E | 43.130570N | 670 |
| Capua | 14.175158E | 41.121389N | 30 |
| Caserta | 14.332310E | 41.072620N | 14 |
| Castellana Grotte | 17.147777E | 40.875611N | 312 |
| Cecima | 9.078854E | 44.814460N | 670 |
| Cuneo | 7.540082E | 44.384776N | 559 |
| Felizzano | 8.437167E | 44.912736N | 122 |
| Finale Ligure | 8.327450E | 44.178270N | 35 |
| Genova | 8.936114E | 44.425473N | 310 |
| Gorga | 13.636000E | 41.392100N | 810 |
| Isnello | 14.021338E | 37.939684N | 580 |
| Lecce | 18.111235E | 40.335278N | 23 |
| Lignan | 7.4783333E | 45.789861N | 1678 |
| Loiano | 11.331773E | 44.256571N | 787 |
| Luserna San Giovanni | 7.258267E | 44.827685N | 571 |
| Medicina | 11.644608E | 44.524383N | 35 |
| Merate | 9.428611E | 45.705833N | 345 |
| Montelupo Fiorentino | 11.043198E | 43.755337N | 500 |
| Monteromano | 11.635978E | 44.138456N | 765 |
| Monte Sarchio | 14.645457E | 41.063718N | 298 |
| Napoli | 14.255361E | 40.862528N | 102 |
| Navacchio | 10.491633E | 43.683200N | 15 |
| Padova | 11.868540E | 45.401945N | 64 |
| Palermo | 13.299417E | 38.187283N | 35 |
| Piacenza | 9.725030E | 45.035376N | 77 |

Table A.11. continued.

| Station | Long | Lat | Alt |
|--------------------------|------------|------------|------|
| Pino Torinese | 17.764939E | 45.041240N | 620 |
| Pontevaltellina | 9.981636E | 46.190379N | 1207 |
| Reggio Calabria | 15.660189E | 38.119310N | 100 |
| Roma | 12.485338E | 41.894802N | 52 |
| Rovigo | 11.795048E | 45.081666N | 15 |
| SanMarcello Pistoiese | 10.803850E | 44.064155N | 1000 |
| Sardinia Radio Telescope | 9.130760E | 39.281950N | 100 |
| Savignano | 12.392745E | 44.089660N | 100 |
| Scandiano | 10.657597E | 44.591002N | 153 |
| Serra la Nave | 14.978864E | 37.691831N | 1725 |
| Sormano | 9.2285806E | 45.883000N | 1131 |
| Trento | 11.140785E | 46.065509N | 500 |
| Tricase | 18.366199E | 39.923622N | 94 |
| Triestre | 13.875086E | 45.642691N | 412 |
| Vicenza | 11.534934E | 45.558383N | 39 |

Table A.12. Mexico.

| Station | Long | Lat | Alt |
|------------------|-------------|------------|------|
| San-Pedro-Martir | 115.465753W | 31.045931N | 2830 |
| Ensenada | 116.666651W | 31.869425N | 50 |

Table A.13. Morocco.

| Station | Long | Lat | Alt |
|------------|-----------|------------|------|
| Casablanca | 7.634891W | 33.596191N | 15 |
| Oukaimeden | 7.866467W | 31.206160N | 2725 |
| Ben-Guerir | 7.936012S | 32.218554N | 460 |

Table A.14. Netherlands.

| Station | Long | Lat | Alt |
|-------------|------------|------------|-----|
| Denekamp | 6.965788E | 52.414965N | 27 |
| Dwingeloo | 6.234525E | 52.484699N | 16 |
| Groningen | 6.5256694E | 53.249458N | 21 |
| Noordwijk | 4.418402E | 52.218752N | 25 |
| Oostkapelle | 3.537670E | 51.571920N | 4 |

Table A.15. MOROI - Romania.

| Station | Long | Lat | Alt |
|-----------|------------|------------|------|
| Bârlad | 27.671676E | 46.230847N | 81 |
| Berthelot | 22.889832E | 45.614765N | 400 |
| Bocşa | 21.777756E | 45.384465N | 283 |
| Bucureşti | 26.096667E | 44.413333N | 81 |
| Dej | 21.230793E | 45.738060N | 101 |
| Feleac | 23.593715E | 46.710241N | 800 |
| Galaţi | 28.031919E | 45.419133N | 81 |
| Mădărjác | 27.134554E | 47.045297N | 200 |
| Mărişel | 23.075184E | 46.660976N | 1200 |
| Păuleşti | 25.978060E | 45.006917N | 242 |
| Timişoara | 21.230793E | 45.738060N | 101 |

Table A.16. Peru.

| Station | Long | Lat | Alt |
|---------------|------------|------------|------|
| Arequipa | 71.493272W | 16.465638S | 2400 |
| Caral | 77.520278W | 10.893611S | 350 |
| Moquegua | 70.678491W | 16.828119S | 3300 |
| Pisac-Cusco | 71.849639W | 13.422278S | 2972 |
| Puno | 70.015600W | 15.824174S | 3830 |
| Samaca | 75.759028W | 14.568028S | 325 |
| Santa Eulalia | 76.661667W | 11.897667S | 1036 |
| Sicaya | 75.296444W | 12.040167S | 3370 |
| Tarma | 75.683330W | 11.418250S | 3056 |

Table A.17. Senegal.

| Station | Long | Lat | Alt |
|-------------|------------|------------|-----|
| Dakar | 17.479673W | 14.704672N | 15 |
| Thies | 16.962996W | 14.793530N | 20 |
| Saint-Louis | 16.062019W | 16.423375N | 10 |

Table A.18. South Africa.

| Station | Long | Lat | Alt |
|------------|------------|------------|------|
| Cape Town | 18.477390E | 33.934400S | 25 |
| Sutherland | 20.810676E | 32.379791S | 1800 |
| Cederberg | 19.252677E | 32.499412S | 1000 |

Table A.19. SPMN - Spain.

| Station | Long | Lat | Alt |
|-----------|-----------|------------|-----|
| Barcelona | 2.119061E | 41.391765N | 97 |
| Bilbao | 2.948512W | 43.262257N | 60 |
| Montsec | 0.736836E | 42.024865N | 820 |

Table A.20. Switzerland.

| Station | Long | Lat | Alt |
|-----------|-----------|------------|------|
| Saint Luc | 7.612583E | 46.228347N | 2200 |
| Vicques | 7.420632E | 47.351819N | 600 |

Table A.21. Tunisia.

| Station | Long | Lat | Alt |
|----------|------------|------------|-----|
| La Marsa | 10.335108E | 36.880492N | 20 |
| Sousse | 10.611125E | 35.812668N | 15 |

Table A.22. SCAMP - UK.

| Station | Long | Lat | Alt |
|-------------|-----------|------------|-----|
| Armagh | 6.649632W | 54.352350N | 75 |
| Canterbury | 1.072080E | 51.273500N | 21 |
| Cardiff | 3.177870W | 51.486110N | 33 |
| East Barnet | 0.169234W | 51.637359N | 87 |
| Harwell | 1.315363W | 51.572744N | 90 |
| Honiton | 3.184408W | 50.801832N | 170 |
| Manchester | 2.233606W | 53.474365N | 70 |

Appendix B: FRIPON radio hardware description

FRIPON radio setup (Rault et al. 2014) is a multi-static radar consisting of 25 distant receivers and a high power large aperture (HPLA) radar. Thanks to its omni-directional reception antenna, each single radio station is able to receive scattered GRAVES echoes from a meteor, from its ionized trail and/or from the plasma surrounding the meteor body.

A typical FRIPON radio setup consists of

- a 2.5 m long vertical ground-plane antenna ref. COMET GP-5N connected to the radio receiver via a 50Ω coaxial cable model KX4;
- a general purpose Software Defined Radio (SDR) ref. FUNcube Dongle Pro + (Abbey 2013).

The ground-plane antenna radiation pattern is omni-directional in the horizontal plane, allowing both back and forward meteor scatter modes. The gain of this vertically polarized antenna is around 6 dBi. The FUNcube SDR is connected to one of the USB ports of the station and the *I/Q* data produced by the radio are recorded 24 h a day on the local computer hard disk. The SDR is a general coverage receiver (Fig. B.1), whose main characteristics are as follows:

- frequency range 150 kHz to 240 MHz and 420 MHz to 1.9 GHz;
- sensitivity: typically 12 dB SINAD NBFM for 0.15 μV at 145 MHz;
- reference oscillator stability: 1.5 ppm;
- sampling rate: 192 kHz;
- bit depth: 16 bits (32 bits used internally).

A low noise amplifier (LNA) and a surface acoustic wave (SAW) filter fitted in the front end of each receiver offer an adequate sensitivity and selectivity for the meteor echoes.

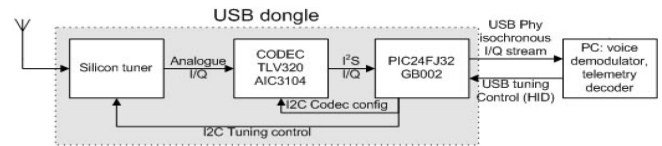


Fig. B.1. Diagram of the FUNcube (Abbey 2013) Software Defined Radio.

Appendix C: Map of FRIPON meteor trajectories

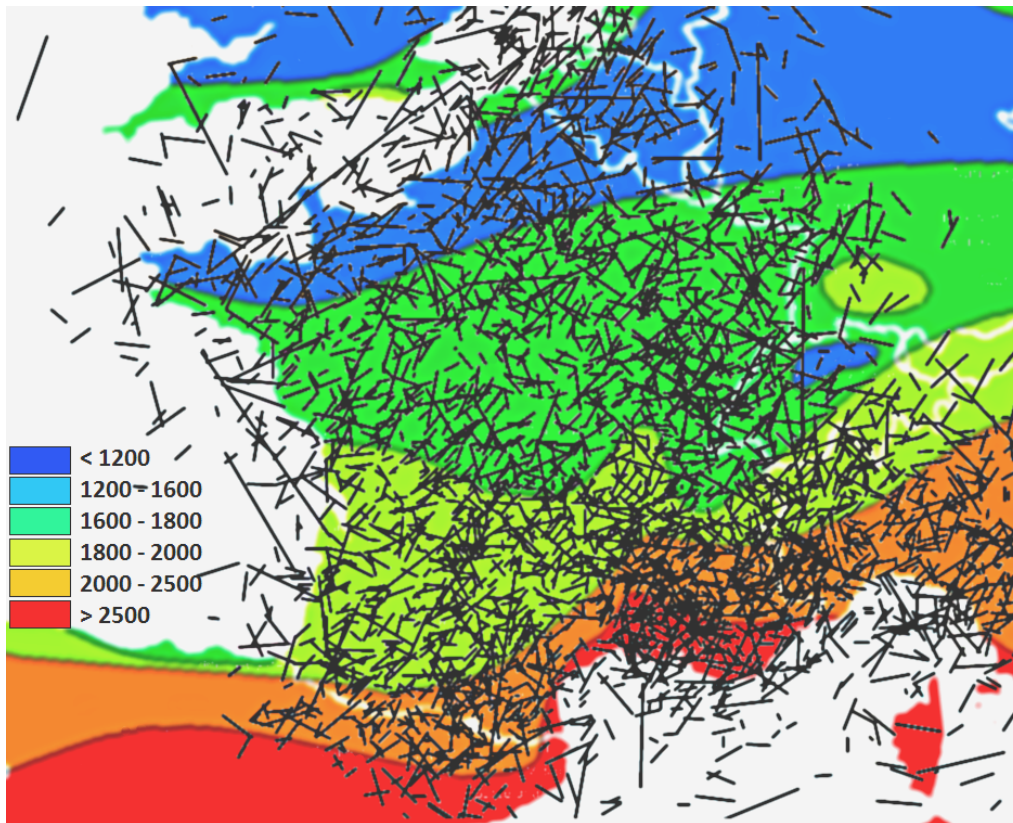


Fig. C.1. Map of the 3700 trajectories measured with FRIPON data from 2016 to early 2020. The concentration of detections is in part explained by the background sunshine weather map (sunshine duration in hours per year). The Rhône valley and the south of France have twice as many clear nights as the north. Another factor is that the installation of the cameras, done mostly throughout 2016, started in southern France and around Paris.