



HAL
open science

Visualizing the dynamics of exported bacterial proteins with the chemogenetic fluorescent reporter FAST

Yankel Chekli, Caroline Peron-Cane, Dario Dell'arciprete, Jean-François Allemand, Chenge Li, Jean-Marc Ghigo, Arnaud Gautier, Alice Lebreton, Nicolas Desprat, Christophe Beloin

► To cite this version:

Yankel Chekli, Caroline Peron-Cane, Dario Dell'arciprete, Jean-François Allemand, Chenge Li, et al.. Visualizing the dynamics of exported bacterial proteins with the chemogenetic fluorescent reporter FAST. *Scientific Reports*, 2020, 10 (1), pp.15791. 10.1038/s41598-020-72498-2 . hal-03093348

HAL Id: hal-03093348

<https://hal.science/hal-03093348v1>

Submitted on 3 Jan 2021

HAL is a multi-disciplinary open access archive for the deposit and dissemination of scientific research documents, whether they are published or not. The documents may come from teaching and research institutions in France or abroad, or from public or private research centers.

L'archive ouverte pluridisciplinaire **HAL**, est destinée au dépôt et à la diffusion de documents scientifiques de niveau recherche, publiés ou non, émanant des établissements d'enseignement et de recherche français ou étrangers, des laboratoires publics ou privés.



Distributed under a Creative Commons Attribution - NonCommercial - NoDerivatives 4.0 International License



OPEN

Visualizing the dynamics of exported bacterial proteins with the chemogenetic fluorescent reporter FAST

Yankel Chekli^{1,2}, Caroline Peron-Cane^{3,4}, Dario Dell'Arciprete³, Jean-François Allemand^{3,4}, Chenge Li⁵, Jean-Marc Ghigo¹, Arnaud Gautier^{5,6,7}, Alice Lebreton^{4,8}, Nicolas Desprat^{3,4}✉ & Christophe Beloin¹✉

Bacterial proteins exported to the cell surface play key cellular functions. However, despite the interest to study the localisation of surface proteins such as adhesins, transporters or hydrolases, monitoring their dynamics in live imaging remains challenging, due to the limited availability of fluorescent probes remaining functional after secretion. In this work, we used the *Escherichia coli* intimin and the *Listeria monocytogenes* InlB invasin as surface exposed scaffolds fused with the recently developed chemogenetic fluorescent reporter protein FAST. Using both membrane permeant (HBR-3,5DM) and non-permeant (HBRAA-3E) fluorogens that fluoresce upon binding to FAST, we demonstrated that fully functional FAST can be exposed at the cell surface and used to specifically tag the external side of the bacterial envelope in both diderm and monoderm bacteria. Our work opens new avenues to study the organization and dynamics of the bacterial cell surface proteins.

The study of protein localisation dynamics using fluorescent reporters has led to major insights into many biological processes. For instance, the use of fluorescent reporters enabled to show that MreB, the actin-like protein found in bacteria, spatially dictates the subcellular sites of cell wall synthesis^{1,2}. Super folder-GFP fusions with the MinC, D and E proteins, allowed the observation of their oscillation from pole to pole clarifying the role of the Min system in the division septum positioning^{3,4}. Nevertheless, whilst most studies on protein dynamics have been performed on either periplasmic or cytoplasmic proteins, visualizing protein dynamics on the outer bacterial envelope has remained a challenge. Indeed, GFP or GFP-like fluorescent reporters are either blocked before export, or denatured after crossing the bacterial secretion machineries.

To tackle these issues, alternatives to GFP-derived methods have been developed⁵. In *Escherichia coli*, for instance, fluorescent inactivated colicins have been shown to interact specifically with outer-membrane receptors but their use is restricted to the colicin cognate receptors⁶. Site-specific covalent labeling of cysteines using thiol-reactive maleimide dyes^{7,8} or Fluorescein-based biarsenical dyes (FIAsH)⁹ have been used to label cysteines from polymeric protein structures such as flagellar filaments and type IV pili or bacterial effectors. However, cysteine labeling can be toxic and suffers from a low signal-to-noise ratio, making it more suitable for the study of proteins with repeated motifs. The fluorescence of the Light Oxygen or Voltage (LOV) domain from *Arabidopsis thaliana* phototropin 2 has also been used to tag a flagellin protein in *C. difficile*¹⁰ or IpaB in *Shigella*¹¹ but the near-UV excitation of the fluorophore raises issues of phototoxicity during continuous imaging. More recently, the SpyTag/SpyCatcher system based on the covalent tethering of a recombinant reporting domain¹², has been used to label a truncated intimin exposed on the outer membrane of *E. coli*¹³. However, this method

¹Genetics of Biofilms Laboratory, Institut Pasteur, UMR CNRS2001, 75015 Paris, France. ²Université de Paris, Sorbonne Paris Cité, Paris, France. ³Laboratoire de Physique de L'ENS, École Normale Supérieure, Université PSL, CNRS, Sorbonne Université, Université de Paris, 75005 Paris, France. ⁴Institut de Biologie de l'ENS (IBENS), École Normale Supérieure, CNRS, INSERM, Université PSL, 75005 Paris, France. ⁵École Normale Supérieure, Université PSL, CNRS, Laboratoire Des Biomolécules (LBM), Sorbonne Université, 75005 Paris, France. ⁶PASTEUR, Department of Chemistry, École Normale Supérieure, PSL University, Sorbonne Université, CNRS, 75005 Paris, France. ⁷Institut Universitaire de France, Paris, France. ⁸INRAE, IBENS, 75005 Paris, France. ✉email: nicolas.desprat@phys.ens.fr; christophe.beloin@pasteur.fr

is limited by the duration of the labeling process itself, and the protocol involves washing steps to remove the unwanted background caused by the fluorescent dye in the medium, which prevents real-time observation of *de-novo* synthesized proteins.

Recently, a 14 kDa monomeric protein derived from the photoactive yellow protein from *Halorhodospira halophila*, called FAST, was developed as a new chemogenetic fluorescent reporting system¹⁴. FAST has been engineered to reversibly bind fluorogens derived from hydroxybenzylidene rhodanine (HBR) with spectral properties ranging from 525 to 600 nm. HBR and its analogues are non-fluorescent by themselves, but they strongly fluoresce when immobilized within FAST due to inaccessible radiationless decay channels. Stabilization of their phenolate state within FAST red-shifts their absorption. This spectral change enables one to selectively excite FAST without exciting free chromophores (protonated at physiological pH). This property prevents any nonspecific fluorescence even when the fluorogen is present in large excess, allowing to accurately localise FAST-tagged proteins¹⁵. FAST has already been successfully used in different organisms such as mammalian cells, zebrafish, yeast and bacteria¹⁴. Moreover, this system can be used in anaerobic conditions since fluorescence only depends on the interaction between FAST and the fluorogen. This feature allowed the study of anaerobic organism like *Clostridium* or the study of bacteria in anaerobic environments such as biofilms^{16,17}.

In this study, we showed that FAST can be exposed on the surface of gram-negative (*Escherichia coli*) and gram-positive (*Listeria monocytogenes*) model bacteria. FAST is still able to bind its fluorogenic ligand after its secretion to the surface of bacteria, thereby allowing fluorescence imaging. To characterize the cell uptake of the non-permeant fluorogen HBRAA-3E¹⁸ through the outer and inner membranes, we localized FAST constructs in the different *E. coli* cell compartments. Finally, we showed that FAST is suitable for monitoring the dynamics of tagged proteins within growing microcolonies for several hours. Overall, these results demonstrate the versatility of the FAST fluorescent reporter system to label proteins exposed on the surface of bacteria and to follow their localisation in living cells during colony growth.

Results and discussion

FAST can be exported to the cell surface of *E. coli*. To assess whether FAST can be exported and exposed at the cell surface of *E. coli* we used an anchoring module based on the scaffold of the intimin protein, an outer membrane protein expressed by Enterohemorrhagic *E. coli* (EHEC) and Enteropathogenic *E. coli* (EPEC), and required for intimate attachment to the host cell. The intimin scaffold was shown to efficiently display nanobodies at the *E. coli* cell surface^{19,20}. It is composed of the so-called Neae N-terminal fragment of intimin that encompass a N-terminal signal peptide, a periplasmic LysM domain (allowing binding to peptidoglycan), a β -barrel domain that allows the anchoring of intimin in the outer membrane of bacteria and two Ig-like domains (D00-D0) (Fig. 1a). In the plasmid pNeae2²¹ three different tags (E-tag, His-tag and Myc-tag) have been fused in frame with the C-terminal end of the D0 domain. We introduced the DNA encoding the FAST polypeptide after the three tags. In this configuration, D00-D0, the three tags and FAST were expected to be exposed in this order at the cell surface of *E. coli* (Fig. 1a,e). The construction is under the control of the IPTG-inducible *plac* promoter and induction of the expression of the intimin-FAST encoding construct resulted in the production of full-length intimin-D00-D0-tags-FAST (expected size = 86 kDa) as detected using an anti-E-tag antiserum (Fig. 2a). As it has been described in previous studies using the β -anchoring module of intimin as a surface display module^{20,21}, we also observed extra bands at lower and higher molecular weights. The lower molecular weight bands could correspond to the migration of unfolded or partially folded form of the protein, while bands at higher molecular weights can occur when the protein is highly expressed²⁰. When using the same antiserum and immunofluorescence on intact cells, in presence of IPTG, we detected a clear fluorescent signal at the periphery of *E. coli* cells (Fig. 2b), thus suggesting that the chimeric construction was properly exported to the outer membrane and exposed at the cell surface by the β -domain of the intimin.

To confirm that the chimeric protein was indeed transported to the cell surface we assessed its sensitivity to degradation by proteinase K. We performed immunofluorescence and western-blot experiments using cells untreated or treated with increasing amounts of proteinase K (0, 5, 10 or 15 $\mu\text{g mL}^{-1}$) in order to digest the proteins exposed at their surface. The experiment was also performed on a control strain that did not express the chimeric protein as well as on a strain that expresses a cytoplasmic version of FAST (Pf3-FAST Fig. 1e) (Supplementary Fig. S1). When adding increasing concentration of proteinase K, while the cytoplasmic FAST version remained intact (Supplementary Fig. S1), high molecular weight bands of intimin-FAST, including the band corresponding to the full-length protein (i.e. the protein exposed at the surface), disappeared. Only low molecular weight bands remained, probably corresponding to protein fragments that are not exposed at the bacterial surface (Fig. 2a). Accordingly, immunofluorescence signals detected at the cell surface for the intimin-FAST chimeric protein progressively disappeared with increasing proteinase K concentration (Fig. 2b). Quantification of the mean fluorescence intensity of cells for each condition confirmed the results shown by western blot and immunofluorescence (Supplementary Fig. S2). Indeed, the use of 5 and 10 $\mu\text{g mL}^{-1}$ of proteinase K led to a significant 2.5 fold decrease of quantified fluorescence compared to the negative control. This decrease was even more striking when using 15 $\mu\text{g mL}^{-1}$ of proteinase K, with an 18-fold decrease observed between the two conditions, although some proteases might enter into the periplasm when using this amount of proteinase K. Altogether these results show that FAST was accessible to proteinase K and thus exposed on the surface of the bacteria when fused to the intimin translocator domain.

FAST can be used to fluorescently tag the β domain of intimin. While detection of intimin-FAST chimeric constructs on the cell surface by anti-E-tag immunofluorescence demonstrated FAST export, the demonstration of the functionality of FAST requires the use of fluorescence microscopy in presence of FAST fluorogenic ligands in the extracellular medium. Upon binding to FAST, the membrane permeant fluorogen

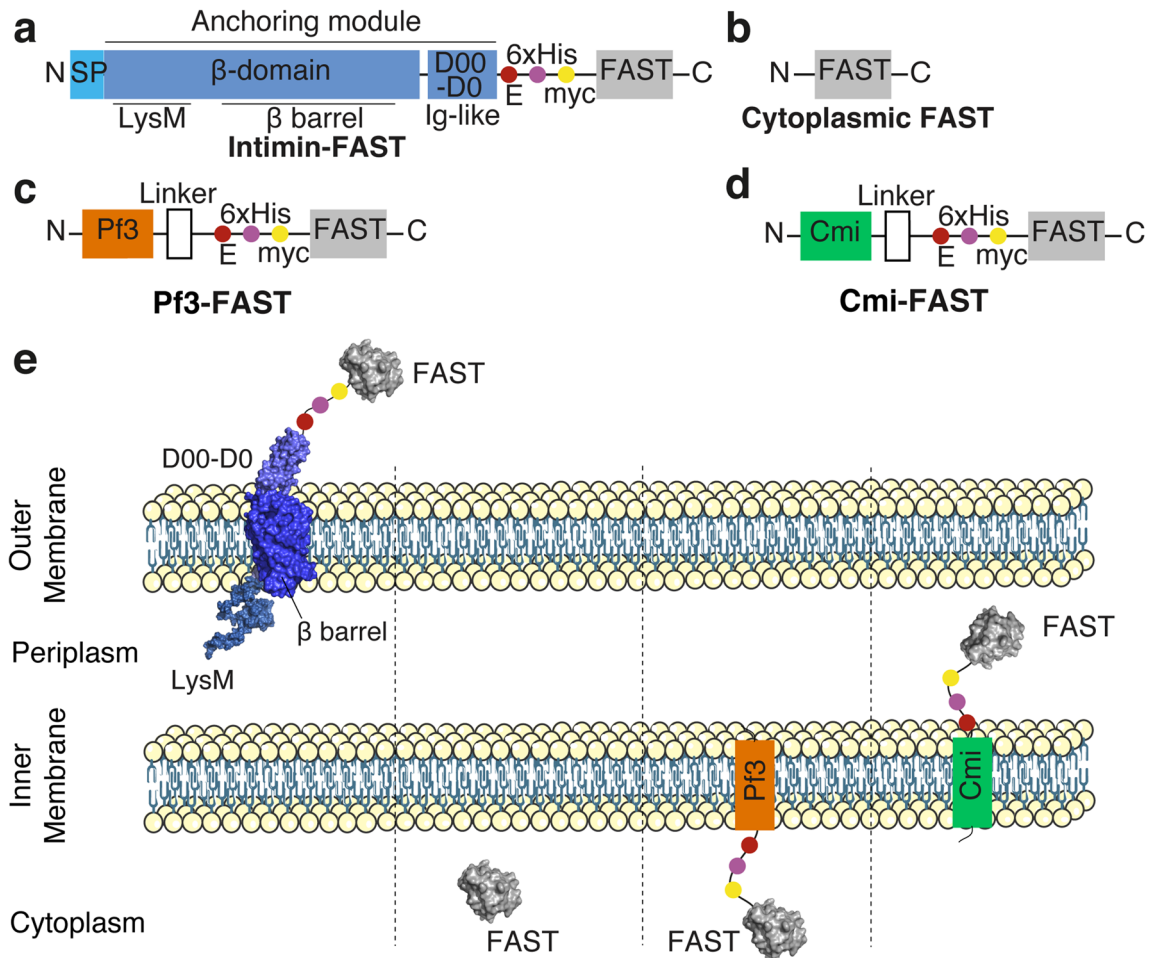


Figure 1. Schematic representation of the different FAST constructs used for *E. coli* in this study. FAST was fused to different scaffolds to allow its presentation as an *E. coli* cell-surface protein through the anchoring domain of the intimin (**a**, **e**), a free cytoplasmic protein (**b**, **e**), an inner-membrane attached cytoplasmic protein through the use of Pf3 transmembrane domain (**c**, **e**) or an inner-membrane attached periplasmic protein through the use of Cmi transmembrane domain (**d**, **e**). FAST structure was modeled using Phyre2²² based on the structure of the Photoactive Yellow Protein (PYP, PDB [d1nwza](#)) it derived from. The structure of the anchoring module of intimin corresponds to original structures of respectively, the intimin LysM domain (PDB [2mpw](#)), the intimin β-barrel domain (PDB [4e1s](#)) and the D00-D0 Ig-like domain (PDB [d1f00i1](#) and [d1f00i2](#)).

HBR-3,5DM becomes fluorescent (Fig. 3a). We used total internal reflection fluorescence (TIRF) microscopy to visualize the distribution of the intimin β-domain on the bacterial surface (Fig. 3b). For observations, cells were sandwiched between a glass coverslip and a LB agar pad containing the HBR-3,5DM fluorogen. Brightfield images were obtained from correlation imaging²³. Cells expressing the intimin-FAST construct were fluorescent when IPTG and HBR-3,5DM were added to the LB agar pad (Fig. 3c). Due to leakage of the *plac* promoter, cells containing the intimin-FAST construct were still weakly fluorescent even in the absence of IPTG (Fig. 3c). As expected, only a very weak signal, reflecting the non-specific fluorescent background, was detected for bacteria that did not harbor the intimin-FAST construct in presence of HBR-3,5DM (Fig. 3c). These results thus indicated that functional intimin-FAST fusions could be specifically detected using the HBR-3,5DM fluorogen. Of note, compared to immunofluorescence experiments, the evanescent wave generated by TIRF microscopy excites fluorescence only over the first 200 nm above the coverslip. Consequently, the contour of the membrane cannot be distinguished (Fig. 3b), and fluorescence is only excited in the vicinity of the coverslip (Fig. 3c).

Since the fluorogen HBR-3,5DM used to reveal FAST constructs permeated the cell membranes, TIRF microscopy did not guarantee that the fluorescent FAST-labeled intimin β-domain was actually exposed on the outer membrane. Although FAST levels were 5 times higher than the non-specific background of the wild type (WT) strains (Fig. 3d), we could not assert whether the functional FAST detected by the fluorescence of the fluorogen HBR-3,5DM actually corresponded to the cell-surface exposed intimin-FAST or to a fraction of the intimin-FAST located in the periplasm or in the cytoplasm.

A non-permeant fluorogen to differentiate FAST localized in different *E. coli* cellular compartments. To address whether the signal observed with HBR-3,5DM was actually located at the cell-surface, we used a modified fluorogen, HBRAA-3E, that was previously reported not to permeate through the membranes

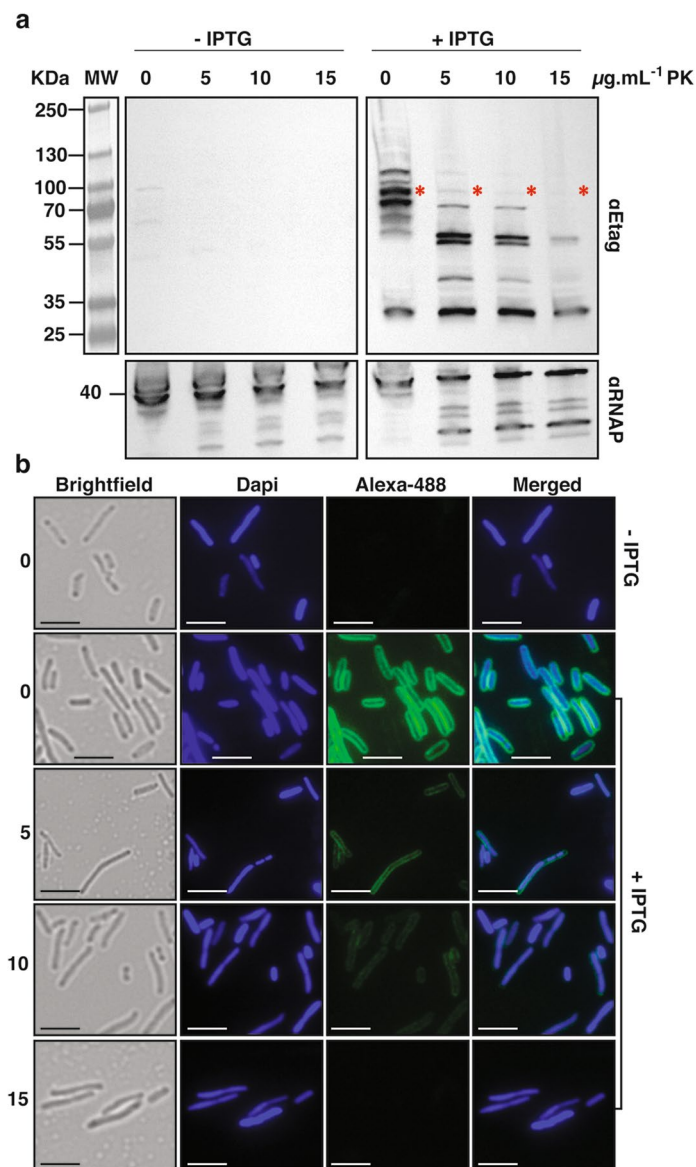


Figure 2. The chimeric Intimin-FAST protein is exposed at *E. coli* cell surface. *E. coli* MG1655 harbouring pNeae2-FAST (expressing intimin-FAST construct) cells were grown overnight in absence or presence of 0.25 mM IPTG to induce the production of the chimeric Intimin-FAST protein. Bacteria were treated with 0, 5, 10 or 15 $\mu\text{g}\cdot\text{mL}^{-1}$ of proteinase K for 15 min at 40 °C before (a) Western blot of whole-cell protein extracts and revelation with a rabbit anti-E-tag primary antibody and a HRP-linked anti-rabbit secondary antibody (The image has been cropped from a larger blot as depicted in Supplementary Information file S8), and (b) immunofluorescence on whole cells using a rabbit anti-E-tag primary antibody and an anti-rabbit Alexa 488 conjugated secondary antibody. All images are displayed with the same contrast. In (a), red stars indicate the position of the full length intimin-FAST. In (b), scale bars = 2 μm .

of eukaryotic cells¹⁸ but which capacity to cross bacterial membranes is unknown. We first checked if the non-permeant fluorogen HBRAA-3E did not stain the bacterial cytoplasm of *E. coli* using a strain constitutively expressing a free cytoplasmic FAST (Fig. 1b,e). While, by using TIRF microscopy, we detected FAST produced in the cytoplasm of *E. coli* as a uniform signal with the permeant fluorogen (HBR-3,5DM), no signal was detected when using the non-permeant fluorogen (HBRAA-3E) (Fig. 4a). This indicated that the non-permeant fluorogen was not able to cross the cytoplasmic inner membrane, but it does not necessarily mean that it might not cross the outer membrane of *E. coli*.

To further evaluate whether HBRAA-3E could cross the *E. coli* outer membrane, we built two strains expressing inner membrane-anchored protein either exposing FAST on the periplasmic, or on the cytoplasmic side of the inner membrane (Fig. 1c–e). In the first one FAST was fused at the C-terminus of the transmembrane domain of the major coat protein of the bacteriophage Pf3. The Pf3 transmembrane domain allows insertion into the inner membrane of bacteria with the protein facing the cytoplasm^{24–26}. In the second construction, FAST was

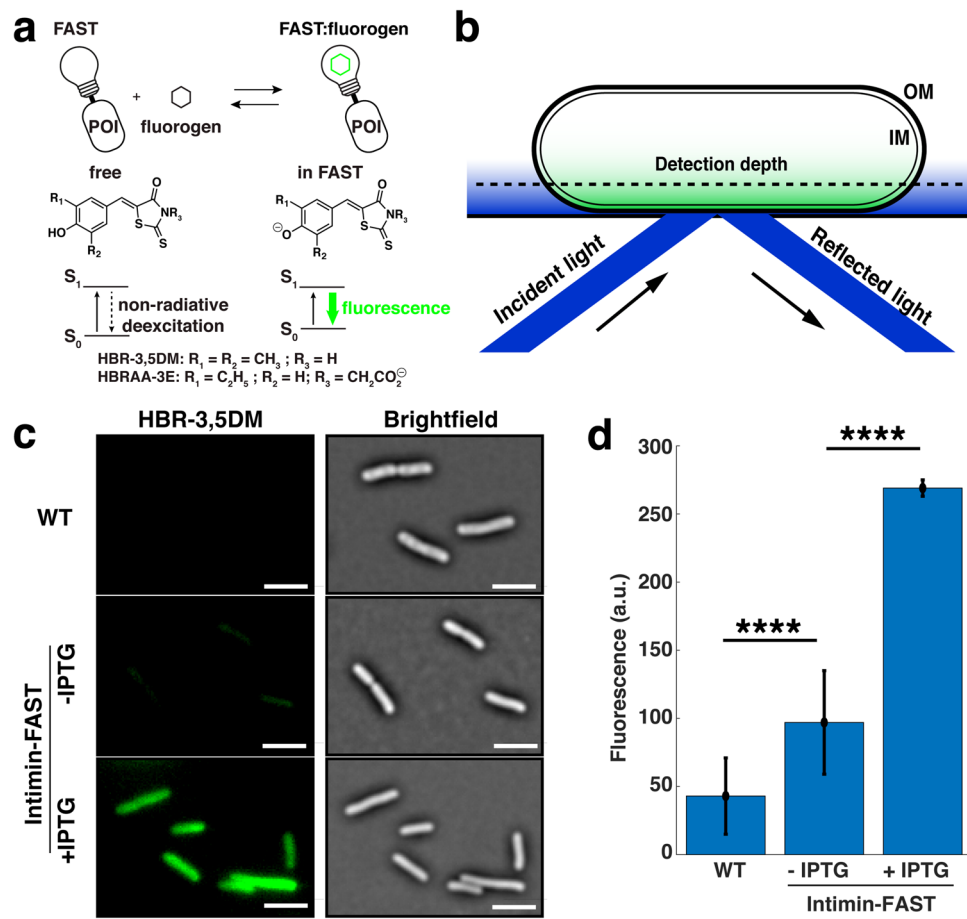


Figure 3. The chimeric Intimin-FAST protein expressed by *E. coli* cells becomes fluorescent upon binding to the membrane permeant fluorogen HBR-3,5DM. **(a)** FAST is fused to a protein of interest (POI). The fluorogen HBR-3,5DM supplied in the culture medium becomes fluorescent when it binds to FAST and reveals the POI. **(b)** Total internal reflection fluorescence microscopy (TIRF) generates an evanescent wave at the glass-gel interface in the sample. The short penetration depth of the evanescent wave (typically 200 nm) allows to remove the unwanted background but only reveals a section of bacteria close to the coverslip. IM and OM are the inner and outer membrane respectively. **(c)** Brightfield (right) and TIRF (left) images of *E. coli* MG1655 wild-type (WT) and Intimin-FAST cells. Exponentially growing cells ($OD_{600} = 0.7$) WT or containing pNeae2-FAST were deposited on a 1% agarose LB pad containing 20 μM of HBR-3,5DM with no (first two rows) or with 0.5 mM IPTG (bottom row). The background of the fluorescence images has been subtracted. All fluorescent images are displayed with the same contrast. Scale bar is 5 μm . Representative images of one experiment are presented. **(d)** Quantification of the fluorescent signal for WT and intimin-FAST cells in presence or absence of IPTG. Error bars represent standard errors of three biological replicates each containing at least 100 bacteria. Statistical analysis was performed using unpaired *t* tests (****, *p* value < 0.0001).

fused at the C-terminus of the transmembrane domain of the specific immunity protein Cmi, which inhibits the action of colicin M in the periplasm of *E. coli*²⁷. The transmembrane domain of Cmi also allows insertion into the inner membrane, but unlike Pf3, Cmi exposes the residues fused to its C-terminus in the periplasm²⁷. Western blot on whole cell extracts using anti-E-tag primary antibodies demonstrated that both proteins were produced (Supplementary Fig. S3a). Both chimeric proteins migrated with an apparent higher molecular weight (MW) than expected (35 kDa instead of 24 kDa for Pf3-FAST; 30 kDa instead of 22 kDa for Cmi-FAST), possibly due to the hydrophobic nature of the transmembrane domain of the proteins. Consistent with antibodies inability to cross intact outer membranes, we detected no Cmi-FAST or Pf3-FAST immunofluorescence signal with anti-E-tag antibodies, in contrast with the surface-exposed Intimin-FAST (Supplementary Fig. S3b). We then added the membrane permeant fluorogen (HBR-3,5DM), and detected FAST signals for strains producing both Cmi-FAST and Pf3-FAST, indicating that these constructs were functional. On the contrary, we did not detect any periplasmic or cytoplasmic signals with the membrane non-permeant fluorogen (HBRAA-3E) in strains expressing Cmi-FAST or Pf3-FAST (Fig. 4a) indicating that HBRAA-3E was indeed a non-permeant fluorogen that could not cross the *E. coli* outer membrane in significant amount. Strains carrying the pNeae2 backbone (i.e. Pf3-FAST, Cmi-FAST and intimin-FAST) displayed an apparent small increase of length as compared to the WT and cyto-FAST strains. This was also observed with a strain carrying the intimin without FAST, regardless

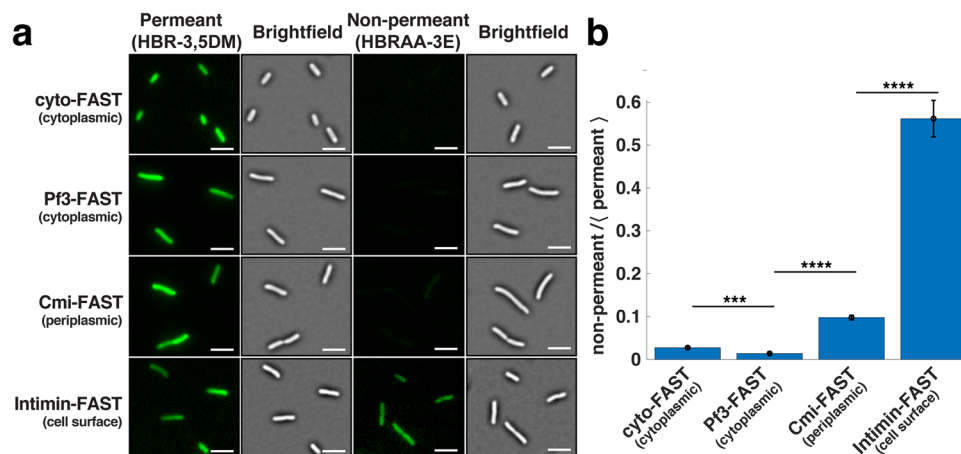


Figure 4. The outer membrane chimeric protein Intimin-FAST becomes fluorescent upon binding to the non-membrane permeant fluorogen HBRAA-3E. **(a)** Brightfield (right) and TIRF (left) images of exponentially growing ($OD_{600} = 0.7$) *E. coli* harbouring FAST constructs revealed by the permeant (HBR-3,5DM) and non-permeant (HBRAA-3E) fluorogens. From top to bottom: cyto-FAST constitutively produced freely in the cytoplasm from the plasmid pZE1R-FAST; Pf3-FAST exposed on the cytoplasmic leaflet of the inner membrane produced from the plasmid pPf3-FAST; Cmi-FAST exposed on the periplasmic leaflet of the inner membrane produced from the plasmid pCmi-FAST; and intimin-FAST exposed at the cell surface produced from pNeae2-FAST, all in presence of IPTG. Cells were deposited on a 1% agarose LB pad containing either 20 μ M of HBR-3,5DM or 40 μ M of HBRAA-3E with 0.5 mM IPTG when necessary. The background of the fluorescence images has been subtracted. For each construct, fluorescent images obtained with the permeant and non-permeant fluorogens are displayed with the same contrast. Scale bar is 5 μ m. **(b)** The signal of the non-permeant (HBRAA-3E) fluorogen divided by the average of the permeant (HBR-3,5DM) fluorescent signal for the different constructs: cyto-FAST ($n = 318$ for HBR-3,5DM; $n = 55$ for HBRAA-3E); Pf3-FAST ($n = 211$ for HBR-3,5DM; $n = 198$ for HBRAA-3E); Cmi-FAST ($n = 214$ for HBR-3,5DM; $n = 160$ for HBRAA-3E) and intimin-FAST ($n = 99$ for HBR-3,5DM; $n = 89$ for HBRAA-3E). Error bars represent standard errors. Statistical analysis was performed using unpaired t-tests (***, p value < 0.001 ; ****, p value < 0.0001).

of the presence of the IPTG inducer (Supplementary Fig. S4). This shows that presence of the pNeae2 backbone plasmid may have some fitness burden and induces a small elongation of the cells. Further studies of protein localisation should consider inserting genetic constructions directly onto the chromosome to reduce fitness costs due to plasmids.

Finally, we used TIRF microscopy and both permeant and non-permeant fluorogens to probe the localisation of functional intimin-FAST chimera and detected FAST signals with both fluorogens (Fig. 4a). The permeant fluorogen HBR-3,5DM revealed the total amount of FAST-tagged proteins expressed by cells, while the non-permeant fluorogen HBRAA-3E only revealed the fraction that was exposed on *E. coli* cell-surface. Since the two fluorogens have different emission/absorption spectra, brightness and affinity for the FAST amino-acid sequence (see methods), we could not quantitatively determine the absolute fraction of tagged proteins at the surface of cells. However, we could qualitatively compare strains by measuring the ratio between the non-permeant and the permeant signal. For the intimin-FAST construct the signal detected by the non-permeant fluorogen represented more than 50% of the total FAST revealed by the permeant fluorogen. For comparison this ratio was only 10% for the periplasmic Cmi-FAST construct and less than 2% for cytoplasmic constructs cyto-FAST and Pf3-FAST (Fig. 4b). These results confirmed that the non-permeant HBRAA-3E barely penetrates the outer membrane and that a large fraction of fluorescently labeled intimin-FAST is located on the cell-surface of *E. coli*. Besides, when bacteria are exponentially growing, a fraction of intimin-FAST fusions is located in the periplasmic space where the intimin protein undergoes folding by the SurA pathway^{28,29}. On the contrary, when bacteria are resuming growth from stationary phase, proteins must first be expressed, transported into the periplasm and folded before being exposed on the external face of the outer membrane. Consistently, when bacteria were harvested from stationary phase prior to observations, the appearance of the intimin-FAST signal revealed by a non-permeant fluorogen was delayed (Supplementary Fig. S5, Supplementary Movies S1 & S2). Interestingly, we noticed that the subcellular distribution of intimin-FAST fusions, which is homogeneous in exponential phase (Supplementary Movies S1 & S2), became polar when entering stationary phase (Supplementary Fig. S6, Supplementary Movies S3 & S4). This is consistent with previous studies using the SpyTag/SpyCatcher system¹³, and may reflect some functional relevance, i.e. the concentration of intimin proteins at the poles, may be to enhance *E. coli* interaction with host cells in certain physiological conditions.

Intimin-FAST differentially re-localised upon treatment of *E. coli* by antibiotics targeting either PG or the bacterial actin cytoskeleton MreB. To investigate if the activity of the cell wall synthesis machinery influences the distribution of intimins along the cell envelope, we exposed bacteria to antibi-

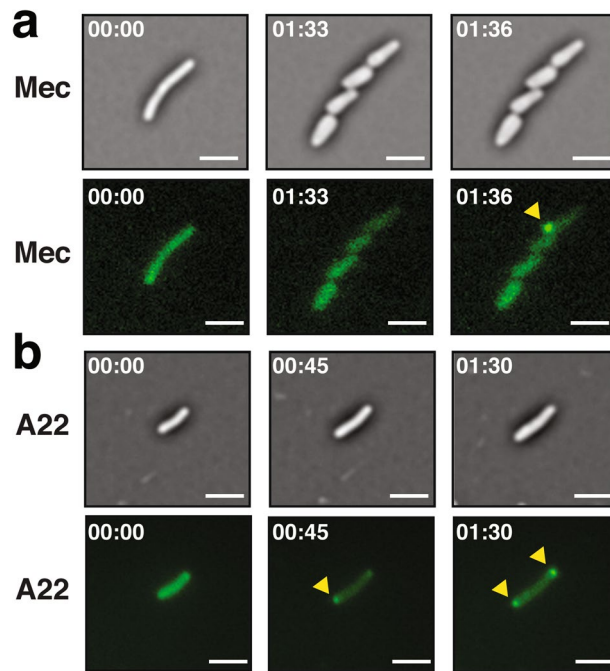


Figure 5. Re-localisation of Intimin-FAST upon antibiotic treatments. **(a)** Treatment with 100 µg/mL of mecillinam (Mec) to target PG organisation. Brightfield (top row) and TIRF (bottom row) images of exponentially growing ($OD_{600} = 0.7$) *E. coli* harbouring the intimin-FAST construct revealed by the permeant fluorogen (HBR-3,5DM). The yellow arrowhead indicates a sudden agglutination of the intimin-FAST proteins. **(b)** Treatment with 100 µg/mL of A22 to target MreB activity. Brightfield (top row) and TIRF (bottom row) images of exponentially growing ($OD_{600} = 0.7$) *E. coli* harbouring the intimin-FAST construct revealed by the permeant fluorogen (HBR-3,5DM). The yellow arrowheads indicate the accumulation of intimin-FAST proteins at poles.

otics and monitored the dynamics of FAST signal. We used two types of antibiotics: mecillinam and A22 that respectively target the peptidoglycan (PG) and MreB activity.

Mecillinam exclusively binds to Penicillin Binding Protein 2 (PBP2) and inhibits its transpeptidase activity, which is necessary to form peptide bridges between the glycan strands. As a result of PBP2 inhibition, bacteria become spherical and ultimately lyse^{30,31}. When exposed to a 1 µg/mL concentration of mecillinam, we observed that bacteria became round while the distribution of intimin-FAST fusion remained homogenous on the outer membrane (Supplementary Movie S5). At higher concentration (100 µg/mL), the response to mecillinam is heterogeneous across the population. In some cases, we observed that rapid re-localization of intimin-FAST fusions can occur within two successive snapshots of the time-lapse (Fig. 5a, Supplementary Movie S6). The pattern of the signal suggests that outer membrane vesicles may form and recruit intimin-FAST fusions.

A22 binds directly to MreB in its nucleotide-binding pocket, thus blocking ATP binding. As a consequence, A22 inhibits MreB polymerization, causing morphological defects and uneven chromosome segregation^{32,33}. When exposed to a 1 µg/mL concentration of A22, we observed that, as for mecillinam treatment, bacteria became round and intimin-FAST fusion distribution remained homogenous on the outer membrane (Supplementary Movie S7). However, the distribution of intimin-FAST fusions became polar at higher concentration (100 µg/mL) of A22 (Fig. 5b, Supplementary Movie S6). Contrary to mecillinam experiments, the polar re-localisation of intimin-FAST fusions is progressive in time (Supplementary Movie S8) and the response is homogeneous across the population.

Beyond the significance of intimin localisation, which is questionable in the context of intimin insertion in the non-pathogenic strain MG1655, these experiments illustrate that FAST labelling can be used to monitor rapid as well as slow reorganisations of protein distribution on the cell envelope.

A fully functional FAST can also be exposed on the surface of gram-positive bacteria. Internalin B (InlB) is a surface protein involved in the invasion of host cells by the pathogenic monoderm bacterium *L. monocytogenes*³⁴. The association of InlB with the bacterial surface is labile^{35,36}. It has been reported to be mediated by affinity between the C-terminal GW domains of InlB and lipoteichoic acids in the bacterial membrane. Due to this non-covalent surface attachment, InlB has also been detected in soluble form in the culture medium of *L. monocytogenes*³⁶, which has been suggested to contribute to the activation of the InlB cell surface receptor, Met, at a distance from bacteria³⁷. Whereas the expression of *inlB* by *in-vitro* grown bacteria is low, it is activated *in vivo* by the main regulator of *L. monocytogenes* virulence genes, PrfA³⁸.

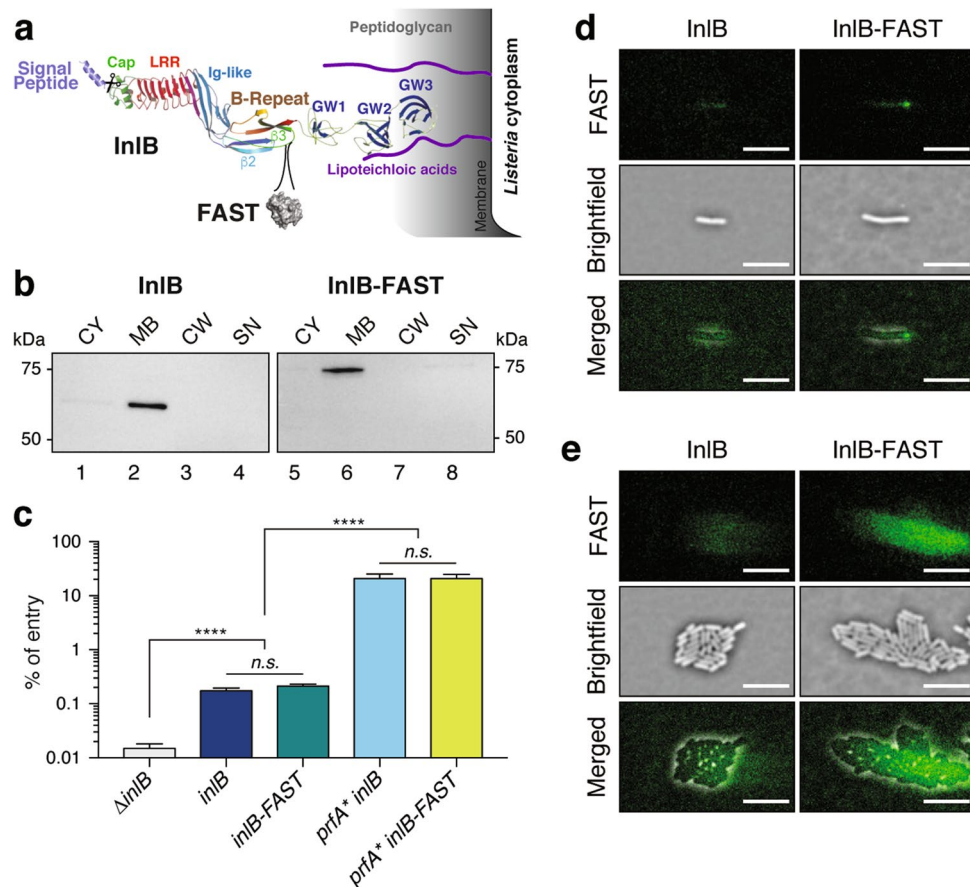


Figure 6. Re-localisation of InIB-FAST from stationary to exponential phase. **(a)** Diagram of the InIB-FAST construct anchored to the surface of *L. monocytogenes*. The insertion position of FAST, between the leaflets $\beta 2$ and $\beta 3$ of the "B-repeat" domain is indicated. **(b)** Western blot against InIB for *L. monocytogenes* producing InIB or InIB-FAST. CY = cytoplasmic fraction; MB = membrane fraction; CW = wall fraction; SN = supernatant fraction, the image has been cropped from a larger blot as depicted in Supplementary Information file S8. **(c)** The percentage of entry of *L. monocytogenes* in HeLa cells was assessed by gentamicin protection assay. It was expressed as the ratio of recovered colony-forming units counted from cell lysates at 2 h post-infection, to the initial number of bacteria in the inoculum. Plotted data represents average and standard deviation from three independent wells in a representative experiment. Adjusted p values were obtained by one-way ANOVA on \log_{10} -transformed percentages of entry for each well ($N = 3$). The experiment was reproduced thrice independently. ****, $p < 10^{-7}$. **(d, e)** *L. monocytogenes* *prfA** that produced either InIB or InIB-FAST were grown in BHI with 20 μ M HBR-3,5DM and imaged by TIRF microscopy. The contrast was the same on all images. Cells were resuming from stationary phase in **(d)** and were in exponential phase in **(e)**. The microcolonies shown in **(e)** have developed from the cells shown in **(d)**. Scale bar, 5 μ m.

In order to evaluate whether FAST could be used to detect InIB, either when surface-exposed or when diffusible, the FAST coding sequence was introduced between InIB residues 342 and 343 in a flexible loop between the $\beta 2$ and $\beta 3$ leaflets of the B-repeat domain of the protein, that is neither involved in surface anchoring, nor in binding the Met receptor (Fig. 6a). This loop was selected because its sequence was less conserved among *L. monocytogenes* strains than the rest of InIB, with the aim of minimizing the impact of introducing the FAST sequence on InIB structure and properties. The production of the InIB-FAST protein and its localisation were assessed by immunodetection. We used an anti-InIB antiserum after fractionation of *L. monocytogenes* grown in Brain Heart Infusion (BHI) to separate proteins that were secreted and released in the medium (supernatant fraction SN), secreted proteins that were associated with the cell wall (cell wall fraction CW), proteins that were associated with the cytoplasmic membrane (membrane fraction MB, where InIB has been reported to be anchored) and cytoplasmic proteins (cytoplasm fraction CY) (Fig. 6b). Both InIB and InIB-FAST were almost exclusively detected in the MB fraction, indicating that InIB-FAST was exposed on the bacterial membrane in the same proportions as the wild-type protein, thus the introduction of FAST did not interfere with the anchoring of InIB to surface lipoteichoic acids. To assess whether the fusion of FAST to InIB affected its functionality, we compared the capacity of strains decorated with native InIB or the InIB-FAST chimeric protein to promote entry into HeLa cells (which are only permissive to *L. monocytogenes* via the InIB internalisation pathway³⁹). A Δ *inIB* strain, used as a negative control, was unable to enter HeLa cells, confirming that InIB is necessary for entry into

HeLa cells (Fig. 6c). InlB or InlB-FAST were produced either at the endogenous levels characteristic of *in-vitro* grown bacteria, or at enhanced levels, when using strains that carry the *prfA** mutation. The *prfA** allele encodes a PrfA variant with a G145S substitution that is constitutively active and thereby leads to the high expression of PrfA-dependent virulence genes, including that of *inlB*⁴⁰. This strategy allowed us to bypass the need for PrfA activation that is otherwise triggered *in vivo*. In both WT and *prfA** backgrounds, the entry efficiency obtained with strains expressing *inlB-FAST* was indistinguishable from that of strains expressing *inlB*, suggesting that the function of InlB is not affected by the presence of FAST.

In order to observe the localisation of InlB at the single cell level, a culture of *L. monocytogenes* carrying the *prfA** mutation and producing InlB-FAST was observed in TIRF microscopy. Bacteria issued from a stationary phase culture were deposited on a nutrient BHI gel containing the permeant fluorogen HBR-3,5DM. When resuming growth, the localisation of InlB-FAST fusion was polar for 28% of cells (n = 184) (Fig. 6d). However, the distribution of InlB became more diffuse as the microcolony grew, possibly due to labile binding that allows the release of InlB molecules from the bacterial surface as previously reported^{35,36} (Fig. 6e, Supplementary Movie S9). On the contrary, the non-tagged strain showed a constant non-specific signal, ruling out that the observed signal variations were non-specific (Fig. 6d, e, Supplementary Fig. S7). The observation of specific InlB-FAST dynamics in microcolonies thus demonstrates that FAST remains fully functional when exported outside of *L. monocytogenes* cell-wall. Our results are consistent with previous immunofluorescence observations showing that the localisation of InlA, another internalin involved in *Listeria* invasion of host cells, redistributes from the lateral side to poles in stationary phase⁴¹.

As a conclusion, we have shown that the FAST reporter system efficiently tags proteins exposed at the surface of both gram-negative and gram-positive bacteria. We used this reporter system to tag the β -domain of *E. coli* intimin and InlB from *L. monocytogenes*, two bacterial surface proteins involved in adhesion to or invasion of host cells. In agreement with previous studies, we observed that these two proteins were distributed on the whole surface of rod-shaped bacteria during exponential growth, while becoming polar in stationary phase. Whether this modulation of intimin/InlB localisation during growth phase transition has any functional relevance remains an open question. Interestingly *L. monocytogenes* preferentially present their pole when triggering their entry into epithelial cells.

The use of FAST presents several benefits over the use of other strategies to label cell-surface proteins. FAST labeling requires off-the-shelf synthetic fluorogens and is almost instantaneous allowing the study of highly dynamic processes in real-time as shown by intimin-FAST re-localisation upon antibiotic treatments. The reversible binding of the fluorogen reduces bleaching issues, which is advantageous for long term observations. In addition, since the fluorogen undergoes a red shift in emission upon binding to FAST, it allows to discriminate the bound from the unbound fractions, which opens ways for live imaging without any washing steps. Furthermore, FAST offers the possibility to label intracellular as well as cell-surface proteins, through the use of membrane-impermeant or membrane-permeant fluorogens, allowing higher versatility when studying the dynamics of protein exposition to the cell-surface. For gram negative bacteria, the technology awaits for future developments that would enable to selectively monitor the different compartments (cytoplasm, periplasm, extracellular) in order to follow the dynamics of protein insertion in the outer membrane.

Methods

Bacterial strains and culture conditions. *E. coli* K12 strain used in this study is MG1655 (F⁻, λ ⁻, *rph-1*) obtained *E. coli* genetic stock center CGSC#6300. Plasmid construction were performed directly in this strain. All strains were grown in Lysogeny Broth (LB) (Corning) medium supplemented with the appropriate antibiotic for plasmid selection, at 37 °C with shaking at 180 rpm. The concentrations of the different antibiotics used for *E. coli* are as follow: Chloramphenicol 25 μ g/mL (Cm), Ampicillin 100 μ g/mL (Amp). For interfering with cell wall organisation, we used A22 (475951, Merck) and mecillinam (33447, Merck).

Listeria monocytogenes strains used in this work were derived from the clinical isolate LL195⁴². The *prfA** mutant that carried a single nucleotide mutation in the *prfA* allele, encoding a PrfA variant with a G145S substitution⁴⁰, was previously generated in this background⁴³. Plasmid constructions were performed using chemically-competent *E. coli* NEB5 α (New England Biolabs Cat# C2987). All strains were grown at 37 °C, 180 rpm in brain heart infusion (BHI, Difco) for *L. monocytogenes*.

Strains and plasmids used in this study are listed in Table S1.

Strains and plasmids constructions. In order to favor the expression of transgenes, the DNA coding sequence for FAST, were codon-optimized for *E. coli* and *L. monocytogenes* using the online Optimizer application (<https://genomes.urv.es/OPTIMIZER/>) in guided random mode. The optimized sequences were obtained as synthetic gene fragments (Epoch Life Science and Eurofins genomics, respectively) and can be provided upon request. For the constructions of pZE1R-FAST and pNeae2-FAST, the two vectors, pZE1R-GFP and pNeae2, were linearized by PCR and the FAST encoding gene was amplified in the same time using Phusion Flash High-Fidelity PCR Master-Mix (Thermo Scientific, F548). The linearization of pZE1R-GFP has been designed to remove the GFP coding sequence. The primers used to linearize the vectors and to amplify FAST-coding sequence carry at their ends 20 bp of homology to facilitate recombination during the Gibson reaction. To construct pPf3-FAST and pCmi-FAST we used the same strategy. The pNeae2 plasmid has been linearized by PCR and the Neae coding sequence has been removed. In the same time, the sequences coding Pf3, Cmi and FAST have been amplified by PCR. The primers used to amplify Pf3 and Cmi transmembrane domain carried, in one end, homology region with FAST in addition to the homology region with the vector at the other end. Before performing the Gibson reaction, the linearized vectors were treated with the Fast Digest DpnI enzyme (FD1704) for 30 min at 37 °C to remove any remains of circular plasmid which served as a matrix in the first

round of PCR. The reaction was stopped by incubating the mixture for 20 min at 80 °C. The Gibson reaction was then performed as described in⁴⁴ using 2 µL of linearized plasmid (100 ng/µL), 2 µL of insert, 10 µL of Gibson Master Mix 2X (100 µL 5X ISO Buffer, 0.2 µL 10,000 U/mL T5 exonuclease (NEB #M0363S), 6.25 µL 2000 U/mL Phusion HF polymerase (NEB #M0530S), 50 µL 40,000 U/mL Taq DNA ligase (NEB #M0208S), 87 µL dH₂O for 24 reactions) and q.s for 20 µL of sterile H₂O. The mix was then incubated for 30 min at 50 °C and dialyzed for 30 min. 50 µL of competent bacteria were then transformed, by electroporation, with 2 µL of Gibson's reaction product. After 1 h at 37 °C in LB, bacteria were spread on LB supplemented with appropriate antibiotic.

For allelic replacement at the *inlB* locus, the shuttle vector pMAD⁴⁵ was used. A sequence encompassing 1000 base pairs upstream and downstream the site of insertion of FAST in the B-repeats domain of *inlB* was amplified, between which the FAST sequence was introduced, flanked by two twelve base pairs linkers. These fragments were obtained by PCR on LL195 genomic DNA or on the pAD-FAST-Myc plasmid pBIRD15⁴³, assembled by PCR and inserted at the Sall/BglII sites of the pMAD plasmid. Allelic replacements of the *inlB* open reading frame by this construct in the genomes of *L. monocytogenes* strains LL195 and LL195 *prfA** were obtained as previously described⁴⁵.

Primers used in this study are listed in Table S2.

Digestion by the proteinase K. *E. coli* cells were inoculated from plate and shaken at 180 rpm overnight at 37 °C in LB. Equivalent of 1 OD₆₀₀ was centrifuged for 10 min at 1500×g at 4 °C. The pellets were then resuspended in protease buffer (50 mM Tris, pH 8.8). Then 0, 5, 10 or 15 µg mL⁻¹ of Proteinase K (Canvax) was added and the samples incubated for 15 min at 40 °C. Proteinase K activity was then stopped with 5 mM PMSF (phenylmethylsulfonyl fluoride). The bacteria were then centrifuged for 10 min at 1500×g at 4 °C, resuspended in 1 mL of 50 mM Tris pH 8.8 buffer and used for western blot, immunofluorescence.

Immunodetection using Western Blot. After proteinase K digestion, bacteria were pelleted, resuspended in 100 µL of 1X Laemli buffer (Bio-Rad #1610747) and boiled at 100 °C for 10 min. The proteins of an 0.1 OD₆₀₀ equivalent quantity of cells were separated by SDS-polyacrylamide denaturing gel electrophoresis using precast TGX 4–15% gradient gels (Bio-Rad). The proteins were then transferred to a 0.2 µm nitrocellulose membrane using Trans-Blot Turbo RTA Transfer Kit, nitro (Bio-Rad) and Trans-blot Turbo Transfer System (Bio-Rad). In order to verify that all wells have been uniformly loaded and to ensure that the proteins have been transferred, the membrane was stained with ponceau red (0.2% Ponceau S in 3% trichloroacetic acid). The membranes were washed with PBST (Phosphate Buffered Saline with Tween: PBS 0.05% Tween20) and saturated with a solution of PBST + 5% skimmed milk powder for 1 h at room temperature. The membrane was washed twice in PBST before being incubated with the primary rabbit anti-E-tag antibody diluted 1/5000 in PBST (Abcam, ab3397) for 1 h at room temperature (RT). The membrane was saturated again with a solution of PBST + 5% milk for 1 h at RT and washed twice in PBST before being incubated with a secondary goat HRP-linked anti-rabbit antibody diluted 1/10,000 in PBST (Abcam #98431) for 1 h at RT. The membrane was then washed 4 times 15 min in PBST. The revelation was performed using an ECL kit (Amersham, ECL western blotting detection reagents) and the iBright™ CL1500 system (ThermoFisher).

Immunofluorescence. The microscopy black slides (12 wells) were washed successively with water, 70% EtOH and 100% EtOH and then quickly fired. The wells were treated with 0.1% Poly-L-Lysine (Sigma P8920) for 2 min and washed 3 times with 1 mL PBS 1X (Ozyme) and allowed to dry. After proteinase K digestion, bacteria were pelleted, washed twice with 1 mL PBS 1X and then resuspended in 1 mL PBS 1X. 50 µL of sample was placed in each well, left 5 min at RT for cell attachment and fixed with 4% paraformaldehyde (PFA) (Sigma P6148) for 10 min at RT. The PFA was removed and the wells washed 3 times with 1 mL PBS 1X, then the samples were quenched with 50 mM NH₄Cl (in PBS 1X) for 3 min at RT, before 3 washes with 1 mL PBS and saturation with a 0.5% BSA solution in PBS 1X (Sigma A7888) for 15 min at RT. Excess of BSA was removed and the wells are covered with the primary rabbit 1/500e anti-E-tag antibody (Abcam, ab3397) in 0.5% PBS 1X-BSA for 45 min at RT. The wells were washed 3 times with 1 mL PBS 1X and covered with a mixture containing secondary goat anti-rabbit-Alexa488 antibodies (Invitrogen Molecular Probe 2 mg mL⁻¹, 1/300e) and DAPI (1/100e, Invitrogen Molecular Probe 10 mg mL⁻¹ D1306) for 45 min at RT. The slides are then washed 3 times with 1 mL of PBS and once with 1 mL of water and dried. Lastly, slides were mounted in Dako fluorescent mounting medium (Dako S3023) and observed by epifluorescence microscopy.

***L. monocytogenes* fractionation and immunoblots.** Bacterial proteins were separated into four fractions: supernatant, cell wall, membrane and cytoplasm as follows (adapted from³⁶). One milliliter of overnight culture of *L. monocytogenes* was pelleted by centrifugation for 30 s at 6000 ×g. The supernatant (SN) was passed through a 0.22 µm filter, and proteins were precipitated with 16% TCA, overnight at 4 °C. The precipitated proteins were recovered by centrifugation at 16,000 ×g, 15 min, 4 °C, then washed twice with 1 mL acetone and finally resuspended in 80 µL 1X Laemmli buffer (4% SDS, 50 mM Tris pH 6.8, 10% glycerol, 50 mM DTT, 0.01% Bromophenol blue).

The bacterial pellet was washed once in 2 mL PBS, once in 2 mL TMS buffer (10 mM Tris HCl pH 6.0, 10 mM MgCl₂, 0.5 M sucrose), resuspended in 100 µL of TMS supplemented with 60 µg/mL mutanolysin and 2 mM serine protease inhibitor AEBSE, and incubated for 1 h at 37 °C with gentle agitation to digest the peptidoglycan cell wall. The protoplasts were recovered by centrifugation at 15,000 ×g for 5 min. The supernatant corresponding to the cell wall fraction (CW) was precipitated with 16% TCA as described above. The protoplasts were lysed in 200 µL of lysis buffer (100 mM Tris pH 7.5, 100 mM NaCl, 10 mM MgCl₂) and disrupted by multiple freeze-thaw cycles. Membrane (MB) and cytoplasm (CY) fractions were separated by centrifugation at 21,000 ×g

for 15 min at 4 °C. The pelleted MB fraction was resuspended in 200 µL of RIPA buffer (25 mM Tris HCl pH 7.6, 150 mM NaCl, 1% NP-40, 1% sodium deoxycholate, 0.1% SDS). All the collected fractions were supplemented with Laemmli buffer, heat denatured for 5 min at 95 °C and each fraction were analyzed by sodium dodecyl sulfate–polyacrylamide gel electrophoresis (SDS-PAGE) and Western blotting.

For Western blot analysis, 10 µL of each fraction were separated on 4–15% Mini-Protein TGX gels (Bio-Rad) by SDS-PAGE, and transferred on a 0.1 µm Amersham Protran nitrocellulose membrane (GE Healthcare Cat #10600000) using a Pierce G2 Fast Blotter. Proteins were probed with anti-InlB mouse monoclonal antibody B4.6³⁵ at a 1/1000 dilution in PBS supplemented with 0.05% Tween-20 and 5% skimmed milk powder, followed by secondary hybridization with anti-Mouse IgG-heavy and light chain Antibody (Bethyl Cat# A90-116P, RRID:AB_67183) at a 1/50,000 dilution in the same buffer. Signals were detected using Pierce ECL Plus Western Blotting Substrate and a Las4000 imager (GE Healthcare).

***L. monocytogenes* entry into HeLa cells: gentamicin protection assay.** HeLa cells, that are only permissive for InlB-mediated entry because they lack E-cadherins (the receptor for InlA-mediated entry)³⁹, were grown as monolayers in 24-well plates. 4 h before infection, their culture medium was replaced with 500 µl of D-MEM without serum. Precultures of each *Listeria* strain were diluted and grown until they reached early stationary phase (OD₆₀₀ of 2) in BHI media at 37 °C. Bacteria were washed with pre-warmed PBS, resuspended in pre-warmed D-MEM to achieve a MOI of 120 (for WT strains) or 70 (for *prfA** strains), and 500 µl of inoculum was added to each well of the 24-well plates. Plates were centrifuged at 200 × *g* for 1 min and then incubated at 37 °C and 5% CO₂ for 1 h. The inoculum was washed away twice with PBS containing 40 µg/ml gentamicin, and then D-MEM containing 25 µg/ml gentamicin and 10% fetal bovine serum was added to each well. Infection was allowed to proceed for 1 h, after which cells were washed in PBS and then lysed in 500 µl of ice-cold sterile water. Colony forming units were counted out the inocula and cell lysates by serial dilutions and plating on BHI-agar plates. For each strain, three distinct wells were infected, and each was counted thrice independently. The experiment was performed thrice, and results of technical triplicates from a representative experiment were plotted (average ± standard deviation).

Description of the Fluorogens. The preparation of HBR-3,5DM⁴⁶ and HBRAA-3E¹⁸ was previously described. HBR-3,5DM and HBRAA-3E are commercially available from The Twinkle Factory (the-twinkle-factory.com) under the name ^{TF}Amber, and ^{TF}Amber-NP, respectively. FAST binds HBR-3,5DM and HBRAA-3E with a *K_D*s of 0.08 and 1.3 µM, respectively. FAST: HBR-3,5DM and FAST: HBRAA-3E complexes are characterized by absorption/emission peaks of 499/562 nm and 505/559 nm, and molecular brightness (i.e. the product of the fluorescence quantum yield and the absorptivity) of 23,500 M⁻¹ cm⁻¹ and 5000 M⁻¹ cm⁻¹, respectively.

TIRF microscopy. *E. coli* and *L. monocytogenes* strains were inoculated from glycerol stocks and grown overnight at 37 °C with shaking at 180 rpm in lysogeny broth (LB) and brain heart infusion (BHI), respectively. The next day, cultures were diluted (10³ times) in fresh medium and seeded on a gel pad (1% agarose with culture medium: LB or BHI) after reaching OD₆₀₀=0.7 for *E. coli* single cell measurements or directly from stationary phase for microcolonies experiments. The gel pads were loaded with either 20 µM of the permeant (HBR-3,5DM) or 40 µM of the non-permeant (HBRAA-3E) fluorogens. The preparation was sealed on a glass coverslip with double-sided tape (Gene Frame, Fischer Scientific). A duct was previously cut through the center of the pad to allow for oxygen diffusion into the gel. Temperature was maintained at 37 °C using a custom-made temperature controller. Bacteria were imaged on a custom microscope using a 100X/NA 1.45 objective lens (UPlan-Apo, Olympus) and an iXON EMCCD camera (Andor). Fluorescent images were taken using objective-based TIRF and laser excitation (Calypso 479 nm, Cobolt). We used an emission filter of 540 ± 20 nm and a dichroic mirror of 500 ± 10 nm (Semrock). We illuminated with 10 mW and exposed for 300 ms. Image acquisition and microscope control were actuated with a LabView interface (National Instruments). Brightfield images were reconstructed from a z-stack of brightfield images²³. Brightfield images were used to segment bacteria and compute the mean fluorescence per pixel in the mask of each bacteria.

Image analysis. For single cell experiments, we analyzed 10 different fields of view. Fluorescence quantification was performed by segmenting cells using either brightfield or DAPI fluorescent images for TIRF or immunofluorescence experiments, respectively. For each cell, we computed the mean intensity per pixel by averaging the fluorescence on cell mask. The fluorescence of the background was computed on the complementary of cell masks and then subtracted from the fluorescent images. Single cell measurements for the permeant fluorogen were given as the mean and the standard errors in the population for each strain. We computed the average ratio between the non-permeant and permeant signals by dividing single cell measurements obtained with the non-permeant fluorogen by the average fluorescence obtained with the permeant fluorogen on the same strain (i.e. average fluorescence in the population measured in single cells for 10 different fields of view using the HBR-3,5DM fluorogen). For experiments on microcolonies, we segmented microcolonies and yielded a single fluorescent trace for each field of view. Since InlB is loosely bound to the cell surface and can diffuse in the gel, we subtracted the fluorescent background measured on the first frame on every fluorescent images of the *L. monocytogenes* InlB-FAST time lapse. Image and data analysis were performed using custom MatLab routines. Statistical analysis was performed using unpaired *t* tests (***, *p* value < 0.001; ****, *p* value < 0.0001).

Data availability

The datasets generated during and/or analysed during the current study are available from the corresponding author on reasonable request.

Received: 30 April 2020; Accepted: 27 August 2020

Published online: 25 September 2020

References

- van Teeffelen, S. *et al.* The bacterial actin MreB rotates, and rotation depends on cell-wall assembly. *Proc. Natl. Acad. Sci. USA* **108**, 15822–15827. <https://doi.org/10.1073/pnas.1108999108> (2011).
- Shi, H., Bratton, B. P., Gitai, Z. & Huang, K. C. How to build a bacterial cell: MreB as the foreman of *E. coli* construction. *Cell* **172**, 1294–1305. <https://doi.org/10.1016/j.cell.2018.02.050> (2018).
- Rowlett, V. W. & Margolin, W. The bacterial Min system. *Curr. Biol.* **23**, R553–R556. <https://doi.org/10.1016/j.cub.2013.05.024> (2013).
- Rowlett, V. W. & Margolin, W. The Min system and other nucleoid-independent regulators of Z ring positioning. *Front. Microbiol.* **6**, 478. <https://doi.org/10.3389/fmicb.2015.00478> (2015).
- Gunasinghe, S. D., Webb, C. T., Elgass, K. D., Hay, I. D. & Lithgow, T. Super-resolution imaging of protein secretion systems and the cell surface of gram-negative bacteria. *Front. Cell Infect. Microbiol.* **7**, 220. <https://doi.org/10.3389/fcimb.2017.00220> (2017).
- Rassam, P. *et al.* Supramolecular assemblies underpin turnover of outer membrane proteins in bacteria. *Nature* **523**, 333–336. <https://doi.org/10.1038/nature14461> (2015).
- Ellison, C. K., Dalia, T. N., Dalia, A. B. & Brun, Y. V. Real-time microscopy and physical perturbation of bacterial pili using maleimide-conjugated molecules. *Nat. Protoc.* **14**, 1803–1819. <https://doi.org/10.1038/s41596-019-0162-6> (2019).
- Ellison, C. K. *et al.* Obstruction of pilus retraction stimulates bacterial surface sensing. *Science* **358**, 535–538. <https://doi.org/10.1126/science.aan5706> (2017).
- Enninga, J., Mounier, J., Sansonetti, P. & Tran Van Nhieu, G. Secretion of type III effectors into host cells in real time. *Nat. Methods* **2**, 959–965. <https://doi.org/10.1038/nmeth804> (2005).
- Buckley, A. M. *et al.* Lighting up clostridium difficile: reporting gene expression using fluorescent Lov domains. *Sci. Rep.* **6**, 23463–23463. <https://doi.org/10.1038/srep23463> (2016).
- Gawthorne, J. A. *et al.* Visualizing the translocation and localization of bacterial type III effector proteins by using a genetically encoded reporter system. *Appl. Environ. Microbiol.* **82**, 2700–2708. <https://doi.org/10.1128/AEM.03418-15> (2016).
- Hatlem, D., Trunk, T., Linke, D. & Leo, J. C. Catching a SPY: using the SpyCatcher-SpyTag and related systems for labeling and localizing bacterial proteins. *Int. J. Mol. Sci.* **20**, 10. <https://doi.org/10.3390/ijms20092129> (2019).
- Keeble, A. H. *et al.* Evolving accelerated amidation by SpyTag/SpyCatcher to analyze membrane dynamics. *Angew. Chem. Int. Ed. Engl.* **56**, 16521–16525. <https://doi.org/10.1002/anie.201707623> (2017).
- Plamont, M.-A. *et al.* Small fluorescence-activating and absorption-shifting tag for tunable protein imaging in vivo. *Proc. Natl. Acad. Sci. USA* **113**, 497–502. <https://doi.org/10.1073/pnas.1513094113> (2016).
- Peresse, T. & Gautier, A. Next-generation fluorogen-based reporters and biosensors for advanced bioimaging. *Int. J. Mol. Sci.* **20**(24), 6422. <https://doi.org/10.3390/ijms20246142> (2019).
- Monmeyran, A. *et al.* The inducible chemical-genetic fluorescent marker FAST outperforms classical fluorescent proteins in the quantitative reporting of bacterial biofilm dynamics. *Sci. Rep.* **8**, 10336–10336. <https://doi.org/10.1038/s41598-018-28643-z> (2018).
- Streett, H. E., Kalis, K. M. & Papoutsakis, E. T. A strongly fluorescing anaerobic reporter and protein-tagging system for clostridium organisms based on the fluorescence-activating and absorption-shifting tag protein (FAST). *Appl. Environ. Microbiol.* **85**, e00622–e01619. <https://doi.org/10.1128/AEM.00622-19> (2019).
- Li, C. *et al.* Fluorogenic probing of membrane protein trafficking. *Bioconjug. Chem.* **29**, 1823–1828. <https://doi.org/10.1021/acs.bioconjchem.8b00180> (2018).
- Piñero-Lambea, C. *et al.* Programming controlled adhesion of *E. coli* to target surfaces, cells, and tumors with synthetic adhesins. *ACS Synth. Biol.* **4**, 463–473. <https://doi.org/10.1021/sb500252a> (2015).
- Glass, D. S. & Riedel-Kruse, I. H. A synthetic bacterial cell-cell adhesion toolbox for programming multicellular morphologies and patterns. *Cell* **174**, 649–658. <https://doi.org/10.1016/j.cell.2018.06.041> (2018).
- Salema, V. *et al.* Selection of single domain antibodies from immune libraries displayed on the surface of *E. coli* cells with two β -domains of opposite topologies. *PLoS ONE* **8**, e75126–e75126. <https://doi.org/10.1371/journal.pone.0075126> (2013).
- Kelley, L. A., Mezulis, S., Yates, C. M., Wass, M. N. & Sternberg, M. J. E. The Phyre2 web portal for protein modeling, prediction and analysis. *Nat. Protoc.* **10**, 845–858. <https://doi.org/10.1038/nprot.2015.053> (2015).
- Julou, T. *et al.* Cell-cell contacts confine public goods diffusion inside *Pseudomonas aeruginosa* clonal microcolonies. *Proc. Natl. Acad. Sci. USA* **110**, 12577–12582. <https://doi.org/10.1073/pnas.1301428110> (2013).
- Kiefer, D., Hu, X., Dalbey, R. & Kuhn, A. Negatively charged amino acid residues play an active role in orienting the Sec-independent Pf3 coat protein in the *Escherichia coli* inner membrane. *EMBO J.* **16**, 2197–2204. <https://doi.org/10.1093/emboj/16.9.2197> (1997).
- Chen, M. *et al.* Direct interaction of YidC with the Sec-independent Pf3 coat protein during its membrane protein insertion. *J. Biol. Chem.* **277**, 7670–7675. <https://doi.org/10.1074/jbc.M110644200> (2002).
- Facey, S. J. & Kuhn, A. Membrane integration of *E. coli* model membrane proteins. *Biochim. Biophys. Acta* **1694**, 55–66. <https://doi.org/10.1016/j.bbamcr.2004.03.012> (2004).
- Gross, P. & Braun, V. Colicin M is inactivated during import by its immunity protein. *Mol. Gen. Genet.* **251**, 388–396. <https://doi.org/10.1007/bf02172531> (1996).
- Bodelon, G., Marin, E. & Fernandez, L. A. Role of periplasmic chaperones and BamA (YaeT/Omp85) in folding and secretion of intimin from enteropathogenic *Escherichia coli* strains. *J. Bacteriol.* **191**, 5169–5179. <https://doi.org/10.1128/jb.00458-09> (2009).
- Oberhettinger, P. *et al.* Intimin and invasins export their C-terminus to the bacterial cell surface using an inverse mechanism compared to classical autotransport. *PLoS ONE* **7**, e47069. <https://doi.org/10.1371/journal.pone.0047069> (2012).
- Spratt, B. G. Distinct penicillin binding proteins involved in the division, elongation, and shape of *Escherichia coli* K12. *Proc. Natl. Acad. Sci. USA* **72**, 2999–3003. <https://doi.org/10.1073/pnas.72.8.2999> (1975).
- Spratt, B. G. The mechanism of action of mecillinam. *J. Antimicrob. Chemother.* **3**(Suppl B), 13–19. https://doi.org/10.1093/jac/3.suppl_b.13 (1977).
- Bean, G. J. *et al.* A22 disrupts the bacterial actin cytoskeleton by directly binding and inducing a low-affinity state in MreB. *Biochemistry* **48**, 4852–4857. <https://doi.org/10.1021/bi900014d> (2009).
- Bonez, P. C. *et al.* Antibacterial, cyto and genotoxic activities of A22 compound ((S-3, 4-dichlorobenzyl) isothiourea hydrochloride). *Microb. Pathog.* **99**, 14–18. <https://doi.org/10.1016/j.micpath.2016.07.007> (2016).
- Disson, O. *et al.* Conjugated action of two species-specific invasion proteins for fetoplacental listeriosis. *Nature* **455**, 1114–1118. <https://doi.org/10.1038/nature07303> (2008).
- Braun, L. *et al.* InlB: an invasion protein of *Listeria monocytogenes* with a novel type of surface association. *Mol. Microbiol.* **25**, 285–294. <https://doi.org/10.1046/j.1365-2958.1997.4621825.x> (1997).
- Jacquiers, R., Bierne, H., Fiedler, F., Gounon, P. & Cossart, P. Interaction between the protein InlB of *Listeria monocytogenes* and lipoteichoic acid: a novel mechanism of protein association at the surface of gram-positive bacteria. *Mol. Microbiol.* **34**, 902–914. <https://doi.org/10.1046/j.1365-2958.1999.01652.x> (1999).

37. Bierne, H. & Cossart, P. InlB, a surface protein of *Listeria monocytogenes* that behaves as an invasin and a growth factor. *J. Cell Sci.* **115**, 3357–3367 (2002).
38. Toledo-Arana, A. *et al.* The *Listeria* transcriptional landscape from saprophytism to virulence. *Nature* **459**, 950–956. <https://doi.org/10.1038/nature08080> (2009).
39. Pizarro-Cerdá, J., Kühbacher, A. & Cossart, P. Entry of *Listeria monocytogenes* in mammalian epithelial cells: an updated view. *Cold Spring Harbor Perspect. Med.* **2**(11), a010009. <https://doi.org/10.1101/cshperspect.a010009> (2012).
40. Ripio, M. T., Dominguez-Bernal, G., Lara, M., Suarez, M. & Vazquez-Boland, J. A. A Gly145Ser substitution in the transcriptional activator PrfA causes constitutive overexpression of virulence factors in *Listeria monocytogenes*. *J. Bacteriol.* **179**, 1533–1540. <https://doi.org/10.1128/jb.179.5.1533-1540.1997> (1997).
41. Bruck, S., Personnic, N., Prevost, M.-C., Cossart, P. & Bierne, H. Regulated shift from helical to polar localization of *Listeria monocytogenes* cell wall-anchored proteins. *J. Bacteriol.* **193**, 4425–4437. <https://doi.org/10.1128/JB.01154-10> (2011).
42. Weinmaier, T. *et al.* Complete Genome Sequence of *Listeria monocytogenes* LL195, a Serotype 4b Strain from the 1983–1987 Listeriosis Epidemic in Switzerland. *Genome Announc.* **1**(1), e00152-e212. <https://doi.org/10.1128/genomeA.00152-12> (2013).
43. Peron Cane, C. *et al.* Fluorescent secreted bacterial effectors reveal an intravacuolar replication compartment for *Listeria monocytogenes*. *BioRxiv* <https://doi.org/10.1101/2019.12.23.886689> (2020).
44. Gibson, D. G. *et al.* Enzymatic assembly of DNA molecules up to several hundred kilobases. *Nat. Methods* **6**, 343–345. <https://doi.org/10.1038/nmeth.1318> (2009).
45. Arnaud, M., Chastanet, A. & Debarbouille, M. New vector for efficient allelic replacement in naturally nontransformable, low-GC-content, gram-positive bacteria. *Appl. Environ. Microbiol.* **70**, 6887–6891. <https://doi.org/10.1128/aem.70.11.6887-6891.2004> (2004).
46. Li, C. *et al.* Dynamic multicolor protein labeling in living cells. *Chem. Sci.* **8**, 5598–5605. <https://doi.org/10.1039/c7sc01364g> (2017).
47. Lutz, R. & Bujard, H. Independent and tight regulation of transcriptional units in *Escherichia coli* via the LacR/O, the TetR/O and AraC/I1–I2 regulatory elements. *Nucleic Acids Res.* **25**, 1203–1210. <https://doi.org/10.1093/nar/25.6.1203> (1997).

Acknowledgements

We thank the Institut Pierre-Gilles de Gennes for technical support and Marion Lemarignier for assistance with InlB constructs. Work in the groups of ND and CB was supported by the Agence Nationale pour la Recherche (ANR) ADOBE-PRC-2019, by an Institut Pasteur grant, by the French government's Investissement d'Avenir Program, Laboratoire d'Excellence "Integrative Biology of Emerging Infectious Diseases" (Grant No. ANR-10-LABX-62-IBEID) and the *Fondation pour la Recherche Médicale* (Grant No. DEQ20180339185). Work in the group of ND contributes to the IdEx Université de Paris ANR-18-IDEX-0001 and is part of "Institut Pierre-Gilles de Gennes" (laboratoire d'excellence, "Investissements d'avenir" program ANR-10-IDEX-0001-02 PSL and ANR-10-LABX-31) and the Qlife Institute of Convergence (PSL). Work in the group of AL has received support under the program "Investissements d'Avenir" implemented by ANR (ANR-10-LABX-54 MemoLife and ANR-10-IDEX-0001-02 PSL University), *Fondation pour la Recherche Médicale* (FRM-AJE20131128944), Inserm ATIP-Avenir and Mairie de Paris (programme Émergences – Recherche médicale). Work in the group of AG was supported by the European Research Council (ERC-2016-CoG-724705 FLUOSWITCH). YC was supported by a MENESR (Ministère Français de l'Éducation Nationale, de l'Enseignement Supérieur et de la Recherche) fellowship. CPC received a doctoral fellowship from programme Interface pour le Vivant from Sorbonne University. DDA was funded a Marie Skłodowska-Curie Action MSCA-IF-2018 (ERC).

Author contributions

Y.C., C.P.C. and D.D.A. conducted the experiments. C.B., N.D. and A.L. supervised the work. C.B., N.D., A.L., C.L., A.G. and J.F.A. contributed to the methodology development. Y.C., C.B., N.D., C.P.C., D.D.A., A.L. and J.M.G. analyzed the data. Y.C., C.B., N.D. and A.L. wrote the manuscript with significant help from C.P.C., D.D.A., J.M.G. and A.G. All authors read and edited the manuscript.

Competing interests

The authors declare no competing interests.

Additional information

Supplementary information is available for this paper at <https://doi.org/10.1038/s41598-020-72498-2>.

Correspondence and requests for materials should be addressed to N.D. or C.B.

Reprints and permissions information is available at www.nature.com/reprints.

Publisher's note Springer Nature remains neutral with regard to jurisdictional claims in published maps and institutional affiliations.



Open Access This article is licensed under a Creative Commons Attribution 4.0 International License, which permits use, sharing, adaptation, distribution and reproduction in any medium or format, as long as you give appropriate credit to the original author(s) and the source, provide a link to the Creative Commons licence, and indicate if changes were made. The images or other third party material in this article are included in the article's Creative Commons licence, unless indicated otherwise in a credit line to the material. If material is not included in the article's Creative Commons licence and your intended use is not permitted by statutory regulation or exceeds the permitted use, you will need to obtain permission directly from the copyright holder. To view a copy of this licence, visit <http://creativecommons.org/licenses/by/4.0/>.

© The Author(s) 2020