



**HAL**  
open science

## **Gamma-D crystallin gene (CRYGD) mutation causes autosomal dominant congenital cerulean cataracts**

Emeline Nandrot, Christine Slingsby, A Basak, M Cherif-Chefchaoui, B Benazzouz, Y Hajaji, S Boutayeb, Olivier Gribouval, Laurence Arbogast, A. Berraho, et al.

### ► To cite this version:

Emeline Nandrot, Christine Slingsby, A Basak, M Cherif-Chefchaoui, B Benazzouz, et al.. Gamma-D crystallin gene (CRYGD) mutation causes autosomal dominant congenital cerulean cataracts. *Journal of Medical Genetics*, 2003. hal-03086814

**HAL Id: hal-03086814**

**<https://hal.science/hal-03086814>**

Submitted on 17 Nov 2021

**HAL** is a multi-disciplinary open access archive for the deposit and dissemination of scientific research documents, whether they are published or not. The documents may come from teaching and research institutions in France or abroad, or from public or private research centers.

L'archive ouverte pluridisciplinaire **HAL**, est destinée au dépôt et à la diffusion de documents scientifiques de niveau recherche, publiés ou non, émanant des établissements d'enseignement et de recherche français ou étrangers, des laboratoires publics ou privés.

## ORIGINAL ARTICLE

Gamma-D crystallin gene (*CRYGD*) mutation causes autosomal dominant congenital cerulean cataracts

E Nandrot, C Slingsby, A Basak, M Cherif-Chefchaoui, B Benazzouz, Y Hajaji, S Boutayeb, O Gribouval, L Arbogast, A Berraho, M Abitbol\*, L Hilal\*

See end of article for authors' affiliations

*J Med Genet* 2003;**40**:262–267

## Correspondence to:

Dr M Abitbol, Centre de Recherches Thérapeutiques en Ophtalmologie, Faculté de Médecine Necker-Enfant Malades, 156 Rue de Vaugirard, 75015 Paris cedex, France; abitbol@necker.fr or Pr L Hilal, Laboratoire de Génétique et Biologie Moléculaire, Département de Biologie, Faculté des Sciences, Université Ibn Tofail, Kénitra, Morocco; lhilal@yahoo.fr

Revised version received 19 December 2002  
Accepted for publication 13 January 2003

Congenital cataracts are a major cause of bilateral visual impairment in childhood. We mapped the gene responsible for autosomal congenital cerulean cataracts to chromosome 2q33-35 in a four generation family of Moroccan descent. The maximum lod score (7.19 at recombination fraction  $\theta=0$ ) was obtained for marker D2S2208 near the  $\gamma$ -crystallin gene (*CRYG*) cluster. Sequencing of the coding regions of the *CRYGA*, *B*, *C*, and *D* genes showed the presence of a heterozygous C>A transversion in exon 2 of *CRYGD* that is associated with cataracts in this family. This mutation resulted in a proline to threonine substitution at amino acid 23 of the protein in the first of the four Greek key motifs that characterise this protein. We show that although the x ray crystallography modelling does not indicate any change of the backbone conformation, the mutation affects a region of the Greek key motif that is important for determining the topology of this protein fold. Our data suggest strongly that the proline to threonine substitution may alter the protein folding or decrease the thermodynamic stability or solubility of the protein. Furthermore, this is the first report of a mutation in this gene resulting in autosomal dominant congenital cerulean cataracts.

Congenital cataracts (ADCC) are a significant cause of visual impairment in childhood. The estimated prevalence is 1-6/10 000 live births.<sup>1, 2</sup> In non-consanguineous populations, most cases of inherited non-syndromic cataracts show an autosomal dominant (AD) mode of transmission, but X linked and autosomal recessive forms have also been observed. Inherited cataracts are clinically highly heterogeneous and show considerable inter- and intrafamilial variability.<sup>3-5</sup> To date, more than 15 independent loci and genes on different chromosomes have been shown to be associated with autosomal dominant congenital cataracts (ADCC),<sup>2, 6-9</sup> and causative mutations have been identified in several distinct genes, including genes encoding crystallins,<sup>10-18</sup> lens specific connexins (gap junction proteins),<sup>19-22</sup> aquaporin (*MIP*),<sup>23, 24</sup> and cytoskeletal structural proteins,<sup>25, 26</sup> as well as in the homeobox gene *PITX3*<sup>27</sup> and the heat shock transcription factor 4 gene (*HSF4*).<sup>28</sup> Congenital cataracts are genetically heterogeneous as clinically identical cataracts have been mapped to different loci.<sup>2, 29</sup> Conversely, an identical mutation can result in different phenotypes.<sup>5, 10, 14</sup>

Cerulean cataracts, which were first described by Vogt in 1922,<sup>30</sup> are characterised by early onset, progressive development of bilateral lens opacities and complete penetrance. Affected newborns appear to be asymptomatic until the age of 18 to 24 months. At this age they can be clinically diagnosed by slit lamp examination, which shows the presence of tiny blue or white opacities that first develop in the superficial layers of the fetal lens nucleus. Armitage *et al*<sup>31</sup> suggested that cerulean cataracts should be classified as developmental cataracts rather than as congenital cataracts. The opacities spread

throughout the adult lens nucleus and cortex and form concentric layers with radially orientated central lesions.

Two cerulean ADCCs (ADCCC) have been mapped in distinct, large families: one to 17q24 (CCA1, MIM 115660) and the other to 22q11.2-q12.2 (CCA2, MIM 601547), which is close to the  $\beta$ -crystallin gene (*CRYBB2*, MIM 123620).<sup>31, 32</sup> Litt *et al*<sup>10</sup> identified a chain termination mutation in the *CRYBB2* gene and showed that this mutation is associated with the CAA2 type. However, no mutated genes have yet been found to be associated with the CCA1 type. We recently reported a large Moroccan pedigree with an unusual form of cerulean blue dot cataract, characterised by a very early onset of lens opacities and a rapid progression towards blindness in the absence of rapid surgical intervention. In this family, we excluded any linkage to previously mapped loci for ADCCs (17q24 and 22q).<sup>33</sup> We report here the linkage of the ADCCC affecting this Moroccan family to a region of chromosome 2q33-q35, spanning the  $\gamma$ -crystallin gene cluster. We also identified a missense mutation in the *CRYGD* gene, causing this precocious and rapidly progressing form of ADCCC.

## MATERIALS AND METHODS

## Family data

We have studied a large Moroccan family with ADCCC. The family consists of 19 affected and 24 unaffected subjects spanning four generations. Appropriate informed consent was obtained from all patients participating in the study. Clinical and ophthalmological examination of patients affected by cerulean cataract as well as unaffected family members were carried out as described previously. The diagnosis of cerulean cataract was confirmed in each affected patient by four independent ophthalmologists. There was no history of other ocular or systemic abnormalities in this family. The clinical aspects of the present study have been published recently.<sup>33</sup>

\*The last two authors contributed equally to this work

**Table 1** Two point lod scores (Z) for linkage between autosomal dominant congenital cerulean cataract CCA3 and markers in the chromosomal region 2q33-35

Marker	Genetic distance* (Mb)	Lod score at $\theta$						
		0.0	0.01	0.05	0.1	0.2	0.3	0.4
D2S116	3.09	—	2.24	3.22	3.27	2.70	1.77	0.70
D2S72	0.87	—	3.47	3.85	3.72	3.07	2.17	1.08
D2S2237	1.32	4.61	4.54	4.24	3.85	2.99	2.02	0.93
D2S155	1.16	5.87	5.77	5.37	4.84	3.72	2.50	1.18
D2S2192	0.61	5.46	5.37	5.01	4.54	3.51	2.38	1.14
D2S2208	0.36	7.19	7.09	6.67	6.11	4.86	3.44	1.82
CRYGA	5.95	1.75	1.71	1.54	1.33	0.88	0.46	0.12
D2S128	1.25	5.72	5.64	5.30	4.84	3.84	2.70	1.41
D2S2361	2.31	—	4.82	5.07	4.77	3.79	2.53	1.09
D2S173	3.16	—	1.29	1.78	1.82	1.56	1.12	0.59
D2S126	—	—	1.18	2.84	3.18	2.85	2.03	0.95

\*Between the adjacent mapped markers.

Blood samples were collected from 43 family members. Genomic DNA was extracted by standard techniques.

### Genotyping and linkage analysis

The genotyping was performed as described previously<sup>33</sup> using firstly 30 microsatellite markers, corresponding to 13 known candidate loci for autosomal dominant congenital cataracts, and then 21 markers localised to 2q33-35. The oligonucleotide primer sequences were taken from Génethon (<http://www.genethon.fr>). Two point disease to marker linkage analysis was conducted by MLINK from the FASTLINK (version 3.0P) software package.<sup>34</sup> The mode of inheritance was considered to be autosomal dominant with full penetrance. The gene frequency was set at 1/20 000. As the allelic frequencies of the polymorphic markers were unknown in the Moroccan population, they were considered to be equal. Order and genetic distances were taken from the Marshfield database (<http://research.marshfieldclinic.org>) and ensembl genome data resources (<http://www.ensembl.org>). Multipoint analysis was computed using Genehunter software.<sup>35</sup>

### DNA sequencing

Genomic DNA samples from all affected and unaffected family members of the pedigree and from control subjects were screened for mutations in *CRYGA*, *B*, *C*, and *D* by direct cycle sequencing. Gene specific PCR primers were used to amplify the three exons and flanking introns sequences of *CRYGA*, *CRYGB* (sequences available upon request), *CRYGC*, and *CRYGD*.<sup>12-15</sup> PCR products were purified by means of "invitrogen" rapid PCR purification systems and were sequenced on ABIprism A310 and ABI A377 automated sequencer (PE Biosystems, USA) using the original and additional internal primers.

### Molecular modelling

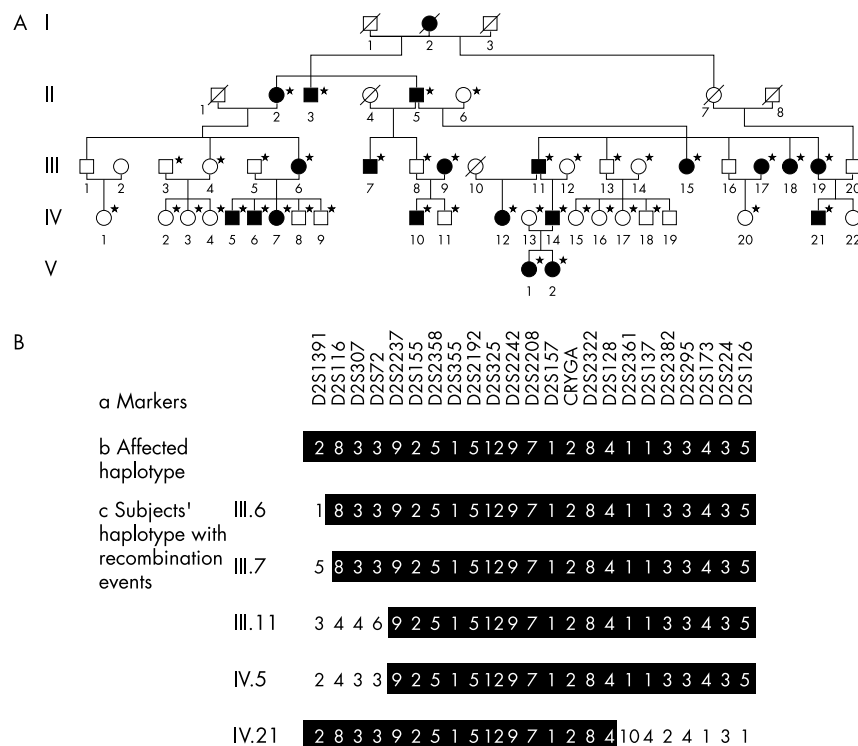
A model of the P23T mutant structure was built based on the human  $\gamma$ D crystal coordinates using the program "O"<sup>36</sup> by placing the mutant side chain in the most favourable conformation using the side chain database within the program and using the lego-side chain option. The model was energy minimised using 200 cycles of Powell energy minimisation using the CNS program<sup>37</sup> and the quality of the model was checked with Procheck.<sup>38</sup>

## RESULTS

We analysed, clinically and genetically, a large Moroccan family affected by ADCCC. The congenital cerulean cataract phenotype was clearly distinct from the phenotypes of the lamellar, coralliform, aculeiform, Coppock-like, and polymorphic congenital cataracts phenotypes.<sup>11-15 39-41</sup>

Forty-three members of the pedigree, including 20 affected subjects, 17 unaffected family members, and six unaffected spouses (fig 1A), were genotyped. The preliminary linkage analysis performed in this family using 30 microsatellite markers allowed us to exclude 12 candidate loci for ADCC (1pter-p36.13, 1q21.2, 1q21.2, 3p21.2-22.3, 10q23.3-25, 12q12-14.1, 13q11-12, 16q22.1, 17p12-13, 17q11.2-q12.2, 17q24, 21q22.3, and 22q11.2-q12.2) (data not shown). Positive two point lod scores were obtained for markers D2S72 ( $Z_{\max}=3.47$  at  $\theta=0.01$ ) and *CRYGA* ( $Z_{\max}=1.75$  at  $\theta=0.00$ ) (table 1). D2S72 and *CRYGA* flank the 4.5 cM 2q33-35 interval, where the loci corresponding to polymorphic congenital cataracts (MIM 601286),<sup>39</sup> Coppock-like cataracts (MIM 123660, MIM 116200),<sup>40</sup> juvenile onset punctate cataracts (MIM 123690),<sup>41</sup> aculeiform congenital cataracts (MIM 115700),<sup>41</sup> and variable zonular pulverulent cataracts<sup>15</sup> have been previously mapped. Twenty-one additional markers spanning this critical interval were subsequently used for further genotyping of all family members. The two point lod scores for 10 of these 21 markers are summarised in table 1. Significant positive lod scores ( $Z_{\max}>3$  at  $\theta=0$ ) were found for 11 markers. The maximum two point lod score was obtained with marker D2S2208 ( $Z_{\max}=7.19$  at  $\theta=0.00$ ) (table 1). Multipoint analysis with the most informative markers confirmed that this locus mapped to chromosome 2q33-q35 (data not shown).

Haplotype analysis showed that the affected patients of this family shared a common haplotype involving 12 markers (D2S2237, D2S155, D2S2358, D2S355, D2S2192, D2S325, D2S2242, D2S2208, D2S157, *CRYGA*, D2S22322, D2S128). Critical recombination events were detected in affected subjects III.6, III.7, III.11, IV.21, and IV.5. This allowed us to define a disease gene containing an interval of about 11.5 cM between markers D2S72 and D2S2361 (fig 1B). All affected subjects had an affected parent, and no unaffected subjects carried the disease haplotype. Thus, penetrance appears to be virtually complete in this family. Several candidate genes have been mapped in this interval, the obvious one being the  $\gamma$ -crystallin gene cluster, *CRYG*, which has been mapped to 2q33-35.<sup>42</sup> Another crystallin gene, *CRYBA2*, has been mapped to the 2q34-36 region.<sup>43</sup> *CRYBA2* is 10.5 cM telomeric to *CRYGA* and 1 cM telomeric to D2S173. *PAX3*, a major developmental gene, is localised 1 cM telomeric to D2S126 and is thus outside the critical interval. The observation of recombination events, which are centromeric to these two genes, in our family excluded the *CRYBA2* and *PAX3* genes as candidate genes for the cerulean cataracts affecting this family. Thus, this linkage analysis identified a third locus (CCA3) associated with the cerulean blue dot cataract type. This type differs from those previously described and is characterised by early onset (diagnosed at birth) and by a faster progression.



**Figure 1** (A) Pedigree of the large Moroccan family affected by autosomal dominant congenital cerulean cataracts (CCA3). (B) a Markers of the chromosomal region 2q33-q35 used for linkage analysis. b Common haplotype present in all affected family members. c Haplotypes observed in patients III.6, III.7, III.11, IV.5 and IV.21, displaying critical recombination events. Asterisks indicate subjects who underwent linkage analysis.

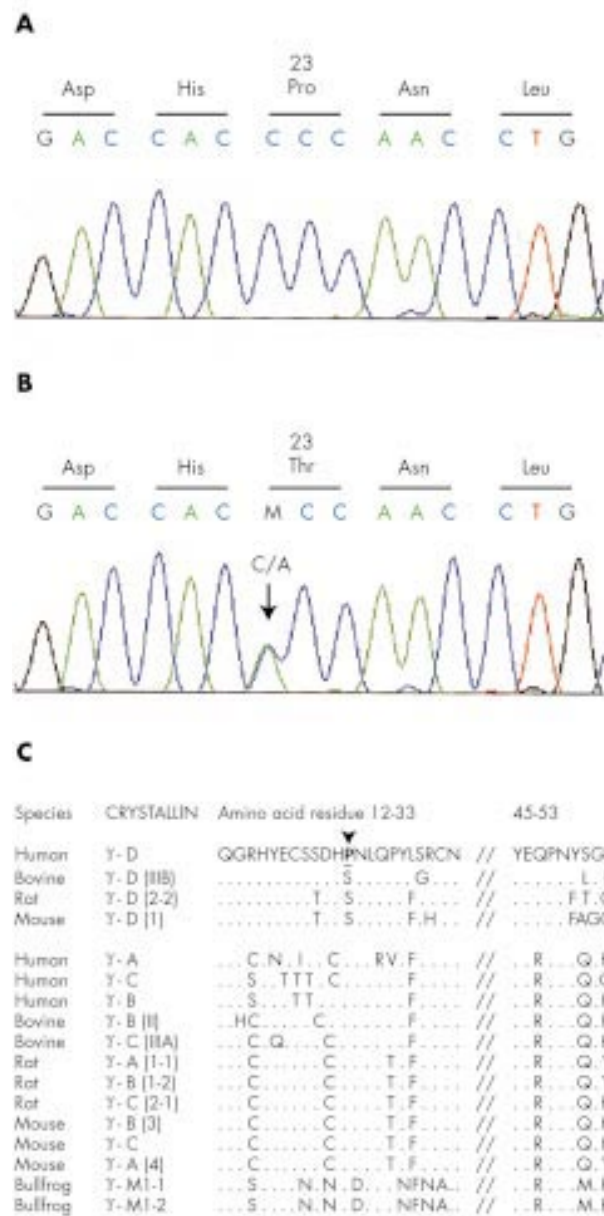
Given our linkage analysis results and the fact that  $\gamma$ -crystallin genes are expressed early in development<sup>44, 45</sup> and are associated with hereditary cataracts in mice and humans,<sup>2, 6, 46-49</sup> we focused on these genes. The analysis of the sequences of all three exons of *CRYGA*, *CRYGB*, *CRYGC*, and *CRYGD* did not show any disease causing mutations in the *CRYGA*, *CRYGB*, or *CRYGC* gene in any of the members of this large family. Only the single nucleotide polymorphisms previously described were identified, like 2437C/T (M19364) (P64P) in exon 2 of *CRYGB*,<sup>12</sup> 5391C>A (M193364) (L111I) in exon 3 of *CRYGB*,<sup>17</sup> 18229A>G (M19364) (IVS-70 intron A) in *CRYGC*,<sup>12</sup> and 286T>C (K03005) (Y16Y) in exon 2 of *CRYGD*.<sup>12</sup> A unique heterozygous C>A transversion was identified at nucleotide 305 in exon 2 (K03005) of the *CRYGD* gene in all affected family members. This transversion led to the replacement of a proline residue at amino acid 23 by a threonine (P23T) in the first "Greek key motif" (motif 1) of the  $\gamma$ D-crystallin protein. This substitution was not found in any of the unaffected members of the pedigree. This mutation cosegregated strictly with the trait in the kindred studied with complete penetrance. This nucleotide sequence alteration was not found in a panel of 100 unrelated control DNA samples collected from normal Moroccan subjects or in a panel of 100 unrelated control DNA samples collected from people of various ethnic backgrounds. An alignment of  $\gamma$ -crystallin protein sequences from different species showed that Pro 23 is conserved in all major human  $\gamma$ -crystallins as well as in rat and mouse  $\gamma$ A,  $\gamma$ B, and  $\gamma$ C-crystallins and in bovine  $\gamma$ B and  $\gamma$ C-crystallins (fig 2C). Furthermore, a threonine is never found in any crystallin, whatever the species analysed, at this position. The identified *CRYGD* proline to a threonine (P23T) substitution at amino acid 23 is a non-conservative amino acid change as proline has a hydrophobic side chain.

## DISCUSSION

In this report, after excluding most known loci corresponding to ADCC, we identified a third locus (CCA3) on 2q33-35, asso-

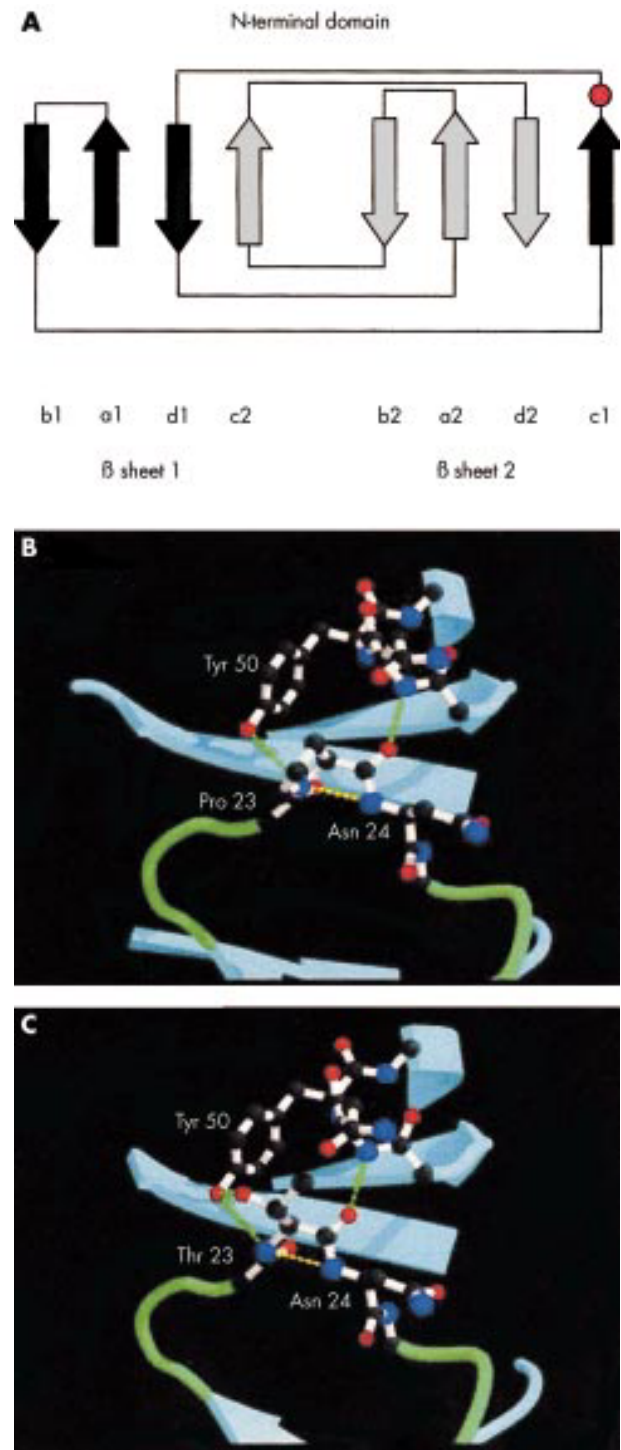
ciated with the cerulean blue dot cataract type in a large Moroccan family. We then found a C>A transversion in exon 2 of *CRYGD* only in all affected members of the large family studied. Crystallin genes encode a superfamily of major soluble structural proteins in the lens. There are three major classes of crystallins in humans, the  $\alpha$ -,  $\beta$ -, and  $\gamma$ -crystallins.<sup>50, 51</sup> All three types of crystallins are  $\beta$  pleated sheets. Protein sequence analysis has shown homology between the  $\beta$ - and  $\gamma$ -crystallins. The  $\gamma$ -crystallin gene cluster comprises six genes;  $\gamma$ A,  $\gamma$ B,  $\gamma$ C,  $\gamma$ D,  $\gamma$ E, and  $\gamma$ F. Different levels of expression of these genes are associated with the lens refractive index characteristics of the vertebrate enabling adaptation to varying optical requirements.<sup>52</sup> In mammals, these genes each consist of three exons.<sup>53, 54</sup> Only  $\gamma$ C- and  $\gamma$ D encode abundant lens  $\gamma$ -crystallins in humans.<sup>44, 45</sup>  $\gamma$ E and  $\gamma$ F are pseudogenes with in frame stop codons.  $\gamma$ D is one of the only two  $\gamma$ -crystallins to be expressed at high concentrations in the fibre cells of the embryonic human lens. These cells subsequently form the lens nucleus fibres.

The identified C>A transversion found exclusively in all affected members of the pedigree results in a P23T substitution. Proline has a hydrophobic side chain often associated with turns in polypeptide chain conformation, whereas the threonine side chain has both hydrophilic and hydrophobic functions. Furthermore, a threonine is never found in any crystallin, whatever the species analysed, at this position. Proline is known to have a strong ability to break  $\beta$ -strands in soluble proteins.<sup>55, 56</sup> These data strongly suggest that the 305C>A transversion is indeed the CCA3 causing mutation rather than a rare benign polymorphism. It is noteworthy that the same mutation has recently been suggested to cause an autosomal dominant congenital form of lamellar cataracts in a proband and her affected father in a small nuclear Indian family.<sup>17</sup> The difference between the phenotype reported in this Indian family and that observed in our Moroccan family may be related to the effect of an unknown modifier gene or to sequence variations within regulatory regions that could



**Figure 2** Mutation analysis of CRYGD. (A) Sequence chromatograms of the wild type allele showing a proline (CCC) at amino acid 23. (B) Sequence chromatograms of the mutant allele showing the C to A transversion that changed proline 23 to threonine. (C) Sequence alignment of the  $\gamma$ -crystallin proteins in different species. Shown below are the amino acid residues 12-33 and 45-53 of human  $\gamma$ D-crystallin. Proline 23 of human CRYGD protein is underlined and appears in bold type. The arrow indicates the P23T mutated position. Residues in the other  $\gamma$ -crystallins identical to those at homologous positions of human CRYGD are indicated by dots.

affect the expression of the  $\gamma$ D-crystallin gene. This phenotypic heterogeneity caused by an identical genetic crystallin mutation is strongly reminiscent of that previously reported for the  $\beta$ B2-crystallin gene. The same chain termination mutation in the  $\beta$ B2-crystallin gene caused autosomal dominant congenital Coppock-like cataracts in a four generation Swiss family<sup>14</sup> and autosomal dominant congenital cerulean cataracts (CCA2) in a very large American family.<sup>10 32 57</sup> These data further strengthen the hypothesis that the  $\gamma$ D-crystallin P23T mutation is pathogenic and prompted us to try to obtain further insights into the molecular mechanisms underlying cataractogenesis in the large Moroccan kindred studied.



**Figure 3** (A) Cartoon topology diagram of the characteristic domain structure found in all  $\beta$ -crystallins showing how two "Greek key motifs", each comprising four  $\beta$ -strands (a, b, c, and d), associate to form two  $\beta$ -sheets. The red circle shows the site of the P23T mutation in the N-terminal domain of  $\gamma$ D-crystallin. (B) Schematic view of the protein fold determined by x-ray crystallography centred on residue P23 and looking along  $\beta$ -sheet 2 of the normal CRYGD protein. (C) The same view centred on the mutation site but based on a predicted structure modelled on the crystallographic coordinates of the normal CRYGD protein. Light blue =  $\beta$ -sheet strands, green = loops connecting  $\beta$ -sheet strands, dashed green lines = hydrogen bonds between the region adjacent to the  $\beta$ -sheet c strand and residues in the folded ab  $\beta$ -hairpin, dashed yellow lines = local hydrogen bond in the region of the  $\beta$ -sheet c strand, red = oxygen atoms and blue = nitrogen atoms.

The 3D structures of several members of the monomeric  $\gamma$ -crystallin family are known, showing that the polypeptide folds into four similar "Greek key motifs". These motifs then form two similar domains joined by a linker (recently reviewed in Jaenicke *et al*<sup>58</sup>). The 3D structure of human  $\gamma$ D-crystallin has now been determined at a very high resolution (1.25 Å) by x ray crystallography.<sup>59</sup> We may try to gain some insight into the pathogenicity of the P23T  $\gamma$ D-crystallin mutation from the crystallographic structure of the native human protein. Its conformation is very similar to that of  $\gamma$ -crystallins from other species<sup>60</sup> and, as expected, very similar to that of the orthologous bovine  $\gamma$ D.<sup>61</sup> Each  $\gamma$ -crystallin domain is formed from two consecutive Greek key motifs and each motif comprises four consecutive  $\beta$ -strands. Thus, the N-terminal domain can be described as comprising **a1 b1 c1 d1** and **a2 b2 c2 d2**  $\beta$ -strands. These eight  $\beta$ -strands form two  $\beta$ -sheets (**b1 a1 d1 c2** and **b2 a2 d2 c1**) that pack together to form a  $\beta$ -sandwich domain. Although  $\beta$ -sandwich domains are common in proteins, in  $\beta\gamma$ -crystallins they are characterised by their high internal conformational symmetry and by a conserved folded hairpin structure between **a** and **b**  $\beta$ -strands. The mutation affects a region of the first Greek key motif that is located immediately after the c1 strand, a region that is important for determining the topology of this protein fold, as after crossing from one  $\beta$ -sheet to the next the polypeptide chain has to get back to the original  $\beta$ -sheet to place the **d1** strand within it. Obviously, a single Greek key cannot fold on its own; it is dependent on the concomitant folding of its partner motif. The degree of sequence conservation of residue 23 in motif 1 and the corresponding region in the other three motifs gives an idea of the importance of this region. Although not absolutely conserved, this residue tends to be a proline or a serine in motifs 1, 2, and 3, whereas it is an arginine in motif 4. The mutation site thus substitutes a threonine residue into a strategic position in terms of the fold topology, a site that has been occupied, however, by a very similar residue, serine. Fig 3 shows the N-terminal domain along the second  $\beta$ -sheet from the edge of the short c1 strand and centred around residue 23. In wild type human  $\gamma$ D-crystallin, the carbonyl oxygen of Pro 23 forms a hydrogen bond with the backbone amide nitrogen of Asn 49 (fig 3B). This backbone interaction helps to stabilise the folded **ab** hairpin onto the sheet and is thus an important tertiary structure determinant. However, as it involves only backbone interactions, it is not affected by side chain alterations, assuming that in the mutant structure the backbone is in the same conformation as in the native structure. When threonine is modelled into this position, the new side chain is readily accommodated into the space without changing the backbone conformation (fig 3C). Threonine is more polar than proline as it has a polar backbone amide nitrogen and a side chain hydroxyl function. In this predicted model the mutant side chain appears to strengthen the interaction with tyrosine 50. The aromatic side chain of this residue can play an important role in stabilising the folded **ab** hairpin. Threonine 23 can make a stronger hydrogen bond with the side chain hydroxyl function of Tyr 50 using its backbone amide as well as an additional hydrogen bond with its own side chain hydroxyl. It is difficult to imagine that the mutation has such a catastrophic effect on the 3D structure of the human  $\gamma$ D-crystallin based on this model. There are three possible scenarios: the protein does not fold properly because a side chain with a branched C $\beta$  atom has a propensity to extend the  $\beta$ -strand rather than make the necessary turn; the substitution of threonine decreases the thermodynamic stability of the N-terminal domain in a subtle way so that the protein is more prone to denaturation; or thirdly the threonine side chain somehow decreases the solubility of the protein in water. The discovery of this mutation site, with its major clinical consequences, challenges our understanding of crystallin structure. This is clearly shown also by studies on other cataractogenic mutations of human  $\gamma$ D-crystallin; recent biophys-

ical studies suggest that the R14C  $\gamma$ D-crystallin mutant increases the phase separation temperature<sup>62</sup> and that the two  $\gamma$ D-crystallin mutant proteins, R58H and R36S, crystallise far more readily than the native protein.<sup>63</sup> However, none of these mutant proteins has been shown to change the conformation of the protein significantly. In contrast, the T5P CRYGC mutant protein induces obvious folding changes and decreases conformational stability.<sup>64</sup> Thus, further biophysical characterisation of the P23T mutant protein is important to provide more information about the nature of the disease and improve our understanding of the molecular phenotype of lens crystallins.

## ACKNOWLEDGEMENTS

We are grateful to the members of the family for their participation in this study. We warmly thank Dr Jayanti Pande for critical reading of the manuscript. We thank Université René Descartes and Professor Patrick Berche, Dean of Faculté de Médecine Necker for his permanent support for the CERTO Laboratory. We thank Ibn Tofail University, Faculty of Sciences of Kénitra and Centre National pour la Recherche Scientifique et Technique of Morocco. We thank Professor Jean-Louis Dufier for his constant encouragement and efforts for the development of the CERTO Laboratory. We also thank Dr Cécile Marsac and Dr Maurice Menasche for their scientific support. We thank all members of the medical staff of the Department of Ophthalmology B (Hôpital des Spécialités de Rabat, Morocco). This work was mainly supported by a grant to the CERTO Laboratory from RETINA France and also by a "Programme d'Appui à la Recherche Scientifique" (Pars Médecine No 151), by a research grant from INSERM (Programme PROGRES), and by several grants from Faculté de Médecine Necker and Université René Descartes. Emeline Nandrot has been supported by a PhD grant from RETINA-France for three years and by a PhD grant for one year from Fondation pour la Recherche Médicale. We gratefully acknowledge the financial support of the Medical Research Council, London.

## Authors' affiliations

**E Nandrot, L Arbogast, M Abitbol**, Centre de Recherches Thérapeutiques en Ophtalmologie de la Faculté de Médecine Necker, EA No 2502 du Ministère de la Recherche et de l'Enseignement Supérieur, Université René Descartes, Paris, France

**C Slingsby, A Basak**, Birkbeck College, Department of Crystallography, Malet Street, London WC1E 7HX, UK

**M Cherif-Chefchaoui, A Berraho** Département d'Oto-Neuro-Ophtalmologie, Service d'Ophtalmologie B, Hôpital des Spécialités, Rabat, Morocco

**B Benazzouz, Y Hajaji, S Boutayeb, L Hilal**, Laboratoire de Génétique et Biologie Moléculaire de la Faculté des Sciences, Université Ibn Tofail, Kénitra, Morocco

**O Gribouval**, Unité INSERM 423, CHU Necker-Enfants Malades, Paris, France

## REFERENCES

- 1 Lambert SR, Drack AV. Infantile cataracts. *Surv Ophthalmol* 1996;**40**:427-58.
- 2 Francis PJ, Berry V, Bhattacharya SS, Moore AT. The genetics of childhood cataract. *J Med Genet* 2000;**37**:481-8.
- 3 Merin S. Inherited eye diseases: diagnosis and clinical management. In: Dekker NYM, ed. *Inherited cataracts*. Chapter 4. New York: Marcel Dekker 1991.
- 4 Scott MH, Hejtmancik JF, Wozencraft LA, Wozencraft LA, Reuter LM, Parks MM Kaiser-Kupfer MI. Autosomal dominant congenital cataract. Intercular phenotypic variability. *Ophthalmology* 1994;**101**:866-71.
- 5 Vanita. *Genetical investigations in congenital cataract cases*. Amritsar, India: Guru Nanak, 1998.
- 6 Hejtmancik JF. The genetics of cataract: our vision becomes clearer. *Am J Hum Genet* 1998;**62**:520-5.
- 7 Ionides A, Berry V, Mackay D, Shiels A, Bhattacharya S, Moore A. Anterior polar cataract: clinical spectrum and genetic linkage in a single family. *Eye* 1998;**12**(Pt 2):224-6.
- 8 Vanita, Singh JR, Sarhadi VK, Singh D, Reis A, Rueschendorf F, Becker-Follmann J, Jung M, Sperling K. A novel form of "central pouchlike" cataract, with sutural opacities, maps to chromosome 15q21-22. *Am J Hum Genet* 2001;**68**:509-14.
- 9 Vanita, Sarhadi V, Reis A, Jung M, Singh D, Sperling K, Singh, J. R. Burger JA unique form of autosomal dominant cataract explained by gene conversion between beta-crystallin B2 and its pseudogene. *J Med Genet* 2001;**38**:392-6.
- 10 Litt M, Carrero-Valenzuela R, LaMorticella DM, Schultz DW, Mitchell TN, Kramer P, Maumenee IH. Autosomal dominant cerulean cataract is

- associated with a chain termination mutation in the human beta-crystallin gene CRYBB2. *Hum Mol Genet* 1997;**6**:665-8.
- 11 **Stephan DA**, Gillanders E, Vanderveen D, Freas-Lutz D, Wistow G, Baxevanis AD, Robbins CM, VanAuken, A, Quesenberry MI, Bailey-Wilson J, Joo SH, Trent JM, Smith L, Brownstein MJ. Progressive juvenile-onset punctate cataracts caused by mutation of the gammaD-crystallin gene. *Proc Natl Acad Sci USA* 1999;**96**:1008-12.
  - 12 **Heon E**, Priston M, Schorderet DF, Billingsley GD, Girard PO, Lubsen, N, Munier FL. The gamma-crystallins and human cataracts: a puzzle made clearer. *Am J Hum Genet* 1999;**65**:1261-7.
  - 13 **Bateman JB**, Geyer DD, Flodman P, Johannes M, Sikela J, Walter N, Moreira AT, Clancy K, Spence, MA. A new betaA1-crystallin splice junction mutation in autosomal dominant cataract. *Invest Ophthalmol Vis Sci* 2000;**41**:3278-85.
  - 14 **Gill D**, Klose R, Munier FL, McFadden M, Priston M, Billingsley G, Ducrey N, Schorderet DF, Heon, E. Genetic heterogeneity of the Coppock-like cataract: a mutation in CRYBB2 on chromosome 22q11.2. *Invest Ophthalmol Vis Sci* 2000;**41**:159-65.
  - 15 **Ren Z**, Li A, Shastri BS, Padma T, Ayyagari R, Scott MH, Parks MM, Kaiser-Kupfer MI, Hejtmancik JF. A 5-base insertion in the gammaC-crystallin gene is associated with autosomal dominant variable zonular pulverulent cataract. *Hum Genet* 2000;**106**:531-7.
  - 16 **Berry V**, Francis P, Reddy MA, Collyer D, Vithana E, MacKay I, Dawson G, Carey AH, Moore A, Bhattacharya SS, Quinlan RA. Alpha-B crystallin gene (CRYAB) mutation causes dominant congenital posterior polar cataract in humans. *Am J Hum Genet* 2001;**69**:1141-5.
  - 17 **Santhiya ST**, Shyam Manohar M, Rawley D, Vijayalakshmi P, Namperumalsamy P, Gopinath PM, Loster J, Graw J. Novel mutations in the gamma-crystallin genes cause autosomal dominant congenital cataracts. *J Med Genet* 2002;**39**:352-8.
  - 18 **Mackay DS**, Boskovska OB, Knopf HL, Lampi KJ, Shiels, A. A nonsense mutation in CRYBB1 associated with autosomal dominant cataract linked to human chromosome 22q. *Am J Hum Genet* 2002;**71**:1216-21.
  - 19 **Shiels A**, Mackay D, Ionides A, Berry V, Moore A, Bhattacharya S. A missense mutation in the human connexin50 gene (GJA8) underlies autosomal dominant "zonular pulverulent" cataract, on chromosome 1q. *Am J Hum Genet* 1998;**62**:526-32.
  - 20 **Mackay D**, Ionides A, Kibar Z, Rouleau G, Berry V, Moore A, Shiels A, Bhattacharya S. Connexin46 mutations in autosomal dominant congenital cataract. *Am J Hum Genet* 1999;**64**:1357-64.
  - 21 **Rees MI**, Watts P, Fenton I, Clarke A, Snell RG, Owen MJ, Gray J. Further evidence of autosomal dominant congenital zonular pulverulent cataracts linked to 13q11 (CZP3) and a novel mutation in connexin 46 (GJA3). *Hum Genet* 2000;**106**:206-9.
  - 22 **Polyakov AV**, Shagina IA, Khlebnikova OV, Evgrafov OV. Mutation in the connexin 50 gene (GJA8) in a Russian family with zonular pulverulent cataract. *Clin Genet* 2001;**60**:476-8.
  - 23 **Berry V**, Francis P, Kaushal S, Moore A, Bhattacharya S. Missense mutations in MIP underlie autosomal dominant "polymorphic" and lamellar cataracts linked to 12q. *Nat Genet* 2000;**25**:15-7.
  - 24 **Francis P**, Chung JJ, Yasui M, Berry V, Moore A, Wyatt MK, Wistow G, Bhattacharya SS, Agre, P. Functional impairment of lens aquaporin in two families with dominantly inherited cataracts. *Hum Mol Genet* 2000;**9**:2329-34.
  - 25 **Conley YP**, Erturk D, Keverline A, Mah TS, Keravala A, Barnes LR, Bruchis A, Hess JF, FitzGerald PG, Weeks DE, Ferrell RE, Gorin MB. A juvenile-onset, progressive cataract locus on chromosome 3q21-q22 is associated with a missense mutation in the beaded filament structural protein-2. *Am J Hum Genet* 2000;**66**:1426-31.
  - 26 **Jakobs PM**, Hess JF, FitzGerald PG, Kramer P, Weleber RG, Litt M. Autosomal-dominant congenital cataract associated with a deletion mutation in the human beaded filament protein gene BFSP2. *Am J Hum Genet* 2000;**66**:1432-6.
  - 27 **Semina EV**, Ferrell RE, Mintz-Hittner HA, Bitoun P, Alward WL, Reiter RS, Funkhauser C, Daack-Hirsch S, Murray J. A novel homeobox gene PITX3 is mutated in families with autosomal-dominant cataracts and ASMD. *Nat Genet* 1998;**19**:167-70.
  - 28 **Bu L**, Jin Y, Shi Y, Chu R, Ban A, Eiberg H, Andres L, Jiang H, Zheng G, Qian M, Cui B, Xia Y, Liu J, Hu L, Zhao G, Hayden MR, Kong, X. Mutant DNA-binding domain of HSF4 is associated with autosomal dominant lamellar and Marner cataract. *Nat Genet* 2002;**31**:276-8.
  - 29 **He W**, Li S. Congenital cataracts: gene mapping. *Hum Genet* 2000;**106**:1-13.
  - 30 **Vogt A**. Weitere Ergebnisse der Spaltlampenmikroskopie des vorderen Bulbusabschnittes. III (Abschnitt-Fortsetzung). Angeborene und früh aufgetretene Linsenveränderungen. *Graefes Arch Klin Exp Ophthalmol* 1922;**108**:182-91.
  - 31 **Armitage MM**, Kivlin JD, Ferrell RE. A progressive early onset cataract gene maps to human chromosome 17q24. *Nat Genet* 1995;**9**:37-40.
  - 32 **Kramer P**, Yount J, Mitchell T, LaMorticella D, Carrero-Valenzuela R, Lovrien E, Maumenee I, Litt M. A second gene for cerulean cataracts maps to the beta crystallin region on chromosome 22. *Genomics* 1996;**35**:539-42.
  - 33 **Hilal L**, Nandrot E, Belmekki M, Cherif-Chefchaoui M, El Bacha S, Benazzouz B, Hajaji Y, Gribouval O, Dufier JL, Abitbol M, Berraho A. Evidence of clinical and genetic heterogeneity in autosomal dominant congenital cerulean cataracts. *Ophthalmol Genet* 2002;**22**:199-208.
  - 34 **Lathrop GM**, Lalouel JM. Easy calculations of lod scores and genetic risks on small computers. *Am J Hum Genet* 1984;**36**:460-5.
  - 35 **Cottingham RW, Jr.**, Idury RM, Schaffer AA. Faster sequential genetic linkage computations. *Am J Hum Genet* 1993;**53**:252-63.
  - 36 **Jones TA**, Kjeldgaard M. Electron density map interpretation. *Methods Enzymol* 1997;**277**:173-208.
  - 37 **Brunger AT**, Adams PD, Clore GM, DeLano WL, Gros P, Grosse-Kunstleve RW, Jiang JS, Nilges M, Pannu NS, Read RJ, Rice LM, Simonson T, Warren GL. Crystallography & NMR system: a new software suite for macromolecular structure determination. *Acta Crystallogr* 1998;**D54**:905-21.
  - 38 **Laskowski RA**, MacArthur MW, Moss DS, Thornton JM. A program to check the stereochemical quality of protein structures. *J Appl Crystallogr* 1993;**26**:283-91.
  - 39 **Rogaev EI**, Rogaeva EA, Korovaitseva G, Farrer LA, Petrin, AN, Keryanov SA, Turaeva S, Chumakov I, St George-Hyslop, P, Ginter EK. Linkage of polymorphic congenital cataract to the gamma-crystallin gene locus on human chromosome 2q33-35. *Hum Mol Genet* 1996;**5**:699-703.
  - 40 **Lubsen NH**, Renwick JH, Tsui LC, Breitman ML, Schoenmakers JG. A locus for a human hereditary cataract is closely linked to the gamma-crystallin gene family. *Proc Natl Acad Sci USA* 1987;**84**:489-92.
  - 41 **Heon E**, Liu S, Billingsley G, Bernasconi O, Tsiflidis C, Schorderet DF, Munier FL, Tsiflidis C. Gene localization for aculeiform cataract, on chromosome 2q33-35. *Am J Hum Genet* 1998;**63**:921-6.
  - 42 **Shiloh Y**, Donlon T, Bruns G, Breitman ML, Tsui LC. Assignment of the human gamma-crystallin gene cluster (CRYG) to the long arm of chromosome 2, region q33-36. *Hum Genet* 1986;**73**:17-19.
  - 43 **Hulsebos TJ**, Cerosaletti KM, Fournier RE, Sinke RJ, Rocchi M, Marzella R, Jenkins NA, Gilbert DJ, Copeland, NG. Identification of the human beta A2 crystallin gene (CRYBA2): localization of the gene on human chromosome 2 and of the homologous gene on mouse chromosome 1. *Genomics* 1995;**28**:543-8.
  - 44 **Russell P**, Meakin SO, Hohman T, Tsui LC, Breitman ML. Relationship between proteins encoded by three human gamma-crystallin genes and distinct polypeptides in the eye lens. *Mol Cell Biol* 1987;**7**:3320-3.
  - 45 **Brakenhoff RH**, Aarts HJ, Reek FH, Lubsen NH, Schoenmakers JG. Human gamma-crystallin genes. A gene family on its way to extinction. *J Mol Biol* 1990;**216**:519-32.
  - 46 **Graw J**. Cataract mutations as a tool for developmental geneticists. *Ophthalmic Res* 1996;**28**(suppl 1):8-18.
  - 47 **Graw J**. Cataract mutations and lens development. *Prog Retin Eye Res* 1999;**18**:235-67.
  - 48 **Graw J**, Loster J, Soewarto D, Fuchs H, Meyer B, Reis A, Wolf E, Balling R, de Angelis MH. Characterization of a new, dominant V124E mutation in the mouse alphaA-crystallin-encoding gene. *Invest Ophthalmol Vis Sci* 2001;**42**:2909-15.
  - 49 **Graw J**, Klopp N, Neuhauser-Klaus A, Favor J, Loster J. Cryg(Rop): the first mutation in the Cryg gene causing a unique radial lens opacity. *Invest Ophthalmol Vis Sci* 2002;**43**:2998-3002.
  - 50 **van Rens GL**, de Jong WW, Bloemendal H. A superfamily in the mammalian eye lens: the beta/gamma-crystallins. *Mol Biol Rep* 1992;**16**:1-10.
  - 51 **Slingsby C**, Clout NJ. Structure of the crystallins. *Eye* 1999;**13**(Pt 3b):395-402.
  - 52 **Wistow GJ**. *Molecular biology and evolution of crystallins: gene recruitment and multifunctional proteins in the eye lens*. Austin (TX): R G Landes, 1995.
  - 53 **Graw J**. The crystallins: genes, proteins and diseases. *Biol Chem* 1997;**378**:1331-48.
  - 54 **Wistow GJ**, Piatigorsky J. Lens crystallins: the evolution and expression of proteins for a highly specialized tissue. *Annu Rev Biochem* 1988;**57**:479-504.
  - 55 **Chou PY**, Fasman GD. Prediction of the secondary structure of proteins from their amino acid sequence. *Adv Enzymol Relat Areas Mol Biol* 1978;**47**:45-148.
  - 56 **Chou PY**, Fasman GD. Empirical predictions of protein conformation. *Annu Rev Biochem* 1978;**47**:251-76.
  - 57 **Bodker FS**, Lavery MA, Mitchell TN, Lovrien EW, Maumenee IH. Microphthalmos in the presumed homozygous offspring of a first cousin marriage and linkage analysis of a locus in a family with autosomal dominant cerulean congenital cataracts. *Am J Med Genet* 1990;**37**:54-9.
  - 58 **Jaenicke R**, Slingsby C. Lens crystallins and their microbial homologs: structure, stability, and function. *Crit Rev Biochem Mol Biol* 2001;**36**:435-99.
  - 59 **Basak A**, Bateman O, Slingsby C, Pande A, Asherie N, Ogun O, Benedek GB, Pande J. High-resolution x-ray crystal structures of human  $\gamma$ D crystallin (1.25Å) and the R58H mutant (1.15Å) associated with aculeiform cataract. (Submitted.)
  - 60 **Norledge BV**, Trinkl S, Jaenicke R, Slingsby C. The x-ray structure of a mutant eye lens beta B2-crystallin with truncated sequence extensions. *Protein Sci* 1997;**6**:1612-20.
  - 61 **Chirgadze YN**, Driessen, HPC, Wright G, Slingsby C, Hay RE, Lindley PF. Structure of the bovine eye lens  $\gamma$ D ( $\gamma$ IIb)-crystallin at 1.95 Å. *Acta Cryst* 1996;**D52**:712-21.
  - 62 **Pande A**, Pande J, Asherie N, Lomakin A, Ogun O, King JA, Lubsen NH, Walton D, Benedek GB. Molecular basis of a progressive juvenile-onset hereditary cataract. *Proc Natl Acad Sci USA* 2000;**97**:1993-8.
  - 63 **Pande A**, Pande J, Asherie N, Lomakin A, Ogun O, King J, Benedek GB. Crystal cataracts: human genetic cataract caused by protein crystallization. *Proc Natl Acad Sci USA* 2001;**98**:6116-20.
  - 64 **Fu L**, Liang JJ. Conformational change and destabilization of cataract gammaC-crystallin T5P mutant. *FEBS Lett* 2002;**513**:213-16.