



**HAL**  
open science

## **SMC 5/6 acts jointly with Fanconi anemia factors to support DNA repair and genome stability**

Francesco Rossi, Anne Helbling-leclerc, Ryotaro Kawasumi, Nanda Kumar Jegadesan, Xinlin Xu, Pierre Devulder, Takuya Abe, Minoru Takata, Dongyi Xu, Filippo Rosselli, et al.

► **To cite this version:**

Francesco Rossi, Anne Helbling-leclerc, Ryotaro Kawasumi, Nanda Kumar Jegadesan, Xinlin Xu, et al.. SMC 5/6 acts jointly with Fanconi anemia factors to support DNA repair and genome stability. EMBO Reports, 2020, 21 (2), 10.15252/embr.201948222 . hal-03085623

**HAL Id: hal-03085623**


**<https://hal.science/hal-03085623>**

Submitted on 21 Dec 2020

**HAL** is a multi-disciplinary open access archive for the deposit and dissemination of scientific research documents, whether they are published or not. The documents may come from teaching and research institutions in France or abroad, or from public or private research centers.

L'archive ouverte pluridisciplinaire **HAL**, est destinée au dépôt et à la diffusion de documents scientifiques de niveau recherche, publiés ou non, émanant des établissements d'enseignement et de recherche français ou étrangers, des laboratoires publics ou privés.

# SMC5/6 acts jointly with Fanconi anemia factors to support DNA repair and genome stability

Francesco Rossi<sup>1,†</sup>, Anne Helbling-Leclerc<sup>2,†</sup>, Ryotaro Kawasumi<sup>1</sup>, Nanda Kumar Jegadesan<sup>1</sup>, Xinlin Xu<sup>3</sup>, Pierre Devulder<sup>2</sup>, Takuya Abe<sup>1,‡</sup>, Minoru Takata<sup>4</sup>, Dongyi Xu<sup>3</sup>, Filippo Rosselli<sup>2</sup> & Dana Branzei<sup>1,5,\*</sup> 

## Abstract

SMC5/6 function in genome integrity remains elusive. Here, we show that SMC5 dysfunction in avian DT40 B cells causes mitotic delay and hypersensitivity toward DNA intra- and inter-strand crosslinkers (ICLs), with *smc5* mutants being epistatic to FANCC and FANCM mutations affecting the Fanconi anemia (FA) pathway. Mutations in the checkpoint clamp loader RAD17 and the DNA helicase DDX11, acting in an FA-like pathway, do not aggravate the damage sensitivity caused by SMC5 dysfunction in DT40 cells. SMC5/6 knockdown in HeLa cells causes MMC sensitivity, increases nuclear bridges, micronuclei, and mitotic catastrophes in a manner similar and non-additive to FANCD2 knockdown. In both DT40 and HeLa systems, SMC5/6 deficiency does not affect FANCD2 ubiquitylation and, unlike FANCD2 depletion, RAD51 focus formation. SMC5/6 components further physically interact with FANCD2-I in human cells. Altogether, our data suggest that SMC5/6 functions jointly with the FA pathway to support genome integrity and DNA repair and may be implicated in FA or FA-related human disorders.

**Keywords** DNA repair; Fanconi anemia; intra- and inter-strand crosslinks; mitotic instability; SMC5/6

**Subject Categories** Cell Cycle; DNA Replication, Recombination & Repair; Molecular Biology of Disease

**DOI** 10.15252/embr.201948222 | Received 3 April 2019 | Revised 19 November 2019 | Accepted 21 November 2019 | Published online 23 December 2019

**EMBO Reports (2020) 21: e48222**

## Introduction

Genomic integrity is safeguarded by multiple genome caretakers that are often implicated in chromosome metabolism reactions induced by various types of replication stress. The structural maintenance of chromosomes (SMC) complexes, including cohesin (SMC1/3), condensin (SMC2/4), and SMC5/6, are critical for chromosome

transactions that ensure normal proliferation and genome integrity. Structurally, SMC complexes form molecular rings that can entrap genomic DNA [1]. The SMC5/6 complex ring is composed of two coiled-coil SMC heterodimers SMC5 and SMC6, which associate with a kleisin component, NSMCE4 [2]. In addition, SMC5/6 contains several peripheral subunits. The NSMCE1–NSMCE3 heterodimer has ubiquitin ligase activity and interacts with NSMCE4 and SMC6, while NSMCE2 has SUMO ligase activity and interacts with SMC5 [3]. The NSMCE1–NSMCE3–NSMCE4 sub-complex presents double-stranded (ds) DNA-binding activity, without preference for structured DNA [4]. SMC5/6 also interacts with SLF1 and SLF2, which are functional orthologs of budding and fission yeast Nse5 and Nse6, respectively [5]. The budding yeast Nse5/6 heterodimer is a component of the Smc5/6 complex (essential for proliferation in budding yeast, but not in fission yeast) and has single-stranded (ss) DNA-binding activity [6]. In human cells, SLF1 and SLF2 physically link RAD18 to the SMC5/6 complex, defining a pathway for SMC5/6 recruitment to sites of DNA damage [5].

In terms of molecular functions, SMC5/6 contributes to DNA repair [7], facilitates DNA topological transitions [8], and promotes timely resolution of DNA cruciform structures arising during homologous recombination repair [9,10]. In unperturbed conditions, budding yeast Smc5/6 is required for the organization and segregation of repeat elements [1,11,12] and promotes replication through difficult to replicate regions known as natural pausing sites [13].

Understanding the functions of SMC5/6 in genome integrity and DNA repair is important, because mutations in SMC5/6 have been linked to different human disease conditions that may derive from impaired DNA metabolism reactions. Specifically, mutations in SMC5/6 components increase overall breast cancer risk [14], promote brain metastasis development [15], and result in debilitating diseases associated with severe developmental defects. To date, two genetic disorders caused by mutations in SMC5/6 have been reported: the NSMCE2-associated syndrome featuring primordial dwarfism and deregulation of glucose metabolism [16], and the NSMCE3-associated disorder also known as LICS, characterized by

1 The FIRC Institute of Molecular Oncology, IFOM, Milan, Italy

2 UMR8200 CNRS, Equipe Labellisée La Ligue Contre le Cancer, Université Paris Sud, Gustave Roussy, Villejuif Cedex, France

3 School of Life Sciences, Peking University, Beijing, China

4 Laboratory of DNA Damage Signaling, Radiation Biology Center, Graduate School of Biostudies, Kyoto University, Kyoto, Japan

5 Istituto di Genetica Molecolare, Consiglio Nazionale delle Ricerche (IGM-CNR), Pavia, Italy

\*Corresponding author. Tel: +3902574303259; E-mail: dana.branzei@ifom.eu

†These authors contributed equally to this work as first authors

‡Present address: Department of Chemistry, Graduate School of Science, Tokyo Metropolitan University, Hachioji-shi, Tokyo, Japan

increased chromosome breakage and defective T- and B-cell function [17]. At the cellular level, the two syndromes are characterized by increased replication stress, micronuclei formation, and defects in homologous recombination (HR). While the involvement of SMC5/6 in preventing replication-stress accumulation is consistent with the results obtained in other model systems and likely linked to its function in DNA repair, the molecular roles of SMC5/6 in DNA repair are incompletely understood.

Here, we set out to investigate the roles of SMC5/6 that assist genome integrity in vertebrate and mammalian cells, by studying the consequences of SMC5/6 depletion in avian DT40 cells and HeLa cells. Both knockout and conditional depletion of SMC5 in DT40 cells allowed cellular proliferation, as previously reported [18]. *smc5* mutant cells showed sensitivity toward DNA intra- and inter-strand crosslinkers (ICLs). Notably, the repair defect of *smc5* DT40 cells toward cisplatin was genetically epistatic with mutations in the Fanconi anemia (FA) components, FANCC and FANCM, and with mutations in the FA-like pathway defined by the DNA damage checkpoint clamp loader, RAD17, and the DDX11 helicase [19,20]. Moreover, *smc5* mutants were additive to mutations in *KU70*, mediating non-homologous end-joining (NHEJ) repair of double-strand breaks (DSBs). SMC5/6 knockdown in human cells also caused ICL sensitivity, micronuclei, and aberrant mitoses, in a manner similar and non-additive with FANCD2 knockdown [21]. However, SMC5/6 dysfunction did not interfere with FANCD2 ubiquitylation, and unlike FANCD2 depletion, it did not affect RAD51 focus formation in unperturbed or replication-stress conditions. Combining co-immunoprecipitation and mass-spectrometry approaches, we detected physical interaction between several SMC5/6 components and FANCD2-I in human cells, both when SMC5/6 was overexpressed and with endogenous proteins. The results support the notion that vertebrate SMC5/6 functions jointly with the FA pathway in the repair of DNA lesions to prevent genome instability. We propose that mutations in SMC5/6 in humans may be implicated in FA or FA-like disorders.

## Results

### SMC5/6 function is required for normal proliferation in DT40 cells

Here, we applied the auxin-inducible degron (AID) system, which enables rapid degradation of target proteins by the proteasome

[22,23] to establish conditional depletion of SMC5. We used the DT40 avian B-cell line that stably expresses *TIR1*, an essential component in the auxin degron system [24] in which we C-terminally tagged the endogenous *SMC5* gene with the 3AID-6FLAG tag, using the Flip-In system for insertion of epitope tags [25] (Fig EV1A). As *SMC5* is present on chromosome Z, with only one replacement we generated *SMC5<sup>3AID6FLAG</sup>* cells expressing *TIR1* (hereafter referred to as *smc5-aid*) cells. The functionality of the AID tag inserted to the carboxyl-terminus of SMC5 was confirmed by Western blotting (Fig 1A). After auxin addition, the SMC5-3AID-6FLAG protein was strongly reduced within 24 h (Fig 1A). In regard to proliferation, *smc5-aid* cells behaved similarly with the wild-type (WT) control in the absence of auxin, but addition of auxin caused slower proliferation (Fig 1B).

To rule out that remaining low levels of SMC5-AID are sufficient for proliferation, albeit with lower speed, we established constitutive knockout of *SMC5*, employing a construct that causes complete disruption of the open-reading frame (Fig EV1B). *SMC5* knockout cells (hereafter referred to as *smc5*) proliferated slower than WT cells and had a longer doubling time (Fig 1C), showing results similar to the ones observed upon SMC5-AID depletion.

We further investigated whether the observed slower proliferation phenotype of *smc5* cells is complemented by expressing WT copies of chicken SMC5 (cSMC5) tagged with HA. To estimate the level of introduced cSMC5-HA vs. endogenous SMC5 present in WT, we also established an *smc5-HA* cell line using the Flip-In system and used both Western blotting against HA and quantification of mRNA levels (Fig EV1C). The results revealed that cSMC5-HA introduced for complementation was expressed 3–4 times higher than endogenous SMC5 and fully complemented the growth defect of *smc5* cells (Fig EV1C). Next, we assessed the cell cycle distribution profile, and found a statistically significant increase in the G2/M population in *smc5* mutants (about 25% in *smc5* compared with 18% in WT), which was associated with a concomitant decrease in the S-phase population (Fig 1D). We considered the scenario in which *smc5* mutants endure replication stress and as a result accumulate lesions that cause G2/M arrest and/or problems in completing mitosis. Supportive of this notion, addition of caffeine, which inhibits damage checkpoint kinases, reduced the population of *smc5* cells arrested in G2/M (Fig EV1D). Thus, *SMC5* is dispensable for viability in avian DT40 cells [18], but is required for physiological levels of fast proliferation.

#### Figure 1. SMC5 dysfunction causes slower proliferation.

- A WB analysis of *smc5-aid* clones in the absence or presence of auxin using  $\alpha$ -FLAG. Tubulin is used as loading control and WT cells are used as a negative control for the FLAG tag.
- B Proliferation curve of WT and *smc5-aid* cells in the presence or absence of auxin. The data represent means  $\pm$  SD of three independent experiments.
- C Proliferation curves of WT and two independent *smc5* clones grown at 39.5°C, with the estimated doubling time on the right. Data represent means  $\pm$  SD of four experiments. Asterisks indicate  $P$  value  $\leq$  0.05, as derived from unpaired t-test type 3, two-sample unequal variance, carried out to check statistical significance between *smc5* clones and WT. *smc5* clone 1 vs. WT,  $P = 0.016$ , *smc5* clone 2 vs. WT,  $P = 0.04$ .
- D Bidimensional FACS analysis shows significant accumulation in G2/M and decrease in the S phase in *smc5* mutants. The data represent means  $\pm$  SD of three independent experiments for *smc5* clones 2 and 3, and 4 independent experiments for WT and *smc5* clone 1. Asterisks indicate  $P$  value  $\leq$  0.05, detailed below, using paired t-test. S phase (*smc5* clones 1, 2, 3 vs. WT:  $P = 0.0031$ ;  $P = 0.0002$ ;  $P = 0.004$ , respectively). G2/M (*smc5* clones 1, 2, 3 vs. WT:  $P = 0.029$ ;  $P = 0.0014$ ;  $P = 0.02$ , respectively).

Source data are available online for this figure.

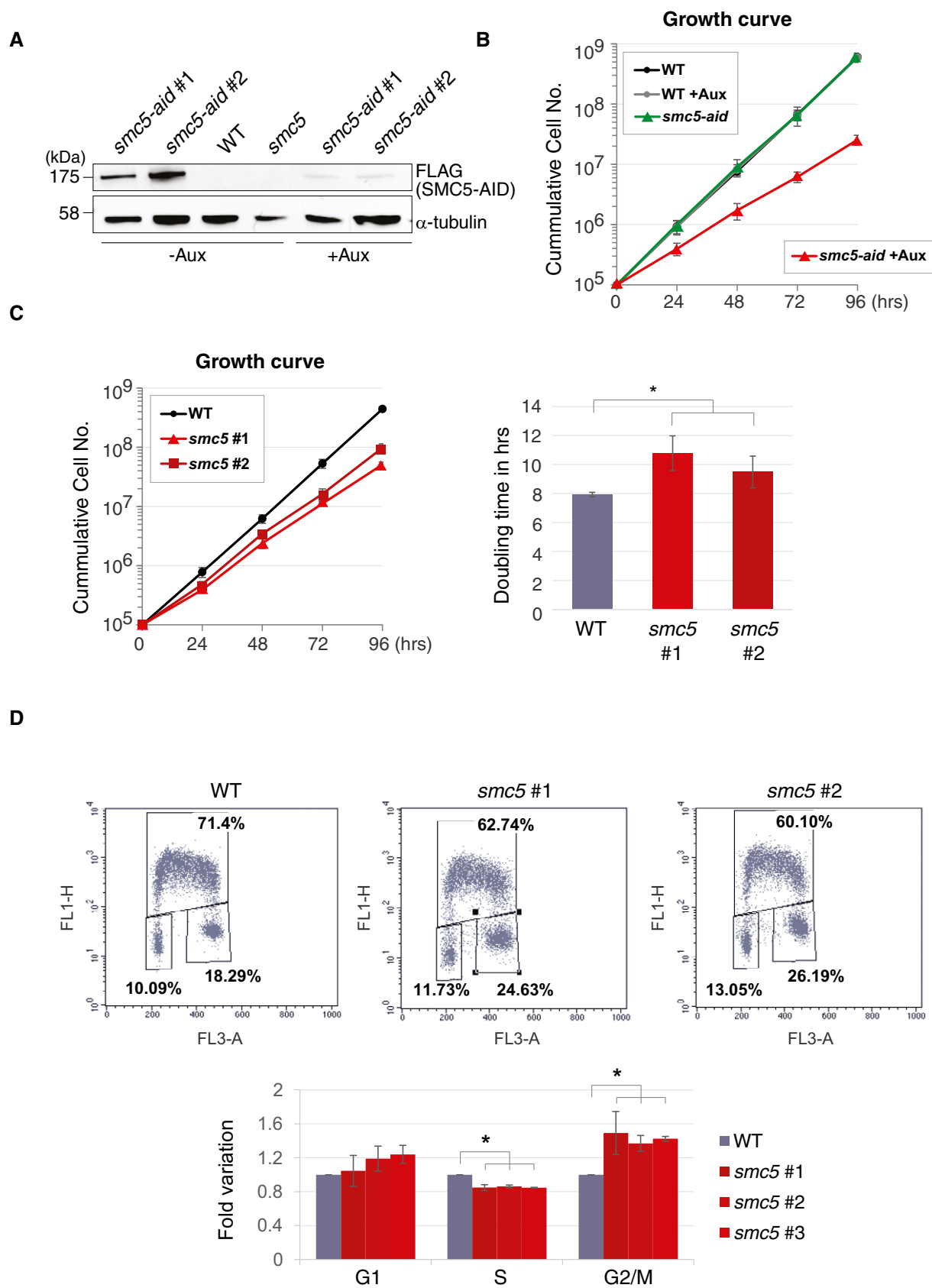


Figure 1.

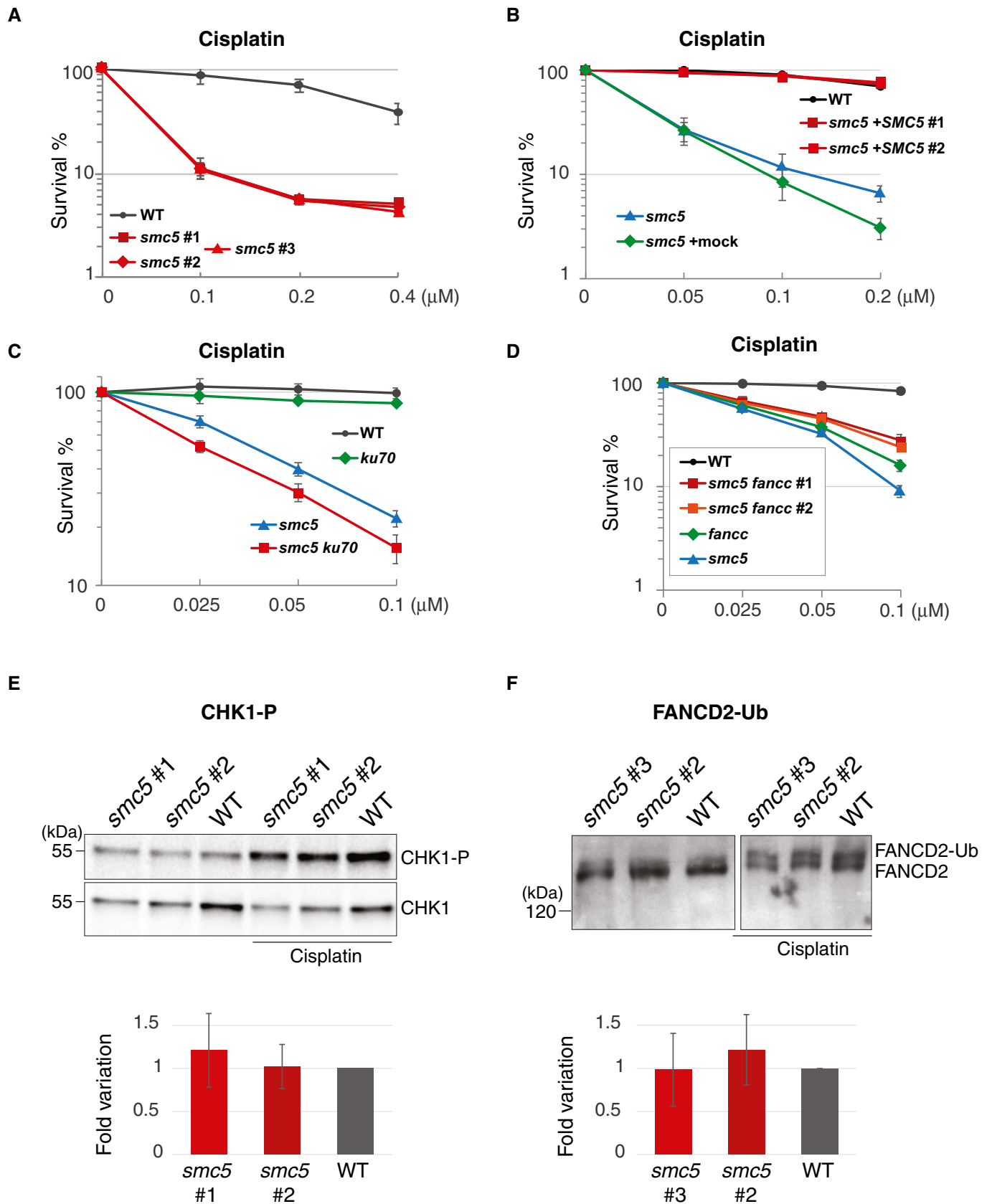


Figure 2.

**Figure 2. SMC5 contributes to the repair of intra- and inter-strand crosslinks, independently of KU70 and jointly with FANCC.**

- A Survival curve of *smc5* cells treated with different concentrations of cisplatin. Data represent means  $\pm$  SD of three experiments.
- B Survival curve of *smc5* cells complemented or not with chicken *SMC5* cDNA and treated with different concentrations of cisplatin. The experiment is carried out at 39.5°C. Data represent means  $\pm$  SD of three experiments.
- C Survival curve of *smc5 ku70* cells treated with different concentrations of cisplatin. Data represent means  $\pm$  SD of three experiments.
- D Survival curve of *smc5 fancc* cells treated with different concentrations of cisplatin. Data represent means  $\pm$  SD of three experiments.
- E WB analysis of CHK1-P levels at steady state or after treatment with 1  $\mu$ M cisplatin for 3 h. CHK1 total protein is used as loading control. Quantitative analysis of CHK1-P levels at steady state vs. total CHK1 is shown in the bottom panel. Data represent means  $\pm$  SD of four experiments.
- F WB analysis of FANCD2 ubiquitylation levels at steady state after treatment with 1  $\mu$ M cisplatin for 3 h. Analysis of the ratio between FANCD2 ubiquitylated/non-ubiquitylated forms is shown on the bottom panel. Data represent means  $\pm$  SD of three experiments.

Source data are available online for this figure.

**SMC5 acts jointly with the FA protein FANCC in the repair of ICLs**

SMC5 function has been linked to HR repair in several model systems, including budding and fission yeast, proliferating germ cells of *Caenorhabditis elegans* and avian DT40 cells [9,10,18,26–29]. In chicken DT40 cells, *smc5* mutants are sensitive to IR (ionizing radiation) and MMS (methyl methanesulfonate) [18]. In regard to IR sensitivity, *smc5* cells are epistatic to *rad54*, defective in HR, but additive to *ku70*, defective in the non-homologous end-joining (NHEJ) repair of double-strand breaks (DSBs) [18]. However, more information on the roles of SMC5/6 in DNA repair in vertebrate cells is currently missing, especially in regard to lesions other than DSBs.

We investigated the sensitivity of DT40 *smc5* mutants to several DNA damaging agents that cause replication-associated lesions, using Celltiter-Glo assay that measures the amount of ATP levels in living cells. We uncovered hypersensitivity of *smc5* cells toward cisplatin, a DNA damaging agent causing ICLs (Fig 2A). In addition, we observed intermediate levels of sensitivity of *smc5* cells toward the PARP inhibitor olaparib (Fig EV2A), which creates substrates relying on HR-mediated functions for fork protection and/or fork restart [30,31]. The observed cisplatin sensitivity of *smc5* knockout cells was fully recovered by the expression of the *cSMC5-HA* (Fig 2B, see also Fig EV1C for levels of expressed *cSMC5-HA*) and also recapitulated in *smc5-aid* cells treated with auxin (Fig EV2B). Similarly to cisplatin, endogenous formaldehyde causes ICLs [32]. Thus, we next examined the sensitivity of *smc5* cells to this chemical. We found *smc5* mutants to be sensitive to formaldehyde (Fig EV2C), although to a lesser extent than *fanc* mutants defective in the FA pathway.

Previous reports found *smc5* mutants to be additive to mutations in *ku70*, defective in NHEJ, in regard to repair of lesions induced by IR [18]. We found additivity between *smc5* and *ku70* knockout mutations also in regard to cisplatin (Fig 2C), while eliminating NHEJ suppresses the sensitivity of FA mutants [33,34]. Thus, SMC5

facilitates damage tolerance of bulky lesions and ICLs, and may be an important player, along with the FA pathway in mediating ICL repair.

Fanconi anemia is a multigenic syndrome characterized by bone marrow failure, developmental abnormalities, and predisposition to cancer, with FA patient cells showing a characteristic cellular sensitivity to agents that induce ICLs. So far, 22 complementation groups have been delineated in FA, with the causal genes shown to act in a common repair pathway [35–37]. In addition, several FA components have also FA-independent roles in DNA replication, fork protection, and checkpoint activation [38–41].

The central components of the FA pathway, FANCD2 and FANCI, interact with each other [42], and are monoubiquitylated by the FANCL ubiquitin ligase component of the FA core complex, comprising several FA subunits (FA-A, FA-B, FA-C, FA-E, FA-F, FA-G, FA-L, FA-M, FA-T) and associated proteins FAAP20 and FAAP100. FANCD2–FANCI ubiquitylation promotes lesion unhooking, causing the formation of a gapped DNA molecule, with the unhooked lesion in the gapped part, and a double-strand break (DSB) on the other. The gap and DSB are subsequently repaired by TLS and HR [43]. We investigated potential genetic relationships between SMC5 and FANCC, which is essential for FANCD2-I ubiquitylation and required for both HR and TLS-mediated pathways of DNA repair in DT40 cells [44]. Both *fanc* and *smc5* mutants show mild proliferation delays with the double-mutant *fanc* *smc5* showing additive growth defects (Fig EV2D). Double-mutant *smc5 fanc* did not show additive sensitivity (Fig 2D), suggesting that SMC5 and FANCC do not work in redundant pathways. The apparent improved survival of the double mutant when exposed to cisplatin might stem from the poorer proliferation of these cells (Fig EV2D), which may cause them not to be effectively damaged by cisplatin that functions during replication.

Because FANCC is required for FANCD2 ubiquitylation, which also relies on an intact ATR checkpoint response [42,45], we next

**Figure 3. SMC5 acts jointly with FANCM and the FA-like pathway involving the RAD17 checkpoint clamp loader and the DDX11 DNA helicase.**

- A Left panel: Growth curve was carried out to test *smc5 fancm* cell proliferation. Data represent means  $\pm$  SD of three experiments. Right panel: survival curve of *smc5 fancm* cells treated with different concentrations of cisplatin. Data represent means  $\pm$  SD of the three experiments.
- B Clonogenic assay to test cisplatin sensitivity of *smc5 fancm* cells in long-term assays. Data represent means  $\pm$  individual values of two independent experiments with two independent clones analyzed for *smc5 fancm*.
- C, D Left panel: Growth curve was carried out to test *smc5 rad17* (C) and *smc5 ddx11* (D) cell proliferation. Data represent means  $\pm$  SD of three experiments. Right panel: survival curve of *smc5 rad17* (C) and *smc5 ddx11* (D) cells treated with different concentrations of cisplatin. Data represent means  $\pm$  SD of three experiments.

Source data are available online for this figure.



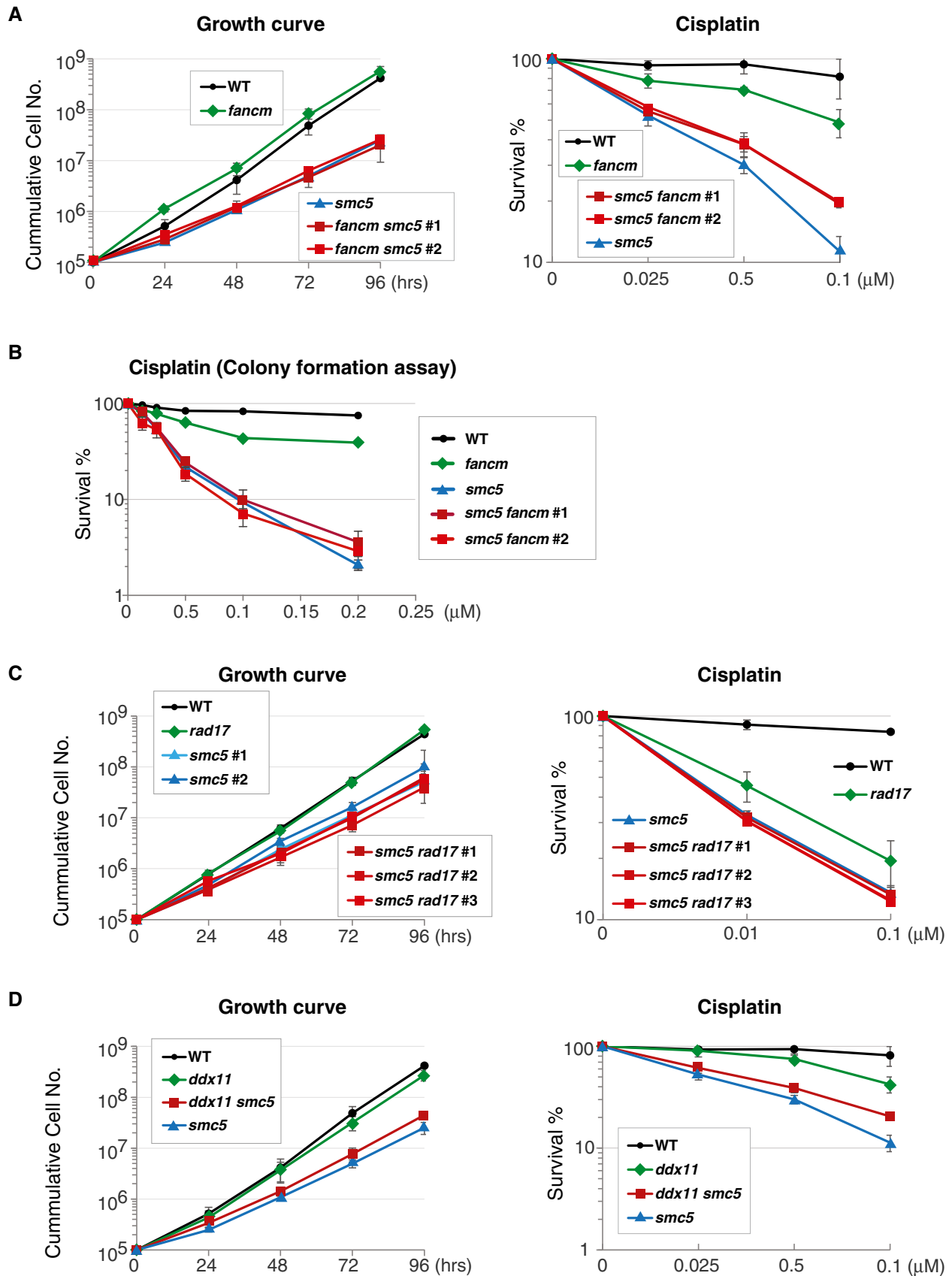


Figure 3.

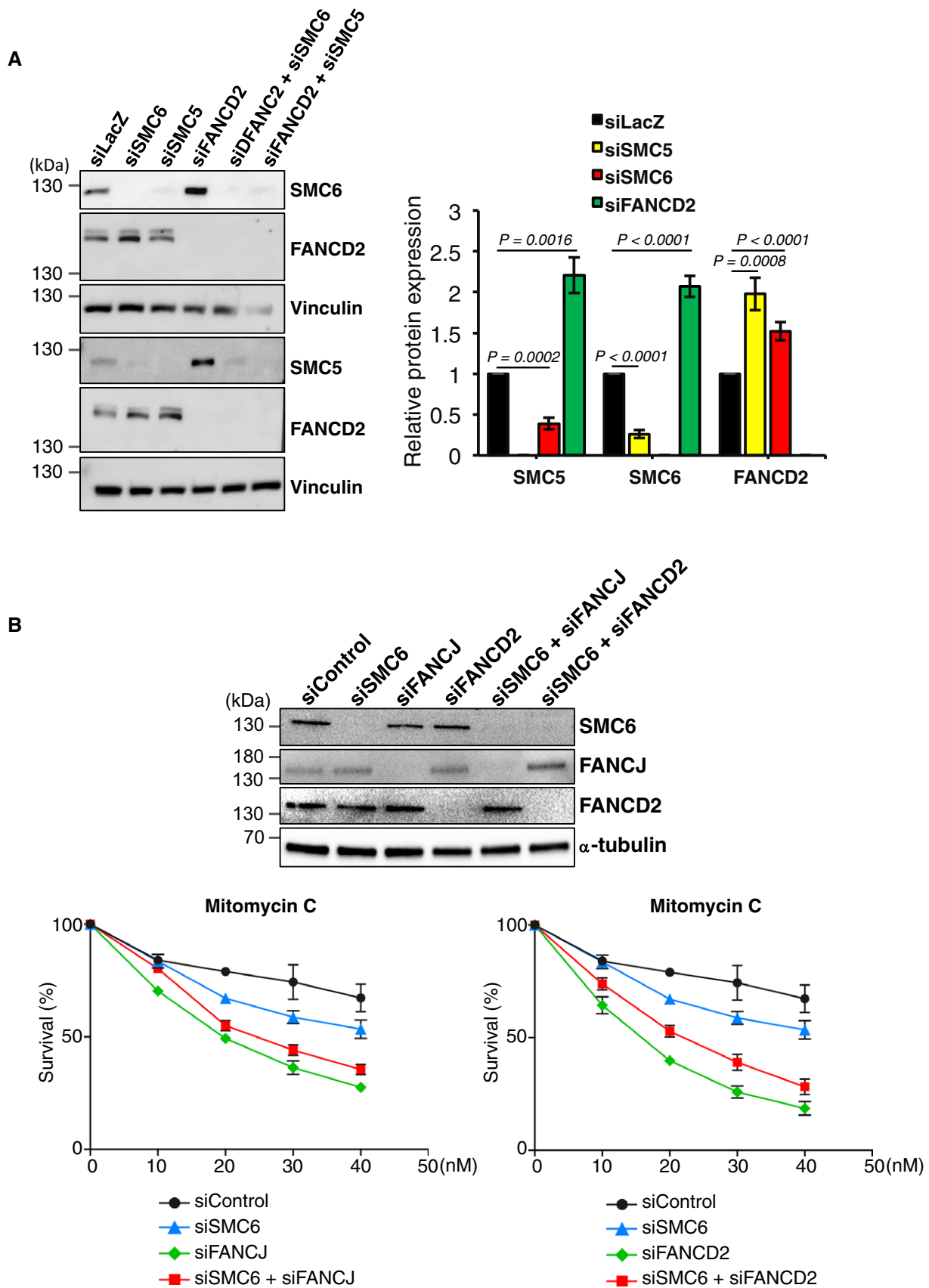


Figure 4.



**Figure 4. SMC5/6 and FANCD2 jointly promote DNA repair of MMC-induced lesions.**

- A Left panel: representative Western blots illustrating the expression of SMC6, SMC5, and FANCD2 in protein extracts from HeLa cells 48 h after transfection with the indicated siRNAs. Right panel: relative expression of SMC5, SMC6, and FANCD2. We performed individual experiments for each cell line with technical replicates. In each individual experiment, we first normalized SMC5, SMC6, or FANCD2 expression to that of Vinculin (internal control) and calculated its relative level in each cell line in relation to the target protein/Vinculin ratio of the siLacZ-transfected cells, which was set as one in each experiment. Data present the mean  $\pm$  SEM and were analyzed by unpaired *t*-test. SMC5 in siSMC6:  $n = 7$  and  $P = 0.0002$ ; SMC5 in siFANCD2:  $n = 7$  and  $P = 0.0016$ ; SMC6 in siSMC5:  $n = 8$  and  $P < 0.0001$ ; SMC6 in siFANCD2:  $n = 24$  and  $P < 0.0001$ ; FANCD2 in siSMC6:  $n = 30$  and  $P < 0.0001$ ; and FANCD2 in siSMC5:  $n = 10$  and  $P = 0.0008$ .
- B Top: representative Western blots illustrating the expression of SMC6, FANCD2, and FANCD2 in protein extracts from HeLa cells 48 h after transfection with the indicated siRNAs. Bottom: survival curves of cells transfected with indicated siRNA and treated with different concentrations of mitomycin C (MMC). Data represent the means and SEM (standard error of the mean) of three independent experiments.

Source data are available online for this figure.

analyzed whether these signaling pathways were functional in *smc5* mutants. We found that both CHK1 phosphorylation, used as readout for ATR activity, and FANCD2 ubiquitylation, used as readout for FA pathway functionality, proceeded unaffected in *smc5* mutants (Fig 2E and F). Thus, SMC5 functions downstream of FANCD2 ubiquitylation in a manner non-redundant with FANCC, potentially to support the DNA repair function of the FA pathway.

**SMC5 acts jointly with FANCM and the FA-like pathway involving the RAD17 checkpoint clamp loader and the DDX11 DNA helicase**

FANCM is a component of the FA core presenting DNA translocase and branch-migrating activities and a degenerate C-terminal ERCC4 nuclease domain that binds to DNA structures *in vitro* [46]. FANCM has functions within the FA pathway related to the recruitment of the FA core complex to chromatin and in triggering checkpoint activation, as well as functions outside the FA pathway related to lesion bypass potentially by fork reversal (reviewed in Ref. [47]).

We established double mutants between *fancm* and *smc5* knockouts and found these cells to be proliferating similarly with the *smc5* single mutants (Fig 3A). In regard to cisplatin sensitivity measured again by the Celltiter-Glo assay, *smc5* mutants are more sensitive than *fancm*, while *smc5 fancm* mutants showed reduced cisplatin sensitivity compared with *smc5* (Fig 3A), a situation recapitulating the phenotype observed with *fancc* (Fig 2D), but in a situation in which *smc5* and *smc5 fancm* mutants proliferated equally well (although worse than WT). Moreover, long-term clonogenic assays revealed a similar epistatic relationship between *fancm* and *smc5* mutations in regard to cisplatin sensitivity (Fig 3B).

A backup pathway for the FA pathway involves the conserved DDX11 helicase and the checkpoint clamp loader RAD17, which act jointly to facilitate recombination-mediated repair of bulky lesions in vertebrate cells [19,20]. In human cells, RAD17 also affects FANCD2 ubiquitylation [48]. To study the relationship between this FA-related pathway and SMC5 function, we established double

mutants between *smc5* (and *smc5-aid*) and *rad17*, *ddx11* mutations. The double mutants proliferated similarly with *smc5* single mutants, and both *rad17* and *ddx11* showed epistasis to *smc5* mutants toward cisplatin (Fig 3C and D). *ddx11* showed similar non-additive relationship with depletion of SMC5-AID in regard to proliferation and repair (Fig EV3A and B). Thus, SMC5 functions jointly with FANCM and FA-related pathway involving DDX11 and RAD17 in DNA repair.

**SMC5/6 acts jointly with FANCD2 to mediate DNA repair and prevent genomic instability in human cells**

To validate and extend our previous observations made in the chicken DT40 cell system, we analyzed the consequence of SMC5/6 depletion in HeLa cells. siSMC5 depletion and siSMC6 depletion were very efficient by 48 h post-transfection and validated by using different siRNA sequences to avoid off-target consequences of the siRNA approach. SMC5 or SMC6 depletion strongly affected the stability of the other partner (Fig 4A). Notably, their depletion was associated with an increased level of FANCD2, and conversely, FANCD2 depletion was associated with increased SMC5/SMC6 levels (Fig 4A).

Cell survival in response to mitomycin C (MMC) exposure, measured using crystal violet staining, revealed that SMC6-depleted HeLa cells are slightly more sensitive than control cells but significantly less sensitive than FANCD2- or FANCD2-depleted cells. The simultaneous depletion of SMC6 and FANCD2 had minimal effect on the MMC sensitivity of FANCD2-depleted cells, whereas the downregulation of SMC6 in FANCD2-depleted cells increased their resistance to MMC (Fig 4B). These results were obtained using smart siRNA pools, but qualitatively similar results were obtained using individual different siRNAs for SMC6 and a single siRNA for FANCD2 and FANCD2 (Fig EV4). Thus, also in human cells, SMC6 acts in a DNA repair pathway non-redundant with the one mediated by the FA proteins FANCD2 and FANCD2.

**Figure 5. SMC6 is not critical for efficient FANCD2 ubiquitylation or RAD51 focus formation.**

- A Representative Western blots illustrating the expression of SMC6 and of monoubiquitylated FANCD2 in protein extracts from HeLa cells transfected with the indicated siRNAs and treated 48 h after transfection with HU (5 mM, 18 h) or mitomycin C (200 ng/ml, 18 h). Vinculin is used as loading control.
- B Top: representative images of nuclei (DAPI-stained, blue) with RAD51 (green) foci in HeLa cells transfected with the indicated siRNAs and treated with HU or MMC, as indicated in panel (A). The scale bar represents 10  $\mu$ m. Bottom: histograms presenting the percentage of RAD51 foci-positive cells as evaluated in the different conditions of above. Data represent the means  $\pm$  SEM and were analyzed by unpaired *t*-test. siSMC6 vs. siLacZ:  $n = 3$ , NT, MMC or HU  $P = n.s.$ ; siFANCD2 vs. siLacZ:  $n = 4$ , NT  $P = n.s.$ , MMC  $P = 0.0003$ , HU  $P = 0.0479$ ; and siSMC6 + siFANCD2 vs. siLacZ:  $n = 3$ , NT  $P = n.s.$ , MMC  $P = 0.0439$ , HU  $P = 0.0458$ .

Source data are available online for this figure.

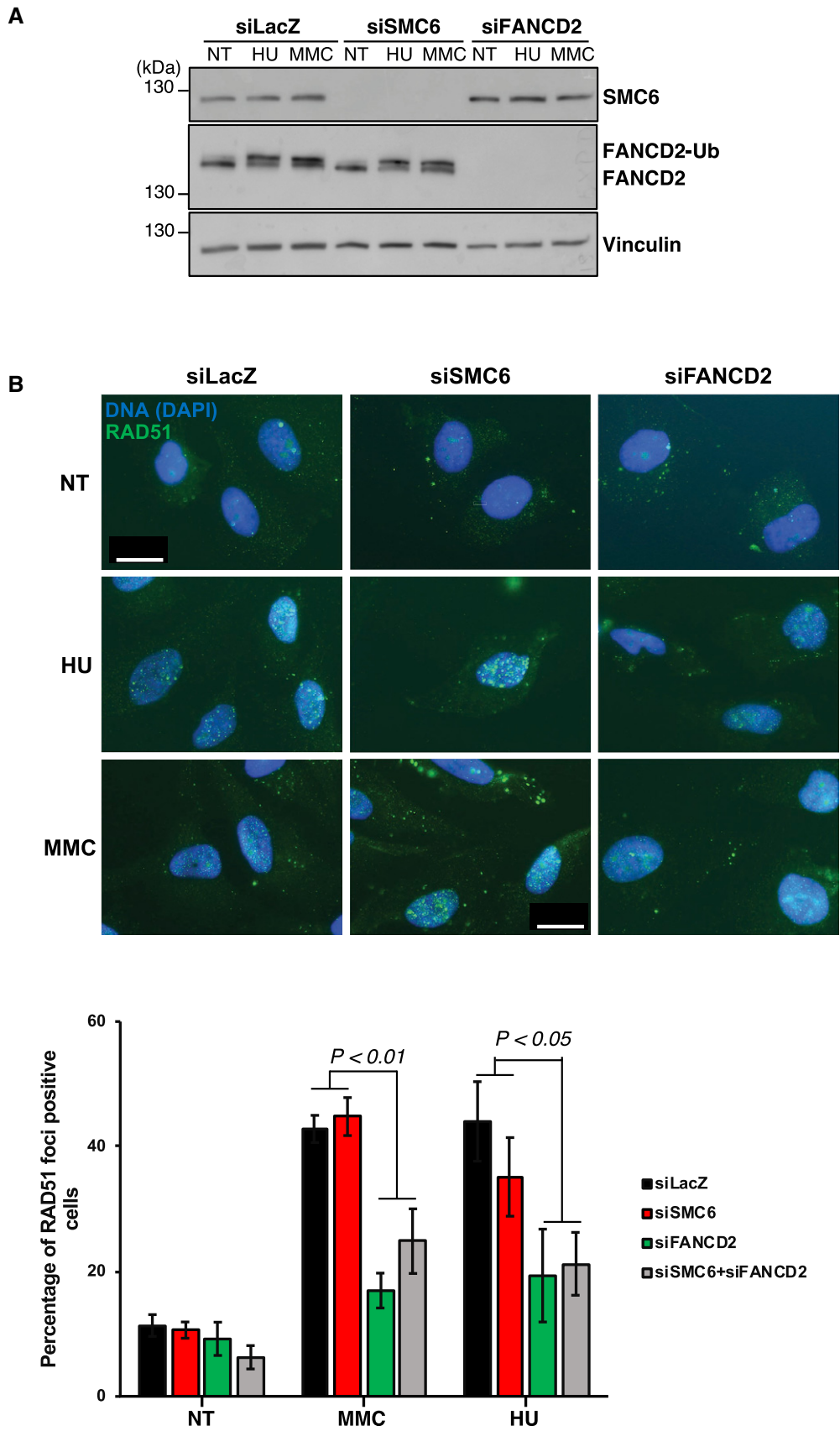


Figure 5.

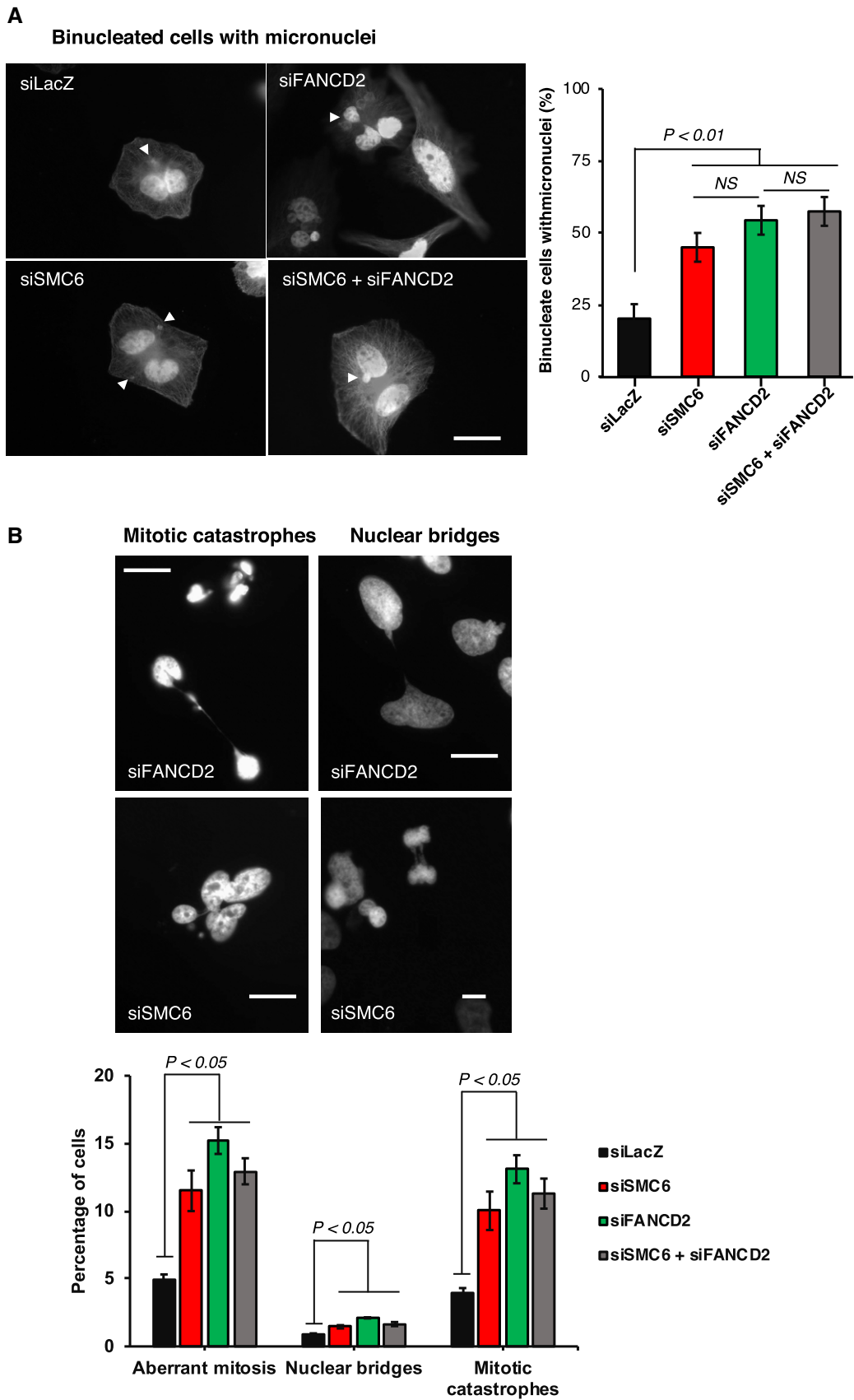


Figure 6.

**Figure 6. SMC6 acts jointly with FANCD2 to prevent micronuclei and mitotic abnormalities.**

- A Left panel: representative images of anaphase HeLa cells with micronuclei (white arrows). Forty-eight hours after transfection with indicated siRNAs, cells were incubated 18 h with 2  $\mu\text{g/ml}$  cytochalasin B to block cytokinesis. The scale bar represents 20  $\mu\text{m}$ . Right panel: histograms presenting the percentage of binucleate cells with micronuclei. Data represent the mean  $\pm$  SEM of three independent experiments, *t*-test, unpaired. siSMC6 vs. siLacZ,  $P = 0.0085$ ; siFANCD2 vs. siLacZ,  $P = 0.0057$ ; and siSMC6 + siFANCD2 vs. siLacZ,  $P = 0.0019$ .
- B Top: examples of HeLa mitotic catastrophes and anaphase bridges as observed 48 h after siRNA transfection. The scale bar represents 20  $\mu\text{m}$ . Bottom: histograms presenting the percentage of cells with mitotic abnormalities. Data represent the mean  $\pm$  SEM of three independent experiments. *t*-test, unpaired. siSMC6 vs. siLacZ: aberrant mitosis  $P = 0.0125$ , nuclear bridges  $P = 0.0198$ , mitotic catastrophes  $P = 0.0145$ ; siFANCD2 vs. siLacZ: aberrant mitosis  $P = 0.0005$ , nuclear bridges  $P = 0.0002$ , mitotic catastrophes  $P = 0.0011$ ; and siSMC6 + siFANCD2 vs. siLacZ: aberrant mitosis  $P = 0.0012$ , nuclear bridges  $P = 0.0116$ , mitotic catastrophes  $P = 0.0033$ .

Source data are available online for this figure.

SMC6 depletion using different siRNAs did not affect FANCD2 monoubiquitylation in either untreated or replication-stress conditions involving hydroxyurea (HU), MMC, or aphidicolin (APH) treatment (Figs 4A and 5A, and EV5) nor FANCD2 foci assembling in S/G2 phases of the cell cycle (Fig EV5), supporting the notion that SMC5/6 acts independently or downstream of FANCD2 activation.

The FANCD2 monoubiquitylation is important for optimal RAD51 focus formation [49–51], and *DDX11* deletion in DT40 that does not affect FANCD2 monoubiquitylation also reduces RAD51 focus formation [19]. We assessed the consequences of SMC6 depletion on the formation of RAD51 foci in MMC- or HU-treated HeLa cells. Differently from FANCD2 depletion, siSMC6 did not alter RAD51 foci *per se* and did not modify the frequency of RAD51 foci-positive cells observed in the absence of FANCD2 (Fig 5B). Thus, our data suggest that SMC5/6 acts independently or downstream of RAD51 focus assembly, and downstream of FANCD2 and *DDX11* that facilitate efficient RAD51 focus assembly.

It was proposed that FANCD2 foci assembled during S phase at stalled/delayed replication forks persist into G2/M and up to the end of mitosis to rescue under-replicated or untangled replicated regions, with this action serving to avoid anaphase bridges and genomic instability in daughter cells [21]. Indeed, FANCD2 loss of function is associated with an increased frequency of mitotic catastrophes and nuclear bridges at anaphase–telophase as well as with increased frequency of post-mitotic cells presenting micronuclei [21]. Notably, SMC6-depleted cells revealed a similar level of mitotic abnormalities with FANCD2-depleted cells, and the frequency of these abnormalities remains unchanged in SMC6 and FANCD2 double-depleted cells (Fig 6A and B). The results thus suggest joint action between SMC6 and FANCD2 in preventing genomic instability in mitotic and post-mitotic cells.

**SMC5/6 physically interacts with FANCD2-I in human cells**

To examine potentially informative physical interactions, we transiently expressed FLAG-tagged SMC5, SMC6, and NSMCE2 in HEK293 cells and immunoprecipitated the complexes with an anti-FLAG antibody. Mass spectrometry identified the other SMC5/6 components in the immunoprecipitate of SMC5, along with a few other proteins of interest, among which FANCI (Table 1). Immunoblotting further validated that FANCI was present in the immunoprecipitates of SMC5/6 and NSMCE2 (Fig 7A), even in the presence of ethidium bromide (EtBr), which binds DNA and disrupts DNA–protein interactions.

Because in the above experiments SMC5/6 and NSMCE2 were overexpressed, we examined whether the interaction was observed

**Table 1. FLAG-SMC5 IP-MS.**

Protein ID	Peptide number <sup>a</sup>
SMC5	119.5
NSMCE3	21
NSMCE1	14
NSMCE4A	11
SMC6	39
NSMCE2	9
TUFT1	6.5
MLF2	1.5
CPD	1.5
FANCI	1

<sup>a</sup>The numbers of peptides are averaged over two technical replicates.

among endogenous proteins. As we experienced low IP efficiency with commercial SMC5 antibodies, we tagged endogenous SMC5 alleles C-terminally with the mAID-EGFP tag in human TK6 cells using CRISPR-Cas9, using the strategy reported in Ref. [52]. Using SMC5-mAID-EGFP TK6 cells, we found that SMC5-EGFP pull-down led to co-immunoprecipitation of FANCD2, and vice versa, independently of induced DNA damage (Fig 7B and C). These results suggest that SMC5/6 physically interacts with FANCD2-I *in vivo*.

**Discussion**

Studies of the Smc5/6 complex in budding and fission yeast are consistent with the involvement of this complex in dynamic DNA processes, such as stabilization of stalled replication forks and regulation of recombination intermediate resolution [9–11,13]. The essential functions of the SMC5/6 complex, at least in budding yeast, primarily manifest after the bulk of replication is complete, and involve processes mediating replication termination and DNA synthesis through difficult to replicate regions [11,13], such as ribosomal DNA, rDNA [12,53]. The postreplicative or late replication nature of the essential processes requiring SMC5/6 suggests that this complex may be especially important during late replication, in a subset of DNA metabolism reactions with repercussions on the mitotic chromosome structure and its compaction [54]. In budding yeast, those processes may be particularly relevant to rDNA condensation and segregation [12], whereas in vertebrates they may encompass several classes of fragile sites or structures that remain

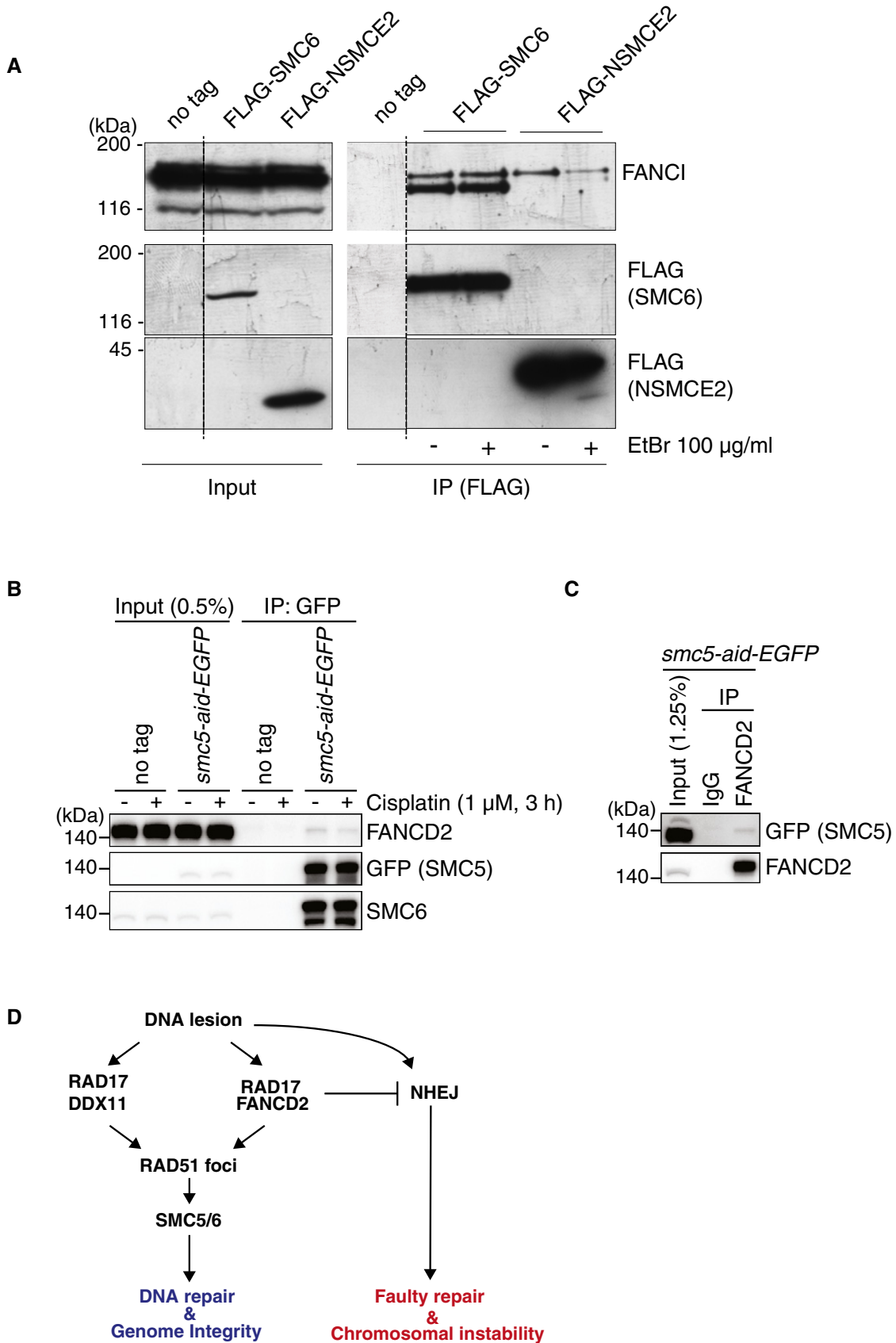


Figure 7.



**Figure 7. SMC5/6 physically interacts with FANCD2-I in human cells.**

- A Immunoprecipitation of FLAG–SMC6 and FLAG–NSMCE2 with FANCI in HEK293T cells overexpressing the SMC6 or NSMCE2, respectively, in the presence or absence of ethidium bromide (EtBr). The experiment was performed three times, and the blot shows a representative experiment. The band under the one indicated as FANCI may represent a degradation product.
- B, C Co-immunoprecipitation of endogenous SMC5-mAID-EGFP and FANCD2 in TK6 cells in the presence of benzonase. Both experiments were performed twice independently, with the note that the cisplatin condition was performed only in one of the experiments, and the FANCD2 pull-down in the experiment not shown was performed without benzonase.
- D Model schematizing the proposed view of SMC5/6 action in genome integrity and DNA repair. SMC5/6 acts differently from non-homologous end-joining and downstream of RAD51 filament formation and of homologous recombination branches mediated by DDX11, RAD17, and FANCD2, RAD17.

Source data are available online for this figure.

to be identified. Nevertheless, the partners of SMC5/6 in these repair processes remain poorly understood, especially in vertebrate cells.

In this study, we undertook a dual approach to better understand the functions of vertebrate/mammalian SMC5/6 in DNA repair and genome stability. One approach aimed at identifying new interacting partners of SMC5/6 in mammalian cells, while the other addressed the molecular functions of SMC5/6 in DNA repair and genome integrity by examining several mutant combinations in DT40 and upon knockdown in HeLa cells. Remarkably, both our approaches intersected on the FA pathway and particularly FANCD2-I, already reported to play roles in facilitating replication through common fragile sites (CFSs) [21,55–57] and for preventing fragile site expression in the presence or absence of replication stress [45,58–60]. Here, we find that SMC5/6 components interact physically with FANCD2-I and function jointly with FA proteins (FANCC, FANCM, FANCI, FANCD2) and FA-related pathways (RAD17, DDX11) in the repair of ICLs created by cisplatin and mitomycin C. Considering that SMC5/6 depletion does not impair FANCD2 ubiquitylation and either FANCD2 or RAD51 focus formation, these results indicate roles of SMC5/6 in the late steps of HR, perhaps by resolving emerging recombination intermediates (Fig 7D). This could explain the effects of SMC5/6 depletion on anaphase bridge and micronuclei formation, which resemble in extent and are non-additive with the ones of FANCD2 depletion. FANCD2 counteracts NHEJ, and inhibition of NHEJ in FA rescues survival and genetic instability in FA [33,34]. Our new results suggest that this rescue happens because cells become able to funnel lesions in the HR pathway dependent on DDX11 and SMC5/6 (Fig 7D). Because ICL repair resembles replication termination [61] and termination regions are predisposed to fragility [62,63] and protected by budding yeast *Smc5/6* [13], we propose joint roles of SMC5/6 and FANCD2-I at these regions and possibly at other subsets of CFSs.

Our findings can be accommodated by a model envisaging two functional interaction points between the FA pathway and SMC5/6: one in which SMC5/6 function/recruitment to the DNA lesion or terminal sites of replication is facilitated by FA components such as FANCM, and a subsequent one in which SMC5/6 facilitates the repair function of the FA pathway (Fig 7D). The role of SMC5/6 in facilitating DNA repair may be manifested via recruitment and/or Sumoylation of BLM, already reported to act jointly with FANCD2 and SMC5/6/NSMCE2 in certain conditions of replication stress [21,64]. Alternatively, SMC5/6 may downregulate the fork transversal function of FANCM and/or activate the degradation/mobilization of other replication, repair, or structural factors to facilitate lesion bypass and subsequently replication completion. This latter envisaged function may involve the ubiquitin and SUMO ligase activity of the SMC5/6 complex and potentially facilitate replisome

disassembly during replication termination [65] or cohesin removal to facilitate repair completion and normal chromosome structure in prophase [66]. We thus envisage that there remain undiscovered genetic disorders caused by mutations in genes of the SMC5/6 complex that lead to FA or FA-like disorders and in which the physiological role SMC5/6 in mediating DNA repair and replication termination becomes more apparent.

## Materials and Methods

### Cell lines and genotoxic treatments

All DT40 cell lines used in the study were derived from the DT40 WT clone 18 [67] and reported in Table 2.

HeLa cells were purchased from ATCC and routinely maintained in 75-cm<sup>2</sup> flasks in DMEM (Gibco<sup>®</sup>) + 13% fetal calf serum (Gibco<sup>®</sup>) + 1% penicillin–streptomycin (Gibco<sup>®</sup>) with reseeding every 4 days after trypsinization.

TK6 cells expressing *TIR1* are a gift from Shunichi Takeda at Kyoto University. TK6 cells were cultured in RPMI 1640 (Cat. No. BE12-167F, Lonza), horse serum 5% (Cat. No. 16050-122, Life Technologies), L-glutamine 2 mM (Cat. No. X0550, Microtech or Euroclone, Cat. No. LOBE17605F), sodium pyruvate 1.8 mM (Cat. No. L0642, Microtech), and P/S (Cat. No. L0022, Microtech or Euroclone, Cat. No. ECB3001L), at 37°C.

Genotoxic treatments were performed using mitomycin C (MMC, Cat. No. M0503, Sigma-Aldrich), cisplatin (CDDP, Cat. No. P4394, Sigma-Aldrich), hydroxyurea (HU, Cat. No. 400046, Sigma-Aldrich), aphidicolin (APH, Cat. No. A0781, Sigma-Aldrich), or formaldehyde (Cat. No. F8775, Sigma-Aldrich) at the indicated concentrations and time periods for chronic and acute treatments.

### DNA restriction enzymes and DNA ligase

All restriction enzymes and T4 DNA ligase were purchased from New England Biolabs (Frankfurt, Germany) and used according to the manufacturer's specification. GeneArt<sup>®</sup> Seamless Cloning and Assembly enzyme mix (Cat. No. A14606, Thermo Fisher Scientific) and GeneArt<sup>®</sup> Seamless Plus Cloning and Assembly enzyme mix (Cat. No. A14603, Thermo Fisher Scientific) were used to clone the homologous recombination arms for SMC5 C-terminus tagging in DT40 cells.

### Plasmids

The vectors used for DT40 cloning were previously reported [68,69]. Vectors used for SMC5 tagging with HA and AID were

**Table 2. DT40 cell lines used in the study.**

Code	Clones	Description	Origin
FR#1	WT	DT40 cl. 18 (WT)	Laboratory stock
FR#2	<i>smc5#1</i>	WT, <i>smc5::Puro</i>	This study
FR#4	<i>smc5#2</i>	WT, <i>smc5::Puro</i>	This study
FR#3	<i>smc5#3</i>	WT, <i>smc5::Puro</i>	This study
#FR29	<i>rad17#</i>	WT, <i>rad17::His</i>	Takuya Abe, Laboratory stock
FR#42	<i>smc5 ddx11#1</i>	<i>smc5#2, ddx11::Hygro, Bsr</i>	This study
FR#48	<i>smc5 fancc#1</i>	<i>smc5#2, fancc::His</i>	This study
FR#49	<i>smc5 fancc#2</i>	<i>smc5#2, fancc::His</i>	This study
FR#50	<i>fancc#</i>	WT, <i>fancc::His</i>	This study
FR#24	<i>smc5-aid#1</i>	WT, TIR1-9MYC::His, SMC5-3AID-6FLAG::Bsr	This study
FR#20	<i>smc5compl#1</i>	<i>smc5#1, SMC5-HA::Bsr</i>	This study
FR#21	<i>smc5compl#2</i>	<i>smc5#1, SMC5-HA::Bsr</i>	This study
FR#22	<i>smc5#1 + mock</i>	<i>smc5#1, mock::Bsr</i>	This study
#35	<i>ddx11#1</i>	WT, <i>ddx11::Bsr, Puro</i>	Takuya Abe, Laboratory stock
FR#9	<i>smc5 rad17#1</i>	<i>smc5#2, rad17::His</i>	This study
FR#10	<i>smc5 rad17#2</i>	<i>smc5#2, rad17::His</i>	This study
FR#11	<i>smc5 rad17#3</i>	<i>smc5#2, rad17::His</i>	This study
FR#44	<i>smc5 fancm#1</i>	<i>smc5#2, fancm::His, Bsr, Puro</i>	This study
FR#35	<i>smc5 fancm#2</i>	<i>smc5#2, fancm::His, Bsr, Puro</i>	This study
FR#46	<i>fancm#1</i>	WT, <i>fancm::His, Bsr</i>	This study
<i>wtM</i>	<i>wtM</i>	DT40 cl. 18 (WT)	Dr. Morrison laboratory stock
N29	<i>smc5N29</i>	WT, <i>smc5</i>	[18], Dr. Morrison laboratory stock
K30	<i>smc5 ku70#</i>	<i>ku70, smc5off</i>	[18], Dr. Morrison laboratory stock
#78	<i>Ku70#</i>	WT, <i>ku70</i>	[18], Dr. Morrison laboratory stock
R379	<i>SMC5-HA</i>	WT, <i>SMC5-HA::Eco</i>	This study

modified in the laboratory starting from a backbone received from the Hirota Lab [25]. The Px458 CRISPR/Cas9 vector reported in Ref. [70] was used in this study to establish *fanc*, and *fancm* knockouts in WT and *smc5* backgrounds. Guide DNA targeting for *fanc* and *fancm* was purchased from Sigma-Aldrich and cloned in the px458 vector (<https://www.addgene.org/48138/>), generating vectors FR18# (for *fanc*) and FR20# (for *fancm*), respectively. FR18# was transiently co-transfected with vector #122 [71] in *smc5* and WT, respectively, in order to induce double-strand breaks to enhance HR and the insertion of the resistance marker contained in the vector in order to KO *fanc*. FR20# was transiently co-transfected with vectors #12–31 and #12–29 in *smc5* or WT in order to induce double-strand breaks to enhance HR and the insertion of the resistance marker contained in vector in order to KO *fancm*.

SMC5-3xmAID-6xFLAG Flip-In was generated from genomic PCR products combined with p3xmAID-6xFLAG containing histidinol D selection marker cassette. Genomic DNA sequences were amplified using primers 5'-ATAAAAGTCGACGGAGAGCTTAATTTTGTGTGA C-3' (containing *Sall* restriction enzyme site) and 5'-ACCATTGCTA GCCTGTCATCCATTCTCC-3' (containing *NheI* restriction enzyme site). Amplified PCR product was purified by gel extraction and digested by *Sall* high-fidelity and *NheI* high-fidelity restriction enzymes, then purified again, and ligated in p9xMyc vector [72]. Then, they were cloned with the same strategy in 3xmAID-6xFLAG vector [24]. The Flip-In vector was then linearized at one restriction enzyme site in the middle of the homology region and transfected to DT40 cells as previously described [25].

SMC5-HA Flip-In was generated from genomic PCR products combined with p3xmAID-6xFLAG containing Ecogpt selection marker cassette. Genomic DNA sequences were amplified using primers 5'-ATAAAAGTCGACGGAGAGCTTAATTTTGTGTGAC-3' (containing *Sall* restriction enzyme site) and 5'-ATGCGGCGCGCTCAAGCGTAATCT GGAACGTCATATGGATACTGTTCCATCCATTCTCCAAGTCGC-3' (containing sequence coding HA-tag and *Ascl* restriction enzyme site). Amplified PCR product was digested by *Sall* and *Ascl* restriction enzymes and purified by gel extraction, and then ligated into p3xmAID-6xFLAG vector. The Flip-In vector was then linearized by *SnaBI* restriction enzyme before transfection.

SMC5 knockout construct was generated by modifying the SMC5 KO-Neo vector published in Ref. [18], which was digested with *BamHI* in order to cut exon 1 from the 5' arm, purified by gel extraction, and ligated with loxp (histidinol D) selection marker cassette. Then, the vector was digested with *PvuI* and *BamHI* restriction enzymes, purified by gel extraction, and ligated with loxp (puromycin) selection marker cassette. SMC5-KO-Puro vector was then linearized with *NotI* before being transfected to DT40 cells. *rad17* and *ddx11* mutations were established as previously reported [19].

To construct the targeting vectors for introducing mAID-EGFP tag to the C-terminus of the *SMC5* gene in TK6 cells, the 5' arm was amplified by using primers 5'-AGGGCGAATTGGAGCTCCCCAGT AGATAGTCTTGTGGAATAGTCAC-3' and 5'-TTGGCGCTGCAC CGGATCCAGAAGGTTGAGTGAATGTAATACg-3'. The 3' arm was amplified by using primers 5'-CGAAGTTATTAGGTCCTCGTG GAACTATAATGACCTTTCC-3' and 5'-GGGAACAAAAGCTGGG GAACCTCTCTGTTCAAAGACATGACTTTGG-3'. (Primers contain homology sequence to the backbone vectors.)

The 5' and 3' arms were assembled with pBS-mAID-GFP-loxp-Neo (neomycin-resistant cassette) or Hyg (hygromycin-resistant cassette) [52] digested with *EcoNI* and *SmaI* using GeneArt™ Seamless PLUS Cloning and Assembly Kit (Cat# 14603, Thermo Fisher Scientific) according to the manufacturer's protocol. To construct the CRISPR/Cas9 vector for targeting *SMC5*, annealed primers 5' CACCGTATGGCTCAACTGAATAAAA-3' and 5'-AACTTTATTACAGTTG AGCCATAC-3' were inserted into the *BbsI* site of px458 vector (Cat# 48138, Addgene). The two resulting targeting vectors containing Neo and Hyg antibiotic markers and the px458-gRNA vector were transfected into wild-type expressing the *TIR1* gene.

TK6 cells expressing *TIR1* were electroporated using Neon® Transfection System MPK5000 (voltage/width/number of pulses: 1,350 V/10 ms/3), with medium containing no PBS. Cells were selected 24 h after electroporation, using the drugs corresponding to



the resistance marker(s) used, and then, the cells were plated in 96 wells to get single-cell clonal population. Cells were grown in medium until a single colony/well was visible, then picked up with a filter tip, and moved to a 24-well dish. Then, genomic DNA was extracted, the genotype was established by PCR, and ultimately confirmed by WB.

### Antibodies

As primary antibodies for DT40 cell extracts, we used the following: anti- $\alpha$ -tubulin, mouse monoclonal antibody, clone B-5-1-2 (Cat. No. T5168, Sigma-Aldrich), 1:5,000 for WB; anti-CHK1 (G-4), mouse monoclonal antibody (Cat. No. sc-8408, Santa Cruz Biotechnology), 1:1,000 for WB; anti-CHK1-P S345, rabbit polyclonal antibody (Cat. No. 133D3, #2341, Cell Signaling), 1:1,000 for WB; anti-FANCD2, rabbit polyclonal antibody, the Takata laboratory, Kyoto medical University [20], 1:4,000 in BSA 5% TBS-T 0.1% for WB; anti-Flag M2, mouse monoclonal Ab (Cat. No. F1365 Sigma-Aldrich), 1:3,000 for WB; anti-Histone H2B, rabbit polyclonal (Cat. No. ab1790, Abcam), 1:3,000 for WB; anti-HA, rat monoclonal (3F10, Cat. No. 11867423001, Roche), 1:500 for WB; and anti-BrdU antibody, mouse monoclonal (B44, Cat. No. 5295722, BW), 1:5 for FACS. For WB on HeLa cell extracts, the following antibodies were used: anti-SMC5, mouse monoclonal antibody, clone B11, 1/250 (Cat. No. sc-393282, Santa Cruz Biotechnology); anti-SMC6 mouse monoclonal antibody, clone A3, 1/250 (Cat. No. sc-365742 Santa Cruz Biotechnology); anti-FANCD2 mouse monoclonal antibody, clone F117, 1/500 (Cat. No. sc-20022, Santa Cruz Biotechnology); anti-Vinculin mouse monoclonal [SPM227], 1/3,000 (Cat. No. ab18058, Abcam); and anti-FANCI rabbit polyclonal antibody, 1/1,000 (Cat. No. NB100-416, Novus Biologicals). For Co-IP of SMC5, SMC6, NSMCE2, and FANCI, an antibody against FANCI home-made by Weidong Wang's Lab at NIH/NIA was used. For Co-IP in TK6 cells, anti-GFP rabbit polyclonal (Cat. No. TP401, OriGene) was used for both IP (2.5  $\mu$ g/sample) and WB (1:1,000).

As secondary antibodies, the following were used: goat anti-mouse secondary antibody, horseradish peroxidase-conjugated (Cat. No. 170-6516, Bio-Rad), 1:5,000 for WB; goat anti-rabbit secondary antibody, horseradish peroxidase-conjugated (Cat. No. 170-6515, Bio-Rad), 1:5,000 for WB; and donkey anti-mouse FITC (Cat. No. 11-095-150, Jackson ImmunoResearch), 1:50 for FACS. For experiments performed in HeLa cells, secondary anti-mouse or anti-rabbit antibodies were from Bethyl.

### Cell culture and transfection procedures

All DT40 cells were derived from DT40 WT clone 18 [67]. DT40 cells were cultured in DMEM F-12 medium (Cat. No. 31331-093, Life Technologies or Cat. No. L0090-500, Biowest) supplemented with  $10^{-5}$  M mercaptoethanol (Cat. No. 31350-010, Life Technologies), 10% fetal bovine serum, South America (Cat. No. S1810-500, Biowest), and 1% chicken serum (Cat. No. C5405-100ML, Sigma-Aldrich), and P/S (Cat. No. L0022, Microtech) and grown at 39.5°C if not otherwise indicated.

For drug selection during knockout/knock-in generation, cells were selected 16–24 h after electroporation, using the drug corresponding to the employed resistance marker, and then the cells were plated in 96 wells to get single-cell clonal population. Cells

were grown in medium until a single colony per well was visible, then it was picked up with a filter tip, and moved to a 24-well dish. Then, genomic DNA was extracted and the genotype was checked by PCR, and eventually, mRNA expression was checked with reverse transcriptase-PCR (RT-PCR) for the indicated clones. For DT40 cells, electroporation was carried out using Gene Pulser II<sup>®</sup> Electroporation System (Cat. No. 165-2105, Bio-Rad Laboratories, Hercules, CA, USA). Methods for DNA transfection and selection of clones were performed as described previously [67].

HeLa cells were plated at  $2 \times 10^5$  cells/well in a 6-well plate and then transfected 24 h later with a mix of 190  $\mu$ l of Opti-MEM<sup>®</sup> (Invitrogen<sup>™</sup>), 8.5  $\mu$ l of INTERFERIN<sup>®</sup> (Polyplus), and 2.2  $\mu$ l of siRNA (20 nM final) incubated 10 min at RT before use. siLacZ transfection was used as a control.

siSMC5-a	5'-GGAACUUCAGCAGGGCUUUAUAGUA-3'
siSMC5-b	5'-GGCAUUAUGUGAAGCGGAAUUAUU-3'
siSMC6-a	5'-GACCUAUCUUGAUCUGGAUAGUAAA-3'
siSMC6-b	5'-CAAUUCUUGAUGAAAGCAACGCAA-3'
siFANCD2	5'-GGAGAUUGAUGGUCUACUA-3'
siFANCI	5'-CAUACAGGGCCUUAACCA-3'
siLacZ	5'-CGUCGACGGAUACUUCGA-3'

For the MMC sensitivity assays in HeLa presented in Fig 4B, cells were transfected with ON-TARGETplus SMARTpool siRNAs (Dharmacon) targeting SMC6 (L-018408-01-0010), FANCI (L-010587-00-0005), FANCD2 (L-016376-00-0010), and siRNA control (non-targeting pool) by using Lipofectamine RNAiMAX<sup>®</sup> according to the manufacturer's protocol. Knockdown of proteins was analyzed by Western blot (WB). In addition, single siRNAs, siSMC6-a, and siSMC6-b with sequences indicated above were tested together with siRNA for FANCD2 and FANCI (indicated above) in sensitivity assays shown in Fig EV4.

### Growth curve

For proliferation curves, cells were plated with a starting concentration of  $10^5$  cells/ml in triplicate. They were counted at the indicated time points with the Burkert chamber. Before counting, they were stained with erythrosine (1 volume of medium containing cells and 1 volume of erythrosine) to mark viable cells. Raw data were plotted in Excel to derive growth curves and to calculate the doubling time of individual cell lines.

### Auxin treatment

When indicated, auxin was added to the medium to a final concentration of 500  $\mu$ M. Cells were treated with auxin for the indicated time, dependent on the assay. In order to check the depletion or the recovery of the expression of the target protein,  $1 \times 10^6$  cells were pelleted, then washed 1 $\times$  with PBS 1 $\times$ , and lysed with sample buffer 1 $\times$ . Since auxin is reported to be degraded in the media, during proliferation experiments, auxin concentration was maintained by diluting the culture with fresh medium containing auxin. In Cell-titer-Glo ATP sensitivity assays, cells were supplemented with auxin after 24 h of treatment.

### Quantitative PCR for mRNA

Total RNA was isolated from DT40 cells by using TRIzol RNA Isolation Reagents (Invitrogen) according to the manufacturer's protocol. cDNA library was prepared from total RNA by using SuperScript™ III Reverse Transcriptase (Invitrogen) according to the manufacturer's protocol. Quantitative PCR was performed using GoTaq® qPCR Master Mix (Promega) and LightCycler® 96 Instrument (Roche) according to the manufacturer's protocols. *ACTB* was used as house-keeping gene. Used primers are described below.

*ACTB* fw: 5'-CGTGCTGTGTTCCATCTATCGTG-3'

*ACTB* rv: 5'-TACCTCTTTGCTCTGGGCTTCATC-3'

*SMC5* fw: 5'-GCAGGGCTGCTTGAAGGTCTAGTG-3'

*SMC5* rv: 5'-GCTTCCTGTGATATGCCAGGTTGAC-3'

### Drug sensitivity assays (Celltiter-Glo, colony survival, and crystal violet assays)

Sensitivity assays in DT40 were carried out treating  $2 \times 10^4$  cells/ml with the indicated drug concentration for 48 h. To assess cellular sensitivity, we measured the amount of ATP levels using Celltiter-Glo® assay (Cat. No. G7571, Promega). Luminescence levels were detected using Victor3™ (PerkinElmer). Control cells were treated with the vehicle diluted at the same concentration of the drug used in the assay. We have carried out each biological experiment in technical triplicates, and in certain occasions, eliminated outliers. We defined as outlier the measurement having a ratio bigger than 25% of each of the other two measurements and with their averages, dividing the smaller data with the bigger data. The other two data should not have a ratio bigger than 25% among themselves. Each experiment was conducted in at least three independent biological experiments.

To determine cisplatin sensitivity in DT40 by colony survival assay, an appropriate number of DT40 cells were inoculated in a medium supplemented with 1.5% (w/v) methylcellulose, 15% fetal bovine serum, and 1.5% chicken serum. Indicated concentration of cisplatin was added and mixed for 6 h before inoculating cells. Colonies were counted after 14 days, and the percent survival was determined relative to the number of colonies of untreated cells. Two independent biological experiments and two independent clones for *smc5 fancm* were used in the analysis shown in Fig 3B.

For cell viability assays in HeLa (Figs 4B and EV4),  $2-3 \times 10^3$  cells/well were seeded in 48-well plates and allowed to adhere for 8–10 h. Chronic drug treatment was given to cells with indicated concentrations for 5 days. The cell viability was measured by staining the cells using 0.5% crystal violet containing 20% methanol, and the graph was plotted by normalizing with untreated cells. Three independent biological experiments were performed.

### SDS-PAGE and Western blot

DT40 cells were harvested by trypsin treatment and lysed or fractionated according to the experimental aim. Protein quantification was obtained using the Bradford reagent assay (Cat. N., Bio-Rad Laboratories, Hercules, CA, USA), according to the manufacturer's instructions. Samples were boiled in sample buffer (50 mM Tris-HCl pH 6.8, 10% glycerol, 1.6% SDS, 0.1 M DTT, 0.1% bromophenol blue). Whole-cell lysates (WCLs) were separated on 4–12%

Blot™ Bis-Tris Plus (NW04125BOX, Thermo Fisher Scientific) or Criterion TGX Stain-Free (#5678094, Bio-Rad). Resolved samples were transferred to Hybond-ECL nitrocellulose membrane (Amersham Bioscience, Glattbrugg, Switzerland), 1 h at 100 V or overnight at 30 V (4°C). Then, the membrane was saturated with 5% non-fat milk Tris-buffered saline (TBS 10 mM Tris-HCl pH 7.4, 100 mM NaCl) supplemented with 0.1% Tween-20 (TBS-T). The membranes were incubated with primary antibodies for 1 h at room temperature or overnight at 4°C. Then, the membranes were washed as mentioned above and incubated with the horseradish peroxidase (HRP)-conjugated secondary antibody for 1 h at room temperature. The luminescent signal was detected by PICO or FEMTO reagent (Cat No. #34080, #34095, Thermo Fisher Scientific) on Amersham Hyperfilm™ ECL films (Cat No. 28906836 GE Healthcare UK, Little Chalfont, UK) or Chemidoc XRS+ System (Cat No. 1708265; Bio-Rad Laboratories, Hercules, CA, USA). Western blot bands were analyzed by ImageJ software (Rasband, W.S., ImageJ, U.S. National Institutes of Health, Bethesda, MD, USA, <http://rsb.info.nih.gov/ij/>, 1997–2009) for film acquisitions.

### FACS analysis

Bidimensional FACS analysis was carried out pulsing the cells with BrdU, final concentration 20  $\mu$ M for 15 min at 39.5°C (10 mM stock, Cat. No. B9285, Sigma-Aldrich). After pelleting  $1 \times 10^6$  cells, cells were resuspended in 50  $\mu$ l ice-cold PBS, and then 1 ml of 70% ethanol (ice cold) was added. Cells were washed once in 1 ml PBS 1% BSA (4°C in all the steps if not differently indicated), then resuspended in 1 ml denaturing solution (2N HCl), and incubated at room temperature for 25 min.

Cells were washed twice with 1 ml PBS 1% BSA. Then, cells were stained with primary mouse anti-BrdU antibody (B44, Cat. No. 5295722, BW), diluted 1:5 in PBS 1% BSA, and incubated 1 h at room temperature, light-protected. They were washed once in 1 ml PBS 1% BSA, then the pellet was resuspended in 100  $\mu$ l anti-mouse secondary goat anti-FITC antibody diluted 1:50 in PBS 1% BSA, and incubated for 1 h at room temperature, light-protected (Cat. No. F0257, Sigma-Aldrich). Cells were then washed once in 1 ml PBS 1% BSA, then resuspended in 1 ml propidium iodide F.C. 2.5 g/ml (50  $\mu$ g/ml, Cat. No. P4170, Sigma-Aldrich) containing RNase I F.C. 250  $\mu$ g/ml, and incubated overnight at 4°C or 30 min at 37°C. Data were acquired using FACSCalibur (BD, Biosciences). Data analysis was carried out using Cell Quest.

Note: If not differently indicated, all the solutions were ice-cold. Cells were spun down at  $300 \times g$  at 4°C, for 5 min.

### Immunofluorescence

Cells were seeded at  $2 \times 10^5$  cells/well in a 6-well plate on glass slides. After treatment, if any, cells were washed with PBS and then incubated in pre-extraction buffer CSK100 (100 mM NaCl, 300 mM sucrose, 3 mM MgCl<sub>2</sub>, 1 mM EGTA, 0.2% Triton X-100, PIPES pH 6.8 10 mM, anti-protease) for 5 min at room temperature and then fixed for 10 min with PBS + 4% formaldehyde, and finally permeabilized with PBS + 0.1% Triton X-100 for 10 min at RT. The cells were incubated 1 h with PBS + 5% BSA and then 1 h at 37°C with the primary antibodies, washed in PBS, and incubated again for 1 h at 37°C in the dark with the secondary

antibodies coupled to Alexa 488 fluorophore (green) at 1/1,000. After a final wash with PBS, the slides were mounted with the DAPI-DAKO solution. The labeling was revealed using an epifluorescence microscope (Zeiss Axio Observer Z1). The following antibodies and conditions were used: rabbit anti-FANCD2 (ab180928 Abcam, 1/1,000); rabbit anti-RAD51 (PC.130 Calbiochem, 1/500); and mouse anti- $\alpha$ -tubulin (T5168 Sigma 1/2,000). A minimum of 200 cells for each condition was analyzed to calculate the percentage of RAD51-positive cells.

Detection and scoring of micronuclei were performed using an adapted cytokinesis-block assay. Cells were incubated with cytochalasin-B (3  $\mu$ g/ml; Sigma) for 18 h before fixation. Micronuclei were scored in 40–80 bi-nucleated cells for each condition.

Mitotic catastrophes, anaphase bridges, and post-mitotic cells with nucleocytoplasmic bridges were scored on cells prepared for immunofluorescence analysis looking at nuclei stained with DAPI. A minimum of 10 fields (100–300 cells) were recorded for each condition to score the percentage of abnormal mitotic figures in relation to the totality of the mitoses in the microscopic fields.

### Mass spectrometry and co-immunoprecipitation

For immunoprecipitation, HEK293 suspension cells were transiently transfected with expression plasmids of FLAG-tagged SMC5, SMC6, and NSMCE2 using polyethylenimine. Specifically, SMC5, SMC6, and NSMCE2 genes from hORFemone (V8.1) were transferred to mammalian expression destination plasmid pDEST26-FLAG with LR reaction (Invitrogen). For transfection, HEK293 suspension cells were cultured in SMM 293-TI medium (Sino Biological Inc.) supplemented with 1% Gibco FBS and 1% P/S in a 37°C incubator with shaking at 140 r.p.m.

Cells were directly lysed with NTEN buffer [20 mM Tris-HCl (pH 7.5), 150 mM NaCl, 10% glycerol, 0.5% NP40, 10 mM NaF, 1 mM PMSF, 1  $\mu$ g/ml leupeptin, 1  $\mu$ g/ml aprotinin] 2 days after transfection. The lysates were ultra-centrifuged at 440,000  $\times$  g for 15 min, and then, the supernatant was incubated with anti-Flag M2-conjugated beads (Sigma-Aldrich) for 3–4 h at 4°C. The beads were washed four times with IP buffer [20 mM Tris-HCl (pH 7.5), 150 mM NaCl, MgCl<sub>2</sub> 5 mM, 10% glycerol, 0.1% NP40, 1 mM DTT, and 1 mM PMSF] and then incubated with IP buffer containing 400  $\mu$ g/ml 3XFlag peptide for 1–2 h. Subsequently, the eluted complexes were analyzed by SDS-PAGE and mass spectrometry.

For immunoprecipitating SMC5-mAID-EGFP, 5  $\times$  10<sup>8</sup> of TK6 cells were harvested and washed by cold PBS twice. Cells were then lysed with 5 ml of CSK buffer (0.3% Triton X-100, 100 mM NaCl, 3 mM MgCl<sub>2</sub>, 300 mM sucrose, 1 mM EDTA, 10 mM PIPES, 1 mM PMSF, 1 $\times$  complete) for 10 min on ice. Lysates were subsequently sonicated by Bandelin SONOPULS (Sigma) (20%, 10 s, five cycles). After sonication, lysates were centrifuged at 20,000  $\times$  g for 5 min at 4°C. Supernatants were then incubated with 3 mg of magnetic beads protein A (Invitrogen, 10001D) which were pre-incubated with 5  $\mu$ g of anti-GFP (OriGene, TP401) antibody. After 2 h of incubation with rotation at 4°C, beads were washed by CSK buffer once and incubated with 1 ml of CSK buffer containing benzonase (Novagen, 70746, final: 50 U/ml) for 20 min at 37°C. Beads were then washed by CSK buffer twice and boiled with sample buffer (10% glycerol, 60 mM Tris-HCl pH 6.8, 2% SDS, 0.025% bromophenol blue) for 10 min to elute proteins.

To immunoprecipitate FANCD2, 1  $\times$  10<sup>8</sup> TK6 cells expressing SMC5-mAID-EGFP were lysed with 1 ml of CSK buffer. After centrifugation at 20,000  $\times$  g for 5 min at 4°C, supernatants were incubated with 3 mg of magnetic beads anti-mouse IgG (Invitrogen, 11301) which were pre-incubated with either 5  $\mu$ g of anti-FANCD2 antibody (sc20022) or mouse IgG.

Data are available upon request or uploaded as Source Data.

**Expanded View** for this article is available online.

### Acknowledgements

We thank C. Morrison and S. Takeda for cell lines; W. Wang for sharing FANCI antibody, J. Sale., H. Sasanuma, and S. Takeda for critical discussions and technical advice; B. Szakal for help with the figures and the synopsis image; A. Campan for technical help; and all Branzei Lab members for discussions. This work was supported by the Italian Association for Cancer Research (IG 18976), and European Research Council (Consolidator Grant 682190) grants to D.B., La Ligue Contre le Cancer (EL2018.LNCC) to FiR, and an AIRC 3-year fellowship “Starwood Hotel and Resort” (Rif.16474) to FrR.

### Author contributions

FrR executed experiments shown in Figs 1–3 (except for Fig 3B) and EV1–EV3 and established cell lines shown in Table 2 with contributions from RK and TA. AH-L, together with PD and FiR, designed and executed experiments shown in Figs 4A, 5, 6 and EV5. RK conducted experiments shown in Figs 3B, EV1C and 7B, C, NKJ the experiments shown in Figs 4B and EV4. XX and DX provided the results shown in Table 1 and Fig 7A. TA and MT provided useful reagents and advice. B. Szakal (acknowledged), RK, FiR, and DB made the figures starting from data provided by co-authors. DB designed the study, supervised the work, and wrote the paper. All authors commented and provided feedback on figures and article content.

### Conflict of interest

The authors declare that they have no conflict of interest.

### References

- Jeppsson K, Kanno T, Shirahige K, Sjogren C (2014) The maintenance of chromosome structure: positioning and functioning of SMC complexes. *Nat Rev Mol Cell Biol* 15: 601–614
- Aragon L (2018) The Smc5/6 complex: new and old functions of the enigmatic long-distance relative. *Annu Rev Genet* 52: 89–107
- Palecek JJ, Gruber S (2015) Kite proteins: a superfamily of SMC/Kleisin partners conserved across bacteria, archaea, and eukaryotes. *Structure* 23: 2183–2190
- Zabradý K, Adamus M, Vondrova L, Liao C, Skoupilova H, Novakova M, Jurcisinova L, Alt A, Oliver AW, Lehmann AR et al (2016) Chromatin association of the SMC5/6 complex is dependent on binding of its NSE3 subunit to DNA. *Nucleic Acids Res* 44: 1064–1079
- Raschle M, Smeenk G, Hansen RK, Temu T, Oka Y, Hein MY, Nagaraj N, Long DT, Walter JC, Hofmann K et al (2015) DNA repair. Proteomics reveals dynamic assembly of repair complexes during bypass of DNA cross-links. *Science* 348: 1253671
- Alt A, Dang HQ, Wells OS, Polo LM, Smith MA, McGregor GA, Welte T, Lehmann AR, Pearl LH, Murray JM et al (2017) Specialized interfaces of Smc5/6 control hinge stability and DNA association. *Nat Commun* 8: 14011

7. Lehmann AR (2005) The role of SMC proteins in the responses to DNA damage. *DNA Repair* 4: 309–314
8. Kegel A, Betts-Lindroos H, Kanno T, Jeppsson K, Strom L, Katou Y, Itoh T, Shirahige K, Sjogren C (2011) Chromosome length influences replication-induced topological stress. *Nature* 471: 392–396
9. Branzei D, Sollier J, Liberi G, Zhao X, Maeda D, Seki M, Enomoto T, Ohta K, Foiani M (2006) Ubc9- and mms21-mediated sumoylation counteracts recombinogenic events at damaged replication forks. *Cell* 127: 509–522
10. Ampatzidou E, Irmisch A, O'Connell MJ, Murray JM (2006) Smc5/6 is required for repair at collapsed replication forks. *Mol Cell Biol* 26: 9387–9401
11. Murray JM, Carr AM (2008) Smc5/6: a link between DNA repair and unidirectional replication? *Nat Rev Mol Cell Biol* 9: 177–182
12. Torres-Rosell J, Machin F, Farmer S, Jarmuz A, Eydmann T, Dalgaard JZ, Aragon L (2005) SMC5 and SMC6 genes are required for the segregation of repetitive chromosome regions. *Nat Cell Biol* 7: 412–419
13. Menolfi D, Delamarre A, Lengronne A, Pasero P, Branzei D (2015) Essential roles of the Smc5/6 complex in replication through Natural pausing sites and endogenous DNA damage tolerance. *Mol Cell* 60: 835–846
14. Stevens KN, Wang X, Fredericksen Z, Pankratz VS, Cerhan J, Vachon CM, Olson JE, Couch FJ (2011) Evaluation of associations between common variation in mitotic regulatory pathways and risk of overall and high grade breast cancer. *Breast Cancer Res Treat* 129: 617–622
15. Saunus JM, Quinn MC, Patch AM, Pearson JV, Bailey PJ, Nones K, McCart Reed AE, Miller D, Wilson PJ, Al-Ejeh F et al (2015) Integrated genomic and transcriptomic analysis of human brain metastases identifies alterations of potential clinical significance. *J Pathol* 237: 363–378
16. Payne F, Colnaghi R, Rocha N, Seth A, Harris J, Carpenter G, Bottomley WE, Wheeler E, Wong S, Saudek V et al (2014) Hypomorphism in human NSMCE2 linked to primordial dwarfism and insulin resistance. *J Clin Invest* 124: 4028–4038
17. van der Crabben SN, Hennus MP, McGregor GA, Ritter DI, Nagamani SC, Wells OS, Harakalova M, Chinn IK, Alt A, Vondrova L et al (2016) Destabilized SMC5/6 complex leads to chromosome breakage syndrome with severe lung disease. *J Clin Invest* 126: 2881–2892
18. Stephan AK, Kliszczak M, Dodson H, Cooley C, Morrison CG (2011) Roles of vertebrate Smc5 in sister chromatid cohesion and homologous recombinational repair. *Mol Cell Biol* 31: 1369–1381
19. Abe T, Ooka M, Kawasumi R, Miyata K, Takata M, Hirota K, Branzei D (2018) Warsaw breakage syndrome DDX11 helicase acts jointly with RAD17 in the repair of bulky lesions and replication through abasic sites. *Proc Natl Acad Sci USA* 115: 8412–8417
20. Tomida J, Itaya A, Shigechi T, Unno J, Uchida E, Ikura M, Masuda Y, Matsuda S, Adachi J, Kobayashi M et al (2013) A novel interplay between the Fanconi anemia core complex and ATR-ATRIP kinase during DNA cross-link repair. *Nucleic Acids Res* 41: 6930–6941
21. Naim V, Rosselli F (2009) The FANCD2 pathway and BLM collaborate during mitosis to prevent micro-nucleation and chromosome abnormalities. *Nat Cell Biol* 11: 761–768
22. Morawska M, Ulrich HD (2013) An expanded tool kit for the auxin-inducible degron system in budding yeast. *Yeast* 30: 341–351
23. Nishimura K, Fukagawa T, Takisawa H, Kakimoto T, Kanemaki M (2009) An auxin-based degron system for the rapid depletion of proteins in nonplant cells. *Nat Methods* 6: 917–922
24. Kawasumi R, Abe T, Arakawa H, Garre M, Hirota K, Branzei D (2017) ESCO1/2's roles in chromosome structure and interphase chromatin organization. *Genes Dev* 31: 2136–2150
25. Kobayashi K, Fujii T, Asada R, Ooka M, Hirota K (2015) Development of a targeted flip-in system in avian DT40 cells. *PLoS One* 10: e0122006
26. De Piccoli G, Cortes-Ledesma F, Ira G, Torres-Rosell J, Uhle S, Farmer S, Hwang JY, Machin F, Ceschia A, McAleenan A et al (2006) Smc5-Smc6 mediate DNA double-strand-break repair by promoting sister-chromatid recombination. *Nat Cell Biol* 8: 1032–1034
27. Sollier J, Driscoll R, Castellucci F, Foiani M, Jackson SP, Branzei D (2009) The *Saccharomyces cerevisiae* Esc2 and Smc5-6 proteins promote sister chromatid junction-mediated intra-S repair. *Mol Biol Cell* 20: 1671–1682
28. Santa Maria SR, Gangavarapu V, Johnson RE, Prakash L, Prakash S (2007) Requirement of Nse1, a subunit of the Smc5-Smc6 complex, for Rad52-dependent postreplication repair of UV-damaged DNA in *Saccharomyces cerevisiae*. *Mol Cell Biol* 27: 8409–8418
29. Wolters S, Ermolaeva MA, Bickel JS, Fingerhut JM, Khanikar J, Chan RC, Schumacher B (2014) Loss of *Caenorhabditis elegans* BRCA1 promotes genome stability during replication in smc-5 mutants. *Genetics* 196: 985–999
30. Feng W, Jasin M (2017) Homologous recombination and replication fork protection: BRCA2 and more!. *Cold Spring Harb Symp Quant Biol* 82: 329–338
31. Schlacher K (2017) PARPi focus the spotlight on replication fork protection in cancer. *Nat Cell Biol* 19: 1309–1310
32. Pontel LB, Rosado IV, Burgos-Barragan G, Garaycochea JI, Yu R, Arends MJ, Chandrasekaran G, Broecker V, Wei W, Liu L et al (2015) Endogenous formaldehyde is a hematopoietic stem cell genotoxin and metabolic carcinogen. *Mol Cell* 60: 177–188
33. Adamo A, Collis SJ, Adelman CA, Silva N, Horejsi Z, Ward JD, Martinez-Perez E, Boulton SJ, La Volpe A (2010) Preventing nonhomologous end joining suppresses DNA repair defects of Fanconi anemia. *Mol Cell* 39: 25–35
34. Renaud E, Barascu A, Rosselli F (2016) Impaired TIP60-mediated H4K16 acetylation accounts for the aberrant chromatin accumulation of 53BP1 and RAP80 in Fanconi anemia pathway-deficient cells. *Nucleic Acids Res* 44: 648–656
35. Alpi AF, Patel KJ (2009) Monoubiquitylation in the Fanconi anemia DNA damage response pathway. *DNA Repair (Amst)* 8: 430–435
36. Ceccaldi R, Sarangi P, D'Andrea AD (2016) The Fanconi anaemia pathway: new players and new functions. *Nat Rev Mol Cell Biol* 17: 337–349
37. Gueiderikh A, Rosselli F, Neto JBC (2017) A never-ending story: the steadily growing family of the FA and FA-like genes. *Genet Mol Biol* 40: 398–407
38. Schlacher K, Wu H, Jasin M (2012) A distinct replication fork protection pathway connects Fanconi anemia tumor suppressors to RAD51-BRCA1/2. *Cancer Cell* 22: 106–116
39. Sobock A, Stone S, Costanzo V, de Graaf B, Reuter T, de Winter J, Wallisch M, Akkari Y, Olson S, Wang W et al (2006) Fanconi anemia proteins are required to prevent accumulation of replication-associated DNA double-strand breaks. *Mol Cell Biol* 26: 425–437
40. Lossaint G, Larroque M, Ribeyre C, Bec N, Larroque C, Decaillet C, Gari K, Constantinou A (2013) FANCD2 binds MCM proteins and controls replicative function upon activation of S phase checkpoint signaling. *Mol Cell* 51: 678–690
41. Luebben SW, Kawabata T, Johnson CS, O'Sullivan MG, Shima N (2014) A concomitant loss of dormant origins and FANCC exacerbates genome instability by impairing DNA replication fork progression. *Nucleic Acids Res* 42: 5605–5615
42. Smogorzewska A, Matsuoka S, Vinciguerra P, McDonald ER III, Hurov KE, Luo J, Ballif BA, Gygi SP, Hofmann K, D'Andrea AD et al (2007)



- Identification of the FANCI protein, a monoubiquitinated FANCD2 paralog required for DNA repair. *Cell* 129: 289–301
43. Knipscheer P, Raschle M, Smogorzewska A, Enoiu M, Ho TV, Scharer OD, Elledge SJ, Walter JC (2009) The Fanconi anemia pathway promotes replication-dependent DNA interstrand cross-link repair. *Science* 326: 1698–1701
  44. Niedzwiedz W, Mosedale G, Johnson M, Ong CY, Pace P, Patel KJ (2004) The Fanconi anaemia gene FANCC promotes homologous recombination and error-prone DNA repair. *Mol Cell* 15: 607–620
  45. Debatisse M, Rosselli F (2019) A journey with common fragile sites: from S phase to telophase. *Genes Chromosom Cancer* 58: 305–316
  46. Ciccia A, Ling C, Coulthard R, Yan Z, Xue Y, Meetei AR, el Laghmani H, Joenje H, McDonald N, de Winter JP et al (2007) Identification of FAAP24, a Fanconi anemia core complex protein that interacts with FANCM. *Mol Cell* 25: 331–343
  47. Xue X, Sung P, Zhao X (2015) Functions and regulation of the multitasking FANCM family of DNA motor proteins. *Genes Dev* 29: 1777–1788
  48. Guervilly JH, Mace-Aime G, Rosselli F (2008) Loss of CHK1 function impedes DNA damage-induced FANCD2 monoubiquitination but normalizes the abnormal G2 arrest in Fanconi anemia. *Hum Mol Genet* 17: 679–689
  49. Pichierri P, Averbeck D, Rosselli F (2002) DNA cross-link-dependent RAD50/MRE11/NBS1 subnuclear assembly requires the Fanconi anemia C protein. *Hum Mol Genet* 11: 2531–2546
  50. Taniguchi T, Garcia-Higuera I, Andreassen PR, Gregory RC, Grompe M, D'Andrea AD (2002) S-phase-specific interaction of the Fanconi anemia protein, FANCD2, with BRCA1 and RAD51. *Blood* 100: 2414–2420
  51. Digweed M, Rothe S, Demuth I, Scholz R, Schindler D, Stumm M, Grompe M, Jordan A, Sperling K (2002) Attenuation of the formation of DNA-repair foci containing RAD51 in Fanconi anaemia. *Carcinogenesis* 23: 1121–1126
  52. Sasanuma H, Tsuda M, Morimoto S, Saha LK, Rahman MM, Kiyooka Y, Fujiiike H, Cherniack AD, Itou J, Callen Moreu E et al (2018) BRCA1 ensures genome integrity by eliminating estrogen-induced pathological topoisomerase II-DNA complexes. *Proc Natl Acad Sci USA* 115: E10642–E10651
  53. Peng XP, Lim S, Li S, Marjavaara L, Chabes A, Zhao X (2018) Acute Smc5/6 depletion reveals its primary role in rDNA replication by restraining recombination at fork pausing sites. *PLoS Genet* 14: e1007129
  54. Outwin EA, Irmisch A, Murray JM, O'Connell MJ (2009) Smc5-Smc6-dependent removal of cohesin from mitotic chromosomes. *Mol Cell Biol* 29: 4363–4375
  55. Madireddy A, Kosiyatrakul ST, Boisvert RA, Herrera-Moyano E, Garcia-Rubio ML, Gerhardt J, Vuono EA, Owen N, Yan Z, Olson S et al (2016) FANCD2 facilitates replication through common fragile sites. *Mol Cell* 64: 388–404
  56. Wang H, Li S, Oaks J, Ren J, Li L, Wu X (2018) The concerted roles of FANCM and Rad52 in the protection of common fragile sites. *Nat Commun* 9: 2791
  57. Chan KL, Palmal-Pallag T, Ying S, Hickson ID (2009) Replication stress induces sister-chromatid bridging at fragile site loci in mitosis. *Nat Cell Biol* 11: 753–760
  58. Pentzold C, Shah SA, Hansen NR, Le Tallec B, Seguin-Orlando A, Debatisse M, Lisby M, Oestergaard VH (2018) FANCD2 binding identifies conserved fragile sites at large transcribed genes in avian cells. *Nucleic Acids Res* 46: 1280–1294
  59. Okamoto Y, Abe M, Itaya A, Tomida J, Ishiai M, Takaori-Kondo A, Taoka M, Isoe T, Takata M (2018) FANCD2 protects genome stability by recruiting RNA processing enzymes to resolve R-loops during mild replication stress. *FEBS J* 286: 139–150
  60. Okamoto Y, Iwasaki WM, Kugou K, Takahashi KK, Oda A, Sato K, Kobayashi W, Kawai H, Sakasai R, Takaori-Kondo A et al (2018) Replication stress induces accumulation of FANCD2 at central region of large fragile genes. *Nucleic Acids Res* 46: 2932–2944
  61. Dewar JM, Budzowska M, Walter JC (2015) The mechanism of DNA replication termination in vertebrates. *Nature* 525: 345–350
  62. Fachinetti D, Bermejo R, Cocito A, Minardi S, Katou Y, Kanoh Y, Shirahige K, Azvolinsky A, Zakian VA, Foiani M (2010) Replication termination at eukaryotic chromosomes is mediated by Top2 and occurs at genomic loci containing pausing elements. *Mol Cell* 39: 595–605
  63. Song W, Dominska M, Greenwell PW, Petes TD (2014) Genome-wide high-resolution mapping of chromosome fragile sites in *Saccharomyces cerevisiae*. *Proc Natl Acad Sci USA* 111: E2210–E2218
  64. Pond KW, de Renty C, Yagle MK, Ellis NA (2019) Rescue of collapsed replication forks is dependent on NSMCE2 to prevent mitotic DNA damage. *PLoS Genet* 15: e1007942
  65. Sonnevile R, Moreno SP, Knebel A, Johnson C, Hastie CJ, Gartner A, Gambus A, Labib K (2017) CUL-2LRR-1 and UBXN-3 drive replisome disassembly during DNA replication termination and mitosis. *Nat Cell Biol* 19: 468–479
  66. Lin SJ, O'Connell MJ (2017) DNA Topoisomerase II modulates acetylation of cohesin-mediated chromosome dynamics. *Curr Genet* 63: 923–930
  67. Buerstedde JM, Takeda S (1991) Increased ratio of targeted to random integration after transfection of chicken B cell lines. *Cell* 67: 179–188
  68. Arakawa H, Lodygin D, Buerstedde JM (2001) Mutant loxP vectors for selectable marker recycle and conditional knock-outs. *BMC Biotechnol* 1: 7
  69. Hoa NN, Akagawa R, Yamasaki T, Hirota K, Sasa K, Natsume T, Kobayashi J, Sakuma T, Yamamoto T, Komatsu K et al (2015) Relative contribution of four nucleases, CtIP, Dna2, Exo1 and Mre11, to the initial step of DNA double-strand break repair by homologous recombination in both the chicken DT40 and human TK6 cell lines. *Genes Cells* 20: 1059–1076
  70. Ran FA, Hsu PD, Lin CY, Gootenberg JS, Konermann S, Trevino AE, Scott DA, Inoue A, Matoba S, Zhang Y et al (2013) Double nicking by RNA-guided CRISPR Cas9 for enhanced genome editing specificity. *Cell* 154: 1380–1389
  71. Hirano S, Yamamoto K, Ishiai M, Yamazoe M, Seki M, Matsushita N, Ohzeki M, Yamashita YM, Arakawa H, Buerstedde JM et al (2005) Functional relationships of FANCC to homologous recombination, translesion synthesis, and BLM. *EMBO J* 24: 418–427
  72. Abe T, Kawasumi R, Arakawa H, Hori T, Shirahige K, Losada A, Fukagawa T, Branzei D (2016) Chromatin determinants of the inner-centromere rely on replication factors with functions that impart cohesion. *Oncotarget* 7: 67934–67947



**License:** This is an open access article under the terms of the Creative Commons Attribution 4.0 License, which permits use, distribution and reproduction in any medium, provided the original work is properly cited.