



HAL
open science

The Science Case for a Titan Flagship-class Orbiter with Probes (White paper for the NRC Decadal Survey for Planetary Science and Astrobiology)

Conor A. Nixon, James Abshire, Andrew Ashton, Jason W. Barnes, Nathalie Carrasco, Mathieu Choukroun, Athena Coustenis, Louis-Alexandre Couston, Niklas J. T. Edberg, Alexander Gagnon, et al.

► To cite this version:

Conor A. Nixon, James Abshire, Andrew Ashton, Jason W. Barnes, Nathalie Carrasco, et al.. The Science Case for a Titan Flagship-class Orbiter with Probes (White paper for the NRC Decadal Survey for Planetary Science and Astrobiology): Whitepaper #325 submitted to the Planetary Science and Astrobiology Decadal Survey 2023-2032. *Bulletin of the American Astronomical Society*, 2021, 53 (4), 10.48550/arXiv.2008.05680 . hal-03085250

HAL Id: hal-03085250

<https://hal.science/hal-03085250>

Submitted on 21 Dec 2020

HAL is a multi-disciplinary open access archive for the deposit and dissemination of scientific research documents, whether they are published or not. The documents may come from teaching and research institutions in France or abroad, or from public or private research centers.

L'archive ouverte pluridisciplinaire **HAL**, est destinée au dépôt et à la diffusion de documents scientifiques de niveau recherche, publiés ou non, émanant des établissements d'enseignement et de recherche français ou étrangers, des laboratoires publics ou privés.

The Science Case for a Titan Flagship-class Orbiter with Probes

Authors:

Conor A. Nixon, *NASA Goddard Space Flight Center, USA*
Planetary Systems Laboratory, 8800 Greenbelt Road, Greenbelt, MD 20771
(301) 286-6757 conor.a.nixon@nasa.gov

James Abshire, *University of Maryland, USA*

Andrew Ashton, *Woods Hole Oceanographic Institution, USA*

Jason W. Barnes, *University of Idaho, USA*

Nathalie Carrasco, *Université Paris-Saclay, France,*

Mathieu Choukroun, *Jet Propulsion Laboratory, Caltech, USA*

Athena Coustenis, *Paris Observatory, CNRS, PSL, France*

Louis-Alexandre Coustou, *British Antarctic Survey, UK*

Niklas Edberg, *Swedish Institute of Space Physics, Sweden*

Alexander Gagnon, *University of Washington, USA*

Jason D. Hofgartner, *Jet Propulsion Laboratory, Caltech, USA*

Luciano Iess, *University of Rome "La Sapienza", Italy*

Stéphane Le Mouélic, *CNRS, University of Nantes, France*

Rosaly Lopes, *Jet Propulsion Laboratory, Caltech, USA*

Juan Lora, *Yale University, USA*

Ralph D. Lorenz, *Applied Physics Laboratory, Johns Hopkins University, USA*

Adrienn Luszpay-Kuti, *Applied Physics Laboratory, Johns Hopkins University USA,*

Michael Malaska, *Jet Propulsion Laboratory, Caltech, USA*

Kathleen Mandt, *Applied Physics Laboratory, Johns Hopkins University, USA*

Marco Mastrogiuseppe, *University of Rome "La Sapienza", Italy*

Erwan Mazarico, *NASA Goddard Space Flight Center, USA*

Marc Neveu, *University of Maryland, USA*

Taylor Perron, *Massachusetts Institute of Technology, USA*

Jani Radebaugh, *Brigham Young University, USA*

Sébastien Rodriguez, *Université de Paris, IPGP, Diderot, France*

Farid Salama, *NASA Ames Research Center, USA*

Ashley Schoenfeld, *University of California Los Angeles, USA*

Jason M. Soderblom, *Massachusetts Institute of Technology, USA*

Anezina Solomonidou, *European Space Agency/ESAC, Spain*

Darci Snowden, *Central Washington University, USA*

Xioali Sun, *NASA Goddard Space Flight Center, USA*

Nicholas Teanby, *School of Earth Sciences, University of Bristol, UK*

Gabriel Tobie, *Université de Nantes, France*

Melissa G. Trainer, *NASA Goddard Space Flight Center, USA*

Orenthal J. Tucker, *NASA Goddard Space Flight Center, USA*

Elizabeth P. Turtle, *Johns Hopkins Applied Physics Laboratory, USA*

Sandrine Vinatier, *Paris Observatory, CNRS, PSL, France*

Véronique Vuitton, *Université Grenoble Alpes, France*

Xi Zhang, *University of California Santa Cruz, USA*

Endorsed by:

Veronica Allen, *Universities Space Research Association, USA*

Carrie Anderson, *NASA Goddard Space Flight Center, USA*

Shiblee Barua, *Universities Space Research Association, USA*

J. Michael Battalio, *Yale University, USA*

Patricia Beauchamp, *Jet Propulsion Laboratory, California Institute of Technology, USA*

Ross A. Beyer, *SETI Institute and NASA Ames Research Center, USA*

Julie Brisset, *University of Central Florida, USA*

John Cooper, *NASA Goddard Space Flight Center, USA*

Daniel Cordier, *CNRS, Université de Reims, France*

Martin Cordiner, *Catholic University of America, USA*

Thomas Cornet, *Aurora Technology BV for ESA, ESAC, Spain*

Ellen C. Czaplinski, *University of Arkansas, USA*

Chloe Daudon, *Université de Paris, IGP, France*

Ravindra T. Desai, *Imperial College London, UK*

Shawn Domagal-Goldman, *NASA Goddard Space Flight Center, USA*

Chuanfei Dong, *Princeton University, USA*

Sarah Fagents, *University of Hawai'i, USA*

Tom G Farr, *NASA Jet Propulsion Laboratory, Caltech, USA*

William Farrell, *NASA Goddard Space Flight Center, USA*

Lori K. Fenton, *SETI Institute, USA*

Matthew Fillingim, *University of California, Berkeley, USA*

Timothy A. Goudge, *The University of Texas at Austin, USA*

Mark A Gurwell, *Center for Astrophysics | Harvard & Smithsonian, USA*

Jennifer Hanley, *Lowell Observatory, USA*

Tilak Hewagama, *University of Maryland, USA*

Amy E. Hofmann, *NASA Jet Propulsion Laboratory, Caltech, USA*

Sarah Hörst, *Johns Hopkins University, USA*

Der-You Kao, *Universities Space Research Association, USA*

Mathieu Lapôtre, *Stanford University, USA*

Sébastien Lebonnois, *CNRS, Sorbonne Univ., France*

Liliana Lefticariu, *Southern Illinois University, USA*

Alice Le Gall, *LATMOS/IPSL, UVSQ, IUF, France*

Liming Li, *University of Houston, USA*

Nicholas A. Lombardo, *Yale University, USA*

Chris McKay, *NASA Ames Research Center, USA*

Delphine Nna-Mvondo, *University of Maryland Baltimore County, USA*

Alena Probst, *NASA Jet Propulsion Laboratory, CalTech, USA*

Kerry Ramirez, *Arizona State University, USA*

Miriam Rengel, *Max-Planck-Institut für Sonnensystemforschung, Germany*

Emilie Royer, *Planetary Science Institute, USA*

Lauren Schurmeier, *University of Hawai'i, USA*

Edward Sittler, *NASA Goddard Space Flight Center, USA*

Jennifer Stern, *NASA Goddard Space Flight Center, USA*

Cyril Szopa, *Université Paris-Saclay, France*
Alexander Thelen, *Universities Space Research Association, USA*
Tuan H. Vu, *NASA Jet Propulsion Laboratory, Caltech, USA*

1.0 Introduction – The Need for a Titan Orbiter with Probes

The joint NASA-ESA-ASI *Cassini-Huygens* mission [2, 3], which investigated the Saturnian system from 2004 to 2017, provided the first detailed look at its largest moon, Titan. Through 127 targeted flybys of the *Cassini* orbiter and *in situ* investigations of the lower atmosphere and surface by the *Huygens* probe, Titan was revealed for the first time. The mission uncovered surface features such as seas, lakes, dunes, mountains, filled and desiccated river valleys and plains [4-7] that were reminiscent of Earth in some respects but utterly different in others, as well as a dynamic atmosphere laden with organic molecules and replete with multiple layers of haze, clouds and rain [8-11] (Fig. 1). Titan provides a unique opportunity to study terrestrial processes in a completely different regime, and to learn about our home planet even as we learn about the solar system.

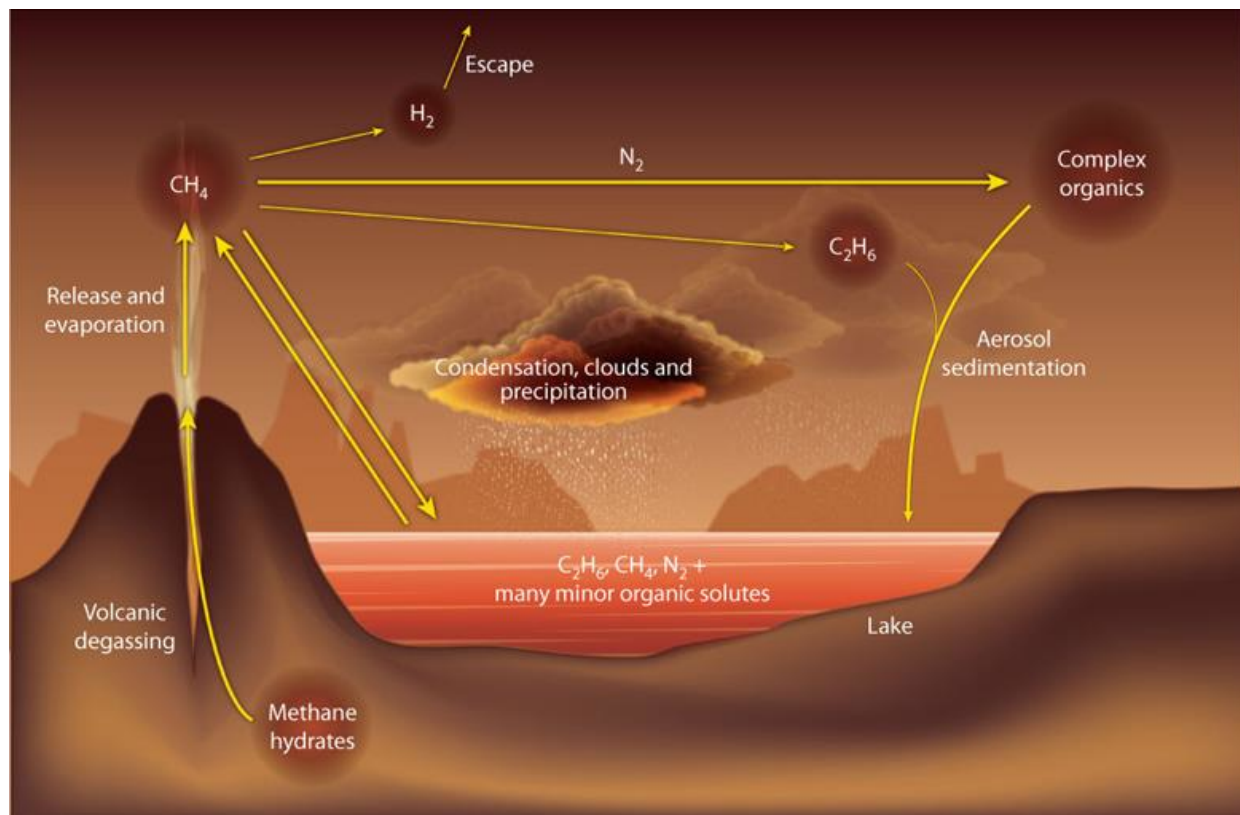


Figure 1: Titan's atmosphere and seas are in constant interaction, through aerosol sedimentation, precipitation, evaporation and other processes. A flagship mission accomplishing remote sensing (orbiter) and *in situ* (probe) measurements, would build on Cassini's legacy, and provide insights to key questions both for Titan, and our solar system as a whole. (Figure credit: [1])

In addition to its astounding successes, *Cassini-Huygens* left many questions about Titan unanswered (see Section 2). Insights into some of these questions will be provided by NASA's forthcoming *Dragonfly* mission, which will land on Titan's equatorial dune fields and sample the troposphere, surface and low latitude regions. However, *Dragonfly* will not address many other questions raised by *Cassini-Huygens* [12], including those related to global-scale geological history, atmospheric seasonal cycle and chemical processes, and origin and evolution of the polar seas, among other things. Furthermore, after *Dragonfly* only equatorial *in situ* measurements will

have been obtained. Therefore, a complementary mission to investigate Titan’s global-scale processes and make the first polar *in situ* measurements is highly desirable. These measurements could be accomplished by an instrumented orbiter, plus 1-2 entry probes that would investigate Titan’s polar seas, giving the first ground-truth data from the only seas aside from Earth’s found in the solar system, and a truly detailed global picture of Titan’s dynamic atmosphere and surface.

Such a mission would advance NASA’s most current goals in planetary science and should be pursued in the coming decade. For example, it would “advance scientific knowledge of the origin and history of the solar system, the potential for life elsewhere” (NASA Science Plan, 2020), and improve our understanding of “how geologic processes on Mars and on ocean-bearing worlds in our solar system might give rise to habitable environments”. Similarly, it would address Strategic Objective 1.2: “scientific research of and from the Moon, lunar orbit, Mars, and beyond.”

2.0 Titan from Cassini-Huygens

Through the *Cassini-Huygens* mission, Titan was discovered to have a subsurface water ocean, its surface was imaged in detail for the first time, and its atmospheric composition, thermal structure, and dynamics were examined from the surface to the exobase over two seasons.

At low latitudes, Titan was found to be mostly dry, except for large episodic methane rain storms [9] (Fig. 2(a)). The *Huygens* landing site was found to potentially be a dried river bed, with

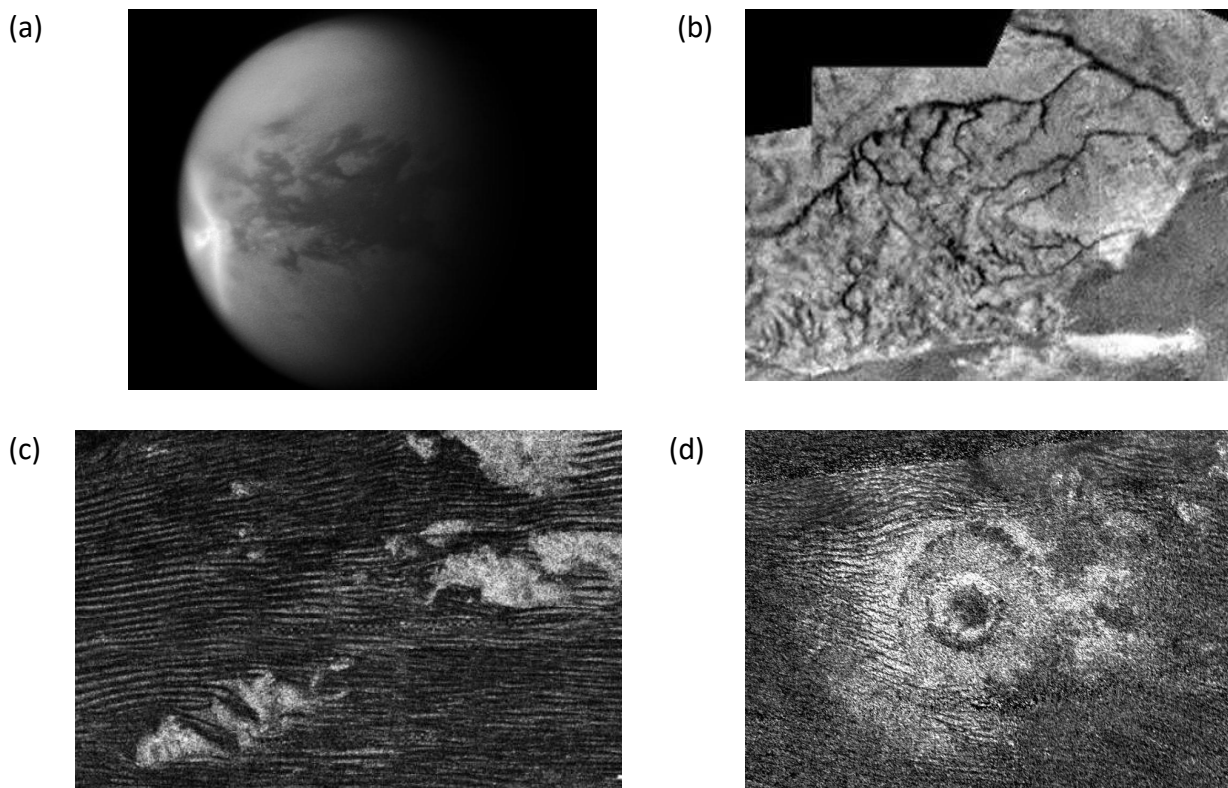


Figure 2: Views of Titan at low latitudes. (a) a vast arrow-shaped storm sweeps around Titan, wetting the surface with methane rain (NASA/JPL/SSI); (b) branching river networks seen during the *Huygens* descent (NASA/ESA/University of Arizona); (c) equatorial dunes showing east-west zonal morphology (NASA/JPL); (d) dunes flowing around a crater (NASA/JPL).

evidence of past streamflow. However, no liquids were observed filling the channels that were seen incising nearby hills [8] (Fig. 2(b)). Indeed Titan’s methane hydrologic cycle is now the only other known example of such a cycle outside of Earth, composed of surface liquids, surface-atmosphere fluxes, atmospheric transport, and precipitation [13]. In addition, vast dune fields of apparently organic material girdle Titan’s equator, reaching hundreds of meters in height and hundreds of kilometers in length [5] (Fig. 2(c)). At mid-latitudes, Titan exhibits a mostly bland, undifferentiated appearance of as-of-yet undetermined organic material [14], perhaps overlaying and masking any historical record of impacts or geologic activity in the buried regolith. Impact

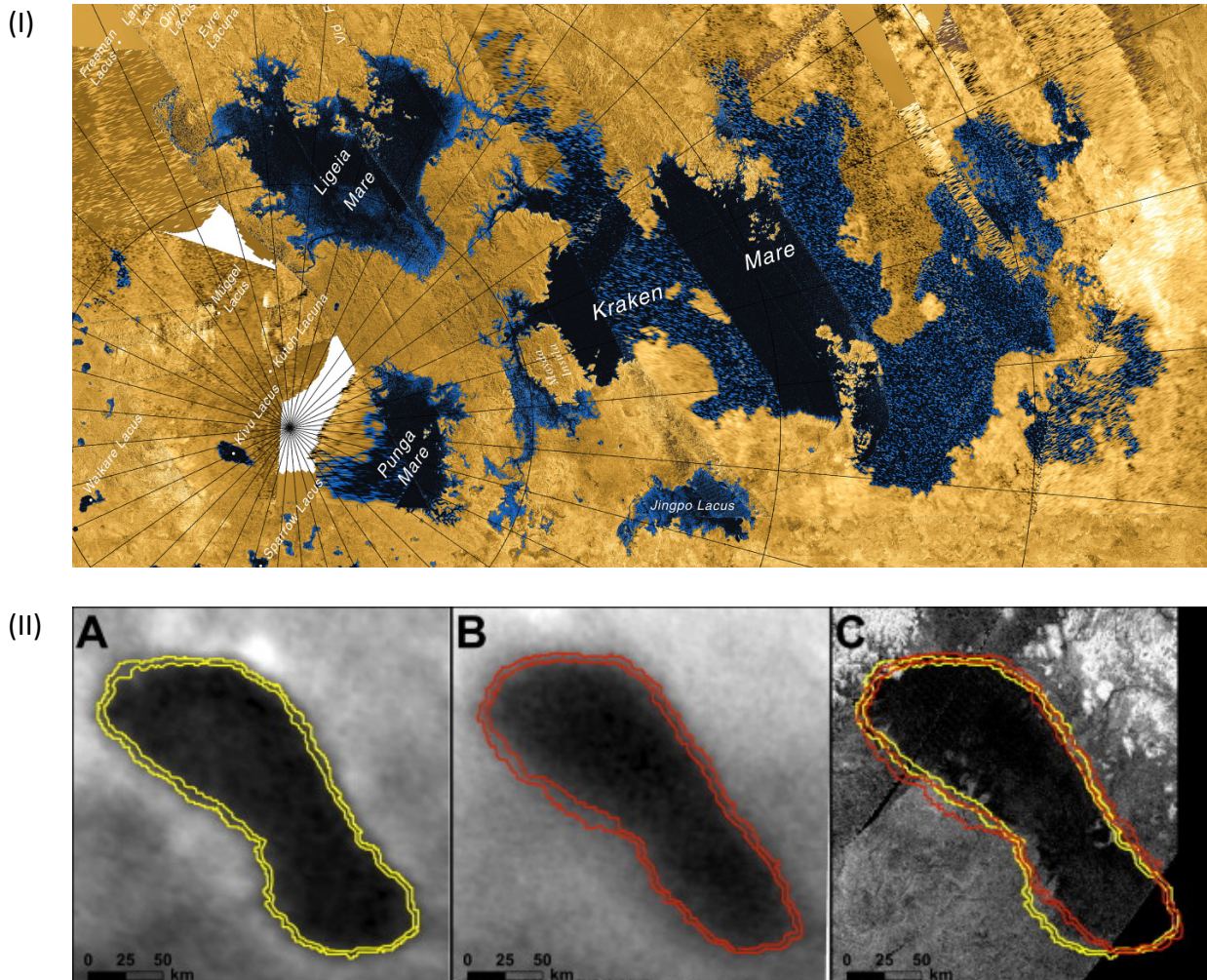


Figure 3: Titan at high latitudes. (I) Northern seas (NASA/JPL/ASI); (II) Ontario Lacus near the south pole, showing changing shoreline from 2005 (A, from Cassini ISS) to 2009 (B, from ISS, and C, from Cassini radar). A polar orbiter could both map the polar regions at a consistent resolution and probe the sub-surface with radar, while probes could make measurements of the composition of the seas, giving insights into Titan’s methane cycle and history.

craters (Fig. 2(d)) were found to be less abundant than anticipated, indicating a youthful surface age of 200-1000 Myr [15]. The large craters that were seen provided evidence of erosional and

possible tectonic activity [16-22]. Hence, Titan's surface seems to be dominated by sedimentary and/or depositional processes with dunes at the equator, plains at mid-latitudes, and dissected organic plateaux and lakes at the poles [7]. However, a full interpretation of the complex history, interaction, and ages of formation of the fluvial, aeolian, and impact features and processes **requires much greater compositional and morphological detail** from future missions.

Titan's polar regions provided the biggest surprises of the mission. Large, partially interconnected seas and myriad small lakes of liquid hydrocarbons were discovered at the north pole [4]. *Cassini's* radar was able to determine bathymetric and crude compositional information for the largest seas [23] (Fig. 3(I)) such as Ligeia, showing depths reaching 160 m and a methane-rich composition. Titan's south pole appeared completely different, with only a single large lake (Ontario Lacus, Fig. 3(II)) with a composition including the less volatile hydrocarbon, ethane [24]. The great contrast between Titan's polar regions at the surface is only partially understood, but may in part be due to long-term cycles in Titan's seasons [25]. The recently-discovered presence of ramparts surrounding a few lakes imply that these lakes might be the youngest on Titan and require further investigation [26]. While there is **no direct evidence currently available about possible subsurface reservoirs**, they may have a large impact on climate stability [13, 27-29].

In the neutral atmosphere, *Cassini's* instruments unveiled the distribution of organic compounds like never before, showing how molecules are transported from equator to pole in a global circulation that reverses direction annually [30, 31]. This reversal causes trace gases to seasonally accumulate over the winter pole and form ice clouds with complex compositions that need further investigation. The high-altitude 'detached' haze layer, first discovered by *Voyager 1* in 1980, was seen to migrate between hemispheres, rising and sinking in a complex interplay between chemistry and dynamics [10]. **However, the episodic nature of flyby observations have left a spatially and temporally incomplete picture of the seasonal changes occurring in Titan's atmosphere**, greatly limiting our ability to constrain climate models.

Above the neutral atmosphere, *Cassini's* suite of six particle and field instruments also made unanticipated discoveries. The Ion and Neutral Mass Spectrometer (INMS) saw a rich cornucopia of organic molecular ions filling the mass range up to 100 Da [32]; the Cassini Plasma Spectrometer (CAPS) extended that range to hundreds of Da for positive ions and thousands of Da for negative ions, showing a continuum of masses from molecules to small aerosols [33]. The formation mechanisms, chemical composition, and evolution of these aerosols as they precipitate and travel through the atmosphere **remains uncertain, as there are many gaps in our understanding of their transition from molecules to particles**.

Cassini did not detect an internal magnetic field at Titan, suggesting a maximum permanent dipole moment of $0.78 \text{ nT} \times R_T^3$ [34]. The magnetic interaction between Titan's atmosphere and Saturn's outer magnetosphere is variable due to periodic flapping of Saturn's plasma sheet [35]. Cold, dense nitrile and hydrocarbon ions were observed above the exobase (~2000 to 3000 km altitude) and several Titan radii down the magnetospheric wake with estimates of mass loss rates due to ion outflow of 10^{27} amu/s [36-39]. This rate is significantly smaller than predictions of neutral loss rates near the exobase ($\sim 10^{28} \text{ amu/s}$), leaving uncertainties about the atmospheric loss rates of CH_4 in particular [40] – **another major missing puzzle piece in our understanding of Titan's long-term atmospheric evolution and stability**.

Cassini's Radio Science Sub-system (RSS) also probed Titan's interior, giving the first definitive confirmation that a deep water ocean exists [41, 42], inspiring interest and speculation in Titan's astrobiological potential. **However, the depth and boundaries of the internal water ocean have substantial uncertainties, requiring the collection of further data**.

Although a resounding success, the *Cassini-Huygens* mission raised as many questions about Titan as it answered [12, 43], including:

- What are the dominant escape processes at Titan’s exobase, how do they vary with Titan’s magnetospheric environment, and what is the fate of escaping molecules?
- What is the nature of the Saturn magnetosphere-Titan ionosphere interaction and which plasma processes contribute to atmospheric escape?
- Is the atmosphere in a steady-state, with on-going methane replenishment, or will it suffer long-term changes or collapse after methane depletion?
- What chemical pathways synthesize complex organic molecules in Titan’s atmosphere?
- What chemistry and microphysics produce organic aerosols and clouds in the atmosphere?
- How fast do erosive processes act to obliterate surfaces features, including impact craters?
- How symmetric are the physical and chemical responses to Titan’s seasons, and do liquids eventually migrate between hemispheres on long timescales leaving a climate record?
- What is the variability of composition between the lakes and seas, as well as surface terrains?
- Is there a vast, subsurface network of ‘alkanofers’ connecting the seas, acting as a reservoir for atmospheric methane?
- Does Titan have any internal geophysical activity (tectonic, seismic, cryovolcanic)?
- Do organic compounds from the atmosphere enter the subsurface ocean, producing a potentially habitable environment?

3.0 Titan Flagship Mission Concept

To fully understand Titan as a global system, a mission that addresses polar and global science questions is required. Key goals for such a mission include:

- global, multi-spectral surface and subsurface mapping at a uniform resolution sufficient to identify geologic processes;*
- temporal measurements of the atmosphere and exosphere to enable investigations of ongoing processes and seasonal change in the atmosphere and on the surface;*
- in situ measurements of the polar regions, including the polar atmosphere and surface.*

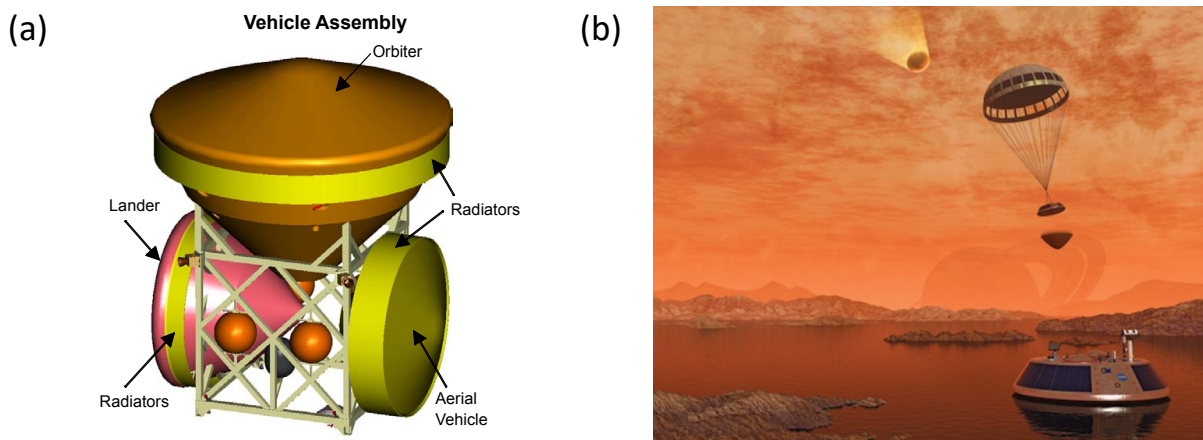


Figure 4: (a) Titan orbiter, with lander and balloon components in cruise configuration, from the 2007 Titan flagship study. An orbiter with two sea-landing probes could be stowed in a similar configuration, but without the depicted aerocapture heatshield. (b) Artists concept of Titan Mare Explorer (TiME) Discovery-class mission (2011 proposal) (G. Murdoch, *Pop. Sci.*).

The requirements for simultaneous global measurements and local polar information point to the need for dual investigation by a spacecraft in Titan polar orbit, surviving at least one full season (7.5 Earth years), and 1-2 probes targeting large polar seas and the near-surface environment. An orbiter with a suite of instruments would tackle the most important, high-level science questions raised by *Cassini-Huygens* at the global scale, while a probe would land in Kraken Mare, Titan’s largest sea, and a possible second probe would target Ligeia Mare, Titan’s second largest sea, to measure any compositional differences (see Fig. 4).

We envisage a flagship mission launching in the late 2020s. The final trajectory, including the gravity assist maneuvers, would be a factor determining launch vehicle size. It would be desirable for the mission to arrive at Saturn in the late 2030s, as the north pole emerges from winter and the probes are able to descend to the seas in daylight, with the possibility of direct radio monitoring from Earth. This would also allow direct comparison to *Voyager* and *Cassini* measurements made of the same season in 1980 and ~2010, two and one Titan years earlier, respectively.

Following cruise, the spacecraft would insert into Saturn’s orbit, with apoapse near Titan. Probe release would occur during one of the subsequent Titan flybys, and the data relayed back to Earth. The probes for Titan’s seas would be scaled down from *Huygens* or *TiME* [44] (Fig 4(b)). The probes would parachute to Titan’s surface and use batteries for power, including thermal management, instrument operations and communications. Total operational lifetime would be several hours, sufficient to record data from the seas and relay back to the orbiter.

After probe data relay via the orbiter, the spacecraft would enter an elliptical polar orbit of Titan at high inclination ($>80^\circ$), and later circularize using either atmospheric drag or a propulsive burn. The length of the circular mapping phase is expected to last at least 3 Earth years and would be determined during a mission design study. The orbiter vehicle would use next-generation RTGs for power and downlink the data to Earth via the Deep Space Network (DSN). The final instrument payload and number of probes would be determined by the available cost cap. An example payload for the orbiter and probes that meets the science requirements is given in Table 1.

Table 1: Example Payload for Orbiter and Probes

Instrument	Science Driver
Orbiter	
Visible/NIR Color Camera	Take wide-angle, color images with multiple filters.
Vis/NIR Spectrometer	Make hyperspectral image cube maps of surface/atmosphere.
Topographic lidar	Topographic surface mapping for geology and geophysics.
Sub-mm sounder	Measure atmospheric temperature, composition and winds.
Surface-penetrating radar	Make 3D maps of Titan’s subsurface.
Multistage mass spectrometer	Measure densities of major gases & ions.
Aerosol mass spectrometer	Particulate composition.
Magnetometer	Measure magnetic field environment.
Dual Langmuir probe	Upper atmosphere plasma fluid properties and E-field.
Gravity science investigation	Measure gravity field, atmospheric temperature.
Probes	
Atmospheric Structure Expt.	Measure temperature, pressure, hydrogen abundance.
Color Camera	Take color images of probe descent and from Titan’s surface.
Surface Science Package	Measure winds, waves, dielectric constant, sea depth.
Mass spectrometer	Composition of the atmosphere, sea, and particulates.

4.0 Summary and Conclusions

While our knowledge of Titan expanded dramatically during the *Cassini-Huygens* era, it has also greatly increased the scope of scientific questions to be addressed by future missions. *Cassini-Huygens* revealed that Titan is the only body with topography, meteorology, surface evolution, and atmospheric chemistry as rich and complex as Earth; however, we are limited in further inquiry by the restrictions of the current global dataset. **In addition, even after *Huygens* and *Dragonfly*, we will only have *in situ* data for low latitudes, whose nature strongly differs from the polar regions.** To address the large questions remaining after *Cassini-Huygens*, a new dedicated Titan mission that addresses both global and local (polar) science and provides long-term temporal coverage of the atmosphere is required. This points to the need for a flagship-class orbiter along with one or more probes targeting the northern seas. A mission study could be performed in the near future, including during the current decadal survey, to make a full costing and risk analysis of the strawman payload. Downsizing or changing instrument complement, as well as investigating opportunities for international partnerships, could be investigated. Such a study would provide a robust baseline for future decision-making and mission prioritization.

References: [1] F. Raulin et al., *Nature*, **454**, pp. 587-589, 2008. [2] D. L. Matson et al., *Space Sci. Rev.*, **104**, pp. 1-58, 2008. [3] J.-P. Lebreton and D.L. Matson, *Space Sci. Rev.*, **104**, pp. 59-100, 2002. [4] E.R. Stofan et al., *Nature*, **445**, pp. 61-64, 2007. [5] R.D. Lorenz et al., *Science*, **312**, pp. 724-727, 2006. [6] A. Le Gall et al., *Icarus*, **207**, pp. 948-958, 2010. [7] R.M.C. Lopes et al. *Nat. Astron.*, **4**, pp. 228-233, 2020. [8] M.G. Tomasko et al., *Nature*, **438**, pp. 765-778, 2005. [9] E.P. Turtle et al., *Science*, **331**, pp. 1414-1417, 2011. [10] R.A. West et al., *Geophys. Res. Lett.*, **38**, L06204, 2011. [11] R.A. West et al., *Icarus*, **270**, pp. 399-408, 2016. [12] C.A. Nixon et al., *Plan. Space Sci.*, **155**, pp. 50-72, 2018. [13] S. P. Faulk et al., *Nat. Astron.*, **4**, 90-398, 2020. [14] R.M.C. Lopes et al., *Icarus*, **270**, pp. 162-182, 2016. [15] C.D. Neish and R.D. Lorenz, *Plan. Space Sci.*, **60**, pp. 26-33, 2012. [16] C.D. Neish et al., *Icarus*, **223**, pp. 82-90, 2013. [17] C.D. Neish and R.D. Lorenz, *Icarus*, **228**, pp. 27-34, 2014. [18] C.D. Neish et al., *Icarus*, **270**, pp. 114-129, 2016. [19] J.M. Soderblom et al., *Icarus*, **208** pp. 905-912, 2010. [20] M.J. Malaska et al., *Icarus*, **270**, pp. 130-161, 2016. [21] B.J. Buratti et al., *Plan. Space Sci.*, **60**, pp. 18-25, 2012. [22] D.A. Williams et al., *Icarus*, **212**, pp. 744-750, 2011. [23] M. Mastrogiuseppe et al., *Geophys. Res. Lett.*, **41**, pp. 1432-1437, 2014. [24] R.H. Brown et al., *Nature*, **454**, pp. 607-610, 2008. [25] O. Aharonson et al., *Nat. Geosci.*, **2**, pp. 851-854, 2009. [26] A. Solomonidou et al., *Icarus*, in press, 2020. [27] J.L. Mitchell and J.M. Lora, *Ann. Rev. Earth Plan. Sci.*, **44**, pp. 353-380, 2016. [28] J.M. Lora and J.L. Mitchell, *Geophys. Res. Lett.*, **42**, pp. 6213-6220, 2015. [29] D.E. Jennings et al., *Astrophys. J. Lett.*, **816**, L17, 2016. [30] N.A. Teanby et al., *Nat. Comm.*, **8**, A1586, 2017. [31] S. Lebonnois et al., *Icarus*, **218**, pp. 707-722, 2012. [32] J.H. Waite et al., *Science*, **308**, pp. 982-986, 2005. [33] J.H. Waite et al., *Science*, **316**, pp. 870-875, 2007. [34] H.Y. Wei et al., *J. Geophys. Res.*, **115**, E10007, 2010. [35] C.S. Arridge et al., *Space Sci. Rev.*, **162**, pp. 25-83, 2011. [36] K. Agren et al., *Ann. Geophys.*, **25**, pp. 2359-2369, 2007. [37] J.H. Westlake et al., *Geophys. Res. Lett.*, **39**, L19104, 2012. [38] A.J. Coates et al., *J. Geophys. Res.*, **117**, A05324. [39] E.C. Sittler et al., *Plan. Space Sci.*, **58**, pp. 327-350, 2010. [40] D.F. Strobel, *Titan: Interior, Surface, Atmosphere, and Space Environment*, CUP, pp. 355-375, 2014. [41] L. Iess et al., *Science*, **337**, pp. 457-459, 2012. [42] D. Durante et al., *Icarus*, **326**, pp. 123-132, 2019. [43] S. M. Hörst, *J. Geophys. Res.*, **122**, pp. 432-482. [44] E. Stofan et al., *IEEE-Aeroconf.*, doi: 10.1109/AERO.2013.6497165, 2013.

References (uncondensed format)

- [1] F. Raulin, "Planetary science - Organic lakes on Titan," *Nature*, vol. 454, no. 7204, pp. 587-589, Jul 2008, doi: 10.1038/454587a.
- [2] D. L. Matson, L. J. Spilker, and J. P. Lebreton, "The Cassini/Huygens mission to the Saturnian system," *Space Science Reviews*, vol. 104, no. 1-2, pp. 1-58, 2002, doi: 10.1023/a:1023609211620.
- [3] J. P. Lebreton and D. L. Matson, "The Huygens Probe: Science, payload and mission overview," *Space Science Reviews*, vol. 104, no. 1-4, pp. 59-100, 2002, doi: 10.1023/a:1023657127549.
- [4] E. R. Stofan *et al.*, "The lakes of Titan," *Nature*, vol. 445, no. 7123, pp. 61-64, Jan 2007, doi: 10.1038/nature05438.
- [5] R. D. Lorenz *et al.*, "The sand seas of Titan: Cassini RADAR observations of longitudinal dunes," *Science*, vol. 312, no. 5774, pp. 724-727, May 2006, doi: 10.1126/science.1123257.
- [6] A. Le Gall, M. A. Janssen, P. Paillou, R. D. Lorenz, S. D. Wall, and T. Cassini Radar, "Radar-bright channels on Titan," *Icarus*, vol. 207, no. 2, pp. 948-958, Jun 2010, doi: 10.1016/j.icarus.2009.12.027.
- [7] R. M. C. Lopes *et al.*, "A global geomorphologic map of Saturn's moon Titan," *Nature Astronomy*, vol. 4, no. 3, pp. 228-233, Mar 2020, doi: 10.1038/s41550-019-0917-6.
- [8] M. G. Tomasko *et al.*, "Rain, winds and haze during the Huygens probe's descent to Titan's surface," *Nature*, vol. 438, no. 7069, pp. 765-778, Dec 2005, doi: 10.1038/nature04126.
- [9] E. P. Turtle *et al.*, "Rapid and Extensive Surface Changes Near Titan's Equator: Evidence of April Showers," *Science*, vol. 331, no. 6023, pp. 1414-1417, Mar 2011, doi: 10.1126/science.1201063.
- [10] R. A. West *et al.*, "The evolution of Titan's detached haze layer near equinox in 2009," *Geophysical Research Letters*, vol. 38, Mar 2011, Art no. L06204, doi: 10.1029/2011gl046843.
- [11] R. A. West *et al.*, "Cassini Imaging Science Subsystem observations of Titan's south polar cloud," *Icarus*, vol. 270, pp. 399-408, May 2016, doi: 10.1016/j.icarus.2014.11.038.
- [12] C. A. Nixon *et al.*, "Titan's cold case files - Outstanding questions after Cassini-Huygens," *Planetary and Space Science*, vol. 155, pp. 50-72, Jun 2018, doi: 10.1016/j.pss.2018.02.009.
- [13] S. P. Faulk, J. M. Lora, J. L. Mitchell, and P. C. D. Milly, "Titan's climate patterns and surface methane distribution due to the coupling of land hydrology and atmosphere," *Nature Astronomy*, vol. 4, no. 4, pp. 390-398, Apr 2020, doi: 10.1038/s41550-019-0963-0.
- [14] R. M. C. Lopes *et al.*, "Nature, distribution, and origin of Titan's Undifferentiated Plains," *Icarus*, vol. 270, pp. 162-182, May 2016, doi: 10.1016/j.icarus.2015.11.034.
- [15] C. D. Neish and R. D. Lorenz, "Titan's global crater population: A new assessment," *Planetary and Space Science*, vol. 60, no. 1, pp. 26-33, Jan 2012, doi: 10.1016/j.pss.2011.02.016.

- [16] C. D. Neish *et al.*, "Crater topography on Titan: Implications for landscape evolution," *Icarus*, vol. 223, no. 1, pp. 82-90, Mar 2013, doi: 10.1016/j.icarus.2012.11.030.
- [17] C. D. Neish and R. D. Lorenz, "Elevation distribution of Titan's craters suggests extensive wetlands," *Icarus*, vol. 228, pp. 27-34, Jan 2014, doi: 10.1016/j.icarus.2013.09.024.
- [18] C. D. Neish *et al.*, "Fluvial erosion as a mechanism for crater modification on Titan," *Icarus*, vol. 270, pp. 114-129, May 2016, doi: 10.1016/j.icarus.2015.07.022.
- [19] J. M. Soderblom *et al.*, "Geology of the Selk crater region on Titan from Cassini VIMS observations," *Icarus*, vol. 208, no. 2, pp. 905-912, Aug 2010, doi: 10.1016/j.icarus.2010.03.001.
- [20] M. J. Malaska *et al.*, "Geomorphological map of the Afekan Crater region, Titan: Terrain relationships in the equatorial and mid-latitude regions," *Icarus*, vol. 270, pp. 130-161, May 2016, doi: 10.1016/j.icarus.2016.02.021.
- [21] B. J. Buratti *et al.*, "A newly discovered impact crater in Titan's Senkyo: Cassini VIMS observations and comparison with other impact features," *Planetary and Space Science*, vol. 60, no. 1, pp. 18-25, Jan 2012, doi: 10.1016/j.pss.2011.05.004.
- [22] D. A. Williams, J. Radebaugh, R. M. C. Lopes, and E. Stofan, "Geomorphologic mapping of the Menrva region of Titan using Cassini RADAR data," *Icarus*, vol. 212, no. 2, pp. 744-750, Apr 2011, doi: 10.1016/j.icarus.2011.01.014.
- [23] M. Mastrogiuseppe *et al.*, "The bathymetry of a Titan sea," *Geophysical Research Letters*, vol. 41, no. 5, pp. 1432-1437, Mar 2014, doi: 10.1002/2013gl058618.
- [24] R. H. Brown *et al.*, "The identification of liquid ethane in Titan's Ontario Lacus," *Nature*, vol. 454, no. 7204, pp. 607-610, Jul 2008, doi: 10.1038/nature07100.
- [25] O. Aharonson, A. G. Hayes, J. I. Lunine, R. D. Lorenz, M. D. Allison, and C. Elachi, "An asymmetric distribution of lakes on Titan as a possible consequence of orbital forcing," *Nature Geoscience*, vol. 2, no. 12, pp. 851-854, Dec 2009, doi: 10.1038/ngeo698.
- [26] **A. Solomonidou** *et al.*, "Spectral and emissivity analysis of the raised ramparts around Titan's northern lakes," *Icarus*, 2020.
- [27] J. L. Mitchell and J. M. Lora, "The Climate of Titan," in *Annual Review of Earth and Planetary Sciences, Vol 44*, vol. 44, R. Jeanloz and K. H. Freeman Eds., (Annual Review of Earth and Planetary Sciences, 2016, pp. 353-380.
- [28] J. M. Lora and J. L. Mitchell, "Titan's asymmetric lake distribution mediated by methane transport due to atmospheric eddies," *Geophysical Research Letters*, vol. 42, no. 15, pp. 6213-6220, Aug 2015, doi: 10.1002/2015gl064912.
- [29] D. E. Jennings *et al.*, "SURFACE TEMPERATURES ON TITAN DURING NORTHERN WINTER AND SPRING," *Astrophysical Journal Letters*, vol. 816, no. 1, Jan 1 2016, Art no. L17, doi: 10.3847/2041-8205/816/1/L17.
- [30] N. A. Teanby *et al.*, "The formation and evolution of Titan's winter polar vortex," *Nature Communications*, vol. 8, Nov 2017, Art no. 1586, doi: 10.1038/s41467-017-01839-z.
- [31] S. Lebonnois, J. Burgalat, P. Rannou, and B. Charnay, "Titan global climate model: A new 3-dimensional version of the IPSL Titan GCM," *Icarus*, vol. 218, no. 1, pp. 707-722, Mar 2012, doi: 10.1016/j.icarus.2011.11.032.
- [32] J. H. Waite *et al.*, "Ion Neutral Mass Spectrometer results from the first flyby of Titan," *Science*, vol. 308, no. 5724, pp. 982-986, May 2005, doi: 10.1126/science.1110652.

- [33] J. H. Waite *et al.*, "The process of tholin formation in Titan's upper atmosphere," *Science*, vol. 316, no. 5826, pp. 870-875, May 2007, doi: 10.1126/science.1139727.
- [34] H. Y. Wei, C. T. Russell, M. K. Dougherty, F. M. Neubauer, and Y. J. Ma, "Upper limits on Titan's magnetic moment and implications for its interior," *Journal of Geophysical Research-Planets*, vol. 115, Oct 2010, Art no. E10007, doi: 10.1029/2009je003538.
- [35] C. S. Arridge *et al.*, "Upstream of Saturn and Titan," *Space Science Reviews*, vol. 162, no. 1-4, pp. 25-83, Dec 2011, doi: 10.1007/s11214-011-9849-x.
- [36] K. Agren *et al.*, "On magnetospheric electron impact ionisation and dynamics in Titan's ram-side and polar ionosphere - a Cassini case study," *Annales Geophysicae*, vol. 25, no. 11, pp. 2359-2369, 2007, doi: 10.5194/angeo-25-2359-2007.
- [37] J. H. Westlake *et al.*, "The observed composition of ions outflowing from Titan," *Geophysical Research Letters*, vol. 39, Oct 2012, Art no. L19104, doi: 10.1029/2012gl053079.
- [38] A. J. Coates *et al.*, "Cassini in Titan's tail: CAPS observations of plasma escape," *Journal of Geophysical Research-Space Physics*, vol. 117, May 2012, Art no. A05324, doi: 10.1029/2012ja017595.
- [39] E. C. Sittler *et al.*, "Saturn's magnetospheric interaction with Titan as defined by Cassini encounters T9 and T18: New results," *Planetary and Space Science*, vol. 58, no. 3, pp. 327-350, Feb 2010, doi: 10.1016/j.pss.2009.09.017.
- [40] D. F. Strobel, "Titan's upper atmosphere/exosphere, escape processes, and rates," in *Titan: Interior, Surface, Atmosphere, and Space Environment*, C. G. I. Müller-Wodarg, E. Lellouch, & T. Cravens Ed., (Cambridge Planetary Science. Cambridge: Cambridge University Press, 2014, pp. 355-375.
- [41] L. less *et al.*, "The Tides of Titan," *Science*, vol. 337, no. 6093, pp. 457-459, Jul 2012, doi: 10.1126/science.1219631.
- [42] D. Durante, D. J. Hemingway, P. Racioppa, L. less, and D. J. Stevenson, "Titan's gravity field and interior structure after Cassini," *Icarus*, vol. 326, pp. 123-132, Jul 2019, doi: 10.1016/j.icarus.2019.03.003.
- [43] S. M. Horst, "Titan's atmosphere and climate," *Journal of Geophysical Research-Planets*, vol. 122, no. 3, pp. 432-482, Mar 2017, doi: 10.1002/2016je005240.
- [44] E. Stofan *et al.*, "TiME - The Titan Mare Explorer," in *2013 IEEE Aerospace Conference*, (IEEE Aerospace Conference Proceedings, 2013.