

# Higher roots of the Schrödinger equation

Pierre-François (Titou) LOOS

Laboratoire de Chimie et Physique Quantiques (UMR 5626),  
Université de Toulouse, CNRS, UPS, Toulouse, France.

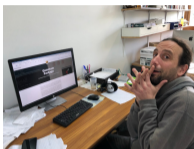
JTMS 2020: Journées “Théorie, Modélisation et Simulation”



## Section 1

# Selected Configuration Interaction

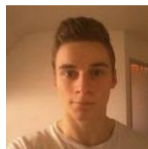
## Collaborators



Anthony  
Scemama



Yann  
Garniron



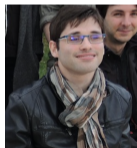
Yann  
Damour



Michel  
Caffarel



Martial  
Boggio-Pasqua



Mickaël  
VÉRIL



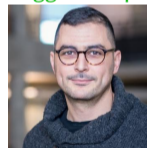
Manu  
Giner



Denis  
Jacquemin



Julien  
Toulouse



Anouar  
Benali

# One selected CI (SCI) algorithm to rule them all

## CIPSI = CI using a Perturbative Selection made Iteratively

- Developed in Toulouse many (many) years ago  
Huron, Malrieu & Rancurel, JCP 58 (1973) 5745
- Based on old idea by Bender and Davidson, and Whitten and Hackmeyer  
Bender & Davidson, Phys. Rev. 183 (1969) 23  
Whitten & Hackmeyer, JCP 51 (1969) 5584
- CIPSI (and SCI methods in general) has been recently resurrected!  
Giner, Scemama & Caffarel, CJC 91 (2013) 879  
Giner, Scemama & Caffarel, JCP 142 (2015) 044115
- CIPSI  $\approx$  deterministic version of FCIQMC  
Caffarel et al., Recent Progress in Quantum Monte Carlo (2016) Chap. 2, 15-46.

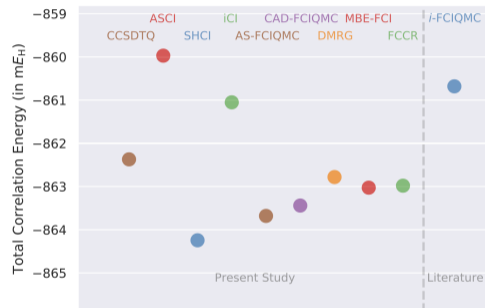
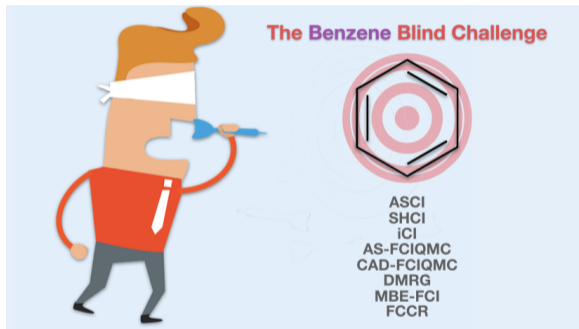
## Selected CI or how to create new methods with new acronyms

*“SCI methods provide near full CI (FCI) quality energies with only a small fraction of the determinants of the FCI space”*

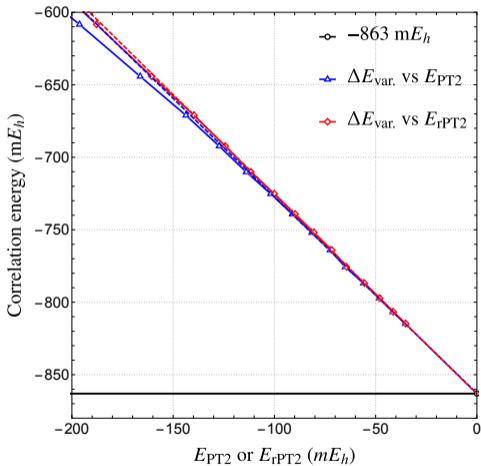
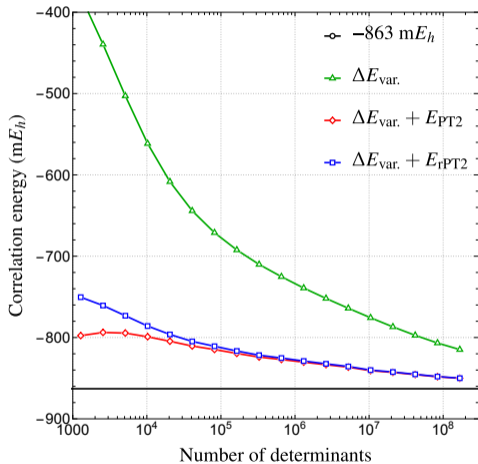
- CIPSI (Malrieu, Evangelisti, Angeli, Spiegelman, Giner, Caffarel, Scemama, etc)
- Semistochastic Heat-bath CI (Sharma & Umrigar)
- Adaptive sampling CI (Evangelista & Tubman)
- Incremental CI (Zimmerman)
- Iterative CI (Liu & Hoffmann)
- FCIQMC (Alavi & Booth)
- ...



# The Benzene Blind Challenge: Frozen-core correlation energy (cc-pVDZ)



Eriksen et al. JPCL 11 (2020) 8922

Performance of CIPSI for  $C_6H_6/cc\text{-pVDZ}$  (1)

Loos, Damour &amp; Scemama JCP 153 (2020) 176101



Performance of CIPSI for C<sub>6</sub>H<sub>6</sub>/cc-pVDZ (2)TABLE I. The frozen-core correlation energy  $\Delta E$  (in  $mE_h$ ) of benzene in the cc-pVDZ basis set using various methods.

Method	$\Delta E$	Ref.
ASCI	-860.0	17
iCI	-861.1	17
CCSDTQ	-862.4	17
DMRG	-862.8	17
FCCR	-863.0	17
MBE-FCI	-863.0	17
CAD-FCIQMC	-863.4	17
AS-FCIQMC	-863.7	17
SHCI	-864.2	17
ph-AFQMC	-864.3(4)	45
CIPSI	-863.4	This work

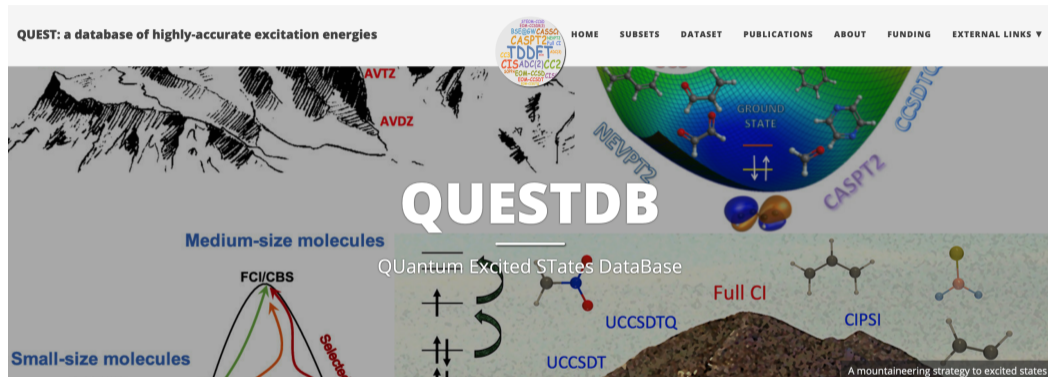
TABLE III. Extrapolation distances,  $\Delta E_{\text{dist}}$ , defined as the difference between the final computed energy,  $\Delta E_{\text{final}}$ , and the extrapolated energy,  $\Delta E_{\text{extrap.}}$ , associated with ASCI, iCI, SHCI, DMRG, and CIPSI for the best blind-test and post-blind-test estimates of the correlation energy of benzene in the cc-pVDZ basis. The final variational energies  $\Delta E_{\text{var.}}$  are also reported. See Ref. 17 for more details. All correlation energies are given in  $mE_h$ .

Method	$\Delta E_{\text{var.}}$	$\Delta E_{\text{final}}$	$\Delta E_{\text{extrap.}}$	$\Delta E_{\text{dist}}$
Best blind-test estimates				
ASCI	-737.1	-835.4	-860.0	-24.6
iCI	-730.0	-833.7	-861.1	-27.4
SHCI	-827.2	-852.8	-864.2	-11.4
DMRG	-859.2	-859.2	-862.8	-3.6
Best post-blind-test estimates				
ASCI	-772.4	-835.2	-861.3	-26.1
iCI	-770.7	-842.8	-864.2	-21.3
SHCI	-835.2	-854.9	-863.6	-8.7
CIPSI	-814.8	-850.2	-863.4	-13.2

Loos, Damour &amp; Scemama JCP 153 (2020) 176101



## Highly-accurate excitation energies: The QUEST project (2)



Véril et al. WIREs Comput. Mol. Sci. (in preparation)

[https://github.com/mveril/QUESTDB\\_website](https://github.com/mveril/QUESTDB_website)

## CIPSI trial wave functions for periodic solids

The Journal  
of Chemical Physics

ARTICLE

scitation.org/journal/jcp

# Toward a systematic improvement of the fixed-node approximation in diffusion Monte Carlo for solids—A case study in diamond

Cite as: J. Chem. Phys. 153, 000000 (2020); doi: 10.1063/5.0021036

Submitted: 6 July 2020 • Accepted: 12 October 2020 •

Published Online: XX XX XXXX



View Online



Export Citation



CrossMark

Anouar Benali,<sup>1,a)</sup>  Kevin Gasperich,<sup>2</sup>  Kenneth D. Jordan,<sup>2</sup>  Thomas Applencourt,<sup>3</sup>  Ye Luo,<sup>1</sup>   
 M. Chandler Bennett,<sup>4</sup>  Jaron T. Krogel,<sup>4</sup>  Luke Shulenburger,<sup>5</sup>  Paul R. C. Kent,<sup>6,7</sup>   
 Pierre-François Loos,<sup>8</sup>  Anthony Scemama,<sup>8</sup>  and Michel Caffarel<sup>8,a)</sup> 

See also Scemama et al. JCP (in press) arXiv:2008.10088 for a range-separated approach in molecules

## Section 2

# Many-Body Perturbation Theory: GW and Bethe-Salpeter equation

# Collaborators



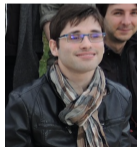
Anthony  
Scemama



Arjan  
Berger



Pina  
Romaniello



Mickael  
Véril

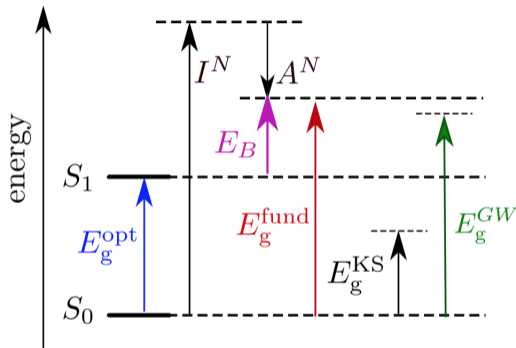
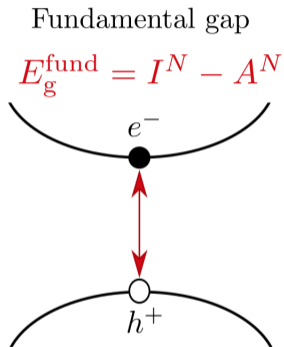
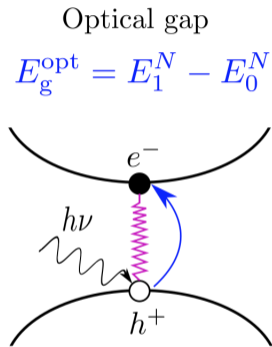


Denis  
Jacquemin



Xavier  
Blase

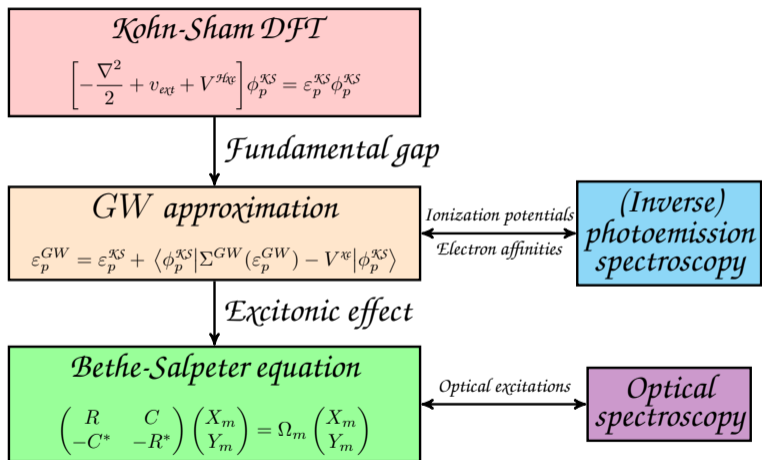
## Fundamental gap vs Optical gap



© Bruno Senjean

Bredas, Mater. Horiz. 1 (2014) 17

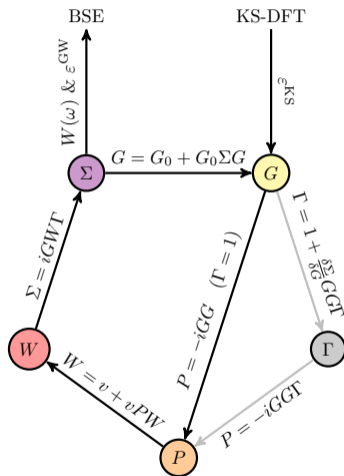
## The MBPT chain of actions



Blase et al. JPCL 11 (2020) 7371



## The GW approximation: Hedin's pentagon



Hedin, Phys. Rev. 139 (1965) A796

## The bridge between TD-DFT and BSE

TD-DFT	Connection	BSE
<p>One-point density</p> $\rho(1)$	$\rho(1) = -iG(11^+)$	<p>Two-point Green's function</p> $G(12)$
<p>Two-point susceptibility</p> $\chi(12) = \frac{\partial \rho(1)}{\partial U(2)}$	$\chi(12) = -iL(12; 1^+2^+)$	<p>Four-point susceptibility</p> $L(12; 34) = \frac{\partial G(13)}{\partial U(42)}$
<p>Two-point kernel</p> $K(12) = v(12) + \frac{\partial V^{xc}(1)}{\partial \rho(2)}$		<p>Four-point kernel</p> $i\Xi(1234) = v(13)\delta(12)\delta(34) - \frac{\partial \Sigma^{xc}(12)}{\partial G(34)}$

## TD-DFT and BSE in practice: Casida-like equations

## Linear response problem

$$\begin{pmatrix} R & C \\ -C^* & -R^* \end{pmatrix} \begin{pmatrix} X_m \\ Y_m \end{pmatrix} = \Omega_m \begin{pmatrix} X_m \\ Y_m \end{pmatrix}$$

## Blue pill: TD-DFT within the adiabatic approximation

$$R_{ia,jb} = \left( \varepsilon_a^{\text{KS}} - \varepsilon_j^{\text{KS}} \right) \delta_{ij} \delta_{ab} + 2(ia|bj) + f_{ia,bj}^{\text{xc}} \quad C_{ia,jb} = 2(ia|jb) + f_{ia,jb}^{\text{xc}}$$

$$f_{ia,bj}^{\text{xc}} = \iint \phi_i(\mathbf{r}) \phi_a(\mathbf{r}) \frac{\delta^2 E^{\text{xc}}}{\delta \rho(\mathbf{r}) \delta \rho(\mathbf{r}')} \phi_b(\mathbf{r}) \phi_j(\mathbf{r}) d\mathbf{r} d\mathbf{r}'$$

## Red pill: BSE within the static approximation

$$R_{ia,jb} = \left( \varepsilon_a^{\text{GW}} - \varepsilon_j^{\text{GW}} \right) \delta_{ij} \delta_{ab} + 2(ia|bj) - W_{ij,ba}^{\text{stat}} \quad C_{ia,jb} = 2(ia|jb) - W_{ib,ja}^{\text{stat}}$$

$$W_{ij,ab}^{\text{stat}} \equiv W_{ij,ab}(\omega = 0) = (ij|ab) - W_{ij,ab}^{\text{c}}(\omega = 0)$$

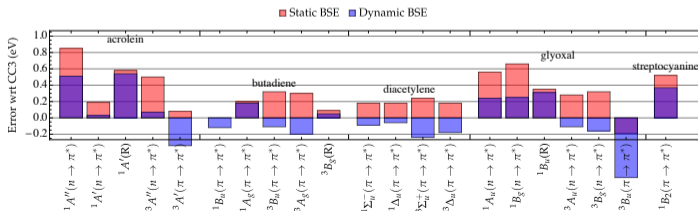
# Dynamical correction to the BSE

## Non-linear response problem

$$\begin{pmatrix} R(\Omega_S) & C(\Omega_S) \\ -C^*(-\Omega_S) & -R^*(-\Omega_S) \end{pmatrix} \begin{pmatrix} X_S \\ Y_S \end{pmatrix} = \Omega_S \begin{pmatrix} X_S \\ Y_S \end{pmatrix}$$

## Dynamical BSE formalism [Strinati, Riv. Nuovo Cimento 11 (1988) 1]

$$R_{ia,jb}(\omega) = \left( \varepsilon_a^{GW} - \varepsilon_i^{GW} \right) \delta_{ij} \delta_{ab} + 2(i a | b j) - \tilde{W}_{ij,ba}(\omega) \quad \tilde{W}_{ij,ab}(\omega) = (ij | ab) - \tilde{W}_{ij,ab}^c(\omega)$$

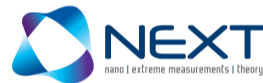


# Acknowledgements & Funding

- **DFT for ensembles:** Clotilde Marut, Bruno Senjean & Emmanuel Fromager
- **Basis-set correction:** Barthélémy Pradines Julien Toulouse & Emmanuel Giner
- **MBPT:** Julien Authier, Roberto Orlando, Stefano Di Sabatino, Pina Romaniello, Arjan Berger, Ivan Duchemin & Xavier Blase
- **CIPSI:** Mika Véril, Yann Garniron, Yann Damour, Martial Boggio-Pasqua, Denis Jacquemin, Emmanuel Giner, Anouar Benali, Michel Caffarel & Anthony Scemama
- **PT-symmetry:** Antoine Marie, Enzo Monino, Fabris Kossoski, Alex Thom & Hugh Burton



Laboratoire de Chimie et Physique Quantiques



European Research Council  
Established by the European Commission