



## Expert assessment of future vulnerability of the global peatland carbon sink

J. Loisel, A. Gallego-Sala, M. Amesbury, G. Magnan, G. Anshari, D. Beilman, J. Benavides, J. Blewett, P. Camill, D. Charman, et al.

### ► To cite this version:

J. Loisel, A. Gallego-Sala, M. Amesbury, G. Magnan, G. Anshari, et al.. Expert assessment of future vulnerability of the global peatland carbon sink. Nature Climate Change, 2020, pp.70-77. 10.1038/s41558-020-00944-0 . hal-03064857

**HAL Id: hal-03064857**

**<https://hal.science/hal-03064857>**

Submitted on 9 Nov 2021

**HAL** is a multi-disciplinary open access archive for the deposit and dissemination of scientific research documents, whether they are published or not. The documents may come from teaching and research institutions in France or abroad, or from public or private research centers.

L'archive ouverte pluridisciplinaire **HAL**, est destinée au dépôt et à la diffusion de documents scientifiques de niveau recherche, publiés ou non, émanant des établissements d'enseignement et de recherche français ou étrangers, des laboratoires publics ou privés.



# Expert assessment of future vulnerability of the global peatland carbon sink

J. Loisel<sup>1</sup>✉, A. V. Gallego-Sala<sup>2</sup>✉, M. J. Amesbury<sup>1,2,3</sup>, G. Magnan<sup>4</sup>, G. Anshari<sup>5</sup>, D. W. Beilman<sup>6</sup>, J. C. Benavides<sup>7</sup>, J. Blewett<sup>8</sup>, P. Camill<sup>9</sup>, D. J. Charman<sup>10</sup>, S. Chawchai<sup>10</sup>, A. Hedgpeth<sup>11</sup>, T. Kleinen<sup>12</sup>, A. Korhola<sup>3</sup>, D. Large<sup>13</sup>, C. A. Mansilla<sup>14</sup>, J. Müller<sup>15</sup>, S. van Bellen<sup>16</sup>, J. B. West<sup>17</sup>, Z. Yu<sup>18,19</sup>, J. L. Bubier<sup>20</sup>, M. Garneau<sup>4</sup>, T. Moore<sup>21</sup>, A. B. K. Sannel<sup>22</sup>, S. Page<sup>23</sup>, M. Välranta<sup>3</sup>, M. Bechtold<sup>24</sup>, V. Brovkin<sup>12</sup>, L. E. S. Cole<sup>25</sup>, J. P. Chanton<sup>26</sup>, T. R. Christensen<sup>27</sup>, M. A. Davies<sup>28</sup>, F. De Vleeschouwer<sup>29</sup>, S. A. Finkelstein<sup>28</sup>, S. Frolking<sup>30</sup>, M. Gałka<sup>31</sup>, L. Gandois<sup>32</sup>, N. Girkin<sup>33</sup>, L. I. Harris<sup>34</sup>, A. Heinemeyer<sup>35</sup>, A. M. Hoyt<sup>36,37</sup>, M. C. Jones<sup>38</sup>, F. Joos<sup>15</sup>, S. Juutinen<sup>3</sup>, K. Kaiser<sup>39</sup>, T. Lacourse<sup>40</sup>, M. Lamentowicz<sup>41</sup>, T. Larmola<sup>42</sup>, J. Leifeld<sup>43</sup>, A. Lohila<sup>44</sup>, A. M. Milner<sup>45</sup>, K. Minkinen<sup>3,46</sup>, P. Moss<sup>47</sup>, B. D. A. Naafs<sup>8</sup>, J. Nichols<sup>48</sup>, J. O'Donnell<sup>49</sup>, R. Payne<sup>50,59</sup>, M. Philben<sup>51</sup>, S. Piilo<sup>3</sup>, A. Quillet<sup>52</sup>, A. S. Ratnayake<sup>53</sup>, T. P. Roland<sup>2</sup>, S. Sjögersten<sup>54</sup>, O. Sonnentag<sup>55</sup>, G. T. Swindles<sup>56</sup>, W. Swinnen<sup>24</sup>, J. Talbot<sup>55</sup>, C. Treat<sup>30</sup>, A. C. Valach<sup>57</sup> and J. Wu<sup>58</sup>

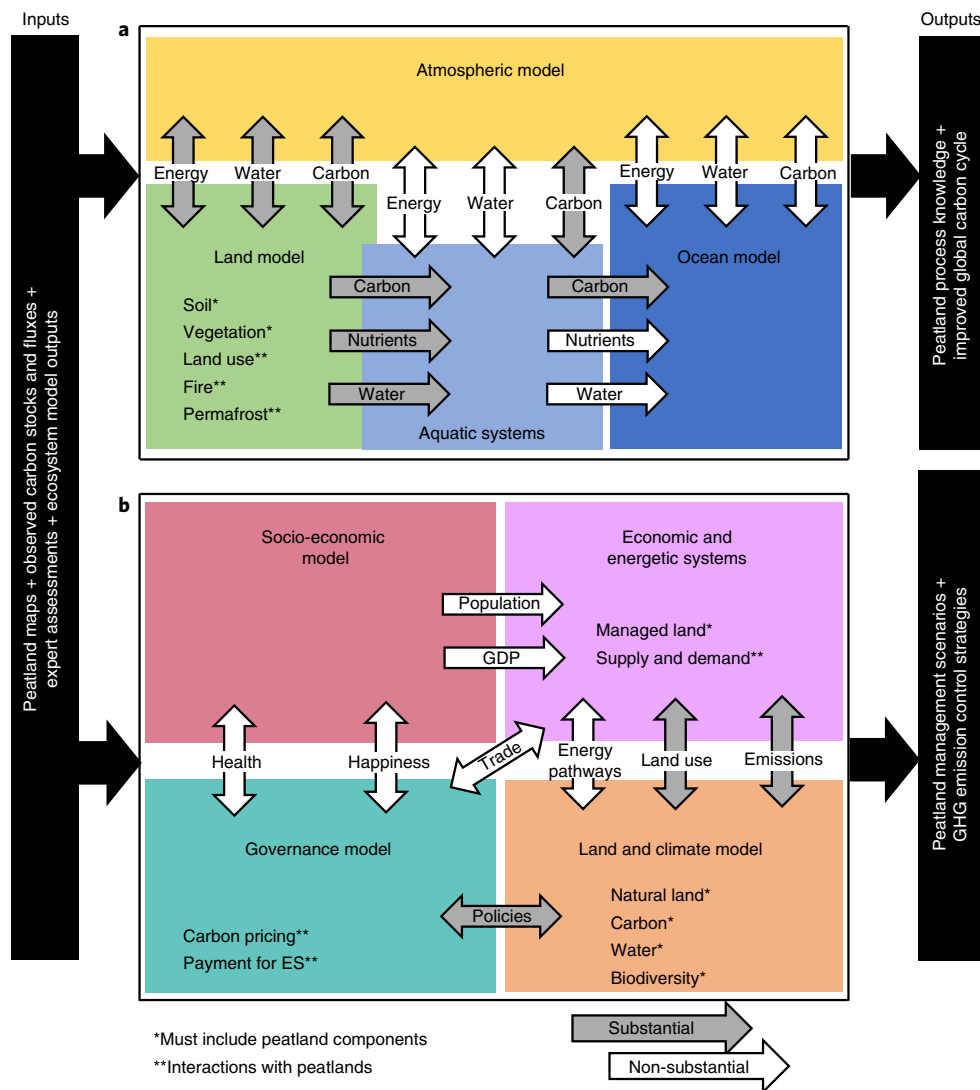
**The carbon balance of peatlands is predicted to shift from a sink to a source this century. However, peatland ecosystems are still omitted from the main Earth system models that are used for future climate change projections, and they are not considered in integrated assessment models that are used in impact and mitigation studies. By using evidence synthesized from the literature and an expert elicitation, we define and quantify the leading drivers of change that have impacted peatland carbon stocks during the Holocene and predict their effect during this century and in the far future. We also identify uncertainties and knowledge gaps in the scientific community and provide insight towards better integration of peatlands into modelling frameworks. Given the importance of the contribution by peatlands to the global carbon cycle, this study shows that peatland science is a critical research area and that we still have a long way to go to fully understand the peatland-carbon-climate nexus.**

**P**eatlands are often regarded as stable systems, with limited influence on annual carbon (C) cycling dynamics at the global scale. To some extent, this is true: their net C exchange with the atmosphere (a sink of  $\sim 0.14 \text{ Gt yr}^{-1}$ ) (ref. <sup>1</sup>) is equivalent to  $\sim 1\%$  of human fossil fuel emissions, or 3–10% of the current net sink of natural terrestrial ecosystems<sup>2</sup>. However, and despite occupying only 3% of the global land area<sup>3</sup>, peatlands contain about 25% (600 GtC) of the global soil C stock<sup>4</sup>, which is equivalent to twice the amount in the world's forests<sup>5</sup>. This large and dense C store is the result of the slow process of belowground peat accumulation under saturated conditions that has been taking place over millennia, particularly following the Last Glacial Maximum (LGM), as peatlands spread across northern ice-free landscapes<sup>4</sup>. Given their ability to sequester C over long periods of time, peatlands acted as a cooling mechanism for Earth's climate throughout most of the Holocene<sup>6,7</sup>. Should these old peat C stores rejoin today's active C cycle, they would create a positive feedback on warming. However, the fate of the global peat C store remains disputed, mainly because of uncertainties that pertain to permafrost dynamics in the high latitudes as well as land-use and land-cover changes (LULCC) in the boreal, temperate and tropical regions<sup>8</sup>.

Peatland C stocks and fluxes have yet to be incorporated into Earth system models (ESMs), although they are beginning to be implemented in global terrestrial models<sup>9,10</sup>. As these models are

moving towards the integration of permafrost dynamics, LULCC and other disturbances (such as fire), the absence of peatland C dynamics could lead to many problems in the next generation of models (Fig. 1a). For example, the omission of organically rich soils was a key contributor to the inaccurate estimates of organic soil mass, heterotrophic respiration and methane ( $\text{CH}_4$ ) emissions in recent Climate Model Intercomparison Project Phase 5 (CMIP5) simulations<sup>11</sup>. Likewise, the successful integration of permafrost dynamics into land surface models necessitates the inclusion of peatlands, as the latter occupy approximately 10% of the northern permafrost area and account for at least 20% of the permafrost C stocks<sup>12</sup>, of which a sizable fraction is susceptible to wildfire<sup>13</sup>. LULCC scenarios must also account for temperate and tropical peatland degradation to derive better estimates of C fluxes<sup>14</sup> and associated impacts on radiative forcing<sup>15</sup>. The inclusion of peatlands in ESMs should help address the complexity of the interacting, cross-scale drivers of change that control peat C dynamics and quantify their contribution to a positive C cycle feedback, now and in the future.

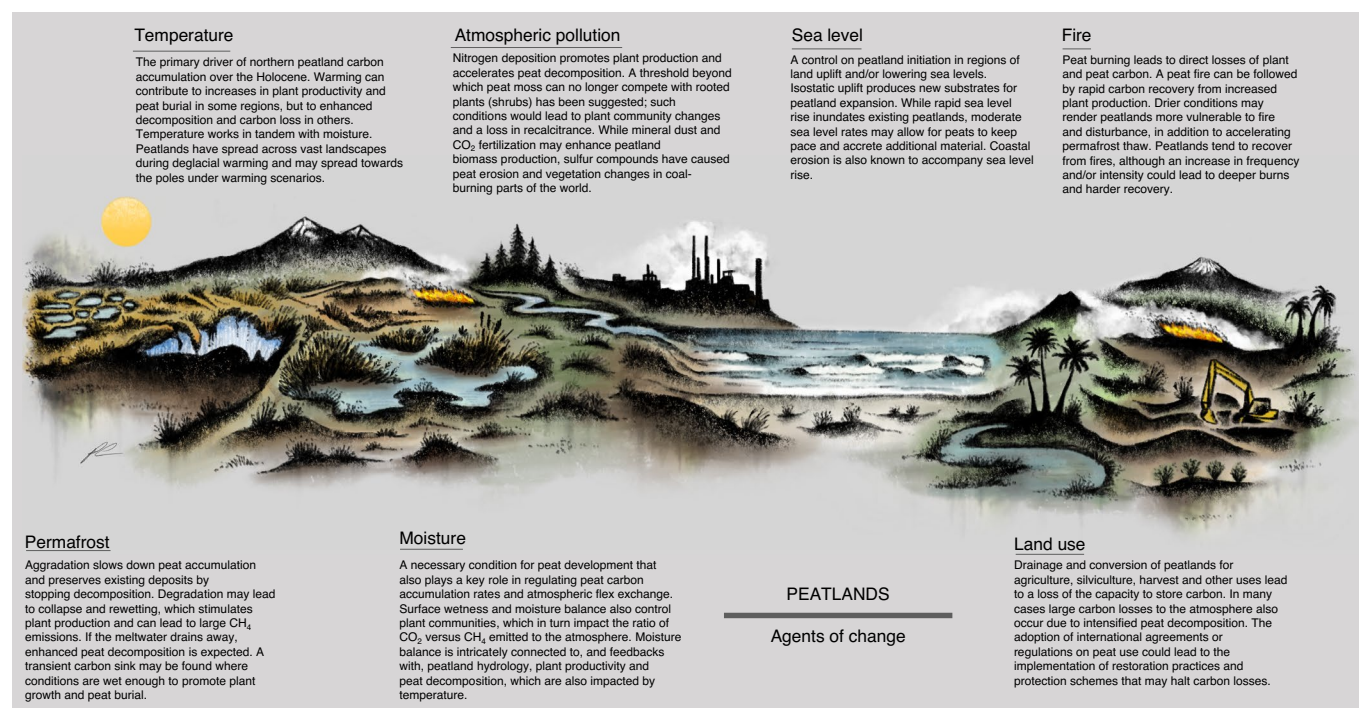
Peatland conversion and restoration are also not considered in integrated assessment models (IAMs), although there is growing anthropogenic pressure on peatland ecosystems worldwide<sup>16,17</sup>. Atmospheric carbon dioxide ( $\text{CO}_2$ ) emissions associated with degraded peatlands account for 5–10% (0.5–1 GtC) of the global



**Fig. 1 | Integrating peatland knowledge in climate change modelling frameworks. a,b,** Conceptual structure of an Earth system model (a) and an integrated assessment model (b). The ESM emphasizes peatland carbon, energy, water and nutrient pools, and exchanges with the atmosphere, aquatic systems and the world's oceans. The IAM focuses on the importance of considering peatlands in policy options and land management decisions, as these carbon-rich ecosystems can contribute substantially to strategies for GHG emission reduction. ES, ecosystem services; GDP, gross domestic product; grey arrows, fluxes with important contribution from peatlands; white arrows, non-peatland fluxes.

annual anthropogenic CO<sub>2</sub> emissions<sup>18,19</sup>, despite their small geographic footprint (Fig. 1b). Although the preservation of pristine peat deposits would be ideal, the restoration of degraded sites, particularly through rewetting, could prevent additional CO<sub>2</sub> release to the atmosphere and reduce the risk of peat fires<sup>20,21</sup>. Even if restoration leads to C neutrality (that is, sites stop losing C but do not start gaining it), their GHG-saving potential would be similar to that of the most optimistic sequestration from biochar and cover cropping from all agricultural soils combined<sup>19,22</sup>. As IAMs move towards the integration of nature-based climate solutions to limit global temperature rise, peatland restoration and conservation are poised to gain in importance in those models, as well as in the international political arena<sup>23</sup>. In turn, the socio-economic scenarios developed in IAMs could help inform the role of management interventions in future peatland use and could guide policy options to best inform the implementation of GHG emission control strategies for decision makers. Ultimately, these model outputs will help predict the effect of peatland management on the global C cycle.

Here, we review the main agents of change of peatland C stocks and fluxes, including drivers that can induce rapid peatland C losses (peat fire, land-use change (LUC), and permafrost thaw) and gradual drivers that can lead to rapid, nonlinear responses in peatland ecosystems (temperature increase, water table drawdown, sea-level rise, and nutrient addition) (Fig. 2). We use an expert elicitation to assess the perceived importance of these agents of change on C stocks, and ask one question: 'What is the relative role of each agent of change in shifting the peatland C balance in the past, present and future?' Estimates are based on responses from 44 peat experts (see Supplementary Information for details). Four time periods are studied: post-LGM (21,000 yr BP to 1750 CE), Anthropocene (1750–2020 CE), remainder of this century (2020–2100 CE) and far future (2100–2300 CE). The confidence and expertise levels are tallied for each of the experts' responses (Supplementary Tables S6 and S9), along with the sources that guided their estimates (Supplementary Information Appendix 4). Arithmetic means and 80% central ranges (10th to 90th percentiles) are presented (below and in Fig. 3), as well



**Fig. 2 | The main agents of change impacting the global peatland carbon balance globally.** With expert elicitation combined with a literature review, the importance of each agent in the past, present and future is assessed semi-quantitatively in this study (see Supplementary Information Appendix 5 for a high-resolution image without text details and a brief review of each agent of change).

as other measures of central tendencies (Supplementary Tables S4 and S5). Central values provide order-of-magnitude estimates that may be useful to the reader, but the strength of this elicitation is in its ability to identify where experts agree and disagree, and to recognize ranges of responses across experts. Therefore, the elicitation findings can inform how integrating peatlands into modelling frameworks such as ESMs and IAMs could advance peatland process understanding and further test hypotheses that emerge from different schools of thought.

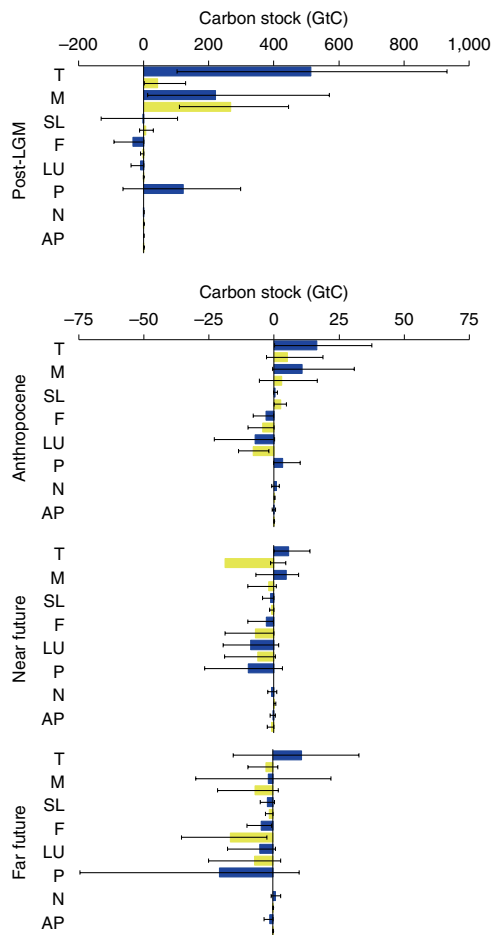
### Drivers of peatland carbon stocks since the Last Glacial Maximum

For the post-LGM time period, experts consider temperature to be the most important long-term driver of peat accumulation in extra-tropical peatlands (arithmetic mean = 524 GtC; 10th to 90th percentiles = 60 GtC to 890 GtC) (Fig. 3). A positive moisture balance is deemed a necessary condition for peatland development, maintenance and C preservation (238 (10 to 570) GtC). Several respondents comment that it is difficult, if not impossible, to separate the respective roles of these two agents of change (Supplementary Information Appendix 3). This exemplifies the need to integrate peatlands in ESMs, as cross-scale interactions between agents of change on peatland C dynamics could then be evaluated further. Permafrost is also thought to be of importance owing to its capacity to inhibit peat decay in northern high-latitude peatlands (218 (−14 to +531) GtC). That said, experts note that permafrost also probably contributes to lower C accumulation rates (when compared to non-permafrost sites); permafrost also possibly contributes to peat erosion in regions where wind-drifted snow and ice crystals can abrade dry peat surfaces<sup>24</sup>. The large range of values for permafrost (Extended Data Fig. 1) stems from the fact that some respondents attribute the entire permafrost peatland C pool to the presence of permafrost itself, whereas others attribute the C pool mainly to temperature and moisture, with permafrost aggradation playing the secondary role of protecting C stocks. Experts suggest

that, in the tropics, long-term peat C sequestration is driven mainly by moisture availability (268 (24 to 360) GtC), with wetter conditions slowing down peat decomposition. Temperature (43 (0 to 128) GtC) and sea level (7 (−13 to +52) GtC) are identified as secondary agents promoting peat formation and growth. Estimates for the net role of sea level on tropical C stocks are near zero because some of the high C accumulation rates following sea-level rise in certain regions are counterbalanced by C losses owing to continental shelf flooding and associated peat erosion or burial in other regions<sup>25</sup> (Fig. 3).

These results are largely corroborated by the literature review. On the basis of extensive paleo records, we know that peatlands have spread across vast landscapes following the LGM<sup>4</sup>. As long as sufficient moisture conditions are maintained, warmer and longer growing seasons can contribute to increases in plant productivity and peat burial in many extra-tropical regions<sup>26–28</sup>, but can contribute to enhanced decomposition and carbon loss in the tropics<sup>29,30</sup> where the growing season length and temperature are not limiting factors for photosynthesis<sup>1,31</sup>. Indeed, water saturation is a key control on oxygen availability in peat and on plant community composition, and therefore an important determinant for CO<sub>2</sub> and CH<sub>4</sub> emissions and for net ecosystem C balance in both intact and drained peatlands worldwide<sup>32–34</sup>. Soil moisture excess is a necessary condition for long-term peat development; surface wetness must remain sufficient to minimize aerobic respiration losses and to provide conditions that inhibit the activity of phenol oxidase<sup>35</sup>. In the tropical and mid-latitude regions, water table depth is recognized as the main agent driving long-term peat accumulation<sup>36–38</sup>. The literature review tells us that, at the regional scale, sea-level rise may lead to either net C losses<sup>39</sup> or net C gains<sup>40</sup>. For example, sea-level decline in the tropics<sup>41</sup> and land uplift following deglaciation in the North<sup>42</sup> contributed to peat expansion over the past 5,000 years. Conversely, in the (sub-)tropics, sea-level rise can drive up groundwater levels regionally, which allows coastal peatlands to expand and accrete at greater rates<sup>43,44</sup>. This process, which took place during the previous





**Fig. 3 | Expert assessment of the global peatland carbon balance over time.** Changes in carbon stocks are shown for the extra-tropical northern region (blue) and the (sub-)tropical region (yellow) for the post-LGM (21,000 yr BP to 1750 CE), Anthropocene (1750–2020 CE), near future and remainder of this century (2020–2100 CE), and far future (2100–2300 CE). Agents of change: temperature (T), moisture (M), sea level (SL), fire (F), land use (LU), permafrost (P), nitrogen deposition (N) and atmospheric pollution (AP). Coloured bars, arithmetic means; error bars, 80% central range. Positive values represent carbon sinks to the atmosphere (see Extended Data Fig. 1 for individual survey responses).

interglacial<sup>25</sup> and other past warm climates, is likely to be most pronounced in the large coastal peatlands of the (sub-)tropics. Tectonic subsidence can lead to vast accumulations of lignite over millions of years<sup>45,46</sup>, but its conjunction with rapid sea-level rise, rapid subsidence or peat surface collapse due to water abstraction or LUC can lead to peatland loss<sup>47,48</sup>. In general, sea-level rise has been suggested to be a threat for coastal peatlands<sup>49,50</sup>, as these systems have limited capacity to move inland because of topography or human development.

### Drivers of peatland carbon stocks during the Anthropocene

During the Anthropocene, short-term peat C losses across the northern high latitudes are linked to LUC (−7 (−23 to 0) GtC) and fire (−3 (−8 to 0) GtC) by the experts (Fig. 3). As for permafrost dynamics, small C gains (2 (0 to 10) GtC) are suggested, though many experts warn that large and rapid losses of old C have only recently begun and are expected to increase in the future (Supplementary Information Appendix 3). Peat drainage for agriculture, forestry, industrial-scale peat extraction and grazing

were identified as the main sources of anthropogenic pressure on these peatlands (Fig. 3). The loss of peat C to human activity must have been considerable during the pre-industrial time and the start of the industrial era across Europe, but historical reports are too few to provide a reliable estimate<sup>18</sup>. In this case, LULCC simulations from IAMs could reduce this uncertainty or provide several scenarios. The loss of C to fire is attributed to an increase in both natural and anthropogenic burning. Similarly, the main suggested causes of peat C losses in the tropics are LUC (−8 (−14 to −2) GtC) and fire (−4 (−10 to 0) GtC). Despite these losses, the trend suggests that northern high-latitude peatlands have persisted as C sinks throughout the Anthropocene. Experts attribute the net C gain across the northern high latitudes primarily to greater peat accumulation rates that are induced by longer and warmer growing conditions from climate warming (16 (0 to 38) GtC). An increase in moisture from greater precipitation is suggested as an additional agent that leads to C gain in the Arctic, although several experts mention C losses due to drought across the boreal and mid-latitude regions; an overall increase of 11 (−1 to +31) GtC from moisture is suggested by the survey respondents. Finally, nitrogen (N) deposition and other atmospheric pollution are thought to have a negligible impact (<1 (−1 to +1) GtC) on the peatland C sink capacity worldwide.

The importance of permafrost and fire revealed in the expert elicitation is reflected in the main findings from the literature review. For instance, across the northern high-latitude regions, increasing air temperatures and winter precipitation have been linked to a greater than 50% reduction in *palsa* or peat plateau area since the late 1950s<sup>51–53</sup>, although this varies by region<sup>54</sup>. In general, thermokarst landforms such as ponds or collapse-scar wetlands with saturated soils form when ice-rich peat thaws and collapses. These mainly anaerobic environments are characterized by high CH<sub>4</sub> emissions<sup>55–57</sup>; mass-balance accounting for C stocks indicates as much as 25–60% of ‘old’ permafrost C is lost in the years to decades that follow thaw<sup>58–60</sup>. Over time, increased C sequestration and renewed peat accumulation occur in drained thermokarst lake basins<sup>61,62</sup> and collapse-scar wetlands, but it can take decades to centuries and sometimes millennia for collapse-scar wetlands to transition from having a positive (warming) to a negative (cooling) net radiative forcing<sup>59,63</sup>. Moreover, the combustion of peat layers has led to direct losses of plant and peat C. Fire-derived emissions can be substantial, exceeding biological emissions from peat decomposition in some years<sup>64</sup>. The highest emissions are observed from drained tropical peatlands in extremely dry years such as the 1997 El Niño period (810–2570 TgCyr<sup>−1</sup>) (ref. <sup>65</sup>) and the 2015 fire season (380 TgCyr<sup>−1</sup>) (ref. <sup>66</sup>) in Indonesia. However, as a result of drainage, peat fires are observed even in wet years<sup>67</sup>. Although peat C losses from northern peat fires are smaller than those from tropical peat fires (for example, 5 TgCyr<sup>−1</sup> from Alaskan wetlands)<sup>68</sup>, there is a need to consider wildfires in permafrost thaw dynamics because of their effects on soil temperature regime<sup>69</sup>. Peatland surface drying, as a result of both droughts and human activity, has been shown to increase the frequency and extent of peat fires<sup>13,70</sup>, which could lead to deeper burns and hindered recovery<sup>71</sup> as well as peat water repellency<sup>72</sup>. In terms of LUC, it is well accepted that widespread peatland conversion, drainage and mining across the temperate and tropical regions have led to large C losses<sup>73–76</sup>, in addition to immediate ecosystem damage and land subsidence<sup>47,77</sup>. Most peatland management practices result in decreased CH<sub>4</sub> emissions owing to drainage<sup>32</sup>, but peatland inundation or rewetting can lead to episodic CH<sub>4</sub> releases<sup>78,79</sup>. Finally, the structure and function of peatlands are now threatened by increased N availability and atmospheric phosphorus (P) deposition<sup>80</sup> from anthropogenic emissions<sup>81</sup>. For example, *Sphagnum* moss cover dies off after a few years of sustained N loading<sup>82–84</sup>, and changes in climate can exacerbate these negative effects<sup>85</sup>. Changes in microbial communities and litter quality associated with N deposition can also contribute to

increased decomposition<sup>86,87</sup> by lowering the peatland surface<sup>88</sup> and causing a rise in the water table and CH<sub>4</sub> emission<sup>89</sup>. Conversely, a study reported a net C gain with modest N deposition in a Swedish peatland, which was driven by a greater increase in plant production than in decomposition<sup>90</sup>; this illustrates differences, and perhaps a threshold response, in C balance response to N deposition.

### Quantification of future peatland stocks

Experts anticipate that, during the remainder of this century (2020–2100 CE) and in the far future (2100–2300 CE), the C loss mechanisms presented above will be amplified (Fig. 3). In the northern high latitudes, whereas C gains are still linked to shifts in temperature and precipitation (17 (–16 to +47) and 3 (–37 to +32) GtC, respectively), C losses to fire are expected (–7 (–10 to 0) GtC). Many respondents suggest that better fire management could mitigate this. These losses are predicted to be accompanied by additional ones from permafrost degradation (–30 (–102 to +12) GtC), sea-level rise that would inundate coastal peatlands (–3 (–9 to +1) GtC), and LUC (–14 (–38 to +3) GtC). The latter, and primarily drainage for agriculture, are expected to cause substantial peatland C losses, although many experts anticipate the rate to decrease with increasing conservation and restoration efforts. Regional drought-induced C losses are also suggested for the mid-latitude regions. For the tropics, experts generally agree that every agent of change will negatively impact C stocks. Net peat C losses are predicted owing to higher temperatures (–22 (–14 to +4) GtC; the mean is skewed outside 10th–90th percentile range by an outlier), fires (–23 (–54 to –2) GtC), negative moisture balance (–9 (–31 to +3) GtC) and sea-level rise (–3 (–5 to 0) GtC). Of particular importance is the evolution of the El Niño–Southern Oscillation, as El Niño droughts may lead to substantial C losses to the atmosphere. LUC (–13 (–44 to +3) GtC) is also predicted to play a key role in the future, as it could lead to the drainage of large peat basins such as the Amazon and Congo.

The confidence of experts in their predictions declines for the far future (Supplementary Tables S6 and S7, and Extended Data Fig. 2), in part because of the lack of models capable of simulating the effect of agents of change on peatland C stocks, but also because policy and land management decisions will influence the future of peatlands. In this area, the integration of peatlands into IAMs would allow the generation of pertinent scenarios to help inform the science as well as policy options and land management decisions. A growing world population may put additional pressure on peatlands as farming becomes possible at higher latitudes, and further deforestation may occur in the tropics, but the need to conserve peat resources may eventually outweigh these pressures. In this case, the adoption of policies designed to protect peatlands would greatly limit C losses. Likewise, the pricing of C could change the way peatlands are perceived, valued and managed. These diverging opinions are all included in our assessment (Supplementary Information Appendix 3), but explicit IAM simulations would allow exploration of different policies and socio-economic scenarios. Noteworthy is that extra-tropical peatlands could play an important role, second only to the oceans, in reducing the global atmospheric CO<sub>2</sub> concentration if cumulative anthropogenic emissions are kept below 1,000 GtC (refs. <sup>91,92</sup>). Mitigation is therefore highly important in counterbalancing the climate impact of peatland C loss<sup>93</sup>.

### Insights from the expert elicitation and their limits

Expert assessment is critical for informing decisions that require judgements that go beyond established knowledge and model simulations<sup>94</sup>. For this reason, expert opinion is often used in environmental assessments, either as a means to assess confidence levels or rank potential outputs<sup>95</sup> or as data points that offer estimates that could not be provided otherwise<sup>95,96</sup>. This expert assessment also highlights key knowledge gaps and uncertainties, for example in the impact of permafrost aggradation and degradation on the future

peatland C balance (see Supplementary Information and Extended Data Fig. 1). Our dataset reflects two main schools of thought that are anchored in conflicting evidence from the literature: rapid C loss from deep peats and slow recovery of the peatlands following permafrost thaw<sup>59,60</sup>, and net C gain from rapidly recovering plant production owing to warm and moist conditions following thaw<sup>1,28</sup>.

Our results indicate low to medium confidence in future C flux estimates. Confidence levels are highest for the post-LGM and Anthropocene time periods, in part reflecting the majority of paleo researchers among the survey respondents, and in part because of compounded uncertainties that pertain to future levels of GHG emissions from the energy and land systems, patterns of LUC and so on, as these emissions are affected by social, economic, political and policy drivers (Supplementary Information Appendix 3). The overall confidence level for the post-LGM and Anthropocene is medium (a value of 3 on a scale of 1 to 5); even respondents who rate themselves highly as experts (score of 4 or 5) give low to medium confidence to some of their answers, which could suggest great uncertainty based on current literature (Supplementary Tables S6 and S7, and Extended Data Figs. 2 and 3). For the remainder of this century and the far future, confidence drops to low (a value of 2), which probably reflects the low confidence in our projection of human-based decisions (Supplementary Information Appendix 3 and Extended Data Fig. 2). Areas of research for which expertise is lowest include LUC, N deposition and atmospheric pollution (Supplementary Tables S8 and S9, and Extended Data Fig. 2), which may have contributed to some of the low confidence levels mentioned above. Here again, results from the expert elicitation provide a unique opportunity to generate pertinent socio-economic scenarios that will help inform our science, policy options and land management decisions.

Although the present assessment may be used as a bridge towards policy (as decisions need to be made even when uncertainty is high and confidence is low), we are not interested in offering ‘consensus statements’ on peatland C storage. Rather, our intent is to contribute a novel perspective that identifies the central tendencies, communicates uncertainties and highlights contradictions; we anticipate this will improve understanding of the peat C process and press the community to add organic soils and peatland plant functional types in ESMs and IAMs (see Supplementary Information for further discussion). Overall, results from the expert elicitation can help determine which ecosystem mechanisms and properties should be prioritized and integrated into ESMs; in turn, those model outputs will help constrain the peat–carbon–climate feedback, inform future data collection strategies and advance understanding by further testing different hypotheses. As such, the inclusion of peatland process understanding in models, and particularly better attribution of the role of each agent of change in peatland C dynamics, would help increase confidence in C flux predictions. Modelling efforts that include peatland dynamics would improve ESM and IAM outputs and benefit the peatland and climate research communities in a positive feedback loop.

### Online content

Any methods, additional references, Nature Research reporting summaries, source data, extended data, supplementary information, acknowledgements, peer review information; details of author contributions and competing interests; and statements of data and code availability are available at <https://doi.org/10.1038/s41558-020-00944-0>.

Received: 9 March 2020; Accepted: 1 October 2020;  
Published online: 07 December 2020

### References

- Gallego-Sala, A. V. et al. Latitudinal limits to the predicted increase of the peatland carbon sink with warming. *Nat. Clim. Change* **8**, 907–913 (2018).

2. IPCC *Climate Change 2007: The Physical Science Basis* (eds Solomon, S. et al.) (Cambridge Univ. Press, 2007).
3. Xu, J., Morris, P. J., Liu, J. & Holden, J. PEATMAP: refining estimates of global peatland distribution based on a meta-analysis. *Catena* **160**, 134–140 (2018).
4. Yu, Z., Loisel, J., Brosseau, D. P., Beilman, D. W. & Hunt, S. J. Global peatland dynamics since the Last Glacial Maximum. *Geophys. Res. Lett.* **37**, L13402 (2010).
5. Pan, Y. et al. A large and persistent carbon sink in the world's forests. *Science* **333**, 988–993 (2011).
6. Frolking, S., Roulet, N. & Fuglestad, S. How northern peatlands influence the Earth's radiative budget: sustained methane emission versus sustained carbon sequestration. *J. Geophys. Res.* **111**, G01008 (2006).
7. IPCC *Climate Change 2013: The Physical Science Basis* (eds Stocker, T. F. et al.) (Cambridge Univ. Press, 2013).
8. Frolking, S. et al. Peatlands in the Earth's 21st century climate system. *Environ. Res.* **19**, 371–396 (2011).
9. Kleinen, T., Brovkin, V. & Schuldt, R. J. A dynamic model of wetland extent and peat accumulation: results for the Holocene. *Biogeosciences* **9**, 235–248 (2012).
10. Müller, J. & Joos, F. Peatland area and carbon over the past 21 000 years – a global process based model investigation. *Biogeosci. Discuss.* Preprint at <https://doi.org/10.5194/bg-2020-110> (2020).
11. Todd-Brown, K. E. et al. Causes of variation in soil carbon simulations from CMIP5 Earth system models and comparison with observations. *Biogeosciences* **10**, 1717–1736 (2013).
12. Hugelius, G. et al. Large stocks of peatland carbon and nitrogen are vulnerable to permafrost thaw. *Proc. Natl Acad. Sci. USA* **117**, 20438–20446 (2020).
13. Turetsky, M. R. et al. Global vulnerability of peatlands to fire and carbon loss. *Nat. Geosci.* **8**, 11–14 (2015).
14. Miettinen, J., Shi, C. & Liew, S. C. Land cover distribution in the peatlands of Peninsular Malaysia, Sumatra and Borneo in 2015 with changes since 1990. *Glob. Ecol. Conserv.* **6**, 67–78 (2016).
15. Rommain, R. et al. A radiative forcing analysis of tropical peatlands before and after their conversion to agricultural plantations. *Glob. Change Biol.* **24**, 5518–5533 (2018).
16. Page, S. E. & Baird, A. J. Peatlands and global change: response and resilience. *Annu. Rev. Environ. Resour.* **41**, 35–57 (2016).
17. Warren, M., Frolking, S., Zhao, D. & Kurnianto, S. Impacts of land use, restoration, and climate change on tropical peat carbon stocks in the twenty-first century: implications for climate mitigation. *Mitig. Adapt. Strateg. Glob. Change* **22**, 1041–1061 (2017).
18. Parish F. et al (eds) *Assessment on Peatlands, Biodiversity and Climate Change: Main Report* (Global Environment Centre and Wetlands International, 2008).
19. Leifeld, J. & Menichetti, L. The underappreciated potential of peatlands in global climate change mitigation strategies. *Nat. Commun.* **9**, 1071 (2018).
20. Nugent, K. A. et al. Prompt active restoration of peatlands substantially reduces climate impact. *Environ. Res. Lett.* **14**, 124030 (2019).
21. Günther, A. A. et al. Prompt rewetting of drained peatlands reduces climate warming despite methane emissions. *Nat. Commun.* **11**, 1644 (2020).
22. Bossio, D. A. et al. The role of soil carbon in natural climate solutions. *Nat. Sustain.* **3**, 391–398 (2020).
23. Bonn, A. et al. (eds) *Peatland Restoration and Ecosystems: Science, Policy, and Practice* (Cambridge Univ. Press, 2016).
24. Seppälä, M. Surface abrasion of palsas by wind action in Finnish Lapland. *Geomorphology* **52**, 141–148 (2003).
25. Treat, C. et al. Widespread global peatland establishment and persistence over the last 130,000 y. *Proc. Natl Acad. Sci. USA* **116**, 4822–4827 (2019).
26. Beilman, D. W., MacDonald, G. M., Smith, L. C. & Reimer, P. J. Carbon accumulation in peatlands of West Siberia over the last 2000 years. *Global Biogeochem. Cycles* **23**, GB1012 (2009).
27. Loisel, J., Gallego-Sala, A. V. & Yu, Z. Global-scale pattern of peatland *Sphagnum* growth driven by photosynthetically active radiation and growing season length. *Biogeosciences* **9**, 2737–2746 (2012).
28. Charman, D. J. et al. Climate-related changes in peatland carbon accumulation during the last millennium. *Biogeosciences* **10**, 929–944 (2013).
29. Jauhainen, J., Kerojoki, O., Silvennoinen, H., Limin, S. & Vasander, H. Heterotrophic respiration in drained tropical peat is greatly affected by temperature—a passive ecosystem cooling experiment. *Environ. Res. Lett.* **9**, 105013 (2014).
30. Wang, S., Zhuang, Q., Lähdenoja, O., Draper, F. C. & Cadillo-Quiroz, H. Potential shift from a carbon sink to a source in Amazonian peatlands under a changing climate. *Proc. Natl Acad. Sci. USA* **115**, 12407–12412 (2018).
31. Sjögersten, S. et al. Temperature response of ex-situ greenhouse gas emissions from tropical peatlands: interactions between forest type and peat moisture conditions. *Geoderma* **324**, 47–55 (2018).
32. Couwenberg, J., Dommain, R. & Joosten, H. Greenhouse gas fluxes from tropical peatlands in south-east Asia. *Glob. Change Biol.* **16**, 1715–1732 (2010).
33. Carlson, K. M., Goodman, L. K. & May-Tobin, C. C. Modeling relationships between water table depth and peat soil carbon loss in Southeast Asian plantations. *Environ. Res. Lett.* **10**, 074006 (2015).
34. Hoyt, A. M. et al. CO<sub>2</sub> emissions from an undrained tropical peatland: interacting influences of temperature, shading and water table depth. *Glob. Change Biol.* **25**, 2885–2899 (2019).
35. Freeman, C., Ostle, N. & Kang, H. An enzymatic 'latch' on a global carbon store. *Nature* **409**, 149 (2001).
36. Lund, M., Christensen, T. R., Lindroth, A. & Schubert, P. Effects of drought conditions on the carbon dioxide dynamics in a temperate peatland. *Environ. Res. Lett.* **7**, 045704 (2012).
37. Cobb, A. R. et al. How temporal patterns in rainfall determine the geomorphology and carbon fluxes of tropical peatlands. *Proc. Natl Acad. Sci. USA* **114**, E5187–E5196 (2017).
38. Dargie, G. C. et al. Age, extent and carbon storage of the central Congo Basin peatland complex. *Nature* **542**, 86–90 (2017).
39. Henman, J. & Poulter, B. Inundation of freshwater peatlands by sea level rise: uncertainty and potential carbon cycle feedbacks. *J. Geophys. Res. Atmos.* **113**, G01011 (2008).
40. Rogers, K. et al. Wetland carbon storage controlled by millennial-scale variation in relative sea-level rise. *Nature* **567**, 91–96 (2019).
41. Dommain, R., Couwenberg, J. & Joosten, H. Development and carbon sequestration of tropical peat domes in south-east Asia: links to post-glacial sea-level changes and Holocene climate variability. *Quat. Sci. Rev.* **30**, 999–1010 (2011).
42. Packalen, M. S. & Finkelstein, S. A. Quantifying Holocene variability in carbon uptake and release since peat initiation in the Hudson Bay Lowlands, Canada. *Holocene* **24**, 1063–1074 (2014).
43. Grundling P.-L. The role of sea-level rise in the formation of peatlands in Maputaland. *Boletim Geológico* (Ministerio dos Recursos Minerais e Energia, Direcção Geral de Geologia Mozambique) **43**, 58–67 (2004).
44. Kirwan, M. L. & Mudd, S. M. Response of salt-marsh carbon accumulation to climate change. *Nature* **489**, 550–553 (2012).
45. Briggs, J. et al. Influence of climate and hydrology on carbon in an early Miocene peatland. *Earth Planet. Sci. Lett.* **253**, 445–454 (2007).
46. Lähdenoja, O. et al. The large Amazonian peatland carbon sink in the subsiding Pastaza-Marañón foreland basin, Peru. *Glob. Change Biol.* **18**, 164–178 (2012).
47. Hooijer, A. et al. Subsidence and carbon loss in drained tropical peatlands. *Biogeosciences* **9**, 1053–1071 (2012).
48. Whittle, A. & Gallego-Sala, A. V. Vulnerability of the peatland carbon sink to sea-level rise. *Sci. Rep.* **6**, 28758 (2016).
49. Blankespoor, B., Dasgupta, S. & Laplante, B. Sea-level rise and coastal wetlands. *Ambio* **43**, 996–1005 (2014).
50. Spencer, T. et al. Global coastal wetland change under sea-level rise and related stresses: the DIVA Wetland Change Model. *Glob. Planet. Change* **139**, 15–30 (2016).
51. Zuidhoff, F. S. & Kolstrup, E. Changes in peat distribution in relation to climate change in Laivadal, northern Sweden, especially 1960–1997. *Permafrost. Periglacial. Process.* **11**, 55–69 (2000).
52. Payette, S., Delwaide, A., Caccianiga, M. & Beauchemin, M. Accelerated thawing of subarctic peatland permafrost over the last 50 years. *Geophys. Res. Lett.* **31**, L18208 (2004).
53. Borge, A. F., Westermann, S., Solheim, I. & Etzelmüller, B. Strong degradation of palsas and peat plateaus in northern Norway during the last 60 years. *Cryosphere* **11**, 1–16 (2017).
54. Cooper, M. D. A. et al. Limited contribution of permafrost carbon to methane release from thawing peatlands. *Nat. Clim. Change* **7**, 507–511 (2017).
55. Bubier, J., Moore, T., Bellisario, L., Comer, N. T. & Crill, P. M. Ecological controls on methane emissions from a Northern Peatland Complex in the zone of discontinuous permafrost, Manitoba, Canada. *Global Biogeochem. Cycles* **9**, 455–470 (1995).
56. Christensen, T. R. et al. Thawing sub-arctic permafrost: effects on vegetation and methane emissions. *Geophys. Res. Lett.* **31**, L04501 (2004).
57. Olefeldt, D., Turetsky, M. R., Crill, P. M. & McGuire, A. D. Environmental and physical controls on northern terrestrial methane emissions across permafrost zones. *Glob. Change Biol.* **19**, 589–603 (2013).
58. O'Donnell, J. A. et al. The effects of permafrost thaw on soil hydrologic, thermal, and carbon dynamics in an Alaskan peatland. *Ecosystems* **15**, 213–229 (2012).
59. Jones, M. C. et al. Rapid carbon loss and slow recovery following permafrost thaw in boreal peatlands. *Glob. Change Biol.* **23**, 1109–1127 (2017).
60. Turetsky, M. R. et al. Carbon release through abrupt permafrost thaw. *Nat. Geosci.* **13**, 138–143 (2020).
61. Jones, M. C., Grosse, G., Jones, B. M. & Walter Anthony, K. Peat accumulation in drained thermokarst lake basins in continuous, ice-rich permafrost, northern Seward Peninsula, Alaska. *J. Geophys. Res. Biogeosci.* **117**, G00M07 (2012).
62. Walter Anthony, K. M. et al. A shift of thermokarst lakes from carbon sources to sinks during the Holocene epoch. *Nature* **511**, 452–456 (2014).
63. Turetsky, M. R., Wieder, R. K., Vitt, D. H., Evans, R. J. & Scott, K. D. The disappearance of relict permafrost in boreal North America: effects on peatland carbon storage and fluxes. *Glob. Change Biol.* **13**, 1922–1934 (2007).



64. Rossi, S. et al. FAOSTAT estimates of greenhouse gas emissions from biomass and peat fires. *Climatic Change* **135**, 699–711 (2016).
65. Page, S. E. et al. The amount of carbon released from peat and forest fires in Indonesia during 1997. *Nature* **420**, 61–65 (2002).
66. Field, R. D. et al. Indonesian fire activity and smoke pollution in 2015 show persistent nonlinear sensitivity to El Niño-induced drought. *Proc. Natl Acad. Sci. USA* **113**, 9204–9209 (2016).
67. Gaveau, D. L. A. et al. Major atmospheric emissions from peat fires in Southeast Asia during non-drought years: evidence from the 2013 Sumatran fires. *Sci. Rep.* **4**, 6112 (2014).
68. Lyu, Z. et al. The role of environmental driving factors in historical and projected carbon dynamics of wetland ecosystems in Alaska. *Ecol. Appl.* **28**, 1377–1395 (2018).
69. Gibson, C. M. et al. Wildfire as a major driver of recent permafrost thaw in boreal peatlands. *Nat. Commun.* **9**, 3041 (2018).
70. Dadap, N. C., Cobb, A. R., Hoyt, A. M., Harvey, C. F. & Konings, A. G. Satellite soil moisture observations predict burned area in Southeast Asian peatlands. *Environ. Res. Lett.* **14**, 094014 (2019).
71. Zaccane, C. et al. Smouldering fire signatures in peat and their implications for palaeoenvironmental reconstructions. *Geochim. Cosmochim. Acta* **137**, 134–146 (2014).
72. Kettridge, N. et al. Burned and unburned peat water repellency: implications for peatland evaporation following wildfire. *J. Hydrol.* **513**, 335–341 (2014).
73. Koh, L. P., Miettinen, J., Liew, S. C. & Ghazoul, J. Remotely sensed evidence of tropical peatland conversion to oil palm. *Proc. Natl Acad. Sci. USA* **108**, 5127–5132 (2011).
74. Rooney, R. C., Bayley, S. E. & Schindler, D. W. Oil sands mining and reclamation cause massive loss of peatland and stored carbon. *Proc. Natl Acad. Sci. USA* **109**, 4933–4937 (2012).
75. Turunen, J. Development of Finnish peatland area and carbon storage 1950–2000. *Boreal Environ. Res.* **13**, 319–334 (2008).
76. Wild, B. et al. Rivers across the Siberian Arctic unearth the patterns of carbon release from thawing permafrost. *Proc. Natl Acad. Sci. USA* **116**, 10280–10285 (2019).
77. Hoyt, A. M., Chaussard, E., Seppäläinen, S. S. & Harvey, C. F. Widespread subsidence and carbon emissions across Southeast Asian peatlands. *Nat. Geosci.* **13**, 435–440 (2020).
78. Tuittila, E.-S. et al. Methane dynamics of a restored cut-away peatland. *Glob. Change Biol.* **6**, 569–581 (2000).
79. Waddington, J. M. & Day, S. M. Methane emissions from a peatland following restoration. *J. Geophys. Res. Biogeosci.* **112**, G03018 (2007).
80. Vet, R. et al. A global assessment of precipitation chemistry and deposition of sulfur, nitrogen, sea salt, base cations, organic acids, acidity and pH, and phosphorus. *Atmos. Environ.* **93**, 3–100 (2014).
81. Dentener, F. et al. Nitrogen and sulfur deposition on regional and global scales: a multimodel evaluation. *Global Biogeochem. Cycles* **20**, GB4003 (2006).
82. Bubier, J. L., Moore, T. R. & Bledzki, L. A. Effects of nutrient addition on vegetation and carbon cycling in an ombrotrophic bog. *Glob. Change Biol.* **13**, 1168–1186 (2007).
83. Juutinen, S. et al. Responses of mosses *Sphagnum capillifolium* and *Polytrichum strictum* to nitrogen deposition in a bog: height growth, ground cover, and CO<sub>2</sub> exchange. *Botany* **94**, 127–138 (2016).
84. Wieder, R. K. et al. Experimental nitrogen addition alters structure and function of a boreal bog: critical load and thresholds revealed. *Ecol. Monogr.* **89**, e01371 (2019).
85. Limpens, J. et al. Climatic modifiers of the response to nitrogen deposition in peat-forming *Sphagnum* mosses: a meta-analysis. *New Phytol.* **191**, 496–507 (2011).
86. Larmola, T. et al. Vegetation feedbacks of nutrient deposition lead to a weaker carbon sink in an ombrotrophic bog. *Glob. Change Biol.* **19**, 3729–3739 (2013).
87. Pinsonneault, A. J., Moore, T. R. & Roulet, N. T. Effects of long-term fertilization on peat stoichiometry and associated microbial enzyme activity in an ombrotrophic bog. *Biogeochemistry* **129**, 149–164 (2016).
88. Bragazza, L. et al. Atmospheric nitrogen deposition promotes carbon loss from peat bogs. *Proc. Natl Acad. Sci. USA* **103**, 19386–19389 (2006).
89. Juutinen, S. et al. Long-term nutrient addition increased CH<sub>4</sub> emission from a bog through direct and indirect effects. *Sci. Rep.* **8**, 3838 (2018).
90. Olid, C., Nilsson, M. B., Eriksson, T. & Klaminder, J. The effects of temperature and nitrogen and sulfur additions on carbon accumulation in a nutrient-poor boreal mire: decadal effects assessed using <sup>210</sup>Pb peat chronologies. *J. Geophys. Res. Biogeosci.* **119**, 392–403 (2014).
91. Alexandrov, G. A., Brovkin, V. A., Kleinen, T. & Yu, Z. The capacity of northern peatlands for long-term carbon sequestration. *Biogeosciences* **17**, 47–54 (2020).
92. Griscom, B. W. et al. Natural climate solutions. *Proc. Natl Acad. Sci. USA* **114**, 11645–11650 (2017).
93. Christensen, T. R., Arora, V. K., Gauss, M., Höglund-Isaksson, L. & Parmentier, F.-J. W. Tracing the climate signal: mitigation of anthropogenic methane emissions can outweigh a large Arctic natural emission increase. *Sci. Rep.* **9**, 1146 (2019).
94. Mach, K. J., Mastrandrea, M. D., Freeman, P. T. & Field, C. B. Unleashing expert judgment in assessment. *Glob. Environ. Change* **44**, 1–14 (2017).
95. Schuur, E. A. G. et al. Expert assessment of vulnerability of permafrost carbon to climate change. *Climatic Change* **119**, 359–374 (2013).
96. Bamber, J. L., Oppenheimer, M., Kopp, R. E., Aspinall, W. P. & Cooke, R. M. Ice sheet contributions to future sea-level rise from structured expert judgment. *Proc. Natl Acad. Sci. USA* **116**, 11195–11200 (2019).

**Publisher's note** Springer Nature remains neutral with regard to jurisdictional claims in published maps and institutional affiliations.

© The Author(s), under exclusive licence to Springer Nature Limited 2020

<sup>1</sup>Department of Geography, Texas A&M University, College Station, TX, USA. <sup>2</sup>Department of Geography, University of Exeter, Exeter, UK. <sup>3</sup>Ecosystems and Environment Research Programme, University of Helsinki, Helsinki, Finland. <sup>4</sup>Department of Geography and Geotop Research Center, University of Quebec at Montreal, Montreal, Quebec, Canada. <sup>5</sup>Magister of Environment and Soil Science Department, Tanjungpura University, Pontianak, Indonesia. <sup>6</sup>Department of Geography and Environment, University of Hawaii at Manoa, Honolulu, HI, USA. <sup>7</sup>Department of Ecology and Territory, Pontifical Xavierian University, Bogotá, Colombia. <sup>8</sup>Organic Geochemistry Unit, School of Chemistry, and School of Earth Sciences, University of Bristol, Bristol, UK. <sup>9</sup>Environmental Studies Program and Earth and Oceanographic Science Department, Bowdoin College, Brunswick, ME, USA. <sup>10</sup>Department of Geology, Chulalongkorn University, Bangkok, Thailand. <sup>11</sup>Department of Geography, University of California, Los Angeles, Los Angeles, CA, USA. <sup>12</sup>Max Planck Institute for Meteorology, Hamburg, Germany. <sup>13</sup>Faculty of Engineering, Chemical and Environmental Engineering, University of Nottingham, Nottingham, UK. <sup>14</sup>Centro de Investigación GAIA Antártica, University of Magallanes, Punta Arenas, Chile. <sup>15</sup>Climate and Environmental Physics, Physics Institute and Oeschger Centre for Climate Change Research, University of Bern, Bern, Switzerland. <sup>16</sup>Consortium Érudite, Université de Montréal, Montreal, Quebec, Canada. <sup>17</sup>Department of Ecology and Conservation Biology, Texas A&M University, College Station, TX, USA. <sup>18</sup>Department of Earth and Environmental Sciences, Lehigh University, Bethlehem, PA, USA. <sup>19</sup>Institute for Peat and Mire Research, School of Geographical Sciences, Northeast Normal University, Changchun, China. <sup>20</sup>Department of Environmental Studies, Mount Holyoke College, South Hadley, MA, USA. <sup>21</sup>Department of Geography, McGill University, Montreal, Quebec, Canada. <sup>22</sup>Department of Physical Geography, Stockholm University, Stockholm, Sweden. <sup>23</sup>School of Geography, Geology and the Environment, University of Leicester, Leicester, UK. <sup>24</sup>Department of Earth and Environmental Sciences, KU Leuven, Leuven, Belgium. <sup>25</sup>School of Geography & Sustainable Development, University of St Andrews, St Andrews, UK. <sup>26</sup>Department of Earth, Ocean & Atmospheric Science, Florida State University, Tallahassee, FL, USA. <sup>27</sup>Department of Bioscience, Aarhus University, Roskilde, Denmark. <sup>28</sup>Department of Earth Sciences, University of Toronto, Toronto, Ontario, Canada. <sup>29</sup>Instituto Franco-Argentino para el Estudio del Clima y sus Impactos, Buenos Aires, Argentina. <sup>30</sup>Institute for the Study of Earth, Oceans, and Space, University of New Hampshire, Durham, NH, USA. <sup>31</sup>Department of Geobotany and Plant Ecology, University of Lodz, Lodz, Poland. <sup>32</sup>Laboratoire d'Ecologie Fonctionnelle et Environnement, UMR 5245, CNRS-UPS-INPT, Toulouse, France. <sup>33</sup>Cranfield Soil and Agrifood Institute, Cranfield University, Cranfield, UK. <sup>34</sup>Department of Renewable Resources, University of Alberta, Edmonton, Alberta, Canada. <sup>35</sup>Stockholm Environment Institute, University of York, York, UK. <sup>36</sup>Max Planck Institute for Biogeochemistry, Jena, Germany. <sup>37</sup>Lawrence Berkeley National Laboratory, Berkeley, CA, USA. <sup>38</sup>Florence Bascom Geoscience Center, United States Geological Survey, Reston, VA, USA. <sup>39</sup>Department of Marine and Coastal Environmental Science, Texas A&M University at Galveston, Galveston, TX, USA. <sup>40</sup>Department of Biology, University of Victoria, Victoria, British Columbia, Canada. <sup>41</sup>Faculty of Geographical and Geological Sciences, Climate Change Ecology Research Unit, Adam Mickiewicz University, Poznań, Poland. <sup>42</sup>Natural Resources



Institute Finland (Luke), Helsinki, Finland. <sup>43</sup>Agroscope, Zurich, Switzerland. <sup>44</sup>Institute for Atmospheric and Earth System Research, University of Helsinki, Helsinki, Finland. <sup>45</sup>Department of Geography, Royal Holloway, University of London, Egham, UK. <sup>46</sup>Department of Forest Sciences, University of Helsinki, Helsinki, Finland. <sup>47</sup>School of Earth and Environmental Sciences, University of Queensland, Brisbane, Queensland, Australia. <sup>48</sup>Lamont-Doherty Earth Observatory, Palisades, NY, USA. <sup>49</sup>National Park Service, Washington DC, WA, USA. <sup>50</sup>Department of Environment & Geography, University of York, York, UK. <sup>51</sup>Department of Chemistry, and Department of Geological and Environmental Science, Hope College, Holland, MI, USA. <sup>52</sup>Department of Geography and Environmental Science, University of Reading, Reading, UK. <sup>53</sup>Department of Applied Earth Sciences, Uva Wellassa University, Badulla, Sri Lanka. <sup>54</sup>School of Biosciences, University of Nottingham, Nottingham, UK. <sup>55</sup>Département de Géographie, Université de Montréal, Montréal, Québec, Canada. <sup>56</sup>Geography, School of Natural and Built Environment, Queen's University Belfast, Belfast, UK. <sup>57</sup>Department of Environmental Science, Policy, and Management, University of California, Berkeley, Berkeley, CA, USA. <sup>58</sup>Department of Environment and Sustainability, Grenfell Campus, Memorial University, Corner Brook, Newfoundland, Canada. <sup>59</sup>Deceased: R. Payne. <sup>✉</sup>e-mail: [julieloisel@tamu.edu](mailto:julieloisel@tamu.edu); [a.gallego-sala@exeter.ac.uk](mailto:a.gallego-sala@exeter.ac.uk)

## Data availability

Data supporting the findings of this study, as well as references used to generate the maps, are available within the supplementary information files. All anonymized survey data generated and analysed during this study are available from the corresponding authors upon request.

## Acknowledgements

This work developed from the PAGES (Past Global Changes) C-PEAT (Carbon in Peat on Earth through Time) working group; we acknowledge support from PAGES funding by the American and Swiss National Science Foundations. We also thank the International Union for Quaternary Research (INQUA) and the Department of Geography at Texas A&M University for workshop support. We thank P. Campbell for creating the peatland infographic, as well as D. McGuire for his comments on a previous version of the manuscript. We also acknowledge research support from Universidad Javeriana (J.C.B.); the National Science Foundation of the United States under grant nos. 1802838 (J. Loisel), 1019523 (J.L.B.) and 1802825 (C.T. and S.F.); the National Environment Research Council of the United Kingdom under grant nos. NE/1012915 and NE/S001166/1 (A.V.G.-S. and D.J.C.); the Attraction and Insertion of Advanced Human Capital Program of the National Commission for Scientific and Technological Research of Chile and the NEXER-UMAG project under grant no. 7718002 (C.A.M.); the Geological Survey Land Resources Research and Development program of the United States (M.C.J.); the Natural Sciences and Engineering Research Council of Canada (M. Garneau, S.F., T. Lacourse and J.W.); the National Science Centre of Poland under grant no. 2015/17/B/ST10/01656 (M.L.); the Academy of Finland projects 286731 and 319262 (T. Larmola); the Belgian National Fund for Scientific Research under grant no. 1167019N (W.S.); the Office of International Affairs and Global Network at Chulalongkorn University (S.C.); the Alexander von Humboldt Foundation of

Germany (M.B.); the Accelerating Higher Education Expansion and Development and Development Oriented Research programs of the World Bank (A.S.R.); and the Swiss National Science Foundation under grant no. 200020\_172476 (F.J. and J.M.).

## Author contributions

J. Loisel, A.V.G.-S., M.J.A. and G.M. performed most of the analyses and wrote most of the manuscript. D.B., J.C.B., J. Blewett, P.C., D.J.C., S.C., A.V.G.-S., A. Hedgpeth, T.K., A.K., D.L., J. Loisel, C.A.M., J.M., S.v.B., J.B.W. and Z.Y. formulated the research goals and ideas during the 2018 C-PEAT workshop in Texas, United States. J.L.B., M. Garneau, T.M., A.B.K.S., S. Page, M.V., A.M.H., S.J., T. Larmola, A.L., K.M. and C.T. wrote parts of the review section. Other co-authors (A. Heinemeyer, S.P., T. Lacourse and M. Galka) contributed with unpublished data or completed the expert opinion survey. All co-authors contributed to data analysis and writing of the manuscript.

## Competing interests

The authors declare no competing interests.

## Additional information

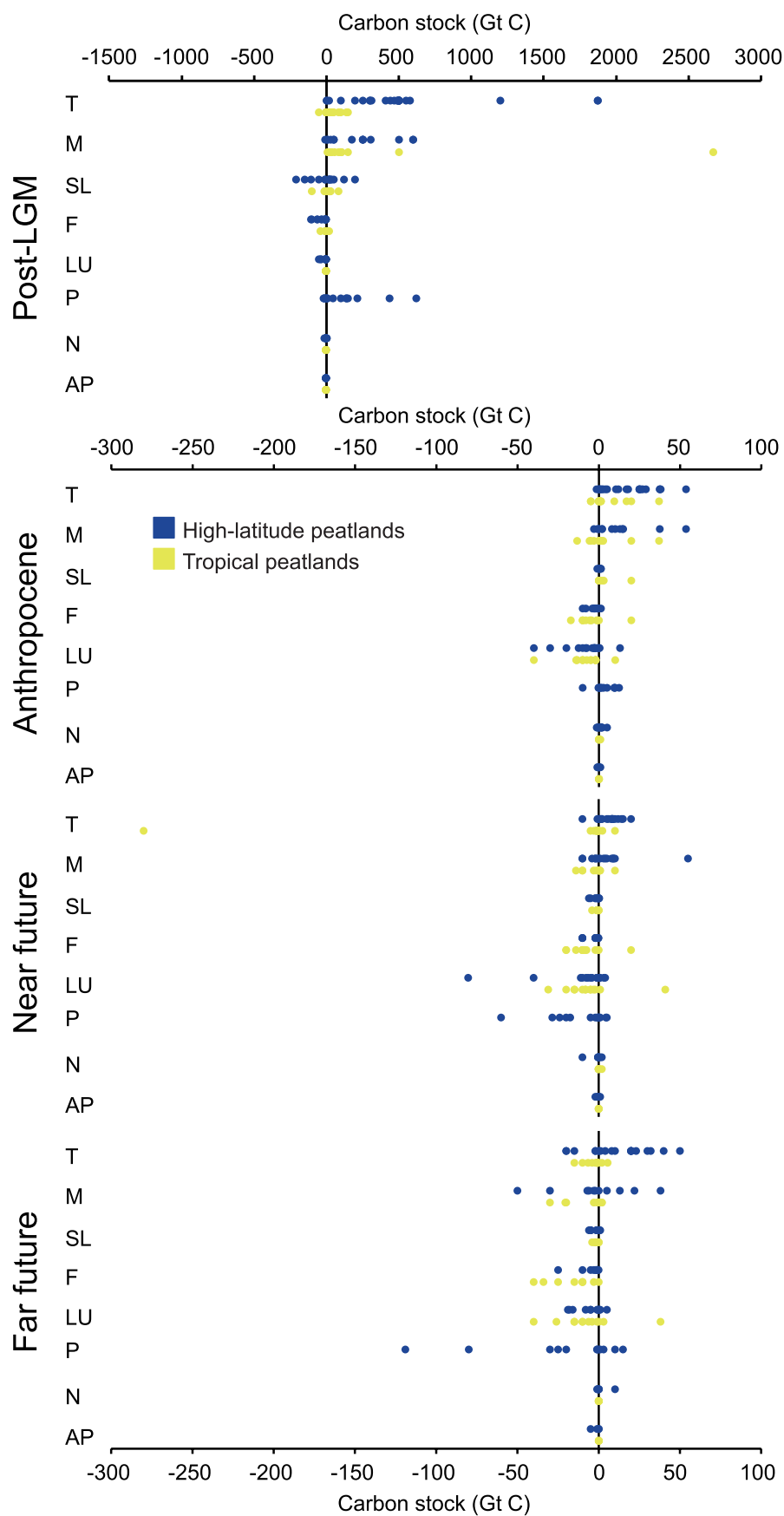
**Extended data** is available for this paper at <https://doi.org/10.1038/s41558-020-00944-0>.

**Supplementary information** is available for this paper at <https://doi.org/10.1038/s41558-020-00944-0>.

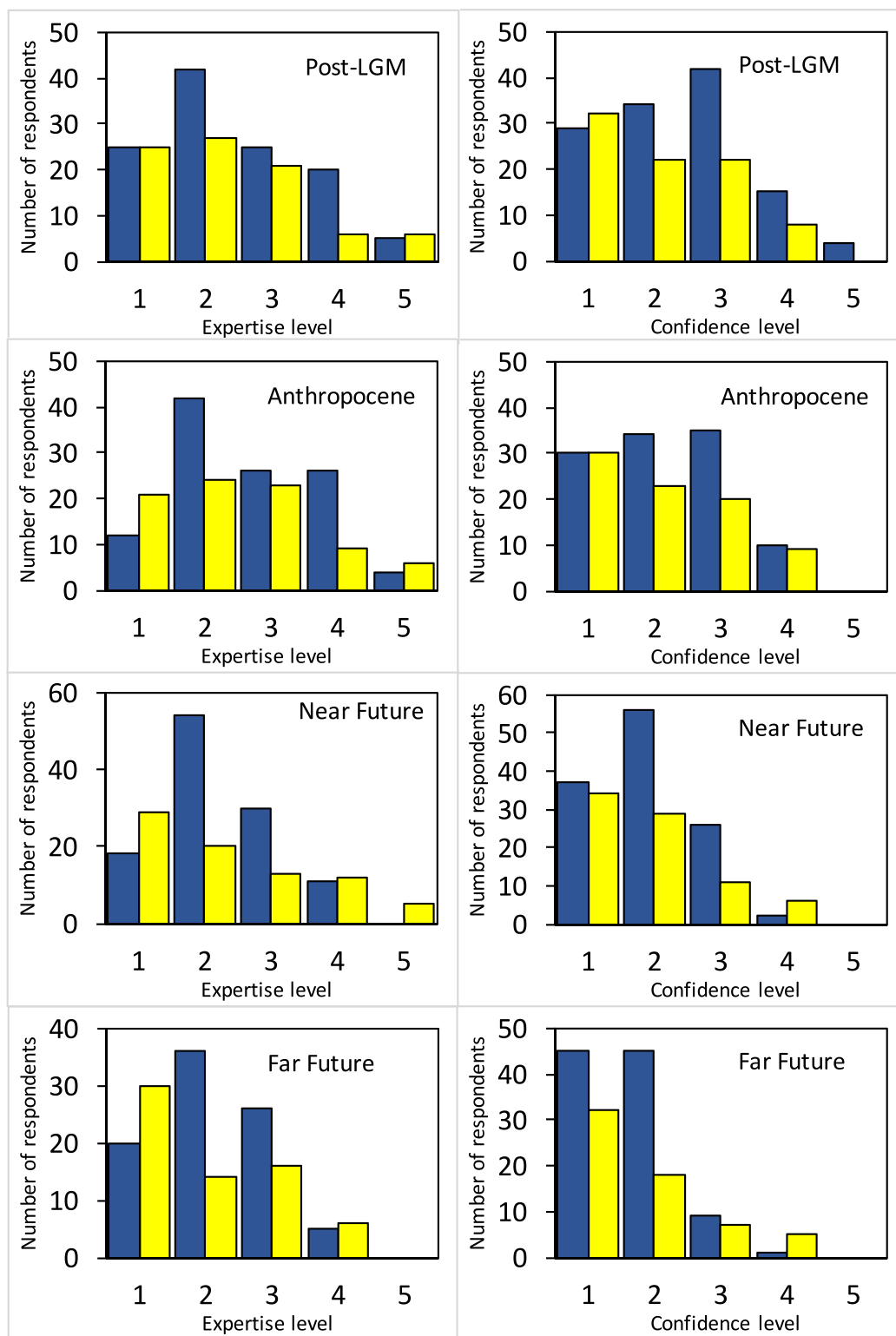
**Correspondence and requests for materials** should be addressed to J.L. or A.V.G.-S.

**Peer review information** *Nature Climate Change* thanks Katharine Mach and Matthew Warren for their contribution to the peer review of this work.

**Reprints and permissions information** is available at [www.nature.com/reprints](http://www.nature.com/reprints).

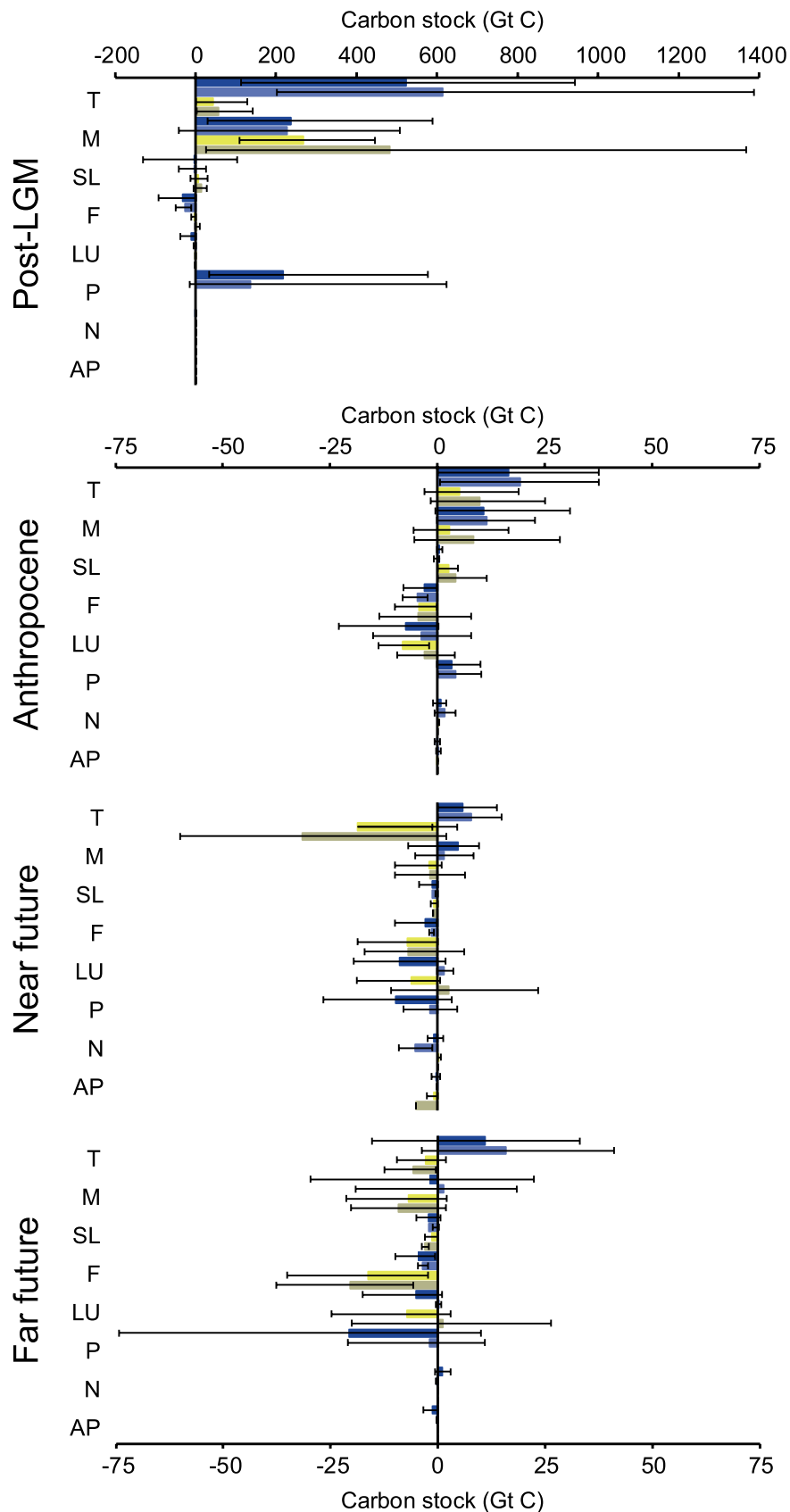


**Extended Data Fig. 1 | All survey results (individual data points).** Each individual response is shown as a spot. Positive values represent peatland sinks, negative values represent peatland sources to the atmosphere. When a range of values was given, the midpoint is used. Codes for drivers: T = temperature, M = moisture balance, SL = sea level, F = fire, LU = land use, P = permafrost, N = nitrogen deposition, AP = atmospheric pollution.



**Extended Data Fig. 2 | All self-reported confidence and expertise levels, organized by time period and peatland region.** Blue (yellow) bars represent high-latitude (tropical) peatlands. Confidence and expertise values specified in the survey were 1 = very low, 2 = low, 3 = medium, 4 = high, 5 = very high.





**Extended Data Fig. 3 | Comparison of survey results from all respondents vs. those from highly self-rated experts.** Data shown as mean and 10th – 90th percentiles. High-latitude peatland results shown in blue (dark = all data, light =  $E > 2$ ). Tropical peatland data shown in yellow (dark yellow = all data, light beige =  $E > 2$ ). Positive values represent peatland sinks, negative values represent peatland sources to the atmosphere. Codes for drivers: T = temperature, M = moisture balance, SL = sea level, F = fire, LU = land use, P = permafrost, N = nitrogen deposition, AP = atmospheric pollution.