



HAL
open science

Population genetic structure of the malaria vector *Anopheles funestus*, in a recently re-colonized area of the Senegal River basin and human-induced environmental changes

Badara Samb, Ibrahima Dia, Lassana Konate, Diego Ayala, Didier Fontenille,
Anna Cohuet

► **To cite this version:**

Badara Samb, Ibrahima Dia, Lassana Konate, Diego Ayala, Didier Fontenille, et al.. Population genetic structure of the malaria vector *Anopheles funestus*, in a recently re-colonized area of the Senegal River basin and human-induced environmental changes. *Parasites & Vectors*, 2012, 5, pp.188. 10.1186/1756-3305-5-188 . hal-03059005

HAL Id: hal-03059005

<https://hal.science/hal-03059005>

Submitted on 12 Dec 2020

HAL is a multi-disciplinary open access archive for the deposit and dissemination of scientific research documents, whether they are published or not. The documents may come from teaching and research institutions in France or abroad, or from public or private research centers.

L'archive ouverte pluridisciplinaire **HAL**, est destinée au dépôt et à la diffusion de documents scientifiques de niveau recherche, publiés ou non, émanant des établissements d'enseignement et de recherche français ou étrangers, des laboratoires publics ou privés.



Distributed under a Creative Commons Attribution 4.0 International License

RESEARCH

Open Access

Population genetic structure of the malaria vector *Anopheles funestus*, in a recently re-colonized area of the Senegal River basin and human-induced environmental changes

Badara Samb^{1,2}, Ibrahima Dia^{2*}, Lassana Konate¹, Diego Ayala^{3,5}, Didier Fontenille³ and Anna Cohuet^{3,4}

Abstract

Background: *Anopheles funestus* is one of the major malaria vectors in tropical Africa. Because of several cycles of drought events that occurred during the 1970s, this species had disappeared from many parts of sahelian Africa, including the Senegal River basin. However, this zone has been re-colonized during the last decade by *An. funestus*, following the implementation of two dams on the Senegal River. Previous studies in that area revealed heterogeneity at the biological and chromosomal level among these recent populations.

Methods: Here, we studied the genetic structure of the newly established mosquito populations using eleven microsatellite markers in four villages of the Senegal River basin and compared it to another *An. funestus* population located in the sudanian domain.

Results: Our results presume Hardy Weinberg equilibrium in each *An. funestus* population, suggesting a situation of panmixia. Moreover, no signal from bottleneck or population expansion was detected across populations. The tests of genetic differentiation between sites revealed a slight but significant division into three distinct genetic entities. Genetic distance between populations from the Senegal River basin and sudanian domain was correlated to geographical distance. In contrast, sub-division into the Senegal River basin was not correlated to geographic distance, rather to local adaptation.

Conclusions: The high genetic diversity among populations from Senegal River basin coupled with no evidence of bottleneck and with a gene flow with southern population suggests that the re-colonization was likely carried out by a massive and repeated stepping-stone dispersion starting from the neighboring areas where *An. funestus* endured.

Keywords: *Anopheles funestus*, Re-emergent population, Population structure, Microsatellites, Senegal river basin

Background

Anopheles funestus Giles, 1900 is one of the major malaria vectors in tropical Africa with *An. gambiae sensu stricto* and *An. arabiensis* [1], being the primary malaria vector in some areas [2-5]. In Senegal, *An. funestus* has been already described in all bio-geographic zones [6] and exhibits a predominant role in malaria transmission [7-9]. Following the recurrent droughts that have

occurred during the 1970s, this species had disappeared from many parts of sahelian Africa, including the Senegal River basin, in consequence of the disappearance of its specific breeding sites [10]. However, after more than three decades of absence, the re-emergence of *An. funestus* was reported at the beginning of this century in the low valley of the Senegal River [11]. The hydro-agricultural implementations following the start-up of the Diama dam are highly suspected to create favourable breeding places for the re-establishment of *An. funestus* [9,12]. This re-colonization had thus given rise to the fear of recrudescence of the transmission and incidence

* Correspondence: dia@pasteur.sn

²Unité d'entomologie médicale, Institut Pasteur de Dakar, 36 Avenue Pasteur, Dakar BP 220, Sénégal

Full list of author information is available at the end of the article

of malaria in this area. An entomological survey carried out thereafter in the Senegal River basin showed heterogeneity of *An. funestus* populations in their anthropophily, densities and parity [9]. Because this species is known to be biologically and genetically highly polymorphic [13-17], these observations led us to suspect a potential genetic structure within the newly established *An. funestus* populations. Likewise, significant chromosomal differentiation not linked to geographical distance has been reported between the *An. funestus* populations from the Senegal River basin and those from the sudanian domain [12].

In the present study, we studied the genetic structure of the *An. funestus* populations in the Senegal River basin using microsatellite DNA markers. This set of molecular markers were demonstrated to be suitable tools for population genetics studies within this mosquito [17-20]. We aimed at investigating the genetic diversity and the genetic structure of the newly established *An. funestus* populations in the Senegal River basin in comparison to a more southern population of this species.

Methods

Study sites and mosquito collection

The study was carried out in four villages located in the Senegal River Basin, in sahelian domain (Mbilor, Gankette Balla, Diaminar Keur Kane, Loboudou) and in the village of Dielmo, located in the sudanian domain (Figure 1). The re-emergence of *An. funestus* was previously observed in the four selected villages from the Senegal River basin and biological heterogeneities were observed between sites [9]. The village of Mbilor (16°29' N, 15°33' W) is situated in the low valley of the Senegal River. A retention basin made by the Senegalese Sugarcane Company and derived from the Senegal River represents the unique source of permanent water, which represents the main breeding site of anopheline mosquitoes. The village of Gankette Balla (15°58'N, 15°55'W), Diaminar Keur Kane (16°00'N, 15°54'W) and Loboudou (15°57'N, 15°55'W) are situated on the shores of The Guiers Lake. The association between the shores of the Guiers Lake and the development of fresh water plants represent the main breeding sites for *An. funestus*, being the predominant anopheline species collected [9]. Mosquito collections were carried out between October 2003 and September 2004 in these four villages.

Mosquitoes from the Senegal River basin populations were compared to Dielmo (13°45'N, 16°25'W), located in a sudanian domain of central Senegal, on the marshy bank of a small permanent stream, where anopheline mosquitoes breed all year round. Specimens from Dielmo were collected during the rainy season in 2000, between July and October.

All mosquitoes were collected by indoor pyrethrum spraying in randomly selected human dwellings. After collection, *An. funestus* were identified morphologically [21] and stored individually in labelled tubes with desiccant for further molecular processing.

DNA extraction, molecular species identification and microsatellite genotyping

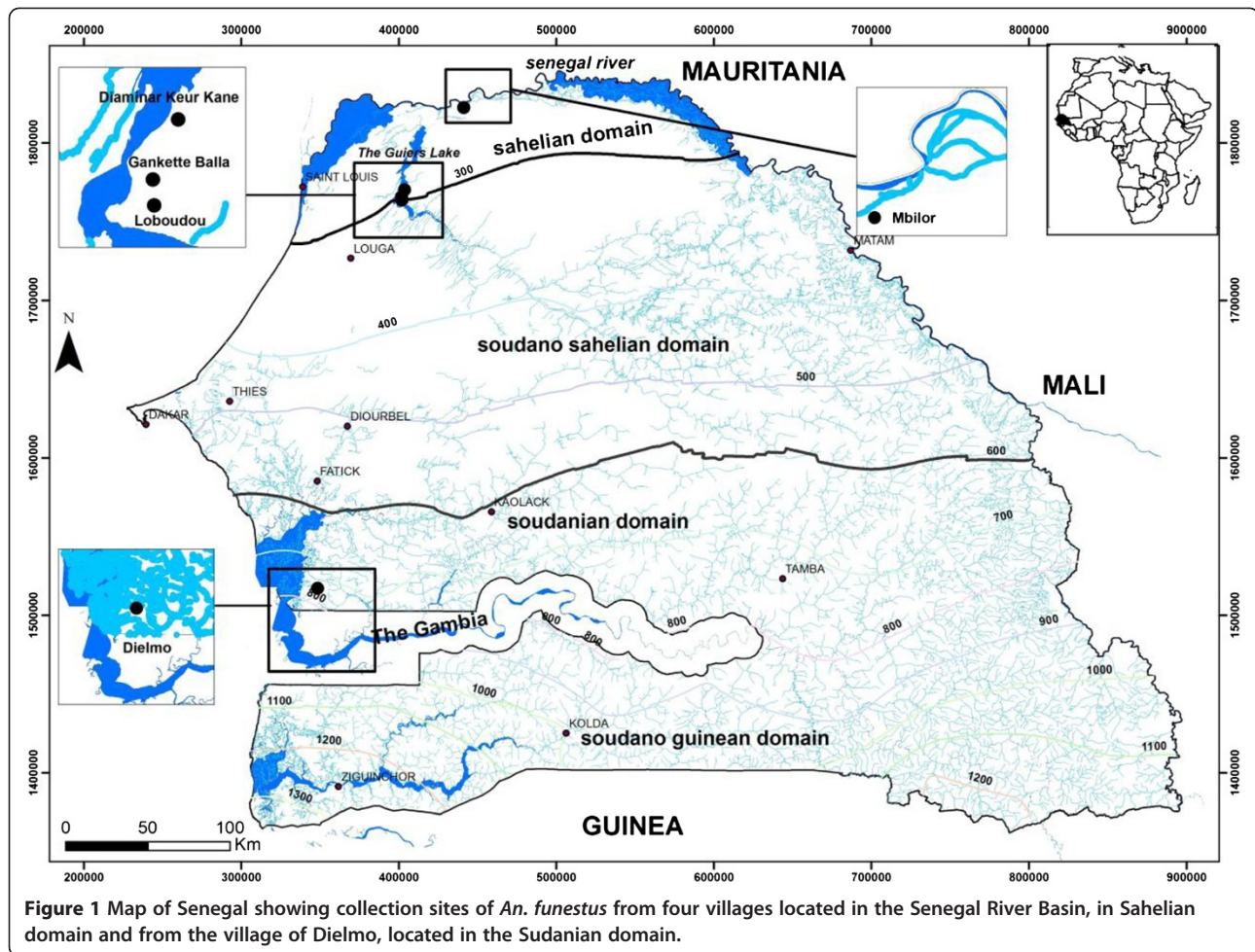
Genomic DNA was extracted from wings and legs of each individual mosquito following the protocol described by Morlais *et al.* [22]. DNA was then resuspended in sterile water in individual tubes. Morphological identification of *An. funestus sensu stricto* was confirmed by molecular methods [23,24]. Eleven microsatellite loci were selected from published *An. funestus* sequence data [25-28], based on their high polymorphism and no evidence for null alleles. These microsatellites were *FunL*, *FunO*, *AFUB11*, *AFND19*, *AFND20*, *AFND32*, *FunQ*, *AFND40*, *AFND5*, *FunG* and *FunF*.

PCR was performed for each locus individually in a 25 µl reaction volume. The reaction mixture contained 1 X PCR buffer containing 1.5 mM MgCl₂ (Promega, France), 0.2 mM of each dNTP (Eurogentec, Belgium), 10 pmol of each primer, 0.1U of Taq DNA polymerase (Promega, France) and approximately 5–10 ng of template DNA. The forward primer was labelled in 5' with either by Fam, Vic, Ned or Pet fluorescent markers to allow multiplex electrophoresis (Eurogentec, Belgium). Amplification was performed in a GeneAmp 9700 thermocycler (Applied Biosystems, France). Cycling conditions were: an initial denaturation step at 94°C for 2 min followed by 36 cycles of 30 s at 94°C, 30 s at 54°C, 30 s at 72°C and a final elongation step of 10 min at 72°C. Amplified products were diluted and pooled for genotyping in AB3130 sequencer (Applied Biosystems, France). Alleles were sized relatively to an internal size standard using GENEMAPPER v4.0 (Applied Biosystems, France).

Data analysis

For each locus and each population sample, heterozygosity was computed using GENETIX v.4.05 [29] and the number of alleles were computed using FSTAT v.2.9.3.2 [30]. FSTAT and GENEPOP v.4.0.3 [31] were used to assess the deviation from Hardy-Weinberg equilibrium at each locus, each population sample, and overall as indicated by the inbreeding coefficient (F_{IS}). Linkage disequilibrium between pairs of microsatellite loci was assessed using FSTAT v.2.9.3.2 [30]. Significance was tested using the randomization approach implemented in FSTAT with Bonferroni-adjusted P -values.

Genetic differentiation between populations was assessed by estimating Wright's F -statistics [32], calculated according to Weir & Cockerham [33]. Statistical significance of F_{ST}



was assessed using G-based exact tests for genotypic differentiation [34], available in GENEPOP.

Because demographic instability such as recent population bottleneck and/or expansion might bias genetic differentiation, heterozygosity tests were implemented to test for Mutation-Drift Equilibrium (MDE) using BOTTLENECK V1.2.02 [35]. At selectively neutral loci, the expected heterozygosities calculated from allele frequency data (H_e) and from the number of alleles and sample sizes (H_{eq}) are expected not to be significantly different ($H_e \approx H_{eq}$) in a population at MDE. If a population experiences a bottleneck, rare alleles will be lost by genetic drift, and H_{eq} will decrease faster than H_e ($H_e > H_{eq}$). The resulting apparent excess of heterozygotes is an indicator of a recent bottleneck event, while the opposite ($H_e < H_{eq}$) may suggest population expansion. Estimates of expected heterozygosity under MDE were calculated using two mutation models for microsatellite evolution: the Two Phased Mutation model (TPM) [36] and the Stepwise Mutation Model (SMM) [37]. Wilcoxon signed rank tests were used to determine whether deviations from MDE were statistically significant.

We applied a Bayesian model-based clustering algorithm to infer population structure and to assign individuals (probabilistically) to clusters without a priori knowledge of population units and limits. This approach, implemented in STRUCTURE v2.2 [38], uses individual multilocus genotype data to cluster individuals into K groups while minimising Hardy-Weinberg disequilibrium and gametic phase disequilibrium between loci within groups [39]. In STRUCTURE v 2.2, the number of distinct genetic clusters in the data set (K) was estimated from 1 to 12 by the posterior log probability of data under each K , $\ln [\Pr(X|K)]$ [38]. Each run carried out 500,000 iterations after a burn-in period of 40,000, using the admixture model and correlated allele frequencies. To check for convergence of the Markov chain Monte Carlo (MCMC), we performed over 5 replicates for each value of K and then checked the consistency of results [40]. The estimated number of clusters (K) was taken to be the value of K with the highest $\Pr(X|K)$ [39].

Groups of populations were defined according to STRUCTURE results and the hierarchical genetic variation

Table 1 Genetic Variability at 11 microsatellites loci in *Anopheles funestus* from Senegal

Locus (chromosomal location)	Populations						Overall
	Diaminar (N = 48)	Dielmo (N = 41)	Gankette (N = 49)	Loboudou (N = 47)	Mbilor (N = 50)	(N = 235)	
AFUB11 (2 L)	Nall HO	7 0.5682	9 0.7576	7 0.5833	6 0.6383	7 0.4681	9 0.594
	Fis	0.215	-0.009	0.106	0.046	0.347	0.1530
FUNL (2 L)	Nall HO	10 0.8864	11 0.7813	7 0.8140	9 0.6444	9 0.9375	15 0.816
	Fis	-0.076	0.043	0.013	0.191	-0.094	0.0175
FUNO (2R)	Nall HO	9 0.7381	7 0.8125	8 0.7083	7 0.8085	8 0.8298	10 0.778
	Fis	-0.010	-0.062	-0.036	-0.114	-0.102	-0.0363
AFND19 (3R)	Nall HO	11 0.5870	8 0.7179	11 0.7234	11 0.7179	9 0.7200	13 0.692
	Fis	0.305	0.010	0.137	0.127	0.141	0.1673
AFND20 (3R)	Nall HO	8 0.7500	8 0.7949	7 0.7234	8 0.7500	6 0.6800	10 0.736
	Fis	-0.045	-0.062	0.049	0.052	0.059	0.0232
AFND32 (2R)	Nall HO	10 0.7609	10 0.7750	9 0.8723	8 0.8974	9 0.7000	15 0.797
	Fis	0.101	0.081	-0.049	-0.073	0.102	0.0535
FUNQ (X)	Nall HO	3 0.5000	4 0.6500	4 0.4681	5 0.5128	4 0.6600	6 0.559
	Fis	0.109	0.081	0.156	0.184	-0.021	0.1162
AFND40 (2R)	Nall HO	6 0.8889	7 0.7250	7 0.8000	7 0.7273	5 0.7292	8 0.775
	Fis	-0.146	-0.022	-0.051	0.085	-0.001	-0.0182
AFND5 (2R)	Nall HO	5 0.3913	6 0.5000	5 0.5217	5 0.4783	5 0.4286	6 0.463
	Fis	0.246	0.141	0.039	0.211	0.089	0.1493
FUNF (3 L)	Nall HO	5 0.7391	7 0.7500	4 0.7174	6 0.6739	5 0.6122	7 0.696
	Fis	-0.138	0.028	-0.114	0.020	-0.067	-0.0285
FUNG (3R)	Nall HO	10 0.8043	8 0.7500	9 0.8261	9 0.7826	8 0.7917	12 0.792
	Fis	0.063	-0.020	0.020	0.078	0.070	0.0854
Mean	Nall	7.6	7.7	7.09	7.3	6.8	10
across all loci	HO	0.6922	0.7286	0.7053	0.6938	0.6870	0.700
	Fis	0.054	0.017	0.023	0.070	0.048	0.06

existing within groups of populations and within populations was analyzed by Analysis of Molecular Variance (AMOVA) using Arlequin version 3.5 [41].

The correlation between genetic and geographical distances was assessed by the regression of $F_{ST}/(1 - F_{ST})$

Table 2 Heterozygosity tests in *An. funestus* populations from Senegal

Locality	TPM			SMM
	70%	80%	90%	
Diaminar	3	4	4	7
Dielmo	7	7	7	10**
Gankette	3	3	4	7
Loboudou	1**	3*	7	8
Mbilor	2	5	5	6

TPM: Two-Phase mutation Model. **SMM:** Stepwise Mutation Model.
 *P < 0.05, **P < 0.01 (two-tailed Wilcoxon signed-rank test P-values for deviation from MDE) after correction for multiple tests. The number of microsatellite loci showing heterozygote deficiency (e.g., He < Heq) out of 11 test loci is given.

on the logarithm (ln) of geographical distance [42], and tested using the Mantel test available in GENEPOP. Dispersion ability was estimated by the “neighborhood size,” $D\sigma^2$, that is, the product of the effective population density (D) by the average squared parent offspring distance (σ^2) [42].

Kruskal-Wallis test was used to compare the average number of alleles and the average proportions of heterozygosity between populations using XLSAT Pro 2006[®].

The Bonferroni correction procedure [43] was applied to evaluate significance when multiple tests were performed.

Results

Genetic variability

Genotypes of 235 *An. funestus* females were scored at 11 microsatellite loci. These microsatellite loci were highly polymorphic with a number of distinct alleles per locus ranging from 6 (*FUNQ*, *AFND5*) to 15 (*AFND32*, *FUNL*) in our five populations (Table 1). The average number of alleles per locus ranged from 6.8 to 7.7 and was not significantly different among populations ($P = 0.83$). Mean observed heterozygosity across all loci ranged from 0.68 to 0.72 and was not significantly different among populations ($P = 0.89$). Heterozygosity tests were performed to explore

Table 3 Estimates of F_{ST} values and their statistical significance (Bolded values)

Populations	Diaminar	Dielmo	Gankette	Loboudou
Diaminar		-	-	-
Dielmo	0.0463		-	-
Gankette	-0.0004	0.0490		-
Loboudou	-0.0030	0.0429	0.0055	
Mbilor	0.0092	0.0519	0.0125	0.0140

P-values obtained after 10,000 permutations; Indicative adjusted nominal level (5%) for multiple (10) comparisons is 0.005.
 P < 0.0001 for Bolded values.

demographic stability in *An. funestus* populations and compliance to mutation-drift equilibrium. Significant deviations from mutation-drift equilibrium, as a result of heterozygote excess, was found in a population of Loboudou, when the studies were performed under TPM 70% and TPM 90% model. In Dielmo, significant deviations associated with strong heterozygote deficiencies were detected under SMM model. For the populations of Gankette, Diaminar and Mbilor, no deviation from MDE was found (Table 2).

Hardy-Weinberg and linkage disequilibrium

When the pooled samples were analyzed as a single population, 3 (*AFUB11*, *AFND19* and *FUNQ*) of 11 loci showed significant deviations from Hardy-Weinberg equilibrium due to significant heterozygote deficiency (Table 1). When considering all loci, no deviation from Hardy-Weinberg equilibrium was observed within each population studied. However, significant deviation from Hardy-Weinberg expectations was observed for loci *AFUB11* and *AFND19* respectively in populations of Mbilor and Diaminar after the Bonferroni correction was applied. These deviations from Hardy-Weinberg expectations were associated with heterozygote deficiency (Table 1). No linkage disequilibrium was observed in any pair of loci (6600 permutations, $P > 0.05$).

Genetic differentiation and structure analysis

The levels of genetic differentiation between pairs of populations were estimated by F_{ST} values. Table 3 shows F_{ST} estimates for all pairwise population comparisons. The values of F_{ST} between pairwise population comparisons for all loci ranged from 0 (Diaminar-Gankette) to 0.0519 (Dielmo-Mbilor). The highest F_{ST} estimates were obtained between the most distant populations. F_{ST} estimates were highly significant ($P < 10^{-4}$) between Dielmo and the populations of the Senegal River basin and between Mbilor and the populations around Guiers Lake area (Diaminar, Gankette and Loboudou). After all, only three comparisons were not significant after Bonferroni correction: Diaminar-Loboudou ($P > 0.005$), Diaminar-Gankette ($P > 0.005$), and Gankette-Loboudou ($P > 0.005$).

Structure v 2.2. provided consistent results over 5 replicated runs tested for each K . The probability of the data ($\text{LnPr}(X|K)$) greatly increased from $K=1$ to $K=2$, and then reached a maximum value at $K=3$, after which the values decreased gradually (Figure 2). Thus, in agreement with results based on F_{ST} , the most likely number of genetic clusters in the dataset is $K=3$ (Figure 2).

The analysis of molecular variance (AMOVA) of all the eleven microsatellites then confirmed the differentiation and structure analysis with the variation within

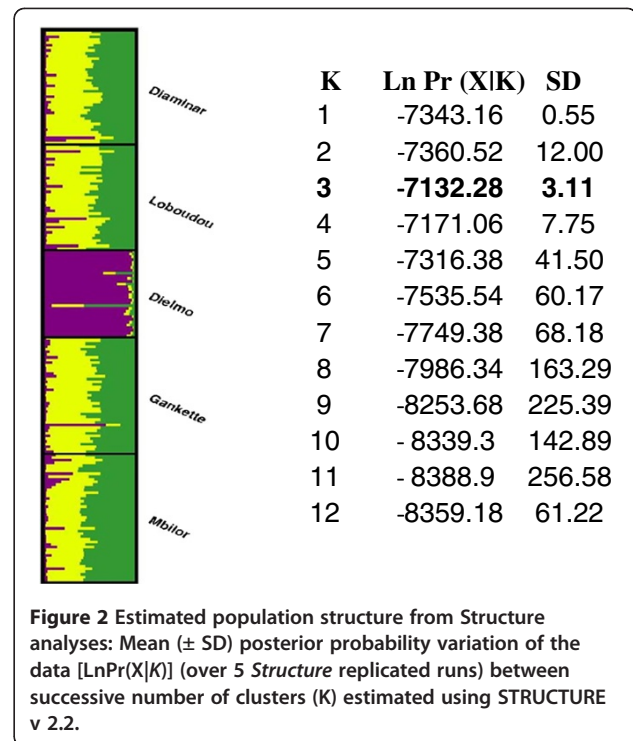


Figure 2 Estimated population structure from Structure analyses: Mean (\pm SD) posterior probability variation of the data [$\text{LnPr}(X|K)$] (over 5 Structure replicated runs) between successive number of clusters (K) estimated using STRUCTURE v 2.2.

individuals, among individuals within populations, among populations within groups and among groups being 92.73%, 4.21%, 0.08%, and 2.97% respectively (Table 4). AMOVA showed that the variation among populations within groups explained only 0.06% of the total variance while the variation from among individuals within populations and within individuals explained 4.21% and 92.73% of the total variation, respectively.

Isolation by distance

Isolation by distance was tested and showed a positive and significant ($R^2 = 0.76$, $P = 0.02$) correlation between $F_{ST}/(1 - F_{ST})$ and the logarithm of distance, when considering the five villages ($D\sigma^2 = 7.23$) (Figure 3). The

Table 4 Analysis of molecular variance (AMOVA) of 11 microsatellite loci in the *An. funestus* populations from Senegal, for 5 populations and 3 groups defined as (Dielmo/Mbilor/Diaminar, Gankette and Loboudou)

Source of variation	Sum of squares	Variance components	Percentage variation
Among groups	39.166	0.12333	2.97159
Among populations within groups	8.986	0.00339	0.08157
Among individuals within populations	907.273	0.17487	4.21357
Within individuals	850.500	3.84868	92.73328
Total	1805.926	4.15026	

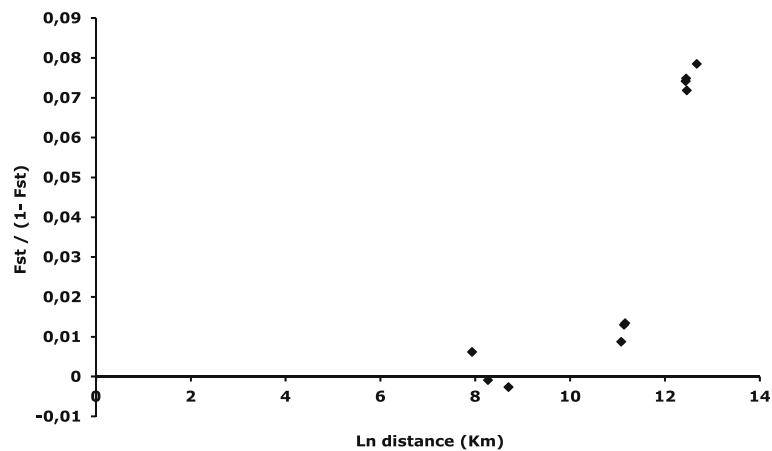


Figure 3 Correlation between $F_{ST}/(1 - F_{ST})$ and logarithm of distance (in Km) for pair-wise comparisons of 5 *Anopheles funestus* populations from Senegal genotyped at 11 microsatellite loci.

correlation became non significant when considering only the *An. funestus* populations of the Senegal River basin ($R^2 = 0.69$, $P = 0.20$) ($D\sigma^2 = 20.94$).

Discussion

This study revealed genetic stability among the populations of *Anopheles funestus* in the Senegal River basin. Moreover, our results showed high levels of genetic diversity within the re-emergent populations of the Senegal River basin and a permanent population in the Sudanian domain. The comparable levels of genetic diversity between both areas confirmed the genetic stability of the newly established populations from the Senegal River basin. Furthermore, geographical distance seems to be the key factor for population genetic divergence, although, other factors could potentially play a role in the genetic differentiation among Senegal River basin populations. The high levels of gene flow denote important mosquito migration among populations.

The observed genetic stability of *An. funestus* populations from the Senegal River basin was at least unexpected. Indeed, after several decades of periodic droughts, and recent re-emergence of *An. funestus*, we predicted a genetic signal of bottleneck followed by population expansion, as reported elsewhere in *An. gambiae* [44]. The absence of such demographic signals may be explained by the noteworthy effective population size of the *An. funestus* population, which could promptly foster population equilibrium [45]. For instance, the large population size in *Anopheles gambiae* prevented any impact on the mosquito population structure after strong population selection (i.e. vector control measures, dry seasons) [46,47]. On the other hand, high migration rates between populations can also erase any genetic signal of

natural selection [48]. Therefore, the absence of signal for bottleneck and demographic expansion may indicate that the re-colonization was massive and/or seasonally repeated. We then hypothesize that the gene flow between Senegal River basin and other *An. funestus* populations may occur each year at the rainy season, when breeding sites are numerous and close enough to allow mosquito dispersal among populations.

Our results showed low but significant levels of genetic differentiation between populations of the Senegal River basin and those from the sudanian area. High levels of gene flow have been repeatedly reported on *An. funestus* and our estimates are consistent with previous studies on genetic structure of *An. funestus* populations in Senegal and other parts of Africa using microsatellites [17,18,20,49,50]. The important gene flow between *An. funestus* populations from the Senegal River basin and the sudanian population (252 km apart), revealed by our analysis, indicate the existence of continuous populations of this malaria mosquito are inter-connected. Such observations were already reported in the other genetic studies in the populations of *An. funestus* [19,49,51,52] and *An. gambiae s.l* [53-56]. Therefore, these results reassert that the re-colonization of *An. funestus* in the Senegal River basin was probably carried out by a step by step dispersion starting from the neighbouring areas where *An. funestus* had not disappeared.

The genetic analysis clearly distinguished between sahelian and sudanian populations. The genetic tests of isolation by distance suggested that genetic differences observed between domains are linked to the geographical distance. This is a common pattern in *Anopheles* [44,57,58] and particularly in *Anopheles funestus* [18,20,50,51]. In contrast, *An. funestus*

populations from the Senegal River basin may be subdivided into two distinct genetic entities: populations around Guiers lake area (Diaminar, Gankette, Loboudou) and populations from the low valley of Senegal River (Mbilor). The existence of these three genetic entities (two in the Senegal River basin and one from the sudanian domain) was confirmed by different genetic approaches (i.e. Structure and AMOVA). When Dielmo was excluded from the isolation by distance analysis, geographical distance did not explain the genetic differentiation observed between Mbilor and populations around Guiers Lake area. Thereby, other factors rather than geographical distance should play a key role into the population structuration of *An. funestus* populations in the Senegal River basin. Chromosomal differentiation detected between *An. funestus* populations of the low valley of Senegal River and the Guiers Lake area (difference of frequency for the inversion 3La) [12] may be implicated in the structure observed as demonstrated in the *An. funestus* populations of Burkina Faso [17]. Because paracentric inversions are involved in the adaptation to various environments, the chromosomal differentiation detected between *An. funestus* populations of the low valley of Senegal River and the Guiers Lake area [12] could be the consequence of different breeding sites, themselves consequences of different environmental changes induced by human activity.

Conclusions

Our study showed the existence of three genetically different subpopulations of *An. funestus*: populations around Guiers Lake area, populations from the low valley of Senegal River, and populations from Dielmo. The high genetic diversity among populations from the Senegal River basin coupled with no evidence of bottleneck and with a gene flow with the southern population suggested that the re-colonization was likely carried out by massive and repeated stepping-stone dispersions starting from the neighbouring areas where *An. funestus* endured. Geographical distance is not the only factor involved in shaping of the genetic structure observed between the *An. funestus* populations from the low valley of the Senegal River and The Guiers Lake area and we hypothesize that the different breeding sites created by human activities may have shaped chromosomal structuration and may explain the restricted but still occurring gene flow. Our study is therefore indicative of adaptation of malaria vectors to the environment modified by humans.

Competing interests

The authors declare that they have no competing interests.

Authors' contributions

ID, LK and DF designed and supervised the study. BS, ID and LK performed field activities. BS performed laboratory work under guidance of AC. BS, DA, AC analyzed the data. BS, DA, ID and AC drafted and revised the manuscript. All authors approved the final version of the manuscript.

Acknowledgments

We are grateful to Malick Faye, Moussa Diagne, Omar Niang for technical assistance and help during field investigations and the villagers for their cooperation and their active participation in this study. The authors also acknowledge Kader Ba from the Institut des Sciences de la Terre, Dakar, Sénégal for his help in making the map of the study area and the PAL-Fleuve programme. This study was supported by the French Ministry of Research through the PAL+ program and the Institut Pasteur de Dakar.

Author details

¹Département de Biologie animale Laboratoire d'écologie vectorielle et parasitaire, Université Cheikh Anta Diop de Dakar, Dakar-Fann BP 5005, Sénégal. ²Unité d'entomologie médicale, Institut Pasteur de Dakar, 36 Avenue Pasteur, Dakar BP 220, Sénégal. ³Institut de Recherche pour le Développement, Unité MIVEGEC (IRD 224-CNRS 5290-UM1-UM2), 34394, Montpellier Cedex 5 BP 64501, France. ⁴Institut de Recherche en Sciences de la Santé-Direction Régionale de l'Ouest, Bobo Dioulasso, Burkina Faso. ⁵Department of Biological Sciences Eck Institute for Global Health, University of Notre Dame, Notre Dame, IN 46556, USA.

Received: 22 March 2012 Accepted: 21 August 2012

Published: 5 September 2012

References

1. Coetzee M, Fontenille D: **Advances in the study of *Anopheles funestus*, a major vector of malaria in Africa.** *Insect Biochem Mol Biol* 2004, **34**:599-605.
2. Fontenille D, Lepers JP, Campbell GH, Coluzzi M, Rakotoarivony I, Coulanges P: **Malaria transmission and vector biology in Manarintsoa, high plateaux of Madagascar.** *AmJTrop Med Hyg* 1990, **43**:107-115.
3. Mendis C, Jacobsen J, Gamage-Mendis A, Bule E, Dgedge M, Thompson R, Cuamba N, Barreto J, Begtrup K, Sinden R, Hogh B: ***Anopheles arabiensis* and *Anopheles funestus* are equally important vectors of malaria in Matola coastal suburb of Maputo, southern Mozambique.** *Med Vet Entomol* 2000, **14**:171-180.
4. Cohuet A, Simard F, Wondji CS, Antonio-Nkondjio C, Awono-Ambene P, Fontenille D: **High malaria transmission intensity due to *Anopheles funestus* (Diptera: Culicidae) in a village of savannah-forest transition area in Cameroon.** *J Med Entomol* 2004, **41**:901-915.
5. Dabire KR, Baldet T, Diabate A, Dia I, Costantini C, Cohuet A, Guiguemde TR, Fontenille D: ***Anopheles funestus* (Diptera: Culicidae) in a Humid Savannah Area of Western Burkina Faso: Bionomics, Insecticide Resistance Status, and Role in Malaria Transmission.** *J Med Entomol* 2007, **44**:990-997.
6. Diagne N, Fontenille D, Konate L, Faye O, Lamizana MT, Legros F, Molez JF, Trape JF: **Les anophèles du Sénégal. Liste commentée et illustrée.** *Bull Soc Pathol Exot* 1994, **87**:267-277.
7. Fontenille D, Lochouart L, Diagne N, Sokhna CS, Lemasson JJ, Diatta M, Konate L, Faye O, Rogier C, Trape JF: **High annual and seasonal variations in malaria transmission by anophelines and vector species composition in Dielmo, a holoendemic area in Senegal.** *AmJTrop Med Hyg* 1997, **56**:247-253.
8. Dia I, Diop T, Rakotoarivony I, Kengne P, Fontenille D: **Bionomics of *Anopheles gambiae* Giles, *Anopheles arabiensis* Patton, *Anopheles funestus* Giles and *Anopheles nili* (Theobald) (Diptera: Culicidae) and transmission of *Plasmodium falciparum* in a Sudano-Guinean zone (Ngari, Senegal).** *J Med Entomol* 2003, **40**:279-283.
9. Dia I, Konate L, Samb B, Sarr J, Diop A, Rogerie F, Faye M, Riveau G, Remoue F, Diallo M, Fontenille D: **Bionomics of malaria vectors and relationship with malaria transmission and epidemiology in three physiographic zones in the Senegal River Basin.** *Acta Trop* 2008, **105**:145-153.
10. Mouchet J, Faye O, Julvez J, Manguin S: **Drought and malaria retreat in the Sahel West Africa.** *Lancet* 1996, **348**:1736.

11. Konate L, Diop A, Sy N, Faye MN, Dieng Y, Izri A, Faye O, Mouchet J: **Comeback of *Anopheles funestus* in Sahelian Senegal.** *Lancet* 2001, **358**:336.
12. Dia I, Samb B, Konate L, Fontenille D: **Population structure of newly established *Anopheles funestus* populations in the Senegal River basin using paracentric chromosomal inversions.** *Acta Trop* 2010, **115**:90–94.
13. Boccolini D, Sabatini A, Sanogo E, Sagnon Nf, Coluzzi M, Costantini C: **Chromosomal and vectorial heterogeneities in *Anopheles funestus* in Burkina Faso West Africa.** *Parassitologia* 1994, **36**(Supp I1):20.
14. Lochouart L, Dia I, Boccolini D, Coluzzi M, Fontenille D: **Bionomical and cytogenetic heterogeneities of *Anopheles funestus* in Senegal.** *Trans Roy Soc Trop Med Hyg* 1998, **92**:607–612.
15. Costantini C, Sagnon N, Ilboudo-Sanogo E, Coluzzi M, Boccolini D: **Chromosomal and bionomic heterogeneities suggest incipient speciation in *Anopheles funestus* from Burkina Faso.** *Parassitologia* 1999, **41**:595–611.
16. Dia I, Lochouart L, Boccolini D, Costantini C, Fontenille D: **Spatial and temporal variations of the chromosomal inversion polymorphism of *Anopheles funestus* in Senegal.** *Parasite* 2000, **7**:179–183.
17. Michel AP, Guelbeogo WM, Grushko O, Schemerhorn BJ, Kern M, Willard MB, Sagnon Nf, Costantini C, Besansky NJ: **Molecular differentiation between chromosomally defined incipient species of *Anopheles funestus*.** *Insect Mol Biol* 2005, **14**:375–387.
18. Ayala D, Fontaine CM, Cohuet A, Fontenille D, Vitalis R, Simard F: **Chromosomal Inversions Natural Selection and Adaptation in the Malaria Vector *Anopheles funestus*.** *Mol Biol Evol* 2011, **28**:745–758.
19. Braginetz OP, Minakawa N, Mbogo CM, Yan G: **Population genetic structure of the African malaria mosquito *Anopheles funestus* in Kenya.** *AmJTrop Med Hyg* 2003, **69**:303–308.
20. Cohuet A, Dia I, Simard F, Raymond M, Fontenille D: **Population structure of the malaria vector *Anopheles funestus* in Senegal based on microsatellite and cytogenetic data.** *Insect Mol Biol* 2004, **13**:251–258.
21. Gillies MT, De Meillon B: **The Anophelinae of Africa South of the Sahara (Ethiopian zoogeographical region).** *Publ South Afr Inst Med Res* 1968, **54**:343.
22. Morlais I, Ponçon N, Simard F, Cohuet A, Fontenille D: **Intraspecific nucleotide variation in *anopheles gambiae*: new insights into the biology of malaria vectors.** *AmJTrop Med Hyg* 2004, **71**:795–802.
23. Koekemoer LL, Kamau L, Hunt RH, Coetzee M: **A cocktail polymerase chain reaction assay to identify members of the *Anopheles funestus* (Diptera: Culicidae) group.** *AmJTrop Med Hyg* 2002, **66**:804–811.
24. Cohuet A, Simard F, Toto JC, Kengne P, Coetzee M, Fontenille D: **Species identification within the *Anopheles funestus* group of malaria vectors in Cameroon and evidence for a new species.** *AmJTrop Med Hyg* 2003, **69**:200–205.
25. Sinkins SP, Hackett BJ, Costantini C, Vulule J, Ling YY, Collins FH, Besansky NJ: **Isolation of polymorphic microsatellite loci from the malaria vector *Anopheles funestus*.** *Mol Ecol* 2000, **9**:490–492.
26. Sharakhov I, Braginetz O, Grushko O, et al: **12 co-authors A microsatellite map of the African human malaria vector *Anopheles funestus*.** *J Hered* 2004, **95**:29–34.
27. Cohuet A, Simard F, Berthomieu A, Raymond M, Fontenille D, Weill M: **Isolation and characterisation of microsatellite DNA markers in the malaria vector *Anopheles funestus*.** *Mol Ecol Notes* 2002, **2**:498–500.
28. Bj S, Greeman S, Banks M, Vulule J, Sagnon Nf, Costantini C, Besansky NJ: **Dinucleotide microsatellite markers from *Anopheles funestus*.** *Mol Ecol Notes* 2003, **3**:505–507.
29. Belkhir K, Borsa P, Chikhi L, Raufaste N, Bonhomme F: **GENETIX 4.05, logiciel sous Windows TM pour la génétique des populations.** In *Laboratoire Génome, Populations, Interactions, CNRS UMR 5000*. France: Université de Montpellier II, Montpellier; 2004. Available from [http://www.genetix.univ-montp2.fr/genetix/intro.htm].
30. Goudet J: **FSTAT version 2.9.3.2. A computer software to calculate F-statistics.** *J Hered* 1995, **86**:485–486.
31. Raymond M, Rousset F: **GENEPOP, Version 1.2. A population genetics software for exact tests and ecumenicism.** *J Hered* 1995, **86**:248–249.
32. Wright S: **Evolution and Genetics of populations.** In *Variability within and among natural populations*. Volume 4. Chicago: University of Chicago Press; 1978.
33. Weir BS, Cockerham CC: **Estimating F-statistics for the analysis of population structure.** *Evolution* 1984, **38**:1358–1370.
34. Goudet J, Raymond M, De Meeüs T, Rousset F: **Testing differentiation in diploid populations.** *Genetics* 1996, **144**:1933–1940.
35. Cornuet JM, Luikart G: **Description and power analysis of two tests for detecting recent population bottlenecks from allele frequency data.** *Genetics* 1996, **144**:2001–2014.
36. Kimura M, Ohta T: **Stepwise mutation model and distribution of allelic frequencies in a finite population.** *Proc Natl Acad Sci USA* 1978, **75**:2868–2872.
37. Di Rienzo A, Peterson AC, Garza JC, Valdes AM, Slatkin M, Freimer NB: **Mutational processes of simple-sequence repeat loci in human populations.** *Proc Natl Acad Sci USA* 1994, **91**:3166–3170.
38. Pritchard JK, Stephens M, Donnelly P: **Inference of population structure using multilocus genotype data.** *Genetics* 2000, **155**:945–959.
39. Falush D, Stephens M, Pritchard JK: **Inference of population structure using multilocus genotype data: linked loci and correlated allele frequencies.** *Genetics* 2003, **164**:1567–1587.
40. Fontaine MC, Baird SJE, Piry S, et al: **19 co-authors Rise of oceanographic barriers in continuous populations of a cetacean: the genetic structure of harbour porpoises in Old World waters.** *BMC Biol* 2007, **5**:30.
41. Excoffier L, Lischer HEL: **Arlequin suite version 3.5: A new series of programs to perform population genetics analyses under Linux and Windows.** *Mol Ecol Resour* 2010, **10**:564–567.
42. Rousset F: **Genetic differentiation and estimation of gene flow from F-statistics under isolation by distance.** *Genetics* 1997, **145**:1219–1228.
43. Holm S: **A simple sequentially rejective multiple test procedure.** *Scand J Stat* 1979, **6**:65–70.
44. Lehmann T, Licht M, Elissa N, Maega BT, Chimumbwa JM, Watsenga FT, Wondji CS, Simard F, Hawley WA: **Population Structure of *Anopheles gambiae* in Africa.** *J Hered* 2003, **94**:133–147.
45. Michel AP, Grushko O, Guelbeogo WM, Sagnon Nf, Costantini C, Besansky NJ: **Effective population size of *Anopheles funestus* chromosomal forms in Burkina Faso.** *Malaria J* 2006, **5**:115.
46. Simard F, Lehmann T, Lemasson JJ, Diatta M, Fontenille D: **Persistence of *Anopheles arabiensis* during the severe dry season conditions in Senegal: an indirect approach using microsatellite loci.** *Insect Mol Biol* 2000, **9**(5):467–479.
47. Wondji C, Simard F, Lehmann T, Fondjo E, Samè-Ekobo A, Fontenille D: **Impact of insecticide-treated bed nets implementation on the genetic structure of *Anopheles arabiensis* in an area of irrigated rice fields in the Sahelian region of Cameroon.** *Mol Ecol* 2005, **14**:3683–3693.
48. Lenormand T: **Gene flow and the limits to natural selection.** *Trends Ecol Evol* 2002, **17**(4):183–189.
49. Michel AP, Ingrassi MJ, Schemerhorn BJ, Kern M, Le Goff G, Coetzee M, Elissa N, Fontenille D, Vulule J, Lehmann T, Sagnon Nf, Costantini C, Besansky NJ: **Rangewide population genetic structure of the African malaria vector *Anopheles funestus*.** *Mo Ecol* 2005, **14**:4235–4248.
50. Cohuet A, Dia I, Simard F, Raymond M, Rousset F, Antonio-Nkondjio C, Awono-Ambene PH, Wondji CS, Fontenille D: **Gene flow between chromosomal forms of the malaria vector *Anopheles funestus* in Cameroon, Central Africa, and its relevance in malaria fighting.** *Genetics* 2005, **169**:301–311.
51. Ayala D, Le Goff G, Robert V, Jong PD, Takken W: **Population structure of the malaria vector *Anopheles funestus* (Diptera: Culicidae) in Madagascar and Comoros.** *Acta Trop* 2006, **97**:292–300.
52. Temu EA, Hunt RH, Coetzee M: **Microsatellite DNA polymorphism and heterozygosity in the malaria vector mosquito *Anopheles funestus* (Diptera: Culicidae) in east and southern Africa.** *Acta Trop* 2004, **90**:39–49.
53. Lehmann T, Hawley WA, Kamau L, Fontenille D, Simard F, Collins FH: **Genetic differentiation of *Anopheles gambiae* populations from east and west Africa: comparison of microsatellite and allozyme loci.** *Heredity* 1996, **77**:192–200.
54. Lehmann T, Besansky NJ, Hawley WA, Fahey TG, Kamau L, Collins FH: **Microgeographic structure of *Anopheles gambiae* in western Kenya based on mtDNA and microsatellite loci.** *Mol Ecol* 1997, **6**:243–253.
55. Chen H, Minakawa N, Beier J, Yan G: **Population genetic structure of *Anopheles gambiae* mosquitoes on Lake Victoria islands west Kenya.** *Malaria J* 2004, **3**:48.

56. Donnelly MJ, Townson H: Evidence for extensive genetic differentiation among populations of the malaria vector *Anopheles arabiensis* in east Africa. *Insect Mol Biol* 2000, **9**:357–367.
57. Ndo C, Antonio-Nkondjio C, Cohuet A, Ayala D, Kengne P, Morlais I, Awono-Ambene HP, Couret D, Ngassam P, Fontenille D, Simard F: Population genetic structure of the malaria vector *Anopheles nili* in sub-Saharan Africa. *Malar J* 2010, **9**:161.
58. Antonio-Nkondjio C, Ndo C, Kengne P, Mukwaya L, Awono-Ambene HP, Fontenille D, Simard F: Population structure of the malaria vector *Anopheles moucheti* in the equatorial forest region of Africa. *Malar J* 2008, **7**:120.

doi:10.1186/1756-3305-5-188

Cite this article as: Samb *et al.*: Population genetic structure of the malaria vector *Anopheles funestus*, in a recently re-colonized area of the Senegal River basin and human-induced environmental changes. *Parasites & Vectors* 2012 **5**:188.

Submit your next manuscript to BioMed Central
and take full advantage of:

- Convenient online submission
- Thorough peer review
- No space constraints or color figure charges
- Immediate publication on acceptance
- Inclusion in PubMed, CAS, Scopus and Google Scholar
- Research which is freely available for redistribution

Submit your manuscript at
www.biomedcentral.com/submit

