



HAL
open science

Induction of amyloid- β deposits from serially transmitted, histologically silent, A β seeds issued from human brains

Anne-Sophie Herard, Fanny Petit, Charlotte Gary, Martine Guillermier, Susana Boluda, Clément M Garin, Suzanne Lam, Marc Dhenain, Franck Letournel, Marie-Laure Martin-Negrier, et al.

► To cite this version:

Anne-Sophie Herard, Fanny Petit, Charlotte Gary, Martine Guillermier, Susana Boluda, et al.. Induction of amyloid- β deposits from serially transmitted, histologically silent, A β seeds issued from human brains. *Acta Neuropathologica Communications*, 2020, 8 (1), 10.1186/s40478-020-01081-7. hal-03052986

HAL Id: hal-03052986

<https://hal.science/hal-03052986>

Submitted on 10 Dec 2020

HAL is a multi-disciplinary open access archive for the deposit and dissemination of scientific research documents, whether they are published or not. The documents may come from teaching and research institutions in France or abroad, or from public or private research centers.


L'archive ouverte pluridisciplinaire **HAL**, est destinée au dépôt et à la diffusion de documents scientifiques de niveau recherche, publiés ou non, émanant des établissements d'enseignement et de recherche français ou étrangers, des laboratoires publics ou privés.

RESEARCH

Open Access



Induction of amyloid- β deposits from serially transmitted, histologically silent, A β seeds issued from human brains

Anne-Sophie Hérard^{1,2†}, Fanny Petit^{1,2†}, Charlotte Gary^{1,2}, Martine Guillermier^{1,2}, Susana Boluda^{3,4}, Clément M. Garin^{1,2}, The Brainbank Neuro-CEB Neuropathology Network⁵, Suzanne Lam^{1,2} and Marc Dhenain^{1,2*} 

Abstract

In humans, iatrogenic transmission of cerebral amyloid- β (A β)-amyloidosis is suspected following inoculation of pituitary-derived hormones or dural grafts presumably contaminated with A β proteins as well as after cerebral surgeries. Experimentally, intracerebral inoculation of brain homogenate extracts containing misfolded A β can seed A β deposition in transgenic mouse models of amyloidosis or in non-human primates. The transmission of cerebral A β is governed by the host and by the inoculated samples. It is critical to better characterize the propensities of different hosts to develop A β deposition after contamination by an A β -positive sample as well as to better assess which biological samples can transmit this lesion. A β precursor protein (huAPP_{wt}) mice express humanized non-mutated forms of A β precursor protein and do not spontaneously develop A β or amyloid deposits. We found that inoculation of A β -positive brain extracts from Alzheimer patients in these mice leads to a sparse A β deposition close to the alveus 18 months post-inoculation. However, it does not induce cortical or hippocampal A β deposition. Secondary inoculation of apparently amyloid deposit-free hippocampal extracts from these huAPP_{wt} mice to APP_{swe}/PS1_{dE9} mouse models of amyloidosis enhanced A β deposition in the alveus 9 months post-inoculation. This suggests that A β seeds issued from human brain samples can persist in furtive forms in brain tissues while maintaining their ability to foster A β deposition in receptive hosts that overexpress endogenous A β . This work emphasizes the need for high-level preventive measures, especially in the context of neurosurgery, to prevent the risk of iatrogenic transmission of A β lesions from samples with sparse amyloid markers.

Keywords: β -amyloid pathology, Alzheimer's disease, A β transmission

Introduction

Epidemiological data suggest that, in humans, iatrogenic cerebral A β -amyloidosis can be induced following administration of cadaver-sourced human growth hormone [3, 9] or dura mater graft [8] containing amyloid- β (A β) proteins as well as after cerebral surgeries potentially involving tools contaminated with A β [10]. In addition to their occurrence in parenchymal tissue, these iatrogenic induced lesions can affect cerebral vasculature leading to amyloid angiopathy sometimes associated to cerebral hemorrhages inducing dramatic clinical signs and fatality

*Correspondence: marc.dhenain@cea.fr

†Anne-Sophie Hérard and Fanny Petit equally contributed to this work

¹ Laboratoire des Maladies Neurodégénératives, Université Paris-Saclay, CEA, CNRS, 18 Route du Panorama, 92265 Fontenay-aux-Roses, France
Full list of author information is available at the end of the article



[1, 8, 10]. A β deposition can be induced experimentally in mouse models that overexpress mutated forms of A β protein precursor (A β PP) after intracerebral inoculation of A β -containing brain extracts issued from transgenic mouse models of amyloidosis or from Alzheimer's disease patients [5, 14]. The experimental transmission of A β -amyloidosis is considered to be related to A β seeds that act as self-propagating agents responsible for its initiation, progression and spreading in the brain. It has been observed that there is variability in the development of A β deposition between different hosts, e.g. different mouse models, which implies that host factors are critical for in vivo seeding [14]. The ability to induce A β deposition is also governed by the inoculated samples [14]. In order to assess the risk of iatrogenic contamination, it is critical: (1) to extensively characterize the hosts in which A β deposition can be induced, especially in animals with low propensities to develop amyloidosis; (2) to evaluate the potential of different brain samples to induce A β deposition. Our group recently showed that inoculation of human AD brain extracts to non-human primates that have a cerebral environment close to the human one can induce cerebral A β deposition [5]. Here, we found that intra-hippocampal inoculation of human AD brain extracts to huAPP_{wt} mice, a model that expresses humanized non-mutated forms of A β PP and does not spontaneously develop amyloid deposits, induces slight A β deposition in regions surrounding the alveus but not in other parts of the hippocampus or brain regions. This suggests that induction of cerebral A β deposition is low in models that have a low propensity to develop amyloid pathology. We then showed that apparently A β -deposit-free hippocampal samples from AD-inoculated huAPP_{wt} mice enhance A β deposition in the APP_{swe}/PS1_{ΔE9} mouse model 9 months after their intrahippocampal inoculation. Thus, A β seeds can be transmitted from apparently A β -deposit-negative samples and induce A β deposition in hosts that have a high propensity to develop amyloid pathology. This suggests that the prevention of iatrogenic amyloid transmission from one patient to another does not rely solely on the amyloid status of the donors since samples with sparse A β lesions can induce pathology in a receptive host.

Materials and methods

Human brain samples

Frozen brain tissue samples (parietal cortex) from two Alzheimer's disease patients (Braak stage VI, Thal phases 5 and 4, respectively) and one control individual that did not show clinical or histological signs of neurological disease (Braak stage/Thal phase 0) were obtained through a brain donation program of the Brainbank Neuro-CEB Neuropathology Network. The consent forms were

signed by either the patients themselves or their next of kin in their name, in accordance with French bioethics laws. The Brainbank Neuro-CEB Neuropathology Network has been declared at the Ministry of Higher Education and Research and has received approval to distribute samples (agreement AC-2013-1887).

Detailed histological and biochemical characterization of these brains were previously published, as well as the preparation and assessment of human brain homogenates [5]. Operators were blinded to the status of the patients. The routine detection of A β and tau deposits was performed with the 6F3D anti-A β antibody (Dako, Glostrup, Denmark, 1/200) and polyclonal anti-tau antibody (Dako, Glostrup, Denmark, 1/500). Parietal cortex homogenates (20% weight/volume in a sterile 5% glucose solution) were aliquoted into sterile polypropylene tubes and stored at -80°C until use. The 20% aliquoted homogenates were diluted to 10% (w/v) in sterile Dulbecco's phosphate-buffered saline (PBS, Gibco, ThermoFisher Scientific, France) extemporaneously prior to inoculation in mice. The extracts from the two Alzheimer brain samples were shown to be able to induce amyloid deposition four months after inoculation in two-month-old female APP_{swe}/PS1_{ΔE9} mice [5].

Ethical statement for animal experiments

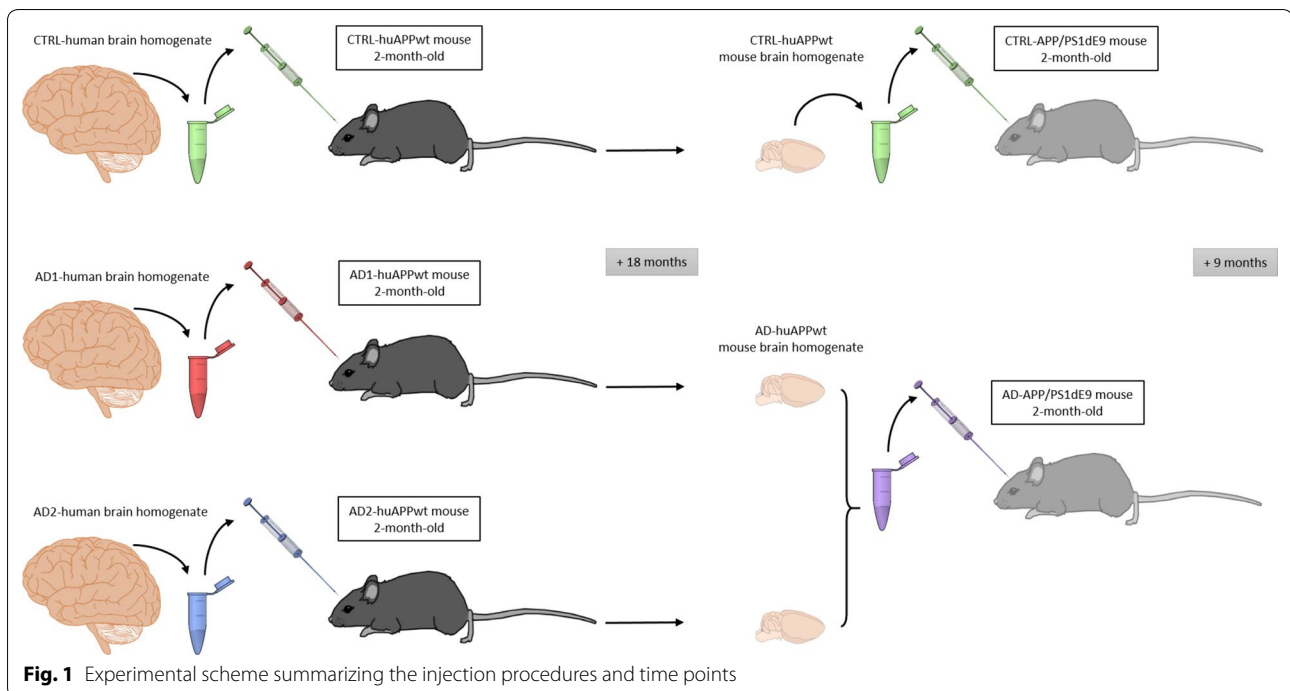
All animal experiments were conducted in accordance with the European Community Council Directive 2010/63/ECC. Animal care was in accordance with institutional guidelines and experimental procedures were approved by local ethical committees (APAFIS 2015062412105538 v1; ethics committees CEtEA-CEA DSV IdF N°44, France). They were performed in a facility authorized by local authorities (authorization #D92-032-02), in strict accordance with recommendations of the European Union (2010-63/EEC), and in compliance with the 3R recommendations. Animal care was supervised by a dedicated veterinarian and animal technicians. Animals were housed under standard environmental conditions (12-h light-dark cycle, temperature: $22 \pm 1^{\circ}\text{C}$ and humidity: 50%) with ad libitum access to food and water.

Animals and overall experimental plan

Transgenic mouse models

The overall experimental plan is described in Fig. 1.

First, three experimental groups were initially created for experiments involving female huAPP_{wt} mice. These transgenic animals express a wild type form of the β -amyloid peptide precursor (A β PP) [16]. Mice involved in this study were heterozygous. These mice do not display any A β deposits even at late age [15]. HuAPP_{wt} mice were stereotaxically inoculated, in the hippocampus, at 2 months of age with AD brain



homogenates from the two different AD patients (AD-huAPP_{wt}, n=6 for AD1, n=6 for AD2) or with control human brain homogenate (CTRL-huAPP_{wt}, n=8). Their brains were collected at 20 months of age (18 months post-inoculation) and used for histological and biochemical analyses. Data from huAPP_{wt} mice inoculated with AD brain homogenates were pooled for statistical analysis. We thus compared two groups of animals, CTRL-huAPP_{wt} (n=8) and AD-huAPP_{wt} (n=12). Brains from huAPP_{wt} mice were also used to prepare hippocampal homogenates for secondary injection into APP_{swe}/PS1_{dE9} mice. Two homogenates were prepared. The first one was made from the hippocampi of huAPP_{wt} mice inoculated with either AD1 (n=6) or AD2 (n=6) that were pooled to serve as a single homogenate. The second one was issued from the hippocampi of huAPP_{wt} mice inoculated with CTRL brains (n=8). The APP_{swe}/PS1_{dE9} transgenic mice express mutated forms of both human A β PP (APP_{swe}: KM670/671NL) and presenilin 1 (deletion of exon 9) at high levels all throughout the brain and present with amyloid plaques and amyloid angiopathy [4]. Two experimental groups were followed-up: APP_{swe}/PS1_{dE9} mice inoculated with brain homogenates from AD-huAPP_{wt} mice (AD-APP_{swe}/PS1_{dE9}, n=6) or from CTRL-huAPP_{wt} mice (CTRL-APP_{swe}/PS1_{dE9}, n=5). The mice were stereotactically injected, in the hippocampus, at 2 months of age. Their brains were collected at 11 months of age (9 months post-inoculation).

Stereotaxic injections and mouse brain collection

Inoculations were performed bilaterally in the dorsal hippocampus (AP - 2 mm, DV - 2 mm, L \pm 1 mm [17]). The animals were anaesthetized by an intraperitoneal ketamine-xylazine injection (Imalgène 1000, Merial, France (1 mg/10 g); 2% Rompun, Bayer Healthcare, Leverkusen, Germany (0.1 mg/10 g)) and placed in a stereotaxic frame (Phymep, France). Respiration rate was monitored and body temperature was maintained at 37 \pm 0.5 $^{\circ}$ C with a heating blanket during surgery. After making a midline incision of the scalp, burr holes were drilled in the appropriate location. Bilateral intrahippocampal injections of 2 μ L 10% brain homogenates were performed with a 26-gauge needle. The surgical area was cleaned before and after surgery (iodinate povidone, Vetedine, Vetoquinol, France), the incision sutured, and the animals placed in an incubator (temperature 25 $^{\circ}$ C) and monitored until recovery from anesthesia.

Animals were euthanized with an overdose of sodium pentobarbital (100 mg/kg intraperitoneally), followed by intracardiac perfusion with phosphate-buffered saline (PBS, Gibco, ThermoFisher Scientific, France) for APP_{swe}/PS1_{dE9} mice only. Indeed, to preserve soluble A β species at best in the brain of huAPP_{wt} mice initially inoculated with human brain homogenates, we decided not to drain their brains with PBS. The left hemisphere was post-fixed with 4% paraformaldehyde in PBS for histological analysis. The right hemisphere was dissected to extract the hippocampus, which was immediately

snap-frozen in liquid nitrogen and stored at -80°C for biochemical analysis and homogenate preparation.

huAPPwt mouse brain homogenate preparation

Hippocampi from huAPP_{wt} mice were sonicated 6 times (cycle 0.5, amplitude 30%, Heidolph, Entraigues sur la Sorgue, France) in Dulbecco's PBS (10% m/m). They were then homogenized using ceramic beads (CK14-KT03961-1-003.2) and a Precellys 24 tissue homogenizer (Bertin Instrument, France) at 5000 rpm for 20 s. Samples were vortexed for 2 min, sonicated for 5 s (cycle 1, 40 amplitude units, 80 W) and centrifugated at 3000 g for 5 min. The supernatant was aliquoted and stored at -80°C . Samples were extemporaneously sonicated 20 times (cycle 0.5, 20 amplitude units) before injection in APP_{swe}/PS1_{dE9} mice. A fraction of all the huAPP_{wt} mouse hippocampal homogenates, either AD- or CTRL-inoculated, were pooled to prepare the two homogenates injected in the brains of APP_{swe}/PS1_{dE9} mice.

Immunohistochemistry and microscopic image analysis

The 4% paraformaldehyde post-fixed hemispheres were cryoprotected using 15% and 30% sucrose solutions. Series of brain coronal sections (40- μm -thick) were cut on a sliding freezing microtome (SM2400, Leica Microsystems). The floating histological serial sections were preserved in a storage solution (30% glycerol, 30% ethylene glycol, 30% distilled water, and 10% phosphate buffer) at -20°C until use. Serial sections of the entire brain were stained for the evaluation of A β pathology (4G8 immunohistochemistry and Congo red staining). For 4G8 immunohistochemistry brain sections were rinsed with PBS, pre-treated with 70% formic acid for 3 min (only for biotinylated-4G8) and then incubated in 0.3% hydrogen peroxide for 20 min. Sections were then blocked with PBS-0.2% Triton (Triton X-100, Sigma, St Louis, MO, USA) and 4.5% normal goat serum (NGS) for 30 min before overnight incubation with biotinylated-4G8 at 4°C (1:500; Biologend Covance #SIGNET-39240, monoclonal). The sections stained were rinsed with PBS and then incubated with ABC Vectastain (Vector Labs) before diaminobenzidine tetrahydrochloride (DAB) revelation (DAB SK4100 kit, Vector Labs). For Congo red staining, sections were pretreated with 1% NaOH in 80% EthOH saturated with NaCl for 30 min. Then, they were immersed in the same solution saturated with Congo red for 30 min. Image of stained sections were digitized with a Zeiss Axio Scan.Z1 (Zeiss, Jena, Germany) whole slide imaging microscope at X20 (0.22 μm in plane resolution). Sections stained for A β or Congo red were blindly analyzed using ImageJ software [18]. A β deposits were segmented from 4G8-immunostained sections by applying a threshold (value of 100) on the blue component of

the 8-bit images. A β burden was evaluated as the percentage of surface occupied by the 4G8 staining inside delineated regions of interest as well as the number of plaques per unit of surface. They were quantified in four regions: the hippocampus, parietal cortex, entorhinal cortex, and a region that follows the virtual ventricle that borders the alveus of the hippocampus towards the lateral ventricle. In the hippocampus, ROI definition was based on manual drawing following the region shape. In the parietal and entorhinal cortices, it relied on circles of constant diameter. For the alveus, ROIs were ribbons of 88 μm wide centered on the alveus (one per section, all labelled sections per mouse, selection brush tool from ImageJ). Four to seven sections were used for each animal depending on the number of available sections. Scientists who performed the analyses were blinded to the inoculation groups. Evaluations from Congo-red stained sections used similar methods (but with a threshold of 90), based on the green component of the 8-bit images. As lesions were more discrete, ribbons used for alveus ROIs were 35 μm wide. Labelling from structure with a diameter inferior to 7 μm were excluded from the quantification to avoid measures of background signal.

Quantification of A β by immunoassays

Hippocampal extracts from both mouse strains were homogenized in Dulbecco's PBS (10% m/m) and sonicated 6 times (cycle 0.5, 30% amplitude). They were incubated with a lysis buffer at a final concentration of 50 mM Tris HCl pH7.4, 150 mM NaCl, 1% Triton X-100 supplemented with protease and phosphatase inhibitor cocktails, and sonicated again as previously described. Samples were centrifugated at 20,000 g for 20 min at $+4^{\circ}\text{C}$, the supernatant was collected as the soluble fraction and stored at -80°C until use. A β was measured by an electrochemiluminescence (ECL)-linked immunoassay (Meso Scale Discovery, MSD). The MSD V-PLEX A β peptide panel 1 (6E10) kit was used according to the manufacturer's instructions. Briefly, samples were diluted 10-fold or 25-fold in the provided dilution buffer, respectively for soluble and insoluble fractions. Meanwhile, 96-well plates pre-coated with capture antibodies against A β _{x-40} and A β _{x-42} were blocked for 1 h and washed three times according to the manufacturer instructions, at room temperature. The SULFO-TAG anti-A β 6E10 detection antibody solution was then added to the wells and co-incubated with the diluted samples or calibrators at room temperature with shaking for 2 h. After washing, MSD Read Buffer T was added to the wells and the plate was read immediately on a MSD Sector Imager 2400. Data were analyzed using the MSD DISCOVERY WORKBENCH software 4.0. Internal samples were used

for quality control of the assay performance and inter-plate variability. All samples and calibrators were run in duplicates.

Statistics

Statistical analysis was performed using GraphPad Prism software, version 8, using a Mann-Whitney test (one-tailed). Data are shown on scattered dot plots with median and interquartile range.

Results

Human Alzheimer's disease brain extracts induce a slight amyloid pathology in huAPP_{wt} mice

We bilaterally inoculated brain extracts from clinically and pathologically confirmed AD patients into the hippocampus of huAPP_{wt} mice. A brain extract from a non-AD patient was used as control. In a previous study, we demonstrated that, 4 months after inoculation, APP_{swe}/PS1_{dE9} mice inoculated with the same AD brain extracts display increased amyloid plaque deposition and higher level of biochemically detectable A β as compared to mice inoculated with a CTRL human brain extract [5].

Using 4G8 biotinylated antibodies or Congo red, we did not detect any A β or amyloid deposits in the cortex or hippocampus of the huAPP_{wt} mice whether they were inoculated with human AD- or CTRL-brains. A clear labelling for A β was however detected in 4G8-stained sections in the region surrounding the alveus of almost all the mice inoculated with the AD brains (Fig. 2a–c). It consisted of diffuse extracellular deposits that did not adopt the morphology of plaques and were not present around blood vessels (Fig. 2c). This labelling was not detectable in the CTRL-inoculated mice (Fig. 2e–f). Congo-red stained sections did not reveal any amyloid deposits in AD- or CTRL-inoculated mice (Fig. 2g–h). Quantification of 4G8 sections confirmed the significantly higher A β load in AD-inoculated mice as compared to CTRL-inoculated mice (Fig. 2d, $U=9$; $p=0.001$) and only 2/12 AD-inoculated mice did not display obvious A β load. Biochemical analysis of huAPP_{wt} mouse hippocampus extracts demonstrated similar amounts of soluble A β ₁₋₄₂ ($U=26$; $p=0.11$) or A β ₁₋₄₀ ($U=32.50$; $p=0.26$) in both AD and CTRL groups (data not shown).

Induction of amyloid pathology in APP_{swe}/PS1_{dE9} mice after inoculation of brain samples from huAPP_{wt} mice primarily inoculated with AD brains

Hippocampal homogenates from AD-huAPP_{wt} or CTRL-huAPP_{wt} mice were stereotaxically injected in the hippocampus of APP_{swe}/PS1_{dE9} mice (AD-APP_{swe}/PS1_{dE9} or CTRL-APP_{swe}/PS1_{dE9}). Nine months post-inoculation, as expected, 4G8-positive A β plaques were detected in the hippocampus and cortex of both AD-APP_{swe}/PS1_{dE9}

(Fig. 3a, b) and CTRL-APP_{swe}/PS1_{dE9} (Fig. 3c, d) animals. A clear labelling for A β , in the form of plaques, was also detected in the region surrounding the alveus of almost all the AD-APP_{swe}/PS1_{dE9} mice, and to a lower extent of CTRL-APP_{swe}/PS1_{dE9} mice. The morphology of the A β deposits observed in the alveus differed in the APP_{swe}/PS1_{dE9} compared to that seen in the huAPP_{wt} mice. In the APP_{swe}/PS1_{dE9} A β formed plaques while it was more diffuse in AD-huAPP_{wt} mice (Fig. 2a, b). However, as for AD-huAPP_{wt} mice, A β was not deposited within blood vessels of the APP_{swe}/PS1_{dE9} mice (Fig. 3h). Quantification of 4G8-stained histological sections revealed an increased A β load (Fig. 3e, Mann-Whitney test, $U=1$, $p=0.004$) and an increase in the number of A β plaques per surface unit (Fig. 3f, Mann-Whitney test, $U=3$, $p=0.015$) in the regions surrounding the alveus of the AD-APP_{swe}/PS1_{dE9} mice as compared to CTRL-APP_{swe}/PS1_{dE9} mice. These plaques were not different in size ($U=10$, $p=0.2$). There was not a statistically significant difference in A β load in the hippocampus (Fig. 3g, $U=11$, $p=0.3$), parietal cortex (not shown, $U=14$, $p=0.5$) or entorhinal cortex (not shown, $U=13$, $p=0.4$) of these two groups. The number of A β plaques per surface unit was also not different between these two groups in these regions (not shown, $U>10$, $p>0.2$). Staining with Congo red detected amyloid plaques in the hippocampus and cortex of AD-APP_{swe}/PS1_{dE9} animals (Fig. 3i) or CTRL-APP_{swe}/PS1_{dE9} animals (Fig. 3j). Some amyloid plaques were also detected in the region surrounding the alveus of almost all the mice. Whatever the regions, congophilic plaques were however less numerous and visible than 4G8-labelled plaques. Unlike for 4G8 staining, quantification of Congo red stained sections did not show differences between the two groups of APP_{swe}/PS1_{dE9} animals either in regions surrounding the alveus ($U=10$, $p=0.2$) or in other regions as the hippocampus ($U=9$, $p=0.2$) or parietal cortex ($U=13$, $p=0.4$). Soluble A β ₁₋₄₂ and A β ₁₋₄₀ were assayed in the hippocampus of the APP_{swe}/PS1_{dE9} animals inoculated with AD- or CTRL-huAPP_{wt} mouse brain homogenates. No differences were found between the two groups of animals (not shown, A β ₁₋₄₂: $U=11$, $p=0.3$; A β ₁₋₄₀: $U=12$; $p=0.3$).

Discussion

Human AD-brain extracts were inoculated in the hippocampus of huAPP_{wt} mice that express human wild-type A β PP gene. We showed that, 18 months after inoculation, there was no induction of cortical or hippocampal A β deposits. However, extracts from the apparently A β -deposit-free hippocampus of these AD-inoculated animals induced A β -deposition in APP_{swe}/PS1_{dE9} mice 9 months after inoculation. This suggests

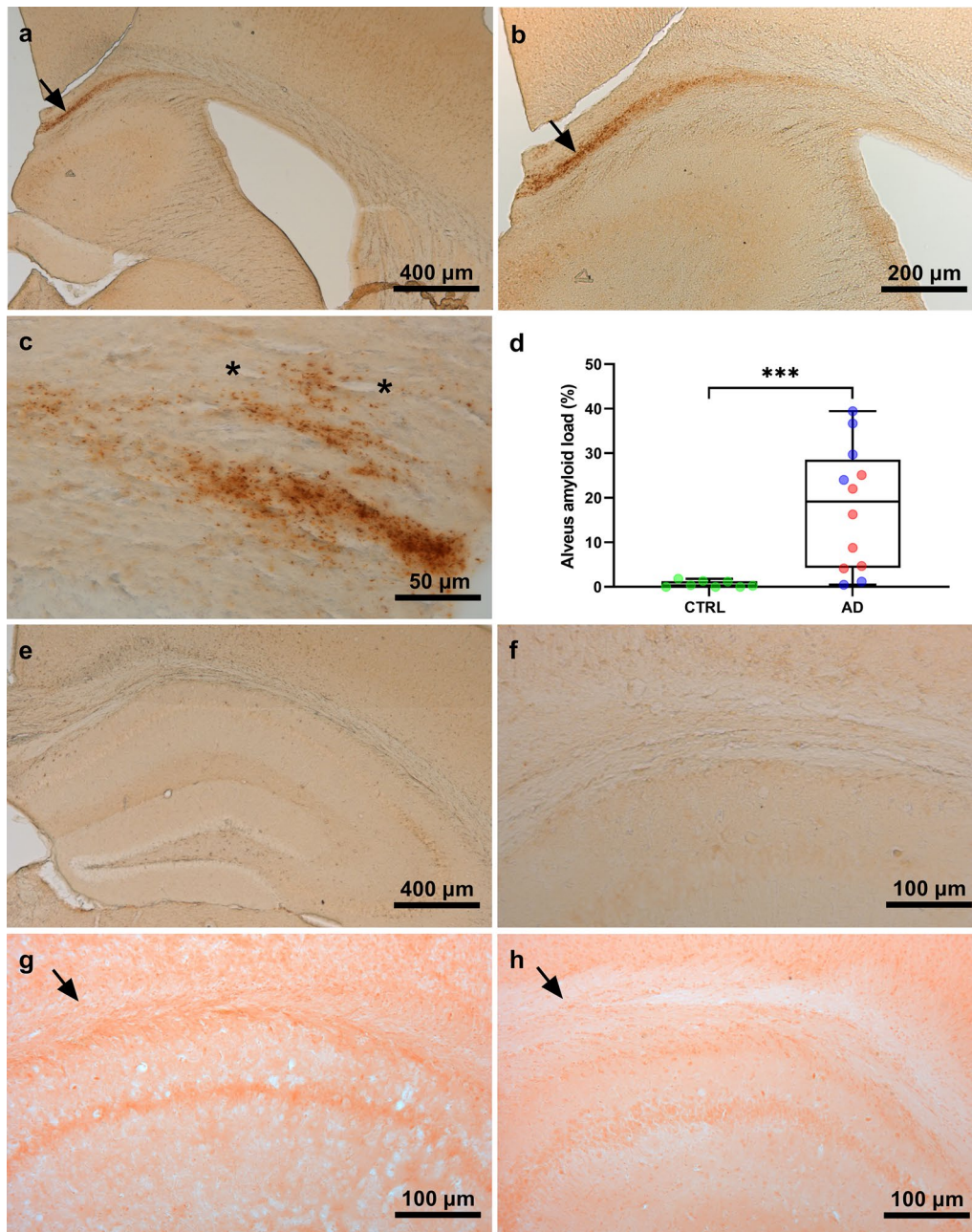


Fig. 2 Detection of A β in the huAPP_{wt} mice inoculated with AD or CTRL brain. Mice inoculated with human brain homogenates were euthanized 18 months after the inoculation. Brain sections were stained with anti-A β (4G8-biotinylated) antibody. Staining was detected in the region surrounding the alveus of almost all the mice inoculated with the AD brains (a–c, arrows) but not the CTRL-brains (e–f). There was no staining in the hippocampus or cortex of the inoculated mice. 4G8 staining was not observed in the close vicinity of blood vessels (asterisk) as shown in a mouse inoculated with AD brain extract (c). Congo red did not stain any deposits in the inoculated mice, as shown in the alveus of an AD- (g) or CTRL-inoculated animal (h). 4G8-labeling was quantified in the alveus (d). First, regions of interest corresponding to the alveus were defined as ribbons of 88 μ m wide centered on the virtual ventricle that borders the alveus of the hippocampus. Amyloid burden in this region was defined, using a thresholding method, as the percentage of surface occupied by the 4G8-staining inside the regions of interest. This analysis showed significant difference between CTRL and AD mice ($U = 9; p = 0.001$)

(See figure on next page.)

Fig. 3 Increased A β deposition in the alveus of 11-month-old APP_{swe}/PS1_{dE9} mice inoculated with AD-huAPP_{wt} brain homogenate. APP_{swe}/PS1_{dE9} mice were inoculated with apparently amyloid deposit-free hippocampus extracts from huAPP_{wt} mice previously inoculated with human brain homogenates and euthanized 18 months after the inoculation. A β (biotinylated 4G8) stained brain sections from the APP_{swe}/PS1_{dE9} mice showed plaques in the hippocampus of all mice (**a–d**). A β deposition was also seen in regions surrounding the alveus of the mice inoculated with AD-huAPP_{wt} brains (**a–b**, arrows). 4G8 staining did not involve blood vessels (asterisk) as highlighted here in a mouse inoculated with AD-huAPP_{wt} (**h**). 4G8-positive load (**e**) and the number of plaques per surface unit (**f**) were significantly increased in the region surrounding the alveus of AD-APP_{swe}/PS1_{dE9} mice compared to the CTRL-APP_{swe}/PS1_{dE9} ($U = 1, p = 0.004^{**}$, and $U = 3, p = 0.015^*$, respectively). **g** Amyloid load was not different in the hippocampus of AD-APP_{swe}/PS1_{dE9} and CTRL-APP_{swe}/PS1_{dE9} mice ($U = 11, p = 0.3$). Congo red stained brain sections from the APP_{swe}/PS1_{dE9} mice showed amyloid plaques (arrows) in the hippocampus and cortex of mice from AD (**i**) and CTRL groups (**j**)

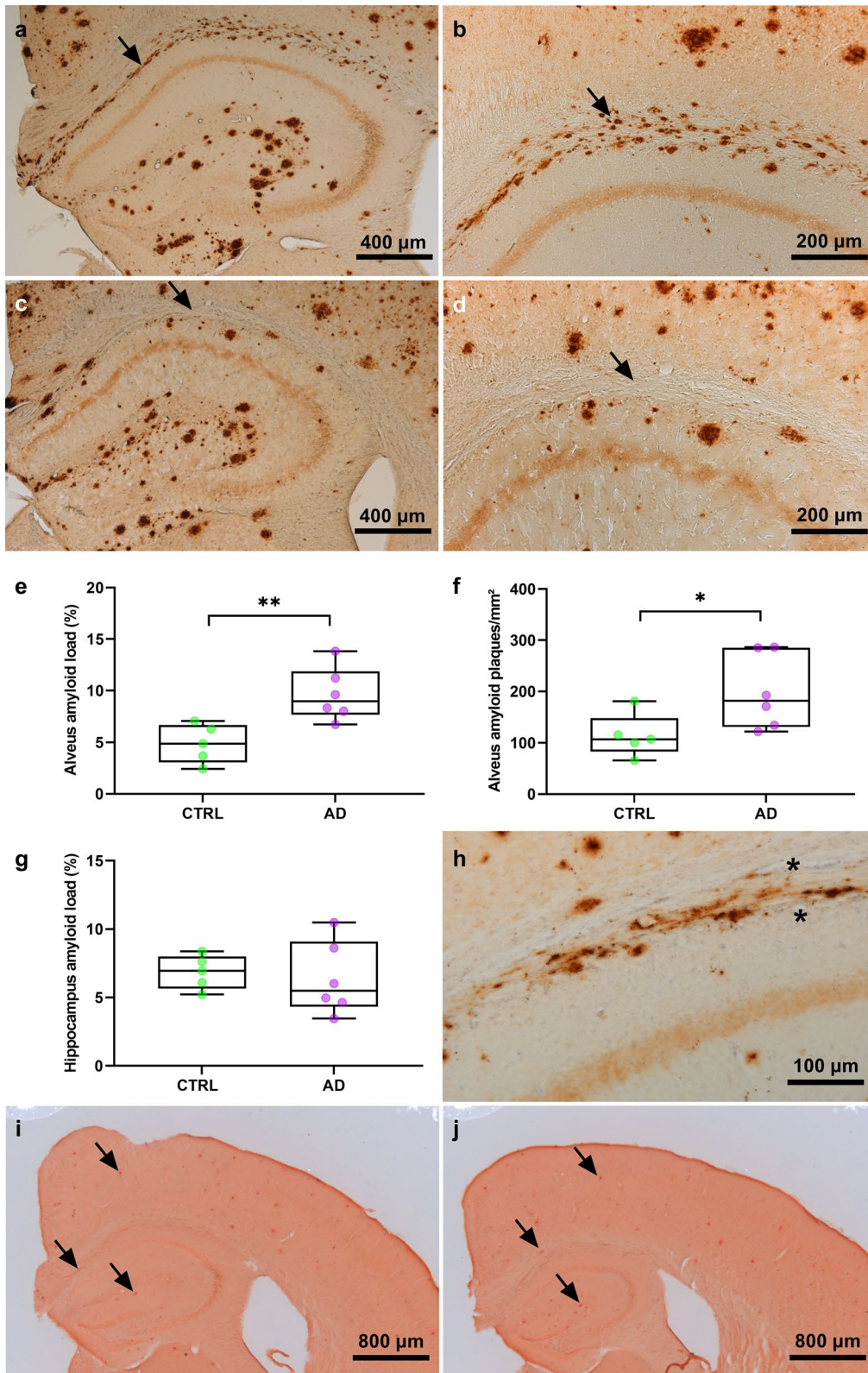
that A β seeds, able to foster A β deposition, were present in the hippocampus of huAPP_{wt} without being easily detectable.

Several studies have shown that the inoculation of human brains containing A β seeds can accelerate cerebral amyloid plaque occurrence in mouse models or primates [5, 14]. The ability to induce cerebral A β -amyloidosis experimentally highly depends on the hosts and the inoculated samples [14]. Inoculation of human brains in hosts that overexpress A β PP (i.e. in specific transgenic mice) leads to an acceleration of A β plaque occurrence. In particular, in a previous study, we showed that inoculation to APP_{swe}/PS1_{dE9} mouse models of amyloidosis of the human AD brain extracts used in the current study induced A β depositions 4 months after the inoculation [5]. Studies in primates that have a natural expression of A β PP (100% homology with the human gene) showed that sparse A β deposits can also be induced following inoculation of A β seeds [5]. A previous study in huAPP_{wt} mice that express the human wild-type A β PP gene, which never develop A β plaques spontaneously, showed sparse A β deposition in the cortex and hippocampus in 40% of the animals 9 months post inoculation, in 65% of the animals 15 months post inoculation and in 100% of the animals 19 months post inoculation [15]. In our hands, small diffuse A β deposits were detected in the region surrounding the alveus, but Congoophilic amyloid plaques were not detected. The lower detection of A β deposits in our study as compared to the previous study [15] might be related to a different preparation of the human samples, and potentially different sonication procedures.

We wondered why A β accumulation occurred in regions surrounding the alveus. Several articles reported A β deposition in this region after intrahippocampal inoculation of human AD-brain homogenates [2, 5, 11, 14, 21], amyloid-positive mouse brains [7, 14, 20, 22] or synthetic A β species [19, 20]. The presence of abnormal protein deposits in this region was also reported after inoculation of prion homogenates in the thalamus/brain midline with a needle that crossed the parietal cortex, the lateral ventricle and the hippocampus [6]. It was

suggested that the orientated disposition of white matter fibers in this area might provide an efficient path for the diffusion from the inoculation sites towards the lateral ventricles to clear pathological proteins [13].

One of the critical questions to prevent iatrogenic transmission of amyloid concerns the propensity of the donor to induce A β -deposits or amyloidosis. Studies in transgenic mouse models of A β -amyloidosis proved that amyloid plaque-positive brains from non-demented subjects are able to induce cerebral A β -amyloidosis [2] while amyloid plaque-negative human brain samples were not able to induce A β -amyloid pathology [2]. Here, we show that homogenates from hippocampi free of A β plaques can induce A β deposition when injected into APP_{swe}/PS1_{dE9} mice. We hypothesize that the huAPP_{wt} hippocampi from mice previously inoculated with AD brain extracts probably contained very low amount of A β seeds. Indeed, even if A β -deposits were not detected in the hippocampus, they were detected in the alveus that juxtaposes the hippocampus. This small amount of A β did not lead to A β plaque occurrence or stronger A β detection by biochemical analysis of A β ₁₋₄₀ or A β ₁₋₄₂ in the hippocampi of huAPP_{wt} animals. However, these samples could induce an increase A β deposition in regions surrounding the alveus, 9 months post inoculation after their inoculation in the hippocampus of APP_{swe}/PS1_{dE9} mice. Evidence for A β deposition was provided by the increase in A β burden as well as the increase in the number of A β -plaques. This clearly outlines that brains with minimal amount of A β are able to induce A β deposition. Furthermore, a recent study showed long-term resilience (180 days) of transmissible but barely detectable A β seeds in A β PP null mice previously inoculated with the brain of mouse models of amyloidosis [23]. The study was based on inoculation of A β -containing brain extracts issued from very old transgenic mice with high amyloid load in A β PP null mice that cannot produce A β proteins. These mice were analyzed up to 6 months after inoculation and only slight A β accumulation (pg/ml range) could be detected by ultra-sensitive techniques in their brains. When these brains were intracerebrally inoculated



in 3-month-old APP23 mice (harboring the APP_{swe} (APP KM670/671NL) transgene), they accelerated A β -deposition as early as 4 months after their inoculation, thus suggesting the long resilience—at least, up to 6 months— of the contaminating forms of A β [23]. This means that exogenous A β seeds from transgenic mice can remain in the brain at levels below routine detection, retain their pathogenicity in A β PP null mice, i.e. in the absence of replication, and therefore have extreme longevity. Unlike this latter study, our experiment was based on the inoculation of human (and not mouse) brain extracts. We speculate that the pathology developed in the APP_{swe}/PS1_{dE9} mice may reflect a dual process based on the resilience of initial seeds and/or on the nucleation of the A β from the huAPP_{wt} mice. Congophilic plaques were however not modulated by the inoculation of AD-huAPP_{wt} brain extracts. In any case, this study shows that very small amounts of A β seeds presumably issued from the human brain samples are able to induce an A β pathology. Nonetheless, the limitations of some ELISA kits to detect very low amounts of A β peptide are pointed out by some authors. We cannot rule out that A β would have been detected with more sensitive tools as Simoa technology. Unfortunately, we did not have any sample left to test this hypothesis. Based on our data, it is reasonable to suggest that soluble forms of A β can act as seeds that are able to induce A β aggregation in recipient hosts. This is consistent with previous data showing that supernatant from full brain extracts have a strong ability to induce A β aggregation while containing only low level (0.05%) of the brain A β pool [12].

Aside from sporadic and genetic forms of AD, iatrogenic transmissions are “new” ways to transmit an AD-related amyloid pathology. These iatrogenic transmissions can be based on surgical procedures and/or inoculation of cadaver brain extracted hormones. Elucidating the risk factors is critical to organize prevention procedures. Here, we outline that even small amounts or undetectable A β seeds can induce A β deposits in a recipient host. Previous studies have recommended the systematic use of prion diseases preventive measures in neurosurgery and the exclusion of patients with AD from donor programs. Since, as suggested by our results, A β deposit-negative samples can also induce A β pathology, it may be useful to also recommend prudence with samples from donors who could present unsuspected A β deposits.

Acknowledgements

The project was funded by France-Alzheimer and Vaincre Alzheimer associations as well as the CEA bottom-up program. It was performed in a core facility supported by/member of NeurATRIS - ANR-11-INBS-0011. We thank the donors and the Brain Donation Program of the “The Brainbank Neuro-CEB Neuropathology Network” run by a consortium of Patient Associations: ARSLA

(association for research on amyotrophic lateral sclerosis), CSC (cerebellar ataxias), Fondation ARSEP (association for research on multiple sclerosis), France DFT (fronto-temporal dementia), Fondation Vaincre Alzheimer, France Parkinson, with the support of Fondation Plan Alzheimer and IHU A-ICM for providing the brain samples used in this study.

The Neuro-CEB Neuropathology network includes: Dr Franck Letournel (CHU Angers), Dr Marie-Laure Martin-Négrier (CHU Bordeaux), Dr Maxime Faisant (CHU Caen), Pr Catherine Godfraind (CHU Clermont-Ferrand), Pr Claude-Alain Maurage (CHU Lille), Dr Vincent Deramecourt (CHU Lille), Dr Mathilde Duchesne (CHU Limoges), Dr David Meyronnet (CHU Lyon), Dr André Maues de Paula (CHU Marseille), Pr Valérie Rigau (CHU Montpellier), Dr Fanny Vandenbos-Burel (Nice), Pr Charles Duyckaerts (CHU PS Paris), Pr Danielle Seilhean (CHU PS, Paris), Dr Susana Boluda (CHU PS, Paris), Dr Isabelle Plu (CHU PS, Paris), Dr Serge Milin (CHU Poitiers), Dr Dan Christian Chiforeanu (CHU Rennes), Pr Annie Laquerrière (CHU Rouen), Dr Béatrice Lannes (CHU Strasbourg).

Author contributions

Ch.G., F.P., and M.D. contributed to the study conception and design. N.N.N. provided the human brain samples. N.N.N., A.S.H., S.B. and Ch.G. characterized the human brain samples. Ch.G., C.I.G., M.G., S.L. performed the inoculations in mice. A.S.H., F.P., S.L. designed and performed the immunohistological analysis in animals. A.S.H., C.I.G. performed biochemical analysis in mice. A.S.H. and M.D. wrote the manuscript. All authors commented on previous versions of the manuscript. All authors read and approved the final manuscript.

Conflict of interest

The authors declare no conflict of interest.

Author details

¹ Laboratoire des Maladies Neurodégénératives, Université Paris-Saclay, CEA, CNRS, 18 Route du Panorama, 92265 Fontenay-aux-Roses, France. ² Molecular Imaging Research Center, CEA, 18 Route du Panorama, 92265 Fontenay-aux-Roses, France. ³ Paris Brain Institute, Alzheimer’s and Prion Diseases Team, CNRS, UMR 7225, INSERM 1127, Sorbonne University UMR75, Paris, France. ⁴ Laboratoire Neuropathologie Raymond Escourrolle, Pitié, APHP, Salpêtrière Hospital, Sorbonne University, 47, Blvd l’Hôpital, 75651 Paris Cedex 13, Paris, France. ⁵ Neuro-CEB Neuropathology Network Network: Plate-Forme de Ressources Biologiques, Bâtiment Roger Baillet, Hôpital de la Pitié-Salpêtrière, 47-83 boulevard de l’Hôpital, 75651 Paris Cedex 13, France.

Received: 7 October 2020 Accepted: 15 November 2020

Published online: 30 November 2020

References

- Banerjee G, Adams ME, Jaunmuktane Z, Lammie GA, Turner B, Wani M, Sawhney IMS, Houlden H, Mead S, Brandner S, Werring DJ (2019) Early onset cerebral amyloid angiopathy following childhood exposure to cadaveric dura. *Ann Neurol* 85:284–290. <https://doi.org/10.1002/ana.25407>
- Duran-Aniotz C, Morales R, Moreno-Gonzalez I, Hu PP, Soto C (2013) Brains from non-Alzheimer’s individuals containing amyloid deposits accelerate Abeta deposition in vivo. *Acta Neuropathol Commun* 1:76. <https://doi.org/10.1186/2051-5960-1-76>
- Duyckaerts C, Sazdovitch V, Ando K, Seilhean D, Privat N, Yilmaz Z, Peckeu L, Amar E, Comoy E, Maceski A, Lehmann S, Brion JP, Brandel JP, Haik S (2018) Neuropathology of iatrogenic Creutzfeldt-Jakob disease and immunoassay of French cadaver-sourced growth hormone batches suggest possible transmission of tauopathy and long incubation periods for the transmission of Abeta pathology. *Acta Neuropathol* 135:201–212. <https://doi.org/10.1007/s00401-017-1791-x>
- Garcia-Alloza M, Robbins EM, Zhang-Nunes SX, Purcell SM, Betensky RA, Raju S, Prada C, Greenberg SM, Bacskai BJ, Frosch MP (2006) Characterization of amyloid deposition in the APP_{swe}/PS1_{dE9} mouse model of Alzheimer disease. *Neurobiol Dis* 24:516–524. <https://doi.org/10.1016/j.nbd.2006.08.017>
- Gary C, Lam S, Herard AS, Koch JE, Petit F, Gipchtein P, Sawiak SJ, Caillierez R, Eddarkaoui S, Colin M, Aujard F, Deslys JP, Network FN, Brouillet E, Buée L, Comoy EE, Pifferi F, Picq J-L, Dhenain M (2019) Encephalopathy induced

- by Alzheimer brain inoculation in a non-human primate. *Acta Neuropathol Commun*. <https://doi.org/10.1186/s40478-019-0771-x>
6. Gibson PH (1986) Distributions of amyloid plaques in four regions of the brains of mice infected with scrapie by intracerebral and intraperitoneal routes of injection. *Acta Neuropathol* 69:322–325. <https://doi.org/10.1007/BF00688311>
 7. Hamaguchi T, Eisele YS, Varvel NH, Lamb BT, Walker LC, Jucker M (2012) The presence of Abeta seeds, and not age per se, is critical to the initiation of Abeta deposition in the brain. *Acta Neuropathol* 123:31–37. <https://doi.org/10.1007/s00401-011-0912-1>
 8. Herve D, Porche M, Cabrejo L, Guidoux C, Tournier-Lasserre E, Nicolas G, Adle-Biasset H, Plu I, Chabriet H, Duyckaerts C (2018) Fatal Abeta cerebral amyloid angiopathy 4 decades after a dural graft at the age of 2 years. *Acta Neuropathol* 135:801–803. <https://doi.org/10.1007/s00401-018-1828-9>
 9. Jaunmuktane Z, Mead S, Ellis M, Wadsworth JD, Nicoll AJ, Kenny J, Launchbury F, Linehan J, Richard-Loendt A, Walker AS, Rudge P, Collinge J, Brandner S (2015) Evidence for human transmission of amyloid-beta pathology and cerebral amyloid angiopathy. *Nature* 525:247–250. <https://doi.org/10.1038/nature15369>
 10. Jaunmuktane Z, Quaegebeur A, Taipia R, Viana-Baptista M, Barbosa R, Koriath C, Scot R, Mead S, Brandner S (2018) Evidence of amyloid-beta cerebral amyloid angiopathy transmission through neurosurgery. *Acta Neuropathol* 135:671–679. <https://doi.org/10.1007/s00401-018-1822-2>
 11. Kane MD, Lipinski WJ, Callahan MJ, Bian F, Durham RA, Schwarz RD, Roher AE, Walker LC (2000) Evidence for seeding of beta-amyloid by intracerebral infusion of Alzheimer brain extracts in beta-amyloid precursor protein-transgenic mice. *J Neurosci* 20:3606–3611. <https://doi.org/10.1523/JNEUROSCI.20-10-03606.2000>
 12. Langer F, Eisele YS, Fritschi SK, Staufienbiel M, Walker LC, Jucker M (2011) Soluble Abeta seeds are potent inducers of cerebral beta-amyloid deposition. *J Neurosci* 31:14488–14495. <https://doi.org/10.1523/JNEUROSCI.3088-11.2011>
 13. Manson JC, Jamieson E, Baybutt H, Tuzi NL, Barron R, McConnell I, Somerville R, Ironside J, Will R, Sy MS, Melton DW, Hope J, Bostock C (1999) A single amino acid alteration (I01L) introduced into murine PrP dramatically alters incubation time of transmissible spongiform encephalopathy. *EMBO J* 18:6855–6864. <https://doi.org/10.1093/emboj/18.23.6855>
 14. Meyer-Luehmann M, Coomaraswamy J, Bolmont T, Kaeser S, Schaefer C, Kilger E, Neuenschwander A, Abramowski D, Frey P, Jaton AL, Vigouret JM, Paganetti P, Walsh DM, Mathews PM, Ghiso J, Staufienbiel M, Walker LC, Jucker M (2006) Exogenous induction of cerebral beta-amyloidogenesis is governed by agent and host. *Science* 313:1781–1784. <https://doi.org/10.1126/science.1131864>
 15. Morales R, Duran-Aniotz C, Castilla J, Estrada LD, Soto C (2012) De novo induction of amyloid-beta deposition in vivo. *Mol Psychiatry* 17:1347–1353. <https://doi.org/10.1038/mp.2011.120>
 16. Mucke L, Masliah E, Yu GQ, Mallory M, Rockenstein EM, Tatsuno G, Hu K, Kholodenko D, Johnson-Wood K, McConlogue L (2000) High-level neuronal expression of abeta 1–42 in wild-type human amyloid protein precursor transgenic mice: synaptotoxicity without plaque formation. *J Neurosci* 20:4050–4058. <https://doi.org/10.1523/JNEUROSCI.20-11-04050.2000>
 17. Paxinos G, Franklin KBJ (2001) *The mouse brain in stereotaxic coordinates*. Academic Press, Cambridge
 18. Schneider CA, Rasband WS, Eliceiri KW (2012) NIH Image to ImageJ: 25 years of image analysis. *Nat Methods* 9:671–675. <https://doi.org/10.1038/nmeth.2089>
 19. Stohr J, Condello C, Watts JC, Bloch L, Oehler A, Nick M, DeArmond SJ, Giles K, DeGrado WF, Prusiner SB (2014) Distinct synthetic Abeta prion strains producing different amyloid deposits in bigenic mice. *Proc Natl Acad Sci USA* 111:10329–10334. <https://doi.org/10.1073/pnas.1408968111>
 20. Stohr J, Watts JC, Mensinger ZL, Oehler A, Grillo SK, Dearmond SJ, Prusiner SB, Giles K (2012) Purified and synthetic Alzheimer's amyloid beta (Abeta) prions. *Proc Natl Acad Sci USA* 109:11025–11030. <https://doi.org/10.1073/pnas.1206555109>
 21. Watts JC, Condello C, Stohr J, Oehler A, Lee J, DeArmond SJ, Lannfelt L, Ingelsson M, Giles K, Prusiner SB (2014) Serial propagation of distinct strains of Abeta prions from Alzheimer's disease patients. *Proc Natl Acad Sci USA* 111:10323–10328. <https://doi.org/10.1073/pnas.1408900111>
 22. Watts JC, Giles K, Grillo SK, Lemus A, DeArmond SJ, Prusiner SB (2011) Bioluminescence imaging of Abeta deposition in bigenic mouse models of Alzheimer's disease. *Proc Natl Acad Sci USA* 108:2528–2533. <https://doi.org/10.1073/pnas.1019034108>
 23. Ye L, Fritschi SK, Schelle J, Obermuller U, Degenhardt K, Kaeser SA, Eisele YS, Walker LC, Baumann F, Staufienbiel M, Jucker M (2015) Persistence of Abeta seeds in APP null mouse brain. *Nat Neurosci* 18:1559–1561. <https://doi.org/10.1038/nn.4117>

Publisher's Note

Springer Nature remains neutral with regard to jurisdictional claims in published maps and institutional affiliations.

Ready to submit your research? Choose BMC and benefit from:

- fast, convenient online submission
- thorough peer review by experienced researchers in your field
- rapid publication on acceptance
- support for research data, including large and complex data types
- gold Open Access which fosters wider collaboration and increased citations
- maximum visibility for your research: over 100M website views per year

At BMC, research is always in progress.

Learn more biomedcentral.com/submissions

