



**HAL**  
open science

# Dissecting the phenotypic and functional heterogeneity of mouse inflammatory osteoclasts by the expression of **Cx3cr1**

Maria-Bernadette Madel, Lidia Ibáñez, Thomas Ciucci, Julia Halper, Matthieu Rouleau, Antoine Boutin, Christophe Hue, Isabelle Duroux-Richard, Florence Apparailly, Henri-Jean Garchon, et al.

► **To cite this version:**

Maria-Bernadette Madel, Lidia Ibáñez, Thomas Ciucci, Julia Halper, Matthieu Rouleau, et al.. Dissecting the phenotypic and functional heterogeneity of mouse inflammatory osteoclasts by the expression of Cx3cr1. *eLife*, 2020, 9, 10.7554/eLife.54493 . hal-03048183

**HAL Id: hal-03048183**

**<https://hal.science/hal-03048183>**

Submitted on 10 Dec 2020

**HAL** is a multi-disciplinary open access archive for the deposit and dissemination of scientific research documents, whether they are published or not. The documents may come from teaching and research institutions in France or abroad, or from public or private research centers.

L'archive ouverte pluridisciplinaire **HAL**, est destinée au dépôt et à la diffusion de documents scientifiques de niveau recherche, publiés ou non, émanant des établissements d'enseignement et de recherche français ou étrangers, des laboratoires publics ou privés.

# Dissecting the phenotypic and functional heterogeneity of mouse inflammatory osteoclasts by the expression of *Cx3cr1*

Maria-Bernadette Madel<sup>1,2</sup>, Lidia Ibáñez<sup>3</sup>, Thomas Ciucci<sup>4</sup>, Julia Halper<sup>1,2</sup>, Matthieu Rouleau<sup>1,2</sup>, Antoine Boutin<sup>1,2</sup>, Christophe Hue<sup>5</sup>, Isabelle Duroux-Richard<sup>6</sup>, Florence Apparailly<sup>6</sup>, Henri-Jean Garchon<sup>5,7</sup>, Abdelilah Wakkach<sup>1,2</sup>, Claudine Blin-Wakkach<sup>1,2\*</sup>

<sup>1</sup>Laboratoire de PhysioMédecine Moléculaire, CNRS, Nice, France; <sup>2</sup>Université Côte d'Azur, Nice, France; <sup>3</sup>Department of Pharmacy, Cardenal Herrera-CEU University, Valencia, Spain; <sup>4</sup>Laboratory of Immune Cell Biology, Center for Cancer Research, National Cancer Institute, National Institutes of Health, Bethesda, United States; <sup>5</sup>Université Paris-Saclay, UVSQ, INSERM, Infection et inflammation, Montigny-Le-Bretonneux, France; <sup>6</sup>IRMB, Univ Montpellier, INSERM, CHU Montpellier, Montpellier, France; <sup>7</sup>Genetics division, Ambroise Paré Hospital, AP-HP, Boulogne-Billancourt, France

**Abstract** Bone destruction relies on interactions between bone and immune cells. Bone-resorbing osteoclasts (OCLs) were recently identified as innate immune cells activating T cells toward tolerance or inflammation. Thus, pathological bone destruction not only relies on increased osteoclast differentiation, but also on the presence of inflammatory OCLs (i-OCLs), part of which express *Cx3cr1*. Here, we investigated the contribution of mouse *Cx3cr1*<sup>+</sup> and *Cx3cr1*<sup>neg</sup> i-OCLs to bone loss. We showed that *Cx3cr1*<sup>+</sup> and *Cx3cr1*<sup>neg</sup> i-OCLs differ considerably in transcriptional and functional aspects. *Cx3cr1*<sup>neg</sup> i-OCLs have a high ability to resorb bone and activate inflammatory CD4<sup>+</sup> T cells. Although *Cx3cr1*<sup>+</sup> i-OCLs are associated with inflammation, they resorb less and have in vitro an immune-suppressive effect on *Cx3cr1*<sup>neg</sup> i-OCLs, mediated by PD-L1. Our results provide new insights into i-OCL heterogeneity. They also reveal that different i-OCL subsets may interact to regulate inflammation. This contributes to a better understanding and prevention of inflammatory bone destruction.

\*For correspondence: claudine.BLIN@unice.fr

**Competing interests:** The authors declare that no competing interests exist.

**Funding:** See page 18

**Received:** 16 December 2019

**Accepted:** 26 April 2020

**Published:** 13 May 2020

**Reviewing editor:** Gordana Vunjak-Novakovic, Columbia University, United States

© This is an open-access article, free of all copyright, and may be freely reproduced, distributed, transmitted, modified, built upon, or otherwise used by anyone for any lawful purpose. The work is made available under the [Creative Commons CC0 public domain dedication](https://creativecommons.org/licenses/by/4.0/).

## Introduction

Chronic inflammation and bone destruction are frequently associated due to complex interactions between activated immune cells and progenitors of bone-resorbing osteoclasts (OCLs). While they have long been attributed to the sole effect of immune cells on osteoclastogenesis, recent evidences demonstrated that these interactions are reciprocal (*Buchwald et al., 2012; Ibáñez et al., 2016; Kiesel et al., 2009; Li et al., 2010*). Indeed, OCLs are monocytic cells responding to immune signals and beside bone resorption, they present antigens and activate T cells (*Madel et al., 2019*). However, to date, the mechanisms that reciprocally link inflammation and bone destruction remain poorly understood.

OCLs are long-lived multinucleated cells arising from bone marrow (BM) progenitors (*Arai et al., 1999; Jacome-Galarza et al., 2013; Jacome-Galarza et al., 2019*). However, in inflammation, they also arise from inflammatory Ly6C<sup>hi</sup> monocytes (MNs) (*Ammari et al., 2018; Seeling et al., 2013*) and dendritic cells (DCs) including in vivo (*Wakkach et al., 2008; Ibáñez et al., 2016;*

*Mansour et al., 2012; Rivollier et al., 2004; Madel et al., 2019*). Furthermore, OCLs permanently fuse with MNs and undergo fission to maintain their nuclei number (*Jacome-Galarza et al., 2019*). We and others showed that depending on their origin and environment, OCLs induce different T cell responses. In steady state or when derived from BM MNs of healthy mice, OCLs activate regulatory CD4<sup>+</sup> and CD8<sup>+</sup> T cells (tolerogenic-OCLs/t OCLs) (*Ibáñez et al., 2016; Kiesel et al., 2009*), whereas when derived from DCs or during inflammation, they induce TNF $\alpha$ -producing CD4<sup>+</sup> T cells (inflammatory-OCLs/i-OCLs) (*Ibáñez et al., 2016; Madel et al., 2019*). Thus, according to their origin and environment, OCLs are heterogeneous and initiate different immune responses. However, the full contribution of i-OCLs to inflammatory bone loss remains to be elucidated.

Recently, we identified the fractalkine receptor Cx3cr1 as a marker identifying i-OCLs (*Ibáñez et al., 2016*). Cx3cr1 is expressed by OCL precursors and mediates their BM recruitment by Cx3cl1-producing endothelial cells and osteoblasts (*Han et al., 2014; Hasegawa et al., 2019; Koizumi et al., 2009; Matsuura et al., 2017*). During osteoclastogenesis, the level of expression of Cx3cr1 decreases and is very low in t-OCLs (*Hoshino et al., 2013; Koizumi et al., 2009*). However, in inflammatory conditions, Cx3cr1 remains expressed in about 25% of i-OCLs (*Ibáñez et al., 2016*). Nevertheless, the role of Cx3cr1 in i-OCLs as well as the function and contribution of Cx3cr1<sup>neg</sup> and Cx3cr1<sup>+</sup> i-OCLs in inflammation have not yet been explored.

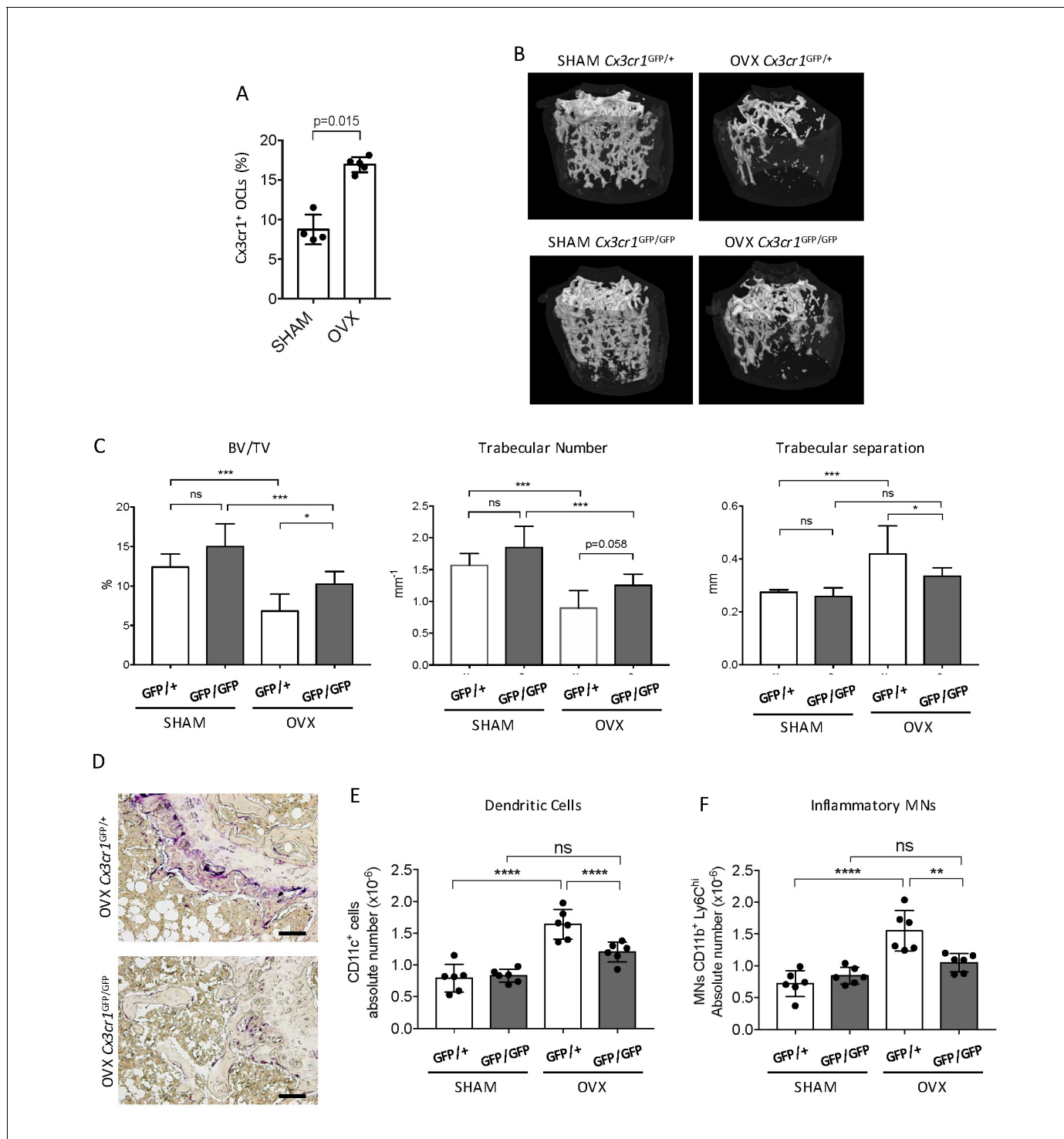
We addressed these questions using Cx3cr1<sup>GFP</sup> mutant mice in which the *Gfp* gene is inserted in the second exon of the *Cx3cr1* gene (*Jung et al., 2000*). Consequently, while Cx3cr1 activity is normal in wild type (WT) Cx3cr1<sup>GFP/+</sup> mice, this protein is non-functional in Cx3cr1<sup>GFP/GFP</sup> mice and in both mice, GFP expression allows to identify Cx3cr1-expressing cells (*Jung et al., 2000*). We evaluated the consequences of Cx3cr1 deficiency on inflammatory bone loss in vivo in ovariectomized (OVX) mice, a model where osteoclastogenesis is driven by TNF- $\alpha$  and RANK-L-producing CD4<sup>+</sup> T cells (*Cenci et al., 2000; Li et al., 2011; Weitzmann and Pacifici, 2006*). These conditions are similar to those priming Cx3cr1<sup>+</sup> OCLs previously described in inflammatory colitis (*Ibáñez et al., 2016*). We also compared Cx3cr1<sup>+</sup> and Cx3cr1<sup>neg</sup> i-OCLs as well as Cx3cr1-deficient i-OCLs by RNA-sequencing (RNA-seq) analysis and in vitro functional assays. We showed that Cx3cr1 deficiency does not change the bone resorption and T cell activation capacity of mature Cx3cr1<sup>+</sup> i-OCLs demonstrating that the Cx3cr1 protein per se does not play a major role in these functions. Furthermore, we showed that Cx3cr1 is a marker that identifies two distinct subsets of i-OCLs (Cx3cr1<sup>neg</sup> and Cx3cr1<sup>+</sup>) having different immune functions. Our findings unveil the heterogeneity of i-OCLs and their contribution to inflammation and bone loss. These new insights into osteoimmunology and OCL heterogeneity contribute to a better understanding of the bone microenvironment regulation and the underlying molecular processes during inflammatory bone destruction.

## Results

### Cx3cr1 deficiency protects against inflammatory bone loss in osteoporosis

We addressed in vivo the participation of Cx3cr1 in inflammatory osteoclastogenesis in ovariectomized (OVX) mice. We previously showed that Cx3cr1<sup>+</sup> i-OCLs increased in inflammatory colitis associated with bone destruction (*Ibáñez et al., 2016*) and we confirmed here that they also increased after ovariectomy in WT OVX mice (**Figure 1A**). To evaluate the implication of Cx3cr1 in OVX-induced bone loss, we used Cx3cr1-deficient Cx3cr1<sup>GFP/GFP</sup> and WT Cx3cr1<sup>GFP/+</sup> control mice. Micro-CT analysis revealed that after ovariectomy, Cx3cr1-deficient mice displayed moderate but significant higher BV/TV and trabecular number and lower trabecular separation than WT Cx3cr1<sup>GFP/+</sup> mice (**Figure 1B–C**). They also had less TRAcP<sup>+</sup> OCLs compared to OVX WT Cx3cr1<sup>GFP/+</sup> mice (**Figure 1D**). Thus, Cx3cr1 deficiency partially protects against bone destruction in OVX mice.

As Cx3cr1 is involved in the recruitment of OCL progenitors to the BM particularly under inflammatory conditions (*Charles et al., 2012*), we examined i-OCL progenitors in the BM of OVX Cx3cr1-deficient Cx3cr1<sup>GFP/GFP</sup> mice and WT Cx3cr1<sup>GFP/+</sup> mice. While both DCs and Ly6C<sup>hi</sup> MNs have been involved in the formation of OCLs in pathological conditions, only DCs were shown to give rise to Cx3cr1<sup>+</sup> i-OCLs (*Ibáñez et al., 2016*). Thus, we analyzed the osteoclastogenic capacity of blood Ly6C<sup>hi</sup> MNs sorted from Cx3cr1<sup>GFP/+</sup> mice. About 35% of the resulting OCLs expressed GFP



**Figure 1.** *Cx3cr1*-deficient mice display reduced bone loss after ovariectomy. (A) FACS analysis of *Cx3cr1*<sup>+</sup> OCLs generated from BM cells from SHAM-operated and OVX WT mice. Histograms indicate the mean ± SD percentage of *Cx3cr1*<sup>+</sup> i-OCLs (n = 4–5). (B) Representative images of femur μCT analysis from SHAM-operated and OVX WT *Cx3cr1*<sup>GFP/+</sup> and *Cx3cr1*-deficient *Cx3cr1*<sup>GFP/GFP</sup> mice 6 weeks post-surgery. (C) Histograms show the mean ± SD percentage of bone volume fraction (BV/TV), trabecular number and trabecular separation (n = 8 mice per group). (D) Representative TRAcP staining on femora from OVX *Cx3cr1*<sup>GFP/+</sup> and *Cx3cr1*<sup>GFP/GFP</sup> mice. Scale bar = 100 μm. (E) Ex vivo FACS analysis of CD11c<sup>+</sup> DCs and (F) CD11b<sup>+</sup>Ly6C<sup>hi</sup> MNs present in the BM of SHAM and OVX mice. Cells were gated as in **Figure 1—figure supplement 2** and histograms are showing the absolute cell number of these populations in the bone marrow. \*\*p<0.01; \*\*\*p<0.001; n.s., no significant difference.

The online version of this article includes the following figure supplement(s) for figure 1:

Figure 1 continued on next page

Figure 1 continued

**Figure supplement 1.** Analysis of i-OCLs progenitors in OVX mice.

**Figure supplement 2.** Gating strategy for ex vivo FACS analysis.

indicating that Ly6C<sup>hi</sup> MNs are also progenitors of Cx3cr1<sup>+</sup> OCLs (**Figure 1—figure supplement 1A–B**). FACS analysis in OVX mice revealed that both DCs and Ly6C<sup>hi</sup> MNs increased in the BM of OVX Cx3cr1<sup>GFP/+</sup> but not Cx3cr1<sup>GFP/GFP</sup> mice (**Figure 1E–F, Figure 1—figure supplement 2**). These results suggest that the reduced bone loss observed in Cx3cr1-deficient Cx3cr1<sup>GFP/GFP</sup> mice is, at least partly, related to a decrease in BM progenitors of Cx3cr1<sup>+</sup> OCLs, namely DCs and Ly6C<sup>hi</sup> MNs.

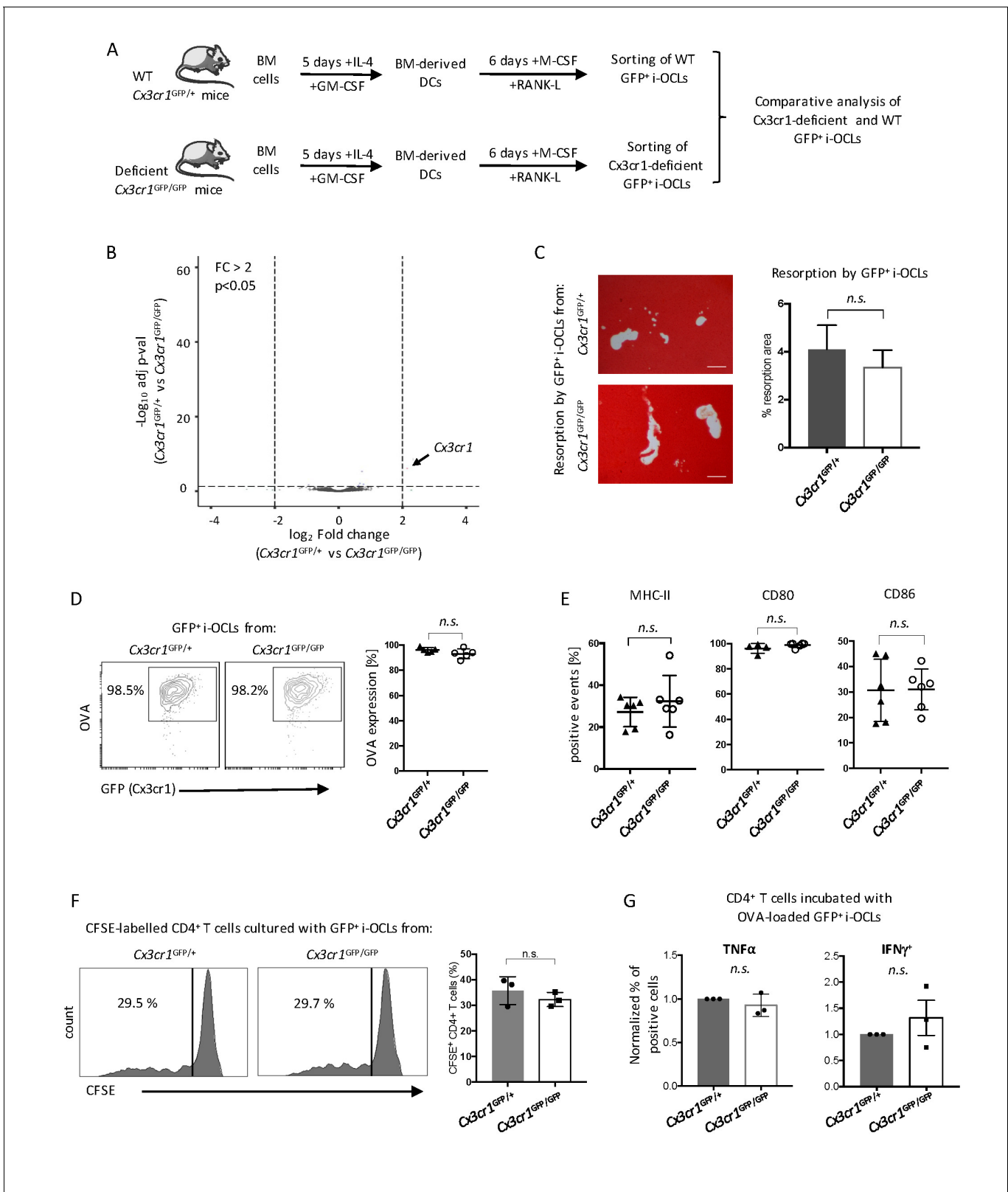
### Cx3cr1 deficiency does not alter immune and bone resorption function of Cx3cr1<sup>+</sup> i-OCLs

These results suggest a central role of Cx3cr1 in i-OCL differentiation. To further investigate underlying mechanisms, we performed the first comparative RNA-seq approach on GFP<sup>+</sup> mature i-OCLs from WT Cx3cr1<sup>GFP/+</sup> and Cx3cr1-deficient Cx3cr1<sup>GFP/GFP</sup> mice (**Figure 2A**). OCLs represent a small population of cells firmly attached to the bone that cannot be isolated ex vivo in sufficient number for transcriptomic and functional assays (**Madel et al., 2018**). Thus, i-OCLs were differentiated from BM-derived CD11c<sup>+</sup> DCs of WT Cx3cr1<sup>GFP/+</sup> and Cx3cr1-deficient Cx3cr1<sup>GFP/GFP</sup> mice as described (**Ibáñez et al., 2016**). Mature Cx3cr1<sup>+</sup> i-OCLs were then sorted based on their GFP expression and multinucleation according to **Madel et al. (2018)** (**Figure 2—figure supplement 1**).

Except for their Cx3cr1 expression, no differences were detected between GFP<sup>+</sup> i-OCLs from Cx3cr1-deficient Cx3cr1<sup>GFP/+</sup> and WT Cx3cr1<sup>GFP/GFP</sup> mice suggesting that Cx3cr1 deficiency did not change the identity of i-OCLs (**Figure 2B, Figure 2—figure supplement 2A–B**). Similarly, functional in vitro assays revealed that regardless if they derived from Cx3cr1-deficient Cx3cr1<sup>GFP/+</sup> or WT Cx3cr1<sup>GFP/GFP</sup> mice, GFP<sup>+</sup> i-OCLs had equivalent resorption activity, antigen-presentation capacity or expression of MHC-II and co-stimulatory molecules (**Figure 2C–E**). In addition, we performed a T cell activation assay using carboxyfluorescein succinimidyl ester (CFSE)-labelled CD4<sup>+</sup> T cells from OT-II mice bearing a T cell receptor (TCR) specific for the immunodominant ovalbumin (OVA) peptide (**Barnden et al., 1998**). No differences between GFP<sup>+</sup> i-OCLs from Cx3cr1<sup>GFP/GFP</sup> versus Cx3cr1<sup>GFP/+</sup> mice were found in their T cell activation and polarization capacity (**Figure 2F–G**). Thus, our results indicate that the function of the Cx3cr1 protein per se is not essential for the resorption and immune function of mature Cx3cr1-expressing i-OCLs.

### Cx3cr1<sup>+</sup> and Cx3cr1<sup>neg</sup> i-OCLs are distinct populations

Although Cx3cr1 is important for i-OCL progenitors, its deficiency does not affect bone resorption or T cell activation by mature Cx3cr1-expressing i-OCLs. However, being expressed in part of i-OCLs, Cx3cr1 remains a marker for the heterogeneity of these i-OCLs. We explored this heterogeneity and in particular the specific role of Cx3cr1-expressing and Cx3cr1<sup>neg</sup> i-OCL subsets, comparing them using an RNA-seq approach. Mature Cx3cr1<sup>+</sup> and Cx3cr1<sup>neg</sup> i-OCLs were generated in vitro from BM-derived CD11c<sup>+</sup> DCs of WT Cx3cr1<sup>GFP/+</sup> mice and sorted based on their GFP expression and multinucleation (**Figure 3A, Figure 2—figure supplement 1; Madel et al., 2018**). A total of 1771 genes were significantly differentially expressed (adj.pVal < 0.05, Log<sub>2</sub>FC ≥ 1) between the 2 populations. Principal Component Analysis (PCA) of all detectable genes revealed that Cx3cr1<sup>+</sup> (GFP<sup>+</sup>) and Cx3cr1<sup>neg</sup> (GFP<sup>neg</sup>) i-OCLs were clustered into 2 distinct populations (**Figure 3B**), which was reinforced by volcano plot and hierarchical clustering analysis of the top 107 significantly differently expressed genes (adj.pVal < 0.05 and Log<sub>2</sub>FC ≥ 1) (**Figure 3C–D**). In addition to Cx3cr1, genes interacting with its functional pathway were also differentially expressed (**Figure 3—figure supplement 1A**). In particular, *Nr1d1*, a negative regulator of Cx3cr1 (**Song et al., 2018**) was reduced whereas *Tlr4* that mediates Cx3cr1 upregulation by LPS (**Panek et al., 2015**) was increased in Cx3cr1<sup>+</sup> versus Cx3cr1<sup>neg</sup> i-OCLs (**Figure 3—figure supplement 1B–C**). These data suggest that Cx3cr1 expression is tightly controlled during i-OCL differentiation. This was further confirmed by showing that Cx3cr1<sup>+</sup> OCLs could be generated from either Cx3cr1<sup>+</sup> or Cx3cr1<sup>neg</sup> BM-derived DCs (**Figure 3—figure supplement 1D**). Thus, the expression of Cx3cr1 in i-OCLs is not only inherited from their progenitors but may be acquired through a dynamic up-regulation during the



**Figure 2.** *Cx3cr1* deficiency does not affect resorption and immune function in *Cx3cr1*<sup>+</sup> i-OCLs. (A) Schematic representation of the differentiation of i-OCLs from BM-derived DCs of WT *Cx3cr1*<sup>GFP/+</sup> and *Cx3cr1*-deficient *Cx3cr1*<sup>GFP/GFP</sup> mice. (B) RNA-seq analysis on sorted GFP<sup>+</sup> i-OCLs (representing *Cx3cr1*<sup>+</sup> i-OCLs) differentiated from BM-derived DCs of WT *Cx3cr1*<sup>GFP/+</sup> and *Cx3cr1*-deficient *Cx3cr1*<sup>GFP/GFP</sup> mice (gated as in **Figure 2—figure supplement 1**). Volcano-plot indicates  $-\log_{10}$  adjusted p value versus  $\log_2$  fold-change comparing gene expression in i-OCL subsets. (C) Matrix **Figure 2 continued on next page**

## Figure 2 continued

dissolution activity of sorted GFP<sup>+</sup> i-OCs from WT *Cx3cr1*<sup>GFP/+</sup> and *Cx3cr1*-deficient *Cx3cr1*<sup>GFP/GFP</sup> mice seeded at the same cell density on a calcified matrix was evidence by red alizarin staining of the mineralized matrix. Unstained areas correspond to the resorbed areas. Left panel: representative images of resorbed area. Scale bar = 100 μm. Right panel: quantification of resorbed areas presented as mean ± SD percentage of three independent biological replicates each in triplicates. (D) FACS analysis of fluorescent-OVA uptake among GFP<sup>+</sup> i-OCs from *Cx3cr1*<sup>GFP/+</sup> and *Cx3cr1*<sup>GFP/GFP</sup> mice. Left panel: representative density plots and right panel: percentage of OVA<sup>+</sup> cells from five independent experiments. (E) FACS analysis of GFP<sup>+</sup> i-OCs from *Cx3cr1*<sup>GFP/+</sup> and *Cx3cr1*<sup>GFP/GFP</sup> mice in at least four independent experiments. (F) T cell proliferation assay on CD4<sup>+</sup> T cells labelled with CFSE and cultured in the presence of OVA-challenged GFP<sup>+</sup> i-OCs differentiated from *Cx3cr1*<sup>GFP/+</sup> and *Cx3cr1*<sup>GFP/GFP</sup> mice and analyzed by FACS after 4 days of coculture. (G) CD4<sup>+</sup> T cells activated by OVA-challenged GFP<sup>+</sup> i-OCs from *Cx3cr1*<sup>GFP/+</sup> and *Cx3cr1*<sup>GFP/GFP</sup> mice were analyzed for their expression of TNFα and IFNγ by FACS after intracytoplasmic staining of these cytokines. n.s., no significant difference. The online version of this article includes the following figure supplement(s) for figure 2:

**Figure supplement 1.** Gating strategy for mature *Cx3cr1*<sup>+</sup> and *Cx3cr1*<sup>neg</sup> i-OCs.

**Figure supplement 2.** Comparative transcriptomic analysis of *Cx3cr1*<sup>+</sup> i-OCs from *Cx3cr1*<sup>GFP/GFP</sup> and *Cx3cr1*<sup>GFP/+</sup> mice.

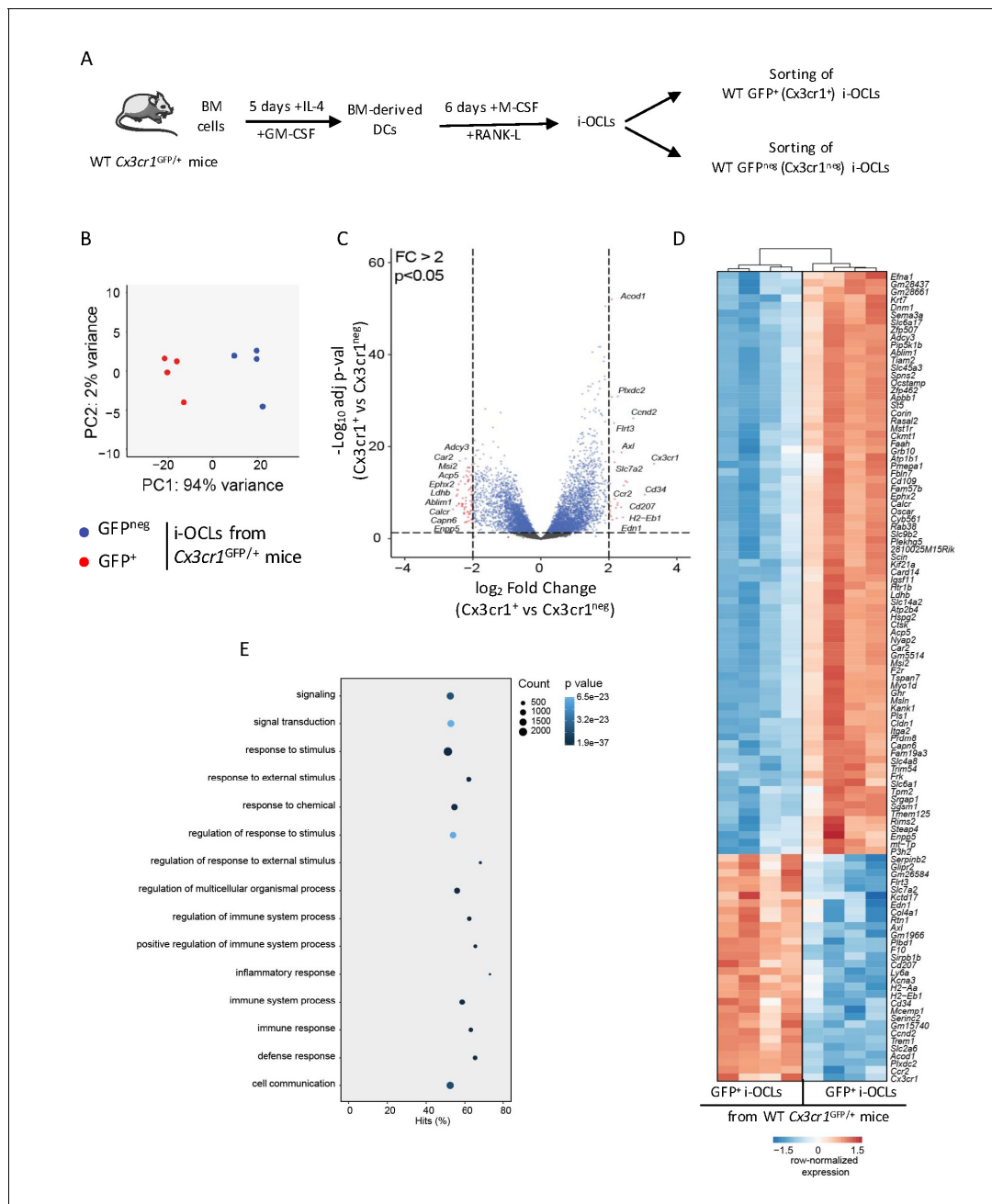
differentiation of a subset of i-OCs having a specific function. In particular, genes and functional pathways differentially expressed between *Cx3cr1*<sup>+</sup> and *Cx3cr1*<sup>neg</sup> i-OCs (**Figure 3D–E**) strongly suggested that the function of *Cx3cr1*<sup>+</sup> i-OCs is related to the immune system. Therefore, we further characterized *Cx3cr1*<sup>+</sup> and *Cx3cr1*<sup>neg</sup> i-OCs focusing on their bone resorption capacity and their immune potential.

Transcriptomic profiling revealed that *Cx3cr1*<sup>neg</sup> i-OCs expressed higher levels of genes responsible for bone resorption (**Figure 4A**), which was confirmed by RT-qPCR (**Figure 4B**). We compared *Cx3cr1*<sup>neg</sup> and *Cx3cr1*<sup>+</sup> i-OCs subsets to CD169<sup>+</sup>CD68<sup>+</sup> macrophages that also express *Cx3cr1* (**Figure 4—figure supplement 1A–B**). Our results revealed that both *Cx3cr1*<sup>neg</sup> and *Cx3cr1*<sup>+</sup> i-OCs subsets differed from BM-derived macrophages as they did not express CD68 and CD169 (**Figure 4—figure supplement 1C–D**). Moreover, the 2 i-OCs subsets shared the main characteristics of OCs, e.g. TRAcP expression and resorption activity (**Figure 4C–F**) while BM-macrophages did not express TRAcP (**Figure 4—figure supplement 1E**). However, when sorted mature *Cx3cr1*<sup>neg</sup> and *Cx3cr1*<sup>+</sup> i-OCs were seeded at the same cell concentration, *Cx3cr1*<sup>neg</sup> i-OCs showed a higher matrix dissolution activity compared to *Cx3cr1*<sup>+</sup> i-OCs (**Figure 4E–F**). These results demonstrate that *Cx3cr1*<sup>neg</sup> and *Cx3cr1*<sup>+</sup> subsets correspond to 2 subsets of *bona fide* OCs that differ in their resorption activity.

Besides these differences in bone resorption, RNA-seq data revealed significant differences in genes involved in antigen-processing and presentation (**Figure 5A**). Further in vitro analysis confirmed that whereas both i-OCs subsets engulfed OVA, this capacity was significantly decreased in *Cx3cr1*<sup>neg</sup> i-OCs (**Figure 5B–C**). In line with the RNA-seq data, FACS analysis confirmed that MHC-II molecules were more expressed in *Cx3cr1*<sup>neg</sup> than *Cx3cr1*<sup>pos</sup> i-OCs (**Figure 5D**), while no significant differences were observed in the expression of CD80 and CD86 (**Figure 5E–F**). Moreover, *Cx3cr1*<sup>neg</sup> i-OCs showed higher capacity to induce T cell proliferation than *Cx3cr1*<sup>+</sup> i-OCs (**Figure 5G**). Nevertheless, both i-OCs subsets were able to induce TNFα and IFNγ-producing CD4<sup>+</sup> T cells but not FoxP3<sup>+</sup>CD4<sup>+</sup> regulatory T (Treg) cells (**Figure 5—figure supplement 1**), in accordance with the previously described immune properties of i-OCs (*Ibáñez et al., 2016*).

### ***Cx3cr1*<sup>+</sup> i-OCs express immunosuppressive factors and control the immune function of *Cx3cr1*<sup>neg</sup> i-OCs in vitro**

RNA-seq data also revealed that both i-OCs subsets expressed inflammation-associated genes in line with their capacity to induce TNFα and IFNγ-producing CD4<sup>+</sup> T cells (**Figure 6A**). However, *Cx3cr1*<sup>+</sup> i-OCs had significant higher expression of immunosuppressive genes (**Figure 6A**) that could contribute to their lower inflammatory potential. Further RT-qPCR of the immunosuppressive genes *CD274* (PD-L1), *Lgals9* (Galectin-9) and *Tnfrsf14* (HEVM) confirmed these findings (**Figure 6B**). Interestingly, blocking the PD-L1/PD-1 axis with an anti-PD-1 antibody in co-cultures of *Cx3cr1*<sup>+</sup> i-OCs and CD4<sup>+</sup> T cells increased the capacity of *Cx3cr1*<sup>+</sup> i-OCs to induce T cell proliferation (**Figure 6C**). These findings reveal that PD-L1 plays a central role in the immunosuppressive potential of *Cx3cr1*<sup>+</sup> i-OCs. They also suggest that *Cx3cr1*<sup>+</sup> i-OCs could have an immunosuppressive effect on *Cx3cr1*<sup>neg</sup> i-OCs. Therefore, we set up an immunosuppressive assay where OVA-loaded *Cx3cr1*<sup>neg</sup> i-OCs were co-cultured with CFSE-labelled CD4<sup>+</sup> T cells from OT-II mice. Different ratios

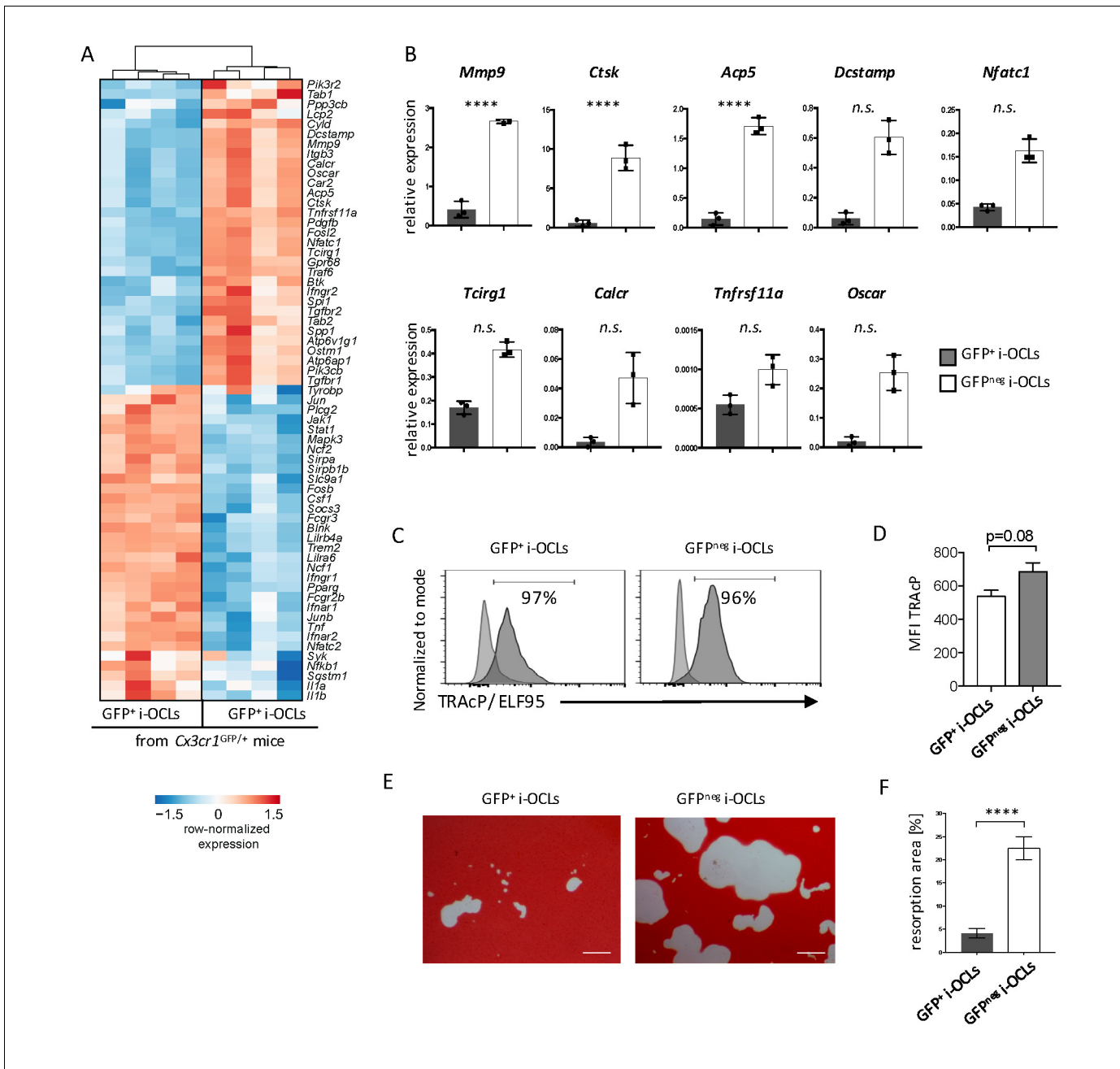


**Figure 3.** Transcriptomic profiling of *Cx3cr1*<sup>+</sup> and *Cx3cr1*<sup>neg</sup> i-OCLs reveals two distinct populations of i-OCLs. **(A)** Schematic representation of the differentiation of GFP<sup>+</sup> (*Cx3cr1*<sup>+</sup>) and GFP<sup>neg</sup> (*Cx3cr1*<sup>neg</sup>) i-OCLs from BM-derived DCs of WT *Cx3cr1*<sup>GFP/+</sup> mice and their sorting (gated as in **Figure 2—figure supplement 1**). **(B)** Principal component analysis of *Cx3cr1*<sup>+</sup> and *Cx3cr1*<sup>neg</sup> i-OCLs clusters samples in two groups (red: GFP<sup>+</sup> (*Cx3cr1*<sup>+</sup>) OCLs and blue GFP<sup>neg</sup> (*Cx3cr1*<sup>neg</sup>) OCLs, both from *Cx3cr1*<sup>GFP/+</sup> mice). Data shows the two first components on the top 500 most differentially expressed genes after batch correction. Each dot represents the expression profile of one sample. **(C)** Volcano-plot showing representative differentially expressed genes for *Cx3cr1*<sup>+</sup> and *Cx3cr1*<sup>neg</sup> i-OCLs. Cut-off values were defined by a fold change (FC) >2 and an adjusted p-value < 0.05. **(D)** Heatmap visualization of the top 107 genes significantly differentially expressed between GFP<sup>+</sup> (*Cx3cr1*<sup>+</sup>) and GFP<sup>neg</sup> (*Cx3cr1*<sup>neg</sup>) i-OCLs from *Cx3cr1*<sup>GFP/+</sup> mice (adjusted p-value < 0.05, FC ≥ 2). **(E)** Graphical representation of gene ontology analysis associated with differentially expressed genes between *Cx3cr1*<sup>+</sup> and *Cx3cr1*<sup>neg</sup> i-OCLs.

The online version of this article includes the following figure supplement(s) for figure 3:

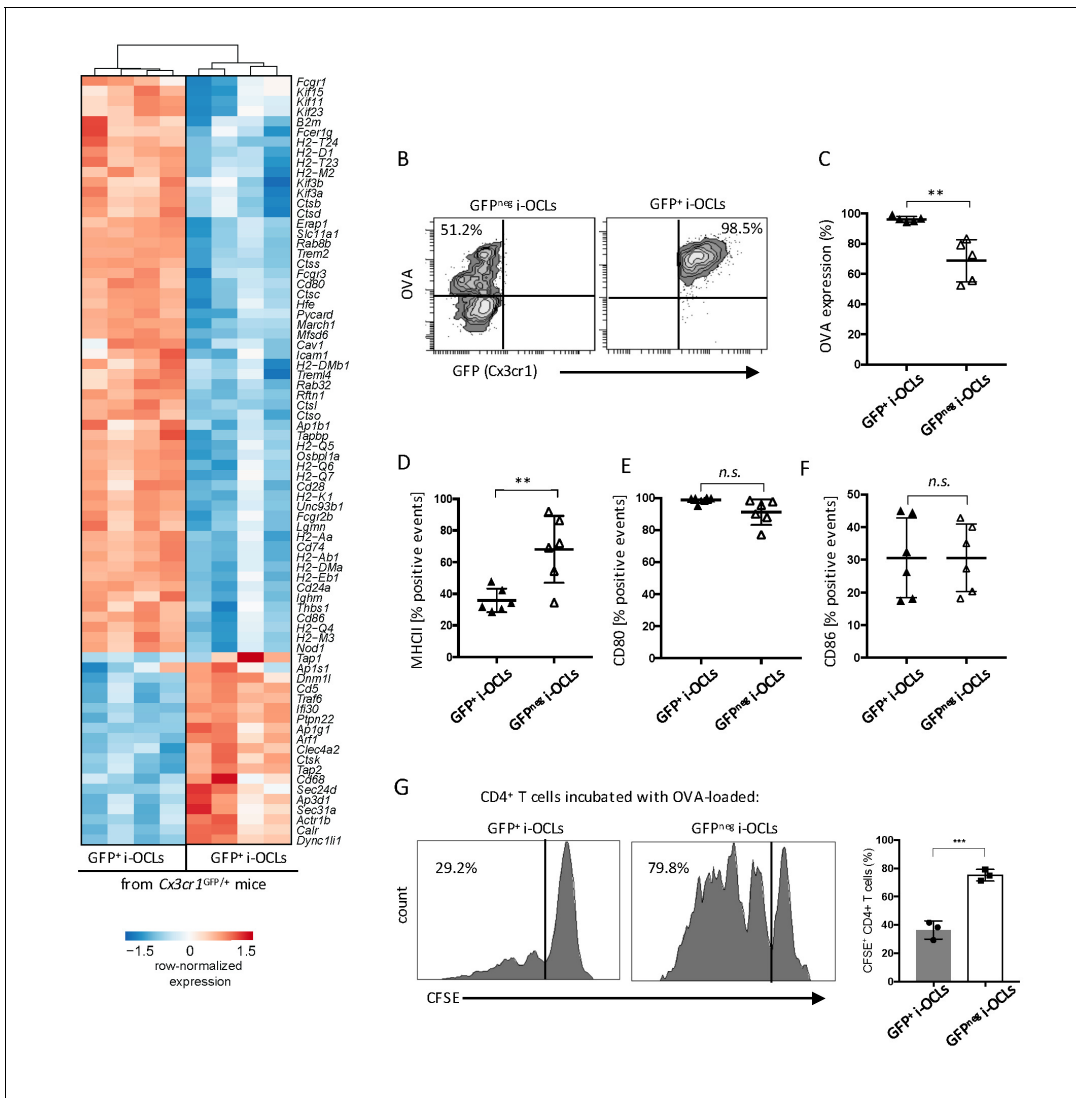
**Figure supplement 1.** *Cx3cr1*<sup>+</sup> and *Cx3cr1*<sup>neg</sup> i-OCLs differ in their expression of *Cx3cr1*-interacting genes.





**Figure 4.** Cx3cr1<sup>neg</sup> and Cx3cr1<sup>+</sup> i-OCLs differ in their resorbing activity. (A) Heatmap visualization of the z-scored expression for selected genes involved in bone resorption, osteoclast fusion and differentiation that are differentially expressed between GFP<sup>+</sup> (Cx3cr1<sup>+</sup>) and GFP<sup>neg</sup> (Cx3cr1<sup>neg</sup>) i-OCLs both differentiated from WT Cx3cr1<sup>GFP/+</sup> mice (adjusted p-value < 0.05, FC ≥ 2). (B) RT-qPCR analysis on GFP<sup>+</sup> (Cx3cr1<sup>+</sup>) and GFP<sup>neg</sup> (Cx3cr1<sup>neg</sup>) i-OCLs. Results are represented as the mean with 95% confidence interval of 3 independent biological replicates in triplicates. (C) Flow cytometry analysis of TRAcP expression using ELF95 substrate in the 2 i-OCLs subsets. Percentage of positive cells (dark curve) compared to the negative control (light curve) is indicated. (D) Quantification of the mean fluorescence intensity (MFI) of TRAcP in GFP<sup>+</sup> (Cx3cr1<sup>+</sup>) and GFP<sup>neg</sup> (Cx3cr1<sup>neg</sup>) i-OCLs (n = 3). (E) Representative images of matrix dissolution activity of sorted GFP<sup>+</sup> (Cx3cr1<sup>+</sup>) and GFP<sup>neg</sup> (Cx3cr1<sup>neg</sup>) i-OCLs seeded at the same cell density. Red alizarin staining of the mineralized matrix revealed the resorbed areas as unstained. Scale bar = 100 μm. (F) Quantification of resorbed areas from three independent experiments in triplicates are indicated as percentage. \*\*\*\*p < 0.0001; n.s., no significant difference. The online version of this article includes the following figure supplement(s) for figure 4:

**Figure supplement 1.** Cx3cr1<sup>+</sup> i-OCLs differ from Cx3cr1<sup>+</sup> BM-derived macrophages.

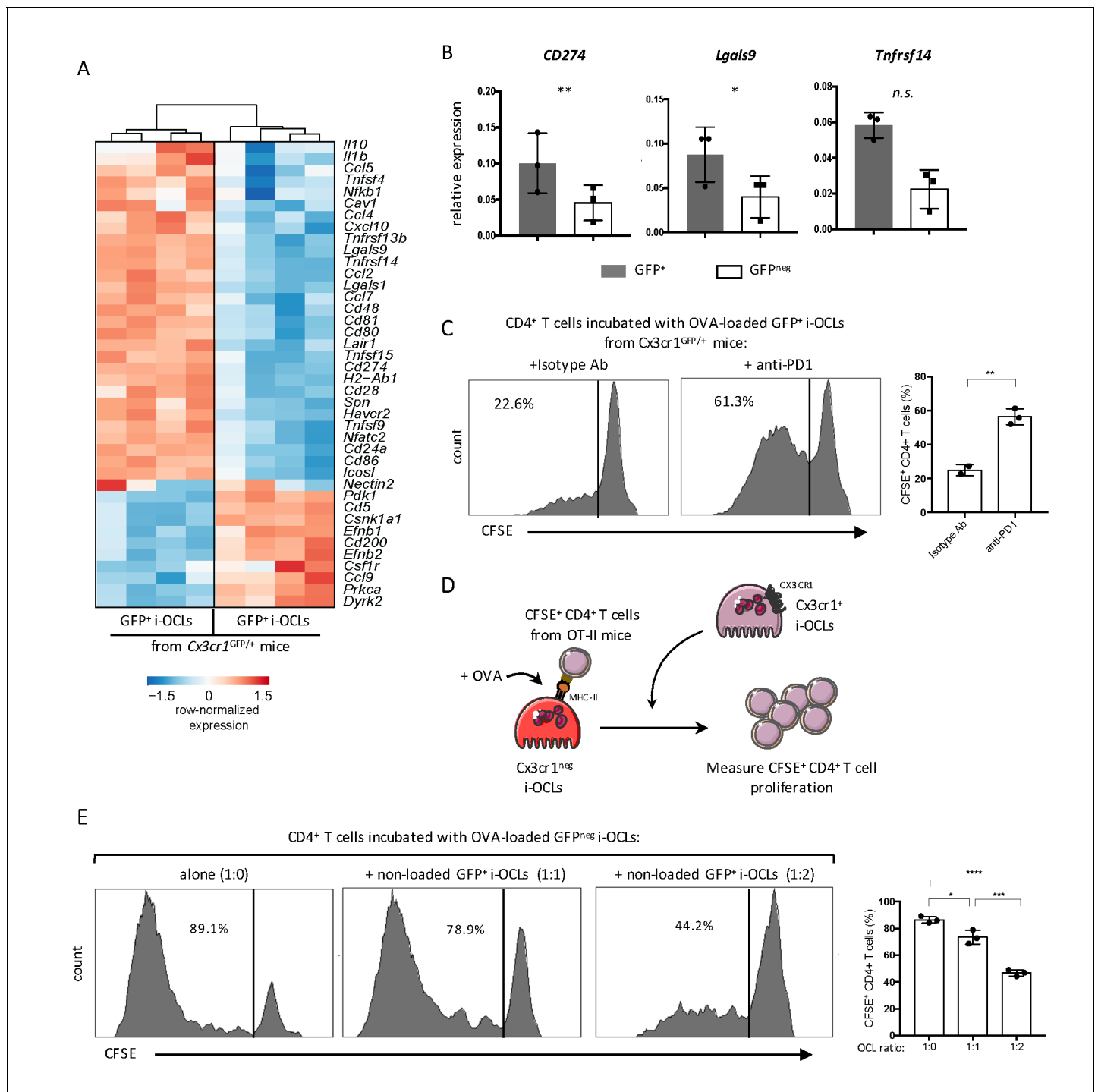


**Figure 5.** Cx3cr1<sup>neg</sup> and Cx3cr1<sup>+</sup> subsets differ in their antigen uptake and presentation. (A) Heatmap visualization of the z-scored expression for selected genes involved in antigen uptake, processing and presentation that are differentially expressed between GFP<sup>+</sup> (Cx3cr1<sup>+</sup>) and GFP<sup>neg</sup> (Cx3cr1<sup>neg</sup>) i-OCLs from WT Cx3cr1<sup>GFP/+</sup> mice (adjusted pVal < 0.05, FC ≥ 2). (B) Representative FACS plots of OVA uptake in Cx3cr1<sup>+</sup> and Cx3cr1<sup>neg</sup> i-OCLs. (C) Quantification of FACS analysis for OVA uptake in GFP<sup>+</sup> (Cx3cr1<sup>+</sup>) and GFP<sup>neg</sup> (Cx3cr1<sup>neg</sup>) i-OCLs (n = 5). (D–F) FACS analysis of GFP<sup>+</sup> (Cx3cr1<sup>+</sup>) and GFP<sup>neg</sup> (Cx3cr1<sup>neg</sup>) i-OCLs for (D) MHC-II, (E) CD80 and (F) CD86 (n = 6). (G). Representative FACS histograms for T cell proliferation assay of CFSE-labelled CD4<sup>+</sup> T cells from OT-II mice cultured with OVA-loaded GFP<sup>+</sup> (Cx3cr1<sup>+</sup>) or GFP<sup>neg</sup> (Cx3cr1<sup>neg</sup>) i-OCLs after 5 days of coculture. \*\*p < 0.01; n.s., no significant difference.

The online version of this article includes the following figure supplement(s) for figure 5:

**Figure supplement 1.** CD4<sup>+</sup> T cell polarization analysis CD4<sup>+</sup> T cells from OT-II mice were cocultured with OVA-challenged GFP<sup>+</sup> (Cx3cr1<sup>+</sup>) and GFP<sup>neg</sup> (Cx3cr1<sup>neg</sup>) i-OCLs from WT Cx3cr1<sup>GFP/+</sup> mice, respectively, and analyzed by intracytoplasmic staining for their (A) TNFα, (B) IFNγ and (C) FoxP3 expression using flow cytometry. n.s., no significant difference.

of Cx3cr1<sup>+</sup> i-OCLs not challenged with OVA (unable to directly activate OT-II T cells) were added to the culture (**Figure 6D**). Cx3cr1<sup>neg</sup> i-OCLs alone (ratio 1:0) highly stimulated CD4<sup>+</sup> T cell proliferation, which was dramatically decreased by the addition of Cx3cr1<sup>+</sup> i-OCLs (ratio 1:2; **Figure 6E**). These data demonstrate that Cx3cr1<sup>+</sup> i-OCLs are able to control the inflammatory activity of Cx3cr1<sup>neg</sup> i-OCLs in vitro, suggesting the existence of a novel mechanism of interaction between OCLs in inflammatory conditions that remains to be addressed in vivo.

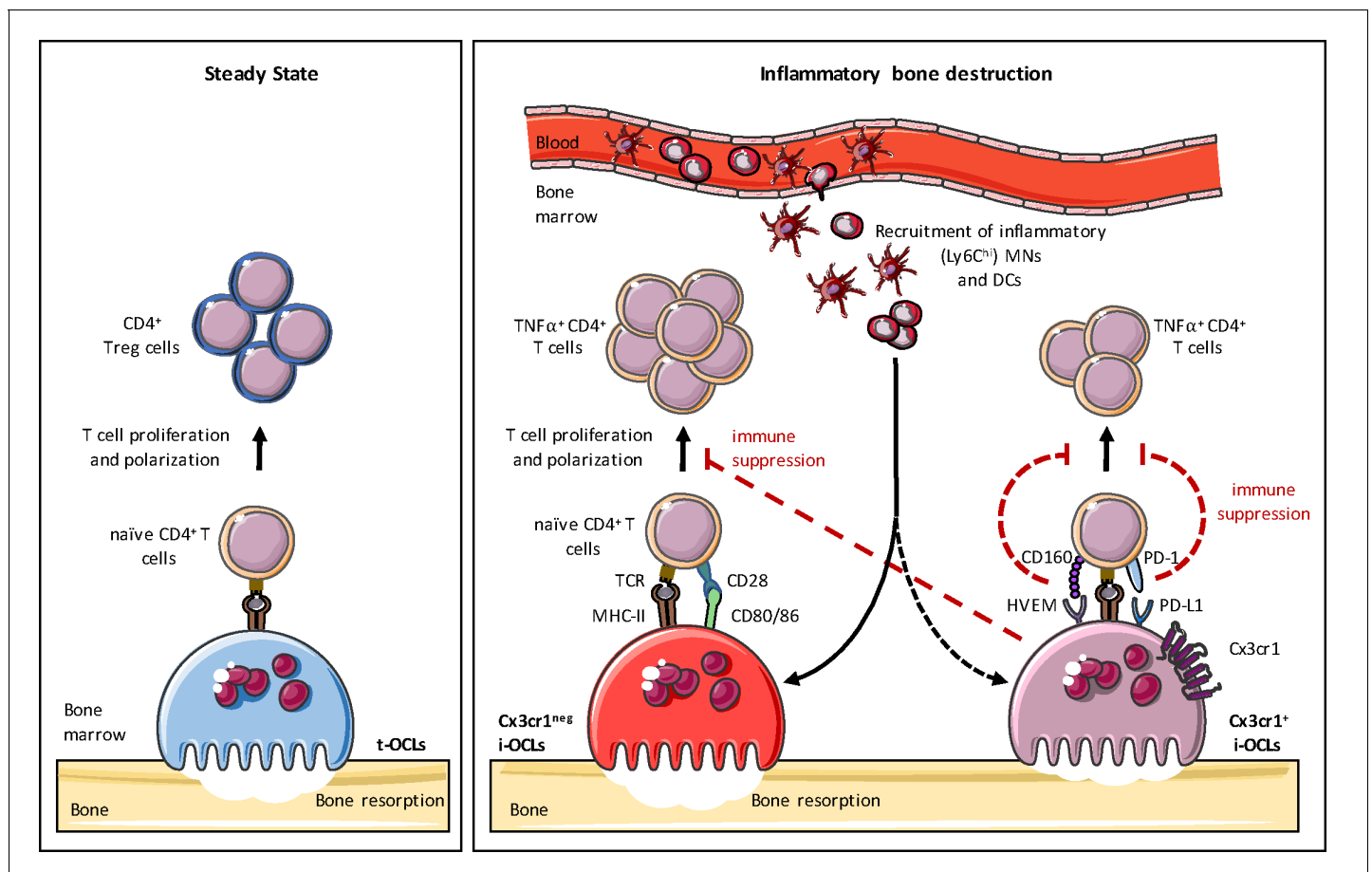


**Figure 6.** *Cx3cr1*<sup>neg</sup> and *Cx3cr1*<sup>+</sup> subsets differ in their T cell activation capacity. (A) Heatmap visualization of the z-scored expression for selected genes involved in T cell stimulation and inhibition that are differentially expressed between GFP<sup>+</sup> (*Cx3cr1*<sup>+</sup>) and GFP<sup>neg</sup> (*Cx3cr1*<sup>neg</sup>) i-OCLs from WT *Cx3cr1*<sup>GFP/+</sup> mice (adjusted *p*<0.05, FC ≥2). (B) RT-qPCR analysis of immunosuppressive molecules. Graphs show three independent experiments conducted in triplicates. (C) Representative FACS histograms and quantification of the proliferation of CFSE-labelled CD4<sup>+</sup> T cell from OT-II mice cocultured with OVA-loaded *Cx3cr1*<sup>+</sup> i-OCLs from WT *Cx3cr1*<sup>GFP/+</sup> mice and an isotype antibody (left panel) or an anti-PD-1 antibody (right panel). (D) Schematic representation of the experimental setup. Sorted GFP<sup>neg</sup> (*Cx3cr1*<sup>neg</sup>) i-OCLs from WT *Cx3cr1*<sup>GFP/+</sup> mice were loaded with OVA for 3 hr and incubated with CFSE<sup>+</sup> CD4<sup>+</sup> T cells in the presence of different ratios of non-OVA loaded GFP<sup>+</sup> (*Cx3cr1*<sup>+</sup>) i-OCLs from WT *Cx3cr1*<sup>GFP/+</sup> mice. (E) FACS analysis and quantification of CFSE<sup>+</sup> CD4<sup>+</sup> T cells of OT-II mice cocultured in the presence of different ratios (1:0; 1:1; 1:2) between OVA-loaded *Cx3cr1*<sup>neg</sup> i-OCLs and *Cx3cr1*<sup>+</sup> i-OCLs (non-loaded with OVA) for 5 days. \**p*<0.05; \*\**p*<0.01; \*\*\**p*<0.001; \*\*\*\**p*<0.0001; n.s., no significant difference.

## Discussion

This study provides further evidence of OCL heterogeneity. We previously demonstrated the existence of t-OCLs priming CD4<sup>+</sup> Treg cells and i-OCLs inducing TNFα<sup>+</sup>CD4<sup>+</sup> T cells that emerge under different conditions (Ibáñez et al., 2016). Here, we show that i-OCLs encompass two distinct populations of *bona fide* OCLs that can be distinguished by their Cx3cr1 expression. Although these 2 i-OCL subsets prime TNFα-producing CD4<sup>+</sup> T cells and resorb, they display different capacities for bone resorption and immunosuppression. Moreover, they do not activate Treg cells, and thus, they differ considerably from t-OCLs (Ibáñez et al., 2016). We also show that Cx3cr1<sup>+</sup> i-OCLs control the inflammatory activity of Cx3cr1<sup>neg</sup> i-OCLs in vitro, suggesting that different OCL subsets could interact with each other to control their immune activity, an hypothesis that remains to be investigated in vivo (Figure 7).

Cx3cr1 is involved in the development and progression of chronic inflammatory diseases, such as colitis and arthritis (Kotani et al., 2013; Rossini et al., 2014; Tarrant et al., 2012) while Cx3cr1 deficiency reduces the severity of these diseases (Niess and Adler, 2010; Rossini et al., 2014; Tarrant et al., 2012). Our results extend the protective effect of Cx3cr1 deficiency to OVX-induced bone destruction. As in inflammatory bowel disease, this model is driven by TNFα and RANK-L-



**Figure 7.** Heterogeneity of osteoclasts and underlying molecular mechanisms. In steady state, BM progenitors differentiate into tolerogenic OCLs (t-OCLs) that are able to present antigens and induce CD4<sup>+</sup> Treg cells. During inflammation, inflammatory MNs and DCs are recruited to the BM and differentiate into i-OCLs. Approx. 25% of these i-OCLs can be characterized by their expression of Cx3cr1 while the majority of i-OCLs does not express this marker. Cx3cr1<sup>neg</sup> i-OCLs show significantly higher bone resorption activity in vitro compared to Cx3cr1<sup>+</sup> i-OCLs. Both i-OCL subsets act as antigen-presenting cells but differ in their T cell activation capacity that is higher for the Cx3cr1<sup>neg</sup> i-OCL subset. Both i-OCL subsets are able to induce TNFα-producing CD4<sup>+</sup> T cells, however the Cx3cr1<sup>+</sup> OCL subset express high levels of co-inhibitory molecules such as PD-L1 that reduce their capacity to activate T cells. Moreover, Cx3cr1<sup>+</sup> i-OCLs have an immune suppressive effect on Cx3cr1<sup>neg</sup> i-OCLs by reducing their T cell proliferation capacity in vitro.

producing CD4<sup>+</sup> T cells leading to the development of Cx3cr1<sup>+</sup> OCLs (Cenci et al., 2000; Ibáñez et al., 2016; Weitzmann and Pacifici, 2006). As a chemokine receptor, Cx3cr1 is required for the migration of monocytic cells and was suggested to participate in the maintenance of OCL progenitors particularly in inflammatory conditions (Charles et al., 2012; Han et al., 2014; Hasegawa et al., 2019). Its ligand (Fractalkine/Cx3cl1) increases in OVX mice and osteoporotic patients and correlates with disease severity (Chen et al., 2016; Wang et al., 2017). Fractalkine-producing mesenchymal cells attract OCL precursors and support their differentiation (Goto et al., 2016; Matsuura et al., 2017). In agreement with these data, we demonstrate that the reduced bone loss in OVX Cx3cr1-deficient mice is related to a decrease in BM i-OCL precursors (DCs and Ly6C<sup>hi</sup> MNs) and a reduced osteoclastogenesis. Although Cx3cr1-deficient mice were reported to have slightly reduced bone density (Hoshino et al., 2013), we only observed moderate but significant differences in OVX mice, highlighting the importance of Cx3cr1 in pathological bone destruction. Compared to previous reports (Hoshino et al., 2013), we gained advantage from working on purified mature i-OCLs from Cx3cr1-deficient mice and we did not observe any significant variations when comparing Cx3cr1<sup>+</sup> i-OCLs from Cx3cr1-deficient Cx3cr1<sup>GFP/GFP</sup> and WT Cx3cr1<sup>GFP/+</sup> mice. Overall, our results demonstrate that the Cx3cr1/Cx3cl1 axis is essential for the increased BM recruitment and differentiation of i-OCL progenitors observed in OVX mice but that the Cx3cr1 protein per se is not involved in the resorption and immune function of fully mature i-OCLs.

This raises the question of the role of Cx3cr1 in a subset of mature i-OCLs. As OCLs permanently fuse with new monocytic cells (Jacome-Galarza et al., 2019), Cx3cr1 could be considered as a marker for some of these progenitor cells that remains expressed in the resulting OCLs. However, Cx3cr1<sup>+</sup> OCLs are induced by inflammatory cytokines such as IL-17 and TNF $\alpha$  and arise in conditions associated with inflammatory bone destruction (Ibáñez et al., 2016; Madel et al., 2019). Furthermore, Cx3cr1<sup>+</sup> and Cx3cr1<sup>neg</sup> i-OCLs significantly differ in the expression of genes involved in Cx3cr1-interacting pathways. For instance, Cx3cr1<sup>+</sup> OCLs show lower expression of *Nr1d1*, a Cx3cr1 inhibitor (Song et al., 2018) and higher levels of *Tlr4* that mediates the positive effects of LPS on Cx3cr1 (PANEK et al., 2015). Furthermore, we observed that Cx3cr1<sup>+</sup> OCLs arise from both Cx3cr1<sup>+</sup> and Cx3cr1<sup>neg</sup> progenitors (Figure 3—figure supplement 1D), indicating that Cx3cr1 expression by some mature OCLs is inducible and not solely inherited from their progenitors.

In line with our observations in OCLs, Cx3cr1 is also a marker for MN and DC diversity (Ginhoux et al., 2009; Varol et al., 2009; Yona et al., 2013). Depending on their environment, BM progenitors can differentiate into immunogenic Cx3cr1<sup>low/neg</sup>MHC-II<sup>hi</sup> DCs or Cx3cr1<sup>+</sup>MHC-II<sup>low</sup> macrophages with high antigen-uptake and a PD-L1-associated immunosuppressive function (Zhang et al., 2012). In the gut mucosa, Cx3cr1<sup>hi</sup> macrophages efficiently take up antigens but induce lower T cell proliferation compared to CD103<sup>+</sup>Cx3cr1<sup>neg</sup> DCs (Schulz et al., 2009). The balance between immunosuppressive Cx3cr1<sup>hi</sup> and inflammatory Cx3cr1<sup>low</sup> phagocytes in the gut is essential in controlling inflammatory responses in colitis (Regoli et al., 2017; Yin et al., 2012). Accordingly, Cx3cr1<sup>+</sup> and Cx3cr1<sup>neg</sup> i-OCLs exert different immune functions. Cx3cr1<sup>+</sup> cells were more efficient in antigen uptake but less potent in T cell activation than Cx3cr1<sup>neg</sup> i-OCLs. In addition, as Cx3cr1<sup>hi</sup> macrophages, Cx3cr1<sup>+</sup> i-OCLs decrease T cell proliferation, notably via immunosuppressive molecules such as PD-L1, Galectin-9 and HVEM. These factors are major immune checkpoints involved in autoimmune disorders and tumor-induced immune suppression associated with T cell dysfunction, exhaustion, and low activation (Bjordahl et al., 2013; Cai and Freeman, 2009; Francisco et al., 2009; Tai et al., 2018). Thus, their high expression in Cx3cr1<sup>+</sup> i-OCLs further strengthens the hypothesis that Cx3cr1<sup>+</sup> i-OCLs act as immunosuppressive cells emerging upon inflammatory signals to regulate inflammation, which was confirmed in vitro by a functional immunosuppressive assay (Figure 6).

The contribution of OCLs to an immunosuppressive BM microenvironment has been recently explored in the context of multiple myeloma (MM). Bone destruction in MM is supported by malignant plasma cells that favor OCL differentiation, including from DCs, through high RANK-L, IL-17 and TNF $\alpha$  production (Mansour et al., 2017; Noonan et al., 2010; Tucci et al., 2011). In these conditions, OCLs suppress T cell activation via PD-L1, Galectin-9 and HVEM (An et al., 2016; Mansour et al., 2017; Tai et al., 2018). Although OCL heterogeneity was not investigated in MM, osteoclastogenic conditions are similar to those supporting the differentiation of Cx3cr1<sup>+</sup> i-OCLs (Ibáñez et al., 2016). Thus, our results provide new insights into the immunosuppressive property of

OCLs and suggest that Cx3cr1<sup>+</sup> i-OCLs are likely to be involved in pathological conditions such as MM.

Although Cx3cr1<sup>+</sup> and Cx3cr1<sup>neg</sup> i-OCLs both induce TNF $\alpha$ -producing CD4<sup>+</sup> T cells and are resorbing cells, we showed that mature Cx3cr1<sup>neg</sup> i-OCLs are more efficient to induce CD4<sup>+</sup> T cell proliferation and have a higher resorption capacity in vitro than Cx3cr1<sup>+</sup> i-OCLs. This suggests that Cx3cr1<sup>neg</sup> i-OCLs play a major role in inflammatory bone destruction such as in osteoporosis and chronic inflammatory diseases. Interestingly, when comparing Cx3cr1<sup>+</sup> i-OCLs from Cx3cr1-deficient Cx3cr1<sup>GFP/GFP</sup> and WT Cx3cr1<sup>GFP/+</sup> mice no differences were observed. Thus, the Cx3cr1 protein as such is not essential for the immunomodulatory and bone resorbing function of Cx3cr1<sup>+</sup> i-OCLs. However, it remains a membrane marker allowing to distinguish between 2 i-OCLs subsets (namely Cx3cr1<sup>+</sup> and Cx3cr1<sup>neg</sup> i-OCLs) exerting different immunomodulatory roles. Apart from the lack of Cx3cr1 expression and their immunogenic effect, there is currently no specific marker for the identification of Cx3cr1<sup>neg</sup> i-OCLs. Thus, an in-depth characterization of these cells is necessary to fully address their specific role. Interestingly, Cx3cr1<sup>neg</sup> i-OCLs induce high proportions of TNF $\alpha$  and IFN $\gamma$ -producing CD4<sup>+</sup> T cells in vitro. These cytokines are potent inducers of Cx3cr1 and PD-L1 (Bjordahl et al., 2013; McGrath and Najafian, 2012; Tsukamoto et al., 2019) suggesting that TNF $\alpha$ -producing T cells induced by Cx3cr1<sup>neg</sup> i-OCLs may participate in the regulation of Cx3cr1<sup>+</sup> i-OCLs. This observation supports the existence of a regulatory loop between pro-inflammatory Cx3cr1<sup>neg</sup> i-OCLs and immunosuppressive Cx3cr1<sup>+</sup> i-OCLs that negatively regulate Th1 cell activation to control inflammation and that remains to be confirmed in vivo. Therefore, our findings suggest that the balance between the 2 i-OCL subsets would be an important aspect of the immune regulation during inflammatory bone loss.

In summary, we describe 2 OCL subsets that arise during inflammation and that are characterized by their Cx3cr1 expression (Figure 7). While Cx3cr1<sup>neg</sup> i-OCLs mediate inflammatory bone destruction, Cx3cr1<sup>+</sup> i-OCLs are more prone to immunosuppression. This might contribute to the regulation of inflammatory processes but also to maintain an immunosuppressive BM microenvironment. Therefore, our in vitro data suggest the existence of a negative feedback mechanism by a gatekeeper subset of Cx3cr1-expressing i-OCLs during inflammation. This strongly emphasizes the heterogeneity of i-OCLs and provides new insights in their inflammatory function. Our study uncovered a hitherto neglected OCL diversity that contributes to a deeper understanding of the balance between inflammation and immunosuppression in the BM. Interestingly, OCL-related reduction of T cell activation can be restored using anti-PD-1 antibodies. Thus Cx3cr1<sup>+</sup> i-OCLs might represent a novel promising target to overcome the OCL-mediated immunosuppression and restore an anti-tumorigenic BM microenvironment. On the other hand, our results suggest that Cx3cr1<sup>neg</sup> i-OCLs are promising targets against inflammatory bone destruction. A deeper comprehension of OCL diversity is therefore indispensable to identify more specific markers and to evaluate the therapeutic interest of targeting specific OCL subsets.

## Materials and methods

### Key resources table

Reagent type (species) or resource	Designation	Source or reference	Identifiers	Additional information
Strain, strain background ( <i>Mus musculus</i> )	Cx3cr1 <sup>GFP/+</sup>	Jung et al., 2000		CDTA, CNRS, Orléans, France
Sequenced-based reagent	<i>Calcr</i>		PCR primers	CTTCCATGCTGATCTTCTGG and CAGATCTCCATTGGGCACAA
Sequenced-based reagent	<i>Acp5</i>		PCR primers	TGCCTACCTGTGTGGACATGA and CACATAGCCCCACACCGTTCTC
Sequenced-based reagent	<i>Mmp9</i>		PCR primers	TGAGTCCGGCAGACAATCCT and CGCCCTGGATCTCAGCAATA

Continued on next page

Continued

Reagent type (species) or resource	Designation	Source or reference	Identifiers	Additional information
Sequenced-based reagent	<i>Ctsk</i>		PCR primers	CAGCAGAGGTGTGTACTATG and GCGTTGTTCTTATTCCGAGC
Sequenced-based reagent	<i>Atp6V0a3/Tcirg1</i>		PCR primers	CGCTGCGAGGAACTGGAG and AGCGTCAGACCTGCCCC
Sequenced-based reagent	<i>Tnfrsf11a</i>		PCR primers	CTTGGACACCTGGAATGAAGAAG and AGGGCCTTGCTGCATC
Sequenced-based reagent	<i>Nfatc1</i>		PCR primers	TGAGGCTGGTCTTCCGAGTT and CGCTGGGAACACTCGATAGG
Sequenced-based reagent	<i>Dcstamp</i>		PCR primers	GGGCACCAGTATTTTCCTGA and CAGAACGGCCAGAAGAATGA
Sequenced-based reagent	<i>Oscar</i>		PCR primers	GTAACGGATCAGCTCCCCAG and CGCGGTACAGTGCAAAACTC
Sequenced-based reagent	<i>CD274</i>		PCR primers	CAAGCGAATCACGCTGAAAG and GGGTTGGTGGTCACTGTTTGT
Sequenced-based reagent	<i>Lgals9</i>		PCR primers	TCAAGGTGATGGTGAACAAGAAA and GATGGTGTCCACGAGGTGGTA
Sequenced-based reagent	<i>Lightr/Tnfrsf14</i>		PCR primers	TGTCCATTCTTTTGCCACTTG and CCTGATGGTGTCTCCTGTTGTT
Sequenced-based reagent	<i>36B4</i>		PCR primers	TCCAGGCTTTGGGCATCA and CTTTATCAGCTGC ACATCACTCAGA
Antibody	Monoclonal anti-mouse CD80	BD Biosciences	clone 16-10A1	APC-conjugated (1:100)
Antibody	Monoclonal anti-mouse CD86	BD Biosciences	clone GL1	PE-conjugated (1:100)
Antibody	Monoclonal anti-mouse I-A[b]	BD Biosciences	clone AF6-120.1	Biotin-conjugated (1:200)
Antibody	Monoclonal anti-mouse/human CD11b	BD Biosciences	clone M1/70	PE-conjugated (1:500)
Antibody	Monoclonal anti-mouse CD4	BD Biosciences	clone RM4-5	PECy7-conjugated (1:1000)
Antibody	Monoclonal anti-mouse CD68	ThermoFisher Scientific	clone FA-11	PECy7-conjugated (1:200)
Antibody	Monoclonal anti-mouse CD11c	ThermoFisher Scientific	clone N418	PECy7-conjugated (1:200)
Antibody	Monoclonal anti-mouse Ly6C	ThermoFisher Scientific	clone HK1.4	PerCP-conjugated (1:1000)
Antibody	Monoclonal anti-mouse CD169	ThermoFisher Scientific	clone SER-4	APC-conjugated (1:100)

Continued on next page

Continued

Reagent type (species) or resource	Designation	Source or reference	Identifiers	Additional information
Antibody	Monoclonal anti-mouse IFN $\gamma$	ThermoFisher Scientific	clone XMG1.2	APC-conjugated (1:400)
Antibody	Monoclonal anti-mouse TNF $\alpha$	ThermoFisher Scientific	clone MP6-XT22	BV421-conjugated (1:400)
Chemical compound, drug	streptavidin	ThermoFisher Scientific		PercP-conjugated (1:200)
Chemical compound, drug	ovalbumin	ThermoFisher Scientific		Alexa Fluor 647-conjugated
Commercial assay or kit	Acid Phosphatase Leucocyte (TRAcP) kit	Sigma-Aldrich	387A	
Commercial assay or kit	ELF 97 Endogenous Phosphatase Detection Kit	Molecular probes	E-6601	

### Mice and ovariectomy-induced osteoporosis

OT-II mice were purchased from Charles River Laboratory and C57BL/6 *Cx3cr1<sup>GFP/+</sup>* mice were kindly provided by F. Laurent (INRA, Nouzilly, France). Animals were maintained under a 12 hr light/12 hr dark cycle with free access to water and standard mouse diet. For ovariectomy, female mice were randomly divided into 2 groups, which were then sham-operated (SHAM) or ovariectomized (OVX). Ovariectomy and sham surgery were performed on 6 weeks old *Cx3cr1<sup>GFP/+</sup>* and *Cx3cr1<sup>GFP/GFP</sup>* female mice after anesthesia with isoflurane. The animals were intensively monitored for 72 hr after the procedure. Animals were weighed at the beginning of the study and twice a week thereafter. Six weeks after ovariectomy, mice were sacrificed. Uteri were weighed to control the quality of ovariectomy (not shown). Bones were used either for bone marrow cell isolation and further flow cytometry analysis or for subsequent  $\mu$ CT and histological analysis. Approval for animal experiments was obtained from the Institutional Ethics Committee on Laboratory Animals (CIEPAL-Azur, Nice Sophia-Antipolis, France) and experiments were conducted in compliance with ethical regulations for animal testing and research.

### Bone analyses

Femora were fixed in 4% paraformaldehyde (PFA) overnight. Subsequently, microcomputed tomography ( $\mu$ CT) was performed using the Skyscan 1176  $\mu$ CT system (Bruker  $\mu$ CT, Belgium) at the preclinical platform ECELLFRANCE (IRMB, Montpellier, France). Scans were performed using isotropic voxels size of 18  $\mu$ m, voltage of 50 kV, current of 500 mA, 0.5 mm aluminum filter, 180 degrees with a 0.7-degree rotation step and 210 ms exposure time. Data 3D reconstructions were generated for visual representation using NRecon software (Bruker  $\mu$ CT, Belgium).

For histological analysis, fixed femora were decalcified in 10% EDTA for 10 days, embedded in paraffin and tartrate-resistant acid phosphatase (TRAcP) staining was performed on 7  $\mu$ m sections following manufacturer's recommendations (Sigma).

### Primary osteoclast culture

As OCLs cannot be isolated directly ex vivo in sufficient number for subsequent functional analysis, inflammatory OCLs (i-OCLs) were differentiated in vitro from BM-derived CD11c<sup>+</sup> DCs or from blood CD11b<sup>+</sup> Ly6C<sup>hi</sup> MNs of 6 week old WT *Cx3cr1<sup>GFP/+</sup>* and deficient *Cx3cr1<sup>GFP/GFP</sup>* mice as previously described (Ibáñez *et al.*, 2016). Briefly, bone marrow was flushed out of the long bones and after red blood cell lysis, BM cells were cultured in 24-well plates at  $0.5 \times 10^6$  cells/well in RPMI medium (ThermoFisher Scientific) supplemented with 5% serum (Hyclone, GE Healthcare), 1% penicillin-streptomycin, 50  $\mu$ M  $\beta$ -mercaptoethanol (both from ThermoFisher Scientific), 10 ng/ml IL-4 and 10 ng/ml



GM-CSF (both from PeproTech). CD11c<sup>+</sup> DCs were sorted using anti-CD11c antibody (1:200; HL3; BD Biosciences) and anti-biotin microbeads (Miltenyi Biotec). Alternatively, when indicated, i-OCLs were obtained from blood SSC<sup>lo</sup> CD11b<sup>+</sup> Ly6C<sup>hi</sup> MNs of *Cx3cr1*<sup>GFP/+</sup> OVX mice sorted on a FACS-Aria II (BD Biosciences) using anti-CD11b and Ly6C antibodies. For i-OCLs culture,  $2 \times 10^4$  CD11c<sup>+</sup> DCs or CD11b<sup>+</sup> Ly6C<sup>hi</sup> MNs were seeded/well on 24-well plates in MEM-alpha (ThermoFisher Scientific) supplemented with 5% serum (Hyclone, GE Healthcare), 1% penicillin-streptomycin, 50  $\mu$ M  $\beta$ -mercaptoethanol, 25 ng/ml M-CSF and 30 ng/ml RANK-L (both R and D). Cells were cultured at 37°C and 5% CO<sub>2</sub>. Medium was changed every 3–4 days. Fully differentiated i-OCLs were stained with TRAcP (Sigma-Aldrich) according to manufacturer's instructions or collected from the culture plates using Accutase (Sigma-Aldrich) and used for subsequent FACS analysis or FACS sorting based on their nuclei number using H33342 (Sigma-Aldrich) as described previously (Madel et al., 2018). When indicated, macrophages were differentiated in vitro from total BM cells ( $0.5 \times 10^6$  BM cells/well in 24-well plates) in MEM-alpha supplemented with 5% serum (Hyclone, GE Healthcare), 1% penicillin-streptomycin, 50  $\mu$ M  $\beta$ -mercaptoethanol and 25 ng/ml M-CSF for a total of 6 days.

### FACS and cell sorting on osteoclasts

Mature in vitro differentiated i-OCLs were analyzed and sorted based on their multinucleation and GFP expression as described previously (Madel et al., 2018) using flow cytometry analysis. Briefly, cells were incubated with 5  $\mu$ g/ml H33342 (Sigma-Aldrich) in PBS 1X supplemented with 1% FBS and 2 mM EDTA (PSE) for 30 min at 37°C. For cell sorting, cells were filtered through a 100  $\mu$ m nylon mesh and sorted on a FACS Aria IIu (BD Bioscience) using a 100  $\mu$ m nozzle at a flow rate of 2000 events/s. Sorted cells were collected in FBS. Hoechst-stained i-OCLs from *Cx3cr1*<sup>GFP</sup> mutant mice were labeled with antibodies specific for murine anti-CD80, CD86 and IAb (MHC-II, biotinylated) antibodies with a PercP-conjugated streptavidin in PSE for 15 min on ice. For antigen-uptake, mature OCLs were collected and incubated in the presence of 25  $\mu$ g/ml ovalbumin (ThermoFisher Scientific) for 2.5 hr at 37°C before adding 5  $\mu$ g/ml H33342 staining for another 30 min and subsequent FACS acquisition. Gating strategies for *Cx3cr1*<sup>+</sup> and *Cx3cr1*<sup>neg</sup> i-OCLs are shown in **Figure 2—figure supplement 1**. For FACS analysis of TRAcP expression, OCLs were stained using the ELF97 substrate according to the manufacturer's protocol (endogenous phosphatase detection kit; Molecular Probes).

For ex vivo FACS analysis of OCL progenitors, after red blood cell lysis (Sigma-Aldrich) BM cells were labelled with anti-CD11c, CD11b and Ly6C antibodies. For FACS analysis of macrophages, BM-derived macrophages were labeled with anti-CD68 and CD169 antibodies.

For intracellular cytokine analysis, CD4<sup>+</sup> T cells were stimulated with PMA, ionomycin and Brefeldin A, labelled with an anti-CD4 antibody and fixed with 4% formaldehyde overnight as described (Ciucci et al., 2015). Cells were stained with anti-IFN $\gamma$  and TNF $\alpha$  antibodies in Saponin 1X. Data were acquired using a FACS Canto-II (BD Biosciences).

### Resorption assay

Mature in vitro differentiated i-OCLs were sorted based on their multinucleation and GFP (*Cx3cr1*) expression as described above (**Figure 2—figure supplement 1**; Madel et al., 2018). A total of  $10^3$  *Cx3cr1*<sup>+</sup> or *Cx3cr1*<sup>neg</sup> i-OCLs was seeded/well on a 96-well osteoassay plate (Corning) in MEM-alpha containing 10% FBS (Hyclone, GE Healthcare) and 30 ng/ml RANK-L (R and D). After 48 hr, matrix dissolution activity was evaluated by removing the cells using distilled sterile water and staining with 2% Alizarin Red (Sigma-Aldrich) for 1 min. Imaging was performed using an Axio Observer D1 microscope (Zeiss) and images were taken using AxioVision Rel. 4.8 software (Zeiss). Resorbed areas were quantified using Fiji/ImageJ software (Schindelin et al., 2012).

### T cell proliferation and immune suppression assay

Mature in vitro differentiated *Cx3cr1*<sup>+</sup> and *Cx3cr1*<sup>neg</sup> i-OCLs were sorted based on their multinucleation and GFP expression as mentioned above (**Figure 2—figure supplement 1**) and seeded on 96-well plates with  $10^3$  cells/well in the presence of 600 nM ovalbumin (OVA) peptide (ThermoFisher Scientific). Splens of 8 weeks old OT-II mice were used to isolate CD4<sup>+</sup> T cells that express transgenic OVA-specific  $\alpha\beta$ -TCRs by using the Dynabeads Untouched Mouse CD4 Cell Isolation Kit (ThermoFisher Scientific) according to manufacturer's specifications. To analyze T cell proliferation, CD4<sup>+</sup>

T cells were labelled with 250  $\mu$ M CFSE for 10 min at 37°C. OVA-loaded i-OCLs and CD4<sup>+</sup> T cells were seeded in a ratio 1:20 in IMDM medium supplemented with 5% FCS (Hyclone, GE Healthcare), 1% penicillin-streptomycin (Gibco) and 50  $\mu$ M  $\beta$ -mercaptoethanol (Gibco). T cell proliferation was assessed by FACS after 3–5 days.

Implication of the PD-1/PD-L1 axis was evaluated by adding 5  $\mu$ g/ml isotype control or anti-PD-1 (clone Rpm 14–1; kindly provided by V. Vouret (IRCAN, Nice, France)) antibodies at the beginning of the coculture. To validate the immune suppressive effect of Cx3cr1<sup>+</sup> i-OCLs, sorted Cx3cr1<sup>neg</sup> i-OCLs were stimulated with 600 nM OVA for 3 hr at 37°C, washed 3 times with IMDM medium and cultured together with CFSE-labelled CD4<sup>+</sup> T cells from transgenic OT-II mice on 96-well plates as described above. Cx3cr1<sup>+</sup> i-OCLs were sorted and added to the coculture without ovalbumin challenge in different ratios between Cx3cr1<sup>neg</sup> vs Cx3cr1<sup>+</sup> i-OCLs (1:1; 1:2; 2:1). T cell proliferation was assessed using FACS after 3–5 days of coculture.

## RNA sequencing on sorted osteoclasts

Total RNA (100 ng) from 4 biological replicates (from 4 different mice) in each group was extracted from in vitro differentiated i-OCLs (after sorting according to their multinucleation and GFP expression as described above and shown in **Figure 2—figure supplement 1**) with the RNeasy kit (Qiagen) and processed for directional library preparation using the Truseq stranded total RNA library kit (Illumina). Libraries were pooled and sequenced paired-ended for 2  $\times$  75 cycles on a Nextseq500 sequencer (Illumina) to generate 30–40 million fragments per sample. After quality controls, data analysis was performed with 2 different approaches. For the first one, reads were ‘quasi’ mapped on the reference mouse transcriptome (Gencode vM15) and quantified using the SALMON software with the mapping mode and standard settings (**Patro et al., 2017**). Estimates of transcripts counts and their confidence intervals were computed using 1000 bootstraps to assess technical variance. Gene expression levels were computed by aggregating the transcript counts for each gene. Gene expression in biological replicates (n = 4) was then compared using a linear model as implemented in Sleuth (**Pimentel et al., 2017**) and a false discovery rate of 0.01. Lists of differentially expressed genes were annotated using Innate-DB and EnrichR web portals. For the second approach, raw RNAseq fastq reads were trimmed with Trimmomatic and aligned to the reference mouse transcriptome (Gencode mm10) using STAR (v. 2.6.1 c) (**Dobin et al., 2013**) on the National Institutes of Health high-performance computing Biowulf cluster. Gene-assignment and estimates counts of RNA reads were performed with HTseq (**Anders et al., 2015**). Further analyses were performed with R software and gene expression in biological replicates (n = 4) was compared between the different conditions to identify differentially expressed genes using DESeq2 (**Love et al., 2014**) with the Wald test (FDR < 0.01). Batch removal was performed using limma (**Ritchie et al., 2015**). Gene ontology (GO) pathway analyzes were performed using Goseq (**Young et al., 2010**). Both approaches gave equivalent results (not shown).

## Gene expression analyses

Total RNA of sorted in vitro differentiated Cx3cr1<sup>+</sup> and Cx3cr1<sup>neg</sup> i-OCLs was extracted using TRIzol reagent with subsequent isopropanol precipitation following manufacturer’s instructions. RT-qPCR was performed after reverse transcription (Superscript II, Life Technologies) as described previously (**Mansour et al., 2012**) using SYBR Green and the primers indicated in the Key resources table. Samples of 3 biological replicates were run in triplicates and results were normalized to the reference gene 36B4 using the 2<sup>−ΔCt</sup> method as described (**Mansour et al., 2011**).

## Statistical analyses

All data were analyzed using Graph Pad Prism 7.0 software using an appropriate two tailed student’s t-test with Bonferroni adjustment when comparing two groups. When more than two groups were compared two-way analysis of variance (ANOVA) was used. Statistical significance was considered at p<0.05. Experimental values are presented as mean  $\pm$  standard deviation (SD) of at least three biological replicates. Error bars for gene expression analysis of humans and mice using RT-qPCR show the mean value with 95% confidence interval. All experiments were repeated with a minimum of three biological replicates and at least two technical replicates.

## Acknowledgements

We acknowledge M Topi (LP2M, Nice, France) for her technical assistance, the Genomic Facility of the UFR Simone Veil, (Université Versailles-Saint-Quentin, France) for the RNA sequencing, the IRCAN animal core facility (Nice, France) and the preclinical platform of ECELLFRANCE for  $\mu$ CT analysis (IRMB, Montpellier, France). This work utilized the computational resources of the NIH-HPC-Bio-wulf cluster (<http://hpc.nih.gov>).

The work was supported by the Agence Nationale de la Recherche (ANR-16-CE14-0030), the French government, managed by the ANR as part of the Investissement d'Avenir UCA<sup>JEDI</sup> project (ANR-15-IDEX-01), the Fondation Arthritis, Société Française de Biologie des Tissus Minéralisés, European Calcified Tissue Society and American Society of Bone and Mineral Research. M-B M is supported by the Fondation pour la Recherche Médicale (FRM, ECO20160736019) and TC is supported by the Intramural Research Program of the National Cancer Institute, Center for Cancer Research, National Institutes of Health.

## Additional information

### Funding

Funder	Grant reference number	Author
Agence Nationale de la Recherche	ANR-16-CE14-0030	Florence Apparailly Henri-Jean Garchon Claudine Blin-Wakkach
Agence Nationale de la Recherche	ANR-15-IDEX-01	Maria-Bernadette Madel Claudine Blin-Wakkach
Fondation pour la Recherche Médicale	ECO20160736019	Maria-Bernadette Madel
Fondation Arthritis		Maria-Bernadette Madel Claudine Blin-Wakkach
Société Française de Biologie des TissusMinéralisés		Maria-Bernadette Madel
European Calcified Tissue Society		Maria-Bernadette Madel
American Society of Bone and Mineral Research		Maria-Bernadette Madel
National Cancer Institute	Intramural Research Program	Thomas Ciucci

The funders had no role in study design, data collection and interpretation, or the decision to submit the work for publication.

### Author contributions

Maria-Bernadette Madel, Formal analysis, Validation, Investigation, Visualization, Methodology, Writing - original draft, Writing - review and editing; Lidia Ibáñez, Formal analysis, Validation, Investigation, Methodology, Writing - review and editing; Thomas Ciucci, Formal analysis, Visualization, Writing - review and editing; Julia Halper, Formal analysis, Investigation, Methodology; Matthieu Rouleau, Visualization, Writing - review and editing, contributed to the discussion of results and provided helpful advices throughout the study; Antoine Boutin, Formal analysis, Validation, Investigation; Christophe Hue, Data curation, Validation, Investigation, Methodology; Isabelle Duroux-Richard, Formal analysis, Writing - review and editing; Florence Apparailly, Supervision, Writing - review and editing, Contributed to the discussion of results and provided helpful advices throughout the study; Henri-Jean Garchon, Formal analysis, Validation, Visualization, Methodology, Writing - review and editing; Abdelilah Wakkach, Conceptualization, Supervision, Visualization, Methodology, Writing - review and editing; Claudine Blin-Wakkach, Conceptualization, Formal analysis, Supervision, Funding acquisition, Validation, Visualization, Methodology, Writing - original draft, Project administration, Writing - review and editing

**Author ORCIDs**Matthieu Rouleau  <http://orcid.org/0000-0002-0075-9880>Claudine Blin-Wakkach  <https://orcid.org/0000-0002-2621-3907>**Ethics**

Animal experimentation: The protocol for animal experiments was approved by the Institutional Ethics Committee on Laboratory Animals (CIEPAL-Azur, France) (#2016121216457153 (V3)). Experiments were conducted in compliance with ethical regulations for animal testing and research.

**Decision letter and Author response**Decision letter <https://doi.org/10.7554/eLife.54493.sa1>Author response <https://doi.org/10.7554/eLife.54493.sa2>**Additional files****Supplementary files**

- Source data 1. Raw counts-HTSeq. Raw counts (HTseq) per gene and per sample from the RNAseq analysis of Cx3cr1<sup>+</sup> and Cx3cr1<sup>neg</sup> i-OCLs from WT Cx3cr1<sup>GFP/+</sup> mice and Cx3cr1<sup>+</sup> i-OCLs from deficient Cx3cr1<sup>GFP/GFP</sup> mice. In each group, the 4 i-OCL samples have been obtained from 4 different mice.
- Source data 2. Counts\_Deseq NormaBatch Corrected. Counts per gene and per sample after normalization and batch correction from the RNAseq analysis of Cx3cr1<sup>+</sup> and Cx3cr1<sup>neg</sup> i-OCLs from WT Cx3cr1<sup>GFP/+</sup> mice and Cx3cr1<sup>+</sup> i-OCLs from deficient Cx3cr1<sup>GFP/GFP</sup> mice. In each group, the 4 i-OCL samples have been obtained from 4 different mice.
- Source data 3. Cx3cr1<sup>+</sup> i-OCLs from WT Cx3cr1<sup>GFP/+</sup> mice versus Cx3cr1<sup>+</sup> i-OCLs from deficient Cx3cr1<sup>GFP/GFP</sup> mice \_Deseq. Statistics (Deseq) for the comparison of expressed genes in Cx3cr1<sup>+</sup> i-OCLs from WT Cx3cr1<sup>GFP/+</sup> mice versus Cx3cr1<sup>+</sup> i-OCLs from deficient Cx3cr1<sup>GFP/GFP</sup> mice. In each group, the 4 i-OCL samples have been obtained from 4 different mice.
- Source data 4. Cx3cr1<sup>+</sup> i-OCLs from WT Cx3cr1<sup>GFP/+</sup> mice versus Cx3cr1<sup>neg</sup> i-OCLs from WT Cx3cr1<sup>GFP/+</sup> mice \_Deseq. Statistics (Deseq) for the comparison of expressed genes in Cx3cr1<sup>+</sup> versus Cx3cr1<sup>neg</sup> i-OCLs from WT Cx3cr1<sup>GFP/+</sup> mice. In each group, the 4 i-OCL samples have been obtained from 4 different mice.
- Transparent reporting form

**Data availability**

All the RNA sequencing data are included in the submitted manuscript as data source files. RNA-Sequencing data have been deposited in ENA (European Nucleotide Archive) under accession number PRJEB36092.

The following dataset was generated:

Author(s)	Year	Dataset title	Dataset URL	Database and Identifier
Madel MB, Garchon HJ, Wakkach A, Blin-Wakkach C	2020	Heterogeneity of inflammatory osteoclasts based on CX3CR1 expression	<a href="https://www.ebi.ac.uk/ena/data/view/PRJEB36092">https://www.ebi.ac.uk/ena/data/view/PRJEB36092</a>	European Nucleotide Archive, PRJEB36092

**References**

Ammari M, Presumey J, Ponsolles C, Roussignol G, Roubert C, Escriou V, Toupet K, Mausset-Bonnefont AL, Cren M, Robin M, Georgel P, Nehmar R, Taams L, Grün J, Grützkau A, Häupl T, Pers YM, Jorgensen C, Duroux-Richard I, Courties G, et al. 2018. Delivery of miR-146a to Ly6C high monocytes inhibits pathogenic

- bone erosion in inflammatory arthritis. *Theranostics* **8**:5972–5985. DOI: <https://doi.org/10.7150/thno.29313>, PMID: 30613275
- An G, Acharya C, Feng X, Wen K, Zhong M, Zhang L, Munshi NC, Qiu L, Tai YT, Anderson KC. 2016. Osteoclasts promote immune suppressive microenvironment in multiple myeloma: therapeutic implication. *Blood* **128**:1590–1603. DOI: <https://doi.org/10.1182/blood-2016-03-707547>, PMID: 27418644
- Anders S, Pyl PT, Huber W. 2015. HTSeq—a Python framework to work with high-throughput sequencing data. *Bioinformatics* **31**:166–169. DOI: <https://doi.org/10.1093/bioinformatics/btu638>, PMID: 25260700
- Arai F, Miyamoto T, Ohneda O, Inada T, Sudo T, Brasel K, Miyata T, Anderson DM, Suda T. 1999. Commitment and differentiation of osteoclast precursor cells by the sequential expression of c-Fms and receptor activator of nuclear factor kappaB (RANK) receptors. *The Journal of Experimental Medicine* **190**:1741–1754. DOI: <https://doi.org/10.1084/jem.190.12.1741>, PMID: 10601350
- Barnden MJ, Allison J, Heath WR, Carbone FR. 1998. Defective TCR expression in transgenic mice constructed using cDNA-based alpha- and beta-chain genes under the control of heterologous regulatory elements. *Immunology and Cell Biology* **76**:34–40. DOI: <https://doi.org/10.1046/j.1440-1711.1998.00709.x>, PMID: 9553774
- Bjordahl RL, Steidl C, Gascoyne RD, Ware CF. 2013. Lymphotoxin network pathways shape the tumor microenvironment. *Current Opinion in Immunology* **25**:222–229. DOI: <https://doi.org/10.1016/j.coi.2013.01.001>
- Buchwald ZS, Kiesel JR, DiPaolo R, Pagadala MS, Aurora R. 2012. Osteoclast Activated FoxP3+ CD8+ T-Cells Suppress Bone Resorption in vitro. *PLOS ONE* **7**:e38199. DOI: <https://doi.org/10.1371/journal.pone.0038199>
- Cai G, Freeman GJ. 2009. The CD160, BTLA, LIGHT/HVEM pathway: a bidirectional switch regulating T-cell activation. *Immunological Reviews* **229**:244–258. DOI: <https://doi.org/10.1111/j.1600-065X.2009.00783.x>, PMID: 19426226
- Cenci S, Weitzmann MN, Roggia C, Namba N, Novack D, Woodring J, Pacifici R. 2000. Estrogen deficiency induces bone loss by enhancing T-cell production of TNF-alpha. *Journal of Clinical Investigation* **106**:1229–1237. DOI: <https://doi.org/10.1172/JCI11066>, PMID: 11086024
- Charles JF, Hsu LY, Niemi EC, Weiss A, Aliprantis AO, Nakamura MC. 2012. Inflammatory arthritis increases mouse osteoclast precursors with myeloid suppressor function. *Journal of Clinical Investigation* **122**:4592–4605. DOI: <https://doi.org/10.1172/JCI60920>, PMID: 23114597
- Chen YD, Huang CY, Liu HY, Yao WF, Wu WG, Lu YL, Wang W. 2016. Serum CX3CL1/fractalkine concentrations are positively associated with disease severity in postmenopausal osteoporotic patients. *British Journal of Biomedical Science* **73**:121–128. DOI: <https://doi.org/10.1080/09674845.2016.1209897>, PMID: 27476376
- Ciucci T, Ibáñez L, Boucoiran A, Birgy-Barelli E, Pène J, Abou-Ezzi G, Arab N, Rouleau M, Hébuterne X, Yssel H, Blin-Wakkach C, Wakkach A. 2015. Bone marrow Th17 tnfa cells induce osteoclast differentiation, and link bone destruction to IBD. *Gut* **64**:1072–1081. DOI: <https://doi.org/10.1136/gutjnl-2014-306947>, PMID: 25298539
- Dobin A, Davis CA, Schlesinger F, Drenkow J, Zaleski C, Jha S, Batut P, Chaisson M, Gingeras TR. 2013. STAR: ultrafast universal RNA-seq aligner. *Bioinformatics* **29**:15–21. DOI: <https://doi.org/10.1093/bioinformatics/bts635>, PMID: 23104886
- Francisco LM, Salinas VH, Brown KE, Vanguri VK, Freeman GJ, Kuchroo VK, Sharpe AH. 2009. PD-L1 regulates the development, maintenance, and function of induced regulatory T cells. *The Journal of Experimental Medicine* **206**:3015–3029. DOI: <https://doi.org/10.1084/jem.20090847>, PMID: 20008522
- Ginhoux F, Liu K, Helft J, Bogunovic M, Greter M, Hashimoto D, Price J, Yin N, Bromberg J, Lira SA, Stanley ER, Nussenzweig M, Merad M. 2009. The origin and development of nonlymphoid tissue CD103<sup>+</sup> DCs. *The Journal of Experimental Medicine* **206**:3115–3130. DOI: <https://doi.org/10.1084/jem.20091756>, PMID: 20008528
- Goto Y, Aoyama M, Sekiya T, Kakita H, Waguri-Nagaya Y, Miyazawa K, Asai K, Goto S. 2016. CXCR4<sup>+</sup> CD45<sup>-</sup> cells are niche forming for osteoclastogenesis via the SDF-1, CXCL7, and CX3CL1 signaling pathways in bone marrow: cxcr4<sup>+</sup> CD45<sup>-</sup> cells in osteoclastogenesis. *Stem Cells* **34**:2733–2743. DOI: <https://doi.org/10.1002/stem.2440>
- Han KH, Ryu JW, Lim KE, Lee SH, Kim Y, Hwang CS, Choi JY, Han KO. 2014. Vascular expression of the chemokine CX3CL1 promotes osteoclast recruitment and exacerbates bone resorption in an irradiated murine model. *Bone* **61**:91–101. DOI: <https://doi.org/10.1016/j.bone.2013.12.032>, PMID: 24401612
- Hasegawa T, Kikuta J, Sudo T, Matsuura Y, Matsui T, Simmons S, Ebina K, Hirao M, Okuzaki D, Yoshida Y, Hirao A, Kalinichenko VV, Yamaoka K, Takeuchi T, Ishii M. 2019. Identification of a novel arthritis-associated osteoclast precursor macrophage regulated by FoxM1. *Nature Immunology* **20**:1631–1643. DOI: <https://doi.org/10.1038/s41590-019-0526-7>, PMID: 31740799
- Hoshino A, Ueha S, Hanada S, Imai T, Ito M, Yamamoto K, Matsushima K, Yamaguchi A, Imura T. 2013. Roles of chemokine receptor CX3CR1 in maintaining murine bone homeostasis through the regulation of both osteoblasts and osteoclasts. *Journal of Cell Science* **126**:1032–1045. DOI: <https://doi.org/10.1242/jcs.113910>
- Ibáñez L, Abou-Ezzi G, Ciucci T, Amiot V, Belaïd N, Obino D, Mansour A, Rouleau M, Wakkach A, Blin-Wakkach C. 2016. Inflammatory osteoclasts prime TNFα-Producing CD4<sup>+</sup> T Cells and Express CX3CR1. *Journal of Bone and Mineral Research* **31**:1899–1908. DOI: <https://doi.org/10.1002/jbmr.2868>, PMID: 27161765
- Jacome-Galarza CE, Lee S-K, Lorenzo JA, Aguila HL. 2013. Identification, characterization, and isolation of a common progenitor for osteoclasts, macrophages, and dendritic cells from murine bone marrow and periphery. *Journal of Bone and Mineral Research* **28**:1203–1213. DOI: <https://doi.org/10.1002/jbmr.1822>
- Jacome-Galarza CE, Percin GI, Muller JT, Mass E, Lazarov T, Eitler J, Rauner M, Yadav VK, Crozet L, Bohm M, Loyher P-L, Karsenty G, Waskow C, Geissmann F. 2019. Developmental origin, functional maintenance and genetic rescue of osteoclasts. *Nature* **568**:541–545. DOI: <https://doi.org/10.1038/s41586-019-1105-7>

- Jung S**, Aliberti J, Graemmel P, Sunshine MJ, Kreutzberg GW, Sher A, Littman DR. 2000. Analysis of fractalkine receptor CX(3)CR1 function by targeted deletion and green fluorescent protein reporter gene insertion. *Molecular and Cellular Biology* **20**:4106–4114. DOI: <https://doi.org/10.1128/MCB.20.11.4106-4114.2000>, PMID: 10805752
- Kiesel JR**, Buchwald ZS, Aurora R. 2009. Cross-presentation by osteoclasts induces FoxP3 in CD8<sup>+</sup> T cells. *Journal of Immunology* **182**:5477–5487. DOI: <https://doi.org/10.4049/jimmunol.0803897>, PMID: 19380796
- Koizumi K**, Saitoh Y, Minami T, Takeno N, Tsuneyama K, Miyahara T, Nakayama T, Sakurai H, Takano Y, Nishimura M, Imai T, Yoshie O, Saiki I. 2009. Role of CX3CL1/fractalkine in osteoclast differentiation and bone resorption. *The Journal of Immunology* **183**:7825–7831. DOI: <https://doi.org/10.4049/jimmunol.0803627>, PMID: 19923448
- Kotani M**, Kikuta J, Klauschen F, Chino T, Kobayashi Y, Yasuda H, Tamai K, Miyawaki A, Kanagawa O, Tomura M, Ishii M. 2013. Systemic circulation and bone recruitment of osteoclast precursors tracked by using fluorescent imaging techniques. *The Journal of Immunology* **190**:605–612. DOI: <https://doi.org/10.4049/jimmunol.1201345>, PMID: 23241888
- Li H**, Hong S, Qian J, Zheng Y, Yang J, Yi Q. 2010. Cross talk between the bone and immune systems: osteoclasts function as antigen-presenting cells and activate CD4<sup>+</sup> and CD8<sup>+</sup> T cells. *Blood* **116**:210–217. DOI: <https://doi.org/10.1182/blood-2009-11-255026>, PMID: 20304810
- Li JY**, Tawfeek H, Bedi B, Yang X, Adams J, Gao KY, Zayzafoon M, Weitzmann MN, Pacifici R. 2011. Ovariectomy deregulates osteoblast and osteoclast formation through the T-cell receptor CD40 ligand. *PNAS* **108**:768–773. DOI: <https://doi.org/10.1073/pnas.1013492108>, PMID: 21187391
- Love MI**, Huber W, Anders S. 2014. Moderated estimation of fold change and dispersion for RNA-seq data with DESeq2. *Genome Biology* **15**:550. DOI: <https://doi.org/10.1186/s13059-014-0550-8>, PMID: 25516281
- Madel MB**, Ibáñez L, Rouleau M, Wakkach A, Blin-Wakkach C. 2018. A novel reliable and efficient procedure for purification of mature osteoclasts allowing functional assays in mouse cells. *Frontiers in Immunology* **9**:2567. DOI: <https://doi.org/10.3389/fimmu.2018.02567>, PMID: 30450105
- Madel M-B**, Ibáñez L, Wakkach A, de Vries TJ, Teti A, Apparailly F, Blin-Wakkach C. 2019. Immune function and diversity of osteoclasts in normal and pathological conditions. *Frontiers in Immunology* **10**:01408. DOI: <https://doi.org/10.3389/fimmu.2019.01408>
- Mansour A**, Anginot A, Mancini SJ, Schiff C, Carle GF, Wakkach A, Blin-Wakkach C. 2011. Osteoclast activity modulates B-cell development in the bone marrow. *Cell Research* **21**:1102–1115. DOI: <https://doi.org/10.1038/cr.2011.21>, PMID: 21321604
- Mansour A**, Abou-Ezzi G, Sitnicka E, Jacobsen SE, Wakkach A, Blin-Wakkach C. 2012. Osteoclasts promote the formation of hematopoietic stem cell niches in the bone marrow. *The Journal of Experimental Medicine* **209**:537–549. DOI: <https://doi.org/10.1084/jem.20110994>, PMID: 22351931
- Mansour A**, Wakkach A, Blin-Wakkach C. 2017. Emerging roles of osteoclasts in the modulation of bone microenvironment and immune suppression in multiple myeloma. *Frontiers in Immunology* **8**:954. DOI: <https://doi.org/10.3389/fimmu.2017.00954>, PMID: 28848556
- Matsuura T**, Ichinose S, Akiyama M, Kasahara Y, Tachikawa N, Nakahama KI. 2017. Involvement of CX3CL1 in the migration of osteoclast precursors across osteoblast layer stimulated by Interleukin-1β. *Journal of Cellular Physiology* **232**:1739–1745. DOI: <https://doi.org/10.1002/jcp.25577>, PMID: 27579490
- McGrath MM**, Najafian N. 2012. The role of coinhibitory signaling pathways in transplantation and tolerance. *Frontiers in Immunology* **3**:47. DOI: <https://doi.org/10.3389/fimmu.2012.00047>, PMID: 22566929
- Niess JH**, Adler G. 2010. Enteric flora expands gut Lamina propria CX3CR1<sup>+</sup> dendritic cells supporting inflammatory immune responses under normal and inflammatory conditions. *Journal of Immunology* **184**:2026–2037. DOI: <https://doi.org/10.4049/jimmunol.0901936>, PMID: 20089703
- Noonan K**, Marchionni L, Anderson J, Pardoll D, Roodman GD, Borrello I. 2010. A novel role of IL-17-producing lymphocytes in mediating lytic bone disease in multiple myeloma. *Blood* **116**:3554–3563. DOI: <https://doi.org/10.1182/blood-2010-05-283895>, PMID: 20664052
- Panek CA**, Ramos MV, Mejias MP, Abrey-Recalde MJ, Fernandez-Brando RJ, Gori MS, Salamone GV, Palermo MS. 2015. Differential expression of the fractalkine chemokine receptor (CX3CR1) in human monocytes during differentiation. *Cellular & Molecular Immunology* **12**:669–680. DOI: <https://doi.org/10.1038/cmi.2014.116>, PMID: 25502213
- Patro R**, Duggal G, Love MI, Irizarry RA, Kingsford C. 2017. Salmon provides fast and bias-aware quantification of transcript expression. *Nature Methods* **14**:417–419. DOI: <https://doi.org/10.1038/nmeth.4197>, PMID: 28263959
- Pimentel H**, Bray NL, Puente S, Melsted P, Pachter L. 2017. Differential analysis of RNA-seq incorporating quantification uncertainty. *Nature Methods* **14**:687–690. DOI: <https://doi.org/10.1038/nmeth.4324>, PMID: 28581496
- Regoli M**, Bertelli E, Gulisano M, Nicoletti C. 2017. The multifaceted personality of intestinal CX3CR1<sup>+</sup> macrophages. *Trends in Immunology* **38**:879–887. DOI: <https://doi.org/10.1016/j.it.2017.07.009>
- Ritchie ME**, Phipson B, Wu D, Hu Y, Law CW, Shi W, Smyth GK. 2015. Limma powers differential expression analyses for RNA-sequencing and microarray studies. *Nucleic Acids Research* **43**:e47. DOI: <https://doi.org/10.1093/nar/gkv007>, PMID: 25605792
- Rivollier A**, Mazzorana M, Tebib J, Piperno M, Aitsiselmi T, Rabourdin-Combe C, Jurdic P, Servet-Delprat C. 2004. Immature dendritic cell transdifferentiation into osteoclasts: a novel pathway sustained by the rheumatoid arthritis microenvironment. *Blood* **104**:4029–4037. DOI: <https://doi.org/10.1182/blood-2004-01-0041>, PMID: 15308576

- Rossini V**, Zhurina D, Radulovic K, Manta C, Walther P, Riedel CU, Niess JH. 2014. CX3CR1<sup>+</sup> cells facilitate the activation of CD4 T cells in the colonic Lamina propria during antigen-driven colitis. *Mucosal Immunology* **7**: 533–548. DOI: <https://doi.org/10.1038/mi.2013.70>, PMID: 24129164
- Schindelin J**, Arganda-Carreras I, Frise E, Kaynig V, Longair M, Pietzsch T, Preibisch S, Rueden C, Saalfeld S, Schmid B, Tinevez JY, White DJ, Hartenstein V, Eliceiri K, Tomancak P, Cardona A. 2012. Fiji: an open-source platform for biological-image analysis. *Nature Methods* **9**:676–682. DOI: <https://doi.org/10.1038/nmeth.2019>, PMID: 22743772
- Schulz O**, Jaensson E, Persson EK, Liu X, Worbs T, Agace WW, Pabst O. 2009. Intestinal CD103<sup>+</sup>, but not CX3CR1<sup>+</sup>, antigen sampling cells migrate in lymph and serve classical dendritic cell functions. *The Journal of Experimental Medicine* **206**:3101–3114. DOI: <https://doi.org/10.1084/jem.20091925>, PMID: 20008524
- Seeling M**, Hillenhoff U, David JP, Schett G, Tuckermann J, Lux A, Nimmerjahn F. 2013. Inflammatory monocytes and fcy receptor IV on osteoclasts are critical for bone destruction during inflammatory arthritis in mice. *PNAS* **110**:10729–10734. DOI: <https://doi.org/10.1073/pnas.1301001110>, PMID: 23754379
- Song C**, Tan P, Zhang Z, Wu W, Dong Y, Zhao L, Liu H, Guan H, Li F. 2018. REV-ERB agonism suppresses osteoclastogenesis and prevents ovariectomy-induced bone loss partially via FABP4 upregulation. *The FASEB Journal* **32**:3215–3228. DOI: <https://doi.org/10.1096/fj.201600825RRR>, PMID: 29401617
- Tai YT**, Cho SF, Anderson KC. 2018. Osteoclast immunosuppressive effects in multiple myeloma: role of programmed cell death ligand 1. *Frontiers in Immunology* **9**:1822. DOI: <https://doi.org/10.3389/fimmu.2018.01822>, PMID: 30147691
- Tarrant TK**, Liu P, Rampersad RR, Esserman D, Rothlein LR, Timoshchenko RG, McGinnis MW, Fitzhugh DJ, Patel DD, Fong AM. 2012. Decreased Th17 and antigen-specific humoral responses in CX<sub>3</sub>CR1-deficient mice in the collagen-induced arthritis model. *Arthritis & Rheumatism* **64**:1379–1387. DOI: <https://doi.org/10.1002/art.34320>, PMID: 22144035
- Tsukamoto M**, Imai K, Ishimoto T, Komohara Y, Yamashita YI, Nakagawa S, Umezaki N, Yamao T, Kitano Y, Miyata T, Arima K, Okabe H, Baba Y, Chikamoto A, Ishiko T, Hirota M, Baba H. 2019. PD-L1 expression enhancement by infiltrating macrophage-derived tumor necrosis factor- $\alpha$  leads to poor pancreatic cancer prognosis. *Cancer Science* **110**:310–320. DOI: <https://doi.org/10.1111/cas.13874>, PMID: 30426611
- Tucci M**, Ciavarella S, Strippoli S, Brunetti O, Dammacco F, Silvestris F. 2011. Immature dendritic cells from patients with multiple myeloma are prone to osteoclast differentiation in vitro. *Experimental Hematology* **39**: 773–783. DOI: <https://doi.org/10.1016/j.exphem.2011.04.006>, PMID: 21569821
- Varol C**, Vallon-Eberhard A, Elinav E, Aychek T, Shapira Y, Luche H, Fehling HJ, Hardt WD, Shakhar G, Jung S. 2009. Intestinal Lamina propria dendritic cell subsets have different origin and functions. *Immunity* **31**:502–512. DOI: <https://doi.org/10.1016/j.immuni.2009.06.025>, PMID: 19733097
- Wakkach A**, Mansour A, Dacquin R, Coste E, Jurdic P, Carle GF, Blin-Wakkach C. 2008. Bone marrow microenvironment controls the in vivo differentiation of murine dendritic cells into osteoclasts. *Blood* **112**: 5074–5083. DOI: <https://doi.org/10.1182/blood-2008-01-132787>, PMID: 18768394
- Wang L**, Hu Y-Q, Zhao Z-J, Zhang H-Y, Gao B, Lu W-G, Xu X-L, Lin X-S, Wang J-P, Jie Q, Luo Z-J, Yang L. 2017. Screening and validation of serum protein biomarkers for early postmenopausal osteoporosis diagnosis. *Molecular Medicine Reports* **16**:8427–8433. DOI: <https://doi.org/10.3892/mmr.2017.7620>
- Weitzmann MN**, Pacifici R. 2006. Estrogen deficiency and bone loss: an inflammatory tale. *Journal of Clinical Investigation* **116**:1186–1194. DOI: <https://doi.org/10.1172/JCI28550>, PMID: 16670759
- Yin N**, Xu J, Ginhoux F, Randolph GJ, Merad M, Ding Y, Bromberg JS. 2012. Functional specialization of islet dendritic cell subsets. *The Journal of Immunology* **188**:4921–4930. DOI: <https://doi.org/10.4049/jimmunol.1103725>, PMID: 22508930
- Yona S**, Kim K-W, Wolf Y, Mildner A, Varol D, Breker M, Strauss-Ayali D, Viukov S, Guillems M, Misharin A, Hume DA, Perlman H, Malissen B, Zelzer E, Jung S. 2013. Fate Mapping Reveals Origins and Dynamics of Monocytes and Tissue Macrophages under Homeostasis. *Immunity* **38**:79–91. DOI: <https://doi.org/10.1016/j.immuni.2012.12.001>
- Young MD**, Wakefield MJ, Smyth GK, Oshlack A. 2010. Gene ontology analysis for RNA-seq: accounting for selection Bias. *Genome Biology* **11**:R14. DOI: <https://doi.org/10.1186/gb-2010-11-2-r14>, PMID: 20132535
- Zhang X**, Yu S, Hoffmann K, Yu K, Förster R. 2012. Neonatal lymph node stromal cells drive myelodendritic lineage cells into a distinct population of CX3CR1+CD11b+F4/80+ regulatory macrophages in mice. *Blood* **119**:3975–3986. DOI: <https://doi.org/10.1182/blood-2011-06-359315>, PMID: 22403256