



**HAL**  
open science

# Early Palaeozoic diversifications and extinctions in the marine biosphere: a continuum of change

David A.T. Harper, Borja Cascales-Miñana, Thomas Servais

## ► To cite this version:

David A.T. Harper, Borja Cascales-Miñana, Thomas Servais. Early Palaeozoic diversifications and extinctions in the marine biosphere: a continuum of change. *Geological Magazine*, 2020, 157 (1), pp.5-21. 10.1017/S0016756819001298 . hal-03046667

**HAL Id: hal-03046667**

**<https://hal.science/hal-03046667>**

Submitted on 18 Dec 2020

**HAL** is a multi-disciplinary open access archive for the deposit and dissemination of scientific research documents, whether they are published or not. The documents may come from teaching and research institutions in France or abroad, or from public or private research centers.

L'archive ouverte pluridisciplinaire **HAL**, est destinée au dépôt et à la diffusion de documents scientifiques de niveau recherche, publiés ou non, émanant des établissements d'enseignement et de recherche français ou étrangers, des laboratoires publics ou privés.

Early Palaeozoic diversifications and extinctions in the marine biosphere: a continuum of change

David A.T. Harper<sup>1,2,\*</sup>, Borja Cascales-Miñana<sup>3</sup> & Thomas Servais<sup>1,3</sup>

<sup>1</sup>Palaeoecosystems Group, Department of Earth Sciences, Durham University, Durham DH1 3LE, UK

<sup>2</sup>China University of Geosciences, 388 Lumo Road, Wuhan 430074, People's Republic of China

<sup>3</sup>CNRS, University of Lille, UMR 8198-Evo-Eco-Paleo, F-59000 Lille, France

\*Author for correspondence: David A.T. Harper, Email: david.harper@durham.ac.uk

Received: 28 April 2019

Accepted: 30 September 2019

Abstract

A review of biodiversity curves of marine organisms indicates that, despite fluctuations in amplitude (some large), a large-scale, long-term radiation of life took place during the early [AQ1] Palaeozoic Era [AQ2]; it was aggregated by a succession of more discrete and regionalized radiations across geographies and within phylogenies. This major biodiversification within the marine biosphere started during late Precambrian time and was only finally interrupted in the Devonian Period. It includes both the Cambrian Explosion and the Great Ordovician Biodiversification Event. The establishment of modern marine ecosystems took place during a continuous chronology of the successive establishment of organisms and their ecological communities, developed during the 'Cambrian substrate revolution', the 'Ordovician plankton revolution', the 'Ordovician substrate revolution', the 'Ordovician bioerosion revolution' and the 'Devonian nekton revolution'. At smaller scales, different regional but important radiations can be recognized geographically and some of them have been identified and named (e.g.

those associated with the 'Richmondian Invasion' during Late Ordovician time in Laurentia and the contemporaneous 'Boda event' in parts of Europe and North Africa), in particular from areas that were in or moved towards lower latitudes, allowing high levels of speciation on epicontinental seas during these intervals. The datasets remain incomplete for many other geographical areas, but also for particular time intervals (e.g. during the late Cambrian 'Furongian Gap'). The early Palaeozoic biodiversification therefore appears to be a long-term process, modulated by bursts in significant diversity and intervals of inadequate data, where its progressive character will become increasingly clearer with the availability of more complete datasets, with better global coverage and more advanced analytical techniques.

Keywords: Cambrian Explosion; Great Ordovician Biodiversification Event; Ordovician extinction; Silurian; biodiversification; radiation

## 1. Introduction

The trajectory of early Palaeozoic biodiversity is commonly narrated in terms of a series of discrete diversifications and extinctions, each providing a focus for much attention. The alternative hypothesis, that life diversified onwards and upwards within a constant continuum of change, implies the former model may in part be controlled and expressed by the preservation of the fossil and rock record and is not an accurate proxy for the shape of the early diversification of complex life. The latter implies a single diversity curve for all life with changing diversity and ecological patterns and trends along this journey, constructed by the products of a plethora of different players. This pattern is not new and was established in some of the first attempts at sketching out the diversity of life through deep time. If indeed all life is related it must be part of a single biodiversification curve ([Benton, 2016](#)), modulated by biases in the fossil record and the heterogeneity of evolutionary rates together with that of habitats, locally, regionally and globally.

Irrespective of extrinsic causes, clades have expanded and declined through time, taken advantage of unoccupied ecospace and exploited more specialized niches (Benton & Emerson, 2007 [AQ6]), and have been removed or thinned out by extinction events, both regional and global. Ecological opportunities utilized in deep time (Benton & Emerson, 2007) coupled with early substantial radiations within clades, which will guarantee their longevity, essentially the 'push of the past' ([Budd & Mann, 2018](#)), have been key players in the cadence of diversity through time. Finally, the expansion of biodiversity is a key property of life and simple stochastic algorithms have produced branching trees, similar to those observed in nature (Raup et al. 1973). [AQ7]

In this review we discuss some of the implications of both models. Can they be reconciled and, more importantly, what do they reveal about the early Palaeozoic history of marine life?

In the first volume of Geological Magazine (published in 1864), issues are replete with descriptions and discussions of new and existing fossil taxa, including the brachiopod *Thecidium*, bryozoans, crustaceans, elephants and mammoths, together with eurypterids and ichthyosaurs. Intriguingly, Parker ([1864](#)) discussed the relationships of *Archaeopteryx* to both the birds and reptiles, providing hints of a missing link between key vertebrate groups. However, within the regular book reviews is an examination of the fifth edition of John Phillips's *Guide to Geology*. The reviewer harks back to Phillips's first edition and his fondness of tables and calculations. His scientific approach to the history of life was expanded to the first comprehensive inventory of fossil range data in his *Life on Earth* ([Phillips, 1860](#)). Phillips's opus used the ranges of fossils (taxonomic counts) to define his Palaeozoic, Mesozoic and Cenozoic eras, partitioned by major extinctions and significant biotic turnovers at the end of the Permian and Cretaceous periods (two of the big five extinction events), respectively. In mapping out the diversity of Phanerozoic fossil life, Phillips noted that more recent formations hosted more diverse biotas than those in ancient strata, but the abundance of taxa appeared time-independent. During early Palaeozoic time,



his iconic diversity curve ([Phillips, 1860](#), fig. 4) plots a gradual increase in numbers of species through the Cambrian and Silurian with a dip during the Devonian Period and a subsequent rise during the Carboniferous Period. A year previously, in the first edition of *Origin of Species*, Charles Darwin ([1859](#)) devoted two chapters to geology and palaeontology: 'On the Imperfection of the Geological Record' (Chapter 9) and 'On the Geological Succession of Organic Beings' (Chapter 10). In the former he noted such imperfections clearly do not preserve the entire continuity of life, a 'finely-graduated organic chain', that potentially might provide a serious objection to the theory of evolution; we thus lack visibility of many intermediate and transitional forms. Moreover, in the latter Darwin highlighted that fossils were generally preserved during intervals of subsidence (increased rates of sedimentation), with blank intervals occurring when the seabed was either stationary or rising. In his summary of these two chapters, Darwin emphasized that only a small portion of the globe had been explored, only specific organisms are preserved as fossils, and that museum collections are an inadequate proxy for the true diversity of the fossil record ('absolutely as nothing as compared with the number of generations which must have passed away even during a single formation'). Nevertheless, old forms were supplanted by new and improved forms as a product of variation and natural selection. Darwin's figure (tree of life) hinted at a phylogenetic diversification, increasing complexity matched by increasing diversity. Significantly, and in contrast to Darwin, Phillips considered that the imperfections in the fossil record were overrated; in his opinion, there are ample fossils to test any hypothesis on the sequence of marine life.

Some hundred years after publication of the first edition of Phillips's influential work, interest intensified on the adequacy and quality of the fossil record as more complex and sophisticated analyses of the evolution of fossil organisms and their diversity were developed through deep time.

Palaeontologists had long accepted that the fossil record is incomplete, but nevertheless adequate to describe and understand the history of life on our planet. Some of the subsequent benchmark studies during the twentieth and twenty-first centuries have been recently charted by Harper et al. ([2019b](#)) in connection with unravelling the Furongian Biodiversity Gap; the studies of [Newell \(1959\)](#), [Raup \(1972\)](#) and [Valentine \(1973\)](#) have been particularly influential. [Raup developed the concept of time-dependent and time-independent biases \(1972, 1976a, b\)](#), themes elaborated on by [Raup and Stanley in their textbook \(1971\)](#), together with [Sheehan \(1977\)](#) and [Foote & Miller \(2007\)](#). [Benton et al. \(2000\)](#) focused on the correspondence of phylogenetic trees with the fossil record, demonstrating that correspondence was equally good whether dealing with Palaeozoic groups or Cenozoic taxa.

There is a close relationship between the fossil and rock records, narrated by a number of authors such as [Smith \(2001\)](#) who noted that, over the last 600 Ma [AQ8], diversity tracked sea level; preservation was usually low during regressions and high during transgressions. Moreover, [McGowan & Smith \(2008\)](#) cautioned that global eustatic curves may not be a good proxy for outcrop area; actual regional data on rock occurrence may provide a better signal. [Peters & Foote \(2002\)](#) noted correlation between named formations and named fossils, emphasizing that the appearance and disappearance of fossils may be linked to the presence and absence of strata. Geology is actually controlling preserved biodiversity, framing the preservation bias hypothesis, but the signal is possibly still real. [Peters' \(2005\)](#) common cause hypothesis posited that during intervals of high sea level biodiversity is actually high and during regression it drops: transgressions provide not only increased habitable areas for marine biotas but also an increased volume of fossiliferous rock. More modern analyses by multi-author groups, for example, [Alroy et al. \(2008\)](#), have applied sophisticated sampling corrections, but this has not necessarily achieved a consistency across the shape of available biodiversity curves through time.

There remain vast areas of lower Palaeozoic rocks that have not been adequately explored or not explored at all, particularly across eastern parts of Gondwana or on palaeocontinents such as Siberia; nearshore environments during some intervals, the probable origin of many clades, have been especially neglected and deep-water environments are rarely preserved except in obducted parts of mountain belts ([Bruton & Harper, 1992](#)). Global analyses consistently use data from better-known continents, for example, Baltica and Laurentia as proxies for global diversity (e.g. [Franeck & Liow, 2019](#)). These key factors may provide some explanation for the variation in data quality from this critical interval of life history.

Nevertheless, in the last few years there has been an escalation in the management and numerical treatment of big data, notably that in the Paleobiology Database (see following section). [Kröger & Lintulaasko \(2017\)](#), [Franeck & Liow \(2019\)](#), [Kröger et al. \(2019\)](#), [Rasmussen et al. \(2019\)](#) and [Stigall et al. \(2019\)](#) have published some formidably sophisticated studies at various levels of granularity and resolution, exposing the rates and sites of diversifications during Ordovician time.

## 2. Biodiversity drivers and mechanisms

Studies of biodiversity have been focused on taxon counts at various levels, normally families and genera for the abundant invertebrate fossil record and commonly species for the less-rich vertebrate record. Data have been stored in databases, such as the Paleobiology Database (PBDB, e.g. [Alroy et al. 2008](#)) or the Geobiodiversity Database (GBDB, e.g. [Fan et al. 2014](#)). The PBDB (initially based on Sepkoski's compendium: <http://strata.geology.wisc.edu/jack/>) is most commonly used for global studies of biodiversity through time (<https://paleobiodb.org/#/>); its data are focused in a number of key regions of the world but are by no means comprehensive. There is now a range of analytical tools available to manage and manipulate data, rather than using raw data (e.g. [Sepkoski, 1997, 2002](#)) techniques such as Shareholder Quorum sampling ([Alroy, 2010](#); [Na & Kiessling, 2015](#)) and Capture–Recapture modelling ([Rasmussen et al. 2019](#)) to provide forms of standardization. For the reasons noted above, data in PBDB

or GBDB (the latter being initially focused on extensive Chinese data) are far from complete, but have been proving robust for analyses of palaeobiodiversity and the framing of testable hypotheses.

Sepkoski's compendium and the PBDB show similar trends for the early Palaeozoic biodiversification, displaying a long-term background radiation but indicating different biodiversification pulses ('peaks' of biodiversity), depending on the datasets analysed (Fig. 1).

Geographical isolation has been a key player in the origin and diversification of life. The finches and land tortoises of the Galapagos Islands have served as models for geographic isolation and modification, forming the core of Darwin's theory of evolution; the theory, based on adaptation, is now well founded and hardened within a well-established framework of heredity. Framed within the context of deep time there is a heterogeneity of diversification across clades, environments, latitudes and regions (see e.g. [Harper & Servais, 2013](#)). [Stigall \(2018\)](#) summarized some of the key drivers associated with the Great Ordovician Biodiversification Event (GOBE) that have been published by a range of authors over the three decades. These include development of islands (whether arcs or microcontinents) during tectonic processes, fluctuating sea levels associated with glaciations, and a heterogeneity of environments from the nearshore to the deep sea and across latitudes, from the poles to the tropics. Both dispersion and vicariance models are complementary with the migration of organisms to new habitats matched by the splitting, by tectonics, of resident populations. Important too, however, is the distinction between alpha, beta and gamma diversity. This concept was applied, principally to brachiopods faunas, during the GOBE ([Harper, 2010](#)): (1) the expansion of within-community diversity as more niches were created across often heterogeneous environments; (2) sequential development of new communities during the period as biotas occupied deeper-water environments and exploited the many niches available in mudmound and reef build-ups; and (3) the escalation of provincialism during intervals of continental dispersion.

Attempts to identify and verify the (biological or geological) triggers of the individual radiations at a global level have proved challenging, because the curve is the sum of different data from diverse datasets that are all incomplete. Nevertheless, it is important to analyse the peaks of diversity of different fossil groups or fossil categories across different regions. What are the early Palaeozoic biological and geological triggers of these individual radiation(s) and the drivers of the Late Ordovician extinction? Contradictions arise. For example, the GOBE was considered as a rather short event (e.g. [Trotter et al. 2008](#)), with indications that massive diversifications took place during a constrained interval associated with rapid cooling; in contrast, the event was originally described as a prolonged, complex biodiversification composed of numerous, diverse radiations (e.g. [Sepkoski, 1995](#); [Webby, 2004](#); see [Servais & Harper, 2018](#) for discussion of the term). Sporadically, more spectacular novel results have sought to explain parts of the radiation in a simple but impactful way; the 'short event' was triggered by a single parameter, for example, the GOBE was initiated by a superplume ([Barnes, 2004](#)), an asteroid break-up ([Schmitz et al. 2008](#)) or by rapid global cooling during Middle Ordovician time ([Rasmussen et al. 2016](#)). On the other hand, an alternative hypothesis that the GOBE is part of a long radiation, with no single, spectacular geological trigger, but probably related to an increase in sea level and the continuous development of large continental shelf areas, has been proposed in lower-profile journals that escape media attention (e.g. [Servais et al. 2009, 2010](#)). In reality, the early Palaeozoic biodiversity curve is overall one of continuous and sustained increase, but with residuals caused partly by sampling bias, both positive and negative, and the waxing and waning of regional biological hotspots or species pumps. All add to a complexity obscured by the process of taxon counting.

### 3. Key early Palaeozoic biodiversity and extinction events

Palaeontologists have identified a number of discrete diversification and extinction events during the early Palaeozoic Period, each with its own peculiar characteristics. The perception or reality of these

events has reinforced the concept that diversity progresses in a series of quantum leaps; by implication, these discrete events are triggered by major environmental shifts, conforming to the Court Jester model. The alternative hypothesis, that the diversification of life is more gradual, is explained by the mutual relationships of groups of evolving organisms, that is, the Red Queen hypothesis. [AQ9] Three diversifications – the Cambrian Explosion, the Great Ordovician Biodiversification Event and the Devonian Nekton Revolution – are apparently partitioned by the Furongian Gap and the Late Ordovician Mass Extinction. Are these in fact discrete diversifications or part of a chain of continuous and gradual diversification?

The Cambrian Explosion is the most profound and visible of the Phanerozoic marine diversifications (and the one attracting the most media attention), and holds the clues for understanding the basic structure of the tree of life and the origin and evolution of animal-based communities. The explosion may extend backwards into the Ediacaran Period, where the Nama biota may represent a recovery after a major extinction, hosting a recognizable metazoan fauna segueing into the explosion proper during early Cambrian time ([Darroch et al. 2018](#)). To date, the evidence is drawn from a number of well-known biotas, related to Fossil-Konservat-Lagerstätten with exceptional preservation, such as the Burgess Shale in the Canadian Rocky Mountains (e.g. [Briggs et al. 1994](#); [Erwin & Valentine, 2013](#); [Briggs, 2015](#)), Chengjiang (e.g. [Hou et al. 2017](#); [Yang et al. 2018](#)) in South China, Sirius Passet in North Greenland (e.g. [Harper et al. 2019a](#)) and others. Among the other key biotas that have been described more recently, the Qingjiang biota from South China ([Fu et al. 2019](#)) is the most spectacular, but other discoveries are still to be made. The Cambrian Explosion is distinguished by the apparent origination of bilaterian body plans, essentially phyla, the endemism of its biotas and a dominance in many faunas of predators. The explosion was partitioned by the Sinsk extinction event, at least in Siberian sections ([Zhuravlev & Wood, 2018](#)); prior to the event many stem groups radiated but few survived, while crown group brachiopods and molluscs diversified. A critical part of the ‘explosion’ was the Cambrian substrate revolution ([Bottjer](#)

[et al. 2000](#)). Seafloors with microbial mats, so typical of the Ediacaran Period, became increasingly scarce in the shallow-marine environments of Cambrian time, with the evolution of burrowing organisms and vertical bioturbation. The ecological and evolutionary consequences for benthic metazoans were profound, while bioturbation dramatically changed the condition of the substrate in terms of its oxygenation and redox environment ([Canfield & Farquhar, 2009](#)). Nevertheless, it is possible that the main pulse of the explosion was fairly short and had virtually concluded prior to the appearance of a more typical Cambrian fossil record ([Paterson et al. 2019](#)).

The Furongian Biodiversity Gap has been recently noted in a number of papers (e.g. [Servais & Harper, 2018](#)) and examined in detail ([Harper et al. 2019b](#)). There is a marked drop in biodiversity during the Furongian interval. Harper et al. ([2019b](#)) have discussed this gap in detail, concluding that diversity has been significantly underestimated by a paucity of examined rock, compounded by a distinctive palaeogeography, extreme climates and fluctuating environments.

The GOBE is the largest marine radiation in the history of life. This extended event, already recognized in the original statistical datasets and introduced as the 'Ordovician radiations' by [Sepkoski \(1995\)](#) and first defined as such by [Webby \(2004\)](#), covers the entire Ordovician Period and involves biotic radiations at the species, genus and family levels. It is a taxonomic ([Sepkoski, 1995](#)), phylogenetic (e.g. [Harper et al. 2017](#)) and ecological ([Droser & Sheehan, 1997](#)) event. Sepkoski (1995) noted that the Ordovician biodiversification consisted of a series of smaller events across the constituent taxonomic groups. Diversity curves for most of the biotic groups were provided in Webby et al. ([2004](#)) with discussions of the patterns and trends within each group. It became evident that considerable diachronism across regions and taxonomic groups and the patterns were present in the different datasets. In simple terms the 'Ordovician Plankton Revolution' was already accelerating during late Cambrian time, providing a source of nutrients for the filter-feeding and deposit-feeding benthos ([Servais et al. 2008](#)) and

subsequent rise of metazoan reef systems later during Ordovician time. [Harper \(2006\)](#) summarized the many dimensions of the event and [Harper \(2010\)](#) focused specifically on diversity within the Brachiopoda. Many other aspects of the event have been summarized during the last decade (e.g. [Munnecke et al. 2010](#); [Servais et al. 2010](#); [Servais & Harper, 2018](#)).

Significantly, some of the typical (soft body) fossils of the Cambrian Explosion have now also been found in the Fezouata Biota from Lower Ordovician deposits of Morocco ([Van Roy et al. 2010](#); [Lefebvre et al. 2018](#)), indicating that faunas typical of the Cambrian Explosion survived after the Furongian Gap and were still present during the GOBE. The Cambrian Explosion seems indeed to be related in part to a taphonomical window (e.g. [Butterfield, 2003](#); [Strang et al. 2016](#)) but under exceptional conditions; the iconic fossils of the Cambrian Explosion might be found later in the fossil record, for example, in Lower Ordovician strata. [AQ10]

A greater granularity and resolution of data in the Paleobiology Database has identified more discrete events against a background of overall diversity increase ([Franeck & Liow, 2019](#); [Kröger et al. 2019](#); [Rasmussen et al. 2019](#); [Stigall et al. 2019](#)).

The cascading trend in biodiversity was ascribed to a number of short-term environmental drivers, accumulating diversity most dramatically from early Middle Ordovician time onwards and abruptly curtailed by the end Ordovician, volcanically induced, extinctions ([Rasmussen et al. 2019](#)). Within this general framework, Franeck & Liow ([2019](#)) considered the Middle Ordovician biodiversity hike was a global phenomenon (based on PBDB data from mainly Baltica and Laurentia); diversifications before and after were more regional. [Stigall et al. \(2019\)](#) have developed an elegant model of coordinated biotic and abiotic change, focused on the Darriwilian Stage of the Middle Ordovician Series. Increasing diversity in many groups is linked to a decrease in ocean temperatures, an increase in oxygen levels and a decrease in pulses of anoxia. These factors are linked to an increase in the complexity and diversity of



some elements of the ecosystem, mainly the benthos, accelerated intercontinental dispersal and an increase in body size. The GOBE sensu [Stigall et al. \(2019\)](#) as a whole is partitioned into Pre-GOBE, Main GOBE and Peak GOBE phases. Some of these themes are elaborated by Kröger et al. ([2019](#)) in their demonstration of the resilience of the Ordovician ecosystem; the volatility of the longevity of species (on average 5 Ma in the Cambrian and 10 Ma in the Ordovician) decreases through time.

The Ordovician biodiversifications have been aligned with a number of ecological processes, each capable of generating alpha and beta diversity. The 'Ordovician Substrate Revolution' involved the modification of the seafloor by cyanobacterial films, produced by planktic bacteria, over extensive areas of the Middle Ordovician Baltic palaeobasin. These were rapidly mineralized, and the resulting hardgrounds were colonized by various stalked echinoderms, bryozoans and boring animals, while the soft substrate underneath the hardgrounds were occupied by abundant ichnofauna. The formation of hardgrounds on bioherms was more patchy and usually in shallower water. These hardgrounds in turn produced carbonate detritus over large areas of the seafloor around the bioherms. These hardgrounds provided a new focus for the benthos and the availability of more niches associated with carbonate environments and factories ([Rozhnov, 2017](#)).

The 'Ordovician Bioerosion Revolution' was described as a major change during the GOBE, defined as a dramatic diversification of macroboring ichnotaxa during Middle and Late Ordovician time ([Wilson & Palmer, 2006](#)). The intensity of carbonate substrate bioerosion greatly increased, reaching highest levels during Late Ordovician and early Silurian time. Such important bioerosion was not achieved again until the Jurassic Period. This abundant ichnological diversity was considered by [Wilson & Palmer \(2006\)](#) as directly related to the GOBE, reflecting niche differentiation on hard substrates at that time.

The Late Ordovician Mass Extinction (LOME) was the first of the big five extinctions ([Harper et al. 2014](#)), taxonomically severe, classically presented in two phases but causing only slight disruption to the

ecosystem. The first phase was associated with global cooling, and regression restricted on-shelf habitats as the continental shelves were exposed and deep-water biotas suffered as habitats were destroyed by anoxia; during the second phase, cooler-water faunas, such as the Hirnantia brachiopod fauna, began to dominate globally as tropical biotas were largely removed. [AQ11]

During and after the GOBE, parts of the water column were filled with a diversity of planktonic life. However, it was only during the Devonian Nekton Revolution that larger animals moved out of the shadow of the GOBE to participate in events in the water column ([Klug et al. 2010](#)). Following a clear shift of a number of organisms from the benthos to the plankton near the Cambrian–Ordovician boundary, by late Silurian and Devonian time space on the seabed may have become exhausted; demersal and nekton life modes were initiated by this competition for space and resources on the seafloor, as well as the availability of vacant ecospace and planktonic food.

#### 4. Biodiversity in the seas

The taxonomic diversity of the main animal groups has been plotted from data in the PBDB providing granularity for interrogation. Many of the illustrated diversity plots (Figs 2–4) clearly demonstrate that for many groups the data in the PBDB are not complete, and that studies published separately by specialists of the individual fossil groups usually provide much more precise data. The present study is therefore at best a short review of data, and the reader is referred to more detailed diversity studies [AQ12] of the different fossil groups, which remain essential for a full understanding of the taxonomy, biostratigraphical control and palaeoecological signal of each group.

In order to explore the main diversity dynamics in the marine realm, the tool ‘Diversity over time’ in the Paleobiology Database (<https://paleobiodb.org/classic/displayDownloadGenerator>) has been used to download raw diversity counts of most of the main groups considered here (Figs 2–4). The downloads

were performed on 21 February 2019 and involved 14 marine groups (in alphabetical order): Bivalvia, Brachiopoda, Bryozoa, Cephalopoda, Cnidaria, Conodonta, Echinodermata, Gastropoda, Graptholithina, Ostracoda, Porifera, Radiolaria, Stromatoporoidea and Trilobita. Total marine diversity counts were also investigated. The diversity data of 'fishes' (Fig. 2e), involving the Agnatha, Hyperotreti, Pteraspidomorphi, Thelodonti, Anaspida, Galeaspida, Osteostraci, Chondrichthyes, Acanthodii and Osteichthyes were treated separately as a combined total (downloaded on 15 March 2019). In all cases, diversity counts were restricted to the Cambrian–Silurian interval. Data were downloaded at the genus level, and only named taxa are considered in the datasets used here. Uncertain genus and species occurrences were excluded, and it is assumed that extant taxa range through to present. The rest of the parameters were considered, following default options. Moreover, due to inherent PBDB limitations on certain groups, some diversity data were directly adapted from review papers. Ordovician polychaete diversity patterns are from [Eriksson et al. \(2013\)](#), whereas the Ordovician chitinozoan diversity curve is adapted from [Achab & Paris \(2007\)](#). The early Palaeozoic data on the phytoplankton (acritarchs) is based on unpublished data (Kroeck, pers. comm [AQ13]).

Figures 2–4 include the total diversity (i.e. all taxa observed in a given time interval), the sampled diversity (i.e. all taxa recovered in a given time interval) and normalized diversity sensu [Cooper \(2004\)](#) (i.e. all taxa ranging from the interval below to the interval above, plus half the taxa that originate and/or become extinct within the interval, plus half of single-interval taxa).

Evidence suggests that while the Ediacara biota is dominated by lower-grade metazoans such as rangeomorphs and possibly sponges and cnidarians, the early Palaeozoic diversifications are based on the emergence of the bilaterians: the ecdysozoans, lophophorates and the deuterostomes. The phyto- and zooplankton groups have first Cambrian records and expand during the Ordovician Period as the base of the trophic chain broadened. The lophophorates (brachiopods, bryozoans and molluscs) have

contrasting stratigraphical distributions, as do the ecdysozoans (arthropod and related groups) and the deuterstomes (echinoderms and hemichordates).

In global datasets, a major ecological shift occurred between the Cambrian and Ordovician periods ([Klug et al. 2010](#)) with the appearance of massive [AQ14] planktonic groups; this shift had clearly started during late Cambrian time ([Servais et al. 2016](#)). The fossil record of the smaller fractions of the plankton (bacterio- and picoplankton) is unknown, and that of the microphytoplankton is only partly known. The PBDB does not include any data on these important groups at the base of the marine food web. The diversity of the organic-walled microphytoplankton has been studied, partly in detail (e.g. [Nowak et al. 2015](#)), but these data are not yet included in the PBDB. The presence of calcareous microplankton during the early Palaeozoic Period is still under debate (e.g. [Munnecke & Servais, 2008](#)) and siliceous phytoplankton is unknown. The organic-walled fraction of the phytoplankton is represented by the acritarchs, showing a continuous increase between the early Cambrian and Late Ordovician periods (Fig. 2a). Some studies show a strong increase in diversity during Furongian time ([Nowak et al. 2015](#)), indicating the onset of the Ordovician plankton revolution ([Servais et al. 2016](#)). The diversity of the acritarch microphytoplankton increases up through the upper Cambrian strata, but is observed to decrease in the Katian deposits.

The most extensively studied zooplanktonic group are the graptolites. Graptolite evolution during early Palaeozoic time has been discussed in detail (e.g. [Maletz, 2017](#)). Members of the fixed, benthic dendroids detached in the latest Cambrian to join the plankton, developing life-modes as automobile sweep-net feeders; their stipe configurations and thecal form became adapted to this life mode, with colony shapes aiding mobility and the harvesting of food. These morphological changes are tracked through a succession of evolutionary faunas, the anisograptid, dichograptid, diplograptid and monograptid assemblages. Graptolite biodiversity peaked during Late Ordovician time, suffered

significantly at the end of the Ordovician Period and recovered during early Silurian time (Fig. 2d) with the radiation of the monograptids. Compared with the PBDB, the more detailed study of the diversification of the graptolites by [Crampton et al. \(2016\)](#) indicates a first appearance of planktonic forms in the basal Tremadocian and the most important diversity increase during the middle Floian Age.

The other zooplanktonic groups with a sufficiently documented, but still incomplete, fossil record are the radiolarians and the chitinozoans. Radiolarians have only been sporadically studied, with few occurrences in the Cambrian System and a more complete record in the Ordovician System (Fig. 2c), but the datasets are still fairly poorly populated. Chitinozoans, similar to the graptolites, make their first appearance in the basal Ordovician strata. The global diversity is driven by the aggregation of regional trends reaching highest levels in the lower Katian Stage (Fig. 2b).

The fixed benthos is dominated by suspension-feeding organisms. The brachiopods dominated the Palaeozoic benthos, appearing in significant numbers during the Cambrian Explosion, and established a wide range of lifestyles supplemented during the GOBE ([Topper et al. 2018](#)). Cambrian brachiopod faunas are generally of low diversity (Fig. 3a), dominated by nonarticulates together with billingsellides, chileids, obolellides, naukatides, orthides and pentamerides protorthides featuring sporadically. Nevertheless, the majority of brachiopod life modes had already been established by early Cambrian time with few additions later during the Ordovician Period ([Topper et al. 2018](#)). The Early Ordovician diversifications around parts of tropical Gondwana (e.g. [Zhan & Harper, 1996](#)) escalated during Middle Ordovician time (Fig. 3a) on Baltica and Laurentia, associated with cooler-water conditions and the delivery of nutrients onto shelves by vigorous oceanic circulation ([Rasmussen et al. 2016](#)) segueing into the diverse later Ordovician brachiopod fauna associated with carbonate factories ([Harper & Rong, 2001](#)). A number of adaptations can be mapped onto the diversification, for example the dominance of recumbent lifestyles among the strophomenides and the development of cyrtomatodont dentition and

brachidia in the spire-bearing forms, and many diversifications are coincident with the Ordovician substrate revolution.

The bryozoans were represented by the trepostome Stenolaemata, forming part of the low-level benthos and commonly participating in reefal structures as bush-like colonies with polygonal apertures. The first skeletalized bryozoans were present during Tremadocian time, but markedly diversified during the Ordovician Period (Fig. 3c), reaching a peak during the Katian Age ([Ernst, 2018](#)).

Polychaetes were prominent benthic predators in early Palaeozoic ecosystems, apparently originating during Early Ordovician time, diversifying through the period to peak in the Katian Age (Fig. 2f). Data from the Cambrian Period are sparse and a Silurian diversity curve has yet to be drawn. The data presented here are limited to the Ordovician Period and based on [Eriksson et al. \(2013\)](#), indicating a significant Middle Ordovician radiation related to the substantial number of studies from Baltica.

The cnidarians, represented mainly by the rugose and tabulate corals, escalated their diversities during Late Ordovician and Silurian time (Fig. 3e) and are commonly associated with shallow-water, carbonate environments and amenable substrates.

The molluscs (bivalves and gastropods) showed a steady increase in diversity during the Ordovician Period (Fig. 4a, c) but in lower numbers than the brachiopods, which became established as the dominant bilaterian benthos throughout most of Palaeozoic time. There are no sudden explosions of taxa; rather each is defined in terms of an individual pattern which combines to form the global signal. Bivalves are reported from the lower Cambrian System, but diversified during Ordovician time to peak during the Katian (Late Ordovician) Age. During the radiation, actinodonts, heterodonts and taxodonts evolved, associated with predominantly deposit- and suspension-feeding life modes. The group suffered a major extinction at the end of Ordovician time, slowly recovering during early Silurian time and

stabilizing at low diversities. Gastropods were dominated by deposit feeders and herbivores and exhibit similar diversity trends to those of the bivalves, that is, showing a gradual increase through Ordovician time with losses at the end of the Ordovician Period and a recovery during the Silurian Period.

The cephalopods appeared during late Cambrian time and radiated during Early Ordovician time (Fig. 4f), particularly diverse on the shallow-water tropical and subtropical platforms, probably first as part of the swimming nektobenthos and later moving into the pelagic realm. They have been implicated as predators in an Early Ordovician arms race. The group peaked again during the Katian Age, increasing in size, and again commonly associated with carbonate factories.

Considered to be at or near the top of the marine trophic web, the cephalopods were joined in larger numbers by early vertebrates much later during the Silurian Period. There were a few fishes in the water column (Fig. 2e), but eurypterids may have joined the cephalopods as apex predators.

The mobile nektobenthos is dominated by the trilobites. The pattern is more complex than in other groups (Fig. 4e). The trilobites were the key element of the Cambrian Evolutionary Fauna, with the Olenellina, Ptychopariina and Redlichiina dominating the mobile benthos. The group first peaked shortly after their appearance in Series 2, but suffered a substantial drop, apparent or real, in diversity during the Furongian Epoch. A massive radiation during the Early Ordovician Period introduced a number of new groups with new adaptations: visual systems became more sophisticated and enrolment mechanisms more secure. The Asaphina, Calymenina, Odontopleurida and Trinucleidina diversified while the cyclopygids and telephinids joined the epipelagic and mesopelagic realms, respectively (partially departing from the nektobenthos). Critical was the gradual transition from the Ibex fauna to the Whiterock fauna, the latter originating in more offshore environments but with more intense diversifications in lower latitudes ([Adrain et al. 1998](#)). During Ordovician time the trilobite diversity curve was cumulative, comprising more than one component pattern (Adrain et al. 1998).

Ostracods were relatively diverse during the Middle and Late Ordovician Period but suffered dramatically during the end Ordovician extinctions (Fig. 4b), recovering gradually during the Silurian Period.

Within the deuterostomes, the echinoderms were present during the Cambrian Explosion and accelerated in diversity during the Katian Age through the appearance of diverse stalked forms, the blastoid, crinoid and cystoid faunas, forming part of the higher-level filter-feeding benthos (Fig. 3f). There are a number of more aberrant echinoderms reported from Cambrian Series 2, such as the helioplacoids, which were mud-stickers best adapted to life on lower Cambrian matgrounds. The stalked echinoderms, associated with a firmer seabed (during the first stages of the Ordovician substrate revolution), were of generally low diversity during the Early Ordovician Period but rose to a peak in the Katian Age before dropping at the end of the Ordovician Period; their Katian prominence was recovered during the Llandovery Epoch. The different groups of echinoderms show very diverse and complex pattern of radiations that can be traced in detail in publications related to these groups (e.g. [Sprinkle & Guensburg, 2004](#)).

The conodonts are generally retrieved by acid treatment and are therefore partly reliant on the availability of acid residues from carbonates. They are represented in the Cambrian strata by the protoconodonts, simple cones of unknown precise affinity. Euconodonts are relatively common throughout Ordovician time, but the occurrences of the group dropped during the Silurian Period (Fig. 4d). The euconodonts exhibit marked provincialism during intervals within the Ordovician and Silurian periods, suggesting their dominant life mode was nektobenthic.

The fishes have a moderate early Palaeozoic record, dominated by nektobenthic placoderms during the Ordovician Period. Numbers escalate during the Ludlow and Pridoli epochs (Fig. 2e). The diversity data highlight the occurrence of *Haikouichthys* and *Myllokunmingia* from the lower Cambrian Chengjiang



Lagerstätte, followed by a gap until the exponential increase in the number of taxa through the low-diversity armoured, jawless, ostracoderm faunas during the Ordovician Period to the appearance of the jawed, acanthodians, chondrichthyans and placoderms during the later Silurian and into the Early Devonian periods when they migrated into the water column and participated in the Nekton Revolution ([Klug et al. 2010](#)).

Carbonate mudmounds, composed of algal material together with sponge reefs constructed by archaeocythans, are common in lower–middle Cambrian deposits and algal build-ups continued during the Early Ordovician Period (Fig. 3b), segueing into metazoan-dominated reefs with bryozoan and coral reef-builders during the later Ordovician Period. Reef-built ecosystems were dominated by the spongiform archaeocythans during Series 2, proving a massive diversity hike during early–middle Cambrian time; sponges show a progressive diversification during the Ordovician Period with a peak in the Katian Age, a drop at the end of the Ordovician Period and a recovery during the Silurian Period. During much of the Early Ordovician Period, reef building was restricted to microbial organisms (not captured in the available data); in the later part of the period, a number of further key metazoan players in the GOBE participated in reef building. Stromatoporoids, particularly in carbonate environments, gradually increased in diversity during the Ordovician and Silurian periods to peak in the Wenlock and Ludlow epochs (Fig. 3d). These were joined by corals with increasing numbers of genera from Middle and Upper Ordovician into Silurian time.

The diversity trends of the individual fossil groups (Figs 2–4) clearly indicate different scenarios. The Cambrian Explosion is visible for some groups, but not all. The Furongian Gap is present for many of the groups appearing in the Cambrian Period. The GOBE is clearly the sum of different radiations; the various groups clearly have their ‘major biodiversity pulses’ at different time intervals with different intensities, some during the Early and others during the Middle and Late Ordovician Period.

It is particularly interesting to attempt to group the different fossil groups into some major categories (Fig. 5): plankton, mobile nektobenthos, nekton, fixed benthos, mobile benthos and reef builders. Data analysis was performed by taxonomic and ecological groups/categories as follows: plankton (i.e. acritarchs, chitinozoans, graptolites and radiolarians), mobile nektobenthos (i.e. ostracods and trilobites), nekton (i.e. cephalopods and fishes), fixed benthos (i.e. brachiopods, bryozoans, echinoderms, sponges and stromatoporoids), mobile benthos (i.e. bivalves and gastropods) and reef builders (i.e. bryozoans, cnidarians, sponges and stromatoporoids). It is, however, not straightforward to classify an individual fossil group within a single category, because several groups can clearly be categorized in different entities. The cephalopods, for example, had different life modes from nektobenthic to fully nektonic. Some organisms have complex life cycles, with parts of their life cycle being in the plankton and other parts in the benthos. The analyses of the diversity changes of the different categories therefore has to be considered with care. Nevertheless, a few pointers are obvious (Fig. 5). The plankton includes the phytoplankton that increasingly diversified over the entire early Palaeozoic Era, whereas graptolites and chitinozoans only massively arrived during Early Ordovician time (Fig. 5a). The groups attributed to the nekton indicate this dramatic change at the onset of the Ordovician Period, when the water column started to be filled with planktonic/nektonic organisms (Fig. 5c). [AQ15] The mobile nektobenthos (Fig. 5b) and the fixed benthos (Fig. 5d) show peaks of diversity during the Cambrian Explosion and again, after the Furongian Gap, during the GOBE. However, the mobile benthos only shows a clear diversification from Early Ordovician time (Fig. 5e). The reef-building organisms show two clearly distinct ecosystems between the archaeocythan-sponge reefs during early–middle Cambrian time, and bryozoan-sponge-reefs during Middle–Late Ordovician time (Fig. 5f). The different datasets highlight that the GOBE clearly started as early as during Early Ordovician (if not late Cambrian) time and that the Ordovician radiation indicates a three-fold diversification with plankton followed by the benthos and the reef builders (compare [Servais & Harper, 2018](#)).

## 5. A portfolio of potential triggers

Many publications deal with the triggers of the radiation and diversification 'pulses'. Such studies focused either on global diversity changes, explaining globally visible radiation or extinction events, or on regional scenarios, explaining events at the scale of a basin or a continental margin. Similarly, several studies focused on detecting the trigger of the radiation of separate fossil groups, locally or globally. At present there are a wide range of publications, partly contradicting each other, with a large portfolio of potential triggers of the individual radiations, biodiversification pulses or extinctions. The causes of the early Palaeozoic events have been classified in terms of extrinsic (abiotic) and intrinsic (biotic) triggers, drivers and enablers, and those explicable by the Court Jester and Red Queen models (e.g. [Harper et al. 2015](#) for explanations of the GOBE). Very few triggers can be directly associated with individual radiations and extinctions.

A number of papers have attempted to understand the causes of the Cambrian Explosion. [Smith & Harper \(2013\)](#) assembled the various drivers and enablers into an inclusive model for the Cambrian Explosion. The model is constructed around the major marine transgression marked by the Great Unconformity on Laurentia and the subsequent erosion of the regolith expelling Ca and PO<sub>4</sub> ions into the oceans and generating biomineralization through cell toxicity, together with increasing nutrient levels. Genome patterning had a key role and bilaterian animals modified the substrates (oxygenating the sediment through bioturbation), developed predator–prey relationships with more complex food webs and moved into the water column. These factors acted in consort to create more habitable areas on the sea floor and in the water column, permitting an explosion of animal diversity.

Similarly, a substantial number of publications and larger, international research projects sponsored by the International Union of Geological Sciences (e.g. [Harper et al. 2011](#); [Harper & Servais, 2013, 2018](#)) were and are focused on the search for triggers of the GOBE. Following the Furongian Gap, diversity

apparently picked up pace with the establishment of the GOBE. The causes of this exceptional and prolonged diversification have been discussed in many tens of publications (see [Harper et al. 2015](#) for a brief review and tabulation of principal alleged causes). There is a family of intrinsic drivers based on the biological interactions within the ecosystem and possibly explicable by the Red Queen model. The Plankton Revolution ([Servais et al. 2008](#)) that had already begun in the late Cambrian Period ([Servais et al. 2016](#)) fuelled the ecosystem from the base of the food chain. Strong evidence, that is, the presence of large, sweep-net feeders such as the early Cambrian Tamisiocaris ([Vinther et al. 2014](#)) and the Early Ordovician anomalocaridid from Fezouata ([Van Roy et al. 2015](#)), suggests that the water column was already replete with nutrients from the early stages of the evolution of complex animal communities. Intricate food webs containing a range of predators were rapidly established during the early stages of the Cambrian Explosion ([Vannier et al. 2018](#)) and developed through the Ordovician Period. Predator–prey relations escalated during Early Ordovician time with the diversification of the orthoconic nautiloids ([Kröger et al. 2009](#)), driving a greater armouring, infaunalization and mobility of prey. In addition, there was increasing competition on the seabed for space and resources, as alpha diversity within communities increased. A large range of enabling factors, extrinsic and mostly explicable by the Court Jester model, provided a favourable milieu and stimuli to help generate biodiversity. Factors such as the asteroid impact Intermediate Disturbance Hypothesis (clearing the seabed for recolonization ([Schmitz et al. 2008](#)), the erosion of emergent mountain chains (providing erosional products and nutrients; [Miller & Mao, 1995](#)), global cooling (reduction in temperature more compatible with metazoan metabolism and skeletal growth; [Achab & Paris, 2007](#); [Trotter et al. 2008](#)), high sea levels (providing increased habitable platform areas; [Kiessling et al. 2003](#); [Nardin & Lefebvre, 2010](#)), oxygenation (pulse of atmospheric oxygen aids metabolism, production of collagen and skeletal material; [Berner et al. 2007](#); [Saltzman et al. 2011](#); [C Diamond, unpub. thesis, Ohio State University, 2013](#)), substrate change (general trend from carbonate to siliciclastic substrates favoured particular groups of organisms; [Miller & Connolly, 2001](#)),

superplume activity (providing nutrients; [Barnes, 2004](#)), tectonic and magmatic activity (creation of island habitats, providing intra-oceanic nurseries, museums and stepping stones for taxa; [Bruton & Harper, 1981, 1985](#); [Harper, 1992](#); [Harper et al. 1996, 2008, 2009](#); [Servais et al. 2009](#)) and the production of submarine volcanoes (providing nutrients; [Vermeij, 1995](#); [Servais et al. 2009](#))....???

[AQ16]

Similarly, a large number of publications are focused on the causes of the first of the big five mass extinctions at the end of the Ordovician Period. This extinction, captured within the Hirnantian Stage, is the second largest of the big five extinctions and the first involving animals ([Sheehan, 2001](#); [Harper et al. 2014](#)). It is described in terms of two phases, one associated with the intensification of a relatively short but pervasive ice age and another coincident with the retreat of the ice caps ([Brenchley et al. 2003, 2006](#); [Armstrong & Harper, 2014](#)); the former is characterized by a major regression and the latter a major transgression. An alternative review is presented by Wang et al. (2019), [AQ17] identifying three broadly defined time zones (TBF 1–3) within the Hirnantian Stage. They recognize the major extinction at and around the base of the Hirnantian Stage associated with the onset of glaciation. However, within the Hirnantian Stage they advocate a gradual recovery of faunas extending into the Silurian System. During the middle Hirnantian Age, TB1 contains the typical Kosov Hirnantia fauna but TB2 appears to have a more restricted variant, dominated by *Dalmanella* and *Hindella* (core elements of the typical fauna). The second pulse, however, is clearly expressed by the changeover from the global Hirnantia brachiopod fauna to the *Cathaysiorthis* and *Edgewood* faunas at the boundary between TBF 2 and 3 within the postglacial interval (see Wang et al. 2019, fig. 7). Nevertheless, the ice age set in train a number global cooling of the surface waters, [AQ18] destroying the subtropical carbonate belts and the near-cosmopolitan cold-water Hirnantia brachiopod fauna spread out from high latitudes almost to the tropics; habitat areas of the shelves were restricted with the drawdown of water from the oceans, and vigorous ocean circulation allowed the ventilation of the deep oceans but also the delivery of toxic

waters onto the shelves. Recent studies suggest that intense volcanic activity may have been the cause of the changes (e.g. [Smolarek-Lach et al. 2019](#)), providing a direct kill mechanism for some groups of organisms and dramatic environmental change, translated into widespread habitat destruction in parts of the world's oceans. This interval has been intensively studied over the years, investigating the many Ordovician–Silurian boundary sections for the definition and correlation of Global Boundary Stratotype and Section Point for the base of the Silurian System (Llandovery Series, Rhuddanian Stage).

Clearly the triggers (drivers and enablers) of the Cambrian Explosion, the GOBE and the end-Ordovician mass extinction are complex. But is there a common driver behind these three key events, perhaps not distinct events, particularly in the light of the more recent diversity studies that indicate a single, long-term radiation?

There are a large number of publications that associate biodiversity curves, and in particular the highest diversity values ('peaks' of diversity), with curves generated from datasets illustrating environmental or geological parameters. It is tempting to correlate diversity 'peaks' with isotope excursions, such as those apparent in  $\delta^{13}\text{C}_{\text{carb}}$  [AQ19] curves (e.g. for the Ordovician, [Bergström et al. 2009](#)), or to correlate diversity changes with strontium isotope shifts ( $^{87}\text{Sr}/^{86}\text{Sr}$ ), available in literature ([Shields & Veizer, 2004](#); [Young et al. 2009](#); [Saltzman et al. 2014](#)).

Figure 6 illustrates the genus-level diversity and the proportion of extinction (based on data from the PBDB) for all fossil groups at a global level, together with carbon isotope, strontium isotope and sea-level data. Several authors have proposed correlations between the biodiversity and isotopic curves or models of atmospheric oxygen or carbon dioxide. However, such correlations require careful scrutiny. For example, [Munnecke et al. \(2010, fig. 5\)](#) illustrated three different published curves documenting the concentration of atmospheric  $\text{O}_2$  published between 2004 and 2007. While a first  $\text{pO}_2$  model showed strongly increasing values between Cambrian and Middle Ordovician time, a second model indicated

strongly decreasing pO<sub>2</sub> and a third model illustrated no change at all, for the same interval. It is therefore essential to carefully evaluate these and similar correlations between biological and non-biological datasets; diversity increases and 'peaks' are related to oxygenation by some authors, whereas other publications are in direct contrast. The same is valid for climate. Is it climate cooling or climate warming that drives diversification (e.g. cooling, [Mayhew et al. 2008](#) versus warming, [Mayhew et al. 2012](#))? It is always possible to find a curve (or an isotopic excursion) that is correlatable with a diversity trend (or diversity peak); establishing a causal relationship between isotope curves and changing palaeobiodiversity is more challenging. An example of multiple, and partly contradictory, interpretations are apparent in the discussions about the Steptoean Positive Carbon Isotope Excursion  $\delta^{13}\text{C}_{\text{carb}}$  (SPICE) event during the late Cambrian Period (Paibian Stage, Furongian Series), considered by some as an indication of an oxygenation event (see discussion in [Servais et al. 2016](#)). Similar discussions exist for other carbon isotopic excursions that have been related to regional radiations or, at a global level, to the Late Ordovician extinction event, that clearly seem to be related to the Hirnantian Carbon Isotope Excursion  $\delta^{13}\text{C}_{\text{carb}}$  (HICE). However, there is no clear correlation or obvious trend between the carbon isotopic curve and a long-term radiation during the early Palaeozoic Era.

Strontium isotopes have also been analysed in order to understand biodiversification trends at a global level. The very strong shift of  $^{87}\text{Sr}/^{86}\text{Sr}$  during Middle–Upper Ordovician time (Fig. 6) appears just before the highest diversities recorded during early Palaeozoic time, and also coincides with the establishment of reef systems in low latitudes during this time interval. Another important  $^{87}\text{Sr}/^{86}\text{Sr}$  shift was recorded at the end of Cambrian Stage 2. How can these important shifts, most probably reflecting changes in continental weathering (and therefore plate tectonic events), be related to marine biodiversifications? There is no generally accepted interpretation so far.

Have there been major tectonic, magmatic or volcanic events that interacted with the biodiversification at a global scale? [Barnes \(2004\)](#) discussed the possible presence of a mantle superplume during Ordovician time, but evidence for such a plume does not exist, even if modelling studies indicate that such a mantle plume, and its related Large Igneous Province (LIP), could have first resulted in a global warming during Late Ordovician time (the 'Boda Event' of [Fortey & Cocks, 2005](#)) and subsequently the Late Ordovician mass extinction ([Lefebvre et al. 2010](#)). Similarly, the early Cambrian Kalkarindji continental flood basalt province in northern Australia may have had a severe effect on the earliest Cambrian biota (e.g. [Evins et al. 2009](#)). These LIPs, if they existed, most probably had a similar impact on the biodiversity levels, probably leading to extinctions, as for later mass extinction events (see discussion in [Lefebvre et al. 2010](#)).

Among all the many possible triggers that have been related to the global increase in marine diversity, the obvious candidate of sea-level change stands out. There is general agreement that global sea levels rose steadily between the late Precambrian Eon and the Late Ordovician Period. Moreover, this long-term sea-level change appears to clearly track increasing marine biodiversity (e.g. [Rasmussen et al. 2019](#), fig. 3). Figure 6 indicates that, according to the most recent models on sea-level change, the sea level rose continuously until the early Katian Age, matching the increase in marine biodiversity. Both the drop in sea level after that interval and some of the Late Ordovician extinctions appear to start earlier than the Hirnantian Age. Highest sea levels seem to correlate with highest diversities (in the lower and middle parts of the Upper Ordovician strata). This observation also confirms the observation of [Smith \(2001\)](#) who noted that diversity throughout the entire Phanerozoic can be related to sea level, with lower diversities indicating regressions and radiations taking place during transgressions.

This continuous, long-term sea-level rise between the early Cambrian and the Late Ordovician periods may also be related to the palaeogeographical position of the major continents, and in particular those



sited at low latitudes. The fragmentation of the Precambrian supercontinent Rodinia continued during the Cambrian–Ordovician interval, giving rise to a greater number of continents; these included several microcontinents located at low to middle latitudes where speciation is usually high, even in modern oceans. This continental fragmentation spawning numerous microcontinents and large epicontinental seas at low latitudes, together with the high sea levels, generated an increase of tropical shelf areas to a maximum at 450 Ma, that is, during the Katian Age (Late Ordovician), before an amalgamation of some microcontinents and continents during latest Ordovician time ([Rasmussen & Harper, 2011](#)) and a decline of these epicontinental seas until the end of Silurian time ([Walker et al. 2002](#)). It is generally assumed that speciation is particularly high in the areas of tropical shelves (such as present-day Indonesia); the increasing size of such areas probably led to the highest diversities and also the construction of reef-building ecosystems during Ordovician time, culminating during the early Late Ordovician Period. These factors are indicative of the long-term, but continuous, evolution of the geosphere, reflected most probably in the long-term radiation of marine organisms. The major pulse of diversifications was also conditioned by the position of the palaeocontinents. The GOBE started in South China during Early Ordovician time ([Rong et al. 2007](#)), while the major pulse on Baltica only took place during Middle Ordovician time when the continent had moved into low latitudes. Additional radiations took place on the Laurentian continent even later, such as during the Richmondian invasion ([Stigall, 2010](#)) that involved the coordinated invasion of some 60 genera and, after a speciation gap, intensive niche differentiation and speciation ([Stigall, 2019](#)). Numerical analyses of the distribution of the GOBE in time–space has suggested that the early diversifications were an aggregation of local and regional events, whereas those during the Darriwilian Age and later were more global ([Franeck & Liow, 2019](#)). The latter data are mainly based on biota from Baltica and Laurentia and, hypothetically, when other areas are captured in sufficient detail, the scenario of diachronism across groups and regions may have continued into the Silurian Period.

It therefore appears that the major driver of the long-term radiation that can be observed between the late Precambrian Eon and the Early Devonian Period is the palaeogeographical configuration, with continental fragmentation, and the presence of large epicontinental seas near the equator. The palaeogeographical scenario was also most probably related to the general climate conditions, leading to a long-term cooling event during the Ordovician Period (e.g. [Nardin et al. 2011](#); [Pohl et al. 2014](#)). The palaeogeographical configuration was also responsible for the global oceanic circulation pattern, including the generation of upwelling zones ([Servais et al. 2014](#); [Pohl et al. 2016](#)).

## 6. Discussion

Is diversity driven by a series of paradigm shifts and quantum leaps, or it is a slow gradual process? This question invokes the philosophies of Thomas Kuhn (1922–1996) versus Karl Popper (1902–1994), the gradualism models of Charles Lyell (1797–1875) versus the catastrophism of George Cuvier (1769–1832), the neocatastrophism of Otto Schindewolf (1896–1871) and the punctuated equilibria of Stephen J. Gould (1941–2002). Biodiversity curves are merely proxies for a range of commonly complex biological and environmental processes that have driven and enabled diversity at a series of different levels. Most parts of the curves are associated with complex and evolving ecosystems. The Cambrian Explosion has been discussed in detail in many papers; clearly, the triggers of this rapid increase in diversity during the early–middle Cambrian Period (initiated at approximately at the base of the second, unnamed stage of the Cambrian) are diverse, complex and interrelated ([Smith & Harper, 2013](#)). There are no particular dramatic and sudden environmental changes, although many of the enabling factors were associated with major transgression at the base of the Cambrian, marked by the Great Unconformity. Otherwise, sea level increases slowly but steadily, the climate data show no dramatic changes and plate tectonic events are not highlighted (as corroborated by the strontium isotope data). The increase of diversity during the Cambrian explosion was probably biologically initiated and related to a complex interaction

of enabling parameters. The massive increase in diversity of the planktonic groups (that are only partly recorded in the PBDB) at the Cambrian–Ordovician boundary, clearly initiated as early as during late Cambrian time, has been related to a possible oxygenation event ([Saltzman et al. 2011](#); [Servais et al. 2016](#)). Changing tectonic or volcanic events, or drastic sea-level changes, have not been reported for this interval.

Previous studies ([Harper, 2006](#); [Servais et al. 2009, 2010](#); [Harper et al. 2015](#)) have indicated that, among the different potential environmental and geological triggers for the GOBE, long-term sea-level rise generally appears to be linked to the continuous and sustained rise of the Cambrian–Ordovician biotas, also highlighted by the present study. Depending on the statistical methodology used to construct the diversity curves, they are either smooth (e.g. [Kröger & Lintulaakso, 2017](#); [Kröger et al., 2019](#)) or display different steps, indicating a ‘cascading trend’ ([Rasmussen et al. 2019](#)) correlated with a range of cumulative extrinsic factors ([Stigall et al. 2019](#)). However, in all cases sea-level change (e.g. [Haq & Schutter, 2008](#)) correlates with an overall increasing diversity, together with the decrease in diversity starting in the Katian Age, prior to the end-Ordovician extinctions. In addition, palaeogeographical changes indicate the long-term and slow continental splitting from the Precambrian supercontinent Rodinia into smaller microcontinents together with island arcs, providing numerous ecospace for various marine habitats, as recognized several decades ago (e.g. [Valentine & Moores, 1972](#)) as a driver of biodiversity. An obvious ‘enabler’ of the Cambrian–Ordovician radiation is therefore most probably this combination of sea-level rise and continental fragmentation, at least for the long-term background scenario. There are significant residuals, however, identified by increasingly better-resolved datasets that modify the global trend. For example, the ‘Mid-Ordovician’ pulse of (mostly) benthic fossil groups, named ‘GOBE’ in a few studies (but see discussion in [Servais & Harper, 2018](#) for alternative nomenclature), has been tentatively associated with an asteroid break-up ([Schmitz et al. 2008](#)) or with a hypothetical change in oceanic circulation patterns enabled by global cooling ([Rasmussen et al. 2016](#));

these pulses are also compatible with the abundant data from the palaeocontinent Baltica that moved during Middle Ordovician time into tropical and subtropical latitudes, favouring speciation. The ‘trigger’ of these pulses may also be associated with plate tectonics: the epicontinental seas located in low latitudes became extremely large (probably with highest areas of the entire Phanerozoic), coupled with increasing sea levels that continued to rise until middle Late Ordovician time, and changes in oceanic circulation patterns associated with an ice age. Recent studies of biodiversity patterns throughout the entire Phanerozoic Eon and possible periodicity indicate that both the Cambrian Explosion and the GOBE may be linked to a trajectory driven by larger-scale geological processes driven by plate kinematics ([Roberts & Mannion, 2019](#)). The shorter intervals, such as the ‘GOBE’ of [Rasmussen et al. \(2019\)](#), are therefore associated with shorter episodes linked to more regional, but nevertheless important, drivers that impacted strongly on gamma diversity.

Similarly, the end-Ordovician extinction is not a simple ‘event’, but a very complex decrease in diversity associated with a coincidence of causes ([Harper et al. 2014](#)) possibly driven by prolonged volcanicity. It is now largely accepted that the decrease in diversity was not limited to the Hirnantian Age, but started in the Katian Age, coinciding with the beginning of a global reduction in sea-level fall and concluding with the late Hirnantian transgression.

## 7. Conclusions

A single, long-term, background radiation occurred during early Palaeozoic time; in itself, it was not spectacular and, taken alone, was not particularly dramatic. This radiation had already been identified by nineteenth century palaeontologists, and was referred to as ‘The Early Palaeozoic Radiation’. This single trajectory for early Palaeozoic life is not without twists and turns. All three radiations – the Cambrian Explosion, Great Ordovician Biodiversification Event and the Devonian Nekton Revolution –

were complex events and the curve is also modulated by preservational biases, both positive and negative.

One obvious way forward is to understand each chord or component of the curve in terms of the following.

**Cambrian Explosion:** the prevalence of Lagerstätten, the evolution of new body plans and predators, and the effects of the Cambrian substrate revolution.

**Furongian Biodiversity Gap:** collection failure against a background of inhospitable conditions.

**Great Ordovician Biodiversification Event:** an Ordovician radiation of marine life, with a main phase in the Darriwilian Age in some parts of the world, driven by processes such as the Ordovician Plankton Revolution, the Ordovician Substrate Revolution, the Ordovician Bioerosion Revolution together with the Richmondian Invasion, and enabled by the evolving climate and palaeogeography of the period.

**Late Ordovician Mass Extinction:** waxing and waning of Gondwanan ice sheets, habitat destruction, biotic migration and extinction; may be related to volcanicity.

**Nekton Revolution:** an evacuation of the seabed in favour of more ecospace in the water column as nektobenthic organisms became larger and more complex.

The increasing granularity and resolution of biodiversity curves is advancing our understanding of the many biotic radiations that accumulate diversity on their upwards trajectories, exposing the processes occurring that drive and enable the expansion of life on our planet. Life has the intrinsic ability to diversify, through mutation and selection, but requires extrinsic and intrinsic factors to drive and enable adaptation to a range of environments within an evolving ecospace. It is a continuous process, and one which we have to break down to understand its constituent parts.

## Acknowledgements.

David A.T. Harper thanks the Leverhulme Trust for support. Thomas Servais thanks Van Mildert College for receipt of a W. Arthur Prowse Fellowship. This is a contribution to IGCP 653 study on 'The onset of the Great Ordovician Biodiversification Event.' Graham Budd and an anonymous reviewer gave us pause for thought and their comments have improved the clarity of the manuscript.

## Conflict of interest

None.

## References

Achab A and Paris F (2007) The Ordovician chitinozoan biodiversification and its leading factors.

*Palaeogeography, Palaeoclimatology, Palaeoecology* 245, 5–19.

Adrain JM, Fortey RA and Westrop SR (1998) Post-Cambrian trilobite diversity and evolutionary faunas.

*Science* 280, 1922–5.

Alroy J (2010) The shifting balance of diversity among major marine animal groups. *Science* 329, 1191–

994.

Alroy J, Aberhan M, Bottjer DJ, Foote M, Fürsich FT, Harries PJ, Hendy AJ, Holland SM, Ivany LC, Kiessling

W, Kosnik MA, Marshall CR, McGowan AI, Miller AI, Olszewski TD, Patzkowsky ME, Peters SE, Villier L,

Wagner PJ, Bonuso M, Borkow PS, Brenneis B, Clapham ME, Fall LM, Ferguson CA, Hanson VL, Krug AZ,

Layout KM, Leckey EH, Nürnberg S, Powers CM, Sessa JA, Simpson C, Tomašových A and Visaggi CC (2008)

Phanerozoic trends in the global diversity of marine invertebrates. *Science* 321, 97–100.

Armstrong HA and Harper DAT (2014) An earth system approach to understanding the end-Ordovician (Hirnantian) mass extinction. In *Volcanism, Impacts, and Mass Extinctions: Causes and Effects* (eds G Keller and AA Kerr), pp. 287–300. Boulder, Colorado: The Geological Society of America.

Babcock LE, Peng SC, Brett CE, Zhu MY, Ahlberg P, Bevis M and Robison RA (2015). Global climate, sea-level cycles, and biotic events in the Cambrian Period. *Palaeoworld* 24, 5–15. [AQ23]

Barnes CR (2004) Was there an Ordovician superplume event? In *The Great Ordovician Biodiversification Event* (eds BD Webby, F Paris, ML Droser and IG Percival), pp. 77–80. New York, NY: Columbia University Press.

Benton MJ (2016) Origins of biodiversity. *PLoS Biol* 14, e2000724.

Benton MJ, Wills MA and Hitchin R (2000) Quality of the fossil record through time. *Nature* 403, 534–7.

Bergström SM, Chen X, Gutiérrez-Marco JC and Dronov A (2009) The new chronostratigraphic classification of the Ordovician System and its relations to major regional series and stages and to  $\delta^{13}\text{C}$  chemostratigraphy. *Lethaia* 42, 97–107.

Berner RA, VandenBrooks JM and Ward PD (2007) Oxygen and evolution. *Science* 316, 557–8.

Bottjer DJ, Hagadorn JW and Dornbos SQ (2000) The Cambrian substrate revolution. *GSA Today* 10, 1–6.

Brenchley PJ, Carden GA, Kaljo D, Marshall J, Martma T, Meidla T and Nölvak J (2003) High-resolution stable isotope stratigraphy of Upper Ordovician sequences: constraints on the timing of bioevents and environmental changes associated with mass extinction and glaciation. *GSA Bulletin* 115, 89–104.

Brenchley PJ, Marshall JD, Harper DAT, Buttler CJ and Underwood CJ (2006) A late Ordovician (Hirnantian) karstic surface in a submarine channel, recording glacioeustatic sea-level changes: Meifod, central Wales. *Geological Journal* 41, 1–22.

Briggs DEG (2015) The Cambrian explosion. *Current Biology* 25, R864–8.

Briggs DEG, Erwin DH and Collier FJ (1994). *The fossils of the Burgess Shale*. Washington: Smithsonian Institution Press, 238 p.

Bruton DL and Harper DAT (1981) Brachiopods and trilobites of the early Ordovician serpentine Otta Conglomerate, south central Norway. *Norsk Geologisk Tidsskrift* 61, 153–81.

Bruton DL and Harper DAT (1985) Early Ordovician (Arenig – Llanvirn) faunas from oceanic islands in the Appalachian–Caledonian orogen. In *The Caledonian Orogen—Scandinavia and Related Areas* (eds DG Gee and BA Sturt), pp. 359–68. Chichester: Wiley.

Bruton DL and Harper DAT (eds) (1992) Fossils from fold belts. *Terra Nova* 4, 179–83.

Budd GE and Mann RP (2018) History is written by the victors: the effect of the push of the past on the fossil record. *Evolution* 72, 2276–91.

Butterfield NJ (2003) Exceptional preservation and the Cambrian Explosion. *Integrative and Comparative Biology* 43, 1–177.

Canfield DE and Farquhar J (2009) Animal evolution, bioturbation, and the sulfate concentration of the oceans. *PNAS* 106, 8123–7.

Cooper RA (2004) Measures of diversity. In *The Great Ordovician Biodiversification Event* (eds BD Webby, F Paris, ML Droser and IG Percival), pp. 52–57. New York: Columbia University Press.



Crampton JS, Cooper RA, Sadler PM and Foote M (2016) Greenhouse–icehouse transition in the Late Ordovician marks a step change in extinction regime in the marine plankton. *Proceedings of the National Academy of Sciences, USA* 113, 1498–503.

Darroch SAF, Smith EF, LaFlamme M and Erwin DH (2018) Ediacaran Extinction and Cambrian Explosion. *Trends in Ecology and Evolution* 33, 653–63.

Darwin C (1859) *On the Origin of Species by Means of Natural Selection, or the Preservation of Favoured Races in the Struggle for Life*. London, UK: John Murray.

Droser ML and Sheehan PM (1997) Palaeoecology of the Ordovician radiation: resolution of large-scale patterns with individual clade histories, palaeogeography and environments. *Geobios, Mémoire Spécial* 20, 221–9.

Eriksson ME, Hints O, Paxton H and Tonarova P (2013). Ordovician and Silurian polychaete diversity and biogeography. In *Early Palaeozoic Biogeography and Palaeogeography* (eds DAT Harper & T Servais), pp. 265–72. Geological Society of London, Memoir no. 38.

Ernst A (2018) Diversity dynamics of Ordovician Bryozoa. *Lethaia* 51, 198–206.

Erwin D and Valentine J (2013) *The Cambrian Explosion: The Construction of Animal Biodiversity*. New York: WH Freeman, 416 pp.

Evins LZ, Jourdan F and Phillips D (2009) The Cambrian Kakarindji Large Igneous Province: extent and characteristics based on new  $^{40}\text{Ar}/^{39}\text{Ar}$  and geochemical data. *Lithos* 110, 294–304.

Fan J, Hou X, Chen Q, Melchin MJ, Goldman D, Zhang L and Chen Z (2014) Geobiodiversity Database (GBDB) in stratigraphic, palaeontological and palaeogeographic research: graptolites as an example. *GFF* 136, 70–4.

Foote M and Miller A (2007) *Principles of Paleontology*. 2nd edition. New York: WH Freeman, 480 p.

Fortey RA and Cocks LRM (2005) Late Ordovician global warming—the Boda event. *Geology* 33, 405–8.

Franeck F and Liow LH (2019) Dissecting the paleocontinental and paleoenvironmental dynamics of the great Ordovician biodiversification. *Paleobiology* 2019, 1–14.

Fu D, Tong G, Dai T, Liu W, Yang Y, Zhang Y, Cui L, Li L, Yun H, Wu Y, Sun A, Liu C, Pei W, Gaines RR and Zhang Z (2019) The Qingjiang biota—a Burgess Shale-type fossil Lagerstätte from the early Cambrian of South China. *Science* 363, 1338–42.

Haq BU and Schutter SR (2008) A chronology of Palaeozoic sea-level changes. *Science* 322, 64–8.

Harper DAT (1992) Ordovician provincial signals from Appalachian–Caledonian terranes. *Terra Nova* 4, 204–9.

Harper DAT (2006) The Ordovician biodiversification: setting an agenda for marine life.

*Palaeogeography, Palaeoclimatology, Palaeoecology* 232, 148–66.

Harper DAT (2010) The Ordovician Radiation: roles of alpha, beta and gamma diversity. *Geological Society of America, Special Paper* 466, 69–83.

Harper DAT, Bruton DL and Rasmussen CMØ (2008) The Otta brachiopod and trilobite fauna: palaeogeography of Early Palaeozoic terranes and biotas across Baltoscandia. In *Brachiopoda: Fossil and Recent* (eds DAT Harper, SL Long and C Nielsen), pp. 31–40, 54. *Fossils and Strata*. [AQ3]

Harper DAT, Hammarlund EU and Rasmussen CMØ (2014) End Ordovician extinctions: a coincidence of causes. *Gondwana Research* 25, 1294–307.

Harper DAT, Hammarlund EU, Topper TP, Nielsen AT, Rasmussen JA, Park T-YS and Smith MP (2019a) The Sirius Passet Lagerstätte of North Greenland: a remote window on the Cambrian Explosion. *Journal of the Geological Society* (invited, in review). [AQ4]

Harper DAT and Jiayu R (2001) Palaeozoic brachiopod extinctions and recoveries. *Geological Journal* 36, 317–28. [AQ23]

Harper DAT, Li J, Munnecke A, Owen AW, Servais T and Sheehan PM (2011) Concluding IGCP 503: towards a holistic view of Ordovician and Silurian Earth Systems. *Episodes* 34, 32–8.

Harper DAT, MacNiocaill C and Williams SH (1996) The palaeogeography of early Ordovician Iapetus terranes: an integration of faunal and palaeomagnetic constraints. *Palaeogeography, Palaeoclimatology, Palaeoecology* 121, 297–312.

Harper DAT, Owen AW and Bruton DL (2009) Ordovician life around the Celtic fringes: diversifications, extinctions and migrations of brachiopod and trilobite faunas at middle latitudes. In *Early Palaeozoic Peri-Gondwana Terranes: New Insights from Tectonics and Biogeography* (ed. MG Bassett), pp. 155–68. Geological Society of London, Special Publication no. 325.

Harper DAT, Popov LE and Holmer LE (2017) Brachiopods: origin and early history. *Palaeontology* 60, 609–31.

Harper DAT, Rasmussen CMØ, Liljeroth M, Blodgett RB, Candela Y, Jin J, Percival, IG, Rong JY, Villas E and Zhan RB (2013) Biodiversity, biogeography and phylogeography of Ordovician rhynchonelliform brachiopods. In *Early Palaeozoic Biogeography and Palaeogeography* (eds DAT Harper & T Servais), pp. 127–44. Geological Society of London, Memoir no. 38. [AQ23]

Harper DAT and Rong JY (2001) Palaeozoic brachiopod extinctions and recoveries. *Geological Journal* 36, 317–28.

Harper DAT and Servais T (eds) (2013) *Early Palaeozoic Biogeography and Palaeogeography*. London: Geological Society, Memoir 38, 490 p.

Harper DAT and Servais T (2018) Contextualizing the onset of the Great Ordovician Biodiversification Event. *Lethaia* 51, 149–323.

Harper DAT, Topper TP, Cascales-Miñana B, Servais T, Zhang YD and Ahlberg P (2019b) The Furongian (late Cambrian) Biodiversity Gap: real or apparent? *Palaeoworld* 28, 4–12.

Harper DAT, Zhan RB and Jin J (2015) The Great Ordovician Biodiversification event: reviewing two decades of research on diversity's big bang illustrated by mainly brachiopod data. *Palaeoworld* 24, 75–85.

Hou XG, Siveter DJ, Aldridge RJ, Cong PY, Gabbott SE, Ma XY, Purnell MA and Williams M (2017) *The Cambrian Fossils of Chengjiang, China: The Flowering of Early Animal Life*. Chichester: John Wiley and Sons, 328 p.

Kiessling W, Flügel E and Golonka J (2003) Patterns of Phanerozoic carbonate platform sedimentation. *Lethaia* 36, 195–225.

Klug C, Kröger B, Kiessling W, Mullins GL, Servais T, Frýda J, Korn D and Turner S (2010) The Devonian nekton revolution. *Lethaia* 43, 465–77.

Kröger B, Franeck F and Rasmussen CMØ (2019) The evolutionary dynamics of the early Palaeozoic marine biodiversity accumulation. *Proceedings of the Royal Society B* 286, 20191634.

Kröger B and Lintulaakso K (2017) RNames, a stratigraphical database designed for the statistical analysis of fossil occurrences - the Ordovician diversification as a case study. *Palaeontologica Electronica* 20.1.1T, 1–12.

Kröger B, Servais T and Zhang YB (2009) The origin and initial rise of pelagic cephalopods in the Ordovician. *PLoS One*, published online 30 September 2009, doi:10.1371/journal.pone.0007262.

Lefebvre B, Gutierrez-Marco JC, Lehnert O, Martin ELO, Nowak H, Akodad M, Hariri El and Servais T (2018) Age calibration of the lower Ordovician Fezouata Lagerstätte, Morocco. *Lethaia* 51, 296–311.

Lefebvre V, Servais T, François L and Averbuch O (2010) Did a Katian igneous province trigger the Late Ordovician glaciation? A hypothesis tested with a carbon cycle model. *Palaeogeography, Palaeoclimatology, Palaeoecology* 296, 310–19.

Maletz J (2017) *Graptolite Palaeobiology*. Wiley Blackwell, 336 p. [AQ5]

Mayhew PJ, Bell MA, Benton TG and McGowan AJ (2012) Biodiversity tracks temperature over time. *Proceedings of the National Academy of Sciences, USA* 109, 15141–5.

Mayhew PJ, Jenkins GB and Benton TG (2008) A long-term association between global temperature and biodiversity, origination and extinction in the fossil record. *Proceedings of the Royal Society B* 275, 47–53.

McGowan AJ and Smith AB (2008) Are global Phanerozoic marine diversity curves truly global? A study of the relationship between regional rock records and global Phanerozoic marine diversity. *Paleobiology* 34, 80–103.

Miller AI and Connolly SR (2001) Substrate affinities of higher taxa and the Ordovician Radiation. *Paleobiology* 27, 768–78.

Miller AI and Mao SG (1995) Association of orogenic activity with the Ordovician radiation of marine life. *Geology* 23, 305–8.

Munnecke A, Calner M, Harper DAT and Servais T (2010). Ordovician and Silurian sea–water chemistry, sea level, and climate: a synopsis. *Palaeogeography, Palaeoclimatology, Palaeoecology* 296, 389–413.

Munnecke A and Servais T (2008) Palaeozoic calcareous plankton: evidence from the Silurian of Gotland. *Lethaia* 41, 185–94.

Na L and Kiessling W (2015) Diversity partitioning during the Cambrian radiation. *Proceedings of the National Academy of Sciences of the United States of America* 112, 4702–6.

Nardin E, Godd ris Y, Donnadieu Y, Le Hir G, Blakey RC, Puceat E and Aretz M (2011) Modeling the early Paleozoic long-term climatic trend. *Geological Society of America Bulletin* 123, 1181–92.

Nardin E and Lefebvre B (2010) Unravelling extrinsic and intrinsic factors of the early Palaeozoic diversification of the blastozoan echinoderms. *Palaeogeography, Palaeoclimatology, Palaeoecology* 294, 142–60.

Newell ND (1959) Adequacy of the fossil record. *Journal of Paleontology* 33, 488–99.

Nowak H, Servais T, Monnet C, Molyneux SG and Vandenbroucke TRA (2015) Phytoplankton dynamics from the Cambrian Explosion to the onset of the Great Ordovician Biodiversification Event: a review of Cambrian acritarch diversity. *Earth-Science Reviews* 151, 117–31.

Parker WK (1864) Remarks on the Skeleton of the Arch opteryx; and on the relations of the bird to the reptile. *Geological Magazine* 1, 55–7.

Paterson JR, Edgecombe GD and Lee MSY (2019) Trilobite evolutionary rates constrain the duration of the Cambrian explosion. *PNAS* 116, 4394–9.

Peters S (2005) Geologic constraints on the macroevolutionary history of marine animals. *PNAS* 102, 12326–31.

Peters S and Foote M (2002) Determinants of extinction in the fossil record. *Nature* 416, 420–4.

Phillips J (1860) *Life on Earth: Its Origin and Succession*. Cambridge: Cambridge University Press.

Pohl A, Donnadiou Y, Le Hir G, Buoncristiani JF and Vennin E (2014) Effect of the Ordovician paleogeography on the (in) stability of the climate. *Climate of the Past* 10, 2053–66.

Pohl A, Nardin E, Vandenbroucke T and Donnadiou Y (2016) High dependence of Ordovician ocean surface circulation on atmospheric CO<sub>2</sub> levels. *Palaeogeography, Palaeoclimatology, Palaeoecology* 458, 39–51.

Rasmussen CMØ and Harper DAT (2011) Did the amalgamation of continents drive the end Ordovician mass extinctions? *Palaeogeography, Palaeoclimatology, Palaeoecology* 311, 48–62.

Rasmussen CMØ, Kröger B, Nielsen ML and Colmenar J (2019) Cascading trend of early Paleozoic marine radiations paused by Late Ordovician extinctions. *Proceedings of the National Academy of Sciences of the USA* 116, 7207–13.

Rasmussen CMØ, Ullmann CV, Jakobsen KG, Lindskog A, Hansen J, Hansen T, Eriksson ME, Dronov A, Frei R, Korte C, Nielsen AT and Harper DAT (2016) Onset of main Phanerozoic marine radiation sparked by emerging Mid Ordovician icehouse. *Scientific Reports* 6, 18884.

Raup D (1972) Taxonomic diversity during the Phanerozoic. *Science* 177, 1065–71.

Raup D (1976a) Species diversity in the Phanerozoic: a tabulation. *Paleobiology* 2, 279–88.

Raup D (1976b) Species diversity in the Phanerozoic: an interpretation. *Paleobiology* 2, 289–97.

Raup DM and Stanley SM (1971) *Principles of Paleontology*. San Francisco: WH Freeman, 388 p.

Roberts GG and Mannion PD (2019) Timing and periodicity of Phanerozoic marine biodiversity and environmental change. *Scientific Reports* 9, 6116.

Rong JY, Fan JX, Miller AI and Li GX (2007) Dynamic patterns of latest Proterozoic-Palaeozoic-early Mesozoic marine biodiversity in South China. *Geological Journal* 42, 431–54.

Rozhnov SV (2017) The beginning of the Ordovician evolutionary radiation in the Baltic Region: substrate revolution, explosive increase in diversity of stalked echinoderms, and the cyanobacterial origin of hardgrounds. In *Filling the Gap between the Cambrian Explosion and the GOBE-IGCP Project 653: Annual Meeting 2017, Extended Summaries* (eds YD Zhang, RB Zhan, JX Fan and LA Muir), pp. 133–9. Hangzhou: Zhejiang University Press.

Saltzman MR, Edwards CT, Leslie SA, Dwyer GS, Bauer JA, Repetski JE, Harris AG and Bergström SM (2014) Calibration of a conodont apatite-based Ordovician  $87\text{Sr}/86\text{Sr}$  curve to biostratigraphy and geochronology: implications for stratigraphic resolution. *GSA Bulletin* 126, 1551–68.

Saltzman MR, Young SA, Kump LR, Gill BC, Lyons TW and Runnegar B (2011) A pulse of atmospheric oxygen during the late Cambrian. *PNAS* 108, 3876–81.

Schmitz B, Harper DAT, Peucker-Ehrenbrink B, Stouge S, Alwmark C, Cronholm A, Bergström SM, Tassinari M and Wang XF (2008) Asteroid breakup linked to the Great Ordovician Biodiversification Event. *Nature Geoscience* 1, 49–53.



Sepkoski JJ Jnr (1995) The Ordovician Radiations: diversification and extinction shown by global genus level taxonomic data. In *Ordovician Odyssey: Short Papers, 7th International Symposium on the Ordovician System* (eds JD Cooper, ML Droser and SC Finney), pp. 393–6. Pacific Section Society for Sedimentary Geology (SEPM), California, Book 77.

Sepkoski JJ Jnr (1997) Biodiversity: past, present and future. *Journal of Paleontology* 71, 533–9.

Sepkoski JJ Jnr (2002) A compendium of fossil marine animal genera. *Bulletins of American Paleontology* 363, 10–560.

Servais T, Danelian T, Harper DAT and Munnecke A (2014) Possible oceanic circulation patterns, surface water currents and upwelling zones in the Early Palaeozoic. *GFF* 136, 229–33.

Servais T and Harper DAT (2018) The Great Ordovician Biodiversification Event (GOBE): definition, concept and duration. *Lethaia* 51, 151–64.

Servais T, Harper DAT, Li J, Munnecke A, Owen AW and Sheehan PM (2009) Understanding the Great Ordovician Biodiversification Event (GOBE): influences of paleogeography, paleoclimate, or paleoecology? *GSA Today* 19, 4–10.

Servais T, Lehnert O, Li J, Mullins GL, Munnecke A, Nützel A and Vecoli M (2008) The Ordovician Biodiversification: revolution in the oceanic trophic chain. *Lethaia* 41, 99–109.

Servais T, Owen AW, Harper DAT, Kröger B and Munnecke A (2010) The Great Ordovician Biodiversification Event (GOBE): the palaeoecological dimension. *Palaeogeography, Palaeoclimatology, Palaeoecology* 294, 99–119.

Servais T, Perrier V, Danelian T, Klug C, Martin R, Munnecke A, Nowak H, Nützel A, Vandenbroucke TRA, Williams M and Rasmussen CMØ (2016) The onset of the 'Ordovician Plankton Revolution' in the late Cambrian. *Palaeogeography, Palaeoclimatology, Palaeoecology* 458, 12–28.

Sheehan PM (1977) A reflection of labor by systematists? *Paleobiology* 3, 325–9.

Sheehan PM (2001) The Late Ordovician mass extinction. *Annual Review of Earth and Planetary Sciences* 29, 331–64.

Shields GA, Veizer J (2004) Isotopic signatures. In *The Great Ordovician Biodiversification Event* (eds BD Webby, F Paris, ML Droser and IG Percival), pp. 68–71. New York: Columbia University Press.

Smith A (2001) Large-scale heterogeneity of the fossil record: implications for Phanerozoic biodiversity studies. *Philosophical Transactions of the Royal Society; Biological Sciences* 356, 351–67.

Smith MP and Harper DAT (2013) Causes of the Cambrian explosion. *Science* 341, 1355–6.

Smolarek-Lach J, Marynowski L, Trela W and Wignall PB (2019) Mercury spikes indicate a volcanic trigger for the late Ordovician mass extinction event: an example from a deep shelf of the peri-Baltic region. *Scientific Reports* 9, 3139.

Sprinkle J and Guensburg TE (2004) Crinozoan, blastozoan, echinozoan, asterozoan, and homalozoan echinoderms. In *The Great Ordovician Biodiversification Event* (eds BD Webby, F Paris, ML Droser and IG Percival), pp. 266–80. New York: Columbia University Press.

Stigall AL (2010) Using GIS to assess the biogeographic impact of species invasions on native brachiopods during the Richmondian Invasion in the Type-Cincinnatian (Late Ordovician, Cincinnati Region).

*Palaeontologia Electronica* 13, 5A, 19 p.

Stigall AL (2018) How is biodiversity produced? Examining speciation processes during the GOBE. *Lethaia* 51, 165–72.

Stigall AL (2019) The invasion hierarchy: ecological and evolutionary consequences of invasions in the fossil record. *Annual Review Ecology Evolution Systematics* 50, 15.1–15.26.

Stigall AL, Edwards CT, Freeman RL and Rasmussen CMØ (2019) Coordinated biotic and abiotic change during the Great Ordovician Biodiversification Event: Darriwilian assembly of early Palaeozoic building blocks. *Palaeogeography, Palaeoclimatology, Palaeoecology* 530, 249–70.

Strang KM, Armstrong HA and Harper DAT (2016) Minerals in the gut: scoping a Cambrian digestive system. *Royal Society Open Science* 3, 160420.

Topper TP, Zhifei Z, Gutierrez-Marco JC and Harper DAT (2018). The dawn of a dynasty: life strategies of Cambrian and Ordovician brachiopods. *Lethaia* 51, 254–66.

Trotter JA, Williams IS, Barnes CR, Lécuyer C and Nicol RS (2008) Did cooling oceans trigger Ordovician biodiversification? Evidence from conodont thermometry. *Science* 321, 550–4.

Valentine J (1973) Phanerozoic taxonomic diversity: a test of alternate models. *Science* 180, 1078–9.

Valentine JW and Moores EM (1972) Global tectonics and the fossil record. *The Journal of Geology* 80, 167–84.

Vannier J, Arci, C, Taylor RS and Caron JB (2018) *Waptia fieldensis* Walcott, a mandibulate arthropod from the middle Cambrian Burgess Shale. *Royal Society Open Science*, published online 20 June 2018, doi:10.1098/rsos.172206.

Van Roy P, Daley AC and Briggs DEG (2015) Anomalocaridid trunk limb homology revealed by a giant filter-feeder with paired flaps. *Nature* 522, 77–80.

Van Roy P, Orr PJ, Botting JP, Muir LA, Vinther J, Lefebvre B, El Hariri K and Briggs DEG (2010) Ordovician faunas of Burgess Shale type. *Nature* 465, 215–8.

Vermeij GJ (1995) Economics, volcanoes, and Phanerozoic revolutions. *Paleobiology* 21, 125–52.

Vinther J, Stein M, Longrich NR and Harper DAT (2014) A suspension-feeding anomalocarid from the Early Cambrian. *Nature* 507, 496–99.

Walker LJ, Wilkinson BH and Ivany LC (2002) Continental drift and Phanerozoic carbonate accumulation in shallow-shelf and deep-marine settings. *The Journal of Geology* 110, 75–87.

Webby BD (2004) Introduction. In *The Great Ordovician Biodiversification Event* (eds BD Webby, F Paris, ML Droser and IG Percival), pp. 1–37. New York, NY: Columbia University Press.

Webby BD, Paris F, Droser ML and Percival IG (eds) (2004). *The Great Ordovician Biodiversification Event*. New York, NY: Columbia University Press, 496 p.

Wilson A and Palmer TJ (2006) Patterns and processes in the Ordovician Bioerosion Revolution. *Lethaia* 13, 109–12.

Yang C, Li XH, Zhu M, Condon DJ and Chen J (2018) Geochronological constraint on the Cambrian Chengjiang biota, South China. *Journal of the Geological Society* 175, 659–66.

Young SA, Saltzman MR, Foland KA, Linder JS and Kump LR (2009) A major drop in sea-water  $^{87}\text{Sr}/^{86}\text{Sr}$  during the Middle Ordovician (Darriwilian): links to volcanism and climate? *Geology* 37, 951–4.

Zhan RB and Harper DAT (2006) Biotic diachroneity during the Ordovician Radiation: evidence from South China. *Lethaia* 39, 211–26.

Zhuravlev AY and Wood RA (2018) The two phases of the Cambrian Explosion. *Scientific Reports* 8, 16656.

Fig. 1. Main global patterns by previous authors of genus-level Cambrian–Silurian marine diversity. (a) Comparison of range-based Sepkoski's (2002) marine diversity patterns with Alroy's (2010) sample standardized diversity curve. (b) Global curve after Kröger et al. (2019, fig. 1a) per time genus-level richness.

Fig. 2. Comparative plots of Cambrian–Silurian genus-level marine diversity patterns by biological groups (I): (a) Acritarcha, (B) Chitinozoa, (C) Radiolaria, (D) Graptolithina, (E) Fishes (I.E. Agnatha, Hyperotreti, Pteraspodomorphi, Thelodonti, Anaspida, Galeaspida, Osteostraci, Chondrichthyes, Acanthodii, Osteichthyes) and (f) Polychaeta. [AQ20] Except for Chitinozoan and Polychaete patterns, the total, normalized and sampled diversity are plotted. See methods section [AQ21] for details.

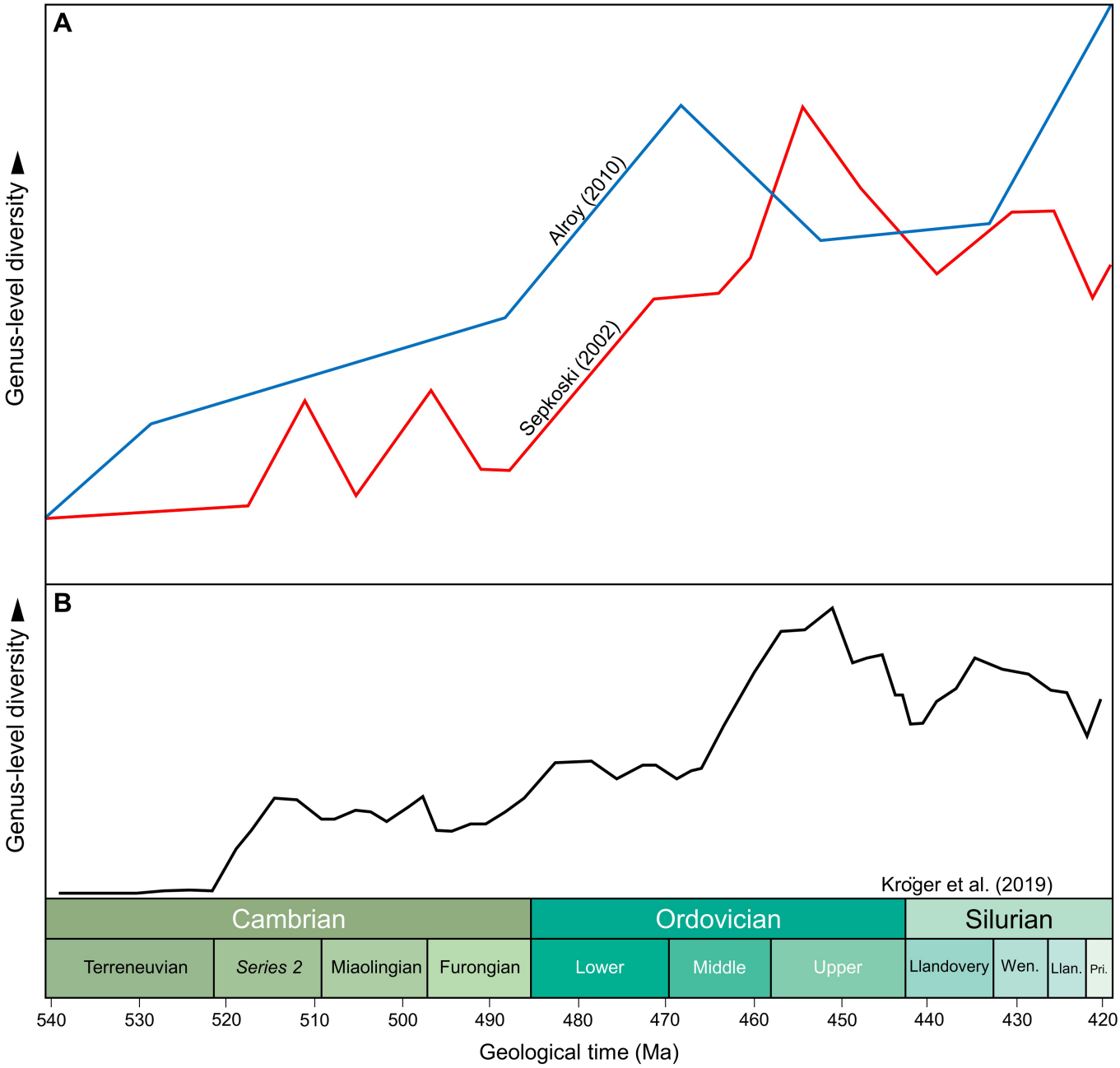
Fig. 3. Comparative plots of Cambrian–Silurian genus-level marine diversity patterns by biological groups (II): (a) Brachiopoda, (b) Stromatoporoidea, (c) Bryozoa, (d) Porifera, (e) Cnidaria and (f) Echinodermata. In all cases, the total, normalized and sampled diversity are plotted. See methods section for details.

Fig. 4. Comparative plots of Cambrian–Silurian genus-level marine diversity patterns by biological groups (III): (a) Bivalvia, (b) Ostracoda, (c) Gastropoda, (d) Conodonts, (e) Trilobita and (f) Cephalopoda. In all cases, the total, normalized and sampled diversity are plotted. See methods section for details.

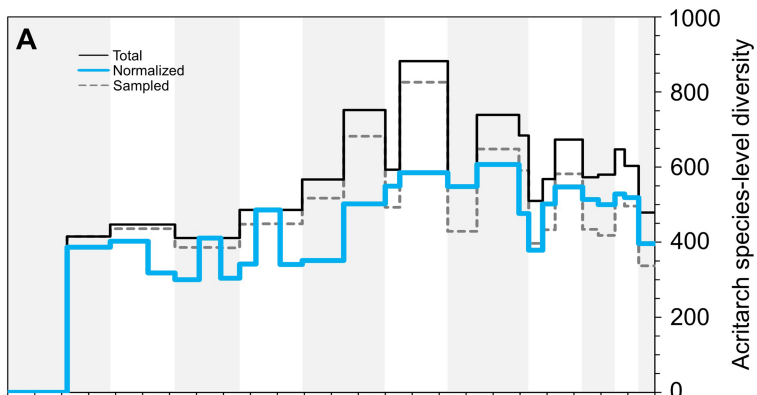
Fig. 5. Comparative plots of Cambrian–Silurian genus-level marine diversity patterns by simplified ecological categories: (a) Plankton (i.e. acritarchs, chitinozoans, graptolites and radiolarians), (b) mobile

nektobenthos (i.e. ostracods and trilobites), (c) Nekton [AQ22] (i.e. cephalopods and fishes), (d) fixed benthos (i.e. brachiopods, bryozoans, echinoderms, sponges and stromatoporoids), (e) mobile benthos (i.e. bivalves and gastropods) and (f) reef builders (i.e. bryozoans, cnidarians, sponges and stromatoporoids). In all cases, the total, normalized and sampled diversity are plotted. See methods section for details.

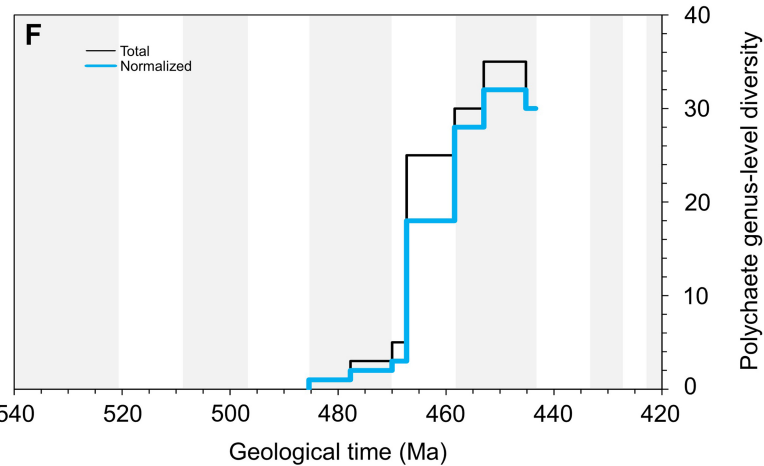
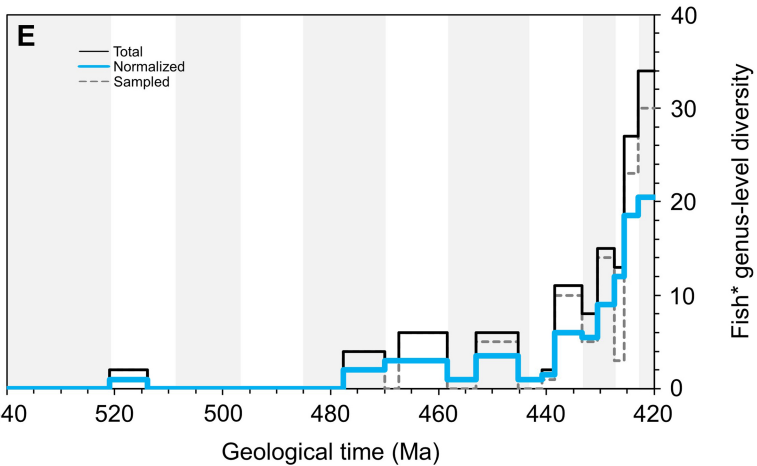
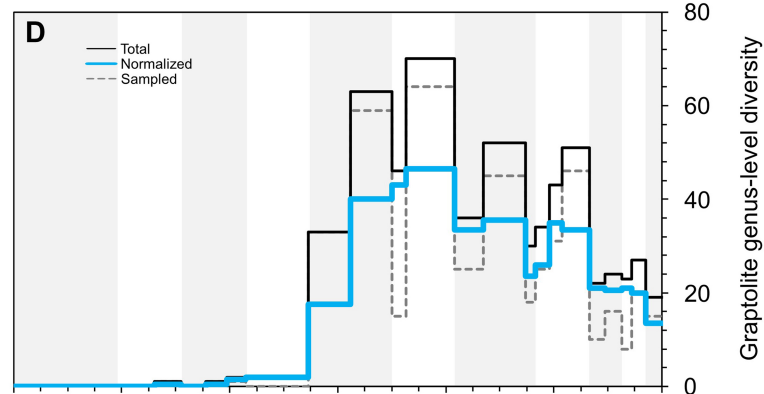
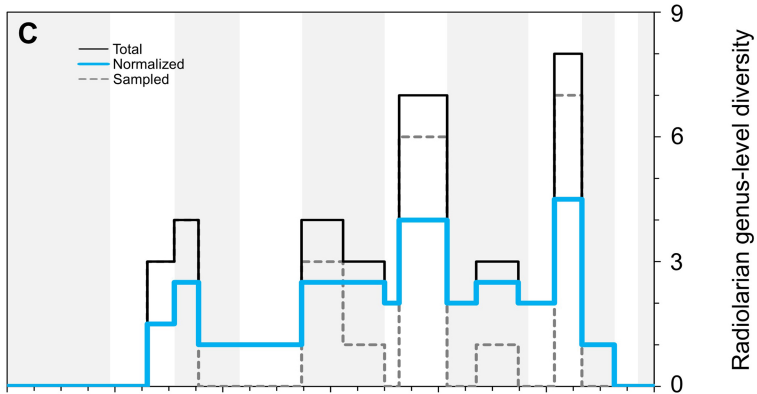
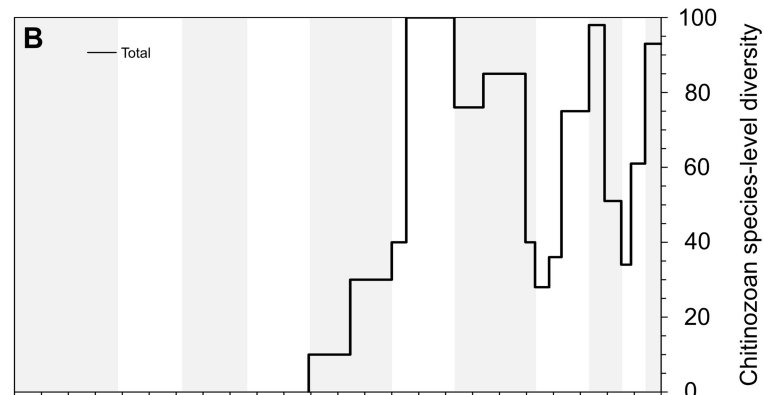
Fig. 6. Genus-level diversity, proportion of extinction (based on data in the PBDB), illustrating the Cambrian Explosion, the Furongian Gap, the Cambrian Substrate Revolution, the Ordovician Plankton Revolution, the Ordovician Bioerosion Revolution and the Late Ordovician Mass Extinction Event (based on data in the PBDB), plotted against carbon and strontium isotopes, global sea-level curve and possible climate change.



Cambrian				Ordovician			Silurian			
Terreneuvian	Series 2	Miaol.	Fur.	Lower	Middle	Upper	Llan.	W.	L.	P.



Cambrian				Ordovician			Silurian			
Terreneuvian	Series 2	Miaol.	Fur.	Lower	Middle	Upper	Llan.	W.	L.	P.

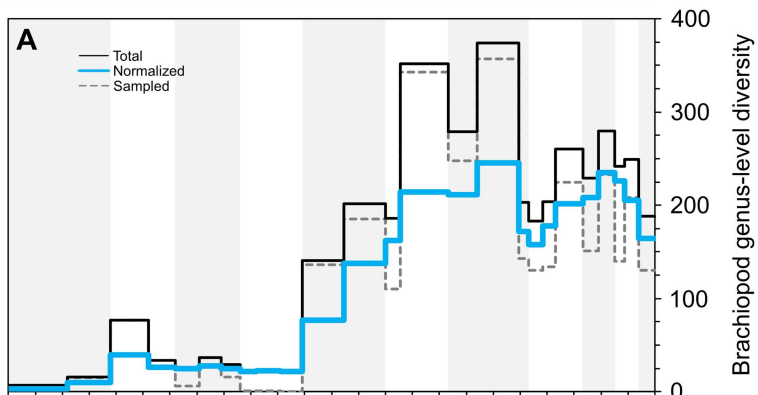


Geological time (Ma)

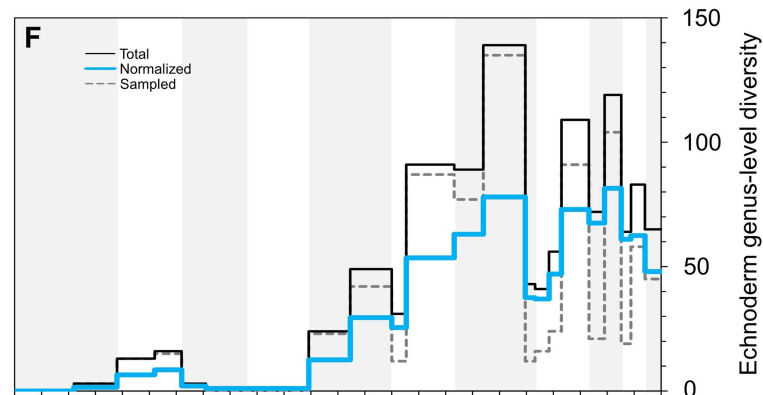
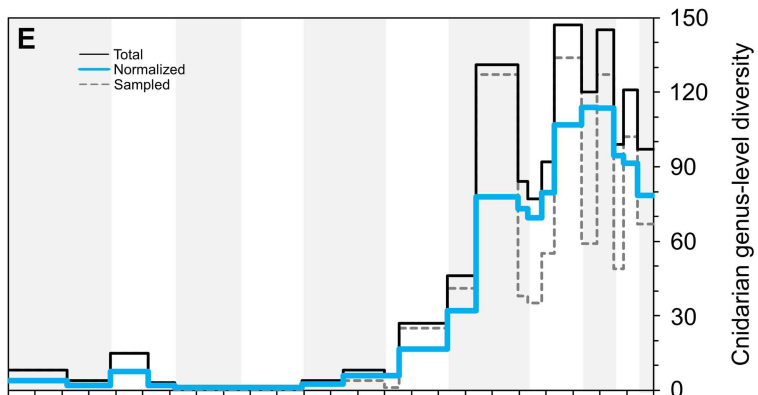
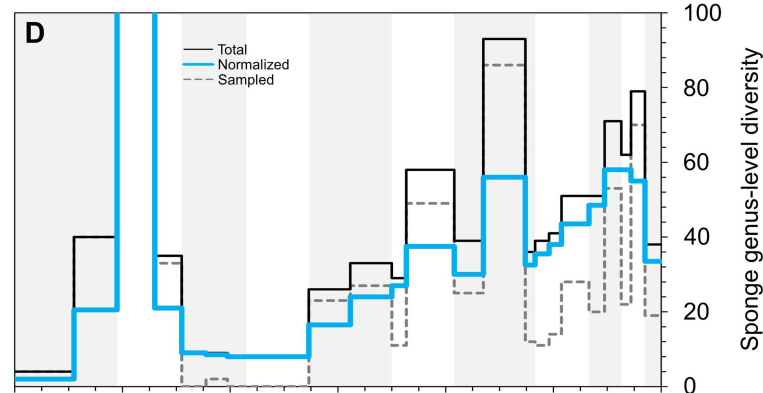
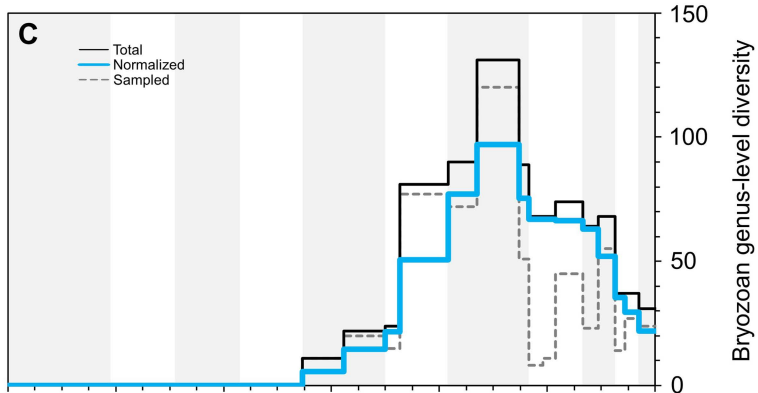
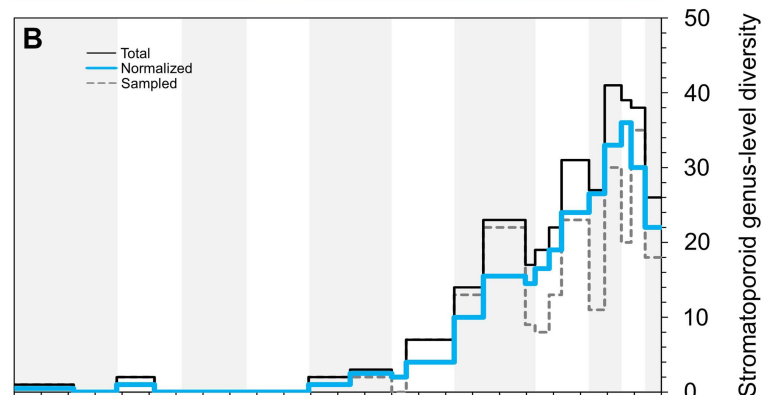
Geological time (Ma)



Cambrian				Ordovician			Silurian			
Terreneuvian	Series 2	Miaol.	Fur.	Lower	Middle	Upper	Llan.	W.	L.	P.



Cambrian				Ordovician			Silurian			
Terreneuvian	Series 2	Miaol.	Fur.	Lower	Middle	Upper	Llan.	W.	L.	P.

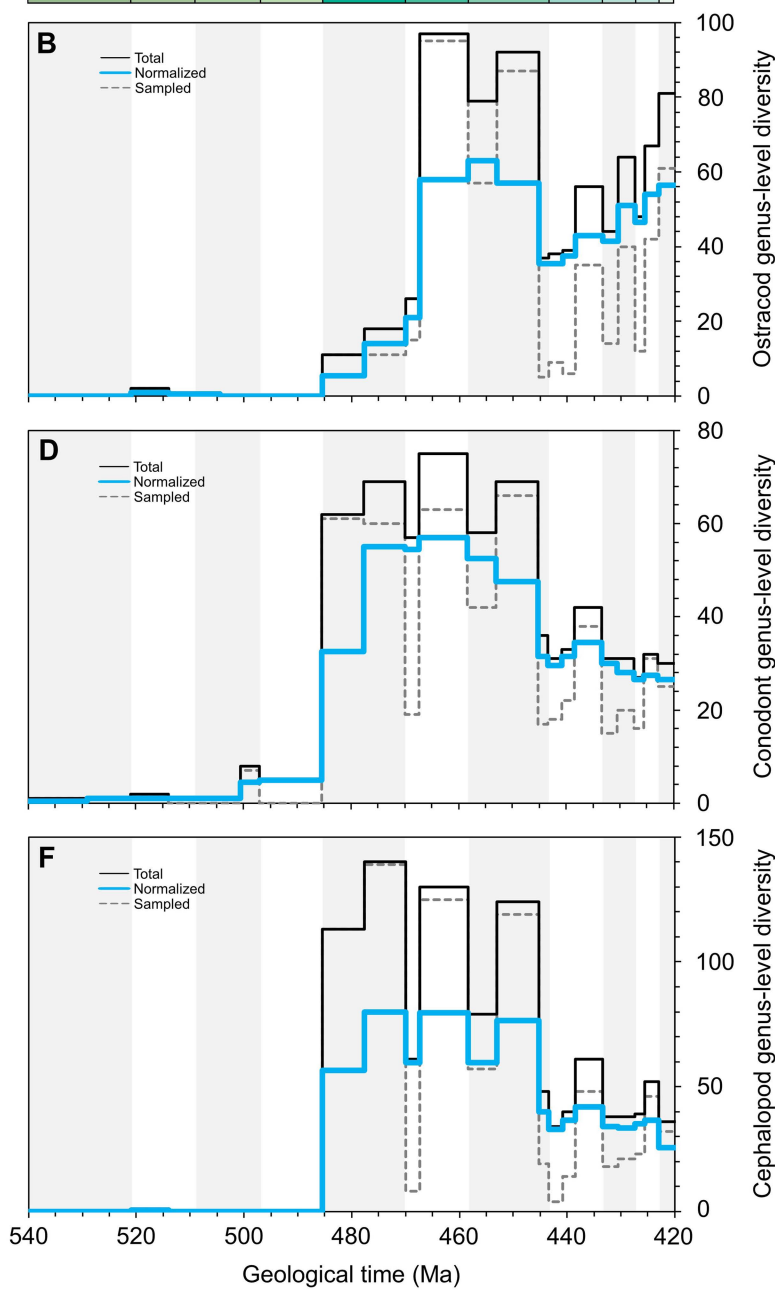
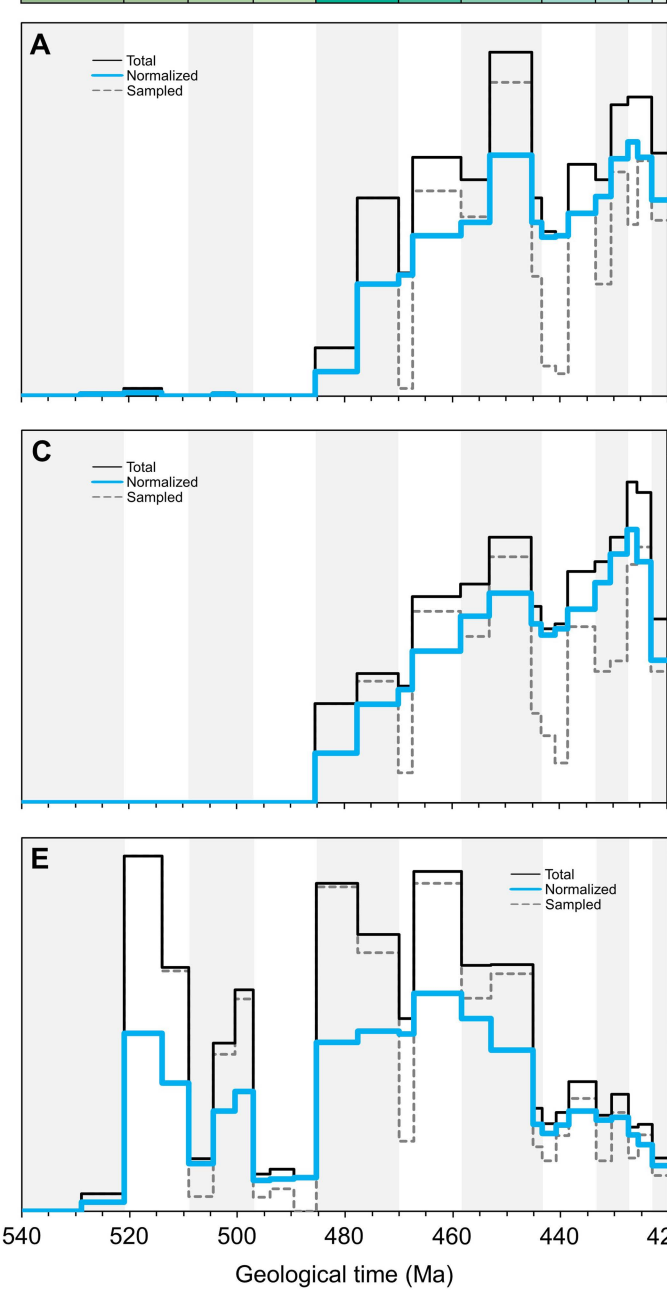


540 520 500 480 460 440 420

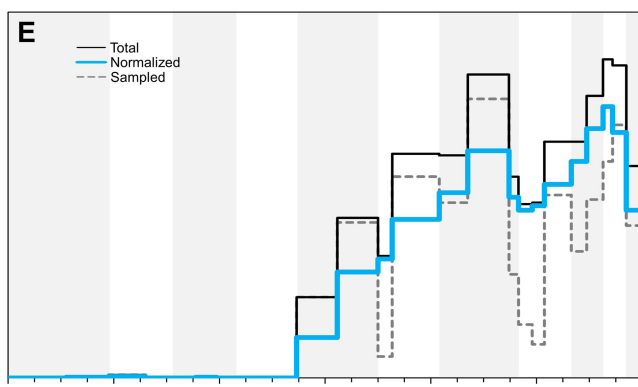
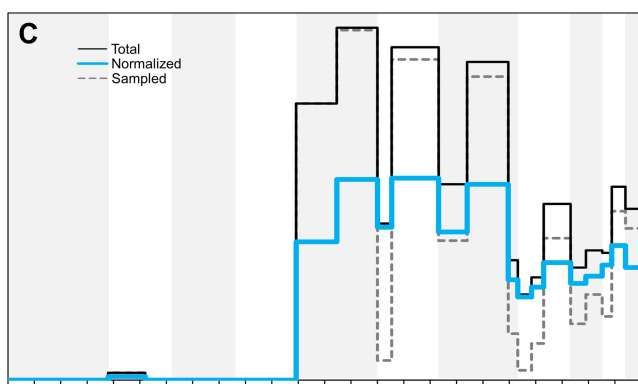
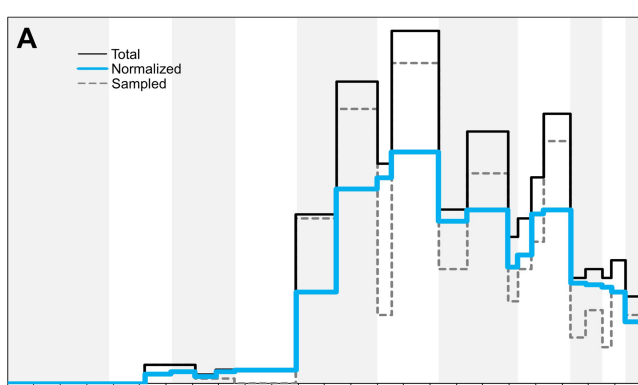
Geological time (Ma)

540 520 500 480 460 440 420

Geological time (Ma)

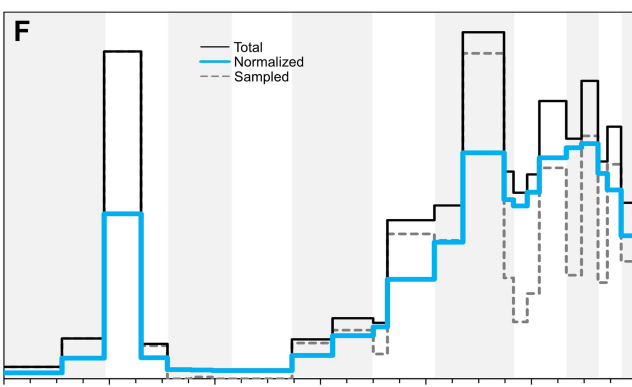
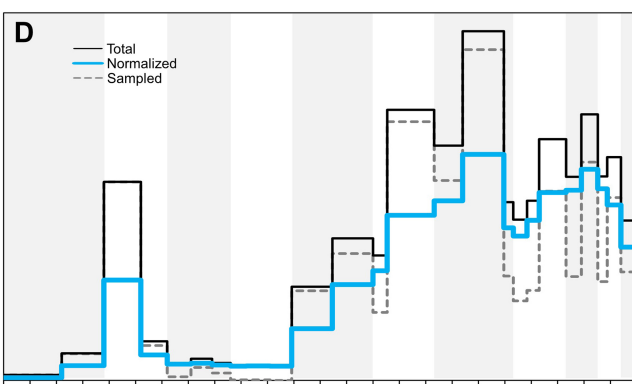
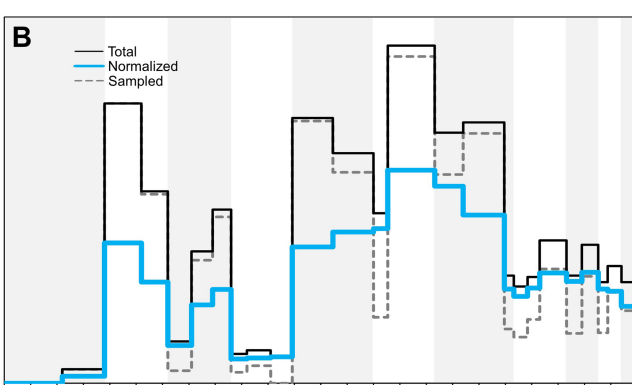


Cambrian				Ordovician			Silurian			
Terreneuvian	Series 2	Miaol.	Fur.	Lower	Middle	Upper	Llan.	W.	L.	P.



Geological time (Ma)

Cambrian				Ordovician			Silurian			
Terreneuvian	Series 2	Miaol.	Fur.	Lower	Middle	Upper	Llan.	W.	L.	P.



Geological time (Ma)

