



**HAL**  
open science

# Making Droplet-Embedded Vesicles to Model Cellular Lipid Droplets

Aymeric Chorlay, Alexandre Santinho, Abdou Rachid Thiam

► **To cite this version:**

Aymeric Chorlay, Alexandre Santinho, Abdou Rachid Thiam. Making Droplet-Embedded Vesicles to Model Cellular Lipid Droplets. STAR Protocols, 2020, 1 (3), pp.100116. 10.1016/j.xpro.2020.100116 . hal-03046286

**HAL Id: hal-03046286**

**<https://hal.science/hal-03046286v1>**

Submitted on 8 Dec 2020

**HAL** is a multi-disciplinary open access archive for the deposit and dissemination of scientific research documents, whether they are published or not. The documents may come from teaching and research institutions in France or abroad, or from public or private research centers.

L'archive ouverte pluridisciplinaire **HAL**, est destinée au dépôt et à la diffusion de documents scientifiques de niveau recherche, publiés ou non, émanant des établissements d'enseignement et de recherche français ou étrangers, des laboratoires publics ou privés.

## STAR Protocols

v2.1 April 2020

### Author Instructions

- Please fill in the template below.
- Replace any text within [square brackets] with text relevant for your protocol.
- Brief instructions are in *italics*. **Additional instructions are highlighted** and appear in the comment boxes, which can be found when you choose “All Markup” in the Track Changes menu.
- Please do not change any headings in all capital letters (e.g., BEFORE YOU BEGIN, STEP-BY-STEP METHOD DETAILS).
- Before submitting your protocol, please delete the instructions on this page as well as all italicized instructions and all comments in this template.
- You can see an example of a submitted protocol as a Word document [here](#).

Please [use this survey to share your feedback](#) on this template and how it might be improved.

# Making droplet-embedded vesicles to model cellular lipid droplets

**Aymeric Chorlay<sup>1,§</sup>, Alexandre Santinho<sup>1,§</sup>, and Abdou Rachid Thiam<sup>1,2,\*</sup>**

<sup>1</sup> Laboratoire de Physique de l'École Normale Supérieure, ENS, Université PSL, CNRS, Sorbonne Université, Université de Paris, F-75005 Paris, France

<sup>2</sup> Lead Contact

<sup>§</sup> These authors contributed equally

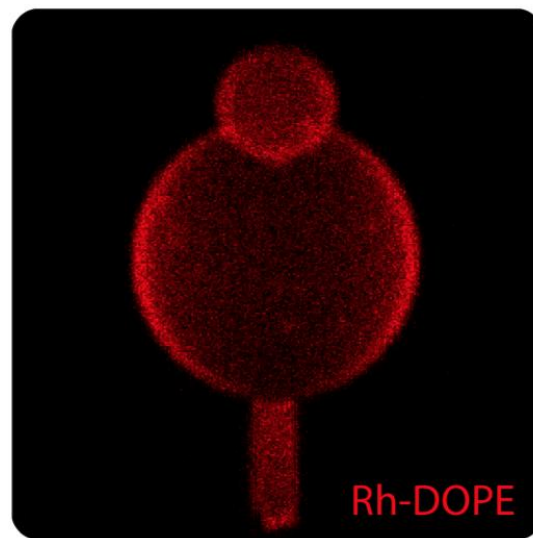
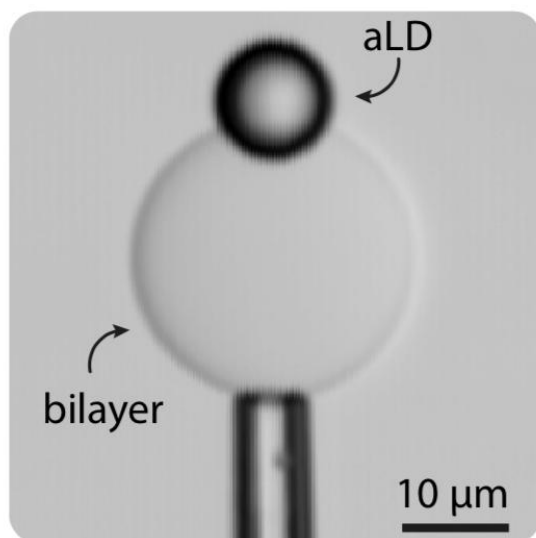
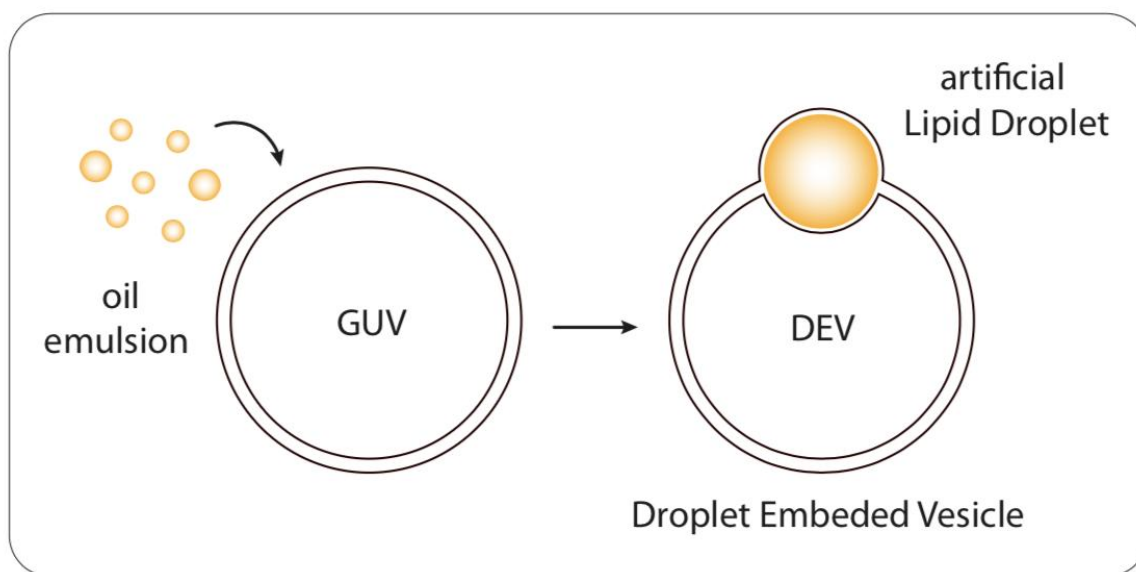
\*Correspondence: [thiam@ens.fr](mailto:thiam@ens.fr)

## SUMMARY

We present a reproducible protocol for the preparation of droplet embedded vesicles (DEVs) consisting of a neutral lipid droplet embedded in a phospholipid bilayer membrane. This system is an in vitro mimicry of a cellular organelle, the lipid droplet, emerging from or in contact with the bilayer of the endoplasmic reticulum. It allows for a precise modulation of the physicochemical parameters of both the droplet and the bilayer, and to test and predict biological mechanisms underlying lipid droplet and membrane dynamics.

For complete details on the use and execution of this protocol, please refer to (Chorlay and Thiam, 2020) and (Santinho et al., 2020).

## GRAPHICAL ABSTRACT



## BEFORE YOU BEGIN

1. The day before making the droplet-embedded vesicles (DEVs), make 10 mL of Bovine Serum Albumin solution 10% (w/w) in Milli-Q water. In the protocol, you only need a few thousand microliters of the BSA solution. However, we recommend preparing a volume of 50mL which can be stored at 4°C and reused for a few weeks.
2. Prepare a HEPES-potassium acetate-magnesium chloride buffer (HKM): 50 mM HEPES, 120 mM KOAc and 1 mM MgCl<sub>2</sub> in Milli-Q water and adjust pH to 7.4 with diluted HCl or KOH. Osmolarity should be around 270 +/-10 mOsm.
3. Prepare 50 mL of a sucrose solution at 5 g/L in Milli-Q water. Check that the osmolarity is around 270 +/-10 mOsm.
4. Prepare the electroformation chamber of the giant unilamellar vesicles (GUVs) (Dimova and Marques, 2019). Make two 6 cm square indium tin oxide (ITO) coated glass plate (**Figure 1A**). Cut two aluminum foil rectangles of 15 cm x 5 cm and fold them each six times along their length (**Figure 1B**). Place each folded foil on the border of the two ITO coated glass plates. **Make sure to place them it on the electrically conductive border.** Use adhesive tape to fix them (**Figure 1C**). The aluminum foils must protrude on both sides. Prepare a 3 mm thick polydimethylsiloxane polymer slab (10x10 cm), and punch in it a large hole that will represent the GUV preparation chamber (**Figure 1D**). This chamber will be sandwiched between the conductive faces of the ITO glass plates (**Figure 1E, 1F**).

Note that GUVs containing sucrose can be made by other methods that are not described here, such as by the inverted emulsion approach (Pautot et al., 2003). The latter for instance enables to generate GUVs faster but with a lower yield and with oil molecules being present in the GUV membrane already before DEVs are generated.

## KEY RESOURCES TABLE

REAGENT or RESOURCE	SOURCE	IDENTIFIER
Chemicals, and Recombinant Proteins		
DOPC (1,2-dioleoyl- <i>sn</i> -3glycero-3-phosphocholine)	Avanti Polar Lipids	850375C
Rhodamine-DOPE (1,2-dioleoyl- <i>sn</i> -glycero-3-phosphoethanolamine-N-(lissamine rhodamine B sulfonyl)	Avanti Polar Lipids	810150P
Chloroform containing 0.5-1.0% ethanol as stabilizer	Sigma Aldrich	288306
Triolein	Sigma Aldrich	T7140
BODIPY 493/503	Thermo Fisher	D3922
HCS LipidTox Deep Red	Thermo Fisher	H34477
Bovine Serum Albumin (BSA)	Sigma Aldrich	A7906-100G
HEPES	Sigma Aldrich	54457-250-F
CH <sub>3</sub> COOK (potassium acetate)	Sigma Aldrich	P1190
MgCl <sub>2</sub>	Sigma Aldrich	M8266-100G
Sucrose	Sigma Aldrich	59378-500G
Other		
coverslip	Menzel	P35G-0-20-C

Indium Tin Oxide coated glass (150x150mm)	Delta-Technologies	CB-90IN-1511
PDMS	DOW CORNING	SYLGARD 184 / 1.1kg
Eppendorf tubes 0.5 & 2 mL	Eppendorf	N°0030121023 and N°0030125150
Sonicator	Electris	DVELUC500CH
Vortex	Scientific Industries	Vortex Genie 2
Dessicator	Detalab Spain	19232
Tube rotator	Ika loopster basics	n/a
Microsyringe 10µL, fixed needle	Hamilton	701N
Osmometer	Roebing	Micro-osmometer Autocal Type 13 D-14129
Signal generator	Rigol	DG1022

## STEP-BY-STEP METHOD DETAILS

### Formation of Giant Unilamellar Vesicles (GUVs)

#### Timing: 3 hours

1. Wash the two ITO coated glass plate and the PDMS spacer with water.
2. Dry the two ITO coated glass plate and the PDMS spacer and wash it with ethanol.

**Critical:** When chloroform is used, work under a laminar flow hood and wear gloves.

3. Wash the two ITO coated glass plate with chloroform.

**Note:** ITO coated glasses and PDMS chamber can be reused dozens of times to generate GUVs.

4. Dilute a DOPC 99,5% (w/w) and Rh-DOPE 0,5% (w/w) mixture in 200  $\mu\text{L}$  of chloroform at 2 mg/mL for DOPC.
5. Homogenize the phospholipid mixture by vortexing.
6. Collect 20  $\mu\text{L}$  with a micro-syringe and make little droplet spots (2  $\mu\text{L}$ ) on the ITO coated glass inside the PDMS chamber (**Figure 2A**).

**Note:** The phospholipid mixture can be stored at  $-20^{\circ}\text{C}$  by saturating the upper volume of the tube with argon before closing the tube. If there is no evaporation or oxidation, the mixture can be reused for a few weeks.

7. Seal the electroformation chamber with the other ITO coated glass plate as shown in (**Figure 1F**).
8. Desiccate the lipid film during 1h in a vacuum chamber (**Figure 2A**).
9. Clip the chamber with fold back clips as shown in (**Figure 1F**) and add very slowly 3 mL of sucrose solution in the chamber (**Figure 2A and 2B, video 1**).

**Critical:** While injecting sucrose into the chamber, try to minimize the number of air bubbles that form in the sucrose volume. This may alter the formation of GUV.

10. Apply 100 Hz AC voltage at 1.4 Vpp by using conductive alligator clip between the generator and the aluminum strips. Maintain it for at least 2h (**Figure 2A and 2C**).
11. Collect GUVs **gently** with a Pasteur pipette in two Eppendorf tubes of 1,5mL (**Figure 2A and 2D, video 2**).
12. Store them at  $4^{\circ}\text{C}$ .

**Note:** GUVs stored at  $4^{\circ}\text{C}$  can be used during approximately two weeks.

**Note:** To check if the electroformation process is successful, one can observe the GUVs solution under confocal microscopy (see section observation of DEVs for more details) by using the following dilution: 20  $\mu\text{L}$  of the sucrose-GUV solution into 80  $\mu\text{L}$  of HKM buffer on a Menzel coverslip. This dilution allows GUVs to settle down on the coverslip, since the HKM buffer is lighter than the sucrose encapsulated by the GUVs. By using a x10 objective dozens of GUVs, between 5  $\mu\text{m}$  and 40  $\mu\text{m}$  in size, can be observed per target region.



## Formation of Droplet Embedded vesicles (DEVs)

**Timing: 20 minutes**

13. Prepare two empty Eppendorf tubes of 0.5 mL cleaned with air stream.
14. Add 70  $\mu\text{L}$  of HKM buffer in the first Eppendorf tube (**Figure 3A**). **Make sure your HKM buffer is clean and dust-free** by filtering it with 0.45 $\mu\text{m}$  filter. To double check if the buffer does not contain huge dusts, one can place a small volume of buffer (e.g. 5 $\mu\text{L}$ ) on a Menzel coverslip and observe it under the microscope.
15. Add 5  $\mu\text{L}$  of triolein oil into the HKM volume and close the Eppendorf tube (**Figure 3A**).

**Optional:** Different oil types can be used and be fluorescently stained for subsequent imaging by fluorescence microscopy.

16. In the other Eppendorf tube, add gently 50  $\mu\text{L}$  of previously produced GUVs solution (from step #12) and keep it within easy reach.
17. Prepare a 200  $\mu\text{L}$  micro-pipette to collect the 50  $\mu\text{L}$  and cut the cone of the micro-pipette 5 mm from the tip to obtain a large aperture. This modified cone is further referred as truncated cone. (**Figure 3B and 3C, video 3**).
18. Vortex the first Eppendorf tube for 10s to make a coarse emulsion (**Figure 3A**).
19. Sonicate this emulsion with the water bath sonicator for 10 s until the solution starts to be cloudy. Do not sonicate too long to avoid the formation of a gel phase. (**Figure 3A**).
20. Vortex again during 10 s (**Figure 3A**).
21. Sonicate again during 10 s to obtain a nano-emulsion (**Figure 3A**). At this stage, you are supposed to get a milky solution (**figure 3D**), if necessary vortex and sonicate it again.
22. Collect **rapidly** a volume of 50  $\mu\text{L}$  of the nano-emulsion with the truncated cone (**Figure 3B, 3C and 3E**).
23. Pour this volume **very gently** into the second Eppendorf tube containing the GUVs solution (**Figure 3E, video 4**).
24. Mix back and forth **very gently** with the same truncated pipette tip to homogenize the GUVs and nano-droplets mixture (**Figure 3E, video 4**).

**Note:** This step brings GUVs into contact with the nano-oil droplets. It promotes the formation of DEV and it is a crucial step for a high yield of DEVs.

25. Then, **immediately** place the Eppendorf tube on a rotating tube mixer during 5 minutes. This allows further mixing of the GUVs and the nano-emulsion while avoiding precipitation and aggregation of the DEVs and GUVs at the bottom of the Eppendorf tube. (**Figure 3E**).
26. DEV solution is ready for observation.

## Observation of Droplet Embedded vesicles (DEVs)

### Timing: 10min

27. Take a Menzel glass coverslip for confocal microscopy observation.
28. With a pipette, place an 80  $\mu\text{L}$  of the BSA solution on the coverslip and wait for 10s (**Figure 4A**).
29. Remove the BSA solution with the pipette. (**Figure 4A**).
30. To remove the excess of BSA from the coverslip, rinse the BSA spot on the coverslip with 80  $\mu\text{L}$  of HKM buffer and discard this solution (**Figure 4A, video 5**). Repeat this process 3 times.
31. Deposit again 80  $\mu\text{L}$  of the HKM buffer on the glass coverslip, on the BSA-treated spot, (**Figure 4A and 4B**) and place the coverslip on the microscope for observation (**Figure 4C**).
32. Prepare a 20  $\mu\text{L}$  micropipette to collect 10  $\mu\text{L}$  of the DEV solution with pipette tip also cut 5 mm from the tip.
33. Collect gently 10  $\mu\text{L}$  of the DEVs solution with the micropipette and pour it in the HKM solution on the glass coverslip (**Figure 4A**).

**Optional:** You can add oil markers such as Bodipy to the DEV solution to visualize the oil droplets by fluorescence microscopy.

34. Wait 5 minutes for the DEVs to settle down on the coverslip and for the excess non-GUV-incorporated nano-droplets to float at the top of the sample, cleared from the observation regions of the DEVs (Chorlay and Thiam, 2018; Thiam et al., 2013).
35. DEVs that settle down on the coverslip can be pre-visualized by an 10x objective (**Figure 4D**).

**Note:** DEVs can be easily recognized thanks to the dark contrast in brightfield of their oil droplets (due to their refractive index) (**Figure 4E**).

## EXPECTED OUTCOMES

At the end of the protocol, you can expect to have at least one vesicle over two with droplets incorporated. It corresponds to the formation of 50% of DEVs from the total GUVs. A suitable DEV is a vesicle with a radius of 10  $\mu\text{m}$  with an over-micrometric droplet. **(Figure 4D, E and F)**. **By using a X63 objective, we determine the DEV radius as the radius of the equatorial plane of the DEV bilayer.**

## LIMITATIONS

This protocol allows the production of DEVs in a reproducible and robust manner. However, there is some variability in the stability of DEVs depending on the physical chemistry of their molecular components. For example, the combination of triolein and diolein for the oil phase may result in less stable DEVs. This can be problematic because stability is essential if one wants to manipulate DEVs with micropipettes or to use them for long-term experiments such as reconstituting biological reactions.

In addition, the production efficiency of DEVs can be modified depending on the type of oil used. For example, viscous oils seem to be more difficult to be incorporate in GUVs.

In conclusion, the ability of an oil to produce a nano-emulsion is crucial for this protocol, especially in step 24. In fact, the smaller the size of the oil droplets (nanometric) is, the higher the efficiency to incorporate them into the bilayer will be.

## TROUBLESHOOTING

### Problem 1:

You do not visualize any DEV but only GUV in step #35.

### Potential Solution 1:

It is possible that the GUVs have not been sufficiently brought into contact with the nanodrops of the emulsion. It is therefore necessary to mix the emulsion better with the GUVs by making more back and forth mixing (step #24). If this does not work, check that the nano-emulsion is milky, a sign of the presence of many nanodrops. If necessary, re-sonicate the emulsion.

### Problem 2:

DEVs seem to be normal when observed from the top, but when positioned in side view, droplets are not incorporated into the bilayer as in **(Figure 5A)**,

### Potential Solution 2a:

Check that your HKM buffer is clean (step 14). If some contaminating molecules have polluted your solution, they may act as surfactants recruited to the surface of the nano oil droplets. This will interfere with the incorporation of the droplets between the two phospholipid leaflets of the GUV, and the droplets may simply adhere to the membrane. Prepare a new HKM buffer solution.

### Potential Solution 2b:

Make more back and forth when mixing the nano-emulsion with the GUVs (step #24), to allow better incorporation of the nano droplets in the bilayer of the GUVs

### Problem 3:

DEVs presents a lot of droplets in their bilayer **(Figure 5B)**.

### Potential Solution 3:

Wait longer after deposition of the DEV on the observation coverslip (step #34) to allow the droplets to laterally fuse and gather as one bigger droplet (Salo et al., 2019). Lateral fusion is helped by higher bilayer surface tension. Thus, you can slightly increase the tension of the bilayer by adding a few microliters of MQ water in the medium. You can also repeat step #21 by sonicating your emulsion for a shorter time. This will result in fewer and larger droplets.

### Problem 4:

Many DEVs present multilamellar structures more **(Figure 5C)** or less visible **(Figure 5D)**,

## Potential Solution 4:

After electroformation (step #11), Ensure that GUVs are not multilamellar. If too many are multilamellar, repeat the GUVs electroformation process from the beginning.

## Problem 5:

You do not visualize any DEV or GUV in step #35.

## Potential Solution 5a:

Make sure that after the electroformation step you have enough GUVs in the solution, step #11.

## Potential Solution 5b:

If the mixing of the emulsion with the GUVs is too abrupt (step #24), the vesicles may burst due to the high shear rate. Mix the emulsion with the GUVs more gently.

## Potential Solution 5c:

It is possible for the DEVs to burst and spread over the glass coverslip if the glass slide is not well covered with BSA (step #28). If this is the case and the phospholipids are fluorescently labeled, you should see vesicles burst and spread on the glass slide (Figure 5E).

Be sure to deposit BSA on the glass coverslip used for observation (step #28). Coating the glass with BSA creates a steric barrier between the bilayer of the vesicles and the glass, which prevents bursting.

## RESOURCE AVAILABILITY

Further information and request for resources and reagents should be directed to and will be fulfilled by Abdou Rachid Thiam ([thiam@ens.fr](mailto:thiam@ens.fr)).

## ACKNOWLEDGMENTS

This work was supported by grants from the Emergence program of Ville de Paris, ANR-Nanodrop, ANR-MOBIL to A.R. Thiam. We are thankful to all the group members for their valuable comments and critical discussions.

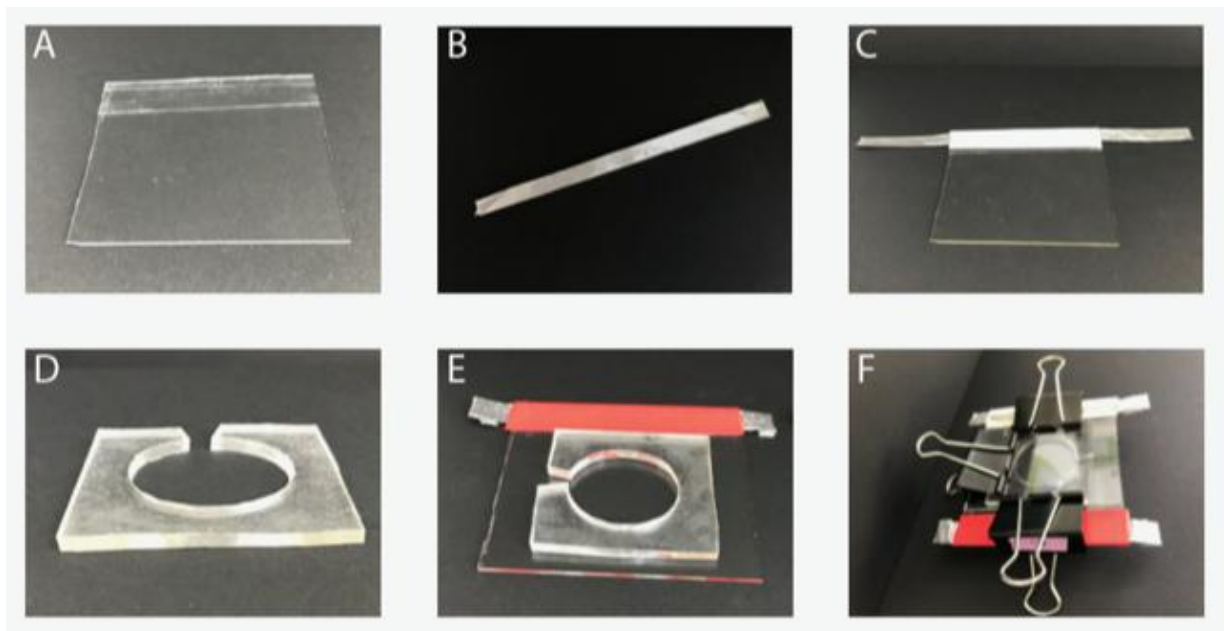
## AUTHOR CONTRIBUTIONS

A.S and A.C drafted the manuscript. A.S, A.C and A.R.T contributed to the protocol development and edited the manuscript. Funding Acquisition, A.R.T

## DECLARATION OF INTERESTS

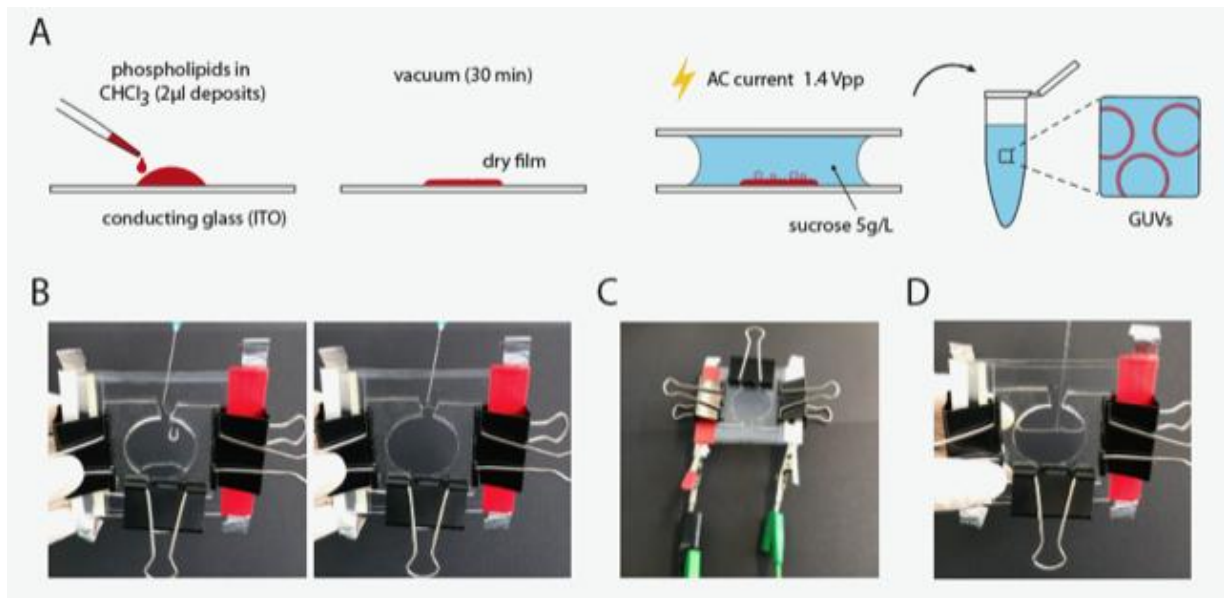
The authors declare no competing interests.

## FIGURE LEGENDS



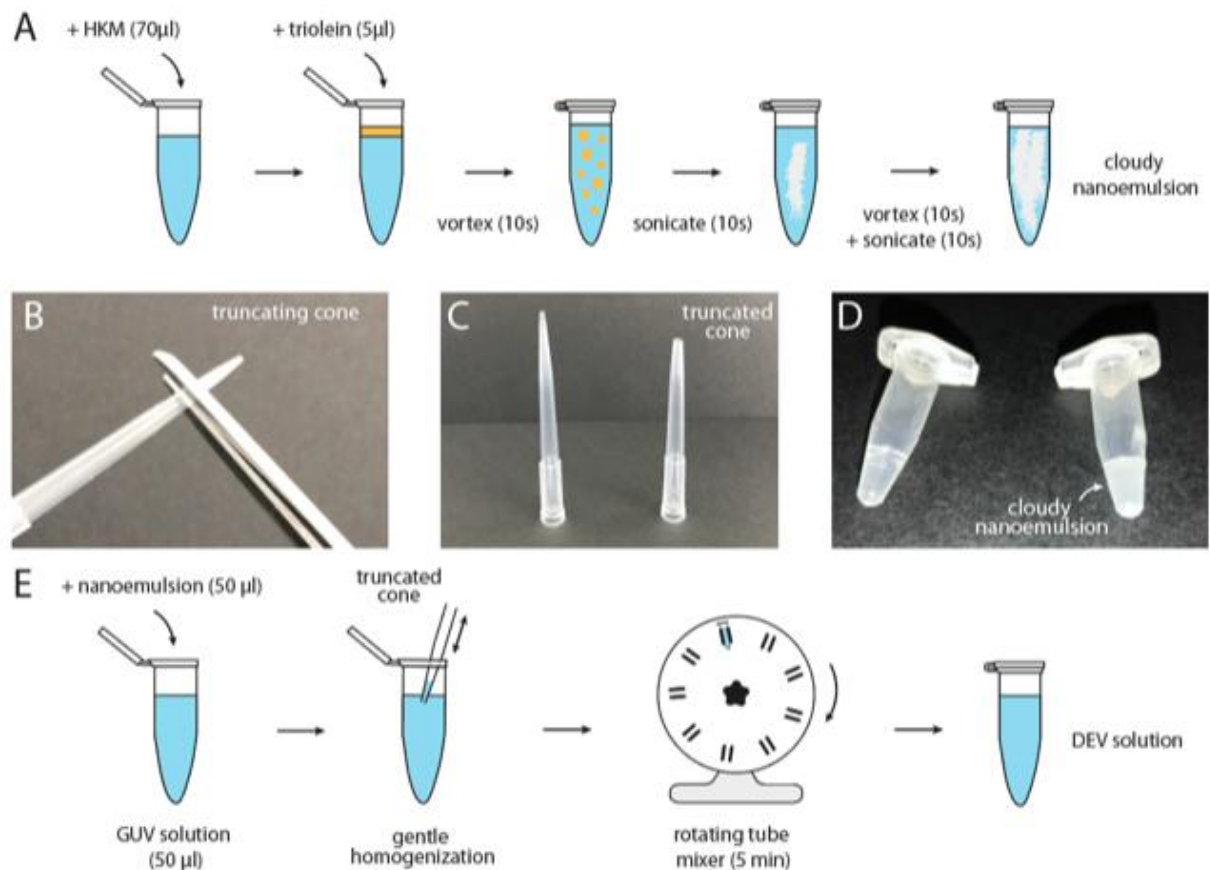
**Figure 1: Preparing the electroformation chamber. Related to the “before you begin” section.**

**A)** Square plate of Indium Tin Oxide coated glass (6x6 cm). **B)** Aluminum strip (15 cm long) serving as a contact electrode. **C)** Aluminum strip taped on the conductive face at one extremity of the ITO coated glass plate. **D)** Picture of the PDMS spacer used to form the electroformation chamber (3mm width). **E)** Positioning of the PDMS spacer on the ITO coated glass plate. **F)** Picture whole electroformation chamber: second coated glass plate is clipped to the first one with the PDMS spacer in between.



**Figure 2: GUV formation**

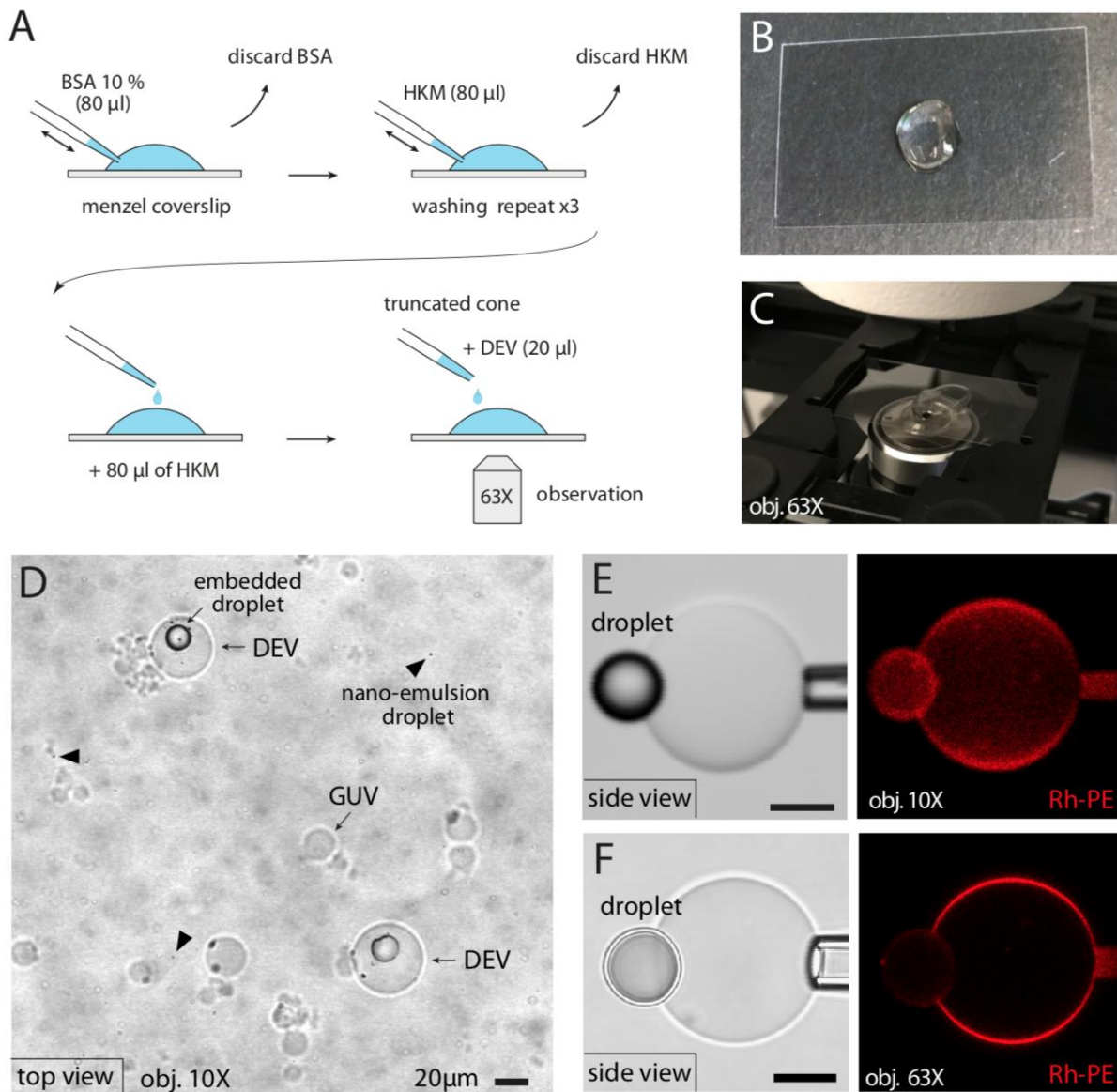
**A)** Step by step schematic illustration of the GUV formation protocol. From the left to the right: Deposit of the phospholipid mixture diluted in chloroform on the conductive face of the ITO coated glass plate (step #6); Lipid mixture is dried under vacuum during 30 min (step #8); Electroformation chamber is formed and sucrose solution is added (step #9), then submitted to a AC current of 1.4Vpp (step #10); GUVs are collected into Eppendorf tube (step #11). **B)** Picture of the sucrose solution injection into the electroformation chamber. Left: beginning of the injection. Right: end of the injection (step #9). **C)** Electroformation chamber connected to the signal generator in order to apply AC current (step #10). **D)** Illustration of the collect of the sucrose solution containing the GUV with a Pasteur pipette (step #11).



**Figure 3: DEVs formation by mixing an oil nano-emulsion with a GUV solution.**

**A)** Step by step schematic illustration of how to make the nano-emulsion with triolein and HKM. From the left to the right: HKM and oil are added in an Eppendorf tube (step #14 & step #15); the Eppendorf tube is vortexed resulting in a coarse emulsion (step #18); the solution is sonicated until a cloudy nano-emulsion is obtained and then homogenized by vortexing (Step #19 - #21). **B)** The micropipette tip cone is truncated, used in (step #17). **C)** Picture of a truncated micropipette tip cone (right) compared to a normal tip cone (left), (step #17). **D)** Oil-buffer solution before (left, step #15) and after sonication (right, step #21), resulting in a cloudy solution indicating the formation of the nano-emulsion. **E)** Step by step protocol of the mixing of GUVs solution with the nano-emulsion to form DEVs. From left to right: the nano-emulsion is injected into the GUV solution with the truncated cone (step #22 & #23). The double arrow heads designate the back and forth mixing with the micropipette to gently mix the emulsion with the GUVs (step #24). Before observation, the previous solution is homogenized with a rotating tube mixer to allow further mixing (step #25). After five minutes, the DEV solution is ready for observation. (step #26).

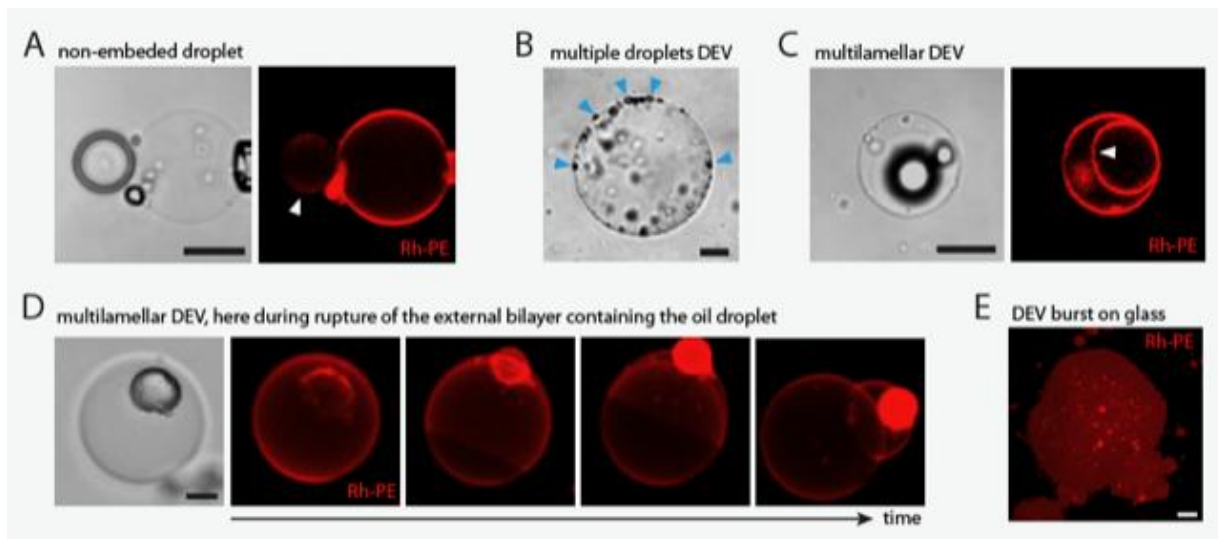




**Figure 4: Observation of DEVs under the confocal microscope.**

**A)** Step by step illustration of the DEV observation by microscopy. From left to right: the BSA solution is placed on the glass coverslip (step #28) and then discarded after 10sec. The HKM buffer solution is used to rinse the BSA treated spot; rinsing is performed 3 times for the efficient removal of the excess BSA (step #30). An 80µL HKM solution is then deposited on the washed coverslip and an 20µL of DEV solution added to it (step #31). The coverslip is placed under the microscope for observation (step #35). **B)** Picture of the deposited droplet of HKM (step #31) on the coverslip before adding the DEVs and the observation. **C)** Picture of the coverslip of the DEVs in the HKM solution ready for observation (end of step #31). **D)** Representative microscope image of DEVs at 10 min, after DEVs settled down (end of step #35) on the glass coverslip (brightfield 10x objective). DEVs and GUVs without droplet can be seen in the same area. Nano-emulsion oil droplets, not incorporated in GUVs, are indicated by

black arrowheads. **E)** Confocal brightfield and fluorescence images of a DEV, side view. The DEV is maintained thanks to a micropipette. Rh-PE is used to report for phospholipids. Objective 10x, scale bar is 10  $\mu\text{m}$ . **F)** Brightfield and fluorescence side view of a DEV obtained with 63x objective. See that the droplet is embedded in between the two leaflets of the bilayer. Note that the phospholipid signal on the droplet monolayer is dimmed because light refraction due to index mismatch between the oil and the buffer (Chorlay and Thiam, 2020); this observation mainly happens with a 63x oil objective. scale bar is 10  $\mu\text{m}$ .



**Figure 5: Illustration of troubleshooting during DEVs formation.**

**A)** Representative image of an oil droplet NOT embedded in a bilayer (white arrowhead). If observed in a top view, this system could be mistaken for a DEV, related to problem 2. scale bar is 10  $\mu\text{m}$ . **B)** Representative image of a DEV presenting multiple small droplets (blue arrowheads), related to problem 3. 63x objective, scale bar is 10  $\mu\text{m}$ . **C)** Representative image (brightfield and fluorescence) of a DEV which exhibit multilamellar bilayers, see arrowhead in fluorescence image. Related to problem 4 section. 63x objective, scale bar is 10  $\mu\text{m}$ . **D)** Time-lapse of the rupture of the external bilayer of a multilamellar DEV. After a pore opening, the external bilayer containing the droplet is ejected. Note that prior to the rupture of the external bilayer, the multilamellar DEV looked similar to a unilamellar DEV, except for the phospholipid fluorescence that was more pronounced inside the vesicle. Related to problem 4. 63x objective, scale bar is 10  $\mu\text{m}$ . **E)** Representative fluorescence image of a DEV which had burst and spread at the surface of a glass coverslip not enough treated with BSA. Related to problem 5 section, X63 objective, scale bar is 10  $\mu\text{m}$ .

**Video 1:** The sucrose solution is injected in the GUV electroformation chamber without making air bubbles. Related to step #9.

**Video 2:** Gentle collection of GUV solution thanks to a Pasteur pipette, related to step #11.

**Video 3:** Truncating a micropipette cone before mixing the GUV solution and the nano-emulsion, related to step #17

**Video 4:** Gentle mixing of the nano-emulsion and the GUV solution by making back and forth aspiration with a micropipette, related to step #24.

**Video 5:** Washing the excess of BSA on the coverslip before observation with HKM buffer. related to step #30.

## REFERENCES

- Chorlay, A., and Thiam, A.R. (2018). An asymmetry in monolayer tension regulates lipid droplet budding direction. *Biophys. J.* *114*, 631–640.
- Chorlay, A., and Thiam, A.R. (2020). Neutral lipids regulate amphipathic helix affinity for model lipid droplets. *J. Cell Biol.* *219*.
- Dimova, R., and Marques, C. (2019). *The Giant Vesicle Book* (CRC Press).
- Pautot, S., Frisken, B.J., and Weitz, D.A. (2003). Production of unilamellar vesicles using an inverted emulsion. *Langmuir* *19*, 2870–2879.
- Salo, V.T., Li, S., Vihinen, H., Hölttä-Vuori, M., Szkalitsy, A., Horvath, P., Belevich, I., Peränen, J., Thiele, C., and Somerharju, P. (2019). Seipin facilitates triglyceride flow to lipid droplet and counteracts droplet ripening via endoplasmic reticulum contact. *Dev. Cell* *50*, 478–493.
- Santinho, A., Salo, V.T., Chorlay, A., Li, S., Zhou, X., Omrane, M., Ikonen, E., and Thiam, A.R. (2020). Membrane Curvature Catalyzes Lipid Droplet Assembly. *Curr. Biol.* *30*, 2481-2494.e6.
- Thiam, A.R., Antonny, B., Wang, J., Delacotte, J., Wilfling, F., Walther, T.C., Beck, R., Rothman, J.E., and Pincet, F. (2013). COPI buds 60-nm lipid droplets from reconstituted water–phospholipid–triacylglyceride interfaces, suggesting a tension clamp function. *Proc. Natl. Acad. Sci.* *110*, 13244–13249.