



**HAL**  
open science

## **Renal cell carcinoma with leiomyomatous stroma in tuberous sclerosis complex: a distinct entity**

Marjorie Gournay, Frederic Dugay, Marc-Antoine Belaud-Rotureau, Benoit Peyronnet, Romain Mathieu, Gregory Verhoest, Karim Bensalah, Sylvie Odent, Philippe Denizeau, Cécile Vigneau, et al.

### ► **To cite this version:**

Marjorie Gournay, Frederic Dugay, Marc-Antoine Belaud-Rotureau, Benoit Peyronnet, Romain Mathieu, et al.. Renal cell carcinoma with leiomyomatous stroma in tuberous sclerosis complex: a distinct entity. *Virchows Archiv*, 2021, 478 (4), pp.793-799. 10.1007/s00428-020-02910-9 . hal-03039966

**HAL Id: hal-03039966**

**<https://hal.science/hal-03039966v1>**

Submitted on 10 Dec 2020

**HAL** is a multi-disciplinary open access archive for the deposit and dissemination of scientific research documents, whether they are published or not. The documents may come from teaching and research institutions in France or abroad, or from public or private research centers.

L'archive ouverte pluridisciplinaire **HAL**, est destinée au dépôt et à la diffusion de documents scientifiques de niveau recherche, publiés ou non, émanant des établissements d'enseignement et de recherche français ou étrangers, des laboratoires publics ou privés.

**Renal cell carcinoma with leiomyomatous stroma in Tuberous Sclerosis Complex:  
a distinct entity.**

Renal cell carcinoma with leiomyomatous stroma in TSC

Marjorie Gournay<sup>1</sup>, Frédéric Dugay<sup>2</sup>, Marc-Antoine Belaud-Rotureau<sup>2</sup>, Benoit Peyronnet<sup>3</sup>,  
Romain Mathieu<sup>3</sup>, Gregory Verhoest<sup>3</sup>, Karim Bensalah<sup>3</sup>, Sylvie Odent<sup>4</sup>, Philippe Denizeau<sup>4</sup>,  
Cécile Vigneau<sup>5</sup>, Aurélien Morini<sup>6</sup>, Nathalie Rioux-Leclercq<sup>1</sup>, Solène-Florence Kammerer-  
Jacquet<sup>1</sup>

Affiliations

<sup>1</sup>Department of Pathology, University Hospital, 35000 Rennes, France.

<sup>2</sup>Department of Cytogenetics, University Hospital, 35000 Rennes, France.

<sup>3</sup>Department of Urology, University Hospital, 35000 Rennes, France.

<sup>4</sup>Department of Genetic, University Hospital, 35000 Rennes, France.

<sup>5</sup>Department of Nephrology, University Hospital, 35000 Rennes, France.

<sup>6</sup>Department of Pathology, Georges Pompidou European Hospital, Paris, France.

Corresponding author:

Marjorie Gournay, 2 rue Henri le Guilloux, 35000 Rennes

marjorie.gournay@chu-rennes.fr.

+33 2 99 28 42 79.

Conflict of interest Statement

Disclosure of potential conflicts of interest: The authors of this article have no relevant financial relationships with commercial interests to disclose and no funding to declare.

Words: 1479 (excluding abstract and references)

**Abstract:**

1  
2 Renal cell carcinoma with leiomyomatous stroma (RCCLS) is an emerging entity frequently  
3 associated with tuberous sclerosis complex (TSC). We described herein a series of RCCLS in  
4 TSC patients at pathological and cytogenetic levels. Three male patients with TSC and  
5 RCCLS were identified between 2000 and 2019 at the University Hospital of Rennes.  
6  
7 Histologically, the architecture was tubulo-papillary with thick bundles of smooth muscle  
8 cells. The tumor cells showed clear cytoplasm with eosinophilic globules. The  
9 immunohistochemical profile was identical with an intense positivity of CK7, CAIX, CD10  
10 and a heterogeneous positivity of CK20. SDHB was low but positive and TFE3 was not  
11 expressed. Comparative genomic hybridization (CGH) did not show any quantitative  
12 chromosome abnormality. No recurrence was observed with a median follow-up of 4-years.  
13  
14 RCCLS in TSC patients has morphological, immunohistochemical and cytogenetic distinct  
15 features that could constitute a distinct entity and a sentinel manifestation for the diagnosis of  
16 TSC.  
17  
18  
19  
20  
21  
22  
23  
24

25  
26  
27 Keywords :

28  
29 Renal cell carcinoma, leiomyomatous stroma, Tuberous Sclerosis Complex, TSC1, TSC2.  
30  
31  
32  
33  
34  
35  
36  
37  
38  
39  
40  
41  
42  
43  
44  
45  
46  
47  
48  
49  
50  
51  
52  
53  
54  
55  
56  
57  
58  
59  
60  
61  
62  
63  
64  
65

## 1. Introduction

1  
2  
3  
4  
5  
6  
7  
8  
9  
10  
11  
12  
13  
14  
15  
16  
17  
18  
19  
20  
21  
22  
23  
24  
25  
26  
27  
28  
29  
30  
31  
32  
33  
34  
35  
36  
37  
38  
39  
40  
41  
42  
43  
44  
45  
46  
47  
48  
49  
50  
51  
52  
53  
54  
55  
56  
57  
58  
59  
60  
61  
62  
63  
64  
65

Tuberous Sclerosis Complex (TSC) is an autosomal dominant disease characterized by multisystemic tumors (brain, skin, heart, lungs and kidneys) and hamartomas. This disease is caused by alterations in *TSC1* or *TSC2* genes, which encode hamartin and tuberin respectively, and form the TSC protein complex that regulate mTOR pathway, and thus increase protein translation, cell growth, decreased autophagy, and metabolic adaptations favoring the emergence of tumors [1].

Renal involvement in TSC is largely represented by angiomyolipoma with a minority of renal cell carcinoma (RCC) (2-5%). Yang *et al.* reported 46 renal epithelial tumors from 19 TSC patients distributed in TSC-associated papillary RCC (n=24), hybrid oncocyctic /chromophobe tumors (n=15) and unclassified tumors (n=7) [2]. The same year Guo *et al.* described a cohort of 57 RCC from 18 TSC patients distributed in RCC with smooth muscle stroma (n=17), chromophobe RCC (n=34) and eosinophilic-macrocytic RCC (n=6) [3]. Even if the taxonomy is different, the latter category shared morphological characteristics with the unclassified tumors by Yang. Moreover, TSC-associated papillary RCC and RCC with smooth muscle stroma could constitute the same entity. Unfortunately, these studies did not explore the cytogenetic profile of these tumors.

Leiomyomatous stroma is present in a variety of RCC mainly including clear cell RCC (ccRCC), papillary RCC (pRCC), clear cell papillary RCC (cpRCC), MiTF translocated RCC (tRCC) and TCEB1-mutated RCC [4–7]. However, it remains unclear whether the presence of leiomyomatous stroma should classify the tumor as a RCCLS.

The aim of this study was to describe a series of RCCLS in TSC patients in order to characterize this rare entity at pathological and cytogenetic level.

## 2. Material and Methods

### 2.1. Patient selection

From January 2000 to January 2019, in the University Hospital of Rennes, we identified 3 patients with TSC who underwent partial nephrectomy for RCC in the Department of Urology.

1  
2           2.2. Pathological analysis

3 Fresh surgical specimens were received at the Department Pathology. Partial nephrectomy  
4 were weighed and measured. Tumors were described at gross examination and samples were  
5 formalin fixed and paraffin embedded with hematoxylin, eosin and safran staining.  
6  
7  
8  
9

10           2.3. Immunohistochemistry

11 Four-µm thick whole tissue sections were cut and mounted on glass slides (Superfrost+,  
12 Menzel Glazer). The preparations were dried for 1 hour at 58°C, and then overnight at 37°C.  
13 The sections were deparaffinized with toluene and rehydrated with ethanol. The preparations  
14 were pretreated and immunostained using Ventana Benchmark XT. Immunohistochemical  
15 analyses were carried out using the following antibodies: CK07 (mouse monoclonal antibody,  
16 clone OV-TL 12/30, dilution 1/150, Dako), CK20 (mouse monoclonal antibody, clone  
17 Ks20,8, dilution 1/25, Dako), CAIX (rabbit polyclonal antibody, ab15086, dilution 1/1500,  
18 Abcam), CD10 (mouse monoclonal antibody 56C6, dilution 1/75, Leica), AMACR (rabbit  
19 monoclonal antibody, clone 13H4-Dako, prediluted), SDHB (clone 21A11AE7, dilution  
20 1/200, Abcam) and TFE3 (rabbit monoclonal antibody, clone MRQ-37-Cell, Ventana,  
21 prediluted). The detection was performed using horseradish peroxidase-labeled polymer  
22 conjugated secondary antibodies using diaminobenzidine as chromogen (Sigma-Aldrich,  
23 France).  
24  
25  
26  
27  
28  
29  
30  
31  
32  
33  
34  
35  
36  
37

38           2.4. Comparative genomic hybridization (CGH) analysis

39 Genomic DNA was extracted from formol fixed paraffin embedded (FFPE) tissue using the  
40 Generead DNA FFPE kit (Qiagen, Hilden, Germany). Oligonucleotide array-comparative  
41 genomic hybridization (CGH) was performed using the standard version of the Agilent  
42 Human Genome CGH microarray 180K (Agilent Technologies, Santa Clara, CA, USA).  
43 Microarrays were scanned using the Agilent scanner G2565BA. Images were extracted using  
44 Agilent Feature Extraction software and data were analyzed with Agilent Cytogenomics  
45 v.2.5.8.11 software.  
46  
47  
48  
49  
50  
51  
52  
53

54 **3. Results**

55           3.1. Clinical Features

56  
57  
58  
59  
60  
61  
62  
63  
64  
65

1 All patients were male, with a median age of 31 years (22-42 years) at diagnosis (Table 1).  
2 Two patients appeared to be first cousins. Patient 1 reported concomitant angiomyolipoma  
3 and patient 2 presented aortic bicuspid valve, patient 3 was asymptomatic. Patient 1 harbored  
4 a mutation of TSC1 (c.2585insT) whereas the first cousins patients 2 and 3 showed the same  
5 TSC2 mutation (c.440C>G). With a median follow-up of 4 years the patients were all alive  
6 without any signs of local recurrence or metastasis.  
7  
8  
9

### 10 11 12 3.2. Pathological findings

13 The three tumors showed similar gross examination. Macroscopically, they were well  
14 circumscribed, brownish with an irregular pseudo-capsule. The cut surface was solid with  
15 fibrotic changes. Neither hemorrhagic nor necrotic areas were found. The average tumor size  
16 was 3.3 cm (1-6 cm) and was limited to the kidney and staged pT1. Microscopically, they  
17 shared a tubulo-papillary architecture (Figure 1). The tumor cells had either clear cytoplasm  
18 with the presence of eosinophilic globules or an eosinophilic and granular cytoplasm. Some  
19 tumor cells exhibit cytoplasm vacuolization. The cytoplasmic membrane was well defined  
20 with a plant-cell like appearance. The nucleus was round, with conspicuous, large nucleoli  
21 equivalent to grade 3 according to WHO/ISUP histologic grading system for clear cell and  
22 papillary renal cell carcinoma. The stromal component consisted of thick bundles of well  
23 differentiated smooth muscle cells. In one case, bone metaplasia was identified. There were  
24 no sinusoidal vessels with branching vessels seen in ccRCC. There was no prominent atypia,  
25 mitoses, rhabdoid or sarcomatoid component or necrotic area.  
26  
27  
28  
29  
30  
31  
32  
33  
34  
35  
36  
37  
38  
39

### 40 3.3. Immunohistochemical features

41 Immunohistochemically, all 3 tumors displayed similar immunochemical profile (Figure 2).  
42 The tumor cells were strongly and diffusely positive for CK7 with no expression of AMACR.  
43 CD10, CAIX were diffusely expressed whereas CK20 was more heterogeneous. The  
44 expression of SDHB was very weak and TFE3 was negative (Supplementary Data S3, S4 and  
45 S5). The smooth muscle cells expressed muscle specific-actin and smooth muscle actin.  
46  
47  
48  
49  
50

### 51 3.4. Cytogenetic data

52 A neutral profile was observed for each case without any gene copy number abnormalities. In  
53 particular, neither deletion of 3p and monosomy 8 nor trisomy of chromosomes 7 and 17 were  
54 identified.  
55  
56  
57  
58  
59  
60  
61  
62  
63  
64  
65

#### 4. Discussion

1  
2  
3  
4 In this study, we identified in TSC patients, RCCLS sharing the same morphology: they  
5 showed nested, papillary or trabecular architecture, an epithelial component with clear and  
6 eosinophilic granular cytoplasm and a stromal component with thick bunds of smooth muscle  
7 cells. They expressed CK7, CK20, CAIX, and CD10 and their cytogenetic profile showed no  
8 alteration.  
9  
10

11  
12  
13  
14 Yang *et al.* described TSC-associated papillary RCC whose morphology is similar to the RCC  
15 we described herein [2]. They had a papillary architecture with clear and eosinophilic cells  
16 and eosinophilic cytoplasmic globules. The tumor was surrounded by thick fibrous stroma.  
17  
18 The immunophenotype was the same: CK7+, CAIX+, CD10+, AMACR- and TFE3- except  
19 that SDHB was misinterpreted as negative[8]. Guo *et al.* also described similar RCC with  
20 smooth muscle stroma in TSC patients [3]. The epithelial component had a branching  
21 architecture with clear tumor cells. The immunohistochemical profile was also CK7+ and  
22 CAIX+. Bah *et al.* reported a family case of RCCLS with the same morphology and  
23 immunohistochemical profile [9]. It is very likely that these previous cases belong to the same  
24 entity.  
25  
26  
27  
28  
29  
30  
31

32  
33  
34 Few studies analyzed the cytogenetic profile of these RCCLS in TSC patients. Parilla *et al.*  
35 confirmed the absence of chromosomal alteration and Tyburczy *et al.* performed whole  
36 exome sequencing and did not find any copy number changes either [10]. The absence of  
37 chromosomal abnormality is very rare in RCC and consistent with the lack of aggressiveness  
38 of these RCCLS [5,11,12].  
39  
40  
41  
42

43  
44  
45 Leiomyomatous stroma is encountered in a wide variety of RCC; mainly in ccRCC, pRCC,  
46 cpRCC, TCEB1-mutated RCC and tRCC (Supplementary data S1). RCCLS remains a  
47 diagnosis of exclusion and the diagnosis should be based on the epithelial component. First of  
48 all, ccRCC could be excluded by the presence of VHL deletion frequently observed in this  
49 entity (Supplementary data S2) [5,12,13]. The absence of AMACR IHC staining and the lack  
50 of trisomy 7 and 17 do not favor a pRCC [12,13]. In addition, the apical position of nuclei and  
51 basal positivity of CAIX is not encountered in RCCLS [14]. Furthermore, a translocation of  
52 *TFE3* or *TFEB* should be excluded by IHC and/or FISH analysis [7]. *TCEB1* mutated RCC  
53 display a similar morphology to RCCLS but typically harbor an 8 monosomy [6]. Thus, we  
54  
55  
56  
57  
58  
59  
60  
61  
62  
63  
64  
65

1 hypothesize that RCCLS in TSC patients is a distinct entity and the absence of chromosomal  
2 alterations could help the differential diagnosis.  
3  
4

5 Leiomyomatous stroma was demonstrated to be polyclonal and reactive contrary to the  
6 epithelial component [4]. As *TSC1/2* is a tumor suppressor gene, a second hit is pivotal in  
7 oncogenesis. Indeed, Tyburczy *et al.* and Bah *et al.* identified biallelic inactivation of TSC2  
8 in RCCLS of TSC patients [9,10]. Interestingly, very small number of additional somatic  
9 genetic events has been found, with no association with *VHL* mutation confirming the driver  
10 impact of TSC inactivation. As for *VHL* in ccRCC, a biallelic inactivation of TSC could be  
11 the driver of both hereditary and sporadic RCCLS. This sporadic counterpart was recently  
12 demonstrated by Shah *et al* with somatic mutations of *TSC1* and *TSC2* identified in RCC with  
13 the same morphology and immunohistochemical profile [5,15].  
14  
15  
16  
17  
18  
19  
20  
21  
22

23 In conclusion, even if our study is limited by the very low frequency of this entity, we  
24 described, along with previous cases, a distinct subgroup of RCCLS in TSC patients. This  
25 entity could be considered as a sentinel manifestation of TSC and thus added as a diagnostic  
26 criterion. In consequence, an oncogenetic counselling should be advised to identify a TSC  
27 disease.  
28  
29  
30  
31  
32  
33

### 34 **Compliance with ethical standards**

35  
36 Research involving human participants and/or animals: All procedures performed in studies  
37 involving human participants were in accordance with the ethical standards of the institutional  
38 and/or national research committee and with the 1964 Helsinki declaration and its later  
39 amendments or comparable ethical standards.  
40  
41  
42

43 Informed consent: Informed consent was obtained from all individual participants included in  
44 the study.  
45  
46  
47  
48  
49  
50  
51  
52  
53  
54  
55  
56  
57  
58  
59  
60  
61  
62  
63  
64  
65



## **List of abbreviations**

1  
2  
3 AMACR : Alpha-Methylacyl-CoA Racemase  
4  
5 ccRCC : clear cell Renal Cell Carcinoma  
6  
7 CGH : Comparative Genomic Hybridization  
8  
9 cpRCC : clear cell papillary Renal Cell Carcinoma  
10  
11 DNA : DesoxyriboNucleic Acid  
12  
13 FFPE : Formol Fixed Paraffin Embedded  
14  
15 FISH : Fluorescence In situ Hybridization  
16  
17 IHC : Immunochemistry  
18  
19 ISUP : International Society of Urological Pathology  
20  
21 mTOR : mechanistic Target Of Rapamycin  
22  
23 pRCC : papillary Renal Cell Carcinoma  
24  
25 RCC : Renal Cell Carcinoma  
26  
27 RCCLS : Renal Cell Carcinoma with Leiomyomatous Stroma  
28  
29 SDHB : Succinate DeHydrogenase complex iron sulfur subunit B  
30  
31 TCEB1 : Transcription Elongation factor B  
32  
33 TFE3 : Transcription Factor binding to IGHM Enhancer 3  
34  
35 tRCC : translocated Renal Cell Carcinoma  
36  
37 TSC : Tuberos Sclérosis Complex  
38  
39 VHL : Von Hippel Lindau  
40  
41  
42  
43  
44  
45  
46  
47  
48  
49  
50  
51  
52  
53  
54  
55  
56  
57  
58  
59  
60  
61  
62  
63  
64  
65  
66  
67  
68  
69  
70  
71  
72  
73  
74  
75  
76  
77  
78  
79  
80  
81  
82  
83  
84  
85  
86  
87  
88  
89  
90  
91  
92  
93  
94  
95  
96  
97  
98  
99  
100  
101  
102  
103  
104  
105  
106  
107  
108  
109  
110  
111  
112  
113  
114  
115  
116  
117  
118  
119  
120  
121  
122  
123  
124  
125  
126  
127  
128  
129  
130  
131  
132  
133  
134  
135  
136  
137  
138  
139  
140  
141  
142  
143  
144  
145  
146  
147  
148  
149  
150  
151  
152  
153  
154  
155  
156  
157  
158  
159  
160  
161  
162  
163  
164  
165  
166  
167  
168  
169  
170  
171  
172  
173  
174  
175  
176  
177  
178  
179  
180  
181  
182  
183  
184  
185  
186  
187  
188  
189  
190  
191  
192  
193  
194  
195  
196  
197  
198  
199  
200  
201  
202  
203  
204  
205  
206  
207  
208  
209  
210  
211  
212  
213  
214  
215  
216  
217  
218  
219  
220  
221  
222  
223  
224  
225  
226  
227  
228  
229  
230  
231  
232  
233  
234  
235  
236  
237  
238  
239  
240  
241  
242  
243  
244  
245  
246  
247  
248  
249  
250  
251  
252  
253  
254  
255  
256  
257  
258  
259  
260  
261  
262  
263  
264  
265  
266  
267  
268  
269  
270  
271  
272  
273  
274  
275  
276  
277  
278  
279  
280  
281  
282  
283  
284  
285  
286  
287  
288  
289  
290  
291  
292  
293  
294  
295  
296  
297  
298  
299  
300  
301  
302  
303  
304  
305  
306  
307  
308  
309  
310  
311  
312  
313  
314  
315  
316  
317  
318  
319  
320  
321  
322  
323  
324  
325  
326  
327  
328  
329  
330  
331  
332  
333  
334  
335  
336  
337  
338  
339  
340  
341  
342  
343  
344  
345  
346  
347  
348  
349  
350  
351  
352  
353  
354  
355  
356  
357  
358  
359  
360  
361  
362  
363  
364  
365  
366  
367  
368  
369  
370  
371  
372  
373  
374  
375  
376  
377  
378  
379  
380  
381  
382  
383  
384  
385  
386  
387  
388  
389  
390  
391  
392  
393  
394  
395  
396  
397  
398  
399  
400  
401  
402  
403  
404  
405  
406  
407  
408  
409  
410  
411  
412  
413  
414  
415  
416  
417  
418  
419  
420  
421  
422  
423  
424  
425  
426  
427  
428  
429  
430  
431  
432  
433  
434  
435  
436  
437  
438  
439  
440  
441  
442  
443  
444  
445  
446  
447  
448  
449  
450  
451  
452  
453  
454  
455  
456  
457  
458  
459  
460  
461  
462  
463  
464  
465  
466  
467  
468  
469  
470  
471  
472  
473  
474  
475  
476  
477  
478  
479  
480  
481  
482  
483  
484  
485  
486  
487  
488  
489  
490  
491  
492  
493  
494  
495  
496  
497  
498  
499  
500  
501  
502  
503  
504  
505  
506  
507  
508  
509  
510  
511  
512  
513  
514  
515  
516  
517  
518  
519  
520  
521  
522  
523  
524  
525  
526  
527  
528  
529  
530  
531  
532  
533  
534  
535  
536  
537  
538  
539  
540  
541  
542  
543  
544  
545  
546  
547  
548  
549  
550  
551  
552  
553  
554  
555  
556  
557  
558  
559  
560  
561  
562  
563  
564  
565  
566  
567  
568  
569  
570  
571  
572  
573  
574  
575  
576  
577  
578  
579  
580  
581  
582  
583  
584  
585  
586  
587  
588  
589  
590  
591  
592  
593  
594  
595  
596  
597  
598  
599  
600  
601  
602  
603  
604  
605  
606  
607  
608  
609  
610  
611  
612  
613  
614  
615  
616  
617  
618  
619  
620  
621  
622  
623  
624  
625  
626  
627  
628  
629  
630  
631  
632  
633  
634  
635  
636  
637  
638  
639  
640  
641  
642  
643  
644  
645  
646  
647  
648  
649  
650  
651  
652  
653  
654  
655  
656  
657  
658  
659  
660  
661  
662  
663  
664  
665  
666  
667  
668  
669  
670  
671  
672  
673  
674  
675  
676  
677  
678  
679  
680  
681  
682  
683  
684  
685  
686  
687  
688  
689  
690  
691  
692  
693  
694  
695  
696  
697  
698  
699  
700  
701  
702  
703  
704  
705  
706  
707  
708  
709  
710  
711  
712  
713  
714  
715  
716  
717  
718  
719  
720  
721  
722  
723  
724  
725  
726  
727  
728  
729  
730  
731  
732  
733  
734  
735  
736  
737  
738  
739  
740  
741  
742  
743  
744  
745  
746  
747  
748  
749  
750  
751  
752  
753  
754  
755  
756  
757  
758  
759  
760  
761  
762  
763  
764  
765  
766  
767  
768  
769  
770  
771  
772  
773  
774  
775  
776  
777  
778  
779  
780  
781  
782  
783  
784  
785  
786  
787  
788  
789  
790  
791  
792  
793  
794  
795  
796  
797  
798  
799  
800  
801  
802  
803  
804  
805  
806  
807  
808  
809  
810  
811  
812  
813  
814  
815  
816  
817  
818  
819  
820  
821  
822  
823  
824  
825  
826  
827  
828  
829  
830  
831  
832  
833  
834  
835  
836  
837  
838  
839  
840  
841  
842  
843  
844  
845  
846  
847  
848  
849  
850  
851  
852  
853  
854  
855  
856  
857  
858  
859  
860  
861  
862  
863  
864  
865  
866  
867  
868  
869  
870  
871  
872  
873  
874  
875  
876  
877  
878  
879  
880  
881  
882  
883  
884  
885  
886  
887  
888  
889  
890  
891  
892  
893  
894  
895  
896  
897  
898  
899  
900  
901  
902  
903  
904  
905  
906  
907  
908  
909  
910  
911  
912  
913  
914  
915  
916  
917  
918  
919  
920  
921  
922  
923  
924  
925  
926  
927  
928  
929  
930  
931  
932  
933  
934  
935  
936  
937  
938  
939  
940  
941  
942  
943  
944  
945  
946  
947  
948  
949  
950  
951  
952  
953  
954  
955  
956  
957  
958  
959  
960  
961  
962  
963  
964  
965  
966  
967  
968  
969  
970  
971  
972  
973  
974  
975  
976  
977  
978  
979  
980  
981  
982  
983  
984  
985  
986  
987  
988  
989  
990  
991  
992  
993  
994  
995  
996  
997  
998  
999  
1000

## References

- 1 Lam HC, Nijmeh JS, Henske EP. New developments in the genetics and pathogenesis of tumours in tuberous sclerosis complex. *J. Pathol.* 2017; **241**; 219-225.
- 2 Yang P, Cornejo KM, Sadow PM, et al. Renal Cell Carcinoma in Tuberous Sclerosis Complex. *Am. J. Surg. Pathol.* 2014; **38**; 895-909.
- 3 Guo J, Tretiakova MS, Troxell ML, et al. Tuberous sclerosis-associated renal cell carcinoma: a clinicopathologic study of 57 separate carcinomas in 18 patients. *Am. J. Surg. Pathol.* 2014; **38**; 1457-1467.
- 4 Petersson F, Branzovsky J, Martinek P, et al. The leiomyomatous stroma in renal cell carcinomas is polyclonal and not part of the neoplastic process. *Virchows Arch. Int. J. Pathol.* 2014; **465**; 89-96.
- 5 Parilla M, Alikhan M, Al-Kawaaz M, et al. Genetic Underpinnings of Renal Cell Carcinoma With Leiomyomatous Stroma. *Am. J. Surg. Pathol.* April 2019.
- 6 Hakimi AA, Tickoo SK, Jacobsen A, et al. TCEB1-mutated renal cell carcinoma: a distinct genomic and morphological subtype. *Mod. Pathol. Off. J. U. S. Can. Acad. Pathol. Inc* 2015; **28**; 845-853.
- 7 Ellis CL, Eble JN, Subhawong AP, et al. Clinical heterogeneity of Xp11 translocation renal cell carcinoma: impact of fusion subtype, age, and stage. *Mod. Pathol.* 2014; **27**; 875-886.
- 8 Williamson SR, Hornick JL, Eble JN, et al. Renal cell carcinoma with angioleiomyoma-like stroma and clear cell papillary renal cell carcinoma: exploring SDHB protein immunohistochemistry and the relationship to tuberous sclerosis complex. *Hum. Pathol.* 2018; **75**; 10-15.
- 9 Bah I, Fahiminiya S, Bégin LR, et al. Atypical tuberous sclerosis complex presenting as familial renal cell carcinoma with leiomyomatous stroma. *J. Pathol. Clin. Res.* 2018; **4**; 167-174.
- 10 Tyburczy ME, Jozwiak S, Malinowska IA, et al. A shower of second hit events as the cause of multifocal renal cell carcinoma in tuberous sclerosis complex. *Hum. Mol. Genet.* 2015; **24**; 1836-1842.
- 11 Williamson SR, Cheng L, Eble JN, et al. Renal cell carcinoma with angioleiomyoma-like stroma: clinicopathological, immunohistochemical, and molecular features supporting classification as a distinct entity. *Mod. Pathol.* 2015; **28**; 279-294.
- 12 Petersson F, Martinek P, Vanecek T, et al. Renal Cell Carcinoma With Leiomyomatous Stroma: A Group of Tumors With Indistinguishable Histopathologic Features, But 2 Distinct Genetic Profiles: Next-Generation Sequencing Analysis of 6 Cases Negative for Aberrations Related to the VHL gene. *Appl. Immunohistochem. Mol. Morphol. AIMM* 2018; **26**; 192-197.

- 1  
2  
3  
4  
5  
6  
7  
8  
9  
10  
11  
12  
13  
14  
15  
16  
17  
18  
19  
20  
21  
22  
23  
24  
25  
26  
27  
28  
29  
30  
31  
32  
33  
34  
35  
36  
37  
38  
39  
40  
41  
42  
43  
44  
45  
46  
47  
48  
49  
50  
51  
52  
53  
54  
55  
56  
57  
58  
59  
60  
61  
62  
63  
64  
65
- 13 Peckova K, Grossmann P, Bulimbasic S, et al. Renal cell carcinoma with leiomyomatous stroma--further immunohistochemical and molecular genetic characteristics of unusual entity. *Ann. Diagn. Pathol.* 2014; **18**; 291-296.
  - 14 Williamson SR, Eble JN, Cheng L, et al. Clear cell papillary renal cell carcinoma: differential diagnosis and extended immunohistochemical profile. *Mod. Pathol. Off. J. U. S. Can. Acad. Pathol. Inc* 2013; **26**; 697-708.
  - 15 Shah RB, Stohr BA, Tu ZJ, et al. 'Renal Cell Carcinoma With Leiomyomatous Stroma' Harbor Somatic Mutations of TSC1, TSC2, MTOR, and/or ELOC (TCEB1): Clinicopathologic and Molecular Characterization of 18 Sporadic Tumors Supports a Distinct Entity. *Am. J. Surg. Pathol.* December 2019.

Cases	Mutation	Age at diagnosis		Size (cm)	TNM	CK7	CK20	CAIX	CD10	AMACR	SDHB	TFE3	CGH	Follow-up (years)
		(years)	Sexe											
1	c.2585insT exon 20 TSC1	22	M	3	pT1a	++	+	++	++	-	+	-	neutral	12
2	c.440C>G exon 4 TSC2	31	M	6	pT1a	++	+	++	++	-	+	-	neutral	2
3	c.440C>G exon 4 TSC2	42	M	1	pT1a	++	+	++	++	-	+	-	neutral	1

**TABLE 1.** Summary of clinical, Immunohistochemistry, FISH and array-CGH features of the three RCCLS cases.

	Immunohistochemistry					Cytogenetic alteration			
	CK7	AMACR	CAIX	CD10	TFE3	VHL deletion	Monosomy 8	Trisomy 7 or 17	TFE3 or TFEB translocation
<b>ccRCC</b>	+/-	+/-	+	+	-	+	-	-	-
<b>pRCC</b>	+	+	-	-	-	-	-	+	-
<b>ccpRCC</b>	+	-	+	-	-	-	-	-	-
<b>tRCC</b>	-	+	-	+	+	-	-	-	+
<b>TCEB1-mutated RCC</b>	+	na	+	-	na	-	+	-	-
<b>RCCLS in TSC patients</b>	+	+	+	+	-	-	-	-	-

**Supplementary Data S2.** Immunohistochemistry and cytogenetics features of different RCC with leiomyomatous stroma.

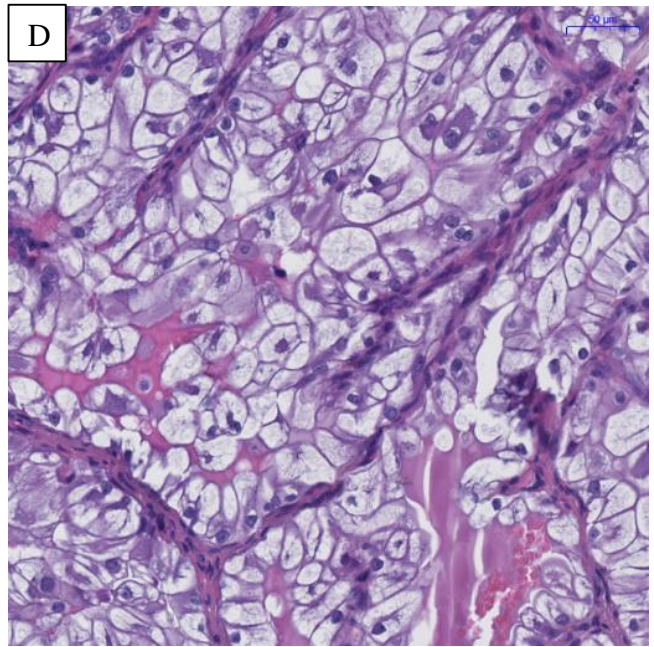
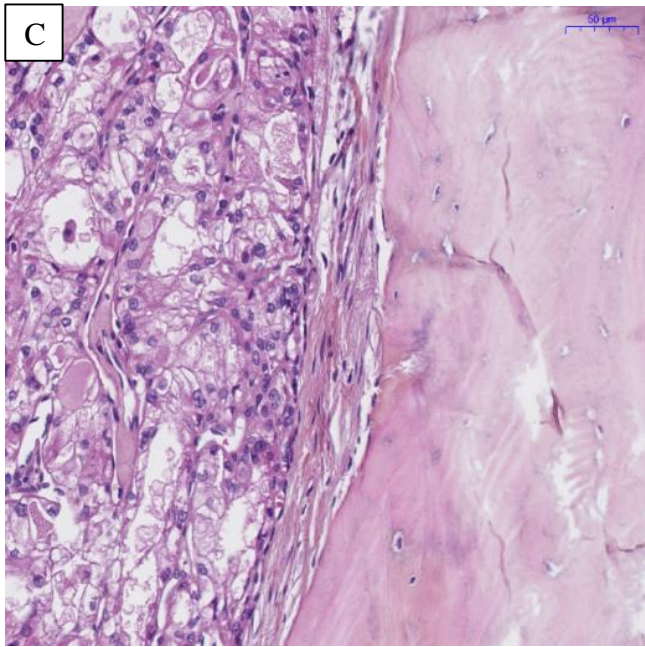
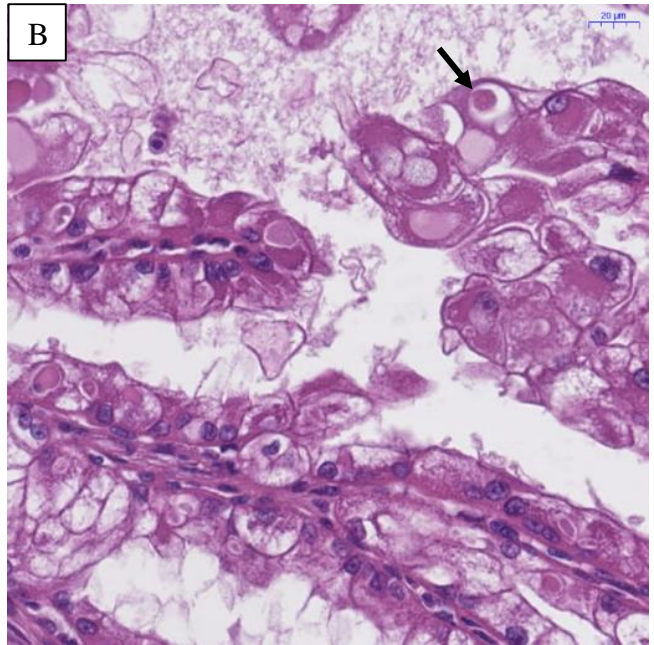
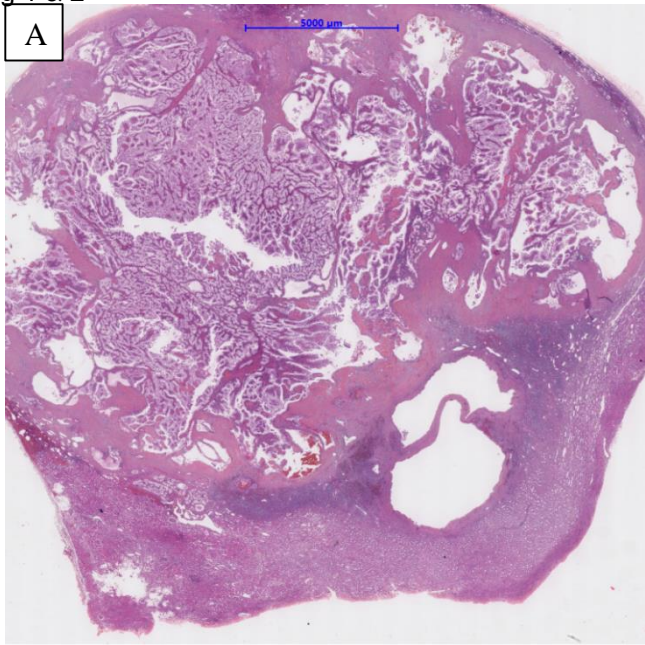


Figure 1: Case 1 showing well-circumscribed tumor (A , HES) and clarified and eosinophilic components with papillary architecture and tumor cells with eosinophilic globules (arrow) (B, HESx40). Case 2 showing osseous metaplasia (C, HESx20). Case 3 with the same papillary architecture (D, HESx20).

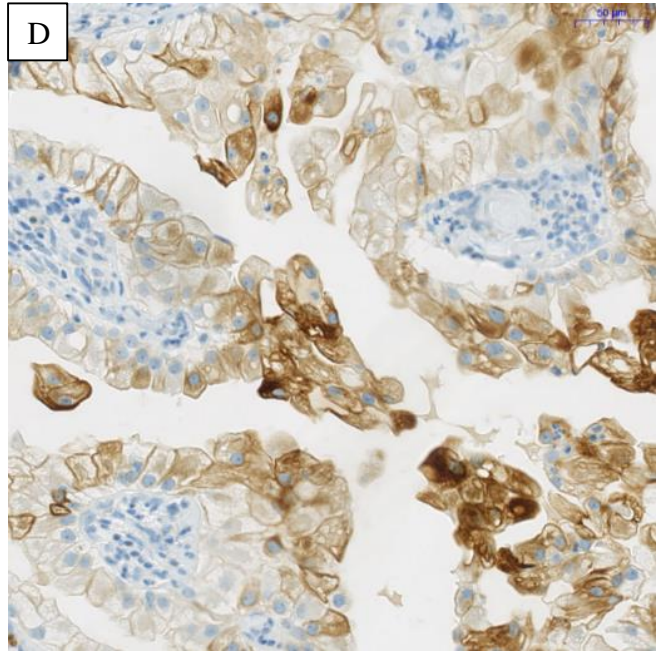
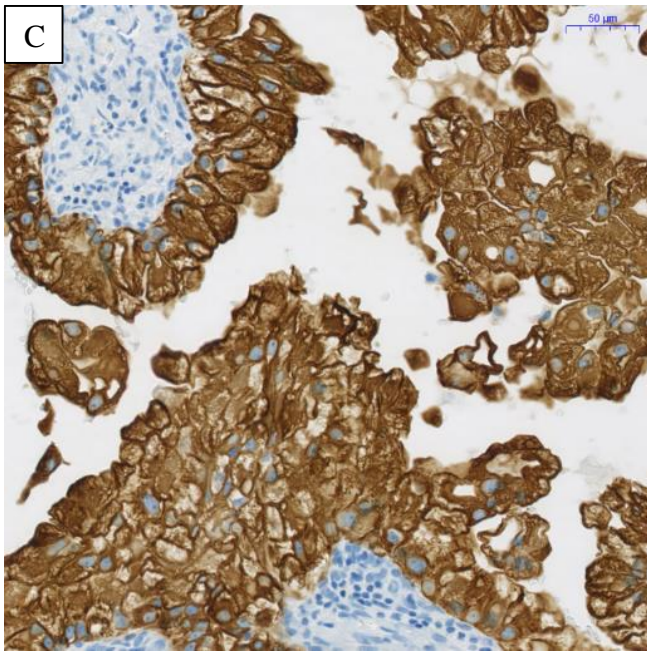
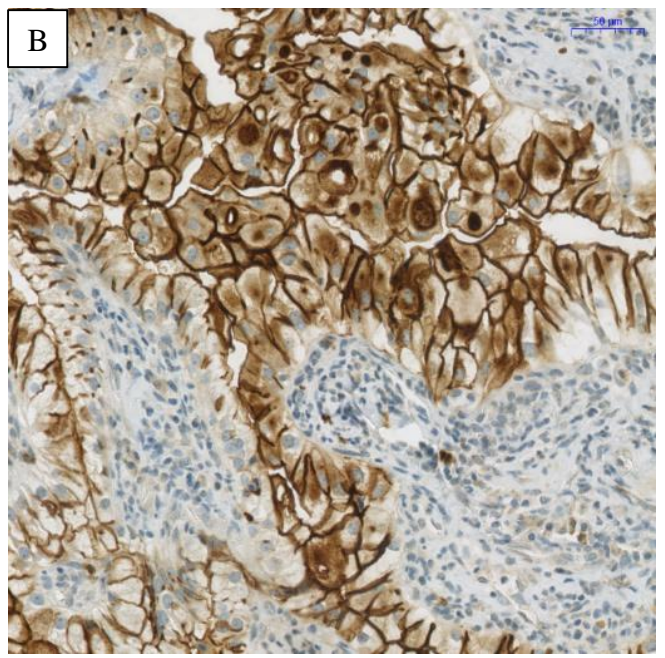
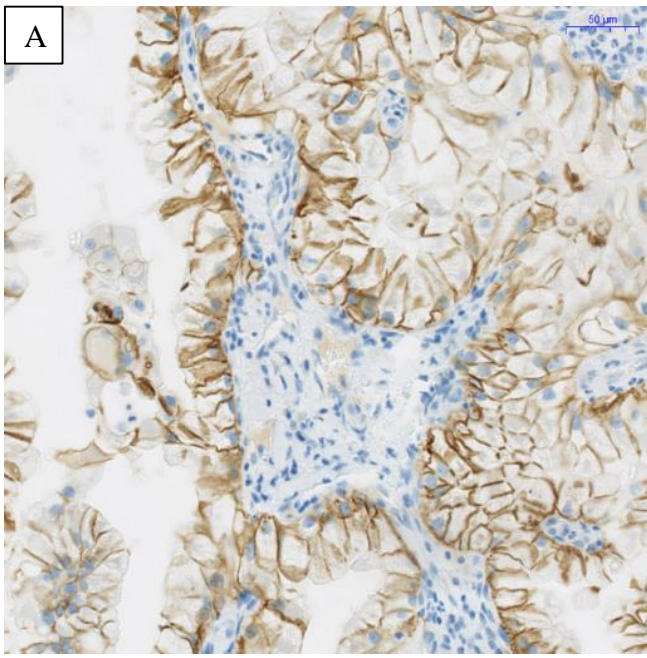


Figure 2: Immunohistochemistry x20, the immunohistochemistry profile was identical with membranous CAIX (A) and cytoplasmic CD10 (B), CK07 (C) and CK20 positivity (D).