



**HAL**  
open science

## Evaluation of chromium in red blood cells as an indicator of exposure to hexavalent chromium: An in vitro study

Jérôme Devoy, Antoine Géhin, Samuel Müller, Mathieu Melczer, Aurélie Remy, Guillaume Antoine, Isabelle Sponne

### ► To cite this version:

Jérôme Devoy, Antoine Géhin, Samuel Müller, Mathieu Melczer, Aurélie Remy, et al.. Evaluation of chromium in red blood cells as an indicator of exposure to hexavalent chromium: An in vitro study. Toxicology Letters, 2016, 255, pp.63-70. 10.1016/j.toxlet.2016.05.008 . hal-03038111

**HAL Id: hal-03038111**

**<https://hal.science/hal-03038111v1>**

Submitted on 3 Dec 2020

**HAL** is a multi-disciplinary open access archive for the deposit and dissemination of scientific research documents, whether they are published or not. The documents may come from teaching and research institutions in France or abroad, or from public or private research centers.

L'archive ouverte pluridisciplinaire **HAL**, est destinée au dépôt et à la diffusion de documents scientifiques de niveau recherche, publiés ou non, émanant des établissements d'enseignement et de recherche français ou étrangers, des laboratoires publics ou privés.

1 **Evaluation of Chromium in Red Blood Cells as an Indicator of Exposure to Hexavalent Chromium: an**  
2 ***In Vitro* Study.**

3

4 Jérôme Devoy\*<sup>1</sup>, Antoine Géhin<sup>2</sup>, Samuel Müller<sup>1</sup>, Mathieu Melczer<sup>1</sup>, Aurélie Remy<sup>1</sup>, Guillaume Antoine<sup>1</sup> and  
5 Isabelle Sponne<sup>3</sup>

6

7 <sup>1</sup>*Laboratory of Toxicology, Institut National de Recherche et de Sécurité, Rue du Morvan, CS 60027, F-54519*  
8 *Vandoeuvre-les-Nancy, France.*

9 <sup>2</sup>*ISTerre, University of Grenoble, Maison des Geosciences, 1381 Rue de la Piscine, F-38400 St Martin d'Hères,*  
10 *France.*

11 <sup>3</sup>*Laboratory of Immunology, Institut National de Recherche et de Sécurité, Rue du Morvan, CS 60027, F-54519*  
12 *Vandoeuvre-les-Nancy, France.*

13

14

15

16

17 \*Corresponding author (Jérôme Devoy)

18 Tel: +33-3 83 50 20 43; Fax: +33-3 83 50 20 96; E-mail address: [jerome.devoy@inrs.fr](mailto:jerome.devoy@inrs.fr)

19

20

21

22

1    **Abstract**

2    Chromium(VI) compounds are classified as carcinogenic to humans. Whereas chromium  
3    measurements in urine and whole blood (i.e., including plasma) are indicative of recent exposure,  
4    chromium in red blood cells (RBC) is attributable specifically to Cr(VI) exposure.

5    Before recommending Cr in RBC as a biological indicator of Cr(VI) exposure, *in-vitro* studies must  
6    be undertaken to assess its reliability. The present study examines the relationship between the  
7    chromium added to a blood sample and that subsequently found in the RBC.

8    After incubation of total blood with chromium, RBC were isolated, counted and their viability  
9    assessed. Direct analysis of chromium in RBC was conducted using Atomic Absorption  
10   Spectrometry.

11   Hexavalent, but not trivalent Cr, was seen to accumulate in the RBC and we found a strong  
12   correlation between the Cr(VI) concentration added to a blood sample and the amount of Cr in RBC.  
13   This relationship appears to be independent of the chemical properties of the human blood samples  
14   (e.g., different blood donors or different reducing capacities).

15   Even though *in-vivo* studies are still needed to integrate our understanding of Cr(VI) toxicokinetics,  
16   our findings reinforce the idea that a single determination of the chromium concentration in RBC  
17   would enable biomonitoring of critical cases of Cr(VI) exposure.

- 1 *Keywords: Chromium, chromate, dichromate, erythrocyte, RBC, blood, ICP-MS, GF-AAS,*  
2 *biomonitoring.*
- 3 *Abbreviations:*
- 4 *AA: Ascorbic Acid*
- 5 *ACGIH: American Conference of Governmental Industrial Hygienists*
- 6 *BEI: Biological Exposure Indicator*
- 7 *CrA: Chromium in Atmosphere*
- 8 *CRI: Collision Reaction Interface*
- 9 *CrIE: Chromium in Erythrocyte (in RBC)*
- 10 *ECHA: European Chemicals Agency*
- 11 *GEQUAS: The German External Quality Assessment Scheme (For Analyses in Biological Materials)*
- 12 *GF-AAS: Graphite Furnace Atomic Absorption Spectroscopy*
- 13 *ICP-MS: Inductively Coupled Plasma – Mass Spectrometry*
- 14 *PRC: Plasma Reduction Capacity*
- 15 *QMEQAS: Quebec Multielement External Quality Assessment Scheme*
- 16 *RBC: Red Blood Cells or erythrocytes*
- 17 *SVHC: Substance of Very High Concern*
- 18 *TLV-TWA: Threshold Limit Value - Time Weighted Average*

## 1        **1. Introduction**

2            Chromium was first discovered in 1780 by the French chemist, Nicolas Louis Vauquelin, in a  
3 mineral sample of ‘Siberian red lead’- now known as crocoite (lead chromate). Chromium is a silver,  
4 lustrous and very hard metal that can take a high mirror polish, and it is odorless, tasteless and  
5 malleable (Weeks, 1932). Chromium compounds are valued as pigments due to their vivid green,  
6 yellow, red and orange colors. The metal is also widely used for its catalytic properties. Chromium is  
7 used in stainless steel, contributing to resistance to oxidation, and when combined with nickel or  
8 vanadium (and tungsten), contributes to ductility and resistance to temperature, respectively.  
9 Chromium can exist in oxidation states ranging from -2 to +6. Of these, pure metal (Cr(0)), trivalent  
10 (Cr(III)) and hexavalent chromium (Cr(VI)) can all be encountered in the working environment.  
11 Metallic chromium dust may pose a health risk in the workplace but the risk can easily be reduced  
12 through the use of respiratory protection and/or technical devices. Cr(III) is an essential dietary  
13 nutrient for humans and is considered nontoxic (Nurminen, 2004). Upon skin contact, both Cr(III)  
14 and Cr(VI) may cause irritation and frequently produce allergic reactions (affecting 1 to 3 % of the  
15 general population) (Hansen et al., 2003; Thyssen and Menne, 2010; Yoshihisa and Shimizu, 2012).  
16 This contact dermatitis could easily be prevented by wearing protective clothing and gloves to avoid  
17 dermal exposure. Among the forms of chromium encountered in workspace, only Cr(VI) compounds  
18 are recognized as carcinogenic and are classified as SVHC by the ECHA (IARC, 1990; INRS, 2006).  
19 Monitoring of this species is therefore of particular importance.

20            Industrial operations such as refractory steel processing, stainless steel production, welding,  
21 chrome plating, tanning (Hedberg et al., 2015) and chromite ore-processing may expose employees  
22 to these elements. In metrological approaches, monitoring of exposure to these metals combines  
23 analysis of the air with analysis of biological environments such as urine or blood. In Europe, the  
24 recommended indicative limiting values for professional exposure are atmospheric chromium (CrA)  
25 concentrations of 2 mg/m<sup>3</sup> (8-hour average) for Cr(0), for the inorganic chromium compounds  
26 (Cr(II)) and for the (insoluble) inorganic chromium compounds (Cr(III)) (European Commission,  
27 2006). In France, professional exposure limit values (VLEP) also exist for the compounds of Cr(VI)  
28 (0.001 mg Cr/m<sup>3</sup>) and Cr trioxydes (0.05 mg Cr/m<sup>3</sup>) (JO, 2012). In the United States, the ACGIH  
29 (American Conference of Governmental Industrial Hygienists) recommends the use of limiting  
30 values based on actual occupational exposure: the TLV (Threshold Limit Value). The TLV-TWA  
31 (Threshold Limit Value - Time Weighted Average) exposure limit value corresponds to a  
32 concentration accumulated over either an 8-hour workday or a 40-hour working week. The ACGIH

1 recommends a value of 0.5 mg Cr/m<sup>3</sup> for chromium metal and for the compounds of Cr(III), a value  
2 of 0.05 mg Cr/m<sup>3</sup> for Cr(VI) and a value of 0.01 mg Cr/m<sup>3</sup> for insoluble Cr(VI) (ACGIH, 2013).

3 While analysis of CrA is well-documented from a methodological point of view, and is  
4 therefore used for regulatory purposes, there is a lack of data concerning the analysis of chromium in  
5 biological samples, even though chromium in these samples reflects the real exposure experienced  
6 by a worker.

7 In recent decades, a number of surveillance techniques have been developed that allow internal  
8 exposure to Cr(VI) to be monitored through analysis of biological fluids such as urine, blood and  
9 plasma. A number of investigations have helped to establish the relationship between airborne  
10 chromium and levels of chromium in blood, plasma and urine (Alexopoulos et al., 2008; Gube et al.,  
11 2010; Mateczak et al., 1195; Miksche and Lewalter, 1997; Mutti et al., 1979; Mutti et al., 1984;  
12 Stridsklev et al., 2004; Tola et al., 1977). Urinary chromium can be regarded as a reliable marker of  
13 internal chromium exposure and is sufficiently sensitive for biological monitoring of exposure levels  
14 below the occupational limits. However, on the basis of urinary chromium alone, it is not possible to  
15 distinguish between exposure to Cr(VI) and exposure to Cr(III). Only chromium in erythrocytes is  
16 diagnostic of internal exposure to Cr(VI). This is because hexavalent chromium, unlike Cr(III)  
17 complexes, is able to cross the cell membranes of red blood cells (RBC) via anion carrier proteins  
18 (Kortenkamp et al., 1987). Chromium in lymphocytes has also been suggested to be a good indicator  
19 of Cr(VI) exposure (Lukanova et al., 1996).

20 Before validating the use of chromium in RBC and/or lymphocytes as an eventual Cr(VI)  
21 exposure biomarker, in vitro verification experiments should be performed. The main goal of this  
22 study is to check for linearity between the amounts of Cr(VI) added to blood samples and the  
23 concentrations of Cr measured in erythrocytes. We tested several parameters including the chromium  
24 oxidation state (oxidation states 3 and 6), chromium counterion (K<sup>+</sup>, Na<sup>+</sup> and NH<sub>4</sub><sup>+</sup>), chromium  
25 concentration (1 µg/L to 1 g/L), incubation temperature (4 to 37°C), incubation time (up to 24  
26 hours), added ascorbic acid (AA) concentration (0 to 100 mg/L) and different blood donors. To study  
27 the influence of these parameters, whole blood samples were spiked with various quantities of  
28 highly-water-soluble Cr(VI) and Cr(III) compounds and the chromium levels in the RBC and  
29 lymphocytes were then determined. Only data for the RBC are presented in this paper.

## 2. Experimental Methods

### 2.1. Apparatus

A Varian AA280Z atomic absorption spectrophotometer, equipped with a Zeeman background corrector, was used for atomic absorption measurement of chromium at 357.9 nm and with a slit-width of 0.5 mm. A hollow cathode Cr lamp (SCP Science, 030-150-244) was operated at 3 mA. Uncoated graphite tube cuvettes were purchased from Schunk Kohlenstofftechnik (Germany).

The Vi-CELL Cell Viability Analyze system, composed of the analyzer instrument and software (Beckman Coulter, Miami, USA), was used to determine cell concentration and viability. This system provides an automated means of performing the trypan blue dye exclusion method. The Vi-CELL instrument was calibrated using the Beckman Coulter Vi-CELL concentration control, following standard Beckman Coulter procedures. Each measurement consisted of the acquisition of fifty individual images per sample. Vi-CELL reagent packs were used as instructed in the Beckman Coulter, Inc instruction manual.

### 2.2. Reagents and solutions

All chemicals used in the study were of analytical grade or higher. Nitric acid was used to prepare 0.2% HNO<sub>3</sub> (v/v) with ultrapure water. All single element stock solutions (1000 mg/L) were delivered by SCP Science and were certified for purity and concentration. From these stock solutions, a mixed working-standard solution with a concentration of 10 mg/L for each element was prepared by adding 1 mL of each stock solution to a 100-mL measuring flask, then adding 5 mL of purified HNO<sub>3</sub> and diluting to 100 mL with ultrapure water (MilliQ, Millipore, Germany).

Chromium standard solutions for calibrations were prepared by diluting a 10 g/L chromium standard stock solution (140.002.24x, SCP Science) with 2% v/v HNO<sub>3</sub>.

Na<sub>2</sub>Cr<sub>2</sub>O<sub>7</sub> (Alfa Aesar, 43180, 99.999%), (NH<sub>4</sub>)<sub>2</sub>Cr<sub>2</sub>O<sub>7</sub>, K<sub>2</sub>Cr<sub>2</sub>O<sub>7</sub> (Sigma-Aldrich, 216615, 99%), Na<sub>2</sub>CrO<sub>4</sub> and K<sub>2</sub>CrO<sub>4</sub> were tested for Cr(VI), and CrCl<sub>3</sub> (Sigma Aldrich, 27096) was selected for Cr(III). Ascorbic acid (analR NORMAPUR, 20150) was used to estimate blood reducing capacity.

Quality control materials (such as standard or certified reference materials) are routinely used in analytical laboratories to ensure the accuracy of both the instrument and the analytical procedure. In this work, six blood metal control materials (QMEQAS blood control (QM-B-Q1403, QM-B-Q1404, QM-B-Q1409 and QM-B-Q1410) and GEQUAS (49/2012 1A, 49/2012 1B)) and two plasma metal control materials (GEQUAS (49/2012 11A, 49/2012 11B)) were used.

1 External quality assurance was carried out through participation in the following international  
2 comparison programs and quality assessment schemes:

- 3 - the German External Quality Assessment Scheme (G-EQUAS) at the Institute and Out-  
4 Patient Clinic for Occupational, Social and Environmental Medicine at Friedrich-Alexander-  
5 University Erlangen-Nuremberg, Germany;
- 6 - the Quebec Multielement External Quality Assessment Scheme (QMEQAS) at the Canadian  
7 Institut National de Santé Publique du Québec.

### 8 **2.3. Human blood samples**

9 A sufficient number of 500-mL human blood bag units were purchased from the local hospital  
10 to meet our research needs. The blood donors were all anonymous. Anticoagulant Citrate Phosphate  
11 Dextrose solution is systematically present in the blood bag units. Citrate was chosen due to its  
12 negligible influence on the accumulation of Cr(VI) in RBC (Afolaranmi et al., 2010).

### 13 **2.4. Collection and preparation of biological samples**

14 In order to eliminate any possible Cr contamination, all plastic ware was soaked in 20 % HNO<sub>3</sub>  
15 for 24 hours prior to use and rinsed three times with deionized distilled water. Each 500 mL human  
16 blood bag unit was drawn into fifty 10-mL top metal-free Vacutainer tubes. Each Cr concentration  
17 (represented by individual points in the figures) was duplicated at least once. Hematocrit 1 (Ht 1)  
18 was determined in the 500 mL human blood bag units using a hematocrit centrifuge.

19 Chromium was added to 10-mL Vacutainer tubes of blood.

20 Samples were left for 40 minutes at room temperature to allow the blood to separate into two  
21 fractions: Fraction 1, the supernatant, which contained the plasma and the white blood cells; and  
22 Fraction 2, which contained predominantly RBC. The second fraction was diluted with 3 mL of NaCl  
23 solution (0.9 %) up to the initial volume of 15 mL, then divided into three aliquots, left to stand at  
24 room temperature for 10 min, and finally centrifuged for 10 min at 3000 rpm. The washing  
25 procedure was then repeated twice more using 0.9 % NaCl solution. The pellets were re-suspended  
26 very gently to prevent disruption of the erythrocyte membrane. Hematocrit 2 (Ht 2) was determined  
27 just before the third washing step. The erythrocyte pellets (RBC) were diluted to the initial volume of  
28 the blood sample and Triton X-100 was added at 0.1 %. Cell counting and viability determinations  
29 were performed by V-Cell counter.



## 2.5. Direct analysis of Cr using GF-AAS

Direct analysis of chromium in whole blood and RBC cells was conducted using a Varian AA280Z. To reduce sample viscosity and dispense the sample more evenly in the graphite tube, aliquots of the blood samples were further diluted by a factor of 1:5 by adding 2% v/v HNO<sub>3</sub> and 1.0% v/v Triton X-100. RBC samples were also diluted by a factor of 1:5. 30 μL of diluted sample was introduced to a graphite tube and atomized according to a set temperature program (Table 1). Peak areas in absorbance were used for quantitative analysis. Chromium calibration solutions were prepared in 0.2% v/v HNO<sub>3</sub> and 1.0% v/v Triton X-100. Method quantification limits for the original samples (before dilution or treatment) were 0.4 μg/L in RBC and total blood.

## 2.6. Validation of analytical methods

In order to validate our analytical method, we followed the same procedure as that described in an earlier paper in which we assessed analysis of beryllium in human urine samples (Devoy et al., 2013). The validation procedure provides estimates of the linearity limit, precision (intermediate precision, repeatability and reproducibility), accuracy and sensitivity, for analysis of the element in question. The procedure used is also similar to that proposed by Peters et al. (Peters et al., 2007).

## 2.7. Statistical analysis

The RBC chromium data were analyzed using a linear mixed-effect model after log-transformation of the data. Chromium in RBC was expressed either as a fraction (%) or as mass per number of cells (μg/10<sup>6</sup> RBC). The fixed effects were the chromium species, the chromium concentration on the logarithm scale and the counterion. The random effect was the “Donor”, to take into account the variability between the different donors. The statistical significance level was set at 5%. All statistical analyses were performed with Stata 13.0.

## 3. Results and discussion

### 3.1. Cr(VI)/Cr(III) in RBC

To validate the use of the chromium concentration in erythrocytes as an eventual biomarker of Cr(VI) exposure, only Cr(VI), and therefore no Cr(III), should penetrate the membrane of the erythrocytes.

Chromium concentrations in RBC are well-established for monitoring of critical cases of Cr(VI) exposure (Lewalter et al., 1985). Radiolabeled sodium chromate (<sup>51</sup>Cr(VI)) is commonly used

1 for diagnostic purposes for *in vitro* and *ex vivo* RBC marking (Coogan et al., 1991). Dianionic  
2 chromate ions appear to bind to the red blood cell in two steps: first by a rapid but reversible  
3 attachment to the cell membrane and then by a slower near-irreversible binding to intracellular  
4 hemoglobin and reduction to the anionic state (Qu et al., 2008). It has been suggested that the slow  
5 rate of uptake is dependent on the rate at which chromate can penetrate the cell membrane. Binding  
6 is maintained until the red blood cells have been sequestered by the spleen or until the chromium is  
7 eluted into the plasma. The chromium is then readily excreted, mainly in the urine.

8 Cr(III) ions cross the membranes slowly by simple diffusion (Cohen et al., 1993; Kotenkamp et  
9 al., 1987). Cr(III) RBC membrane penetration is not well understood but plays an important role that  
10 should be taken into account when considering RBC chromium as a specific Cr(VI) exposure  
11 biomarker.

12 In order to check the selectivity of the RBC membrane regarding chromium oxidation states,  
13 different concentrations of chromium (Cr(VI) or Cr(III)) (2 µg/L to 1 g/L) were spiked in a 10-mL  
14 metal-free Vacutainer tube of blood. (NH<sub>4</sub>)<sub>2</sub>Cr<sub>2</sub>O<sub>7</sub> and CrCl<sub>3</sub> were tested for Cr(VI) and Cr(III),  
15 respectively. Two measurements were made for each concentration.

16 Figure 1A shows the fraction of chromium (Cr(VI) or Cr(III)) that accumulated in the RBC as  
17 a function of the amount of chromium in the blood. At concentrations of up to 20 µg/L, 100 % of the  
18 Cr(VI) was detected in the erythrocytes. In contrast, at the same concentrations, the fraction of  
19 Cr(III) in the RBC reached a maximum of 21 % and was commonly less than 5 %. As the  
20 concentration of Cr(VI) in the blood was increased from 30 µg/L to 50 mg/L, the fraction of Cr(VI)  
21 in the erythrocytes decreased gradually, to a value of 73 %. A sharp decrease in the fraction of  
22 Cr(VI) in the erythrocytes was observed at Cr(VI) concentrations above 50 mg/L, to a value of 15%  
23 at a concentration of 1 g/L. During biomonitoring of workers exposed to soluble Cr(VI) during  
24 chrome-plating (Goldoni et al., 2010), electrodeposition (Lukanova et al., 1996) or electro-welding  
25 (Ivanenko, 2011), maximum Cr concentrations of 20 µg/L in RBC and whole blood have been  
26 reported. In this concentration range, our data show that 100 % of the Cr(VI) is located in the RBC.  
27 At Cr concentrations above 50 mg/L, the cellular viability was still higher than 95% and no effect on  
28 viability was observed for higher chromium concentrations. Consequently, maximum chromium  
29 accumulation in the cells appears to have been reached. Chromium is naturally present in RBC and  
30 this may explain the fractions of over 100 % recorded for Cr(VI), or fractions above zero for Cr(III).

31 In Figure 1B, we examine the same data, this time focusing on the range of possible  
32 occupational chromium concentrations. The data are expressed as Cr in RBC versus Cr in blood. For  
33 Cr concentrations of 3 to 100 µg/L, the Cr in RBC for Cr(VI) is proportional to the Cr added to the

1 blood ( $y = 0.0271x + 932.16$ ;  $R^2 = 0.9$ ). In contrast, the Cr in RBC for Cr(III) stays below  $0.6 \mu\text{g}/10^6$   
2 cells, and is comparable to the blank concentration ( $0.24 \pm 0.23 \mu\text{g}/10^6$  cells).

3 For biomonitoring purposes, and because a large decrease in the fraction was observed at  
4 concentrations above  $100 \text{ mg/L}$ , we performed statistical analysis only on the data from added  
5 chromium concentrations of up to  $100 \text{ mg/L}$ . After log-transformation of the data, the slopes of the  
6 mass of chromium in the RBC as a function of the mass of chromium added to the blood sample can  
7 be calculated. The slopes determined for Cr(III) and Cr(VI) were  $0.48 [0.42-0.53]$  and  $0.99 [0.96-$   
8  $1.01]$ , respectively, and the difference in slope is significant ( $p < 0.001$ ).

9 Eight blank tests were performed to estimate the residual chromium concentration in blood and  
10 RBC. Concentrations of  $2.8 \pm 1.6 \mu\text{g/L}$  and  $0.28 \pm 0.27 \mu\text{g}/10^6$  cells, respectively, were  
11 determined/measured. The chromium blood concentration is lower than that reported in Kucera et al.  
12 ( $4.2 \pm 1.1 \mu\text{g/L}$ ,  $n=10$ ) for Czech and Slovak populations (Kucera et al., 1995), and is slightly higher  
13 than the concentrations reported in White and Sabbioni ( $0.19 \mu\text{g/L}$ ,  $n=134$ ) for a population from the  
14 United Kingdom (White and Sabbioni, 1998) and by Christensen et al. ( $0.18 \mu\text{g/L}$ ,  $n=23$ ) for a  
15 Danish population (Christensen et al., 1993).

### 16 **3.2. The effect of speciation of hexavalent chromium**

17 Speciation of hexavalent chromium may influence the accumulation of chromium in RBC.  
18 Chromate ( $\text{CrO}_4^{2-}$ ) and dichromate ( $\text{Cr}_2\text{O}_7^{2-}$ ) were added at different concentrations (ranging from  $2$   
19  $\mu\text{g/L}$  to  $1 \text{ g/L}$ ) to  $10 \text{ mL}$  blood samples. The results are illustrated in Figure 2A.

20 After log-transformation of the data, the slopes (and 95 % confidence intervals) of the  
21 chromate and dichromate data are  $0.97 [0.93-1.00]$  and  $0.99 [0.97-1.02]$ , respectively. The difference  
22 in slope is not significant ( $p > 0.05$ ).

23 The influence of the counterion associated with dichromate ( $\text{K}^+$ ,  $\text{Na}^+$  and  $\text{NH}_4^+$ ) was also  
24 investigated (Fig. 2B). The slopes for potassium, sodium and ammonium are  $0.95 [0.90-1.00]$ ,  $1.00$   
25  $[0.97-1.03]$  and  $1.04 [0.97-1.11]$ , respectively. The differences in slope are not significant ( $p > 0.05$ ).

26 The speciation of hexavalent chromium (chromate and dichromate associated with  $\text{K}^+$ ,  $\text{Na}^+$  and  
27  $\text{NH}_4^+$ ) therefore appears to have had no effect on its accumulation in RBC.

### 28 **3.3. The effect of incubation temperature and time.**

29 Incubation parameters such as time and temperature may also have a strong influence on the  
30 fraction of chromium in RBC.

31 Different incubation temperatures were tested for a 40-min incubation time (Fig. 3A):  $4$ ,  $10$ ,  
32  $15$ ,  $20$ ,  $22$ ,  $30$  and  $37^\circ\text{C}$ . The fraction of chromium detected in the RBC was over 50 %, even at the

1 lowest temperatures, and the fraction increased over temperatures up to 20°C. The highest fraction  
2 (more than 98 %) was reached at temperatures above 20°C.

3 Different incubation times were then tested at room temperature (22°C) (Fig. 3B): 1, 2, 5, 10,  
4 40, 120, 360, 960, 1440 minutes. After 2 minutes of incubation, 89 % of the hexavalent chromium  
5 had accumulated in the RBC, and a plateau was observed at between 10 and 40 minutes. These  
6 results are very similar to those obtained with chromate on human leucocytes (Lilien et al., 1970).  
7 The appropriate *in-vitro* incubation conditions required to reach a plateau therefore appear to be 40  
8 minutes at room temperature.

9 In comparison, chromium in RBC derived from trivalent chromium added to blood samples at  
10 a concentration of up to 10 mg/L and an incubation time of up to 24 hours, reached no more than 3  
11  $\mu\text{g}/10^6$  RBC, i.e., a maximum of 0.2 % of the total chromium.

12 One limitation of this study is that the effect of longer incubation times could not be assessed  
13 due to the difficulty in keeping RBC alive for more than 24 hours. However, we note that Weber  
14 (Weber, 1983) reported constant RBC chromium values for up to 15 days following intratracheal  
15 chromate exposure in rats.

16 **3.4. Influence of PRC and blood donors**

17 Human plasma has a spontaneous reduction capacity that allows it to detoxicate up to 2 ppm of  
18 Cr(VI) compounds into Cr(III) compounds through the formation of excretable Cr-protein complexes  
19 (Korallus et al., 1984). The plasma reduction capacity (PRC) can be explained by the combined  
20 presence of a multitude of reducing substances. One such substance, glutathione, also has the  
21 capacity to reduce Cr(VI) to Cr(III) in RBC via an intracellular mechanism (Wiegand et al., 1984), in  
22 effect helping to trap the Cr(VI) in the RBC. For this study, we chose to use another reducing agent,  
23 ascorbic acid (AA), to examine the influence of the PRC.

24 In order to assess the influence of AA on chromium accumulation in RBC, increasing amounts  
25 of AA were added to 10-mL blood samples taken from a single donor. Different concentrations of  
26 AA were tested (Fig. 4): 0, 1, 2, 3, 5, 7, 10, 20, 50 and 100 mg/L. As the concentration of added AA  
27 was increased from 0 to 20 mg/L, the fraction of Cr in the RBC decreased, but still remained at over  
28 87 %. At concentrations above 20 mg/L, the decrease in the fraction continued. The average  
29 concentration of AA present in human blood is  $8.9\pm 0.3$  mg/L (ranging from 1 to 25 mg/L) (Moran et  
30 al., 1993). Thus, though AA may have an influence on chromium accumulation in RBC, it is  
31 probably not significant in most human blood sample cases. This may suggest that the PRC is not  
32 strong enough to prevent hexavalent chromium from penetrating the RBC. This is consistent with the

1 findings of Qu et al. (Qu et al., 2008) but contrary to those of Harzdorf et al.(Harzdorf and Lewalter,  
2 1997).

3 As different blood donors can also have different PRC, we examined the dichromate  
4 accumulation capacities of blood samples from four different donors (Fig. 5). The data points in  
5 Figure 5 all lay on the same trend and, furthermore, all statistical analyses were able to integrate the  
6 variability of the donor with the use of linear mixed effects models, including the random effect,  
7 “Donor”.

### 8 **3.5. Cytotoxicity of hexavalent chromium**

9 With our incubation parameters (40 minutes at room temperature), and even when using  
10 chromate and dichromate concentrations of up to 1 g/L, the viability of the RBC remained at over  
11 95%. The mean viabilities were  $96.4 \% \pm 0.6 \%$  (n=8) for blank samples,  $97.8 \% \pm 0.3 \%$  (n=22) for  
12 RBC exposed to Cr(III) and  $96.9 \% \pm 0.8 \%$  (n=123) for RBC exposed to Cr(VI). There are no  
13 significant differences between these means. However, while no cytotoxicity was indicated under  
14 these conditions, different results might be obtained at another incubation temperature or over a  
15 longer incubation time.

### 16 **3.6. Application to biological monitoring**

17 In this study, chromate and dichromate, but not Cr(III), were seen to accumulate in the RBC.  
18 This suggests that RBC selectively accumulate Cr(VI). Because Cr(VI) but not Cr(III) penetrates  
19 RBC, and because RBC have a long residence time in the body (up to 120 days), RBC might  
20 therefore be a sensitive indicator of Cr(VI) exposure. We also observed a strong correlation between  
21 the Cr(VI) concentration added to a blood sample and the amount of Cr measured in RBC. This  
22 relationship appears to be independent of certain chemical properties of the human blood samples  
23 (e.g., different blood donors or different concentrations of AA commonly found in blood samples).

24 In an earlier study, Gao et al. monitored the total chromium present in rat fluids following  
25 intratracheal administration of soluble trivalent and hexavalent chromium compounds (Gao et al.,  
26 1993). Wistar rats exhibited increased chromium concentrations in whole blood, plasma and urine up  
27 to 72 h post exposure. The ratio of whole blood chromium to plasma chromium concentrations  
28 differed significantly for Cr(VI) and Cr(III) treatments. They therefore recommended that both blood  
29 chromium and plasma chromium assays be used for assessment of chromium exposure. They  
30 concluded their article by pointing out the potential of blood cells for use as biomarkers for the  
31 assessment of exposure to chromium compounds.

1           Given these findings, we can conclude that Cr in RBC may be a good indicator of hexavalent  
2 chromium exposure. Several authors have studied the relationships between chromium levels in  
3 lymphocytes, RBC and urine, and ambient air exposure among “chromium workers” and some  
4 interesting correlations were found. Nevertheless, Cr-RBC still needs to be validated as a hexavalent  
5 chromium exposure indicator. This validation may prove quite difficult however, since RBC and  
6 lymphocytes have different lifetimes, of approximately 115 days, and months to years, respectively.  
7 The very variable lifetimes of lymphocytes could thus make their use as an exposure indicator  
8 somewhat difficult. In contrast, RBC-Cr should be representative of the amount of hexavalent  
9 chromium accumulated within the cells over the preceding eight to ten weeks (Miksche et Lewalter,  
10 1997).

11           Our study has highlighted that hexavalent chromium, unlike trivalent chromium, enters RBC  
12 quantitatively, regardless of any differences between the blood samples analyzed (e.g. different blood  
13 donors or different AA concentrations). The final step will be to firmly link hexavalent chromium  
14 exposure to measured RBC chromium. A significant amount of *in vitro* and *in vivo* data should be  
15 collected in order to confirm this relationship and to allow RBC-Cr to be proposed as a biological  
16 indicator of hexavalent chromium exposure.

17

#### 18 **4. Conclusions**

19           The core objective of this *in vitro* study was to confirm that the RBC selectively accumulate  
20 hexavalent chromium. This would allow Cr-RBC to be proposed as an indicator (or biomarker) of  
21 exposure to hexavalent chromium and the data could be used/experiments could be performed to  
22 verify the possible toxic effect of chromium species on RBC.

23           The different forms of soluble chromium were added to blood samples and Cr concentrations  
24 were then measured in the RBC and whole blood. A linear relationship, with a slope close to 1, was  
25 observed between the concentration of chromium added to the blood and the hexavalent chromium  
26 content subsequently measured in the RBC. In contrast, the penetration of trivalent chromium in the  
27 RBC was found to be almost nonexistent.

28           To evaluate the veracity of our results and assess the robustness of Cr-RBC as an indicator, different  
29 parameters were tested: hexavalent chromium speciation and the associated counterion, incubation  
30 parameters (temperature and time), the reducing capacity of the blood, and the blood donor.

31           In the context of biomonitoring, concentrations of chromium and ascorbic acid in the blood are  
32 unlikely to exceed 100 µg/L and 20 mg/L, respectively. Under these conditions, the results of this  
33 study therefore confirm that the Cr-RBC is a good candidate for an indicator of the internal dose  
34 resulting from recent exposure (during the preceding 8-10 weeks) to hexavalent chromium. The

1 proposed method provides rapid and simple determination of ultratrace amounts of chromium in  
2 RBC samples and is appropriate for the biomonitoring of occupationally-exposed people in the  
3 chromium-using industry. The method allows analysis of chromium in RBC samples at  
4 concentrations as low as 0.4 µg/L, a level low enough to meet that required for environmental  
5 biomonitoring.

6 In terms of the appearance of hexavalent chromium toxicity, Cr (VI) accumulates in RBC at  
7 levels of up to 1 g / L without any effect on cell viability for a 40 minute incubation time. A bearing  
8 effect appears to start at 1 g/L, which might be interpreted as/might reflect the onset of chromium  
9 saturation in RBC.

## 10 **Conflict of interest**

11 The authors declare that there are no conflicts of interest.

## 12 **Acknowledgments**

13 The authors thank the National Institute for Research and Safety. We particularly acknowledge  
14 the efforts of Alice Williams, Anne-Marie Lambert-Xolin, Elodie Bonfanti and Constance Devoy.

## 15 **References**

- 16 ACGIH, 2013. Documentation of the Threshold Limit Values for Chemical Substances and Physical  
17 Agents, Biological exposure indices.
- 18 Afolaranmi, G.A., Tettey, J.N.A., Murray, H.M., Meek, R.M.D., Grant, M.H., 2010. The Effect of  
19 Anticoagulants on the Distribution of Chromium VI in Blood Fractions. *Journal of Arthroplasty*  
20 25, 118-120.
- 21 Alexopoulos, E.C., Cominos, X., Trougakos, I.P., Lourda, M., Gonos, E.S., Makropoulos, V., 2008.  
22 Biological monitoring of hexavalent chromium and serum levels of the senescence biomarker  
23 apolipoprotein J/Clusterin in welders. *Bioinorganic Chemistry and Applications*. Article ID  
24 420578.
- 25 Christensen, J.M., Holst, E., Bonde, J.P., Knudsen, L., 1993. Determination of chromium in blood  
26 and serum - evaluation of quality-control procedures and estimation of reference values in danish  
27 subjects. *Sci Total Environ* 132, 11-25.
- 28 Cohen, M.D., Kargacin, B., Klein, C.B., Costa, M., 1993. Mechanisms of chromium carcinogenicity  
29 and toxicity. *Critical Reviews in Toxicology* 23, 255-281.
- 30 Coogan, T.P., Squibb, K.S., Motz, J., Kinney, P.L., Costa, M., 1991. Distribution of chromium  
31 within cells of the blood. *Toxicol Appl Pharmacol* 108, 157-166.

1 Devoy, J., Melczer, M., Antoine, G., Remy, A., Heilier, J.-F., 2013. Validation of a standardised  
2 method for determining beryllium in human urine at nanogram level. *Analytical and Bioanalytical*  
3 *Chemistry* 405, 8327-8336.

4 European Commission, 2006. Directive 2006/15/CE de la Commission du 7 février 2006 établissant  
5 une deuxième liste de valeurs limites indicatives d'exposition professionnelle en application de la  
6 directive 98/24/CE du Conseil et portant modification des directives 91/322/CEE et 2000/39/CE  
7 *Journal officiel de l'Union européenne*, du 9 février 2006, L 38/36.

8 Gao, M., Levy, L.S., Braithwaite, R.A., Brown, S.S., 1993. Monitoring of total chromium in rat-  
9 fluids and lymphocytes following intratracheal administration of soluble trivalent or hexavalent  
10 chromium compounds. *Human & Experimental Toxicology* 12, 377-382.

11 Goldoni, M., Caglieri, A., De Palma, G., Acampa, O., Gergelova, P., Corradi, M., Apostoli, P.,  
12 Mutti, A., 2010. Chromium in exhaled breath condensate (EBC), erythrocytes, plasma and urine  
13 in the biomonitoring of chrome-plating workers exposed to soluble Cr(VI). *J Environ Monit* 12,  
14 442-447.

15 Gube, M., Ebel, J., Brand, P., Goen, T., Holzinger, K., Reisgen, U., Kraus, T., 2010. Biological  
16 effect markers in exhaled breath condensate and biomonitoring in welders: impact of smoking and  
17 protection equipment. *International Archives of Occupational and Environmental Health* 83, 803-  
18 811.

19 Hansen, M.B., Johansen, J.D., Menne, T., 2003. Chromium allergy: significance of both Cr(III) and  
20 Cr(VI). *Contact Dermatitis* 49, 206-212.

21 Harzdorf, C., Lewalter, J., 1997. Analytical methodology for biological monitoring of chromium.  
22 *Regul Toxicol Pharmacol* 26, S86-S93.

23 Hedberg, Y.S., Liden, C., Wallinder, I.O., 2015. Chromium released from leather - I: exposure  
24 conditions that govern the release of chromium(III) and chromium(VI). *Contact Dermatitis* 72,  
25 206-215.

26 IARC, 1990. Chromium, Nickel and Welding, IARC Monographs. Volume 49.

27 INRS, 2006. Fiche Toxicologique n° 180. Chromates et dichromates de potassium.

28 Ivanenko, A., 2011. Analysis of Electro Welders' Blood for Mn, Cr and Ni Content by Graphite  
29 Furnace Atomic Absorption Spectrometry with Zeeman Background Correctionk. *Voprosy*  
30 *biologicheskoi, meditsinskoi i farmatsevticheskoi khimii* 9, 41-46.

31 *Journal Officiel de la République Française*, Décret 2012-746 du 9 mai 2012 fixant des valeurs  
32 limites d'exposition professionnelle.



1 Korallus, U., Harzdorf, C., Lewalter, J., 1984. Experimental bases for ascorbic acid therapy of  
2 poisoning by hexavalent chromium compounds. *International Archives of Occupational and*  
3 *Environmental Health* 53, 247-256.

4 Kortenkamp, A., Beyersmann, D., O'Brien, P., 1987. Uptake of Cr(III) complexes by erythrocytes.  
5 *Toxicological and Environmental Chemistry* 14, 23-32.

6 Kucera, J., Bencko, V., Sabbioni, E., Vanderverne, M.T., 1995. Review of trace-elements in blood,  
7 serum and urine for the czech and slovak populations and critical-evaluation of their possible use  
8 as reference values. *Sci Total Environ* 166, 211-234.

9 Lewalter, J., Korallus, U., Harzdorf, C., Weidemann, H., 1985. Chromium bond detection in isolated  
10 erythrocytes: a new principle of biological monitoring of exposure to hexavalent chromium.  
11 *International Archives of Occupational and Environmental Health* 55, 305-318.

12 Lilien, D.L., Spivak, J.L., Goldman, I.D., 1970. Chromate transport in human leukocytes. *The*  
13 *Journal of clinical investigation* 49, 1551-1557.

14 Lukanova, A., Toniolo, P., Zhitkovich, A., Nikolova, V., Panev, T., Popov, T., Taioli, E., Costa, M.,  
15 1996. Occupational exposure to Cr(VI): Comparison between chromium levels in lymphocytes,  
16 erythrocytes, and urine. *International Archives of Occupational and Environmental Health* 69, 39-  
17 44.

18 Matczak, W., Trzcinka-Ochocka, M., Chmielnicka, J., 1995. Urinary excretion of chromium as an  
19 indicator of exposure to various chromium forms in MMA/SS welders. *International journal of*  
20 *occupational medicine and environmental health* 8, 301-313.

21 Miksche, L.W., Lewalter, J., 1997. Health surveillance and biological effect monitoring for  
22 chromium-exposed workers. *Regulatory Toxicology and Pharmacology* 26, S94-S99.

23 Moran, J.P., Cohen, L., Greene, J.M., Xu, G.F., Feldman, E.B., Hames, C.G., Feldman, D.S., 1993.  
24 Plasma ascorbic-acid concentrations relate inversely to blood-pressure in human-subjects.  
25 *American Journal of Clinical Nutrition* 57, 213-217.

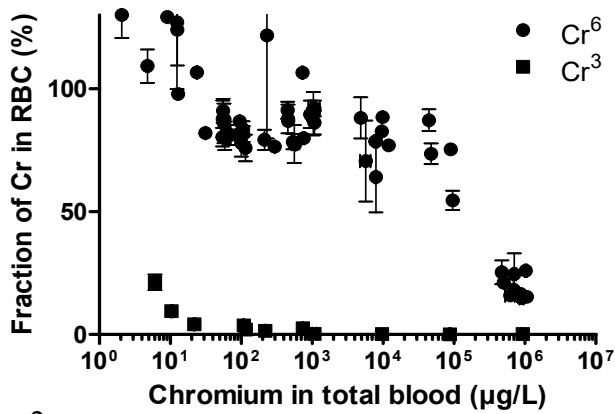
26 Mutti, A., Cavatorta, A., Pedroni, C., Borghi, A., Giaroli, C., Franchini, I., 1979. The role of  
27 chromium accumulation in the relationship between airborne and urinary chromium in welders.  
28 *International Archives of Occupational and Environmental Health* 43, 123-133.

29 Mutti, A., Pedroni, C., Arfini, G., Franchini, I., Minoia, C., Micoli, G., Baldi, C., 1984. Biological  
30 monitoring of occupational exposure to different chromium compounds at various valency states.  
31 *International journal of environmental analytical chemistry* 17, 35-41.

32 Nurminen, M., 2004. On the carcinogenicity risk assessment of chromium compounds. *American*  
33 *Journal of Industrial Medicine* 45, 308-309.

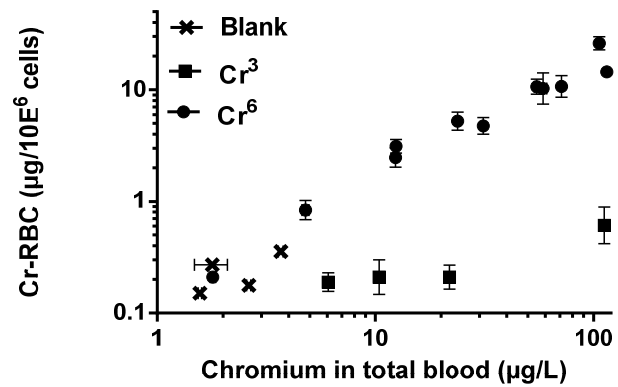
- 1 Peters, F.T., Drummer, O.H., Musshoff, F., 2007. Validation of new methods. *Forensic Science*  
2 *International* 165, 216-224.
- 3 Qu, Q., Li, X., An, F., Jia, G., Liu, L., Watanabe-Meserve, H., Koenig, K., Cohen, B., Costa, M.,  
4 Roy, N., Zhong, M., Chen, L.C., Liu, S., Yan, L., 2008. Cr(VI) exposure and biomarkers: Cr in  
5 erythrocytes in relation to exposure and polymorphisms of genes encoding anion transport  
6 proteins. *Biomarkers* 13, 467-477.
- 7 Stridsklev, I.C., Schaller, K.H., Langard, S., 2004. Monitoring of chromium and nickel in biological  
8 fluids of stainless steel welders using the flux-cored-wire (FCW) welding method. *International*  
9 *Archives of Occupational and Environmental Health* 77, 587-591.
- 10 Thyssen, J.P., Menne, T., 2010. Metal Allergy-A Review on Exposures, Penetration, Genetics,  
11 Prevalence, and Clinical Implications. *Chem Res Toxicol* 23, 309-318.
- 12 Tola, S., Kilpio, J., Virtamo, M., Haapa, K., 1977. Urinary chromium as an indicator of the exposure  
13 of welders to chromium. *Scandinavian journal of work, environment & health* 3, 192-202.
- 14 Weber, H., 1983. Long-term study of the distribution of soluble chromate-51 in the rat after a single  
15 intratracheal administration. *Journal of toxicology and environmental health* 11, 749-764.
- 16 Weeks, M.E., 1932. Discovery of the Elements V. *Journal of Chemical Education*, 470.
- 17 White, M.A., Sabbioni, E., 1998. Trace element reference values in tissues from inhabitants of the  
18 European union. X. A study of 13 elements in blood and urine of a United Kingdom population.  
19 *Sci Total Environ* 216, 253-270.
- 20 Wiegand, H.J., Ottenwalder, H., Bolt, H.M., 1984. The reduction of chromium (VI) to chromium  
21 (III) by glutathione: an intracellular redox pathway in the metabolism of the carcinogen chromate.  
22 *Toxicology* 33, 341-348.
- 23 Yoshihisa, Y., Shimizu, T., 2012. Metal allergy and systemic contact dermatitis: an overview.  
24 *Dermatology research and practice* 2012, Article ID 749561.
- 25  
26

1



2

B



3 **Fig. 1.** Influence of chromium oxidation state on the accumulation of chromium in RBC. Incubation  
4 time of 40 minutes at room temperature. Each data point was derived from duplicate analyses.

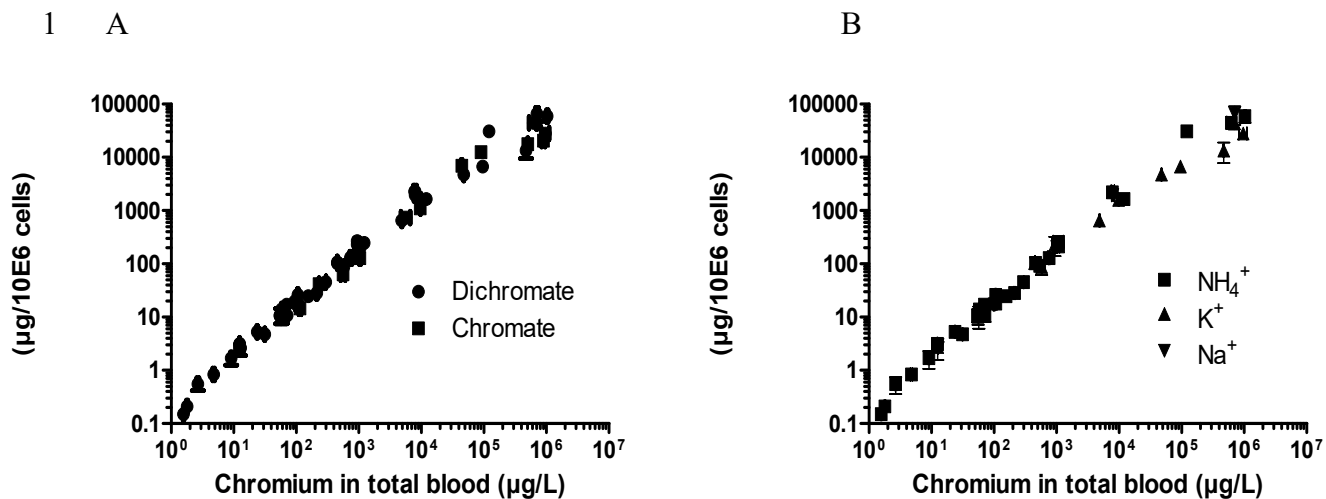
5 A: Fraction of Cr accumulated in RBC.

6 B: Mass of Cr accumulated per million RBC, shown over the occupational range of Cr  
7 concentrations. "Blank": no chromium added to blood. The slopes defined by the Cr(III) and Cr(VI)  
8 data are significantly different ( $p < 0.0001$ ).

9

10

11

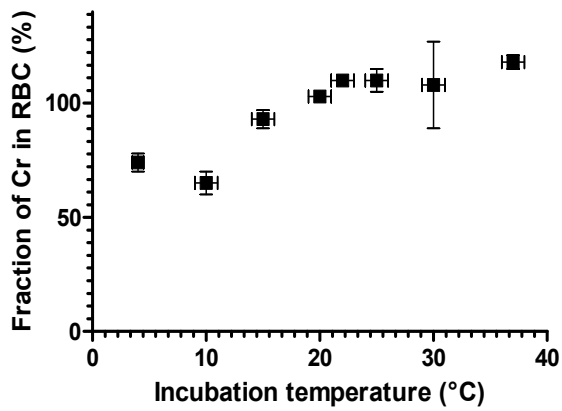


**Fig. 2.** Effect of chromium speciation on the accumulation of Cr in RBC according to the amount of chromium added to blood samples. Incubation time of 40 minutes at room temperature. Each data point was derived from duplicate analyses.

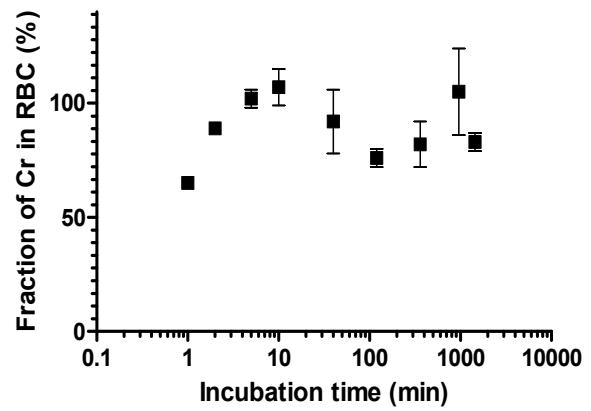
A: Effect of chromate and dichromate on the fraction of Cr(VI) accumulated in RBC. Statistically, there is no significant difference between the two slopes.

B: Effect of different counterions ( $\text{NH}_4^+$ ,  $\text{K}^+$  and  $\text{Na}^+$ ) on the fraction of dichromate accumulated in RBC. Statistically, there is no significant difference between the slopes.

1 A



B



2

3

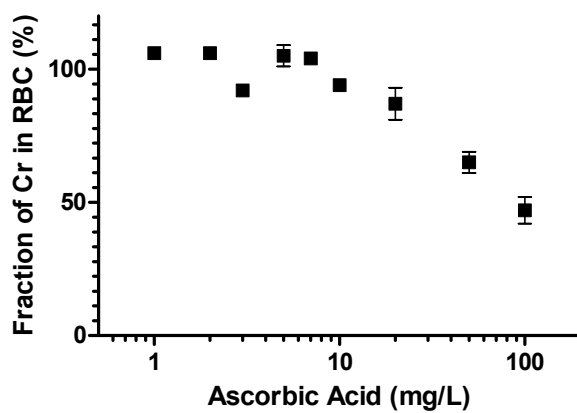
4 **Fig. 3.** Influence of incubation parameters (temperature (A) and time (B)) on the fraction of Cr(VI)  
5 accumulated in RBC. Each data point was derived from duplicate analyses.

6 A: Effect of incubation temperature. Incubation time of 40 minutes. 100 µg/L of Cr as (NH<sub>4</sub>)<sub>2</sub>Cr<sub>2</sub>O<sub>7</sub>  
7 in 10 mL blood sample.

8 B: Effect of incubation time. 100 µg/L of Cr as (NH<sub>4</sub>)<sub>2</sub>Cr<sub>2</sub>O<sub>7</sub> in 10 mL blood sample at room  
9 temperature.

1

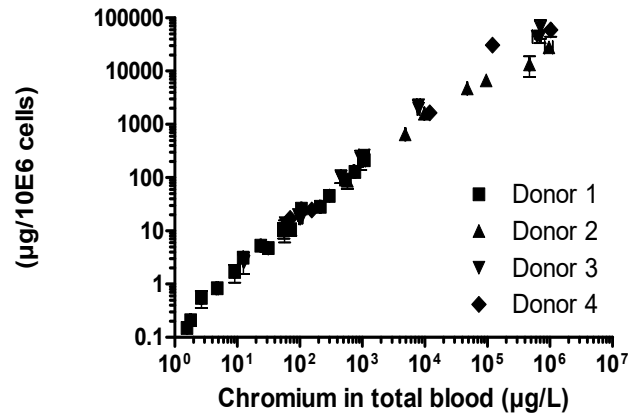
2



3

4 **Fig. 4.** Influence of AA on incorporation of hexavalent chromium in RBC. Incubation time of 40  
5 minutes at room temperature. 100  $\mu\text{g/L}$  of Cr as  $(\text{NH}_4)_2\text{Cr}_2\text{O}_7$  in a 10 mL blood sample. Each data  
6 point was derived from duplicate analyses.

7



1

2 **Fig. 5.** Effect of blood donor. Incubation time of 40 minutes at room temperature.  $(\text{NH}_4)_2\text{Cr}_2\text{O}_7$  in 10  
 3 mL blood sample. Each data point was derived from duplicate analyses. Statistically, there is no  
 4 significant difference between the slopes defined by each donor.

5

6

7

1 **Table 1.** Instrumental settings for the determination of chromium in HNO<sub>3</sub> solution by GF-AAS.

Wavelength (nm)	234.9
Lamp current (mA)	10
Slit Width (nm)	0.5
Dry Temperature (°C)	300
Dry time (ramp/hold, s)	150/0
Ashing Temperature (°C)	20/10
Ashing time (ramp/hold, s)	50/30
Atomization Temperature (°C)	2600
Atomization time (ramp/hold, s)	0.8/2
Cleaning Temperature (°C)	2700
Cleaning time (ramp/hold, s)	2/0

2  
3  
4  
5