

Fig. 1 XRD diffractogram of CCO (a) co-precipitation (b) sol-gel.

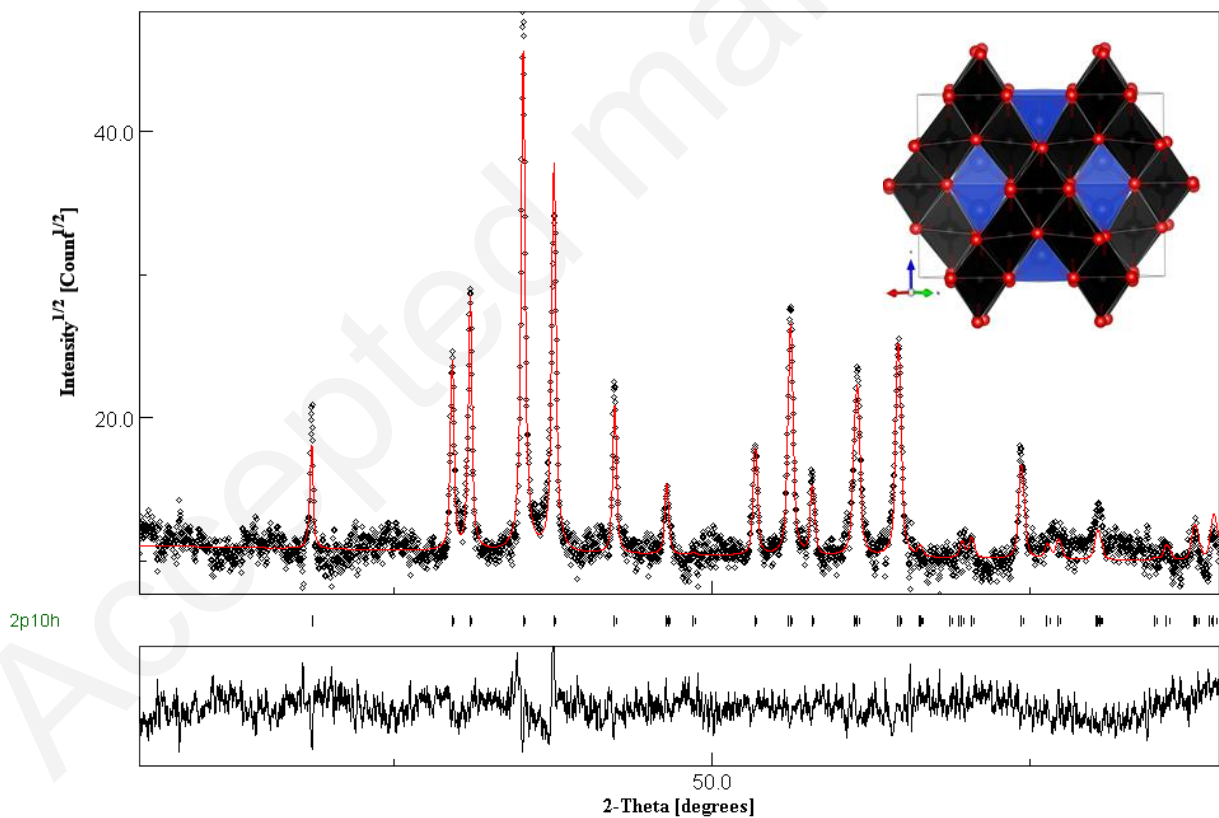


Fig. 2 Rietveld refined XRD diffractogram. Inset: the structural representation of CCO.

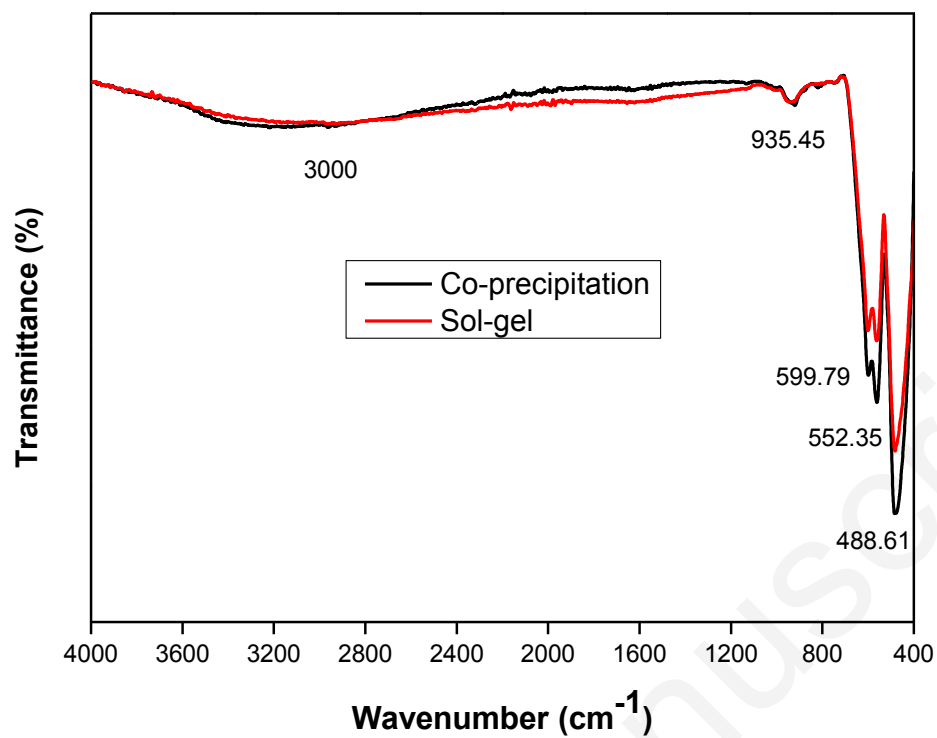


Fig. 3 Fourier transform infrared (FTIR) spectra of CCO.

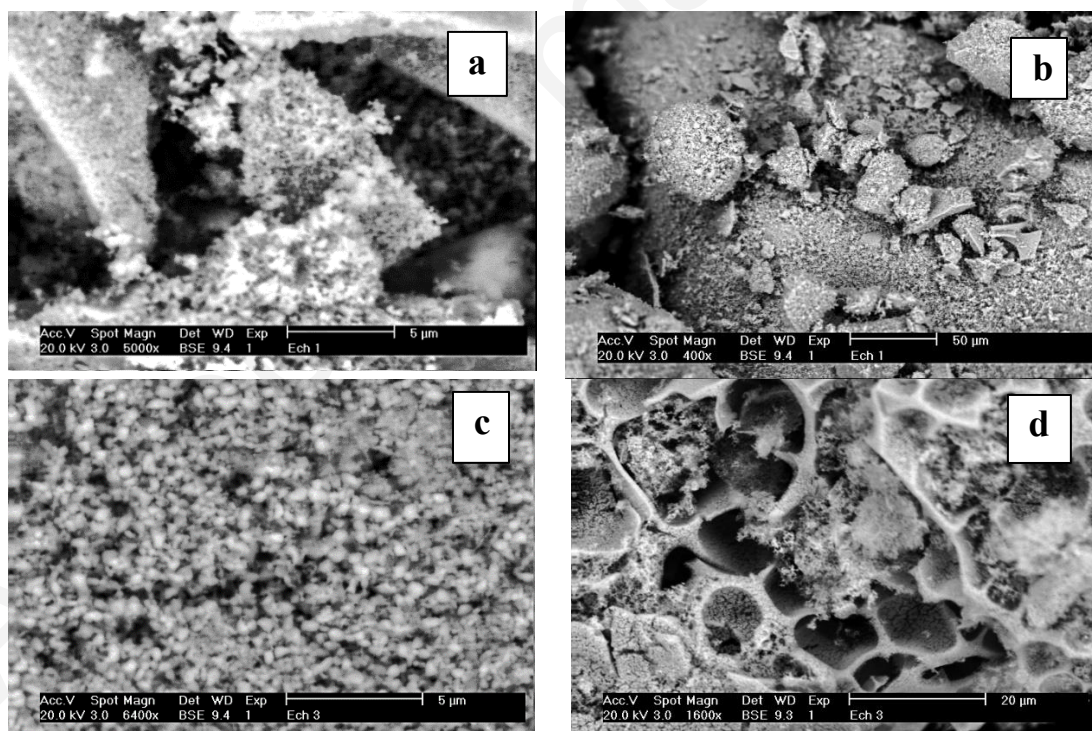


Fig. 4 SEM images of CCO (a,b) sol-gel (c,d) co-precipitation.

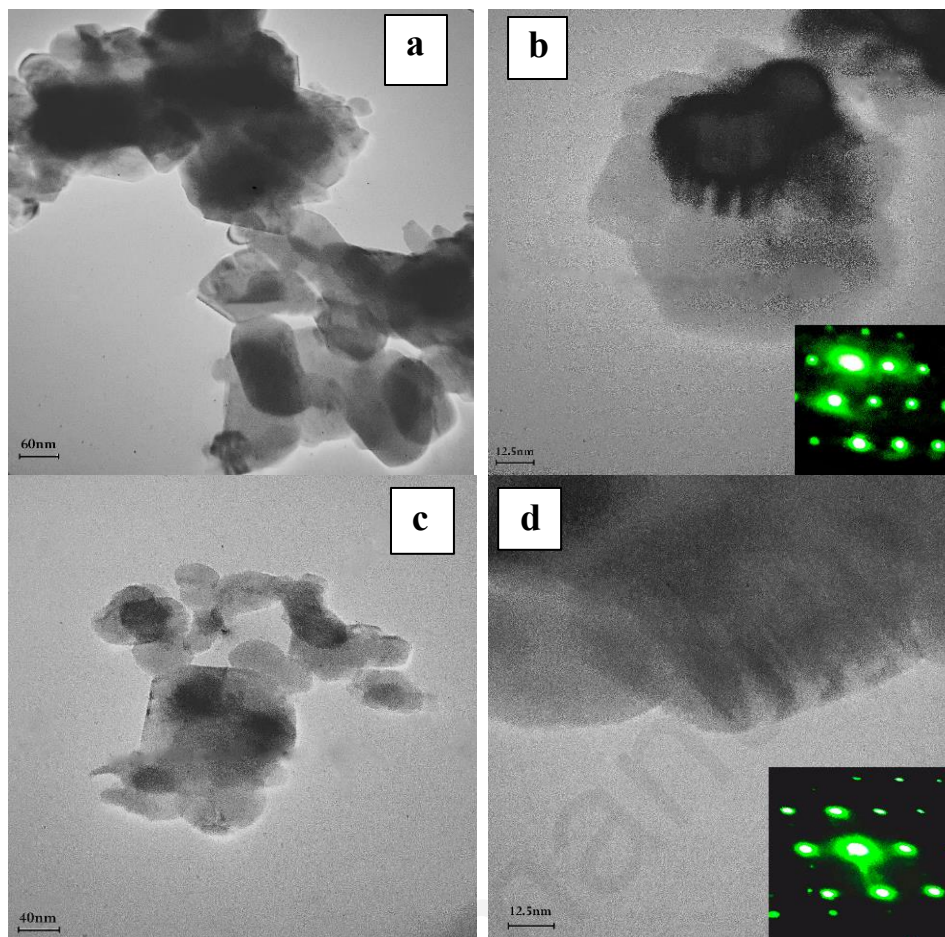


Fig. 5 TEM images of CCO (a,b) sol-gel (c,d) co-precipitation.

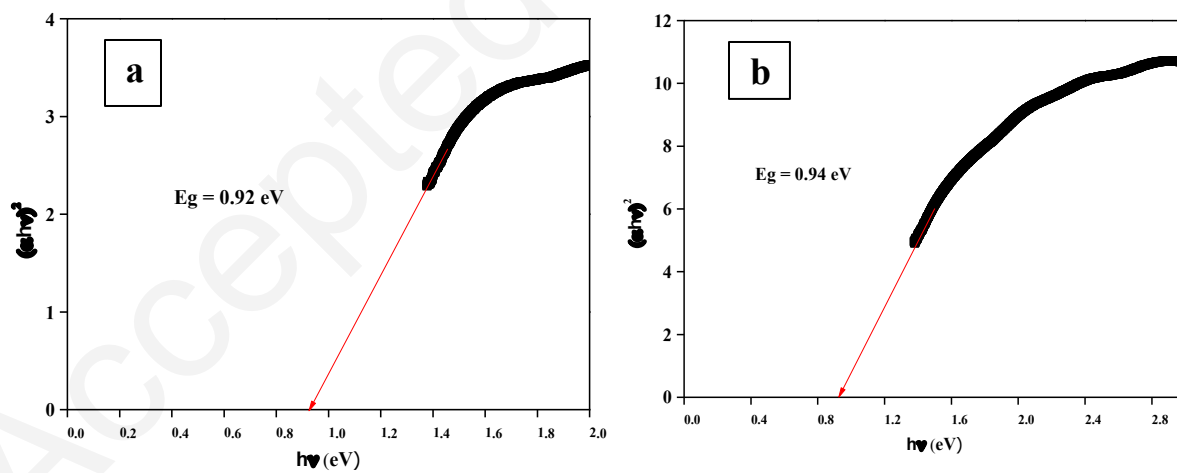


Fig. 6 UV-Vis diffuse reflectance spectrum (a) co-precipitation (b) sol-gel.

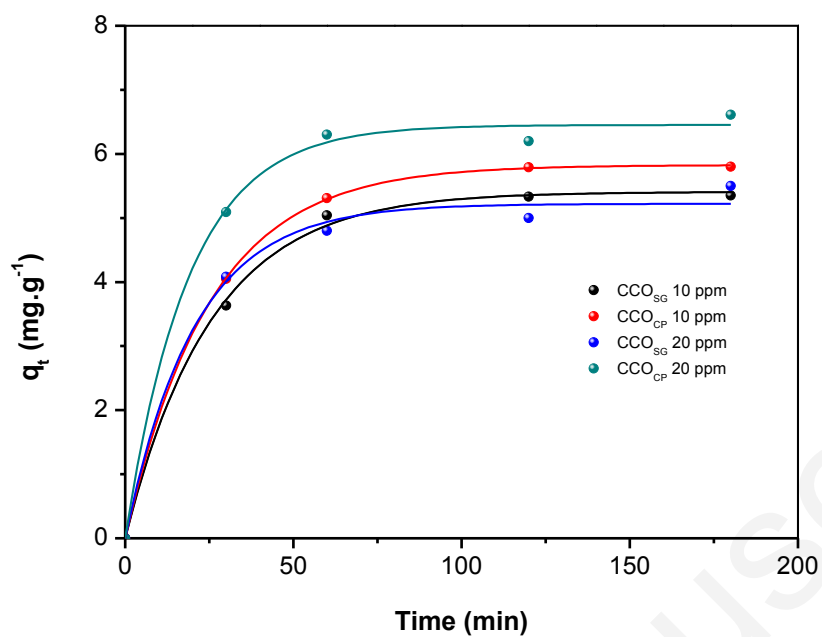


Fig. 7 Equilibrium time for adsorption of CFC (initial concentration:10 and 20 mg/L) on both nanomaterials.

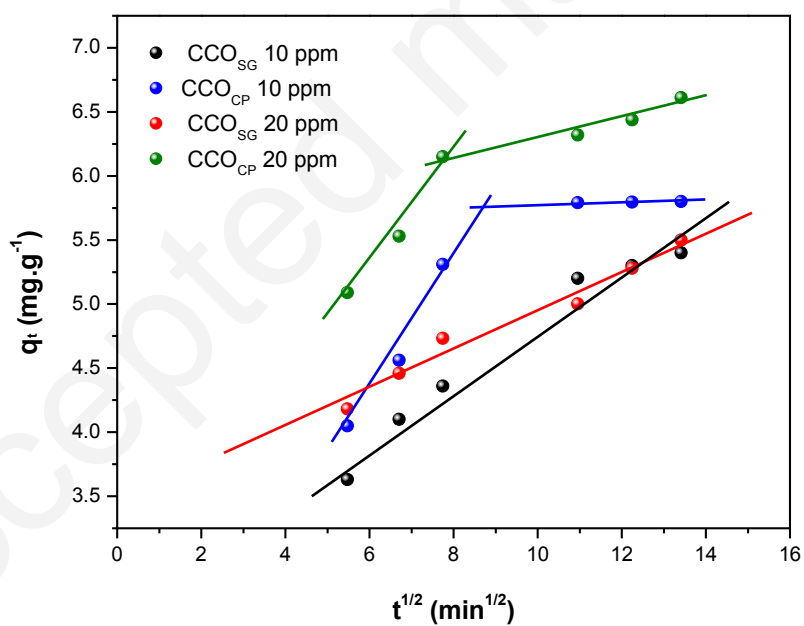


Fig. 8 Intra-particle diffusion plots for adsorption of CFC (initial concentration:10 and 20 mg/L) on both nanomaterials.

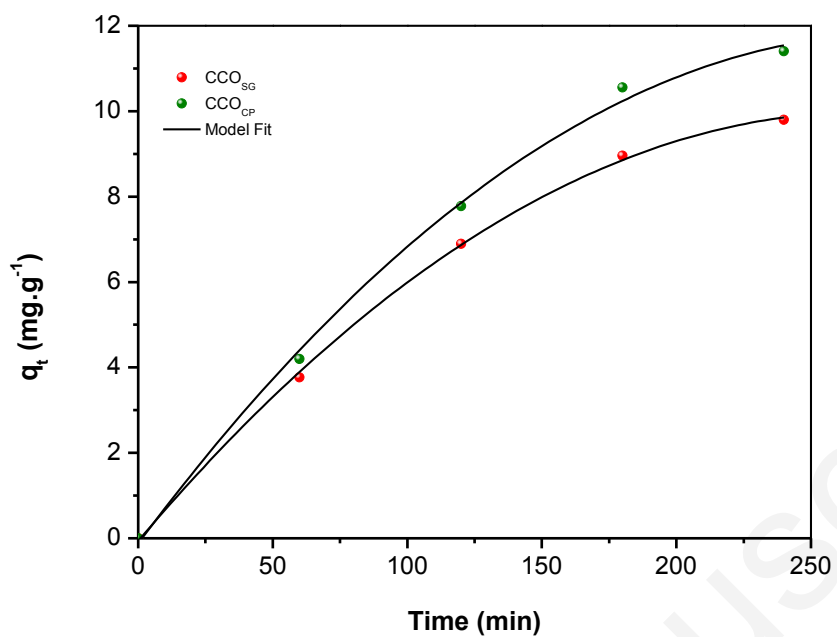


Fig. 9 Equilibrium time for photodegradation of CFC (initial concentration: 20 mg/L) on both nanomaterials.

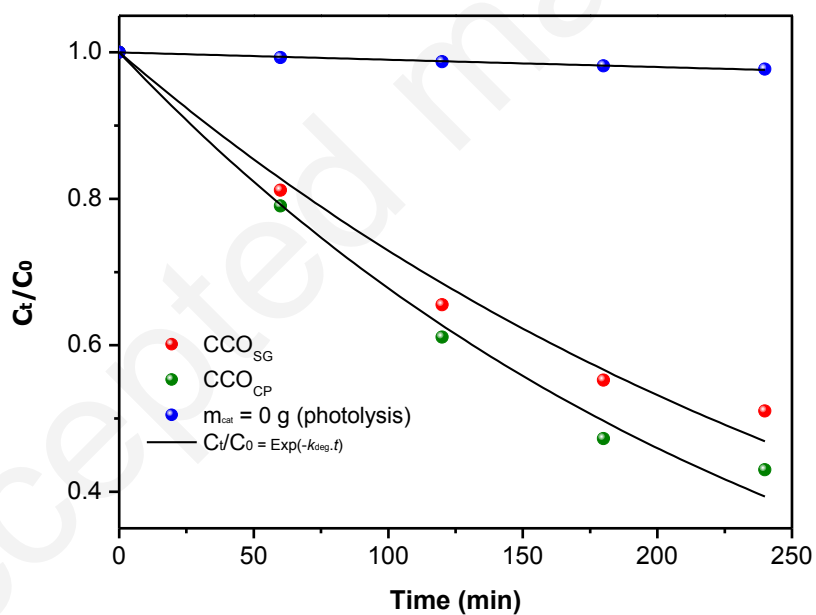


Fig. 10 Kinetic UV photocatalytic degradation of CFC with both nanomaterials CCO_{SG} and CCO_{CP}.