



HAL
open science

$\text{Al}_{5+\alpha}\text{Si}_{5+\delta}\text{N}_{12}$, a new Nitride compound

R. Dagher, L. Lymperakis, V. Delaye, L. Largeau, A. Michon, J. Brault, P. Vennéguès

► **To cite this version:**

R. Dagher, L. Lymperakis, V. Delaye, L. Largeau, A. Michon, et al.. $\text{Al}_{5+\alpha}\text{Si}_{5+\delta}\text{N}_{12}$, a new Nitride compound. Scientific Reports, 2019, 9 (1), 10.1038/s41598-019-52363-7. hal-03035095

HAL Id: hal-03035095

<https://hal.science/hal-03035095v1>

Submitted on 13 Dec 2023

HAL is a multi-disciplinary open access archive for the deposit and dissemination of scientific research documents, whether they are published or not. The documents may come from teaching and research institutions in France or abroad, or from public or private research centers.

L'archive ouverte pluridisciplinaire **HAL**, est destinée au dépôt et à la diffusion de documents scientifiques de niveau recherche, publiés ou non, émanant des établissements d'enseignement et de recherche français ou étrangers, des laboratoires publics ou privés.

OPEN

$\text{Al}_{5+\alpha}\text{Si}_{5+\delta}\text{N}_{12}$, a new Nitride compound

R. Dagher^{1,3}, L. Lymperakis², V. Delaye³, L. Largeau⁴, A. Michon¹, J. Brault¹ & P. Vennéguès^{1*}

The family of III-Nitride semiconductors has been under intensive research for almost 30 years and has revolutionized lighting applications at the dawn of the 21st century. However, besides the developments and applications achieved, nitride alloys continue to fuel the quest for novel materials and applications. We report on the synthesis of a new nitride-based compound by using annealing of AlN heteroepitaxial layers under a Si-atmosphere at temperatures between 1350 °C and 1550 °C. The structure and stoichiometry of this compound are investigated by high resolution transmission electron microscopy (TEM) techniques and energy dispersive X-Ray (EDX) spectroscopy. Results are supported by density functional theory (DFT) calculations. The identified structure is a derivative of the parent wurtzite AlN crystal where the anion sublattice is fully occupied by N atoms and the cation sublattice is the stacking of 2 different planes along $\langle 0001 \rangle$: The first one exhibits a $\times 3$ periodicity along $\langle 11\bar{2}0 \rangle$ with 1/3 of the sites being vacant. The rest of the sites in the cation sublattice are occupied by an equal number of Si and Al atoms. Assuming a semiconducting alloy, a range of stoichiometries is proposed, $\text{Al}_{5+\alpha}\text{Si}_{5+\delta}\text{N}_{12}$ with α being between $-2/3$ and $1/4$ and δ between 0 and $3/4$.

Due to their unique properties, wide-gap group III-Nitrides (III-N) are nowadays the materials of choice for optoelectronic applications especially for light emitting diodes which revolutionized domestic lighting in recent years¹. They also attracted more recently a lot of attention for high power and high frequency electronic applications². In most cases, devices are based on heterostructures of GaN, InGaN, and AlGaIn (including AlN). Silicon plays a major role for the properties of III-N. First, Si is the most efficient n-type dopant for III-N and is therefore extensively used for III-N devices. Moreover, the introduction of Si atoms during the epitaxy drastically modifies the growth and morphology of GaN layers. The so called “SiN treatment” allows changing the growth mode from 2D to 3D³⁻⁶. The gradual formation of GaN pyramids leads to the bending of pre-existing dislocations and eventually to their mutual interaction and annihilation⁷. The “SiN treatment” is thus one of the most efficient methods for controlling the growth and reducing the threading dislocation density in GaN heteroepitaxial layers, which is mandatory for improving the physical properties of the material up to device quality. The “SiN treatment”, implemented during the metalorganic vapor phase epitaxial (MOVPE) growth of GaN, consists in exposing the growing surface for a few minutes to a silane/ammonia flux at temperatures above 1000 °C. It was supposed that this process results in the formation of a SiN_x micro-mask³. In fact, a detailed high-resolution transmission electron microscopy (HRTEM) study revealed the formation of a crystalline monolayer-thick GaSiN_3 compound epitaxially grown on GaN⁸. The atomic structure of this GaSiN_3 layer may be described in reference to the parent GaN wurtzite structure: the N-sublattice is preserved whereas the three cation positions in the proposed unit cell are occupied by one Si atom, one Ga atom and one vacancy, respectively. Thus, the exposure of the GaN surface to a silane/ammonia flux does not lead to the growth of an additional layer but to the replacement of surface Ga atoms by either Si atoms or vacancies. Such a SiGaN_3 monolayer buried by one monolayer of GaN acts as a dielectric mask and prohibits further GaN growth. As long as this SiGaN_3 layer does not fully cover the surface, the nucleation of 3D islands occurs in areas non-covered by GaSiN_3 .

A similar “SiN treatment” has already also been successfully implemented on AlN surfaces also resulting in a further 3D growth of GaN or AlGaIn⁹. Besides the importance of this process for devices based on AlGaIn layers, such as UV LEDs, where the reduction of the dislocation density is crucial, one important and more fundamental question is the nature of this AlSiN layer.

The purpose of this work is to try to answer several questions which arise from the above-presented results. The first one is related to the possibility of obtaining a SiGaIn crystalline layer thicker than one monolayer, while

¹Université Côte d’Azur, CRHEA-CNRS, rue B. Grégory, F-06560, Valbonne, France. ²Max-Planck-Institut für Eisenforschung GmbH, Düsseldorf, Germany. ³Université Grenoble Alpes, CEA, LETI, MINATEC Campus, F-38054, Grenoble, France. ⁴C2N-CNRS/Université Paris-Sud - Université Paris-Saclay, 10 Boulevard Thomas Gobert, 91120, Palaiseau, France. *email: pv@crhea.cnrs.fr

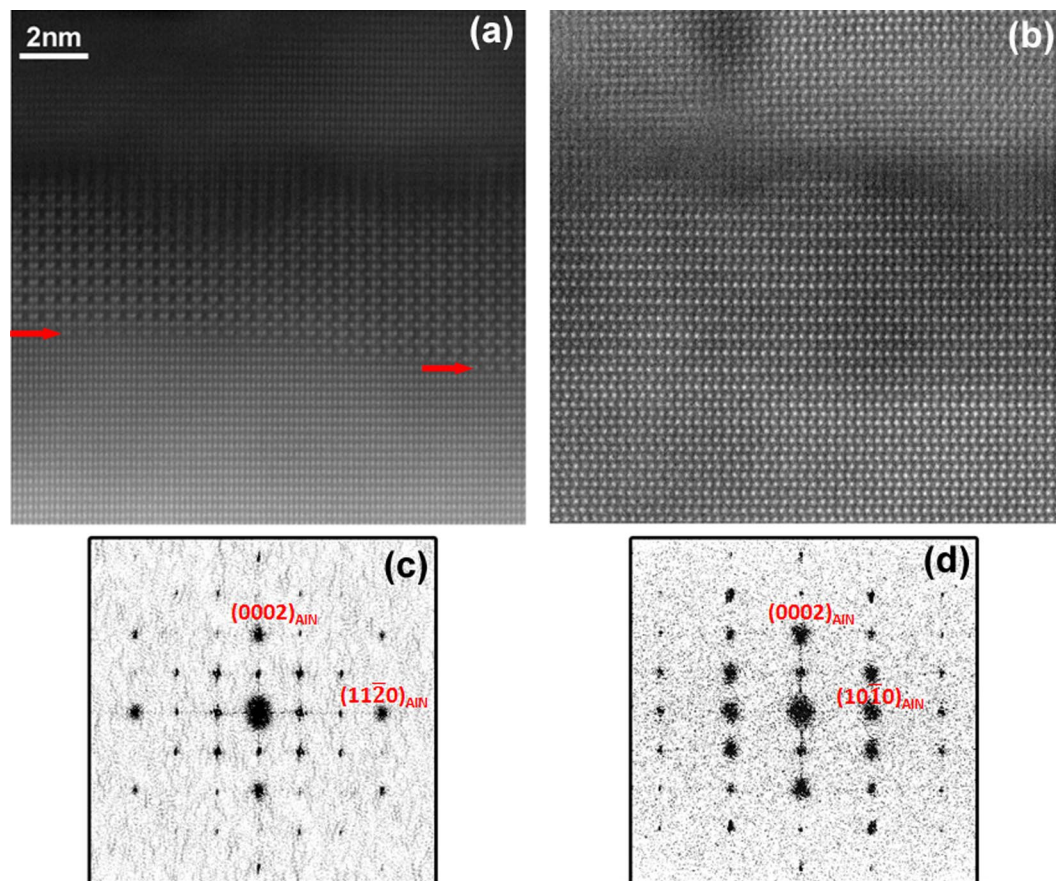


Figure 1. (a,b) HAADF images of the Si-rich layer and (c,d) their relative Fourier transforms: (a,c) along $\langle 10-10 \rangle_{\text{AlN}}$ zone axis; (b,d) along $\langle 11-20 \rangle_{\text{AlN}}$ zone axis. The red arrows in (a) indicate the first planes showing the characteristic contrast of AlSiN.

previous results have shown that a long exposure of a GaN surface to a silane/ammonia flux leads to the growth of an amorphous SiN layer¹⁰. On the other hand, it was reported that the *in-situ* passivation of AlGaIn/GaN high electron mobility transistors leads to the growth of a crystalline Si₃N₄ layer^{11,12}. The second question is about the possible existence of a SiAlN crystalline layer, and its exact structure.

To tackle these questions, we have studied the effect of the exposure of AlN surfaces to a silane flux at temperatures above 1300 °C. In fact, it has been shown that, at these temperatures, atom mobility is sufficiently high to promote a significant improvement of the crystalline quality of AlN layers^{13,14}. This mobility may enhance the Al/Si atomic exchanges. The studied samples were (0001)-oriented AlN films grown by MOVPE or molecular beam epitaxy (MBE) on sapphire substrates and then annealed in a hot wall chemical vapor deposition (CVD) reactor and in a silicon environment. The samples were characterized by high-resolution transmission electron microscopy (HRTEM), high-resolution high-angular annular dark-field scanning TEM (HAADF-STEM), energy dispersive X-ray (EDX) spectroscopy as well as with X-ray photoelectron spectroscopy (XPS) and grazing incidence X-ray diffraction (GIXD). Density functional theory calculations were employed to investigate the atomic structure and the electronic properties of the AlSiN alloys.

Results

The surface chemistry of the samples before and after annealing is systematically studied by X-ray photoelectron spectroscopy (XPS). First, a characteristic Si_{2p} peak appears whatever the temperature and duration of the annealing (see Fig. 1 in supplementary information (SI)) demonstrating a Si-surface enrichment. Moreover, it should be noted that the ratio of the Al_{2p} peaks after and before annealing is always below 1 indicating a decrease in the Al signal and hence suggesting that Si atoms have substituted Al ones to form an AlSiN layer.

Several of these samples have been studied by cross-section TEM to determine the nature of the Si-rich surface layer. One sample has been specifically designed for TEM study and is extensively studied in the following: an MOVPE-AlN on sapphire layer has been annealed for 5 minutes at 1550 °C and then transferred to an MBE reactor. A 280 nanometer-thick AlN layer has then been overgrown to protect the Si-rich layer during TEM sample preparation. Figure 1 shows cross-section HAADF images of the Si-rich layer in this sample along two perpendicular AlN zone axes with their respective Fourier transform (FT). A characteristic contrast, which is present in all annealed AlN layers (see Fig. 2 in SI) is observed along the $\langle 10-10 \rangle_{\text{AlN}}$ zone axis whereas no clear difference of contrast with AlN exists along the $\langle 11-20 \rangle_{\text{AlN}}$ zone axis. The thickness of the layer with the aforementioned

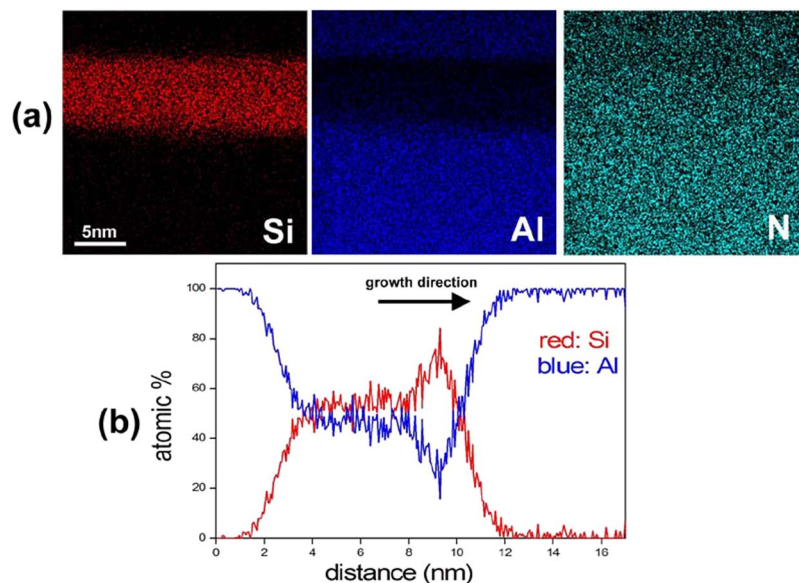


Figure 2. (a) Si, Al and N EDX maps of the AlSiN layer. (b) Profile of the relative Al and Si concentration across an AlSiN layer.

characteristic contrast varies from 4 to 6 nm along the sample. In fact, the bottom interface between this contrasted layer and AlN lies at different depths from the surface (see red arrows in Fig. 1a). The top part of this layer with a thickness of approximately 2 nm has a lower crystallinity and a darker contrast. The FT of the $\langle 10\text{-}10 \rangle$ HAADF image reveals a triple periodicity in the film's plane along the $\langle 11\text{-}20 \rangle$ direction and a double periodicity along the $\langle 0001 \rangle$ direction. On the other hand, there is no additional periodicity along the $\langle 10\text{-}10 \rangle$ direction as shown by the FT of the $\langle 11\text{-}20 \rangle$ HAADF image. This in-plane triple periodicity is also observed in plan-view selected area electron diffraction (see Fig. 2 in SI). TEM describes micrometer large areas at the maximum. In order to study the structure of the AlSiN layer at a larger scale, we have performed non-coplanar GIXD which confirms the in-plane triple periodicity (see Fig. 3 in SI).

In order to identify the chemical composition of the AlSiN layer EDX maps have been measured. As can be seen in Fig. 2a there is an anti-correlation between Si and Al concentrations while the N concentration is nearly constant in the AlN substrate as well as in the AlSiN layer. Figure 2b is a quantitative profile across the epilayers showing the relative Al and Si concentrations. Coming from the substrate side, there is a gradual increase of the Si content up to about 50%. The position of the onset of the characteristic contrast in HAADF coincides with position in EDX profiles where the Si-concentration reaches 50%. In the top part of the layer the Si-concentration increases above 50%. However, as has already been mentioned, this region is suffering from lower crystallinity. Furthermore, a significant concentration of oxygen is also detected in this region (not shown). Nonetheless, no oxygen is detected in the bottom part of the AlSiN layer. The presence of oxygen in the upper part can be attributed to the exposure of the sample surface to air during the transfer from the CVD to the MBE reactors. In the following, we focus on the high crystallinity and oxygen free bottom part of the AlSiN layer which has a thickness of ≈ 4 nm. From the EDX profiles shown in Fig. 2d, the mean Al and Si contents are estimated to correspond to $47 \pm 4\%$ and $53 \pm 4\%$ of the occupied cation sublattice sites, respectively. The error bars correspond to the standard deviation from the mean values of the concentrations in the bottom 4 nm of the Si-rich layer.

Figure 3a is a high resolution TEM image along the $\langle 10\text{-}10 \rangle_{\text{AlN}}$ zone axis. The top part of the layer has been removed during the TEM sample preparation. Figure 3b,c are strain maps of Fig. 3a obtained using the geometrical phase analysis (GPA)¹⁵ method for $\{11\text{-}20\}$ (ϵ_{xx}) and (0002) (ϵ_{zz}) planes respectively. Figure 3d shows the intensities in Fig. 3c summed parallel to the interface. There is no strain for the $\langle 11\text{-}20 \rangle$ planes indicating that the AlSiN epilayers are fully coherent with the AlN substrate. On the other hand, the out-of plane c-lattice parameter is nearly 3% smaller than that of AlN. These observations may have 2 origins. The lattice parameters of the relaxed AlSiN structure may be equal to those of AlN in the interface plane and 3% smaller perpendicularly or AlSiN may be elastically strained to be pseudomorphic with the AlN substrate.

Figure 4a shows a characteristic high magnification Wiener-filtered HAADF image of the Si-rich layer along the $\langle 10\text{-}10 \rangle$ zone axis. The structure may be described as the stacking of 2 different planes, hereafter referred to as plane 1 and plane 2, along the vertical direction corresponding to the observed double periodicity. Plane 1 shows a homogeneous contrast of the atomic columns with intensities similar to those observed in the AlN substrate. However, a triple in-plane periodicity is clearly observed in plane 2. Every third column in this plane appears dark with almost no intensity while the intensity of the other two columns are similar to those of AlN and therefore to those in plane 1. With the acquisition conditions used, HAADF images show Z-contrast with atomic column intensities proportional to Z^α , Z being the average atomic number along the column and with α being between 1.6 and 2. Since Al and Si atoms have close atomic numbers (13 and 14 respectively), it is not possible to distinguish Al-rich or Si-rich columns.

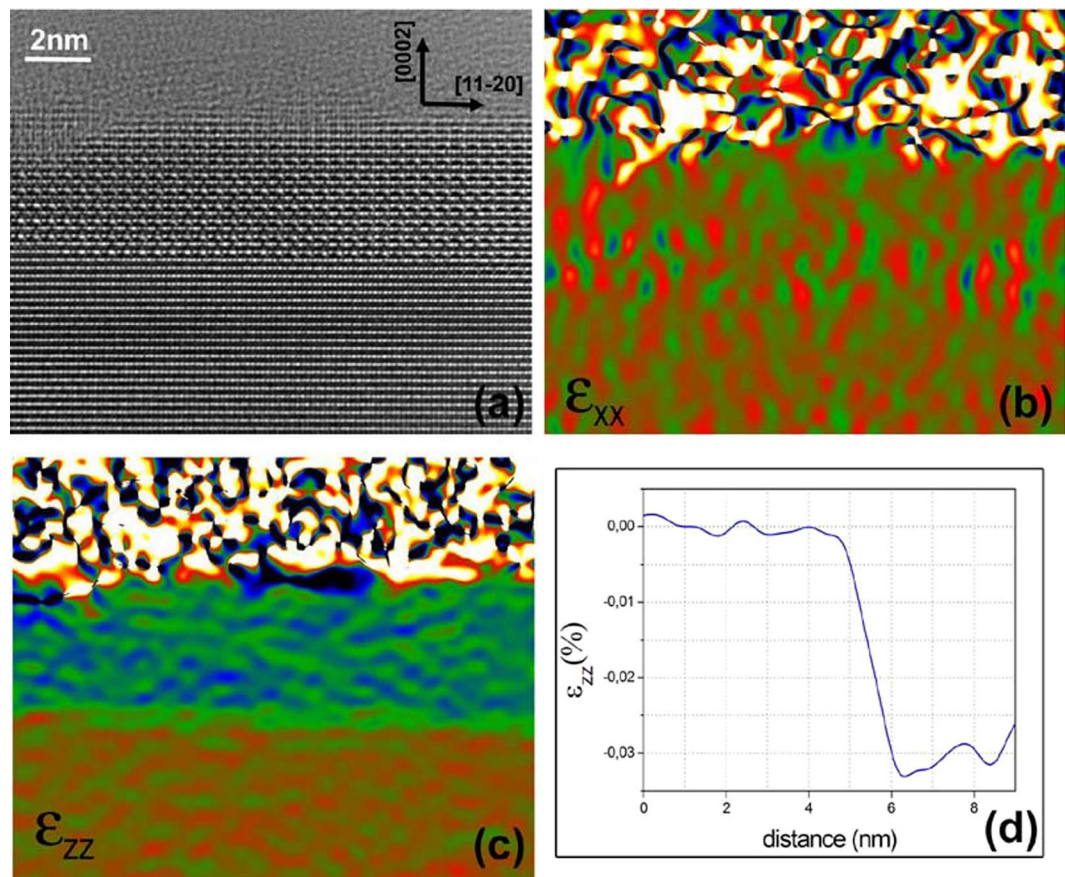


Figure 3. (a) High resolution TEM image along the $\langle 10\bar{1}0 \rangle_{\text{AlN}}$ zone axis. (b) In-plane GPA strain map extracted from (a). (c) Out-of-plane GPA strain map extracted from (a). (d) Intensities in (c) summed up along the horizontal direction.

Discussion

From the above experimental inputs, a structural model can be proposed for the AlSiN structure. First, the compact hexagonal N sublattice is assumed to be unchanged. In plane 1, all atomic columns exhibit similar contrast in HAADF images and EDX indicates nearly the same Al and Si concentrations: the same number of Al and Si atoms is then distributed in the cation sites. Plane 2 presents a triple periodicity similar to the GaSiN₃ monolayer observed by Markurt *et al.*⁸ suggesting a comparable structure. The empty cation position corresponds to the atomic column position showing no intensity in the $\langle 10\bar{1}0 \rangle$ HAADF image. In the case of GaSiN₃, the other two cation positions are occupied by either a Si or a Ga atom. As has already been mentioned, it is impossible from our data to distinguish between Si- or Al- rich columns. Therefore, in the following discussion a random distribution of Si and Al atoms is assumed in the occupied sites of the cation sublattice.

A schematic representation of the structure resulting from DFT calculation is shown in Fig. 4b. In accordance with the experimentally identified dominant structural characteristics, the cation sublattice is a stacking of two alternating layers along the c-direction. Both layers contain an equal number of Si and Al atoms randomly distributed. However, 1/3 of the cation sites in plane 2 are vacant. The vacancies are distributed in an ordered $\sqrt{3} \times \sqrt{3}$ pattern and the structure stoichiometry is Si₅Al₅N₁₂. The out of plane lattice constant is $\approx 2\%$ contracted with respect to the corresponding lattice constant of AlN. This lattice contraction is in good agreement with experimental observations and the difference can be attributed to a larger concentration of the cation vacancies in the calculated structure than in the actual structure (see below). The relaxed structure has been used as input for an HAADF image calculation. The insert in Fig. 4a shows a simulated image for a specimen thickness of 5 nm. The good fit between the simulated and the experimental images allows to validate the proposed structural model.

Although the exact stoichiometry of the AlSiN structure cannot be obtained directly from the aforementioned experiments, under the assumptions that (i) the anion sublattice is fully occupied and (ii) the AlSiN structure is semiconducting, a good estimation can be made. If we assume that the actual stoichiometry is Al_xSi_yN₁₂ then in order to achieve a semiconducting AlSiN layer the electron counting rule (ECR) should be applied, i.e. all bonding and anion dangling bond states should be occupied. The total number of valence electrons per structural unit in the Al_xSi_yN₁₂ layer is $n_e = 3x + 4y + 60$, where the last term is the total number of valence electrons contributed by the twelve N atoms. Moreover, the total number of electrons required to occupy all Si-N and Al-N bonding states as well as all N dangling bond states is $8 \times 12 = 96$ (12 N-sites and 12 cation-sites in the unit cell). Therefore, obeying ECR leads to $3x + 4y = 36$. If we assume equal number of Si and Al atoms then $x = y \approx 5.14$

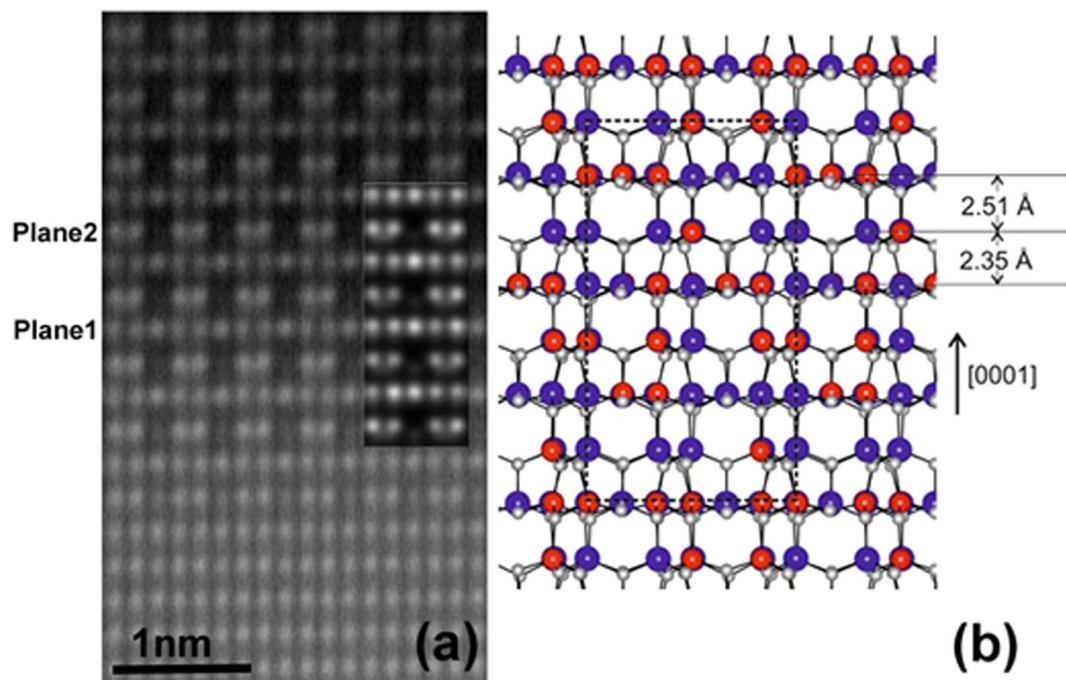


Figure 4. (a) Wiener-filtered HAADF image of the bottom part of the AlSiN layer along the $\langle 10\text{-}10 \rangle_{\text{AlN}}$ zone axis. The insert shows a simulated image using the model presented in (b). (b) Schematic representation of the relaxed $\text{Si}_5\text{Al}_5\text{N}_{12}$ structure in the $\langle 1\text{-}100 \rangle$ projection. The dashed rectangle indicates the unit cell. Large red and blue spheres denote Si and Al atoms, small gray spheres the N atoms. The average interplane distances of the successive layers are also indicated.

and in this case $\approx 14.3\%$ of the cation sites should be vacant. This is somewhat smaller than the 16.6% cation vacancies required if the dark columns in plane 2 consist of vacancies only. The latter could be achieved only if $y = 6$ and $x = 4$, i.e. if the Si and Al contents in the $\text{Al}_x\text{Si}_y\text{N}_{12}$ structure are 50% and 33% of the cation sites, respectively which is not what is experimentally observed. A few Al and/or Si atoms are presumably present in the sites corresponding to the dark columns.

As has already been mentioned, the mean Al and Si contents are estimated to correspond to $47 \pm 4\%$ and $53 \pm 4\%$ of the occupied cation sublattice sites, respectively. Applying the ECR to these compositions we find that $\text{Al}_{5.26}\text{Si}_{5.05}\text{N}_{12}$ and $\text{Al}_{4.34}\text{Si}_{5.75}\text{N}_{12}$ correspond to the extremes of Al rich and Si rich stoichiometries, respectively. These structures contain $\approx 14\%$ and $\approx 16\%$ cation vacancies, respectively. We can therefore propose a stoichiometry $\text{Al}_{5+\alpha}\text{Si}_{5+\delta}\text{N}_{12}$ with α being between $\approx -2/3$ and $\approx 1/4$ and δ between ≈ 0 and $\approx 3/4$.

In order to gather insights in the electronic properties of these alloys we have calculated the bandstructures of two selected $\text{Al}_{5+\alpha}\text{Si}_{5+\delta}\text{N}_{12}$ structures with $\alpha = 0$ and $\delta = 1/4$ that obey ECR. These structures differ by the distribution of Al/Si atoms. For comparison we have also calculated the bandstructure of an alloy where all dark columns in plane 2 consist of vacancies only ($\text{Al}_5\text{Si}_6\text{N}_{12}$). The bandstructures are shown in Fig. 5 and as can be seen in all cases $\text{Al}_{5+\alpha}\text{Si}_{5+\delta}\text{N}_{12}$ has a wide bandgap of the order of $\approx 3.8\text{--}4.4\text{ eV}$. Although the calculated alloy structures do not necessarily correspond to ground state configurations and/or stoichiometries, the above results provide strong evidence that $\text{Al}_{5+\alpha}\text{Si}_{5+\delta}\text{N}_{12}$ alloys are wide bandgap materials with a bandgap that most probably exceeds that of GaN. Furthermore, a common feature in all calculated bandstructures is the almost dispersionless character of the valence band maximum indicating very large values for the hole effective masses.

A few issues on the proposed structural model and stoichiometry as well as on the microstructure of the AlSiN layers have to be further addressed. Firstly, the vacant cation sites of the proposed structural model presents a triple periodicity in the film plane and a double periodicity perpendicular as compared to the wurtzite one of the AlN templates. Therefore, translational domains, such as those formed, for example, when planes 1 and 2 are shifted by $1/2 c_{\text{AlN}}$ in adjacent domains, cannot be excluded in the microstructure of the AlSiN layer. Secondly, we have assumed a random distribution of Al and Si on the cation sites. This assumption cannot be validated by HAADF experiments owing to the very similar Al and Si atomic masses. However, disordered or ordered distributions of Al and Si atoms and/or small changes in the exact stoichiometry may have drastic consequences on the physical properties of AlSiN and should therefore be investigated. These issues are beyond the scope of the present paper.

Nevertheless, the above mentioned preliminary results already point to potential technological applications. First of all, the formation of a non-continuous AlSiN layer may lead to a 3D overgrowth of Al(Ga)N layers and, in a similar way as for GaN, to a drastic reduction of the dislocation density. Moreover, AlSiN seems to be a new semiconductor with a gap around 4 eV . Although this is not completely clear, it might be lattice matched to AlN. Compared to $\text{Al}_{0.2}\text{Ga}_{0.8}\text{N}$ that has a similar gap of 4 eV , and which has a lattice mismatch of about 1.6% with AlN,

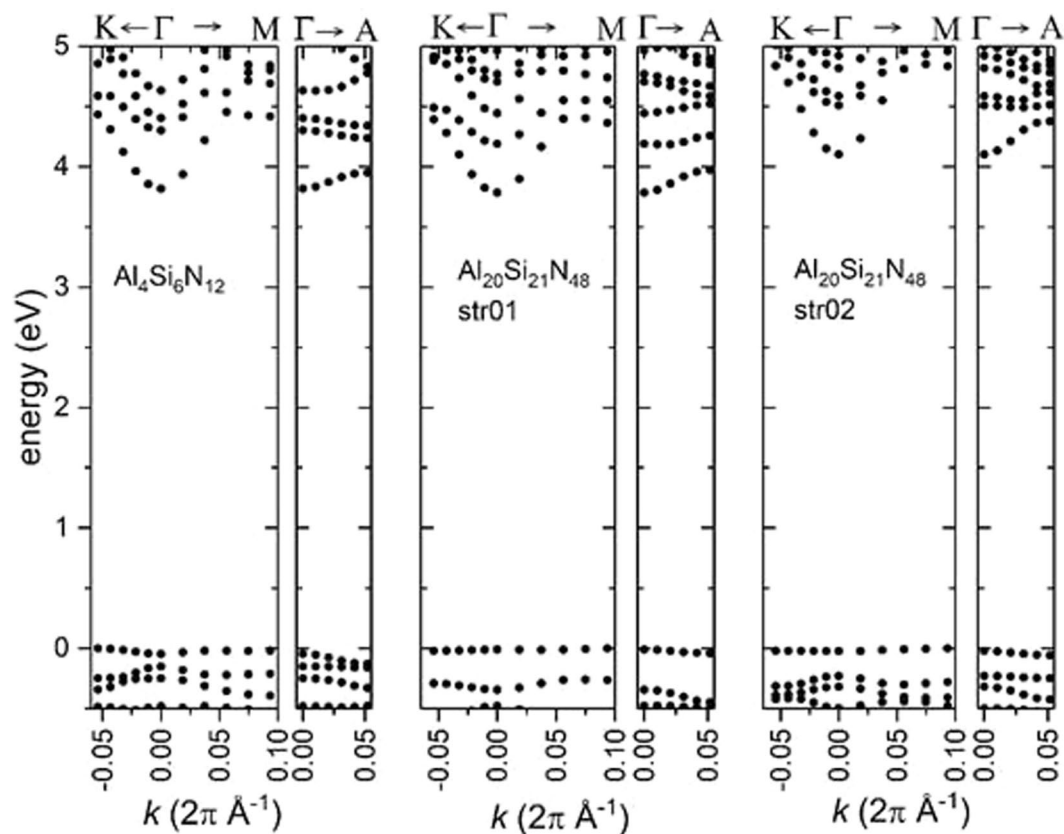


Figure 5. Calculated band structures of selected $\text{Al}_{5+\alpha}\text{Si}_{5+\beta}\text{N}_{12}$ alloys. All structure obey ECR and have the $2\sqrt{3} \times 2\sqrt{3} \times 2$ unit cell. All plots have been shifted such that the edges of the valence bands are at 0 eV.

this can be advantageous for growing heterostructures with AlN barriers. Due to its possibly disordered structure in terms of Al and Si position, one can conjecture that the spontaneous polarization could be smaller than in usual nitrides. If we add a small strain when grown on AlN, this could lead to a total polarization field much smaller than in GaN/AlN or AlGaIn/AlN quantum wells, which could be beneficial for light emitters or normally off transistors. The flat valence band suggests heavy hole masses and a large joint density of states, which means large absorption coefficients. This would not be favorable for lasers but could be interesting for detectors. Finally, carrier and in particular hole localization on a nanometer scale might be interesting to study in such AlSiN layers if the Al and Si distribution is not homogenous. Such a topic would be particularly interesting in the frame of UV emitters.

Conclusions

In conclusion, we have shown that the high temperature annealing of AlN epitaxial layers under a Si atmosphere makes it possible to synthesize a new Nitride compound. Based on HRTEM, HAADF-STEM, EDX measurements and DFT calculations a structural model and a stoichiometry ($\text{Al}_{5+\alpha}\text{Si}_{5+\beta}\text{N}_{12}$) are proposed. Preliminary calculations indicate that this new compound is a wide gap semiconductor with a gap larger than that of GaN. A detailed investigation of the properties of this new material is appealing both from a fundamental point of view as well as to assess potential applications.

Methods

Synthesis. (0001)-oriented AlN heteroepitaxial films grown on sapphire either by MBE¹⁶ or MOVPE¹⁷ are annealed in a hot wall chemical vapor deposition (CVD) reactor in a silicon environment. The presented results do not depend on the growth technique of the AlN template layers. Two different processes are used, process 1 and process 2. Before process 1, the clean CVD reactor is exposed to a silane flux for 5 minutes at 1350 °C and 200 mbar in a H_2 atmosphere. Then, process 1 consists in a simple annealing under N_2 flux at 1550 °C and 800 mbar for a few minutes without silane. Process 2 is similar to process 1, except that in addition to the pre-exposure of the reactor to silane, the annealing is performed under a silane flux varying between 0.5 and 5 sccm. In this study, both the duration and the temperature of the annealing have been varied, as can be seen in Fig. 1 of supplementary information (SI).

TEM investigations. TEM specimens are prepared using a conventional technique involving mechanical thinning followed by ion milling using Ar at 0.5–5 keV. TITAN THEMIS microscopes operated at 200 kV and fitted either with probe or with objective corrector are used enabling spatial resolution below 0.1 nanometer. The

probe corrected one is also fitted with a high sensitivity energy dispersive X-Ray (EDX) spectroscopy system. The HAADF images have been acquired using a half-beam convergence of 20 milliradians, a camera length of 110 millimeters and a detector half-angle width extending from 65 to 200 milliradians. HAADF image simulations have been performed with the JEMS software¹⁸ using the multislice method and the frozen phonon approximation with the experimental parameters indicated above. The AlN on sapphire samples are very insulating and therefore subject to charging effects during TEM observations. To overcome this problem, short exposure images have been acquired. The presented high resolution high angle annular dark field (HAADF) scanning TEM images are in fact the sum of 10 single images.

Ab-initio investigations of $\text{Al}_{5+\alpha}\text{Si}_{5+\delta}\text{N}_{12}$. Density functional theory (DFT) calculations within the local density approximation (LDA) for the exchange and correlation and the projector augmented-wave (PAW) method have been employed in order to calculate the relaxed atomic geometry of the experimentally suggested structure of the AlSiN layers^{19,20}. The AlSiN layers have been modeled using supercells consisting of 8 N-cation ML along $\langle 0001 \rangle$ with a $2\sqrt{3} \times 2\sqrt{3}$ periodicity in the basal plane. The plane-wave energy cutoff was 450 eV and an equivalent of a $6 \times 6 \times 1$ Monkhorst-Pack k-point mesh for the unit cell was used to sample the Brillouin zone (BZ). All the atoms in the supercells have been allowed to relax until the forces are smaller than 1 meV/Å. Furthermore, the AlSiN layers have been assumed to be biaxially strained to AlN, i.e. the in-plane lattice constant is fixed to the lattice constant of AlN and the supercells were allowed to relax the strain along the $\langle 0001 \rangle$ direction. The electronic structure of selected $2\sqrt{3} \times 2\sqrt{3} \times 2$ unit cells of $\text{Al}_{5+\alpha}\text{Si}_{5+\delta}\text{N}_{12}$ structures that obey the electron counting rule been computed with the Heyd, Scuseria, and Ernzerhof hybrid functional (HSE) with 25% exact exchange²¹ and a plane-wave energy cutoff of 400 eV. The calculated bulk bandgap for AlN is 5.88 eV.

Received: 10 June 2019; Accepted: 8 October 2019;

Published online: 04 November 2019

References

- Ponce, F. A. & Bour, D. P. Nitride-based semiconductors for blue and green light-emitting devices. *Nature* **386**, 351 (1997).
- Cordier, Y. *et al.* Nitride-based electron devices for high power/high frequency applications in *III-Nitride Semiconductors and Their Modern Devices* (ed. Gil, B.) 11 (Oxford University Press, 2013).
- Sakai, S., Wang, T., Morishima, Y. & Naoi, Y. A new method of reducing dislocation density in GaN layer grown on sapphire substrate by MOVPE. *J. Crystal Growth* **221**, 334 (2000).
- Vennéguès, P., Beaumont, B., Haffouz, S., Vaille, M. & Gibart, P. Influence of *in situ* sapphire surface preparation and carrier gas on the growth mode of GaN in MOVPE. *J. Cryst. Growth* **187**, 167 (1998).
- Lahreche, H., Vennéguès, P., Beaumont, B. & Gibart, P. Growth of high-quality GaN by low-pressure metal-organic vapour phase epitaxy (LP-MOVPE) from 3D islands and lateral overgrowth. *J. Cryst. Growth* **205**, 245 (1999).
- Kappers, M. J. *et al.* Threading dislocation reduction in (0 0 0 1) GaN thin films using SiN_x interlayers. *J. Cryst. Growth* **300**, 70–74 (2007).
- Vennéguès, P., Beaumont, B., Bousquet, V., Vaille, M. & Gibart, P. Reduction mechanisms for defect densities in GaN using one- or two-step epitaxial lateral overgrowth methods. *J. Appl. Phys* **87**, 4175 (2000).
- Markurt, T. *et al.* Blocking Growth by an Electrically Active Subsurface Layer: The Effect of Si as an Antisurfactant in the Growth of GaN. *Phys. Rev. Lett.* **110**, 036103 (2013).
- Kappers, M. J., Moram, M. A., Sridhara Rao, D. V., McAleese, C. & Humphreys, C. J. Low dislocation density GaN growth on high-temperature AlN buffer layers on (0 0 0 1) sapphire. *J. Cryst. Growth* **312**, 363–367 (2010).
- Frayssinet, E. *et al.* Micro Epitaxial lateral overgrowth of GaN/sapphire by Metal Organic Vapour Phase Epitaxy. *MRS Internet J. Nitride Semicond. Res.* **7**, 8 (2002).
- Derluyn, J. *et al.* Improvement of AlGaIn/GaN high electron mobility transistor structures by *in situ* deposition of a Si₃N₄ surface layer. *J. Appl. Phys.* **98**, 054501 (2005).
- Takizawa, T., Nakazawa, S. & Ueda, T. Crystalline SiN_x Ultrathin Films Grown on AlGaIn/GaN Using *In Situ* Metalorganic Chemical Vapor Deposition. *J. Elec. Mat.* **37**, 628 (2008).
- Miyake, H. *et al.* Annealing of an AlN buffer layer in N₂-CO for growth of a high-quality AlN film on sapphire. *Appl. Phys. Exp.* **9**, 025501 (2016).
- Nemoz, M. *et al.* Dislocation densities reduction in MBE-grown AlN thin films by high temperature, annealing. *J. Cryst. Growth* **461**, 10 (2017).
- Hÿtch, M. J., Snoeck, E. & Kilaas, R. Quantitative measurement of displacement and strain fields from HREM micrographs. *Ultramicroscopy* **74**, 131 (1998).
- Matta, S. *et al.* Properties of AlN layers grown on c-sapphire substrate using ammonia assisted MBE. *J. Cryst. Growth*, **499**, 40 (2018).
- Suzhou Nanowin Science and Technology Co., Ltd (NANOWIN), <http://en.nanowin.com.cn/>.
- Stadelmann, P. A. EMS-a software package for electron diffraction analysis and HRTEM image simulation in material science. *Ultramicroscopy* **21**, 131 (1987).
- Kresse, G. & Hafner, J. Ab initio molecular dynamics for liquid metals. *Phys. Rev. B* **47**, 558 (1993).
- Kresse, G. & Furthmüller, J. Efficient iterative schemes for ab *initio* total-energy calculations using a plane-wave basis set. *Phys. Rev. B* **54**, 11169 (1996).
- Heyd, J., Scuseria, G. E. & Ernzerhof, M. Hybrid functionals based on a screened Coulomb potential. *J. Chem. Phys.* **118**, 8207 (2003).

Acknowledgements

The part of this work done on the NanoCharacterisation PlatForm (PFNC) was supported by the “Recherches Technologiques de Base” Program of the French Ministry of Research. PV wants to thank CP2M Marseille for the access to the objective-corrected TITAN microscope and T. Neisus (University P. Cezanne, Marseille) for his expert help in the use of this microscope. J.Y. Duboz and B. Vinter (CRHEA) are gratefully acknowledged for their critical reading of the manuscript.

Author contributions

R.D. performed annealing of AlN layers and XPS studies and prepared the XPS figure of SI. L. Lymperakis made all the calculations included in the paper, wrote the part of the paper concerning DFT results and part of the discussion and prepared figure 4b and figure 5. V.D. and L. Largeau performed HAADF and EDX experiments. A.M. performed some AlN annealing. J.B. performed AlN MBE growth. P.V. performed TEM experiments, developed the structural model of $\text{Al}_{5+\alpha}\text{Si}_{5+\delta}\text{N}_{12}$, prepared figures 1, 2, 3 and 4a, performed HAADF image simulations and wrote the main part of the paper. All the authors reviewed the manuscript.

Competing interests

The authors declare no competing interests.

Additional information

Supplementary information is available for this paper at <https://doi.org/10.1038/s41598-019-52363-7>.

Correspondence and requests for materials should be addressed to P.V.

Reprints and permissions information is available at www.nature.com/reprints.

Publisher's note Springer Nature remains neutral with regard to jurisdictional claims in published maps and institutional affiliations.



Open Access This article is licensed under a Creative Commons Attribution 4.0 International License, which permits use, sharing, adaptation, distribution and reproduction in any medium or format, as long as you give appropriate credit to the original author(s) and the source, provide a link to the Creative Commons license, and indicate if changes were made. The images or other third party material in this article are included in the article's Creative Commons license, unless indicated otherwise in a credit line to the material. If material is not included in the article's Creative Commons license and your intended use is not permitted by statutory regulation or exceeds the permitted use, you will need to obtain permission directly from the copyright holder. To view a copy of this license, visit <http://creativecommons.org/licenses/by/4.0/>.

© The Author(s) 2019