



HAL
open science

Famennian (Late Devonian) ammonoids from the Ouarourout section (Saoura Valley, Algeria)

Ninon Allaire, Abdelkader Abbache, Catherine Crônier, Claude Monnet

► **To cite this version:**

Ninon Allaire, Abdelkader Abbache, Catherine Crônier, Claude Monnet. Famennian (Late Devonian) ammonoids from the Ouarourout section (Saoura Valley, Algeria). *Annales de Paléontologie*, 2020, 106 (1), pp.102363. 10.1016/j.ampal.2019.08.002 . hal-03034464

HAL Id: hal-03034464

<https://hal.science/hal-03034464v1>

Submitted on 22 Aug 2022

HAL is a multi-disciplinary open access archive for the deposit and dissemination of scientific research documents, whether they are published or not. The documents may come from teaching and research institutions in France or abroad, or from public or private research centers.

L'archive ouverte pluridisciplinaire **HAL**, est destinée au dépôt et à la diffusion de documents scientifiques de niveau recherche, publiés ou non, émanant des établissements d'enseignement et de recherche français ou étrangers, des laboratoires publics ou privés.



Distributed under a Creative Commons Attribution - NonCommercial 4.0 International License

1 **Famennian (Late Devonian) ammonoids from the Ouarourout**
2 **section (Saoura Valley, Algeria)**

3 *Ammonoïdes du Famennien (Dévonien supérieur) de la coupe de Ouarourout*
4 *(Vallée de la Saoura, Algérie)*

5

6 Ninon Allaire ^{a*}, Abdelkader Abbache ^b, Catherine Crônier ^a, Claude Monnet ^a

7

8 ^a Univ. Lille, CNRS, UMR 8198 – Evo-Eco-Paleo, F-59000 Lille, France

9 ^b Université Mustapha Stambouli de Mascara, Faculté des Sciences de la Nature et de la Vie, BP 305,
10 Route de Mamounia, 29000 Mascara, Algérie

11

12 * Corresponding author.

13 *E-mail addresses: ninon.allaire1@free.fr (N. Allaire), kader.abbache@gmail.com (A. Abbache),*
14 *catherine.cronier@univ-lille.fr (C. Crônier), claude.monnet@univ-lille.fr (C. Monnet).*

15

16

17 ABSTRACT

18 In North Africa, the ammonoids constitute an important part of the Devonian marine macro-
19 invertebrates. New material has been recently collected in the ‘Argiles de Marhouma’ Formation
20 from several sections located near Béni-Abbès in the Saoura Valley (Ougarta Mountains, Algerian
21 Sahara). Red nodular limestones (i.e., ‘griotte’ facies) characterize this formation rich in ammonoids.
22 The assemblages from the Ouarourout section are composed of Goniatitida and Clymeniida
23 constituting 30 species and 19 genera belonging to 11 families, with *Cyrtoclymenia*, *Erfoudites*,
24 *Kosmoclymenia*, *Planitornoceras*, *Platyclymenia*, and *Prionoceras*, as the most abundant genera. The
25 taxonomic comparison and the biostratigraphic correlations are made by considering the
26 assemblages recorded in the Anti-Atlas of Morocco, which are very close to those observed in
27 Algeria. In the Ouarourout area, the ‘Argiles de Marhouma’ Formation contains middle and late
28 Famennian ammonoid assemblages and three biostratigraphic intervals can be identified:
29 *Planitornoceras*, *Platyclymenia* and *Medioclymenia*.

30 *Keywords:* Algeria, Devonian, Ammonoidea, systematics, biostratigraphy.

31

32 RESUME

33 En Afrique du Nord, les ammonoïdes constituent une part importante des macro-invertébrés marins

34 du Dévonien. Du nouveau matériel a été récemment collecté au sein de la Formation des 'Argiles de
35 Marhouma' dans plusieurs secteurs situés près de Béni-Abbès dans la vallée de la Saoura (Monts
36 d'Ougarta, Sahara algérien). Des calcaires nodulaires rouges (faciès de type 'griotte') caractérisent
37 cette formation riche en ammonoïdes. Les assemblages de la section de Ouarourout sont composés
38 de Goniatitida et de Clymeniida constituant 30 espèces et 19 genres appartenant à 11 familles ; les
39 genres les plus abondants sont *Cyrtoclymenia*, *Erfoudites*, *Kosmoclymenia*, *Planitornoceras*,
40 *Platyclymenia* et *Prionoceras*. Les comparaisons taxonomiques et les corrélations biostratigraphiques
41 sont établies en considérant les faunes décrites au Maroc, qui sont très proches de celles observées
42 en Algérie. Dans les environs de Ouarourout, la Formation des 'Argiles de Marhouma' contient des
43 assemblages d'ammonoïdes datant du Famennien moyen et supérieur, et trois intervalles
44 biostratigraphiques peuvent être identifiés : *Planitornoceras*, *Platyclymenia* et *Medioclymenia*.
45 *Mots clés:* Algérie, Dévonien, Ammonoidea, systématique, biostratigraphie.

46

47

48 1. Introduction

49

50 Ammonoids (Mollusca, Cephalopoda) appeared in the Early Devonian and rapidly became
51 abundant and diverse in marine habitats (House, 1985; Becker and House, 1994; Klug et al., 2008;
52 Klug et al., 2015a, b). They diversified in the context of the 'Devonian Nekton Revolution'
53 characterized by the development of many active swimming marine organisms and important
54 morphological innovations (Klug et al., 2010). In addition to their classical biostratigraphic ability and
55 application, the knowledge of Devonian ammonoids can provide important insights regarding the
56 understanding of this ecosystem revolution and the early diversification patterns in general (Klug et
57 al., 2010). The Famennian (Late Devonian) corresponds to an important time interval for the
58 ammonoid evolution: it is characterized by particularly high levels of taxonomic richness and
59 morphological disparity and marked by the appearance of the order Clymeniida. Through the
60 Famennian, the ammonoids also suffered several global extinction and were particularly impacted by
61 the Kellwasser (Frasnian/Famennian boundary) and Hangenberg (Devonian/Carboniferous) crises
62 (House, 1970, 1985, 1989; Becker, 1993b; Becker and House, 1994; see reviews of Korn and Klug,
63 2012; Korn et al., 2015c).

64 The North Gondwana platform is considered to be one of the best regions to study the
65 Devonian ammonoids. In the Anti-Atlas of Morocco, the middle and late Famennian ammonoids are
66 particularly well documented, thanks to the numerous articles which have been published over the
67 last 25 years (Korn 1994, 1999, 2004; Becker 1995, 2000, 2002; Becker and House 2000; Becker et al.
68 2002; Korn and Klug 2002; Korn et al. 2000, 2014, 2015a, 2015b, 2016a, 2016b; Ebbighausen and

69 Korn 2007; Klug et al. 2016). However, they remain scarcely known in Algeria (Fig. 1; see reviews of
70 Korn and Klug, 2015; and Korn and De Baets, 2015).

71

72 FIGURE 1 AROUND HERE

73

74 In Algeria (north Gondwana), Late Devonian deposits were first recognized in the Saoura Valley
75 (Ougarta Mountains) by Haug (1903) based on ammonoids. Gautier (1906) realized the first
76 comprehensive study regarding the geology of this area, and Alimen et al. (1952) refined it and
77 described several important sections. More details were also given by Menchikoff (1930) who listed
78 rich ammonoid assemblages in the Famennian succession of the Saoura Valley. The richness in
79 ammonoids enabled Petter (1959, 1960) to discriminate the rough standard zonation established by
80 Wedekind (1908, 1926) in Germany and subsequently modified by several authors (see the review of
81 Korn and Klug, 2015). Göddertz (1987) published a monographic study describing ammonoids from
82 the Saoura Valley (the so-called 'km 30' locality near Marhouma) but the Famennian ammonoids
83 were not revised. Since the study of Göddertz (1987), Devonian ammonoids from Algeria have been
84 only documented in few publications; sporadic information have been included in recent papers
85 (Korn, 2004; Ebbighausen and Korn, 2007; Korn et al., 2014) and only one study entirely focusing on
86 Algerian assemblages have been published (Korn et al. 2017). Korn et al. (2017) studied late
87 Famennian sections from several localities in the vicinity of Béni Abbès (Saoura Valley, Algeria). They
88 recognized several taxa already observed in Morocco, and they also described seven new species.
89 Furthermore, according to Korn et al. (2017), the late Famennian succession in the Saoura Valley of
90 Algeria is constituted of four distinct ammonoid assemblages: by stratigraphic order, the
91 *Goniclymenia*, *Medioclymenia*, *Cymaclymenia lambidia* and *Wocklumeria* assemblages. However
92 their stratigraphic range is not clearly defined and the correlations of these assemblages with the
93 Moroccan biozonations have not been precisely established. Although since several years, the
94 systematic and biostratigraphic revision of Devonian invertebrates from the Saoura Valley of Algeria
95 have received a renewed interest (e.g., for brachiopods: Mottequin et al., 2015; for trilobites: Crônier
96 et al., 2013, Feist et al., 2016; for ammonoids: Korn et al., 2017), the ammonoids still remained
97 scarcely described and not precisely sampled.

98 The recent intensive sampling of new material from several sections in this area gives us the
99 opportunity to better document the diversity of the Devonian ammonoid from the North
100 Gondwanian platform. In this article we first focus on the ammonoid assemblages from one section
101 located near Béni-Abbès: the Ouarourout section. Therefore, the aim of this paper is to describe the
102 Late Devonian ammonoid assemblages collected in this section and to correlate them with the
103 ammonoid assemblages from Morocco (same paleogeographic area, North Gondwana).

104 The ammonoids from the Ouarourout section correspond to middle and basal late Famennian
105 assemblages. In this respect, our work complements the study of Korn et al. (2017) who focused on
106 late Famennian assemblages from the same area.

107

108

109 **2. Geological setting**

110

111 All the material described in this paper comes from the Ouarourout section (labelled 'On') which is
112 located in the eastern part of the Ougarta Mountains (Saoura Valley, Algerian Sahara), north-west of
113 Béni Abbès (Fig. 2). For a description of the section and its palaeoenvironmental interpretation, see
114 Menchikoff (1930), Petter (1959), Elmi and Ameur (1984), Benhamou et al. (2004), Ouali Mehadji et
115 al. (2012), and Abbache et al. (2019).

116

117 FIGURE 2 AROUND HERE

118

119 This area belongs to a major structural unit corresponding to the Saharan Platform. It
120 comprises a Precambrian basement unconformably overlain by thick sediments occurring in several
121 Palaeozoic basins, which include the Ougarta Range (western Algeria). The Ougarta Mountains
122 extend over 400 km in length and 200 km in width, and form an elongated structure with a NW/SE
123 orientation. It is a folded domain which links the Moroccan Anti-Atlas (NW) with the hills of Bled El
124 Mass and Tanezrouft (SE). The Ougarta Mountains encompasses a northern unit ('Saoura'), which is
125 constituted by anticlines corresponding to Cambrian–Ordovician deposits and by synclines
126 corresponding to Silurian–Devonian deposits (Menchikoff, 1930; Donzeau, 1983; Boumendjel et al.,
127 1997a; Fabre et al., 2005).

128 Our material originates from the 'Argiles de Marhouma' Formation (Fig. 3), which is primarily
129 characterized by fine-grained turbidite successions, interspersed with 'griotte' limestones bearing a
130 pelagic fauna and showing a wide variety of fossil traces (Bendella and Ouali Mehadji, 2015).
131 According to ammonoid, brachiopod, trilobite, conodont, and ostracod assemblages (Petter, 1959,
132 1960; Casier, 1983; Malti, 2012; Crônier et al., 2013; Mottequin et al., 2015; Abbache et al., 2019),
133 this formation contains Frasnian to Famennian (Late Devonian) deposits. This succession is overlaid
134 by the sandstones of the uppermost Famennian Ouarourout Formation (Fabre et al., 2005). The
135 'Argiles de Marhouma' Formation (260 m thick; Ouali Mehadji et al., 2012) corresponds to calcareous
136 red nodular limestones rich in ammonoids, called 'griotte' limestones, which suggests an
137 epicontinental platform (Benhamou et al., 2004; Abbache et al. 2019). These facies are linked to
138 slope deposits of deepening basins along their transition toward the platform. These red nodular

139 limestones is observed in the Tafilalt and Maider basins in Morocco and as far as in the Ougarta
140 Mountains (Saoura Valley) in Algeria. A Hercynian distension phase controlled this spatial extension
141 as understood by modelling the physical geography of basins with 'griotte' facies in an insular
142 palaeogeography (Benhamou et al., 2004).

143 The 'Argiles de Marhouma' Formation has been subdivided in four successive members (Malti,
144 2012; Crônier et al., 2013). Member 1 consists of calcareous shales which correspond to late Frasnian
145 deposits according to ammonoids (*Manticoceras*) and entomozocean ostracods (Casier, 1983).
146 Member 2 includes silty shales with 'griotte' nodules and is divided in two sub-members: 1) the unit
147 'M2a' comprises silty shales with numerous rhynchonellids (*Evanidisinurostrum saouraense*,
148 *Sphaeridiorhynchus*; possibly from the early Famennian, see Mottequin et al., 2015) in thin
149 calcareous lenses rich in horizontal burrows; and 2) the unit 'M2b' consists of alternating shales and
150 'griotte' limestones containing the Famennian conodont *Palmatolepis minuta*, as well as the middle
151 Famennian trilobite *Trimerocephalus caecus* and rhynchonellid *Leptoterorhynchus*. Member 3
152 consists of 'griotte' limestones divided into three sub-members (M3a, b, c) corresponding to late
153 Famennian levels according to conodonts (*Palmatolepis expansa*), trilobites (*Dianops*),
154 rhynchonellids, and ammonoids. Member 4 consists of shales including 'griotte' levels associated to
155 sandy and silty deposits. The succession outcropping in Ouarourout corresponds to the middle and
156 upper parts of the Member 3 (sub-members M3b and M3c), and to the lower part of the Member 4
157 (sub-member M4a).

158

159 FIGURE 3 AROUND HERE

160

161

162 3. Biostratigraphy

163

164 The ammonoids described here are distributed among 15 levels in the Ouarourout section. Their
165 stratigraphic distribution is summarized in Figure 4. Three major informal ammonoid assemblages
166 (groups of beds with roughly the same taxonomic composition) can be identified: in stratigraphic
167 order, a *Planitornoceras* interval, a *Platyclymenia* interval, and a *Medioclymenia* interval. 1) The
168 *Planitornoceras* interval is poorly diversified and mainly characterized by relatively abundant *P.*
169 *euryomphalum*. 2) The *Platyclymenia* interval is the most diversified and mainly contains
170 *Platyclymenia*, *Protactoclymenia*, *Trigonoclymenia*, *Erfoudites*, and *Prionoceras*. 3) The
171 *Medioclymenia* interval is mainly characterized by *Medioclymenia saourensis*, *Muessenbiaergia*,
172 *Kosmoclymenia inaequistriata*, *Cymaclymenia subvexa*, and *Mimimitoceras*. The *Platyclymenia*
173 interval can be subdivided in two parts: a lower part with *Erfoudites zizensis* and *Prionoceras*

174 *lamellosum*, and an upper part with *Erfoudites rherisensis*, *Sporadoceras muensteri* and
175 *Procyamclymenia ebbighauseni*, among others. Furthermore, two distinct but poorly represented
176 levels can be identified between the *Platyclymenia* and *Medioclymenia* intervals: the lower one
177 contains *Costaclymenia ornata*, and the upper one *Gonioclymenia cf. ali*.

178

179 FIGURE 4 AROUND HERE

180

181 Based on material from several localities in the Saoura Valley, Menchikoff (1930) and Petter
182 (1959, 1960) established a rough biozonation reflecting the German standard biozonation. They
183 recognized five zones within the Famennian succession in Algeria and correlated them to the major
184 subdivisions established by Wedekind (1908) in Germany: by stratigraphic order, the *Cheiloceras*
185 Zone, the *P. planidorsatum/P. sandbergeri* Zone, the *Platyclymenia* Zone, the *Gonioclymenia* Zone,
186 and the *Kalloclymenia* Zone. The stratigraphic distribution of the material described in this study
187 corroborates this biostratigraphic division, and three biozones can be recognized: the *P.*
188 *planidorsatum/P. sandbergeri* Zone (*Planitornoceras* interval), the *Platyclymenia* Zone (*Platyclymenia*
189 interval) and the *Gonioclymenia* Zone (*Medioclymenia* interval). Therefore, the sedimentary
190 succession studied herein (Ouarourout section, Fig.4) corresponds to middle and late Famennian
191 (basal part) deposits. Interestingly, in Algeria the transitions between the three zones are
192 characterized by sudden changes in ammonoid assemblages. These faunal changes respectively
193 correspond to the global *Annulata* and Dasberg bioevents (see the reviews of Hartenfels and Becker
194 (2016a) for the *Annulata* Event and Hartenfels and Becker (2009) for the Dasberg Crisis).

195 Our newly collected material also enables identifying a finer biostratigraphic sequence for the
196 Famennian deposits of Algeria. Indeed, finer subdivisions can be recognized for some part of the
197 sequence, especially the *Platyclymenia* and *Gonioclymenia* intervals (see above), that can be
198 tentatively correlated with the high-resolution of the Moroccan biozonation (see below). Note that
199 Korn et al. (2017) identified two distinct ammonoid assemblages in Algeria for the *Gonioclymenia*
200 zone of Petter (1959, 1960) based on a new collection: a lower one characterized by *Gonioclymenia*,
201 and an upper one with *Medioclymenia* as the most conspicuous index genus. In the Ouarourout
202 section, the identification of *Gonioclymenia* below the *Medioclymenia* interval (level On8f, Fig. 4)
203 allows to confirm this subdivision. Interestingly, an additional subdivision can be also documented
204 with the identification of *Costaclymenia ornata* at the base of the late Famennian succession. This
205 species has been previously recognized in Morocco (Becker et al., 2002; Korn et al., 2018c) but not in
206 Algeria.

207 As mentioned by Korn et al. (2017), the Algerian ammonoids show close relationship with time
208 equivalent occurrences of the Anti-Atlas of Morocco (same paleogeographic area, Fig. 1);

209 furthermore, the Famennian ammonoids assemblages from Morocco are well documented and
210 recent taxonomic and biostratigraphic descriptions and revisions have been made (see the reviews of
211 Korn and De Baets, 2015; Korn and Klug, 2015). Thus the ammonoid assemblages from Algeria
212 described in this study are here tentatively correlated to the Moroccan assemblages considering the
213 biozonations of Becker et al. (2002, 2013), Klein and Korn (2014), Korn et al. (2014, 2015a, b) and
214 Hartenfels and Becker (2016a, b). The correlations with these Moroccan biozonations are reported in
215 Figure 5. For a general review of the Devonian ammonoid biostratigraphy, see Korn and Klug (2015).

216 The most comprehensive and precise ammonoid zonation has been proposed by Becker et al.
217 (2002, 2013); it was subsequently updated for the middle and late Famennian by Hartenfels and
218 Becker 2016a and b. This biozonation is composed of interval zones defined by the appearance of an
219 index species. In addition, Klein and Korn (2014) and Korn et al. (2014, 2015a, b) created restricted
220 biozones based on the occurrences of the successive species of different families or genera in
221 Morocco (e.g., *Cymaclymeniidae*, *Prionoceras*, *Mimimitoceras*, *Sporadoceratidae*). Overall, the
222 correlation among the Moroccan biozonations and the described Algerian material is complicated by
223 the absence of several index species. The proposed correlation relies more on the coexistence of
224 several taxa, rather than single index species. On the one hand, the genozones of Wedekind (1908)
225 are clearly recognized as already noted by Menchikoff (1930) and Petter (1959, 1960). On the other
226 hand, the species zones of Becker et al. (2002, 2013) are less straightforward to correlate. The poorly
227 diversified *Planitornoceras* interval of Ouarourout does not contain the index species of the
228 *Sulcoclymenia sulcata* and *Afrolobites* sp. Zones, and thus, can only be roughly correlated to the *P.*
229 *euryomphalum* Zone according to the presence of *P. euryomphalum* (*Planitornoceras* genozone of
230 Klein and Korn 2014). The *Platyclymenia* interval contains two distinct assemblages which can be
231 tentatively correlated to the *Protoxyclymenia dunkeri* and *Procymaclymenia ebbighauseni* Zones,
232 respectively, based on the presence of *E. zizensis* with *P. lamellosum*, and of *P. ebbighauseni* with *E.*
233 *rherisensis* and *P. ouarouroutense* (*Platyclymenia* genozone of Klein and Korn 2014). The uppermost
234 part with *Prionoceras* cf. *subtum* may correspond to the *Sporadoceras muensteri -orbiculare* Zone,
235 however some *Prionoceras* species show different ranges compared to the Moroccan record. For
236 example, in Ouarourout, *P. lentis* is associated with *P. ouarouroutense* and not with *P. lamellosum* as
237 in the Anti-Atlas.

238 The *Medioclymenia* assemblage coupled with the *Costaclymenia* and *Gonioclymenia* levels can
239 be correlated with the UD V interval of Becker (2002, 2013) which corresponds to the *Costaclymenia*
240 and *Gonioclymenia* genozones of Klein and Korn (2014) (= *Gonioclymenia* Zone of Petter, 1960). The
241 presence of *Cymaclymenia subvexa* in the *Medioclymenia* interval confirms the correlation with the
242 *Gonioclymenia* genozone (Klein and Korn, 2014) and excludes the correlation with the *Kalloclymenia*
243 genozone. The *Costaclymenia* level, although poorly represented in Ouarourout, is nevertheless in a

244 congruent position with the *Costaclymenia ornata* Zone (Becker et al., 2002, 2013; Korn et al., 2018c)
245 (= *Costaclymenia* genozone of Klein and Korn 2014). As documented and discussed by Korn et al.
246 (2017), the genera *Gonioclymenia* and *Medioclymenia* do not coexist and constitute two distinct
247 successive zones in Algeria. These authors already discussed the correlation of these zones with the
248 Moroccan biozonation: 1) the different species of *Gonioclymenia* co-occur in Algeria (Korn, 2017;
249 Korn and Bockwinkel, 2017) and thus, do not constitute distinct biozones as in Morocco (Becker et
250 al., 2002; Hartenfels and Becker, 2016b); 2) the "*Gonioclymenia hoevelensis*" Zone (= *G. spiniger*)
251 containing "*Sphenoclymenia intermedia*" (= *Medioclymenia saourensis*), and the *Linguaclymenia*
252 *similis-Kalloclymenia subarmata* Zone are separated by the *Medioclymenia aguelmousensis* Zone
253 (Hartenfels and Becker, 2016b). This separation is confirmed in Algeria by the non-coexistence of
254 both genera *Gonioclymenia* and *Kalloclymenia* (Korn et al., 2017; this study). In conclusion, despite
255 slight differences, the Algerian and Moroccan assemblages are very close and most of the common
256 species show similar biostratigraphic ranges which facilitate correlations.

257

258 FIGURE 5 AROUND HERE

259

260

261 **4. Systematic palaeontology**

262

263 The material described and figured here is based on around 250 irregularly preserved and
264 relatively small-sized specimens. Almost 200 of them have been identified at the species rank. They
265 often correspond to internal moulds; most of them preserved the ornamentation, but the shell is
266 rarely present. The preservation is in three dimensions and the deformation is minor. The suture
267 lines are often visible and they were drawn with a light chamber microscope. The described and
268 figured specimens were analysed at the University of Lille and are stored at the University of Mascara
269 in Algeria. All the material was collected by one of us (A. Abbache).

270 The systematic nomenclature follows Korn and Klug (2002). The terminology used to describe
271 the conch geometry, the ornamentation and the suture line follows Arkell et al. (1957), Korn (2010),
272 Klug et al. (2015c) and Klug and Hoffmann (2015). The morphological abbreviations used for the
273 biometric measurements are (Fig. 6; all dimensions are given in millimetres): **D**: shell diameter; **W**:
274 whorl width; **H**: whorl height; **U**: umbilical diameter; **CWI**: conch width index = W/D ; **WWI**: whorl
275 width index = W/H ; **UWI**: umbilical width index = U/D ; **WER**: whorl expansion rate = $(D/d)^2$. The
276 abbreviations used for the suture line terminology are (Fig. 6): E lobe: external lobe; M saddle (M
277 saddle); A lobe: adventive lobe; A₂/A₁ saddle (between the first and the second A lobe); E/A saddle
278 (between E lobe and A₂ lobe); L lobe: lateral lobe; U lobe: umbilical lobe; I lobe: internal lobe.

279 The ammonoids collected in the Ouarourout section (Famennian part of the 'Argiles de
280 Marhouma' Formation) include 122 specimens of Clymeniida (suborders Clymeniina and
281 Cyrtoclymeniina) and 74 specimens of Goniatiitida (suborder Tornoceratina). The Clymeniida are
282 represented by four superfamilies (Cyrtoclymenioidea, 46 specimens; Platyclymenioidea, 37
283 specimens; Clymenioidea, 24 specimens; Gonioclymenioidea, 15 specimens), and the Goniatiitida by
284 two superfamilies (Tornoceratoidea, 24 specimens; Prionoceratoidea, 50 specimens). Overall, the
285 identified ammonoids include 11 families, 19 genera, and 30 species. These ammonoid assemblages
286 from Ouarourout are thus dominated by Clymeniida.

287

288 FIGURE 6 AROUND HERE

289

290 Phylum Mollusca Linnaeus, 1758

291 Class Cephalopoda Cuvier, 1797

292 Subclass Ammonoidea Zittel, 1884

293 Order Goniatiitida Hyatt, 1884

294 Suborder Tornoceratina Wedekind, 1914

295 Superfamily Tornoceratoidea Arthaber, 1911

296 Family Tornoceratidae Arthaber, 1911

297 Subfamily Falcitornoceratinae Becker, 1993a

298 Genus *Gundolficeras* Becker, 1995

299 **Type-species:** *Lobotornoceras bicaniculatum* Petter, 1959, p. 208; by original designation.

300 **Remarks:** Becker (1995) and Korn et al. (2016a, b) discussed in details the genus
301 *Gundolficeras* and its species, especially those from the Anti-Atlas of Morocco.

302

303 ***Gundolficeras fezzouense*** (Becker, 1995)

304 (Figure 7A–D)

305 ? 1959 *Lobotornoceras delepinei* – Petter, p. 209, pl. 15, fig. 15

306 1995 *Exotornoceras fezzouense* – Becker, p. 618, pl. 2, figs 10–13, text-fig. 5a–f

307 1995 ?*Exotornoceras sylviae* – Becker, p. 619, pl. 2, figs 4–9, text-fig. 6

308 2016a *Gundolficeras fezzouense* – Korn et al., p. 206, figs 4–5

309 2017 *Gundolficeras fezzouense* – Korn et al., p. 128, figs 4–5

310 **Material:** Two poorly preserved specimens from samples On9 (*Planitornoceras* interval) and
311 On14 (*Medioclymenia* interval).

312 **Description:** Specimen On14.16 (Fig. 7A, C) has a diameter of 32 mm; its conch is thinly
313 discoidal (CWI = 0.45) and involute (UWI = 0.01), with a weakly compressed whorl cross section (WWI

314 = 0.87) and a high whorl expansion rate (WER = 2.08). The whorl section is oval; the venter is
315 rounded and the flanks are converging (conch widest near the umbilicus); the umbilical margin is
316 subangular and the umbilical wall is oblique. The shell is not preserved (growth lines not visible). The
317 suture line (Fig. 7C) shows a narrow E lobe; a large and broadly rounded E/A saddle; a deep, rounded
318 and asymmetric A lobe; a wide and broadly rounded A/L₂ saddle; and two shallow lateral lobes (L₂,
319 L₁). Specimen On9.2 (Fig. 7B, D) has a smaller diameter (D = 13 mm) and a stouter conch) it is thickly
320 discoidal (CWI = 0.52) and involute (UWI = 0.01), with a weakly compressed whorl cross section (WWI
321 = 0.88) and an extremely high whorl expansion rate (WER = 2.64). Except the E/A ventrolateral saddle
322 which is weakly flattened in On9.2 (Fig. 7D), there is no shape difference when comparing the suture
323 line of both specimens.

324 **Discussion:** The suture line of both studied specimens is characteristic of the genus
325 *Gundolficeras* (narrow E lobe; deep, rounded weakly asymmetric A lobe; large broadly rounded E/A
326 saddle; shallow lateral lobes). Among the Moroccan species of *Gundolficeras*, *G. fezzouense* differs by
327 its discoidal conch, by its rounded A lobe, and by the absence of ventrolateral grooves.

328 **Occurrence:** In the Ouarourout area (Algeria), *Gundolficeras fezzouense* is relatively rare and
329 occurs in the *Planitornoceras* and *Medioclymenia* intervals (middle and late Famennian; Fig. 4). Korn
330 et al. (2017) documented *G. fezzouense* in two localities in Algeria (Ouarourout and Cheffar Ahmar)
331 and recorded it in the *Gonioclymenia* and *Medioclymenia* assemblages (late Famennian). In Morocco,
332 the genus displays a long range within the Famennian, from the *Planitornoceras euryomphalum* Zone
333 to the *Effenbergia falx* Zone (middle and late Famennian; Becker, 1995; Becker et al., 2002, 2013).

334
335 Subfamily Aulatornoceratinae Becker, 1993a

336 Genus *Planitornoceras* Becker, 1995

337 **Type-species:** *Planitornoceras pugnax* Becker, 1995, p. 611; by original designation.

338
339 ***Planitornoceras euryomphalum*** (Wedekind, 1918)

340 (Figure 7E–L)

341 1918 *Pseudoclymenia planidorsata* var. *euryomphala* – Wedekind, p. 138

342 1959 *Tornoceras (Protornoceras) planidorsatum* var. *euryomphala* – Petter, p. 203, pl. 15, figs

343 4–5

344 2002 *Planitornoceras euryomphalum* – Becker et al., pl. 4, fig. 1

345 2002 *Planitornoceras euryomphalum* – Korn and Klug, p. 162, text-fig. 148e

346 **Material:** 21 specimens from samples On4, On6, On7, On8p and On9 (*Planitornoceras*
347 interval).

348 **Description:** The diameter of the specimens assigned to *P. euryomphalum* varies from 10.8 to

349 30.5 mm. They exhibit an extremely discoidal conch (CWI = 0.25–0.34; decreasing through ontogeny)
350 with a weakly compressed whorl cross section (WWI = 0.60–0.78; decreasing through ontogeny). The
351 umbilicus is relatively narrow; most of the specimens have a subinvolute conch (UWI = 0.18–0.34).
352 The whorl expansion rate decreases considerably during the ontogeny, from very high (WER = 2.41 at
353 D = 10.8 mm) to low (WER = 1.73 at D = 30.5 mm). The whorl section is subtrapezoidal; the venter is
354 flat (subangular ventrolateral margins) and the flanks are slightly converging; the umbilical margin is
355 subangular and the umbilical wall is oblique (Fig. 7 E–H). The ornamentation is composed of weak,
356 slightly prorsiradiate, moderately spaced, sinuous ribs, which are thicker on the upper flanks. Growth
357 lines are rectiradiate, biconvex, and projected backward on the venter (well visible in On9.12, Fig.
358 7F). The suture line shows a shallow V-shaped E lobe; a strongly asymmetric, shallow and rounded A
359 lobe which is elongated toward the venter; and an asymmetric, shallow and rounded L lobe (Fig. 7I–
360 L).

361 **Discussion:** The very wide and asymmetric A lobe, the absence of ventrolateral grooves and
362 constrictions, and the compressed subtrapezoidal whorl section (slightly converging flanks and
363 angular venter), are characteristic of the genus *Planitornoceras*. *P. euryomphalum* shows a wide
364 intraspecific variation regarding the thickness of the ornamentation, the conch width and the degree
365 of involution. In Ouarourout, the genus is only represented by the species *P. euryomphalum* (the
366 most evolute species of the genus); the species *P. pugnax* Becker, 1995 described in the Maider
367 region (Morocco) has not been recognized.

368 **Occurrence:** In the Ouarourout area (Algeria), *Planitornoceras euryomphalum* is relatively
369 abundant and occurs through the *Planitornoceras* interval (middle Famennian; Fig. 4). In Morocco, *P.*
370 *euryomphalum* ranges from the *Planitornoceras euryomphalum* Zone to the *Sulcoclymenia sulcata*
371 Zone (middle Famennian; Becker, 1995; Becker et al., 2002, 2013; Fig. 5).

372

373 FIGURE 7 AROUND HERE

374

375 Family Posttornoceratidae Bogoslovsky, 1971

376 Subfamily Discoclymeniinae Korn and Klug, 2002

377 Genus *Discoclymenia* Hyatt, 1884

378 **Type-species:** *Goniatites Haueri* Münster, 1840, p. 109; by monotypy.

379

380 *Discoclymenia atlantea* Korn et al., 2016a

381 (Figure 8A–B)

382 1950 *Discoclymenia cucullata* – Termier and Termier, p. 60, pl. 53, figs 38–45, pl. 54, figs 1–3

383 1959 *Discoclymenia cucullata* – Petter, p. 210, pl. 15, figs 8–10

- 384 ? 1959 *Discoclymenia cucullata* n. var.? – Petter, p. 211, pl. 15, fig. 16
385 1983 *Discoclymenia cucullata* – Gupta and Erben, p. 94, text-figs 1a–d, 6.1
386 1995 *Discoclymenia cucullata* – Becker, p. 622, pl. 3, figs 3–7, text-fig. 8b–d
387 1999 *Discoclymenia cucullata* – Korn, p. 164, pl. 1, figs 7, 8
388 2002 *Discoclymenia cucullata* – Becker, p. 66
389 ? 2002 *Discoclymenia cucullata*– Becker et al., p.171–173
390 2002 *Discoclymenia cucullata* – Korn and Klug, p. 170, text-figs 153a, d–f, 154c–e
391 2016a *Discoclymenia atlantea* – Korn et al., p. 214, figs 13–15
392 2017 *Discoclymenia atlantea* – Korn et al., p. 130, figs 8–9

393 **Material:** One fragmented specimen from sample On13 (*Medioclymenia* interval).

394 **Description:** Specimen On13.12 (Fig. 8A–B) is a fragment of conch with an estimated
395 diameter of 40 mm. The proportions of this fragment indicate a thinly discoidal conch, with a weakly
396 compressed whorl cross section. The whorl section is oval; the venter is narrowly rounded and the
397 flanks are converging. The suture line shows a narrow and subparallel-sided E lobe; a shallow and
398 rounded second adventive lobe (A_2 lobe) bordered by small rounded saddles; a deep, and nearly
399 symmetric V-shaped first adventive lobe (A_1 lobe); and a skewed V-shaped L lobe which is shallower
400 than the A_1 lobe. The shell is not preserved.

401 **Discussion:** The shallow, very short and rounded A_2 lobe is characteristic of the genus
402 *Discoclymenia*. Among the Moroccan species of *Discoclymenia*, the single specimen described here,
403 although fragmented, fits with *D. atlantea*, and therefore it is tentatively assigned to this taxa. The
404 older *D. pola* differs by its subangular and flattened venter (ventrolateral shoulder often pronounced)
405 and by its deeper E lobe, (Korn et al., 2016a, b).

406 **Occurrence:** In the Ouarourout area (Algeria), *Discoclymenia atlantea* seems extremely rare
407 and occurs in the *Medioclymenia* interval (late Famennian; Fig. 4). Korn et al. (2016a, 2017) also
408 documented *D. atlantea* in the Ouarourout area and recorded it in the *Medioclymenia* assemblage
409 (late Famennian). In Morocco, the stratigraphic range of *D. atlantea* is unclear. Becker et al. (2002)
410 documented it (“*D. cucullata*”) from the “*Endosiphonites muensteri*” Zone (= *Costaclymenia muensteri*
411 Zone, UD V.A1) to the “*Mayneoceras nucleus*” Subzone (= *Parawocklumeria paradoxa* Zone, UD VI.C2,
412 see Becker et al. 2013). Korn et al. (2016a) considered that in Morocco, *D. atlantea* is probably
413 restricted to a shorter stratigraphic interval, corresponding to the time equivalent of the Algerian
414 *Medioclymenia* assemblage (Korn et al., 2017). This assemblage constitutes a distinct interval mostly
415 characterized by the presence of *Medioclymenia* coupled to the absence of *Gonioclymenia* and
416 *Kalloclymenia* (Korn et al., 2016a, 2017); thus, it can be considered as time equivalent of the
417 Moroccan *Medioclymenia aguelmousensis* Zone of Becker et al. (2013; see Fig. 5).

418

419 FIGURE 8 AROUND HERE

420

421 Superfamily Prionoceratoidea Miller and Furnish, 1957

422 Family Sporadoceratidae Miller and Furnish, 1957

423 Subfamily Sporadoceratinae Miller and Furnish, 1957

424 Genus *Sporadoceras* Hyatt, 1884

425 **Type species:** *Goniatites bidens* Sandberger and Sandberger, 1851, pl. 8; by original
426 designation.

427 **Remarks:** Two sporadoceratid genera occurred in the Ouarourout section: *Sporadoceras* and
428 *Erfoudites*. Korn et al. (2015b) revised and discussed in detail these genera and other
429 Sporadoceratidae from the Anti-Atlas of Morocco. *Sporadoceras* differs from *Erfoudites* by its convex
430 growth lines, by the absence of spiral ornament, and by its characteristic suture line which shows a
431 very deep A₂ lobe.

432

433 ***Sporadoceras cf. muensteri*** (von Buch, 1832)

434 (Figure 9A–C)

435 For the synonymy list of *S. muensteri*, see Korn et al., 2015b.

436 **Material:** Four specimens from sample On12 (*Platyclymenia* interval).

437 **Description:** Specimen On12.19 (Fig. 9A, C) has a diameter of 19.3 mm; its conch is thickly
438 pachyconic (CWI = 0.80) and involute (UWI = 0.01), with a weakly depressed whorl cross section
439 (WWI = 1.34) and a high whorl expansion rate (WER = 2.01). The whorl section is oval; the venter is
440 broadly rounded and the flanks are converging; the umbilical margin is rounded and the umbilical
441 wall is oblique. The shell shows convex growth lines, otherwise smooth. The suture line shows a
442 narrow V-shaped E lobe; a deep and asymmetric V-shaped A₂ lobe; a deep, relatively wide and
443 asymmetric A₁ lobe; wide and rounded E/A₂ and A₂/A₁ saddles; and an asymmetric, wide and broadly
444 rounded dorsolateral saddle. Specimen On12.26 (Fig. 9 B), with an estimated diameter of 40 mm,
445 shows a very similar suture line. Specimen On12.23' (not illustrated), with a diameter of 23.1 mm,
446 has a similar morphology; its conch is pachyconic (CWI = 0.72) and involute (UWI = 0.01), with a
447 weakly depressed whorl cross section (WWI = 1.26) and a high whorl expansion rate (WER = 2.08).
448 The whorl section is oval; the venter is broadly rounded and the flanks are converging. The surface of
449 the shell is smooth. The suture line is partly visible and shows a narrow V-shaped E lobe and a deep
450 V-shaped A₂ lobe.

451 **Discussion:** The convex growth lines, the absence of spiral ornament on the shell, and the
452 suture line shape, enable the attribution of this material to the genus *Sporadoceras*. The conch
453 proportions and the deep A₂ lobe showed by these Algerian specimens are characteristic of *S.*

454 *muensteri*, and differentiate this taxon from the other Moroccan species of *Sporadoceras*; however,
455 they does not show constrictions on the internal mould (steinkern).

456 **Occurrence:** In the Ouarourout area (Algeria), *Sporadoceras* cf. *muensteri* occurs in the
457 *Platyclymenia* interval (late Famennian, Fig. 4). In Morocco, *S. muensteri* ranges from the *Prionoceras*
458 *ouarouroutense* Zone to the *Prionoceras jeranense* Zone (late Famennian; Korn et al., 2015b), but the
459 most frequent occurrences is in the *Prionoceras subtum* Zone (= time equivalent of the *S. muensteri*-
460 *orbiculare* Zone; see Fig. 5).

461

462 ***Sporadoceras* aff. *conforme*** Korn et al., 2015b

463 For the synonymy list of *S. conforme*, see Korn et al., 2015b.

464 (Figure 9D–F)

465 **Material:** Two specimens from samples On3 (before the *Planitornoceras* interval) and On4
466 (*Planitornoceras* interval).

467 **Description:** Specimens On4.6 (D = 17.6 mm; Fig. 9D, F) and On3.7 (D = 18.0 mm; Fig. 9E)
468 have similar conch proportions. Their conch is thickly discoidal (CWI = 0.56 and 0.50) and involute
469 (UWI = 0.02), with a weakly compressed whorl cross section (WWI = 1.00 and 0.82) and a moderate
470 whorl expansion rate (WER = 1.92 and 1.98). The whorl section is oval; the venter is rounded and the
471 flanks are converging; the umbilicus is almost closed and the umbilical wall is oblique. The shell is not
472 preserved (growth lines not visible). Both specimens show three steinkern constrictions on the last
473 whorl. These constrictions are convex with a shallow ventral sinus, and they are more pronounced on
474 the venter and on the upper part of the flanks. The suture lines are visible on both specimens, and
475 they show a similar shape; however the surface of the fossils is altered and some sutural elements
476 (as the adventive lobes) may appear more rounded than they were. At H = 7 mm, the suture line of
477 specimen On4.6 (Fig. 9D) shows a narrow V-shaped E lobe; a narrow, deep and rounded U-shaped A₂
478 lobe; a deep, relatively wide and slightly asymmetric V-shaped A₁ lobe; a rounded and slightly
479 asymmetric E/A₂ saddle; a relatively wide, rounded and symmetric A₂/A₁ saddle; and a very wide and
480 rounded dorsolateral saddle.

481 **Discussion:** The conch proportions, the presence of steinkern constrictions, and the suture
482 line with a slightly asymmetric V-shaped A₁ lobe showed by the studied specimens are characteristic
483 of *S. conforme*. However, in Morocco *S. conforme* has been recorded in younger levels (late
484 Famennian, *Prionoceras vetus* and *Prionoceras lamellosum* zones; Korn et al., 2015b); and among the
485 middle Famennian species of *Sporadoceras* documented in Morocco, *S. bidens* does not possess
486 constrictions and has a very asymmetric A₂ lobe (Korn et al., 2015b), and *S. equale* also does not
487 possess constrictions and has narrower adventive lobes (Becker et al., 2002). The state of
488 preservation of both specimens (absence of preserved shell, poorly preserved suture) prevents to

489 reach a better assignment.

490 **Occurrence:** In the Ouarourout area (Algeria), *Sporadoceras* aff. *conforme* occurs in the
491 *Planitornoceras* interval (middle Famennian, Fig. 4). In Morocco, *S. conforme* has been documented
492 in younger deposits (late Famennian, *Prionoceras vetus* and *Prionoceras lamellosum* zones; Korn et
493 al., 2015b; time equivalent of the *Platyclymenia annulata* and *Protoxyclymenia dunkeri* zones; see
494 Fig. 5).

495

496 Subfamily Xenosporadoceratinae Korn, 2002

497 Genus *Erfoudites* Korn, 1999

498 **Type species:** *Erfoudites zizensis* Korn, 1999, p. 158; by original designation.

499 **Remarks:** The genus *Erfoudites* and its species, especially those from the Anti-Atlas of
500 Morocco, have been recently discussed in detail (Korn et al., 2015b).

501

502 ***Erfoudites rherisensis*** Korn, 1999

503 (Figure 9G–M)

504 1959 *Sporadoceras biferum* – Petter, p. 260, pl. 20, figs 1, 3, pl. 21, figs 3, 4 (only)

505 1959 *Sporadoceras rotundolobatum* – Petter, p. 267, pl. 21, figs 1, 2

506 1999 *Erfoudites rherisensis* – Korn, p. 158, pl. 2, figs 4–6

507 2000 “*Maeneceras*” *ungeri ungeri* – Becker et al., p. 80, 81

508 2000 “*Maeneceras*” *ungeri rotundolobatum* – Becker et al., p. 80, 81

509 2002 *Erfoudites ungeri* – Becker et al., p. 171.

510 2002 *Erfoudites ungeri rotundolobatus* – Bockwinkel et al., p. 283, text-fig. 4d

511 2002 *Erfoudites rherisensis* – Korn and Klug, p. 189, textfig. 167A, B

512 2013 *Erfoudites ungeri* – Becker et al., p. 70, text-fig. 12.4

513 2015b *Erfoudites rherisensis* – Korn et al., p. 70, figs 23–31

514 **Material:** 12 specimens from samples On10, On11 and On12 (*Platyclymenia* interval).

515 **Description:** Specimens On12.47 (D = 41.8 mm), On12.48 (D = 44.0 mm) and On10.41 (= 36.0
516 mm; Fig. 9G) show similar conch proportions. Their conch is thickly discoidal (CWI = 0.46–0.53) and
517 involute (UWI = 0.01), with a weakly compressed whorl cross section (WWI = 0.83–0.91) and a high
518 whorl expansion rate (WER = 2.30 and 2.01). The whorl section is oval; the venter is rounded and the
519 flanks are converging; the umbilical margin is rounded and the umbilical wall is oblique. The shell is
520 not preserved, but the internal mould shows steinkern constrictions (seven on the last whorl for the
521 three specimens); these constrictions are more prominent on the venter and on the upper part of
522 the flanks, and fade toward the umbilicus; they are concavo-convex and projected backward on the
523 venter (these constrictions are well visible in specimen On 10.41, see Fig. 9G). Suture lines are visible

524 in specimens On 10.41 and On12.47; they show a wide V-shaped A_1 lobe, and a shallow and rounded
525 A_2 lobe. Specimen On12.25 (Fig. 9H) has a diameter of 30.6 mm; its conch is thickly discoidal (CWI =
526 0.59) and involute (UWI = 0.01), with a weakly compressed whorl cross section (WWI = 0.97) and a
527 very high whorl expansion rate (WER = 2.34). The whorl section is oval; the venter is rounded and the
528 flanks are converging; the umbilical margin is rounded and the umbilical wall is oblique. The shell is
529 partly preserved and four concavo -convex constrictions can be seen on the internal mould. The shell
530 is covered by a very fine and dense spiral ornament; the spiral lines are narrower than the spaces
531 between them. The growth lines are slightly biconvex and projected backward on the venter. Suture
532 lines are well visible in specimens On 10.43 and On10.42 (Fig. 9J, K); they show a narrow V-shaped E
533 lobe; a shallow and rounded A_2 lobe; and a deep and pointed V-shaped A_1 lobe. Specimen On12.20
534 (Fig. 9L, M) has a diameter of 20.3 mm; its conch is thickly discoidal (CWI = 0.62) and involute (UWI =
535 0.02), with a weakly depressed whorl cross section (WWI = 1.15) and a high whorl expansion rate
536 (WER = 2.10). The whorl section is oval; the venter is rounded and the flanks are converging. The
537 shell is preserved and shows biconvex growth lines forming a thin spiral ornament (Fig. 9L, M). The
538 suture line is partly visible, and shows a rounded and shallow A_2 lobe, and a deep V-shaped A_1 lobe.
539 Specimen On12.18 (Fig. 9I) has a diameter of 14.7 mm; its conch is thickly discoidal (CWI = 0.60) and
540 involute (UWI = 0.01), with a weakly depressed whorl cross section (WWI = 1.02) and a very high
541 whorl expansion rate (WER = 2.39). The whorl section is oval; the venter is rounded and the flanks
542 are converging. The spiral ornament formed by the thin biconvex growth lines is visible, but is less
543 pronounced than in larger specimens. The series of specimens described herein illustrate the
544 decrease of CWI and WWI through the ontogeny (more discoidal and compressed conch at the adult
545 stage).

546 **Discussion:** The suture line with a shallow and rounded A_2 lobe and a deep V-shaped A_1 lobe,
547 the steinkern constrictions, and the spiral ornament, are characteristic of the genus *Erfoudites*.
548 Among the Moroccan species of *Erfoudites*, the high whorl expansion rate and the thin and dense
549 spiral ornament are characteristic of *E. rherisensis*, and differentiate it from the older *E. zizensis*.

550 **Occurrence:** In the Ouarourout area (Algeria), *Erfoudites rherisensis* occurs in the upper part
551 of the *Platyclymenia* interval (late Famennian; Fig. 4). According to Becker et al. (2002), in Morocco,
552 *E. rherisensis* ("*E. ungeri*") ranges from the *Platyclymenia annulata* Zone to the *Kalloclymenia*
553 *subarmata* Zone (late Famennian; Fig. 5). Korn et al. (2015b) documented a shorter range; they
554 indicated that *E. rherisensis* occurs from the *Prionoceras mrakibense* Zone to the *Prionoceras*
555 *jeranense* Zone (Fig. 5), and that the most frequent occurrence of the species is in the *P. jeranense*
556 Zone (time equivalent of the *Costaclymenia muensteri* Zone; see Fig. 5).

557

558 ***Erfoudites cf. zizensis* Korn, 1999**

559 For the synonymy list of *E. zizensis*, see Korn et al., 2015b.

560 **Material:** Two poorly preserved specimens from sample On8 (*Platyclymenia* interval).

561 **Description:** Specimens On8.60 (D = 28.6 mm) and On8.61 (D = 24.5 mm) have similar conch
562 proportions. Their conch is thickly discoidal (CWI = 0.57 and 0.64) and involute (UWI = 0.01), with a
563 weakly depressed whorl cross section (WWI = 0.98 and 1.12) and a low whorl expansion rate (WER ≈
564 1.7). The whorl section is oval; the venter is rounded and the flanks are converging; the umbilical wall
565 is oblique. The internal mould shows several constrictions (five on the last whorl); they are more
566 prominent on the venter and on the upper part of the flanks

567 **Discussion:** The state of preservation of the material prevents to reach a firm identification,
568 both at the genus and at the species ranks. The conch morphology (thickly discoidal, involute, weakly
569 depressed, with an oval whorl section) and the few convex constrictions projected backward on the
570 venter are suggestive of *Erfoudites*, but the absence of preserved shell and suture line prevent to
571 corroborate this hypothesis. These two specimens are tentatively assigned to *Erfoudites* cf. *zizensis*,
572 based on the low whorl expansion rate (WER < 2.00).

573 **Occurrence:** In the Ouarourout area (Algeria), *Erfoudites* cf. *zizensis* occurs in the lower part
574 of the *Platyclymenia* interval (late Famennian; Fig. 4). In Morocco, *E. zizensis* occurs in the
575 *Prionoceras lamellosum* Zone (Korn et al., 2015b; time equivalent of the *Protoxyclymenia dunkeri*
576 Zone, see Fig. 5).

577

578 ***Erfoudites* aff. *spirifer*** (Lange, 1929)

579 (Figure 9N–Q)

580 **Material:** Three poorly preserved specimens from samples On2 and On3 (levels below the
581 *Planitornoceras* interval).

582 **Description:** Specimen On3.2 (Fig. 9N, O) has a diameter of 23.0 mm; its conch is thinly
583 pachyconic (CWI = 0.63) and involute (UWI = 0.06), with a weakly depressed whorl cross section
584 (WWI = 1.10) and a moderate whorl expansion rate (WER = 1.98). The whorl section is oval; the
585 venter is broadly rounded and the flanks are converging; the umbilical margin and the umbilical wall
586 are rounded. The suture line shows a V-shaped E lobe; a shallow and asymmetric A₂ lobe; a deep and
587 lanceolate A₁ lobe; and a large and broadly rounded dorsolateral saddle. Specimens On2.4 (D = 14
588 mm) and On2.5 (D = 19.7 mm; Fig. 9P, Q) have very similar conch proportions (UWI ≈ 0.09; CWI ≈
589 0.66; WWI ≈ 1.29; WER = 1.56 and 1.77). Their internal moulds show few slightly convex
590 constrictions. The suture line of these specimens shows an A₂ lobe less asymmetric than this of
591 specimen On3.2 (see Fig. 9O, P).

592 **Discussion:** The poorly preserved material prevents to reach a firm identification both at the genus
593 and species ranks. The conch geometry (involute, weakly depressed, thickly discoidal, oval whorl

594 section) and the few convex constrictions are suggestive of *Erfoudites* and *Maenoceras*. The spirally
595 ornamented shell surface is not preserved but the suture line shape resembles to this of the
596 Moroccan species of *Erfoudites* (*E. zizensis* and *E. rherisensis*). These specimens are tentatively
597 assigned to *Erfoudites* aff. *spirifer* (for illustrations of the species *E. spirifer*, see Korn and Klug, 2002;
598 and Becker et al., 2002) because they differ from *E. zizensis* and *E. rherisensis* by a more depressed
599 conch and a highly asymmetric A₂ lobe. This type of suture line resembles those of *Felisporadoceras*,
600 but this genus has a more depressed conch and a much higher whorl expansion rate (Korn et al.,
601 2015b). The genus *Erfoudites* can also be confused with the genus *Ungusporadoceras*; they have
602 similar conch proportions and they both possess spiral ornament, but in *Ungusporadoceras* the A₂
603 lobe is clearly deeper (Korn et al., 2015b).

604 **Occurrence:** In the Ouarourout area (Algeria), *Erfoudites* aff. *spirifer* occurs in the
605 *Planitornoceras* interval (middle Famennian; Fig. 4). In Morocco, *E. spirifer* occurs from the
606 *Planitornoceras euryomphalum* Zone to the *Sulcoclymenia sulcata* Zone (middle Famennian; Becker
607 et al., 2002).

608

609 FIGURE 9 AROUND HERE

610

611 Family Prionoceratidae Hyatt, 1884

612 Subfamily Prionoceratinae Hyatt, 1884

613 Genus *Prionoceras* Hyatt, 1884

614 **Type species:** *Goniatites divisus* Münster, 1832, p. 24; by original designation.

615 **Remarks:** The genus *Prionoceras* and its species, especially those from the Anti-Atlas of
616 Morocco, have been recently discussed in detail (Korn et al., 2014).

617

618 ***Prionoceras ouarouroutense*** Korn et al., 2014

619 (Figure 10A–B)

620 1959 *Prionoceras frechi* – Petter, p. 243, pl. 18, figs 1–3, 17–18

621 2014 *Prionoceras ouarouroutense* – Korn et al., p. 193, figs 25–27

622 **Material:** Three specimens (internal moulds) from samples On10 and On11 (*Platyclymenia*
623 interval).

624 **Description:** The three specimens assigned to *Prionoceras ouarouroutense* (On11.24, D =
625 25.4 mm, Fig. 10A; On10.31, D = 19.6 mm, Fig. 10B; On11.25, D = 20.4 mm) have similar proportions.
626 Their conch is thinly discoidal (CWI = 0.45–0.54) and involute (UWI = 0.01), with a weakly compressed
627 whorl cross section (WWI = 0.80–0.91) and a low whorl expansion rate (WER = 1.48–1.69). The whorl
628 section is oval; the venter is rounded and the flanks are slightly converging; the umbilicus is almost

629 closed. They show five steinkern constrictions standing in distances of 70°; most of them are linear
630 with a relatively deep ventral sinus, but interestingly the last constriction of specimen On 11.24 has a
631 slightly convex course (Fig. 10A), and the last constriction of specimen On10.31 seems to have an
632 irregularity in its course (Fig. 10B). In all specimens, the shell is not preserved, and the suture lines
633 are not visible.

634 **Discussion:** The conch geometry (thickly discoidal, involute, oval whorl section) and the
635 steinkern constrictions are characteristic of the genus *Prionoceras*. These specimens are assigned to
636 *Prionoceras ouarouroutense* based on the number of constrictions (five at a diameter of 15 mm) and
637 on their shape (deep ventral sinus), and on the conch width (compressed conch). Among the species
638 having also five constrictions at similar sizes (Korn et al., 2014), *P. lamellosum* has constrictions
639 without ventral sinus, a higher CWI (> 0.6) and a higher WWI (> 1.20); *P. subtum* has constrictions
640 with shallow ventral sinus, a higher CWI (0.58) and a higher WWI (> 1.10); and *P. jeranense* has
641 constrictions without ventral sinus, a higher CWI (> 0.65) and a higher WWI (> 1.15).

642 **Occurrence:** In the Ouarourout area (Algeria), *Prionoceras ouarouroutense* occurs in the
643 middle part of the *Platyclymenia* interval (late Famennian; Fig. 4). In Morocco, this species marks the
644 *P. ouarouroutense* Zone (late Famennian; Korn et al., 2014; see Fig. 5).

645

646 ***Prionoceras lamellosum*** Korn et al., 2014

647 (Figure 10C–D)

648 ? 1959 *Prionoceras substriatum* – Petter, p. 247, pl. 18, fig. 10 (pars)

649 1994 *Prionoceras divisum* – Korn, text-figs 29B, 30E (only)

650 2002 *Prionoceras divisum* – Korn and Klug, text-fig. 171A

651 2014 *Prionoceras lamellosum* – Korn et al., p. 183, figs 15–18

652 **Material:** Five specimens from sample On8 (*Platyclymenia* interval).

653 **Description:** Specimen On8.58 (Fig. 10D) has a diameter of 20.1 mm; its conch is thinly
654 pachyconic (CWI = 0.70) and involute (UWI = 0.01), with a weakly depressed whorl cross section
655 (WWI = 1.24) and a low whorl expansion rate (WER = 1.58). The whorl section is oval; the venter is
656 rounded and the flanks are converging; the umbilical margin is rounded and the umbilical wall is
657 convex. The internal mould shows three constrictions; they extend linearly on the flanks and on the
658 venter, and they stand in distances of around 120°. Specimens On8.51–8.54 (around 10 mm conch
659 diameter) have similar conch proportions (thinly pachyconic, CWI = 0.58–0.80; involute, UWI = 0.02;
660 weakly depressed, WWI = 1.05–1.57; low whorl expansion rate, WER = 1.65). The whorl section is
661 oval; the venter is broadly rounded and the flanks are converging; the umbilical margin is rounded
662 and the umbilical wall is convex. The internal mould shows three or four constrictions, which have a
663 slightly sinuous course. Specimen 8.51 (Fig. 10C) shows four steinkern constrictions; they are slightly

664 concave on the flanks, with a low ventral projection, and stand in distances of around 90°. In all
665 specimens, the shell is not preserved, and the suture lines are not visible.

666 **Discussion:** The conch shape (thinly pachyconic, involute, weakly depressed, oval whorl
667 section) and the steinkern constrictions are characteristic of the genus *Prionoceras*. These specimens
668 are assigned to *Prionoceras lamellosum* based on the number of constrictions (three at a diameter of
669 20 mm) and on their shape (linear), and on the conch width (depressed conch). *Prionoceras*
670 *lamellosum* has a typical ornamentation (lamellose and wide-standing growth lines with convex
671 course), but it cannot be observed in our Algerian material because none of the studied specimens
672 have preserved their shell surface. As noted by Korn et al. (2014), the CWI and the WWI of this
673 species show a large variability, but not the WER. Among the Moroccan species of *Prionoceras*, *P.*
674 *divisum* also has three linear constrictions at similar size (Korn et al., 2014), but it has a slightly higher
675 WWI (> 1.30) and a lower WER (< 1.55). *P. lentis*, *P. mrakibense* and *P. triens*, also have three
676 constrictions, but all these species have a more compressed conch (WWI < 1.00).

677 **Occurrence:** In the Ouarourout area (Algeria), *Prionoceras lamellosum* occurs in the lower
678 part of the *Platyclymenia* interval (late Famennian; Fig. 4). In Morocco, this species marks the *P.*
679 *lamellosum* Zone (late Famennian; Korn et al., 2014; see Fig. 5).

680

681 ***Prionoceras* aff. *frechi*** (Wedekind, 1913)

682 (Figure 10E–G)

683 For the synonymy list of *P. frechi*, see Korn et al. 2014.

684 **Material:** Three specimens from samples On8 and On10 (*Platyclymenia* interval).

685 **Description:** Specimen On10.34 (Fig. 10F) has a diameter of 32.4 mm; its conch is thinly
686 discoidal (CWI = 0.38) and involute (UWI = 0.01), with a weakly compressed whorl cross section (WWI
687 = 0.72) and a low whorl expansion rate (WER = 1.63). The whorl section is oval; the venter is narrowly
688 rounded and the flanks are subparallel (conch widest at the midflank area); the umbilical margin is
689 rounded and the umbilical wall is convex. The internal mould shows four constrictions, which are
690 linear on the flanks and slightly convex on the venter; they are irregularly-spaced and stand in
691 distances of 120° and 90°. Specimen On10.33 (D = 26.1 mm; Fig.10E, G) has similar conch proportions
692 (thinly discoidal, CWI = 0.39; involute, UWI = 0.04; weakly compressed, WWI = 0.67; low whorl
693 expansion rate, WER = 1.57). The whorl section is oval; the venter is narrowly rounded and the flanks
694 are subparallel; the umbilical margin is rounded and the umbilical wall is convex. The internal mould
695 shows three constrictions, which are relatively linear on the flanks and slightly convex on the venter;
696 they stand in distances of around 110°. The suture line shows a deep, narrow and parallel-sided E
697 lobe; a narrow and relatively deep V-shaped L lobe; a wide, rounded and asymmetric ventrolateral
698 saddle; and a very wide and broadly rounded dorsolateral saddle.

699 **Discussion:** The conch geometry (thinly discoidal, involute, weakly compressed, oval whorl
700 section) and the steinkern constrictions are characteristic of the genus *Prionoceras*. These specimens
701 are tentatively assigned to *Prionoceras* aff. *frechi* based on the number of constrictions (four at 20–
702 30 mm diameter) and on their shape (linear with a shallow ventral sinus), on the conch proportions
703 (weakly compressed conch), and on the shape of the flanks (subparallel) Two species of *Prionoceras*,
704 which resemble to the European species *P. frechi*, are known from Morocco: *P. mrakibense* and *P.*
705 *lentis* (see Korn et al., 2014). *P. mrakibense* differs by having a stouter conch (WWI > 0.90); *P. lentis*
706 has similar conch proportions but differs by having converging flanks (they are subparallel in *P.*
707 *lentis*).

708 **Occurrence:** In the Ouarourout area (Algeria), *Prionoceras* aff. *frechi* occurs in the
709 *Platyclymenia* interval (late Famennian; Fig. 4). Becker et al. (2002) recognized *P. frechi* in the Anti-
710 Atlas of Morocco, and documented it from the *Platyclymenia annulata* Zone to the *Sporadoceras*
711 *muensteri- orbiculare* Zone ; however according to Korn et al. (2014) this species only occurs in
712 Europe where it is restricted to the *Platyclymenia annulata* Zone.

713

714 ***Prionoceras lentis*** Korn et al., 2014

715 (Figure 10H–I)

716 1994 *Prionoceras frechi* – Korn, text-figs 29A, 30D (only)

717 1999 *Prionoceras frechi* – Korn, pl. 2, fig. 7

718 2002 *Prionoceras frechi* – Korn and Klug, text-fig. 171B

719 2014 *Prionoceras lentis* – Korn et al., p. 189, figs 21–22

720 **Material:** Three specimens from sample On11 (*Platyclymenia* interval).

721 **Description:** Specimens On11.20 (D = 15.8 mm; Fig. 10H) and On11.22 (D = 18.5 mm; Fig. 10I)
722 have a similar conch geometry; their conch is thinly discoidal (CWI = 0.45 and 0.47) and involute (UWI
723 = 0.01 and 0.03), with a weakly compressed whorl cross section (WWI = 0.79 and 0.80) and a low
724 whorl expansion rate (WER = 1.56 and 1.61). The whorl section is oval; the venter is narrowly rounded
725 and the flanks are converging; the umbilical margin is rounded and the umbilical wall is convex. The
726 internal mould shows three constrictions standing in distance of 120°; they are linear with a shallow
727 ventral sinus. In all specimens, the shell is not preserved, and the suture lines are not visible.

728 **Discussion:** These specimens are assigned to *Prionoceras lentis* based on the number of
729 constrictions (three) and on their shape (linear with a shallow ventral sinus), and on the conch
730 proportions (weakly compressed conch). In Morocco, two species of *Prionoceras* resemble *P. lentis*:
731 *P. mrakibense* and *P. ouarouroutense* (see Korn et al., 2014); but these both species have a stouter
732 conch at comparable diameter (in *P. mrakibense* and *P. ouarouroutense* WWI = 0.50–0.60 at D = 20
733 mm, but 0.35–0.40 in *P. lentis*). In Algeria, *P. lentis* and *P. aff. frechi* have a very close morphology;

734 they differs only by the shape of their flanks (converging in *P. lentis* and subparallel in *P. aff. frechi*).
735 Intermediary shapes (from converging to subparallel flanks) may exist between these two
736 morphotypes and that would indicate that these species could be actually considered as synonym.
737 However, more material is needed to evaluate this morphological variability and confirm or not this
738 hypothesis.

739 **Occurrence:** In the Ouarourout area (Algeria), *Prionoceras lentis* occurs in the middle part of
740 the *Platyclymenia* interval (late Famennian; Fig. 4). In Morocco, *P. lentis* is restricted to the
741 *Prionoceras lamellosum* Zone (Korn et al., 2014; see Fig. 5).

742

743

744 ***Prionoceras cf. subtum*** Korn et al., 2014

745 (Figure 10J–K)

746 **Material:** Two specimens from sample On12 (*Platyclymenia* interval).

747 **Description:** Specimen On12.22 (Fig. 10J) has a diameter of 21.7 mm; its conch is thinly
748 pachyconic (CWI = 0.67) and involute (UWI = 0.01), with a weakly depressed whorl cross section
749 (WWI = 1.14) and a moderate whorl expansion rate (WER = 1.92). The whorl section is subglobular;
750 the venter is broadly rounded and the flanks are converging. The internal mould shows three
751 irregularly-spaced constrictions, which are convex with a shallow ventral sinus. Specimen On12.13
752 (Fig. 10K) has a diameter of 19.7 mm; its conch is thinly pachyconic (CWI = 0.60) and involute (UWI =
753 0.01), with a weakly depressed whorl cross section (WWI = 1.04) and a low whorl expansion rate
754 (WER = 1.62). The whorl section is subglobular; the venter is rounded and the flanks are converging;
755 the umbilical margin is rounded. The internal mould shows three prominent constrictions, irregularly
756 spaced, and standing in distances of around 90° or 110°; they show a slightly convex course on the
757 flanks with a very shallow ventral sinus. The shell is partly preserved; the growth lines are sinuous,
758 very fine, and densely arranged. The suture lines are not visible.

759 **Discussion:** These specimens are tentatively assigned to *Prionoceras cf. subtum* based on the
760 conch proportions (at D ≈ 20 mm: CWI = 0.60–0.70; WWI = 1.05–1.15) and on the constriction shape
761 (slightly convex with a shallow ventral sinus). However, this Algerian material shows only three
762 constrictions, while *P. subtum* is supposed to have four constrictions at a diameter of 20 mm.
763 Specimen On12.22 has a higher whorl expansion rate than the type material from the Anti-Atlas
764 described by Korn et al. (2014; in *P. subtum* WER ≈ 1.60 at 20 mm). In Morocco, the *Prionoceras*
765 species having close conch proportions are *P. mrakibense*, *P. ouarouroutense*, *P. jeranense*, and *P.*
766 *takhbtitense* (see Korn et al., 2014). *P. ouarouroutense* and *P. mrakibense* differ by having a slender
767 conch (CWI < 0.55; WWI < 1.05); *P. ouarouroutense* differs also by having five constrictions. *P.*
768 *jeranense* has a slightly more depressed whorl section (WWI > 1.15) and up to six constrictions. *P.*

769 *takhtitense* differs by having linear constrictions.

770 **Occurrence:** In the Ouarourout area (Algeria), *Prionoceras* cf. *subtum* occurs in the upper
771 part of the *Platyclymenia* interval (late Famennian; Fig. 4). In Morocco, this species marks the
772 *Prionoceras subtum* Zone (Korn et al., 2014; see Fig. 5).

773

774 ***Prionoceras* cf. *triens*** Korn et al., 2014

775 (Figure 10L)

776 **Material:** One specimens from sample On12 (*Platyclymenia* interval).

777 **Description:** Specimen On12.46 (Fig. 10L) has a diameter of 27.7 mm; its conch is thinly
778 pachyconic (CWI = 0.60) and involute (UWI = 0.01), with a weakly depressed whorl cross section
779 (WWI = 1.04) and a low whorl expansion rate (WER = 1.72). The whorl section is subglobular; the
780 venter is rounded and the flanks are converging; the umbilicus is almost closed. The internal mould
781 shows three irregularly-spaced constrictions (standing in distances of around 140° and 180°), which
782 are concave on flanks and relatively linear on the venter.

783 **Discussion:** This specimen is tentatively assigned to *Prionoceras* cf. *triens* based on the conch
784 proportions and on the constriction shape (concave on flanks, with a shallow ventral sinus) and
785 number (only 3). However, this Algerian specimen has a lower WER and a higher shell diameter than
786 the typical material from Morocco (see Korn et al., 2014).

787 **Occurrence:** In the Ouarourout area (Algeria), *Prionoceras* cf. *triens* occurs in the upper part
788 of the *Platyclymenia* interval (late Famennian; Fig. 4). In Morocco, *P. triens* occurs in the slightly
789 younger *Prionoceras jeranense* Zone (Korn et al., 2014; see Fig. 5).

790

791

792 Genus ***Mimimitoceras*** Korn, 1988

793 **Type species:** *Mimimitoceras trizonatum* Korn, 1988, p. 607; by original designation.

794 **Remarks:** The genus *Mimimitoceras* and its species from the Anti-Atlas (Morocco) and from
795 the Saoura Valley (Algeria) have been recently discussed in detail (Korn et al., 2015a, 2017).

796

797 ***Mimimitoceras* cf. *caratum*** Korn et al., 2015a

798 (Figure 10M–N)

799 For the synonymy list of *M. caratum*, see Korn et al. 2015a.

800 **Material:** Two specimens from samples On13 and On14 (*Medioclymenia* interval).

801 **Description:** Specimens On13.1 (D = 10.1 mm; Fig. 10N) and On14.13 (D = 17.9 mm; Fig.
802 10M) have similar conch proportions; their conch is thinly pachyconic (CWI = 0.72–0.82) and involute
803 (UWI = 0.01), with a weakly depressed whorl cross section (WWI = 1.30–1.37). Specimen On13.1 has

804 a low whorl expansion rate (WER = 1.59); and specimen On14.13 has a very low whorl expansion rate
805 (WER = 1.45). The whorl section is globular; the venter is broadly rounded and the flanks are
806 subparallel; the umbilical margin is rounded and the umbilicus is almost closed. The both specimens
807 show three steinkern constrictions standing in distance of around 120°; their course is almost linear
808 on the flanks and on the venter. In both specimens, the shell is not preserved, and the suture lines
809 are not visible.

810 **Discussion:** The globular and involute conch is typical of the genus *Mimimitoceras*. These
811 specimens are assigned to *Mimimitoceras* cf. *caratum* based on the conch proportions (at a
812 diameter of 15 mm: CWI = 0.75–0.85; WWI = 1.30–1.40; WER = 1.45–1.50). Among the Moroccan
813 species of *Mimimitoceras* revised by Korn et al. (2015a), *M. caratum* has the stoutest conch (CWI >
814 0.70; WWI > 1.30). *M. endocuboide* differs by having a lower whorl expansion rate (WER < 1.40) and
815 by the course of its constrictions which are often interrupted for a short interval on the midventer
816 (Korn et al., 2015a); but the both species have a very similar conch morphology and can be easily
817 confused. According to Korn et al. (2015a), specimens cannot be attributed with confidence to *M.*
818 *caratum* and *M. endocuboide* if the whorl section shape of the juvenile stage (circular in *M.*
819 *caratum* and cuboid with a wider umbilicus in *M. endocuboide*) is unknown. Therefore, it seems
820 reasonable to identify these Algerian specimens as *Mimimitoceras* cf. *caratum*. The Algerian species
821 *M. callumbilicum* differs by its concave umbilical wall due to a shell thickening near the umbilicus
822 (Korn et al., 2017).

823 **Occurrence:** In the Ouarourout area (Algeria), *Mimimitoceras* cf. *caratum* occurs in the
824 *Medioclymenia* interval (late Famennian; Fig. 4). Korn et al. (2017) documented the occurrence of
825 *M. caratum* in Ouarourout (*Medioclymenia* assemblage, see Fig. 5). In Morocco, the stratigraphic
826 range of this species is not well constrained, but it probably occurs in the *Gonioclymenia* beds (Korn
827 et al., 2015a; see Fig. 5).

828

829 ***Mimimitoceras* cf. *comtum*** Korn et al., 2015b

830 (Figure 100–P)

831 For the synonymy list of *M. comtum*, see Korn et al. 2015a.

832 **Material:** Seven specimens from samples On13 and On14 (*Medioclymenia* interval).

833 **Description:** Specimen On14.17 (Fig. 100) is an internal mould with a diameter of 36 mm. Its
834 conch is thinly pachyconic (CWI = 0.60) and involute (UWI = 0.04), with a weakly depressed whorl
835 cross section (WWI = 1.09) and a low whorl expansion rate (WER = 1.62). The whorl section is
836 subglobular; the venter is rounded and the flanks are converging; the umbilical margin is rounded
837 and the umbilicus is almost closed. The conch shows four steinkern constrictions irregularly-spaced;
838 they are slightly convex with a shallow ventral sinus. Specimen On13.3 (Fig. 10P) is also an internal

839 mould, with a diameter of 28.5 mm. Its conch is thinly pachyconic (CWI = 0.62) and involute (UWI =
840 0.03), with a weakly depressed whorl cross section (WWI = 1.11) and a low whorl expansion rate
841 (WER = 1.65). The whorl section is globular; the venter is rounded and the flanks are converging; the
842 umbilical margin is rounded and the umbilicus is almost closed. The conch shows four steinkern
843 constrictions standing in distance of 90°; their course is slightly convex with a shallow ventral sinus.
844 In all specimens, the shell is not preserved, and the suture lines are not visible.

845 **Discussion:** The globular and involute conch is characteristic of the genus *Mimimitoceras*.
846 These specimens are tentatively assigned to *Mimimitoceras* cf. *comtum* based on the conch
847 proportions (at a diameter of 30 mm: CWI = 0.60–0.65; WWI = 1.05–1.15; WER = 1.60–1.80).
848 However, these Algerian specimens slightly differs from the Moroccan type material by having a
849 higher whorl expansion rate (WER = 1.60–1.80 at D = 30 mm, but 1.55–1.65 in *M. comtum*). Among
850 the Moroccan and Algerian species of *Mimimitoceras* (see Korn et al., 2015b, 2017), *M. taourirtense*
851 is the closest species in conch proportions, but it differs by having a significantly higher whorl
852 expansion rate (WER > 1.80).

853 **Occurrence:** In the Ouarourout area (Algeria), *Mimimitoceras* cf. *comtum* occurs in the
854 *Medioclymenia* interval (late Famennian; Fig. 4). Korn et al. (2017) also reported the occurrence of
855 *M. comtum* in Ouarourout (*Medioclymenia* assemblage, see Fig. 5). In Morocco, this species probably
856 occurs in the *Gonioclymenia* beds (Korn et al., 2015a; see Fig. 5).

857

858 FIGURE 10 AROUND HERE

859

860 Order Clymeniida Hyatt, 1884

861 Suborder Cyrtoclymeniina Korn and Klug, 2002

862 Superfamily Cyrtoclymenioidea Hyatt, 1884

863 Family Cyrtoclymeniidae Hyatt, 1884

864 Subfamily Cyrtoclymeniinae Hyatt, 1884

865 Genus *Protactoclymenia* Wedekind, 1908

866 **Type species:** *Clymenia pulcherrima* Wedekind, 1908, p. 608; by subsequent designation
867 (Price and Korn, 1989).

868

869 ***Protactoclymenia* sp. indet. A**

870 **Material:** Six poorly preserved specimens from samples On8, On10 and On11 (*Platyclymenia*
871 interval).

872 **Description:** These poorly preserved specimens (not illustrated) have a diameter of around
873 22 mm; their conch is thinly discoidal (CWI ≈ 0.40) and subinvolute (UWI ≈ 0.29), with a weakly

874 compressed whorl cross section ($WWI \approx 0.98$). The whorl section is oval; the venter is rounded and
875 the flanks are converging; the umbilical margin is rounded. The suture lines have a rounded and
876 shallow ventral saddle; and a broadly rounded, shallow and symmetric L lobe. The ornamentation of
877 the inner whorls is composed of weak and prorsiradiate ribs, rapidly fading on the flanks. Specimen
878 On10.21 shows widely spaced and sinuous growth lines projected backward on the venter.

879 **Discussion:** Based on the suture line shape (shallow ventral saddle, shallow and symmetric L
880 lobe) and on the conch proportions (weakly compressed, subinvolute and thinly discoidal conch),
881 these specimens are attributed to the genus *Protactoclymenia*. However, the poorly preserved
882 material prevents to reach a specific comparison and identification. Petter (1960) described a species
883 from Algeria (*Cyrtoclymenia tenuicostata*) considered as *Protactoclymenia* by Korn and Klug (2002);
884 however, our specimens differ by having a narrower umbilicus, a more depressed conch, and a
885 smooth shell.

886 **Occurrence:** In the Ouarourout area (Algeria), *Protactoclymenia* sp. indet. A occurs in the
887 *Platyclymenia* interval (late Famennian; Fig. 4). In Morocco, the genus *Protactoclymenia* ranges from
888 the *Platyclymenia annulata* Zone to the *Sporadoceras orbiculare* Zone (Becker et al., 2002; see Fig. 5).

890 ***Protactoclymenia* sp. indet. B**

891 (Figure 11F)

892 **Material:** Three specimens from samples On8 and On10 (*Platyclymenia* interval).

893 **Description:** Specimen On8.3 (Fig. 11F) has a diameter of 18.55 mm; its conch is thinly
894 discoidal and subinvolute ($CWI = 0.36$; $UWI = 0.27$), with a whorl cross section weakly compressed
895 ($WWI = 0.82$), and a moderate whorl expansion rate ($WER = 1.87$). The whorl section is oval; the
896 venter is narrowly rounded and the flanks are converging; the umbilical margin is rounded. The
897 ornamentation is composed of very weak and prorsiradiate ribs, rapidly fading on the flanks. The last
898 part of the conch shows two constrictions; they are convex with a deep V-shaped ventral sinus, and
899 they fade on the flanks toward the umbilicus. The suture line shows a rounded and shallow ventral
900 saddle followed by a broadly rounded, shallow and symmetric L lobe. Interestingly the last sutures of
901 the phragmocone are crowded. Specimen On8.1, at $D = 14.3$ mm, has the following conch
902 proportions: thinly discoidal ($CWI = 0.37$) and subinvolute ($UWI = 0.26$), with a weakly compressed
903 whorl cross section ($WWI = 0.83$) and a high whorl expansion rate ($WER = 2.04$). The whorl section is
904 oval; the venter is rounded and the flanks are converging; the umbilical margin is rounded. The conch
905 exhibits two steinkern constrictions which are prominent on the venter where they form a deep and
906 V-shaped ventral sinus. The suture line shows a rounded and shallow ventral saddle; and a wide,
907 shallow, rounded and symmetric L lobe.

908 **Discussion:** The suture line shape (shallow and symmetric L lobe) and the conch proportions

909 (thinly discoidal, subinvolute and weakly compressed) are characteristic of the genus
910 *Protactoclymenia*. However, the state of preservation of the material prevents to reach a detailed
911 specific comparison and a firm identification. The presence of ventral constrictions clearly
912 distinguished these specimens from *Protactoclymenia* sp. indet. A.

913 **Occurrence:** In the Ouarourout area (Algeria), *Protactoclymenia* sp. indet. B occurs in the
914 *Platyclymenia* interval (late Famennian, Fig. 4). In Morocco, the genus *Protactoclymenia* ranges from
915 the *Platyclymenia annulata* Zone to the *Sporadoceras orbiculare* Zone (Becker et al., 2002; see Fig. 5).

916

917

918 Genus *Cyrtoclymenia* Hyatt, 1884

919 **Type species:** *Planulites angustiseptatus* Münster, 1832, p. 7; by original designation.

920

921 *Cyrtoclymenia* cf. *frechi* (Tokarenko, 1903)

922 (Figure 11A–E)

923 For the synonyms of *C. frechi*, see Korn and Klug, 2002.

924 **Material:** 15 specimens from samples On8, On10, On11 and On12 (*Platyclymenia* interval).

925 **Description:** Specimen On12.37 has a diameter of 27.5 mm; its conch is thinly discoidal (CWI
926 = 0.45) and subinvolute (UWI = 0.27), with a weakly depressed whorl cross section (WWI = 1.05) and
927 a very high whorl expansion rate (WER = 2.23). The whorl section is oval; the venter is rounded and
928 the flanks are converging; the umbilical margin is rounded. The ornamentation is composed of weak,
929 slightly concave, prorsiradiate ribs (eight ribs per half whorl), fading on the flanks; the ribs are thicker
930 on the inner whorls. The suture line shows a rounded, shallow and wide ventral saddle, followed by a
931 broadly rounded, deep and symmetric L lobe. Specimen On12.33 (Fig. 11A) has a diameter of 22.8
932 mm; its conch is thinly discoidal (CWI = 0.47) and subevolute (UWI = 0.31) with a weakly depressed
933 whorl cross section (WWI = 1.11) and a very high whorl expansion rate (WER = 2.54). The whorl
934 section is oval; the venter is rounded and the flanks are converging; the umbilical margin is rounded.
935 The conch bears moderately spaced (12 ribs per half whorl), prorsiradiate and slightly concave ribs,
936 rapidly fading on the flanks. The suture lines are partly eroded, but clearly show a rounded ventral
937 saddle, and a symmetric and rounded L lobe. Specimen On10.19 (D = 18.9 mm; Fig. 11E) has a thinly
938 discoidal (CWI = 0.51) and subevolute conch (UWI = 0.31), with a weakly compressed whorl cross
939 section (WWI = 1.21) and a very high whorl expansion rate (WER = 2.08). The whorl section is
940 subtrapezoidal; the venter is rounded and the flanks are strongly converging; the umbilical margin is
941 rounded. The conch shows relatively wide ribs which are relatively prominent near the umbilicus and
942 fading toward the venter. Specimen On10.18 (D = 17.2 mm; Fig. 11D) shows very thick and
943 prominent ribs on its inner whorls, but they suddenly disappear on the last whorl. The suture lines

944 show a rounded ventral saddle, and a slightly asymmetric, wide and rounded L lobe (Fig. 11C).
945 Specimen On10.17 (D = 15.7 mm; Fig. 11B) has a thinly discoidal (CWI = 0.45) and subevolute (UWI =
946 0.32) conch, with a weakly depressed whorl cross section (WWI = 1.15) and very high whorl
947 expansion rate (WER = 2.28). The whorl section is oval; the venter is rounded and the flanks are
948 converging; the umbilical margin is rounded. The conch bears moderately-spaced (12 ribs per half
949 whorl), prorsiradiate and slightly concave ribs, fading on the flanks. The suture lines show a rounded
950 ventral saddle and a wide, symmetric and rounded L lobe.

951 **Discussion:** The suture line shape (rounded ventral saddle, moderately deep and relatively
952 symmetric L lobe) and the conch proportions (thinly discoidal conch with a weakly depressed whorl
953 cross section, and a narrow umbilicus) are characteristic of the genus *Cyrtoclymenia*. There are many
954 species of *Cyrtoclymenia* (see synthesis of Korn and Klug, 2002), and the rounded and slightly curved
955 umbilical ribs fading on the flanks displayed by the studied specimens, remind the species *C. frechi*;
956 therefore, they are tentatively attributed to this species. These specimens differ from the Algerian *C.*
957 *nodifera* (Korn et al., 2017) mainly by having a much higher whorl expansion rate (WER = 2.2).

958 **Occurrence:** In the Ouarourout area (Algeria), *Cyrtoclymenia* cf. *frechi* occurs in the
959 *Platyclymenia* interval (late Famennian; Fig. 4). *C. frechi* has not been reported in Morocco, but the
960 genus has a very long range in the Famennian (Korn, 1999; Becker et al., 2002; Korn et al., 2017).

961
962 FIGURE 11 AROUND HERE

963

964 Family Cymaclymeniidae Hyatt, 1884

965 Subfamily Genuclymeniinae Korn and Klug, 2002

966 Genus ***Genuclymenia*** Wedekind, 1908

967 **Type-species:** *Clymenia frechi* Wedekind, 1908, p. 617; by subsequent designation
968 (Schindewolf, 1957).

969

970 ***Genuclymenia* sp. indet.**

971 (Figure 12O–P)

972 **Material:** One specimen from sample On9 (*Planitornoceras* interval).

973 **Description:** Specimen On9.17 (Fig. 12O) has a diameter of 16.1 mm; its conch is thinly
974 discoidal (CWI = 0.37) and subevolute (UWI = 0.35), with a weakly compressed whorl cross section
975 (WWI = 0.97) and a high whorl expansion rate (WER = 2.11). The whorl section is oval; the venter is
976 narrowly rounded and the flanks are converging; the umbilical margin is rounded. The suture lines
977 show a rounded, shallow and very wide ventral saddle; followed by a broadly rounded, relatively
978 deep and slightly asymmetric L lobe (Fig. 12P).

979 **Discussion:** Based on the conch geometry and on the suture line shape, the single specimen
980 from Ouarourout clearly belongs to the genus *Genuclymenia*. However, without additional material,
981 the specific attribution remains uncertain.

982 **Occurrence:** In the Ouarourout area (Algeria), *Genuclymenia* sp. indet. occurs in the upper
983 part of the *Planitornoceras* interval (middle Famennian; Fig. 4). *Genuclymenia* is unknown in
984 Morocco, but in Germany this genus occurs in the *Platyclymenia delphinus* and *Platyclymenia*
985 *annulata* zones (see House, 1970; Korn, 2004).

986

987

988 Subfamily Cymaclymeniinae Hyatt, 1884

989 Genus ***Procymaclymenia*** Korn and Klug, 2002

990 **Type-species:** *Cymaclymenia inflata* Czarnocki, 1989, p. 67; by original designation.

991 **Remarks:** Klein and Korn (2014) revised the Cymaclymeniinae from the Anti-Atlas of
992 Morocco, and erected new species of *Cymaclymenia* and related genera (*Procymaclymenia* and
993 *Postclymenia*). The morphology of both genera *Procymaclymenia* and *Cymaclymenia* are very close.
994 In *Procymaclymenia*, the lateral lobe is more rounded and less asymmetric, and the venter is slightly
995 flattened (in *Cymaclymenia*, the venter is rounded). Only one species of *Procymaclymenia* is known
996 from Morocco (*P. ebbighauseni*).

997

998 ***Procymaclymenia ebbighauseni*** Klein and Korn, 2014

999 (Figure 12A–I)

1000 1960 *Cymaclymenia striata* – Petter, p. 45, pl. 8, figs 3, 5, 11, 14 (only)

1001 1999 *Cymaclymenia* sp. – Korn, p. 170, pl. 4, fig. 6

1002 2002 *Cymaclymenia pudica* – Becker et al., p. 171, pl. 4, figs 4, 5

1003 2002 *Procymaclymenia* sp. – Korn and Klug, p. 220, fig. 193d

1004 2014 *Procymaclymenia ebbighauseni* – Klein and Korn, p. 11, figs 4a, 11, 12

1005 **Material:** Seven specimens from samples On10 and On12 (*Platyclymenia* interval).

1006 **Description:** Specimen On12.44 (Fig. 12A) has a diameter of 34.4 mm; its conch is extremely
1007 discoidal (CWI = 0.28), with a weakly compressed whorl cross section (WWI = 0.68) and a high whorl
1008 expansion rate (WER = 2.05); the umbilicus is not visible. The whorl section is subrectangular; the
1009 venter is slightly flattened and separated from the flanks by a subangular margin; the flanks are
1010 subparallel. The shell exhibits very faint riblets on the upper part of the flanks. The suture line shows
1011 a very wide and relatively flat ventral saddle, followed by a rounded, shallow and slightly asymmetric
1012 L lobe. Specimen On12.40 (Fig. 12C, H) has a diameter of 22.85 mm; its conch is extremely discoidal
1013 (CWI = 0.28) and subinvolute (UWI = 0.30), with a weakly compressed whorl cross section (WWI =

1014 0.65) and a very high whorl expansion rate (WER = 2.32). The whorl section is subrectangular; the
1015 venter is flattened and separated from the flanks by a subangular margin; the flanks are subparallel;
1016 the umbilical margin is rounded. The shell exhibits faint, rectiradiate and slightly concave riblets,
1017 which are more prominent toward the ventrolateral and umbilical margins. The suture line shows a
1018 very wide and flat ventral saddle, and a rounded, shallow and slightly asymmetric L lobe. Specimens
1019 On12.38 (D = 16.4 mm; Fig. 12B, G), On12.39 (D = 19.9 mm; Fig.12D, F) and On10.25 (D = 20.0 mm;
1020 Fig. 12E, I) have a smaller diameter, but are very similar to On12.40 in conch proportions and suture
1021 line shape (CWI = 0.29–0.34; UWI = 0.24–0.27; WWI = 0.65–0.79; WER = 2.21–2.44). . Their suture
1022 lines show a blunt and slightly asymmetric L lobe, which is characteristic of the genus
1023 *Procymaclymenia*.

1024 **Discussion:** The conch proportions (extremely discoidal, subinvolute, weakly compressed,
1025 subrectangular whorl section) and the suture line shape (small, blunt and slightly asymmetric L lobe)
1026 of these specimens are characteristic of the genus *Procymaclymenia*. Only the species *P.*
1027 *ebbighauseni* is clearly established for Morocco (see Klein and Korn, 2014). Although eroded, the
1028 described specimens from Algeria are very similar to those from Morocco and can be assigned to *P.*
1029 *ebbighauseni*. As noted by Klein and Korn (2014), *P. ebbighauseni* differs from *P. inflata* (Czarnocki,
1030 1989) and *P. pudica* (Czarnocki, 1989) from the Holy Cross Mountains, by the smooth internal mould
1031 without constrictions, and the nearly absence of umbilical riblets.

1032 **Occurrence:** In the Ouarourout area (Algeria), *P. ebbighauseni* occurs in the upper part of the
1033 *Platyclymenia* interval (late Famennian; Fig. 4). In Morocco, *P. ebbighauseni* occurs above the
1034 *Platyclymenia annulata* Zone and ranges until the *Costaclymenia* genozone (Klein and Korn, 2014;
1035 see Fig. 5).

1036

1037

1038 Genus *Cymaclymenia* Hyatt, 1884

1039 **Type-species:** *Cymaclymenia striata* Münster, 1843, p. 11; by original designation.

1040 **Remarks:** Based on large new collections, Klein and Korn (2014) revised the species of
1041 *Cymaclymenia* from the Anti-Atlas of Morocco; these are endemic and differ from the European
1042 species (for their review, see Korn, 1981). *Cymaclymenia* is characterized by a suture line showing a
1043 pointed and asymmetric L lobe, and by a rounded venter.

1044

1045 *Cymaclymenia subvexa* Klein and Korn, 2014

1046 (Figure 12J–N)

1047 1960 *Cymaclymenia striata* – Petter, p. 45, pl. 8, figs 1, 4, 13 (only)

1048 ? 1960 *Cymaclymenia striata* – Petter, p. 45, pl. 7, figs 16, 17, 19 (only)

- 1049 1999 *Cymaclymenia cordata* – Korn, p. 170, pl. 4, fig. 5
1050 2002 *Procyamclymenia* sp. – Korn and Klug, p. 220, fig. 193d
1051 2014 *Cymaclymenia subvexa* – Klein and Korn, p. 13, figs 4b, 13, 14
1052 2017 *Cymaclymenia subvexa* – Korn et al., p. 152, figs 37, 38, table 11

1053 **Material:** 14 specimens from samples On13 and On14 (*Medioclymenia* interval).

1054 **Description:** Specimen On13.27 (not illustrated) has a diameter of 40.25 mm; its conch is
1055 extremely discoidal (CWI = 0.30) and subinvolute (UWI = 0.21), with a weakly compressed whorl
1056 cross section (WWI = 0.63) and a high whorl expansion rate (WER = 2.10). The whorl section is oval;
1057 the venter is rounded and the flanks are slightly converging; the umbilical margin is slightly oblique.
1058 The growth lines are poorly preserved, but they show a biconvex course. The suture line shows a
1059 shallow and rounded M saddle; a faint A lobe; and a pointed and asymmetric L lobe. Specimen
1060 On13.28 (not illustrated) is very similar to On13.27 in conch proportion, ornamentation, and suture
1061 line shape (D = 39.2 mm; CWI = 0.33; UWI = 0.22; WWI = 0.69). It slightly differs by the presence on
1062 the body chamber of two backward-projected U-shaped ventral constrictions. Specimen On13.26 (D
1063 = 35.4 mm; Fig. 12K) has similar conch proportions (CWI = 0.27 and WWI = 0.64). Its suture line
1064 shows a shallow, wide and rounded M saddle; a very shallow and rounded A lobe; and a very pointed
1065 and very asymmetric L lobe (Fig. 12L). Specimen On13.24 (Fig. 12J) has a diameter of 33.4 mm; its
1066 conch is extremely discoidal (CWI = 0.34) and subinvolute (UWI = 0.19), with a weakly compressed
1067 whorl cross section (WWI = 0.70) and very high whorl expansion rate (WER = 2.30). The whorl section
1068 is oval; the venter is narrowly rounded and the flanks are slightly converging; the umbilical margin is
1069 slightly oblique. The growth lines are poorly preserved, but they show a biconvex course. The suture
1070 line shows a shallow and rounded M saddle; a faint A lobe; and a pointed, but slightly blunt, and very
1071 asymmetric L lobe (Fig. 12N). Specimen On13.22 has a diameter of 29.0 mm; its conch is extremely
1072 discoidal (CWI = 0.28) and subinvolute (UWI = 0.27), with a whorl cross section weakly compressed
1073 (WWI = 0.64). The whorl section is oval and similar to the previously described specimens. The suture
1074 line shows a shallow and rounded M saddle; a very shallow and rounded A lobe; and a pointed and
1075 very asymmetric L lobe (Fig. 12M).

1076 **Discussion:** The suture line shape (pointed and strongly asymmetric L lobe) and the conch
1077 proportions (extremely discoidal and subinvolute conch with a weakly compressed whorl cross
1078 section) of these specimens are characteristic of the genus *Cymaclymenia*. The specimens closely
1079 resemble, in conch shape, ornament and suture line, the material described by Klein and Korn (2014)
1080 in Morocco and by Korn et al. (2017) in Algeria, and can be unambiguously assigned to the species *C.*
1081 *subvexa*. One specimen (On13.28) slightly differs by the presence of ventral constrictions at the end
1082 of the growth; this characteristic remind the morphology of some European species such as *C.*
1083 *silesiaca* (Renz, 1914); but without additional material a firm identification is compromised and this

1084 specimen is here attributed to *C. subvexa*.

1085 **Occurrence:** In the Ouarourout area (Algeria), *Cymaclymenia subvexa* occurs in the
1086 *Medioclymenia* interval (late Famennian; Fig. 4). Korn et al. (2017) documented *C. subvexa* in two
1087 localities in Algeria (Ouarourout and Cheffar Ahmar) and recorded it in the *Gonioclymenia*
1088 assemblage (late Famennian; see Fig. 5). In Morocco, *C. subvexa* occurs in the *Gonioclymenia*
1089 genozone (Klein and Korn, 2014; see Fig. 5).

1090

1091 FIGURE 12 AROUND HERE

1092

1093 Suborder Clymeniina Edwards, 1849

1094 Superfamily Platyclymenioidea Wedekind, 1914

1095 Family Platyclymeniidae Wedekind, 1914

1096 Subfamily Platyclymeniinae Wedekind, 1914

1097 Genus ***Platyclymenia*** Hyatt, 1884

1098 **Type-species:** *Goniatites annulatus* Münster, 1832, p. 3; by original designation.

1099 **Remarks:** Price and Korn (1989) discussed in details this genus and its German species.
1100 Interestingly, they pointed out that all named species of the subgenus *Platyclymenia* (*Platyclymenia*)
1101 could be placed in a continuous range of variation in strength and density of ribs, and shape of the
1102 whorl section.

1103

1104 ***Platyclymenia annulata*** (Münster, 1832)

1105 (Figure 13A–D)

1106 1832 *Goniatites annulatus* – Münster, p. 3, pl. 6, fig. 6

1107 1914 *Platyclymenia richteri* – Wedekind, p. 34, pl. 3, fig. 1

1108 1960 *Platyclymenia annulata* – Petter, p. 23, pl. 4, figs 4–4a, 7–7a, 9, 10–10a

1109 1960 *Platyclymenia annulata* var. *densicosta* – Petter, p. 24, pl. 4, fig. 5, pl. 5, figs 13–13a, 23

1110 1960 *Platyclymenia richteri* – Petter, p. 25, pl. 4, figs 13–13a

1111 1960 *Platyclymenia richteri* var. *semperornata* – Petter, p. 25, pl. 4, figs 6–6a, 11–11a

1112 1960 *Platyclymenia ruedemanni* var. *semiornata* – Petter, p. 27, pl. 5, figs 12–12a

1113 ? 1960 *Platyclymenia geminicosata* – Petter, p. 26, pl. 5, figs 6–6a

1114 1999 *Platyclymenia annulata* – Korn, pl. 5, figs 2, 3, 10

1115 **Material:** 18 specimens from samples On8 and On10 (*Platyclymenia* interval).

1116 **Description:** Specimen On8.23 (not illustrated) has a diameter of 27.2 mm; its conch is
1117 extremely discoidal (CWI = 0.26) and evolute (UWI = 0.46), with a weakly compressed whorl cross
1118 section (WWI = 0.86) and a moderate whorl expansion rate (WER = 1.83). The whorl section is

1119 subrectangular; the venter is slightly tabulate, the ventrolateral margins are narrow and slightly
1120 angular, and the flanks are subparallel; the umbilical margin is subangular. The ornamentation
1121 consists of weak, widely spaced (10 ribs per half whorl), prorsiradiate and concave ribs, fading
1122 toward the ventrolateral margins. The suture line shows a flattened M saddle; and a wide,
1123 moderately deep and rounded L lobe. Specimen On10.13 (Fig. 13A) has a diameter of 21.7 mm; its
1124 conch is extremely discoidal (CWI = 0.27) and evolute (UWI = 0.51), with a weakly compressed whorl
1125 cross section (WWI = 0.97) and a high whorl expansion rate (WER = 1.96). The whorl section is oval to
1126 subrectangular; the venter is narrowly rounded and the flanks are subparallel; the umbilical margin is
1127 subangular. The conch shows widely spaced (14 ribs per half whorl), prorsiradiate and concave ribs
1128 fading toward the venter. The suture line is characterized by a very large, rounded and moderately
1129 deep L lobe. Specimen On8.16 (not illustrated) has a diameter of 20 mm; its conch is extremely
1130 discoidal (CWI = 0.31) and subevolute (UWI = 0.40), with a weakly compressed whorl cross section
1131 (WWI = 0.87) and a moderate whorl expansion rate (WER = 1.93). The whorl section is oval; the
1132 venter is narrowly rounded, but shows slightly subangular ventrolateral margins, and the flanks are
1133 subparallel; the umbilical margin is subangular. The conch bears thin, moderately spaced (17 ribs per
1134 half whorl), prorsiradiate and concave ribs, fading toward the venter. Specimen On10.8 (D = 14.7
1135 mm; Fig. 13B) has a similar conch geometry (extremely discoidal, CWI = 0.32; subevolute, UWI = 0.43;
1136 weakly compressed, WWI = 0.98; moderate whorl expansion rate, WER = 1.98; oval whorl section).
1137 The ribs are characteristically concave, prorsiradiate, and fading toward the venter; but they are
1138 closely spaced (23 ribs per half whorl). The suture shows a flattened M saddle; and a wide,
1139 moderately deep L lobe. Specimens On8.31 (Fig. 13C) and On8.35 (Fig. 13D) have a diameter of 17.5
1140 mm; their conch is extremely discoidal (CWI = 0.27 and 0.28) and evolute (UWI = 0.45 and 0.53), with
1141 a weakly compressed whorl cross section (WWI = 0.82) and a moderate whorl expansion rate (WER =
1142 1.98). The whorl section of specimen On8.31 is oval (Fig. 13C); the venter is narrowly rounded and the
1143 flanks are subparallel; the umbilical margin is rounded and slightly oblique. The conch bears thin,
1144 moderately spaced (15 ribs per half whorl), prorsiradiate and concave ribs, fading toward the venter.
1145 The shell is partly preserved and shows thin concave growth lines which are projected backward on
1146 the venter. The whorl section of specimen On8.35 is subquadrate; the venter is flattened and the
1147 flanks are subparallel; the umbilical margin is rounded. The conch is smooth and does not show any
1148 ribs.

1149 **Discussion:** As pointed out by Price and Korn (1989), the genus *Platyclymenia* contains
1150 numerous species, which differ by very minor differences in ornament, and most of them probably
1151 should be synonymised. The material studied here cannot enable this revision. This Algerian material
1152 shows a wide range of morphologies, notably in the thickness and density of ribbing and in the shape
1153 of whorl sections (circular to subquadrate). Two groups can be distinguished: the first one has a WER

1154 ranging from 1.81 to 2.06 and a UWI ranging from 0.39 to 0.51, and is assigned to *P. annulata*; the
1155 second one has a WER ranging from 2.04 to 2.26 and a UWI ranging from 0.34 to 0.43, and is
1156 tentatively assigned to *P. cf. ibnsinai*, which is also characterized by a high whorl expansion rate and
1157 a narrow umbilicus according to Korn (1999).

1158 **Occurrence:** In the Ouarourout area (Algeria), *Platyclymenia annulata* occurs in the lower
1159 and middle parts of the *Platyclymenia* interval (late Famennian; Fig. 4). In Morocco, *Platyclymenia*
1160 *annulata* ranges from its zone to the *Sporadoceras orbiculare* zone (Becker et al., 2002; see Fig. 5).

1161

1162 ***Platyclymenia cf. ibnsinai*** Korn, 1999

1163 (Figure 13E–J)

1164 **Material:** 12 specimens from samples On8, On10, On11 and On12 (*Platyclymenia* interval).

1165 **Description:** Specimen On12.29 has a diameter of 24.6 mm; its conch is extremely discoidal
1166 (CWI = 0.31) and subevolute (UWI = 0.39), with a weakly compressed whorl cross section (WWI =
1167 0.84) and a high whorl expansion rate (WER = 2.05). The suture line shows a flat M saddle; and a
1168 wide, relatively shallow and rounded L lobe (Fig. 13J). Specimen On10.14 (Fig. 13E) has a diameter of
1169 22.7 mm; its conch is extremely discoidal (CWI = 0.31) and subevolute (UWI = 0.42), with a weakly
1170 compressed whorl cross section (WWI = 0.94) and a high whorl expansion rate (WER = 2.12). The
1171 whorl section is oval; the venter is narrowly rounded and the flanks are subparallel; the umbilical
1172 margin is rounded but slightly subangular. The conch shows widely spaced (13 ribs per half whorl),
1173 thin, prorsiradiate and concave ribs, fading toward the venter. Specimen On8.38 (Fig. 13H–I) has a
1174 diameter of 21.8 mm; its conch is extremely discoidal (CWI = 0.27) and subevolute (UWI = 0.40), with
1175 a weakly compressed whorl cross section (WWI = 0.74) and a high whorl expansion rate (WER =
1176 2.11). The whorl section is subrectangular; the venter is slightly tabulate (subangular ventrolateral
1177 margins) and the flanks are subparallel; the umbilical margin is rounded. The ornamentation consists
1178 of weak, widely spaced, prorsiradiate and concave ribs, fading toward the venter. The suture line
1179 shows a flattened M saddle; and a wide, moderately deep and rounded L lobe (Fig. 13I). Specimens
1180 On10.11 (Fig. 13G) and On10.12 (Fig. 13F) have a similar conch geometry (extremely discoidal, CWI =
1181 0.34; subevolute, UWI = 0.40; weakly compressed, WWI = 0.98; high whorl expansion rate, WER =
1182 2.12; oval whorl section). These specimens bear thin, prorsiradiate and concave ribs fading toward
1183 the ventrolateral margins; one has a dense ribbing (On10.12, 22 ribs per half whorl; Fig. 13F), and the
1184 other one a widely-spaced ribbing (On10.11, 11 ribs per half whorl; Fig. 13G).

1185 **Discussion:** As discussed previously, this group of *Platyclymenia* specimens from Ouarourout
1186 is tentatively assigned to *Platyclymenia cf. ibnsinai* based on their high whorl expansion rate and
1187 their narrow umbilicus. However, our material prevents to reach a firm identification, because it is
1188 restricted to small specimens showing a wide variation in conch proportions, partly overlapping the

1189 range of values of *P. annulata*.

1190 **Occurrence:** In the Ouarourout area (Algeria), *Platyclymenia* cf. *ibnsinai* occurs in the
1191 *Platyclymenia* interval (late Famennian; Fig. 4). In Morocco, *P. ibnsinai* ranges from the *Platyclymenia*
1192 *annulata* Zone to the *Cymaclymenia pudica* Zone (Becker et al., 2002; *C. pudica* Zone = time
1193 equivalent of the *P. ebbighauseni* and *P. dunkeri* zones; see Fig. 5).

1194

1195

1196 Genus ***Trigonoclymenia*** Schindewolf, 1934

1197 **Type-species:** *Clymenia spinosa* Münster, 1842, p. 122; by original designation.

1198

1199 *Trigonoclymenia* cf. *spinosa* (Münster, 1842)

1200 (Figure 13K–M)

1201 **Material:** Seven specimens from samples On8, On10 and On11 (*Platyclymenia* interval).

1202 **Description:** Specimen On10.40 (Fig. 13K) has a diameter of 31.7 mm; its conch is extremely
1203 discoidal (CWI = 0.31) and evolute (UWI = 0.51), with a weakly depressed whorl cross section (WWI =
1204 1.23) and a moderate whorl expansion rate (WER = 1.94). The whorl section is subquadrate; the
1205 venter is slightly flattened (subangular ventrolateral margins) and the flanks are subparallel; the
1206 umbilical margin is slightly subangular. The ornamentation consists of widely spaced, rectiradiate and
1207 concave ribs, enlarged on mid-flanks and without crossing the venter; these ribs are projected
1208 forward on the ventrolateral shoulder, irregularly leading to parabolic nodes. The suture line shows a
1209 flat M saddle; and a shallow and very large L lobe going forward near the umbilicus (Fig. 13M).
1210 Specimen On8.22 (Fig. 13L) has a diameter of 19.7 mm; its conch is extremely discoidal (CWI = 0.29);
1211 and evolute (UWI = 0.49), with a weakly depressed whorl cross section (WWI = 1.04) and a moderate
1212 whorl expansion rate (WER = 1.82). The whorl section is subquadrate; the venter is flat (subangular
1213 ventrolateral margins) and the flanks are subparallel; the umbilical margin is subangular. The conch
1214 bears widely spaced, thin, rectiradiate and concave ribs, projected forward on the ventrolateral
1215 shoulder, without crossing the venter; some ribs show weak, ventrolateral, parabolic nodes.
1216 Specimen On10.3 (not illustrated) has a diameter of 14.9 mm; its conch is extremely discoidal (CWI =
1217 0.34) and evolute (UWI = 0.48), with a weakly depressed whorl cross section (WWI = 1.19) and a
1218 moderate whorl expansion rate (WER = 1.87). The whorl section is subquadrate; the venter is
1219 narrowly and the flanks are subparallel; the umbilical margin is oblique. The ornamentation is
1220 characterized by weak, rectiradiate and concave ribs bearing weak, ventrolateral and parabolic
1221 nodes.

1222 **Discussion:** Based on the widely-spaced concave ribs bearing ventrolateral parabolic nodes,
1223 the studied specimens from Ouarourout can be assigned to *Trigonoclymenia*. Many species of

1224 *Trigonoclymenia* have been described; they differ by very minor subtle differences and they may
1225 constitute transitional forms (see Petter, 1960). The parabolic ribs bearing weak nodes near the
1226 ventrolateral shoulders are distinctive of *T. spinosa*, but our limited material prevents to reach a
1227 confident species identification.

1228 **Occurrence:** In the Ouarourout area (Algeria), *Trigonoclymenia* cf. *spinosa* occurs in the lower
1229 and middle parts of the *Platyclymenia* interval (late Famennian; Fig. 4). In Morocco, *T. spinosa* ranges
1230 from the *Platyclymenia annulata* Zone to the *Cymaclymenia pudica* Zone (Becker et al., 2002; *C.*
1231 *pudica* Zone = time equivalent of the *P. ebbighauseni* and *P. dunkeri* zones; see Fig. 5).

1232

1233 FIGURE 13 AROUND HERE

1234

1235 Superfamily Clymenioidea Edwards, 1849

1236 Family Kosmoclymeniidae Korn and Price, 1987

1237 Subfamily Kosmoclymeniinae Korn and Price, 1987

1238 Genus ***Kosmoclymenia*** Schindewolf, 1949

1239 **Type species:** *Planulites undulatus* Münster, 1832, p. 9; by original designation.

1240

1241 ***Kosmoclymenia inaequistriata*** (Münster, 1832)

1242 (Figure 14A–K)

1243 1832 *Planulites inaequistriatus* – Münster, p. 10, pl. 2, fig. 4

1244 ? 1960 *Kosmoclymenia sedgwickii* – Petter, p. 36, pl. 6, figs 1, 3, 6 (only)

1245 1987 *Kosmoclymenia (Kosmoclymenia) inaequistriata inaequistriata* – Korn and Price, p. 29,
1246 pl. 3, figs 18–21, pl. 4, figs 22–28, text-fig. 13F, G

1247 1999 *Kosmoclymenia inaequistriata* – Korn, pl. 6, fig. 7

1248 ? 2017 *Kosmoclymenia* sp. – Korn et al., p. 137, fig. 17

1249 **Material:** 19 specimens from samples On13 and On14 (*Medioclymenia* interval).

1250 **Description:** Specimen On13.18 (Fig. 14A) has a diameter of 51.1 mm; its conch is extremely
1251 discoidal (CWI = 0.25) and subevolute (UWI = 0.41), with a weakly compressed whorl cross section
1252 (WWI = 0.75) and a high whorl expansion rate (WER = 2.12). The whorl section is oval; the venter is
1253 tabulate and bounded by slight ventrolateral furrows forming a ventral band; the flanks are slightly
1254 converging; the umbilical margin is rounded and slightly oblique. At a diameter of 40 mm, the venter
1255 is rounded without ventral band. The last half of the conch shows faint biconvex ribs projected
1256 backward on the venter. Specimen On14.32 (Fig. 14B) has a diameter of 36 mm; its conch is
1257 extremely discoidal (CWI = 0.23) and evolute (UWI = 0.46), with a weakly compressed whorl cross
1258 section (WWI = 0.75) and a high whorl expansion rate (WER = 2.12). At a diameter of 26 mm, the

1259 venter is rounded without ventrolateral furrows. The shell geometry is therefore similar to the
1260 previous specimen On13.18, but in On14.32 the slight ventrolateral furrows appears earlier. The shell
1261 shows dense, closely spaced, biconvex growth lines projected backward on the venter. The suture is
1262 partly visible and shows a typical Z-shaped L lobe. Specimen On13.9 (Fig. 14H) has a diameter of 34.4
1263 mm; its conch is extremely discoidal (CWI = 0.27) and evolute (UWI = 0.46), with a weakly
1264 compressed whorl cross section (WWI = 0.86) and a high whorl expansion rate (WER = 2.05). The
1265 whorl section is oval without slight ventrolateral furrows; the flanks are slightly converging; the
1266 umbilical margin is rounded and slightly oblique. The shell is characterized by dense, closely spaced,
1267 biconvex growth lines projected backward on the venter; this ventral projection forms a relatively
1268 wide ventral band; the growth lines are bunched into groups of approximately six, forming faint ribs.
1269 Specimen On13.8 (not illustrated) has a diameter of 27.1 mm; its conch is extremely discoidal (CWI =
1270 0.28) and subevolute (UWI = 0.43), with a weakly compressed whorl cross section (WWI = 0.86) and a
1271 high whorl expansion rate (WER = 2.23). The whorl section is oval without ventrolateral grooves; the
1272 flanks are slightly converging; the umbilical margin is rounded and slightly oblique. The shell shows
1273 dense, biconvex growth lines projected backward on the venter and forming a relatively large ventral
1274 band; this ventral band shows periodic U-shaped lines corresponding to the growth lines bunched
1275 into groups of approximately six (for a similar example, see Korn and Price, 1987, pl. 3, fig. 20b).
1276 Specimen On13.6 (Fig. 14G) has a diameter of 19.5 mm; its conch is extremely discoidal (CWI = 0.30)
1277 and evolute (UWI = 0.47), with a weakly compressed whorl cross section (WWI = 0.98) and a
1278 moderate whorl expansion rate (WER = 1.91). The whorl section is oval; the venter is rounded and
1279 the flanks are subparallel; the umbilical margin is rounded and slightly oblique. The suture line is well
1280 exposed and shows the typical asymmetric, relatively deep and pointed L lobe, associated to a rather
1281 flat M saddle. Specimens On13.10 (Fig. 14E, J), On13.7 (Fig. 14F, K), On14.10 (Fig. 14D, I), and On14.7
1282 (Fig. 14C) show the suture line at various size (from H = 3 to 8.5 mm); it is characterized by a
1283 relatively flat M saddle, followed by an asymmetric, pointed, Z-shaped L lobe; at the largest size, an
1284 additional rounded, shallow A lobe is visible.

1285 **Discussion:** The specimens from Ouarourout closely resemble, in conch shape, ornament and
1286 suture line, the material from Germany and Morocco (see Korn and Price, 1987; Korn, 1999); they
1287 display the ventral band typical of the genus. *Kosmoclymenia inaequistriata* differ from the closely
1288 allied *K. lamellosa* by more biconvex and more closely spaced growth lines appearing at a diameter
1289 of about 15 mm. It differs from other species of *Kosmoclymenia* by a more compressed whorl section
1290 and by a wider ventral band.

1291 **Occurrence:** In the Ouarourout area (Algeria), *Kosmoclymenia inaequistriata* occurs in the
1292 *Medioclymenia* interval (late Famennian; Fig. 4). In Morocco, *K. inaequistriata* occurs in the
1293 *Goniclymenia hoevelensis* and *Kallocalymenia subarmata* zones; the closely related *K. lamellosa* is

1294 older and occurs in the *Costaclymenia muensteri* and *Gonioclymenia subcarinata* zones (Becker et al.,
1295 2002; see Fig. 5).

1296

1297

1298 Genus ***Muessenbiaergia*** Korn and Price, 1987

1299 **Type species:** *Planulites sublaevis* Münster, 1832, p. 10; by original designation.

1300

1301 ***Muessenbiaergia* cf. *ouarouroutensis*** Korn et al., 2017

1302 (Figure 14L)

1303 **Material:** One incomplete specimen from sample On14 (*Medioclymenia* interval).

1304 **Description:** Specimen On14.36 (Fig. 14L) has a diameter of 47.1 mm; its conch is extremely
1305 discoidal (CWI = 0.26) and subevolute (UWI = 0.42), with a weakly compressed whorl cross section
1306 (WWI = 0.71) and a very high whorl expansion rate (WER = 2.28). The whorl section is oval; the
1307 venter exhibits weak, but distinct ventral grooves, forming a broad ventral keel; the flanks are
1308 subparallel; the umbilical margin is rounded. At a diameter of 33 mm, the venter is rounded without
1309 ventral band. The shell is poorly preserved, but partly shows fine, widely spaced and slightly biconvex
1310 growth lines.

1311 **Discussion:** This specimen from Ouarourout shows a broad ventral keel (only visible in the
1312 outer whorls) associated to a slightly flattened venter. Its morphology is close to the European
1313 species *M. sublaevis* (Münster, 1832) and *M. diversa* (Korn and Price, 1987), but the formers have
1314 more closely spaced growth lines, and a less pronounced ventral band. Nevertheless, specimens
1315 characterized by this late appearance of a wide ventral keel accompanied with weak ventrolateral
1316 grooves have been assigned to a new species, *M. ouarouroutensis*, by Korn et al. (2017) based on
1317 Algerian material from Ouarourout.

1318 **Occurrence:** In the Ouarourout area (Algeria), *Muessenbiaergia* cf. *ouarouroutensis* occurs in
1319 the *Medioclymenia* interval (late Famennian; Fig. 4). Korn et al. (2017) identified this species in
1320 Ouarourout within the *Medioclymenia* assemblage (see Fig. 5). In Morocco, *M. diversa* occurs from
1321 the *Gonioclymenia hoevelensis* to the *Kalloclymenia subarmata* zone, while *M. sublaevis* ranges
1322 above, up to the *Parawocklumeria patens* zone (Becker et al., 2002).

1323

1324 ***Muessenbiaergia beniabbesensis*** Korn et al., 2017

1325 (Figure 14M–N)

1326 ? 1960 *Kosmoclymenia bisulcata* – Petter, p. 38, pl. 6, figs 2, 7, 8

1327 2017 *Muessenbiaergia beniabbesensis* – Korn et al., p. 139, figs 20, 21, table 7

1328 **Material:** Two specimens from samples On13 and On14 (*Medioclymenia* interval).

1329 **Description:** Specimen On14.35 (Fig. 14M–N) has a diameter of 36.8 mm; its conch is
1330 extremely discoidal (CWI = 0.24) and moderately evolute (UWI = 0.45), with a weakly compressed
1331 whorl cross section (WWI = 0.80) and a high whorl expansion rate (WER = 2.17). The venter is
1332 tabulate with a relatively high and narrow keel, which is bounded by two shallow grooves; the flanks
1333 are slightly converging; the umbilical margin is rounded and the umbilical wall is slightly oblique. The
1334 shell is poorly preserved, and partly shows fine, biconvex, rursiradiate growth lines, and faint ribs
1335 parallel to the growth lines which are fading toward the umbilicus. The suture line (partly visible) is
1336 characterized by a deep, asymmetric and pointed L lobe (Fig. 14N). The fragmentary specimen
1337 On13.19 (not illustrated) has a diameter of 33.2 mm; its conch geometry and ornamentation are
1338 similar to specimen On14.35 (tabulate venter bounded by sharp grooves forming a narrow keel). At a
1339 diameter of 25 mm, the venter is already keeled, but the ventrolateral furrows are only weakly
1340 developed leading to a more rounded venter.

1341 **Discussion:** The specimens characterized by the early appearance of a sharp tabulate venter
1342 bordered by ventrolateral grooves forming a narrow keel are assigned to *Muesseniaergia*
1343 *beniabbesensis*. Our specimens slightly differ from those figured by Korn et al. (2017) by their higher
1344 WER (> 2). This species is close to the European group of *M. bisulcata* (see Korn and Price, 1987)
1345 based on the tabulate venter with sharp ventral furrows; but it differs by the biconvex growth lines
1346 not projected forward near the umbilicus, and by the absence of a lateral groove at the adult stage
1347 (Korn et al. 2017).

1348 **Occurrence:** In the Ouarourout area (Algeria), *Muesseniaergia beniabbesensis* occurs in the
1349 *Medioclymenia* interval (late Famennian; Fig. 4). Korn et al. (2017) also identified this species in
1350 Ouarourout within the *Medioclymenia* assemblage (see Fig. 5). *M. beniabbesensis* have not been
1351 reported in Morocco.

1352

1353 FIGURE 14 AROUND HERE

1354

1355 Superfamily Gonioclymenioidea Hyatt, 1884

1356 Family Gonioclymeniidae Hyatt, 1884

1357 Genus ***Gonioclymenia*** Hyatt, 1884

1358 **Type species:** *Goniatites speciosus* Münster, 1831, p. 177; by original designation.

1359 **Remarks:** This genus has been recently revised by Korn (2017) and Korn and Bockwinkel
1360 (2017) for the European and Moroccan occurrences, respectively. They gave a full discussion about
1361 this genus, which seems to have different species among these regions. In the Anti-Atlas of Morocco,
1362 Korn and Bockwinkel (2017) discussed and distinguished six species; three of them have been also
1363 recognized in Algeria by Korn et al. (2017; *G. wendti*, *G. ali* and *G. spiniger*).

1364

1365 ***Gonioclymenia cf. ali*** Korn and Bockwinkel, 2017

1366 (Figure 15A–B)

1367 **Material:** Eight incomplete specimens from sample On8f (*Gonioclymenia* level).

1368 **Description:** Specimen On8.49 (Fig. 15A) has a diameter of 41.1 mm; its conch is extremely
1369 discoidal (CWI = 0.23) and subevolute (UWI = 0.41), with a weakly compressed whorl cross section
1370 (WWI = 0.59) and a relatively high whorl expansion rate (WER = 2.15). At this diameter, the venter is
1371 sharply concave. The ornamentation consists of weak, dense, prorsiradiate ribs, without
1372 ventrolateral nodes. Specimen On8.48 (not illustrated) has an estimated diameter of 65 mm and still
1373 shows weak ribs and a sharp concave venter. At a diameter of 16 mm, the suture lines of specimens
1374 On8.44 and On8.45 (poorly visible, not illustrated) show a deep V-shaped L lobe; a shallow A lobe;
1375 and a wide and asymmetric L/U saddle with a curved left-flank. Specimen On8.46 (Fig. 15B) has a
1376 diameter of 21.7 mm and a stouter conch; it is extremely discoidal (CWI = 0.25) and subevolute (UWI
1377 = 0.41), with a weakly compressed whorl cross section (WWI = 0.65) and a high whorl expansion rate
1378 (WER = 2.27). The whorl section is subrectangular; the venter is concave (typical ventral groove) and
1379 the flanks are slightly converging; the umbilical margin is rounded. The ornamentation consists of
1380 dense, straight to sinuous, prorsiradiate ribs (16 per half-whorl) extending from the umbilicus to the
1381 ventrolateral margins where they fade without crossing the venter. The inner whorls are badly
1382 preserved but show several ventrolateral nodes, which disappear around a diameter of 15 mm.

1383 **Discussion:** The concave venter with a ventral groove in juvenile and intermediate stages,
1384 and the early disappearance of the ventrolateral nodes are typical of the genus *Gonioclymenia*. The
1385 specimens from Ouarourout are close to the species *G. ali*, identified in Morocco and in Algeria (Korn
1386 and Bockwinkel, 2017; Korn et al., 2017). The absence of adult specimens and the poor preservation
1387 of the sutures within our material prevent to reach a firm conclusion, but the sculpture (coarse ribs;
1388 small ventrolateral nodes only in juvenile stage) suggests an affinity with *G. ali*. It differs from other
1389 revised species of *Gonioclymenia* from Morocco by the absence of prominent ventrolateral nodes (in
1390 contrast to *G. wendti*, *G. spiniger* and *G. ebbighauseni*) and by the development of coarse ribs during
1391 the middle stage of the growth (in contrast to *G. inornata*); it differs from *G. subcostulata* (Petter,
1392 1960) by a coarser and a more widely spaced ribbing.

1393 **Occurrence:** In the Ouarourout area (Algeria), *Gonioclymenia cf. ali* occurs in the
1394 *Gonioclymenia* level (late Famennian; Fig. 4). Korn et al. (2017) identified *Gonioclymenia ali* in
1395 Ouarourout within the *Medioclymenia* assemblage (see Fig. 5). In Morocco, it occurs in the
1396 ‘*Gonioclymenia* Limestone’ (Hartenfels and Becker, 2016b; Korn and Bockwinkel 2017); this interval is
1397 not precisely dated, and can belong to the *Gonioclymenia subcarinata* and/or to the *Gonioclymenia*
1398 *hoevelensis* zones (see Becker et al., 2002; Korn and Bockwinkel, 2017; Fig. 5).

1399

1400 Family Costaclymeniidae Ruzhencev, 1957

1401 Genus *Costaclymenia* Schindewolf, 1920

1402 **Type species:** *Goniatites binodosus* Münster, 1832, p. 31; by original designation.

1403 **Remarks:** This genus and the taxonomic problems related to its type species have been

1404 recently revised by Korn et al. (2018a, b). It appears that most Moroccan occurrences attributed to

1405 *Endosiphonites muensteri* and its homonym zone (see Becker et al., 2002) belong to the species

1406 *Costaclymenia ornata* (see Korn et al., 2018c).

1407

1408 ***Costaclymenia ornata*** (Petter, 1960)

1409 (Figure 15G)

1410 1950 *Costaclymenia binodosa* – Termier and Termier, p. 77, pl. 160, fig. 28.10

1411 1960 *Trochoclymenia ornata* – Petter, p. 34, pl. 3, figs 1, 2, 4, 7, 8

1412 1999 *Endosiphonites muensteri* – Korn, p. 161, text-fig. 8A–E, pl. 7, figs 1–3

1413 2002 *Endosiphonites muensteri* – Becker et al., pl. 5, figs 7, 8

1414 2018c *Costaclymenia ornata* – Korn et al., p. 36, figs 1–3 [with additional synonymy]

1415 **Material:** One specimen from a loose block collected just above the sample On12

1416 (*Costaclymenia* level, sample On12f).

1417 **Description:** Specimen On12.31 (Fig. 15G) has a diameter of 49.3 mm; its conch is extremely

1418 discoidal (CWI = 0.20) and evolute (UWI = 0.47), with a weakly compressed whorl cross section (WWI

1419 = 0.64) and a high whorl expansion rate (WER = 2.10). The whorl section is subrectangular; the venter

1420 is flat and slightly arched, and the flanks are very slightly converging toward subangular ventrolateral

1421 margins; the umbilical margin is rounded and slightly oblique. The ornamentation shows moderately

1422 spaced, weak, ventrolateral riblets (around 20 on the last half whorl, which in the meantime shows

1423 nine sutures). The suture line shows a very shallow E lobe; a large asymmetric and broadly rounded L

1424 lobe; and a shallow U lobe.

1425 **Discussion:** Although a single specimen from Ouarourout is assigned to *Costaclymenia*

1426 *ornata*, it perfectly fits with the description and the illustrated Moroccan material of Korn et al.

1427 (2018c), as well as the Algerian material of Petter (1960). Our specimen has a weak ornamentation,

1428 but the whorl shape and the suture line are clearly characteristic of *C. ornata*; thus, it constitutes a

1429 slender variant of the species.

1430 **Occurrence:** In the Ouarourout area (Algeria), *Costaclymenia ornata* seems rare and usually

1431 found in loose blocks. Nevertheless, it probably occurs in a stratigraphic position equivalent to the

1432 Moroccan specimens (*Endosiphonites* (= *Costaclymenia*) *muensteri* Zone of Becker et al., 2002),

1433 between the *Platyclymenia* interval and the *Gonioclymenia* level (late Famennian; see Figs 4–5).

1434
1435
1436
1437
1438
1439
1440
1441
1442
1443
1444
1445
1446
1447
1448
1449
1450
1451
1452
1453
1454
1455
1456
1457
1458
1459
1460
1461
1462
1463
1464
1465
1466
1467
1468

Family Sphenoclymeniidae Korn, 1992

Genus *Medioclymenia* Korn in Korn and Klug, 2002

Type species: *Goniatites intermedius* Münster, 1839, p. 53; by original designation.

Medioclymenia saourensis Korn et al., 2017

(Figure 15C–F)

1960 *Sphenoclymenia intermedia* – Petter, p. 18, fig. 2A, pl. 2, figs 15, 15a, 16

2002 *Sphenoclymenia intermedia* – Becker et al., pl. 5, figs 5, 6

2017 *Medioclymenia saourensis* – Korn et al., p. 146, figs 29, 30, table 9

Material: Six specimens from sample On14 (*Medioclymenia* interval).

Description: Specimen On14.1 (Fig. 15D, F) has a diameter of 16.7 mm; its conch is extremely discoidal (CWI = 0.22) and subevolute (UWI = 0.41), with a weakly compressed whorl cross section (WWI = 0.62) and a very high whorl expansion rate (WER = 2.39). The whorl section is subtrapezoidal; the venter is flat and the flanks are slightly converging toward subangular ventrolateral margins; the umbilical margin is oblique and rounded. The inner whorls show coarse, distant, spiny ventrolateral nodes (seven per whorl at a diameter of 8 mm), which disappear at a diameter of 10 mm; these nodes influence the shape of the subsequent whorl by preventing embracement of the outer flank, thus leading to a polygonal outline of the umbilicus. At a diameter of 12.8 mm, the suture line shows: a shallow and rounded E lobe; a shallow, rounded and symmetric A lobe; a wide, relatively deep, slightly acute and asymmetric L lobe; and a rounded and shallow U lobe (Fig. 15F). Similarly, specimen On14.40 (Fig. 15C), at an estimated diameter of 45 mm, exhibits a smooth conch with a subtrapezoidal whorl section, and a polygonal umbilicus resulting from spiny ventrolateral tubercles present until a diameter of 13 mm. Specimen On14.39 has a diameter of 43.1 mm; its conch is extremely discoidal (CWI = 0.20) and subevolute (UWI = 0.39), with a weakly compressed whorl cross section (WWI = 0.53) and a very high whorl expansion rate (WER = 2.33). The whorl section is subrectangular; the venter is concave and the flanks are slightly converging toward subangular ventrolateral margins; the umbilical margin is rounded. The concave venter is clearly visible at a diameter of 28 mm, but it progressively flattens toward a diameter of 40 mm. The ornamentation shows only weak prorsiradiate, straight to sinuous folds fading toward the umbilicus and venter. At H = 11.0 mm, the suture line shows a relatively shallow, rounded and symmetric E lobe; a moderately deep, rounded and symmetric A lobe; a deep, rounded and slightly asymmetric L lobe; and a rounded and asymmetric U lobe (Fig. 15E). Specimen On14.41 (not illustrated) has an estimated diameter of about 62 mm. The conch geometry and the ornamentation are similar to the specimen On14.39, but the ventral groove has disappeared and consequently the venter is rounded and slightly convex.

1469 Specimen On14.43 (not illustrated) also shows this rounded and convex venter at an estimated
1470 diameter of 120 mm. This specimen shows an eroded suture line with a zigzag course constituted of:
1471 a narrow and deep E lobe; a deep, acute, and narrow A lobe; and an asymmetric and lanceolate L
1472 lobe.

1473 **Discussion:** These specimens from Ouarourout are close to the European species
1474 *Sphenoclymenia intermedia*. However, recent material from Algeria showing the typical polygonal
1475 umbilicus and ventrolateral spines in the inner whorls, as well as a subrectangular whorl section,
1476 have been assigned to a new species, *Medioclymenia saourensis*, by Korn et al. (2017). The A₂ lobe
1477 characterizing *S. intermedia* (Petter, 1960; Price and Korn, 1989) cannot be observed in our
1478 specimens because of their small size. Nevertheless, our material clearly matched the specimens
1479 figured by Becker et al. (2002) and Korn et al. (2017).

1480 **Occurrence:** In the Ouarourout area (Algeria), *Medioclymenia saourensis* occurs in the
1481 *Medioclymenia* interval (late Famennian; Fig. 4). Korn et al. (2017) identified this species in
1482 Ouarourout within the *Medioclymenia* assemblage (see Fig. 5). In Morocco, *M. saourensis* ("*S.*
1483 *intermedia*") is restricted to the *Gonioclymenia hoevelensis* Zone (Becker et al., 2002; see Fig. 5).

1484
1485 FIGURE 15 AROUND HERE

1486
1487

1488 **Acknowledgements**

1489
1490 The authors would like to warmly thank Christian Klug (University of Zürich) for the field-
1491 work in Morocco and for the discussions concerning the taxonomic identification of the Algerian
1492 material. The authors are grateful to Didier Néraudeau, the Editor of the journal, for his advice and
1493 for submitting this work to the evaluation of expert reviewers. The authors are also particularly
1494 thankful to Dieter Korn (Museum für Naturkunde, Berlin) for reviewing the manuscript and making
1495 many helpful remarks. Precious technical assistance was provided by Jessie Cuvelier and Elisabeth
1496 Locatelli (University of Lille). This paper is a contribution to the PHC TASSILI (Egide n°24496VJ; CMEP
1497 n°11MDU849), to the IGCP 596 'Climate change and biodiversity patterns in the Mid Palaeozoic', and
1498 to the French CNRS UMR 8198 Evo-Eco-Paleo. The authors, Catherine Crônier (project's holder),
1499 Claude Monnet and Ninon Allaire, received a grant from the University of Lille ('BQR').

1500
1501

1502 **References**

1503

- 1504 Abbache, A., Ouali Mehadji, A., Crônier, C., Fellah, A.H., Allaire, N., Monnet, C., 2019. Le Dévonien
1505 supérieur du Sahara nord-occidental (Algérie): Faciès, environnements et signification
1506 géodynamique des calcaires griottes. *Carnets de Géologie* 19, 71–96.
- 1507 Alimen, H., Le Maître, D., Menchikoff, N., Petter, G., Poueyto, A., 1952. Les chaînes d'Ougarta et la
1508 Saoura. Actes du XIX^{ème} Congrès Géologique International, Alger, 1^{ère} série, pp. 49–62.
- 1509 Arkell, W., Furnish, W., Kummel, B., Miller, A., Moore, R., Schindewolf, O., Sylvester-Bradley, P.,
1510 Wright, W., 1957. Introduction to Mesozoic Ammonoidea, part L. In: Moore, R.C. (Ed.), *Treatise*
1511 *on Invertebrate Palaeontology, Part L, Mollusca 4, Cephalopoda – Ammonoidea*. Geological
1512 Society of America, and University of Kansas Press, Boulder and Lawrence, 490 p.
- 1513 Arthaber, G., 1911. Die Trias von Albanien. *Beiträge zur Paläontologie und Geologie Österreich-*
1514 *Ungarns und des Orients* 24, 169–277.
- 1515 Becker, R.T., 1993a. Stratigraphische Gliederung und Ammonoideen-Faunen im Nehdenium
1516 (Oberdevon II) von Europa und Nord-Afrika. *Courier Forschungsinstitut Senckenberg* 155, 1–
1517 405.
- 1518 Becker, R.T., 1993b. Anoxia, eustatic changes, and Upper Devonian to lowermost Carboniferous
1519 global ammonoid diversity. *Systematics Association, Special Volume* 47, 115–163.
- 1520 Becker, R.T., 1995. Taxonomy and evolution of Late Famennian Tornocerataceae (Ammonoidea).
1521 *Berliner geowissenschaftliche Abhandlungen* E16, 607–643.
- 1522 Becker, R.T., 2000. Taxonomy, evolutionary history and distribution of the middle to late Famennian
1523 Wocklumeriina (Ammonoidea, Clymeniida). *Mitteilungen aus dem Museum für Naturkunde in*
1524 *Berlin, Geowissenschaftliche Reihe* 3, 27–75.
- 1525 Becker, R.T., 2002. Alpinites and other Posttornoceratidae (Goniatitida, Famennian). *Mitteilungen*
1526 *aus dem Museum für Naturkunde in Berlin, Geowissenschaftliche Reihe* 5, 51–73.
- 1527 Becker, R.T., House, M.R., 1994. Kellwasser Events and goniatite successions in the Devonian of the
1528 Montagne Noire with comments on possible causations. *Courier Forschungsinstitut*
1529 *Senckenberg* 169, 45–77.
- 1530 Becker, R.T., Bockwinkel, J., Ebbighausen, V., House, M.R., 2000. Jebel Mrakib, Anti-Atlas (Morocco),
1531 a potential Upper Famennian substage boundary stratotype section. *Notes et Mémoires du*
1532 *Service géologique du Maroc* 399, 75–86.
- 1533 Becker, R.T., House, M.R., Bockwinkel, J., Ebbighausen, V., Aboussalam, Z.S., 2002. Famennian
1534 ammonoid zones of the eastern Anti-Atlas (southern Morocco). *Münstersche Forschungen zur*
1535 *Geologie und Paläontologie* 93, 159–205.
- 1536 Becker, R.T., El Hassani, A., Tahiri, A., 2013. International Field Symposium 'The Devonian and Lower
1537 Carboniferous of northern Gondwana'. *Documents de l'Institut Scientifique, Rabat*, 27, 1–150.
- 1538 Bendella, M., Ouali Mehadji, A., 2015. Depositional environment and ichnology (*Nereites* ichnofacies)

- 1539 of the Late Devonian Sahara region (SW Algeria). *Arabian Journal of Geosciences* 8, 5303–
1540 5316.
- 1541 Benhamou M., Abbache A., Elmi S., Mekhali L., Racheboeuf P.R., Ouali-Mehadji A., Boumendjel K.,
1542 2004. Les calcaires ‘griottes’ et faciès associés du Dévonien supérieur des environs de Béni-
1543 Abbès au Djebel Heche (Saoura, Algérie): environnements et implications paléogéographiques.
1544 *Bulletin du Service Géologique de l’Algérie* 15, 27–49.
- 1545 Bockwinkel, J., Becker, R.T., Ebbighausen, V., 2002. Morphometry and taxonomy of Lower Famennian
1546 Sporadoceratidae (Goniatitida) from Southern Morocco. *Abhandlungen der Geologischen
1547 Bundesanstalt* 57, 279–297.
- 1548 Bogoslovsky, B.I., 1971. Devonskie ammonoidei. II. Goniatity. *Trudy Paleontologicheskogo Instituta
1549 Akademiyi Nauk SSSR*, 127, 1–228.
- 1550 Boumendjel, K., Morzadec, P., Paris, F., Plusquellec, Y., 1997a. Le Dévonien de l’Ougarta (Sahara
1551 occidental, Algérie). *Annales de la Société géologique du Nord (2^e série)* 5, 73–87.
- 1552 Buch, L. von, 1832. Über Goniatiten. *Physikalische Abhandlungen der königlichen Akademie der
1553 Wissenschaften Berlin 1831*, 159–187.
- 1554 Casier, J.G., 1983. Les ostracodes du Frasnien et de la base du Famennien de la coupe du Km 30
1555 (Saoura, Sahara algérien). *Bulletin de la Société belge de Géologie* 91, 195–207.
- 1556 Crônier, C., Malti, F.Z., François, A., Benyoucef, M., Brice, D., 2013. First occurrence of a phacopid
1557 trilobite faunule from the Upper Devonian of Saoura Valley, Algeria and biodiversity
1558 fluctuations. *Geological Magazine* 150, 1002–1021.
- 1559 Cuvier, G., 1797. *Tableau élémentaire de l’histoire naturelle des animaux*. Baudouin, Paris.
- 1560 Czarnocki, J., 1989. Klimenie Gór Swietokrzyskich. *Prace Panstwowego Instytutu Geologicznego* 127,
1561 1–91.
- 1562 Donzeau, M., 1983. Tectonique des Monts d’Ougarta. In: Fabre, J. (Ed.), *Lexique Stratigraphique
1563 International – Afrique de l’Ouest*. Pergamon Press, Oxford, pp. 118–120.
- 1564 Ebbighausen, V., Korn, D., 2007. Conch geometry and ontogenetic trajectories in the triangularly
1565 coiled Late Devonian ammonoid *Wocklumeria* and related genera. *Neues Jahrbuch für
1566 Geologie und Paläontologie, Abhandlungen* 244, 9–41.
- 1567 Edwards, F.E., 1849. A monograph of the Eocene Mollusca. Part I. Cephalopoda. *Transactions of the
1568 Palaeontographical Society* 2, 1–56.
- 1569 Elmi, S., Ameur M., 1984. Quelques environnements des faciès noduleux mésogiens. *Estratoda
1570 Geologica Romana* 23, 13–22.
- 1571 Fabre, J., Jonquet B., Bronner G., 1978. *Carte géologique du nord-ouest de l’Afrique*. Société
1572 Nationale Diffusion Edition, Alger.
- 1573 Fabre, J., Kazi-Tani N., Moussine-Pouchkine A., 2005. Le Dévonien. In: J. Fabre (Ed.) *Géologie du*

- 1574 Sahara Occidental et Central. Musée royal de l’Afrique Centrale, pp. 227–294.
- 1575 Feist, R., Mahboubi, A., Girard, C., 2016. New Late Devonian phacopid trilobites from Marhouma, SW
1576 Algerian Sahara. *Bulletin of Geosciences* 91, 243–259.
- 1577 Gautier, E.F., 1906. Contribution à l’étude géologique du Sahara (Saoura–Gourara–Touat). *Bulletin de*
1578 *la Société géologique de France* 4, 729–766.
- 1579 Göddertz, B., 1987. Devonische Goniatiten aus SW Algerien und ihre stratigraphische Einordnung in
1580 die Conodonten-Abfolge. *Palaeontographica, Abteilung A Palaeozoologie-Stratigrafie* 197,
1581 127–220.
- 1582 Gupta, V.J., Erben, H.K., 1983. A late Devonian ammonoid fauna from Himachal Pradesh, India.
1583 *Paläontologische Zeitschrift*, 57(1-2), 93-102.
- 1584 Hartenfels, S., Becker R.T., 2009. Timing of the global Dasberg Crisis – implications for Famennian
1585 eustasy and chronostratigraphy. *Palaeontographica Americana* 63, 71–97.
- 1586 Hartenfels, S., Becker R.T., 2016a. The global *Annulata* Events: review and new data from the Rheris
1587 Basin (northern Tafilalt) of SE Morocco. *Geological Society, London, Special*
1588 *Publications* 423(1), 291–354.
- 1589 Hartenfels, S., Becker R.T., 2016b. Age and correlation of the transgressive Goniclymenia Limestone
1590 (Famennian, Tafilalt, eastern Anti-Atlas, Morocco). *Geological Magazine* 155, 586–629.
- 1591 Haug, E., 1903. Deux horizons à Céphalopodes du Dévonien supérieur du Sud-Oranais. *Comptes*
1592 *Rendus de l’Académie des Sciences, Paris*, 138, 85–87.
- 1593 House, M.R., 1970. On the origin of the clymenid ammonoids. *Palaeontology* 13(4), 664–676.
- 1594 House, M.R., 1985. Correlation of mid-Palaeozoic ammonoid evolutionary events with global
1595 sedimentary perturbations. *Nature* 313, 17–22.
- 1596 House, M.R., 1989. Ammonoid extinction events. *Philosophical Transactions of the Royal Society of*
1597 *London B* 325, 307–326.
- 1598 Hyatt, A., 1884. Genera of fossil cephalopods. *Proceedings of the Boston Society of Natural History*
1599 22, 253–338.
- 1600 Klein, C., Korn, D., 2014. A morphometric approach to conch ontogeny of *Cymaclymenia* and related
1601 genera (Ammonoidea, Late Devonian). *Fossil Record* 17, 1–32.
- 1602 Klug, C., Frey, I., Korn, D., Jattiot, R., Rücklin, M., 2016. The oldest Gondwanan cephalopod mandibles
1603 (Hangenberg Black Shale, Late Devonian) and the mid-Palaeozoic rise of jaws. *Palaeontology*
1604 59 (5), 611–629.
- 1605 Klug C., Hoffmann, R., 2015. Ammonoid septa and sutures (Chapter 3). In: Klug, C., Korn, D., De Baets,
1606 K., Kruta, I., Mapes, R.H. (Eds), *Ammonoid paleobiology: from anatomy to ecology*. Springer,
1607 Dordrecht, *Topics in Geobiology* 43, 45–90.
- 1608 Klug, C., Kröger, B., Korn, D., Rücklin, M., Schemm-Gregory, M., De Baets, K., Mapes, R. H., 2008.

- 1609 Ecological change during the early Emsian (Devonian) in the Tafilalt (Morocco), the origin of
 1610 the Ammonoidea, and the first African pyrgocystid edrioasteroids, machaerids and
 1611 phyllocarids. *Palaeontographica Abteilung A* 283, 83–176.
- 1612 Klug, C., Kröger, B., Kiessling, W., Mullins, G.L., Servais, T., Frýda, J., Korn, D., Turner, S., 2010. The
 1613 Devonian nekton revolution. *Lethaia* 43, 465–477.
- 1614 Klug, C., Korn, D., De Baets, K., Kruta, I., Mapes, R.H., 2015a. Ammonoid paleobiology: from anatomy
 1615 to ecology. Springer, Dordrecht, *Topics in Geobiology* 43, 934 p.
- 1616 Klug, C., Korn, D., De Baets, K., Kruta, I., Mapes, R.H., 2015b. Ammonoid paleobiology: from
 1617 macroevolution to paleogeography. Springer, Dordrecht, *Topics in Geobiology* 44, 605 p.
- 1618 Klug, C., Korn, D., Landman, R.H., Tanabe, K., De Baets, K., Naglik, C., 2015c. Describing ammonoid
 1619 conchs (Chapter 1). In: Klug, C., Korn, D., De Baets, K., Kruta, I., Mapes, R.H. (Eds), *Ammonoid
 1620 paleobiology: from anatomy to ecology*. Springer, Dordrecht, *Topics in Geobiology* 43, 3–24.
- 1621 Korn, D., 1981. *Cymaclymenia* – eine besonders langlebige Clymenien-Gattung (Ammonoidea,
 1622 Cephalopoda), *Neues Jahrbuch für Geologie und Paläontologie, Abhandlungen* 161, 172–208.
- 1623 Korn, D., 1988. Oberdevonische Goniatiten mit dreieckigen Innenwindungen. *Neues Jahrbuch für
 1624 Geologie und Paläontologie, Monatshefte*, 1988, 605–610.
- 1625 Korn, D., 1992. Relationship between shell form, septal construction and suture line in clymeniid
 1626 cephalopods (Ammonoidea; Upper Devonian). *Neues Jahrbuch für Geologie und Paläontologie,
 1627 Abhandlungen* 185, 115–130.
- 1628 Korn, D., 1994. Devonische und karbonische Prionoceraten (Cephalopoda, Ammonoidea) aus dem
 1629 Rheinischen Schiefergebirge. *Geologie und Paläontologie in Westfalen* 30, 1–85.
- 1630 Korn, D., 1999. Famennian ammonoid stratigraphy of the Ma’der and Tafilalt (Eastern Anti-Atlas,
 1631 Morocco). *Abhandlungen der Geologischen Bundesanstalt* 54, 147–179.
- 1632 Korn, D., 2002). Die Ammonoideen-Fauna der *Platyclymenia annulata* zone vom Kattensiepen
 1633 (Oberdevon, Rheinisches Schiefergebirge). *Palaeobiodiversity and Palaeoenvironments* 82,
 1634 557–608.
- 1635 Korn, D., 2004. The mid-Famennian ammonoid succession in the Rhenish Mountains: the “annulata
 1636 Event” reconsidered. *Geological Quarterly* 48, 245–252.
- 1637 Korn, D., 2010. A key for the description of Palaeozoic ammonoids. *Fossil Record* 13, 5–12.
- 1638 Korn, D., 2017. The genus *Goniclymenia* (Ammonoidea; Late Devonian) in Europe. *Neues Jahrbuch
 1639 für Geologie und Paläontologie, Abhandlungen* 284, 259–287.
- 1640 Korn, D., Bockwinkel, J., 2017. The genus *Goniclymenia* (Ammonoidea; Late Devonian) in the Anti-
 1641 Atlas of Morocco. *Neues Jahrbuch für Geologie und Paläontologie, Abhandlungen* 285, 97–115.
- 1642 Korn, D., De Baets K., 2015. Biogeography of Paleozoic ammonoids (Chapter 6). In: Klug, C., Korn, D.,
 1643 De Baets, K., Kruta, I., Mapes, R.H. (Eds), *Ammonoid paleobiology: from macroevolution to*

- 1644 paleogeography. Springer, Dordrecht, Topics in Geobiology 44, 145–161.
- 1645 Korn, D., Klug, C., 2002. Ammoneae Devonicae. In: Riegraf, W. (Ed.), Fossilium Catalogus, I: Animalia.
1646 Vol. 138. Backhuys Publishers, Leiden, pp. 1–375.
- 1647 Korn, D., Klug, C., 2012. Palaeozoic ammonoids – diversity and development of conch morphology.
1648 In: J.A. Talent (Ed.) Earth and Life. International Year of Planet Earth. Springer, Berlin, pp. 491–
1649 534.
- 1650 Korn, D., Klug, C., 2015. Paleozoic ammonoid biostratigraphy (Chapter 12). In: Klug, C., Korn, D., De
1651 Baets, K., Kruta, I., Mapes, R.H. (Eds), Ammonoid paleobiology: from macroevolution to
1652 paleogeography. Springer, Dordrecht, Topics in Geobiology 44, 299–328.
- 1653 Korn, D., Price, J., 1987. Taxonomy and phylogeny of the Kosmoclymeniinae subfam. nov.
1654 (Cephalopoda, Ammonoidea, Clymeniida). Courier Forschungsinstitut Senckenberg 92, 5–75.
- 1655 Korn, D., Bockwinkel, J., Ebbighausen, V., 2014. Middle Famennian (Late Devonian) ammonoids from
1656 the Anti-Atlas of Morocco. 1. *Prionoceras*. Neues Jahrbuch für Geologie und Paläontologie,
1657 Abhandlungen 272, 167–204.
- 1658 Korn, D., Bockwinkel, J., Ebbighausen, V., 2015a. The Late Devonian ammonoid *Mimimitoceras* in the
1659 Anti-Atlas of Morocco. Neues Jahrbuch für Geologie und Paläontologie, Abhandlungen 275,
1660 125–150.
- 1661 Korn, D., Bockwinkel, J., Ebbighausen, V., 2015b. Middle Famennian (Late Devonian) ammonoids
1662 from the Anti-Atlas of Morocco. 2. Sporadoceratidae. Neues Jahrbuch für Geologie und
1663 Paläontologie, Abhandlungen 278, 47–77.
- 1664 Korn, D., Bockwinkel, J., Ebbighausen, V., 2016a. The late Famennian tornoceratid ammonoids in the
1665 Anti-Atlas of Morocco. Neues Jahrbuch für Geologie und Paläontologie, Abhandlungen 281,
1666 267–281.
- 1667 Korn, D., Bockwinkel, J., Ebbighausen, V. (2016b. Middle Famennian (Late Devonian) ammonoids
1668 from the Anti-Atlas of Morocco. 3. Tornoceratids. Neues Jahrbuch für Geologie und
1669 Paläontologie, Abhandlungen 281, 201–220.
- 1670 Korn, D., Bockwinkel, J., Ebbighausen, V., 2018c. Middle Famennian (Late Devonian) ammonoids from
1671 the Anti-Atlas of Morocco. 4. *Costaclymenia*. Neues Jahrbuch für Geologie und Paläontologie,
1672 Abhandlungen 289, 35–41.
- 1673 Korn, D., Klug, C., Reisdorf, A., 2000. Middle Famennian ammonoid stratigraphy in the Amessoui
1674 syncline (Late Devonian; eastern Anti-Atlas, Morocco). Travaux de l'Institut Scientifique, Rabat,
1675 Série Géologie & Géographie Physique 20, 69–77.
- 1676 Korn, D., Klug, C., Walton, S.A., 2015c. Taxonomic diversity and morphological disparity of Paleozoic
1677 ammonoids (Chapter 16). In: Klug, C., Korn, D., De Baets, K., Kruta, I., Mapes, R.H. (Eds),
1678 Ammonoid paleobiology: from macroevolution to paleogeography. Springer, Dordrecht, Topics

- 1679 in *Geobiology* 44, 431–464.
- 1680 Korn, D., Malti, F.Z., Benyoucef, M., Bockwinkel, J., Ebbighausen, V., 2017. The late Famennian
1681 ammonoid succession in the vicinity of Béni Abbès (Saoura Valley, Algeria). *Neues Jahrbuch für*
1682 *Geologie und Paläontologie, Abhandlungen* 285, 123–159.
- 1683 Korn, D., Price, J.D., Weyer, D., 2018a. The genus *Costaclymenia* in Europe (Ammonoidea, Late
1684 Devonian). *Neues Jahrbuch für Geologie und Paläontologie, Abhandlungen* 287, 249–260.
- 1685 Korn, D., Price, J.D., Weyer, D., 2018b. Case 3759 – Conservation of *Costaclymenia* Schindewolf, 1920
1686 and *Costaclymeniidae* Ruzhencev, 1957 by proposed designation of a neotype for *Goniatites*
1687 *binodosus* Münster, 1832 (Mollusca, Cephalopoda, Ammonoidea). *Bulletin of Zoological*
1688 *Nomenclature* 75, 142–145.
- 1689 Lange, W., 1929. Zur Kenntnis des Oberdevons am Enkeberg und bei Balve (Sauerland).
1690 *Abhandlungen der Preußischen Geologischen Landesanstalt* 119, 1–132.
- 1691 Linnaeus, C., 1758. *Systema Naturae*. Holmiae, 10th edition.
- 1692 Malti, F.Z., 2012. Passage Devonien/Carbonifère dans l’Ougarta, Sahara occidental, Algérie
1693 (biostratigraphie et paléoenvironnement). Unpublished PhD thesis, University of Oran, 320 p.
- 1694 Menchikoff, N., 1930. Recherches géologiques et morphologiques dans le nord du Sahara occidental.
1695 *Revue de Géographie physique et de Géologie dynamique* 3, 103–247.
- 1696 Miller, A.K., Furnish, W.M., 1957. Paleozoic Ammonoidea. In: Moore, R.C. (Ed.), *Treatise of*
1697 *invertebrate paleontology*, Part L, Mollusca 4. Geological Society of America and University of
1698 Kansas, Lawrence, pp. 11–79.
- 1699 Mottequin, B., Malti, F.Z., Benyoucef, M., Crônier, C., Samar, L., Randon, C., Brice, D., 2015.
1700 Famennian rhynchonellides (Brachiopoda) from deep-water facies of the Ougarta Basin
1701 (Saoura Valley, Algeria). *Geological Magazine* 152, 1009–1024.
- 1702 Münster, G., 1831. Sur le gisement géognostique des Ammonées en Allemagne. *Bulletin de la*
1703 *Société Géologique de France* 1, 173–183.
- 1704 Münster, G., 1832. Über die Planuliten und Goniatiten im Uebergangs-Kalk des Fichtelgebirges.
1705 Bayreuth, Birner, 38 p.
- 1706 Münster, G., 1839. Nachtrag zu den Clymenien des Fichtelgebirges. *Beiträge zur Petrefaktenkunde* 1,
1707 35–43.
- 1708 Münster, G., 1840. Die Versteinerungen des Übergangskalkes mit Clymenien und Orthoceratiten von
1709 Oberfranken. *Beiträge zur Petrefaktenkunde* 3, 33–121.
- 1710 Münster, G., 1842. Nachtrag zu den Versteinerungen des Übergangskalkes mit Clymenien von
1711 Oberfranken. *Beiträge zur Petrefaktenkunde* 6, 112–130.
- 1712 Münster, G., 1843. Über die Clymenien und Goniatiten im Übergangs-Kalk des Fichtelgebirges.
1713 Bayreuth, Birner, 44 p.

- 1714 Ouali Mehadji, A., Bendella, M., Atif, K., Belkacemi, K., Abbache, A., 2012. Estimation de l'épaisseur
1715 réelle et des environnements de dépôts d'âge Famennien (Dévonien supérieur) de la région de
1716 Marhouma (Saoura, Sahara nord-ouest, Algérie). Bulletin du Service Géologique National,
1717 Alger 23, 3–27.
- 1718 Petter, G., 1959. Goniatites dévoniennes du Sahara. Publications du Service de la Carte géologique de
1719 l'Algérie (nouvelle série), Paléontologie, Mémoire 2, 1–313.
- 1720 Petter, G., 1960. Clyménées du Sahara. Publications du Service de la Carte géologique de l'Algérie
1721 (nouvelle série), Paléontologie, Mémoire 6, 1–58.
- 1722 Price, J.D., Korn D., 1989. Stratigraphically important clymeniids (Ammonoidea) from the Famennian
1723 (Later Devonian) of the Rhenish Massif, West Germany. Courier Forschungsinstitut
1724 Senckenberg 11, 257–294.
- 1725 Renz, C., 1914. Neue Arten aus dem Clymenienkalk von Ebersdorf in Schlesien. Jahrbuch der
1726 Preußischen Geologischen Landesanstalt 34, 99–129.
- 1727 Ruzhencev, V.E., 1957. Filogeneticheskaya sistema paleozoiskikh ammonoidei. Byulleten
1728 Moskovskogo obshchestva ispytatelei prirody, otdelenie geologii 32, 49–64.
- 1729 Sandberger, G., Sandberger, F., 1851. Die Versteinerungen des rheinischen Schichtensystems in
1730 Nassau. Kreidel & Niedner, Wiesbaden, I-XIV, 73–104.
- 1731 Schindewolf, O.H., 1920. Neue Beiträge zur Kenntnis der Stratigraphie und Paläontologie des
1732 deutschen Oberdevons. Senckenbergiana 2, 114–129.
- 1733 Schindewolf, O.H., 1934. Über eine oberdevonische Ammoneen-Fauna aus den Rocky Mountains.
1734 Neues Jahrbuch für Mineralogie, Geologie und Paläontologie, Beilage-Band, B72, 331–350.
- 1735 Schindewolf, O.H., 1949. Zur Nomenklatur der Clymenien (Cephalop., Ammon.). Neues Jahrbuch für
1736 Mineralogie, Geologie und Paläontologie Monatshefte B 1949, 64–76.
- 1737 Schindewolf, O.H., 1957. Suborder Clymeniina. In: Moore, R.C. (Ed.), Treatise of invertebrate
1738 paleontology, Part L, Mollusca 4. Geological Society of America and University of Kansas,
1739 Lawrence, pp. 37–47.
- 1740 Termier, G., Termier, H., 1950. Paléontologie Marocaine. II. Invertébrés de l'ère Primaire, Fascicule III,
1741 Mollusques. Service Géologique, Protectorat de la République Française au Maroc, Notes et
1742 mémoires 78, 1–246.
- 1743 Tokarenko, L., 1903. Fauna verkhne-devonskikh izvestnyakov okrestnostey g. Verkhneural'ska
1744 Orenburgskoy gub. Trudy Obshchestva Estestvoispytateley pri Imperatorskom Kazanskom
1745 Universitet 37 (2), 1–40.
- 1746 Wedekind, R., 1908. Die Cephalopoden fauna des höheren Oberdevon am Enkenberg. Neues
1747 Jahrbuch für Mineralogie, Geologie und Paläontologie 26, 565–633.
- 1748 Wedekind, R., 1913. Beiträge zur Kenntnis des Oberdevons am Nordrande des Rheinischen Gebirges.

- 1749 2. Zur Kenntnis der Prolobitiden. Neues Jahrbuch für Mineralogie, Geologie und Paläontologie
1750 1913, 78–105.
- 1751 Wedekind, R., 1914. Monographie der Clymenien des Rheinischen Gebirges. Abhandlungen der
1752 Königlichen Gesellschaft der Wissenschaften zu Göttingen, Mathematisch-Physikalische Klasse
1753 10 (1), 1–73.
- 1754 Wedekind, R., 1918. Die Genera der Palaeoammonoidea (Goniatiten). Mit Ausschluß der
1755 Mimoceratidae, Glyphioceratidae und Prolecanitidae. Palaeontographica 62, 85–184.
- 1756 Wedekind, R., 1926. Die devonische Formation. In: Salomon, W. (Ed.), Grundzüge der Geologie, vol.
1757 2, Erdgeschichte. E. Schweizerbart'sche Verlagbuchhandlung, Stuttgart, pp. 194–226.
- 1758 Zitte K.A., 1884. Paläozoologie II. Handbuch der Paläontologie 1. Oldenburg, München.
1759
1760

1761 Figures

1762

1763 **Fig. 1.** Palaeogeographic map of the Famennian for the North Atlantic region (modified after Korn
1764 and De Baets, 2015, and based on an image from Ron Blakey, <http://jan.ucc.nau.edu/rcb7/>), with the
1765 position of major ammonoid localities (MT Montana, OK Oklahoma; DC Devon and Cornwall; RM
1766 Rhenish Mountains; SU Sudetes; FT Franconia and Thuringia; HC Holy Cross Mountains; SU South
1767 Urals; CM Cantabrian Mountains; MN Montagne Noire; CA Carnic Alps; AA Anti-Atlas; SV Saoura
1768 Valley). The map shows the close affinity of Morocco and Algeria during the Devonian, both located
1769 on the northern Gondwana margin.

1770 *Carte paléogéographique de l'Atlantique Nord au Famennien (modifiée d'après Korn et De Baets,*
1771 *2015, et basée sur une image de Ron Blakey, <http://jan.ucc.nau.edu/rcb7/>) indiquant la position des*
1772 *principales localités caractérisées par la présence d'ammonoïdes. La carte montre les affinités étroites*
1773 *entre le Maroc et l'Algérie, situés sur la marge nord du Gondwana.*

1774

1775 **Fig. 2.** Location of the studied area. The outcrop of Ouarourout (gray star) is located north-west of
1776 Béni-Abbès (C), in the Saoura Valley (B; background from Google Earth) in Algeria (A; simplified
1777 geological context modified after Fabre et al., 1978).

1778 *Localisation de la zone d'étude. L'affleurement de Ouarourout (étoile grise) est situé au nord-ouest de*
1779 *Béni-Abbès (C), dans la vallée de la Saoura (B ; fond d'après Google Earth) en Algérie (A ; contexte*
1780 *géologique simplifié d'après Fabre et al., 1978).*

1781

1782 **Fig. 3.** Stratigraphic log and views of the Ouarourout section near Béni-Abbès (Saoura Valley, Algeria).
1783 The numbers On1–On14 refer to the fossiliferous samples containing ammonoids. A, Late Devonian
1784 strata outcropping as an anticline fold unconformably overlain by Neogene sediments. B, The 'griotte
1785 limestones' unit. C–D, The 'griotte shaly limestones' unit.

1786 *Colonne stratigraphique et vues de la section de Ouarourout près de Béni-Abbès (vallée de la Saoura,*
1787 *Algérie). Les numéros On1–On14 font référence aux échantillons fossilifères contenant des*
1788 *ammonoïdes. A, Dépôts du Dévonien supérieur formant un pli anticlinal recouvert de manière*
1789 *discordante par des sédiments néogènes. B, Unité des 'calcaires griottes'. C–D, Unité des 'calcaires-*
1790 *argileux à griottes'.*

1791

1792 **Fig. 4.** Stratigraphic ranges of the ammonoids identified in the Ouarourout section near Béni-Abbès
1793 (Saoura Valley, Algeria).

1794 *Distributions stratigraphiques des ammonoïdes identifiés au sein de la coupe de Ouarourout près de*
1795 *Béni-Abbès (vallée de la Saoura, Algérie).*

1796

1797 **Fig. 5.** Correlation of the Moroccan biozonations (Famennian) with the intervals and levels identified
1798 in the Ouarourout section near Béni-Abbès (Algeria).

1799 *Corrélation des biozonations marocaines (Famennien) avec les intervalles et niveaux identifiés au sein*
1800 *de la coupe de Ouarourout près de Béni-Abbès (Algérie).*

1801

1802 **Fig. 6.** Explanatory diagram of the classical shell parameters measured for the present study (for
1803 details see text).

1804 *Schéma explicatif des paramètres classiques de la coquille mesurés pour cette étude (pour plus de*
1805 *détails, voir le texte).*

1806

1807 **Fig. 7.** Tornoceratidae from Ouarourout (Algeria). Scale bar = 5 mm. **A–D**, *Gundolficeras fezzouense*
1808 (Becker, 1995); **A**, Specimen On14.16; **B**, Specimen On9.2; **C**, Suture line of On14.16 at H = 16.0 mm;
1809 **D**, Suture lines of On9.2 at H = 7.5 mm and H = 5.5 mm. **E–L**, *Planitornoceras euryomphalum*
1810 (Wedekind, 1918); **E**, Specimen On9.9; **F**, Specimen On9.12; **G**, Specimen On9.15; **H**, Specimen
1811 On8.41; **I**, Suture line of On9.9 at H = 7.3 mm; **J**, Suture lines of On9.15 at H = 5.7 mm and H = 4.5
1812 mm; **K**, Suture line of On9.12 at H = 4.5 mm; **L**, Suture line of On8.41 at H = 3.0 mm.

1813 *Tornoceratidae provenant de Ouarourout (Algérie). Barre d'échelle = 5 mm. A–D*, *Gundolficeras*
1814 *fezzouense (Becker, 1995) ; A, Spécimen On14.16 ; B, Spécimen On9.2 ; C, Ligne de suture de On14.16*
1815 *à H = 16,0 mm ; D, Lignes de suture de On9.2 à H = 7,5 mm et H = 5,5 mm. E–L*, *Planitornoceras*
1816 *euryomphalum (Wedekind, 1918) ; E, Spécimen On9.9 ; F, Spécimen On9.12 ; G, Spécimen On9.15 ; H,*
1817 *Spécimen On8.41 ; I, Ligne de suture de On9.9 à H = 7,3 mm ; J, Lignes de suture de On9.15 à H = 5,7*
1818 *mm et H = 4,5 mm ; K, Ligne de suture de On9.12 à H = 4,5 mm ; L, Ligne de suture de On8.41 à H =*
1819 *3,0 mm.*

1820

1821 **Fig. 8.** Posttornoceratidae from Ouarourout (Algeria). Scale bar = 5 mm. **A–B**, *Discoclymenia atlantea*
1822 Korn et al., 2016a; **A**, Specimen On13.12; **B**, Suture line of On13.12 at H = 17.5 mm.

1823 *Posttornoceratidae provenant de Ouarourout (Algérie). Barre d'échelle = 5 mm. A–B*, *Discoclymenia*
1824 *atlantea Korn et al., 2016a ; A, Spécimen On13.12 ; B, Ligne de suture de On13.12 à H = 17,5 mm.*

1825

1826 **Fig. 9.** Sporadoceratidae from Ouarourout (Algeria). Scale bar = 5 mm. **A–C**, *Sporadoceras* cf.
1827 *muensteri* (von Buch, 1832); **A**, Specimen On12.19; **B**, Specimen On12.26; **C**, Suture lines of On12.19
1828 at H = 10.2 mm and at H = 8.4 mm. **D–F**, *Sporadoceras* aff. *conforme* Korn et al., 2015a; **D**, Suture line
1829 of On4.6 at H = 7 mm; **E**, Specimen On3.7; **F**, Specimen On4.6. **G–M**, *Erfoudites rherisensis* Korn,
1830 1999; **G**, Specimen On10.41; **H**, Specimen On12.25; **I**, Specimen On12.18; **J**, Suture line of On10.43 at

1831 H = 12 mm; **K**, Suture line of On10.42 at H = 7.3 mm; **L**, Specimen On12.20; **M**, Zoom on the upper
1832 flank of On12.20 showing the spiral ornament. **N–Q**, *Erfoudites* aff. *spirifer* (Lange, 1929); **N**,
1833 Specimen On3.2; **O**, Suture line of On3.2 at H = 10 mm; **P**, Suture line of On2.5 at H = 7 mm; **Q**,
1834 Specimen On2.5.

1835 *Sporadoceratidae* provenant de Ouarourout (Algérie). Barre d'échelle = 5 mm. **A–C**, *Sporadoceras* cf.
1836 *muensteri* (von Buch, 1832) ; **A**, Spécimen On12.19 ; **B**, Spécimen On12.26 ; **C**, Lignes de suture de
1837 On12.19 à H = 10,2 mm et à H = 8,4 mm. **D–F**, *Sporadoceras* aff. conforme Korn et al., 2015a ; **D**,
1838 Ligne de suture de On4.6 à H = 7 mm ; **E**, Spécimen On3.7 ; **F**, Spécimen On4.6. **G–M**, *Erfoudites*
1839 *rherisensis* Korn, 1999 ; **G**, Spécimen On10.41 ; **H**, Spécimen On12.25 ; **I**, Spécimen On12.18 ; **J**, Ligne
1840 de suture de On10.43 à H = 12 mm ; **K**, Ligne de suture de On10.42 à H = 7,3 mm ; **L**, Spécimen
1841 On12.20 ; **M**, Zoom sur le flanc supérieur de On12.20 montrant l'ornementation spirale. **N–Q**,
1842 *Erfoudites* aff. *spirifer* (Lange, 1929) ; **N**, Spécimen On3.2 ; **O**, Ligne de suture de On3.2 à H = 10 mm ;
1843 **P**, Ligne de suture de On2.5 à H = 7 mm ; **Q**, Spécimen On2.5.

1844

1845 **Fig. 10.** *Prionoceratidae* from Ouarourout (Algeria). Scale bar = 5 mm. **A–B**, *Prionoceras*
1846 *ouarouroutense* Korn et al., 2014; **A**, Specimen On11.24; **B**, Specimen On10.31. **C–D**, *Prionoceras*
1847 *lamellosum* Korn et al., 2014; **C**, Specimen On8.51; **D**, Specimen On8.58. **E–G**, *Prionoceras* aff. *frechi*
1848 (Wedekind, 1913); **E**, Specimen On10.33; **F**, Specimen On10.34; **G**, Suture line of On10.33 at H = 8.3
1849 mm. **H–I**, *Prionoceras lentis* Korn et al., 2014; **H**, Specimen On11.20; **I**, Specimen On11.22. **J–K**,
1850 *Prionoceras* cf. *subtum* Korn et al., 2014; **J**, Specimen On12.13; **K**, Specimen On12.22. **L**, *Prionoceras*
1851 cf. *triens* Korn et al., 2014, specimen On12.46. **M–N**, *Mimimitoceras* cf. *carnatum* Korn et al., 2015b;
1852 **M**, Specimen On14.13; **N**, Specimen On13.1. **O–P**, *Mimimitoceras* cf. *comtum* Korn et al., 2015b; **O**,
1853 Specimen On14.17; **P**, Specimen On13.3.

1854 *Prionoceratidae* provenant de Ouarourout (Algérie). Barre d'échelle = 5 mm. **A–B**, *Prionoceras*
1855 *ouarouroutense* Korn et al., 2014 ; **A**, Spécimen On11.24 ; **B**, Spécimen On10.31. **C–D**, *Prionoceras*
1856 *lamellosum* Korn et al., 2014 ; **C**, Spécimen On8.58 ; **D**, Spécimen On8.51. **E–G**, *Prionoceras* aff. *frechi*
1857 (Wedekind, 1913) ; **E**, Spécimen On10.33 ; **F**, Spécimen On10.34 ; **G**, Ligne de suture de On10.33 à H =
1858 8,3 mm. **H–I**, *Prionoceras lentis* Korn et al., 2014 ; **H**, Spécimen On11.20 ; **I**, Spécimen On11.22. **J–K**,
1859 *Prionoceras* cf. *subtum* Korn et al., 2014 ; **J**, Spécimen On12.13 ; **K**, Spécimen On12.22. **L**, *Prionoceras*
1860 cf. *triens* Korn et al., 2014, Spécimen On12.46. **M–N**, *Mimimitoceras* cf. *carnatum* Korn et al., 2015b ;
1861 **M**, Spécimen On14.13 ; **N**, Spécimen On13.1. **O–P**, *Mimimitoceras* cf. *comtum* Korn et al., 2015b ; **O**,
1862 Spécimen On14.17 ; **P**, Spécimen On13.3.

1863

1864 **Fig. 11.** *Cyrtoclymeniidae* from Ouarourout (Algeria). Scale bar = 5 mm. **A–E**, *Cyrtoclymenia* cf. *frechi*
1865 (Tokarenko, 1903); **A**, Specimen On12.33; **B**, Specimen On10.17; **C**, Suture lines of On10.18 at H = 5

1866 mm and at H = 4 mm; **D**, Specimen On10.18; **E**, Specimen On10.19. **F**, *Protactoclymenia* sp. indet. **B**;
1867 Specimen On8.3.

1868 *Cyrtoclymeniidae* provenant de Ouarourout (Algérie). Barre d'échelle = 5 mm. **A–E**, *Cyrtoclymenia* cf.
1869 *frechi* (Tokarenko, 1903) ; **A**, Spécimen On12.33 ; **B**, Spécimen On10.17 ; **C**, Lignes de suture de
1870 On10.18 à H = 5 mm et à H = 4 mm ; **D**, Spécimen On10.18 ; **E**, Spécimen On10.19. **F**,
1871 *Protactoclymenia* sp. indet. **B** ; Spécimen On8.3.

1872

1873 **Fig. 12.** *Cymaclymeniidae* from Ouarourout (Algeria). Scale bar = 5 mm. **A–I**, *Procymaclymenia*
1874 *ebbighauseni* Klein and Korn, 2014; **A**, Specimen On12.44; **B**, Specimen On12.38; **C**, Specimen
1875 On12.40; **D**, Specimen On12.39; **E**, Suture line of On10.25 at H = 6.5 mm; **F**, Suture line of On12.39 at
1876 H = 6.5 mm; **G**, Suture line of On12.38 at H = 6.8 mm; **H**, Suture line of On12.40 at H = 6.2 mm; **I**,
1877 Specimen On10.25. **J–N**, *Cymaclymenia subvexa* Klein and Korn, 2014; **J**, Specimen On13.24; **K**,
1878 Specimen On13.26; **L**, Suture line of On13.26 at H = 14 mm; **M**, Suture line of On13.22 at H = 15 mm;
1879 **N**, Suture line of On13.24 at H = 9.8 mm. **O–P**, *Genuclymenia* sp. indet.; **O**, Specimen On9.17; **P**,
1880 Suture lines of On9.17 at H = 5.5 mm and at H = 3 mm.

1881 *Cymaclymeniidae* provenant de Ouarourout (Algérie). Barre d'échelle = 5 mm. **A–I**, *Procymaclymenia*
1882 *ebbighauseni* Klein and Korn, 2014 ; **A**, Spécimen On12.44 ; **B**, Spécimen On12.38 ; **C**, Spécimen
1883 On12.40 ; **D**, Spécimen On12.39 ; **E**, Ligne de suture de On10.25 à H = 6,5 mm ; **F**, Ligne de suture de
1884 On12.39 à H = 6,5 mm ; **G**, Ligne de suture de On12.38 à H = 6,8 mm ; **H**, Ligne de suture de On12.40 à
1885 H = 6,2 mm ; **I**, Spécimen On10.25. **J–N**, *Cymaclymenia subvexa* Klein et Korn, 2014 ; **J**, Spécimen
1886 On13.24 ; **K**, Spécimen On13.26 ; **L**, Ligne de suture de On13.26 à H = 14 mm ; **M**, Ligne de suture de
1887 On13.22 à H = 15 mm ; **N**, Ligne de suture de On13.24 à H = 9,8 mm. **O–P**, *Genuclymenia* sp. indet. ;
1888 **O**, Spécimen On9.17 ; **P**, Lignes de suture de On9.17 à H = 5,5 mm et à H = 3 mm.

1889

1890 **Fig. 13.** *Platyclymeniidae* from Ouarourout (Algeria). Scale bar = 5 mm. **A–D**, *Platyclymenia annulata*
1891 (Münster, 1832); **A**, Specimen On10.13; **B**, Specimen On10.8; **C**, Specimen On8.31; **D**, Specimen
1892 On8.35. **E–J**, *Platyclymenia* cf. *ibnsinai* Korn, 1999; **E**, Specimen On10.14; **F**, Specimen On10.12; **G**,
1893 Specimen On10.11; **H**, Specimen On8.38; **I**, Suture line of On8.38 at H = 6.8 mm; **J**, Suture line of
1894 On12.29 at H = 7 mm. **K–M**, *Trigonoclymenia* cf. *spinosa* (Münster, 1842); **K**, Specimen On10.40; **L**,
1895 Specimen On8.22; **M**, Suture line of On10.40 at H = 6.5 mm.

1896 *Platyclymeniidae* provenant de Ouarourout (Algérie). Barre d'échelle = 5 mm. **A–D**, *Platyclymenia*
1897 *annulata* (Münster, 1832) ; **A**, Spécimen On10.13 ; **B**, Spécimen On10.8 ; **C**, Spécimen On8.31 ; **D**,
1898 Spécimen On8.35. **E–J**, *Platyclymenia* cf. *ibnsinai* Korn, 1999 ; **E**, Spécimen On10.14 ; **F**, Spécimen
1899 On10.12 ; **G**, Spécimen On10.11 ; **H**, Spécimen On8.38 ; **I**, Ligne de suture de On8.38 à H = 6,8 mm ; **J**,
1900 Ligne de suture de On12.29 à H = 7 mm. **K–M**, *Trigonoclymenia* cf. *spinosa* (Münster, 1842) ; **K**,

1901 *Spécimen On10.40 ; L, Spécimen On8.22 ; M, Ligne de suture de On10.40 à H = 6,5 mm.*

1902

1903 **Fig. 14.** *Kosmoclymeniidae* from Ouarourout (Algeria). Scale bar = 5 mm. **A–K**, *Kosmoclymenia*
1904 *inaequistriata* (Münster, 1832); **A**, Specimen On13.18; **B**, Specimen On14.32; **C**, Specimen On14.7; **D**,
1905 Specimen On14.10; **E**, Specimen On13.10; **F**, Specimen On13.7; **G**, Specimen On13.6; **H**, Growth line
1906 of On13.9 at H = 10.4 mm; **I**, Suture line of On14.10 at H = 8.5 mm; **J**, Suture line of On13.10 at H =
1907 8.4 mm; **K**, Suture line of On13.7 at H = 4.5 mm. **L**, *Muessenbiaergia* cf. *ouarouroutensis* Korn et al.,
1908 2017, specimen On14.36. **M–N**, *Muessenbiaergia beniabbesensis* Korn et al., 2017; **M**, Specimen
1909 On14.35; **N**, Suture line of On14.35 at H = 8.2 mm.

1910 *Kosmoclymeniidae* provenant de Ouarourout (Algérie). Barre d'échelle = 5 mm. **A–K**, *Kosmoclymenia*
1911 *inaequistriata* (Münster, 1832) ; **A**, Spécimen On13.18 ; **B**, Spécimen On14.32 ; **C**, Spécimen On14.7 ;
1912 **D**, Spécimen On14.10 ; **E**, Spécimen On13.10 ; **F**, Spécimen On13.7 ; **G**, Spécimen On13.6 ; **H**, Ligne de
1913 croissance de On13.9 à H = 10,4 mm ; **I**, Ligne de suture de On14.10 à H = 8,5 mm ; **J**, Ligne de suture
1914 de On13.10 à H = 8,4 mm ; **K**, Ligne de suture de On13.7 à H = 4,5 mm. **L**, *Muessenbiaergia* cf.
1915 *ouarouroutensis* Korn et al., 2017, spécimen On14.36. **M–N**, *Muessenbiaergia beniabbesensis* Korn et
1916 al., 2017 ; **M**, Spécimen On14.35 ; **N**, Ligne de suture de On14.35 à H = 8,2 mm.

1917

1918 **Fig. 15.** *Gonioclymeniidae*, *Sphenoclymeniidae* and *Costaclymenidae* from Ouarourout (Algeria).
1919 Scale bar = 5 mm. **A–B**, *Gonioclymenia* cf. *ali* Korn and Bockwinkel, 2017; **A**, Specimen On8.49; **B**,
1920 Specimen On8.46. **C–F**, *Medioclymenia saourensis* Korn et al., 2017; **C**, Specimen On14.40; **D**,
1921 Specimen On14.1; **E**, Suture line of On14.39 at H = 11.0 mm. **F**, Suture line of On14.1 at H = 4 mm. **G**,
1922 *Costaclymenia ornata* (Petter 1960), specimen On12.31.

1923 *Gonioclymeniidae*, *Sphenoclymeniidae* et *Costaclymenidae* provenant de Ouarourout (Algérie). Barre
1924 d'échelle = 5 mm. **A–B**, *Gonioclymenia* cf. *ali* Korn et Bockwinkel, 2017 ; **A**, Spécimen On8.49 ; **B**,
1925 Spécimen On8.46. **C–F**, *Medioclymenia saourensis* Korn et al., 2017 ; **C**, Spécimen On14.40 ; **D**,
1926 Spécimen On14.1 ; **E**, Ligne de suture de On14.39 à H = 11,0 mm ; **F**, Ligne de suture de On14.1 à H = 4
1927 mm. **G**, *Costaclymenia ornata* (Petter 1960), spécimen On12.31.



LAURUSSIA

GONDWANA

MT

OK

SU

SU

HC

RM

FT

DC

MN

CA

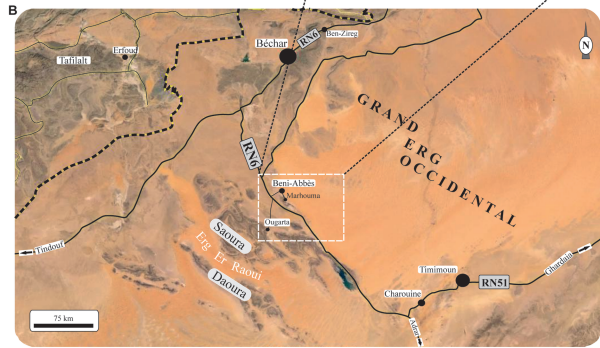
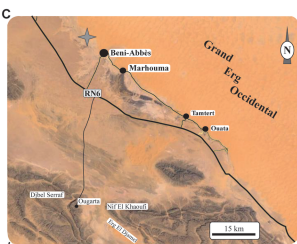
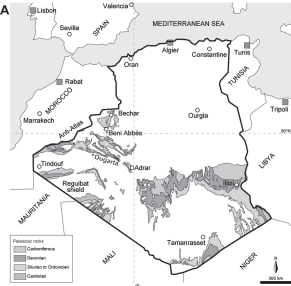
CM

AA

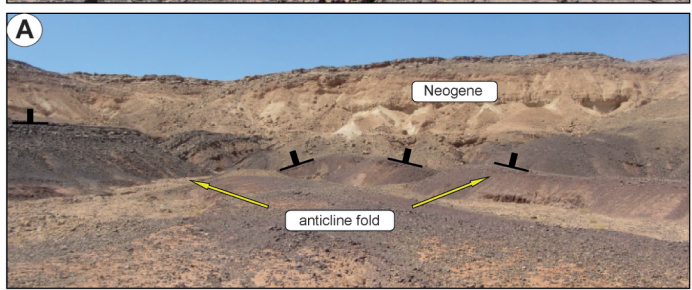
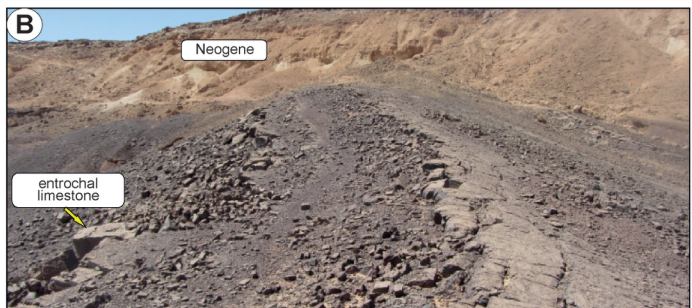
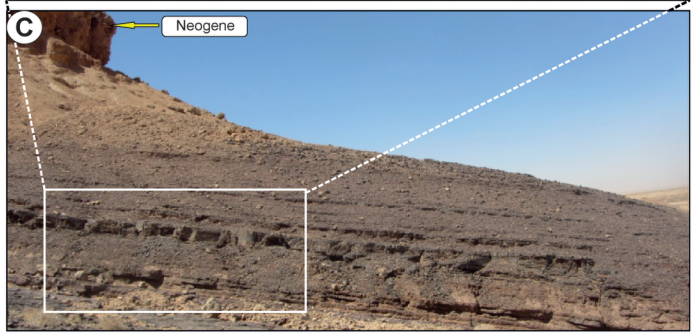
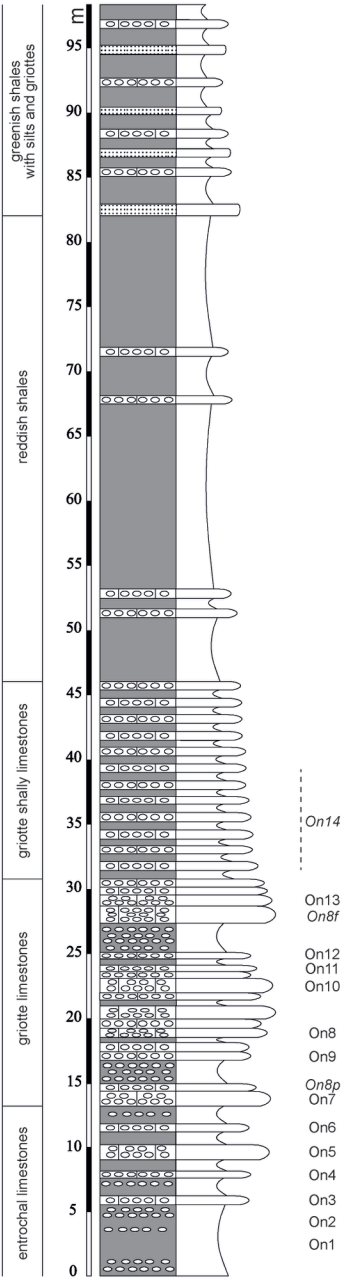
SV

0°

30°

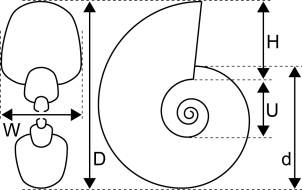


Argiles de Marhouma Formation

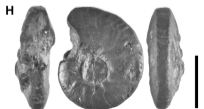
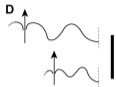
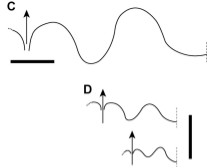
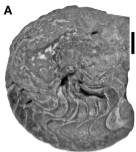


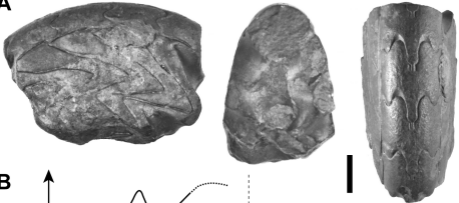
Ammonoid intervals Ouarourout, Algeria (this study)	Ammonoid keys and zones Anti-Atlas (Becker et al. 2013; Hartenfels & Becker 2016a,b)	Ammonoid genozones Anti-Atlas (Klein & Korn 2014)	Prionoceratid zones Anti-Atlas (Korn et al. 2014, 2015a)	Sporadoceratid zones Anti-Atlas (Korn et al. 2015b)	Cymaclymeniid zones Anti-Atlas (Klein & Korn 2014)	Ammonoid assemblages Algeria (Korn et al. 2017)
	UD VI A	<i>Kalliclymenia subarmata</i>	<i>Kalliclymenia</i>	<i>Mimimiceras endocuboide</i> <i>Mimimiceras taouritense</i>	<i>C. aular</i> <i>C. formosa</i>	
<i>Medioclymenia</i> On14 On13	C	<i>Medioclymenia aguelmousensis</i>				<i>Medioclymenia</i>
	UD V B	<i>Gonioclymenia hoewelensis</i>	<i>Gonioclymenia</i>	<i>Mimimiceras camatum</i> <i>Mimimiceras confum</i>	<i>Cymaclymenia subvexa</i>	
<i>Gonioclymenia</i> On8f	A2	<i>Gonioclymenia subcarinata</i>				<i>Gonioclymenia</i>
<i>Costaclymenia</i> On12f	A1	<i>Costaclymenia muensteri</i>	<i>Endosiphonites</i>	<i>Prionoceras jeranense</i>		
	UD IV C	<i>Sporadoceras muensteri-orbiculare</i>		<i>Prionoceras subtum</i>	<i>Erfudites rheisensis</i> <i>Sporadoceras muensteri</i>	<i>Procymaclymenia ebbighauseni</i>
<i>Platyclymenia</i> On12 On10 On11	B	<i>Procymaclymenia ebbighauseni</i>	<i>Platyclymenia</i>	<i>Prionoceras ouarouroutense</i> <i>Prionoceras irakibense</i>		
		<i>Protaxyclymenia dunkeri</i>		<i>Prionoceras lamellosum</i>	<i>E. zizensis</i> <i>Ungosporid unguiforme</i>	
	A	<i>Platyclymenia annulata</i>		<i>Prionoceras vetus</i>		
	UD III C2	<i>Sulcoclymenia sulcata</i>	<i>Sulcoclymenia</i>			
<i>Planitomoceras</i> On4, 5,7,9	C1	<i>Afrolobites</i> sp.	<i>Planitomoceras</i>			
	B	<i>Planitomoceras euryomphalum</i>				
	A	<i>Sporadoceras equale</i>	<i>Maeneceras</i>			

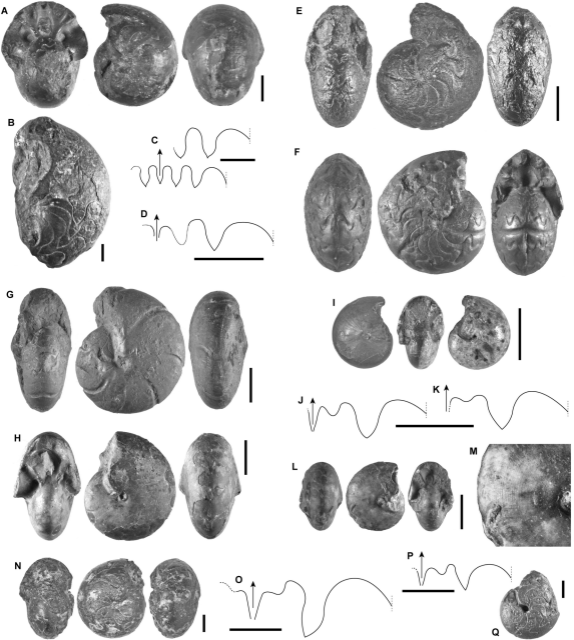
↑ Daaberg Event
 ↑ Annulata Event

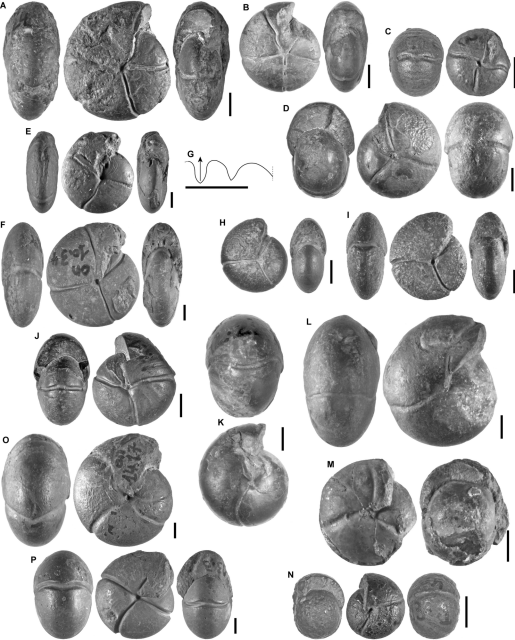


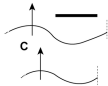
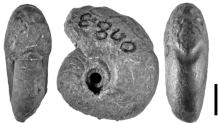
$$\begin{aligned} \text{CWI} &= W / D \\ \text{WWI} &= W / H \\ \text{UWI} &= U / D \\ \text{WER} &= (D / d)^2 \end{aligned}$$

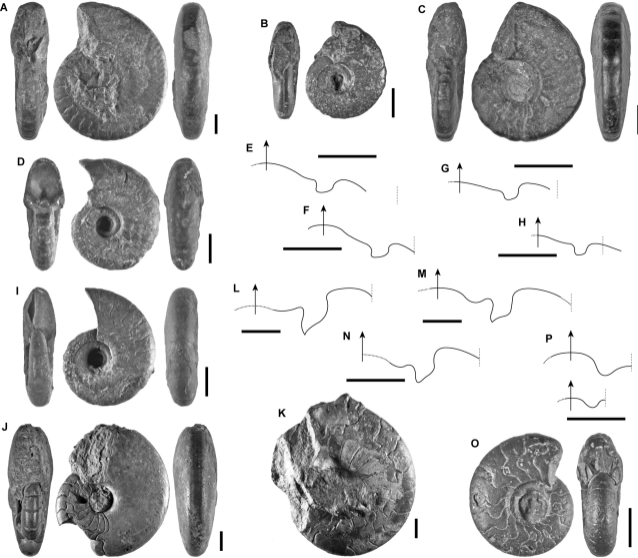


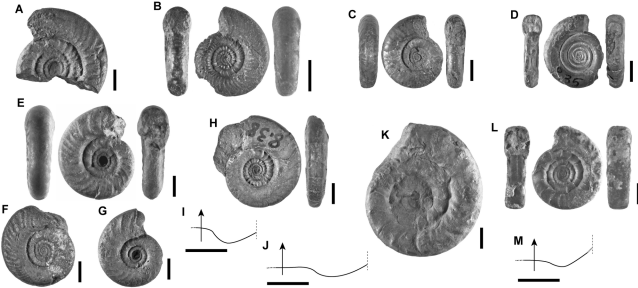
A**B**

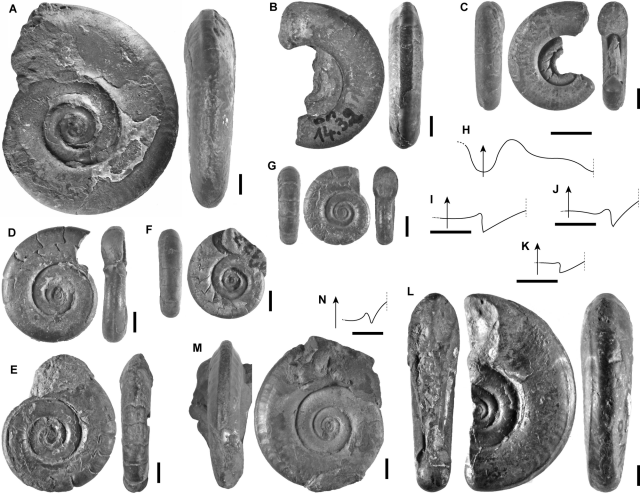




A**E****B****D****F**







A**B****C****D****E****F****G**