



HAL
open science

Marine protected areas Overall Success Evaluation (MOSE): A novel integrated framework for assessing management performance and social-ecological benefits of MPAs

F. Picone, E. Buonocore, Joachim Claudet, R. Chemello, G.F. Russo, P.P. Franzese

► To cite this version:

F. Picone, E. Buonocore, Joachim Claudet, R. Chemello, G.F. Russo, et al.. Marine protected areas Overall Success Evaluation (MOSE): A novel integrated framework for assessing management performance and social-ecological benefits of MPAs. *Ocean and Coastal Management*, 2020, 198, pp.105370. 10.1016/j.ocecoaman.2020.105370 . hal-03034197

HAL Id: hal-03034197

<https://hal.science/hal-03034197v1>

Submitted on 1 Dec 2020

HAL is a multi-disciplinary open access archive for the deposit and dissemination of scientific research documents, whether they are published or not. The documents may come from teaching and research institutions in France or abroad, or from public or private research centers.

L'archive ouverte pluridisciplinaire **HAL**, est destinée au dépôt et à la diffusion de documents scientifiques de niveau recherche, publiés ou non, émanant des établissements d'enseignement et de recherche français ou étrangers, des laboratoires publics ou privés.

Marine protected areas Overall Success Evaluation (MOSE):

A novel integrated framework for assessing management performance and social-ecological benefits of MPAs

Picone F.^{1,4*}, Buonocore E.^{1,4}, Claudet J.³, Chemello R.^{2,4}, Russo G.F.^{1,4}, Franzese P.P.^{1,4}

¹ Department of Science and Technology, Parthenope University of Naples, Centro Direzionale, Isola C4, 80143 Naples, Italy

² Department of Earth and Marine Sciences, University of Palermo, via Archirafi, 22, 90123 Palermo, Italy

³ National Center for Scientific Research, PSL Université Paris, CRIOBE, USR 3278 CNRS-EPHE-UPVD, Maison des Océans, 195 rue Saint-Jacques 75005 Paris, France

⁴ CoNISMa, Consorzio Nazionale Interuniversitario per le Scienze del Mare, Piazzale Flaminio 9, 00197 Rome, Italy

Abstract

Characterized by interlinked social, economic, and ecological dynamics, Marine Protected Areas (MPAs) are a management tool for achieving sustainability goals in social-ecological systems. The recent increase in their establishment worldwide, fostered by international policies, highlights the need for comprehensive and integrated assessment frameworks able to address the evaluation of their social-ecological effectiveness and management performance, which is of fundamental importance for their adaptive management and decision making processes. Although several indicators and methodologies exist to assess MPAs ecological or social performances, no comprehensive assessment framework currently captures their broad range of objectives, encompassing the ecological, socio-cultural, and economic spheres. In this study, we present a novel quantitative framework (named MPAs Overall Success Evaluation – MOSE) able to assess the overall effectiveness and management performance of MPAs under the perspective of social-ecological systems. The multicriteria framework includes indicators linked to nature conservation, socio-cultural, socio-economic, and management objectives, integrating the multidisciplinary knowledge on MPAs in a single but comprehensive approach. The proposed framework was applied to the case study of Cerbère-Banyuls Natural Marine Reserve (France), the first MPA included in the IUCN Green List. Results showed that a high level of management effort is applied to the investigated MPA, generating several social-ecological benefits. This study showed the applicability of the MOSE framework and its potential usefulness as a tool to inform managers and decision-makers in charge for developing adaptive management strategies.

Keywords: marine protected areas; management performance; reserve effectiveness; multicriteria assessment framework; social-ecological systems.

* Corresponding author: flavio.picone@uniparthenope.it

40 **1. Introduction**

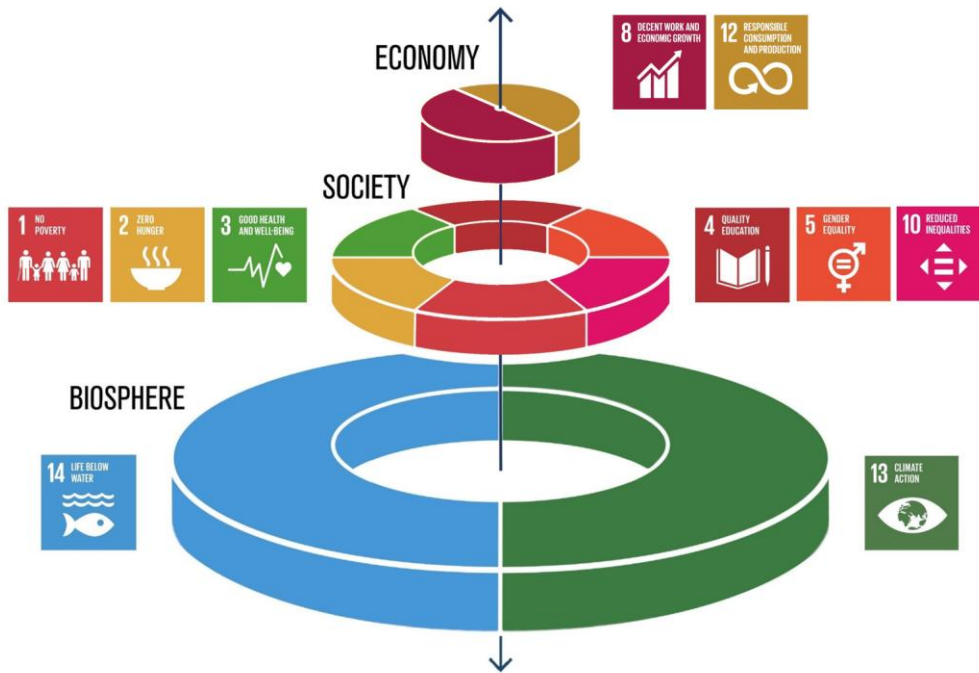
41
42 In the last decades, particular emphasis has been placed upon the sustainable use of the global ocean
43 (Claudet et al., 2020; IOC-UNESCO, 2017; UN, 2015). Close to 40 per cent of the world's
44 population lives in coastal areas and relies on marine and coastal ecosystems for vital services such
45 as food security, coastal protection, and employment in the fishing industry and tourist sector
46 (Barbier, 2017). Nonetheless, ocean benefits to people go far beyond the coastal zone, involving the
47 delivery of ecosystem services at the global scale such as carbon sequestration and climate
48 regulation (Herr and Landis, 2016; Laffoley and Baxter, 2016; Nellemann et al., 2009). Direct and
49 indirect human pressures like overfishing, pollution, urbanization, and climate change are
50 synergically impacting marine natural capital jeopardizing the provisioning of these essential
51 ecosystem services (Buonocore et al., 2018; Pauna et al., 2018; Worm et al., 2006). Considering the
52 vital role of the oceans for human survival and well-being, effective policies and actions aiming at
53 the sustainable use of marine natural capital are imperative.

54 The 2030 Agenda for Sustainable Development of the United Nations included the Sustainable
55 Development Goal (SDG) 14 “Life below water” to face the challenge of the sustainable use of the
56 ocean (UN, 2015). This Goal aims to “conserve and sustainably use the oceans, seas and marine
57 resources for sustainable development” and shares with the Aichi Biodiversity Target 11 the
58 objective of conserving at least the 10 per cent of coastal and marine areas by 2020 (UN, 2015;
59 CBD, 2011). In this context, Marine Protected Areas (MPAs) are increasingly being established to
60 protect and conserve marine natural capital, ecosystem services, and cultural values from the variety
61 of anthropogenic threats on coastal and offshore marine ecosystems (Claudet, 2011). Characterized
62 by interlinked social, economic, and ecological dynamics (Leenhardt et al., 2015a,b), MPAs
63 represent complex conservation and management tools to support the achievement of sustainability
64 goals in social-ecological systems (SEs) (López-Angarita et al., 2014; Pollnac et al., 2010; Zupan
65 et al., 2018a). Marine sustainability studies have been showing an increasing interest towards the
66 SEs approach (e.g., Adger et al., 2005; Berkes, 2011; Leenhardt et al., 2015b; Winter et al., 2018)
67 due to its suitability to integrate natural and social sciences while addressing management issues
68 involving ecosystems, human economy, and governance (Charles, 2012). The growing research on
69 MPAs as sustainability tools has increasingly expanded from the sole ecological domain to also
70 include social, health, cultural, and governance spheres (Bennet et al., 2017; Gill et al., 2017; Hogg
71 et al., 2013; Mascia, 2004). MPAs are indeed expected to deliver social and economic benefits in
72 addition to conserving biodiversity (Leenhardt et al., 2015a, Vihervaara et al., 2019; UNEP-
73 WCMC, IUCN and NGS, 2018).

74 The many ecosystem services provided by MPAs contribute to human well-being in several ways
75 (Ban et al., 2019). MPAs can potentially reduce poverty by creating alternative livelihoods and new
76 jobs, especially in the tourism sector, and by increasing fish catches as a result of fishing spillover
77 from no-take zones (Beukering et al., 2014; Russ et al., 2004). By recovering fish stocks and
78 promoting more productive and sustainable fisheries, MPAs also improve food security of local
79 communities that rely on such food sources (Mascia et al., 2010). In addition, when good
80 governance is in place, MPAs foster equity through community participation to decision-making
81 processes, empowering usually marginalized categories such as women and therefore promoting
82 gender equality (Beukering et al., 2014; Jones et al., 2019). Moreover, by improving ecosystems
83 health and resilience, MPAs play an important part in promoting climate change adaptation and
84 mitigation (Otero et al., 2013; Simard et al., 2016). Finally, MPAs are also tools for scientific
85 research and education. Indeed, they can serve as laboratories to enhance the understanding of the
86 marine environment (Galzin et al., 2004) and can help raising the awareness of the public on marine
87 sustainability issues (Angulo-Valdés and Hatcher, 2010; Brander et al., 2015). It is therefore evident
88 that the well-being of coastal communities is influenced by the overall success of MPAs in the
89 management of marine ecosystems and their resources.

90 The contribution of MPAs to the sustainability of marine SESs follows a hierarchical pattern, in
91 which socio-economic goals can be achieved only after the biophysical ones are met. Considering
92 the abovementioned potential benefits and applying the classification of the United Nations
93 Sustainable Development Goals (SDGs) (UN, 2015), successful MPAs contribute to human well-
94 being supporting not only SDG14 “Life Below Water”, but also SDGs 1 “No Poverty”, 2 “Zero
95 Hunger”, 3 “Good Health and Well-Being”, 4 “Quality Education”, 5 “Gender Equality”, 8 “Decent
96 Work and Economic Growth”, 10 “Reduced Inequalities”, 12 “Responsible Consumption and
97 Production”, and 13 “Climate Action” (Fig.1).

98



99

100 **Figure 1.** Modified version of the Sustainable Development Goals (SDGs) cake model showing the SDGs supported by
 101 MPAs: 1 “No Poverty”, 2 “Zero Hunger”, 3 “Good Health and Well-Being”, 4 “Quality Education”, 5 “Gender
 102 Equality”, 8 “Decent Work and Economic Growth”, 10 “Reduced Inequalities”, 12 “Responsible Consumption and
 103 Production”, 13 “Climate Action”, 14 “Life Below Water”.

104

105 Of course, the implementation of MPAs entails costs besides benefits. Recent findings show that a
 106 global expansion of MPAs can generate economic benefits almost three greater than costs (Brander
 107 et al., 2020). Nonetheless, the establishment of MPAs should be complemented by cost-benefit
 108 analysis to understand the social, economic and environmental implications involved.

109 To promote the achievement of MPA sustainability goals and the delivery of the expected benefits
 110 to ecosystems and human well-being, the implementation of holistic and integrated social-
 111 ecological assessments is much needed (Agardy et al., 2016; Ojeda-Martinez et al., 2009; Rasheed,
 112 2020). Despite the considerable growth of the science of MPAs in the last years, the challenge of
 113 how assessing and promoting MPA success still persists (Bennett and Dearden, 2014; Giakoumi et
 114 al., 2018). To comprehensively evaluate the effectiveness of MPAs, assessment frameworks need to
 115 integrate multiple variables and explore new frontiers of study such as environmental accounting
 116 studies (Buonocore et al., 2019; Brander et al., 2020; Franzese et al., 2015, 2017, 2019; Picone et
 117 al., 2017; Roncin et al., 2008; Unsworth et al., 2010) and organization science (Scianna et al., 2015,
 118 2018, 2019). Such frameworks require the identification of multidisciplinary success criteria and
 119 related measurable indicators suited to the social-ecological context of MPAs (Claudet, 2018;
 120 Claudet and Guidetti, 2010). Several indicators and methodologies can be found in the literature to
 121 assess their ecological, socio-economic, and management effectiveness (e.g., Bennett and Dearden,

122 2014; Gallacher et al., 2016; Pelletier et al., 2005; Pomeroy et al., 2005; Rodríguez-Rodríguez et al.
 123 2016). Nonetheless, too often MPAs are only assessed along one dimension of sustainability while
 124 the others are neglected, as it has been historically the case of the social domain (Bennet et al.,
 125 2017; Claudet and Guidetti, 2010; Pelletier, 2011). This can lead to a false sense of success, for
 126 instance when MPAs are an ecological success but a social failure (Christie, 2004). To holistically
 127 assess MPA success, biophysical, socio-economic, and governance indicators need to be coherently
 128 integrated (Gallacher et al., 2016). In addition to these domains of investigation, fundamental is the
 129 evaluation of MPAs management effectiveness, which remains one of the main issues in MPA
 130 science (Scianna et al., 2019). Existing frameworks usually focus on just one or few of these
 131 domains and fields, providing partial information on MPA outcomes (Tab. 1).

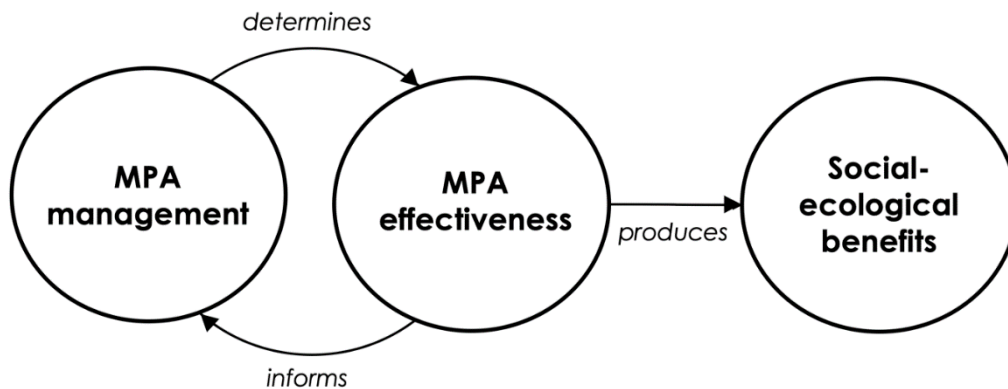
132

133 **Table 1.** Examples of available MPA assessment frameworks. For each one, domain of assessment, authors, and year of
 134 release are reported.

Framework name or subject	Domain of assessment	Authors	Year
Rapid Assessment and Prioritization of Protected Area Management (RAPPAM)	Management	WWF	2003
MPA Management Effectiveness	Management	Pomeroy	2005
Management Effectiveness Tracking Tool (METT)	Management	WWF	2007
DPSIR framework applied to MPAs	Management	Ojeda-Martínez et al.	2009
MPA Management Effectiveness Assessment Tool (MEAT)	Management	MSN	2010
Integrated MPA Socio-Economic Assessment (IMPASEA)	Socio-economic	Rodríguez-Rodríguez et al.	2015
Protected Area Management Effectiveness (PAME)	Management	Hockings et al.	2015
Marine Protected Area Protection Assessment Framework (MaPAF)	Management	Rodríguez-Rodríguez et al.	2016
Socio-Economic Assessment Tool (SEAT)	Socio-economic	Rosales	2018
Management Performance Index (MPI)	Management	Scianna et al.	2018
IUCN Global Standard for MPAs	Governance; management; socio-economic; biophysical	IUCN	2018
Sustainability Evaluation of Marine Protected Areas Index (SEMPAI)	Biophysical; socio-economic; governance	Avelino et al.	2019

135

136 Identifying and coherently integrating biophysical, socio-economic, governance, and management
137 indicators in a single assessment framework is pivotal to support MPA success. By providing
138 critical information on the main gaps to achieve MPA goals, effectiveness assessments can feed
139 MPA management and decision-making processes supporting the implementation of *ad hoc*
140 measures to improve the delivery of the expected social-ecological benefits. When possible, the
141 information should be quantitative and science-based (Pelletier, 2011). The periodic repetition of
142 the assessment provides fundamental insights on the system's response to the measures
143 implemented, feeding back the management process for further decision-making. The negative
144 feedback loop of the iterated steps “assessment-information-management-countermeasure” acts
145 then as a single process, forming an adaptive management cycle (Fig. 2).



146
147 **Figure 2.** Flow diagram showing the relationships among MPA management, effectiveness, and relative social-ecological benefits.

148
149 In this study, we present a novel quantitative framework (named MPAs Overall Success Evaluation
150 – MOSE) aimed at assessing the social-ecological effectiveness and management performance of
151 MPAs under the perspective of SESs. This multicriteria assessment framework includes indicators
152 linked to nature conservation, socio-economic, governance and management objectives, responding
153 to the call for a multidisciplinary approach to the study of MPAs. In addition, to verify its
154 applicability and potential usefulness, the MOSE framework is applied to the case study of Cerbère-
155 Banyuls Natural Marine Reserve (France), the first MPA included in the IUCN Green List of
156 Protected and Conserved Areas.

157
158 **2. Materials and methods**

159 **2.1. The MPAs Overall Success Evaluation (MOSE) framework: structure and indicators**

160
161 The development of the MOSE framework has been inspired by the Ocean Health Index (OHI)
162 (Halpern et al., 2012). Differently from the OHI, the MOSE framework is articulated in two main

163 assessment domains and related indices in turn based on two different sets of indicators and sub-
164 indicators, namely the Reserve Effectiveness Assessment (REA) and the Management Performance
165 Assessment (MaPA). With “reserve effectiveness” we refer to the plurality of social-ecological
166 benefits achieved by MPAs. Instead, according to Horigue et al. (2014) and Scianna et al. (2018),
167 with “management performance” we refer to the “level of effort exerted to enhance and sustain the
168 management of MPAs”.

169

170 *2.1.1 Reserve Effectiveness Assessment (REA)*

171

172 A number of ecological and social-economic benefits are expected from the establishment of MPAs
173 (Ban et al., 2019; Pelletier et al., 2005). Through conservation, fishing, economic, and cultural
174 indicators, the Reserve Effectiveness Assessment (REA) index addresses the evaluation of the
175 social-ecological reserve effect, which is expected to occur when MPAs are successfully managed.
176 The selected indicators (and sub-indicators) are: 1) *Biodiversity (Habitats and Species)*, 2) *Fishing*
177 (*Industrial fishing, Artisanal fishing, and Recreational fishing*), 3) *Local economy (Livelihoods,*
178 *Tourism and recreation, and Natural products)*, and 4) *Cultural identity (Charismatic species and*
179 *Traditional activities)* (Tab. 2). The score for each indicator is calculated as the ratio between the
180 value of the measured variable inside the MPA and the value of the same variable in the outside
181 control area. In the case of multi-use (or multiple-use) MPAs (i.e., MPAs where multiple uses are
182 regulated with different restrictions according to the protection zone), REA indicators are evaluated
183 for each protection zone, with the exception of the sub-indicators *Livelihoods* and *Tourism and*
184 *recreation* that are calculated at the MPA scale. *Biodiversity, Fishing, and Cultural identity*
185 indicators measure variables that are indeed expected to show differences in the scores across the
186 different zones. Variables such as the biomass of fishes or the catch per unit effort (CPUE) of
187 artisanal fishing are predictably related to the degree of protection (i.e., activities allowed), and
188 therefore the relative indicators are supposed to show different outcomes. On the contrary, the
189 *Livelihoods* and the *Tourism and recreation* sub-indicators target variables that respond to the
190 overall performance of the MPA, and the evaluation of their benefits on local communities could
191 not be unambiguously attributed to single zones where human activities occur. Finally, to calculate
192 the REA score of the MPA, the scores of the protection zones are averaged weighting them by the
193 area occupied by each zone in the MPA.

194

195 *2.1.2 Management Performance Assessment (MaPA)*

196

197 Besides the Reserve Effectiveness Assessment (REA), to evaluate MPAs not only as SESs but also
 198 as management tools, the MOSE framework includes the Management Performance Assessment
 199 (MaPA) index. The MaPA index targets management objectives that are acknowledged to be
 200 fundamental to the success of MPAs, encompassing financial, social acceptance, information,
 201 organization, and communication aspects. The achievement of such objectives is assessed through
 202 the following indicators: 1) *Level of surveillance*, 2) *Information and awareness of regulations*, 3)
 203 *Stakeholders engagement*, 4) *Monitoring and reporting*, 5) *Financial support*, 6) *Professionalism*
 204 *and competences*, 7) *Personnel stability*, 8) *Cultural heritage*, and 9) *Social media communication*
 205 (Tab. 2). Differently from the approach adopted in the REA, which compares inside vs outside
 206 values, the MaPA index uses a scorecard approach to calculate the scores of its indicators.

207

208 **Table 2.** Indicators of Reserve Effectiveness Assessment (REA) and Management Performance Assessment (MaPA)
 209 composing the MOSE framework.

Index	Indicator (and sub-indicators)	Description
REA	Biodiversity	Habitats (HAB) Ecological status of the main habitats Species (SPP) Biomass of fish species
	Fishing	Industrial fishing (IF) Catch Per Unit Effort (CPUE) of industrial fishing Artisanal fishing (AF) CPUE of artisanal fishing Recreational fishing (RF) CPUE of recreational fishing
	Local economy	Livelihoods (LIV) Number of allowed diving clubs
		Tourism and recreation (TR) Number of tourists Natural products (NP) Harvest Per Unit Effort (HPUE) of non-food resources
	Cultural identity	Charismatic species (CSPP) Biomass of charismatic species Traditional activities (TA) Number of traditional activities practitioners
MaPA	Level of surveillance (LS)	Effort and diversity of surveillance activities
	Information and awareness of regulations (IAR)	Communication of regulations to the public
	Stakeholder engagement (SE)	Degree of involvement of stakeholders
	Monitoring and reporting (MR)	Monitoring campaigns and reporting activity on main ecological features and threats
	Financial support (FS)	Sufficiency and diversity of financial support
	Professionalism and competences (PC)	Coverage of the main fields of expertise needed for management
	Personnel stability (PS)	Permanent staff working full time
	Cultural heritage (CH)	Conservation and valorisation of cultural heritage
	Social media communication (SMC)	Engagement rate of social media

210

211 A detailed description of the abovementioned indicators, including the rationale behind their choice
212 and the full calculation method, is provided in section 2.4.

213 214 **2.2. Score calculation**

215
216 The overall scores of REA and MaPA are calculated as the average of the scores of their indicators:

$$\text{REA, MaPA} = \sum_{i=1}^N \frac{I_i}{N}$$

217 where I_i is the score of the i -th indicator and N is the number of indicators evaluated (Table 2).
218 Each indicator (I_i) is valued on a dimensionless scale from 0 to 100. When indicators score more
219 than 100, the value of 100 is assigned.

220 221 **2.3. Complementary indicators**

222
223 The two proposed indices REA and MaPA included in the MOSE framework synthetically integrate
224 information pertaining to different domains. To better interpret their results, two complementary
225 indicators are proposed, the *Protection level* and the *Degree of reliability*.

226 The *Protection level (PL)* indicator supports the interpretation of REA results. Multi-use MPAs
227 have different regulations in their protection zones and therefore differences in the social-ecological
228 outcomes are to be expected. Based on regulations of uses and relative potential impacts on
229 biodiversity, Horta e Costa et al. (2016) developed a classification system that unambiguously
230 scores MPAs as well as each MPA zone individually. The protection level is expressed in a range
231 from 1 (i.e., highest protection) to 8 (i.e., lowest protection) classified into 5 protection levels:
232 *unprotected, poorly protected, moderately protected, highly protected, and fully protected*. Such
233 classification method has been applied to a number of MPAs worldwide (Horta e Costa et al.,
234 2016), then used to carry a global meta-analysis of the ecological effectiveness of partially
235 protected areas (PPAs) of MPAs (Zupan et al., 2018b), and also suggested as a tool to support the
236 assessment of protection levels in the context of international marine conservation targets (Claudet,
237 2019; Devillers et al., 2019).

238 The *Degree of reliability (DR)* indicator is included in the MOSE framework to allow for
239 applications even when data are partially lacking and not all indicators can be assessed. It is
240 unlikely that MPA management bodies collect all the ecological, organizational, and management
241 data needed to perform integrated analyses (Guidetti et al., 2014). Therefore, a reliability indicator
242 of such assessments would provide useful information. The DR indicator is calculated for both the
243 REA and MaPA indices as the number of indicators assessed over the total of the assessable ones.

244 This information expresses the consistency of the overall indices scores, suggesting the
245 comprehensiveness level of the assessments.

246

247 **2.4. Rationale behind indicators and calculation methods**

248

249 **2.4.1. Biodiversity**

250 Historically, MPAs have been established with the main goal of conserving marine biodiversity,
251 anticipating positive ecological effects on species and habitats. Assessing and keeping track of the
252 extent to which biodiversity goals are achieved are crucial steps to inform the adaptive management
253 process. The *Biodiversity* indicator is composed by two sub-indicators: Habitats and Species.

254

255 *Sub-indicator: Habitats (HAB)*

256 The establishment of MPAs is expected to have positive impacts on the status of marine and coastal
257 habitats (Ban et al., 2019; Pelletier et al., 2005). As a general rule, habitats in good status are more
258 likely to harbor higher biodiversity than disturbed habitats, maintain their ecological functions, and
259 support the delivery of ecosystem services (Cardinale et al., 2012; Vihervaara et al. 2019). Habitats
260 are valuable not only from an ecological perspective, but also for recreational, aesthetic, sanitary,
261 and existence reasons.

262 Fostered by European policies such as the Water Framework Directive (WFD - 2000/60/EC) and
263 the Marine Strategy Framework Directive (MSFD - 2008/56/EC), the interest in the development of
264 indexes of habitat quality has been increasing in the last years. Such indexes are built to represent
265 an ecological quality target for selected habitats and are often used as proxy of environmental
266 status, thus supporting monitoring and managing coastal environments (Borja et al., 2009). Biotic
267 indexes can integrate information at species or community levels, assessing parameters such as
268 abundance and diversity of sensitive and tolerant taxa. Most assessments classify habitat quality in
269 five Ecological Status Classes (ESCs): High, Good, Moderate, Poor, and Bad.

270 The *Habitats (HAB)* sub-indicator assesses the reserve effect on MPA habitats by comparing the
271 ESCs evaluated in the different protection zones versus the ESCs outside the MPA according to the
272 following formula:

$$\text{Hab} = \frac{1}{N} \sum_{j=1}^N \left(\frac{C_{ji}}{C_{jo}} - 1 \right) \times 100$$

273 where, C_{ji} and C_{jo} are the values associated to the ESC of the j -th habitat, inside (i) the investigated
274 protection zones and outside (o) the MPA, and N is the number of habitats assessed.

275

276 *Sub-Indicator: Species (SPP)*

277 When full protection measures are actually enforced, an increase in abundance, size, and biomass of
278 previously fished assemblages is expected to occur (Guidetti, 2002; Claudet et al., 2008). The
279 increase in size and density of fishes at upper trophic levels, mainly targeted by fishing activities,
280 leads to cascading effects bringing community-wide ecological benefits (Claudet et al., 2011;
281 Filbee-Dexter, 2014; Guidetti, 2006; Prato et al., 2013). In the case of partially protected zones
282 where fishing occurs with restrictions, such benefits are significantly lower or even absent, showing
283 more similarities to open access fished areas (Di Franco et al., 2009). For the *Species (SPP)* sub-
284 indicator, the biomass of fish assemblages in the protection zones versus outside the MPA is
285 compared, as it is commonly considered the most responsive indicator of the effect of protection on
286 fish assemblages (Guidetti et al., 2014). Biomass is calculated based on abundance and size data of
287 fish assemblages collected by means of visual census sampling techniques (Harmelin-Vivien et al.,
288 1985).

289 The sub-indicator is then calculated as follows:

$$SPP = \frac{1}{N} \sum_{j=1}^N \left(\frac{B_i}{B_o} - 1 \right) \times 100$$

290 where, B_i and B_o are the average biomasses per unit area of the j -th species, inside (i) the evaluated
291 protection zone and outside (o) the MPA, and N is the total number of species assessed.

292

293 **2.4.2. Fishing**

294 *Sub-indicators: Industrial fishing (IF), artisanal fishing (AF), and recreational fishing (RF)*

295 Fisheries are an important source of food, livelihoods and incomes for hundreds of millions of
296 people globally (FAO, 2016). Recent estimations on the world's fish stocks state that about 30% of
297 them are fished at a biologically unsustainable rate (i.e., overfished) and almost 60% are fully
298 exploited (i.e., fished close to their maximum sustainable yield) (FAO, 2016). Consequences of
299 overfishing are vast, including the ecological, social, and economic spheres. The need for moving
300 towards a sustainable use of fish resources has led to the Ecosystem Approach to Fisheries (EAF),
301 which identifies principles and guidelines for the sustainability of fisheries management, explicitly
302 linking human and ecosystem health (Garcia et al., 2003 Coll et al. 2013). This approach recognizes
303 the important role that MPAs have in the sustainable management of the linked fisheries-marine
304 resources system through the restrictions of fishing activities inside their boundaries. MPAs
305 regulations aim at protecting and conserving marine biodiversity and, at the same time, enhance
306 local fisheries by promoting a sustainable use of fish resources (Di Franco et al., 2016).
307 Theoretically, the reserve effect on fish assemblages (i.e., increase in size, abundance, and biomass)

308 should lead to spillover phenomena from no-take to buffer zones when the carrying capacity of fish
309 populations is reached. Similarly to the assessment of the reserve effect on fished species, the
310 benefits of MPAs on fisheries could be evaluated by comparing values of catch per unit efforts
311 (CPUEs) in fished protected zones versus outside unprotected areas. According to this approach, the
312 reserve effect on industrial, artisanal, and recreational fishing activities is assessed through the
313 following formula:

$$IF, AF, RF = \frac{1}{N} \sum_{j=1}^N \left(\frac{CPUE_i}{CPUE_o} - 1 \right) \times 100$$

314 where $CPUE_i$ and $CPUE_o$ are the catches per unit effort of the j -th fishing techniques inside (i) and
315 outside (o) the MPA, and N is the total number of fishing techniques assessed.

316

317 **2.4.3. Local Economy**

318 Extractive activities (i.e., fishing and harvest of non-food resources) and tourism are sectors driving
319 the local economy of coastal communities, representing important sources of economic growth and
320 jobs (European Commission, 2018; FAO, 2016). Through the regulations of human activities,
321 MPAs influence local coastal economies that rely on ecosystem services generated by marine and
322 coastal environments. Although less investigated in the literature compared to the ecological ones,
323 impacts of the establishment of MPAs on the local economy are well-known and deserving of as
324 much attention, especially under a SES perspective (Ojea et al., 2017). Economic benefits result
325 from increasing tourist visits leading to higher revenues, increased jobs, and additional livelihood
326 opportunities (European Commission, 2018). The *Local economy* indicator is composed of three
327 sub-indicators: *Livelihoods*, *Tourism and recreation*, and *Natural products*.

328

329 *Sub-indicator: Livelihoods (LIV)*

330 The establishment of MPAs is generally linked to increases in jobs and/or incomes in commercial
331 and tourism sectors, driven by those activities that benefit from the positive ecological impacts of
332 protection on marine ecosystems, e.g. commercial fishing and recreational scuba diving (Alban et
333 al. 2011; Pascual et al., 2016; Roncin et al., 2008). The most direct way to approach an evaluation
334 of the economic impacts of MPAs on local coastal communities would be to collect and analyze
335 data on net income of their activities. Nonetheless, this process could be challenging as
336 entrepreneurs of these activities may be reluctant to share such sensitive data. The employment rate
337 in the diving sector is suggested as one of the potential measures of the impacts of MPAs on local
338 economy, as a consequence of the increase of diver visits (Ojea et al., 2017). For the *Livelihoods*
339 (*LIV*) sub-indicator, we used the number of diving clubs in a 10 km² radius as a proxy of the

340 employment rate in the sector. This buffer area was calculated considering dive boats speed limits
341 and usual length of dives. To assess the score, the number of diving clubs is divided by the
342 considered coast length and then compared to the outside value, according to the formula:

$$\text{LIV} = \frac{d_i}{d_o} \times 100$$

343 where d_i is the number of diving clubs per unit of coast length in the buffer area or authorized by
344 the MPA (if MPA regulations foreseen a maximum number of authorizations) and d_o is the number
345 of diving clubs per unit of coast length outside the MPA. Except from the number of authorized
346 diving clubs, data to calculate the indicator are not supposed to be in possession of the MPA and are
347 therefore collected independently.

348

349 *Sub-indicator: Tourism and recreation (TR)*

350 Nature-based tourism and recreational activities constitute the main attractions of MPAs (Leenhardt
351 et al., 2015; Roncin et al., 2008) and their establishment is expected to have a positive impact on
352 tourist visits (Pascual et al., 2016). Tourism and recreation affect the overall economy of coastal
353 communities, including hotels and restaurants sectors and non-tourism aspects such as the increase
354 of the local real estate values and the improvement of community infrastructure (European
355 Commission, 2018). To account for the increase in the number of tourists in the MPA, different
356 indicators can be used, e.g., tourist arrivals and accommodation capacities, depending on available
357 data. The *Tourism and recreation (TR)* sub-indicator compares data on the number of beds between
358 the MPA area of influence and reference comparable areas. Its score is calculated as follows:

$$\text{TR} = \frac{T_i}{T_o} \times 100$$

359 where T_i and T_o are the number of beds in the MPA area of influence and in the control area placed
360 outside the MPA. Data to calculate the indicator are not supposed to be in possession of the MPA
361 and are therefore collected independently.

362

363 *Sub-indicator: Natural products (NP)*

364 MPAs can have an important role in the provisioning of natural products, i.e., non-food marine
365 resources for manufactured products (sensu Halpern et al., 2012), which can be relevant
366 components of the economies of coastal communities. The *Natural products (NP)* sub-indicator
367 evaluates the artisanal and/or industrial Harvest Per Unit Effort (HPUE) of resources such as coral,
368 marine plants, shells, and sponges, according to the formula:

$$NP = \frac{1}{N} \sum_{j=1}^N \left(\frac{HPUE_i}{HPUE_o} - 1 \right) \times 100$$

369 where, $HPUE_i$ and $HPUE_o$ are the harvests per unit effort of the j -th product inside and outside the
 370 MPA, and N is the total number of products assessed.

371

372 **2.4.4. Cultural identity**

373 The local human component of MPAs is significantly connected to its territory, traditions and
 374 history. Communities place a high value to activities passed through generations (e.g., artisanal
 375 fishing), local species and culturally important places, being evidence of their cultural identity and
 376 heritage. MPAs could represent a shelter for such cultural features, whose existence and protection
 377 may be valued also by non-local people. According to definitions in Gee et al. (2017), MPAs can be
 378 considered culturally significant areas, as they “contain several culturally significant features to
 379 which one or more community have a significant connection”. From this perspective, besides the
 380 traditional function of protecting and conserving their ecological features, MPAs may play an
 381 important role in the preservation of the cultural identity of local coastal communities.

382 The *Cultural identity* indicator is composed by two sub-indicators: *Charismatic Species* and
 383 *Traditional activities*.

384

385 *Sub-indicator: Charismatic species (CSPP)*

386 The concept of charismatic species is frequently used in conservation biology, even if it is poorly
 387 defined compared to other categories of focal species (Ducarme et al., 2012). Here, we refer to
 388 charismatic species as the ones that hold existence, aesthetic, or tradition-related values for the local
 389 coastal culture, inspiring a sense of belonging and identity in the local communities (Ducarme et al.,
 390 2012). The *Charismatic species (CSPP)* sub-indicator is calculated as the reserve effect on the
 391 biomass of charismatic species (or density in case of species more appropriately assessed through
 392 the number of individuals rather than biomass, e.g. in the case of marine mammals or sea turtles),
 393 according to the following formula:

$$CSPP = \frac{1}{N} \sum_{j=1}^N \left(\frac{B_i}{B_o} - 1 \right) \times 100$$

394 where, B_i and B_o are the average biomasses (or number of individuals) per unit area of the j -th
 395 species inside (i) the evaluated protection zone and outside (o) the MPA, and N is the total number
 396 of species assessed.

397 *Sub-indicator: Traditional activities (TA)*

398 Traditional activities are important cultural features of local communities. The knowledge of the
399 environment embedded in such practices and its passing down across generations give them both
400 ecological and cultural relevance. In marine environments, anthropization of the coasts, decrease in
401 fish stocks, and competition with large-scale fishing are endangering the sustainability of artisanal
402 or small-scale fisheries (Kolding et al., 2014). Artisanal fishing is a relevant traditional activity of
403 coastal communities, being an important source of employment, food security, and income (FAO,
404 2016).

405 Through the regulations of extractive uses, MPAs represent a form of spatial management that can
406 be a suitable tool to preserve the viability of artisanal fisheries, providing an environment in which
407 they can thrive in accordance to sustainability goals, potentially creating “win-win” situations
408 (Dalton, 2010; Di Franco et al., 2016). To assess the support MPAs provide to small-scale fisheries,
409 the *Traditional activities (TA)* sub-indicator measures the number of artisanal fishers authorized by
410 the MPA, compared to outside values (e.g., regional or national scales). The score is calculated
411 according to the following formula:

$$TA = \frac{1}{N} \sum_{j=1}^N \left(\frac{A_i}{A_o} - 1 \right) \times 100$$

412 where, A_i and A_o are the average number of people per unit of coast length practicing the j -th
413 traditional activity inside (i) the evaluated protection zone of the MPA and at a regional or national
414 scale (o), and N is the total number of traditional activities assessed.

415 The sub-indicator can be adapted to local peculiarities, accounting for traditional activities
416 occurring in the MPA other than artisanal fishing. Data to calculate the indicator may not be in
417 possession of the MPA. In this case, missing data are collected independently.

418

419 **2.4.5. Level of surveillance (LS)**

420 The enforcement of regulations is one of the main social drivers determining the success of MPAs
421 (Giakoumi et al., 2018). Where the level of enforcement is low, compliance of users and
422 stakeholders with regulations can be easily undermined as rulebreakers are unlikely punished (Rife
423 et al., 2013). In these cases, no positive ecological effects on marine ecosystems should be expected
424 (Guidetti et al., 2008; Edgar et al., 2014). Enforcement represents more than just surveillance or
425 patrolling activities. It can be depicted as a chain composed by technical/operative, social,
426 legislative, and financial links (Arias et al., 2015, 2016). Nonetheless, surveillance is a key aspect of
427 enforcement as it increases the probability of detecting offenses and its lacking can lead to poaching
428 and social distrust about the MPA (López Ornat and Vignes, 2015).

429 The *Level of surveillance (LS)* indicator focuses on the evaluation of the main aspects affecting the
430 effort deployed in the surveillance activity. It is based on Scianna et al. (2018) approach and the
431 score is calculated according to the following formula:

$$LS = \left(\frac{AC + M + A}{3} \right) \times T \times 100$$

432 where, *AC* stands for “authority and cooperation”, *M* for “methods”, *A* for “area”, and *T* for “time”.
433 *AC* assesses the legal powers of the MPA staff enforcement and the cooperation with police bodies.
434 The presence of these features is valued 1, and the absence 0. The score of *AC* is calculated as the
435 mean of the two. *M* refers to the methods used to perform surveillance. A set of available methods
436 and technologies was identified according to López Ornat and Vignes (2015) and Scianna et al.
437 (2018), and is composed by *controls* “at sea”, “from land”, “during daytime”, and “at night”, and
438 through *technologies* such as “video camera”, “radar”, “vessel monitoring system”, “night vision
439 binocular”, “camera with georeferenced position”, “laser”, and “drones”. These methods are valued
440 1 if present and 0 if absent. Finally, the *M* score is calculated as the average of *controls* and
441 *technologies* values. *A* is calculated as the area under surveillance over the total area of the MPA.
442 Different importance (i.e., weights) can be given to different zones, depending on their protection
443 levels. The average of *AC*, *M*, and *A* is then multiplied by *T*. *T* refers to the time of surveillance,
444 accounting for the type of surveillance body and the season. Surveillance bodies are of three types,
445 i.e. “staff without legal power”, “police”, and “staff with legal power or staff cooperating with
446 police”, to which 1, 1.2, and 1.5 weights are given, respectively, to value more the active
447 cooperation of legally powered staff and police bodies. Each surveillance body, if active, is then
448 multiplied by the time ratio between the days of surveillance and the days in the two seasons, i.e.
449 “summer” and “winter”.

450

451 **2.4.6. Information and awareness of regulation (IAR)**

452 The enforcement of regulations does not depend merely on surveillance activity. An important part
453 is played by the extent to which information on regulations is conveyed to the users and visitors.
454 Ignorance and misinformation are indeed the main cause of offences inside MPAs (López Ornat
455 and Vignes, 2015) as compliance can be expected only to rules people are aware of and understand.
456 According to López Ornat and Vignes (2015), different practices are recommended to inform users
457 and visitors. These practices are used to calculate the *Information and awareness of regulations*
458 (*IAR*) indicator as follows:

$$IAR = \frac{S + AI}{2} \times 100$$

459 where, *S* and *AI* are the signage and active information scores. Each score is calculated averaging
460 the presence (value = 1) or absence (value = 0) of three factors. The calculation of the *signage* score
461 takes into account the presence of: 1) information panels on land, 2) buoys delimiting the “no-take
462 zones”, 3) internet website with explained zonation and rules. The *active information* considers if:
463 1) MPA staff distributes brochures with detailed regulation information, 2) MPA staff, in summer,
464 meets the leisure boats on arrival and informs them about boating activity rules, 3) tourist operators
465 inform visitors they bring in the MPA.

466

467 **2.4.7. Stakeholder engagement (SE)**

468 The involvement of stakeholders is recognized as a major factor affecting the success of MPAs
469 (Claudet and Guidetti, 2010; Giakoumi et al., 2018; Guidetti et al., 2010). Well-managed
470 engagement can facilitate learning and trust among stakeholders (Durham et al., 2014) as it helps
471 mediating conflicts and favoring social compliance. This is particularly true in the case of certain
472 stakeholders such as small-scale fisheries and local government for which well-managed
473 engagement is crucial for MPA effectiveness (Beger et al., 2004; Di Franco et al., 2016). For these
474 stakeholders, the need for assessing and monitoring the effectiveness of their engagement is
475 essential.

476 Different levels of engagement with stakeholders can be identified, based on the influence they
477 have on the success of the MPA, and corresponding to different levels and methods of interaction
478 (Durham et al., 2014; Sterling et al., 2017). For the *Stakeholder engagement (SE)* indicator, we
479 identify three levels, namely “inform”, “consult”, and “collaborate” (Durham et al., 2014):

- 480 1) “inform” defines a low level of engagement, in which stakeholders are adequately updated
481 with tailored information;
- 482 2) “consult” defines an intermediate level of engagement, in which stakeholders are more
483 engaged with a higher level of interaction resulting in feedback information;
- 484 3) “collaborate” defines a high level of engagement, in which the involvement of stakeholders
485 can include decision-making.

486 Appropriate methods of interaction can be associated to the three levels of engagement (Durham et
487 al., 2014). The appropriateness of the method to the target level of engagement for a given
488 stakeholder category can be classified in: H = high, M = medium, L = low, NA = not appropriate. If
489 different methods of engagement are adopted for a stakeholder, the most appropriate one is used for
490 the evaluation. Examples of engagement methods and their level of appropriateness are shown in
491 Table 3.

492

493 **Table 3.** Modified from Durham et al. (2014). The table shows the appropriateness of the engagement method. H =
 494 high; M = medium; L = low; NA = not appropriate.

	Inform	Consult	Collaborate
Website	H	M	L
Social media	H	L	L
Lectures	H	L	L
Multi-stakeholder forums	NA	M	H
One-to-one meeting and interviews	NA	M	H
Town Hall meeting	NA	M	H
Workshops	NA	L	H
Questionnaires/surveys	NA	H	L
Practical demonstration	NA	NA	H
Steering group	NA	NA	H

495

496 The *Stakeholder engagement (SE)* indicator is calculated according to the following formula:

$$SE = \sum_{i=1}^N \beta_i \frac{St_i}{N} \times 100$$

497 where, β_i is the engagement appropriateness factor of the *i-th* category (not appropriate = 0; low =
 498 0.3; medium = 0.6; high = 1); St_i is the representativeness score of stakeholder category *i*, calculated
 499 as the number of stakeholders engaged on the total of category *I*; *N* is the total number of
 500 stakeholder categories assessed.

501

502 **2.4.8. Monitoring and reporting (MR)**

503 The adaptive management approach requires that decisions are taken based on the most updated
 504 evaluations on the status of social and ecological features. To make these data available, it is crucial
 505 that well-designed and long-term scientific monitoring programs are in place and carried out
 506 consistently. This would allow to readily respond to pressures, state changes, and impacts on the
 507 components of the social-ecological systems, providing effectiveness and legitimacy of
 508 implemented regulations and management measures (López Ornat and Vignes, 2015).

509 The *Monitoring and reporting (MR)* indicator jointly addresses the evaluation of: 1) the effort put in
 510 the collection of data on the most context-important ecological features and threats through
 511 monitoring activities, and 2) the use of these data to produce public reports/scientific publications.
 512 The monitoring assessment takes into account the continuity of monitoring campaigns, while the
 513 reporting assessment considers both a measure of the quality of the product (i.e., type of report),
 514 according to Scianna et al. (2018), and the continuity of the reporting activity.

515 The indicator is calculated according to the following formula:

$$MR = \frac{1}{2} \left(\sum_{i=1}^M \frac{m_i \alpha_i}{M} + \sum_{i=1}^R \frac{r_i \beta_i \gamma_i}{R} \right) \times 100$$

516 where, m_i is the presence of monitoring campaigns on the i -th feature (presence = 1; absence = 0);
 517 α_i is the “continuity factor” of monitoring campaigns on the i -th feature; M is the total number of
 518 ecological features and threats to be monitored; r_i is the presence of reports on data collected
 519 through monitoring campaigns on the i -th feature; β_i is the “continuity factor” of reports produced
 520 on collected data on the i -th feature; γ_i is the “communication impact factor” of these reports; and
 521 R is the number of features monitored. The way α , β , and γ are calculated is showed in table 4.

522

523 **Table 4.** The table shows the calculation method of the three factors α , β , and γ of the *Monitoring and reporting*
 524 indicator. For each factor, quantities or categories are converted to values from 0 to 1.1.

Factor	Unit	Quantity or category	Value
		0	0
α	Number of monitoring campaigns in the last 5 years	1	0.6
		2	0.7
		3	0.8
		4	0.9
β	Number of reports in the last 5 years	5	1
		> 5	1.1
		not reported	0
γ	Communication method	internal reports	0.6
		communications and outreach	0.8
		scientific papers without impact factors and scientific reports	1
		scientific papers with impact factor	1.1

525

526

527 2.4.9. Financial support (FS)

528 Effective management requires that sufficient financial resources are available to the MPA to cover
 529 overall costs to support management teams and actions (Binet et al., 2015). Given financial
 530 constraints, the capacity of management to achieve MPA goals and objectives is threatened as basic
 531 management costs (such as staff hiring, monitoring, and research) cannot be carried out.

532 The *Financial support (FS)* indicator aims to assess the availability of financial resources and the
 533 evenness of their distribution among their sources. The financial availability is calculated as the gap
 534 between the total amount of financial resources available to the MPA in the assessed year and the

535 sum of the costs faced in the same year. Costs are here intended as the financial needs to operate in
536 a basic management scenario, as defined by Binet et al. (2015). Such scenario takes into account
537 four components: 1) administrative organization and planning; 2) administrative support for
538 stakeholder engagement; 3) knowledge acquisition and environment monitoring; 4) control,
539 regulation, and supervisory.

540 The diversity of financial sources is also an important factor that can affect the financial stability of
541 MPAs. In case the main source is lacking or fails, other sources can help compensating. Several
542 funding sources can be identified for MPAs: local, regional, and national governments, international
543 donors and NGOs, private sector, and self-financing.

544 The *Financial support (FS)* indicator is then calculated according to the following formula:

$$FS = \frac{F_t}{C} \times J \times 100$$

545 where F_t is the total amount of financial resources, C is the overall costs expected for the basic
546 management, and J is the evenness of distribution of F_t among the financial sources calculated using
547 the Shannon-Wiener diversity index.

548

549 **2.4.10. Professionalism and competences (PC)**

550 MPA management requires a multidisciplinary approach and cross-sectors expertise. Considering
551 social-ecological targets and management needs of MPAs, an efficient staff would need to include
552 experts in the fields of reserve management, natural sciences, fisheries science, communication,
553 accounting, and technical support. The *Professionalism and competences (PC)* indicator takes into
554 account the presence of specialized staff in the main identified fields as well as their level of
555 expertise. The indicator is calculated according to the following formula:

$$PC = \sum_{i=1}^N \frac{F_i + E_i}{N} \times 100$$

556 where, F_i is the presence of a staff member expert in the i -th field (presence = 0.5; absence = 0); E_i
557 is the expertise score, calculated as the education, training, and working years of the most
558 experienced staff member of the i -th field multiplied by 0.1; N is the total number of fields of
559 expertise considered.

560

561 **2.4.11. Personnel stability (PS)**

562 The stability of MPA personnel over time is an important factor affecting the effectiveness of
563 management actions. Among other benefits, such as improvements in efficiency of working
564 relationships and management continuity, stability helps meeting social-ecological targets, usually

565 characterized by long-term responses to protection. Such long-term responses need continuity and
566 consistency of management actions (Scianna et al., 2018). Following Scianna et al. (2018), the
567 *Personnel stability (PS)* indicator is calculated as follows:

$$PS = \frac{PE}{FTE} \times 100$$

568 where, *PE* is the number of full-time permanent employees, and *FTE* is the total number of full-
569 time employees.

570

571 **2.4.12. Cultural heritage (CH)**

572 As already stated for the *Cultural identity* indicator of the REA, cultural features may represent
573 important elements of the identity of local coastal communities, carrying historical and traditional
574 values and therefore heritage to pass through generations. Cultural heritage is considered the
575 “cultural capital” of contemporary societies, “essential for promoting peace and sustainable societal,
576 environmental, and economic development” (UNESCO, 2014).

577 Following UNESCO (2014), the *Cultural heritage (CH)* indicator aims at assessing: 1) the adoption
578 of “conservation and valorization” measures and 2) the promotion of activities to “raise awareness
579 and education” on the cultural heritage of MPAs. Cultural heritage elements are identified through
580 sites in the seascape that can be defined as “works of men, or the combined works of nature and
581 man, and areas including archeological sites, which are of outstanding value from the historical,
582 aesthetic, ethnological or anthropological point of view” (UNESCO, 2014). Examples can be
583 natural monuments (e.g., caves, peculiar geological formations), and historical or archeological
584 sites (e.g., prehistorical settlements, harbors, underwater shipwrecks, fish establishments).

585 The score of the indicator is calculated as follows:

$$CH = \sum_{i=1}^N \frac{CV_i + AE_i}{2N} \times 100$$

586 where, CV_i and AE_i represent the presence of “conservation and valorization” measures and of
587 activities aimed at “raising awareness and education” on the *i-th* cultural element, and *N* is the total
588 number of cultural elements considered. “Conservation and valorization” covers the adoption of
589 specific legislation and concrete measures or the establishment of infrastructures intended to
590 safeguard, protect and enhance heritage assets (UNESCO, 2014). “Raising awareness and
591 education” covers measures and programmes intended to promote the educational potential of
592 heritage and its transmission as well as informational and media programmes and facilities
593 addressed to the general public and to key social agents in order to foster understanding,
594 recognition, respect and enhancement of heritage in society (UNESCO, 2014).

595

596 **2.4.13. Social media communication (SMC)**

597 Communication is an important tool for building support for protected areas, bringing
598 environmental awareness to the public and thus helping the achievement of conservation targets
599 (Hamú et al., 2004). In the case of MPAs, the media coverage of the activities performed and the
600 relative social-ecological benefits help connecting people to nature and promote the establishment
601 of trust, thus favouring compliance to MPA rules by users and stakeholders (López Ornat and
602 Vignes, 2015). Even if the MPA is not covered in TV, local radio, or other media, communicating
603 to the public is today possible by means of social networks (e.g., Facebook, Twitter), which provide
604 powerful and easily accessible global communication platforms. Through such channels, awareness
605 and education on environmental topics and conservation issues are not only desirable but probably
606 necessary.

607 The *Social media communication (SMC)* indicator assesses the ability of the MPA to engage users
608 in social networks. It is calculated as follows:

$$SMC = \sum_{i=1}^N \beta \frac{ER_i}{N} \times 100$$

609 where ER_i is the engagement rate of the i -th social network, calculated as the ratio between the total
610 engaged users (i.e., users that engaged with a post by clicking on, reacting to, commenting on, or
611 sharing it) and the total reach (i.e., the number of users that found that post in the news feed); β is
612 the ER target, set to 1% (i.e., 1 user out of 100 that found a MPA post on the news feed engaged
613 with it); N is the total number of social media considered.

614

615 **2.5. Graphic output**

616

617 Results of the MOSE framework are presented through an adapted version of the OHI flower plots
618 (Halpern et al., 2012). R scripts to generate flower plots were downloaded from the GitHub
619 platform (https://github.com/OHI-Science/arc/blob/master/circle2016/plot_flower_local.R) and then
620 modified to display REA and MaPA results. REA sub-indicators and MaPA indicators are
621 represented as petals of the flower. Each petal area is filled according to its score and coloured in a
622 traffic light gradient.

623

624 **2.6. Case study**

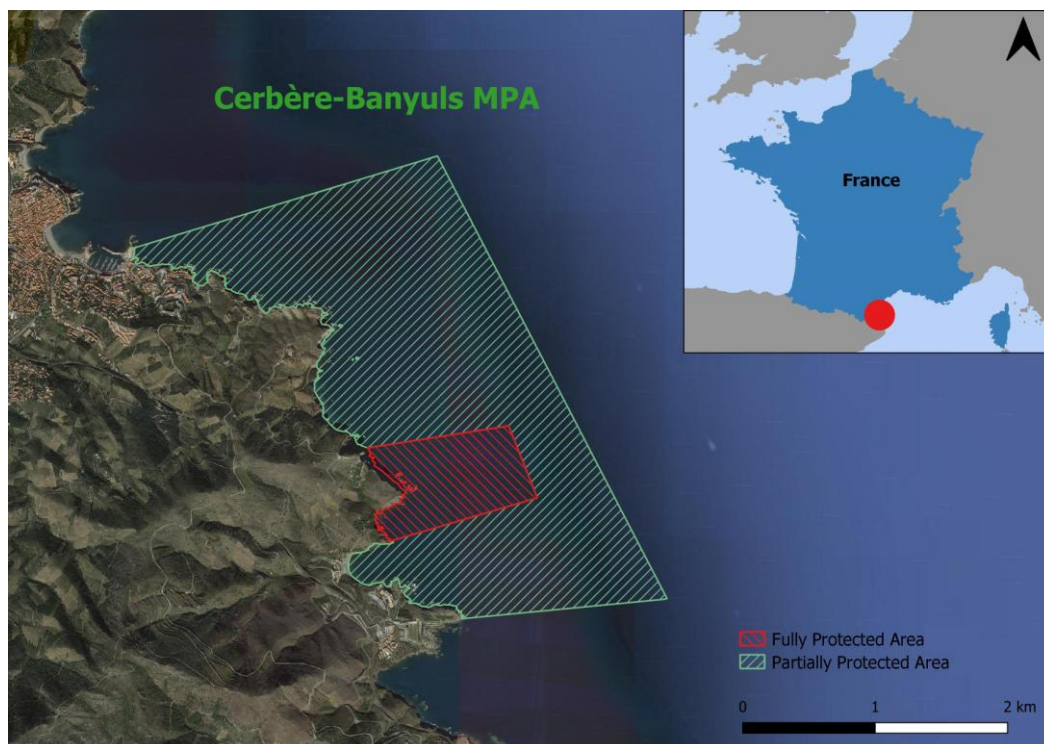
625

626 Located on the Catalan coast of Southern France, the Cerbère-Banyuls Natural Marine Reserve is
627 one of the oldest MPAs of the Mediterranean. It was established in 1974 to protect the seabed and

628 marine species and to sustainably manage human activities and development (Payrot et al., 2014).
629 The MPA aims at protecting local biodiversity and rare and threatened ecosystems as well as areas
630 valuable for geological or other natural features (www.blueparks.org). With an overall area of 6.5
631 km² and a 6 km coast length, the MPA is divided in two distinct protection zones, namely the fully
632 protected area (0.65 km²) and the partially protected area (5.85 km²), where different human uses
633 are allowed (Claudet et al. 2011) (Fig. 3). In the fully protected area, no human activity can occur
634 except from authorized scientific research. Instead, the partially protected area allows human
635 activities such as artisanal and recreational fishing, bathing, and scuba-diving, while others such as
636 spearfishing are prohibited. Scientific monitoring activities are routinely carried out throughout the
637 year, both inside and outside the MPA, also in collaboration with research laboratories
638 (www.blueparks.com).

639 The MPA was chosen as case study to test the applicability and potential usefulness of the MOSE
640 framework because of its management and remarkable conservation results, for which the MPA
641 was awarded with the Green List IUCN label in 2015 and the Global Ocean Refuge System status
642 in 2018 (recently renamed Blue Parks Awards). For these reasons, the MPA represented a suited
643 first application to try out the response of the MOSE framework against the social-ecological
644 effectiveness and management performance of a successful MPA.

645



646
647 **Figure 3.** Cerbère-Banyuls Natural Marine Reserve. In the figure, the two protection zones of the MPA are shown: the
648 fully protected area (red grid) and the partially protected area (green grid).

649

650

651 **2.7. Data collection**

652

653 Data for calculating the REA and MaPA indices were collected through semi-structured surveys
654 submitted to the reserve management body. These surveys allowed for the collection of
655 management data, scientific literature, and reports produced over the last five years. The survey
656 forms can be found in the Supplementary Information on-line material.

657

658 **3. Results**

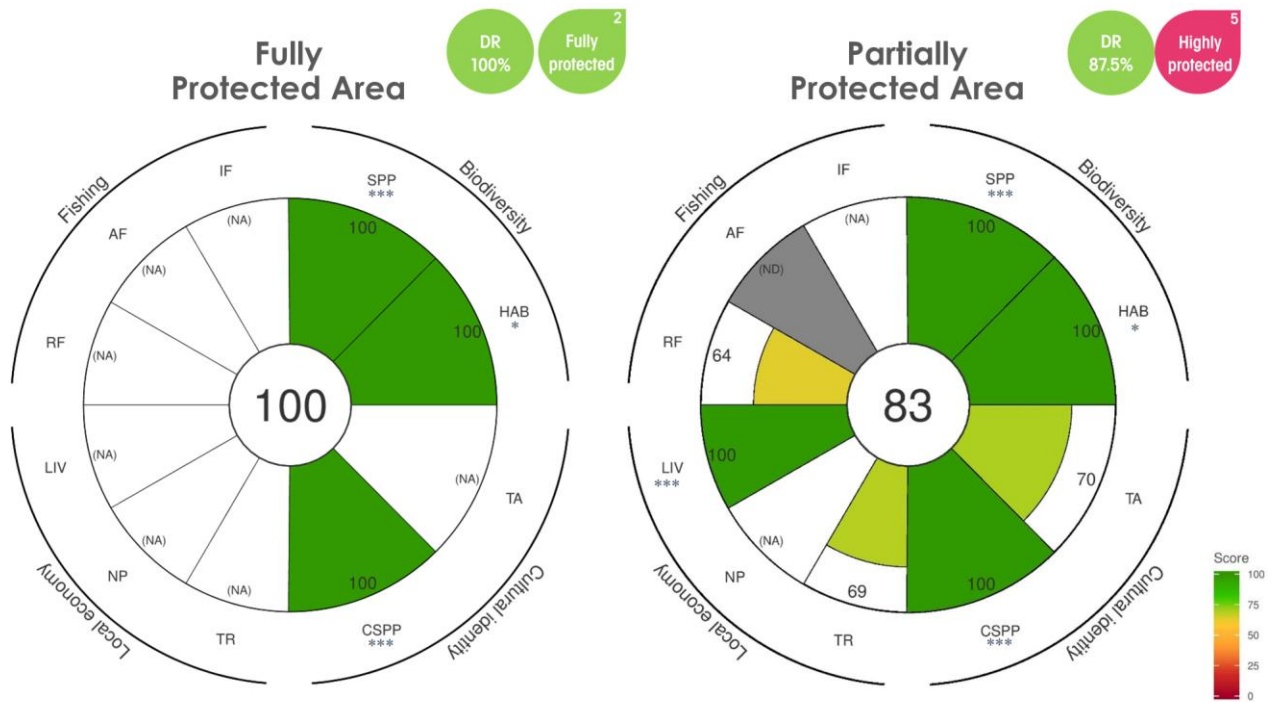
659

660 The REA index calculated for the zone with the highest level of protection (i.e., the fully protected
661 area) resulted in a score of 100 out of 100, with all indicators assessed (DR = 100) and a level of
662 protection corresponding to the *fully protected* class (PL = 2) (Fig. 4). The *Fishing* and the *Local*
663 *economy* indicators as well as the *Traditional activities* sub-indicator were not assessed since they
664 referred to activities that are not allowed in the investigated zone (not applicable = NA). The
665 assessed indicators *Habitats*, *Species*, and *Charismatic species* scored more than 100 (Fig. 4).

666 The partially protected area scored lower than the fully protected one, with an overall score of 83
667 and also a lower degree of reliability (DR = 87.5) (Fig. 4). The *Protection Level (PL)* indicator
668 scored 5, corresponding to the *highly protected* class. *Industrial fishing* and *Natural products* sub-
669 indicators were not assessed because the relative activities are not allowed (NA), while *Artisanal*
670 *fishing* lacked data (no data = ND). Among the four REA indicators, *Biodiversity* showed the
671 highest score (100), followed by *Cultural identity* (85), *Local economy* (84), and *Fishing* (64),
672 whose score was exclusively due to the *Recreational fishing* sub-indicator. The value of *Habitats*,
673 *Species*, *Livelihoods* and *Charismatic species* sub-indicators resulted higher than 100, while
674 *Traditional activities* and *Tourism and recreation* sub-indicators scored 70 and 69, respectively.

675 The REA index score for the whole MPA was calculated as the average of the REA scores of the
676 two protection zones weighted by the area occupied by each zone in the MPA (Fig. 5). Overall, the
677 MPA scored 85 with a higher reliability score (DR = 92.3) than the partially protected area and a
678 level of protection corresponding to the *highly protected* class (PL = 4.7).

679 The MaPA index scored 90 out of 100 with a DR of 100 (Fig. 5). All indicators scored more than
680 60, and 3 of them (i.e., *Information and awareness of regulations*, *Professionalism and*
681 *competences*, and *Personnel stability*) reached 100. *Cultural heritage* and *Social media*
682 *communication* could not be assessed (NA) and therefore were not accounted for in the calculation
683 of the DR. *Professionalism and competences* was the only MaPA indicator that scored more than
684 100.



685

686

687

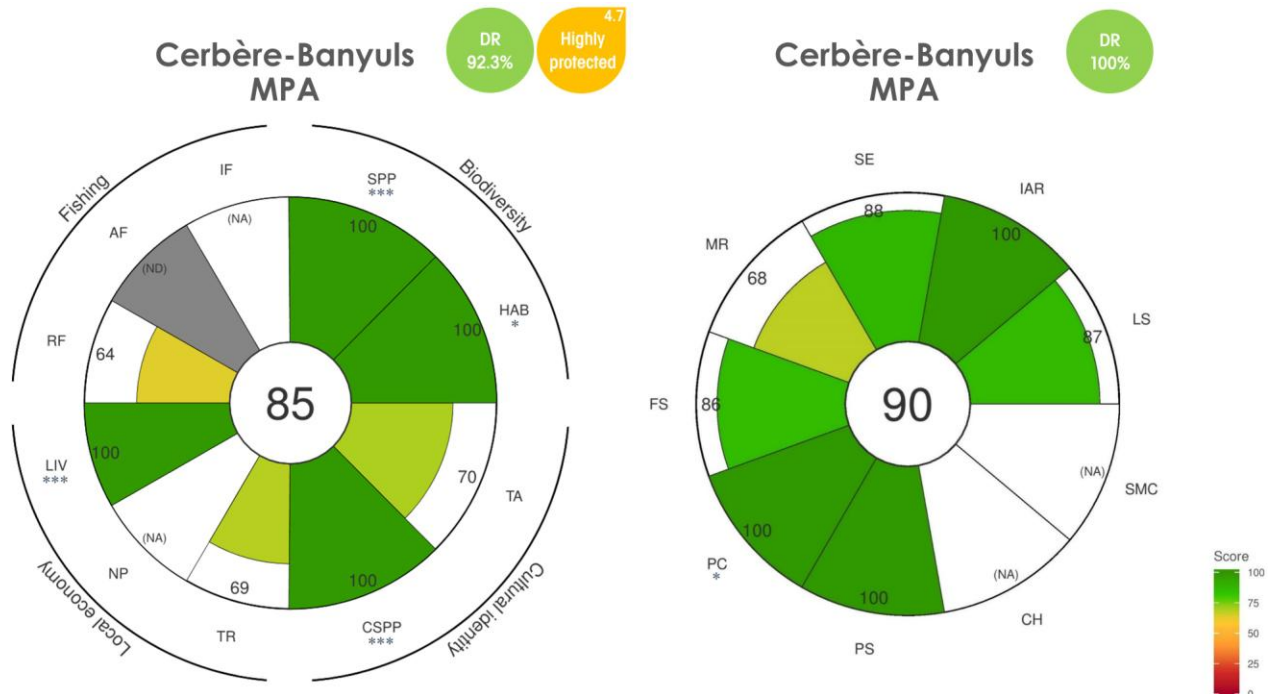
688

689

690

691

Figure 4. Reserve Effectiveness Assessment (REA) index calculated for the fully protected area (left panel) and the partially protected area (right panel). Each indicator is scored from 0 to 100 following a red-yellow-green colour gradient. On the top right of each plot, the scores of the Degree of reliability (DR) and Protection level (PL) indicators are also shown. Indicators scoring more than 100 are marked with the * symbol (*, 100<score<200; **, 200 ≤score<300; ***, score ≥300).



692

693

694

695

696

697

Figure 5. Reserve Effectiveness Assessment (REA) (left panel) and Management Performance Assessment (MaPA) (right panel) indices calculated for the Cerbère-Banyuls Natural Marine Reserve. Each indicator is scored from 0 to 100 following a red-yellow-green colour gradient. On the top right of each plot, the scores of the Degree of reliability (DR) and Protection level (PL) indicators are also shown. Indicators scoring more than 100 are marked with the * symbol (*, 100<score<200; **, 200 ≤score<300; ***, score ≥300).

698

699 **5. Discussion**

700

701 The application of the MOSE framework showed that a high level of management effort is applied
702 to the Cerbère-Banyuls Natural Marine Reserve, generating several social-ecological benefits.

703 Almost all of the data required to implement the MOSE framework were available ($DR_{max}= 100$ and

704 $DR_{min}= 87.5$), with only the *Artisanal fishing* indicator lacking data. The REA results showed high

705 scores for all the assessed indicators in both protection zones (min = 64; max = 100; average = 83),

706 in accordance to their *Level of protection* (i.e., *fully* and *highly protected*). Remarkable are the

707 *Biodiversity*, *Charismatic species*, and *Livelihoods* scores, reflecting the positive ecological effects

708 of the long-lasting conservation effort on habitats and species of the MPA and its consequent

709 attractiveness for divers. Such positive effects are not as evident for the *Tourism and recreation*

710 indicator, since tourism is highly developed in the whole region (www.cdt66-observatoire.com).

711 The MaPA index scored higher than REA (min = 68; max = 100; average = 90), with all applicable

712 indicators assessed ($DR = 100$). *Cultural heritage* and *Social media communication* indicators

713 could not be assessed (NA). Indeed, the reserve is not officially committed to the preservation of

714 local cultural aspects according to its mission. Moreover, it does not manage any social network,

715 which are instead managed by the Department of the Pyrénées-Orientales. Nevertheless, the reserve

716 is regularly requested by press and television but such media were not taken into account in the

717 *Social media communication* indicator. *Professionalism and competences* and *Personnel stability*

718 indicators scored both 100, highlighting the importance of a competent and stable staff. Such results

719 point to professionalism and working stability of the management body as two main drivers of

720 MPA success, allowing quality and continuity of conservation actions.

721 The choice of developing and applying a comprehensive but synthetic assessment framework was

722 taken to provide an overview of the overall level of success of MPAs. Although this first

723 application of the MOSE framework was able to highlight the overall success of the Cerbère-

724 Banyuls Reserve, further applications are needed to test its effectiveness and sensitivity. Such

725 applications should target a larger number and variety of MPAs, including differences in age of

726 establishment, size, geography (i.e., coastal vs island MPA), type (i.e., single- vs multi-use MPA),

727 and configuration (i.e., single MPA vs MPA network).

728 After this first application, strengths of the MOSE framework can be highlighted. Compared to

729 other assessment frameworks for MPAs (Tab. 1), the MOSE framework shows distinctive features.

730 As previously showed, most frameworks focus on one or few domains of assessment. The MOSE

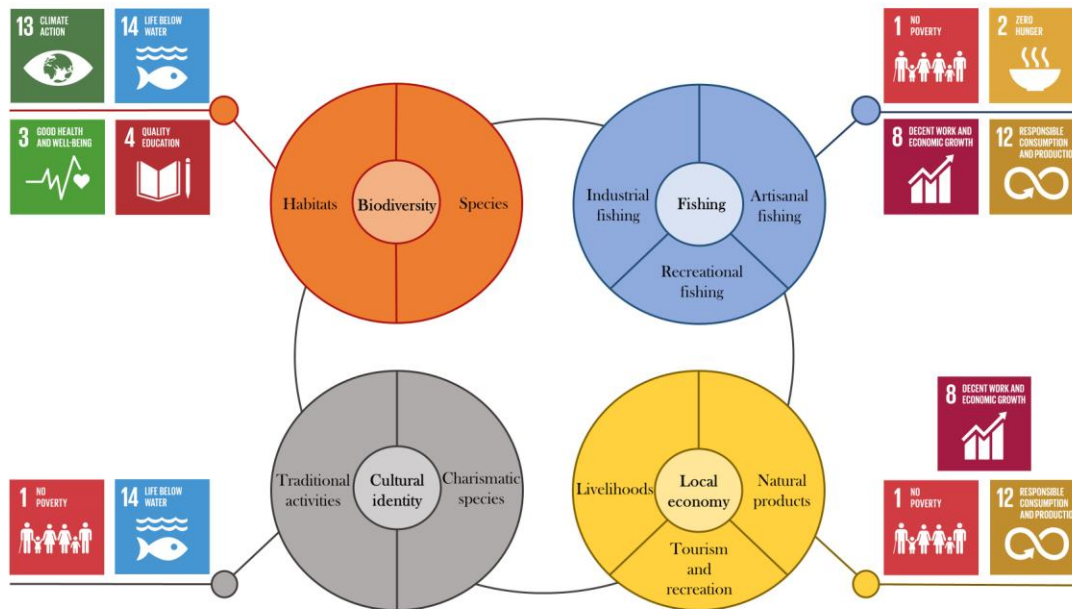
731 framework instead integrates indicators referring to the ecological, social, economic, governance,

732 and management domains, covering all main areas of investigation for the assessment of MPAs

733 effectiveness and performance. In addition, unlike other frameworks, it is able to provide
734 quantitative results, which are synthetically displayed through an intuitive graphical output that
735 simplifies their communication. Graphical representations of results (Fig. 4 and 5) carry indeed
736 remarkable communicative power as they are able to easily provide a quantitatively comparable
737 measure of the degree to which MPAs meet their goals. Flower plots show results at index score
738 level (synthetic information) and indicators score level (detailed information). Such feature is
739 especially useful when conveying information on effectiveness and performance to politicians,
740 decision-makers, and other stakeholders. In addition, the communication of results is strengthened
741 by the information on the reliability of the overall scores of the two indices. Its inclusion gives a
742 measure of their consistency while providing itself an evaluation on the data gap to implement
743 adaptive management strategies. Another strength of the MOSE framework is represented by the
744 fact that the investigation scale matches the scale at which decisions are made. MPAs are legally
745 empowered to regulate human activities inside their borders, which makes system-level assessments
746 - such as the MOSE framework - particularly effective in informing management actions through
747 feedback adaptive loops to meet marine conservation and sustainability goals. Finally, the
748 development of the MOSE framework is timely. MPAs are playing an important role in
749 international strategies for ocean sustainability. Currently, these strategies focus mainly on
750 increasing the coverage of MPAs worldwide without paying enough attention to their actual
751 effectiveness, which is a fundamental point to achieve the pursued sustainability objectives.
752 Science-based and quantitative informative tools to support the adaptive management process of
753 MPAs are needed to fill this gap. The MOSE framework makes an attempt towards this direction,
754 providing a tool to support managers of MPAs all over the world in targeting and assessing local
755 social-ecological benefits and management efforts. Indeed, like in the case of the Ocean Health
756 Index (Halpern et al., 2012), MOSE is a flexible assessment framework allowing for adaptability
757 towards context-related necessities and peculiarities. New indicators can be added and changes can
758 be applied to the existing ones, depending for instance on the MPA mission and objectives.
759 Nonetheless, consistency is one of the main strengths of system scale assessment frameworks and
760 major modifications could compromise the comparability of results among different MPAs and for
761 the same MPA over time. Finally, as previously stated, REA indicators measure the social-
762 ecological benefits that MPAs provide to local communities. Defining such effects as benefits
763 provided by marine natural capital matches the notion of “ecosystem services” internationally
764 recognized and fostered by several initiatives such as the Millennium Ecosystem Assessment (MA),
765 The Economics of Ecosystems and Biodiversity (TEEB), and the Intergovernmental Science-Policy
766 Platform on Biodiversity and Ecosystem Services (IPBES). REA indicators can be also linked to the

767 United Nations SDGs supported by MPAs, providing a quantitative measure of their local support
768 to global sustainability goals (Fig. 6).

769



770

771

Figure 6. Links between the REA indicators of the MOSE framework and UN-SDGs.

772

773 Along with the strengths of the MOSE framework, the following aspects should be carefully
774 considered. The use of a 0-100 scale is well suited in the case of target values which represent the
775 full achievement of the objective that is measured. This is the case of the MaPA indicators, whose
776 scores indicate the degree to which their targets are met. On the contrary, the calculation method of
777 the REA index uses values of measured variables from control areas as reference points for the
778 absence of protection. Hence, the reference points of REA indicators do not represent target values,
779 but rather the threshold beyond which measuring the reserve effect. This difference between REA
780 and MaPA approaches needs to be taken into account when interpreting the results of the two
781 indices. Another aspect to be considered is that the high amount of data required to implement the
782 MOSE framework could represent an obstacle to its applicability. Despite the presence of the
783 *Degree of reliability (DR)* indicator (which can cope with the lack of data addressing the level of
784 assessment comprehensiveness), missing substantial information could compromise the application
785 of the framework and the meaningfulness of the overall REA and MaPA scores. Nevertheless, the
786 verified lack of data represents a result itself as it can inform the adaptive management process and
787 provide useful directions on data to be collected and studies to be carried out. Finally, the

788 multicriteria feature of the MOSE framework requires the capability of dealing with a multitude of
789 socio-economic and ecological data to be managed and interpreted.

790

791 **6. Concluding remarks**

792

793 In this study, a novel integrated framework measuring the overall success of MPAs was presented.

794 The case study of the Cerbère-Banyuls Natural Marine Reserve was implemented to test its

795 applicability and potential usefulness as a tool to support managers and decision-makers in charge

796 for developing nature conservation strategies. These strategies should be based on the application of

797 adaptive management processes requiring multicriteria assessment frameworks and synthetic

798 indices able to capture the complexity of marine social-ecological systems. Future applications of

799 the MOSE framework will allow improving its applicability while contributing to establish a

800 comparative assessment among MPAs at local, national, and larger scales.

801

802

803 **Acknowledgements**

804

805 We are grateful to all those CRIOBE laboratory members that provided constructive feedback on

806 the study. Special thanks go to Rodolphe Devillers for his suggestions and to Jérémy Carlot for his

807 support with R programming. Finally, we also wish to thank Virginie Hartmann of the Cerbère-

808 Banyuls Natural Marine Reserve, who provided essential information for the implementation of the

809 case study.

810

811 **References**

812

813 Adger, W.N., Hughes, T.P., Folke, C., Carpenter, S.R., Rockström, J., 2005. Social-Ecological Resilience to
814 Coastal Disasters. *Science*, 1–6. <http://doi.org/10.1126/science.1112122>

815

816 Agardy, T., Claudet, J., Day, J.C., 2016. ‘Dangerous Targets’ revisited: Old dangers in new contexts plague
817 marine protected areas. *Aquatic Conservation: Marine and Freshwater Ecosystems*, 26, 7–23.
818 <https://doi.org/10.1002/aqc.2675>

819

820 Alban, F., Boncoeur, J., Roncin, N., 2011. Assessing the impact of marine protected areas on society’s well-being:
821 an economic perspective. In: *Marine Protected Areas – A Multidisciplinary Approach*. Cambridge University
822 Press, Cambridge, UK, pp. 226-246.

823

824 Angulo-Valdés, J. A., & Hatcher, B. G. (2010). A new typology of benefits derived from marine protected areas.
825 *Marine Policy*, 34(3), 635–644.

826

827 Arias, A., 2015. Understanding and managing compliance in the nature conservation context. *Journal of*
828 *Environmental Management* 153, 134–143. <https://doi.org/10.1016/j.jenvman.2015.02.013>

829

830 Arias, A., Pressey, R.L., Jones, R.E., Álvarez-Romero, J.G., Cinner, J.E., 2016. Optimizing enforcement and
831 compliance in offshore marine protected areas: A case study from Cocos Island, Costa Rica. *Oryx*, 50(1), 18–26.
832 <https://doi.org/10.1017/S0030605314000337>

833 Ban, N.C., Gurney, G.G., Marshall, N.A., Whitney, C.K., Mills, M., Gelcich, S., et al., 2019. Well-being
834 outcomes of marine protected areas. *Nature Sustainability*, 2(6), 524–532.
835

836 Barbier, E.B., 2017. Marine ecosystem services. *Current Biology*, 27(11), R507–R510.
837

838 Beger, M., Harborne, A.R., Dacles, T.P., Solandt, J.L., Ledesma, G.L., 2004. A framework of lessons learnt from
839 community-based marine reserves and its effectiveness in guiding a new coastal management initiative in the
840 Philippines. *Environmental Management*, 34, 786–801.
841

842 Bennett, N.J., Dearden, P., 2014. From measuring outcomes to providing inputs: Governance, management, and
843 local development for more effective marine protected areas. *Marine Policy*, 50(PA), 96–110.
844

845 Bennett, N.J., Roth, R., Klain, S.C., Chan, K., Christie, P., Clark, D.A., et al., 2017. Conservation social science:
846 Understanding and integrating human dimensions to improve conservation. *Biological Conservation*, 205, 93–
847 108.
848

849 Berkes, F., 2011. Restoring Unity, in: *World Fisheries*. Wiley-Blackwell, Oxford, UK, pp. 9–28.
850

851 Beukering, P. Van, Scherl, L.M., Smith, S., Hale, L., Purvis, N., 2014. How Marine Protected Areas contribute to
852 poverty reduction. *Monographs of the Society for Research in Child Development*, 79(1), 141–141.
853

854 Binet, T., Diazabakana, A., Hernandez, S., 2015. Sustainable financing of Marine Protected Areas in the
855 Mediterranean: a financial analysis. *Vertigo Lab, MedPAN, RAC/SPA, WWF Mediterranean*. 114 pp.
856

857 Borja, A., Ranasinghe, A., Weisberg, S.B., 2009. Assessing ecological integrity in marine waters, using multiple
858 indices and ecosystem components: Challenges for the future. *Marine Pollution Bulletin*, 59(1–3), 1–4.
859

860 Buonocore E., Picone F., Russo G.F., Franzese P.P., 2018. The Scientific Research On Natural Capital: A
861 Bibliometric Network Analysis. *Journal of Environmental Accounting and Management* 6(4), 374-384.
862

863 Buonocore, E., Picone, F., Donnarumma, L., Russo, G.F., Franzese, P.P., 2019. Modeling matter and energy flows
864 in marine ecosystems using emergy and eco-exergy methods to account for natural capital value. *Ecological
865 Modelling*, 392.
866

867 Cardinale, B.J., Duffy, J.E., Gonzalez, A., Hooper, D.U., Perrings, C., Venail, P., et al., 2012. Biodiversity loss
868 and its impact on humanity. *Nature*, 486(7401), 59–67.
869

870 CBD Secretariat. 2011. Strategic Plan for Biodiversity 2011-2020: Further Information Related to the Technical
871 Rationale for the Aichi Biodiversity Targets, Including Potential Indicators and Milestones.
872 UNEP/CBD/COP/10/INF/12/Rev.1. 14/03/2011.
873

874 Charles, A., 2012. People, oceans and scale: Governance, livelihoods and climate change adaptation in marine
875 social-ecological systems. *Current Opinion in Environmental Sustainability*, 4, 351–357.
876

877 Christie, P., 2004. Marine protected areas as biological successes and social failures in Southeast Asia. *American
878 Fisheries Society Symposium*, 2004(42), 155–164.
879

880 Claudet, J., (ed.) 2011. *Marine Protected Areas: Effects, networks and monitoring – A multidisciplinary approach*,
881 Cambridge University Press, Cambridge, UK.
882

883 Claudet, J., 2018. Six conditions under which MPAs might not appear effective (when they are). *ICES Journal of
884 Marine Science*, 75(3), 1172–1174.
885

886 Claudet, J., 2019. France must impose strict levels of marine protection. *Nature*, 570, 36.
887

888 Claudet, J., Bopp, L., Cheung, W. W. L., Devillers, R., Escobar-Briones, E., Haugan, P., et al., 2020. A Roadmap
889 for Using the UN Decade of Ocean Science for Sustainable Development in Support of Science, Policy, and
890 Action. *One Earth*, 2(1), 34–42.
891

892 Claudet, J., García-Charton, J.A., Lenfant, P., 2011. Combined Effects of Levels of Protection and Environmental
893 Variables at Different Spatial Resolutions on Fish Assemblages in a Marine Protected Area. *Conservation*
894 *Biology*, 25(1), 105–114.

895

896 Claudet, J., Guidetti, P., 2010. Fishermen contribute to protection of marine reserves. *Nature*, 464(7289), 673.

897

898 Claudet, J., Guidetti, P., 2010. Improving assessments of marine protected areas. *Aquatic Conservation: Marine*
899 *and Freshwater Ecosystems*, 20(2), 239–242.

900

901 Coll, M., Cury, P., Azzurro, E., Bariche, M., Bayadas, G., Bellido, J.M., et al., 2013. The scientific strategy
902 needed to promote a regional ecosystem-based approach to fisheries in the Mediterranean and Black Seas.
903 *Reviews in Fish Biology and Fisheries*, 23, 415-434.

904

905 Dalton, R., 2010. Reserves ‘win–win’ for fish and fishermen. *Nature*, 463, 1007.

906

907 Devillers, R., Lemieux, C.J., Gray, P.A., Claudet, J., 2019. Canada’s uncharted conservation approach. *Science*,
908 364 (6447), 1243.

909

910 Di Franco, A., Bussotti, S., Navone, A., Panzalis, P., Guidetti, P., 2009. Evaluating effects of total and partial
911 restrictions to fishing on Mediterranean rocky-reef fish assemblages. *Marine Ecology Progress Series*, 387, 275–
912 285.

913

914 Di Franco, A., Thiriet, P., Di Carlo, G., Dimitriadis, C., Francour, P., Gutiérrez, N.L., et al., 2016. Five key
915 attributes can increase marine protected areas performance for small-scale fisheries management. *Scientific*
916 *Reports*, 6(December), 1–9.

917

918 Ducarme, F., Luque, G.M., Courchamp, F., 2013. What are “charismatic species” for conservation biologists?
919 *BioSciences Master Reviews*, 3, 8.

920

921 Durham E., Baker H., Smith M., Moore E., Morgan V., 2014. The BiodivERsA Stakeholder Engagement Hand-
922 book. BiodivERsA, Paris (108 pp).

923

924 Edgar, G.J., Stuart-Smith, R.D., Willis, T.J., Kininmonth, S., Baker, S.C., Banks, S., et al., 2014. Global
925 conservation outcomes depend on marine protected areas with five key features. *Nature*, 506, 216–220.

926

927 European Commission, 2018. Study on the economic benefits of Marine Protected Areas. Literature review
928 analysis. 147 pp.

929

930 European Union, 2000. Water Framework Directive. Directive 2000/60/CE of the European Parliament and
931 Council of 23 October 2000. N° L 327, 22/12/2000.

932

933 European Union, 2008. Marine Strategy Framework Directive. Directive 2008/56/EC of the European Parliament
934 and of the Council of 17 June 2008 establishing a framework for community action in the field of marine
935 environmental policy. N° L 164, 25/06/2008. 22 p.

936

937 FAO, 2016. The State of World Fisheries and Aquaculture 2016. Contributing to food security and nutrition for
938 all. Rome. 200 pp

939

940 Filbee-Dexter, K., Scheibling, R., 2014. Sea urchin barrens as alternative stable states of collapsed kelp
941 ecosystems. *Marine Ecology Progress Series*, 495, 1–25.

942

943 Franzese P.P., Liu G., Aricò S., 2019. Environmental accounting models and nature conservation strategies.
944 *Ecological Modelling* 397, 36-38.

945

946 Franzese, P.P., Buonocore, E., Donnarumma, L., Russo, G.F., 2017. Natural capital accounting in marine
947 protected areas: The case of the Islands of Ventotene and S. Stefano (Central Italy). *Ecological Modelling*, 360,
948 290-299.

949

- 950 Franzese, P.P., Buonocore, E., Paoli, C., Massa, C., Stefano, D., Fanciulli, et al., 2015. Environmental Accounting
951 in Marine Protected Areas: the EAMPA Project. *Journal of Environmental Accounting and Management*, 3(4),
952 324-332.
- 953
- 954 Gallacher, J., Simmonds, N., Fellowes, H., Brown, N., Gill, N., Clark, W., et al., 2016. Evaluating the success of a
955 marine protected area: A systematic review approach. *Journal of Environmental Management*, 183, 280–293.
- 956
- 957 Galzin, R., Crec'hriou, R., Lenfant, P., Planes, S., 2004. Marine protected areas: a laboratory for scientific
958 research. *Revue d'écologie de la Terre et la Vie* 59 (1e2), 37e48.
- 959
- 960 Garcia, S.M., Zerbi, A., Aliaume, C., Do Chi, T., Lasserre, G., 2003. The ecosystem approach to fisheries. Issues,
961 terminology, principles, institutional foundations, implementation and outlook. *FAO Fisheries Technical Paper*.
962 No. 443. Rome, FAO. 2003. 71 p.
- 963
- 964 Gee, K., Kannen, A., Adlam, R., Brooks, C., Chapman, M., Cormier, R., et al., 2017. Identifying culturally
965 significant areas for marine spatial planning. *Ocean & Coastal Management* 136, 139–147.
- 966
- 967 Giakoumi, S., McGowan, J., Mills, M., Beger, M., Bustamante, R.H., Charles, A., et al., 2018. Revisiting
968 “Success” and “Failure” of Marine Protected Areas: A Conservation Scientist Perspective. *Frontiers in Marine*
969 *Science*, 5(June), 223.
- 970
- 971 Gill, D.A., Mascia, M.B., Ahmadi, G.N., Glew, L., Lester, S. E., Barnes, M., et al., 2017. Capacity shortfalls
972 hinder the performance of marine protected areas globally. *Nature*, 543(7647), 665–669.
- 973
- 974 Guidetti, P., 2002. The importance of experimental design in detecting the effects of protection measures on fish
975 in Mediterranean MPAs. *Aquatic Conservation: Marine and Freshwater Ecosystems*, 12, 619–634.
- 976
- 977 Guidetti, P., 2006. Marine Reserves Reestablish Lost Predatory Interactions and Cause Community Changes in
978 Rocky Reefs. *Bulletin Ecological Society of America*, 16, 963–976.
- 979
- 980 Guidetti, P., Baiata, P., Ballesteros, E., Di Franco, A., Hereu, B., Macpherson, E., et al., 2014. Large-Scale
981 Assessment of Mediterranean Marine Protected Areas Effects on Fish Assemblages. *PLoS One*, 9, e91841.
- 982
- 983 Guidetti, P., Bussotti, S., Pizzolante, F., Ciccolella, A., 2010. Assessing the potential of an artisanal fishing co-
984 management in the Marine Protected Area of Torre Guaceto (southern Adriatic Sea, SE Italy). *Fisheries Research*,
985 101(3), 180–187.
- 986
- 987 Guidetti, P., Milazzo, M., Bussotti, S., Molinari, A., Murenu, M., Pais, A., et al., 2008. Italian marine reserve
988 effectiveness: Does enforcement matter? *Biological Conservation*, 141, 699–709.
- 989
- 990 Halpern, B.S., Longo, C., Hardy, D., McLeod, K.L., Samhuri, J.F., Katona, S.K., et al., 2012. An index to assess
991 the health and benefits of the global ocean. *Nature*, 488, 615–620.
- 992
- 993 Halpern, B.S., Warner, R.R., 2002. Marine reserves have rapid and lasting effects. *Ecology Letters*, 5, 361–366.
- 994
- 995 Hamú, D., Auchincloss, E., Goldstein, W., 2004. *Communicating Protected Areas*. Commission on Education and
996 Communication, IUCN, Gland, Switzerland and Cambridge, UK. xiv + 312 pp.
- 997
- 998 Harmelin-Vivien, M., Harmelin, J.G., Chauvet, C., Duval, C., Galzin, R., Lejeune, P., et al., 1985. Evaluation
999 visuelle des peuplements et populations de poissons. Méthodes et problèmes. *Revue d'Écologie – la Terre et la*
1000 *Vie*, 40, 467–539.
- 1001
- 1002 Herr, D., Landis, E., 2016. Coastal blue carbon ecosystems. Opportunities for Nationally Determined
1003 Contributions. Policy Brief. Gland, Switzerland: IUCN and Washington, DC, USA: TNC.
- 1004
- 1005 Hockings, M., Leverington, F., Cook, C., 2015. ‘Protected area management effectiveness’, in G. L. Worboys, M.
1006 Lockwood, A. Kothari, S. Feary and I. Pulsford (eds) *Protected Area Governance and Management*, pp. 889–928,
1007 ANU Press, Canberra.
- 1008

1009 Hogg, K., Noguera-Méndez, P., Semitiel-García, M., & Giménez-Casalduero, M. (2013). Marine protected area
1010 governance: Prospects for co-management in the European Mediterranean. *Advances in Oceanography and*
1011 *Limnology*, 4(2), 241–259.

1012

1013 Horigue, V., Aliño, P.M., Pressey, R.L., 2014. Evaluating management performance of marine protected area
1014 networks in the Philippines. *Ocean & Coastal Management*, 95, 11–25.

1015

1016 Horta e Costa, B., Claudet, J., Franco, G., Erzini, K., Caro, A., Gonçalves, E.J., 2016. A regulation-based
1017 classification system for Marine Protected Areas (MPAs). *Marine Policy*, 72, 192–198.

1018

1019 IOC-UNESCO, 2017. Global Ocean Science Report - The current status of ocean science around the world. L.
1020 Valdés et al. (eds), Paris, UNESCO Publishing.

1021

1022 IUCN WCPA, 2018. Applying IUCN’s Global Conservation Standards to Marine Protected Areas (MPA).
1023 Delivering effective conservation action through MPAs, to secure ocean health & sustainable development.
1024 Version 1.0. Gland, Switzerland. 4pp.

1025

1026 Jones, P.J.S., Murray, R.H., Vestegaard, O., 2019. Enabling Effective and Equitable Marine Protected Areas –
1027 guidance on combining governance approaches. UN Environment.

1028

1029 Kolding, J., Béné, C., Bavinck, M., 2014. Small-scale fisheries—importance, vulnerability, and deficient
1030 knowledge. Chapter 22. In *Governance for marine fisheries and biodiversity conservation. Interaction and*
1031 *coevolution*. Edited by S. Garcia, J. Rice, and A. Charles. Wiley-Blackwell. pp. 317–331.

1032

1033 Laffoley, D., Baxter, J.M., (editors), 2016. Explaining ocean warming: Causes, scale, effects and consequences.
1034 Full report. Gland, Switzerland: IUCN. 456 pp.

1035

1036 Leenhardt, P., Low, N., Pascal, N., Micheli, F., Claudet, J., 2015a. The Role of Marine Protected Areas in
1037 Providing Ecosystem Services, in: *Aquatic Functional Biodiversity*, 211–239.

1038

1039 Leenhardt, P., Teneva, L., Kininmonth, S., Darling, E., Cooley, S., Claudet, J., 2015b. Challenges, insights and
1040 perspectives associated with using social-ecological science for marine conservation. *Ocean & Coastal*
1041 *Management*, 115, 49–60.

1042

1043 López Ornat A., Vignes P., 2015. Surveillance and enforcement of regulations in Mediterranean MPAs, Practical
1044 guide. RAC/SPA, Port-Cros National Park, National Marine Park of Zakynthos. MedPAN Collection. 40 pp.

1045

1046 López-Angarita, J., Moreno-Sánchez, R., Maldonado, J.H., Sánchez, J.A., 2014. Evaluating linked social-
1047 ecological systems in marine protected areas. *Conservation Letters*, 7, 241–252.

1048

1049 Marine Protected Areas Support Network, Marine Protected Area Management Effectiveness Assessment Tool
1050 (MPA MEAT). Coral Triangle Support Partnership of USAID, Department of Environment and Natural
1051 Resources, MPA Support Network Philippines, Quezon City, Philippines, 2010.

1052

1053 Mascia, M. B., 2004. Social dimensions of marine reserves. In Sobel J. and Dahlgren, C. (eds.) *Marine reserves: a*
1054 *guide to science, design, and use*, pp 164-186. Washington: Island Press.

1055

1056 Mascia, M.B., Claus, C.A., Naidoo, R., 2010, Impacts of Marine Protected Areas on Fishing Communities.
1057 *Conservation Biology*, 24: 1424-1429.

1058

1059 Millennium Ecosystem Assessment, 2005. *Ecosystems and Human Well Being: Synthesis*. Island Press,
1060 Washington DC.

1061

1062 Nellemann, C., Corcoran, E., Duarte, C. M., Valdés, L., De Young, C., Fonseca, L., Grimsditch, G. (Eds), 2009.
1063 *Blue Carbon. A Rapid Response Assessment*. United Nations Environment Programme, GRID-Arendal,
1064 www.grida.no

1065

1066 Ocean Health Index, 2016. ohi-global version: Global scenarios data for Ocean Health Index, [04/2019]. National
1067 Center for Ecological Analysis and Synthesis, University of California, Santa Barbara. Available at:
1068 <https://github.com/OHI-Science/ohi-global/releases>
1069

1070 Ojea E., Pascual, M., March, D., Bitetto, I., Melià, P., Breil, M., et al., 2017. Socioeconomic impacts of networks
1071 of Marine Protected Areas. In: *Management of Marine Protected Areas: A Network Perspective*, First Edition.
1072 John Wiley & Sons Ltd. Published 2017 by John Wiley & Sons Ltd. p. 103-124.
1073

1074 Ojeda-Martinez, C., Gimenez Casalduero, F., Bayle-Sempere, J.T., Barbera Cebrian, C., Valle, C., Sanchez-
1075 Lizaso, L., et al., 2009. A conceptual framework for the integral management of marine protected areas. *Ocean &*
1076 *Coastal Management*, 52 (2), 89-10.
1077

1078 Otero, M., Garrabou, J. and Vargas, M., 2013. *Mediterranean Marine Protected Areas and climate change: A*
1079 *guide to regional monitoring and adaptation opportunities*. Malaga, Spain: IUCN.
1080

1081 Pascual, M., Rossetto, M., Ojea, E., Milchakova, N., Giakoumi, S., Kark, S., et al., 2016. Socioeconomic impacts
1082 of marine protected areas in the Mediterranean and Black Seas. *Ocean & Coastal Management*, 133(December),
1083 1–10.
1084

1085 Pauna V.H., Picone F., Le Guyader G., Buonocore E., Franzese P.P., 2018. The scientific research on ecosystem
1086 services: A bibliometric analysis. *Ecological Questions* 29 (3), 53-62.
1087

1088 Payrot, J., et al., 2014. Plan de gestion 2015-2019 de la RNMCB – section A – diagnostic de la RNMCB. Conseil
1089 Général des Pyrénées-Orientales, French: p. 14, English translation: p. 12.
1090

1091 Pelletier, D., 2011. INDICATORS – Constructing and validating indicators of the effectiveness of marine
1092 protected areas. In J. Claudet (Ed.), *Marine Protected Areas* (pp. 247–290).
1093

1094 Pelletier, D., García-Charton, J.A., Ferraris, J., David, G., Thébaud, O., Letourneur, Y., et al., 2005. Designing
1095 indicators for assessing the effects of marine protected areas on coral reef ecosystems: A multidisciplinary
1096 standpoint. *Aquatic Living Resources*, 18(1), 15–33.
1097

1098 Pelletier, D., García-Charton, J.A., Ferraris, J., David, G., Thébaud, O., Letourneur, Y., et al., 2005. Designing
1099 indicators for assessing the effects of marine protected areas on coral reef ecosystems: A multidisciplinary
1100 standpoint. *Aquatic Living Resources*, 18(1), 15–33.
1101

1102 Picone, F., Buonocore, E., D’Agostaro, R., Donati, S., Chemello, R., Franzese, P.P., 2017. Integrating natural
1103 capital assessment and marine spatial planning: A case study in the Mediterranean sea. *Ecological Modelling*,
1104 361.
1105

1106 Pollnac, R., Christie, P., Cinner, J.E., Dalton, T., Daw, T.M., Forrester, G.E., et al., 2010. Marine reserves as
1107 linked social-ecological systems. *Proceedings of the National Academy of Sciences*, 107, 18262–18265.
1108

1109 Pomeroy, R.S., Watson, L.N., Parks, J.E., Gonzola, C.A., 2005. How is your MPA doing? a methodology for
1110 evaluating the management effectiveness of marine protected areas. *Ocean & Coastal Management* 48 (7e8),
1111 485e502.
1112

1113 Prato, G., Guidetti, P., Bartolini, F., Mangialajo, L., Francour, P., 2013. The importance of high-level predators in
1114 marine protected area management: Consequences of their decline and their potential recovery in the
1115 Mediterranean context. *Advances in Oceanography and Limnology*, 4, 176–193.
1116

1117 Rasheed, A. R. (2020). Marine protected areas and human well-being – A systematic review and
1118 recommendations. *Ecosystem Services*, 41(November 2018), 101048.
1119

1120 Rodríguez-Rodríguez, D., Rees, S.E., Rodwell, L.D., Attrill, M.J., 2015. Assessing the socioeconomic effects of
1121 multiple-use MPAs in a European setting: A national stakeholders’ perspective. *Environmental Science and*
1122 *Policy*, 48, 115–127.
1123

1124 Roncin, N., Alban, F., Charbonnel, E., Crec'hriou, R., de la Cruz Modino, R., Culioli, J.M., et al., 2008. Uses of
1125 ecosystem services provided by MPAs: How much do they impact the local economy? A southern Europe
1126 perspective. *Journal for Nature Conservation*, 16(4), 256–270.
1127

1128 Russ, G. R., Alcala, A. C., Maypa, A. P., Calumpong, H. P., & White, A. T. (2004). Marine reserve benefits local
1129 fisheries. *Ecological Applications*, 14(2), 597–606.
1130

1131 Scianna, C., Niccolini, F., Bianchi, C. N., Guidetti, P., 2018. Applying organization science to assess the
1132 management performance of Marine Protected Areas: An exploratory study. *Journal of Environmental
1133 Management* 223(May), 175–184.
1134

1135 Scianna, C., Niccolini, F., Gaines, S. D., Guidetti, P., 2015. “Organization Science”: A new prospective to assess
1136 marine protected areas effectiveness. *Ocean & Coastal Management*, 116, 443–448.
1137

1138 Scianna, C., Niccolini, F., Giakoumi, S., Di Franco, A., Gaines, S.D., Bianchi, C.N., et al., 2019. Organization
1139 Science improves management effectiveness of Marine Protected Areas. *Journal of Environmental Management*,
1140 240(March), 285–292.
1141

1142 Simard, F., Laffoley, D., Baxter, J.M., 2016. *Marine Protected Areas and Climate Change: Adaptation and
1143 Mitigation Synergies, Opportunities and Challenges*. Gland, Switzerland: IUCN. 52 pp
1144

1145 Steffen, W., Persson, Å., Deutsch, L., Zalasiewicz, J., Williams, M., Richardson, K., et al., 2011. The
1146 Anthropocene: From Global Change to Planetary Stewardship. *Ambio* 40, 739–761.
1147

1148 Sterling, E.J., Betley, E., Sigouin, A., Gomez, A., Toomey, A., Cullman, G., et al., 2017. Assessing the evidence
1149 for stakeholder engagement in biodiversity conservation. *Biological Conservation*, 209, 159–171.
1150

1151 Stolton, S., Hockings, M., Dudley, N., MacKinnon, K., Whitten, T., Leverington, F., 2007. 'Reporting Progress in
1152 Protected Areas A Site-Level Management Effectiveness Tracking Tool: second edition.' World Bank/WWF
1153 Forest Alliance published by WWF, Gland, Switzerland.
1154

1155 UNEP-WCMC, IUCN, NGS, 2018. *Protected Planet Report 2018*. UNEP-WCMC, IUCN and NGS: Cambridge
1156 UK; Gland, Switzerland; and Washington, D.C., USA.
1157

1158 UNESCO, 2014. *Culture for Development Indicators: Methodology Manual*. Paris: UNESCO Publishing.
1159 United Nations, 2015. *Transforming Our World: The 2030 Agenda for Sustainable Development*. New York: UN
1160 Publishing.
1161

1162 Unsworth, R.K.F., Cullen, L.C., Pretty, J.N., Smith, D.J., Bell, J.J., 2010. Economic and subsistence values of the
1163 standing stocks of seagrass fisheries: Potential benefits of no-fishing marine protected area management. *Ocean
1164 and Coastal Management*, 53(5–6), 218–224.
1165

1166 Vihervaara P., Franzese P.P., Buonocore E., 2019. Information, energy, and eco-exergy as indicators of ecosystem
1167 complexity. *Ecological Modelling*, 395, 23–27.
1168

1169 Winter, K.B., Lincoln, N.K., Berkes, F., 2018. The social-ecological keystone concept: A quantifiable metaphor
1170 for understanding the structure, function, and resilience of a biocultural system. *Sustainability (Switzerland)*,
1171 10(9).
1172

1173 Worm, B., Barbier, E.B., Beaumont, N., Duffy, J.E., Folke, C., Halpern, B.S., et al., 2006. Impacts of Biodiversity
1174 Loss on Ocean Ecosystem Services. *Science* (80), 314, 787–790.
1175

1176 Zupan, M., Bulleri, F., Evans, J., Frascchetti, S., Guidetti, P., Garcia-Rubies, A., et al., 2018a. How good is your
1177 marine protected area at curbing threats? *Biological Conservation*, 221(August 2017), 237–245.
1178

1179 Zupan, M., Fragkopoulou, E., Claudet, J., Erzini, K., Horta e Costa, B., Gonçalves, E.J., 2018b. Marine partially
1180 protected areas: drivers of ecological effectiveness. *Frontiers in Ecology and the Environment*, 16(7), 381–387.
1181