



**HAL**  
open science

**Ecological evaluation of a marine protected area network: A Progressive-Change BACIPS approach  
Prepared as a research article for Ecosphere**

L. Thiault, L. Kernaléguen, C. W Osenberg, T. Lison de Loma, Y. Chancerelle, G. Siu, Joachim Claudet

► **To cite this version:**

L. Thiault, L. Kernaléguen, C. W Osenberg, T. Lison de Loma, Y. Chancerelle, et al.. Ecological evaluation of a marine protected area network: A Progressive-Change BACIPS approach Prepared as a research article for Ecosphere. Ecosphere, 2019, 10 (2), pp.e02576. 10.1002/ecs2.2576 . hal-03033531

**HAL Id: hal-03033531**

**<https://hal.science/hal-03033531>**

Submitted on 1 Dec 2020

**HAL** is a multi-disciplinary open access archive for the deposit and dissemination of scientific research documents, whether they are published or not. The documents may come from teaching and research institutions in France or abroad, or from public or private research centers.

L'archive ouverte pluridisciplinaire **HAL**, est destinée au dépôt et à la diffusion de documents scientifiques de niveau recherche, publiés ou non, émanant des établissements d'enseignement et de recherche français ou étrangers, des laboratoires publics ou privés.

1 **Ecological evaluation of a marine protected area**  
2 **network: A Progressive-Change BACIPS approach**

3  
4 Prepared as a research article for Ecosphere

5  
6 **L. Thiault<sup>a,b,c,d</sup>, L. Kernaléguen<sup>e</sup>, C.W. Osenberg<sup>f</sup>, T. Lison de Loma<sup>a,b</sup>, Y.**  
7 **Chancerelle<sup>a,b</sup>, G. Siu<sup>a,b</sup>, J. Claudet<sup>a,b</sup>**

8  
9 <sup>a</sup> National Center for Scientific Research, PSL Université Paris, CRIOBE, USR 3278  
10 CNRS-EPHE-UPVD, Maison des Océans, 195 rue Saint-Jacques, 75005 Paris, France

11 <sup>b</sup> Laboratoire d'Excellence CORAIL, France

12 <sup>c</sup> Museum National d'Histoire Naturelle, PALOC, UMR 208 MNHN-IRD, 75231 Paris,  
13 France

14 <sup>d</sup> Center of Applied Ecology and Sustainability (CAPES) and Centro de Conservación  
15 Marina, Facultad de Ciencias Biológicas, Pontificia Universidad Católica de Chile,  
16 Alameda 340, Santiago, Chile

17 <sup>e</sup> Deakin University, Geelong, School of Life and Environmental Sciences (Burwood  
18 Campus), Victoria, Australia

19 <sup>f</sup> Odum School of Ecology, University of Georgia, Athens, GA, 30602, USA

## 20 **Abstract**

21 Marine Protected Area (MPA) networks, with varying degrees of protection and use,  
22 can be useful tools to achieve both conservation and fisheries management benefits.  
23 Assessing whether MPA networks meet their objectives requires data from before the  
24 establishment of the network to better discern natural spatio-temporal variation and pre-  
25 existing differences from the response to protection. Here, we use a Progressive-Change  
26 BACIPS approach to assess the ecological effects of a network of five fully and three  
27 moderately protected MPAs on fish communities in two coral reef habitats (lagoon and  
28 fore reef) based on a time-series of data collected 5 times (over 3 years) before and 12  
29 times (over 9 years) after the network's establishment on the island of Moorea, French  
30 Polynesia. At the network scale, on the fore reef, density and biomass of harvested  
31 fishes increased by 19.3 and 24.8 %, respectively, in protected areas relative to control  
32 fished areas. Fully protected areas provided greater ecological benefits than moderately  
33 protected areas. In the lagoon, density and biomass of harvested fishes increased, but  
34 only the 31% increase in biomass in fully protected MPAs was significant. Non-  
35 harvested fishes did not respond to protection in any of the habitats. We propose that  
36 these responses to protection were small, relative to other MPA assessments, due to  
37 limited compliance and weak surveillance, although other factors such as the occurrence  
38 of a crown-of-thorns starfish outbreak and a cyclone after the network was established  
39 may also have impeded the ability of the network to provide benefits. Our results  
40 highlight the importance of fully protected MPAs over moderately protected MPAs in  
41 achieving conservation objectives, even in complex social-ecological settings, but also  
42 stress the need to monitor effects and adapt management based on ongoing assessments.

43  
44 **Key words:** conservation; coral reef; impact assessment design; Progressive-Change

45 BACIPS; protection regime, marine spatial planning; partially protected areas;

## 46      **Introduction**

47      Marine Protected Areas (MPAs) are an important management tool to conserve or  
48      restore fish populations inside their borders (Kerwath *et al.* 2013; Lubchenco & Grorud-  
49      Colvert 2015) and export biomass to surrounding fishing grounds (McClanahan &  
50      Mangi 2000; Harmelin-Vivien *et al.* 2008; Goñi *et al.* 2008; Di Lorenzo *et al.* 2016).  
51      Studies have shown that ecological effects of MPAs depend on MPA age (Claudet *et al.*  
52      2008; Molloy *et al.* 2009; Friedlander *et al.* 2017), network design (Jupiter & Egli 2011;  
53      Green *et al.* 2014a,b), species traits (McClanahan *et al.* 2007; Claudet *et al.* 2010;  
54      Abesamis *et al.* 2014) and degree of compliance (Guidetti *et al.* 2008; Campbell *et al.*  
55      2012; Gill *et al.* 2017). The most compelling evidence for beneficial effects of MPAs  
56      arises from meta-analyses that synthesize data from many empirical studies (Côté *et al.*  
57      2001; Micheli *et al.* 2004; Claudet *et al.* 2008; Lester *et al.* 2009; Gill *et al.* 2017).

58      Despite accumulated evidence suggesting far-reaching benefits of MPAs, assessment  
59      designs of individual MPAs or MPA networks often have substantive limitations,  
60      including the lack of data from Before the establishment of the MPA (Willis *et al.*  
61      2003). As a result, most assessments cannot discern effects of the MPA from pre-  
62      existing differences or spatio-temporal variability (Guidetti 2002; Halpern *et al.* 2004;  
63      Osenberg *et al.* 2006, 2011). Even studies with Before samples tend to have a limited  
64      time-series, often only one survey, making it difficult to attribute any observed temporal  
65      trends to effects of the MPA or MPA network (Osenberg *et al.* 2006, 2011).

66      When Before data are available, the BACIPS (Before-After Control-Impact Paired-  
67      Series) assessment design (Stewart-Oaten *et al.* 1986; Osenberg *et al.* 1994; Stewart-  
68      Oaten & Bence 2001) provides a powerful tool to overcome many of the limitations of  
69      typical studies (e.g. Guidetti, 2002; Osenberg *et al.*, 2006, 2011). Repeated assessments  
70      *before* enforcement provide an estimate of the spatial variability between the Control

71 and Impact sites in the absence of an effect of the MPA. In its simplest application, a  
72 change from *before* to *after* the establishment of the MPA in the differences ( $\Delta$ ) in  
73 density (or other response parameter) between the Control and Impact sites (i.e.,  $\Delta_{\text{After}} -$   
74  $\Delta_{\text{Before}}$ ) provides an estimate of the local effect of the MPA (see Stewart-Oaten and  
75 Bence, 2001 for a more detailed discussion of the BACIPS analysis and Osenberg et al.,  
76 2006, 2011 for discussion of the BACIPS method applied to marine reserves). However,  
77 this step-change from  $\Delta_{\text{Before}}$  to  $\Delta_{\text{After}}$  is unlikely in most MPA systems. For example,  
78 enforcement *after* MPA establishment may be gradual or the response of long-lived  
79 species may be slow to accumulate (e.g., Russ and Alcala, 2010). In such cases, the  
80 effect of the MPA may follow more complex dynamics (Babcock *et al.* 2010). Recently  
81 a more flexible approach, the Progressive Change BACIPS, was proposed (Thiault *et al.*  
82 2017b) that allows quantification of various patterns of temporal change (e.g., linear,  
83 asymptotic, sigmoid) in addition to the traditional step-change. Although the need for  
84 Before data is widely acknowledged when implementing and assessing an MPA  
85 (Claudet & Guidetti 2010) and although BACIPS studies are increasingly used (Castilla  
86 & Bustamante 1989; Lincoln-Smith *et al.* 2006; Claudet *et al.* 2006; Shears *et al.* 2006;  
87 Moland *et al.* 2013; Grorud-Colvert *et al.* 2014; Fletcher *et al.* 2015), they remain rare  
88 (Osenberg et al. 2011).

89 Existing MPA assessments have focused almost exclusively on no-take, or fully  
90 protected, marine reserves. Partially protected areas, where some extractive activities are  
91 allowed but still regulated, are often used to balance trade-offs between conservation  
92 and exploitation. Partially protected MPAs are often favored to reach international  
93 targets of MPA coverage over the more arduous task of seeking approval for fully  
94 protected areas (Lubchenco & Grorud-Colvert 2015; Claudet 2018). Existing  
95 assessments of partially protected areas show that their ecological benefits are smaller

96 than those achieved with full protection (Shears *et al.* 2006; Lester & Halpern 2008; Di  
97 Franco *et al.* 2009; Giakoumi *et al.* 2017; Zupan *et al.* 2018).

98 Here, we assess the ecological effectiveness of a network of 8 MPAs, consisting of  
99 five fully and three moderately protected MPAs (*sensu* Horta e Costa *et al.* 2016) in  
100 Moorea, French Polynesia. We use a 12-year time series with three years of Before data  
101 and nine years of After data. We apply the Progressive-Change BACIPS design to detect  
102 and quantify the pattern of response of fish communities to the establishment of the  
103 MPA network. We assessed the effects of the MPA network as a whole, and at the sub-  
104 network scales of fully and moderately protected MPAs.

## 105 **Material and methods**

### 106 **Data collection**

107 The MPA network in Moorea, French Polynesia, was officially designated in October  
108 2004, although establishment and enforcement required several additional years (Lison  
109 de Loma *et al.* 2008). MPAs were delimited inside the lagoon using buoys in September  
110 2005. The first information campaign and police patrols were conducted in 2006. A  
111 second information campaign was initiated in 2007, and police monitoring was  
112 subsequently increased (and accomplished by hiring a local mediator/enforcement agent  
113 and purchasing a boat). We therefore consider January 1, 2007 to constitute the start of  
114 enforcement (Lison de Loma *et al.* 2008).

115 MPAs within the network were classified using the Regulation-Based Classification  
116 System for MPAs (Horta e Costa *et al.* 2016). The network consists of five fully  
117 protected MPAs where all fishing activities are prohibited (i.e. equivalent to no-take  
118 zones), and three moderately protected MPAs where restrictions only apply to particular  
119 fishing practices and species (Fig. 1 and Supporting Information Table S1). Other areas  
120 are open to fishing but subject to general restrictions, such as species size regulations.

121 Within these other areas, we selected five control sites that were paired with one, two or  
122 three of the MPA sites (Fig. 1) based upon their geographic proximity and physical  
123 characteristics.

124 [Figure 1]

125 Fish communities and benthic assemblages were sampled from 2004-2015, with  
126 sampling surveys (which we refer to as “dates”) conducted once in 2004 (during the dry  
127 season), twice each year from 2005-2009 (during both the dry and wet seasons), and  
128 once each year thereafter (during the wet season). Thus, our dataset consists of five sets  
129 of surveys from the Before period (i.e., prior to January 2007) and 12 sets of surveys  
130 from the After period (i.e., after January 2007). We refer to each set of surveys as a date,  
131 even though data across the whole island were obtained over an approximately week-  
132 long period.

133 At each MPA and Control site we sampled one location on the fore reef and two  
134 locations in the lagoon (Fig. 1). Fishes were identified to species and enumerated along  
135 3, 25 m x 2 m underwater belt transects at each location. Total length of each fish was  
136 estimated to the nearest centimeter for isolated fish, and mean length was estimated for  
137 schools of fish.

138 We also quantified the density of crown-of-thorns starfish (COTS, *Acanthaster*  
139 *planci*), a coral predator, as well as the cover of live coral and algae. Coral and algal  
140 cover were estimated using a point-intercept transect method, using the line that was  
141 deployed for fish transects. A total of 50 points were used, spaced equally along each  
142 transect. All point contacts were done after the fish surveys to minimize disruption to the  
143 fish assemblage.

#### 144 **The Progressive-Change BACIPS design and analysis**

145 We categorized fish species as harvested or non-harvested based on local expert



146 knowledge, and converted all lengths to wet mass (g) using species-specific length-mass  
147 relationships (Kulbicki *et al.* 2005). Sharks, rays and pelagic species were excluded  
148 from the analyses because the transects were not designed to count those highly vagile  
149 species. Within each date and habitat, data were averaged across transects (n=3 transects  
150 for each fore reef site and n=6 transects for each lagoon site). For each habitat (lagoon or  
151 fore reef) and fish group (harvested or non-harvested), we then determined the  
152 difference,  $\Delta$ , between the MPA and its paired Control site (see Fig. 1) after log-  
153 transformation (Lison de Loma *et al.* 2008):

$$154 \quad \Delta_{P,i} = \ln (N_{MPA,P,i} + a) - \ln (N_{Control,P,i} + a) \quad (\text{Eq. 1})$$

155 where N is the average target fish density or biomass (across the three or six transects) at  
156 either the MPA or Control site, during the  $i^{\text{th}}$  date in the  $P^{\text{th}}$  period (P=Before or  
157 P=After), and a is a constant that was added to avoid taking logarithms of zero. To use  
158 the smallest plausible value of 'a' we chose a value for each fish group that represented  
159 the addition of one fish to one of the n (n=3 or 6) transects (i.e.,  $a = 1/n$  for analyses of  
160 density, and  $a = [\text{average mass of a fish in all surveys}]/n$  for analyses of biomass).

161 We evaluated whether protection had an ecological effect by assessing if the  
162 difference in density or biomass,  $\Delta$ , changed from Before to After the establishment of  
163 the MPAs. The classic BACIPS approach assumes a step-change in  $\Delta$ . Instead of a  
164 step-change in  $\Delta$ , we hypothesized that the temporal change in  $\Delta$  might exhibit a more  
165 complex pattern because: (1) fish assemblages can take several decades after protection  
166 to fully recover from fishing (Russ & Alcala 2004; Babcock *et al.* 2010; MacNeil *et al.*  
167 2015), and, perhaps more importantly, (2) enforcement of the MPAs in the network was  
168 gradually phased in after January 2007. Therefore, we applied a Progressive-Change  
169 BACIPS by comparing four competing models: step-change (Eq. 2), linear (Eq. 3),  
170 asymptotic (Eq. 4) and sigmoid models (Eq. 5). As for any BACIPS analysis, we

171 assumed that in the Before period,  $\Delta$  was stationary through time (i.e., there was no  
 172 consistent temporal trend in  $\Delta_{\text{Before}}$ ), but After enforcement,  $\Delta$  changed with time, with  
 173 an increase indicating a positive effect of the MPA and a decrease indicating a negative  
 174 effect. Thus, the differences between an MPA and its Control After enforcement ( $\Delta_{\text{After}}$ )  
 175 could be described as:

176 Step change response:  $\Delta_{\text{After},i} = M + \Delta_{\text{Before}} + \varepsilon_i$  (Eq. 2)

177 Linear response:  $\Delta_{\text{After},i} = rt_i + \Delta_{\text{Before}} + \varepsilon_i$  (Eq. 3)

178 Asymptotic response:  $\Delta_{\text{After},i} = \frac{Mt}{L+t} + \Delta_{\text{Before}} + \varepsilon_i$  (Eq. 4)

179 Sigmoid response:  $\Delta_{\text{After},i} = \frac{M(t/L)^K}{1+(t/L)^K} + \Delta_{\text{Before}} + \varepsilon_i$  (Eq. 5)

180 where  $t$  is time (in years) since 1 January 2007 associated with the  $i^{\text{th}}$  sampling survey;  
 181  $\Delta_{\text{Before}}$  is the underlying spatial variation between the two sites in the absence of an MPA  
 182 effect (and was estimated during the Before period);  $r$  and  $M$  are the rate of divergence  
 183 and magnitude of change between the MPA site and Control (due to the establishment of  
 184 the MPA), respectively;  $L$  is the time required to achieve half of the long-term effect;  $K$   
 185 is a scaling parameter in the sigmoid model that affects the steepness of the curve; and  $\varepsilon$   
 186 is the error associated with the  $i^{\text{th}}$  survey. Each model was fitted setting all Before data  
 187 to have  $t=0$ , and the magnitude of the response of fish to protection (hereafter referred to  
 188 as effect size) was then measured based on the predictions of the best-fit model (highest  
 189 AICc score) at  $t=9$  (i.e., 2015), the last year of the survey (Thiault *et al.* 2017b).

190 Having first checked assumptions of normality, homogeneity of variance and absence  
 191 of autocorrelation (Supporting Information Table S2), we assessed the effect of (i) the  
 192 whole network (i.e., the island-wide effect of the MPA network), (ii) the two sub-  
 193 networks (i.e., the networks of fully protected and moderately protected MPAs), and (iii)  
 194 individual MPAs. To avoid pseudo-replication, and because we expected that each  
 195 MPA would have its own response, we included MPA as a random effect for all the

196 parameters describing the effect size (i.e., M, r, K and L). Season was not included in  
197 the model to maximize statistical power and because the BACIPS design reduces the  
198 effect of seasonality. All analyses were performed using the R statistical software (R  
199 Core Team 2017).

## 200 **Results**

201 Fishes were generally more abundant on the fore reef compared to the lagoon (Fig.  
202 2). Coral and algal cover changed dramatically over the period of study on the fore reef  
203 following a crown-of-thorns starfish (COTS; *Acanthaster planci*) outbreak between  
204 2007 and 2012 and cyclone Oli in 2010: as COTS increased, coral cover decreased by  
205 more than 90% between October 2006 and March 2010, and algae increased by 34%  
206 (Fig. 2).

207 [Figure 2]

### 208 **Effect of protection on harvested and non-harvested fishes**

209 Estimated statistical power to detect MPA effects was high at the MPA network and  
210 sub-networks scales, suggesting that we would be able to detect changes if they did  
211 occur. For example, the probability of detecting a 100% increase (typically seen in other  
212 MPA assessments) was 0.97 on average across the 24 comparisons (Supporting  
213 Information Fig. S2). Power to detect responses at individual MPAs was considerably  
214 lower. Therefore, we focus on the network and sub-network responses; results for  
215 individual MPAs are presented in the Supporting Information (Supporting Information  
216 Table S3).

217 The pattern of change in response to protection provided more support for the step-  
218 change model (asserting an immediate shift in density in the MPA relative to the Control  
219 site) than for the linear model (in which the difference increases linearly with time since  
220 protection). In no case was the asymptotic or sigmoid model better supported by the

221 data. In 25% of cases, the likelihood ( $\omega$ ) of the second best-fit model was comparable to  
222 that of the best-fit model (i.e.,  $\omega_{\text{best-fit}} - \omega_{\text{second best fit}} \leq 10\%$ ). For consistency, we only  
223 present results derived from the best-fit model (Fig. 3).

224 [figure 3]

225 On the fore reef, at the network scale, harvested fish biomass increased significantly  
226 by 24.8 % in MPAs relative to the paired Controls (Fig. 3); the relative increase in  
227 density was similar in magnitude (19.3 %), although not significant. This increase was  
228 mostly due to the response in fully protected MPAs (where all fishing is prohibited),  
229 where density and biomass of harvested fish increased significantly by 43.2 % and 31  
230 %, respectively. No significant increase in either density or biomass was observed for  
231 the sub-network of moderately protected MPAs, where fishing restrictions apply to only  
232 a subset of fishing methods and species (Fig. 3). Protection benefited herbivores,  
233 invertivores and piscivores (Supporting Information Fig. S2), the large majority of  
234 which are targeted by fishing.

235 For harvested fish inside the lagoon, the only significant effect that we detected was  
236 on biomass in the fully protected MPA sub-network, which showed an increase of 31.1  
237 %. Although positive, the effect on densities was non-significant.

238 Effects on non-harvested fishes were generally smaller in magnitude and more often  
239 negative (Fig 3 and Supporting Information Fig. S2). However, none of these responses  
240 differed from zero, whether for the whole network or for the two sub-networks.

## 241 **Discussion**

242 Disentangling the effects of management interventions from other sources of  
243 spatiotemporal variation is a challenging but necessary task to derive robust inferences  
244 that can inform evidence-based decisions. BACIPS designs are particularly powerful

245 tools to address this challenge, yet, although there have been hundreds of assessments of  
246 Marine Protected Areas (MPAs), very few include data from Before the establishment of  
247 the MPA and even fewer have multiple surveys from Before (Castilla & Bustamante  
248 1989; Lincoln-Smith *et al.* 2006; Shears *et al.* 2006). As a result, most assessments are  
249 unable to unequivocally isolate the effects of the MPA from pre-existing differences  
250 (Osenberg *et al.* 2006). To our knowledge, this is the first time a Progressive-Change  
251 BACIPS approach –which expands the scope of BACIPS analyses beyond the step-  
252 change response assumed in previous assessments– has been used to assess the impact  
253 of a network of MPAs on fish communities.

254 We expected continuous changes in the response of fish to protection due to  
255 ecological processes combined with gradual enforcement in the After period. Yet,  
256 asymptotic and sigmoid models were never selected among the competing models, and  
257 the linear model was only selected twice. The lack of support for complex, non-linear  
258 responses likely resulted from the low effect sizes combined with relatively high  
259 spatiotemporal variability. This likely led to the selection of simple (step-change and  
260 linear) models over more complex ones (Thiault *et al.* 2017b).

261 The establishment of the MPA network in Moorea provided positive, but limited,  
262 ecological benefits. Network-wide, harvested fish biomass had increased by 24.8% on  
263 the fore reef eight years after the start of enforcement, in protected areas relative to  
264 controls. Importantly, this positive, network-scale effect was mostly driven by responses  
265 where fishing was entirely prohibited (i.e., in the fully protected MPAs, biomass and  
266 density increased +30% and +43.2%, respectively). Indeed, no positive effect was  
267 detected in either habitat within moderately protected MPAs (*sensu* Horta e Costa *et al.*  
268 2016). This results is consistent with a recent meta-analysis that found that fully and  
269 highly protected areas consistently conferred ecological benefits, but moderately

270 protected MPAs provided ecological benefits only when immediately adjacent to fully  
271 protected areas (Zupan *et al.* 2018).

272 The response in fully protected MPAs, although the largest effect we detected, was  
273 relatively small compared to effects documented in other published MPA meta-analyses,  
274 in which harvested organisms were generally 2-3 times more abundant inside MPAs  
275 compared to fishing grounds (Halpern 2003; Claudet *et al.* 2008, 2011). The lower  
276 effect measured in this study could be due to a combination of factors, which we  
277 elaborate upon below, including (i) overestimation of the effect size in previous studies  
278 due to the lack of Before data (Osenberg *et al.* 2006, 2011), (ii) limited compliance and  
279 enforcement (Guidetti *et al.* 2008; Campbell *et al.* 2012), and (iii) dramatic ecosystem  
280 disturbance following enforcement due to the crown-of-thorns starfish (COTS) outbreak  
281 and cyclone (Adam *et al.* 2011; Lamy *et al.* 2015, 2016).

282 MPAs are often strategically implemented in sites with higher densities than  
283 surrounding areas. The absence of Before data precludes the incorporation of these  
284 initial, and potentially large, differences, which may then become confounded with  
285 effects of MPAs. As a result, studies that lack Before data may overestimate the benefits  
286 of MPAs. Indeed, it has been suggested that up to half of the commonly observed  
287 "increase" in density inside MPAs may be due to these pre-existing differences  
288 (Osenberg *et al.* 2006, 2011). Our smaller than expected effect sizes support this  
289 interpretation. They also support Osenberg *et al.*'s (2011) conjecture that by identifying  
290 Control sites before MPA enforcement, siting and MPA effects are less likely to be  
291 confounded: e.g., effect sizes from a Control-Impact analysis of our data yielded effects  
292 that were comparable in magnitude to (i.e., not larger than) effects from the BACIPS  
293 analyses (Supporting Information Fig. S3). The Control-Impact comparison, however,  
294 revealed two important differences. First, variation in the effects was greater for the

295 Control-Impact analyses, presumably because initial differences between sites added to  
296 the variation in the Control-Impact effects (relative to the effects quantified with  
297 BACIPS). Secondly, the confidence intervals on the effects were smaller for the  
298 Control-Impact estimates, likely because Control-Impact studies only capture spatial  
299 variation while BACIPS analyses capture spatio-temporal variation. These results not  
300 only suggest that Control-Impact studies might overestimate effects, but that they might  
301 also give a false sense of confidence in the estimates because they fail to incorporate  
302 spatio-temporal variance. The BACIPS approach circumvents these problems, and likely  
303 leads to smaller, more accurate, but less precise, estimates of effect sizes.

304 Limited public appreciation about the benefits of MPAs and an understaffed  
305 management team may have limited compliance, and therefore ecological outcomes  
306 associated with the Moorea MPA network (Gaspar & Bambridge 2008; Guidetti *et al.*  
307 2008; Edgar *et al.* 2014; Gill *et al.* 2017). Surveillance reports made by the local  
308 mediator (Gaspar & Bambridge 2008) and surveys completed by local experts  
309 (Supporting Information Table S5) suggest that enforcement was heterogeneous, being  
310 mostly limited to the north shore, where the largest beneficial effects were observed  
311 (Supporting Information Figs S4-5). Furthermore, the lagoon habitat is highly fished at  
312 night with light attractors, and surveillance is non-existent at night. The fore reef is less  
313 accessible and more hazardous, and, as a result, less likely to experience night poaching  
314 (Thiault *et al.* 2017a), potentially explaining why the responses on the fore reef were  
315 greater than in the lagoon (Fig. 3).

316 The whole island underwent severe natural disturbances since the network's  
317 establishment. A COTS outbreak occurred starting in 2007 and was followed by a  
318 cyclone in 2010. This resulted in a dramatic (90%) decline in live coral cover, especially  
319 on the fore reef, and an increase in turf and macro-algae (Fig. 2). These shifts in

320 microhabitats led to changes in the composition of reef-associated fishes, but after a  
321 time lag of several years (Adam *et al.* 2011; Lamy *et al.* 2015; Han *et al.* 2016). These  
322 types of dramatic temporal changes can cause problems with some types of assessments  
323 (e.g., Before–After comparisons). BACIPS, in theory, can handle such regional  
324 phenomena because the Control site should reflect the effects of the regional processes  
325 (i.e., the natural disturbance) but not the local factors (i.e., MPA). Surveys confirmed  
326 that similar impacts of COTS and the hurricane were simultaneously observed at the  
327 MPA and Control sites (Kayal *et al.* 2012; Lamy *et al.* 2015). This, combined with the  
328 fact that functional groups that are highly sensitive to habitat changes did not respond to  
329 protection (Supporting Information Fig. S2) suggest that observed MPA effects are not  
330 confounded with COTS and cyclone effects. These issues underscore the importance of  
331 implementing BACIPS designs for future MPA assessments.

332 Our results have been communicated to some local community members and to local  
333 administrations to facilitate the ongoing revision of the marine spatial management plan  
334 in Moorea. The marine spatial management plan of Moorea is currently being revised to  
335 better engage local communities and foster better compliance. Monitoring of the current  
336 and future MPA network in Moorea will continue, but will be revised to increase  
337 sampling effort: e.g. more numerous and larger transects should facilitate future MPA-  
338 specific assessments as well as network-wide results. We believe the Progressive-  
339 Change BACIPS approach used here represents a meaningful advance that could  
340 facilitate and inform management interventions in other social-ecological settings.

341

## 342 **Acknowledgements**

343 We thank everyone who contributed to this project over its many years, especially  
344 with respect to study design, data collection and coordination: T Adam, G Bergsma, O



345 Le Bihan, P Bosserelle, A Brooks, N Davies, P Edmunds, R. Galzin, S Geange, X Han, J  
346 Idjadi, A Jezequel, D Lecchini, V Liao, N Maihota, M Petit, S Poujade, N Price, S  
347 Talmage, J Shima, A Stier, C Vieux, and J White. Service des Ressources Marines et  
348 Minières, Service de l'Environnement and CRIOBE Service d'Observation CORAIL  
349 provided funding for data collection, and we especially thank C. Monier for his early  
350 support. Support from ANR (ANR-14-CE03-0001-01), Fondation de France  
351 (INTHENSE), and NSF (OCE-0242312, OCE-1130359) helped facilitate the study.  
352 LT's PhD grant was funded by Pierre and Marie Curie University (PDI-MSc grant).

353 **References**

- 354 Abesamis, R.A., Green, A.L., Russ, G.R. & Jadloc, C.R. (2014). The intrinsic  
355 vulnerability to fishing of coral reef fishes and their differential recovery in fishery  
356 closures. *Reviews in Fish Biology and Fisheries*.
- 357 Adam, T.C., Schmitt, R.J., Holbrook, S.J., Brooks, A.J., Edmunds, P.J., Carpenter, R.C.  
358 & Bernardi, G. (2011). Herbivory, connectivity, and ecosystem resilience:  
359 Response of a coral reef to a large-scale perturbation. *PLoS ONE*, **6**.
- 360 Babcock, R.C., Shears, N.T., Alcala, A.C., Barrett, N.S., Edgar, G.J., Lafferty, K.D.,  
361 McClanahan, T.R. & Russ, G.R. (2010). Decadal trends in marine reserves reveal  
362 differential rates of change in direct and indirect effects. *Proceedings of the*  
363 *National Academy of Sciences of the United States of America*, **107**, 18256–18261.
- 364 Campbell, S.J., Hoey, A.S., Maynard, J., Kartawijaya, T., Cinner, J.E., Graham, N. a J.  
365 & Baird, A.H. (2012). Weak compliance undermines the success of no-take zones  
366 in a large government-controlled marine protected area (J. Clifton, Ed.). *PLOS*  
367 *ONE*, **7**, e50074.
- 368 Castilla, J.C. & Bustamante, R.H. (1989). Human exclusion from rocky intertidal of Las  
369 Cruces, central Chile: effects on *Durvillaea antarctica* (Phaeophyta, Durvilliales).  
370 *Marine Ecology Progress Series*, **50**, 203–214.
- 371 Claudet, J. (2018). Six conditions under which MPAs might not appear effective (when  
372 they are). *ICES Journal of Marine Science*, **75**, 1172–1174.
- 373 Claudet, J., García-Charton, J.A. & Lenfant, P. (2011). Combined effects of levels of  
374 protection and environmental variables at different spatial resolutions on fish  
375 assemblages in a marine protected area. *Conservation biology : the journal of the*  
376 *Society for Conservation Biology*, **25**, 105–14.

377 Claudet, J. & Guidetti, P. (2010). Improving assessments of marine protected areas.  
378 *Aquatic Conservation: Marine and Freshwater Ecosystems*, **20**, 239–242.

379 Claudet, J., Osenberg, C.W., Benedetti-Cecchi, L., Domenici, P., García-Charton, J.-A.,  
380 Pérez-Ruzafa, Á., Badalamenti, F., Bayle-Sempere, J., Brito, A., Bulleri, F.,  
381 Culioli, J.-M., Dimech, M., Falcón, J.M., Guala, I., Milazzo, M., Sánchez-Meca, J.,  
382 Somerfield, P.J., Stobart, B., Vandeperre, F., Valle, C. & Planes, S. (2008). Marine  
383 reserves: size and age do matter. *Ecology Letters*, **11**, 481–489.

384 Claudet, J., Osenberg, C.W., Domenici, P., Badalamenti, F., Milazzo, M., Falcón, J.M.,  
385 Bertocci, I., Benedetti-Cecchi, L., García-Charton, J.-A., Goñi, R., Borg, J.A.,  
386 Forcada, A., de Lucia, G.A., Pérez-Ruzafa, Á., Afonso, P., Brito, A., Guala, I.,  
387 Diréach, L. Le, Sanchez-Jerez, P., Somerfield, P.J. & Planes, S. (2010). Marine  
388 reserves: Fish life history and ecological traits matter. *Ecological Applications*, **20**,  
389 830–839.

390 Claudet, J., Pelletier, D., Jouvenel, J.-Y., Bachet, F. & Galzin, R. (2006). Assessing the  
391 effects of marine protected area (MPA) on a reef fish assemblage in a northwestern  
392 Mediterranean marine reserve: Identifying community-based indicators. *Biological  
393 Conservation*, **130**, 349–369.

394 Côté, I.M., Mosquiera, I. & Reynolds, J.D. (2001). Effects of marine reserve  
395 characteristics on the protection of fish populations: a meta-analysis. *Journal of  
396 Fish Biology*, **59**, 178–189.

397 Edgar, G.J., Stuart-Smith, R.D., Willis, T.J., Kininmonth, S., Baker, S.C., Banks, S.,  
398 Barrett, N.S., Becerro, M.A., Bernard, A.T.F., Berkhout, J., Buxton, C.D.,  
399 Campbell, S.J., Cooper, A.T., Davey, M., Edgar, S.C., Försterra, G., Galván, D.E.,  
400 Irigoyen, A.J., Kushner, D.J., Moura, R., Parnell, P.E., Shears, N.T., Soler, G.,  
401 Strain, E.M.A. & Thomson, R.J. (2014). Global conservation outcomes depend on

402 marine protected areas with five key features. *Nature*, **506**, 216–20.

403 Fletcher, W.J., Kearney, R.E., Wise, B.S. & Nash, W.J. (2015). Large-scale expansion  
404 of no-take closures within the Great Barrier Reef has not enhanced fishery  
405 production. *Ecological Applications*, **25**, 1187–1196.

406 Di Franco, A., Bussotti, S., Navone, A., Panzalis, P. & Guidetti, P. (2009). Evaluating  
407 effects of total and partial restrictions to fishing on Mediterranean rocky-reef fish  
408 assemblages. *Marine Ecology Progress Series*, **387**, 275–285.

409 Friedlander, A.M., Golbuu, Y., Ballesteros, E., Caselle, J.E., Gouezo, M., Olsudong, D.  
410 & Sala, E. (2017). Size, age, and habitat determine effectiveness of Palau’s Marine  
411 Protected Areas (H.M. Patterson, Ed.). *PLOS ONE*, **12**, e0174787.

412 Gaspar, C. & Bambridge, T. (2008). Territorialités et aires marines protégées à Moorea  
413 (Polynésie française). *Le Journal de la Société des Océanistes*, **127**, 231–245.

414 Giakoumi, S., Scianna, C., Plass-Johnson, J.G., Micheli, F., Grorud-Colvert, K., Thiriet,  
415 P., Claudet, J., Di Carlo, G., Di Franco, A., Gaines, S.D., Garcia-Charton, J.,  
416 Lubchenco, J., Reimer, J., Sala, E. & Guidetti, P. (2017). Ecological effects of full  
417 and partial protection in the crowded Mediterranean Sea: a regional meta-analysis.  
418 *Scientific Reports*, 1–12.

419 Gill, D.A., Mascia, M.B., Ahmadi, G.N., Glew, L., Lester, S.E., Barnes, M., Craigie, I.,  
420 Darling, E.S., Free, C.M., Geldmann, J., Holst, S., Jensen, O.P., White, A.T.,  
421 Basurto, X., Coad, L., Gates, R.D., Guannel, G., Mumby, P.J., Thomas, H.,  
422 Whitmee, S., Woodley, S. & Fox, H.E. (2017). Capacity shortfalls hinder the  
423 performance of marine protected areas globally. *Nature*, **543**, 665–669.

424 Goñi, R., Adlerstein, S., Alvarez-Berastegui, D., Forcada, A., Reñones, O., Criquet, G.,  
425 Polti, S., Cadiou, G., Valle, C., Lenfant, P., Bonhomme, P., Pérez-Ruzafa, A.,

426 Sánchez-Lizaso, J., García-Charton, J., Bernard, G., Stelzenmüller, V. & Planes, S.  
427 (2008). Spillover from six western Mediterranean marine protected areas: evidence  
428 from artisanal fisheries. *Marine Ecology Progress Series*, **366**, 159–174.

429 Green, A.L., Fernandes, L., Almany, G., Abesamis, R., McLeod, E., Aliño, P.M., White,  
430 A.T., Salm, R., Tanzer, J. & Pressey, R.L. (2014a). Designing marine reserves for  
431 fisheries management, biodiversity conservation, and climate change adaptation.  
432 *Coastal Management*, **42**, 143–159.

433 Green, A.L., Maypa, A.P., Almany, G.R., Rhodes, K.L., Weeks, R., Abesamis, R. a.,  
434 Gleason, M.G., Mumby, P.J. & White, A.T. (2014b). Larval dispersal and  
435 movement patterns of coral reef fishes, and implications for marine reserve  
436 network design. *Biological Reviews*.

437 Grorud-Colvert, K., Claudet, J., Tissot, B.N., Caselle, J.E., Carr, M.H., Day, J.C.,  
438 Friedlander, A.M., Lester, S.E., de Loma, T.L., Malone, D. & Walsh, W.J. (2014).  
439 Marine protected area networks: Assessing whether the whole is greater than the  
440 sum of its parts (J. Gomez-Gardenes, Ed.). *PLOS ONE*, **9**, e102298.

441 Guidetti, P. (2002). The importance of experimental design in detecting the effects of  
442 protection measures on fish in Mediterranean MPAs. *Aquatic Conservation:  
443 Marine and Freshwater Ecosystems*, **12**, 619–634.

444 Guidetti, P., Milazzo, M., Bussotti, S., Molinari, A., Murenu, M., Pais, A., Spanò, N.,  
445 Balzano, R., Agardy, T., Boero, F., Carrada, G., Cattaneo-Vietti, R., Cau, A.,  
446 Chemello, R., Greco, S., Manganaro, A., Notarbartolo di Sciara, G., Russo, G.F. &  
447 Tunesi, L. (2008). Italian marine reserve effectiveness: Does enforcement matter?  
448 *Biological Conservation*, **141**, 699–709.

449 Halpern, B.S. (2003). The impact of marine reserves: do reserves work and does reserve

450 size matter? *Ecological applications*, **13**, 117–137.

451 Halpern, B.S., Gaines, S.D. & Warner, R.R. (2004). Confounding effects of the export  
452 of production and the displacement of fishing effort from marine reserves.  
453 *Ecological Applications*, **14**, 1248–1256.

454 Han, X., Adam, T.C., Schmitt, R.J., Brooks, A.J. & Holbrook, S.J. (2016). Response of  
455 herbivore functional groups to sequential perturbations in Moorea, French  
456 Polynesia. *Coral Reefs*, **35**, 999–1009.

457 Harmelin-Vivien, M., Le Diréach, L., Baylesempré, J., Charbonnel, E., García-Charton,  
458 J.-A., Ody, D., Pérez-Ruzafa, Reñones, O., Sanchez-Jerez, P. & Valle, C. (2008).  
459 Gradients of abundance and biomass across reserve boundaries in six  
460 Mediterranean marine protected areas: Evidence of fish spillover? *Biological*  
461 *Conservation*, **141**, 1829–1839.

462 Horta e Costa, B., Claudet, J., Franco, G., Erzini, K., Caro, A. & Gonçalves, E.J. (2016).  
463 A regulation-based classification system for Marine Protected Areas (MPAs).  
464 *Marine Policy*, **72**, 192–198.

465 Jupiter, S.D. & Egli, D.P. (2011). Ecosystem-based management in Fiji: Successes and  
466 challenges after five years of implementation. *Journal of Marine Biology*, **2011**, 1–  
467 14.

468 Kayal, M., Vercelloni, J., Lison de Loma, T., Bosserelle, P., Chancerelle, Y., Geoffroy,  
469 S., Stievenart, C., Michonneau, F., Penin, L., Planes, S. & Adjeroud, M. (2012).  
470 Predator crown-of-thorns starfish (*Acanthaster planci*) outbreak, mass mortality of  
471 corals, and cascading effects on reef fish and benthic communities (C. Fulton, Ed.).  
472 *PLOS ONE*, **7**, e47363.

473 Kerwath, S.E., Winker, H., Götz, A. & Attwood, C.G. (2013). Marine protected area

474 improves yield without disadvantaging fishers. *Nature communications*, **4**, 1–6.

475 Kulbicki, M., Guillemot, N. & Amand, M. (2005). A general approach to length-weight  
476 relationships for New Caledonian lagoon fishes. *Cybium*, **29**, 235–252.

477 Lamy, T., Galzin, R., Kulbicki, M., Lison de Loma, T. & Claudet, J. (2016). Three  
478 decades of recurrent declines and recoveries in corals belie ongoing change in fish  
479 assemblages. *Coral Reefs*, **35**, 293–302.

480 Lamy, T., Legendre, P., Chancerelle, Y., Siu, G. & Claudet, J. (2015). Understanding  
481 the spatio-temporal response of coral reef fish communities to natural disturbances:  
482 Insights from beta-diversity decomposition (C.A. Chen, Ed.). *PLOS ONE*, **10**,  
483 e0138696.

484 Lester, S.E. & Halpern, B.S. (2008). Biological responses in marine no-take reserves  
485 versus partially protected areas. *Marine Ecology Progress Series*, **367**, 49–56.

486 Lester, S., Halpern, B.S., Grorud-Colvert, K., Lubchenco, J., Ruttenberg, B., Gaines, S.,  
487 Airamé, S. & Warner, R. (2009). Biological effects within no-take marine reserves:  
488 a global synthesis. *Marine Ecology Progress Series*, **384**, 33–46.

489 Lincoln-Smith, M.P., Pitt, K.A., Bell, J.D. & Madstone, B.D. (2006). Using impact  
490 assessment methods to determine the effects of a marine reserve on abundances and  
491 sizes of valuable tropical invertebrates. *Canadian journal of fisheries and aquatic  
492 sciences*, **63**, 1251–1266.

493 Lison de Loma, T., Osenberg, C.W., Shima, J.S., Chancerelle, Y., Davies, N. & Brooks,  
494 A.J. (2008). A framework for assessing impacts of marine protected areas in  
495 Moorea (French Polynesia). *Pacific Science*, **427**, 427–438.

496 Di Lorenzo, M., Claudet, J. & Guidetti, P. (2016). Spillover from marine protected areas  
497 to adjacent fisheries has an ecological and a fishery component. *Journal for Nature*

498           *Conservation*, **32**, 62–66.

499   Lubchenco, J. & Grorud-Colvert, K. (2015). Making waves: The science and politics of  
500           ocean protection. *Science*, **350**, 382–383.

501   MacNeil, M.A., Graham, N. a J., Cinner, J.E., Wilson, S.K., Williams, I.D., Maina, J.,  
502           Newman, S., Friedlander, A.M., Jupiter, S., Polunin, N.V.C. & McClanahan, T.R.  
503           (2015). Recovery potential of the world’s coral reef fishes. *Nature*, **520**, 341–344.

504   McClanahan, T.R., Graham, N. a J., Calnan, J.M. & MacNeil, M.A. (2007). Toward  
505           pristine biomass: reef fish recovery in coral reef marine protected areas in Kenya.  
506           *Ecological applications*, **17**, 1055–67.

507   McClanahan, T.R. & Mangi, S. (2000). Spillover of exploitable fishes from a marine  
508           park and its effect on the adjacent fishery. *Ecological Applications*, **10**, 1792–1805.

509   Micheli, F., Halpern, B.S., Botsford, L.W. & Warner, R.R. (2004). Trajectories and  
510           correlates of community change in no-take marine reserves. *Ecological*  
511           *applications*, **14**, 1709–1723.

512   Moland, E., Olsen, E.M., Knutsen, H., Garrigou, P., Espeland, S.H., Kleiven, A.R.,  
513           Andre, C. & Knutsen, J.A. (2013). Lobster and cod benefit from small-scale  
514           northern marine protected areas: inference from an empirical before-after control-  
515           impact study.

516   Molloy, P.P., McLean, I.B. & Côté, I.M. (2009). Effects of marine reserve age on fish  
517           populations: a global meta-analysis. *Journal of Applied Ecology*, **46**, 743–751.

518   Osenberg, C.W., Bolker, B.M., White, J.-S.S., Mary, C.M. St. & Shima, J.S. (2006).  
519           Statistical Issues and Study Design in Ecological Restorations : Lessons Leamed  
520           from Marine Reserves. *Resoration ecology in context* (eds A.D. Falk, M.A. Palmer  
521           & J.B. Zedler), pp. 280–302. Foundations of restoration ecology. Island Press,



522 Washington, D.C.

523 Osenberg, C.W., Schmitt, R.J., Holbrook, S.J., Abu-Saba, K.E. & Flegal, A.R. (1994).  
524 Detection of environmental impacts: natural variability, effect size, and power  
525 analysis. *Ecological applications*, **4**, 16–30.

526 Osenberg, C.W., Shima, J.S., Miller, S.L. & Stier, A.C. (2011). Assessing effects of  
527 marine protected areas: confounding in space and possible solutions. *Marine*  
528 *protected areas: a multidisciplinary approach* (ed J. Claudet), pp. 143–167.

529 R Core Team. (2017). R: A language and environment for statistical computing. *R*  
530 *Foundation for Statistical Computing*.

531 Russ, G.R. & Alcala, A.C. (2010). Decadal-scale rebuilding of predator biomass in  
532 Philippine marine reserves. *Oecologia*, **163**, 1103–1106.

533 Russ, G.R. & Alcala, A.C. (2004). Marine reserves: long-term protection is required for  
534 full recovery of predatory fish populations. *Oecologia*, **138**, 622–7.

535 Shears, N.T., Grace, R. V., Usmar, N.R., Kerr, V. & Babcock, R.C. (2006). Long-term  
536 trends in lobster populations in a partially protected vs. no-take Marine Park.  
537 *Biological Conservation*, **132**, 222–231.

538 Stewart-Oaten, A. & Bence, J.R. (2001). Temporal and spatial variation in environment  
539 impact assessment. *Ecological Monographs*, **71**, 305–339.

540 Stewart-Oaten, A., Murdoch, W.W. & Parker, K.R. (1986). Environmental impact  
541 assessment: ‘Pseudoreplication’ in time? *Ecology*, **67**, 929–940.

542 Thiault, L., Collin, A., Chlous, F., Gelcich, S. & Claudet, J. (2017a). Combining  
543 participatory and socioeconomic approaches to map fishing effort in small-scale  
544 fisheries (S.C.A. Ferse, Ed.). *PLOS ONE*, **12**, e0176862.

545 Thiault, L., Kernaléguen, L., Osenberg, C.W. & Claudet, J. (2017b). Progressive-

546 Change BACIPS: a flexible approach for environmental impact assessment (R.  
547 McCrea, Ed.). *Methods in Ecology and Evolution*, **8**, 288–296.

548 Willis, T.J., Millar, R.B., Babcock, R.C. & Tolimieri, N. (2003). Burdens of evidence  
549 and the benefits of marine reserves: putting Descartes before des horse?  
550 *Environmental Conservation*, **30**, S0376892903000092.

551 Zupan, M., Fragkopoulou, E., Claudet, J., Erzini, K., Horta e Costa, B. & Gonçalves,  
552 E.J. (2018). Marine partially protected areas: drivers of ecological effectiveness.  
553 *Frontiers in Ecology and the Environment*, **16**, 381–387.

554

## 555 **Figure legends**

556 **Figure 1:** Network of marine protected areas (MPAs) around the island of Moorea, French  
557 Polynesia. The network consists of five fully protected MPAs (on the north and west shores) and  
558 three moderately protected MPAs (on the east shore) using the regulation-based classification system  
559 for MPAs (Horta e Costa et al. 2016). Numbers in parentheses after MPA names refer to the Control  
560 site to which it was paired. Sampling at each MPA and Control was conducted in two distinct  
561 habitats (in the lagoon at two locations and on the fore reef at one location), 5 times (over 3 years)  
562 before and 12 times (over 9 years) after implementation.

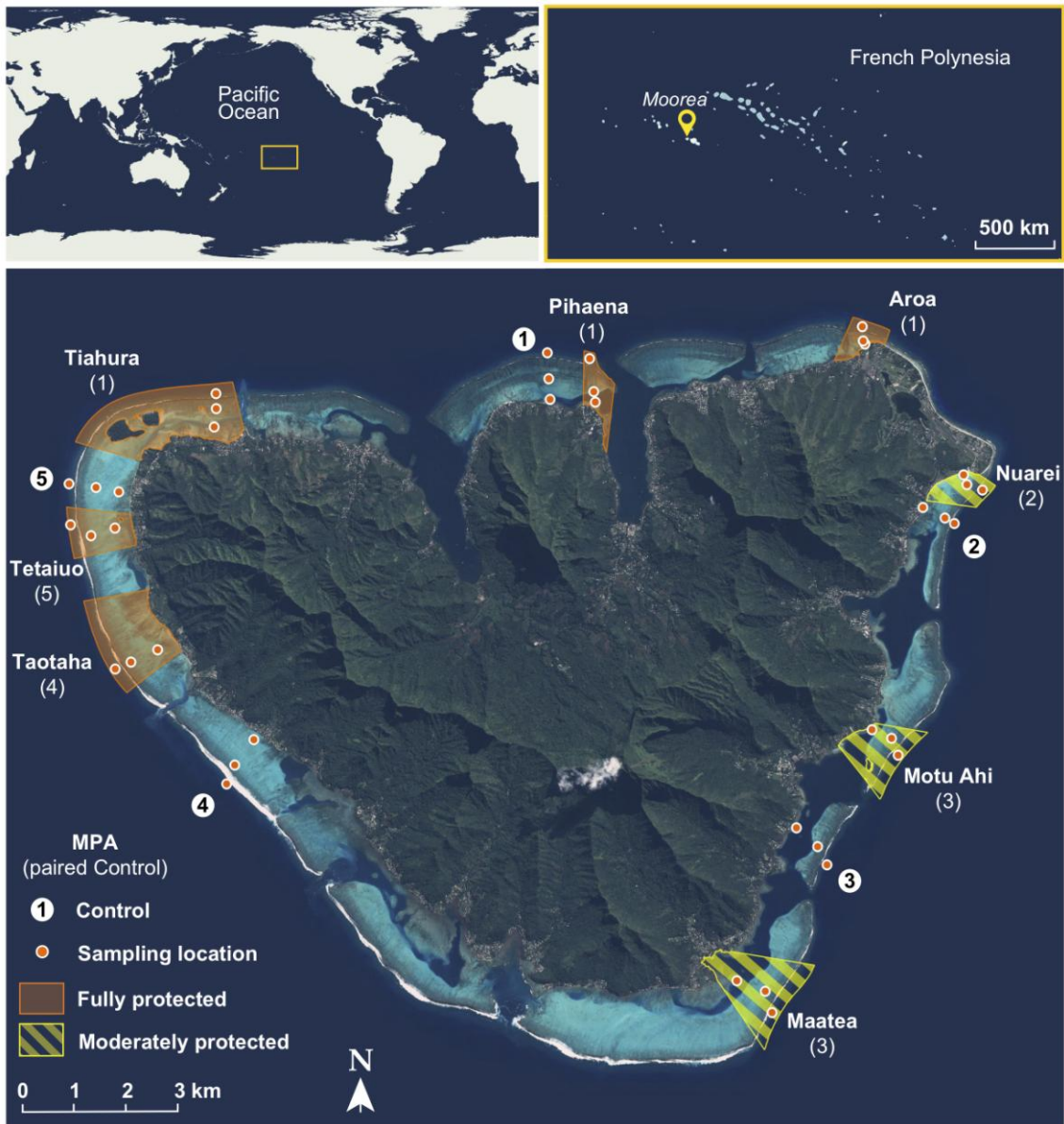
563 **Figure 2:** Temporal variation in key ecological components of the studied coral reef ecosystem.  
564 From top to bottom: density of *Acanthaster planci* (red), living coral cover (yellow), algal cover  
565 (green), biomass of harvested (blue) and non-harvested fish (purple) in the lagoon (left column) and  
566 fore reef (right column). Lines are the mean of the eight MPAs (solid line) and five Control sites  
567 (dashed line) and ribbons represent standard deviations (the darker ribbon corresponds to the  
568 Controls). MPA enforcement started in January 2007, which separates the Before (2004-2006) from  
569 the After (2007-2015) periods.

570 **Figure 3:** Effect sizes measured at the whole network scale, and for fully protected MPAs and  
571 moderately protected MPAs separately, in the lagoon and fore reef, for density and biomass of  
572 harvested and non-harvested fishes. Effect sizes are expressed as the change in the log-ratio of the  
573 density or biomass in the MPA relative to its Control ( $\Delta$ ) from  $t=0$  (i.e., <2007) to  $t=9$  (i.e., 2015) as  
574 predicted by the best-fit model. Changes by a factor of 2 correspond to effects sizes of -0.7 (halving)  
575 or 0.7 (doubling) over the 9-year period of protection. Positive effects are depicted in red and  
576 negative effects in blue. Filled symbols indicate that the 95% confidence interval of the effect does  
577 not overlap zero. Shapes indicate the best-fit model: step-change (circle) and linear (triangle). There  
578 were no cases in which the asymptotic or sigmoid model was best supported by the data. See  
579 Supporting Information Table S3 for results at the individual MPA-scale and Supporting Information  
580 Figure S1 for results broken down by trophic group.

581

582 **Figures**

583 Figure 1



584

585

Figure 2

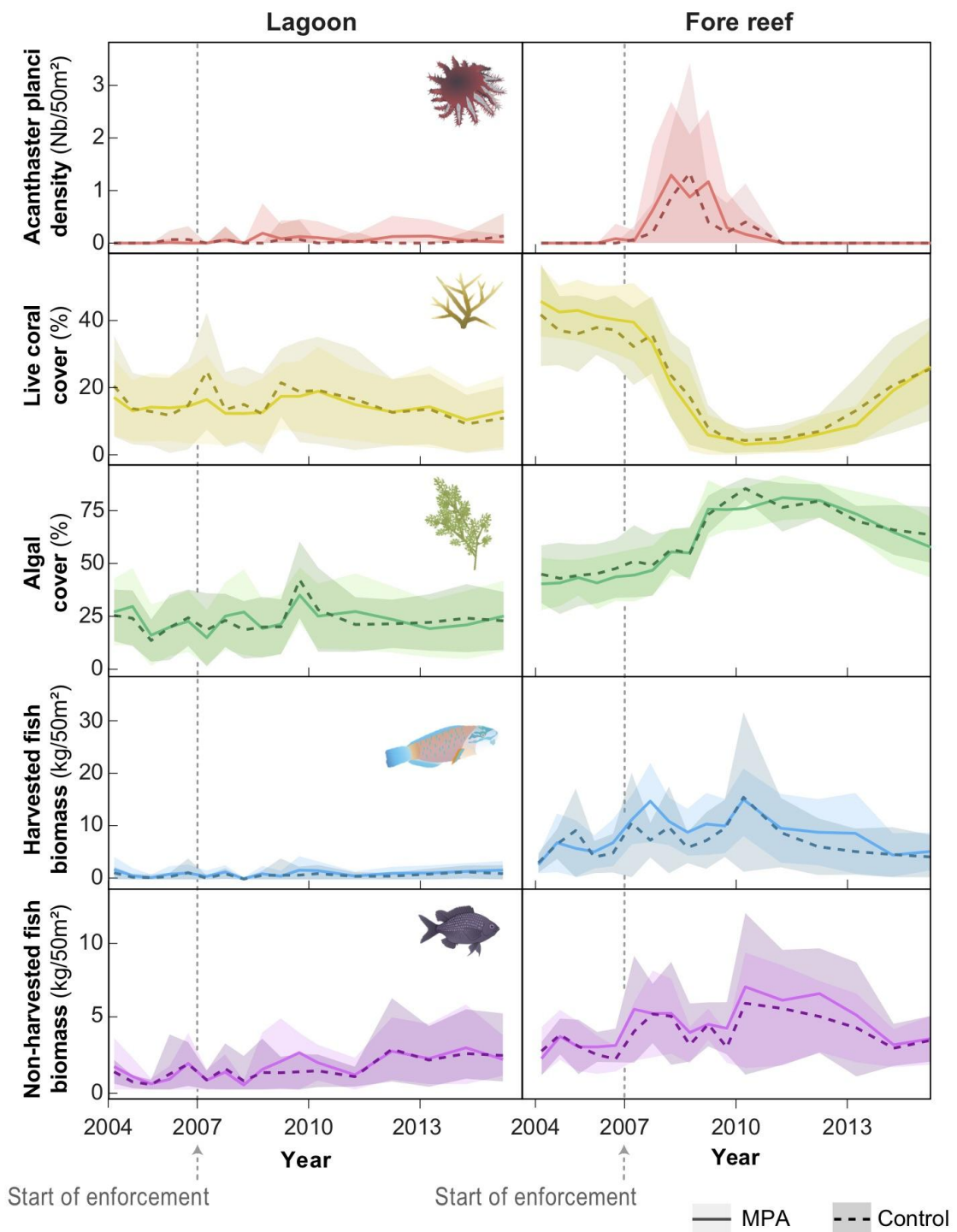


Figure 3

