



Plasma thymidine kinase 1 activity and outcome of ER+ HER2- metastatic breast cancer patients treated with palbociclib and endocrine therapy

Luc Cabel, Dan Rosenblum, Florence Lerebours, Étienne G.C. Brain, Delphine Loirat, Mattias Bergqvist, Paul Henri Cottu, Anne Donnadieu, Anne Bethune, Nicolas Kiavue, et al.

► To cite this version:

Luc Cabel, Dan Rosenblum, Florence Lerebours, Étienne G.C. Brain, Delphine Loirat, et al.. Plasma thymidine kinase 1 activity and outcome of ER+ HER2- metastatic breast cancer patients treated with palbociclib and endocrine therapy. Breast Cancer Research, 2020, 22 (1), 10.1186/s13058-020-01334-2 . hal-03032326

HAL Id: hal-03032326

<https://hal.science/hal-03032326>

Submitted on 7 Jun 2023

HAL is a multi-disciplinary open access archive for the deposit and dissemination of scientific research documents, whether they are published or not. The documents may come from teaching and research institutions in France or abroad, or from public or private research centers.

L'archive ouverte pluridisciplinaire **HAL**, est destinée au dépôt et à la diffusion de documents scientifiques de niveau recherche, publiés ou non, émanant des établissements d'enseignement et de recherche français ou étrangers, des laboratoires publics ou privés.

RESEARCH ARTICLE

Open Access



Plasma thymidine kinase 1 activity and outcome of ER+ HER2– metastatic breast cancer patients treated with palbociclib and endocrine therapy

Luc Cabel^{1,2,3*} , Dan Rosenblum¹, Florence Lerebours¹, Etienne Brain¹, Delphine Loirat¹, Mattias Bergqvist⁴, Paul Cottu², Anne Donnadiou¹, Anne Bethune¹, Nicolas Kiavue¹, Manuel Rodrigues², Jean-Yves Pierga^{1,2,5}, Marie-Laure Tanguy¹ and François-Clément Bidard^{1,2,3}

Abstract

Purpose: Previous cohort studies have reported plasma TK1 activity (pTKa) as a potential prognostic biomarker in estrogen receptor-positive (ER+) HER2-negative (HER2–) metastatic breast cancer (MBC). In this prospective study, we report here the prognostic impact of pTKa in ER+/HER2– MBC patients treated with endocrine therapy and CDK4/6 inhibitor.

Experimental design: Patients were included into the prospective, ethics committee-approved ALCINA study (NCT02866149). Eligibility criteria were patients with ER+/HER2– MBC treated at Institut Curie with endocrine therapy and palbociclib. Plasma samples were obtained at baseline and after 4 weeks of treatment. pTKa was quantified by the DiviTum® assay (Biovica, Sweden).

Results: From May 2016 to August 2018, 103 patients treated with endocrine therapy and palbociclib were included. Patients had received a median of two prior systemic therapies for MBC (range 0–14). Median follow-up was 13.8 months (range 6–31), with median PFS and OS of 9.6 months (95%CI [7.0–11.3]) and 28 months (95%CI [23–not reached]), respectively. Median baseline pTKa was 292 Du/L (range 20–27,312 Du/L, IQR [89–853]). After adjusting for other prognostic factors, baseline pTKa remained an independent prognostic factor for both PFS (HR = 1.3 95%CI [1.1–1.4], $p = 0.0005$) and OS (HR = 1.3 95%CI [1.2–1.6], $p < 0.0001$), and 4-week pTKa was associated with OS (HR = 1.6 95%CI [1.3–2], $p < 0.0001$). That survival prediction was significantly improved by the addition of baseline pTKa to clinicopathological characteristics. Adding pTKa changes at 4 weeks to baseline pTKa did not further increase survival prediction.

Conclusion: This study demonstrates the clinical validity of pTKa as a new circulating prognostic marker in ER+/HER2– MBC patients treated with endocrine therapy and palbociclib.

Keywords: Metastatic breast cancer, CDK4/6 inhibitor, Palbociclib, Thymidine kinase 1, Biomarker

* Correspondence: luc.cabel@curie.fr

¹Department of Medical Oncology, Institut Curie, Saint-Cloud, 92210 Paris, France

²Circulating Tumor Biomarkers Laboratory, SIRIC2 Institut Curie, Paris, France

Full list of author information is available at the end of the article



© The Author(s). 2020 **Open Access** This article is licensed under a Creative Commons Attribution 4.0 International License, which permits use, sharing, adaptation, distribution and reproduction in any medium or format, as long as you give appropriate credit to the original author(s) and the source, provide a link to the Creative Commons licence, and indicate if changes were made. The images or other third party material in this article are included in the article's Creative Commons licence, unless indicated otherwise in a credit line to the material. If material is not included in the article's Creative Commons licence and your intended use is not permitted by statutory regulation or exceeds the permitted use, you will need to obtain permission directly from the copyright holder. To view a copy of this licence, visit <http://creativecommons.org/licenses/by/4.0/>. The Creative Commons Public Domain Dedication waiver (<http://creativecommons.org/publicdomain/zero/1.0/>) applies to the data made available in this article, unless otherwise stated in a credit line to the data.

Introduction

Endocrine therapy is the cornerstone of treatment of estrogen receptor-positive (ER+) HER2-negative (HER2-) breast cancer [1]. Endocrine therapies for metastatic breast cancer (MBC) have remained largely unchanged for the past two decades. They include tamoxifen, aromatase inhibitors (AI), and fulvestrant. More recently, CDK4/6 inhibitors (palbociclib, ribociclib, abemaciclib) have been shown to be effective in ER+ HER2- MBC as first-line therapy in combination with letrozole [2–4] or fulvestrant (a selective ER degrader) after progression on AI [5, 6]. However, no biomarker is currently validated to guide the use of these new drugs in clinical practice.

Thymidine kinase 1 (TK1) plays a crucial role in DNA synthesis and cell proliferation [7, 8]. In preliminary studies using the same assay, serum or plasma TK1 activity (sTKa, pTKa) was reported to be a prognostic circulating biomarker in early and advanced breast cancer [9–12]. The prognostic impact of baseline serum TK1 levels and TK1 variation in response to therapy was also reported in 159 samples from a phase III trial comparing AI and fulvestrant in ER+ HER2- MBC [13].

We report here the prognostic impact of pTKa, assessed in a prospective study on ER+ HER2- MBC patients treated with endocrine therapy and CDK4/6 inhibitor.

Patients and methods

Study

After providing their written informed consent, patients were prospectively included in the ethics committee-approved ALCINA study (NCT02866149), investigating the feasibility of analysis of circulating tumor markers in blood in various early- or advanced-stage malignancies. Eligibility criteria were patients aged > 18 years with ER+ HER2- MBC, treated at Institut Curie with endocrine therapy (AI or fulvestrant) and palbociclib. Blood samples were obtained at baseline (prior to treatment start) and after 4 weeks of treatment.

Blood collection and pTKa assessment

At each time point, 21 mL of blood was drawn in STRECK tubes and rapidly processed (< 72 h) to obtain 6–8 mL of plasma after centrifuging blood at 820 g for 10 min. Plasma was transferred to 2 mL tubes and centrifuged at 16,000g for 10 min to remove debris and stored at – 80 °C until needed.

pTKa was determined by the DiviTum® assay, a refined ELISA-based method, at Biovica laboratories in Uppsala, Sweden. Analysis was performed with no access to, or any knowledge of, patient or tumor characteristics. Each sample was diluted to 1/10 in dilution buffer and then incubated with a reaction mixture on the assay microtiter plate. Bromodeoxyuridine (BrdU), a thymidine

analog, was phosphorylated to BrdU-monophosphate by the TK present in the sample, then further phosphorylated and incorporated in a DNA strand bound to the bottom of the wells. BrdU incorporation was detected by an ELISA technique using anti-BrdU monoclonal antibody conjugated to alkaline phosphatase and a chromogenic substrate, producing a yellow reaction product. Absorbance was measured at 405 nm with the reference wavelength of 630 nm after 30 and 60 min of incubation. The measured optical density is proportional to the TK enzymatic activity (TKa) of each sample, expressed as DiviTum® units per liter (Du/L), calculated from a standard curve based on calibrators of known activity [14].

Statistical analyses

The study had no prespecified power. Associations between baseline pTKa and patients' characteristics were studied with the Mann-Whitney test. OS and PFS were estimated with the Kaplan-Meier method. The association between pTKa (baseline or after 4 weeks) and survival end points was studied using restricted cubic splines with 3 knots. We used a square-root transformation due to the highly right-skewed pTKa distribution. The log-linearity of the relationship between the hazard ratio and pTKa was tested by using the Wald test for nonlinear components of restricted cubic splines. No evidence of nonlinearity was found.

The choice between modeling pTKa as a continuous variable (splines) or as a binary variable (median cutoff) was guided by the Akaike's Information Criterion of univariate Cox models. The survival curves according to the median cutoff are presented for illustrative purposes.

OS and PFS according to the other prognostic factors (including the variation of pTKa, dichotomized as increase of more than 10% from baseline vs other) were compared in univariate analysis by means of a two-sided log-rank test. Variables with a *p* value ≤ 0.2 in univariate analysis were included in a multivariable Cox model with backward procedure for selecting covariates to be kept in the final model.

The correlation between baseline and pTKa at week 4 was studied with the Spearman rank correlation. All reported *p* values are two-sided.

Results

Patients

From May 2016 to August 2018, 103 patients treated with endocrine therapy (fulvestrant (*N* = 93, 90%) or AI (*N* = 10, 10%)) and palbociclib were included. Clinicopathological characteristics are described in Table 1. Median age was 64 years (range 26–89). Patients had received a median of two previous lines of therapy in metastatic setting (range 0–14); most patients presented a good performance status (92% with PS 0–1) and 66%

Table 1 Patients characteristics and association with baseline pTKa

Characteristics	<i>N</i> (%)	Median TKa Du/L [IQR]	<i>p</i> value
Age			
< 65 years	53 (51)	455 [117–1325]	0.2
≥ 65 years	50 (49)	233 [70–705]	
Performance status			
0–1	95 (92)	320 [86–865]	0.9
≥ 2	8 (8)	247 [150–789]	
Grade			
1	15 (15)	482 [99–771]	0.8
2	61 (61)	292 [117–917]	
3	24 (24)	286 [68–710]	
Missing value	3		
Progesterone receptor			
Negative	29 (28)	436 [117–1361]	0.1
Positive	74 (72)	237 [73–546]	
Synchronous metastasis			
No	71 (69)	195 [85–640]	0.1
Yes	32 (31)	476 [111–1292]	
Visceral metastasis			
No	35 (34)	249 [116–483]	0.6
Yes	68 (66)	327 [87–1033]	
Primary endocrine resistance			
No	86 (83)	237 [73–588]	0.04
Yes	17 (17)	758 [233–1641]	
Previous chemotherapy			
No	48 (47)	214 [61–781]	0.4
1 or 2 lines	34 (33)	330 [120–704]	
≥ 3 lines	21 (20)	466 [157–1281]	

All tumors were estrogen receptor-positive

TKa thymidine kinase activity, IQR interquartile range

had visceral metastasis. Seventeen patients (17%) presented primary resistance to endocrine therapy (defined according to ABC4 guidelines [1]).

With a median follow-up of 13.8 months (range 6–31), 73 relapses (71%) and 25 deaths (24%) were observed, with a median PFS of 9.6 months (95%CI [7–11.3]) and a median OS of 28 months (95%CI [23–not reached]).

Association between baseline pTKa and clinicopathological characteristics

Median baseline pTKa was 292 Du/L (range 20–27, 312 Du/L, IQR [89–853]). Associations between baseline pTKa and patient characteristics are shown in Table 1. Among patient characteristics, a significant association was observed between baseline pTKa and endocrine resistance status: patients with primary endocrine resistance displayed higher pTKa (median 758 Du/L versus

237 Du/L, $p = 0.04$). The proliferation marker Ki67 expression level, assessed on primary tumors, was available for 61 patients and was not correlated with baseline pTKa (Spearman $r = 0.03$, $p = 0.8$).

pTKa and outcome

Baseline pTKa (treated as a continuous variable) was significantly associated with both PFS and OS in univariate analysis (Table 2), with HR = 1.3 95%CI [1.2–1.5]; $p < 0.0001$ and HR = 1.4 95%CI [1.2–1.6]; $p = 0.0006$, respectively. PFS (and OS) decreases with increasing pTKa (HR = 1.3, indicating a 30% increase of the hazard of progression or death when $\sqrt{\text{pTKa}}$ increases of 10 units). To illustrate the link between PFS and TKa, Fig. 1a shows the predicted 6-month PFS according to baseline pTKa. Survival curves for dichotomized baseline pTKa according to median cutoff are shown in Fig. 2a and b (median PFS 11.7 months (95%CI [7.4;16]) vs 9.1 months (95%CI [4.4;14]), median OS not reached vs 24.8 months 95%CI [16–33]).

Other baseline prognostic factors in univariate analysis were primary endocrine resistance, number of lines of chemotherapy and performance status for OS and primary endocrine resistance, number of lines of chemotherapy, age, and metastasis-free interval for PFS (Table 2).

In multivariate analysis, baseline pTKa remained significantly associated with PFS and OS with HR = 1.3 95%CI [1.1–1.4], $p = 0.0005$, and HR = 1.3 95%CI [1.2–1.6] $p < 0.0001$, respectively (Table 3). In multivariate analysis, age < 65 years (HR = 2 95%CI [1.2–3.2]; $p = 0.007$) and ≥ 3 lines of chemotherapy (HR = 3.2 [1.8–5.7]; $p < 0.0001$) remained significantly associated with PFS. PS score (HR = 4.3 95%CI [1.3–13.5]; $p = 0.01$), ≥ 3 lines of chemotherapy (HR = 3.1 95%CI [1.3–7.6]; $p = 0.01$) and the presence of synchronous metastasis (HR = 3.1 95%CI [1.3–7.5]; $p = 0.01$) remained significantly associated with OS. The predicted 6-month PFS according to the prognostic factors identified in the multivariate model is presented in Fig. 1b.

pTKa was available after 4 weeks of treatment for 85 patients (82.5%): median pTKa was 134 Du/L (range 20–3877 Du/L, IQR [43–595]) and was moderately correlated with baseline pTKa ($r = 0.6$, $p < 0.0001$). pTKa at 4 weeks was significantly associated with both PFS and OS in univariate analysis with HR = 1.3 95%CI [1.1–1.5], $p = 0.01$, and HR = 1.5 95%CI [1.2–1.8], $p = 0.0003$, respectively (Table 2).

PFS and OS according to pTKa at 4 weeks dichotomized between low (< median, 134 Du/L) and high (> median) are presented in Fig. 2c and d.

Although pTKa at 4 weeks was significantly associated with OS (HR = 1.6 95%CI [1.3–2]; $p < 0.0001$) in a

Table 2 Prognostic factors for progression-free survival (PFS) and overall survival (OS) in univariate analysis

	12 months PFS rate [95%CI]	<i>p</i> value	12 months OS rate [95%CI]	<i>p</i> value
Age (years)				
< 65	24.6 [14.1–43.1]	0.01	83.8 [73.4–95.7]	0.3
≥ 65	30.8 [17.9–53]		89 [80.3–98.75]	
Performance status				
0–1	36.7 [27.5–49]	0.5	88.8 [82.1–96]	0.05
2	0		56.2 [28.1–100]	
Grade				
< 3	38.1 [27.6–52.6]	0.2	85.4 [76.9–94.8]	0.7
≥ 3	23.2 [10.9–49.1]		86.8 [74–100]	
PR status				
Negative	35.7 [21.4–59.5]	0.5	80.3 [66.1–97.6]	0.1
Positive	33.8 [23.5–48.7]		88.9 [81.3–97.1]	
Synchronous metastasis				
No	37.7 [27–52.7]	0.05	95.3 [90.3–100]	0.07
Yes	27.8 [15–51.4]		68 [52.7–87.9]	
Visceral metastasis				
No	39.5 [25.3–61.6]	0.6	80.4 [67.3–96]	0.7
Yes	27.8 [15–51.4]		89.5 [81.8–97.9]	
Primary endocrine resistance				
No	40.4 [30.3–53.8]	0.02	90.2 [83.5–97.5]	0.01
Yes	11.8 [3.2–43.2]		69 [49.7–95.8]	
Previous chemotherapy				
No	49.7 [36.2–68.4]	< 0.001	100% - No death	0.01
1 or 2 lines	35.1 [21.1–58.2]		76.6 [62.8–93.6]	
≥ 3 lines	4.8 [0.7–32.2]		74.8 [57.8–96.7]	
pTKa at baseline*	HR = 1.3 [1.2–1.5]	< 0.0001	HR = 1.4 [1.2–1.6]	0.0006
pTKa at 4 weeks*	HR = 1.3 [1.1–1.5]		HR = 1.5 [1.2–1.8]	
Variation of pTKa between baseline and 4 weeks				
Increase	30.4 [17.6–52.3]	0.9	75 [60.1–93.7]	0.2
Decrease	34.2 [22.6–51.6]		90.7 [82.4–99.9]	

*HR for an increase of 10 units of $\sqrt{\text{pTKa}}$

multivariate model including the others clinical prognostic factors, when both pTKa values (baseline and 4 weeks) were included in the model, only baseline pTKa remained significant. pTKa at 4 weeks was not associated with PFS in multivariate analysis (regardless of the inclusion of the baseline value in the model).

The variation of pTKa between baseline and 4 weeks had no prognostic impact on either PFS or OS (Table 2, Fig. 2e, f), with a 12-month PFS of 34.2% when pTKa decreased versus 30.4% when pTKa increased ($p = 0.9$), and a 12-month OS of 90.7% 95%CI [82.4–99.9] versus 75% 95%CI [60.1–93.7] ($p = 0.2$), respectively. pTKa variation between baseline and 4 weeks according to 6-month progression-free survival is shown in Fig. 3. The median decrease of pTKa was 49 Du/L in the progression group

(PFS < 6 months, $N = 35$) versus 23 Du/L in the progression-free group (PFS ≥ 6 months, $N = 50$) ($p = 0.003$).

Discussion

To our knowledge, this is the largest study in ER+ HER2 – MBC demonstrating the prognostic impact of pTKa at baseline and at 4 weeks in patients treated with endocrine therapy plus CDK4/6 inhibitors.

TK1 is an enzyme that is active during the cell cycle, especially during DNA synthesis. Its primary role is to catalyze thymidine into thymidine monophosphate. A low level of TKa is observed in resting cells, but TKa starts to increase during G1/S phase to reach its highest level during S phase and then disappears at mitosis.

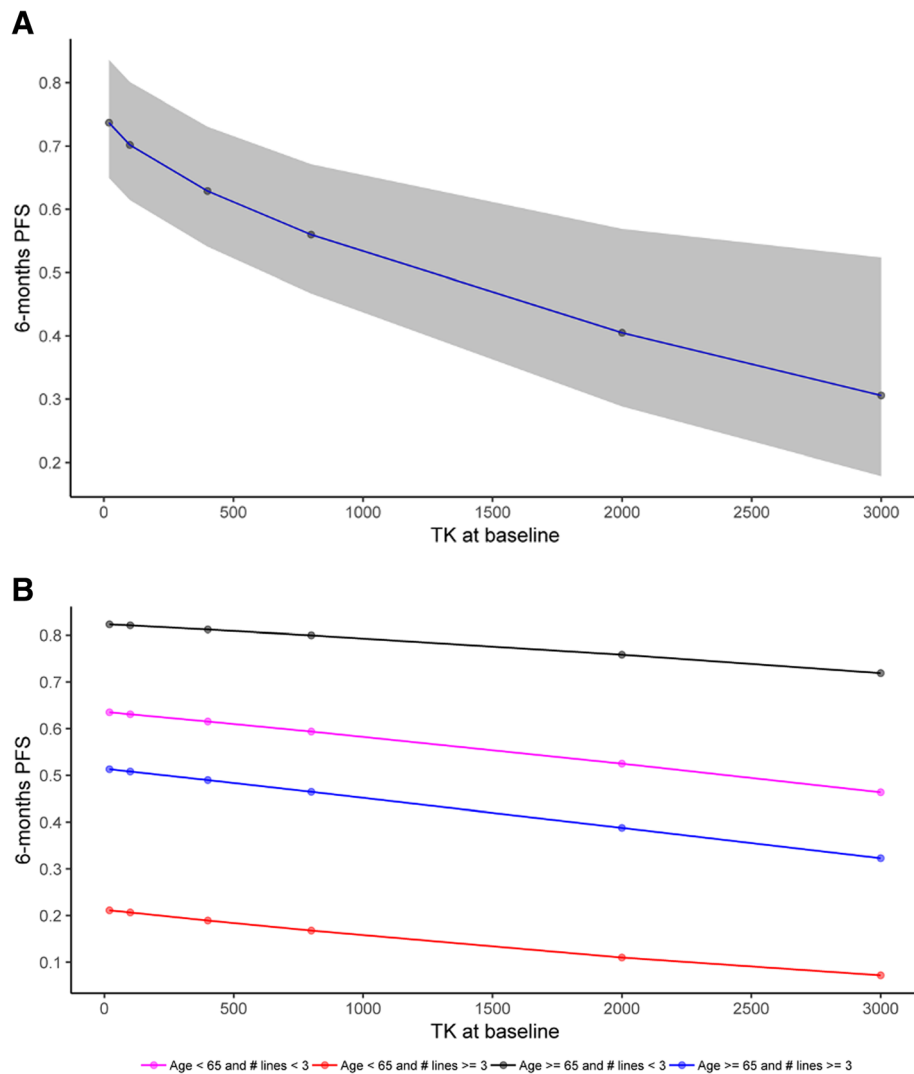


Fig. 1 6-month PFS according to baseline TKa (with 95%CI) predicted by univariate model (a) and by multivariate model according to age or number of lines of chemotherapy (b)

Several studies have shown that TKa is higher in cancer patients than in the healthy population [15], including in patients with breast cancer [14, 16].

Previous studies in BC have demonstrated a correlation between Ki67 and serum TKa [17]. In ER+ HER2-BC treated with anastrozole and palbociclib in the neoadjuvant setting, Bagegni et al. showed that the sensitivity and specificity of the decrease in serum TKa to predict tumor Ki-67 reduction in response to palbociclib were 94.1% (95%CI [86.2–100%]) and 84% (95%CI [69.6–98.4%]), respectively. As Ki67 is known to be a biomarker of tumor response at 15 days from initiation of ET but requires a tumor biopsy, determination of pTKa could be a non-invasive way of measuring this response. In the present study, we did not observe any association between TKa and tumor Ki67 or SBR grade,

which could be explained by the time-lag between determination of Ki67 or SBR grade, assessed on the primary tumor, and determination of pTKa in an advanced metastatic setting (as no tumor biopsy of metastasis was available at the start of ET+ CDK4/6 treatment).

Plasma or serum TKa has been shown to be a prognostic factor in other metastatic cancers [18–20]. Several studies have been conducted in various MBC settings using the same assay (DiviTum) [21]. In 198 MBC patients (mostly HER2-negative) treated with chemotherapy, Bjöhle et al. showed that pretreatment serum TKa predicted PFS and OS in multivariate analysis (OS, HR = 1.81, 95%CI [1.26–2.61], $p = 0.001$, with a cutoff of 235 Du/L) [22]. Larsson et al. also demonstrated a significant association between pTKa and PFS and OS in univariate and multivariate analyses at baseline and at 1,

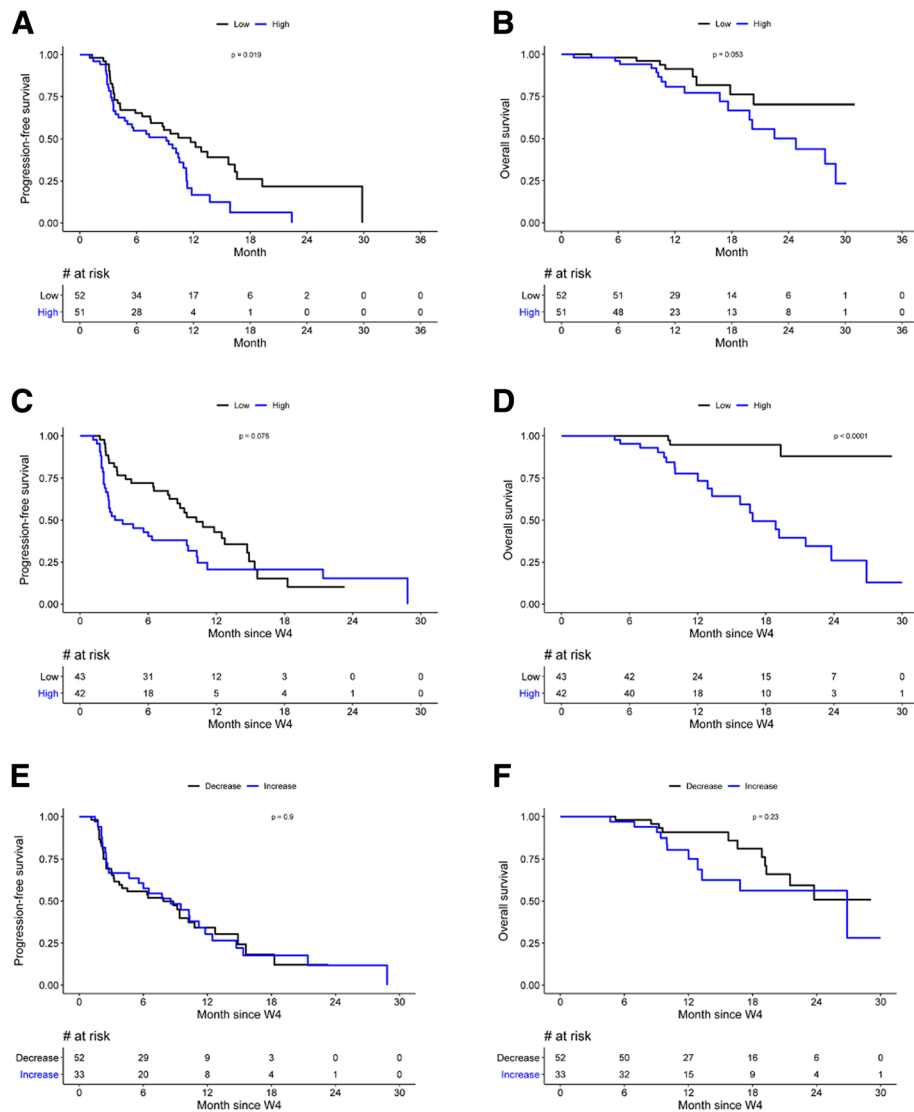
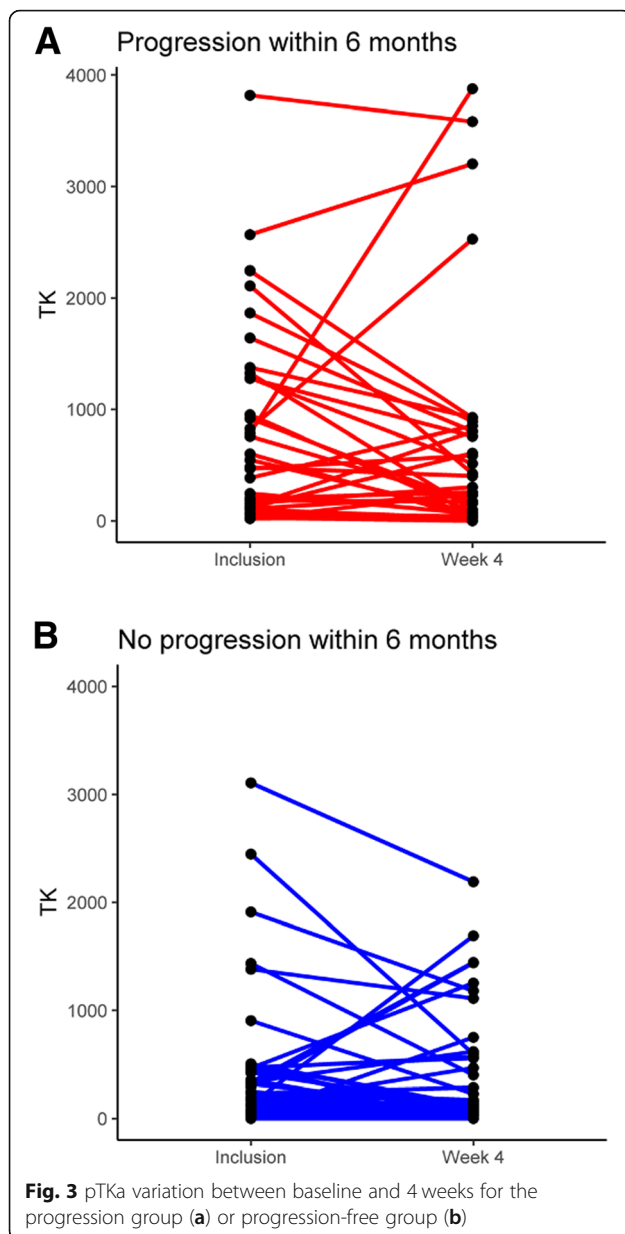


Fig. 2 Progression-free survival and overall survival according to median pTKa levels: **a** PFS according to Baseline pTKa (cutoff 292 Du/L). **b** OS according to Baseline pTKa. **c** PFS according to 4 weeks pTKa (cutoff 134 Du/L). **d** OS according to 4 weeks pTKa. **e** PFS according to pTKa level changes between baseline and 4 weeks. **f** OS according to pTKa level changes between baseline and 4 weeks

Table 3 Prognostic factors for progression-free survival (PFS) and overall survival (OS) in multivariate analysis

Adverse prognostic factor	Baseline			
	PFS		OS	
	HR [95%CI]	<i>p</i> value	HR [95%CI]	<i>p</i> value
Age < 65 years	2 [1.2–3.2]	0.007	N.S.	
≥ 3 lines of chemotherapy	3.2 [1.8–5.7]	< 0.0001	3.1 [1.3–7.6]	0.01
Baseline pTKa*	1.3 [1.1–1.4]	0.0005	1.3 [1.2–1.6]	< 0.0001
Performance status = 2	N.S.	N.S.	4.3 [1.3–13.5]	0.01
Synchronous metastasis	N.S.	N.S.	3.1 [1.3–7.5]	0.01

*HR for an increase of 10 units of $\sqrt{\text{pTKa}}$



3, and 6 months in women with MBC receiving first-line systemic therapy [23]. In ER+ HER2- MBC treated with ET only, sTKa was shown to be a prognostic factor at baseline and during treatment in the EFACT trial [13], in which the median time to progression for patients ($N = 111$) with low baseline serum TKa levels (< 97 Du/L) was 5.03 months (95% confidence interval [CI] 3.9–5.9) versus 2.57 months (95%CI 2.0–3.5) in patients with high baseline serum TKa levels ($p < 0.0001$). A smaller cohort of 31 patients, mostly previously untreated for MBC, also showed a prognostic value of pTKa for PFS with a cutoff of 122 Du/L [24]. We have confirmed the prognostic impact of pTKa on PFS and OS in MBC ER+ HER2- patients treated with ET + CDK4/6, both at

baseline and at 4 weeks, even if baseline pTKa remained the most powerful prognostic factor at 4 weeks. Thus, the 4-week value seems to have less interest when the baseline has been obtained.

The EFACT trial [13] suggested that patients whose sTKa increased from baseline while on endocrine therapy had a significantly shorter time to progression (3.39 months, 95%CI 2.14–4.11) than those in whom sTKa did not increase (5.39 months, 95%CI 4.01–6.68) ($p = 0.0045$). More recently, the TREnd trial [25] showed a significant correlation between the 4-week variation of pTKa and PFS in ER+/HER2- MBC patients treated with palbociclib (alone or in combination with endocrine therapy following progression during a previous line of therapy). In the TREnd study, pTKa increase ($n = 33$ patients) was associated with shorter PFS (median PFS for the group with increasing pTKa = 3.0 months, 95%CI [2.7–NA] versus 9 months for stable or decreasing pTKa, 95%CI [5.8–12.0], $p = 0.002$). Bonechi et al. also showed that patients with decreasing pTKa activity after 1 month of treatment had a significantly better PFS comparatively to the increasing pTKa group (14.5 months versus 3.8 months, respectively, $p = 0.0026$) [24]. In contrast, no significant association was observed between baseline pTKa and PFS. In the present study, we did not find a predictive impact of the variation of pTKa between baseline and 4 weeks, regardless of the increase/decrease cut-off used (data not shown), unlike these other studies [13, 24, 25]. These contradictory results could be explained by several factors. First, the patient population, particularly with regard to the number of lines of chemotherapy received at the time of inclusion. In our study, 20% of patients received at least 3 lines of chemotherapy and 33% received 1 or 2 lines. In contrast the patients included in the TREnd trial had received a maximum of only one line (18%) and those in Bonechi's study were mostly chemotherapy-naïve (67.7%) or had a maximum of 2 lines. Thus, patients in our study appeared to be at a more advanced stage of disease, with tumors becoming resistant to multiple lines of treatment, leading to increased cell proliferation. This might explain a higher median pTKa at baseline compared to the other studies (292 Du/L vs 75–122 Du/L in other studies), although the rate of visceral metastases was globally similar. Because of these differences in median pTKa across studies and clinical settings, a pTKa threshold should be defined according to treatment history and using a large and homogeneous population, for a better assessment of the prognostic impact of baseline pTKa and pTKa variation. Importantly, chemotherapy having been reported to increase TKa levels [26, 27], the early interpretation of the variation could be challenging and this might explain that the variation of pTKa level was not a prognostic factor here. Ongoing large studies like SWOG S0226

(NCT00075764), resistance to first-line therapy with an AI and palbociclib at Johns Hopkins (NCT03439735), and the PYTHIA study (NCT02536742) will address this. Another difference between our study and previous studies was the number of patients included in these studies, which was lower in Bonechi's study ($N = 29$) and TReND ($N = 41$) than in our study ($N = 85$). Concerning the timepoint, in the EFeCT trial, the second time point was collected at 3 months and not at 4 weeks, which could also explain a discrepancy with this study.

The limitations of this study include the lack of power and the heterogeneity of patients, especially in terms of the number of previous lines of ET+ CDK4/6 inhibitor therapy, making it difficult to compare pTKa cutoffs to predict outcome between the various studies. The results of prospective studies with a homogeneous cohort, receiving first-line or second-line CDK4/6 inhibitors are eagerly awaited (NCT03439735 and NCT02536742), as well as an interventional study to define patients in which ET+ CDK4/6 inhibitors should be intensified or could be de-escalated in the case of poor tolerability while maintaining a good prognosis.

Conclusion

This study demonstrates the clinical validity of pTKa as a new circulating prognostic marker for PFS and OS in ER+ HER2- MBC patients treated with endocrine therapy and palbociclib. The clinical utility of this promising biomarker needs to be determined in an adequately designed prospective trial of combined targeted and endocrine therapies.

Acknowledgements

The Circulating Tumor Biomarkers laboratory is supported by the Institut Curie SIRIC2 program (grant INCa-DGOS-INSERM_12554).

Authors' contributions

LC, J-YP, and F-CB were involved in the conception and design of the study. MB, J-YP, and F-CB were involved in the development of methodology. FL, EB, DL, PC, AD, AB, NK, MR, J-YP, and F-CB participated in the acquisition of data (acquired and managed patients, provided facilities, etc.). M-LT provided analysis and interpretation of data (e.g., statistical analysis, biostatistics, computational analysis). All authors were involved in writing, reviewing, and/or revision of the manuscript. LC and M-LT provided administrative, technical, or material support (i.e., reporting or organizing data, constructing databases). The authors read and approved the final manuscript.

Funding

Fundings were supported by Biovica.

Availability of data and materials

All the data supporting the results of this manuscript are available from the corresponding author on request.

Ethics approval and consent to participate

All patients provided their written informed consent and were prospectively included in the ethics committee-approved ALCINA study (NCT02866149), investigating the feasibility of analysis of circulating tumor markers in blood in various early- or advanced-stage malignancies.

Consent for publication

Not applicable.

Competing interests

Mattias Bergqvist is an employee of Biovica.

The Circulating Tumor Biomarkers Laboratory received a research grant from Biovica.

The other authors have no disclosures.

Author details

¹Department of Medical Oncology, Institut Curie, Saint-Cloud, 92210 Paris, France. ²Circulating Tumor Biomarkers Laboratory, SIRIC2 Institut Curie, Paris, France. ³UVSQ, Université Paris-Saclay, Saint-Cloud, Paris, France. ⁴Biovica, Uppsala, Sweden. ⁵Université de Paris, Paris, France.

Received: 7 April 2020 Accepted: 19 August 2020

Published online: 14 September 2020

References

- Cardoso F, Senkus E, Costa A, Papadopoulos E, Aapro M, André F, et al. 4th ESO-ESMO international consensus guidelines for advanced breast Cancer (ABC 4). *Ann Oncol*. 2018;29:1634–57.
- Im S-A, Lu Y-S, Bardia A, Harbeck N, Colleoni M, Franke F, et al. Overall survival with ribociclib plus endocrine therapy in breast cancer. *N Engl J Med*. 2019;381:307–16.
- Hortobagyi GN, Stemmer SM, Burris HA, Yap Y-S, Sonke GS, Paluch-Shimon S, et al. Ribociclib as first-line therapy for HR-positive, advanced breast cancer. *N Engl J Med*. 2016;375:1738–48.
- Finn RS, Martin M, Rugo HS, Jones S, Im S-A, Gelmon K, et al. Palbociclib and letrozole in advanced breast cancer. *N Engl J Med*. 2016;375:1925–36.
- Sledge GW, Toi M, Neven P, Sohn J, Inoue K, Pivot X, et al. MONARCH 2: Abemaciclib in combination with fulvestrant in women with HR+/HER2- advanced breast Cancer who had progressed while receiving endocrine therapy. *J Clin Oncol*. 2017;35:2875–84.
- Turner NC, Slamon DJ, Ro J, Bondarenko I, Im S-A, Masuda N, et al. Overall survival with palbociclib and fulvestrant in advanced breast cancer. *N Engl J Med*. 2018;379:1926–36.
- Zhou J, He E, Skog S. The proliferation marker thymidine kinase 1 in clinical use. *Mol Clin Oncol*. 2013;1:18–28.
- Jagaramudi KK, Shaw M. Thymidine kinase 1 as a tumor biomarker: technical advances offer new potential to an old biomarker. *Biomark Med*. 2018;12:1035–48.
- Chen F, Tang L, Xia T, He E, Hu G, Li Y, et al. Serum thymidine kinase 1 levels predict cancer-free survival following neoadjuvant, surgical and adjuvant treatment of patients with locally advanced breast cancer. *Mol Clin Oncol*. 2013;1:894–902.
- Huang Z-H, Tian X-S, Li R, Wang X-M, Wen W, Guan H, et al. Elevated thymidine kinase 1 in serum following neoadjuvant chemotherapy predicts poor outcome for patients with locally advanced breast cancer. *Exp Ther Med*. 2012;3:331–5.
- He Q, Fornander T, Johansson H, Johansson U, Hu GZ, Rutqvist L-E, et al. Thymidine kinase 1 in serum predicts increased risk of distant or loco-regional recurrence following surgery in patients with early breast cancer. *Anticancer Res*. 2006;26:4753–9.
- Del Re M, Bertolini I, Crucitta S, Fontanelli L, Rofi E, De Angelis C, et al. Overexpression of TK1 and CDK9 in plasma-derived exosomes is associated with clinical resistance to CDK4/6 inhibitors in metastatic breast cancer patients. *Breast Cancer Res Treat*. 2019;178:57–62.
- McCartney A, Biagioni C, Schiavon G, Bergqvist M, Mattsson K, Migliaccio I, et al. Prognostic role of serum thymidine kinase 1 activity in patients with hormone receptor-positive metastatic breast cancer: analysis of the randomised phase III evaluation of Faslodex versus Exemestane clinical trial (EFeCT). *Eur J Cancer*. 2019;114:55–66.
- Romain S, Spyrtatos F, Descotes F, Dayer A, Rostaing-Puissant B, Bougnoux P, et al. Prognostic of DNA-synthesizing enzyme activities (thymidine kinase and thymidylate synthase) in 908 T1-T2, N0-N1, M0 breast cancers: a retrospective multicenter study. *Int J Cancer*. 2000;87:860–8.
- Gronowitz JS, Hagberg H, Källander CF, Simonsson B. The use of serum deoxythymidine kinase as a prognostic marker, and in the monitoring of patients with non-Hodgkin's lymphoma. *Br J Cancer*. 1983;47:487–95.

16. Broët P, Romain S, Daver A, Ricolleau G, Quillien V, Rallet A, et al. Thymidine kinase as a proliferative marker: clinical relevance in 1,692 primary breast Cancer patients. *J Clin Oncol*. 2001;19:2778–87.
17. Bagegni N, Thomas S, Liu N, Luo J, Hoog J, Northfelt DW, et al. Serum thymidine kinase 1 activity as a pharmacodynamic marker of cyclin-dependent kinase 4/6 inhibition in patients with early-stage breast cancer receiving neoadjuvant palbociclib. *Breast Cancer Res*. 2017;19:123.
18. Chen Y, Ying M, Chen Y, Hu M, Lin Y, Chen D, et al. Serum thymidine kinase 1 correlates to clinical stages and clinical reactions and monitors the outcome of therapy of 1,247 cancer patients in routine clinical settings. *Int J Clin Oncol*. 2010;15:359–68.
19. Li Z, Wang Y, He J, Ma J, Zhao L, Chen H, et al. Serological thymidine kinase 1 is a prognostic factor in oesophageal, cardiac and lung carcinomas. *Eur J Cancer Prev*. 2010;19:313–8.
20. Wang J, Liu Q, Zhou X, He Y, Guo Q, Shi Q, et al. Thymidine kinase 1 expression in ovarian serous adenocarcinoma is superior to Ki-67: A new prognostic biomarker. *Tumor Biol*. 2017;39:1010428317706479.
21. McCartney A, Migliaccio I, Bonechi M, Biagioni C, Romagnoli D, De Luca F, et al. Mechanisms of resistance to CDK4/6 inhibitors: potential implications and biomarkers for clinical practice. *Front Oncol*. 2019;9:666.
22. Bjöhle J, Bergqvist J, Gronowitz JS, Johansson H, Carlsson L, Einbeigi Z, et al. Serum thymidine kinase activity compared with CA 15-3 in locally advanced and metastatic breast cancer within a randomized trial. *Breast Cancer Res Treat*. 2013;139:751–8.
23. Larsson A-M, Jansson S, Bendahl P-O, Baker S, Bergqvist M, Aaltonen K, et al. Abstract P3-08-13: Serum thymidine kinase activity is an independent prognostic factor for progression-free and overall survival in women with metastatic breast cancer. Poster Sess Abstr 2018. p. P3-08-13-P3-08-13. Available from: <http://cancerres.aacrjournals.org/lookup/doi/10.1158/1538-7445.SABCS17-P3-08-13>. [cited 2020 Feb 29].
24. Bonechi M, Galardi F, Biagioni C, De Luca F, Bergqvist M, Neumüller M, et al. Plasma thymidine kinase-1 activity predicts outcome in patients with hormone receptor positive and HER2 negative metastatic breast cancer treated with endocrine therapy. *Oncotarget*. 2018;9. Available from: <http://www.oncotarget.com/fulltext/24700>. [cited 2020 Feb 29].
25. McCartney A, Bonechi M, De Luca F, Biagioni C, Curigliano G, Moretti E, et al. Plasma thymidine kinase activity as a biomarker in patients with luminal metastatic breast cancer treated with palbociclib within the TReND trial. *Clin Cancer Res*. 2020;26(9):2131–9.
26. Nisman B, Nechushtan H, Biran H, Gantz-Sorotsky H, Peled N, Gronowitz S, et al. Serum thymidine kinase 1 activity in the prognosis and monitoring of chemotherapy in lung cancer patients: a brief report. *J Thorac Oncol*. 2014; 9:1568–72.
27. Larsson A-M, Bendahl P-O, Aaltonen K, Jansson S, Forsare C, Bergqvist M, et al. Serial evaluation of serum thymidine kinase activity is prognostic in women with newly diagnosed metastatic breast cancer. *Sci Rep*. 2020;10: 4484.

Publisher's Note

Springer Nature remains neutral with regard to jurisdictional claims in published maps and institutional affiliations.

Ready to submit your research? Choose BMC and benefit from:

- fast, convenient online submission
- thorough peer review by experienced researchers in your field
- rapid publication on acceptance
- support for research data, including large and complex data types
- gold Open Access which fosters wider collaboration and increased citations
- maximum visibility for your research: over 100M website views per year

At BMC, research is always in progress.

Learn more biomedcentral.com/submissions

