



HAL
open science

Learning urban capabilities from behaviours. A focus on visitors values for urban planning

Giovanna Fancello, Alexis Tsoukias

► **To cite this version:**

Giovanna Fancello, Alexis Tsoukias. Learning urban capabilities from behaviours. A focus on visitors values for urban planning. *Socio-Economic Planning Sciences*, 2020, pp.100969. <10.1016/j.seps.2020.100969>. <hal-03030065>

HAL Id: hal-03030065

<https://hal.science/hal-03030065v1>

Submitted on 5 Dec 2020

HAL is a multi-disciplinary open access archive for the deposit and dissemination of scientific research documents, whether they are published or not. The documents may come from teaching and research institutions in France or abroad, or from public or private research centers.

L'archive ouverte pluridisciplinaire **HAL**, est destinée au dépôt et à la diffusion de documents scientifiques de niveau recherche, publiés ou non, émanant des établissements d'enseignement et de recherche français ou étrangers, des laboratoires publics ou privés.



HAL Authorization

Learning urban capabilities from behaviours. A focus on visitors values for urban planning.

Giovanna Fancello^{a,**}, Alexis Tsoukiàs^a

^aLAMSADE, PSL University, CNRS, Paris Dauphine, Place du Maréchal de Lattre de Tassigny, 75016, Paris, FR

Abstract

Evaluating environmental resources such as urban and territorial opportunities means understanding their value. Monetary values are not always suitable to synthesize the opportunity that such resources give to the development of individuals in urban space. We propose a spatial multi-criteria analysis method oriented to analyse values that individuals give to different urban and territorial opportunities within a capability approach framework. We analyse visitors' behaviour in space and we learn their urban capabilities considering the values they give to environmental resources and assets. In order to learn such values we use a multi-attribute value measurement method. Furthermore, we define groups of people with similar values of urban opportunities and with similar relevant urban capabilities. This consents to design more legitimated policies aimed to expand the set of relevant capabilities for a given population target. The method is experimented and illustrated with a case study of urban planning for the city of Alghero.

Keywords: Policy analytics, spatial multi-criteria analysis, Capability Approach, Multi-attribute Value Theory, visitors

1. Introduction

There exist resources for which we cannot define an economic value. There might be several reasons for that. Public and common goods (Ostrom, 2015), for example, may not have an economic value representing their characteristics of exclusion and subtractability. There may be no observable market for these resources and there is no proxy which can be used as a substitute that fully explains their value. Besides, even when an economic value might be observable, such a value might not be our principal aim.

Environmental resources and cultural assets are some of such goods. A real market does not exist for them, and the evaluation of their value is a well known problem in literature (Dasgupta, 2001; Haab et al., 2002; Robinson, 2001). Evaluating environmental resources, such as urban and territorial opportunities, means understanding the value of these commons for the inhabitants and the society even if this is not a monetary one (Robinson, 2001). On the other side, analysing such resources is a necessary step in order to design public policies managing or implying them.

Several methods - hedonic prices, travel costs, contingent evaluation, conjoint analysis - help in the analysis of values of environmental resources considering revealed preferences or stated preferences that allow to define the demand curve of an hypothetical market. Although such methods are frequently used in environmental economics in order to evaluate the impact of a project in space (Pearce, 1998), they have been criticised due to the economic vision of the space (Sen, 1995), which is not representative of the whole value of such resources and assets. They consider behaviours and preferences as explicable by normative

*Funding: This project was supported by the PSL Research University with the Project MMAP "Measuring the maps".

**Corresponding author

Present address: Sorbonne Université, INSERM, Institut Pierre Louis d'Épidémiologie et de Santé Publique, Nemesis research team, F (75012), Paris, France

URL: giovanna.fancello@dauphine.fr (Giovanna Fancello)

models that look at people as rational consumers choosing to do something because of an hypothetical or imaginative economic return. Such a consumer is a standard one, acting just following economic rationality principles. All such methods are unable to determine subjective values which can be associated to individuals leaving or using a given space or territory. With reference to such critiques we note Sen's (Sen, 1995) work about environmental evaluation and social choice in which he suggests considering the individual not just as an operator in a market, but as a inhabitant that judges alternatives from a social perspective, including (among others) his wellbeing.

From a decision aiding perspective our issue is to establish the value for a given individual (or group of inhabitants) that such environmental goods have for their development in the society. We are not interested in a generic economic value which is representative of nothing specific (except for the ones who have a policy of giving an economic value to everything), but in the value that each individual gives to environmental assets for his wellbeing. We consider the individuals as a inhabitant, with their preferences and subjective values (Keeney, 1992).

More specifically, we are interested in values in space in terms of capabilities (Nussbaum, 2005; Sen, 1999, 2009), those capabilities that people value as important, which we name "relevant capabilities". What we claim is the possibility to use the Capability Approach (Nussbaum, 2005; Sen, 1999, 2009) in order to analyse how people value environmental resources and assets in terms of urban and territorial opportunities for the development of the individual capabilities in the city. The use of the capability approach in order to assess the quality of life in cities and territories is a new field of study, developed only in recent years by few studies (Blečić et al., 2015b,a, 2013; Frediani, 2015). We contribute by proposing a method analysing the individual values with respect to environmental opportunities, in terms of preference of choice of different "relevant urban capabilities".

According to the Capability Approach (Nussbaum, 2005; Sen, 1999, 2009), different individuals within the same territory can have different capabilities with respect to personal characteristics and contextual factors (environmental and social opportunities). Then individuals choose to develop capabilities they value as important (possible behaviours or states) in functionings (real behaviours or state). The Capability Approach suggests people should be described not by their personal characteristics or by their endowments in resources or their wealthiness, but by their possible behaviour with respect (among others) to the environmental opportunities, as these behaviours capture their preferences and driving values that norm the choice of capabilities. Possible behaviours (i.e. capabilities) can be thus studied by the values that people give to environmental opportunities.

If the problem is to give a "value" to environmental resources then our idea is the following: (1) such goods / assets / commons have a value for each single inhabitant in terms of opportunity for his development of wellbeing and (2) this (subjective) value can be learned observing the single inhabitant behaviour in the territory, i.e his functionings and the values that guide his choice to do and to be in space. (3) We consider that the set of value functions characterising how a single individual values a set of goods / assets / commons (in terms of opportunity) can be considered as being representative of his/her capability set. To be more precise: on how this capability set is structured being the Pareto frontier of the simultaneous maximization of these functions. (4) Supposing we know the subjective value of a given good/asset/common for each single individual we can cluster the inhabitants having similar values for that precise good/asset/common. Moreover, we suppose that (5) knowing the value functions governing each single individual behaviour we can cluster the inhabitants having similar value functions, that is similar capability sets. (6) The value of a given good/common/asset will then be definable only with respect to a given cluster of inhabitants and (7) the acceptability/legitimacy of a given policy (territorial policy, urban development policy) can then be checked with respect to a cluster of inhabitants for which we pursue the expansion of their capability sets.

With reference to these premises, we aim at defining groups of people with similar preferences (values) with respect to environmental resources (i.e. opportunities in space) and with similar needs, in order to determine an approximation of their capability set (possible behaviours). This implies studying both peoples' behaviours (functionings) and the values that guide their choice to do and to be in space. Evaluating values in space entails also understanding how values (preferences) are distributed in the territory in order to build maps helping in decision making.

However, even if the development of MCDM methods and of GIS services in spatial planning are know

numerous in literature, there is a lack of integration among these systems (Malczewski and Rinner, 2015; Harju et al., 2018). There is a growing need to build Multiple Criteria Spatial Decision Support Systems that consider decision makers' values (preferences) and the spatial analysis tools of GIS services in an integrate way. This paper tries to deal with this challenge and to develop a first step in the development of a more integrated MCDM-GIS method designed to study the geography of urban capabilities (Blečić et al., 2013).

In the following paragraphs we first synthesised the theoretical background that guided this study, then we illustrated our method for the analysis of environmental values in space and the definition of urban capabilities for different groups of population. Finally we experimented the method, which we claim of general validity, with respect to the behaviour of a precise category of population, the visitors, and we experimentally validated it with data collected from a survey study in the territory of Alghero (Sassari, Italy).

2. Theoretical background

2.1. Capability Approach

The Capability Approach (Sen, 1999, 2009) goes beyond the economic concept of wellbeing, stressing the importance of evaluating not primary goods, but substantive freedoms (named capabilities) to choose a "life one has reason to value" (Sen, 1999). The concept of capability entails two components (Blečić et al., 2015b; Sen, 1999): the abilities of an individual, with respect to his personal characteristics, and the opportunities, i.e. the presence of external conditions. The individual has the capability to do or to be something if she/he has the opportunity to do or to be something and she/he is able to do it. Thus, the capability set of an individual depends both on individual and contextual conditions and commodities (Figure 1). Under the capability approach, individual wellbeing is not given by the measure of resources owned by individuals, rather by the freedom people have to choose their beings and doings thanks to the conversion of such commodities and conditions in advantage for their wellbeing development.

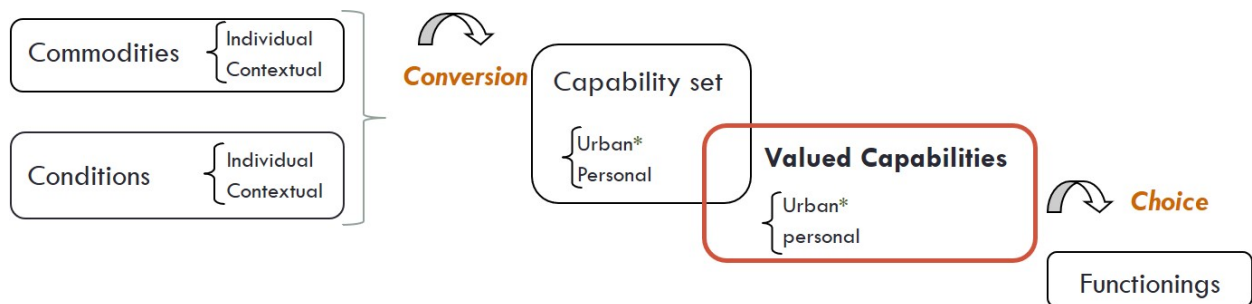


Figure 1: Conversion process of commodities in capabilities in a particular social and personal context. Inspired by Blečić et al. (2015b); Robeyns (2005)

In that conversion process human diversity is fundamental as the notion of advantage deals with a person's real opportunities to use commodities compared to others (Sen, 2009). The advantage that people have thanks to the opportunity offered by the commodities is different for every individual. Peoples can develop different functionings (things a person has valued to do or to be) and capabilities (the combination of possible functionings) with respect to personal and socio-environmental factors (see Figure 1 for the conversion process). The same person can convert the same asset differently in different contexts, in the same way two different persons in the same place may convert the same asset in a different set of functionings. For this reason, the context plays a key role in the individual development process.

The Capability approach is a theoretical framework useful for modelling different quality of life issues (health, education, food, life expectancy, . . .) that is largely used to measure inequalities. The Alkyre-Foster (AF) method (Alkire et al., 2015) is one example of the operationalization of the Capability Approach for policy design and evaluation. This method aims to measure the multidimensional poverty counting the

different type of deprivation that individuals experience (lack of education, employment, health, ...). For what concerns urban issues, there was not many implementation of the capability approach. Blečić et al. Blečić et al. (2013) develop the concept of "urban capabilities" and a model to analyse the walkability in the city considering the pedestrian freedom to access by foot to urban opportunities. In his works Frediani Frediani (2015) explore the poverty process in a capability approach perspective and inquire about the role of space as determinant of poverty.

Moreover, following Blečić et al. (2013, 2015b,a), we claim there is a particular set of capabilities that is influenced by urban and territorial factors and the social context named "urban capabilities". Urban capabilities depend on urban and environmental opportunities that are the contextual factors that we can modify with an urban public policy.

With respect to these premises, we are interested to determine peoples' values of urban and environmental opportunities (here named also environmental resources). These opportunities are the contextual factors that consent the development of "relevant urban capabilities": the set of "urban capabilities" that people value as important.

In our idea, each person should itself choose which capability set to develop in functioning with respect to his values (Sen, 2009). Thus, the evaluation of capabilities can be considered as a multi-objective optimization problem in which the capability components are included in the process of choice of functionings of every inhabitant and learned from their behaviours. We suppose that urban capabilities are a set of not dominated solutions defined by the ability and opportunity components mentioned in this paragraph. Urban opportunities Ψ are analysed by considering the values F that people give to the development of urban functionings, while the ability component is given by the socioeconomic characteristics of inhabitants Φ . In this perspective, the value functions F and the socioeconomic characteristics Φ represent the variables used for evaluating the urban capabilities.

In order to explain our idea we consider an individual who can spend an amount of time (720 minutes) in exploiting two urban opportunities i and j (a garden and a public library) internal to the set of urban opportunities Ψ . Let's denote with x_i and x_j the amount of time spent on each of the two opportunities respectively. Consider now three welfare indicators, let's call them culture (c), health (h) and education (e). Then we have three value functions $\in F$ that map the subjective value of any amount of time to an interval scale $[0, 1]$, here denoted with $v_c(x)$, $v_h(x)$, $v_e(x)$ such that $v_l : [0, 720] \mapsto [0, 1] \quad l \in \{c, h, e\}$. Note that such subjective value depend also on the personal characteristics Φ of the inhabitant analysed. Considering this problem, the expected behaviour of our inhabitant should be represented by:

$$\begin{aligned}
 & \max && v_c(x_i) + v_c(x_j) \\
 & \max && v_h(x_i) + v_h(x_j) \\
 & \max && v_e(x_i) + v_e(x_j) \\
 & \text{subject to} && \\
 & && x_i + x_j \leq 720
 \end{aligned} \tag{1}$$

In case we know the shape of these functions (for instance):

$$\begin{aligned}
 & - v_c(x) = \log(x + 1) \\
 & - v_h(x) = \sqrt{\frac{x}{30}} \\
 & - v_e(x) = e^{x/360} - 1
 \end{aligned}$$

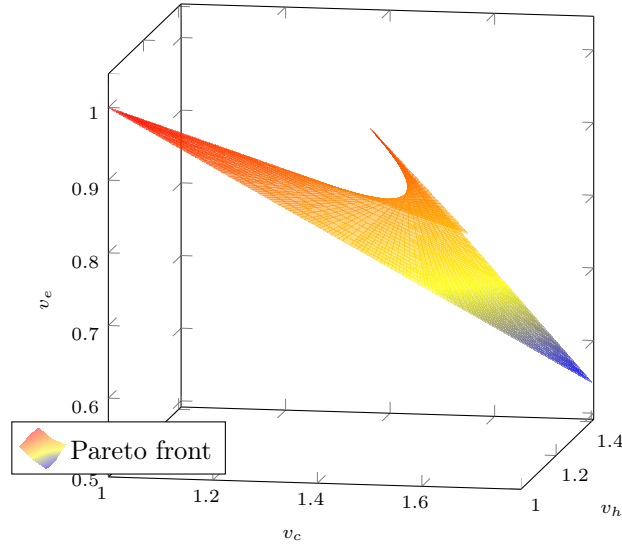
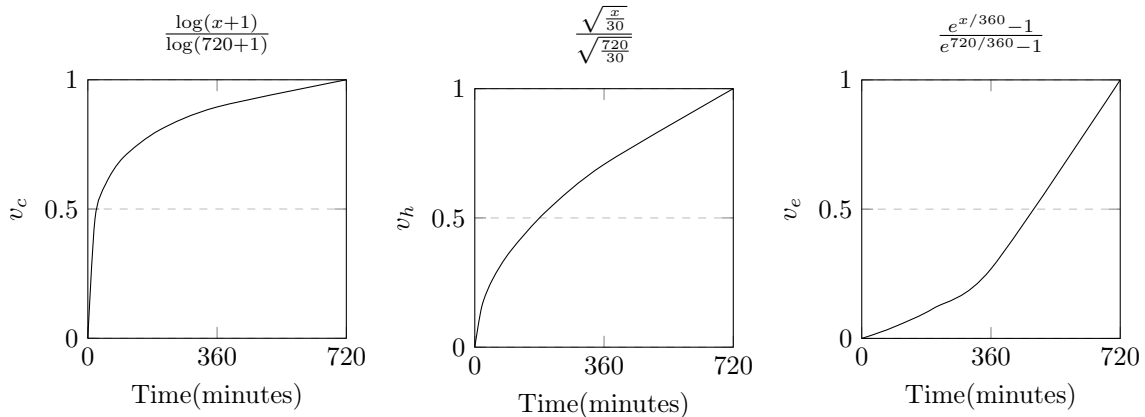


Figure 2: Pareto front example



In order to be solved, such objective functions must trade-off among the time x spent on the different urban opportunities c, h, e (culture, education, health, ...). This multi-objective problem presents a set of solutions, that are defined by the Pareto frontier of non-dominated solutions (see the Figure 2 for a graphic example). The set of non-dominated solutions defined by this frontier represents the approximation of the set of urban capabilities for each individual.

We can compute the Pareto frontier for our inhabitant, that it's the set of non dominated solutions for the system (1). Such solutions represent time allocations to the two opportunities in such a way that any improvement along one of the welfare indicators imply worsening along at least another one. In other terms there is no way to improve further and simultaneously the overall welfare of our inhabitant. Under such a perspective it is safe to assume that our inhabitant will choose any among such behaviours which means that this set represents all possible functionings of this inhabitant with respect to these two urban opportunities. This is exactly what a capability set should be: the set of all possible functionings, maximising the welfare of this inhabitant, welfare subjectively evaluated.

The welfare dimensions considered for this analysis are arbitrary and supposed to be complete. Indeed, if we add a new dimension, for example "leisure", the Pareto frontier will change. If we suppose that the dimensions considered are complete, then we can build the set of objective functions and the Pareto frontier for each individual by analysing his behaviour: why people do what they do? which are their objective functions?

160 Finally we claim that environmental opportunities valued as important by an inhabitant could be valued
important by other inhabitants. Equally we know that each inhabitant can be characterised by a vector of
socio-economic characteristics and as such (s)he can be similar to other inhabitants. However, having similar
socio-economic characteristics does not entail having the same values (and value functions) and sharing the
same values does not imply having similar socio-economic characteristics.

165 Designing a public policy means designing a reallocation of public resources (and/or access to commons)
in order to pursue a political objective (such as improving the life of a group of inhabitants, the ones
targeted by that policy). That said, our claim is that the effectiveness and the legitimacy of a policy
should be measured not with respect to the reallocation of endowments, but with respect to the (subjective)
satisfaction of aspirations offering more and better opportunities. Under such a perspective the target of a
170 public policy should be inhabitants valuing similarly such opportunities that can be converted in capabilities.
In other terms if the new policy consists in expanding green areas, the target of the policy are not only the
inhabitants lacking access to such areas, but the ones who either already appreciate accessing such areas or
the ones who will appreciate this opportunity (once available) although today they do not do it. This last
group is essentially revealed through the construction of its relevant capabilities set.

175 Clustering the inhabitants according both to their socio-economic characteristics and their capabilities
sets (measured through their subjective value functions) allows to identify targets of public policies who will
positively appreciate such a policy and legitimate it. On the other hand it is the time for policy makers
to state explicitly who are the inhabitants benefiting from a certain public policy and how. Being able to
associate policies to inhabitants and their capabilities sets allows to pursue exactly such a purpose. Our
180 proposal, thus, should be viewed as a tool helping policy makers or relevant stakeholders to design policies
or to argue against them, on the basis of the inhabitants included (or excluded) by any given policy and to
explain why.

2.2. *Urban and Environmental assets*

185 Urban and environmental assets are relevant for a given target population with reference to the oppor-
tunities they offer for the development of capabilities. The freedom to access to urban and environmental
opportunities consents to live and act in the city and to practice the right to the city (Harvey, 2003) im-
proving people's urban quality of life (Blečić et al., 2015a). Therefore, the quality and characteristics of the
environmental opportunities are determinant for a given population.

190 Moreover, environmental opportunities are the only components of urban capabilities that we can modify
with a project. People can convert urban opportunities into capabilities considering the advantages they
may obtain. What is important is the presence and access to opportunities, besides what people can do with
such opportunities. For example, the presence and accessibility to a park may influence the development of
the "capability to recreate in the city". However, it is important also the quality of the opportunity: if the
park is equipped with areas where children can play safely. These characteristics can expand or limit the
195 capability set of a population with reference to the level of advantage they give for development.

Another element we need to consider when we talk about environmental opportunities is the spatial
dimension that influences the assessment of such assets. The assessment of the same urban opportunity is
different in two different spaces. A change in space entails a change in the final evaluation of the alternatives
(the urban opportunities) offered by the city. Actually, the city is a system with numerous relations that we
200 need to consider in order to understand the phenomena that influence the development of people's quality
of life. Moreover, the spatial dimension is fundamental in order to unveil the urban and environmental
(in)justices (Soja, 2010) and to design public policies following such analysis. Malczewski and Rinner (2015)
discuss the importance of considering the spatial dimension in the definition of GIS systems integrated with
MCDA (multi-criteria decision aiding) methods.

205 Considering the spatial dimension and unveiling the environmental (in)justices in the city helps the
policy maker to design new shapes of such assets. The urban project can be used in order to modify the
characteristics of the environmental assets in order to modify the advantage for a group of people. More
precisely, we can modify the quality of the assets and the resources in order to enrich the possibility of
people to choose to act and be in the city. This consents to enlarge people's capability set. For example, a

210 public policy can be focused to improve the access to urban opportunities designing new spatial elements
for people with reduced mobility. This entails the enlargement or the change of the set of urban capabilities
for disabled people. Furthermore, a policy can focus on healthy ageing and on the implementation of all
those opportunities that encourage elderly people to act and socialize in the city by planning high quality
215 neighbourhood with leisure activities and walkable paths. Similarly, a policy oriented to children wellbeing
will be one interested in the development of the autonomy of movement in the city by designing safe and
playable pedestrian paths.

These urban and environmental opportunities can therefore be redesigned considering people abilities
and advantages to use such assets. That is what different groups of people can do with such assets. This
consents to have public policies more legitimated and oriented to the enlargement of people capabilities.

220 *2.3. Measuring Values*

If we want to learn about values we need to measure them. We need to learn subjective values (for a
given target population or for an observed one). We may also need to learn values in order to be able to
cluster the population in groups with "similar" values.

225 Subjective values can be measured through formal and well established procedures (Raiffa, 1969; Rescher,
1969). Measurement of subjective values is an appropriate way to learn about peoples' preferences in all
such cases where markets either do not exist (markets being a potential revelator of preferences) or because
the notion of market simply does not fit (Ostrom, 2015).

We make the hypothesis that values can be measured upon a number of separable and independent
attributes. Separability means that the set of chosen attributes is strictly necessary and sufficient in order to
230 be able to describe revealed preferences. Less attributes leave the description incomplete and more attributes
are redundant and thus potentially biasing (Keeney and Raiffa, 1976; Roy and Vincke, 1981). Independent
attributes mean that preferences expressed along one attribute are independent from preferences expressed
on any other attribute or subset of attributes.

If the above hypothesis is accepted then we can use MAVT (Multi-attribute value theory) (Keeney and
235 Raiffa, 1976; von Winterfeldt and Edwards, 1986) and more precisely we can accept that values can be
measured using additive value functions.

Multi-attribute value theory enables to score each alternative with respect to a function that represents
the subjective difference of values on an interval scale (for a given decision maker or user) (Keeney and
Raiffa, 1976). Multi-attribute value theory is a method representing preferences, but also a way to measure
240 preferences in terms of their intensities (how much A is better than B?). This is a unique feature since it
allows to compare decision makers with respect to their values. This unique feature allows us to generate
groups of people with similar values. This value-based information helps to design and plan public policies
with respect to what inhabitants and stakeholders appreciate. Moreover, this decision analytic methodology
consents to measure individual preferences in non-monetary terms, fostering its use for the analysis of
245 environmental values (the reader interested in similar case studies can see Ananda and Herath (2003);
Beinat (1997); Ferretti et al. (2014); Martin et al. (2000)).

That said, the practical problem is how to learn and construct such functions. What we really know
are observations of direct or indirect preference statements which are revealed through the real behaviour
of an observed population. Moreover, when we deal with a public policy it is impossible to interview all
250 inhabitants, even if we are interested in all their preferences. For this reason we claim that holistic or indirect
methods of construction of value functions (Beinat, 1997) are more useful in analysing values of environmental
opportunities in space and unveil the desirability of a possible set of future public policies. The holistic or
indirect strategy is based on overall value judgements of multi-attribute profiles and a successive estimation
of the marginal value function with fitting techniques (regression models, ...). It is a representation of the set
255 of preferences and values that the decision maker uses to make a choice. For this reason we are going to use
methods which "learn" the value functions out of examples of actual observed choice behaviour (preference
learning). Given our hypothesis allowing the existence of separable and additive value functions, we are
going to use a precise class of "disaggregation methods" ((Jacquet-Lagrèze and Siskos, 2001)) the archetype
of which are the UTA methods (Siskos et al., 2016).

260 2.4. The UTA method

Our purpose is to experiment how to learn value functions. Our experiment has been conducted using the multiattribute value method named UTA+ (Kostkowski and Slowinski, 1996), a well known method based on the preference disaggregation approach. We estimate value functions from holistic or indirect judgements deduced observing people’s behaviour. This method consents to investigate indirectly large sets of preferences considering at the same time behaviours or judgments and allows to obtain easily interpretable results.

The UTA method was originally proposed by Jaquet-Lagrezze and Siskos (Jaquet-Lagrèze and Siskos, 1982) and then developed in different forms (Siskos et al., 2005). The method builds a set of additive value functions from a ranking on a reference set A given by the decision maker. It uses linear programming in order to estimate the family of the utility functions with the minimum possible error and to compute the optimal set of functions as consistent as possible with the given preferences.

The reader should note that our choice presents some limitations.

- The hypothesis that the subjective values of each inhabitant are representable through a set of separable additive value functions is reasonable, but “arbitrary”. Other forms of value functions and models could fit (possibly better) the observable behaviour.
- The set of value functions “explaining” the observable behaviour is infinite under affine transformations of such functions.

However, for the purpose of this paper our choice is sufficiently reasonable. What we want to show is that given an observable behaviour of the inhabitants with respect to environmental opportunities it is possible to learn a value model explaining this behaviour and allowing to construct a “measure” of their capability sets, thus allowing a more fine clustering of the population. The precise value model chosen here is simple and straightforward and allows to show exactly our purpose, but other models could do the same.

The criteria aggregation model in UTA is an additive value function (Jaquet-Lagrèze and Siskos, 1982):

$$u(g) = \sum_{i=1}^n p_i u_i(g_i) \quad (2)$$

where u_i , $i = 1, 2, \dots, n$ are non-decreasing real valued functions, named marginal value or utility functions, which are normalized between 0 and 1, and p_i represent the trade-offs among the criteria.

This method was used in decision aiding for different multi-criteria problems and in the environmental field for the evaluation of projects (the interested reader can see case studies developed by Beinat (1997); Demesouka et al. (2013); Siskos and Assimakopoulos (1989); Valiakos and Siskos (2015)). Here we propose to use this family of methods in order to analyse people values and preferences in a way that represents people behaviour.

We use an implementation of the UTA method in the first phase of the analysis (see figure 3): the UTA+ algorithm (Kostkowski and Slowinski, 1996). The UTA+ algorithm gives a score to each alternative starting from a weak order among a subset of alternatives. This method, based on a principle of ordinal regression, consents to solve the linear problem proposing a set of marginal utility functions compatible with the preferences of the decision maker. The particularity of UTA+ software is that it consents to modify interactively the utility functions (paying attention to the sensitivity analysis) in order to meet the preferences of the decision maker. Finally, a post-optimal analysis (using the Kendall coefficient τ) is made in order to measure the correlation between the ranking defined by the user and the ranking obtained using the utility function found by ordinal regression (Kostkowski and Slowinski, 1996).

3. The Method

We propose a policy analytic method aimed to define groups of people with similar preferences and values of environmental opportunities in space (from now named "values in space"). A method aiding in designing public policies aimed to improve the capability set of people with similar preferences, values and needs.

The proposed method is based on a multi-criteria model that combines preference learning (Fürnkranz and Hüllermeier, 2010) methods with cluster analysis (Kaufman et al., 2005) in order to estimate parameters (i.e. the values, preferences) for the best territorial offer for each group of people. Such parameters can be used to define the Pareto frontier and in order to estimate the subset of urban capabilities. The method is composed of different phases as we can see in Figure 3:

1. Survey and data collection. The survey is aimed to collect data useful for the analysis. For the analysis we may use primary data, (collected by the researcher for the principal aim to satisfy a specific analysis) or secondary data (collected by other researches and different aims but that can be useful for the study). Here we used GPS tracking and questionnaires collected during a survey we developed.
2. Multiple-criteria decision analysis of preferences. In this phase we define the set of criteria that describe our problem and analyse the preferences and values of people involved in the survey. More in detail, this phase aims to analyse the set of value functions F useful for the definition of the objective function of each individual. MAVT with the UTA+ method is used for the analysis of such value functions.
3. Selection of relevant factors for personalization. This phase is aimed to define which are the socioeconomic factors Φ that influence the objective functions of inhabitants. In detail, the aim is to simplify the model removing the socioeconomic factors that, even if we consider as important, do not change the final result. It is composed by a [1] cluster analysis of the utility functions and [2] a rough set analysis that considers both the utility functions and the socioeconomic factors.
4. Cluster analysis: profiling. The final phase consents to group people with similar preferences, i.e value functions F , and similar socioeconomic factors Φ .
5. Recommendation. Final recommendations consent to give useful information to the policy maker for the design of new policies for the different groups of inhabitants and considering their values F and socioeconomic characteristics Φ .

In the following paragraphs we describe the case study and we deepen the phases of the method.

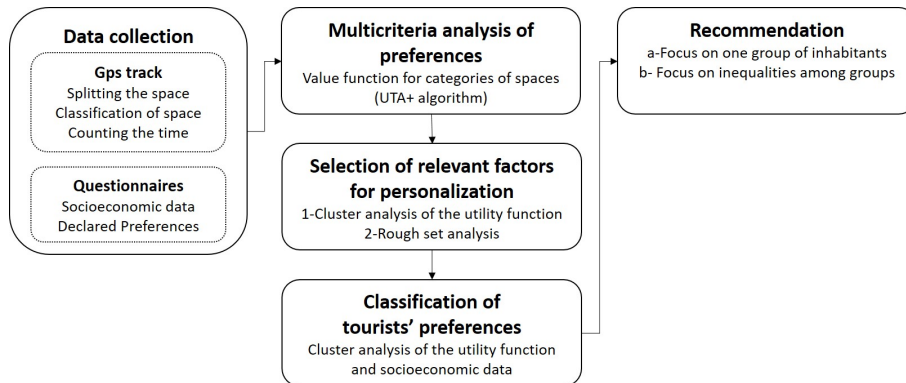


Figure 3: The method

4. The case study

In this paper we develop an experiment aimed to understand and explain what people value in the territory. We aim to enlarge the territorial offer of capabilities and not only to propose doings and beings already existing in the territory. Moreover, we go further to an economic development of the territory, giving attention to the improvement of the possibilities to do and act in the city for different categories of peoples. The inhabitants interested in the study are not only the groups analysed in the case study, but all the inhabitants of a territory. The aim is, in fact, to improve the set of urban opportunities that consent a community development of quality of life (as intended in the capability approach (Sen, 2009)).

In order to test our method, we used a set of data we collected for a past study. We analysed visitors' behaviour in the city of Alghero, and proposed to enlarge the territorial offer with respect to the driving values of the visitor population. Even if the experiment is done with a population, the visitors, that is usually associated with a socio-economic development of the territory, we claim it is important to understand their needs and values as inhabitants. In this perspective, the results of our experiment will be useful for defining public policies aimed to improve the quality of life of all groups of inhabitants (Martinotti, 1993).

Alghero is a city of about 40.000 citizens in the north west coast of the island of Sardinia (ITALY), characterized by an economic dependance from the visitor season for the development of the territory. Data collected by the observatory of tourism show how the city experience each year about 800.000 occasional "population of visitors", among city users, visitors, and business people with a constant growth in the last years (Cannaos et al., 2014).

These visitor inhabitants (Nuvolati, 2003) are concentrated above all in the months of July and August, with officially data that point out a pick of 12.000 occasional population during the mid-August holiday (14-15-16 August). Whereas the months of June, September and October register important numbers of occasional population (more than 100.000 inhabitants per month), that choose to spend from 3 to 8 days in the city, fewer are the numbers of visitors that choose to stay in Alghero for just a weekend between November and April (an average of about 10.000 per month).

These data stress the seasonality of this visitor economy and emphasise the necessity to design public policies oriented to a deseasonalization in order to foster a sustainable development of the territory. The aim is to integrate the tourism activities of the low season period with the environmental assets of the territory in order to offer new opportunities for all the inhabitants and not only for the visitors. We are not interested in the economic development of the territory but in the new possibilities to do and to be in the space for the whole population. For this reason we concentrate the study of visitor's behaviour in the low season period.

Looking at the low season period trends we can frame better the problem. Data collected in October-November 2014 (Blečić et al., 2016) show that this seasonal population usually travels in couple (46,67 %) or alone (17 %), while groups of families, couples with children and groups of friends cover each about a 9 % share of the sample. They choose to stay in Alghero for the favourable climate, the possibility to relax and enjoy food and wine traditions in a environment of high quality. This demonstrates the attractiveness of this location despite the end of the bathing season. A previous work (Blečić et al., 2016) shows that the main places of interest are concentrated between the historical centre and the waterfront. More precisely it is possible to distinguish some historical and archaeological elements located in the city centre and in the whole territory of the city, like the cathedral, the bastions, and the historical settlements located near the city centre linked to the Nuragic civilization, as well as the most recent settlements founded during the period of land reclamation characterized by a rationalist architecture (like Fertilia and Santa Maria). Environmental resources (both local and territorial) are considered indispensable destinations also in the low season period: the beach of the city (Lido), the Nettuno caves and the numerous beaches and panoramic viewpoints that surround the gulf are just some examples of such places. Finally there are some cultural elements (like the civic theater, the museums, ...) and the leisure (waterfront, public gardens, the harbor, ...) and food services (the civic market, the typical restaurants, ...) that are important attractors for the visitors.

According with the community and the local government's aims for the development of the territory, we want to attract visitors during the off-season in order to deseasonalise this economic activity and to improve the urban opportunities for all inhabitants of the city. An economic development heavily exploiting tourism can bring both positive and negative consequences. A "temporal" economy risks to influence the territorial development, at the same time urban and environmental opportunities need to be strategically improved in order to meet the will of the different populations that live the city (Martinotti, 1993).

For this purpose the local government needs to identify which environmental resources should be developed and how. Moreover, the policy maker needs to identify the values and the needs of the people that live in the city with respect to these urban opportunities.

Considering this problem, in our experiment we look at the low-season visitor period, in order (1) to analyse the values and characteristics of visitors that came in Alghero city during this period and (2) to design new public policies aimed to increase the set of urban capabilities for the whole population. There

are different method usually used in literature in order to analyse visitors' behaviour in space for design public policies.

390 4.1. Visitors' behaviours in space. A brief literature review.

The analysis of visitors' behaviour in space is a part of the "time geography" field (Herstraand, 1970; Shoval et al., 2015). Time geography focuses on the constraints on human activities in space and time (Miller, 2005). It deals with the relationship between space and time, considering the constraints and trade-offs for the development of activities given a limited time. Methods surveying and analysing spatio-temporal
395 behaviour are highly developed in transportation research and in social sciences in general (Kwan, 2002), however little attention has been paid to the analysis of spatial and temporal behaviour of visitors (Shoval and Isaacson, 2010). This is due, essentially, to the difficulty to gather data.

In recent years scholars have started to break ground in this specific domain of applied research, experimenting and exploring advantages and disadvantages of satellite-based positioning technologies for the study of visitors' spatio-temporal behaviours (Shoval and Isaacson, 2007, 2010; Shoval et al., 2014). Different methods have been reported for tracking visitor spatio-temporal behaviours by Kellner and Egger (2016): direct observation of visitors' activities, with interviews or remote observations; time-space budget techniques (Pearce and Pearce, 1988) which analyse visitors' activities within destinations by using diaries, questionnaires and interviews; video-based tracking analysis, used to track visitors movements through video
405 footage; smartphones with apps using positioning systems; specialized GPS tracking devices; land-based tracking systems that collect data thanks to radio technology.

Among the different visitor's location, many studies focus on particular urban areas or activities that have a clearly defined entry and exit point, such as natural parks or historical centres (Shoval et al., 2014). Also many urban contexts have been analysed, among which Rome (Calabrese and Ratti, 2006), Lago del
410 Garda (Bruno et al., 2010), Canberra and Sydney (Edwards et al., 2009), Salzburg (Kellner and Egger, 2016), Bilbao (Aranburu et al., 2016), Hong Kong (Shoval et al., 2015). On the other side, there are studies that attempt to analyse visitor behaviour at a very large scale (e.g. on the national scale, by using mobile phones data (Ahas et al., 2007)).

Different statistical and visualisation techniques are used in order to summarize the analysis of such data. Frequently spatial temporal data are used to describe the visitors track frequency in maps. Sometimes these
415 spatial maps combine information collected through questionnaires. This allows to link spatio-temporal behaviours to a specific visitor category of population with classical statistical methods (age pyramid, employment,...). Furthermore, there are studies trying to predict visitors whereabouts, how long they will stay in a place, or carry out a specific activity (Chhetri et al., 2010), and studies that analyse the sequence
420 of movements in space for different groups of people (Shoval et al., 2015). Particularly, Shoval et al. (2015) use a sequence alignment method to determine which type of location are visited and in which order from different groups of visitors. Only few studies try to analyse the relation between space and the visitors' behaviour. One example is given by Aranburu et al. (2016) that use network analysis in order to determine the central places of Bilbao and analyse the spatial interaction between cultural sites starting from the GPS
425 network points of interest.

All such studies analyse data in order to determine behaviours in space, the concentration of individuals in particular areas and the possible relations among individuals and space. These studies analyse what people actually do in space, without considering what people can do thanks to space configuration and activities (the capability set) or how people value a different space configuration (in case of a new project).
430 Under such a perspective, we claim the importance to consider also subjective values in space in a value theory approach (Keeney, 1994).

4.2. Survey and data collection

We analyse the visitor population in Alghero city during the 2014 visitor low season (October-November), considering that Alghero's peek period is the summer season with highest visitor concentration between
435 July and September. We choose to collect data in this period because we want to catch urban limits and opportunities due to the reduction of urban activities. We also expect to catch significant information for the design of a public policy aimed to deseasonalize this trend.

Two types of data were collected in the survey: interviews inspecting expectations and degree of satisfaction as well as GPS movement tracking exploring visitors' movements in the territory. For more information about the survey method see Blečić et al.'s work Blečić et al. (2016).

Especially, we dispose of 75 questionnaires representing a set T of 225 visitors described by a set of attributes A .

$$A = \{gender, age, country, level_of_study, profession, willingness_to_pay\} \quad (3)$$

We know the visitors' paths in the territory, in a space described by Coordinates and Time. Let S denote the set of possible coordinates and τ the set of possible times. A path is a set of points $P \subseteq S \times \tau$.

Finally we define a set of Categories of attractions $C \in S$ that a visitor can choose in Alghero city (Table 1). These Categories are chosen considering the main places of interest as defined from a previous study (the reader interested can found more information in Blečić et al. (2016)).

Criteria: Categories of attractions	Attractions
Environmental elements (local)	Lido, M. Pia, ...
Environmental elements (territorial)	Grotte di Nettuno, Punta Giglio, Spiaggia del Lazzaretto, ...
Historical and archaeological elements (local)	Cattedrale, Bastioni, Historical centre,
Historical and archaeological elements (territorial)	Fertilia, Castelsardo, Stintino, nuraghe Palmavera, ...
Cultural Elements	Theater, Cinema, Museum, ...
Food services	Restaurants, Market, ...
Leisure	Waterfront, Public Gardens, Harbor,
Other	Stay in the Hotel, friends' home, Route from one place to another, ...

Table 1: Set of Criteria: Categories of attractions and examples of attractions

In order to divided GPS points in categories of attractions we did a spatial classification analysis of GPS points (Figure 4). The main phases are summarized as follow:

1. Split the space. Subdivide the territory in different places p representing the environmental opportunities. Alghero territory was divided into polygons, with each polygon representing a single Category of attraction (Figure 4). If the same point in space belongs to different categories of attractions, then we consider the most relevant. Polygons represent specific environmental, historical and cultural attractions (Table1), visitor services and the major urban shopping and dining districts commonly frequented by visitors.
2. Characterise spaces. Assign a Category c to each attraction. Let $C = \{c_1, \dots, c_8\}$ denote the set of categories of attraction.
3. Count the time. For each visitors' path we analyse the time spent for any category of attraction c . For each visitor t we analyse how much time ($i^t \in \mathbb{R}^+$ the total number of seconds) he has spent during his trip in the different category of attraction c . The time spent in any category is given by the sum of the different ranges of time in this category of place $x^t(c_v)$. Finally we consider that each visitor has 15 hours to spend in a day.

Then, we define a vector path $x : C \rightarrow \mathbb{R}^+$ as a function that maps each category of attraction to a number of seconds and $X = \mathbb{R}^{+C}$ the set of all possible vector paths. We associate to each visitor $t \in T$ a vector path x^t and consider that among all the vector paths, the visitor chose a path using a preference relation. A preference relation is given when the visitor can freely choose a path rather than another whit respect to his\her individual characteristics (age, gender, ...) and to his\her personal (income, goods, ...)

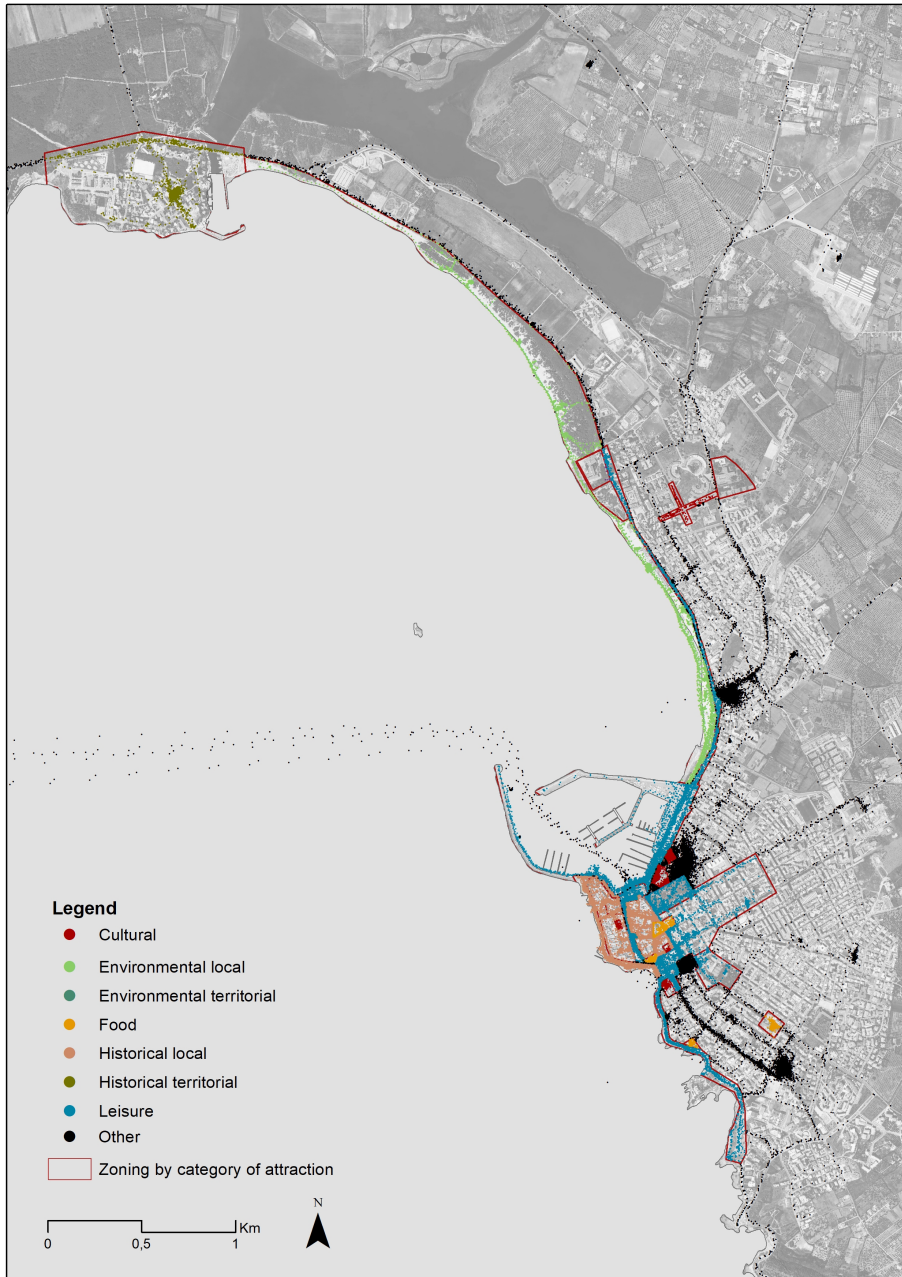


Figure 4: Classification of paths with respect to categories of places

and spatial resources (means of transport, spatial distribution of activities, . . .), expanding his set of urban capabilities (Blečić et al., 2015b; Sen, 2009).

Our objective is to associate to each visitor $t \in T$ a preference relation S_t which represents, according to our model, the way the visitor evaluates the possible paths in the Alghero territory, i.e. how that visitor values the different opportunities in space. This preference relation can also reveal important elements for the design of new paths with respect to the demand of opportunities of the visitor population in Alghero.

Summary of data	Description
T	Set of visitors (t a visitor)
$i^t \in \mathbb{R}^+$	Intensity corresponding to t : the total number of seconds visitor t has spent on his trip in the different categories of space.
C_V	The categories of places in Alghero <i>that can be visited</i> , thus <i>including</i> staying home.
$x^t : C_V \rightarrow \mathbb{R}^+$	The vector path chosen by visitor t that associates a number of seconds to each category of place. By definition, $\sum_{c \in C_V} x^t(c) = i^t$.

Table 2: Summary of data

4.3. Multiple-criteria decision analysis of preferences

This step (see figure 3) aims to define people’s preferences with respect to the criteria selected for the evaluation of space. We consider that each visitor is a decision maker needing to be aided in order to understand his\her priorities and values in terms of what he can do in the Alghero territory. What he\she can freely choose to develop in terms of urban capabilities thanks to the urban environment and his\her personal characteristics.

The analysis of space can be then intended as a multi-criteria decision making problem that aims to rank a set of finite alternatives, i.e. all the possible paths offered by the territory and valued as important by the visitors and similar inhabitants. In that model the criteria are represented by the different opportunities given by the territory, and are described by the intensity of time $i^t \in \mathbb{R}^+$ that each visitor has spent in each category of place C_V . The set of criteria are defined in the table 1 and are: Environmental element (local); Environmental element (territorial); Historical and archaeological elements (local); Historical and archaeological elements (territorial); Cultural Elements; Food services; Leisure; Other.

As stated above, preferences and values can be learned with different methods. In this case we estimate the value functions from holistic judgements deducted from people behaviour using the UTA (Jacquet-Lagrèze and Siskos, 1982) method that elaborates the problem under multi-attribute value theory.

According to this method, we represent the preference relations S using additive value functions. Let u^t denote the value function of visitor t . We define S_t from u^t as follows:

$$(x_1, x_2) \in S_t \text{ iff } u^t(x_1) \geq u^t(x_2). \quad (4)$$

Our objective is thus to obtain the utility u^t from the path data of each visitor x^t . We assume that u^t can be represented as a weighted sum of marginal value functions:

$$u^t(x) = \sum_{c \in C} u_c(x_c)w_c^t, \quad (5)$$

where $w^t \in [0, 1]$ represents the trade-offs among criteria that the visitor t is supposed to give over categories C of places that represent the criteria in this model.

Moreover, given a category of attraction $c \in C$, we define a marginal value function $u_c : \mathbb{R}^+ \rightarrow [0, 1]$. We assume for now that such marginal value functions $\{u_c\}$ and the trade-offs may depend on inhabitants’ values and are different for each visitor t , such that the function $u_c(x_c)$ represents the value we assume

the visitor gives to spending i_t seconds in the category of attraction c (for example: environmental local attractions), not taking into account the partial weight w_c^t . Finally, we define each partial utility function u_c as a two linear piecewise increasing function.

At the beginning we just know the behaviour of each visitor t and his/her declared preferences. In order to learn the set of visitors' preferences as actually performed we consider the relation among the path chosen by the visitor and a set of "typical paths". We define a typical path as a path that a visitor can freely choose with respect to his personal characteristics and spatial and personal resources and assets (in a capability theory framework (Sen, 1999)). A typical path is a combination of categories of attractions C and time τ the visitor ideally spend in (with a maximum of 15 hours of visit per day).

We define the typical paths with an expert of the territory (an urban planner working in the city of Alghero). The set of typical paths consider the trends in the visits (Blečić et al., 2016) and include not expensive and reachable on foot attractions, accessible by all the visitors (see Table 3). We consider the set of typical paths as a set of "visitors' relevant urban capabilities". These are ten typical paths $x_{O_1}, \dots, x_{O_{10}}$ that we assume visitors have considered because are standard paths available for all people and that allows to develop a set of visitor relevant urban capability. With respect to this, we assume that the visitor t prefers the path x^t he/she has chosen to each of the typical paths $u^t(x^t) \geq u^t(x_{O_i}), 1 \leq i \leq 10$, such that the weak order considered is $x^t \succ T p^1 \succ T p^2 \succ T p^3 \succ T p^4 \succ T p^5 \succ T p^6 \succ T p^7 \succ T p^8 \succ T p^9 \succ T p^{10}$.

Tp	EL	ET	HT	HL	FS	LS	CL	OT
Tp1	6	0	0	0	3	1	1	4
Tp2	0	7	0	0	3	0	0	5
Tp3	0	0	0	2	2	6	2	3
Tp4	0	0	0	4	1	3	0	7
Tp5	0	0	7	3	3	0	0	2
Tp6	6	4	0	1	3	0	1	0
Tp7	7	6	0	0	1	1	0	0
Tp8	2	0	0	6	2	3	2	0
Tp9	2	0	6	0	1	3	2	1
Tp10	1	0	6	0	3	2	2	1

Table 3: Soft set. Number of hours for category of places in the Typical Paths (Tp).

Finally, we define the set of value function for each visitor (see the figure 5) using the UTA+ software. The final set of value functions represents the F set of objective function useful for the approximation of the urban capabilities for that visitor. Such a set also provides the trade-offs among urban opportunities for a visitor and can be used to determine the Paretian frontier that defines his capability set.

4.4. Selection of relevant factors for personalization

This step (see figure 3) of the analysis method aims to select the relevant socioeconomic factors that influence the choice of a particular path by the visitors, and consequently the value of the different urban opportunities. In fact, different people in the same place can choose different paths with respect to personal and contextual factors (in a Capability Approach framework (Sen, 1999), see Figure 1 for the conversion process). Here we want to focus on personal factors (gender, age, profession, ...) that influence the choice of people, that is the ability component of the capability (see the paragraph 1 Capability Approach).

In order to analyse the relation between the values given to the different urban opportunities by the visitor x_t and the ability factors (personal characteristics), we propose a two-step analysis. First we made a cluster analysis of the preferences stand alone, then we performed a rough set analysis within the class of the cluster and the personal information of visitors in order to find the relevant set of features.

We classify the visitors considering the value functions as revealed by the UTA+ software. Specifically, we made a hierarchical cluster analysis of the value functions (central and maximal point) for the different categories of spaces. We performed some validation tests in order to define the better number of cluster

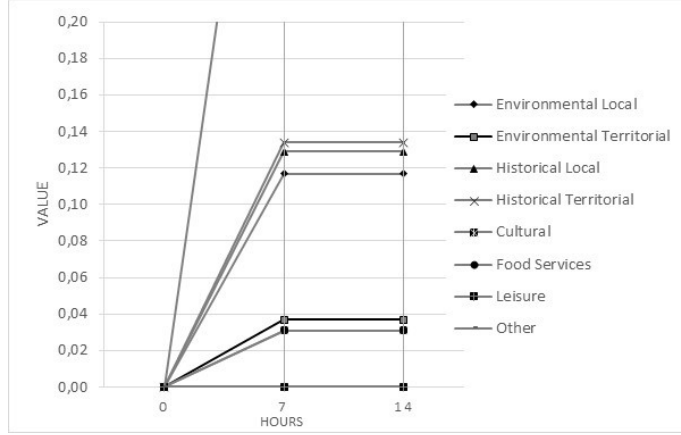


Figure 5: Example of the set of partial value function of the visitor t_1 for the different Categories of Attractions

for different type of cluster analysis (Kassambara, 2017). The validation methods suggested a model with 3 components.

530 Then we perform a rough set feature selection analysis in order to find a subset of features which have the same quality as the complete feature set. The purpose of the rough set feature selection method (Pawlak, 1982) is to select the relevant features and eliminate the not relevant ones. We use this method in order to isolate the socioeconomic features that are useful for the classification of visitors with respect to the cluster families of value functions (previous step).

Starting from the knowledge of Y we select the set of attributes $\in A$

$$A = \{hotel, gender, age, country, level_of_study, profession, travelling_with\} \quad (6)$$

The final rough set analysis eliminated the *level of study* feature from A , creating a feature subset of 6 attributes Y :

$$A^1 = \{hotel, gender, age, country, profession, travelling_with\} \quad (7)$$

535 This two-step phases defined a set of 6 attributes (hotel, gender, age, country, profession, travelling_with) that can be considered as representative of the ability components that determine the choice of the capability set by a visitor t .

4.5. Cluster Analysis.

540 This step of analysis (see the figure 3) aimed to build homogeneous groups of people with similar value function of urban opportunities and similar socioeconomic characteristics. In this regard, we performed a cluster analysis of the max and medium values of utilities functions together with the socioeconomic A^1 data in order to find homogeneous groups of people that value space similarly. That is, groups of people that give the same importance to spending time in particular location of the Alghero's territory. Moreover, we assume that such clusters represents the groups of people that have similar urban capabilities, because 545 starting from the same set of opportunities and a similar set of abilities they choose to perform similar functionings..

Having to deal with numerical (values) and categorical data (socioeconomic information), we cannot use the usual metric distance matrix in order to build the clusters. The Gower dissimilarity index (Gower, 1971) is suggested in such cases in order to define distances and centroids for the clusters. The Gower distance 550 calculates for each variable a distance metric fitting that type of variable, then the distance is scaled between 0 and 1. If the variables are quantitative the coefficient used is the range-normalized Manhattan distance converted into similarity. When the variables are nominal the Dice matching coefficient is used that recodes variables into dummy ones. Finally, the final distance matrix is calculated using a linear combination with user-specified weights (an average).

555 We performed the Hierarchical agglomerative Cluster method (HC) which consents to calculate clusters
without knowing a-priori the number of clusters. To calculate clusters, the HC method begins by inserting
any alternatives in its cluster and then pairs the two closest ones by examining the distances. There are
different methods to examine distances, among that we choose to use one of the more appropriates for the
unsupervised classification: the Ward classification (Ward, 1963) that minimizes the total within-cluster
560 variance. Among the cluster agglomeration methods Ward is preferred as it merges at each step the pair of
clusters with minimum between-cluster distance.

The results of the classification shows a dendrogram with 5 distinct clusters as suggested by the maximum
point of silhouette width visible in (Figure 6).

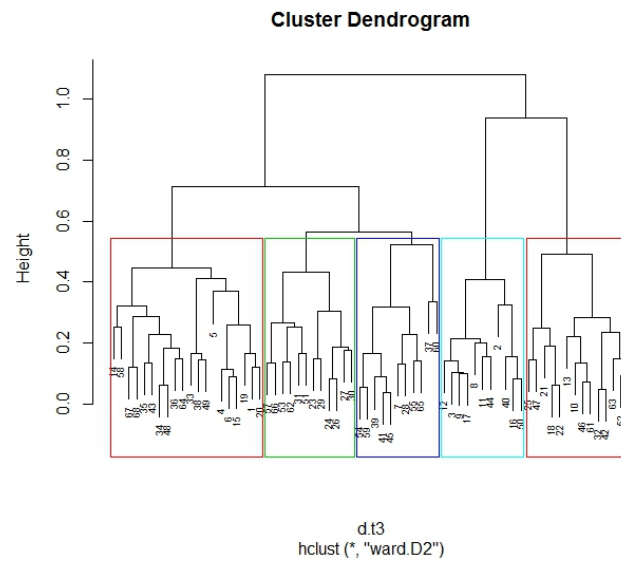


Figure 6: Dendrogram

565 The resulting clusters show different compositions of individuals and of value functions that we synthesize
in Figure 7, 8, 9 and in Tables 4 and 5. More in details, Figure 7 and Table 5 represent the different personal
characteristics that compose the clusters, revealing people with different ages and provenance having similar
interests, while Figure 8 and Table 4 illustrate the trade-offs of values for each cluster. For example, the
Cluster2 is composed by European individuals aged 30-39 and 50-59, which travel in couple and prefer to
visit historical (both local and territorial) opportunities, to enjoy of the food services and taking time to
570 relax in the hotel. The Cluster3 is mainly composed by 40-49 years old individuals coming from Europe,
public employees travelling with group of friends, interested in food services and leisure activities. This
group is also interested in visit historical local opportunities but for just few hours, while for a long visit
they prefer environmental attractions and historical territorial opportunities. Moreover, we can observe that
the Cluster5 is composed by a 70% of people travelling alone of non-European nation, meanwhile Cluster 4
575 is composed by retired people (aged more than 60 years old), coming from European nations, that travel in
family or group and are interested in environmental local opportunities.

Finally, Figure 9 illustrates the values of the same urban opportunity for different groups of visitors. For
example, historical local attractions have a range of values from 0 for the Cluster4 to 0.13 for the Cluster2,
the food services value range from 0.03 for the Cluster2 to 0.22 for the Cluster3, the interest to relax in the
580 hotel range from 0.20 for the Cluster3 to 0.8 for the Cluster4 (composed by more than 60 years old people).

Beyond the analysis of results that can be useful for a policy maker, we can use that final data to define
an approximation of the urban capabilities for the 5 groups of people. These can be useful information for
the policy maker that try to enlarge or to limit such a set of capabilities with reference to a population
target. For example, the Cluster 4 is composed by more than 60 years old retired people, travelling in family

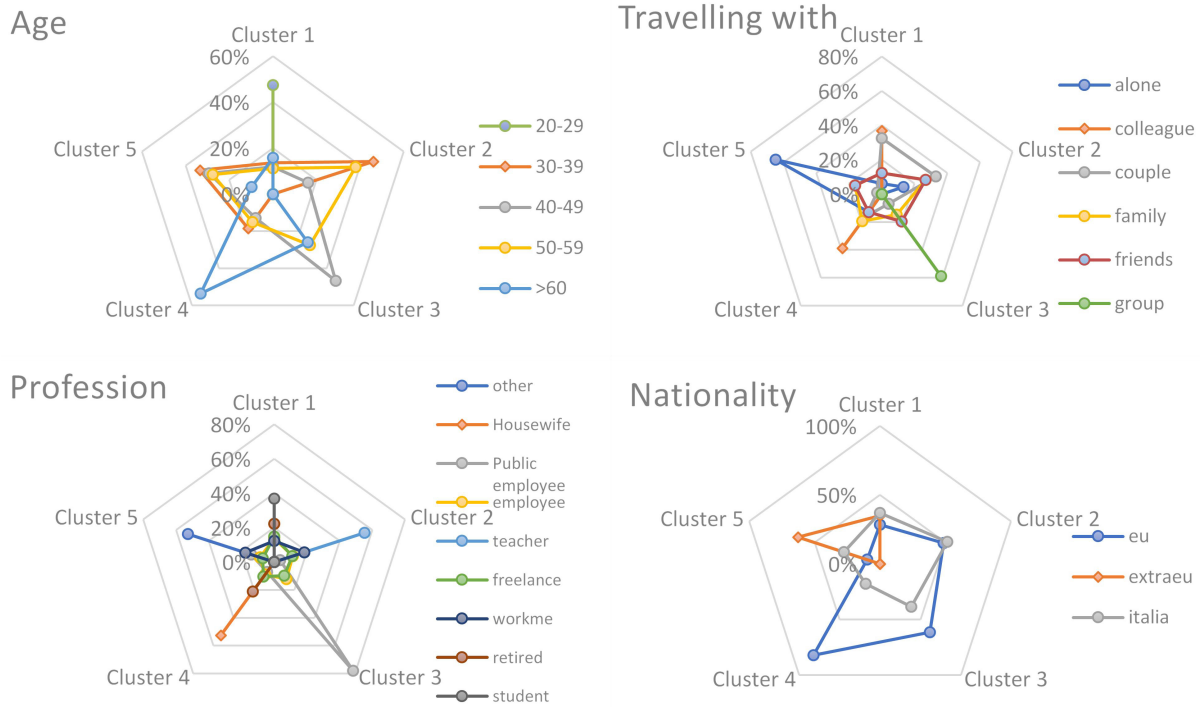


Figure 7: Personal Characteristics

	Cluster 1	Cluster 2	Cluster 3	Cluster 4	Cluster 5
Environmental local	0,07	0,13	0,10	0,35	0,07
Environmental territorial	0,05	0,06	0,08	0,02	0,04
Historican territorial	0,08	0,14	0,10	0,02	0,06
Historical local	0,04	0,13	0,07	0,02	0,03
Food	0,16	0,04	0,19	0,04	0,14
Leisure	0,19	0,02	0,17	0,03	0,12
Culture	0,00	0,01	0,03	0,00	0,00
Other	0,41	0,47	0,27	0,53	0,53

Table 4: Value function maximum value.

585 or group and that are mostly interested in environmental local opportunities and stayed in hotel less time than other groups of people. If the local government wants to attract such a group of people in the visitor low-season, then a new public policy needs to take into account the preferences and needs of such groups and focus, for example, on environmental elements and services that support the access of environmental local opportunities also in the winter season. This will expand the opportunity set valued from this group
590 of visitors and improve their quality of life. Moreover such a policy will consent to develop new services accessible by other group of inhabitants, thus enhancing their capability set. One more example: the Cluster 5 is composed by workers travelling alone from Italy or extra-European nations, that are interested in food and wine spaces and in leisure spaces. In this case we suggested the design of a policy that provides an agreement between hotel activities and recreational activities in order to suggest and encourage such group
595 of visitors to spend in Alghero city more days than those planned for their work. These are only some of the possible policies that can be deduced by the information gather from these results. The policy maker

	Cluster 1	Cluster 2	Cluster 3	Cluster 4	Cluster 5
Age					
<i>20-29</i>	15	0	0	0	0
<i>30-39</i>	20	45	0	36	17
<i>40-49</i>	25	18	55	14	42
<i>50-59</i>	20	36	27	14	33
<i>>60</i>	20	0	18	36	8
Nationality					
<i>eu</i>	65	73	82	93	42
<i>extraeu</i>	5	0	0	0	17
<i>italia</i>	30	27	18	7	42
Profession					
<i>Housewife</i>	0	0	0	21	0
<i>Public employee</i>	0	18	73	14	33
<i>employee</i>	50	54	18	29	41
<i>freelance</i>	30	27	9	21	17
<i>retired</i>	15	0	0	14	0
<i>student</i>	5	0	0	0	0
<i>other</i>	0	0	0	0	8
Travelling with					
<i>alone</i>	5	9	0	14	67
<i>colleague</i>	5	0	0	7	0
<i>couple</i>	75	64	36	50	8
<i>family</i>	10	18	27	21	17
<i>friends</i>	5	9	18	7	8
<i>group</i>	0	0	18	0	0

Table 5: Socio-demographic composition of clusters (%)

can focus on one group (as the example we gave) or on the inequalities among groups, thus considering how the context or a new policy can improve or limit some inhabitants. It depends on the interests of the policy maker how the information offered by our model can be used.

600 4.6. Towards decision maps.

Finally, the method we proposed consents to unveil the spatial distribution of values and capabilities and to design spatial decision maps helping in the policy making process.

605 In Figure 10 we propose a first attempt of spatialization of the values of urban attractions (i.e. urban opportunities) for the different clusters of inhabitants. We use the existent paths in order to understand the different distribution of values in space (the intensity of color in the map indicates an intensity of preference for that urban opportunity type). Figure 10 shows how the different groups of visitors value differently the possibility to use the space with respect to the opportunity offered by the different categories of attractions. This representation can be seen as the set of possible paths K that can be offered to the visitors that belongs in the same cluster. Meaning that a visitor that spent his day in the path $x_t \in K$ is also interested
610 in spending time in other paths internal to the K set.

Such spatial information is fundamental if we want to improve the set of urban capabilities of visitors with respect to their values, designing legitimated public policies. Improving the set of urban capabilities of visitors in a low season period means designing a strategic policy oriented to visitor deseasonalization and fostering a sustainable development of the territory.

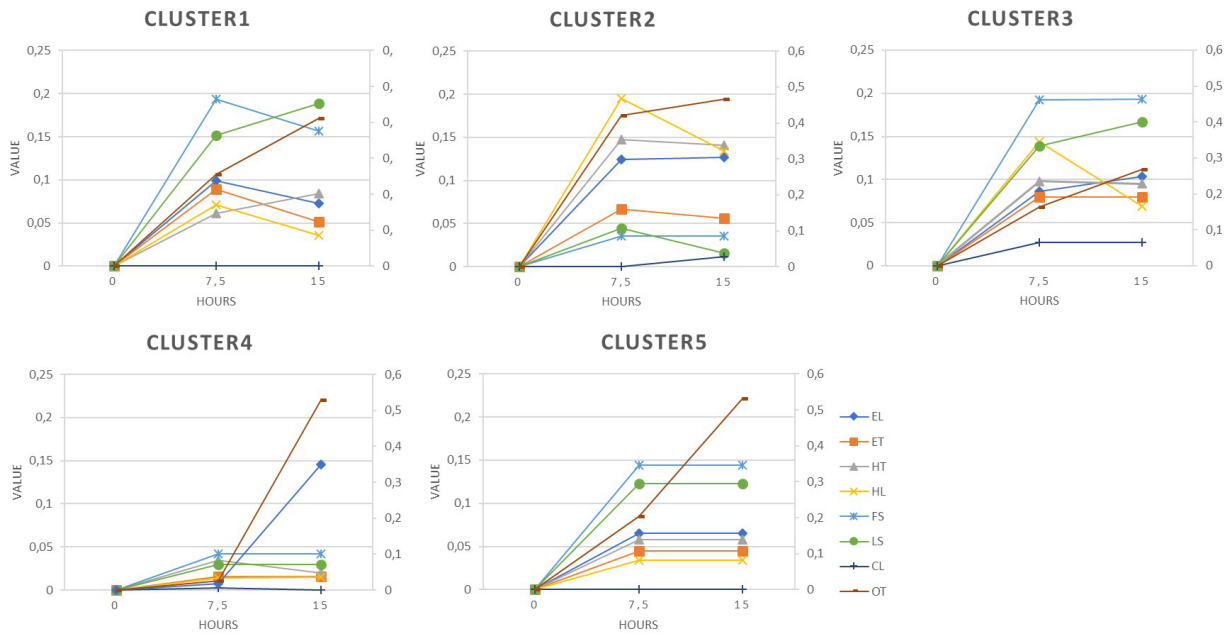


Figure 8: Utility Functions

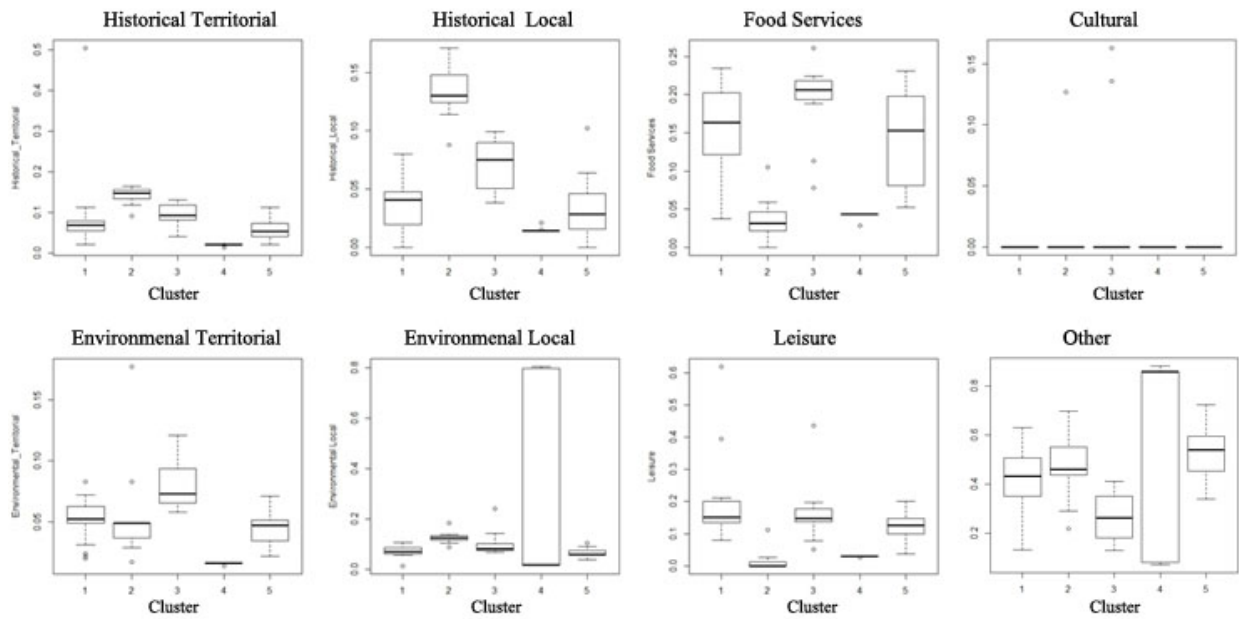


Figure 9: Boxplot of opportunities values for the different groups of visitors

615 4.7. Limitations and future works.

The proposed method has several limitations that we will improve in future works. We tested the method only in one city and with one population (the visitors). On this behalf, we warn the reader that the model should be customized for a different city. For example, the measure of the urban and environmental values in a different city may entail the analysis of a different set of urban and territorial opportunity sets. In

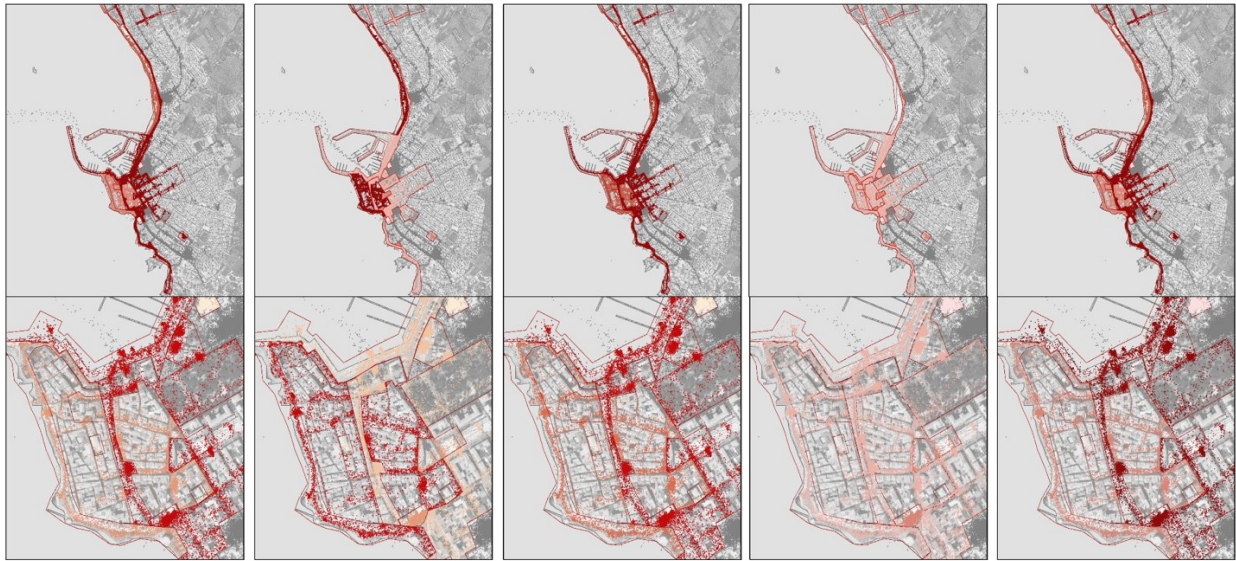


Figure 10: Spatial decision map: summary of clusters. (In order, 1-2-3-4-5 cluster)

620 addition, results of the study cannot be replicable for other cities because are context embedded and depend
on the population composition we analysed. We are conscious that the survey should be improved: an ad
hoc survey will be the best way to collect behavioural information, moreover, the data collection sample
size should be larger, as well as the period of time for collecting data should be enlarged. The method
should be tested with a more large and differentiated group of city users (inhabitants of the city) in order
625 to give a more complete and useful information to policy makers. Moreover, the method as presented here,
is composed of several steps that take a large amount of time for the elaboration. This is due because of the
lack of softwares that work in an integrated way with spatial information and the multicriteria analysis of
value functions. Finally, the method to build the value functions could be enhanced considering the spatial
variability of the functions. Authors are conscious that the value functions may differ in different point in
630 space.

5. Conclusions.

In this work we proposed a replicable method for policy analytics aimed to determine inhabitants' val-
ues of space: values that individuals give to different territorial opportunities in space within a capability
approach framework using multi-attribute value theory. The problem consisted in assessing individual pref-
635 erences about space in order to allow designing legitimated public policies. Our main aim was to demonstrate
the necessity to consider how individual's values matter when we evaluate environmental opportunities and
to propose and test a new method for the analysis of such values in space. We claim that multi-attribute
value theory can offer useful methods in order to unveil the values of what people do and what they believe
in space (i.e. developing a set of capabilities). Values of space are useful in order to unveil the desirability
640 of future public policies for different categories of inhabitants. This is due to the overturning from the
evaluation of alternatives (endowments and conditions offered by the context) to the evaluation of the value
of the opportunities given by such alternatives. These values allows to evaluate the urban capabilities people
are interested to choose and develop.

Results of the experiment proposed in this paper allow to define groups of people that value similarly
645 the different set of urban opportunities. This confirmed our thesis about the subjective values of spaces.
Moreover, these results consented to define the Pareto frontier that describes an approximation of the urban
capability set of such groups of inhabitants.

The method we proposed have important implication for the policy making. There are twofold interesting results that can be deducted from this experiment: on one side the policy maker can help by designing policies that expand the set of urban opportunities valued most important for a particular group of inhabitants. On the other side, the policy maker can observe the capability set of the different groups of inhabitants and design new policies aimed to compensate the limit on urban capabilities of such groups by enlarging their urban opportunities. This will consent to expand the urban opportunities and therefore improving the urban wellbeing of multiple class of inhabitants. For example, the design of public policies that consider visitors' values can strategically improve the quality of life of the territory in terms of the capability set offered to the whole population. Thus, beside a territorial development in a mere economic visitor vision, our method allows to design a policy oriented to expand urban opportunities that can become part of the territorial assets and for which all the inhabitants can benefit. A policy attentive to different peoples values can help in developing personal urban capabilities with the improvement and extension of such urban opportunities that are most valued by this occasional population.

The proposed method generates results that are useful in order to evaluate existing policies as well as designing new ones, since it elaborates a partial order of the values (i.e the objectives) that the project alternatives need to meet for the different groups of inhabitants. Doing this, it offers useful information for designing new policies, by unveiling inequalities in spaces and among individuals; and for the evaluation of new ones as it allows to measure the impact that a new policy can have for a population or a specific territory. Moreover, the method we proposed allows to take into consideration the different preferences of the stakeholders in a possibly participatory process, since it consents to classify inhabitants in groups with similar values and to design personalized policies.

Finally, our method want to be a first attempt to use MCDA and GIS methods in an integrated way in order to define policy analytics methods oriented to design legitimated public policies in a capability approach framework. We are conscious that this is only a first experiment and for this reason our research will be deepen in this sense in further works.

References

- Ahas, R., Aasa, A., Mark, Ü., Pae, T., Kull, A., 2007. Seasonal tourism spaces in Estonia: Case study with mobile positioning data. *Tourism Management* 28, 898–910.
- Alkire, S., Foster, J., Seth, S., Santos, M.E., Roche, J.M., Ballon, P., 2015. Multidimensional Poverty Measurement and Analysis: Chapter 1 Introduction. SSRN Electronic Journal doi:10.2139/ssrn.2564702.
- Ananda, J., Herath, G., 2003. Incorporating stakeholder values into regional forest planning: A value function approach. *Ecological Economics* 45, 75–90.
- Aranburu, I., Plaza, B., Esteban, M., 2016. Sustainable cultural tourism in urban destinations: Does space matter? *Sustainability* 8, 1–14.
- Beinat, E., 1997. *Value Functions for Environmental Management*. Springer, Dordrecht.
- Blečić, I., Canu, D., Cecchini, A., Congiu, T., Fancello, G., Mauro, S., Sacerdotti, S.L., Trunfio, G.A., 2016. Coupling Surveys with GPS Tracking to Explore Tourists' Spatio-Temporal Behaviour, in: *Lecture Notes in Computer Science*. Springer. volume 9789, pp. 150–160.
- Blečić, I., Cecchini, A., Congiu, T., Fancello, G., Trunfio, G.A., 2015a. Evaluating walkability: a capability-wise planning and design support system. *International Journal of Geographical Information Science* 29, 1350–1374. doi:10.1080/13658816.2015.1026824.
- Blečić, I., Cecchini, A., Fancello, G., Talu, V., Trunfio, G.A., 2015b. Walkability and urban capabilities: evaluation and planning decision support. *Territorio Italia* 1, 51–66.
- Blečić, I., Cecchini, A., Talu, V., 2013. The Capability Approach in Urban Quality of Life and Urban Policies: Towards a Conceptual Framework, in: Serreli, S. (Ed.), *City Project and Public Space*. Springer Netherlands, Dordrecht, pp. 269–288.
- Bruno, A., Gasca, E., Mauro, S., Pollichino, G., Sacerdotti, S.L., Stupino, F., 2010. Undersanding tourist behaviour in wide áreas using GPS technologies. *E-Review of Tourism Reseach* .
- Calabrese, F., Ratti, C., 2006. Real Time Rome. *Networks and Communication Studies NETCOM* 20, 247–258.
- Cannaos, C., Cecchini, A., Onni, G., Fancello, G., Blečić, I., Canu, D., 2014. IX Rapporto sul turismo ad Alghero ed in provincia di Sassari. Stagioni 2013, 2014. Technical Report. Tourism Observatory - LAMP Laboratory - Department of Architecture, Design and Urban Planning. Alghero.
- Chhetri, P., Corcoran, J., Arrowsmith, C., 2010. Investigating the Temporal Dynamics of Tourist Movement: An Application of Circular Statistics. *Tourism Analysis* 15, 71–88.
- Dasgupta, P., 2001. *Human Well-Being and the Natural Environment*. Oxford Paperbacks, New York.

- Demesouka, O.E., Vavatsikos, A.P., Anagnostopoulos, K.P., 2013. Spatial UTA (S-UTA) - A new approach for raster-based GIS multicriteria suitability analysis and its use in implementing natural systems for wastewater treatment. *Journal of Environmental Management* 125, 41–54.
- 705 Edwards, D., Griffin, T., Hayllar, B., Dickson, T., 2009. Using GPS to Track Tourists Spatial Behaviour in Urban Destinations. *SSRN Electronic Journal* .
- Ferretti, V., Bottero, M., Mondini, G., 2014. Decision making and cultural heritage: An application of the Multi-Attribute Value Theory for the reuse of historical buildings. *Journal of Cultural Heritage* 15, 644–655.
- Frediani, A.A., 2015. Space and Capabilities: Approaching Informal Settlement Upgrading through a Capability Perspective., in: *EADI Global Development Series*. (Ed.), *The City in Urban Poverty*. Palgrave Macmillan, London, pp. 64–84.
- 710 Fürnkranz, J., Hüllermeier, E., 2010. *Preference Learning: an introduction*. Springer Berlin.
- Gower, J.C., 1971. A General Coefficient of Similarity and Some of Its Properties. *Biometrics* 27, 857–871.
- Haab, T.C., McConnell, K.E., Bishop, R.C., 2002. *Valuing Environmental and Natural Resources*. Edward Elgar Publishing Limited, Northampton.
- 715 Harju, M., Liesjö, J., Virtanen, K., 2018. Spatial multi-attribute decision analysis: Axiomatic foundations and incomplete preference information. *European Journal of Operational Research* 275, 167–181.
- Harvey, D., 2003. The right to the city. *International Journal of Urban and Regional Research* 27, 939–941.
- Herstraand, T., 1970. What about people in regional science? *Papers in Regional Science* 24, 7–24.
- Jacquet-Lagrèze, E., Siskos, Y., 1982. Assessing a set of additive utility functions for multicriteria decision-making, the UTA method. *European Journal of Operational Research* 10, 151–164.
- 720 Jacquet-Lagrèze, E., Siskos, Y., 2001. Preference disaggregation: 20 Years of MCDA experience. *European Journal of Operational Research* .
- Kassambara, A., 2017. *Practical Guide to Principal Component Methods in R*. STDA.
- Kaufman, L., Kaufman, L., Rousseeuw, P.J., Rousseeuw, P.J., 2005. *Finding Groups in Data: An Introduction to Cluster Analysis*. Wiley Online Library.
- 725 Keeney, R.L., 1992. *Value-focused thinking: A Path to Creative Decisionmaking*. Harvard University Press.
- Keeney, R.L., 1994. Creativity in Decision Making with Value-Focused Thinking. *Sloan Management Review* , 33–41.
- Keeney, R.L., Raiffa, H., 1976. *Decisions with multiple objectives. Preference and Value Tradeoffs*. 1993 ed., Cambridge University Press.
- 730 Kellner, L., Egger, R., 2016. Tracking tourist spatial-temporal behavior in urban places, a methodological overview and GPS case study. *Information and Communication Technologies in Tourism 2016* , 481–494.
- Kostkowski, M., Slowinski, R., 1996. UTA+ Application (v. 1.20)-User's manual. URL: <https://www.lamsade.dauphine.fr/spip.php?article566&lang=fr>.
- Kwan, M.P., 2002. Time, Information Technologies, and the Geographies of Everyday Life. *Urban Geography* 23, 471–482.
- 735 Malczewski, J., Rinner, C., 2015. *Multicriteria Decision Analysis in Geographic Information Science*. Springer US.
- Martin, W.E., Wise Bender, H., Shields, D.J., Bender, H.W., Shields, D.J., 2000. Stakeholder objectives for public lands: Rankings of forest management alternatives. *Journal of Environmental Management* 58, 21–32.
- Martinotti, G., 1993. *Metropoli. La nuova morfologia sociale della città*. Il Mulino.
- Miller, H.J., 2005. A Measurement Theory for Time Geography. *Geographical Analysis* 37, 17–45.
- 740 Nussbaum, M.C., 2005. Capabilities as fundamental entitlements: Sen and social justice, in: Kaufman, A. (Ed.), *Capabilities equality: Basic Issues and Problems*. Routledge, pp. 54–80.
- Nuvolati, G., 2003. Resident and non-resident populations: Quality of life, mobility and time policies. *Journal of Regional Analysis and Policy* 33, 67–83.
- Ostrom, E., 2015. *Governing the commons: The evolution of institutions for collective action*. Cambridge University Press.
- 745 Pawlak, Z., 1982. Rough sets. *International Journal of Computer & Information Sciences* .
- Pearce, D., 1998. Cost-Benefit Analysis and Environmental Policy. *Oxford Review of Economic Policy* 14, 84–100.
- Pearce, G., Pearce, D.G., 1988. Tourist Time-Budgets. *Annals of Tourism Research* 15, 106–121.
- Raiffa, H., 1969. *Preferences for Multi-Attribute Alternatives*. Technical Report. RM-5868-DOT, The RAND Corporation, Santa Monica, California.
- 750 Rescher, N., 1969. *Introduction to Value Theory*. Prentice Hall, Englewood Cliffs.
- Robeyns, I., 2005. The Capability Approach: a theoretical survey. *Journal of Human Development* 6, 93–117.
- Robinson, J., 2001. Milestone report: A review of techniques to value environmental resources in coastal zones. Technical Report July. CRC for Coastal Zone Estuary and Waterway Management, University of Queensland.
- Roy, B., Vincke, P., 1981. Multicriteria analysis: survey and new directions. *European Journal of Operational Research* .
- 755 Sen, A., 1995. Environmental Evaluation and Social Choice: Contingent Valuation and the Market Analogy. *Japanese Economic Review* 46, 23–37.
- Sen, A., 1999. *Development as Freedom*. Anchor Book, New York.
- Sen, A., 2009. *The Idea of Justice*. Harvard University Press, Cambridge.
- Shoval, N., Isaacson, M., 2007. Tracking tourists in the digital age. *Annals of Tourism Research* 34, 141–159.
- 760 Shoval, N., Isaacson, M., 2010. *Tourist Mobility and Advanced Tracking Technologies*. Routledge.
- Shoval, N., Isaacson, M., Chhetri, P., 2014. GPS, Smartphones, and the Future of Tourism Research. *The Wiley Blackwell Companion to Tourism* , 251–261.
- Shoval, N., McKercher, B., Birenboim, A., Ng, E., 2015. The application of a sequence alignment method to the creation of typologies of tourist activity in time and space. *Environment and Planning B: Planning and Design* 42, 76–94.
- 765 Siskos, Y., Assimakopoulos, N., 1989. Multicriteria Highway Planning: a case study. *Math. Comput. Modelling* 12, 1401–1410.
- Siskos, Y., Grigoroudis, E., Matsatsinis, N.F., 2005. UTA METHODS General philosophy, in: Greco, S. (Ed.), *Multiple Criteria*

Decision Analysis: State of the Art Surveys. Springer, New York, pp. 297–334.

Siskos, Y., Grigoroudis, E., Matsatsinis, N.F., 2016. UTA methods, in: Greco, S., Ehrgott, M., Figueira, J. (Eds.), Multiple Criteria Decision Analysis. International Series in Operations Research & Management Science. Springer, New York. volume 233, pp. 315–362.

770

Soja, E.W., 2010. Seeking spatial justice. Minnesota Press, Minneapolis.

Valiakos, A., Siskos, Y., 2015. Multicriteria decision support for the evaluation of agricultural units in Greece. Operational Research 15, 379–393.

Ward, J.H., 1963. Hierarchical grouping to optimize an objective function. Journal of the American Statistical Association 58, 236–244.

775

von Winterfeldt, D., Edwards, W., 1986. Decision Analysis and Behavioural Research. Cambridge University Press, Cambridge.

Acknowledgements We thank the two anonymous reviewers for your helpful comments on the manuscript.